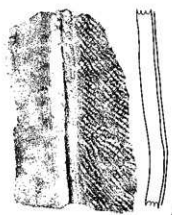
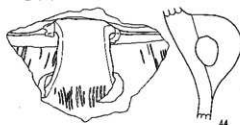


中期後葉の土器 59 (周代遺跡群 SB5340)

1層 (44)

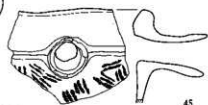


43



44

埋土 (45~47)



45



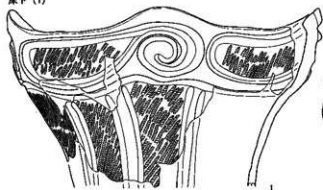
46



47

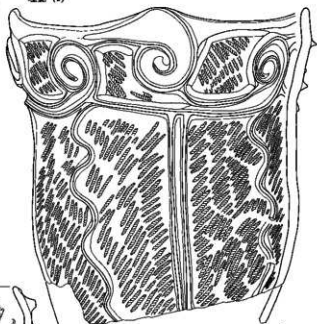
SB5341 (1~10)

床下 (1)



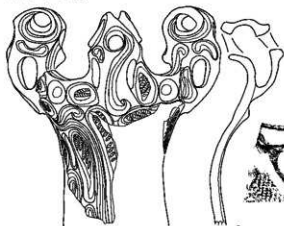
1

埋土 (2)



2

伊 (3・4・6~10)



3



4

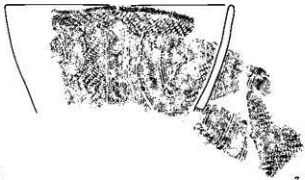
床 (5)



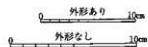
5

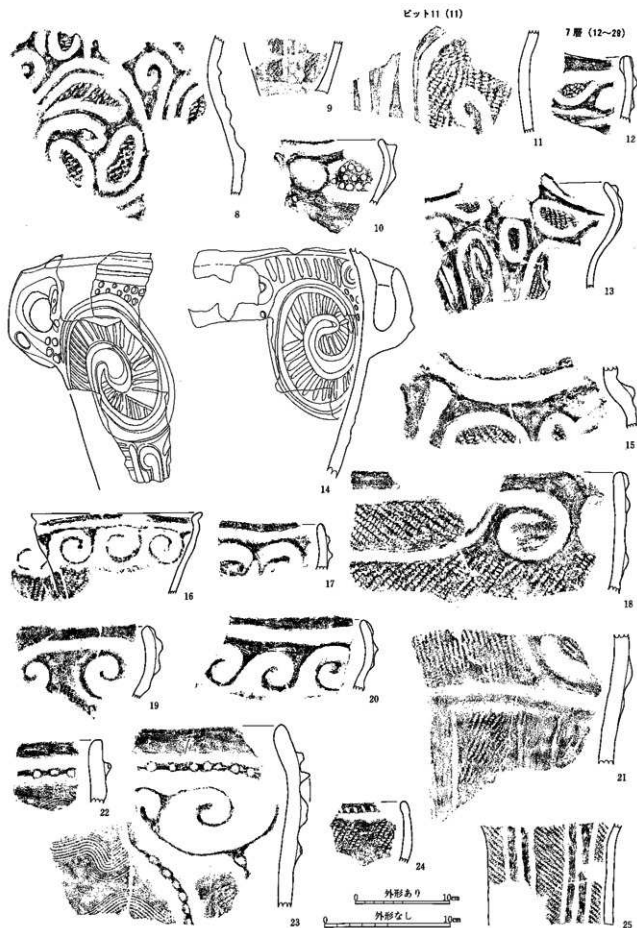


6

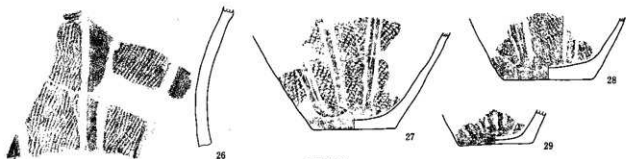


7



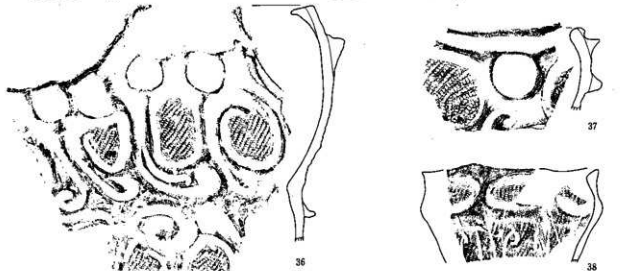
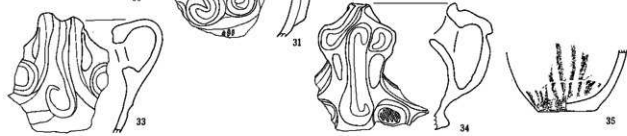


中期後葉の土器 61 (層代違群 SBS341)

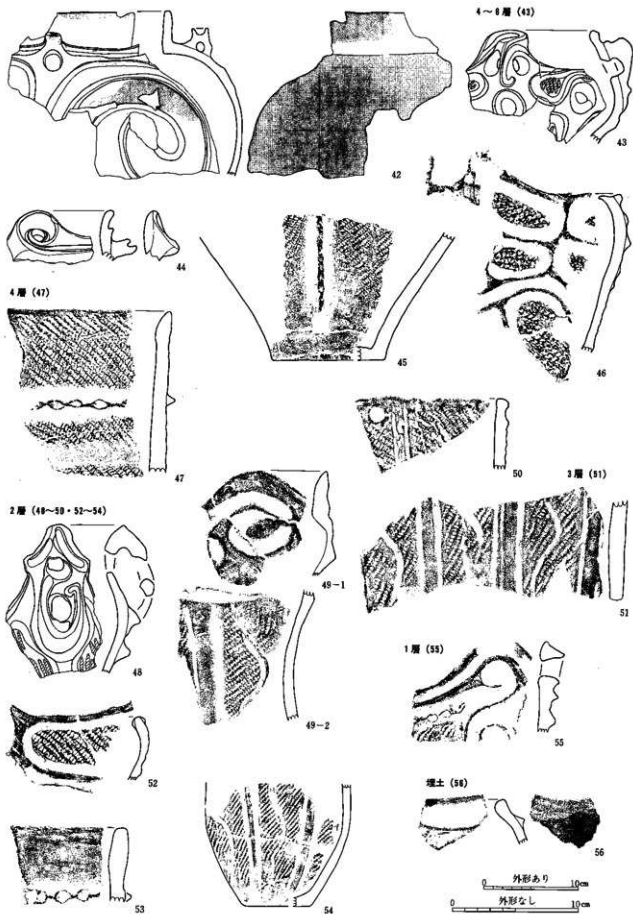


5層 (30・31・32・42・44~46)

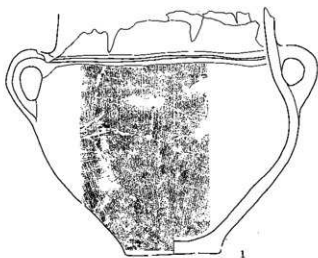
6層 (32)



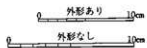
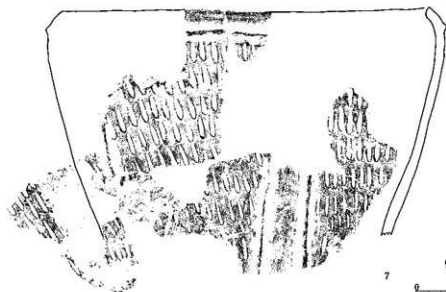
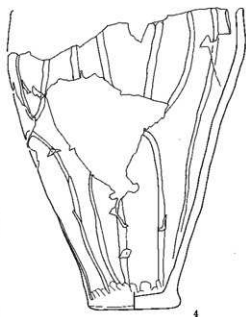
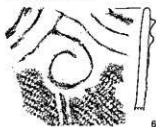
0 外形あり 10cm
0 外形なし 10cm



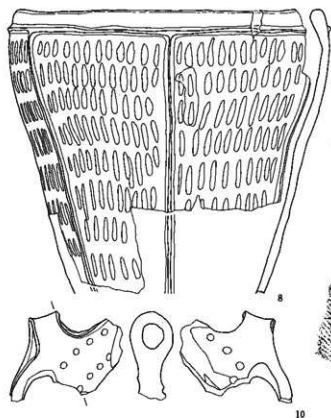
SB5342 (1~12)
 埴輪 (1~4)



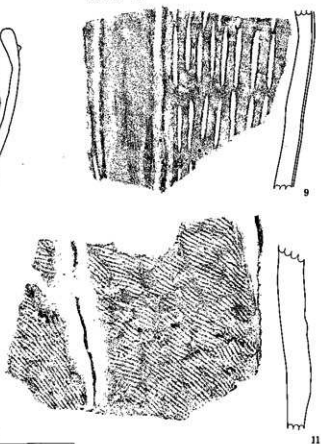
埴土 (5・7・9~12)



1層構造 (8)

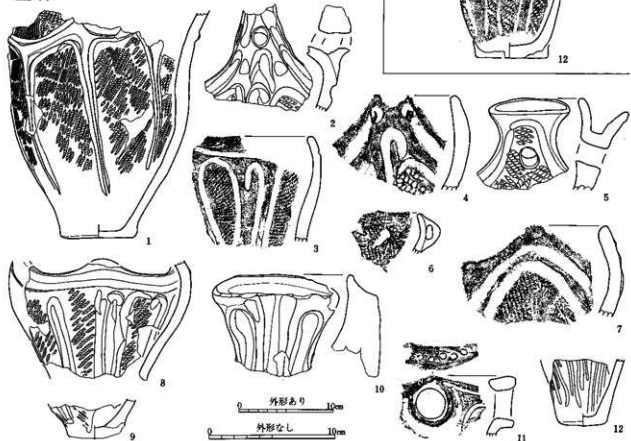


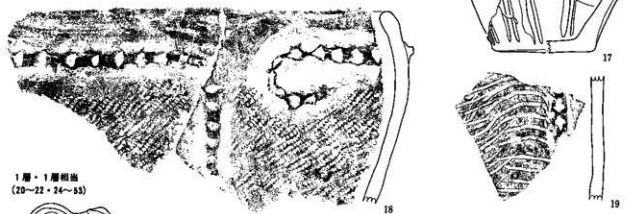
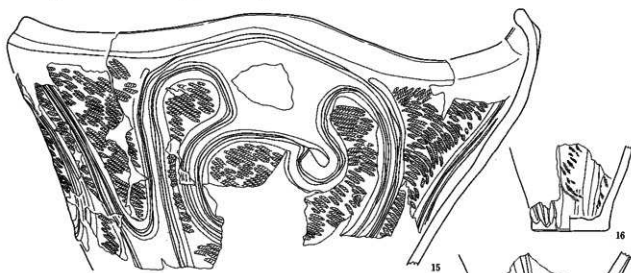
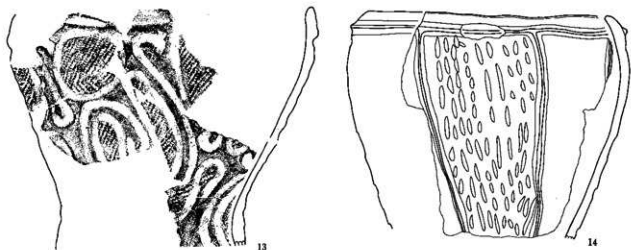
埋土 (9~12)



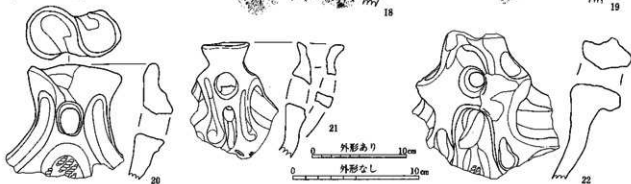
SB5343 (1~53)
埋土 (1)

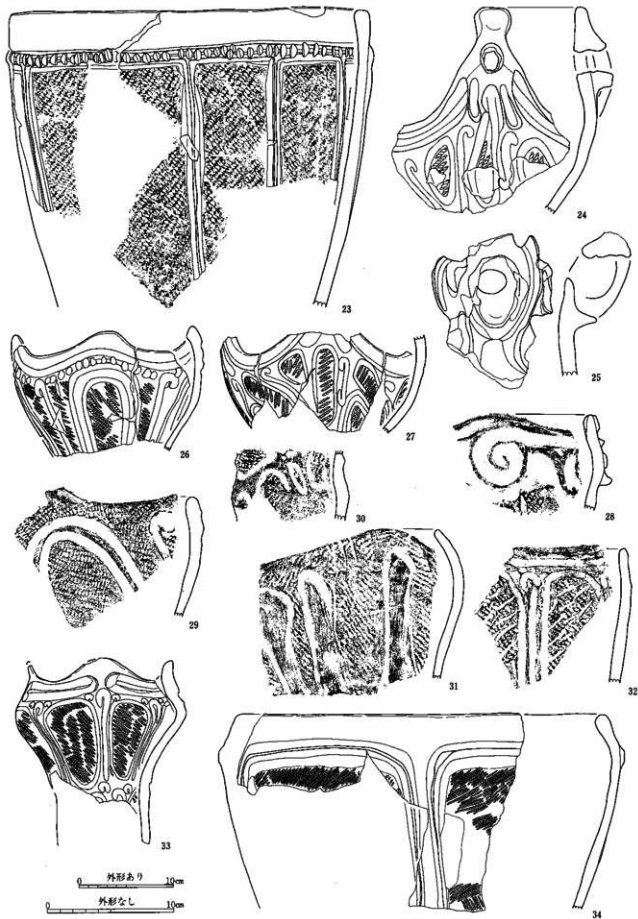
2層 (2~13・23)



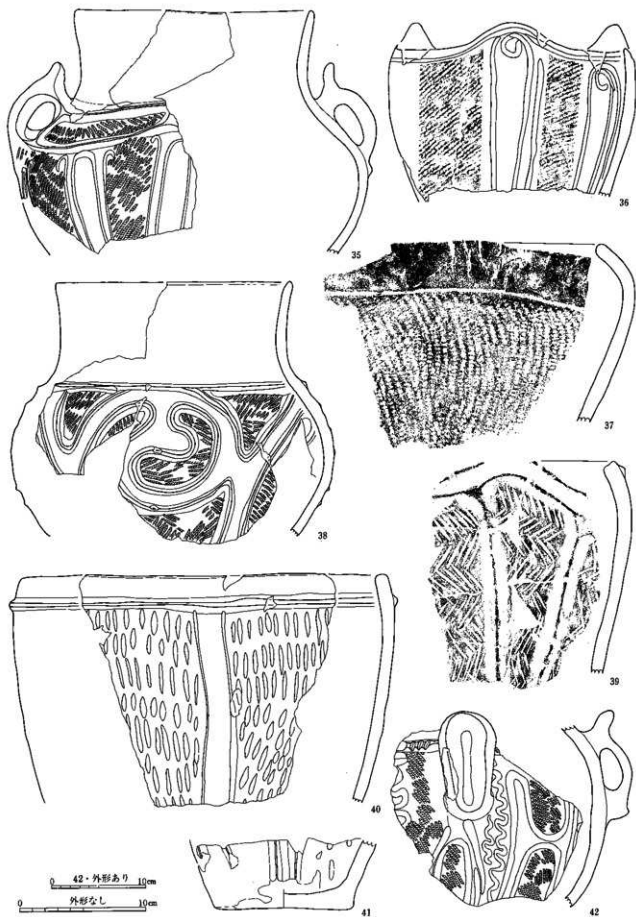


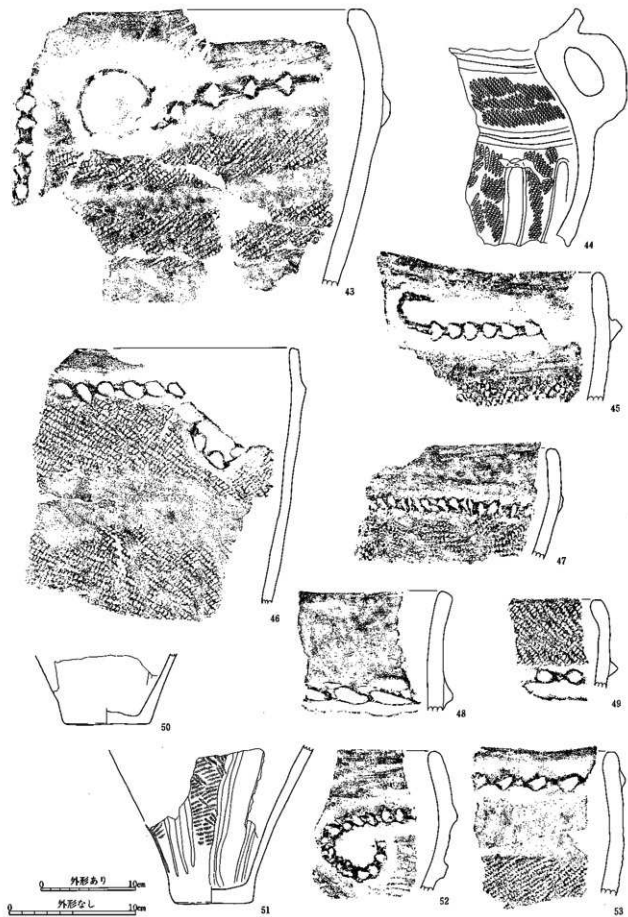
1層・1層相出
(20~22・24~25)





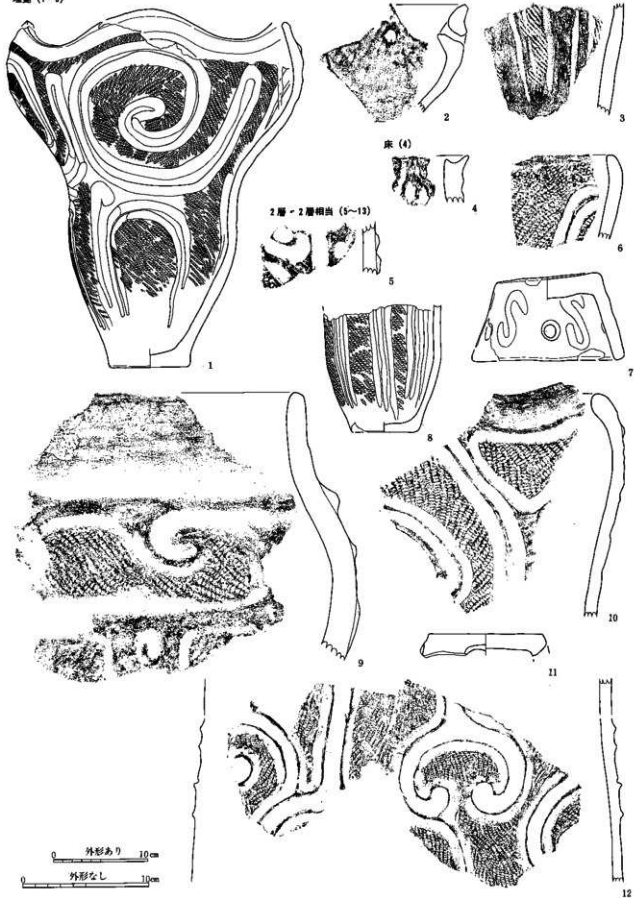
中期後葉の土器 67 (現代遺跡群 SBS343)



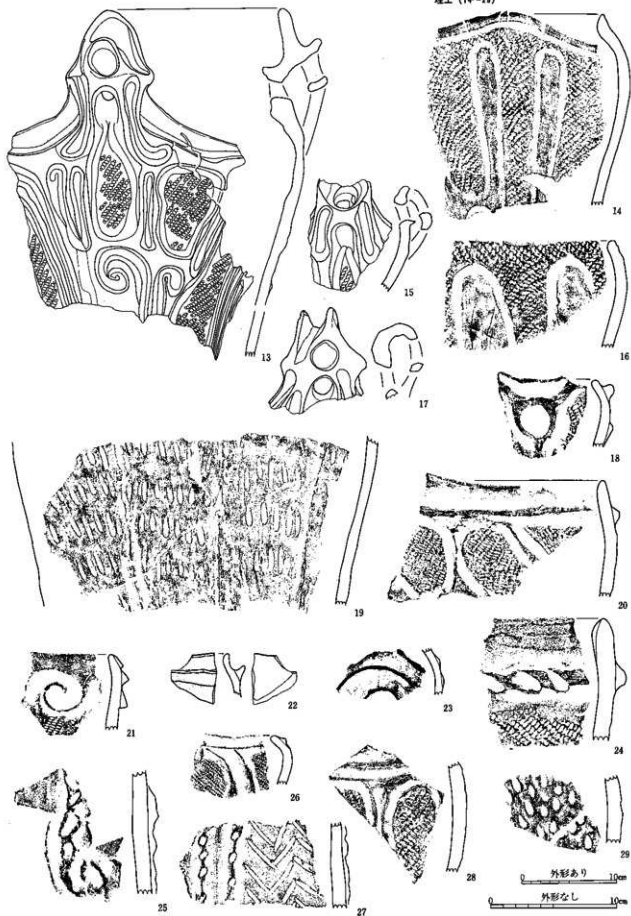


中期後葉の土器 69 (層代遺群群 SBS343)

SBS344 (1~28)
 深鉢 (1~3)



埴土 (14~18)



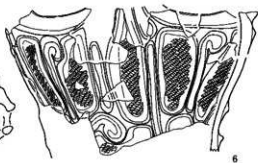
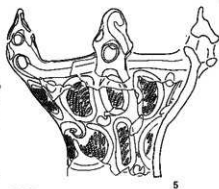
SB5345 (1~10)
 埴輪 (1~3)



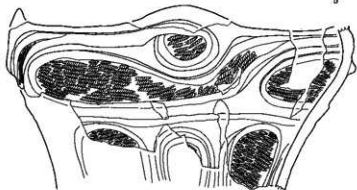
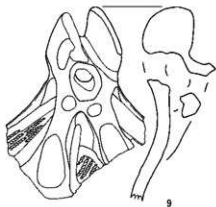
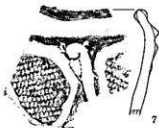
床 (4)



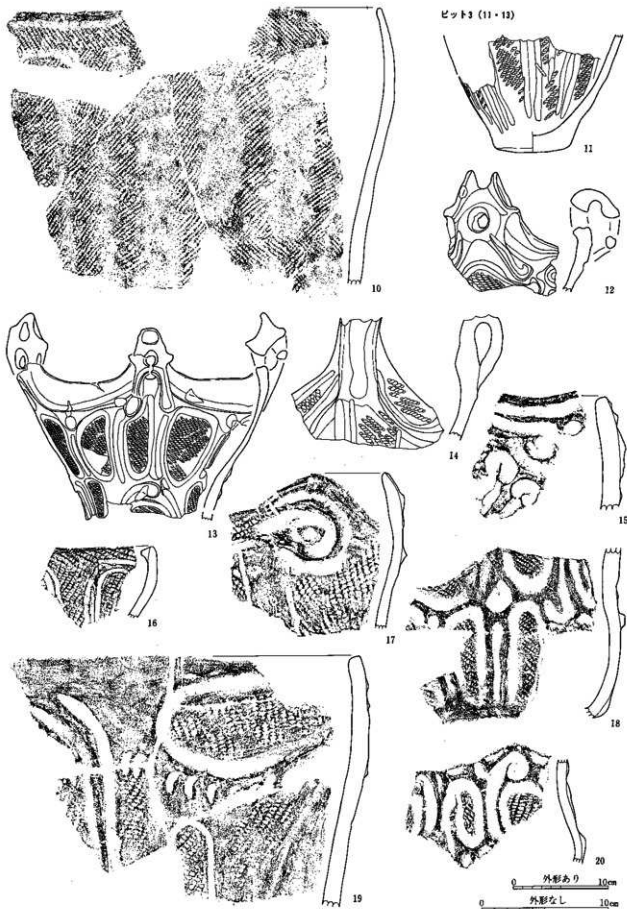
埴7層 (5・8・10)



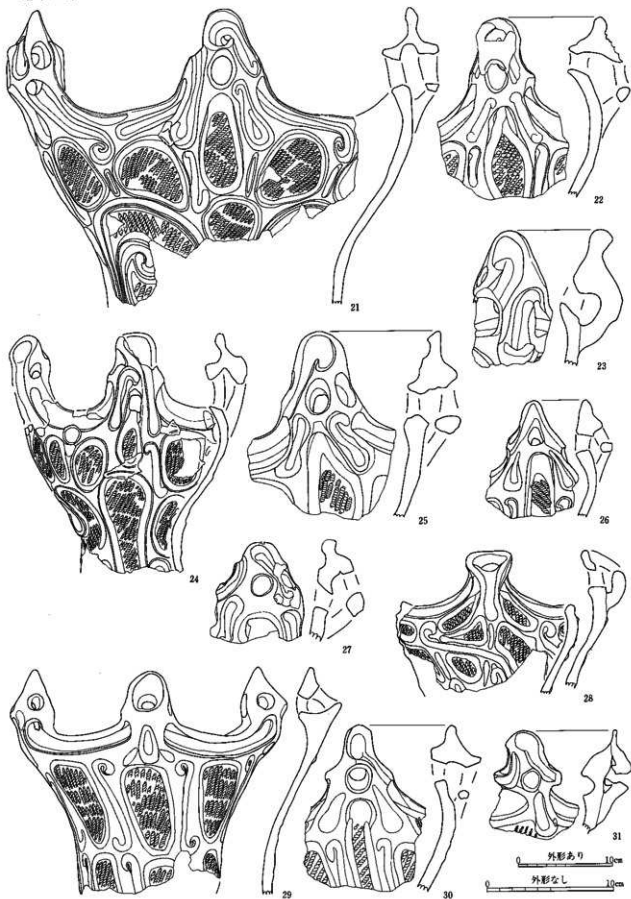
5層 (7・9・12・14~18)

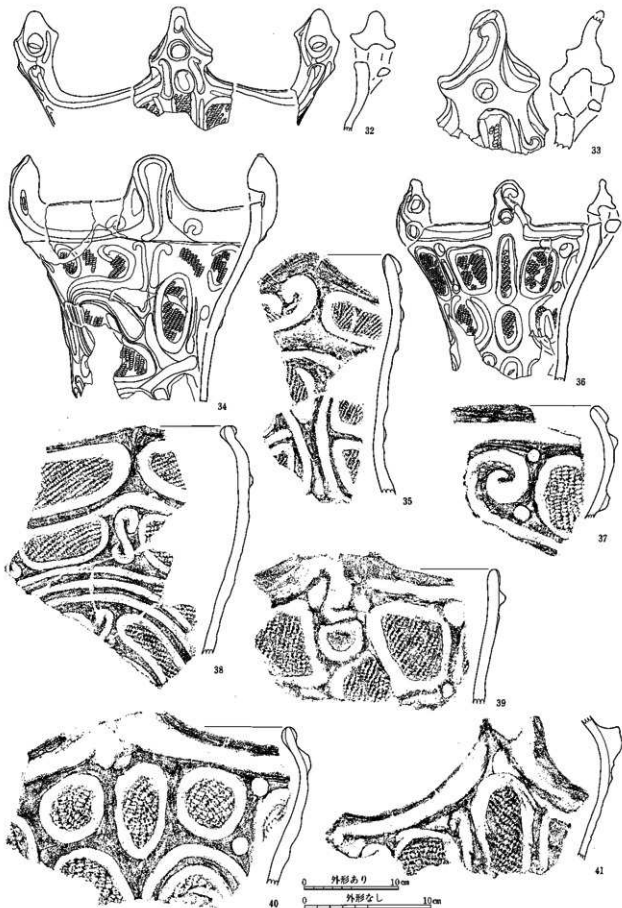


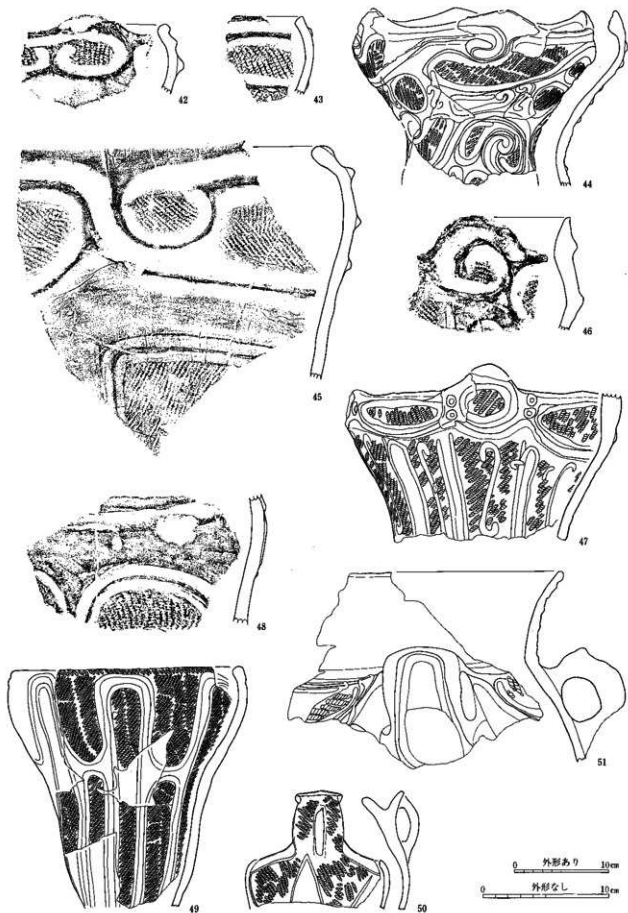
0 外形あり 10cm
 0 外形なし 10cm

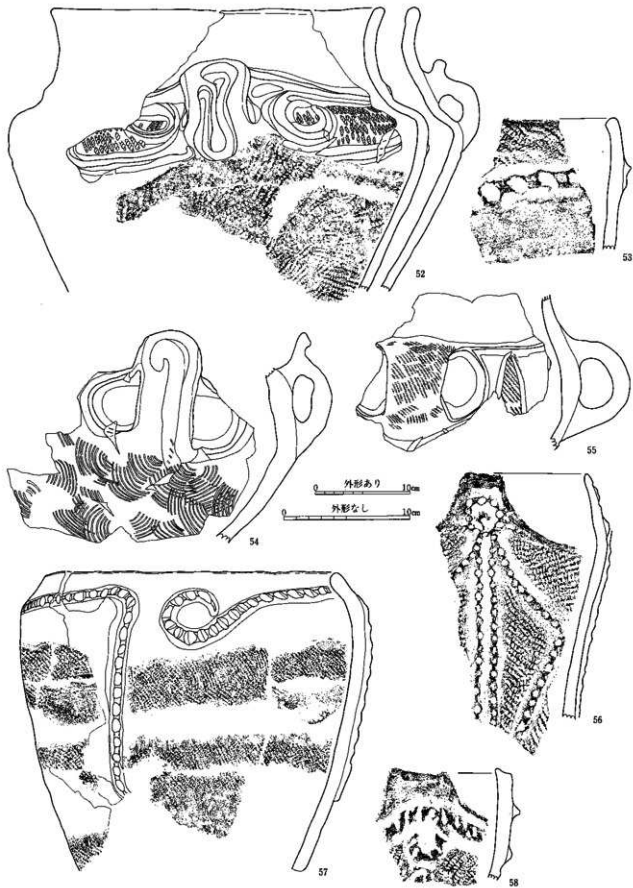


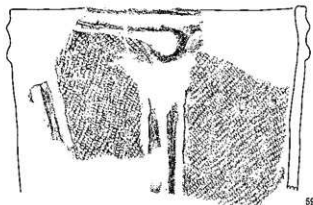
2層 (21~31)



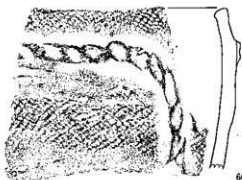








59



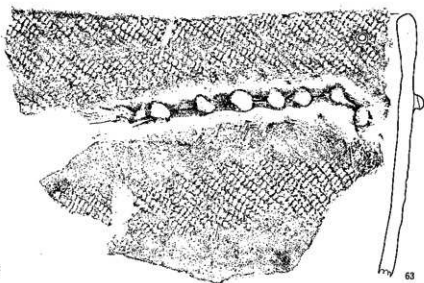
60



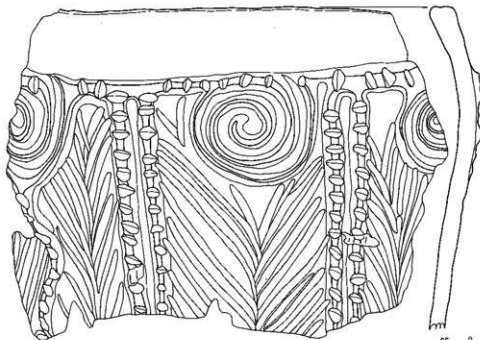
61



62



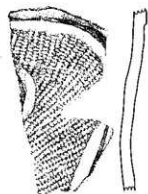
63



64



65



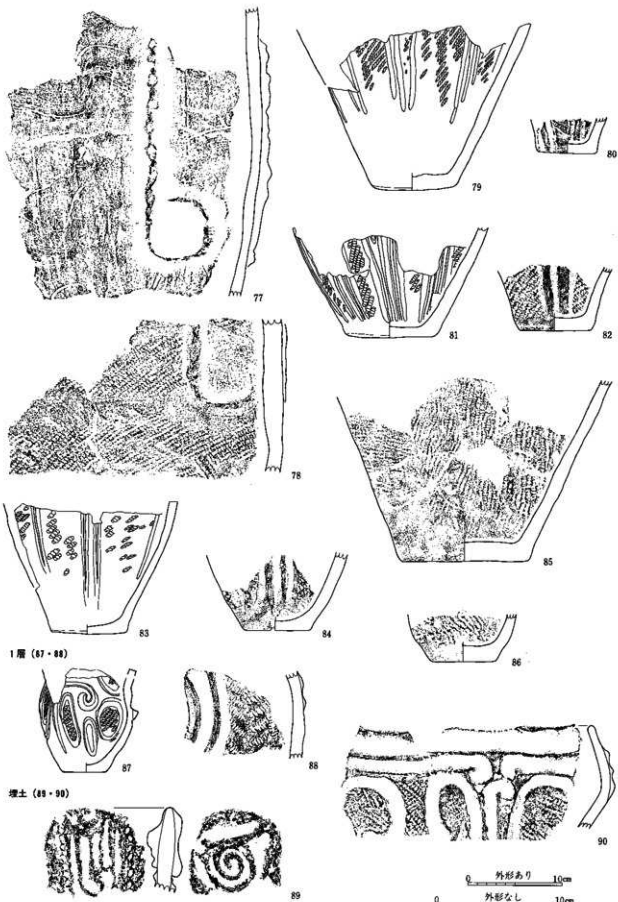
66

0 外形あり 10cm

0 外形なし 10cm



中期後葉の土器 78 (埴代遺跡群 SBS345)

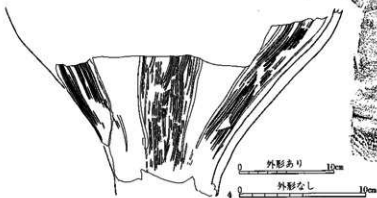
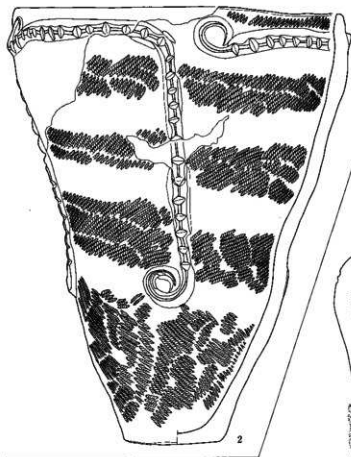
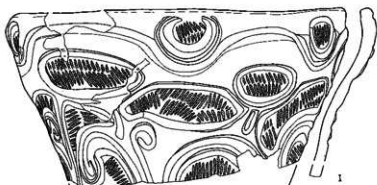


1層 (87・88)

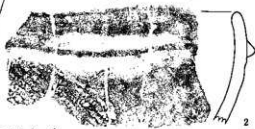
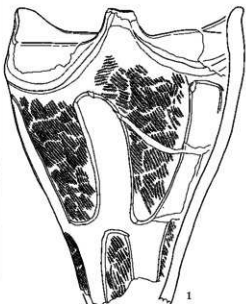
埋土 (89・90)

0 外形あり 10cm
0 外形なし 10cm

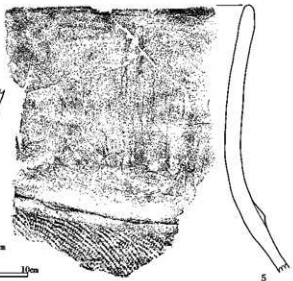
SB5346 (1・2)
埴輪 (1・2)

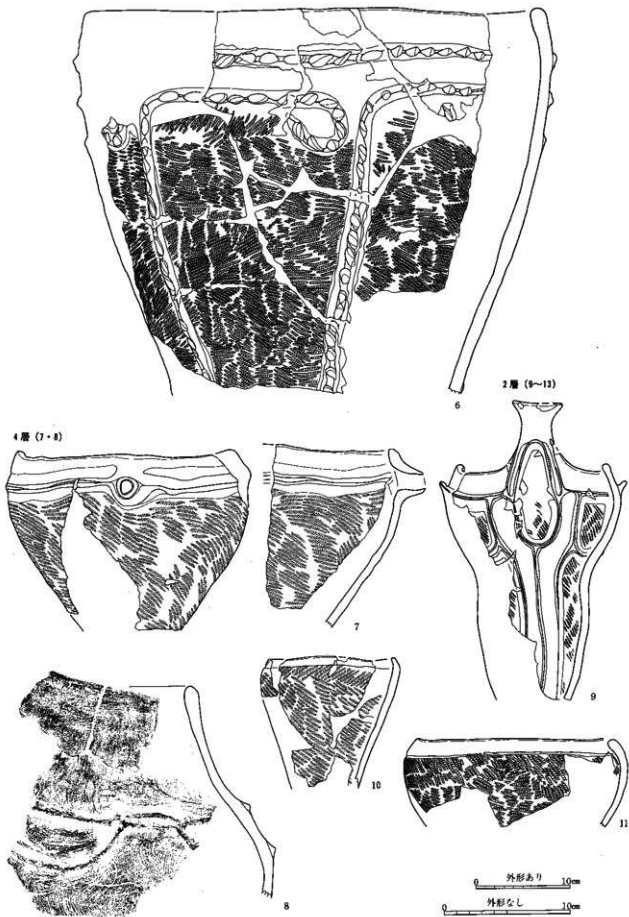


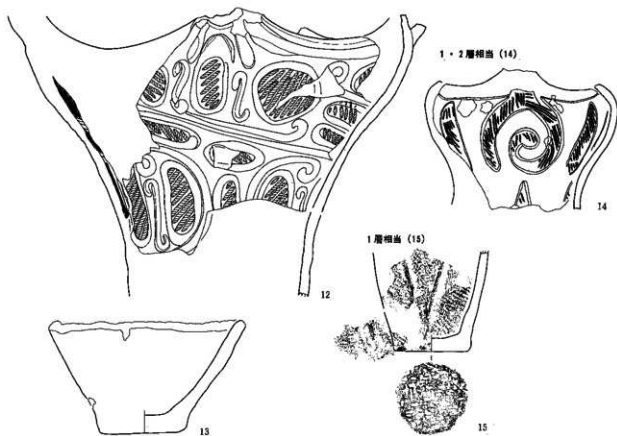
SB5348 (1~15)
8層相出 (1~2)



5層相出 (3~6)



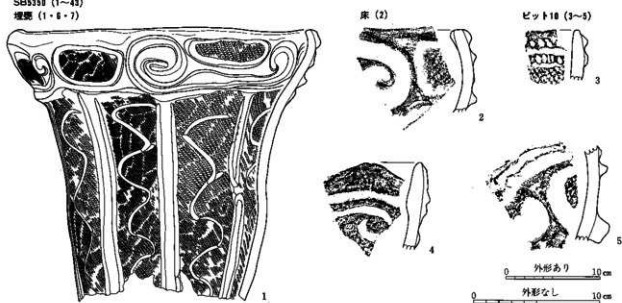


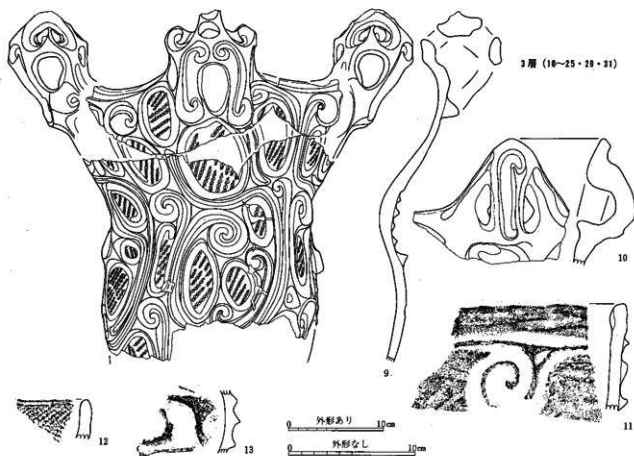
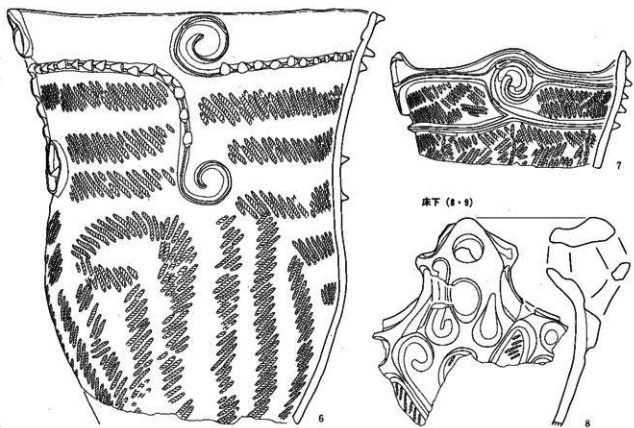


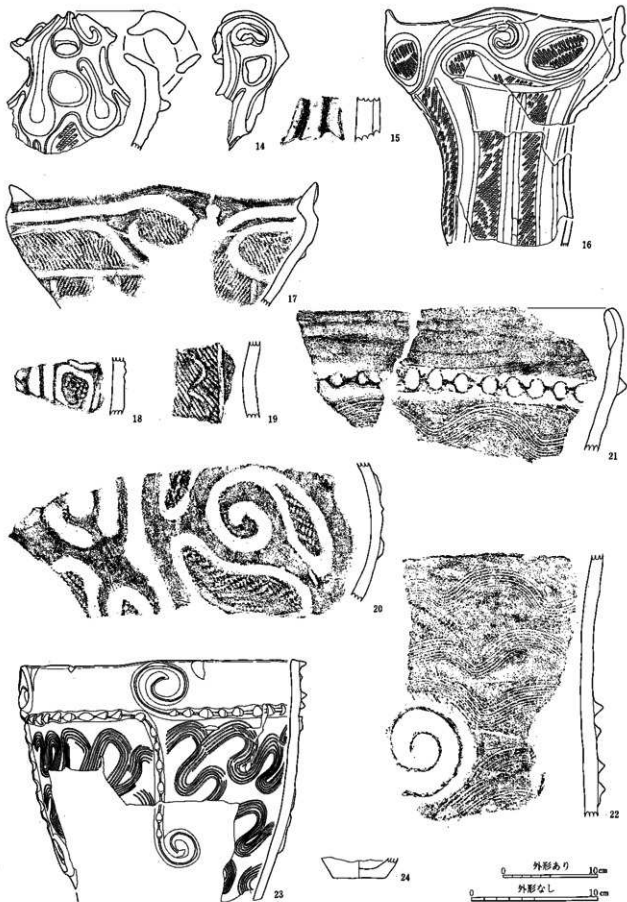
SB5348 (1~3)
埋土 (1~3)

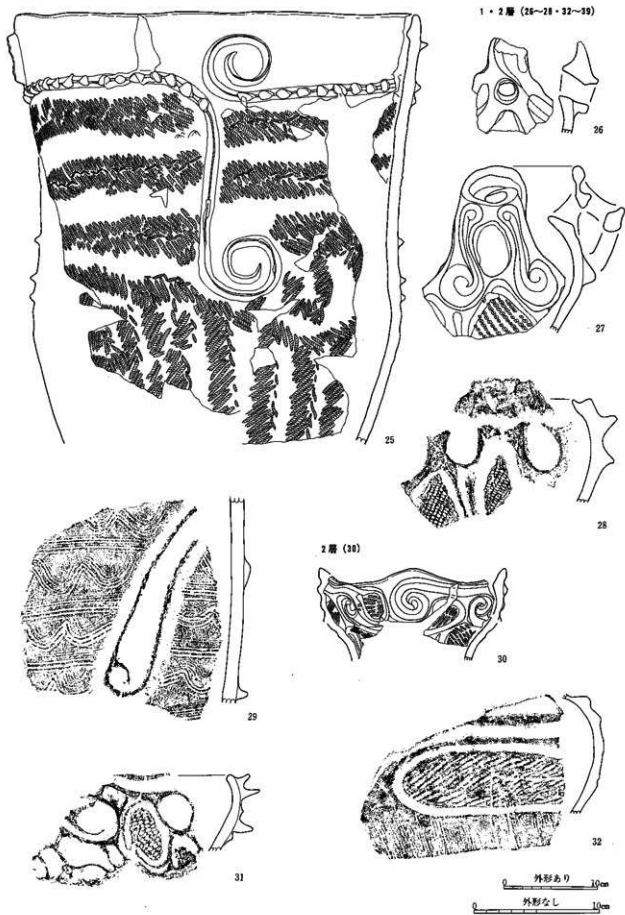


SB5358 (1~4)
埋土 (1・3・7)











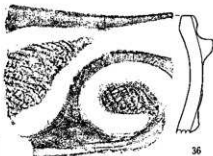
33



34

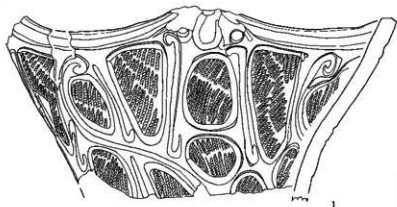


35



36

SB5351 (1~34)
埋藏 (1~4)



1



2



37



38



39

1層 (40・41)



40

41

埋土 (42・43)

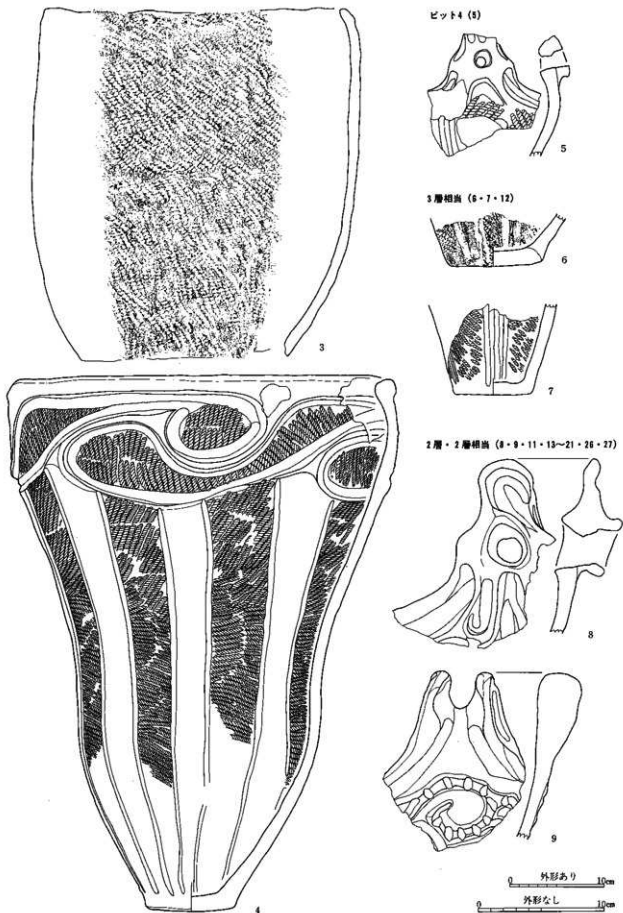


42

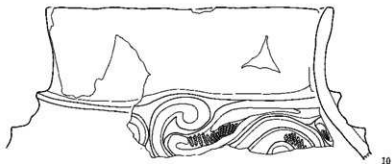
43

0 外形あり 10cm

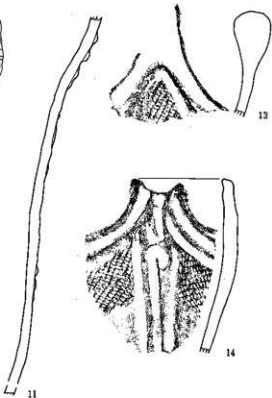
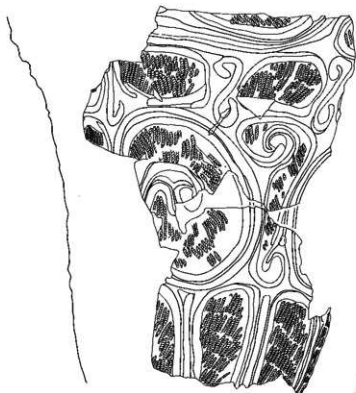
0 外形なし 10cm



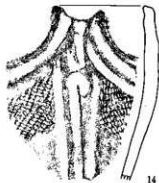
炉 (10)



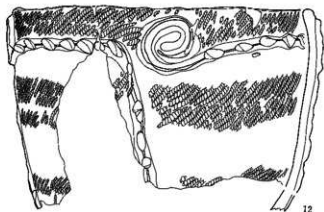
10



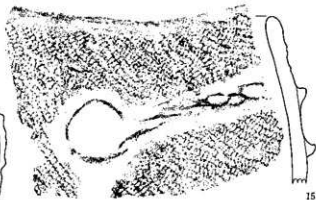
13



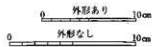
14



12



15





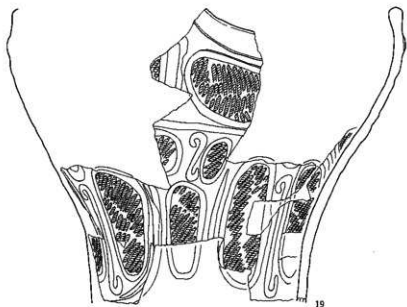
16



17



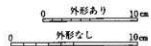
18

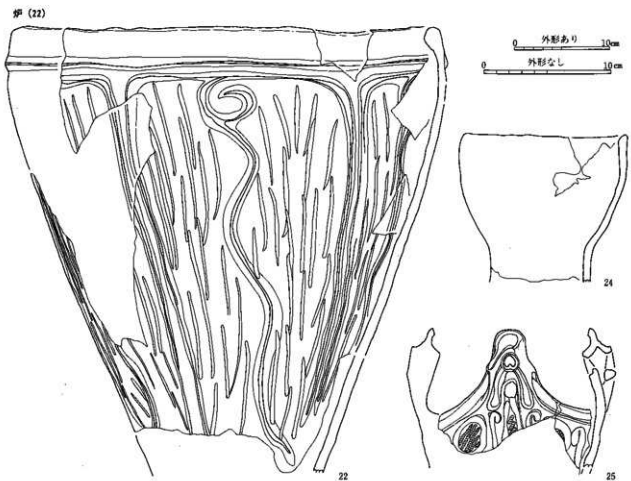
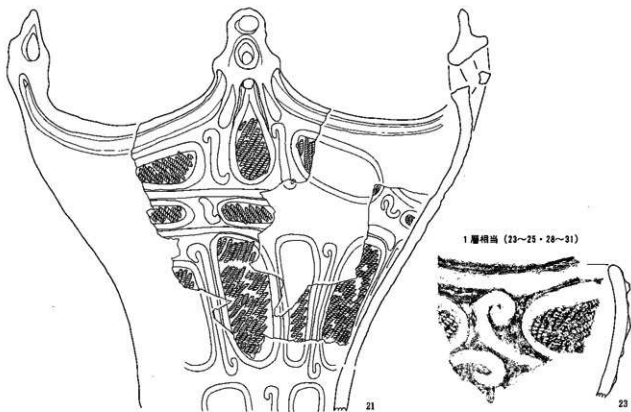


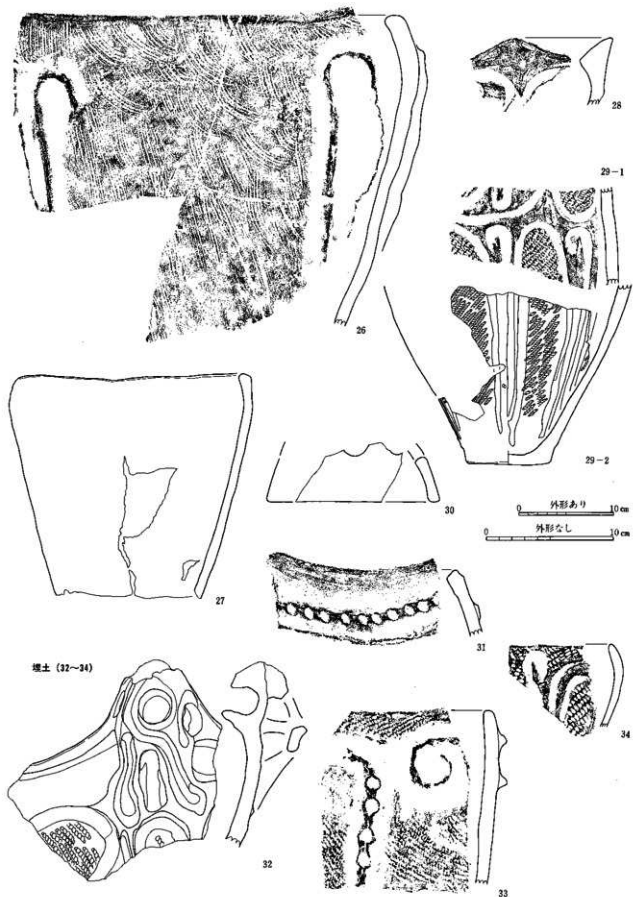
19



20

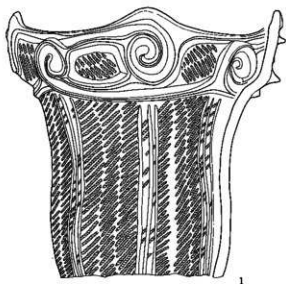






埋土 (32~34)

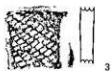
SB5352 (1~8)
埴輪 (1)



1層 (2)



麻直 (3)



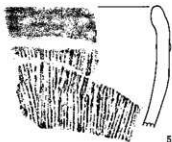
2

3

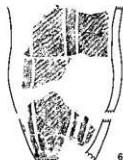
埴 (4~7)



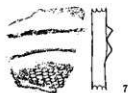
4



5

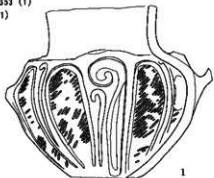


6



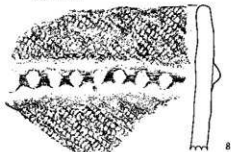
7

SB5353 (1)
埴 (1)



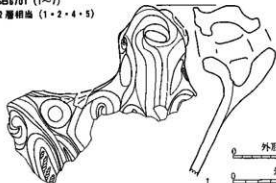
1

ピット1 (8)

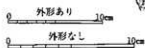


8

SB6701 (1~7)
2層相出 (1・2・4・5)

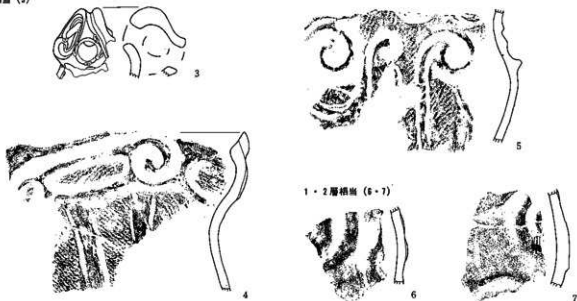


1



2

1層相画 (2)

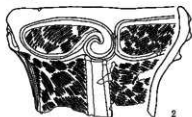


SB6702 (1~6)

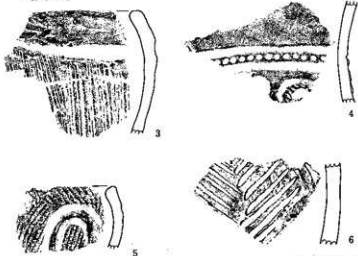
床 (1)



伊 (2)

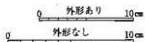
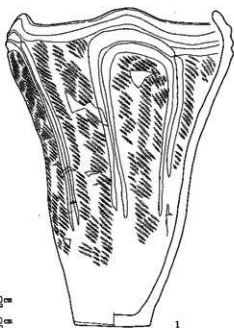


1層 (3~6)

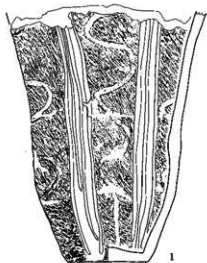


SB6703 (1)

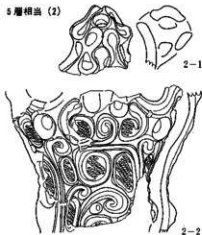
埋蓋 (1)



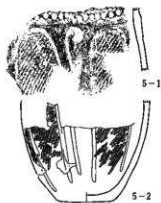
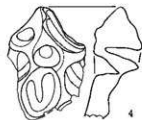
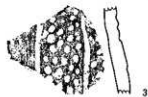
SB9001 (1~24)
浮葉 (1)



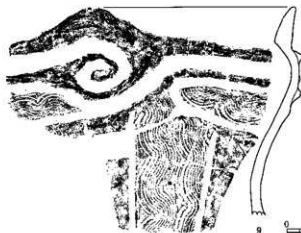
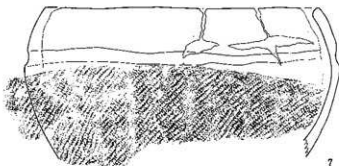
5層相出 (2)



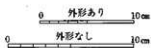
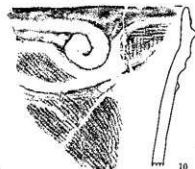
4・5層・4・5層相出 (2~7)



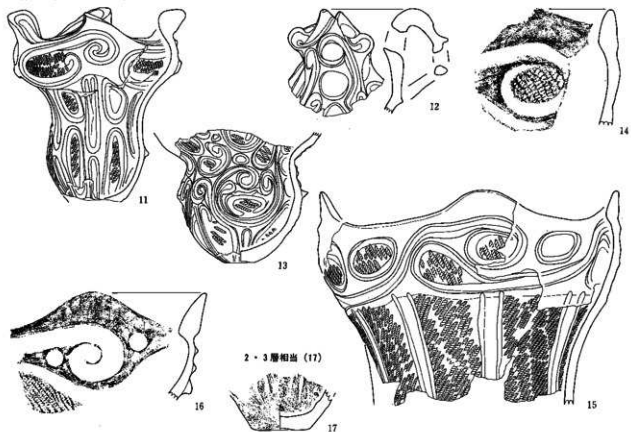
4層相出 (8・9)



3・4層相出 (10)



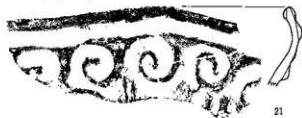
2層相出 (11~16・18~20)



2・3層相出 (17)



1~3層 (21・27)

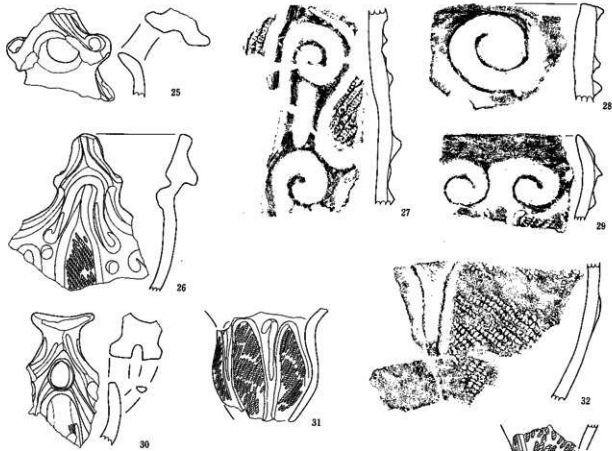


1・2層相出 (22~24)



1層相出 (23・25・26・28~32)





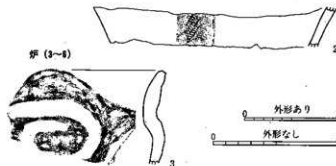
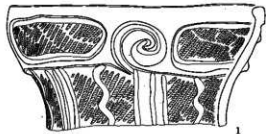
SB9002 (1~3)
1・2層相出 (1~2)



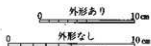
※ただし34は図版351

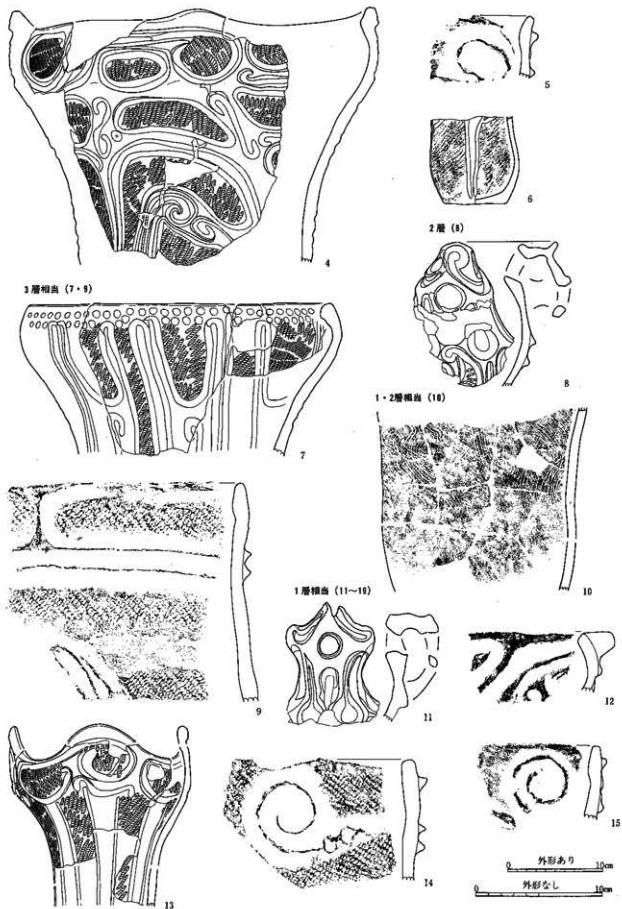
1層相出 (3)

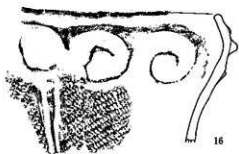
SB9003 (1~19)
燧鑿 (1・2)



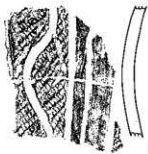
燧 (3~9)



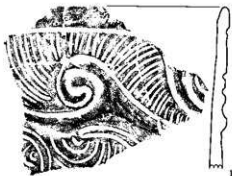




16



17



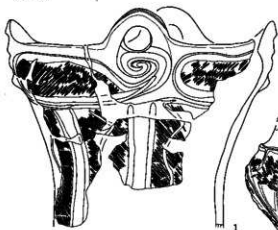
18



19

1層 (2~11)

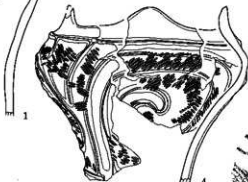
SB9904 (1~11)
 様態 (1)



1



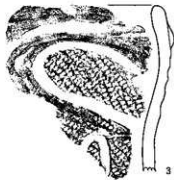
2



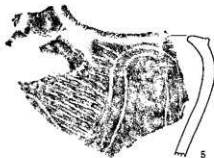
4



6



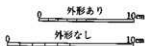
3

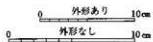
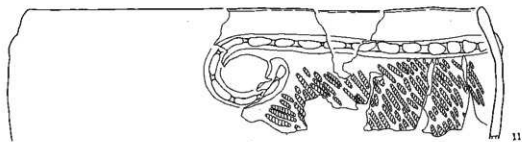
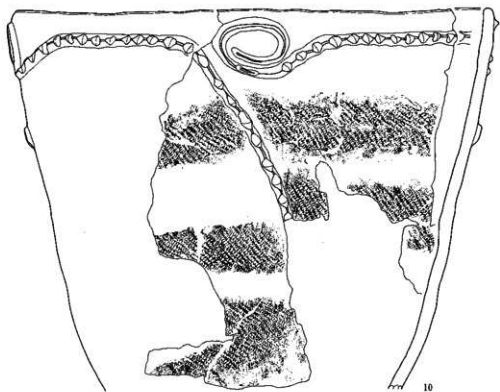
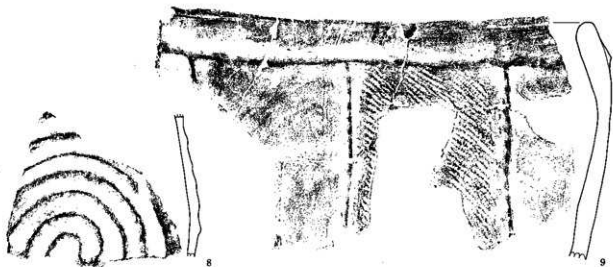


5

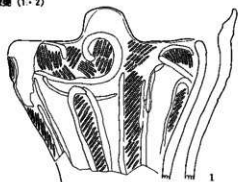


7

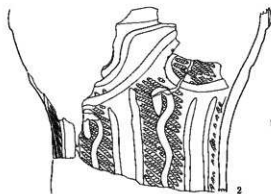
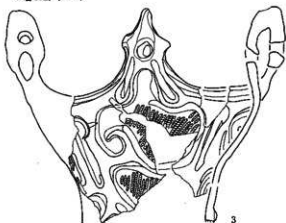




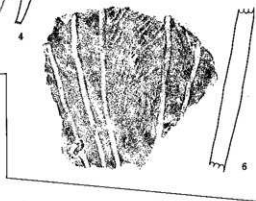
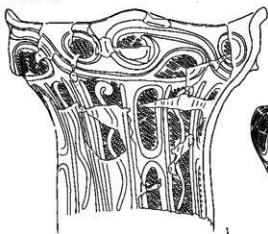
SB9065 (1~4)
埋藏 (1・2)



2層相当 (3~4)



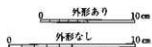
SB9066 (1~10)
埋藏 (1・2)



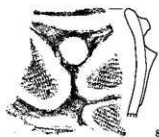
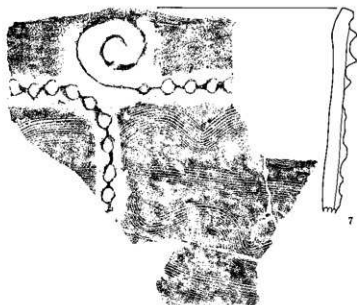
芽 (3~5)



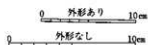
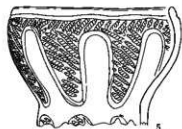
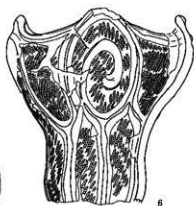
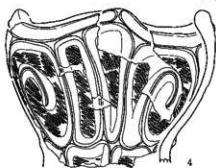
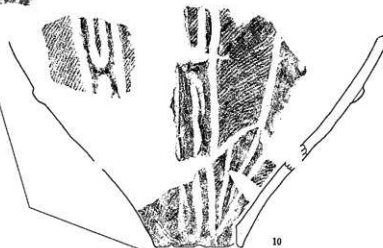
1層 (6・8~10)

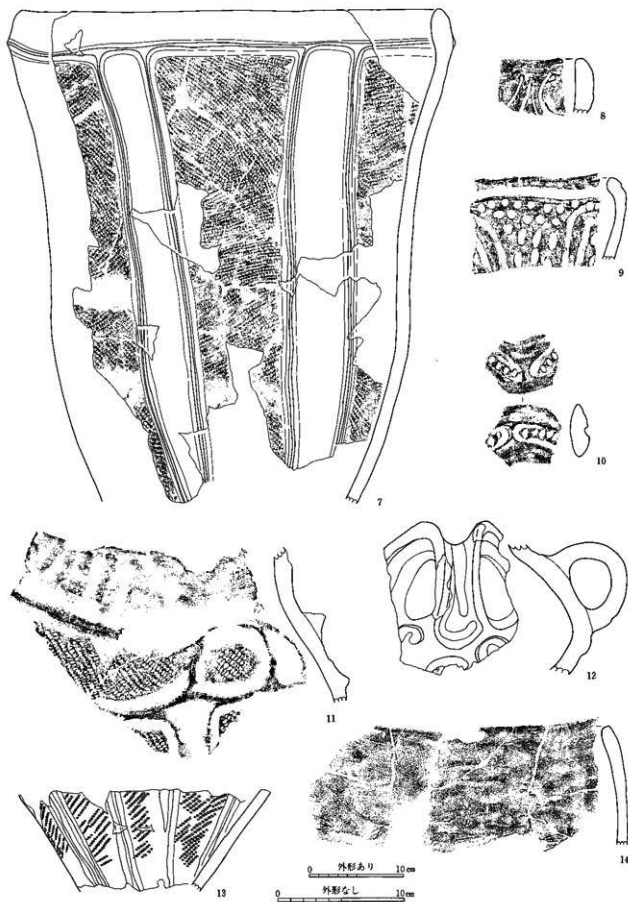


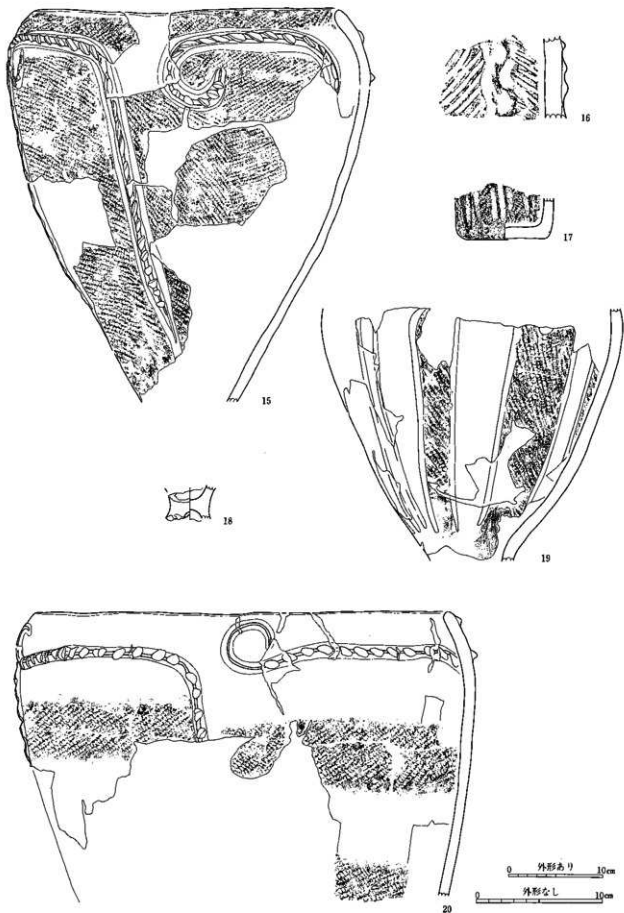
ピット1 (7)



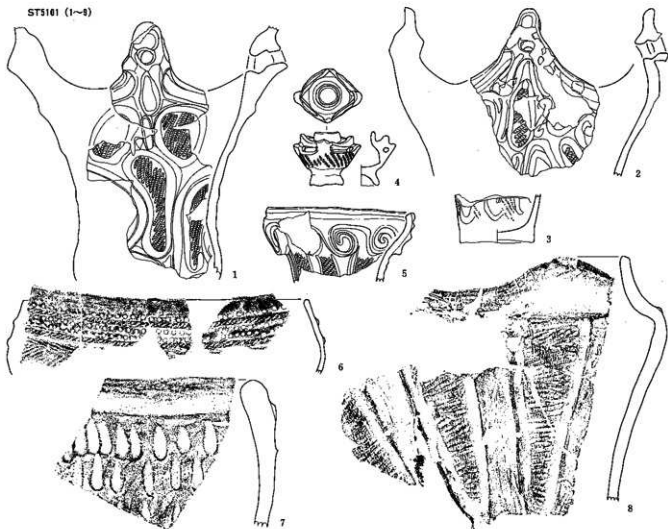
SB9007 (1~20)
2層 (1~20)



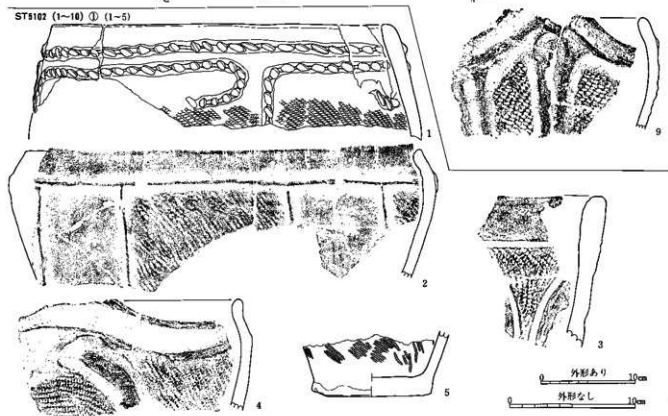




ST5101 (1~8)



ST5102 (1~10) ① (1~5)



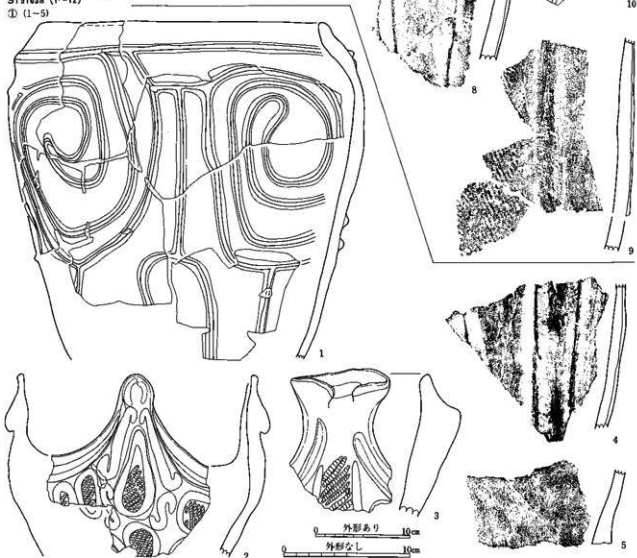
0 外形あり 10cm
0 外形なし 10cm

ST5102② (6-10)

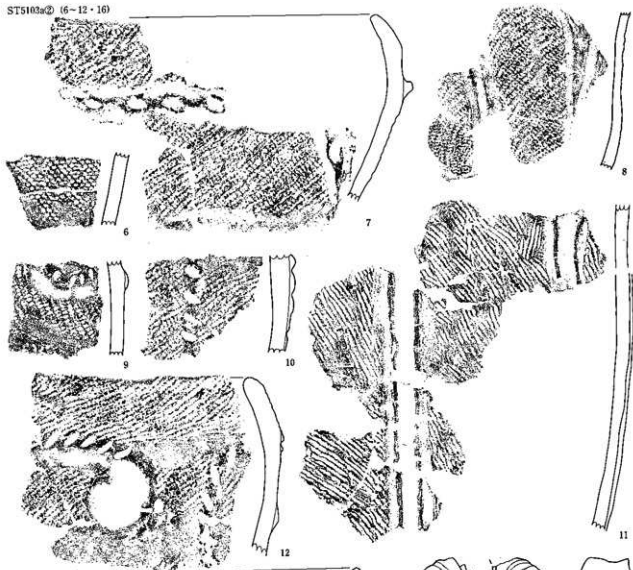


ST5102a (1-12)

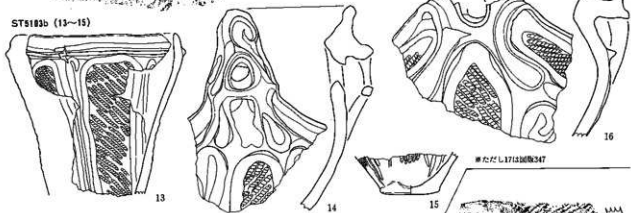
① (1-5)



ST5103a② (6-12・16)



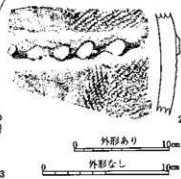
ST5103b (13~15)



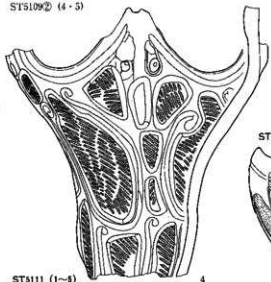
ST5105 (1)



ST5109 (1~5) ① (1~3)

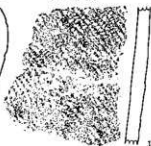
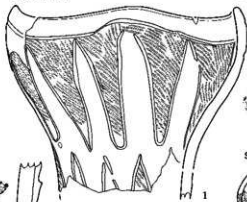


ST5109② (4・5)

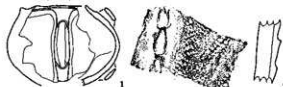


ST5110 (1)

ST5112 (1)



ST5111 (1~4)



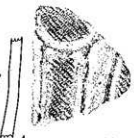
ST5114 (1)



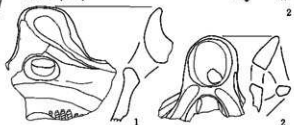
ST5115 (1)



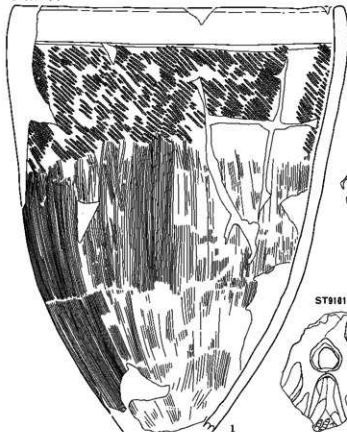
ST5123 (1)



ST5124 (1・2)



ST5118 (1・2)

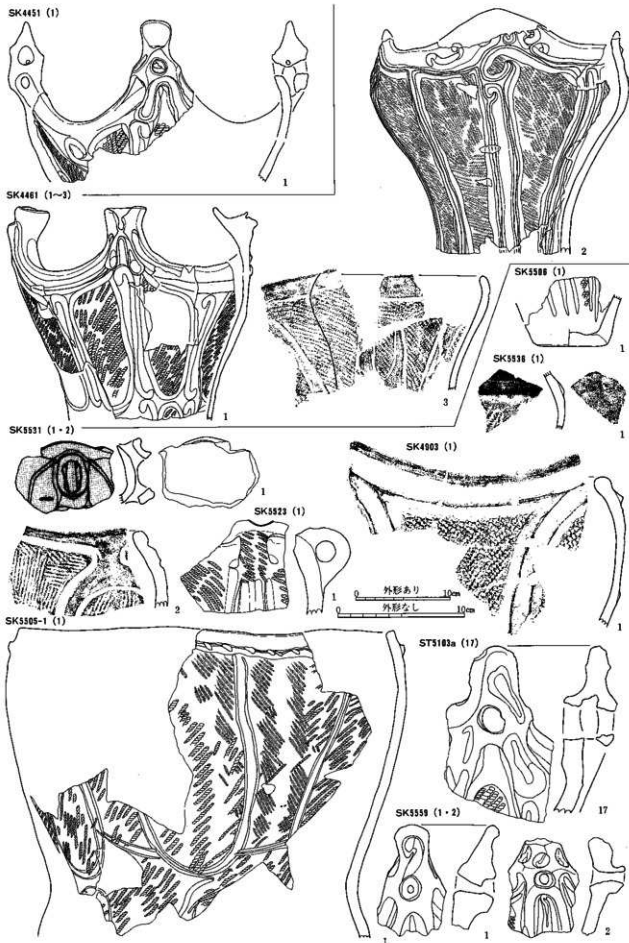


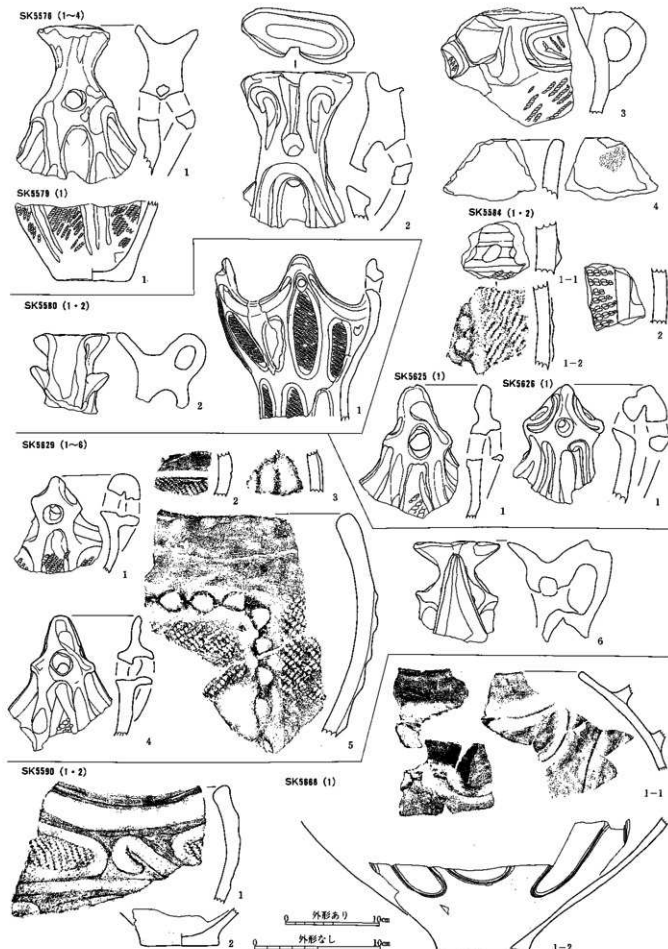
ST5101 (1~3)

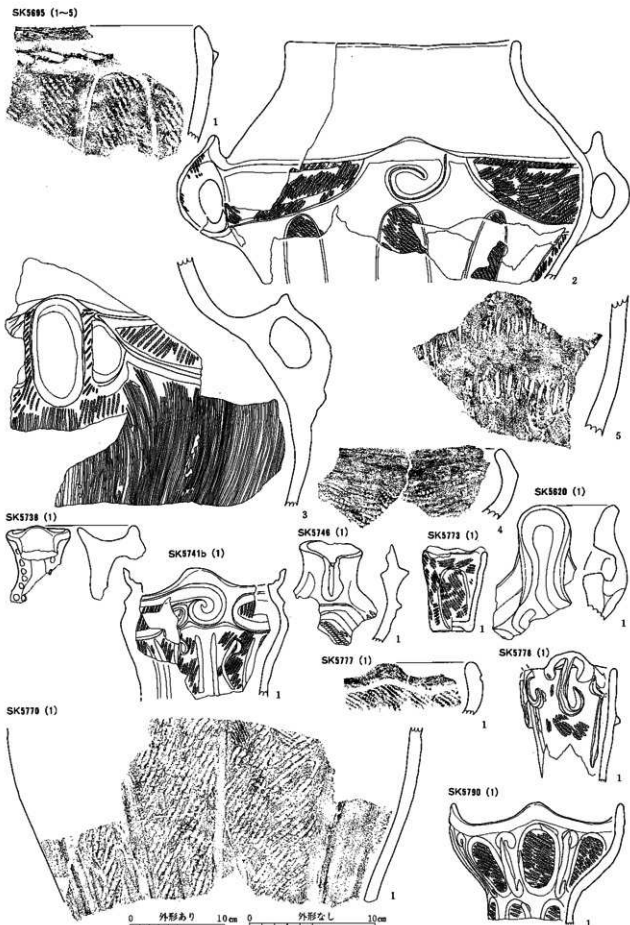


0 外形あり 10cm

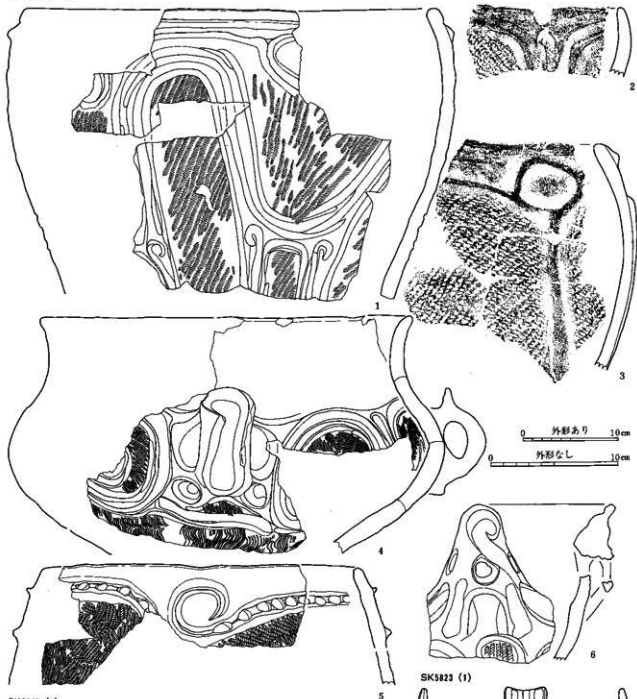
0 外形なし 10cm



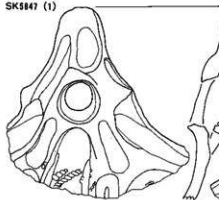




SK5812 (1~8)



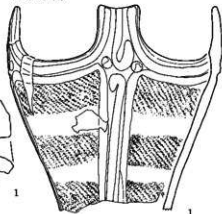
SK5847 (1)



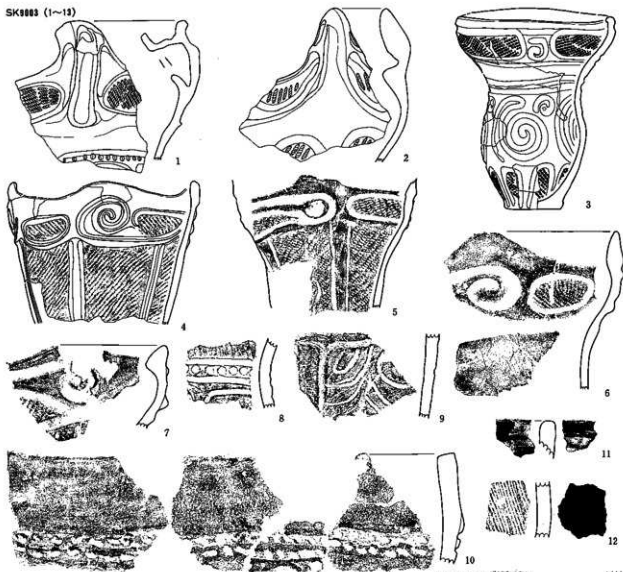
SK6720 (1)



SK5823 (1)



SK9003 (1~13)



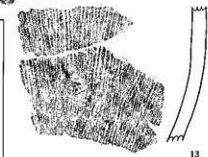
SK9004 (1)



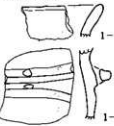
SK9005 (1)



SB9001 (34)



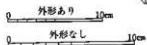
SK9022 (1)

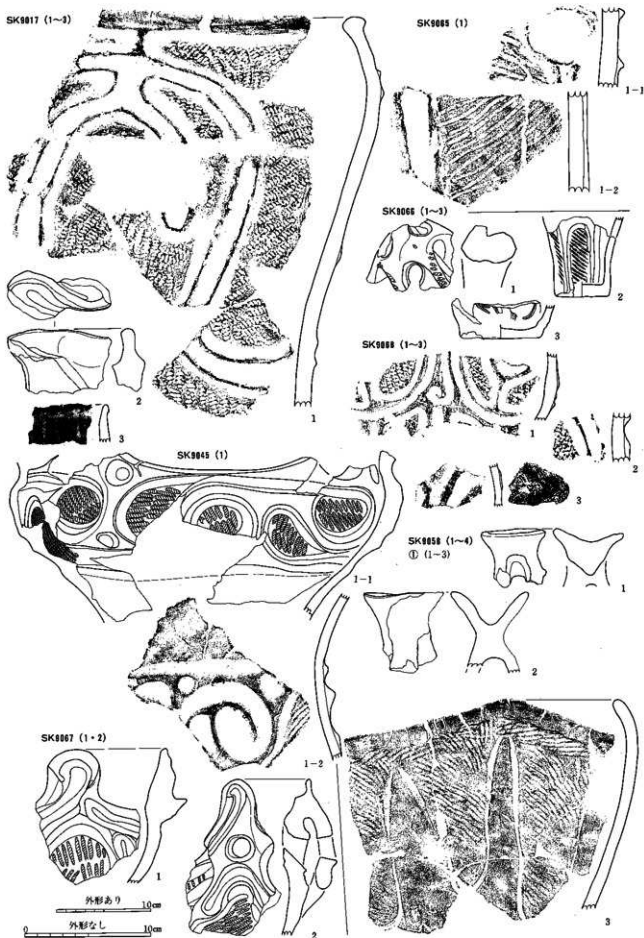


SK9030 (1~2)

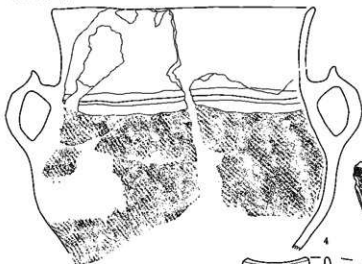


SK9039 (1)

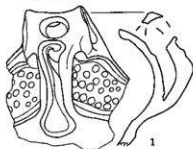




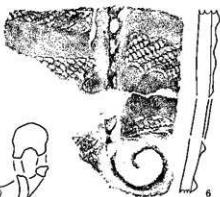
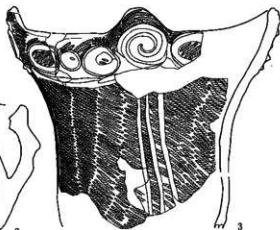
SK9058② (4)



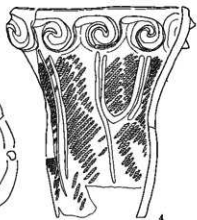
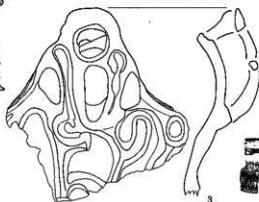
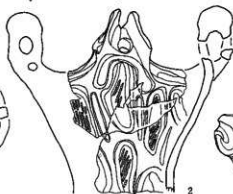
SK9069 (1)



SK9070 (1~6)



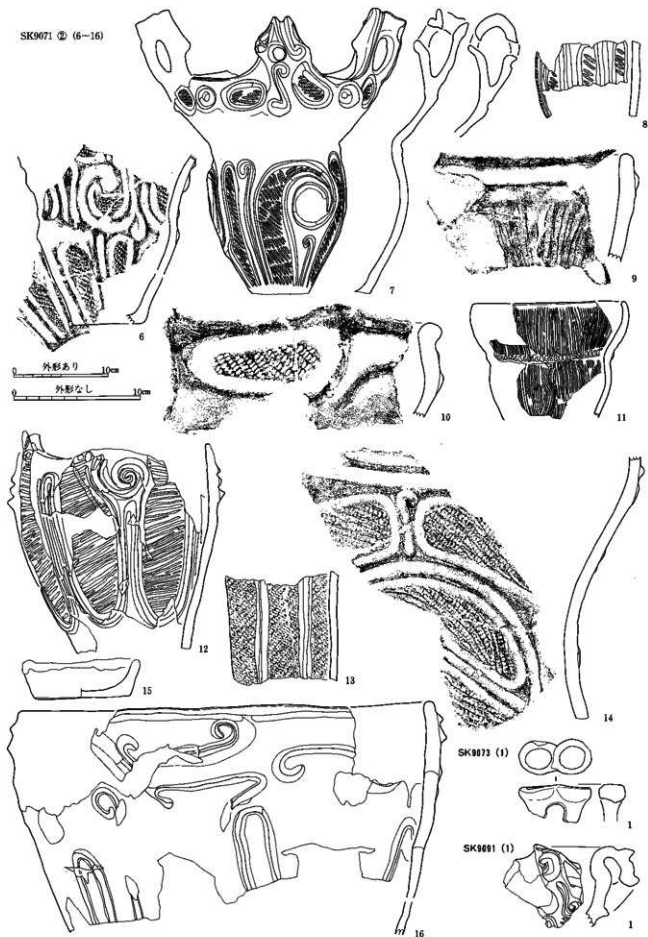
SK9071 (1~16) ① (1~5)



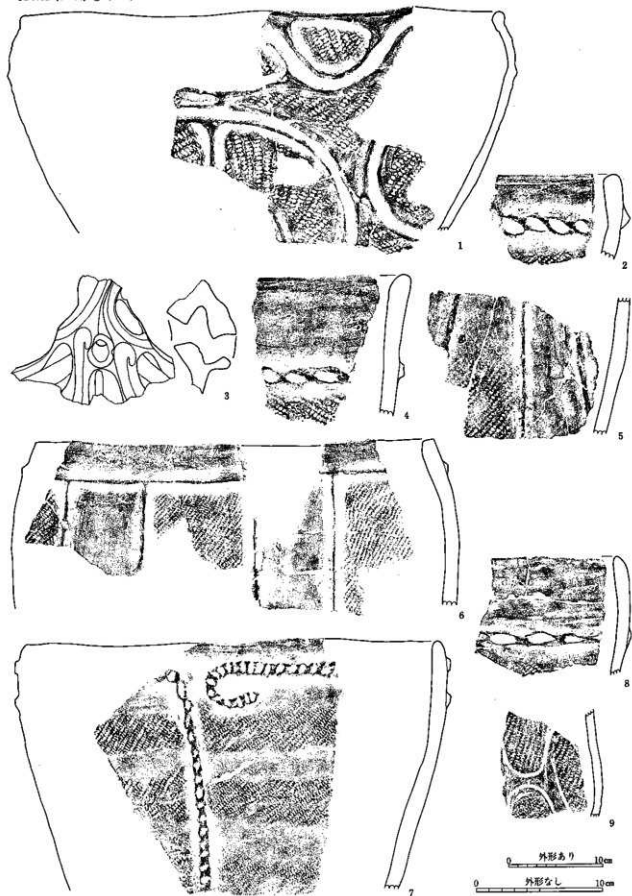
0 外形あり 10cm

0 外形なし 10cm

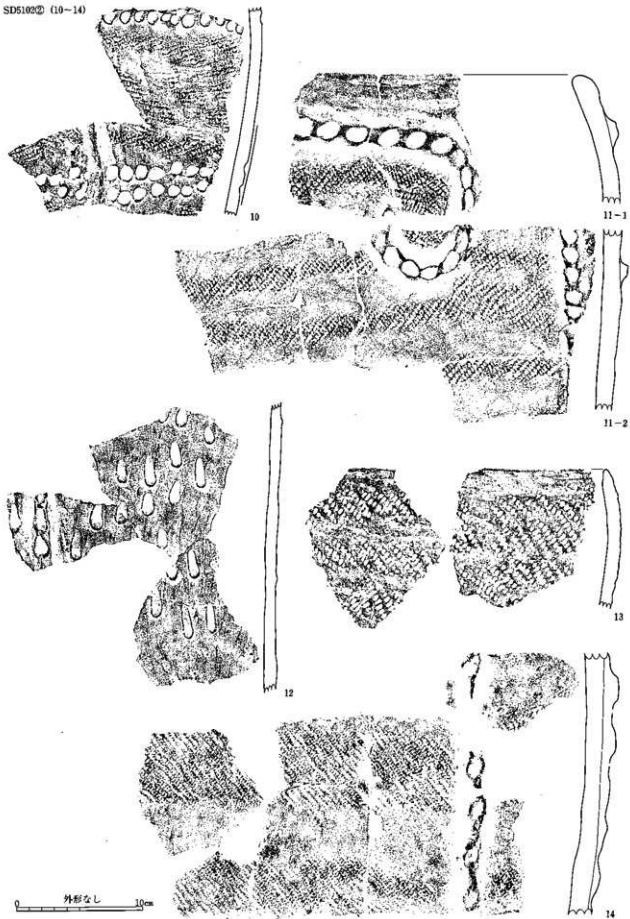
SK9071 ② (6-16)

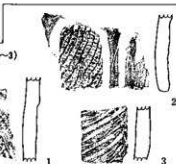
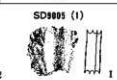
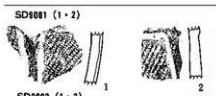
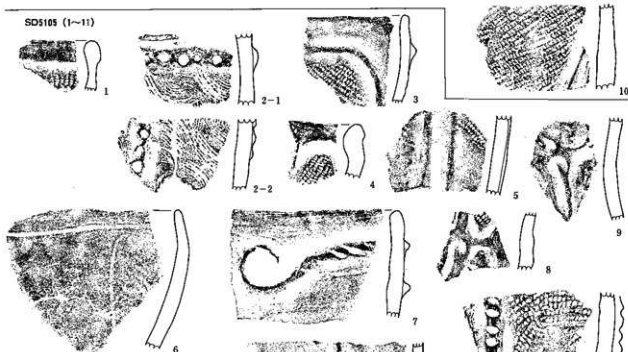
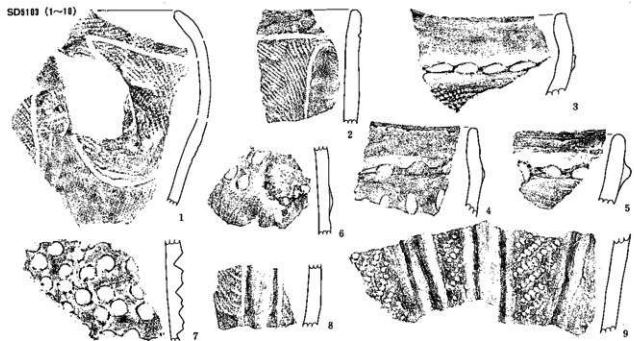


SD5102 (1~14) ① (1~9)

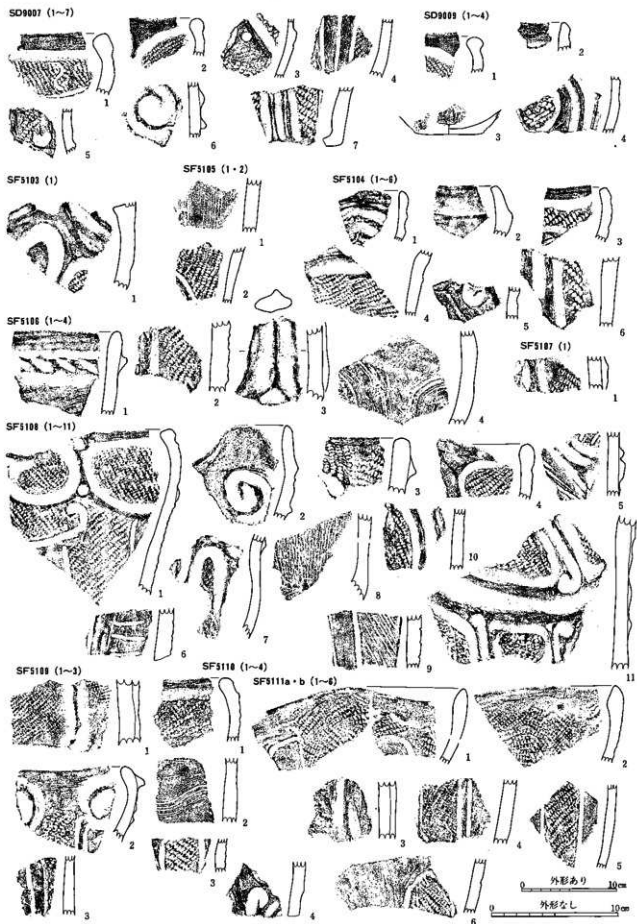


SD5102② (10-14)





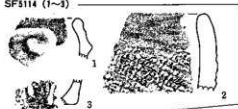
外形なし 10mm



SF5112 (1~8)



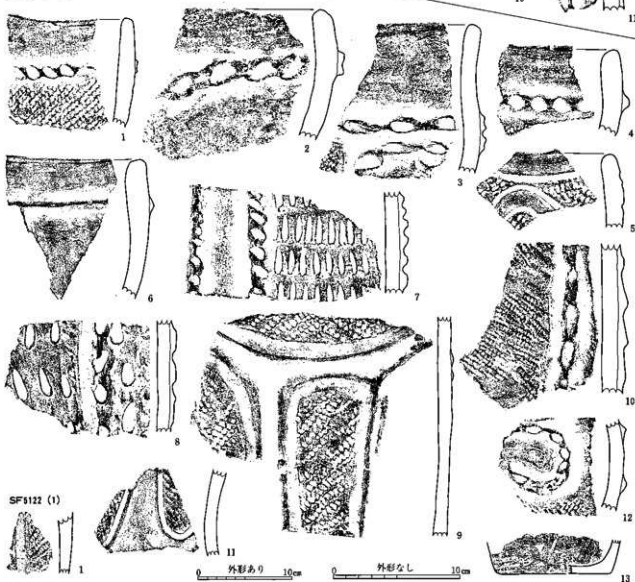
SF5114 (1~3)



SF5117 (1~11)



SF5118 (1~13)

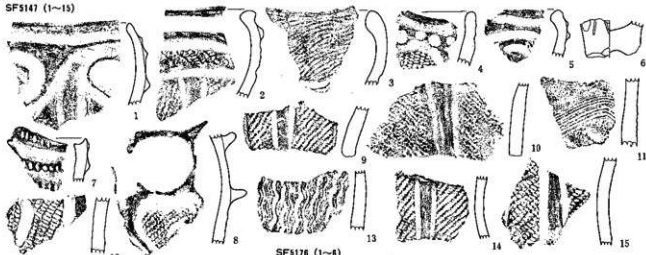


SF5122 (1)

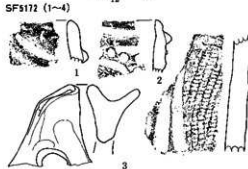


0 外形あり 10cm 0 外形なし 10cm

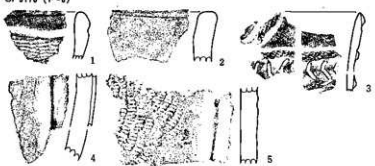
SF5147 (1~15)



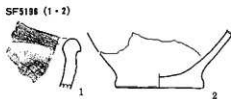
SF5172 (1~4)



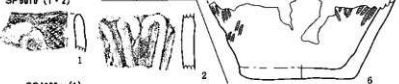
SF5176 (1~6)



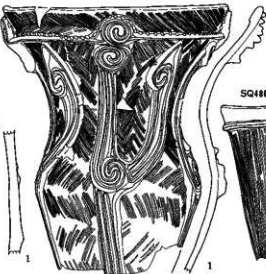
SF5188 (1~2)



SF9010 (1~2)



SQ4803a (1)



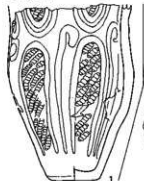
SQ4701 (1)



SQ4453 (1~2)



SQ4782 (1)



SQ4803b (1)

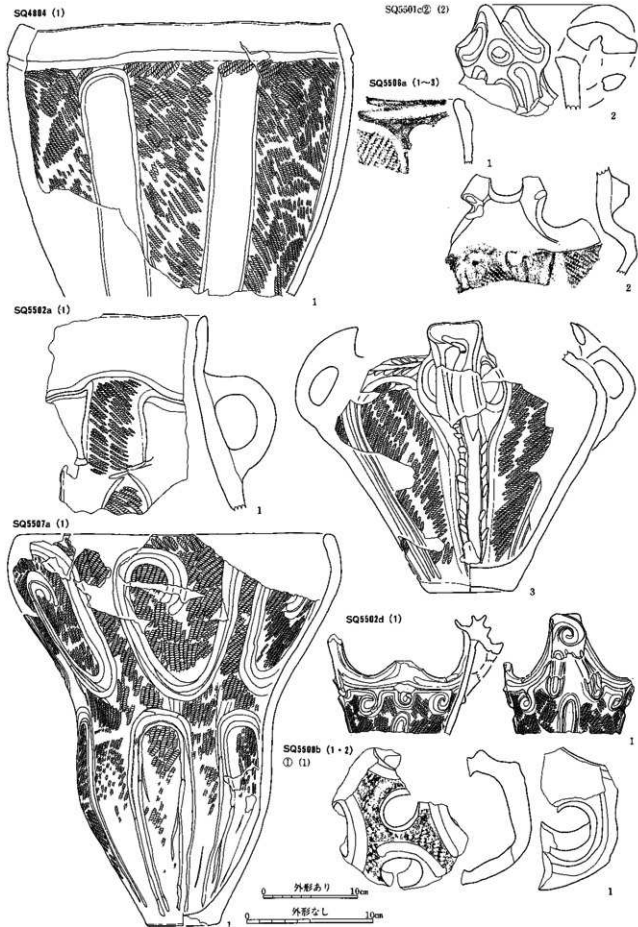


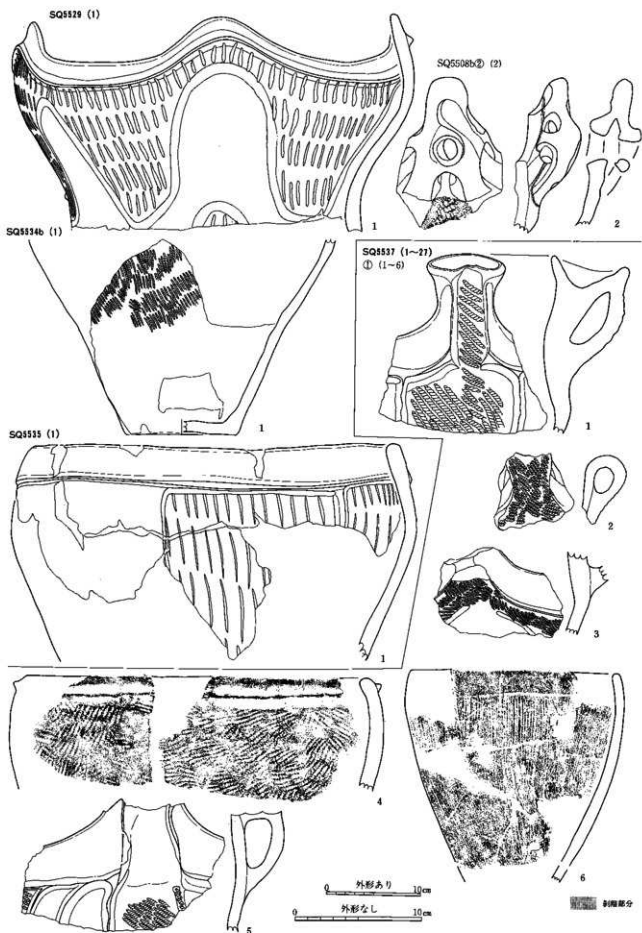
SQ5501c (1~2) ㊦ (1)



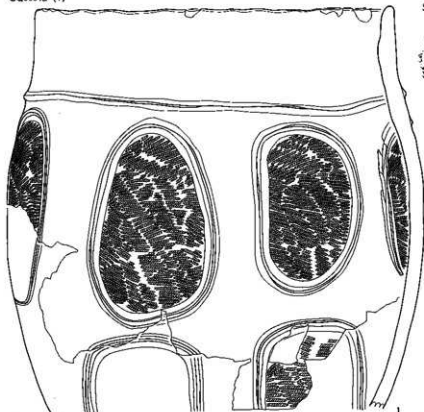
0 外形あり 10cm

0 外形なし 10cm

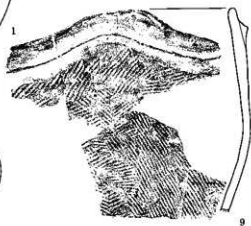
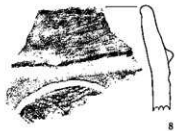
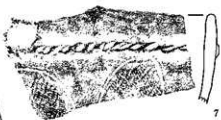




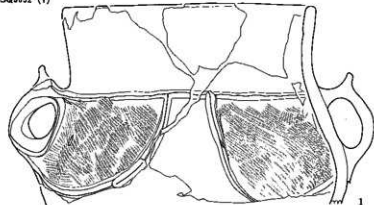
SQ5534a (1)



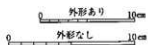
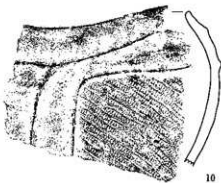
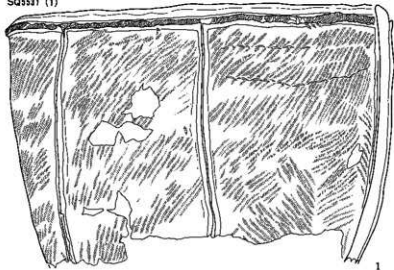
SQ5537② (7-10)



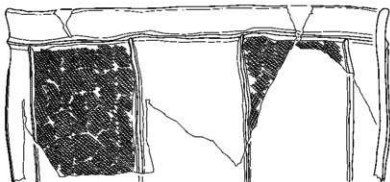
SQ5532 (1)



SQ5531 (1)



SQ5537① (11-20)



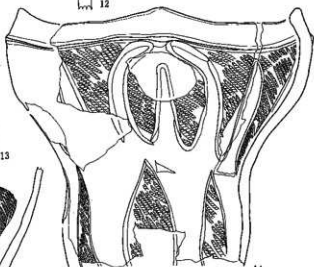
11



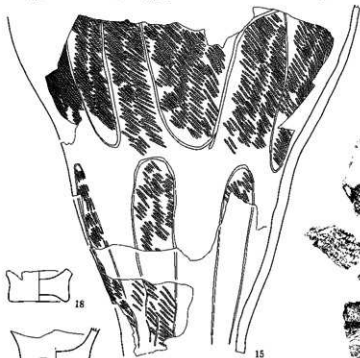
12



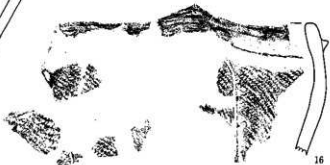
13



14



15



16



18



19



20

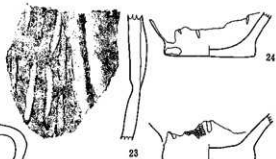
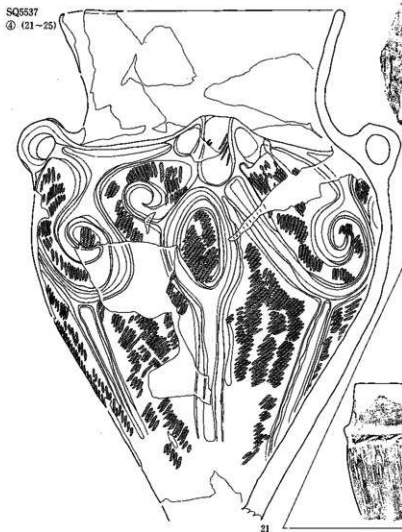
0 外形あり 10cm

0 外形なし 10cm



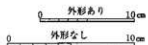
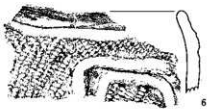
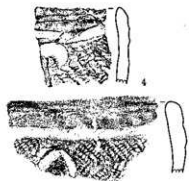
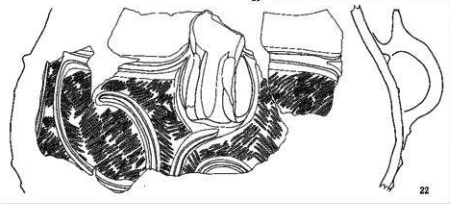
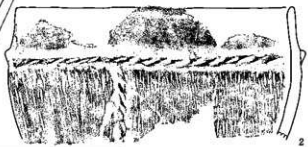
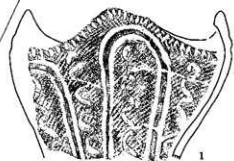
17

SQ5537
④ (21-25)



SQ5541 (1-17)

① (1-8)



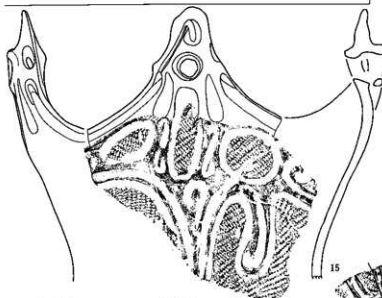
SQ5537㉔ (26・27)



26



27



26

0 外形あり 10mm 0 外形なし 10mm

SQ5541㉔ (9-17)



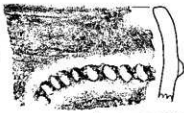
9



10



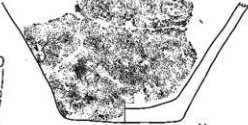
11



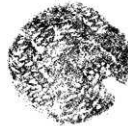
12



13



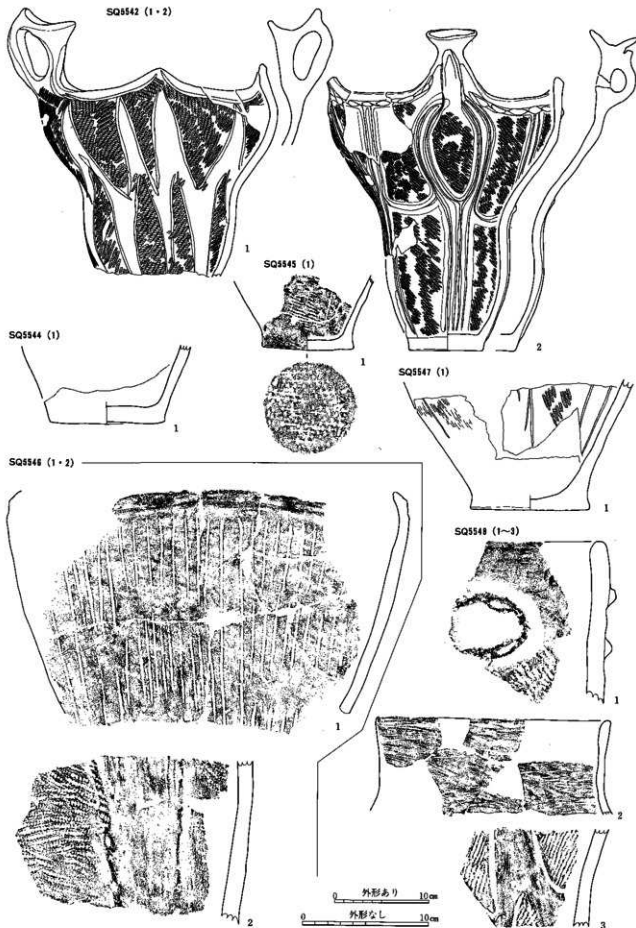
14

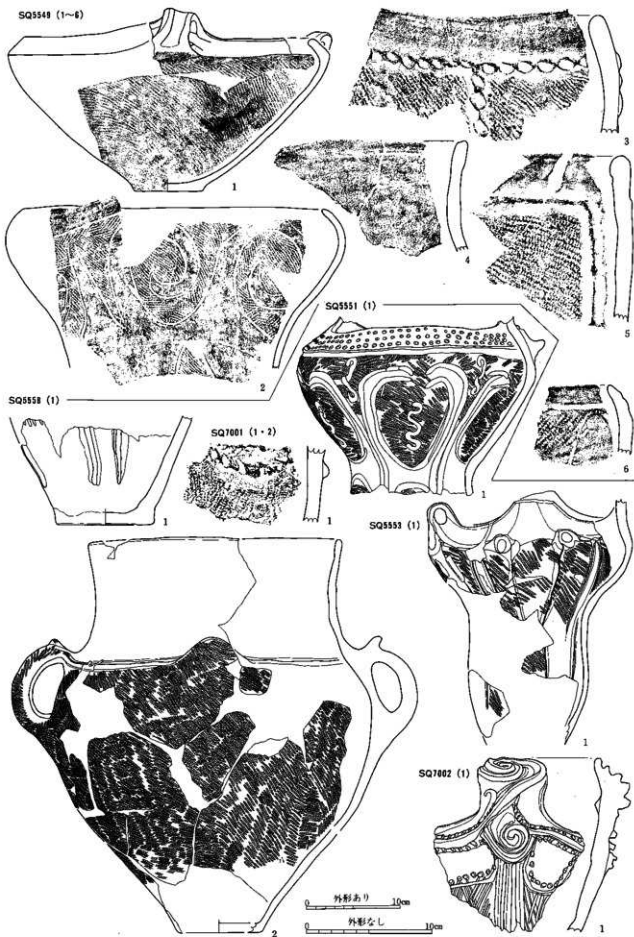


16



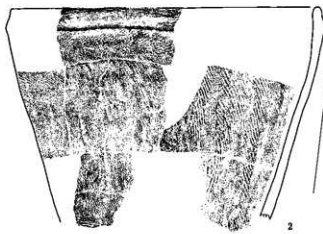
17



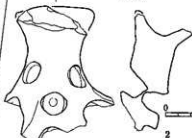
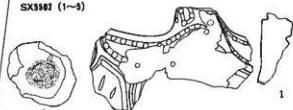


中期後葉の土器 130 (田代遺跡群 SQ5549・5551・5553・5558・7001・7002)

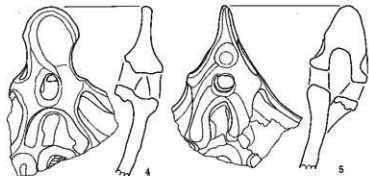
SH5101 (1・2)



SX5502 (1~4)



0 外形あり 10cm
0 外形なし 10cm

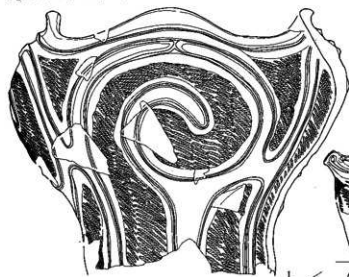


SX5506 (1・2)



遺物包含層出土土器

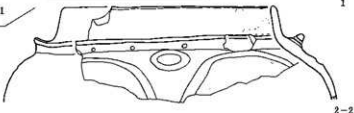
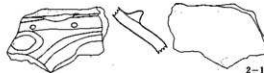
㊤g区W (1・2)・WS (1・2)

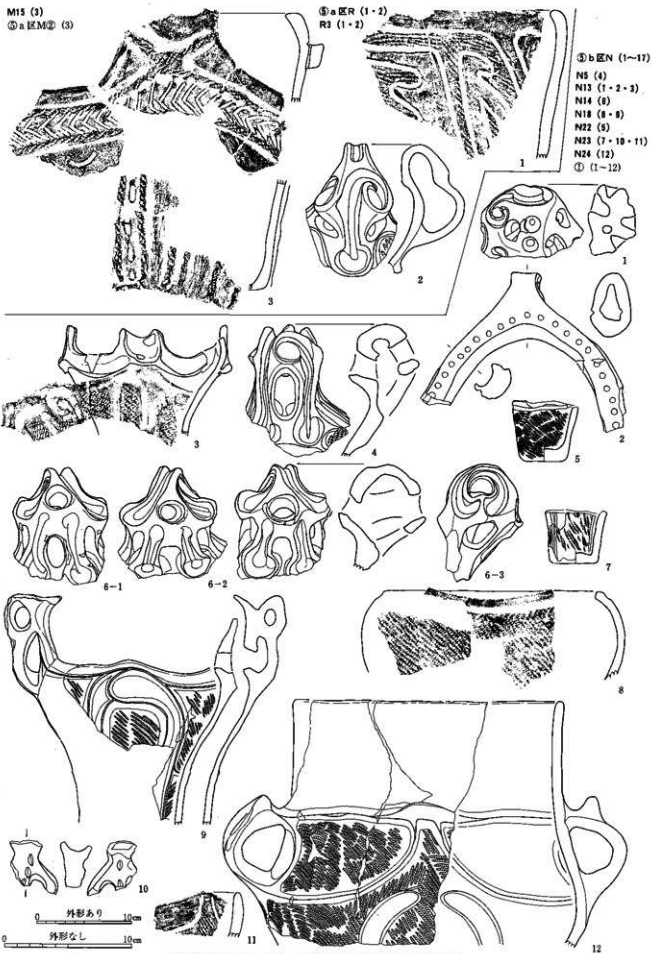


㊤g区X (1)・XS (1)



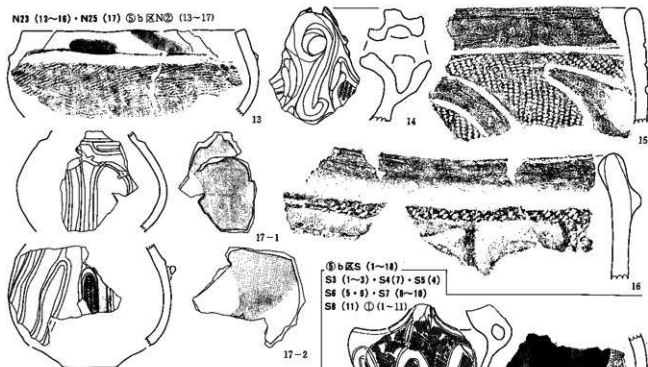
㊤a区M (1~3)・M24 (1)・M15 (2)
① (1・2)





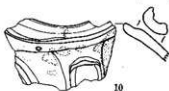
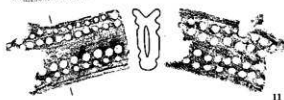
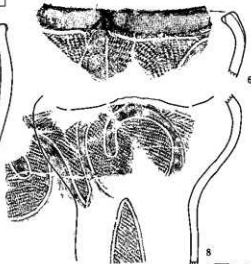
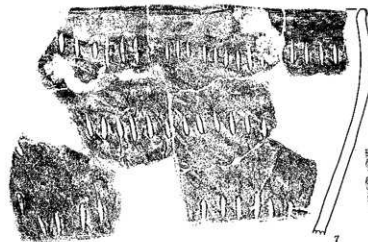
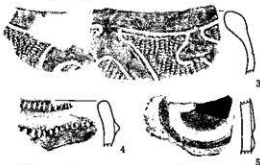
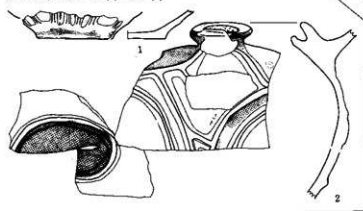
中期後葉の土器 132 (圖代遺跡群 ㊸a区M・R・㊸b区N)

N23 (13~16)・N25 (17) ㊦b区N㊦ (13~17)

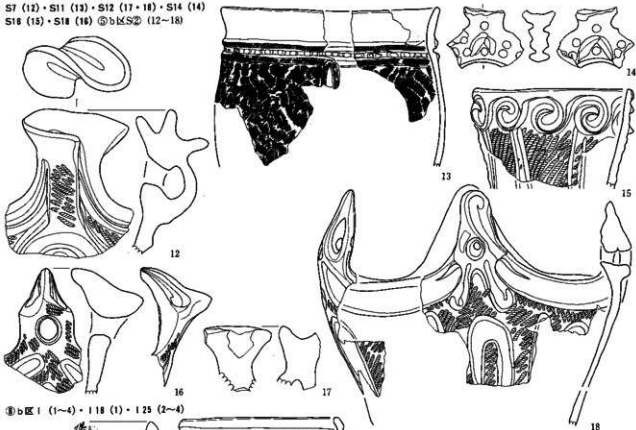


㊦b区S (1~18)
 S1 (1~3)・S4(7)・S5(4)
 S6 (5・8)・S7 (9~16)
 S8 (11) ㊦ (1~11)

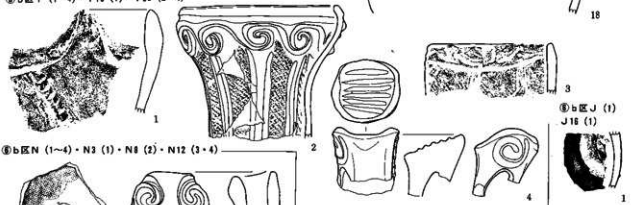
㊦b区O (1・2)・O6 (1)・O11 (2)



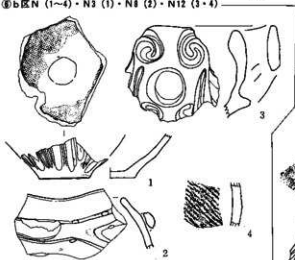
S7 (12)・S11 (13)・S12 (17・18)・S14 (14)
S16 (15)・S18 (16) ㊦b区S② (12-18)



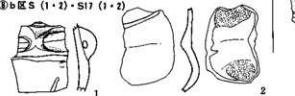
㊦b区I (1~4)・I18 (1)・I25 (2~4)



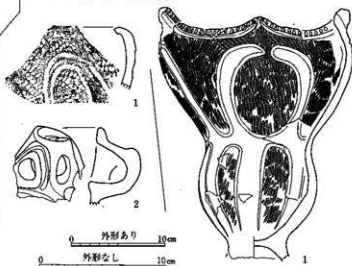
㊦b区N (1~4)・N3 (1)・N8 (2)・N12 (3~4)



㊦b区S (1・2)・S17 (1・2)

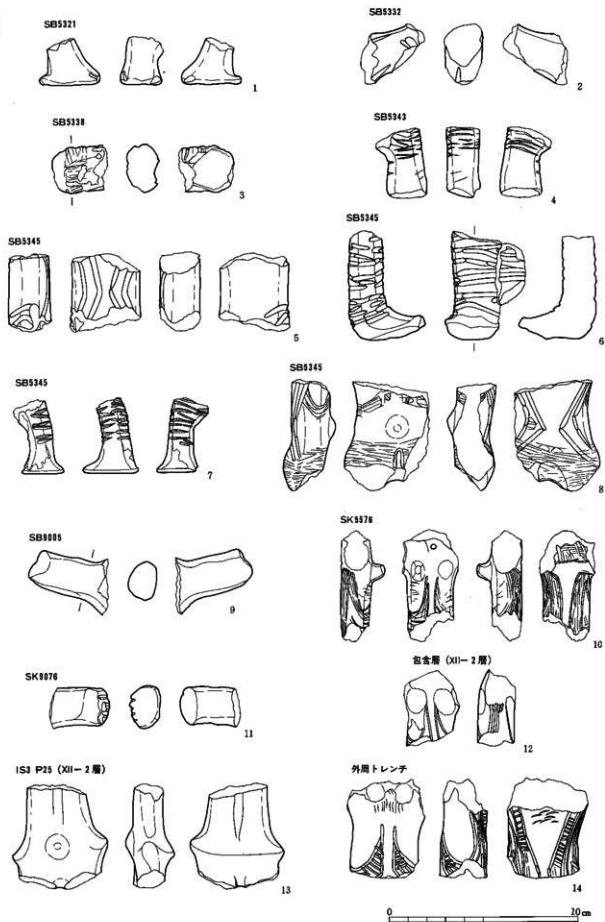


銅蓋区ビット (1・2)
N18ビット7 (1)・S3ビット61 (2)



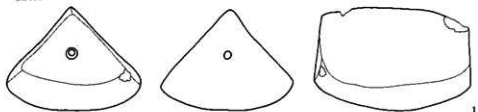
0 外形あり 10cm
0 外形なし 10cm

土偶

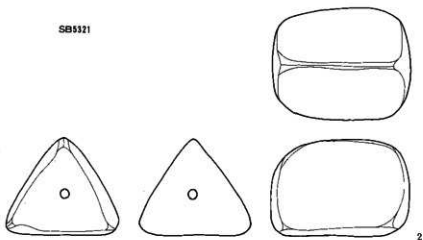


土製品ほか

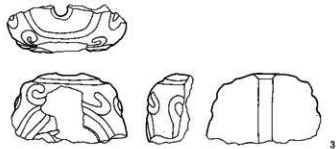
三角塔形土製品
SB9324



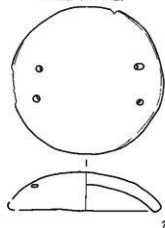
SB9321



有孔球状土製品
包含層 (XI-2層)



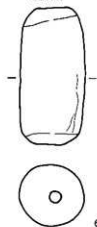
土製蓋
包含層 (XI-2層)



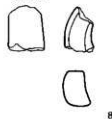
土製円盤
包含層 (XI-2層)



土罐
SB9319



不明土製品
SD9902

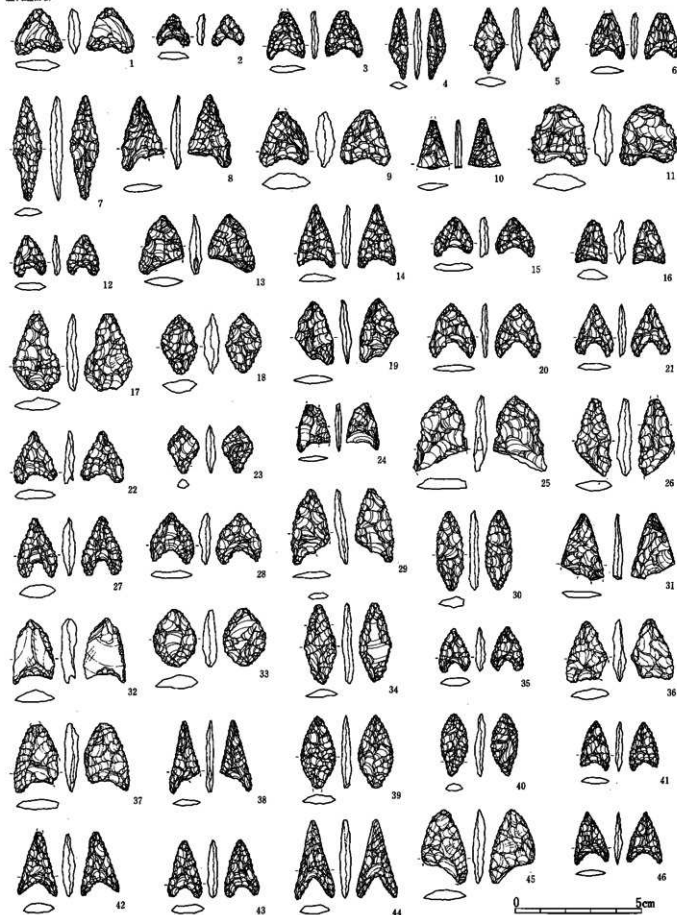


小形土版
SB9903

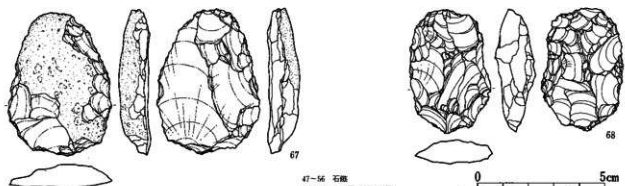
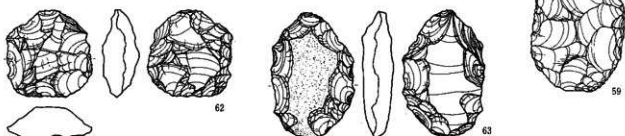
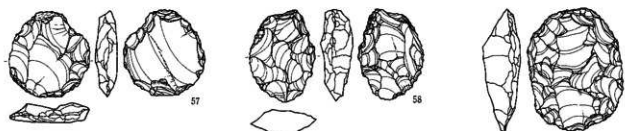
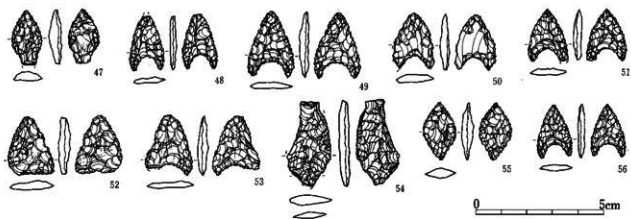


XII-2層 石器

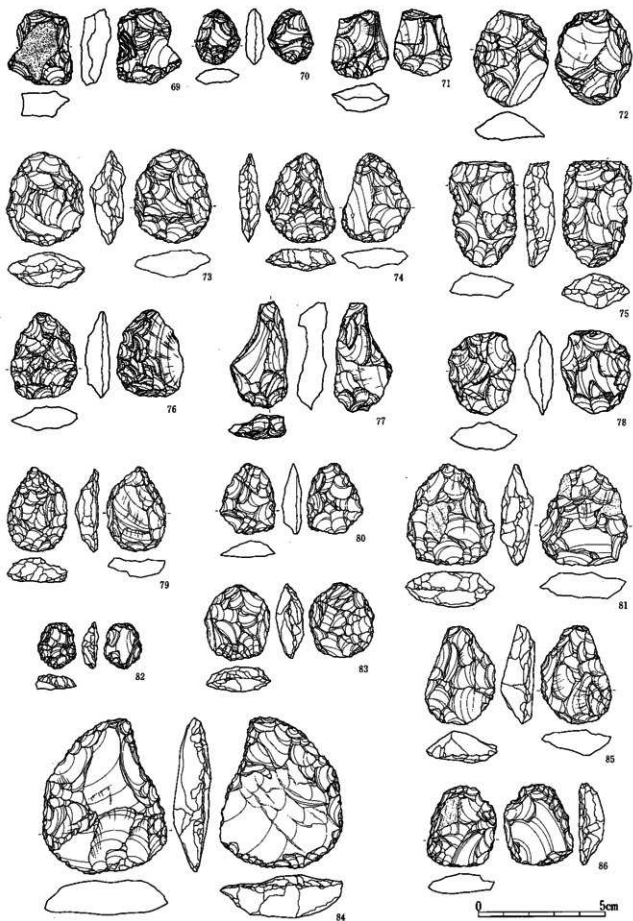
尾代遺跡群



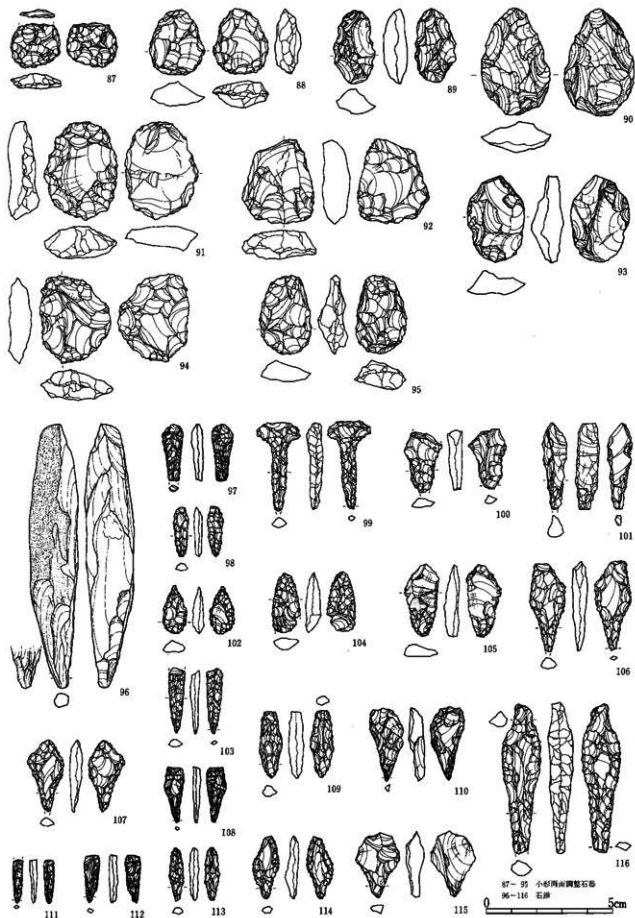
中期後葉の石器 1 (尾代遺跡群 石画)



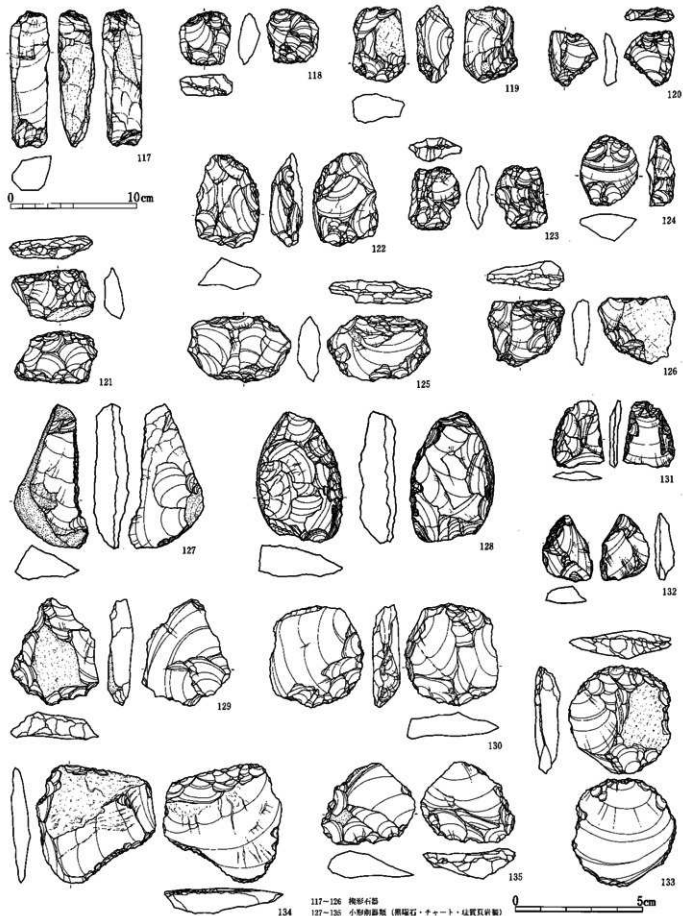
47-56 石版
57-68 小形両面調整石器



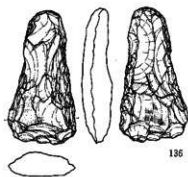
中期後葉の石器 3 (原代遺跡群 小形両面割製石器)



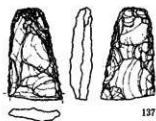
中期後葉の石器 4 (尾代遺跡群 小形両面調整石器・石鏃)



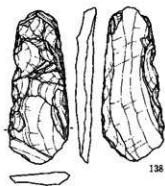
117-126 模形石器
127-136 小形割器類 (黒曜石・チャート・緑閃石質)



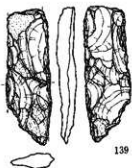
136



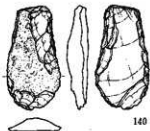
137



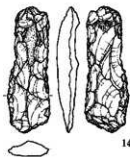
138



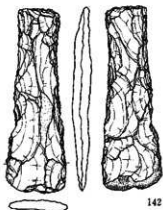
139



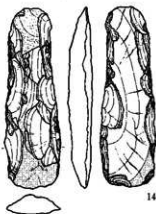
140



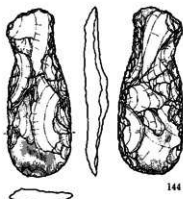
141



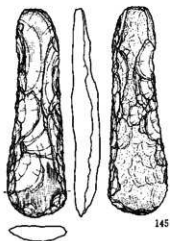
142



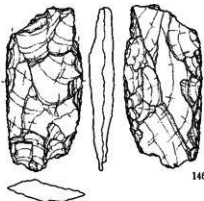
143



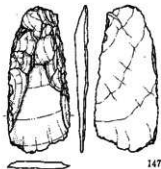
144



145

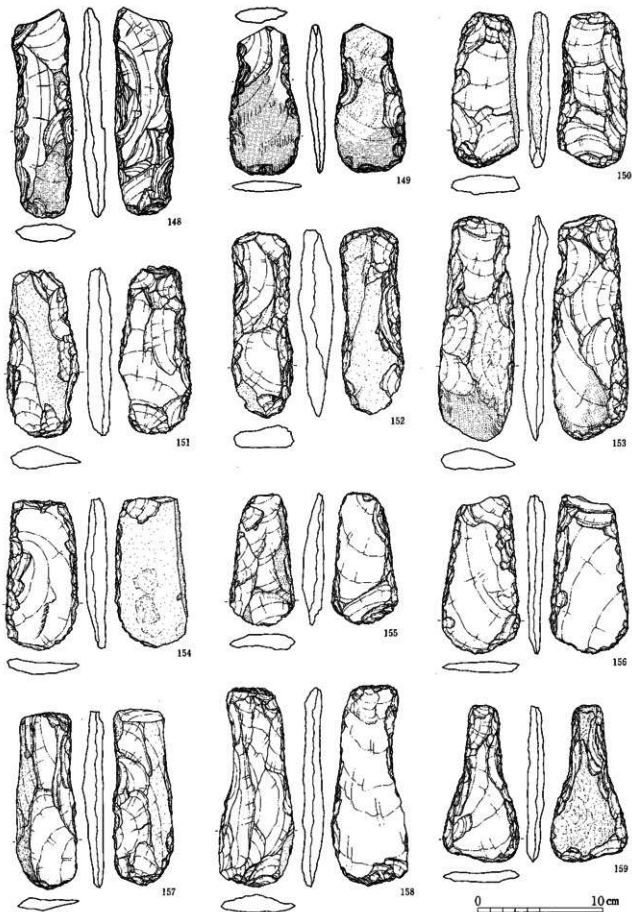


146

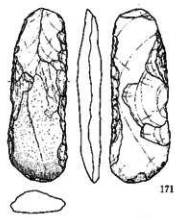
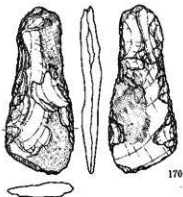
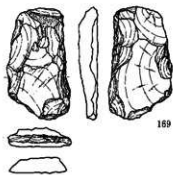
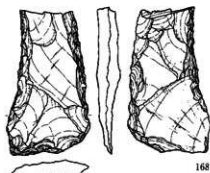
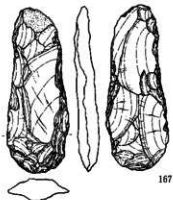
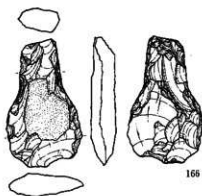
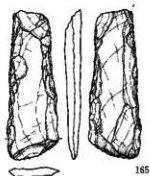
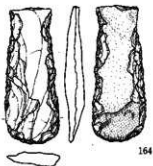
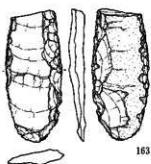
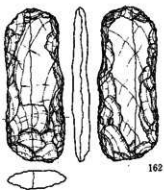
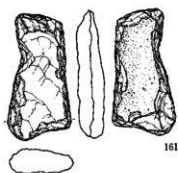
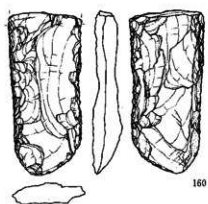


147

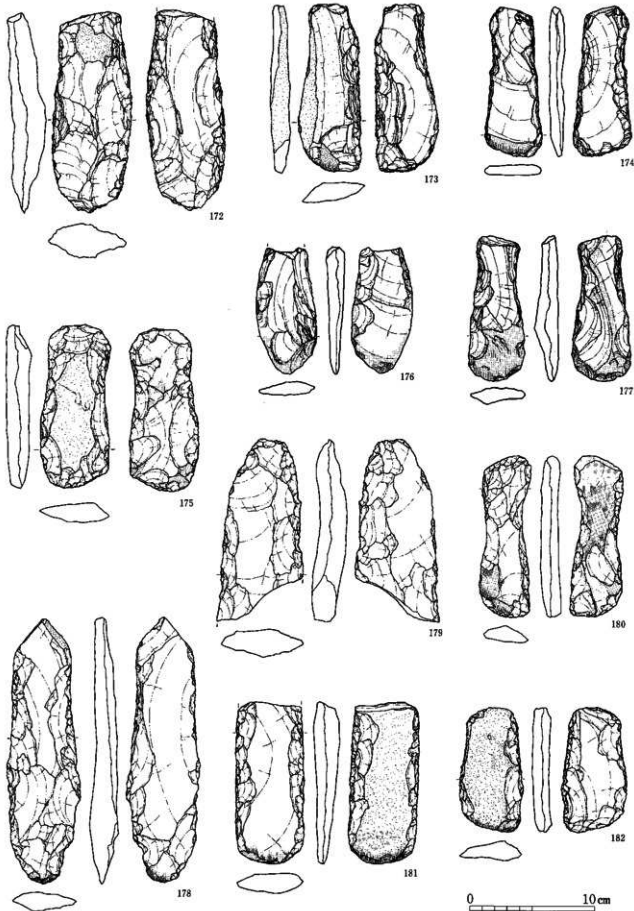
0 10cm



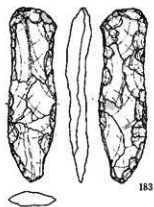
中期後葉の石器 7 (函代遺跡群 打製石片2)



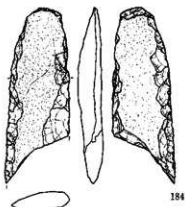
0 10 cm



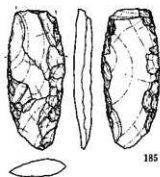
中期後葉の石器 9 (黒代遺跡群 打製石斧4)



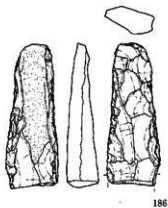
183



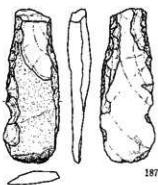
184



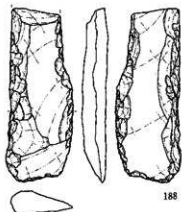
185



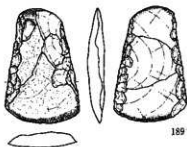
186



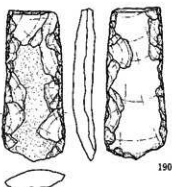
187



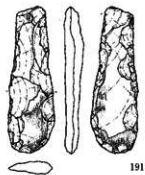
188



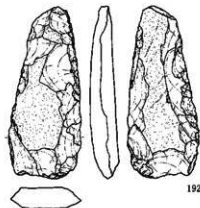
189



190



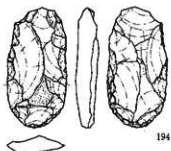
191



192

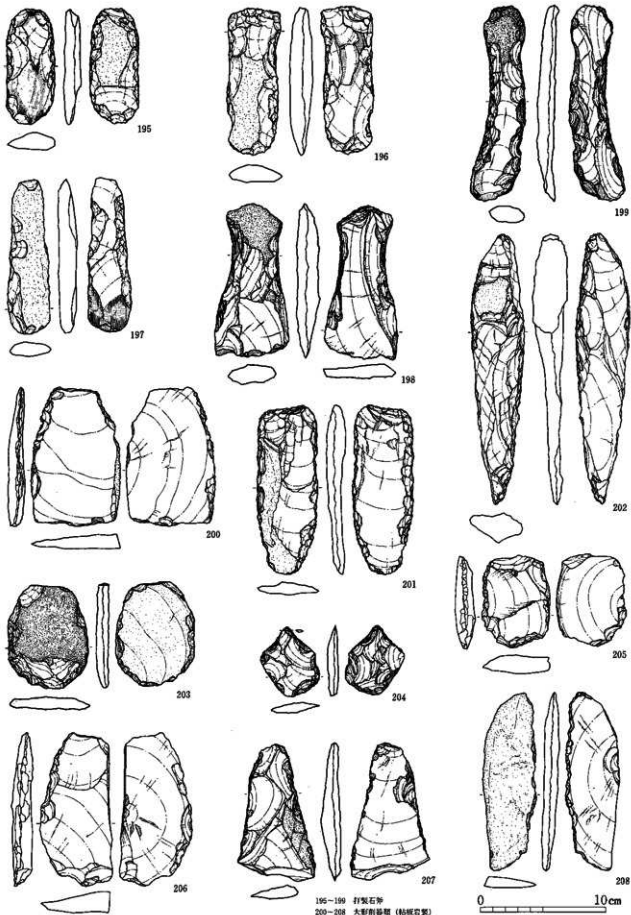


193

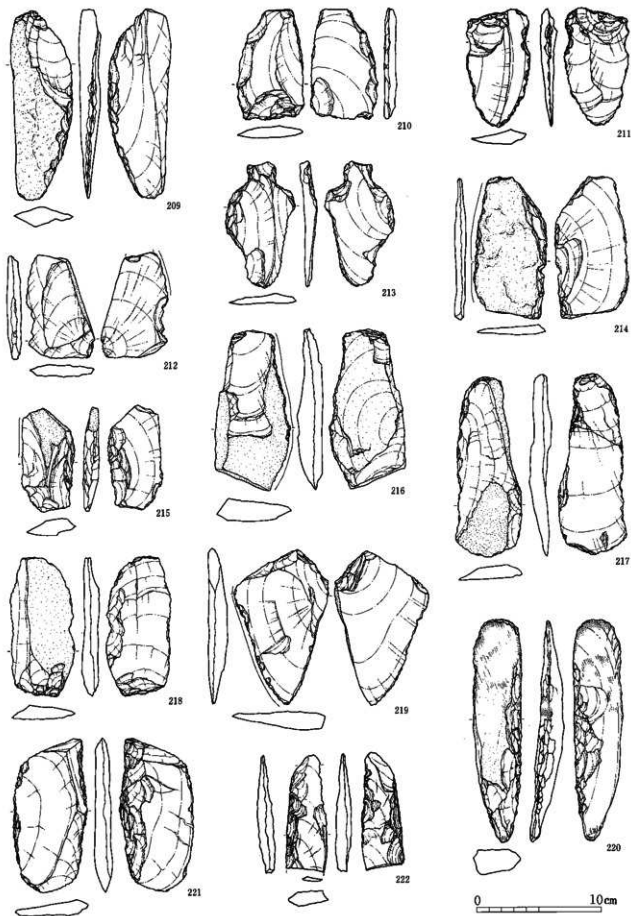


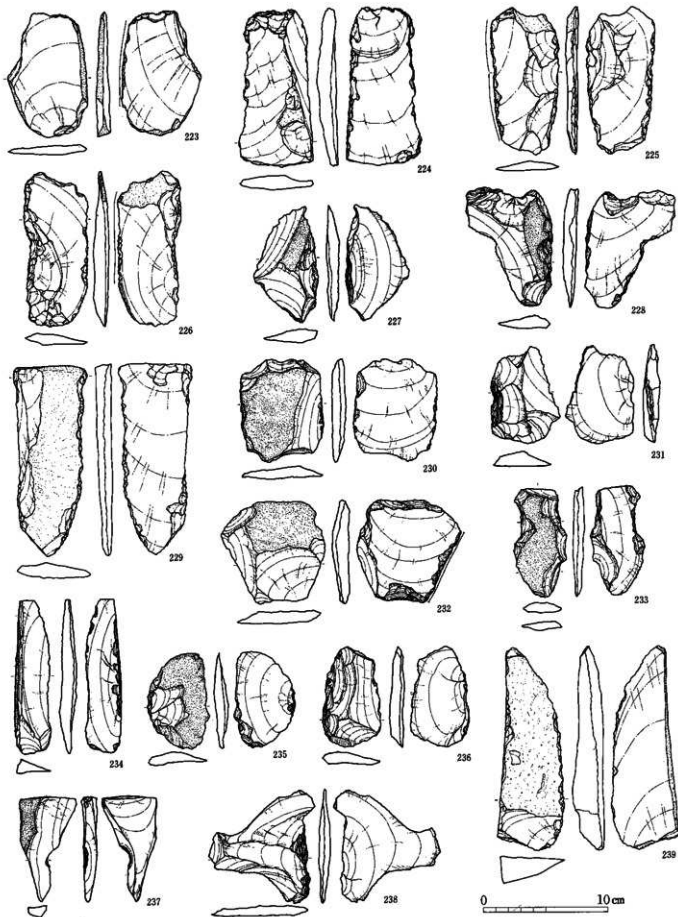
194



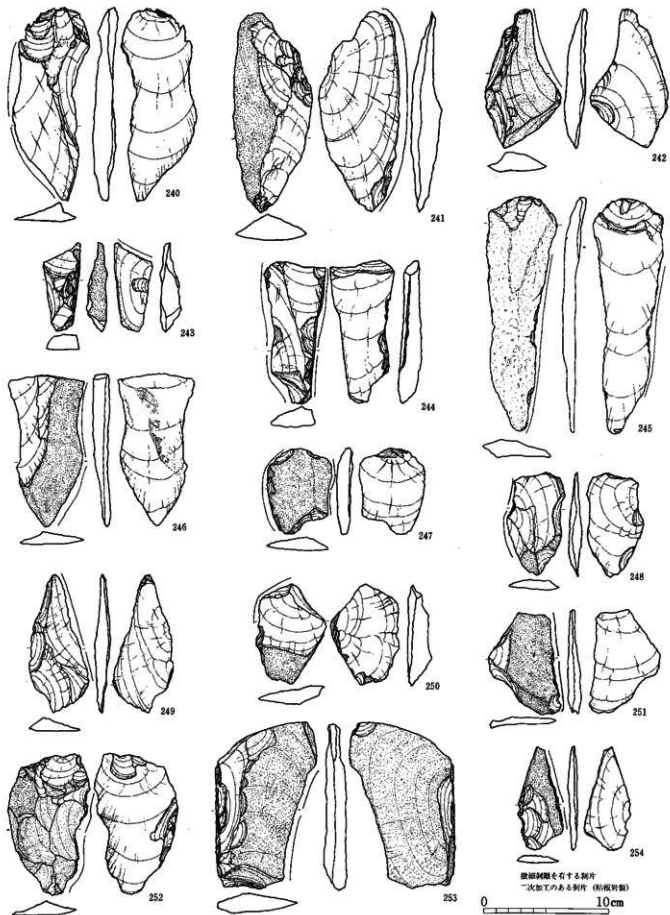


中期後葉の石器 11 (塚代遺跡群 打製石斧6・大形割縁器)

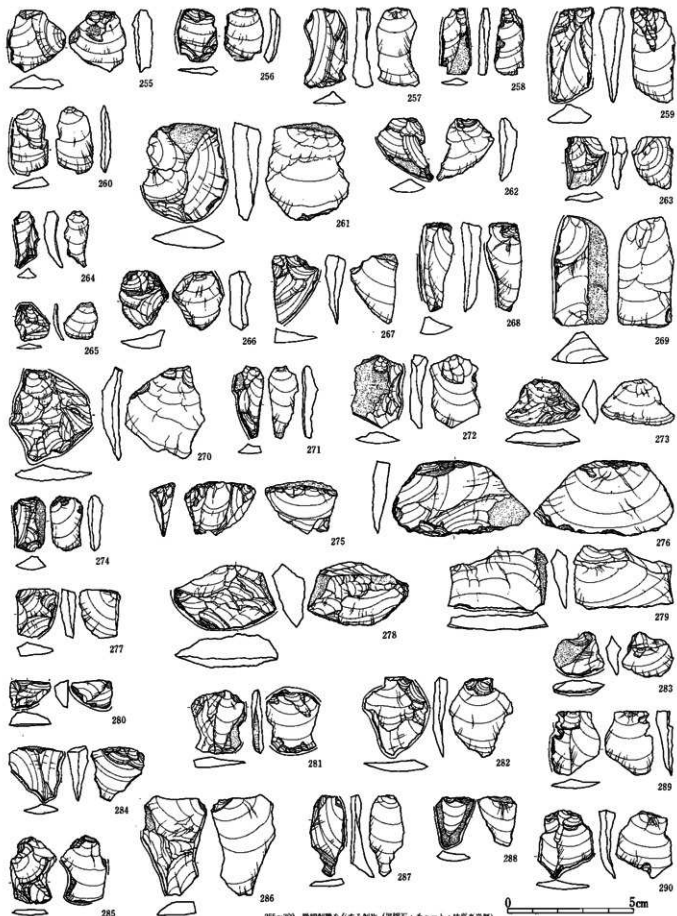




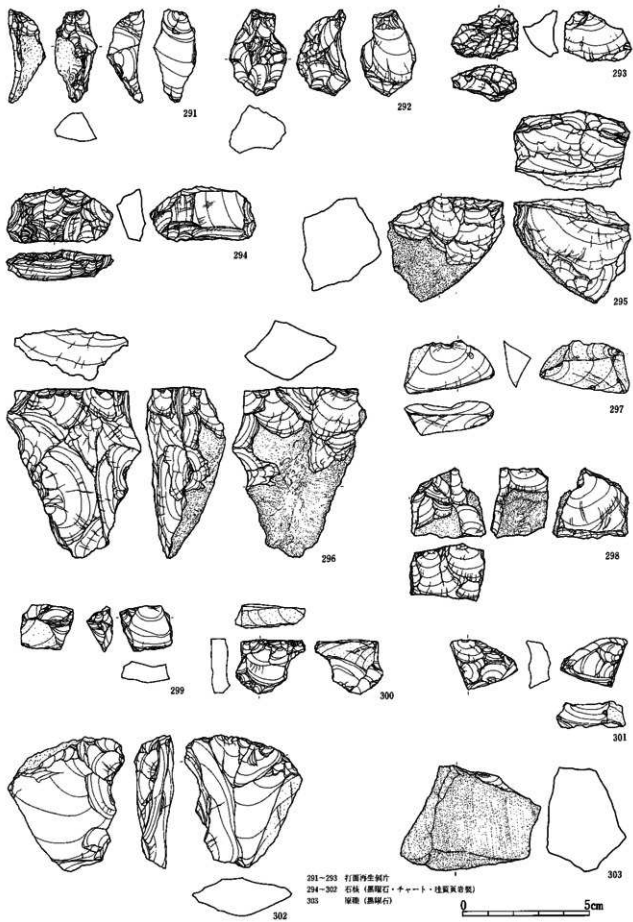
中期後葉の石器 13 (原代遺跡群 大形削器類)



中期後葉の石器 14 (屈代遺跡群 微細網目を有する剥片)

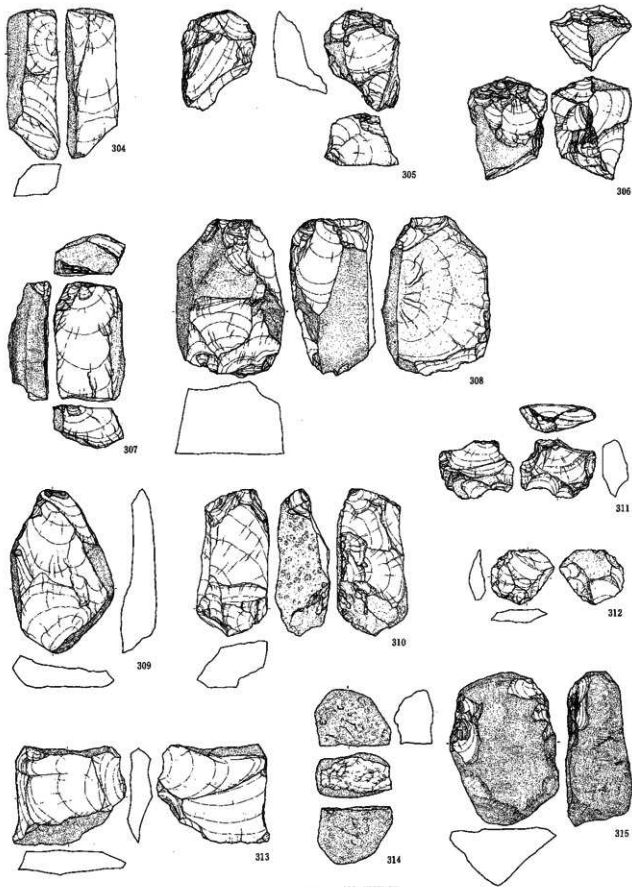


255-290 微細刻痕を有する剥片 (黒輝石・チャート・柱状黒岩質)



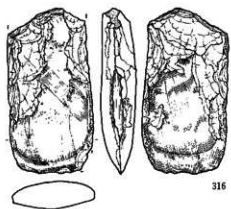
291-293 打面再生剥片
 294-302 石核 (黒曜石・チャート・桂頁岩等製)
 303 燧石 (黒曜石)

0 5cm

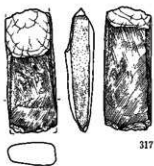


304 剥片 (粘板岩製)
 305-313 石核 (粘板岩・カラス真安山石製)
 314・315 分製礫・初期石核

0 10 cm



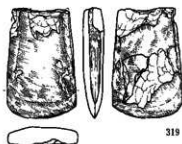
316



317



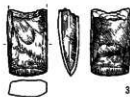
318



319



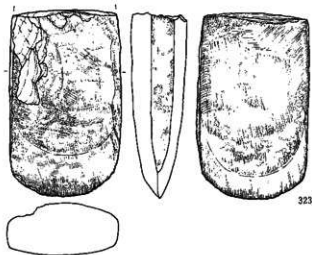
320



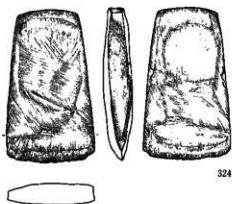
321



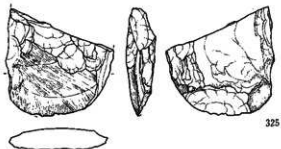
322



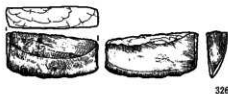
323



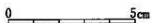
324

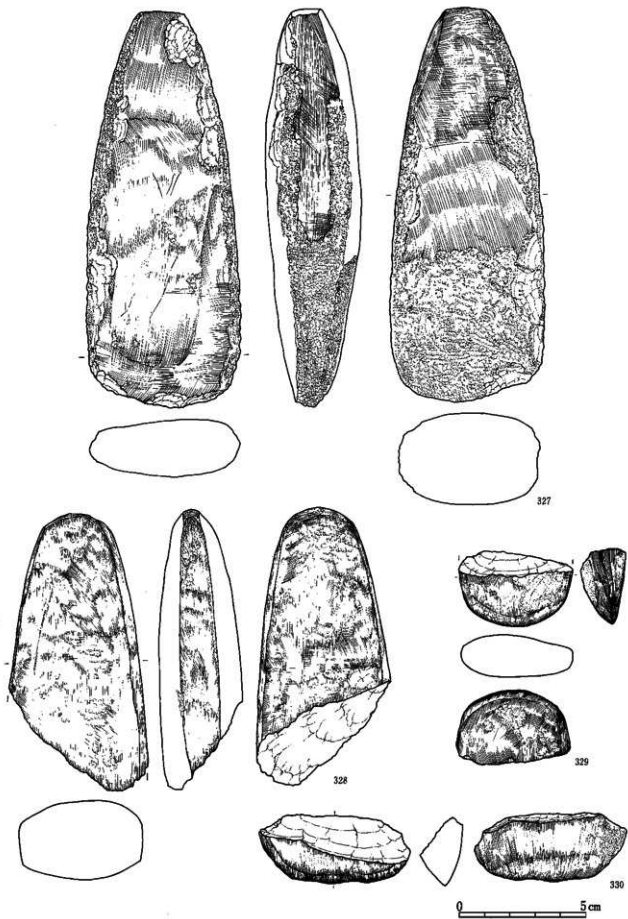


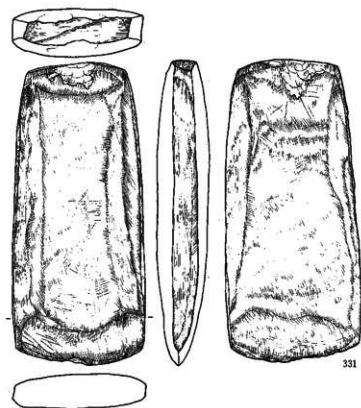
325



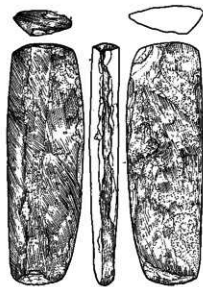
326







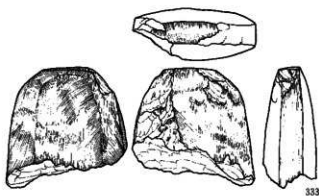
331



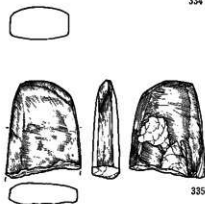
332



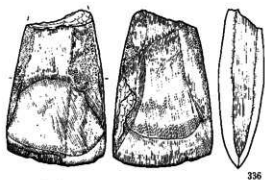
334



333



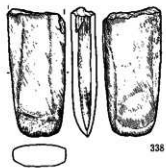
335



336

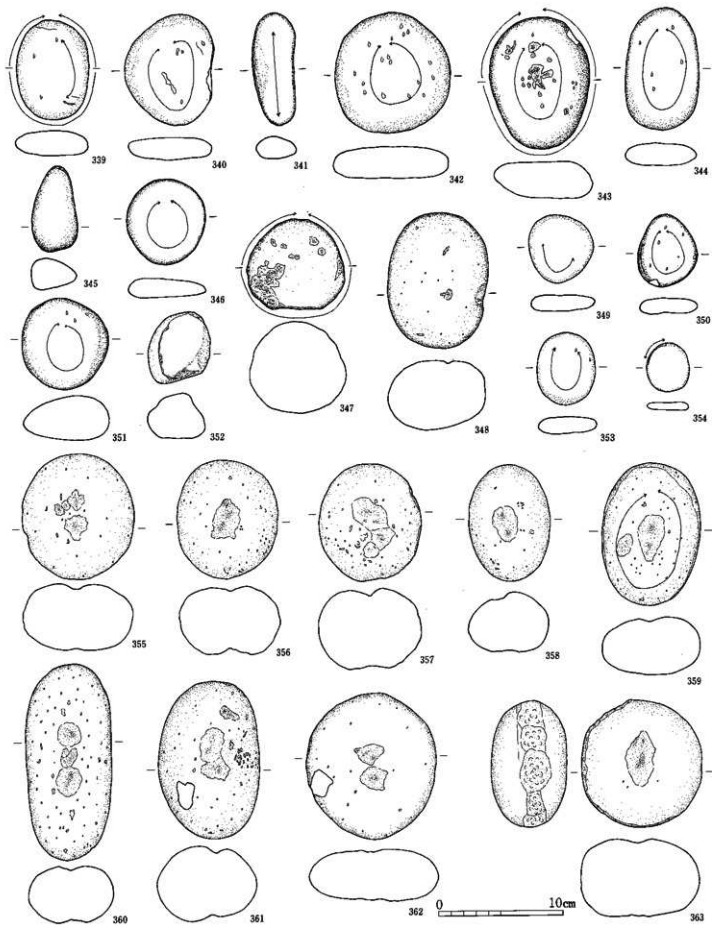


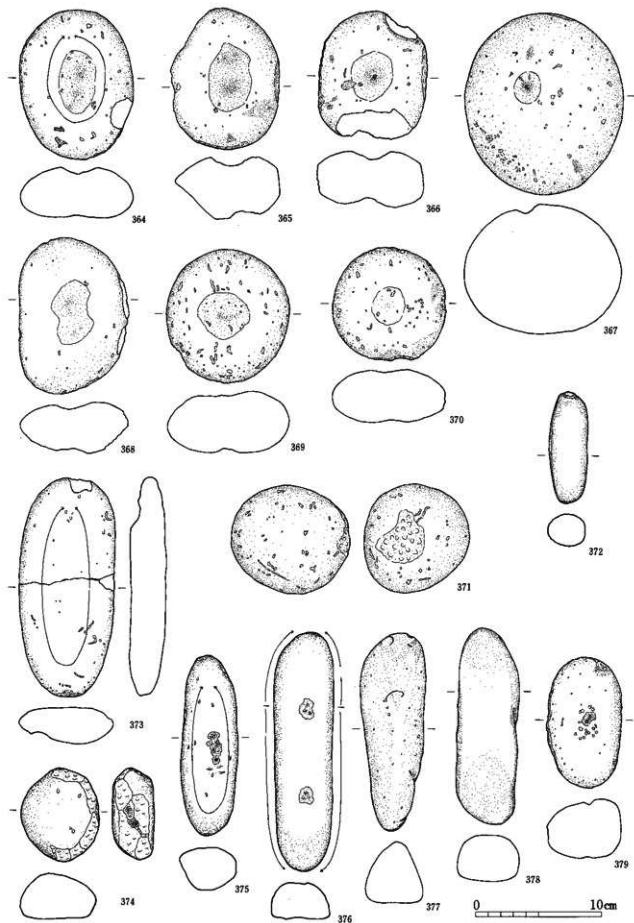
337

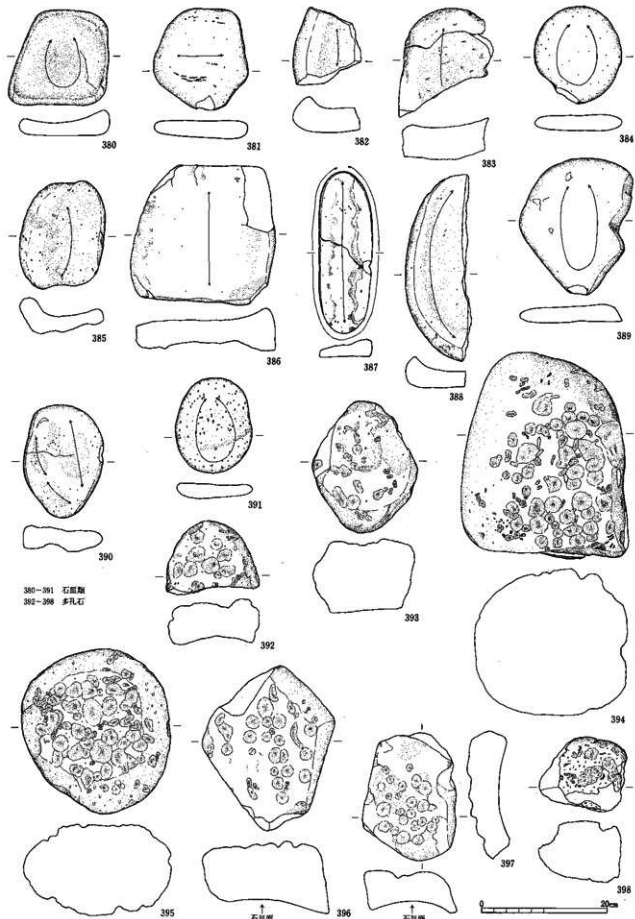


338

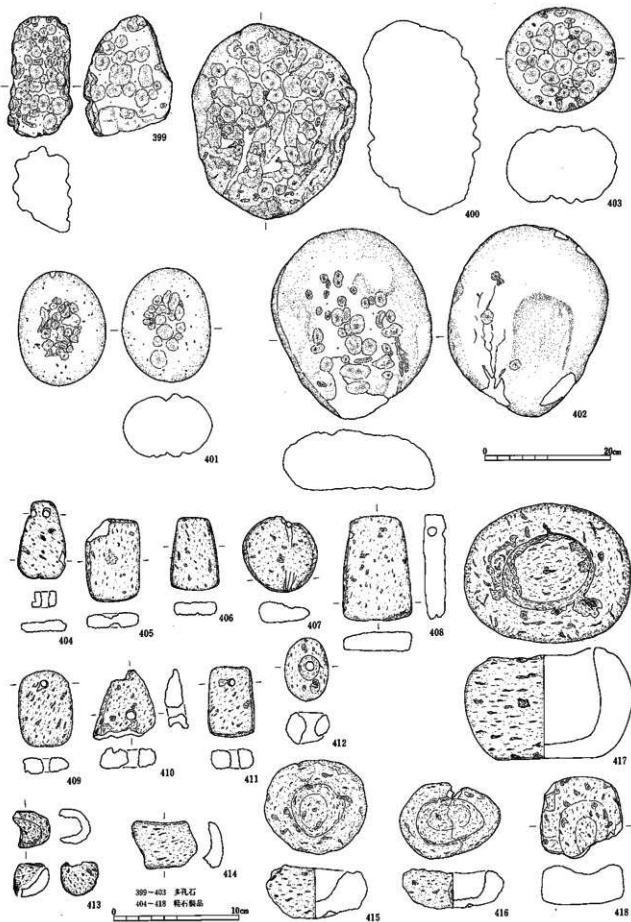




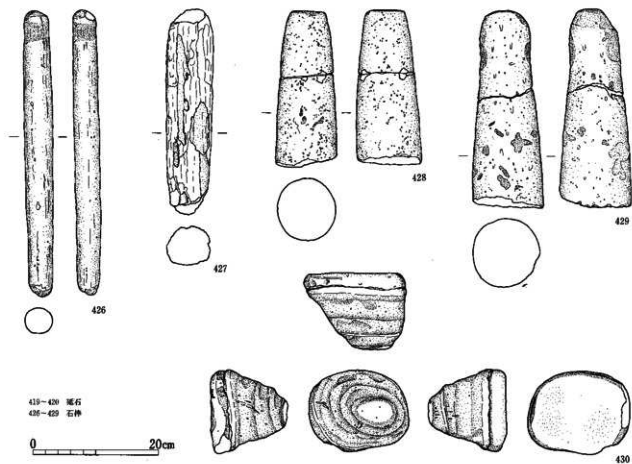
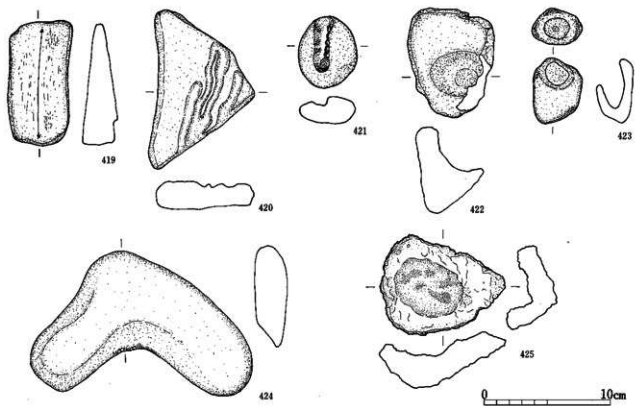




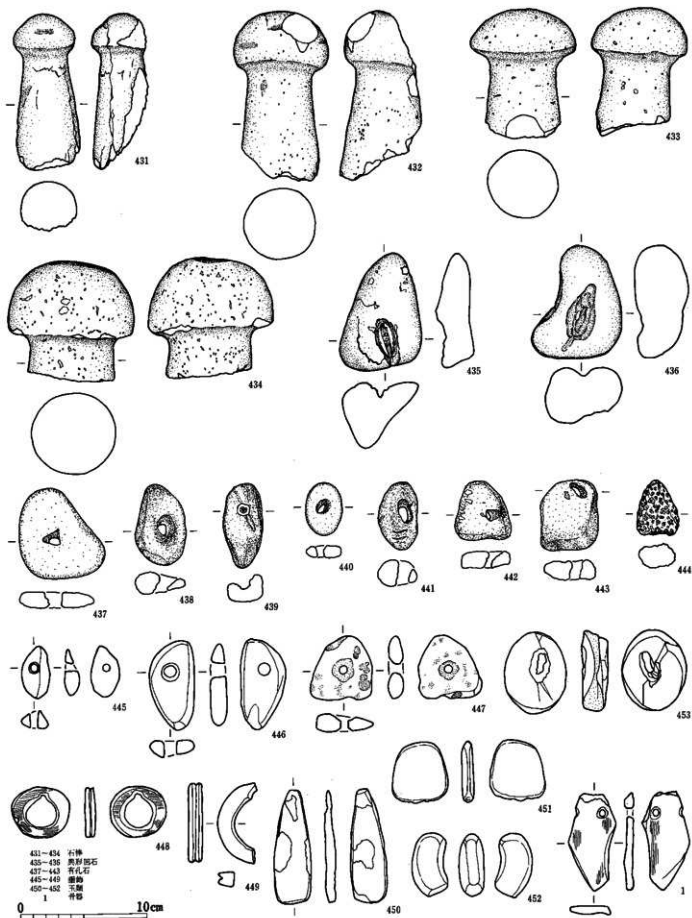
380-391 石皿類
392-398 多孔石



399-413 多孔石
404-418 軽石製品

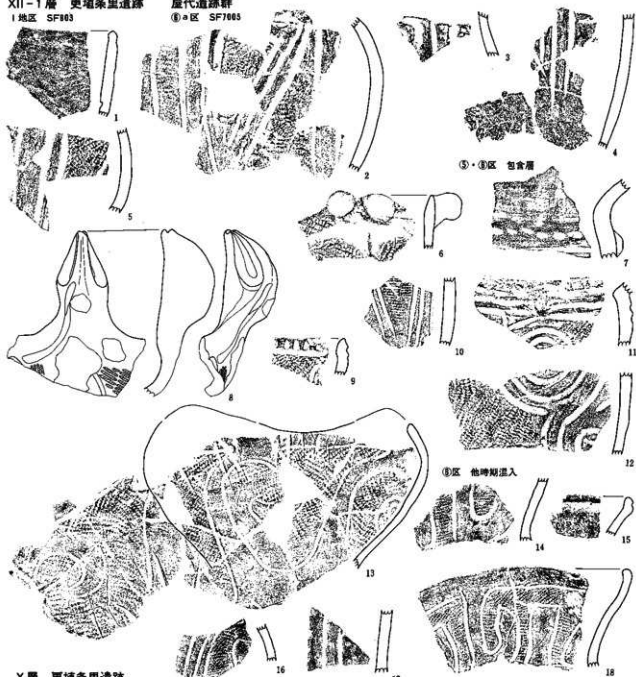


419-420 燧石
426-429 石棒



XII-1層 更埴糸里遺跡
I地区 SF803

歴代遺跡群
①区 SF7005



⑤・⑧区 包含層

⑧区 他時期混入

X層 更埴糸里遺跡
J地区 SQ1009

SQ1009

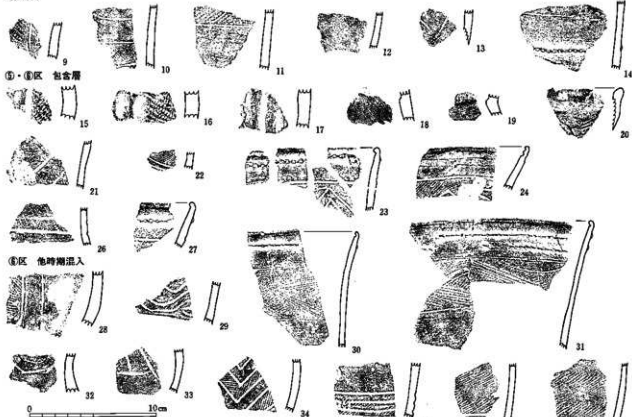


歴代遺跡群
④区 SK4784

0 (SQ1009-4) 10cm

0 (所本・実刻) 10cm

SF4584

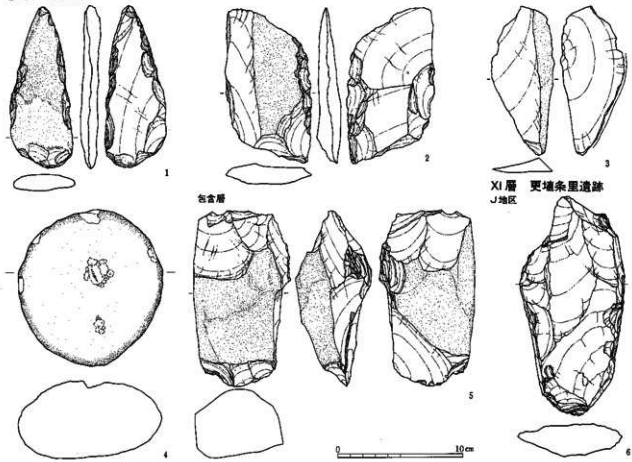


⑤・⑥区 包含層

⑧区 他時期混入

XII-1層 石器 屢代遺跡群

⑨b区 SK3589-2



包含層

XI層 更埴系風遺跡 J地区

後期前葉の石器 2、後期前葉の石器 1

X層石器 更埴糸里遺跡

J地区 SF1821



SQ1888



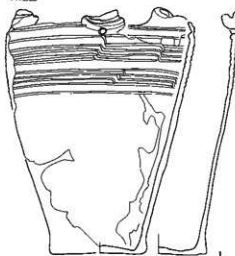
SF1821



0 2cm

IX層 更埴糸里遺跡

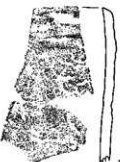
A地区



C地区 SK2038



I地区 包含層



IX層上面 更埴糸里遺跡

E地区 SQ487

包含層



VIII層 更埴糸里遺跡

H地区 SF781



SF783



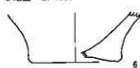
SF784



I地区 SF803



J地区 SF1001



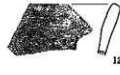
SF1821



F地区 SQ881



SQ883



SQ885

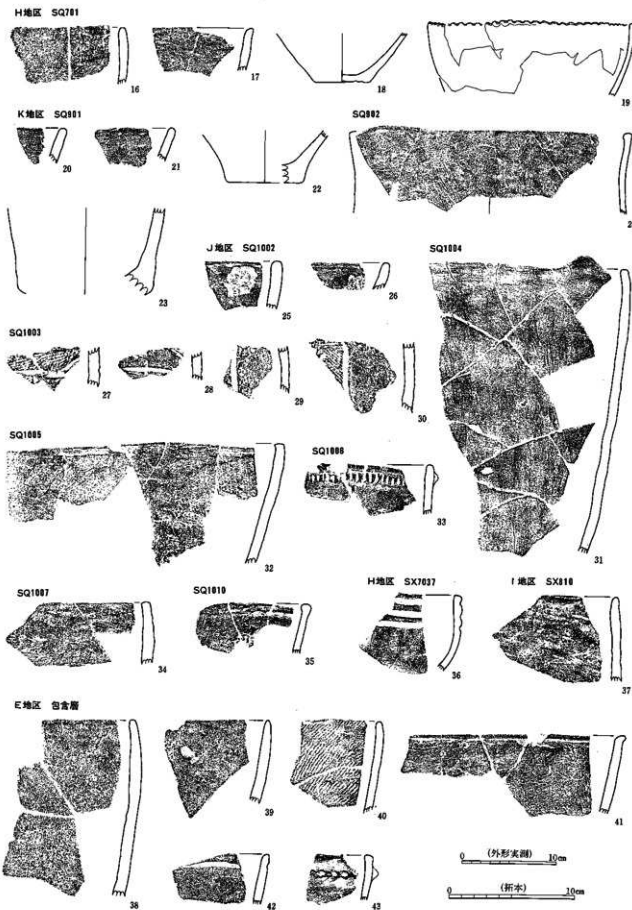


SQ888

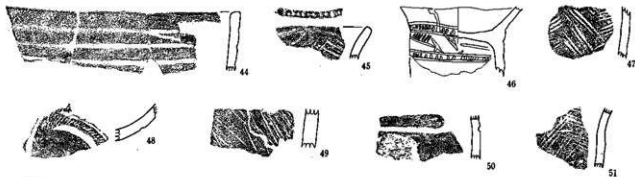


0 (外形実測) 10cm

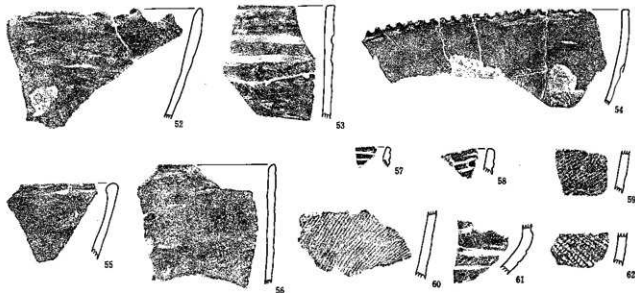
0 (拓本) 10cm



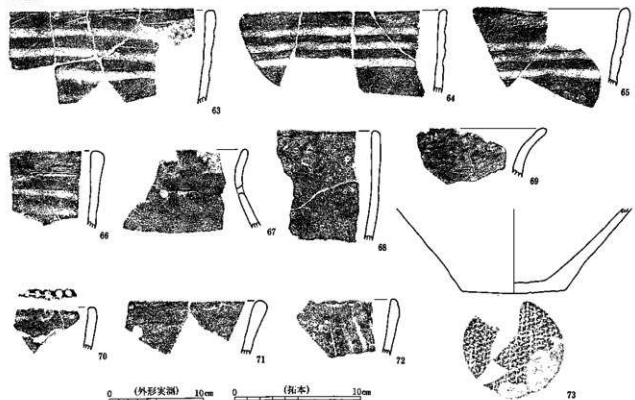
E地区包舍層 (2)

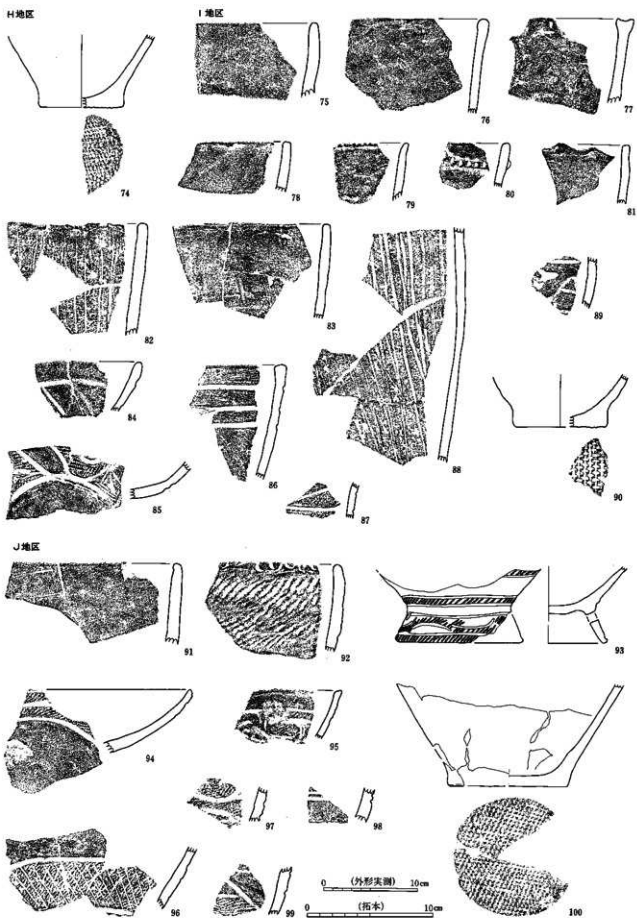


F地区



H地区

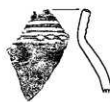
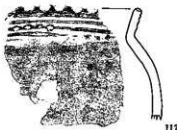
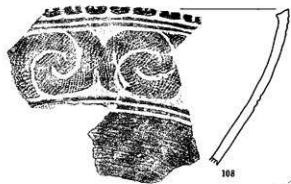
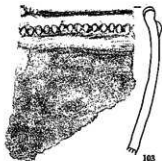
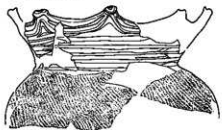




Ⅶ層 屋代遺跡群 他時期混入 更埴糸屋遺跡・屋代遺跡群

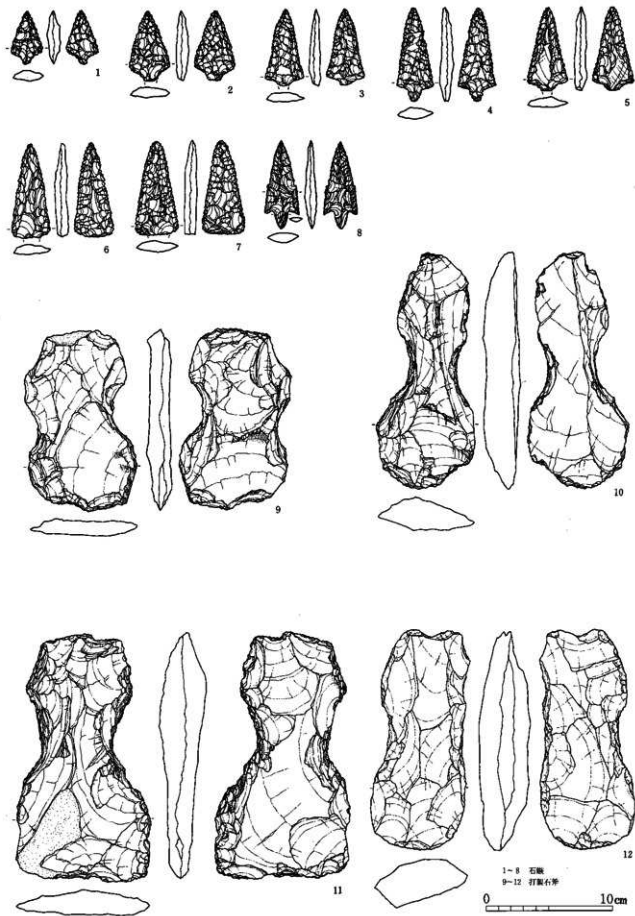
H地区SK7#23

⑤・⑥区 魚

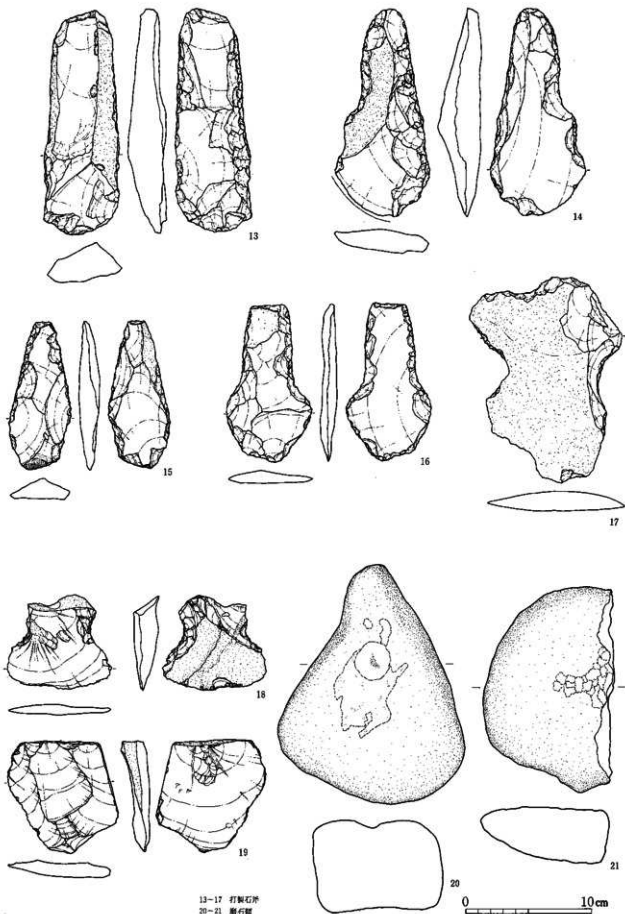


113・115は更埴糸屋遺跡G・E区
その他は屋代遺跡群⑤・⑥区

0 (外形実測) 10cm 0 (拓本) 10cm



晩期の石器 1 (肥後県里道跡 石楯・打製石斧)



13-17 打製石片
20-21 磨石錠

写真図版

(PL)



梅雨明けのなかった夏、1993年。私達は地表下4mにいた。
(屋代遺跡群Ⅱ-2層面)

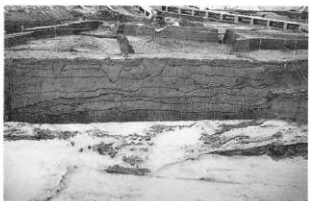
遺跡全景



XVI層・XV層
検出遺構

前期
層代遺跡群
⑤・⑥区

左：⑤b区深掘り断面
右：XVI層検出遺構
(⑥b区)

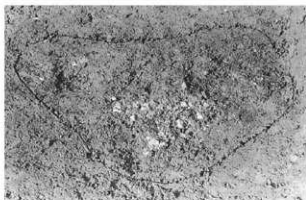


中期前葉1期

左：XV層検出遺構
(⑤a区)

右：SK6916
人骨出土状況





XIV-3層
検出遺構
屋代遺跡群

左: SK5938
出土炭化材
右: SK5938
出土焼骨



XIV-1・2層
検出遺構

中期前葉 2期

左: ㊦b区東壁
XIV-1層
右: ㊦区集落
(北より)



左: ㊦区集落全景
右: SB5401P



左: SB5404
右: SB5408

左: SB5412a
右: SB5412a
出土獣骨



左: SB5412a
炉体土器
右: SB5412a
床面炭化材



左: SB5412b
右: SB7501



左: ◎b区調査風景
右: SB7502断面



左: SB7502
右: SB7502
床下検出ピット

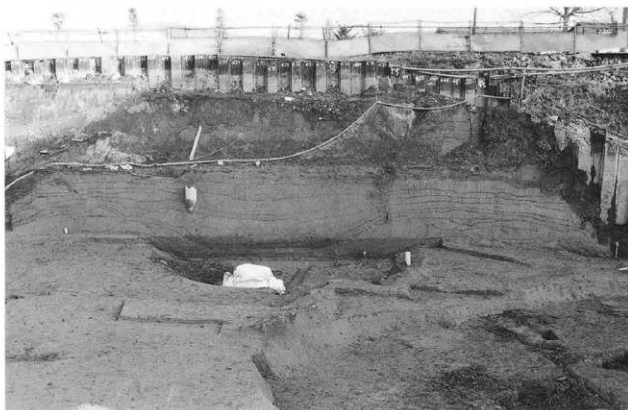




左：SB7502
床下検出ビット
右：SB7502炉断面



右：SB9009



SB9009断面 (開堤)



左：SB9009伊体土器
右：SB9009
埋土出土人骨

左：SB9010
SB9013
右：SB9010印体土器



左：SB9011
床面直上埋葬人骨
右：SB9011
人骨出土状況



左：SB9012
右：SB9014(手筒)



左：SK5915断面
右：SK5932炭化材



左：SK7670
右：SF7038

