

29・33号住居址



36・37号住居址



46号住居址





43・48号住居址



48・43号住居址



50・55・60・61
142号住居址

56号住居址



57号住居址



65号住居址埋甕





68・69・70・89号住居址



73・74・85号住居址



7589号住居址

75・86・132・135号住居址



77号住居址



78号住居址





79号住居址



80号住居址



81号住居址

82・83号住居址

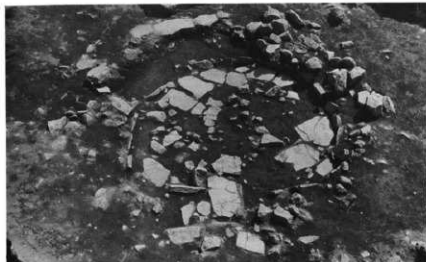


82号住居址遺物出土状況



84・134号住居址





88号住居址

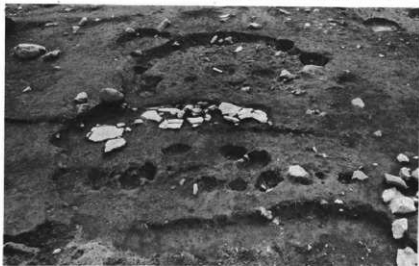


88号住居址



93号住居址

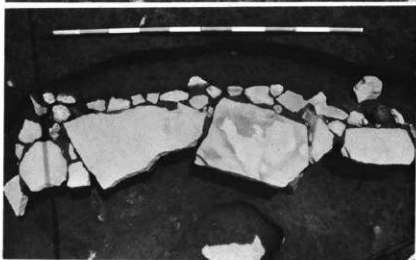
95・110号住居址



99号住居址



99号住居址





100号住居址 (细壺)



102号住居址



111・112・
113(76・72)号住居址

116号住居址



117・119(133)号住居址

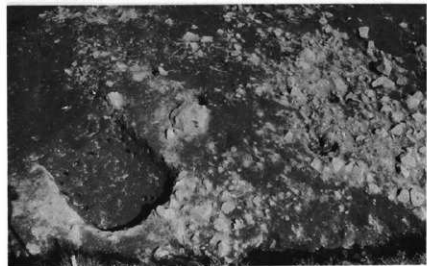


118号住居址

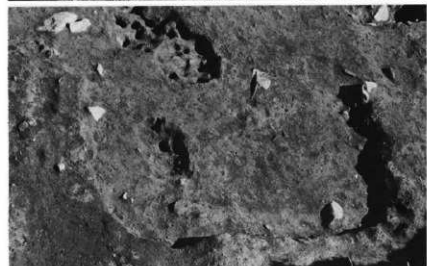




竪穴1

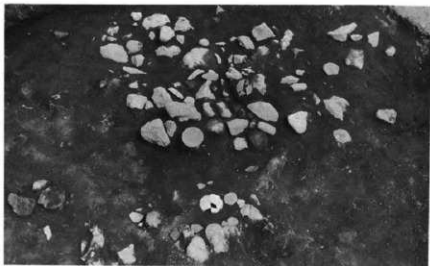


竪穴3とフンド3

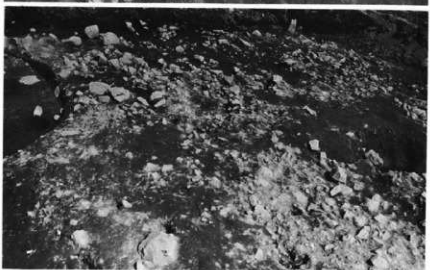


竪穴4

ワンダ2



ワンダ3



ワンダ4





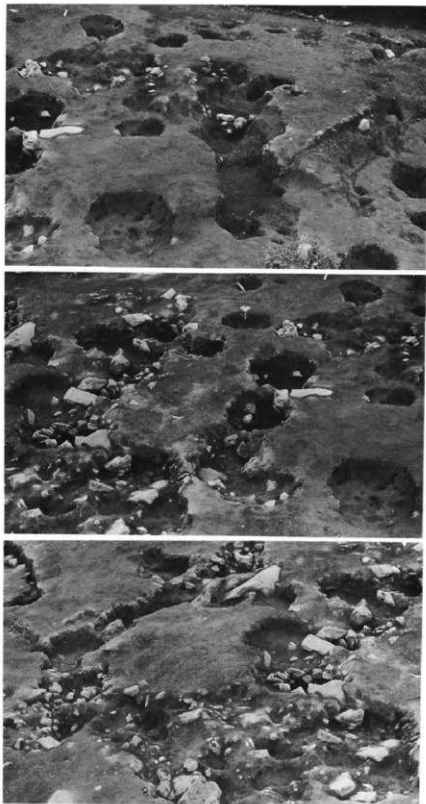
集列石



同



同



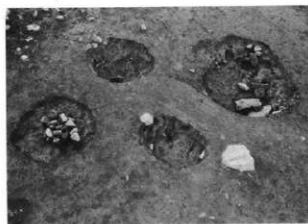
土壇29~32・34~40・46~62・67~70・85~97



一号墓塚



126



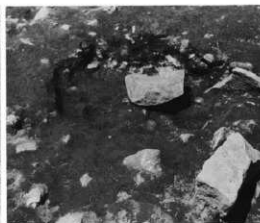
127・128・131・135



130



192



193





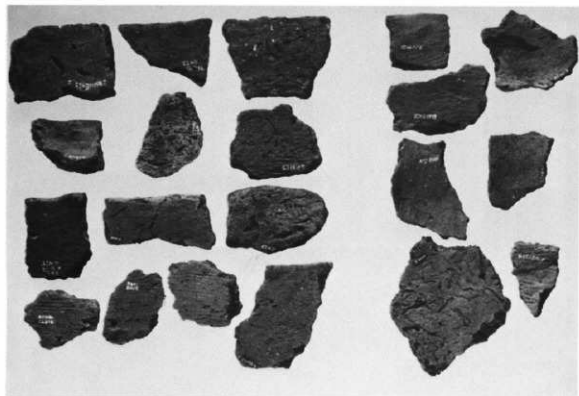
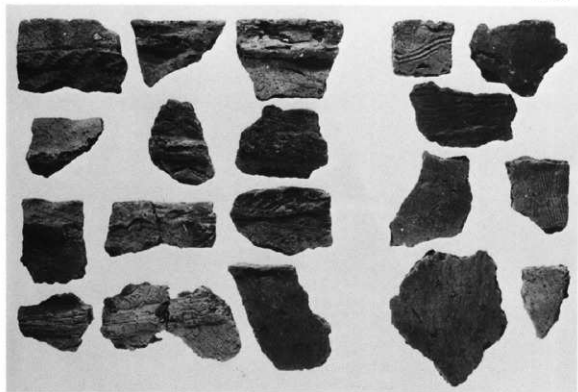
方形配列土塚群



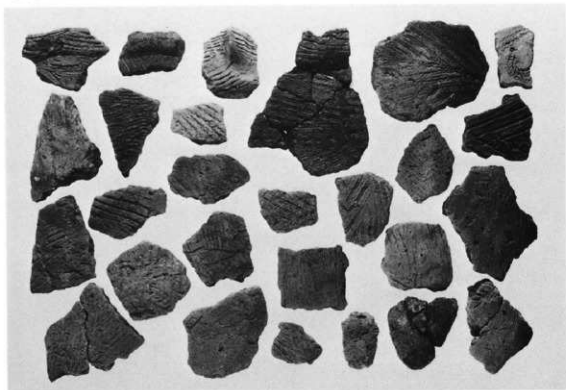
土塚101



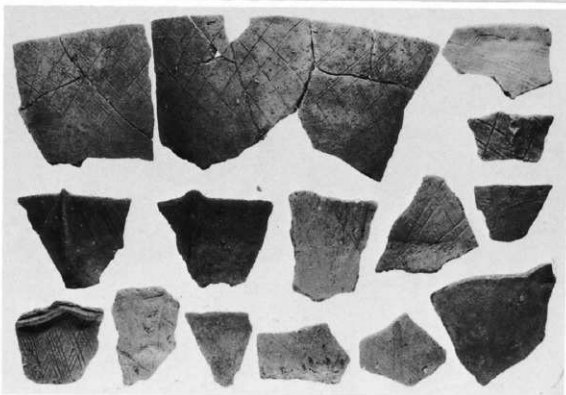
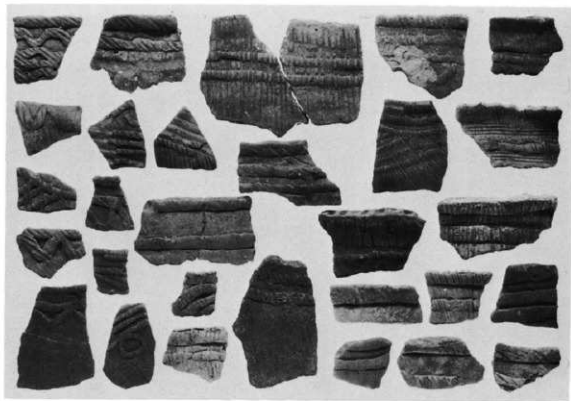
土塚173(土器後部)



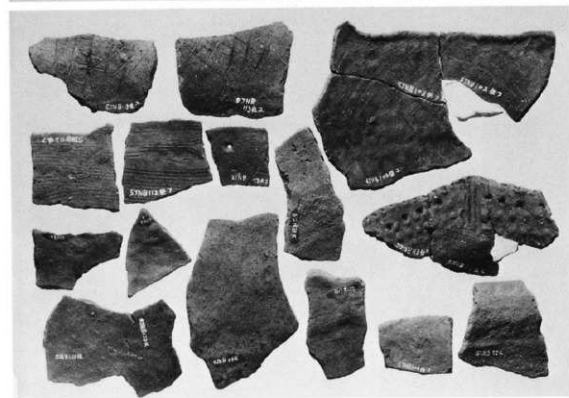
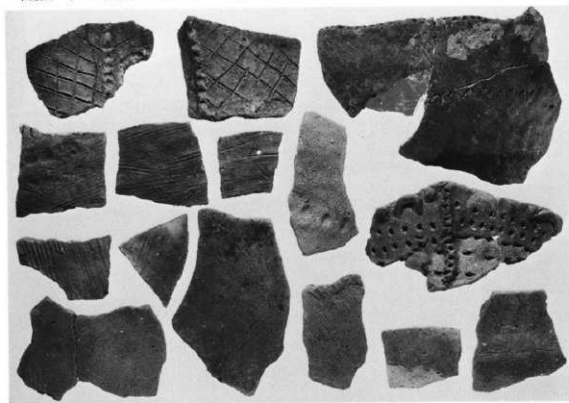
(上) I群1類(別) (下) 同(別)



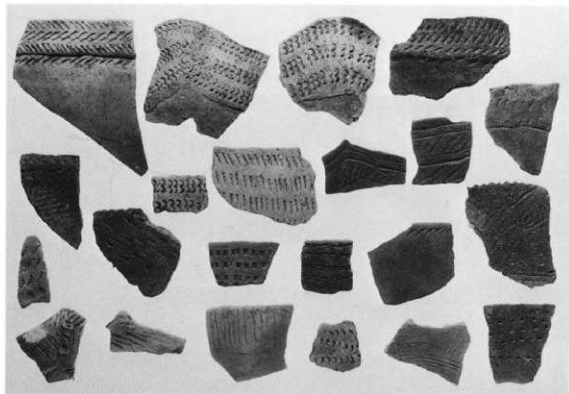
(上) I群1類 (下) I群1類・4類



(上) I群2期A (下) I群2期B



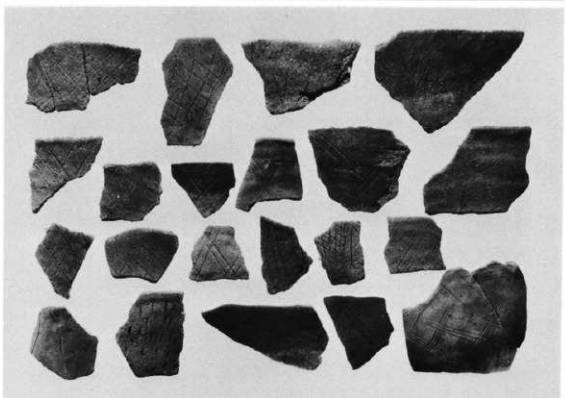
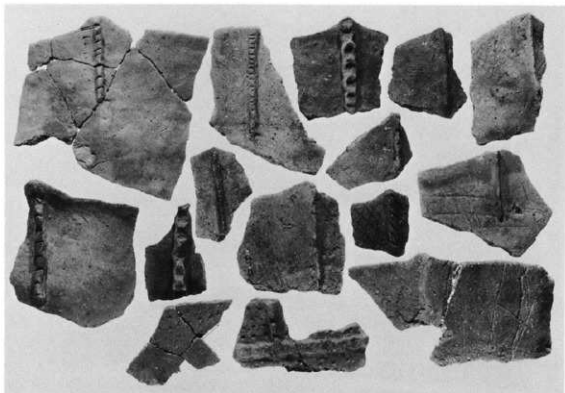
(上) I群2類B・D(表) (下) I群2類B・D(裏)



I群2類他

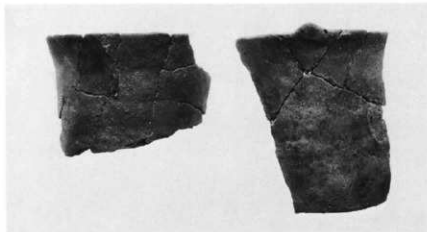


I群3類（完形品）中越



(上) I群3類A (下) I群3類C・D

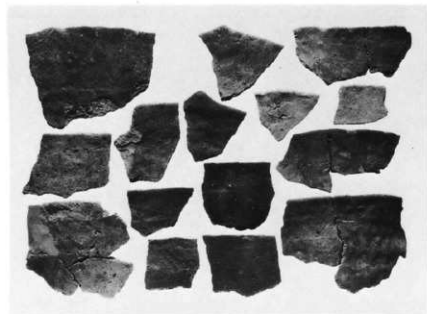
I群3類C

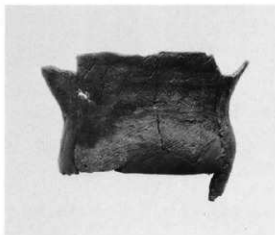
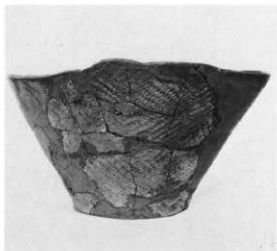


I群3類C

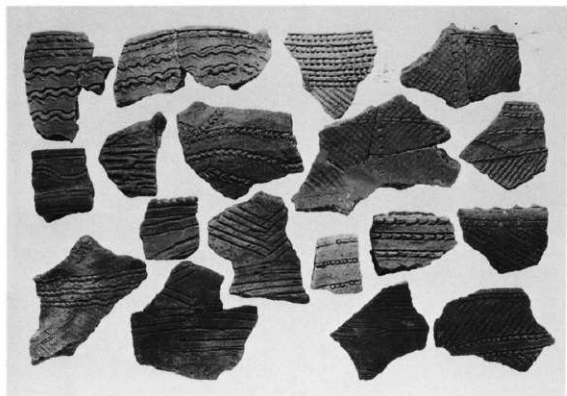
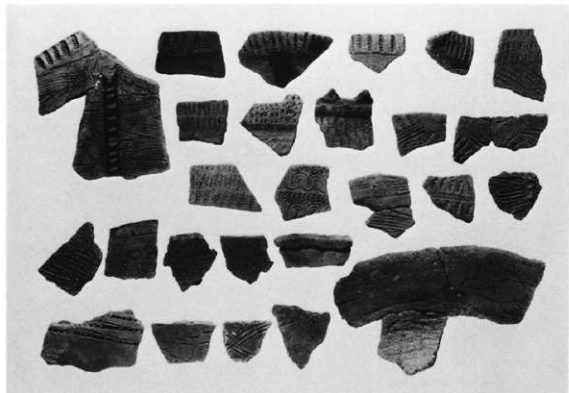


I群3類C

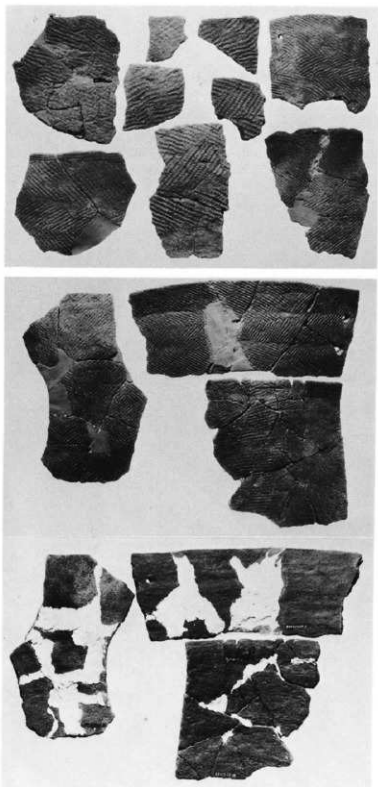




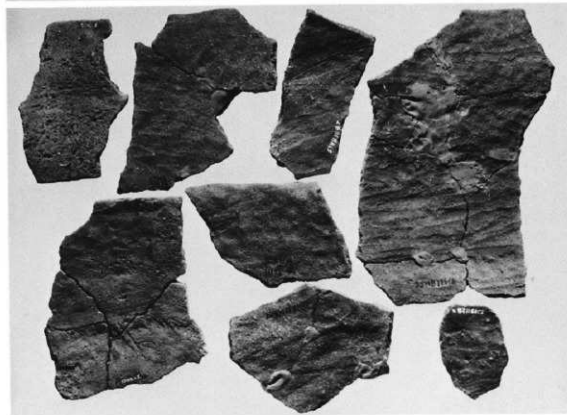
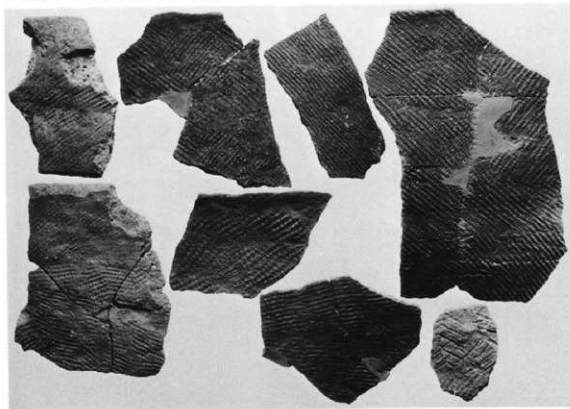
Ⅰ群4・5類の形のあるものを一括する



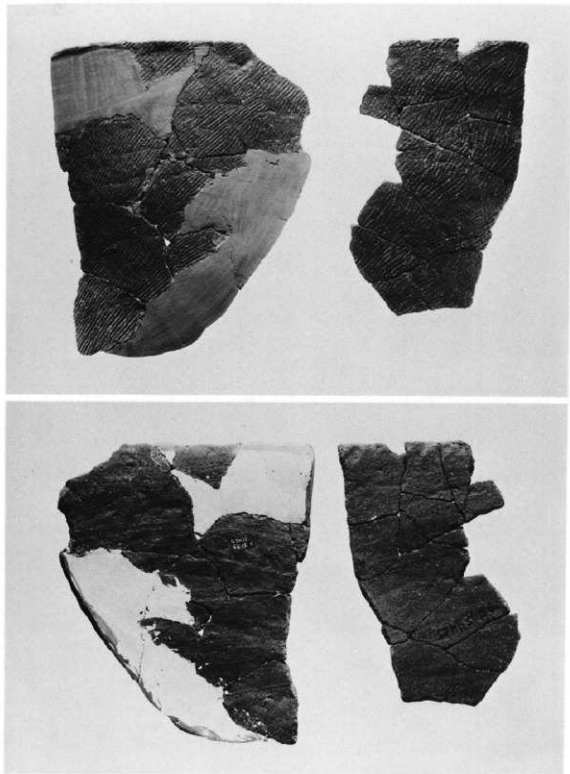
(上) I群4類(神ノ木)・5類 (下) I群5類B



(上) I群5類(縄文) (下) I群4・5類F



(上) I群4・5類(表) (下) 同(裏)



(上) I群4・5類(表) (下) 同(裏)



I群4・5類完形品

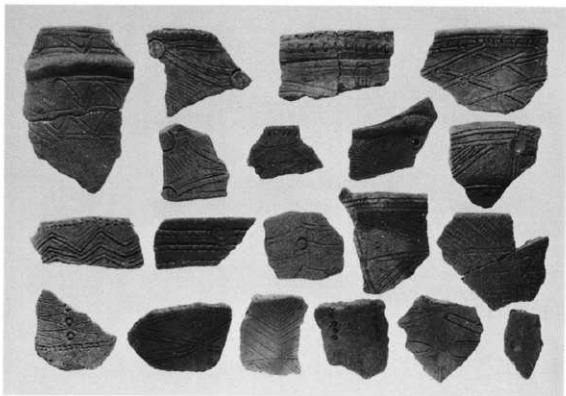
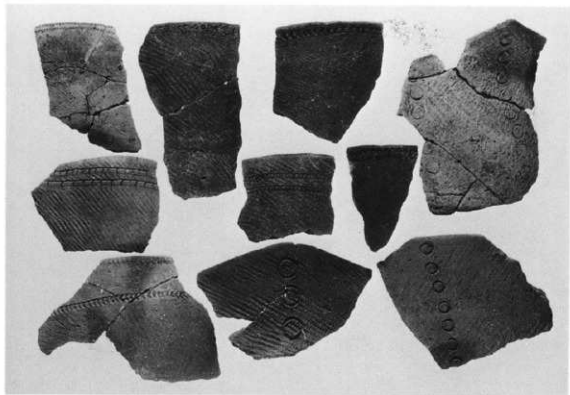


I群4・5類完形品

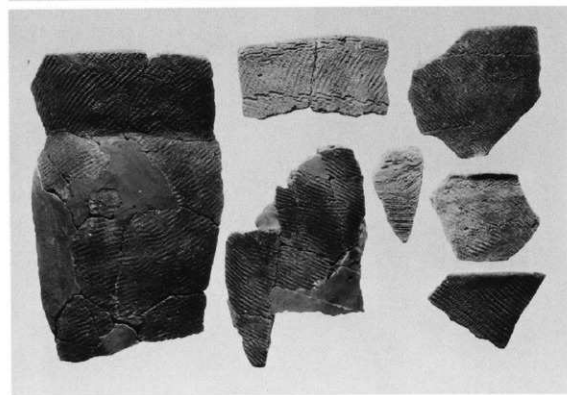
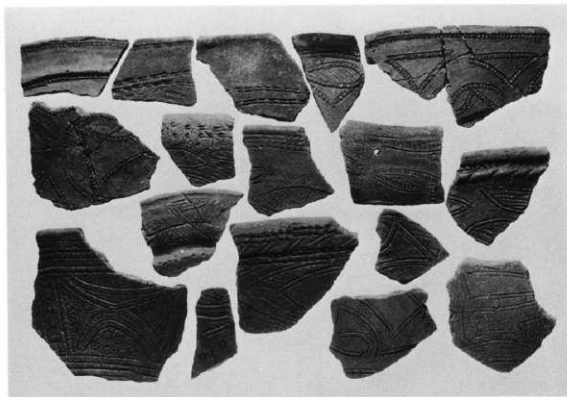
図版70 十二ノ后遺跡出土縄文土器（Ⅱ群1類）



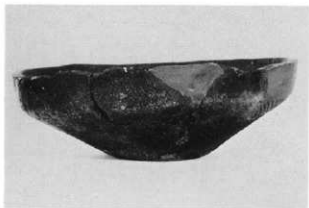
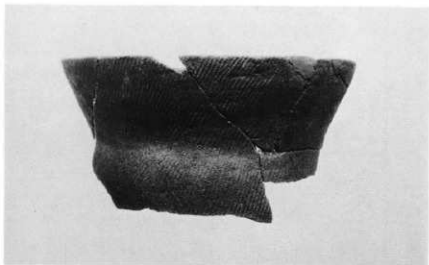
Ⅱ群1類完形品4ヶ



(上) Ⅱ群1類A (下) Ⅱ群1類A



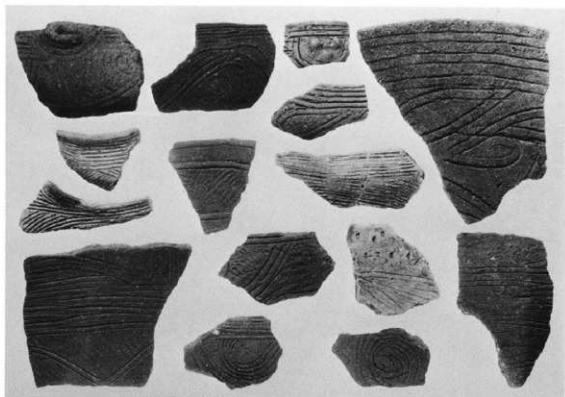
(上) Ⅱ群1類A (下) Ⅱ群1類A



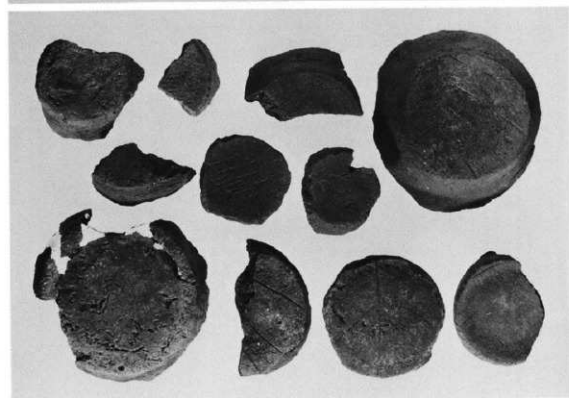
II群1・2類, I群4・5類F (完形4ヶ)



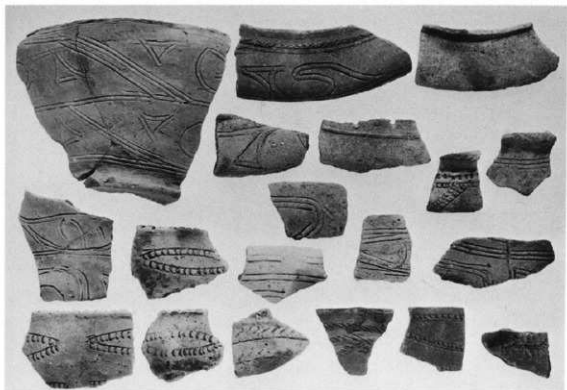
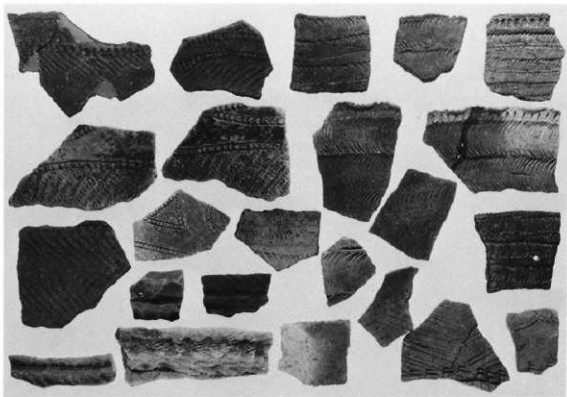
(上) Ⅱ群2類(爪形) (下) Ⅱ群2類(浮線文)



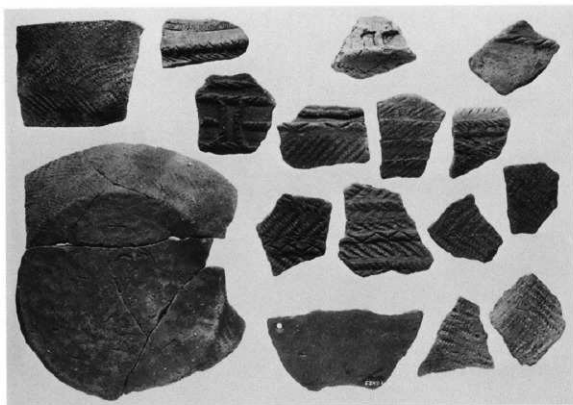
(上) Ⅱ群2類(平行波線文) (下) Ⅱ群1・2類(無文)



(上) I・II群底部 (下) I・II群底部



(上) Ⅱ群4類(北白川) (下) Ⅱ群4類(北白川)



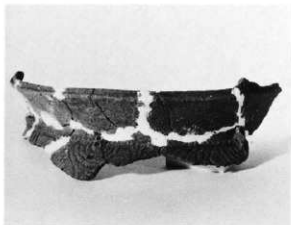
(上) Ⅱ群9類(北白川Ⅲ)



(下) Ⅲ群1類(桑久保)



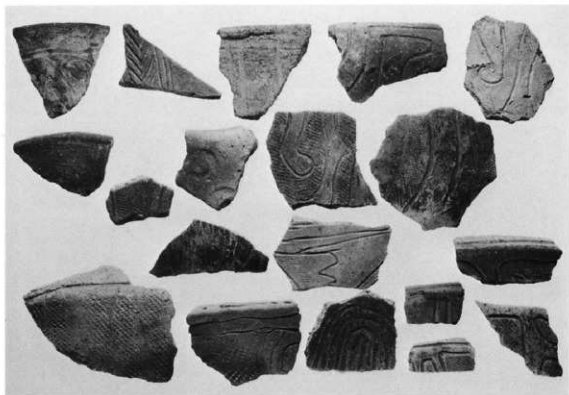




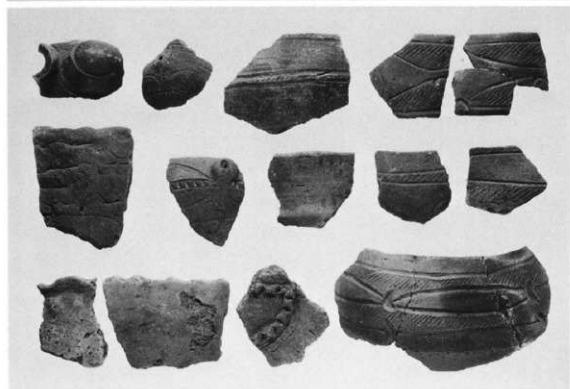
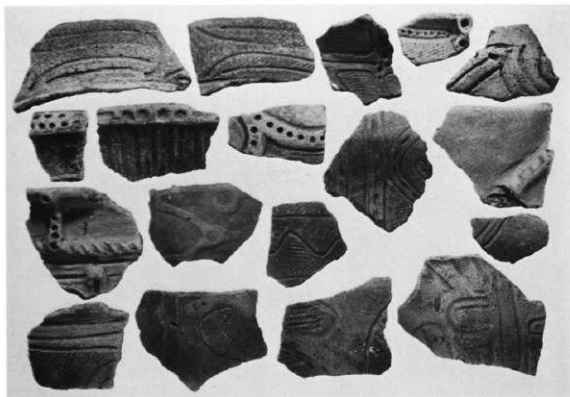
图版82 十二ノ后遺跡出土縄文土器 (IV群)



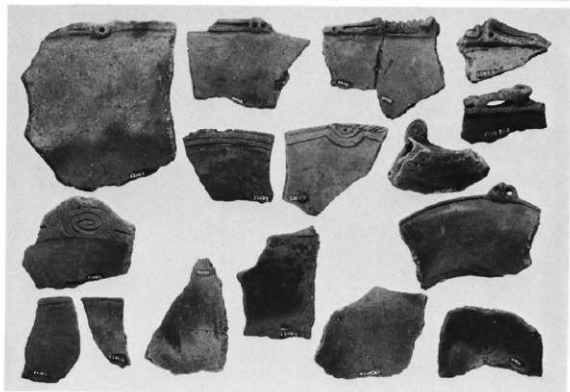
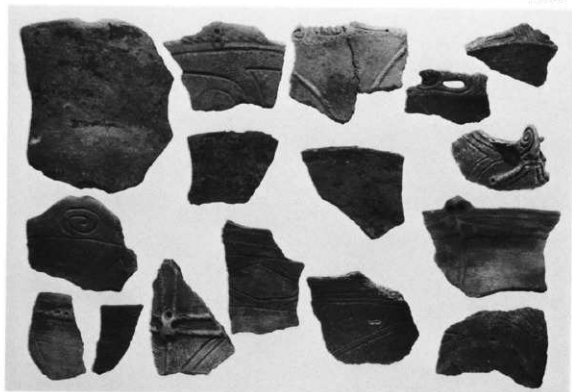
後期完形土器



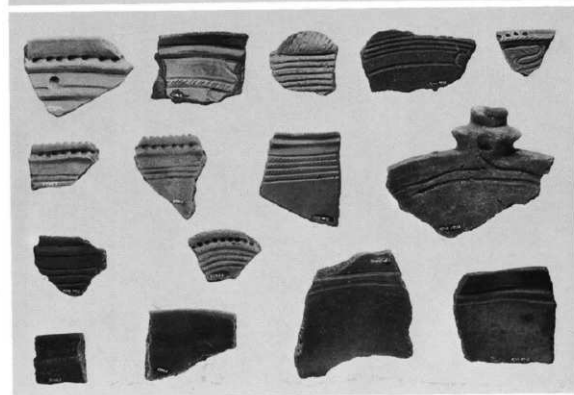
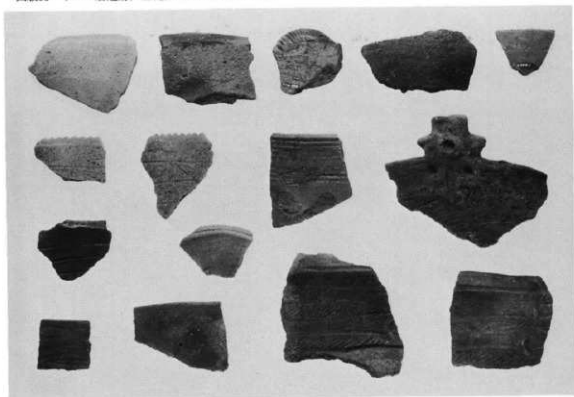
(上) IV群1・2類 (下) IV群1～3類



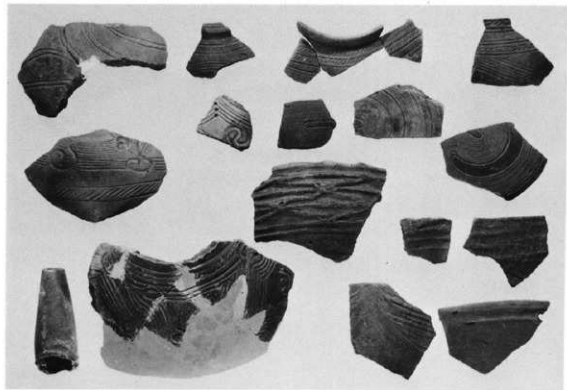
(上) IV群2・3類 (下) IV群4・5類



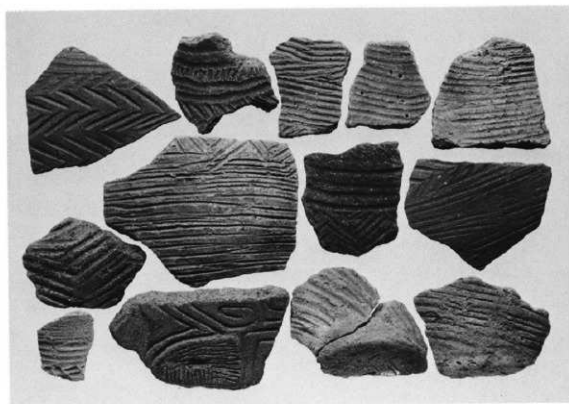
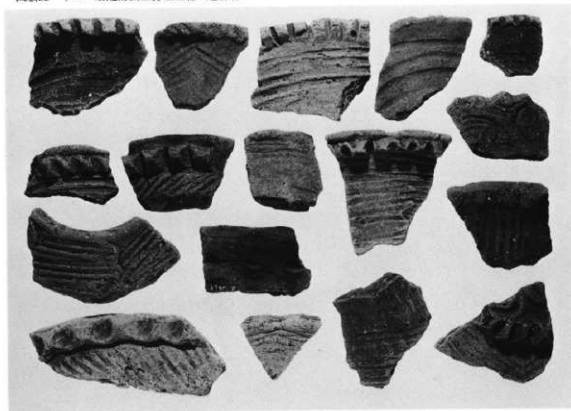
(上) IV群2類(初) (下) 同(其)



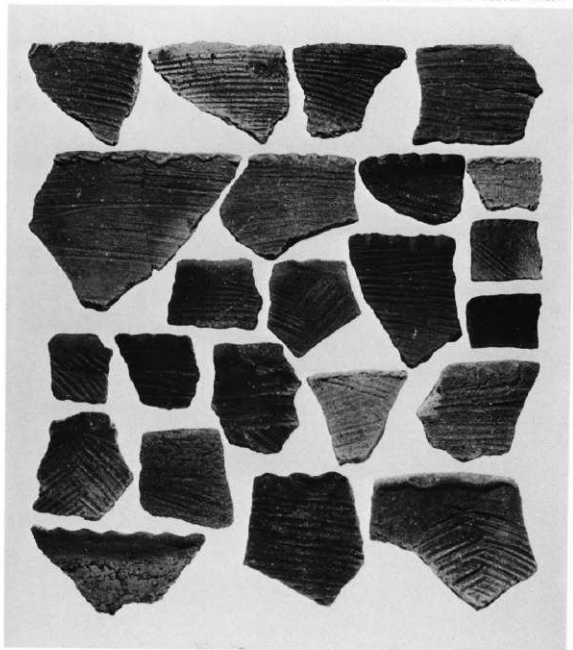
(上) N群4・5類(表) (下) 同(裏)



(上) IV群5・6類 (下) IV群4・5類, V群1類

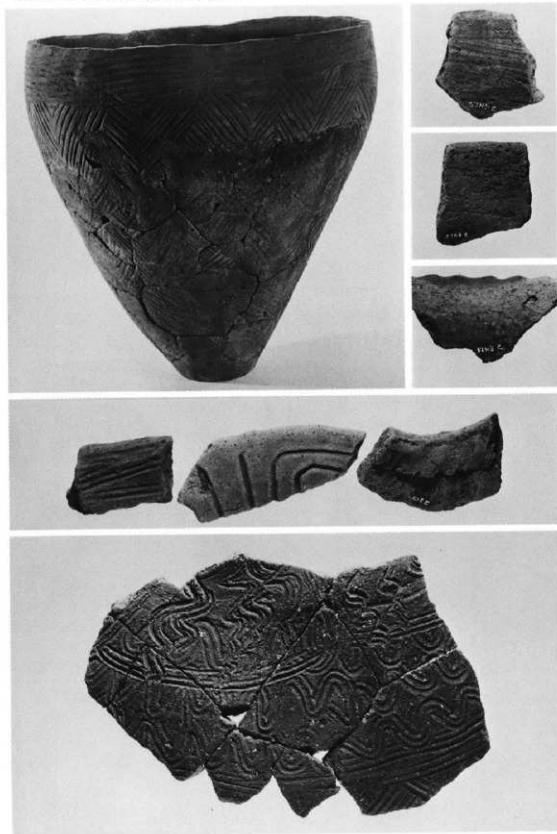


弥生包含層出土



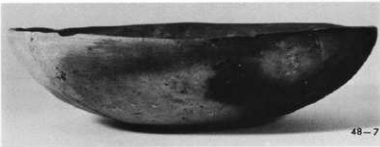
弥生包含層出土

图版90 十二ノ后遺跡出土弥生土器（土坑）





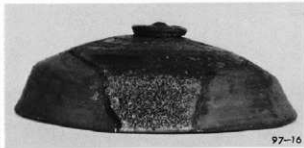
〔116-10は、住居址番号-遺物番号を示す。以下、図版102まで同じ〕

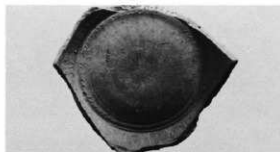




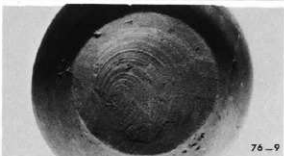








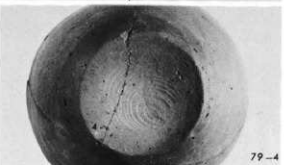
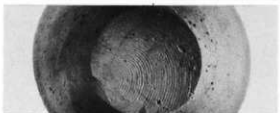
F2-35



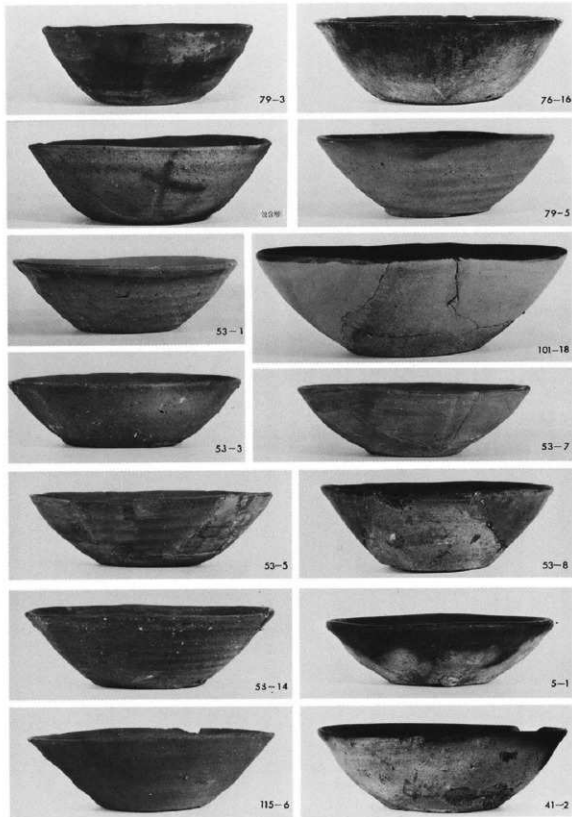
76-9



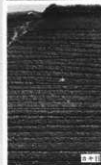
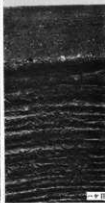
67-7



79-4

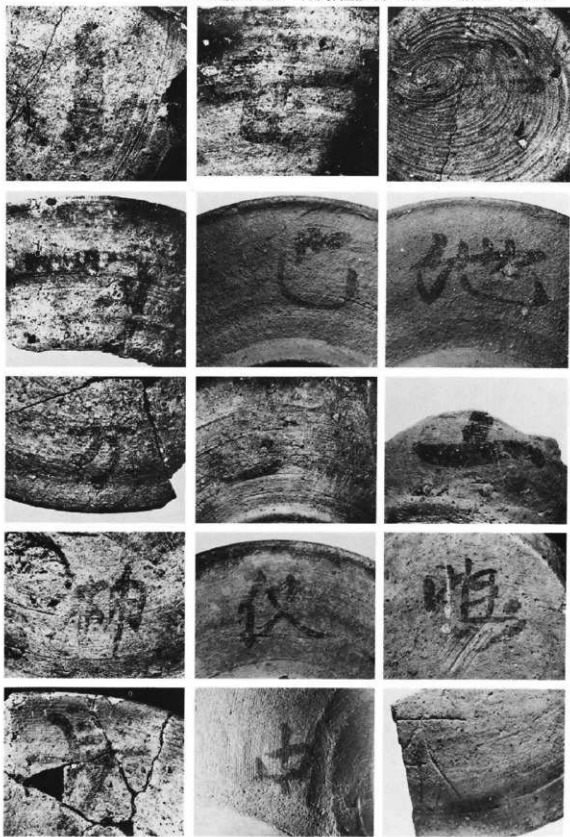


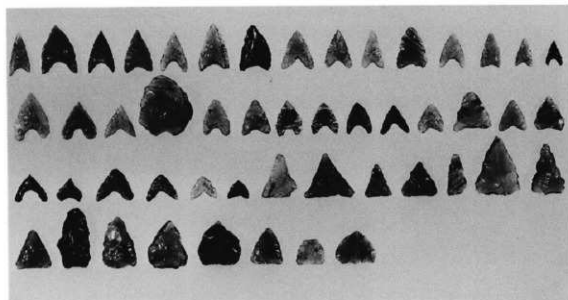
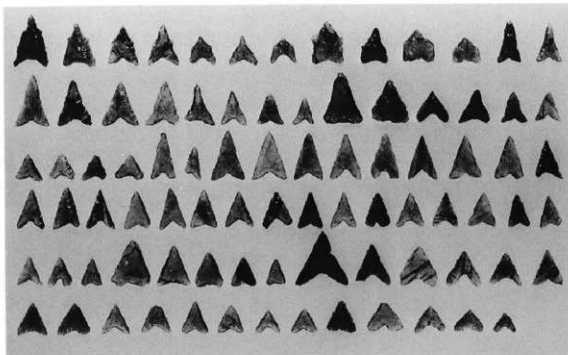












無茎凹基・無茎平基(1:2)