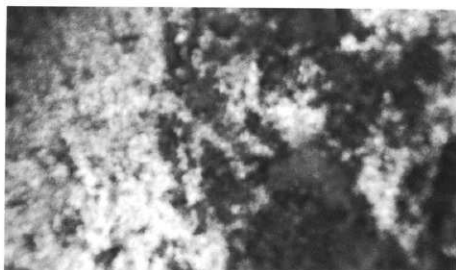


第241図

玉石

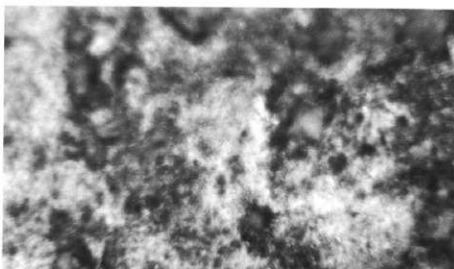
I 1e 類
SB410
PL55-1
PL206-29



A

A. 器面の摩耗・光沢痕

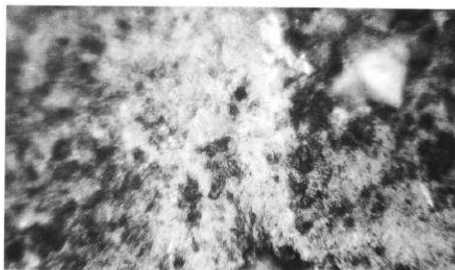
× 5 0



B

B. 器面の摩耗・光沢痕(Aの拡大)

× 1 0 0

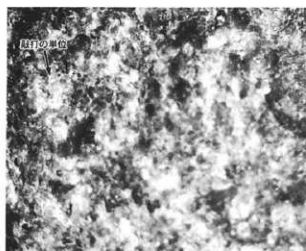


C

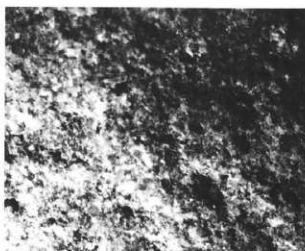
C. 器面の摩耗・光沢痕(Bの拡大)

× 2 0 0

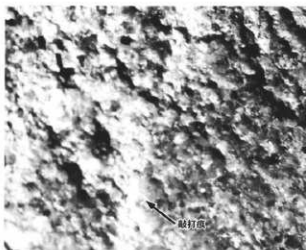
第242図



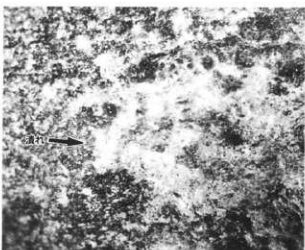
1 ア類 × 10
SB1131, PL201-1



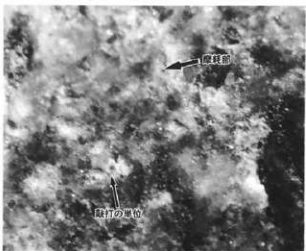
2 ア類 × 10
SK131, PL114-3-PL201-4



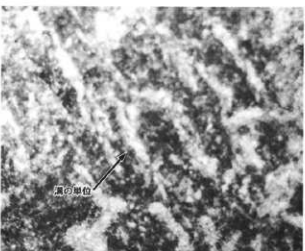
3 工類 × 10
SB1136, PL74-9-PL202-19



4 イ類 × 10
SD12, PL123-36-PL201-9



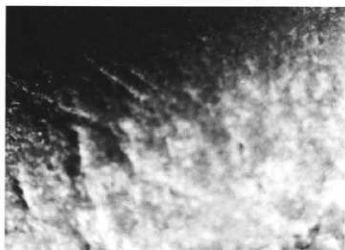
5 ア類 × 10
SD12, PL123-28-PL201-7



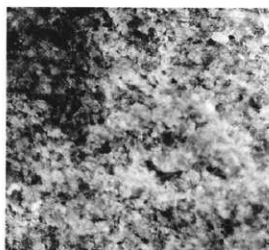
6 工類 × 10
SB1136, PL202-18

第243図

敲石



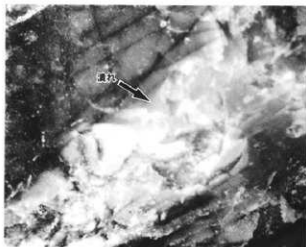
1 工類 ×10
IB 9, PL202-17



2 の類 ×10
SD1027, PL177-6・PL202-16



3 工類 ×10
V G 24, PL203-26



4 力類 ×10
II V 22, PL204-37



5 中類 ×10
SD1027, PL177-4・PL205-44

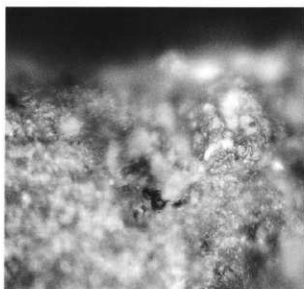
第244図



1A ×100

大形刃器

1 a 類 PL99-10
SB1281 PL207-4



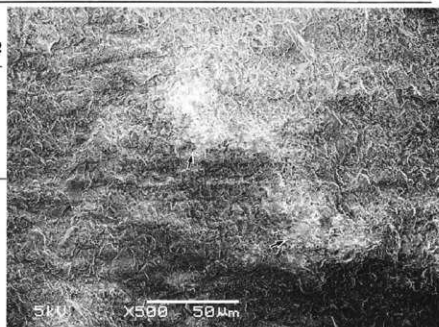
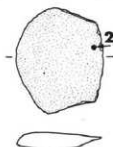
1B ×200

1A.刃部の摩耗・光沢痕

1B.刃部の摩耗・光沢痕(1Aの拡大)

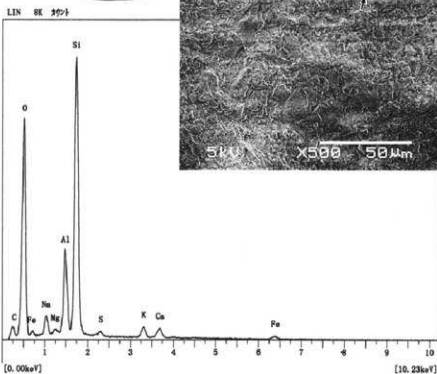
大形刃器

1 a 類
1 B24



2 ×500

2.刃部の摩耗・光沢痕



2. 刃部摩耗光沢痕のEDX分析チャート

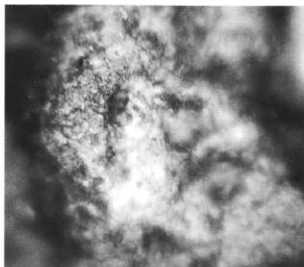
第245図



1A × 100

大形刃器

1 ● 類 SD12, PL125-57



1B × 200

1A. 刃部の摩耗・光沢痕

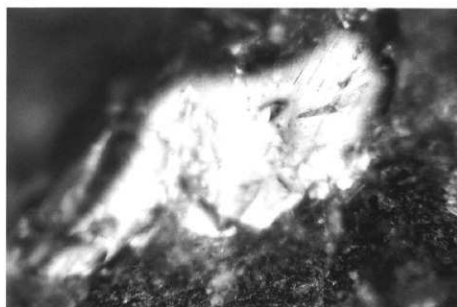
1B. 刃部の摩耗・光沢痕(1Aの拡大)

大形刃器
2 ● 類
SD12



2A × 50

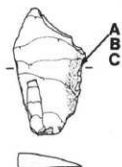
2A. 刃部の摩耗・光沢痕



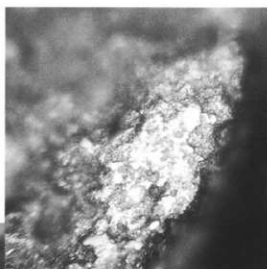
2B × 100

2B. 刃部の摩耗・光沢痕(2Aの拡大)

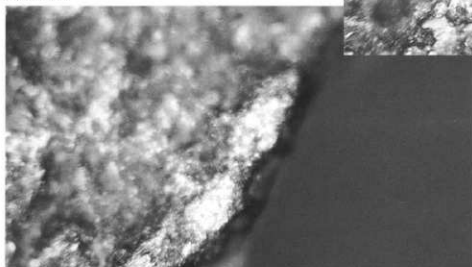
第246図
大形刃器
1 b類
SB1137
PL208-24



- A. 刃縁の摩耗・光沢痕
- B. 刃部の摩耗・光沢痕(Aの拡大)
- C. 刃部の原材面

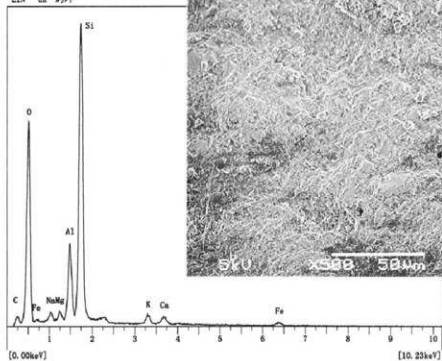


B $\times 200$



A $\times 100$

LIN EK 秒分



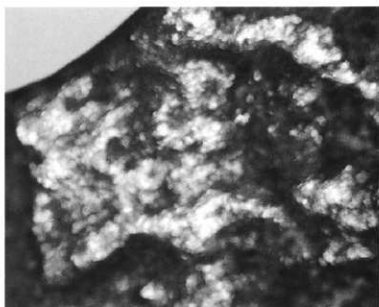
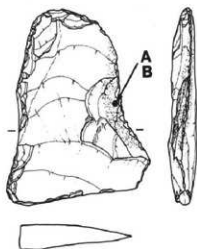
C. 刃部原材面のEDX分析チャート



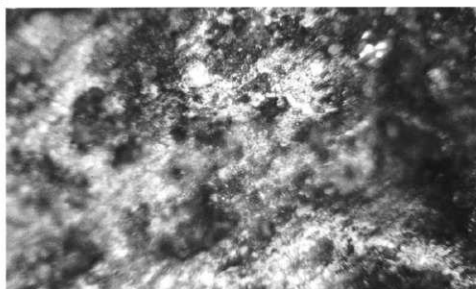
C $\times 500$

第247図
大形刃器

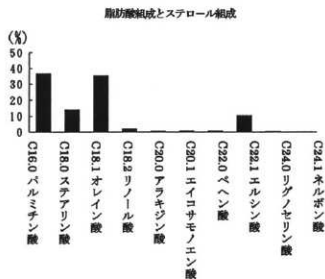
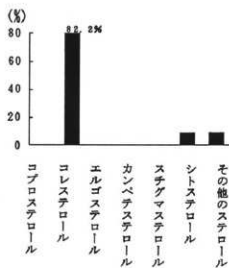
1 b 類, SB1160, PL83-17・PL207-7



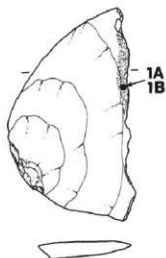
A 刃部の摩耗・光沢面 $\times 50$



B 刃部の摩耗・光沢面(Aの拡大) $\times 100$



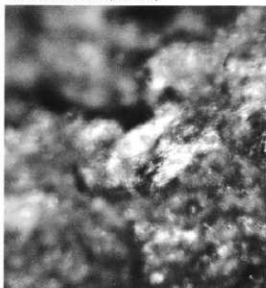
第248図
大形刃器
1 b類
SD12
PL125-56
PL207-14



1A.刃部の摩耗・光沢痕
1B.刃部の摩耗・光沢痕(1Aの拡大)

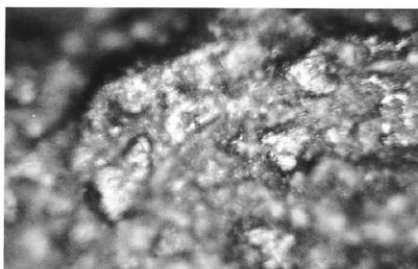
大形刃器
1 b類
SB1134
PL75-7

2A.刃部の摩耗・光沢痕
2B.刃部の摩耗・光沢痕(2Aの拡大)



2A

×50



1A

×100

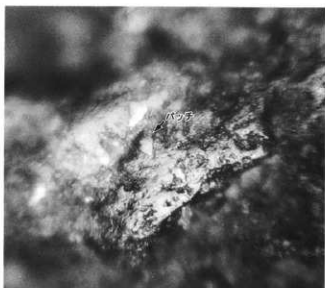


1B

×200

コーングロスパッチ

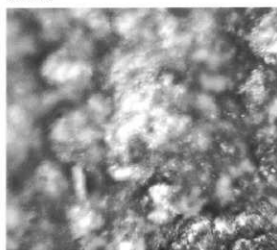
輝石



2B

×100

第249図



1A 大形刃器 ×100

大形刃器

1b類 SB1183, PL89-1



1B ×200

1A.刃部の摩耗・光沢痕

1B.刃部の摩耗・光沢痕(1Aの拡大)

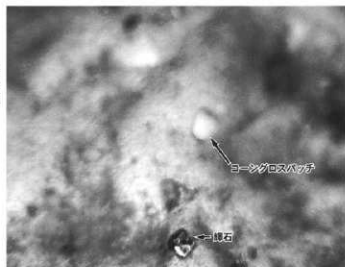
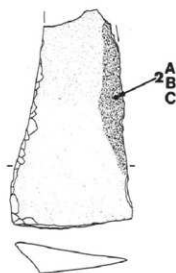
大形刃器

1b類

SB425

PL57-4

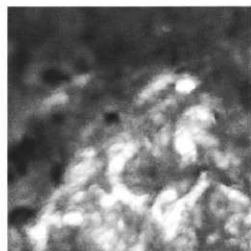
PL214-91



2B 2B.刃部の摩耗・光沢痕(2Aの拡大) ×100

コーンゲロスパッチ

埋石

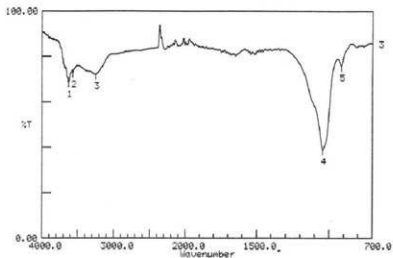
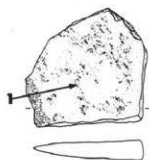


2A 2A.刃部の摩耗・光沢痕 ×50



2C 2C.刃部の摩耗・光沢痕(2Bの拡大) ×200

第250図
大形刃器
2 # 類
SB411
PL55-2



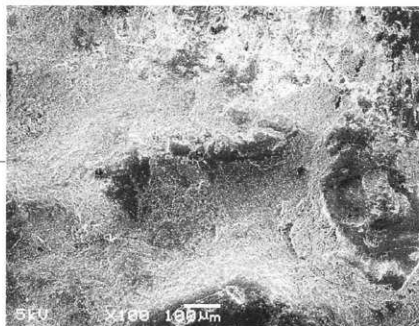
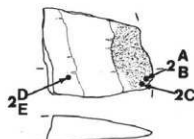
Condition
upper 100.00 lower 0.00 depth 1.00

Peak table

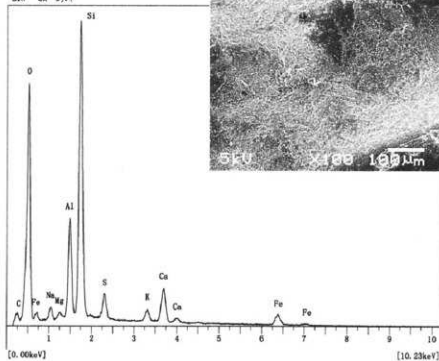
1: 3628.43 (68.5)	2: 3566.70 (72.7)	3: 3250.35 (72.6)
4: 1043.58 (39.0)	5: 916.27 (75.7)	

1 1. 基部付着物のFT-IR分析チャート

大形刃器
2 # 7 類
SB403



LIN 8K 3970

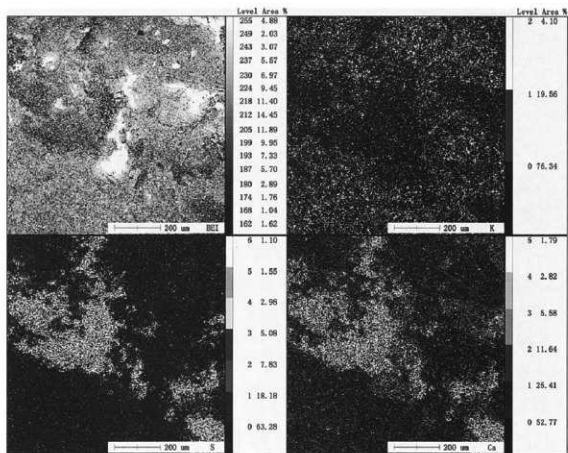
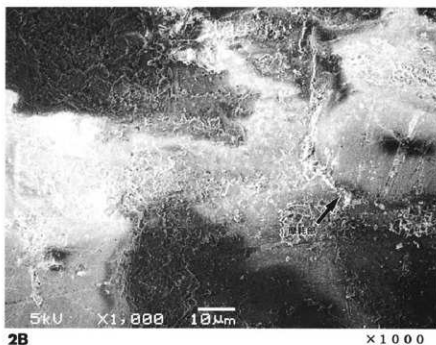


2A. 刃部摩耗痕のEDX分析チャート

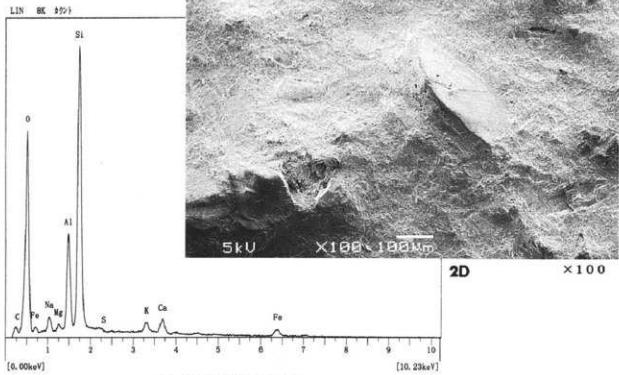
2A ×100

- 2A. 刃部の摩耗・光沢痕
- 2B. 刃部の摩耗・光沢痕(2Aの拡大)
- 2D. 刃部の摩耗・光沢痕

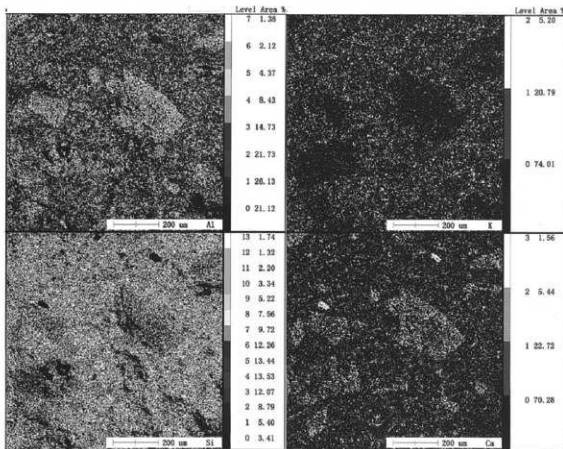
第251図



第252図



2D. 基部のEDX分析チャート

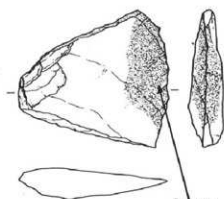


2E

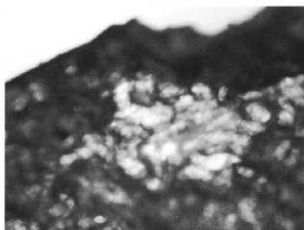
2E. 刃部の主要元素分布(Ca, K, Si, Al)

第253図
大形刃器

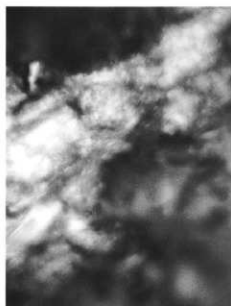
2a類
HN19
PL218-110



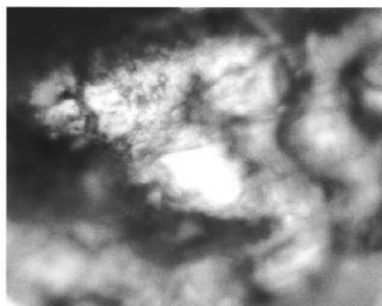
A,B,C
D,E,F



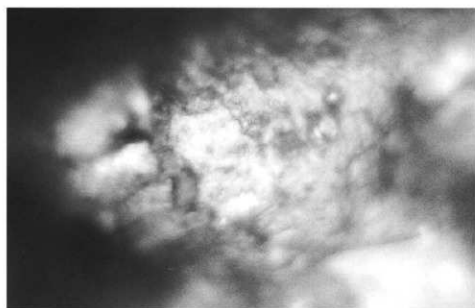
A 刀部の摩耗・光沢痕 (No1) × 50



B 刀部の摩耗・光沢痕(Aの拡大) × 100



C 刀部の摩耗・光沢痕 × 100

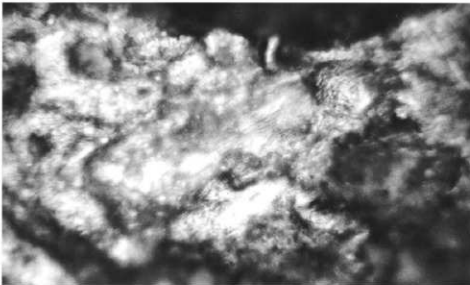


D 刀部の摩耗・光沢痕(Cの拡大) × 200

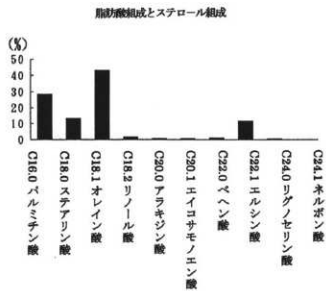
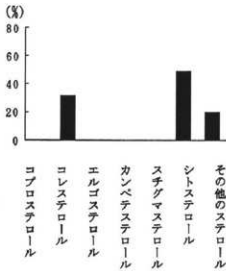
第254図



E 刃部の摩耗・光沢痕(NaCl) ×100



F 刃部の摩耗・光沢痕 ×100



第255図

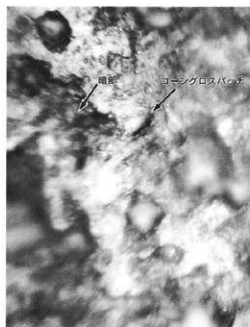
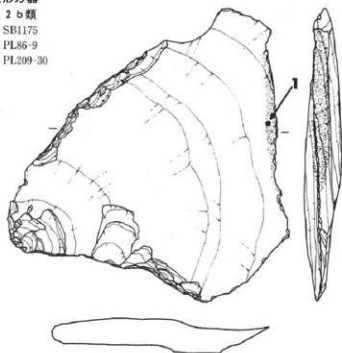
大形刃器

2b類

SB1175

PL86-9

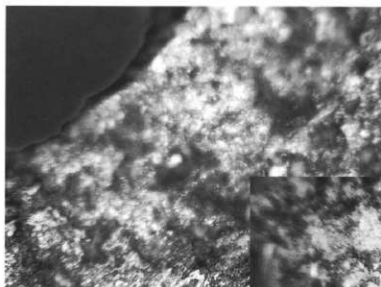
PL209-30



I

×200

I.刃部の摩耗・光沢面



2A

×100

2A.刃部の摩耗・光沢面

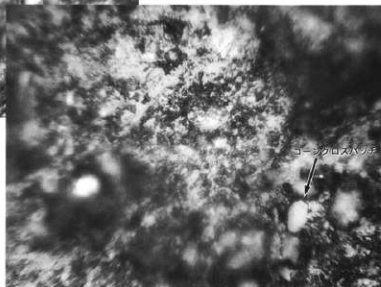
2B.刃部の摩耗・光沢面(2Aの拡大)

大形刃器

2b類

II E17

PL209-34



2B

×200

第256図

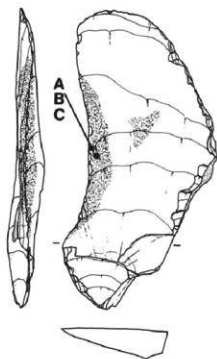
大形刃器

2b類

SB1141

PL77-1

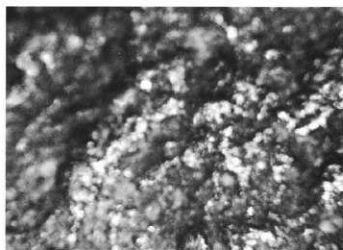
PL212-51



A. 刃部の摩耗・光沢面

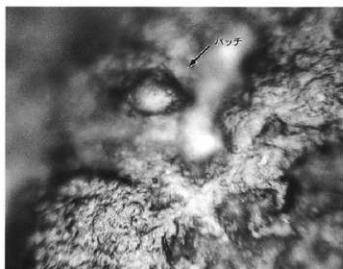
B. 刃部の摩耗・光沢面(Aの拡大)

C. 刃部の摩耗・光沢面(Bの拡大)



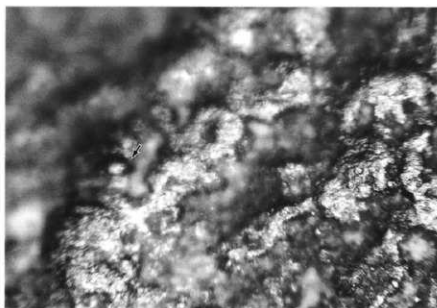
A

×50



C

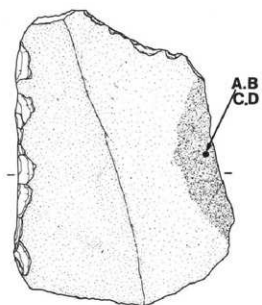
×200



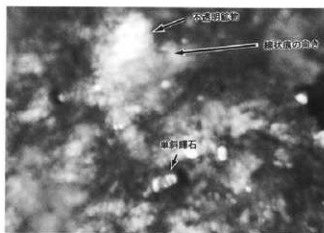
B

×100

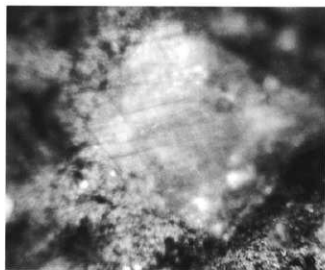
第257図
大形刃器
2 b類
VQ24



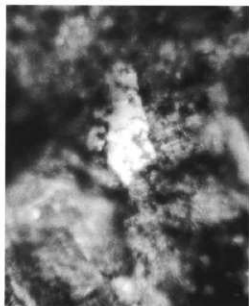
- A. 刃部の摩耗・光沢痕・線状痕
- B. 刃部の摩耗・光沢痕(Aの拡大)
- C. 刃部の摩耗・光沢痕
- D. 刃部の摩耗・光沢痕(Cの拡大)



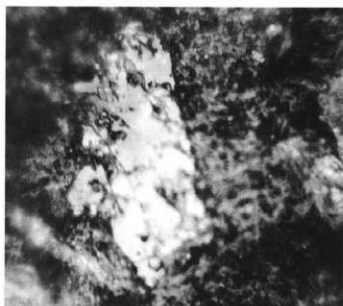
A × 50



B × 100



C × 100



D × 200

第258図
大形刃器
2b類
SB1126
PL73-11



A

A.刃部の摩耗・光沢面

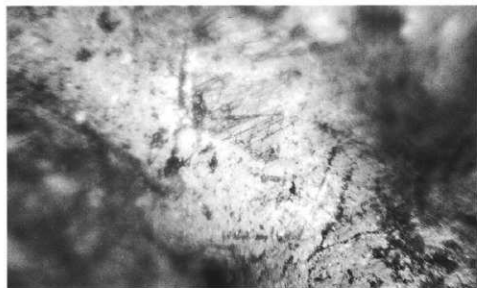
× 5 0



B

B.刃部の摩耗・光沢面(Aの拡大)

× 1 0 0



C

C.刃部の摩耗・光沢面(Bの拡大)

× 2 0 0

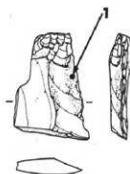
第259図

大形刃器

2c類

1C2

PL211-57



1

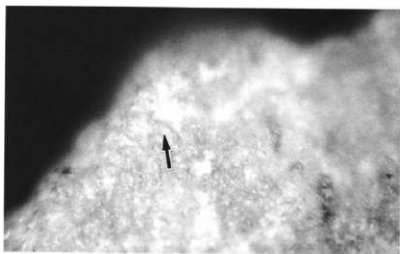
1.刃部の摩耗・光沢痕・線状痕

×100

2c類

1F7

PL211-58



2

2.刃縁の摩耗・光沢痕

×100

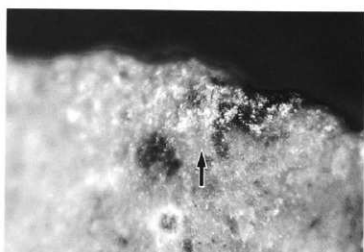


3

3.刃縁の摩耗・光沢痕

×100

2b類,SB286,PL16-2-PL210-38



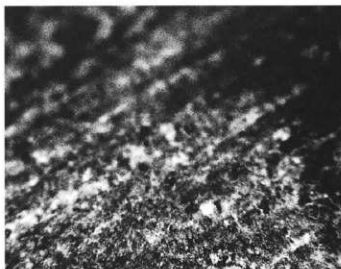
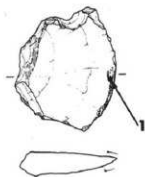
4

4.刃縁の摩耗・光沢痕

×100

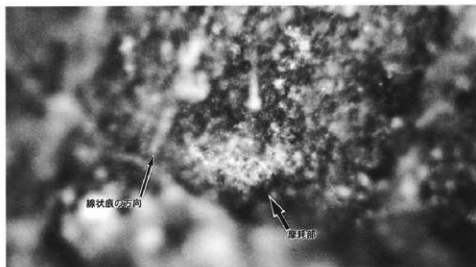
2c類,SB329,PL35-6-PL211-59

第260図
大形刃器
2 d 類
1 A15
PL212-67

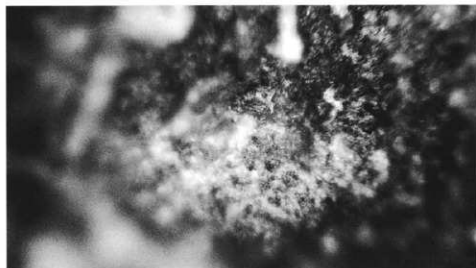


1 刃部の摩耗・線状痕 × 50

大形刃器
2 d 類
1 F19



2A 刃部の摩耗・光沢痕・線状痕 × 100



2B 刃部の摩耗・光沢痕(2Aの拡大) × 200

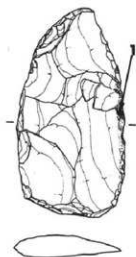
第261図

大形刃器

1類

SB332

PL212-70



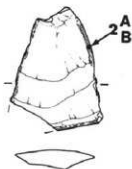
1 刃部の摩耗・光沢痕 ×100

大形刃器

7類

S D12

PL127-70

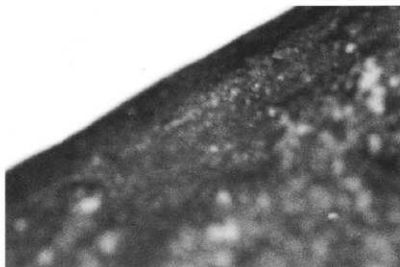
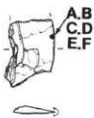


2A 刃部の摩耗・光沢痕・線状痕 ×50



2B 刃部の摩耗・光沢痕(2Aの拡大) ×100

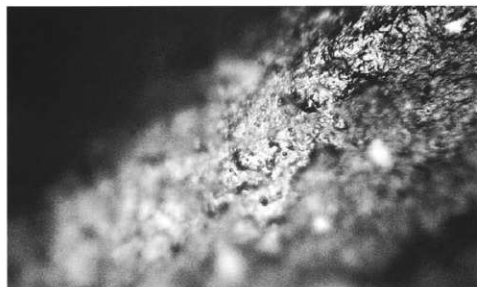
第262図
大形刃器
7類
SB277
PL14-1
PL213-85



A A.刃部の摩耗・線状痕 × 50

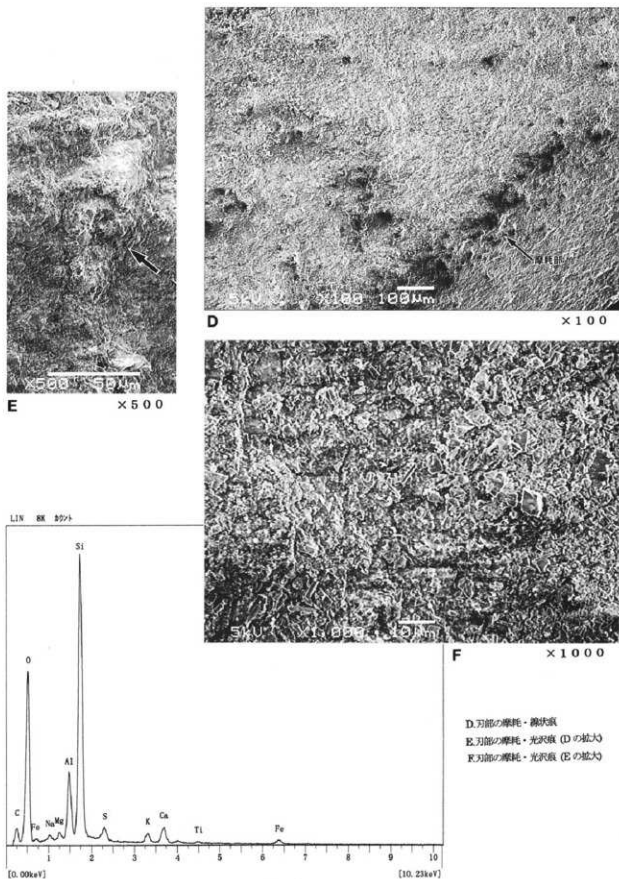


B B.刃部の摩耗・光沢面(Aの拡大) × 100



C C.刃部の摩耗・光沢面(Bの拡大) × 200

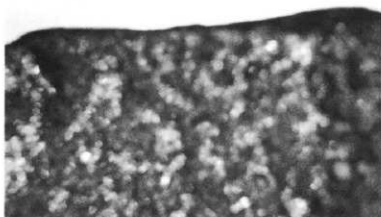
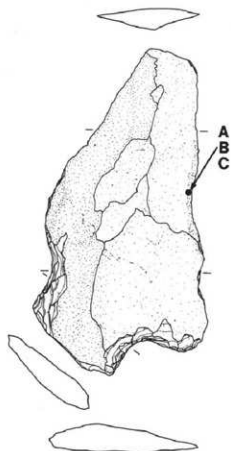
第263図



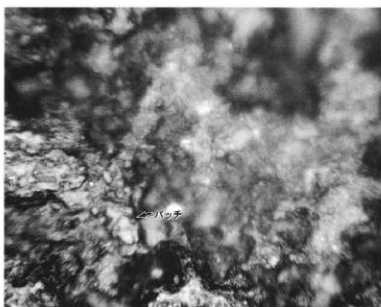
D. 刀部の磨耗・微体鏡
 E. 刀部の磨耗・光沢鏡 (Dの拡大)
 F. 刀部の磨耗・光沢鏡 (Eの拡大)

F. 刀部研削痕のEDX分析チャート

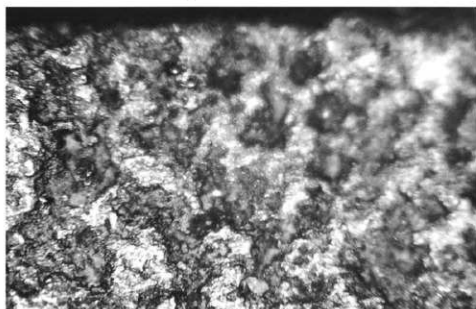
第264図
大形刃器
Ⅷ類
SB1102
PL59-8
PL213-86



A A.刃部の摩耗・光沢面 × 50



C C.刃部の摩耗・光沢面(Bの拡大) × 200



B B.刃部の摩耗・光沢面(Aの拡大) × 100

第265図

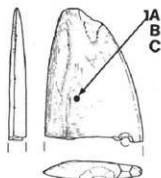
磨製石包丁

直線刃半月形

SD100

PL150-167

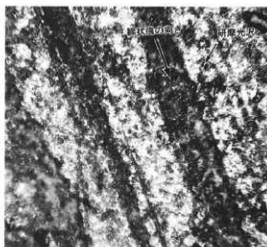
PL229-26



1A.刃部付近の研磨痕

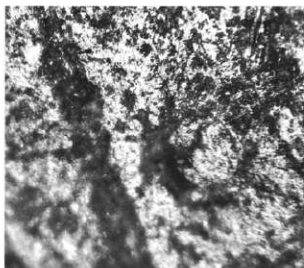
1B.刃部付近の研磨痕

1C.刃部付近の研磨痕(1Bの拡大)



1A

×100



1B

×100



1C

×200

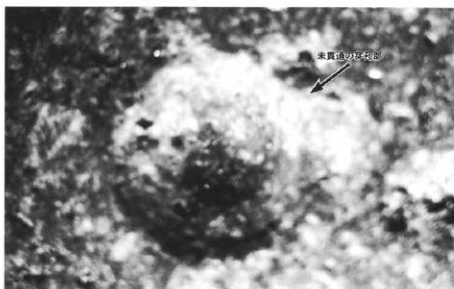
磨製石包丁

失敗品 E.

(外湾刃杏仁形)

II 124

PL228-15

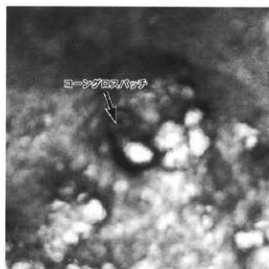
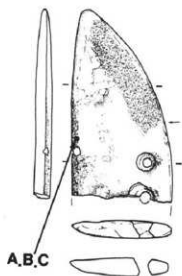


2

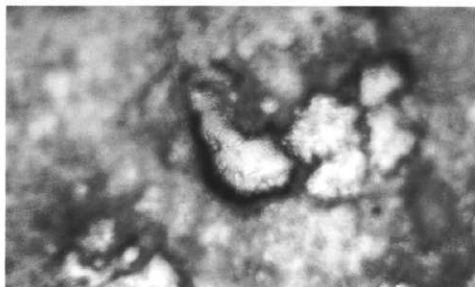
2.未貫通の穴部

×10

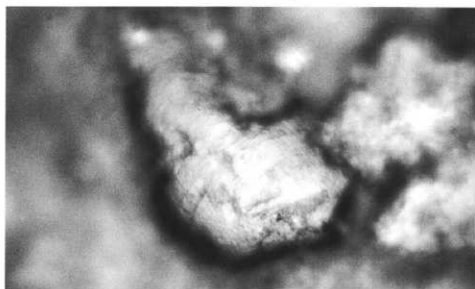
第266図
磨製石包丁
直線刃半月形
II Q15
PL.229-25



A 刃部の磨耗・光沢痕 $\times 50$



B 刃部の磨耗・光沢痕(Aの拡大) $\times 100$



C 刃部の磨耗・光沢痕(Bの拡大) $\times 200$

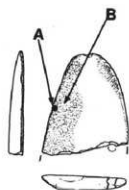
第267図

磨製石包丁

直線刀半月形

VII Y17-19

PL229-24



A. 刃部の摩耗痕

B. 器物面の摩耗・光沢痕



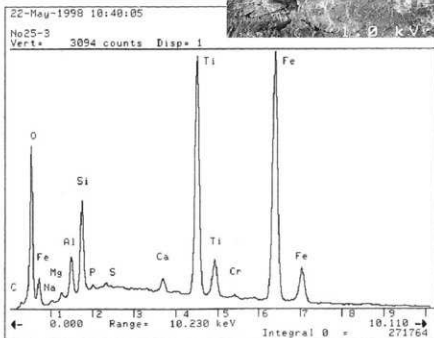
A

x100



B

x500



B. 器物面のEDX分析チャート

第268図

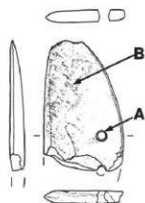
磨製石包丁

直線刃半月形

SB328

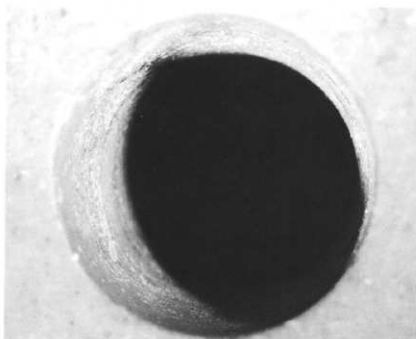
PL32-5

PL229-21



A.紐掛け用穴部

B.基部の「砥状」付着物



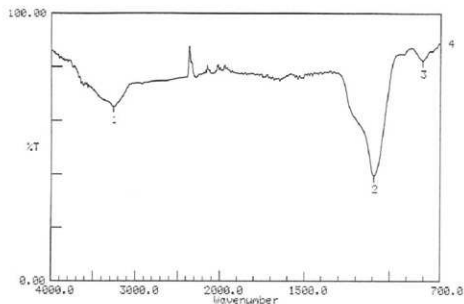
A

×10



B

×200



Condition
upper 100.00 lower 0.00 depth 1.00

B. 基部付着物のFT-IR分析チャート

第269図

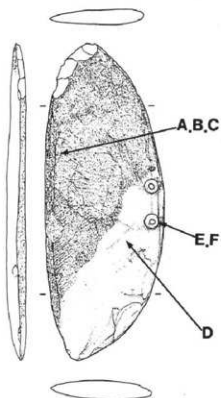
磨製石包丁

直線刃半月形

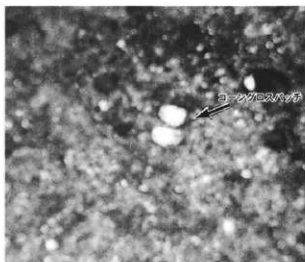
SB1248

PL89-9

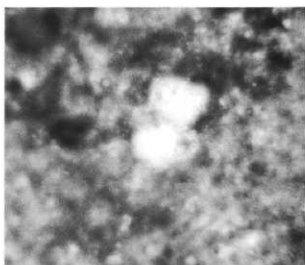
PL230-30



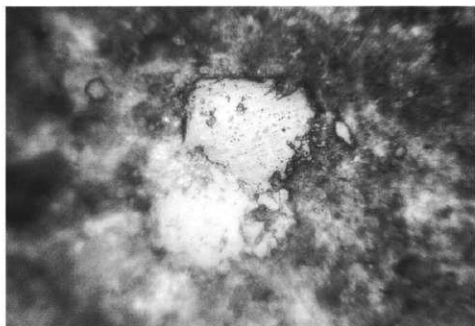
- A. 刃部の摩耗・光沢面
- B. 刃部の摩耗・光沢面(Aの拡大)
- C. 刃部の摩耗・光沢面(Bの拡大)



A $\times 50$

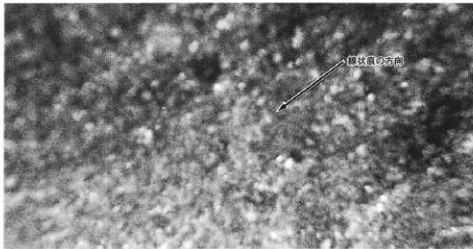


B $\times 100$



C $\times 200$

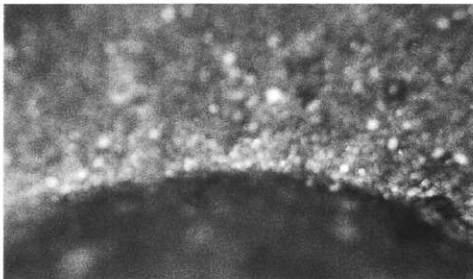
第270図



D

D.刃部の研磨痕

× 5 0



E

E.穴部の磨つた面

× 5 0



F

F.穴部の磨つた面(Eの拡大)

× 1 0 0

第271図

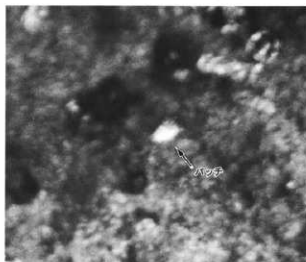
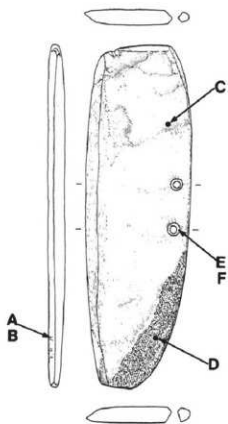
磨製石包丁

直線刃半月形

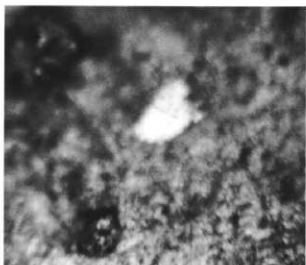
SB1248

PL89-10

PL229-34



A 刃部の摩耗・光沢痕 × 50

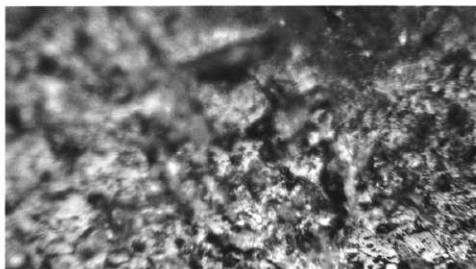


B 刃部の摩耗・光沢痕(Aの拡大) × 100

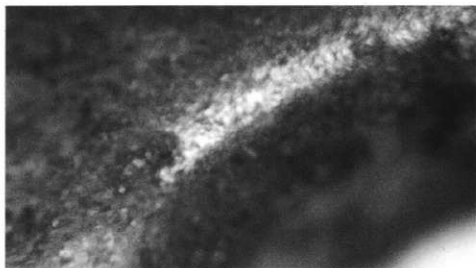


C 基部の腐蝕痕と摩耗・光沢痕 × 50

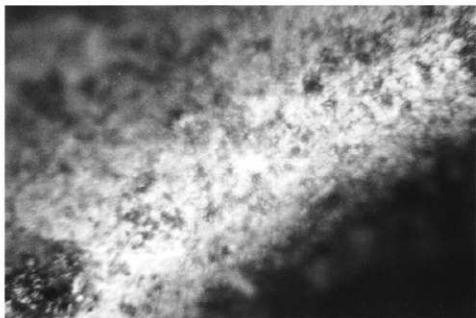
第272図



D 基部の砥屑痕と摩耗・光沢痕(Cの拡大) $\times 100$



E 欠部の融つれ痕 $\times 50$



F 欠部の融つれ痕(Eの拡大) $\times 100$

第273図

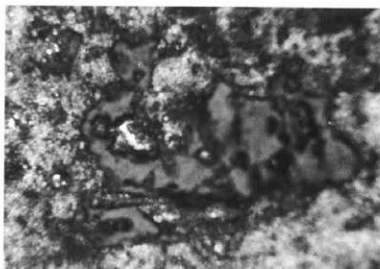
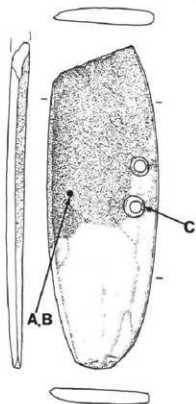
磨製石包丁

外湾刃杏仁形

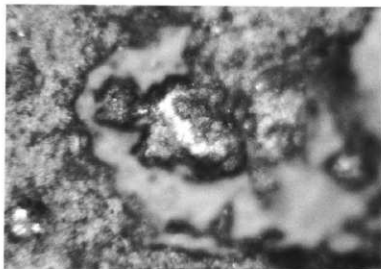
SD101

PL163-44

PL230-43



A 刃部の稜耗・光沢痕 × 50



B 刃部の稜耗・光沢痕(Aの拡大) × 100



C 欠部の継ぎれ面 × 22.5

第274図

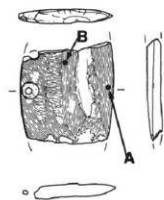
磨製石包丁

外溝刃者仁形

SB409

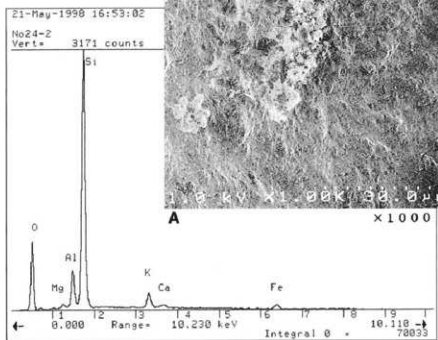
PL52-19

PL230-36

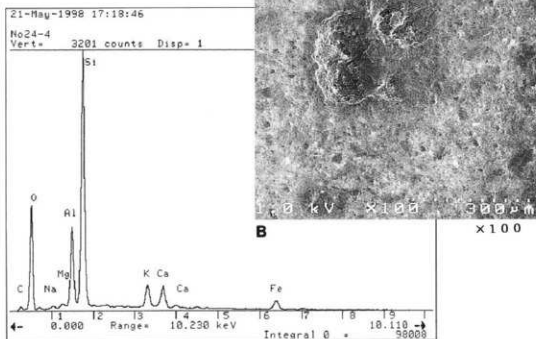


A.刃部の磨耗痕

B.基部の磨耗痕



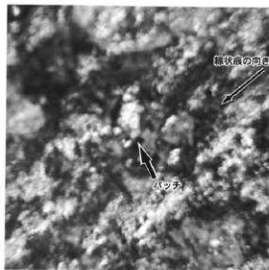
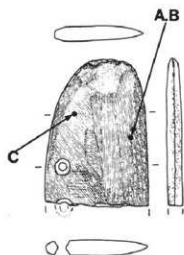
A. 刃部磨耗痕のEDX分析チャート



B. 基部磨耗痕のEDX分析チャート

第275図

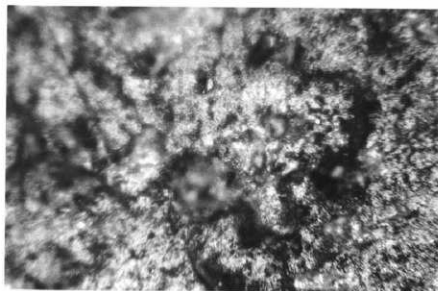
磨製石包丁
外湾刃杏仁形
SBI264
PL96-5
PL229-33



A 刀部の砥粒痕と摩耗・光沢痕 × 50



B 刃部の砥粒痕と摩耗・光沢痕 (Aの拡大) × 100



C 基部の摩耗・光沢痕 × 100

第276図

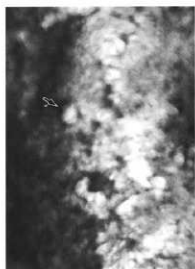
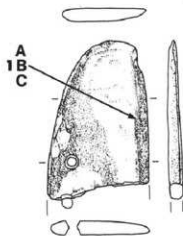
磨製石包丁

外湾刃杏仁形

SD100

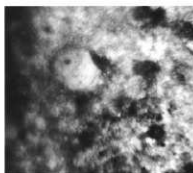
PL150-165

PL229-32

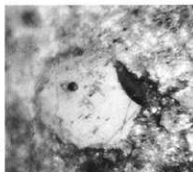


1A × 50

- 1A. 刃部の摩耗・光沢痕
1B. 刃部の摩耗・光沢痕(1Aの拡大)
1C. 刃部の摩耗・光沢痕(1Bの拡大)



1B × 100



1C × 200

磨製石包丁

外湾刃杏仁形

SD100, PL236-38

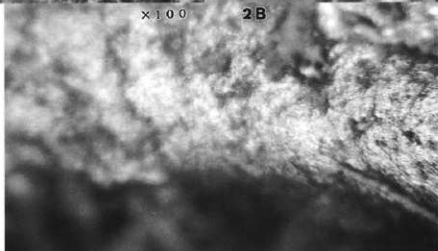
- 2A. 刃部の摩耗・光沢痕
2B. 刃部の摩耗・光沢痕(2Aの拡大)
2C. 穴部の組づけ痕



2A × 100



2B × 200



2C × 100

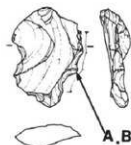
第277図

小形刃器

2c 類

SB268

PL10-8



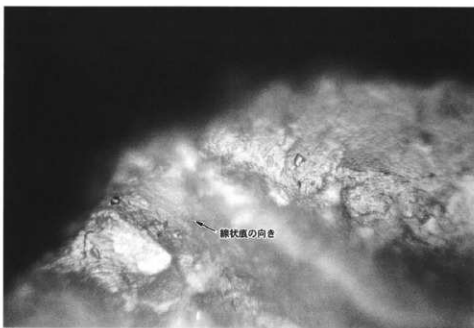
A.刃縁の摩耗・光沢痕・線状痕

B.刃縁の摩耗・光沢痕・線状痕(Aの拡大)



A

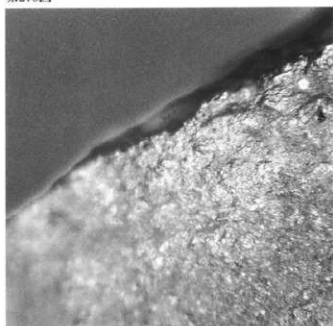
×100



B

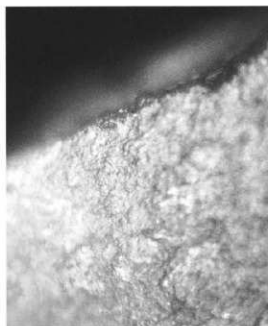
×200

第278図



A

×100



B

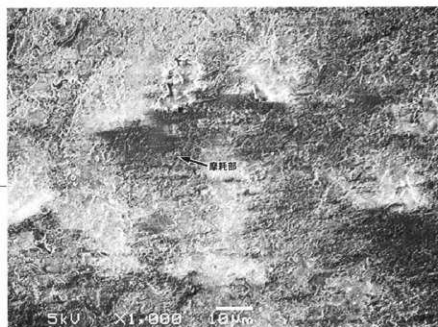
×200

小形刃器

2c 類

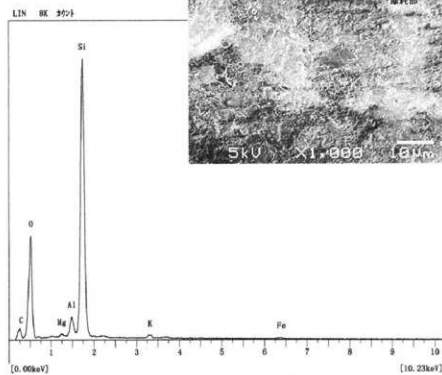
SB405

PL231-3



C

×1000



C. 刃部磨耗部のEDX分析チャート

- A. 刃部の磨耗・光沢面
 B. 刃部の磨耗・光沢面(Aの拡大)
 C. 刃部の磨耗・光沢面(SEM像)

第279図

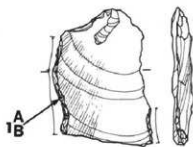
小形刃器

§ a・b c類

SB316

PL27-15

PL231-19



1A.刃縁の痕跡

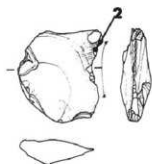
1B.刃縁の痕跡(1Aの拡大)

小形刃器

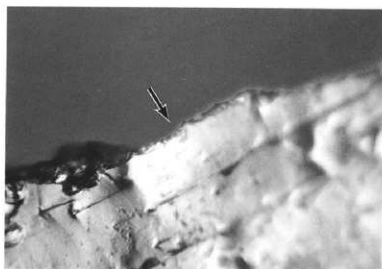
§c類

VU11

PL231-14

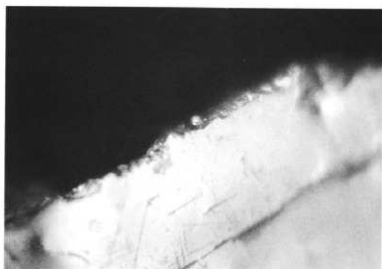


2.刃縁の痕跡(微小刃縁痕)



1A

×100



1B

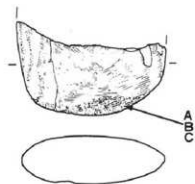
×200



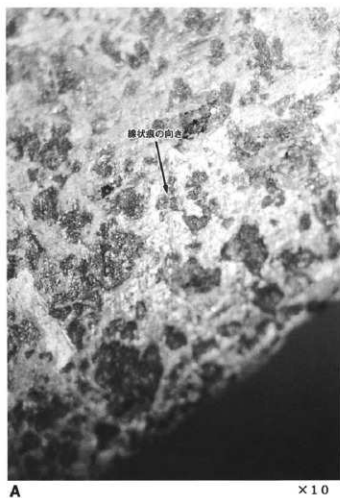
2

×100

第280図
太型蛤刃石斧
I a'類
SD12



- A.刃部の摩耗・光沢痕
B.刃部の摩耗・光沢痕(Aの拡大)
C.刃部の摩耗・光沢痕(Bの拡大)



B

×22.5



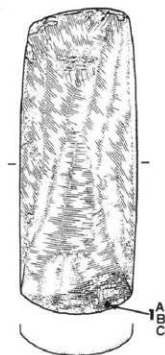
C

×60

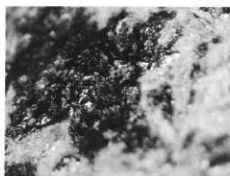
第281図

太型槍刃石斧

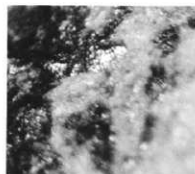
I b'類
I P12
PL234-15



1A 刀部の摩耗・光沢面 ×10



1B 刀部の摩耗・光沢面 (1Aの拡大) ×37.5



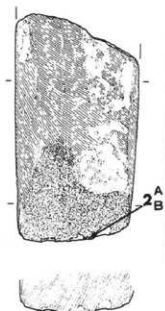
1C 刀部の摩耗・光沢面(1Bの拡大) ×60

太型槍刃石斧

(I b')類

SB401

PL45-4 PL233-13



2A 刀部の摩耗・線状痕・微細砂眼痕 (2Aの拡大) ×10



2B 刀部の摩耗・線状痕・微細砂眼痕(2Aの拡大) ×15

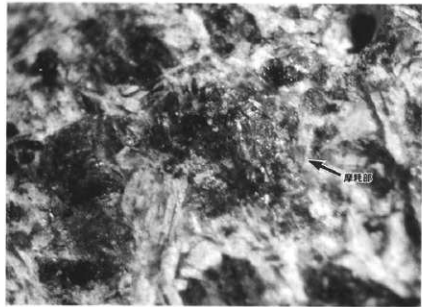
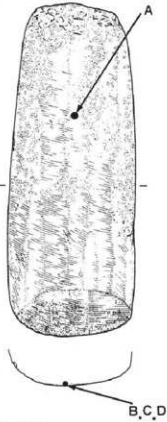
第282図

木型輪刃石斧

I b 類

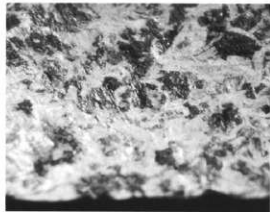
V G 20

PL234-16



A

× 30



B

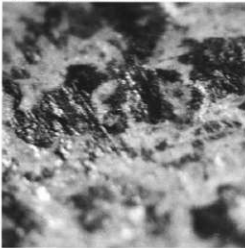
× 10

A. 基部の摩耗痕

B. 刃部の摩耗・線状痕・光沢痕

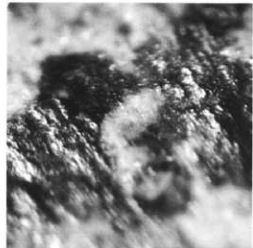
C. 刃部の摩耗・線状痕・光沢痕(Bの拡大)

D. 刃部の摩耗・線状痕・光沢痕(Cの拡大)



C

× 22.5



D

× 52.5

第283図

太型蛤刃石斧

I b'類

SB265

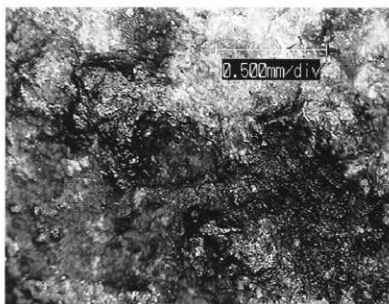
PL8-7

PL234-17

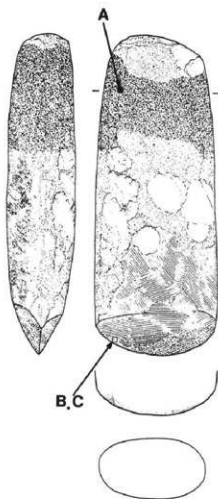
A. 基部の装着痕・ターム状付着物

B. 刃縁の摩耗・鱗状痕

C. 刃縁の摩耗・鱗状痕(Bの拡大)



A

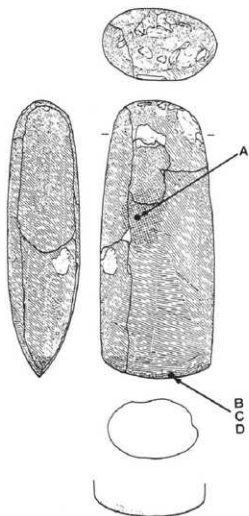
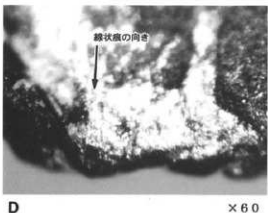
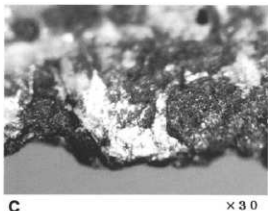
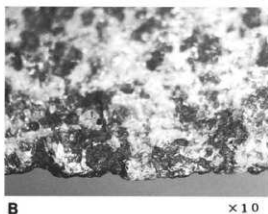
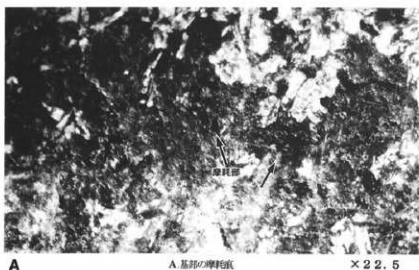


B



C

第284図
 太型給刃石斧
 I c'類
 SB1284
 PL101-5
 PL235-23



B.刃縁の摩耗・光沢痕

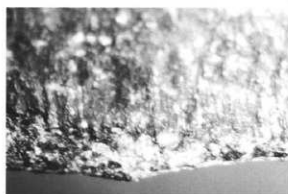
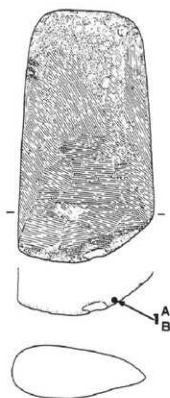
C.刃縁の摩耗・光沢痕(Bの拡大)

D.刃縁の摩耗・光沢痕・磨状痕(Cの拡大)

第285図

太型蛤刃石斧

I c'類
SB1181
PL87-8
PL236-32



1A

×10



1B

×22.5

1A.刀縁の摩耗・線状痕

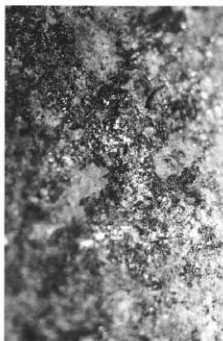
1B.刀縁の摩耗・線状痕(1Aの拡大)

太型蛤刃石斧

I c'類
II E12-17
SB1151
PL236-34

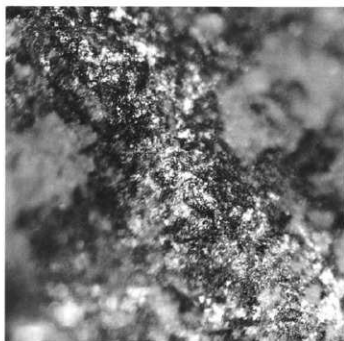
2A.刀頭付近の摩耗・光沢痕

2B.刀頭付近の摩耗・光沢痕(2Aの拡大)



2A

×15

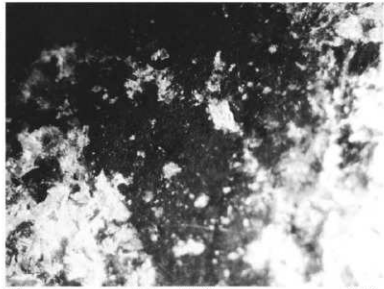
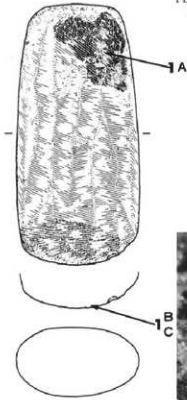


2B

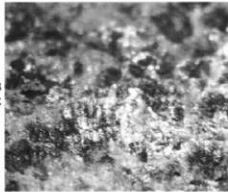
×45

第286図

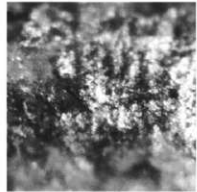
木型絵刃石斧
I c'類
I F14
PL.235-21



1A 「タール状」付着物 ×10

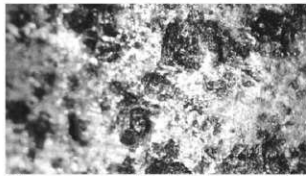


1B 刃部の摩耗・線状痕 ×15

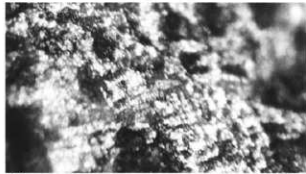


1C 刃部の摩耗・線状痕(1Bの拡大) ×30

木型絵刃石斧
I c'類
SB319
PL.28-7
PL.236-30

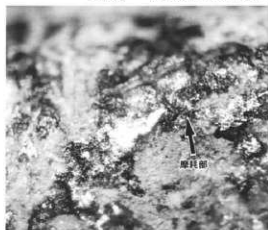


2A 刃部付近の摩耗・光沢痕 ×10

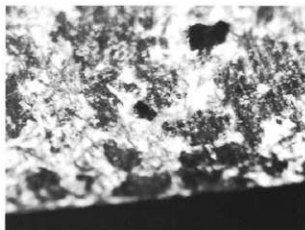


2B 刃部付近の摩耗・光沢痕(2Aの拡大) ×45

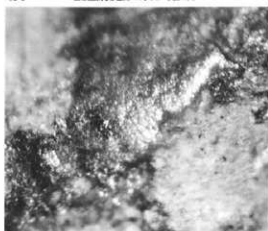
第287図 太型蛤刃石斧
I d'類 SB1259 PL93-4, PL237-44



1A 基部側面部の摩耗・光沢面 × 30



1C 刃縁の摩耗・繊維状面 × 15

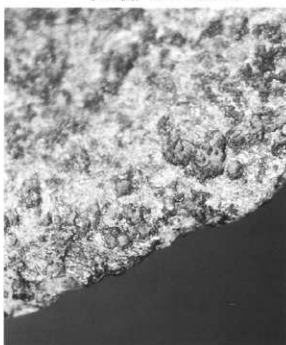


1B 基部側面部の摩耗・光沢面(1Aの拡大) × 60

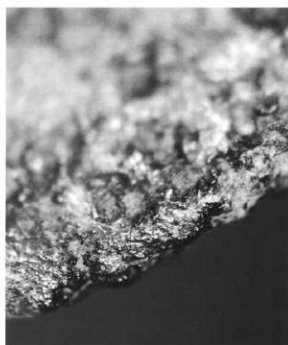


1D 刃部の摩耗・繊維状面(1Cの拡大) × 30

太型蛤刃石斧
(I d')類 SD100 PL151-119



2A 刃縁の摩耗・光沢面 × 10



2B 刃縁の摩耗・光沢面(2Aの拡大) × 22.5

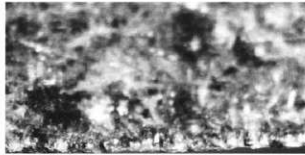
第288図

扁平片刃石斧

II a類
SD100
PL152-126
PL242-51

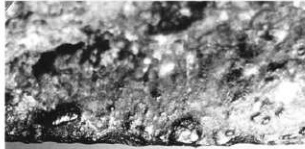


1. 刃部先端の摩耗・線状痕



1

×15



2A

×10

扁平片刃石斧

II a類
SB1113
PL69-11
PL242-49



2A. 刃部先端の摩耗・線状痕

2B. 刃部先端の摩耗・線状痕(2Aの拡大)

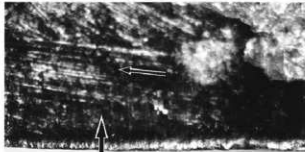
2C. 刃部の摩耗・線状痕・研磨痕

2D. 刃部の摩耗・線状痕



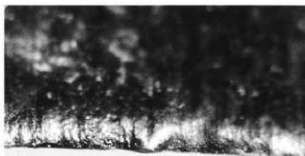
2B

×30



2C

×10



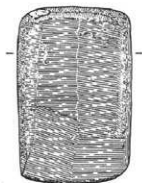
2D

×30

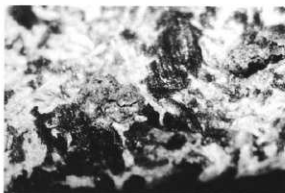
第289図

扁平片刃石斧

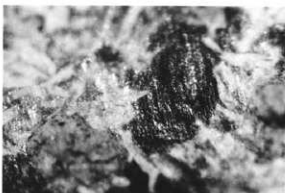
II b 類
SB1258
PL92-8
PL242-55



1A. 刃部先端の摩耗・線状痕
1B. 刃部先端の摩耗・線状痕
(1Aの拡大)



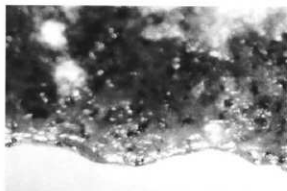
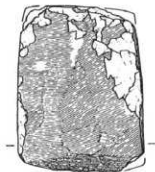
1A ×10



1B ×22.5

扁平片刃石斧

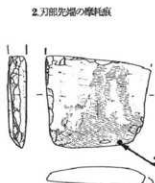
II b 類
SB273
PL11-12
PL243-60



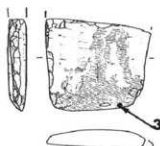
2 ×10

扁平片刃石斧

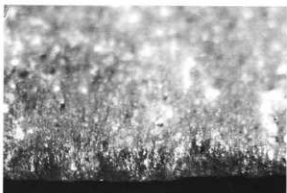
II b 類?
SB265
PL8-9
PL243-65



2. 刃部先端の摩耗痕



3. 刃部先端の摩耗・線状痕



3 ×22.5

第290図

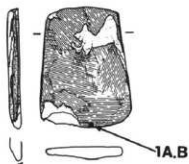
扁平片刃石斧

II b₃類

SB260

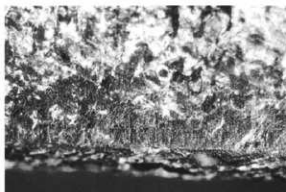
PL5-5

PL244-69



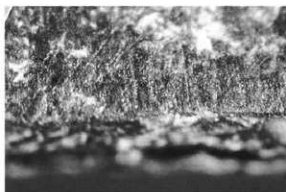
1A.刃部先端の摩耗・線状痕

1B.刃部先端の摩耗・線状痕(1Aの拡大)



1A

×15



1B

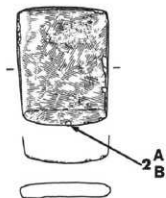
×30

扁平片刃石斧

II b₃類

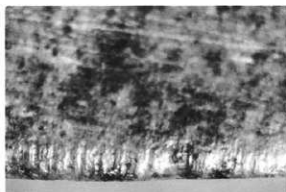
II N 2

PL244-78



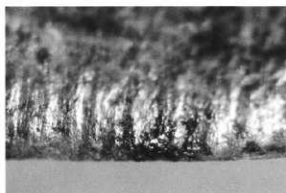
2A.刃部の摩耗・線状痕

2B.刃部の摩耗・線状痕(2Aの拡大)



2A

×10



2B

×30

第291図

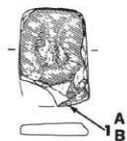
扁平片刃石斧

II c 類

SB1280

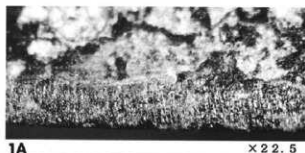
PL99-2

PL244-83

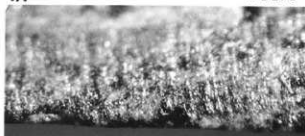


1A.刃部先端の摩耗・綫状痕

1B.刃部先端の摩耗・綫状痕(1Aの拡大)



1A × 22.5



1B × 45

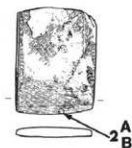
扁平片刃石斧

II c 類

SK352

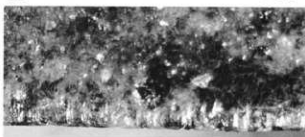
PL117-7

PL244-86



2A.刃部の摩耗・綫状痕

2B.刃部の摩耗・綫状痕(2Aの拡大)



2A × 10



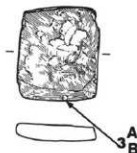
2B × 30

扁平片刃石斧

II c 類

V K24

PL244-87



3A.刃部先端の摩耗・綫状痕

3B.刃部先端の摩耗・綫状痕(3Aの拡大)



3A × 10

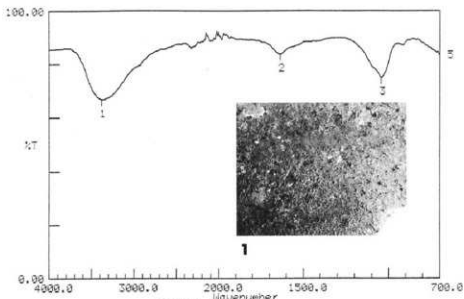


3B × 30

第292図
 扁平片刃石斧
 II・類
 SB1118

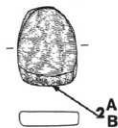


1. 「ダール状」付着物

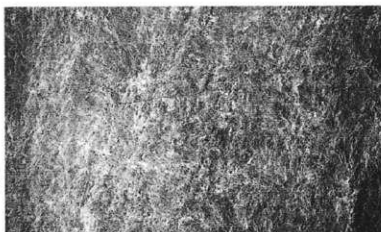


1. 刃部付着物のFT-IR分析チャート

扁平片刃石斧
 II・類
 VQ 4
 PL245-100

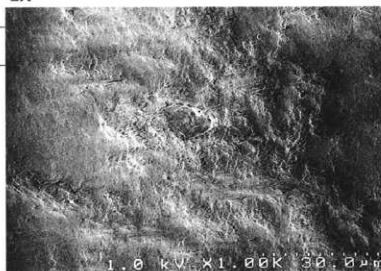


2A. 刃部付近の摩耗痕
 2B. 刃部付近の摩耗痕(2Aの拡大)



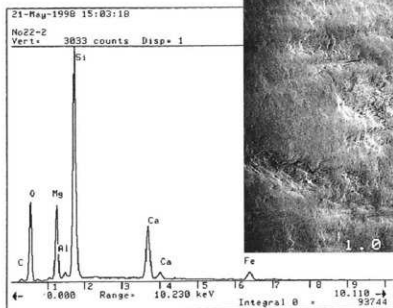
2A

×100



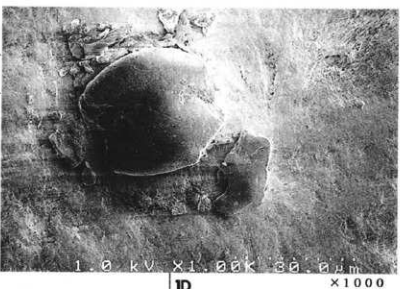
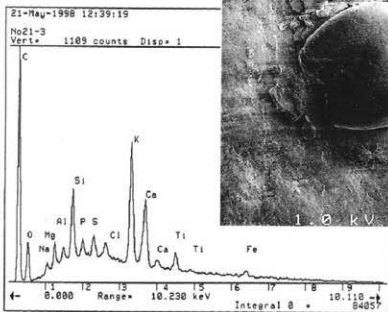
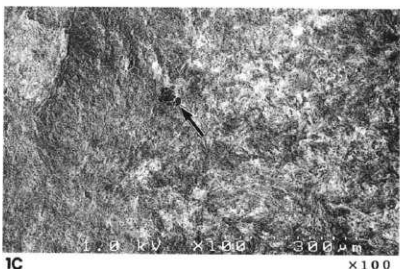
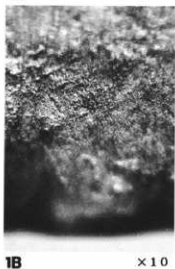
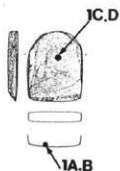
2B

×1000



2B. 刃部摩耗痕のEDX分析チャート

第293図
 扁平片刃石斧
 II 〇類
 SBH58
 PL112-1
 PL245-102



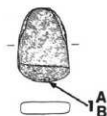
1D. 基部付着物のEDX分析チャート

- 1A. 刃部先端の稜断面(SEM像)
- 1B. 刃部先端の稜断面・線状痕
- 1C. 基部の表面観察(SEM像)
- 1D. 基部の付着物(SEM像)

第294図

扁平片刃石斧

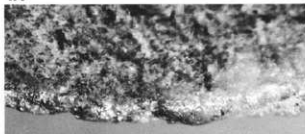
II e 類
SB1282
PL99-18
PL245-101



1A.刃部の磨耗痕
1B.刃部の磨耗痕(1Aの拡大)



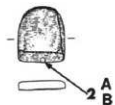
1A × 10



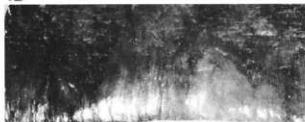
1B × 30

扁平片刃石斧

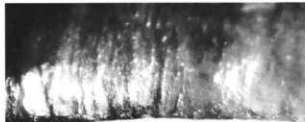
II e 類
IV Y 8
PL245-105



2A.刃部の磨耗・線状痕
2B.刃部の磨耗・線状痕 (2Aの拡大)



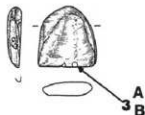
2A × 10



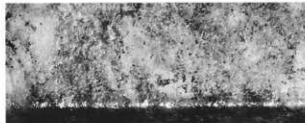
2B × 22.5

扁平片刃石斧

II e 類
SD12
PL129-93
PL245-103



3A.刃部の磨耗・線状痕
3B.刃部の磨耗・線状痕 (3Aの拡大)



3A × 10



3B × 30

第295図

扁平片刃石斧

II d 類

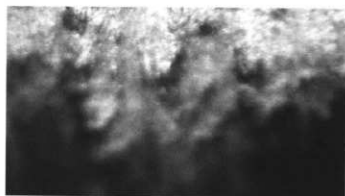
V L 24

PL245-94



1A

× 50



1B

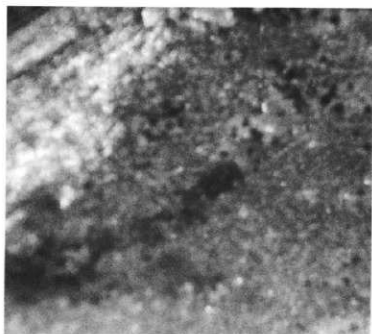
× 100

1A.刃部の磨耗面

1B.刃部の磨耗面(1Aの拡大)

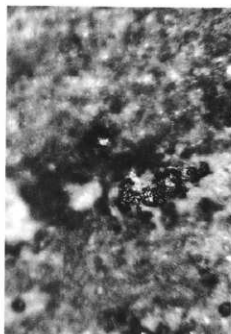
1C.基部の漆状付着物

1D.基部の漆状付着物(1Cの拡大)



1C

× 50



1D

× 100

第296図
ノミ状石器
II f 類
SB1253
PL92-3
PL260-51



1. 刃部先端の摩耗・線状痕

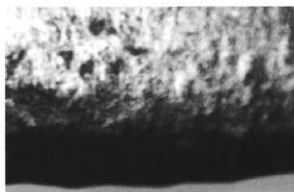


1 ×100

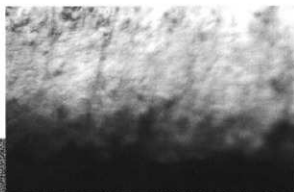
ノミ状石器
II f 類
I B10
PL260-48



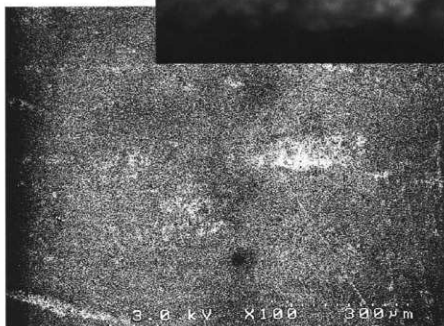
2A. 刃部先端の摩耗・線状痕
2B. 刃部先端の摩耗・線状痕(2Aの拡大)
2C. 刃部の断面 (SEM 像)



2A ×50



2B
×100



2C ×100

3.0 kV X100 300 μm

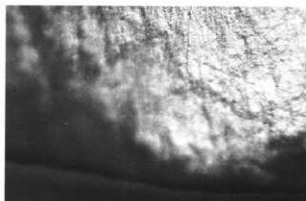
第297図

ノミ状石器

II e 類
SD30
PL137-8
PL260-41



1. 刃部先端の摩耗・線状痕



1

×100

ノミ状石器

II f 類
SB1280
PL99-3
PL260-47



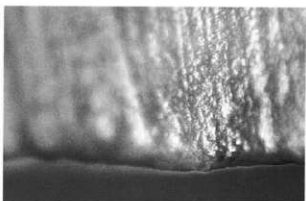
2A,B,C

2A. 刃部先端の摩耗・線状痕

2B. 刃部先端の摩耗・線状痕
光沢面

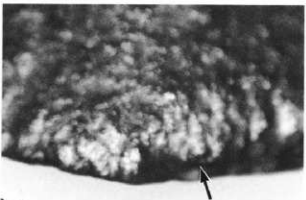
2C. 刃部先端の摩耗・線状痕

光沢面(2B)の拡大



2A

×100



2B

×100



2C

×200

第298図

ノミ状石器

II f 類

SB1259

PL93-5

PL260-52



- A. 刃部先端の摩耗・線状痕
- B. 刃部先端の摩耗・線状痕(AのSEM像)
- C. 刃部先端の摩耗・線状痕
- D. 刃部先端の摩耗・線状痕(Cの拡大)



A

×200



B

×100



C

×100



D

×1000

第299図

ノミ状石器

II e 類

VU26

PL260-42



1. 刃部先端の摩耗・縞状痕



1

×100

ノミ状石器

II f 類

SB422

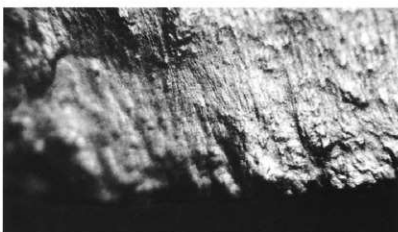
PL56-14

PL260-43



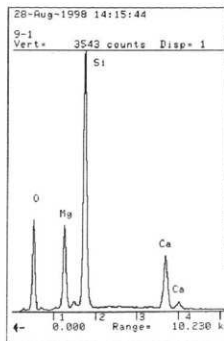
2A. 刃部先端の摩耗・縞状痕・光沢痕

2B. 刃部付近の摩耗痕



2A

×100



2B. 刃部付近のEDX分析チャート



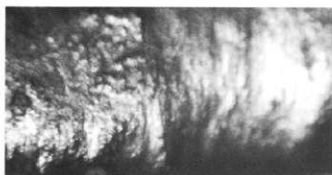
2B

×1000

第300図
ノミ状石器
II f 類
SB422
PL56-13
PL260-54



1A.刃部先端の摩耗・繭状痕
1B.刃部先端の摩耗・繭状痕(1Aの拡大)
1C.刃部先端の摩耗・繭状痕(1BのSEM像)
1D.刃部先端の摩耗面(1Cの拡大)



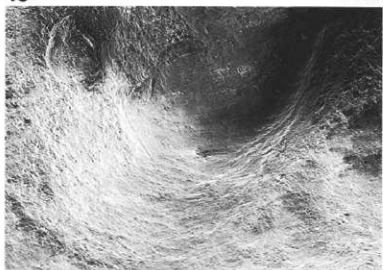
1A ×50



1B ×100



1C ×100

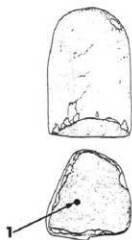


1D ×1000

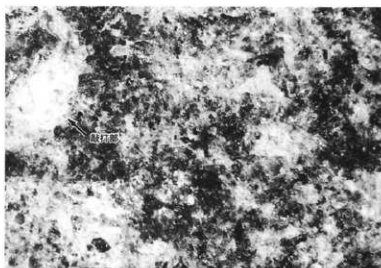
第301図

石槌

SB1156
PL83-13
PL246-3



1. 摩耗面「鈍面状」

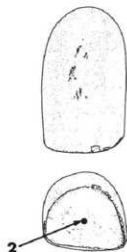


1

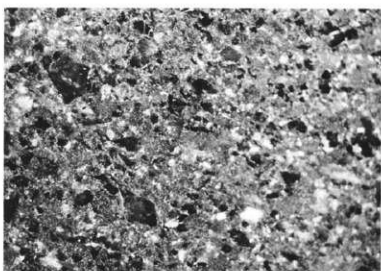
×30

石槌

SB265
PL8-11
PL246-2



2. 摩耗面「鈍面状」

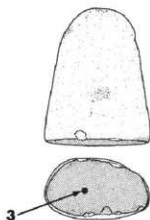


2

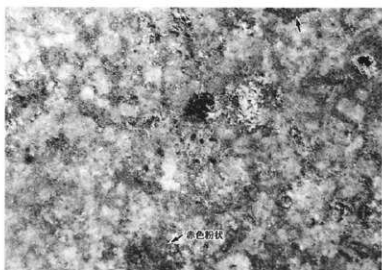
×15

石槌

SB1120
PL246-1



3. 摩耗面「鈍面状」
と赤色粉状付着物



3

×10

第302図

石槌

絵刀石斧乾用(1a'類)

SB1146

PL82-9

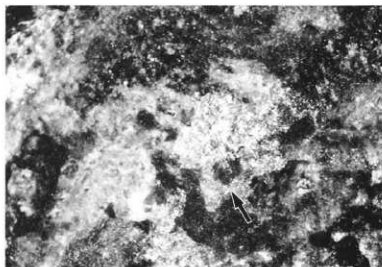
PL247-14



1A,B

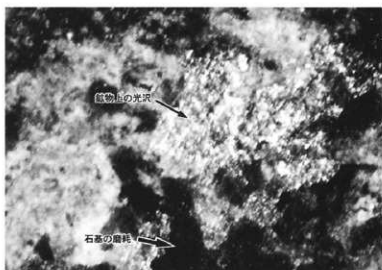
1A.摩耗面「鏡面状」

1B.摩耗面(1Aの拡大)



1A

×37.5



1B

×60

石槌

絵刀石斧乾用(1a'類)

SB1168

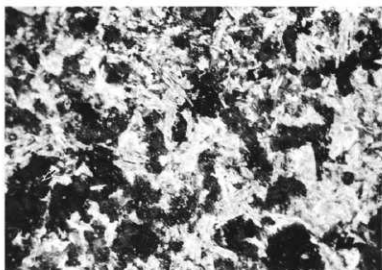
PL86-2

PL247-12



2

2.磨耗面「鏡面状」
と赤色粉状付着物



2

×10

第303図

石鏃

蛤刃石鏃転用(1a'類)

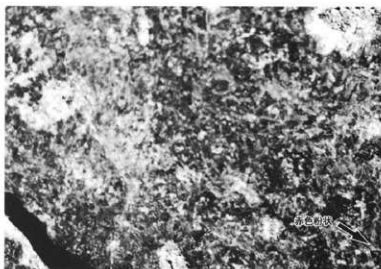
SB320

PL28-12

PL249-26



1. 厚磨面「鏡面状」
と赤色粒状付着物



1

×10

石鏃

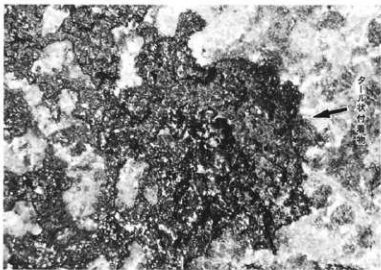
蛤刃石鏃転用(1b'類)

I C 11

PL249-29



2. 厚磨面「鏡面状」
とタール状付着物



2

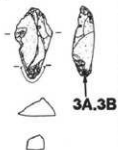
×10

石鏃

I 類

I P 15

PL251-7

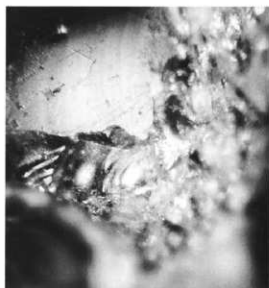


3A, 3B. 鏃部の厚縮痕



3A

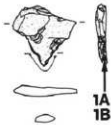
×50



3B

×100

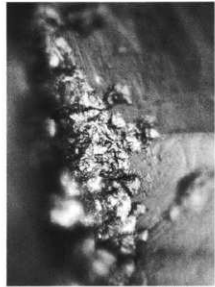
第304図
石錐
2 A類
SK320



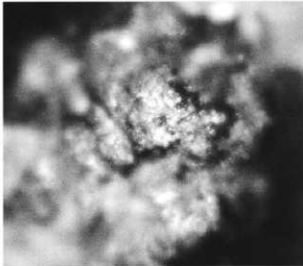
1 A.錐部の摩滅と光沢痕
1 B.錐部の摩滅と光沢痕(1Aの拡大)



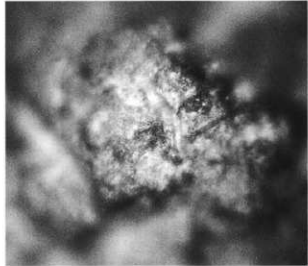
1A ×100



1B ×200

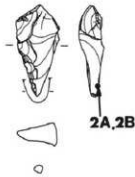


2A ×100



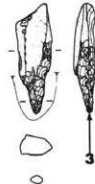
2B ×200

石錐
2 A類
VD 2
PL251-12

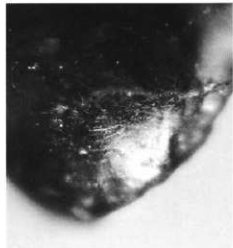


2A.錐部の摩耗痕
2B.錐部の摩耗痕(2Aの拡大)

石錐
2 B類
I C11
PL251-16



3.錐部の摩耗・線状痕



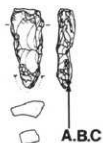
3 ×100

第305図

石鏃

2A類

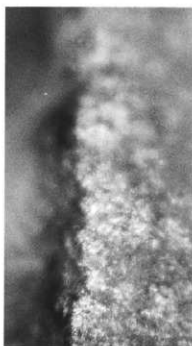
VP13



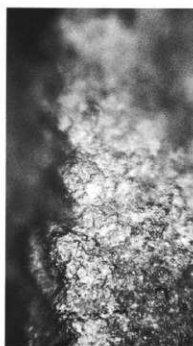
A. 鏃部の摩耗・光沢痕

B. 鏃部の摩耗・光沢痕(Aの拡大)

C. 鏃部の摩耗・光沢痕
(SEM像)



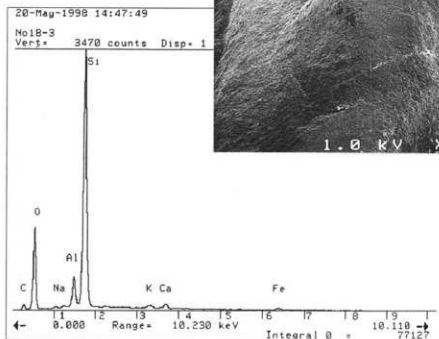
×100



×200



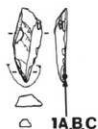
×100



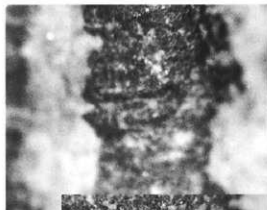
C. 鏃部摩耗痕のEDX分析チャート

第306図
石鏃

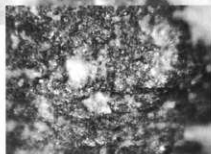
1類
SB405
PL51-11
PL251-5



1A 1A.鏃部の摩耗・線状痕 ×10
1B 鏃部の摩耗・線状痕(1Aの拡大)
1C 鏃部の摩耗・線状痕(1Bの拡大)



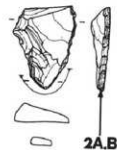
1B
×100



1C ×200

石鏃

1類
SK1994
PL251-3



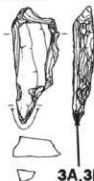
2A 2A.鏃部の摩耗・線状痕 ×10



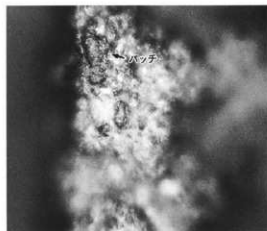
2B 2B.鏃部の摩耗・線状痕(2Aの拡大) ×22.5

石鏃

2A類
SB1136
PL74-12
PL251-15



3A 3A.鏃部の摩耗・光沢痕 ×100

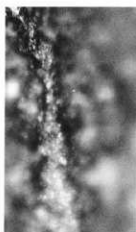
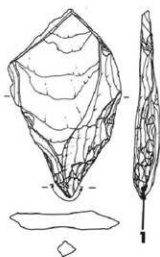


3B 3B.鏃部の摩耗・光沢痕(3Aの拡大) ×200

第307図

石錐

2 A類, SB287, PL17-18



1 × 200
1. 錐部の摩耗・線状痕と光沢痕

石錐

2 A類
SB287
PL17-17, PL251-11

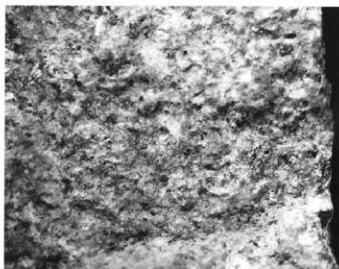
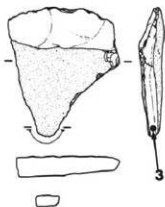


2 × 200
2. 錐部の摩耗・線状痕と光沢痕

石錐

1類

II J 3



3 × 10
3. 錐部の摩滅痕

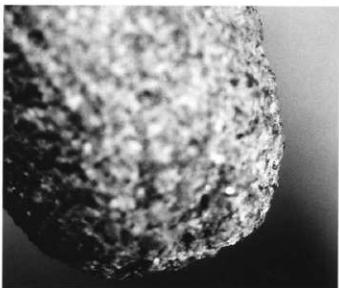
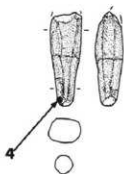
石錐

大形石錐

SB1136

PL74-13

PL251-21



4 × 10
4. 錐部の摩滅痕

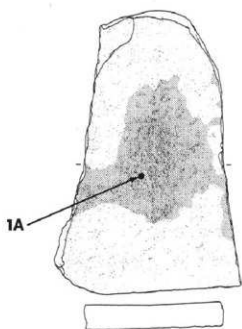
第308図

台石

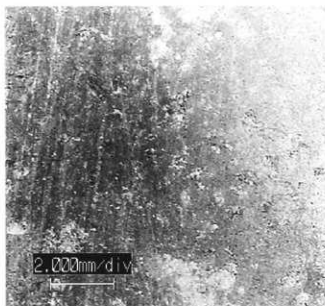
2種A₁類

SB246

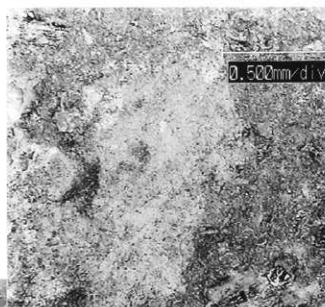
PL3-8



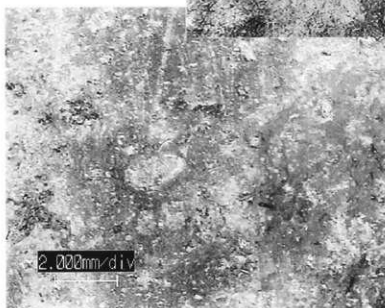
- 1A. 使用面の摩耗痕「輪状」・線状痕
 1B. 使用面の摩耗痕
 1C. 使用面の摩耗痕と「赤色粉状」付着物
 1D・E. 「赤色粉状」付着物の分析サンプル



1A

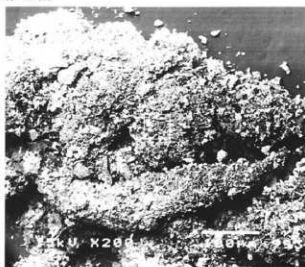


1B



1C

第309図



1D

×200



1E

×1000

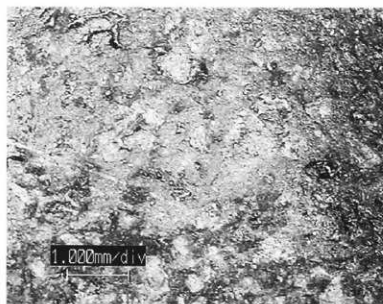
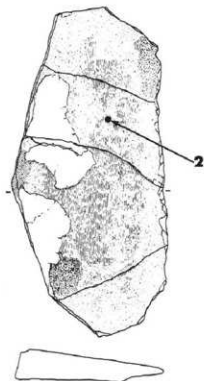
試料番号	Na ₂ O	MgO	Al ₂ O ₃	SiO ₂	K ₂ O	CaO	TiO ₂	MnO	Fe ₂ O ₃	NiO	Total	分析倍率
1D	1.16	2.13	10.28	39.85	0.86	10.17	1.77	1.46	32.32	0.00	100.00	×200倍
1E	1.09	2.40	8.77	39.44	1.41	13.00	2.77	1.52	29.39	0.23	100.02	×1000倍

X線回折分析による成分元素量

台石

2種A,類
SB1124
PL71-8

2使用面の厚切面

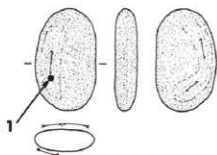


2

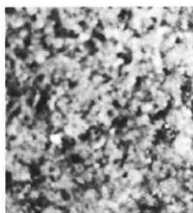
第310図

砥石

I 1a 類
SB1284
PL101-8
PL252-8



1.砥石の程度

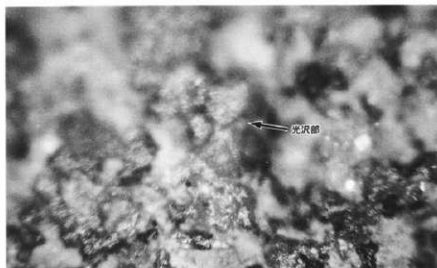


1 × 10

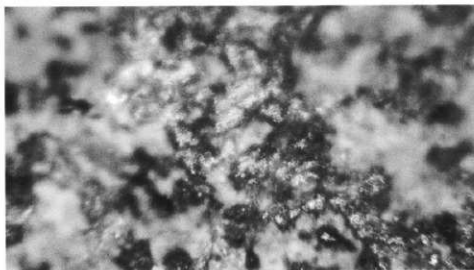
砥石

I 1a 類
II M18
PL252-5

2A.砥石の磨耗・光沢痕
2B.砥石の磨耗・光沢痕



2A × 100

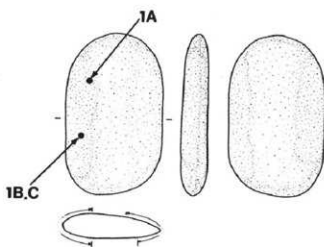


2B × 100

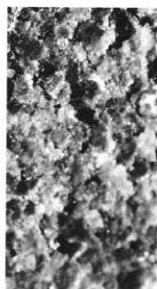
第311図

磁石

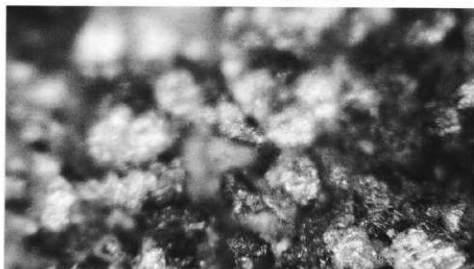
I 1b 類
SB246
PL2-16
PL253-19



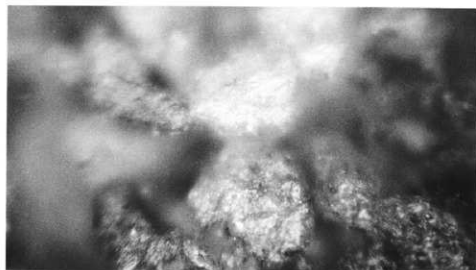
1A 磁面の粒度
1B 磁面の稜角・光消角
1C 磁面の稜角・光消角(1Bの拡大)



1A × 30



1B × 100



1C × 200