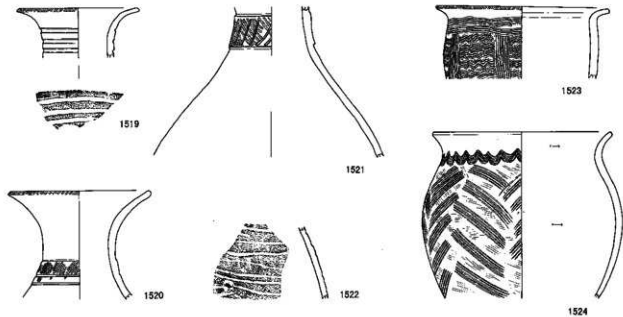
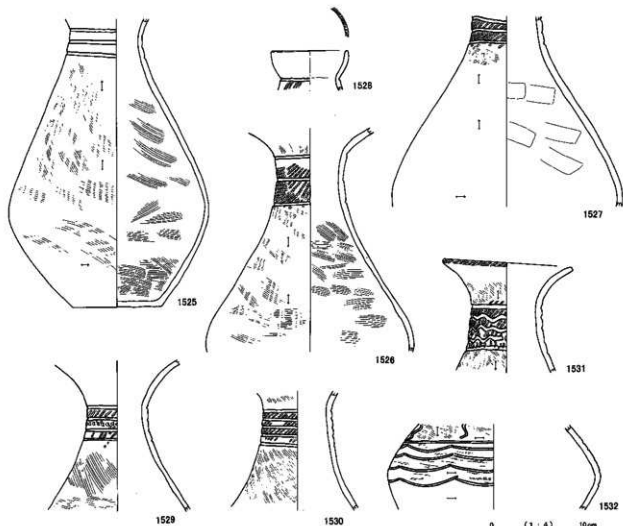


S B 1260



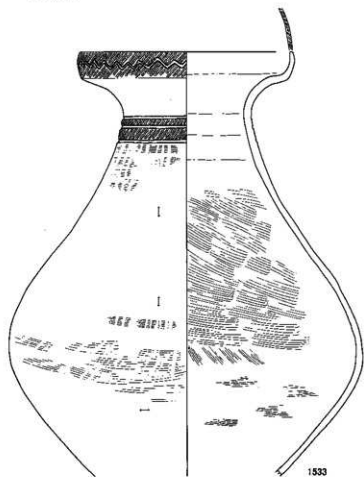
S B 1261



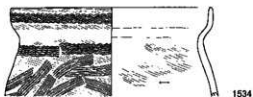
0 (1 : 4) 10mm

S B 1260, 1519~1524 S B 1261, 1525~1532

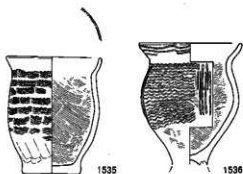
SB1261



1533



1534



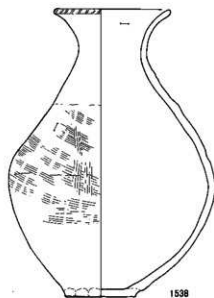
1535

1536

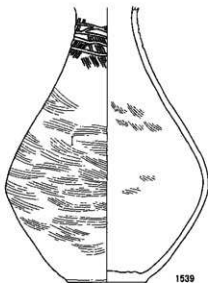


1537

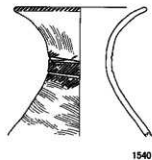
SB1262



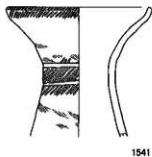
1538



1539



1540

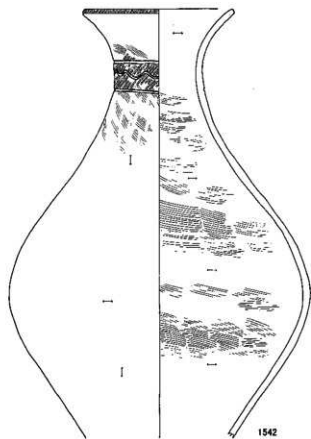


1541

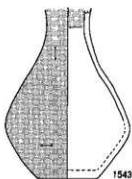
0 (1:4) 10cm

S B1261, 1533~1537 S B1262, 1538~1541

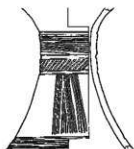
S B1262



1542



1543



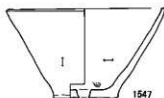
1544



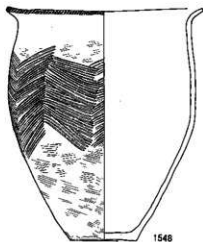
1545



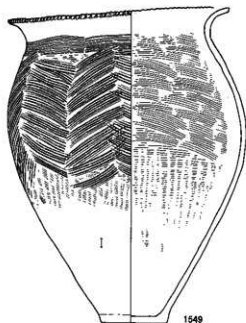
1546



1547



1548

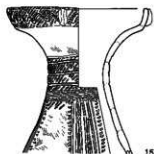


1549

0 (1 : 4) 10 cm

S B1262, 1542~1549

SB 1263



1550



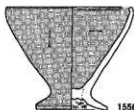
1551



1552



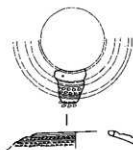
1554



1556



1558



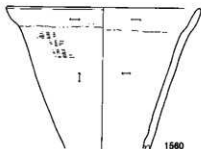
1553



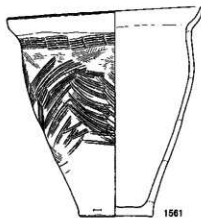
1555



1557



1560



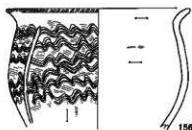
1561



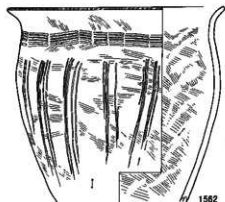
1559



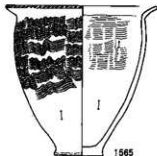
1563



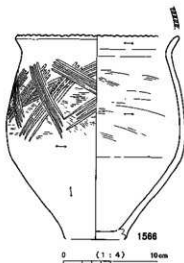
1564



1562



1565

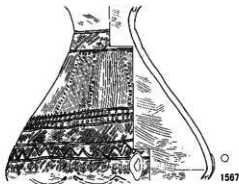


1566

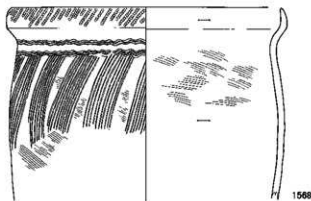
0 (1:4) 10cm

SB 1263, 1550-1566

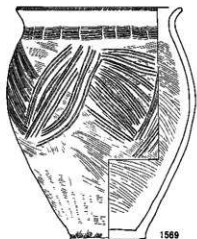
S B 1263



1567

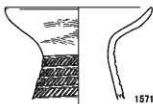


1568



1569

S B 1264



1571

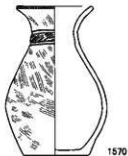


1572

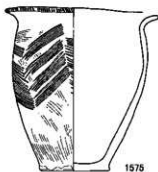


1573

S B 1279



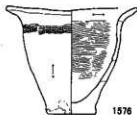
1570



1575

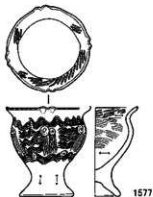


1574

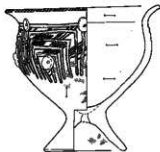


1576

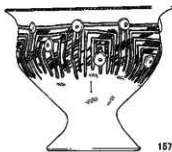
S B 1264



1577



1578



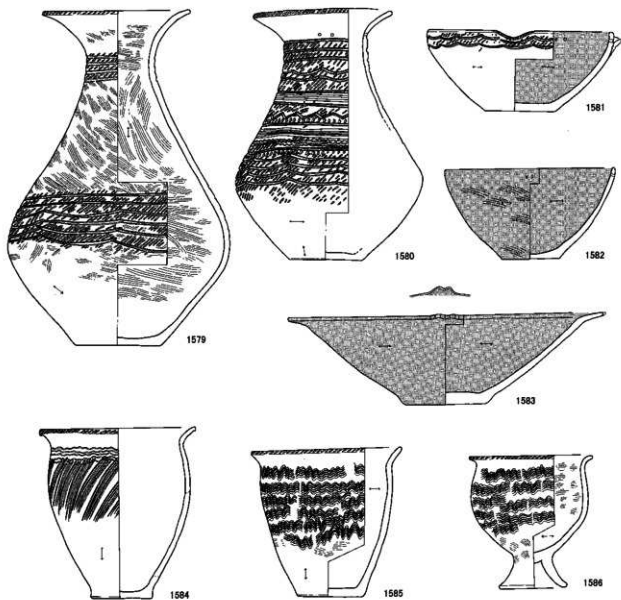
0 (1:4) 10mm

S B 1263, 1567~1569

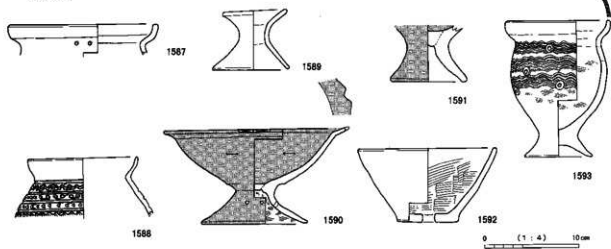
S B 1279, 1570

S B 1264, 1571~1578

SB 1276



SB 1277



0 (1 : 4) 10 cm

S B 1276, 1579~1586 S B 1277, 1587~1593

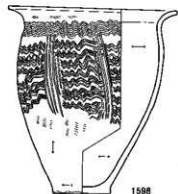
SB1278



1594



1597



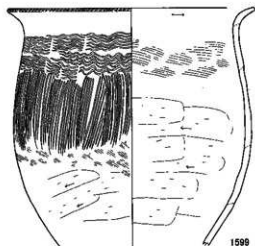
1598



1595

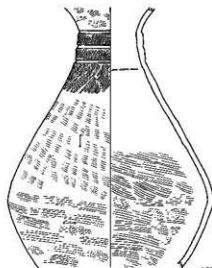


1596



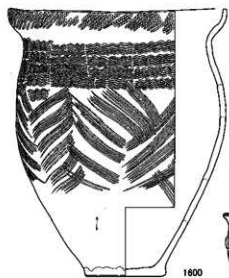
1599

SB1281

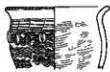


1602

SB1280



1600



1601



1603



1604



1605

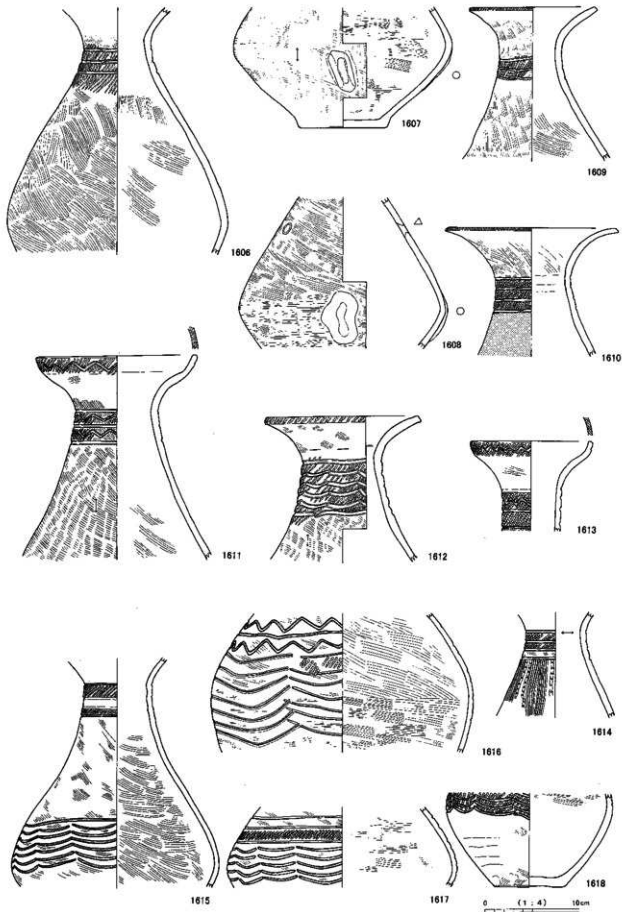
0 (1:4) 10cm

S B1278, 1594~1599

S B1280, 1600~1601

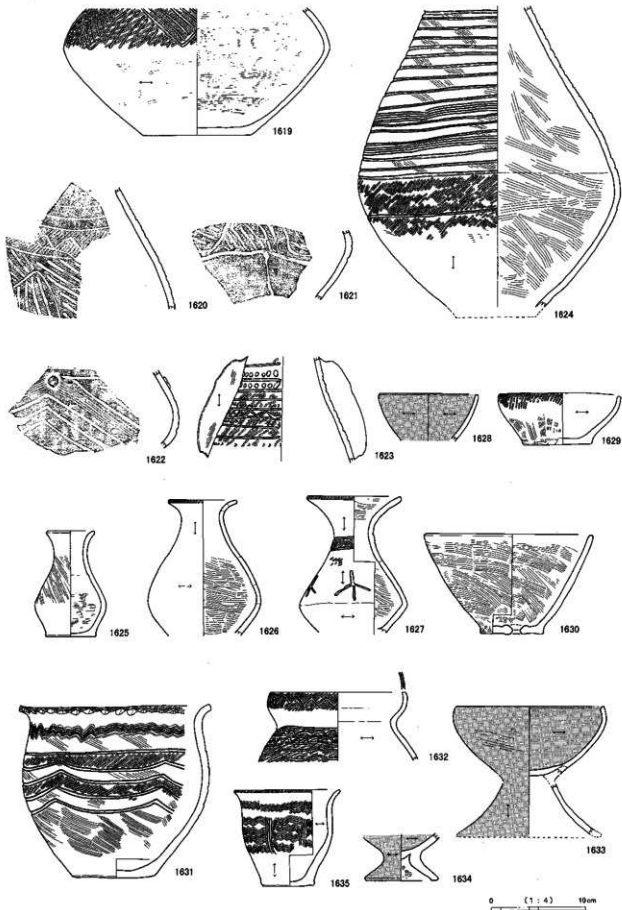
S B1281, 1602~1605

S B 1282



S B 1282, 1606~1618

S B 1282

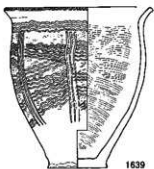


S B 1282, 1619~1635

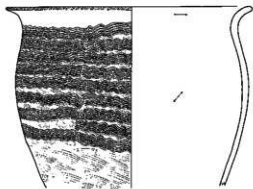
SB1282



1636



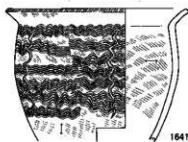
1639



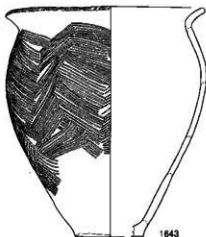
1640



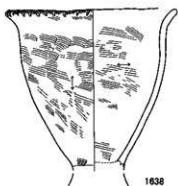
1637



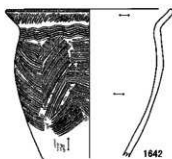
1641



1643



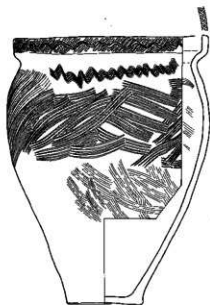
1638



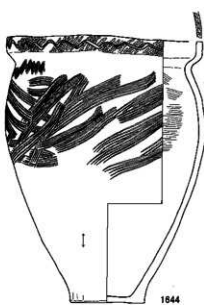
1642



1645



1644



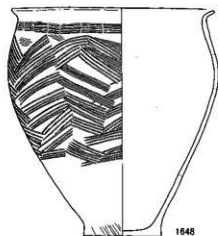
1646



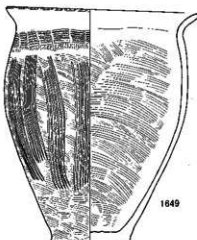
1647

0 (1:4) 10cm

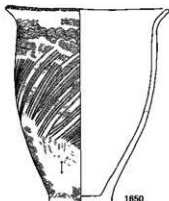
S B 1282



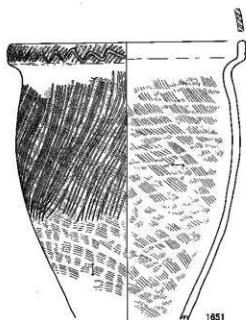
1648



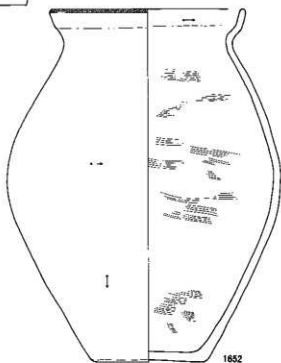
1649



1650

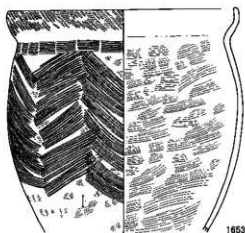


1651

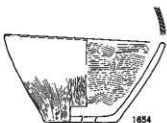


1652

S B 1283



1653



1654

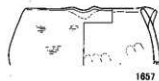
S B 1288



1655



1656



1657

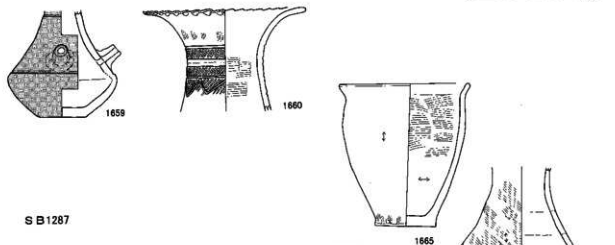
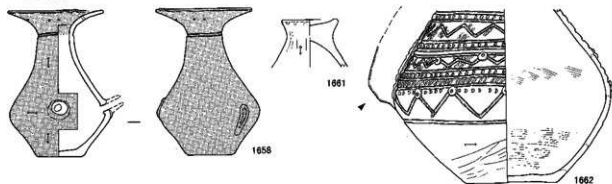
0 (1:4) 10cm

S B 1282, 1648~1652

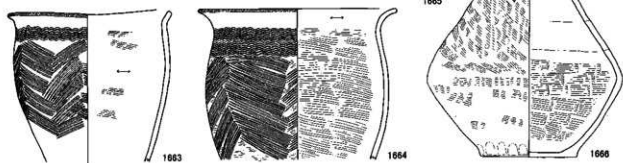
S B 1283, 1653~1654

S B 1288, 1655~1657

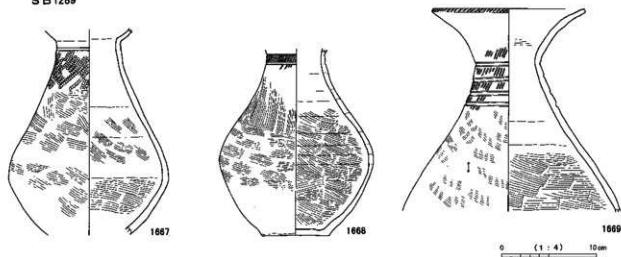
SB1284



SB1287

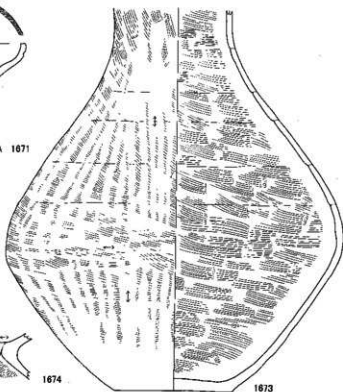
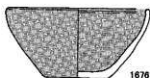
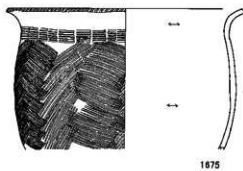
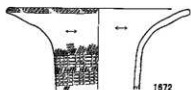
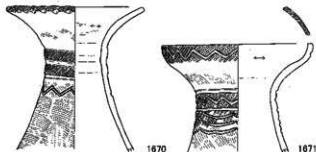


SB1289

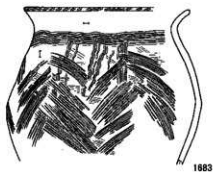
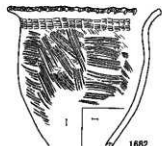
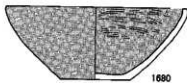
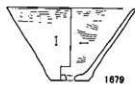
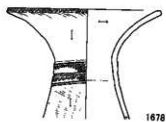
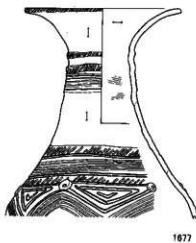


SB1284, 1658~1662 S B1287, 1663~1666 S B1289, 1667~1669

SB1289

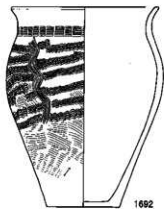
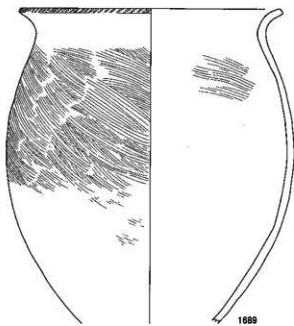
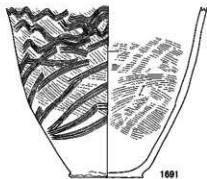
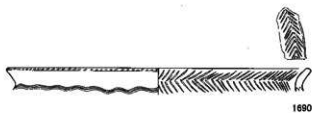
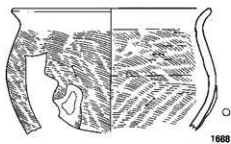
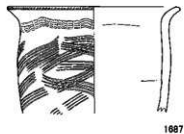
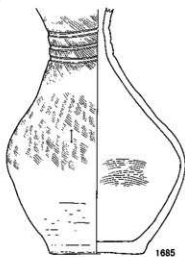
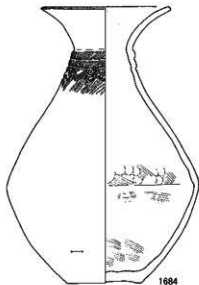


SB1291



0 (1:4) 10cm

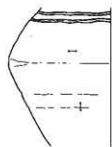
S B 1290



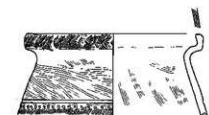
0 (1:4) 10cm

S B 1290, 1684~1692

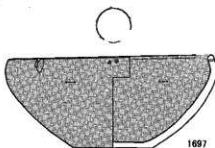
S B 1292



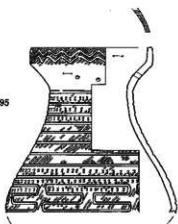
1693



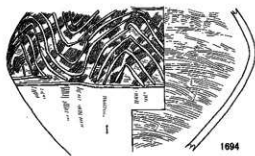
1695



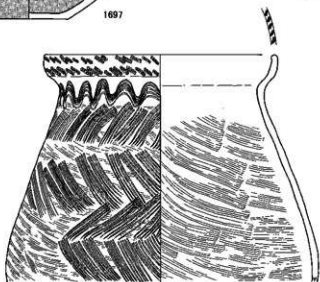
1697



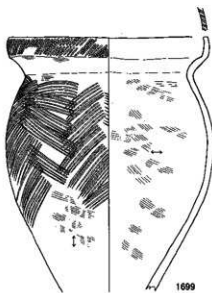
1696



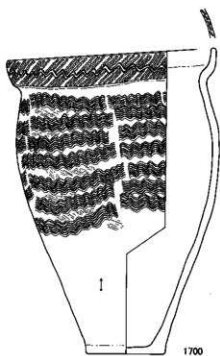
1694



1698



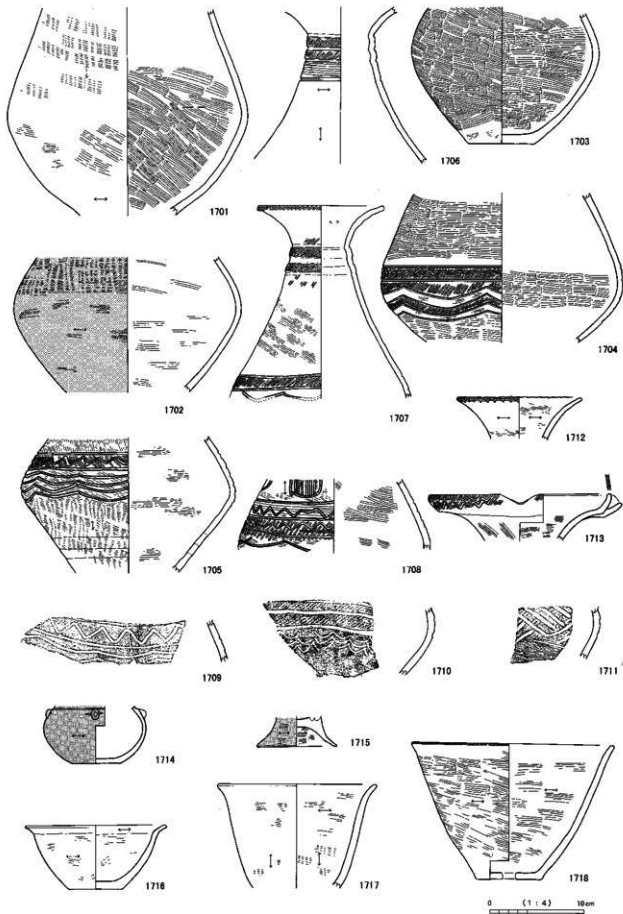
1699



1700

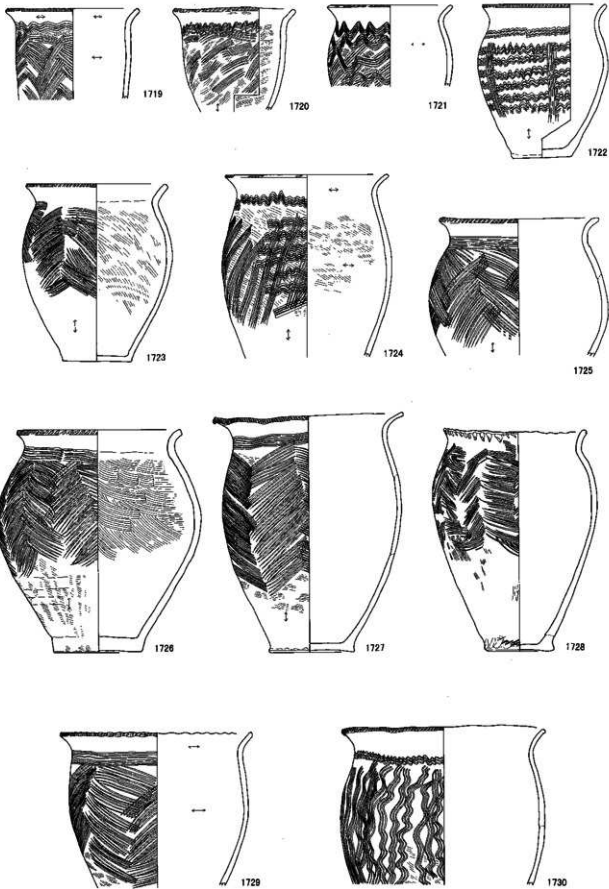
0 (1 : 4) 10mm

SB 1293



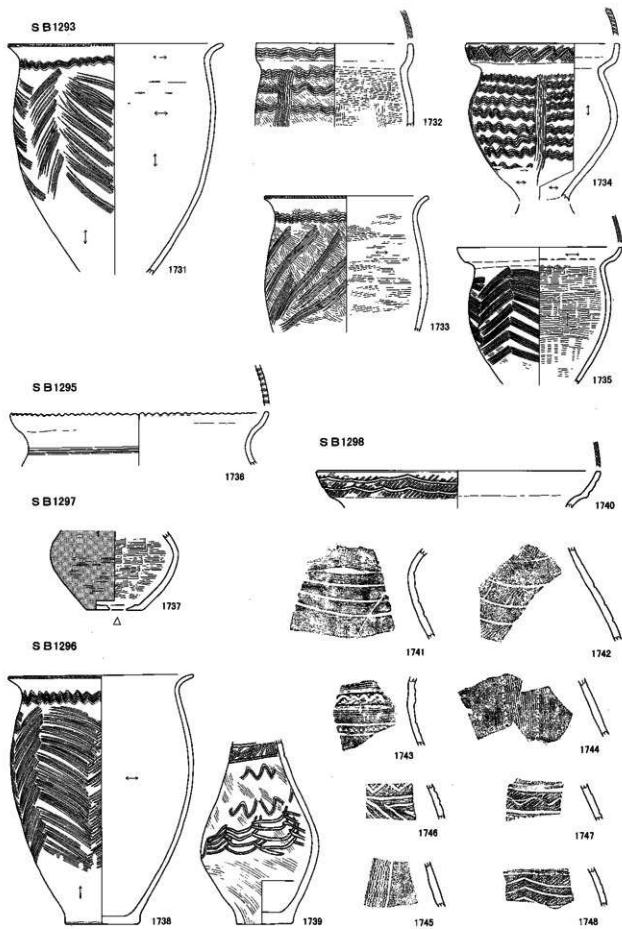
SB 1293, 1701~1718

S B 1293



0 (1 : 4) 10cm

S B 1293, 1719~1730



SB1293, 1731-1735

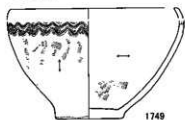
SB1295, 1736

SB1297, 1737

SB1296, 1738-1739

SB1298, 1740-1748

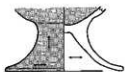
S B 1294



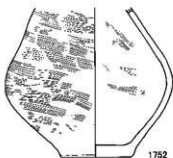
1749



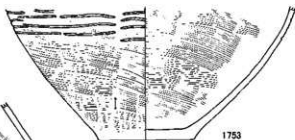
1750



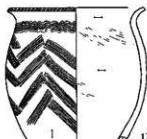
1751



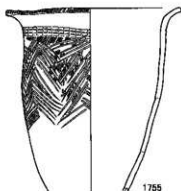
1752



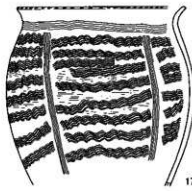
1753



1754



1755



1756

被熱ゆがみ十部



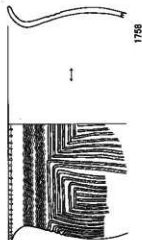
1757



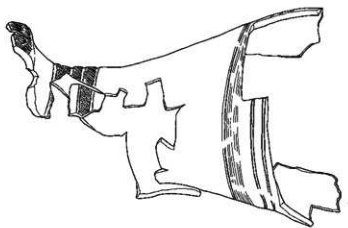
0 (1:4) 10mm

S B 1294, 1749~1757

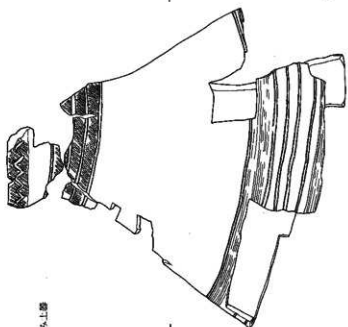
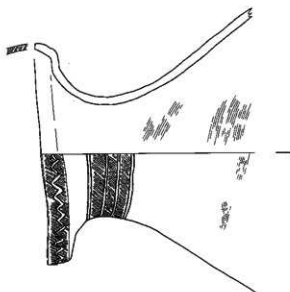
S B1294



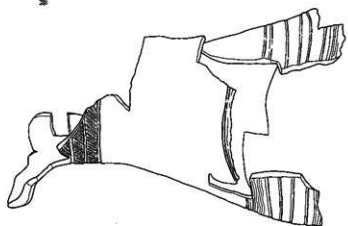
1758



1759



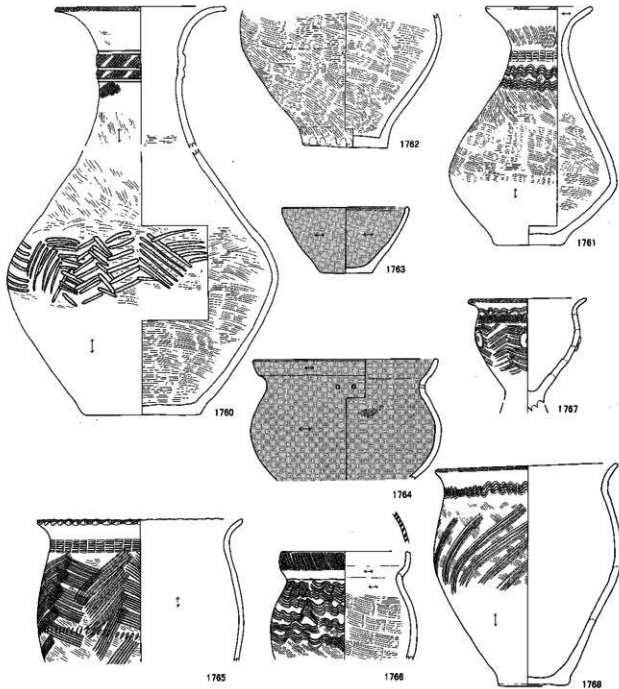
模様のがみ上部



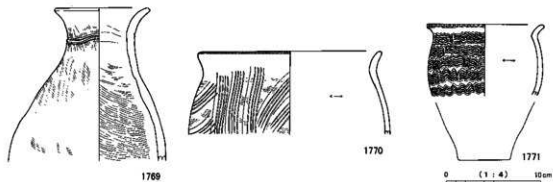
0 (1:4) 10mm

S B1294, 1758~1759

SB1296

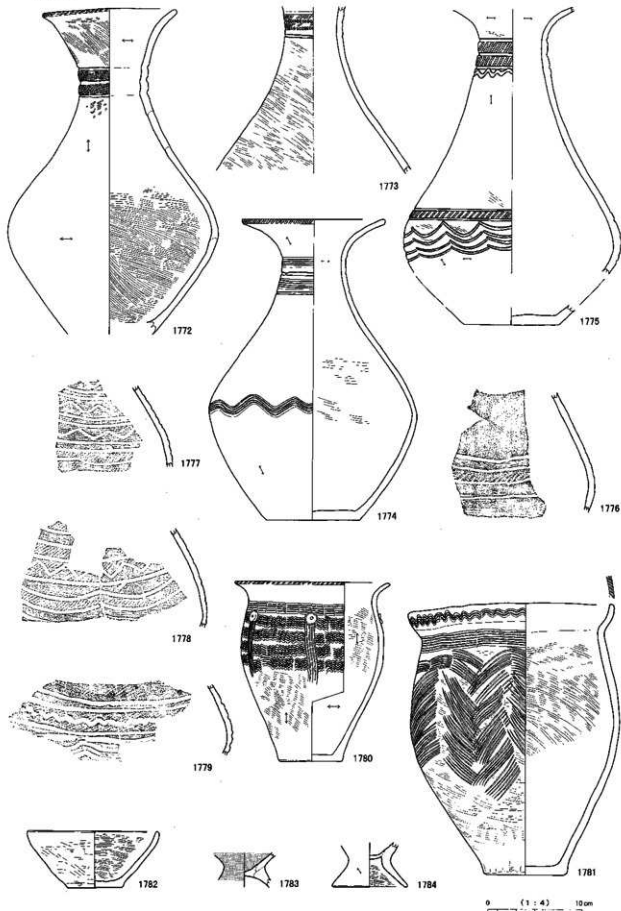


SB1303



SB1296, 1760~1768 SB1303, 1769~1771

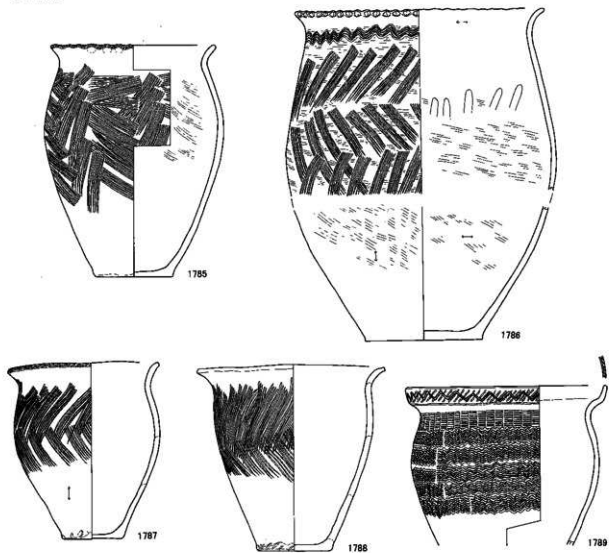
S B 1302



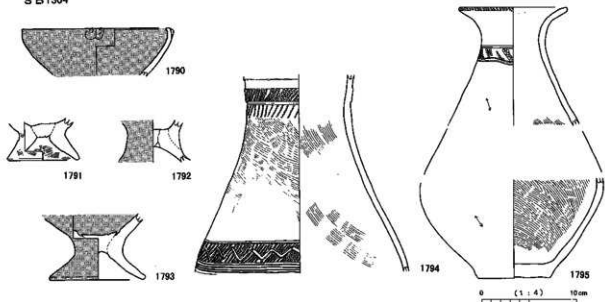
0 (1:4) 10cm

S B 1302, 1772~1784

S B1302

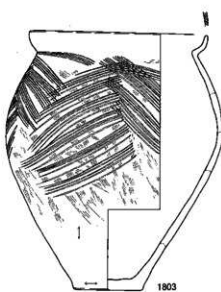
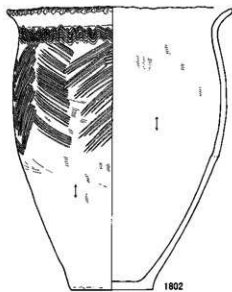
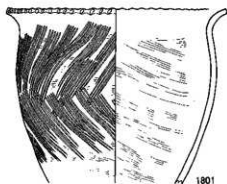
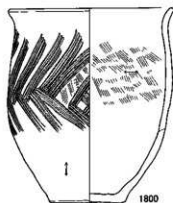
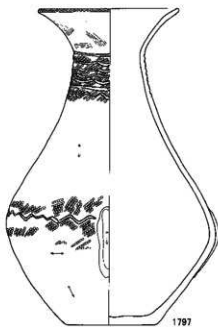
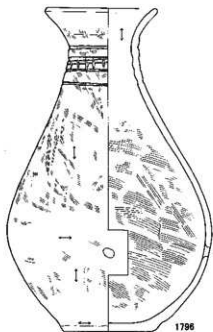


S B1304



S B1302, 1785~1789 S B1304, 1790~1795

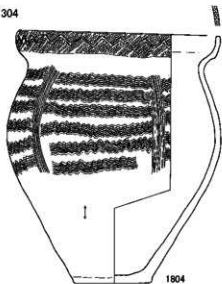
S B 1304



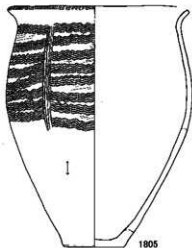
0 (1 : 4) 10 cm

S B 1304, 1796~1803

S B 1304

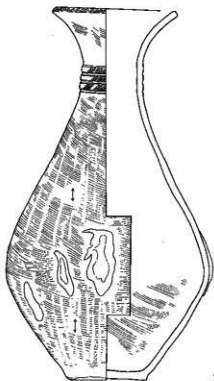


1804

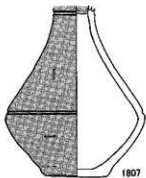


1805

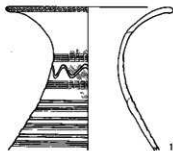
S B 1305



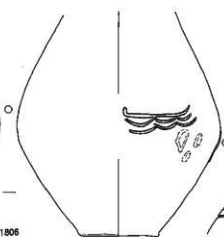
1806



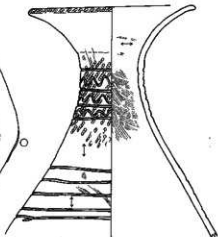
1807



1809



1808



1810



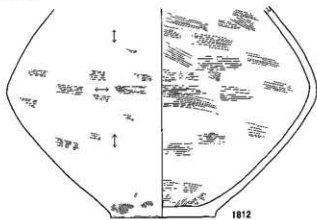
1808



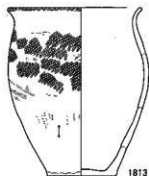
1811

0 (1:4) 10mm

SB1305

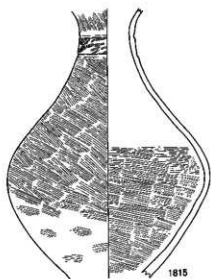


1812

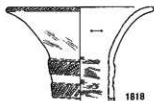


1813

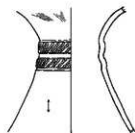
SB1306



1815



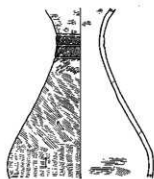
1818



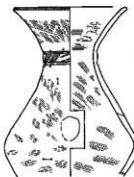
1819



1816



1817



1822



1823



1820



1821



1824

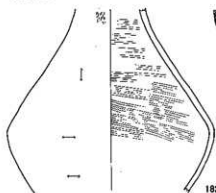


1825

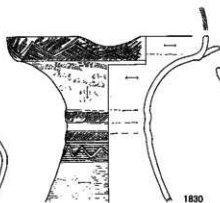
0 (1 : 4) 10cm

SB1305, 1812~1813 SB1306, 1815~1825

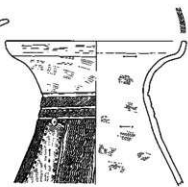
S B 1306



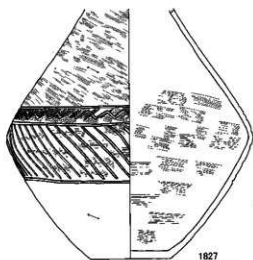
1826



1830



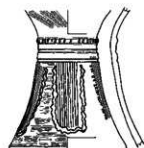
1831



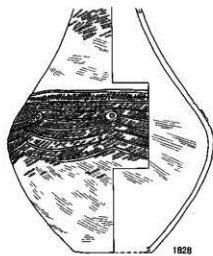
1827



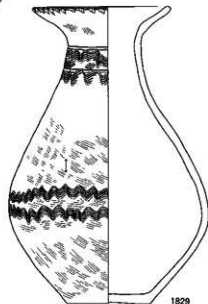
1832



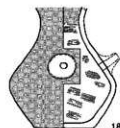
1833



1828



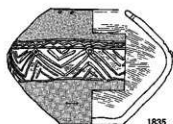
1829



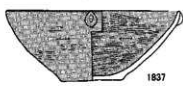
1836



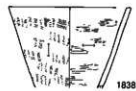
1834



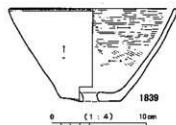
1835



1837

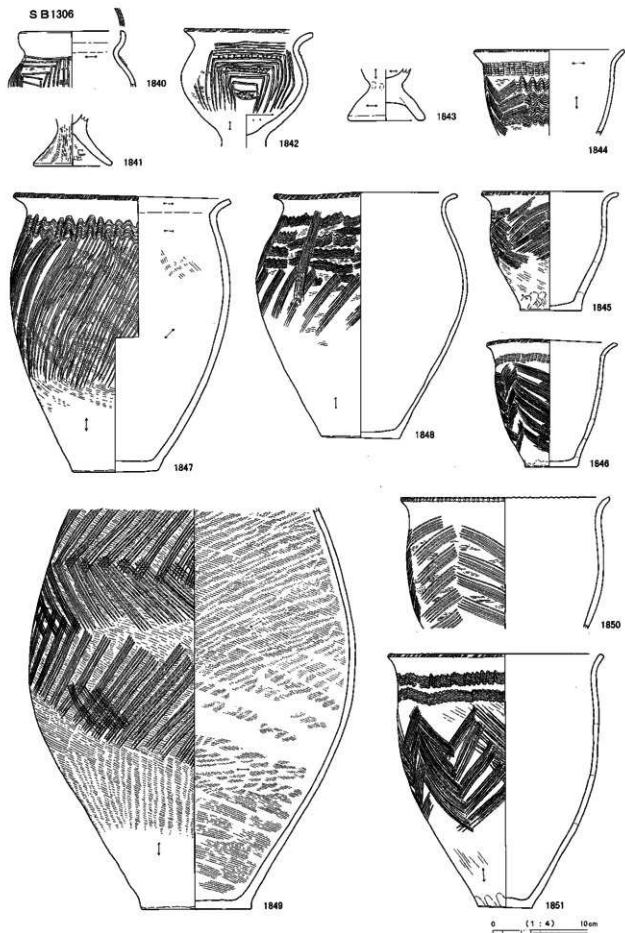


1838



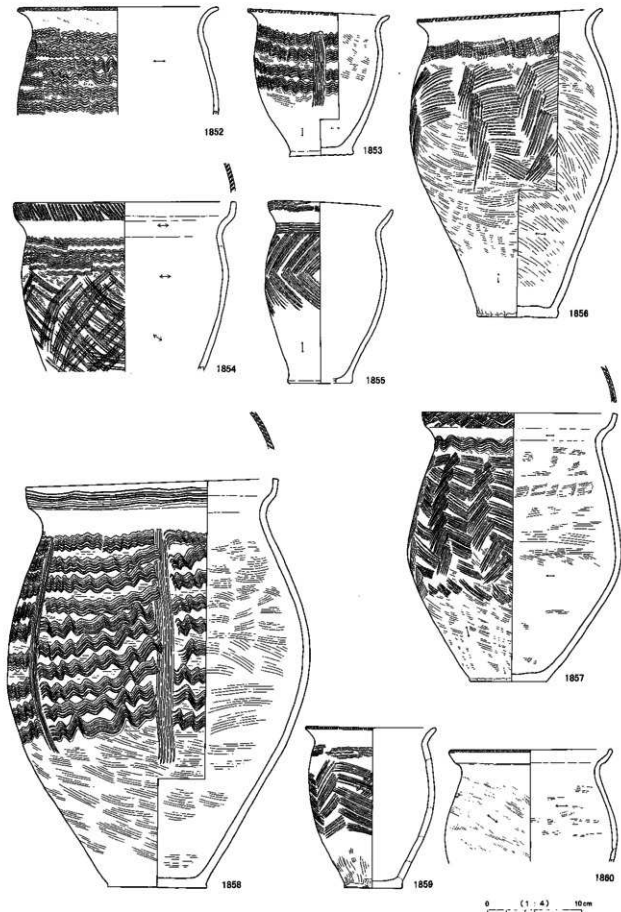
1839

0 (1:4) 10mm

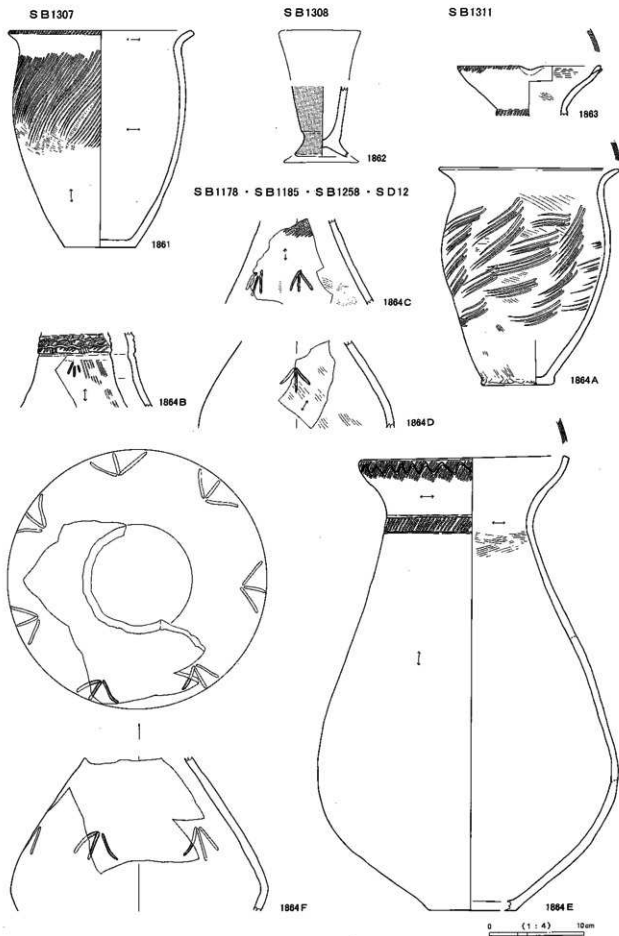


SB1306, 1840~1851

S B 1306

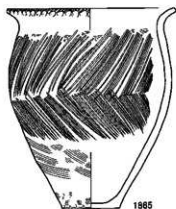


S B 1306, 1852~1860



SB1307, 1861 SB1308, 1862 SB1311, 1863~1864A SB1178, 1864B
 SB1185, 1864C~1864D SB1258, 1864E SD12, 1864F

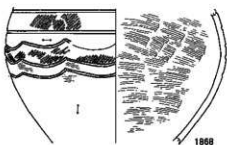
S K127



1865

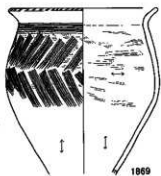


1867



1866

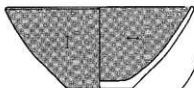
S K131



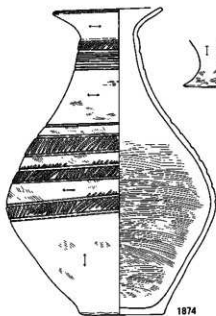
1869



1870



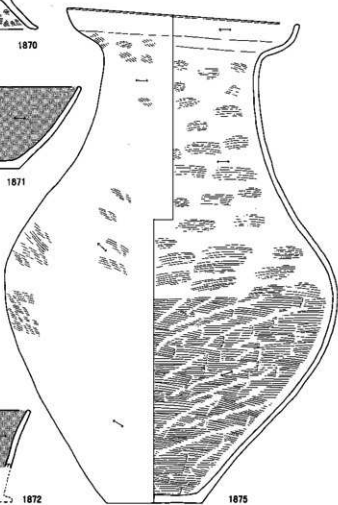
1871



1873



1872



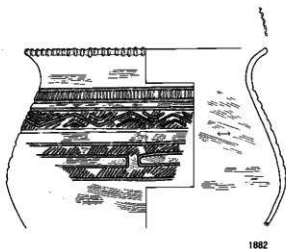
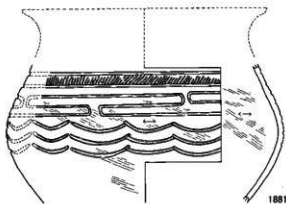
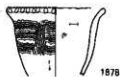
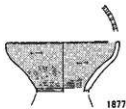
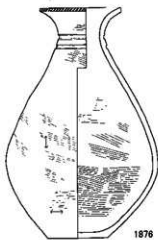
1875

0 (1:4) 10cm

S K127, 1865, 1867~1868

S K131, 1869~1875

SK133



SK141



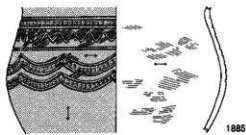
SK143



SK150



SK149



0 (1:4) 10cm

SK133, 1876~1882

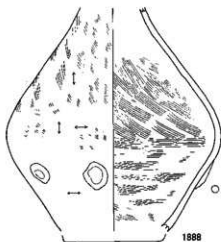
SK141, 1883

SK143, 1884

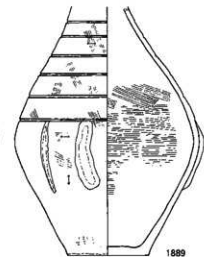
SK149, 1885~1886

SK150, 1887

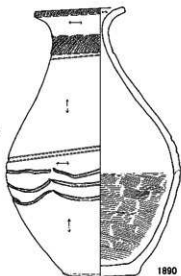
S K 151



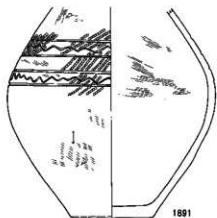
1888



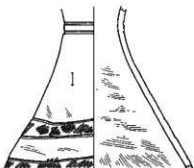
1889



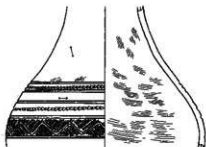
1890



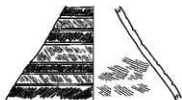
1891



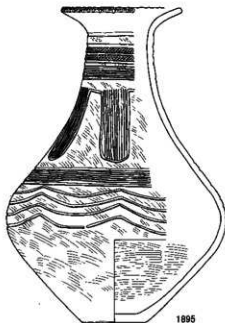
1892



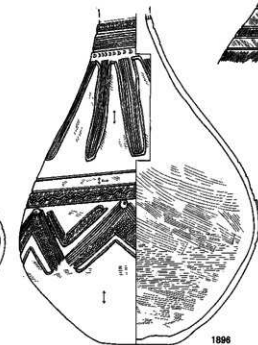
1893



1894



1895



1896

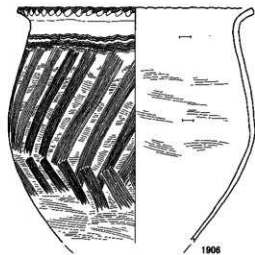
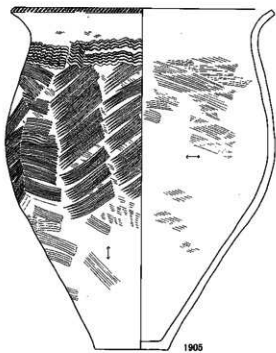
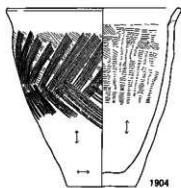
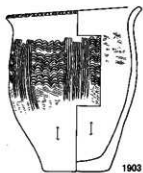
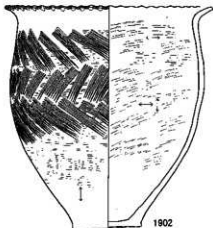
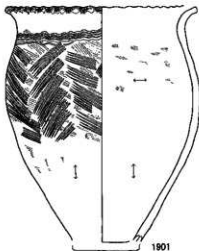
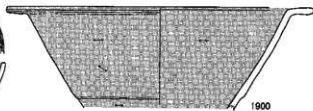
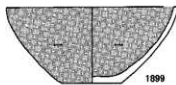
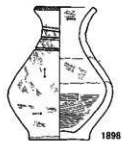


1897

0 (1:4) 10 cm

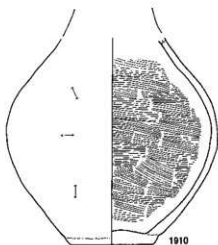
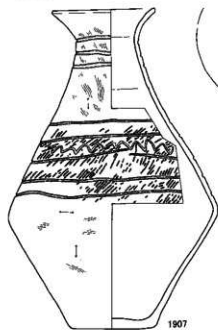
S K 151, 1888~1897

SK151

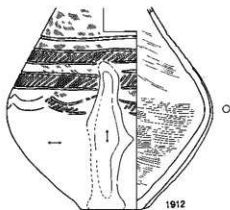
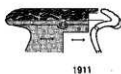


0 (1:4) 10cm

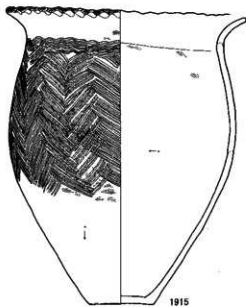
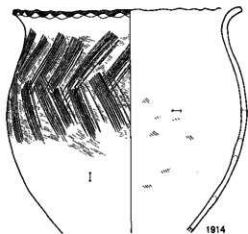
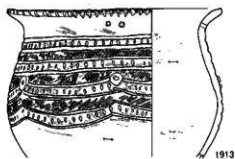
S K 153



S K 154



S K 155



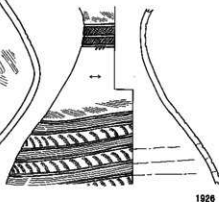
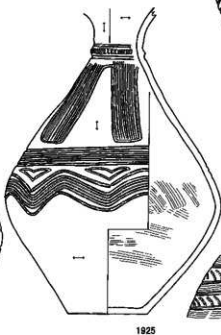
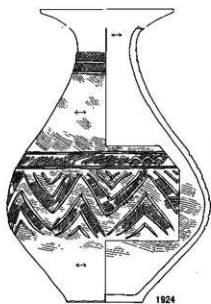
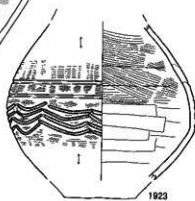
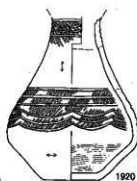
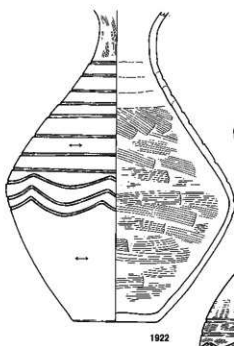
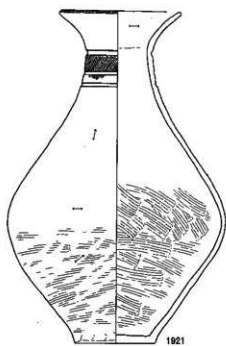
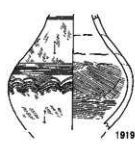
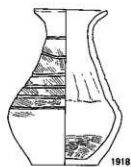
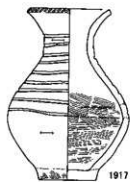
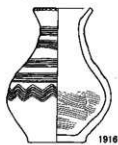
0 (1 : 4) 10 cm

S K 153, 1907~1910

S K 154, 1911~1912

S K 155, 1913~1915

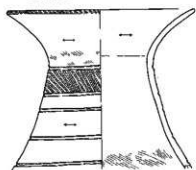
SK156



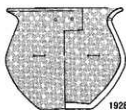
0 (1:4) 10cm

SK156, 1916~1926

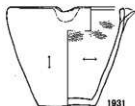
S K 156



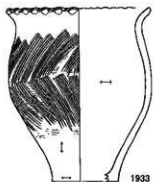
1927



1928



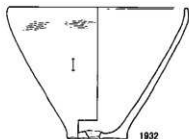
1931



1933



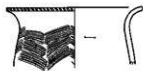
1929



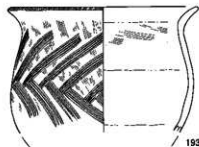
1932



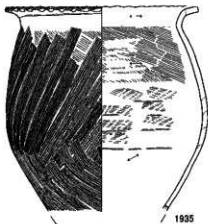
1930



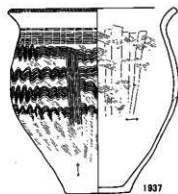
1936



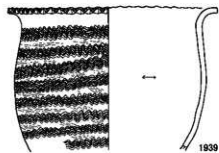
1934



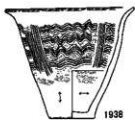
1935



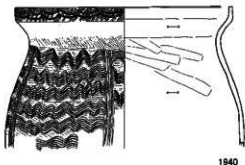
1937



1939



1938

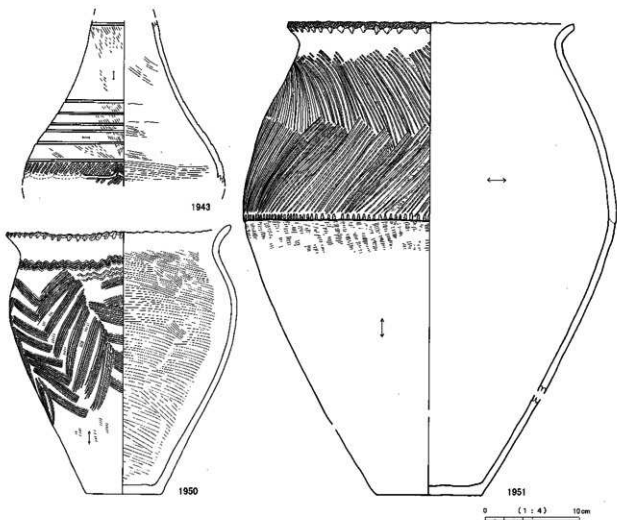
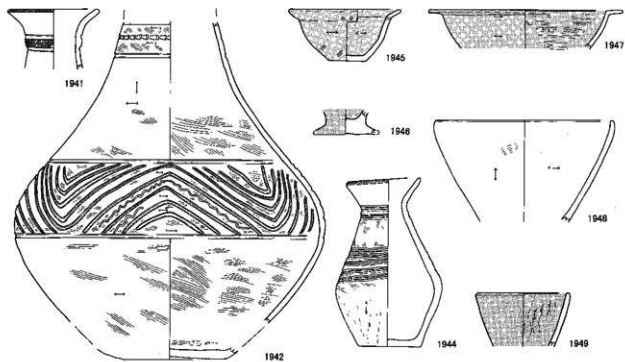


1940

0 (1:4) 10cm

S K 156, 1927~1940

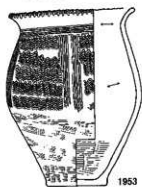
S K 158



0 (1:4) 10cm

S K 158. 1941~1951

SK158

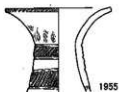


1953

SK159



1954

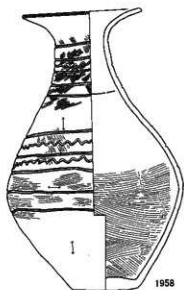


1955



1956

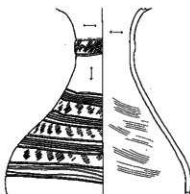
SK163



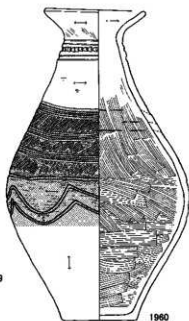
1958



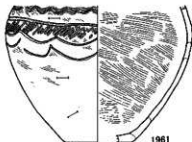
1957



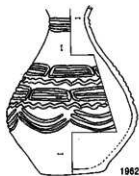
1959



1960



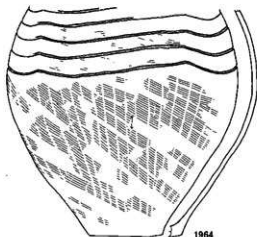
1961



1962



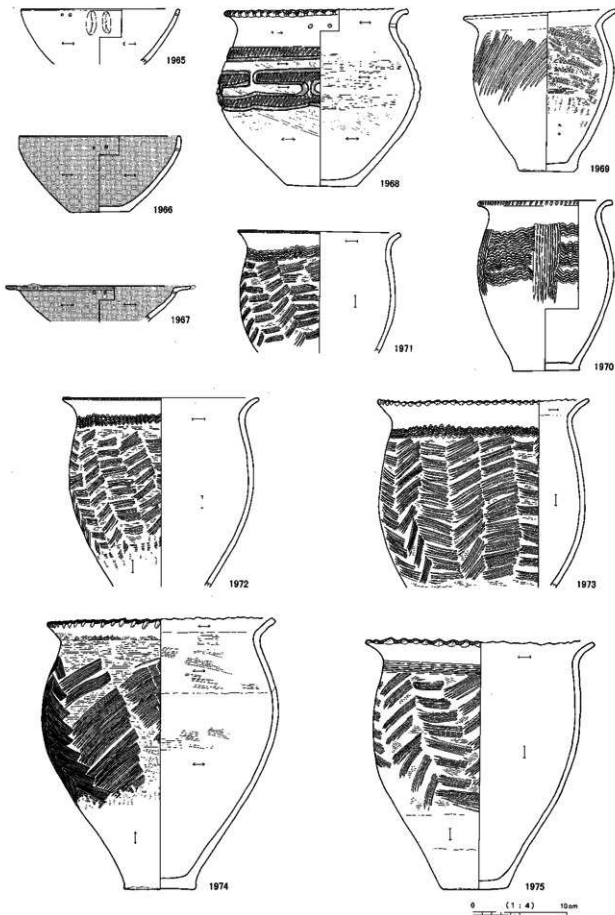
1963



1964

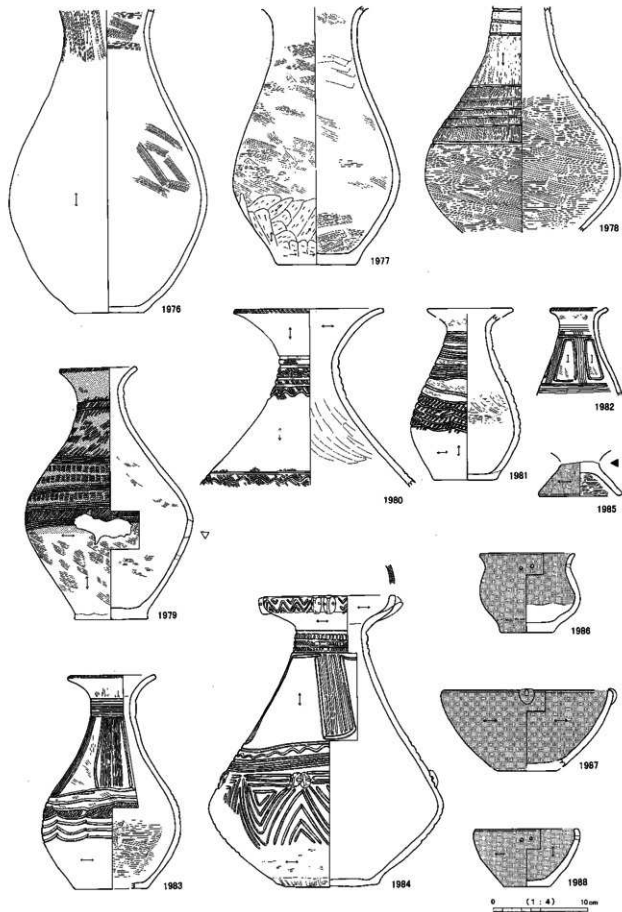
0 (1:4) 10cm

S K 163



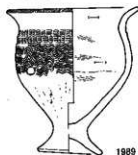
S K 163, 1965~1975

S K164

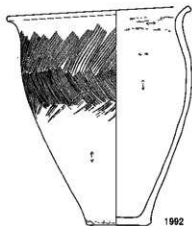


S K164. 1976-1988

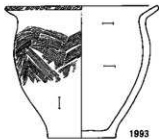
SK164



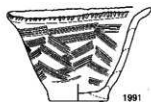
1989



1992



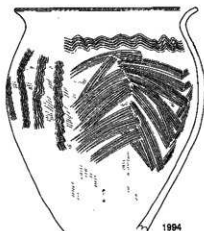
1993



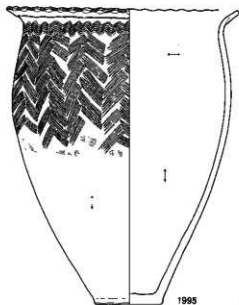
1991



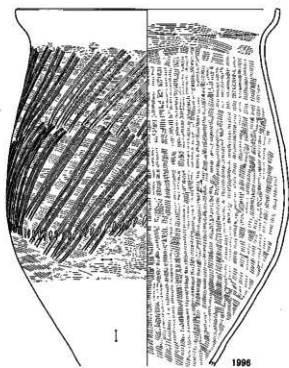
1990



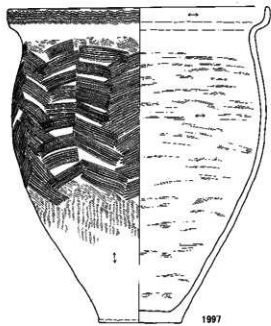
1994



1995



1996

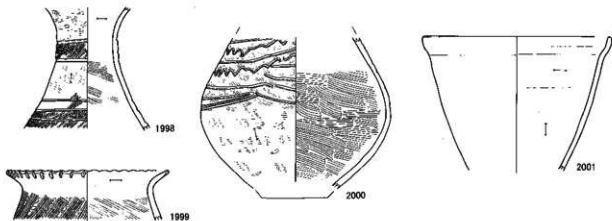


1997

0 (1:4) 10cm

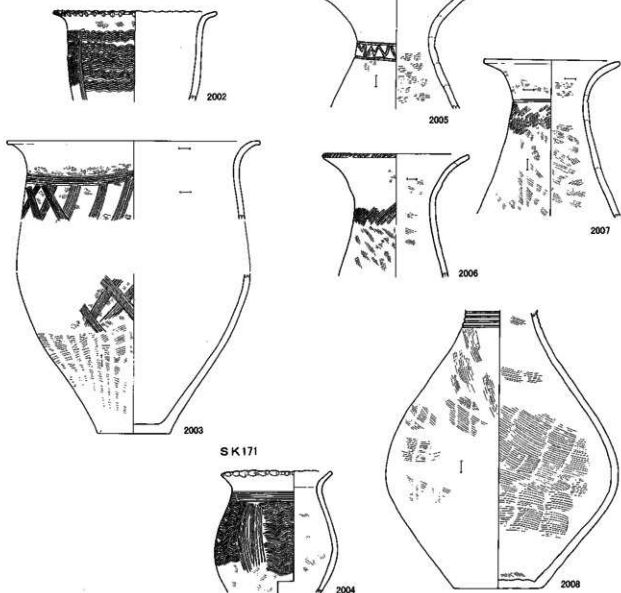
S K164, 1989~1997

SK 169



SK 190

SK 170



0 (1:4) 10cm

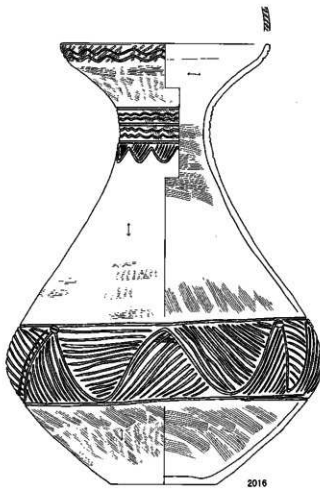
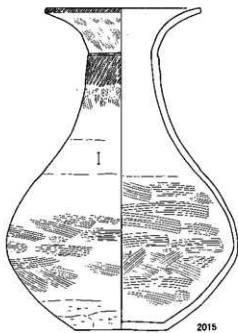
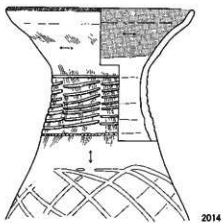
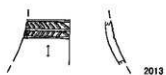
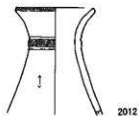
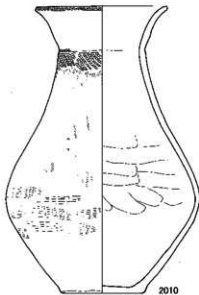
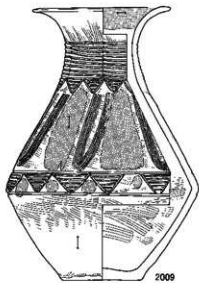
SK 169, 1998~2001

SK 170, 2002~2003

SK 171, 2004

SK 190, 2005~2008

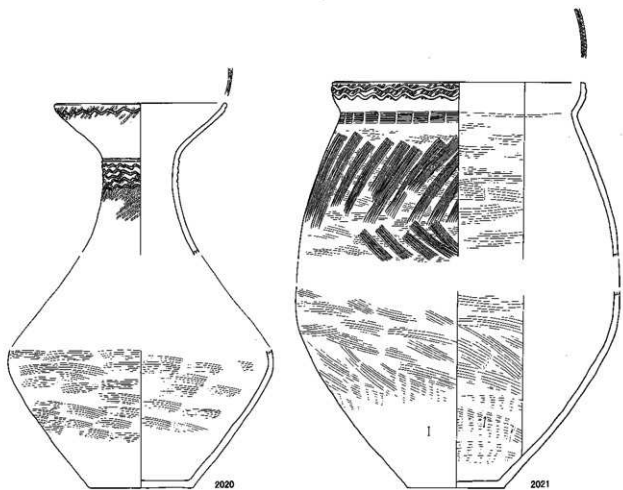
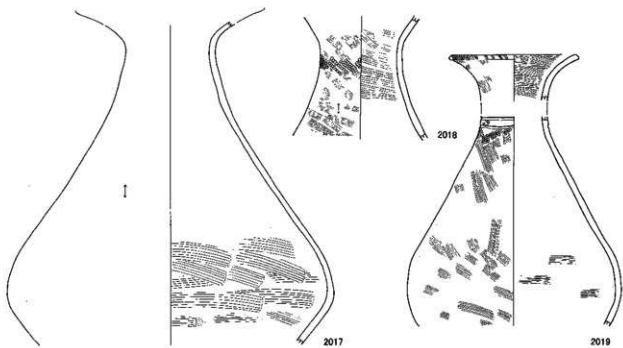
SK191



0 (1:4) 10cm

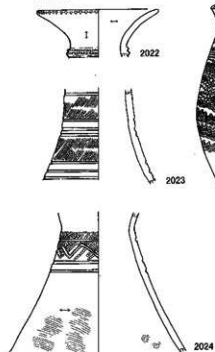
SK191, 2009~2016

S K 191



S K 191, 2017~2021

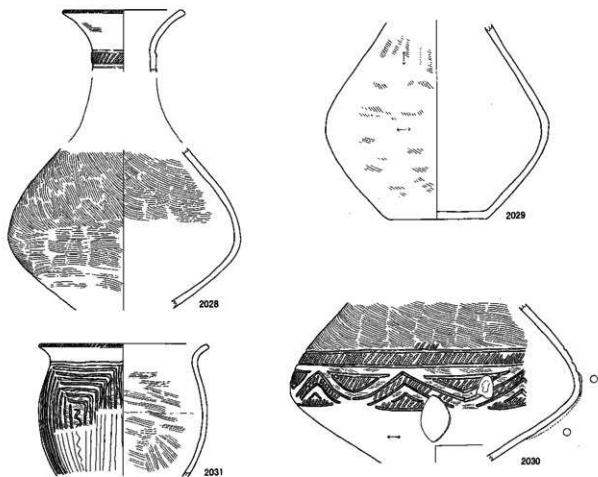
S K 192



S K 195

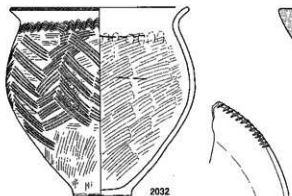


S K 200

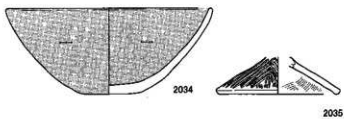


0 (1:4) 10cm

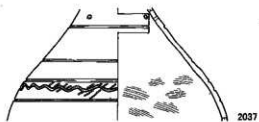
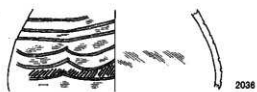
S K 200



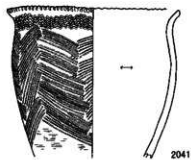
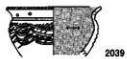
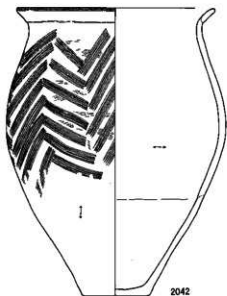
S K 237



S K 355



S K 359



0 (1:4) 10cm

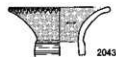
S K 200, 2032~2033

S K 237, 2034~2035

S K 355, 2036~2041

S K 359, 2042

S K345



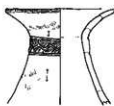
2043



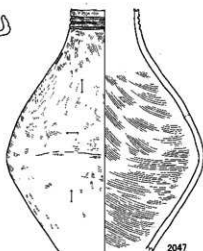
2045



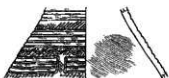
2044



2046



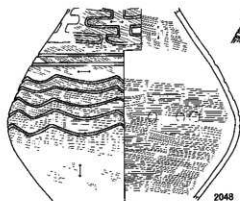
2047



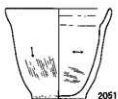
2049



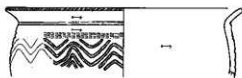
2050



2048



2051



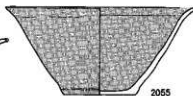
2052



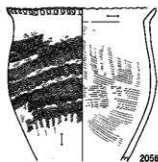
2053



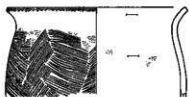
2054



2055



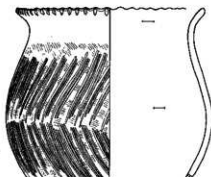
2056



2057



2058



2059

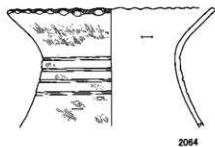
0 (1:4) 10cm

S K345, 2043~2059

S K 313



S K 551



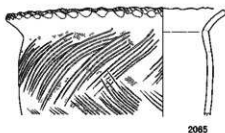
S K 356



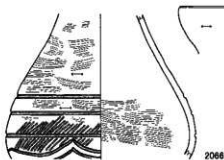
S K 354



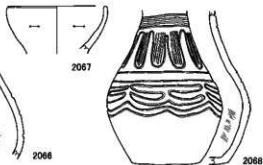
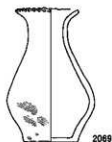
S K 1318



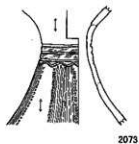
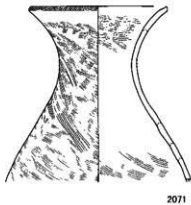
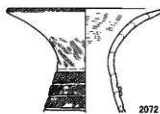
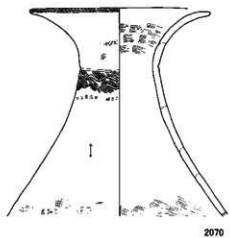
S K 1319



S K 1326



S K 1333

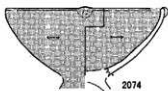


0 (1 : 4) 10cm

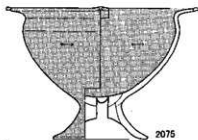
S K 313, 2060 S K 354, 2061 S K 356, 2062-2063 S K 551, 2064
S K 1319, 2066-2068 S K 1326, 2069 S K 1333, 2070-2073

S K 1318, 2065

S K1333



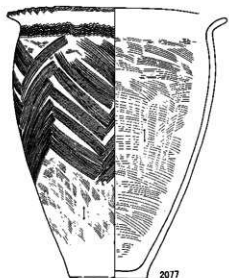
2074



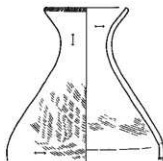
2075



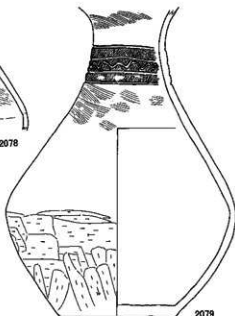
2076



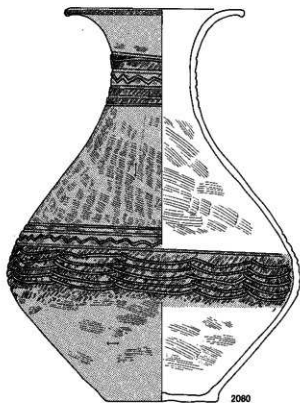
2077



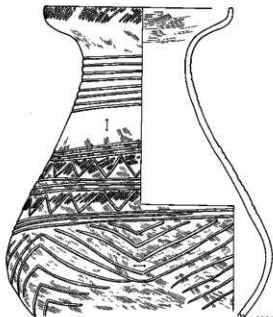
2078



2079



2080

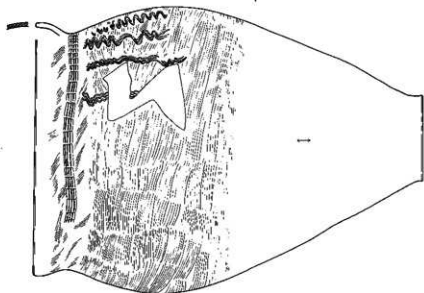
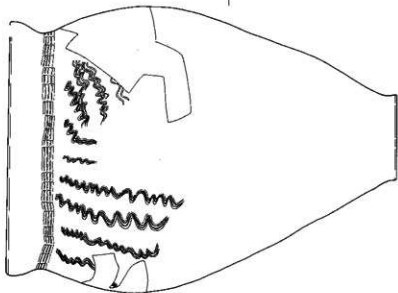
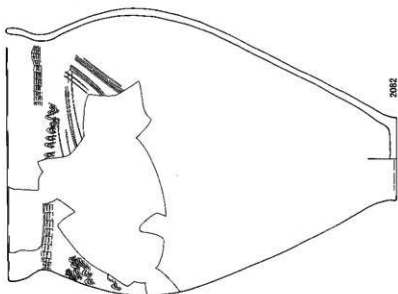


2081

0 (1:4) 10 cm

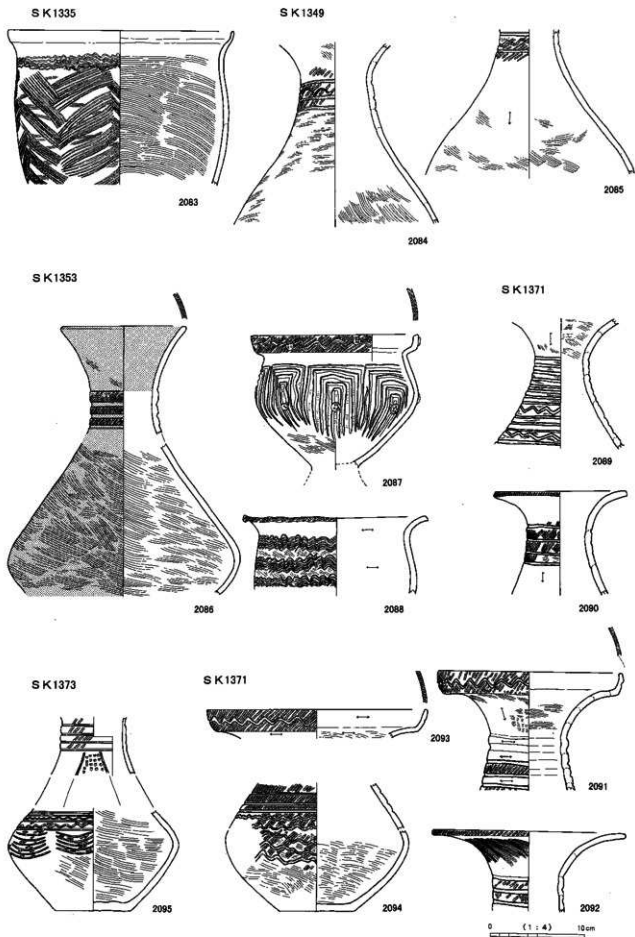
S K1333, 2074~2081

S K1333



0 (1:4) 10cm

S K1333, 2082



S K1335, 2083

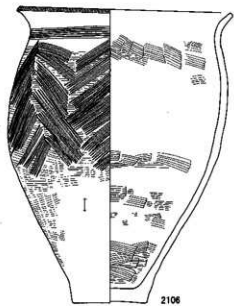
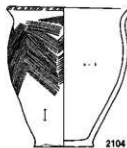
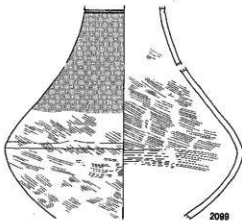
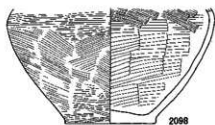
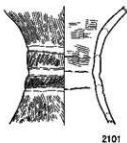
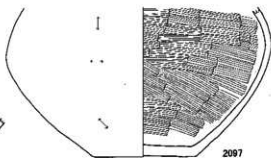
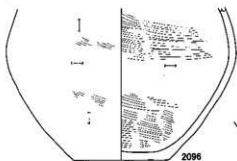
S K1349, 2084~2085

S K1353, 2086~2088

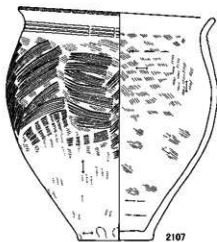
S K1371, 2089~2094

S K1373, 2095

SK 1377

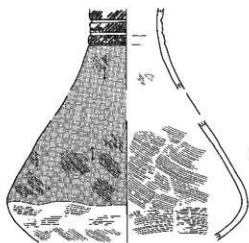


SK 1382

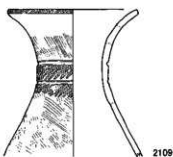


0 (1:4) 10cm

SK1393

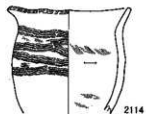


2108

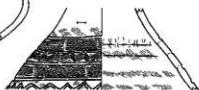


2109

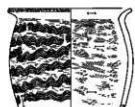
SK1396



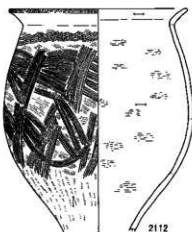
2114



2110



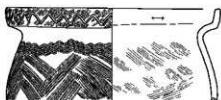
2115



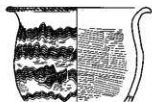
2112



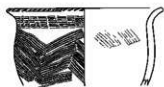
2111



2113

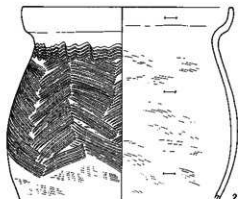


2116

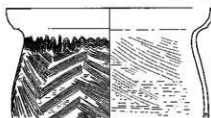


2117

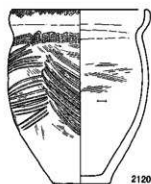
SK1396



2118



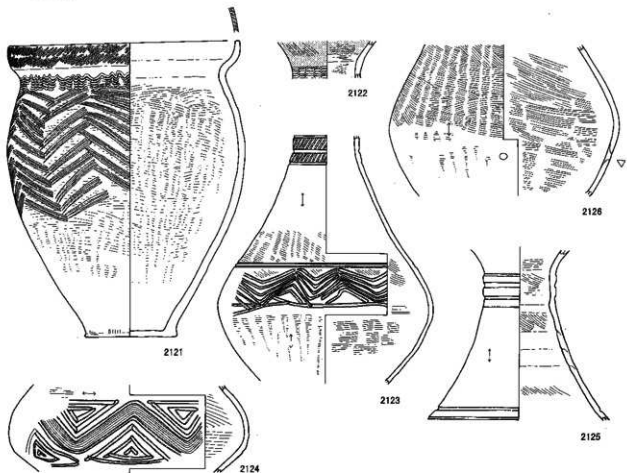
2119



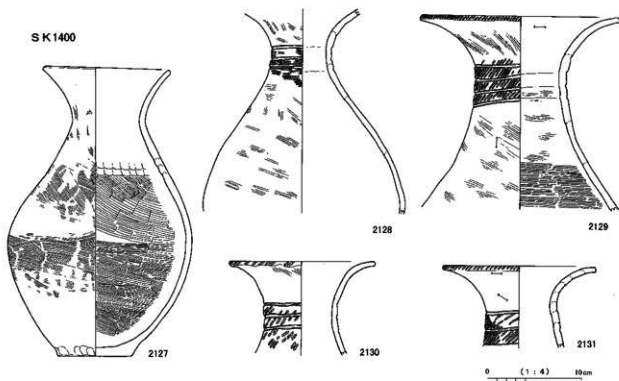
2120

0 (1:4) 10cm

S K 1396



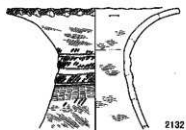
S K 1400



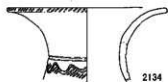
0 (1:4) 10cm

S K 1396, 2121~2126 S K 1400, 2127~2131

SK1400



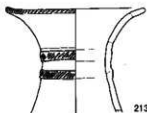
2132



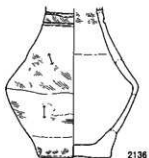
2134



2135



2133



2136



2137

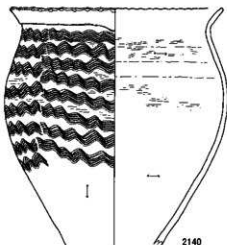


2138

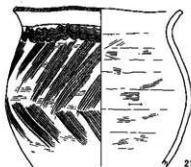


2139

SK1695

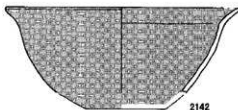


2140

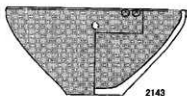


2141

SK1699

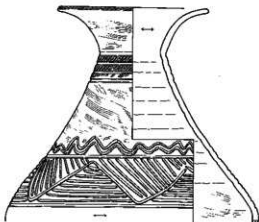


2142



2143

SK1714



2144

0 (1:4) 10cm

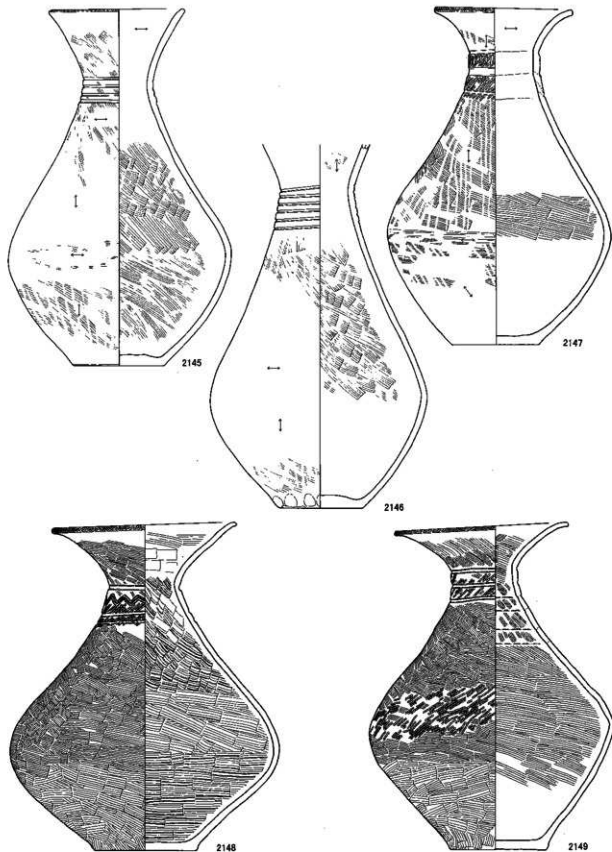
SK1400, 2132~2139

SK1695, 2140~2141

SK1699, 2142~2143

SK1714, 2144

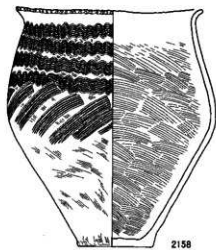
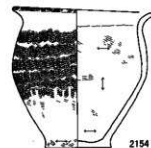
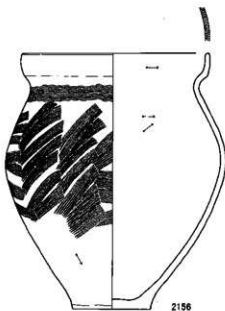
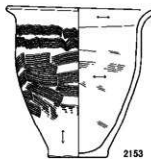
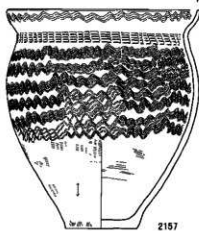
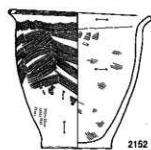
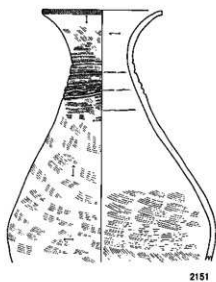
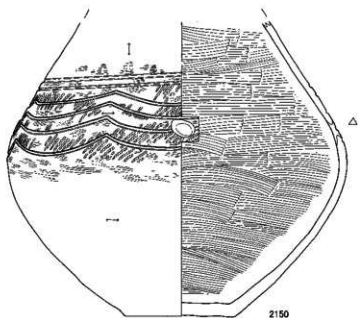
SK1714



0 (1 : 4) 10 cm

SK1714, 2145-2149

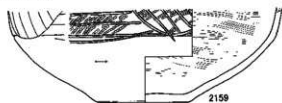
S K1714



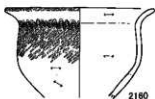
0 (1:4) 10cm

S K1714, 2150-2158

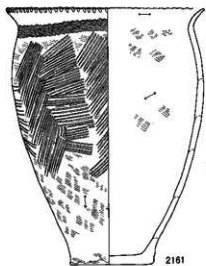
SK1714



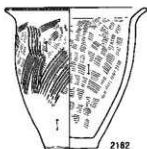
2159



2160



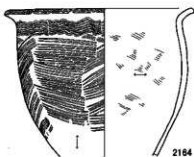
2161



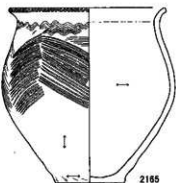
2162



2163

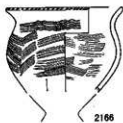


2164

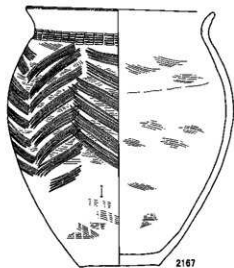


2165

SK1717

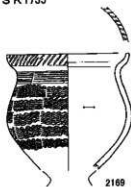


2166



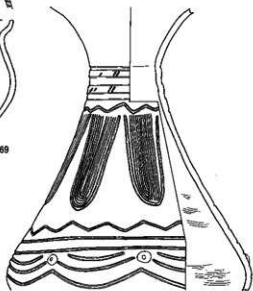
2167

SK1735



2169

SK1718



2168

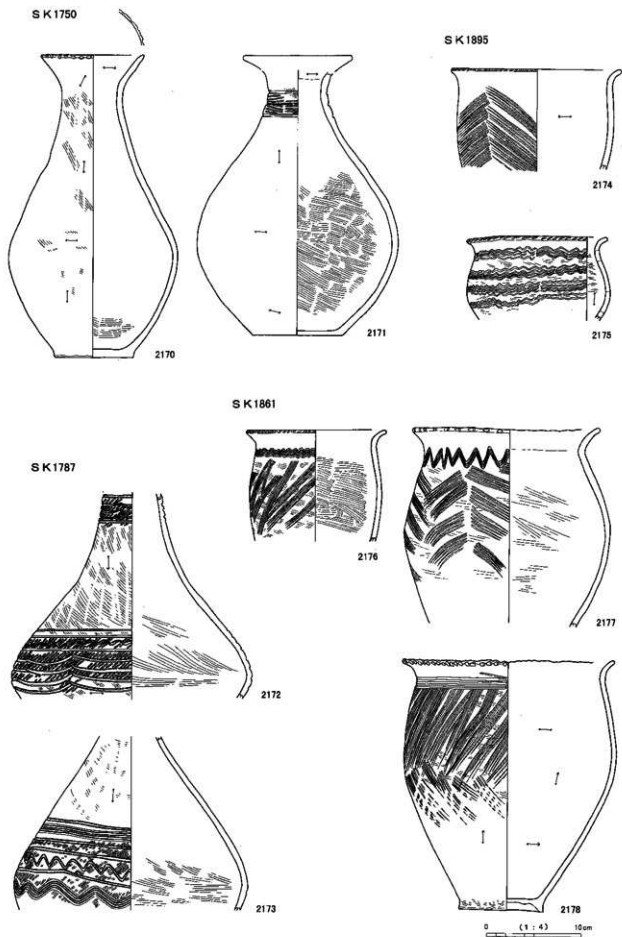
0 (1:4) 10cm

SK1714, 2159-2165

SK1717, 2166-2167

SK1718, 2168

SK1735, 2169



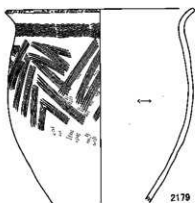
S K 1750, 2170~2171

S K 1787, 2172~2173

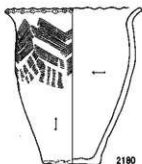
S K 1895, 2174~2175

S K 1861, 2176~2178

SK1865

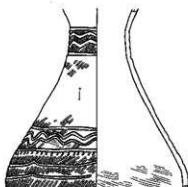


2179



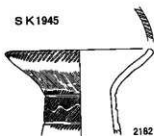
2180

SK1914



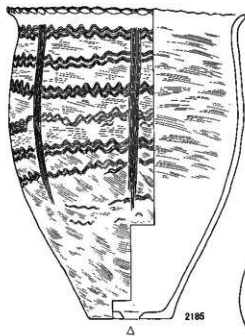
2181

SK1945



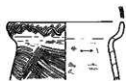
2182

SK1948



2185

SK1953

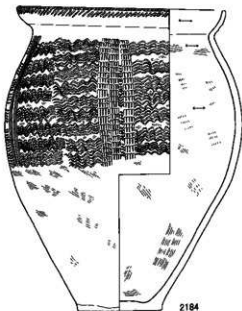


2187

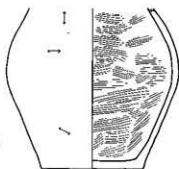


2183

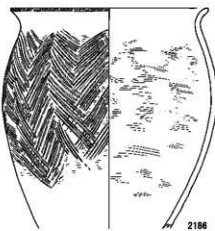
SK1947



2184



2188



2186



2189

0 (1:4) 10cm

SK1865, 2179-2180
SK1948, 2185-2186

SK1914, 2181 SK1945, 2182-2183
SK1953, 2187-2189

SK1947, 2184

S K 1952



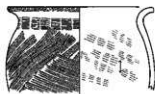
2190



2191



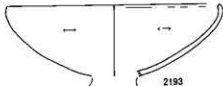
2194



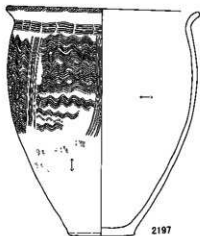
2195



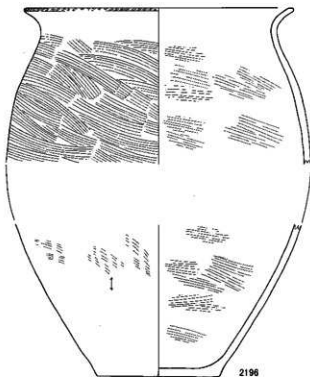
2192



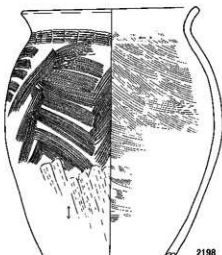
2193



2197

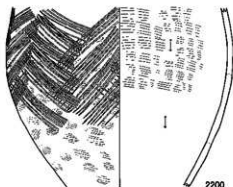


2196



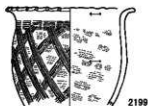
2198

S K 1961



2200

S K 1957



2199

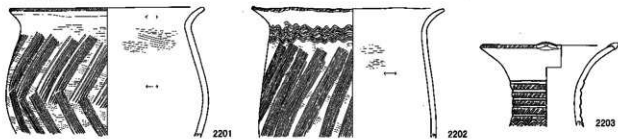
0 (1 : 4) 10cm

S K 1952, 2190~2198

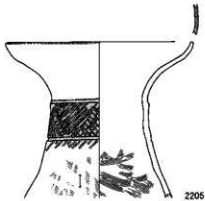
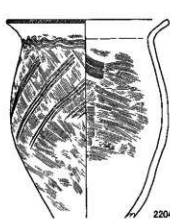
S K 1957, 2199

S K 1961, 2200

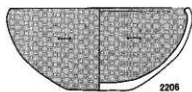
S K 1961



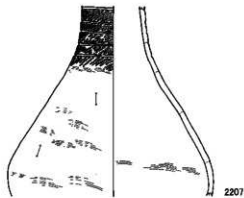
S K 1963



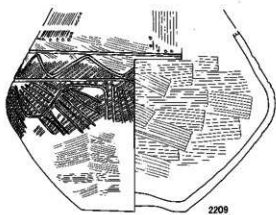
S K 1972



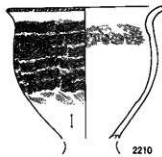
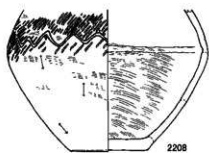
S K 1973



S K 1975



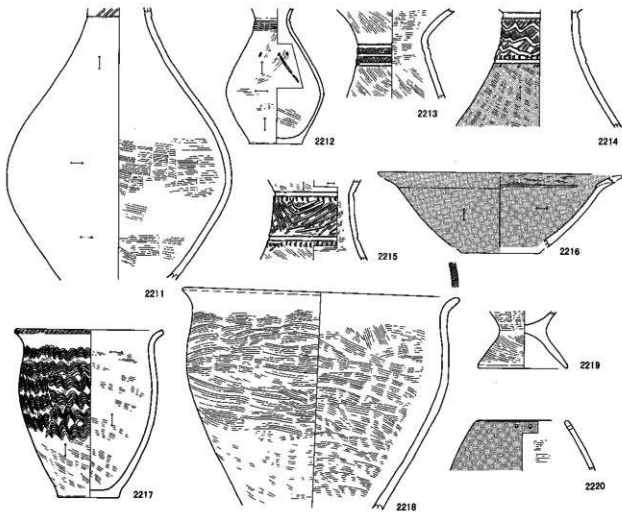
S K 1979



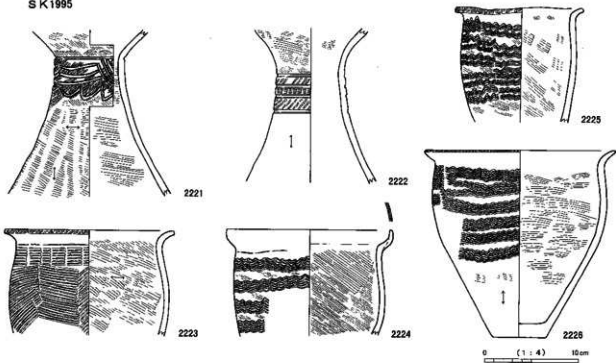
0 (1:4) 10cm

S K 1961, 2201~2203 S K 1963, 2204~2205 S K 1972, 2206 S K 1973, 2207~2208
S K 1975, 2209 S K 1979, 2210

S K 1994

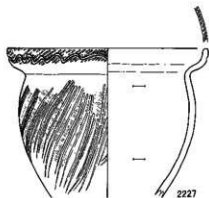


S K 1995



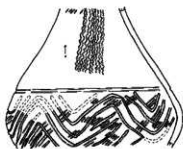
S K 1994, 2211~2220 S K 1995, 2221~2226

S K 1996



2227

S K 2001

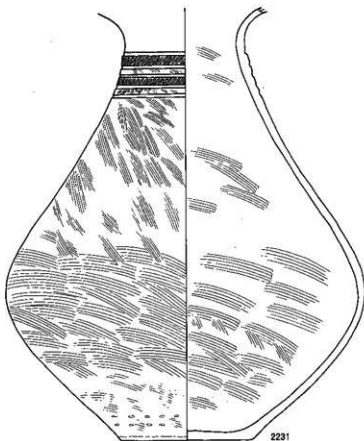


2228

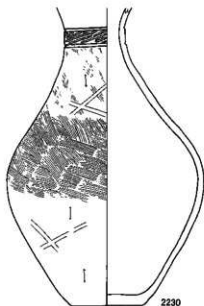
S K 1999



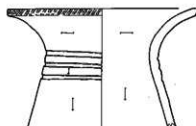
2229



2231



2230

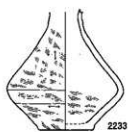


2232

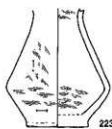
0 (1:4) 10mm

S K 1996, 2227 S K 2001, 2228 S K 1999, 2229~2232

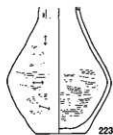
SD100



2233



2234



2235



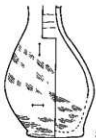
2236



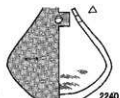
2237



2238



2239



2240



2241



2242



2243



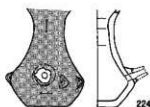
2244



2245



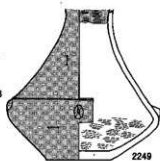
2246



2247



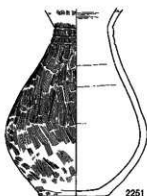
2248



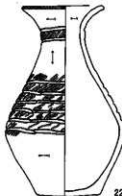
2249



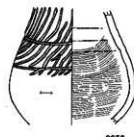
2250



2251



2252

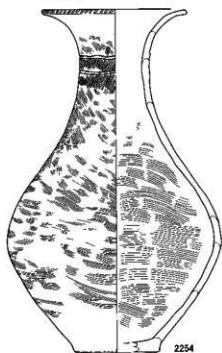


2253

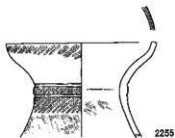
0 (1 : 4) 10cm

SD100, 2233~2253

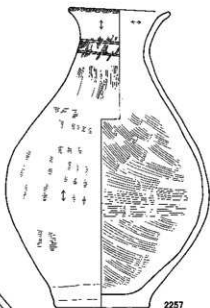
SD100



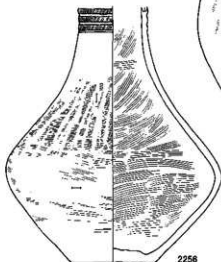
2254



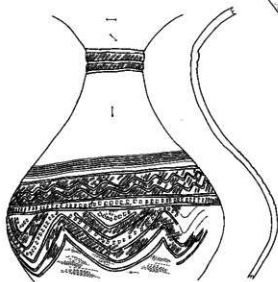
2255



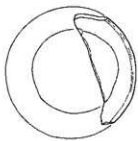
2257



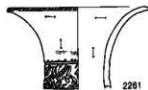
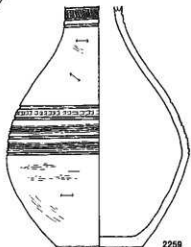
2256



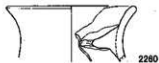
2258



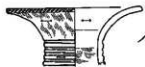
2259



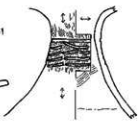
2261



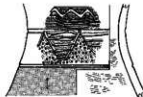
2280



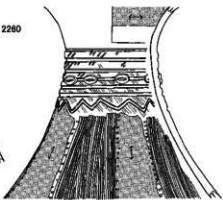
2262



2263



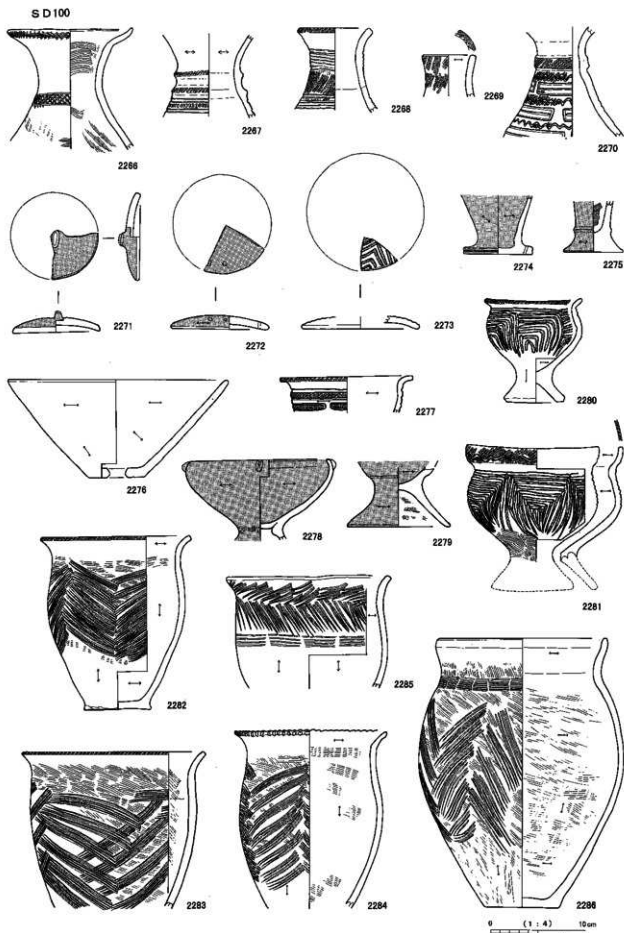
2264



2265

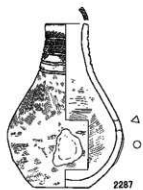
0 (1:4) 10cm

SD100, 2254~2265

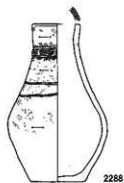


S D100, 2266~2286

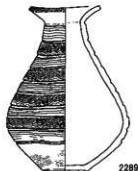
S D 101



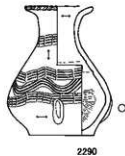
2287



2288



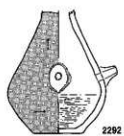
2289



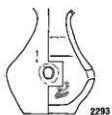
2290



2291



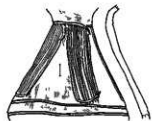
2292



2293



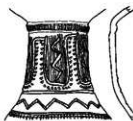
2294



2295



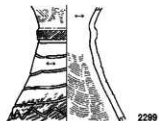
2296



2297



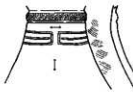
2298



2299



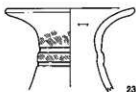
2300



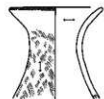
2301



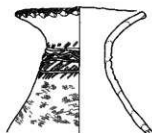
2302



2303



2304



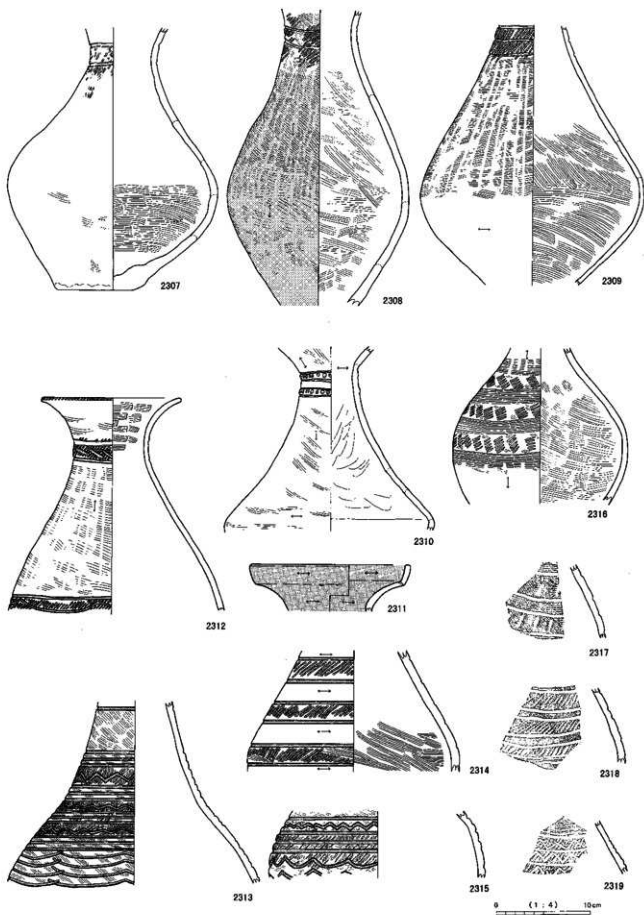
2305



2306

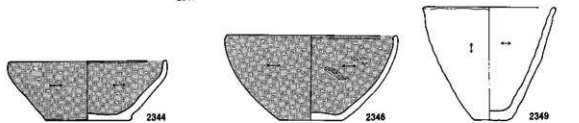
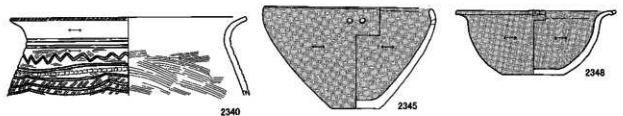
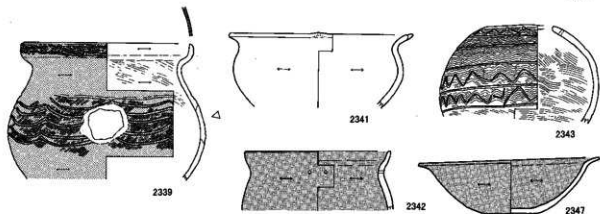
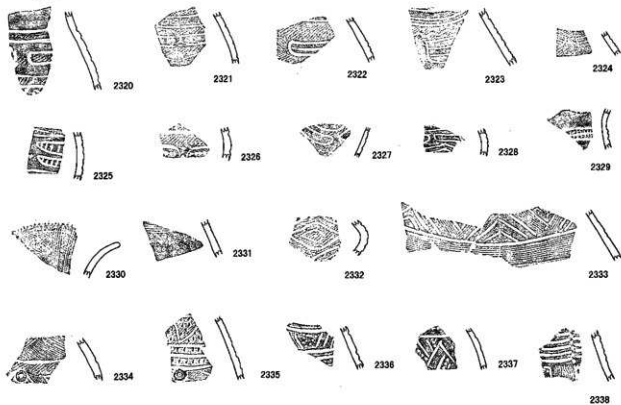
0 (1:4) 10cm

SD101



SD101, 2307~2319

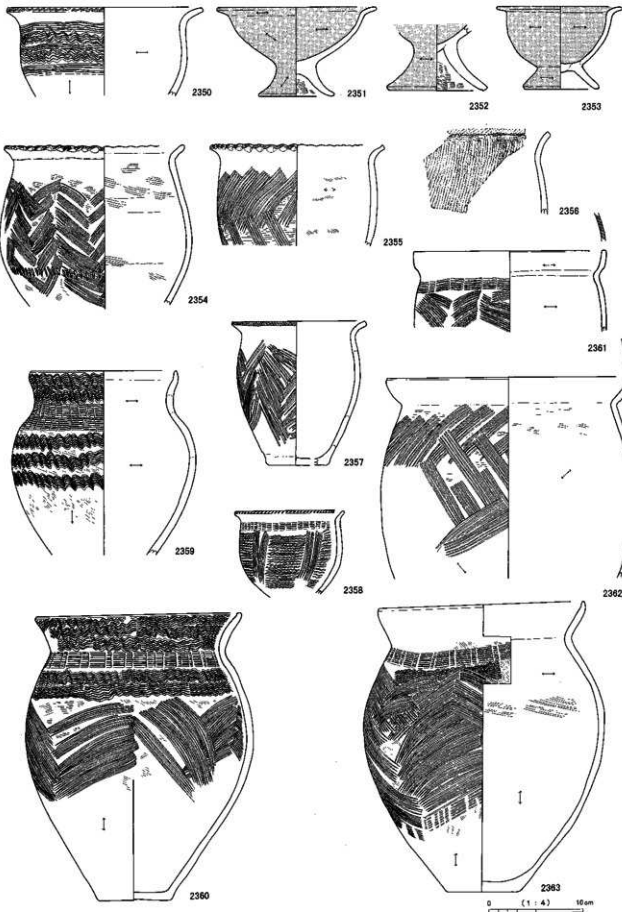
SD101



0 (1:4) 10cm

SD101, 2320-2349

SD101



SD101. 2350~2363

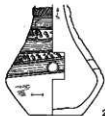
SD102



2364



2365



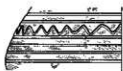
2366



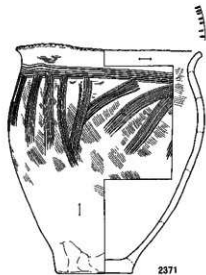
2367



2369



2370



2371



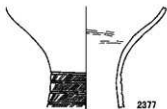
2368

SD 1027

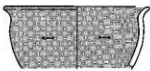


2376

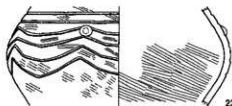
SD1027



2377



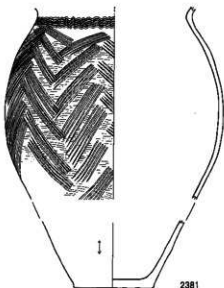
2379



2378



2380

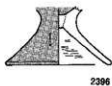
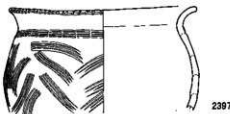
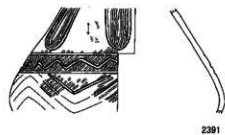
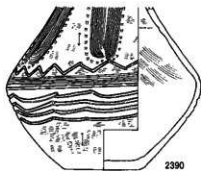
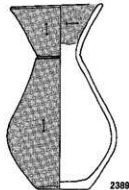
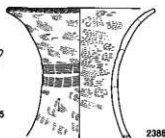
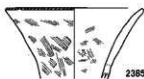
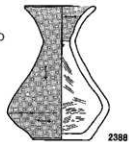
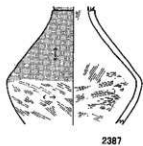
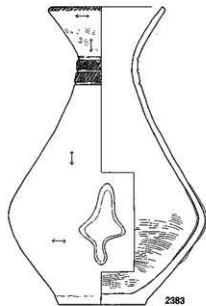
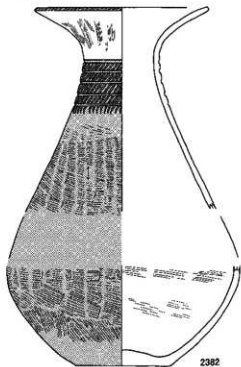


2381

0 (1/4) 10cm

SD102, 2364~2371 SD1027, 2376~2381

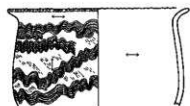
S D 1083



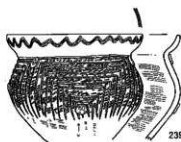
0 (1:4) 10cm

S D 1083, 2382~2397

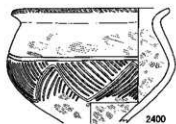
SD1083



2398



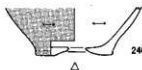
2399



2400



2401

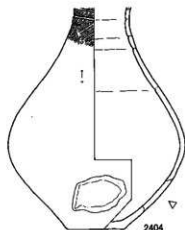


2402



2403

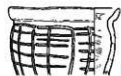
SD1215



2404

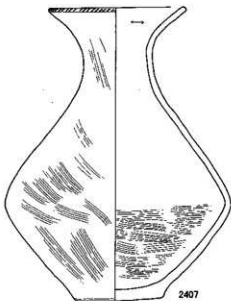


2405



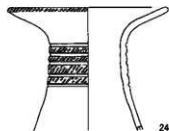
2406

SD1305

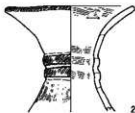


2407

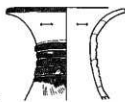
SD1305



2408



2409



2410



2411

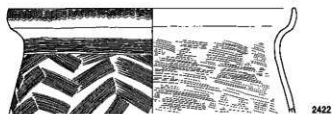
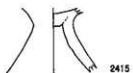
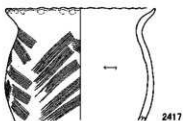
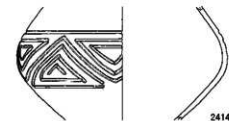
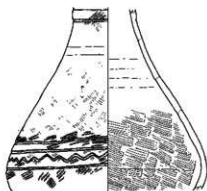
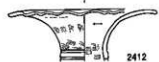
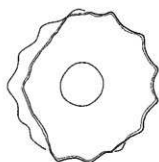
0 (1:4) 10cm

SD1083, 2398~2403

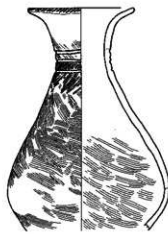
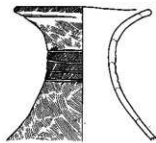
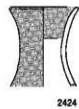
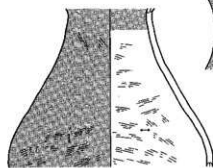
SD1215, 2404~2406

SD1305, 2407~2411

SD1305



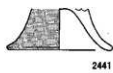
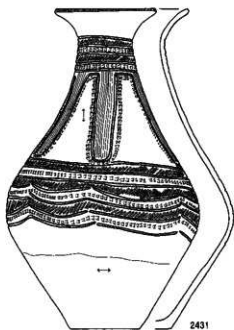
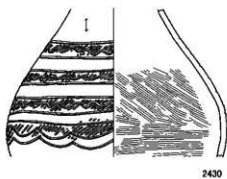
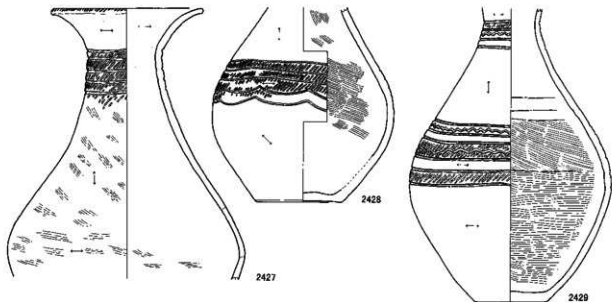
SD18



0 (1:4) 10cm

SD1305, 2412~2422 SD18, 2423~2426

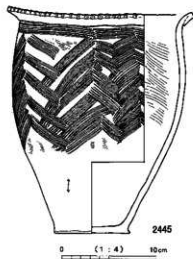
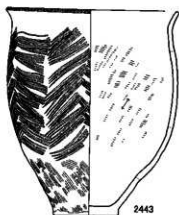
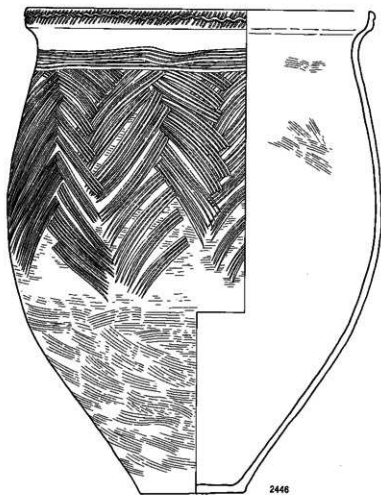
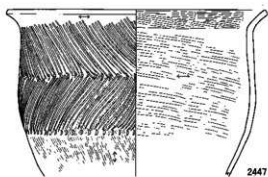
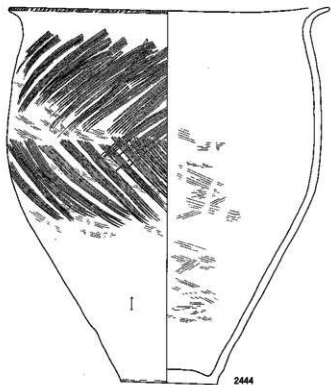
SD18



0 (1:4) 10cm

SD 18, 2427~2441

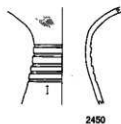
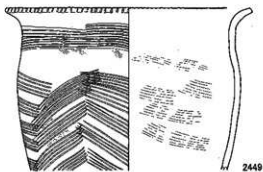
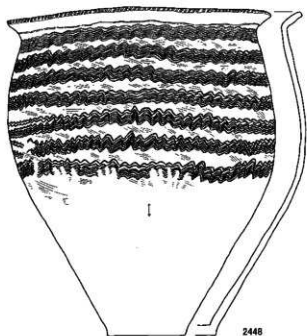
SD18



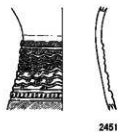
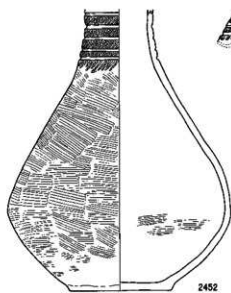
0 (1:4) 10cm

S D18, 2442~2447

SD18

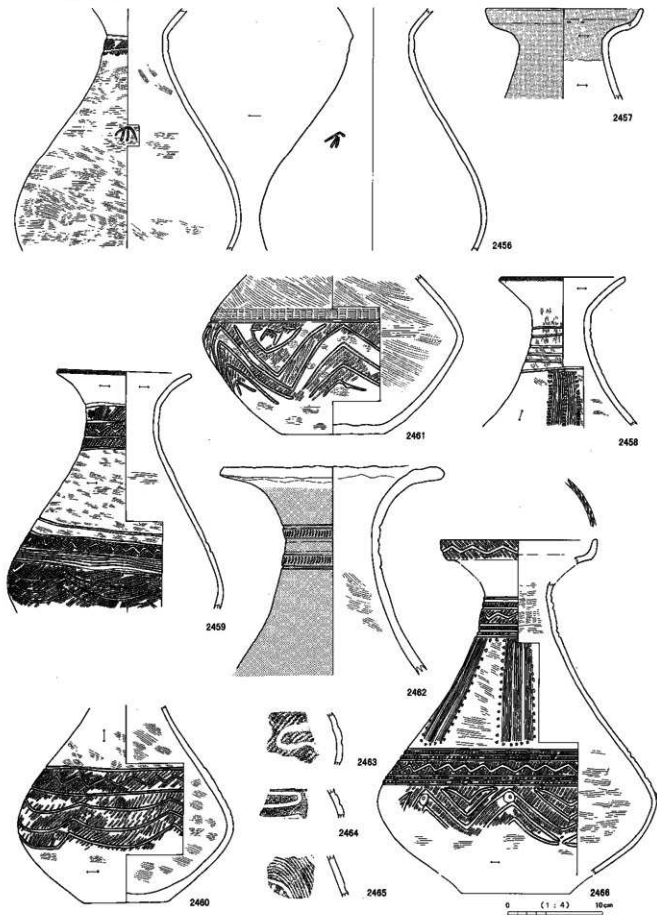


SD12(1A10)



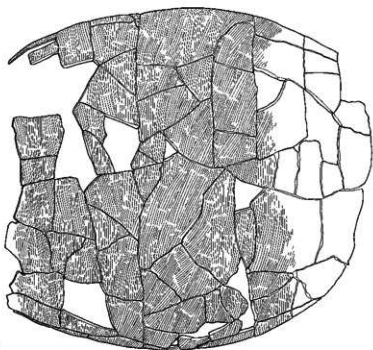
0 (1:4) 10um

SD12(I A15)



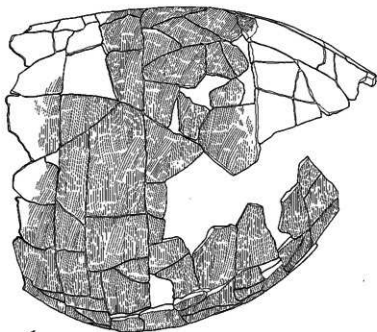
SD12 (I A15), 2456~2466

SD12 (I A15)



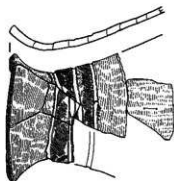
2467

猿橋のからし器

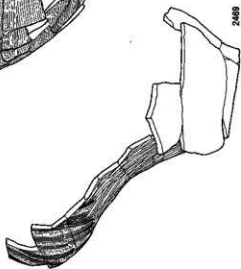


2468

猿橋のからし器



猿橋のからし器



2469

0 (1:4) 10cm

SD12(I A15)



2470

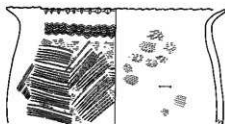


2470

2471



2472



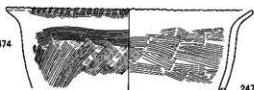
2477



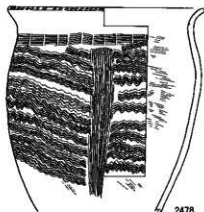
2474



2475



2473



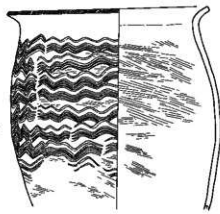
2478



2476

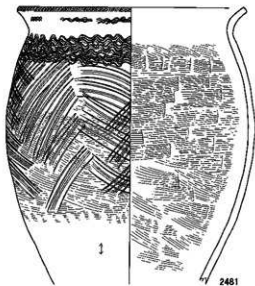


2479

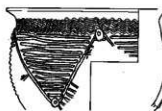


2480

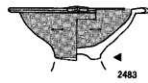
SD12(I B16)



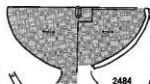
2481



2482



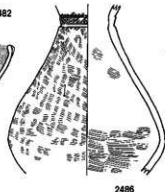
2483



2484



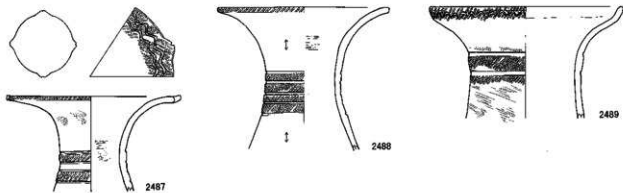
2485



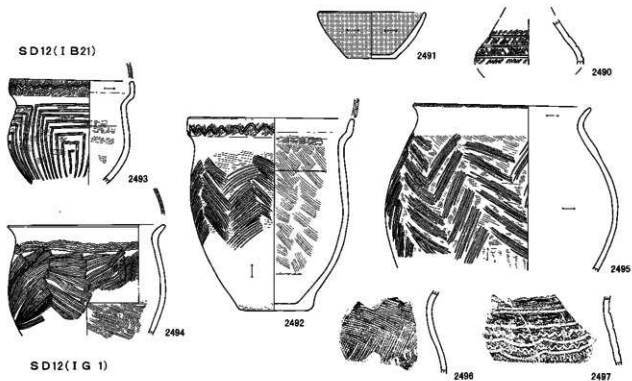
2486

0 (1:4) 10cm

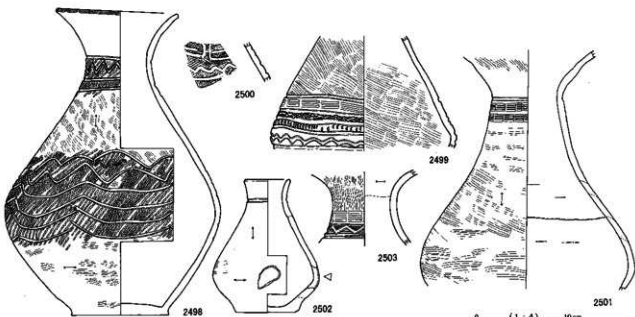
SD12(I B16)



SD12(I B21)



SD12(I G 1)



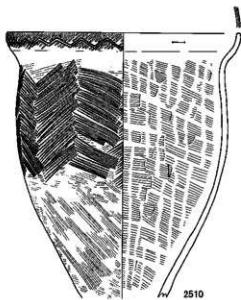
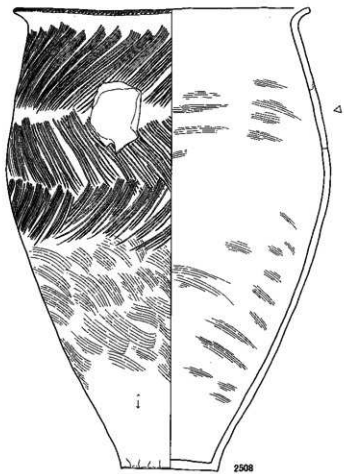
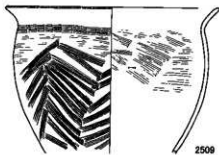
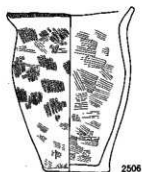
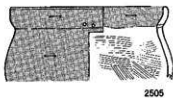
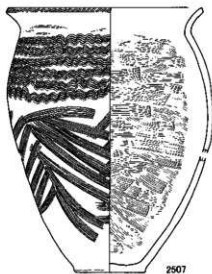
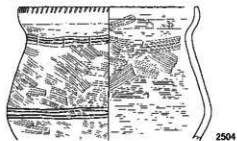
0 (1:4) 10cm

SD12(I B16), 2487~2489

SD12(I B21), 2490~2497

SD12(I G 1), 2498~2503

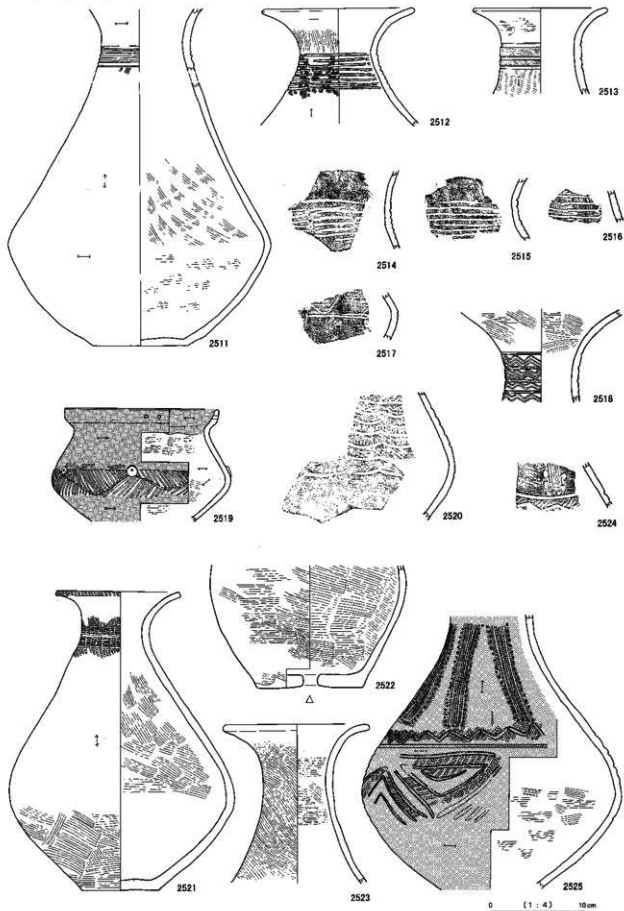
SD12(IG 1)



0 (1:4) 10cm

SD12 (IG 1), 2504~2510

SD12(IG 6)



SD12 (IG 6), 2511~2525

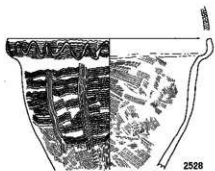
SD12(1G6)



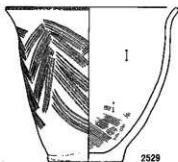
2526



2527



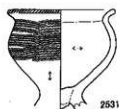
2528



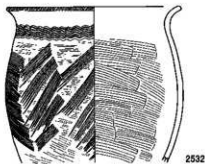
2529



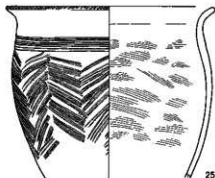
2530



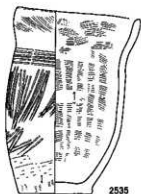
2531



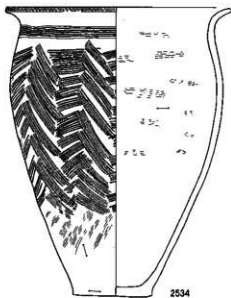
2532



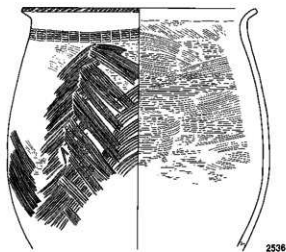
2533



2535



2534

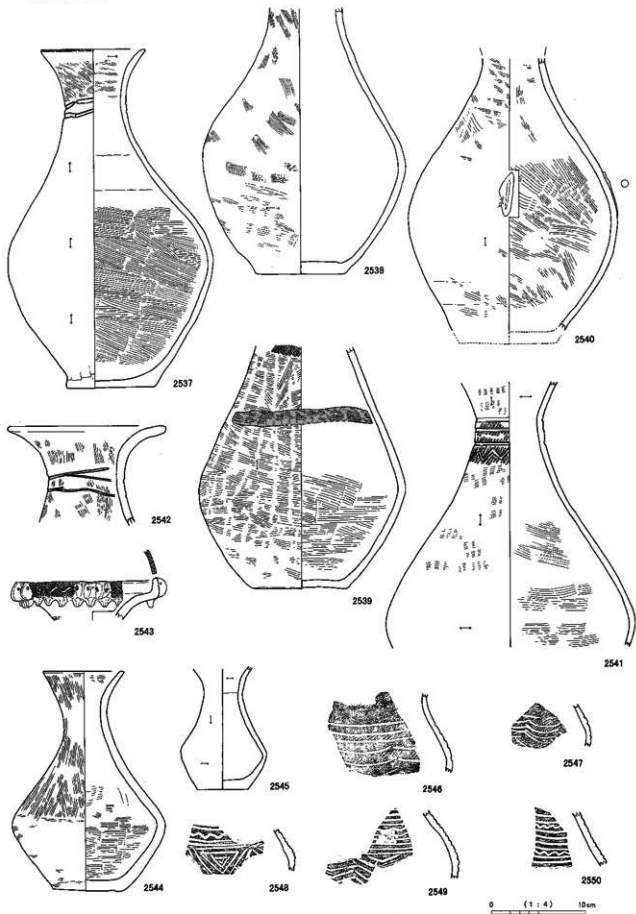


2536

0 (1:4) 10cm

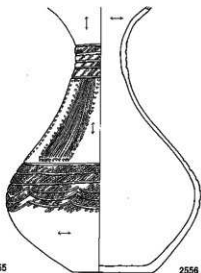
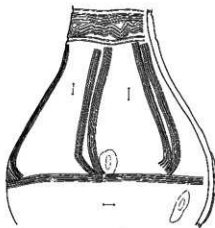
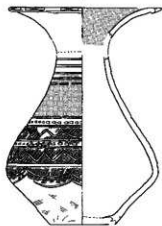
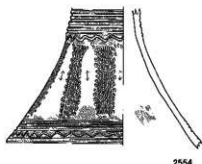
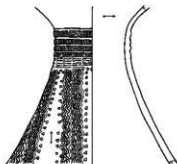
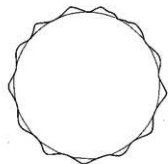
SD12(1G6), 2526~2536

SD12(I G11)



SD12 (I G11), 2537~2550

SD12 (IG11)



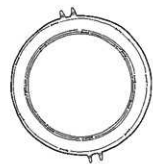
2551

2553

2554

2555

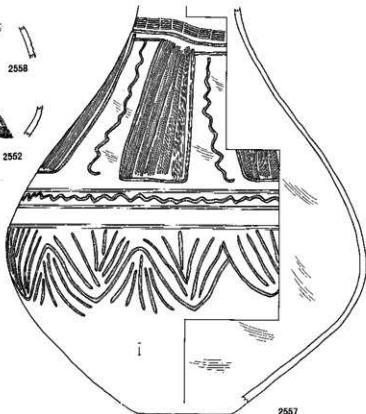
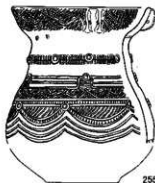
2556



2558



2562

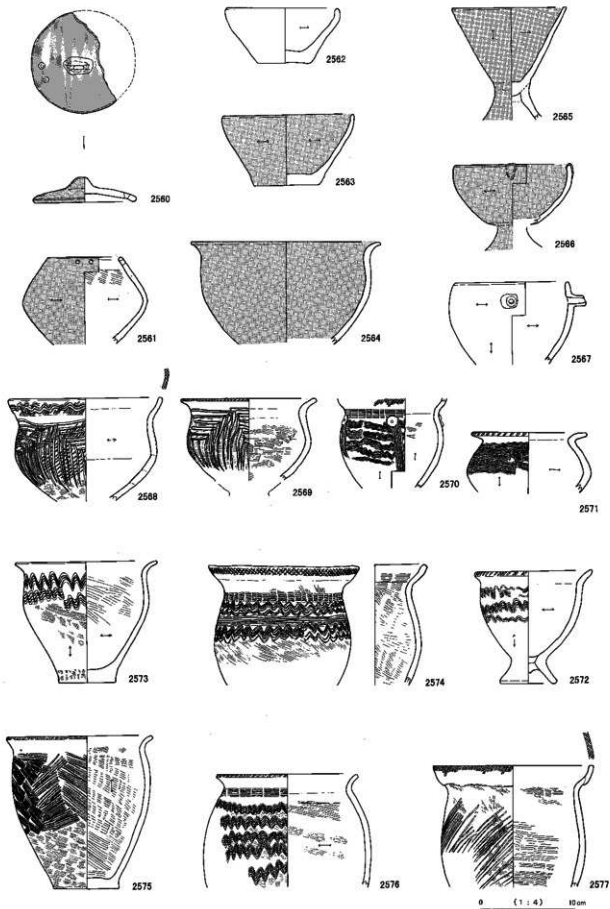


2557

0 (1:4) 10cm

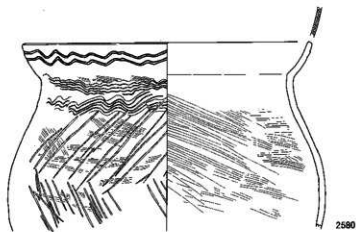
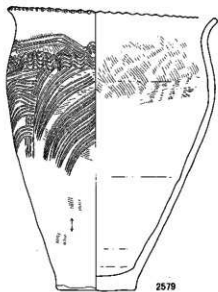
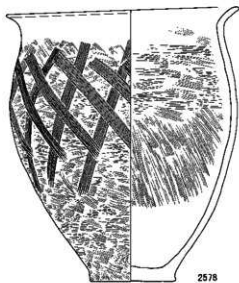
SD12 (IG11), 2551~2559

SD12(I G11)

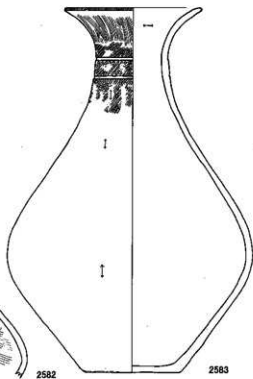
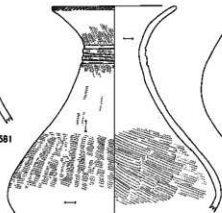


SD12 (I G11), 2560~2577

SD12(I G11)



SD12(I G16)

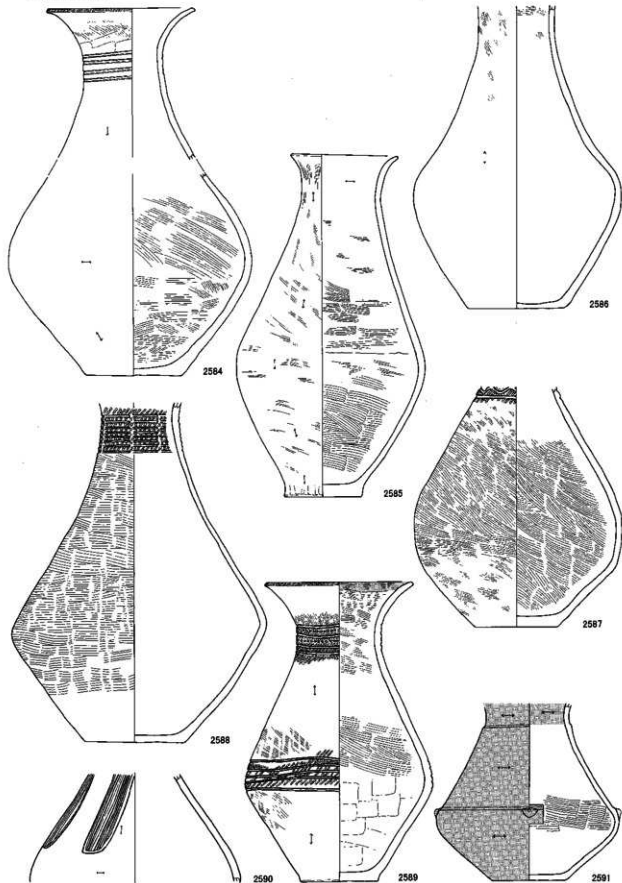


0 (1:4) 10cm

SD12(I G11), 2578~2580

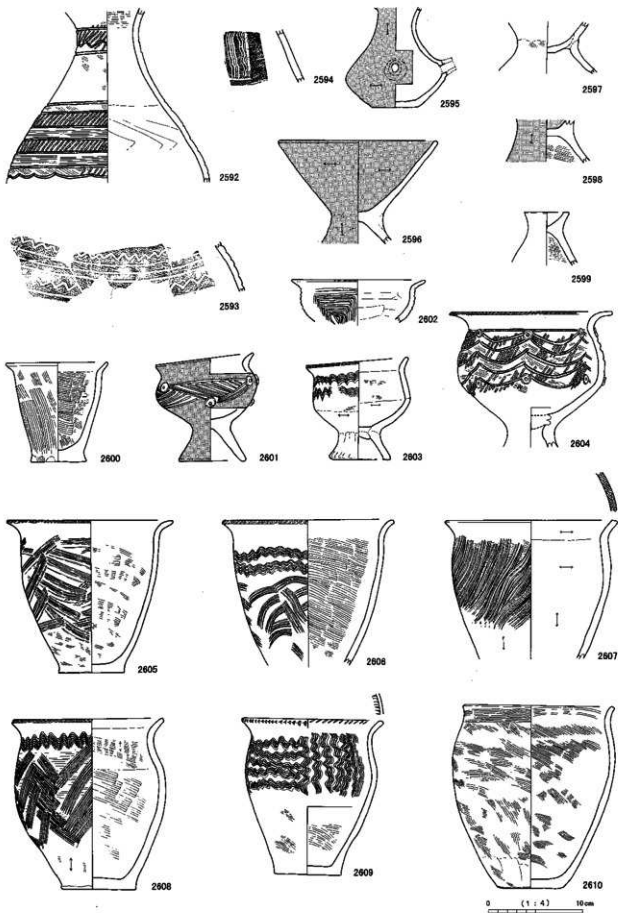
SD12(I G16), 2581~2583

SD12(1G16)



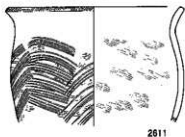
SD12(1G16), 2584~2591

SD12(I G16)

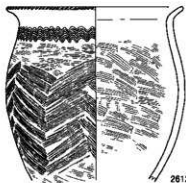


SD12 (IG16), 2592~2610

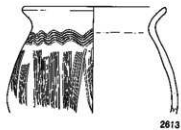
SD12(I G16)



2611

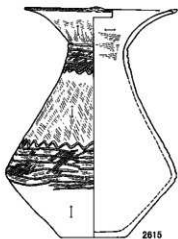


2612

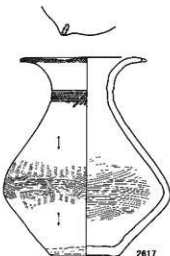


2613

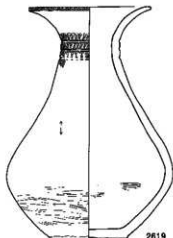
SD12(I G21)



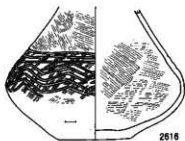
2615



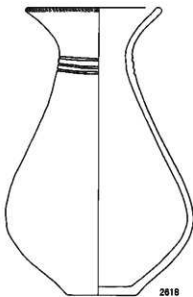
2617



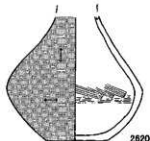
2619



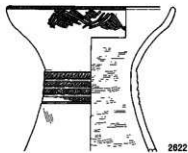
2616



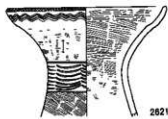
2618



2620



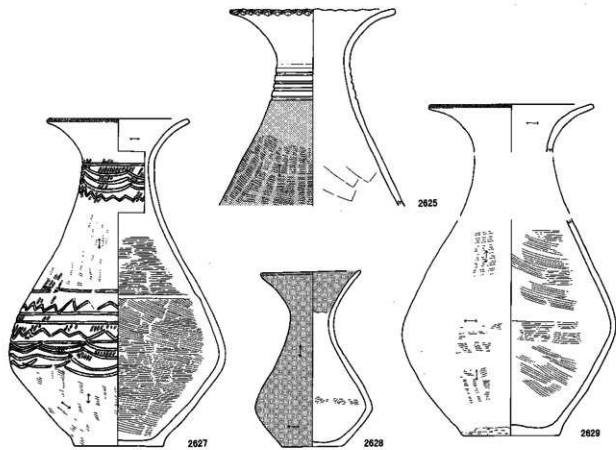
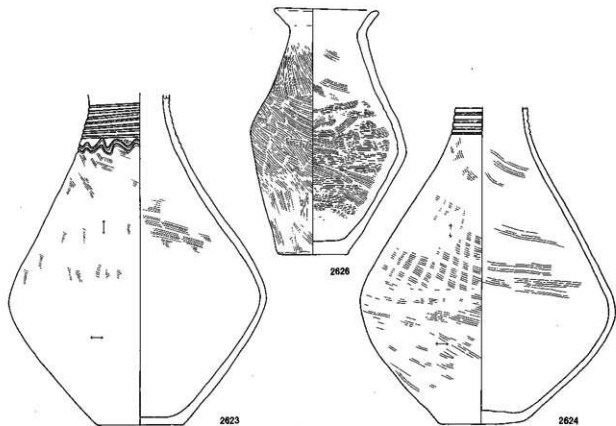
2622



2621

0 (1:4) 10cm

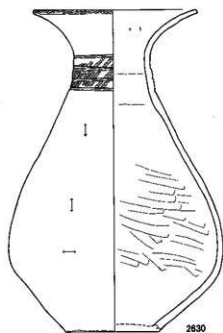
SD12 (IG21)



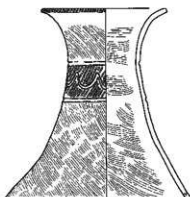
0 (1:4) 10cm

SD12 (IG21), 2623-2629

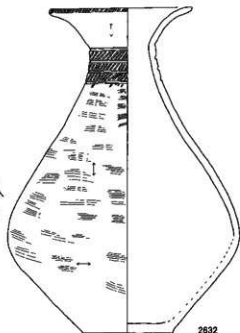
SD12 (I G21)



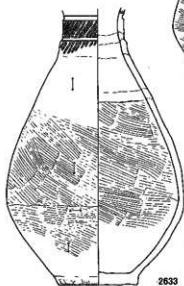
2630



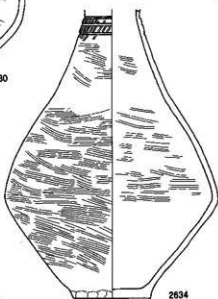
2631



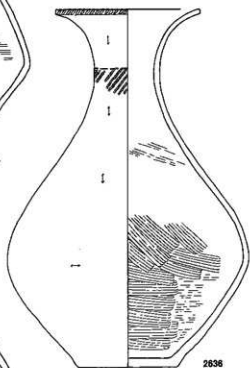
2632



2633



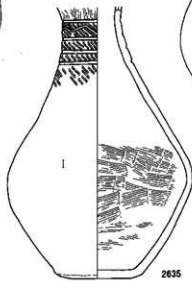
2634



2636



2637



2635

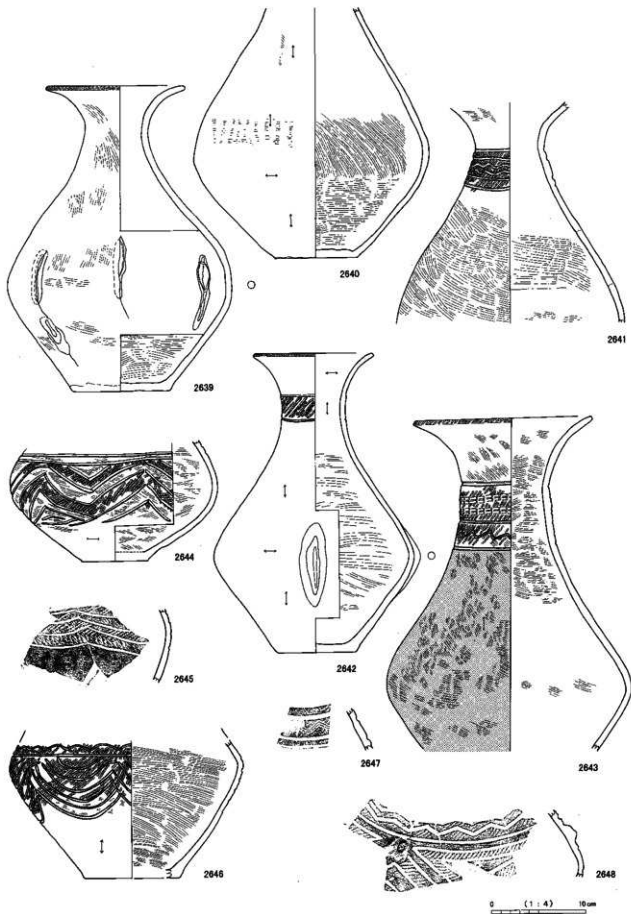


2638

0 (1:4) 10cm

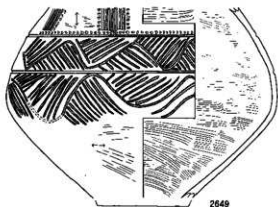
SD12 (I G21), 2630-2638

SD12(I G21)

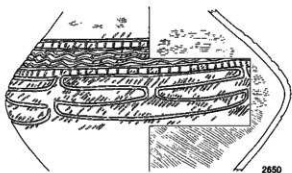


SD12(I G21), 2639-2648

SD12(I G21)



2649



2650



2656



2651



2652



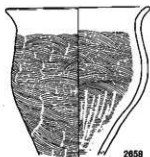
2653



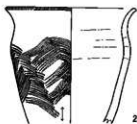
2654



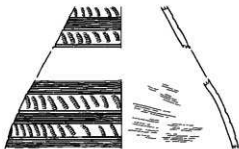
2655



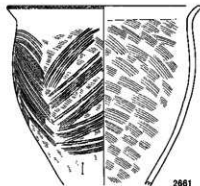
2658



2659



2657



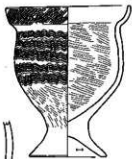
2661



2660



2664



2666



2662



2663

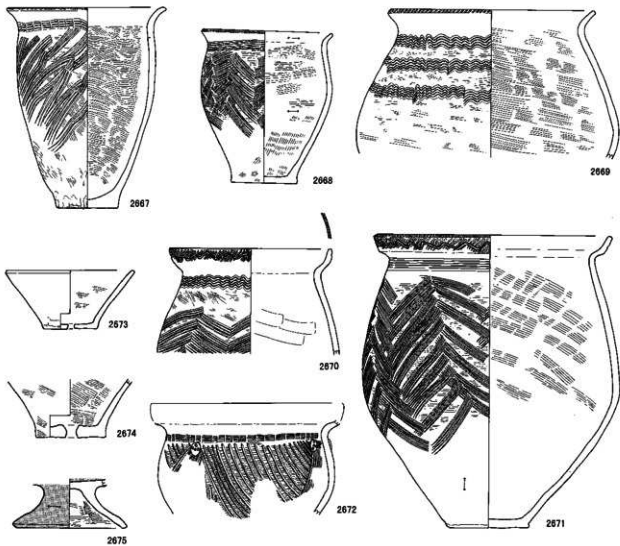


2665

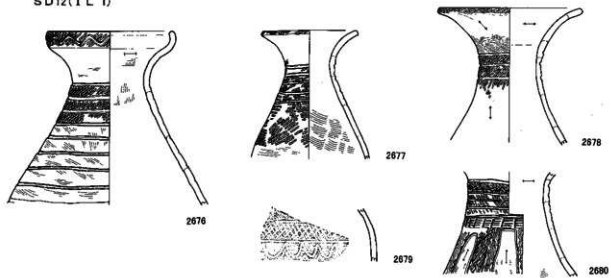
0 (1:4) 10cm

SD12(I G21), 2649~2666

SD12(IG21)

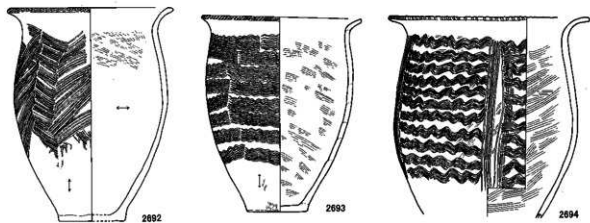
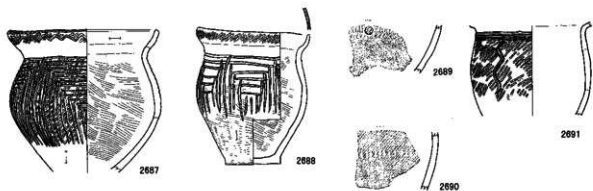
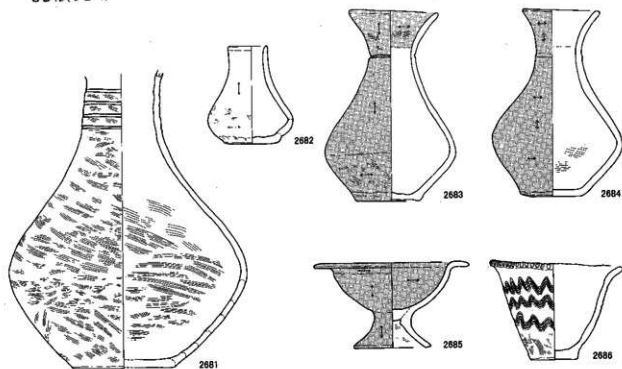


SD12(IL 1)



0 (1:4) 10cm

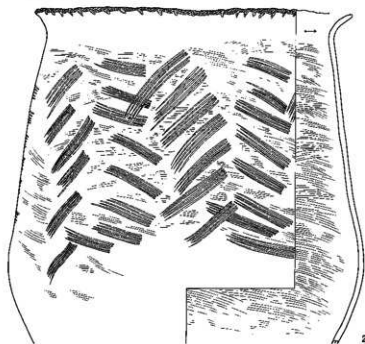
SD12(I L 1)



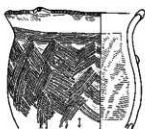
0 (1:4) 10cm

SD12 (I L 1), 2681~2694

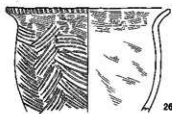
SD12(IL 1)



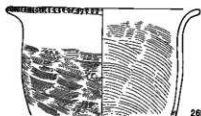
2695



2696



2697

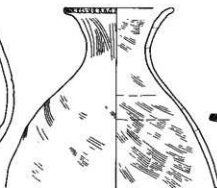


2698

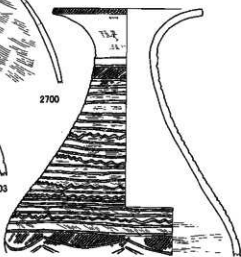
SD12(IL 6)



2699



2700



2706



2701



2702



2703



2704



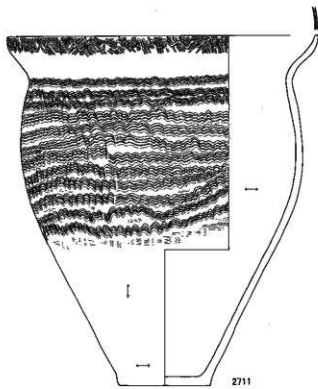
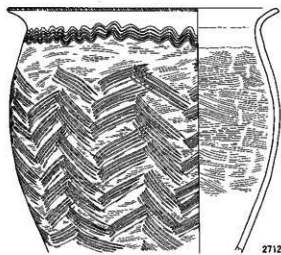
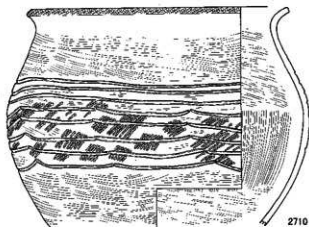
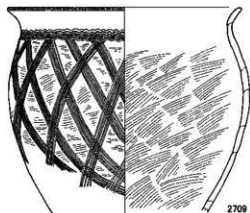
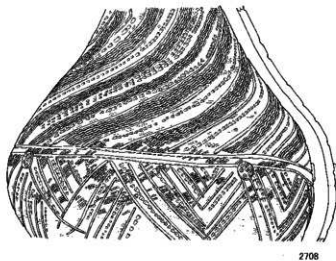
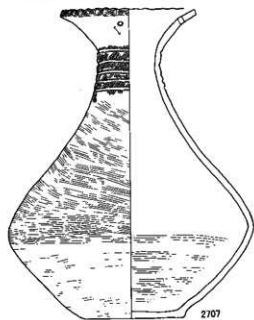
2705

0 (1:4) 10cm

SD12 (IL 1), 2695~2698

SD12 (IL 6), 2699~2706

SD12(1 L 6)



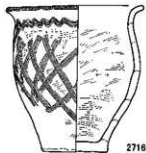
0 (1 : 4) 16cm

SD12 (1 L 6), 2707~2712

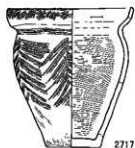
SD12(1L6)



2713



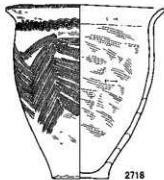
2716



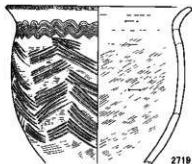
2717



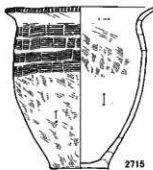
2714



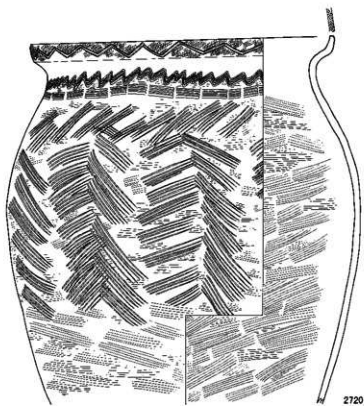
2718



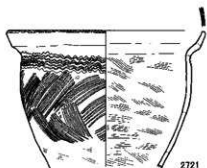
2719



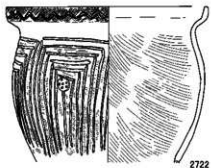
2715



2720



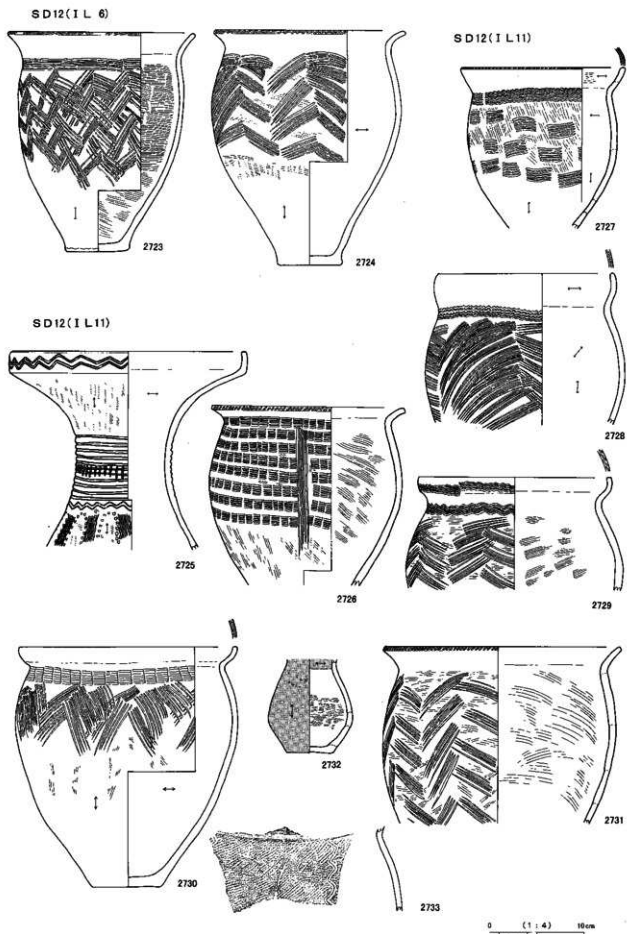
2721



2722

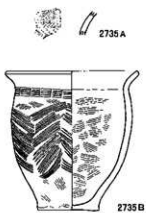
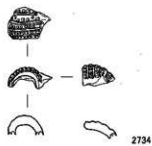
0 (1:4) 10cm

SD12(1L6), 2713~2722

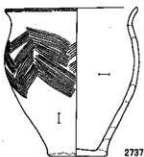
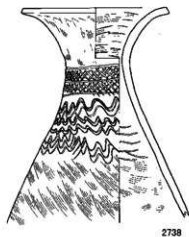


SD12 (I L 6), 2723~2724 SD12 (I L 11), 2725~2733

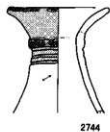
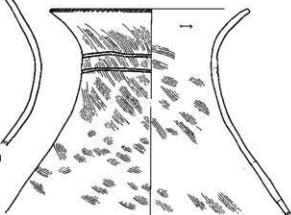
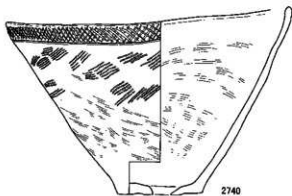
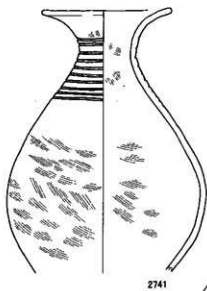
SD12(I L16)



SD12(I L21)

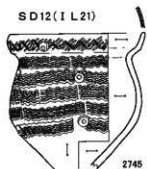


SD12(I L21)

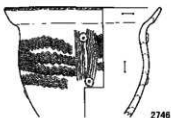


0 (1:4) 10cm

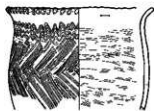
SD12(I L 21)



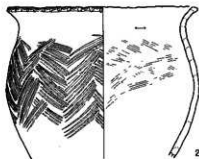
2745



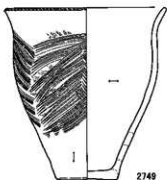
2746



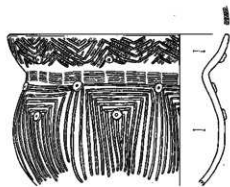
2747



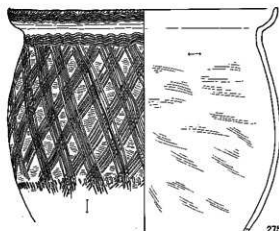
2748



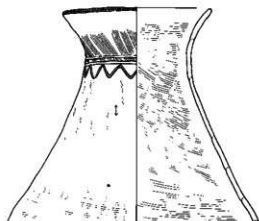
2749



2750

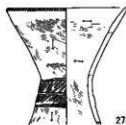


2751

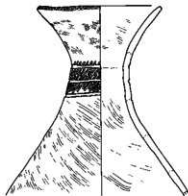


2752

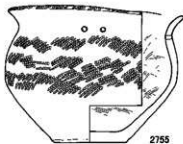
SD12(I P 20)



2753



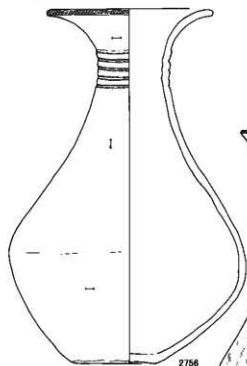
2754



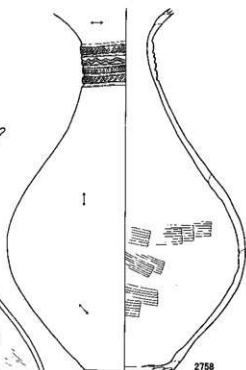
2755

0 (1:4) 10cm

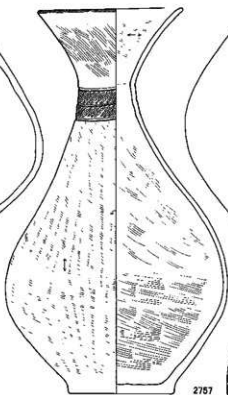
SD 12 (I P 20)



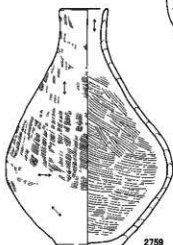
2756



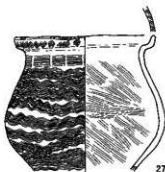
2758



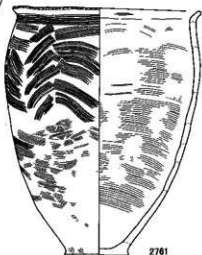
2757



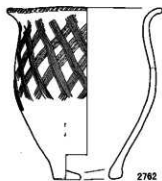
2759



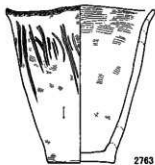
2780



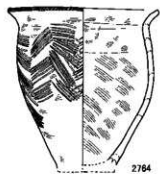
2761



2762



2763



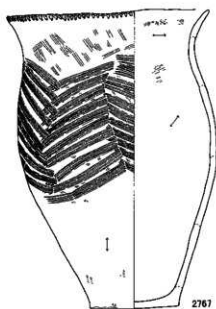
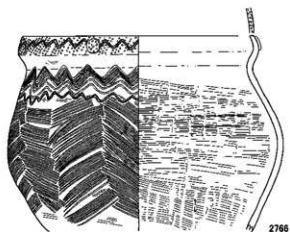
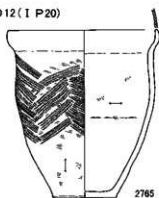
2764

△

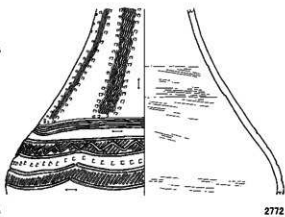
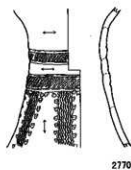
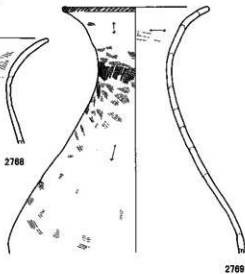
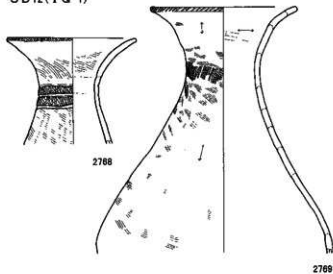
0 (1 : 4) 10cm

SD 12 (I P 20), 2756~2764

SD12(I P20)



SD12(I Q 1)

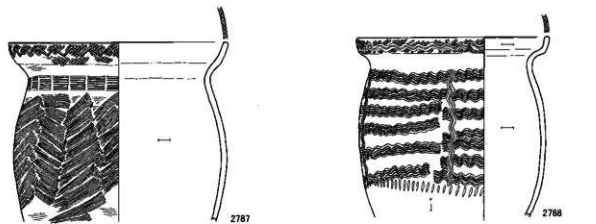
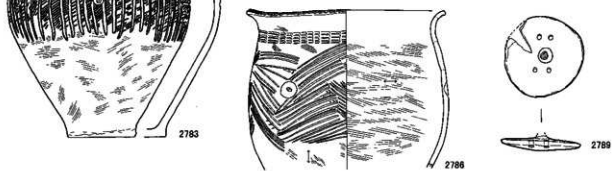
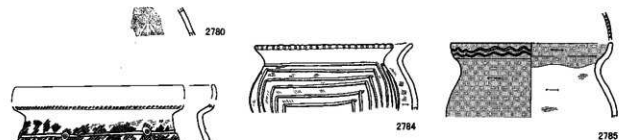
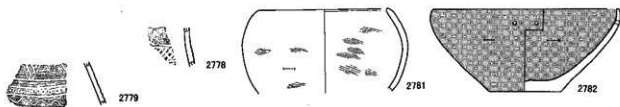
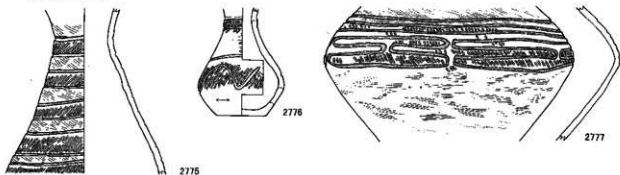


0 (1:4) 10cm

SD12 (I P20), 2765~2767

SD12 (I Q 1), 2768~2774

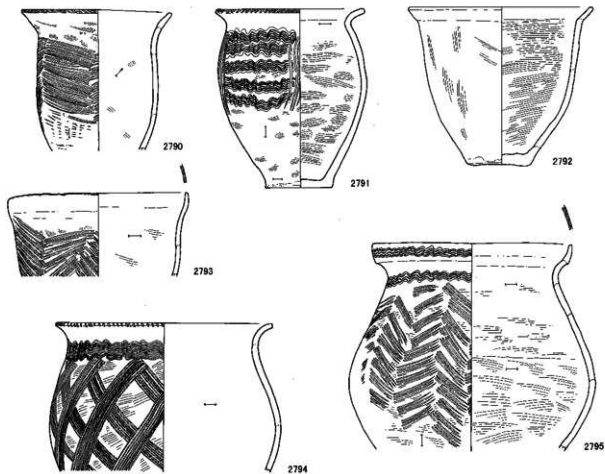
SD12(IQ 1)



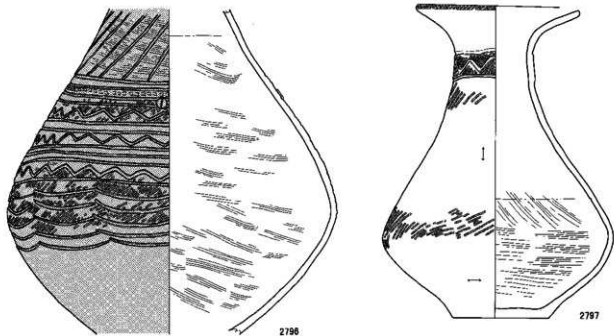
0 (1:4) 10cm

SD12 (IQ 1), 2775-2789

SD12(I Q 1)

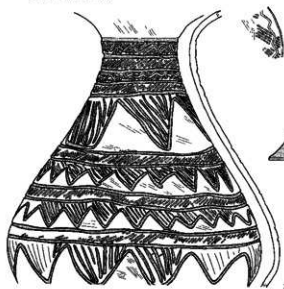


SD12(I Q 6)



0 (1:4) 10mm

SD12(IQ 6)



2798



2799



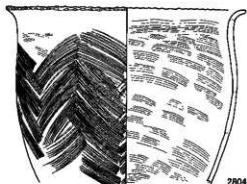
2800



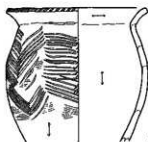
2801



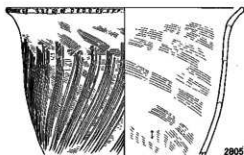
2802



2804

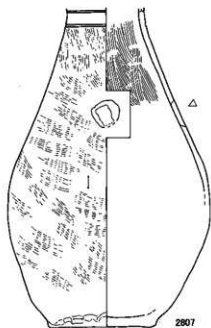


2803

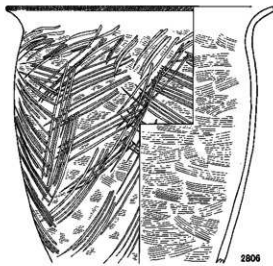


2805

SD12(IQ11)



2807

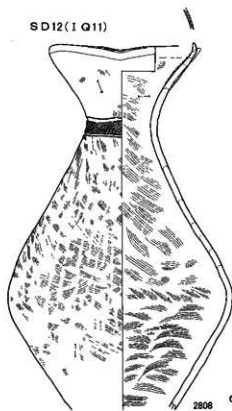


2806

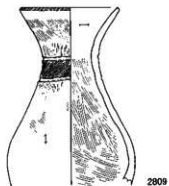
0 (1:4) 10cm

SD12(IQ 6), 2798-2806 SD12(IQ11), 2807

SD12 (I Q11)



2808



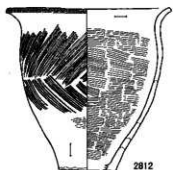
2809



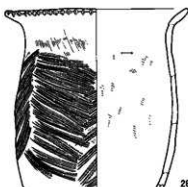
2810



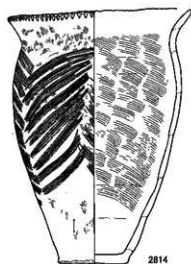
2811



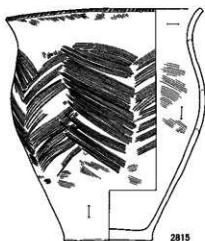
2812



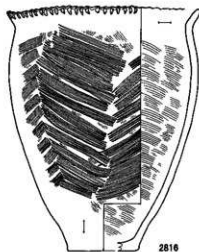
2813



2814



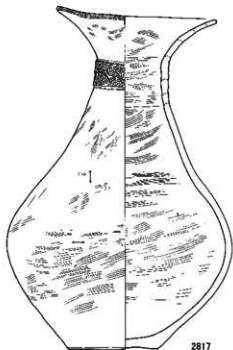
2815



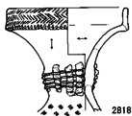
2816

0 (1:4) 10um

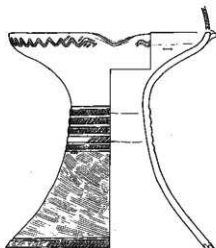
SD12 (I Q16)



2817



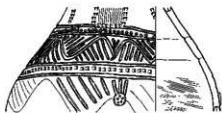
2818



2819



2820



2823



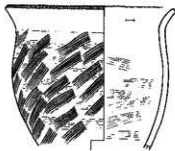
2821



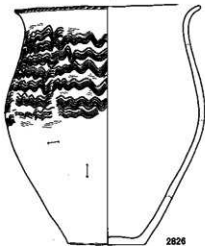
2822



2824



2825



2826

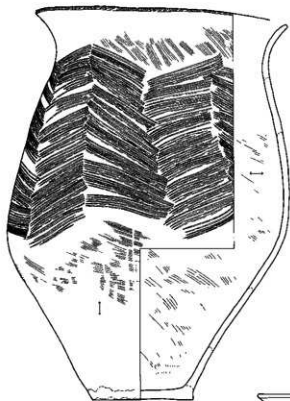


2827

0 (1:4) 10cm

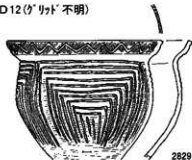
SD12 (I Q16), 2817~2827

SD12 (I Q16)

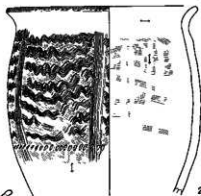


2828

SD12 (グリット不明)

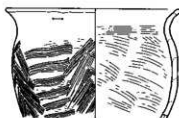


2829

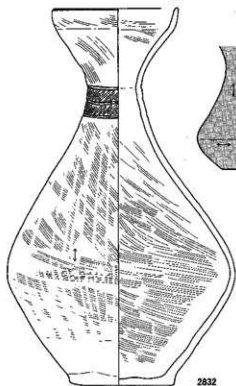


2831

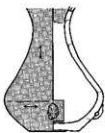
SD12 (グリット不明)



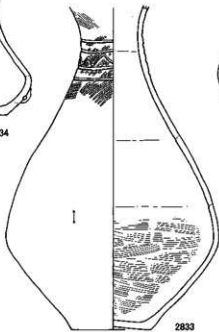
2830



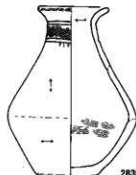
2832



2834



2833



2835



2836

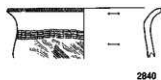
0 (1:4) 10cm

SD12 (I Q16), 2828 SD12 (グリット不明), 2829~2836

SBH208



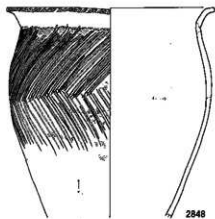
SBH257 (平地住居)



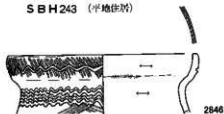
SBH231 (平地住居)



SBH371 (平地住居)



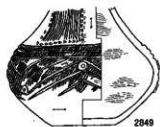
SBH243 (平地住居)



SBH362 (平地住居)



SBH361 (平地住居)



SBH343 (平地住居)

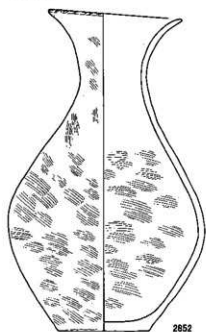


0 (1:4) 10cm

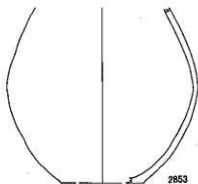
SBH208, 2837~2839 SBH257, 2840~2843 SBH231, 2844~2845

SBH371, 2848 SBH361, 2849~2850 SBH343, 2851

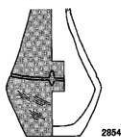
S T 2177



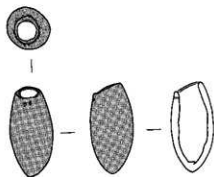
2852



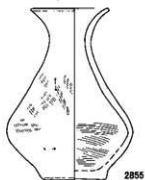
2853



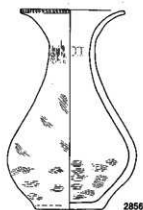
2854



2857



2855



2856

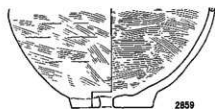
遺構外



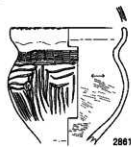
2858



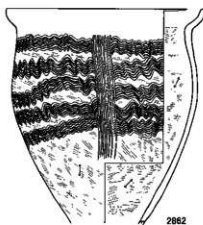
2860



2859



2861



2862

0 (1:4) 10cm

S T 2177, 2852~2857 遺構外, 2858~2862

写真図版





1



31



30



34



35



38



37



38



39



40



41



42



43



44



66



64



67



68



69



71



74



82



85



88



91



99



84



86



87



85



89A



90



102



103



104



105



106



107



108



109



110



111



112



113



114



115



116



117



175



176



262



178



208



269



266



271



276



277



280



311



314



321



331



252



254



258



262



268



265



269



400



403



404



410



406



420



422



421



423



408



425



426



427



430



428



431



435



437



438



439



440



442



441



446



448



454



456



455



477



478