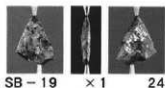


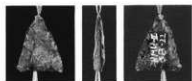
SB-19 × 1 23



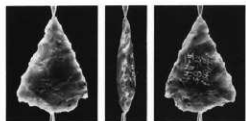
SB-19 × 1 24



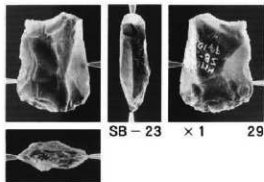
SB-20
× 1/4
25



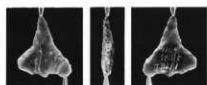
SB-22
× 1
26



SB-23 × 1 27



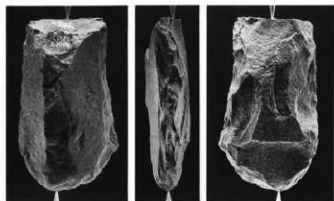
SB-23 × 1 29



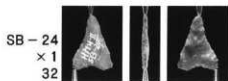
SB-23 × 1 28



SB-23 × 1/2 30



SB-23 × 1/2 31



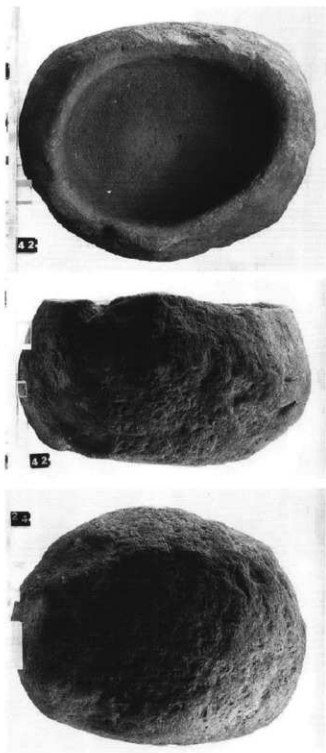
SB-24
× 1
32



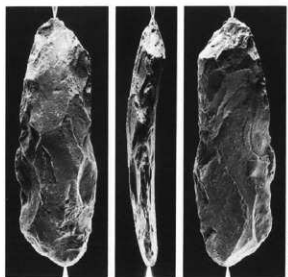
SB-24

× 1/4

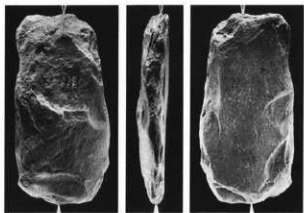
33



SB-25
x 1/4
34



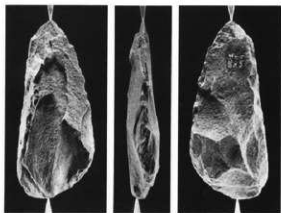
SK-10
 $\times 1/2$
 35



SK-19

$\times 1/2$

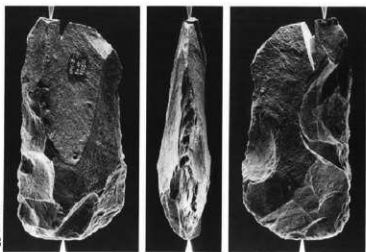
36



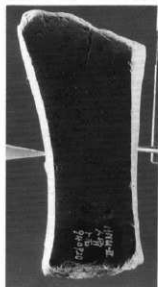
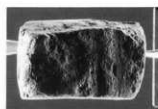
SK-19

$\times 1/2$

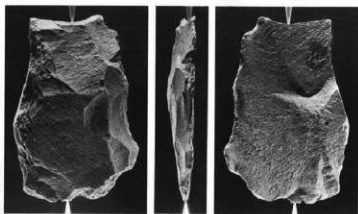
37



SK-19
 $\times 1/2$
 38

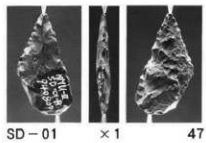
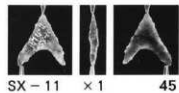
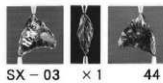
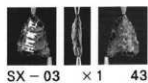
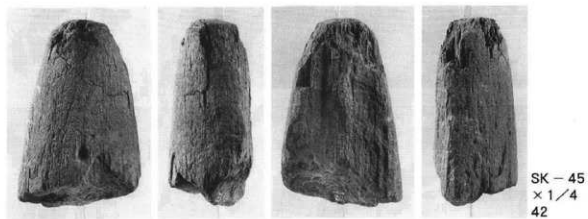
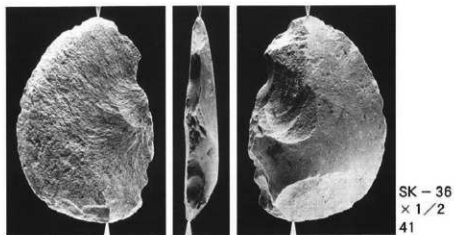


SK - 35
× 1
39



SK - 36
× 1/2
40

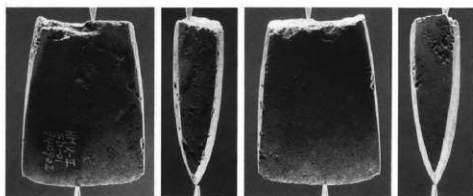
石器写真 11



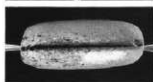
石器写真 12



SD-01
× 1
48



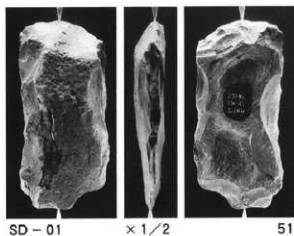
SD-01
× 1
49



SD-01
× 1/2
50



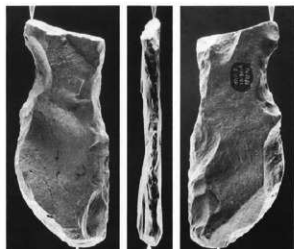
石器写真 13



SD-01

× 1/2

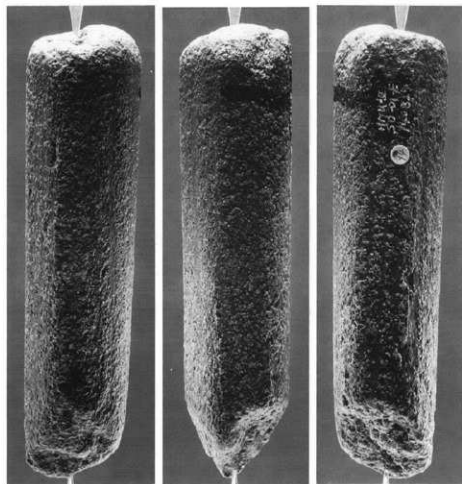
51



SD-01

× 1/2

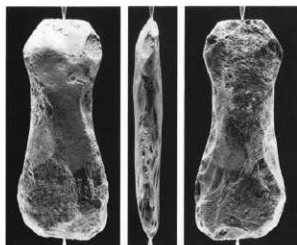
52



SD-01

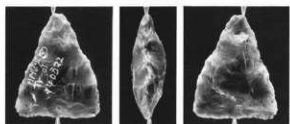
× 1

53

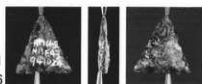


P-78
 $\times 1/2$
 54

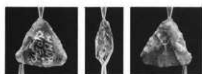
以下遺溝外



$\times 1$
 55



$\times 1$
 56



$\times 1$
 57



$\times 1$
 58



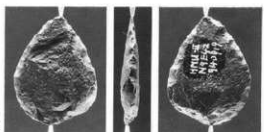
$\times 1$
 59



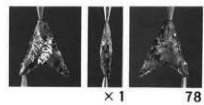
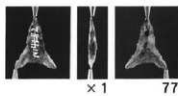
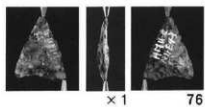
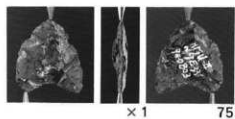
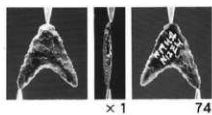
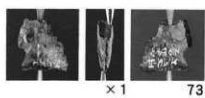
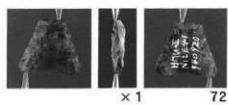
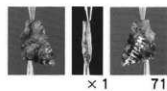
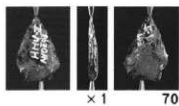
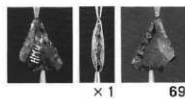
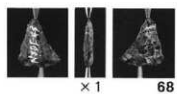
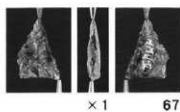
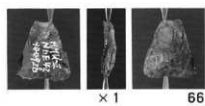
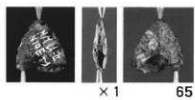
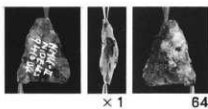
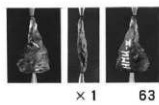
$\times 1$
 60

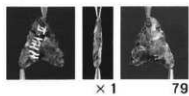


$\times 1$
 61



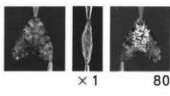
$\times 1$
 62





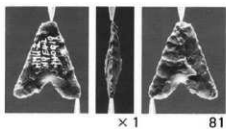
× 1

79



× 1

80



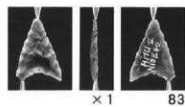
× 1

81



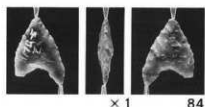
× 1

82



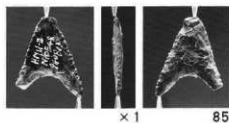
× 1

83



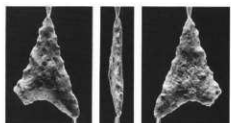
× 1

84



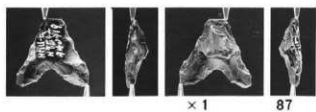
× 1

85



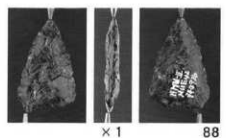
× 1

86



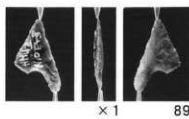
× 1

87



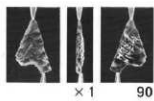
× 1

88



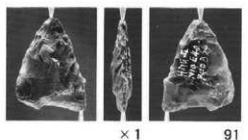
× 1

89



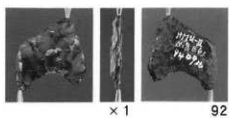
× 1

90



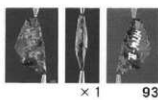
× 1

91



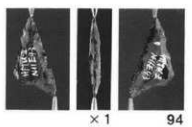
× 1

92



× 1

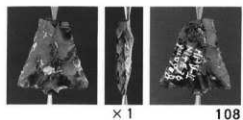
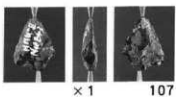
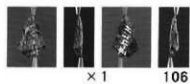
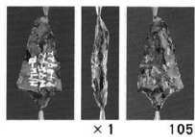
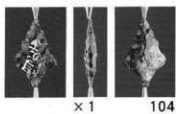
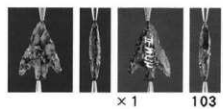
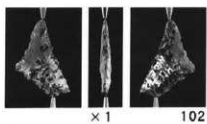
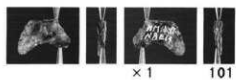
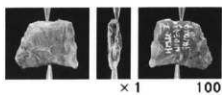
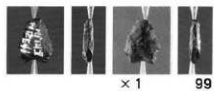
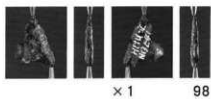
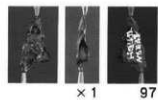
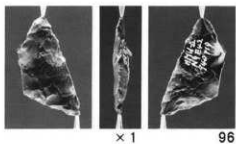
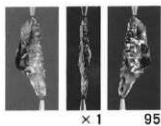
93

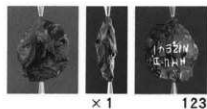
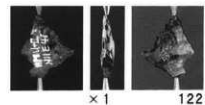
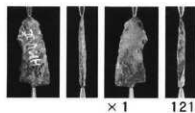
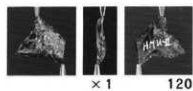
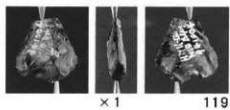
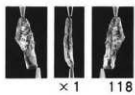
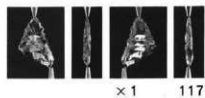
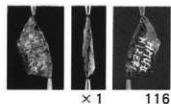
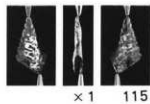
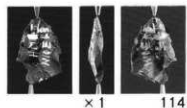
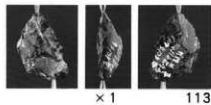
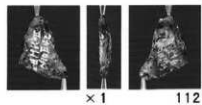
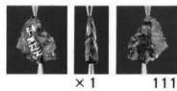
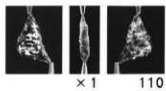
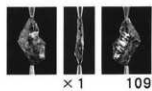


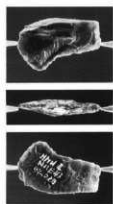
× 1

94

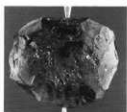
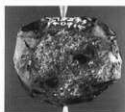
石器写真 17



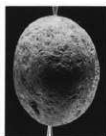
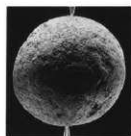




× 1 124



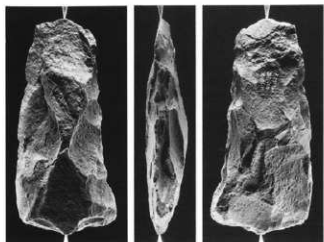
× 1 125



× 1
126

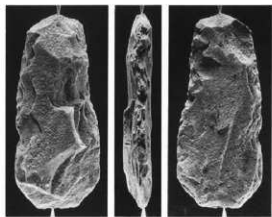


× 1/2
127



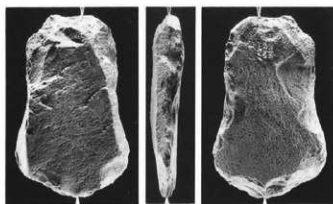
× 1/2

128

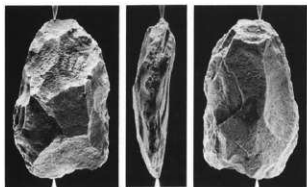


× 1/2

129

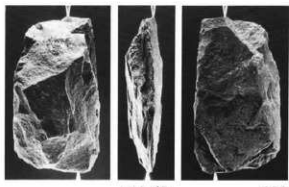


× 1/2
130



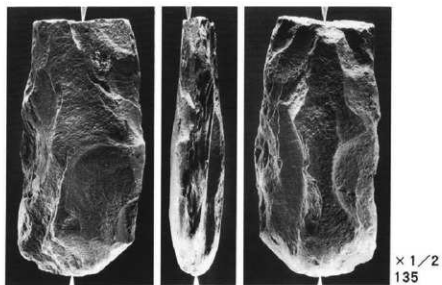
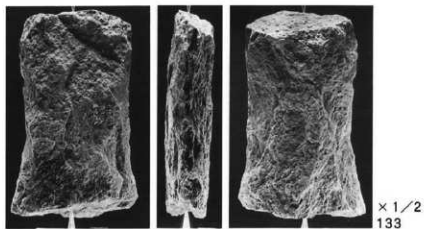
× 1/2

131

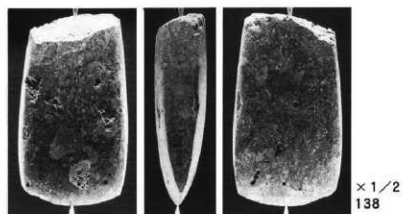
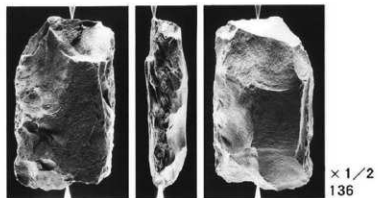


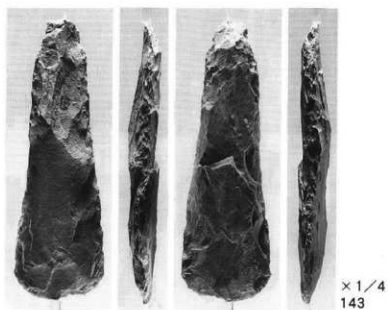
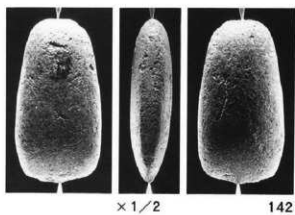
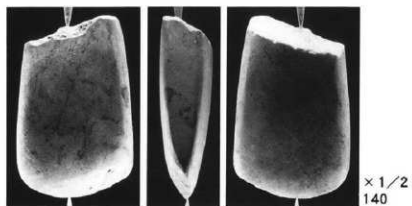
× 1/2

132



石器写真 22





石器写真 24

報告書抄録

ふりがな	はちまんうら に しゃしんずはんへん							
書名	八幡裏Ⅱ 写真図版編							
副書名	国立新病院（長野）の建設工事に伴う八幡裏遺跡発掘調査報告書							
巻次								
シリーズ名	上田市文化財調査報告書							
シリーズ番号	第61集							
編著者名	久保田敦子							
編集機関	上田市教育委員会							
所在地	〒386 長野県上田市天神 2丁目 4番74号 Ⅷ 0268(22)4100 館 5123							
発行年月日	西暦1997年 3月25日							
ふりがな	ふりがな	コ ー ド		北緯	東経	調査期間	調査面積	調査原因
所収遺跡名	所在地	市町村	遺跡番号				㎡	
八幡裏遺跡	上田市 緑が丘 1丁目 27番	20203		138° 15' 3"	36° 24' 6"	平成6年 7月15日 から 11月4日	8,000㎡	国立新病院（長野）の建設工事
所収遺跡名	種別	主な時代	主 な 遺 構		主 な 遺 物		特 別 事 項	
八幡裏遺跡	集落	縄文時代 平安時代 古墳時代	竪穴住居址 敷石住居址 掘立て柱建物址 土壇 集石 溝	16 7 1 46 10 1	縄文土器・土偶・ 土師器・須恵器・ 灰釉陶器・石鏝・ 石斧・大珠			

上田市文化財調査報告書 第61集

八幡裏遺跡Ⅱ

国立新病院(長野)の新築工事に伴う発掘調査

写真図版編

発行日 平成9年3月25日
発行 厚生省関東信越地方医務局
上田市
上田市教育委員会
〒386 長野県上田市天神2-4-74
☎ (0268) 22-4100
印刷 田口印刷株式会社

