



23



24



26

SD1009



27



30



32



1



1



4

左：SD1015
中右：SD1021

8



6



7

SD1021



1



2



3

左中：SD1152
右：SD1173

2



5



7



8

SC1



16-1



16-2



16-3



16-4

SC1



17



19

SK556



1



2



3

左: SK1035
中: SK1094
右: SK1117



1



1



1

左列: SK1226
中列: SK84
右列: SK76



1



1



1



2



4



2

右列: SK128



3



6



1



4



14



2



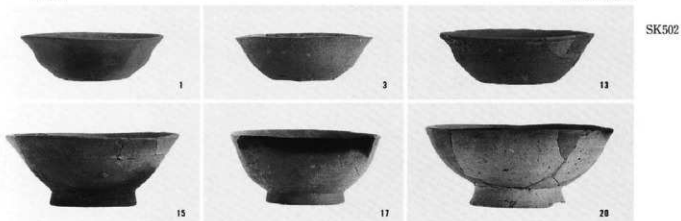
5



14



2



SK502



SK504



SK522



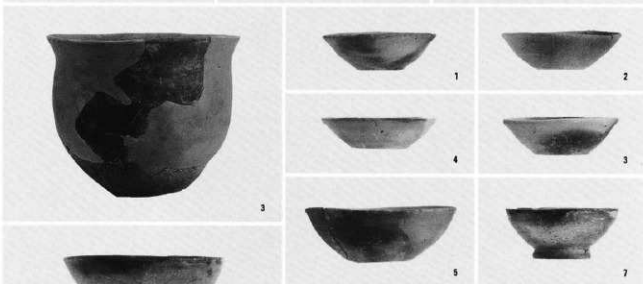
SK1034



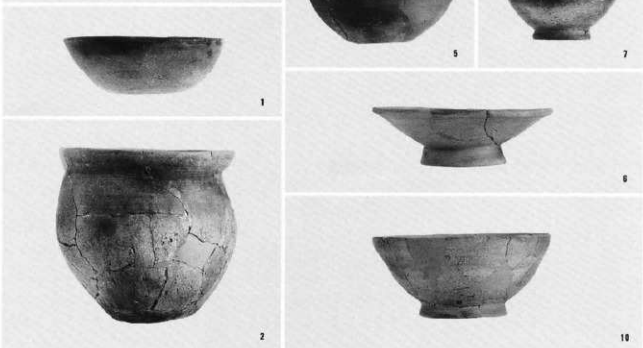
SK2511



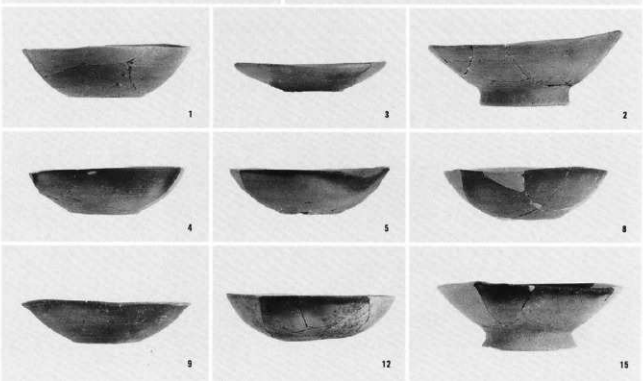
左: SK19
中右: SK47



左: SK32
右: SK47



SK94



SK113



1



2



4



6



7



9



11



12



13



3



4



13



8



11



16



17



10

SK123



23



29



33



34



35



37



40



41



46



43



45



47



48

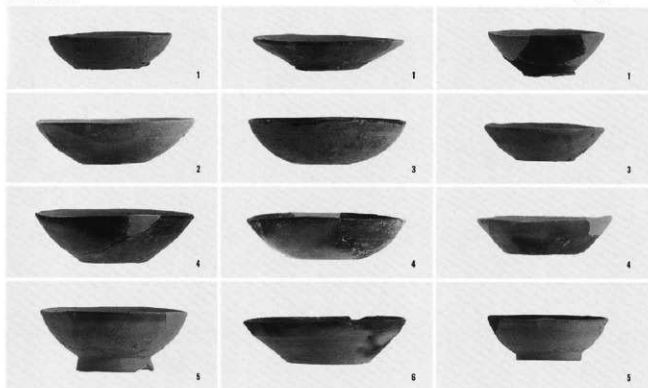


49

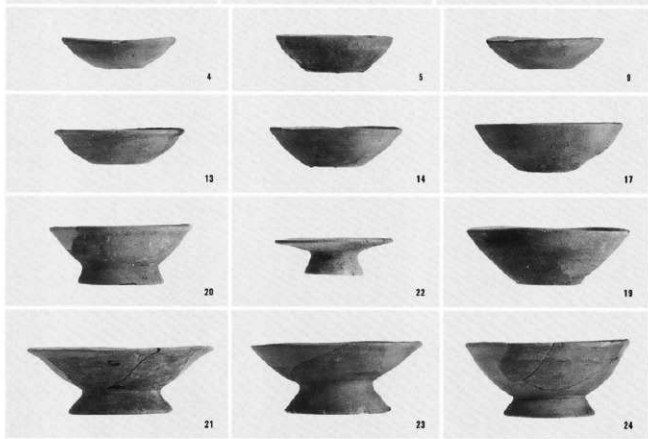


50

左列：SK126
 中列：SK130
 右列：SK347



SK231



左：SK232
 中右：SK349



SK349





1



3



12

SK1028



6



8



14



2



1

左：SK1040
右：SK1501

1



1



2

中右：SK1092



1



4



3

左：SK1636



2



5



1

SK1733



1



2



3



4

SK1733



5



6

SK2108



1



3



4

SK2558



2



3



4

SD102(VDX)



2



6



8



14



15



17



18



20



22



23



24



25



26



27



32



37



39



40

SD102(VE区)



47



48



50



51



54



58



63



64



66

SD102(VD区)



72



75



77

SD102(VIX区)



78



79



81



84



86



89



93



98



102

SD102(VIY区)



108



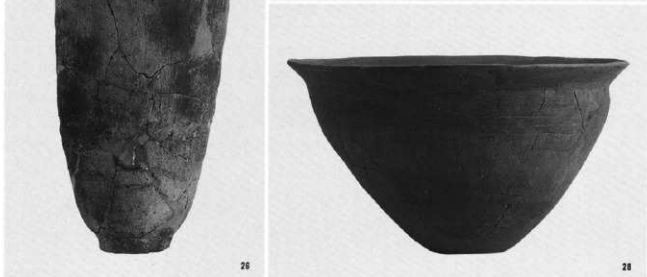
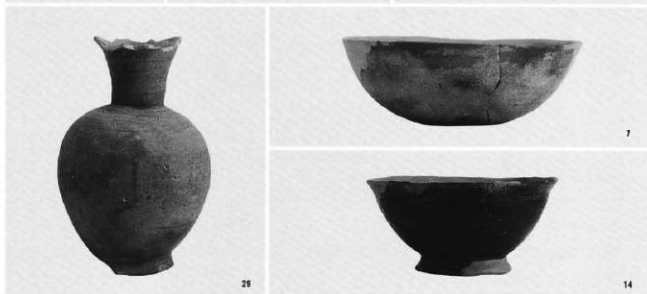
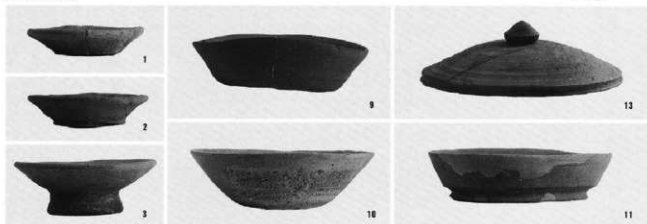
110



115

左中: SD102
右: 蕨状遺構

道橋外出土土器



20

7

14

30

18

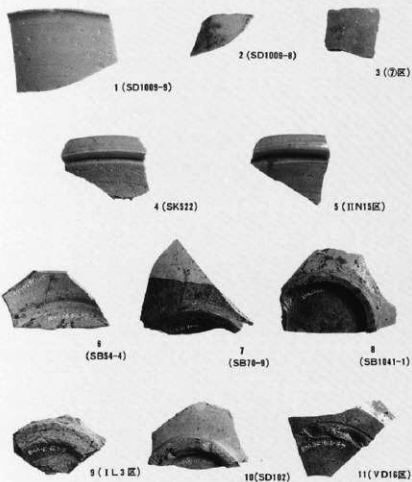
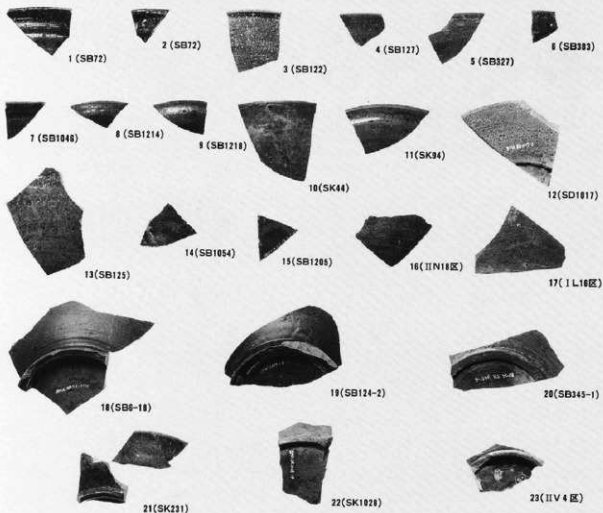
21

27

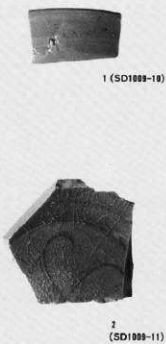
28

28

緑釉陶器



左：白磁
右：青磁



円筒形土製品



6



6 (上方より)



6 (横断)



7



7 (上方より)



7 (横断)

円筒形土製品



15



15



15

(外面)



1



4



2



3



5

(内面)



1



4



2



3



5

円筒形土製品
(外面)



12



9



8



10



11



13



14

(内面)



12



9



8



10



11

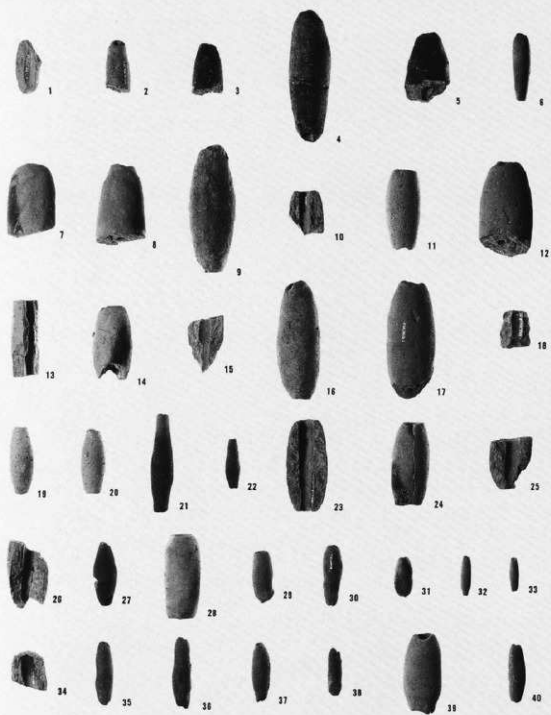


13



14

土鐘



1



2



1



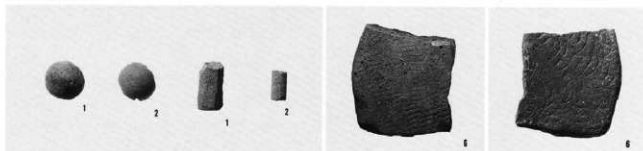
2



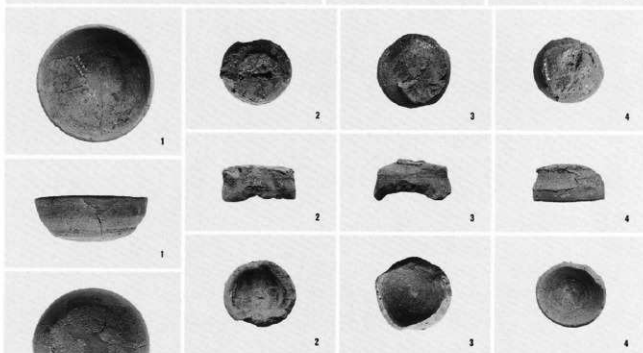
3

土製紡錘車
有孔土製円板

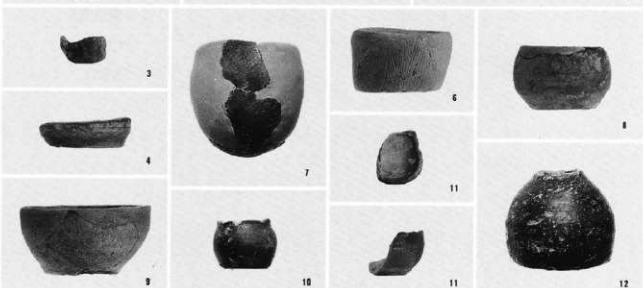
左：球状・円柱状土製品
 中右：用途不明土製品



用途不明土製品



左：ミニチュア土器
 右：用途不明土製品





1



2



1



2



上面



下面



1



2



3



4



5



10



6



7



8



9



1



2



3



4

左上：石帯表面
 左中：石帯裏面
 左下：石製紡錘車
 右：礬石状石製品
 用途不明石製品



1



2



3



4



5



6

編物石



1



2



3



4



5



6



7



8



10



11



13



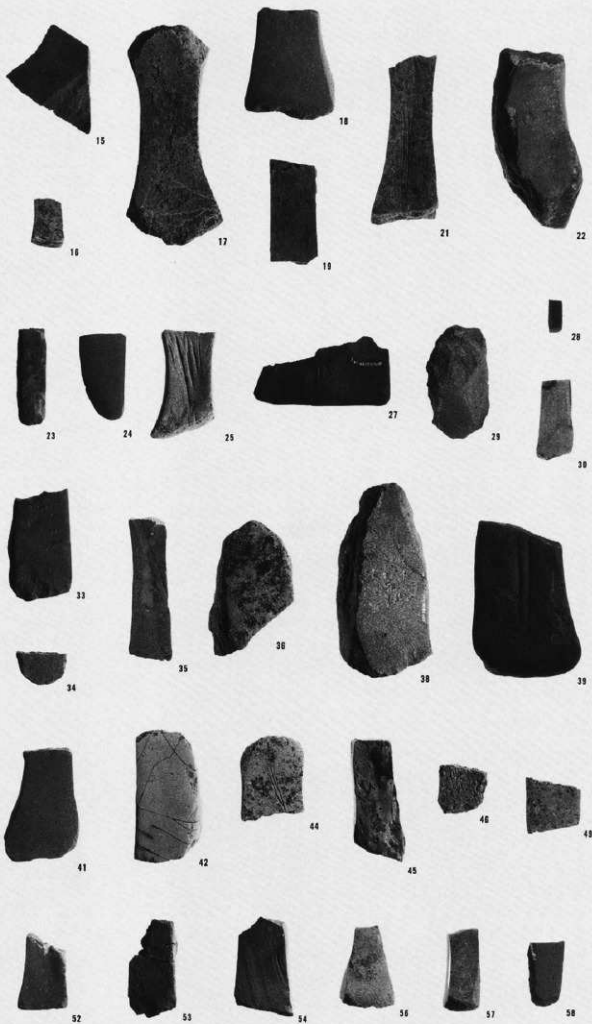
12



14

砥石

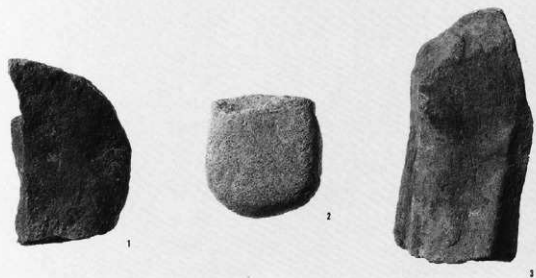
砥石



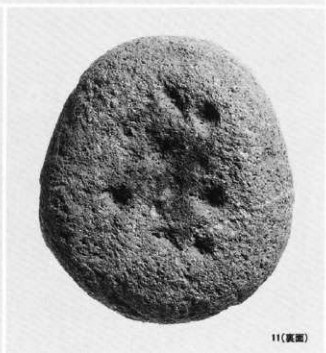
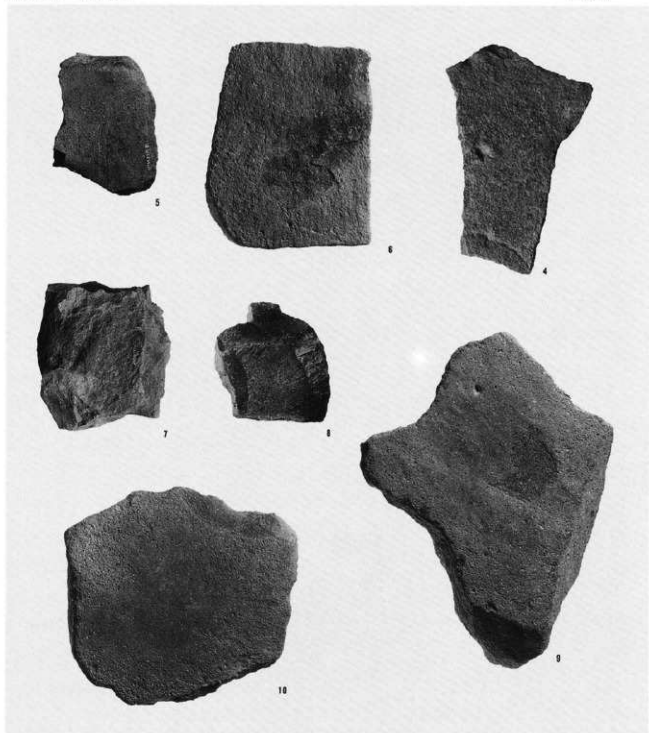
砥石



台石・凹石



台石・凹石



11

11(裏面)



11



11



11



11



15



22



5



6



7



12



13



2



3



8



8



17



25



26



23



1



4



10



14



24



16



18



21

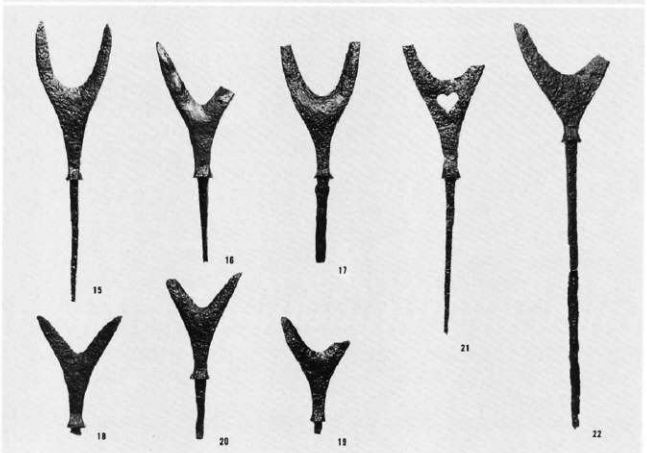
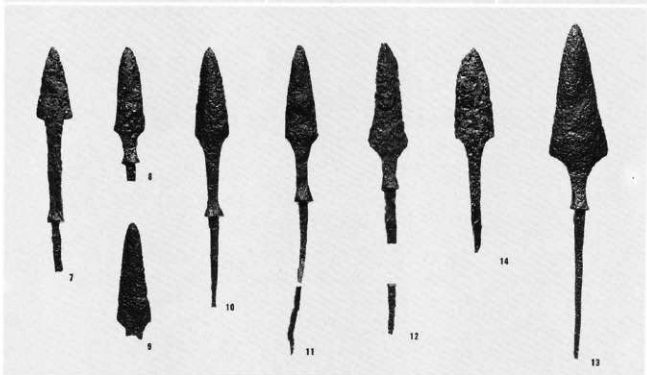
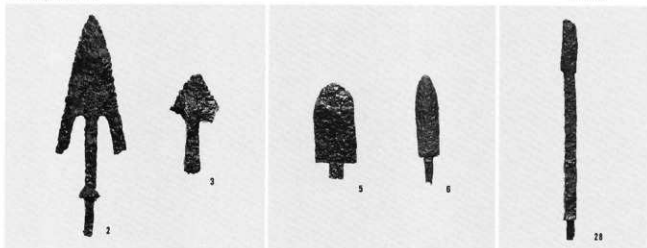


19

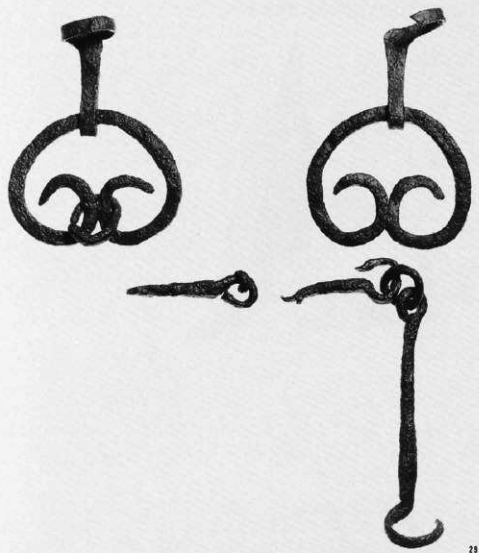


20

鉄鏃



杏葉巻



20

平引鉄



44



45



46



47



48

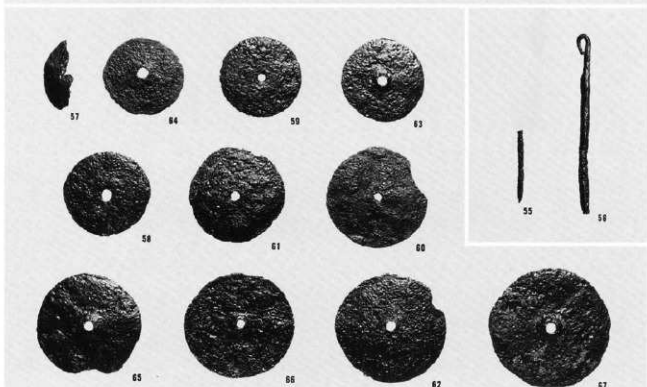


49

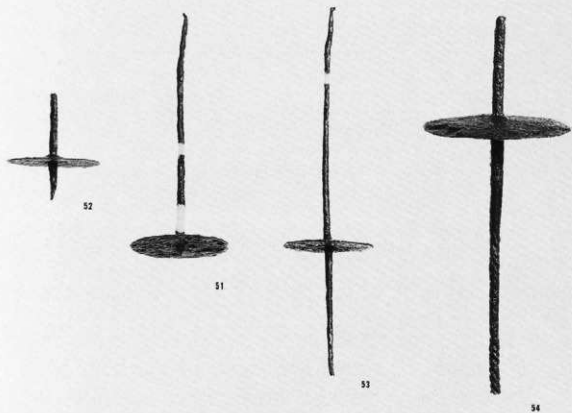
鉄鏃



鉄製紡錘車



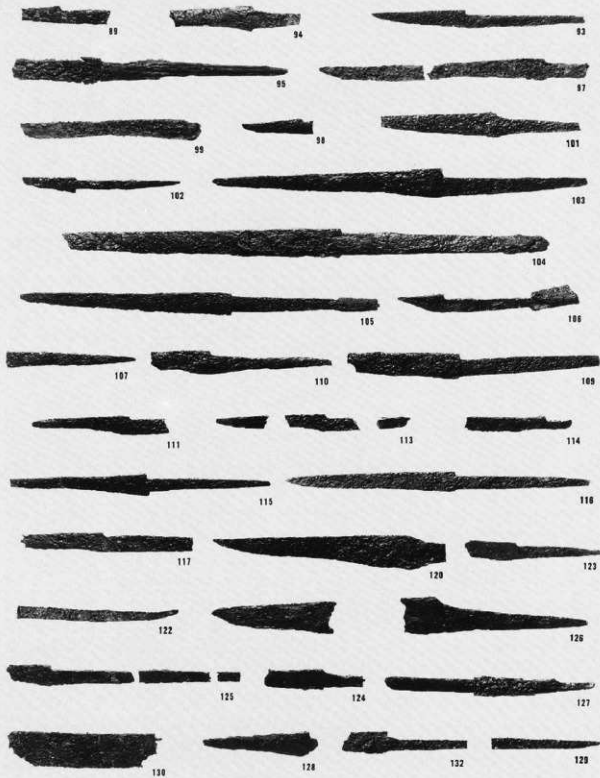
鉄製紡錘車



刀子



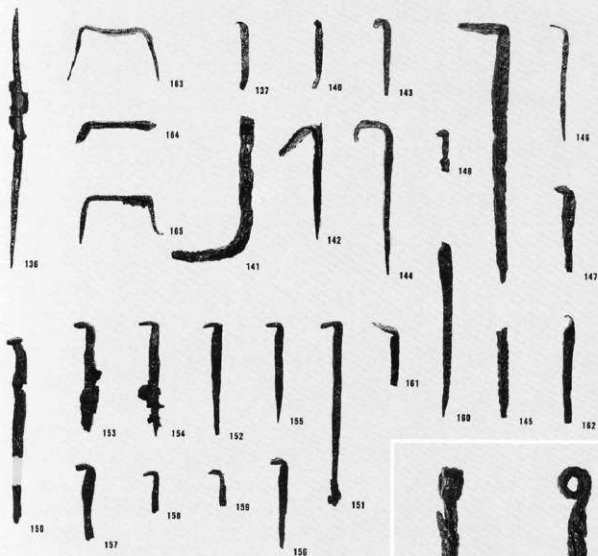
刀子



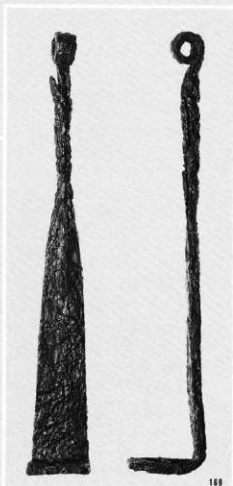
鉄斧



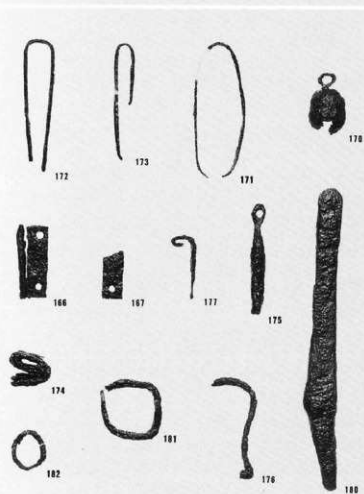
鎌・鋏・釘



鋸



左：その他の鉄製品



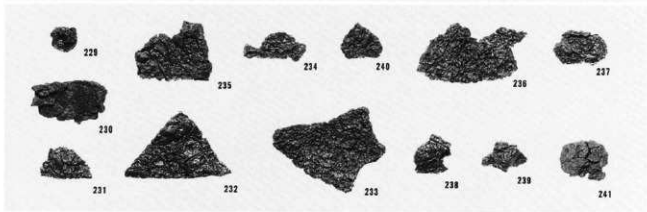
棒状鉄製品



板状鉄製品



鋤物片



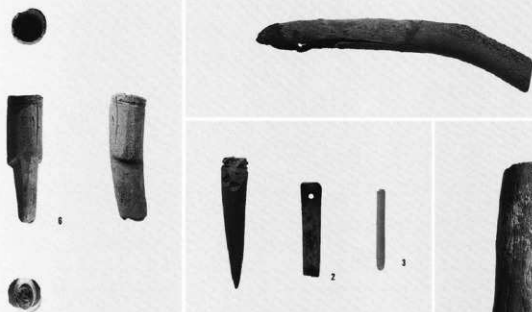
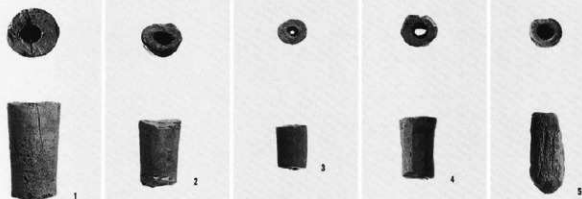
左：皇朝十二銭
右：鏡片



銅鏡片



須

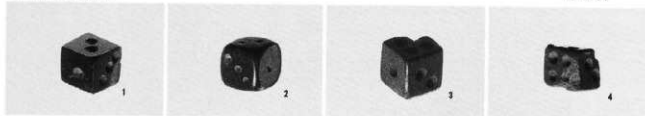


左：須
右：鹿角製刀子柄
中：刺突具・裝飾品

裝飾品



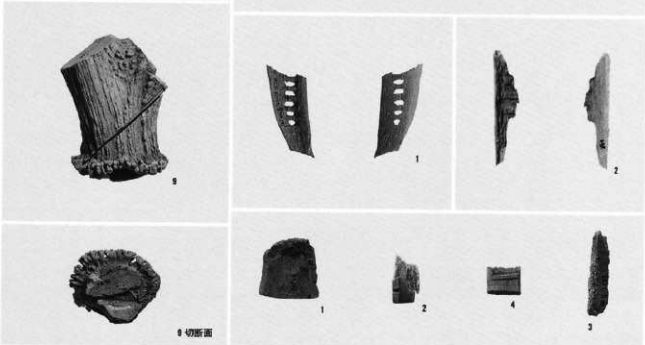
サイコロ
(×2)



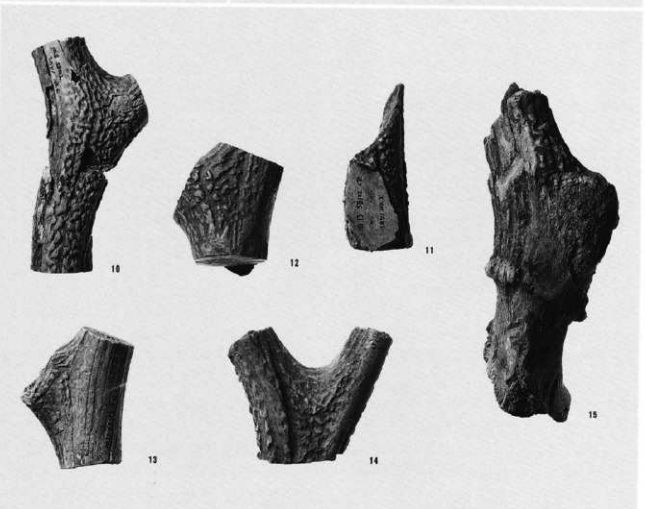
製品素材
5~8(×2)



中右：ト骨



製品素材





1



2



3



4



5



6-1



6-2

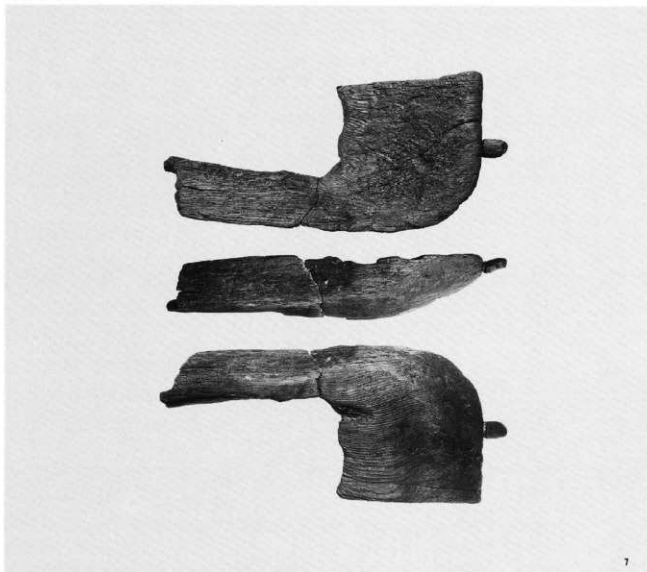
左：曲柄平鍬
中：曲柄又鍬
右：弓

左：えぶり

左：鑿件
中：目盛板

弓幹

剝物



7

曲物



8

曲物



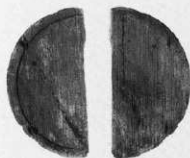
8-1



12-1



11



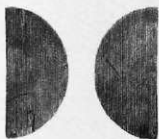
10-1



13



15

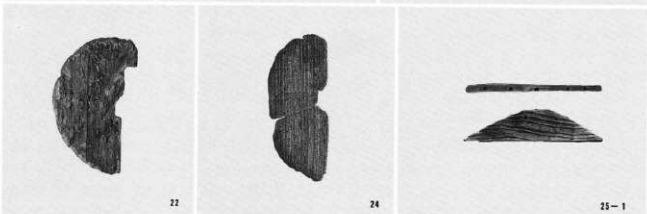
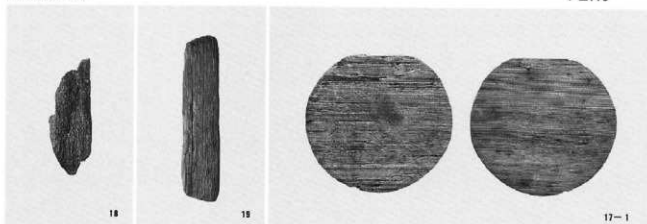


14-1

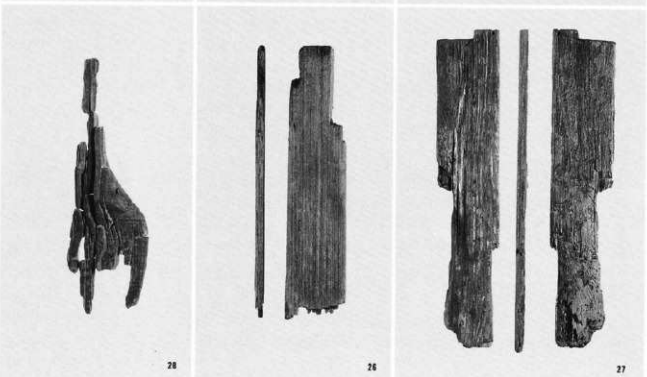


16-1

曲物



左：匙状木製品
中：箱物
右：箱物





8-2



14-2

左：曲物とじ部
右：刃物キズ



10-2



19-3



18-2

左中：曲物とじ部
右：目釘



16-3



17-2



25-2

左中：刃物キズ
右上下：目釘



25-3



28-1



29-2

左：目釘
中右：付札状木製品



12-2



30



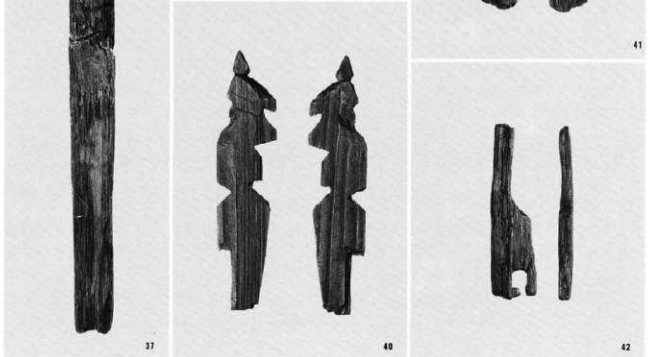
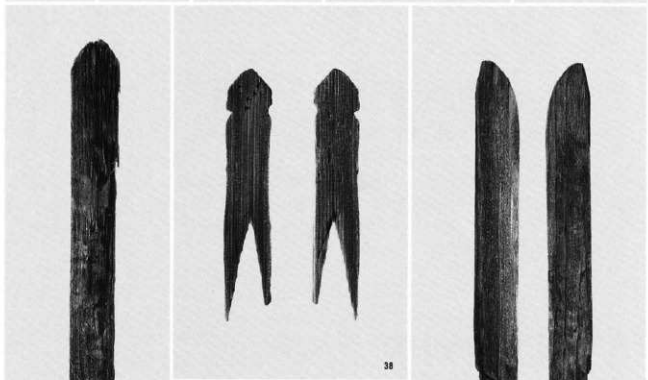
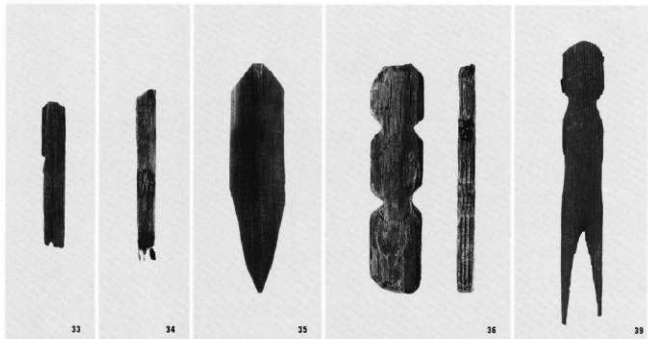
31



32

中：付札状木製品
右：齧串

斎串 (33~37)
 人形 (38~40)
 刀形 (41)
 用途不明品 (42)

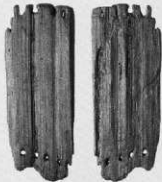




43



44



45-1



45-2

用途不明品



46



47



48



49

柄状木製品



50



51



52



54



53



55



56

建築部材



57



58-1



59



60



59-2



62



61-2



建築部材
板材



66



68



69



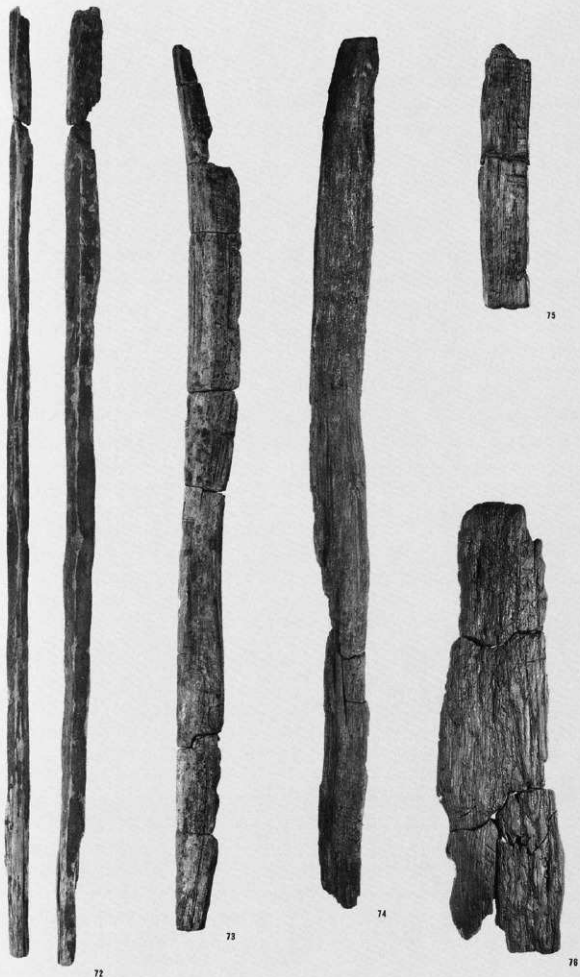
67



70



71



杭



杭



87



88



89



90



91

杭



92



93



94



95



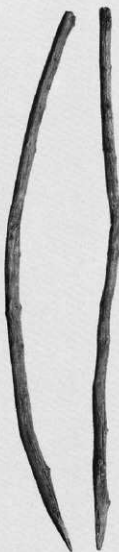
96



97



98



99



100



101



102



103



104



105



106



107



108



109

杭



110



111



112



113



114



115



116



117



118



119



120



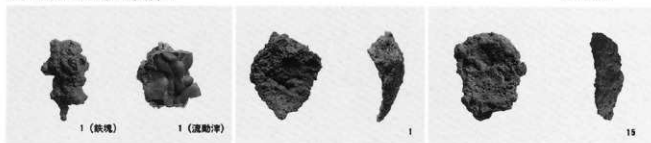
121



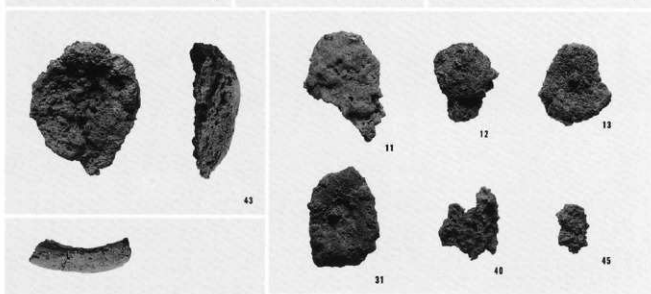
122



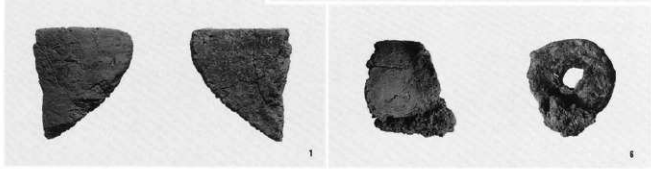
左：鉄塊・流動滓
中・右：腕形滓



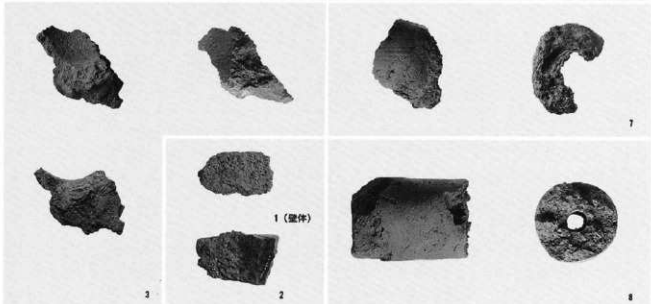
腕形滓



左：炉壁
右：羽口



左：炉壁・壁体
右：羽口



鑄型
 左：扉金具
 右：梵鐘



1

2

啓



3

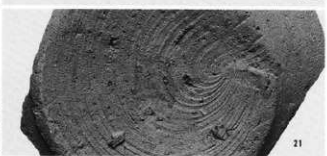


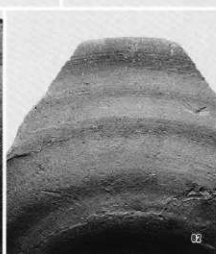
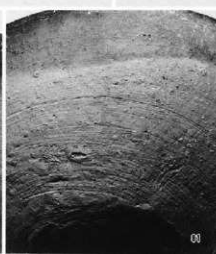
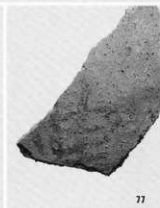
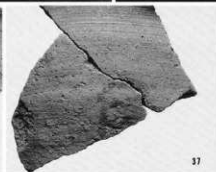
4



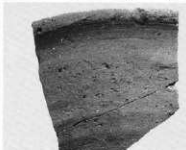
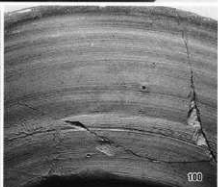
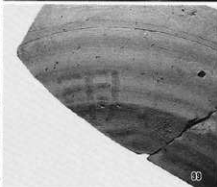
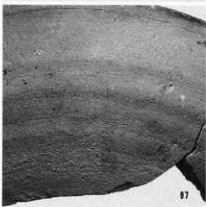
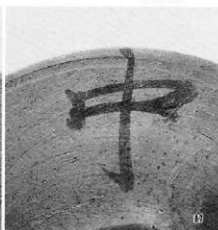
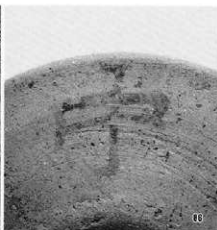
5

墨書



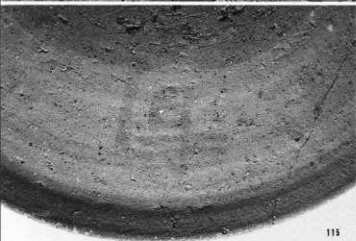


墨書





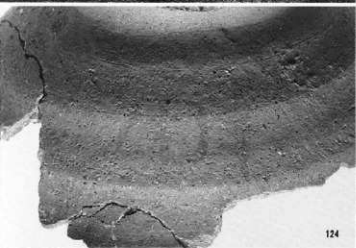
111



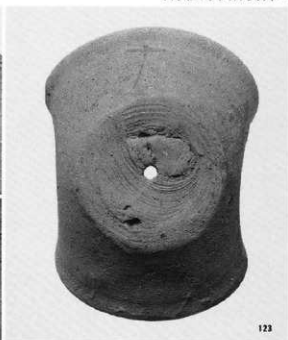
112



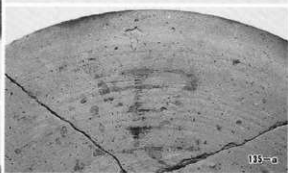
113



124



123



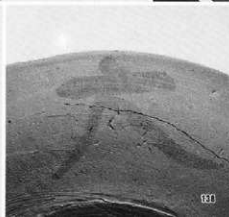
113-a



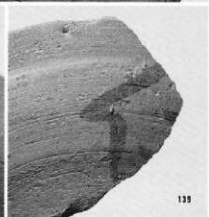
113-b



127

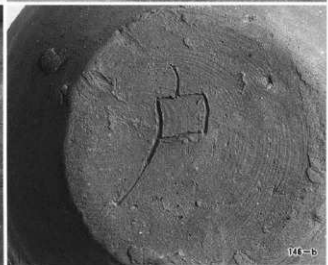
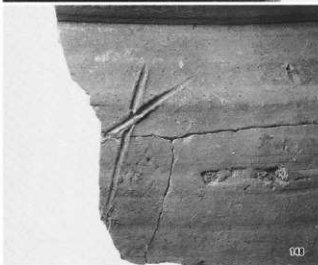
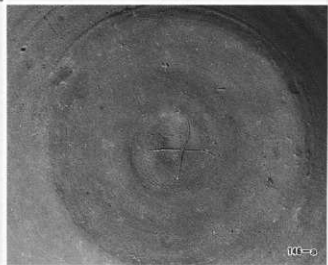
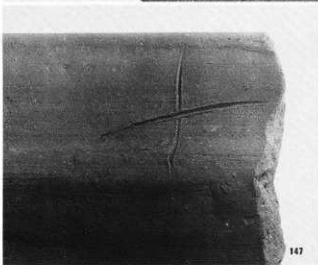


114



119

刻書





150



152



156



153



153



157

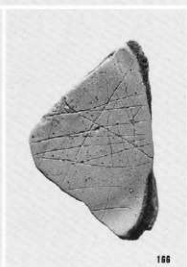


154

瓦書



左中：刻書
右：刻印



左：円面硯
右：転用硯



168



175



174

転用硯



176



180



173



182



183

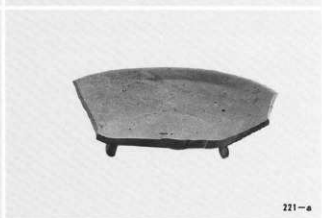


189-a



189-b

転用硯





左：SD15
右：SD1168



左：SK67
右：SK553



左：SK554
右：SK1008



左：SK1032
右：SK1037檢出



左：SK1525
右：SK1037人骨
出土状態



左: SK1011~1016

墓址群

右: SK1011A・B



左: SK1011A

右: SK1011B



SK1012



SK1013



左: SK1014

中: SK1015・1016

右: SK1160





左: SK1543
右: SK1544



左: SK1561
右: SK1658



左: SK1027
右: SK1693



左: SK2008
右: SK2 断面



左: SK1018
右: SK1114