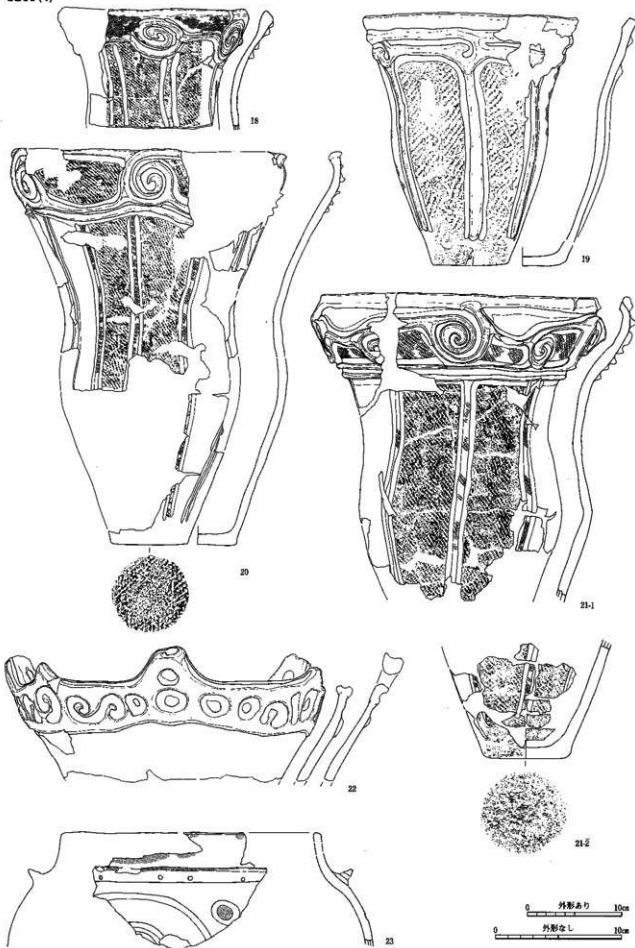
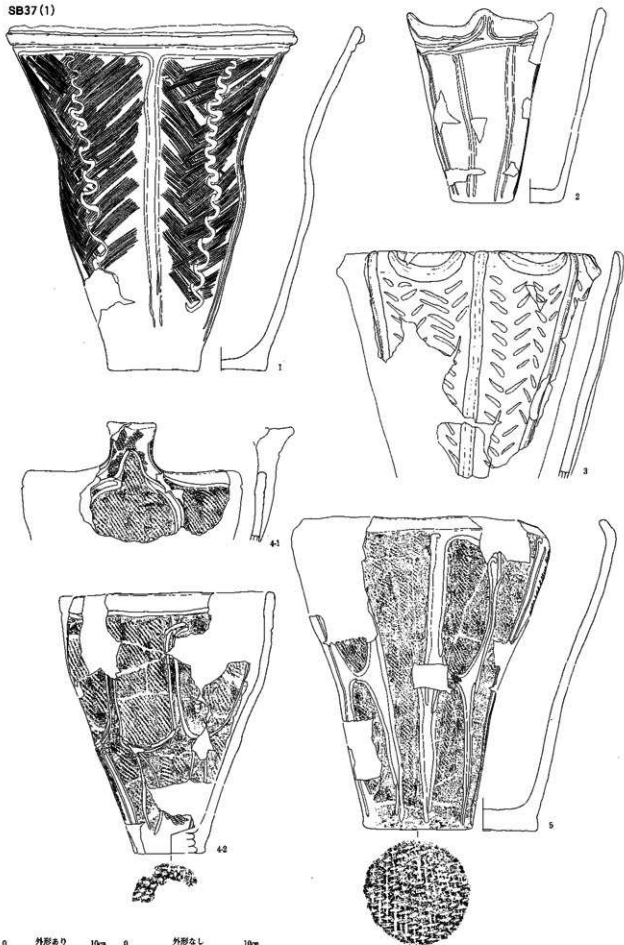


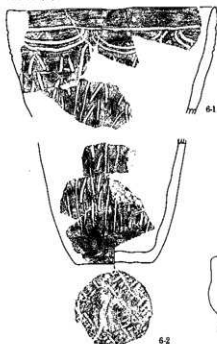
SB36 (4)



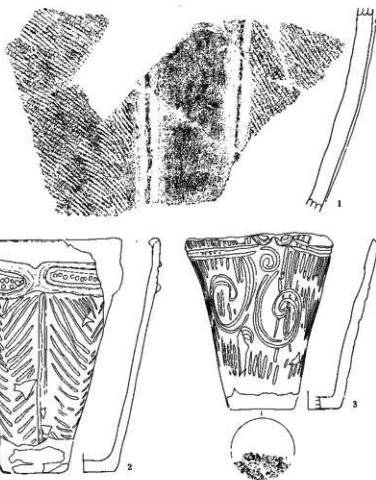
SB37(1)



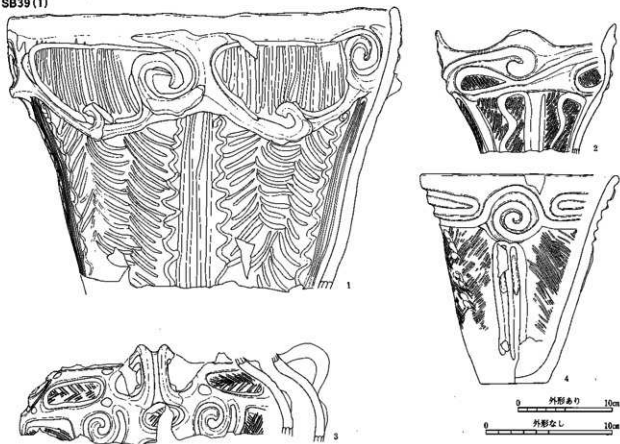
SB37 (2)



SB38



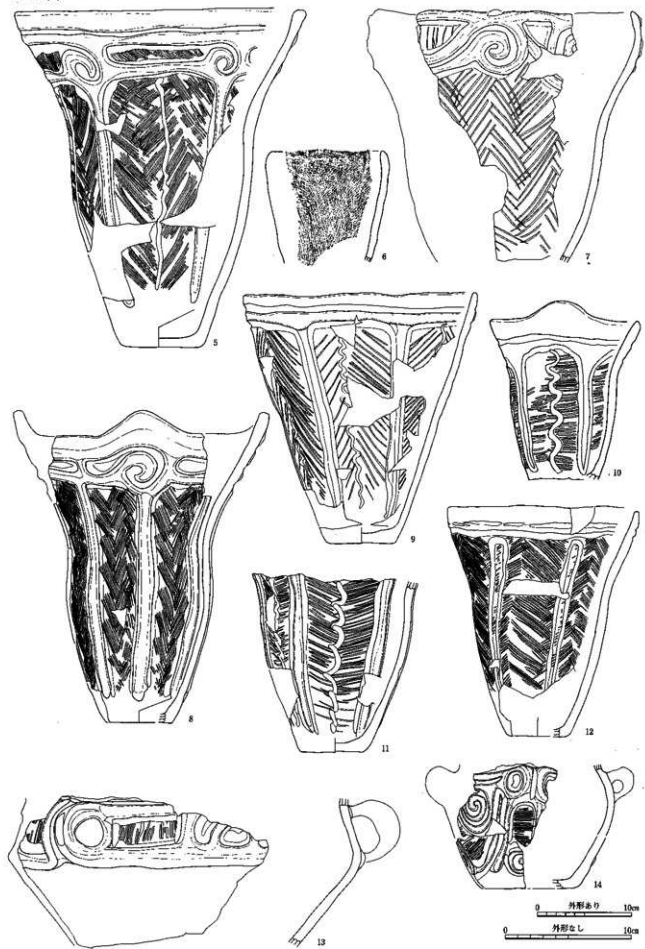
SB39 (1)



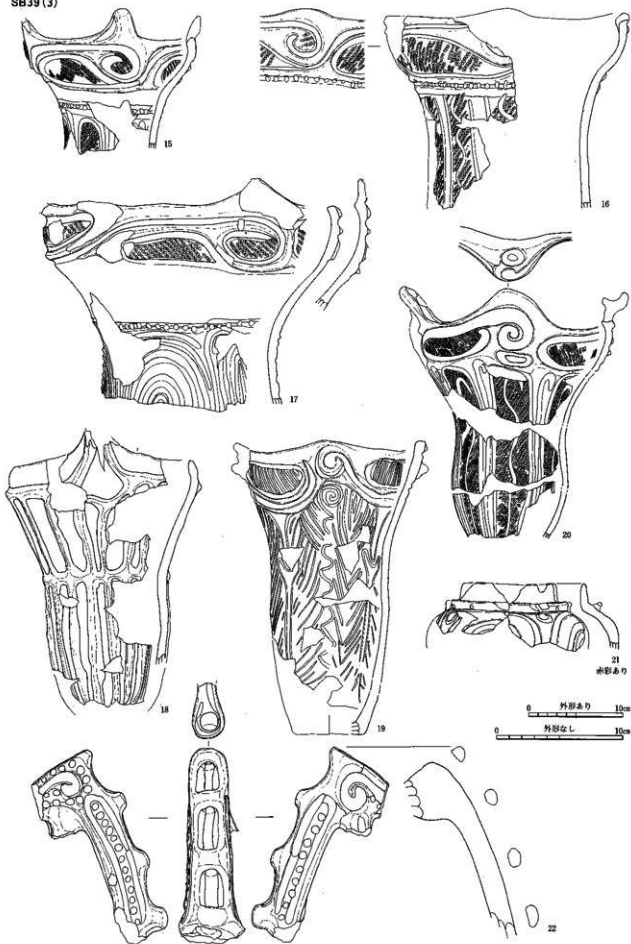
0 10cm
外形あり

0 10cm
外形なし

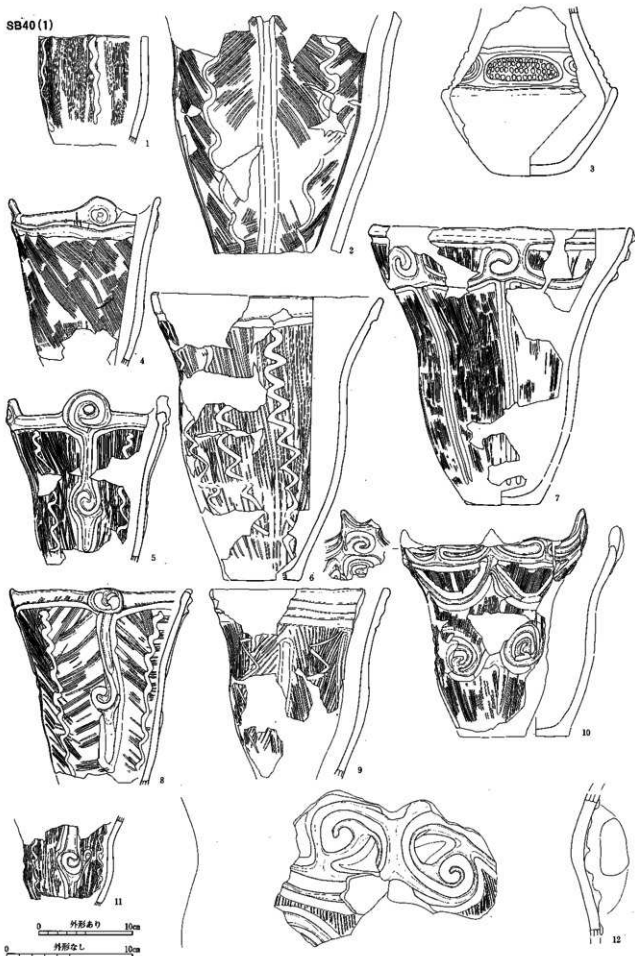
SB39 (2)



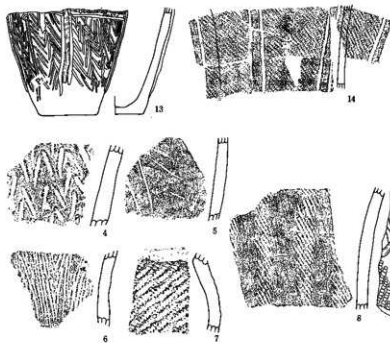
SB39 (3)



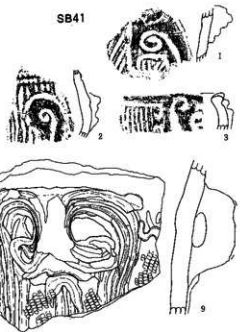
SB40(1)



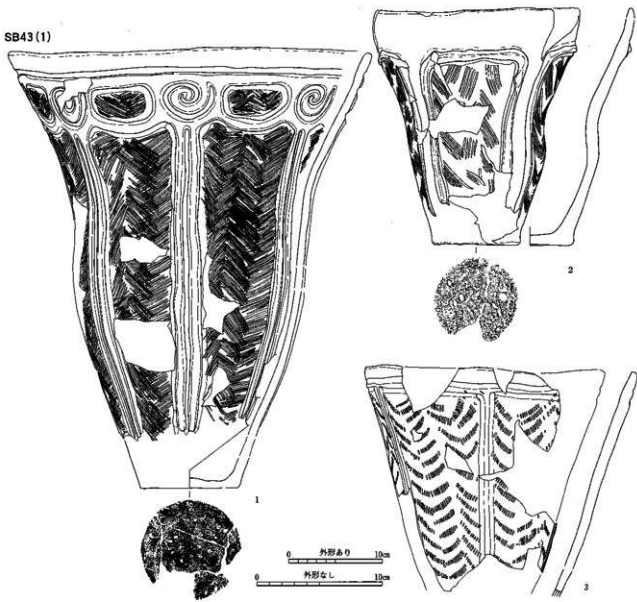
SB40 (2)



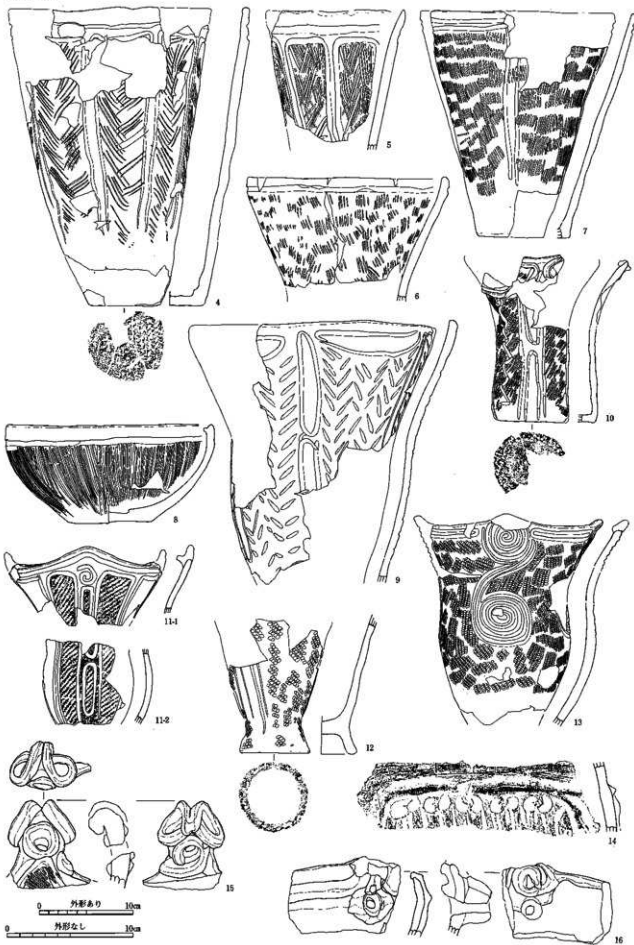
SB41



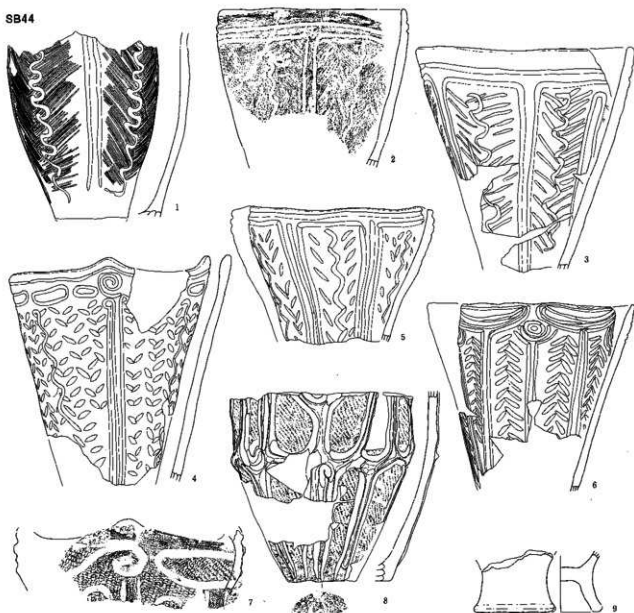
SB43 (1)



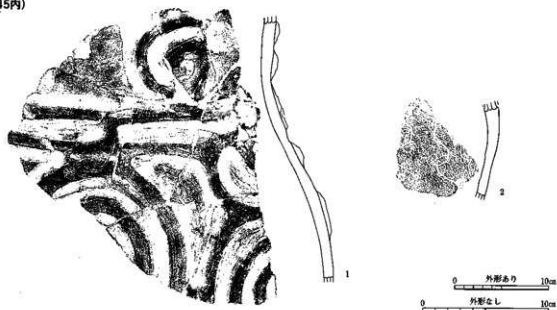
SB43(2)



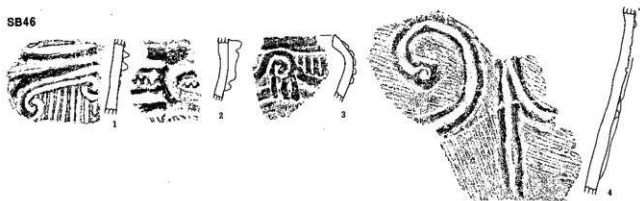
SB44



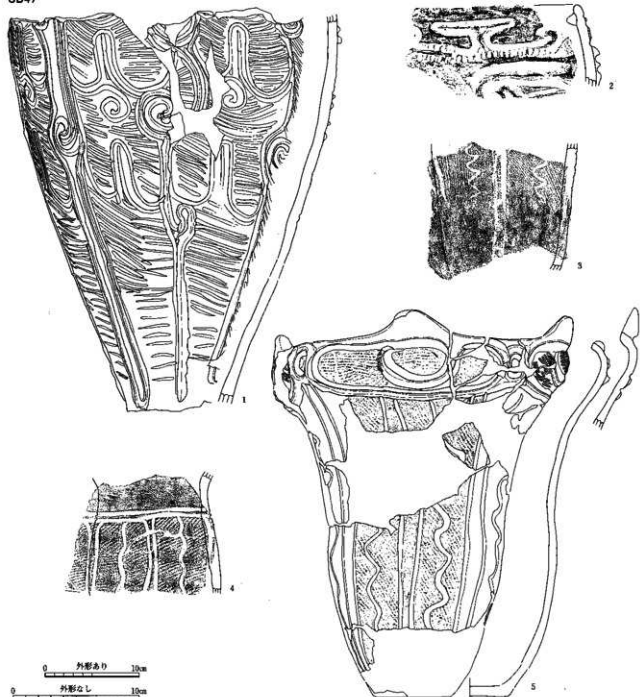
SB90 (ISB45内)



SB46



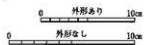
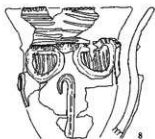
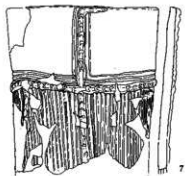
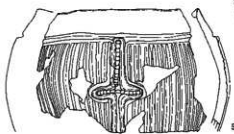
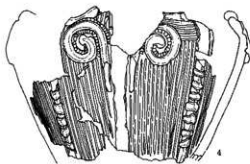
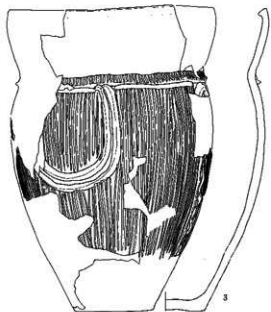
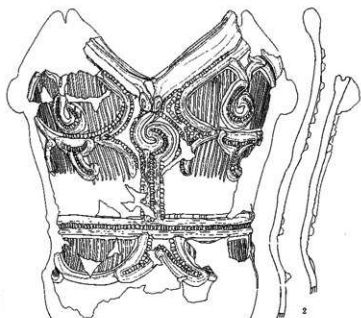
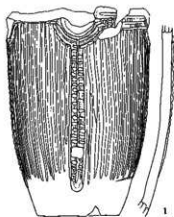
SB47



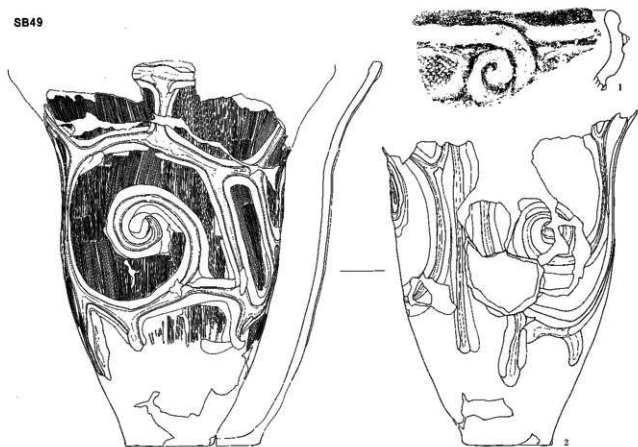
0 外形あり 10cm

0 外形なし 10cm

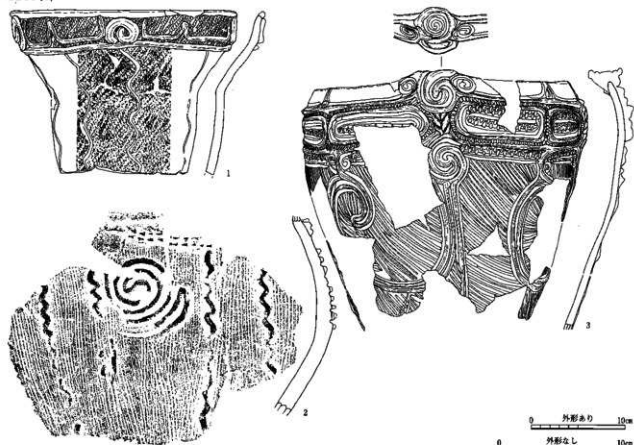
SB48



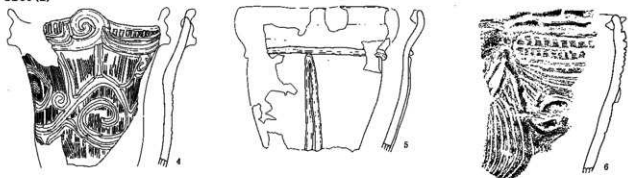
SB49



SB50 (1)



SB50 (2)



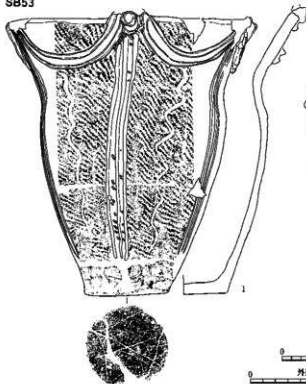
SB51



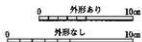
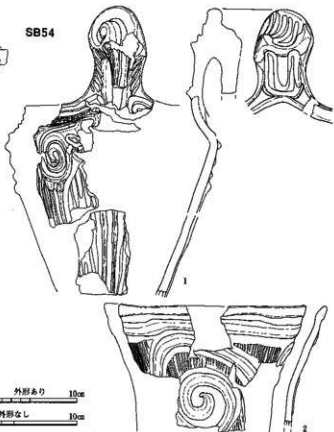
SB52



SB53



SB54



SB55



SB56



SB57



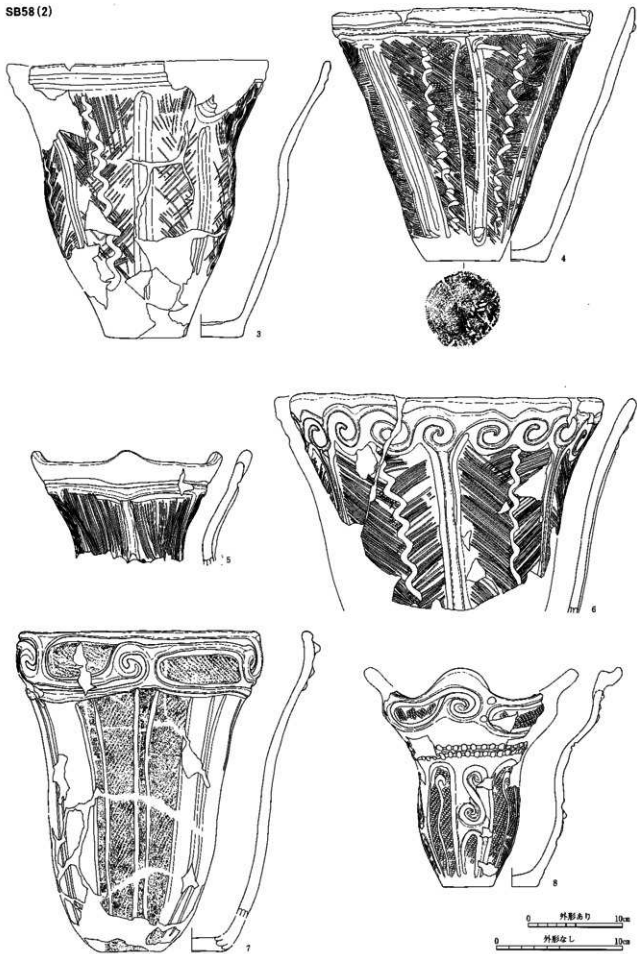
SB58 (1)



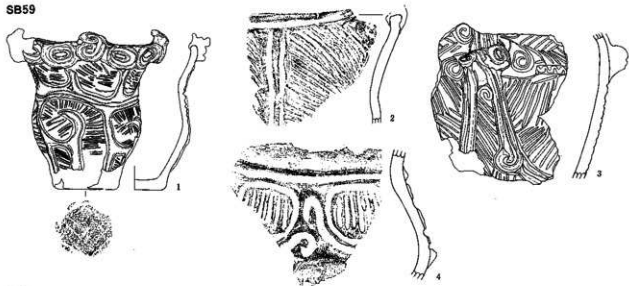
0 外形あり 10cm

0 外形なし 10cm

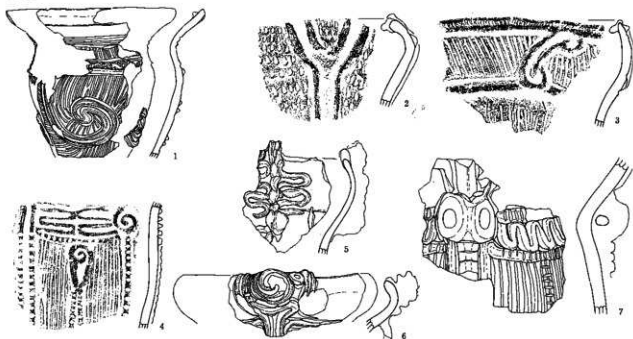
SB58 (2)



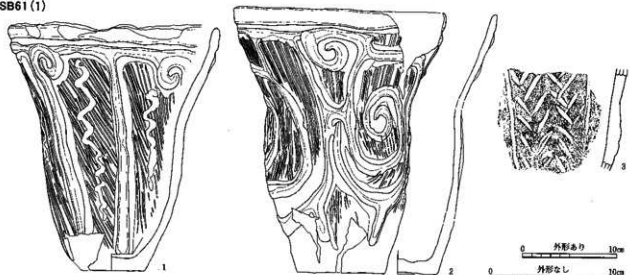
SB59



SB60

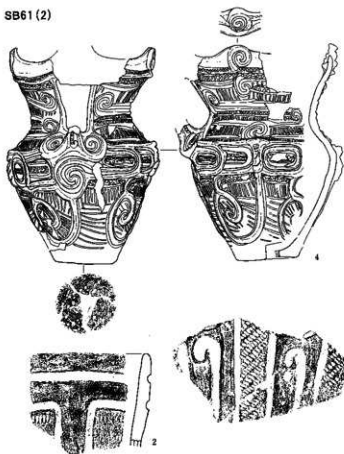


SB61 (1)



0 外形あり 10cm
0 外形なし 10cm

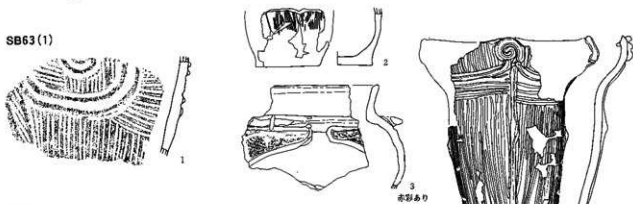
SB61 (2)



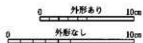
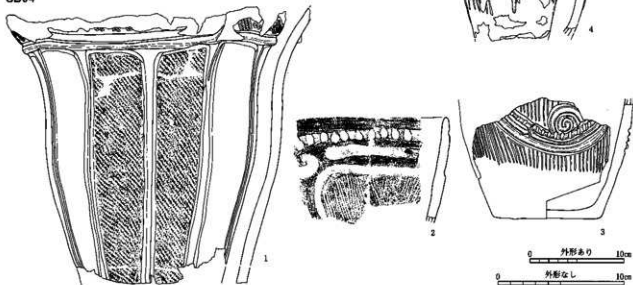
SB62



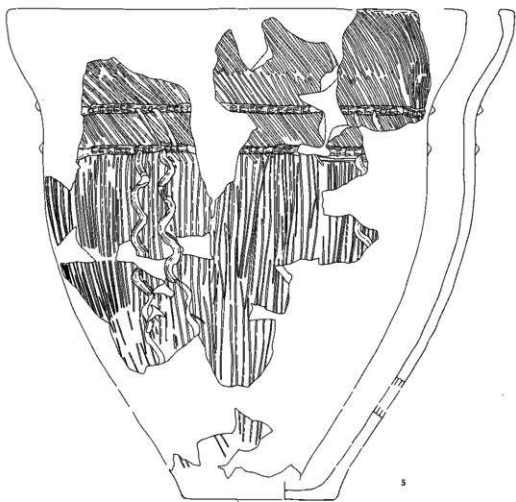
SB63 (1)



SB64

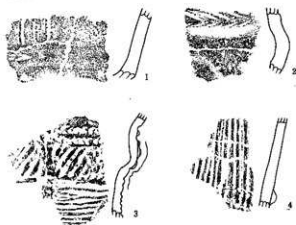


SB63 (2)



SB66 (1)

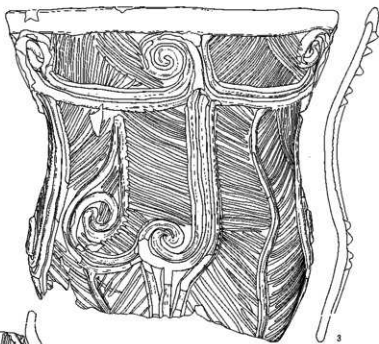
SB65



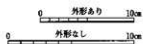
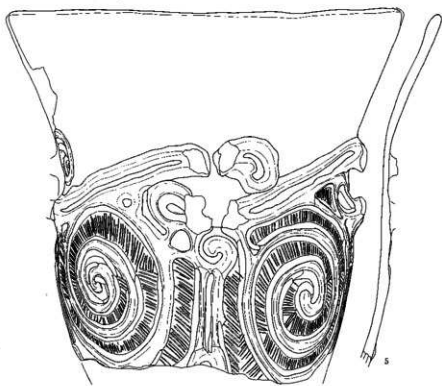
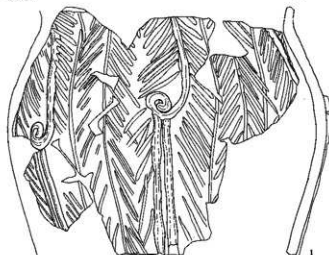
0 外形あり 10cm 0 外形なし 10cm



SB66 (2)



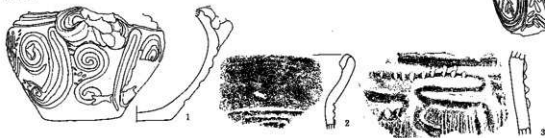
SB67



SB68



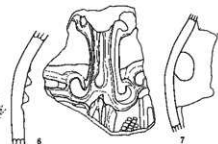
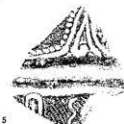
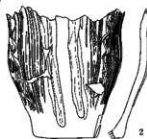
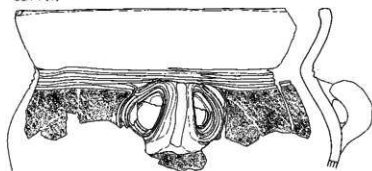
SB69



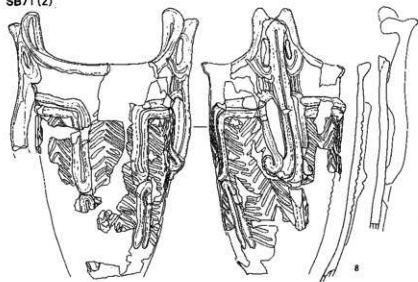
SB70



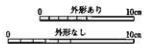
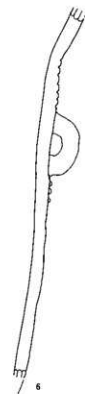
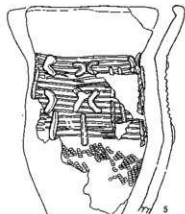
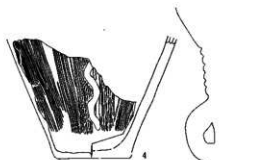
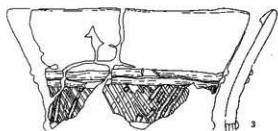
SB71 (1)



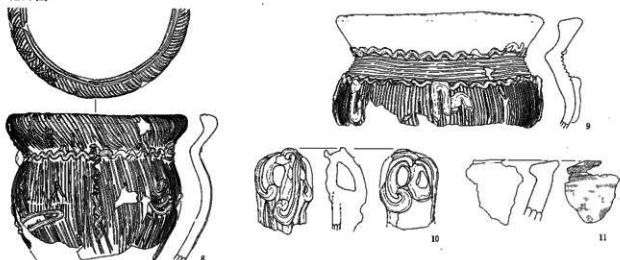
SB71 (2)



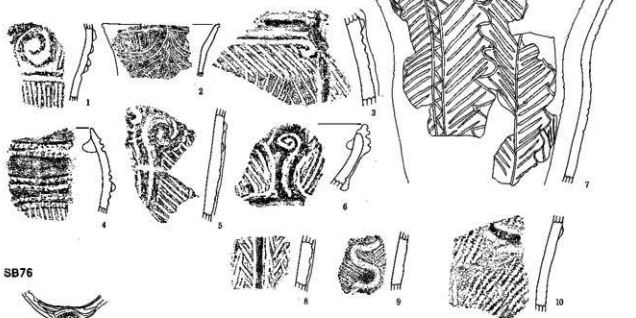
SB73



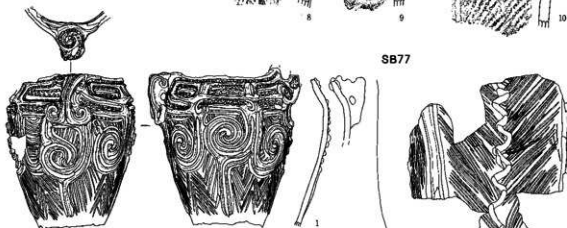
SB73(2)



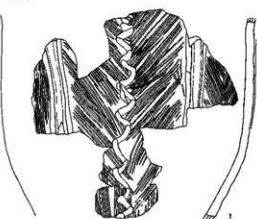
SB74



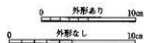
SB76



SB77



SB78



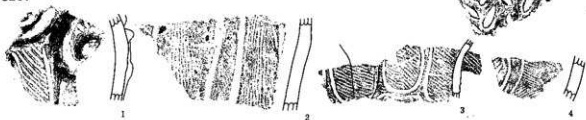
SB79



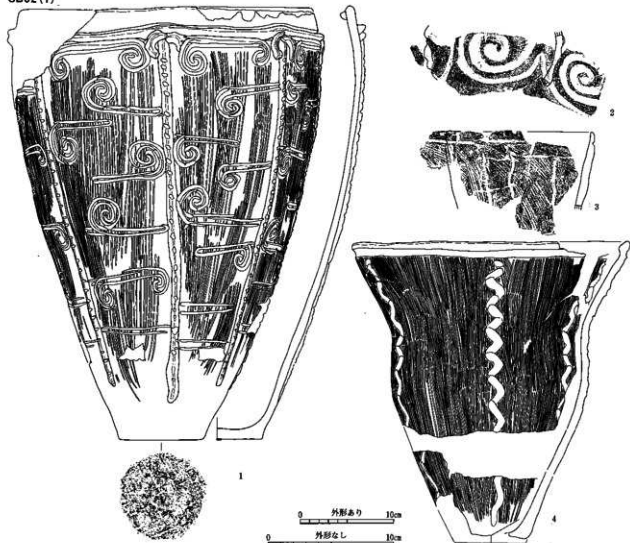
SB80



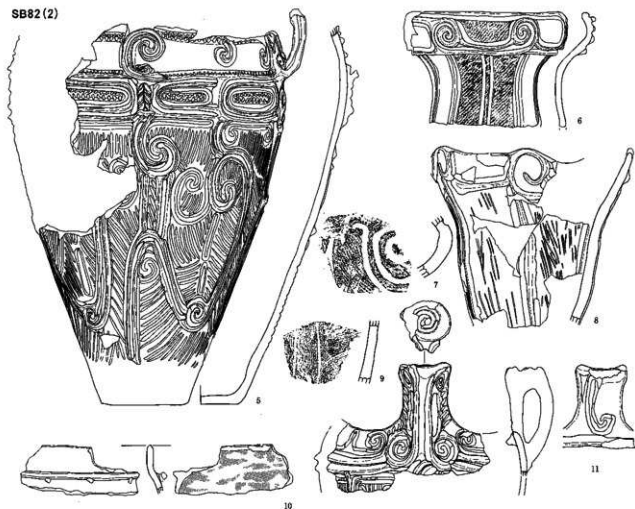
SB81



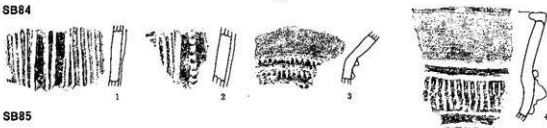
SB82 (1)



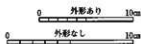
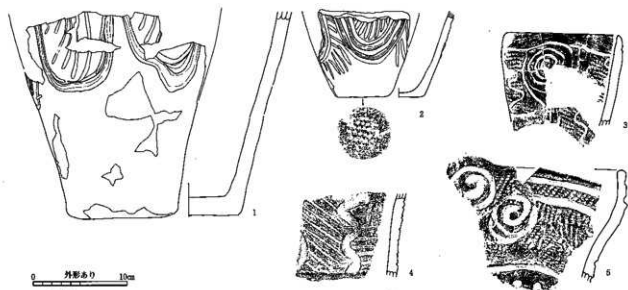
SB82 (2)



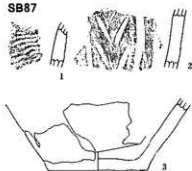
SB84



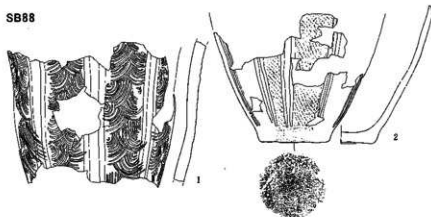
SB85



SB87



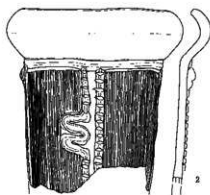
SB88



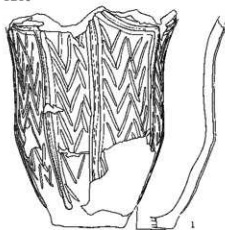
SB90



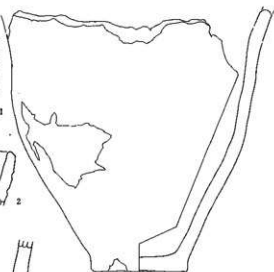
SB95



SB99

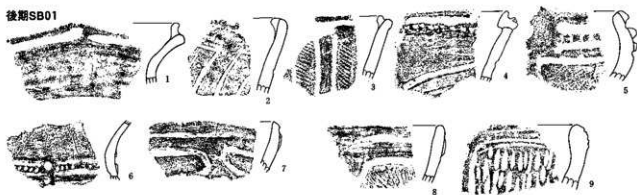


SB105

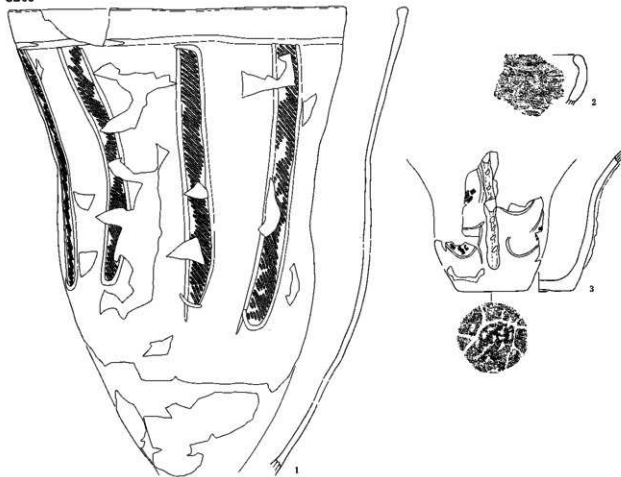


0 外形あり 10cm 0 外形なし 10cm

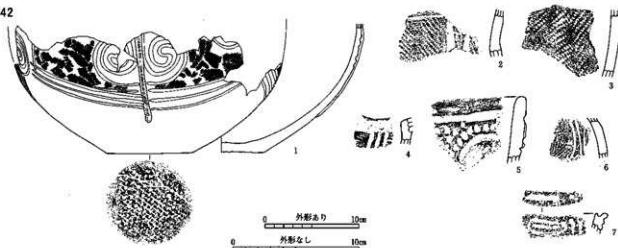
後期SB01



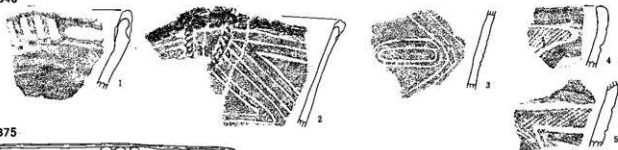
SB05



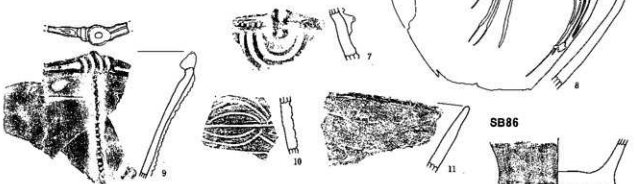
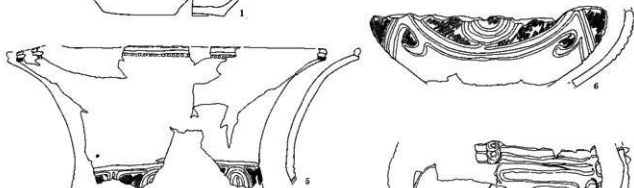
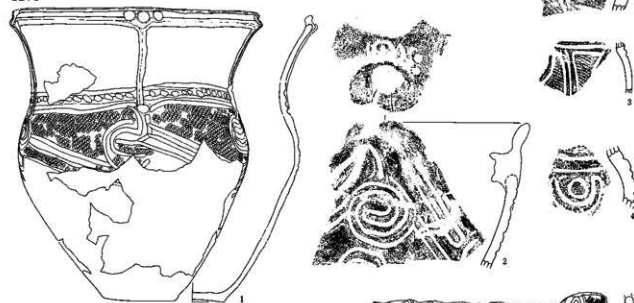
SB42



SB46



SB75



SB86



SB83



SB89

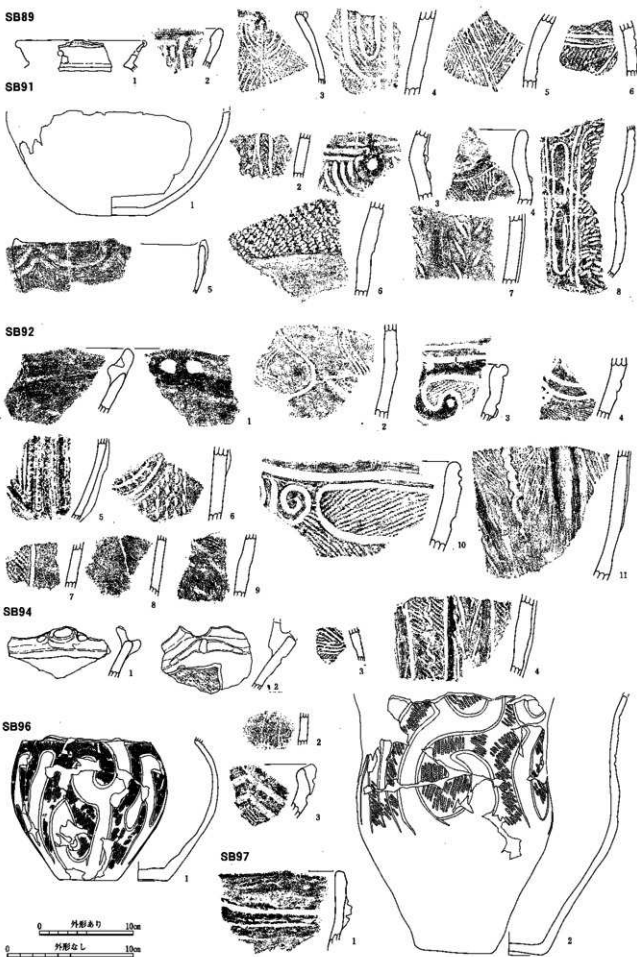
SB91

SB92

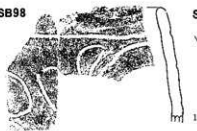
SB94

SB96

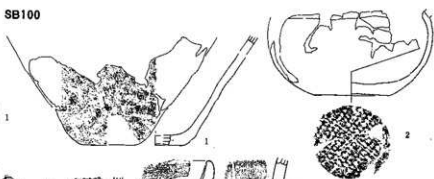
SB97



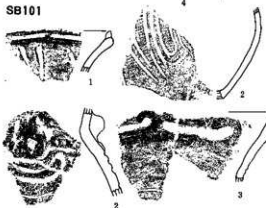
SB98



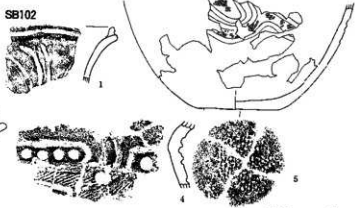
SB100



SB101



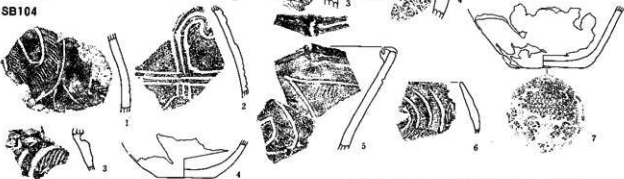
SB102



SB103



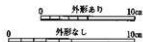
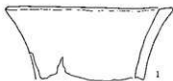
SB104



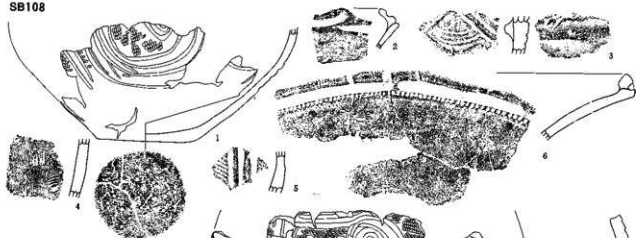
SB107



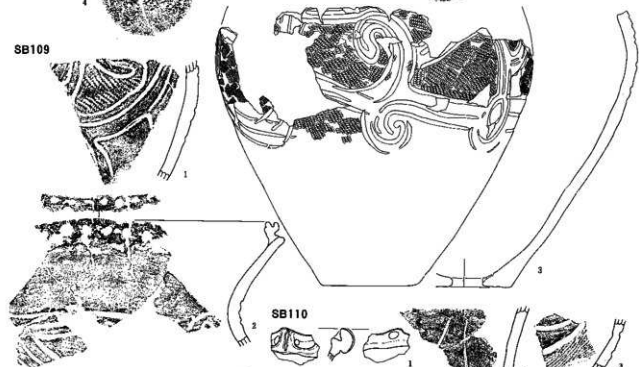
SB106



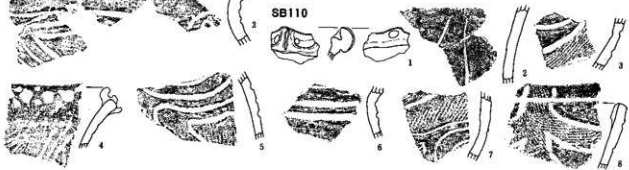
SB108



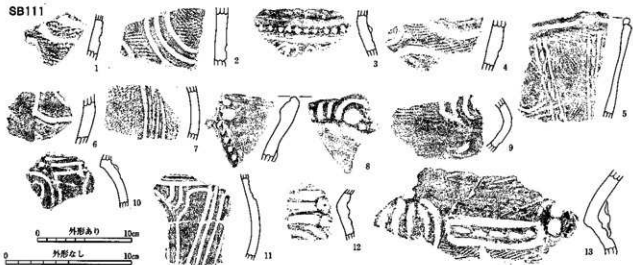
SB109



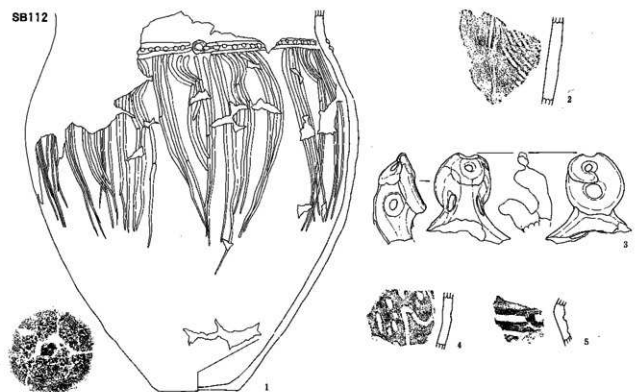
SB110



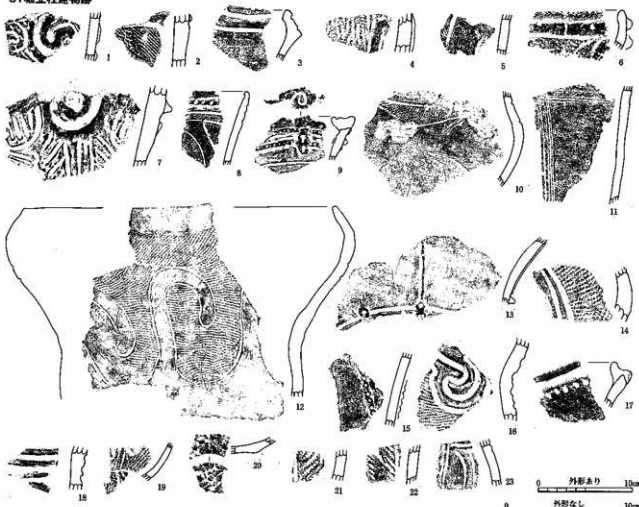
SB111



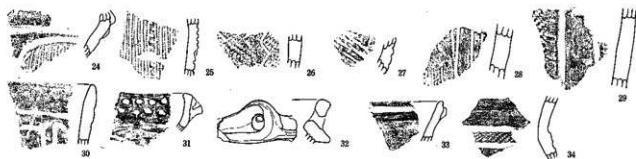
SB112



ST掘立柱建物跡

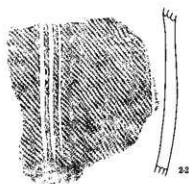
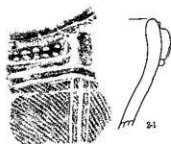
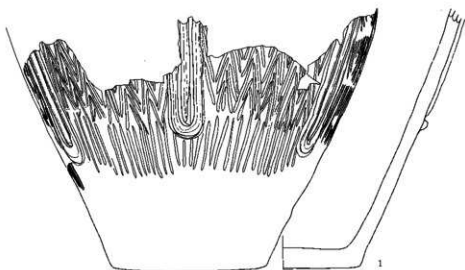


1-ST01, 2-3-ST01ビット5, 4-ST02ビット4, 5-6-ST03ビット2, 7-ST04ビット5, 8-11-ST05ビット1, 12-13-ST06ビット1, 14-15-
16-ST06ビット2, 17-ST06ビット4, 18-ST07ビット3, 19-20-21-ST09ビット5, 22-ST09ビット6, 23-ST10ビット5

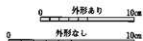
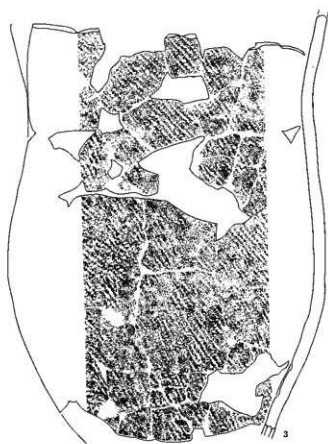


24・25-ST11ピット1, 26-ST13ピット3, 27-ST13ピット4, 28・29-ST14ピット4, 30-ST16ピット3, 31-ST17ピット1, 32-ST17ピット3, 33-ST17ピット5, 34-ST17ピット6

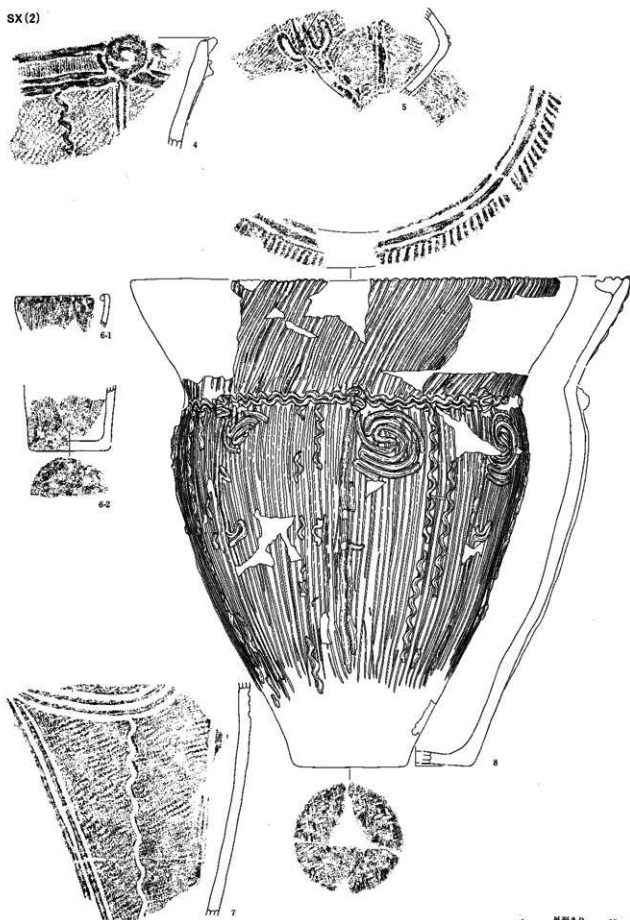
中期・後期
SX屋外埋設ほか(1)



1-SX03, 2-SX04
3-SX05



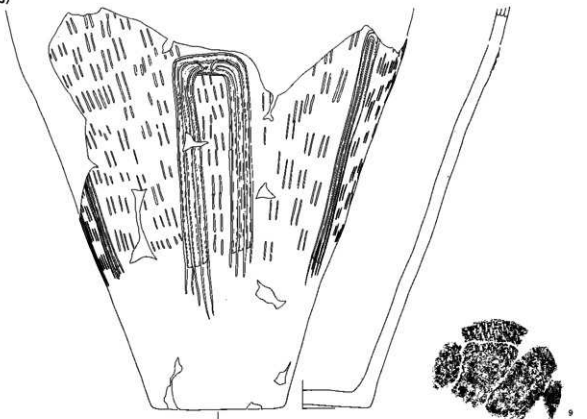
SX(2)



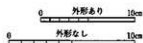
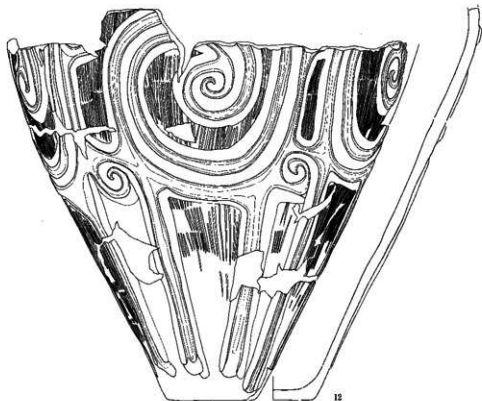
4-8-5304

0 外形あり 10cm
0 外形なし 10cm

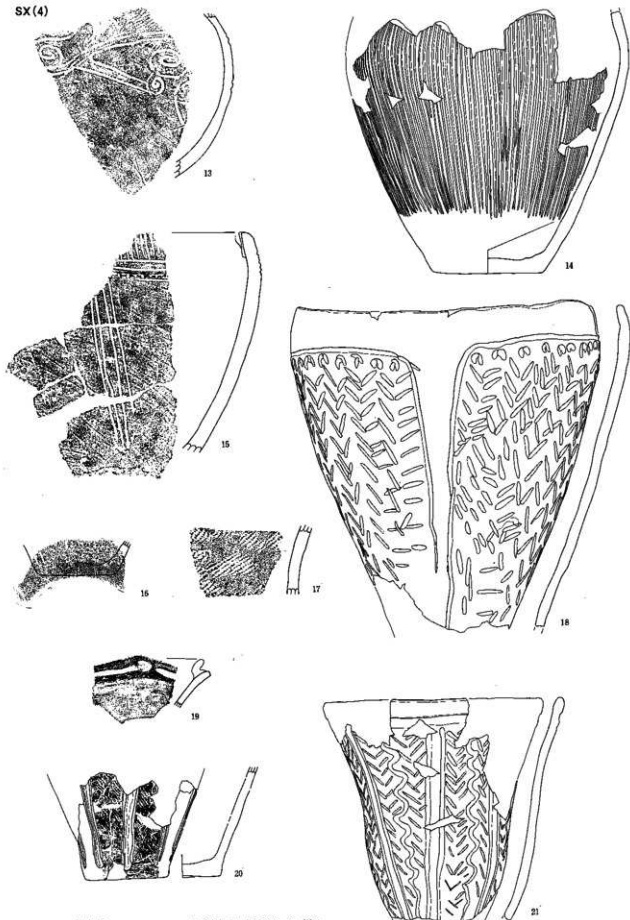
SX (3)



9-SX11 (HSS06)
10-12-SX12



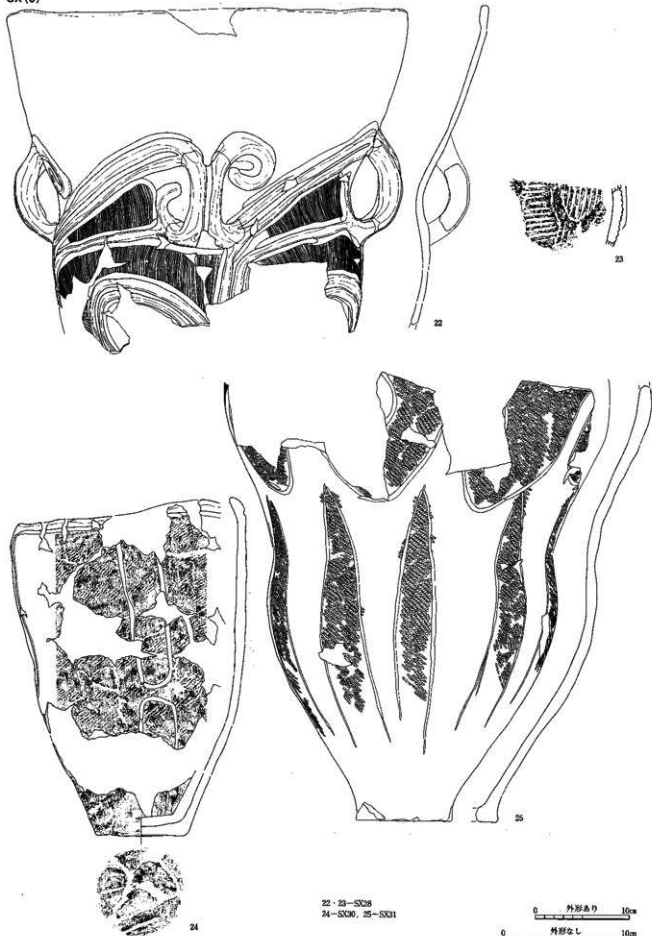
SX(4)



0 外形あり 10cm
0 外形なし 10cm

13-SX16, 14-15-SX17, 16-SX18
17-18-SX19, 19-20-SX25, 21-SX29

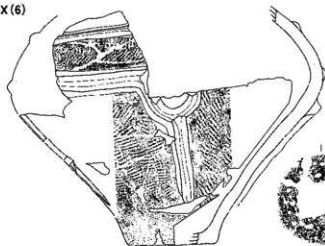
SX(5)



22-23-SX28
24-SX30, 25-SX31

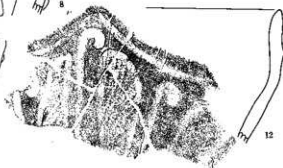
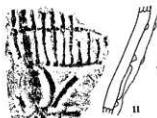
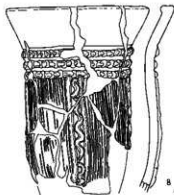
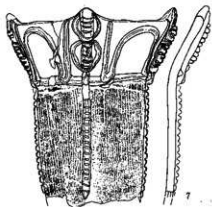
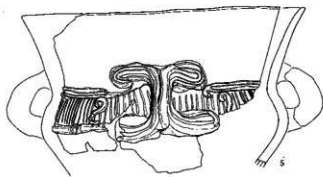
0 外形あり 10cm
0 外形なし 10cm

SX (6)



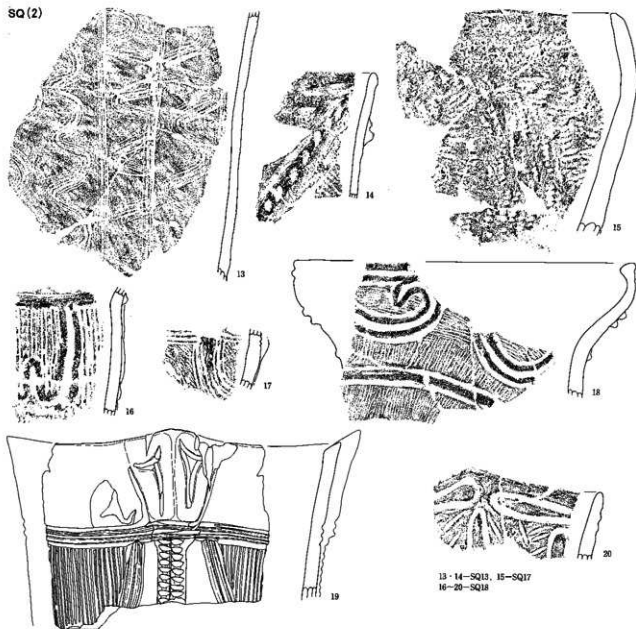
25-28-SX32

SQ (遺物集中)



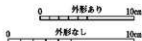
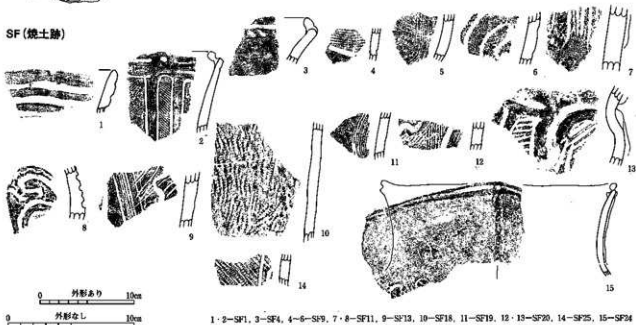
1-2-SQ2, 3-SQ3, 4-5-SQ4, 6-12-SQ6

SQ(2)



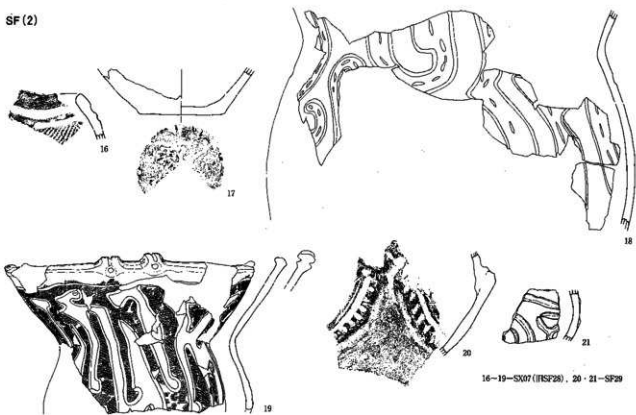
13-14-SQ13, 15-SQ17
16-20-SQ18

SF(焼土跡)



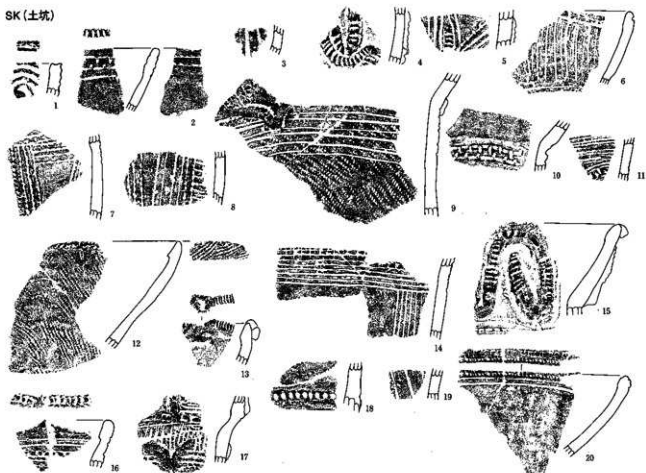
1-2-SF1, 3-SF4, 4-6-SF9, 7-8-SF11, 9-SF13, 10-SF18, 11-SF19, 12-13-SF20, 14-SF25, 15-SF24

SF(2)



16-19-SK07 (HSP28), 20-21-SF29

SK(土坑)



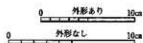
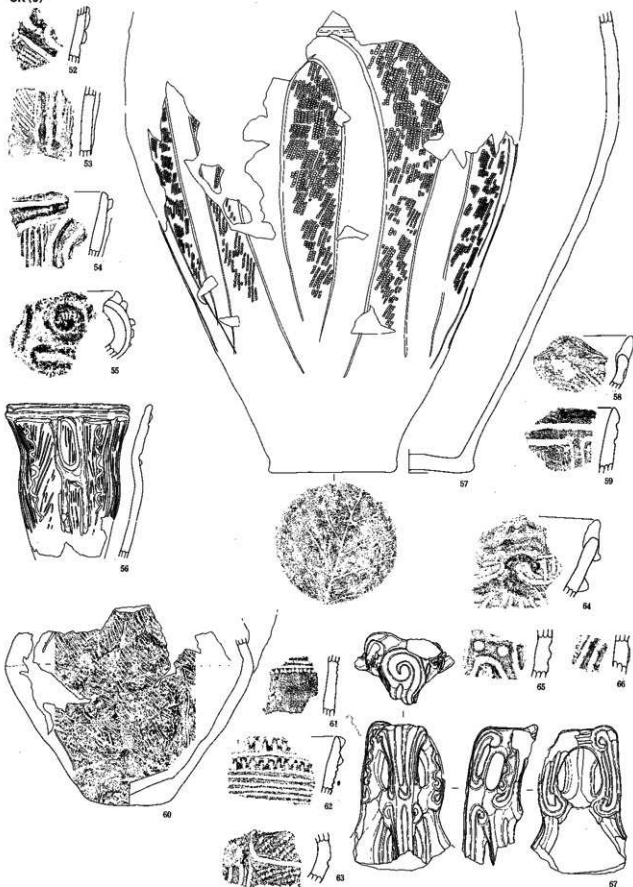
1-SK4, 2-SK9, 3-SK16, 4-10-SK21, 11-13-SK22, 14-SK26・28組合, 15-SK26, 16-17-SK28, 18-SK34, 19-SK36, 20-SK37

SK(2)



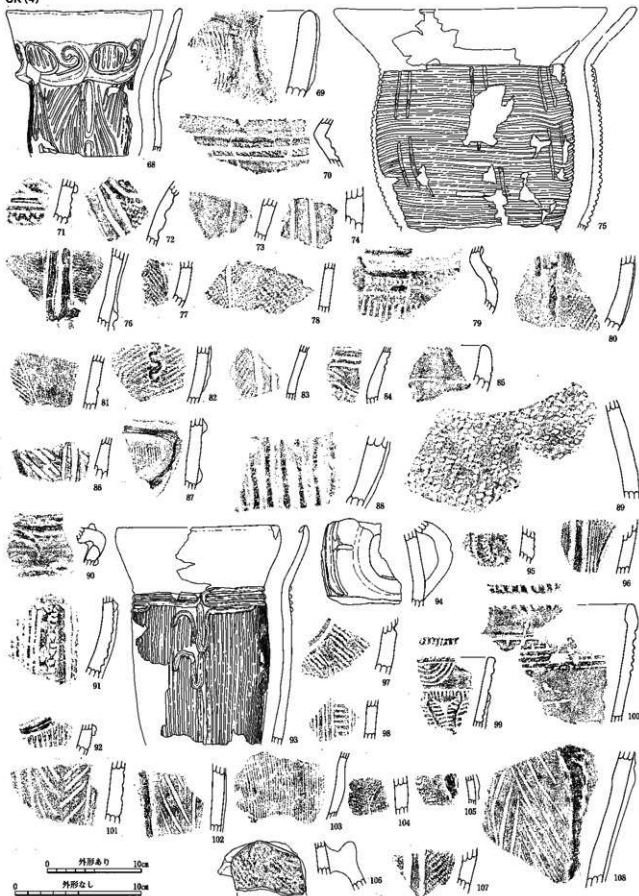
21-24-SK38, 25-SK39, 26-SK44, 27-29-SK47, 30-35-SK49, 36-41-SK50, 42-SK51, 43-44-SK52, 45-46-SK53, 47-SK57, 48-49-SK58, 50-SK69, 51-SK72

SK(3)



52-55-SK74, 56-60-SK78, 61-63-SK79, 63-SK20, 64-SK31, 65-66-SK82, 67-SK88

SK(4)



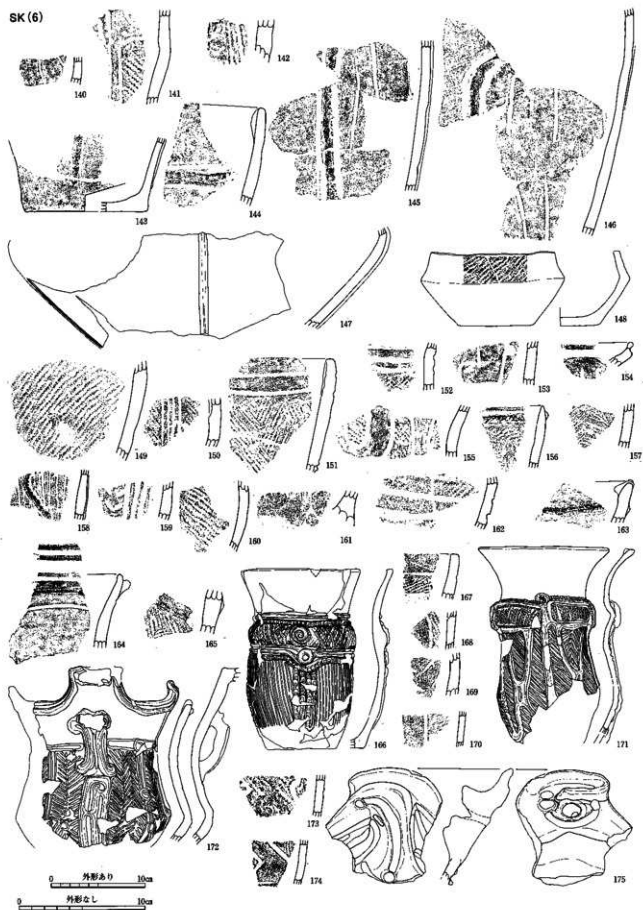
68-SK34, 69-71-SK39, 72-73-SK100, 74-SK102, 75-76-SK106, 77-SK111, 78-79-SK112, 80-81-SK113, 82-85-SK114, 86-87-SK117, 88-89-SK120,
 90-SK123, 91-SK124, 92-96-SK125, 96-97-SK127, 98-100-SK139, 101-SK140, 102-103-SK158, 104-SK159, 105-SK160, 106-SK161, 107-SK162,
 108-SK163

SK(5)



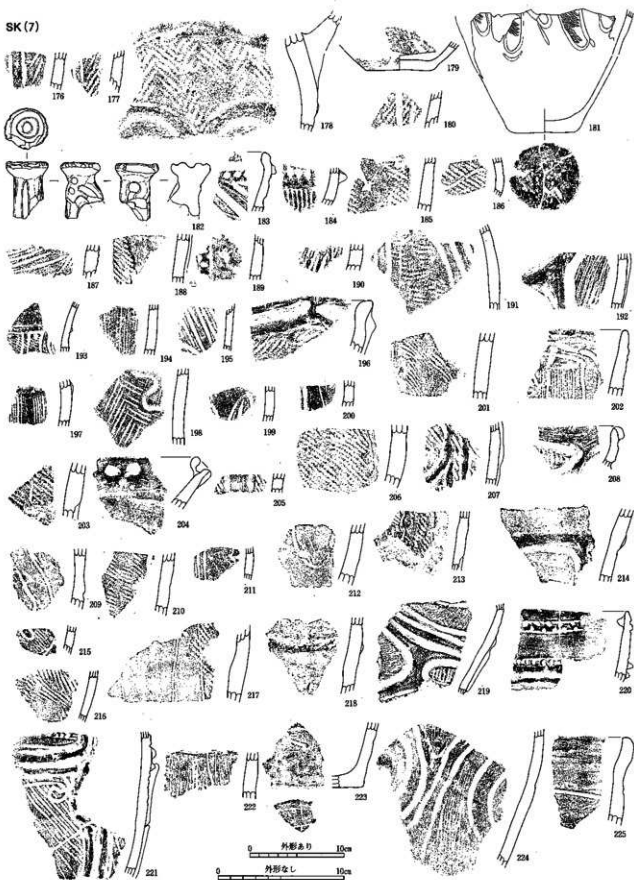
109-SK163, 110-SK164, 111-SK165, 112-SK167, 113・114-SK168, 115・116-SK182, 117・118-SK388, 119-121-SK211, 122・123-SK216, 124-SK218, 125-SK255, 126-SK265, 127-SK281, 128-130-SK388, 131-SK314, 132-SK380, 133-SK402, 134-SK406, 135-SK410, 136-SK425, 137・138-SK448, 139-SK476

SK(6)



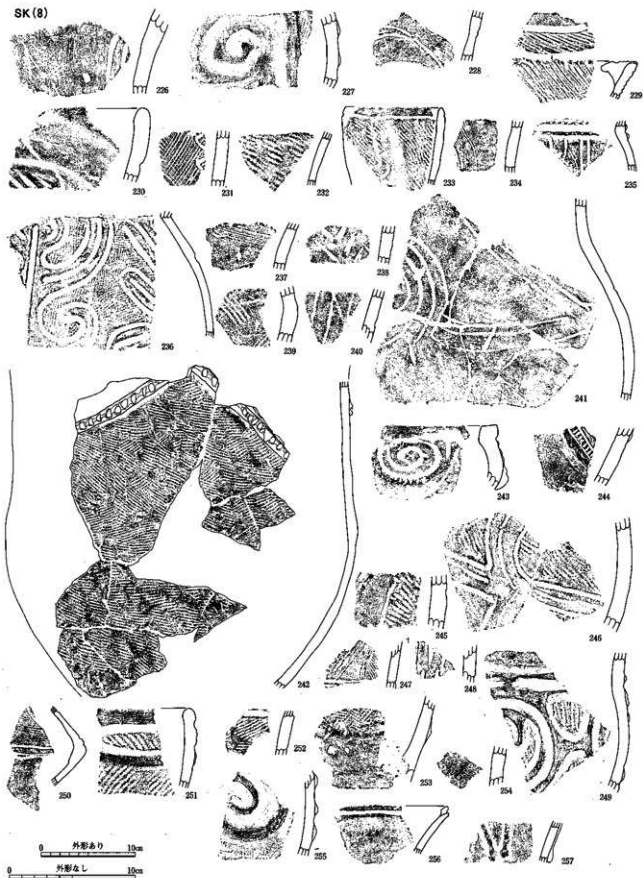
140-SK481, 141-SK495, 142-SK497, 143-144-146-SK499, 145-SK498, 147-148-SK505, 149-SK510, 150-SK516, 151-SK534, 152-SK541, 153-SK502,
 154-SK565, 155-SK566, 156-SK578, 157-SK588, 158-SK590, 159-SK592, 160-SK600, 161-SK629, 162-SK634, 163-SK644, 164-SK645, 165-SK660,
 166-167-SK666, 168-SK669, 169-SK672, 170-172-SK693, 173-SK708, 174-175-SK713

SK (7)



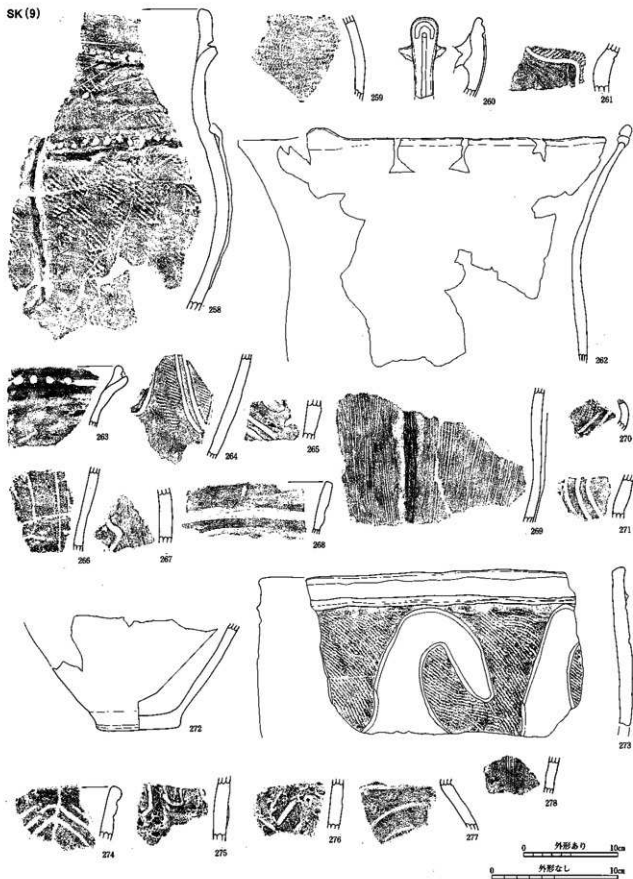
176-SK712, 177-SK714, 178-SK719, 179-SK720, 180-SK749, 181-SK753, 182-183-SK763, 184-SK780, 185-SK784, 186-187-SK787, 188-SK798, 189-SK801, 190-SK802, 191-SK808, 192-SK809, 193-SK821, 194-SK824, 195-SK879, 196-SK880, 197-SK881, 198-SK887, 199-SK894, 200-SK898, 201-SK908, 202-SK970, 203-SK976, 204-SK1034, 205-SK1089, 206-SK1070, 207-SK1084, 208-SK1104, 209-SK1105, 210-SK1122, 211-SK1125, 212-SK1127, 213-SK1130, 214-SK1131, 215-SK1141, 216-SK1154, 217-SK1161, 218-SK1182, 219-221-SK1183, 222-SK1208, 223-SK1210, 224-SK1234, 225-SK1235

SK(8)



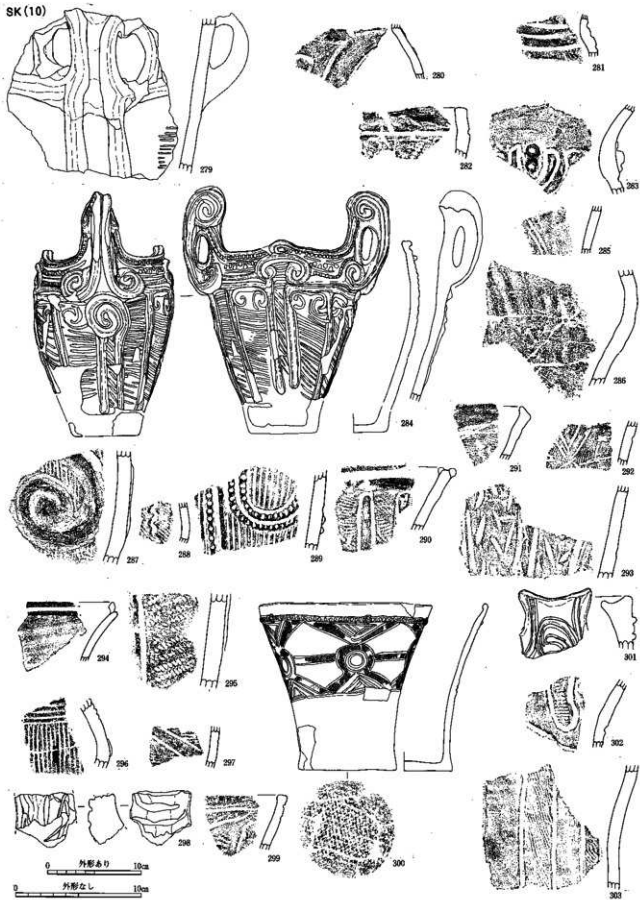
226-SK1251, 227-SK1254, 228-SK1255, 229-SK1275, 230-SK1282, 231-SK1289, 232-SK1302, 233-SK1315, 234-SK1317, 235-236-SK1320,
 237-238-SK1331, 239-SK1333, 240-SK1352, 241-SK1354, 242-SK1373, 243-245-SK1410, 246-SK1413, 247-SK1416, 248-SK1419, 249-SK1420,
 250-SK1421, 251-SK1422, 252-SK1433, 253-SK1427, 254-SK1429, 255-SK1431, 256-257-SK1432

SK(9)



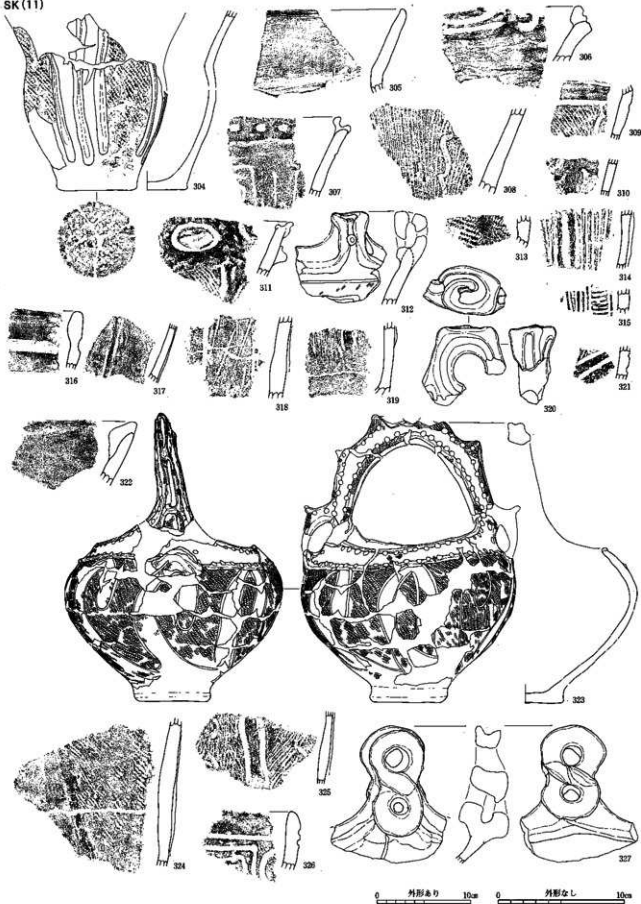
258-SK1420, 259-SK1436, 260-SK1439, 261-SK1443, 262-264-SK1444, 265-SK1447, 266-267-SK1448, 268-269-SK1449, 270-271-SK1450,
272-273-SK1464, 274-275-SK1468, 276-SK1469, 277-SK1470, 278-SK1471

SK (10)



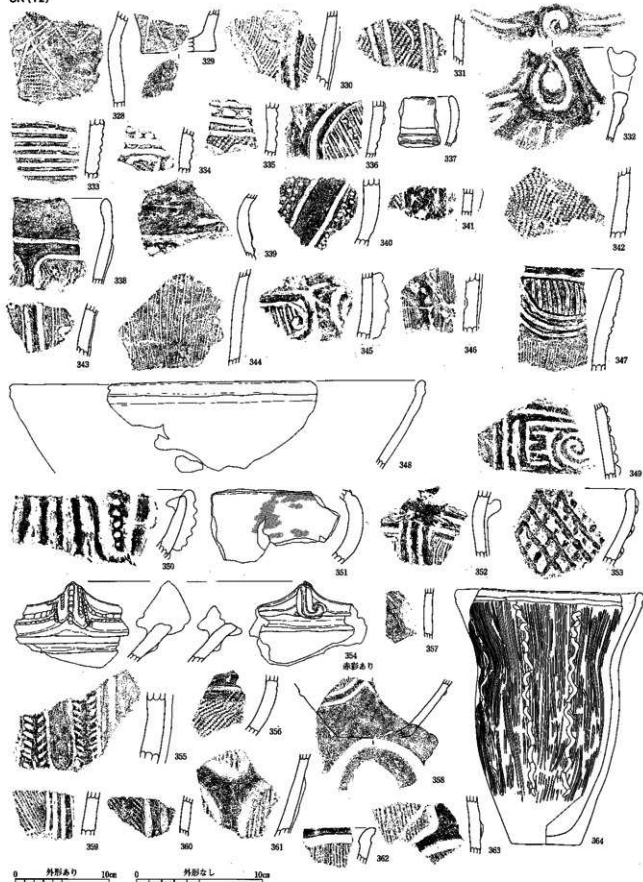
279-SK1473, 280-SK1474, 281-SK1480, 282-SK1483, 283-SK1484, 284-SK1486, 285-SK1490, 286-SK1491, 287-SK1495, 288-SK1497, 289-SK1499,
 290-SK1501, 291-SK1502, 292-293-SK1503, 294-295-SK1504, 296-SK1505, 297-298-SK1508, 299-300-SK1510, 301-SK1513, 302-303-SK1513

SK(11)



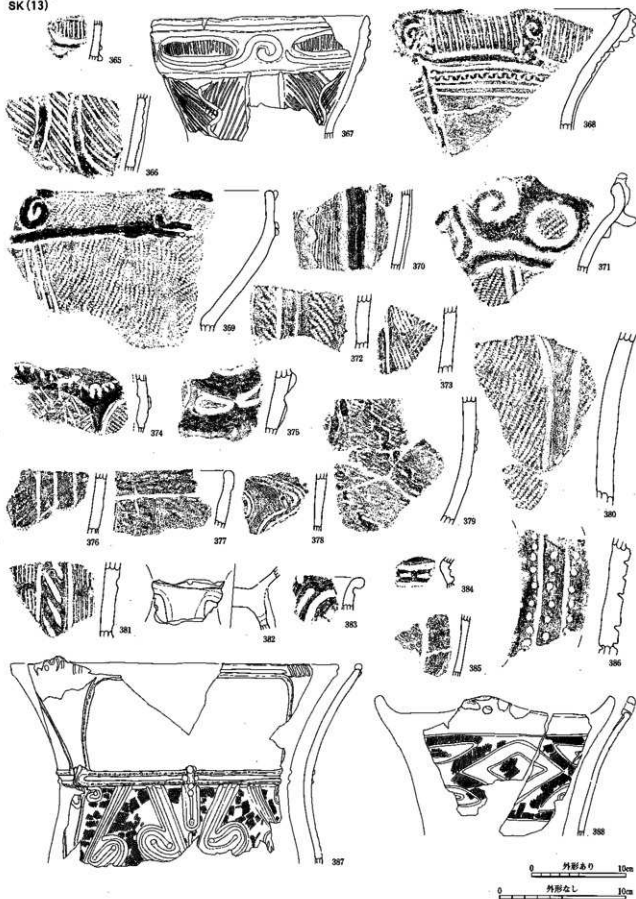
304-SK1514, 305-SK1519, 306-SK1520, 307-SK1521, 308-SK1522, 309-SK1523, 310-SK1523, 311-SK1527, 312-SK1534, 313-SK1535, 314-SK1535, 315-SK1536, 316-SK1536, 317-SK1540, 318-SK1541, 319-SK1542, 320-SK1542, 321-SK1543, 322-SK1544, 323-SK1545, 324-SK1545, 325-SK1546, 326-SK1546, 327-SK1546

SK (12)



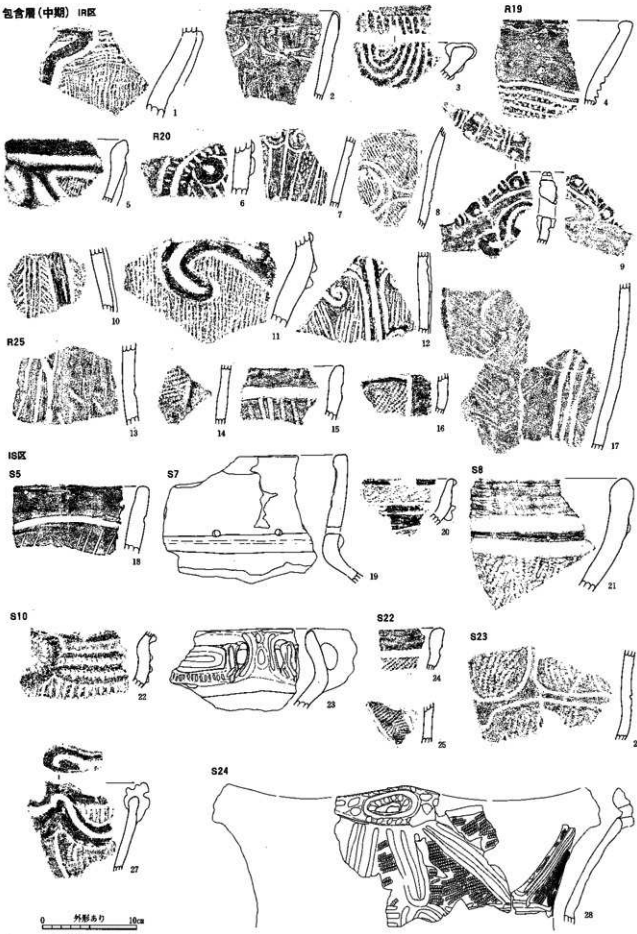
328-SK1546, 329-332-SK1547, 333-SK1549, 334-335-SK1560, 336-SK1552, 337-338-SK1553, 339-SK1554, 340-SK1555, 341-SK1557, 342-343-SK1558,
 344-SK1559, 345-SK1560, 346-SK1561, 347-349-SK1562, 350-352-SK1563, 353-355-SK1564, 356-SK1569, 357-SK1570, 358-SK1571, 359-SK1572,
 360-361-SK1573, 362-364-SK1574

SK(13)



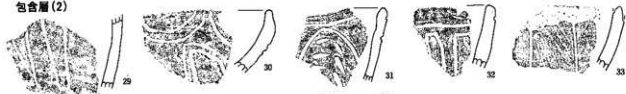
365—SK1576, 366—368—SK1577, 369—SK1578, 370—371—SK1581, 372—373—SK1583, 374—SK1584, 375—SK1591, 376—SK1596, 377—SK1601, 378—SK1602, 379—381—SK1607, 380—SK1609, 382—SK1609, 383—SK1610, 384—SK1612, 385—SK1926, 386—SK1927, 387—388—SK1925

包含層(中期) IⅨ区

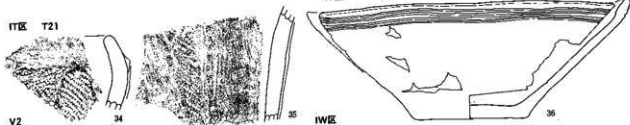


0 外形あり 10cm
0 外形なし 10cm

包含層 (2)



IT区 T21



V2

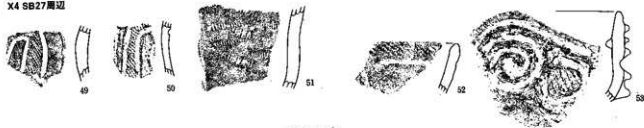


IX区

X4 SB27周辺

X6 SF13付近

X7 ST10上層

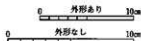


X12 SF5付近

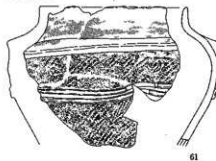
X13 SF17付近



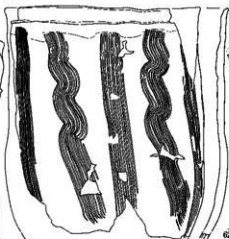
X16 SF02付近



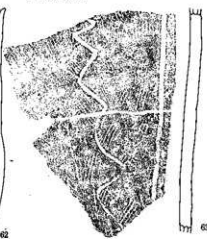
包含層 (3) X16



X17



X21 焼土付近



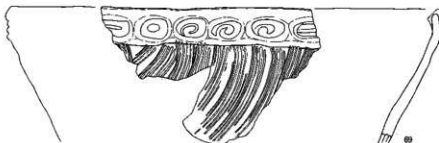
X21 SB35上層



I C区 SB48上層シキ中



C9



I D区, D8



D区 SF8付近



包含層 (後期)

IN区
N24



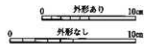
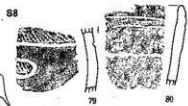
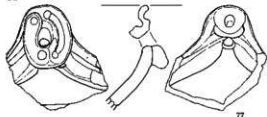
IR区 R15

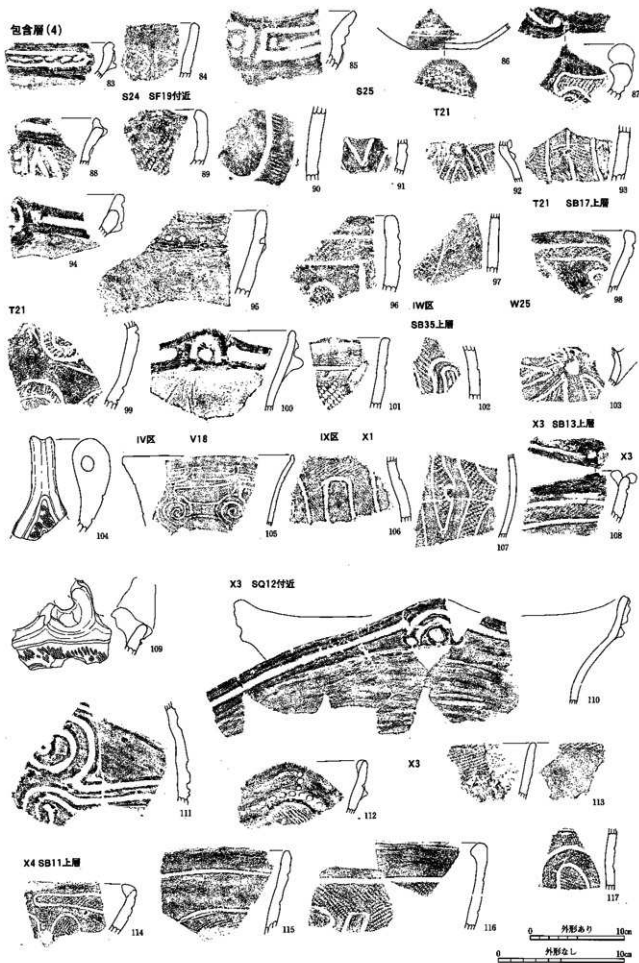


IS区 S4

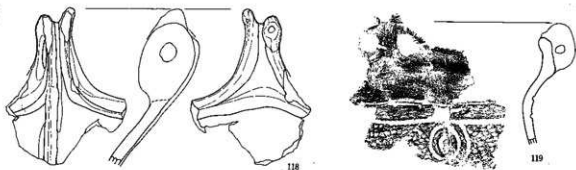


S5

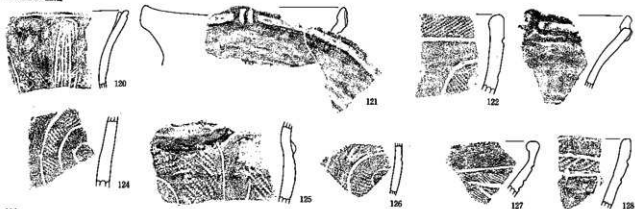




包含層 (5)

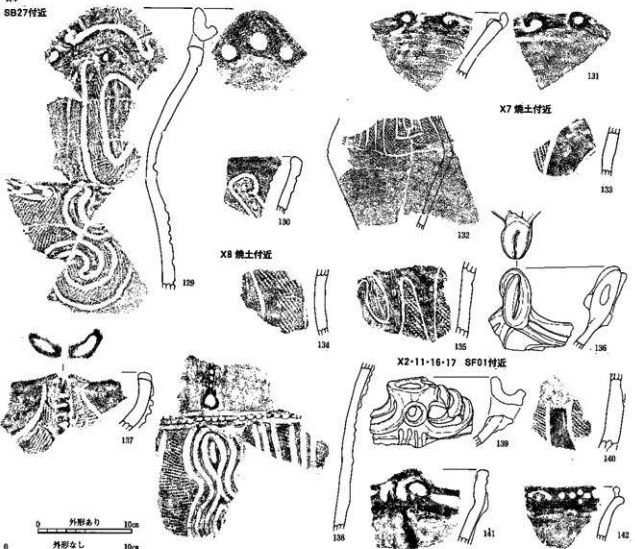


X4 SB27上層



X4

SB27付近



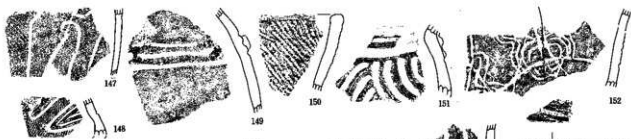
X7 焼土付近

X8 焼土付近

X2-11-16-17 SF01付近



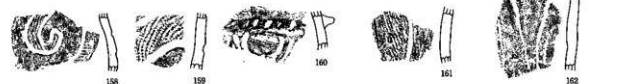
包含層(6)



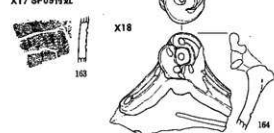
X12 SF05付近



X12 SF18付近



X17 SF09付近



IY区 Y22

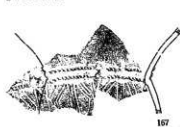


Y23

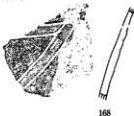


I D区

D1 SB36上層

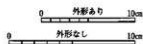
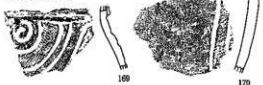


D10

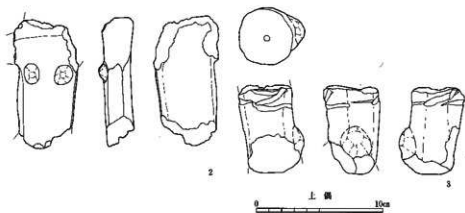
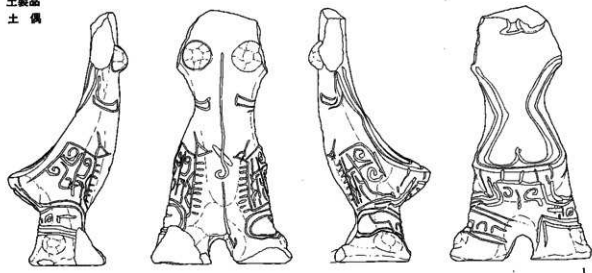


I E区

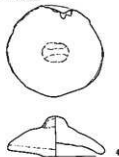
E6-7 SB68上層



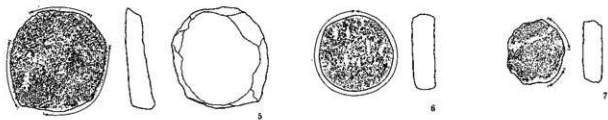
土製品
土偶



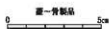
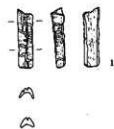
土器蓋

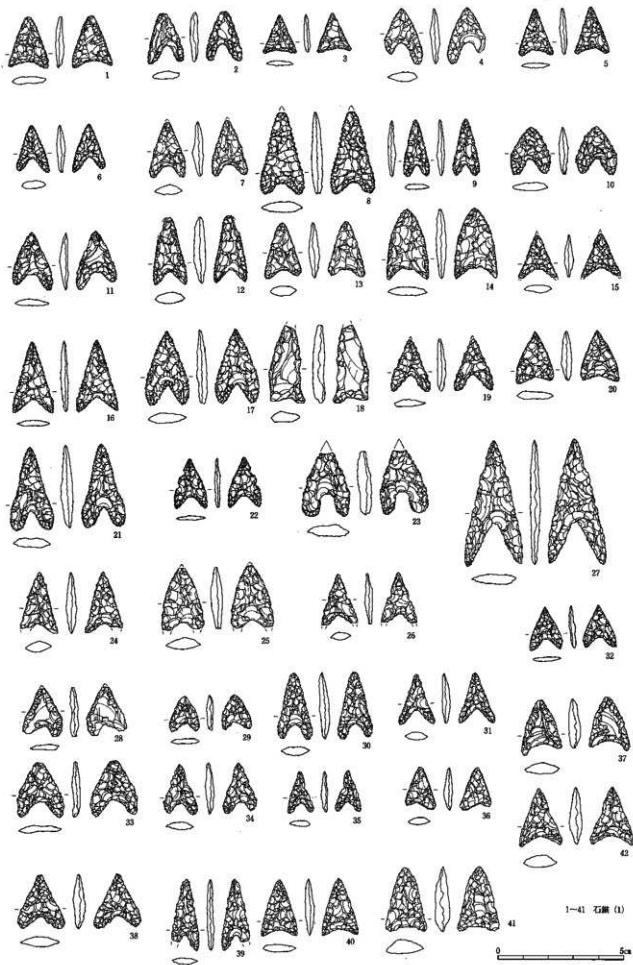


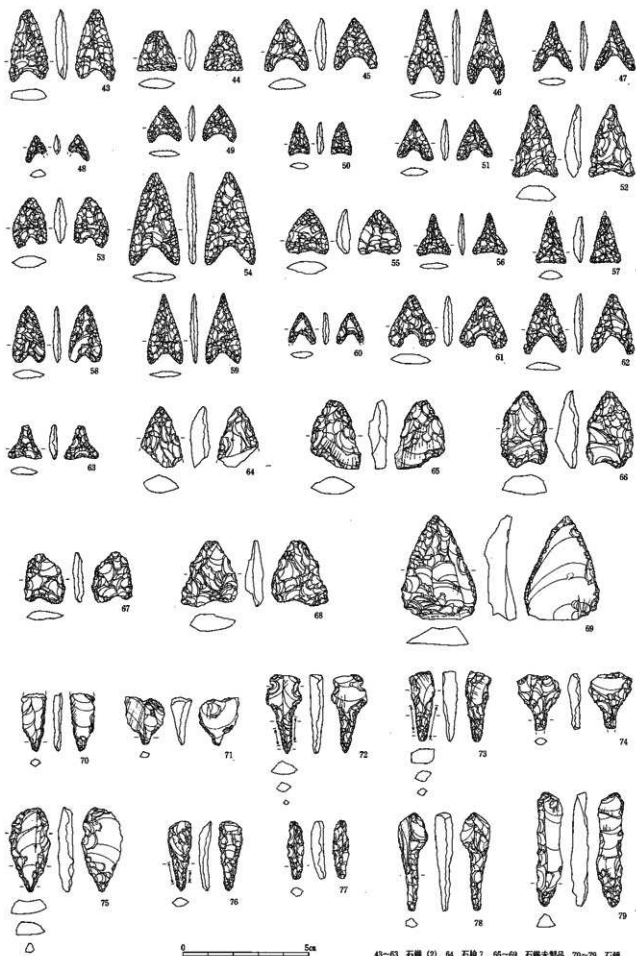
土器片製円板



骨製品





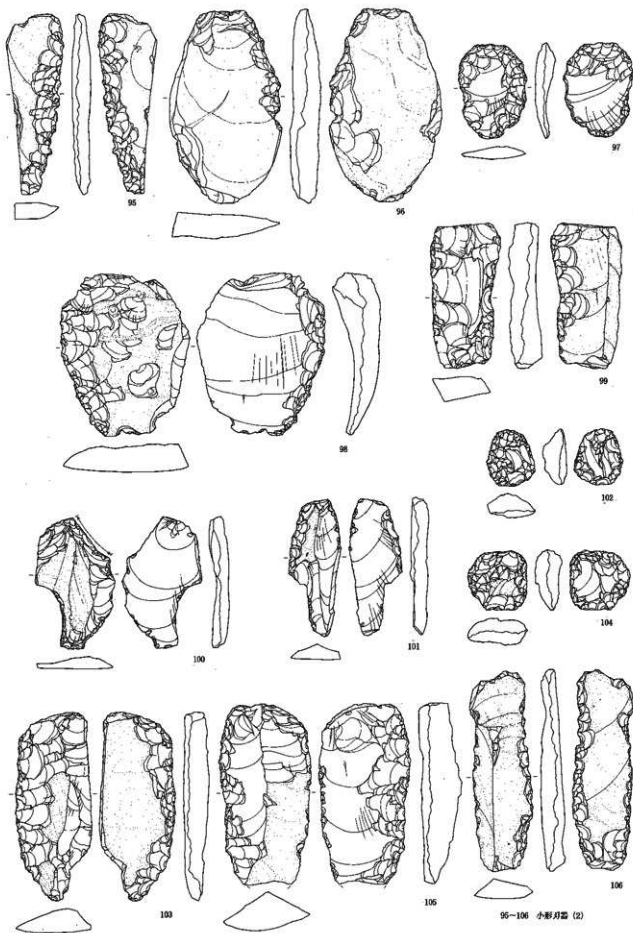


43-63 石鏃(2), 64 石槍?, 65-69 石鏃未製品, 70-79 石錐



80 钩状石器, 81 小形石匙, 82-94 小形刃器 (1)

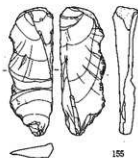
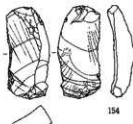
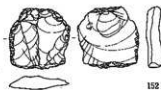
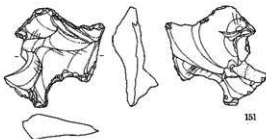
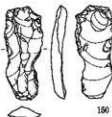
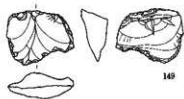
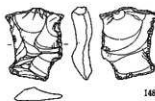
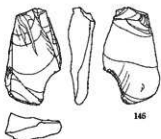
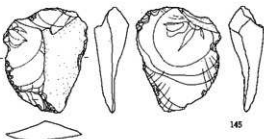
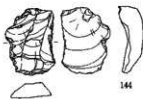
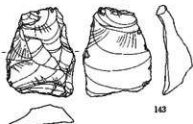
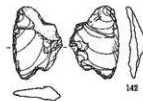
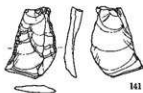
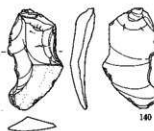
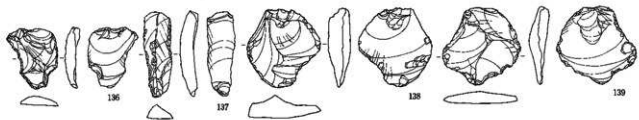






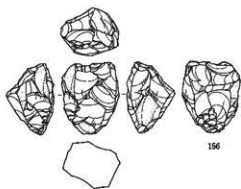
107-130 楔形石器, 131-135 二次加工のある剥片



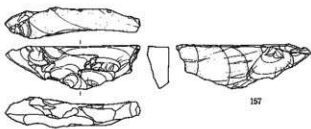


136-155 微細な剥離を有する剥片





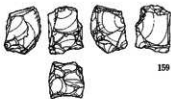
156



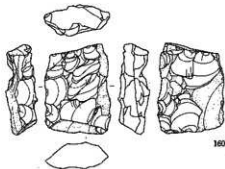
157



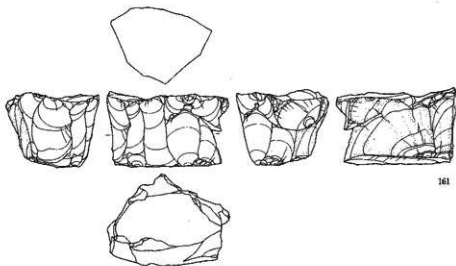
158



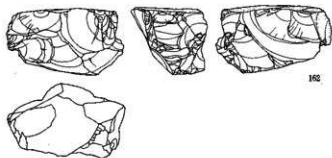
159



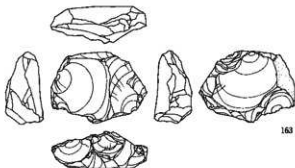
160



161



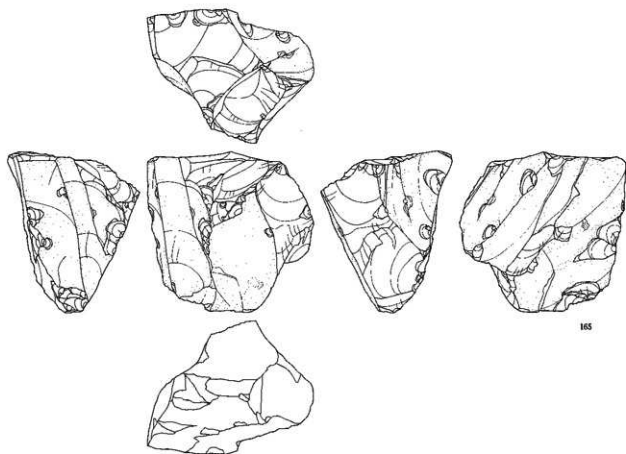
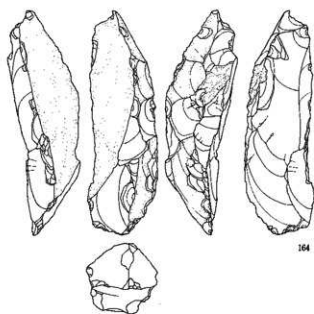
162



163

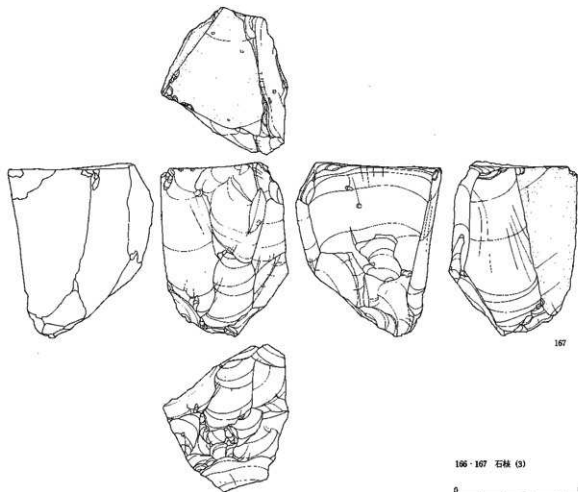
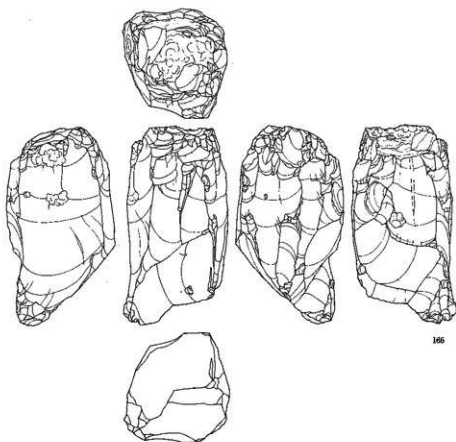


156-163 石核 (1)



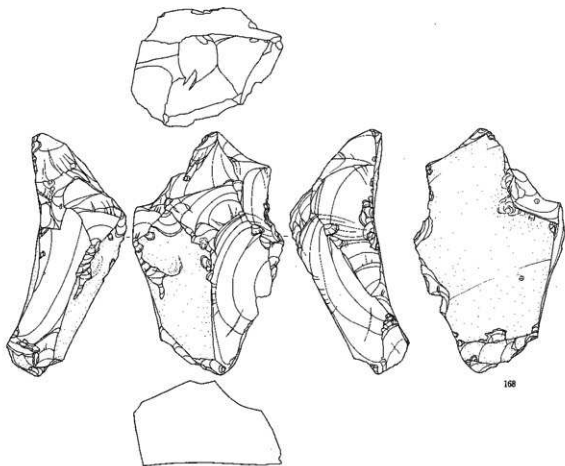
164 · 165 石核(2)



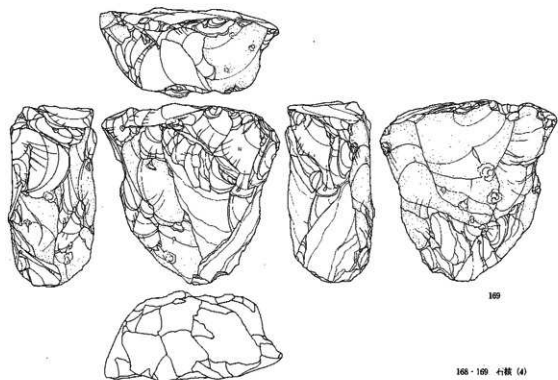


166・167 石核 (3)





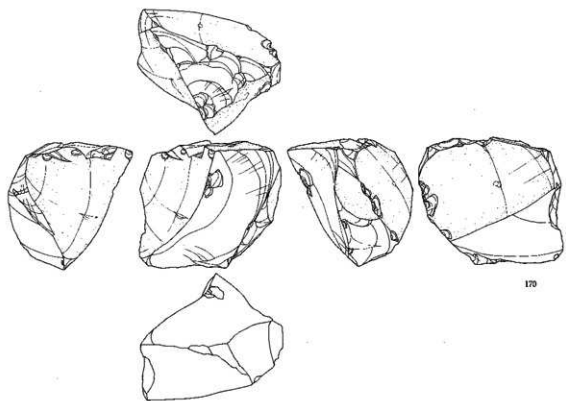
168



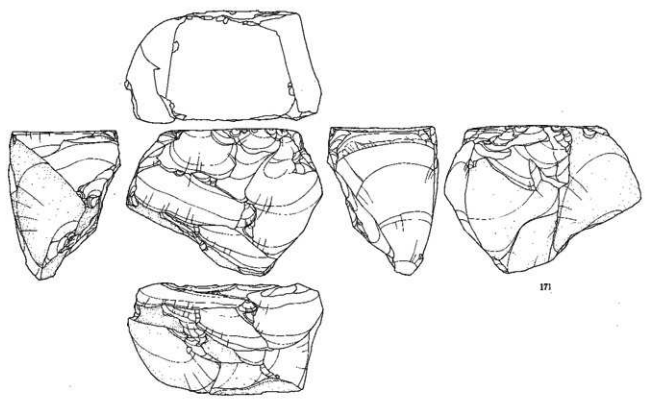
169

168·169 石核 (4)





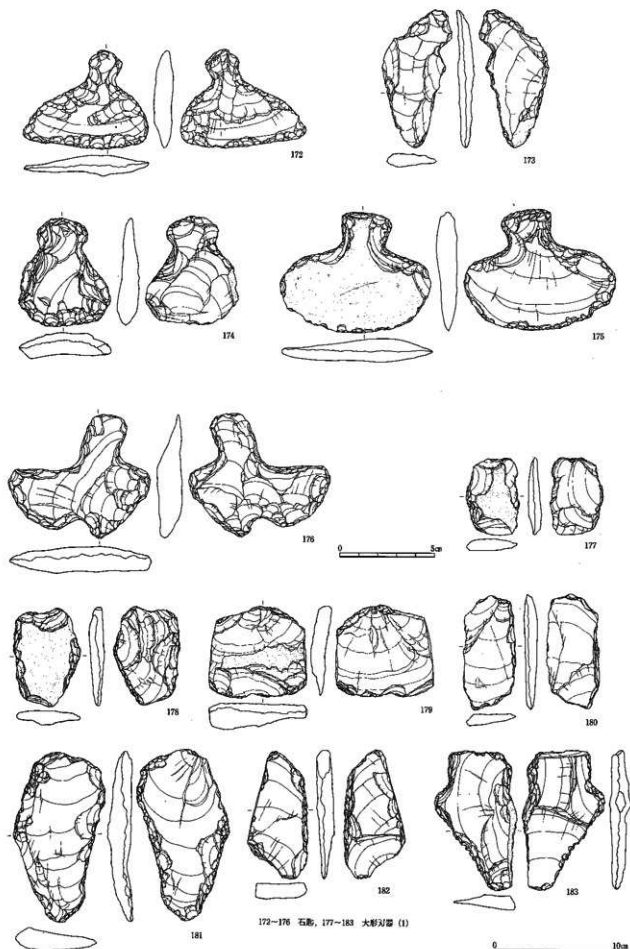
170



171

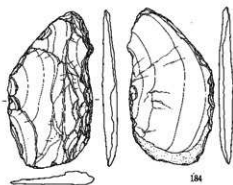
170 - 171 石核 (5)



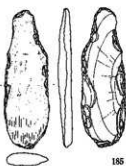


172-176 石匙, 177-183 大形刃器 (1)

0 10cm



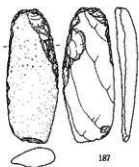
184



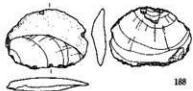
185



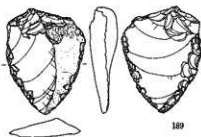
186



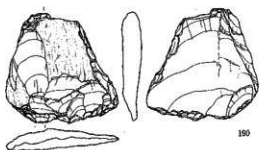
187



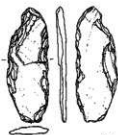
188



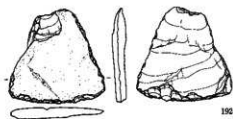
189



190



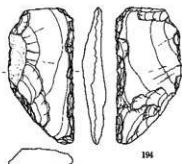
191



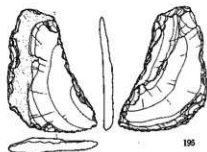
192



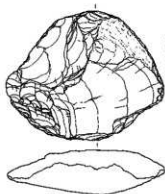
193



194



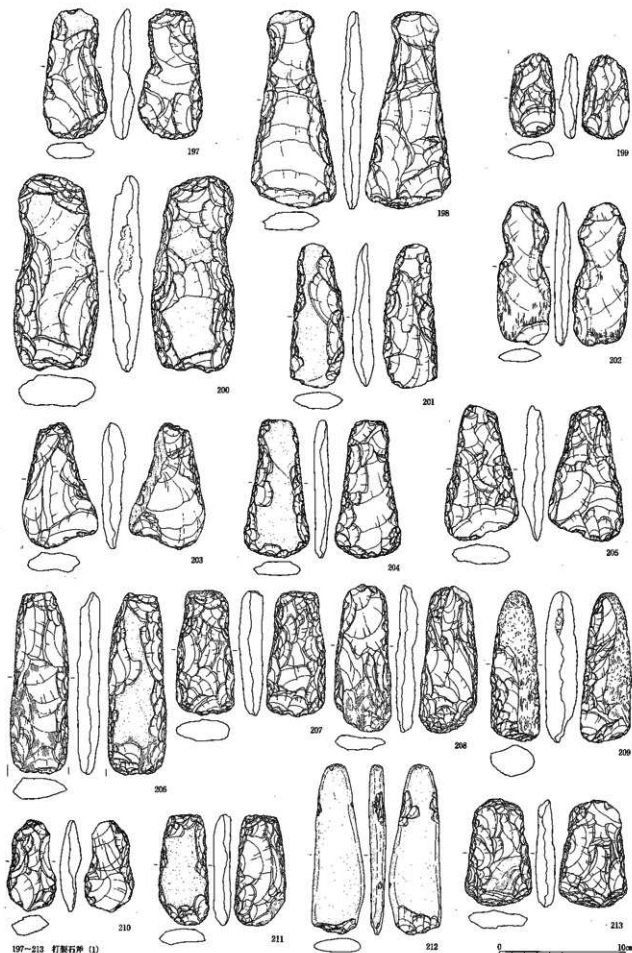
195



196

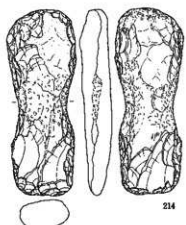
184~196 大形刃器 (2)



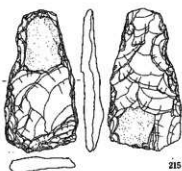


197~213 打製石斧 (1)

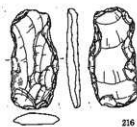
0 10cm



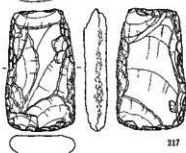
214



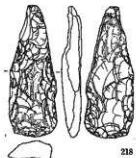
215



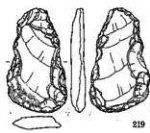
216



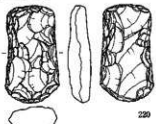
217



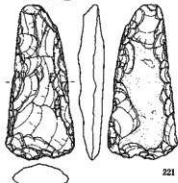
218



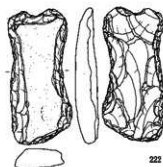
219



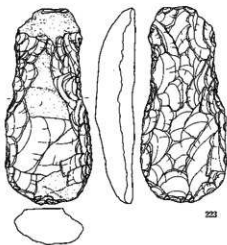
220



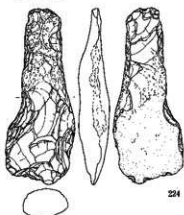
221



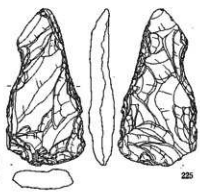
222



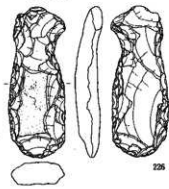
223



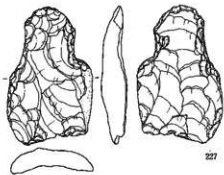
224



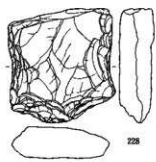
225



226



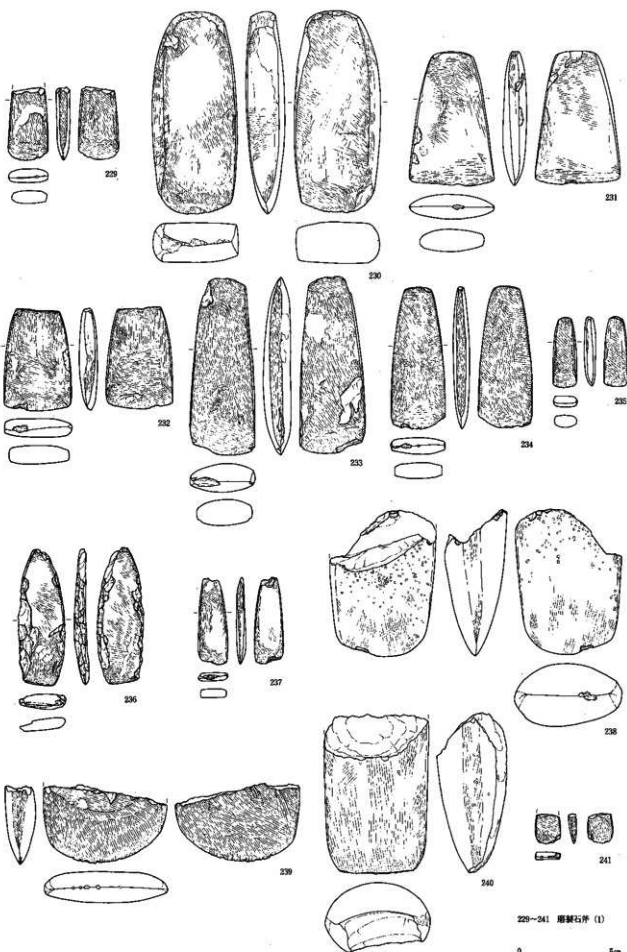
227



228

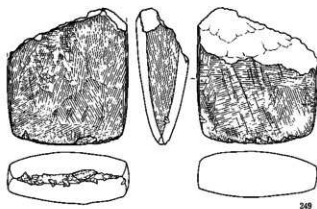
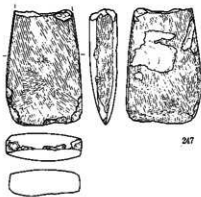
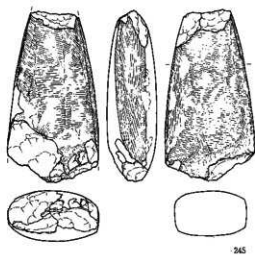
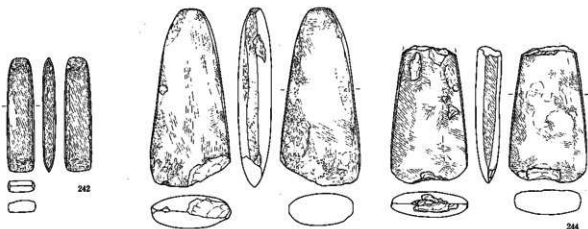
214-228 打製石斧(2)





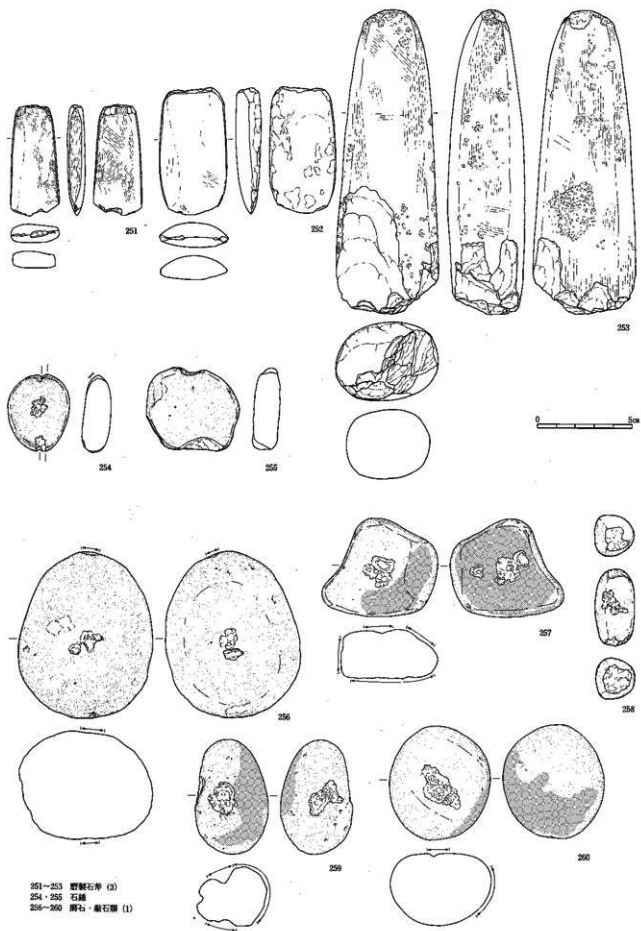
229~241 磨製石斧(1)

0 5cm

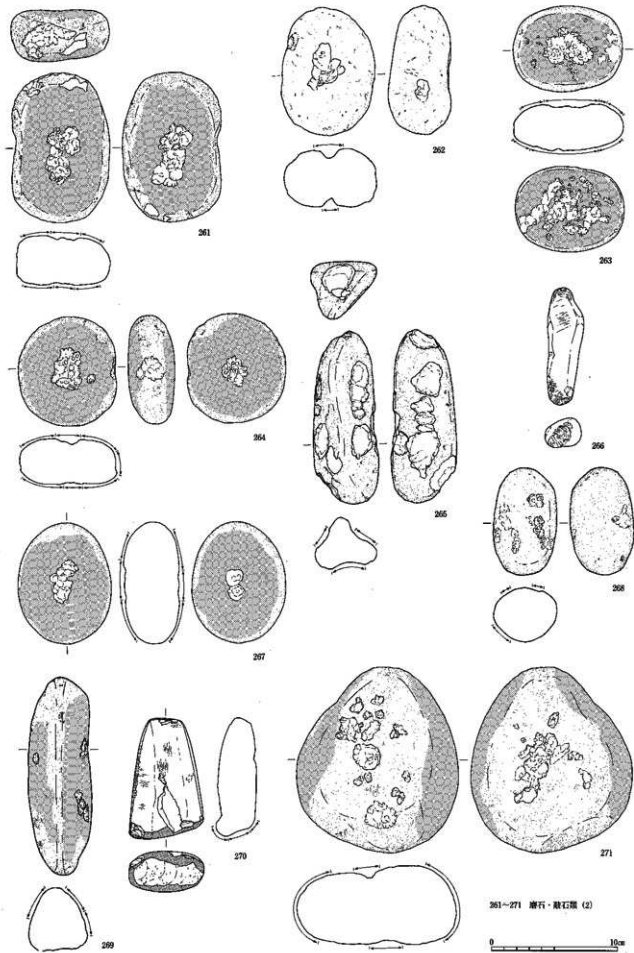


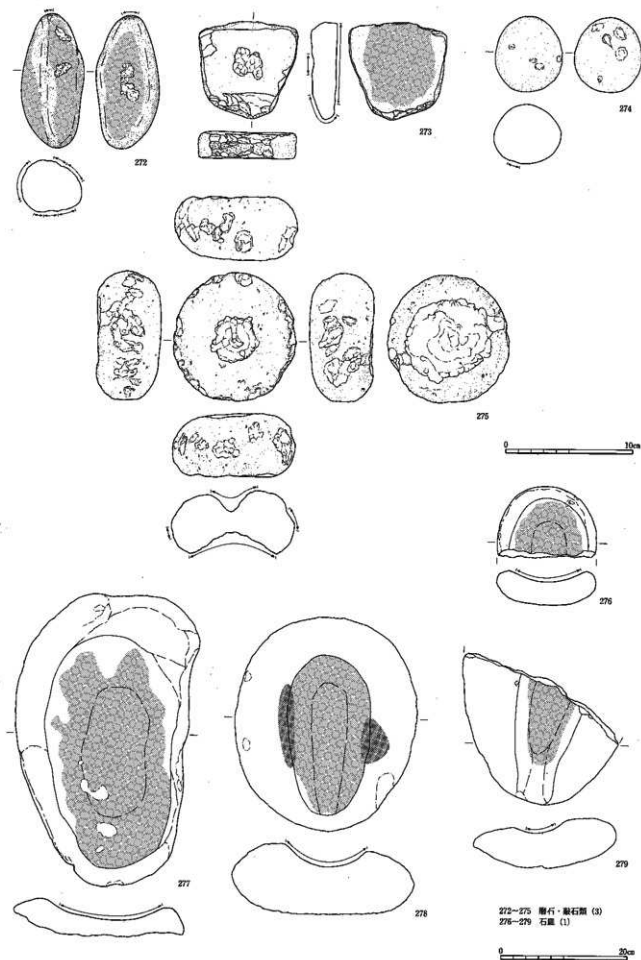
242-250 磨製石斧(2)

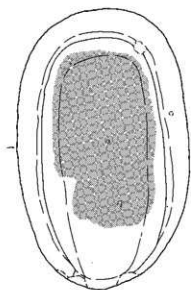




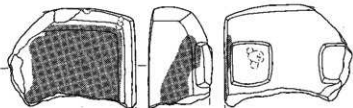
251~253 磨製石斧 (3)
 254・255 石錘
 256~260 磨石・敲石類 (1)



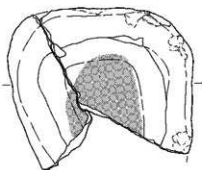




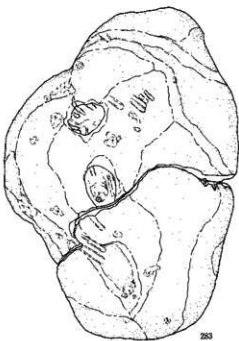
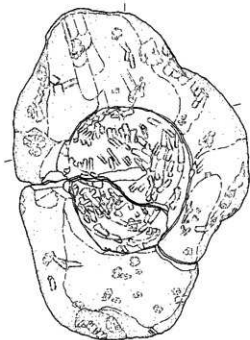
280



281



282

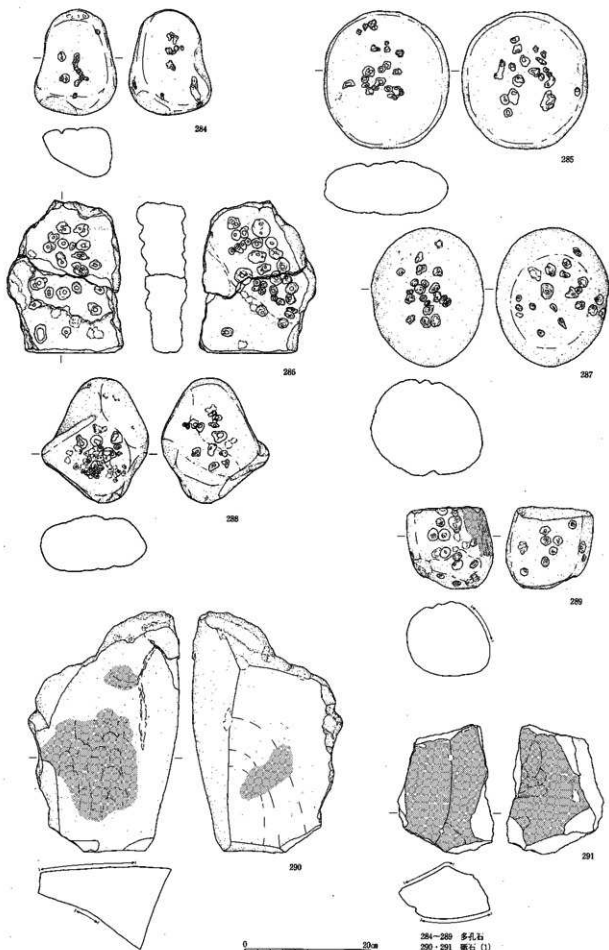


283



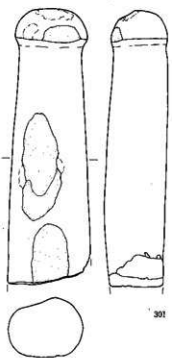
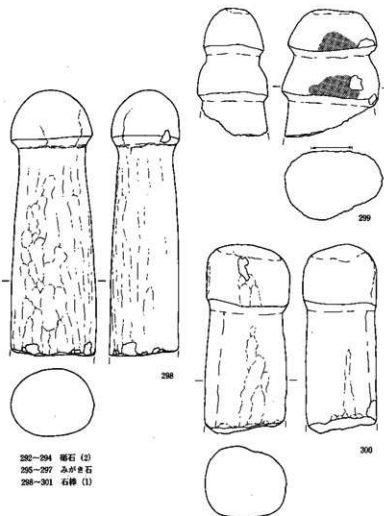
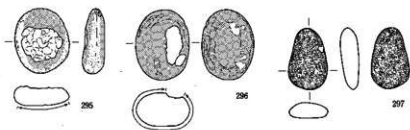
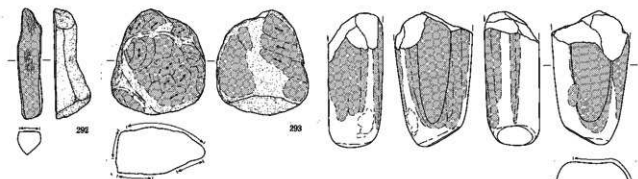
280-283 石皿 (2)



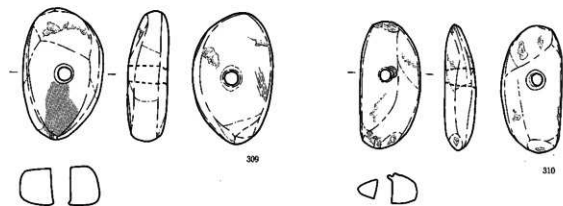
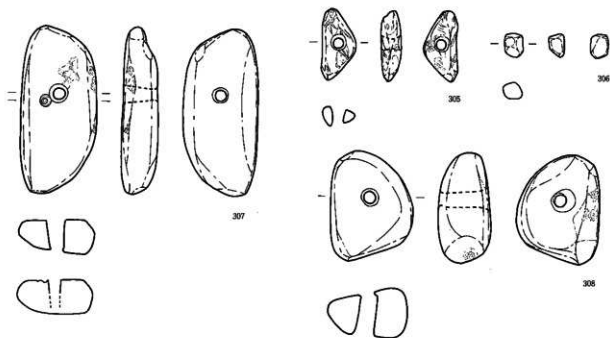
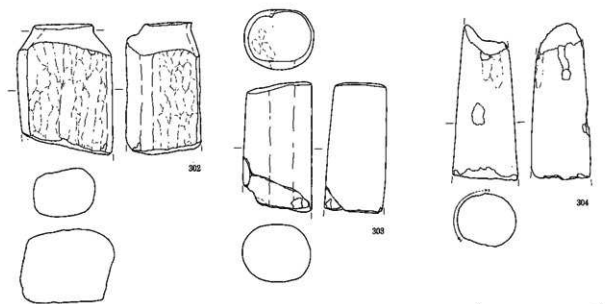


0 20mm

284-289 多孔石
290-291 砥石 (1)



292-294 砥石 (2)
295-297 みがき石
298-301 石棒 (1)



302-304 石棒, 305-310 石製裝身具



写 真 图 版



1. 聖石遺跡と
霧科山
(南西上空より)
平成10年11月
提供：茅野市教育委員会



2. 聖石遺跡と
周辺地形
(南西上空より)
平成10年7月
提供：茅野市教育委員会



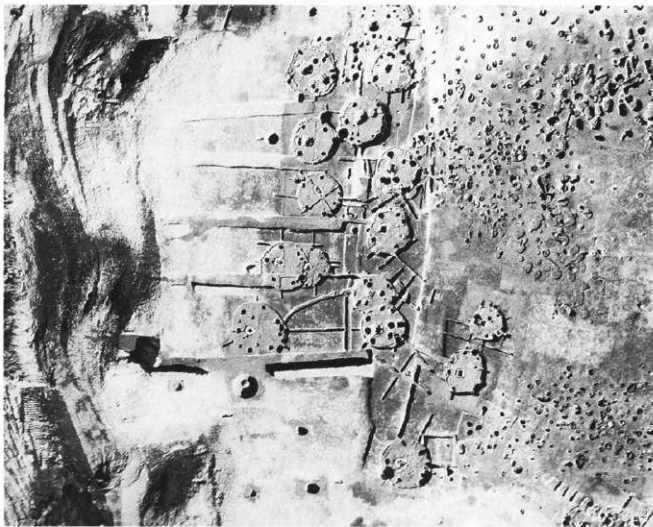
1. 聖石遺跡と
霧が峰
(東上空より)
平成10年11月



2. 環状集落
(北が上)
平成10年11月



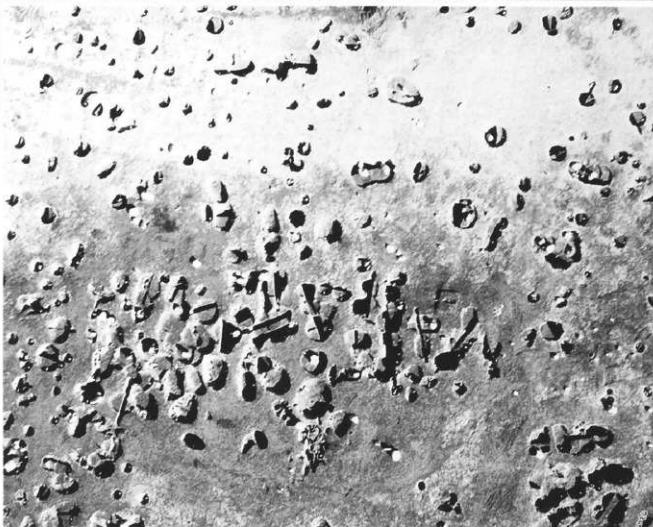
1. 中期の
住居跡群
—台地南側—
(北が上)
平成10年11月



2. 中期の
住居跡群
—台地北側—
(北が上)
平成10年11月



1. 環状集落の
土坑群
—北東側—
(北が上)
平成10年11月



2. 環状集落の
土坑群
—東側—
(北が上)
平成10年11月

1. 基本土層
西端地区
東西ベルト
(南より)
2. SB02
埋裏半載状況
(南より)



3. SB03
(東より)
4. SB03 竈
(南より)

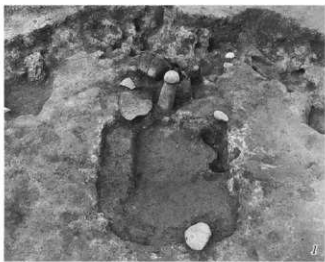


5. SB03
旧炉検出状況
(北より)
6. SB03
埋裏4
半載状況
(南より)



7. SB03
埋裏2, 3
半載状況
(西より)
8. SB04
遺物出土状況
(東より)





1. SB04
か跡と石棒
出土状況
(南より)
2. SB04
か跡と石棒、
一括土器
出土状況
(北より)



3. SB04
石棒半截状況
(北西より)
4. SB04
竈断面
(南西より)



5. SB07
遺物出土状況
6. SB07
遺物出土状況
(近接)
(南東より)



7. SB07
(北西より)
8. SB08・23
(北より)

1. SB08 炉
遺物出土状況
(西より)



2. SB08
遺物出土状況
(近接)
(東より)



3. SB09
遺物出土状況
(北西より)



4. SB09
炉周辺
土器出土状況
(南西より)



5. SB09
土器出土状況
(近接)
(北より)



6. SB13
(北より)



7. SB10
(北より)



8. SB18
(北より)





1. SB18
規堂
1. 2断面
(西より)
2. SB19
(南より)



3. SB19
炉周辺
遺物出土状況
(南より)
4. SB19 炉
遺物出土状況
(南東より)



5. SB19
埋蓋半載状況
(南より)
6. SB23
炉と
石皿出土状況
(東より)



7. SB25
遺物出土状況
(南より)
8. SB25
ピット1内
釣手土器、
磨製石斧
出土状況
(南より)

1. SB26
 (南より)
 2. SB26
 石の断面
 (北東より)



3. SB27
 遺物出土状況
 (北西より)
 4. SB27
 埋裏半截状況
 (西より)



5. SB30
 (南より)
 6. SB30
 石の断面
 検出状況
 (東より)

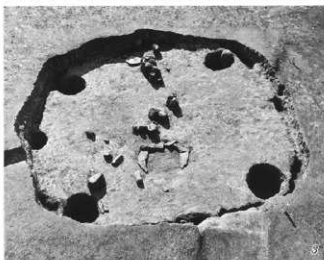


7. SB32
 (北より)
 8. SB32
 埋裏半截状況
 (北より)





1. SB33
(北東より)
2. SB36
埋塞半載状況
(北より)



3. SB37
遺物出土状況
(北より)
4. SB37
炉と石棒
(北より)



5. SB37
埋塞半載状況
(東より)
6. SB39
(北より)



7. SB39
埋塞検出状況
(西より)
8. SB39
埋塞半載状況
(東より)

1. SB39
ピット3内
土器出土状況
(東より)
2. SB40 炉跡
埋戻半載状況
(西より)



3. SB43, 46
(北より)
4. SB44
遺物出土状況
(北より)



5. SB44
埋戻1.2
半載状況
(東より)
6. SB45 炉、
副炉出土状況
(北より)

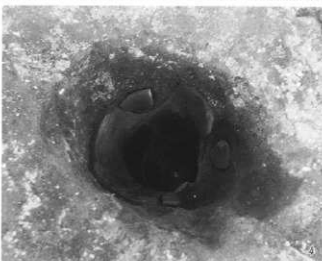


7. SB47
埋戻半載状況
(南より)
8. SB48 炉
(南東より)





1. SB49 炉
(北より)
2. SB50
(北西より)



3. SB50
伏罨 (近接)
(西より)
4. SB53
ピット2内
土器出土状況
(東より)



5. SB55 炉
(西より)
6. SB55、56
検出状況
(西より)

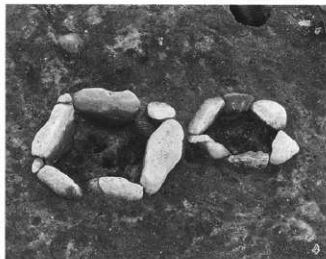


7. SB56 炉
(西より)
8. SB57
北東壁際
土器出土状況
(東より)

1. SB58
 (北より)
 2. SB58
 埋甕1
 半載状況
 (西より)



3. SB58
 埋甕2
 半載状況
 (西より)
 4. SB60
 炉1. 2
 (西より)



5. SB61
 埋甕半載状況
 (西より)
 6. SB62
 遺物出土状況
 (北より)



7. SB63
 (北東より)
 8. SB64
 埋甕半載状況
 (南より)

