



空撮全景(南から)



空撮全景(東から)



S B03



同裸出土狀態



S B07遺物出土狀態



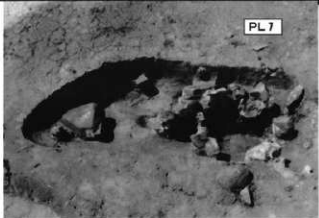
S B01



同遺物出土狀態



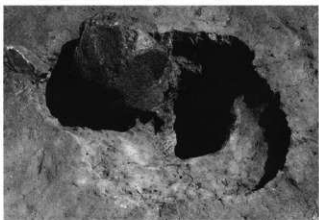
S B05



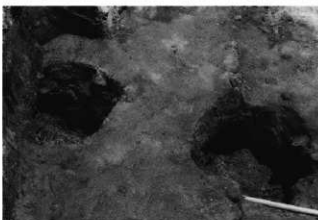
左：SK01  
右：SK02



左：SK05  
右：SK06



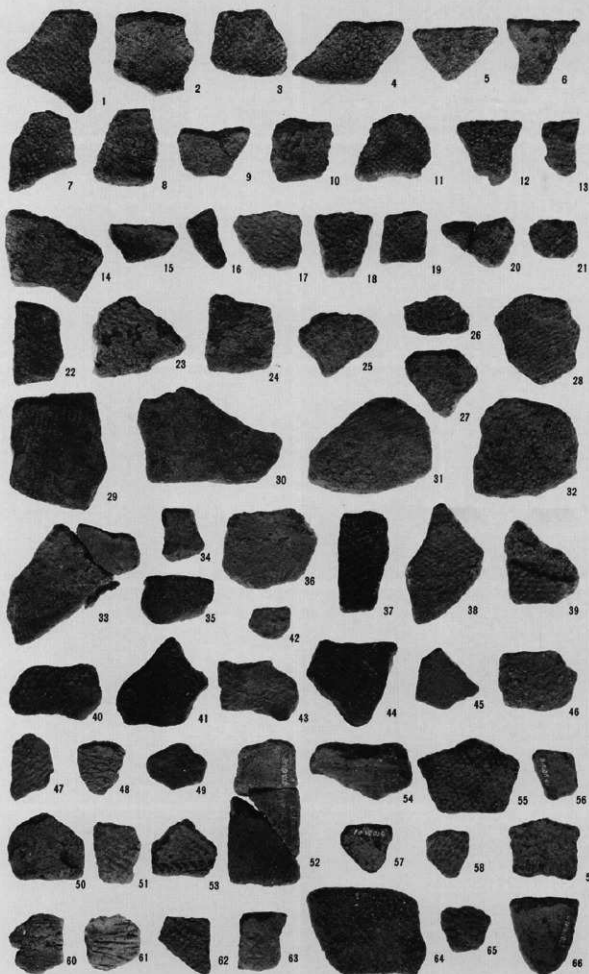
左：SK10  
右：SK11



左：SK07・08  
右：作業風景



左：03トレンチ土層断面  
右：01トレンチ土層断面

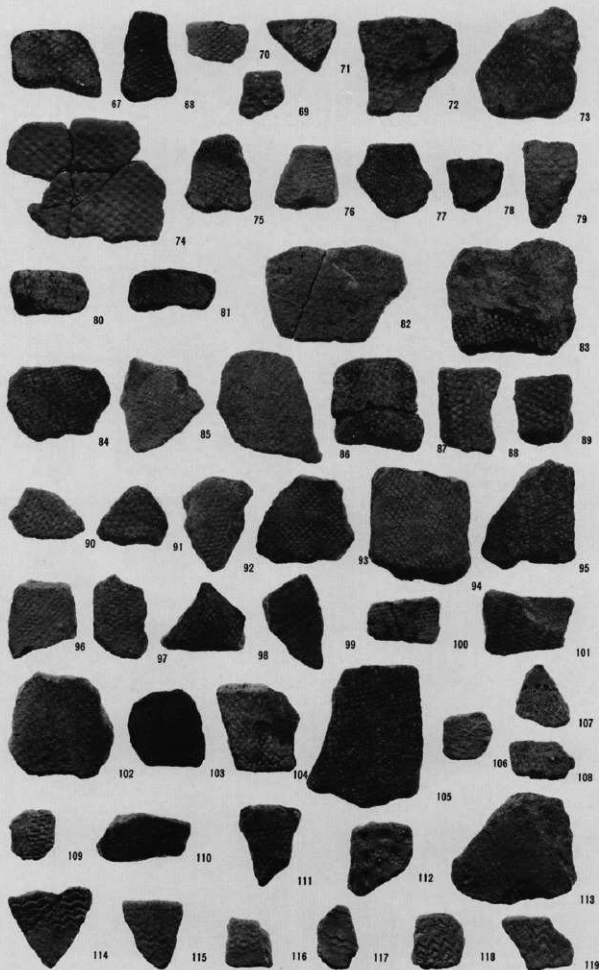


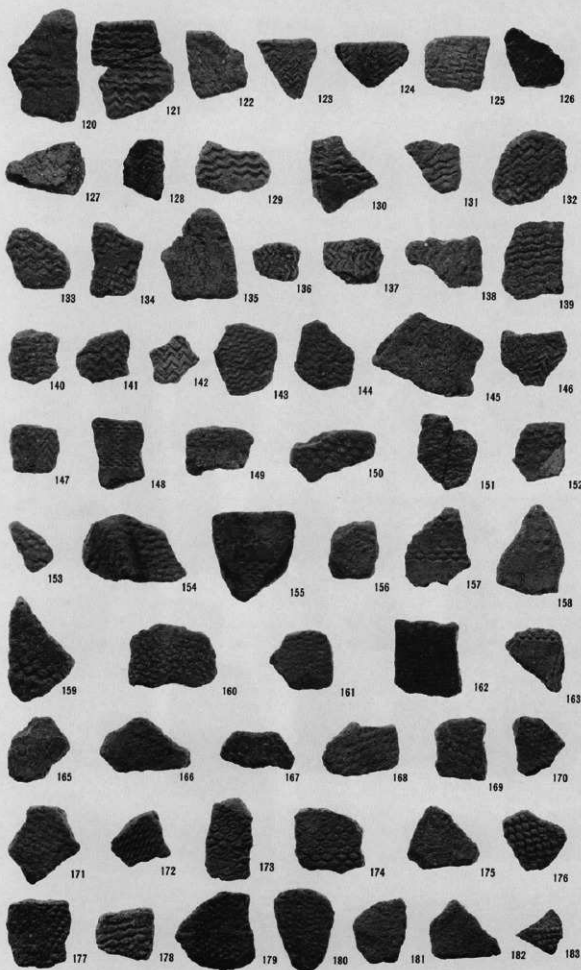
1 ~ 36 : S B 01

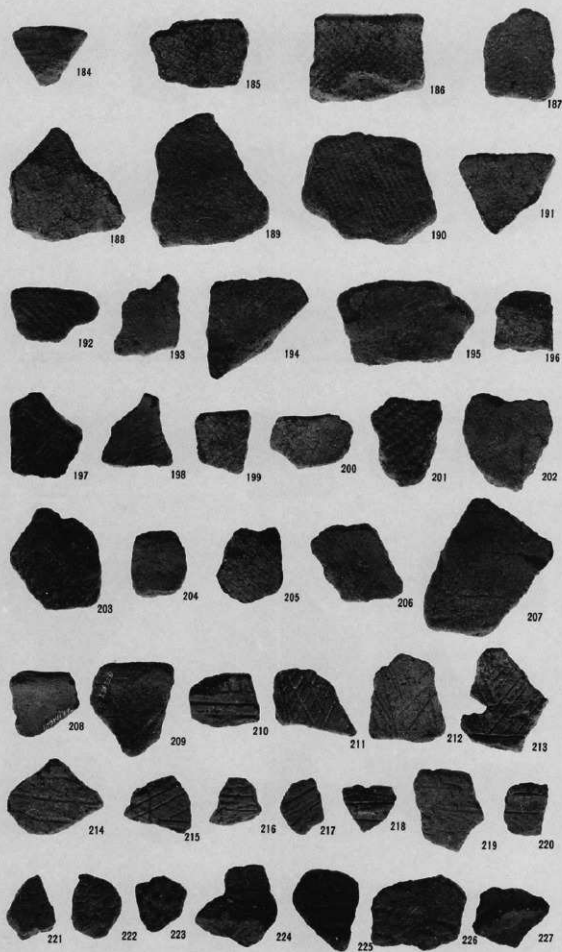
37 ~ 54 : S B 03

55 ~ 61 : S K 01

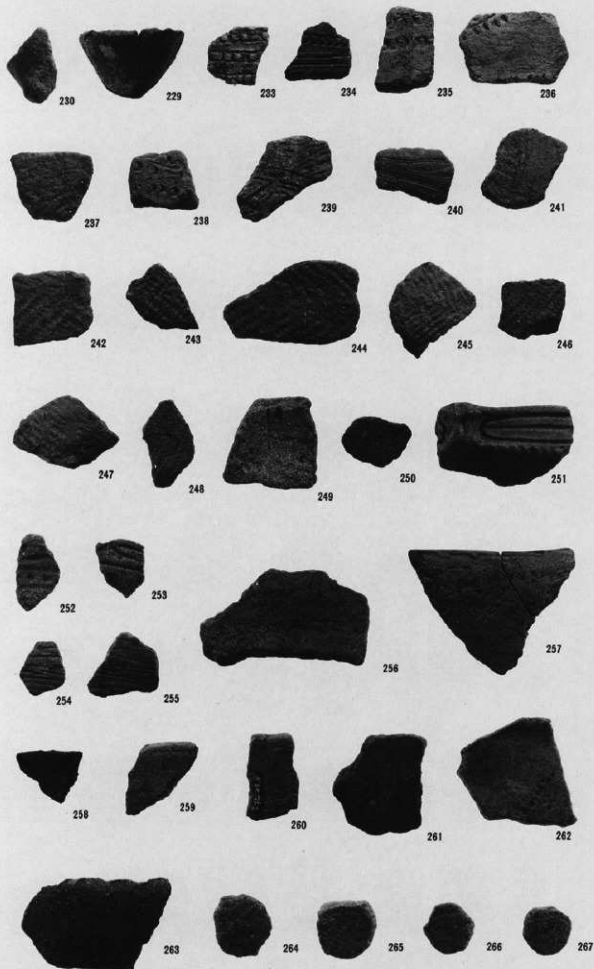
62 ~ 66 : S K 11

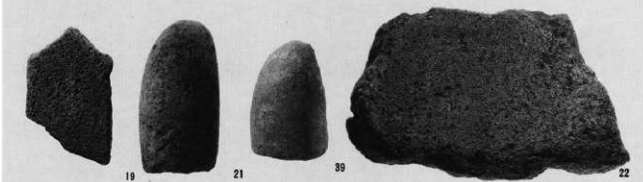
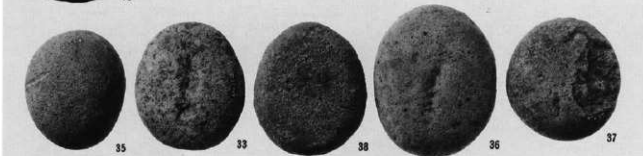
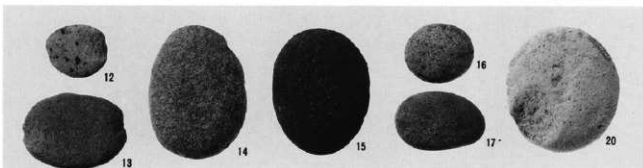
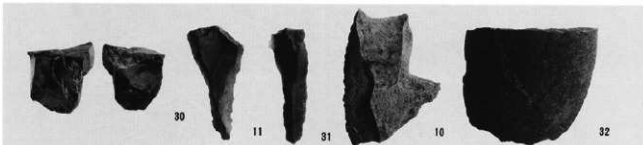














41

48



42



49



47



50



43



44



45



46



51



52

41~46 : S K01  
47 : S K11  
48~52 : S K02

原石・石核



53



54



55



58



59



61



56



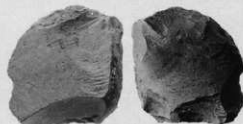
60



57



63



62

剥片A



64

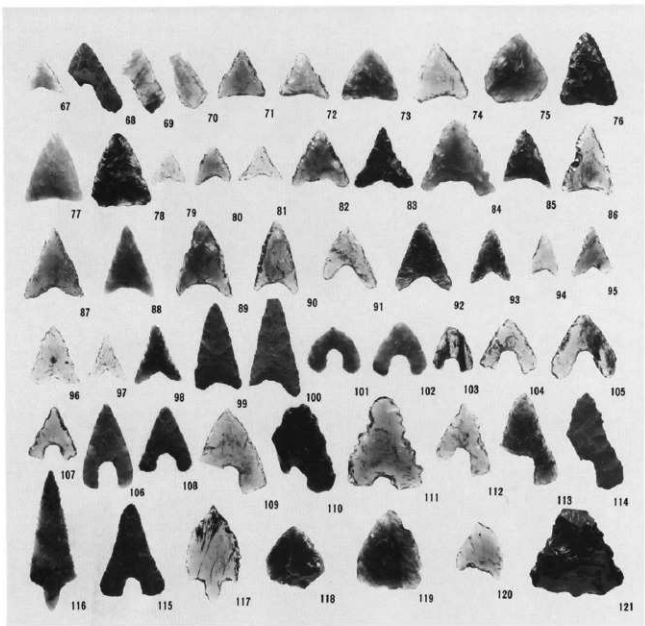


65



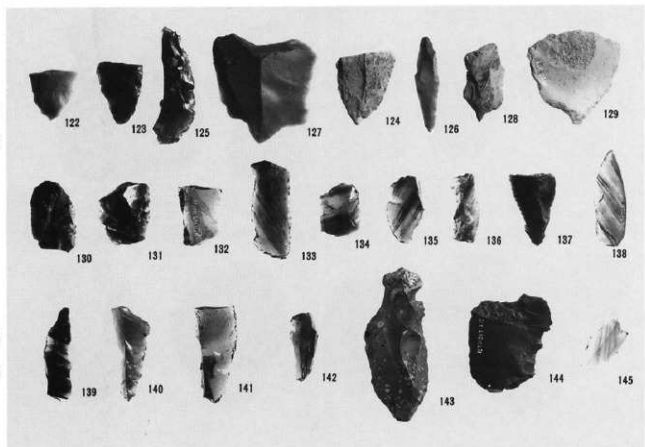
66

石 鏃



122~125 : 石槍

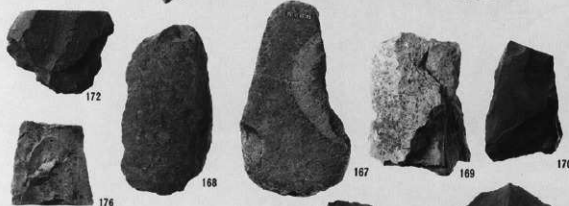
126~129 : 石鏢



130~142 : 刃器

143~145 : 石匙

146~160：大形刃器



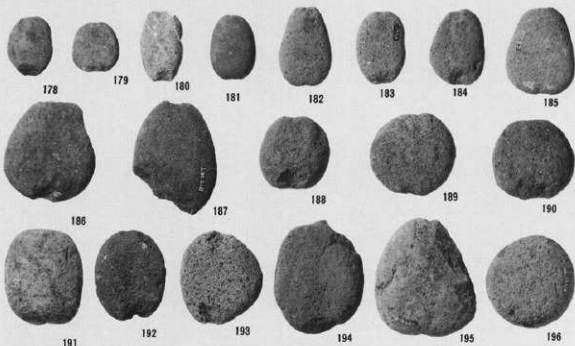
167~172・176・177  
：打製石斧

171・173~175  
：磨製石斧

礮器



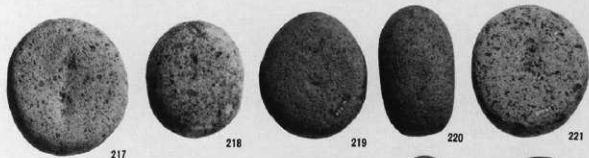
178-195 : 石錘



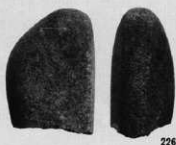
196-216 : 磨石類



217~224・235: 磨石類



225~229: 特殊磨石

230~234・236  
: スタンプ形石器

237・238: 砥石



2・5：SK05  
6～10・13：SB07  
15・16遺構外





遺跡遠景(南西から)



遺跡全景(南東から)



遺跡全景(北西から)



西区全景(北西から)



東区全景(西から)



東区全景(南西から)

PL22



小坂西遺跡

左：東区上段(南西から)  
右：同部分



左：東区中段(南西から)  
右：同部分



東区下段礫層(西から)



同部分(東から)



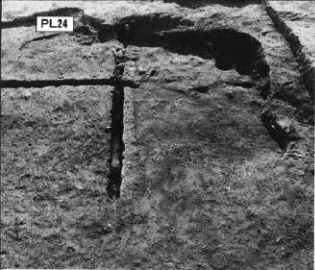
西区中世遺構群  
(東から)



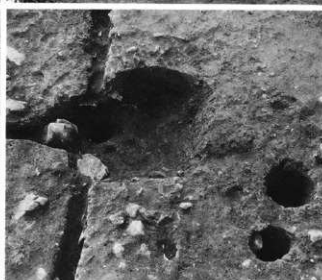
S B01



左：S B02  
右：S K01・02



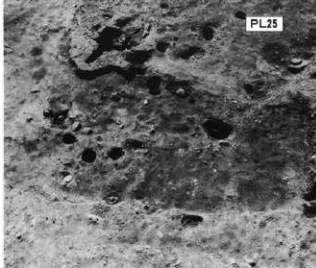
左: S B03  
右: S B04



左: S K05  
右: S K04・06・07



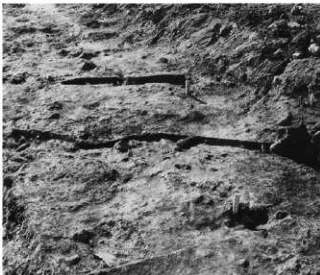
左：S B14  
右：S B06



左：S K60  
右：S K61

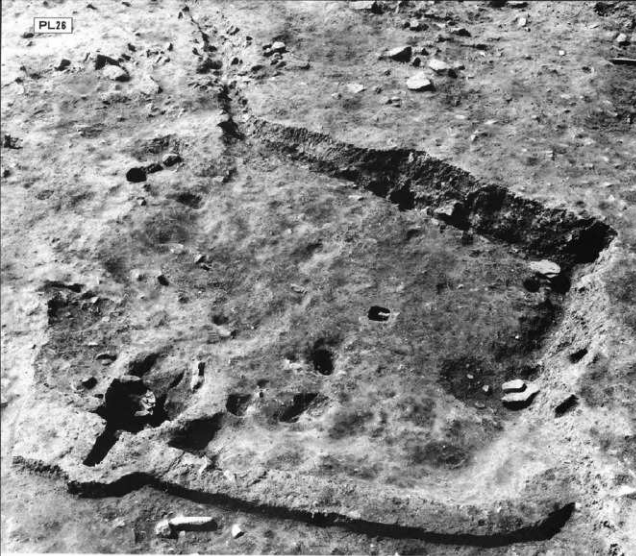


左：S B10  
右：S K34



左：S B08  
右：S B09





S B05



S B06

小坂西遺跡



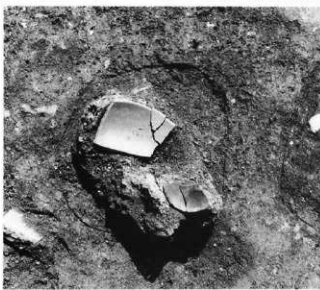
左：SB05  
右：同カマド



左：SB07北西隅  
右上：同北壁  
右下：同西壁

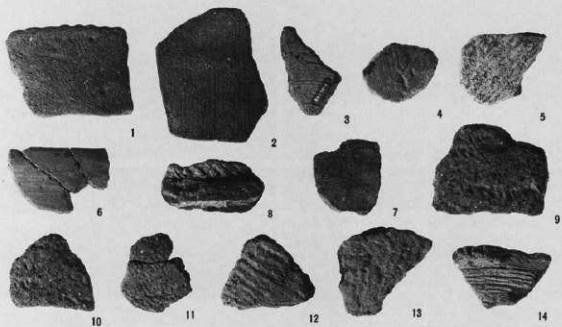


ST03



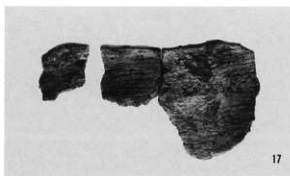
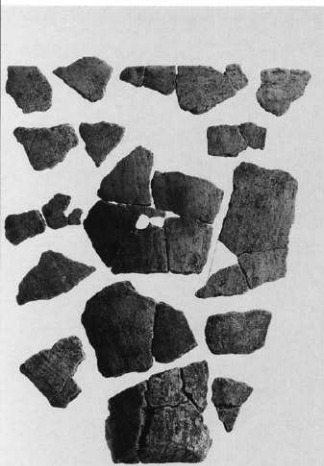
左：SK26遺物出土状態  
右：SK73



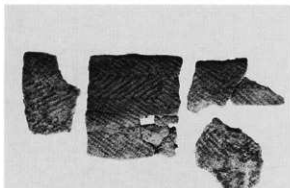


西区

1~7 : S K04



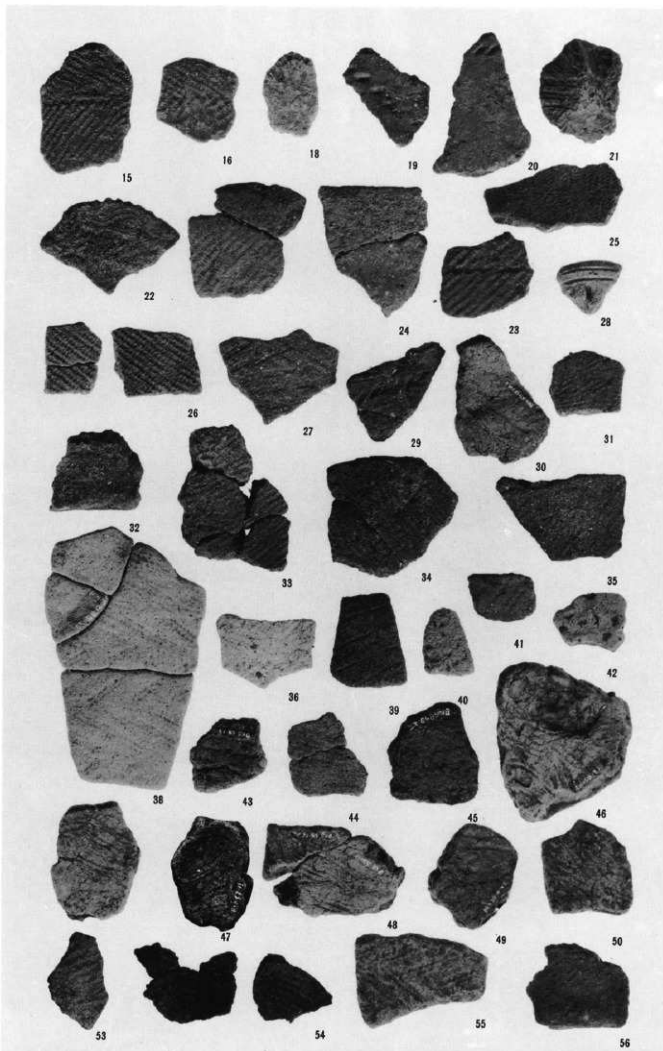
17 : S B12



57 : S B13

104  
東区上段

57

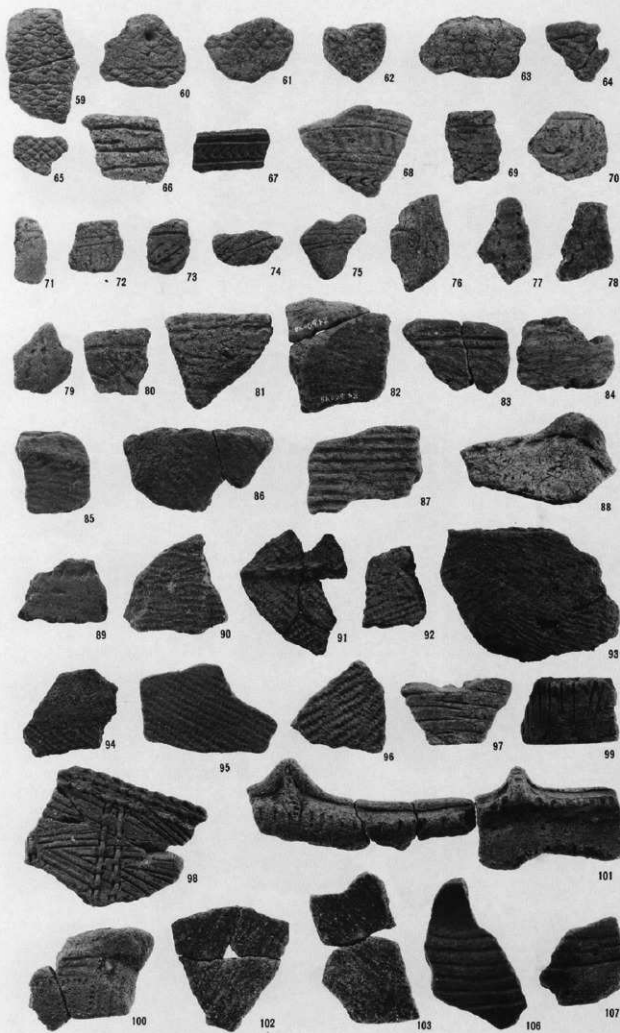


15・16 : S B11

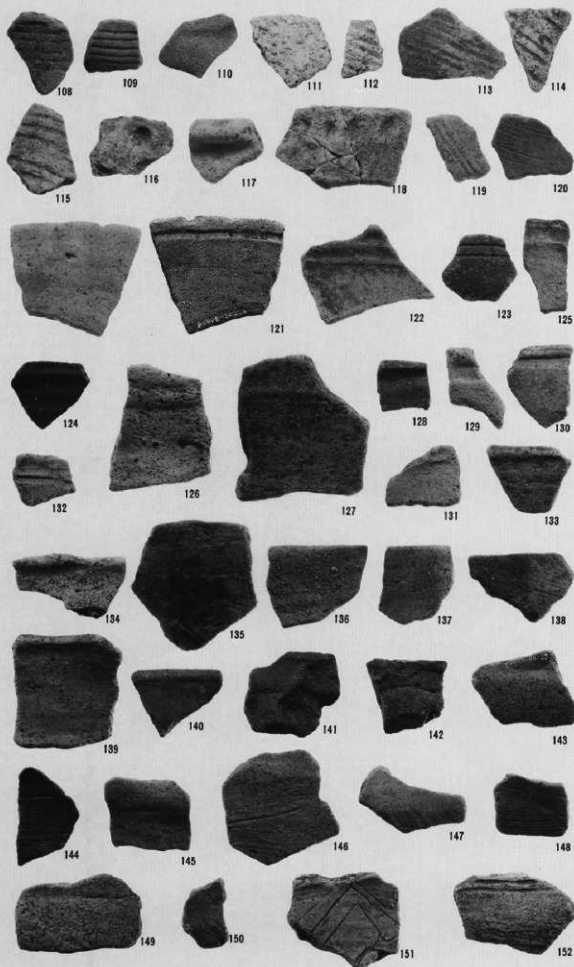
18~27・31・32  
: S B12

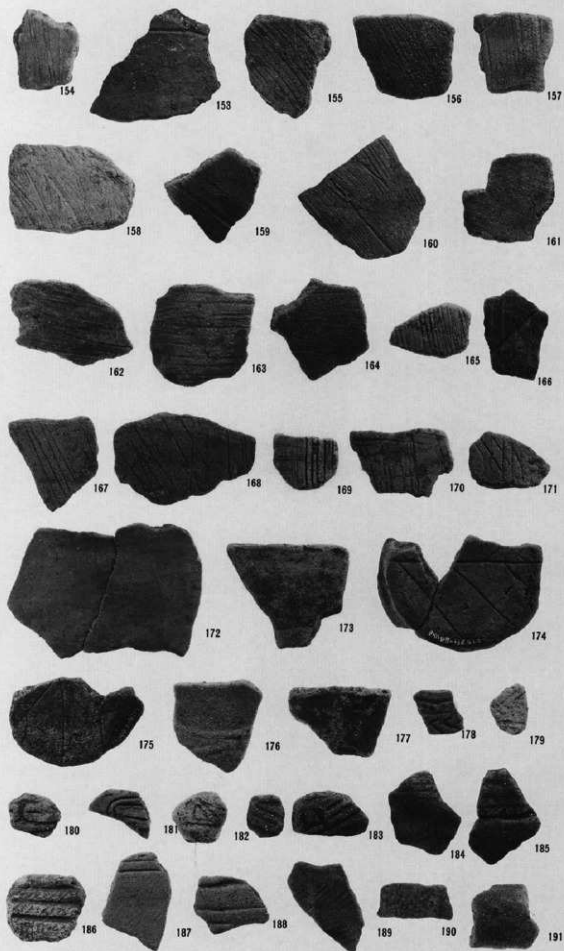
28~30・33~38  
: S B12B

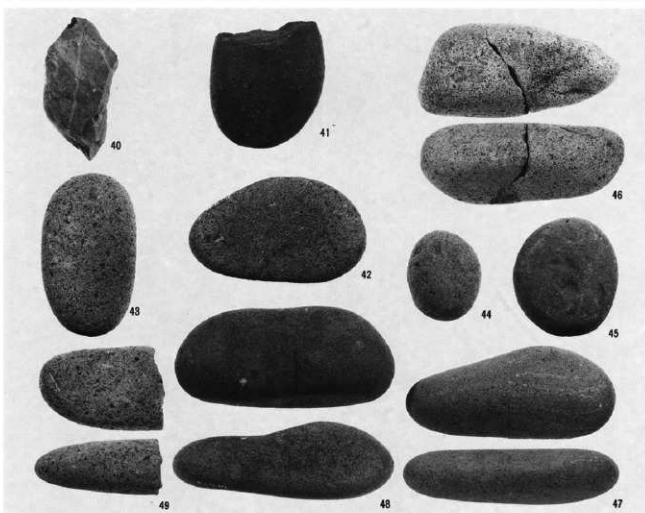
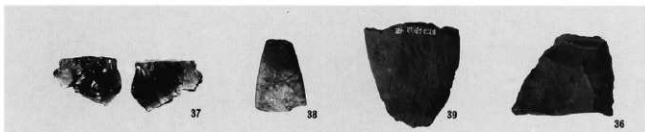
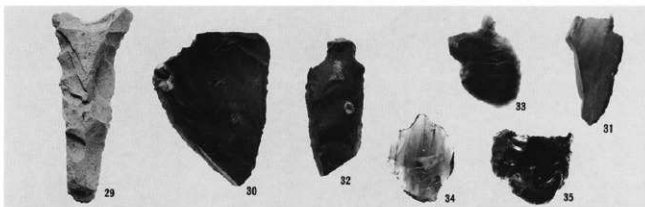
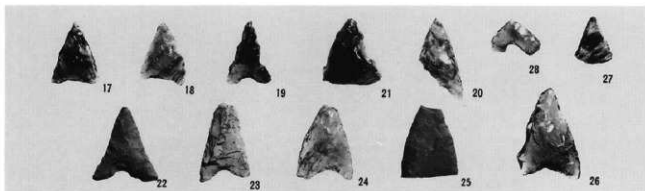
39~56 : S B13



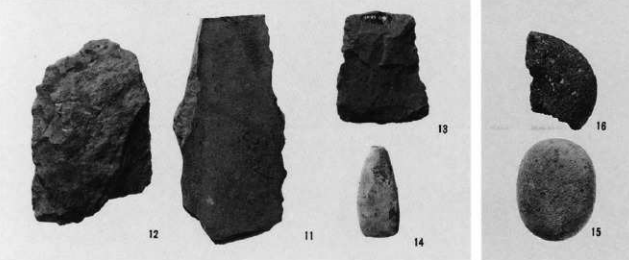
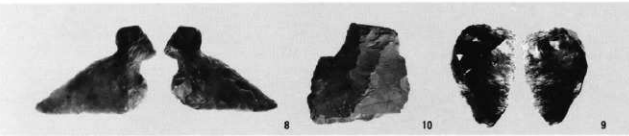
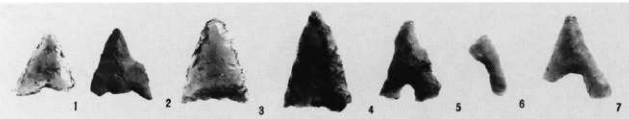
102・103：東区上段  
 60・62・63・65・66・  
 68・70：東区中段  
 その他：東区下段



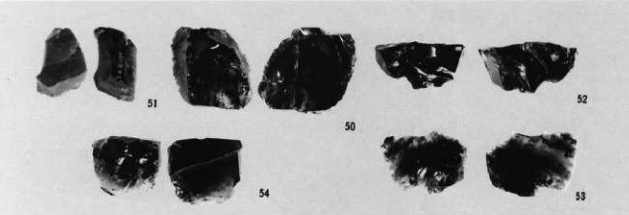




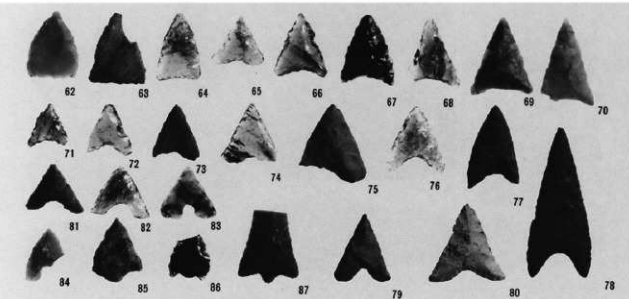
29・30・32・36・39・  
41・46 : S B12  
33 : S B12B  
17~21・31・34・37・  
38・40・42~45・48・  
49 : S B13  
23~28・35・47  
: S B14



1~15:西区



石核・剥片



石 鏃

55~60: 剥片A

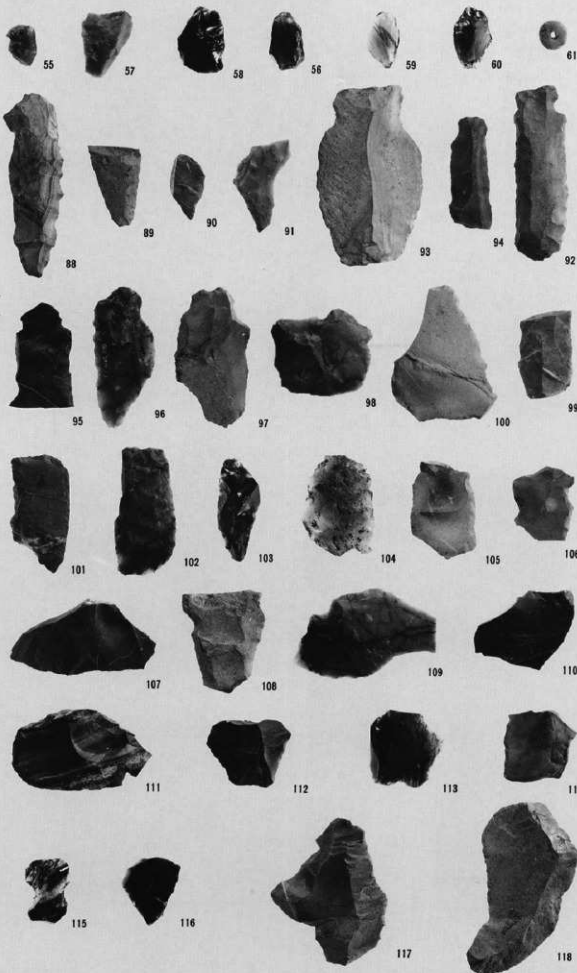
61: 玉

88・89: 石槍

90・91: 石錐

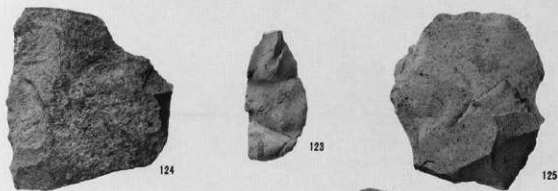
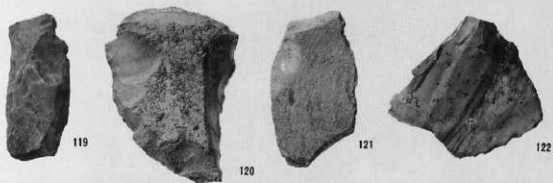
92~98: 石匙

99~118: 刃器





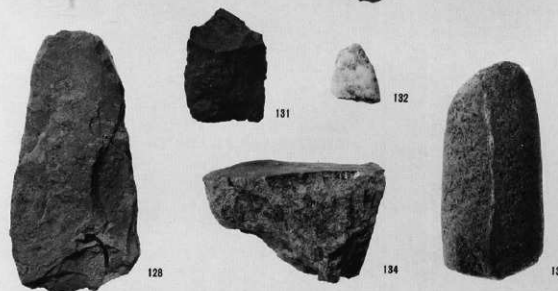
119~126: 大形刃器



127~131: 打製石斧



132・133: 磨製石斧



134: 礮器



9 S K61



1



1 S K60



3 S K34



5 S B03



4 S B06



6 S Q03



8 S B05



7 S Q03

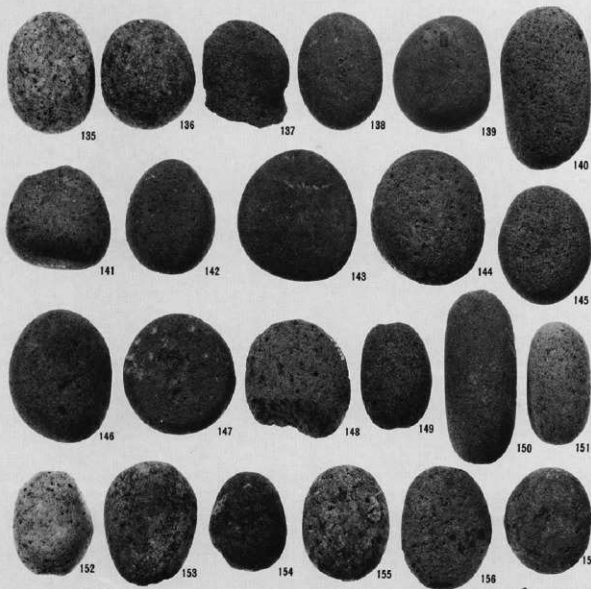


9 東区中段

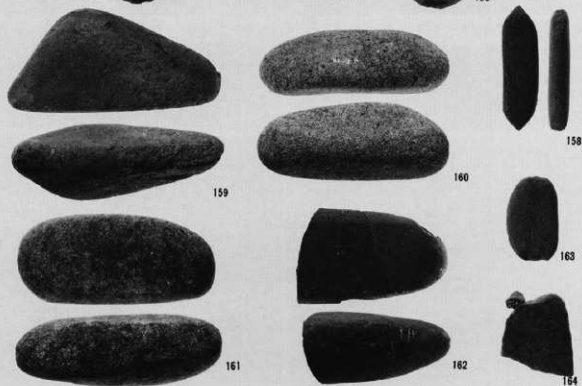


10 S Q03

135~158 : 磨石類



159~162 : 特殊磨石



163 : 石 錘

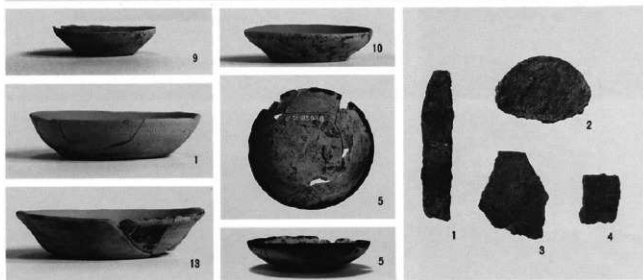
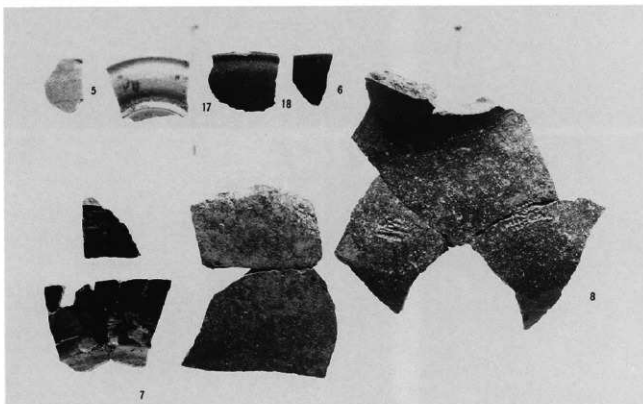
164 : 砥 石

貿易陶磁



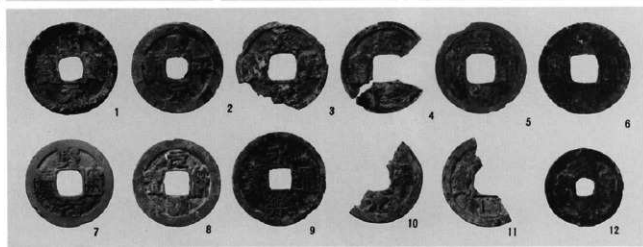
瀬戸美濃系陶器

常滑焼



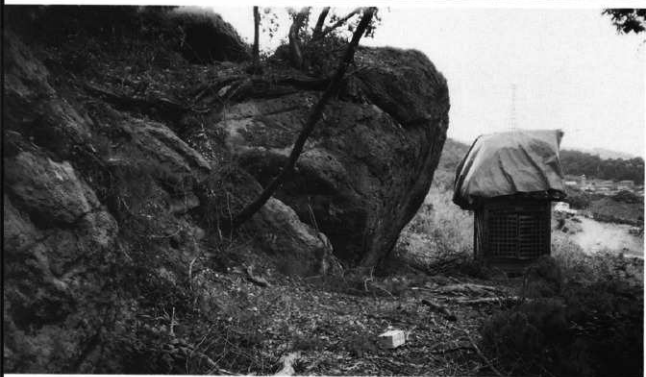
左：土器皿  
右：金屬製品

銭貨

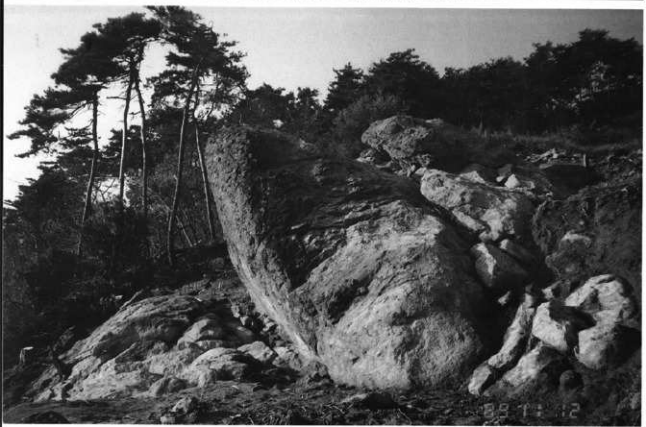




遺跡遠景(東から)



七尋薬師堂(南から)

鶴萩七尋石全景  
(北から)



空撮全景



同近景(石垣撤去後)



空撮全景(垂直)



同(北東から)

鶴萩七尋岩陰遺跡



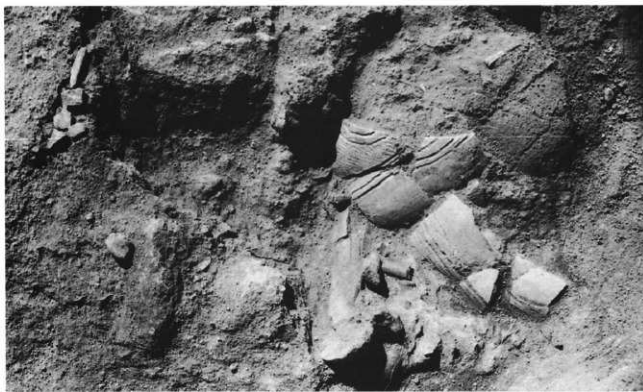
左：石垣正面  
右：薬師堂土台



左：岩上部遺物出土状態(1)  
右：同 (2)

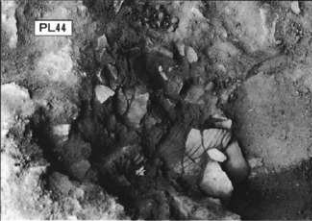


左：岩陰部遺物出土状態  
右：SK02遺物出土状態



SK01土器・人骨出土状態





左：SK01土器出土状態(1)

右：同 (2)



左：同 人骨出土状態(1)

右：同 (2)

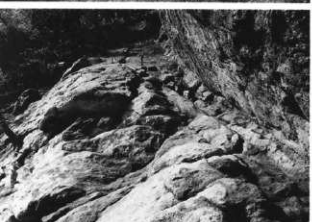


左：SK03遺物出土状態(1)

右：同 (2)

左：-1R3~OR3  
礫出土状態

右：石垣撤去後の状態



左：岩陰部地山

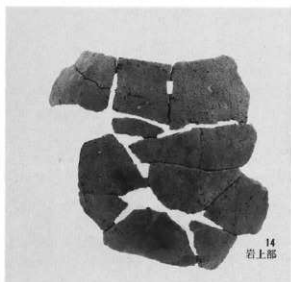
右：記念撮影

弥生土器



1~3 : SK01

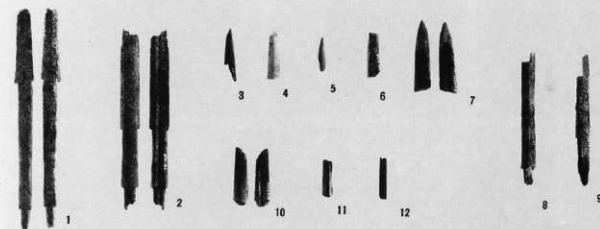
古墳時代土器



## 鉄製品

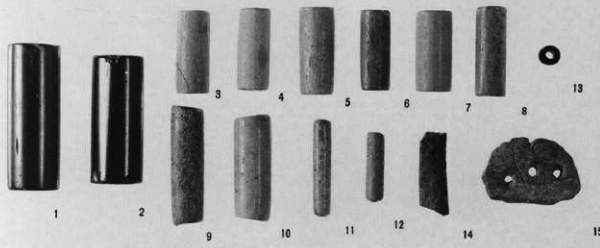


1 : SK02



## 骨 鏃

3 ~ 9 : SK03



## 石製品

1・10・11 : SK02



## 銭 貨