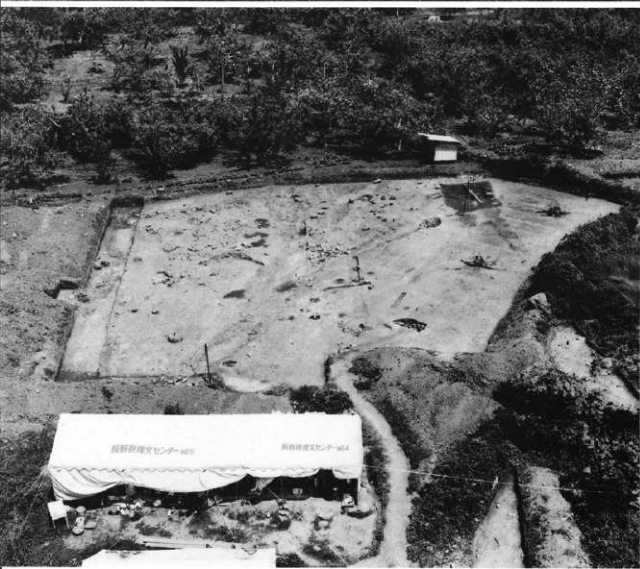




空撮全景(南から)



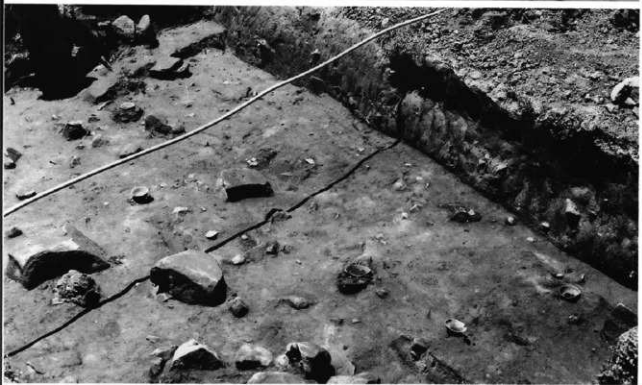
空撮全景(東から)



S B03



同裸出土狀態



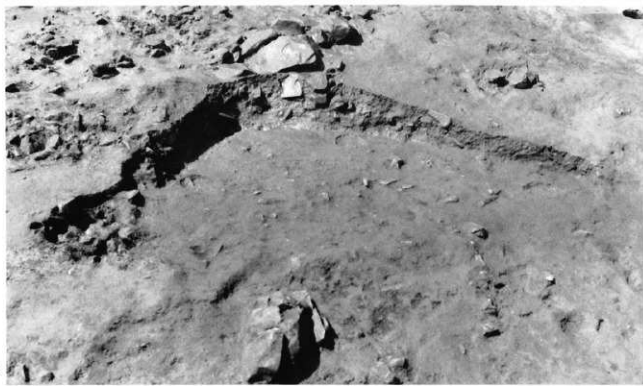
S B07遺物出土狀態



S B01



同遺物出土狀態



S B05

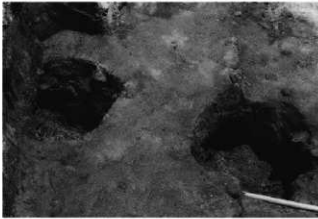
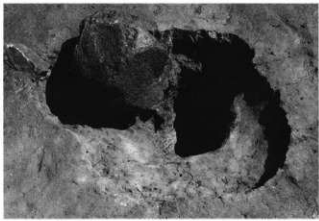
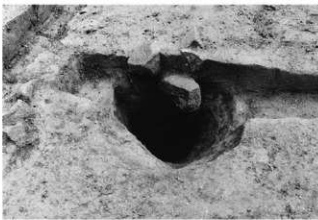
左：SK01  
右：SK02

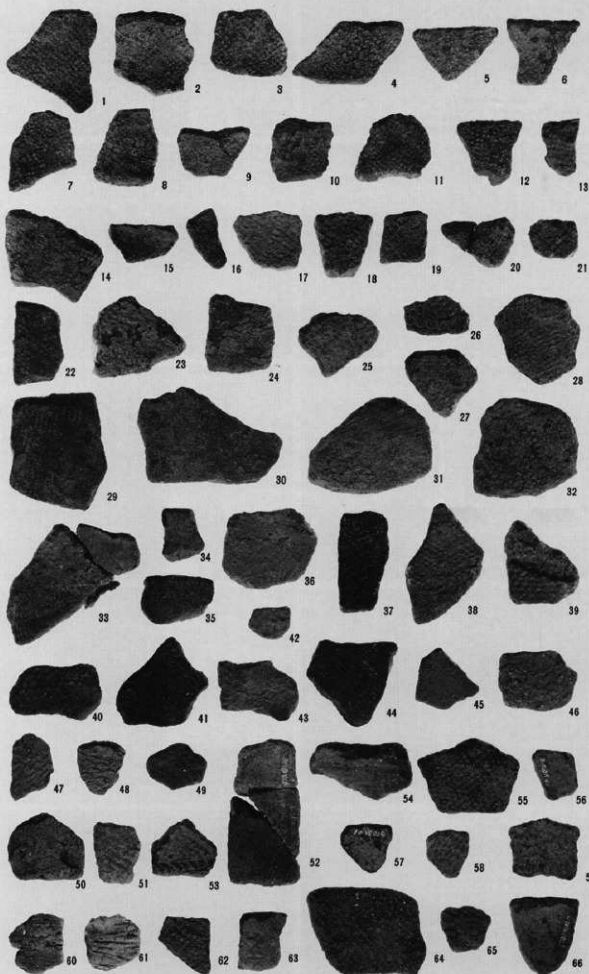
左：SK05  
右：SK06

左：SK10  
右：SK11

左：SK07・08  
右：作業風景

左：03トレンチ土層断面  
右：01トレンチ土層断面



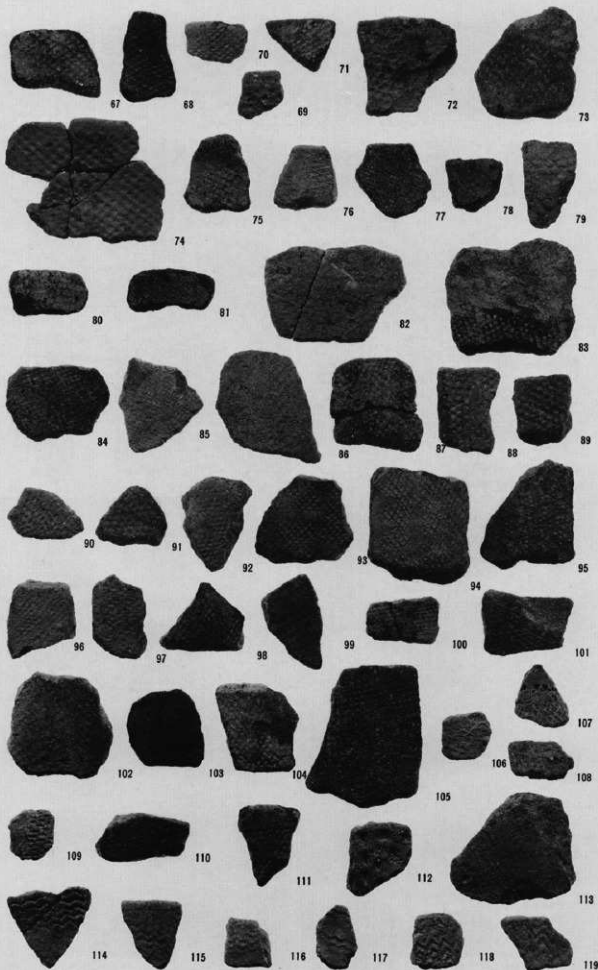


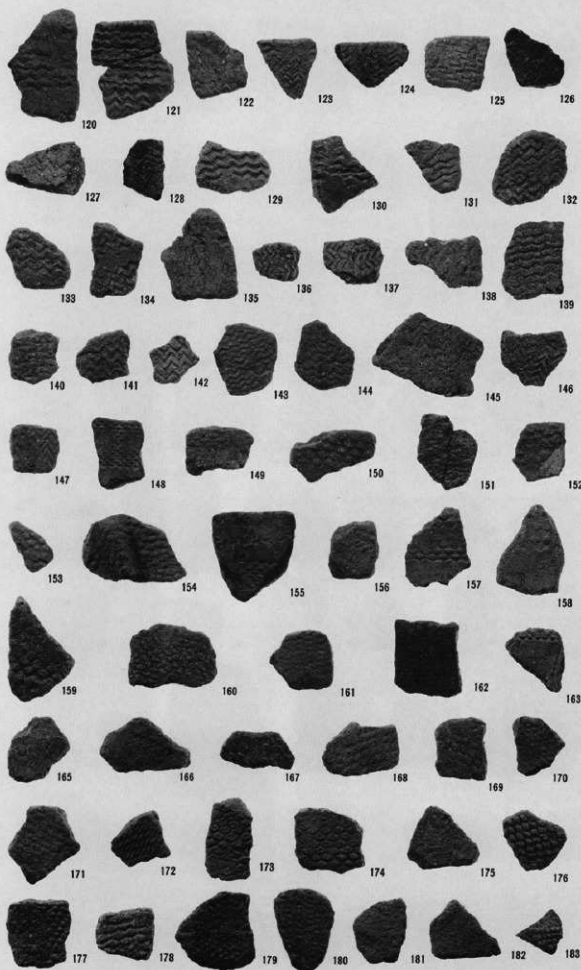
1 ~ 36 : S B01

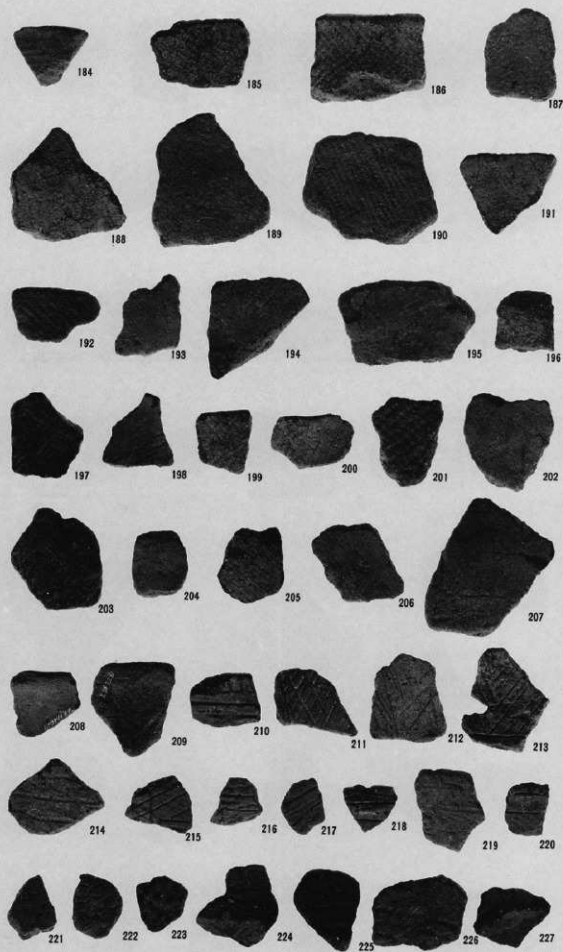
37 ~ 54 : S B03

55 ~ 61 : S K01

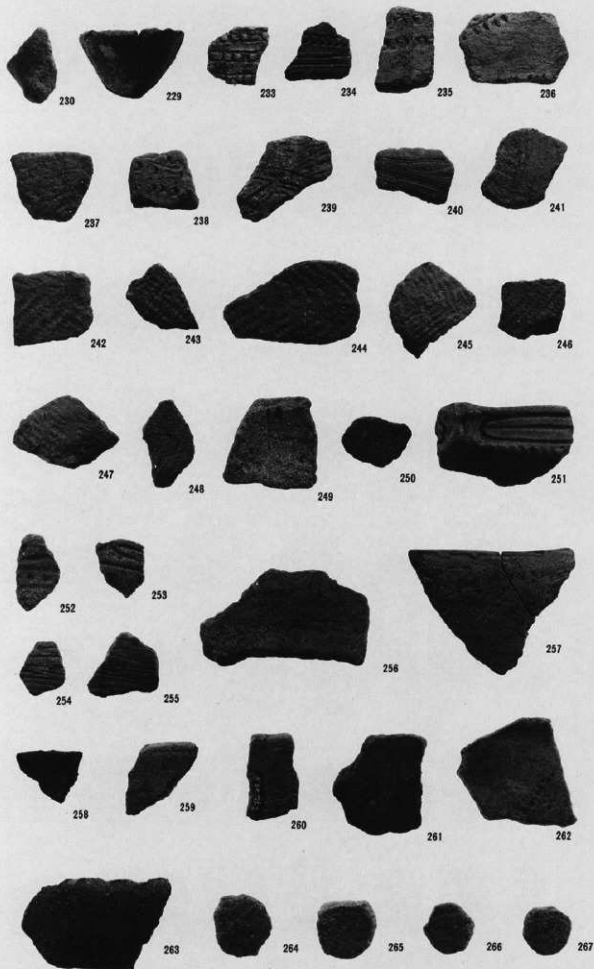
62 ~ 66 : S K11

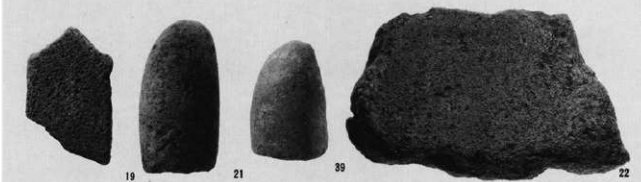
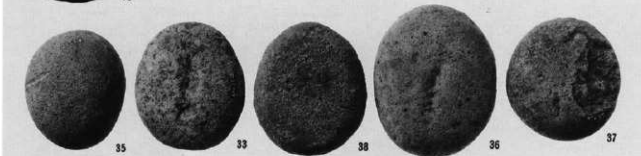
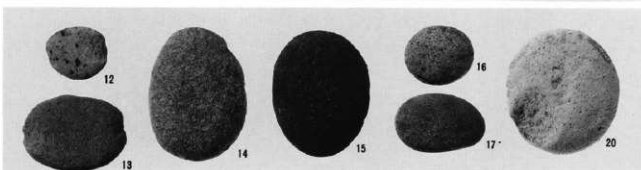


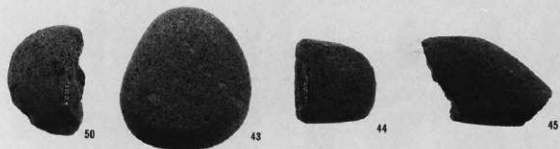






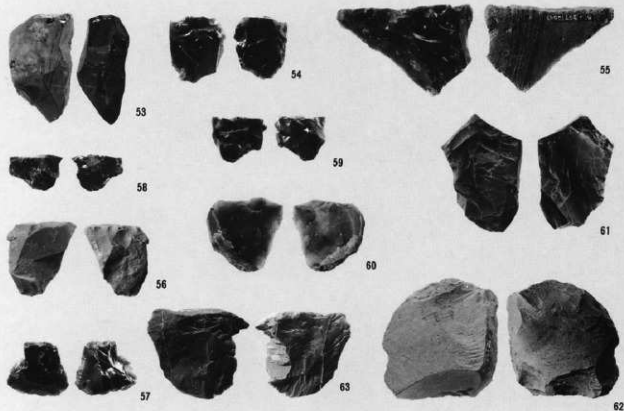






41~46 : S K01  
47 : S K11  
48~52 : S K02

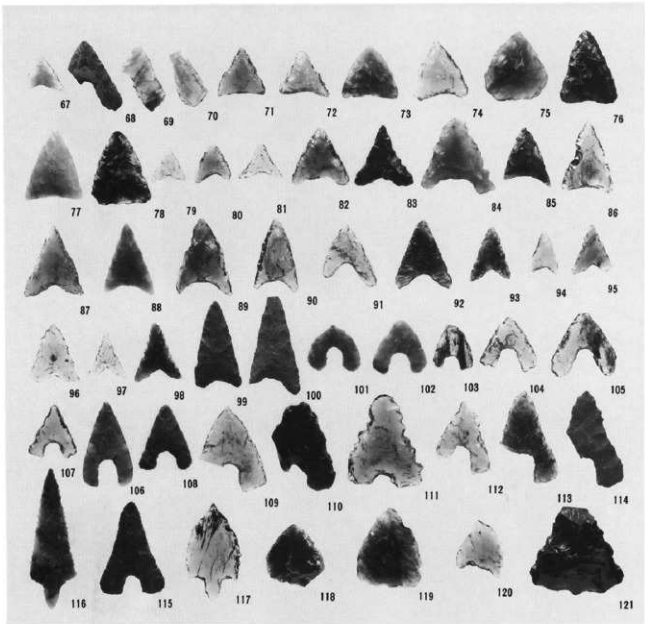
原石・石核



剥片A

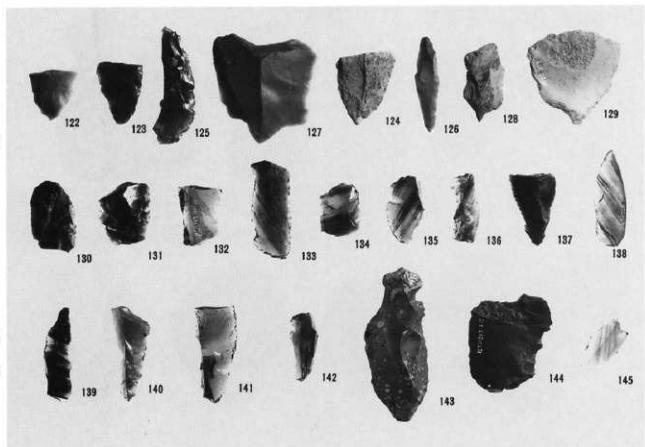


石 鏃



122~125 : 石槍

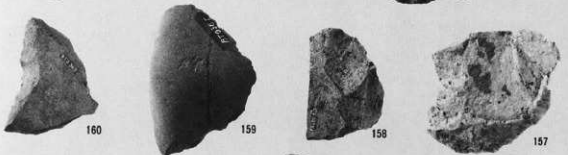
126~129 : 石鏢



130~142 : 刃器

143~145 : 石匙

146~160：大形刃器



167~172・176・177  
：打製石斧



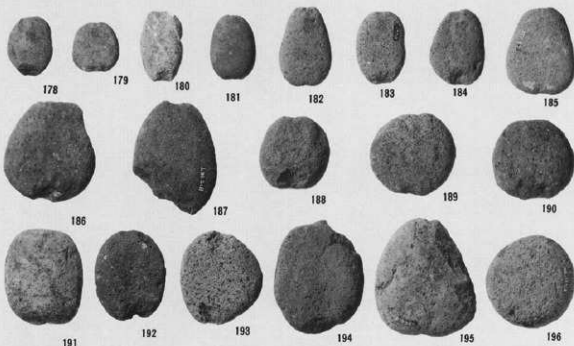
171・173~175  
：磨製石斧



礮器



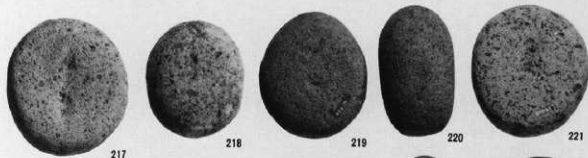
178-195 : 石錘



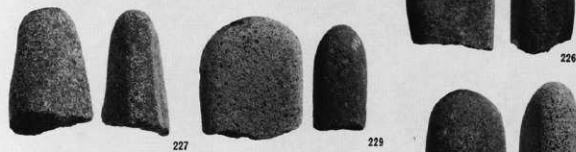
196-216 : 磨石類



217~224・235: 磨石類



225~229: 特殊磨石

230~234・236  
: スタンプ形石器

237・238: 砥石





2・5：SK05  
6～10・13：SB07  
15・16遺構外





遺跡遠景(南西から)



遺跡全景(南東から)



遺跡全景(北西から)



西区全景(北西から)



東区全景(西から)



東区全景(南西から)

PL22



小坂西遺跡

左：東区上段(南西から)  
右：同部分



左：東区中段(南西から)  
右：同部分



東区下段礫層(西から)



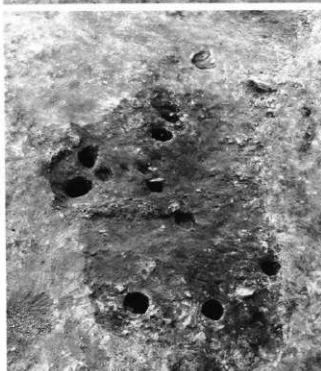
同部分(東から)



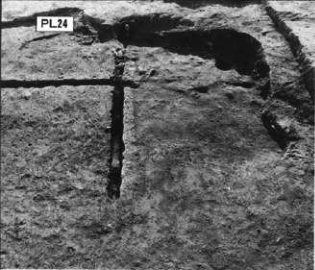
西区中世遺構群  
(東から)



S B01



左：S B02  
右：S K01・02



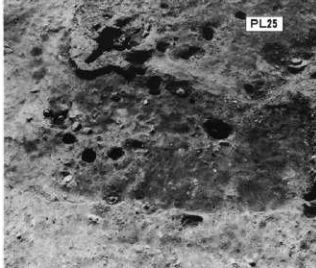
左：S B03  
右：S B04



左：S K05  
右：S K04・06・07



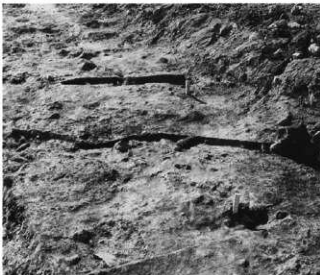
左：S B14  
右：S B06



左：S K60  
右：S K61



左：S B10  
右：S K34



左：S B08  
右：S B09





S B05



S B06

小坂西遺跡



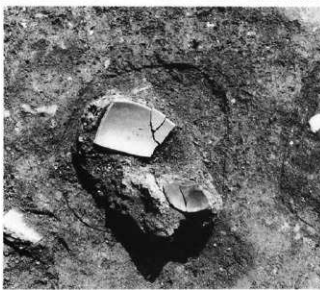
左：SB05  
右：同カマド



左：SB07北西隅  
右上：同北壁  
右下：同西壁

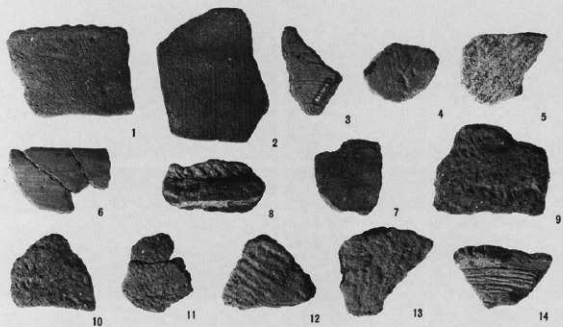


ST03



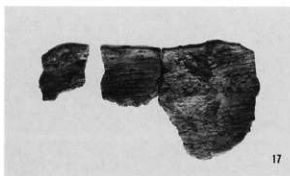
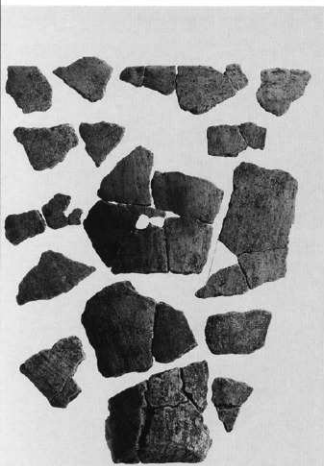
左：SK26遺物出土状態  
右：SK73



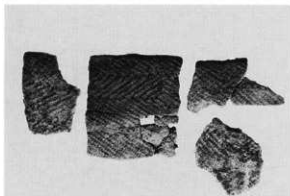


西区

1~7 : S K04



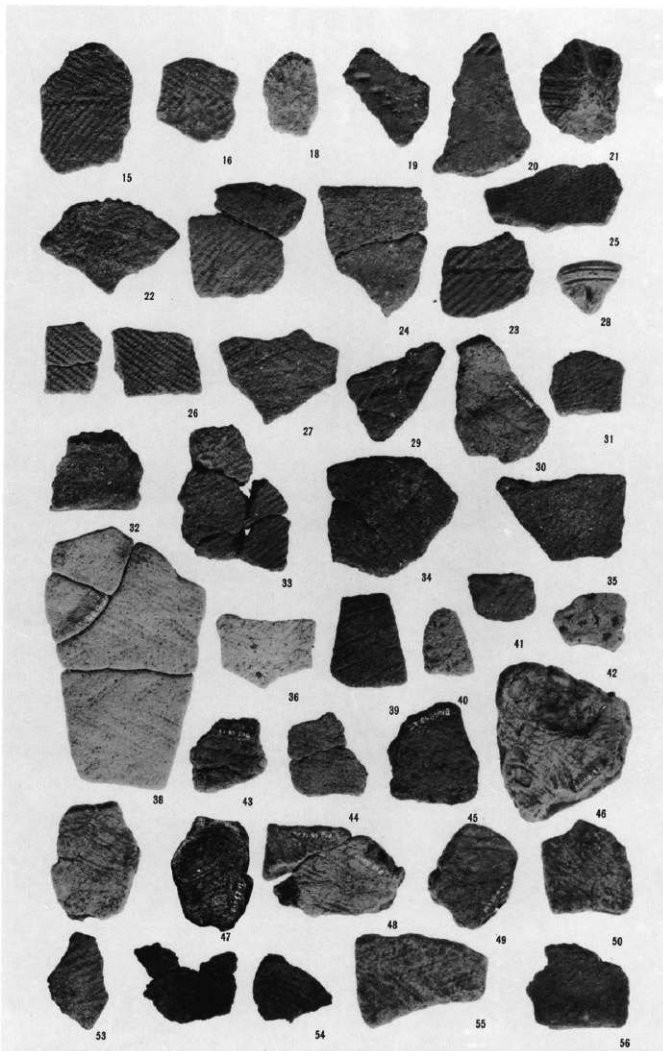
17 : S B12



57 : S B13

104  
東区上段

57

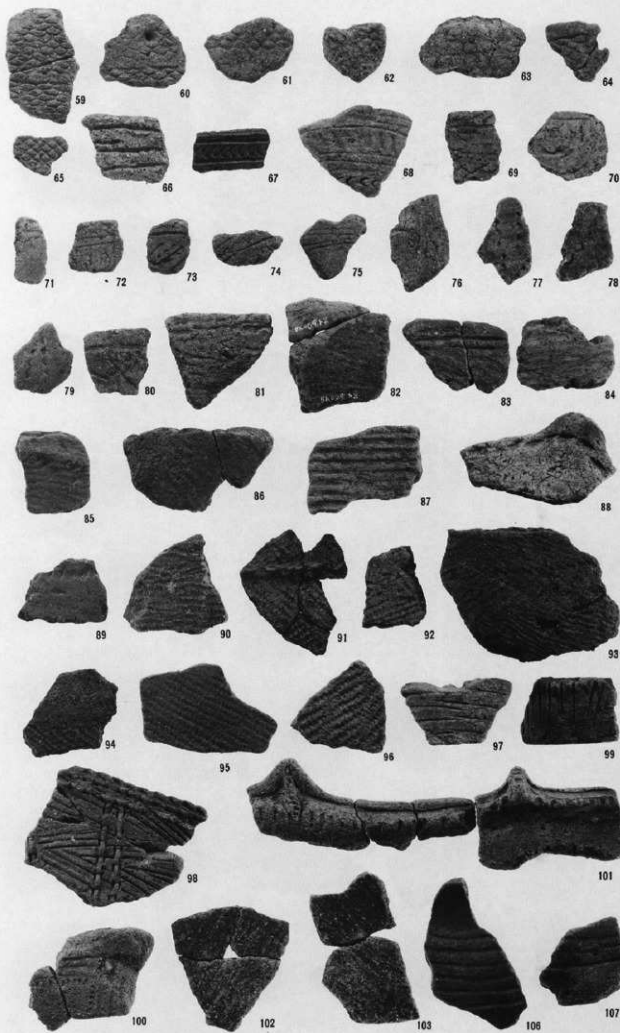


15・16 : S B11

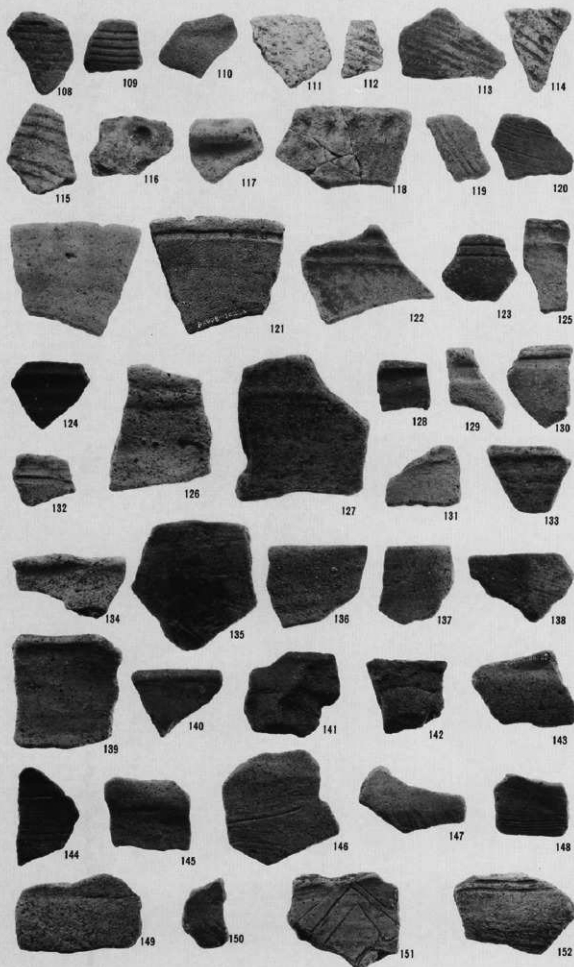
18~27・31・32  
: S B12

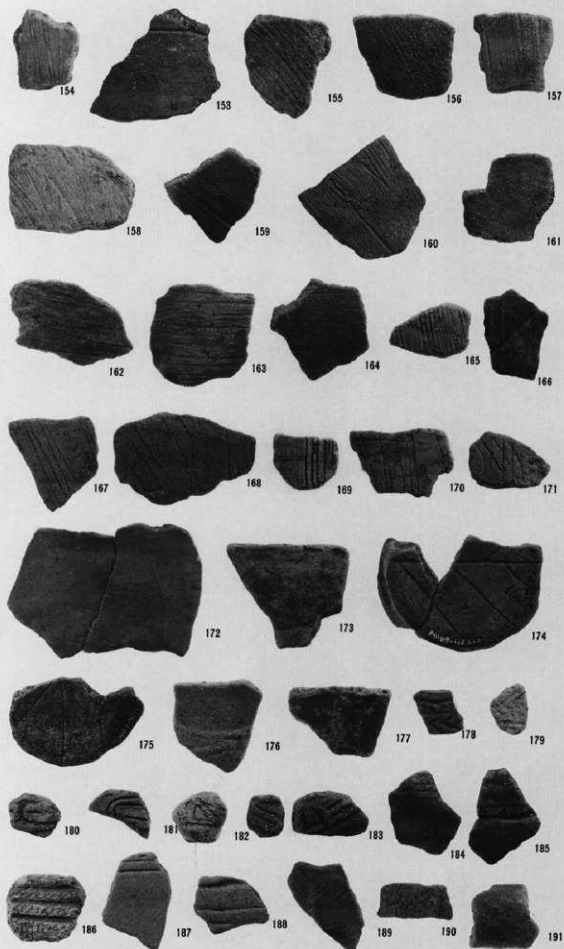
28~30・33~38  
: S B12B

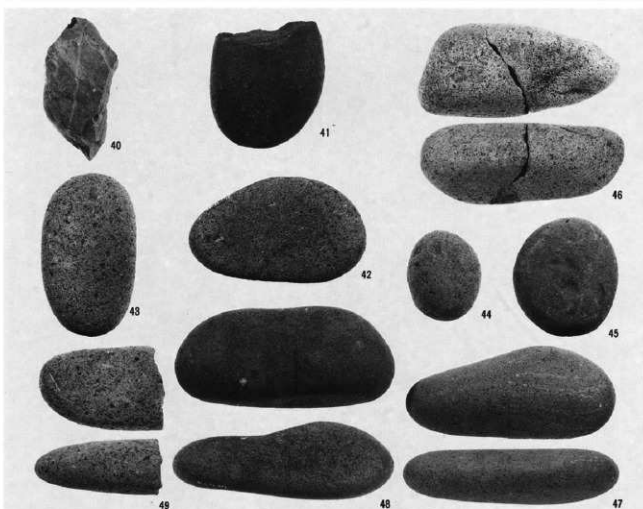
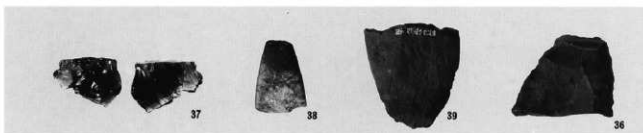
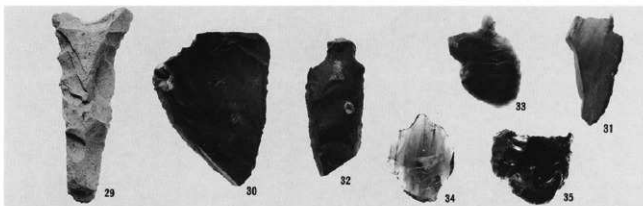
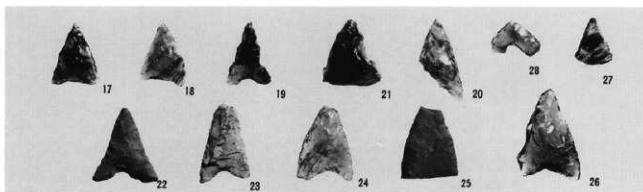
39~56 : S B13



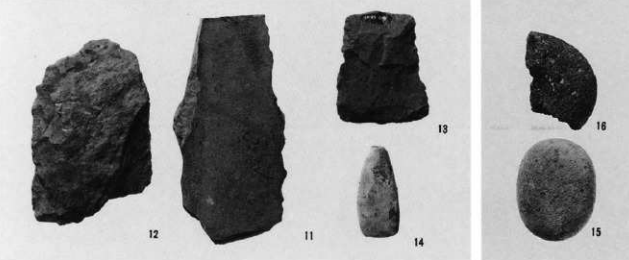
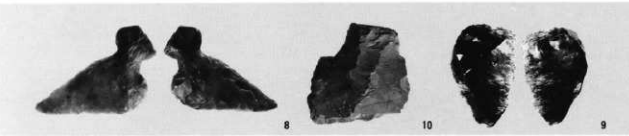
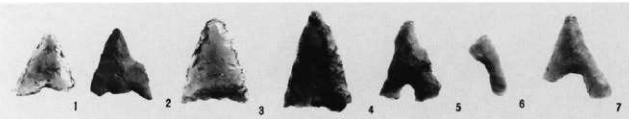
102・103：東区上段  
 60・62・63・65・66・  
 68・70：東区中段  
 その他：東区下段



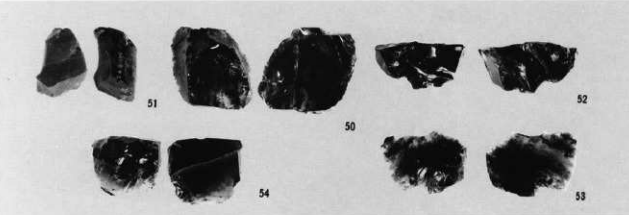




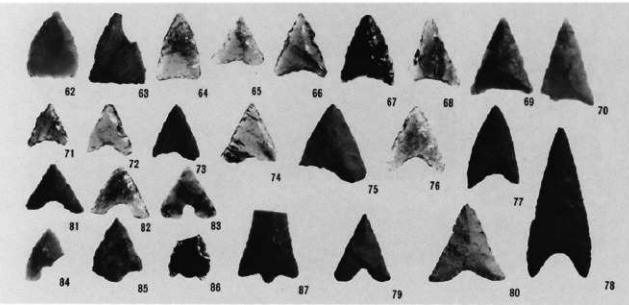
29・30・32・36・39・  
41・46 : S B12  
33 : S B12B  
17~21・31・34・37・  
38・40・42~45・48・  
49 : S B13  
23~28・35・47  
: S B14



1~15:西区



石核・剥片



石 鏃

55~60: 剥片A

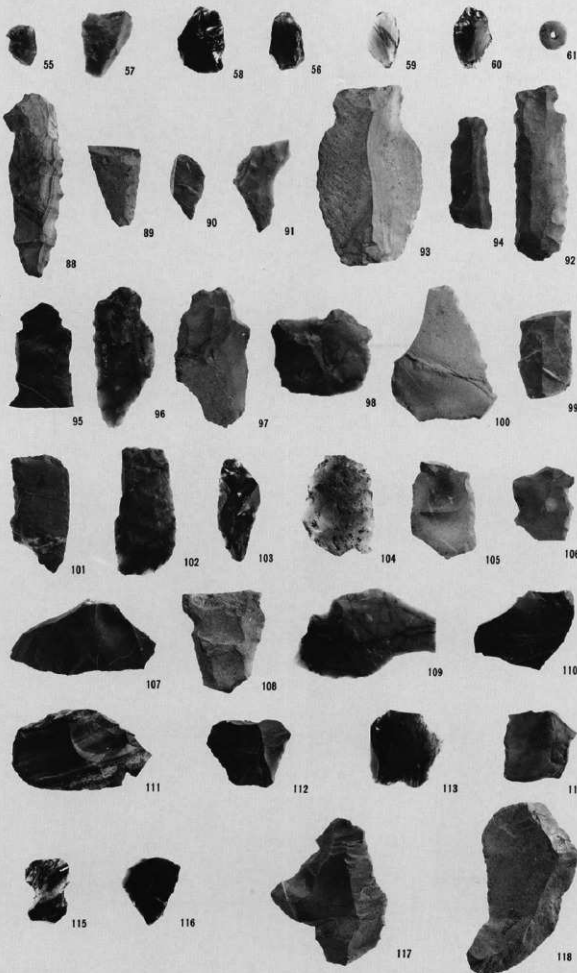
61: 玉

88・89: 石槍

90・91: 石錐

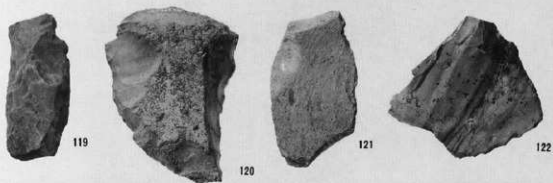
92~98: 石匙

99~118: 刃器





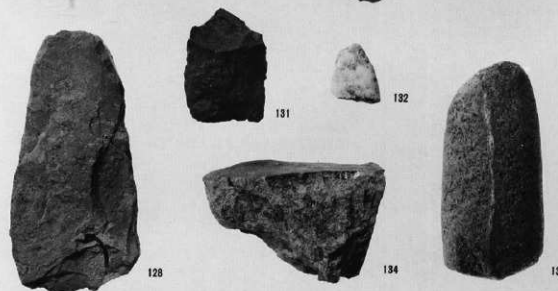
119~126: 大形刃器



127~131: 打製石斧



132・133: 磨製石斧



134: 礮器





9 S K61



1



1 S K60



3 S K34



5 S B03



4 S B06



6 S Q03



8 S B05



7 S Q03

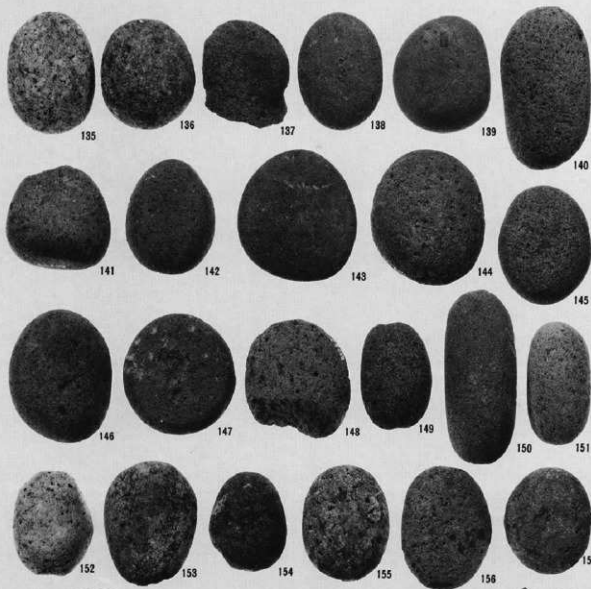


9 東区中段

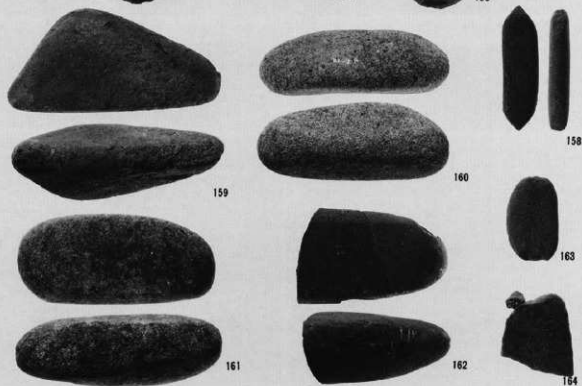


10 S Q03

135~158 : 磨石類



159~162 : 特殊磨石



163 : 石 錘

164 : 砥 石

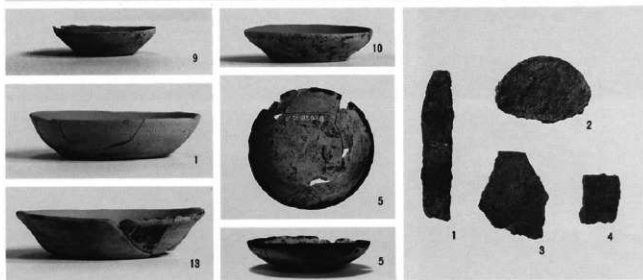
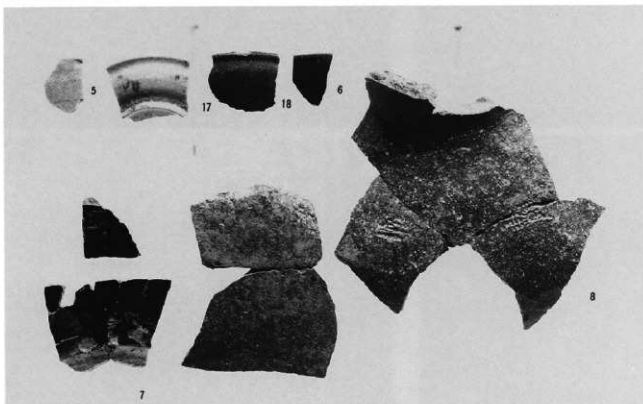


貿易陶磁



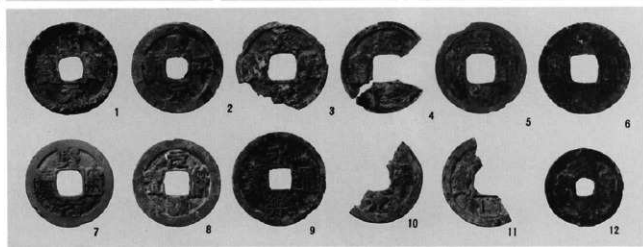
瀬戸美濃系陶器

常滑焼



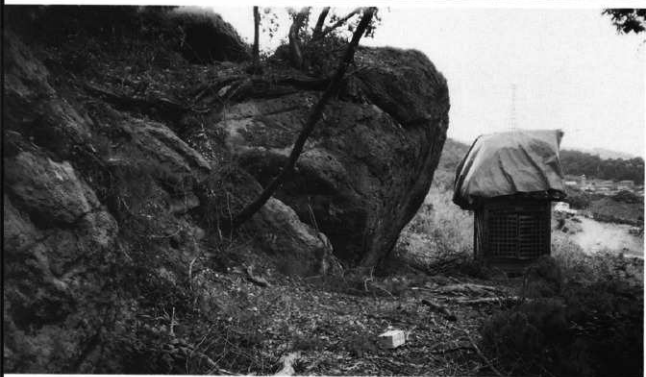
左：土器皿  
右：金屬製品

銭貨

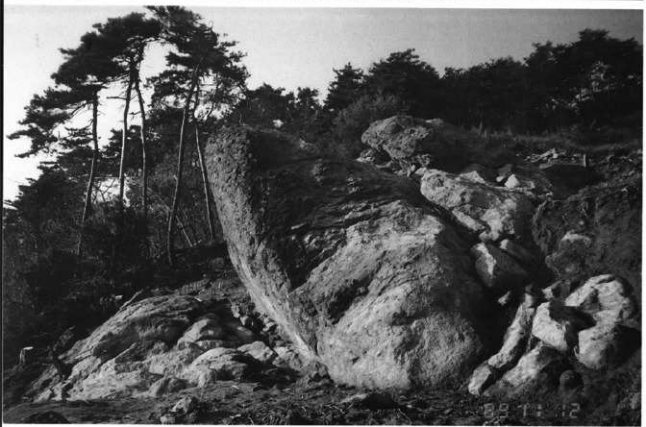




遺跡遠景(東から)



七尋薬師堂(南から)

鶴萩七尋石全景  
(北から)



空撮全景



同近景(石垣撤去後)



空撮全景(垂直)



同(北東から)

鶴萩七尋岩陰遺跡



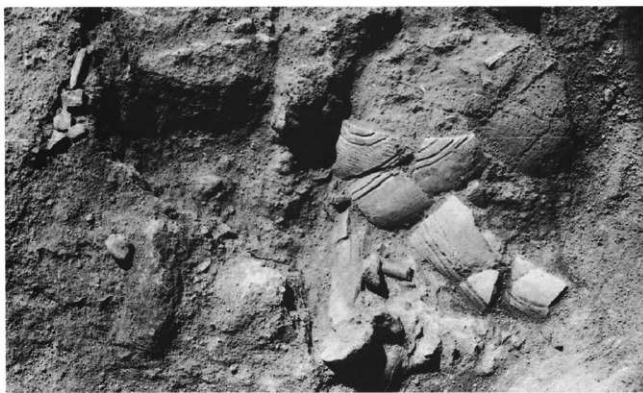
左：石垣正面  
右：薬師堂土台



左：岩上部遺物出土状態(1)  
右：同 (2)

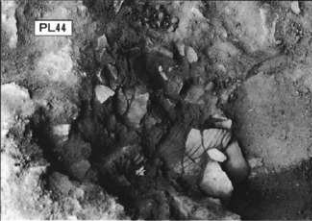


左：岩陰部遺物出土状態  
右：S K 02遺物出土状態



S K 01土器  
・人骨出土状態





左：SK01土器出土状態(1)

右：同 (2)



左：同 人骨出土状態(1)

右：同 (2)



左：SK03遺物出土状態(1)

右：同 (2)

左：-1R3~OR3  
礎出土状態

右：石垣撤去後の状態



左：岩陰部地山

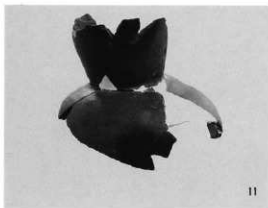
右：記念撮影

弥生土器



1~3 : SK01

古墳時代土器

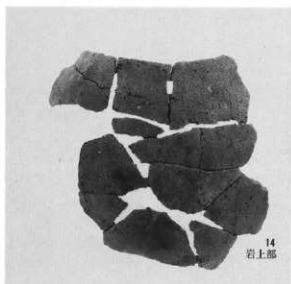


11

32  
SK03



8  
SK02

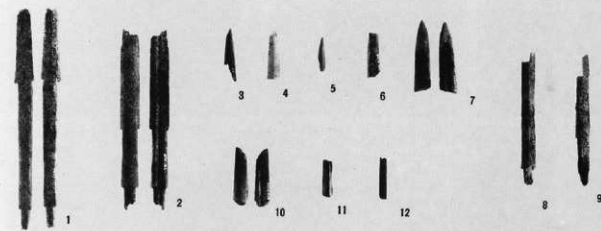


14  
岩上部

## 鉄製品

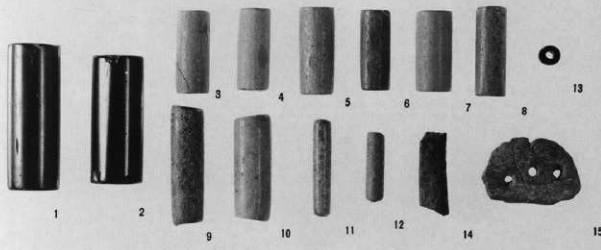


1 : SK02



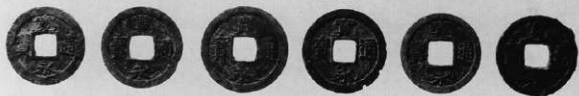
## 骨 鐵

3 ~ 9 : SK03



## 石製品

1・10・11 : SK02



## 錢 貨