

(古銭はS \approx 2/3)
(他はS \approx 1/2)



1a



1b



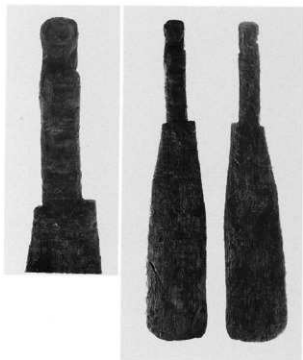
2b



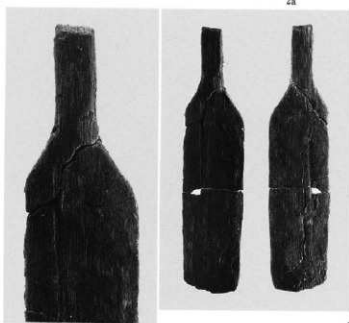
3



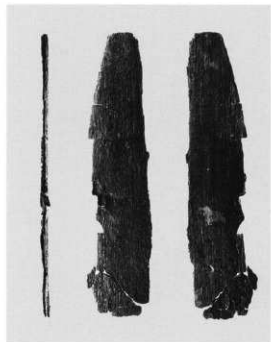
2a



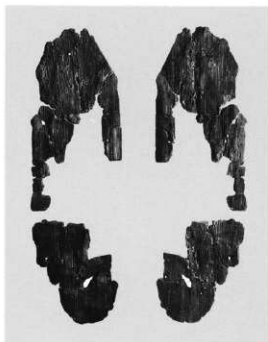
4



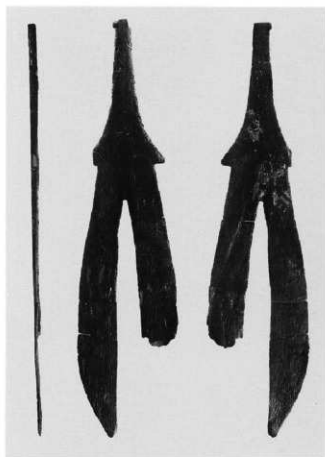
5



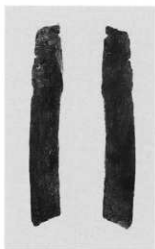
6



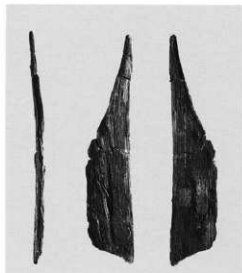
7



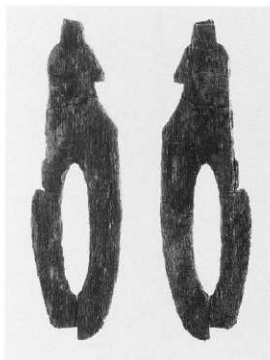
11



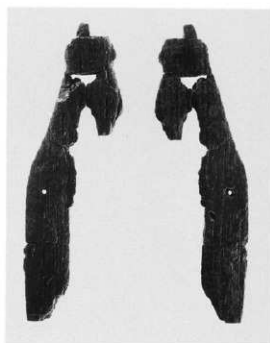
8



9



10



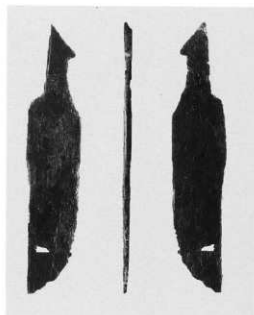
12



15



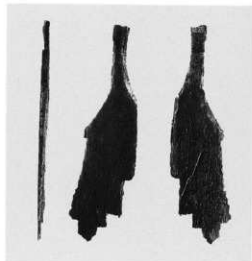
17



14



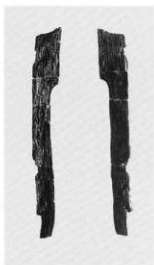
20



16



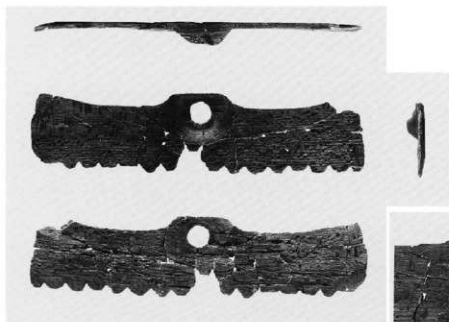
13



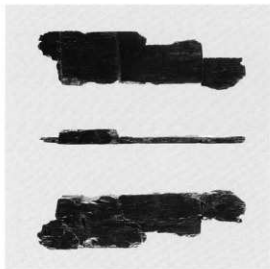
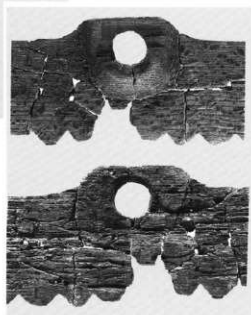
18



19



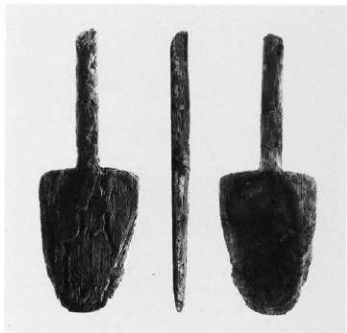
25a



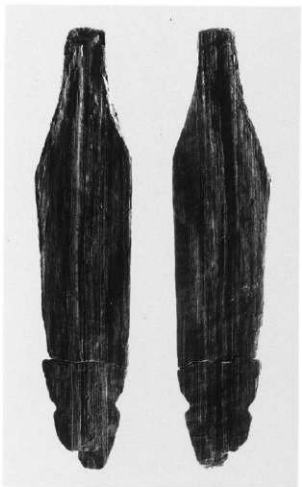
26



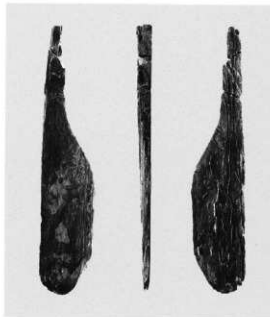
25b



22



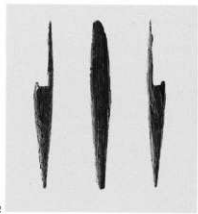
21



23



31



32



28



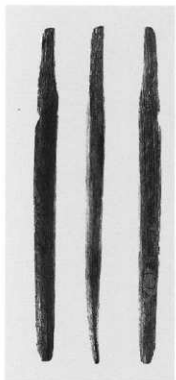
29



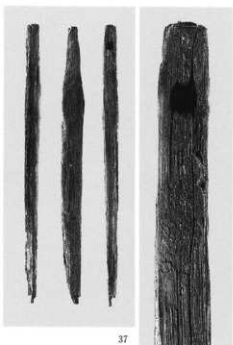
30



40



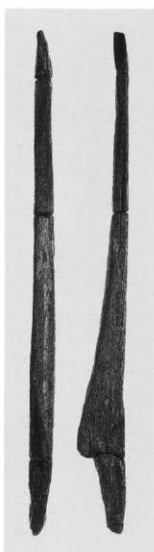
36



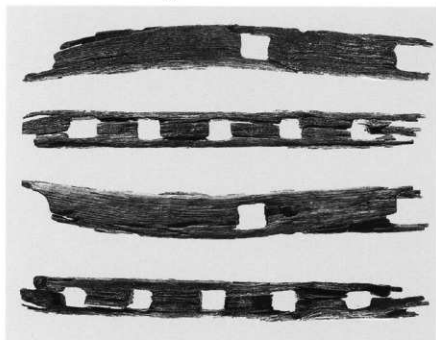
37



34



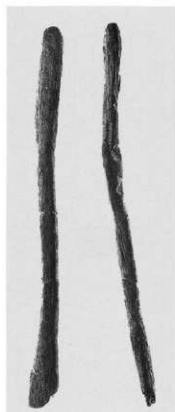
33



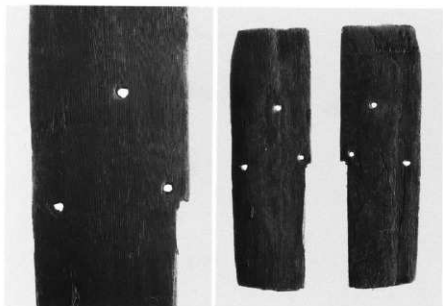
35



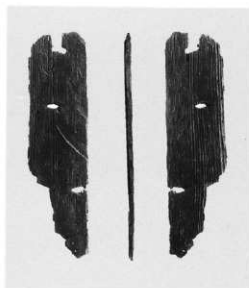
38



27



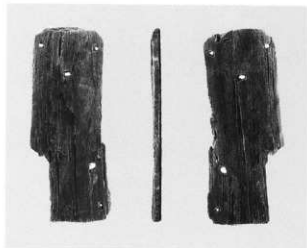
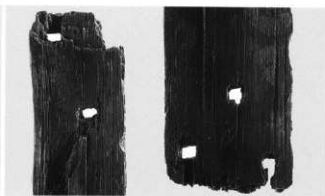
41



46



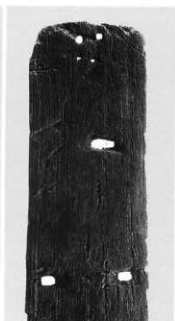
42



43

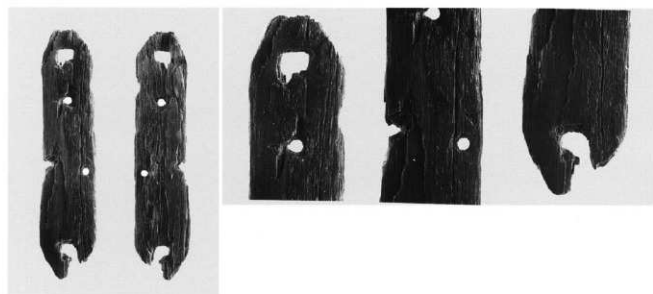


44

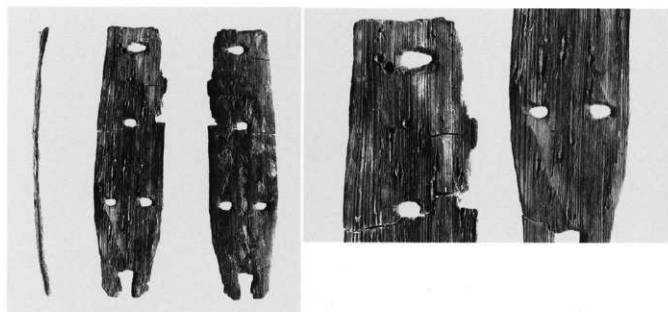




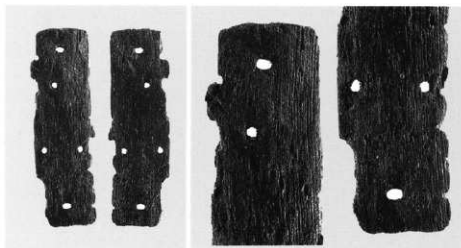
45



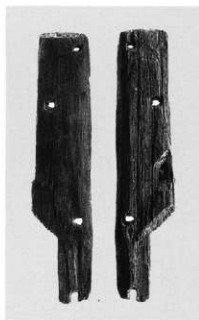
47



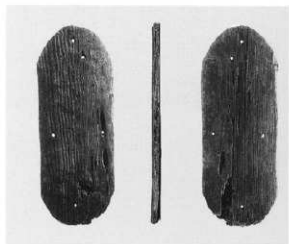
48



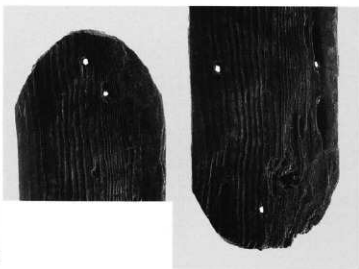
50



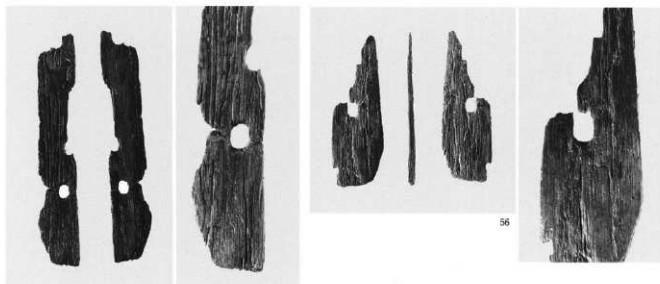
49



51

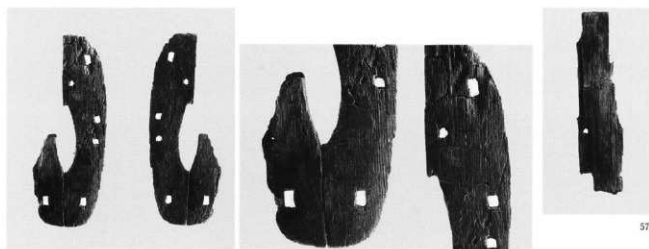


52



55

56



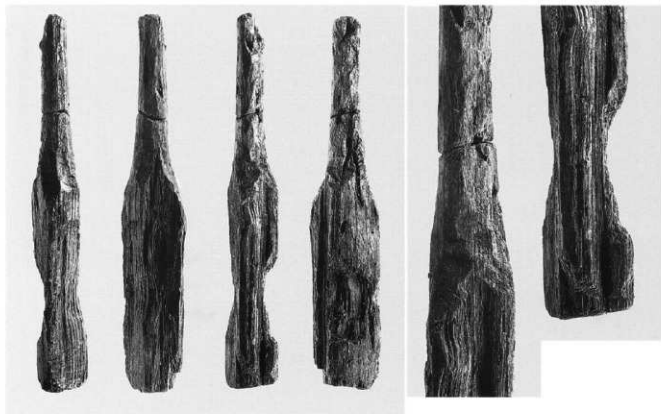
53

57

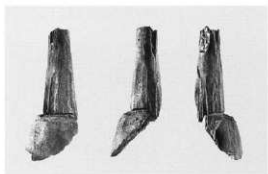


54

58



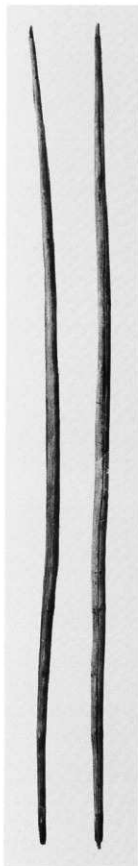
59



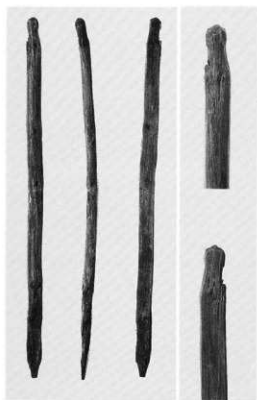
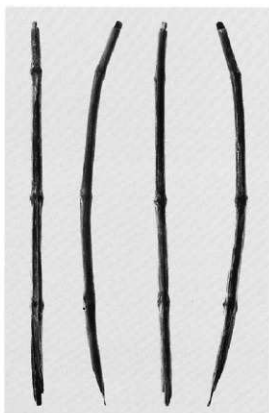
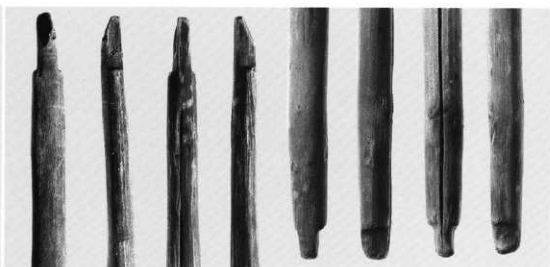
60



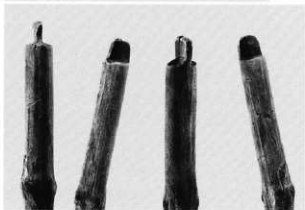
61



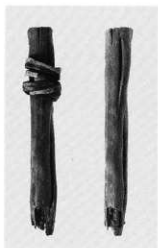
62



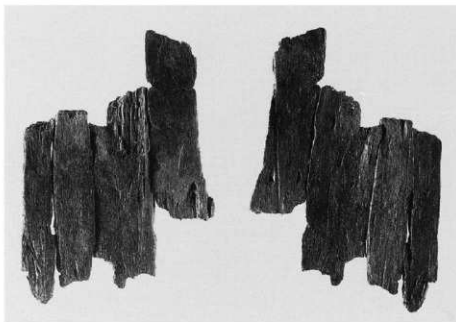
63



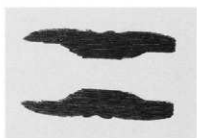
64



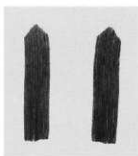
65



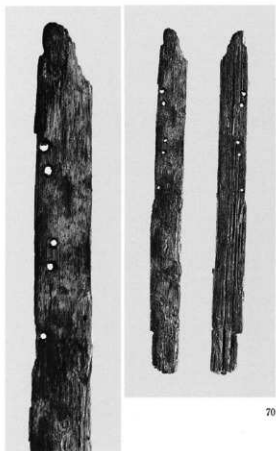
66



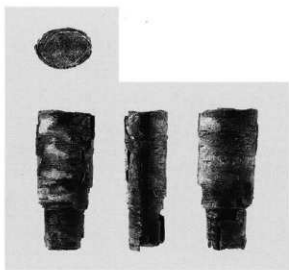
67



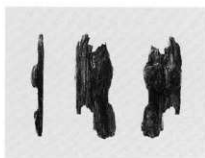
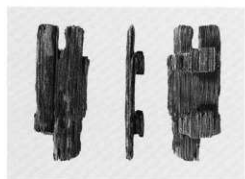
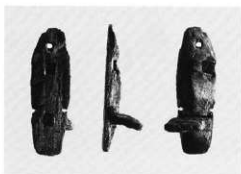
69

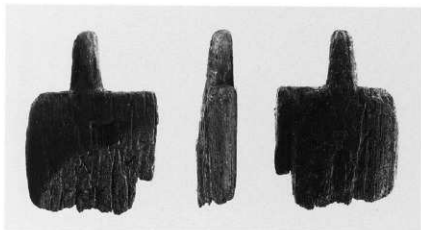


70

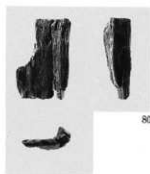


68

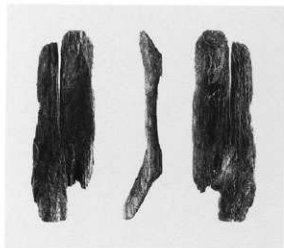




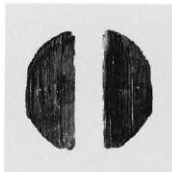
82



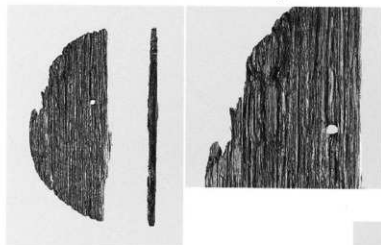
80



79



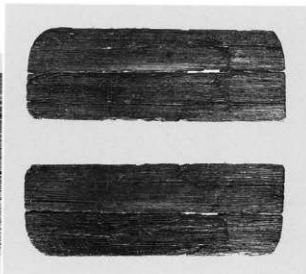
106



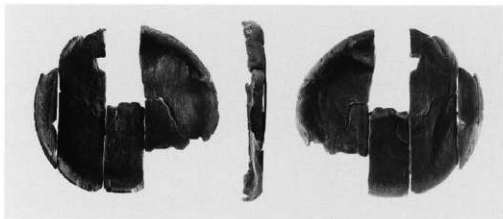
104



81



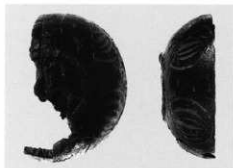
109



83



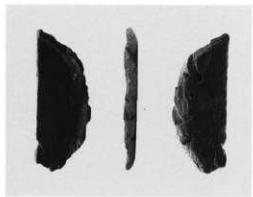
85



86



87



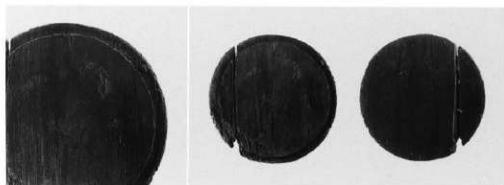
84



89



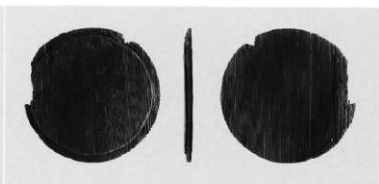
88



92



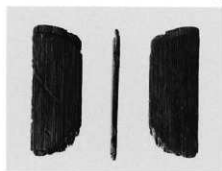
96



90



95



93



91



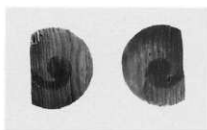
94



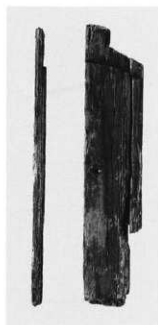
97b



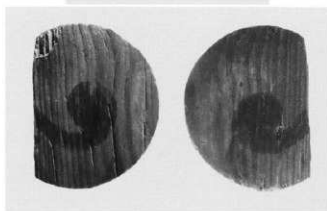
97a



103



101



99



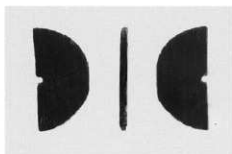
107



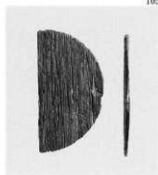
100



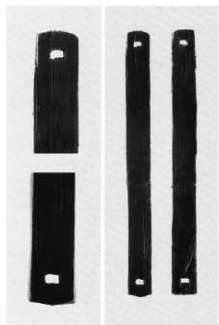
105



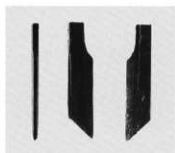
102



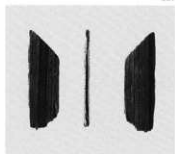
98



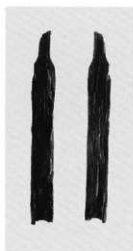
110



117



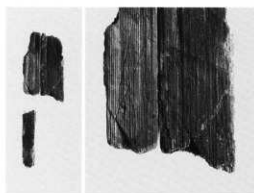
127



124



116



118



122



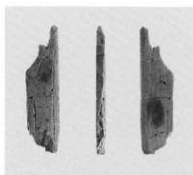
114



120



119



125



121



123



126



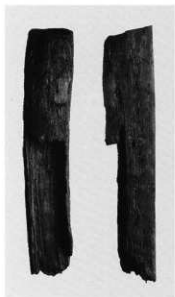
113



111



112



129



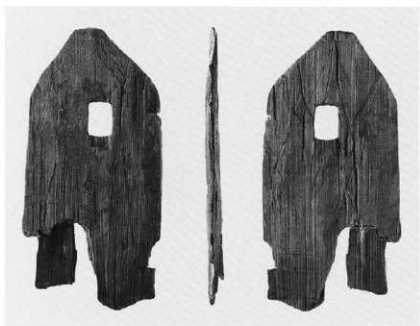
130



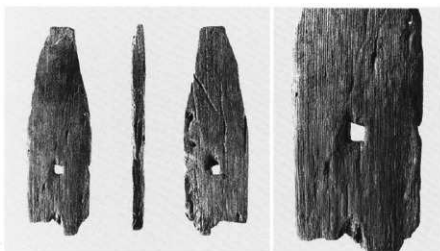
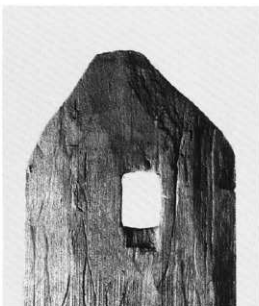


128

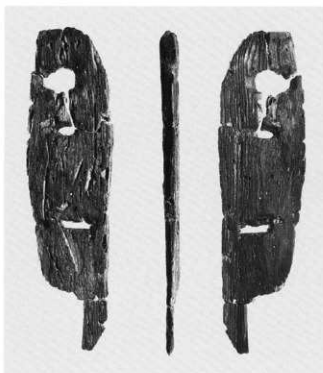




213

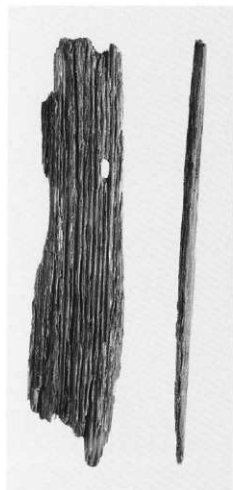


208

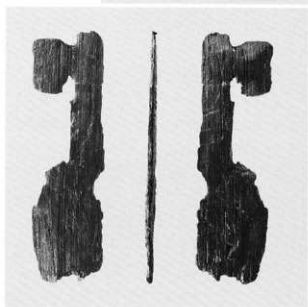


211





207



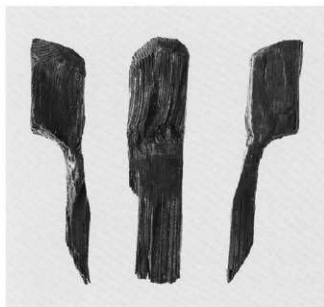
209



212



217



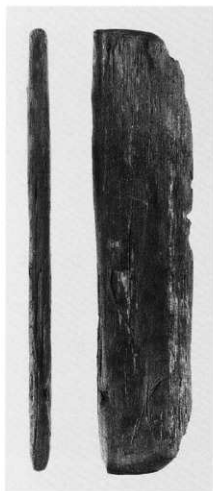
227



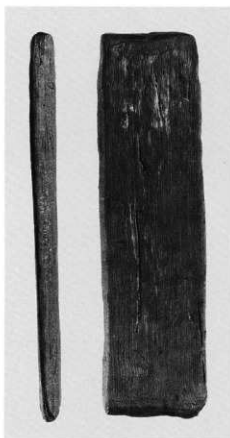
226



185



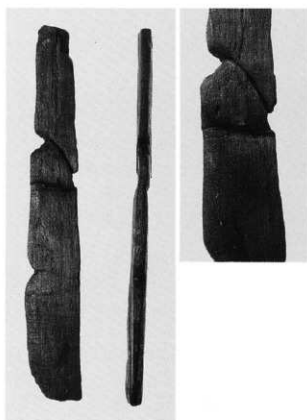
170



169



173



171



205



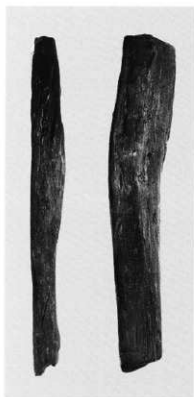
186



178



184



228



179



181



225



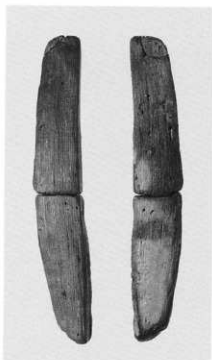
224



214



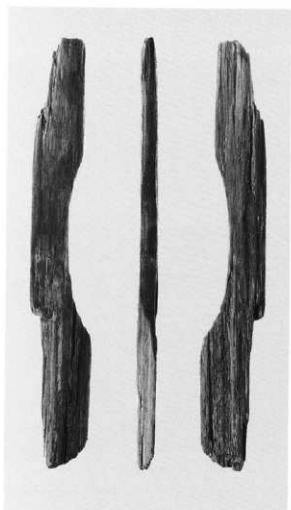
216



237



183



215



234



233



235



232



239



238



240



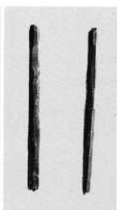
221



159



158



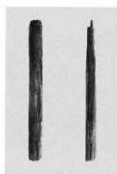
152



151



157



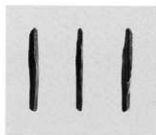
154



156



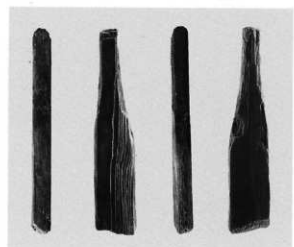
153



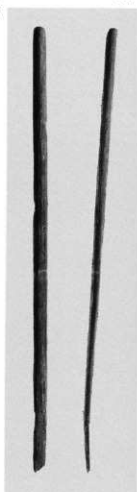
155



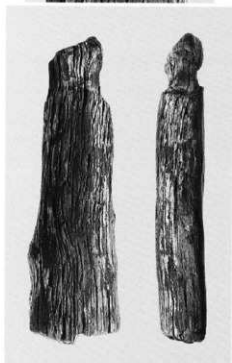
160



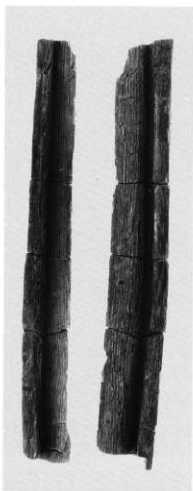
161



150



230



162



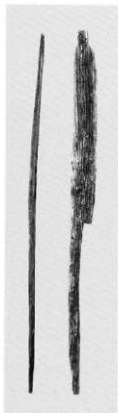
163



165



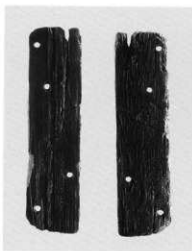
164



168



199



200



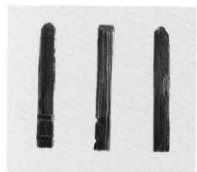
198



191



197



189



187



188



190



131



133



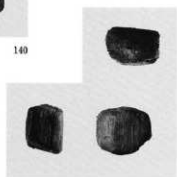
140



134



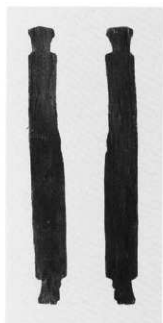
141



142



139



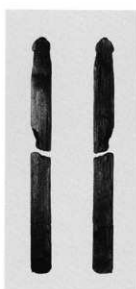
136



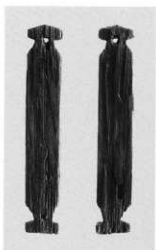
132



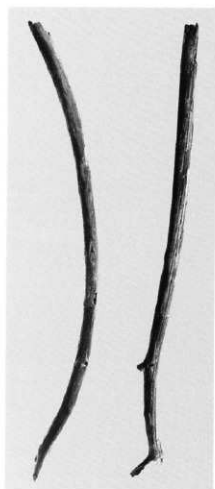
138



137



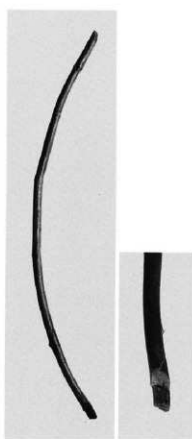
135



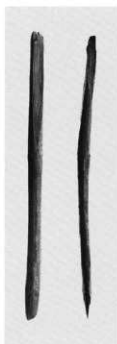
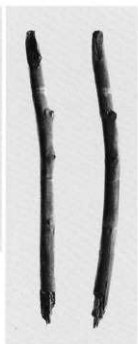
145



143



144

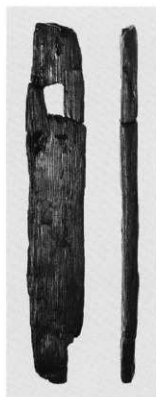


147

146

149

148



210

192



196

204

206



193



195



194



249



250



254



262



253



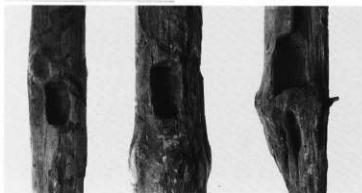
252

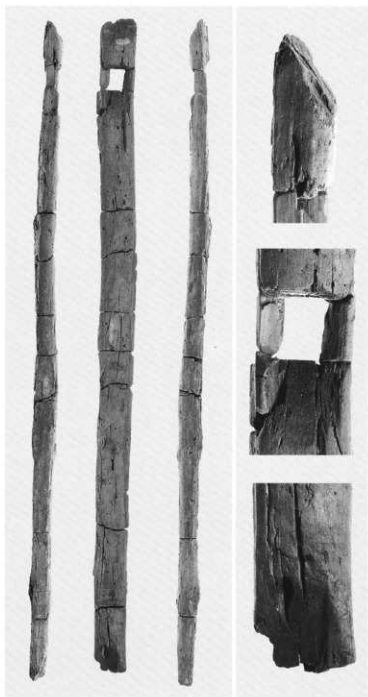
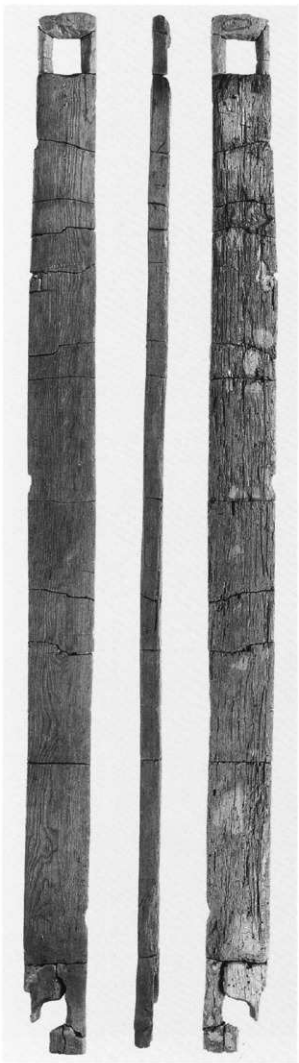


251



259

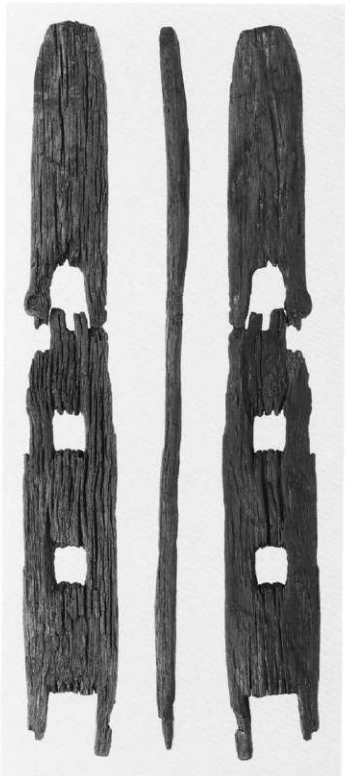




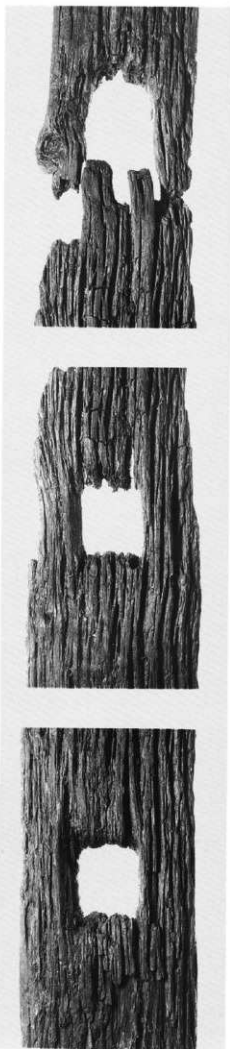
317

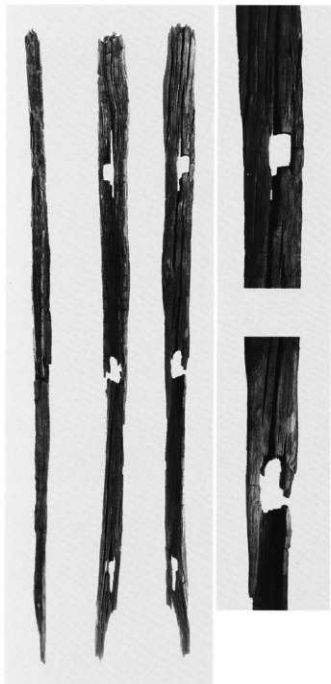


312

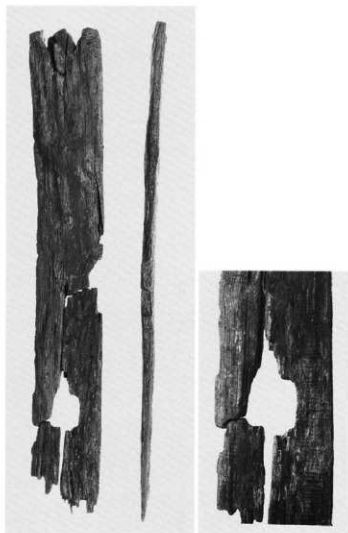


272





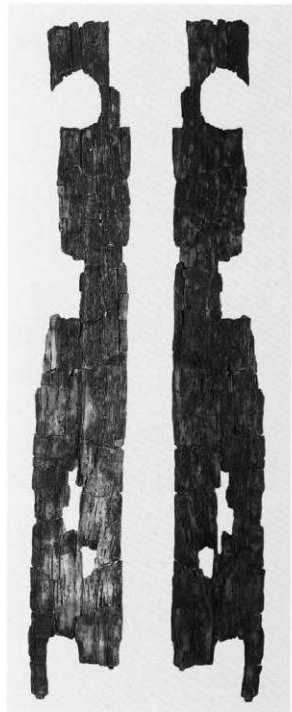
316



283



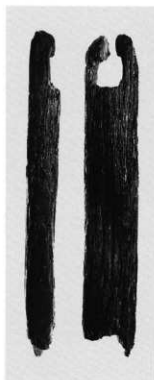
282



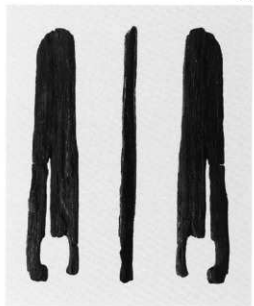
273



278



313



314



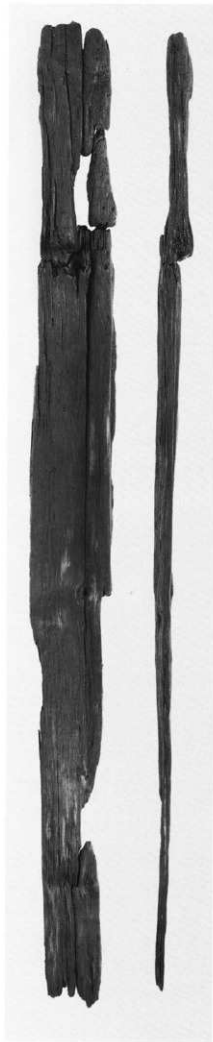
277



307



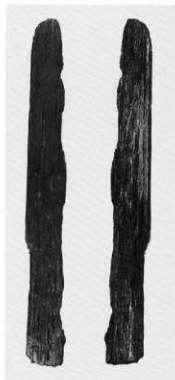
284



300



267

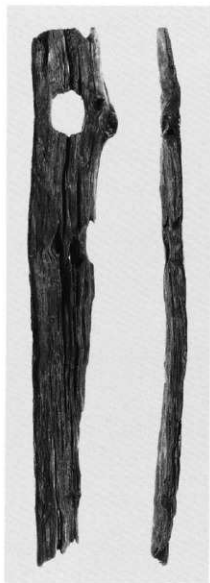


279





268



271



285

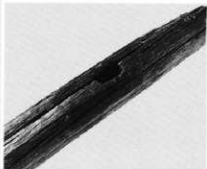




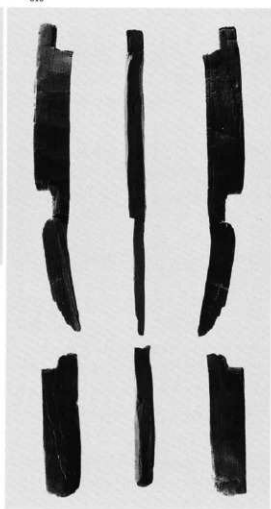
299



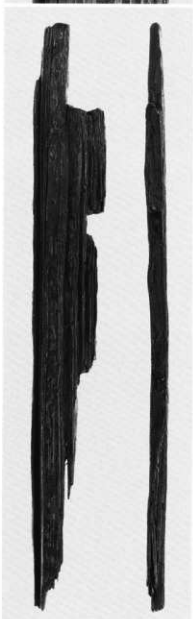
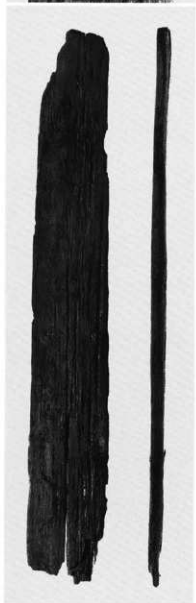
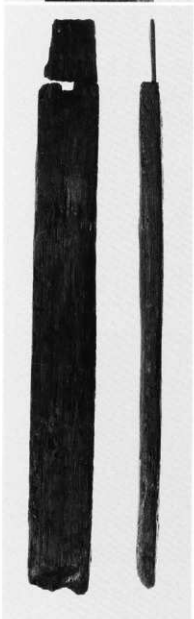
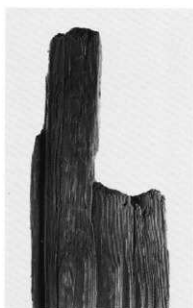
315



297



298



296

286

270



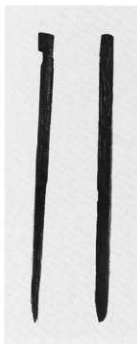
301



289



288



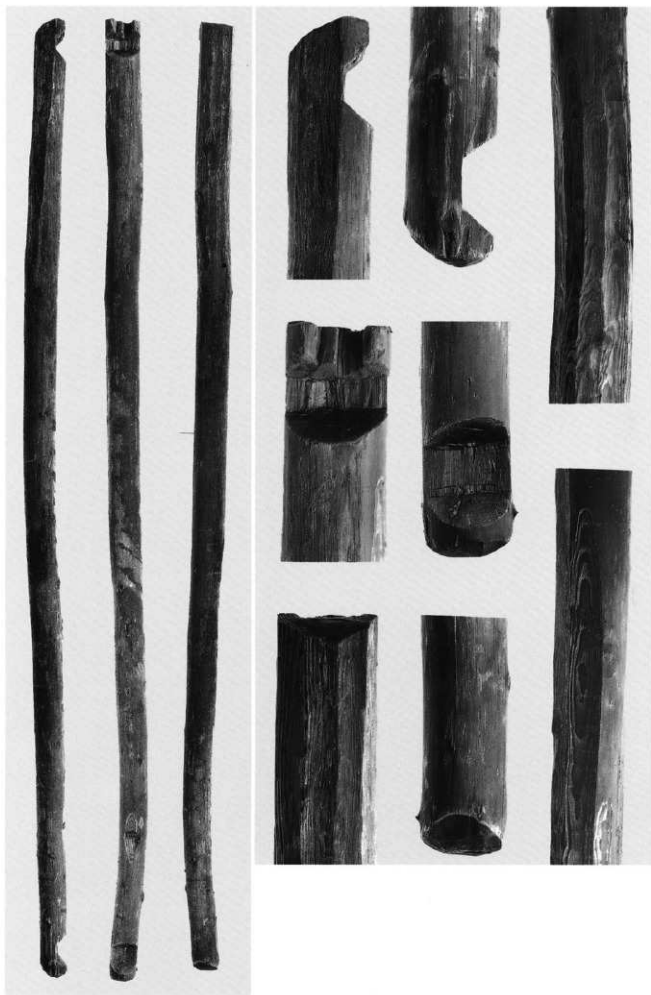
308



309

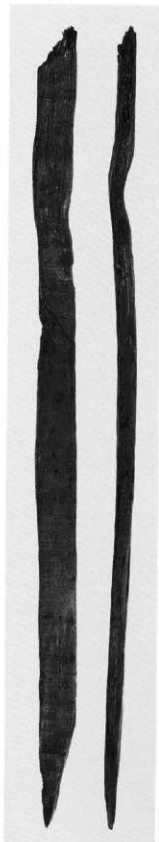


275

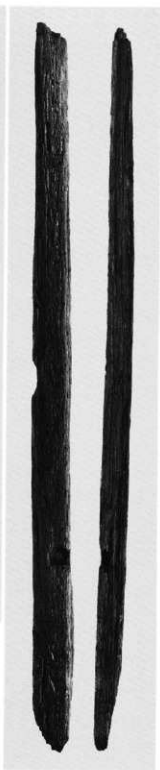




266



291



292



323



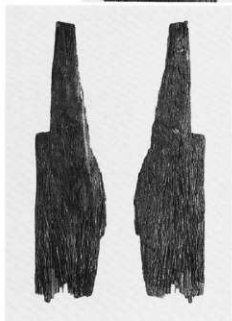
320



286



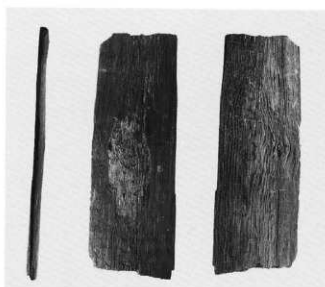
306



325



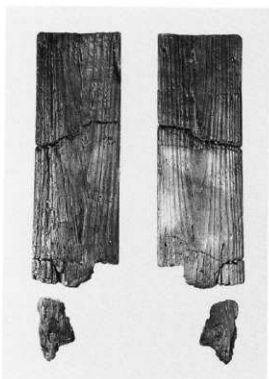
318



324



321



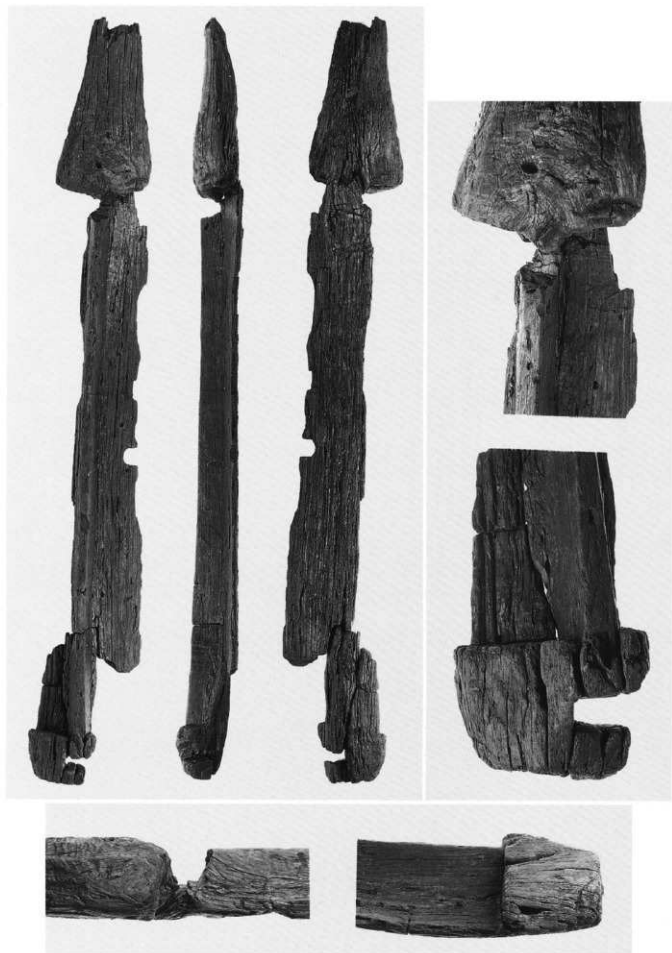
322

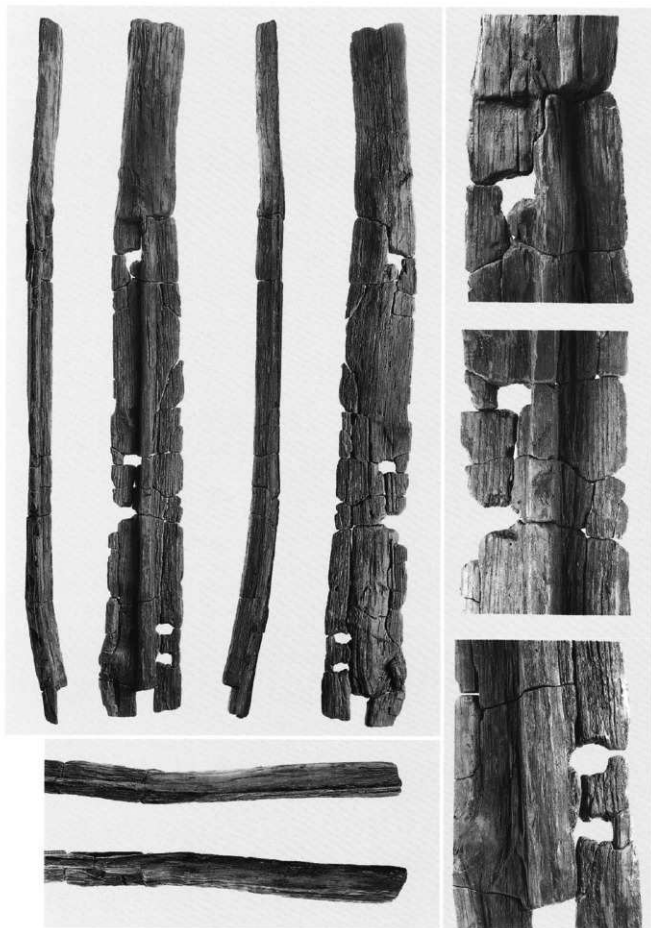


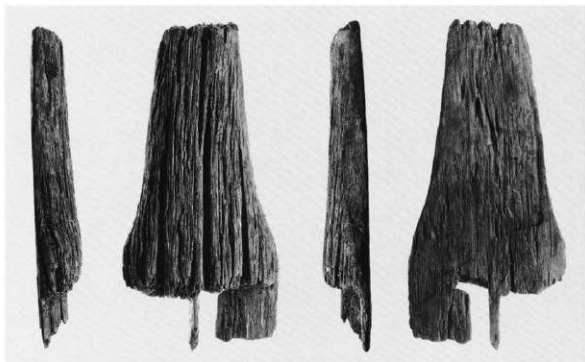
326



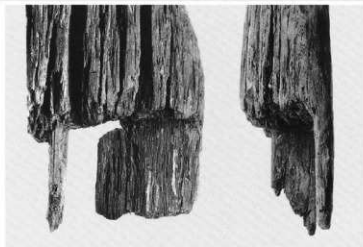




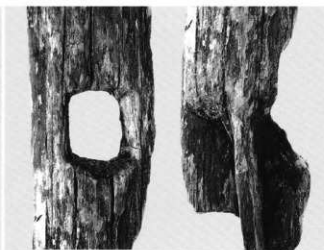




332



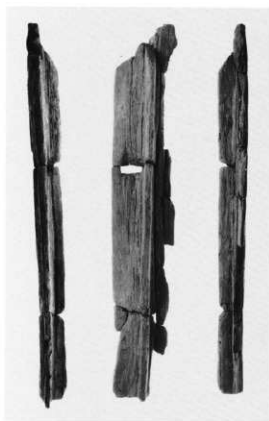
335



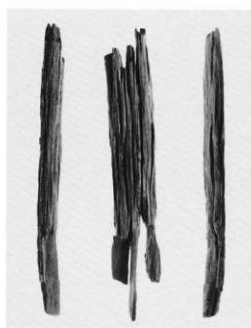


329

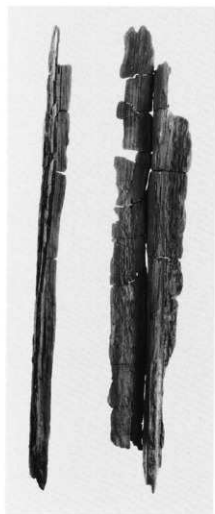




334



341



333



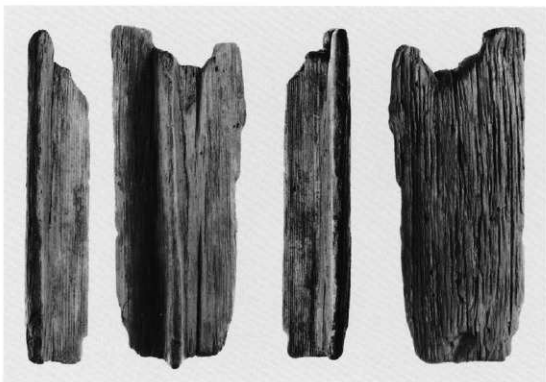
338



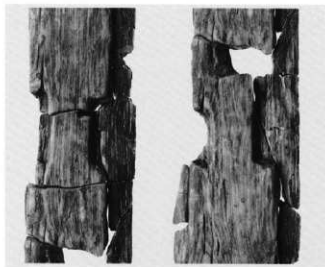
342



337



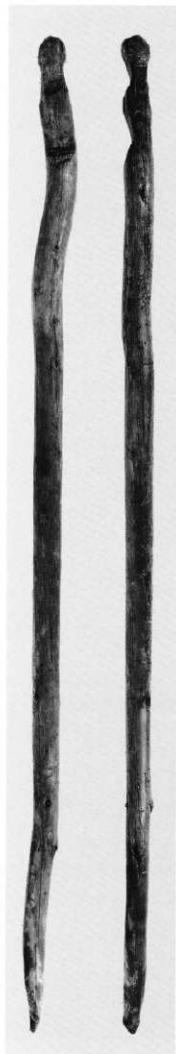
339



340



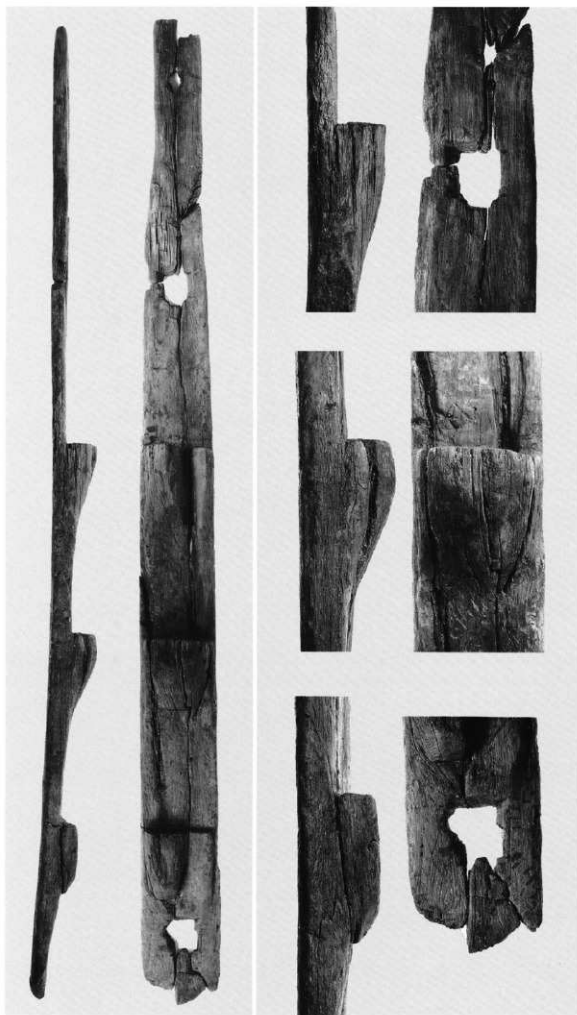
343

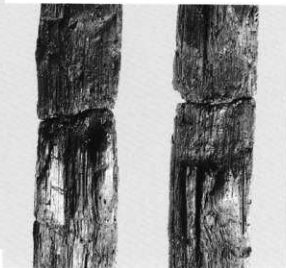
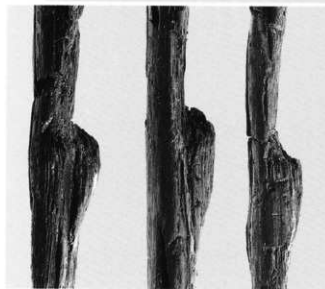
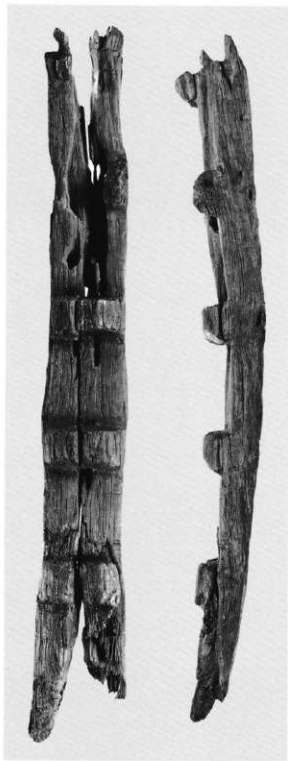
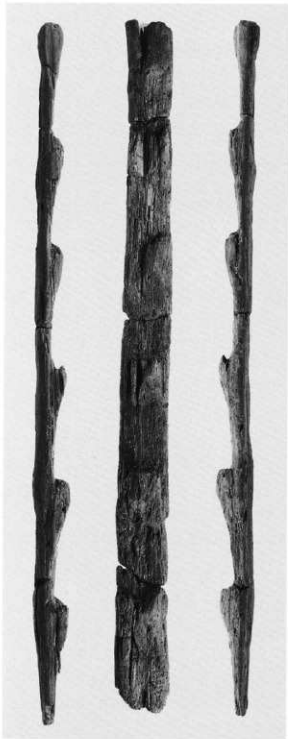


347



350





353

352



360



369



357



1

(A2区SD101)



2

(A2区整地下粘土層)



3

(A2区整地下粘土層)



4

(出土地不明)



5

(A2区整地III下層)



7

(A2区整地下粘土層)



8

(A2区SD101)



6

(A2区整地下粘土層)

0 10cm

- 1 馬中手骨
- 2 馬左上腕骨
- 3 馬右脛骨
- 4 馬左脛骨
- 5 馬右肩甲骨
- 6 馬腰椎骨
- 7 牛中足骨
- 8 鹿角

長野県埋蔵文化財センター発掘調査報告書 47

上信越自動車道埋蔵文化財発掘調査報告書 10

—長野市内 その8—

川田条里遺跡

第2分冊（遺物編）

発行 平成12年3月31日発行
発行者 日本道路公団
長野県教育委員会
長野県埋蔵文化財センター
〒387-0007 長野県更埴市屋代字清水260-6
TEL 026-274-3891
印刷 信毎書籍印刷株式会社
TEL 026-243-2105 FAX 243-3494

