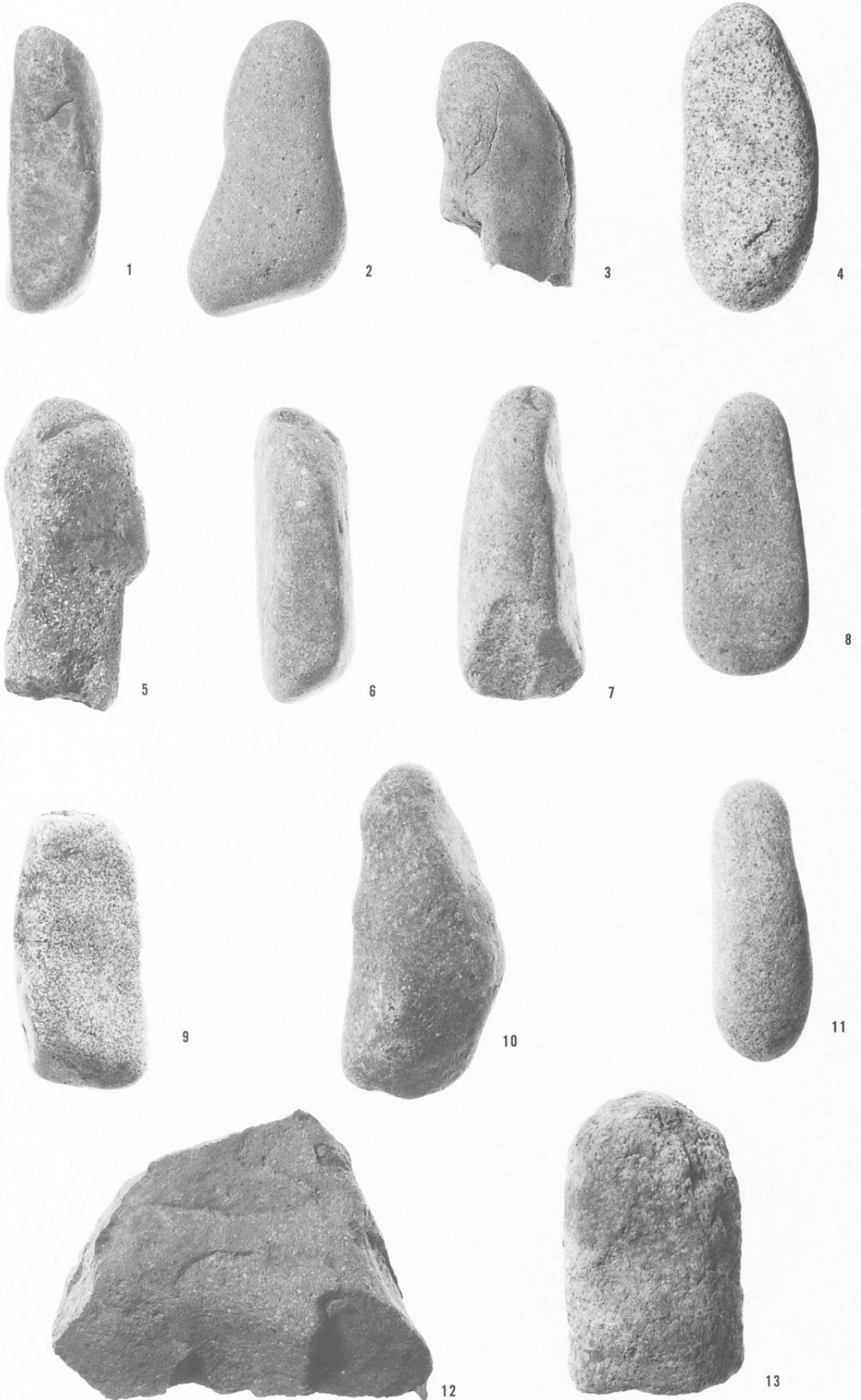


弥生時代石器39

S K 8189出  
土の河原石  
(1 : 3)



切石 1

1 SB7053

(1 : 3)



1

2 SB7053

(1 : 3)



2

古代カマド石 2

切石 2

4 SB7036

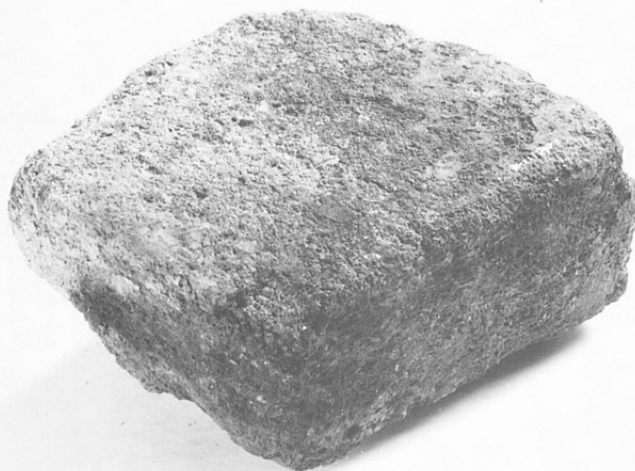
(1:3)



4

3 SB7036

(1:3)



3

SB7200

(1:3)



SB7203

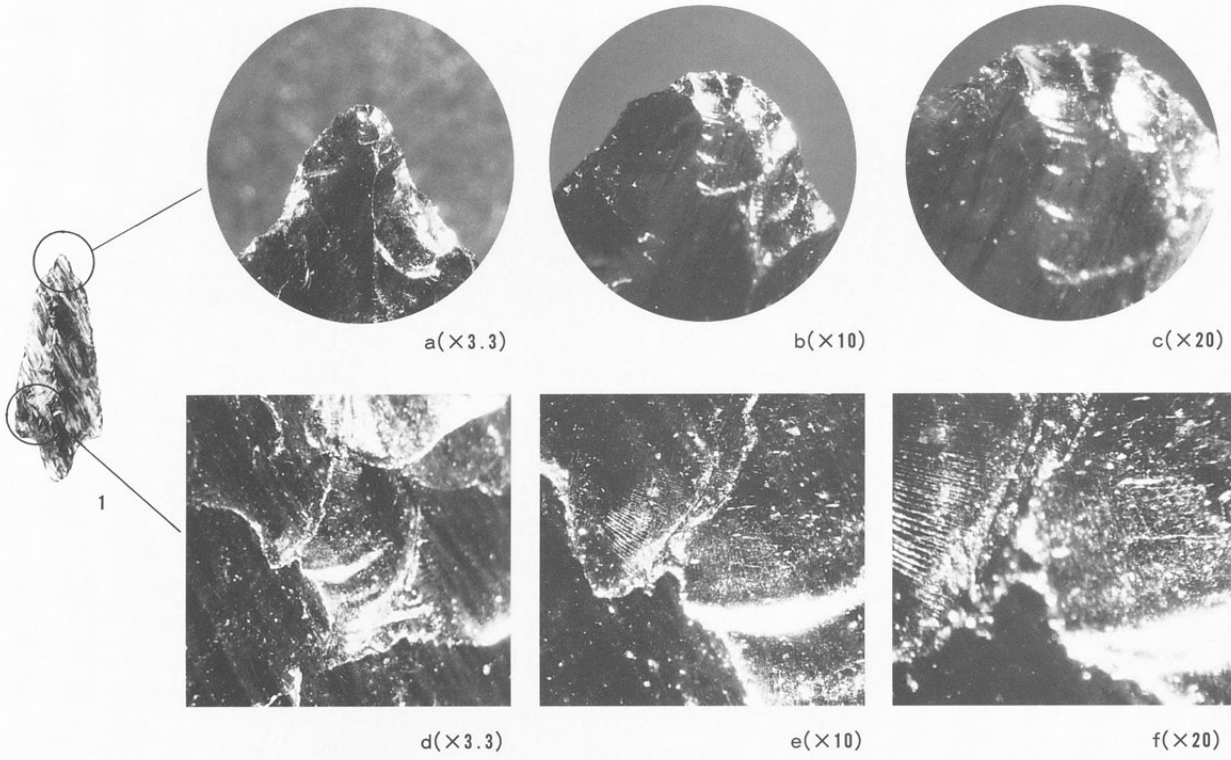
(1:3)



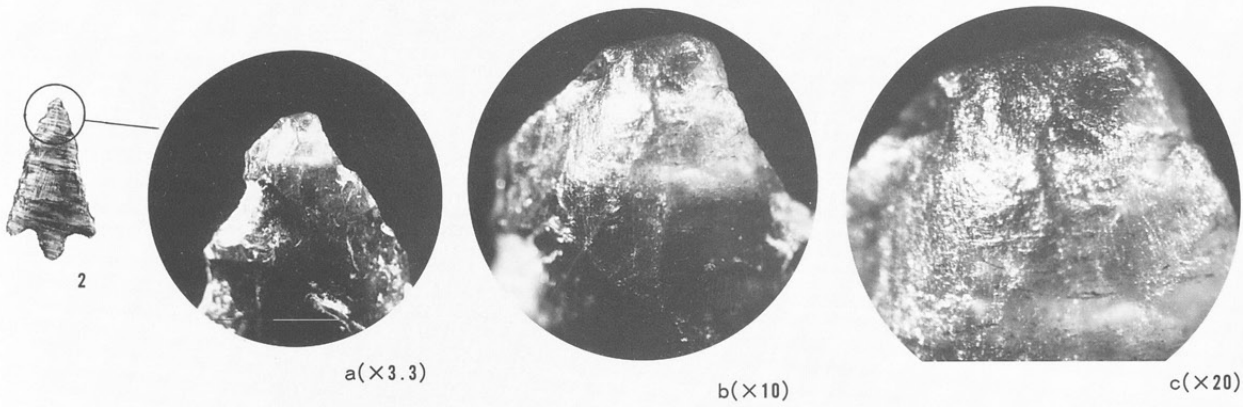
弥生時代石器40  
使用痕写真1

石鏃

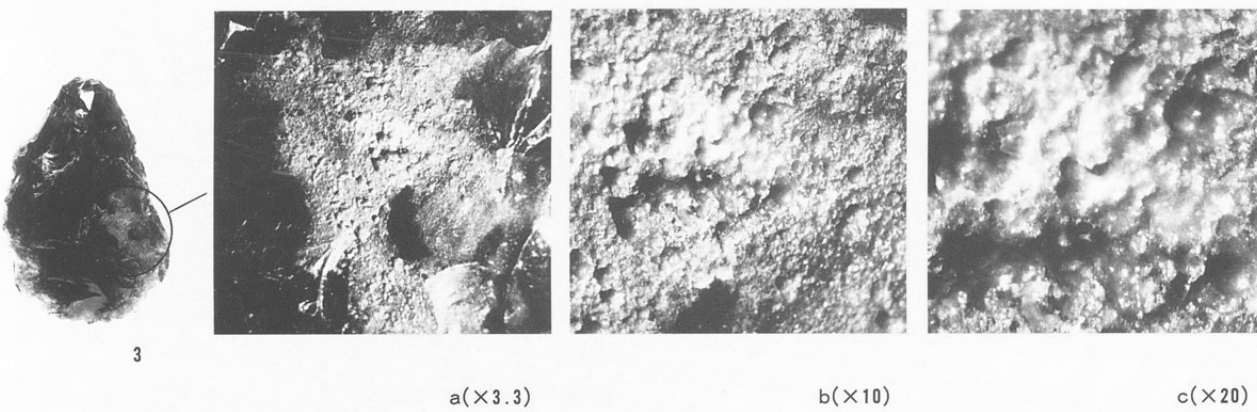
- 1 S B 7499  
 図版228-18  
 (衝擊剝離痕?)  
 (装着痕?)



- 2 S B 7279  
 図版228-20  
 (摩耗痕)

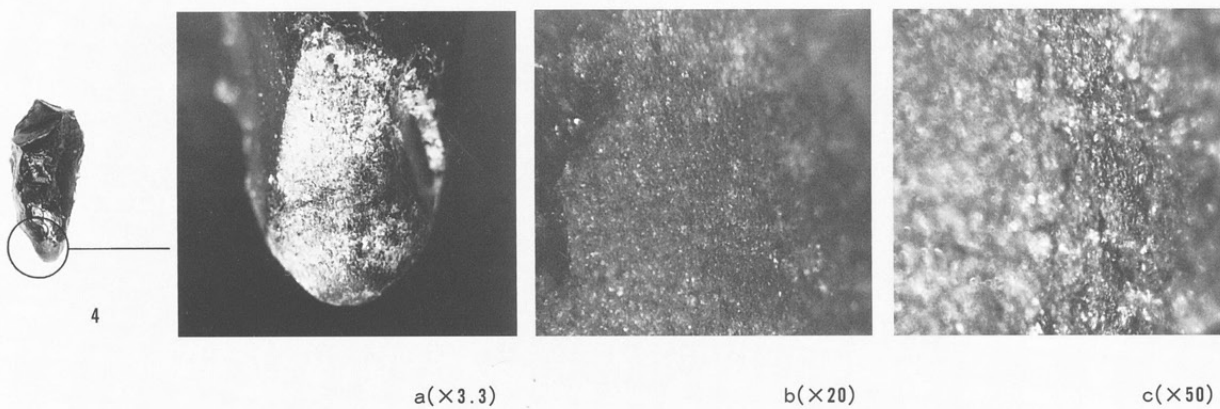


- 3 S B 7372  
 図版228-3  
 (付着物・漆)



石錐

- 4 S B 7268  
 図版229-43  
 (摩耗痕)





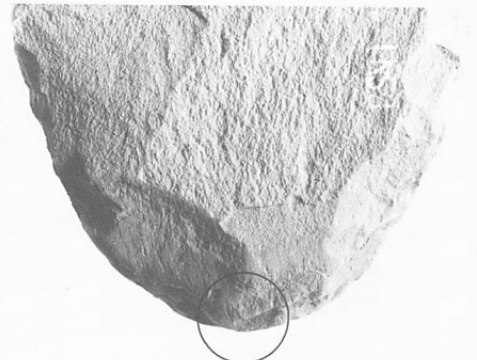
弥生時代石器41  
使用痕写真2

打製石斧

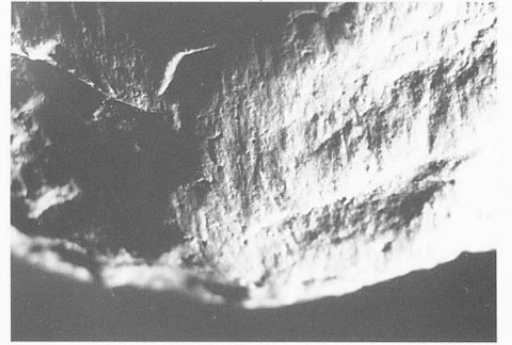
- 1 SD6023  
 図版230-4
- 2 1-2区  
 第3検出面  
 図版231-14  
 (摩耗・線状痕)



1



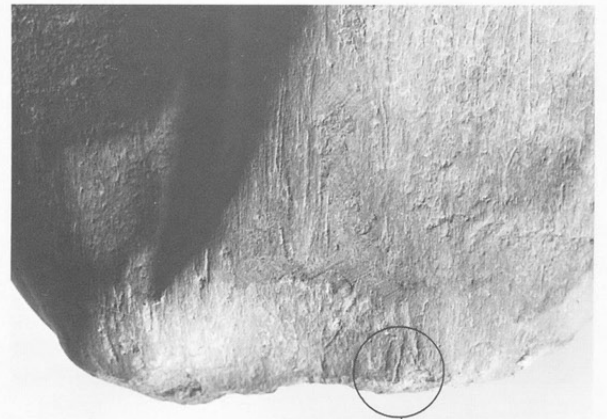
(×1.5)



(×3.3)



2



(×1.5)



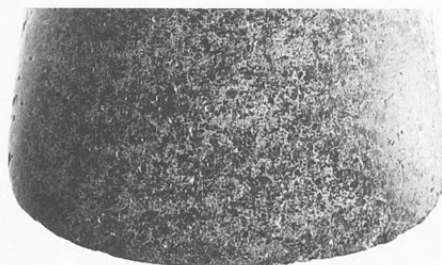
(×3.3)

磨製石斧

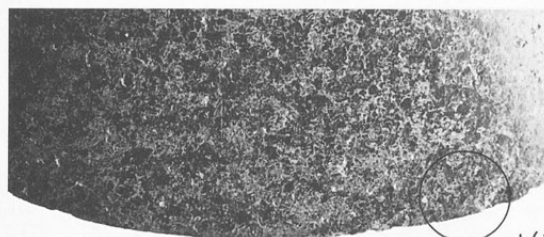
- 1 S K8167  
図版254-4
- 2 S K8167  
図版256-10  
(摩耗・線状痕)



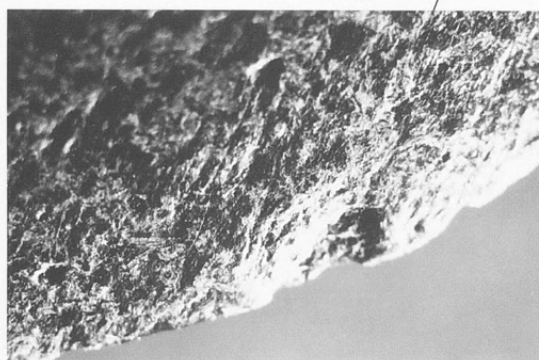
1



a(×1.0)



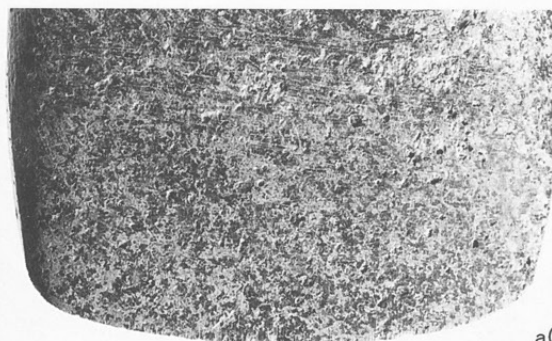
b(×1.5)



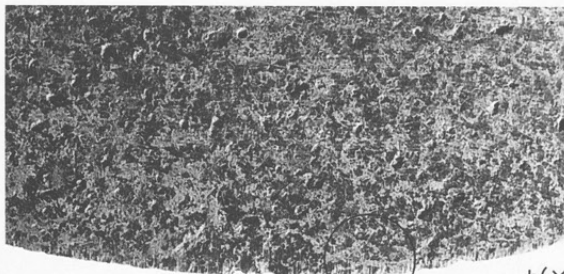
c(×3.3)



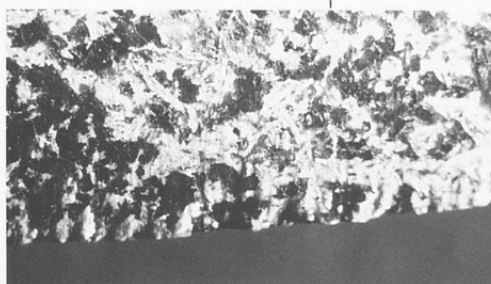
2



a(×1.0)



b(×1.5)

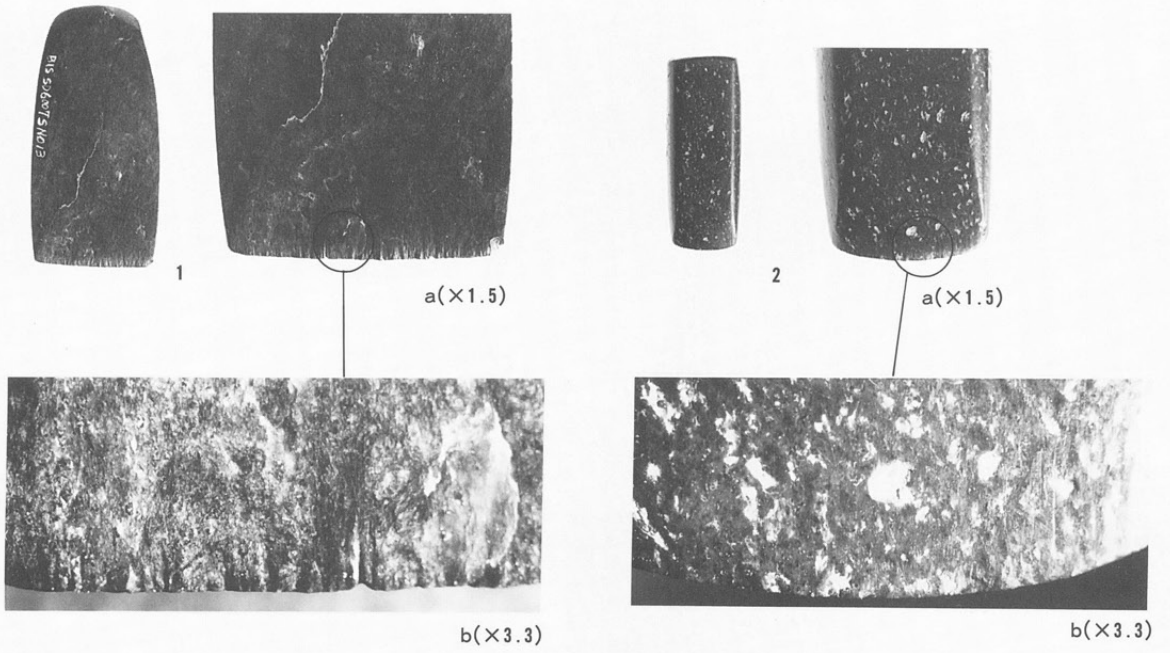


c(×3.3)

弥生時代石器43  
使用痕写真4

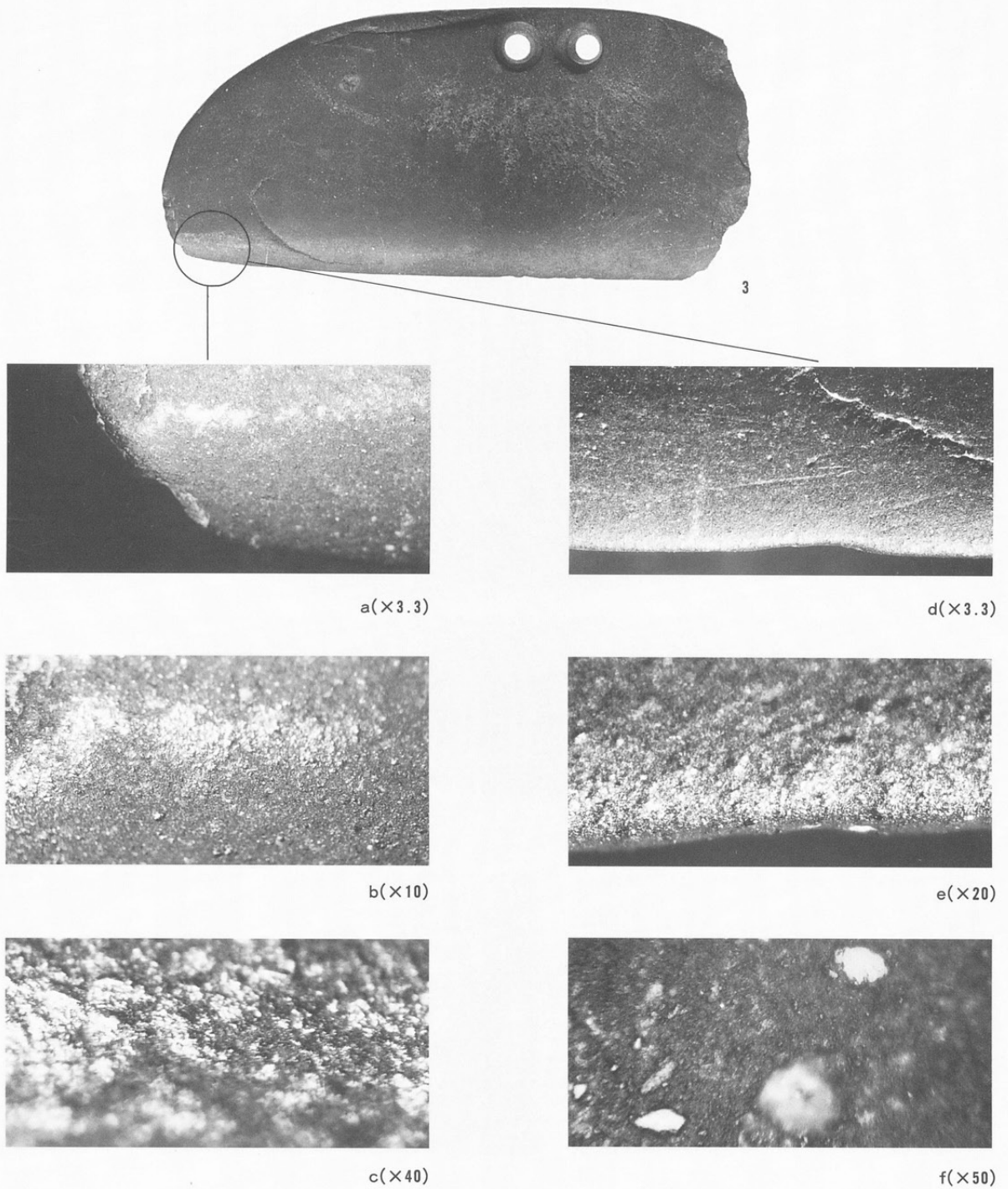
磨製石斧

- 1 S D6007  
図版256-13
- 2 S B7268  
図版256-16  
(摩耗・線状痕)



磨製石包丁

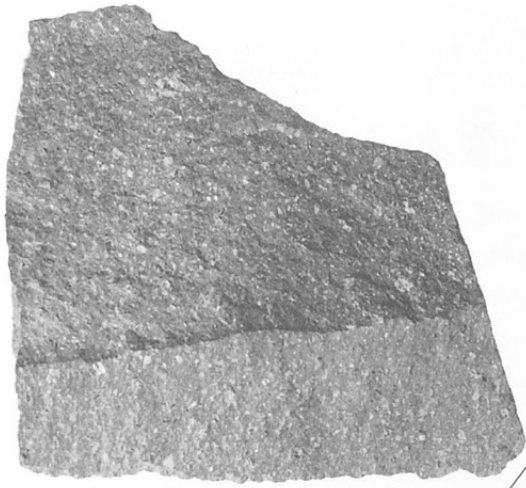
- 3 2-3区  
図版253-6  
(光沢痕)



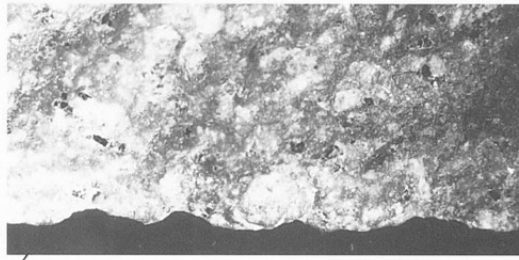


刃器

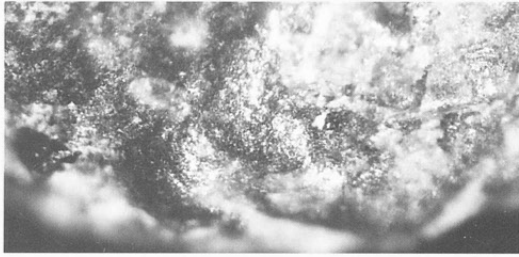
- 1 S K6051  
図版247-26
- 2 S B7268  
図版247-28  
(光泽痕)



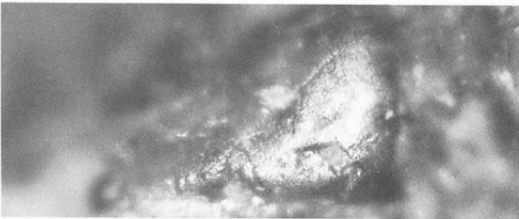
1



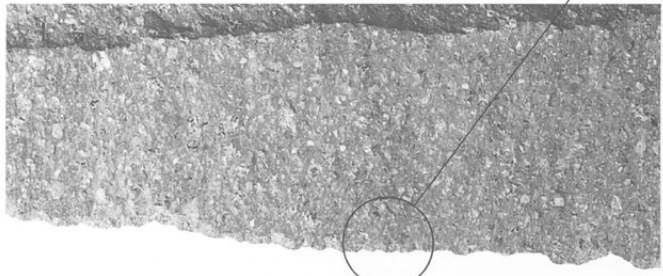
b(×3.3)



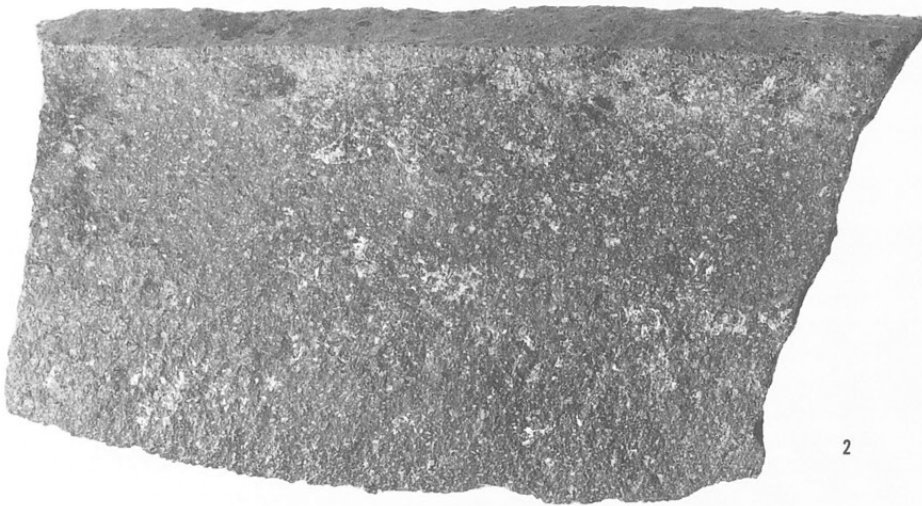
c(×20)



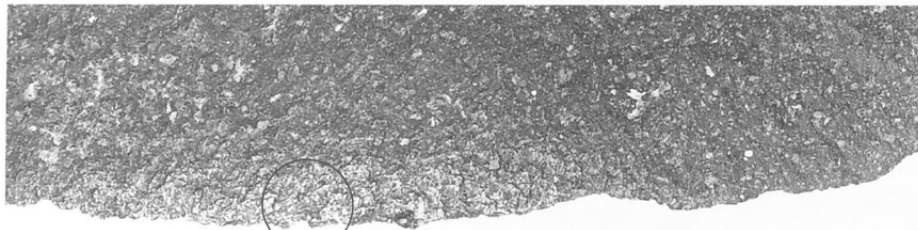
d(×25)



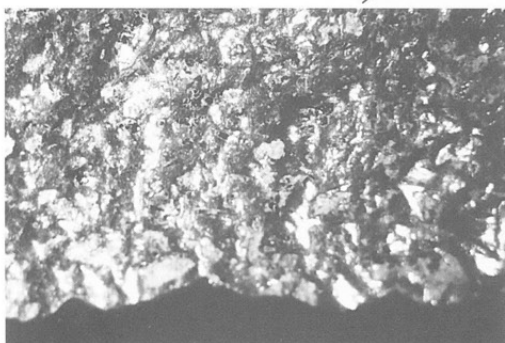
a(×1.0)



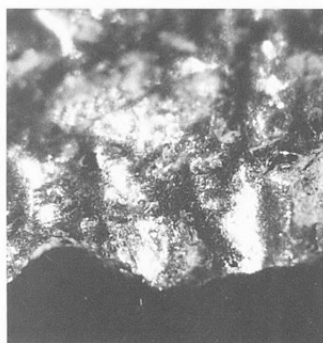
2



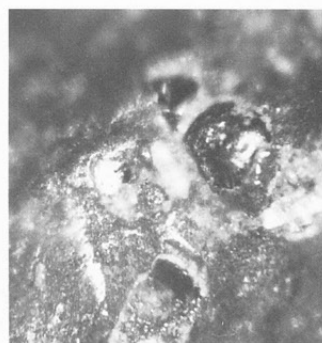
a(×1.0)



b(×3.3)



c(×10)



d(×25)



弥生時代石器45  
使用痕写真6

刃器

1 S B 7106

図版245-2

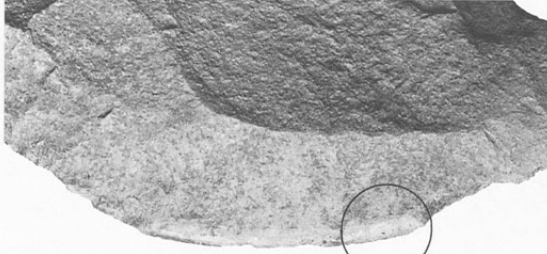
2 S B 7639

図版249-38

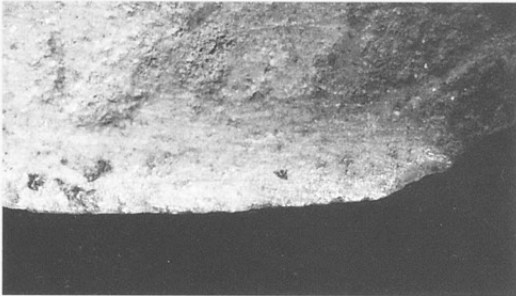
(摩耗・線状・  
光沢痕)



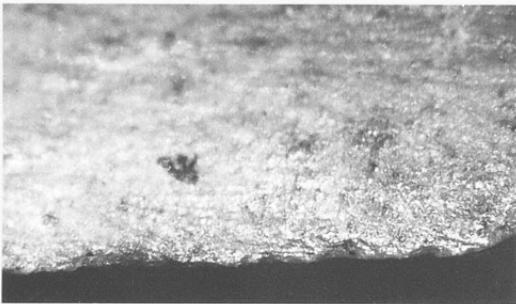
1



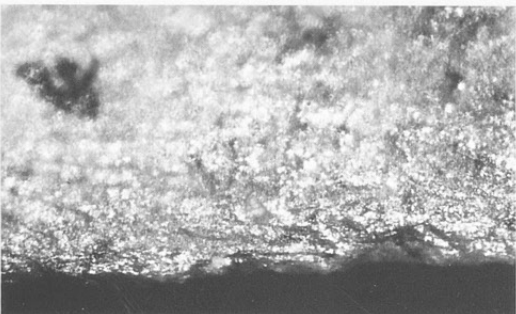
a(x1.5)



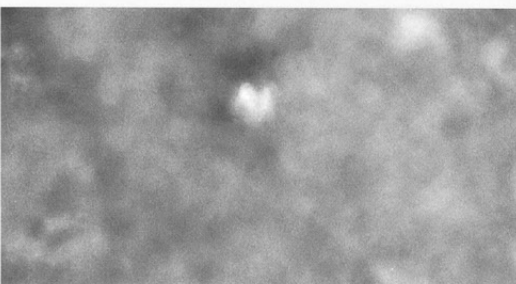
b(x3.3)



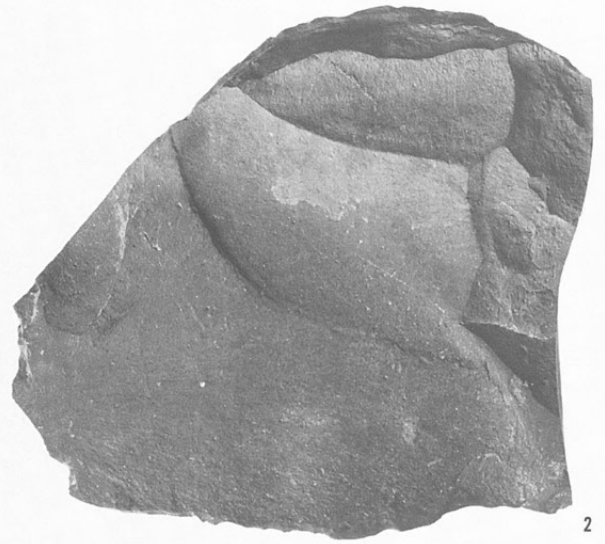
c(x10)



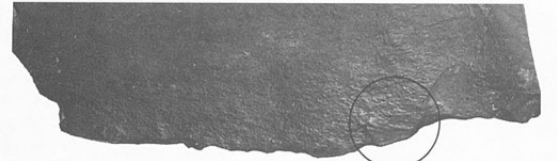
d(x20)



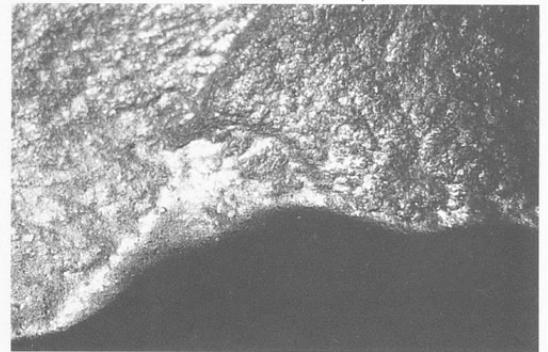
e(x50)



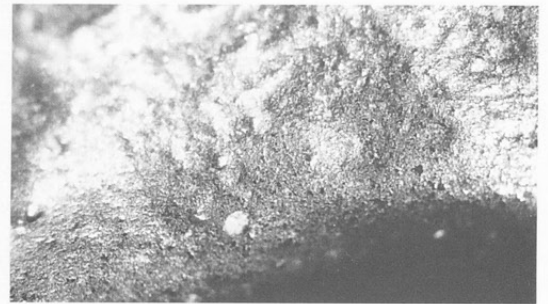
2



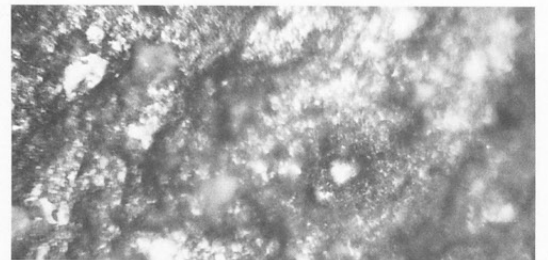
a(x1.0)



b(x3.3)



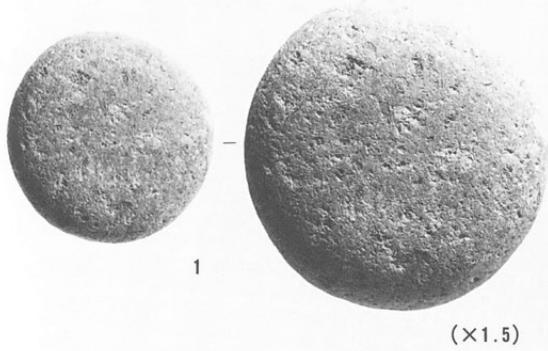
c(x10)



d(x25)



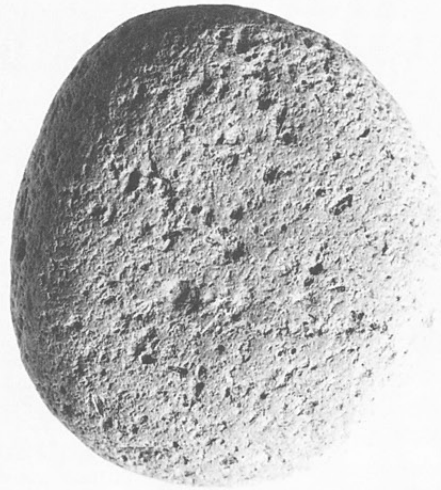
e(x50)



(x1.5)



2



(x1.5)



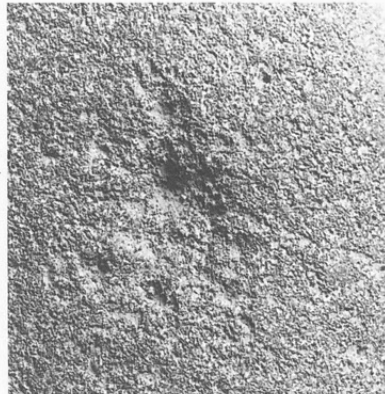
3



(x1.5)



4



(x1.0)



5



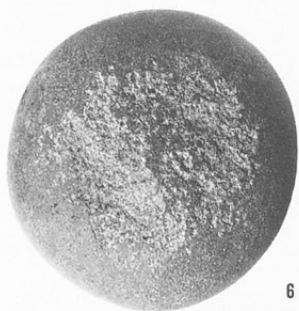
(x1.0)

磨石

- 1 S B7002  
図版236-75
- 2 2-2区  
第1検出面  
図版234-37
- 3 S B7250  
図版236-95  
(摩耗面)

凹石

- 4 S B7089  
図版237-100
- 5 2-2区  
第1検出面  
図版238-115
- 6 S D7046  
図版237-112  
(敲打部)



6



7

敲石

- 7 S B7258  
図版240-31  
(敲打部)



(x1.0)



(x1.0)

弥生時代～  
古代石器47  
使用痕写真8

敲石

- 1 20-1区  
第5検出面  
図版240-27
- 2 S B 7372  
図版239-15
- 3 S B 7025  
図版241-40  
(敲打部)



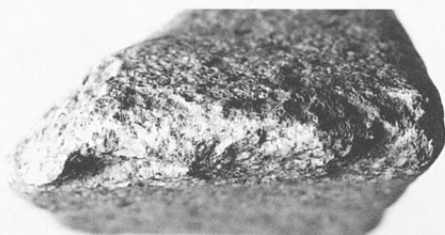
2



1



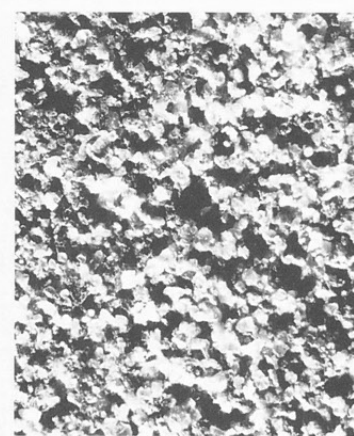
(×1.0)



(×1.0)



4



(×5.0)



3



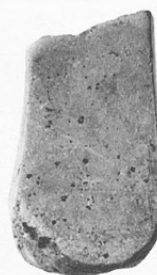
5



(×5.0)



(×1.0)



6



(×5.0)

砥石

- 4 S B 7506  
図版259-36
- 5 S B 7033  
図版258-12
- 6 S B 7113  
図版258-14  
(砥面粒度)



(助)長野県埋蔵文化財センター発掘調査報告書 22

中央自動車道長野線埋蔵文化財発掘調査報告書 16

—長野市内その4—

篠ノ井遺跡群

遺物図版編

発行 平成 9 年 3 月 31 日

発行者 日本道路公団名古屋建設局

長野県教育委員会

(助)長野県埋蔵文化財センター

印刷 第一法規出版株式会社

