

ヘラ書き・  
線刻・  
刻印土器 2

- 1 SD7052
- 2 SB6020
- 3 SB7163
- 4 SK6078
- 5 SD7052
- 6 SK6226



1



2



3



4



5



6

ヘラ書き・  
線刻・  
刻印土器3

- 1 S B6014
- 2 S K6313
- 3 S K8864
- 4 S K7460
- 5 S B7391
- 6 S B7196
- 7 S K7012
- 8 S B7485



1



2



3



4



5



6



7



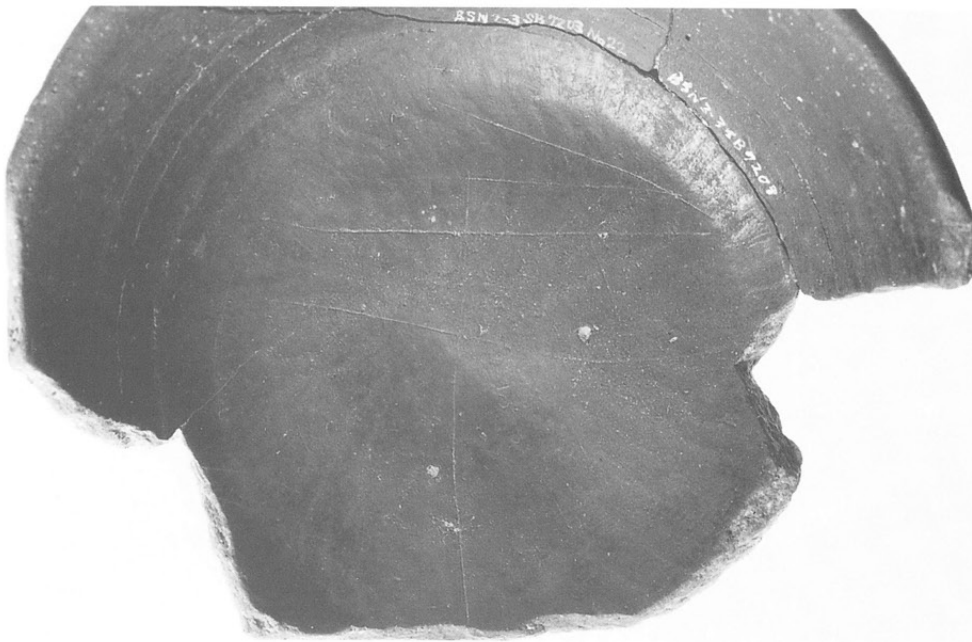
8

ヘラ書き・  
線刻・  
刻印土器4

1 2-2区  
第2検出面  
2~3  
SB7203  
(同一土器)



1



2



3

ヘラ書き・  
線刻・  
刻印土器5

1 S B7002

2・6

S B7222

3 S B7108

4 S B7010

5 S B7703

7 S B6036

8 S B7022

9 2-1区

第4検出面



1



2



3



4



5



6



7



8



9

ヘラ書き・  
線刻・  
刻印土器6

1・4

SB7014

2 SB7001

3 SB7010

5 SB7013

6 SB7041



1



2



3



4



5



6

ヘラ書き・  
線刻・  
刻印土器7

1 SB7011

2 SB7551

3 SB7716



1

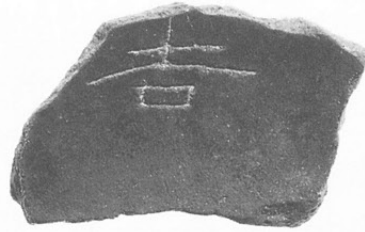


2



3

へら書き・  
線刻・  
刻印土器8



1 SB7404

2・8

SD7006

3 SB7230

4 SB7425

5 SB7136

2 6 SB7008

7 SB7223

9 3区

3層上面



3



4



5



7



6



8



9

ヘラ書き・  
線刻・  
刻印土器9

- 1 SB7416
- 2 SB7264
- 3 SB7133
- 4 SB7391



1



2

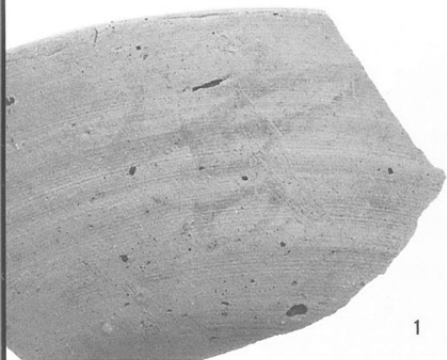


3

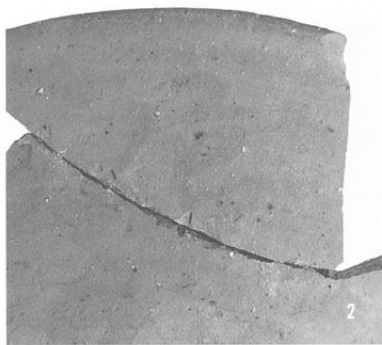


4

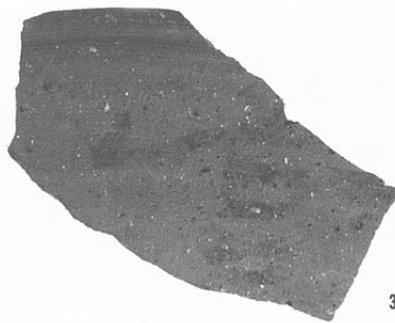




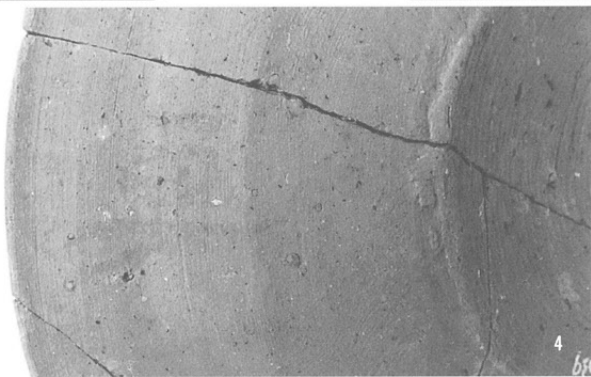
1



2



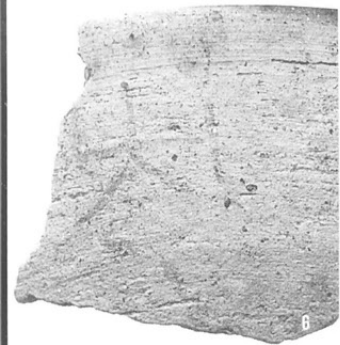
3



4



5



6



7



8



9



10



11



12

- 1 SB7266
- 2 ~ 3  
SD7052
- 4 SD7039
- 5 · 8  
SB7022
- 6 SD7006
- 7 SB7139
- 9 SB7698
- 10 SB7098
- 11 2 - 2 区  
第 1 検出面
- 12 SB7019

墨書土器 2

- 1 SB7022
- 2 SK7369
- 3 SK7137
- 4 SB7002
- 5 SD7006
- 6 SB7209
- 7 SM7005
- 8 SB7036
- 9 SB7203
- 10 SB7610
- 11 SD7002
- 12 SB7006
- 13 SK7302
- 14 SB7007



1



2



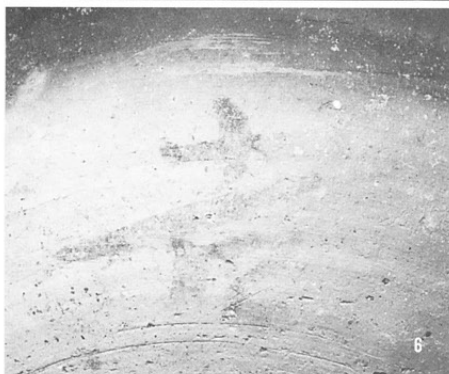
3



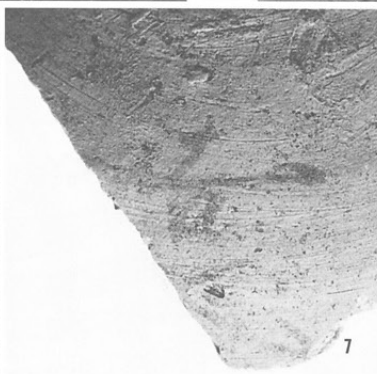
4



5



6



7



8



9



10



11



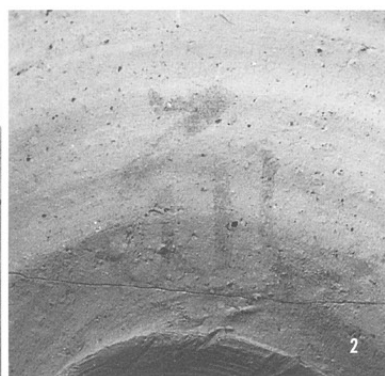
12



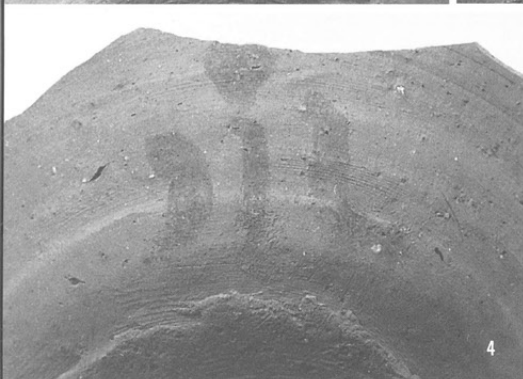
13



14

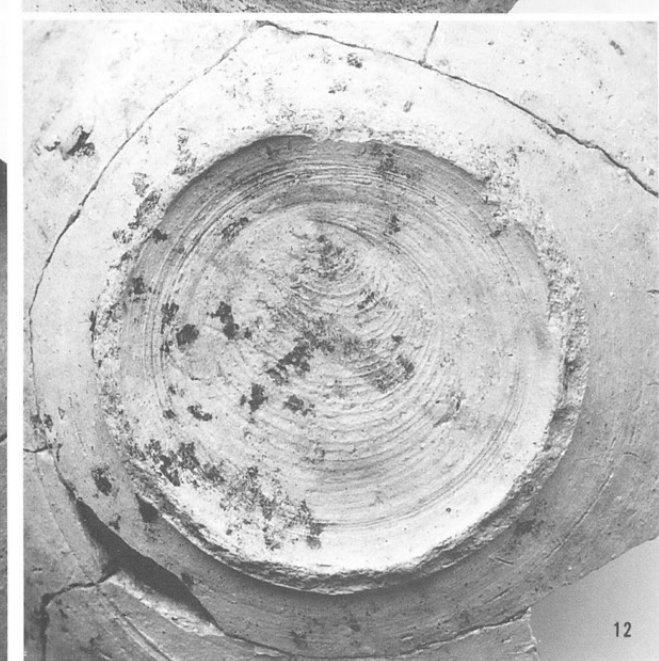
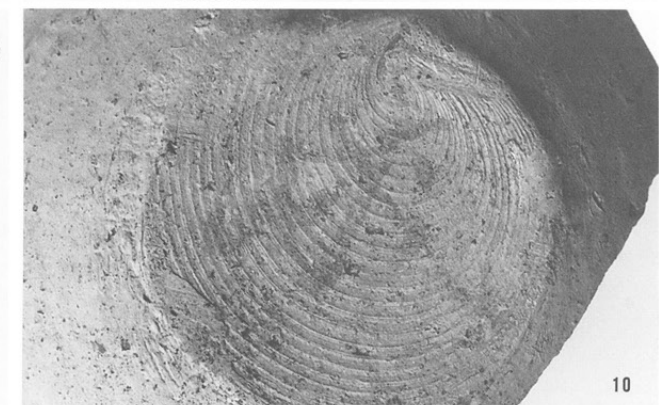
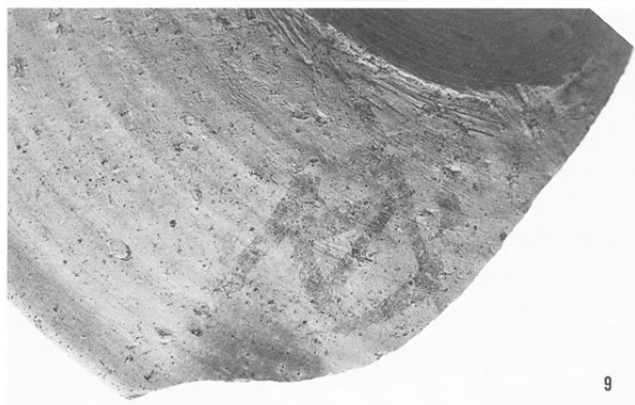
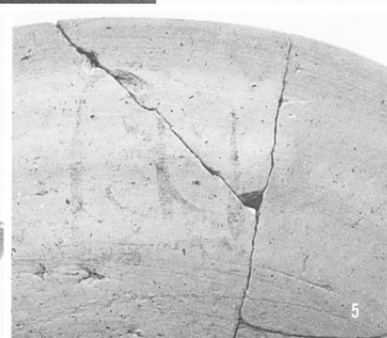
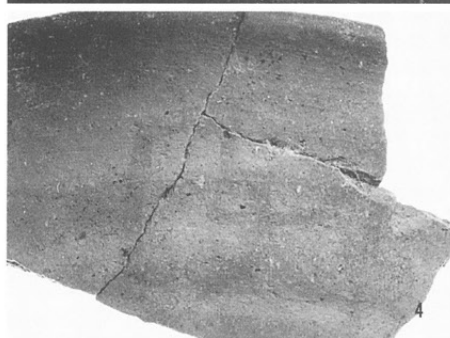
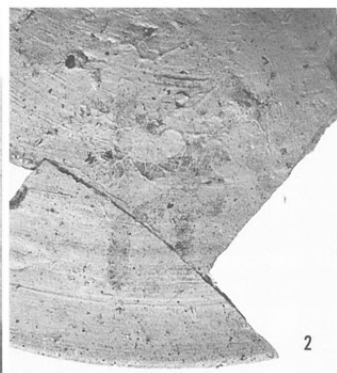


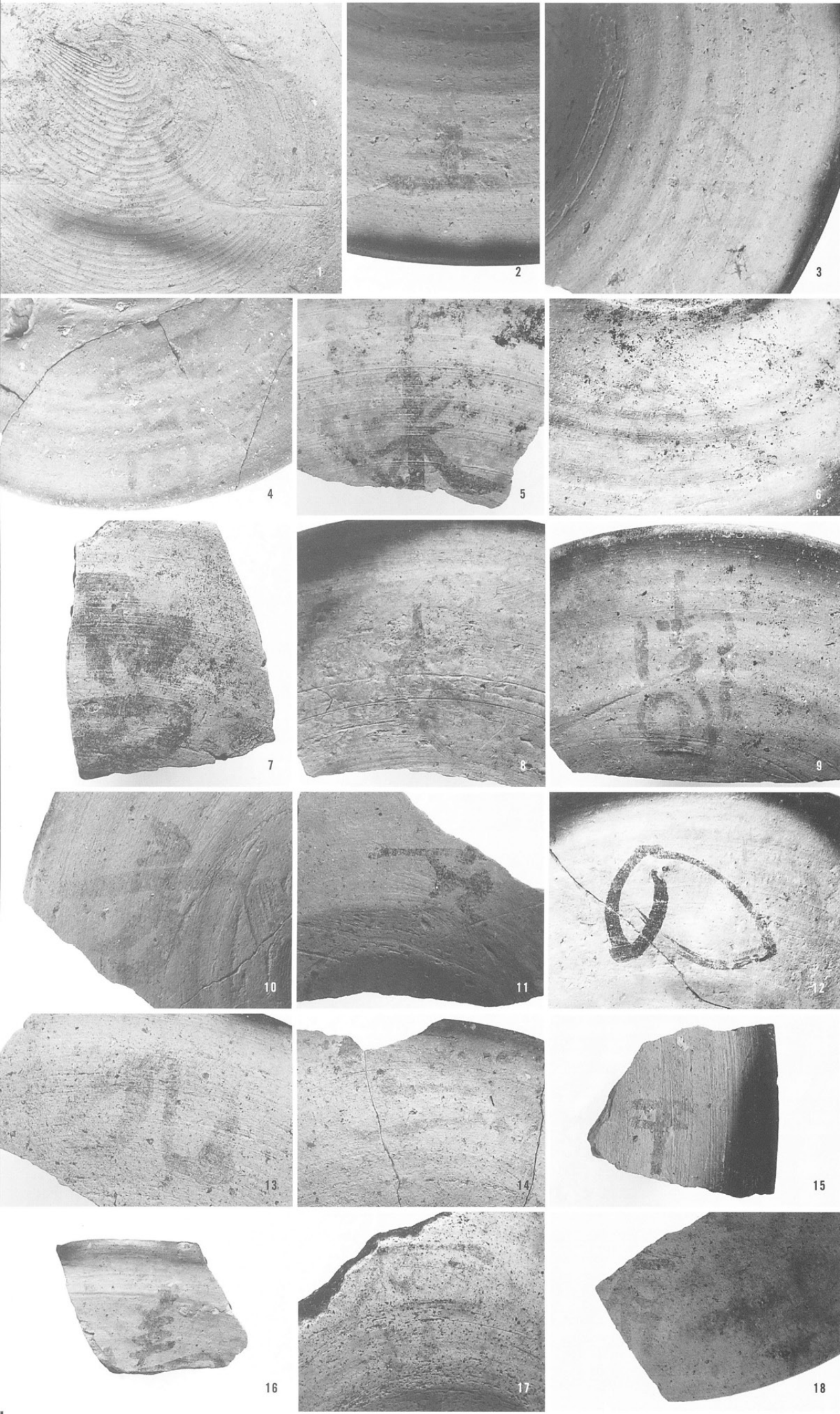
- 1 SB7259
- 2 SB7218
- 3 SD7052
- 4 SB7263
- 5 3区  
3層上面
- 6 SB7013
- 7 BSN一括
- 8 SB7416
- 9~11  
SB7019  
(同一土器)
- 12 SB7007



墨書土器 4

- 1 S B7058
- 2・6
- S B7002
- 3 S B7416
- 4 S B7006
- 5 S D7039
- 7 S B7202
- 8 S B7041
- 9~10
- S B7301
- (同一土器)
- 11~12
- S K7447
- (同一土器)

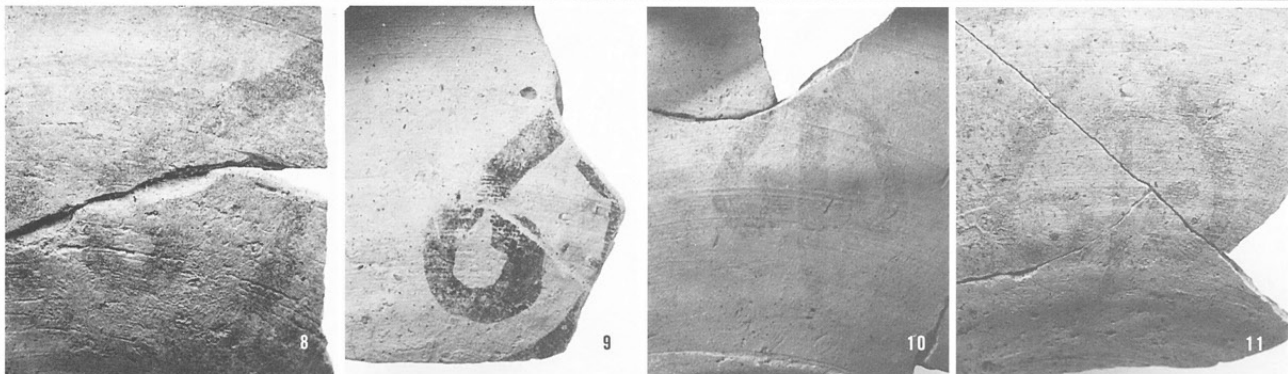
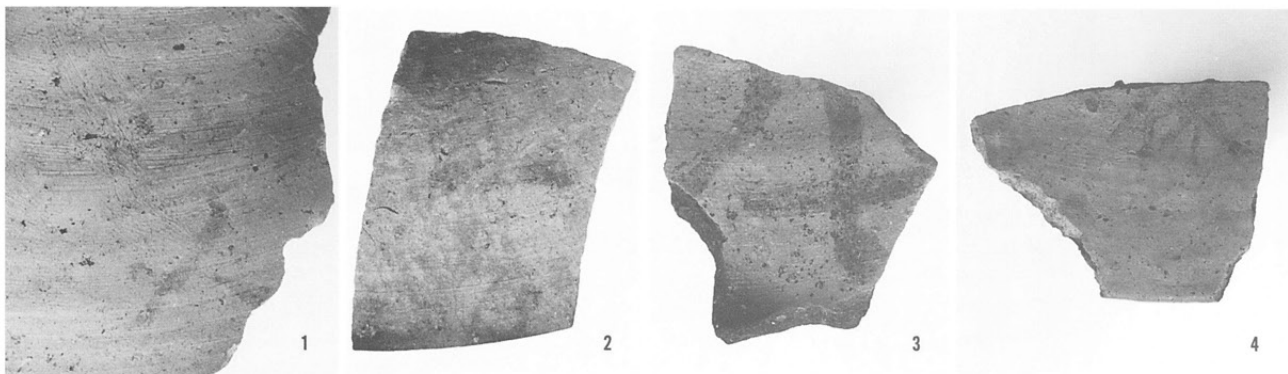




- 1 S B7427
- 2 ~ 3  
S B7015  
(同一土器)
- 4 S B7534
- 5 · 16~17  
S D7006
- 6 S B7305
- 7 2 - 2 区  
第 1 検出面
- 8 S K7229
- 9 S B7181
- 10 · 15  
S B7112
- 11 S D7010
- 12 S K6044
- 13 S B7098
- 14 S B7404
- 18 S B7601

墨書土器 6

- 1 SB7014
- 2 SB7022
- 3 3区
- 耕作土中
- 4 SB7018
- 5 SB7154
- 6 SB7001
- 7 SB7051
- 8 SD7002
- 9 SD7006
- 10~11
- SB7041
- 12~13
- SB7137
- (同一土器)
- 14 2-1区
- 第1検出面
- 15 SD7080



硯類 1

- 1 S B7735
- 2 S B7019
- 3 S B7206
- 4 S B7224
- 5 ~ 6  
S B7263
- 7 S B7053
- 8 S B7340



1



2



3



4



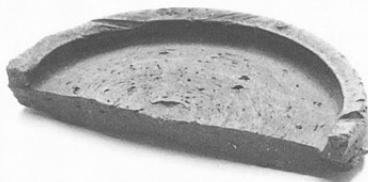
5



6



7



8

硯類 2

- 1 SD7007
- 2 SD7039
- 3~4  
SD7023  
(同一土器)
- 5~6  
SD7052
- 7 SK6044
- 8 SD7083



1



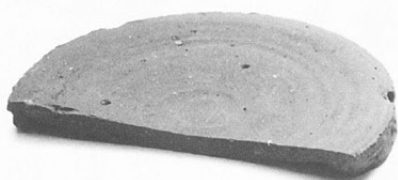
2



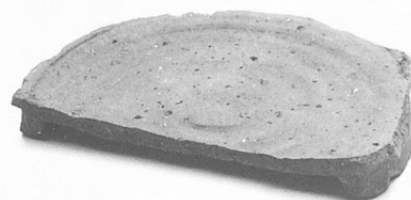
3



4



5



6



7

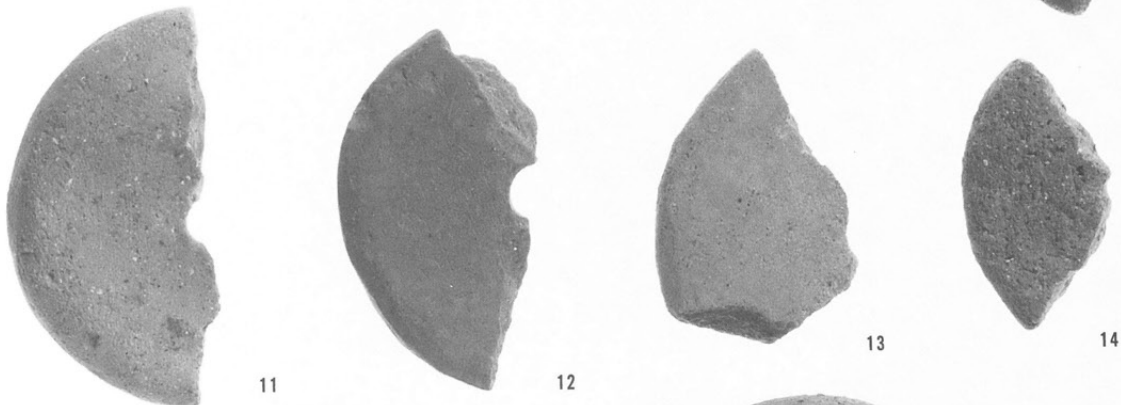
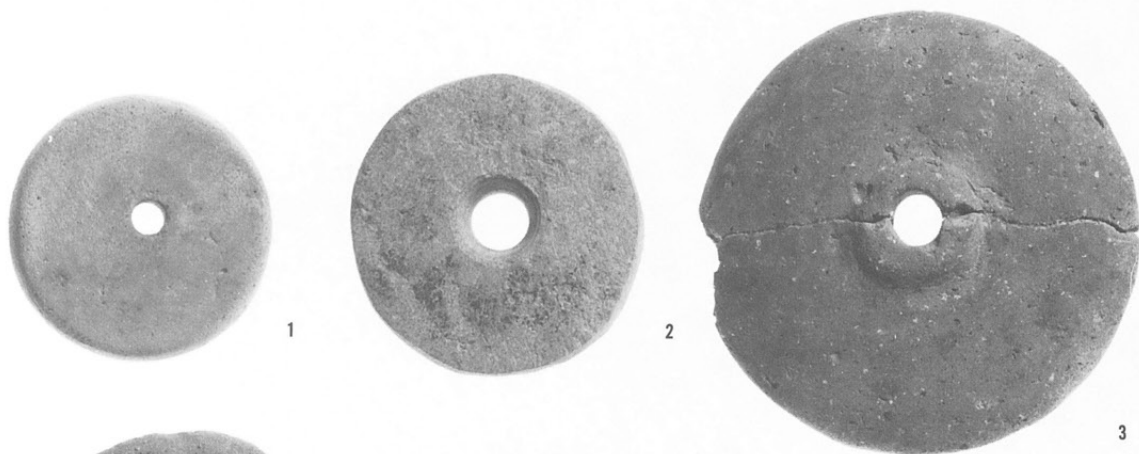


8



紡錘車

- 1 S D5003
- 2・5 S B7191
- 3 S B7655
- 4 S B7423
- 6 S B7343
- 7 S B7226
- 8・12 S B7256
- 9 S D7007
- 10 3区3層上面
- 11 S B7147
- 13 S D7042
- 14 S B7494
- 15~16 S B7215



15

16

土錘 1

- 1 SB7533
- 2 SB7426
- 3 SB7422
- 4 3区3層上面
- 5 SD7084
- 6 SB7519
- 7 SD7006
- 8~9  
2-2区  
第1検出面
- 10 SB7001



1



2



3



4



5



6



7



8



9



10

1・5

S B7486

2 S D7006

3 S D7007

4 S B7004

6 S B7272

7 3区3層上面

8 S B7026

9 S B7041

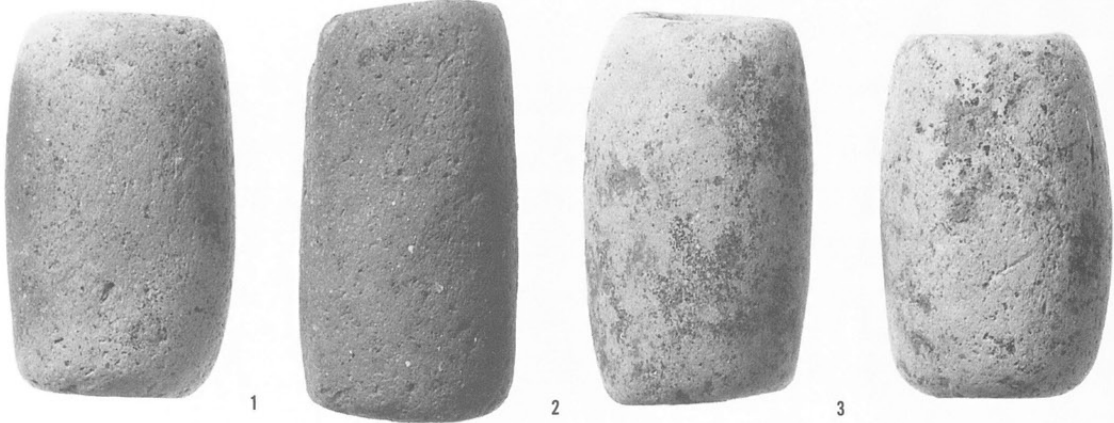
10 S B7019

11 S D7052

12 S D7011

13 S K6432

14 S B7478



土錘 3

1 S B7006

2 S D7001

3 S B7053

4 S B7008

5 S B7013

6 · 13

3区3層上面

7 S K7330

8 · 11

S B7041

9 2-1区

第2検出面

10 S B7348

12 S B7011

14~15

S D7038



1



2



3



4



5



6



7



8



9



10



11



12



13



14



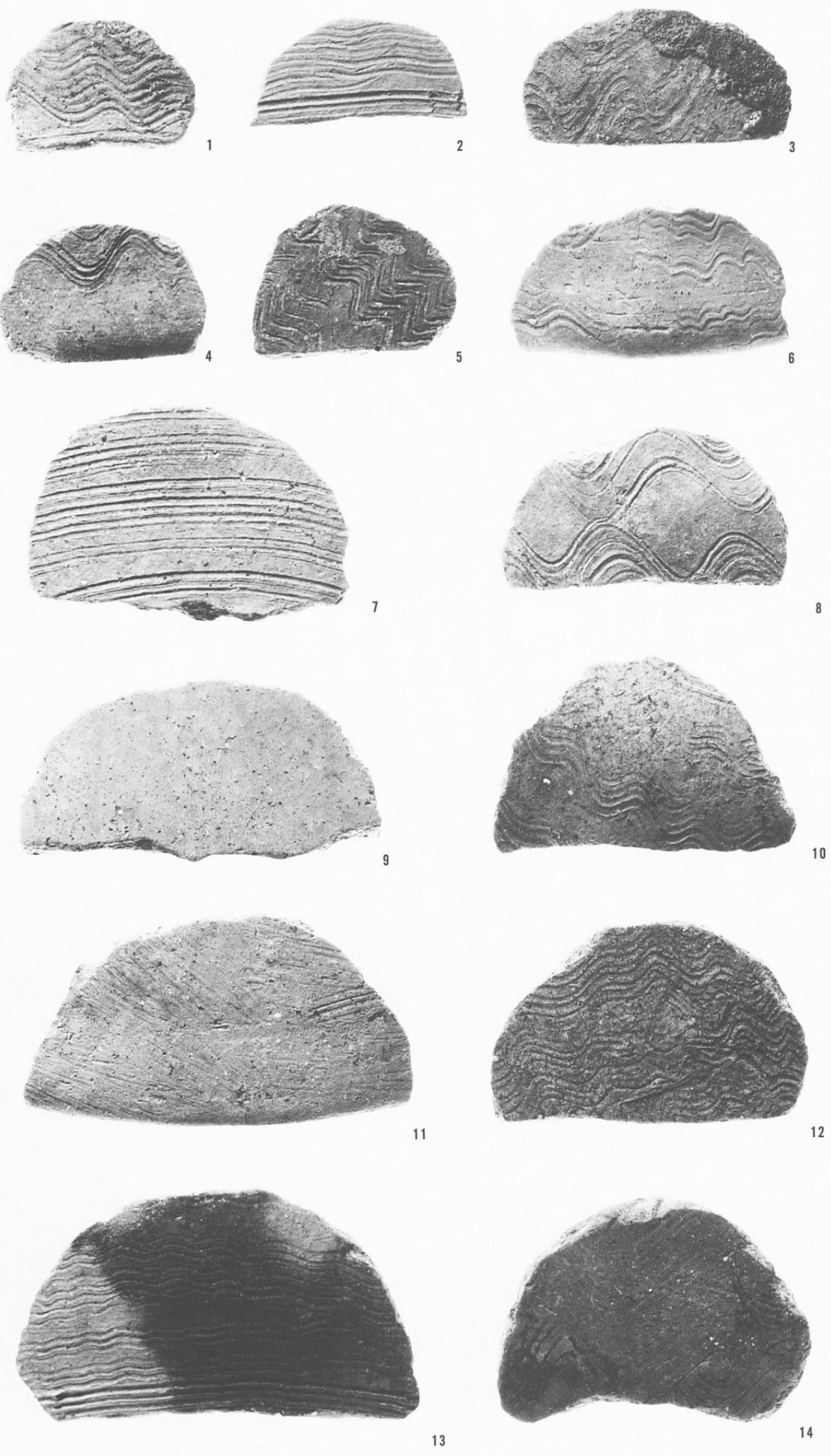
15



- 1 S B7478
- 2 2-1区下層北壁  
下層5層
- 3 2-1-b区  
第2検出面
- 4 3区検出面
- 5・9  
S B7082
- 6 S K7414
- 7 S B7398
- 8 S B7256

土器片製半円板

- 1 2-1-b区
- 第2検出面
- 2 SB7490
- 3 SB7508
- 4 SB7646
- 5・7
- 2-2区
- 第1検出面
- 6 SK7412
- 8 SD7030
- 9 SB7293
- 10~11
- SD7046
- 12 SD7080
- 13 SB7014
- 14 1-3区
- 第1検出面



フィゴの羽口  
粒状滓  
鉄塊剥片  
鍛造剥片

- 1 S B7543
- 2 S D7002
- 3 ~ 6  
S K7277



1



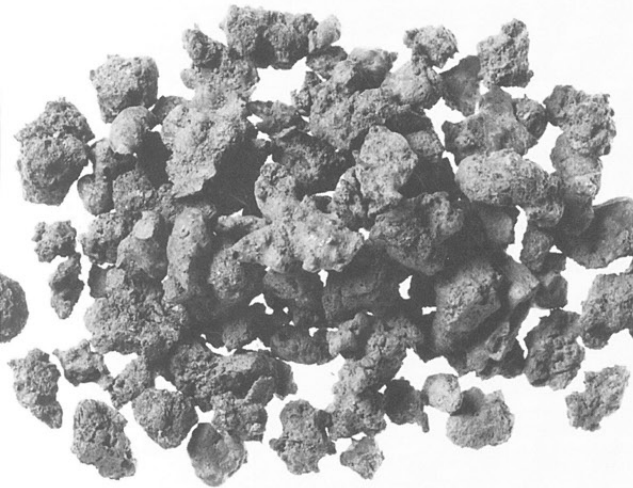
2



3



4



5



6

特異な  
ヘラミガキ土器  
土師器・  
須恵器杯の底部  
調整  
底部木葉痕土器

- 1 SK6044
- 2 SB7227
- 3 SK6097
- 4 SK8050
- 5 SK8110
- 6 SD7007
- 7 SB7216
- 8 SB7404
- 9 SB7416
- 10 SD7006
- 11 SB7404
- 12 SB7019
- 13 SB7001
- 14 SK7376



1



2



3



4



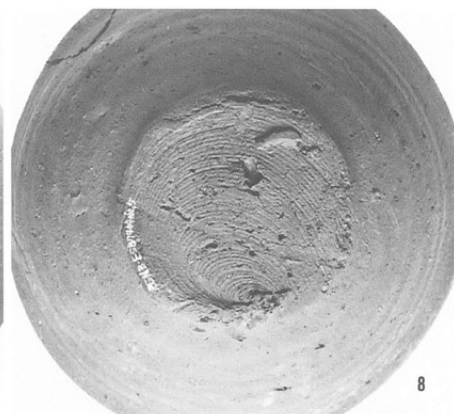
5



6



7



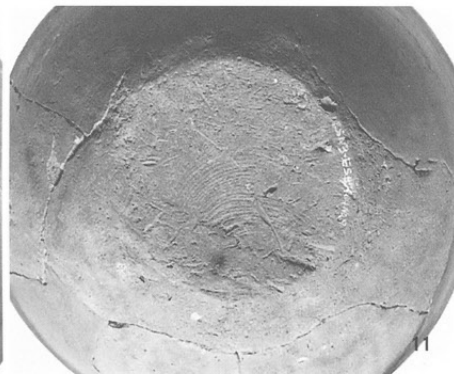
8



9



10



11



12



13



14



不明土器

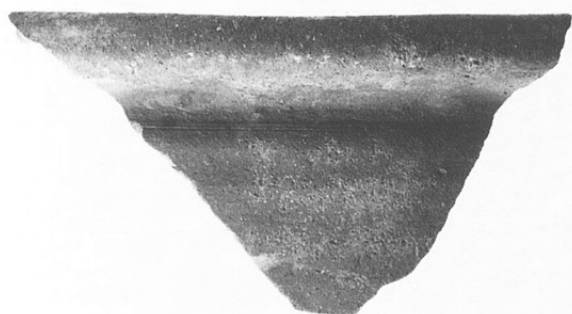
- 1 SB7521
- 2 2~3区2層上面
- 3~4 3区3層上面
- 5 SB7528



1



2



3



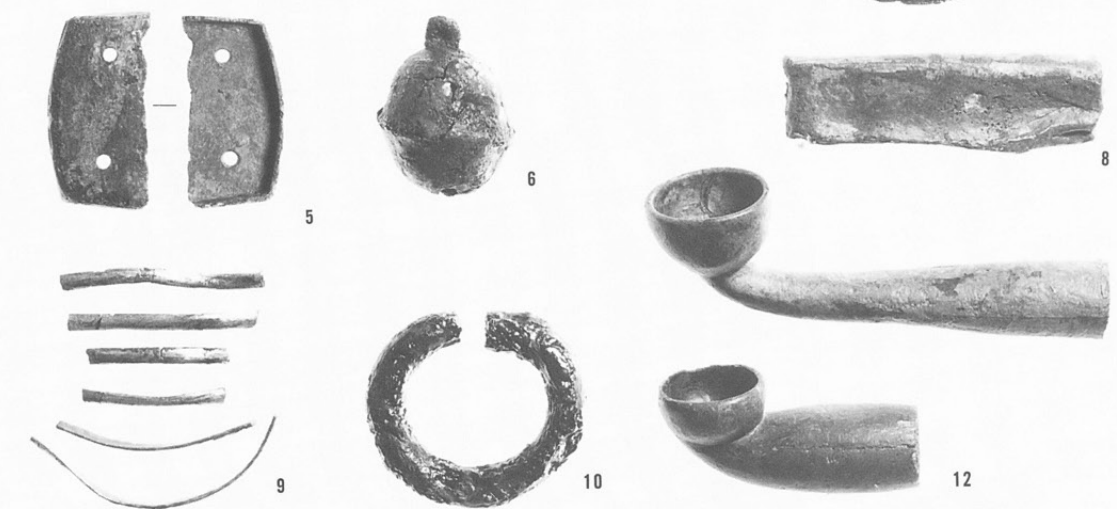
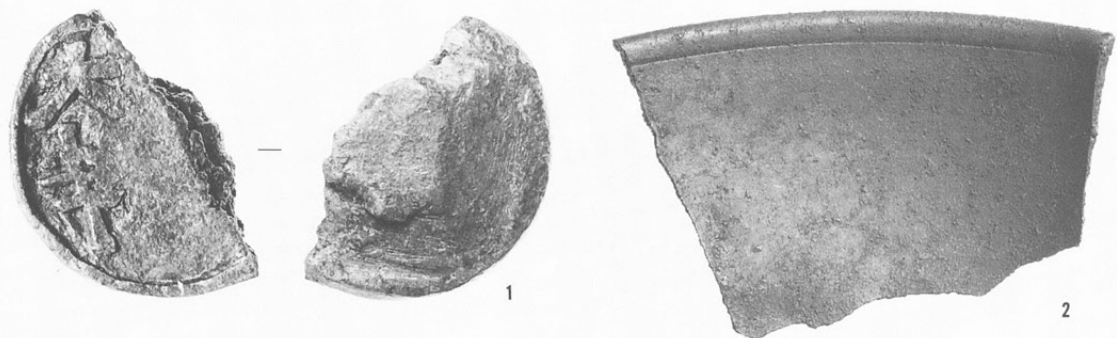
4



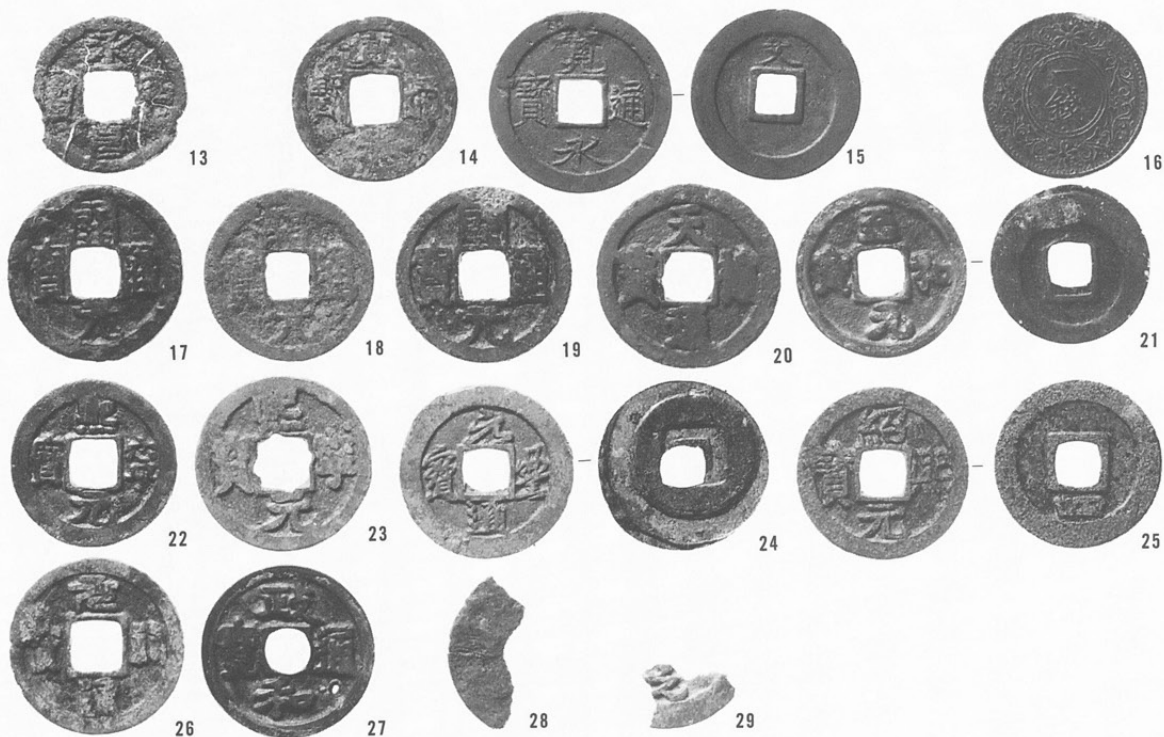
5

青銅製品  
(銅印・錢貨等)

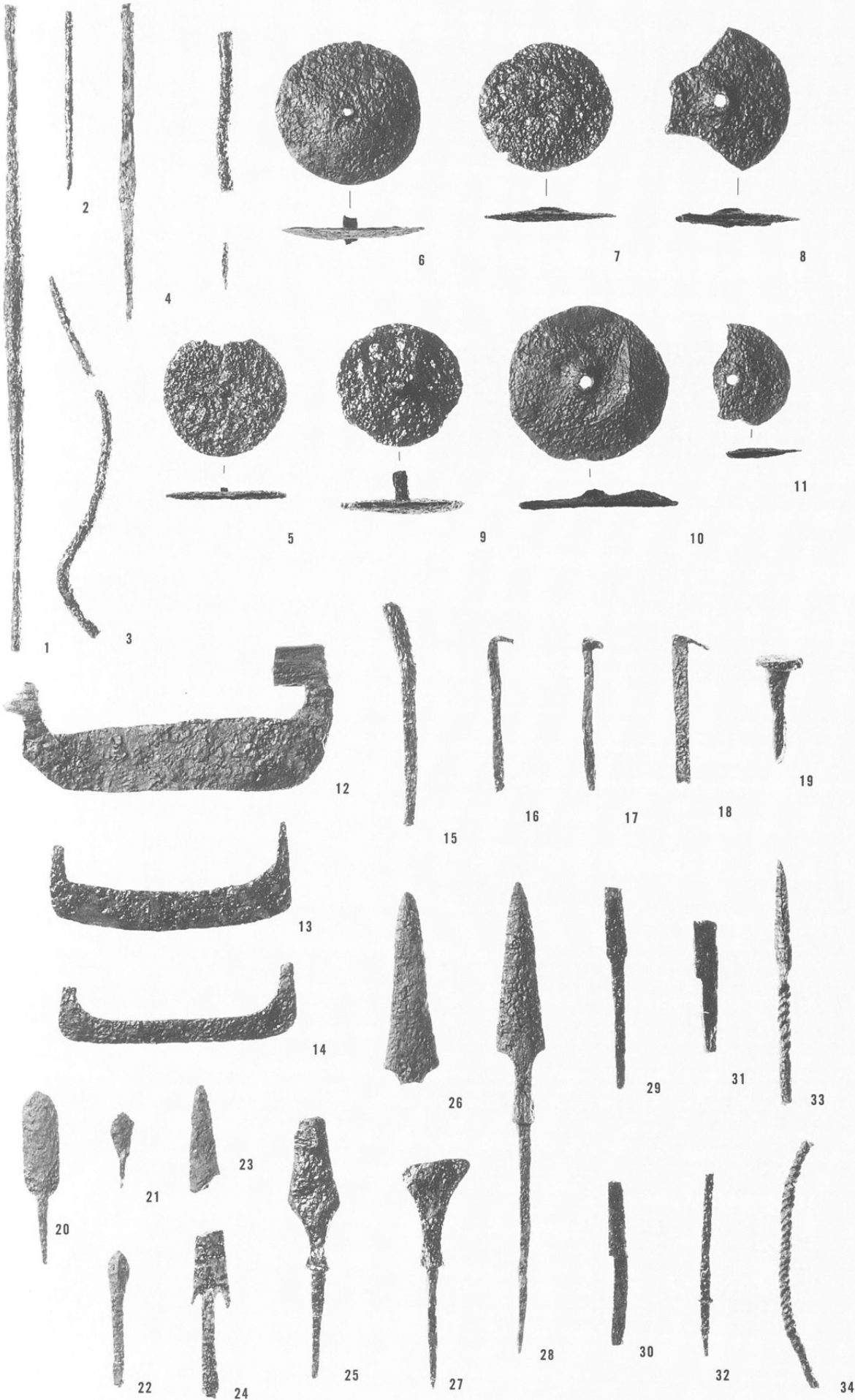
- 1 S B7109
- 2 2~3区  
2層上面
- 3 S B7552
- 4 2-1区  
第1検出面
- 5 2-1区西壁
- 6 S B7017
- 7 S B7421
- 8 3-E区  
検出時
- 9 S K8403
- 10 S B7303
- 11 20-1区東壁
- 12 2-1-b区  
南壁



- 13 S B7404
- 14 20-1区表採
- 15 1-1-b区  
東壁26層
- 16 1-1-b区  
耕作土中
- 17 20-1区表採
- 18 S K7153
- 19 S K8590
- 20 2-2区  
第1検出面
- 21 S K7045
- 22 S D7021
- 23 1-3区  
第2検出面
- 24 3区3層上面
- 25 S K7213
- 26 2-1区東壁
- 27 S K7045
- 28 S K7224
- 29 S K8413



鉄製品 1  
(紡錘車・  
苧引き金具・  
鉄鏃)



- 1 S B7605
- 2 S B7015
- 3 S B7187
- 4 S B7022
- 5 S B7314
- 6 S B7041
- 7・27  
S B7220
- 8・28  
S B7269
- 9 S B7287
- 10 S B7412
- 11 S B7537
- 12 S B7422
- 13 S B7207
- 14 S D7006
- 15 2-2区  
第1検出面
- 16 S B7108
- 17 S K8683
- 18 S K7031
- 19 S B7533
- 20 2-2区  
第1検出面
- 21 S B7038
- 22 2-1-b区  
第1検出面
- 23 S B7391
- 24 S K7229
- 25 2-1区  
第1検出面
- 26 S B7541
- 29 S B7262
- 30 S D7039
- 31 S K7235
- 32 S B7272
- 33 S B7051
- 34 S K7235

鉄製品 2  
(刀子・鉄斧・  
不明品)

1・18

S B7013

2 S B7243

3~4

S B7029

5 S B7030

6 S B7011

7 S B7184

8 S B7470

9 S B7001

10 S B7428

11 S D7006

12 S K7140

13 S B7305

14 S B7407

15 S K7412

16 S B7220

17 S B7602

19 3-北区

第1検出面

20 S K7653

21 S B7593

22 S B7425

23 2-3区

3層上面

24 S D7033

25 2-1区

第1検出面

26 S K8254

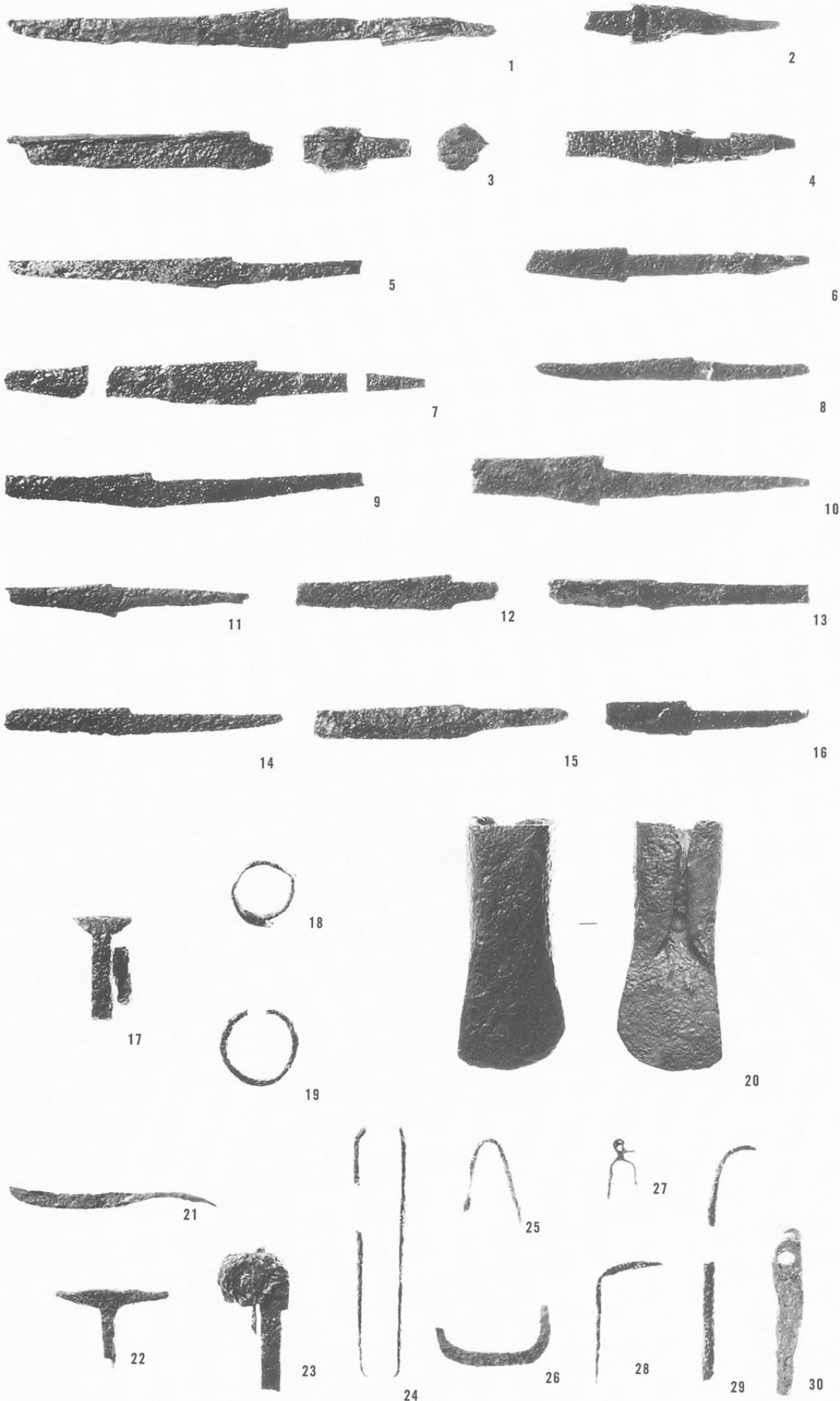
27 S K7012

28 S B7348

29~30

2-1区

第1検出面



鉄製品 3  
(鋤先・鎌)

- 1 S D7002
- 2 S B7054
- 3 S D7068
- 4~5  
2-2区  
第1検出面
- 6 S B7111
- 7 S B7008
- 8 S D7087
- 9 S B7602
- 10 2-1区  
第1検出面

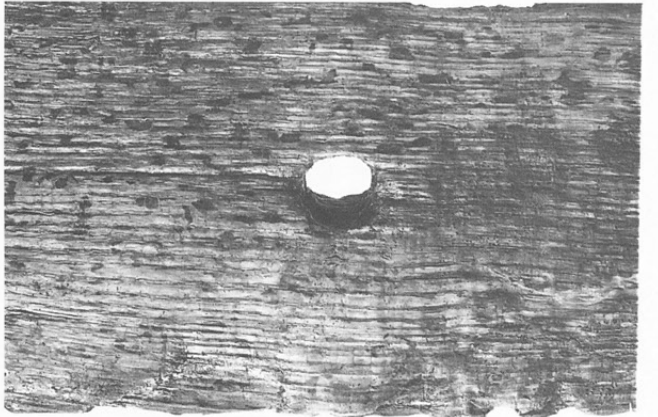
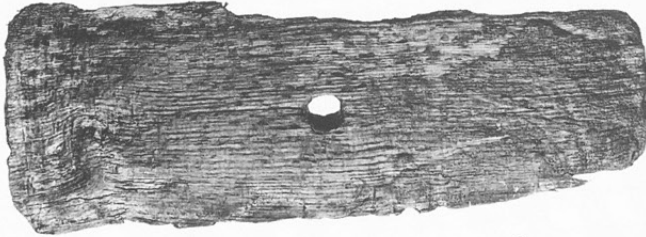
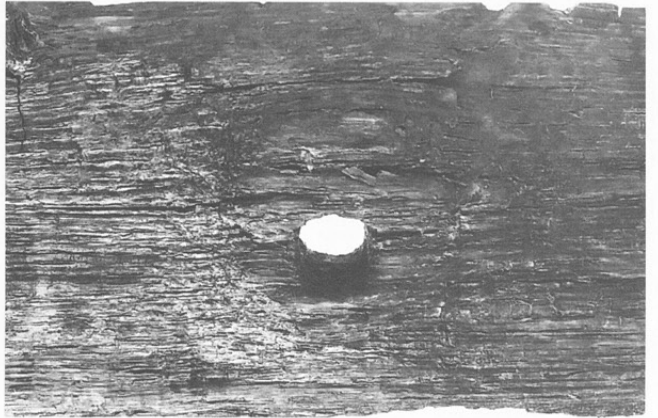


木製品 1  
(農具・  
生活具 1)

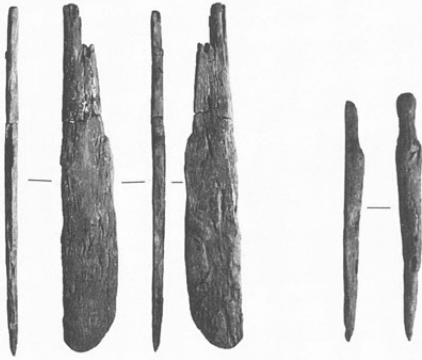
- 1 SK6142
- 2~3 SD6007
- 4 SK8100
- 5 SA5001
- 6 SK6235
- 7 SK6307
- 8 SK6048



1

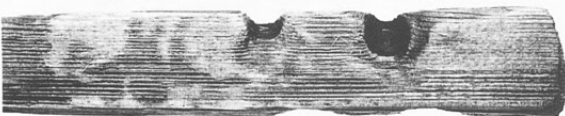


1



2

3



7



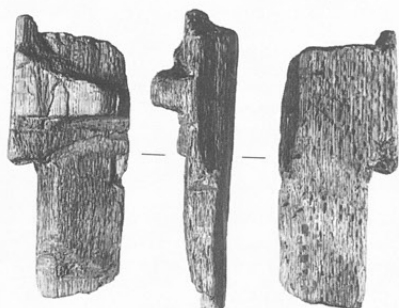
4



5

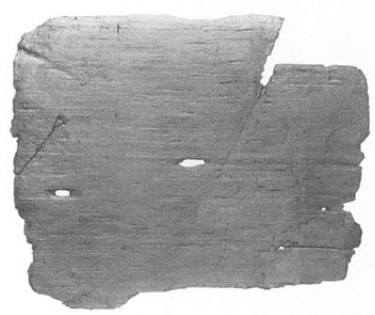
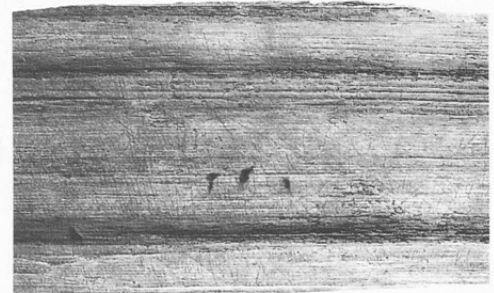
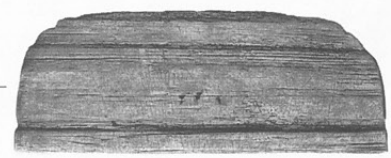
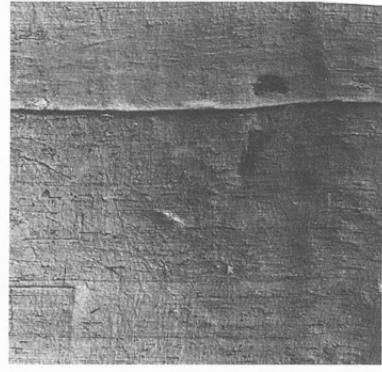
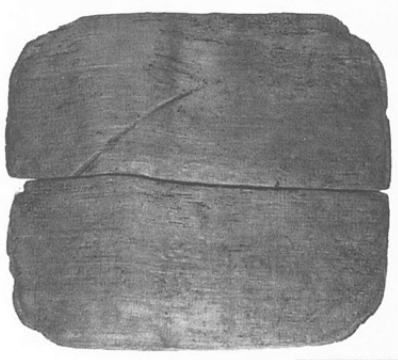
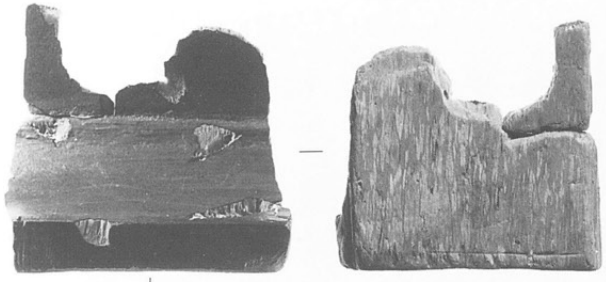


6



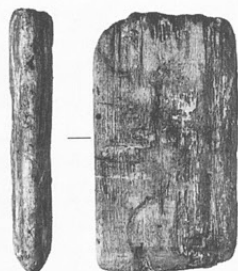
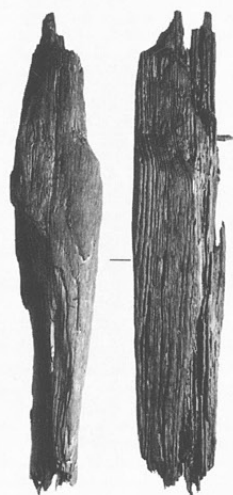
8

1 ~ 3  
SK6202  
4 ~ 7  
SK8253



木製品 3  
(建築材 1)

- 1 SK6202
- 2 20-2区  
第2検出面
- 3 SD6002
- 4~5  
SK6095



3

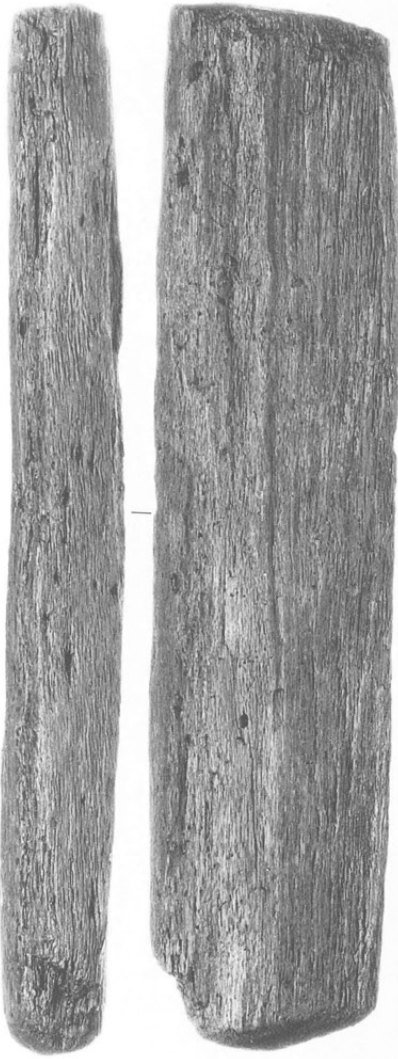
4

5



木製品 4  
(建築材 2)

1 2-1区  
第4検出面  
2~7  
S K8253  
8~9  
S K6307



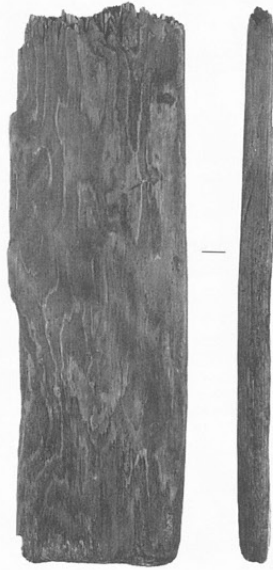
1



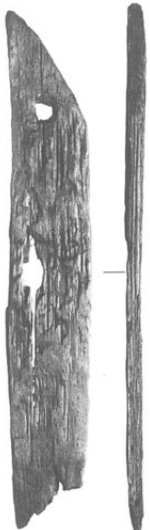
2



3



4



5



6



7



8



9

木製品 5  
(杭 1)

- 1 SK6307
- 2 20-1区  
第4検出面
- 3 SK6048
- 4~5  
SA5001
- 6 SA6001
- 7 SA6002
- 8~9  
SA6003
- 10 SA6006
- 11 1-1-c区  
第1検出面



木製品 6  
(杭 2)

1 ~ 8  
S A6007

9 ~ 13  
S A6009

14 1-1-c区  
第1検出面



弥生時代石器 1

原石・石核 1

1 SD7052

2 SD7080

3 SD6028

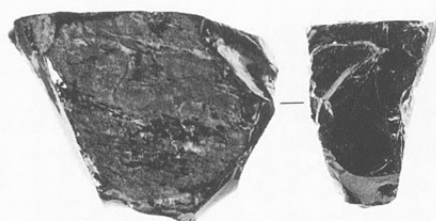
4 SB7110

5 SB7378

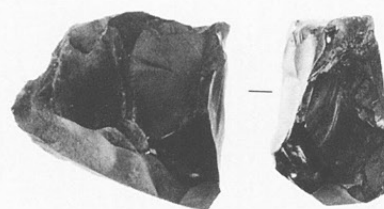
6 2-1区

第2検出面

(1:1)



1



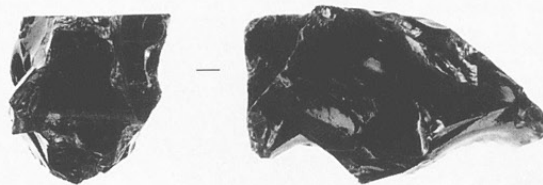
2



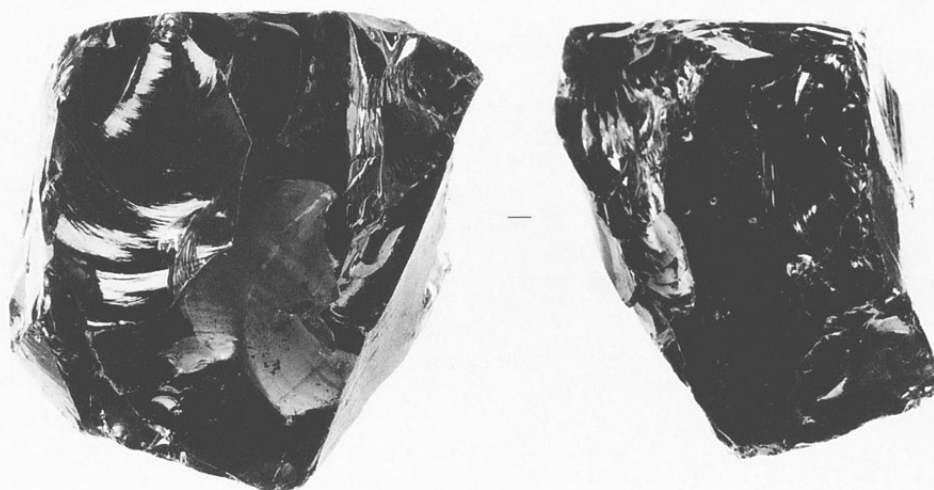
3



4



5



6

原石・石核 2

7 SB7508

8 SK7294

9 SD7006

10 SB7627

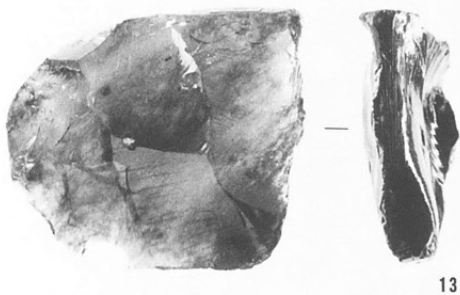
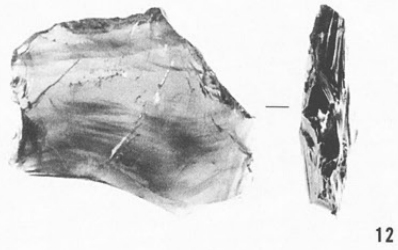
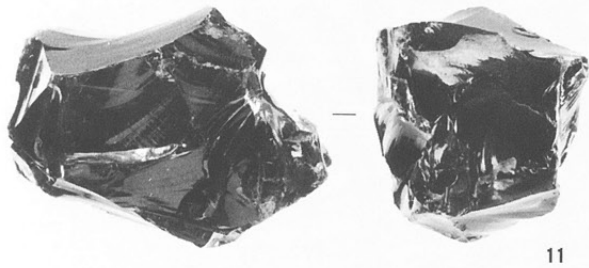
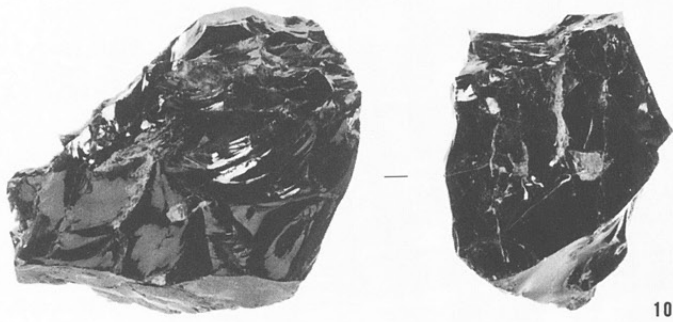
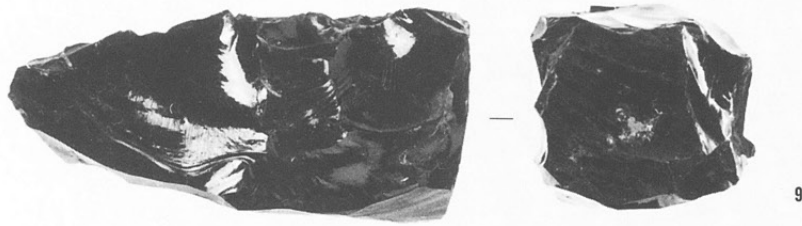
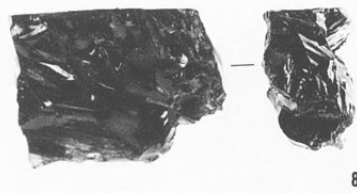
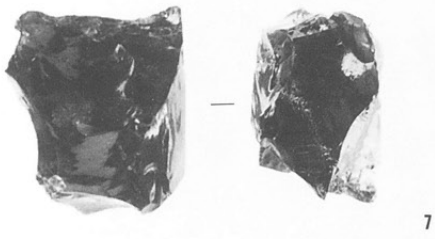
11 SB7180

12 SB7604

13 SB7231

14 ST7020

(1:1)



弥生時代石器 3

剥片A類・

剥片B類

1 SB7506

2 SK7138

3 SB7576

4 SB7078

5 SB7697

6 SB7499

7 SB7420

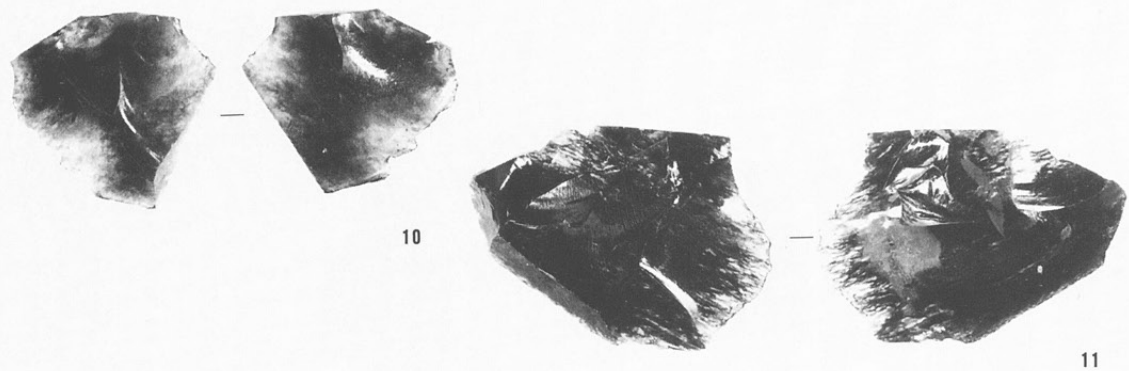
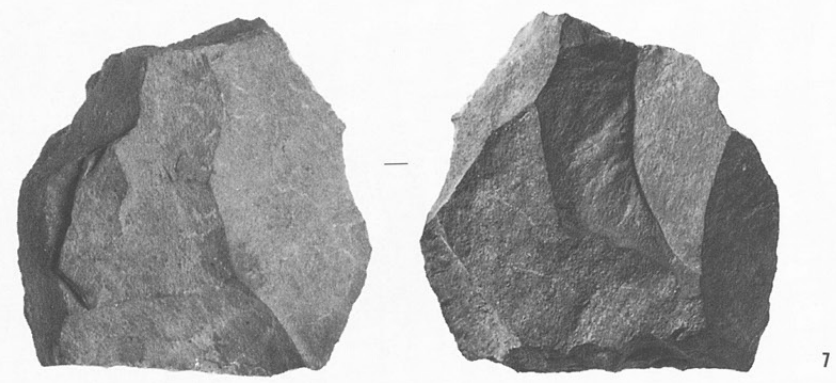
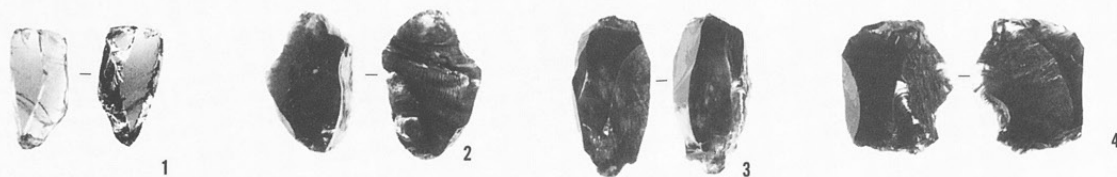
8 SB7613

9 SD7110

10 SD7110

11 SM7026

(1:1)



石鏃 1

- 1 S B 7745
- 2 S B 7426
- 3 S B 7372
- 4 S D 7067
- 5 2-1区
- 6 S B 7593
- 7 S B 7593
- 8 S B 7451
- 9 2-2区
- 第1検出面
- 10 S B 7438
- 11 S B 7488
- 12 S B 7246
- 13 1-3区
- 第1検出面
- 14 S B 7508
- 15 S B 7572
- 16 S B 7257
- 17 2-1区
- 18 S B 7499
- 19 S B 7464
- 20 S B 7279
- 21 S B 7207
- 22 S B 7438
- 23 2-2区
- 第1検出面
- 24 S B 7446
- 25 S B 7702
- 26 S D 7052
- 27 2-3区
- 第1検出面
- 28 S B 7676
- 29 S B 7587
- 30 S D 7088
- 31 S B 7625
- 32 S B 7086

(1 : 1)



1



2



3



4



5



6



7



8



9



10



11



12



13



14



15



16



17



18



19



20



21



22



23



24



25



26



27



28



29



30



31



32

弥生時代石器 5

石鏃 2・石錐

33 S B7593

34 S B7594

35 S B7040

36 1-1区

第4検出面

37 S D7067

38 S D7068

39 S B7071

40 S B7320

41 S D7039

42 S B7277

43 S B7268

44 S B7431

45 S B7082

46 S B7272

47 S B7082

48 S B7495

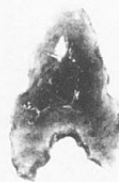
(1:1)



33



34



35



36



37



39



38



40



41



42



43



44



45



46



47



48



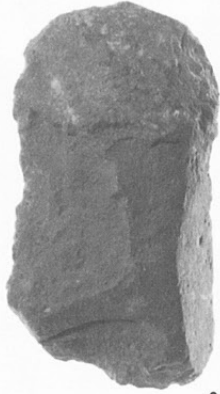


打製石斧 1 (表)

- 1 S B 7420
- 2 S K 8238
- 3 S B 7525
- 4 S D 6023
- 5 3 区
- 6 S B 7250
- 7 S D 7011
- 8 2 - 3 区
- 9 S D 7046
- 10 2 - 1 区  
第 1 検出面
- 11 2 - 2 区  
第 1 検出面
- 12 S D 5003
- 13 S B 7205
- 14 1 - 2 区  
第 3 検出面
- 15 S D 5003  
(1 : 2)



1



2



3



4



5



6



15



7



8



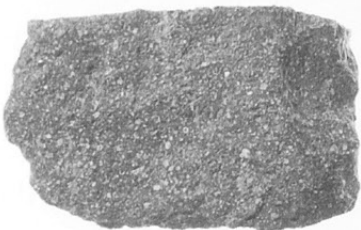
9



10



11



12



13

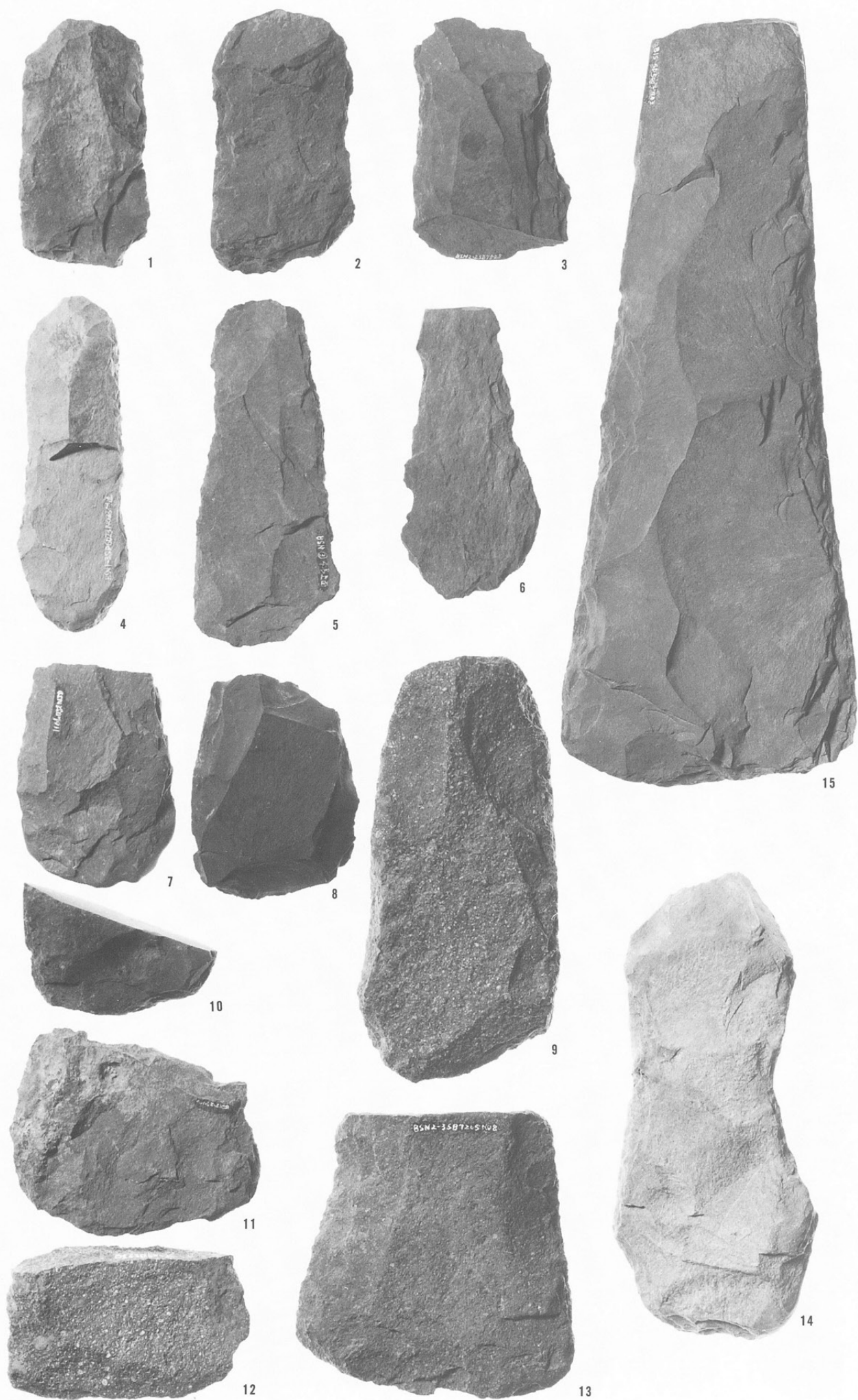


14

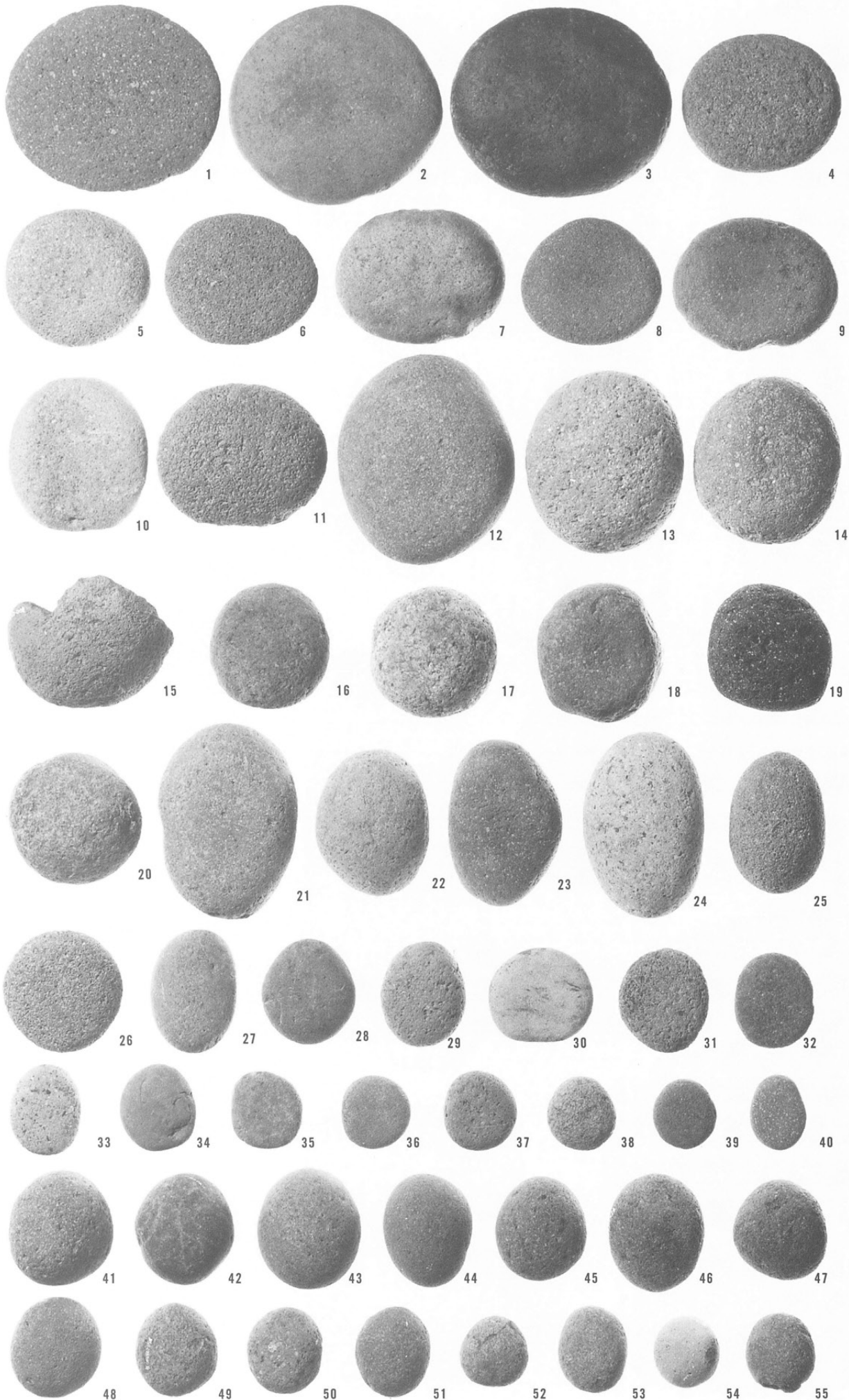
弥生時代石器 7

打製石斧 1 (裏)

- 1 SB7420
- 2 SK8238
- 3 SB7525
- 4 SD6023
- 5 3区
- 6 SB7250
- 7 SD7011
- 8 2-3区
- 9 SD7046
- 10 2-1区  
第1検出面
- 11 2-2区  
第1検出面
- 12 SD5003
- 13 SB7205
- 14 1-2区  
第3検出面
- 15 SD5003  
(1:2)



磨石 1



- 1 SD7007
- 2 SB7198
- 3 3区
- 第1検出面
- 4 SD7031
- 5 SD7080
- 6 SB7008
- 7 SK7376
- 8 SB7252
- 9 SB7552
- 10 SD7007
- 11 SK7235
- 12 SK7517
- 13 SB7213
- 14 SD7110
- 15 SK7281
- 16 SK8289
- 17 SB7009
- 18 SB7524
- 19 SK8100
- 20 2-3区
- 21 SD7004
- 22 SD7052
- 23 SB7626
- 24 SD7006
- 25 SM7022
- 26 SD7110
- 27 SK8372
- 28 SB7149
- 29 SB7203
- 30 2-1区
- 第3検出面
- 31 SM7001
- 32 SD7079
- 33 SD7031
- 34 SD7031
- 35 SB7488
- 36 SB7202
- 37 2-2区
- 第1検出面
- 38 SD7031
- 39 3区
- 40 SK7343
- 41 SB7154
- 42 SB6015
- 43 SD7012
- 44 SB7324
- 45 SM6002
- 46 SB7078
- 47 SB7700
- 48 SB7041
- 49 2-3区
- 50 SK8441
- 51 SD7052
- 52 3区
- 53 SB7601
- 54 2-1区
- 第1検出面
- 55 SD7007  
(1:3)

弥生時代石器 9

磨石 2

56 S B7089

57 S B7101

58 S D7087

59 S D6033

60 S D7006

61 S B7115

62 S B7427

63 S K8189

64 S B7407

65 1-1区

第3検出面

66 S K6410

67 S D7031

68 S B7460

69 S B7751

70 S B7542

71 S D6007

(1:3)

72 S B7268

73 S B7106

74 S B7182

75 S B7002

76 S K7207

77 S B7418

78 SM7017

79 S B7622

80 S B7246

81 S D7031

82 S D7052

83 S B7026

84 S B7001

85 S B7488

86 S K6117

87 2-2区

第1検出面

88 S D7101

89 S B7108

90 S B7052

91 S D7106

92 S B7007

93 S B7519

94 S B7019

95 S B7250

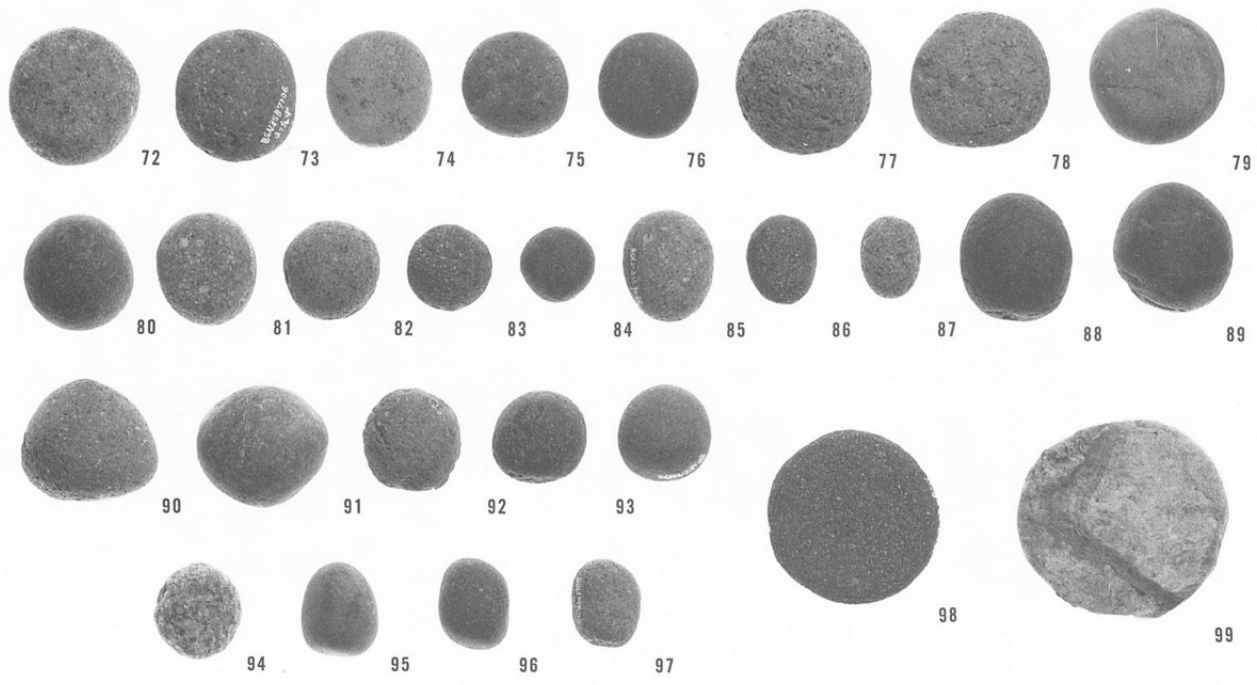
96 S B7250

97 S B7004

98 S K8226

99 S B7750

(2:3)



凹石

- 100 S B7089
  - 101 S K7445
  - 102 S B7252
  - 103 S B7078
  - 104 S D7084
  - 105 S B7213
  - 106 S B7524
  - 107 S B7228
  - 108 S B7032
  - 109 S K7190
  - 110 S B7025
  - 111 S D7046
  - 112 S D7046
  - 113 S B7255
  - 114 S D7047
  - 115 2-2区  
第1検出面
  - 116 S D7041
  - 117 S D7016
  - 118 S B7119
  - 119 2-2区  
第2検出面
  - 120 3区
  - 121 S B7524
  - 122 S K7320
- (1:3)



100



101



102



103



104



105



106



107



108



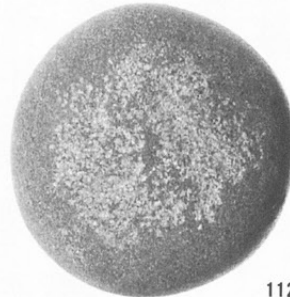
109



110



111



112



113



114



115



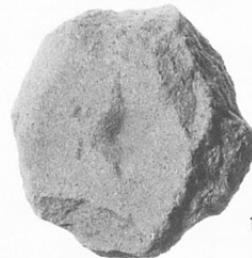
116



117



118



119



120



121

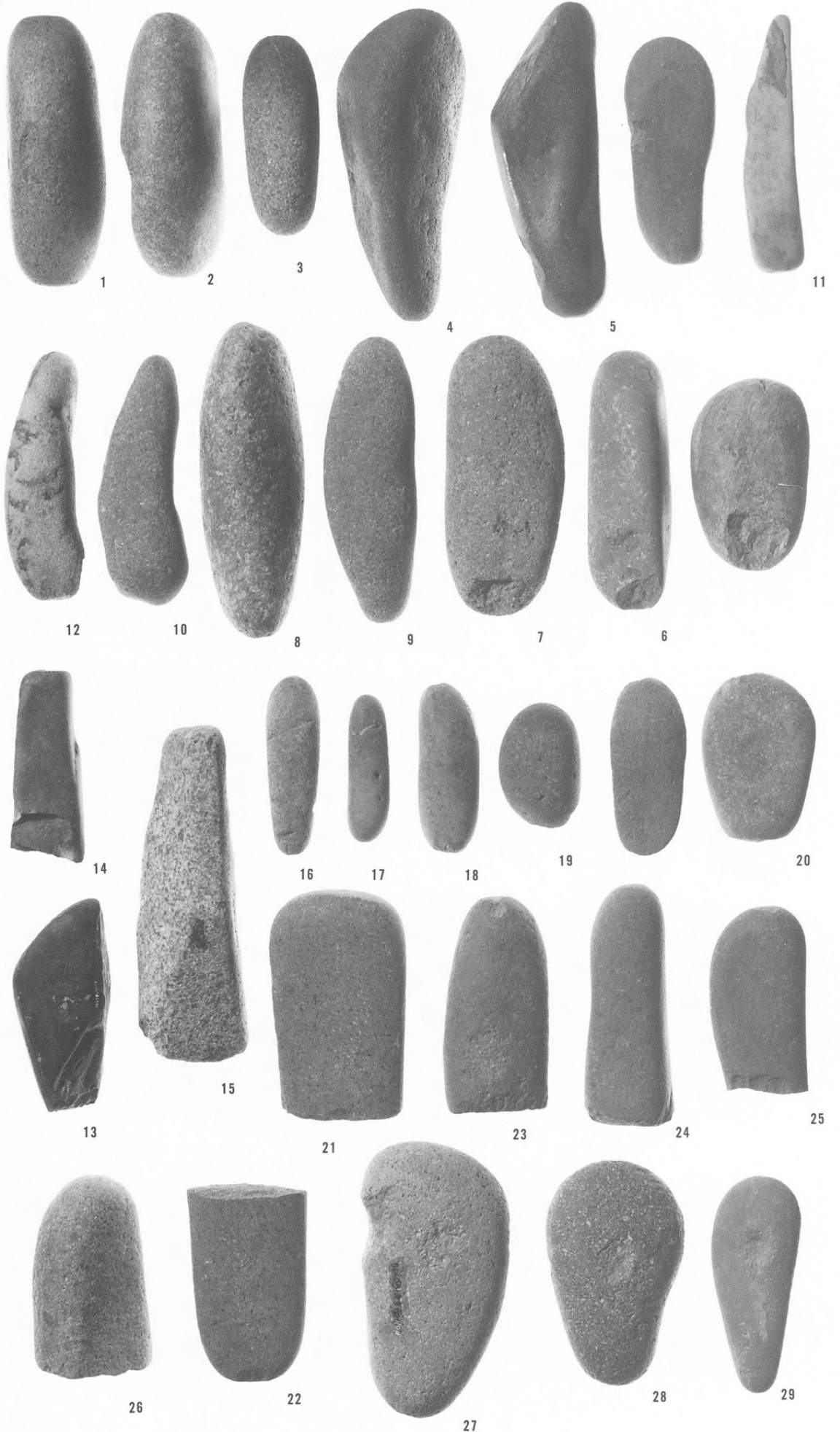


122

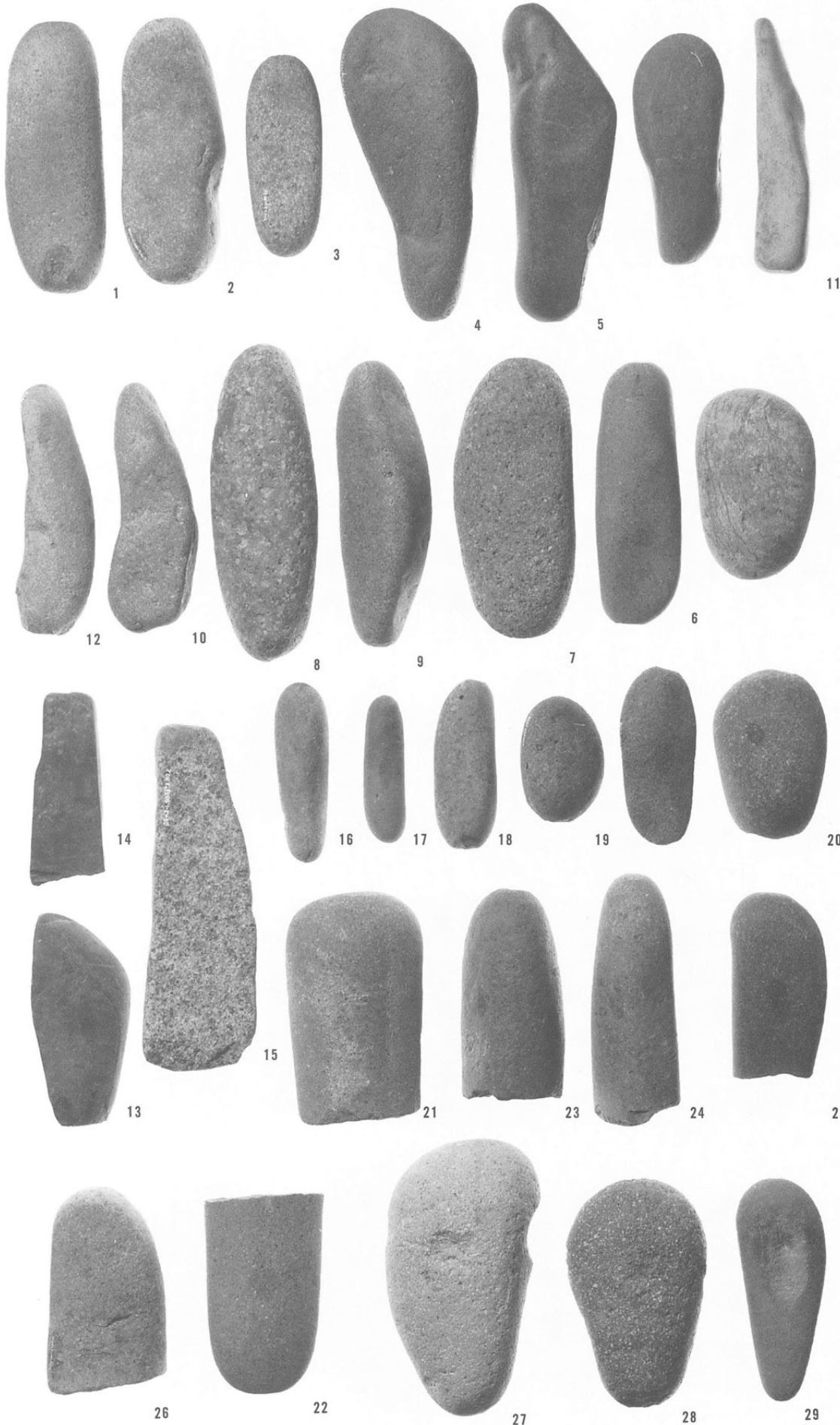
弥生時代石器11

敲石 1 (表)

- 1 S B 7137
  - 2 S B 7595
  - 3 S D 7088
  - 4 S B 7439
  - 5 S B 7416
  - 6 S D 7001
  - 7 2-1区  
第1検出面
  - 8 S B 7007
  - 9 S B 7416
  - 10 S B 7485
  - 11 S B 7525
  - 12 2-1区  
第1検出面
  - 13 S B 7089
  - 14 2-1区  
第1検出面
  - 15 S B 7372
  - 16 2-2区
  - 17 3区
  - 18 S B 7133
  - 19 S B 7514
  - 20 S B 7040
  - 21 S B 7255
  - 22 S K 8413
  - 23 2-1区  
第1検出面
  - 24 S D 7006
  - 25 S D 7002
  - 26 S B 7115
  - 27 20-1区  
第5検出面
  - 28 S D 7030
  - 29 S D 6007
  - 30 S D 7110
  - 31 S B 7258
  - 32 S B 6014
  - 33 S B 7718
- (1 : 3)



敲石 1 (裏)



- 1 SB7137
  - 2 SB7595
  - 3 SD7088
  - 4 SB7439
  - 5 SB7416
  - 6 SD7001
  - 7 2-1区  
第1検出面
  - 8 SB7007
  - 9 SB7416
  - 10 SB7485
  - 11 SB7525
  - 12 2-1区  
第1検出面
  - 13 SB7089
  - 14 2-1区  
第1検出面
  - 15 SB7372
  - 16 2-2区
  - 17 3区
  - 18 SB7133
  - 19 SB7514
  - 20 SB7040
  - 21 SB7255
  - 22 SK8413
  - 23 2-1区  
第1検出面
  - 24 SD7006
  - 25 SD7002
  - 26 SB7115
  - 27 20-1区  
第5検出面
  - 28 SD7030
  - 29 SD6007
  - 30 SD7110
  - 31 SB7258
  - 32 SB6014
  - 33 SB7718
- (1 : 3)

弥生時代石器13

敲石 2 (表)

30 SD7110

31 SB7258

32 SB6014

33 SB7718

34 SB7105

35 SD7001

36 SB7222

37 SD7061

38 SB7040

39 SK8092

40 SB7025

41 SB7354

42 SK7333

(1 : 3)



30



31



32



33



34



35



36



37



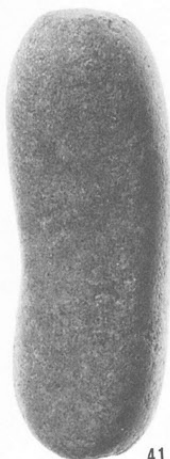
38



39



40



41



42



敲石 2 (裏)

30 S D7110

31 S B7258

32 S B6014

33 S B7718

34 S B7105

35 S D7001

36 S B7222

37 S D7061

38 S B7040

39 S K8092

40 S B7025

41 S B7354

42 S K7333

(1 : 3)



30



31



32



33



34



35



36



37



38



39



40



41



42

弥生時代石器15

台石 1

1 SB6028

2 SB7615

3 SB7027

4 SB7358

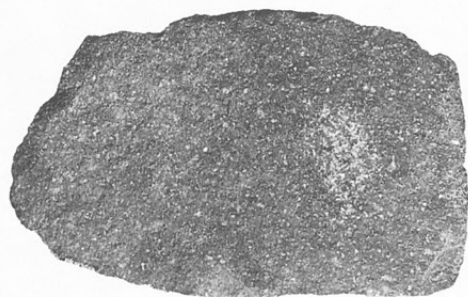
5 SB6031

6 SB7499

(1 : 4)



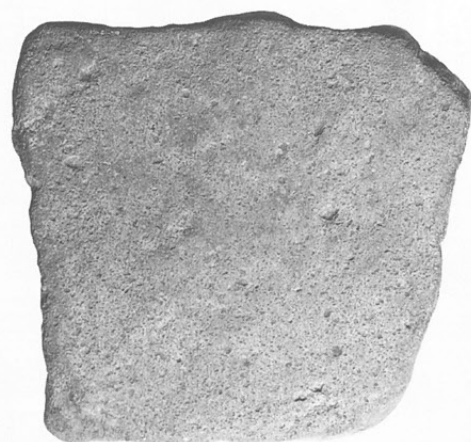
1



2



3



4



5



6

台石 2

7 SK6049

8 SB6035

(1:4)

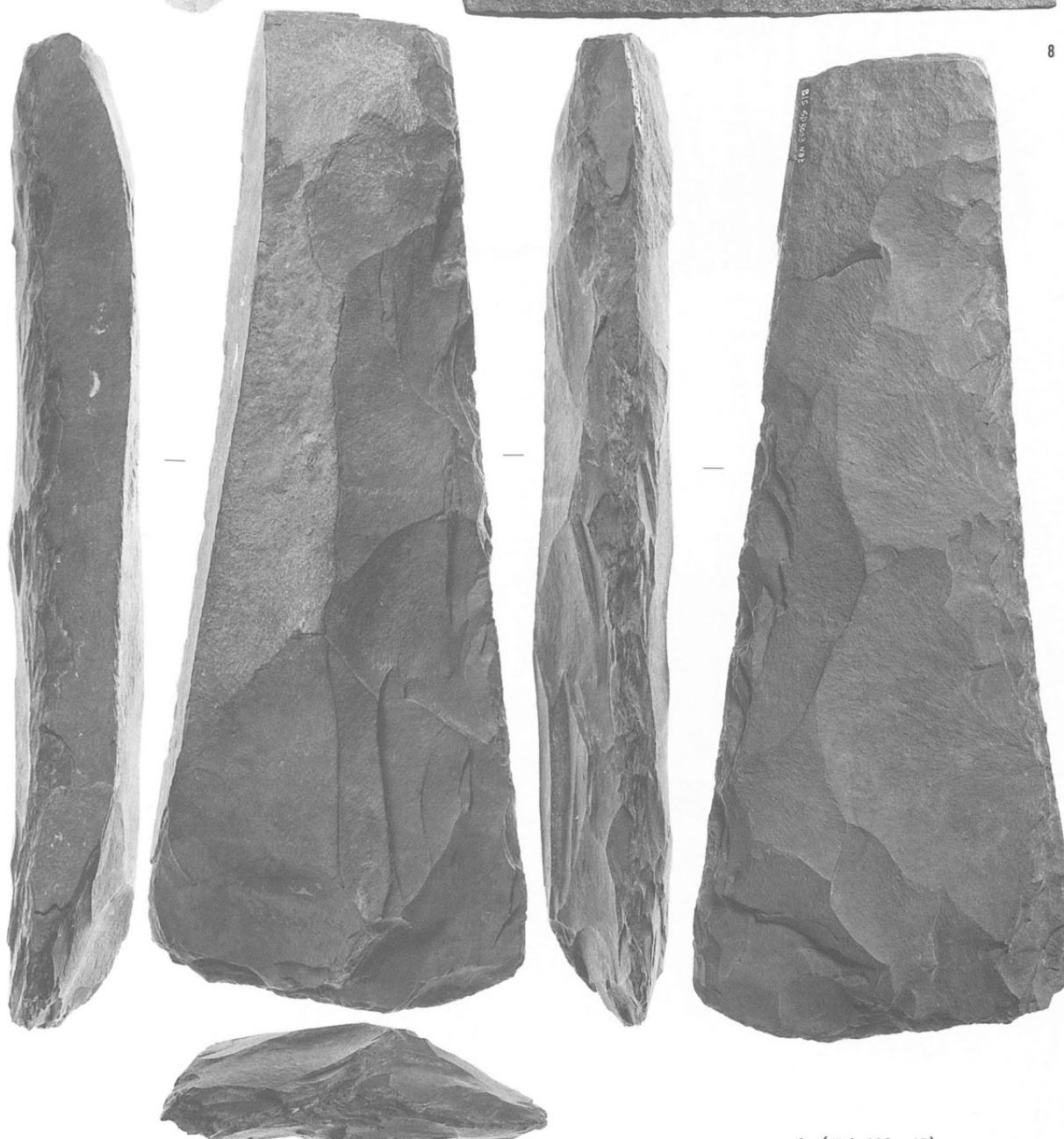


打製石斧 2

9 SD5003

PL190-15

(1:2)



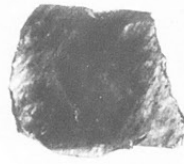
弥生時代石器17

使有石屑

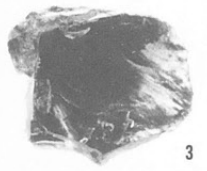
- 1 SB7014
- 2 2-2区
- 第1検出面
- 3 SB7517
- 4 SB7029
- 5 SB7030
- 6 SD7023
- 7 SB7276
- 8 SB7252
- 9 SB7272
- 10 SB7368
- (1:1)



1



2



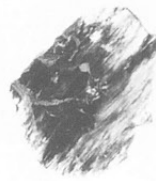
3



4



5



6



7



8



9

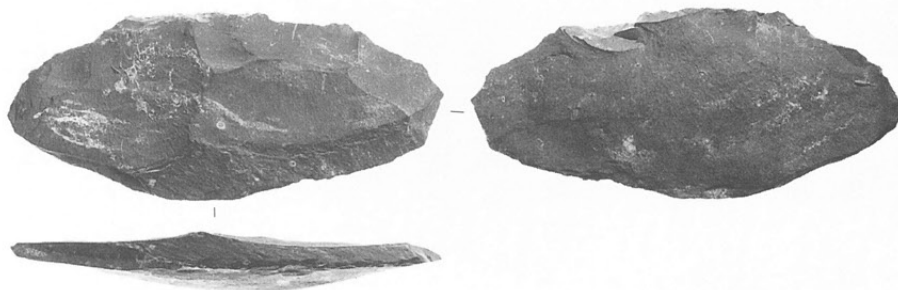
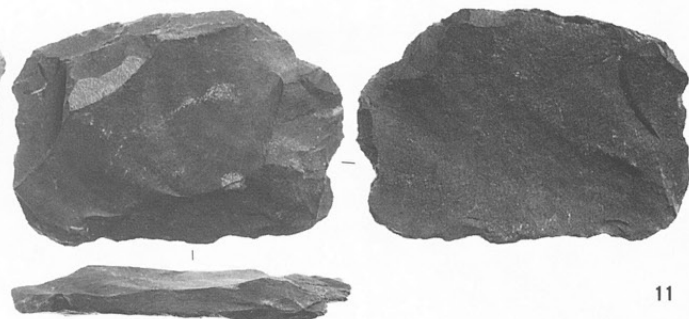
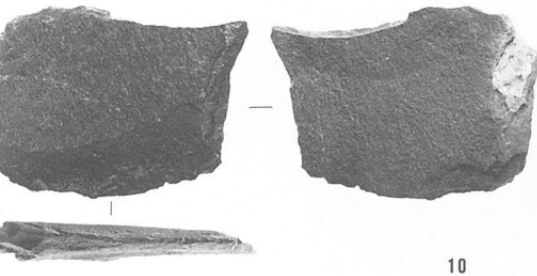
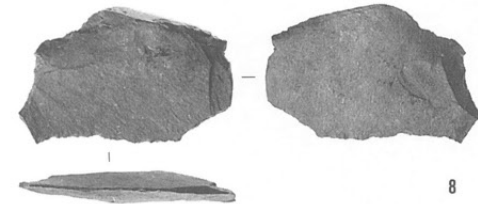
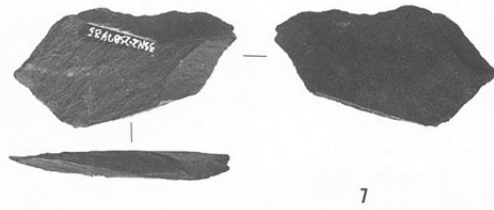
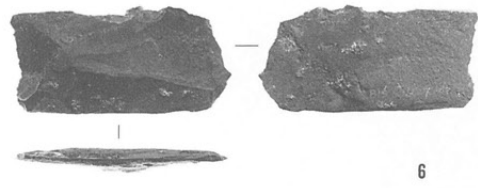
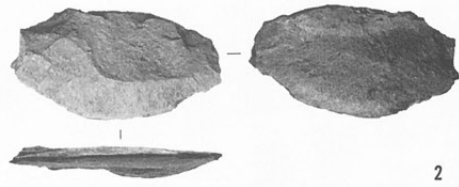
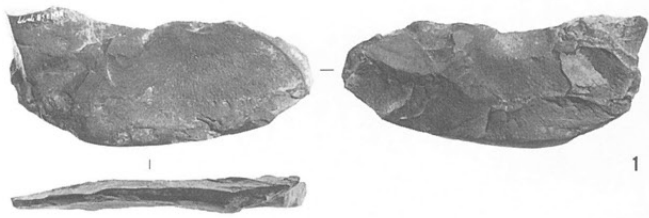


10



刃器 1

- 1 S B7077
  - 2 S B7106
  - 3 S B7272
  - 4 S B7499
  - 5 S D7052
  - 6 S D6007
  - 7 S B7485
  - 8 S B7208
  - 9 S D5003
  - 10 S D7080
  - 11 2-3区
  - 12 S B7499
  - 13 S D7080
- (1:2)



弥生時代石器19

刃器 2

14 S D 7051

15 3区

16 S B 7765

17 S D 7046

18 20-1区

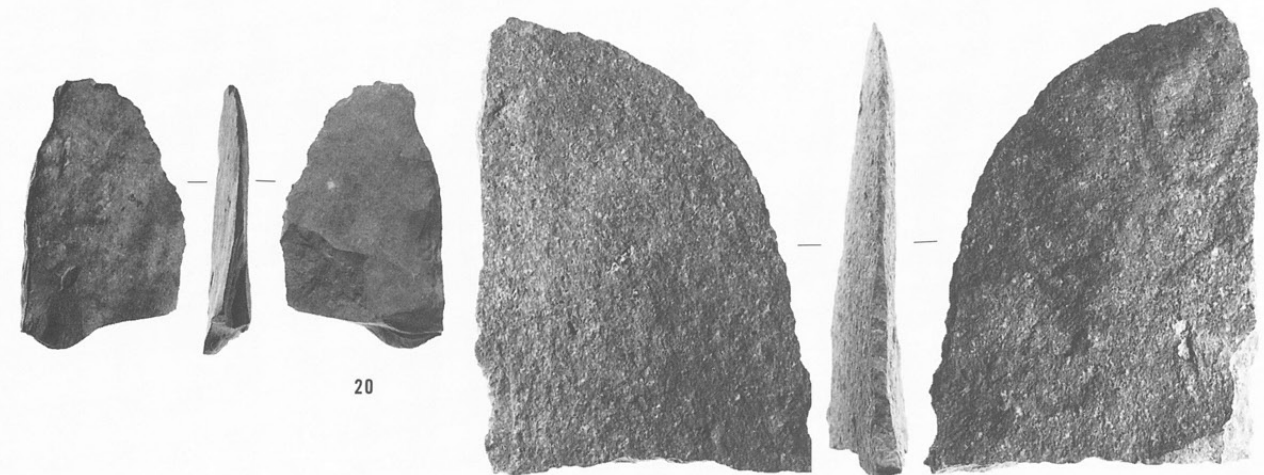
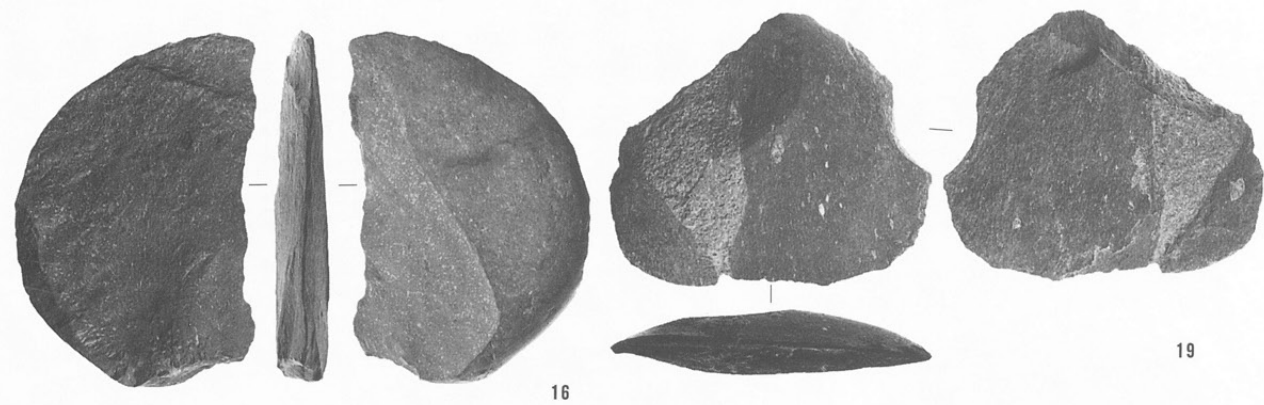
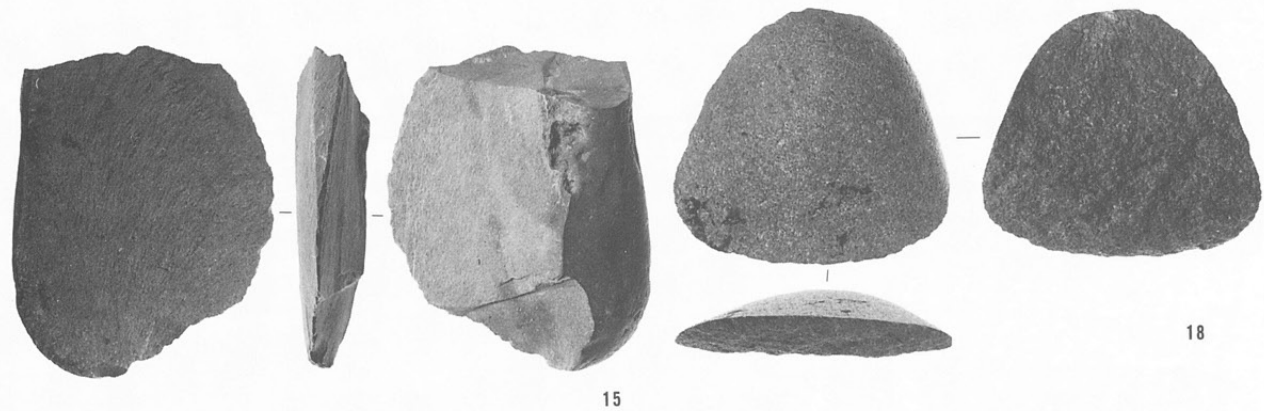
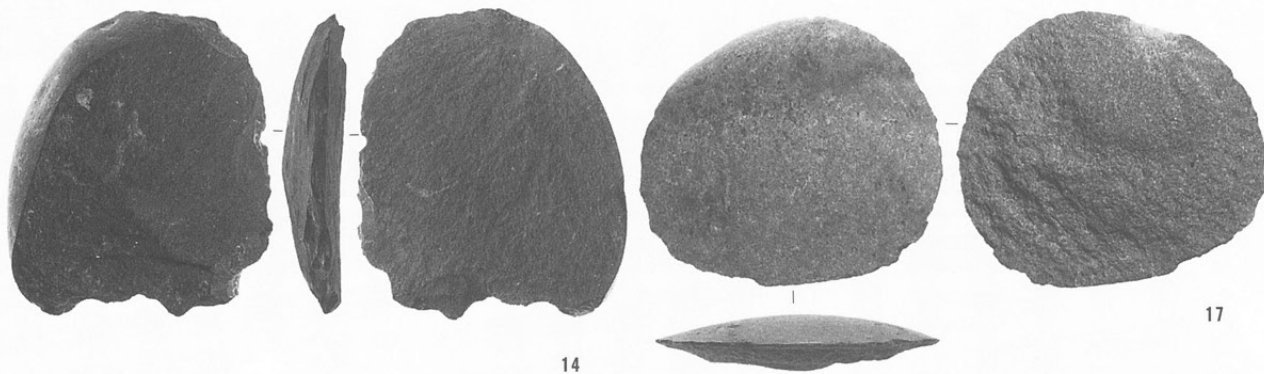
第3検出面

19 S K 6058

20 S B 7086

21 S D 7047

(1 : 2)



刃器 3

22 S D7110

23 S K6051

24 S D7080

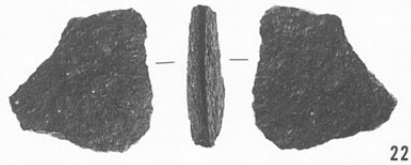
25 2-3区

26 S K6051

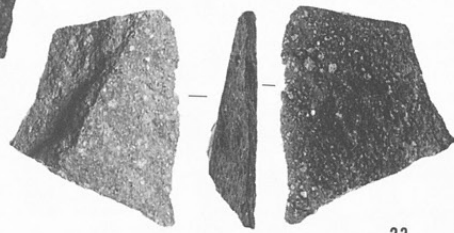
27 S B7493

28 S B7268

(1:2)



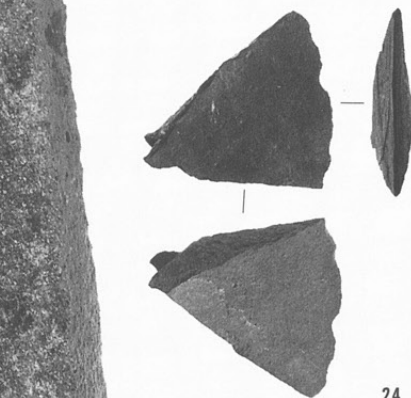
22



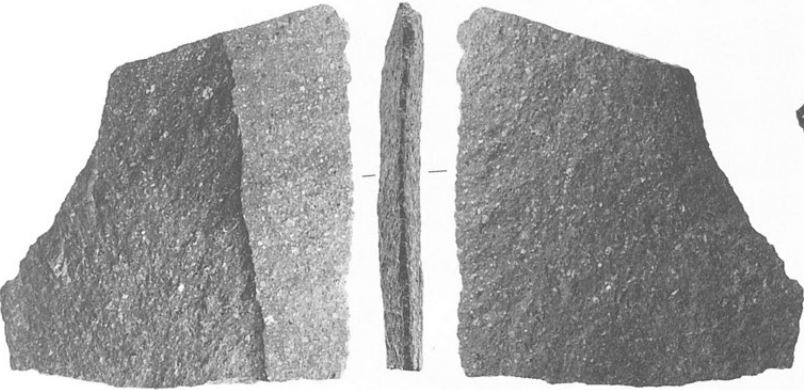
23



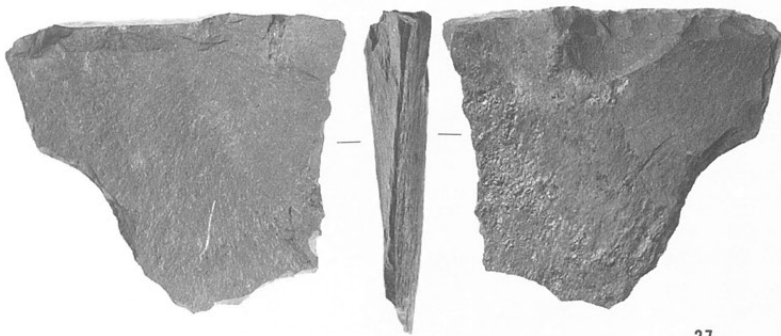
25



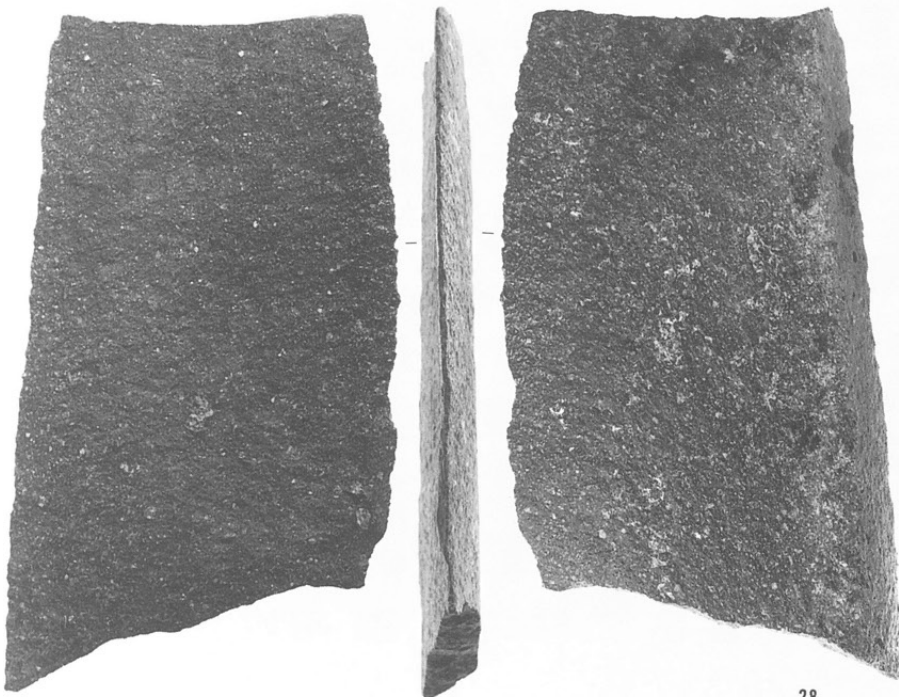
24



26



27



28

弥生時代石器21

刃器 4

29 SD7110

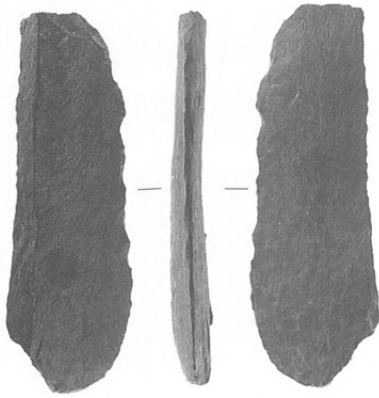
30 SB7546

31 SB7746

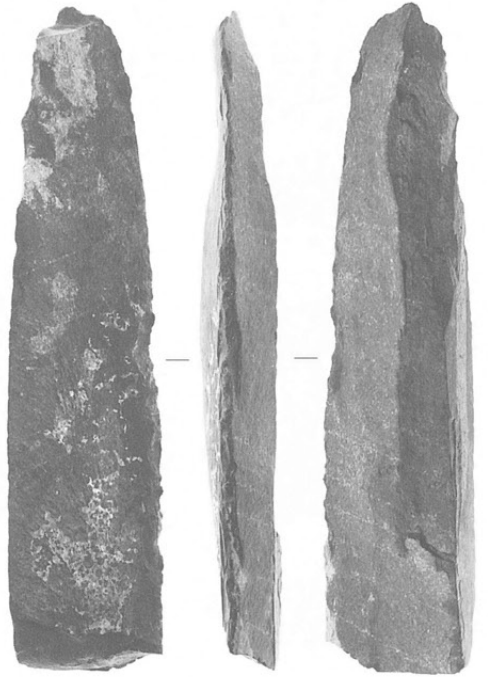
32 SD7083

33 2-3区

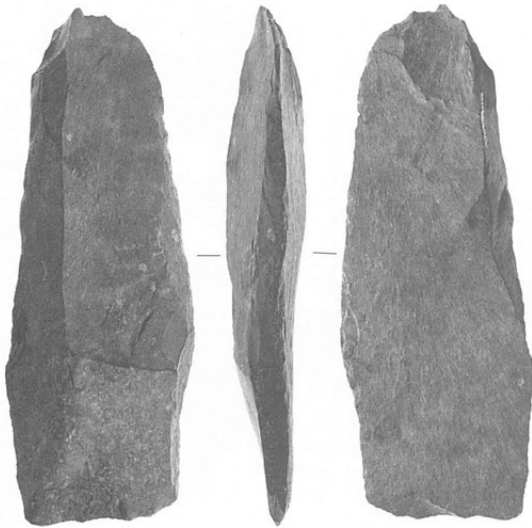
(1:2)



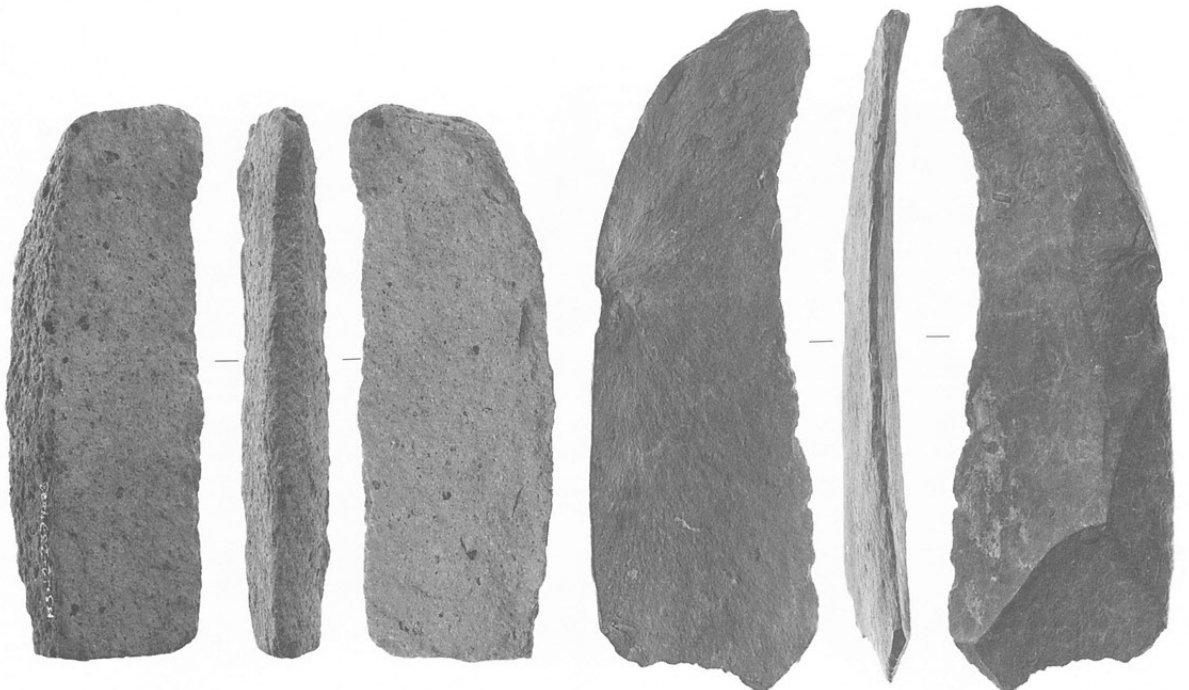
29



31



30



32

33



刃器 5

34 S K 7824

35 S D 7006

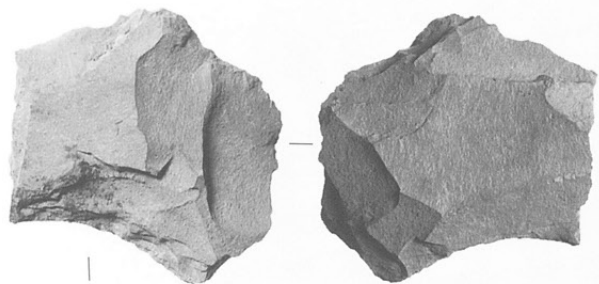
36 S D 7016

37 S B 7272

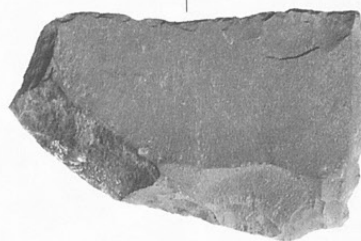
38 S B 7639

39 S D 7048

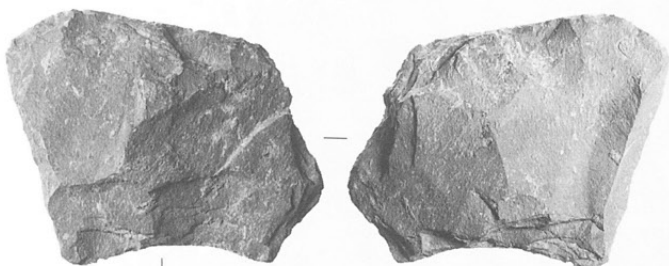
(1 : 2)



34



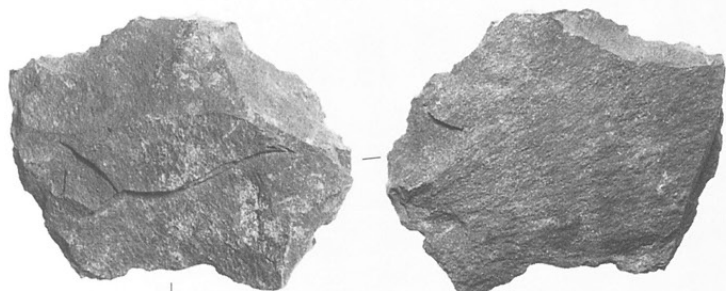
37



35



38



36



39

弥生時代石器23

刃器 6

40 S B7399

41 S D7016

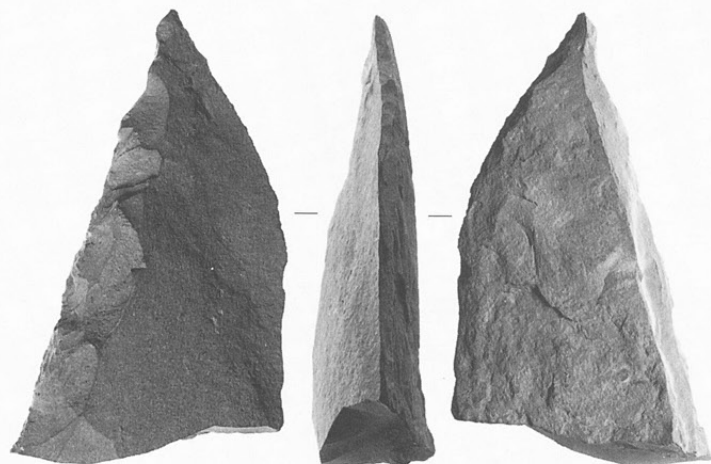
43 S B7427

44 3区

45 S B7442

46 S B7230

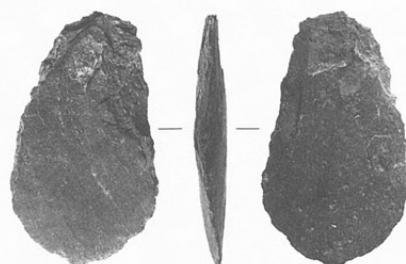
(1 : 2)



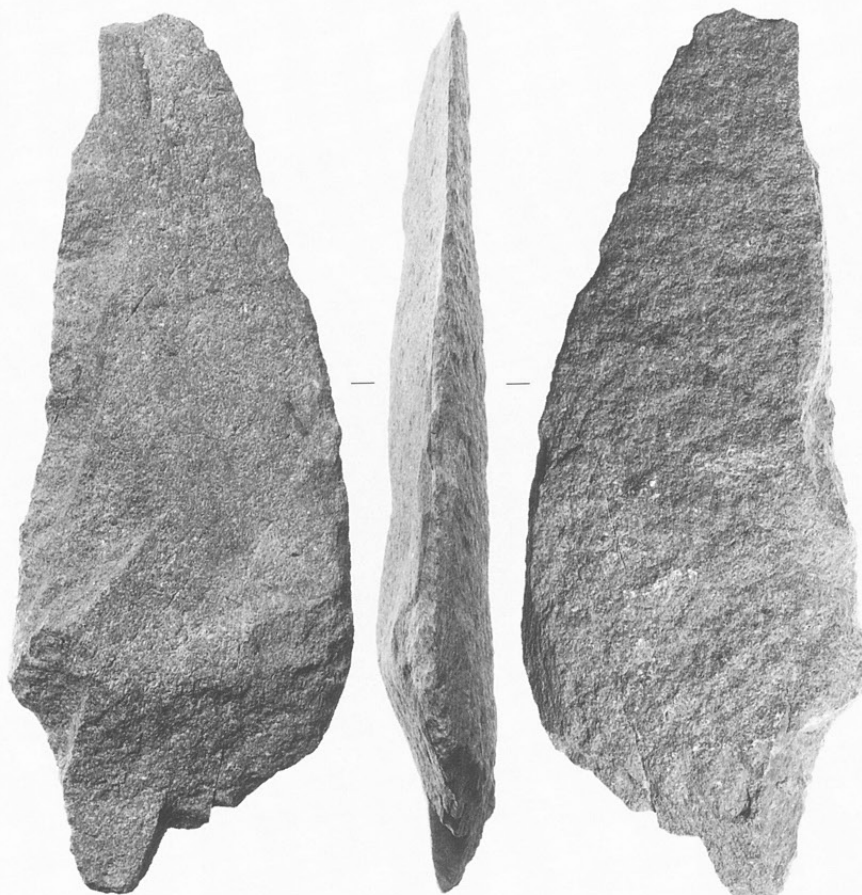
40



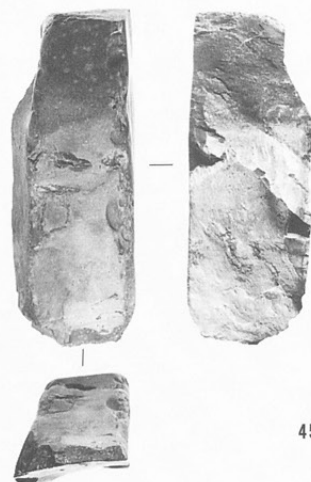
43



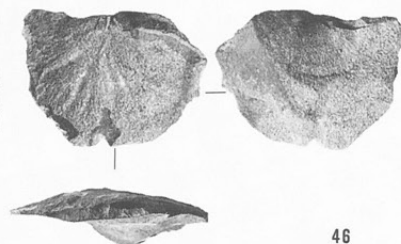
44



41



45

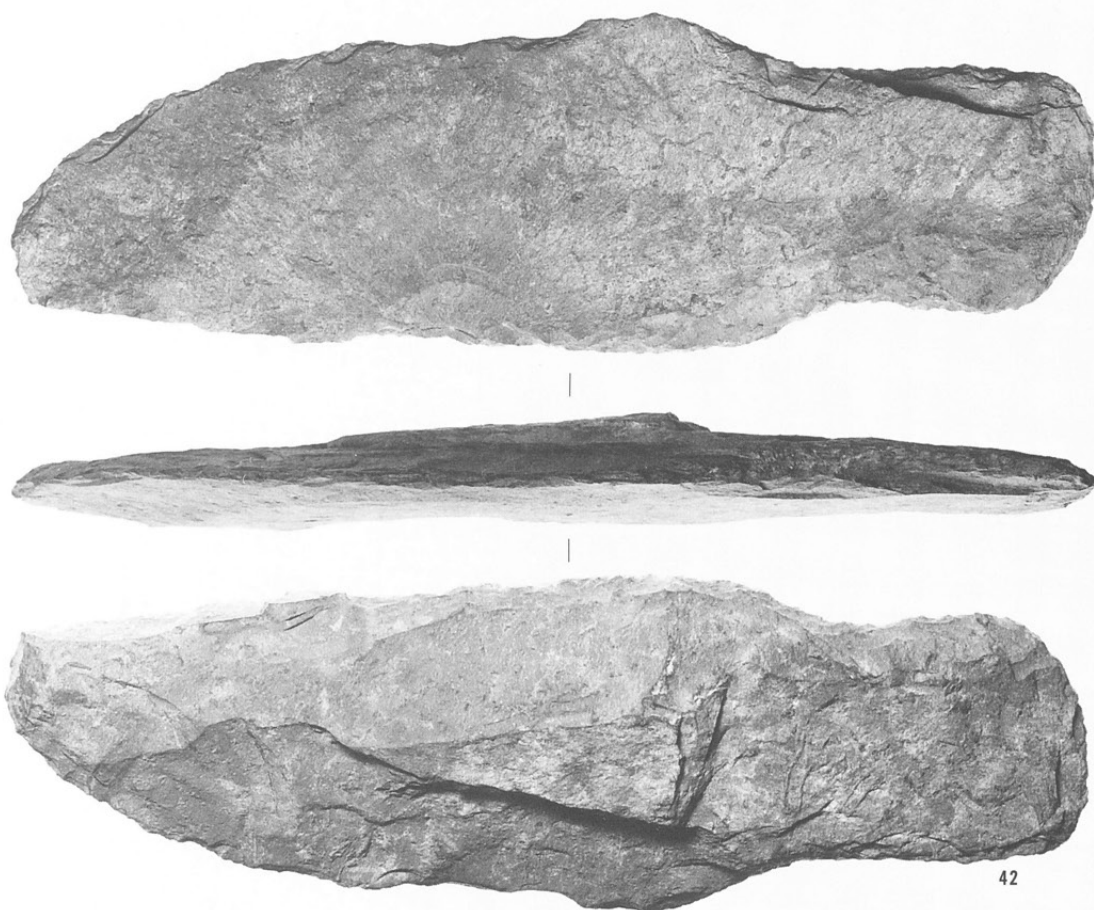


46

刃器 7

42 1-3区

(1:2)



42

刃器素材

1 SB7048

2 SB7517

3 SB7723

4 SB7613

5 SK8864

6 SK8235

7 SK8144

(1:2)



1



2



3



4



5



6



7

弥生時代石器25

刃器 8

47 SD6007

48 SK8864

49 SD7011

50 SD6024

51 SD7110

52 2-1区

第1検出面

53 20-1区

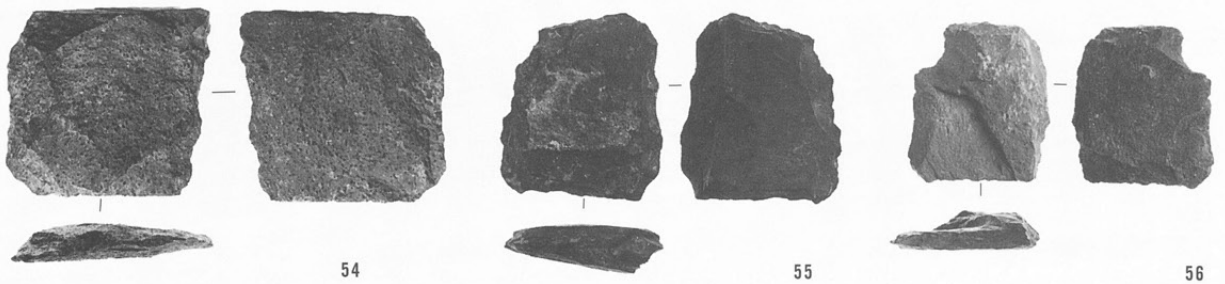
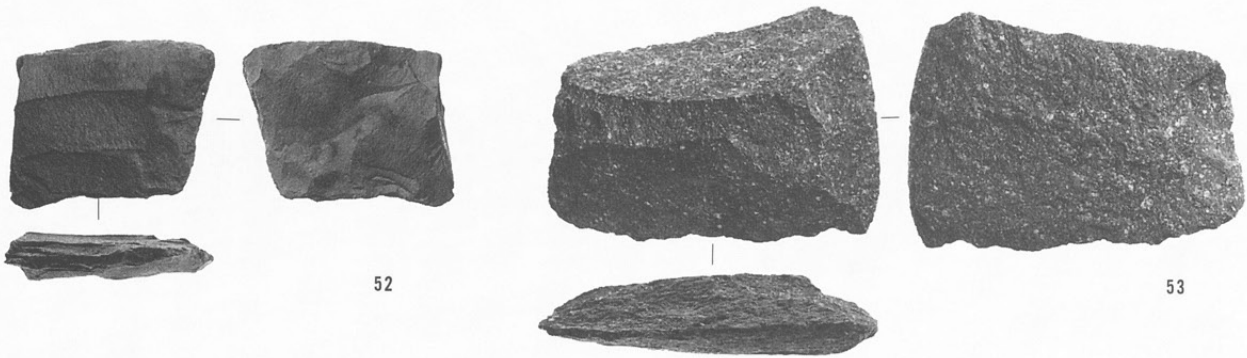
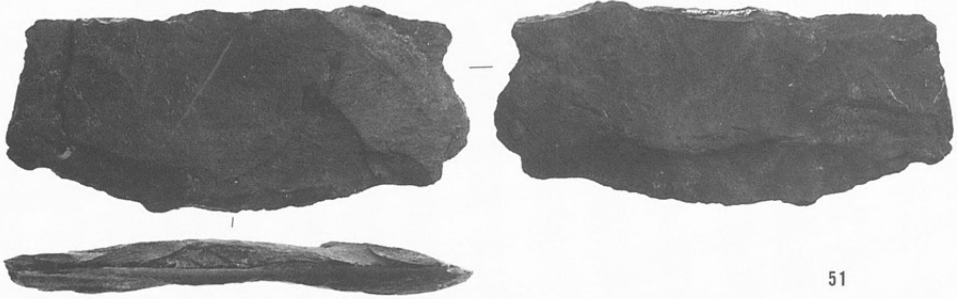
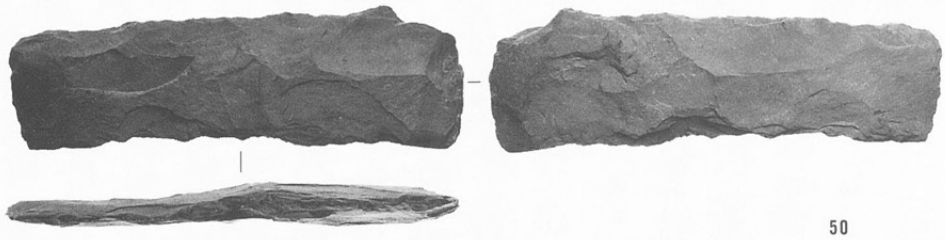
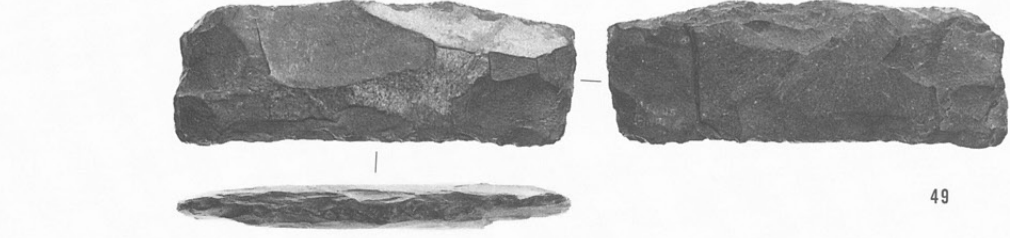
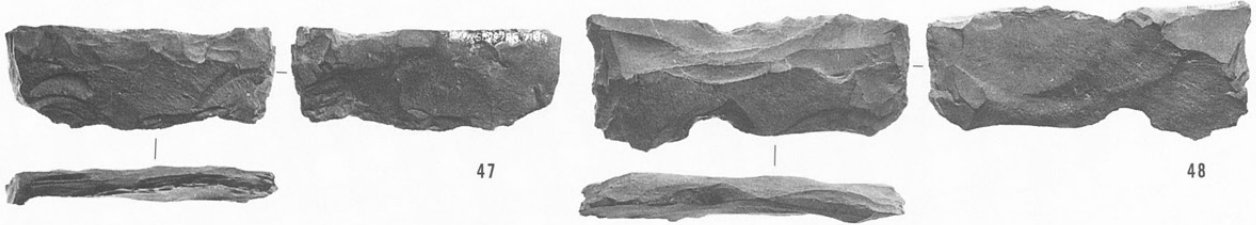
第1検出面

54 SD7110

55 SB7246

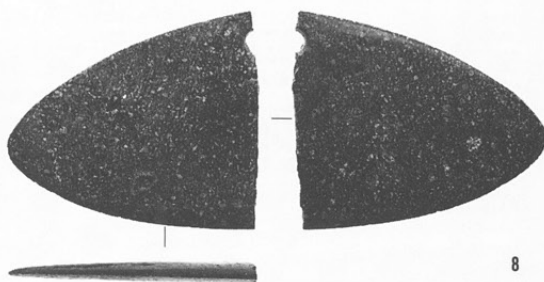
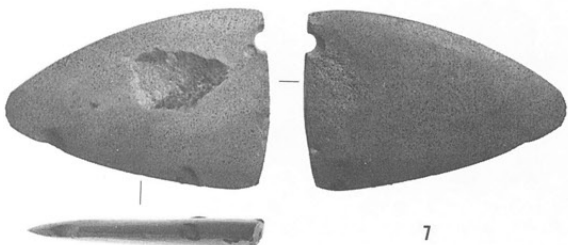
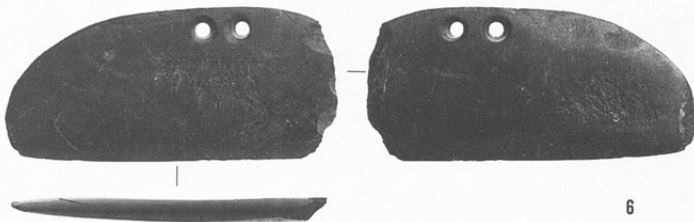
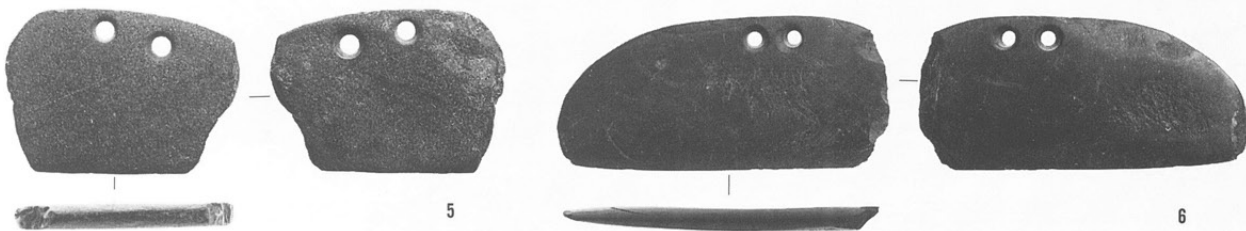
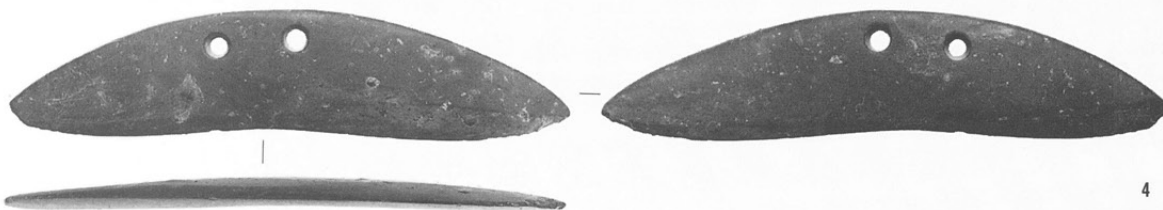
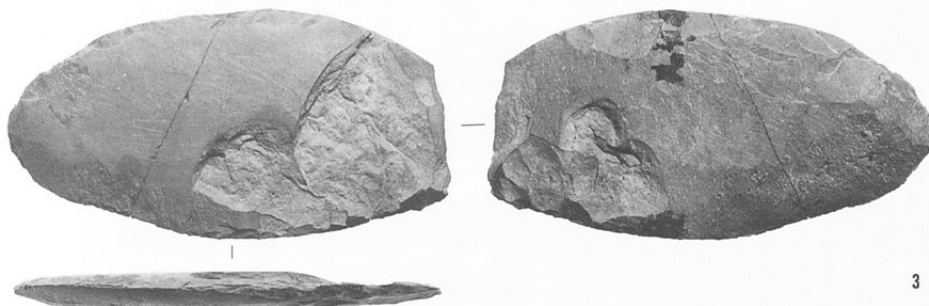
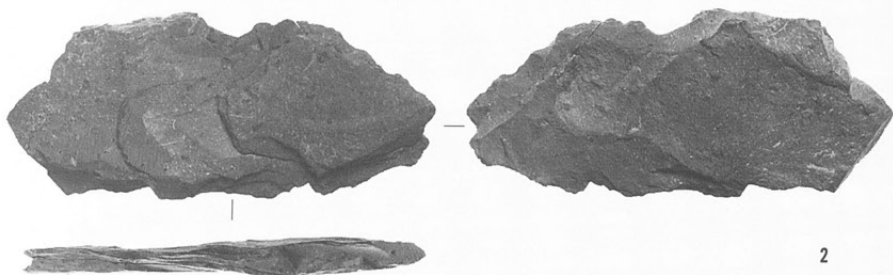
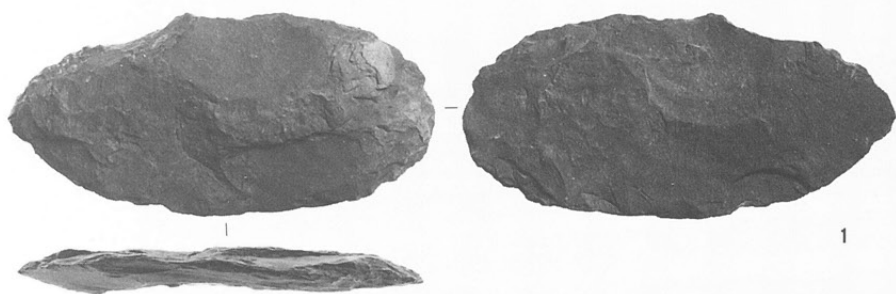
56 SK7343

(1:2)



磨製石包丁

- 1 20-1区  
第4検出面
- 2 S B7216
- 3 S B7272
- 4 S B7276
- 5 S D7006
- 6 2-3区
- 7 S B6014
- 8 S B7277  
(1:2)



弥生時代石器27

磨製石斧 1

- 1 S D7023
  - 2 S D6002
  - 3 S B7027
  - 4 S K8167
  - 5 S B7627
  - 6 3区
  - 7 S B7105
  - S B7021
  - 8 S B6014
  - 9 2-2区
- 第1検出面  
(1:2)



1



2



4



3



5



6



7



8



9

磨製石斧 2

10 S K8167

11 S D7039

12 20-1区

第3検出面

13 S D6007

14 S B7275

15 2-2区

第1検出面

16 S B7268

17 S B7079

18 S D7050

19 3区

20 S D7052

21 S B7680

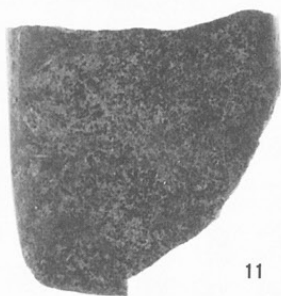
22 2-2区

第1検出面

(1:2)



10



11



12



13



14



15



16



17



18



19



20



21

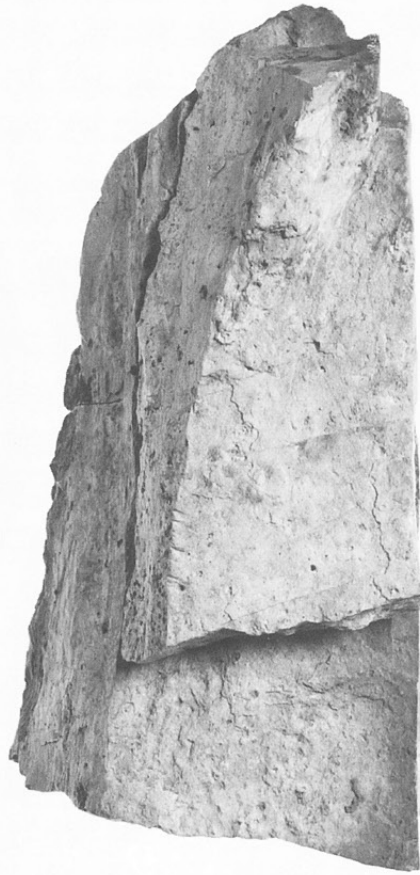


22

弥生時代～  
古代石器29

砥石 1

- 1 SB7256  
SB7654
- 2 SB7178
- 3 SB7147
- 4 SD7080
- 5 SB7283
- 6 SB7101
- 7 2-1区  
第2検出面
- 8 SD7066  
(1:3)



1



2



3



4



6



5



7



8



砥石 2

- 9 2-3区  
第1検出面
- 10 SK7036
- 11 SB7038
- 12 SB7033
- 13 SB7254
- 14 SB7113
- 15 SB7526
- 16 SD7002
- 17 SB7260
- 18 SD7023
- 19 SK7205
- 20 SB7610
- 21 2-2区  
第1検出面
- 22 2-2区  
第1検出面  
(1:3)



9



10



11



12



13



14



15



16



17



18



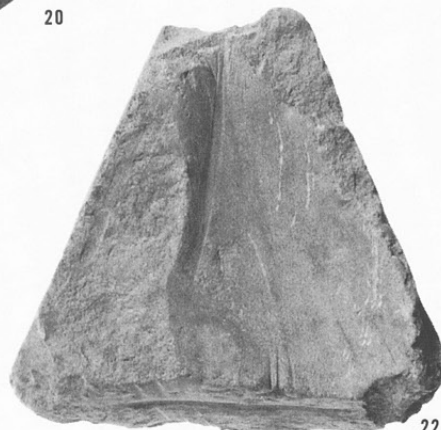
19



20



21



22

弥生時代～  
古代石器31

砥石 3

- 23 2-2区
- 第1検出面
- 24 SB7263
- 25 SD7092
- 26 SB7111
- 27 4区
- 28 SD7052
- 29 SB7372
- 30 SB7521
- 31 SB7706
- 32 SD7014
- 33 SB7213
- 34 SB7651
- 35 SD7010
- 36 SB7506
- 37 SB7177
- 38 SB7268
- (1:3)



23



24



25



26



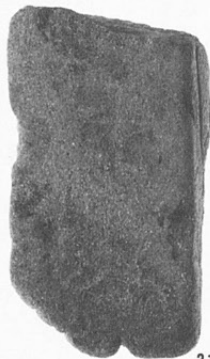
27



29



30



31



32



33



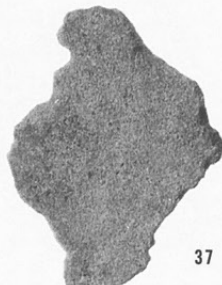
34



35



36



37



38



28

砥石 4

- 39 S B7416
- 40 S B7133
- 41 S B7255  
(1 : 3)

くぼみ石・石臼

- 42 S K8100
- 43 3区  
第2検出面
- 44 S B7215
- 45 SM7019
- 46 S K7012
- 47 S K7134  
(1 : 3)



39



40



41



42



43



44



45



47

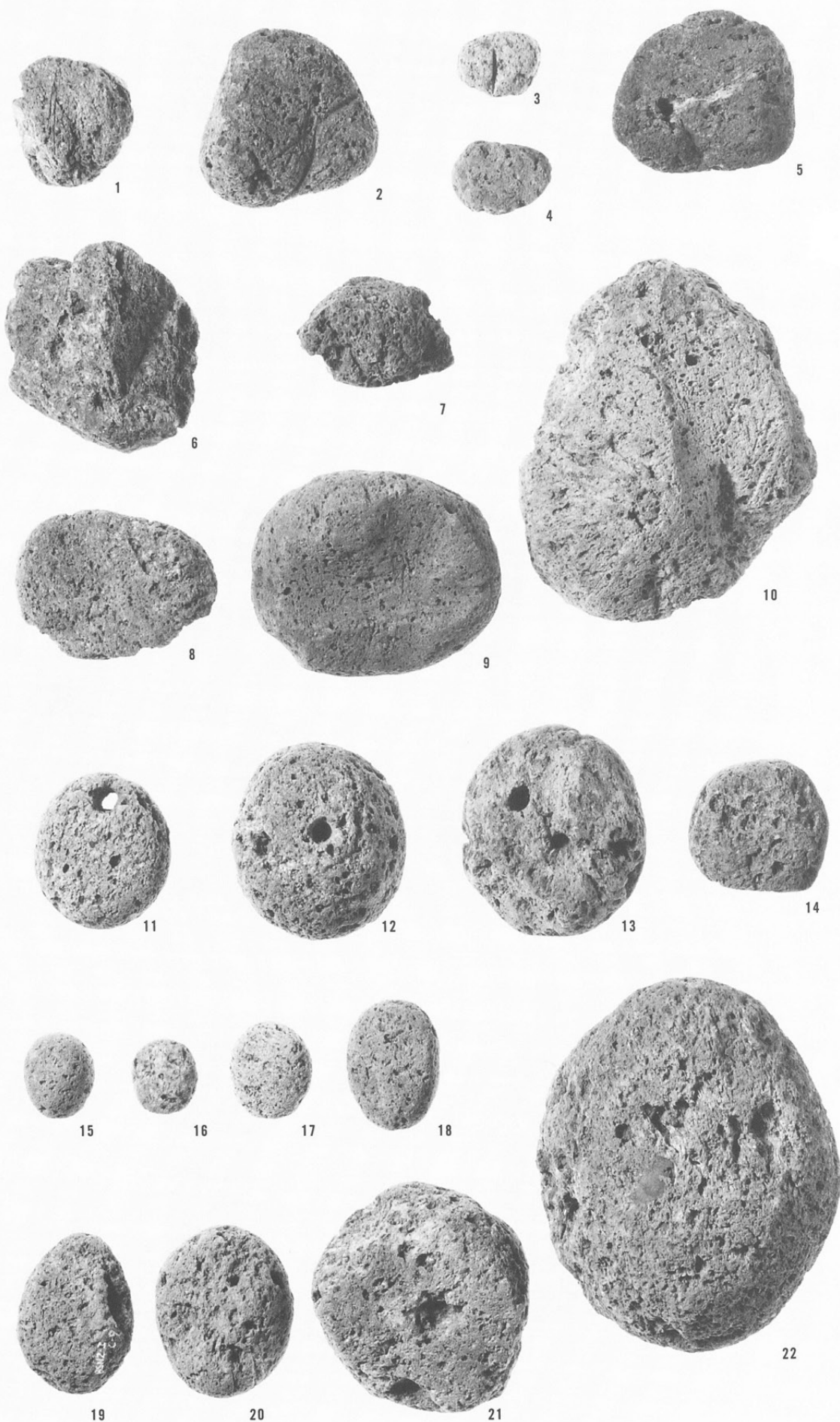


46

弥生時代～  
古代石器33

軽石製品

- 1 S B 6002
- 2 S B 7256
- 3 S D 5003
- 4 S K 8857
- 5 2-2区  
第1検出面
- 6 S B 7190
- 7 S B 7124
- 8 S B 7354
- 9 3区
- 10 不明
- 11 S D 7023と  
S D 7052の境
- 12 S B 7155
- 13 S B 7255
- 14 S B 7230
- 15 S B 7036
- 16 20-1区  
第1検出面
- 17 20-1区  
第2検出面
- 18 S K 6355
- 19 2-2区
- 20 S B 7272
- 21 S K 6097
- 22 S D 7016  
(1:2)



みがき石

- 1 2-3区
  - 2 S B 7021
  - 3 S B 7027
  - 4 3区
  - 5 S B 7161
  - 6 S D 7046
  - 7 S B 7167
  - 8 S B 7126
  - 9 S B 7696
  - 10 S K 8476
  - 11 S B 7079
  - 12 S M 7031
  - 13 S B 7488
  - 14 S B 7655
  - 15 S B 7034
  - 16 S B 7065
  - 17 S D 7110
  - 18 S B 7508
  - 19 S B 7511
  - 20 S B 7358
  - 21 S K 7075
- (1 : 2)



弥生時代石器35

玉石

1 20-1区

2 S B7162

3 S B7142

4 S B7209

5 S D7007

6 S B6024

7 S B7180

8 S B7235

9 S B7008

10 S B7104

11 S B7469

12 S B7160

13 3区

14 3区

15 S D7007

16 2-3区

17 S B7111

18 S B7014

19 S B7387

20 S B7459

21 S B7270

22 S B7063

23 S B7517

24 S B7563

25 S B7094

26 S D7041

27 S B7459

28 S D7040

29 S B7224

30 S B7091

31 S B7150

32 2-3区

33 S B7517

34 2-2区

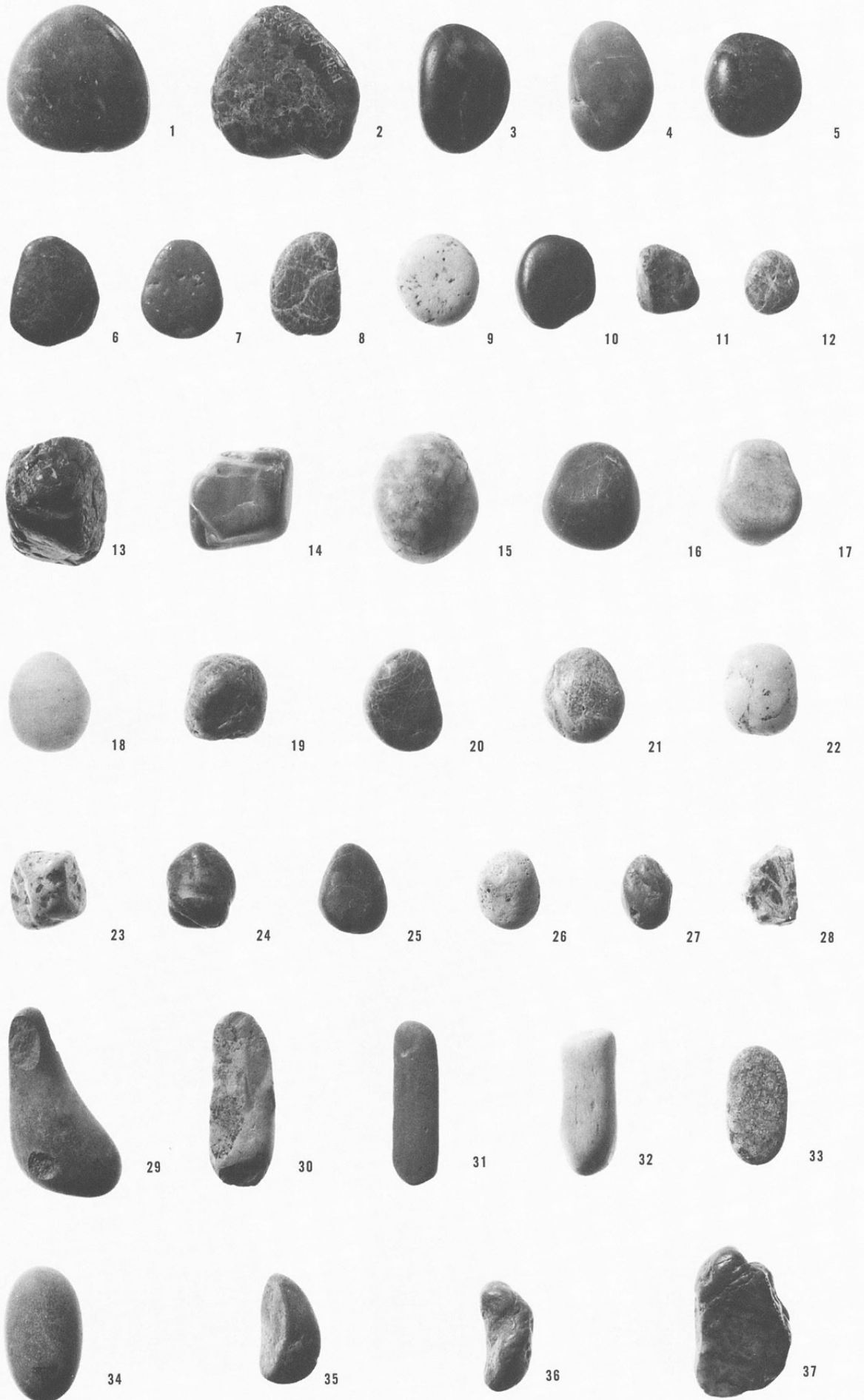
第1検出面

35 S B7078

36 S B7154

37 S B7566

(1:1)



穴開石

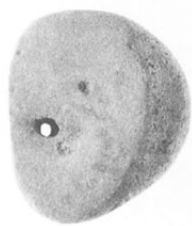
- 1 S B7674
- 2 S B7039
- 3 S K7135
- 4 不明
- 5 S B7426
- 6 S B7698
- 7 2-2区
- 第1検出面
- 8 S D7028

付着物のある石

- 9 S K8226
- 10 S K8226
- 11 S K8226
- 12 S K8226
- 13 S K8226

角礫

- 14 S B7415
- 15 S B7256
- 16 S K7215
- 17 S D7046
- 18 S D7052
- 19 S K7214
- (1:2)



1



2



3



4



5



6



7



8



9



10



11



12



13



14



15



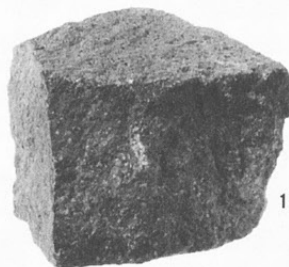
16



17



18



19

弥生時代石器37

玉関係 1

1 2-1区

2 2-3区

3 SB7162

4 SB7654

5 SK7147

6 SB7423

7 SD7039

8 SD7039

9 2-1区

第2検出面

10 SK8638

11 SB7277

12 SD7039

13 SK7213

14 SB7086

15 2-1区

16 SD7080

17 2-2区

第1検出面

18 SK7023

19 SB7105

20 SD7039

21 3区

22 2-2区

第1検出面

23 SK8372

24 1-4区

第2検出面

25 SB6024

26 SB7195

27 2-2区

第2検出面

28 SB7199

29 SD7052

30 SD6007

31 SB7519

32 SK7665

33 SB7006

34 SB7214

35 SB7599

36 SB7239

37 SB7203

38 SB7441

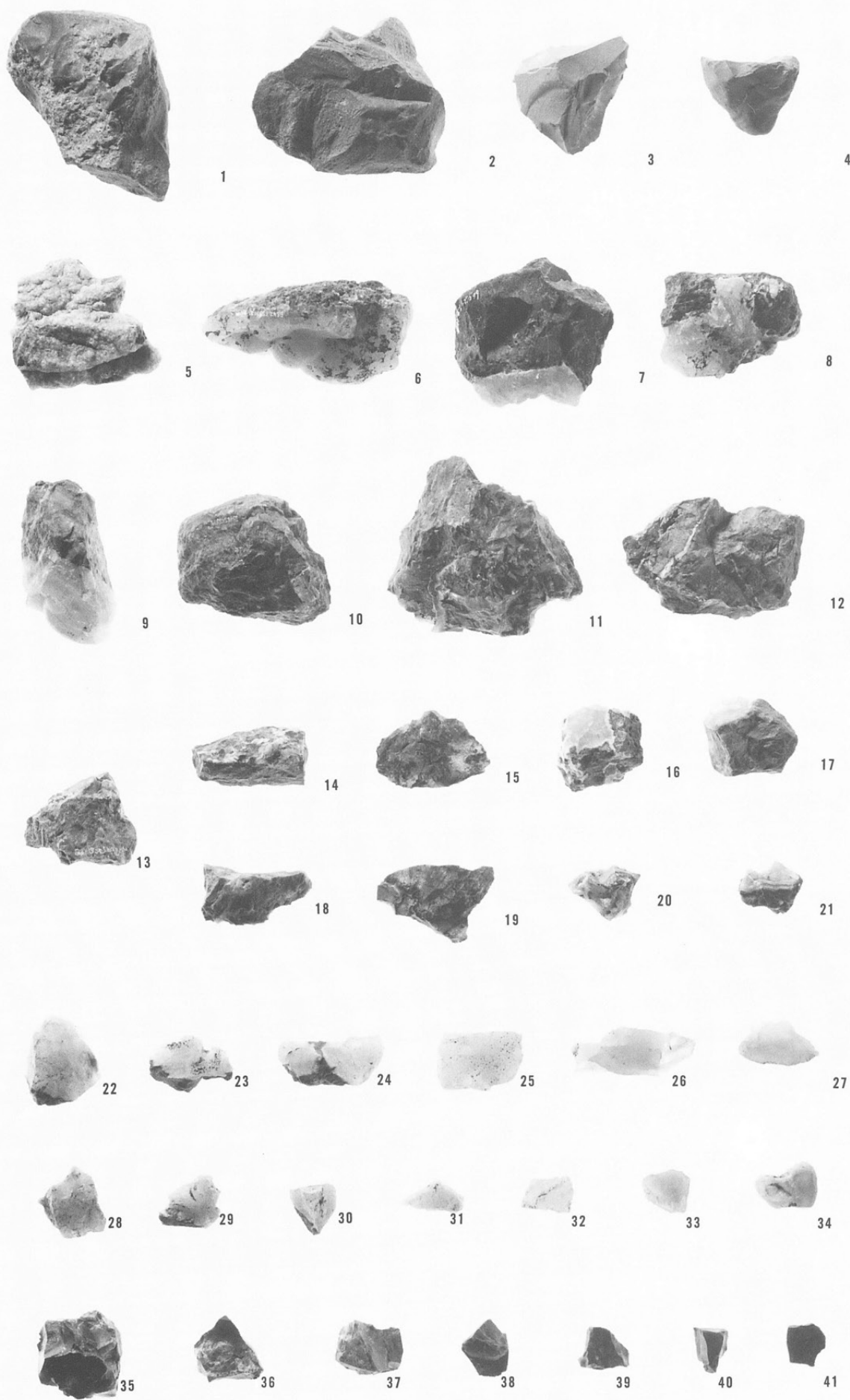
39 SB7275

40 2-2区

第1検出面

41 SB7104

(1:2)





玉關係 2

- 42 S B 6026
  - 43 S B 7022
  - 44 S B 7250
  - 45 S B 6016
  - 46 S B 6025
  - 47 S B 7353
  - 48 S B 7494
  - 49 S D 7007
  - 50 S B 7036
  - 51 S B 7165
  - 52 S B 7009
  - 53 S D 7006
  - 54 S B 7342
  - 55 2-1区
  - 56 2-1区
  - 57 2-1区
  - 58 2-1区
  - 59 S M 7007
  - 60 S K 8372
  - 61 S K 7020
  - 62 S B 7246
  - 63 S B 7735
  - 64 S B 7716
  - 65 S B 7716
  - 66 S B 7578
- (1 : 2)



42



43



44



49



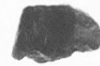
45



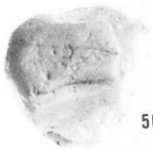
46



47



48



50



51



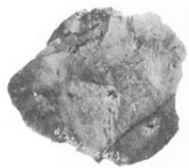
52



53



54



55



56



57



58



59



60



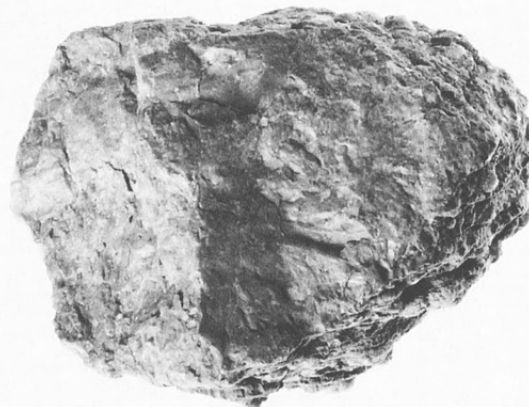
61



62



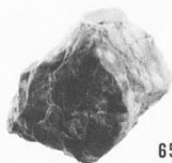
63



66



64



65