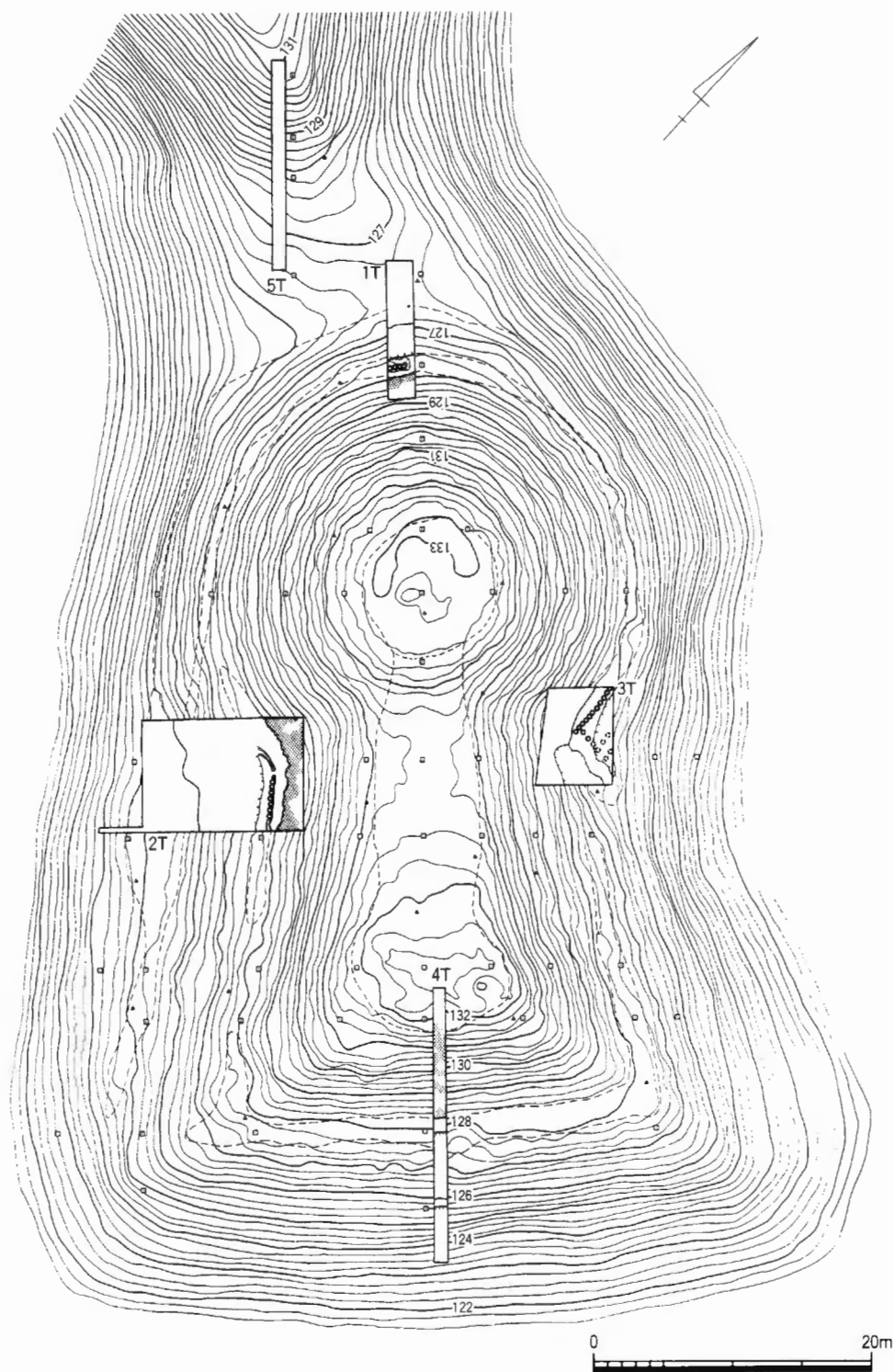
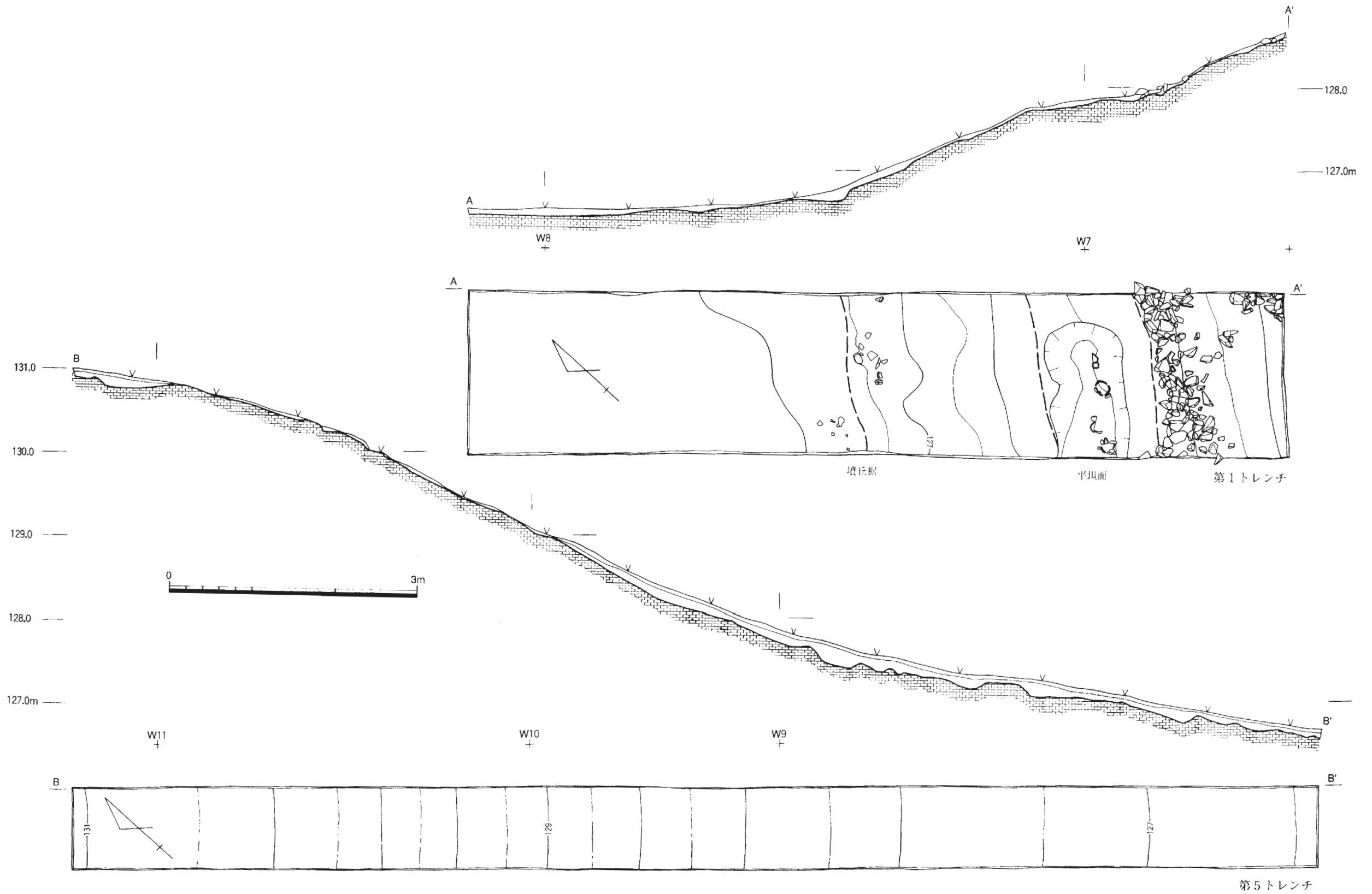


古墳填丘測量図 (1/400)

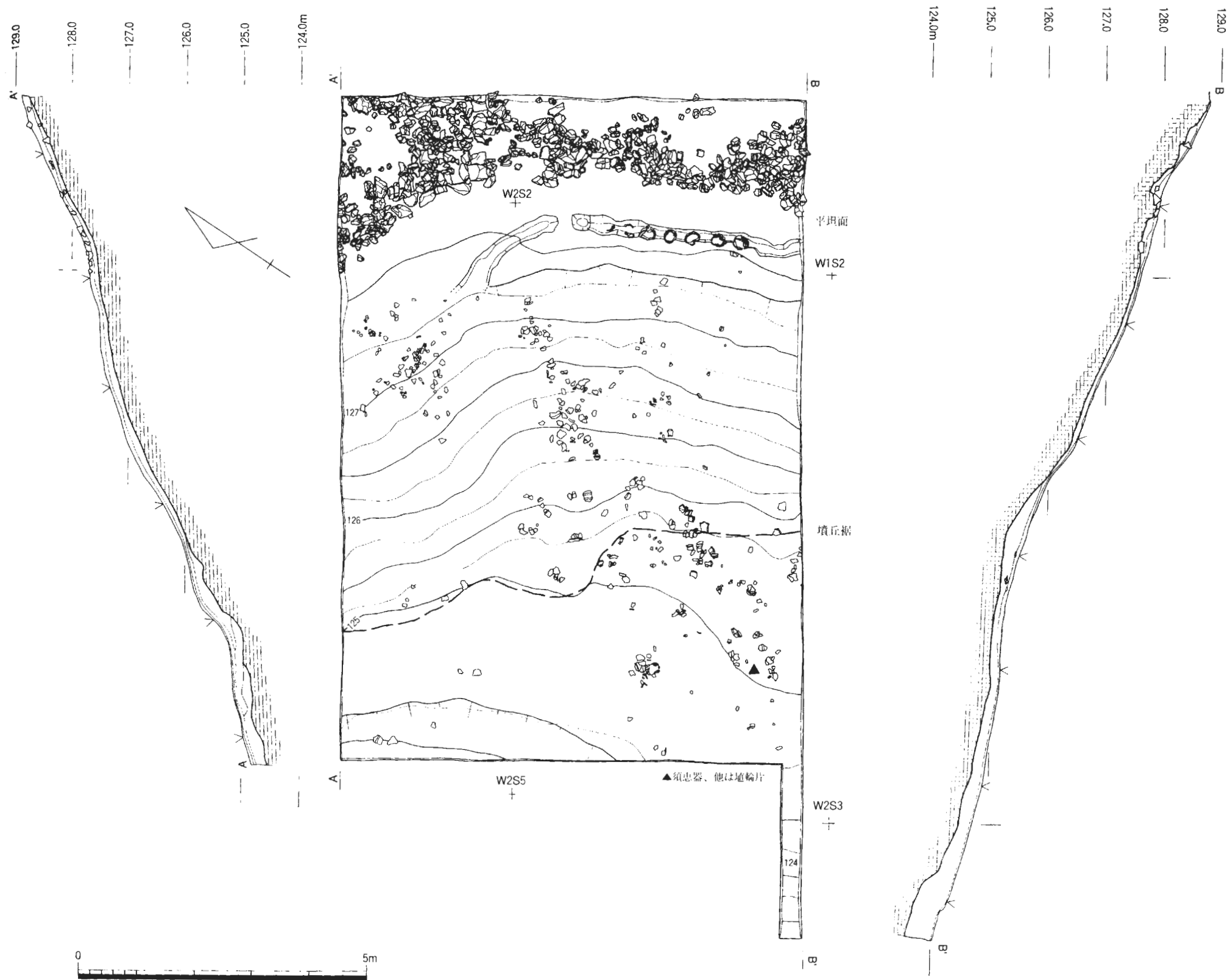


城山古墳遺構検出状況図 (1/500)



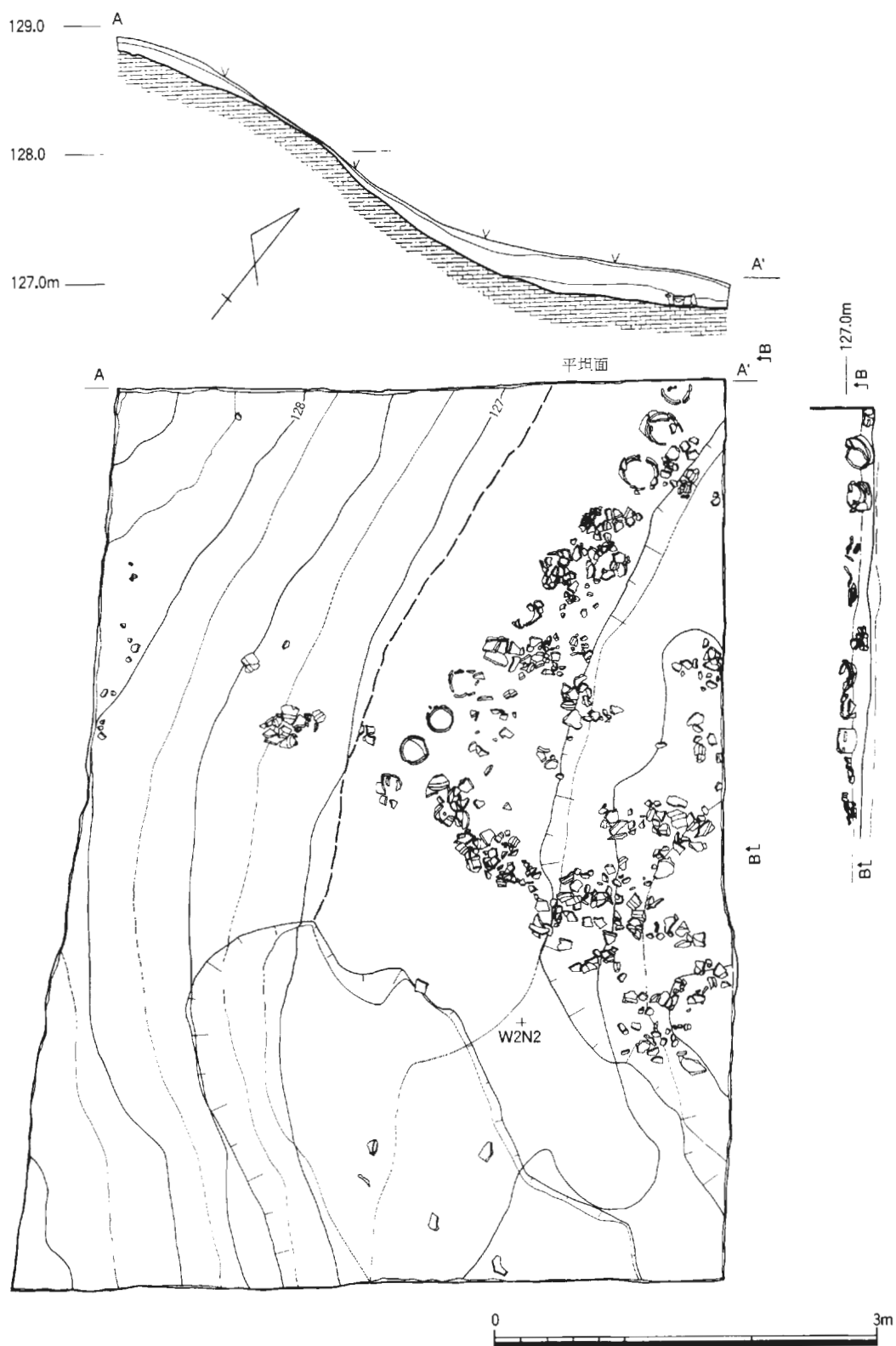
城山古墳第1トレンチ（後門部北側）・第5トレンチ（後門部北側尾根）実測図（1/50）

図版三二 第二トレンチ実測図(1)

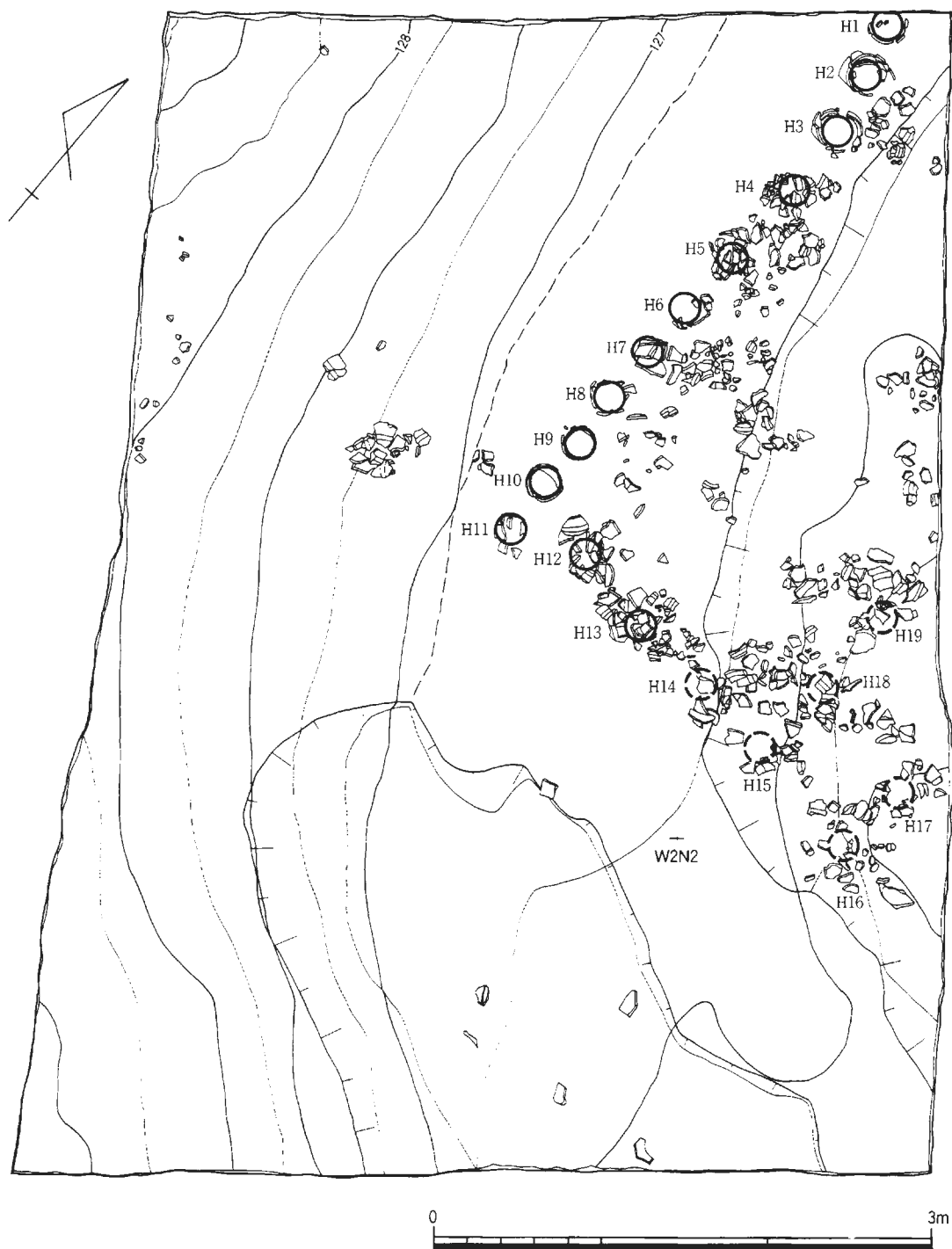




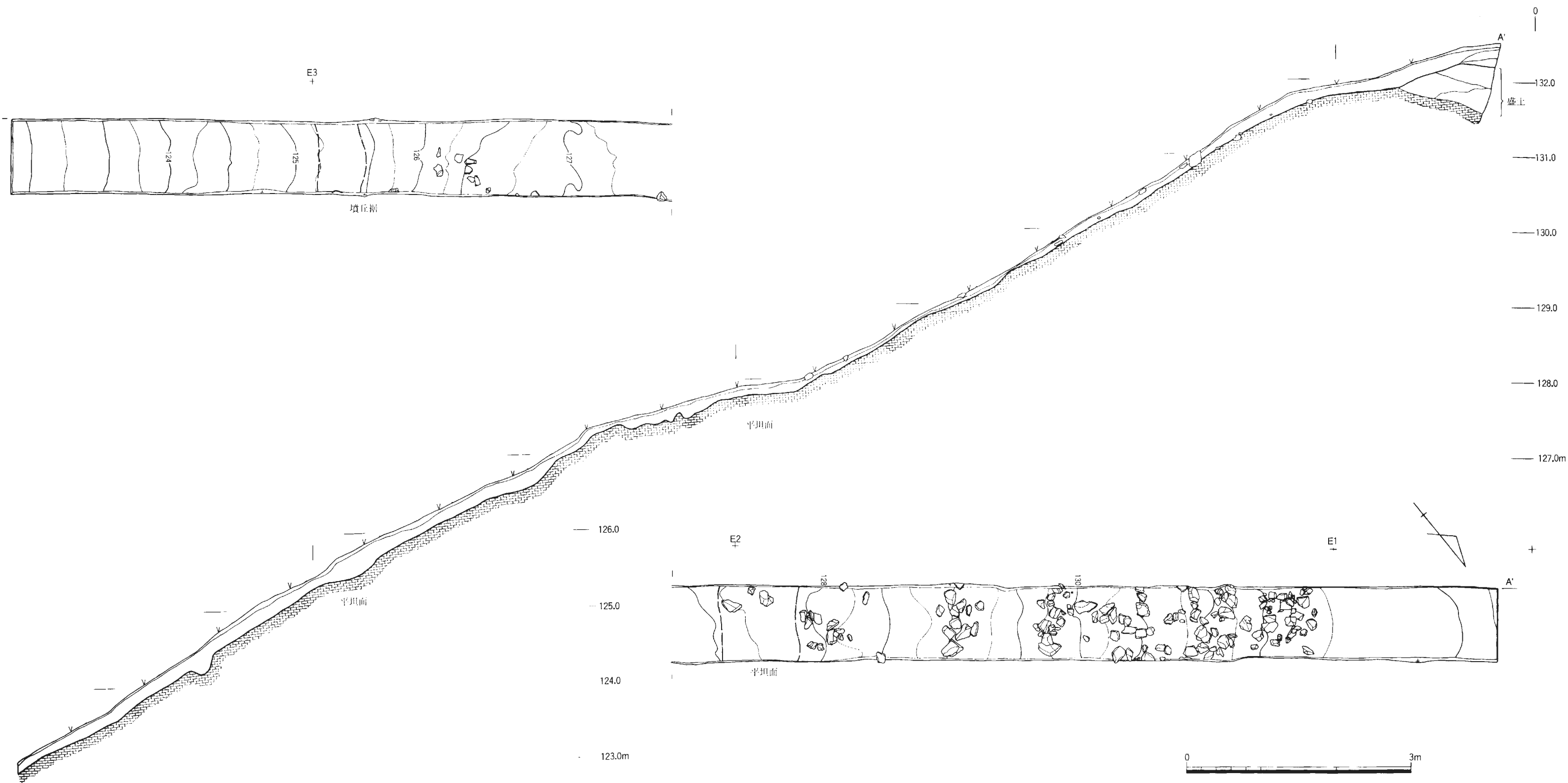
城山古墳第2トレンチ（くびれ部西側）実測図(2) (1/50)



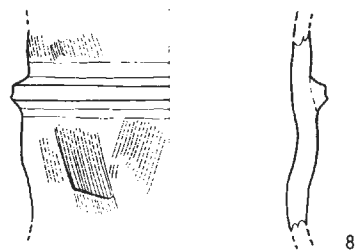
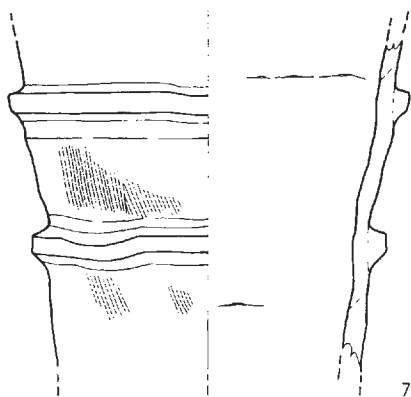
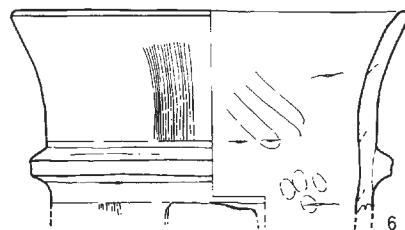
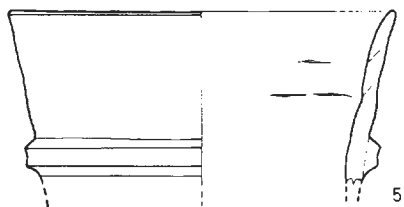
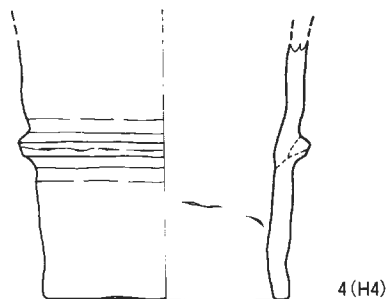
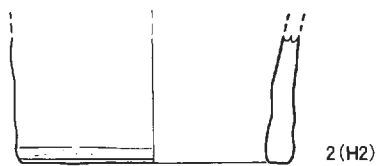
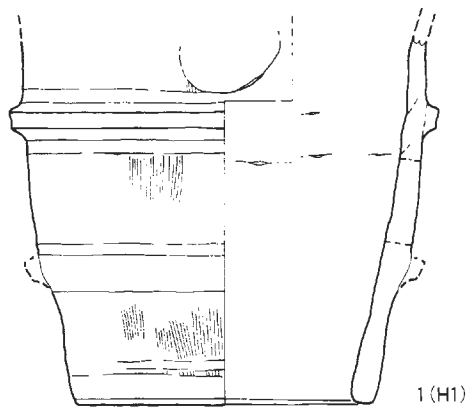
城山古墳第3トレンチ（くびれ部東側）実測図（1/50）



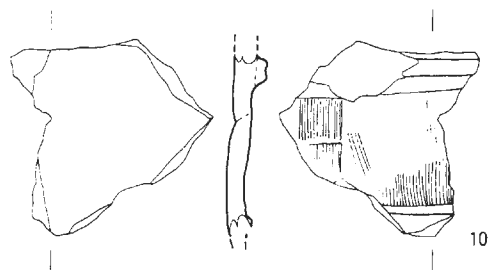
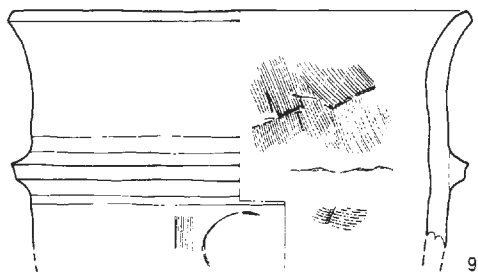
城山古墳第3トレンチ（くびれ部東側）埴輪列復元図（1/40）



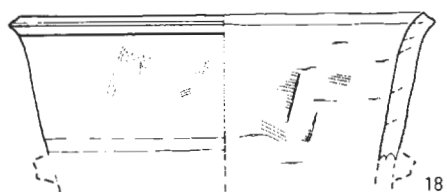
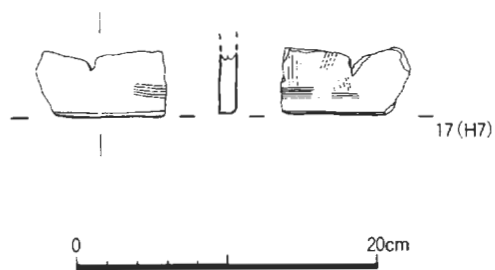
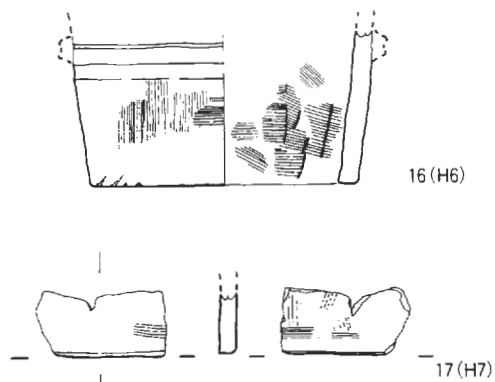
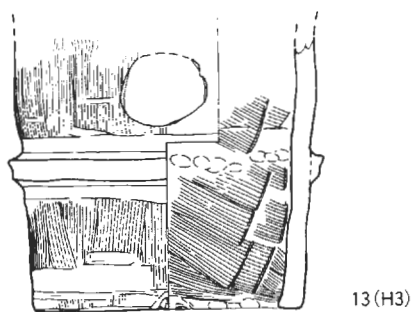
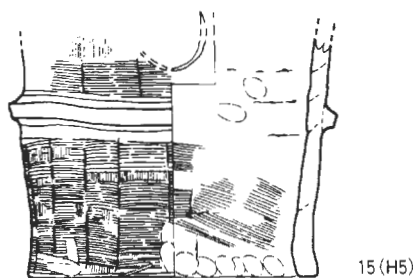
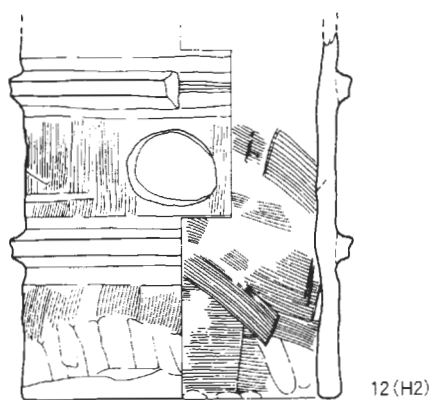
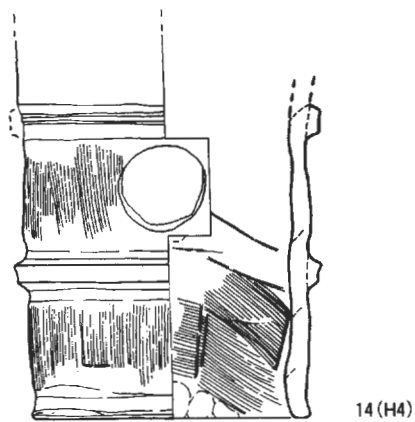
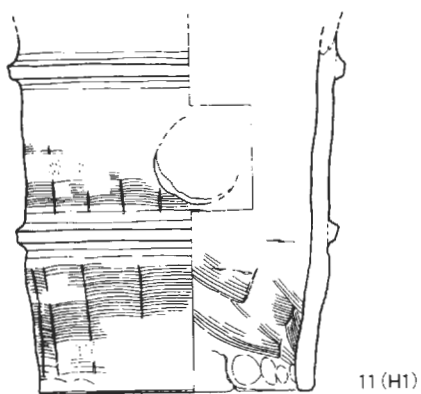
山古墳第4トレンチ（前方部南側）実測図（1/50）



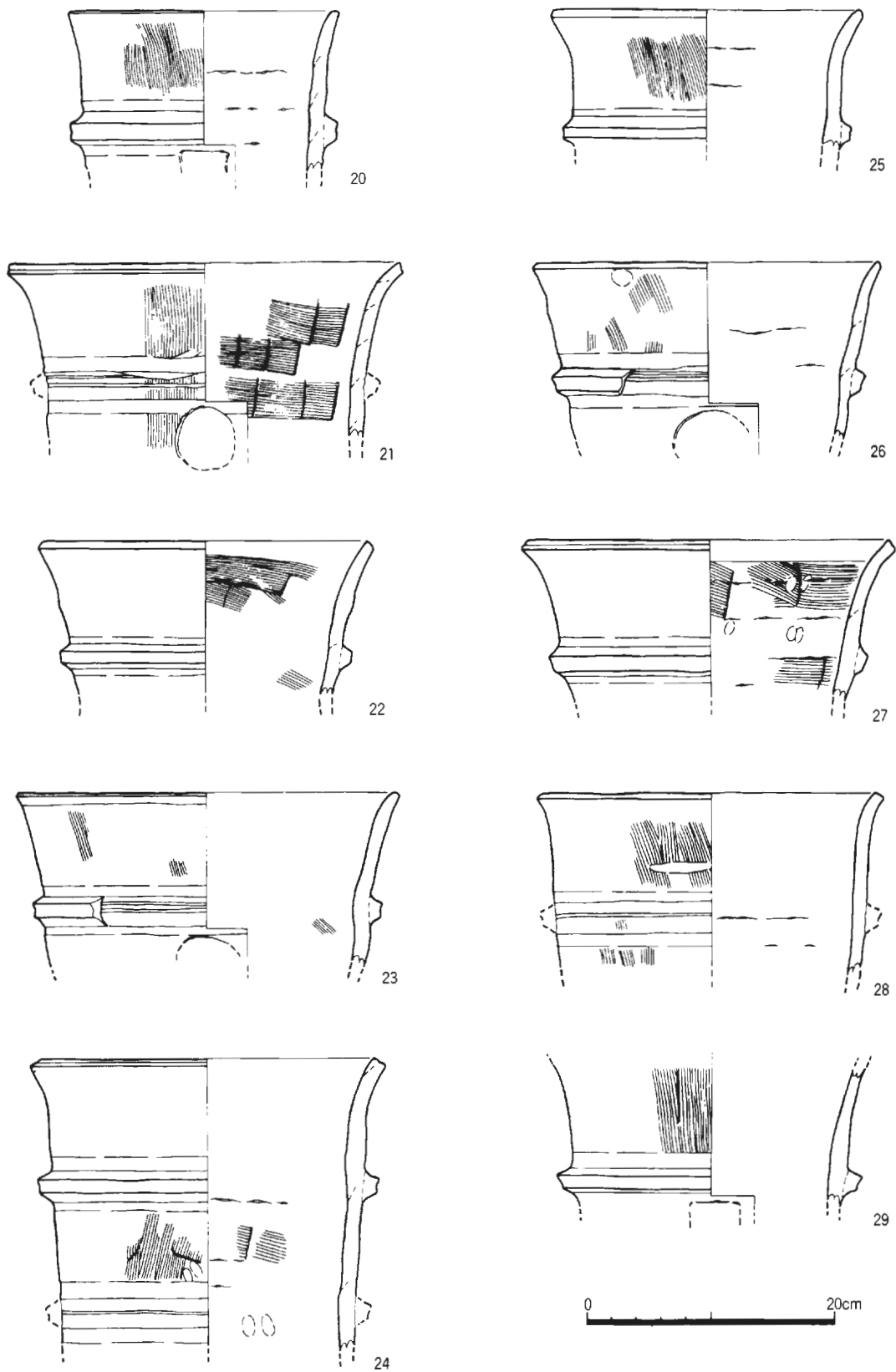
0 20cm



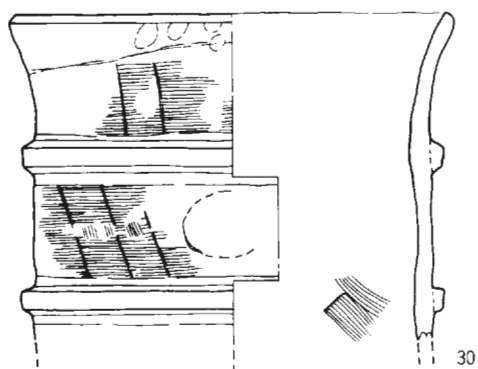
城山古墳円筒埴輪(1) (1～8：第1トレンチ、9・10：第4トレンチ、1/5)



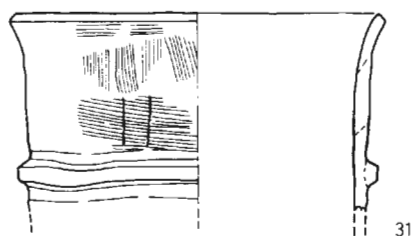
城山古墳円筒埴輪(2) (第2トレンチ、1/5)



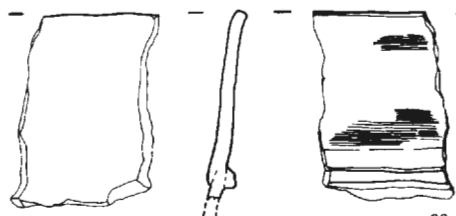
城山古墳円筒埴輪(3) (第2トレンチ、1/5)



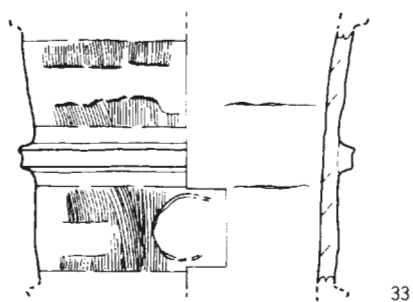
30



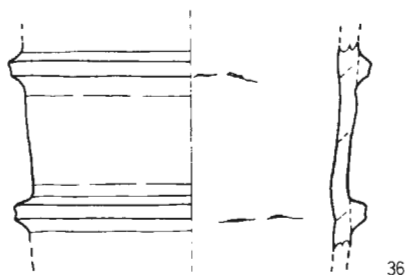
31



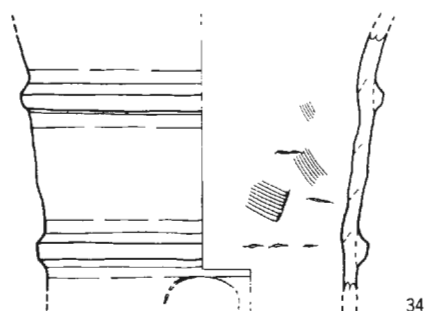
32



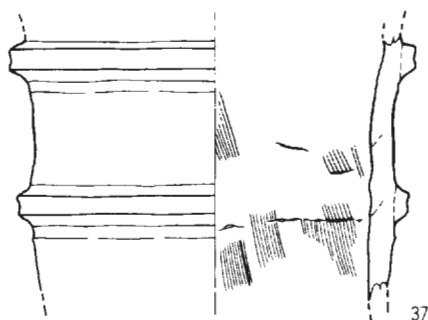
33



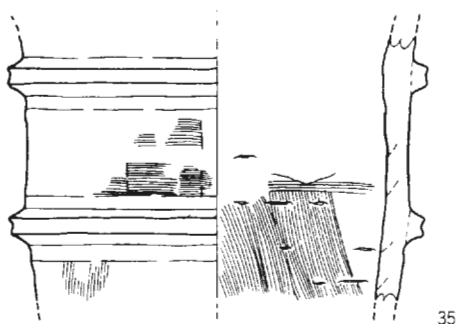
36



34

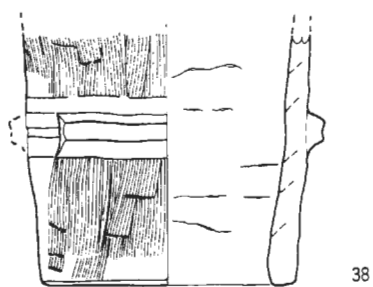


37

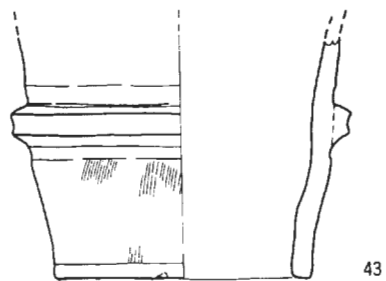


35

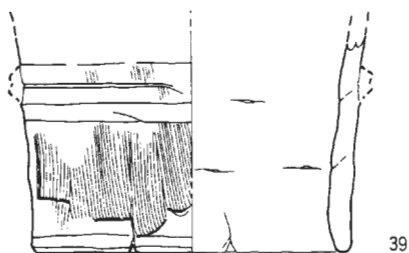
0 20cm



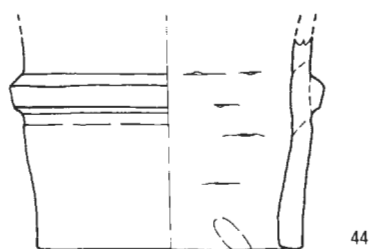
38



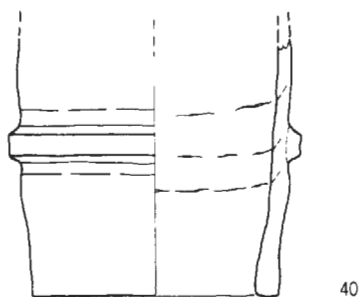
43



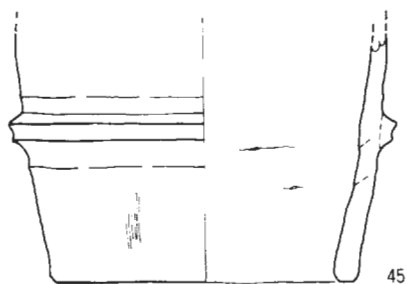
39



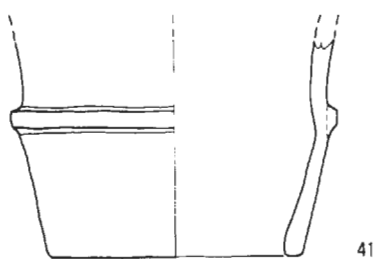
44



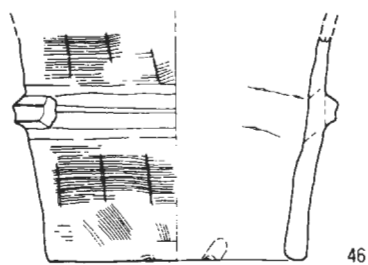
40



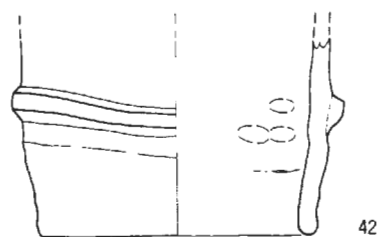
45



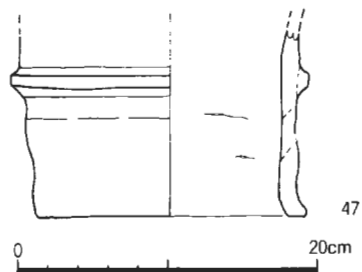
41



46

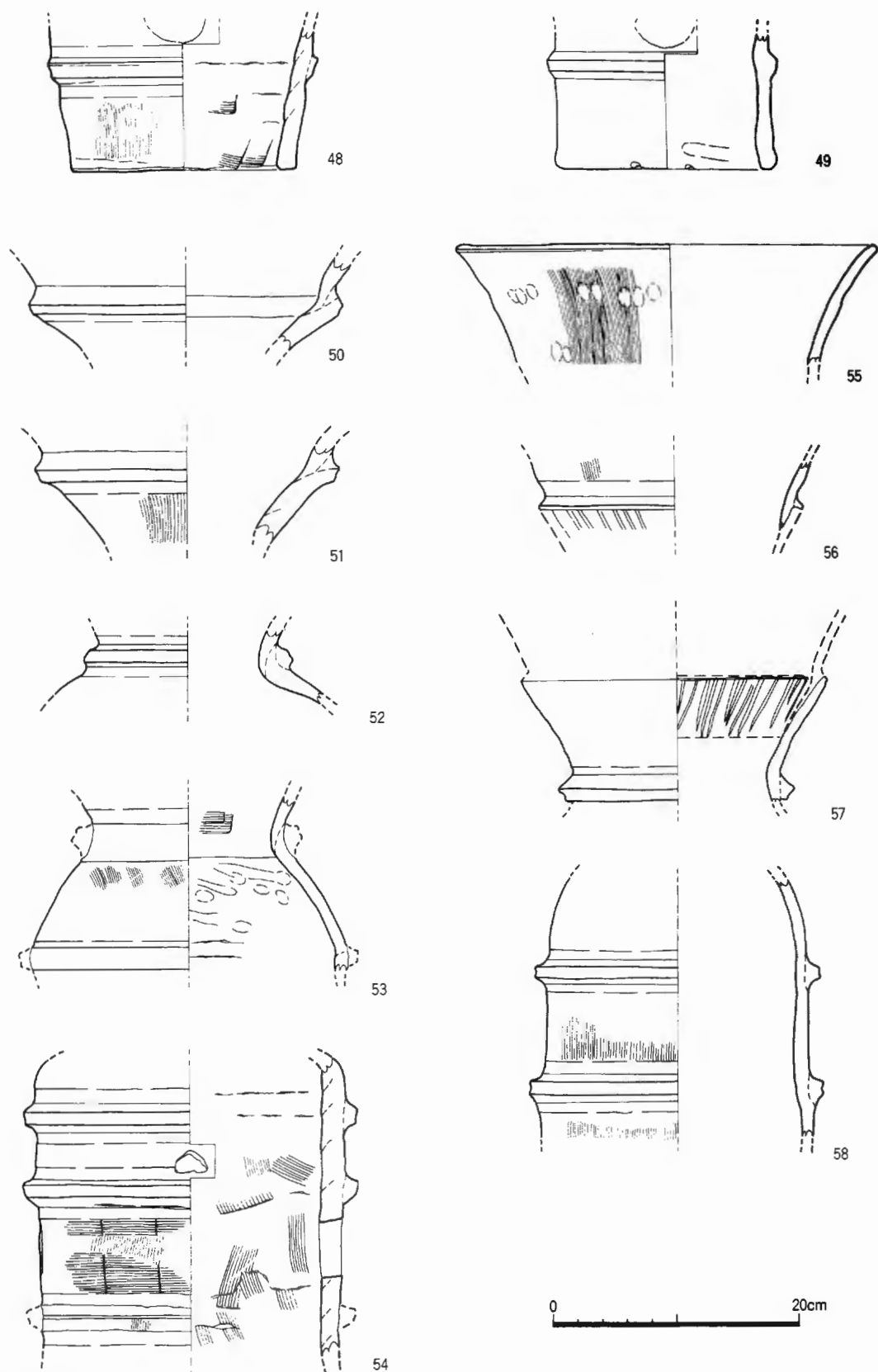


42

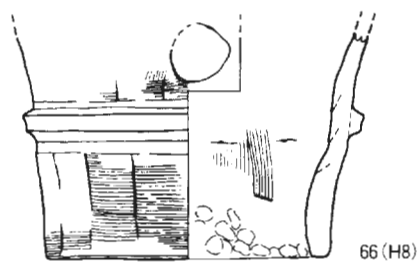
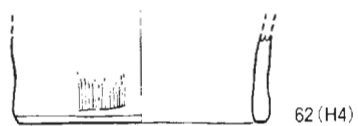
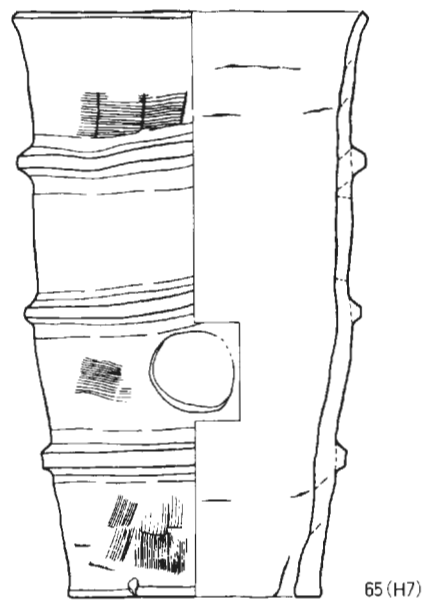
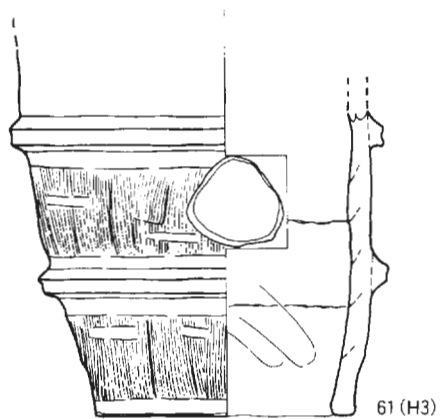
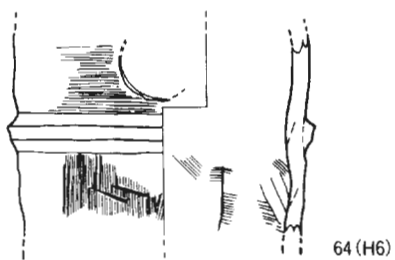
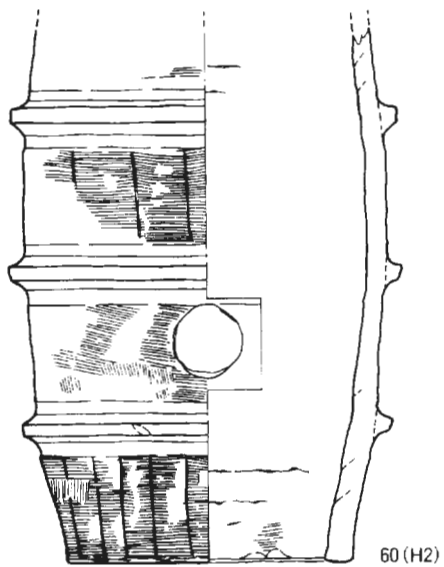
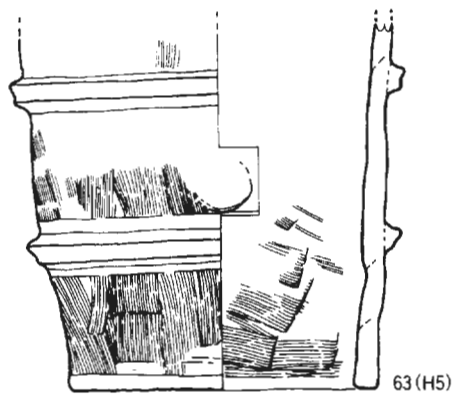
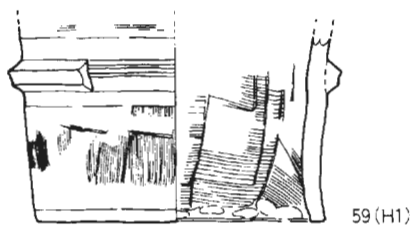


47

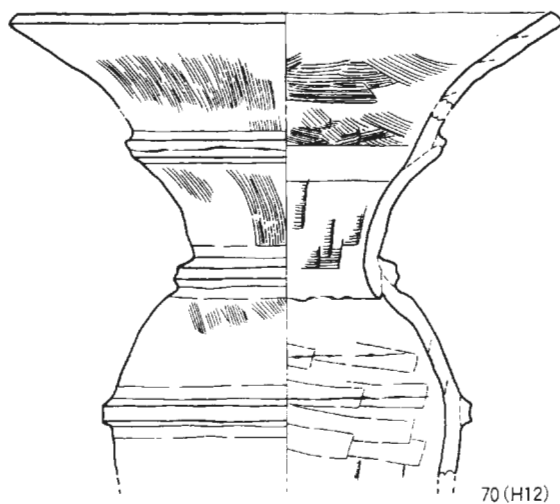
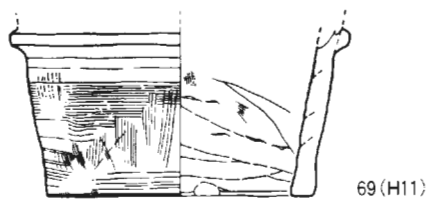
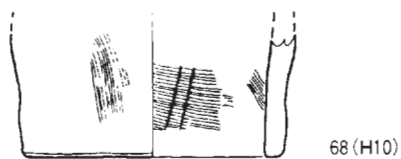
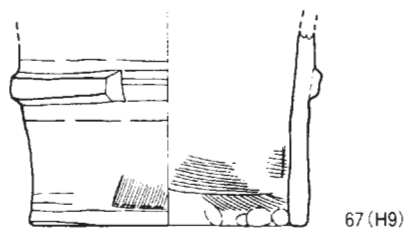
0 20cm



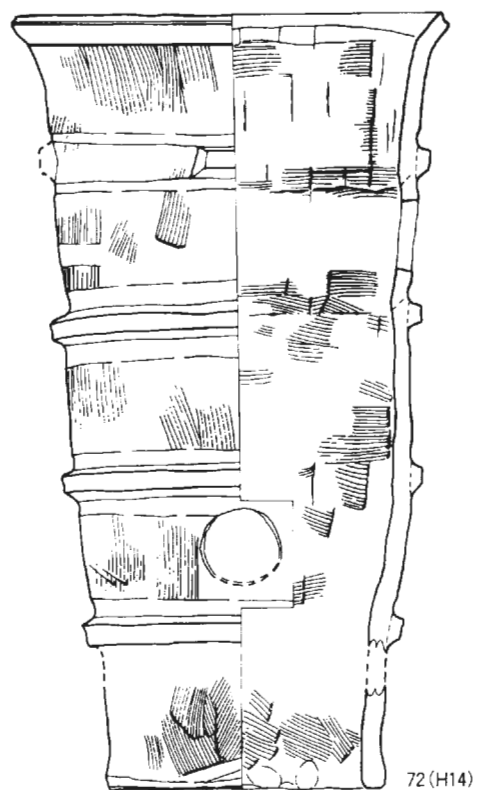
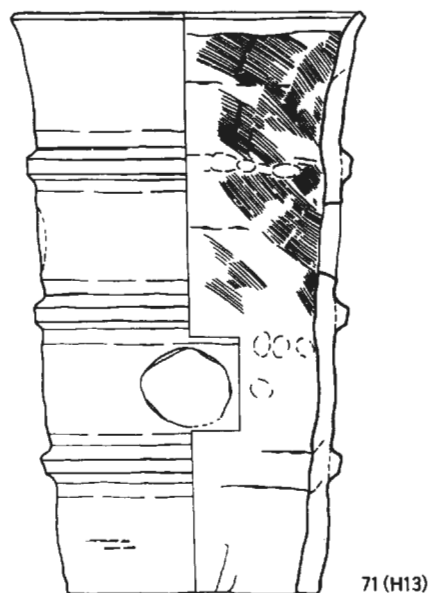
城山古墳円筒埴輪(6) (第2トレンチ、1/5)

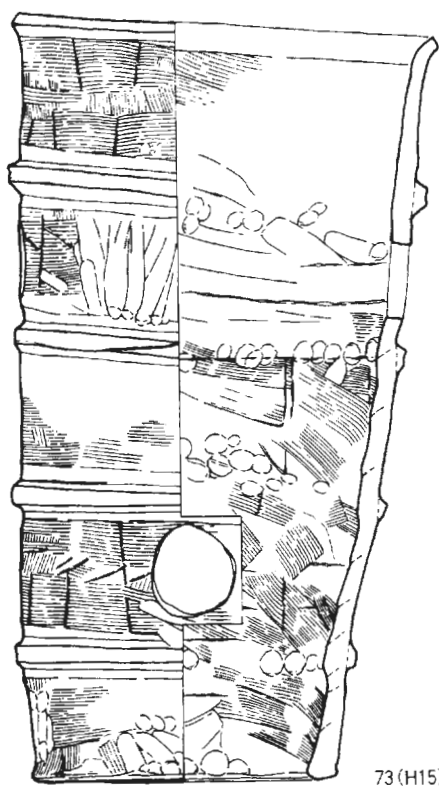


0 20cm

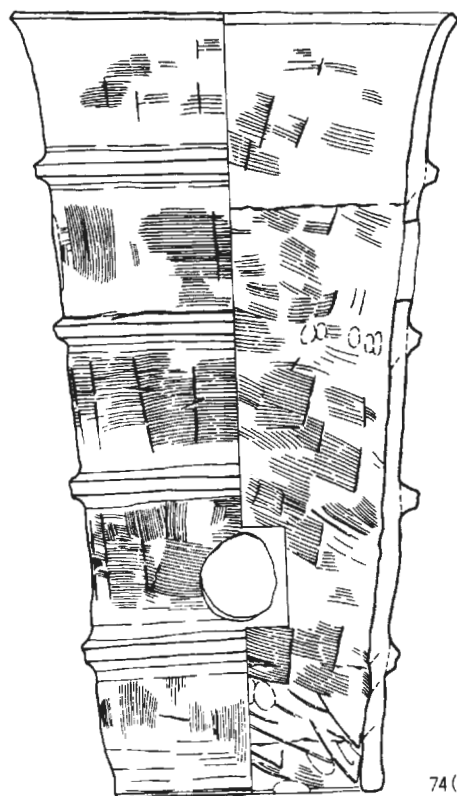


0 20cm

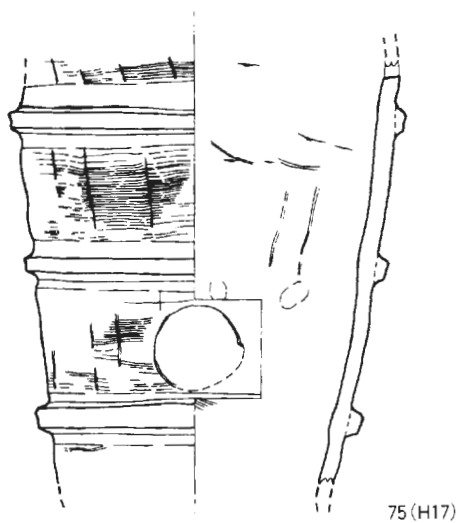




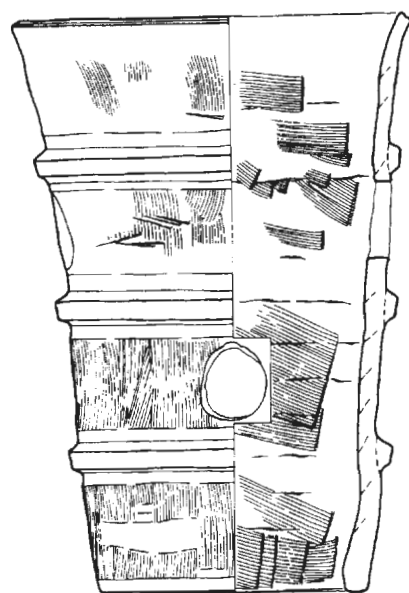
73(H15)



74(H16)

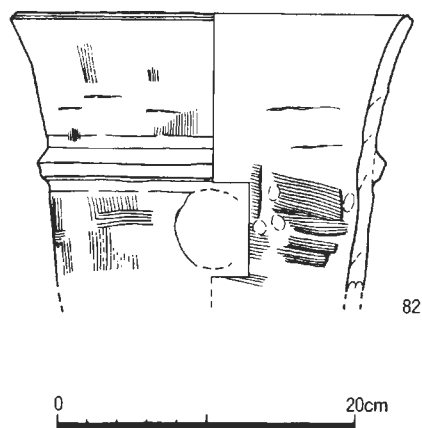
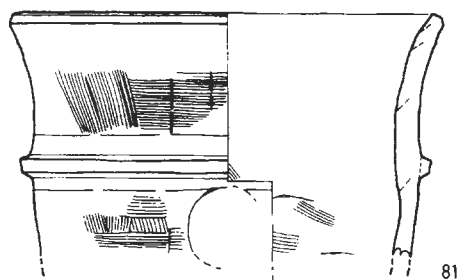
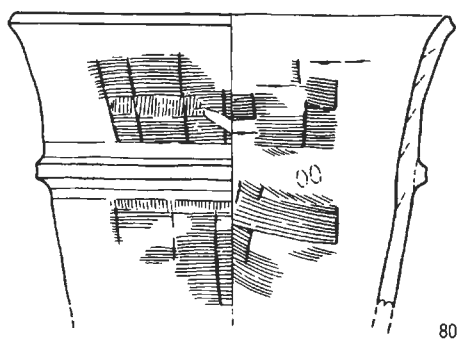
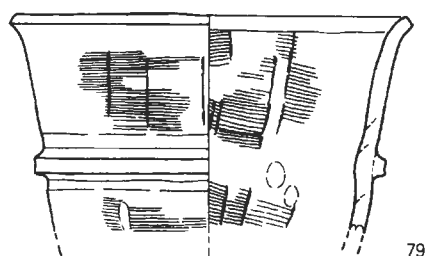
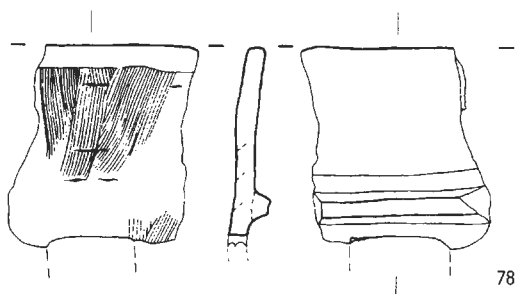
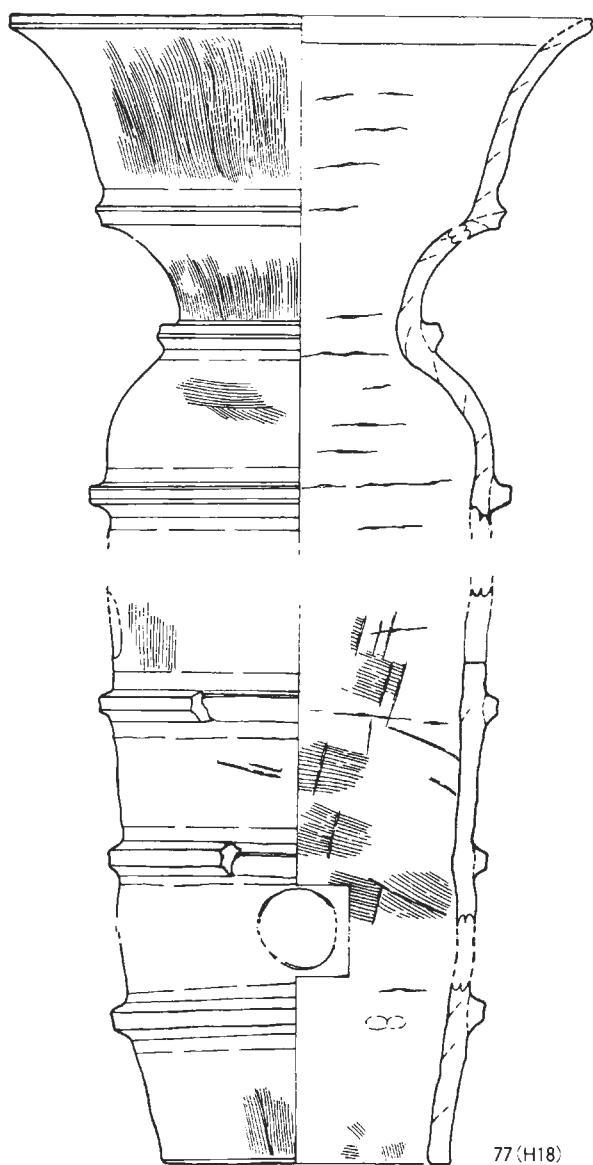


75(H17)

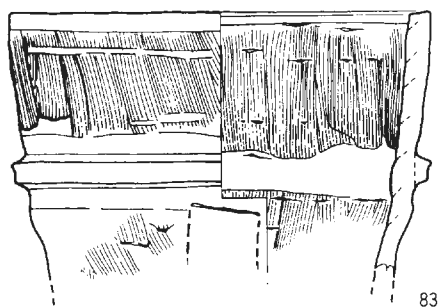


76(H19)

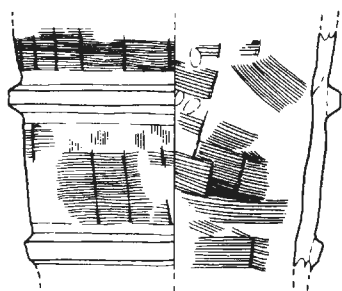
0 20cm



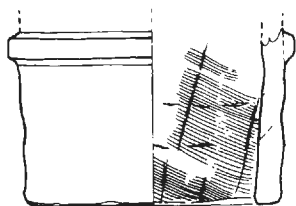
0 20cm



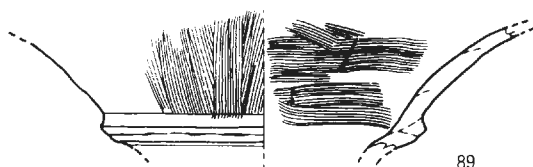
83



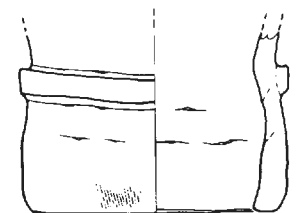
88



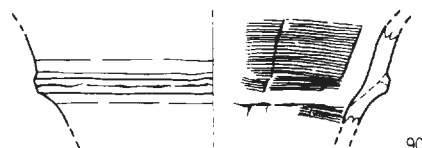
84



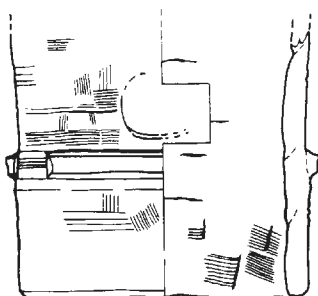
89



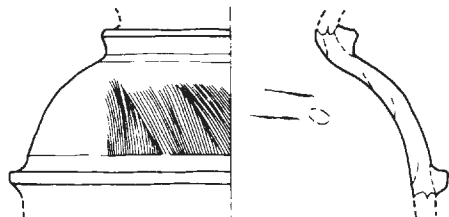
85



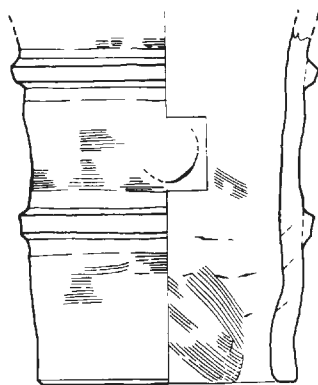
90



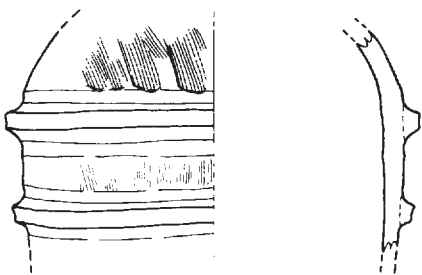
86



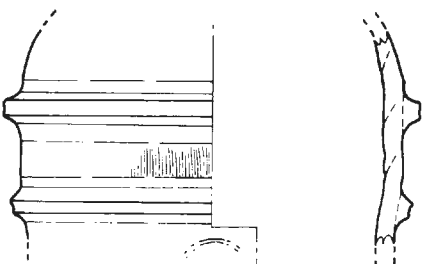
91



87

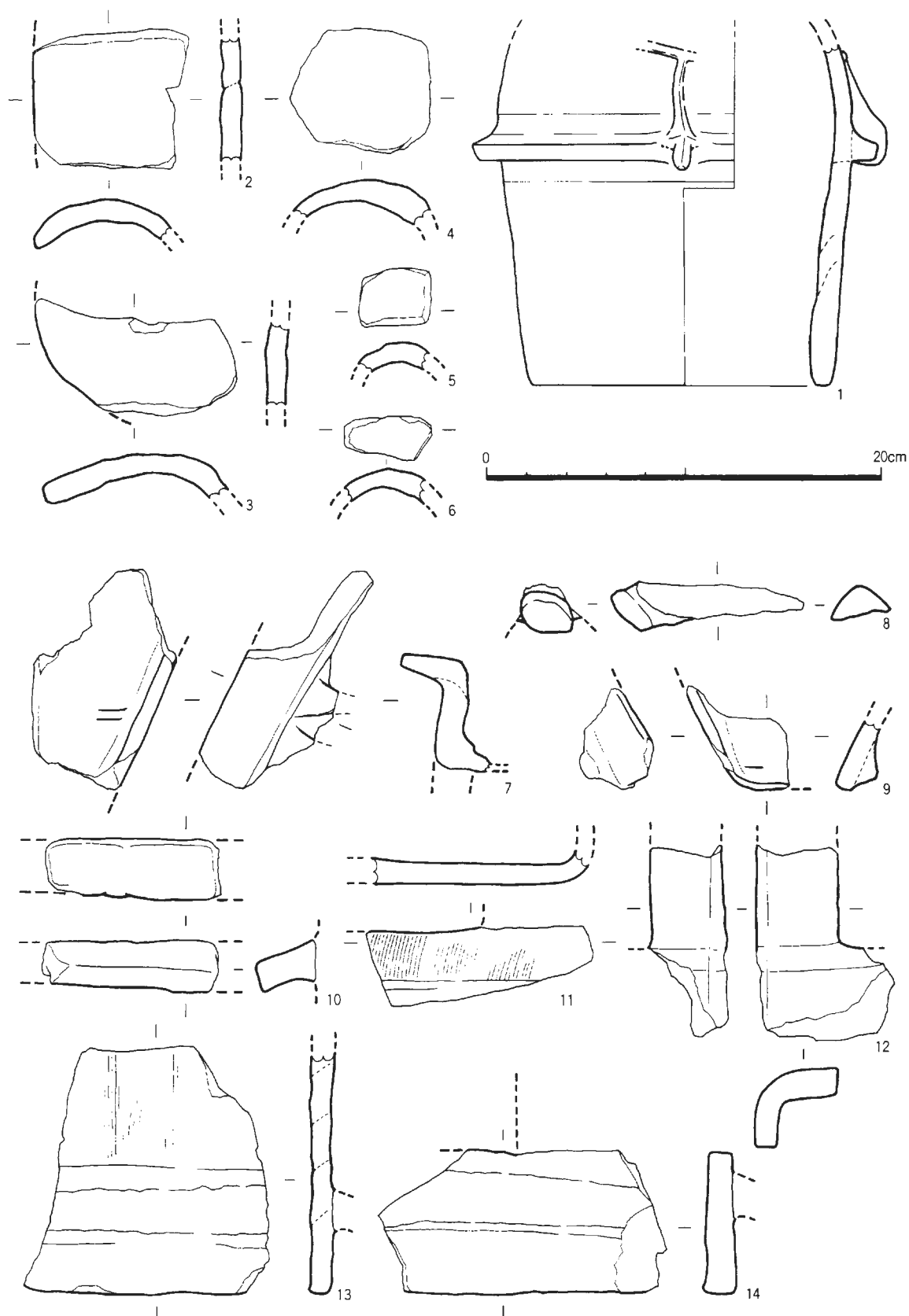


92



93

0 20cm



城山古墳形象埴輪 (1/3)

2007年3月25日印刷

2007年3月31日発行

立命館大学文学部学芸員課程研究報告 第5冊

若狭・城山古墳発掘調査報告

編集
発行

立命館大学文学部学芸員課程

〒603-8577 京都市北区等持院北町56-1

電話 075 (465) 1111(代)

FAX 075 (465) 8188

印刷 有限会社 真 陽 社

電話 075 (351) 6034

FAX 075 (351) 6146