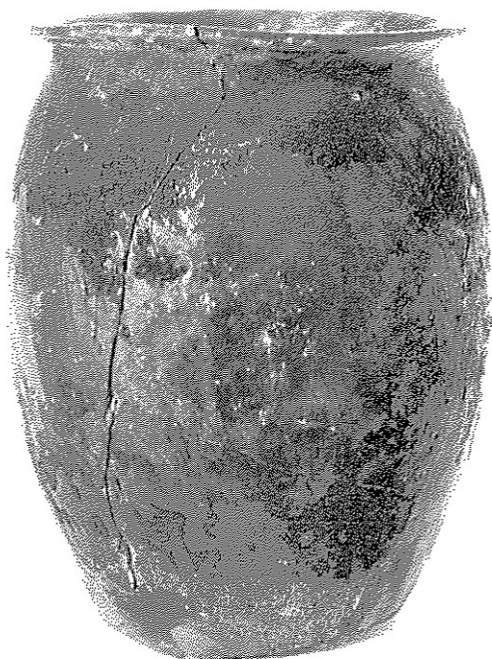


3



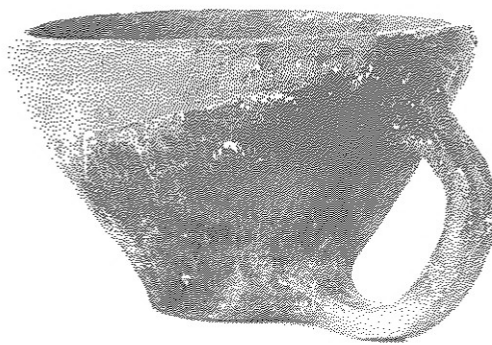
11



6



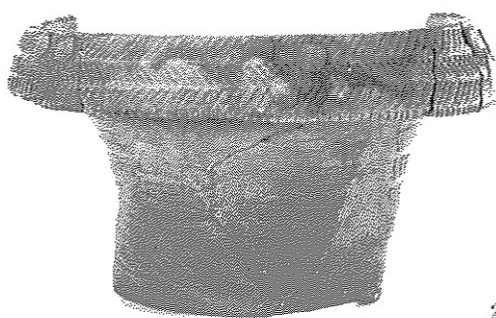
16



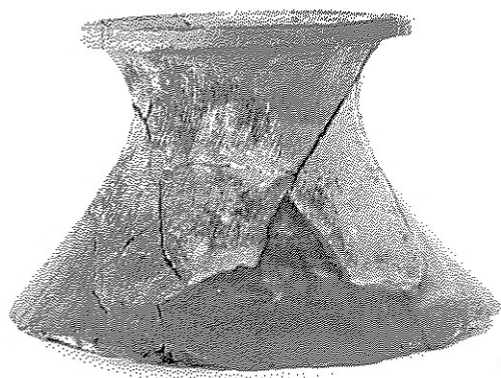
17



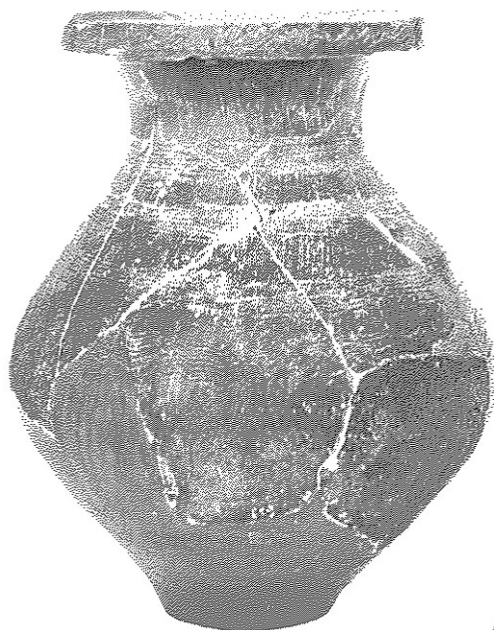
14



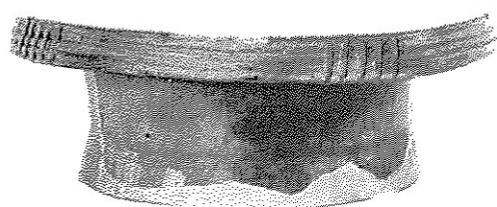
25



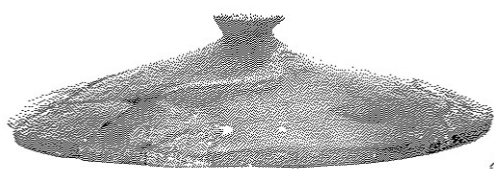
19



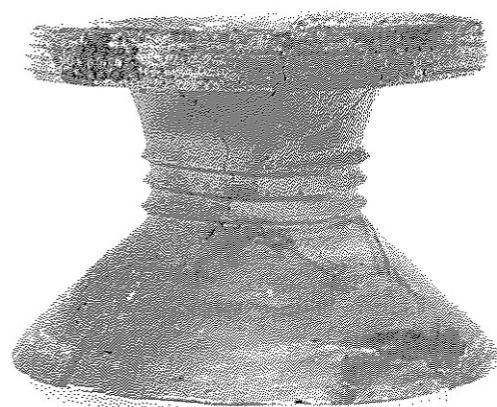
41



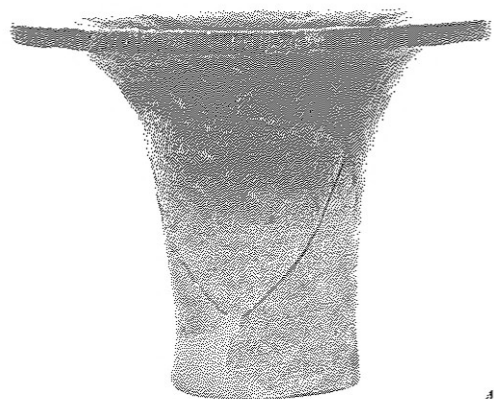
23



45



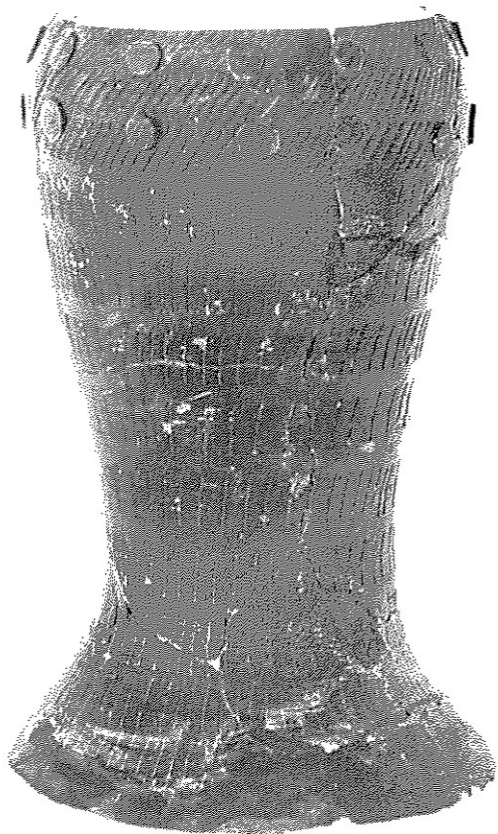
24



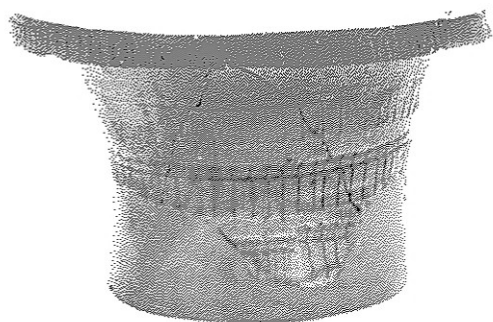
43



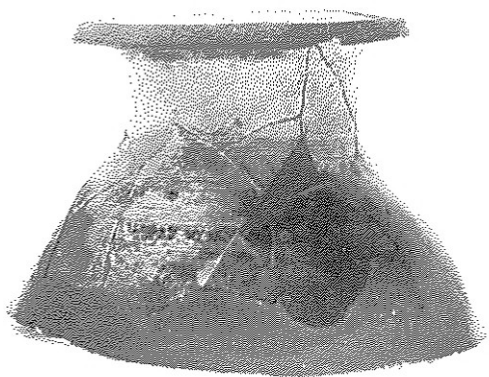
50



58



51



53



57



77



93



116



100



119



105



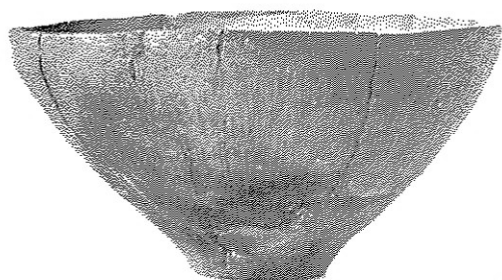
133



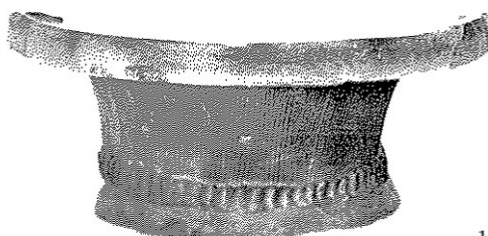
126



134



127



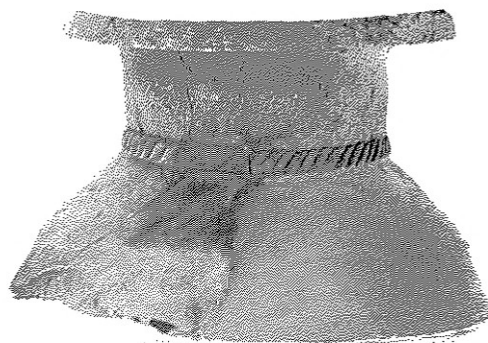
144



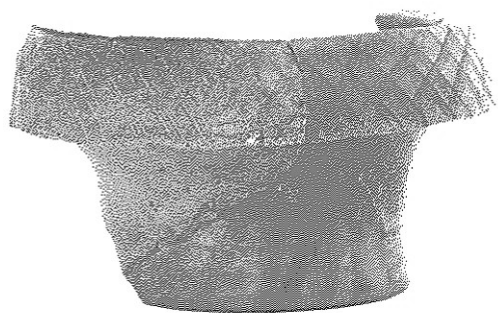
132



145



148



153



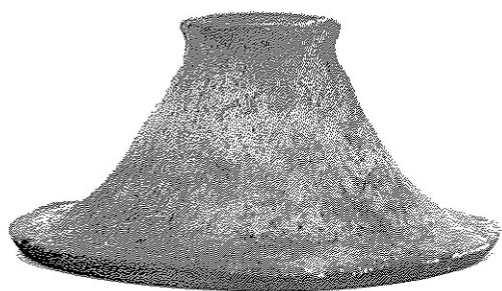
125



166



161



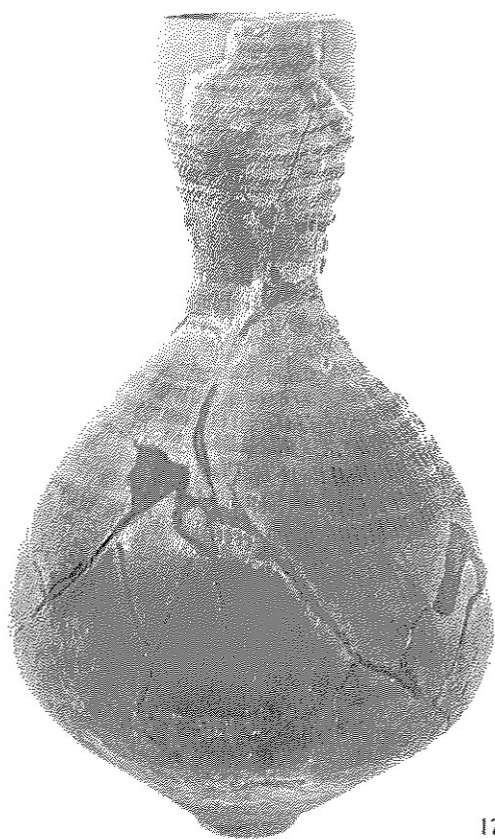
168



169



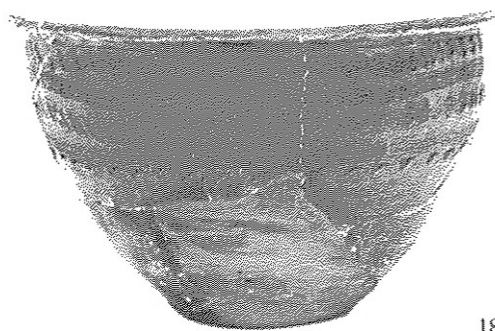
177



179



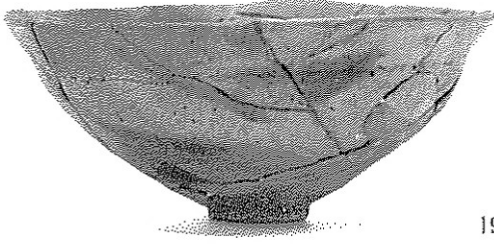
178



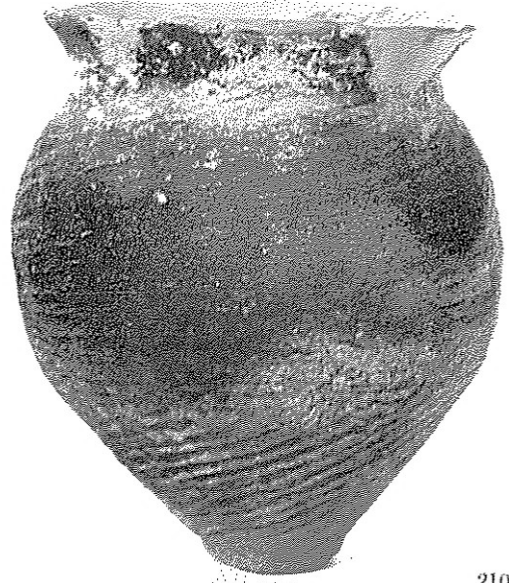
180



191



195



210



198



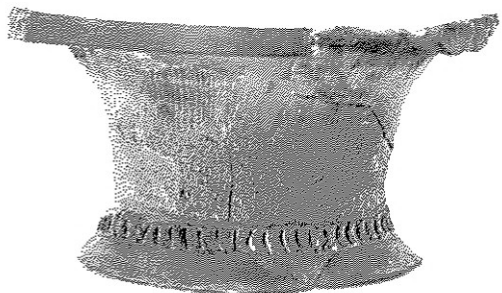
215



196



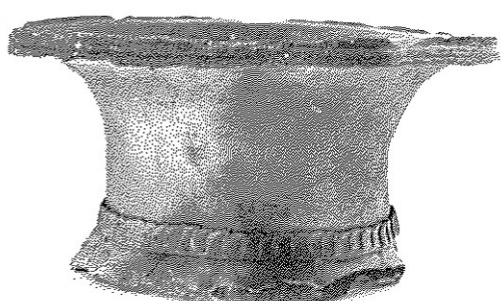
216



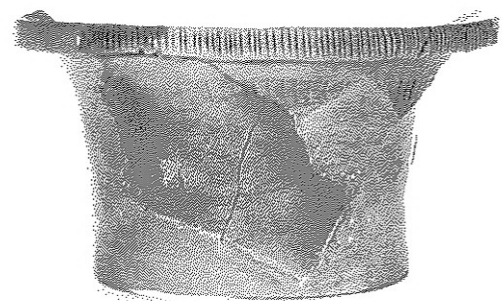
222



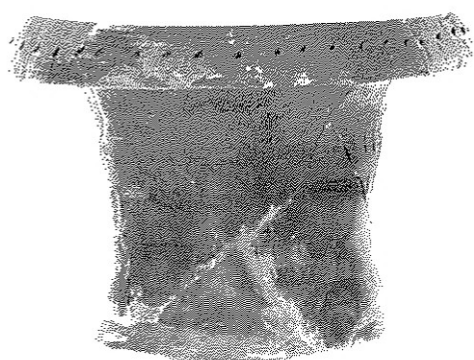
669



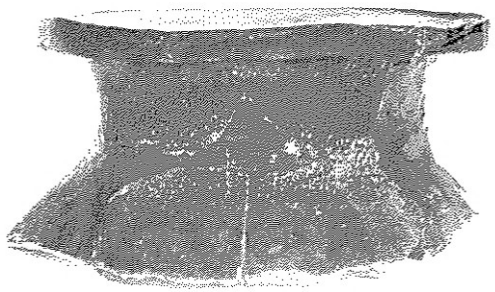
223



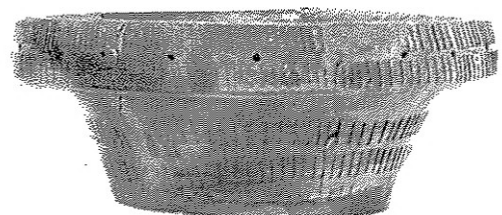
667



224



670



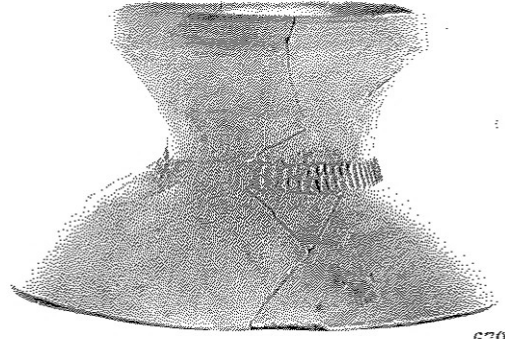
233



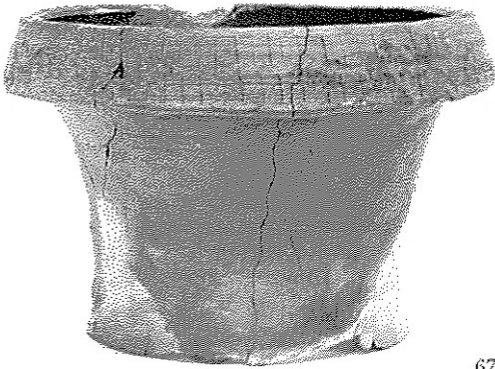
673



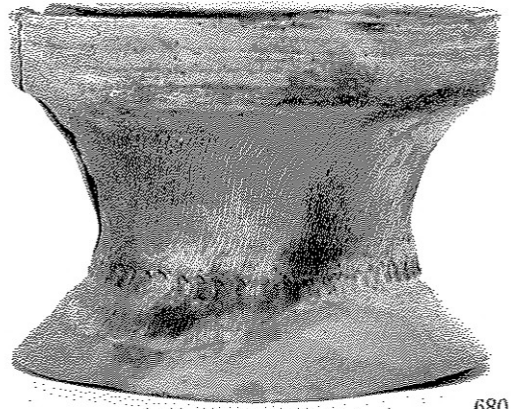
694



679



677



680



666



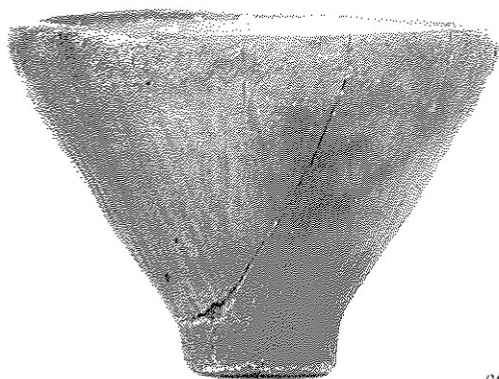
675



689



721



691



707



705



720



236



243



240



247



254



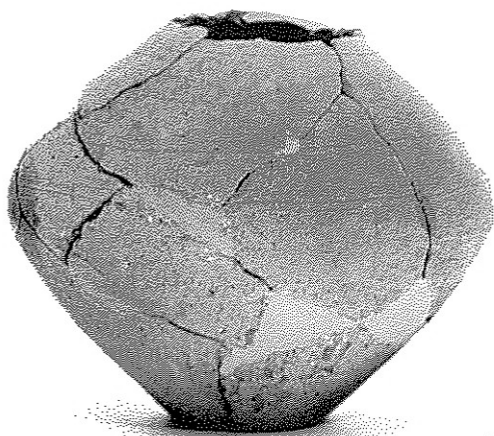
269



314



287



258



302



263



295



316



315



317



318



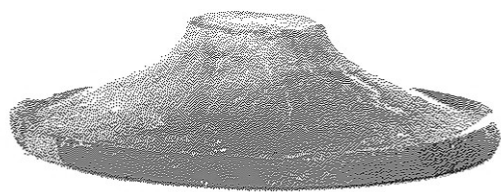
278



340



369



381



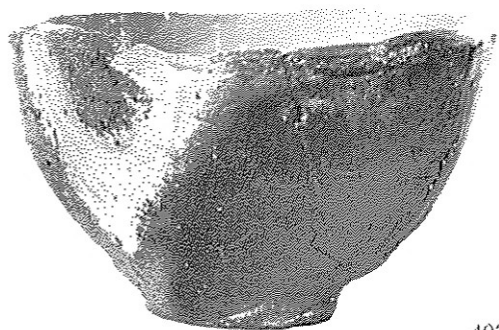
382



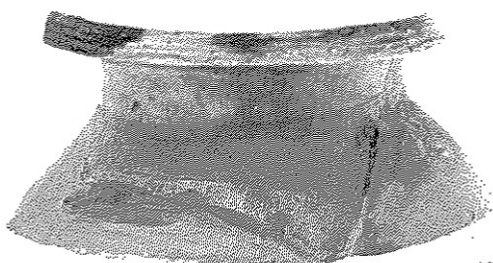
368



383



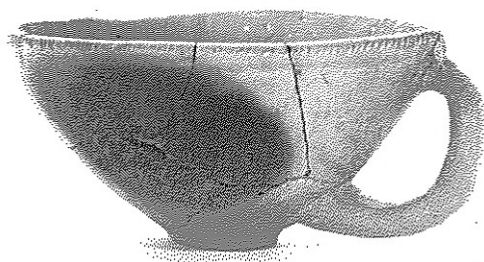
403



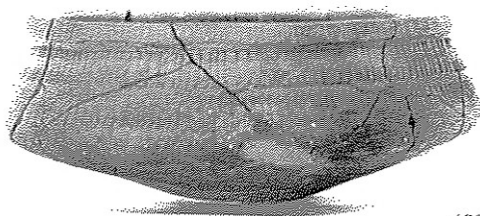
420



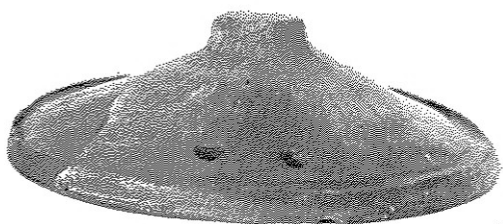
409



432



431



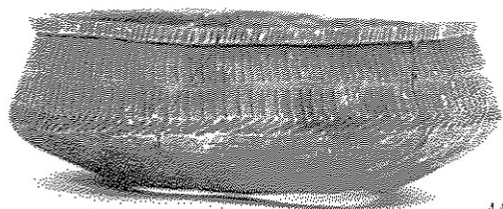
413



428



414



444



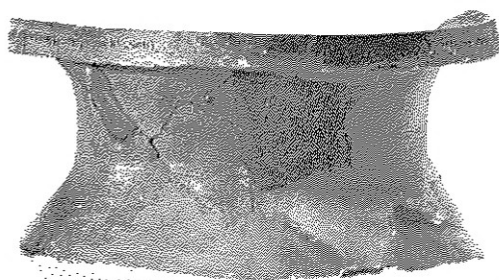
484



446



487



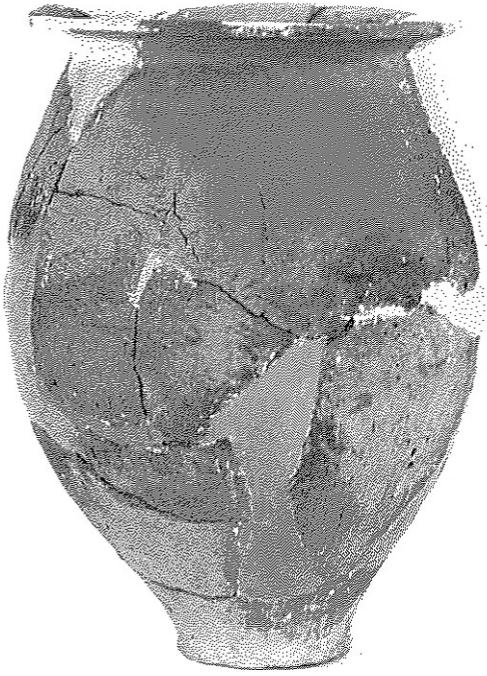
449



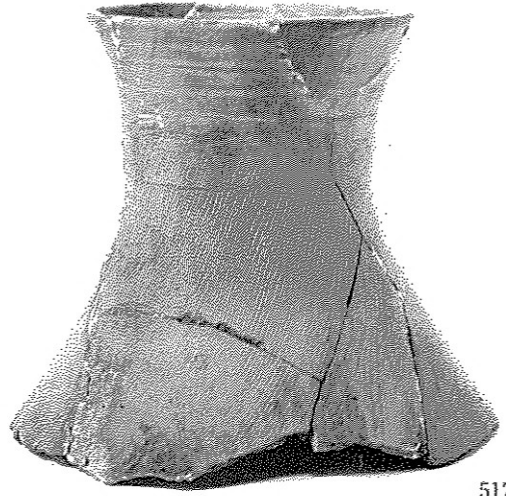
497



460



539



517



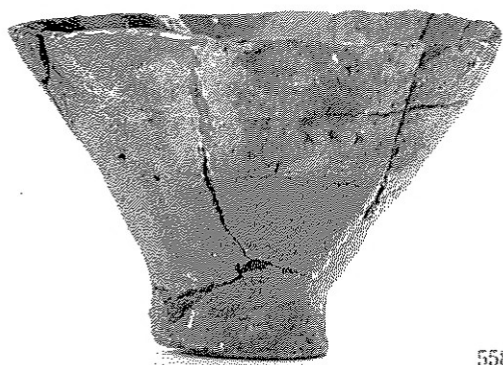
530



540



528



558



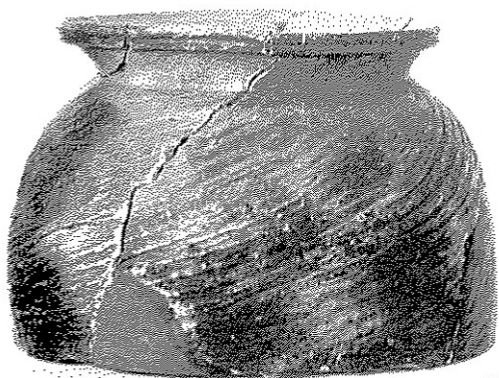
566



563



567



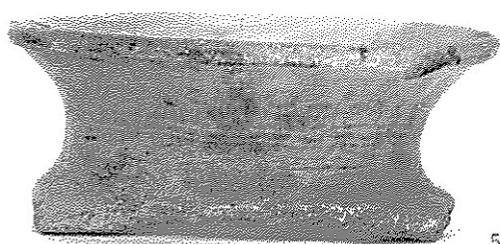
562



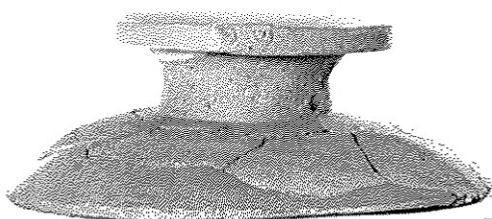
574



577



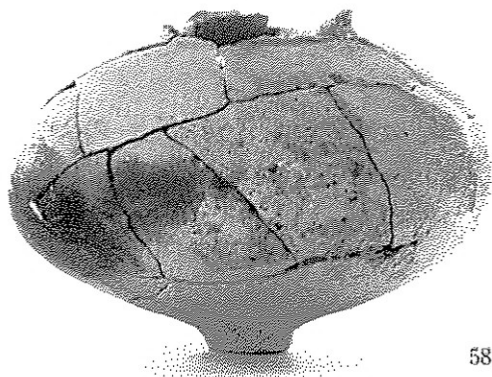
585



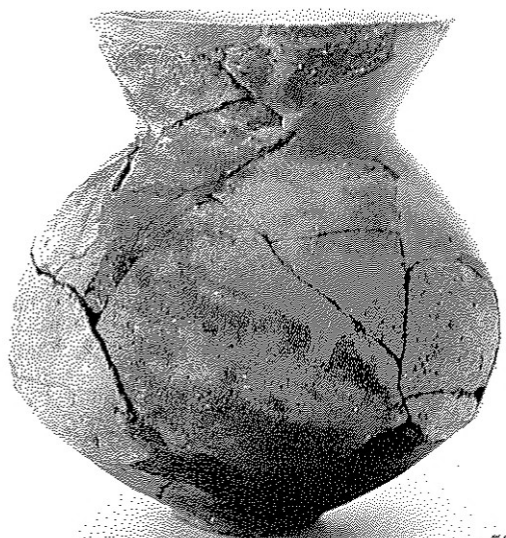
589



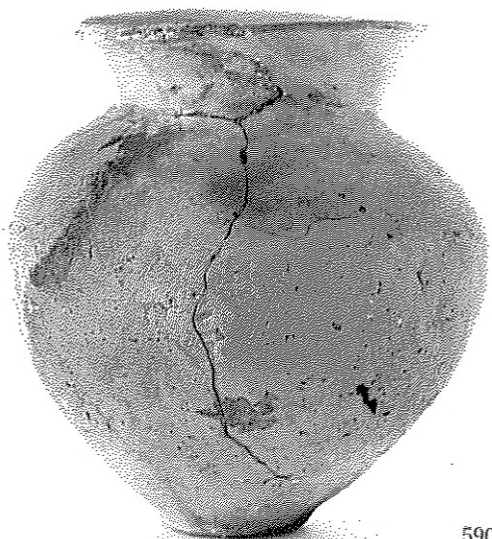
587



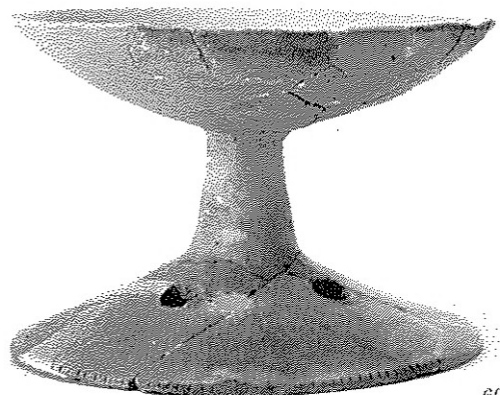
582



591



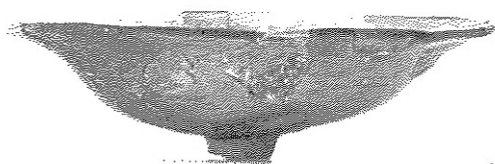
590



603



604



601



597



595



620



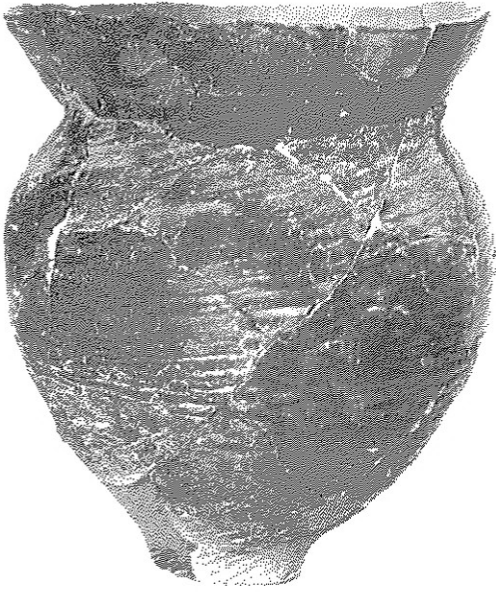
594



622



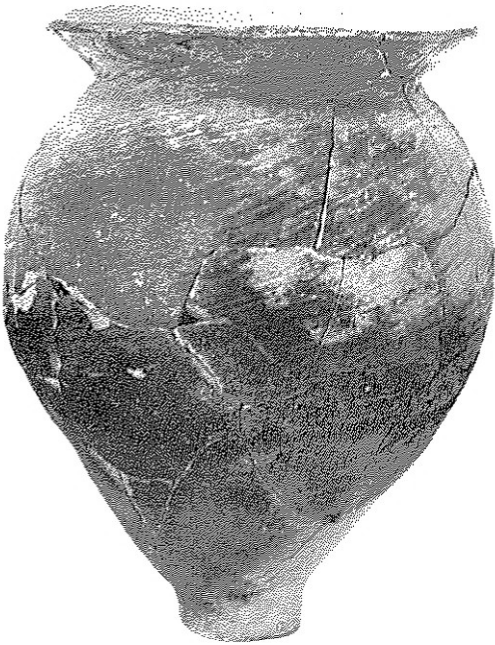
606



624



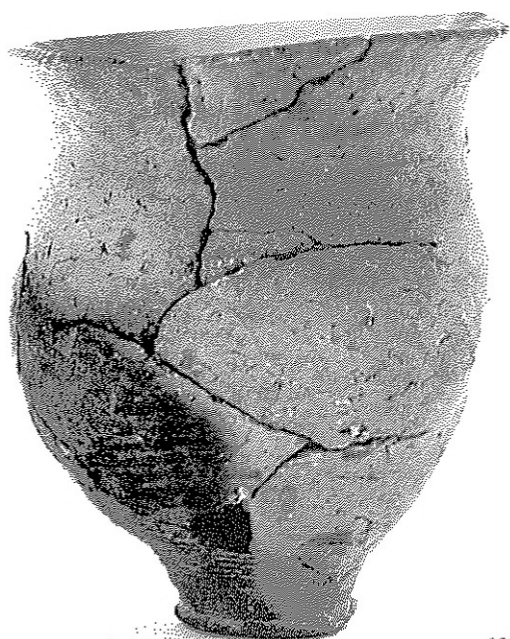
613



610



609



625



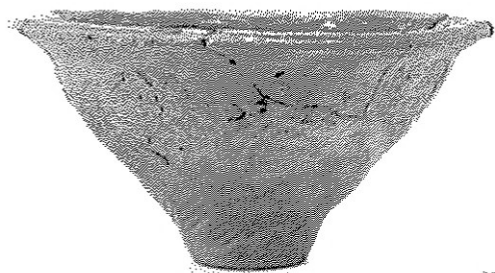
628



626



635



633



638



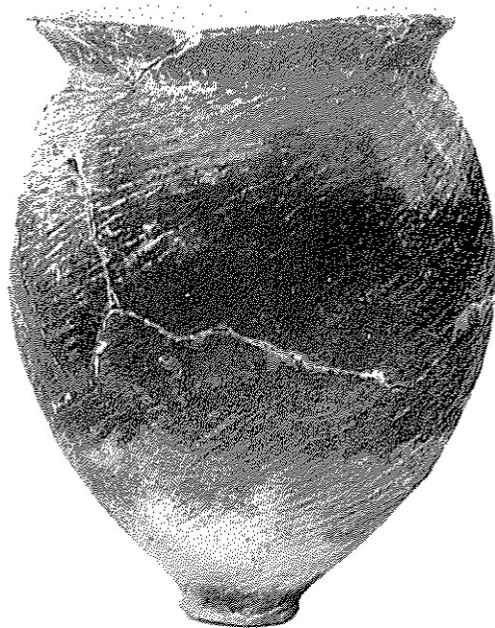
857



858



846



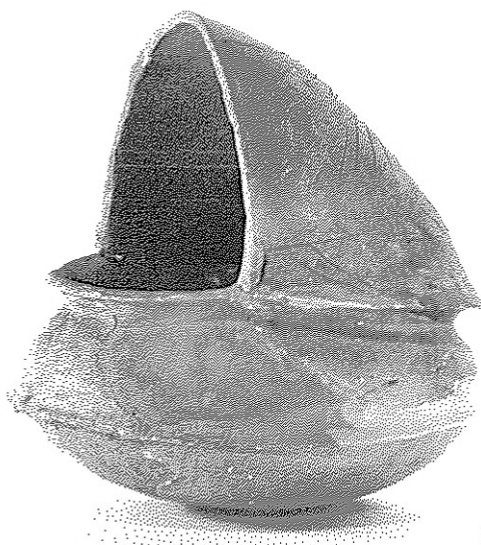
852



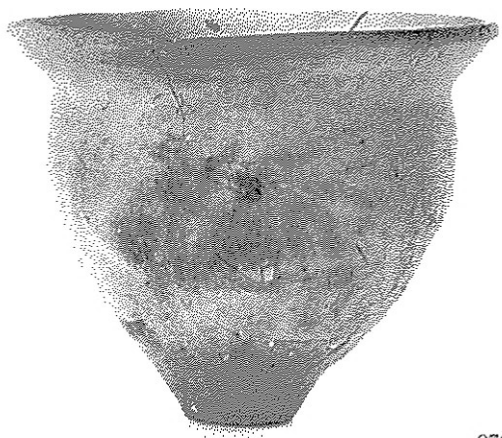
875



877



874



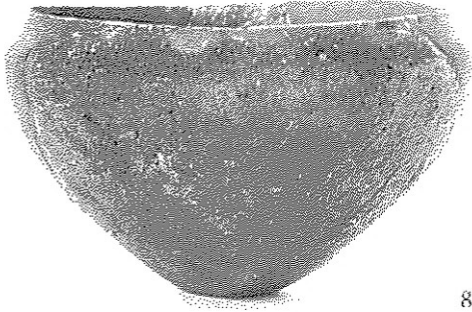
878



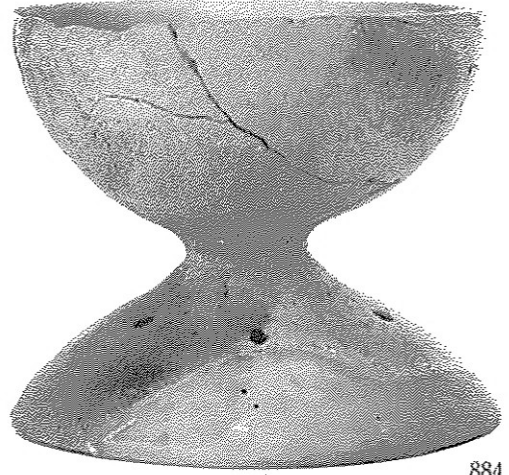
873



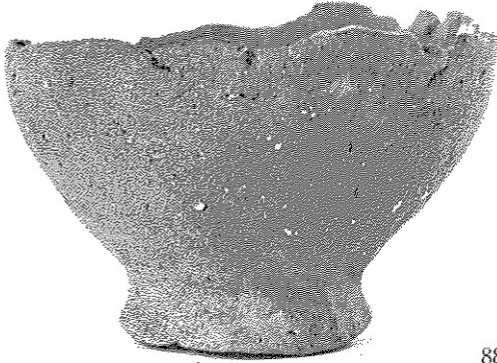
880



871



884



888



885



869



872



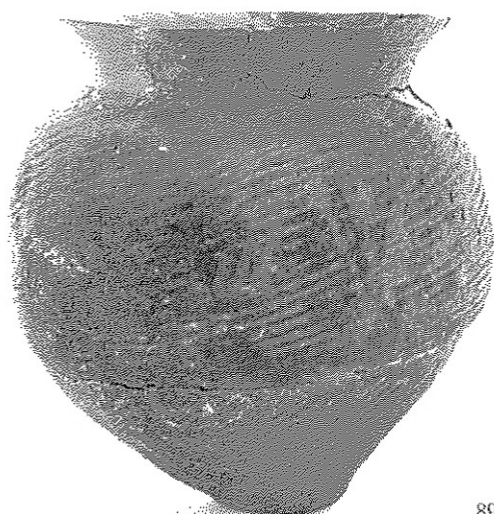
896



891



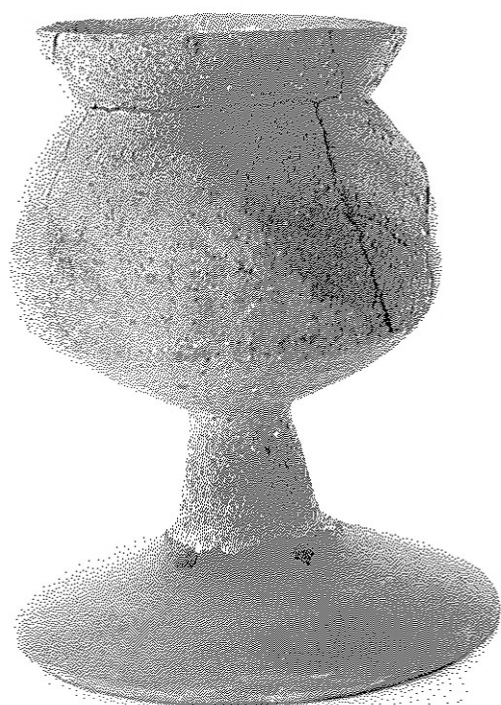
892



894



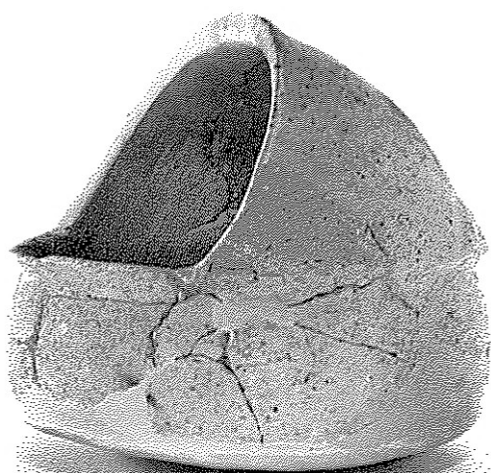
895



833



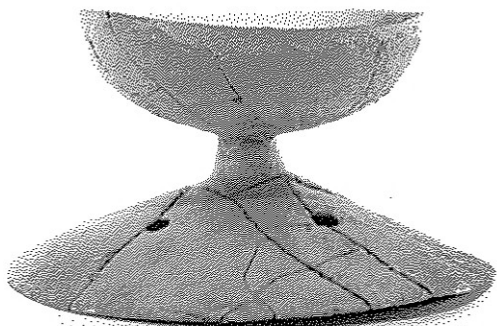
731



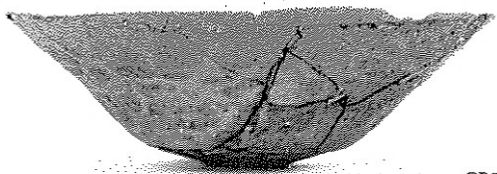
765



738



766



759



756



764



770



777



767



776



771



780



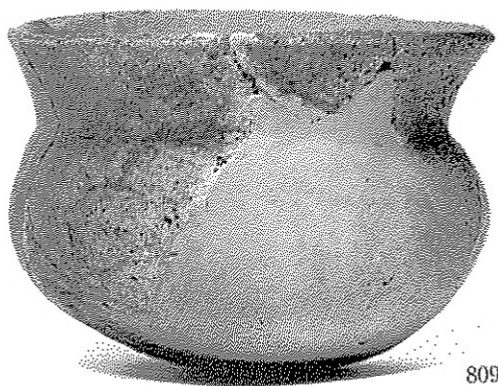
782



807



788



809



792



813



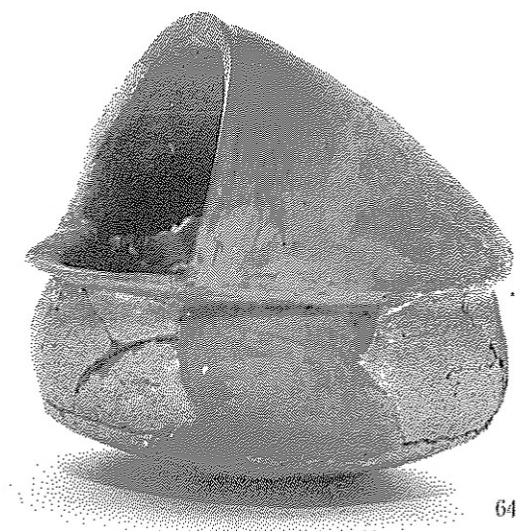
814



665



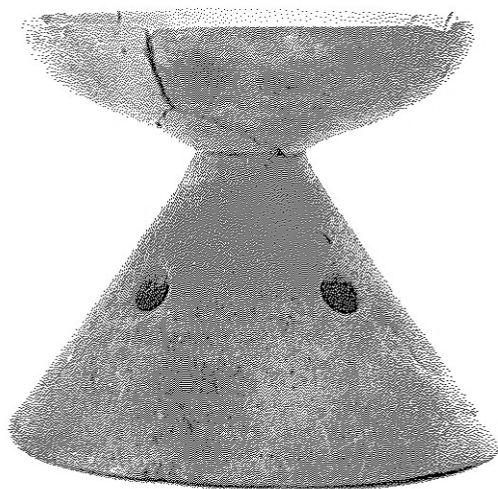
816



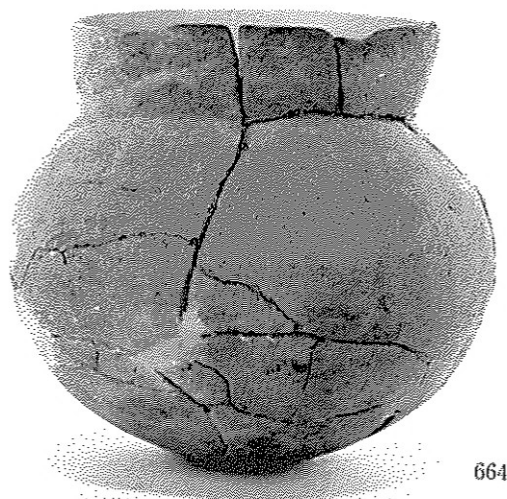
642



824

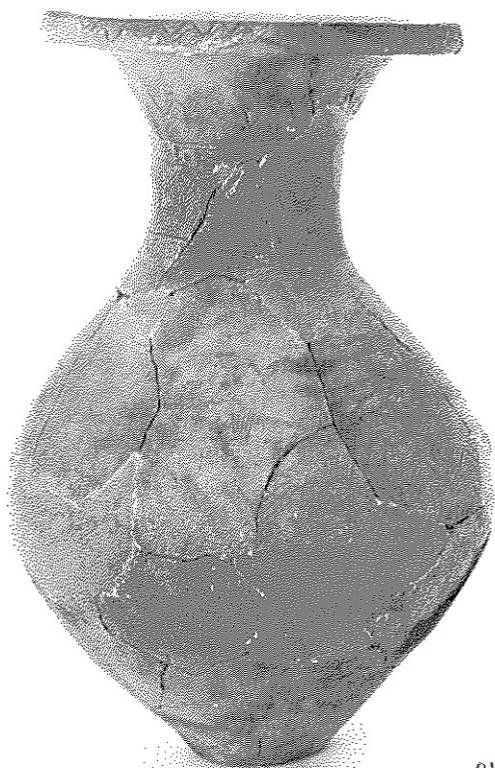


825





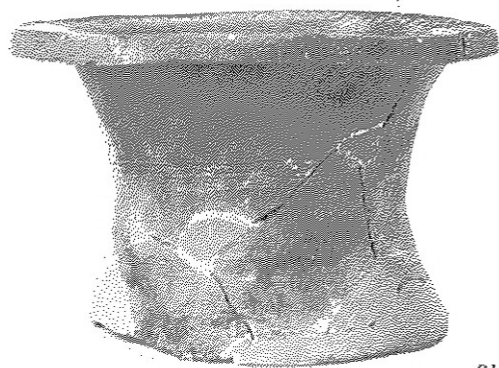
903



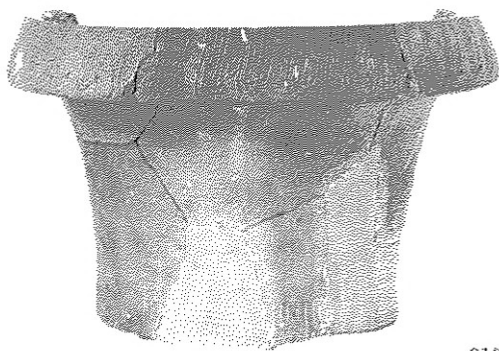
910



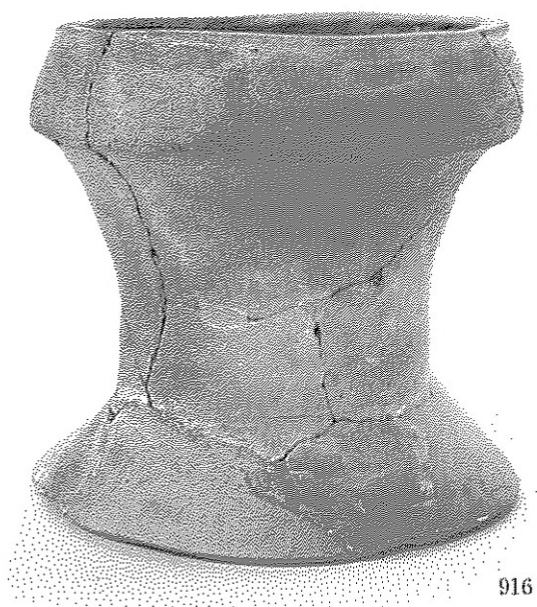
909



913



919



916



923



922



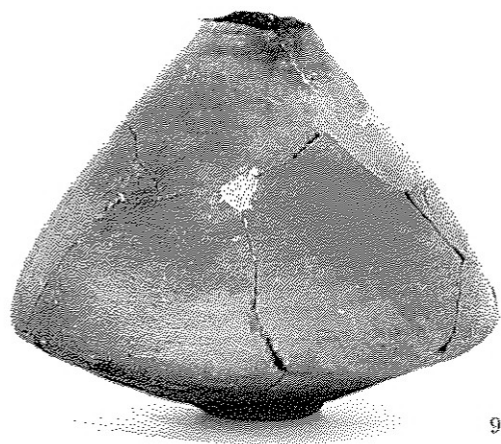
925



971



956



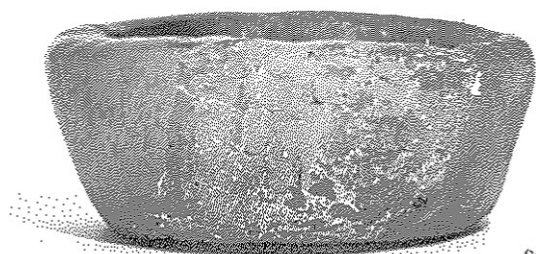
966



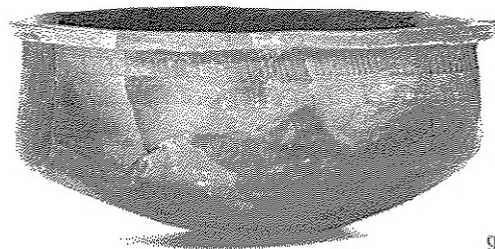
967



970



972



973



978



981

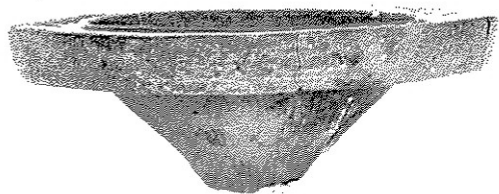
土城 146(966・970)、土城 148(972)、ピット 739(973)、ピット 767(978)、落込 4(981)



983



988



984



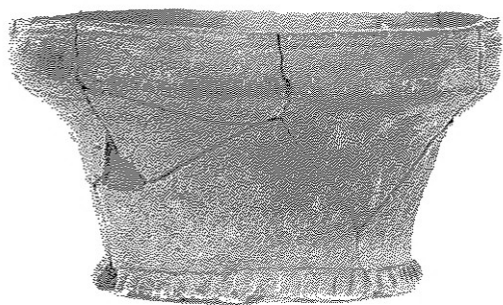
989



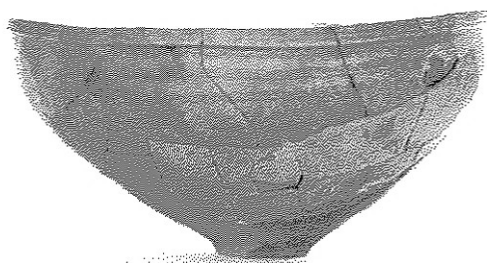
986



994



990



997



999



998



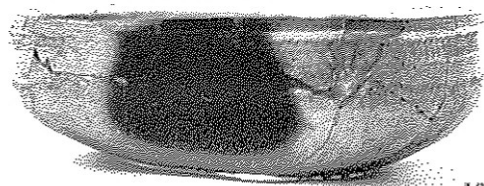
1002



1003



1011



1037



1019



1019
1020

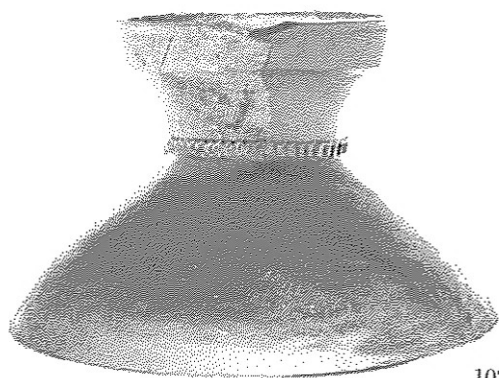


1020

第12号墓盛土内(1011)、第13号墓第3主体部甕棺(1019・1020)、同周溝内(1037)



1025



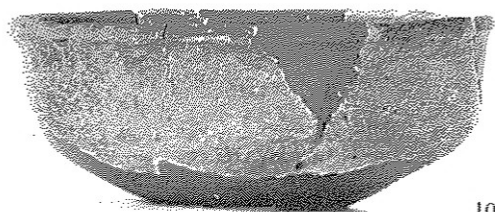
1026



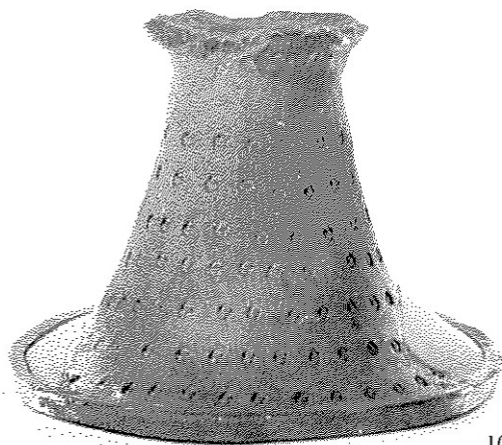
1028



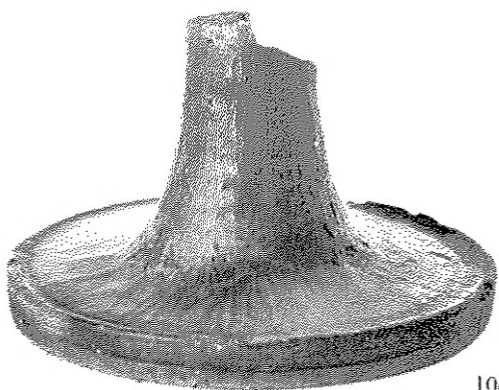
1031



1044



1038



1047



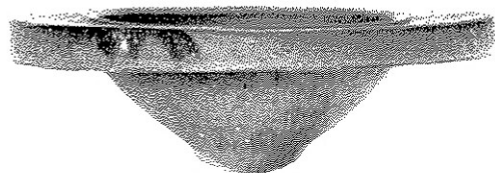
1057



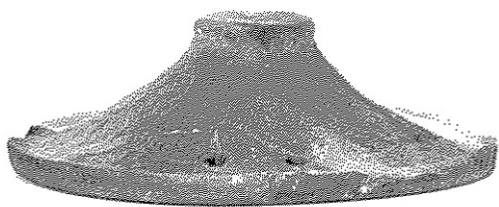
1061



1059



1054



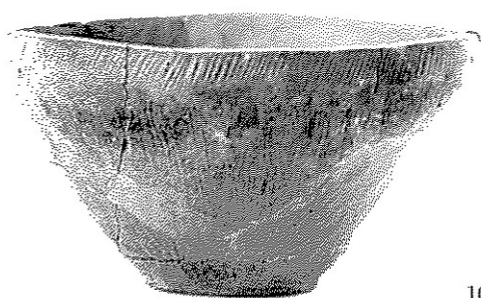
1068



1067



1069



1073



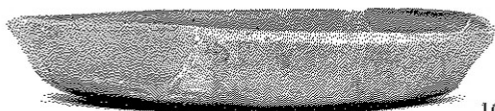
1075



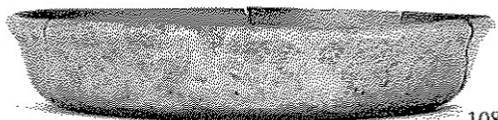
1077



1076



1081



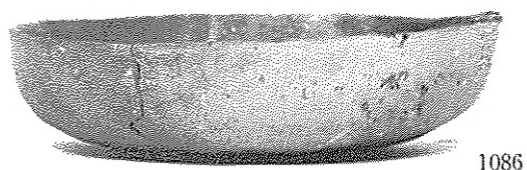
1083



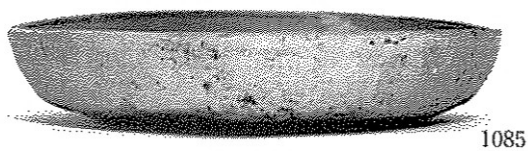
1081



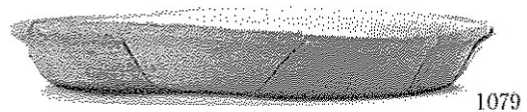
1083



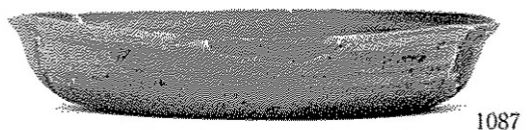
1086



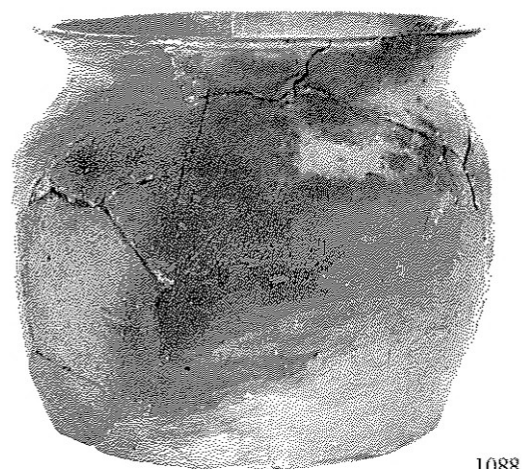
1085



1079



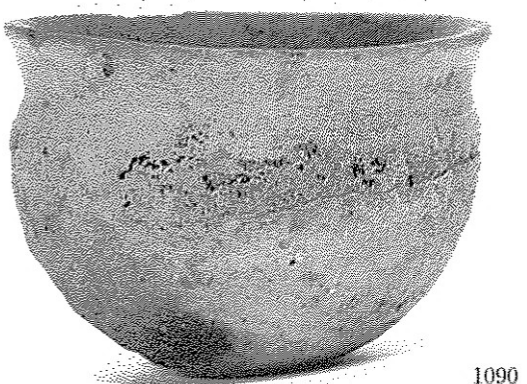
1087



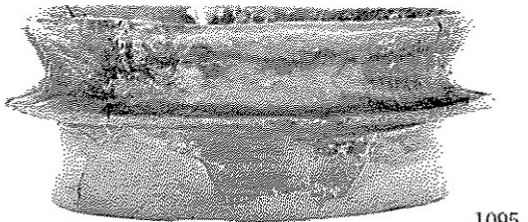
1088



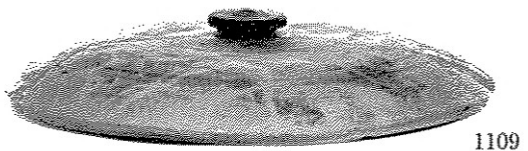
1092



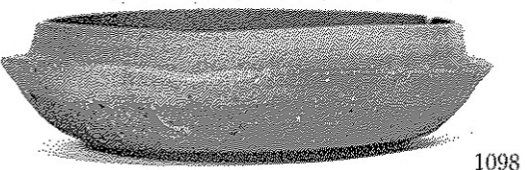
1090



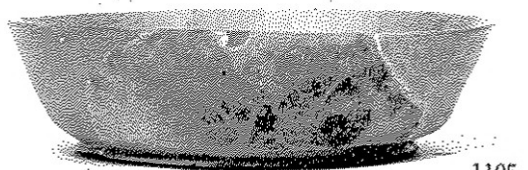
1095



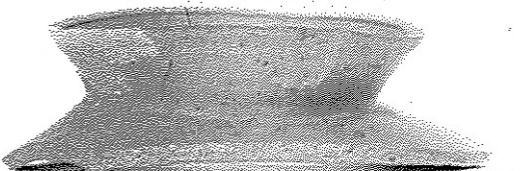
1109



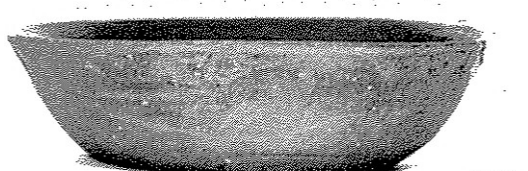
1098



1105



1111



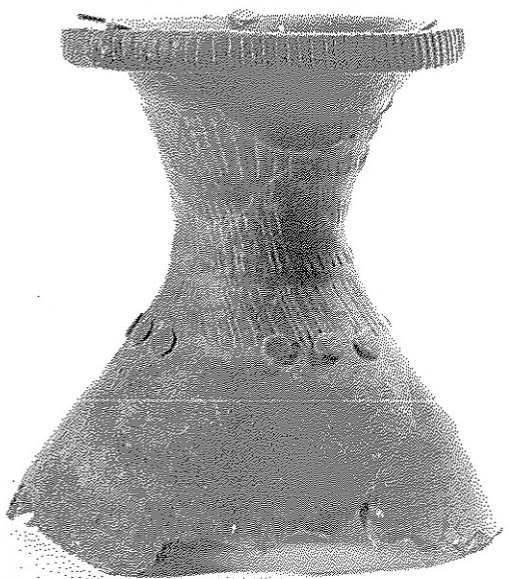
1102



1146



1235



1173



1209



1195



1134



1115



1177



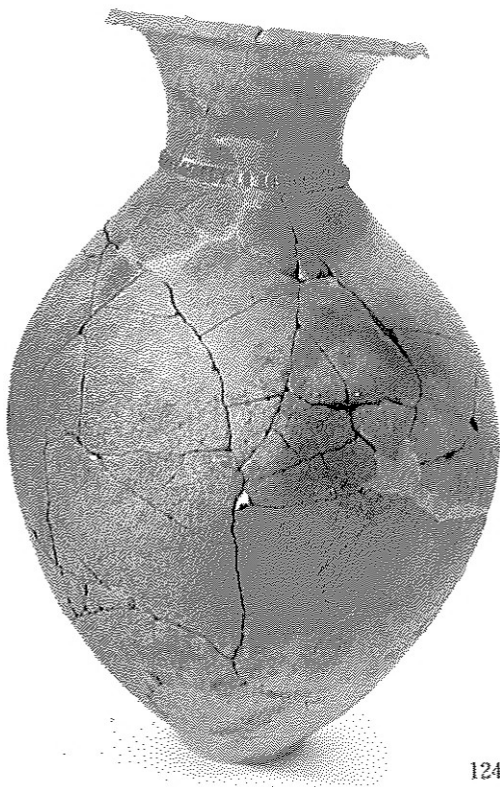
1186



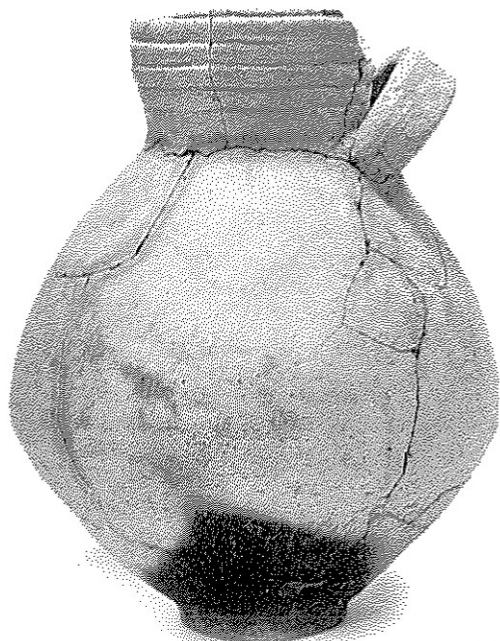
1175



1218



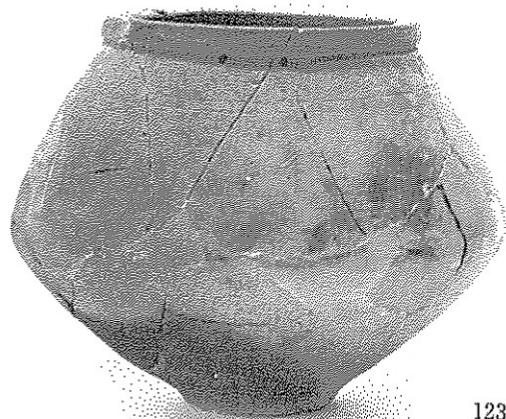
1249



1190



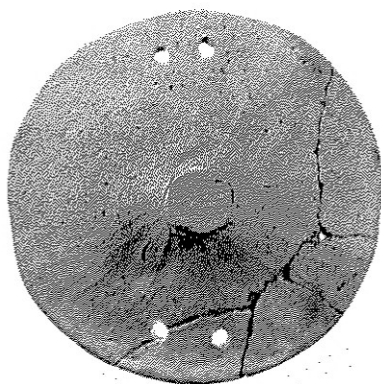
1141



1238



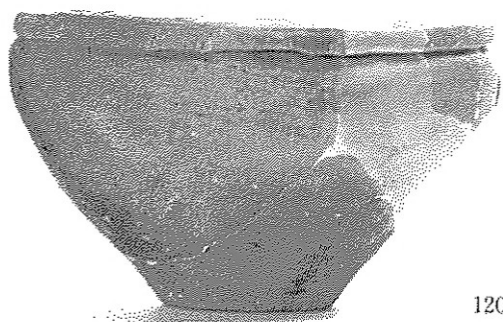
1136



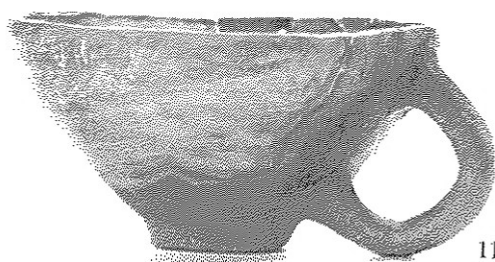
1257



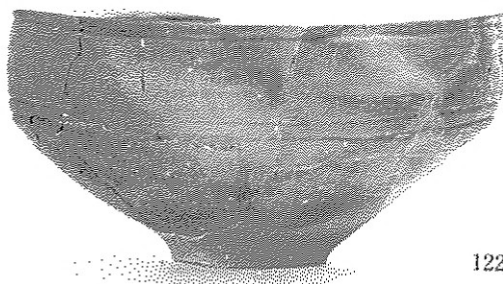
1135



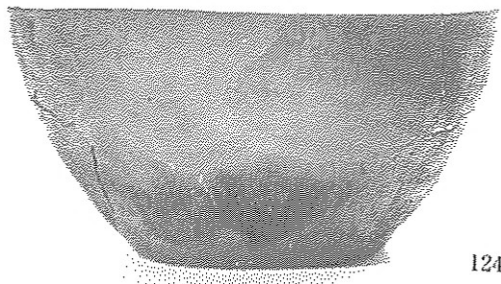
1201



1119



1222



1240



1128



1151

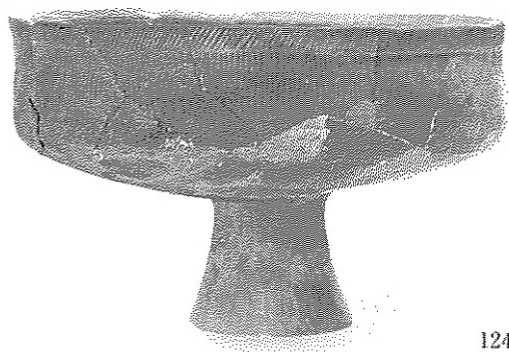


1254

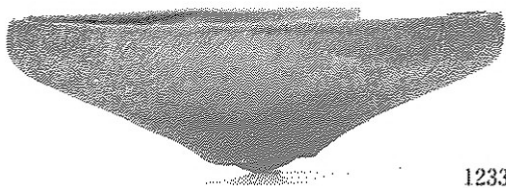


1144

土壙 169(1119)、溝 111(1128)、大溝(溝 201) (1144)、第15号墓(1151)、第21号墓(1201・1222)、第22号墓(1240)、弥生時代中期Ⅱ包含層(1254)



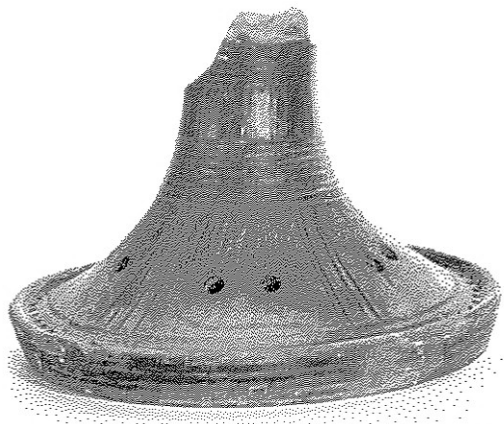
1241



1233



1239



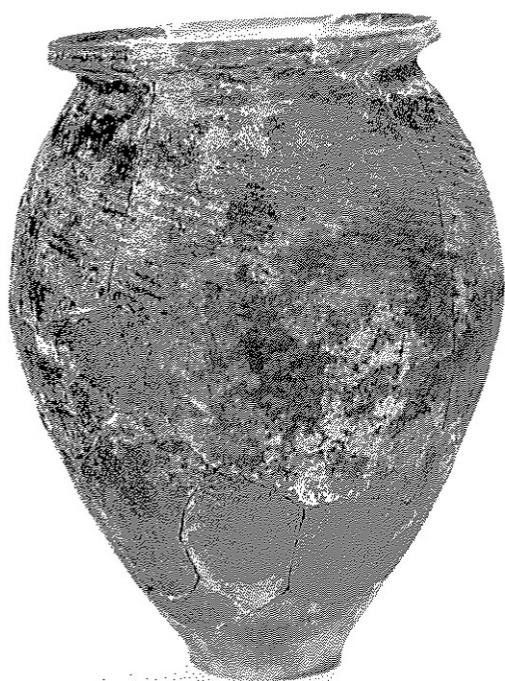
1140



1130



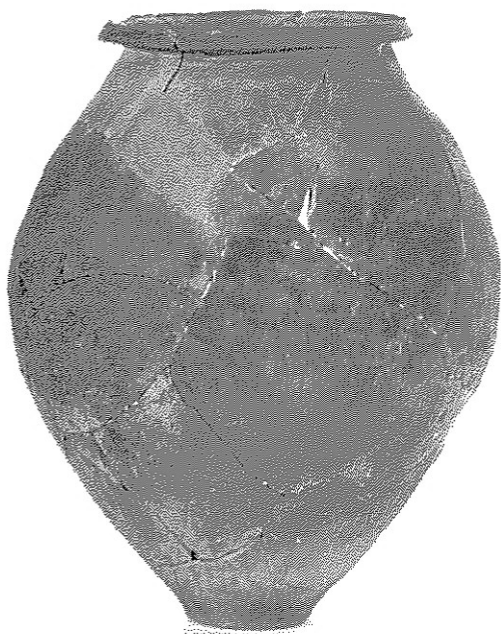
1122



1256



1131



1253



1258

弥生時代中期Ⅰ包含層(1131)、同中期Ⅱ包含層(1253・1256)、同後期包含層(1258)



1262



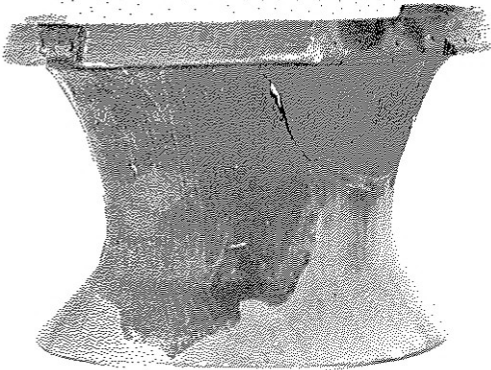
1263



1299



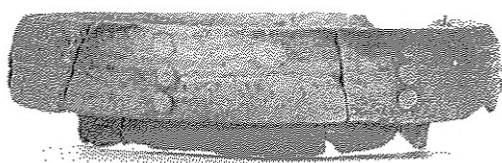
1266



1285



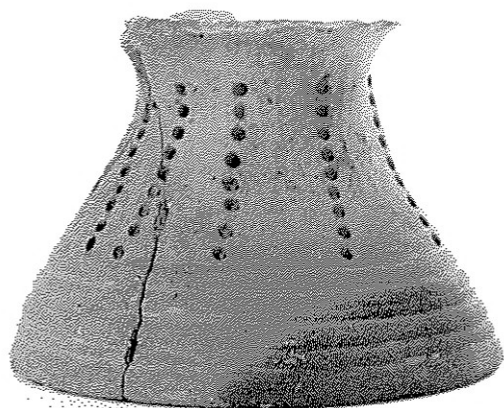
1267



1297



1261



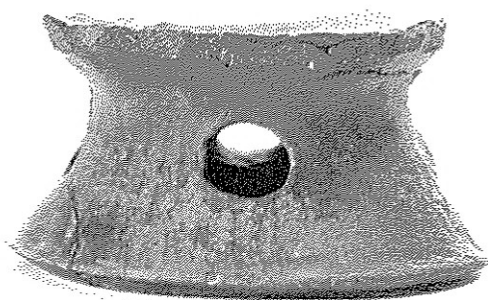
1308



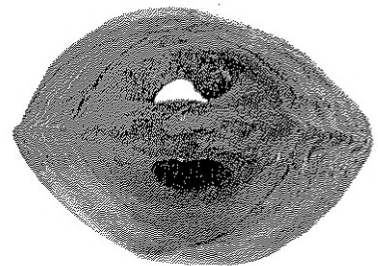
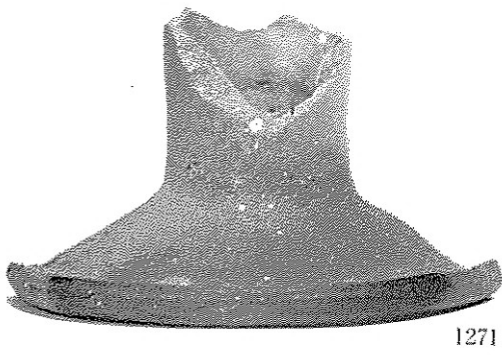
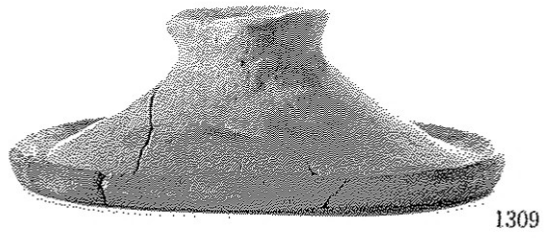
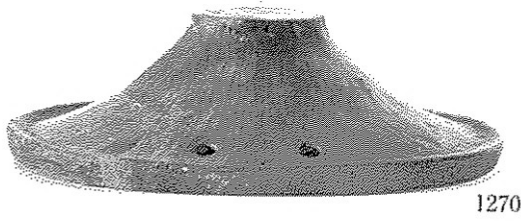
1289

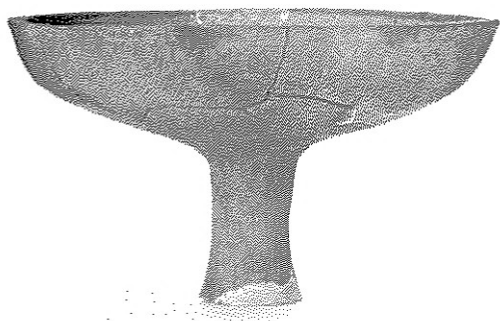


1314



1272





1277



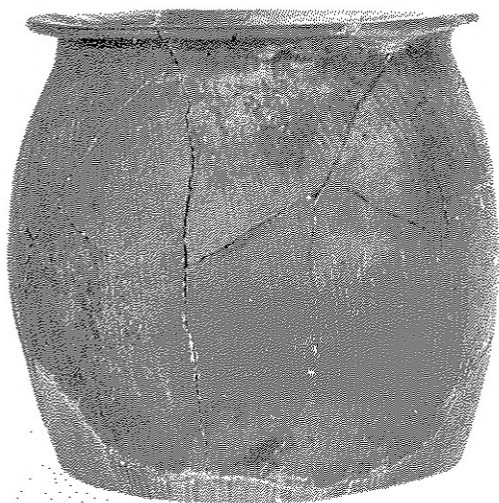
1276



1275



1274



1290



1281



1320



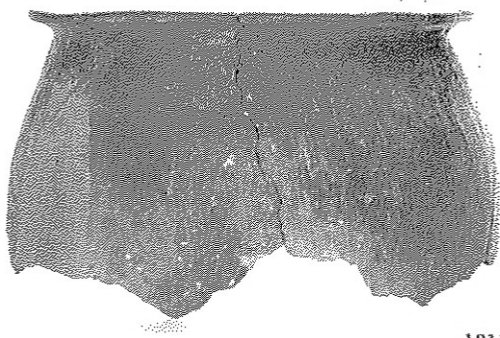
1317



1288



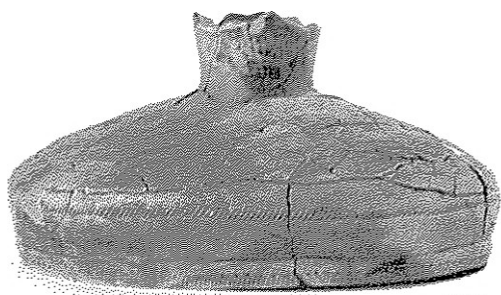
1313



1311



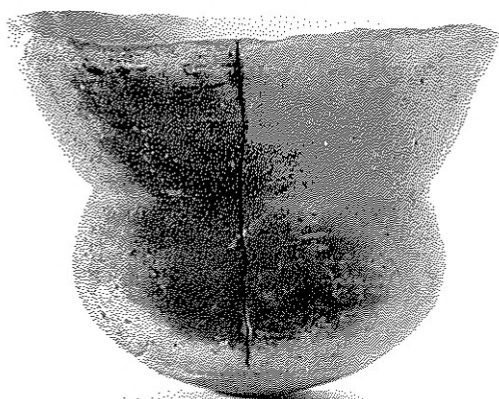
1283
1284



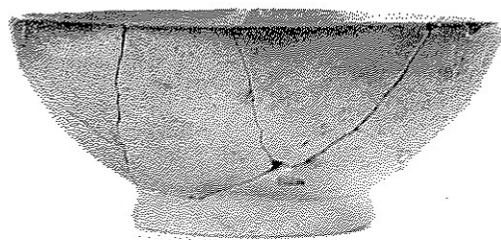
1283



1284



1321



1324



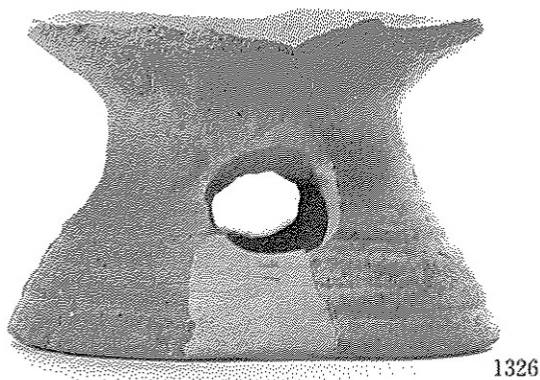
1322



1363



1334



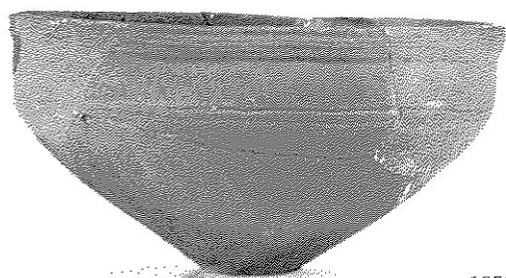
1326



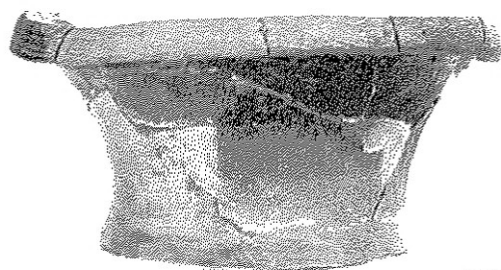
1332



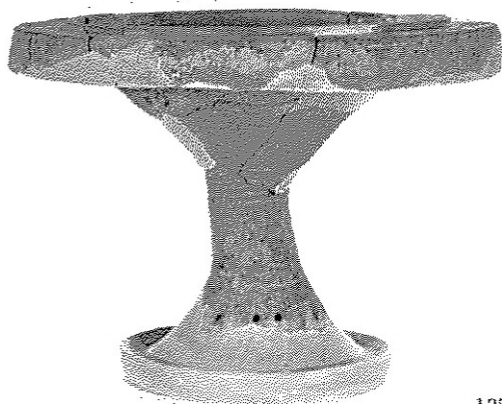
1339



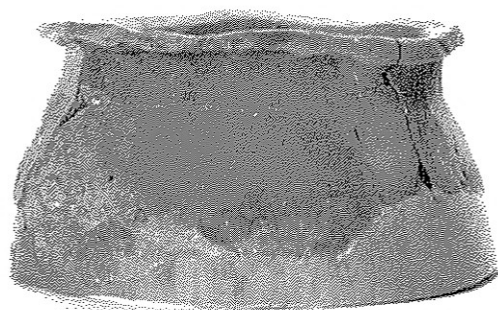
1351



1353



1357



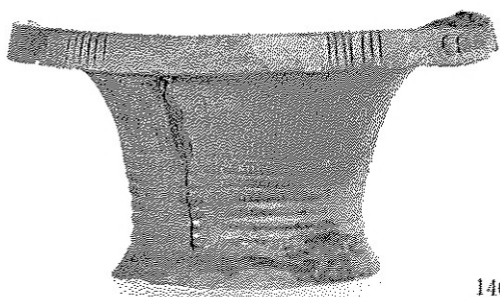
1340



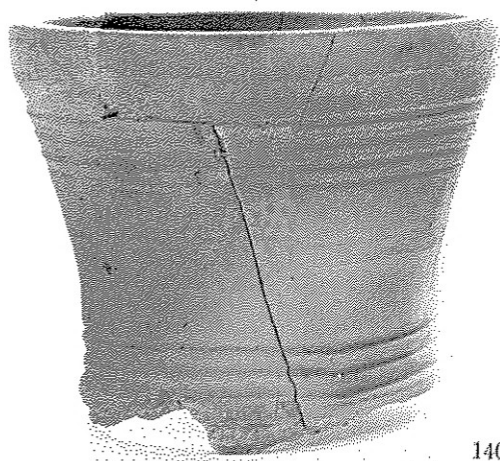
1355



1361



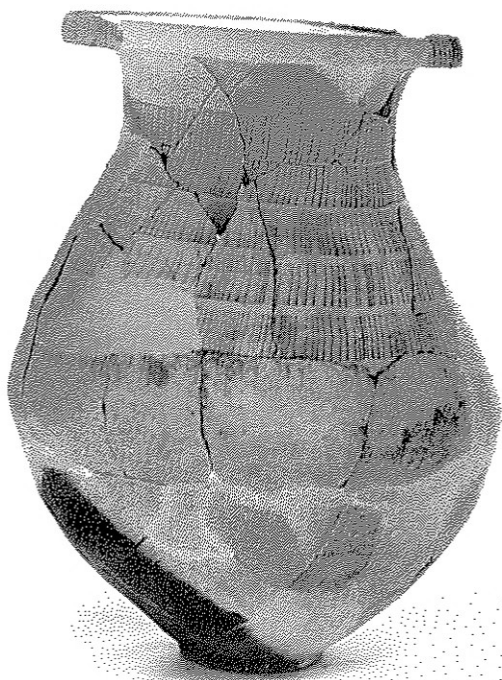
1401



1402



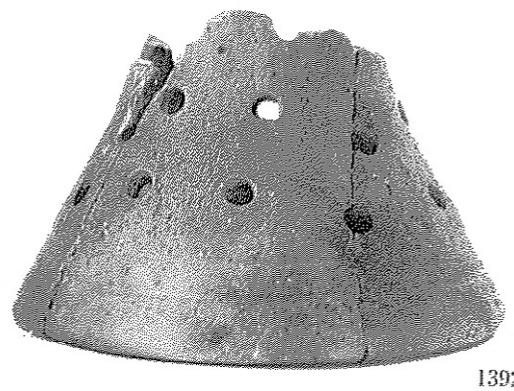
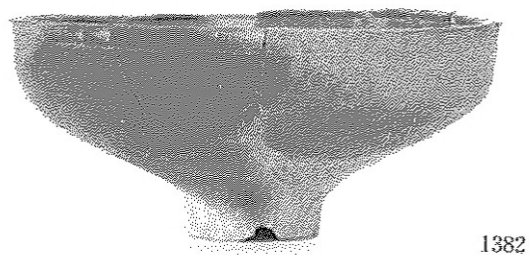
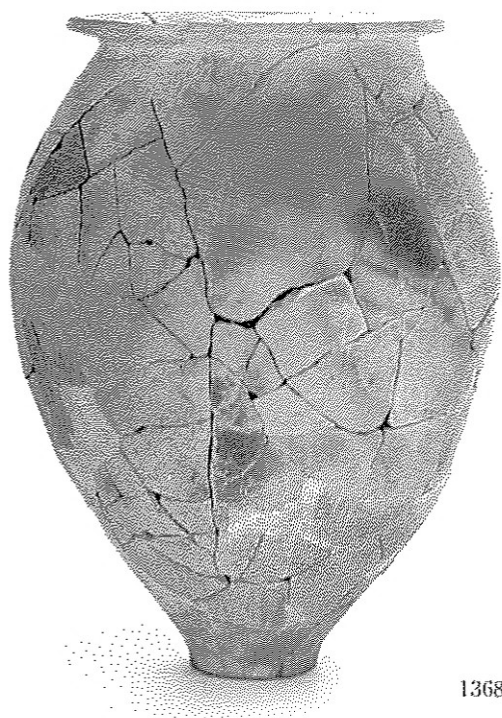
1439



1423



1483



住居址 I (1368・1369)、建物 4 (1382)、溝 (1392)、土城 196(1435)、弥生時代中期Ⅱ包含層(1480)



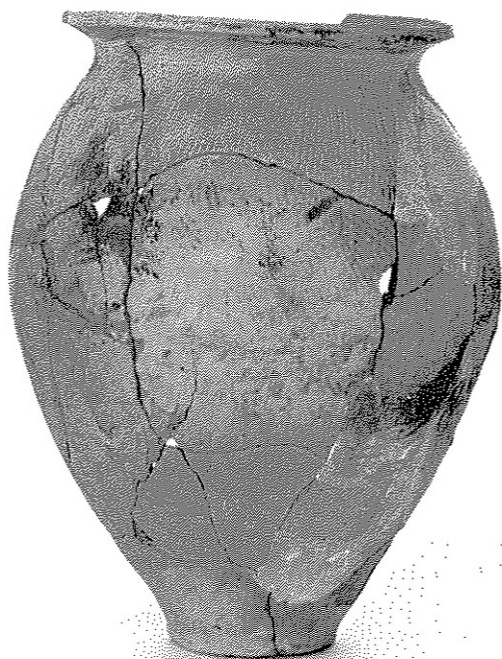
1413



1427



1414

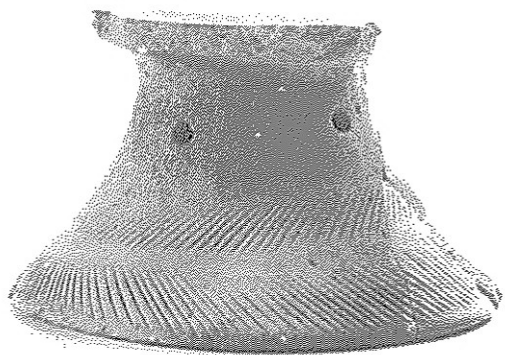


1406

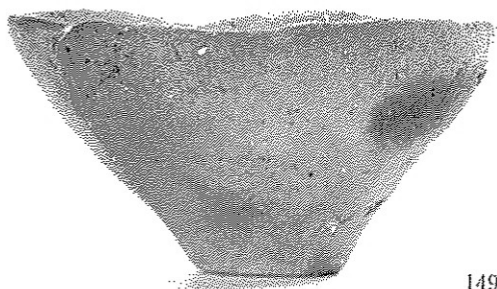
土城 197 上層(1406)、土城 197 上面土器群(1413·1414)、土城 197 下層(1427)



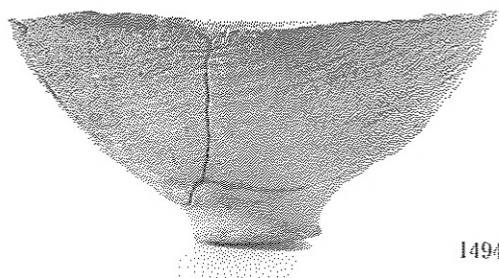
1373



1440



1493



1494



1490



1488



1489



1491



1499



1509



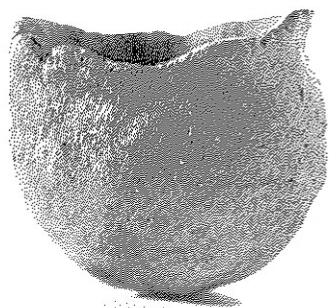
1503



1505



1498



1504



1496



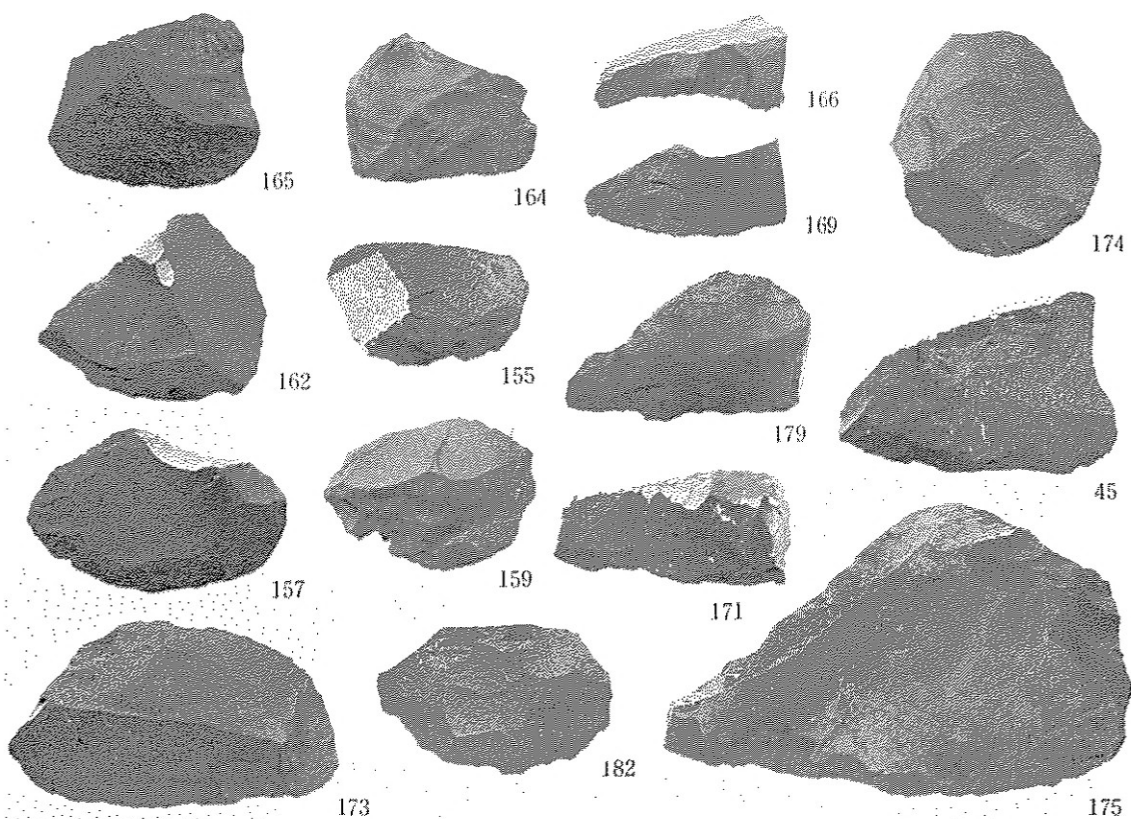
1501



1497

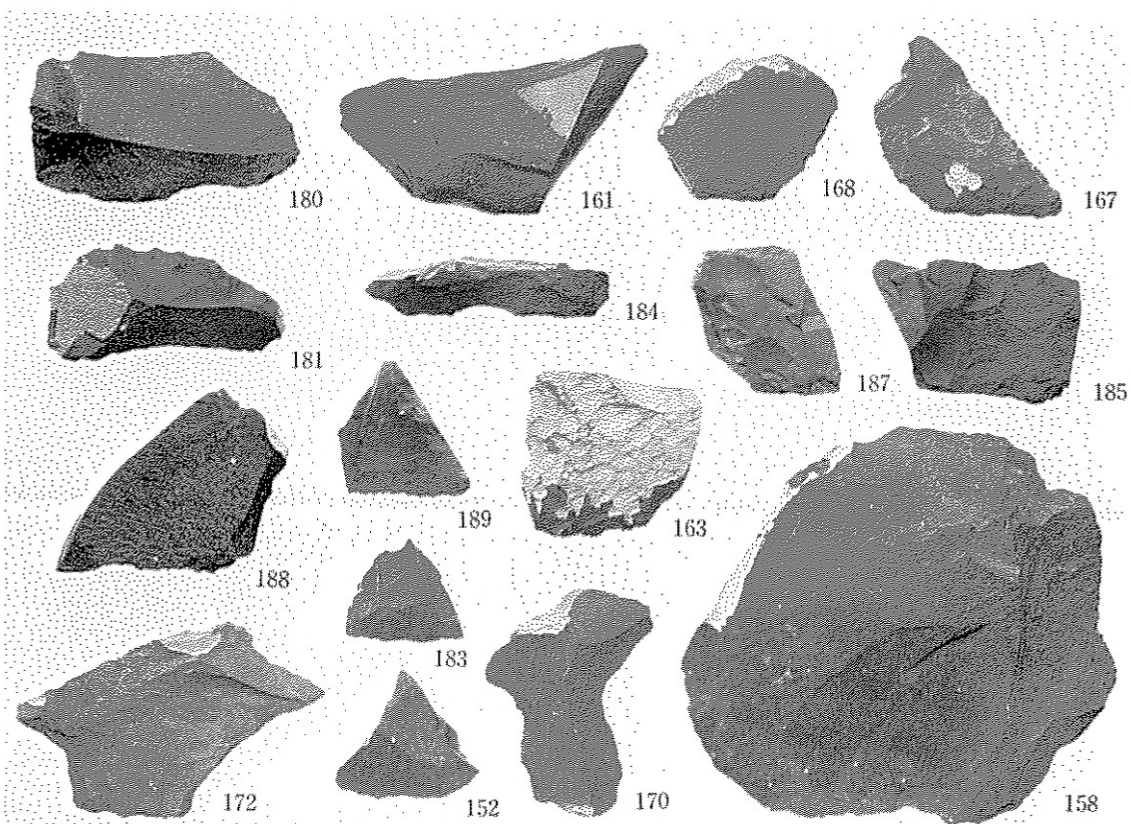


1500



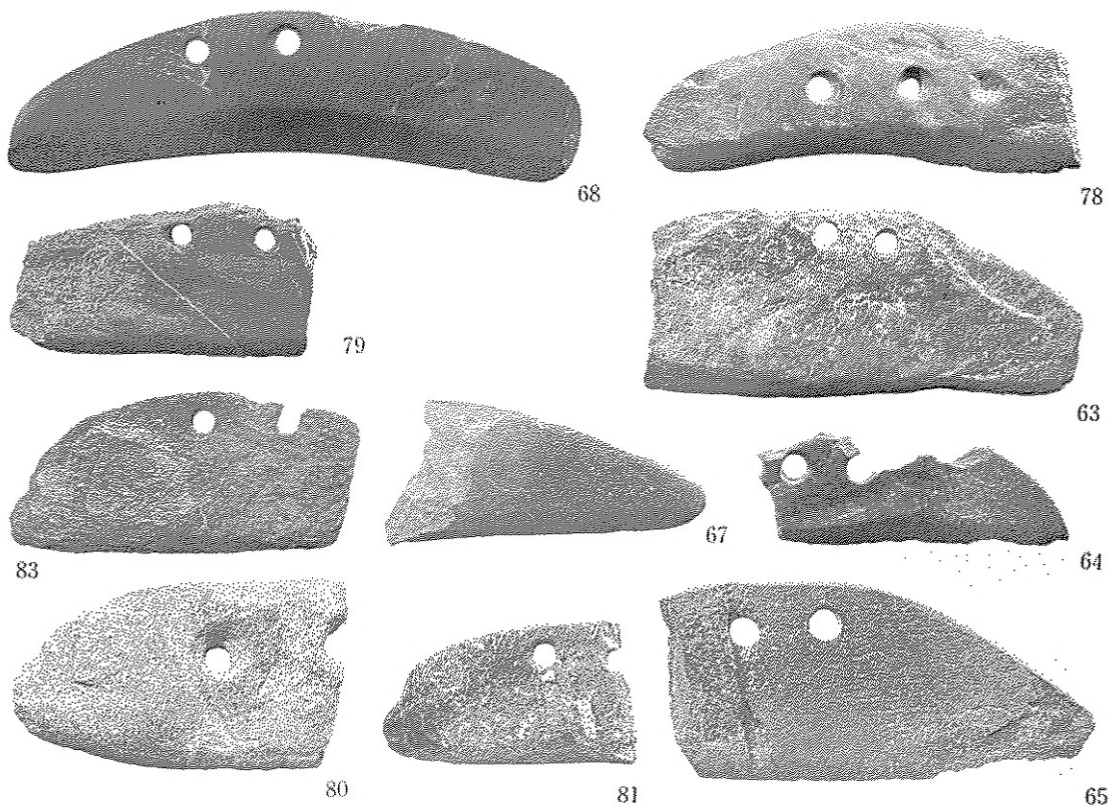
不定形刃器

約1/2



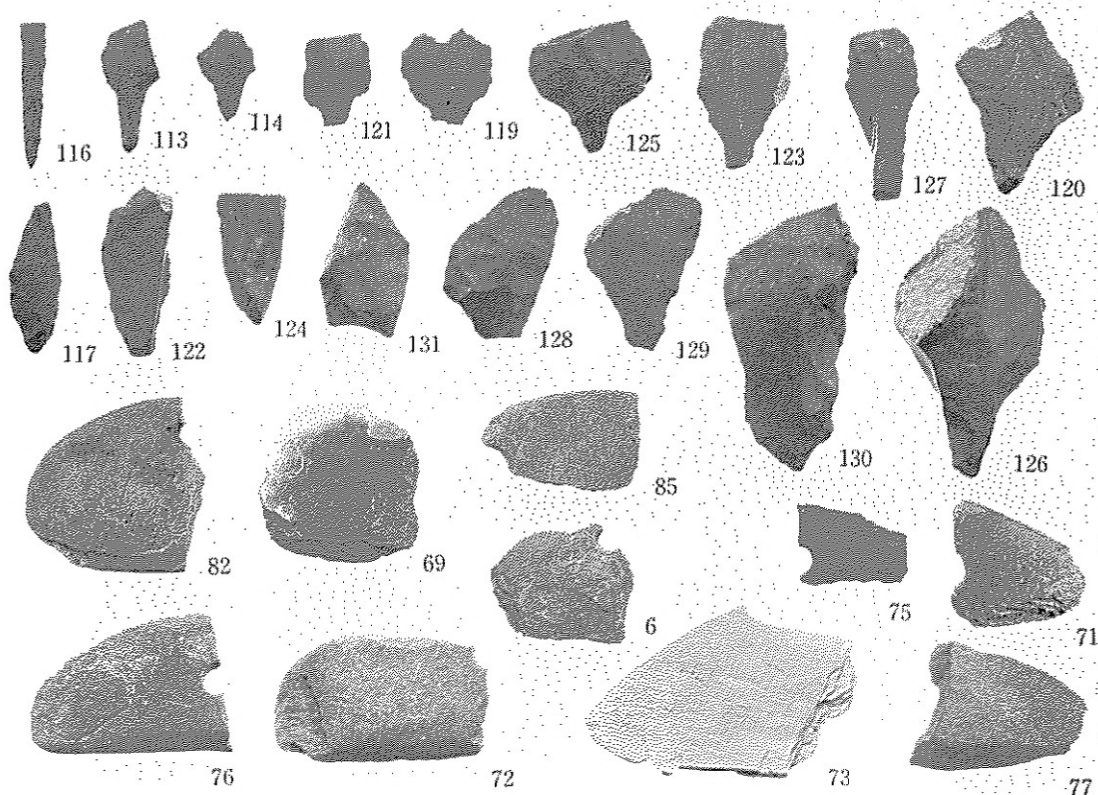
不定形刃器

約1/2



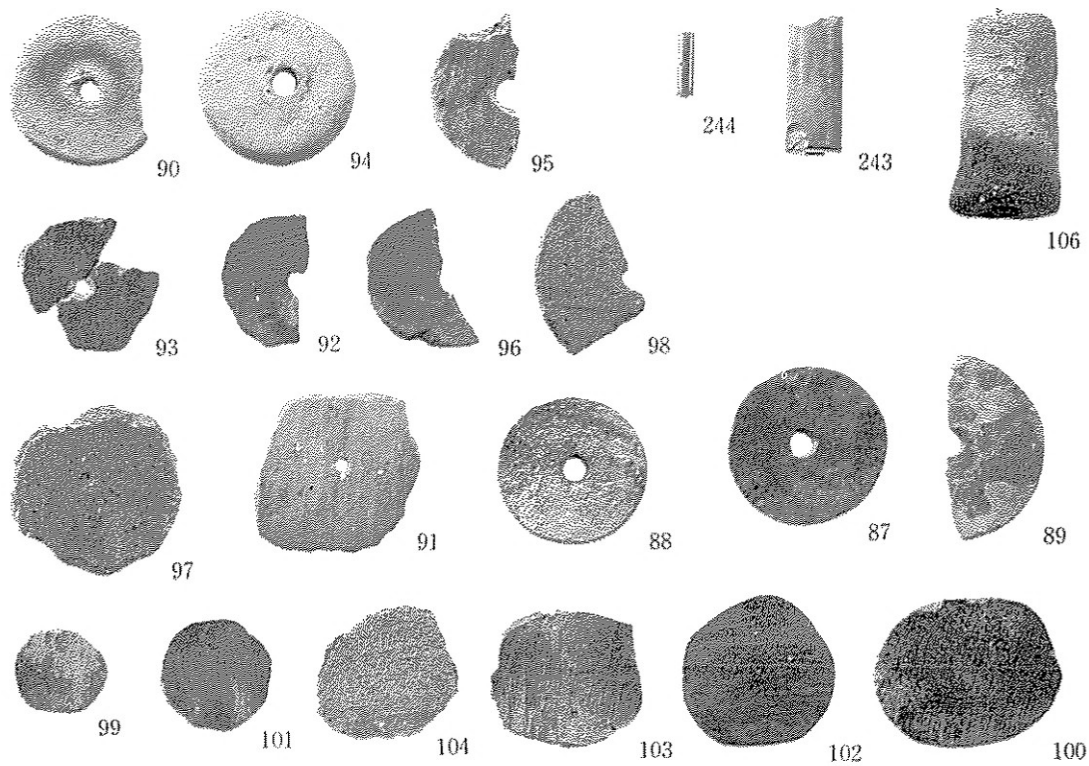
石庖丁

約1/2



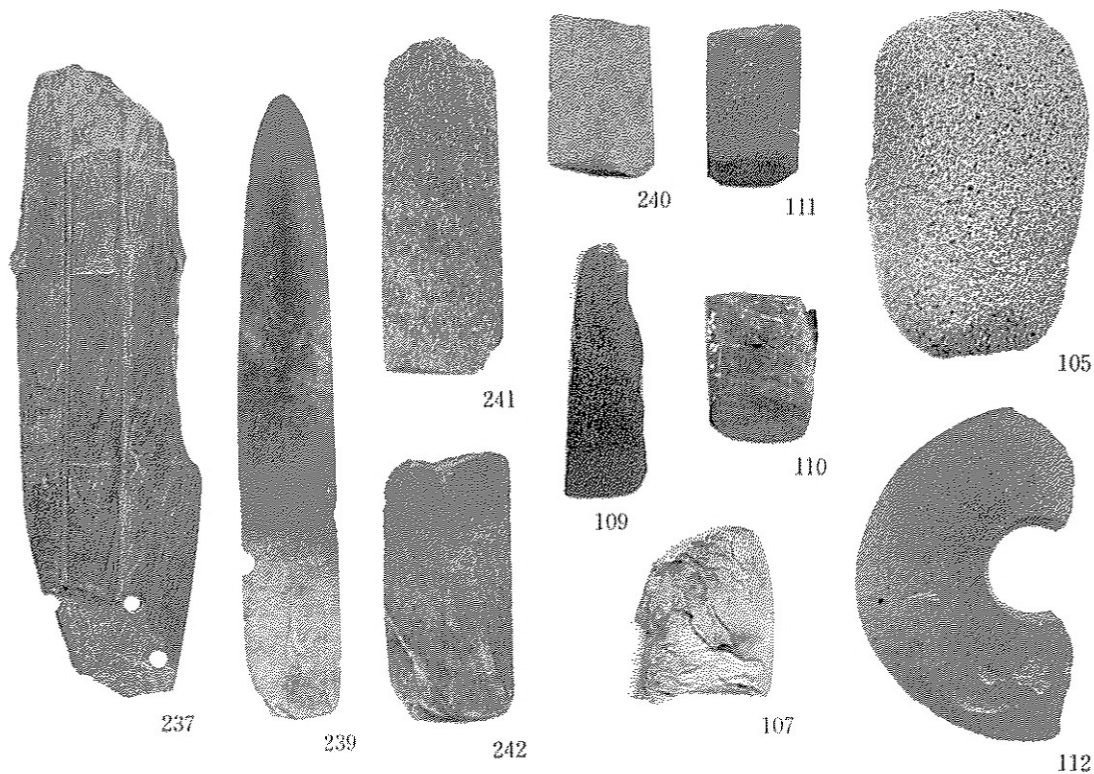
石錐・石庖丁

約1/2



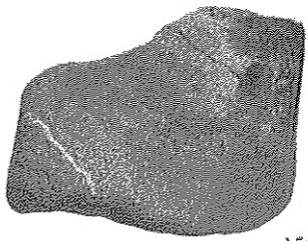
紡錘車・土製円板・管玉・土錘

約 $\frac{1}{2}$

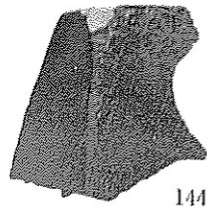


石剣・扁平片刃石斧・柱状片刃石斧・環状石斧・石錘

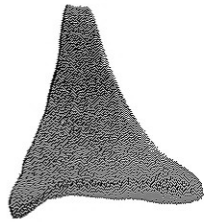
約 $\frac{1}{2}$



150



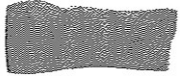
144



151



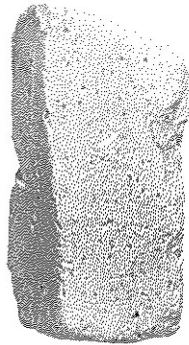
148



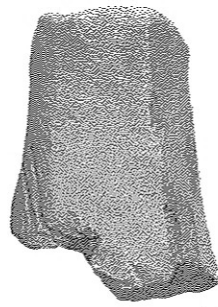
147



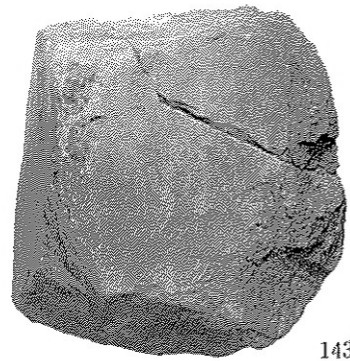
149



141



142



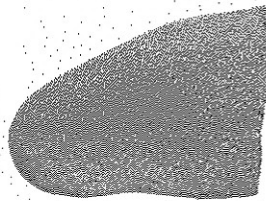
143

砥石

約 $\frac{1}{2}$



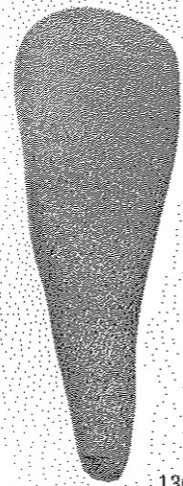
134



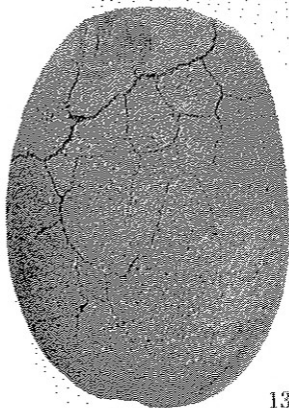
135



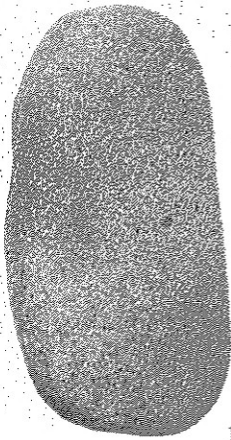
139



136



137



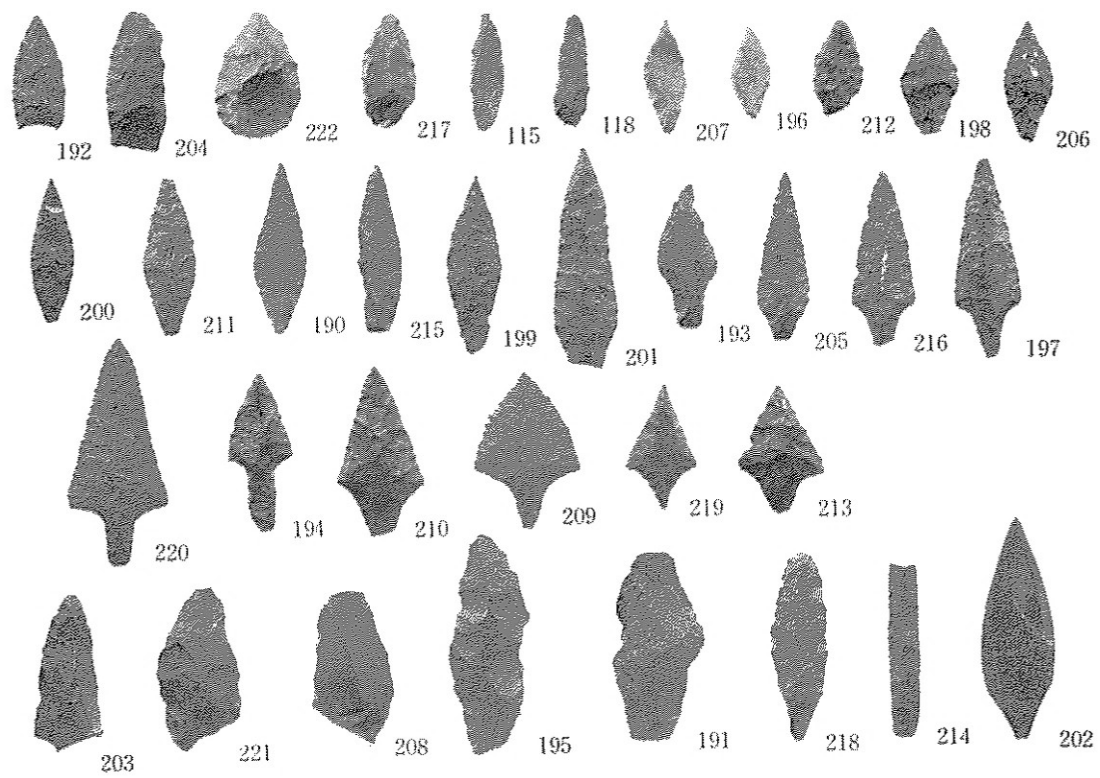
138



140

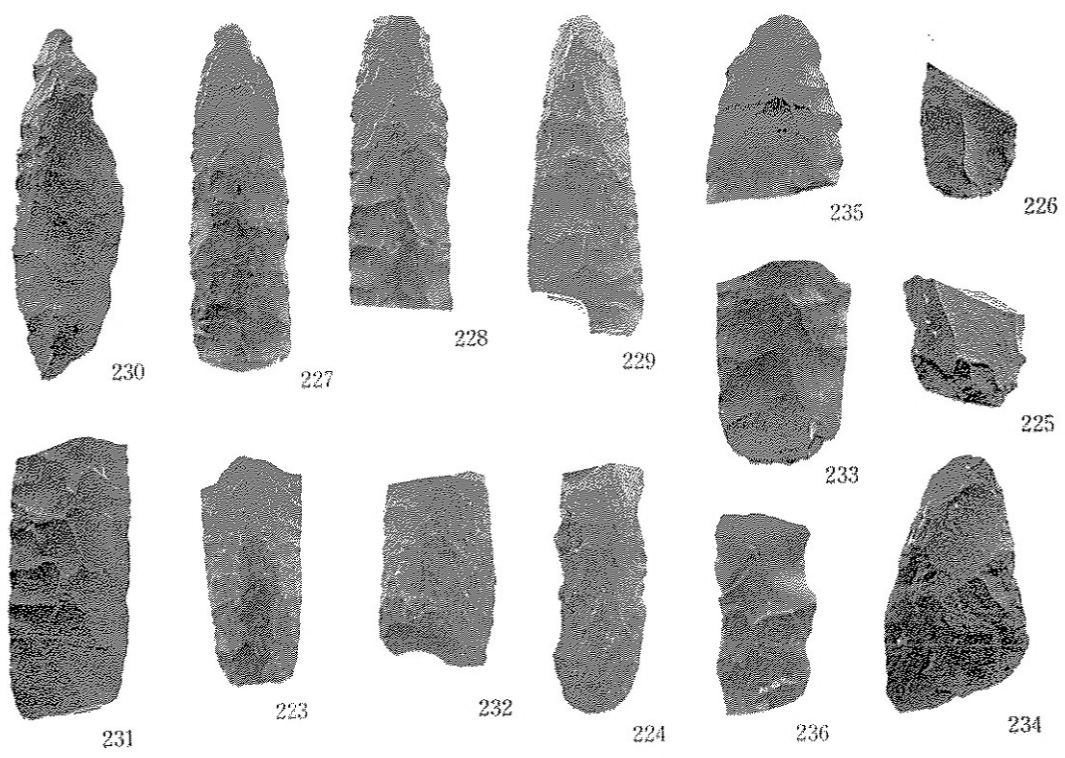
叩き石・凹み石・磨石

約 $\frac{1}{2}$



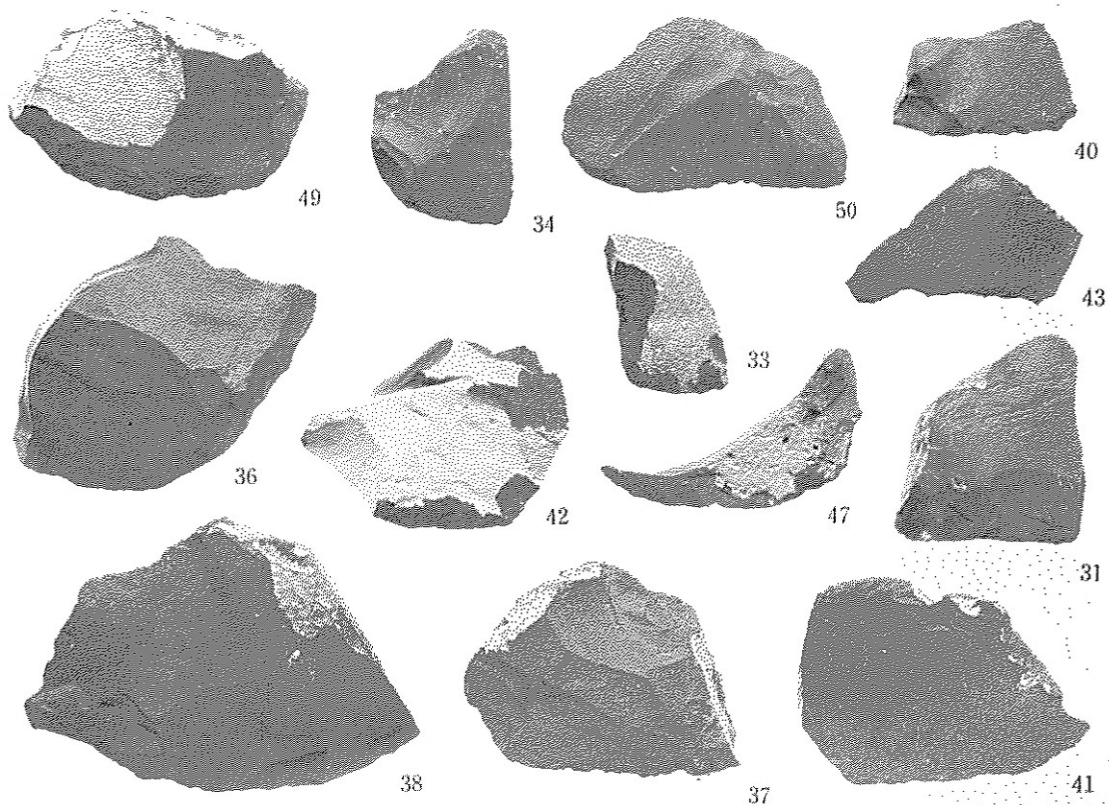
石鏃

約 $\frac{1}{2}$



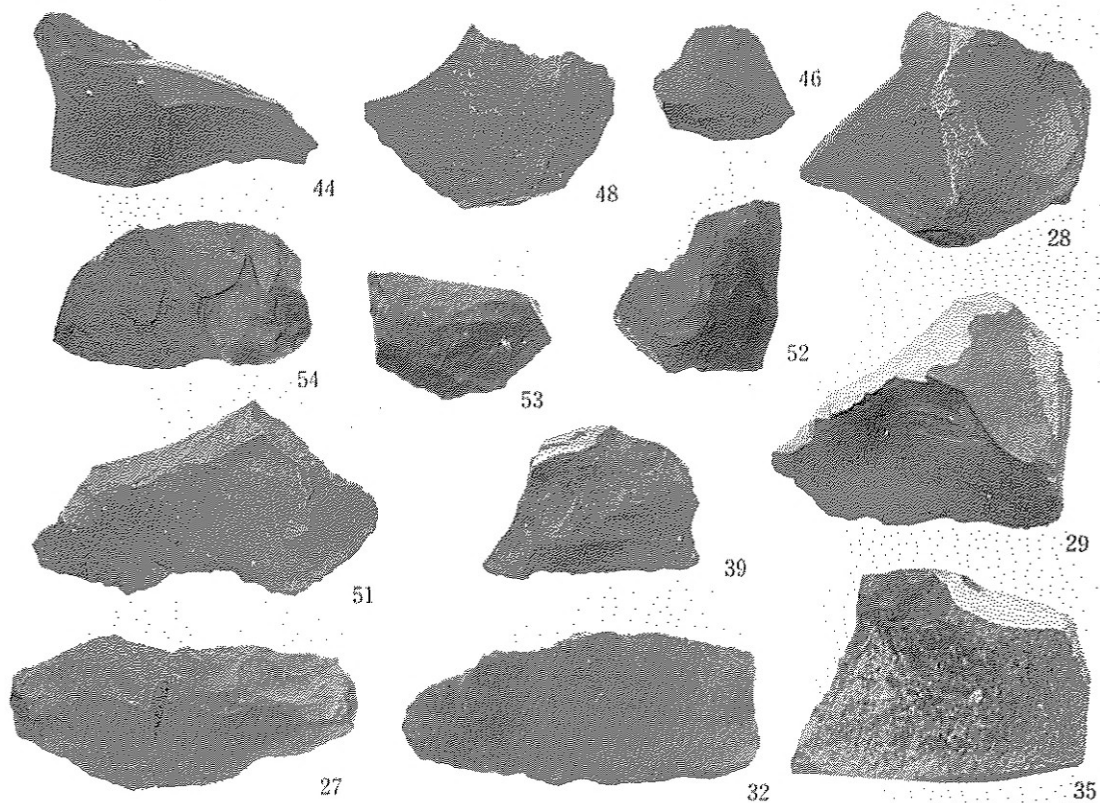
石槍

約 $\frac{1}{2}$



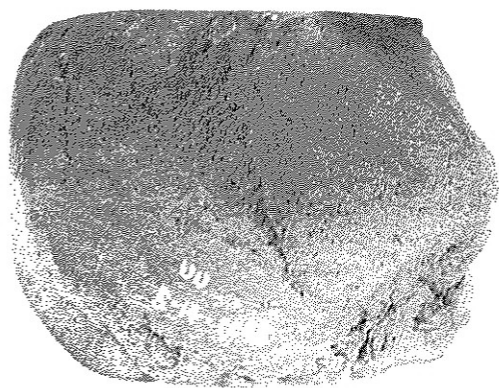
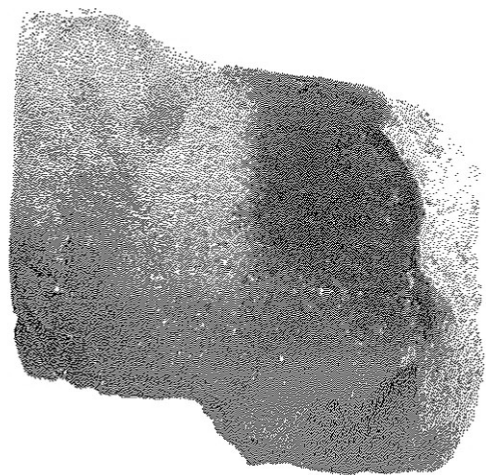
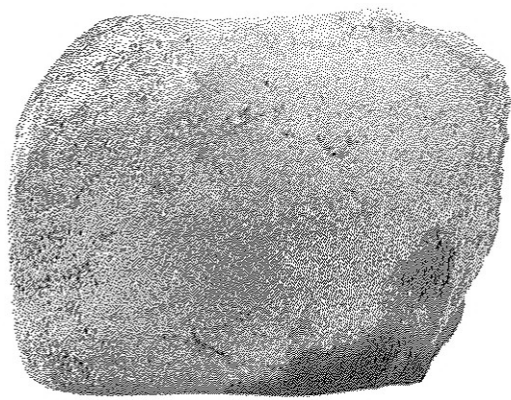
不定形刃器

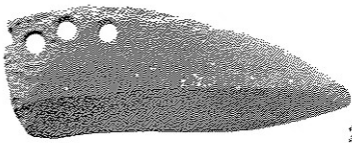
約 $\frac{1}{2}$



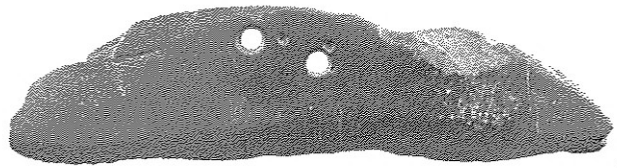
不定形刃器

約 $\frac{1}{2}$

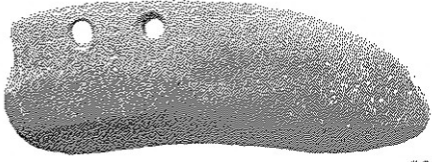




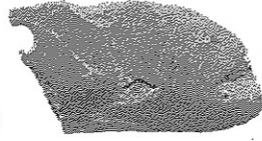
253



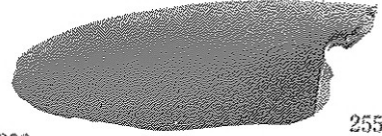
254



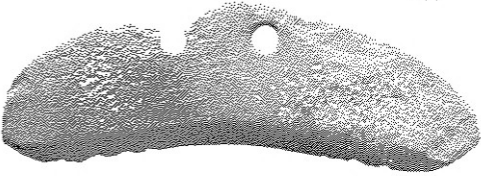
251



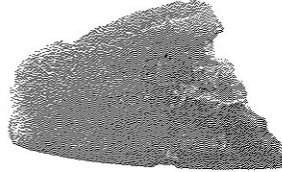
252



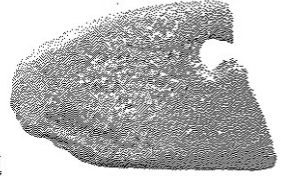
255



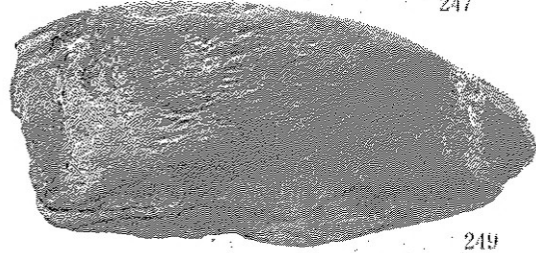
247



256



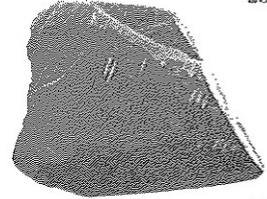
257



249



258



250

石庖丁

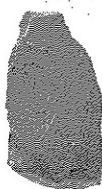
約 $\frac{1}{2}$



302



298



301



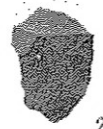
299



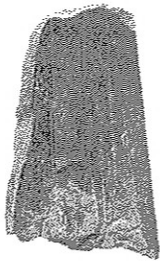
267



266



270



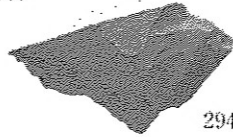
304



296



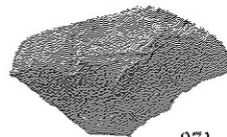
295



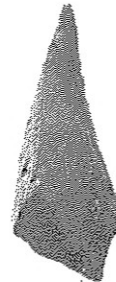
294



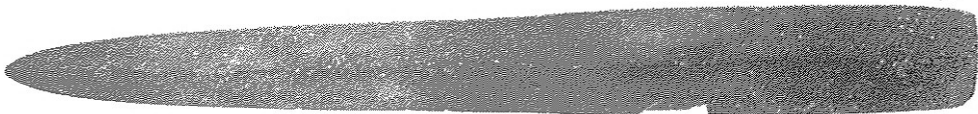
268



271



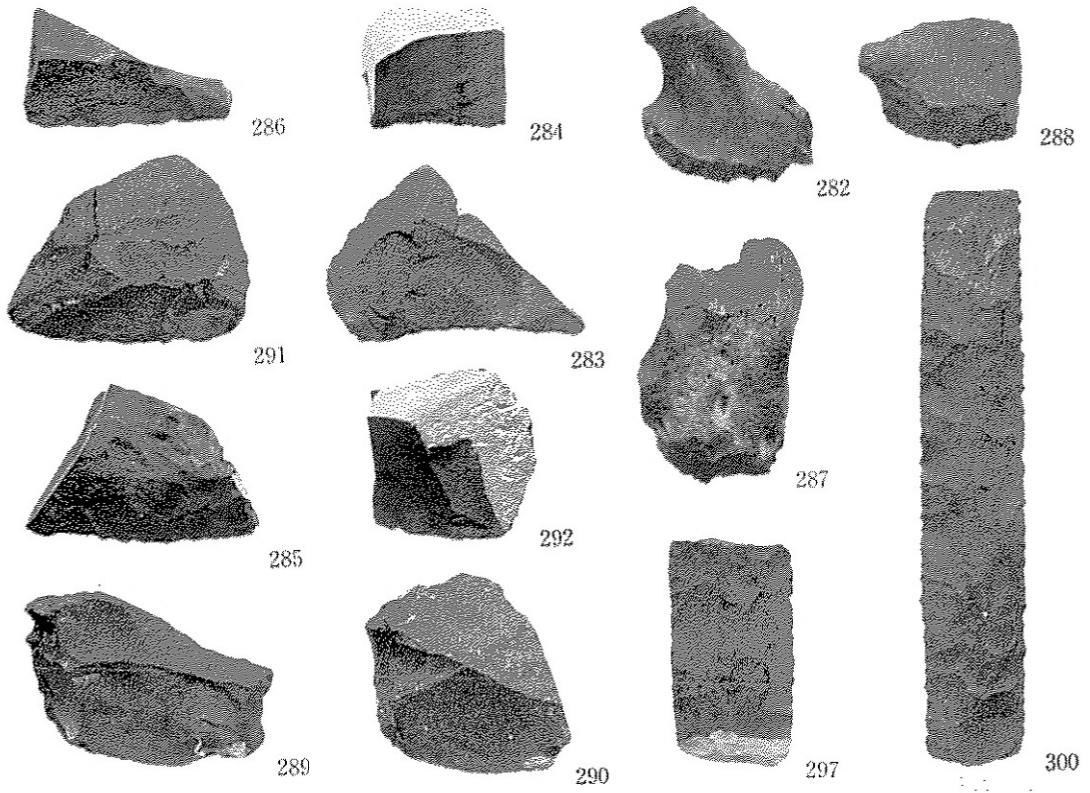
269



303

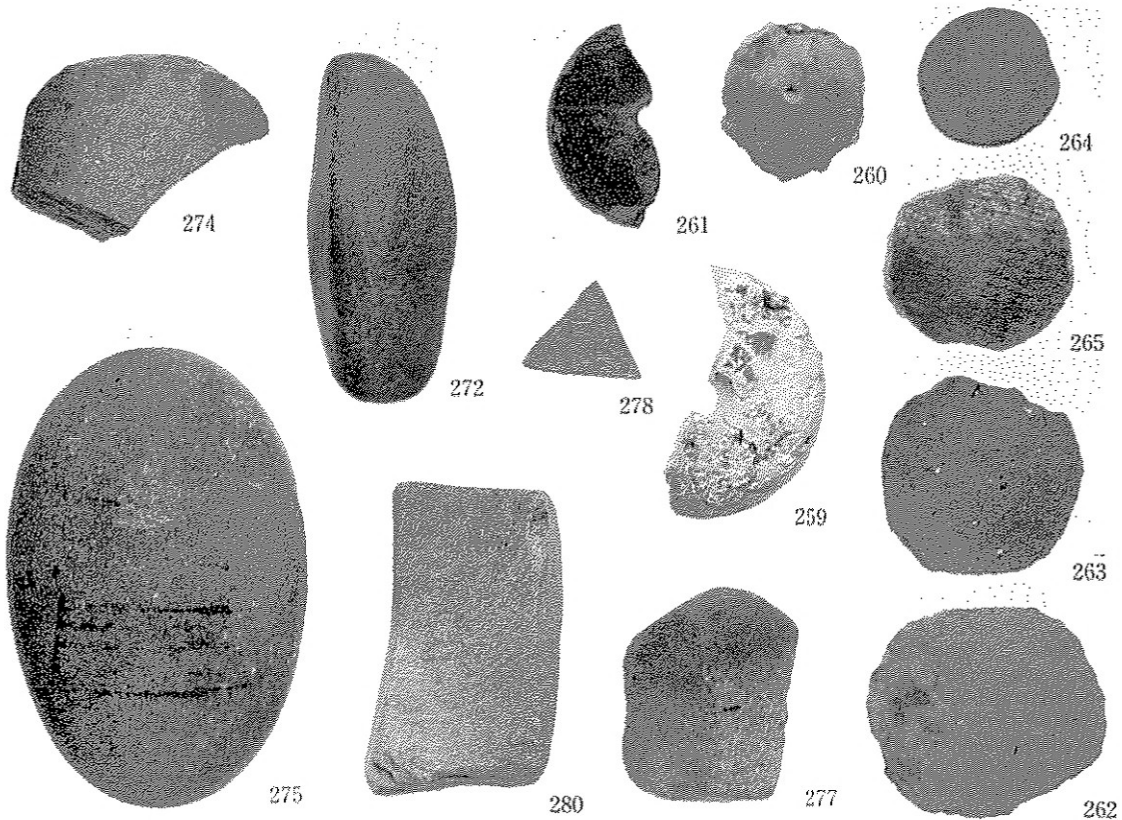
石劍・石戈・石鏃・石錐

約 $\frac{1}{2}$



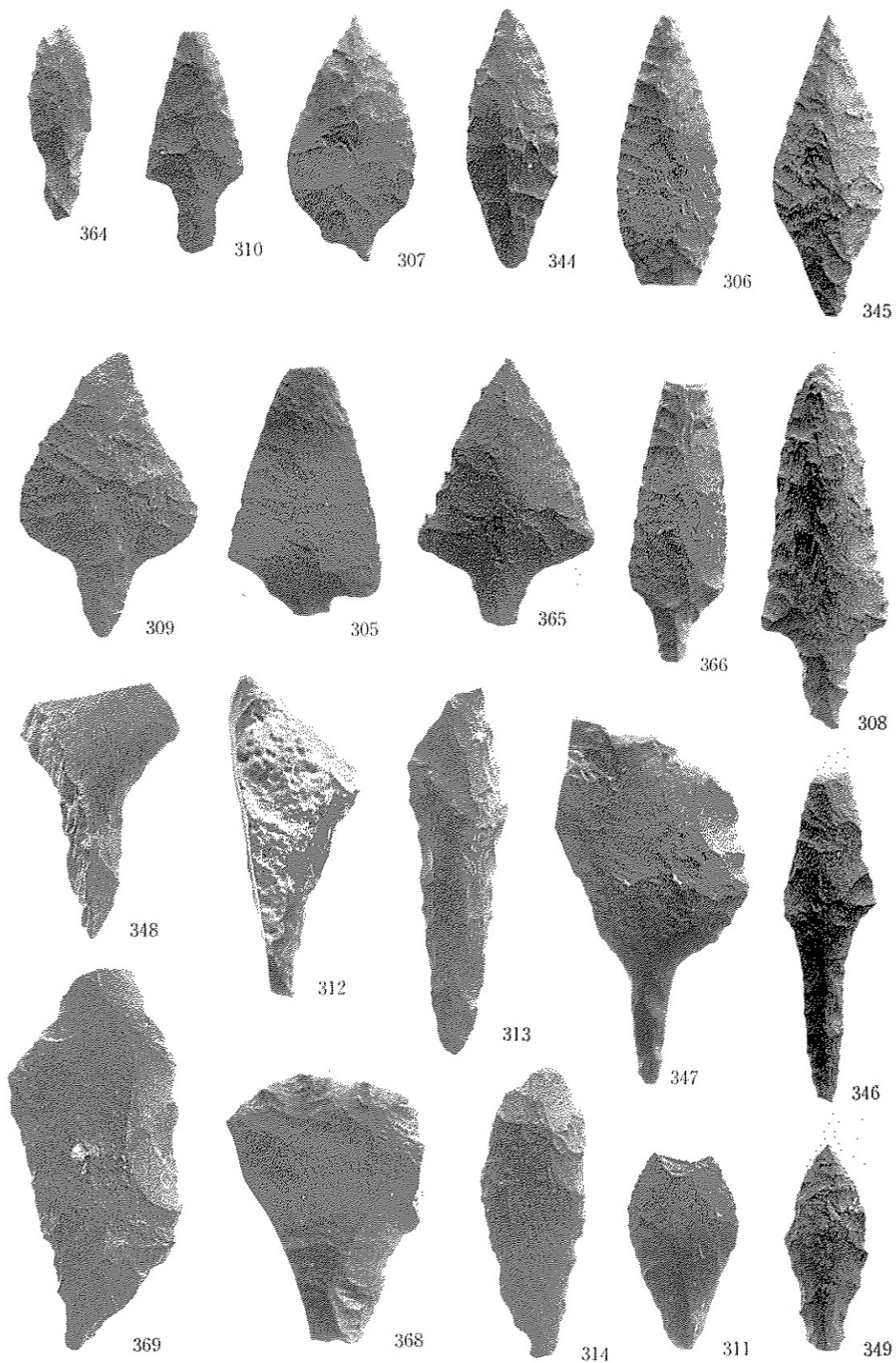
不定形刃器・石槍

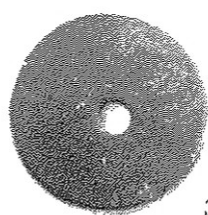
約½



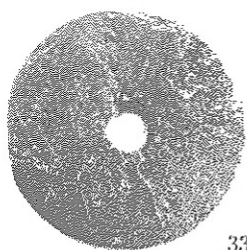
叩き石・凹み石・砥石・紡錘車・土製門板

約½





332



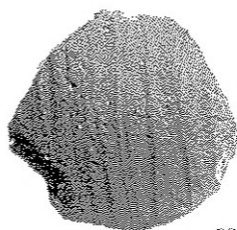
331



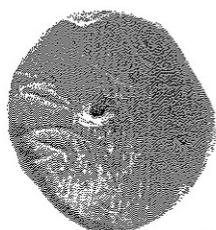
335



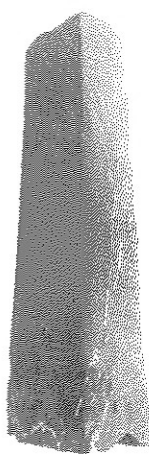
336



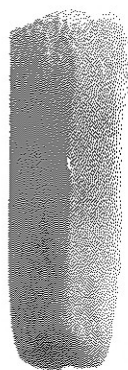
333



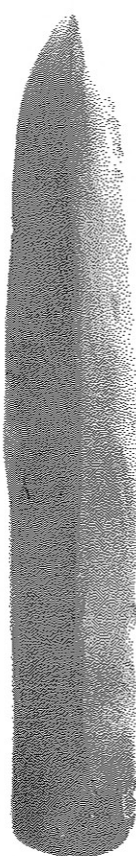
334



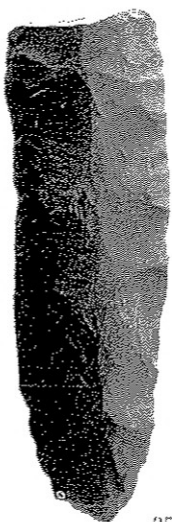
319



320



318

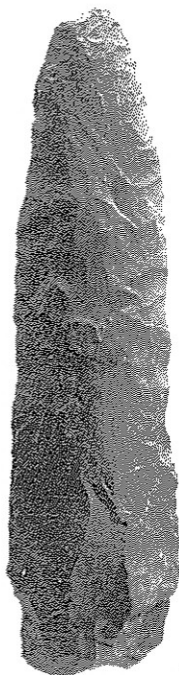


350



351

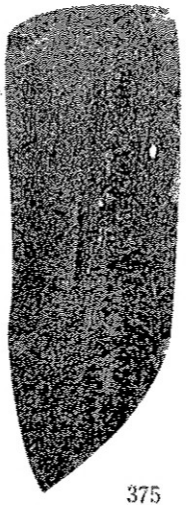
317



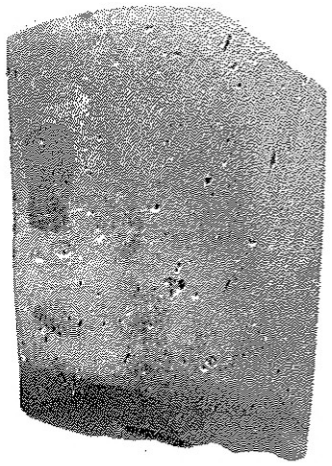
316



315



375



322



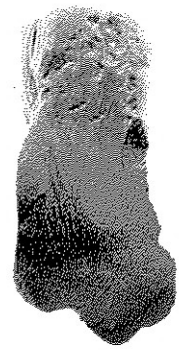
321

柱状片刃石斧・扁平片刃石斧・太型蛤刃石斧

約略



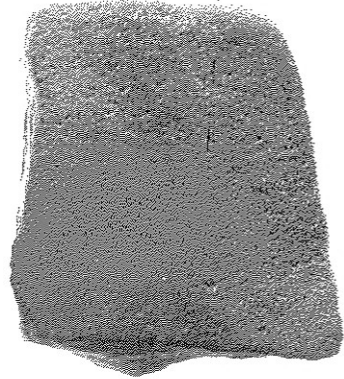
379



357



359



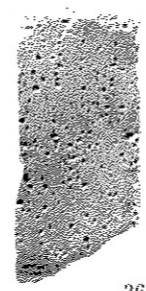
358



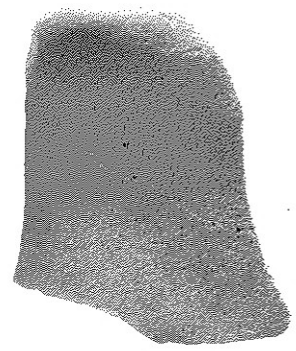
361



380



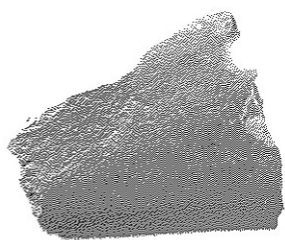
362



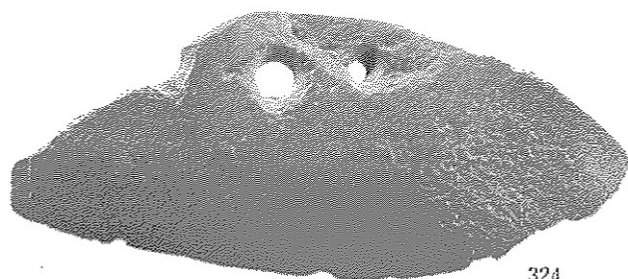
360

砥石・投弾・使用痕のある石

約略



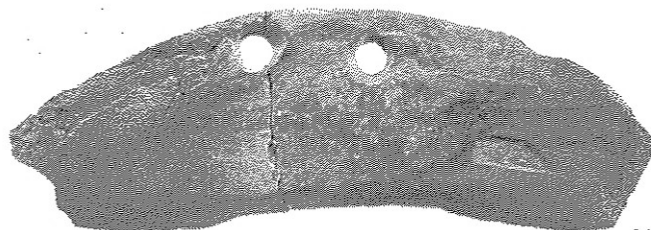
330



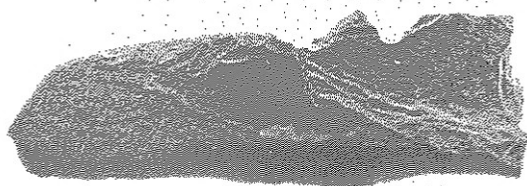
324



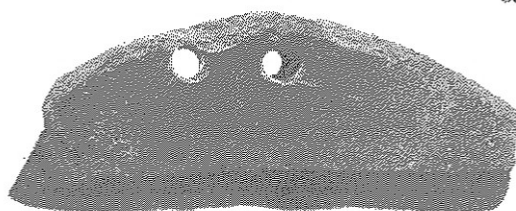
376



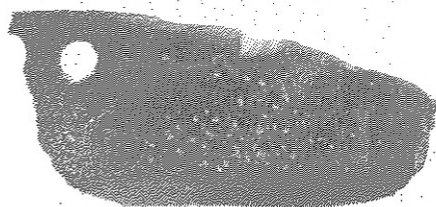
328



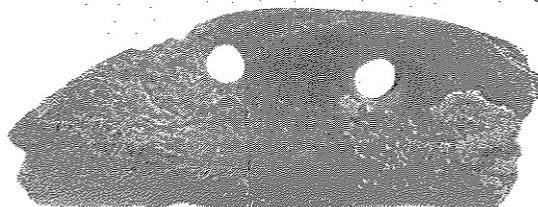
327



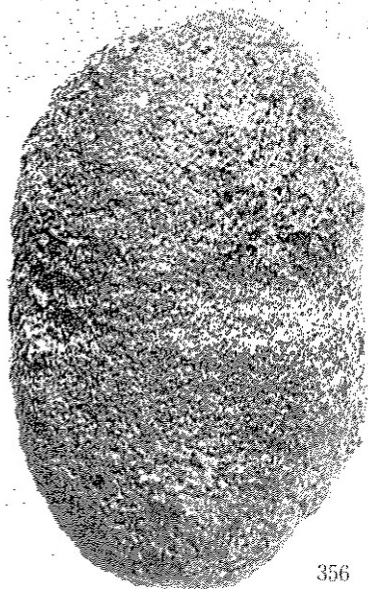
325



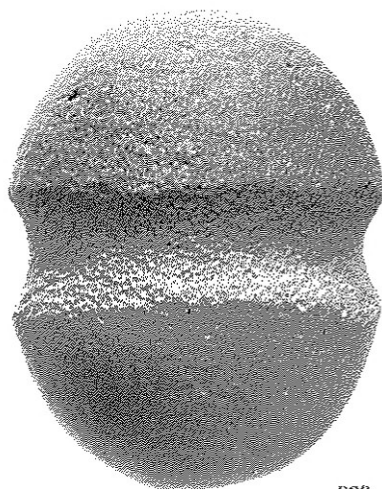
329



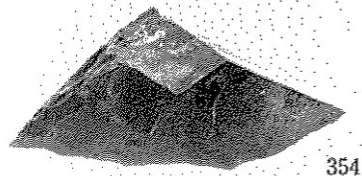
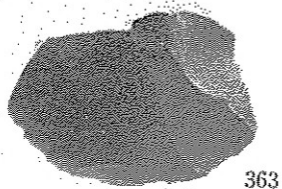
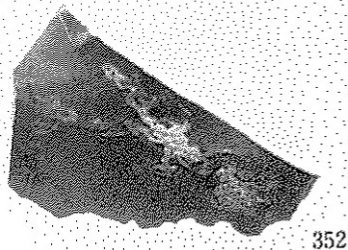
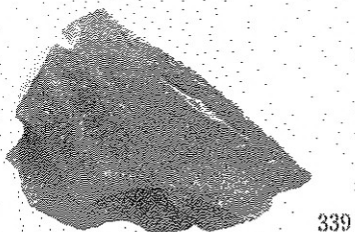
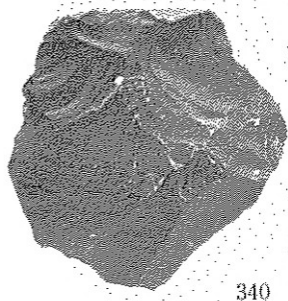
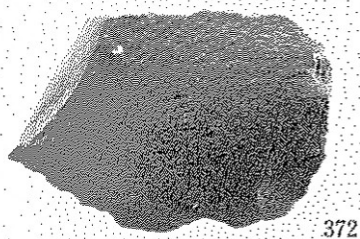
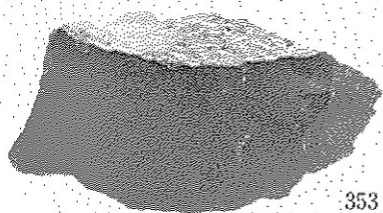
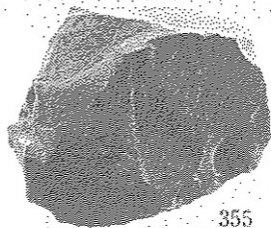
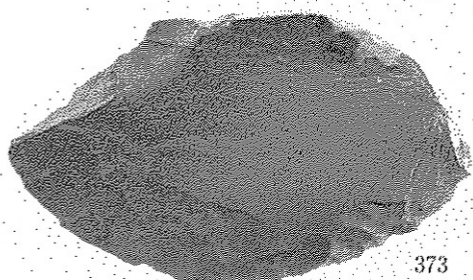
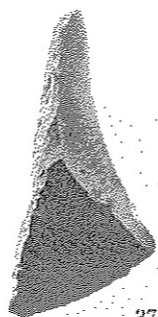
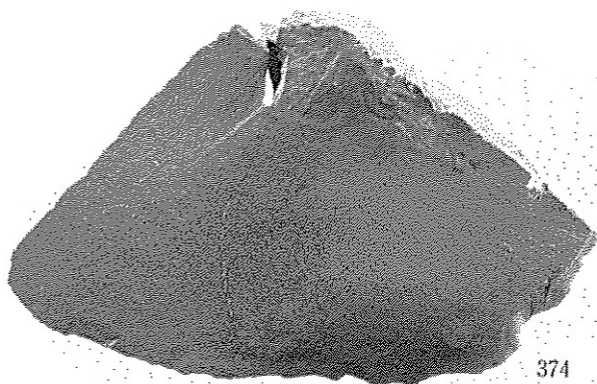
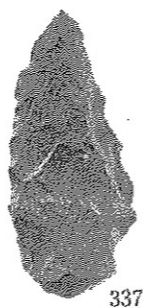
326

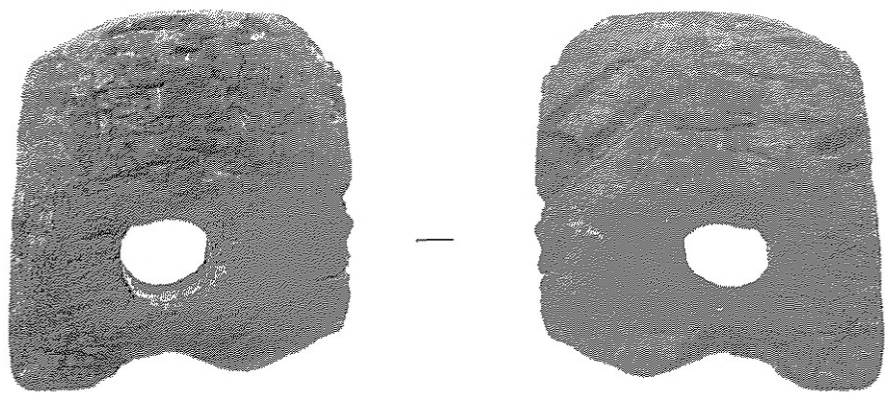


356

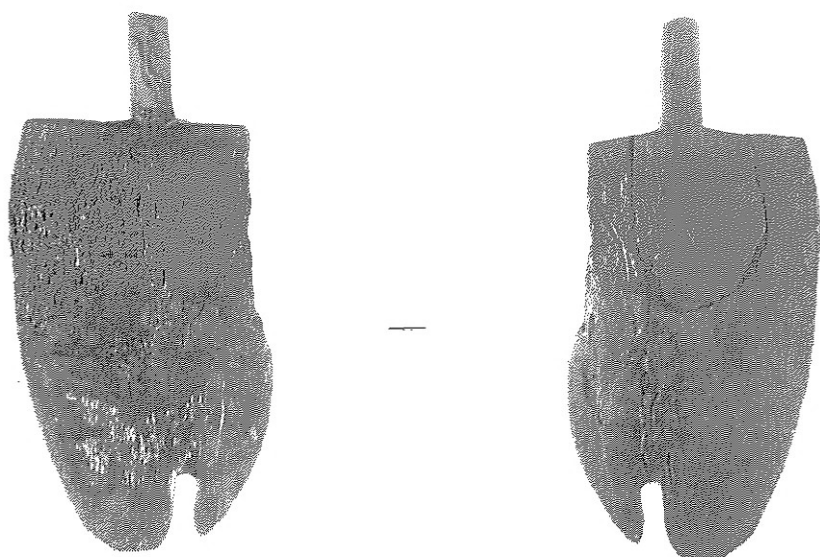


323

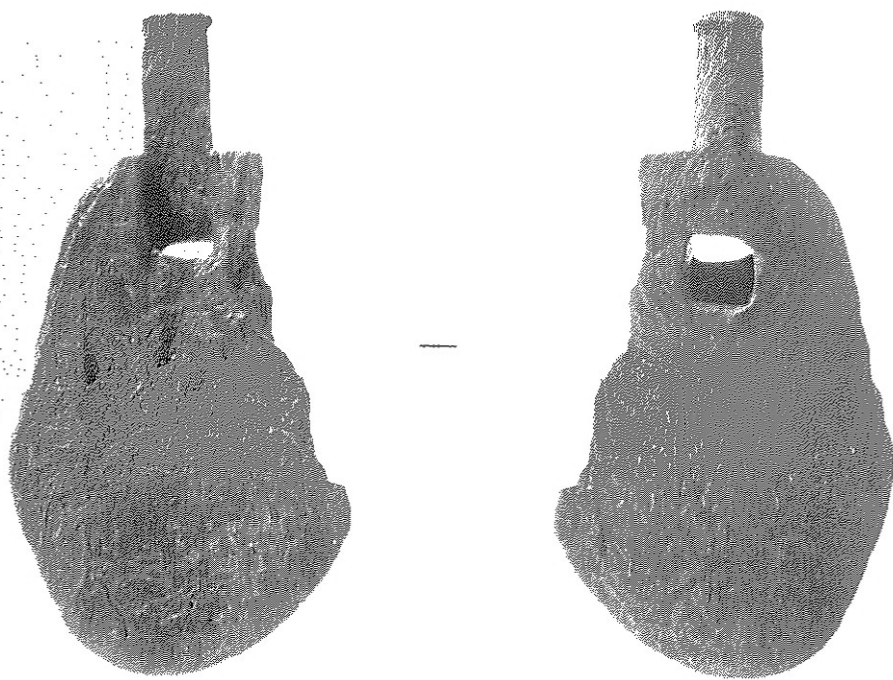




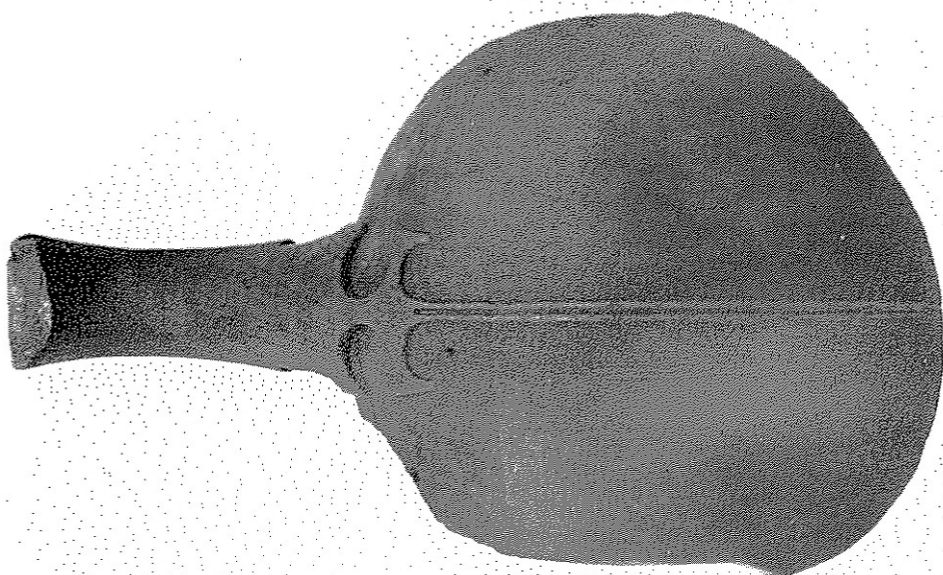
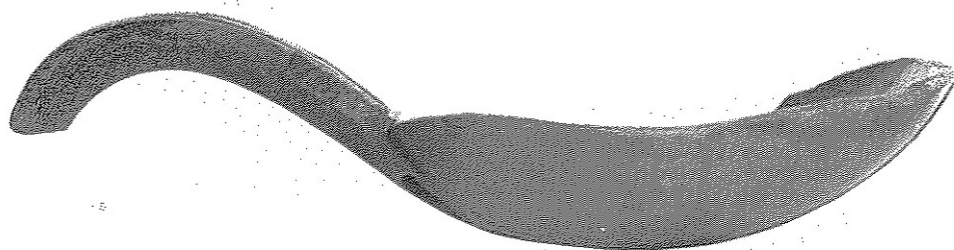
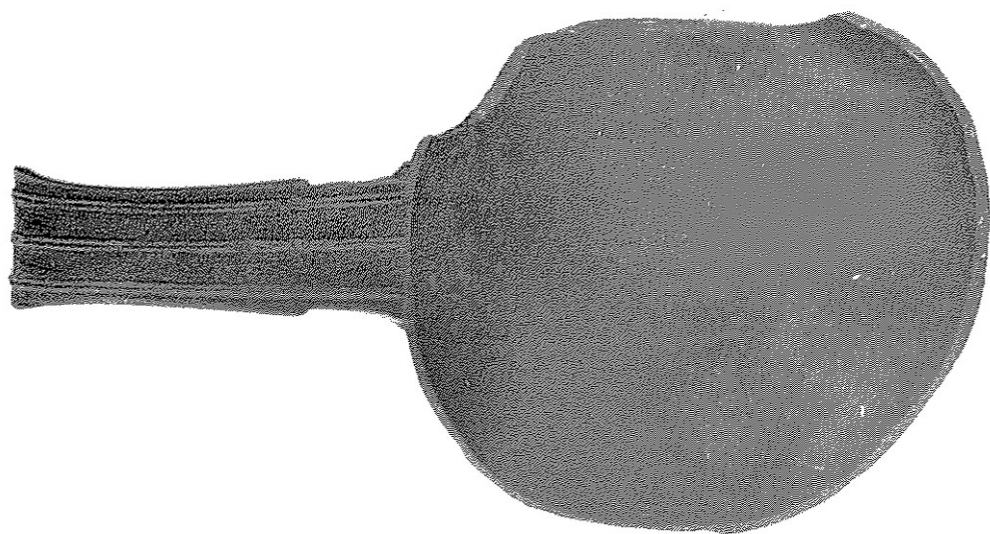
W-1



W-6



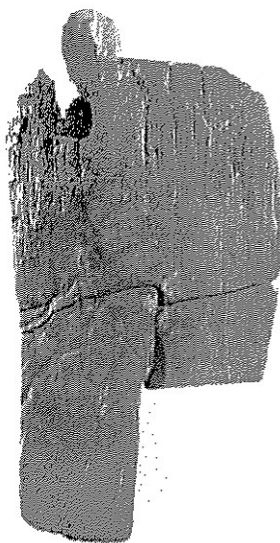
W-4



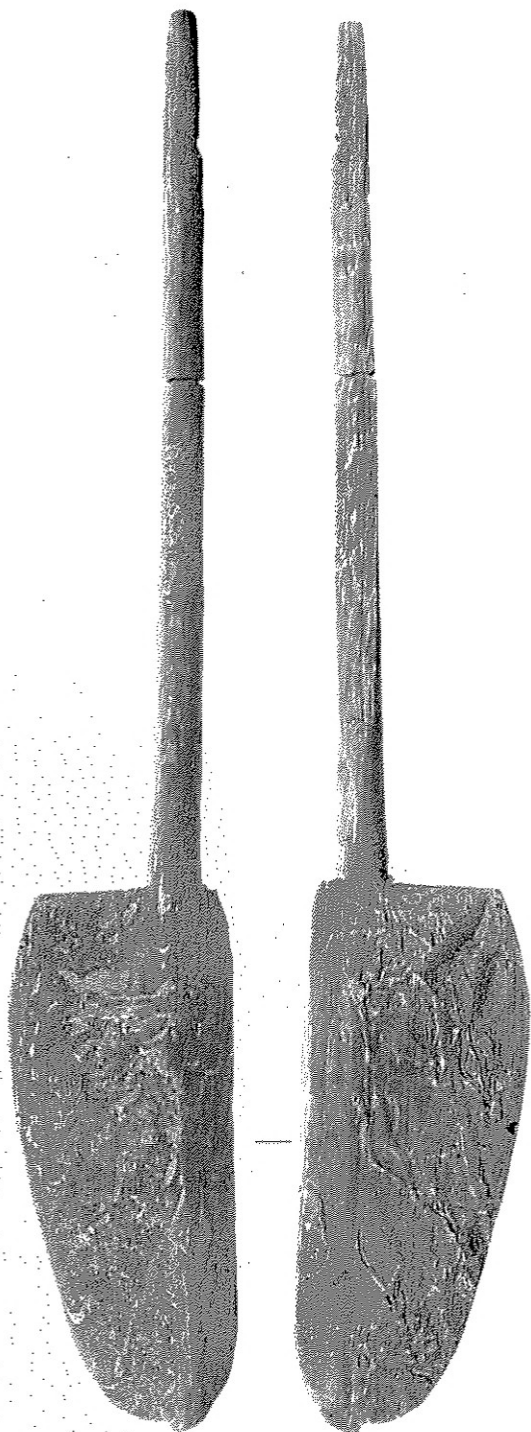
W-2



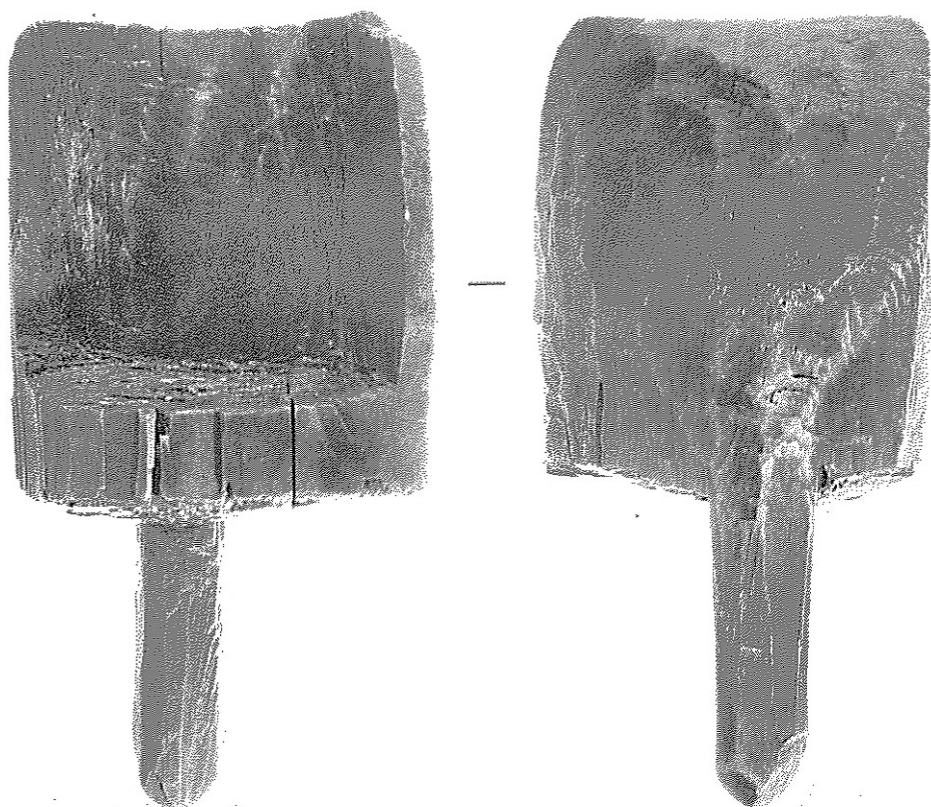
W-3



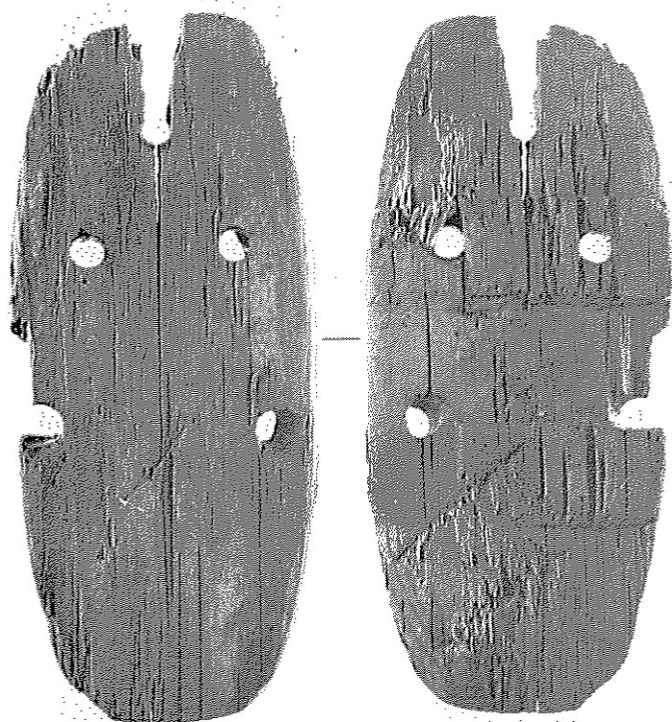
W-5



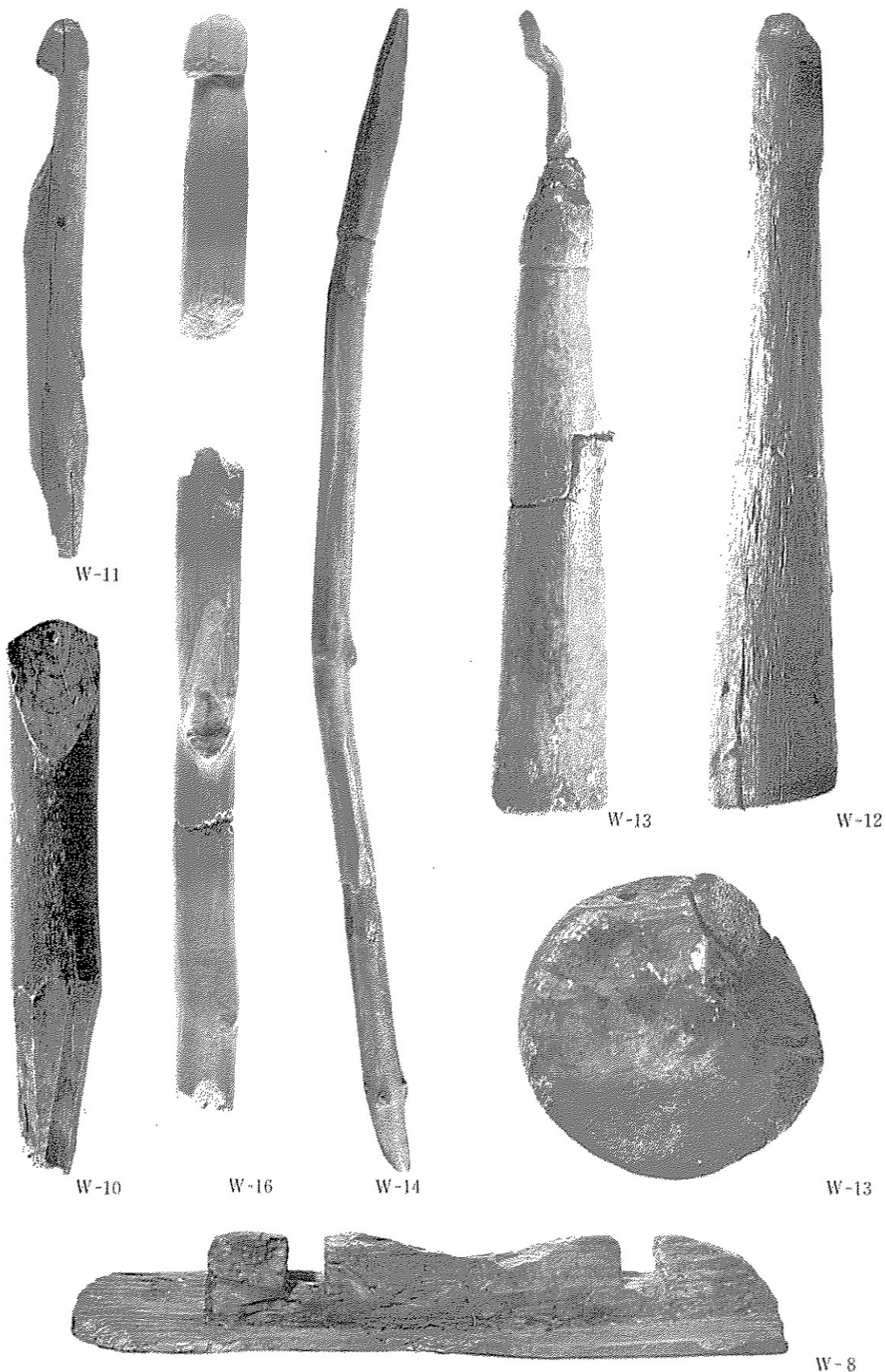
W-7



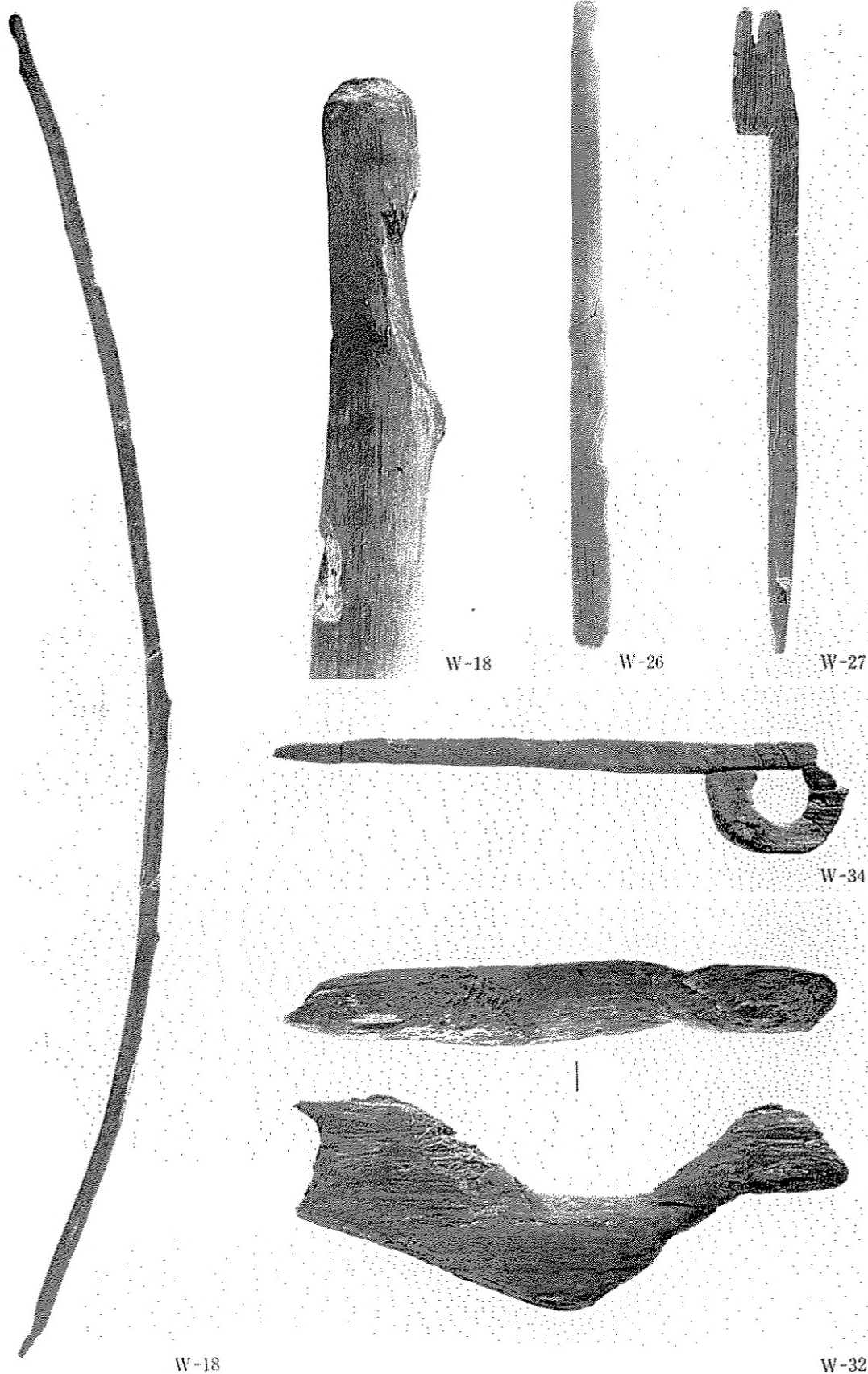
W-15



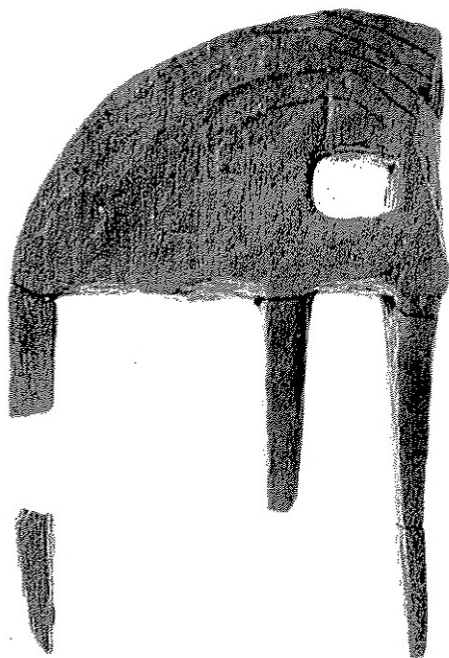
W-17



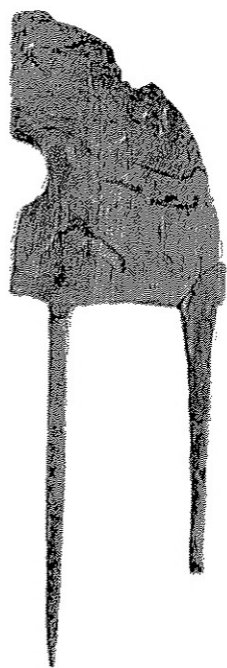
弥生時代中期Ⅱ W-8・10・11 用途不明木製品、W-12・13 杵、W-14 用途不明木製品
弥生時代後期Ⅱ W-16 用途不明木製品



弥生時代中期 W-18 弓、弥生時代中期Ⅰ W-26・27 用途不明木製品
弥生時代中期Ⅱ W-32 鳥形木製品、W-34 用途不明木製品



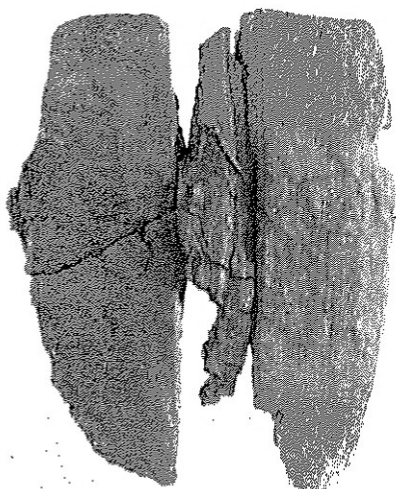
W-21



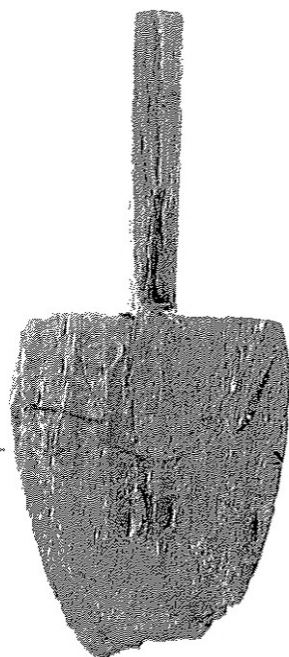
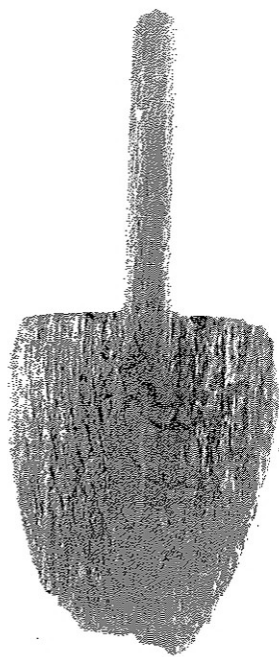
W-19



W-20

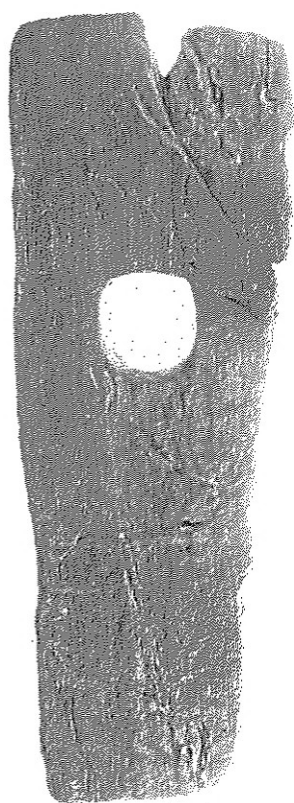


W-22

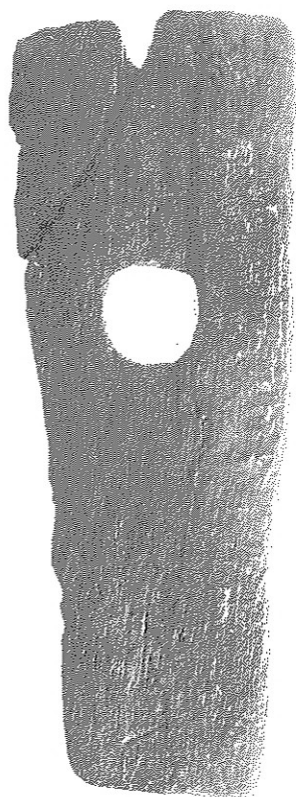


W-37

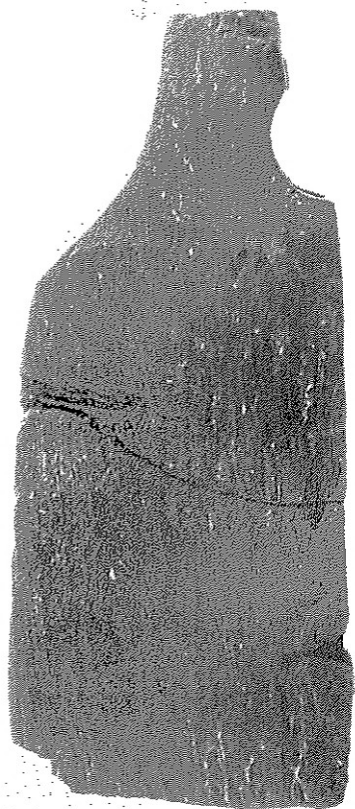
弥生時代中期Ⅰ W-19・21 又鋤、W-20 田下駄、W-22 鋤
弥生時代中期Ⅱ W-37 鋤



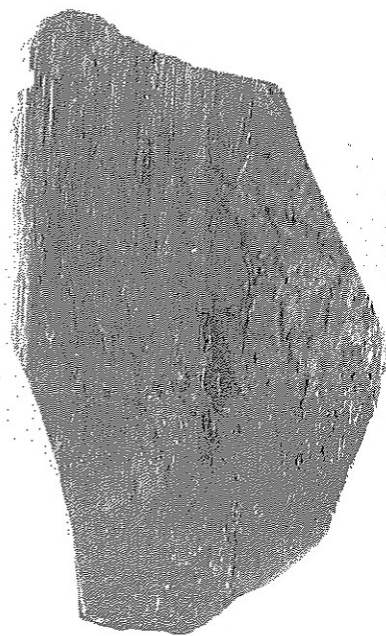
—



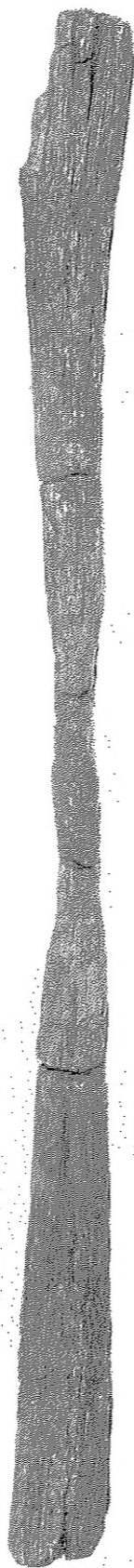
W-30



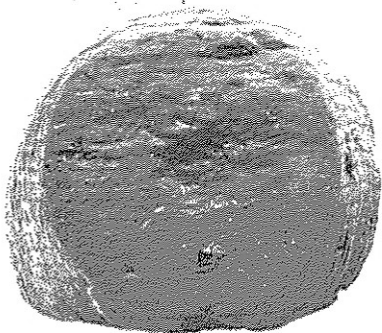
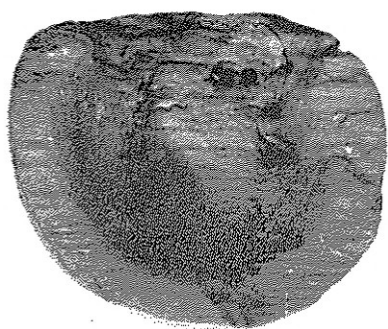
W-24



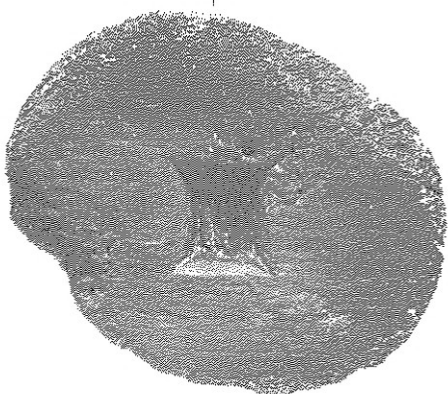
W-33



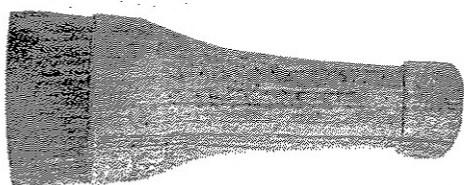
W-29



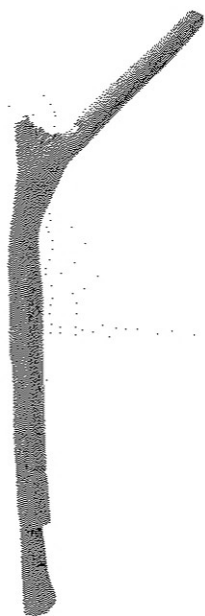
W-32



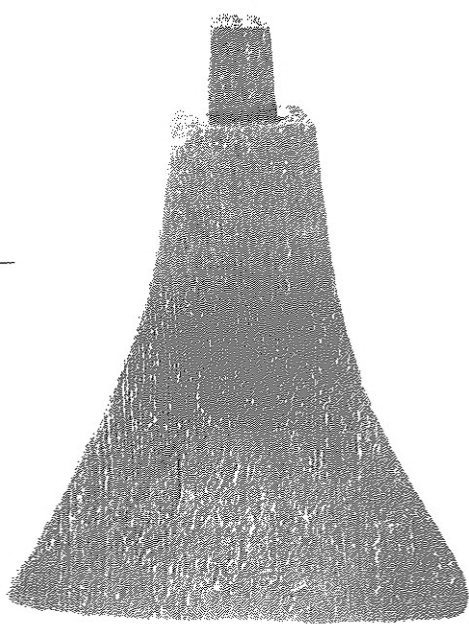
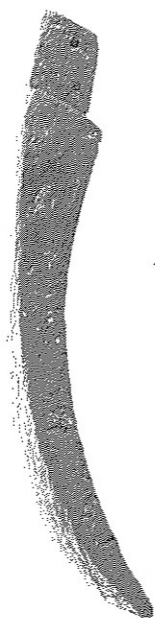
W-25



W-39

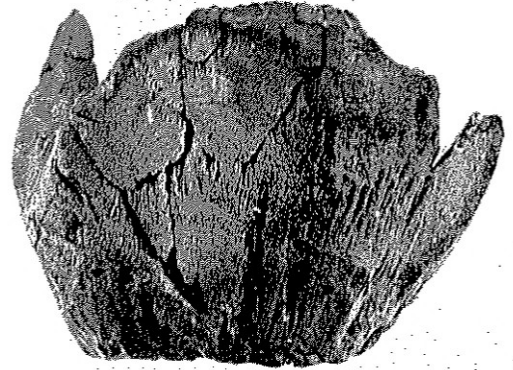
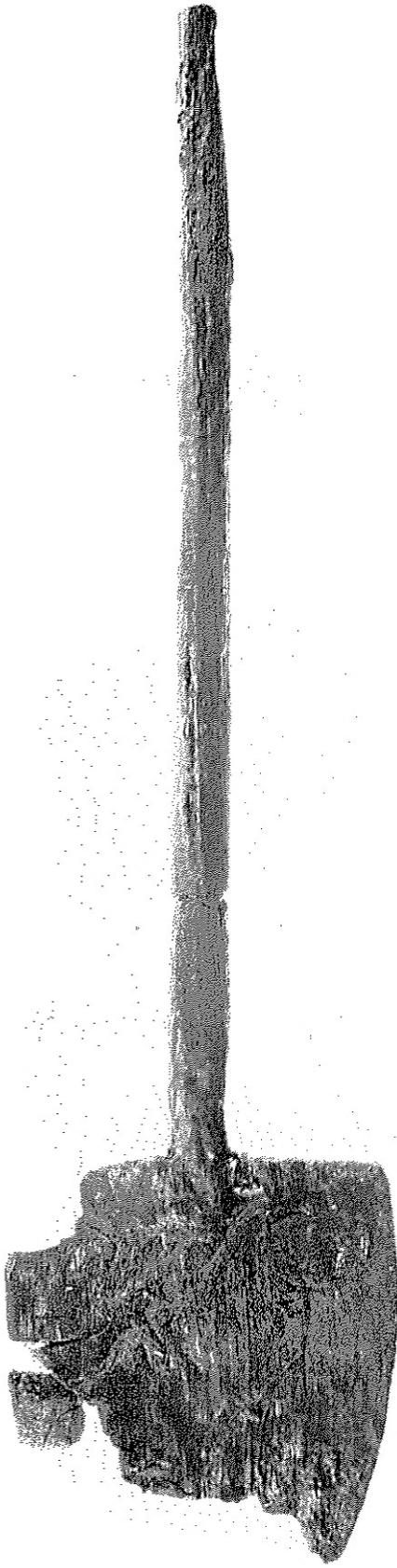


W-40

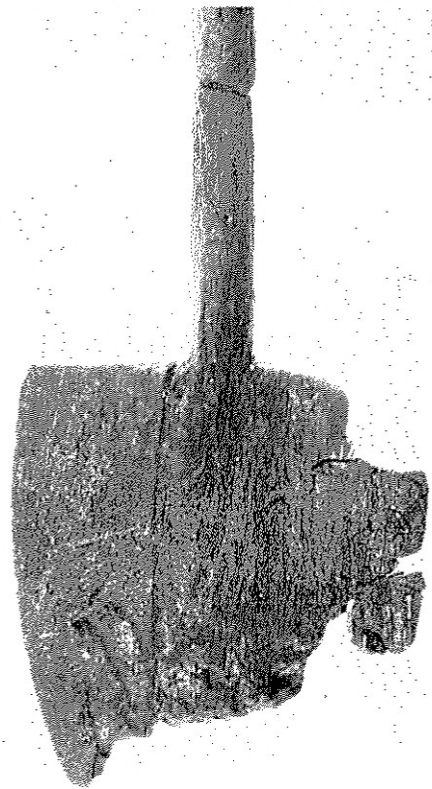


W-38

弥生時代中期Ⅰ W-25 高杯、W-32 容器
弥生時代後期Ⅰ W-38・40 用途不明木製品、弥生時代後期Ⅱ W-39 柄



W-41

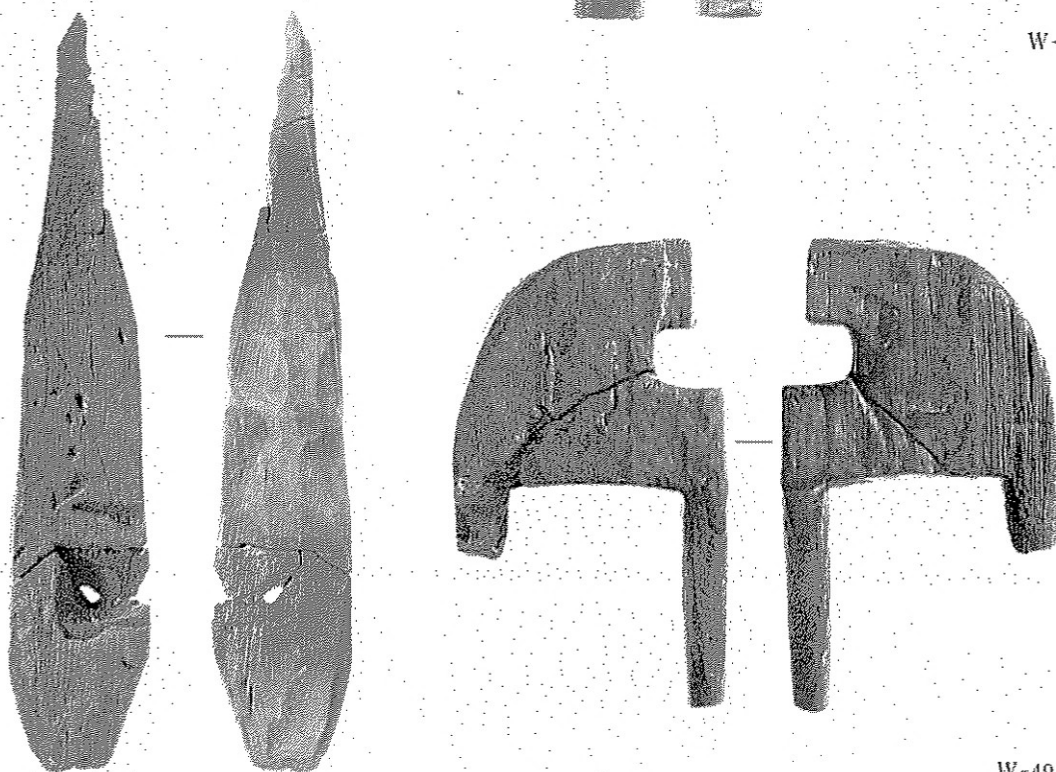


W-42



W-44

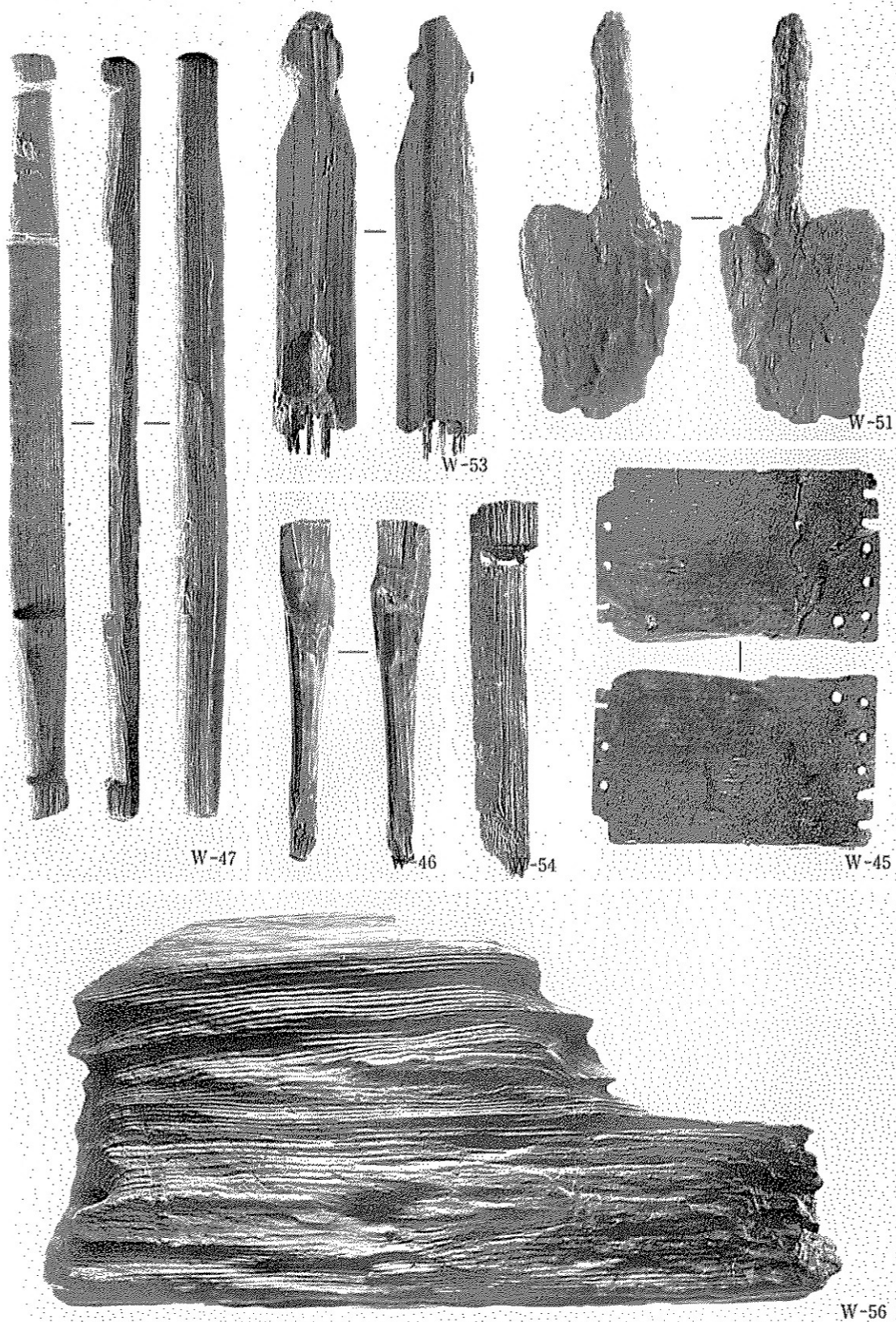
W-43



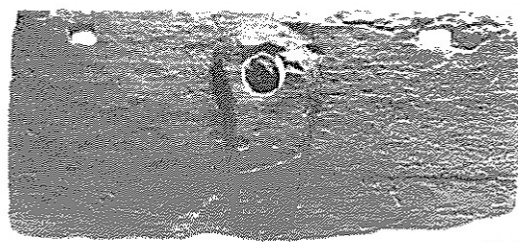
W-48

W-49

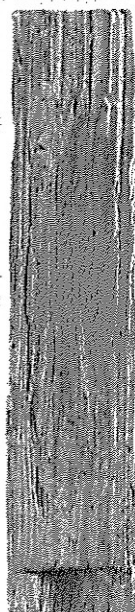
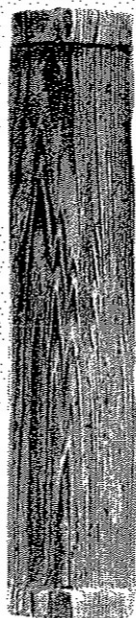
弥生時代中期 W-43 鞘状木製品、W-44 「あかかき」 状木製品、W-48 鋤、W-49 又鋤



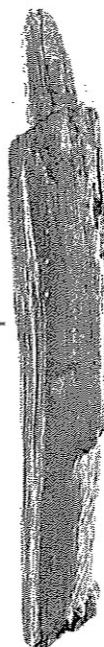
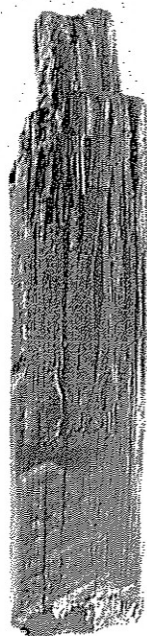
弥生時代中期 W-47 紡織具(ちまき)、W-51 鋤先、W-45・46 不明木製品、W-53・54 板状木製品、W-56 木棺小口板



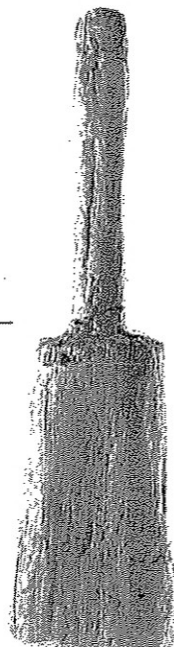
W-57



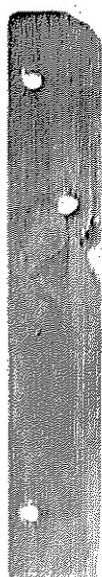
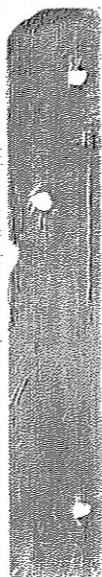
W-58



W-59



W-60

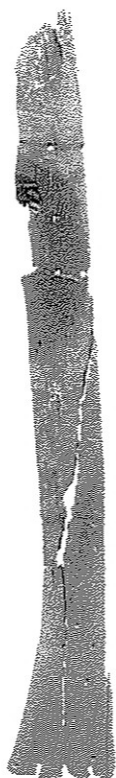


W-63

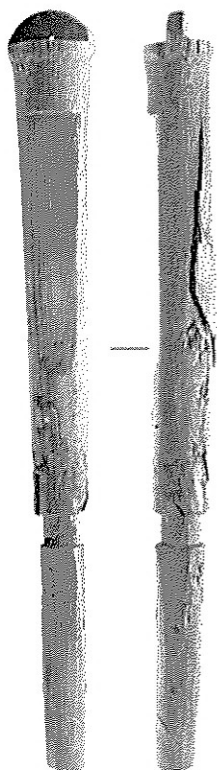


W-62

古墳時代初頭 W-57 えぶり、W-58 軸状木製品、W-59・60 桶、W-62 三脚盤、W-63 板状木製品



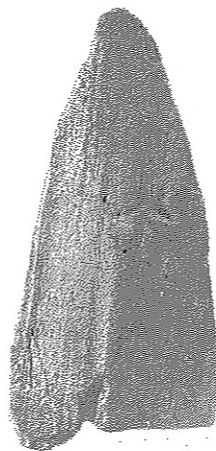
W-64



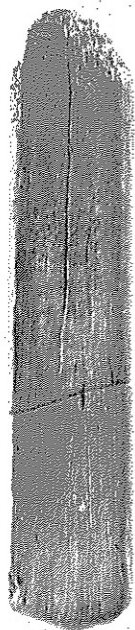
W-66



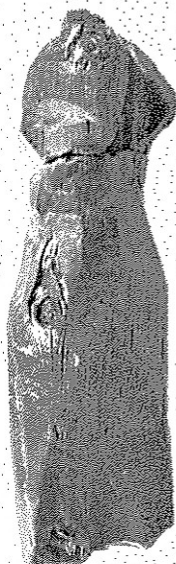
W-68



W-69



W-67

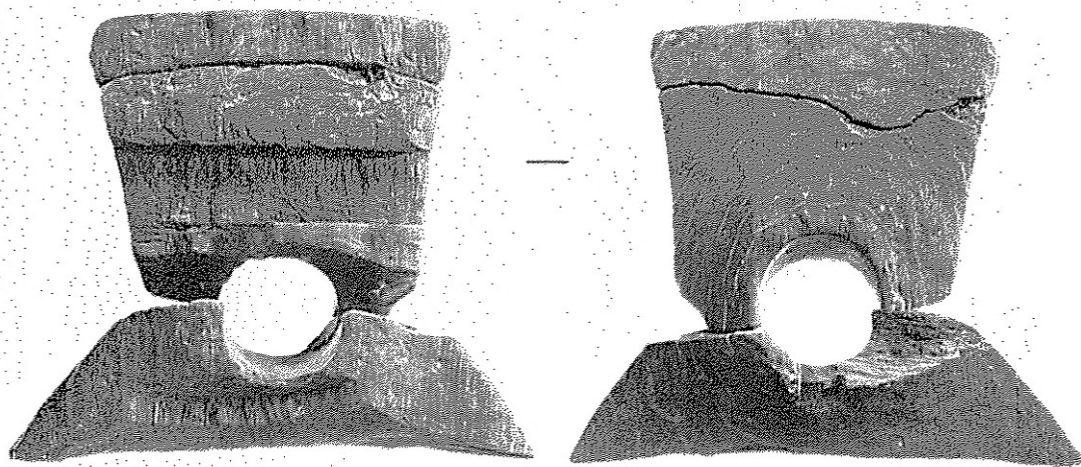


W-70

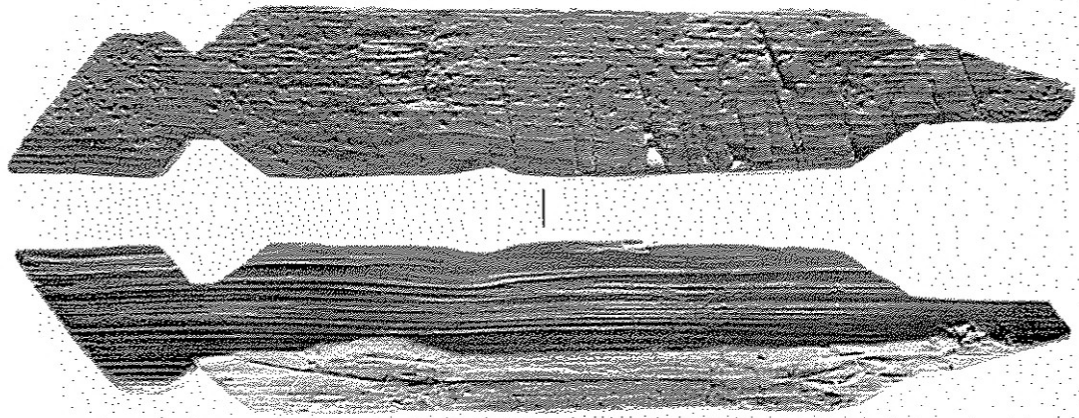
弥生時代中期 W-64 朱彩用途不明板状木製品、W-66・67 不明木製品、W-68 紡織具(ちきり)、W-69 木剣
弥生時代後期～古墳時代初頭 W-70 鳥形木製品



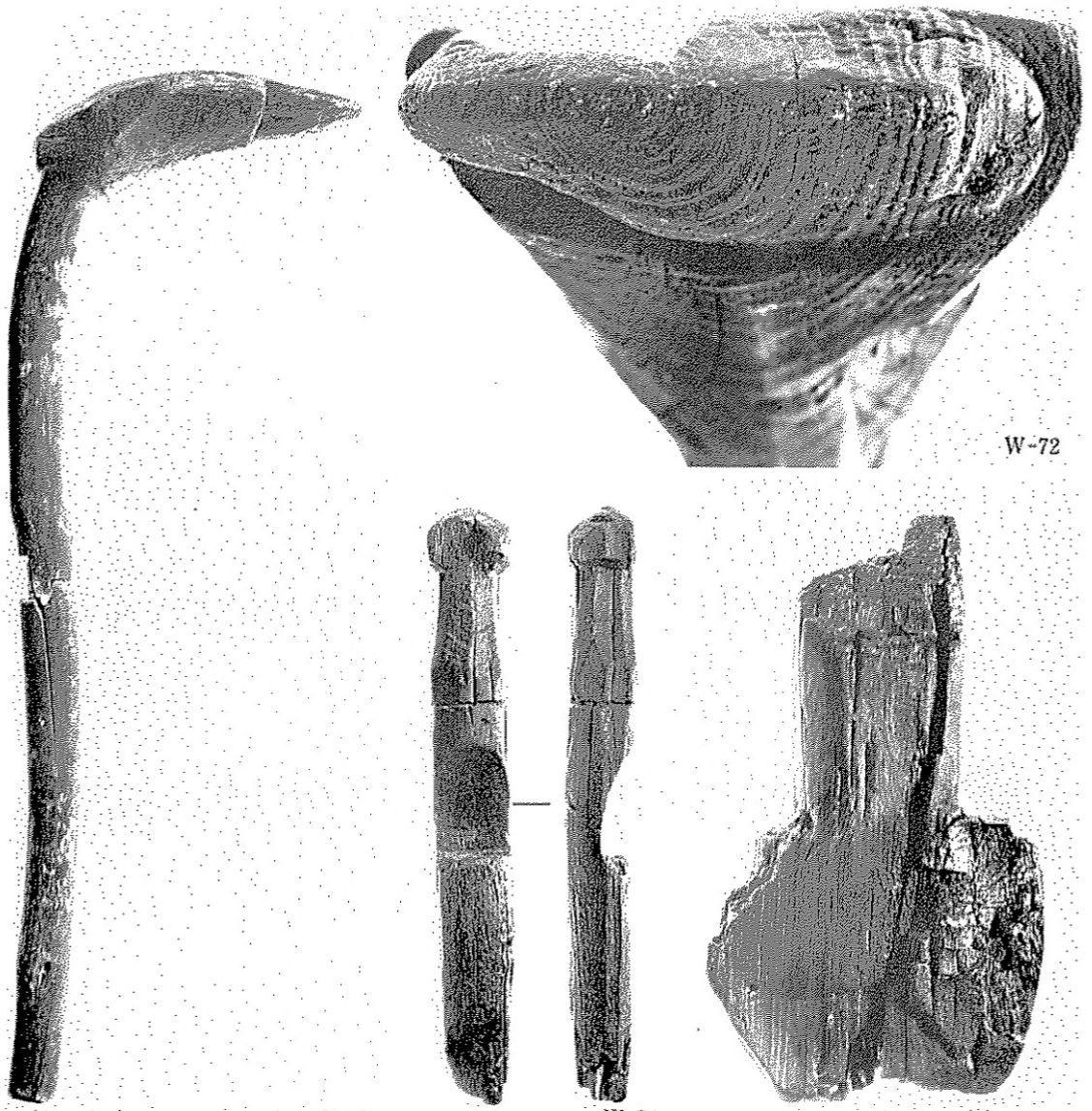
W-69



W-71



W-73



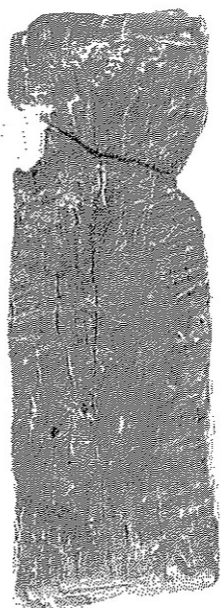
W-72

W-72

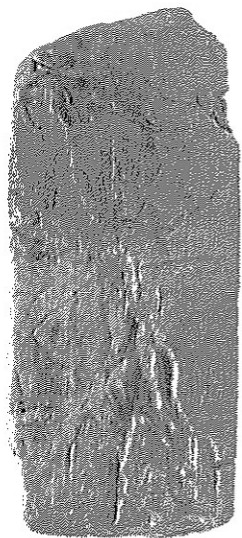
W-74

W-75

弥生時代後期 W-72 手斧の柄、W-73 鳥形木製品、W-74 不明木製品
古墳時代前半 W-75 不明木製品



W-80



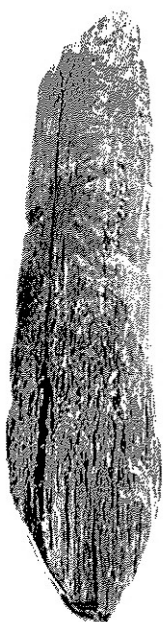
W-81



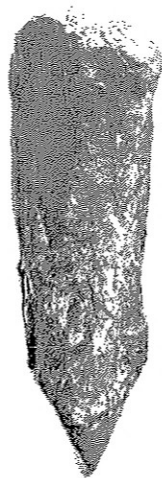
W-82



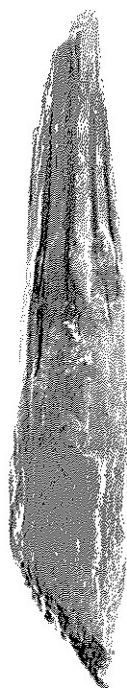
W-83



W-84



W-85



W-86

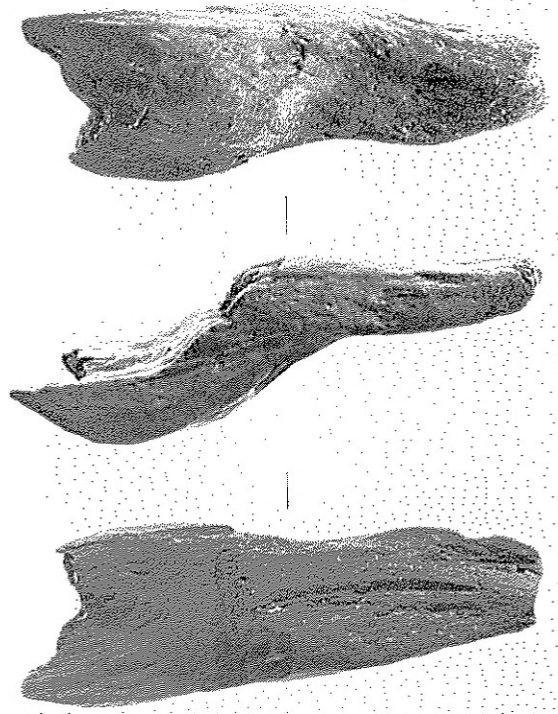


W-87

弥生時代中期 W-82 礎板、W-80・81 不明木製品、W-83~87 柱根



W-79



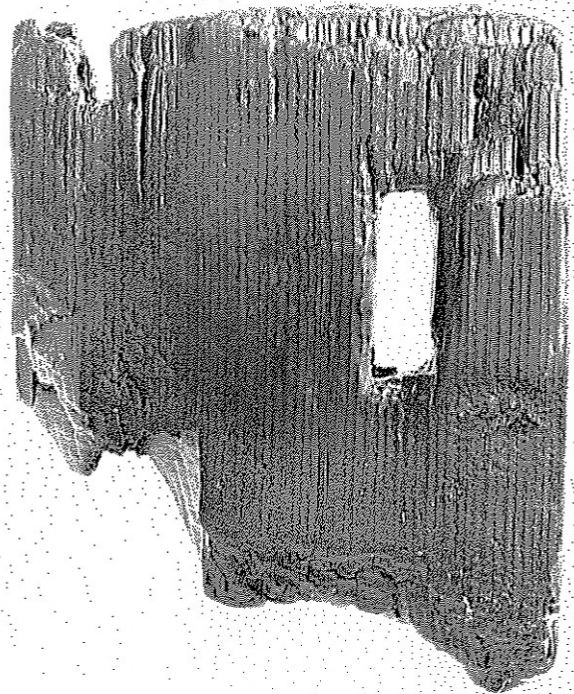
W-77



W-89

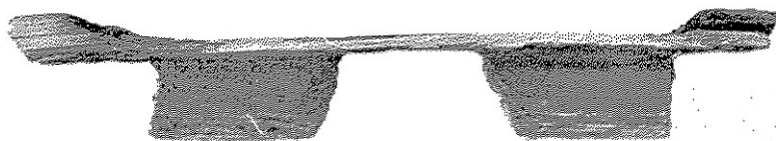
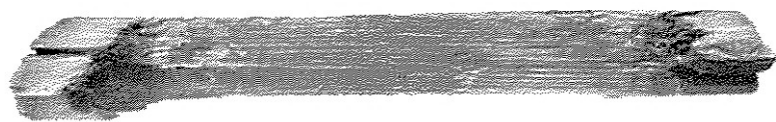


W-90

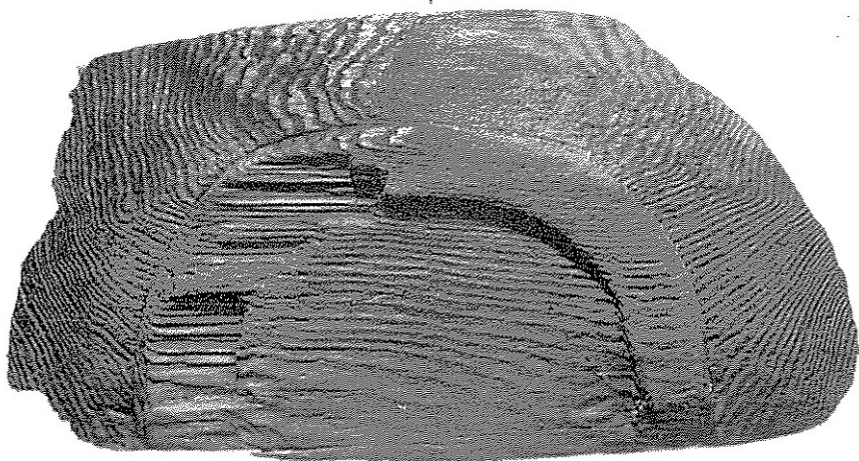
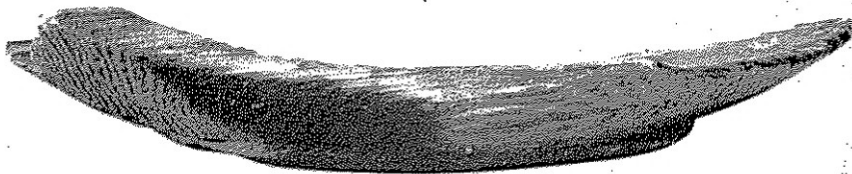
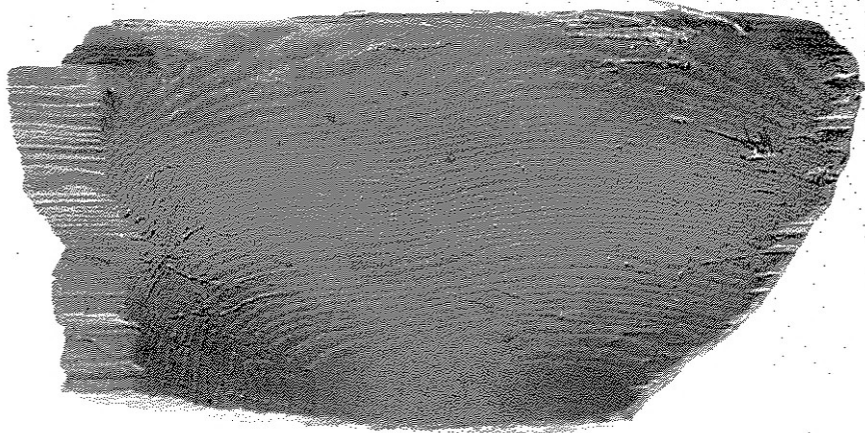


W-78

弥生時代前期 W-90 不明木製品 弥生時代中期 W-89 鋤先
弥生時代後期 W-77 匙、W-79 広楯、W-78 不明木製品



W-88



W-76

