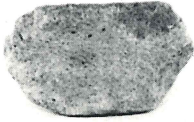


12-4



12-12



12-8



12-13



12-9



12-18

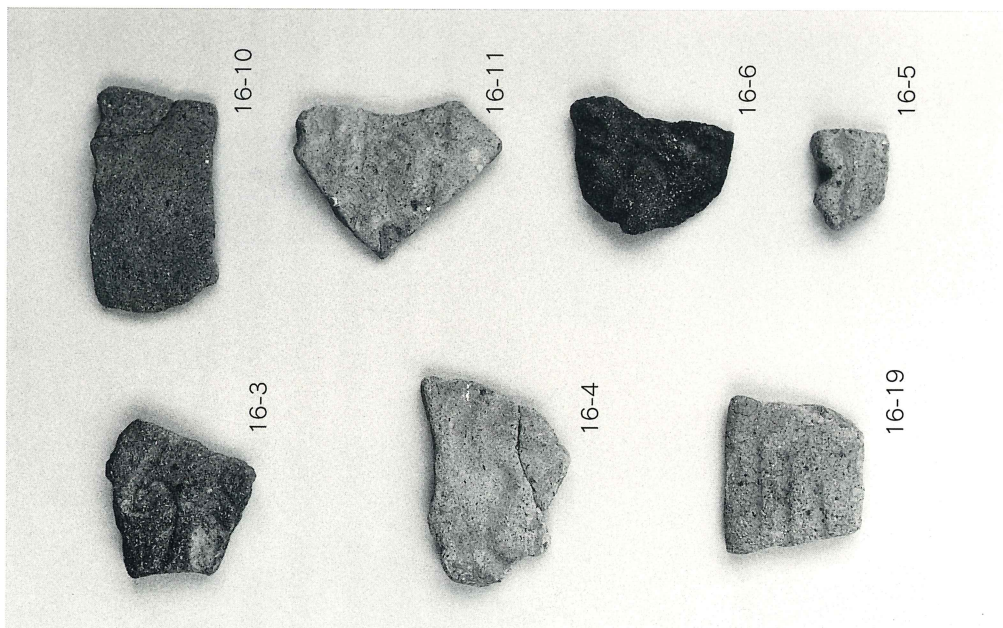
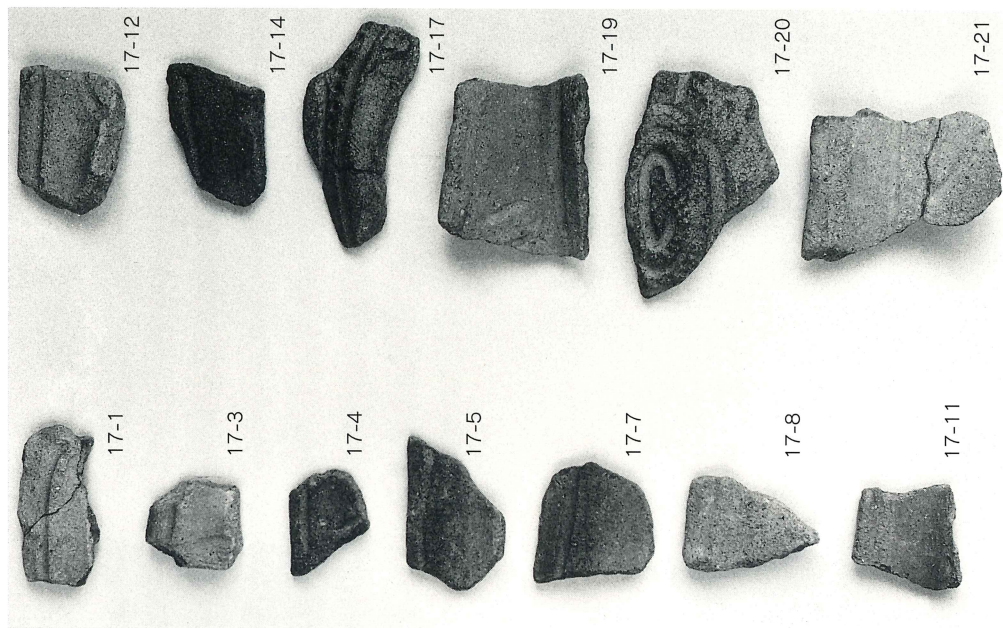


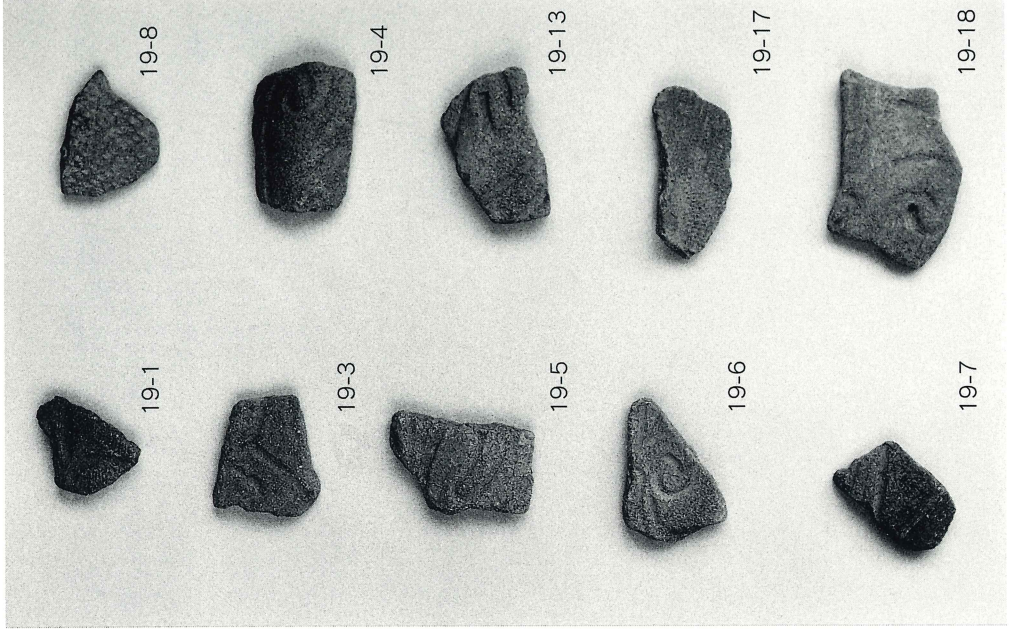
12-11



12-21

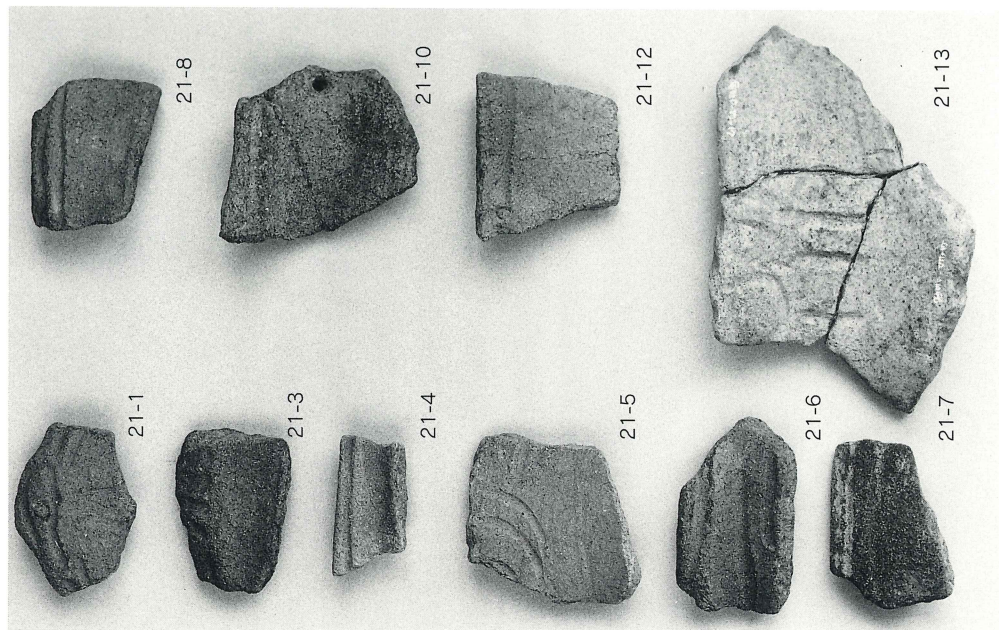
图版三四 尾畑遺跡南Ⅱ区出土遺物(1)

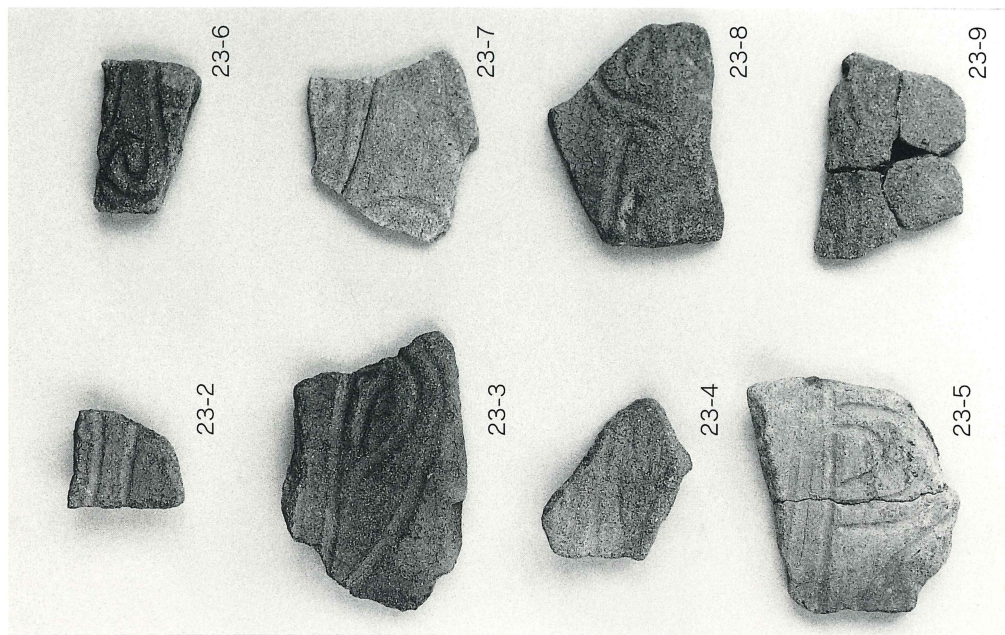
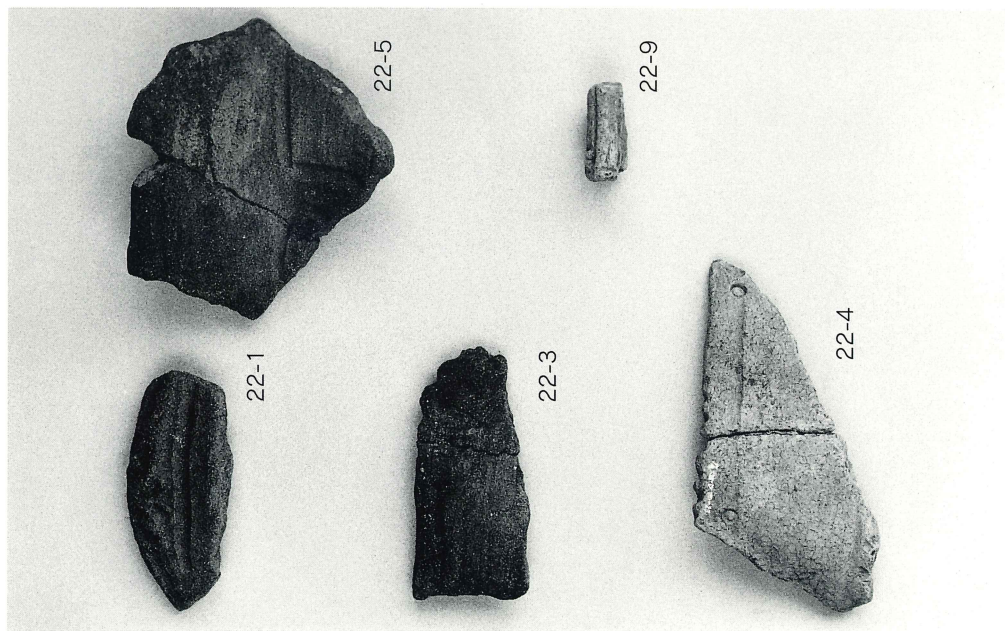




図版三五 尾畑遺跡南Ⅰ区出土遺物(2)

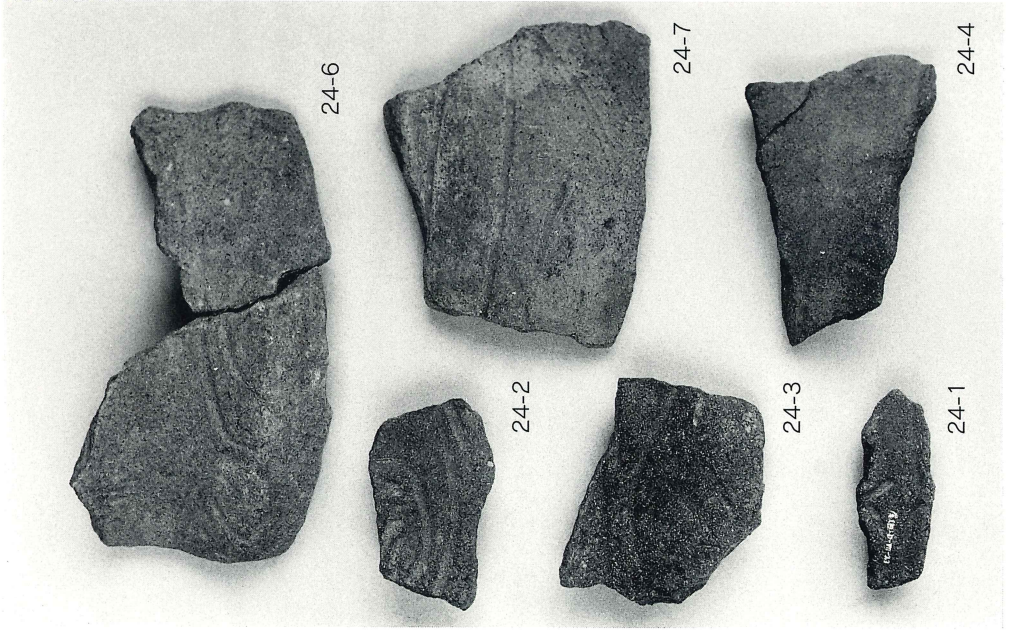
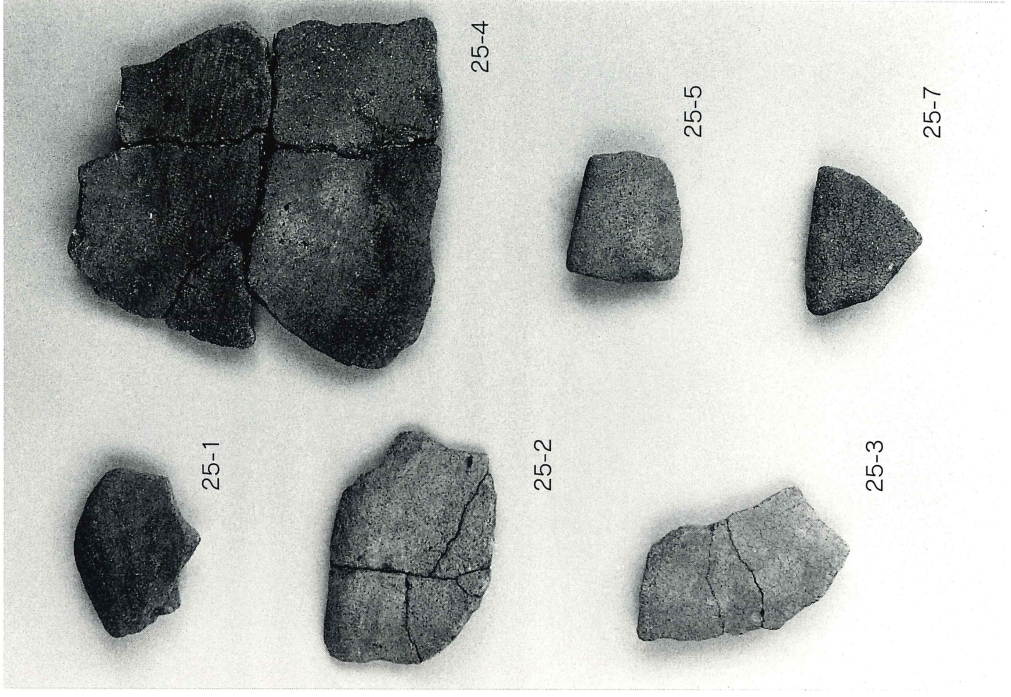
図版三六 尾畑遺跡南Ⅰ区出土遺物(3)

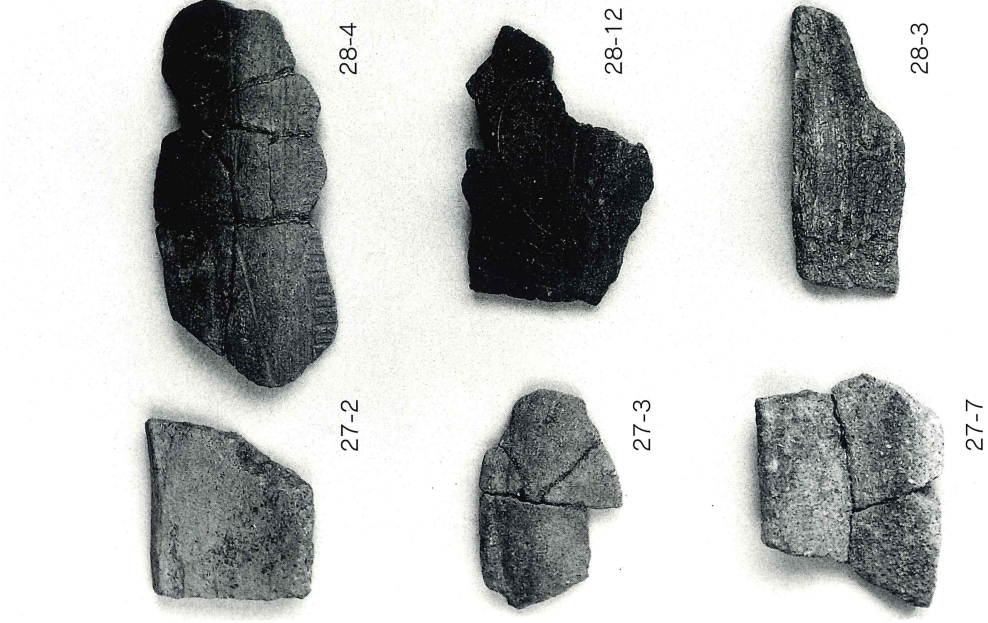
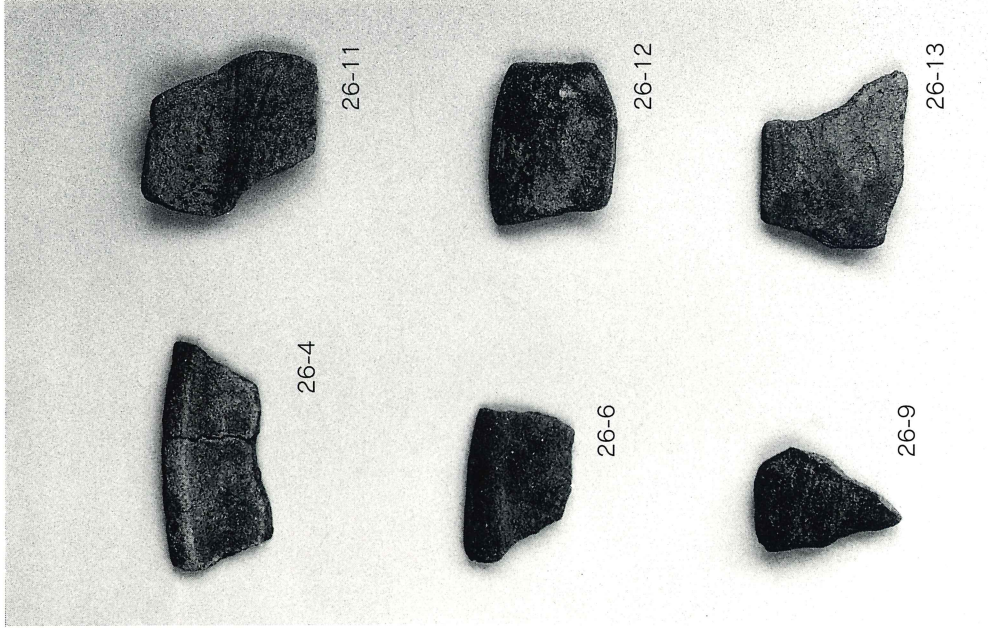




图版三七 尾畑遺跡南Ⅰ区出土遺物(4)

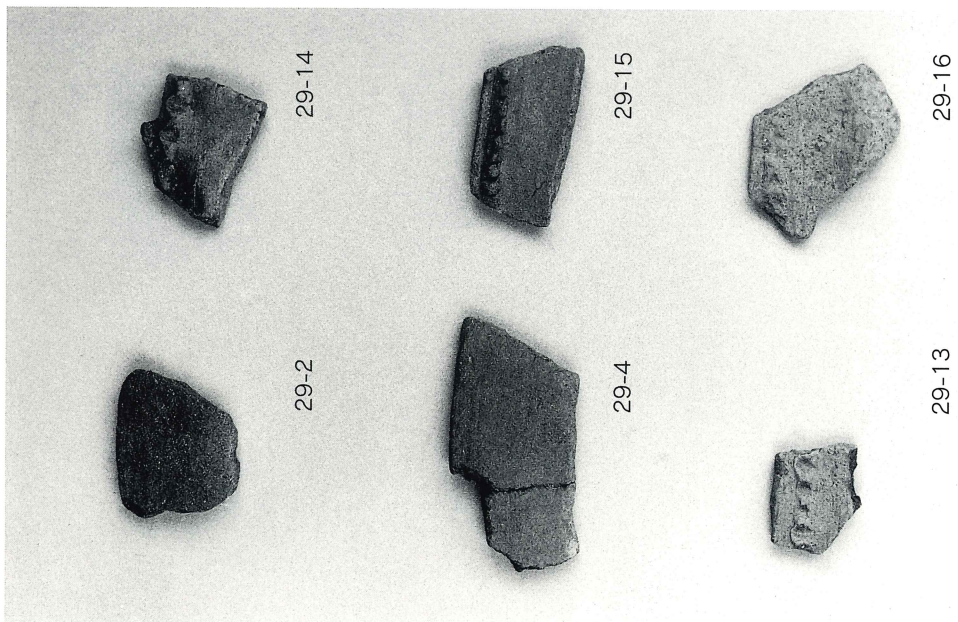
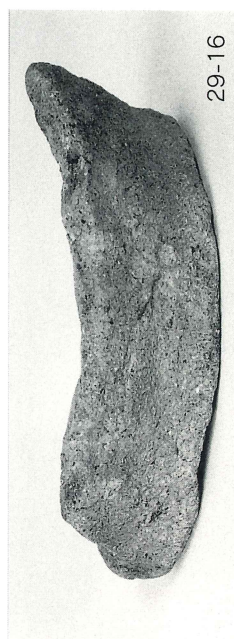
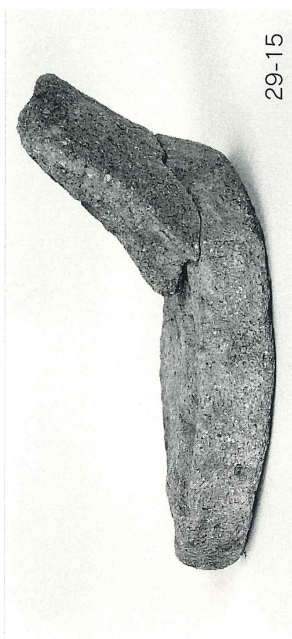
図版三八 尾畑遺跡南Ⅰ区出土遺物(5)

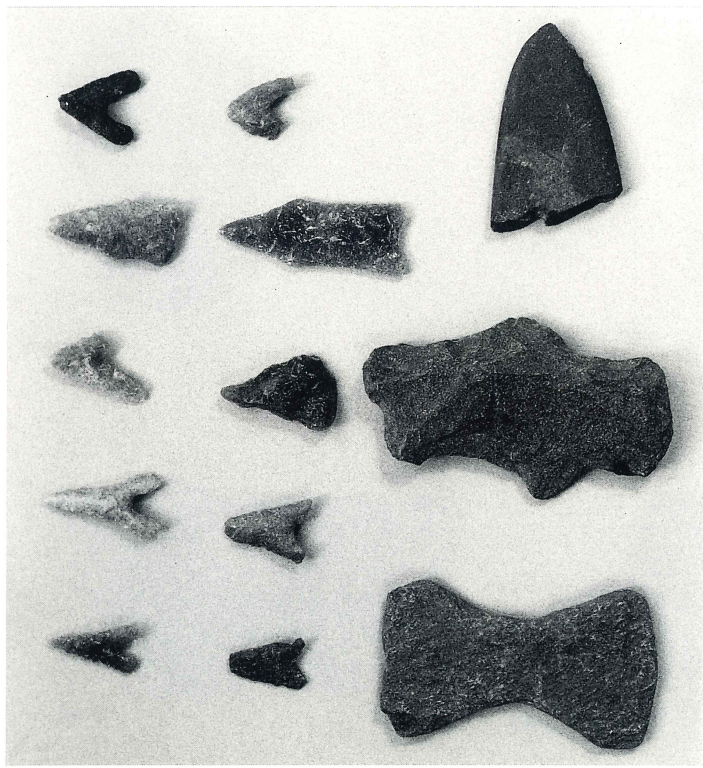




図版三九 尾畑遺跡南Ⅰ区出土遺物(6)

図版四〇 尾畑遺跡南Ⅰ区出土遺物(7)

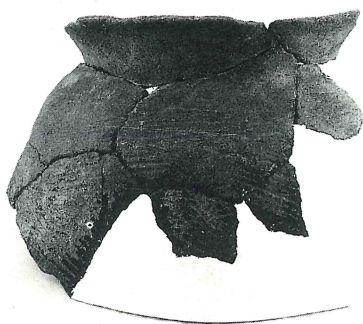




石鏃・石斧・石包丁



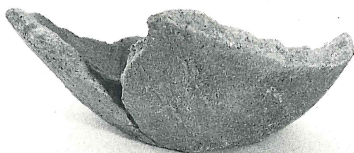
39-1



39-12



39-8



39-13



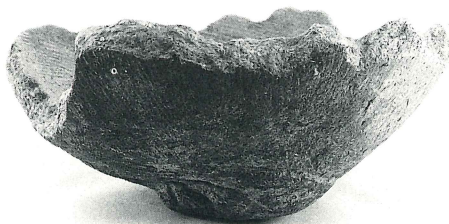
39-9



39-14



39-11



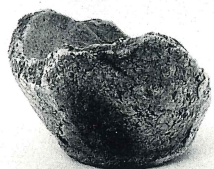
39-15



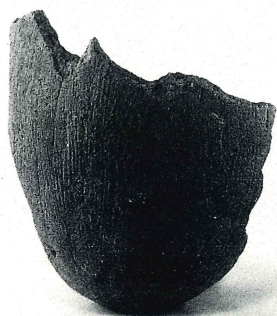
43-1



43-6



43-2



43-4



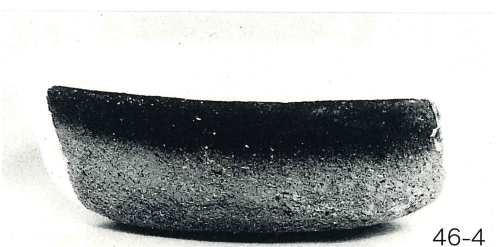
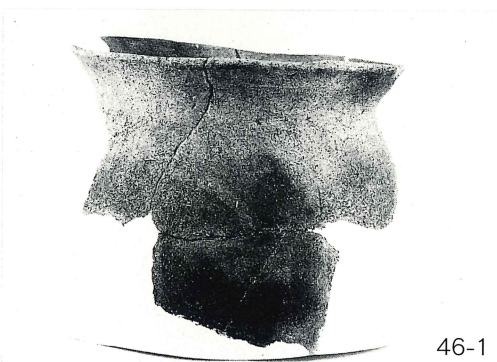
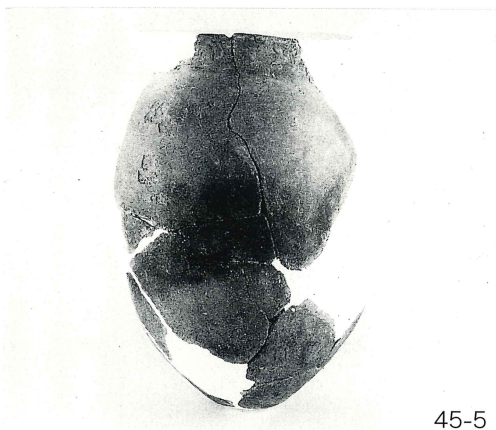
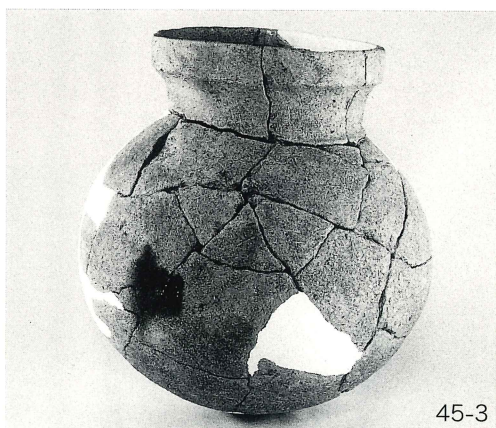
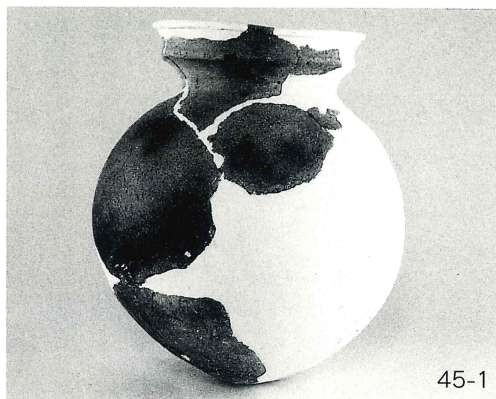
43-7

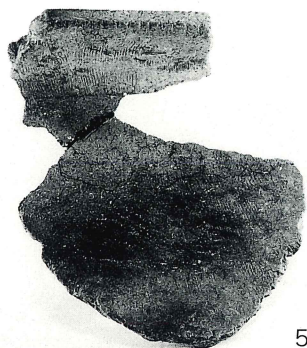


43-5

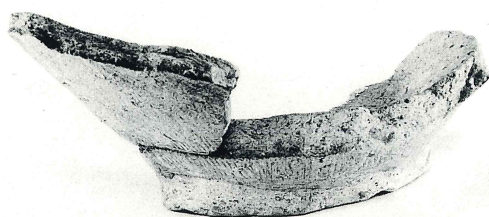


43-8

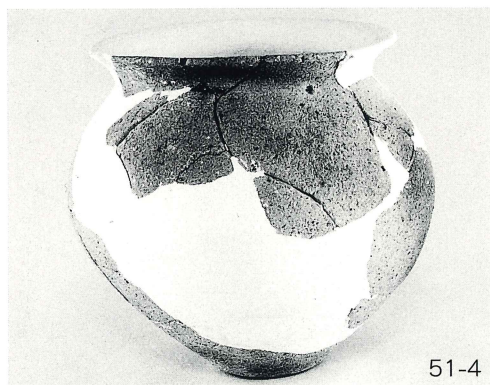




51-1



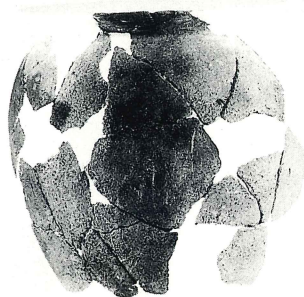
51-3



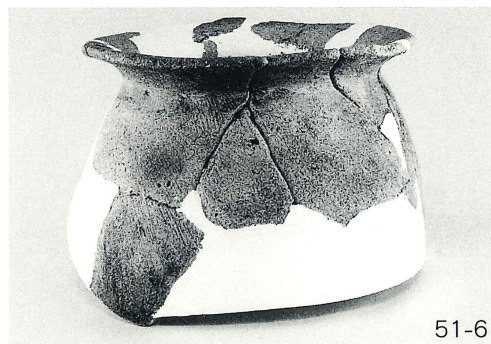
51-4



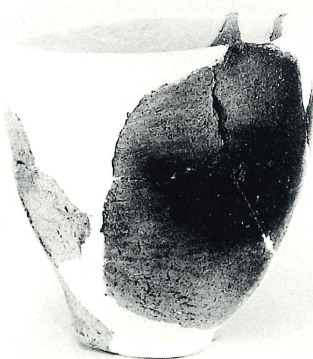
51-5



52-1



51-6



52-4



52-5



63-3



63-14



63-8



63-16



63-10



63-17



63-11



63-20



63-12



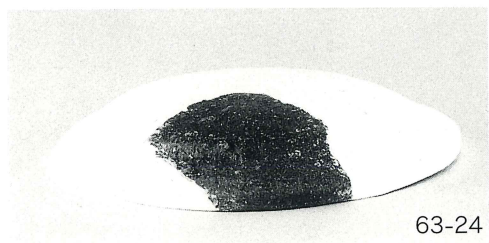
63-22



63-13



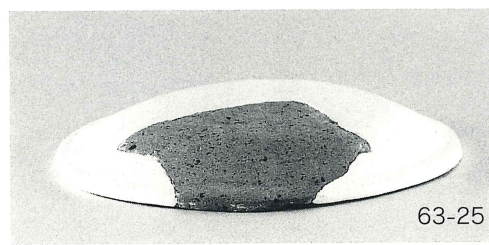
63-23



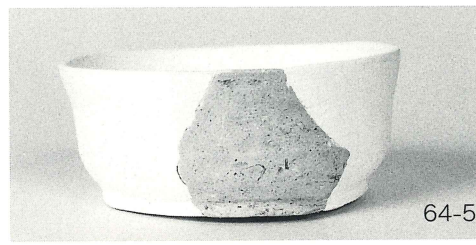
63-24



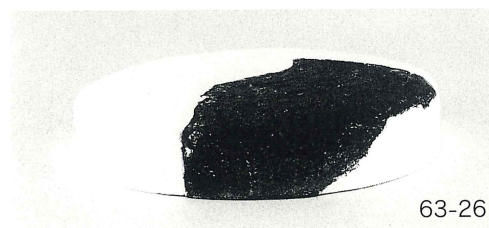
64-4



63-25



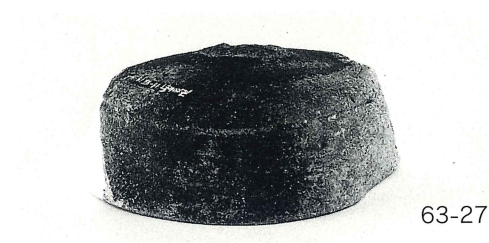
64-5



63-26



64-6



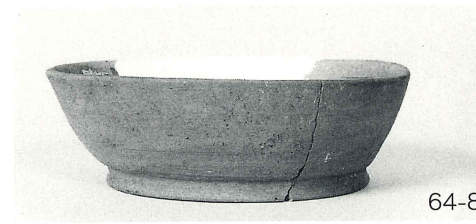
63-27



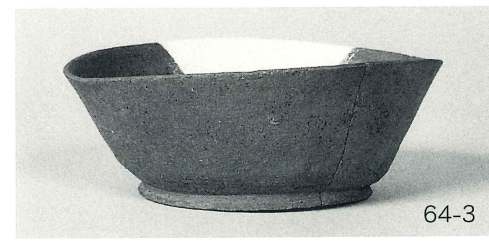
64-7



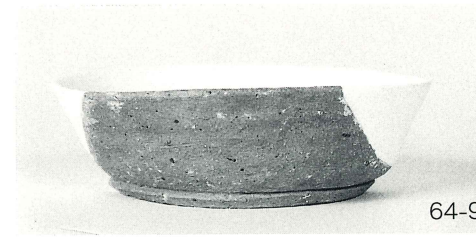
64-2



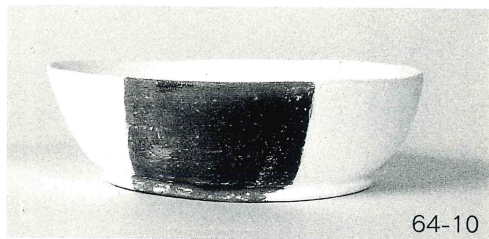
64-8



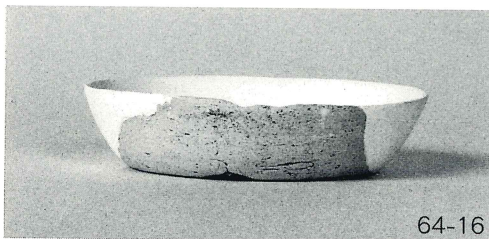
64-3



64-9



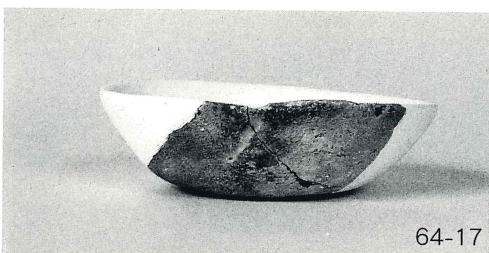
64-10



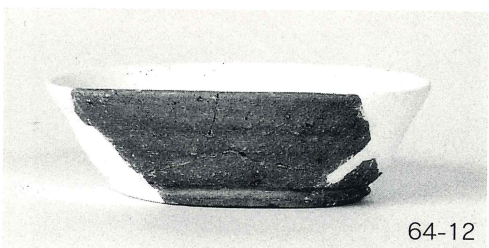
64-16



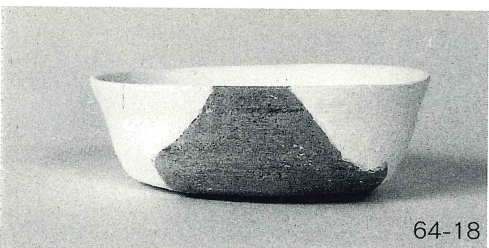
64-11



64-17



64-12



64-18



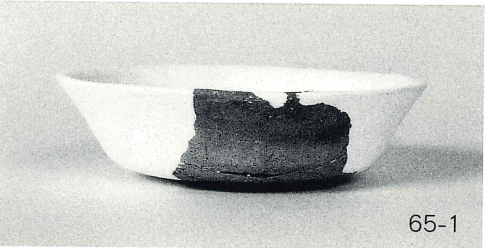
64-13



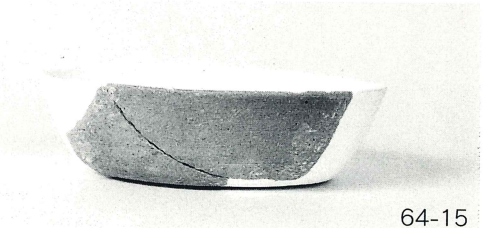
64-20



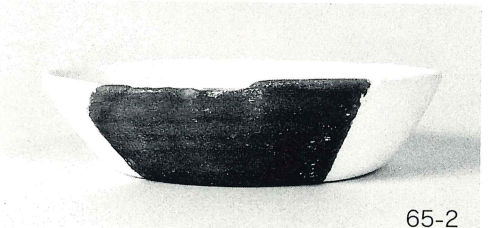
64-14



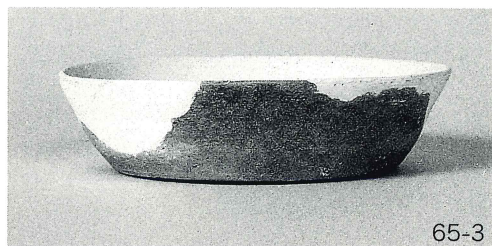
65-1



64-15



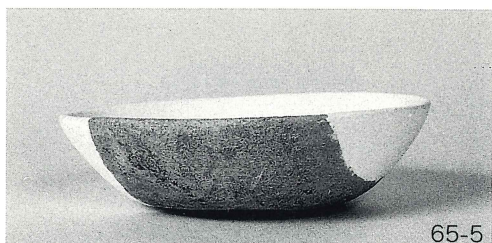
65-2



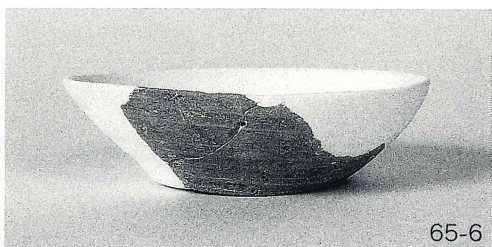
65-3



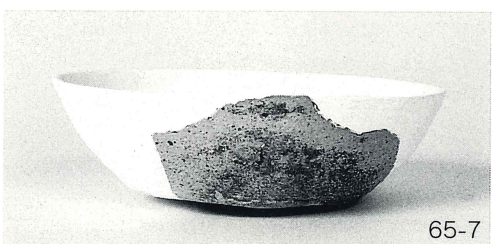
65-4



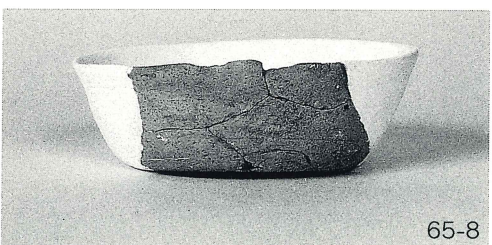
65-5



65-6



65-7



65-8



65-9



65-10



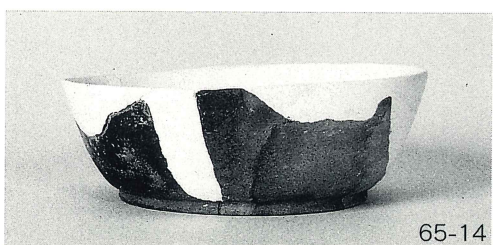
65-11



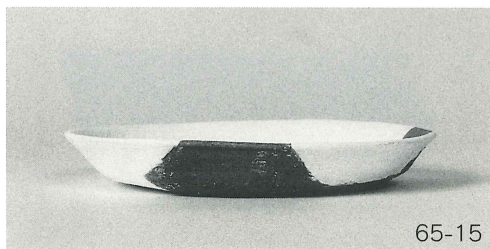
65-12



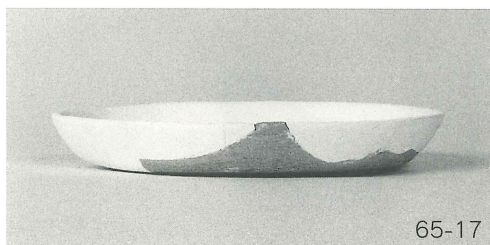
65-13



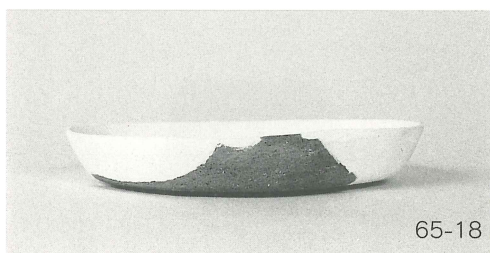
65-14



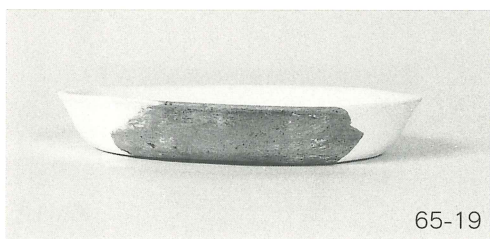
65-15



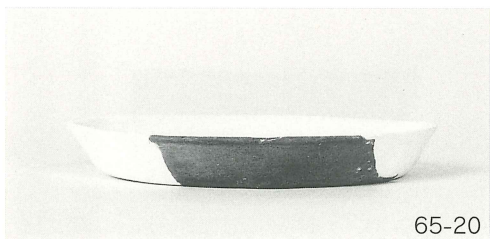
65-17



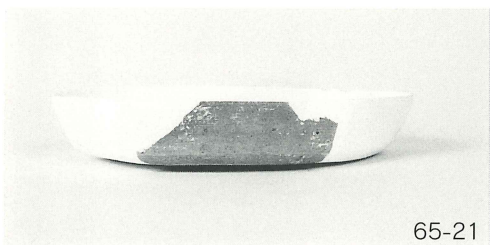
65-18



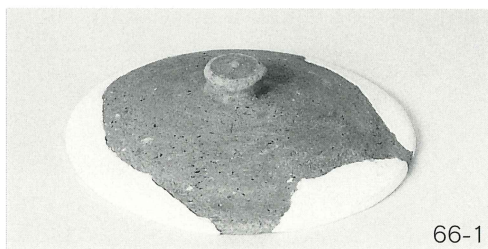
65-19



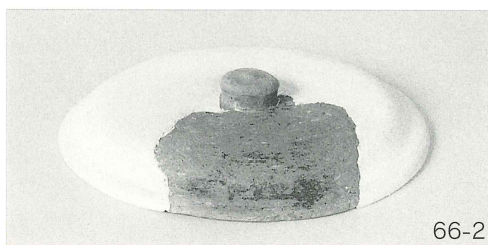
65-20



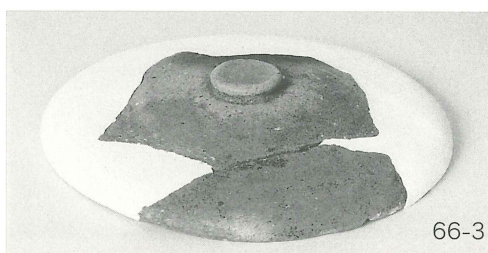
65-21



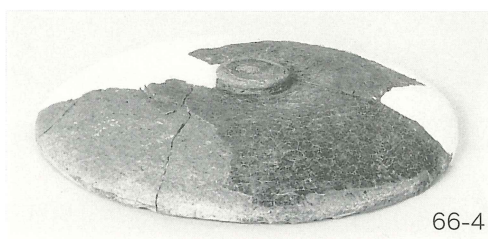
66-1



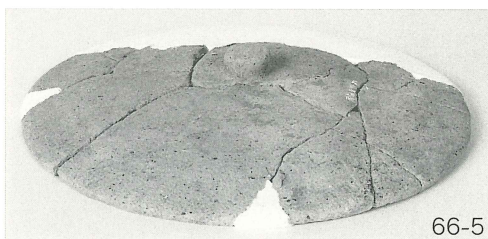
66-2



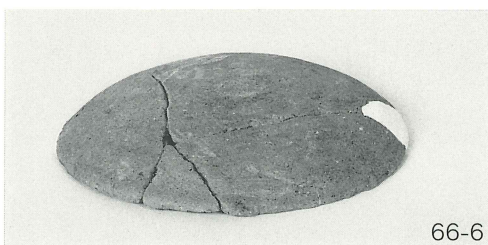
66-3



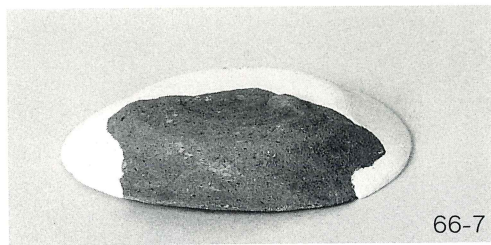
66-4



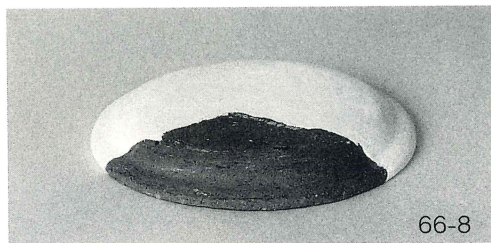
66-5



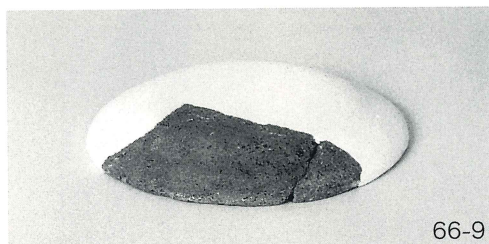
66-6



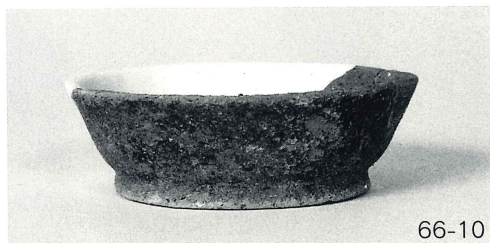
66-7



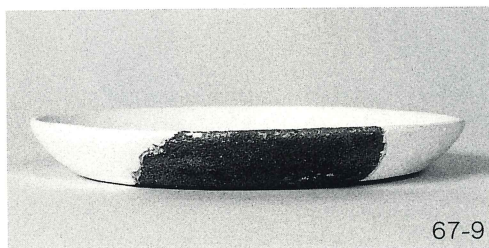
66-8



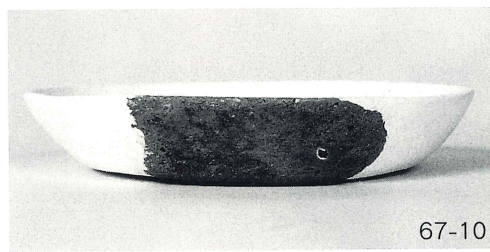
66-9



66-10

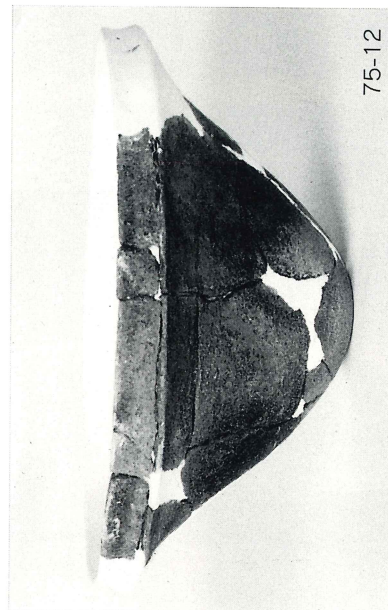
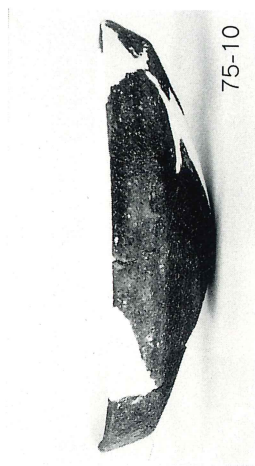
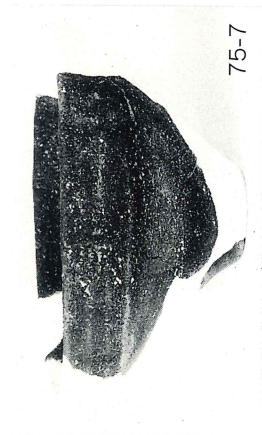
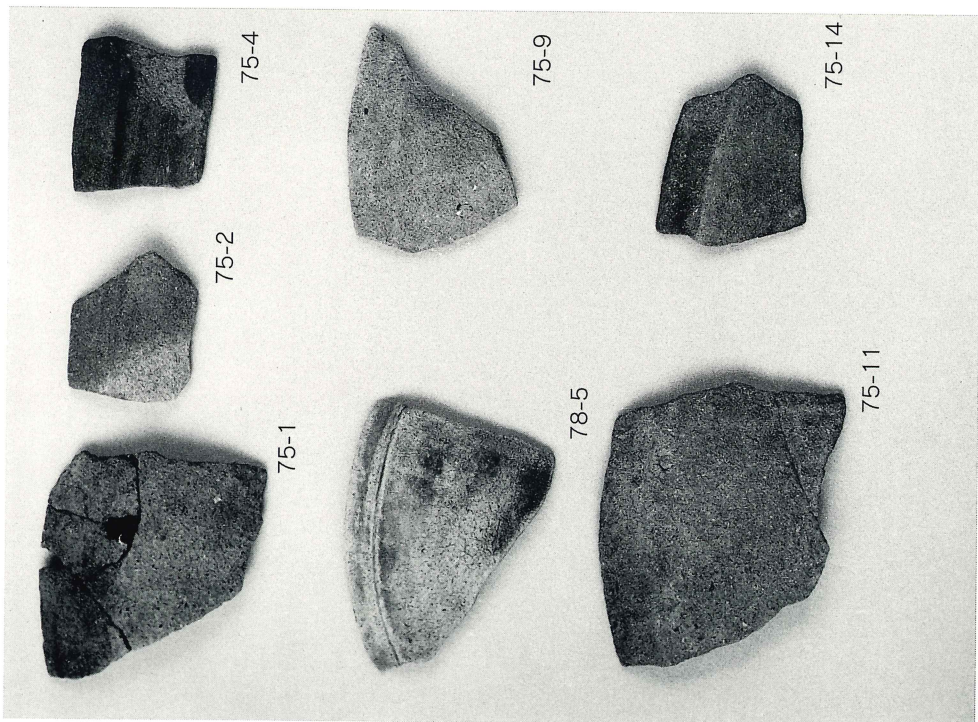


67-9

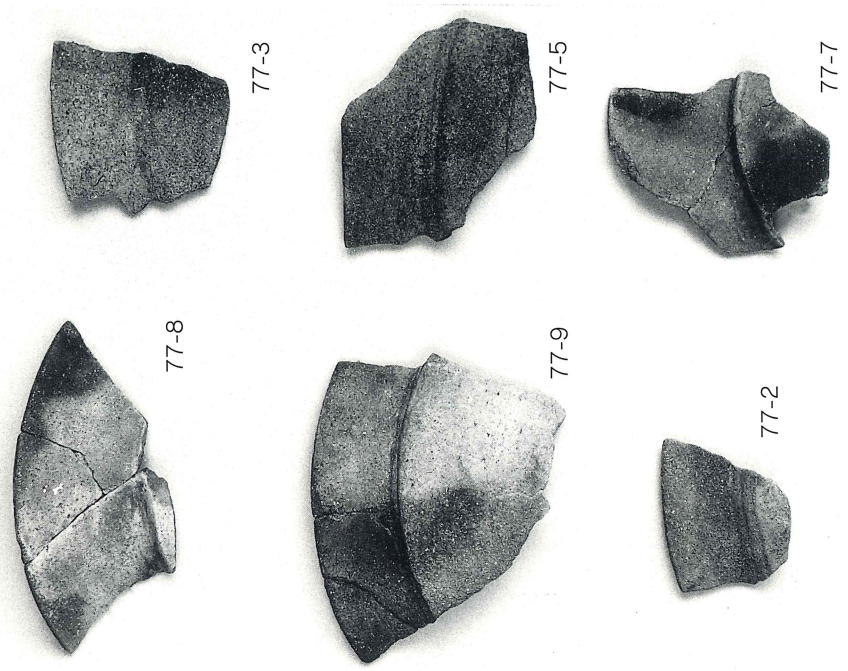
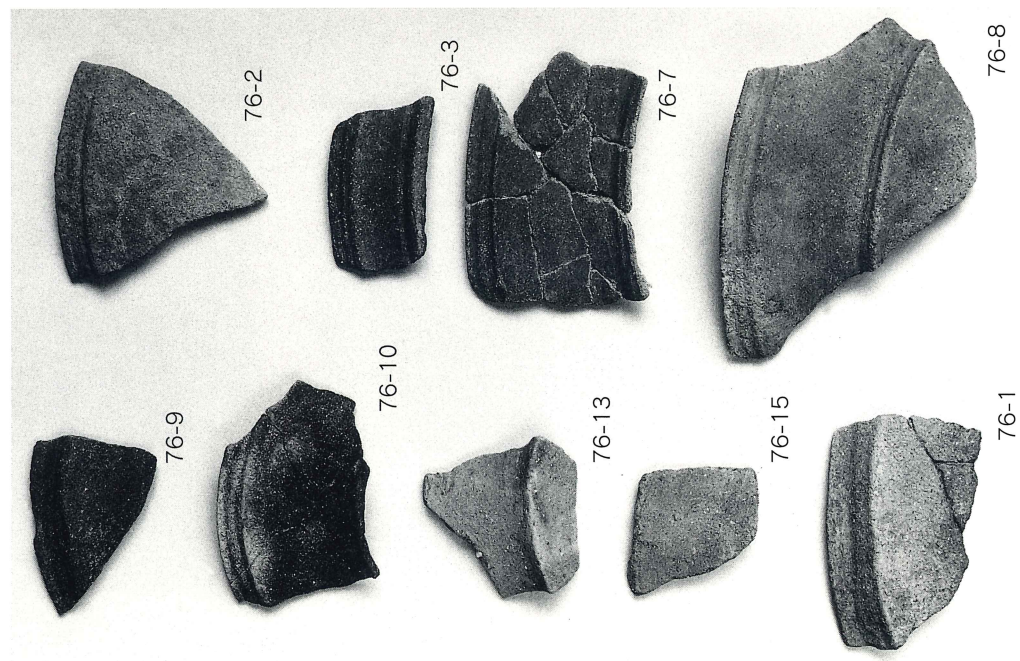


67-10

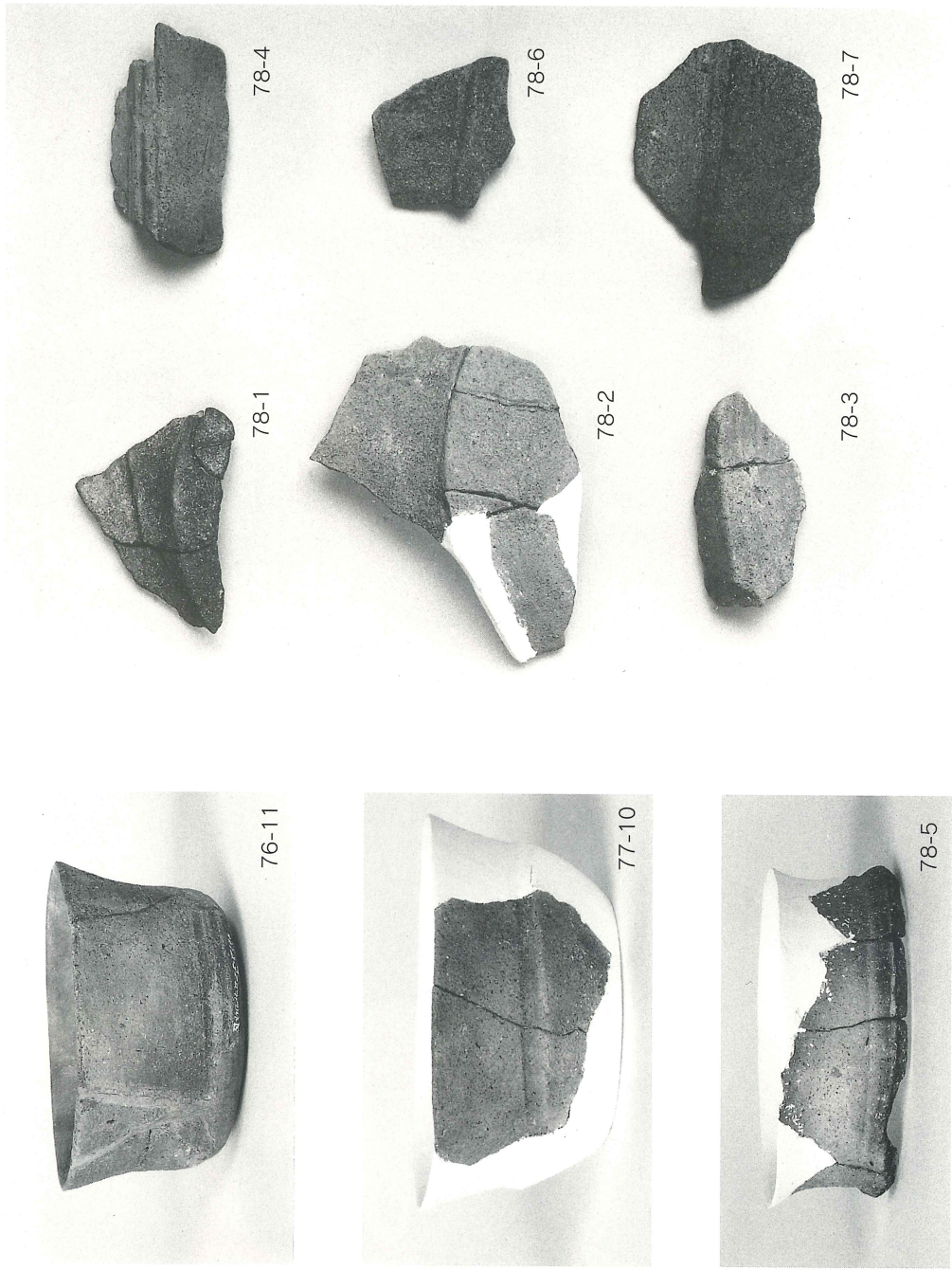
图版五二 尾畑遺跡北Ⅱ区出土遺物(1)

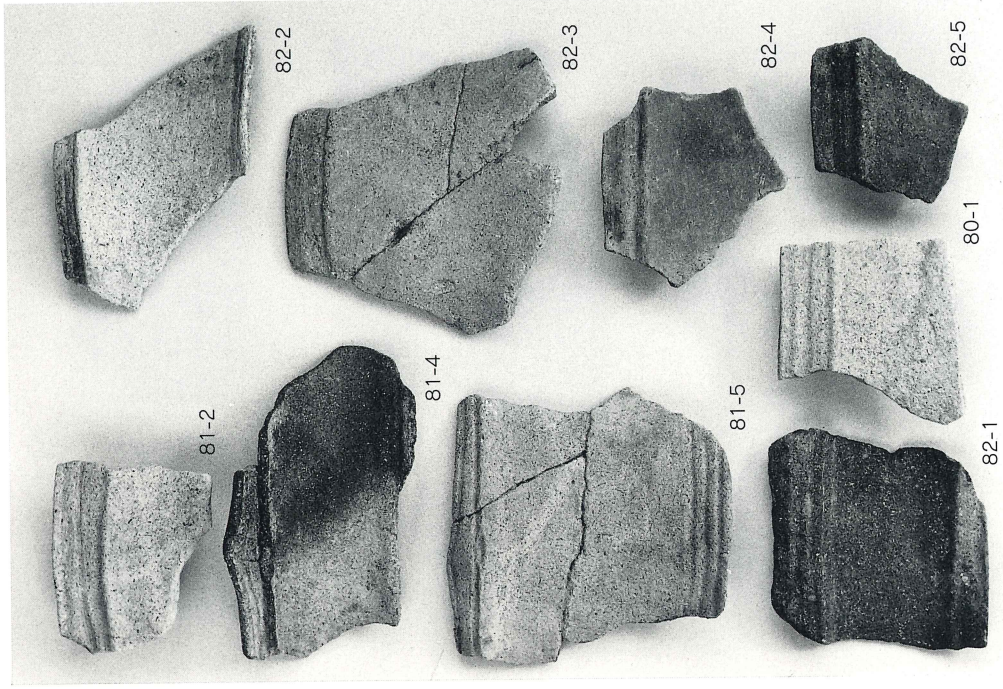
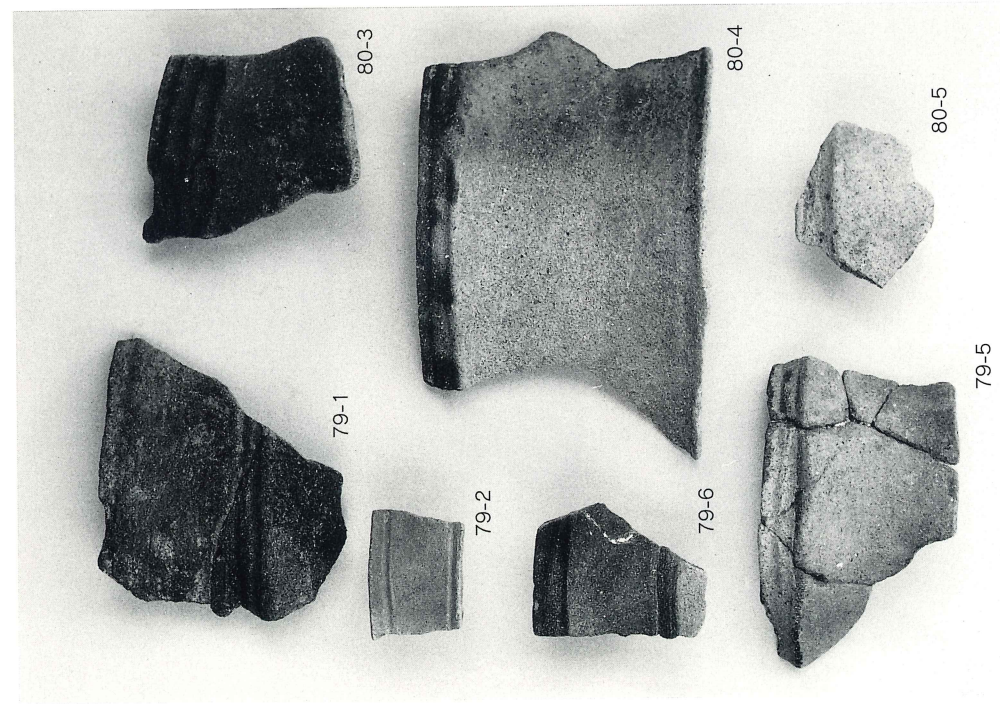


図版五三 尾畑遺跡北Ⅱ区出土遺物(2)



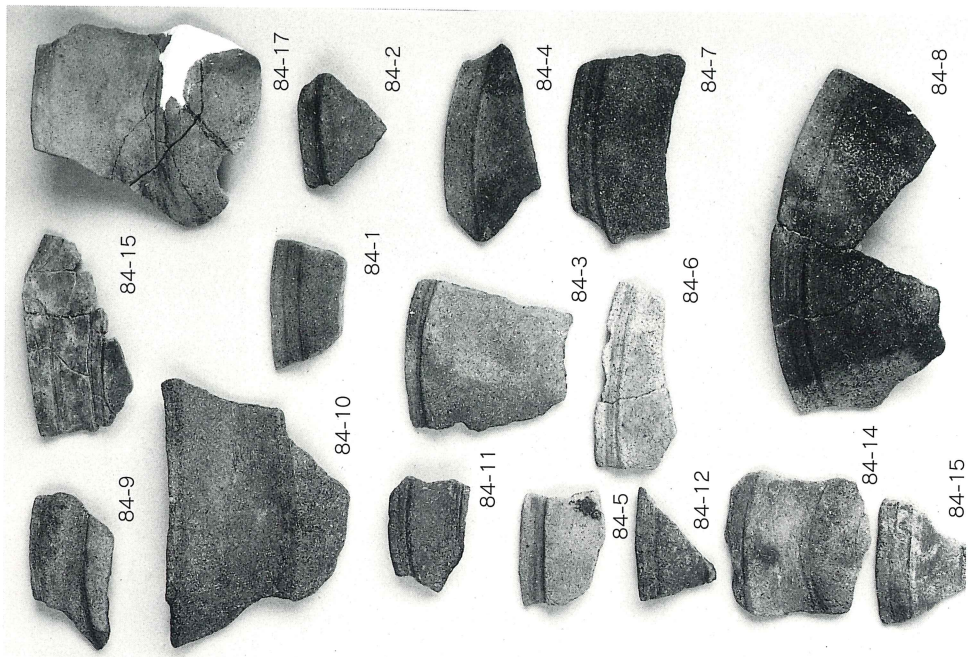
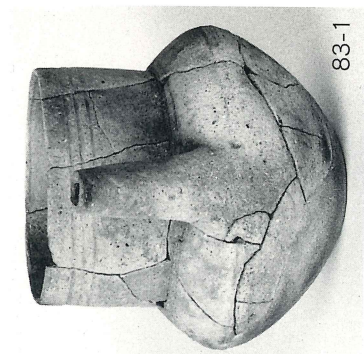
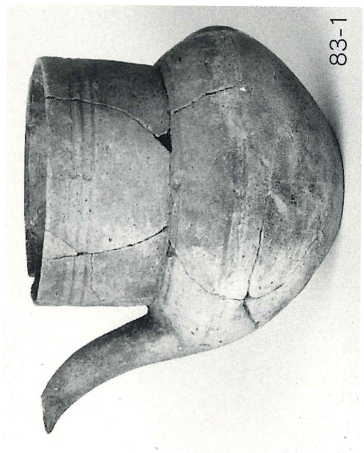
図版五四 尾畑遺跡北II区出土遺物(3)

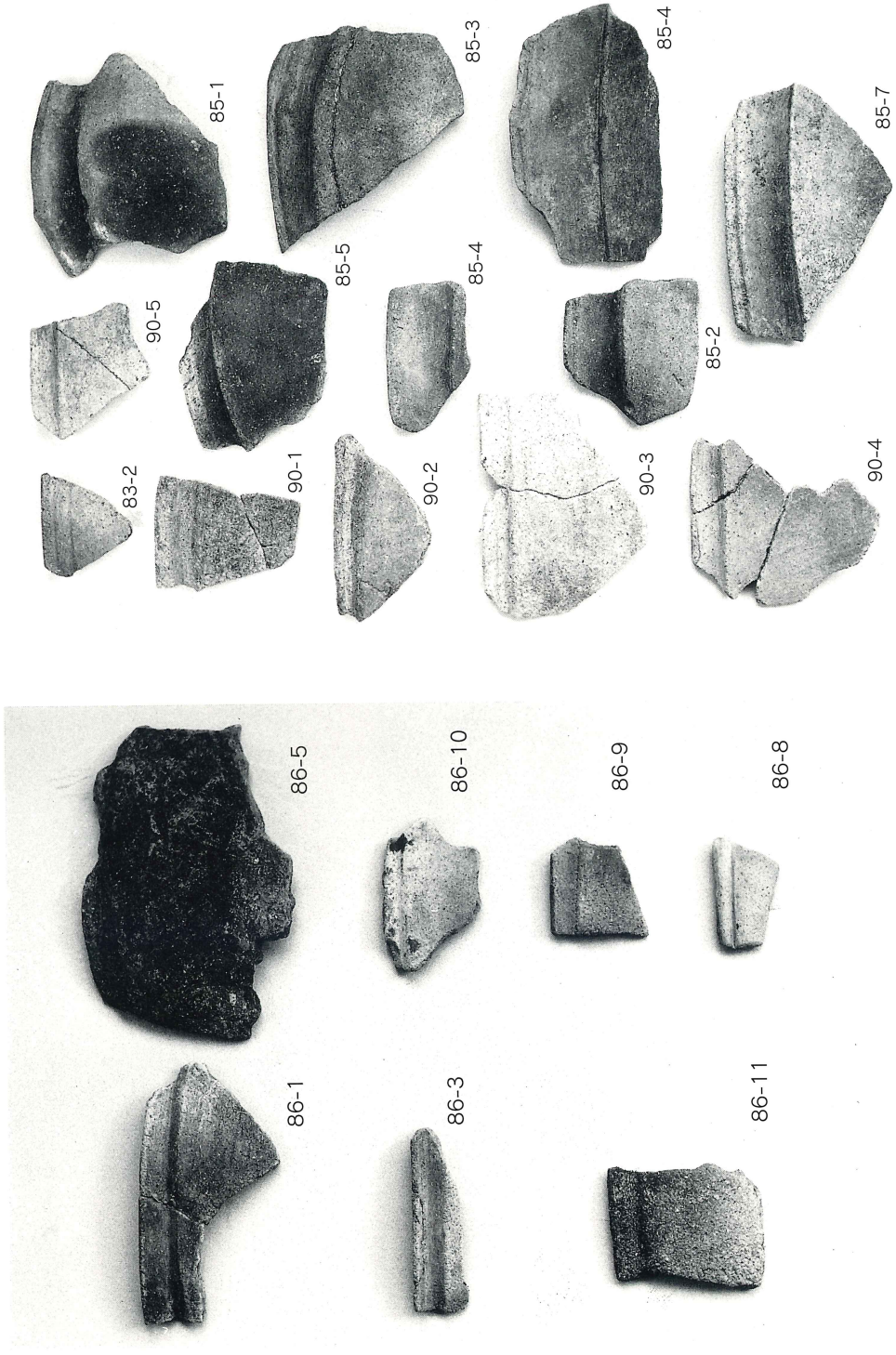


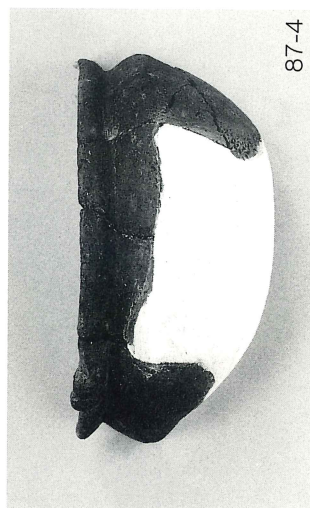
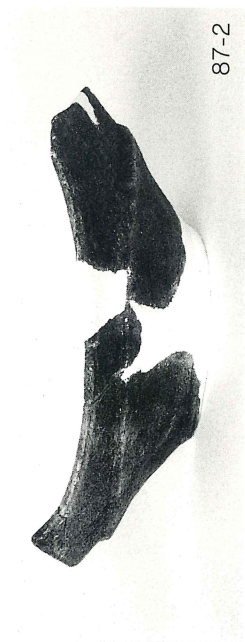


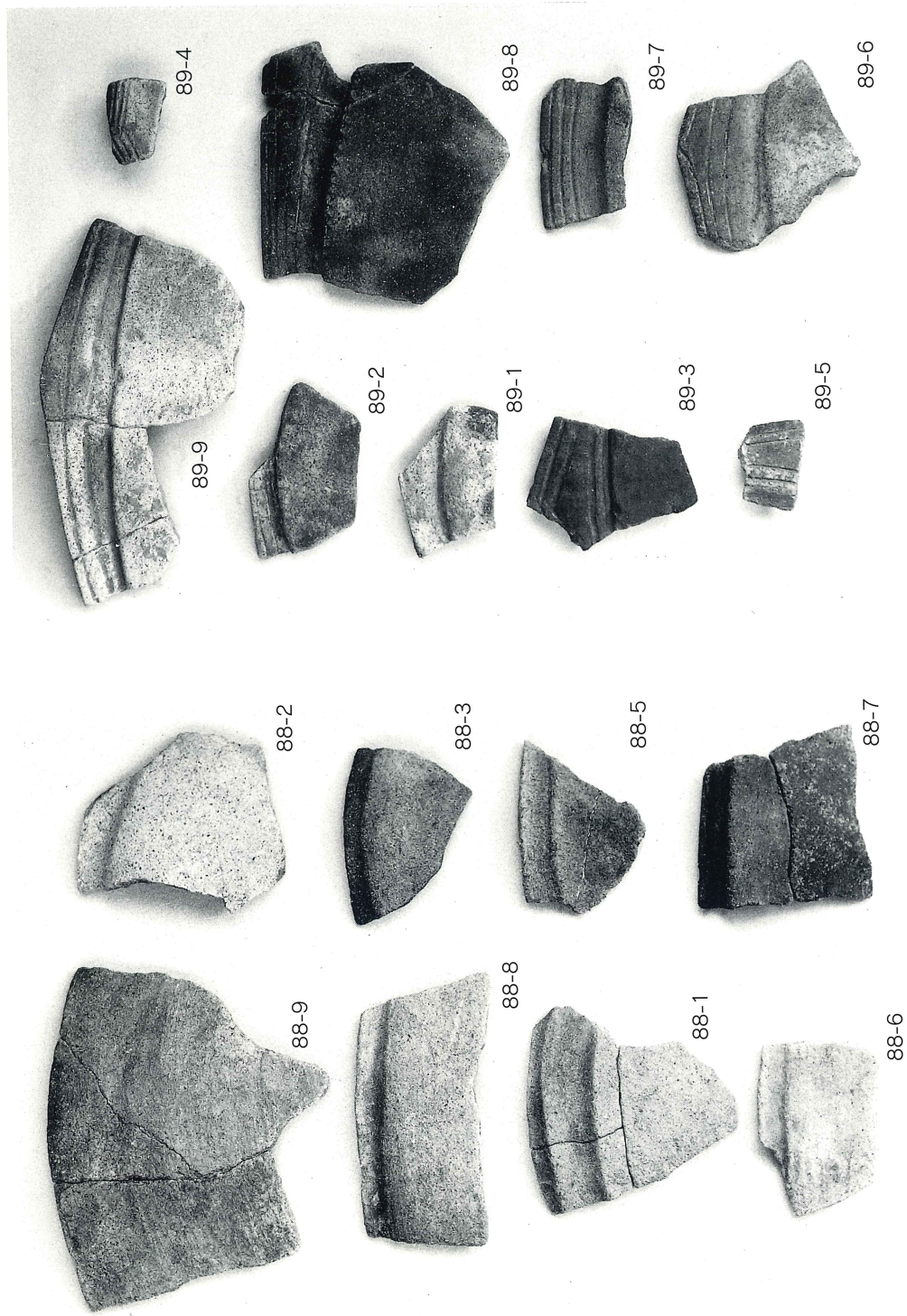
图版五五 尾畑遺跡北Ⅱ区出土遺物(4)

图版五六 尾畑遗迹北II区出土遗物(5)

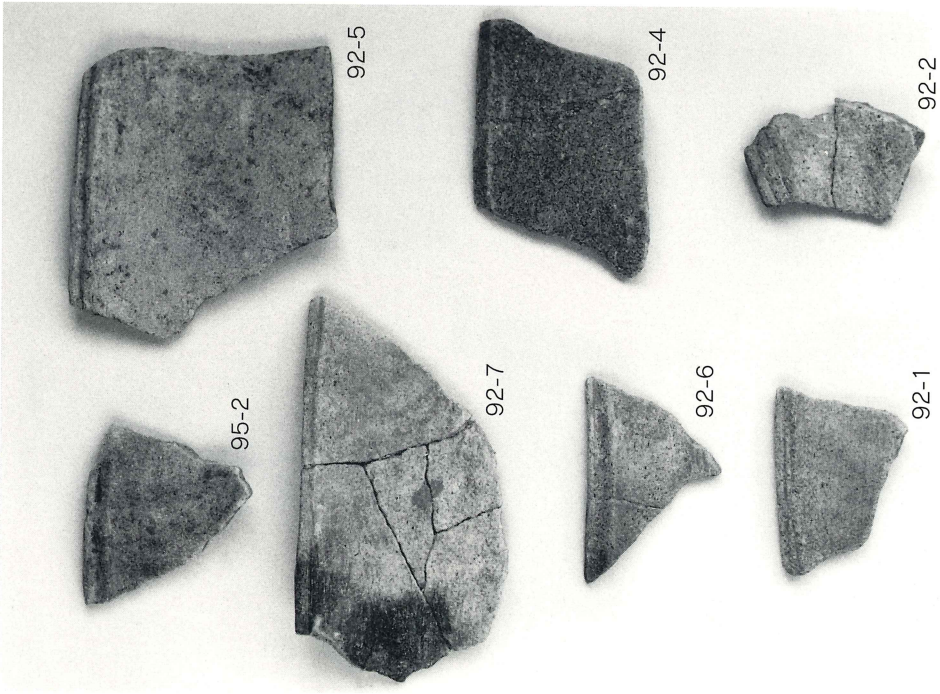
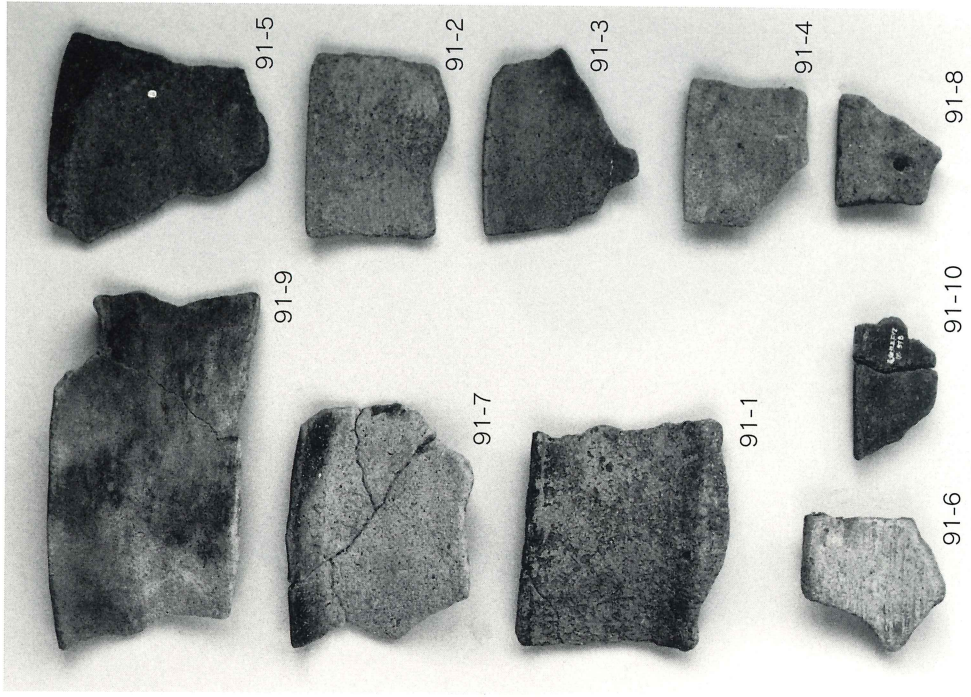




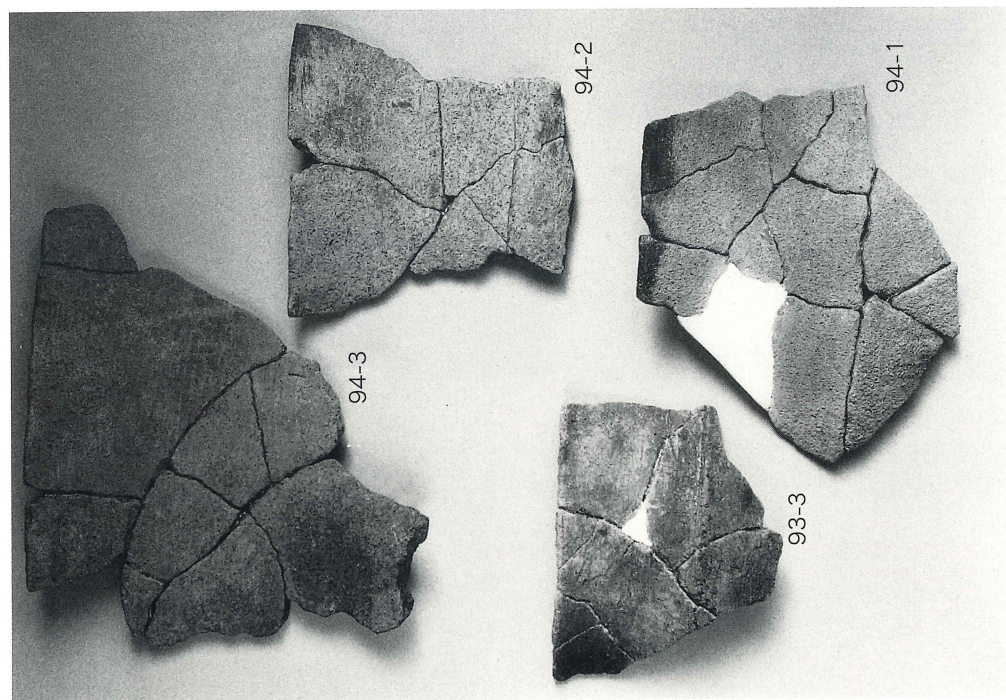
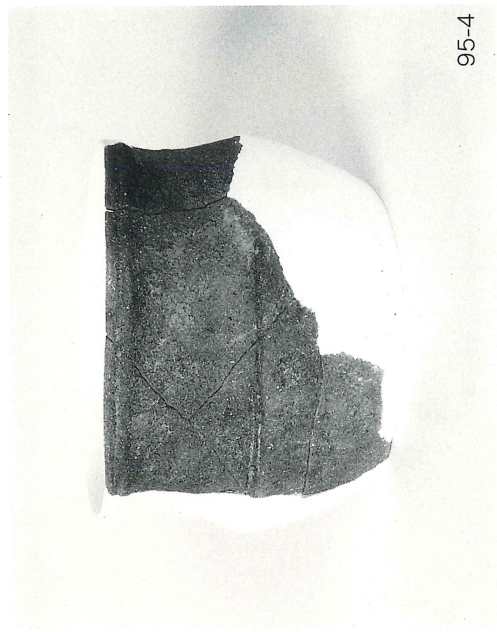




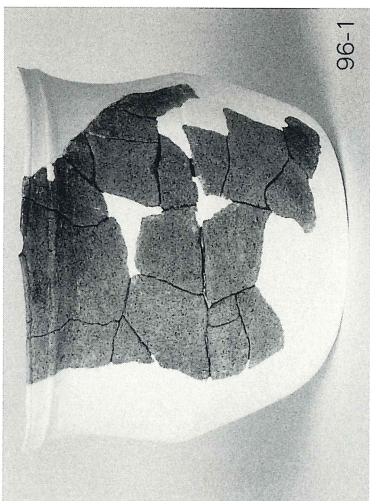
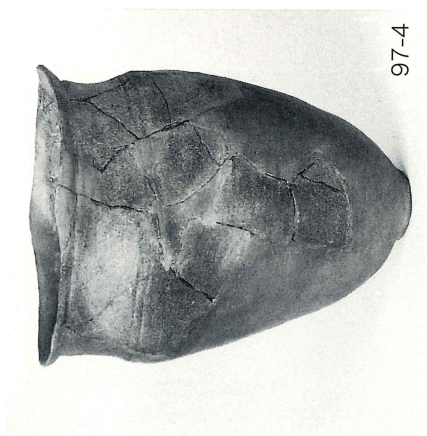
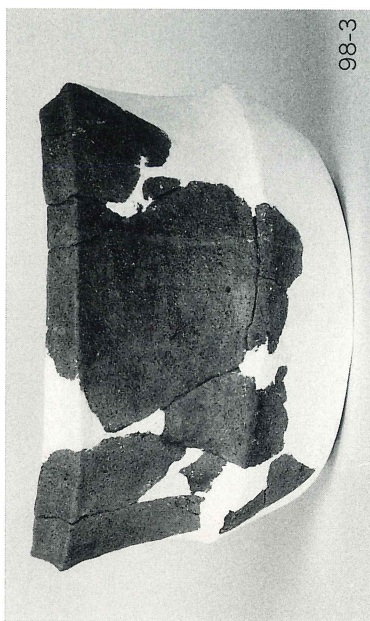
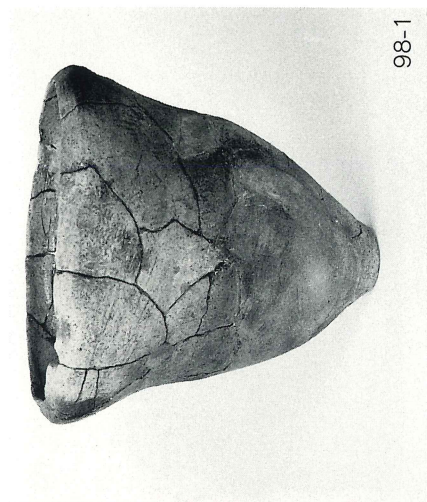
图版六〇 尾畑遺跡北Ⅱ区出土遺物(9)

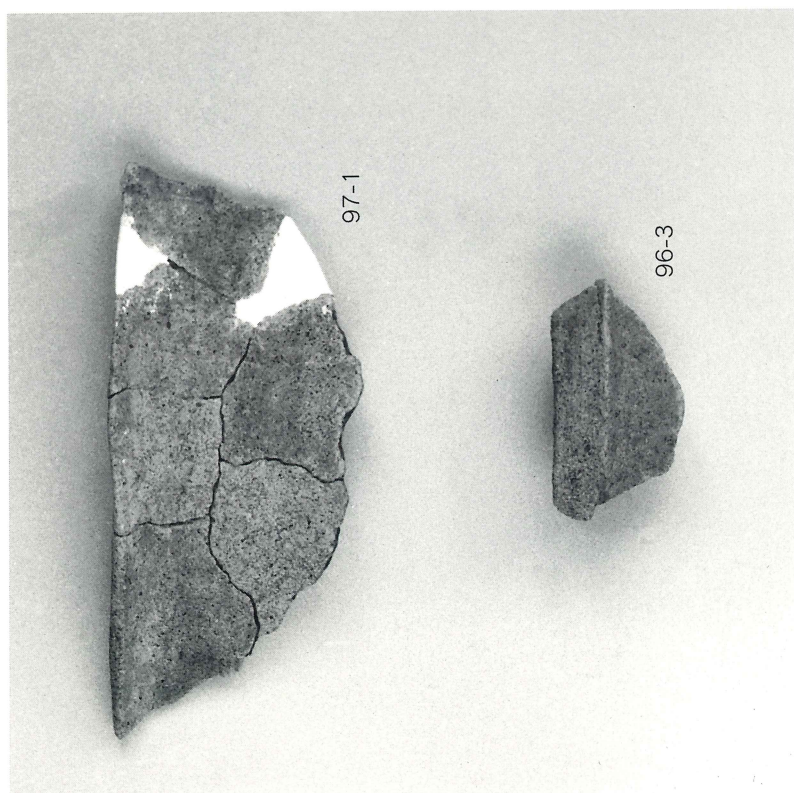
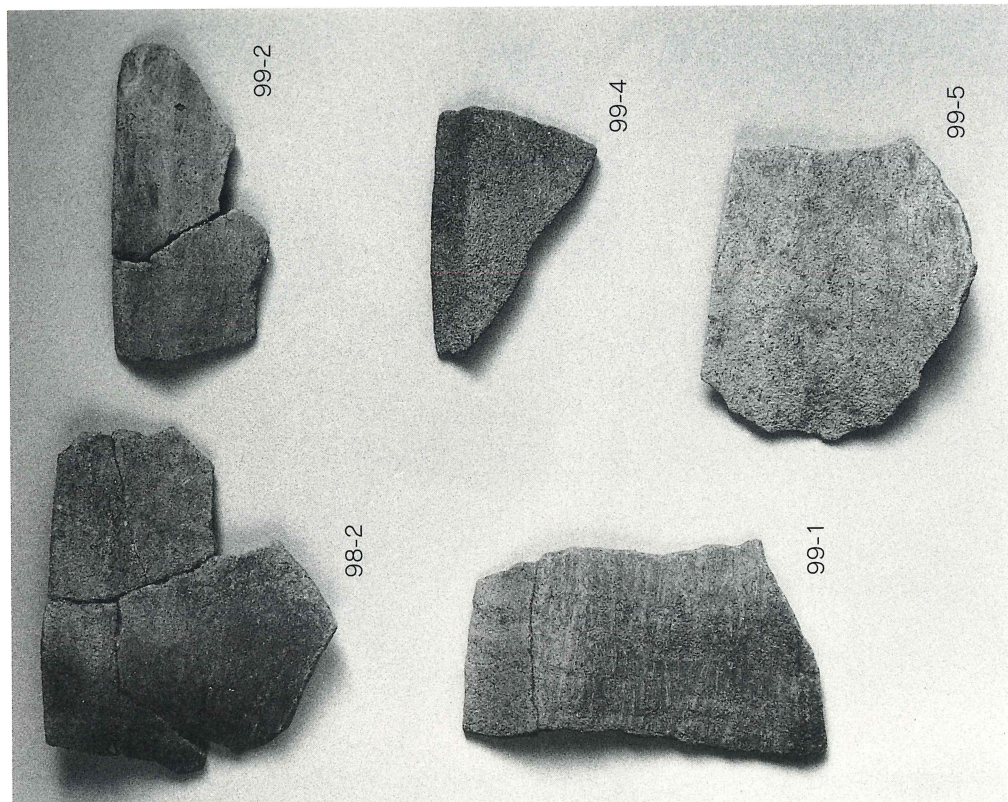


図版六一 尾畑遺跡北II区出土遺物(10)



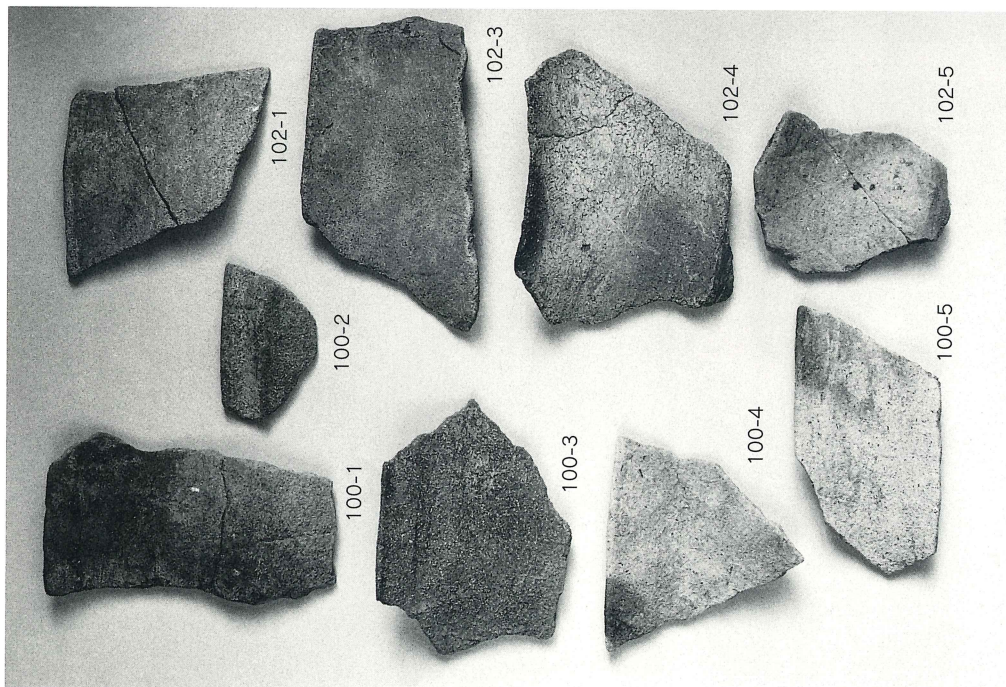
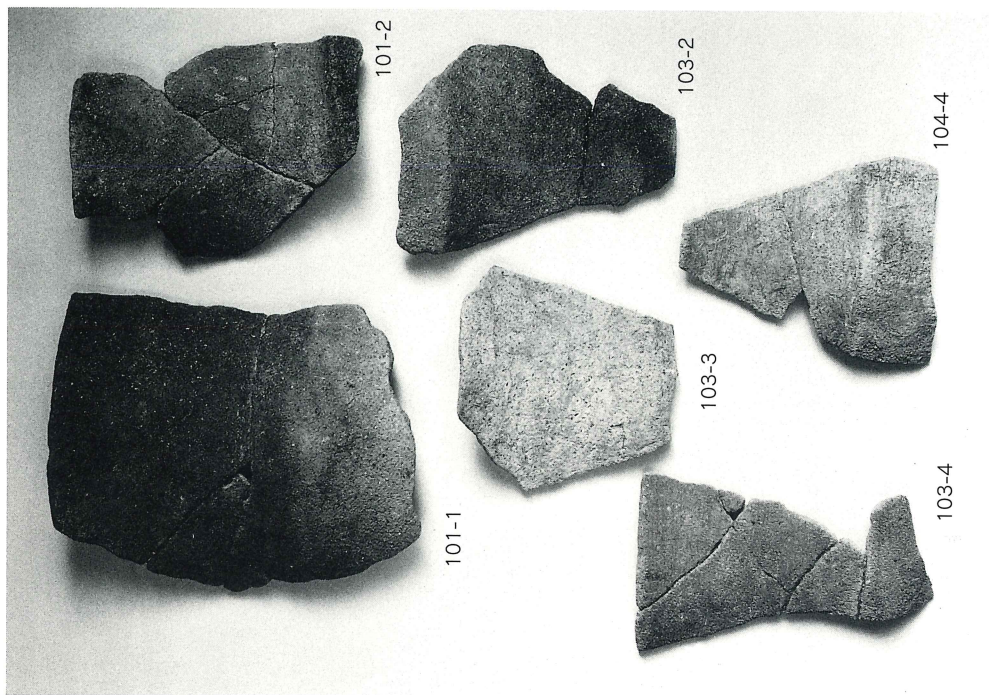
図版六一 尾畑遺跡北Ⅱ区出土遺物(Ⅱ)



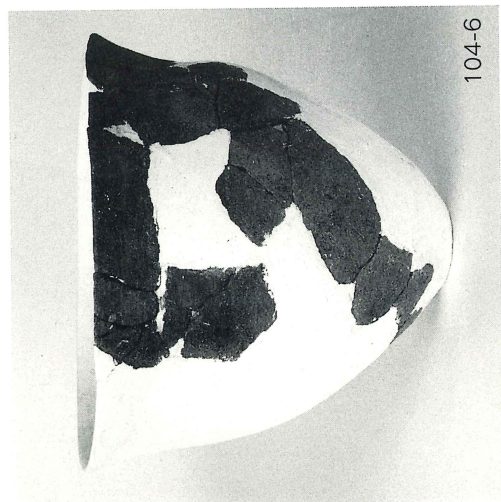
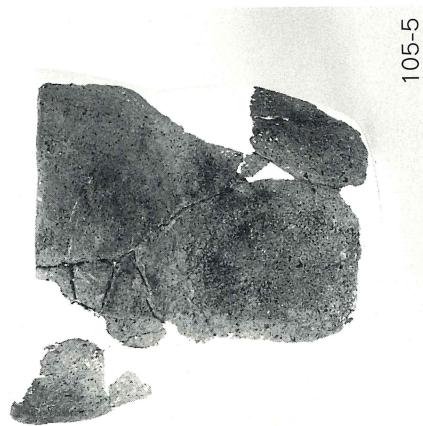
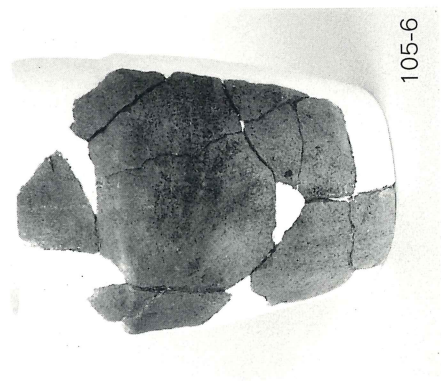
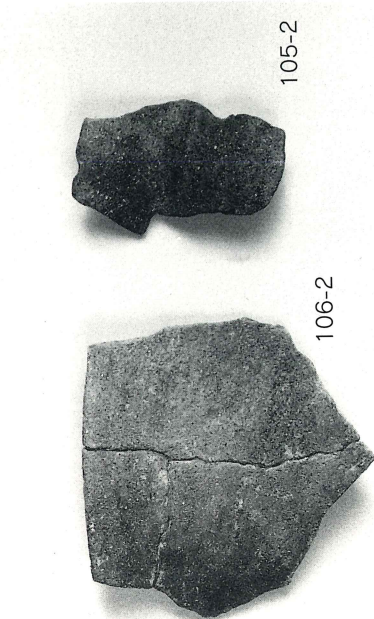


図版六三 尾畑遺跡北Ⅱ区出土遺物(12)

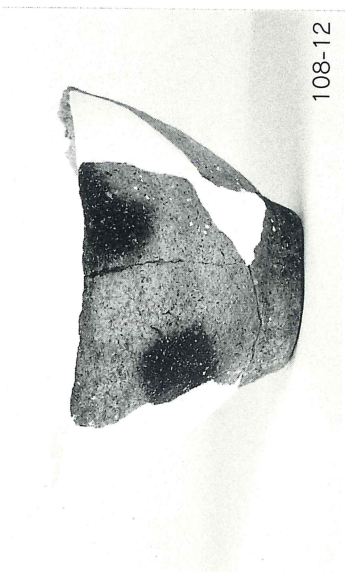
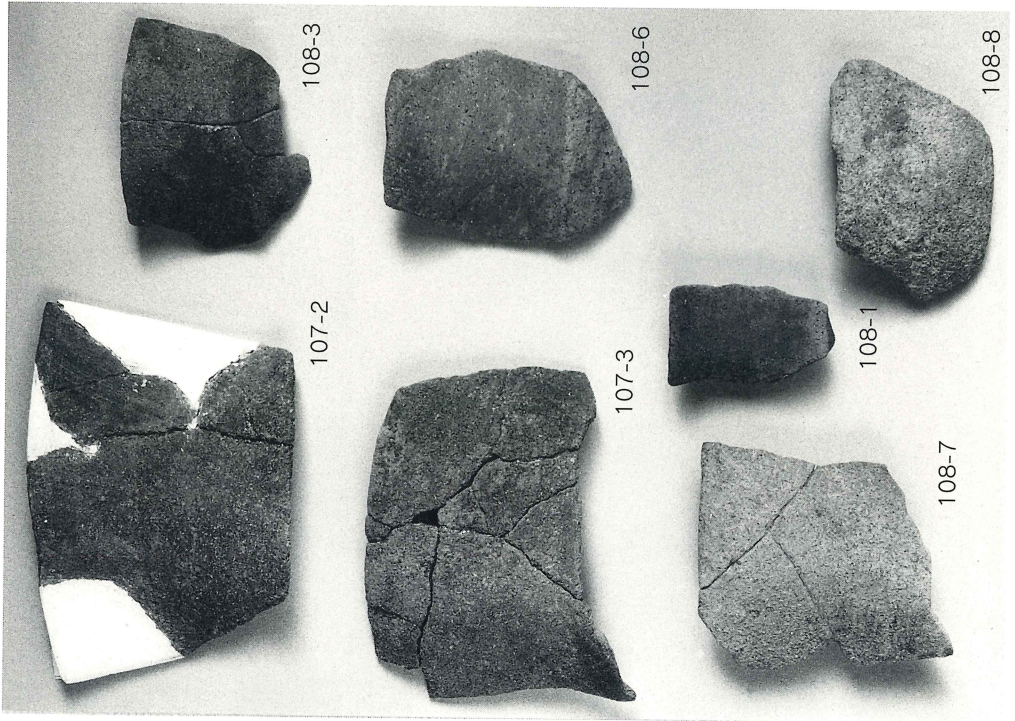
図版六四 尾畑遺跡北Ⅱ区出土遺物(13)

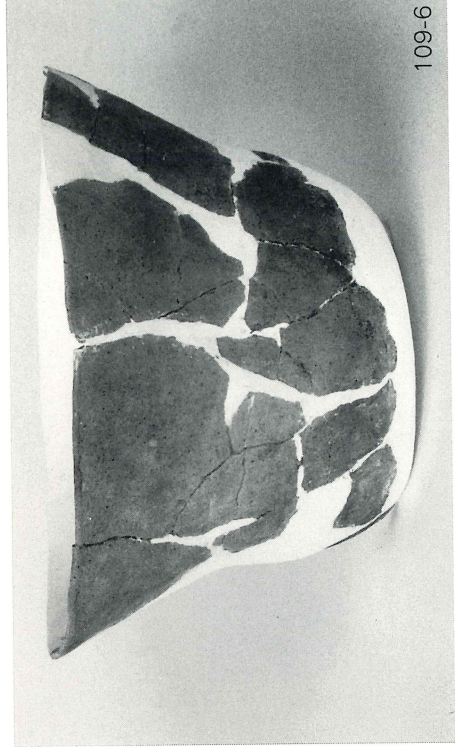
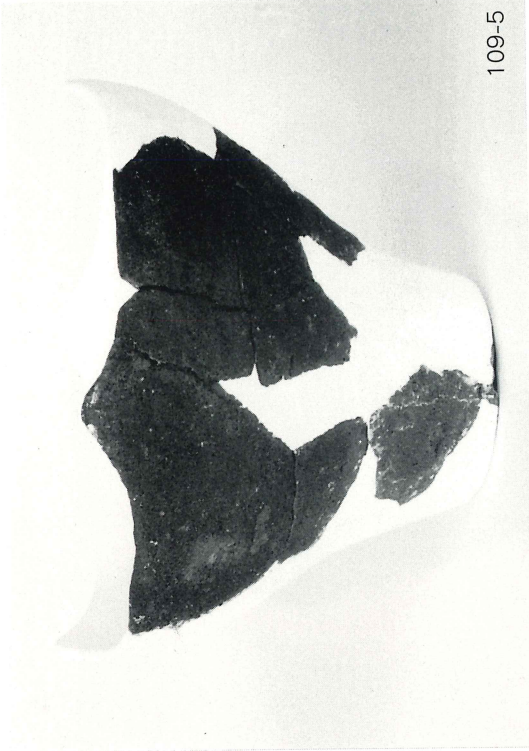
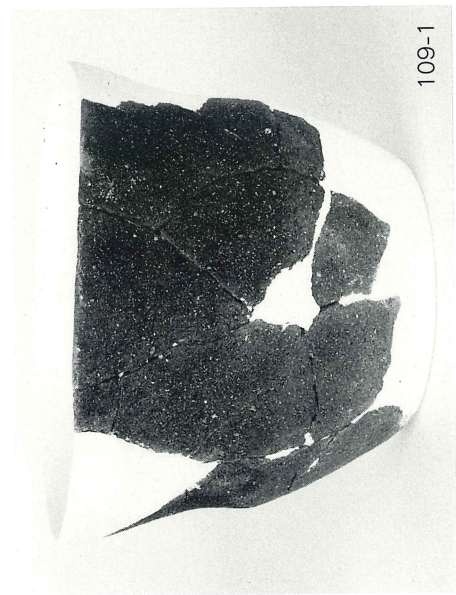


图版六五 尾畑遺跡北II区出土遺物(14)

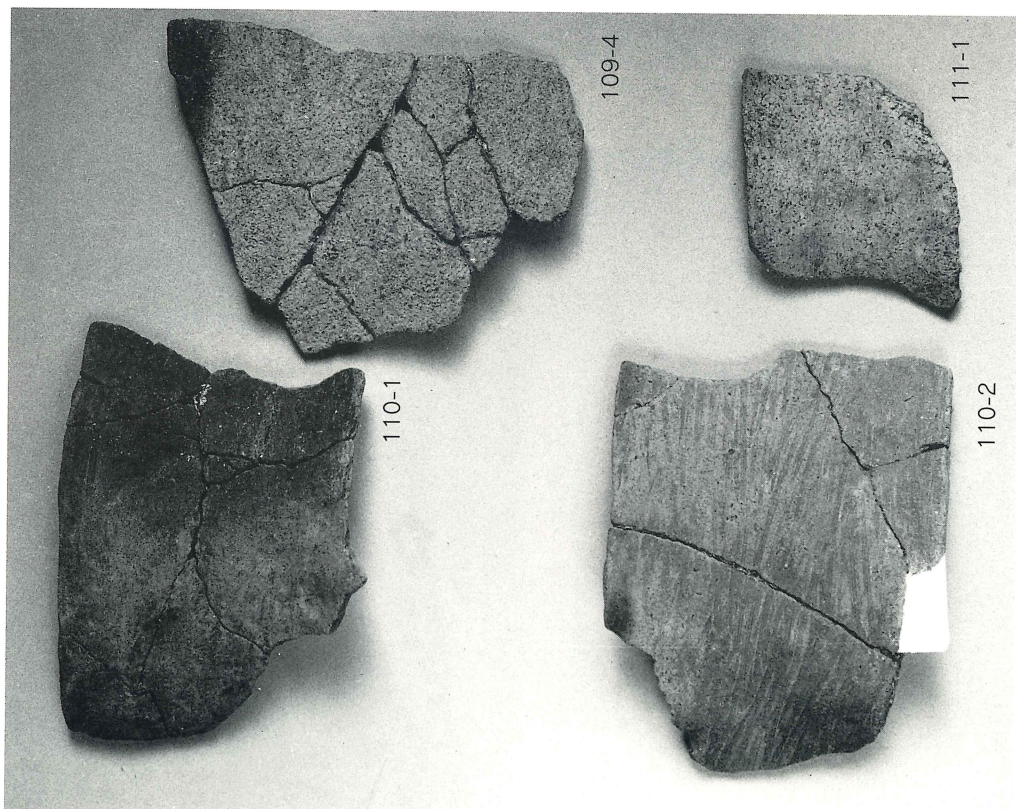


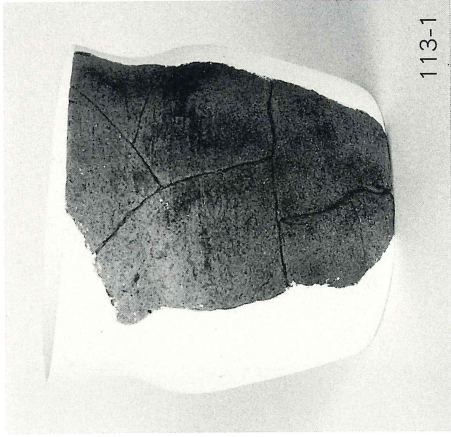
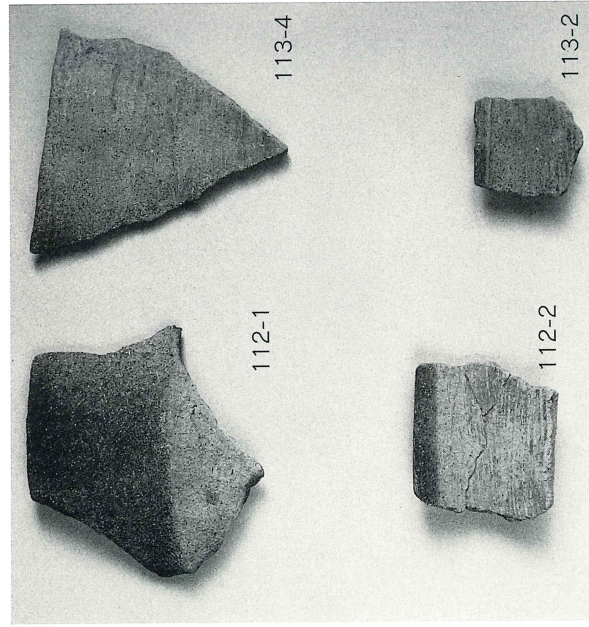
図版六六 尾畑遺跡北Ⅱ区出土遺物(15)



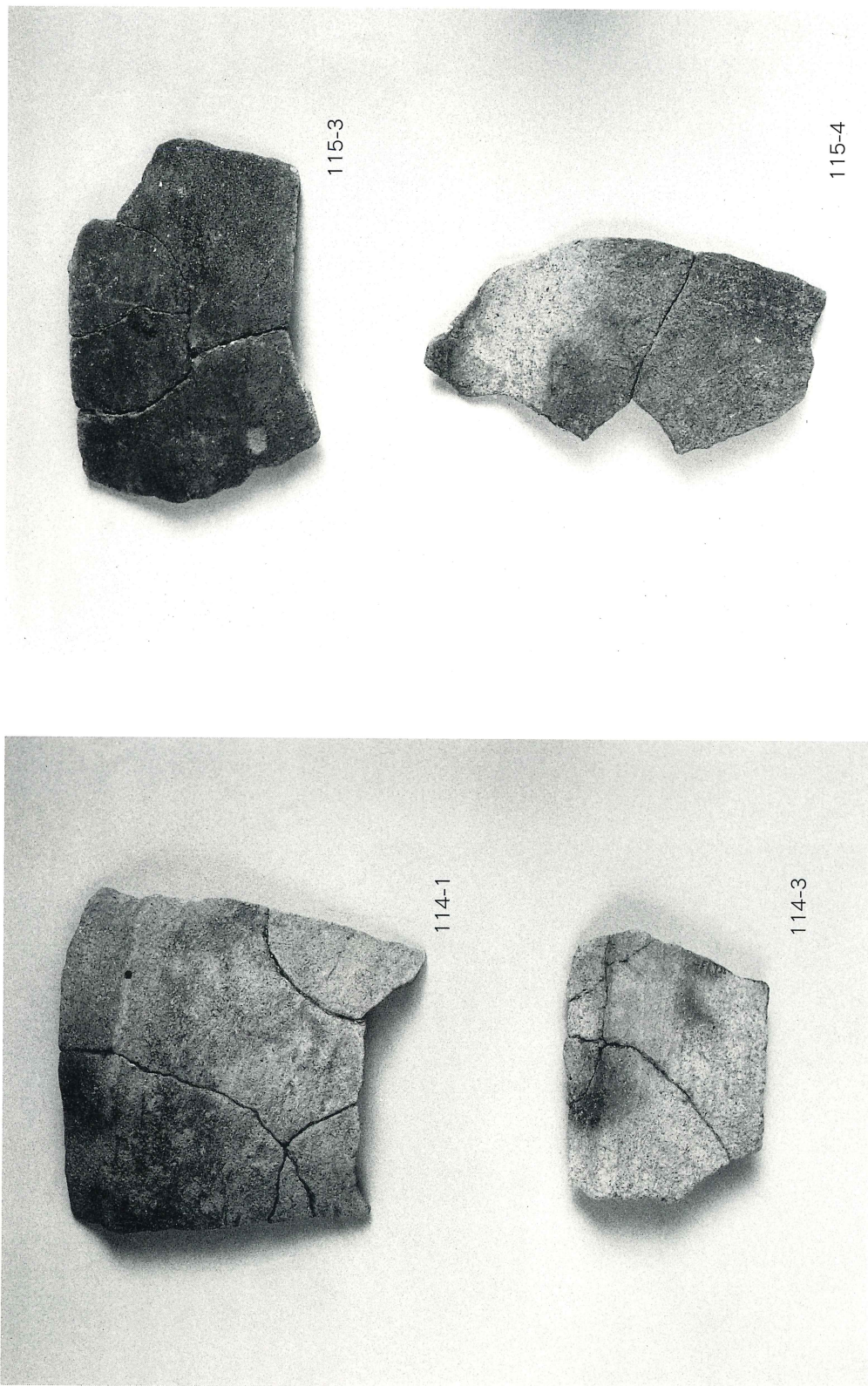


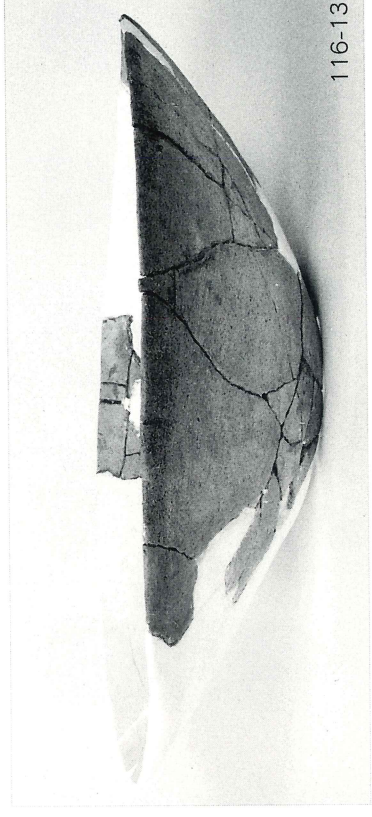
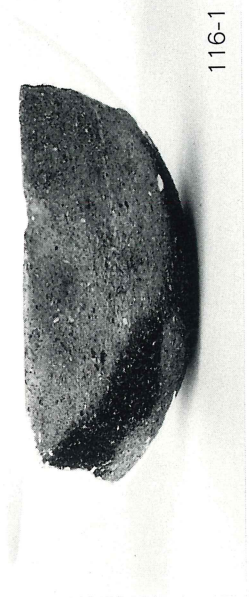
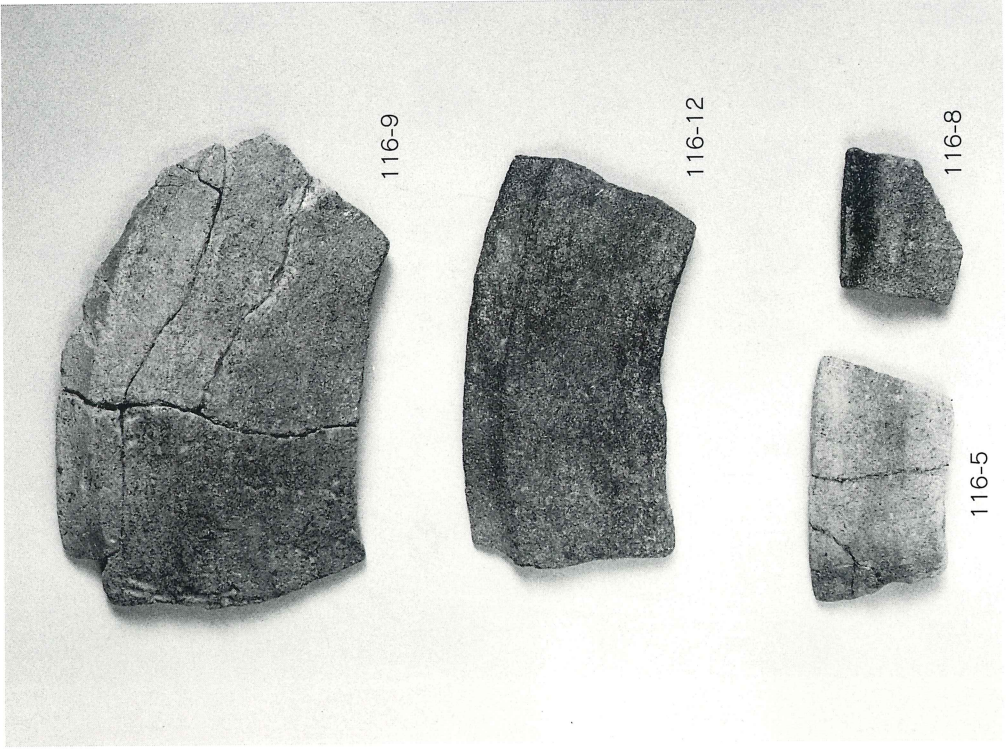
図版六八 尾畑遺跡北Ⅱ区出土遺物(17)



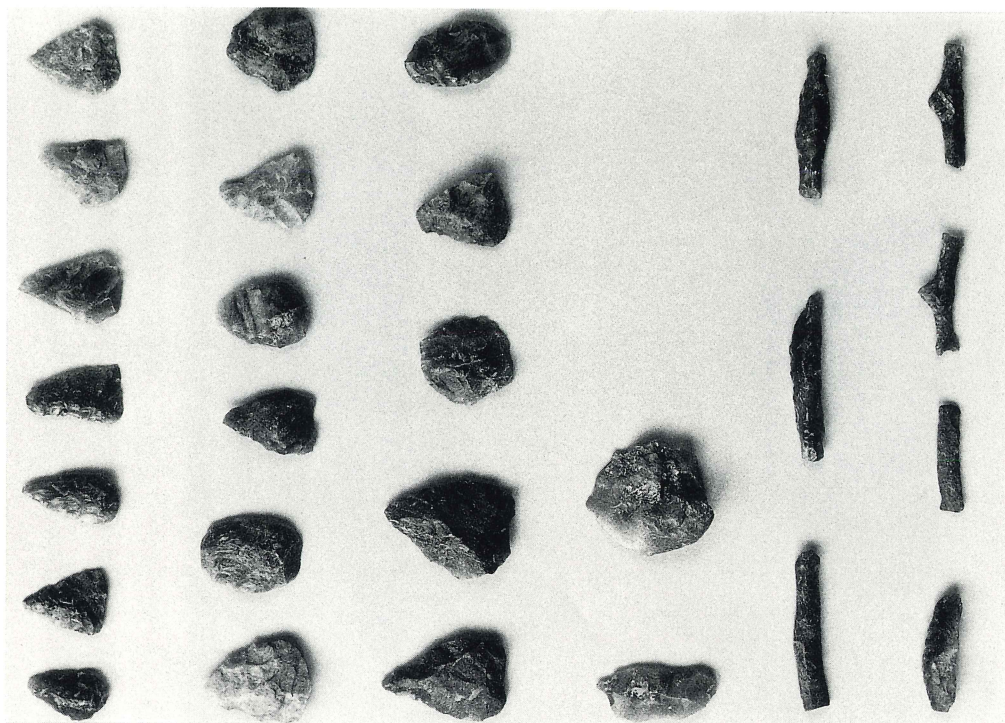


図版七〇 尾畑遺跡北II区出土遺物(19)

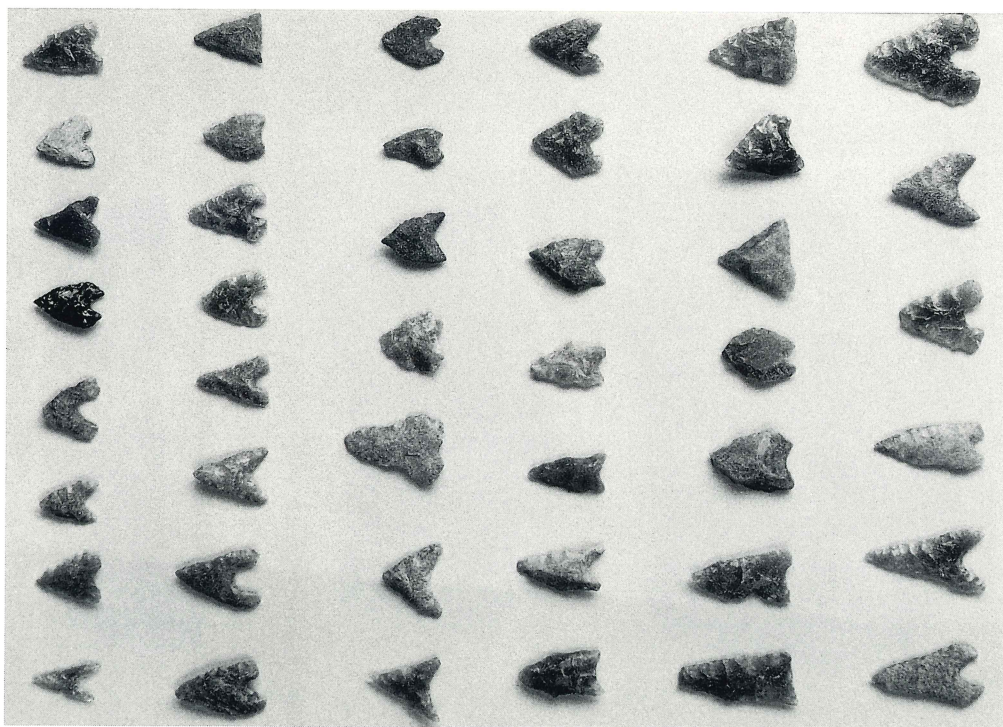




图版七一 尾畑遺跡北II区出土遺物(20)



石鏃・異形石器



石鏃

二次加工石器他



石匙・搔器他



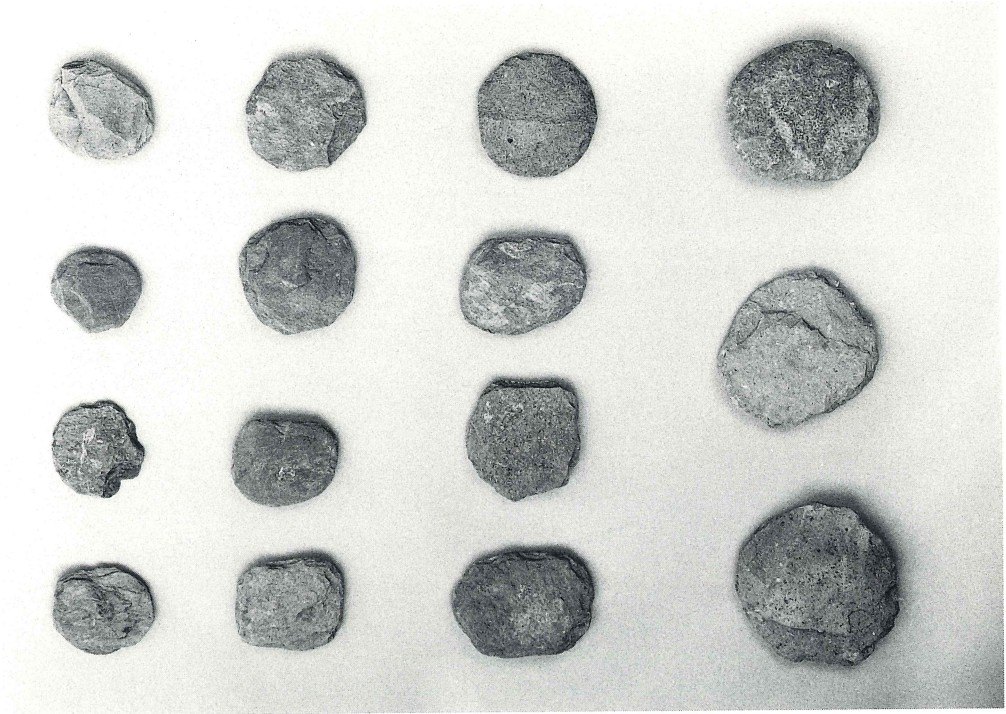
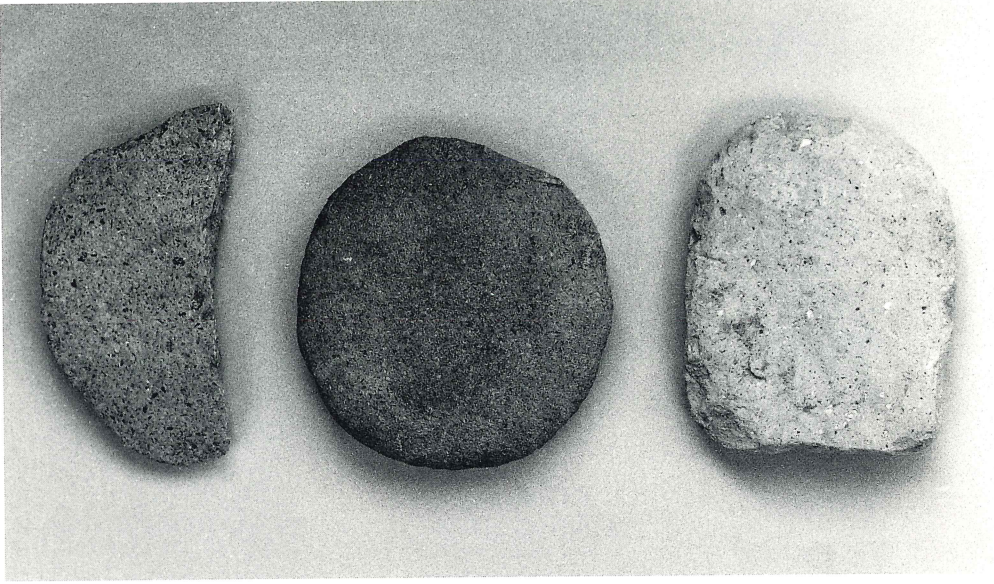


打製石器

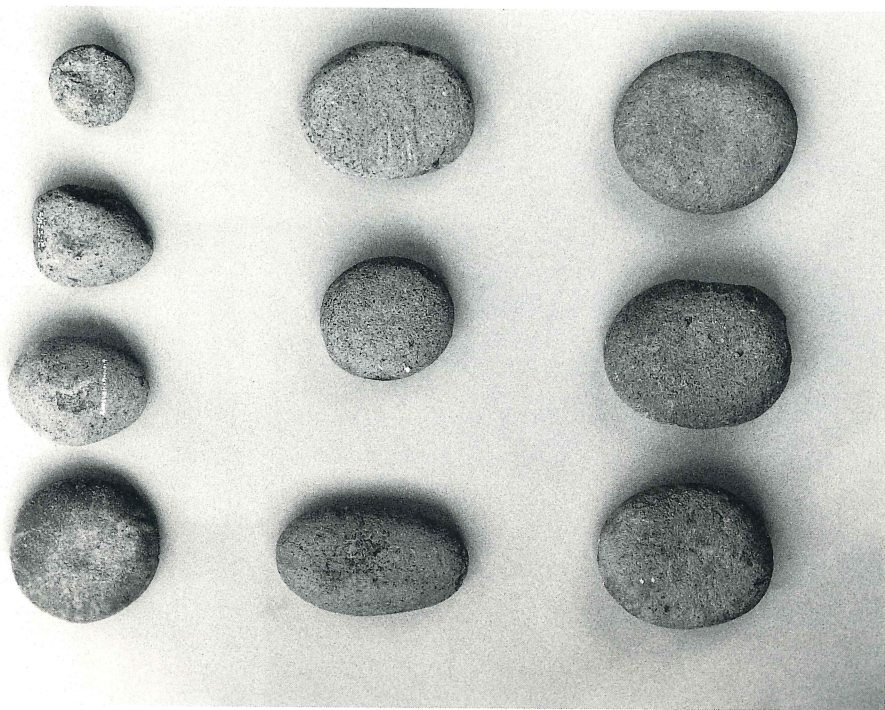


磨製石器

图版七五 尾畑遗迹北Ⅱ区出土遗物(24)



器石形
円



礫石錘



刃砥石

图版七七 尾畑遺跡北II区出土遺物(26)
棒石 · 器石形字十



礫石錘



181-1



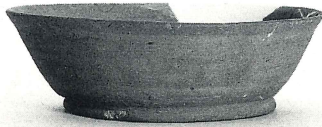
181-2



181-3



181-4



181-7



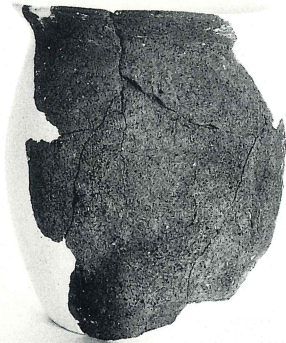
181-8



181-9



181-10



181-5



181-6

報 告 書 抄 録

ふりがな		よこやまいせき おぼたけいせき						
書名	横山遺跡・尾畑遺跡							
副書名								
巻次								
シリーズ名	一般国道10号宇佐道路埋蔵文化財発掘調査報告書							
シリーズ番号	(3)							
編著者名	小林昭彦・坂本嘉弘・牧尾義則・宮内克己							
編集機関	大分県教育委員会							
所在地	〒870 大分県大分市府内町三丁目十番一号 TEL 0975-36-1111							
発行年月日	西暦 1995年3月							
ふりがな	ふりがな	コード		北緯	東経	調査期間	調査面積㎡	調査原因
所収遺跡名	所在地	市町村	遺跡番号					
よこ 横山	おおいたけんうまし 大分県宇佐市 おおあぎやました 大字山下	4421	107092	33度 32分 5秒	131度 17分 52秒	19890901～ 19900320	4500	道路建設
お 尾畑	おおいたけんうまし 大分県宇佐市 おおあぎやました 大字山下	4421	107092	33度 32分	131度 18度 4秒	19870925～ 19900320	12000	道路建設
所収遺跡名	種別	主な時代	主な遺構		主な遺物		特記事項	
横山	集落ほか	弥生 中近世	竪穴住居跡 2基 貯蔵穴 2基 溝 2条 井戸跡 1基		弥生土器 陶器			
尾畑	集落ほか	縄文 奈良	遺物包含層 竪穴住居跡 7基 掘立柱建物跡 23基		縄文土器 土器 弥生土器 須恵器 土師器 和同開寶		土偶を多く含む 縄文時代後期～ 晩期遺物包含層 官衙の集落	

一般国道10号
宇佐道路埋蔵文化財発掘調査報告書(3)

平成7年3月31日

編 集 大分県教育庁文化課
発 行 大分県教育委員会
印 刷 株式会社明文堂印刷
