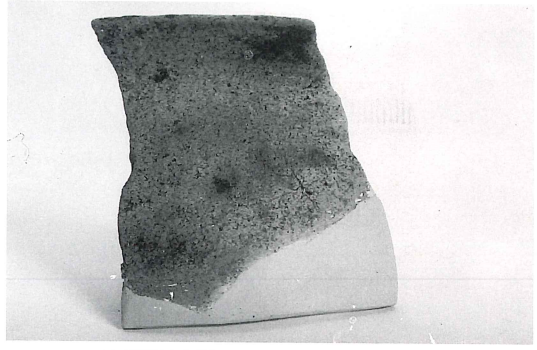
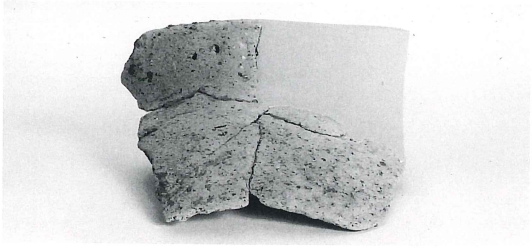


1



2



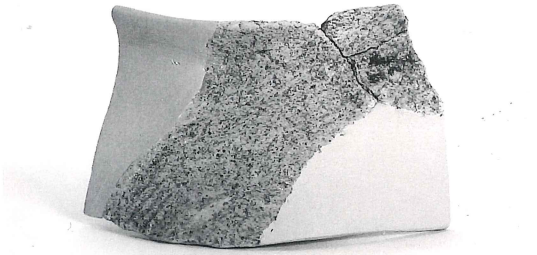
3



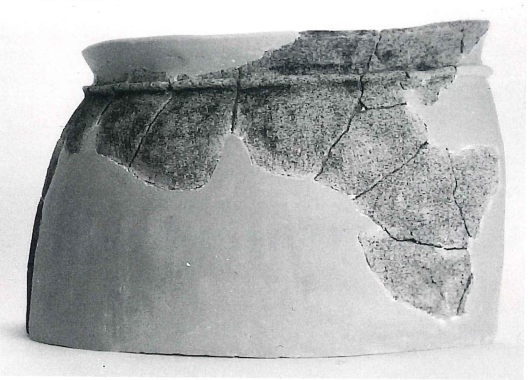
4



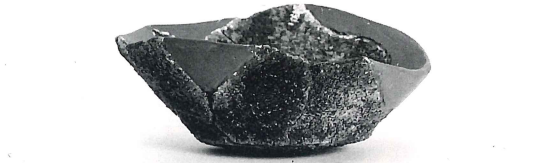
6



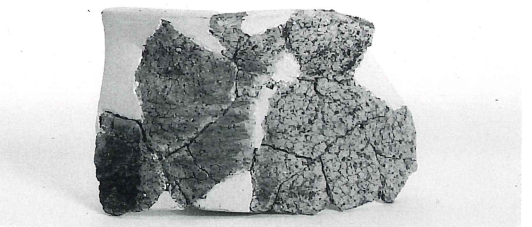
5



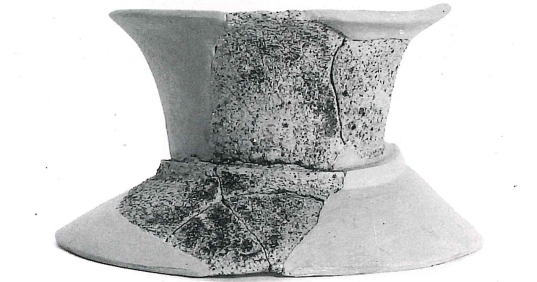
7



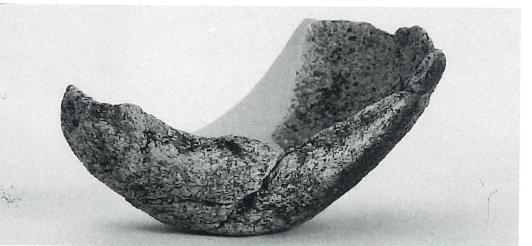
8



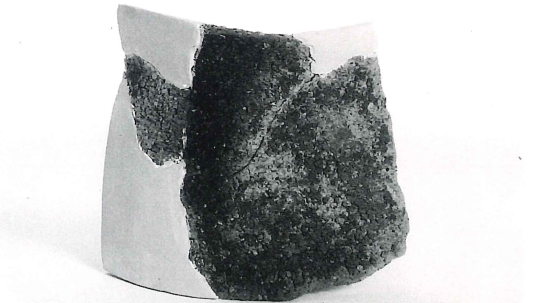
11



9



13



12



14



16



17



18



19



20



21



22



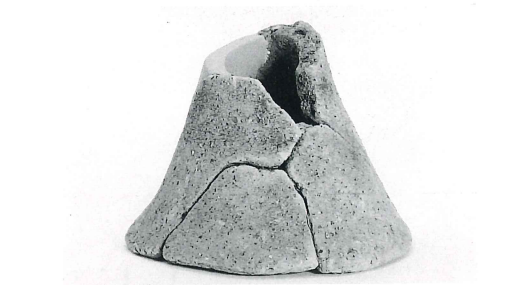
23



24



25



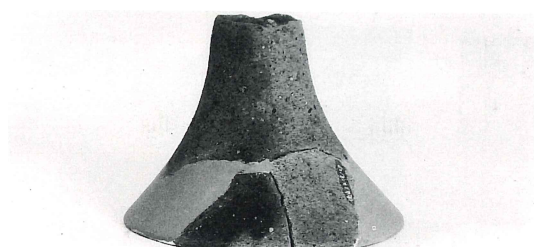
26



27



28



29



30



31



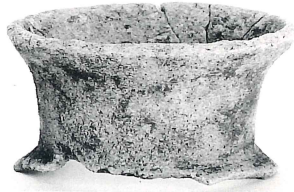
32



33



34



35



37



36



39



38



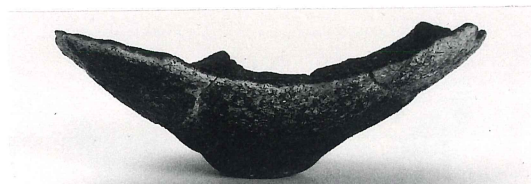
40



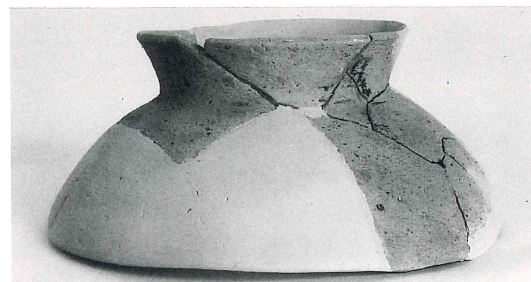
41



43



44



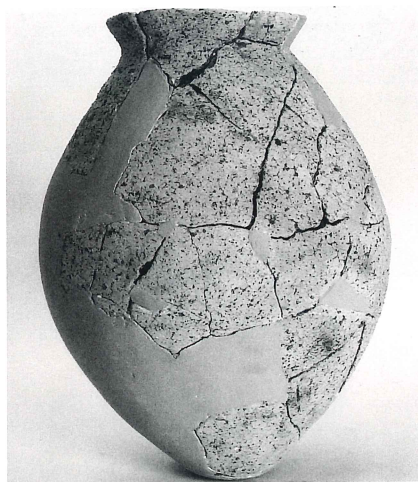
45



47



48



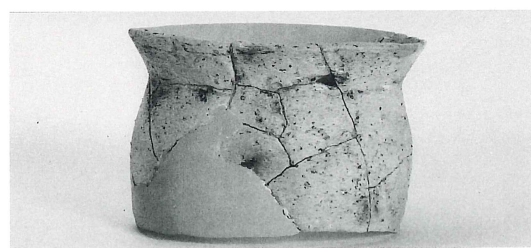
49



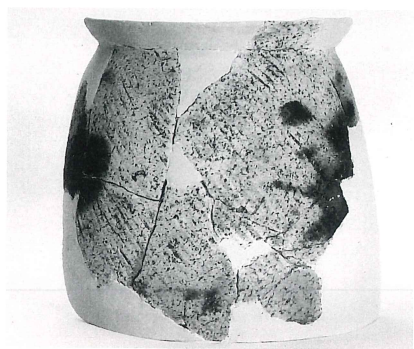
50



52



51



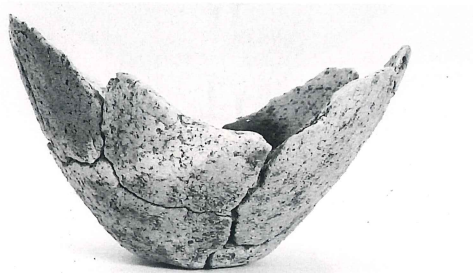
53



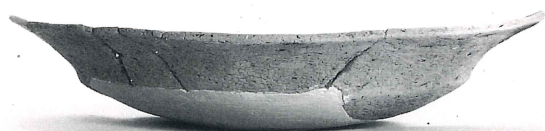
54



55



56



57



58



59



60



61



62



63



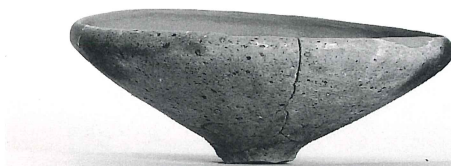
64



65



66



71



72



73



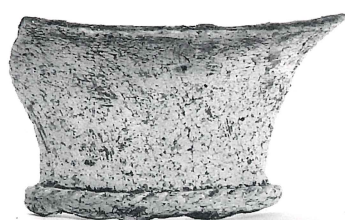
78



79



80



81



85



89



90



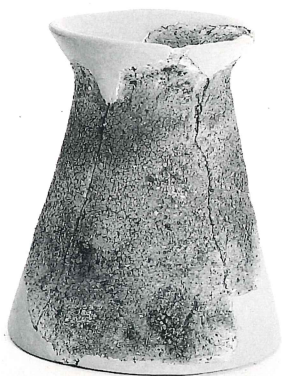
91



92



93



94



97



98



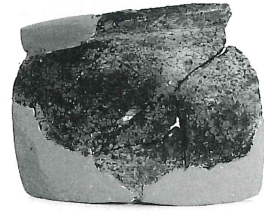
100



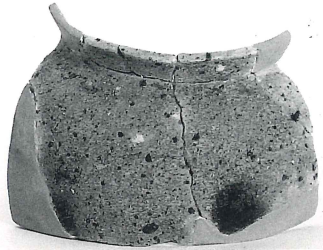
99



102



104



105



107



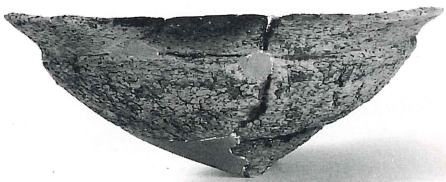
106



108



110



109



111



112

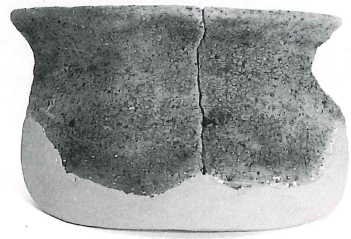


113





114



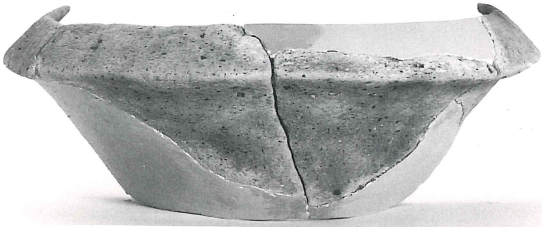
115



116



118



119



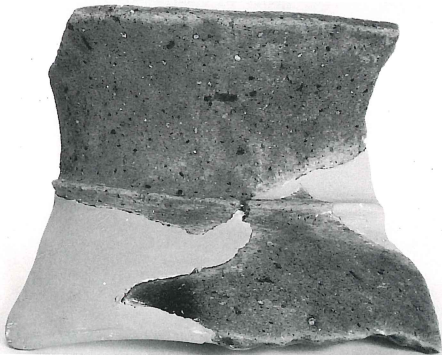
122



123



124



126



128



130



131



132



138



140



144



146



137



139



143



145



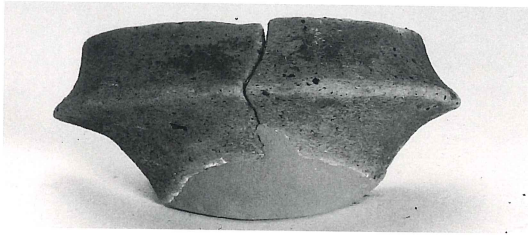
147



148



149



152



153



154



155



156



158



160



161



162



165



166



169



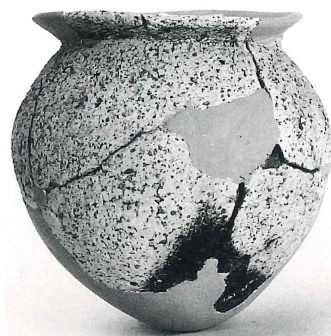
170



163



164



167



168



172



173



174



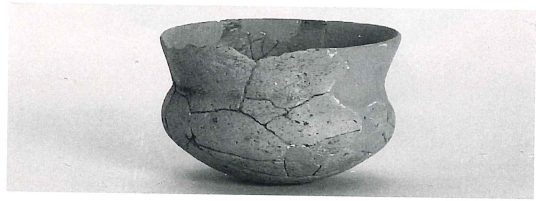
176



175



177



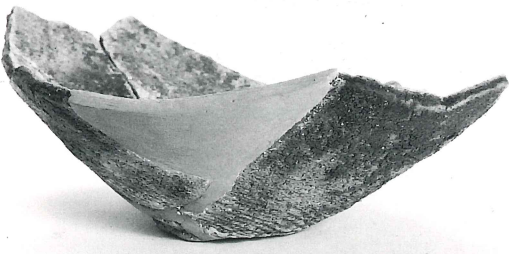
178



180



181



182



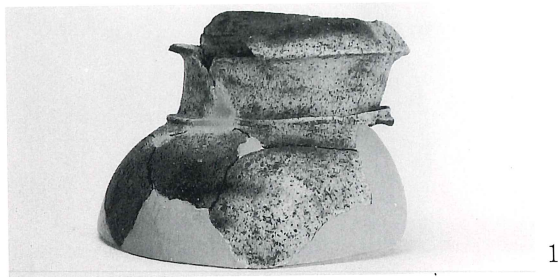
183



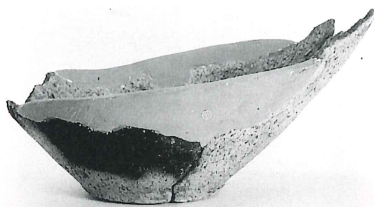
184



185



187



188



189



190



192



191



193



194



195



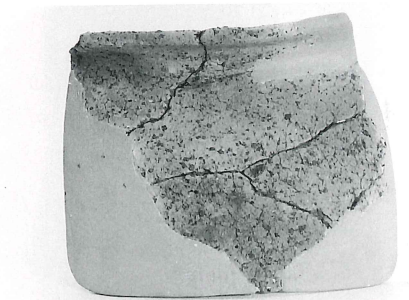
199



196



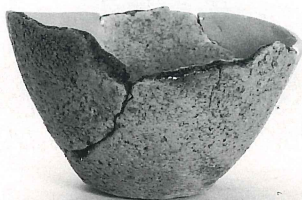
197



200



201



203



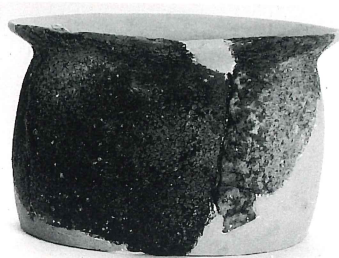
206



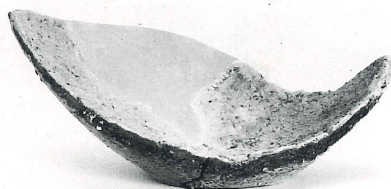
208



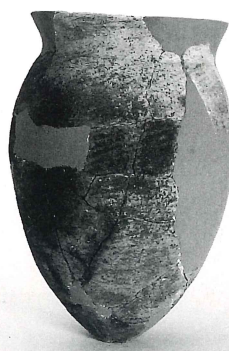
210



202



204



207



209



213



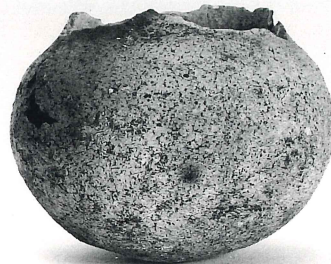
211



212



214



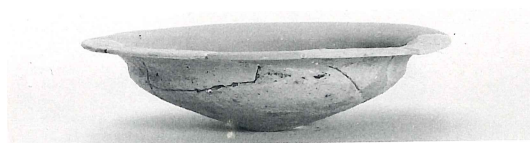
215



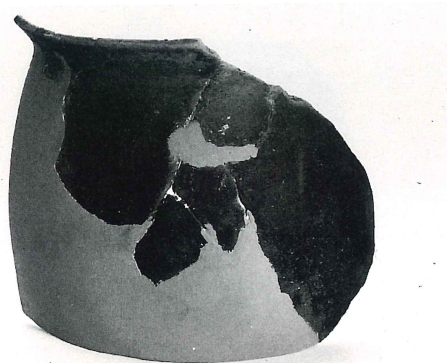
216



218



217



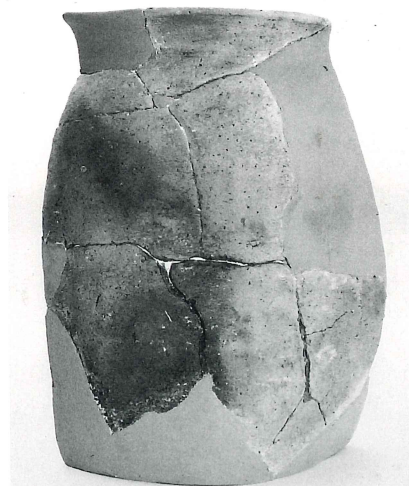
219



220

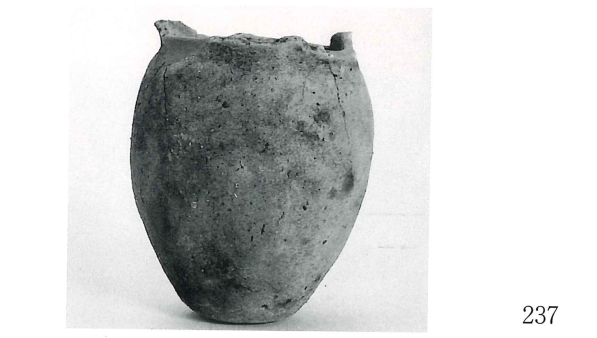
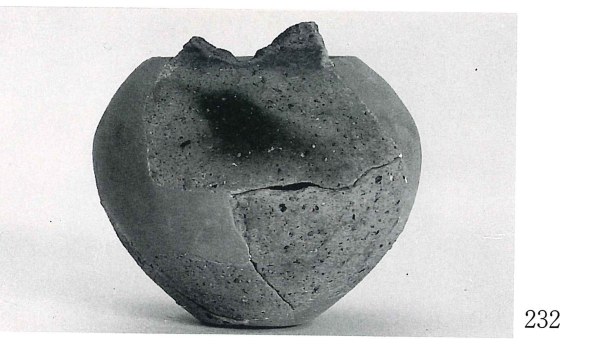
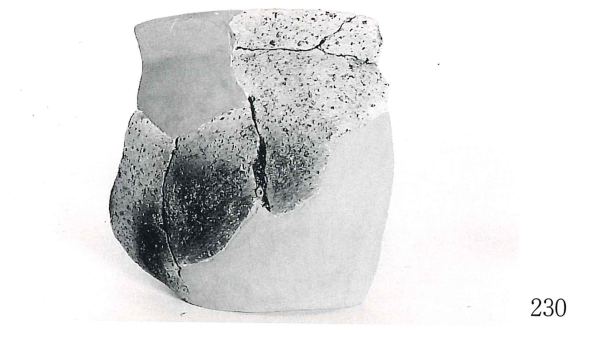
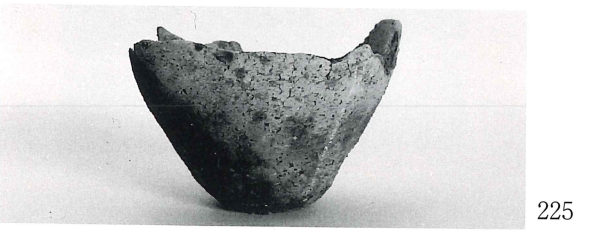
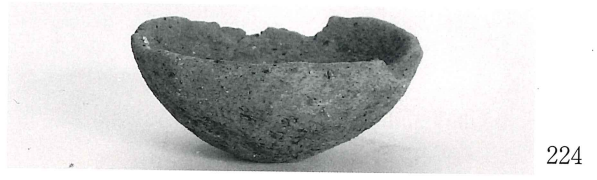


222



221







238



239



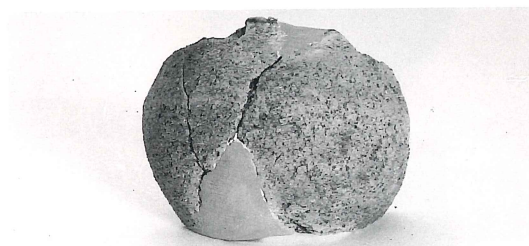
242



240



243



241



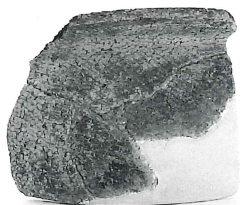
244



246



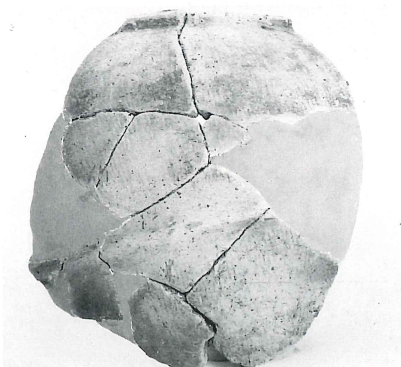
250



251



252



255



254



256



257



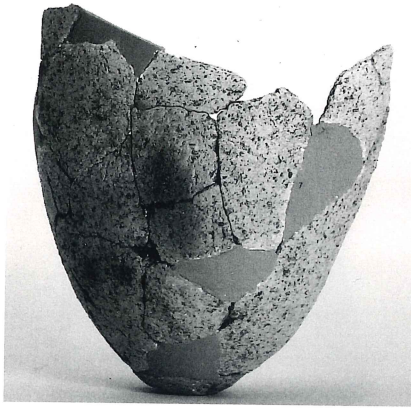
258



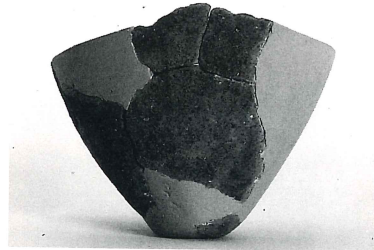
259



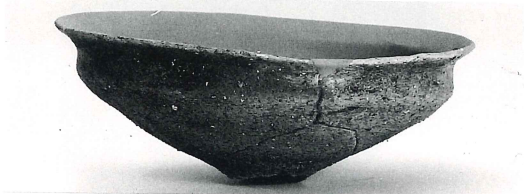
260



262



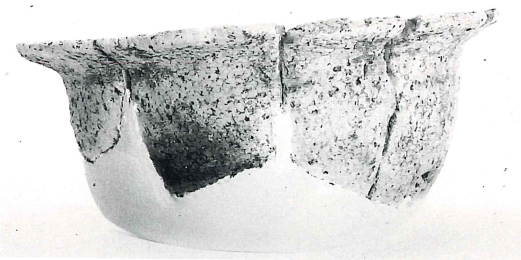
263



265



264



266



268



267



270



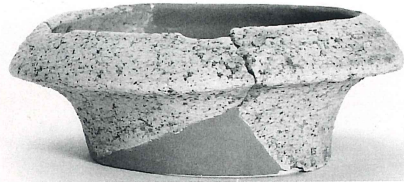
271



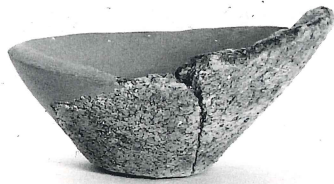
272



273



274



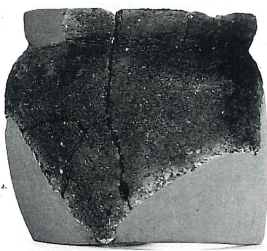
275



278



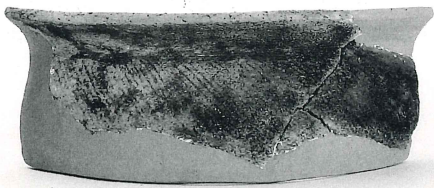
279



280



282



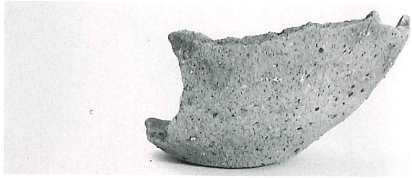
283



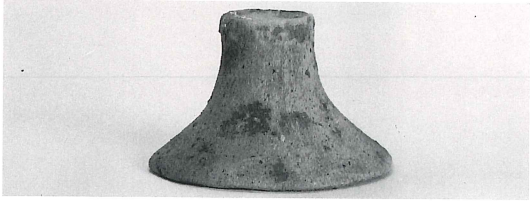
284



285



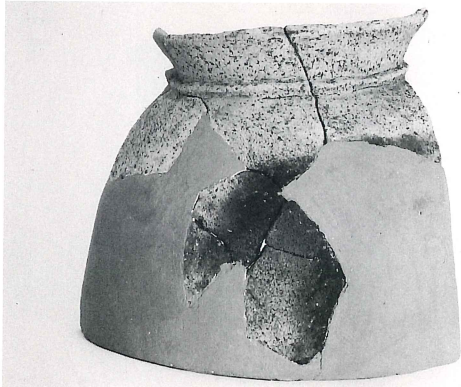
288



290



292



294



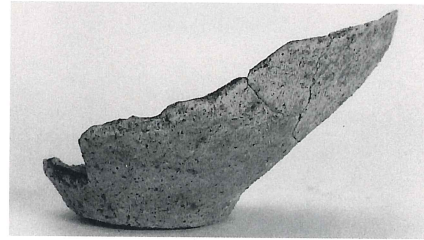
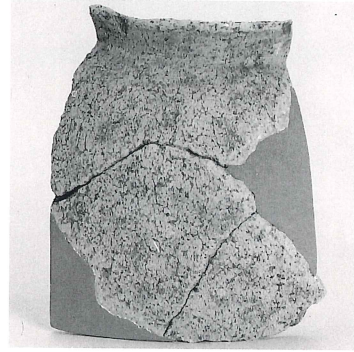
297



299



291



293



295



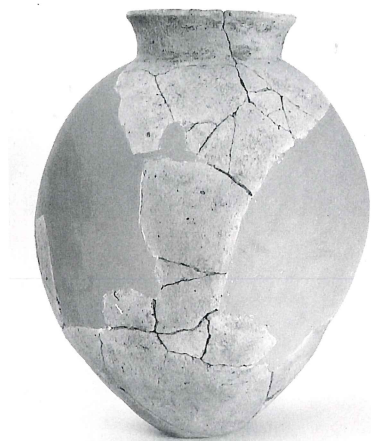
298



300



301



302



304



305



303



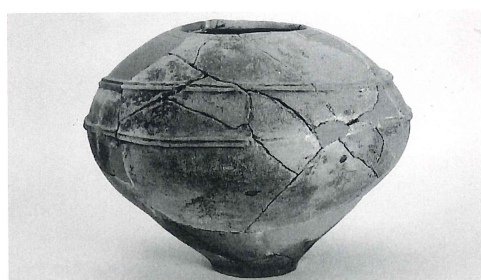
307



308



309



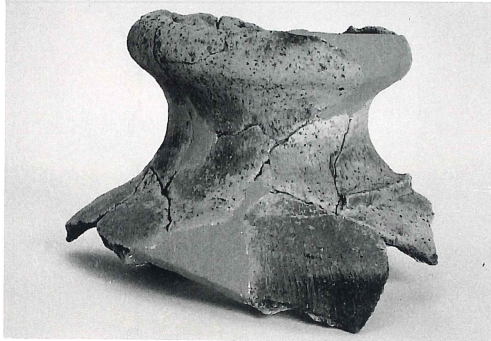
310



311



312



314



313



315



316



317



318



320



322



323



325



324



326



327



328



330



329



333



331



334



335





336



337



338



339



340



341



342



343



344



348



349



350



352



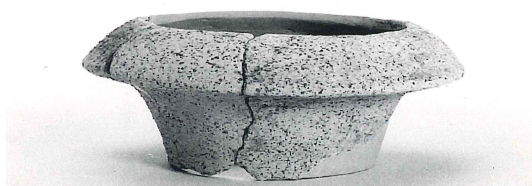
353



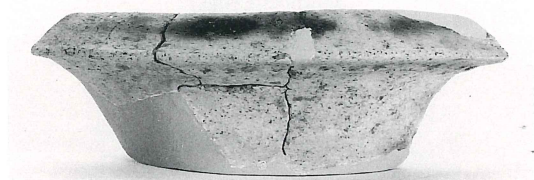
354



355



358



359



360



361



362



363



364



365



366



367



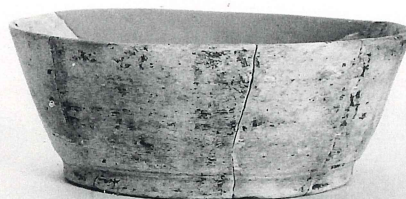
368



369



370



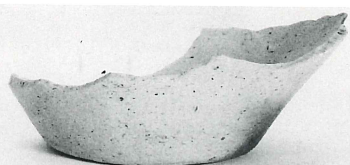
371



372



373



374



375



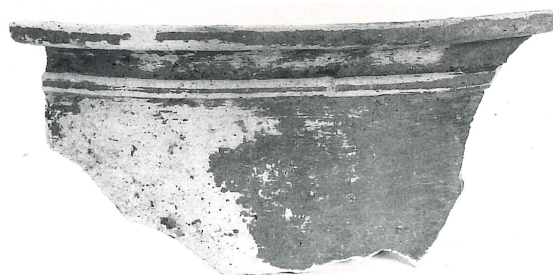
379



382



383



384



386



387



388



390



391



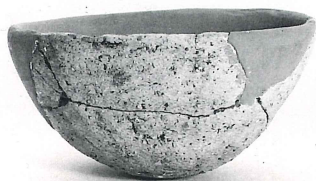
392



394



395



396



397



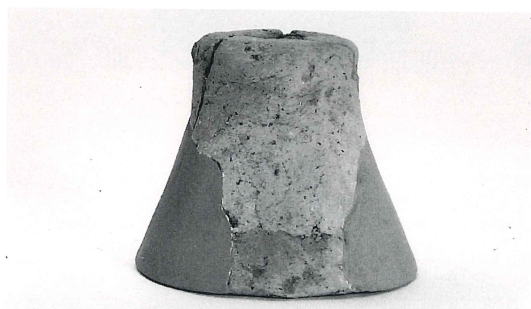
398



399



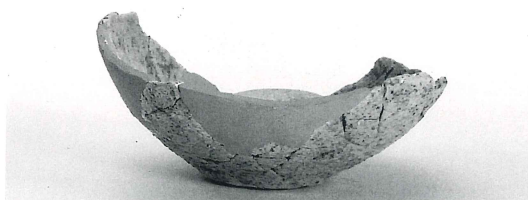
400



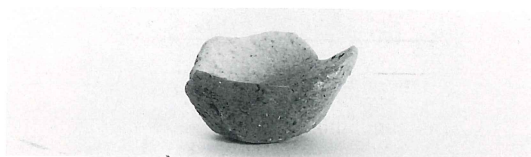
401



402



404



403



405



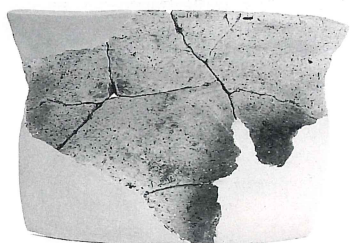
406



408



409



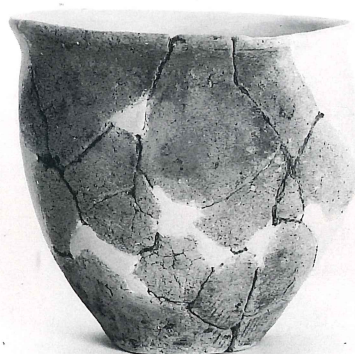
411



410



412



414



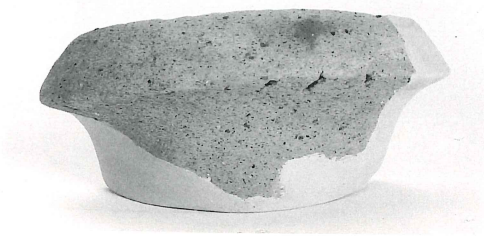
413



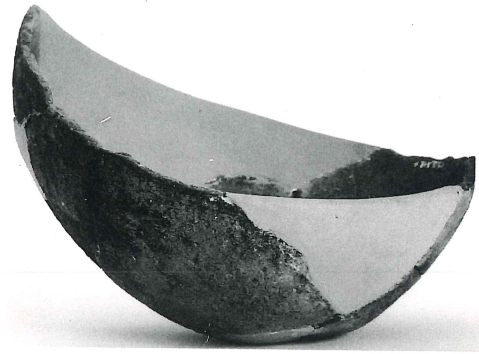
416



419



420



423



424



425



427



428



429



430



431



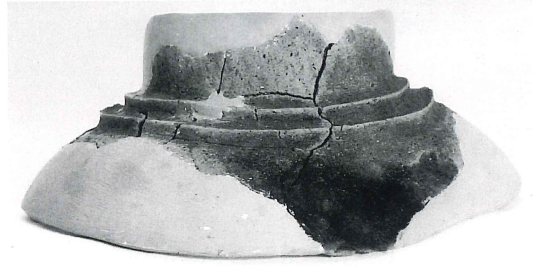
432



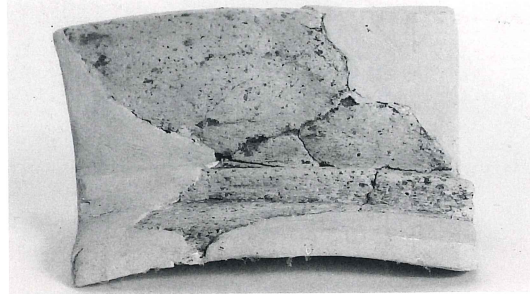
433



436



437



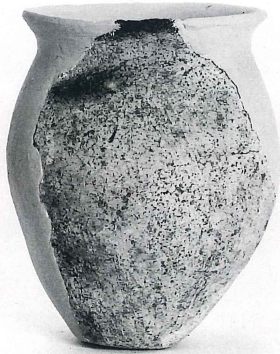
441



444



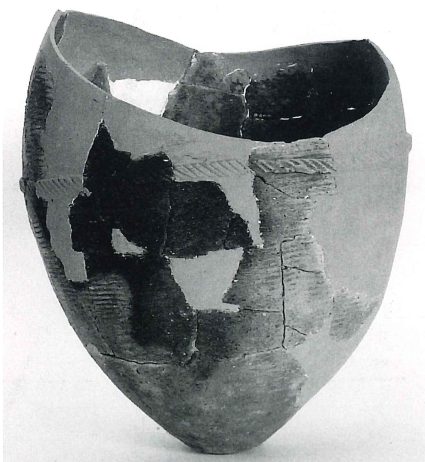
448



447



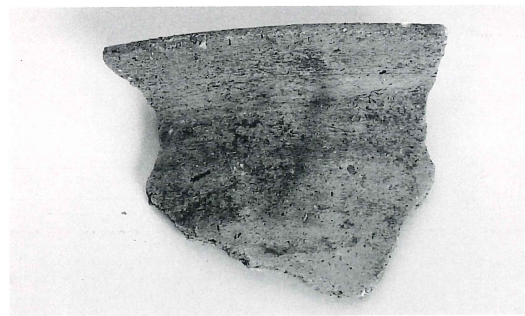
450



458



456



457





459



460



461



462



463



464



466



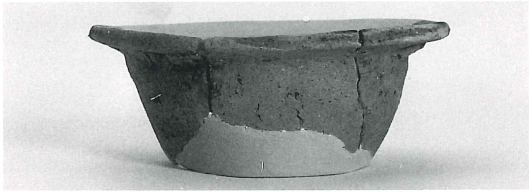
465



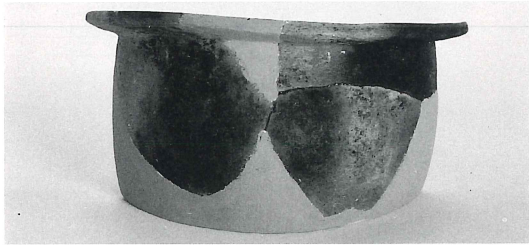
467



470



471



472



474



476



478



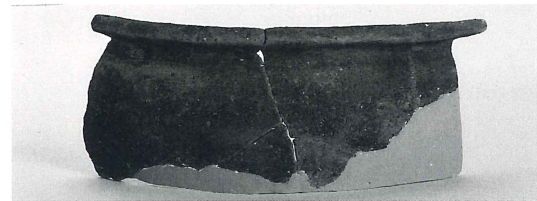
480



473



475



477



479



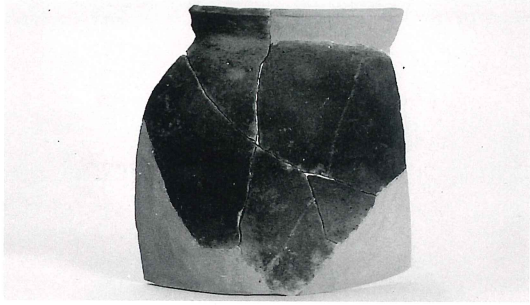
482



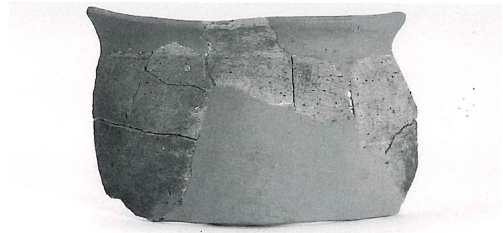
483



484



485



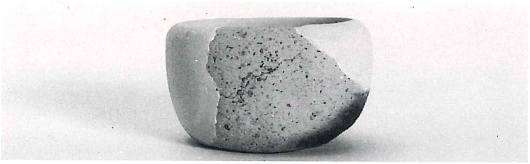
486



487



489



488



491



490



493



492



494



496



497



499



498



500



501



503



502



504



505



507



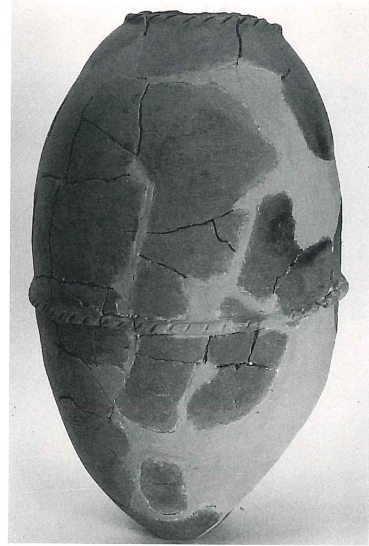
506



508



510



509



511



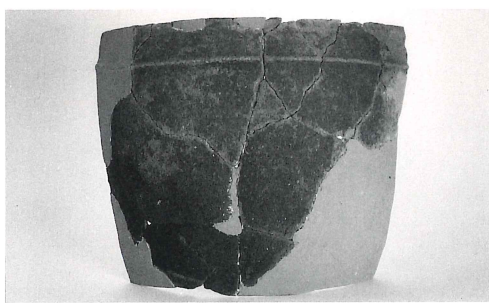
512



513



514



515



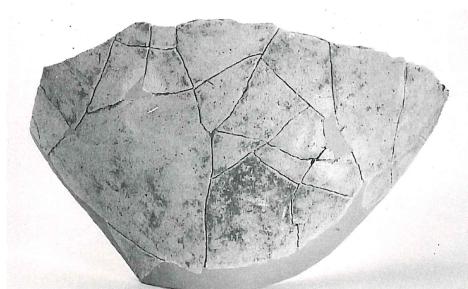
517



516



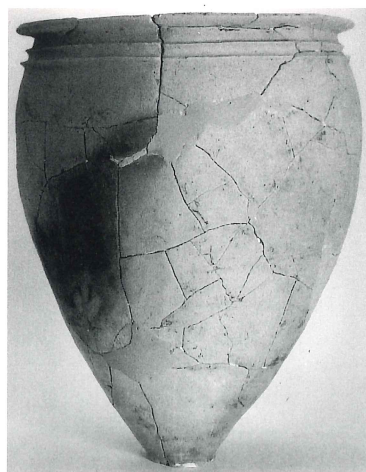
518



520



519



521



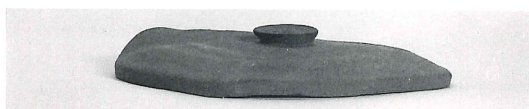
522



525



523



526



524



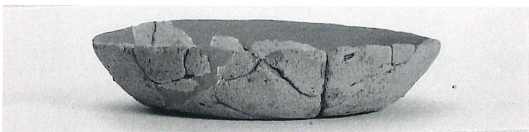
528



527



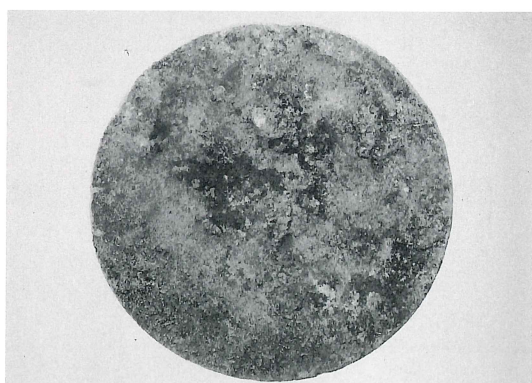
529



530



裏



表

小型仿製鏡

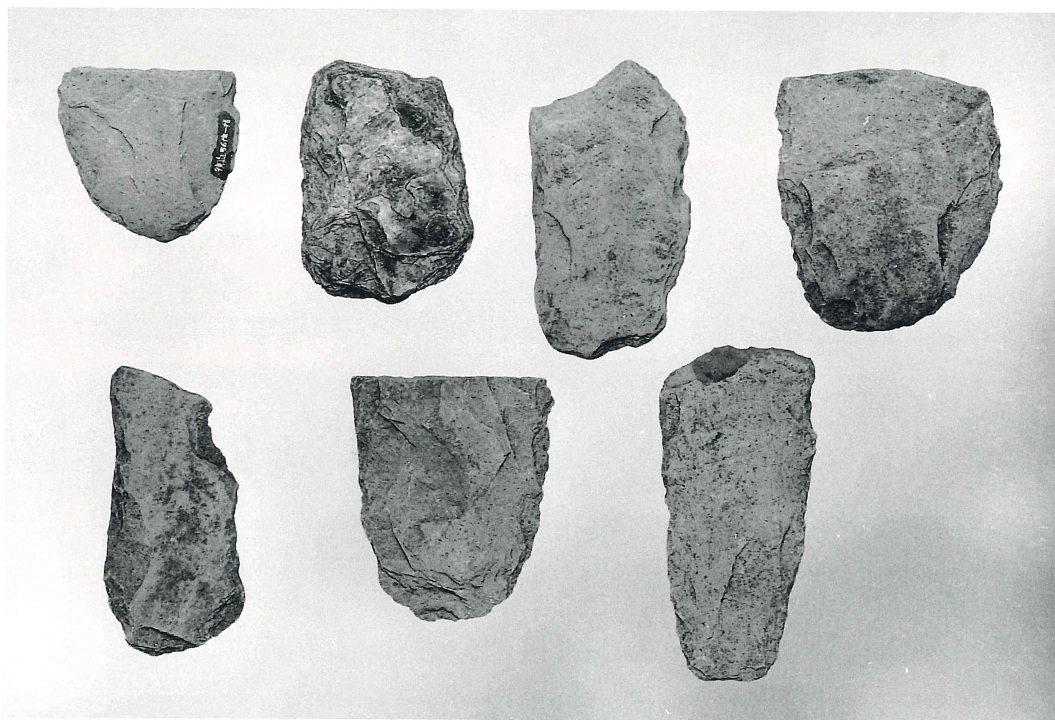


石器類

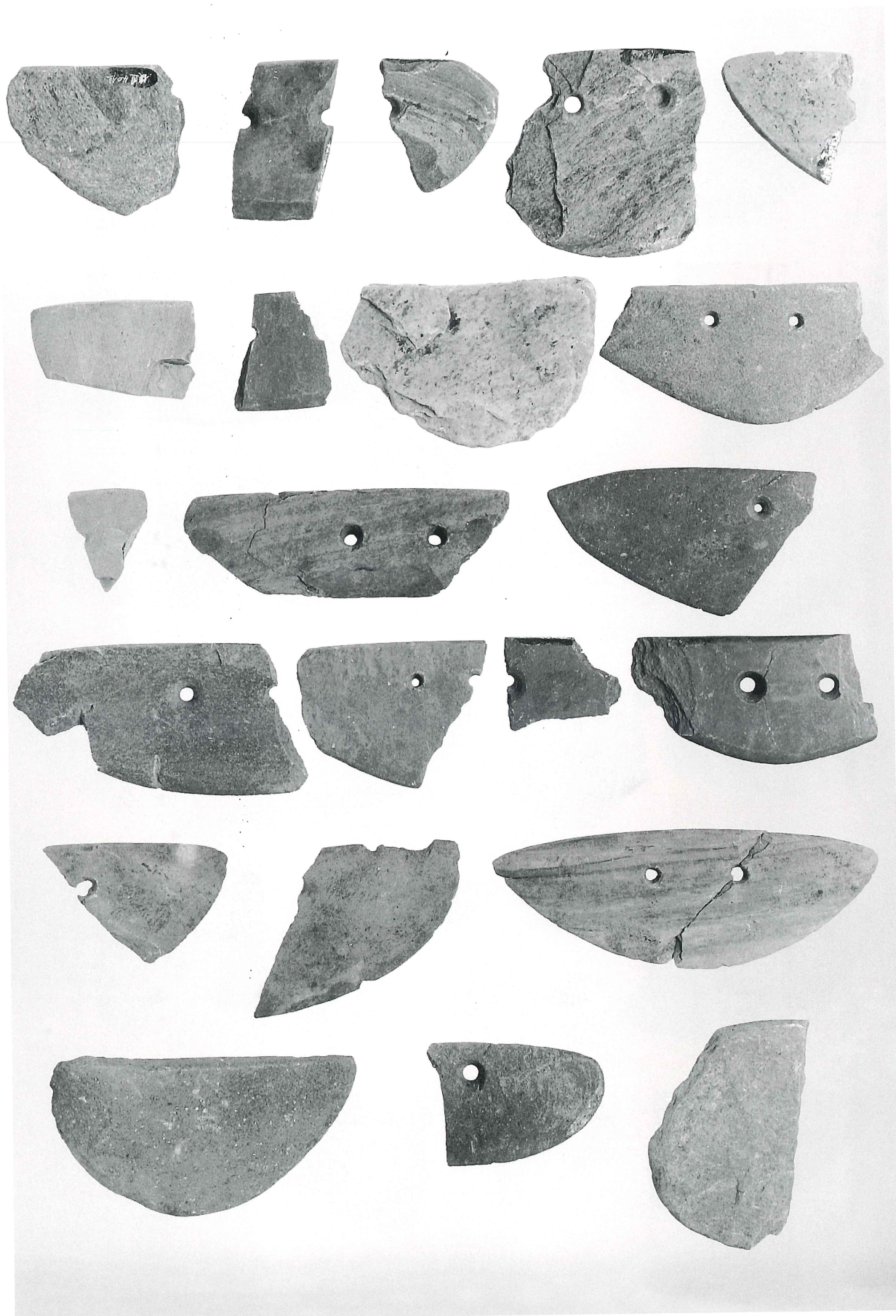




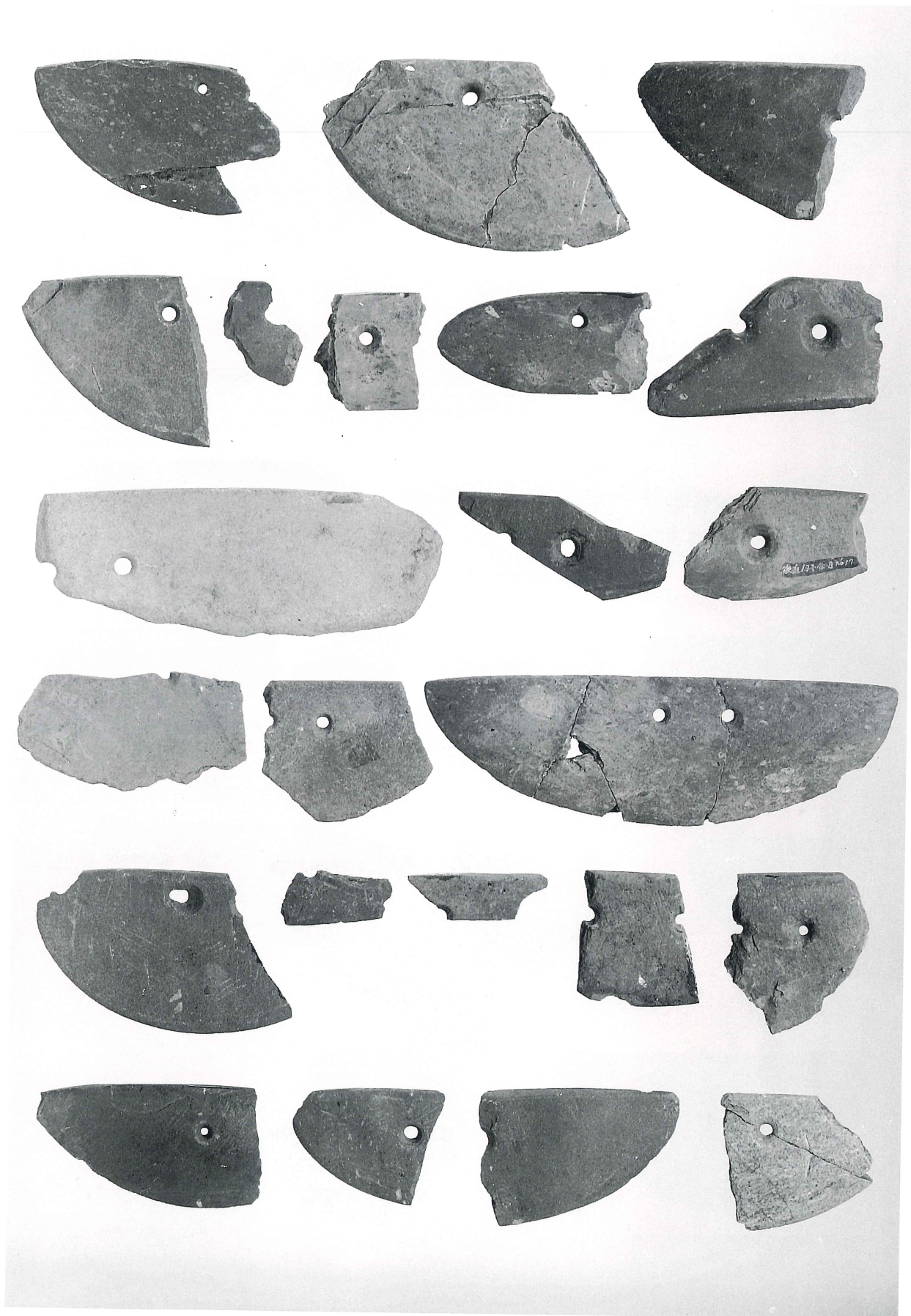
磨製石斧



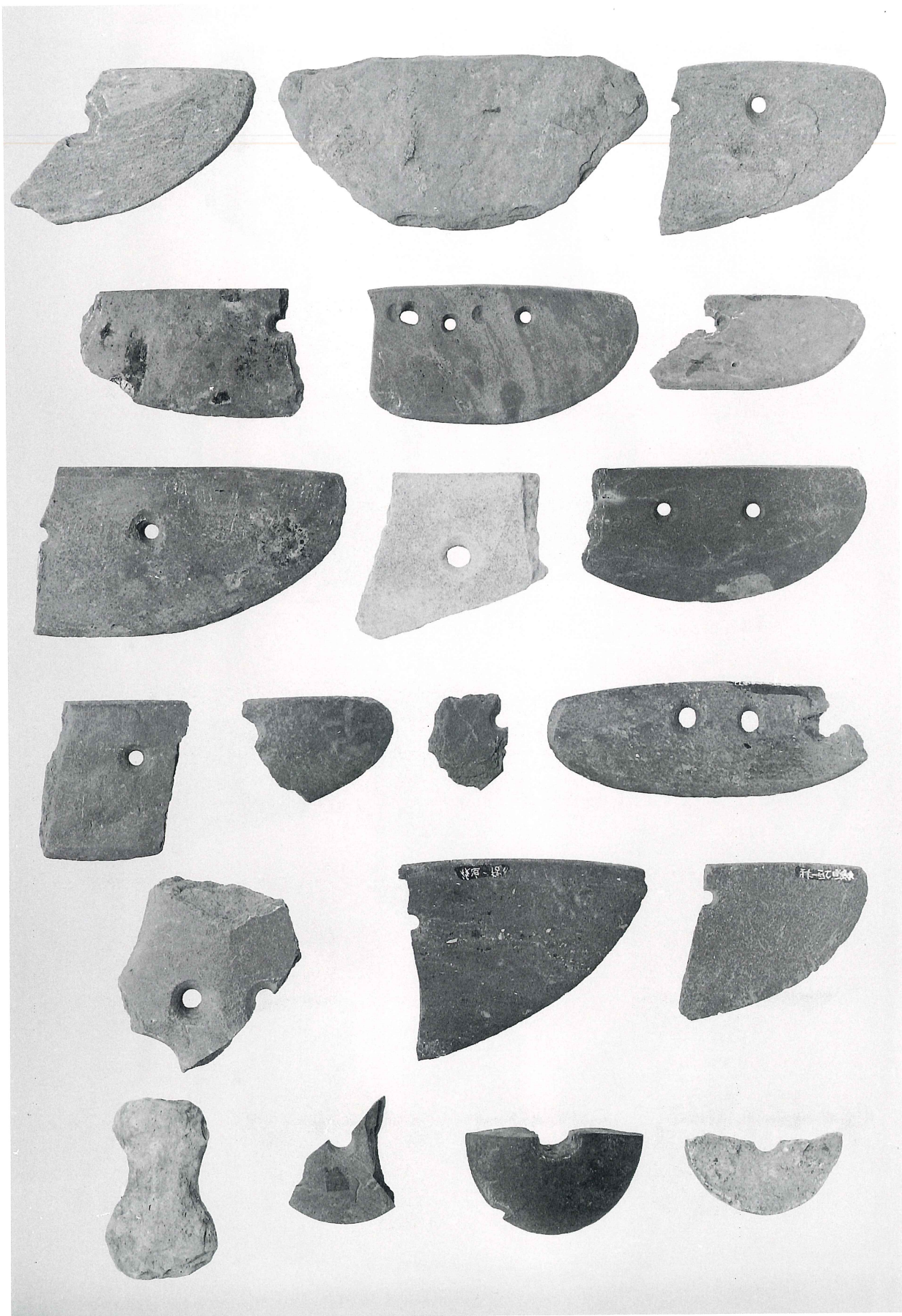
打製石斧



石包丁1



石包丁 2



石包丁 3 · 石戈 · 紡鐘車



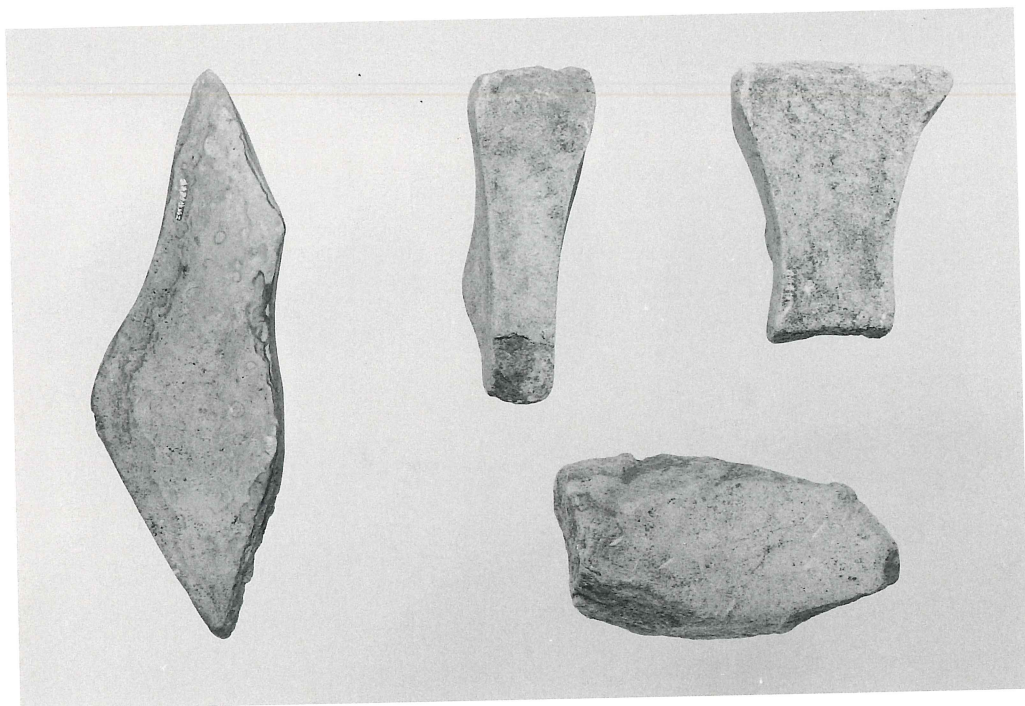
砥石 1



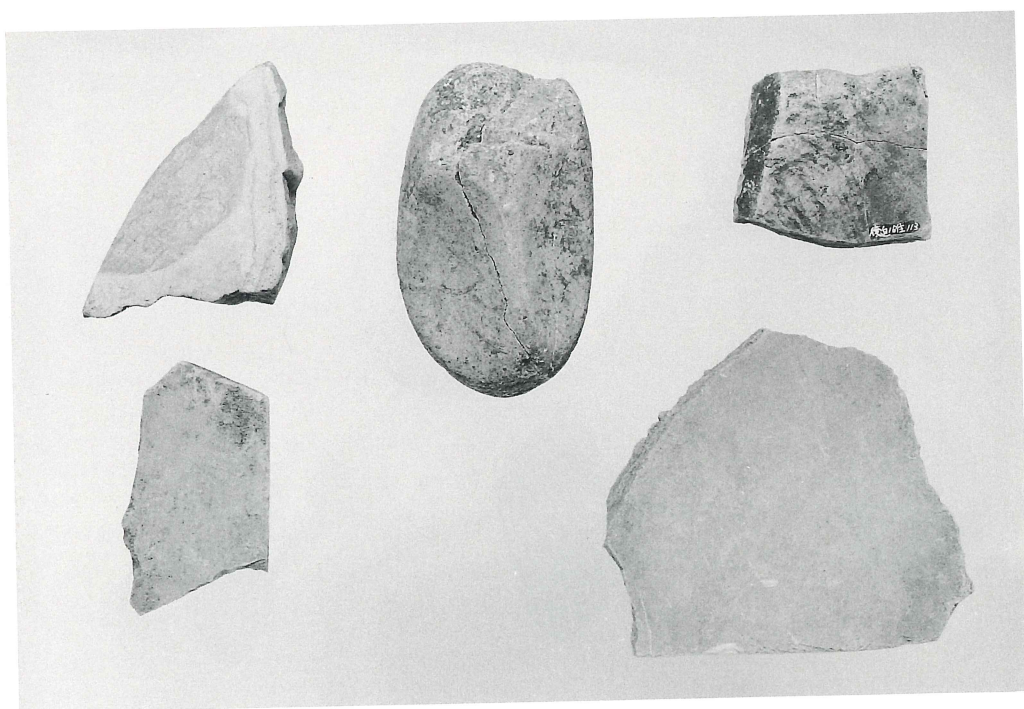
砥石 2



砥石 3

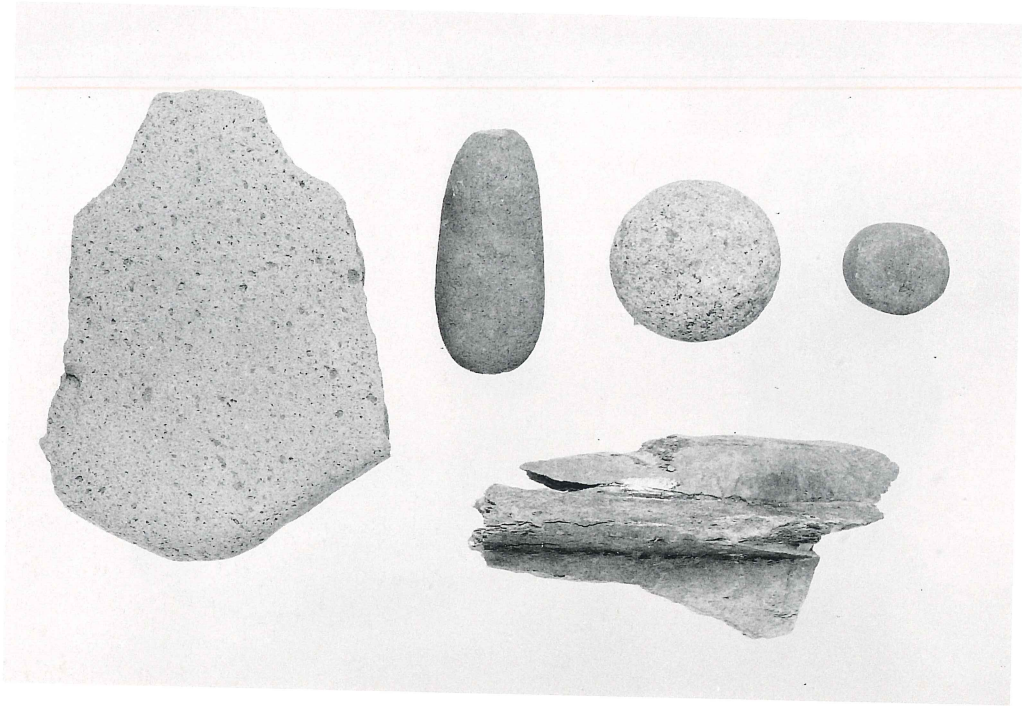


砥石 4



砥石 5

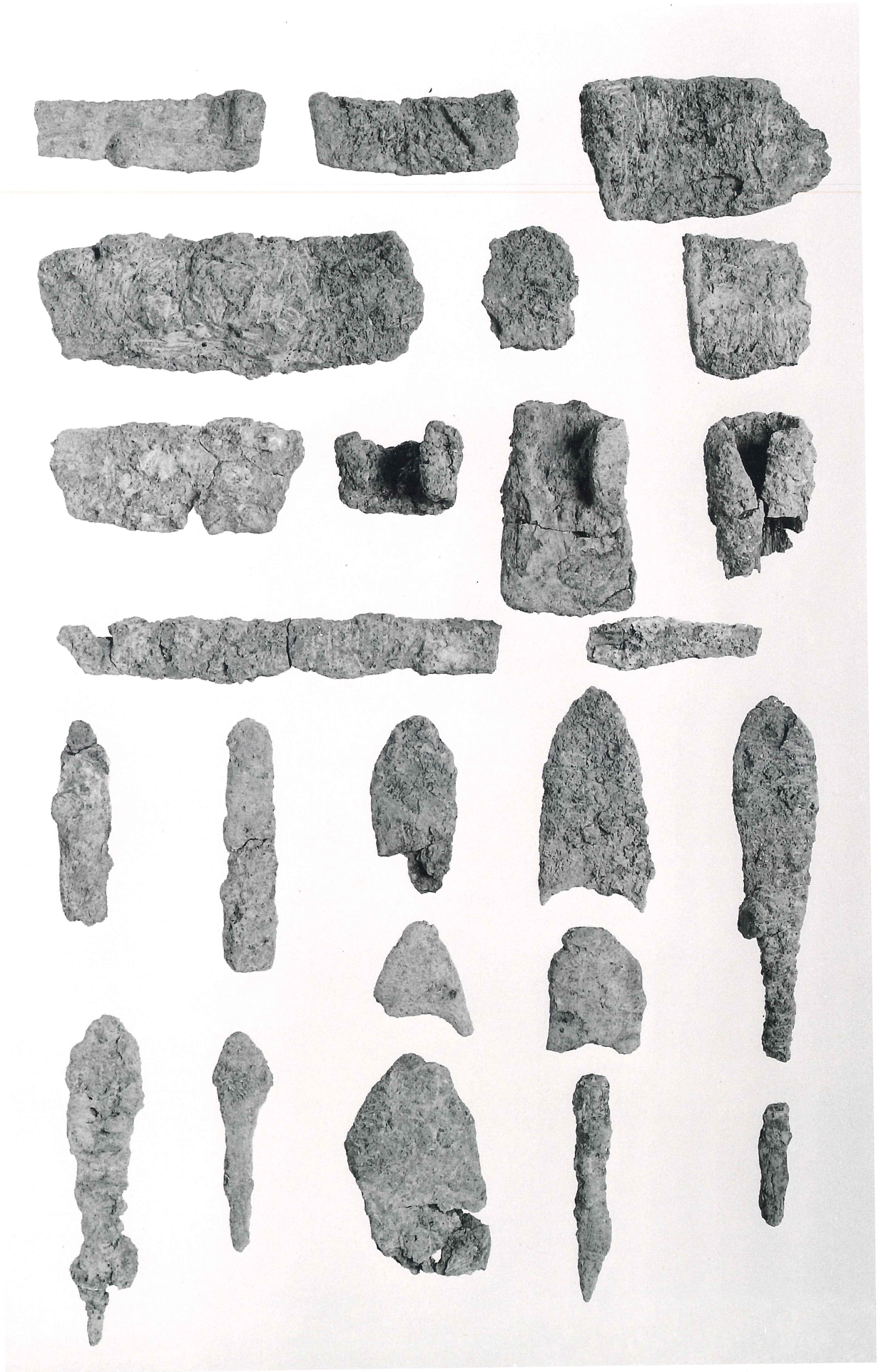




石皿・敲石・石鍋・磨石



勾玉・投弾



鉄器類

# 報 告 書 抄 録

フリガナ	ウシロザコイセキ
書名	後 迫 遺 跡
副書名	九州横断自動車道関係埋蔵文化財発掘調査報告書 (18)
巻次	一
シリーズ名	九州横断自動車道関係埋蔵文化財発掘調査報告書
シリーズ番号	18
編著者名	友岡信彦
編集機関	大分県教育委員会
所在地	〒870-0021 大分県大分市府内町3-10-1
発行年月日	2001年3月30日

フリガナ 所収遺跡名	フリガナ 所在地	コ ー ド		北 緯	東 経	調査期間	調査面積	調査原因
		市町村	遺跡番号					
ウシロザコイセキ 後迫遺跡	オオイトケンヒタシ 大分県日田市  オオアザミワアザ 大字三和字  ハラチ 原地他	442046	049	33° 20' 20"	130° 56' 22"	19910604     19931110	16000m <sup>2</sup>	九州横断  自動車道  建設

所収遺跡名	種 別	主な時代	主な遺構	主な遺物	特記事項
後 迫 遺 跡	集 落 墓 地	弥生時代  奈良時代	掘立柱建物跡 住居跡、土坑 石棺等	土器、石器等	

---

---

# 後 迫 遺 跡

—九州横断自動車道関係埋蔵  
文化財発掘調査報告書(18)—

平成13年3月30日

編集 大分県教育庁文化課 (文化財資料室)

〒870-1113

大分市中判田1977-1

TEL 097 (597) 5675

発行 大分県教育委員会

〒870-0021

大分市府内町3丁目10番1号

TEL 097 (536) 1111

印刷 明治印刷株式会社

---

---