

# 写 真 图 版



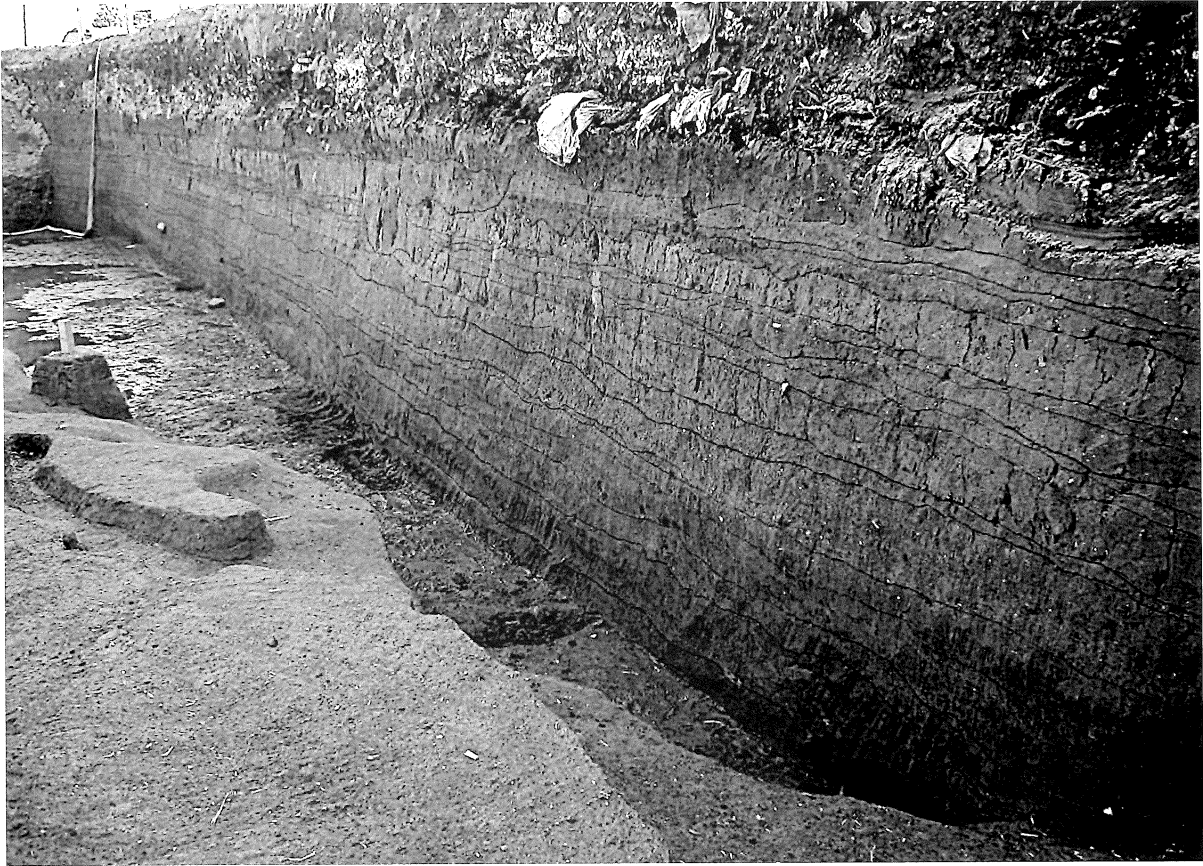
I層上面の遺構 (中世)



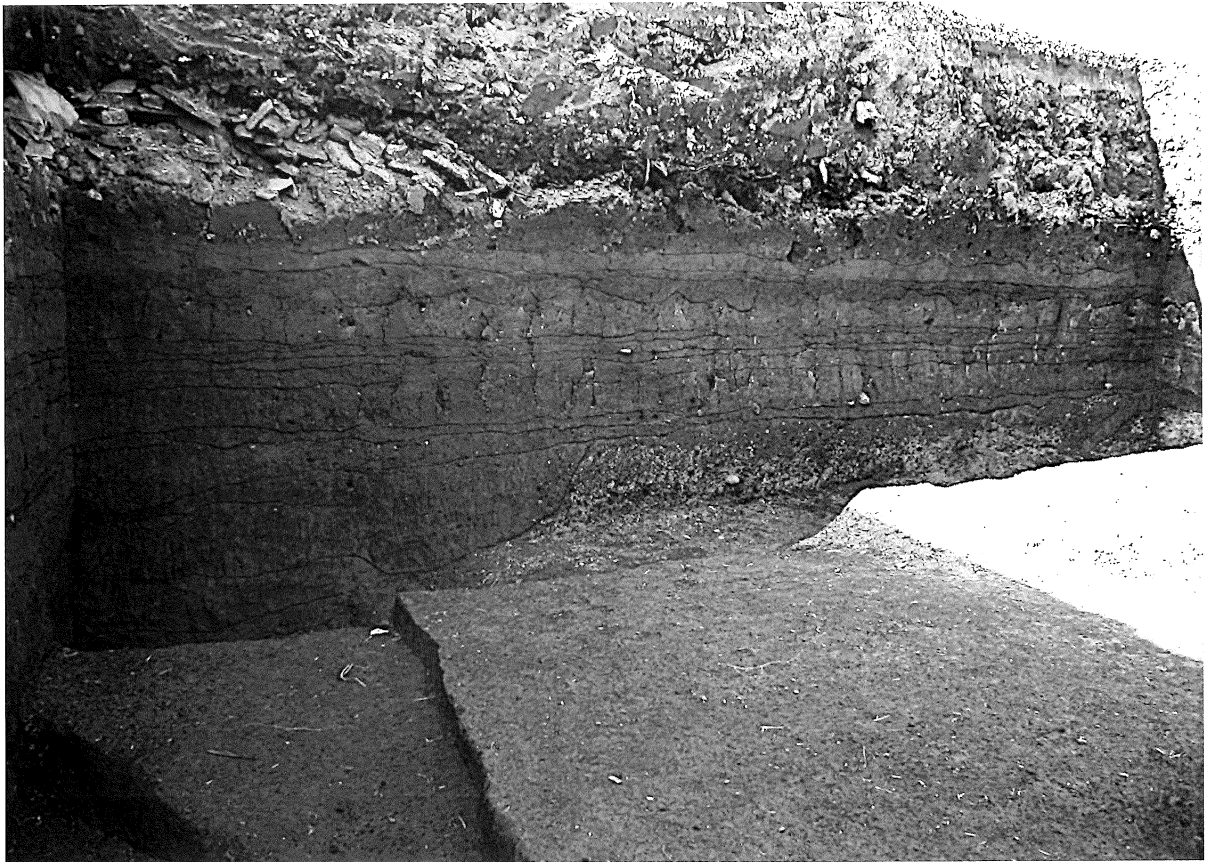
II層下面～IV層中の遺構 (9世紀中頃～後半)



V層上面の遺構 (8世紀末～9世紀前半・弥生時代後期末～古墳時代前期初頭)



上野町遺跡調査区南壁土層



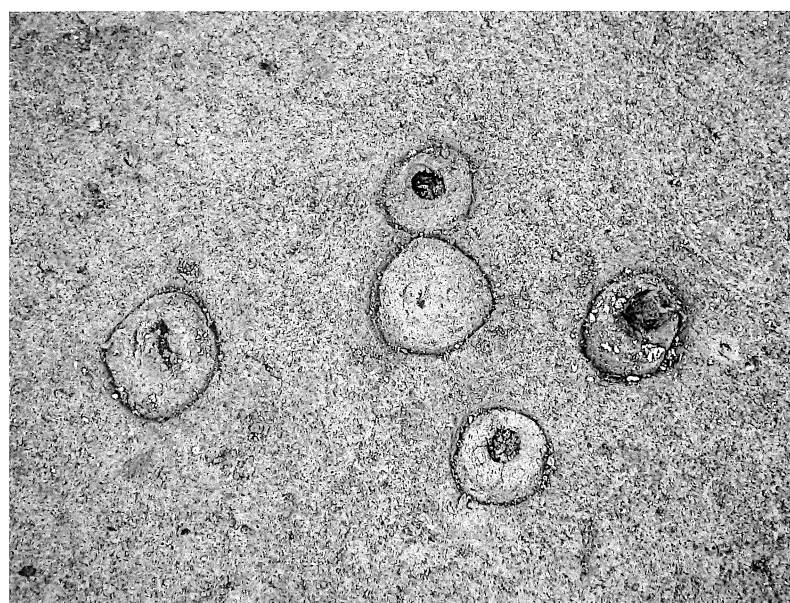
上野町遺跡調査区西壁土層



土坑SK001土層



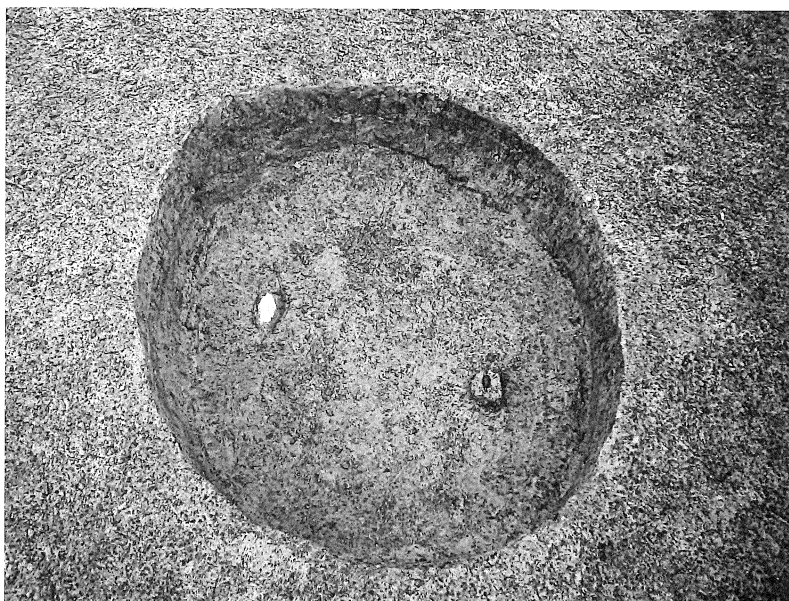
土坑SK001完掘



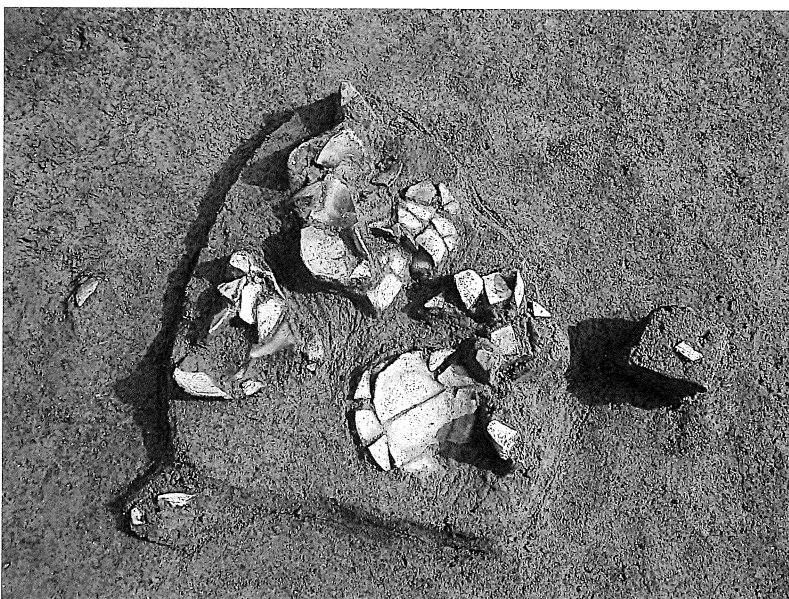
杭列SX004



溝SD002全景



土坑SK003完掘状況



土器集中部SX007遺物出土状況



土錘集中部SX006遺物出土状況



SX006大型土錘出土状況  
(西から)



SX006大型土錘出土状況  
(北から)



長沙窯系黄釉褐彩水注片  
出土状況①



長沙窯系黄釉褐彩水注片  
出土状況②



円面硯(圈足硯)出土状況



木製垂具出土状況



曲物底板出土状況

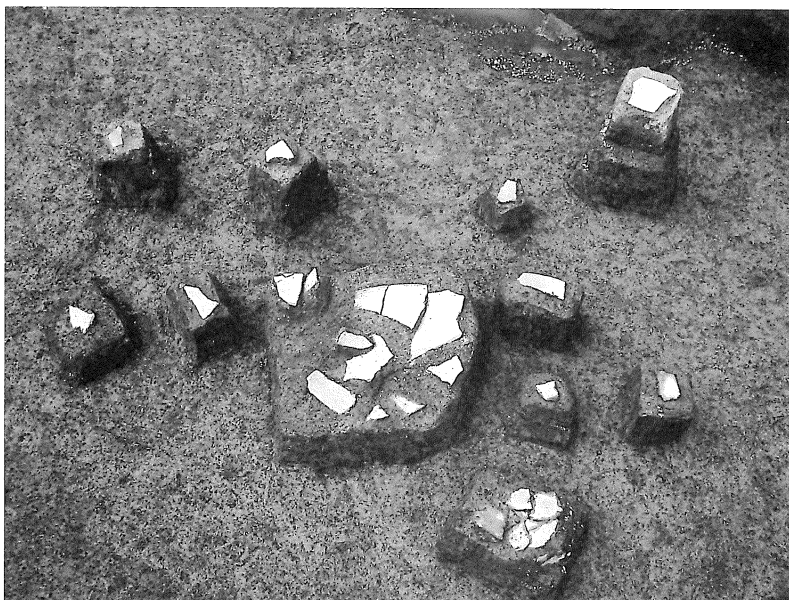


円面硯(圈足硯)出土状況  
(裏面を表にして出土している。)





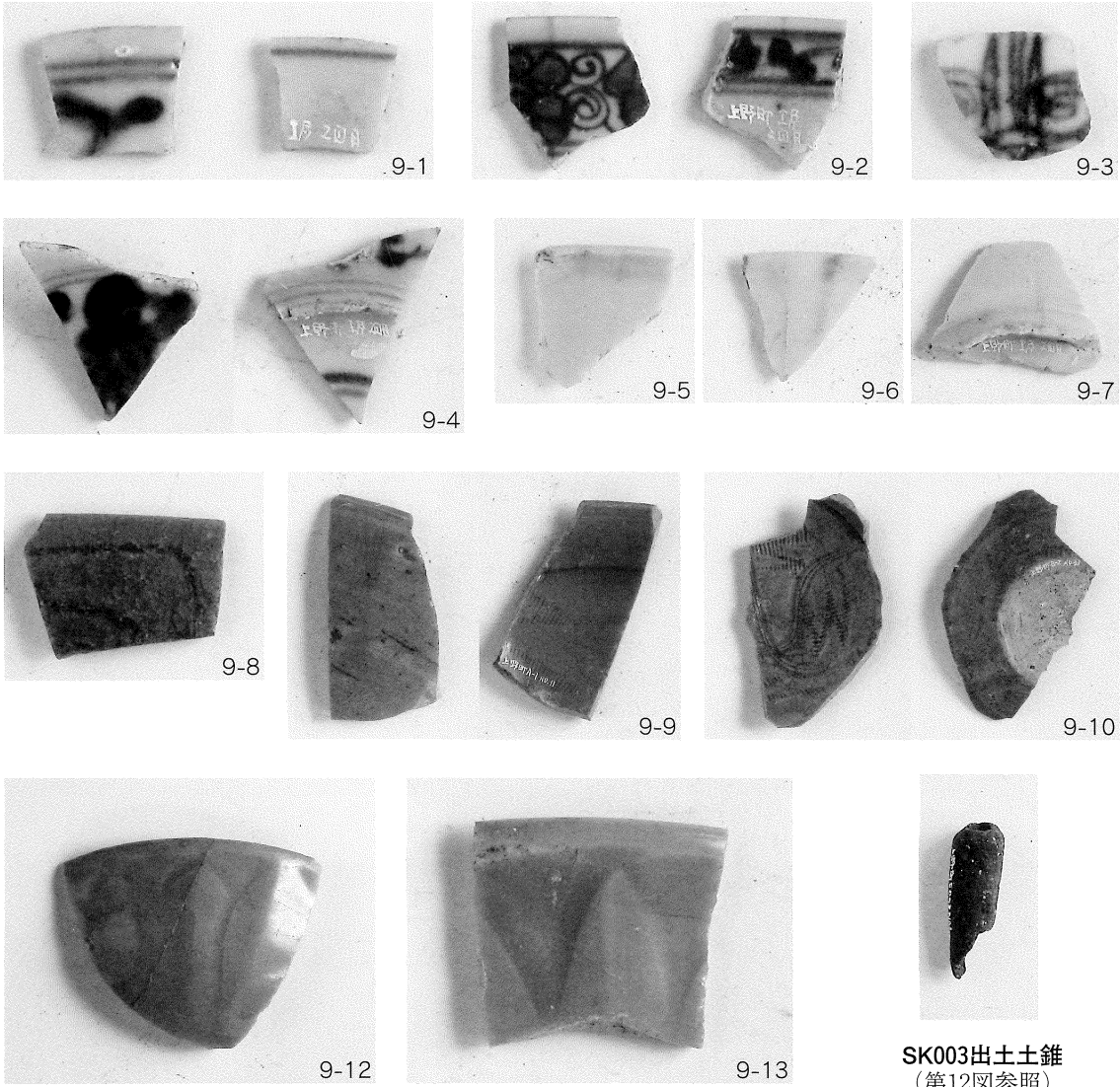
土器溜めSX005遺物出土状況①



土器溜めSX005遺物出土状況②  
(近景)

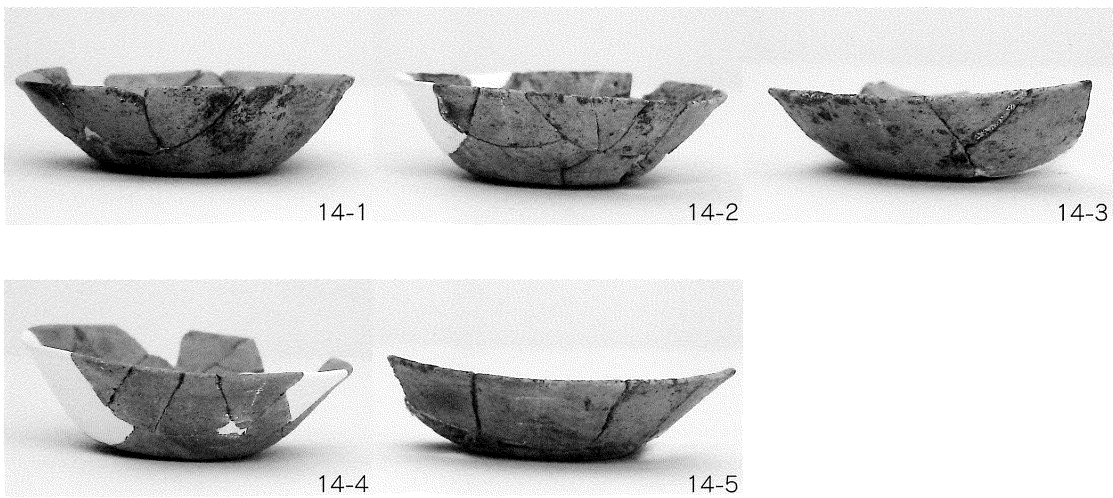


SX009複合口縁壺出土状況

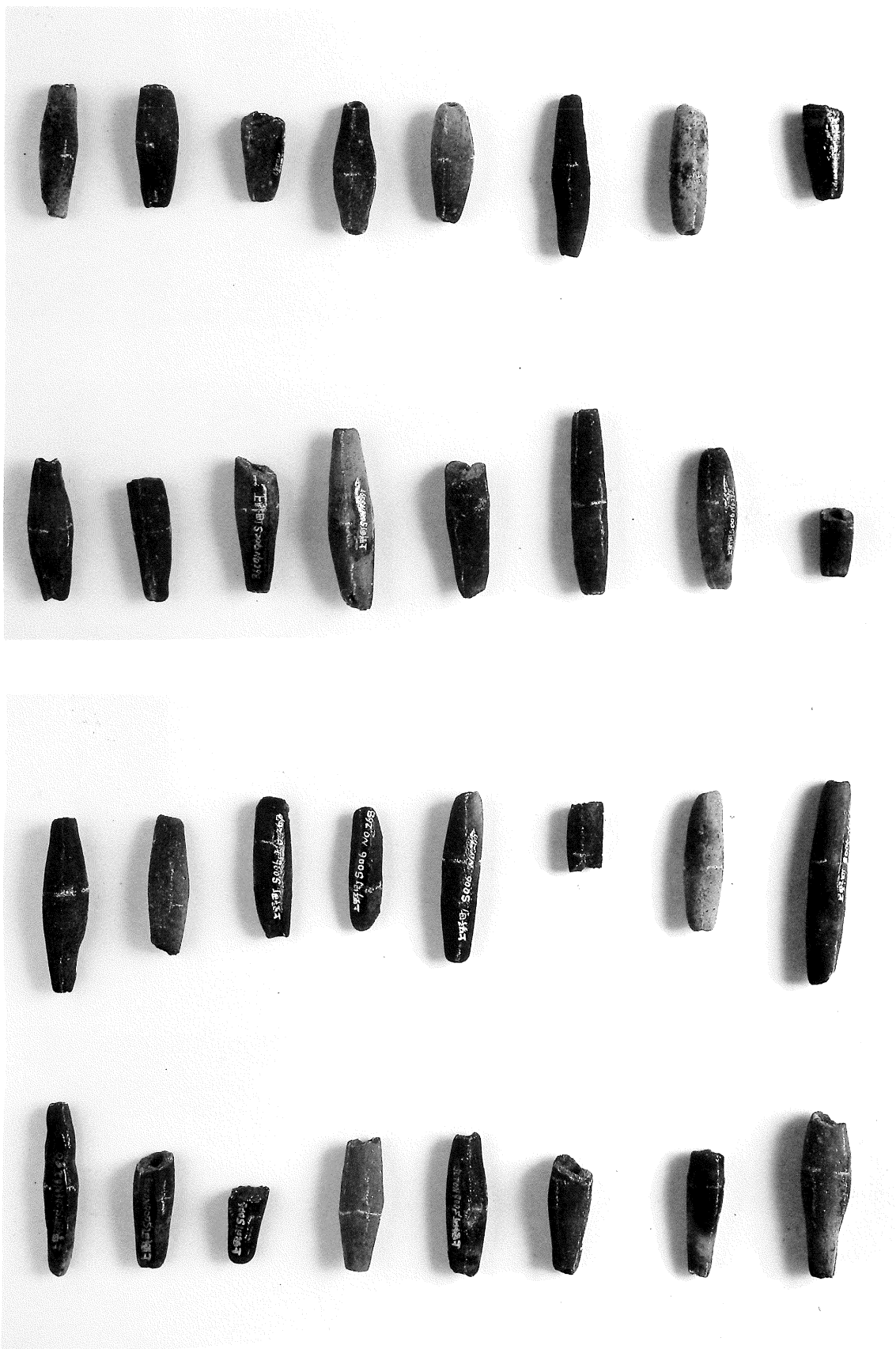


SK003出土土錐  
(第12図参照)

I層出土遺物 (第9図参照)



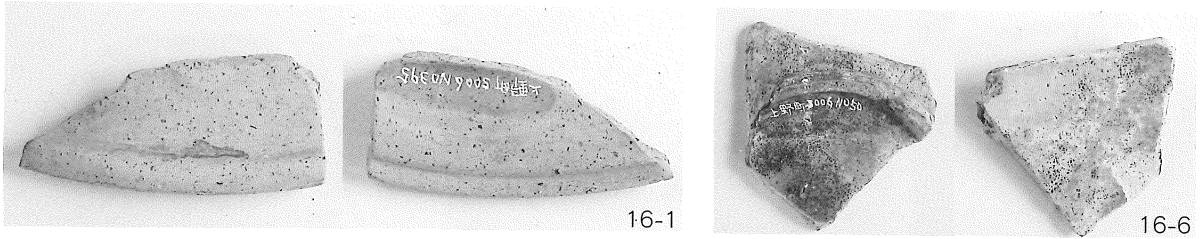
SX007出土遺物 (第14図参照)



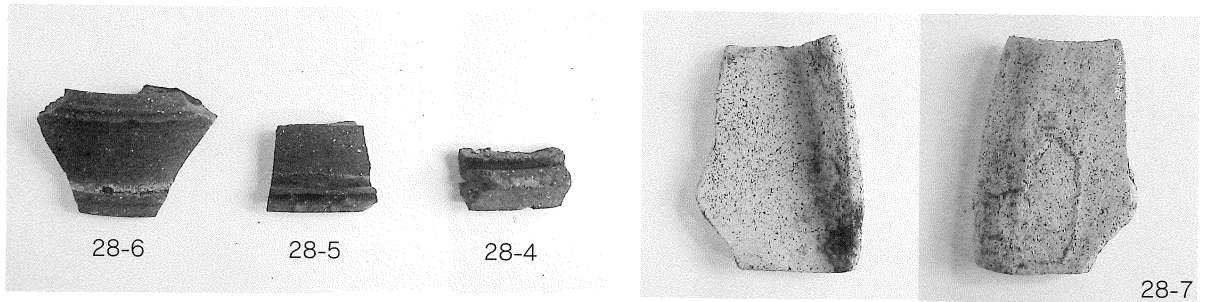
上野町遺跡SX006小型土錘 (第17~21図参照)



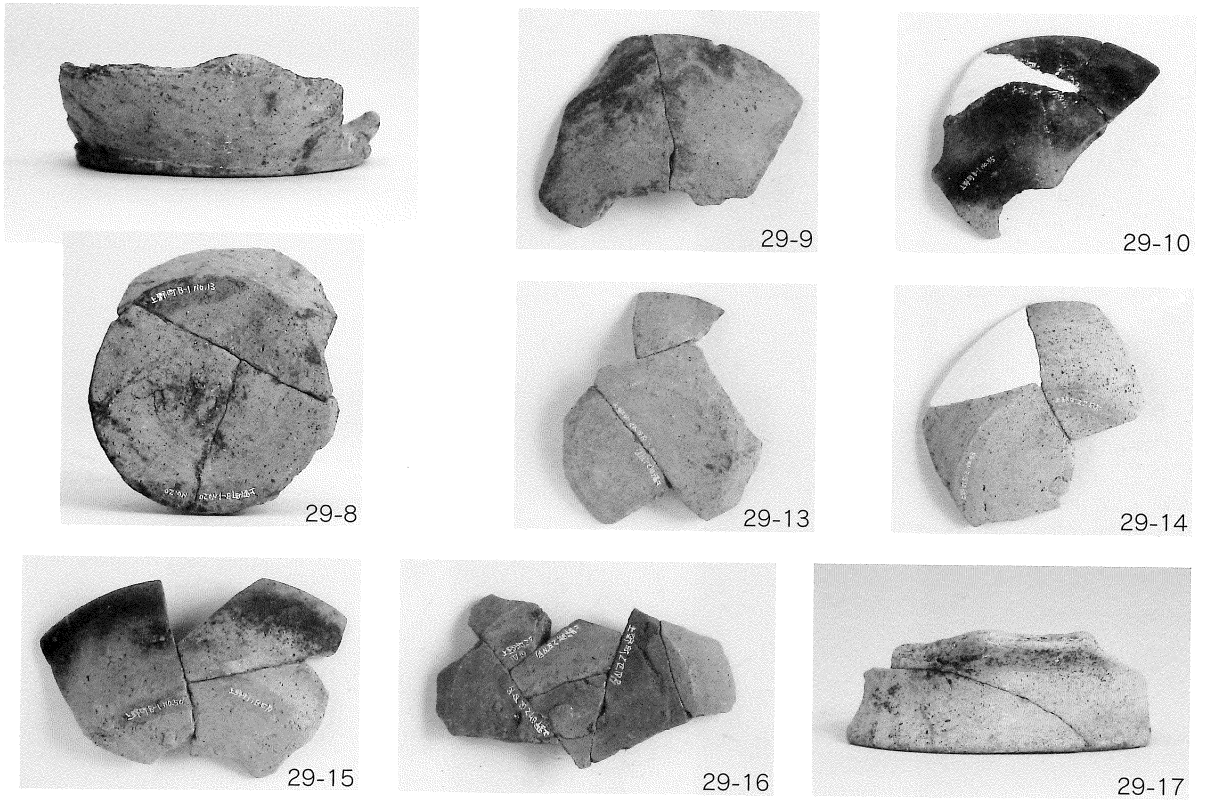
上野町遺跡SX006大型土錘 (第22~25図参照)



SX006出土遺物 (第16図参照)



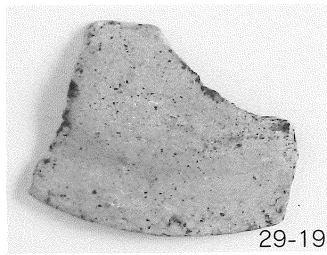
II～IV層群出土硯関連資料 (第28図参照)



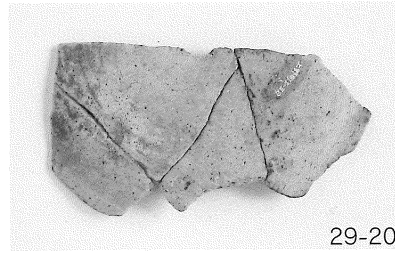
II～IV層群出土遺物① (第29図参照)



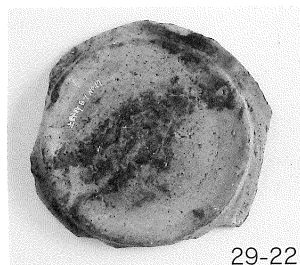
29-18



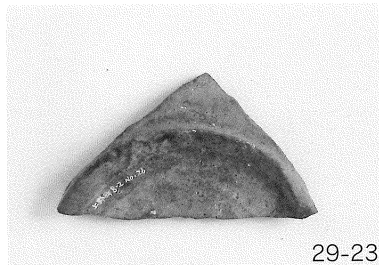
29-19



29-20



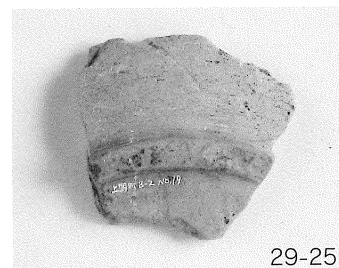
29-22



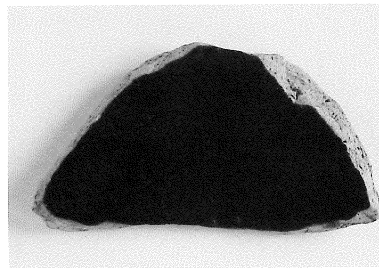
29-23



29-24



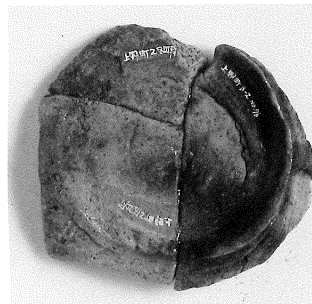
29-25



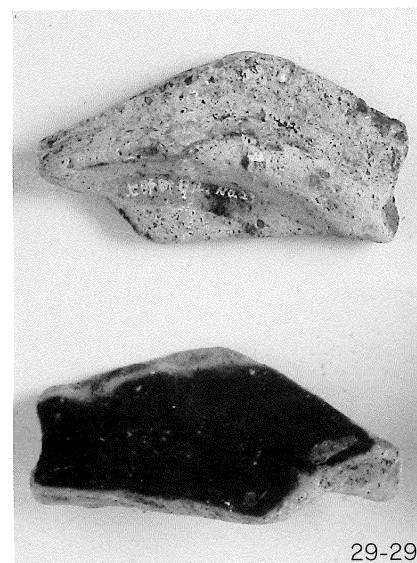
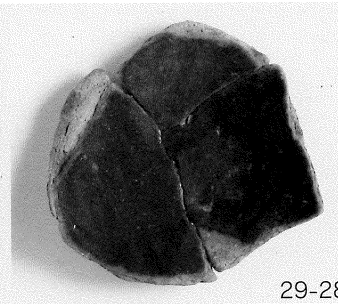
29-26



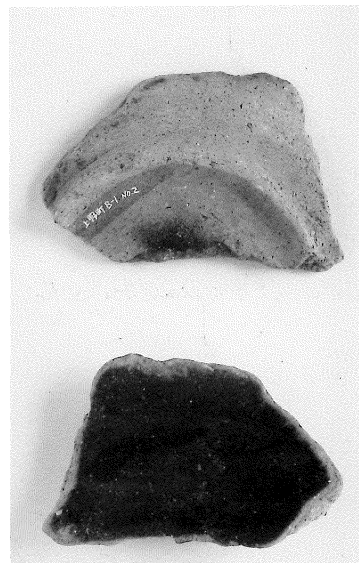
29-27



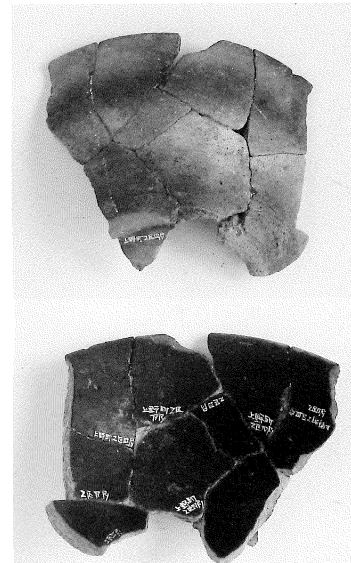
29-28



29-29



29-30

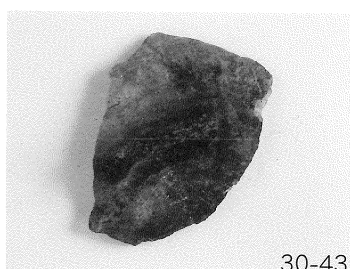


29-32

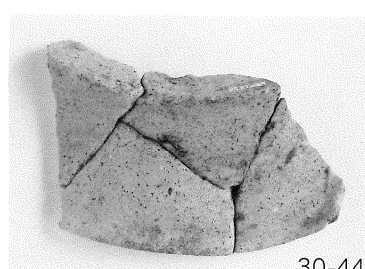
II～IV層群出土遺物② (第29図参照)



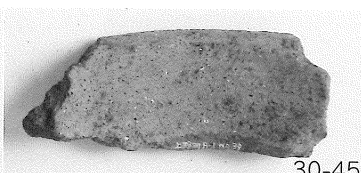
30-42



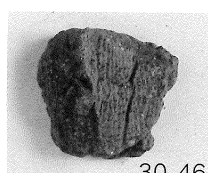
30-43



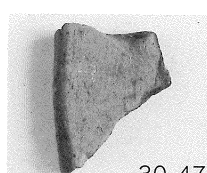
30-44



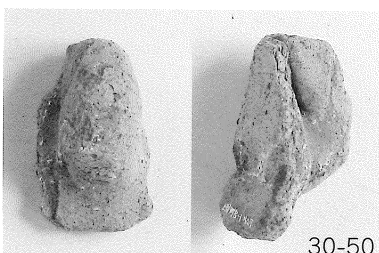
30-45



30-46



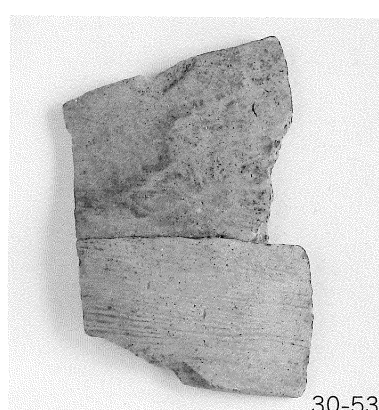
30-47



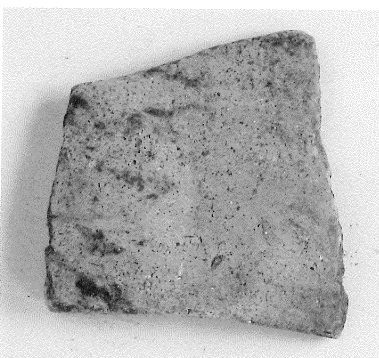
30-50



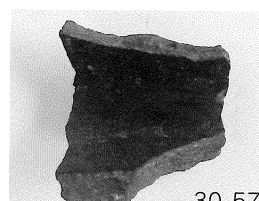
30-51



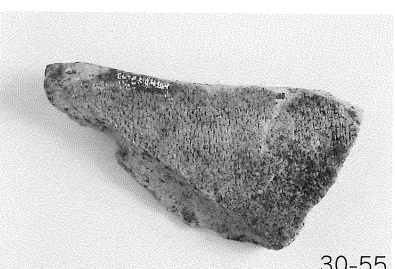
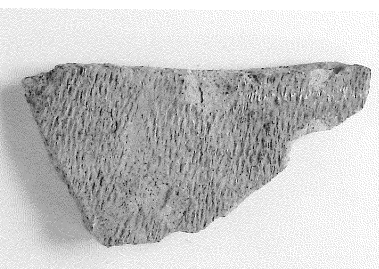
30-53



30-54



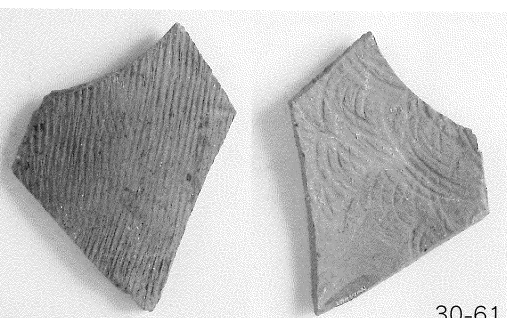
30-57



30-55



30-56

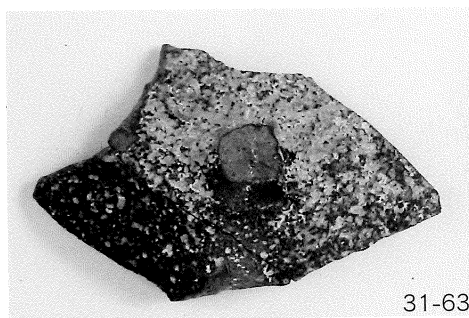


30-61

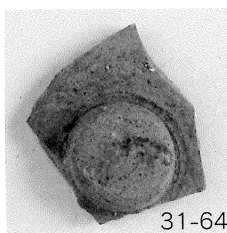


30-58

II～IV層群出土遺物③ (第30・31図参照)



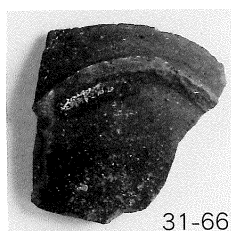
31-63



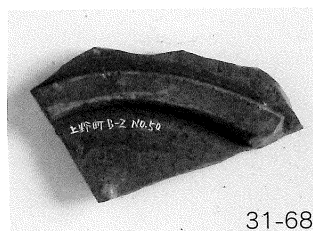
31-64



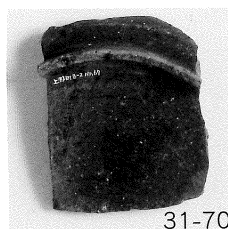
31-65



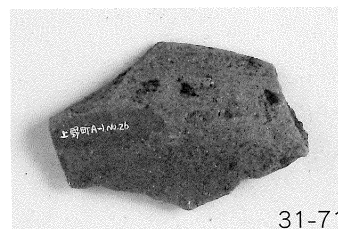
31-66



31-68

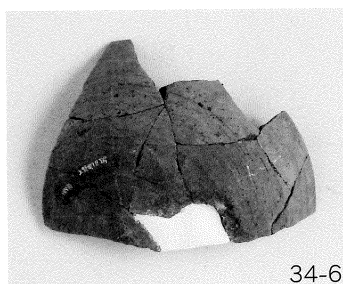


31-70



31-71

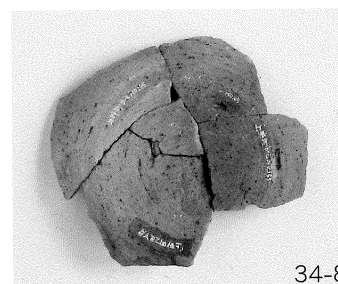
II~IV層群出土遺物④ (第31図参照)



34-6



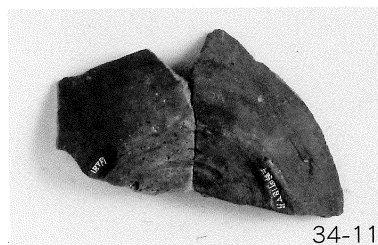
34-7



34-8



34-10



34-11



34-12



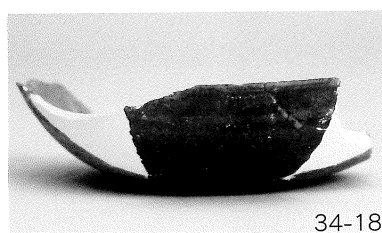
34-13



34-15



34-16



34-18



34-21



34-23

V層群出土遺物① (第34図参照)

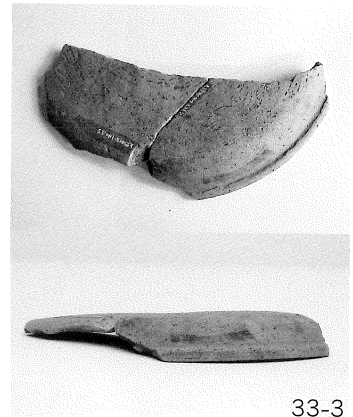




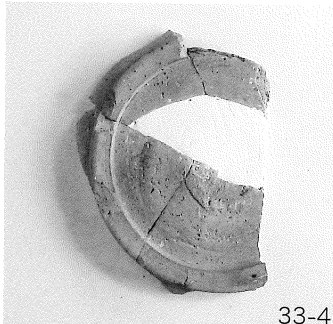
33-1



33-2



33-3



33-4

墨書土器  
 (第33図参照)



33-1



33-2



33-4



33-3

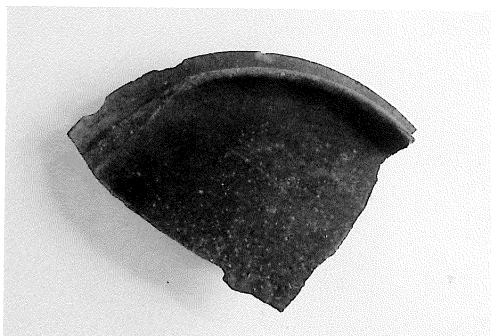
墨書のアップ

33-1 「草」

33-2 「字代」

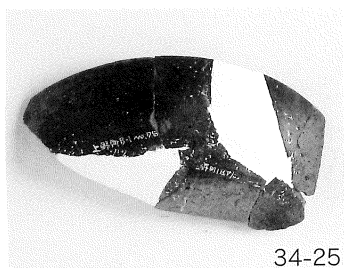
33-3 「一」

33-4 「春」か?



33-5

円面硯 (圈足硯)  
 (第33図参照)



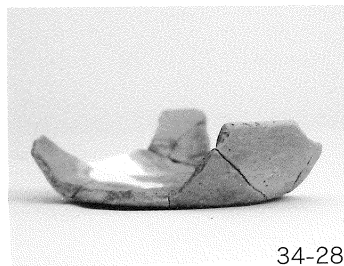
34-25



34-26



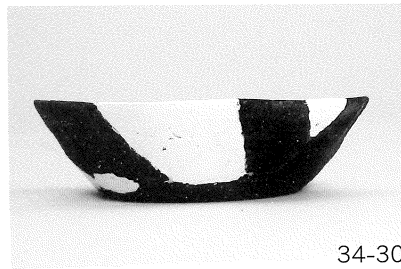
34-27



34-28



34-29



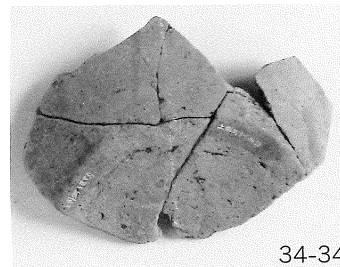
34-30



34-32



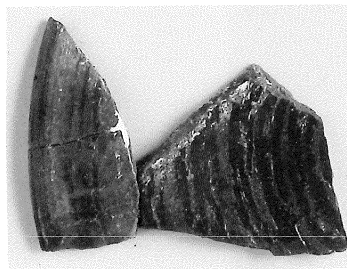
34-33



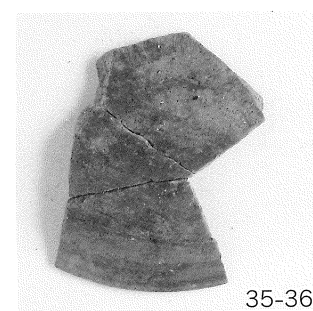
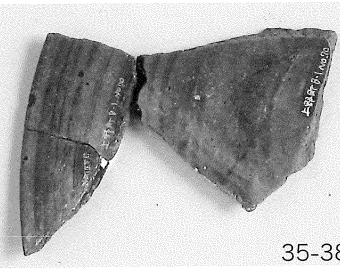
34-34



35-35



35-38



35-36



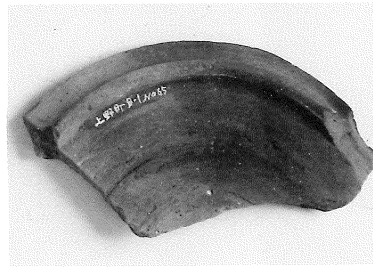
35-40a



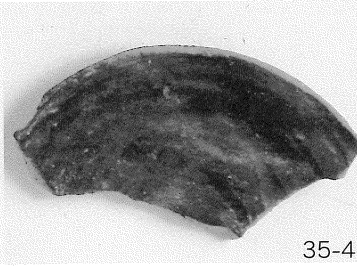
35-40b



35-41



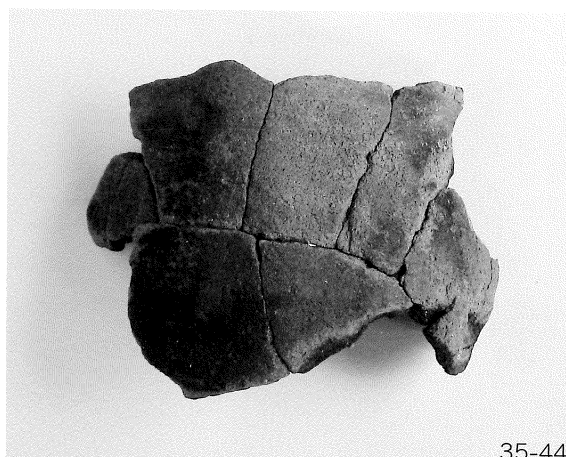
35-42



V層群出土遺物② (第34・35図参照)



35-43



35-44



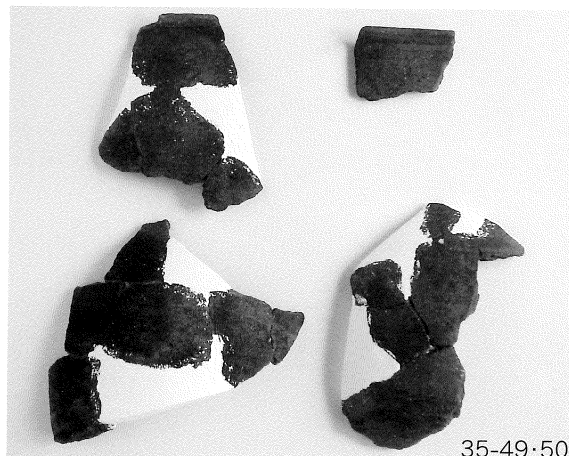
35-45



35-47



35-48



35-49・50



36-51

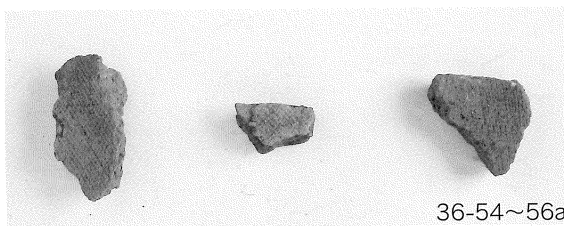


36-52

V層群出土遺物③ (第35・36図参照)



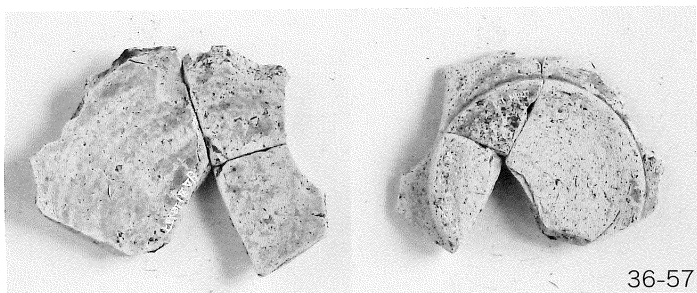
36-53



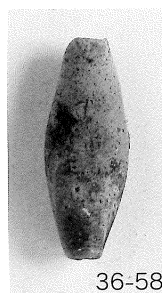
36-54~56a



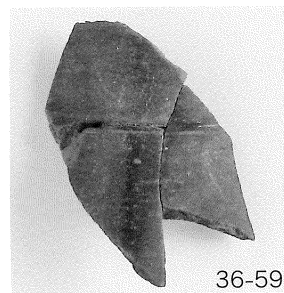
36-54~56b



36-57



36-58



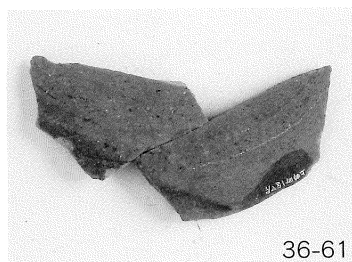
36-59



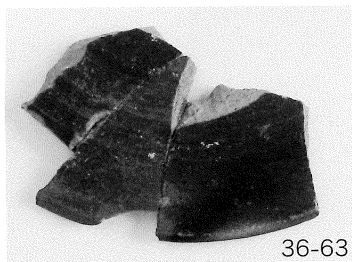
36-60



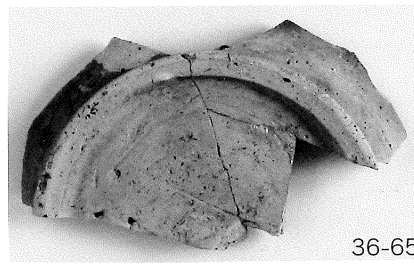
36-62



36-61



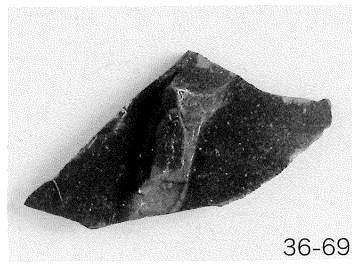
36-63



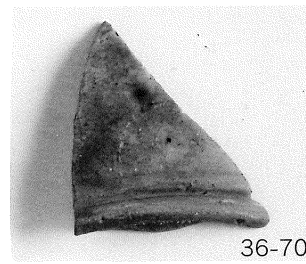
36-65



36-68

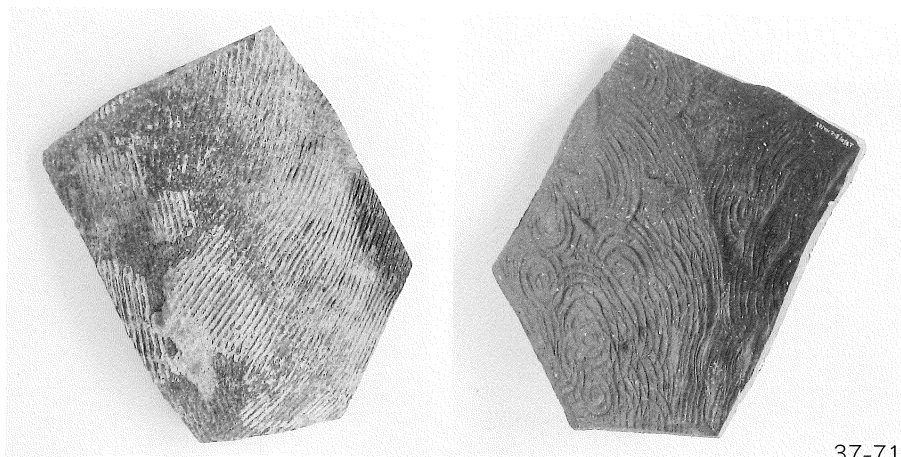


36-69



36-70

V層群出土遺物④ (第36図参照)



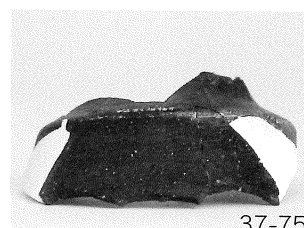
37-71



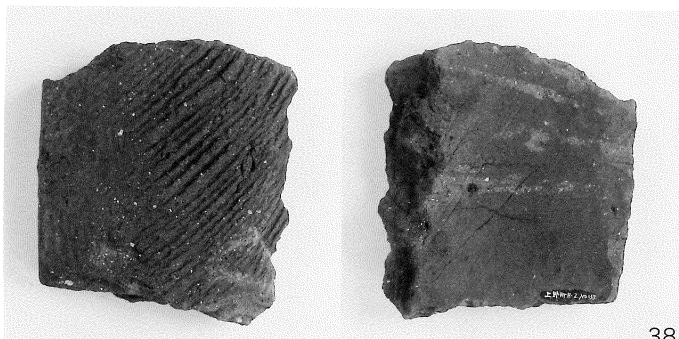
37-73 V層群出土遺物⑤ (第37図参照)



37-74



37-75



38 V層群出土遺物⑥ (第38図参照)

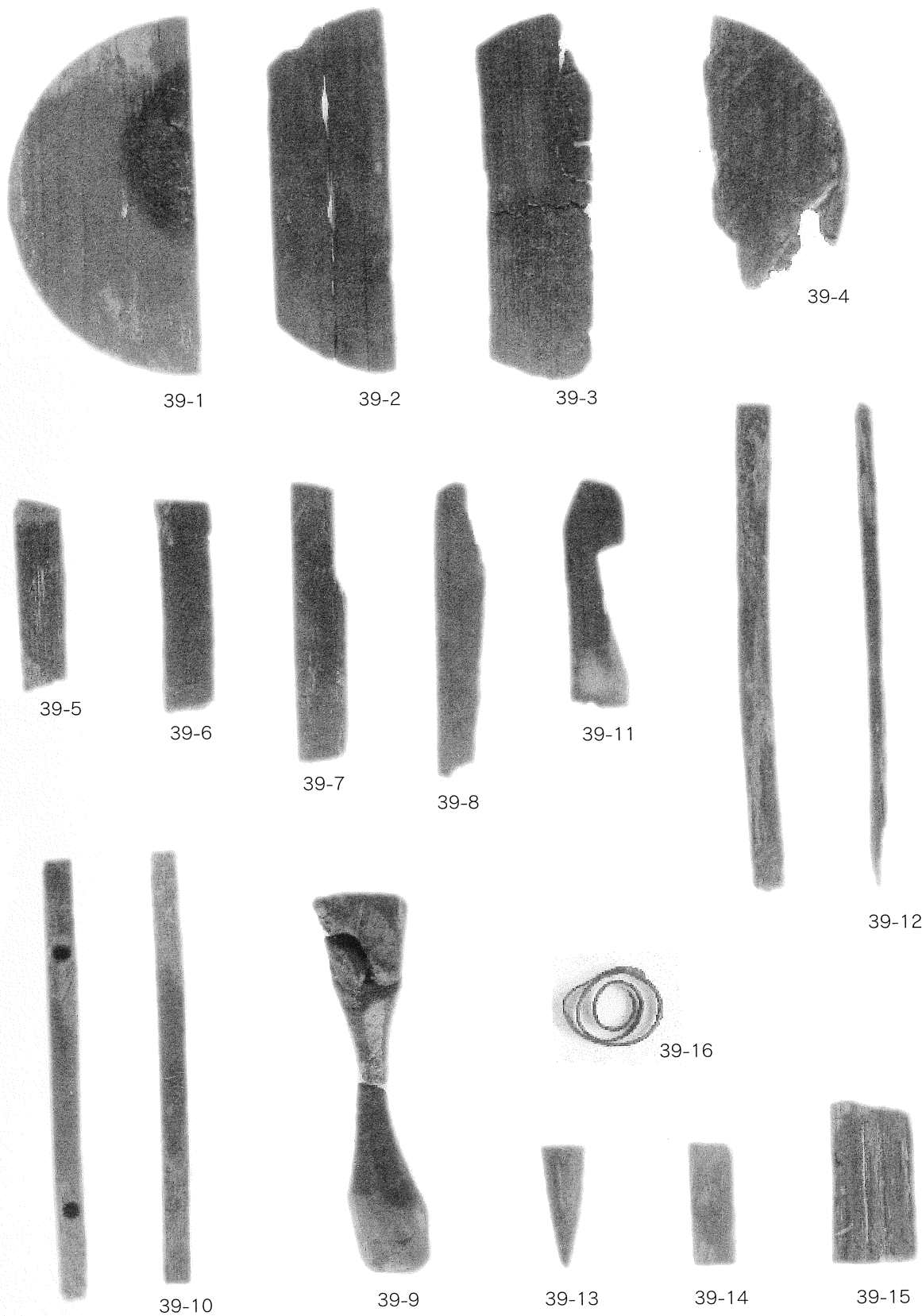


42



44

SX009・SX007出土遺物 (第42・44図参照)



V層群出土木製品 (第39図参照)



調査区全景(東から)



調査区全景(北から)

SD 1 完掘状況  
(東から)



SD 2 遺物出土状況  
(東から)

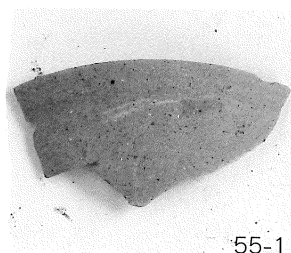


SD 2 牛下顎骨出土状況

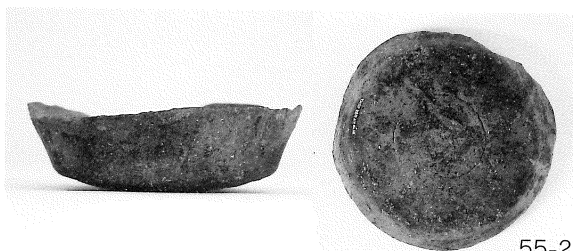


SD 2 遺物出土状況

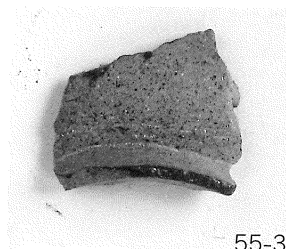




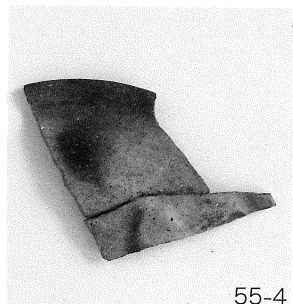
55-1



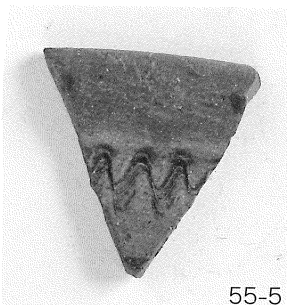
55-2



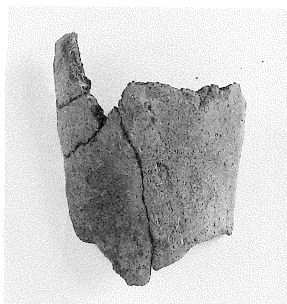
55-3



55-4



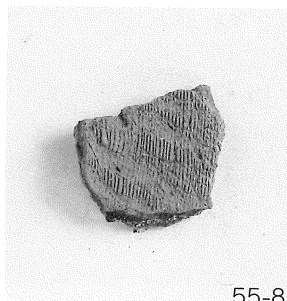
55-5



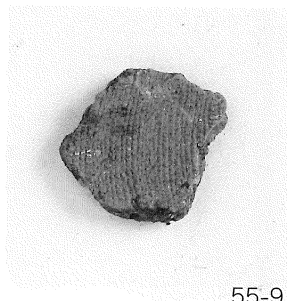
55-7



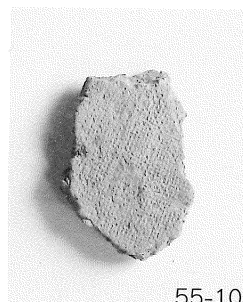
55-6



55-8



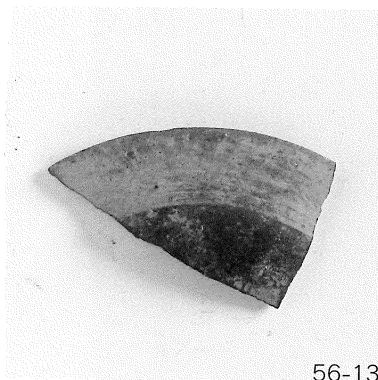
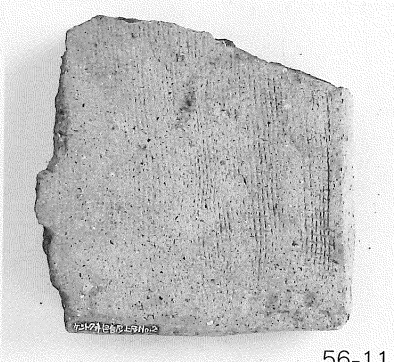
55-9



55-10



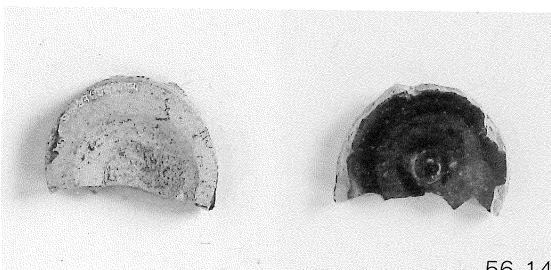
56-11



56-13

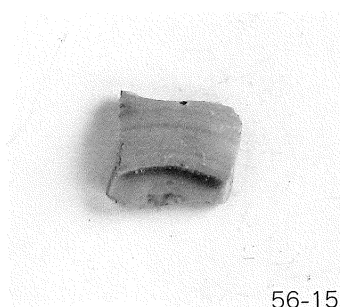


56-12

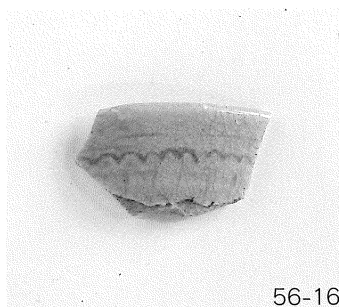


56-14

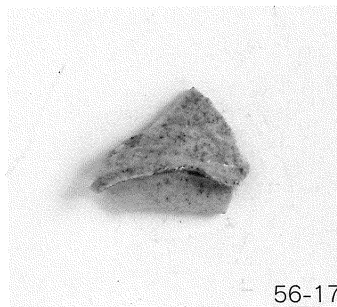
包含層上層出土遺物① (第55・56図参照)



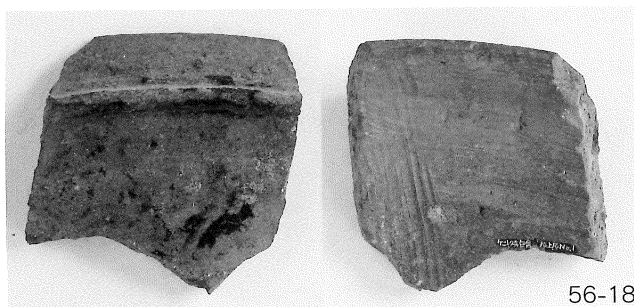
56-15



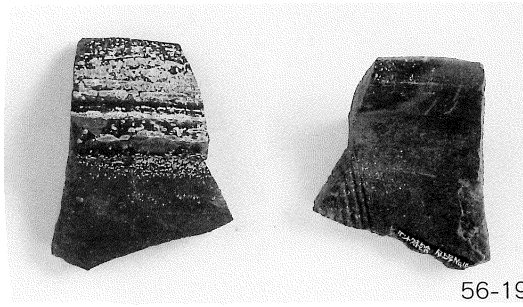
56-16



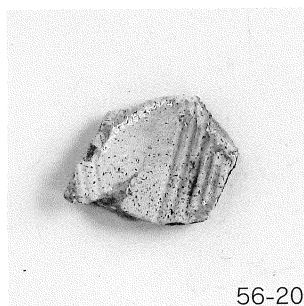
56-17



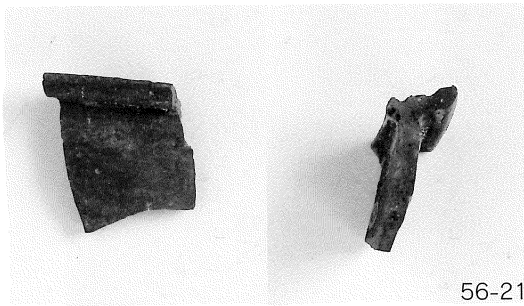
56-18



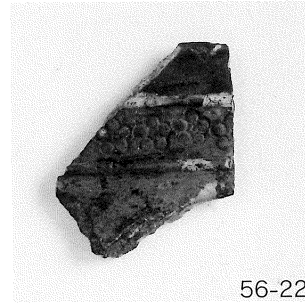
56-19



56-20

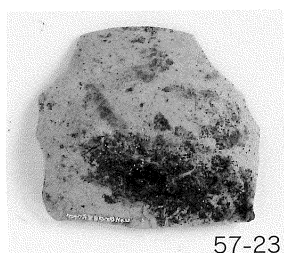


56-21



56-22

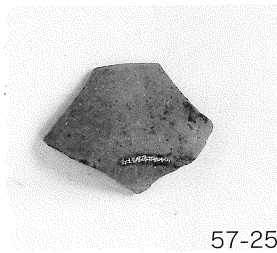
包含層上層出土遺物② (第56図参照)



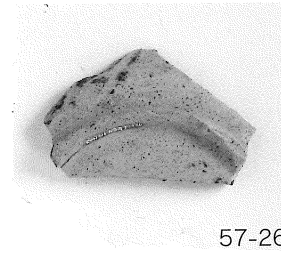
57-23



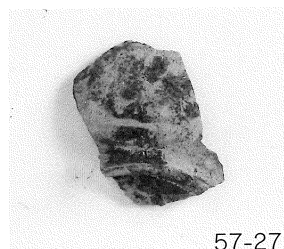
57-24



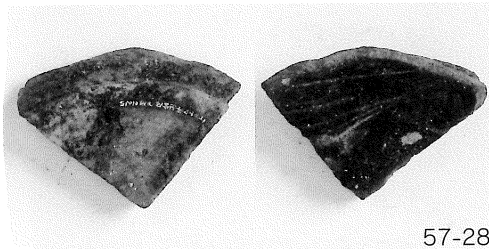
57-25



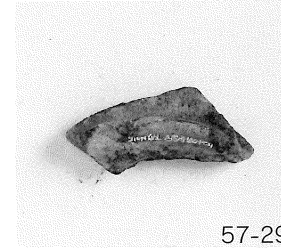
57-26



57-27

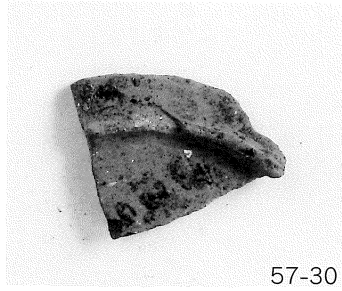


57-28

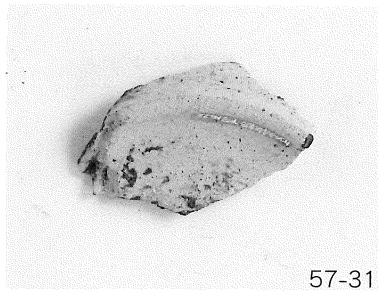


57-29

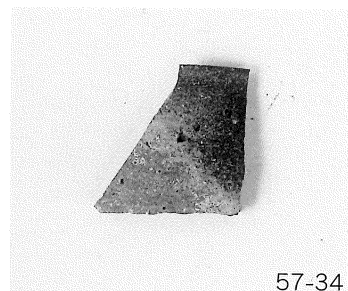
包含層下層出土遺物① (第57図参照)



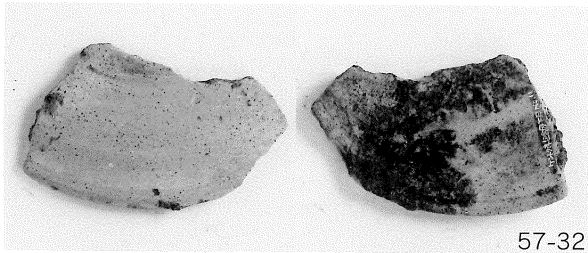
57-30



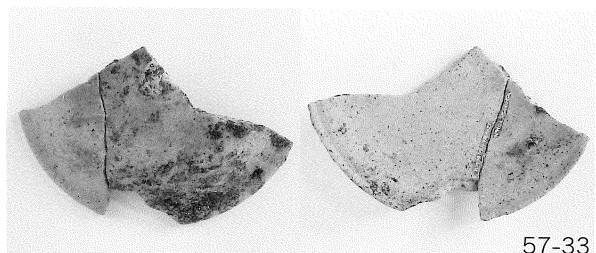
57-31



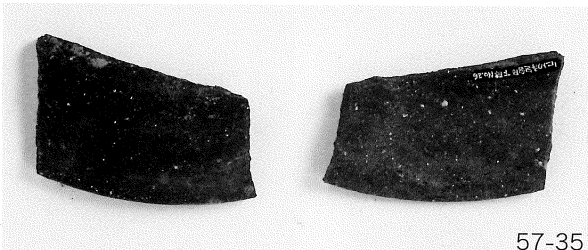
57-34



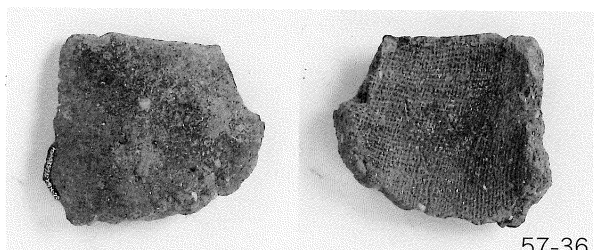
57-32



57-33

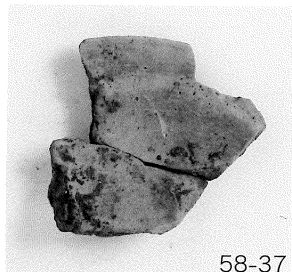


57-35



57-36

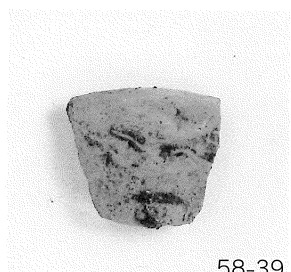
包含層下層出土遺物② (第57図参照)



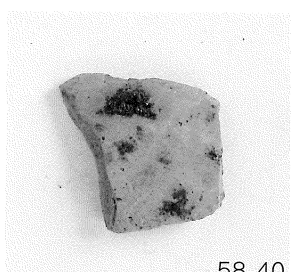
58-37



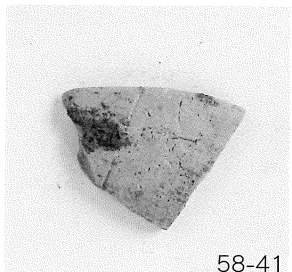
58-38



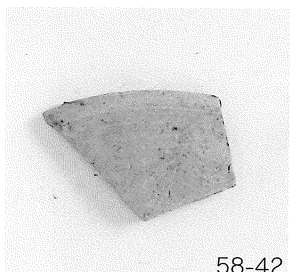
58-39



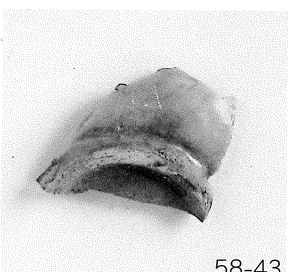
58-40



58-41



58-42

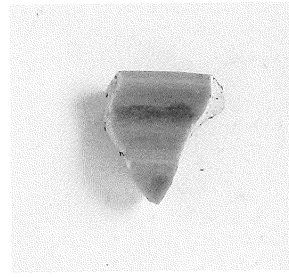
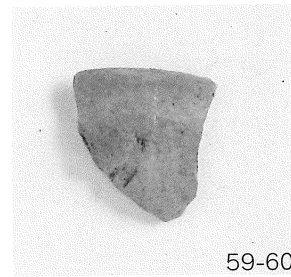
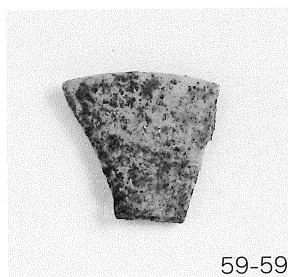
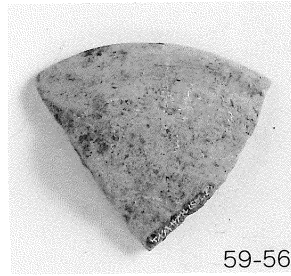
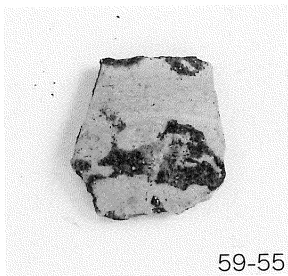
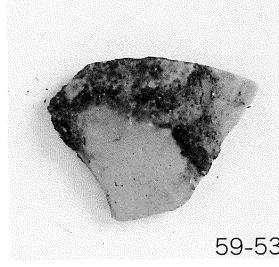
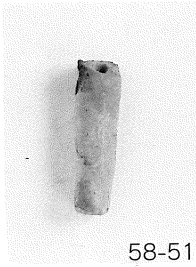
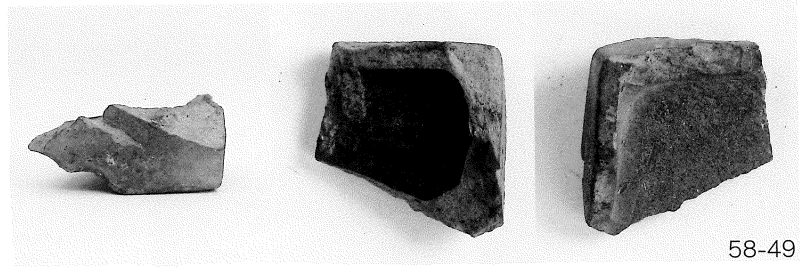
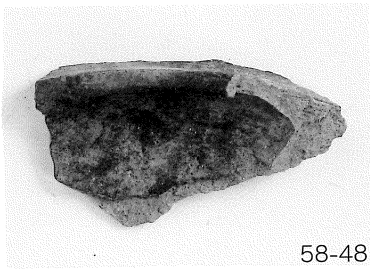
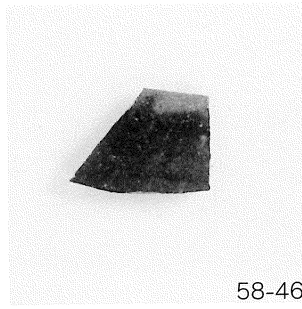
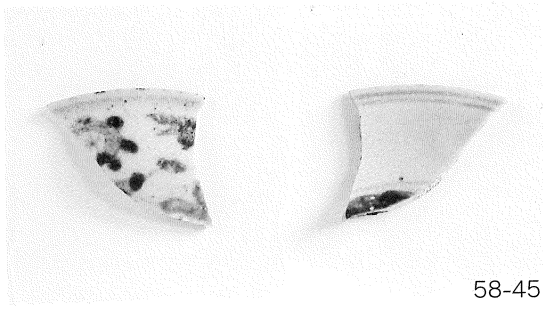


58-43

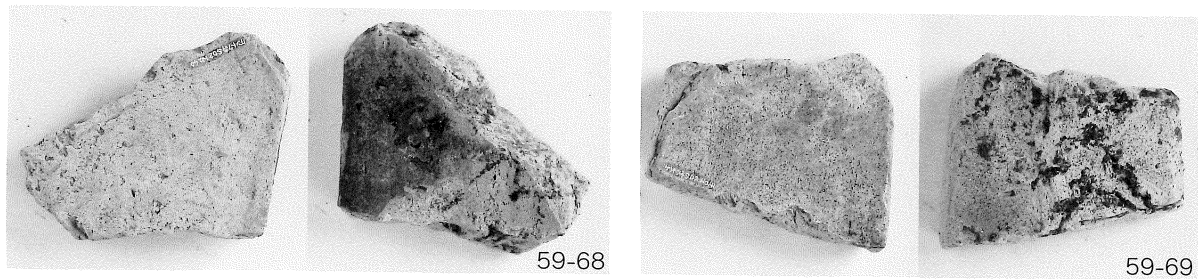
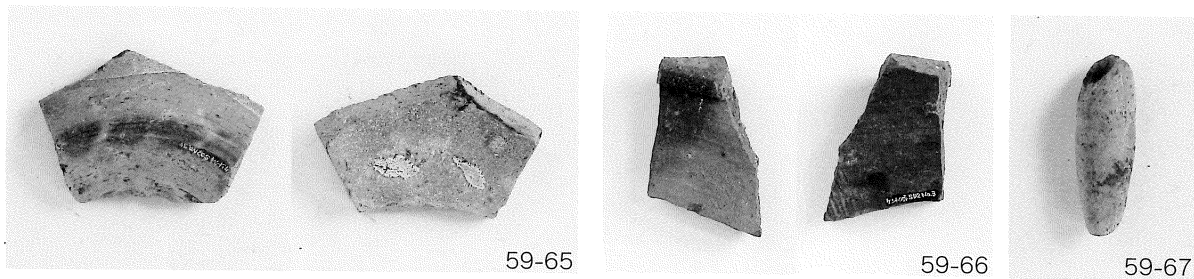
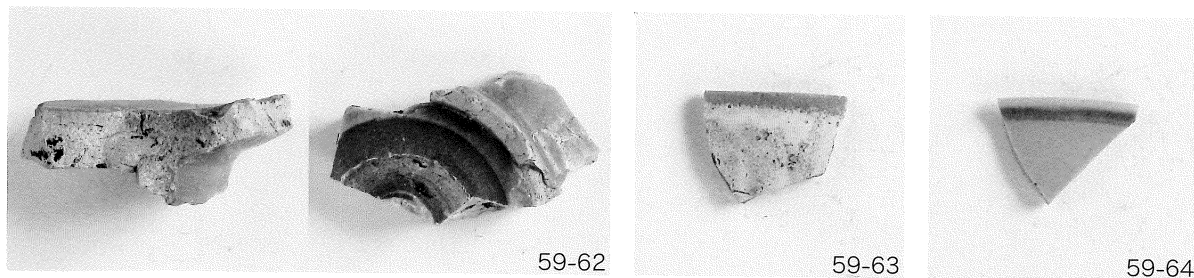


58-44

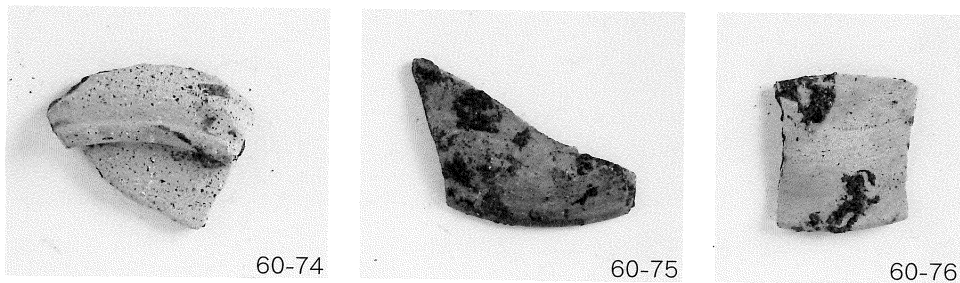
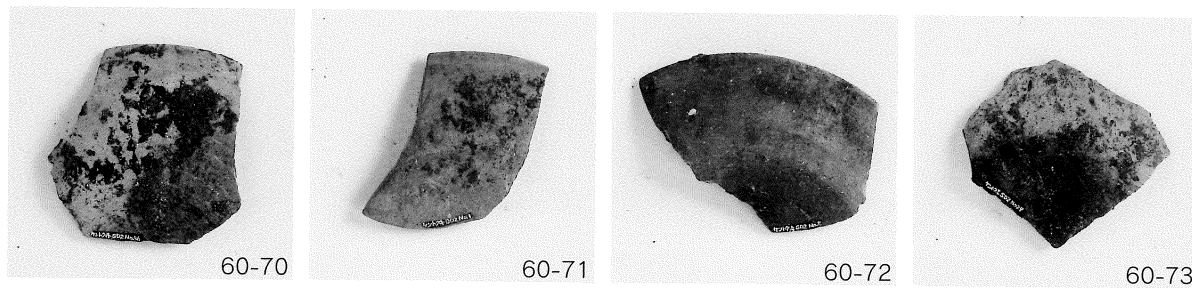
SD 1 出土遺物① (第58図参照)



SD 1 出土遺物② (第58・59図参照)



SD 1 出土遺物③ (第59図参照)



SD 2 出土遺物 (第60図参照)

報 告 書 抄 録

ふりがな	うえのまちいせき・けんとくじいせき							
書名	上野町遺跡・顕徳寺遺跡							
副書名	大分駅付近連続立体交差事業に伴う埋蔵文化財発掘調査報告書							
巻次	I							
シリーズ名	大分県文化財調査報告書							
シリーズ番号	第164輯							
編著者名	吉田寛・後藤晃一							
編集機関	大分県教育委員会							
所在地	大分市府内町3丁目10番1号							
発行年月日	平成16年(2004年)3月31日							
ふりがな 所収遺跡	ふりがな 所在地	コード		北緯 ° ' "	東経 ° ' "	調査 期間	調査 面積 ㎡	調査原因
		市町村	遺跡番号					
うえのまち 上野町遺跡	おおいたけんおおいたし 大分県大分市 うえのまち ほんち 上野町1番地	-	-	33° 13' 34"	131° 36' 54"	020107 ～ 020227	135	大分駅付近連続 立体交差事業
けんとくじ 顕徳寺遺跡	おおいたけんおおいたし 大分県大分市 ろくほうきたまち 六坊北町 けんとくじ 字顕徳寺	-	-	33° 13' 34"	131° 36' 56"	010705 ～ 010831	100	大分駅付近連続 立体交差事業
所収遺跡名	種別	主な時代	主な遺構	主な遺物		特記事項		
上野町遺跡	包含層・ 散布地	古代・中世	中世…土坑、整 地層 古代…落ち込み、 溝、土坑	土錘・墨書土器 ・円面硯・長沙 窯系黄釉褐彩水 注片		大型土錘・小型 土錘が大量に出 土。(約460個)		
顕徳寺遺跡	包含層・ 散布地	古代・中世	遺物包含層、 溝(16世紀後半)	土師器・須恵器 など				

---

---

## 上野町遺跡・顕徳寺遺跡

—大分駅付近連続立体交差事業に伴う埋蔵文化財発掘調査報告書Ⅰ—

大分県文化財調査報告第164輯

平成16年3月31日

編集 大分県教育庁文化課(文化財資料室)  
〒870-1113  
大分市大字中判田字ピアノ門1977番地  
TEL (097)597-5675

発行 大分県教育委員会  
〒870-0021  
大分市府内町3丁目10番1号  
TEL (097)536-1111

印刷 (株)エポックアート  
〒870-0942 大分市羽田984番地の1  
TEL (097)569-1181

---

---