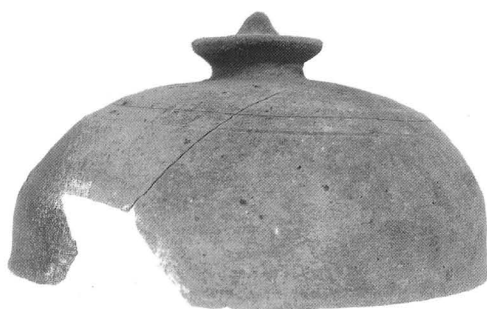


土坑22 出土遺物



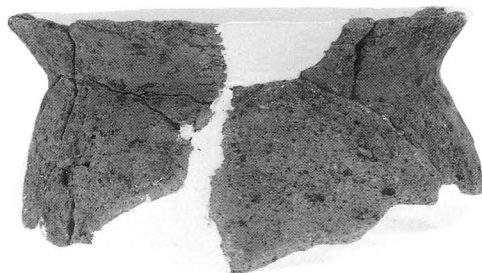
1



4



5



6

a. 土坑5、12、33 出土遺物



7



9

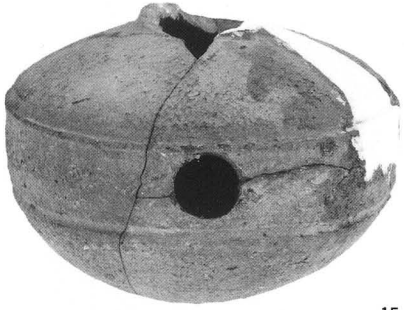


3

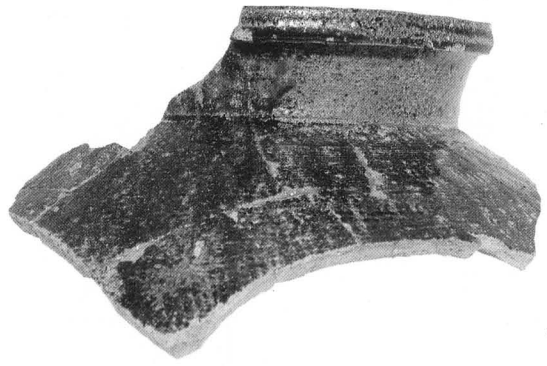


14

b. 土坑51、54 出土遺物



15



16

a. 土坑55 出土遺物



85-1



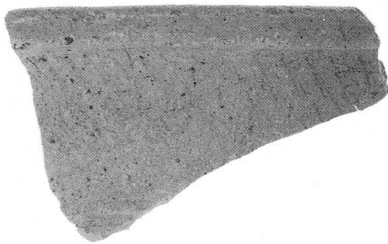
1



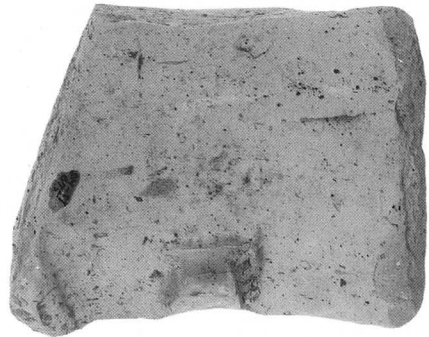
3



4



6



b. 溝2、11 出土遺物



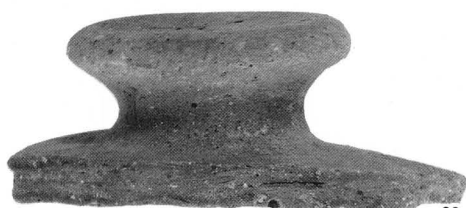
87-4



87-5



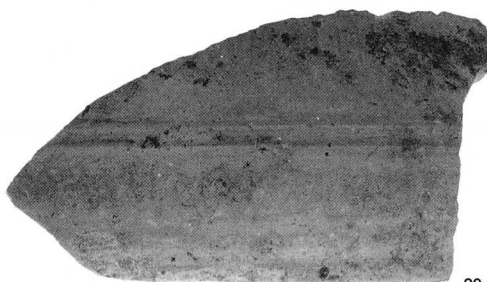
87-1



88-2



89-3



89-5



90-1



90-7

溝12、14、16、17、19、25 出土遺物



6



6

a. 溝22 出土遺物



1



2

b. 井戸3 出土遺物



1



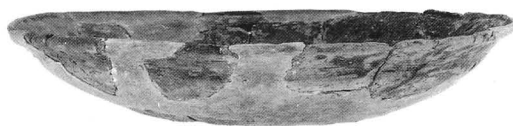
4



5

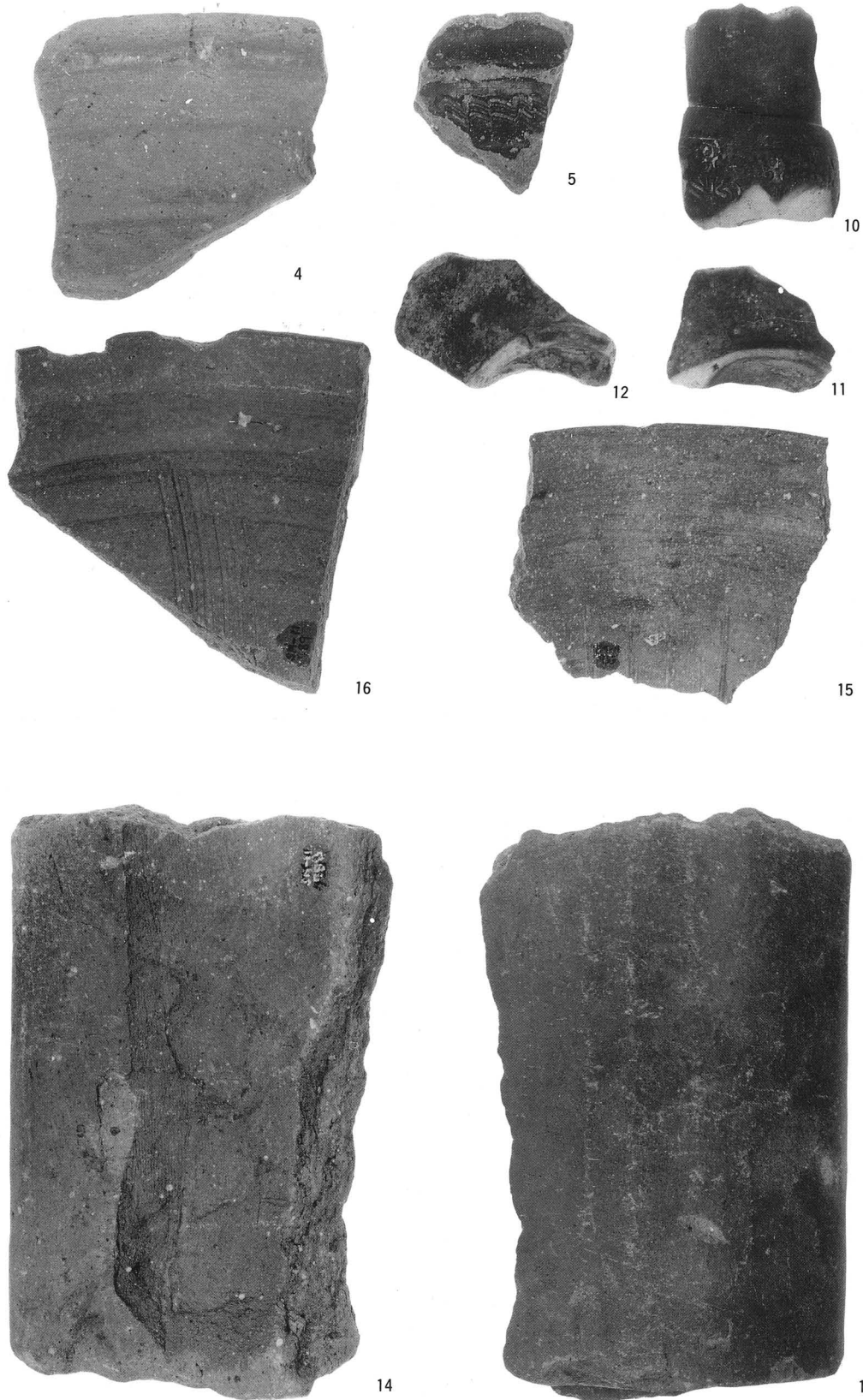


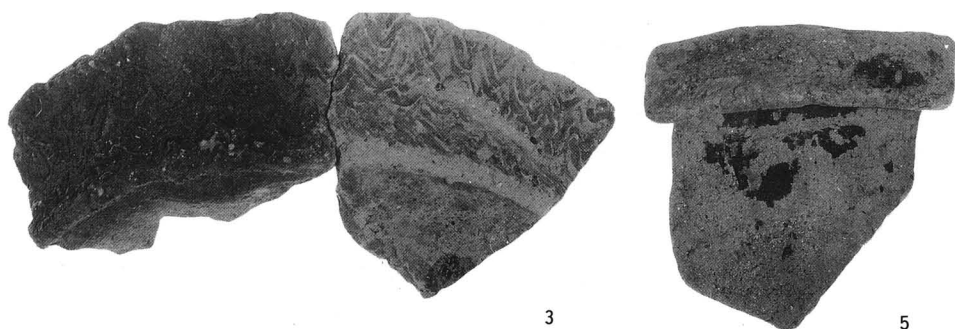
2



3

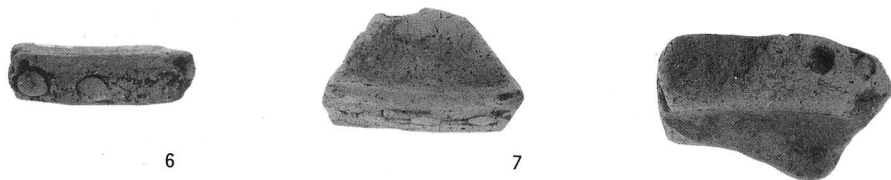
c. 土坑13 (土壙墓) 出土遺物





3

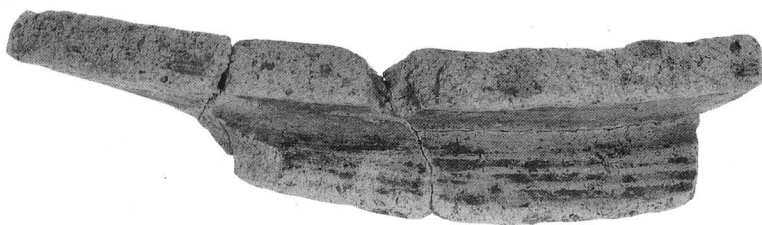
5



6

7

8



11



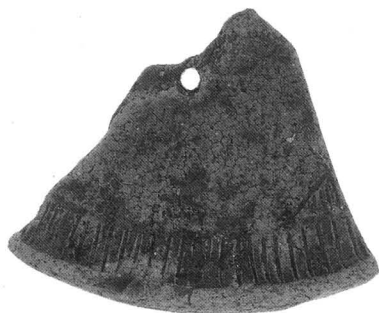
34



35



40



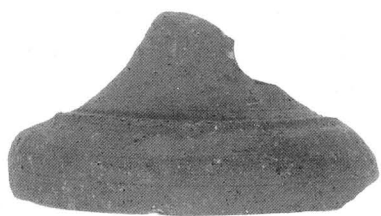
46



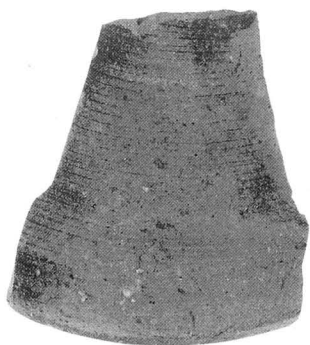
48



49



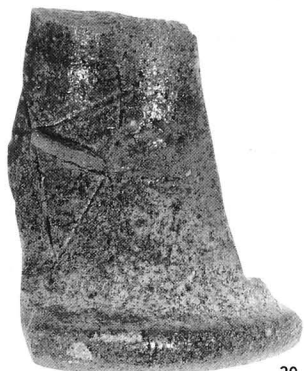
25



28



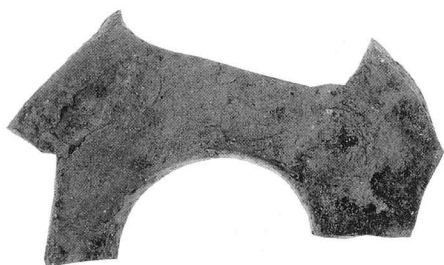
31



30



32



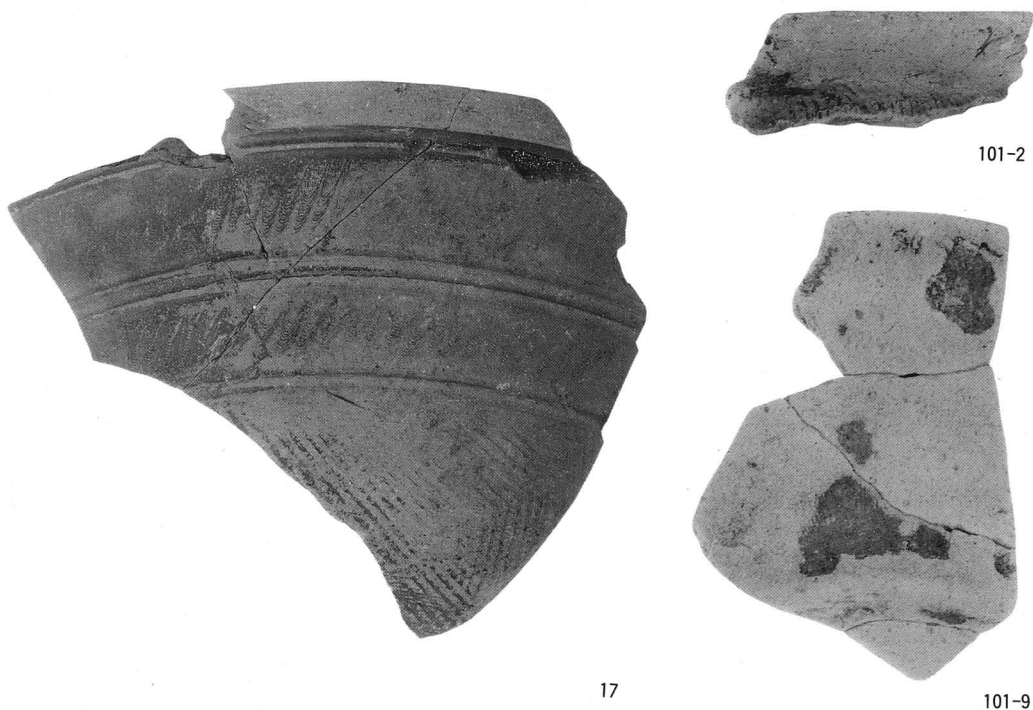
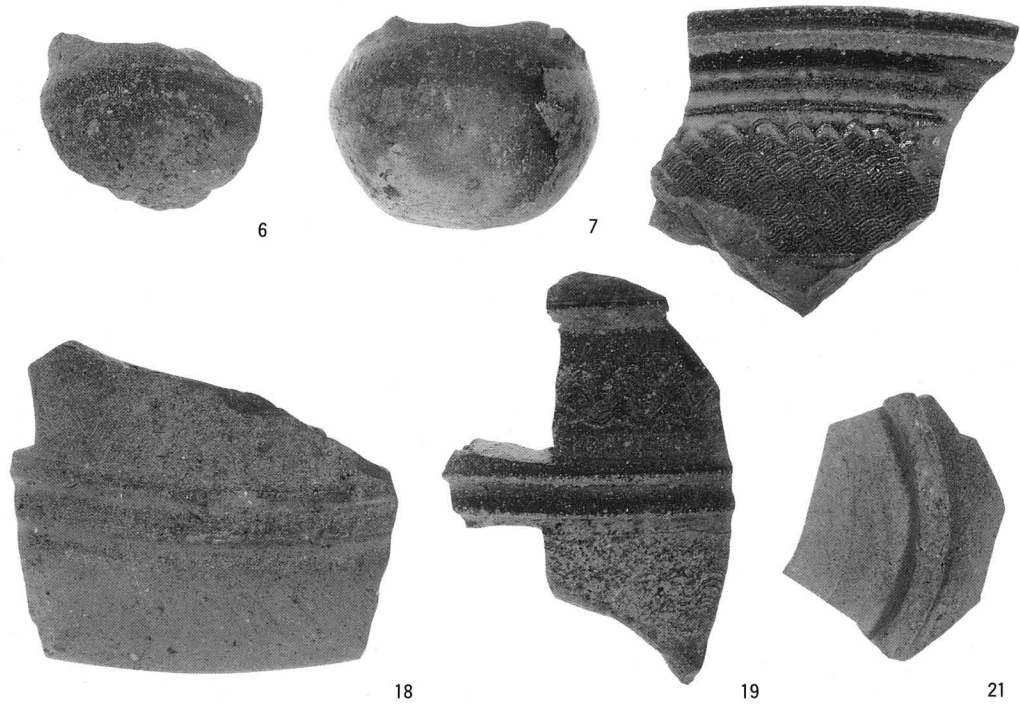
33



34



35



包含層 出土遺物 (3)、(4)



1



1



2



2



6



4



8



10



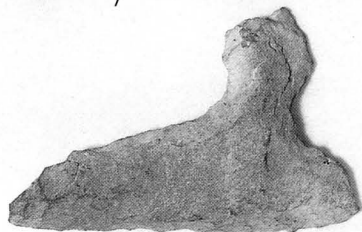
7



9



5



3



11



12

豊中市文化財調査報告 第22集

新免遺跡第11次発掘調査報告書

1987年 3月31日発行

編 集 豊中市教育委員会社会教育課文化係
発 行 阪急宝塚線豊中市内連続立体交差遺
跡調査団
印 刷 株式会社 中島弘文堂印刷所
大阪市東成区深江南2丁目6番8号