

ENGLISH SUMMARY

Outline and progress of the research

This volume details the results of excavation undertaken in the northeastern sector of the Nagahara site in 1997 prior to land rezoning in Eastern Nagayoshi. Five excavations, in the central area of the planned sector for land rezoning, were carried out between April 1997 and March 1998, totaling approximately 1,700 square meters. The locations of excavation were divided into three investigation areas in the northeastern sector of the Nagahara site, as the Eastern investigation area (NG97-12 and NG97-52), the Western investigation area (NG97-13 and NG97-43) and the Southern investigation area (NG97-56).

The basic stratigraphy in the northeastern sector of the Nagahara site

Until recently, excavations carried out mainly on the Uriwari terrace located in the southern part of the Nagahara site. By investigating the northeastern sector, there has been the chance to compare the stratigraphy of the Nagahara alluvial plain with the Uriwari terrace. The formation of strata in this sector differs from the Nagahara Standard Stratigraphy identified mainly by sedimentary environment around the Uriwari terrace. As the results of the excavations carried out around the northeastern sector from 1995 to 1997, the basic stratigraphy in the northeastern sector of the Nagahara site was proposed to explain the differences of sedimentary environment. The most significant difference is the existence of a layer of flood deposition soil, which accumulated between Middle Kofun and Asuka period. This layer can be subdivided into eight distinct layers, and indicates extensive flooding in this area at that time. Other difference is fine sedimentations of strata of the Lower Alluvium. The Akahoya and the Sakate volcanic ashes were found in this layer formation.

The result of the investigations

1. The Late Palaeolithic Period

The discoveries of the Upper Palaeolithic culture were unearthed at the location NG97-12 in which is located at the northeastern part of the Nagahara site. The industry recovered is about 500 stone artifacts and consists of backed knives and scrapers, blades and blade cores, regular-shaped wide flakes, waste flakes. One concentration of stone artifacts, about 10 by 10 meters in size, was found in the Stratum RK13Bi which is recognized as the Pleistocene deposit. The dating of the industry is estimated to be about 18000-16000 years ago by means of the tephrostratigraphy using the volcanic ash obtained from stratified deposits.

The blade technique discovered from the Stratum RK13Bi are used fist size pebbles as the raw materials for cores. The characteristic of core preparation in this blade technique is the making flat surface as striking platforms by flake detachment. But it is not made the platform modified by secondary retouching or trimming. Some cores lack prepared striking platforms in which natural flat surface on the pebbles are used. Parts other than the platform were not shaped for core preparation. There are no crested blades. The flakes resulted from the core preparation are *chapeaux*, the thick cordex flakes. For rejuvenation of cores and striking platforms discoidal flakes were removed and new striking platforms made on opposite end of the cores from the previous platforms.

Some blades detached using this blade technique are shaped into backed blades. The *Setouchi* technique which is defined as the technique of removing a series of regular-shaped

wide flakes, called wing shaped flakes, is associated with the blade production technique in this industry. Backed knives made of wide flakes are superior in number to backed blade in this industry. Interestingly it is recognized that the core detached wide flakes and some blade are refitted in a series of flaking.

According to researches up to now, the industries in the later part of the Upper Palaeolithic Period in Kinki and Setouchi regions are characterized by the technique of wide flake detachment, which the *Kou* type backed knife and the *Setouchi* technique are represented.

The later part of the Upper Palaeolithic Period in Japan islands is well known as advanced stage of the backed knife culture. It is defined as second phase (or stage) in the late palaeolithic culture in Kinki and Setouchi regions. The blade technique in Kinki, Setouchi regions and the surrounding area appeared in the phase 2 which the dating is estimated about 25,000 years ago. After the phase 2, it is inferred that the blade technique declined and techniques of regular-shaped wide flake detachment developed for it. From these discoveries at the Nagahara site, it is possible to discuss the hypothesis that the blade technique was used systematically as stone tool production due to the decline of the *Setouchi* technique.

2. The Jomon Period

Lithic concentration (LC1201) including arrow head were found at the eastern area. And many lithic remains were also excavated from the transition zone RK12/13 strata. These remains consist of arrow heads, wedges, flakes and cores. Lithic remains are frequently made of sanukite. In the eastern investigation area, several natural streams deposited flooding soil were found.

3. The Yayoi Period

Only a small number of pits and pottery shards were found dating to this period, though pottery fragments, ditches and pits were found dating to the Early to Middle Yayoi Period (100 BC - AD 100). At the eastern investigation area, features associated with paddy field were excavated.

4. The Kofun Period to the Early Modern Period

A lot of artifacts and features were found dating from the Early and Middle Kofun Period (4th - 5th centuries), though evidence of wide-spread flooding, which covered the site with sand, was found dating to the former part of the Late Kofun Period (mid-6th century). An irrigation barrier was unearthed from within this deposition, most likely dating to just prior to the flooding and may indicate that the marshy area was being developed at this time. From the Asuka Period (7th century) to the latter half of the Heian Period (12th century), *hottatebashira* style buildings, ditches and pits were constructed, indicating that it was a residential area at this time. Land to the north of the research area was used for farming. From the Medieval Period to the Early Modern Period, the land was continually used for farming.

Further reading

Osaka City Cultural Properties Association

1978-1999 *Archaeological Reports of the Nagahara sites* Vols. I-VII, Osaka. (In Japanese, with English summary)

Osaka City Cultural Properties Association

1989-1999 *Archaeological Reports of the Nagahara and Uriwari sites* Vols. I-XIV, Osaka. (In Japanese, with English summary)

Osaka City Cultural Properties Association

1998-1999 *Archaeological Reports of the Eastern sector of the Nagahara sites* Vols. I-II, Osaka. (In Japanese, with English summary)

報告書抄録

ふりがな	ながはらいせきとうぶちくはつくつちょうさほうこく3								
書名	長原遺跡東部地区発掘調査報告Ⅲ								
副書名	1997年度大阪市長吉東部地区土地区画整理事業施行に伴う発掘調査報告書								
巻次									
シリーズ名									
シリーズ番号									
編集者名	絹川一徳・京嶋覚・杉本厚典・高橋工・久保和士・大庭重信・小倉徹也・趙哲済・松本百合子・松尾信裕								
編集機関	財団法人 大阪市文化財協会								
所在地	〒540-0006 大阪府大阪市中心区法円坂1-1-35 TEL.06-6943-6833								
発行年月日	西暦 2000年3月31日								
ふりがな 所収遺跡名	ふりがな 所在地		コード 市町村 遺跡番号		北緯	東経	調査期間	調査面積	調査原因
ながはらいせき 長原遺跡	おおさかしひらのく 大阪市平野区 ながよろくたん 長吉六反・長吉出戸		27126	—	34° 36′ 24″	135° 34′ 49″	12次 970506～971017 13次 970416～970520 970804～971127 43次 970901～971210 52次 971023～980331 56次 971201～980331	289㎡ 210㎡ 330㎡ 649㎡ 198㎡	長吉東部地区 土地区画整理 事業
所収遺跡名	種別	主な時代	主な遺構			主な遺物			
長原遺跡	その他	旧石器時代	石器製作址			ナイフ形石器・削器			
	その他	縄文時代	石器製作址？			石鏃・尖頭器・縄文土器			
	田畑	弥生時代	水田・溝			石鏃・銅鏃・弥生土器			
	？	古墳時代	土手・溝			木製品・土師器・須恵器			
	集落	飛鳥時代	掘立柱建物・竪穴・溝・土壇			土師器・須恵器			
	田畑	奈良時代	溝			土師器・須恵器			
	田畑	平安時代	溝・畠・土器埋納墳			土師器・須恵器・黒色土器・瓦器			
	田畑	鎌倉時代	溝・土壇			瓦器			
	田畑	江戸時代	野井戸			井戸枳瓦			

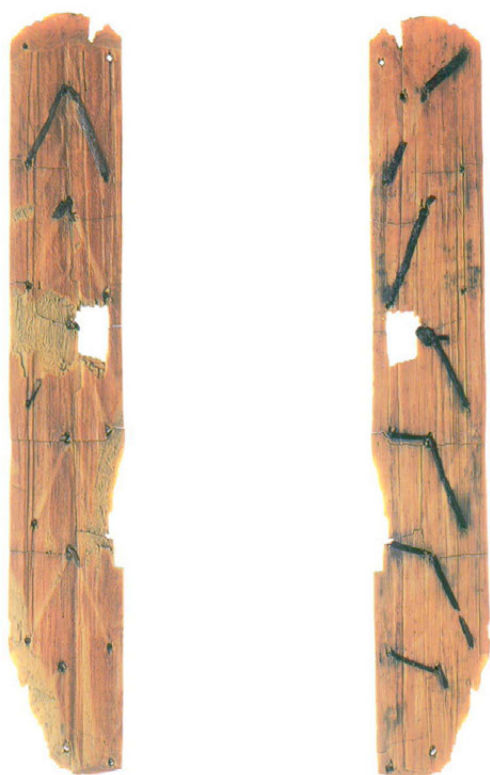
原 色 図 版



石器遺物集中部LC1301・1302（南東から）



出土したナイフ形石器



紐綴じ装飾のある木製品 (97-52次調査地)



曲物 (97-12次調査地)

版 図

97―12次調査地西半
RK6A層基底面検出
遺構完掘状況
（東から）

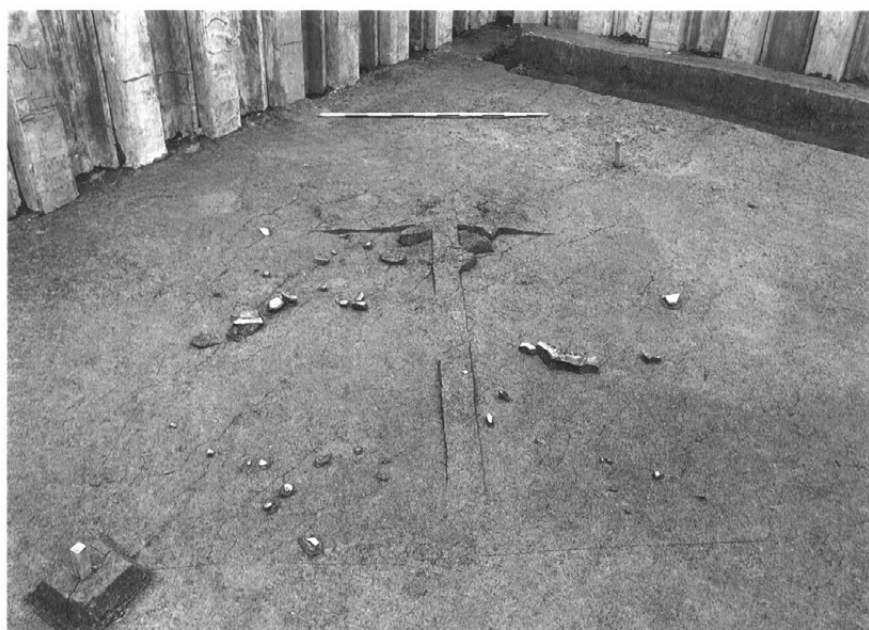


97―12次調査地東半
RK6A層基底面検出
遺構完掘状況
（西から）

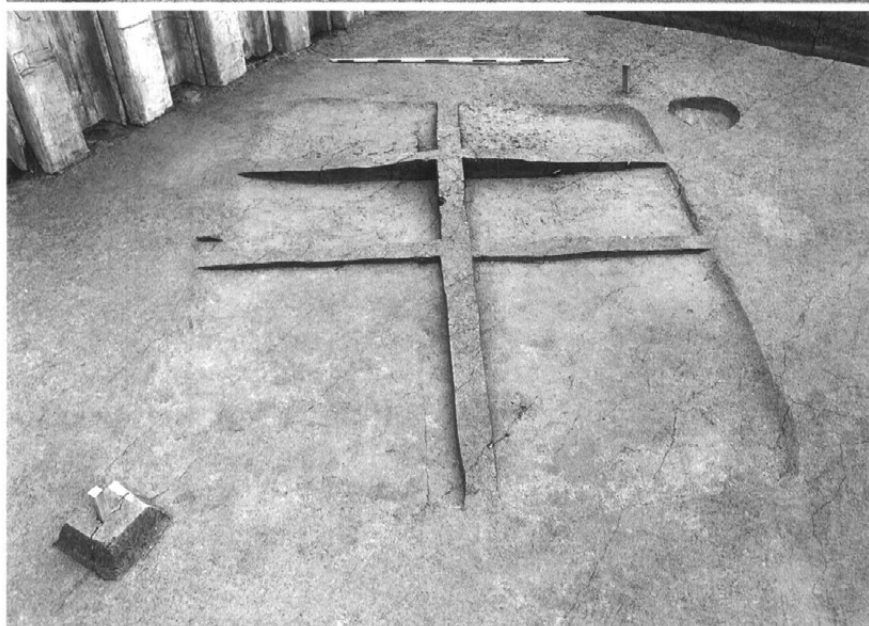


SB602完掘状況
（北から）





SB601遺物出土状況
（北西から）



SB601完掘状況
（北西から）

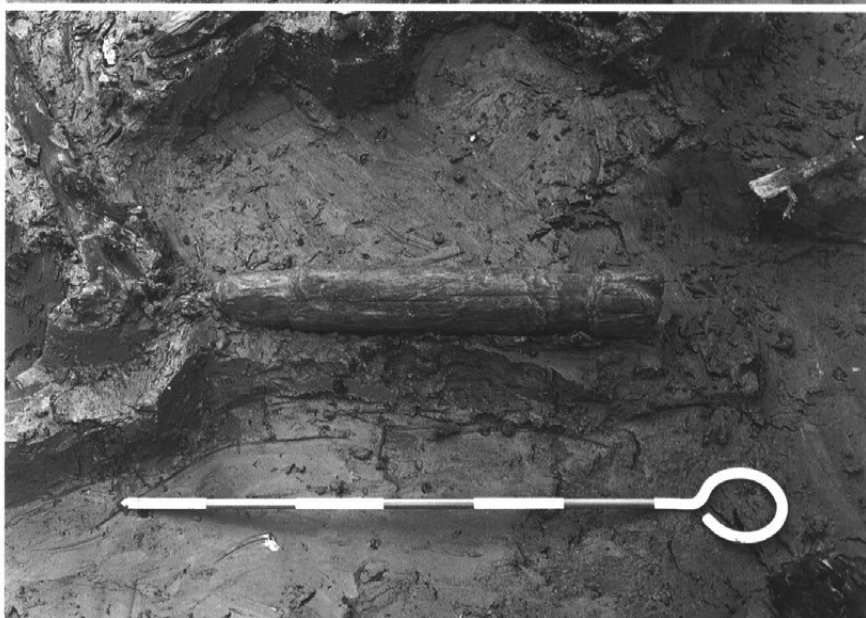


RK7Bi層内出土木製品
（116・117・121ほか）
（北から）

馬形(117)出土状況
(西から)

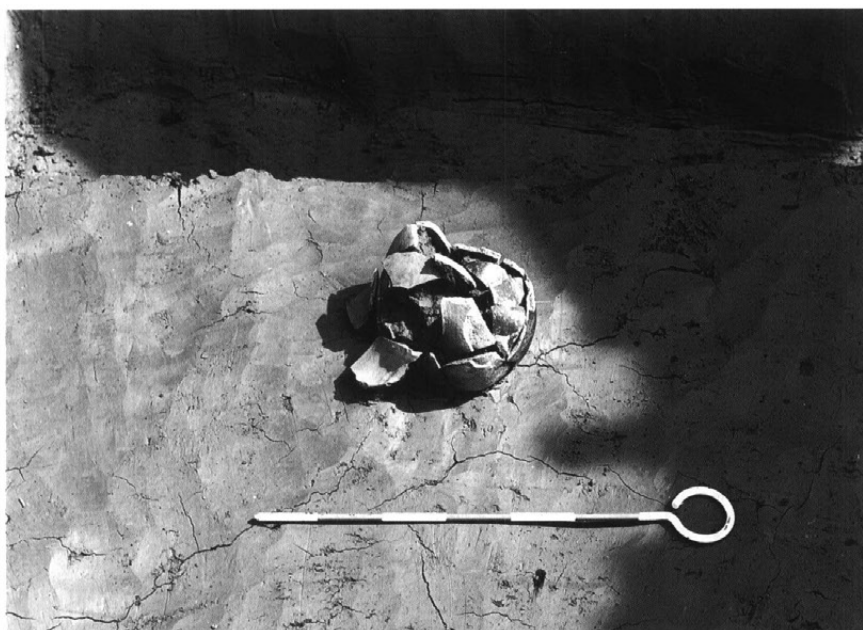


把手(121)出土状況
(北西から)



曲物(116)出土状況
(北から)





RK7Bii層内土器
(115)出土状況
(北から)

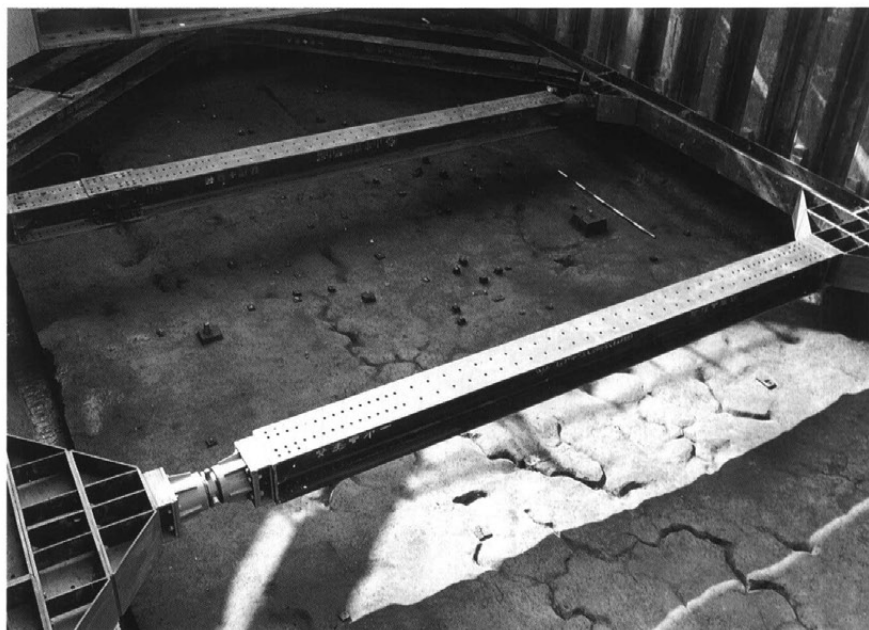


南壁西半地層断面
(RK7A~9B層)
(北東から)



南壁東半地層断面
(RK8A~10C層)
(北西から)

RK12／13層漸移帯
上面石器遺物出土状況
（南東から）



LC1301・1302
石器遺物出土状況
（南東から）



南壁東半地層断面
（RK12BC～15A層）





NR401・402完掘状況
（東から）



SD401・402完掘状況
（南東から）



SX605遺物出土状況
（南東から）

土手状遺構
（北西から）



土手状遺構の杭列と敷
き詰められた植物繊維
（北西から）



杭列A・B検出状況
（北西から）





SD701完掘状況
（東から）



RK7Bi層内検出木製品
出土状況
（南西から）



孔列のある棒状木製品
（130）出土状況
（南から）

SK801遺物出土状況
(西から)



SP801検出状況・銅鏃
(132)出土状況
(北から)



RK9Cii'層上面検出
水田畦畔
(西から)





東壁南半地層断面
(RK7A~10B層)



東壁北半地層断面
(RK9C~11層)



南壁西端地層断面
(RK10A~11層)

石器遺物集中部
LC1201
(北から)



RK13Bi層上面出土の
ナイフ形石器(AK403)
(南から)



南壁西半地層断面
(RK12C～15A層)





南壁中央地層断面
(RK12A～15A層)

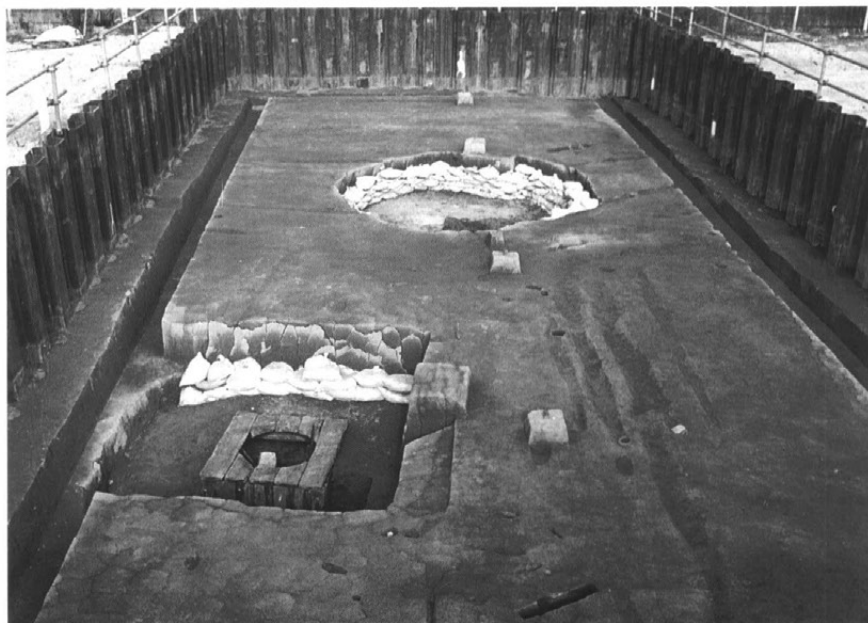


南壁西半谷部地層断面
(RK12B～12D層)

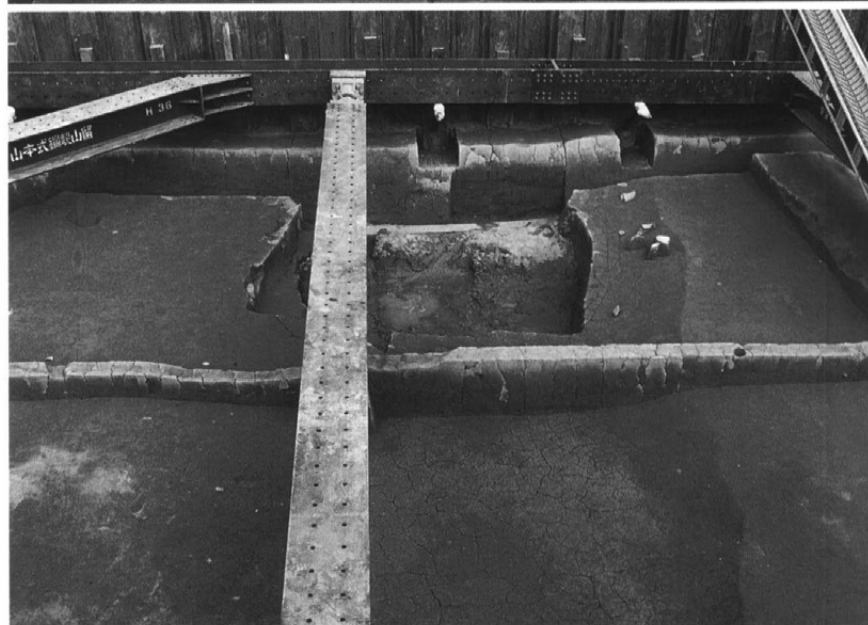


南壁西端谷部地層断面
(RK12B～12D層)

RK1・2層下面
検出遺構全景
（西から）

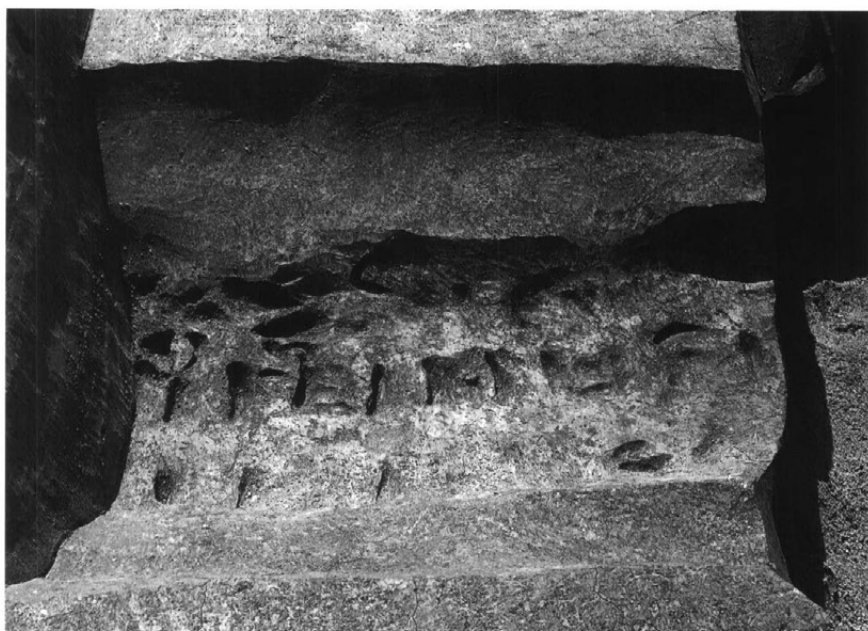


SD407完掘状況
（南から）

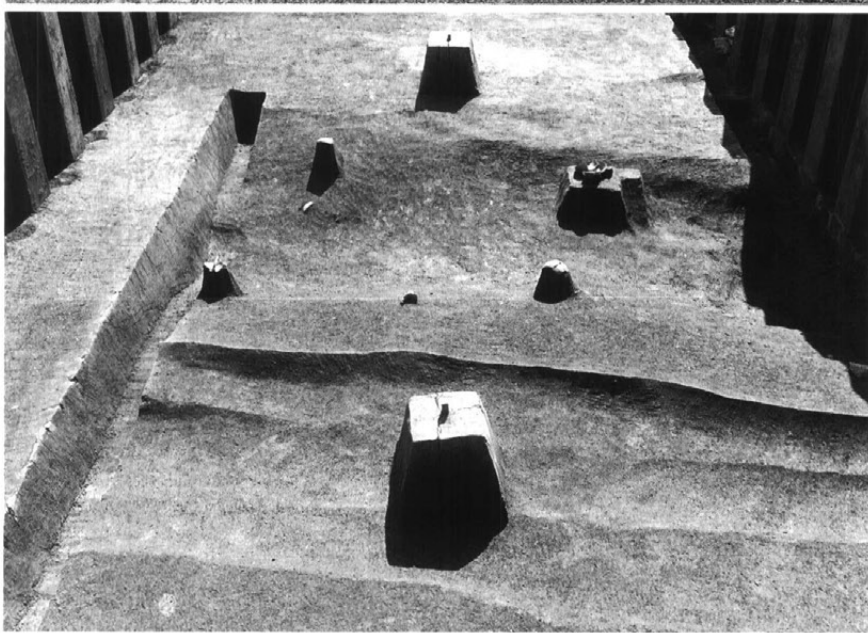


SD407遺物出土状況
（北から）





SD403完掘状況
（北から）

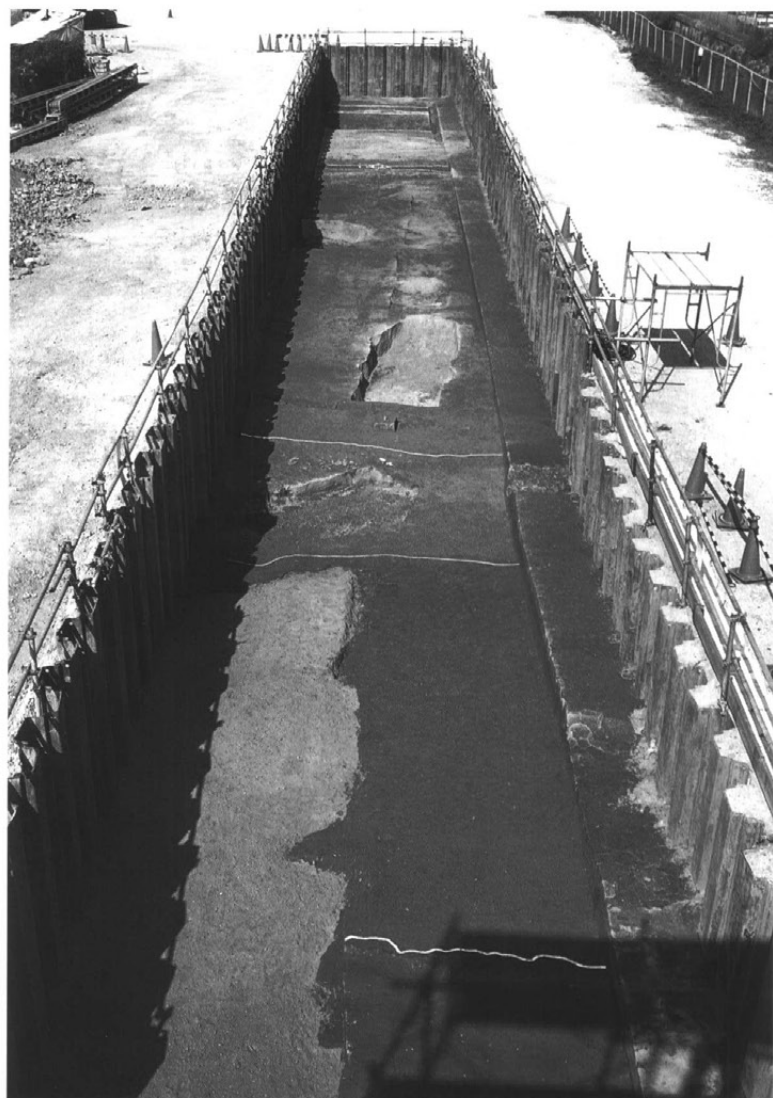


SD414完掘状況
（北から）

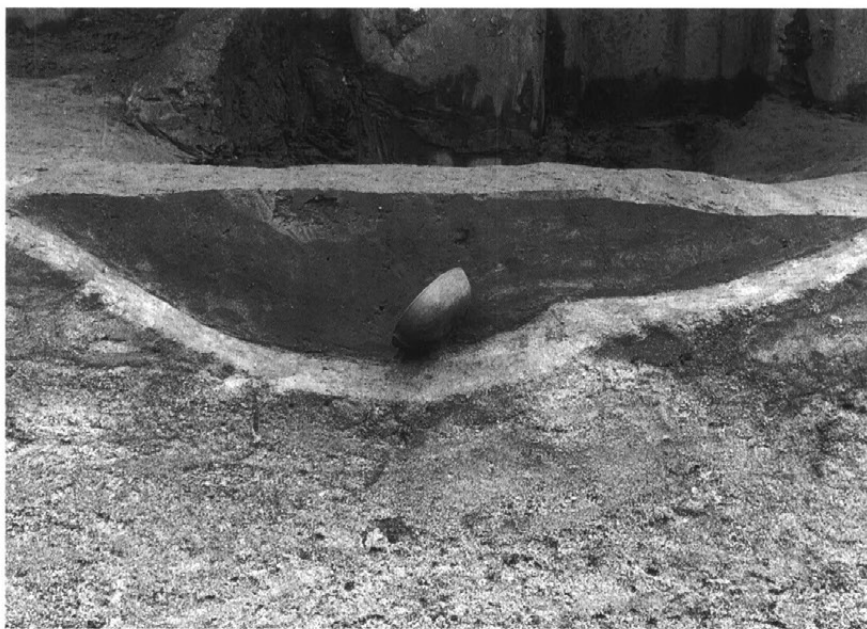


SK402遺物出土状況
（南東から）

RK4C～5層下面検出遺構全景
(南から)



RK7A層地層断面(南西から)



SD701遺物出土状況
（西から）



SK701検出状況
（東から）



RK7Aiii層土器(222)
出土状況
（西から）



RK7Avii層下面検出
グループキャスト
（北から）



調査地南半部RK9B層下面検出遺構ほか（南から）



SD801完掘状況
（西から）



RK9A層出土水差
形土器(341)
（南から）



RK9B層上面検出
ビット完掘状況・
遺物出土状況
（北から）

土手状遺構完掘状況
（北から）



土手状遺構杭列
（南東から）



土手状遺構杭列
倒壊状況
（北東から）





RK4Cvii層下面検出
グループキャスト
（北から）



RK8A層上面検出
土器集積
（南から）



RK10Ci層上面検出
踏込み完掘状況
（北から）

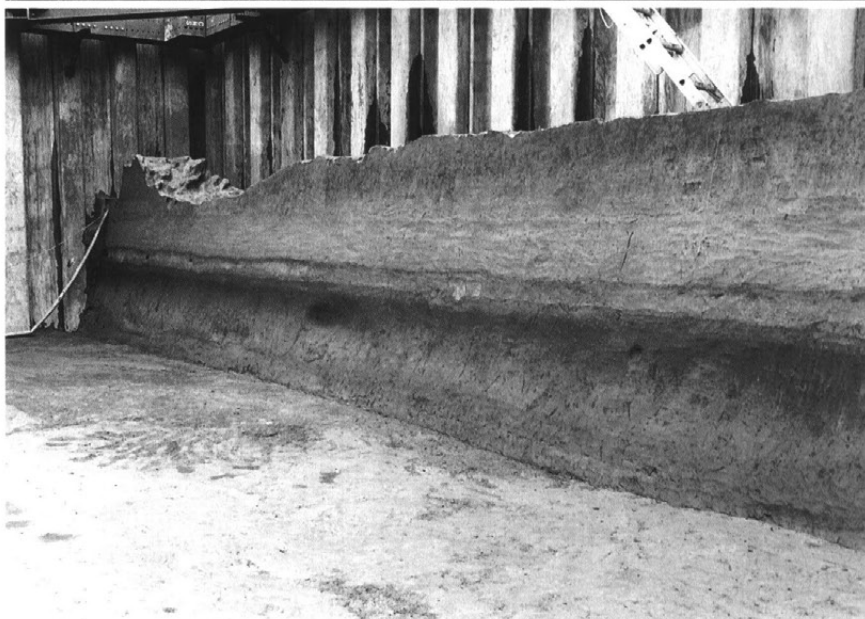
RK12D層石器遺物
出土状況



北壁地層断面
(RK4C～10B層)



西壁地層断面
(RK4C～10B層)





72



5



100



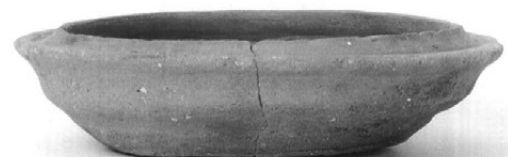
46



20



78



76



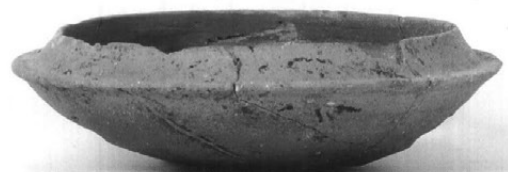
107



98



79



67



102



34

97-12次調査地：SK402(46)、SB601(67)、97-52次調査地：NR401(34・20)、NR402(5)、SX605(72・76・78・79)、SD701(102)、RK7A層(98・100・107)



115



108



131



152



153



193



194



198



197



225



166

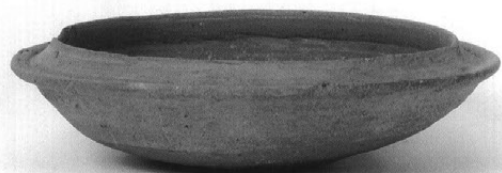
97-12次調査地：RK7Bii層(115)、97-52次調査地：RK7A層(108)、SK801(131)、
97-13次調査地：SD407(166)、97-43次調査地：RK4C層(152・153)、
SK402(193・194・197・198)、SD701(225)



203



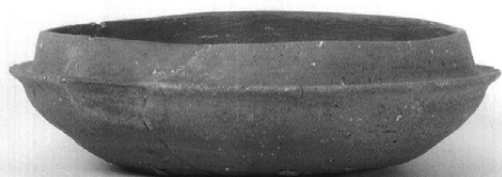
246



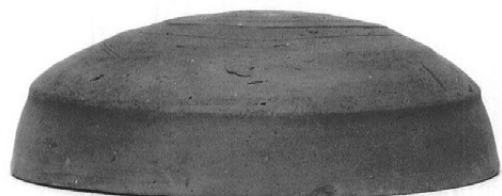
232



271



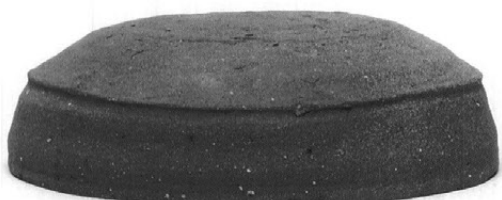
267



254



263



253



256



252



258

97-13次調査地：RK7A層(246・252～254、256・258・263・267・271)、
97-43次調査：SK414底面(203)、RK7A層(232)



275



277



279



242



205



222

97-13次調査地：RK7A層(275・277・279)、97-43次調査地：SD414(205)、
RK7A層(222・242)



243



293



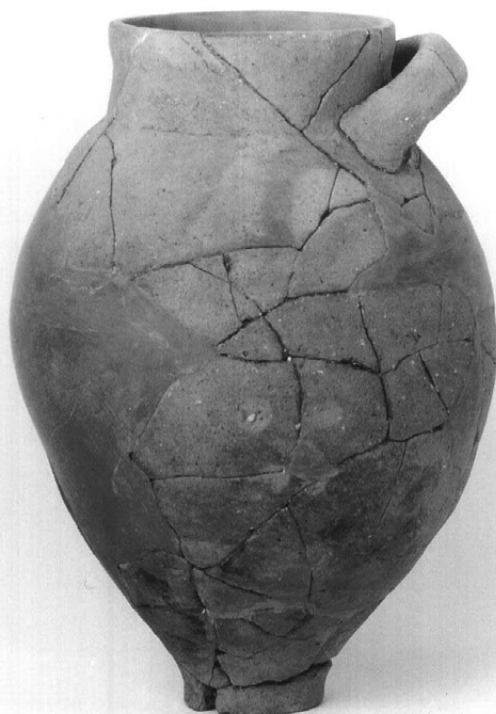
244



245



284



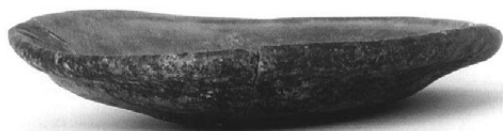
341



343



370



342



372



345



373



351



404



369



412

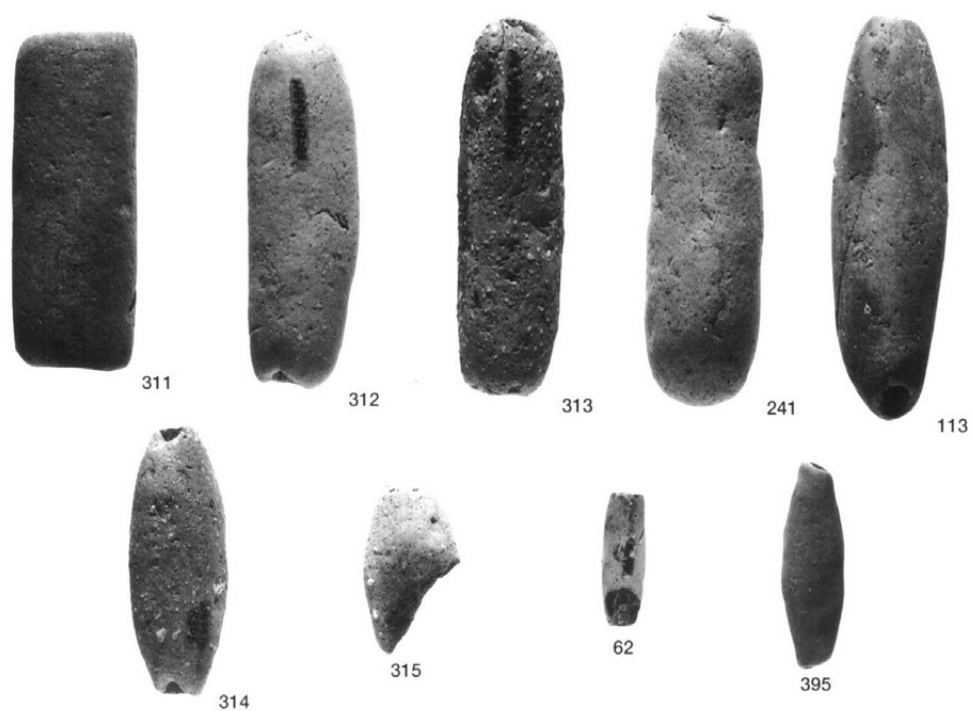


355

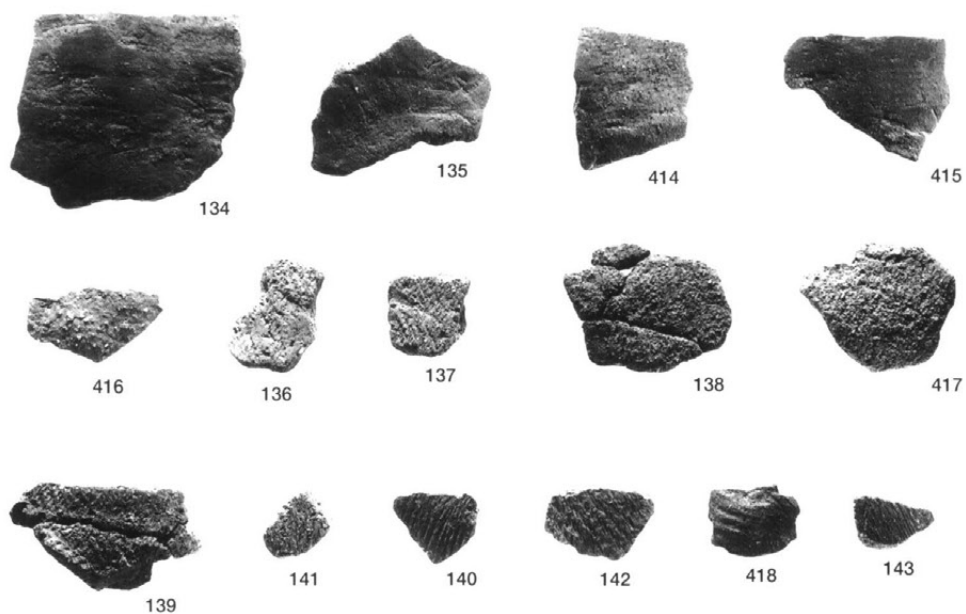


365

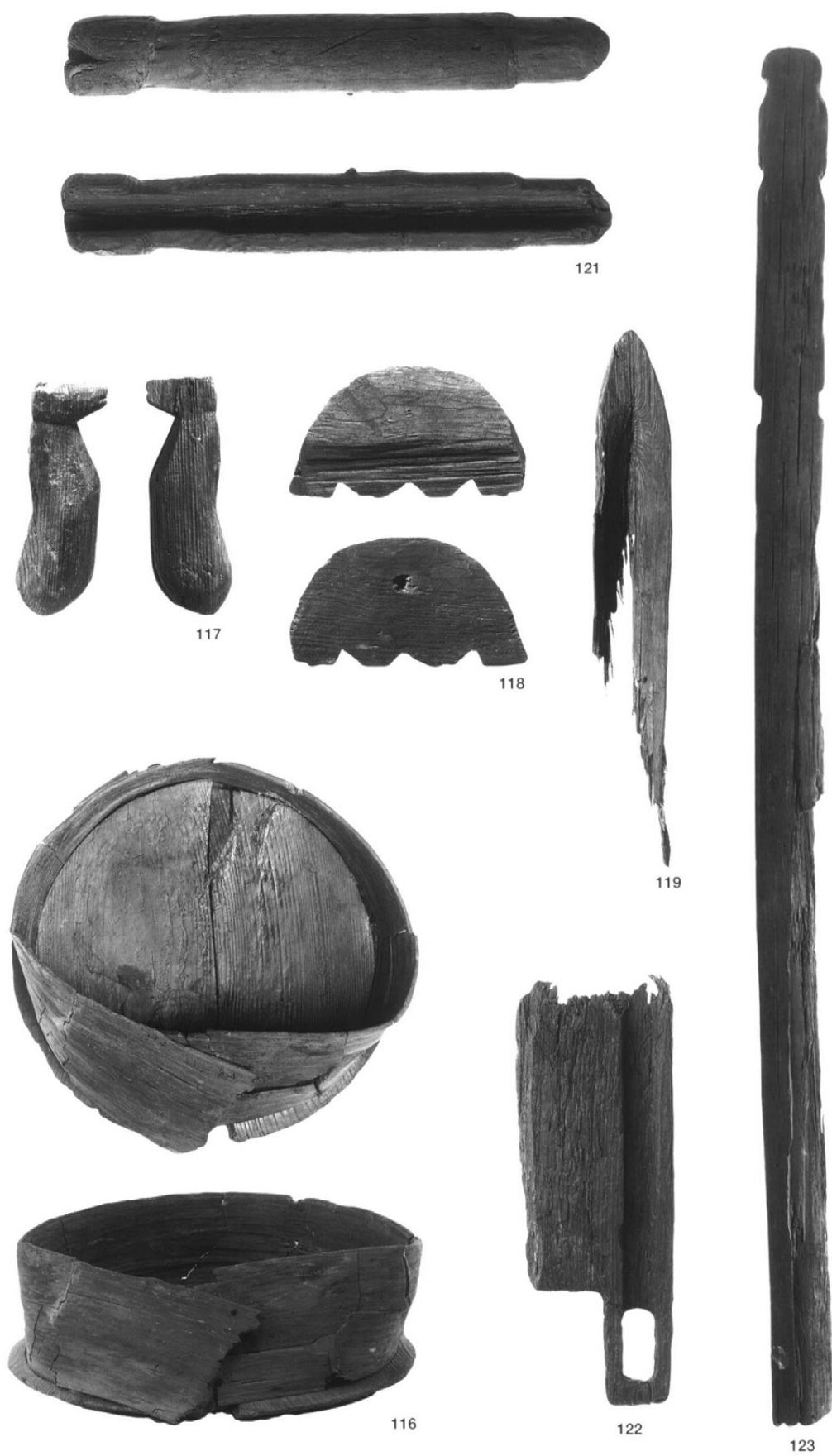
RK4C層(342・343・345・351・355・365・369・370・372・373・404)、
RK8A層上面土器集積(412)



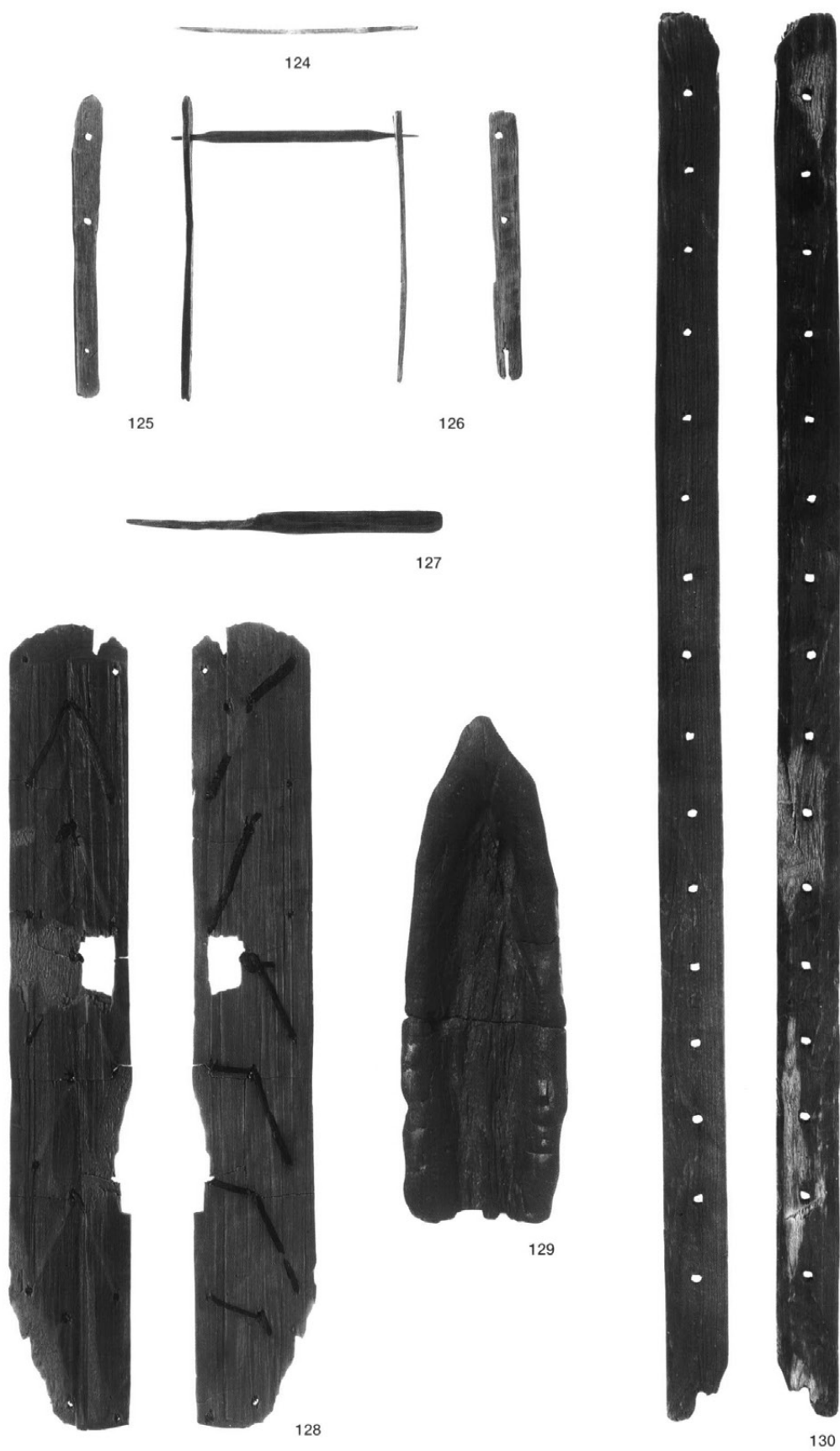
土錘：97-12次調査地(62)、97-52次調査地(113)、97-13次調査地(311～315)、97-43次調査地(241)、97-56次調査地(395)



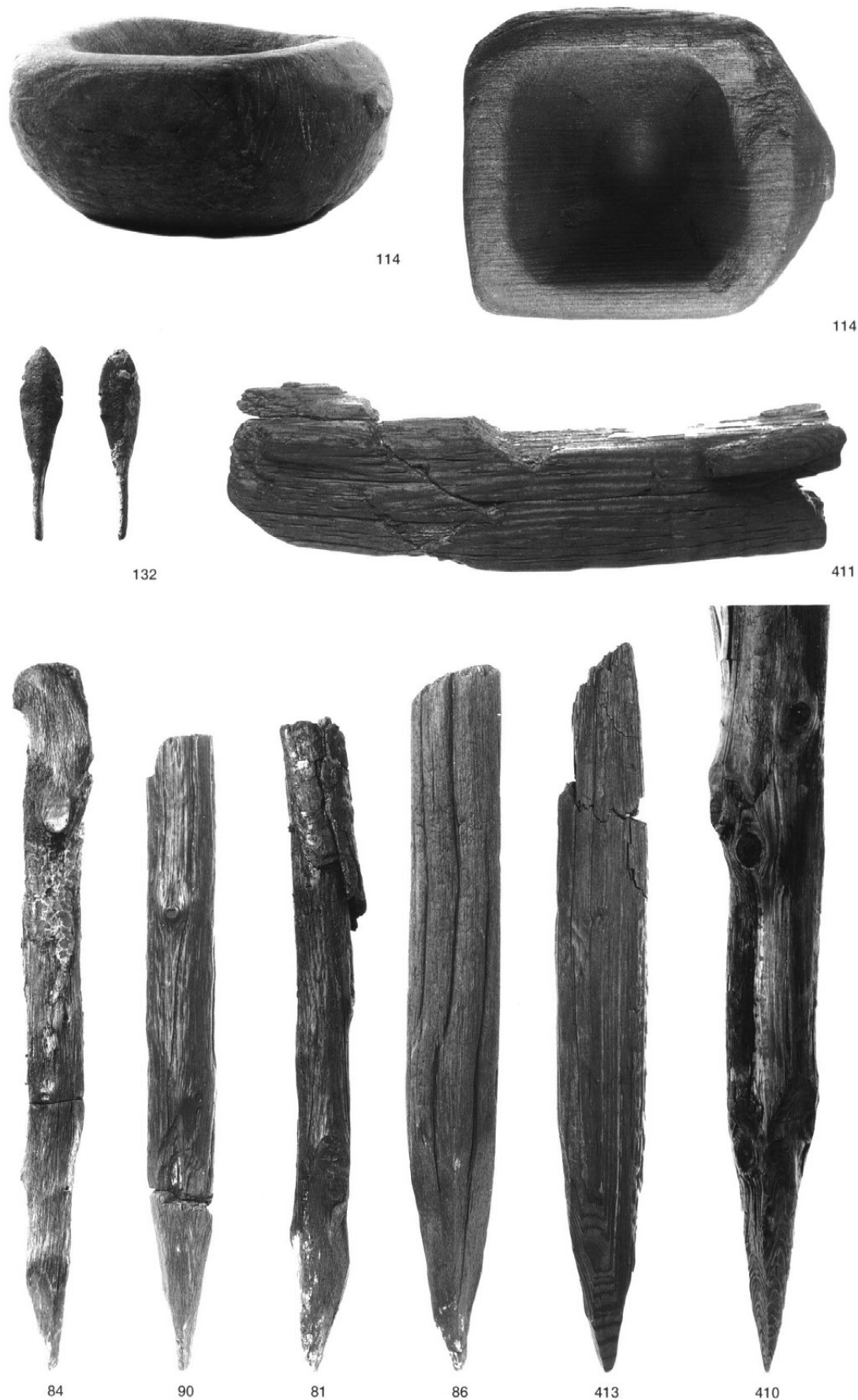
縄文土器：97-12次調査地(134～139・414～417)、97-52次調査地(140～143・418)



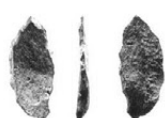
把手(121)、馬形(117)、又鋤模倣品(118)、舟形(119)、曲物(116)、箱材(122)、天秤棒(123)



用途不明木製品(124～127)、紐綴じ装飾のある木製品(128)、舟形(129)、孔列のある棒状木製品(130)



97-52次調査地：刳物容器(114)、銅鏃(132)、杭(81・84・86・90・413)、
97-56次調査地：杭(410)、足付き盤(411)



AB774



AB1227



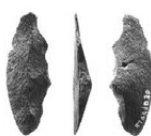
AB516



AB1471



AB1576



AB1030



AB576



JAB-23 (1276+1584)



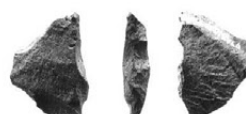
AB1206



AB1485



AB1501



AB1476



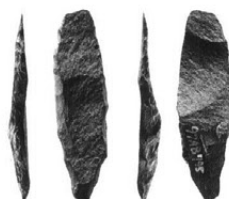
AB1493



AB1063



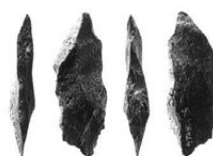
AB1541



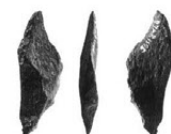
AB795



AB1477



AB1496



AB1195



JAB-55 (1149+1451)



AB708



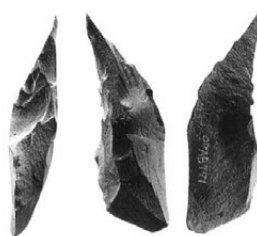
JAB-22 (1195+1496)



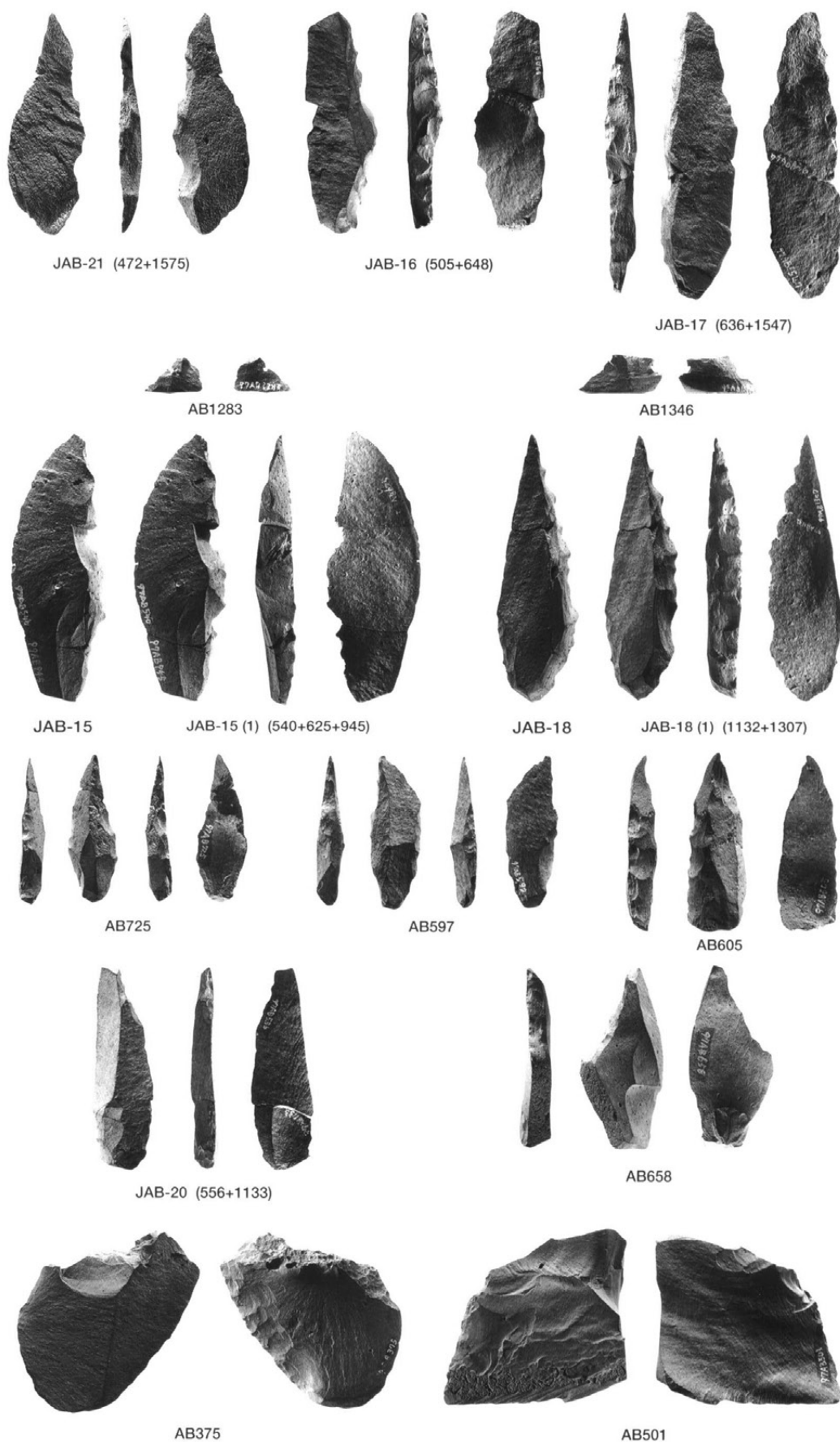
AB595



AB913

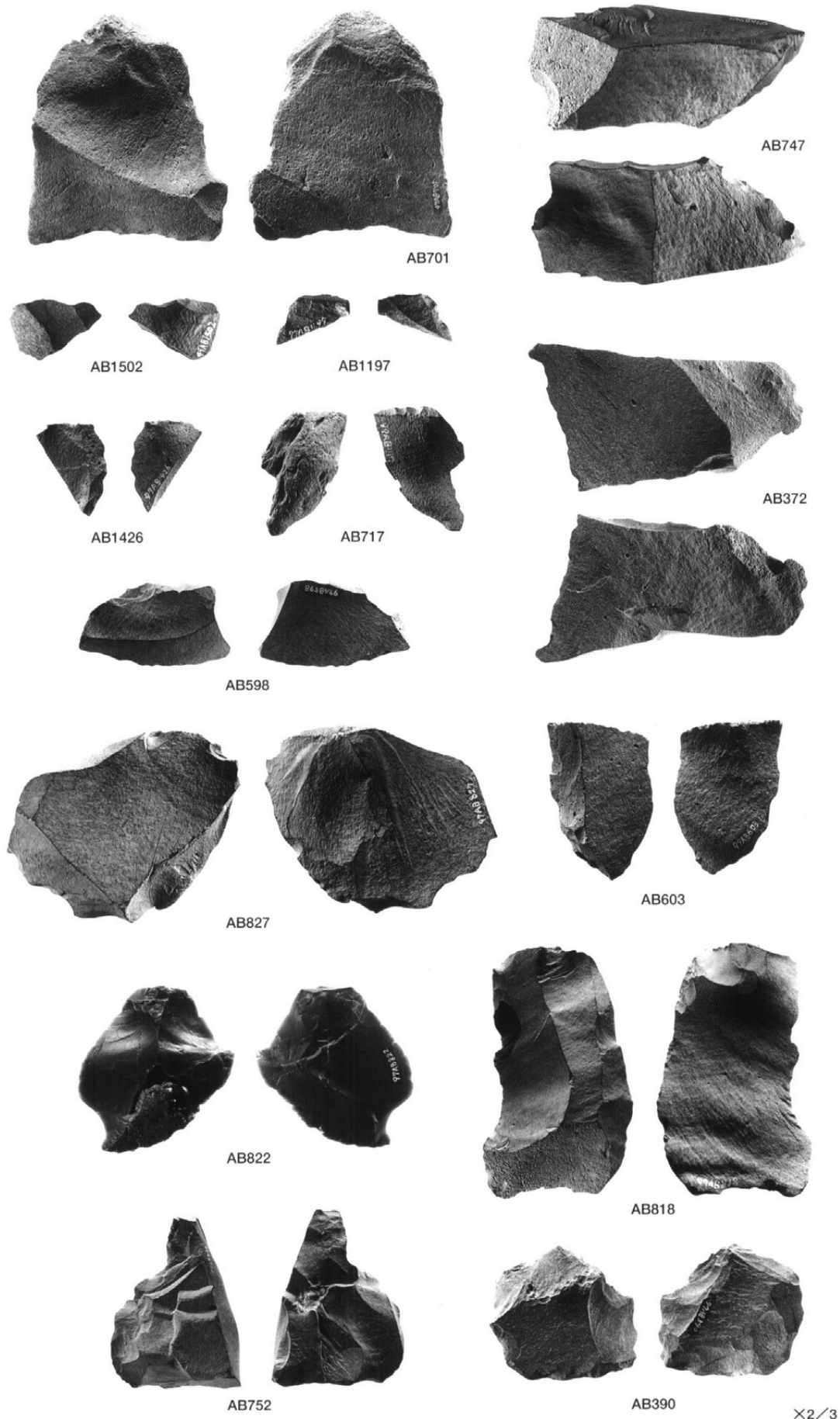


AB771



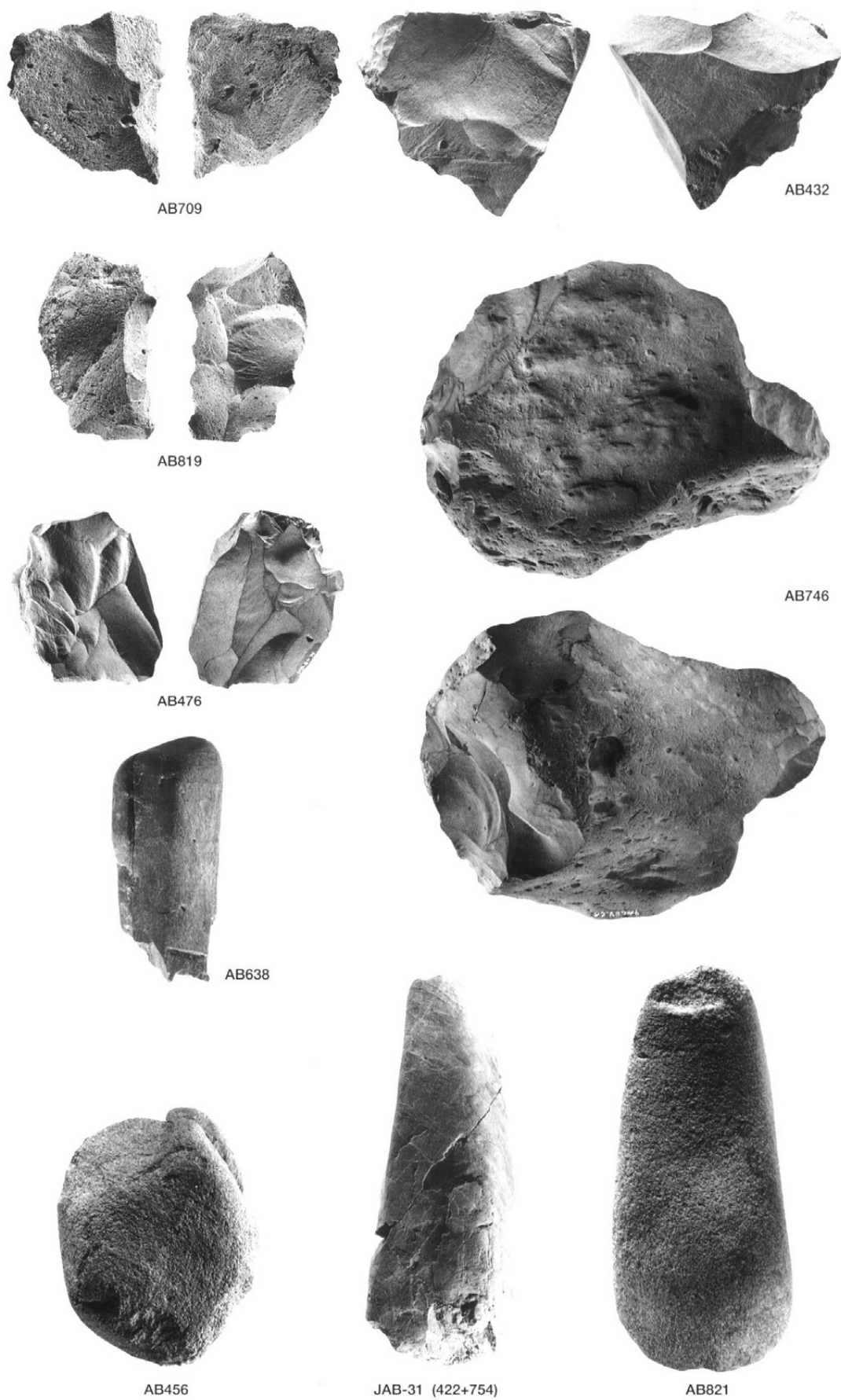
×2/3

ナイフ形石器(AB597・605・658・725・JAB-15(1)～JAB-18(1)・JAB-20・JAB-21)、
背部整形剥片(AB1283・1346)、削器(AB375・501)



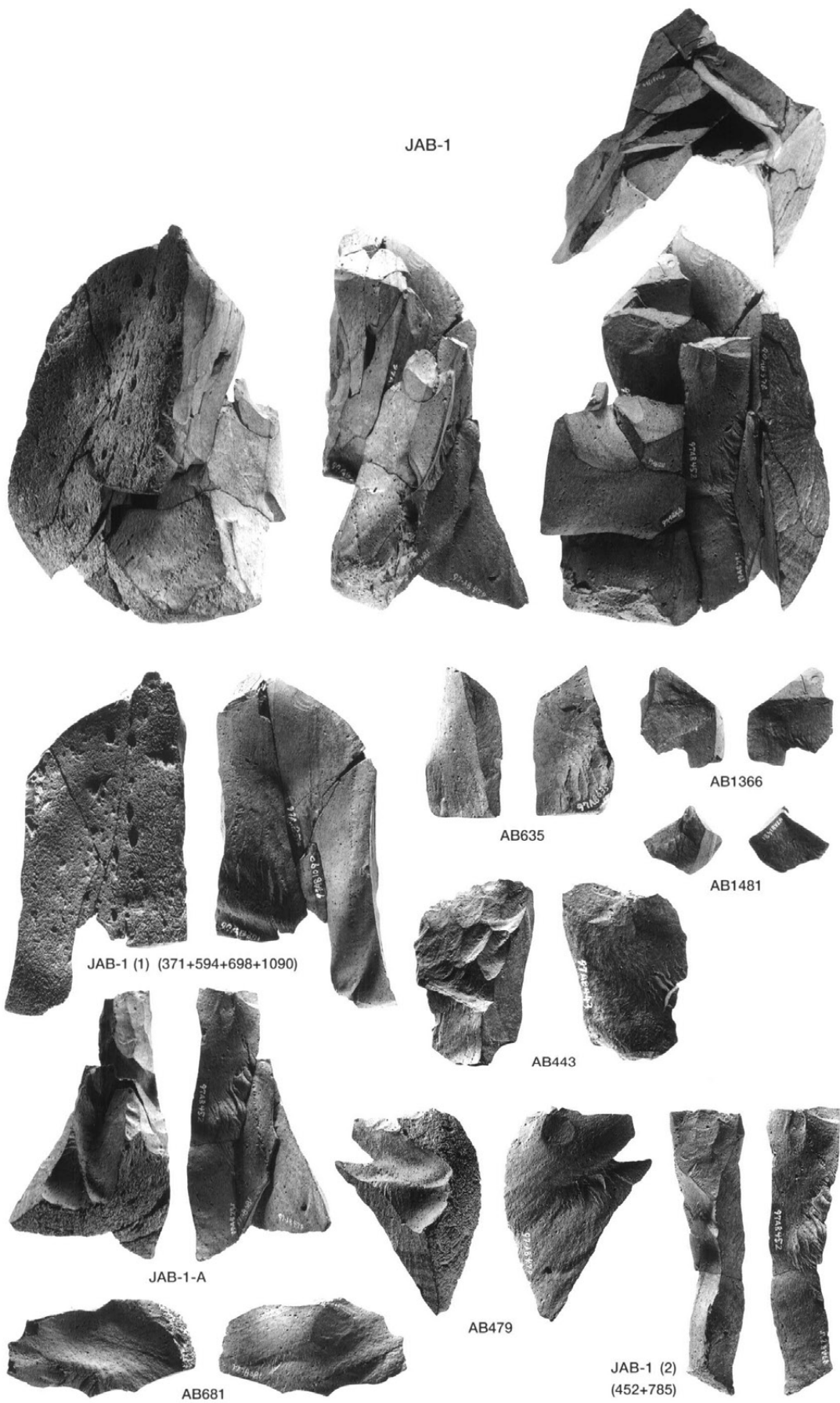
×2/3

削器 (AB372・701・747)、細部調整剥片 (AB603・717・818・827・1197・1426・1502)、微細剥離痕剥片 (AB598・822)、クサビ (AB390・752)

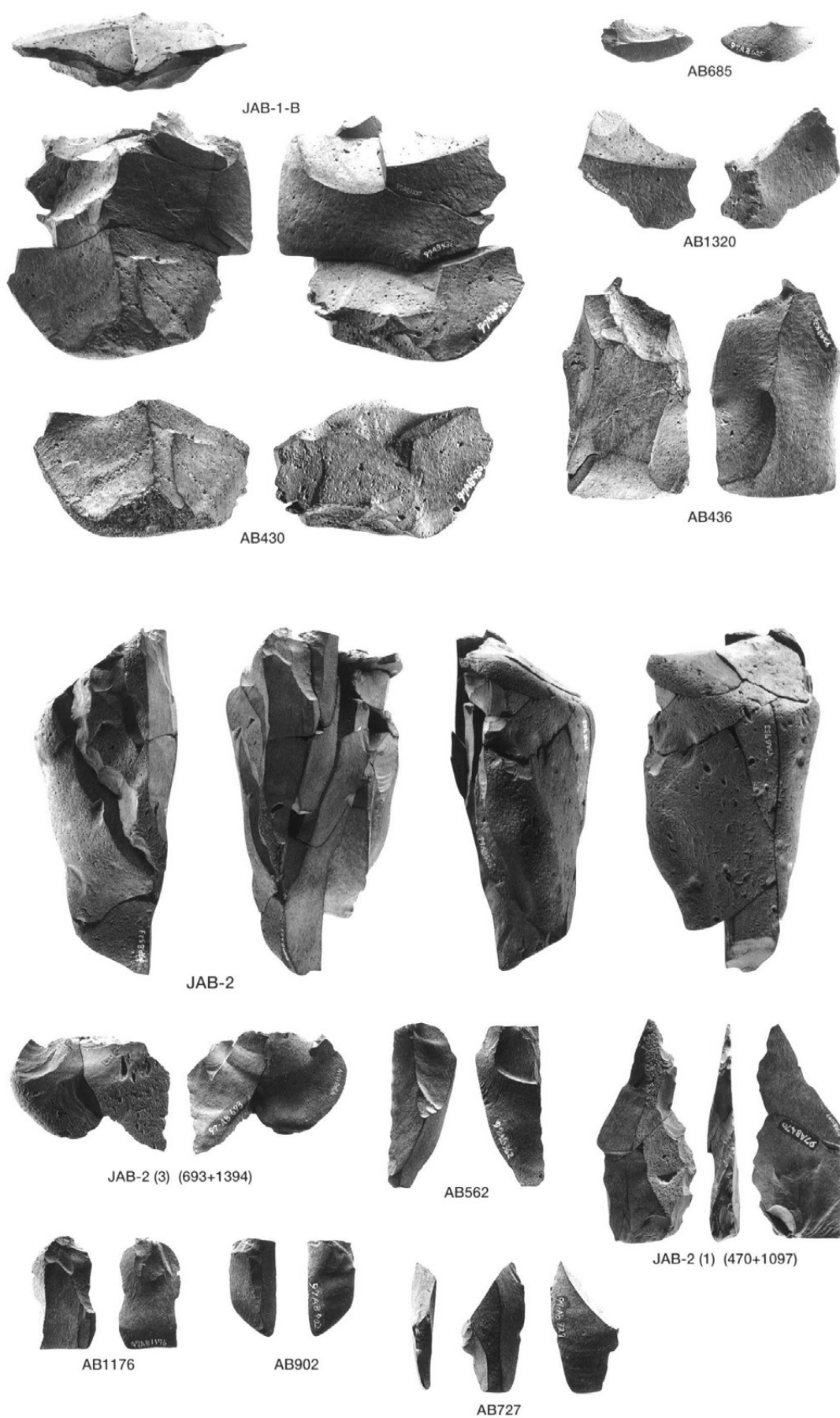


×2/3

石核(AB432・476・709・819)、原石(AB746)、叩き石(AB456・638・821・JAB-31)

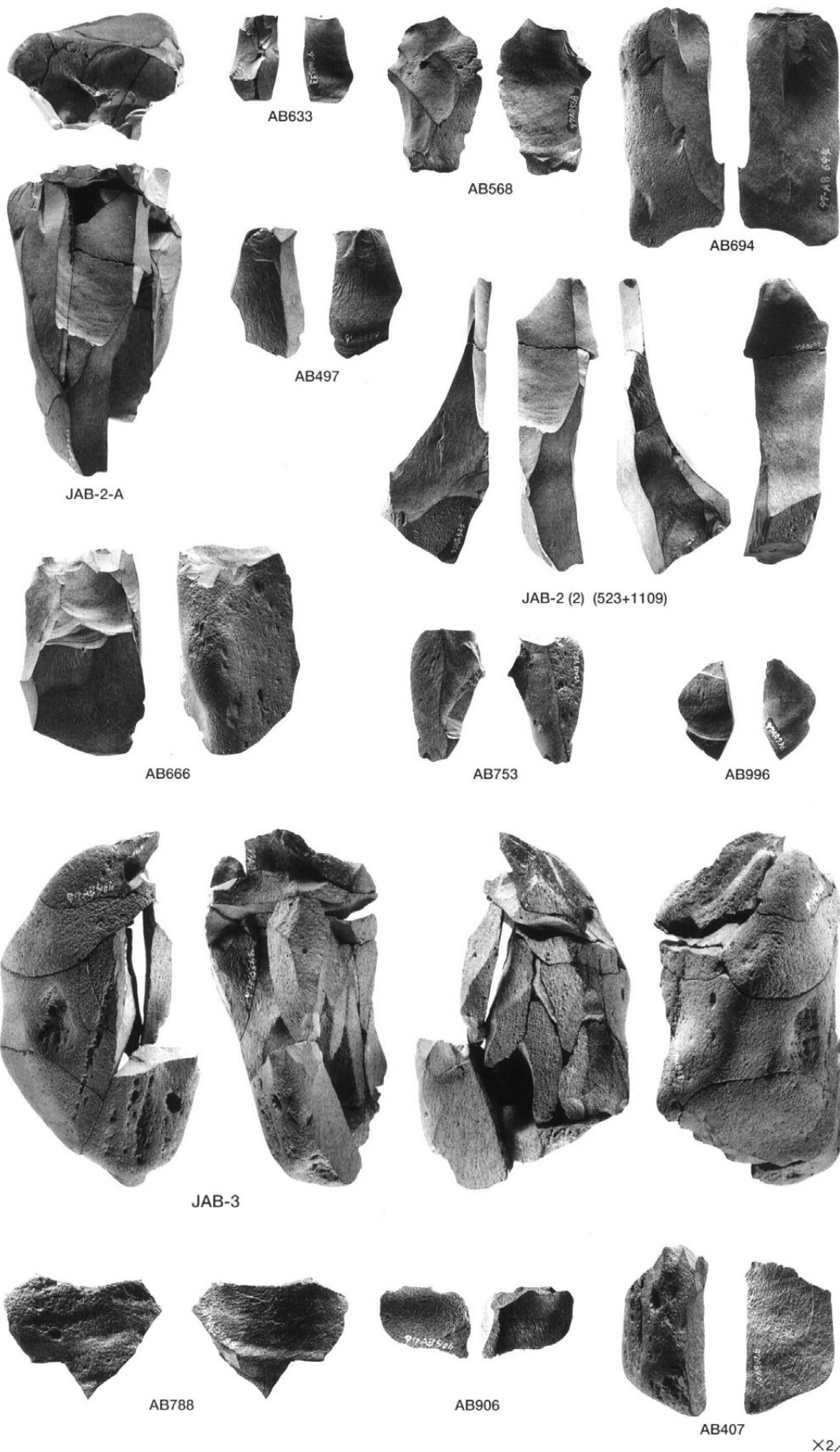


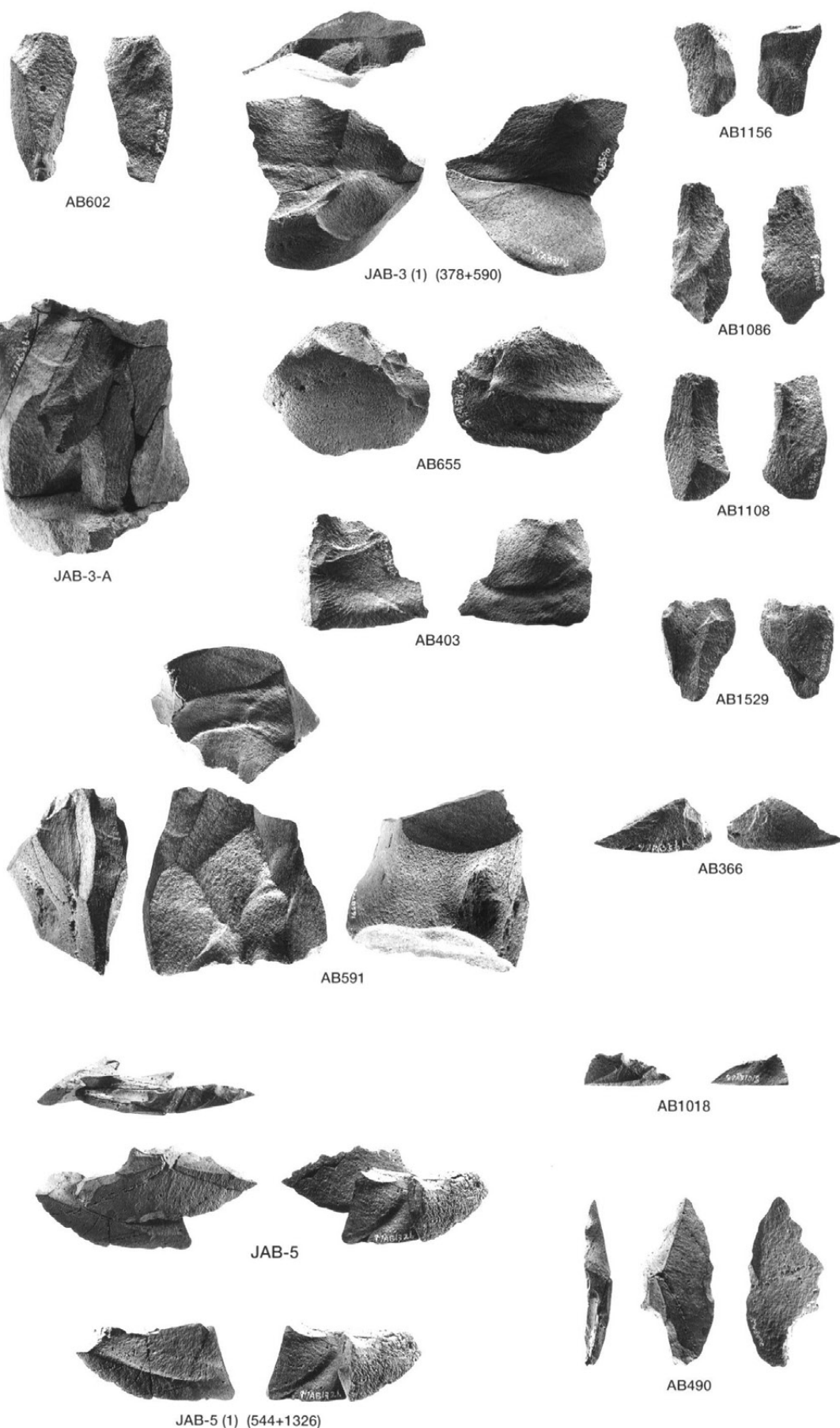
X2/3



×2/3

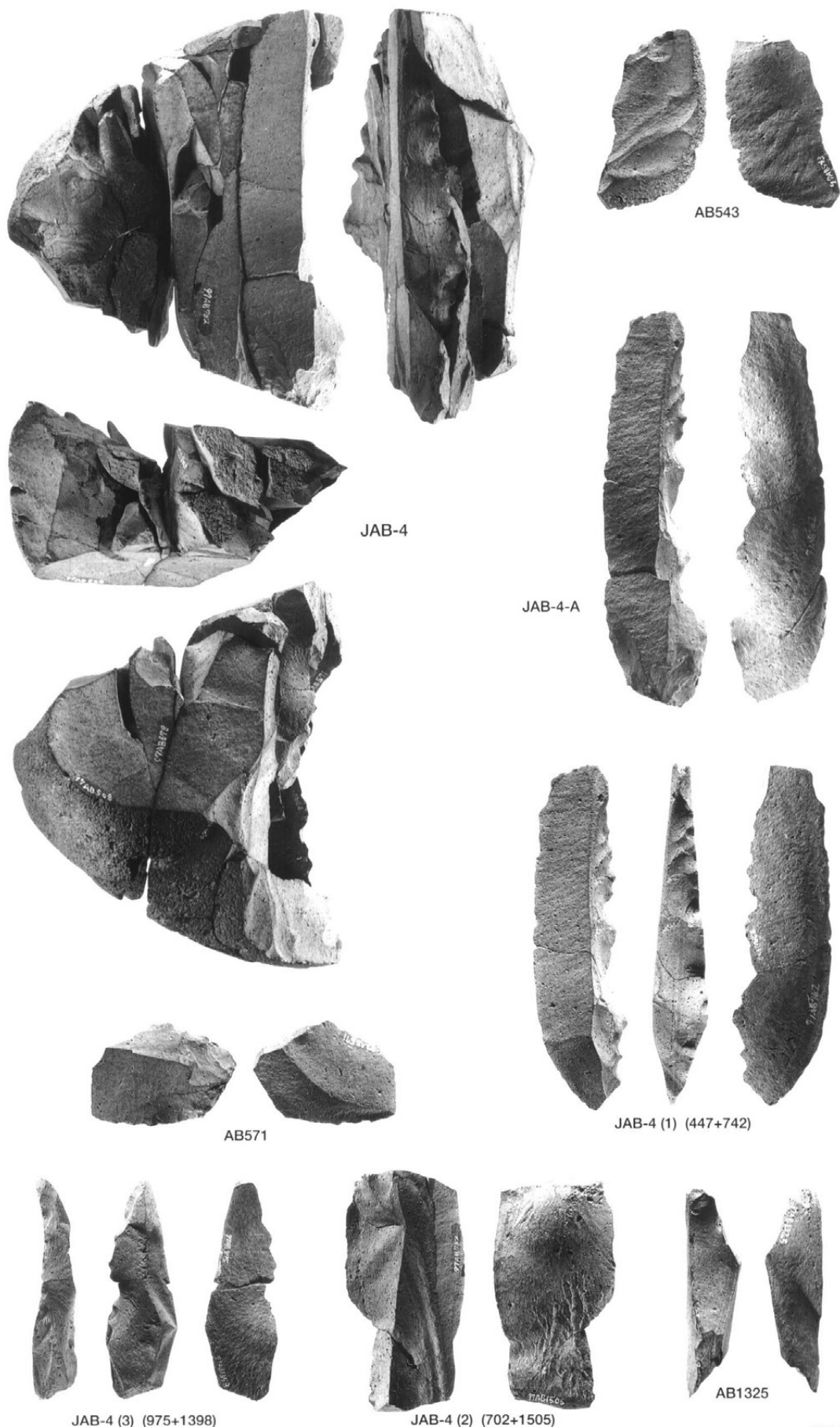
接合資料(JAB-1・2)





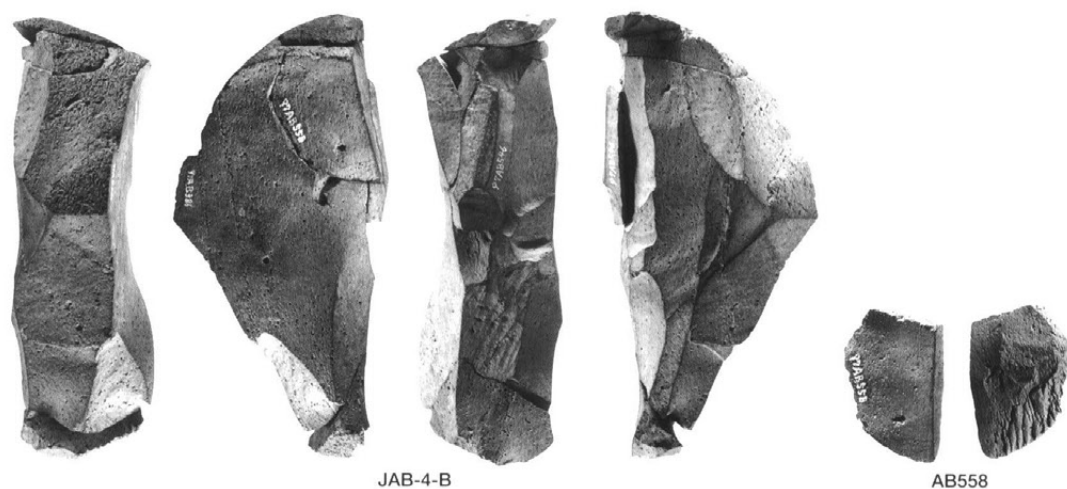
×2/3

接合資料(JAB-3・5)



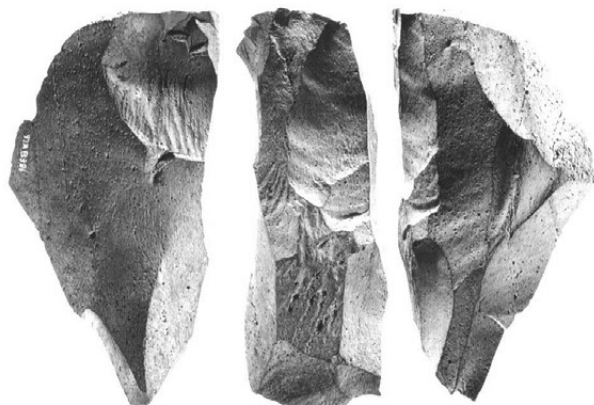
×2/3

接合資料(JAB-4)

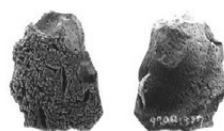


JAB-4-B

AB558



AB386



AB1317



AB1409



AB546



AB1181



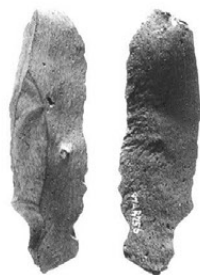
JAB-4-C



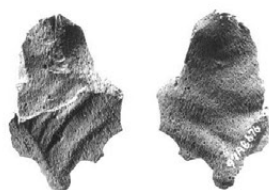
AB678



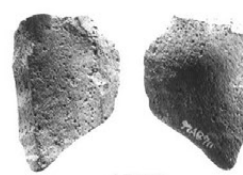
AB599



AB756



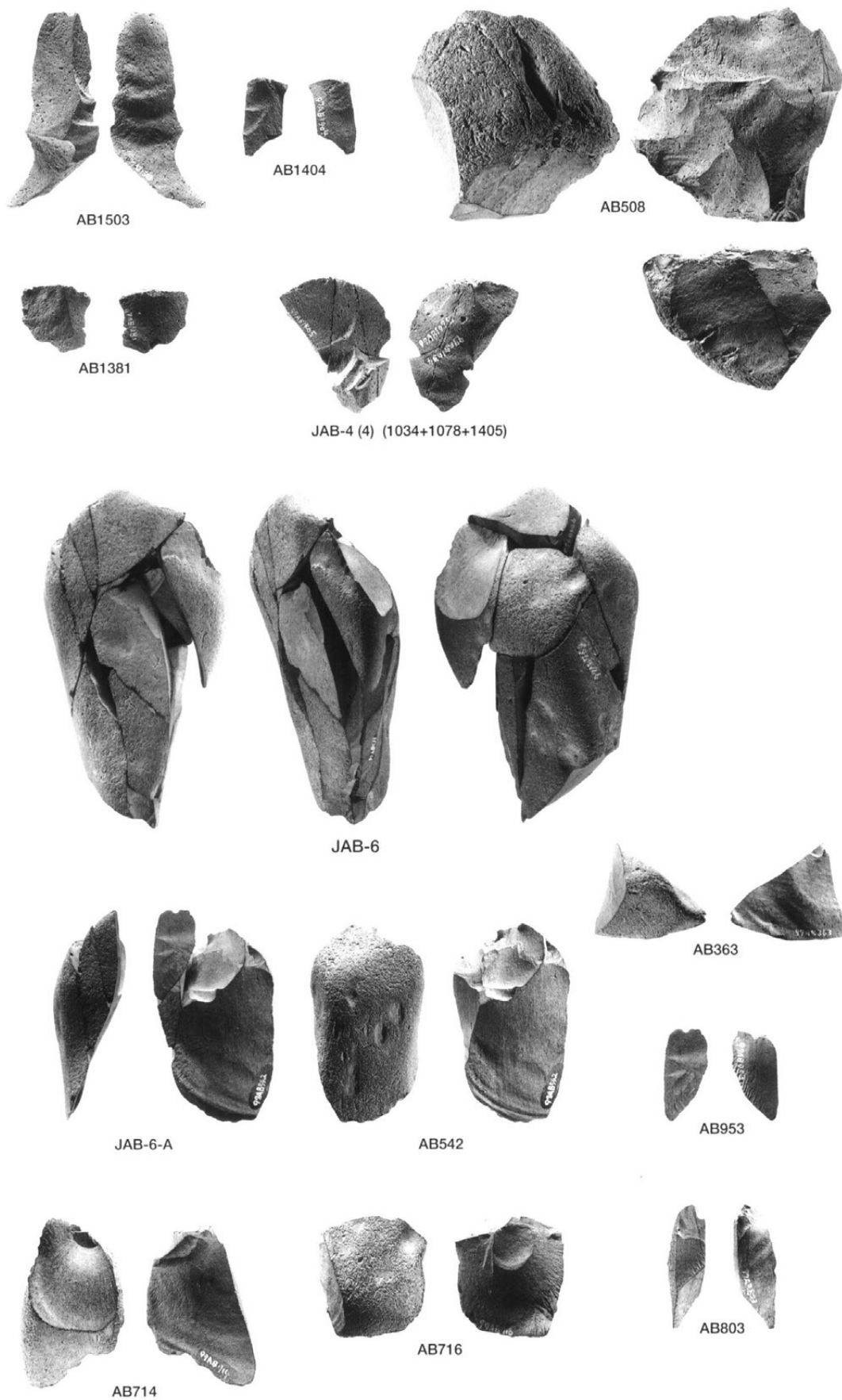
AB676

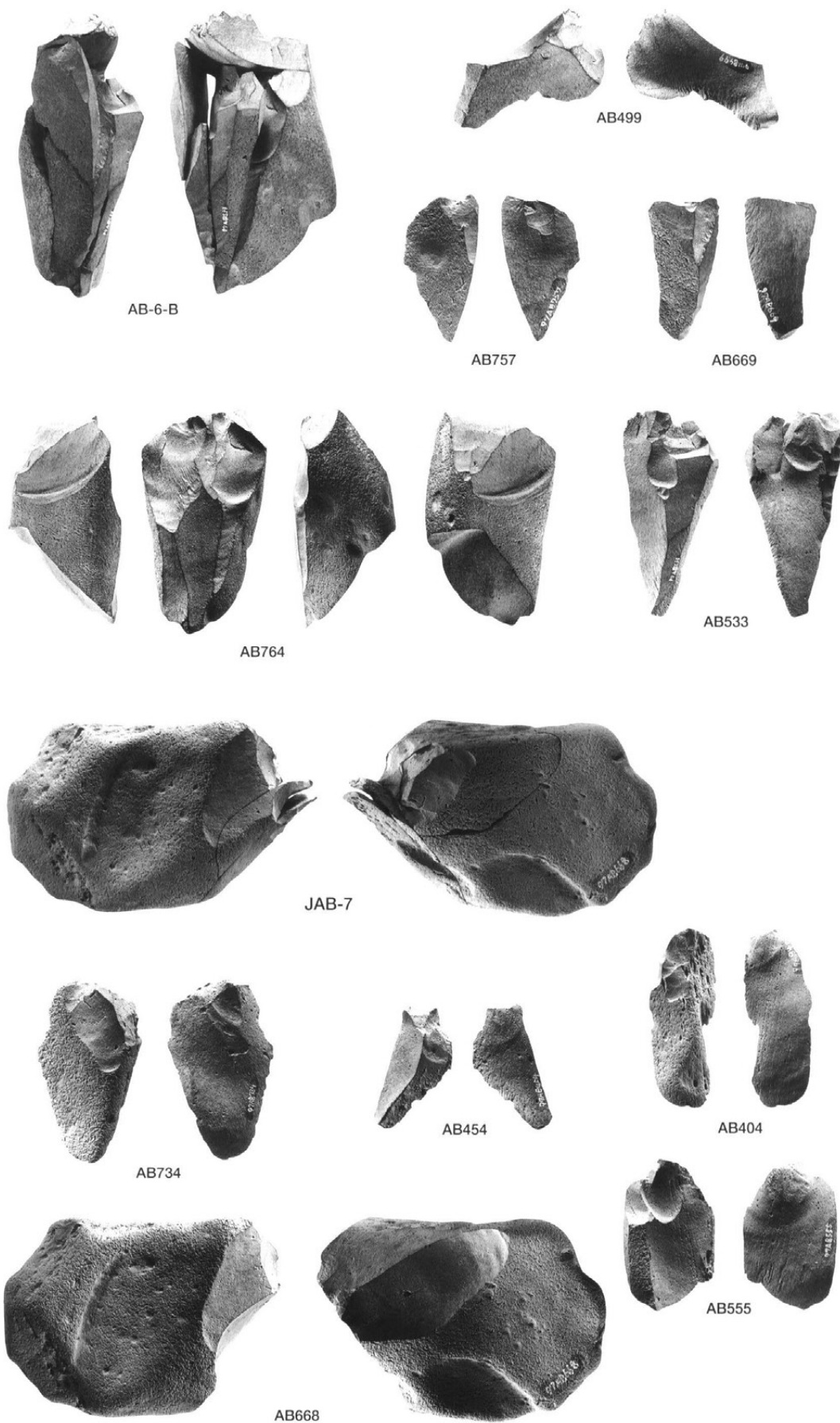


AB711

×2/3

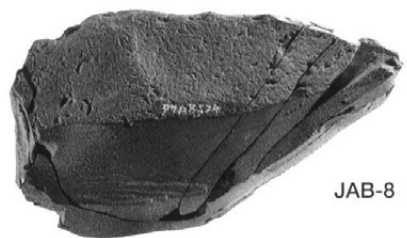
接合資料(JAB-4)





×2/3

接合資料(JAB-6・7)



JAB-8



AB524



AB538



AB521



AB1347



AB718



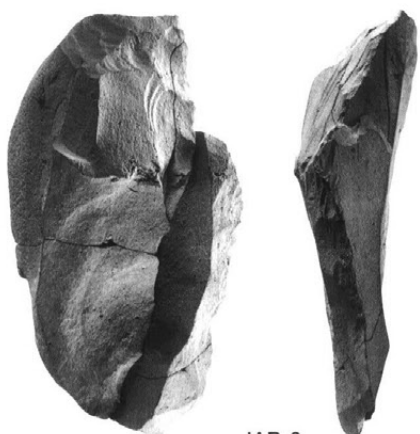
AB539



AB611



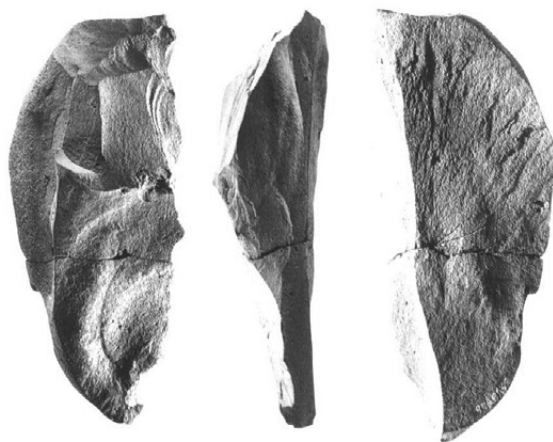
JAB-8 (1)
(1117+1511)



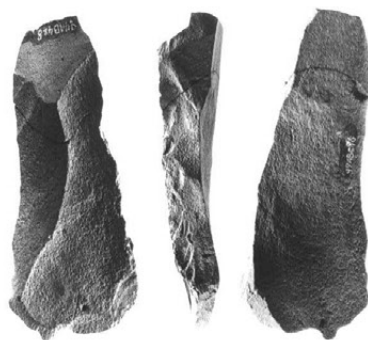
JAB-9



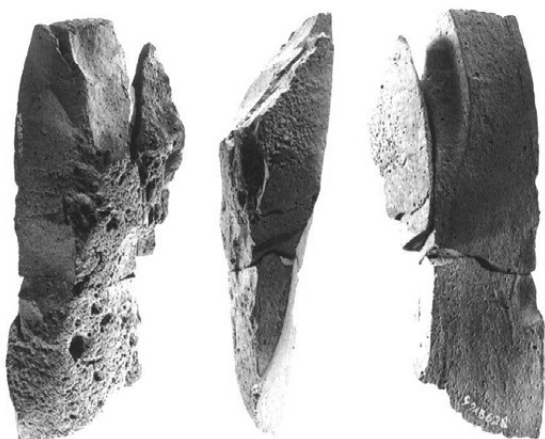
JAB-9 (3) (677+1200)



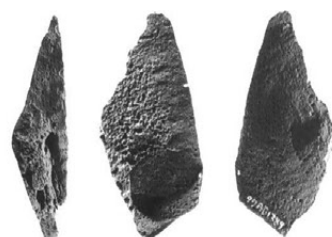
JAB-9 (1) (667+759)



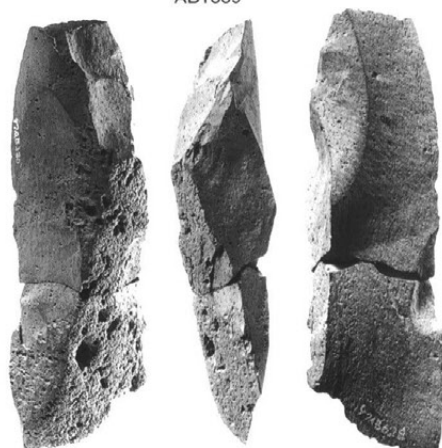
JAB-9 (2) (428+596)



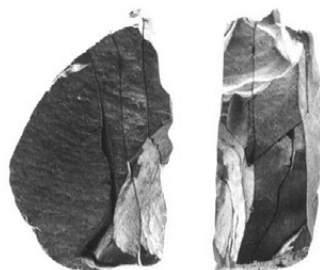
JAB-10



AB1389



JAB-10 (1) (380+628)



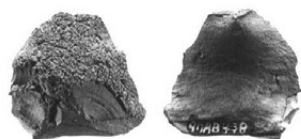
JAB-11



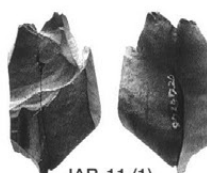
AB699



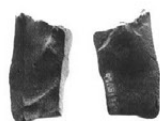
AB776



AB438



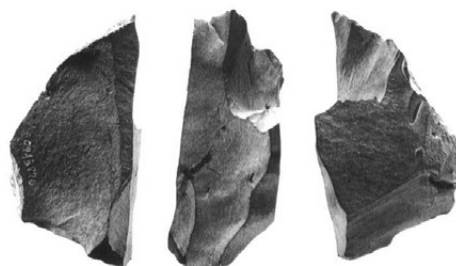
JAB-11 (1)
(720+1447)



AB1418



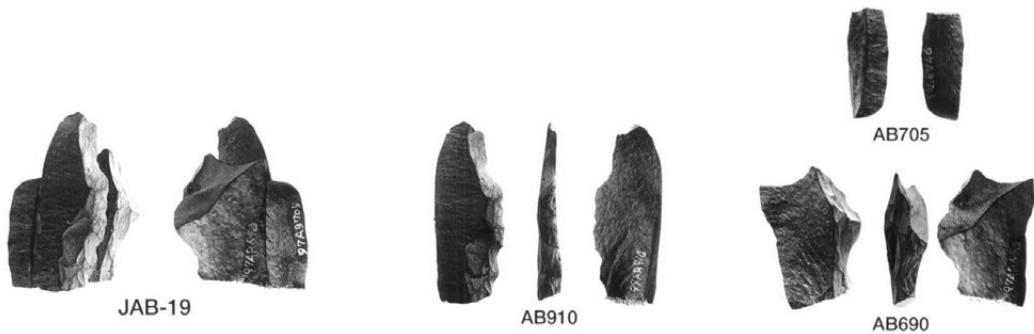
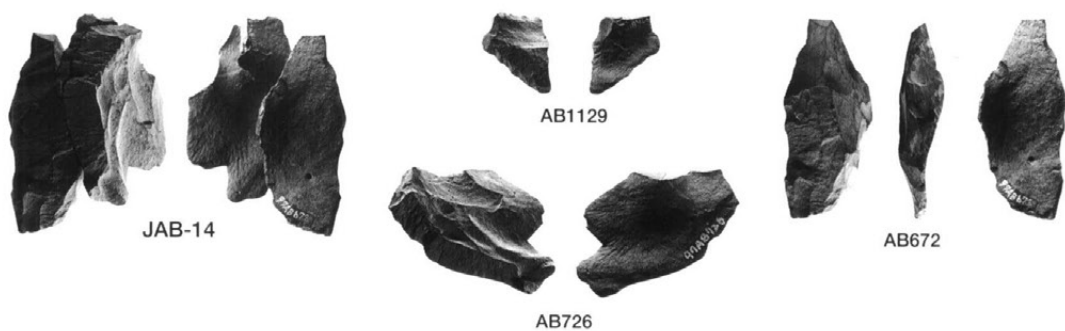
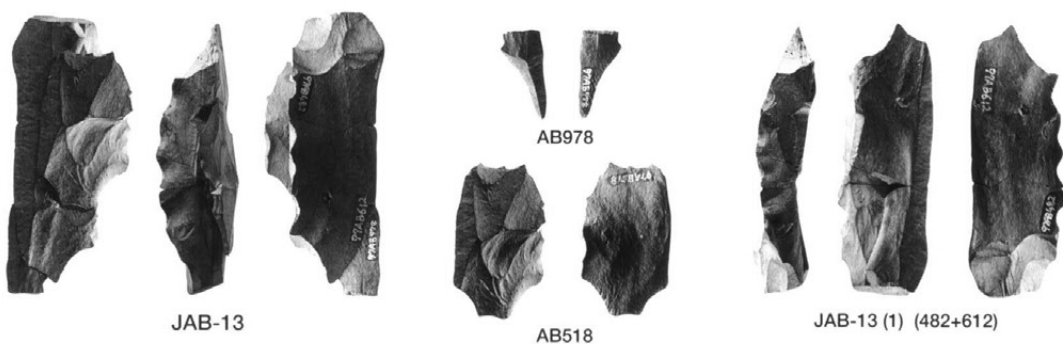
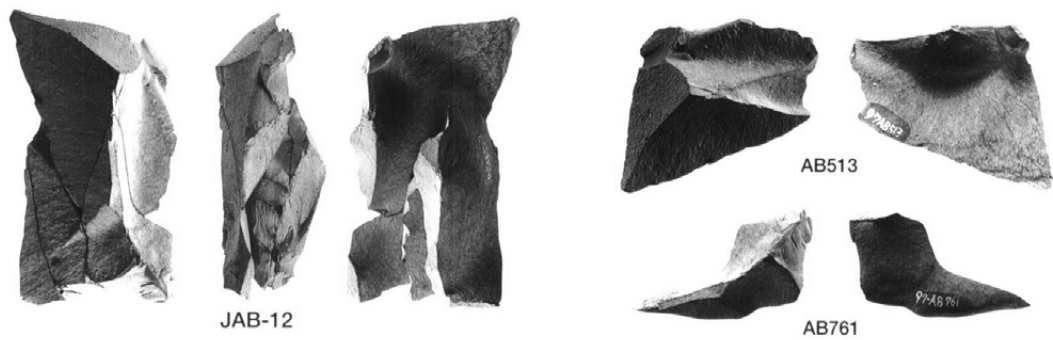
AB1365



AB770

×2/3

接合資料(JAB-9~11)



X2/3



JAB-24



AB1203



AB389



AB640



AB1446



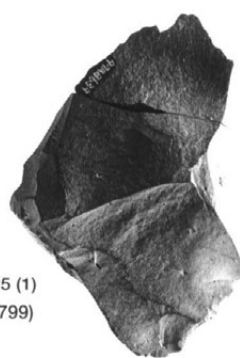
JAB-25



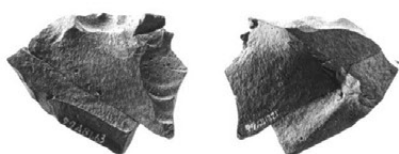
JAB-25 (1)
(639+799)



JAB-25 (2) (663+1321)



AB569



JAB-26



AB1285



JAB-26 (1) (1110+1235)



×2/3

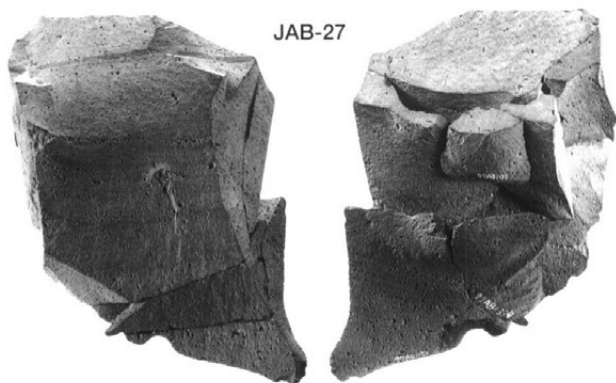
接合資料(JAB-24~26)



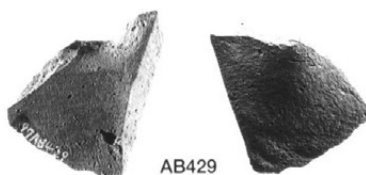
AB680



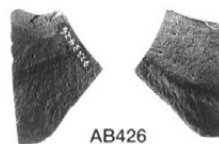
AB665



JAB-27



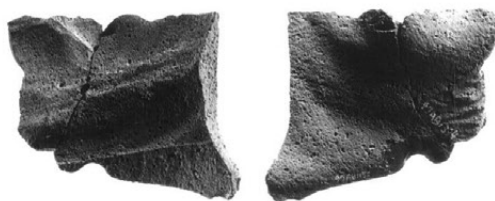
AB429



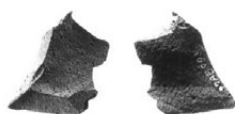
AB426



AB1322



JAB-27 (1) (1152+1334)



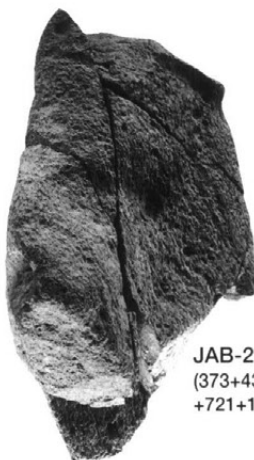
AB993



AB1135



AB741



JAB-29
(373+435+481+535+647
+721+1080+1209+1279+1455)



JAB-28 (1)
(394+587)



JAB-28 (394+587+689+1234)



JAB-30



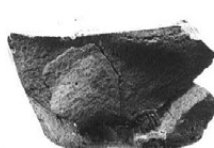
JAB-30 (1) (448+823)



AB692



AB385

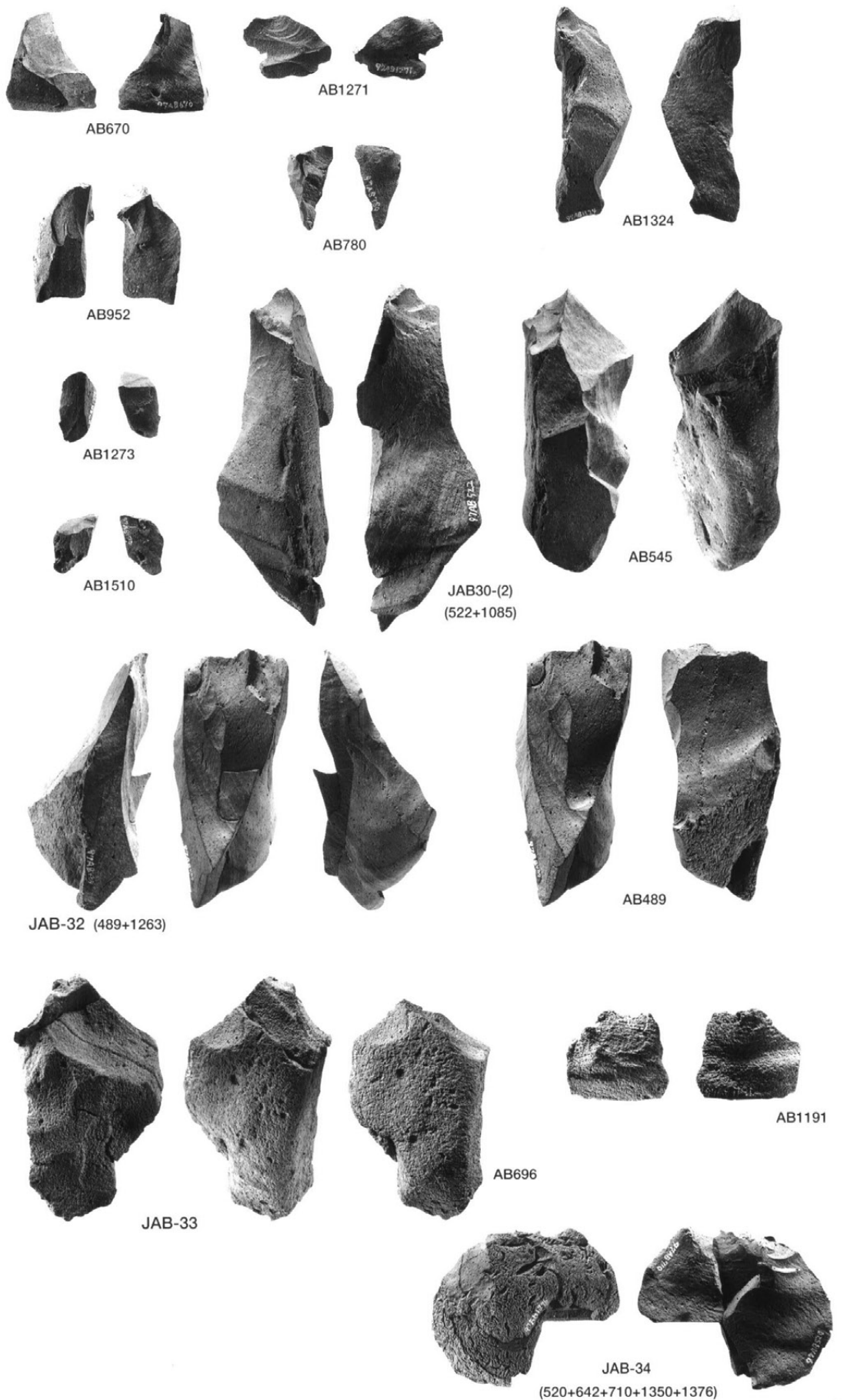


AB1473



×2/3

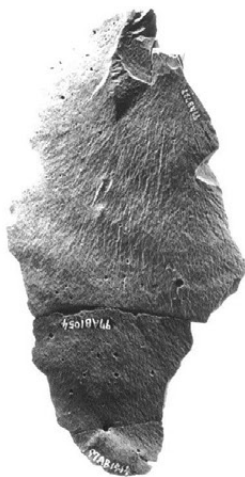
接合資料 (JAB-28・30)



×2/3



JAB-35 (739+1054+1414)

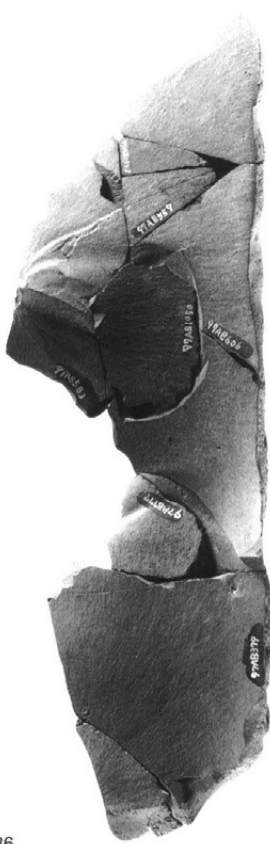


JAB-38 (537+557)



JAB-36

(379+559+578+583+606+740
+777+1050+1123+1343+1512)



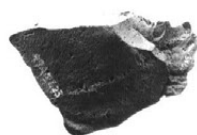
JAB-40 (515+778+1013)



JAB-45 (1114+1131)



JAB-47 (427+623+1140)



JAB-39 (531+589)

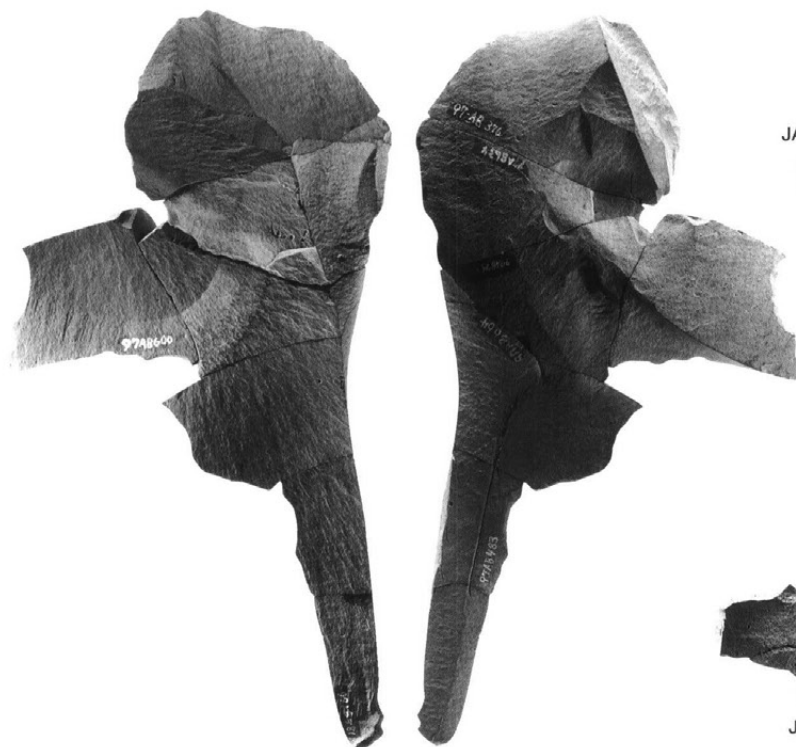


JAB-46 (601+1138)

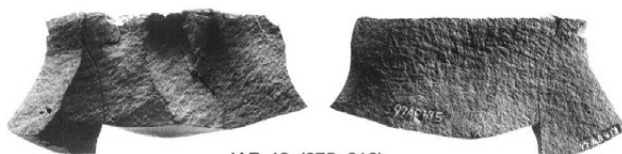


×2/3

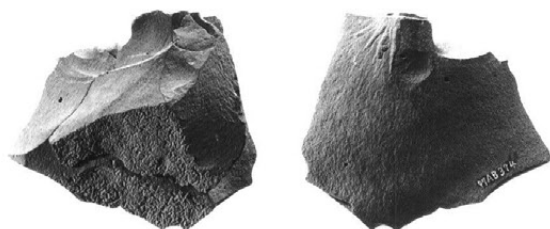
接合資料(JAB-35・36・38~40・45~47)



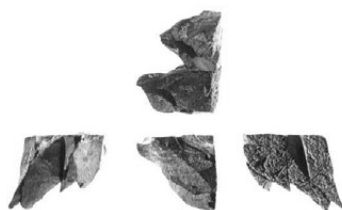
JAB-37
(376+483+581+600
+634+664+767)



JAB-42 (675+813)



JAB-43 (374+586)



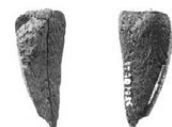
JAB-54
(997+1378+1408+1449)



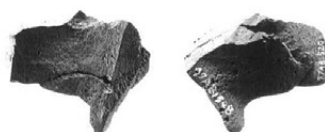
JAB-52(1229+1514)



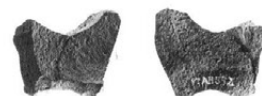
JAB-50 (1330+1472)



JAB-58 (1056+1515)



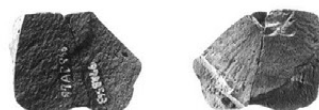
JAB-48 (1520+1548)



JAB-49 (552+917)



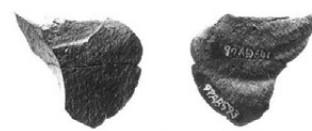
JAB-51 (1249+1445)



JAB-53 (563+966)



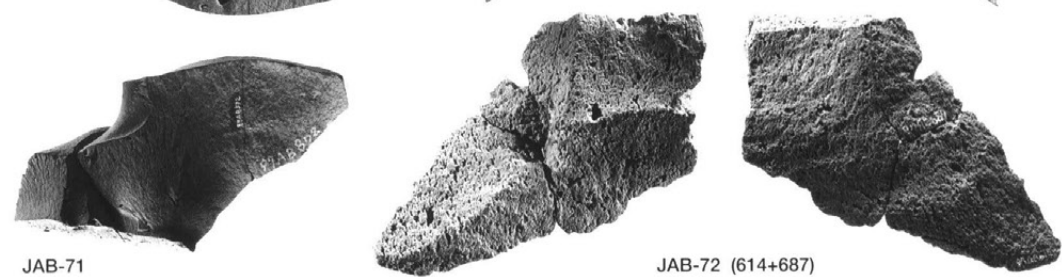
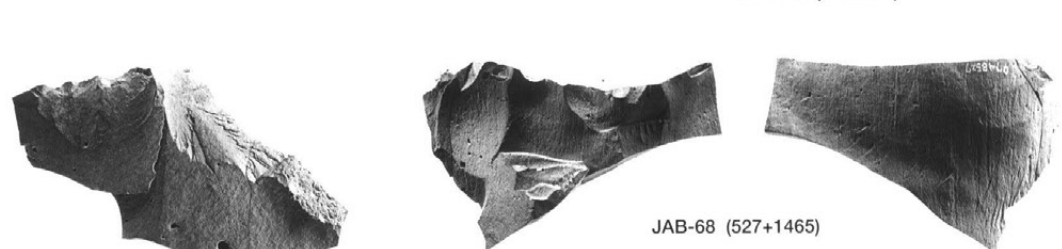
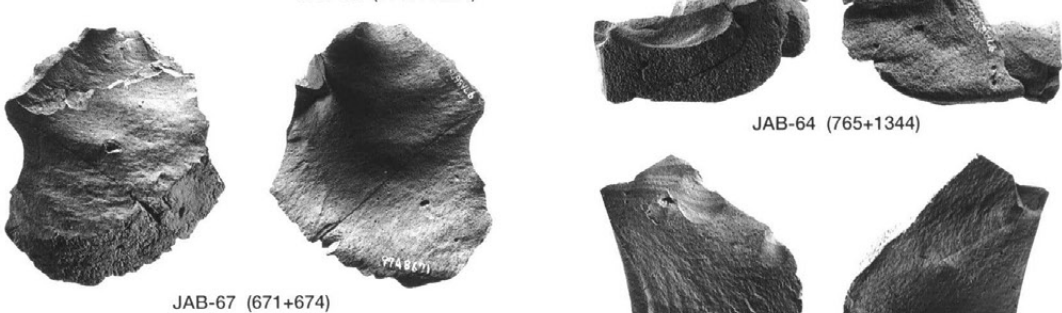
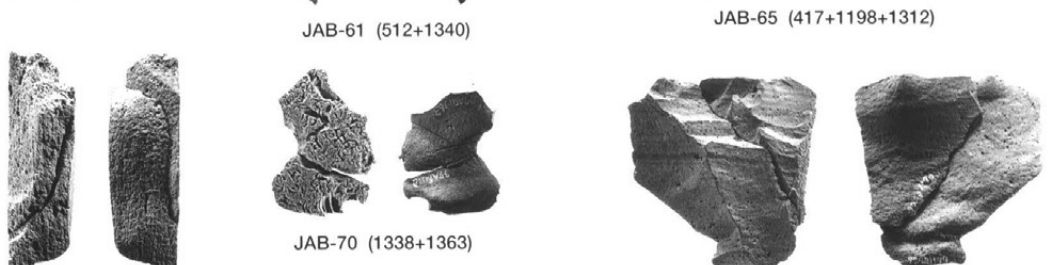
JAB-56 (1286+1382)



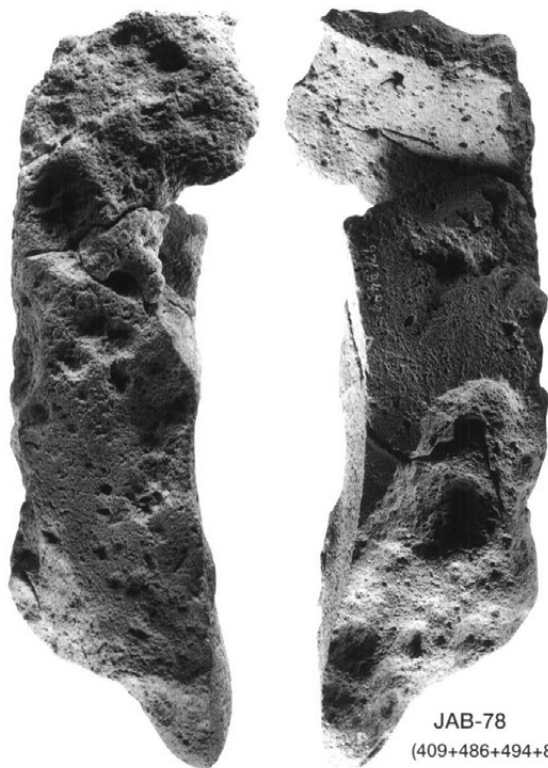
JAB-57 (593+641)



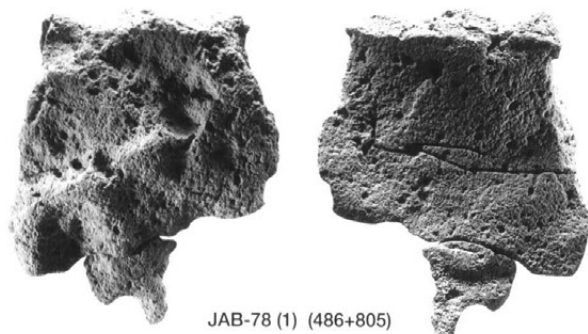
JAB-59 (1328+1461)



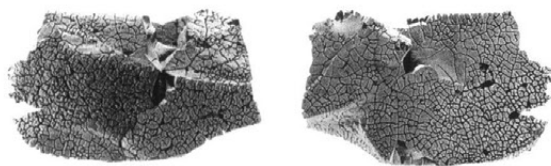
×2/3



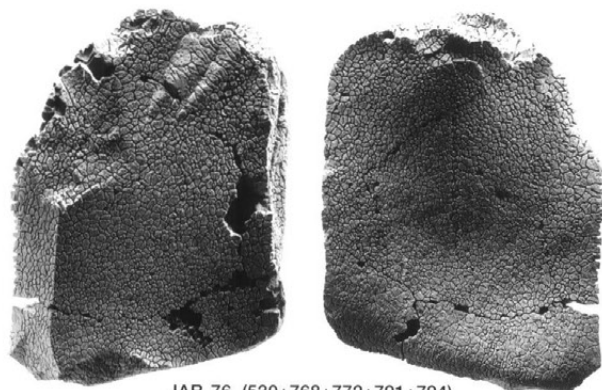
JAB-78
(409+486+494+805)



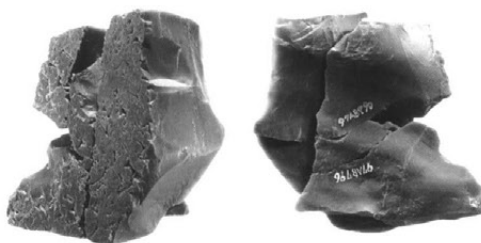
JAB-78 (1) (486+805)



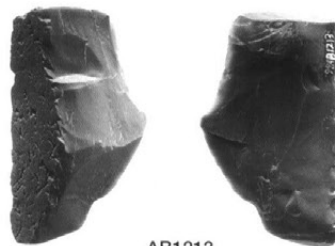
JAB-44 (553+1212)



JAB-76 (530+768+772+791+794)



JAB-79 (691+790+796+1039+1213+1383)

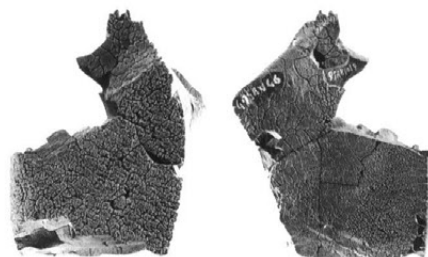


AB1213

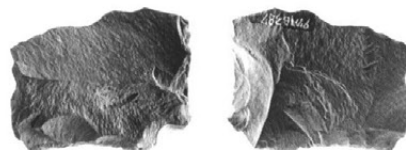


AB796

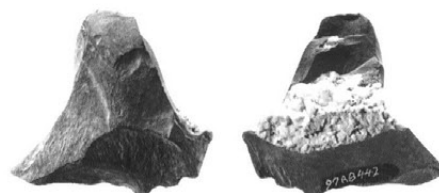
AB691



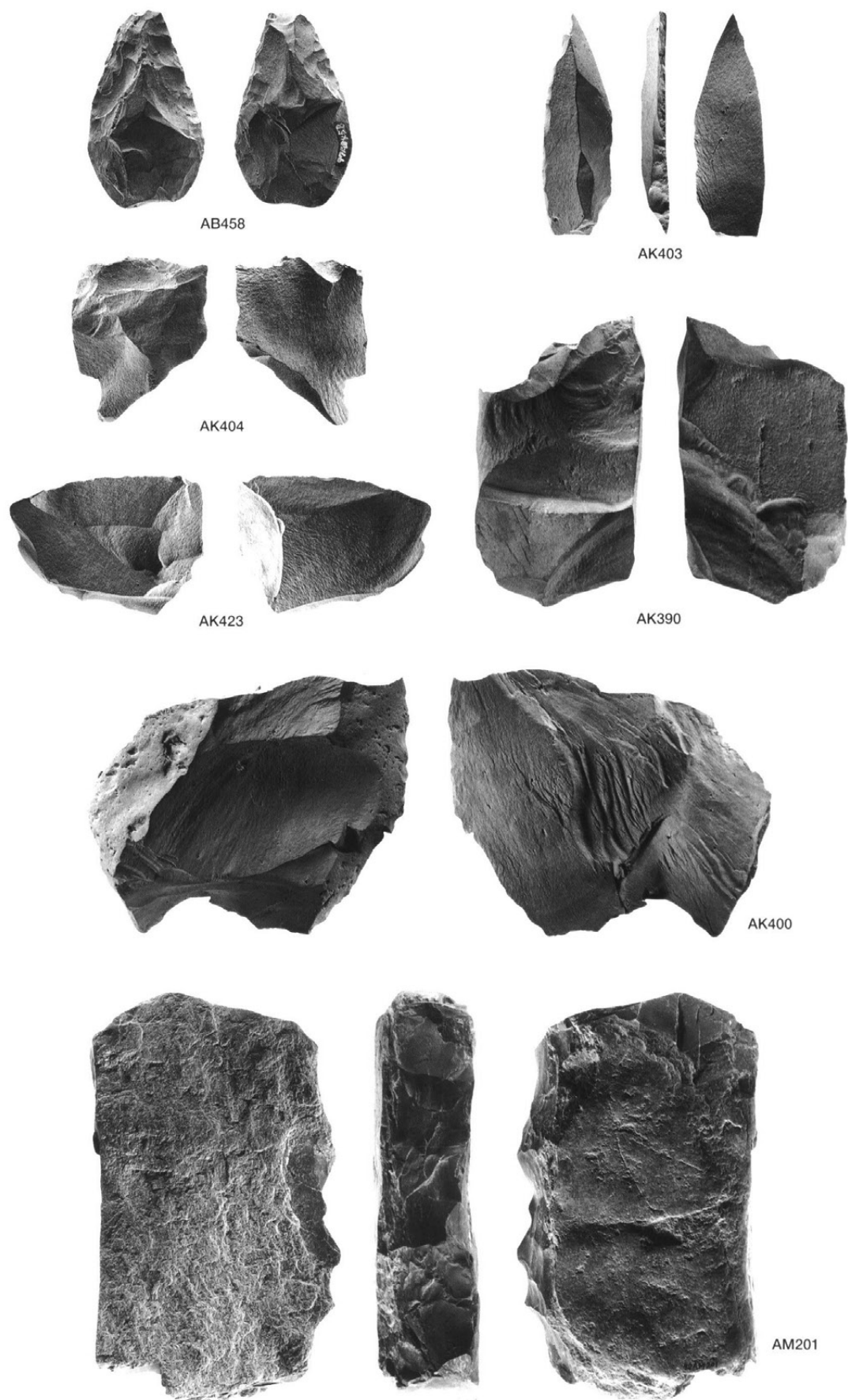
JAB-41 (567+800+1019)



AB387



AB442



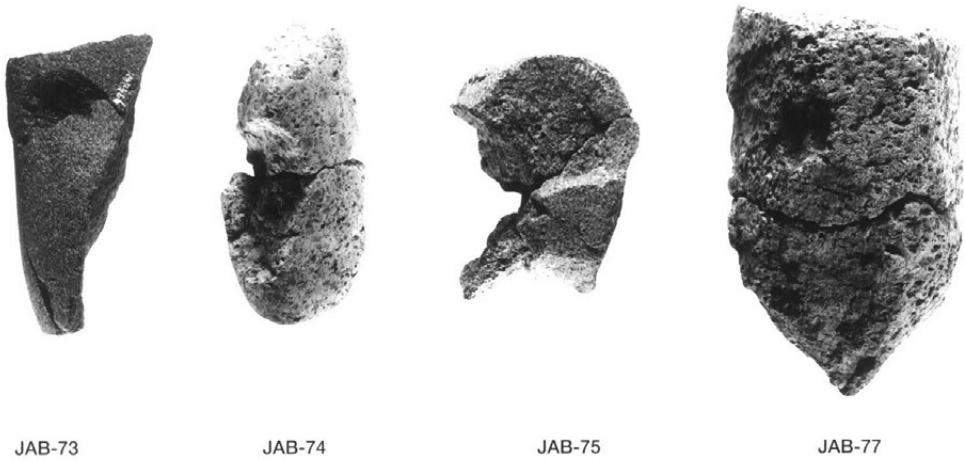
×2/3

97—52次調査地：ナイフ形石器(AK403)、尖頭器(AB458)、クサビ(AK404)、石核(AK390・423)、剥片(AK400)、97—56次調査地：石核(AM201)



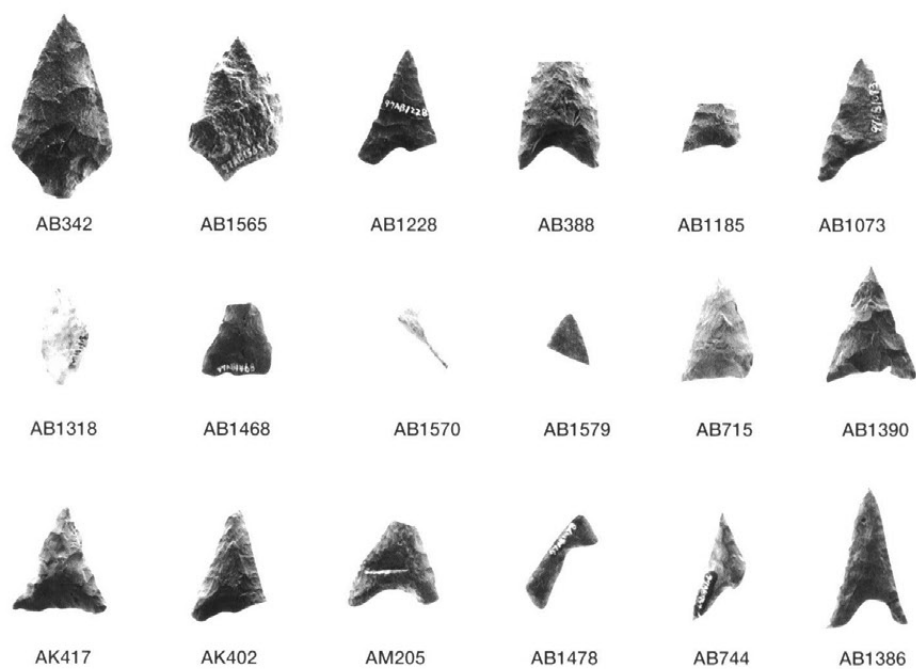
×2/3

背部整形剥片(表面)



×1/2

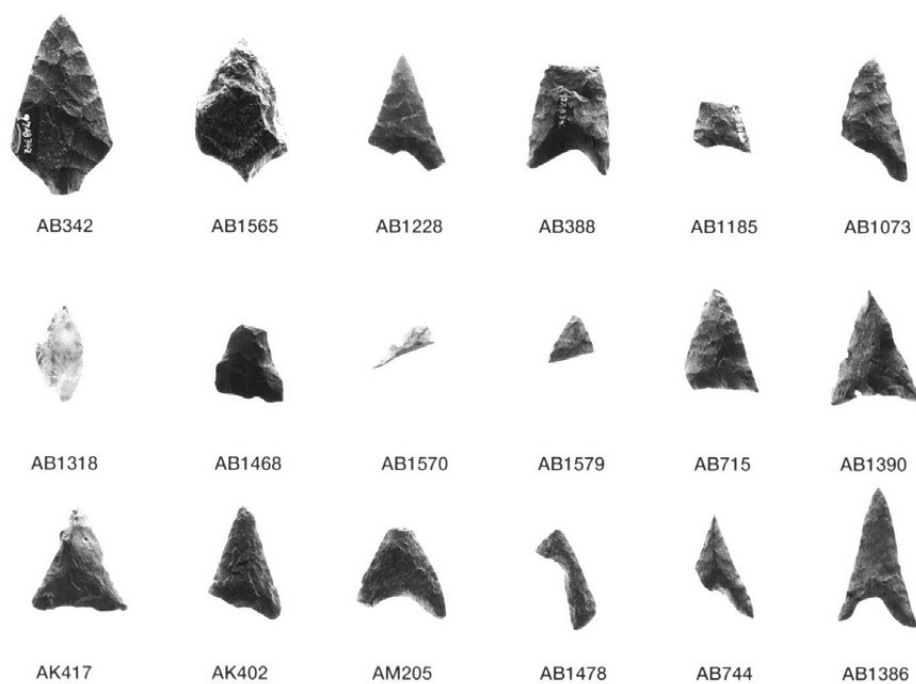
搬入礫(接合資料)



×2/3

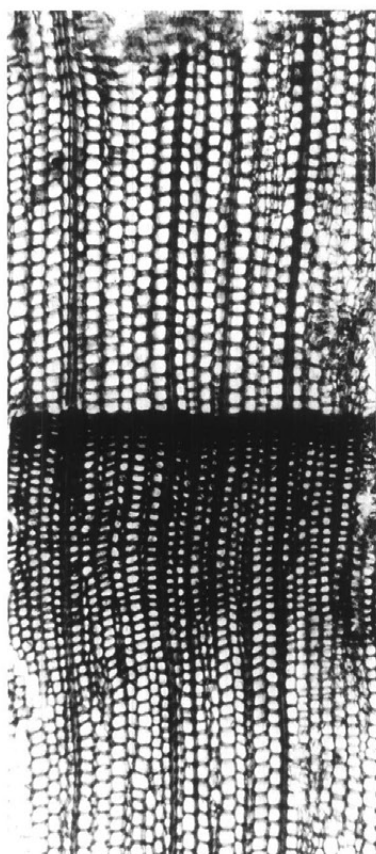
表面

裏面

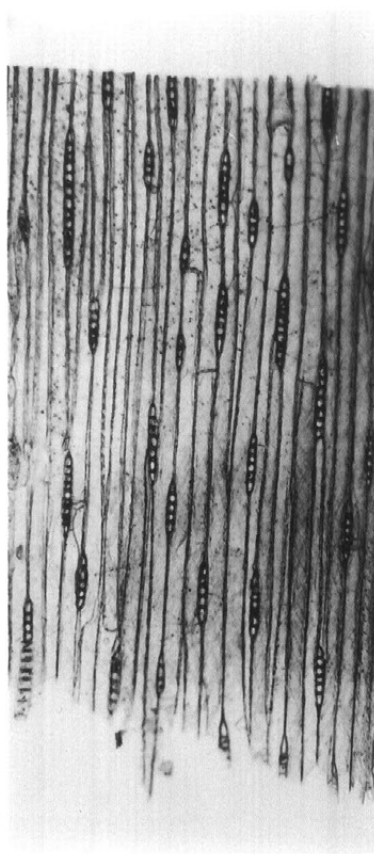


×2/3

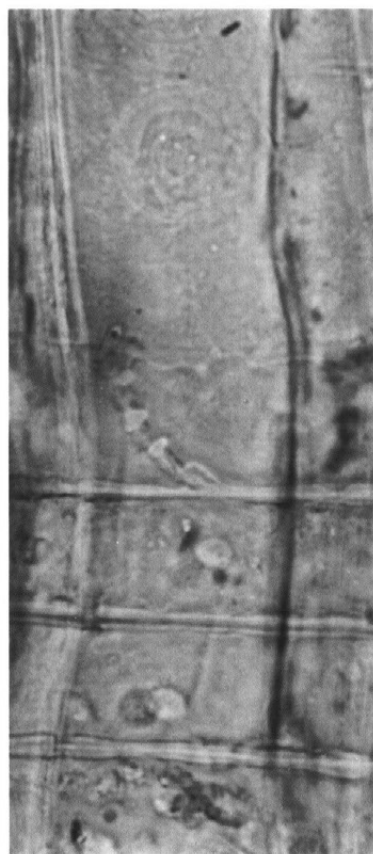
97-12次調査地：RK9B層(AB342)、RK12A層～12/13層漸移帯(AB388・715・744・1073・1185・1228・1318・1386・1390・1468・1478・1565・1570・1579)、97-52次調査地：RK12Dii～iv層(AK402・417)、97-56次調査地：RK12Dii層(AM205)



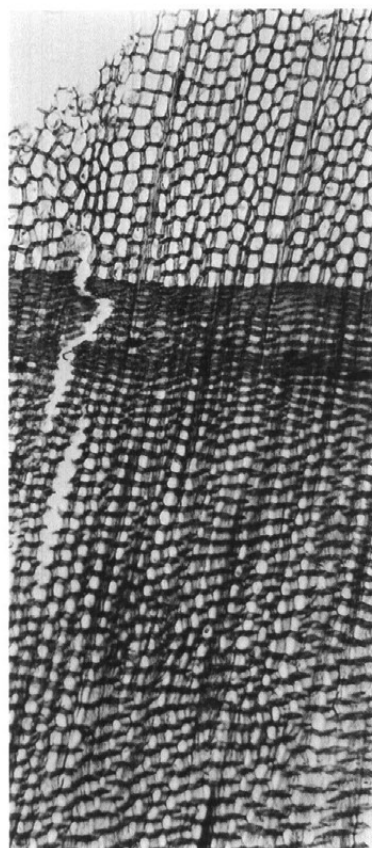
R303(121)モミ属 68倍



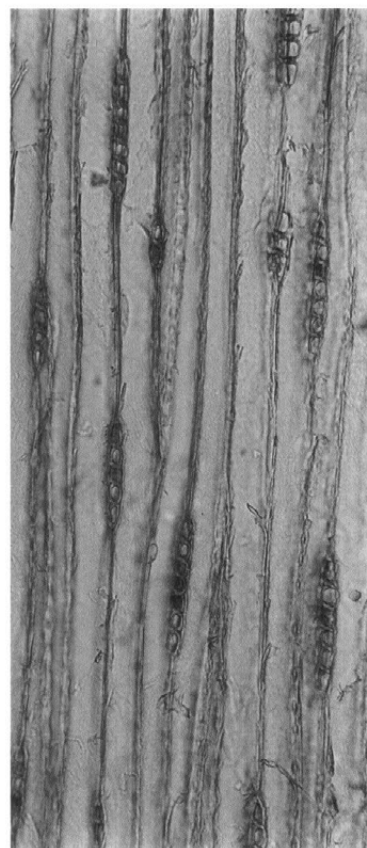
68倍



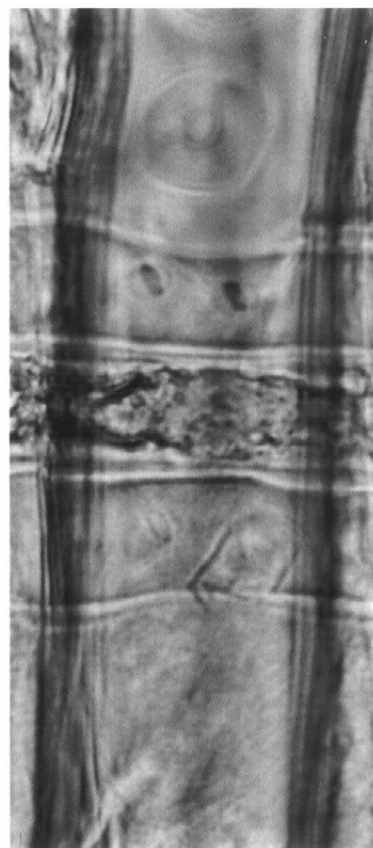
1020倍



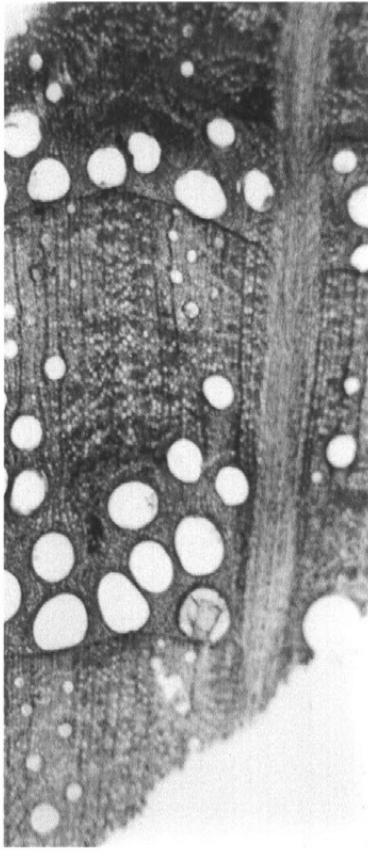
R337(116)ヒノキ属 68倍



170倍



1020倍



R375(92) クヌギ節

34倍



54倍

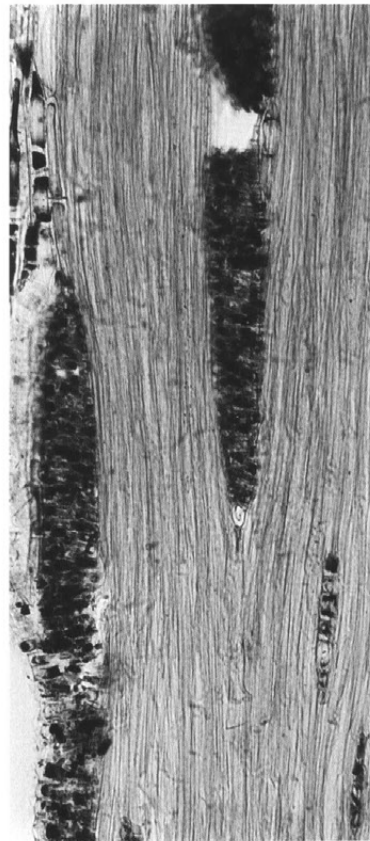


540倍

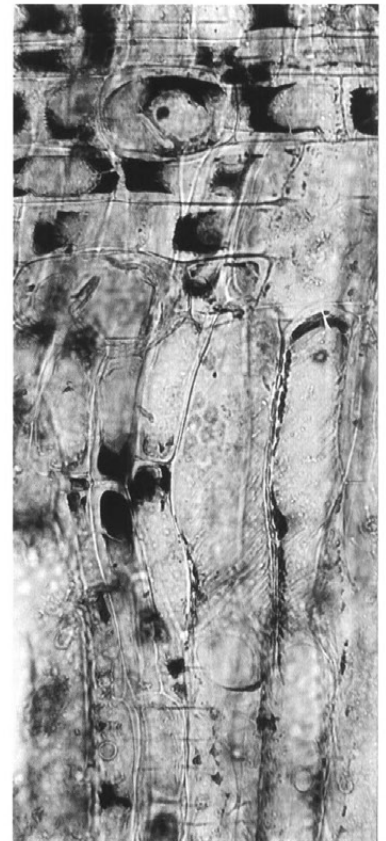


R106(114) ケヤキ

54倍



135倍



270倍

大阪市平野区 長原遺跡東部地区発掘調査報告Ⅲ

ISBN 4-900687-44-8

2000年3月31日 発行

編集・発行 財団法人 大阪市文化財協会 ©

〒540-0006 大阪市中央区法門坂 1-1-35

(TEL.06-6943-6833 FAX.06-6920-2272)

印刷・製本 ヨシダ印刷株式会社 大阪営業所

〒532-0003 大阪市淀川区宮原5-1-18

**Archaeological Reports
of the
Eastern Sector of Nagahara Site
in Osaka, Japan**

Volume III

A Report of Excavations
Prior to the Development of the Eastern Sector of the Nagayoshi Area

March 2000

Osaka City Cultural Properties Association

**Archaeological Reports
of the
Eastern Sector of Nagahara Site
in Osaka, Japan**

Volume III

A Report of Excavations
Prior to the Development of the Eastern Sector of the Nagayoshi Area

March 2000

Osaka City Cultural Properties Association