



(1) SR05 (北東より)



(2) SR06 (北より)



(1) 1区南半全景（東より）



(2) 2区南半全景（北より）



(1) 3～5区北半全景 (南より)



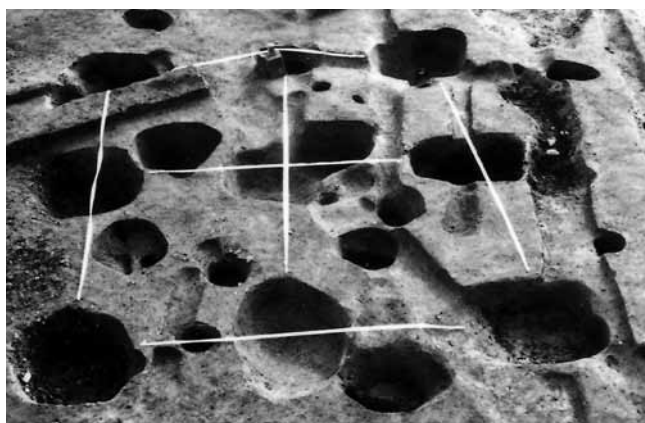
(2) 4・5区南半全景 (南東より)



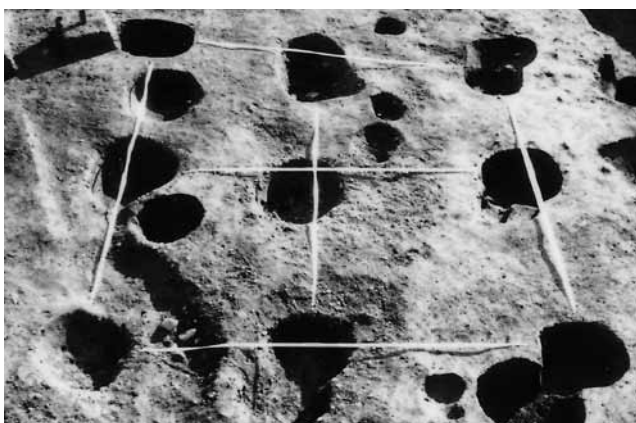
(1) SB39 (北より)



(2) SB40 (北より)



(3) SB41 (北より)



(4) SB42 (北より)



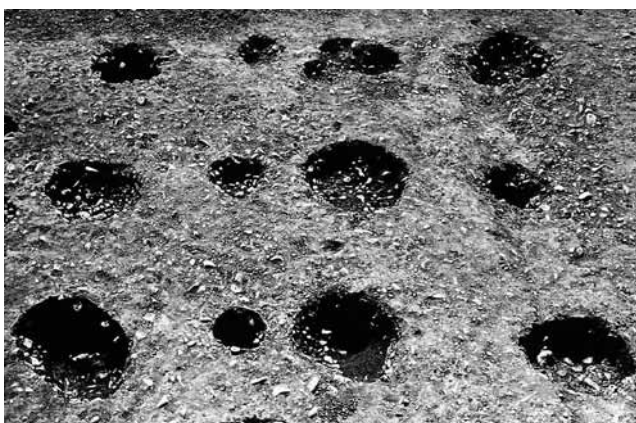
(5) SB43 (北より)



(6) SB44 (北東より)



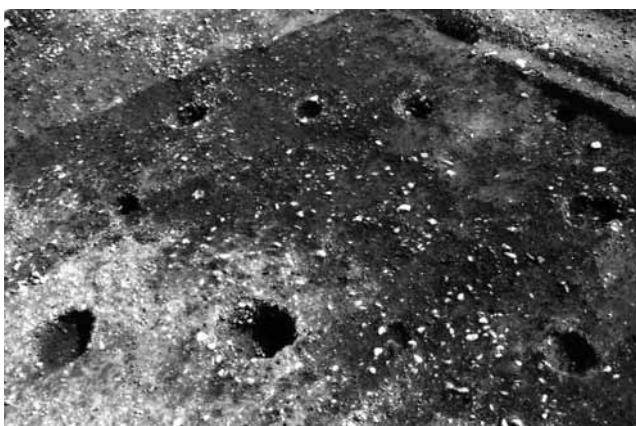
(7) SB45・SK39 (北より)



(8) SB46 (東より)



(1) SB47 (東より)



(2) SB48 (北東より)



(3) SB49 (南東より)



(4) SD41~43 (北西より)



(5) SD42遺物出土状況 (北より)



(6) SD44 (北より)



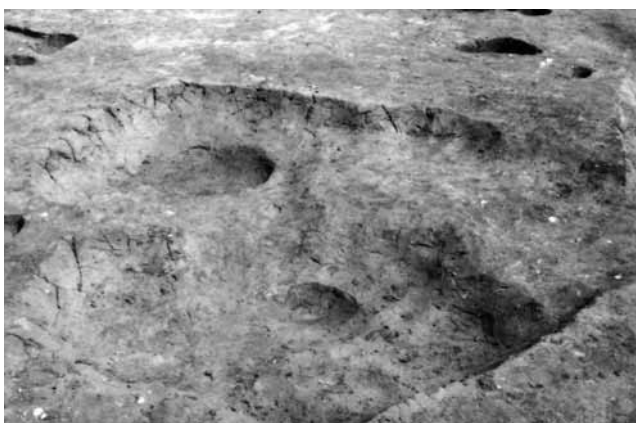
(7) SD45・46 (北より)



(8) SK37 (南より)



(1) SK38 (北東より)



(2) SK40・41 (北より)



(3) SK43遺物出土状況 (西より)



(4) SK44遺物出土状況 (北より)



(5) SR09 (西より)



(6) SR10 (北西より)

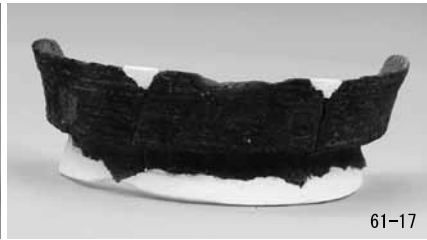
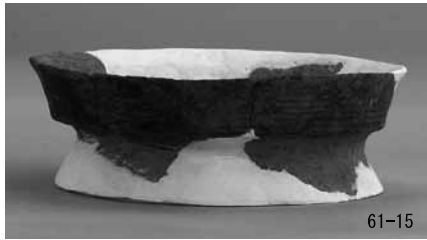
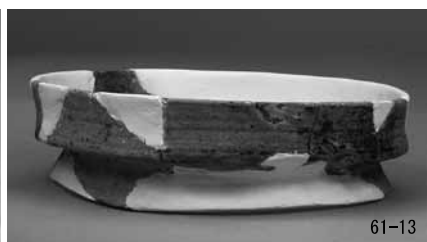
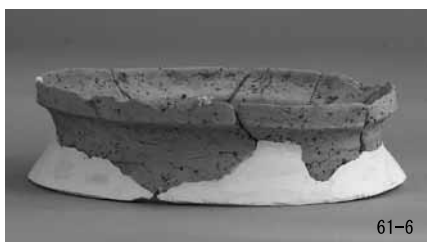


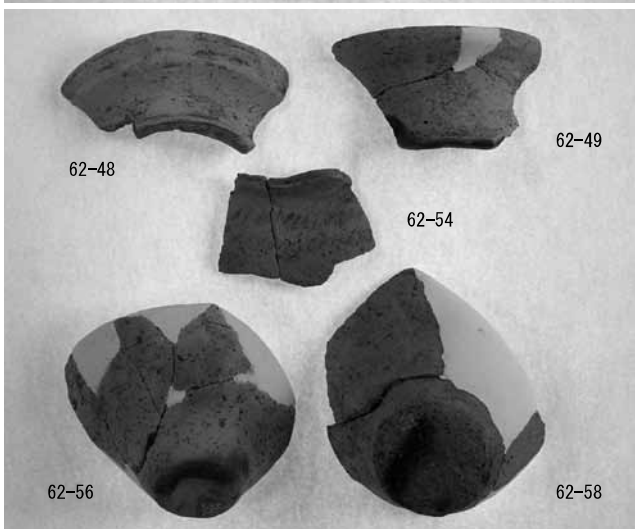
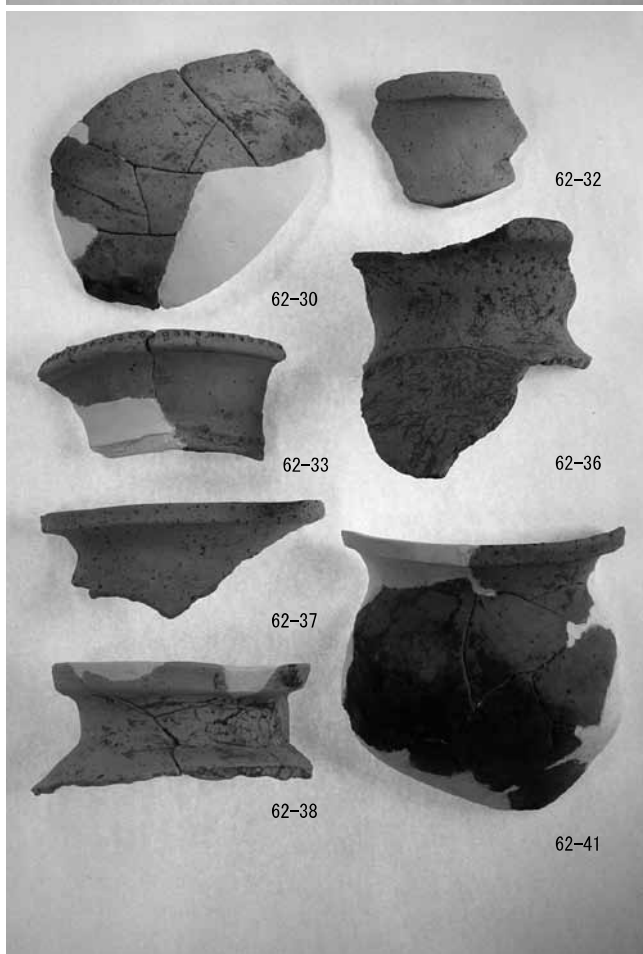
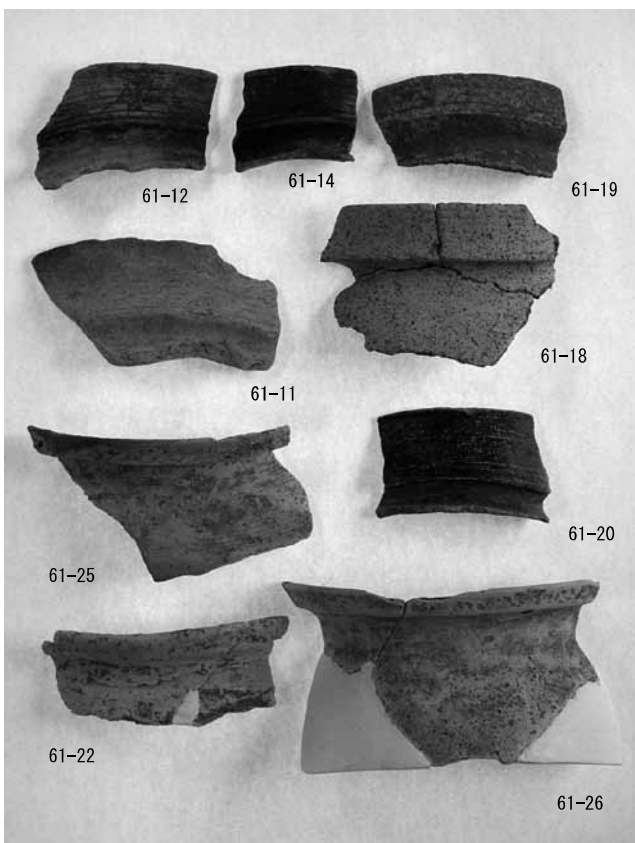
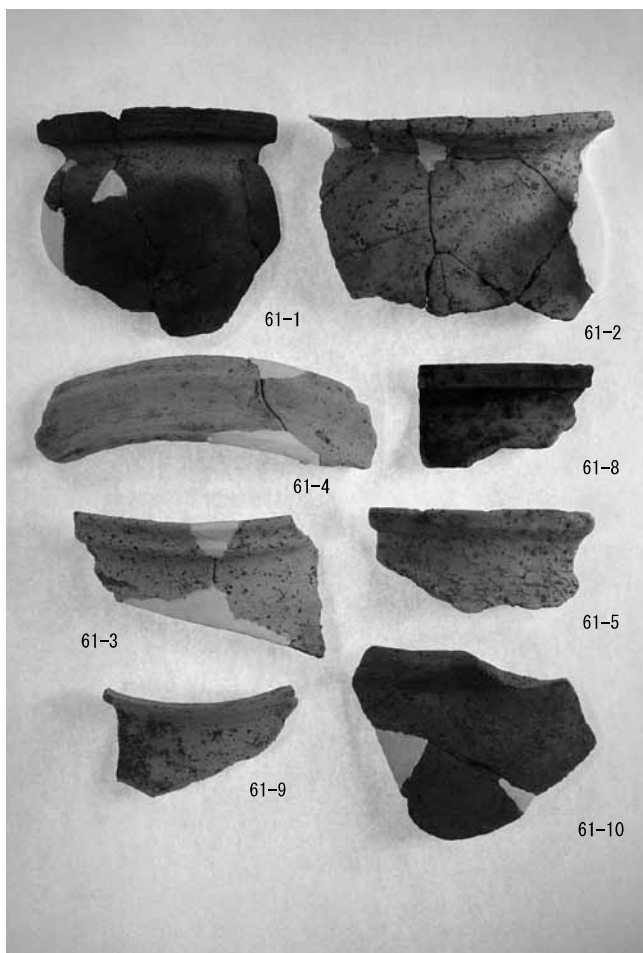
(7) SR11 (南西より)



(8) SR12 (北西より)

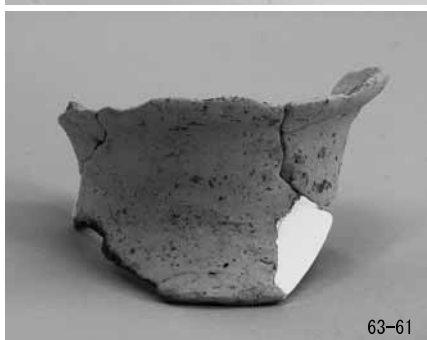
図版第三〇 遺物 弥生土器・土師器他 (一)

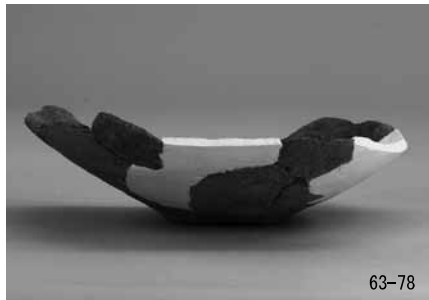




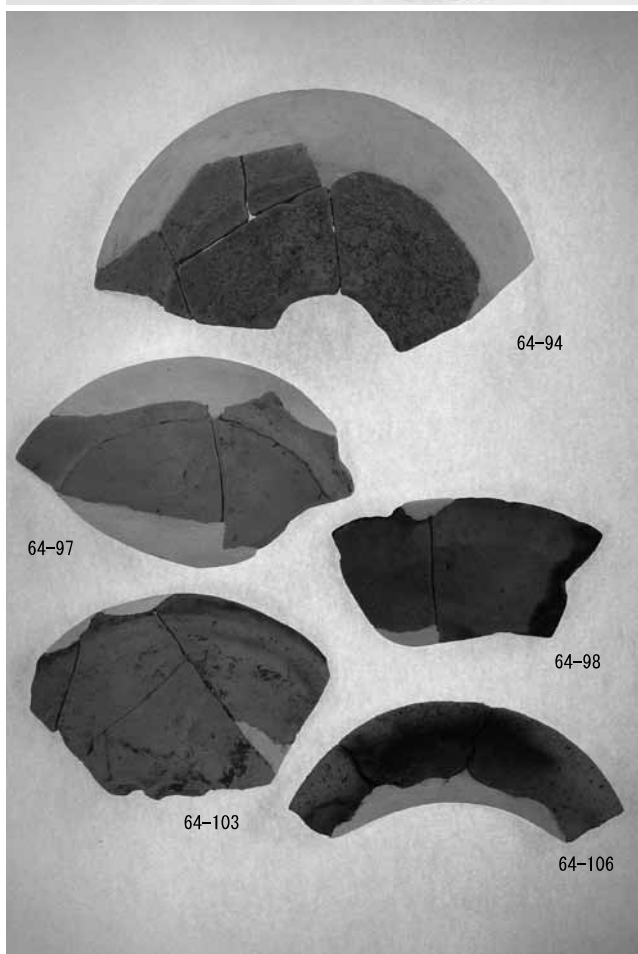
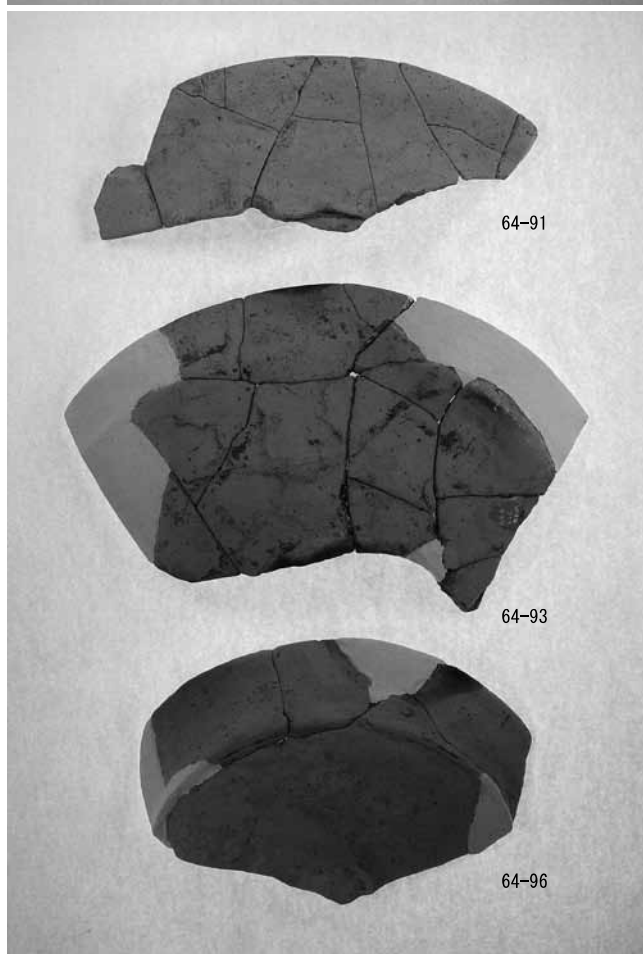
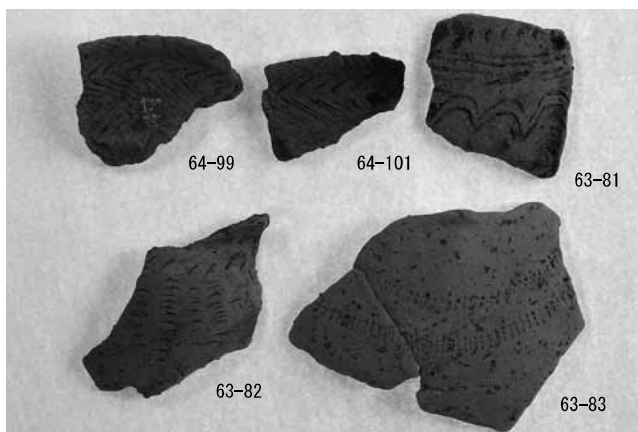
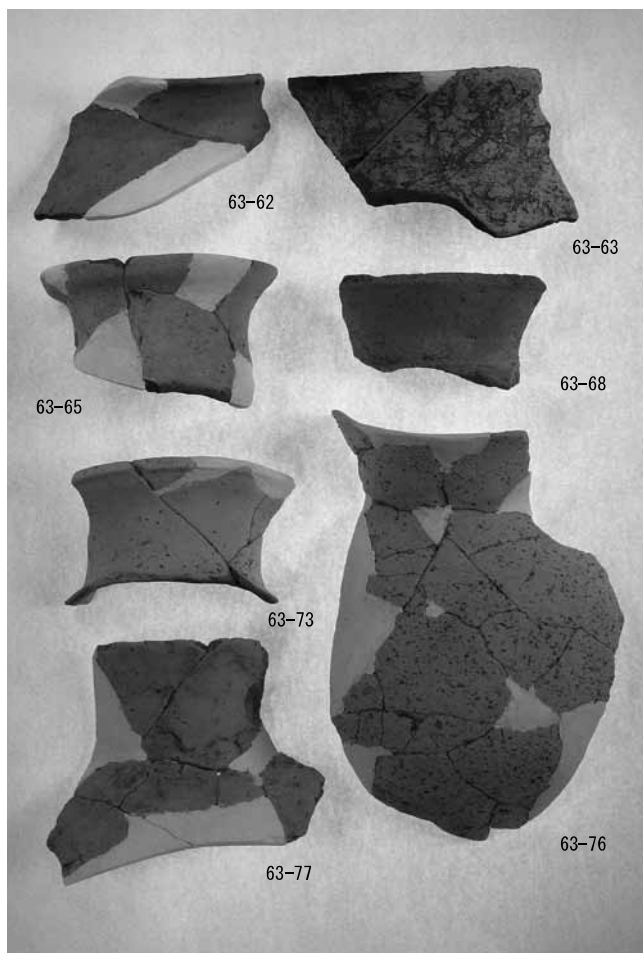


図版第三二 遺物 弥生土器・土師器他 (三)





図版第三四 遺物 弥生土器・土師器他 (五)

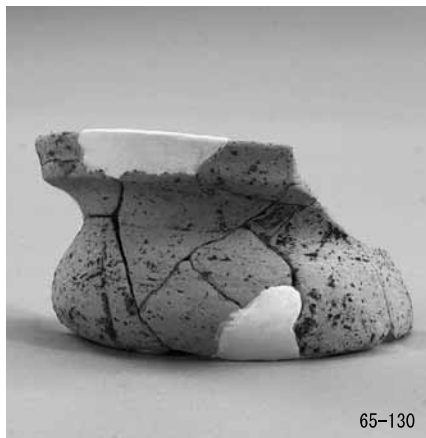




図版第三六 遺物 弥生土器・土師器他 (七)



65-128



65-130



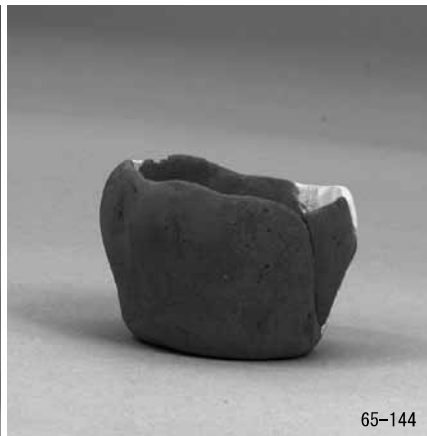
65-131



65-135



65-141



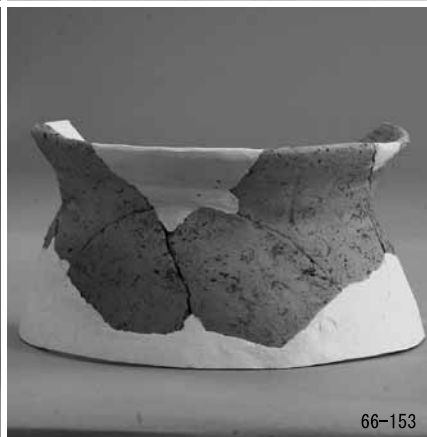
65-144



66-146



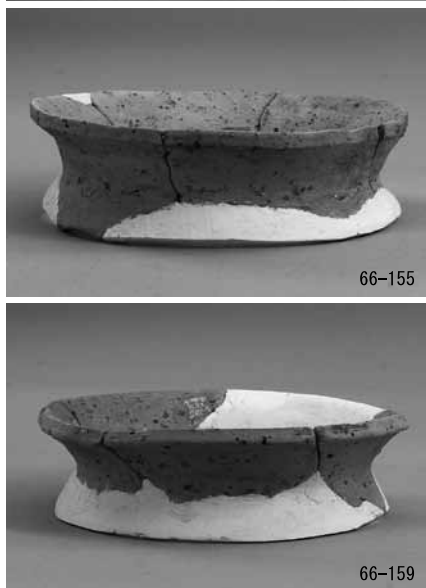
66-149



66-153



66-154



66-155



66-158



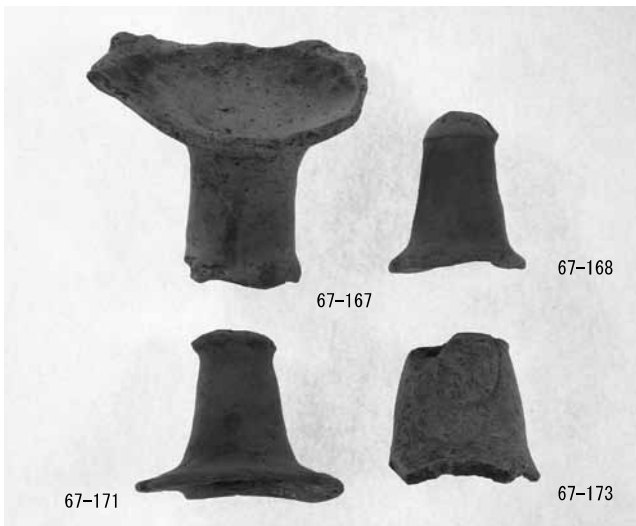
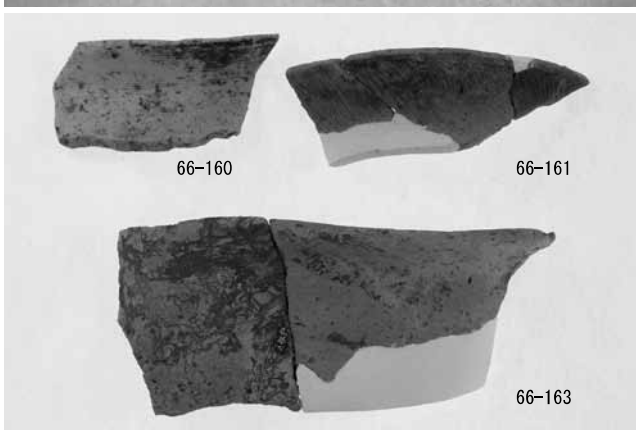
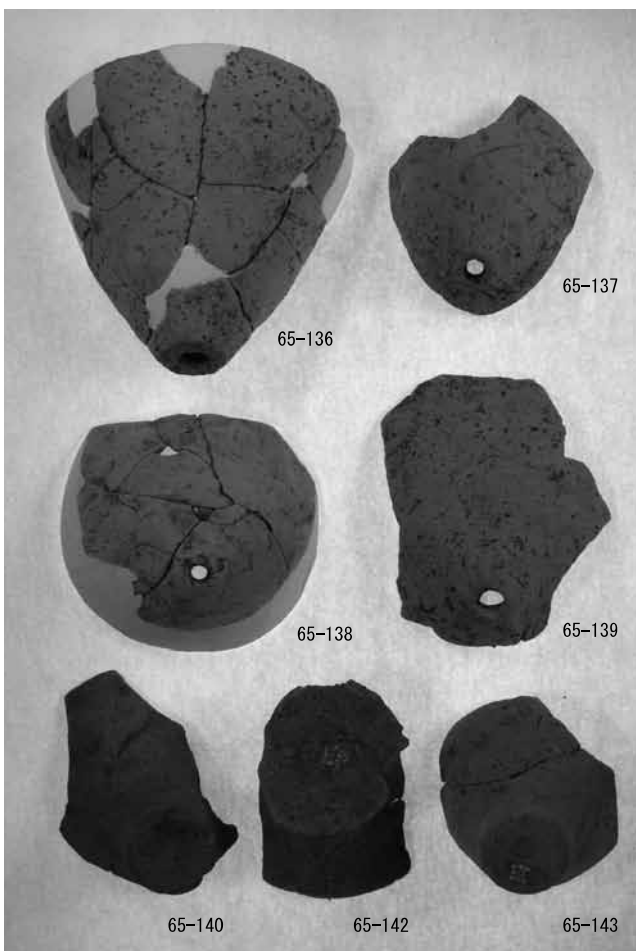
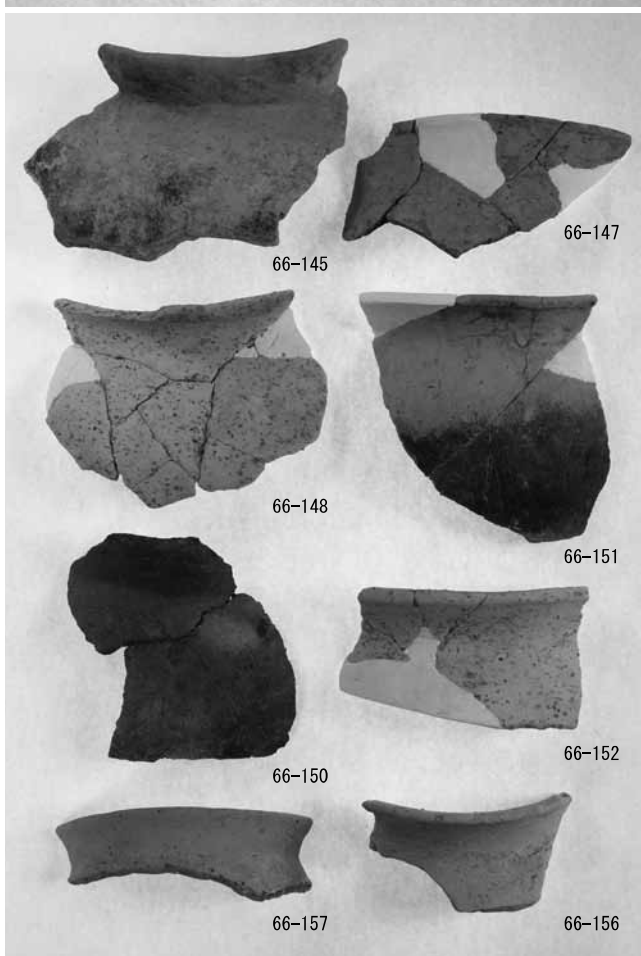
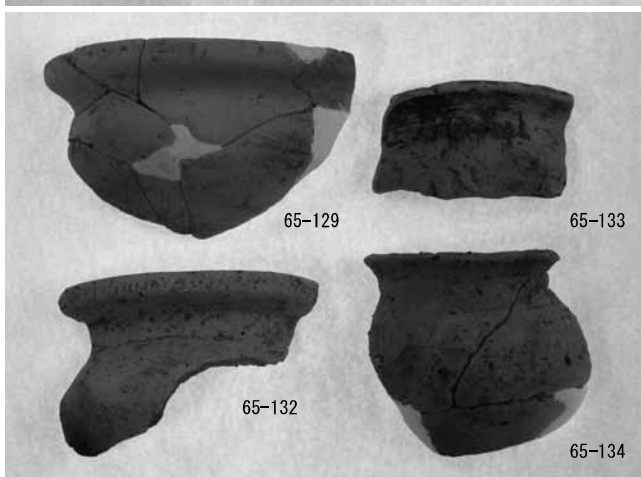
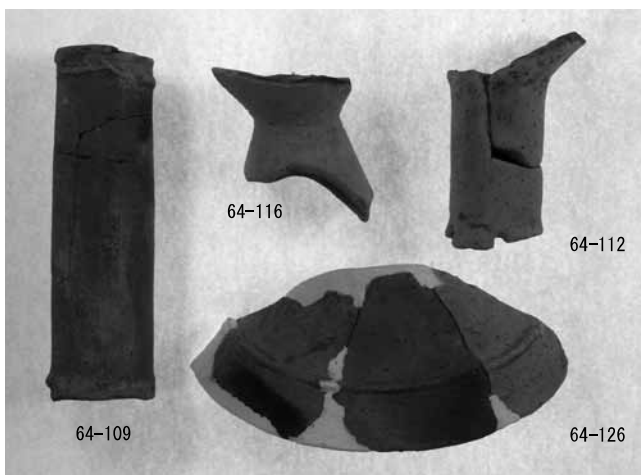
66-159

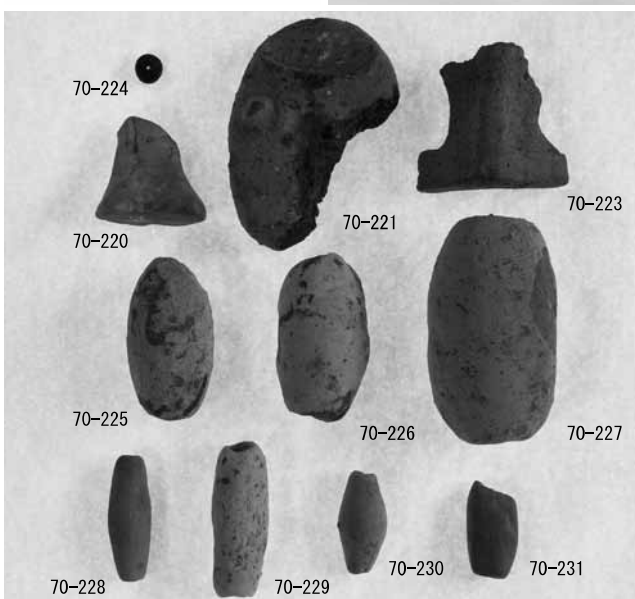
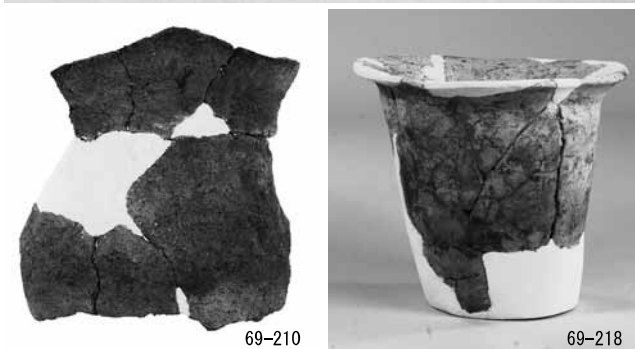
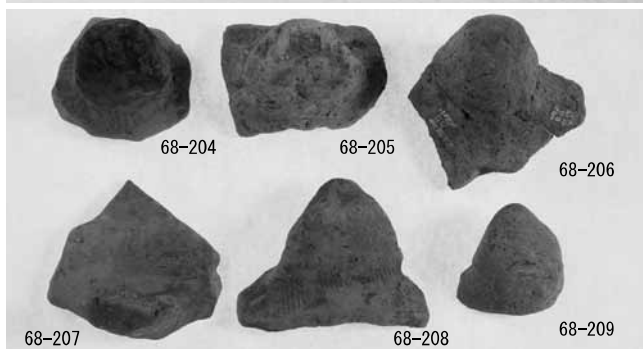
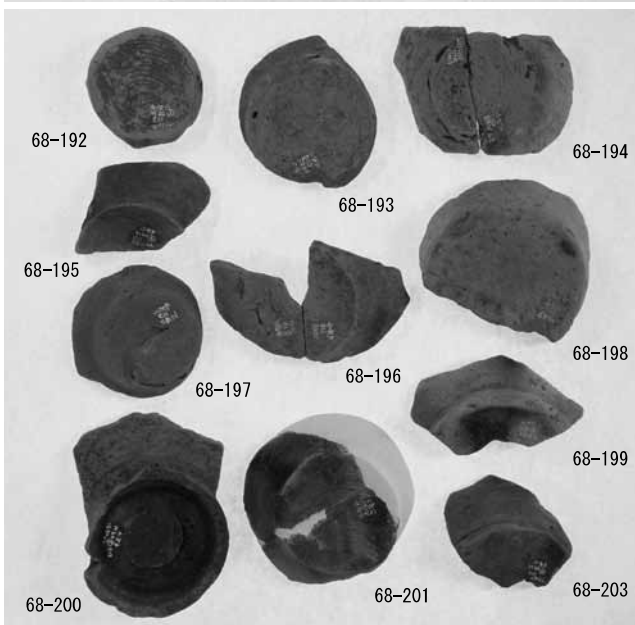
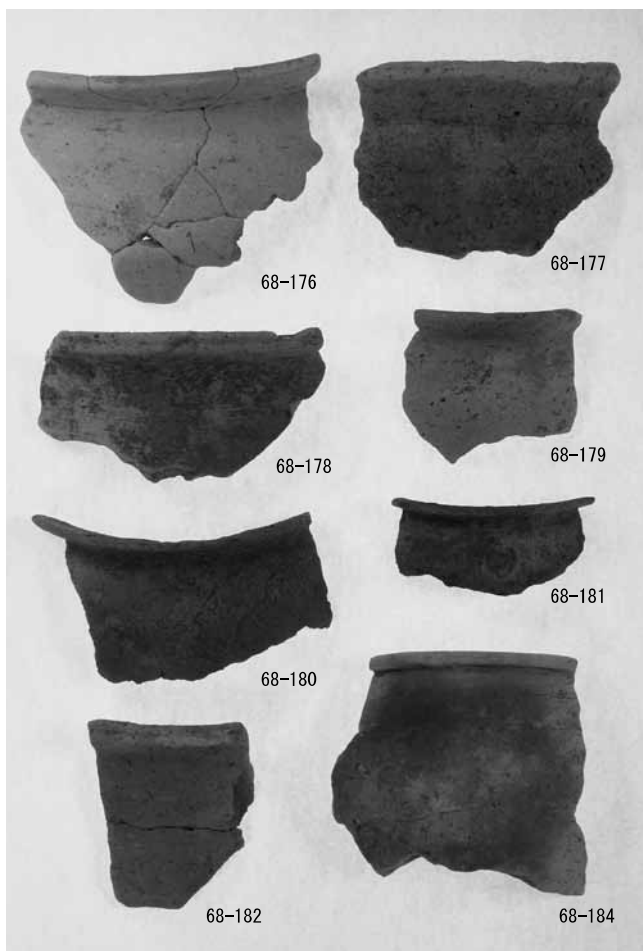


66-162



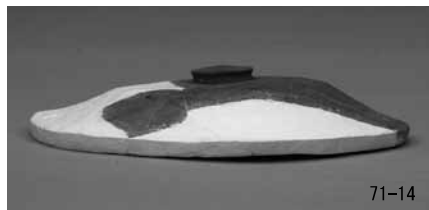
図版第三八 遺物 弥生土器・土師器他 (九)

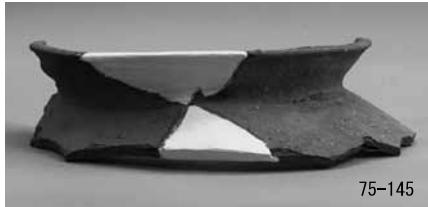
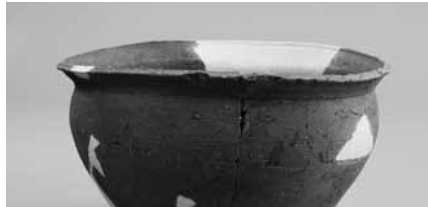
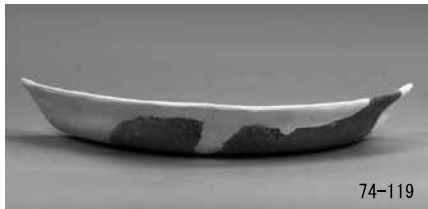
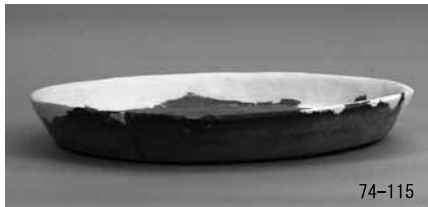






図版第四〇 遺物 須恵器 (一)





図版第四二 遺物 須恵器 (三)

