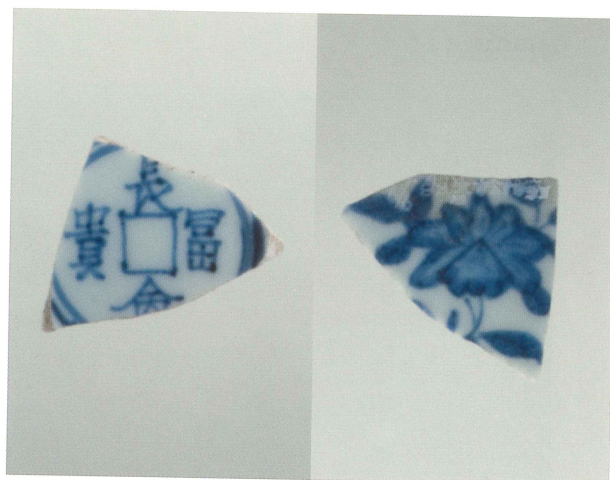
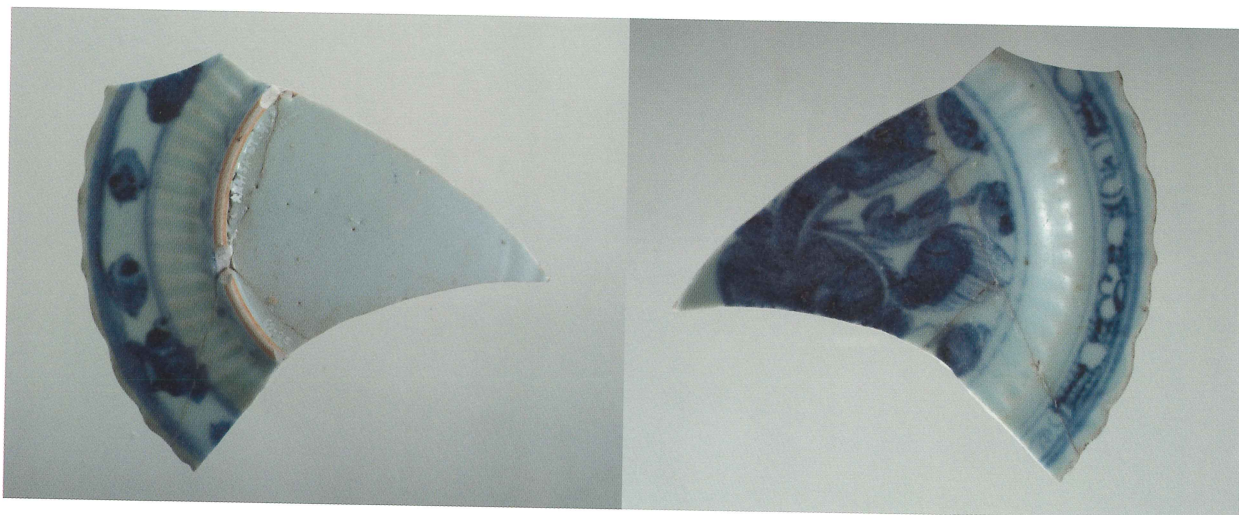


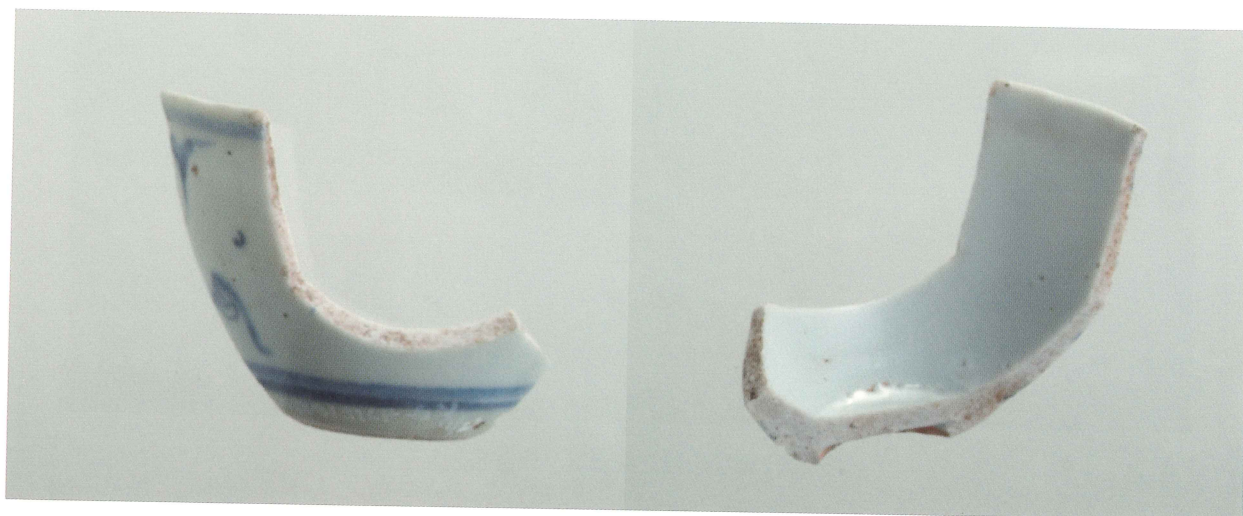
SK4 (華南三彩)



SK4 (青花)



SK4 (青花)



SD1 (青花)



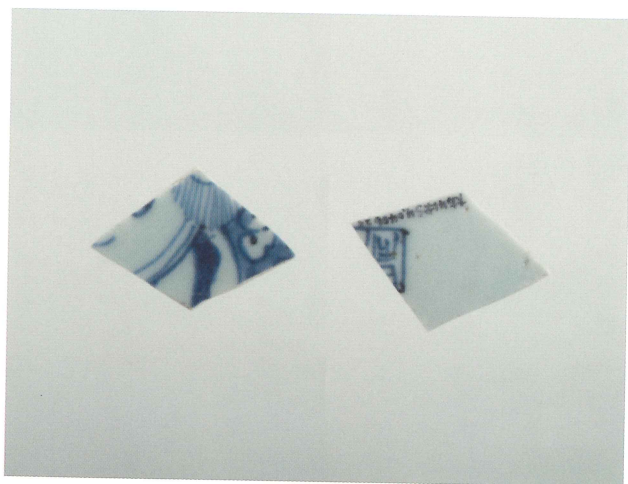
SK4 (京都系土師器)



SK4 (京都系土師器)



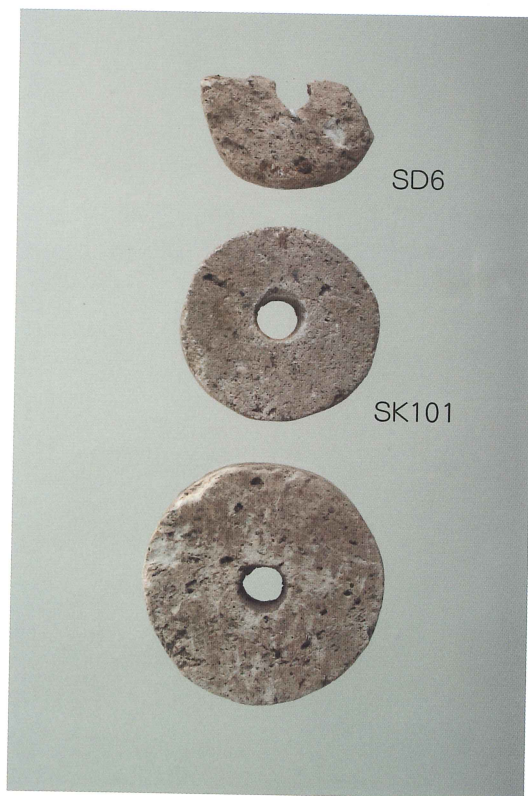
SK4 (青花)



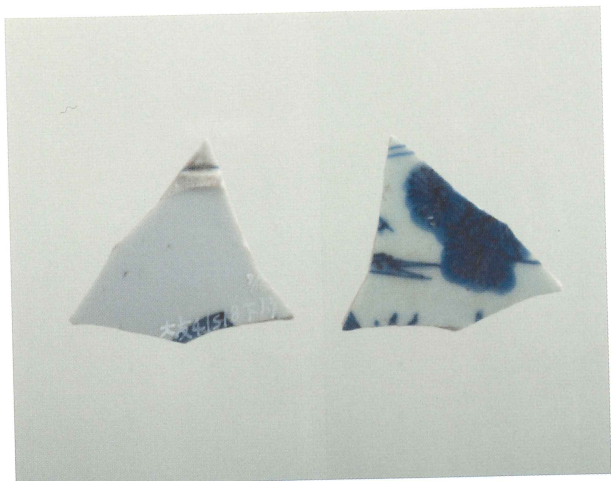
SK4 (青花)



SK4 (磚)



石製紡錘車



SK18 (青花)



SK18 (青花)



SK10 (青花)



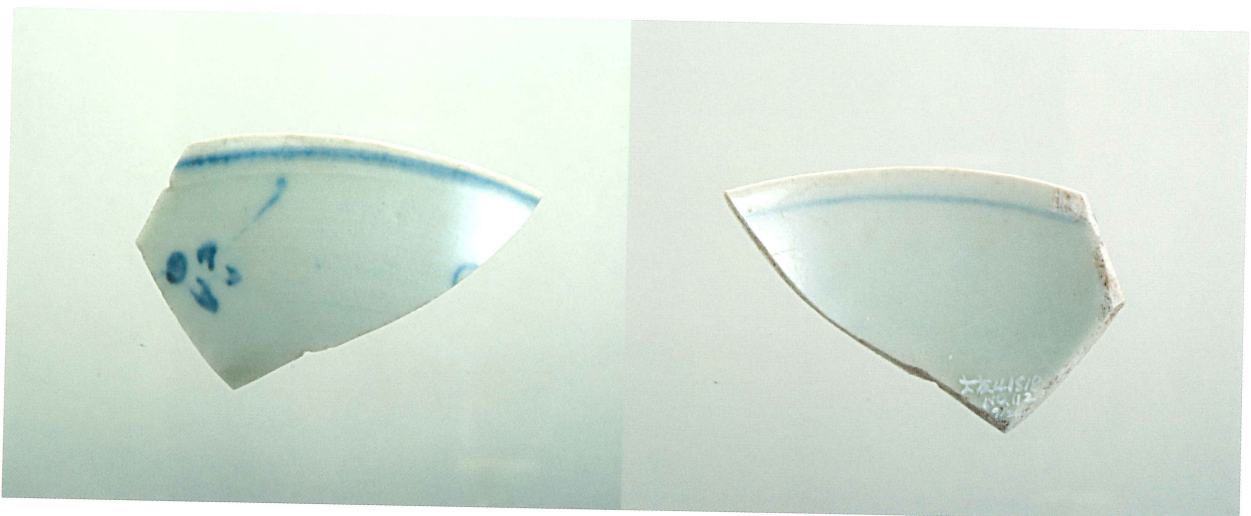
SK7 鉄斧



SK18 (青磁)



SK18 (青磁)



SK18 (青花)



SK18 (備前焼)



SK18 (備前焼)



SK18 (備前焼)



SK18 (中国南部製焼締陶器)



SK18 (備前焼)



SK18 (備前焼)



SK18 (六太郎石)



SK18 (六太郎石・火打石)



SK18 (中国製陶器)



SK18 (砥石)



SK18 (備前焼)



SK20 (砥石)



SK20 (砥石)



SK20 (青花)



SK21 (中国製陶器)



SK33 (青花)



SX34 (羽口)



SK26 (白磁)



SK37 (石臼)



SK37 (石製品)



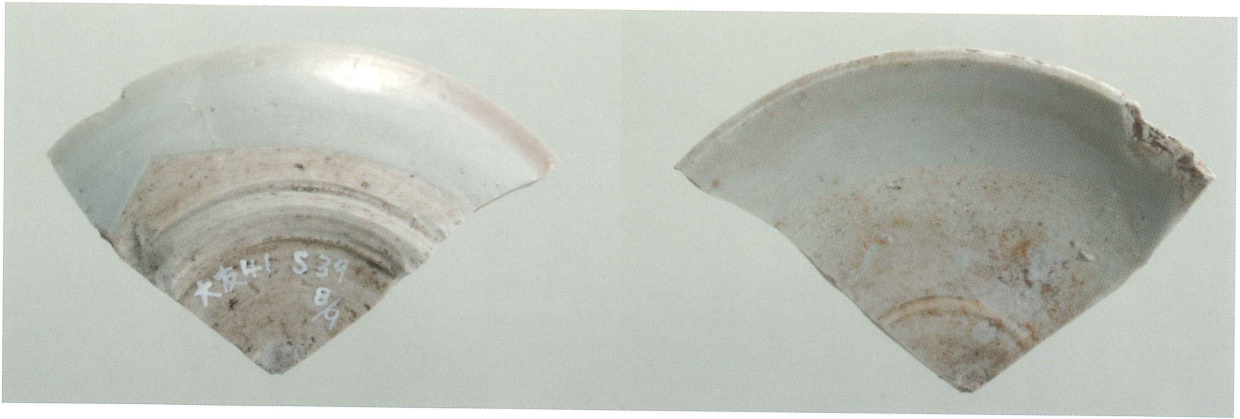
SK37 (石製品)



SK38 (土師器)



SK57 (在地系土師器)



SK39 (白磁)



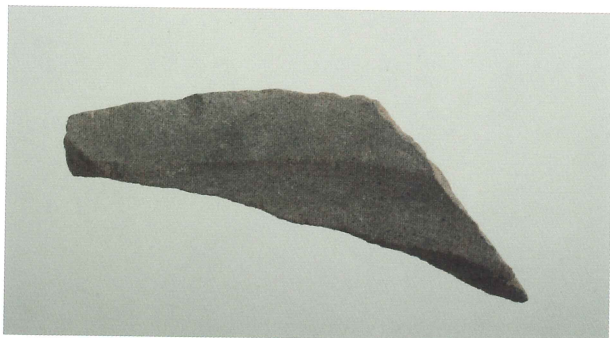
SK72 (瓦質土器)



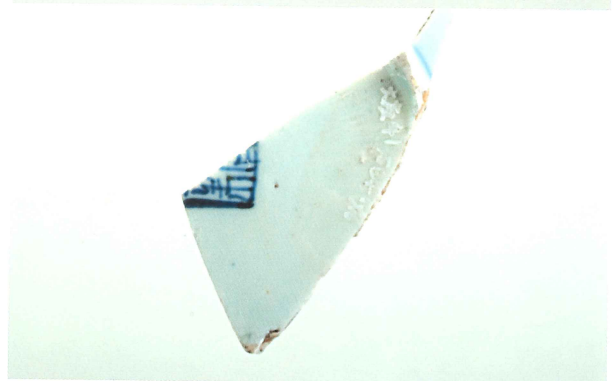
SD84 (青花)



SD84 (京都系土師器)



SD84 (石臼)



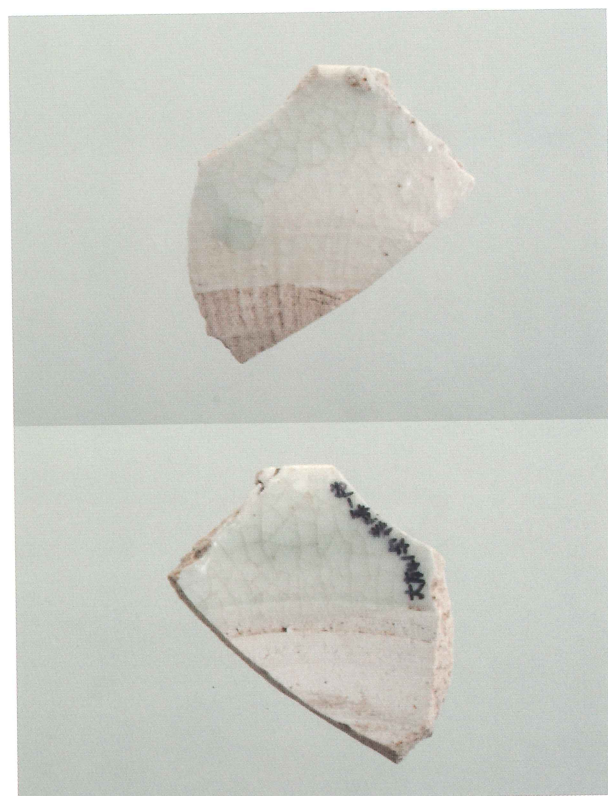
SD84 (青花)



SD84 (青花)



SD84 (青花)



SD84 (白磁)



SD84 (青花)



SK85 (京都系土師器)



SK87 (在地系・京都系土師器)



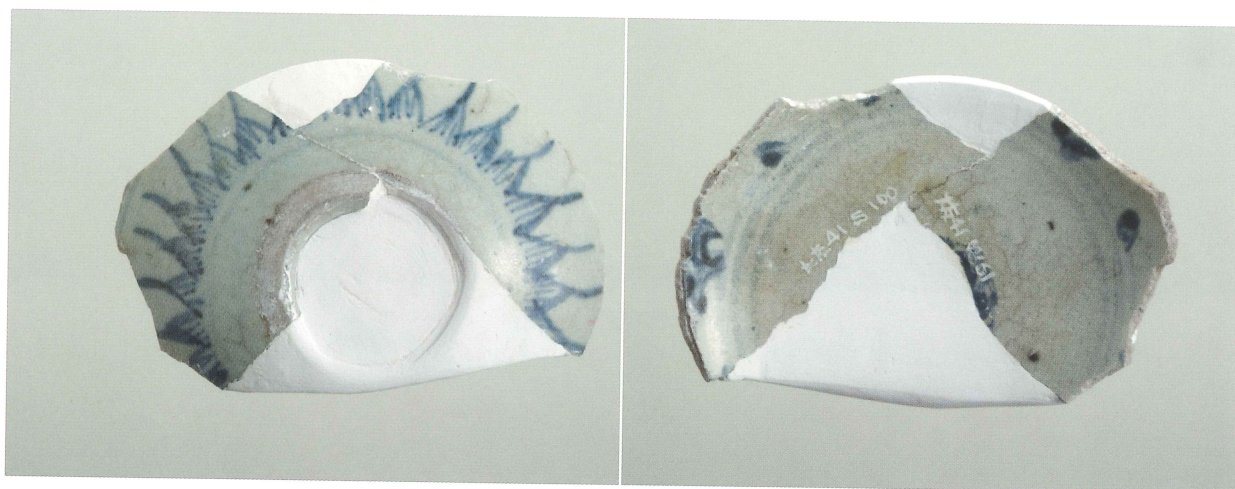
SK88 (京都系土師器)



SK88 (京都系土師器)



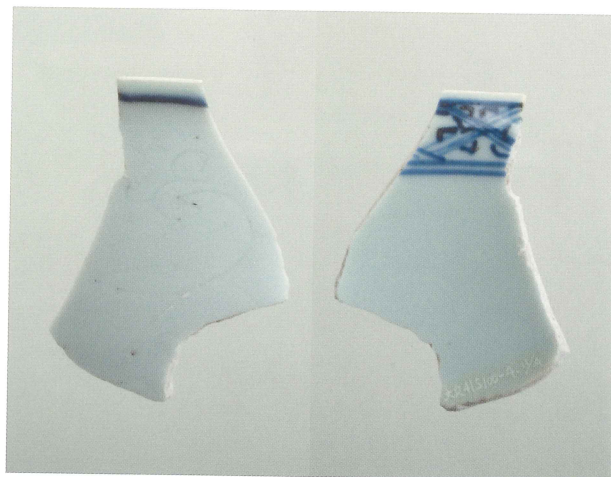
SK88 (青花)



SK88 (青花)



SK88 (磁器)



SK88 (青花)



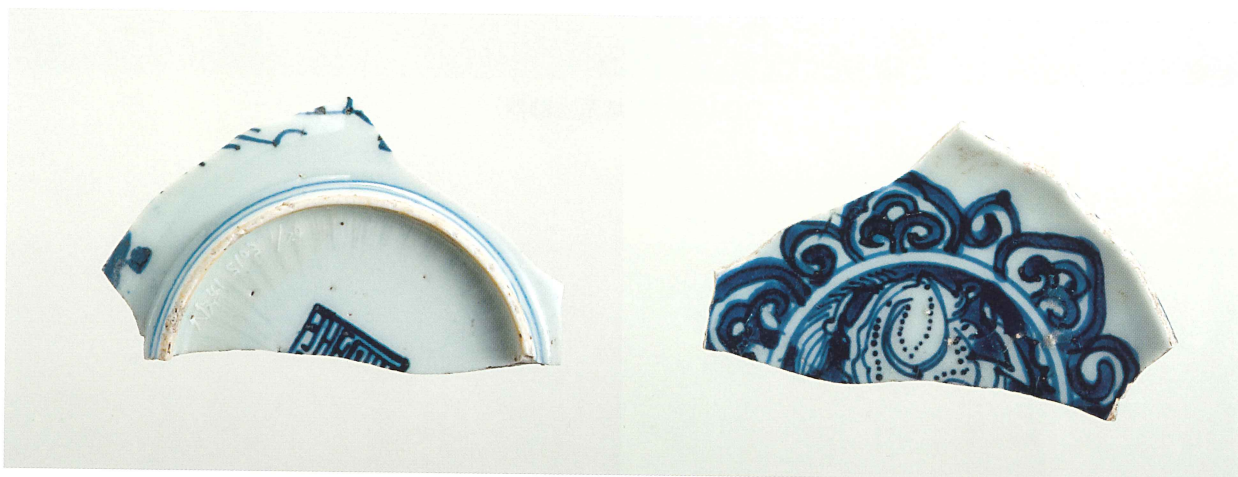
SD103 (在地系土師器)



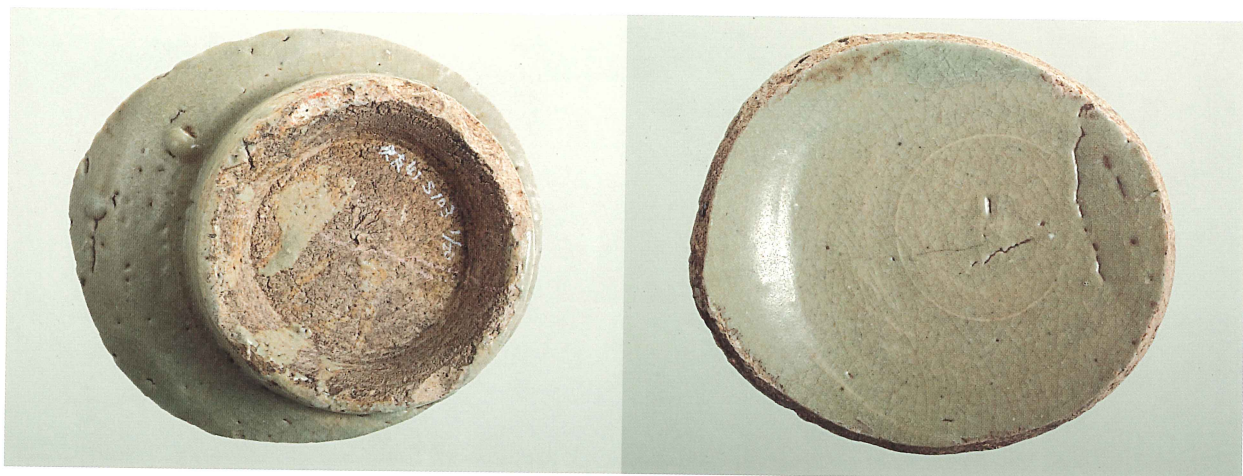
SD103 (京都系土師器)



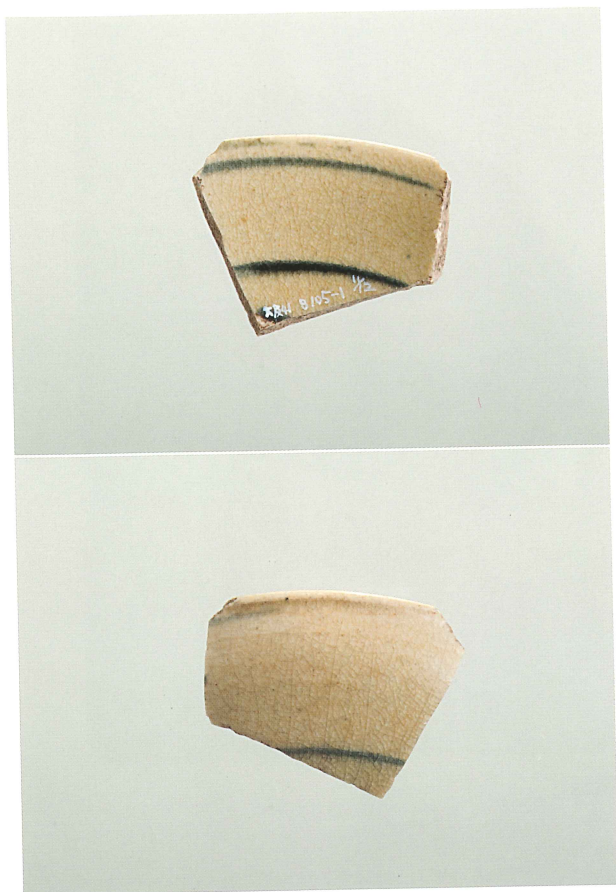
SD103 (京都系土師器)



SD103 (青花)



SD103 (青磁)



SK105 (青花)



SK105 (青磁)



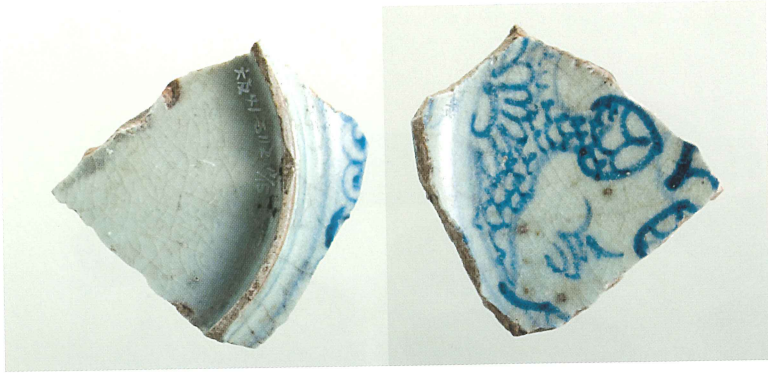
SK108 (京都系土師器)



SK108 (青磁)



SK108 (砥石)



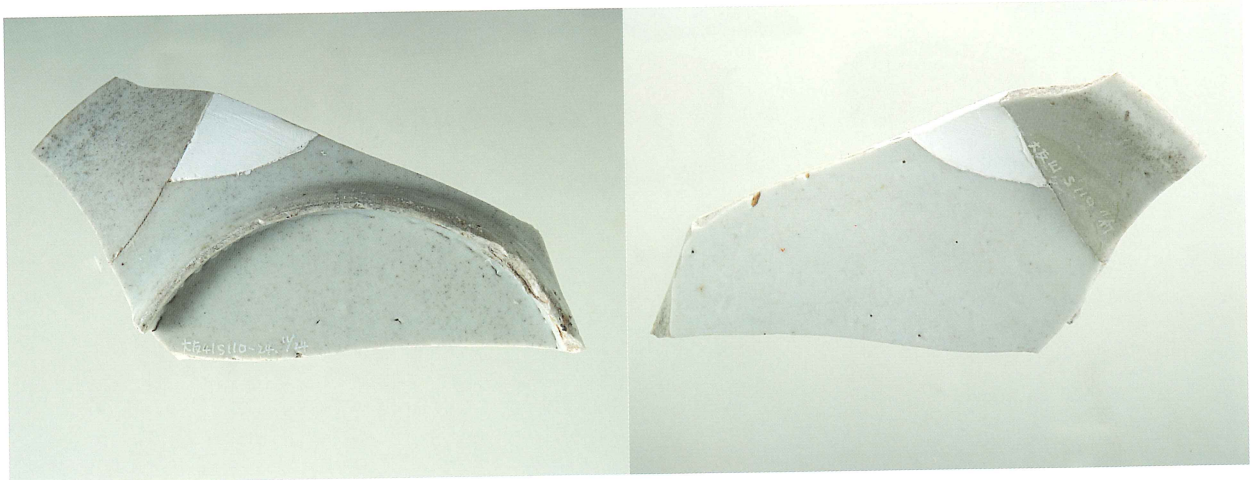
SD112 (青花)



SD112 (青花)



SD112 (青磁)



SD110 (白磁)



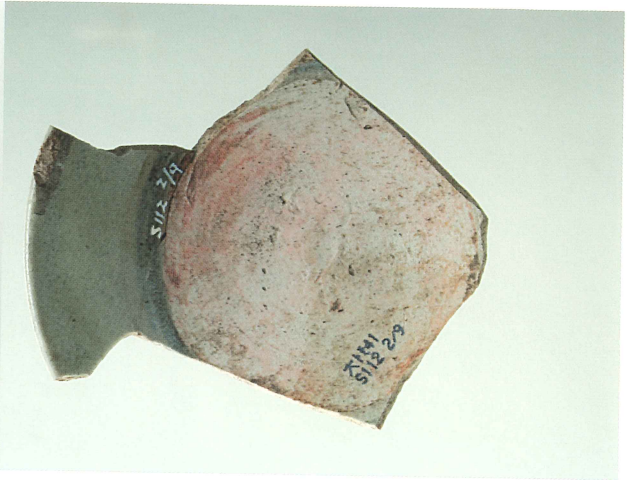
SD112 (京都系土師器)



SD112 (在地系土師器)



SD112 (青花)



SD112 (白磁)



SD112 (五彩)



SD112 (中国製陶器)



SD112 (中国製陶器)



SD112 (中国製陶器)



SD112 (青磁)



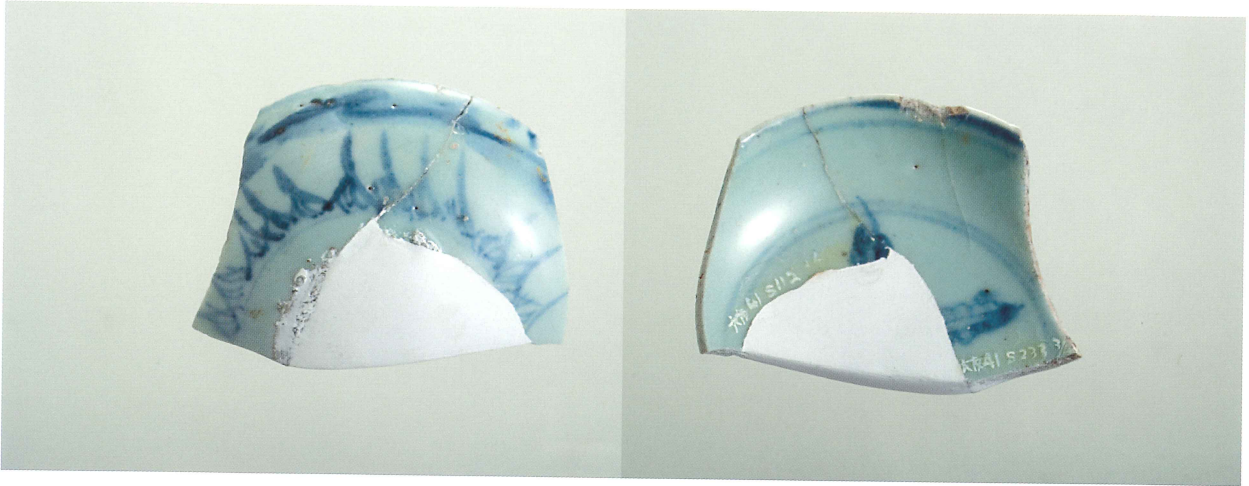
SD112 (華南三彩)



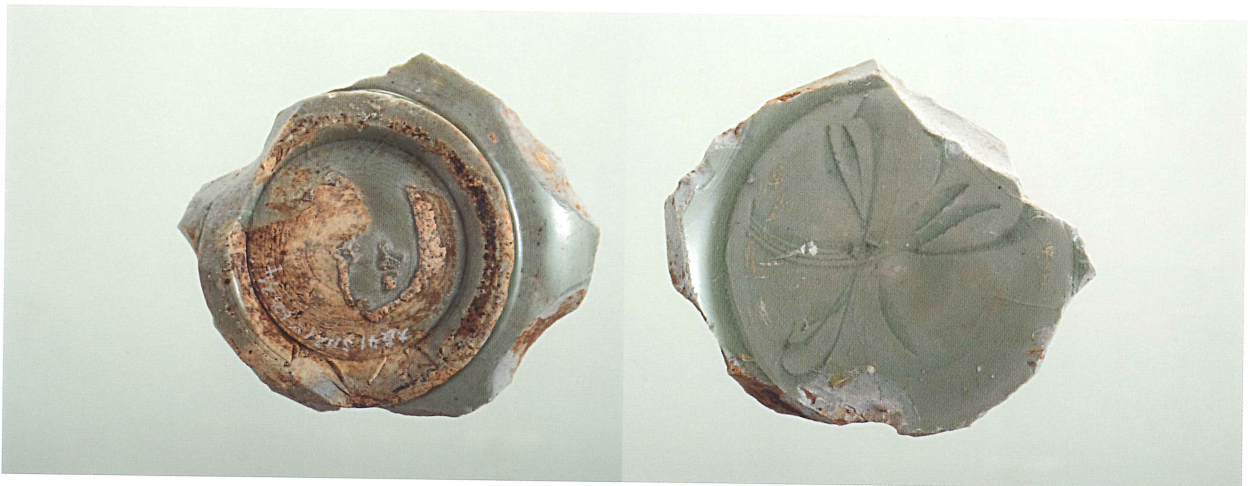
SD112 (砥石)



SD112 (磚)



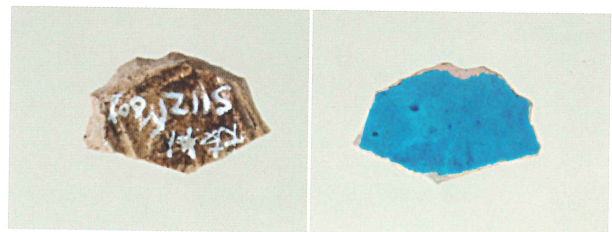
SD112 (青花)



SD112 (青磁)



SD112 (青花)



SD112 (翡翠釉)



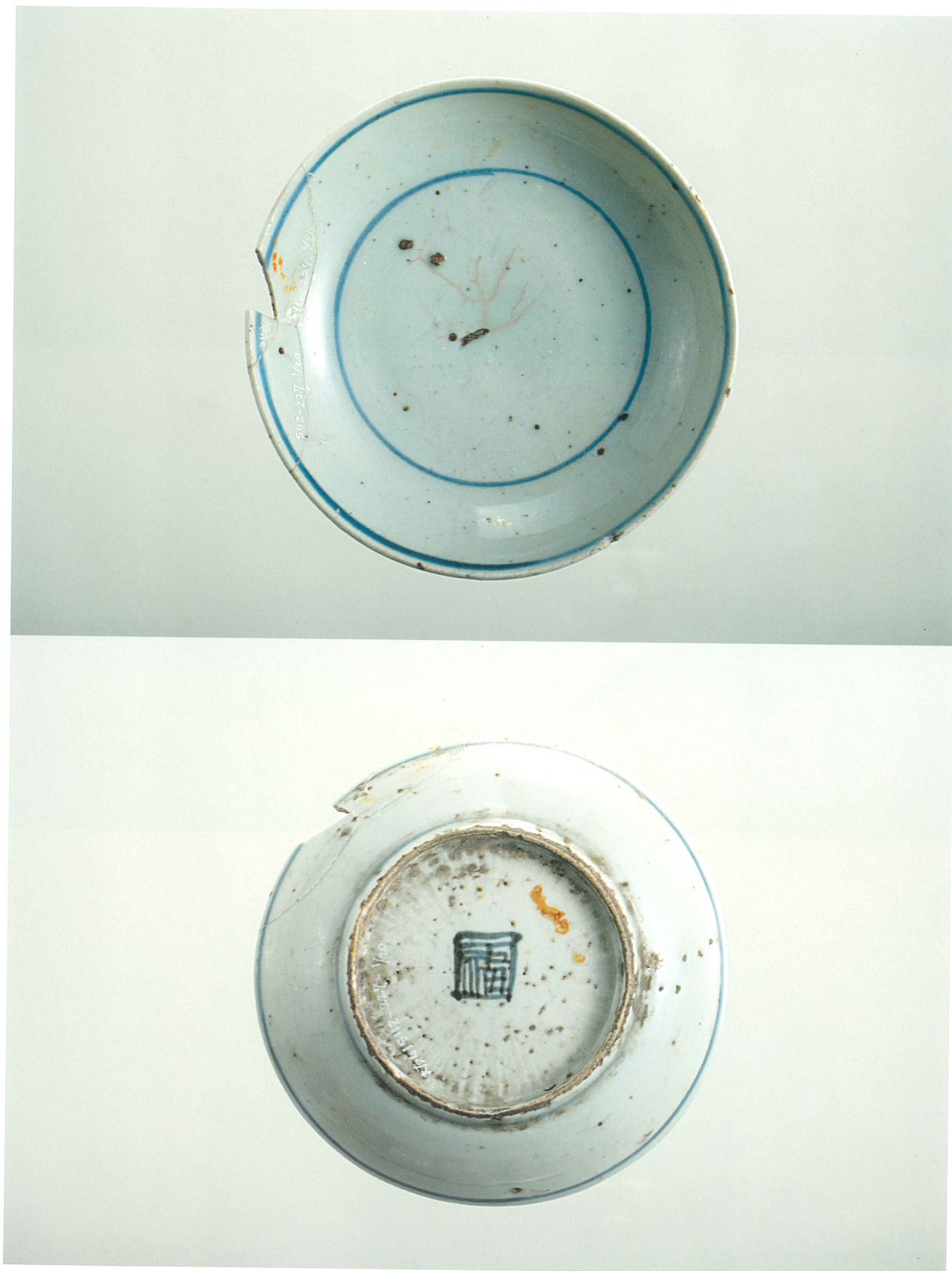
SD112 (陶器)



SD112 (五彩)



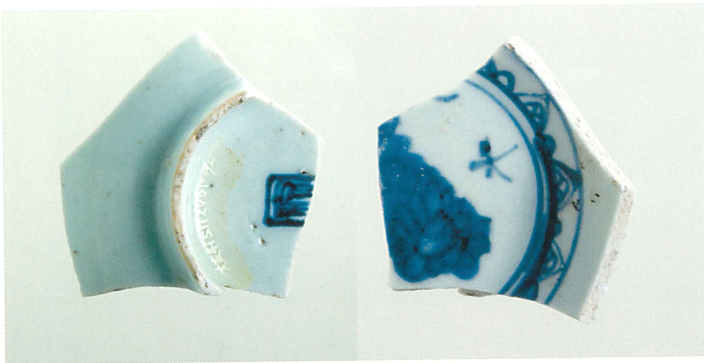
SD112 (古代瓦)



SD112 (青花)



SD112 (青花)



SD112 (青花)



SD112 (青花)

SD112 (唐津焼鉄絵)



SD112 (陶器)



SD112 (備前焼)



SD112 (備前焼)



SD112 (備前焼)



SD112 (中国南部製陶器)



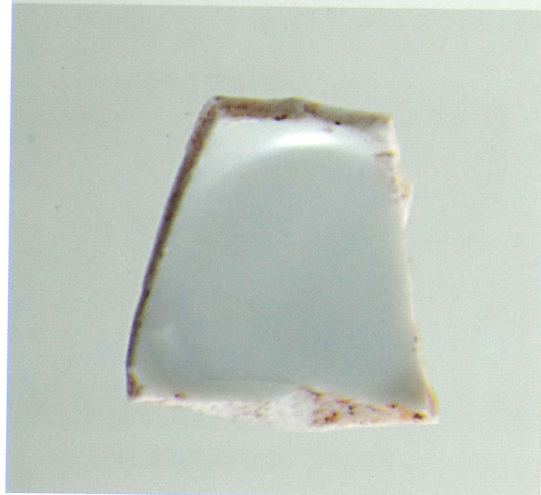
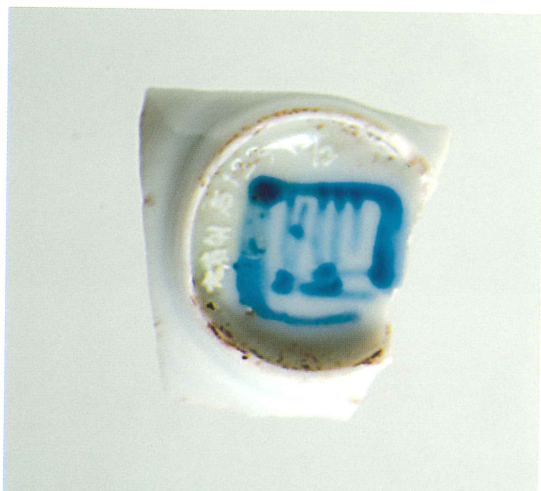
SD112 (備前焼)



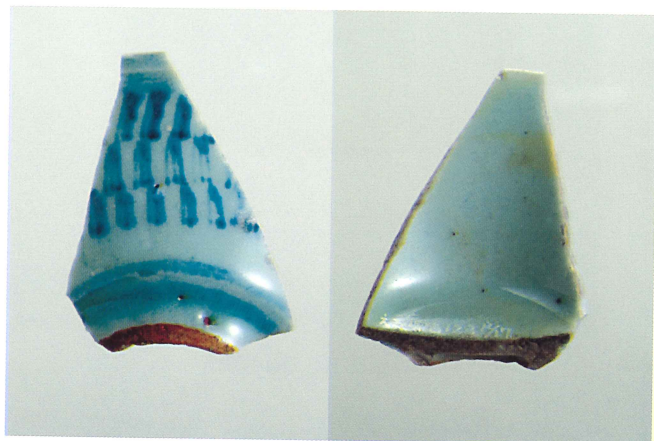
SD112 (砥石)



SK120 (瓦質土器)



SD123 (青花)



SD123 (青花)



SD123 (白磁)



SK125 (青花)



SD123 (ガラス)



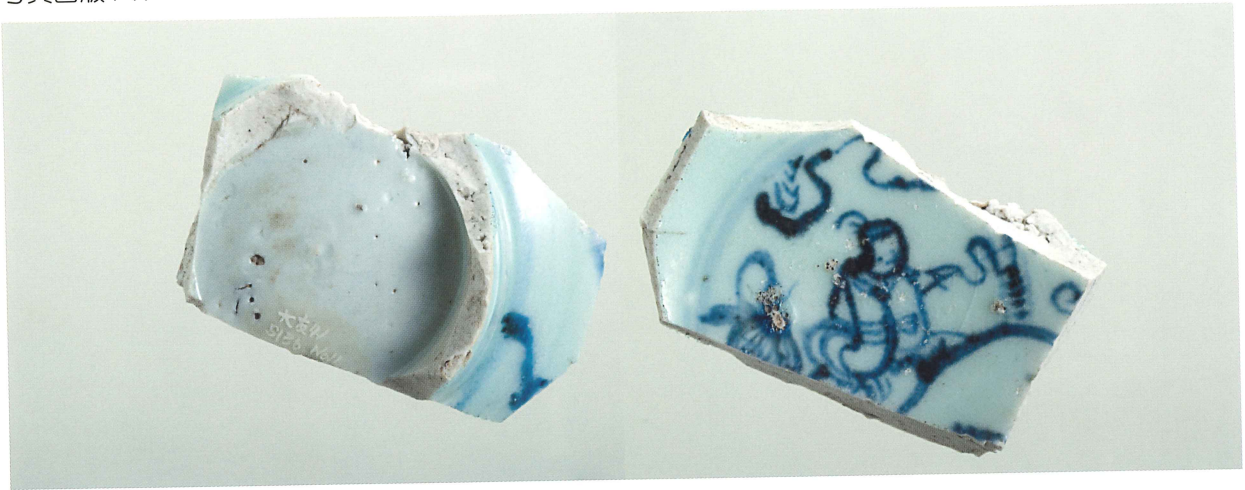
SK127 (青花)



SK125 (青花)



SK126 (青磁)



SK136 (青花)



SK127 (青花)



SK127 (華南三彩)

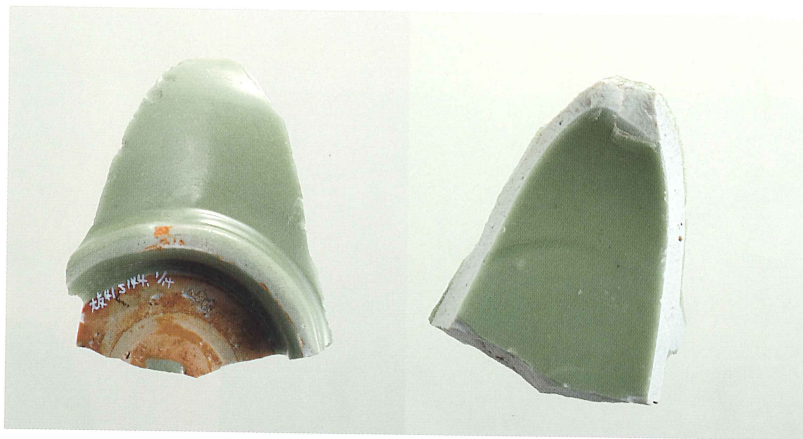


SK127 (華南三彩)





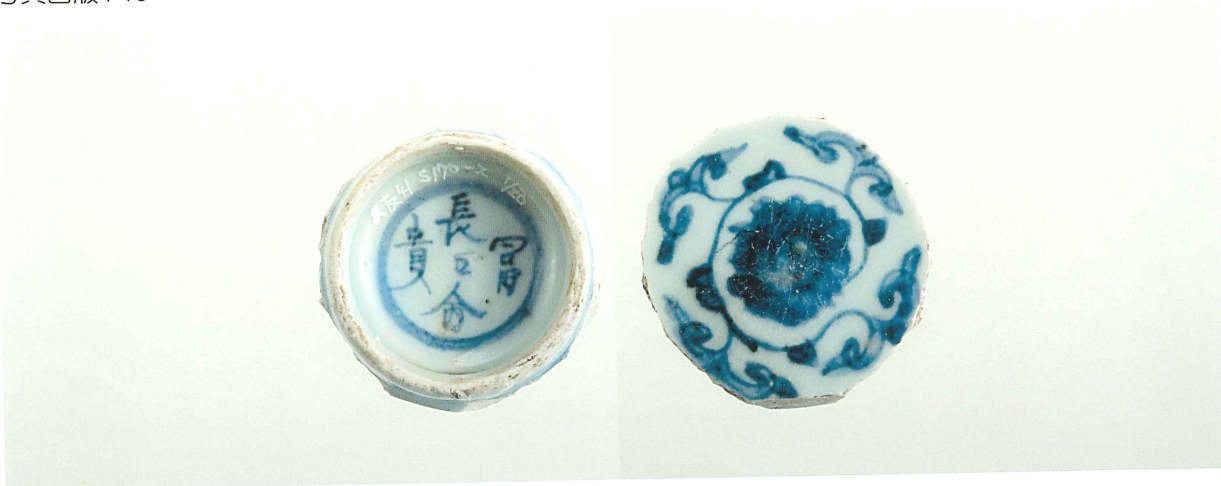
SK145 (青磁)



SK144 (青磁)



SK136 (六太郎石・火打石)



SD170 (青花)



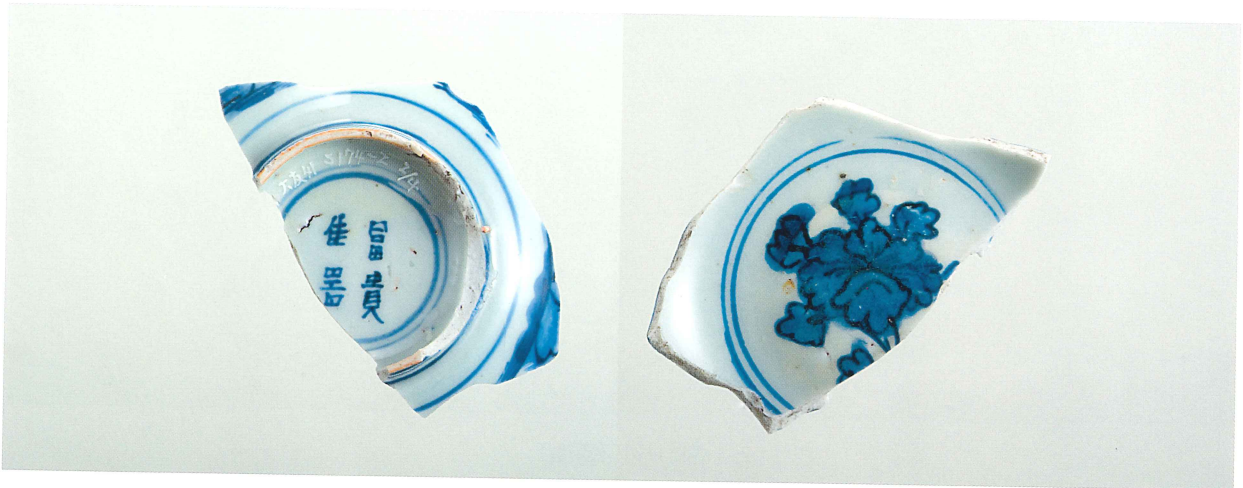
SK164 (青磁)



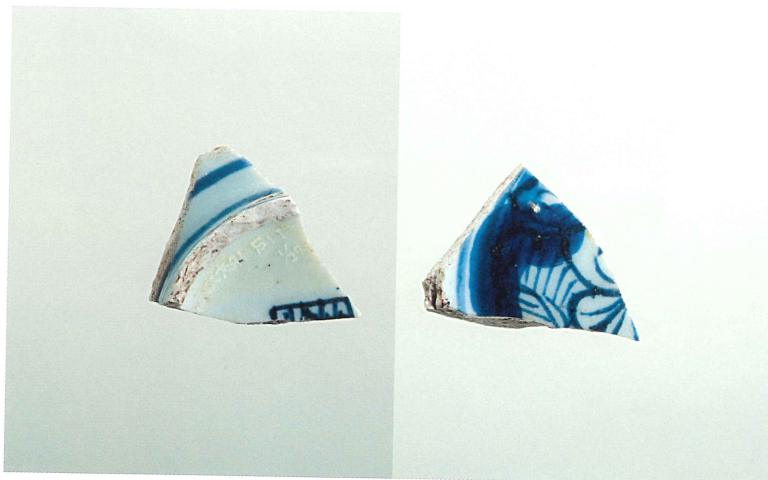
SK164 (石製品)



SK174 (青花)



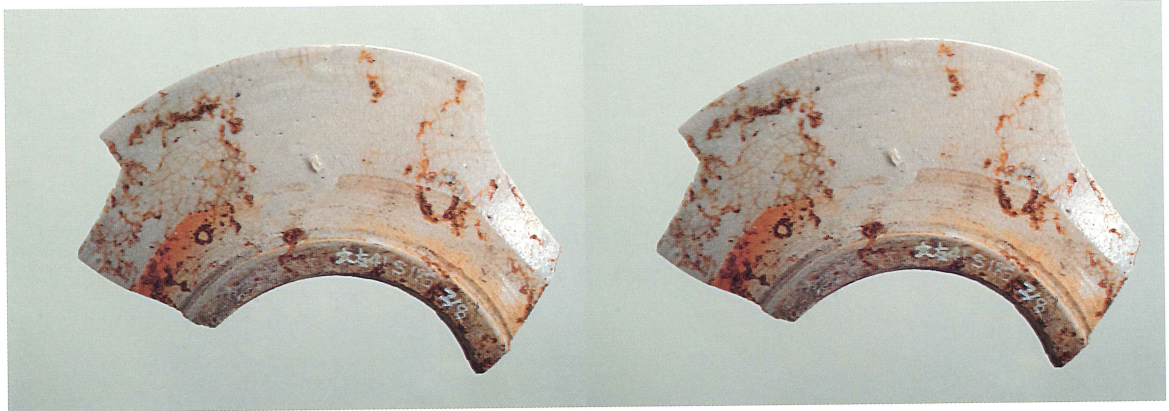
SK174 (青花)



SK174 (青花)



SK182 (在地系土師器)



SK185 (白磁)



SK185 (青花)



SK185 (五彩)



SK192 (青花)



SK185 (翡翠釉)



SK185 (陶器)



SK197 (鉄製紡錘車)



SK203 (石臼)



SK203 (在地系土師器)



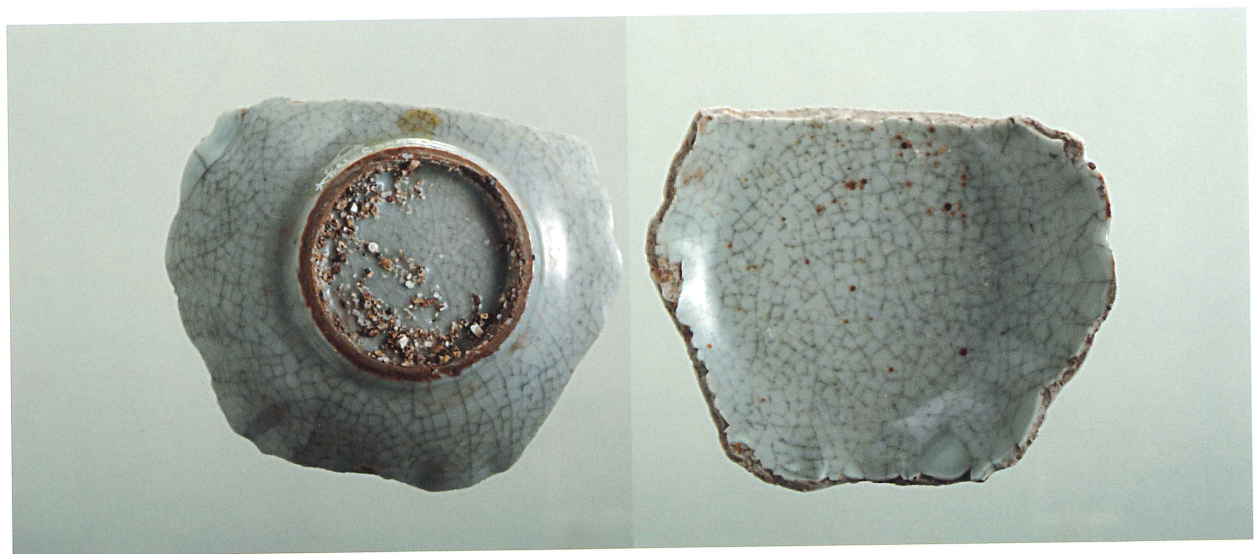
SK203 (在地系・京都系土師器)



SK204 (在地系土師器)



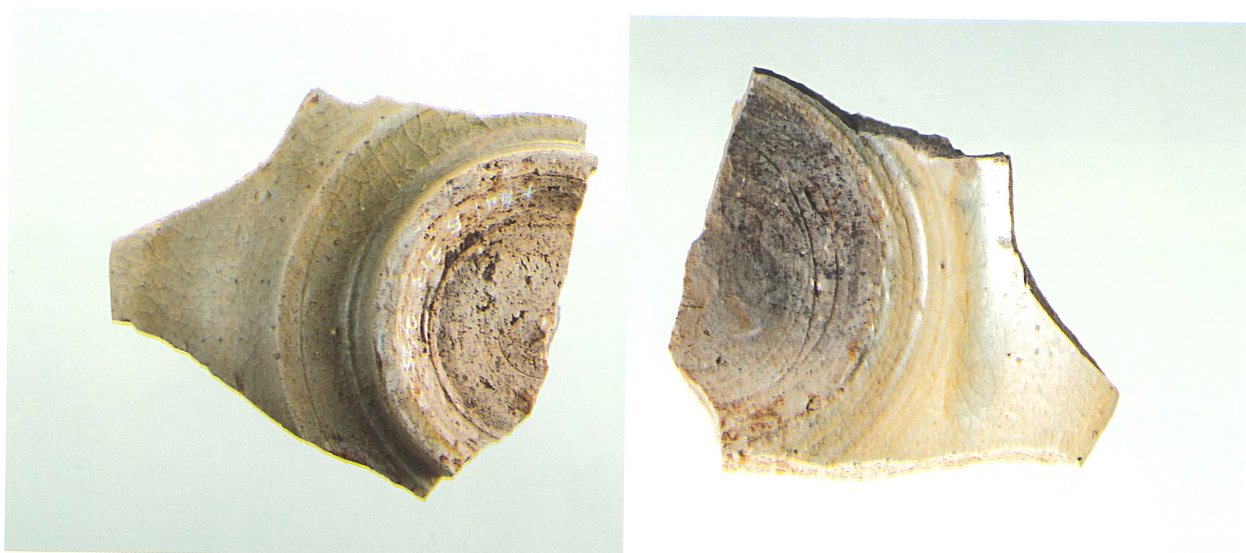
SK212 (白磁)



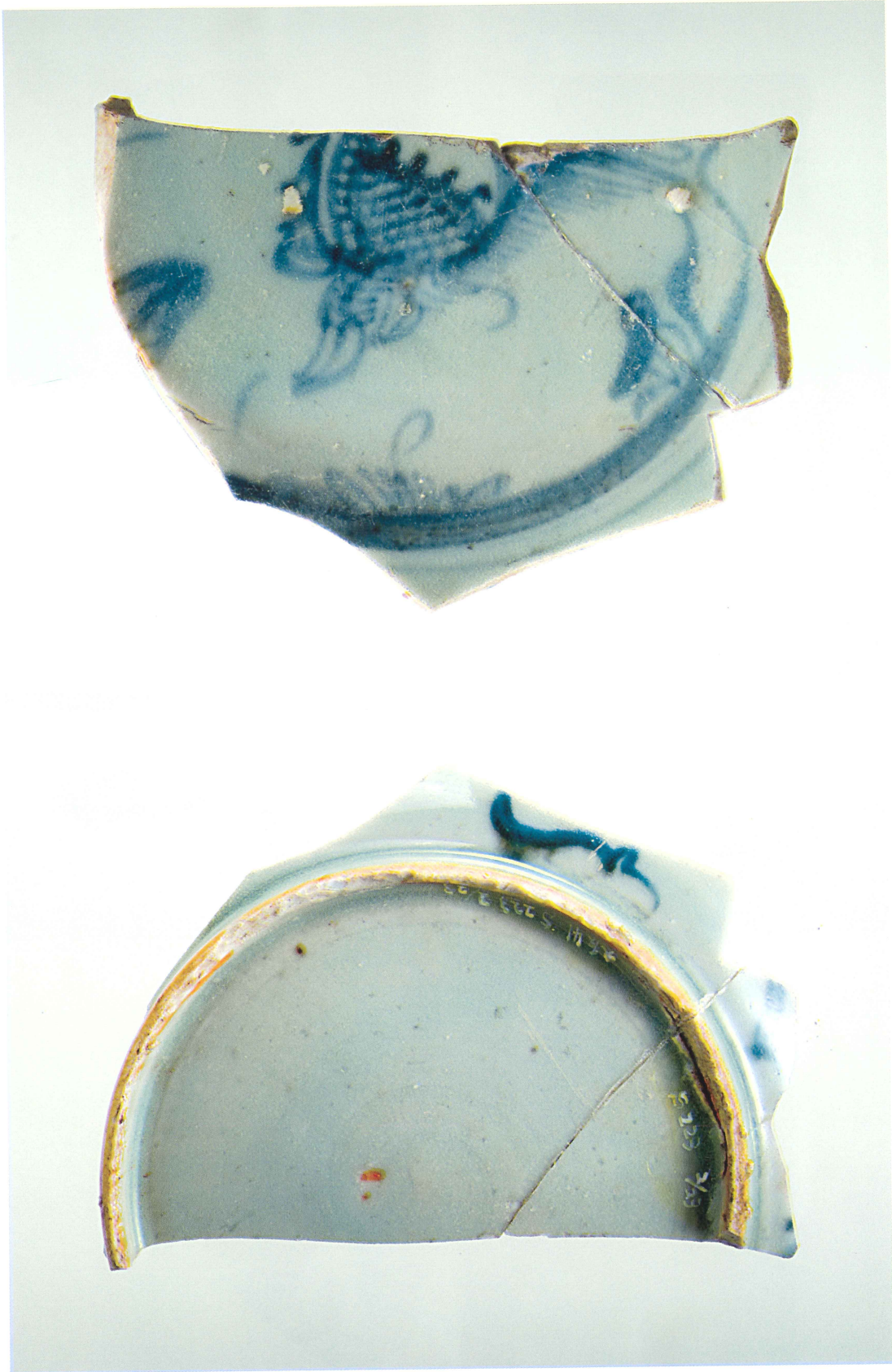
SK208 (青磁)



SK213 (在地系土師器)



SK213 (青磁)



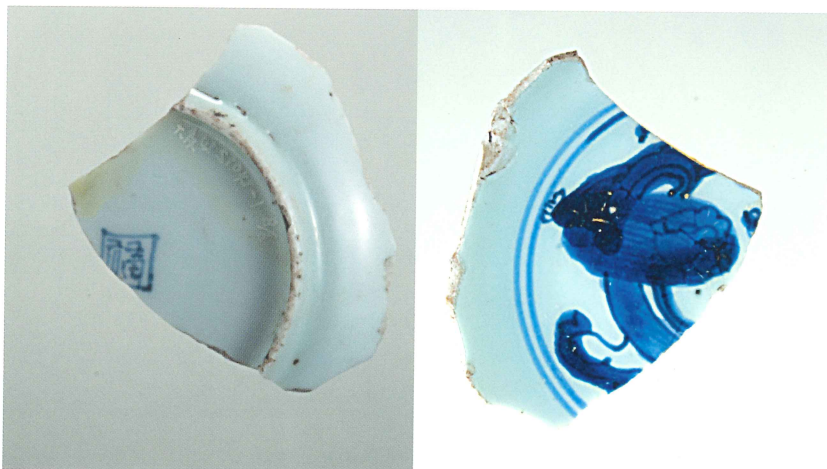
SK223 (青花)



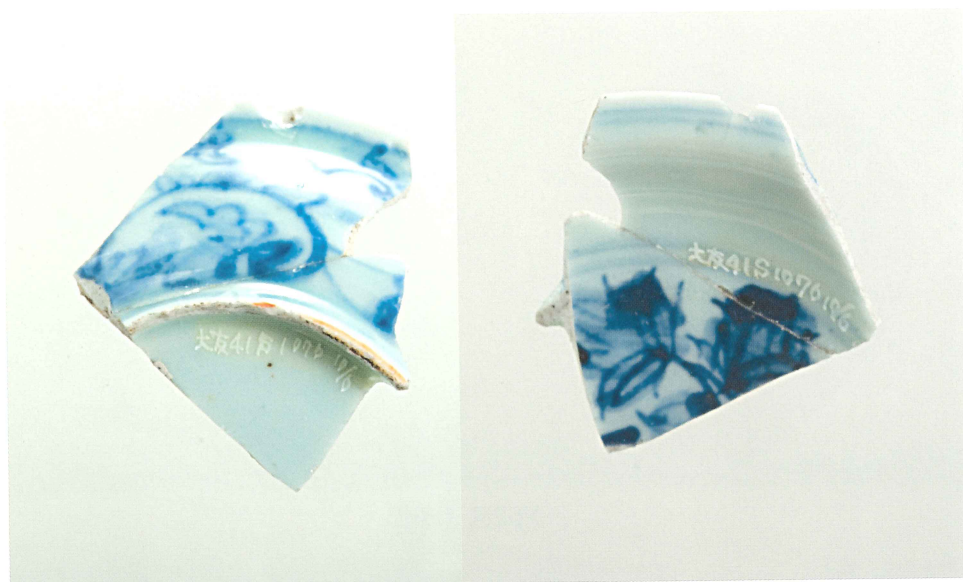
SK233 (中国製陶器)



SK241 (在地系・京都系土師器)



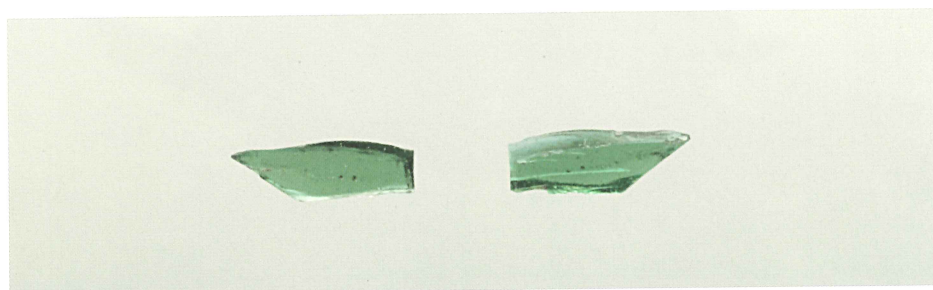
SP1043 (青花)



SP1076 (青花)



SP1076 (白磁)



SP1242 (ガラス)



X62区 (青磁)



X61区 (青磁)



X61区 (瓦質土器)



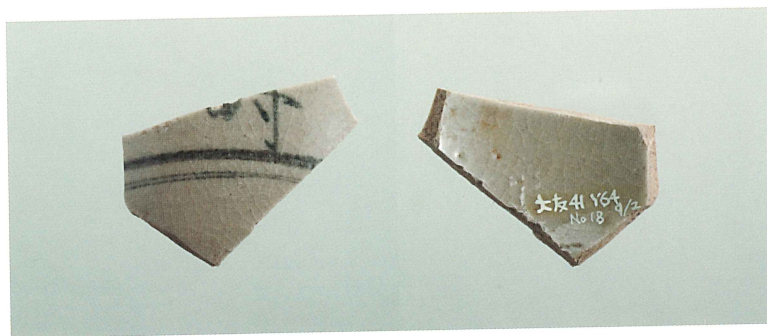
Y63区 (青花)



Y64区 (青花)



Y63区 (青花)



Y63区 (青花)



Y64区 (青花)



Y63区 (五彩)



Y64区 (青花)



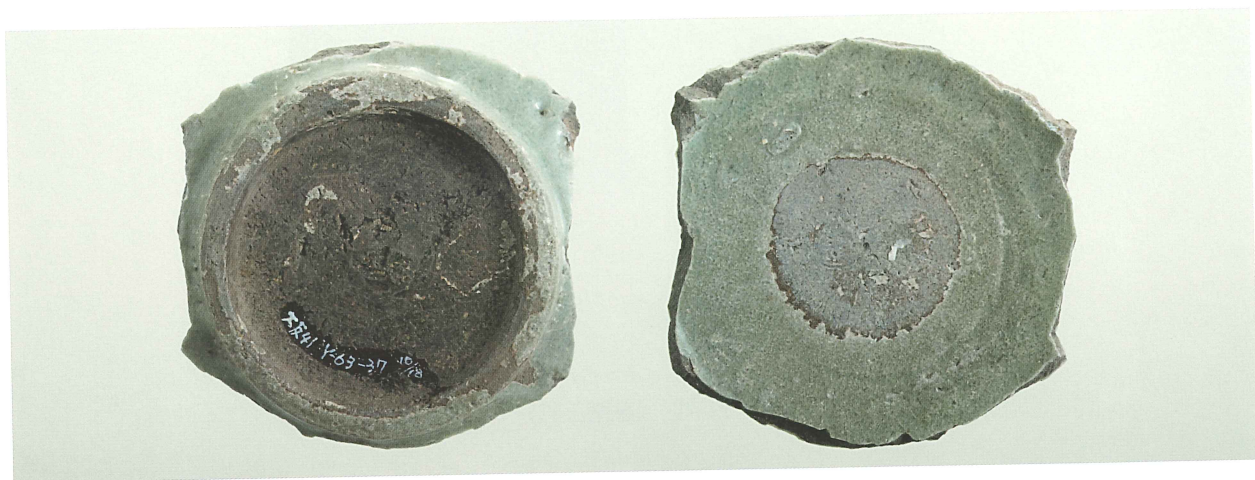
Y63区 (青花)



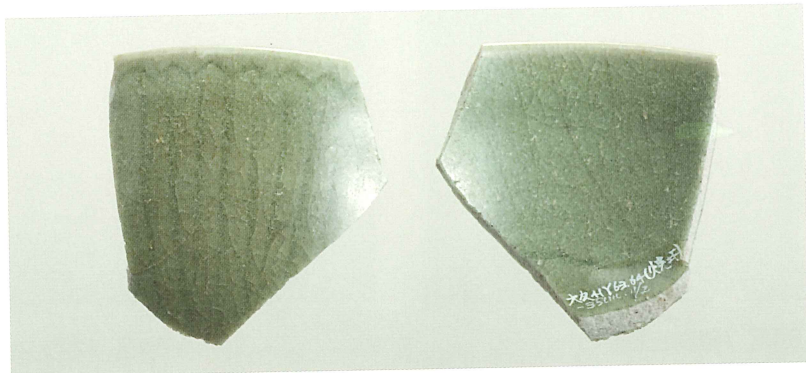
Y63区 (青花)



Y63区 (陶器)



Y63区 (青磁)



Y63·64区 (青花)



Y63区 (砥石)



Y64区 (華南三彩)



Y64区 (華南三彩)



Y63・64区 (華南三彩)



Y64区 (ガラス玉)



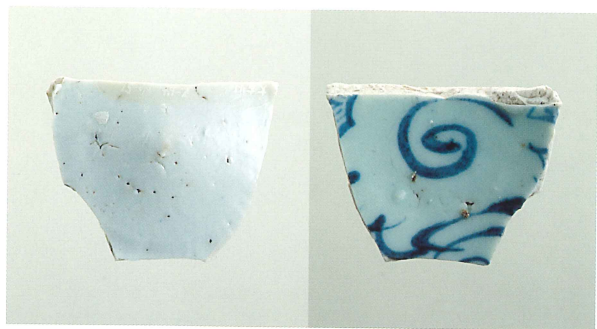
Y64区 (砥石)



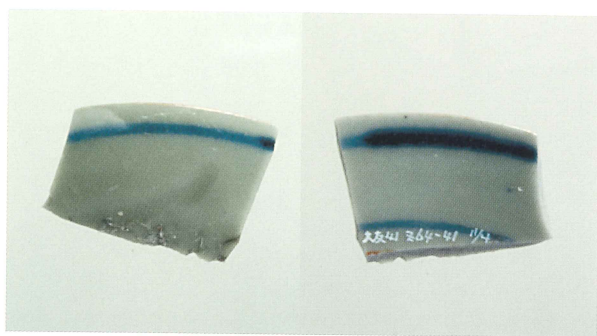
Y63区 (砥石)



Y63区 (砥石)



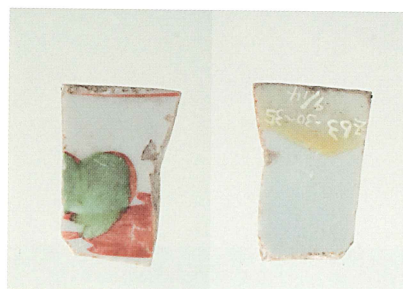
Z64区 (青花)



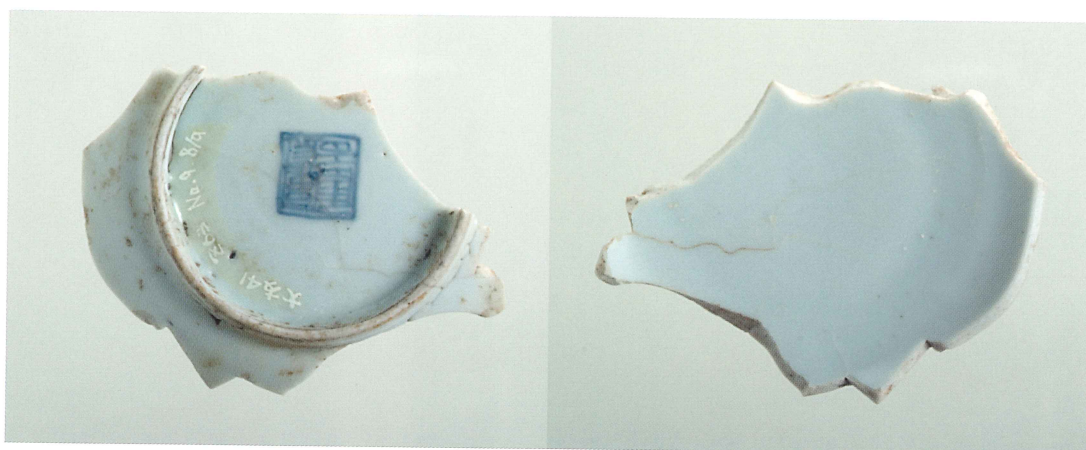
Z64区 (青花)



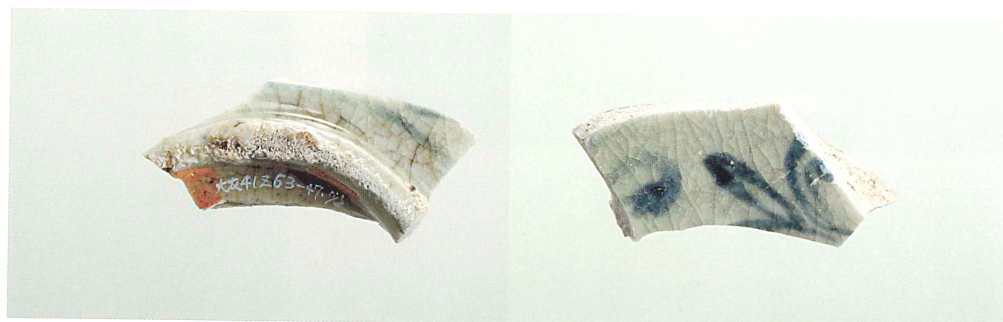
Y63区 (青花)



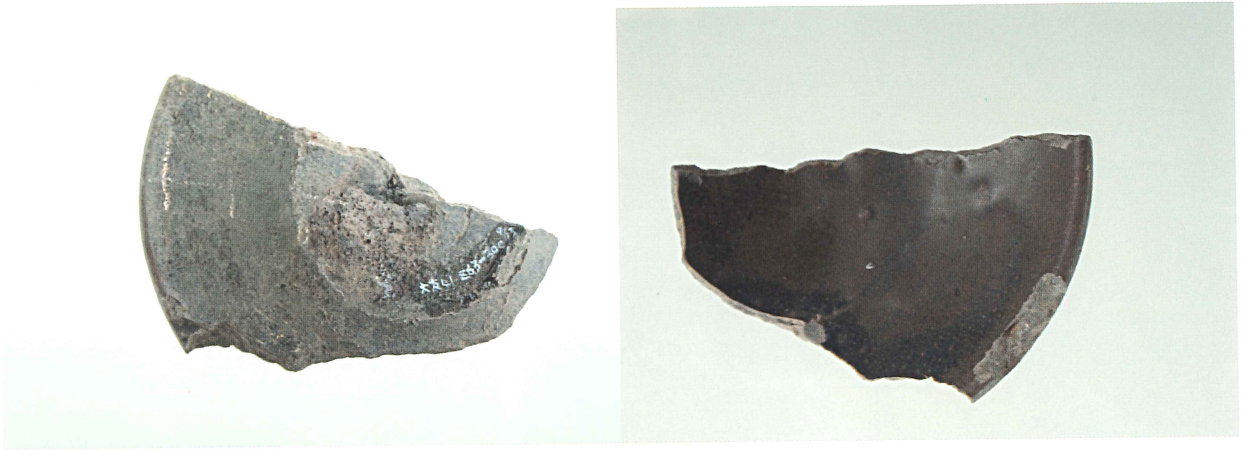
Y63区 (五彩)



Y63区 (青花)



Y63区 (青花)



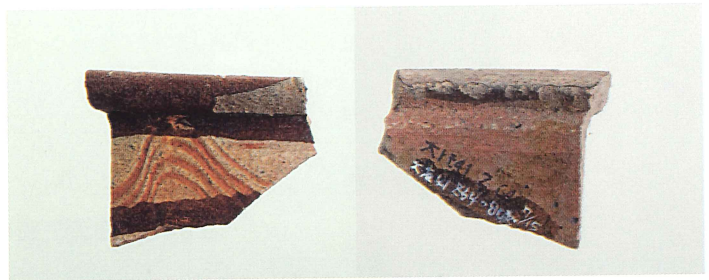
Z63区 (中国製陶器)



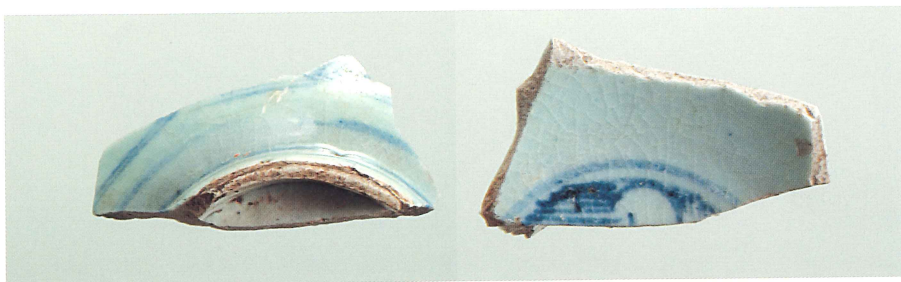
Z64区 (青花)



E64区 (五彩)



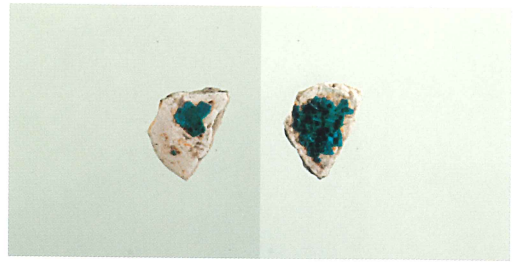
Z64区 (陶器)



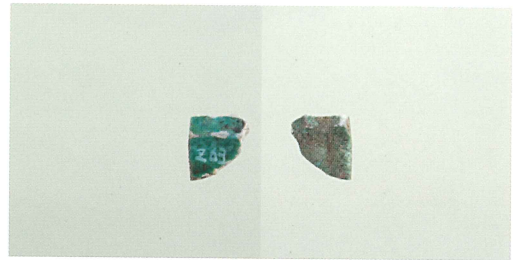
Y63区 (青花)



Z63区 (青磁)



Z63区 (翡翠釉)



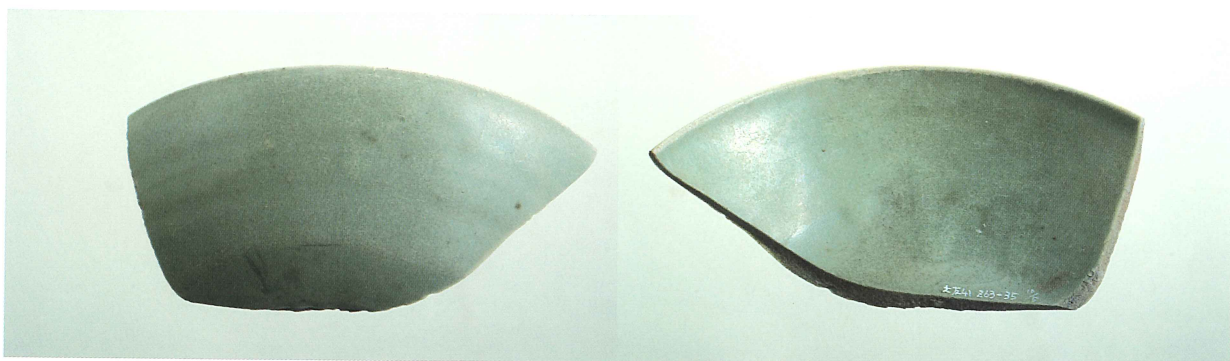
Z63区 (翡翠釉)



Z64区 (翡翠釉)



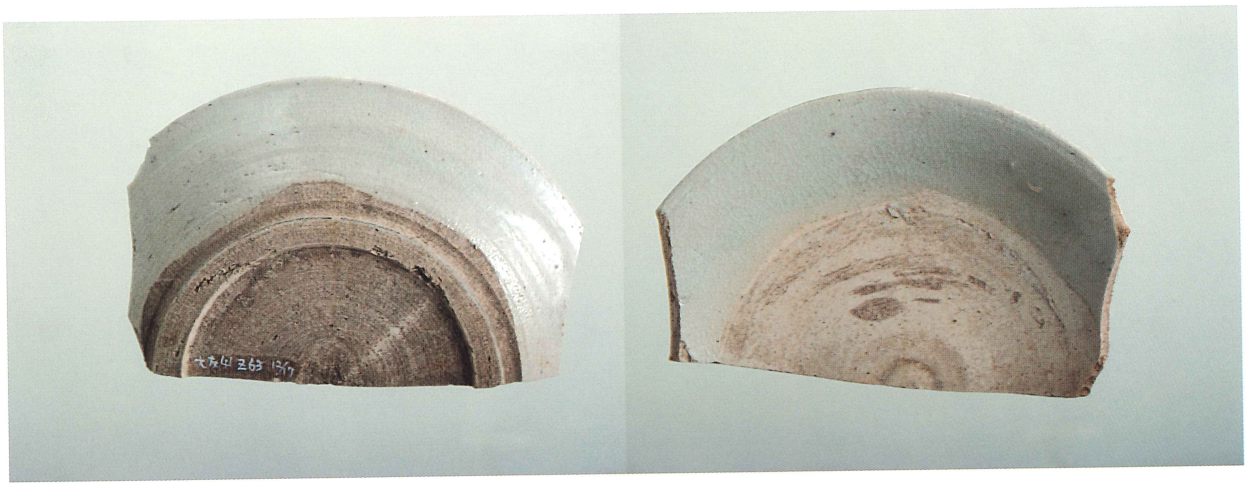
Z64区 (華南三彩)



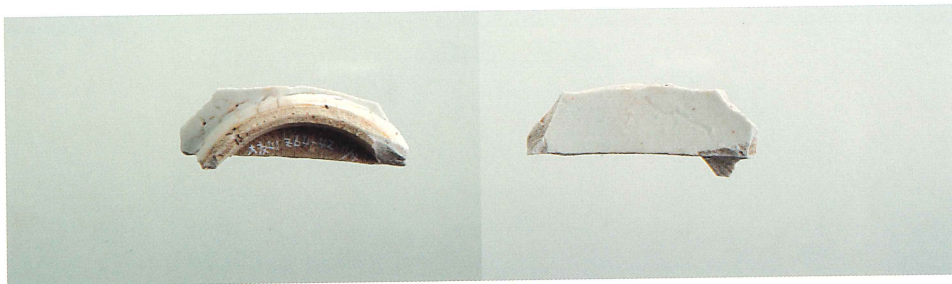
Y63区 (青磁)



Z63区 (白磁)



Z63区 (白磁)



Z64区 (白磁)



Z64区 (白磁)



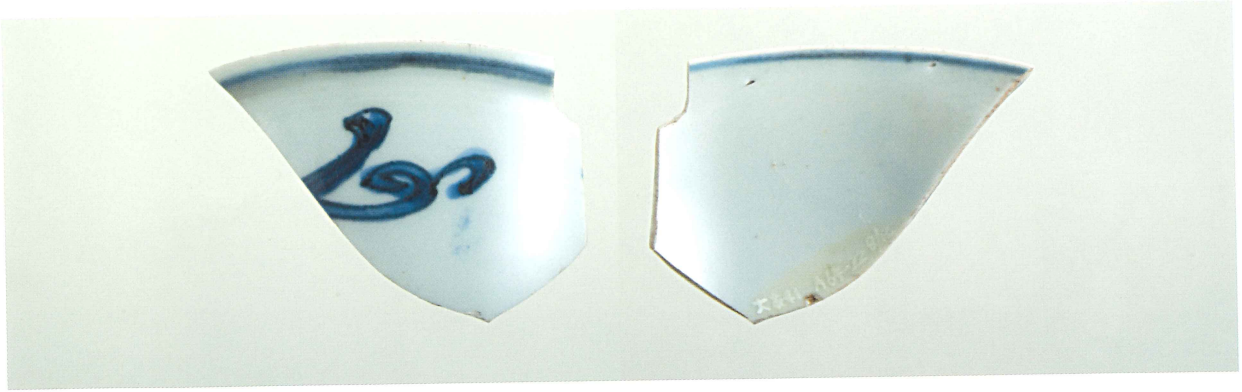
Z61区 (陶器)



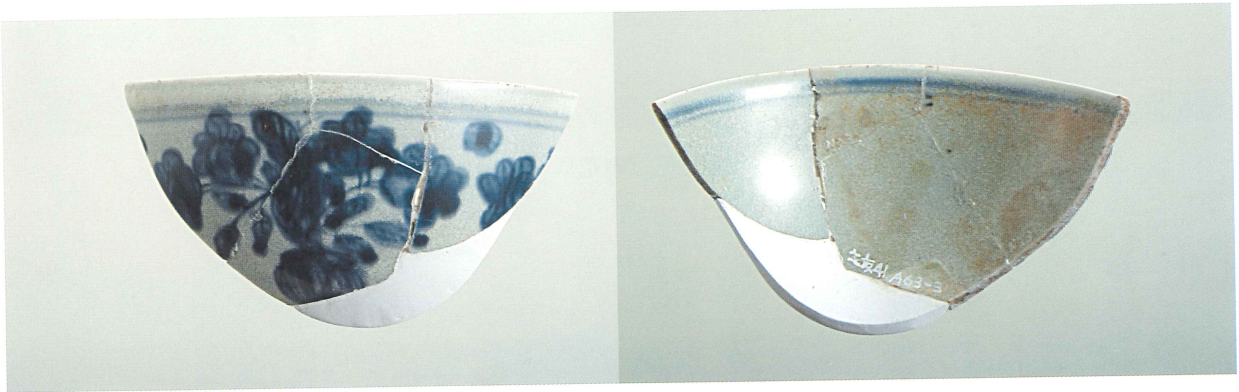
Z63区 (鉄製品)



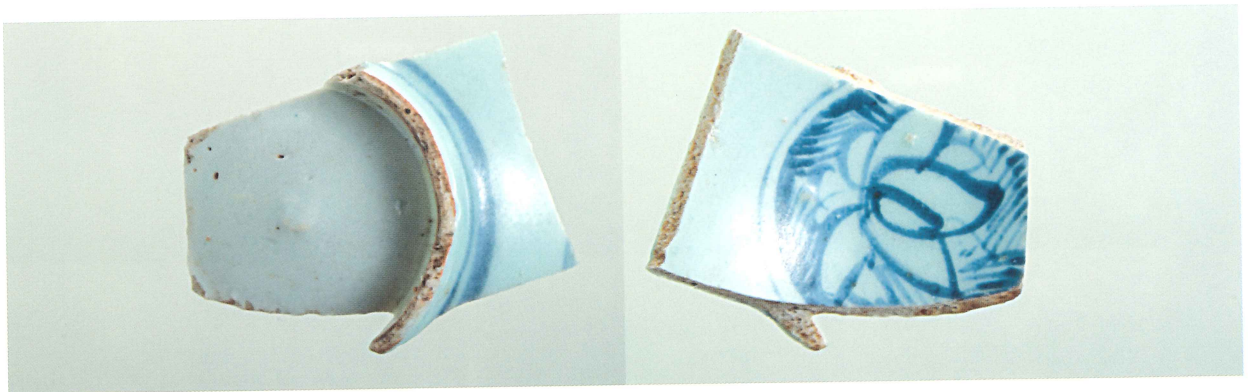
Z63区 (石臼)



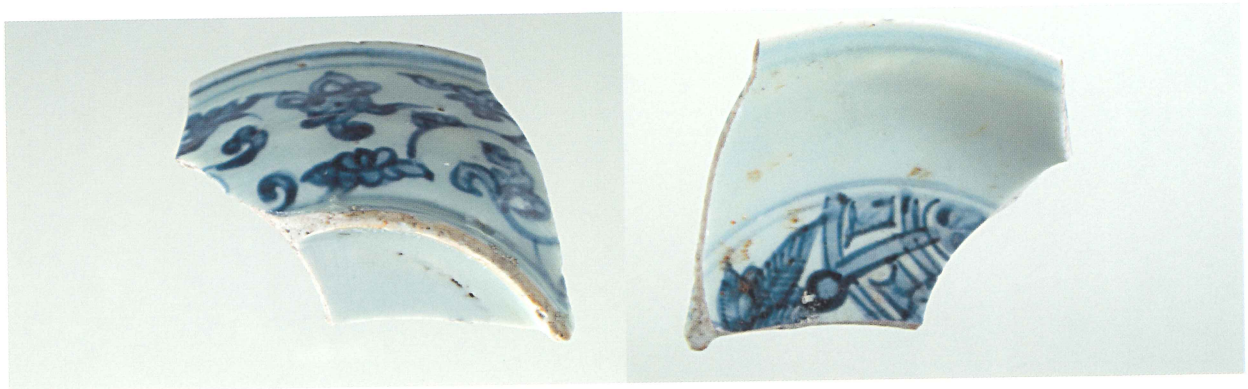
A64区 (青花)



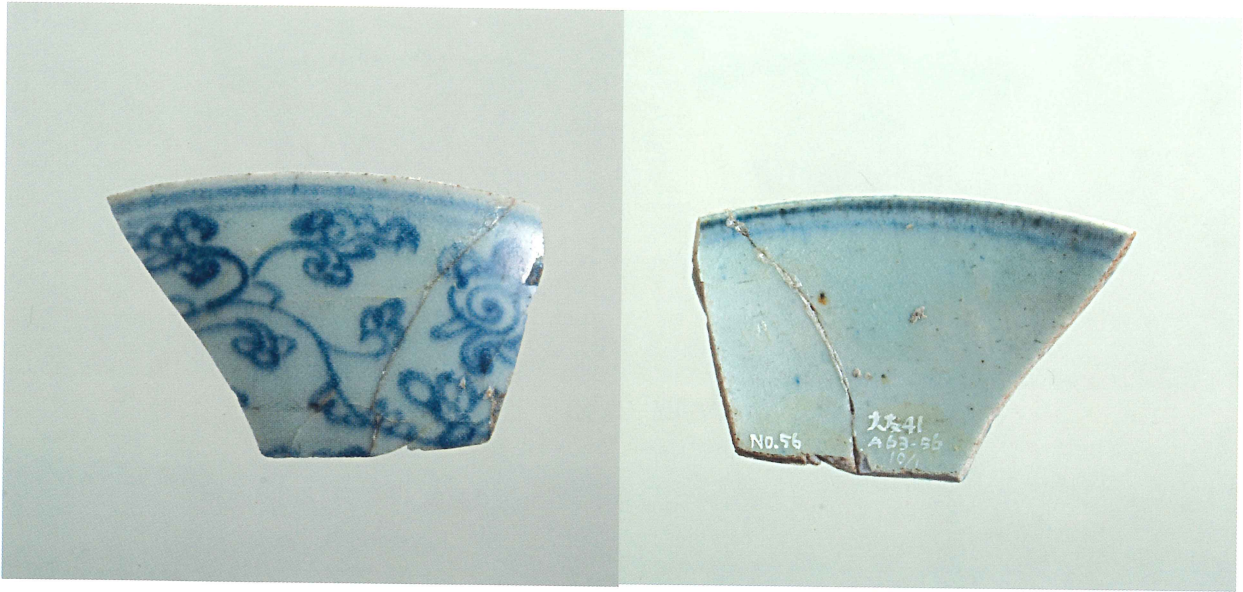
A63区 (青花)



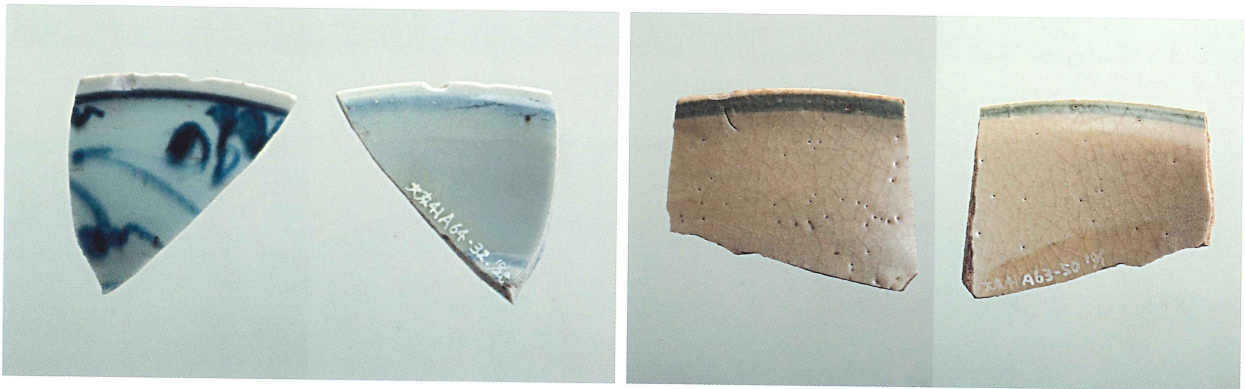
A64区 (青花)



A63区 (青花)

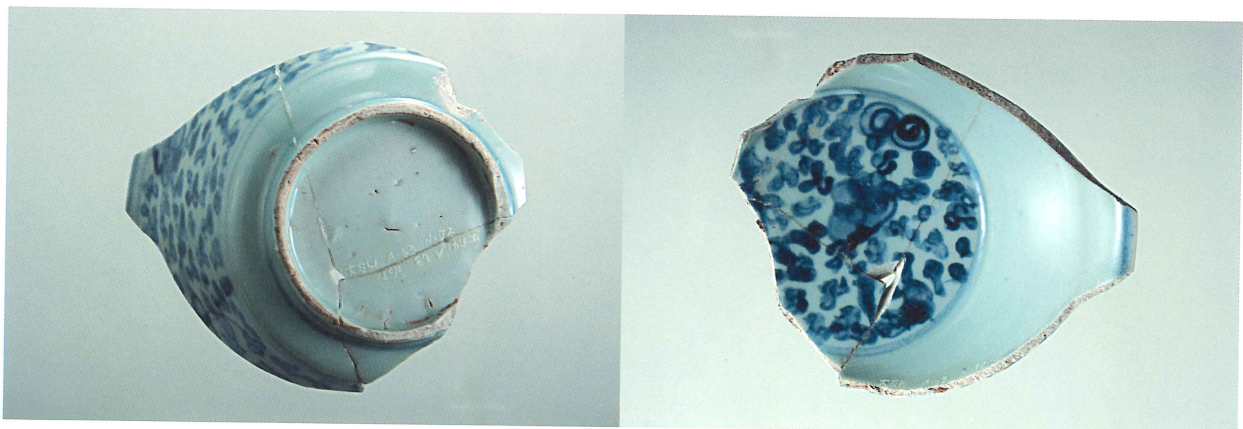


A63区 (青花)



A64区 (青花)

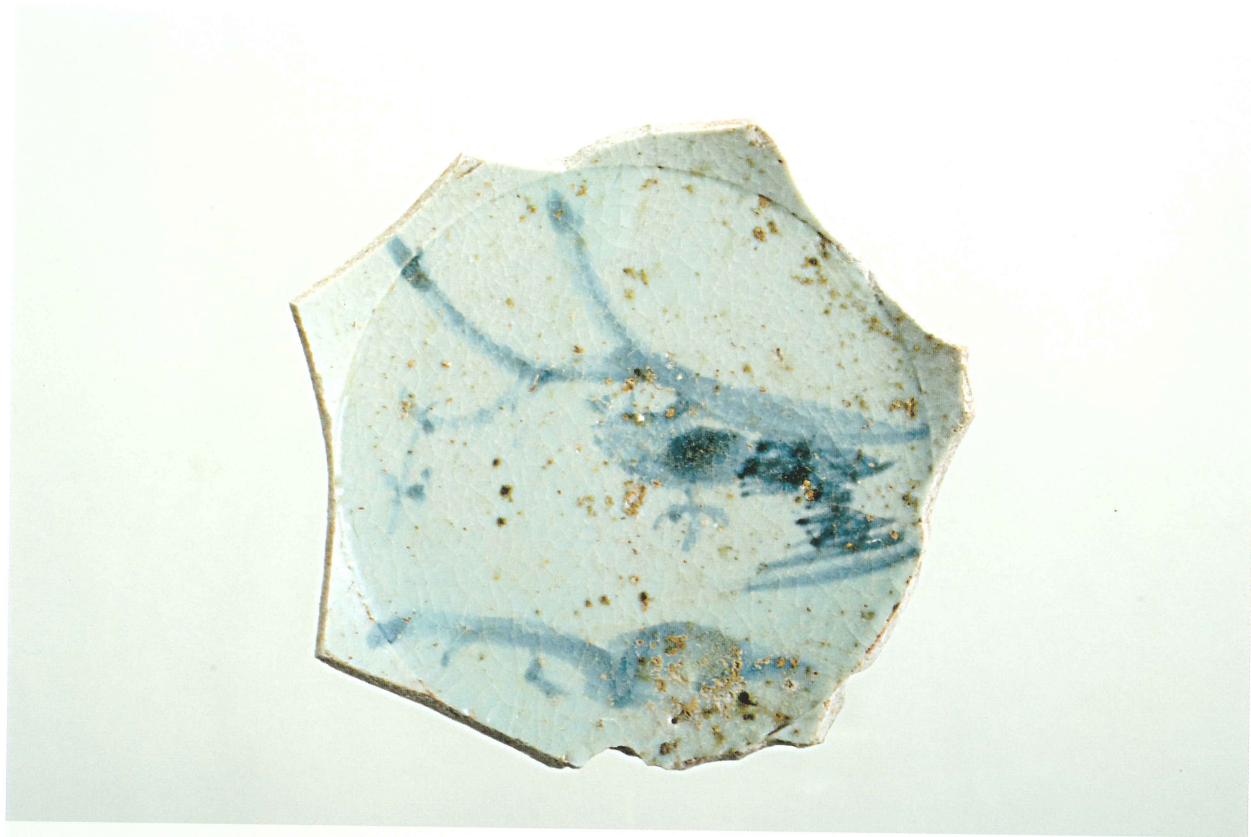
A63区 (青花)



A63区 (青花)



A63区 (青花)



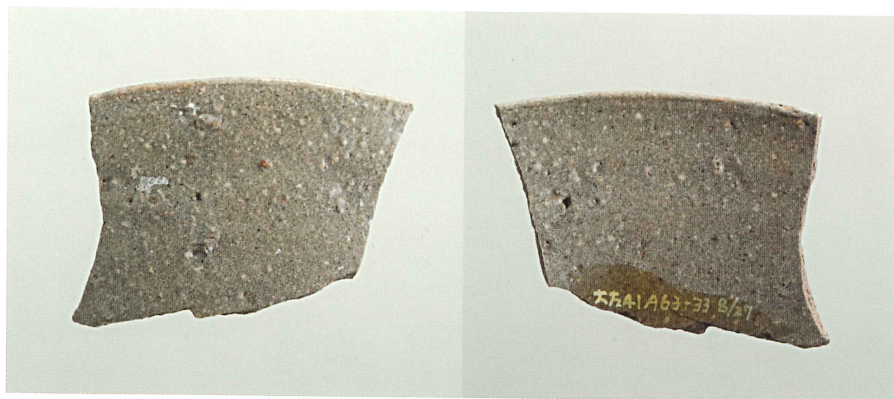
A63区 (初期伊万里)



A63区 (唐津溝縁皿)



A63区 (唐津陶器)



A63区 (陶器)



A63区 (華南三彩)



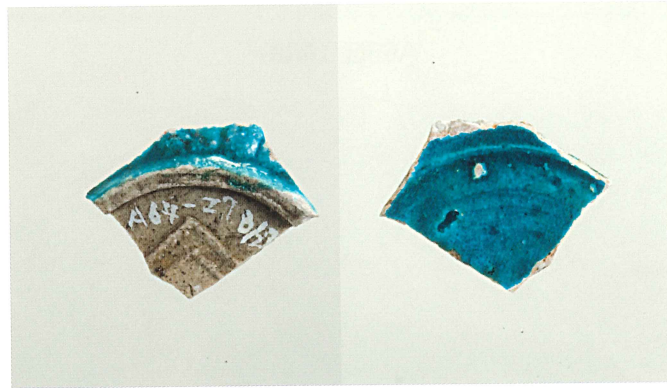
A64区 (白磁)



A64区 (五彩)



A64区 (華南三彩)



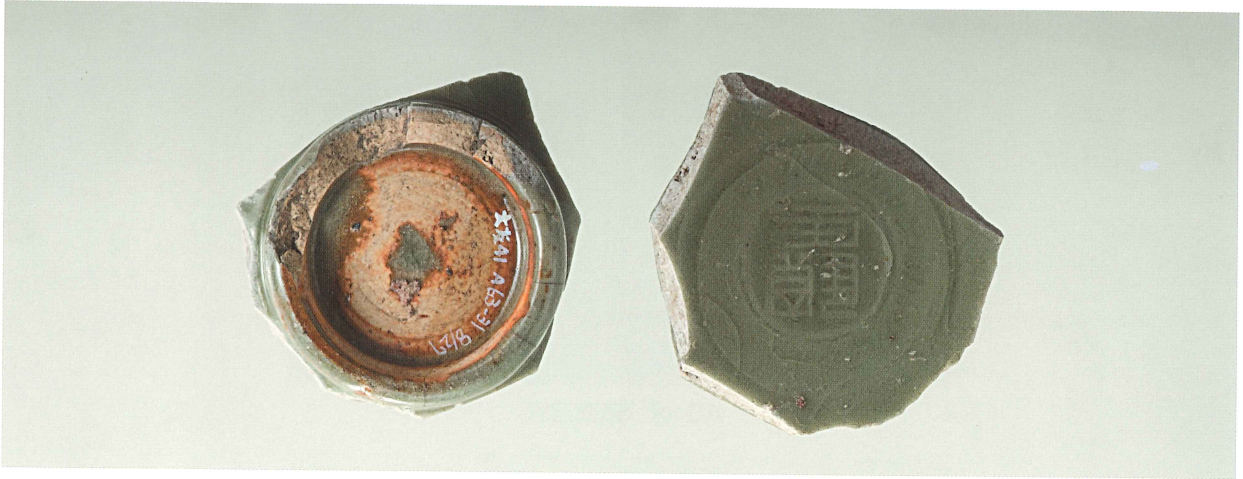
A64区 (翡翠釉彩)



A63区 (華南三彩)



A64区 (華南三彩)



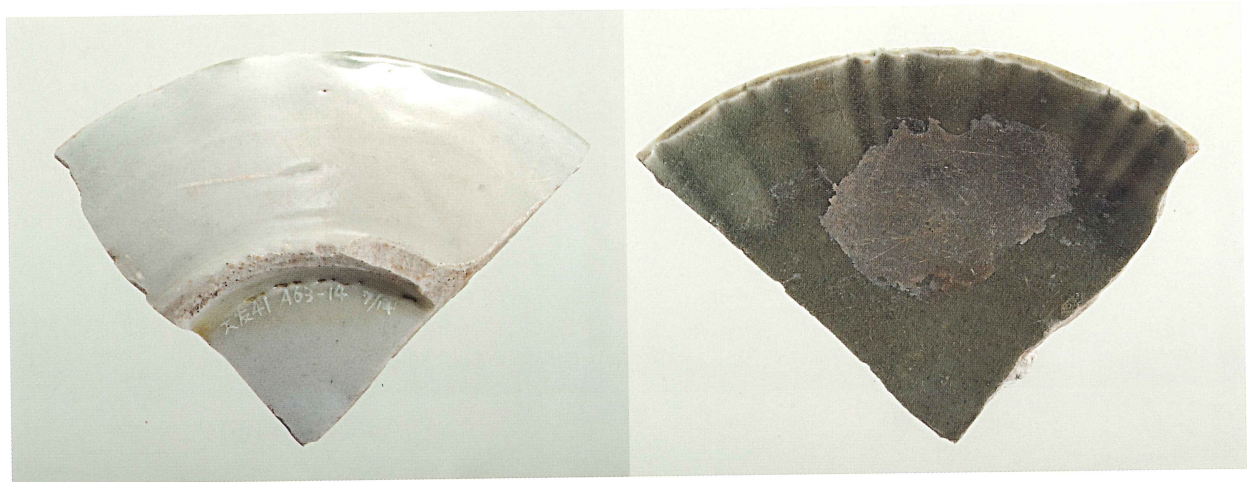
A63区 (青磁)



A63区 (青磁)



A63区 (青磁)



A63区 (青磁)



A63区 (青磁)



A63区 (砥石)



A63区 (硯)



A63区 (火打石)



A63区 (砥石)



B63区 (青花)



A63区 (目貫)



A63区 (小柄)



A63区 (初期伊万里)



A63区 (青花)



B64区 (青花)



B64区 (青花)



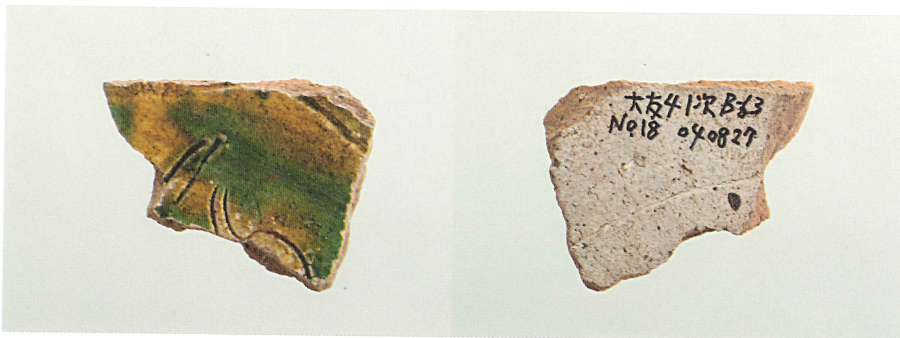
B64区 (青磁)



B64区 (翡翠釉)



B64区 (陶器)



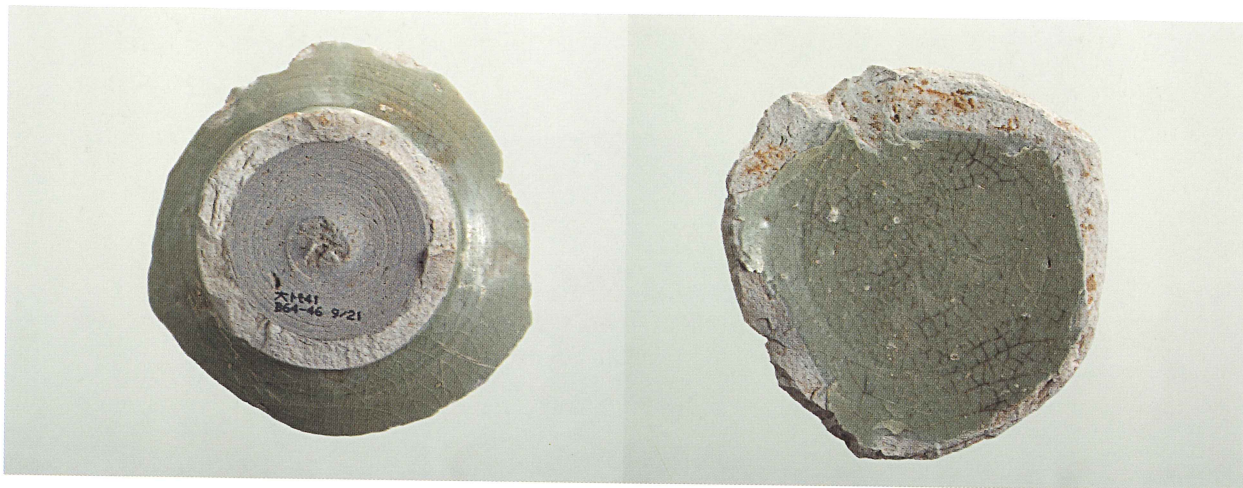
B63区 (華南三彩)



B63区 (青磁)



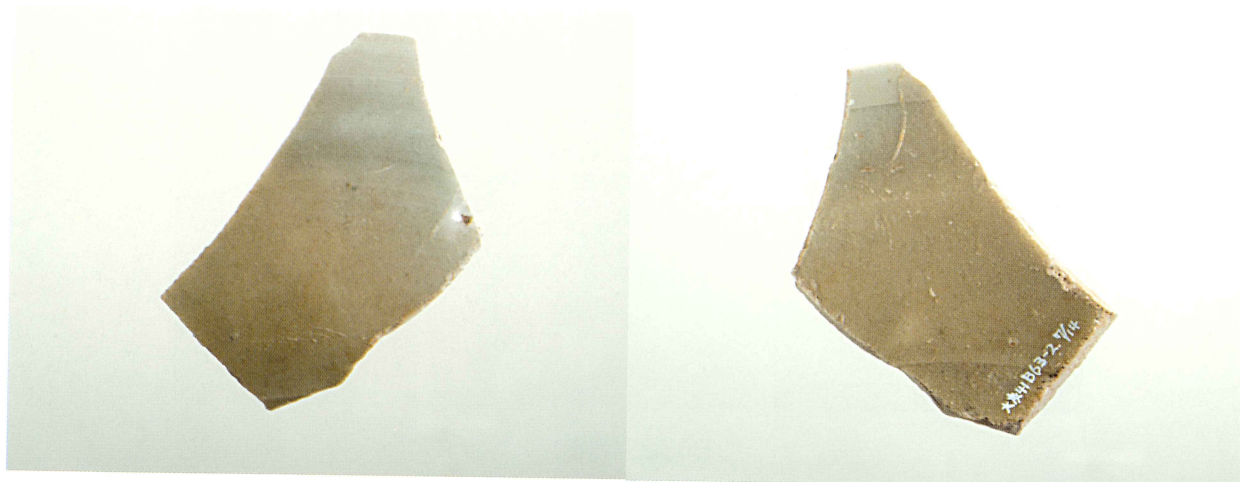
B63区 (青磁)



B64区 (青磁)



B63区 (白磁)



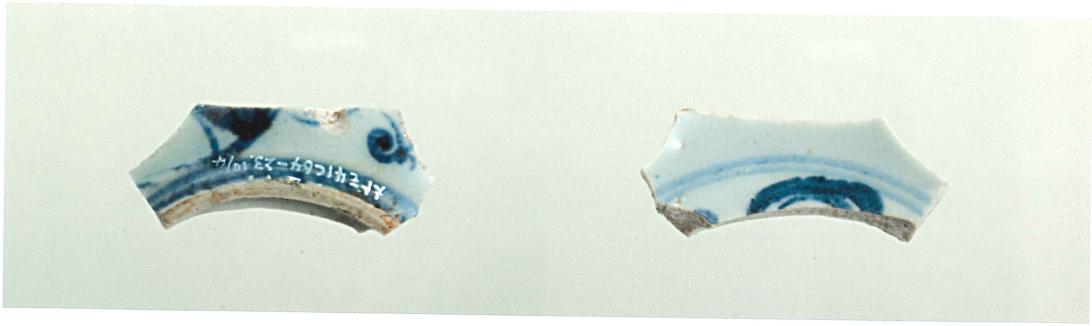
B63区 (青磁)



B64区 (初期伊万里)



B64区 (石臼)



C64区 (青花)



C63·64区 (五彩)



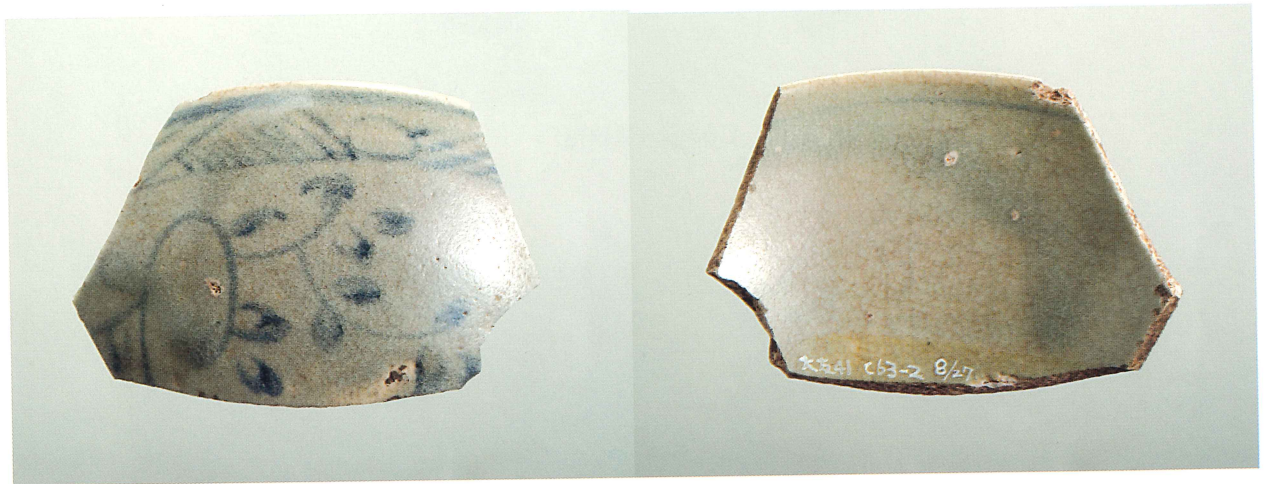
B63区 (砥石)



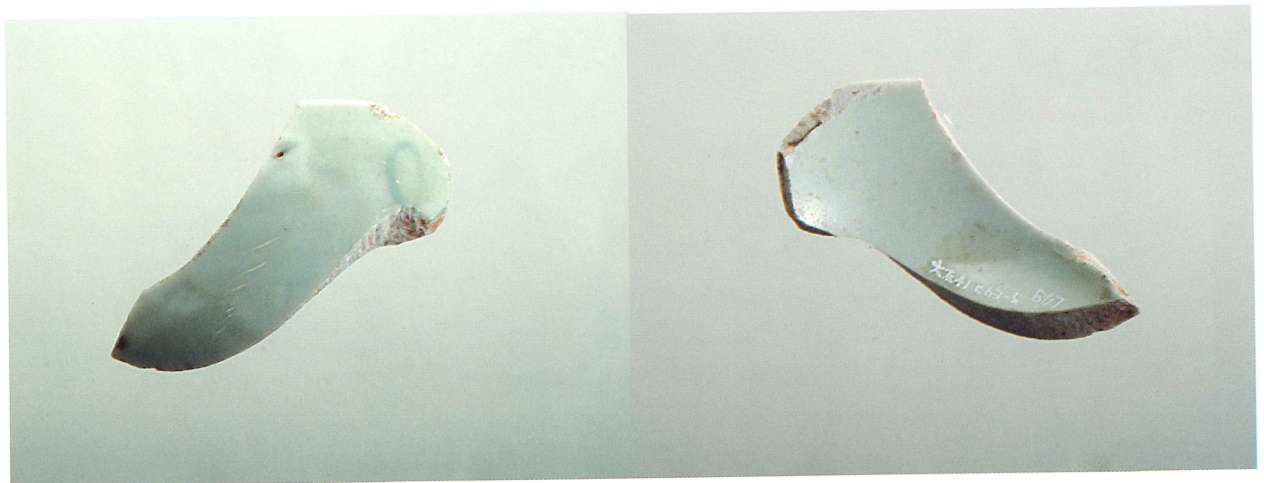
B63区 (六太郎石·火打石)



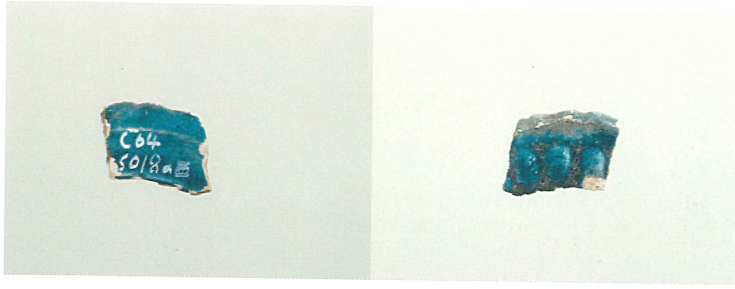
C63区 (青花)



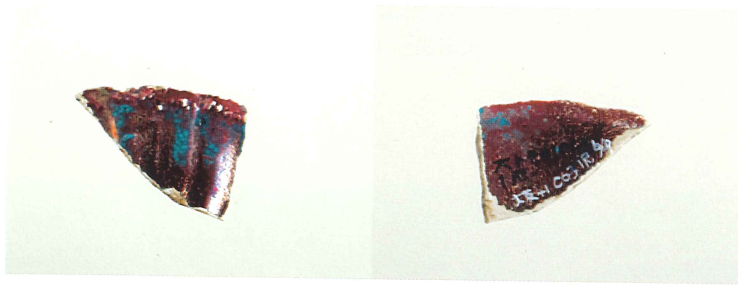
C63区 (青花)



C63区 (古伊万里)



C64区 (翡翠釉)



C63区 (翡翠釉)



C63区 (華南三彩·琴高仙人)



C64区 (磁州窯)



C63区 (青磁)



C64区 (朝鮮陶器)



C63区 (唐津溝縁皿)



C64区 (瀬戸美濃)



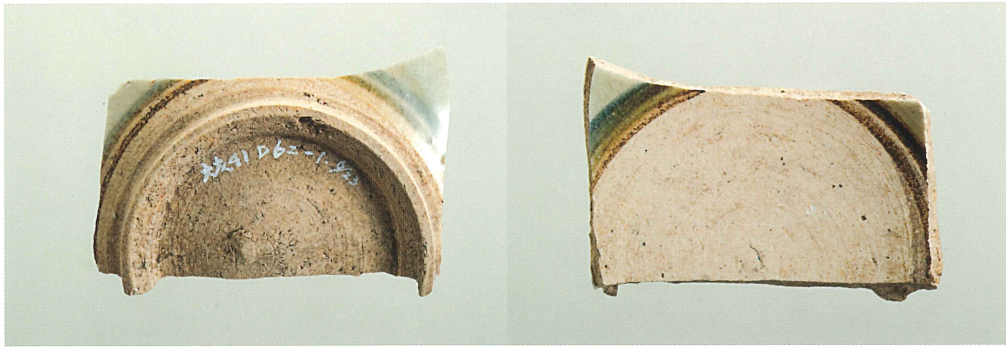
C63区 (るつぼ・銅附着)



D63·64区 (五彩)



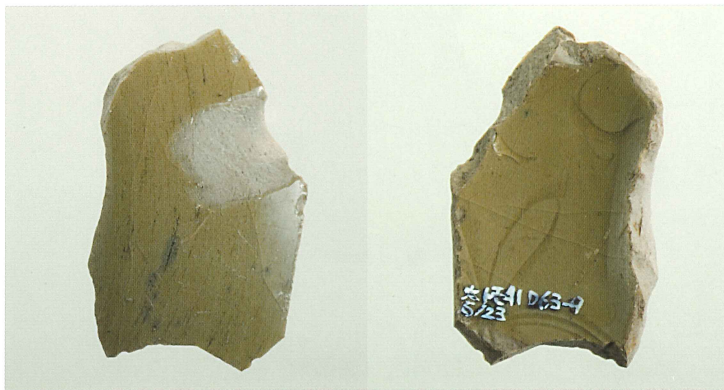
D63区 (青花)



D62区 (青花)



D63区 (青花)



D63区 (青磁)



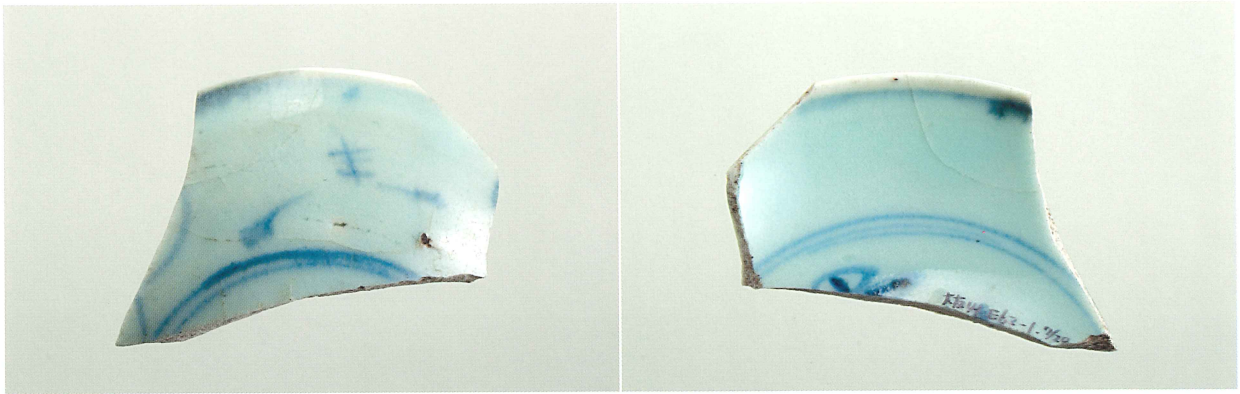
D64区 (瓦器椀)



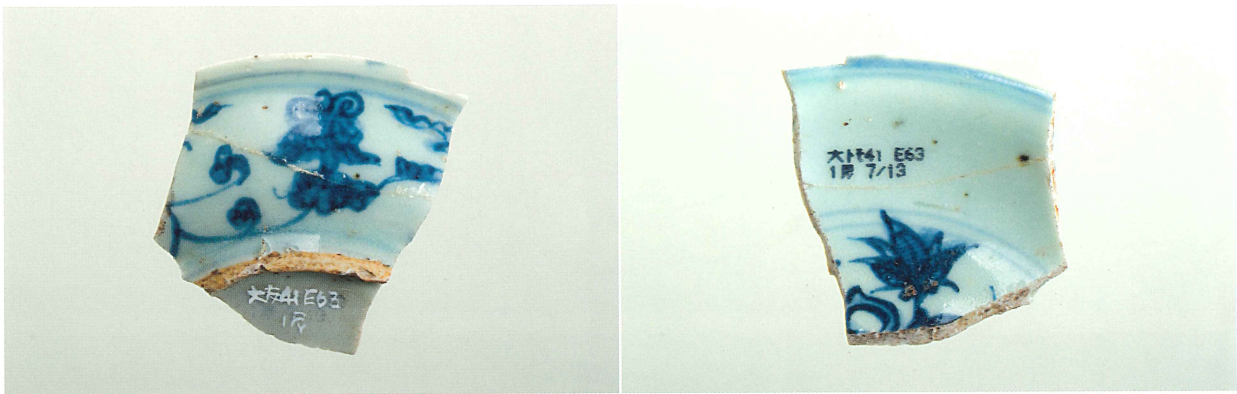
D64区 (瓦器椀)



D64区 (備前焼)



E62区 (青花)



E63区 (青花)



E63区 (五彩)



E63区 (青花)



E63区 (青磁)



E63区 (白磁)



E63区 (硯)



F64区 (埴輪)



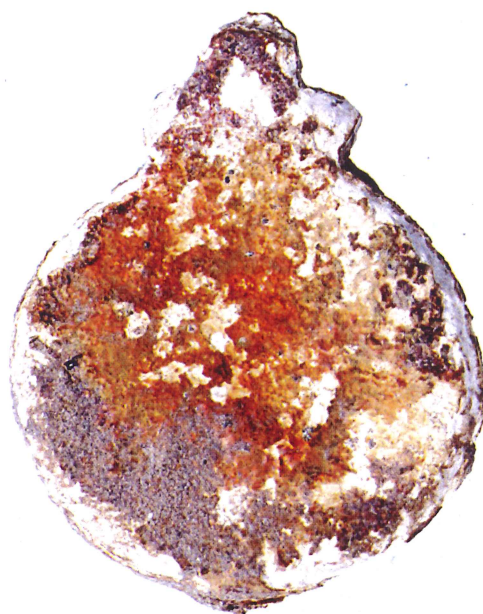
SP235 (タイ製陶器クロツ)



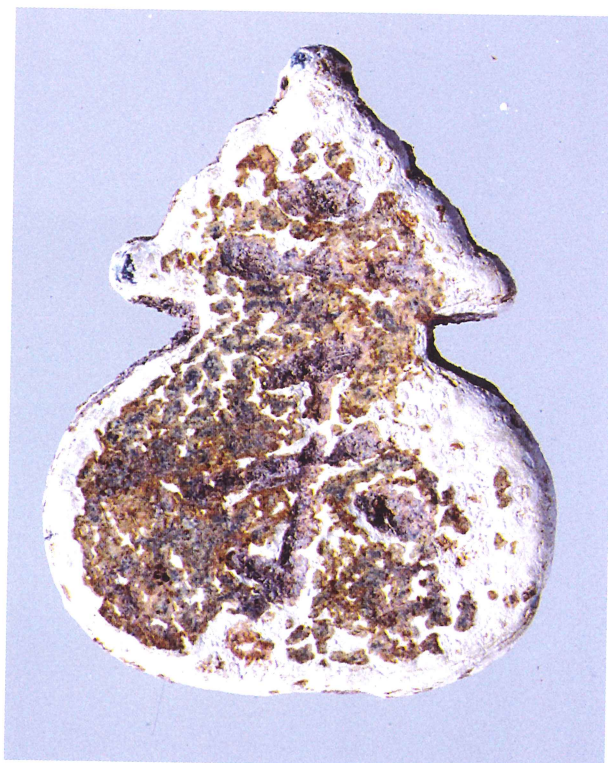
D63区 (瓦質土器)



SK94 (石臼)



SK5 (メダイ)



包含層 (メダイ)

豊後府内16

(第1分冊)

中世大友府内町跡第41・69・75・77調査区

一庄の原佐野線建設工事に伴う埋蔵文化財発掘調査報告書(5) —

大分県教育庁埋蔵文化財センター調査報告書 第48集

平成22年3月31日

編集・発行 大分県教育庁埋蔵文化財センター

〒870-1113

大分市大字中判田字ビワノ門1977

TEL (097) 597-5675

印刷 有限会社 印刷 良栄堂

〒870-0954

大分市下郡中央2-8-17

TEL (097) 567-3116

Y=57800.00m

A

B

C

D

E

F

G

0 20m

59

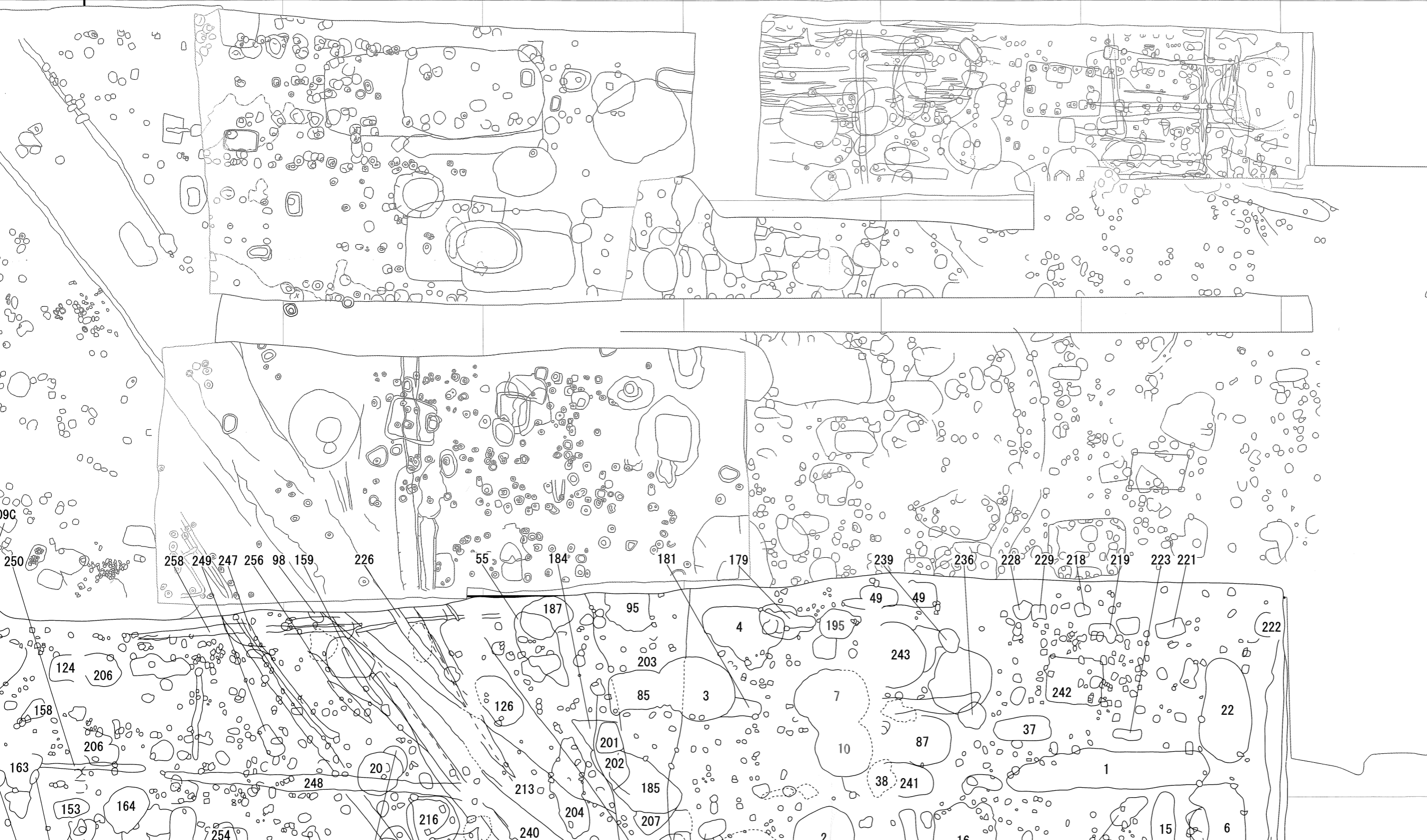
60

61

62

63

X=24900.00m



55・69・75・77次調査区遺構配置図 (1/200)

Y=57800.00m

A B C D E F G

65

64

63

62

61



S

T

U

V

W

X

Y

Z

59

60

61

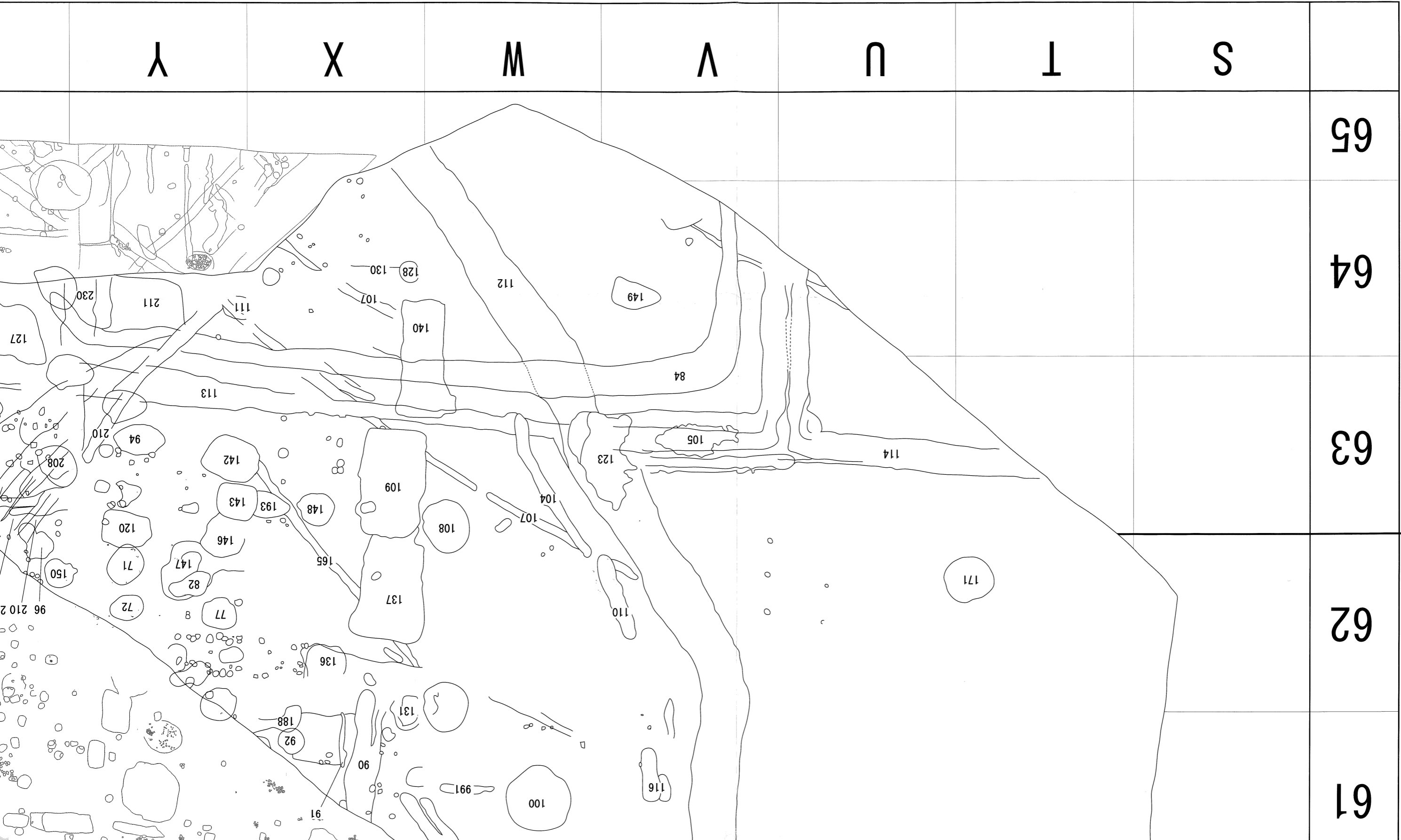
62

63

X=24900.00m



付図1 中世大友府内町跡第36・41



X=24900.00m

Y=57700.00m

Y=57800.00m

R

Q

P

S

T

U

V

W

X

Y

Z

57

58

59

69 次 B

41 次

77 次

60

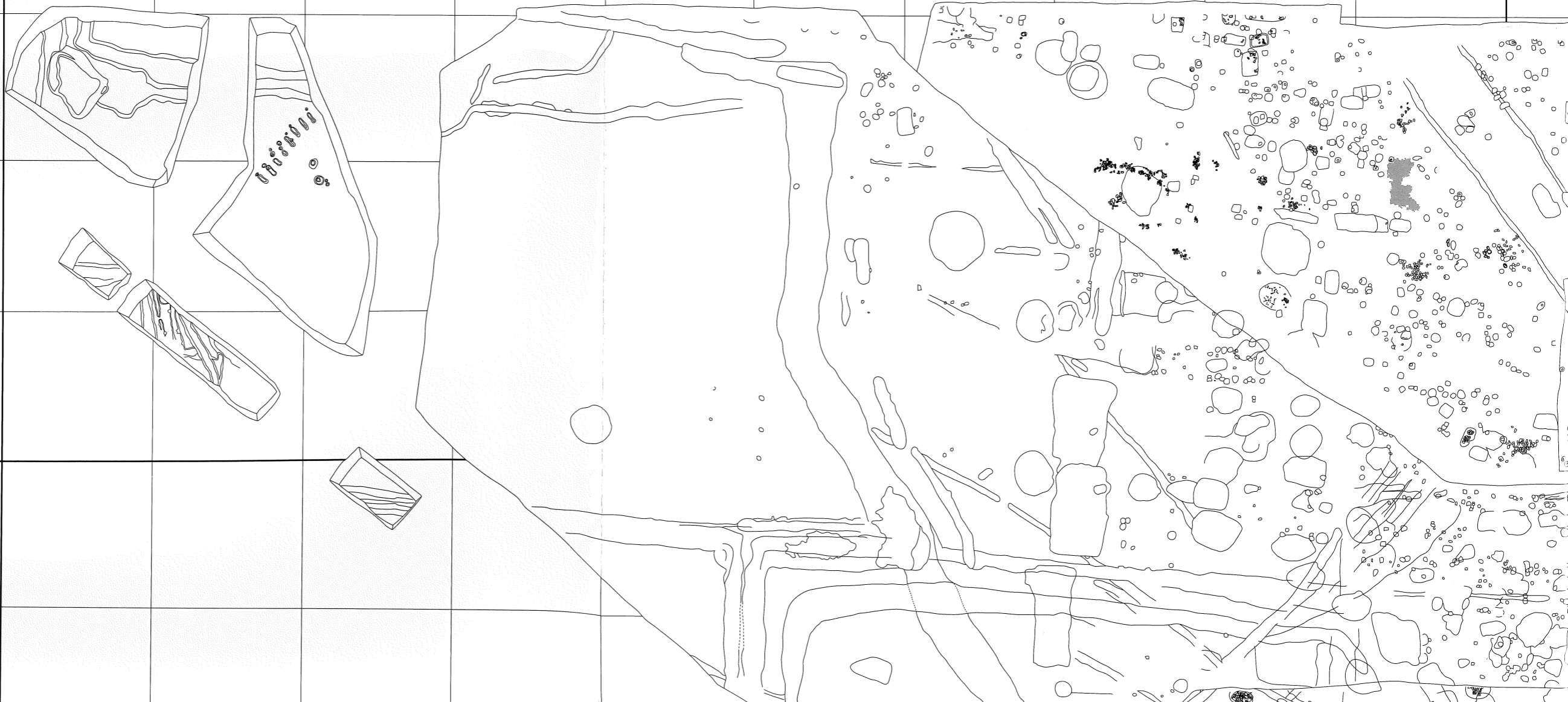
61

62

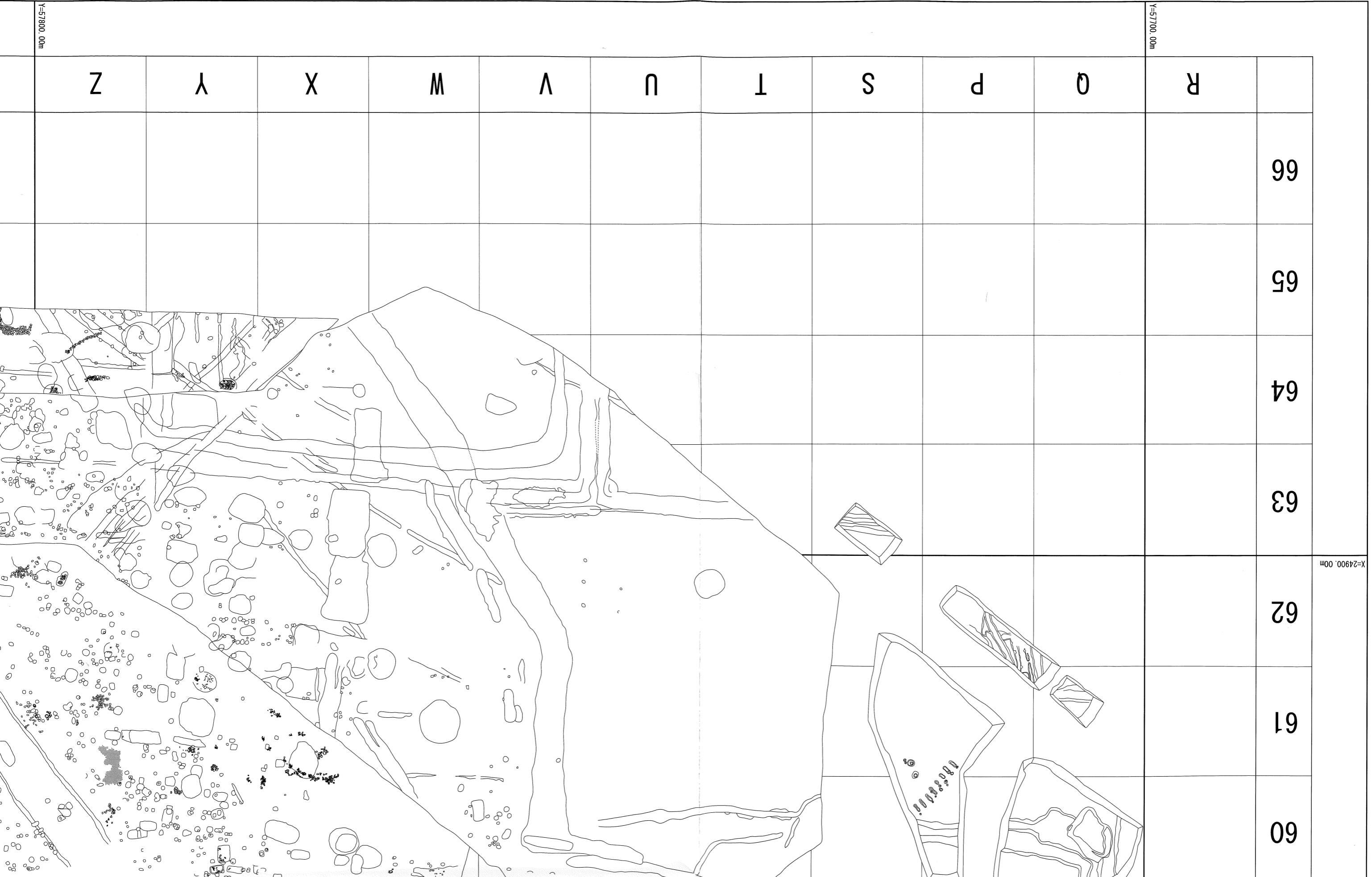
X=24900.00m

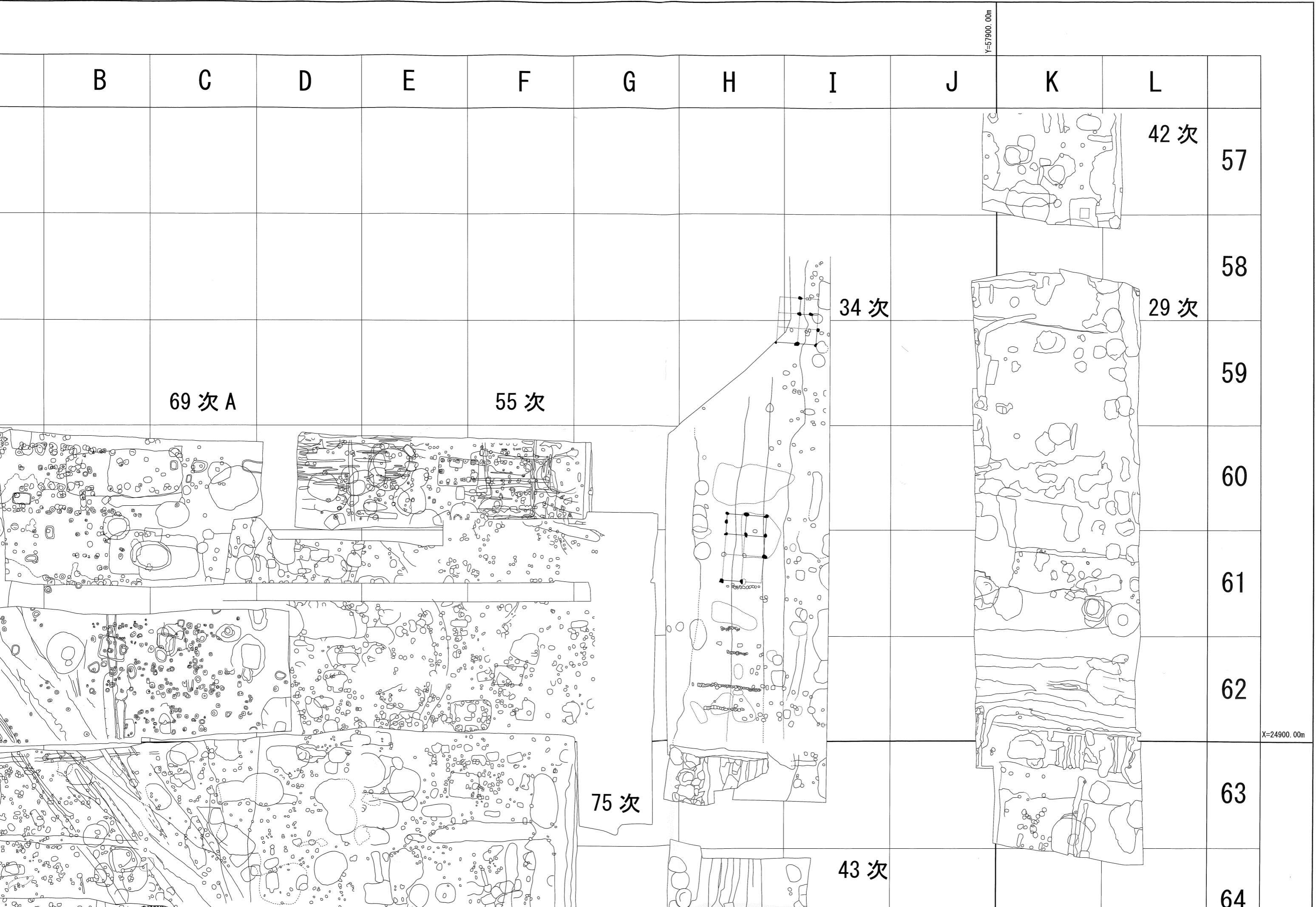
63

64



付図2 中世大友府内町跡第29・34・35・36・41・42・43





B

C

D

E

F

G

H

I

J

K

L

69次 A

55次

75次

34次

43次

42次

29次

57

58

59

60

61

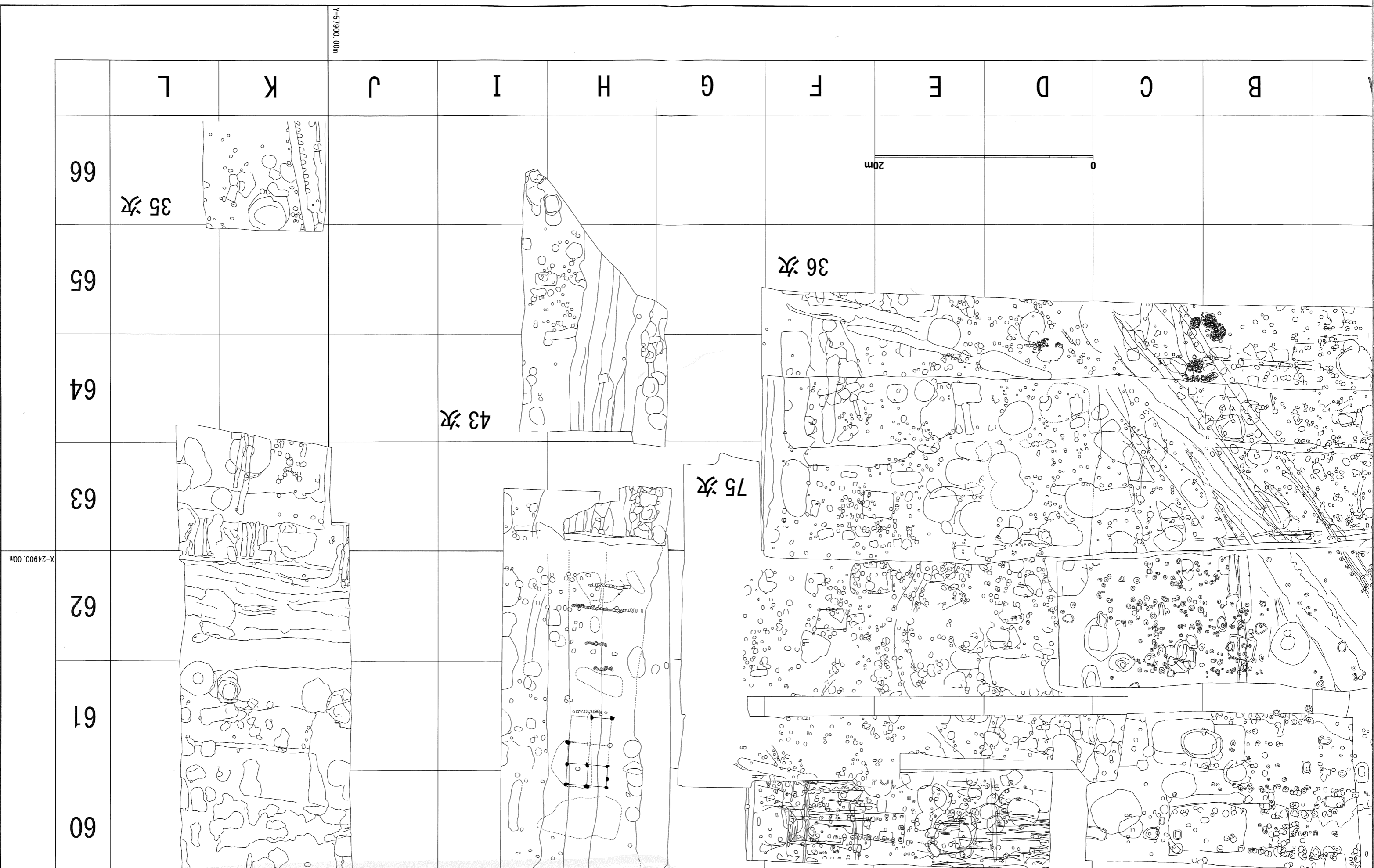
62

63

64

Y=57900.00m

X=24900.00m



Y=57900.00m

X=24900.00m