



E12住-1



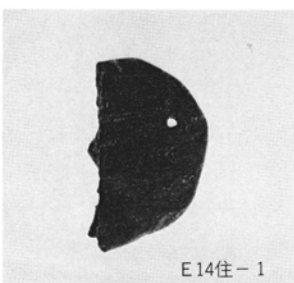
E16住-8



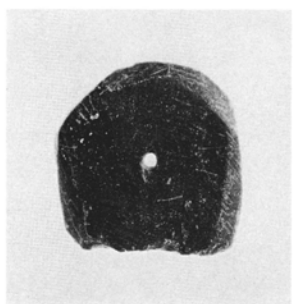
E12住-8



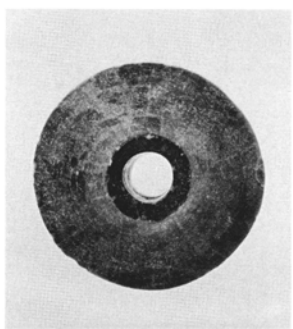
E16住-7



E14住-1



E16住-22



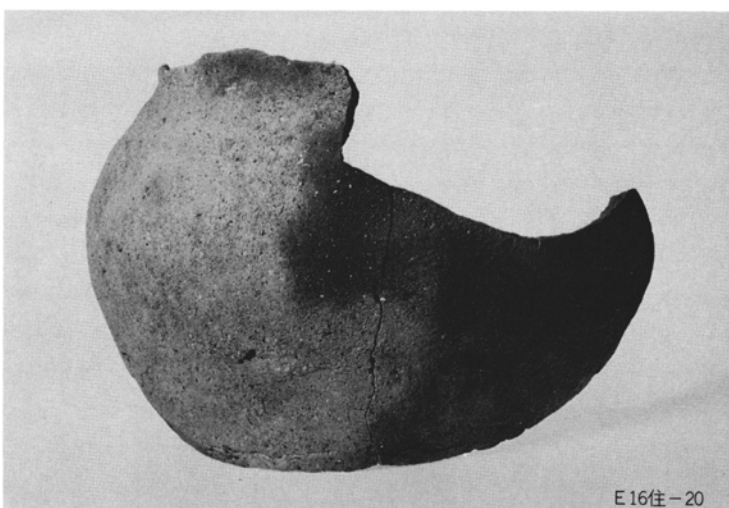
E16住-21



E12住-7



E9住-12



E16住-20



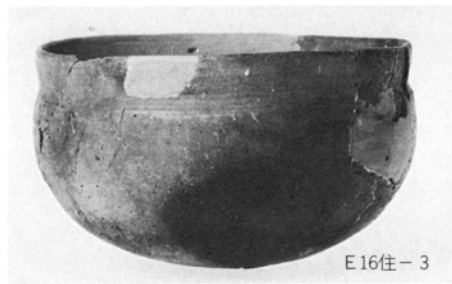
E 16住-13



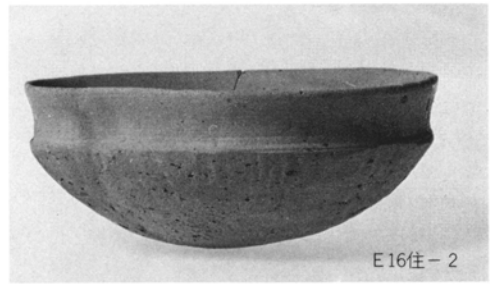
E 16住-4



E 16住-1



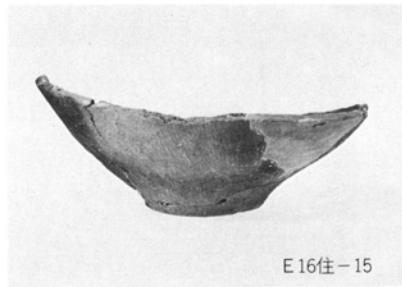
E 16住-3



E 16住-2



E 16住-11



E 16住-15



E 16住-6



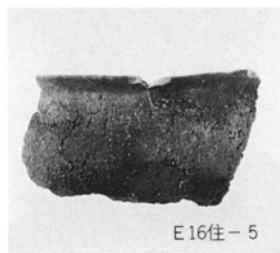
E 16住-14



E 16住-9



E 16住-12



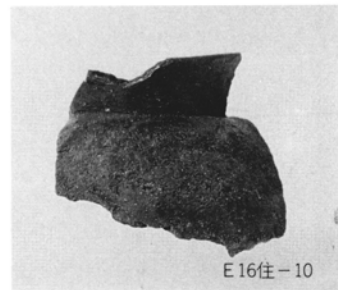
E 16住-5



E 16住-19



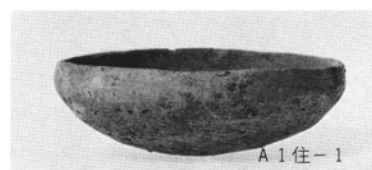
E 16住-17



E 16住-10



E 16住-16



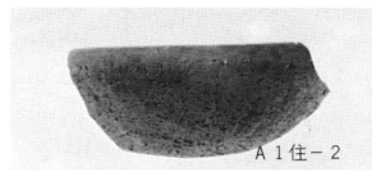
A 1住-1



A 16住-1



A 1住-6



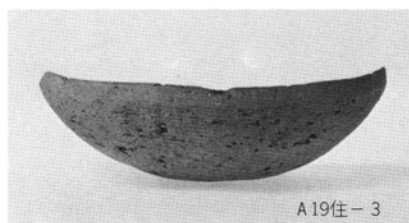
A 1住-2



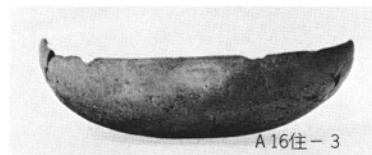
A 16住-2



A 1住-3



A 19住-3



A 16住-3



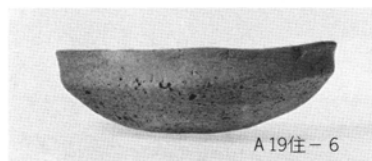
A 19住-8



A 19住-2



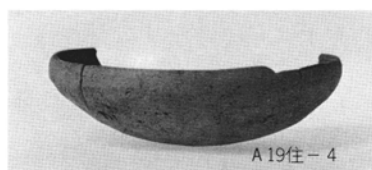
A 1住-4



A 19住-6



A 20住-2



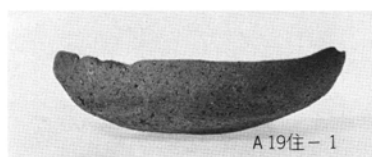
A 19住-4



A 20住-3



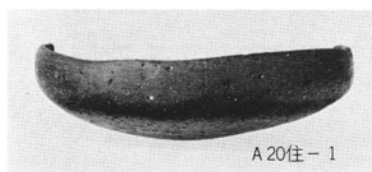
A 16住-4



A 19住-1



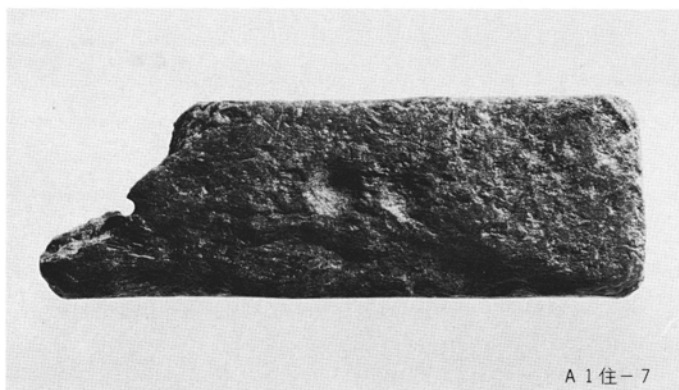
A 19住-7



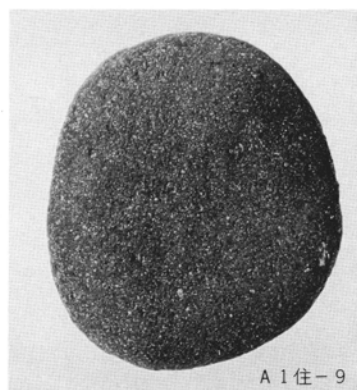
A 20住-1



A 1住-5



A 1住-7



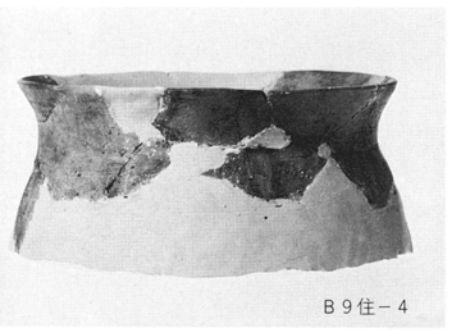
A 1住-9



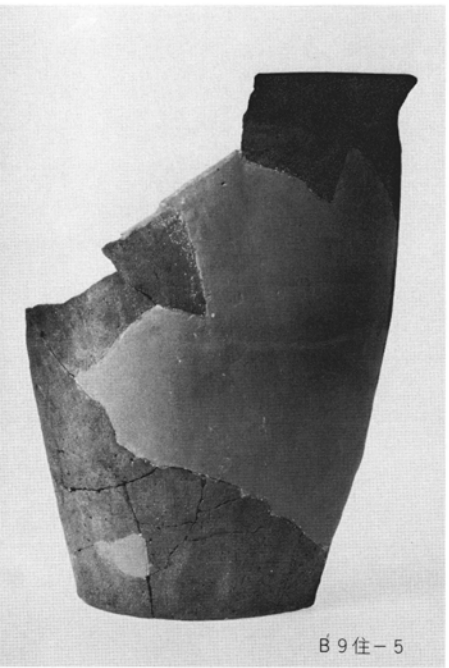
B 1 住-14



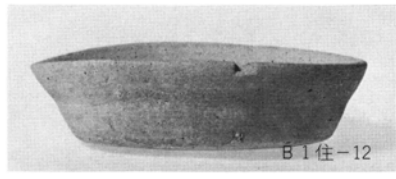
B 9 住-3



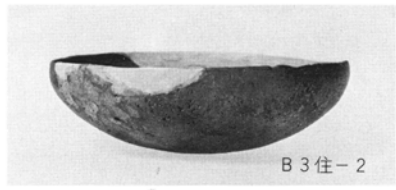
B 9 住-4



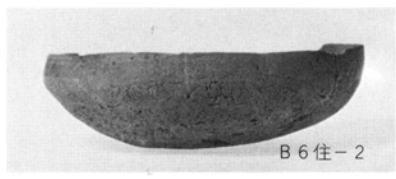
B 9 住-5



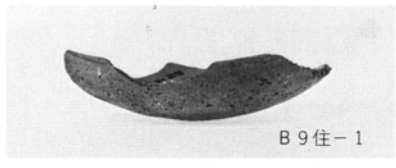
B 1 住-12



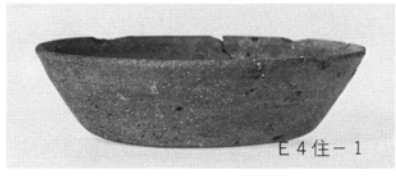
B 3 住-2



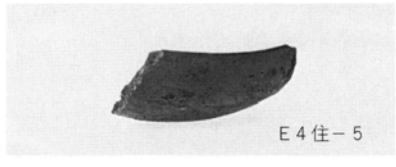
B 6 住-2



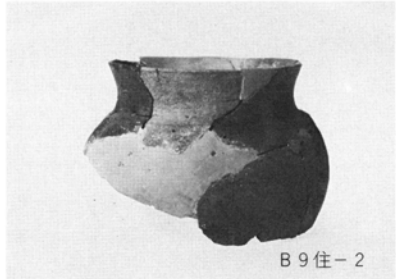
B 9 住-1



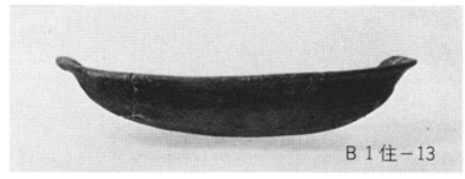
E 4 住-1



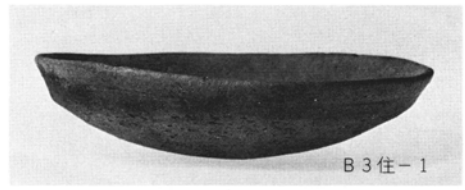
E 4 住-5



B 9 住-2



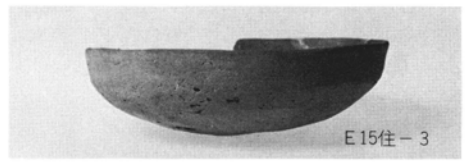
B 1 住-13



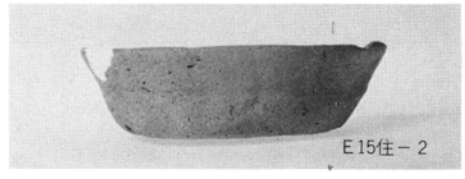
B 3 住-1



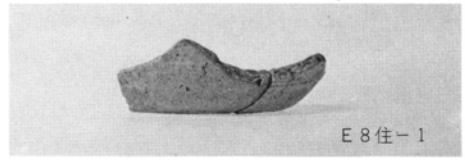
B 4 住-3



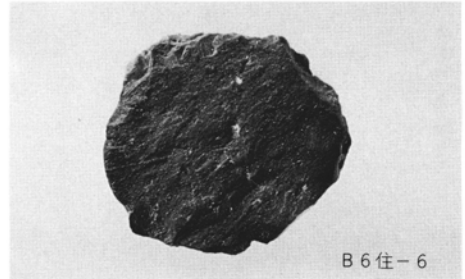
E 15 住-3



E 15 住-2



E 8 住-1



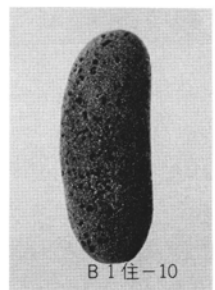
B 6 住-6



B 1 住-1

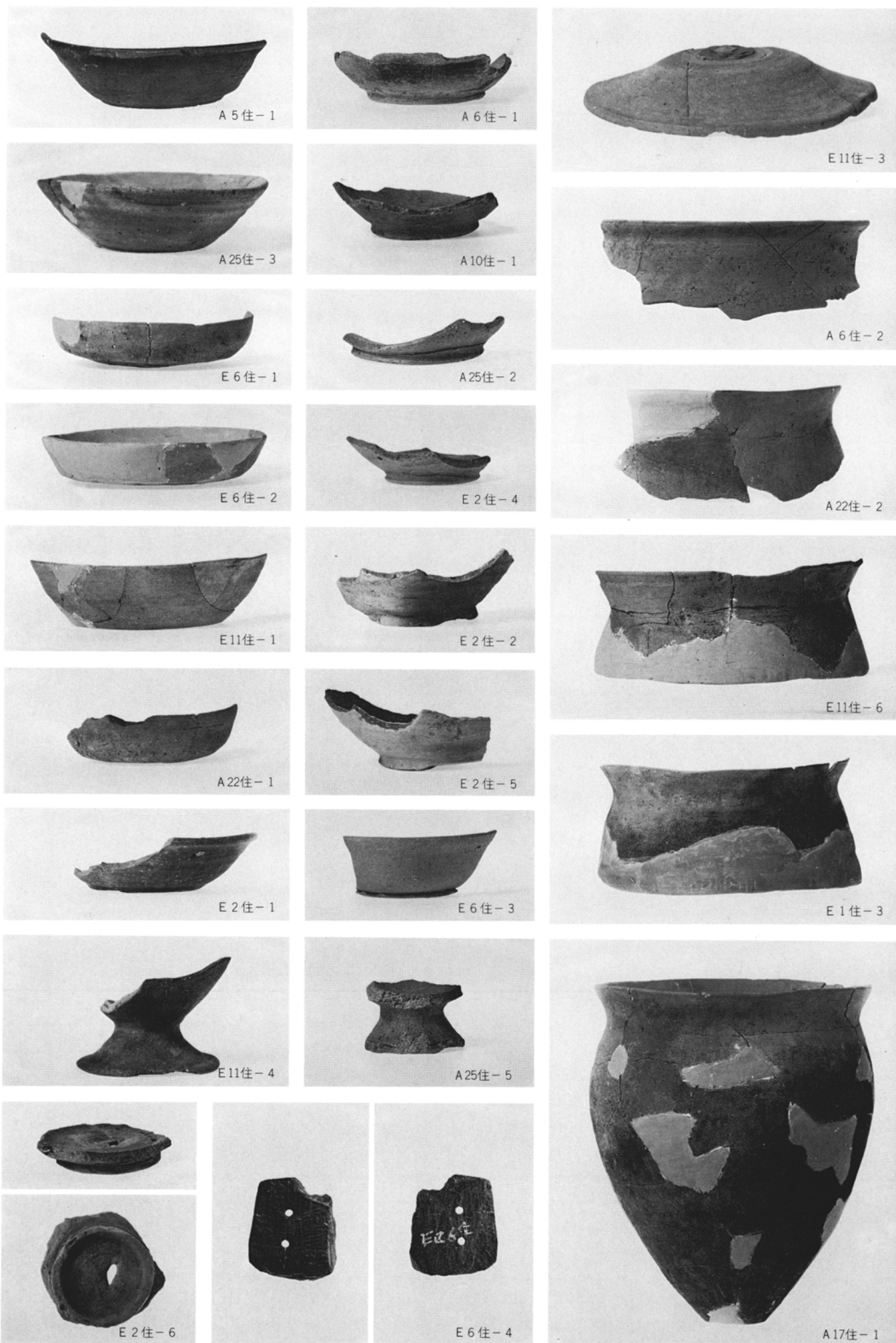


B 1 住-9



B 1 住-10

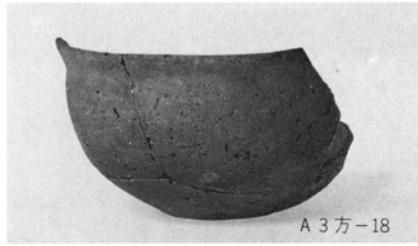
B 区 1 · 3 · 6 · 9 号住居址、E 区 4 · 8 · 15 号住居址出土遺物



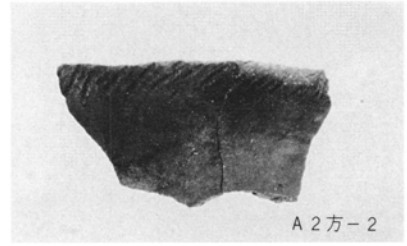
A区5・6・10・17・22・25号住居址、E区1・2・6・11・14号住居址出土遺物



A 3方-20



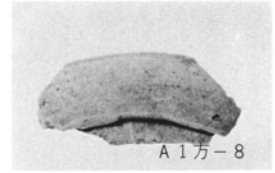
A 3方-18



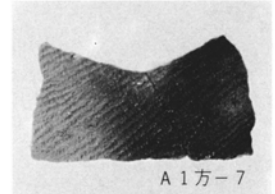
A 2方-2



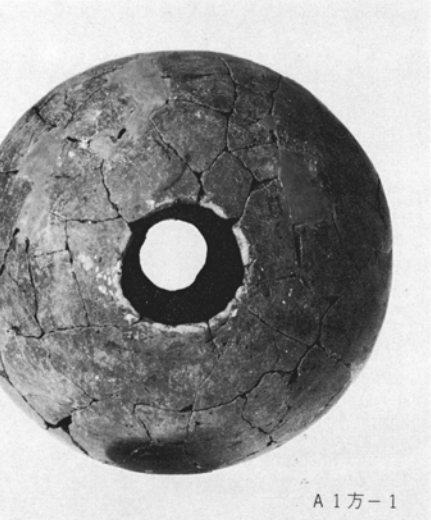
A 1方-2



A 1方-8



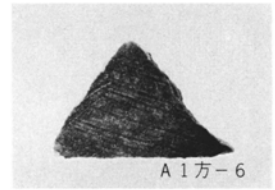
A 1方-7



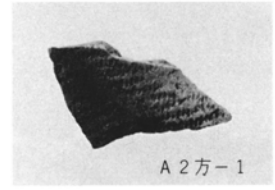
A 1方-1



A 3方-17



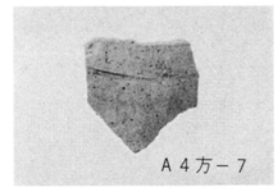
A 1方-6



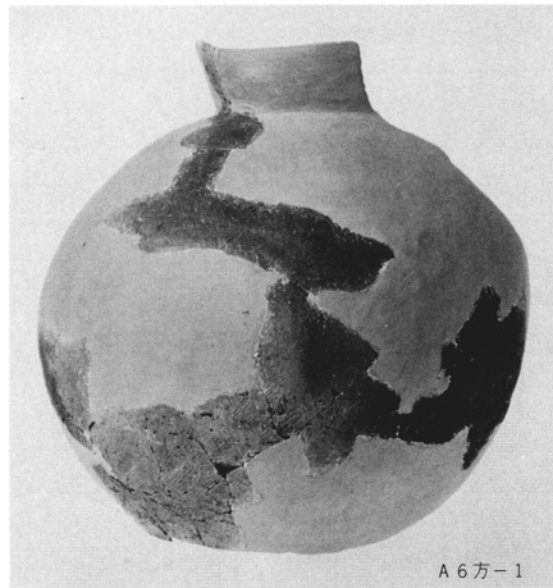
A 2方-1



A 3方-24



A 4方-7



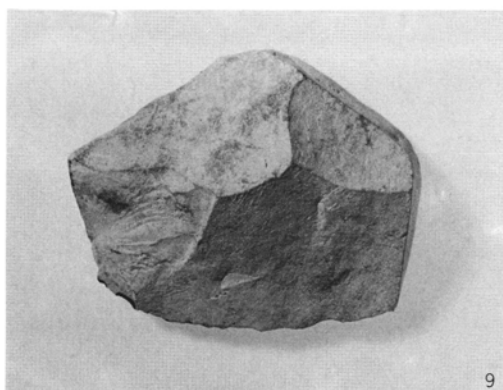
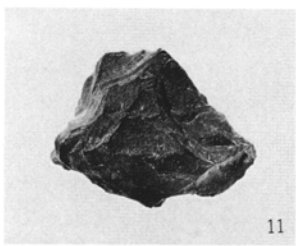
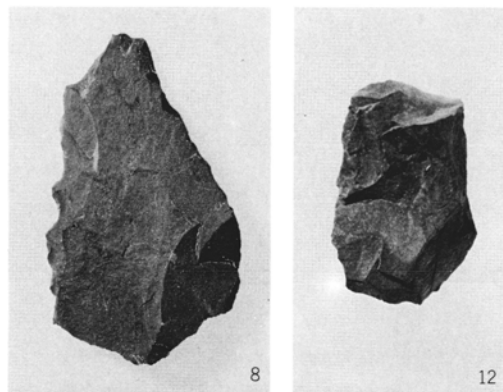
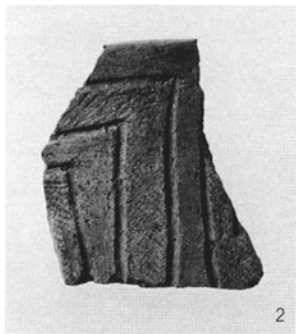
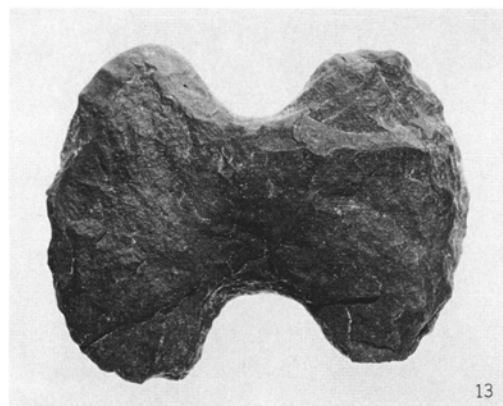
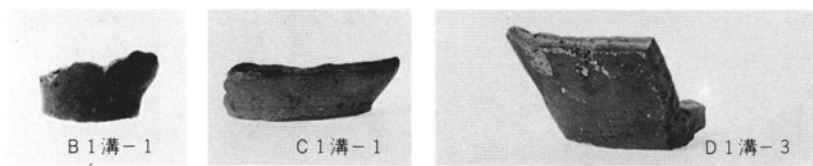
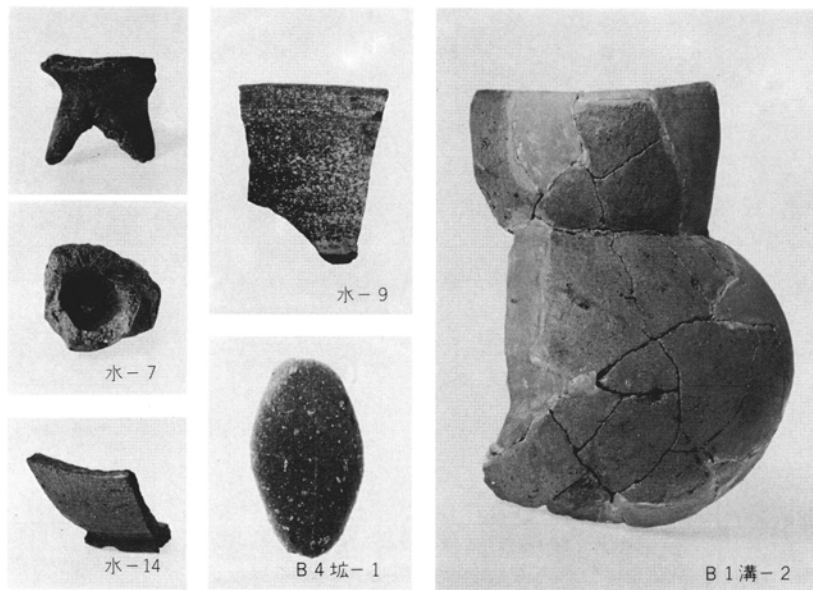
A 6方-1



A 4方-4



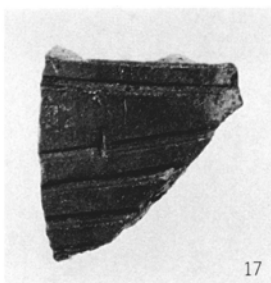
A 5方-1



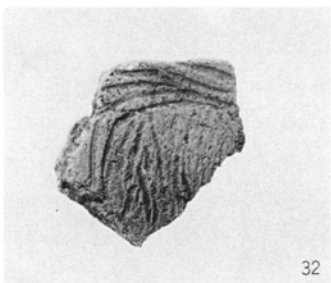
A区浅間B層下水田址、A区1号土坩、B区1号溝、B区4号土坩、C区1・8号溝、D区1号溝、包含層出土遺物



29



17



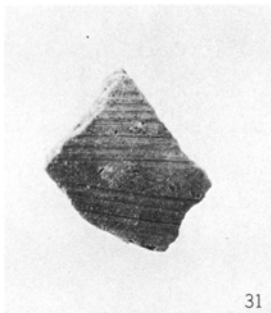
32



38



49



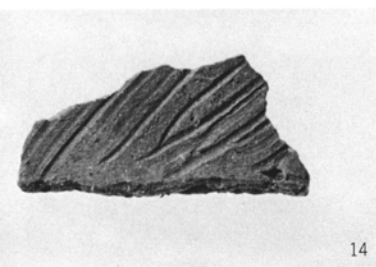
31



41



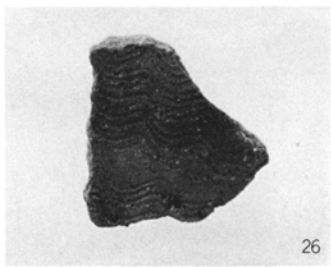
39



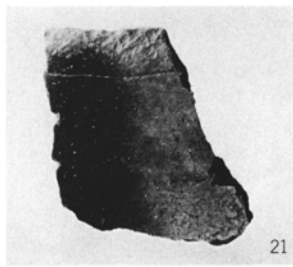
14



15



26



21



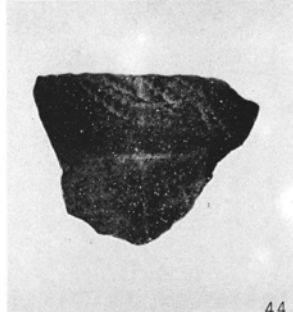
51



28



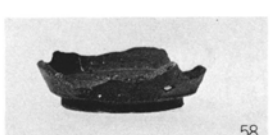
37



44



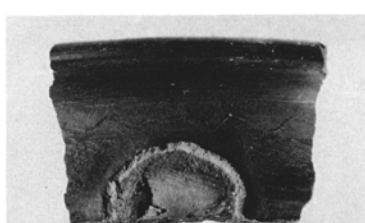
56



58



65



63



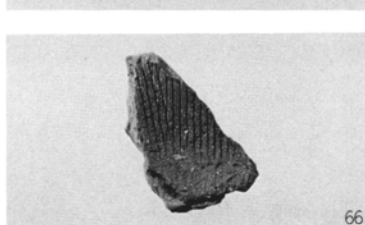
55



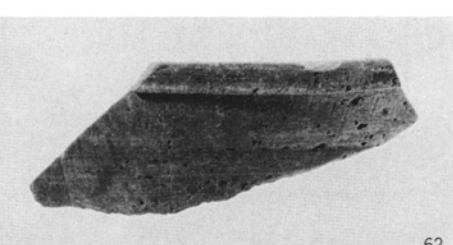
57



64



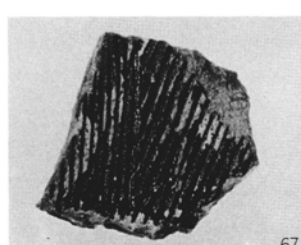
66



62



30



67



61

荒砥島原遺跡 昭和55年度県営圃場整備事業荒砥南部
地区に係る埋蔵文化財発掘調査報告書

昭和56年 3月26日 印刷

昭和56年 3月31日 発行

編集・発行／財団法人群馬県埋蔵文化財調査事業団
勢多郡北橋村大字下箱田784番地の2
電話 (0279) 52-2511(代表)

印刷／朝日印刷工業株式会社
