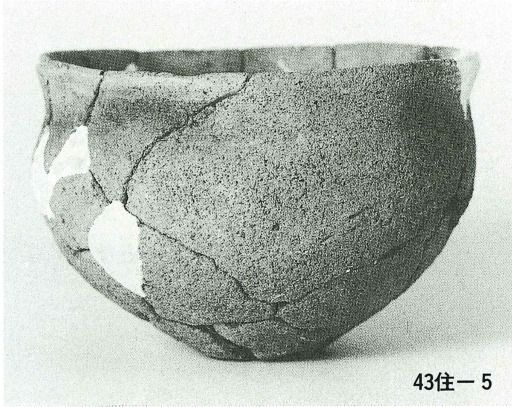


柳町遺跡出土遺物(18)



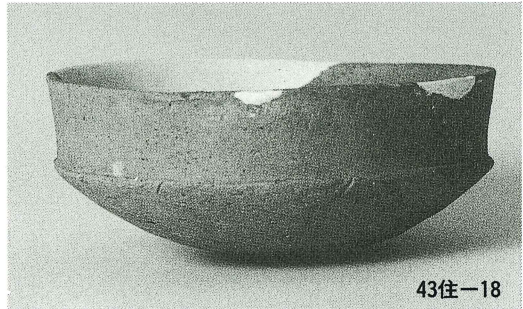
43住-5



43住-6



43住-9



43住-18



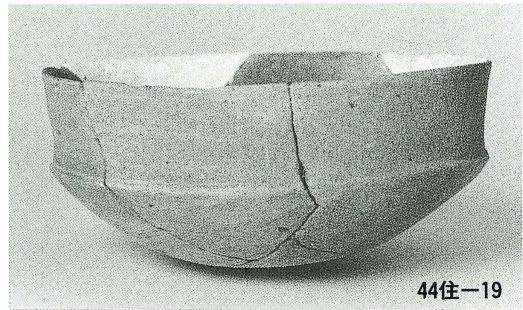
43住-10



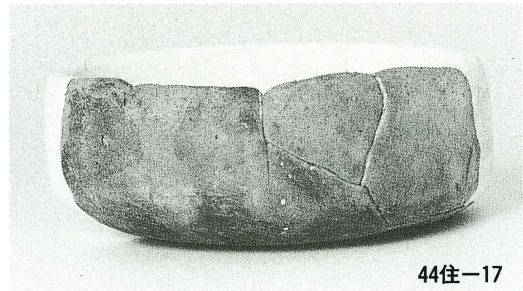
44住-34



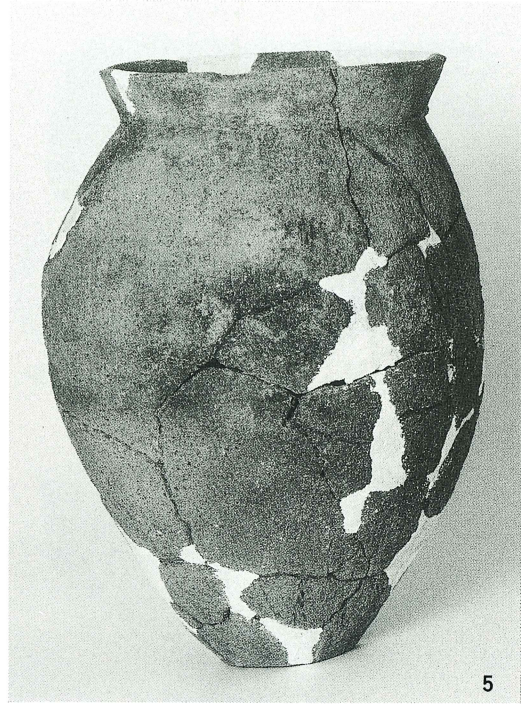
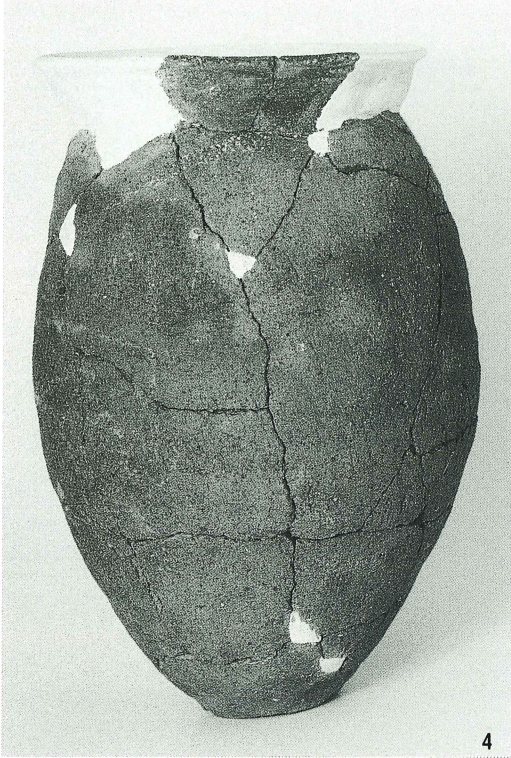
44住-24



44住-19



44住-17



柳町遺跡出土遺物(20)



46住-2



47住-4



50住-2



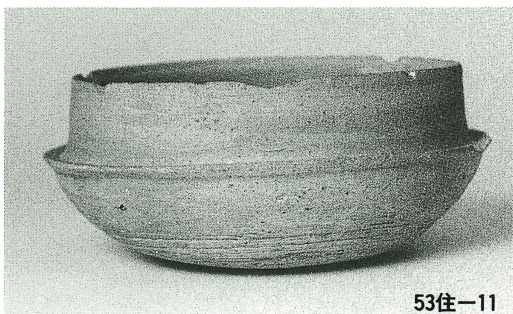
47住-1



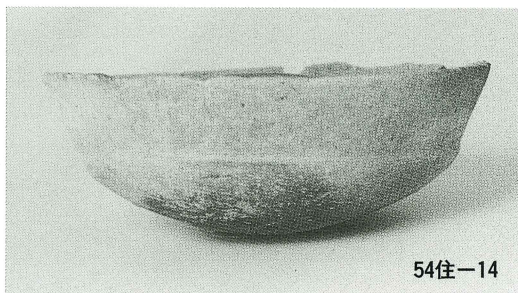
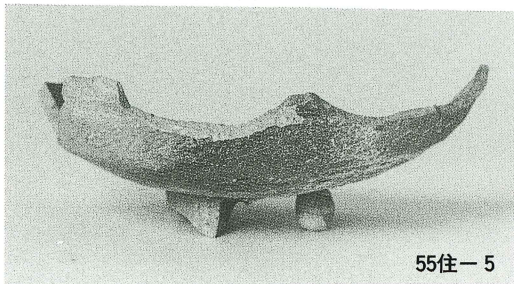
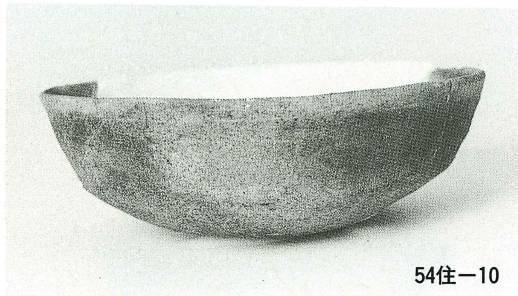
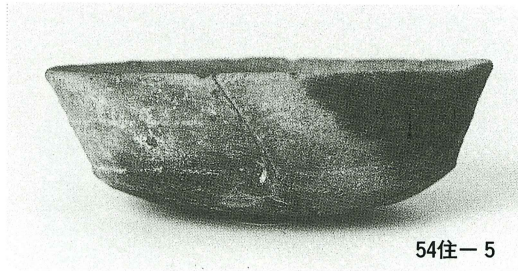
52住-6



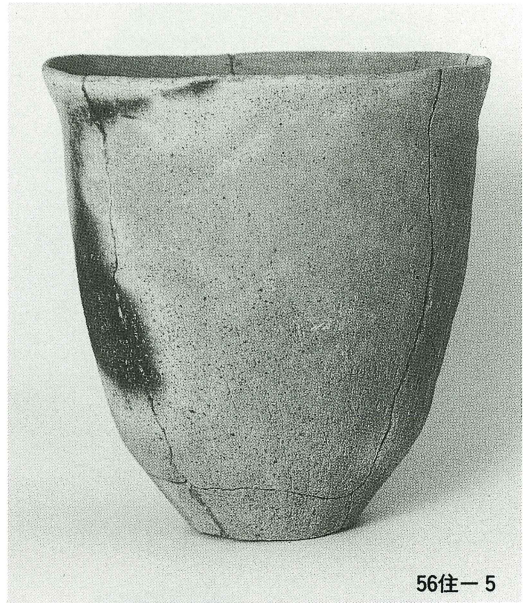
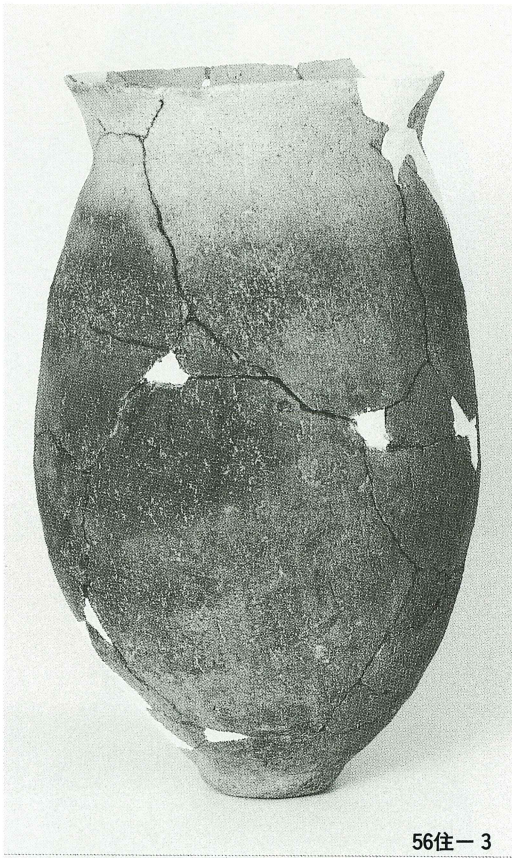
53住-5



53住-11



柳町遺跡出土遺物(2)



柳町遺跡出土遺物(23)



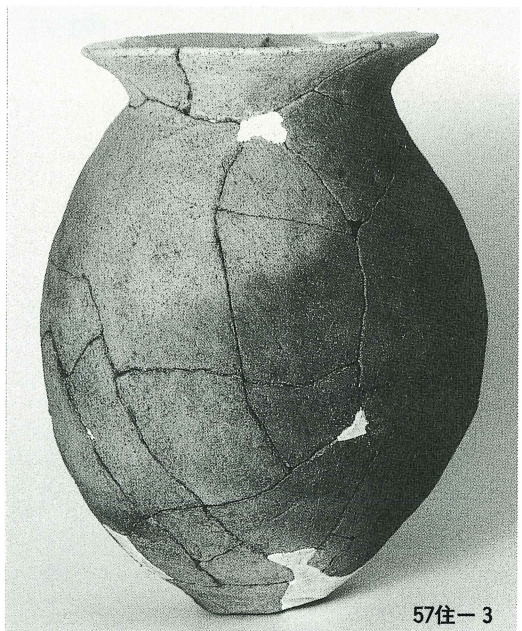
56住-9



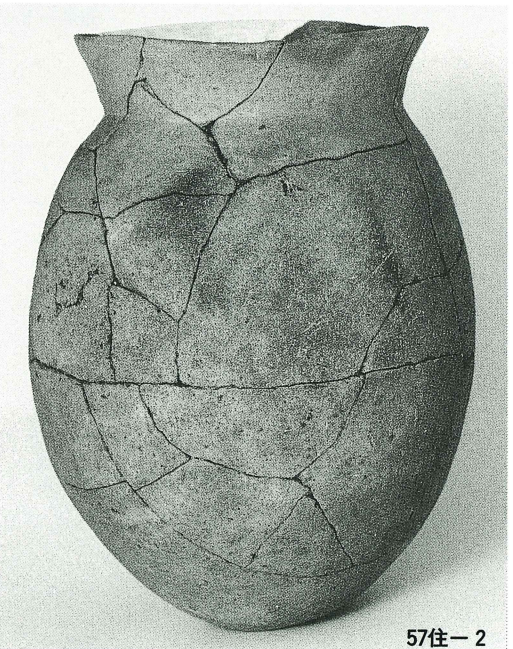
56住-11



57住-1



57住-3

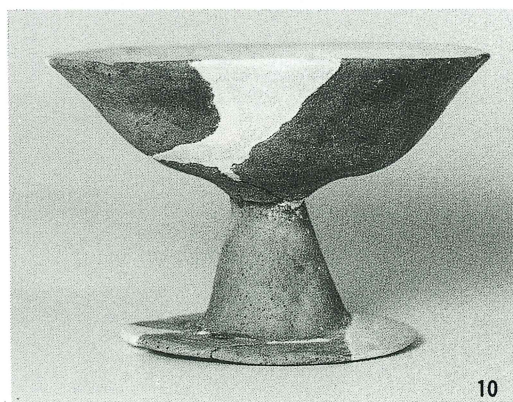
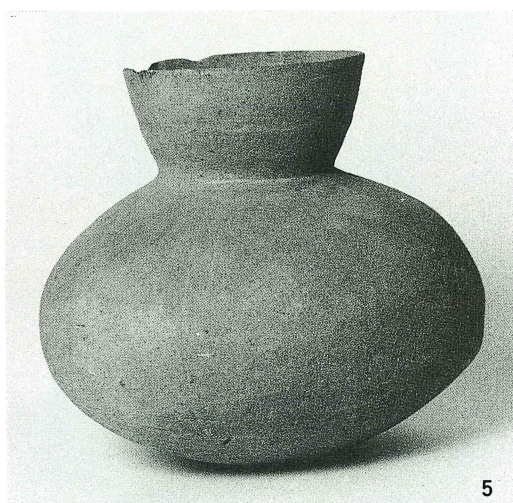
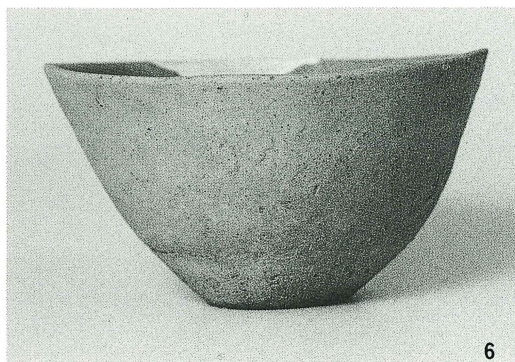


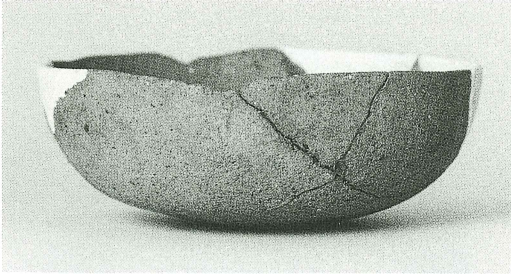
57住-2



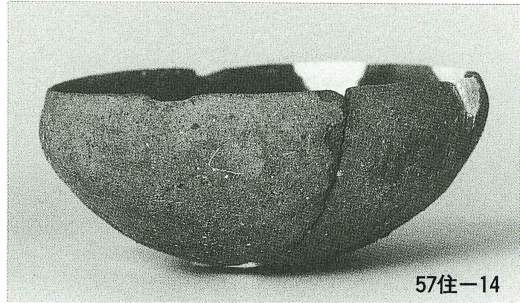
57住-4

柳町遺跡出土遺物(24)

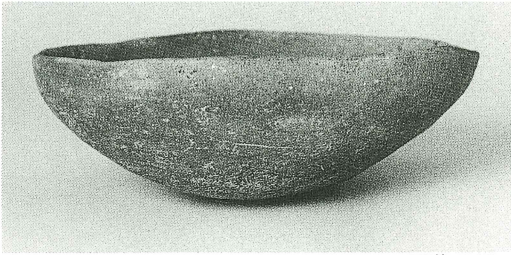




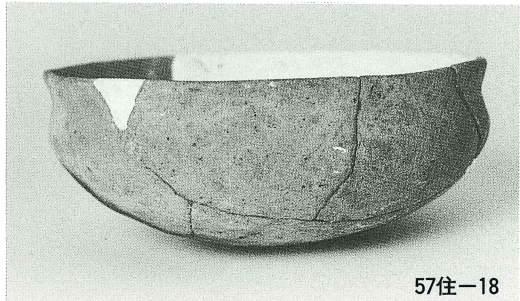
57住-13



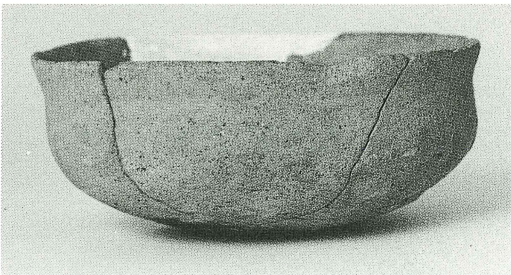
57住-14



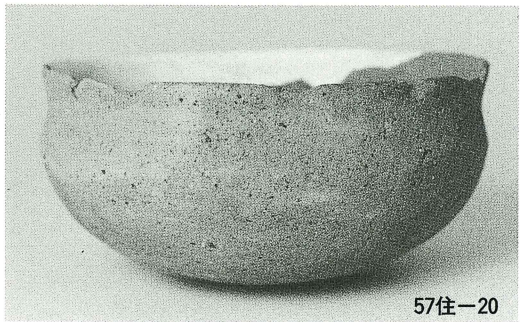
57住-16



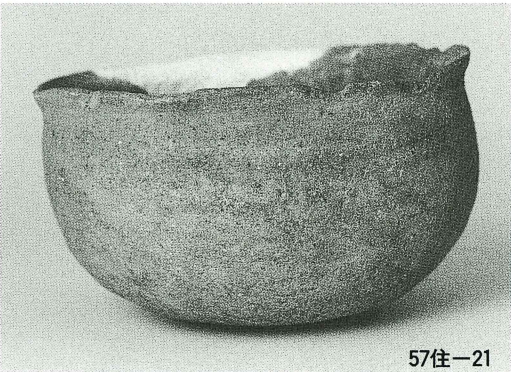
57住-18



57住-19



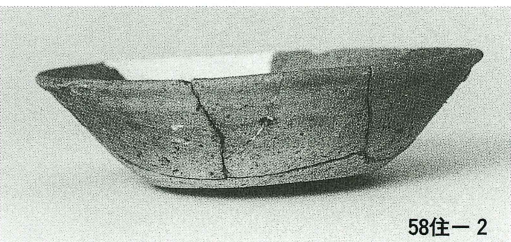
57住-20



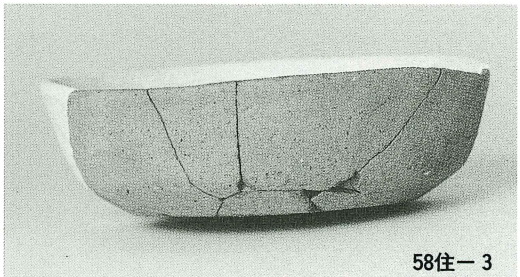
57住-21



57住-22

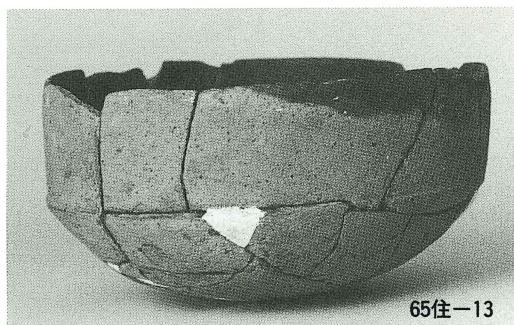
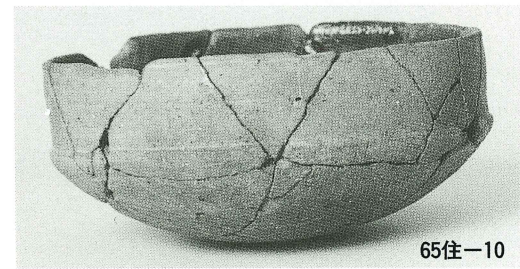
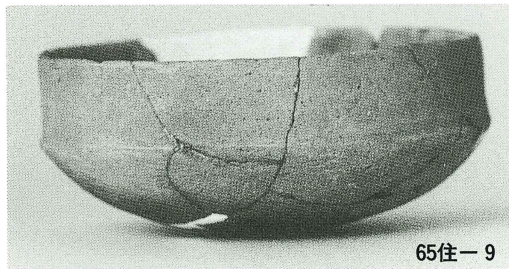
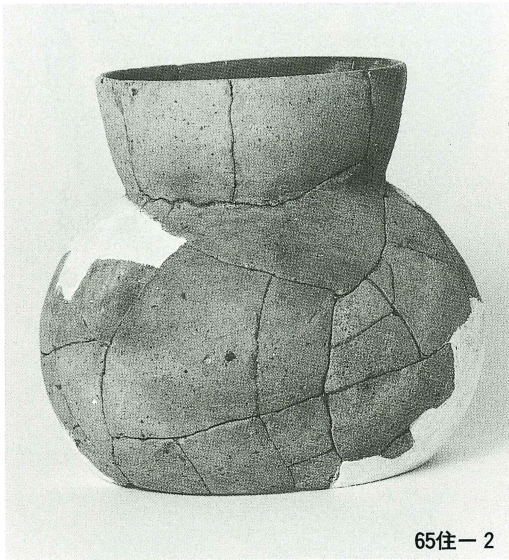
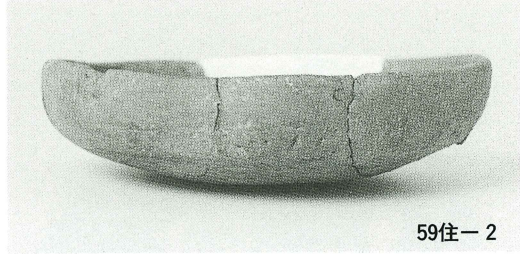
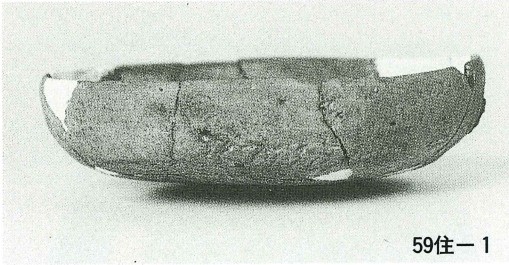


58住-2



58住-3

柳町遺跡出土遺物(26)



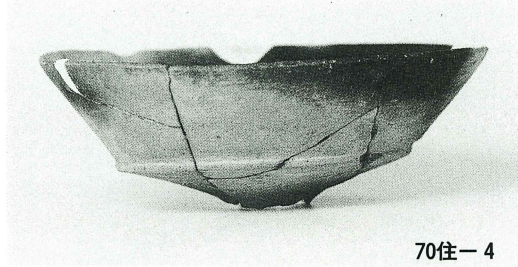
第59・65号住居跡



柳町遺跡出土遺物(28)



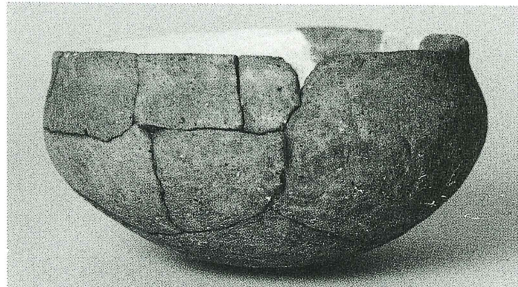
69住-4



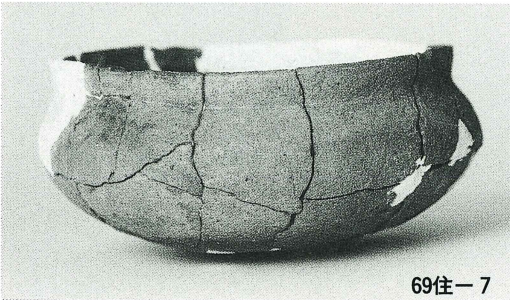
70住-4



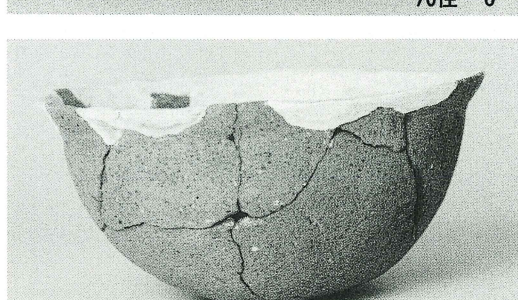
69住-5



70住-6



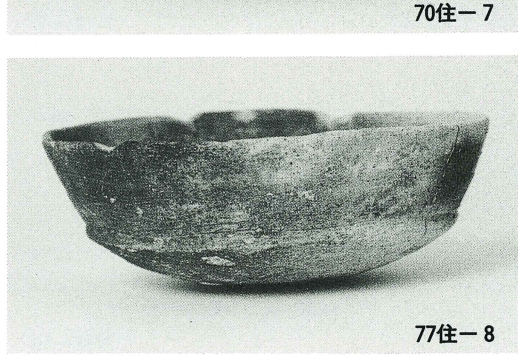
69住-7



70住-7



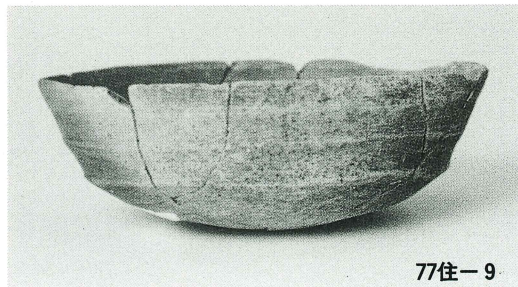
77住-5



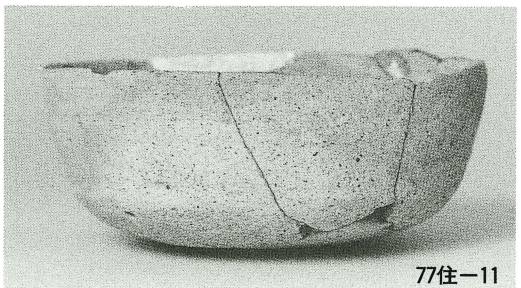
77住-8



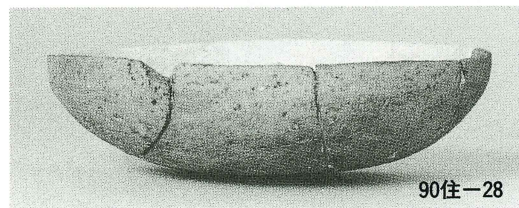
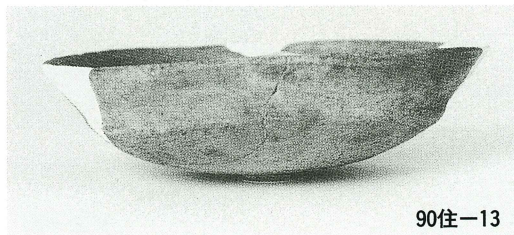
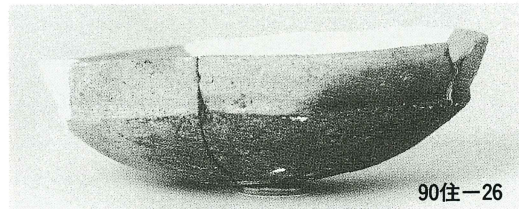
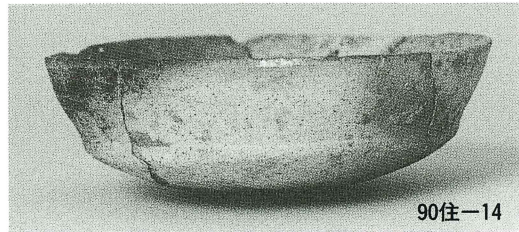
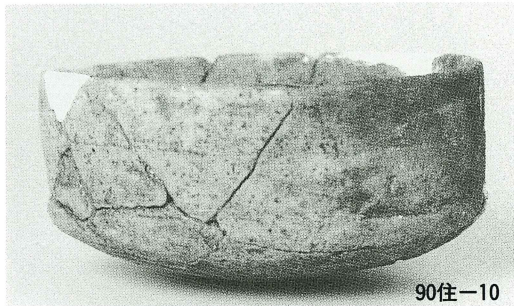
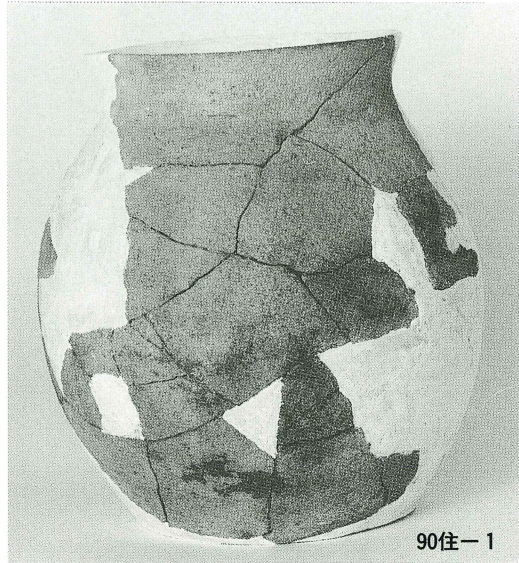
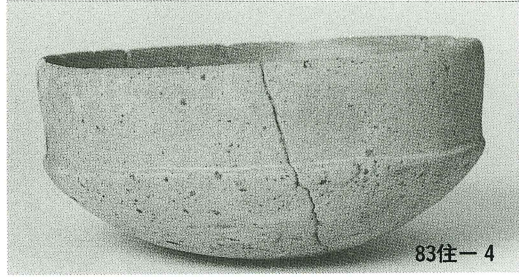
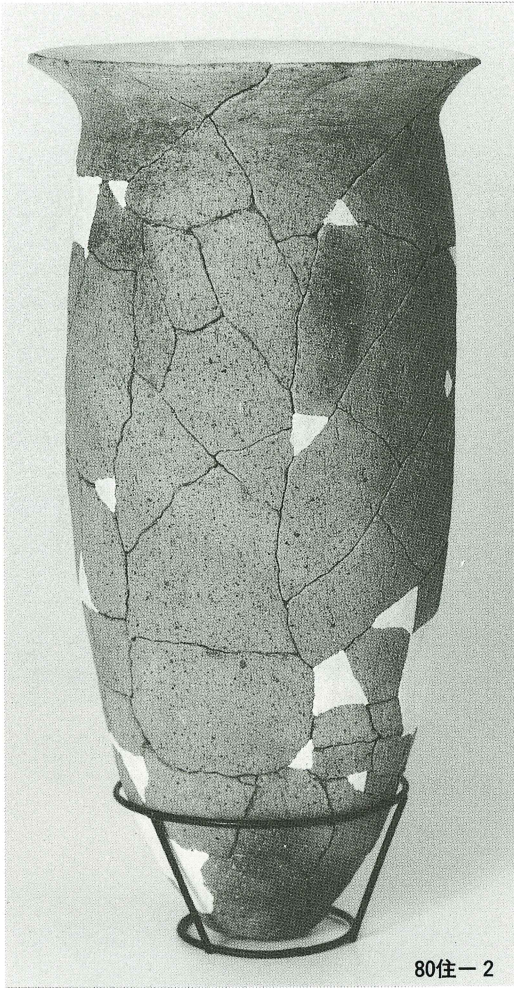
77住-7

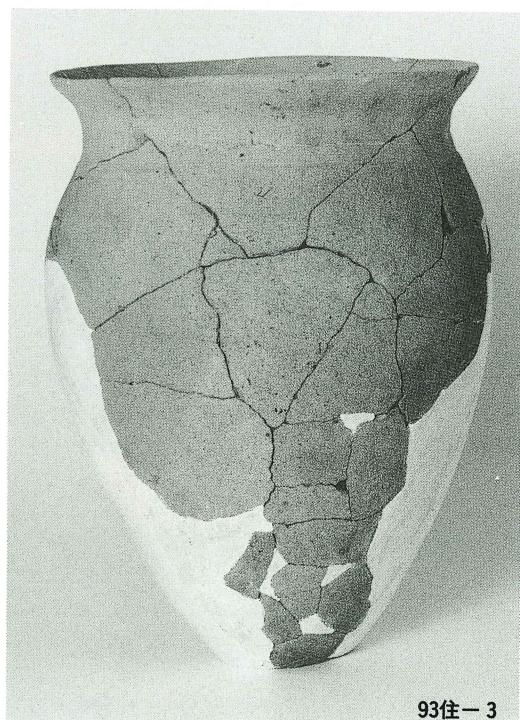


77住-9

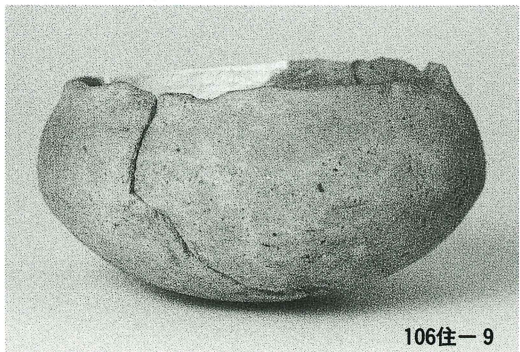
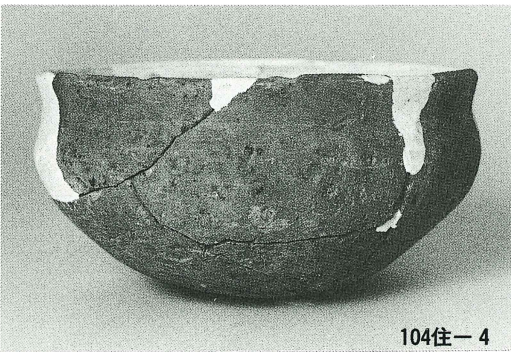
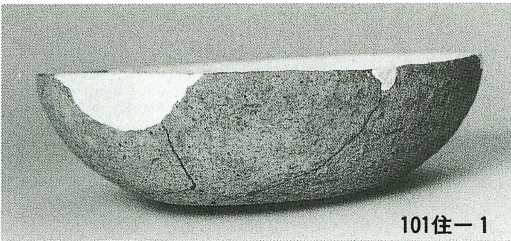
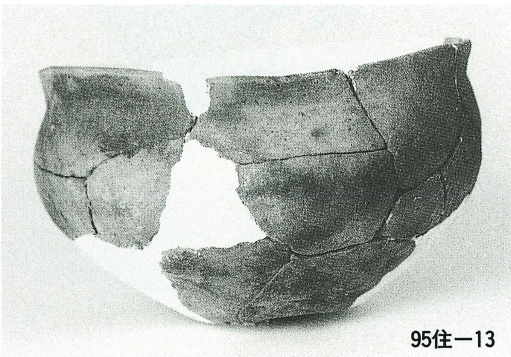
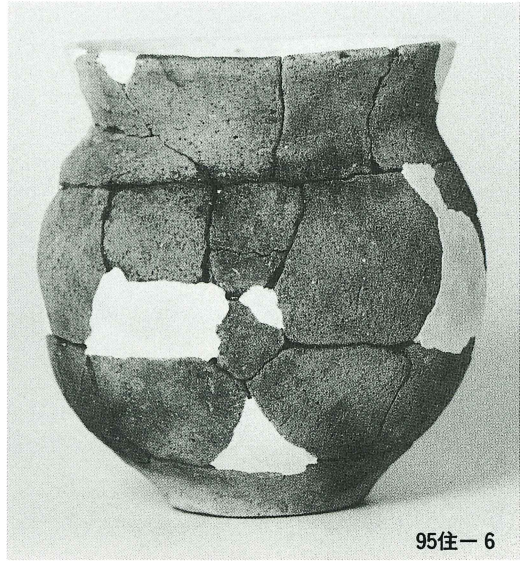
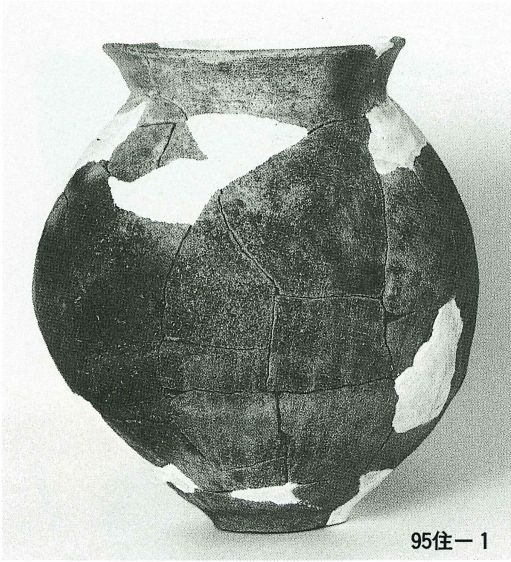


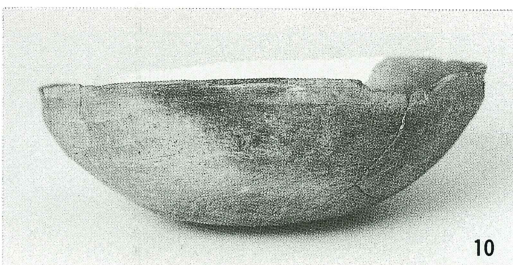
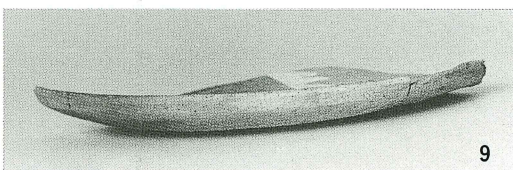
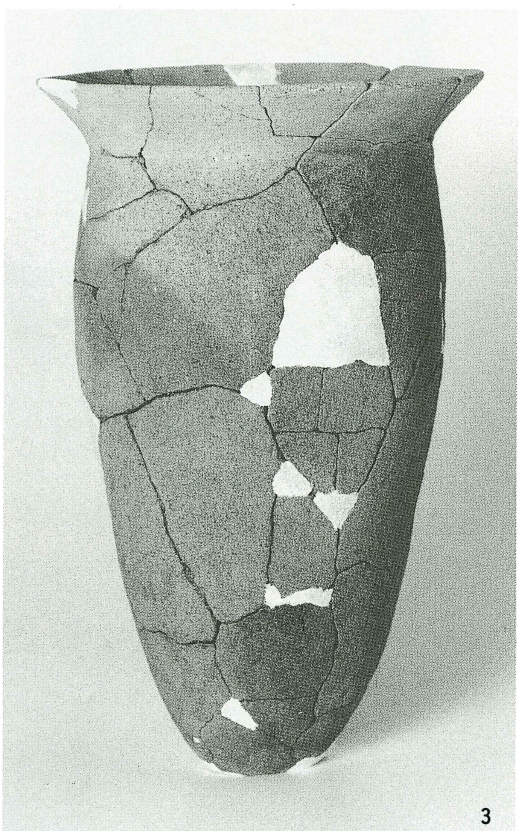
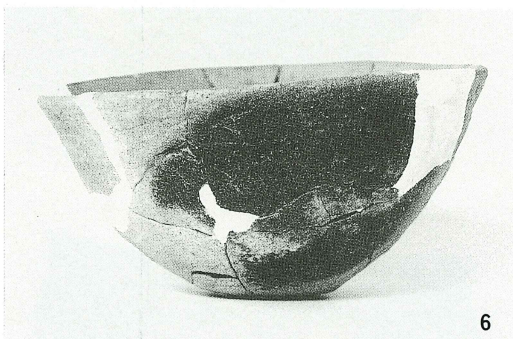
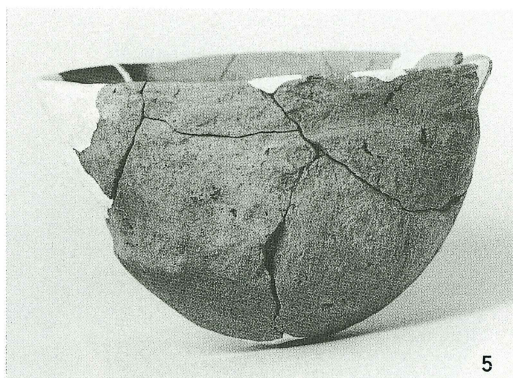
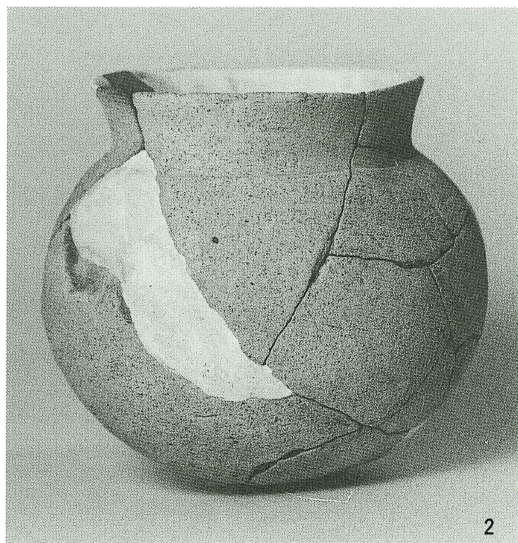
柳町遺跡出土遺物(30)



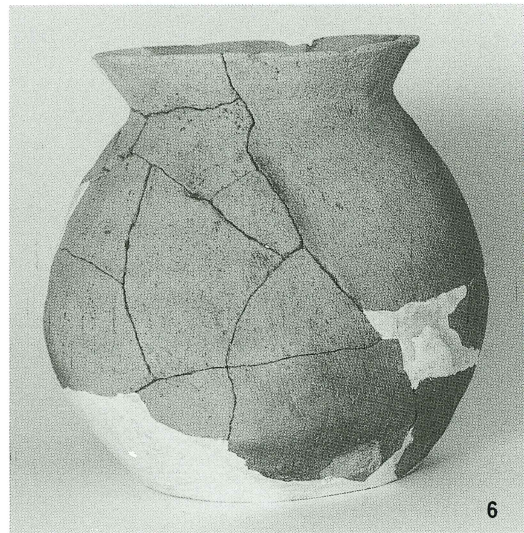
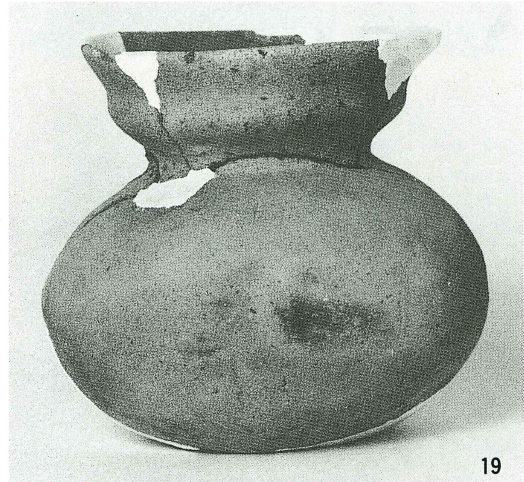
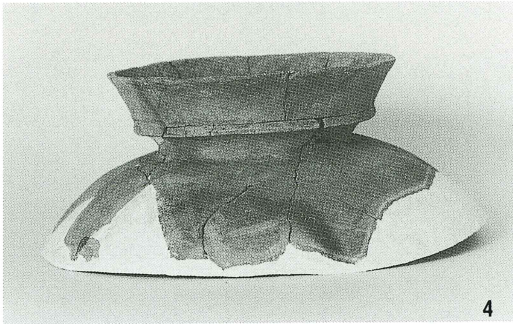


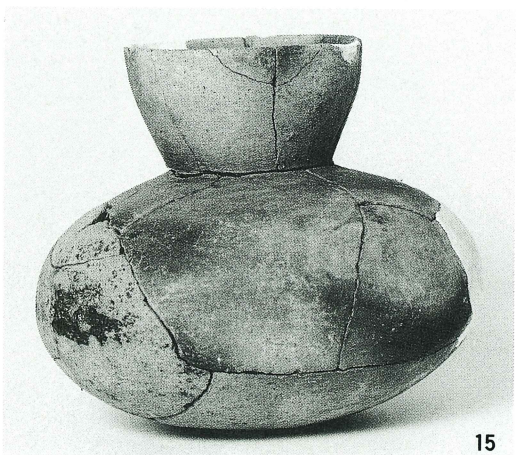
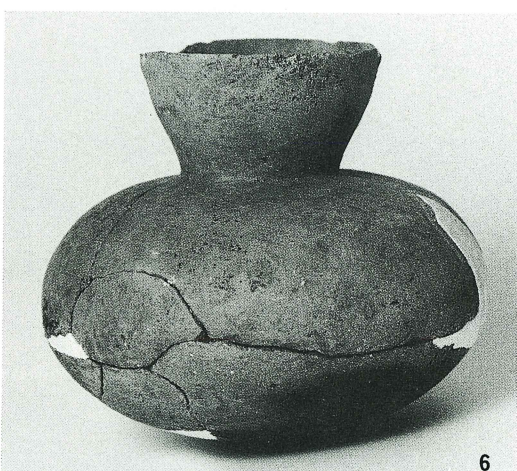
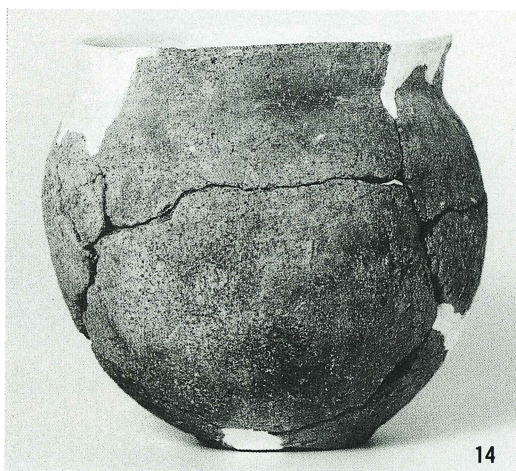
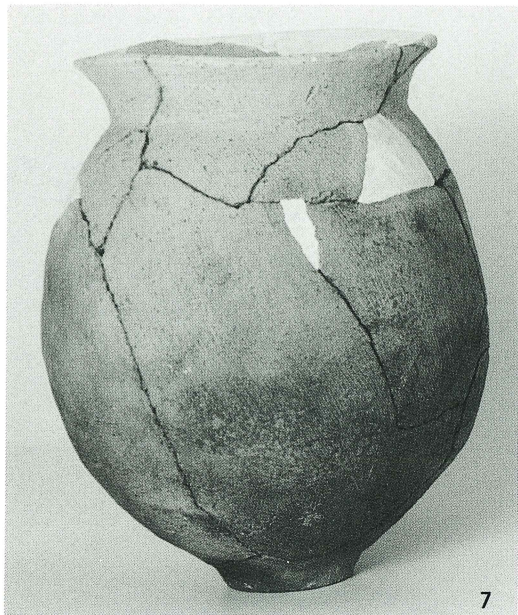
柳町遺跡出土遺物(32)



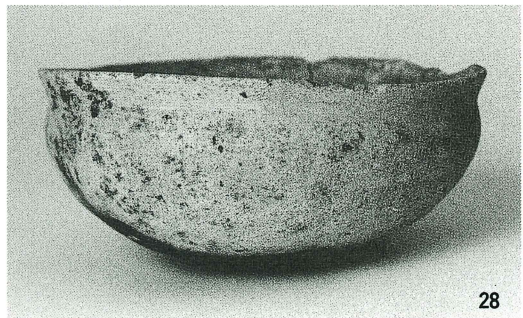
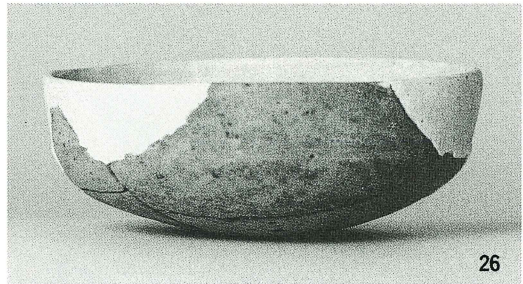


柳町遺跡出土遺物(34)

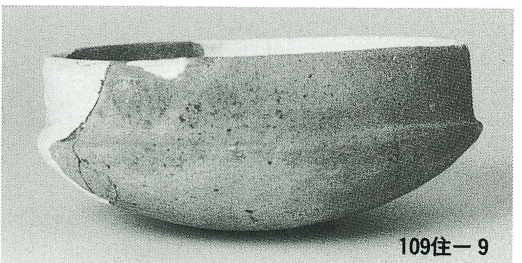
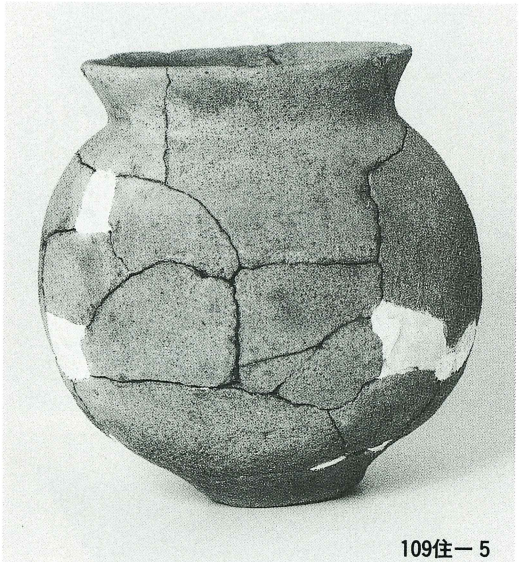
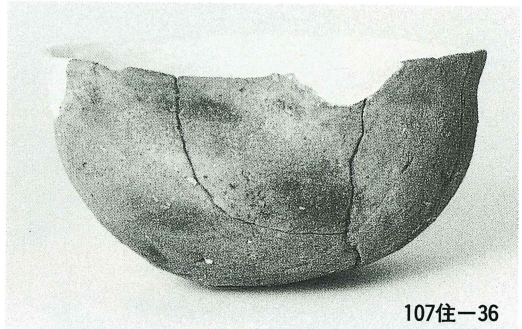
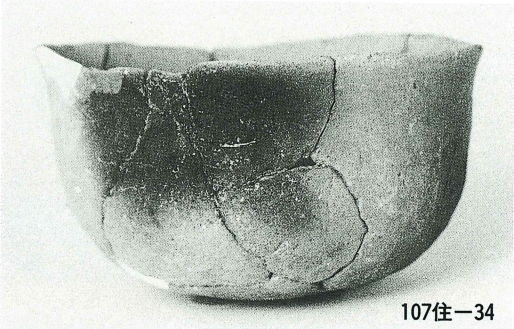
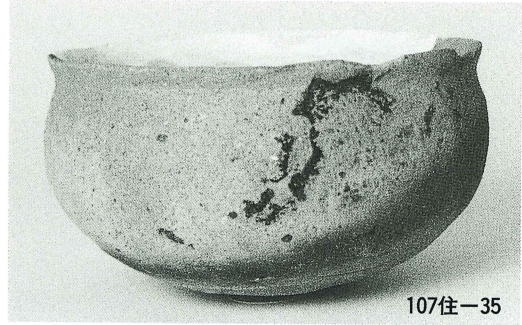
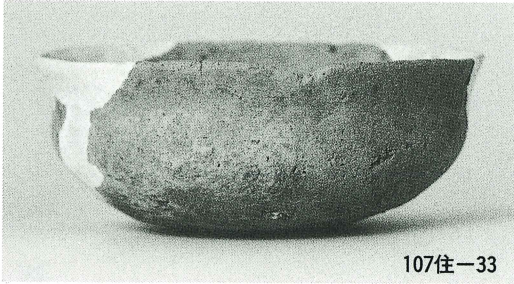




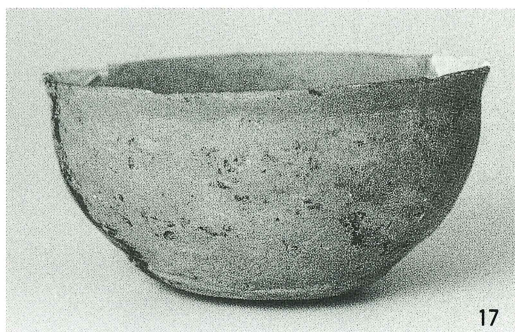
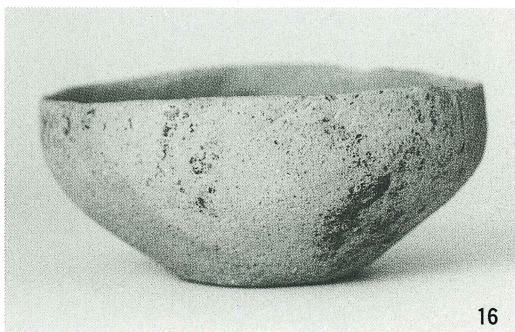
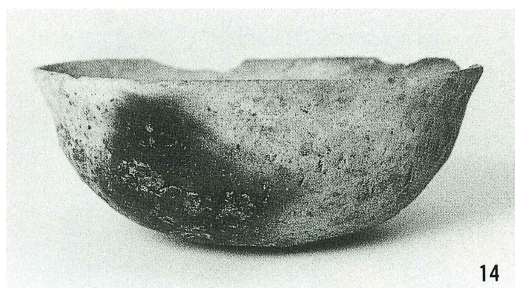
柳町遺跡出土遺物(36)

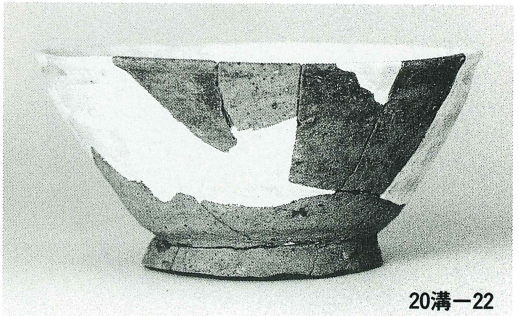
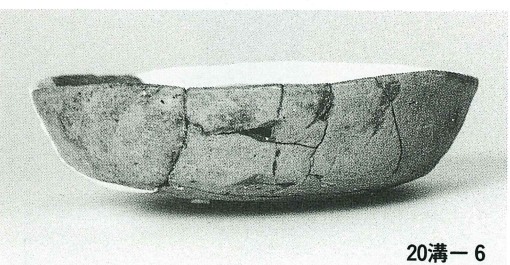
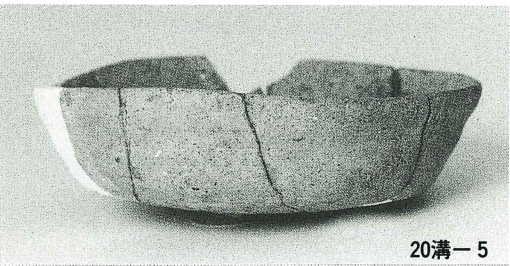
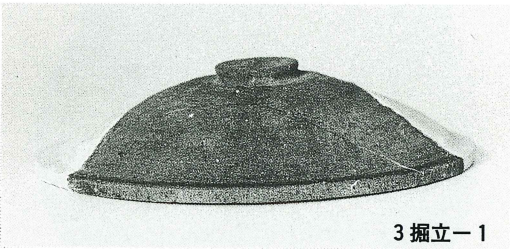
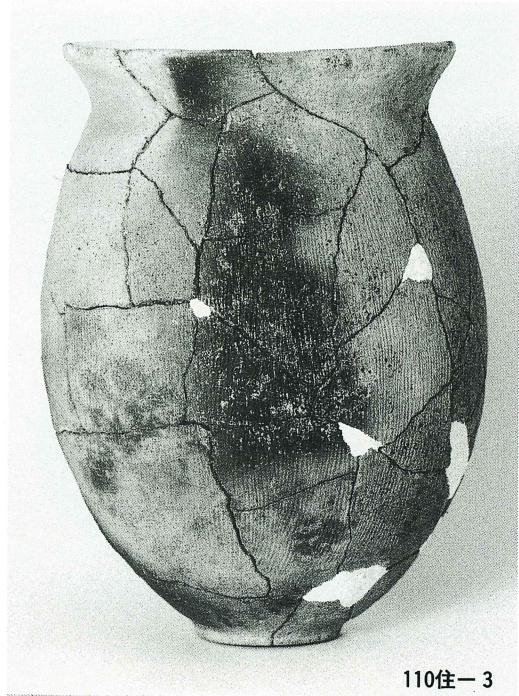
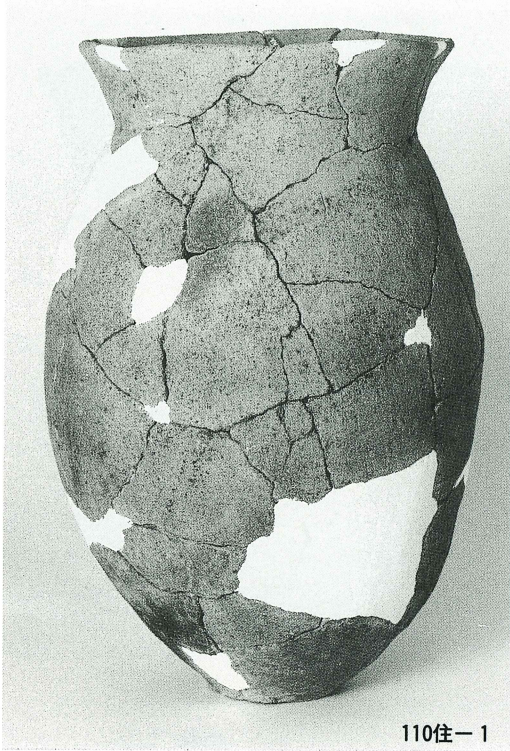


柳町遺跡出土遺物(37)

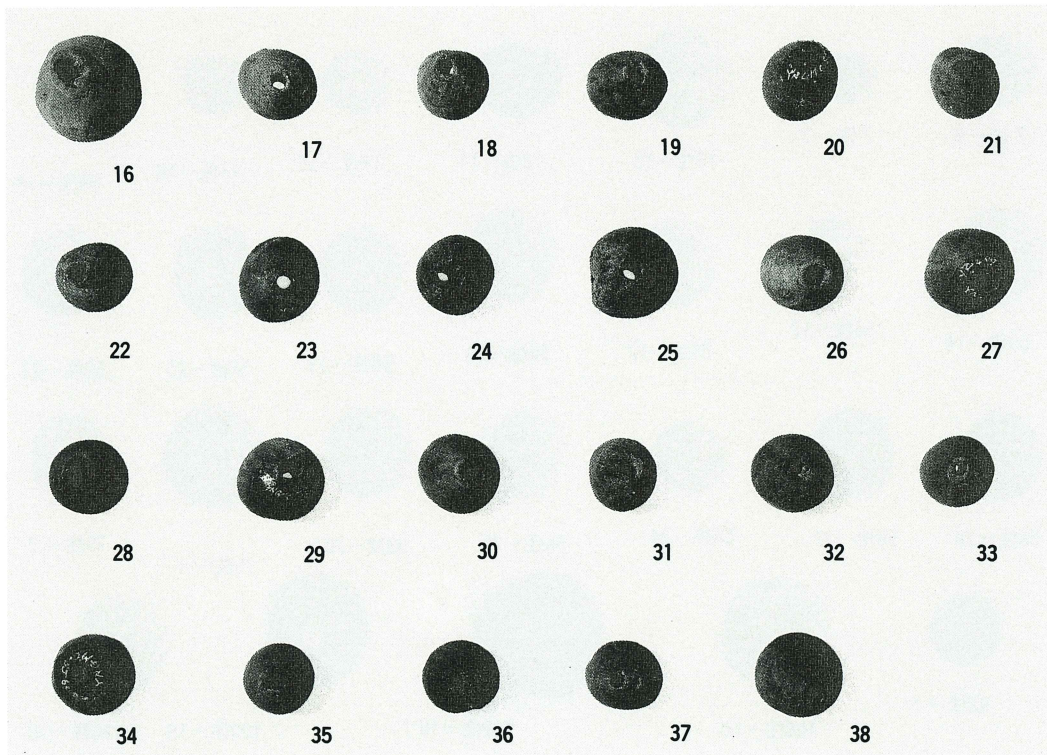
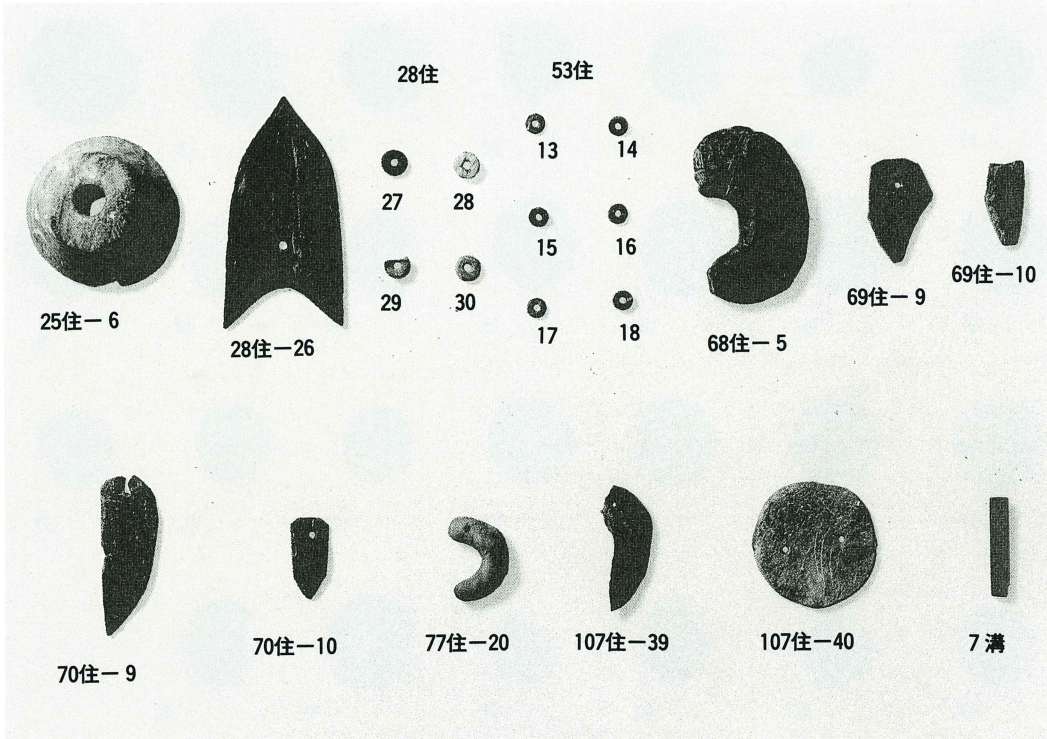


柳町遺跡出土遺物(38)

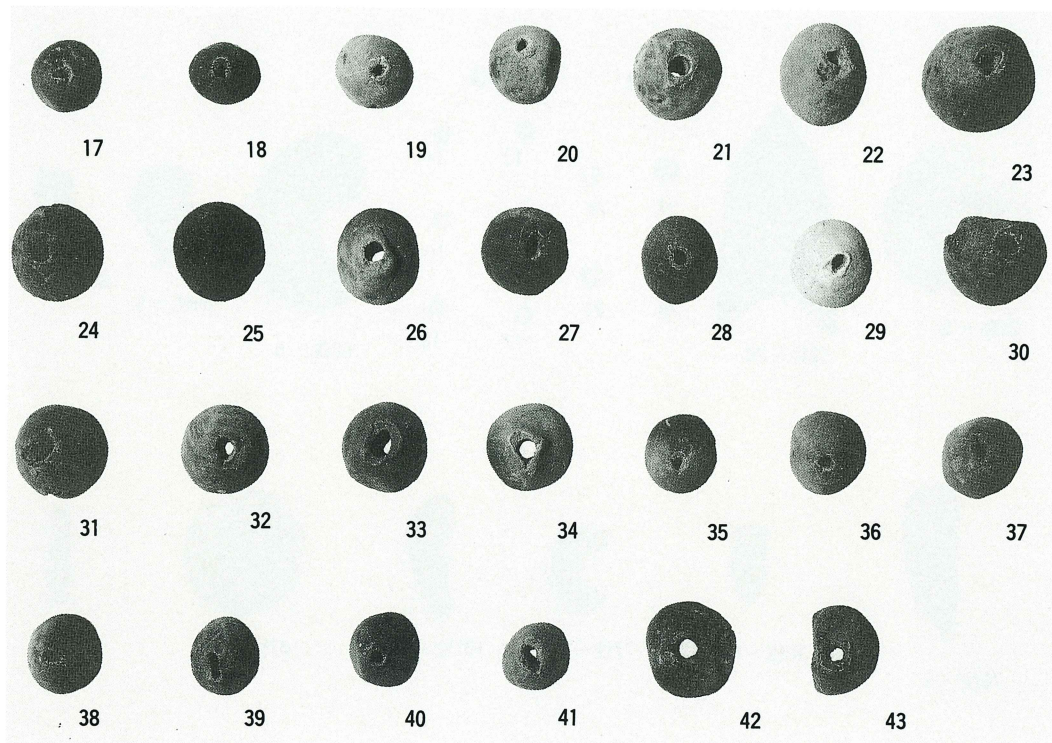




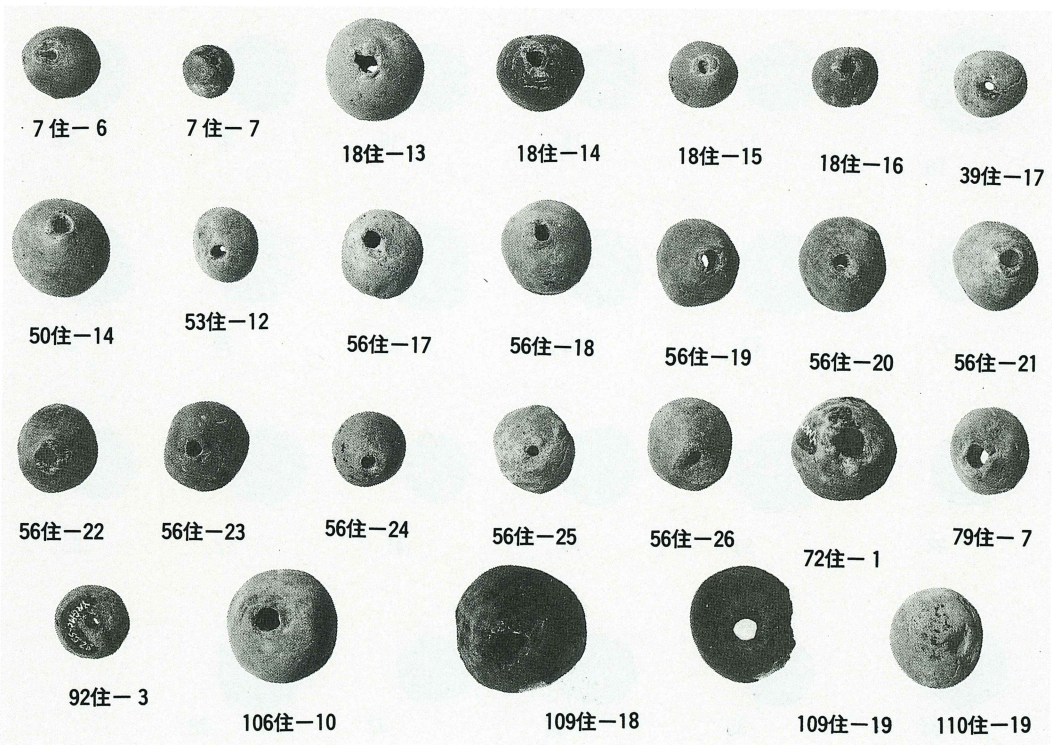
柳町遺跡出土遺物(40)



柳町遺跡出土遺物(41)

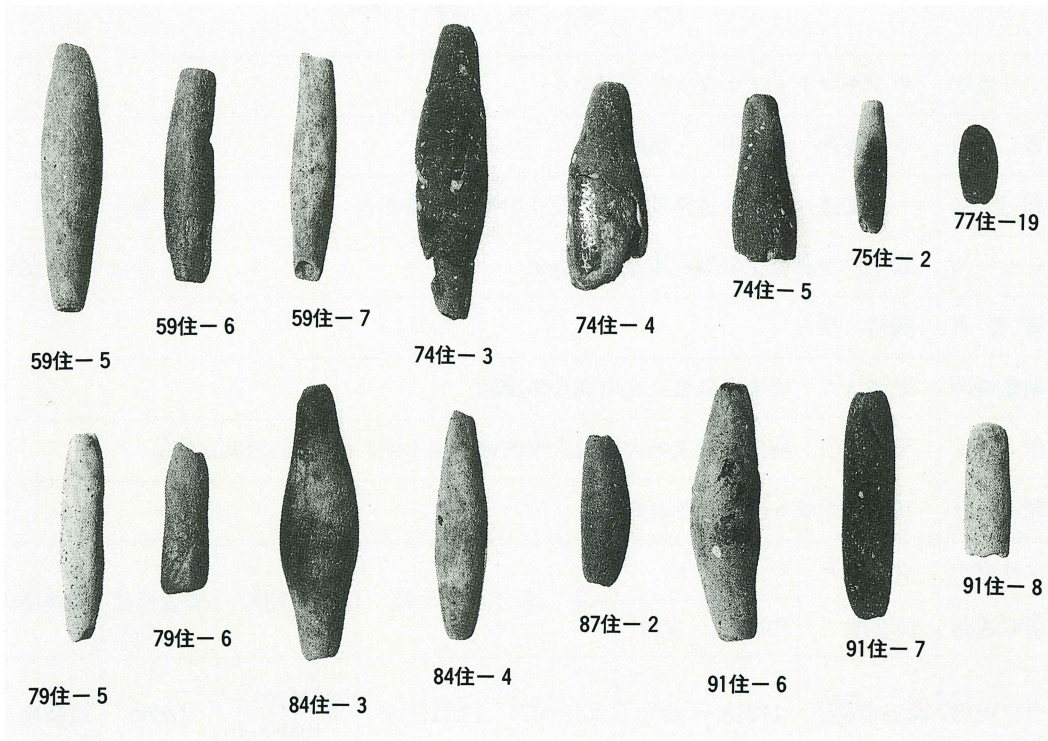


土玉 (第65号住居跡)

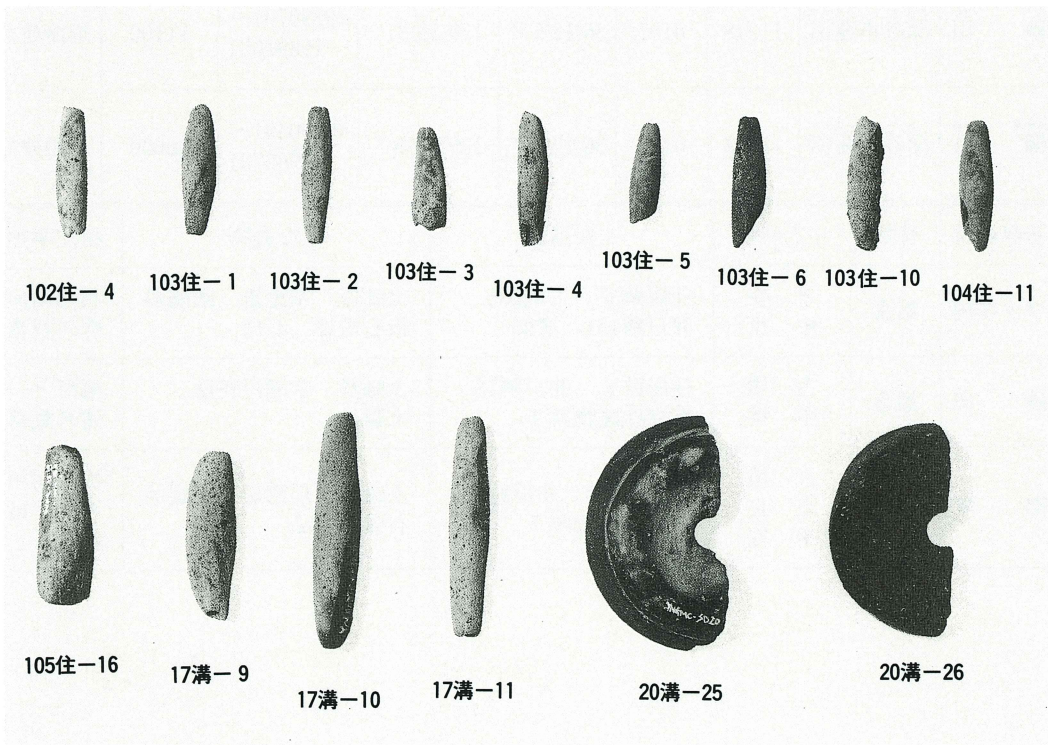


土玉 (住居跡)

柳町遺跡出土遺物(42)



土錘(1)



土錘(2)・紡錘車

報 告 書 抄 録

フリガナ	ウツギウチ・スナダ・ヤナギマチ							
書 名	ウツギ内 ・ 砂田 ・ 柳町							
副 書 名	一般国道17号上武道路関係埋蔵文化財発掘調査報告					巻次	I	
シリーズ	埼玉県埋蔵文化財調査事業団報告書					巻次	第126集	
編 著 者	劔持 和夫							
編集機関	財団法人 埼玉県埋蔵文化財調査事業団							
所 在 地	〒369-01 埼玉県大里郡大里村大字箕輪字船木884 Tel 0493(39)3955							
発 行 日	1993(平成5)年3月31日							
フリガナ 所収遺跡	フリガナ	コード		北 緯	東 経	調査期間	調査面積 (㎡)	調査原因
	所在地	市町村	遺跡					
ウツギ内	フカヤ ハスヌマ 深谷市蓮沼	11218	0256	36°13'07"	139°19'19"	19881201~ 19890631	18900	道路建設
スナダ 砂 田	フカヤ ハスヌマ 深谷市蓮沼	11218	0167	36°12'57"	139°19'37"	19890701~ 19891031	11100	道路建設
ヤナギ 柳 町	フカヤ ハスヌマ 深谷市蓮沼	11218	0171	36°12'50"	139°19'46"	19890401~ 19900731	16000	道路建設
所収遺跡	種別	主な時代	主な遺構		主な遺物		特記事項	
ウツギ内	集落	平 安 中 世	住居跡6 土坑205 井戸跡151 溝95		土師器 須恵器 陶磁器 板石塔婆 石臼		利根川河 畔の村落	
砂 田	集落	古 墳 中 世	住居跡8 井戸跡18 掘立柱建物跡1		土師器 古瀬戸花瓶 土製品		柳町と一 連の集落	
柳 町	集落	古 墳 奈 良 平 安	住居跡110 井戸跡11 掘立柱建物跡7		土師器 須恵器 土製品 石製模造品		埋没河川 の対岸は 城北	

埼玉県埋蔵文化財調査事業団報告書 第126集

ウツギ内・砂田・柳町

一般国道17号上武道路関係埋蔵文化財発掘調査報告

— I —

平成5年3月15日 印刷

平成5年3月31日 発行

発行 財団法人 埼玉県埋蔵文化財調査事業団

〒369-01 埼玉県大里郡大里村大字箕輪字船木884

Tel 0493(39)3955

印刷 アサヒ印刷株式会社