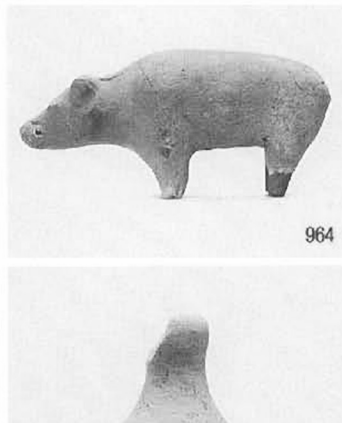
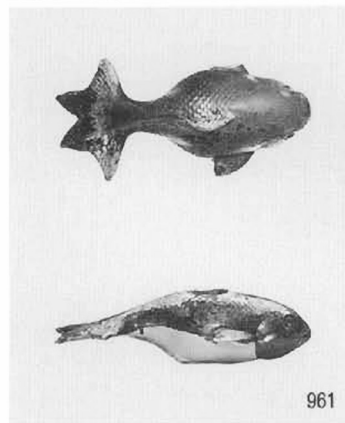
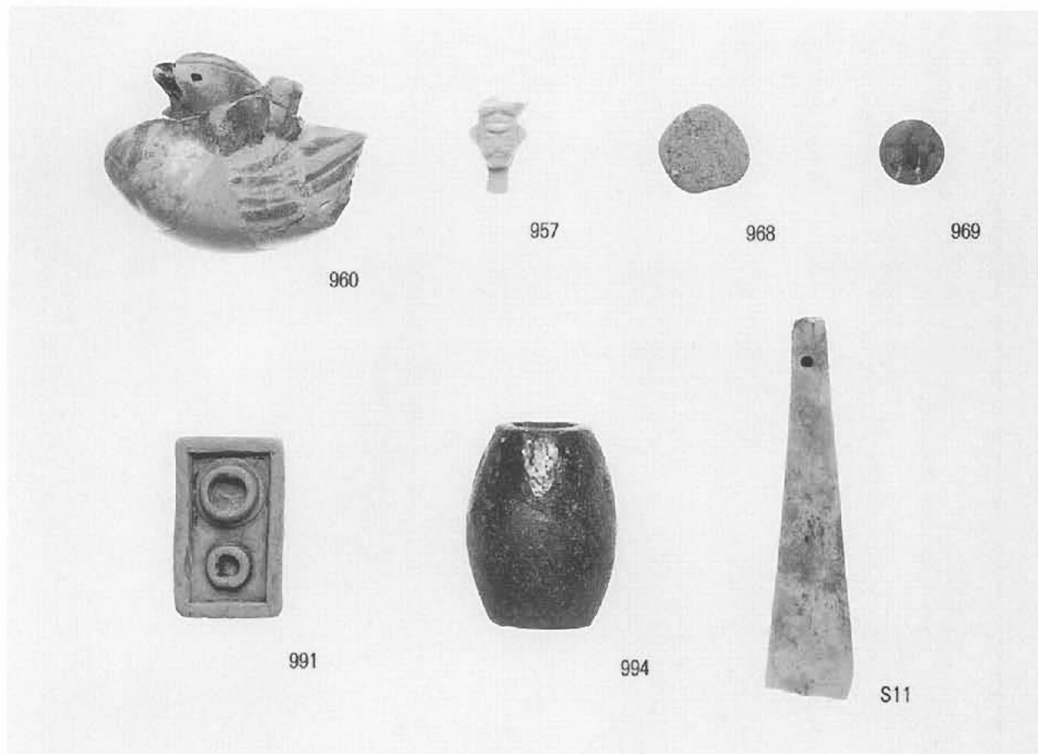


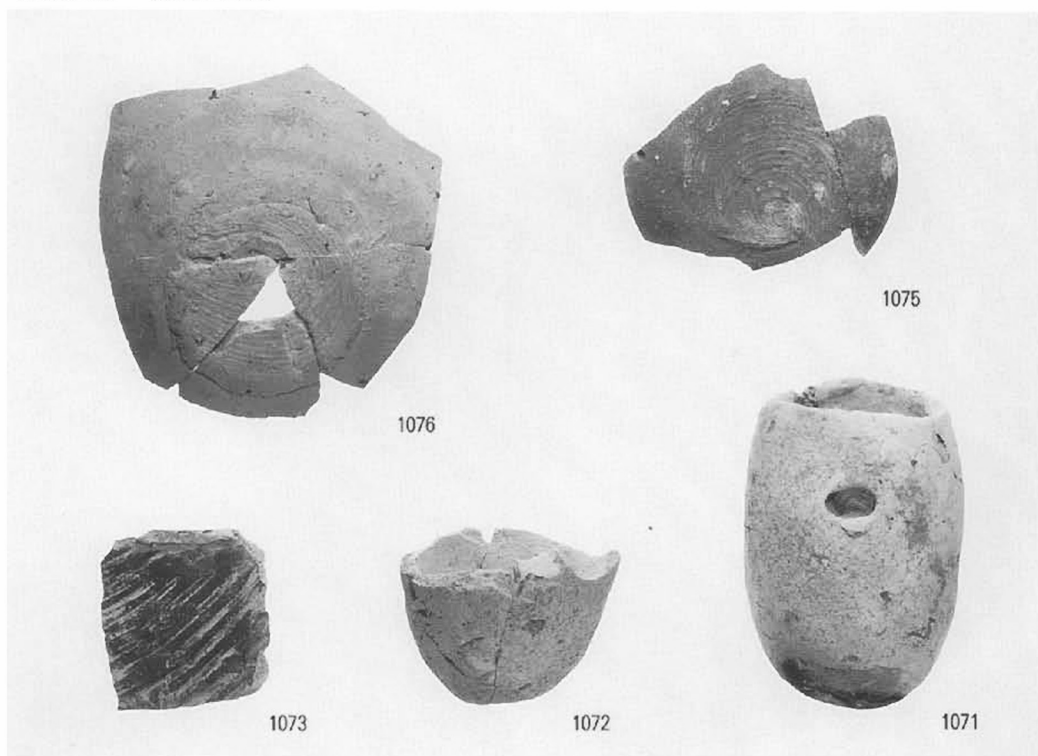
人形・玩具類



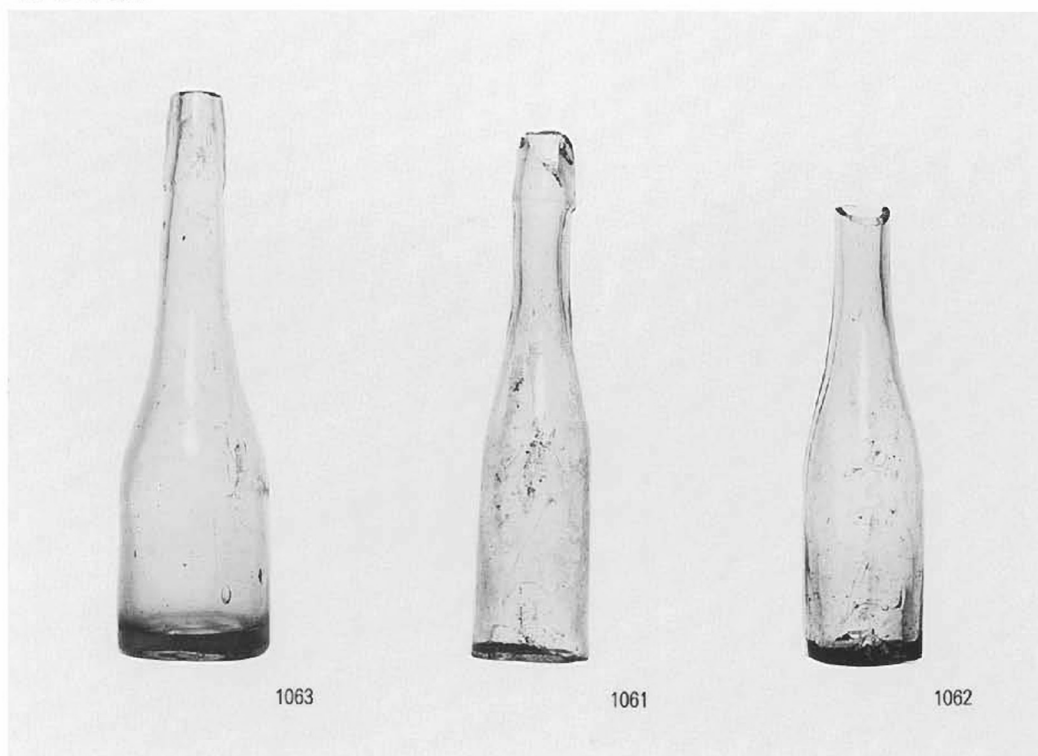
玩具類



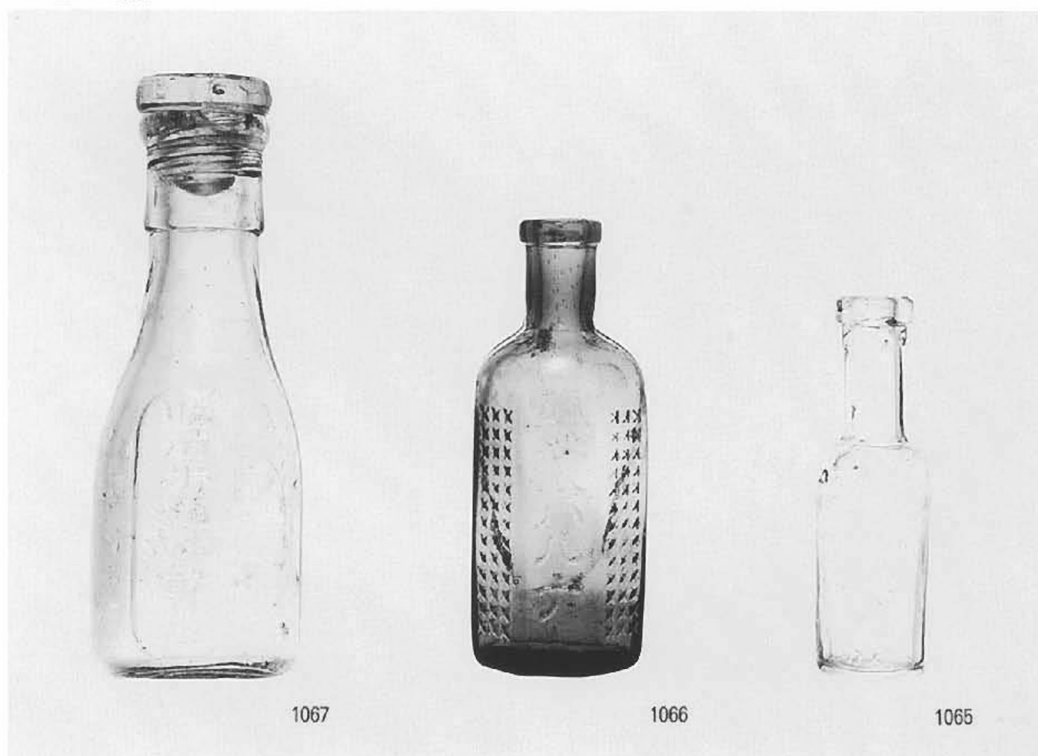
須恵器・弥生土器



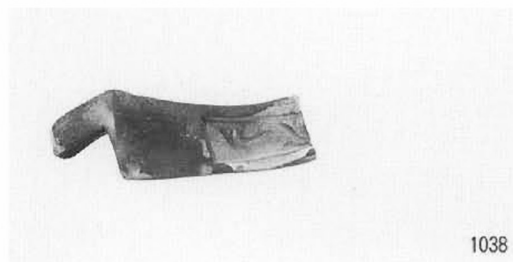
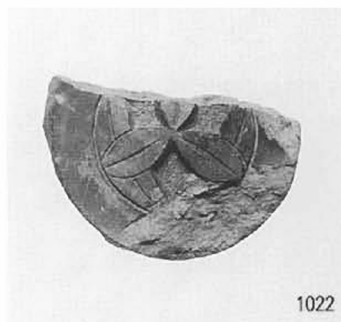
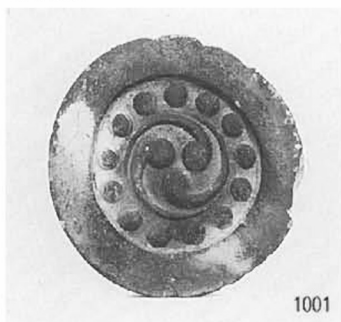
ガラス瓶



ガラス瓶



軒瓦



汽車土瓶



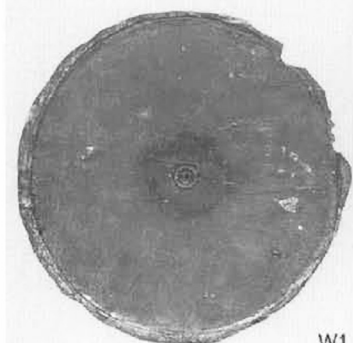
漆器



W4



W5



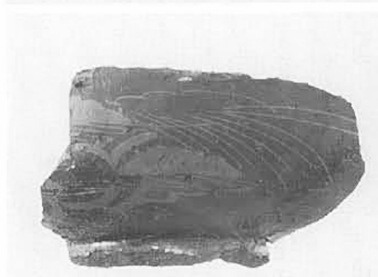
W1



W10



W11



W18



W9



W14



W19



W17

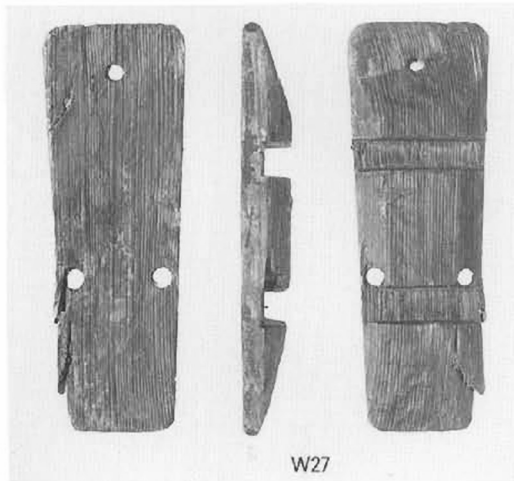
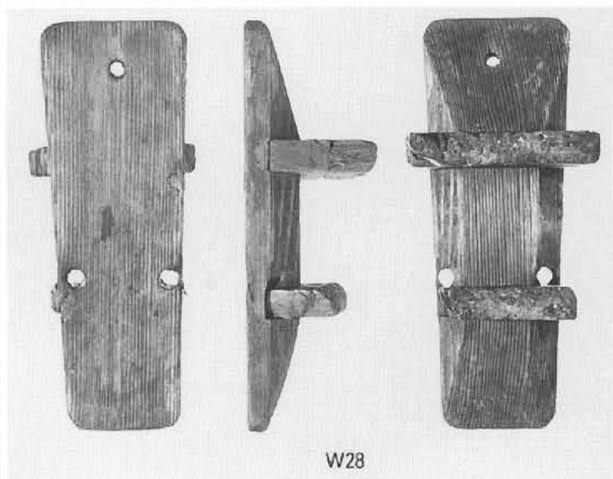
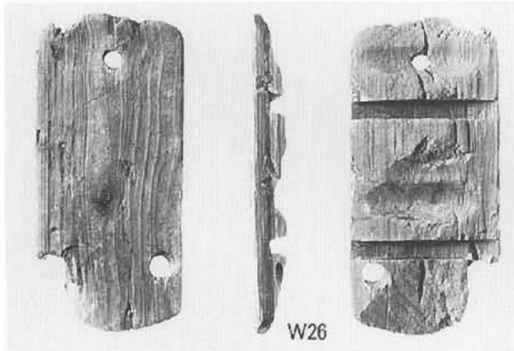
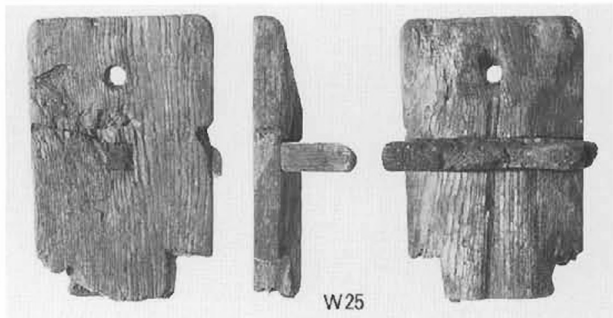
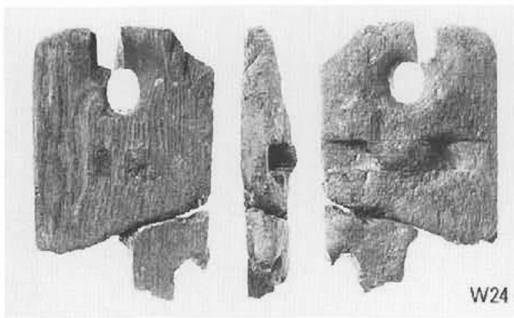
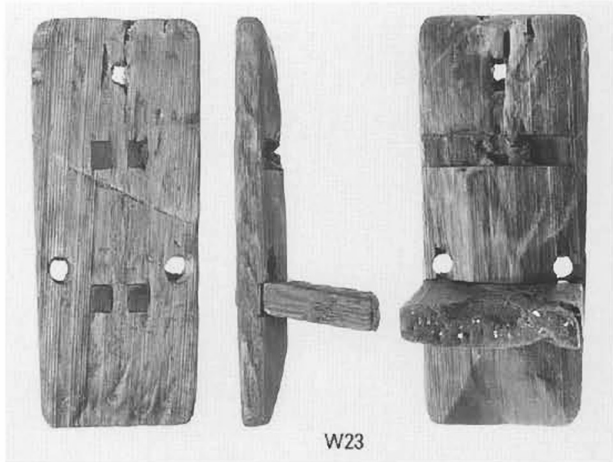
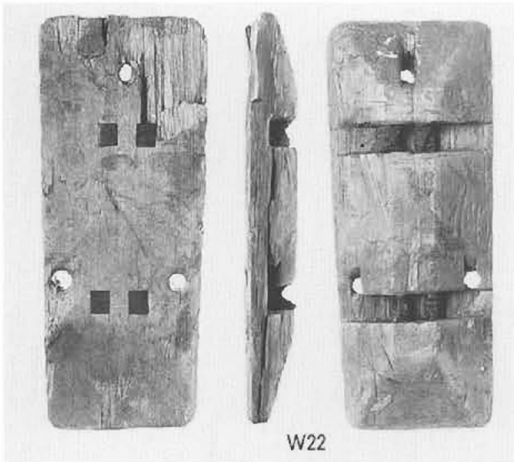


W20

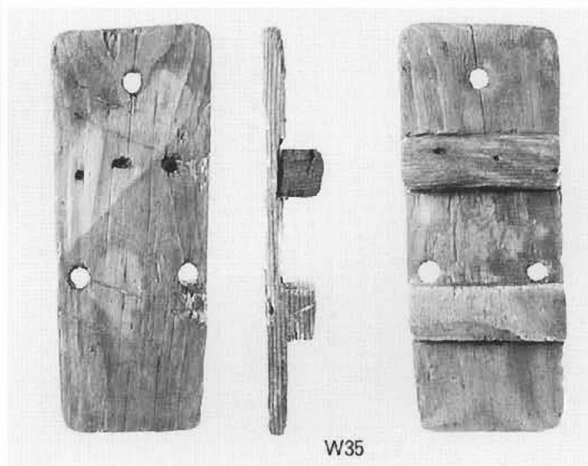
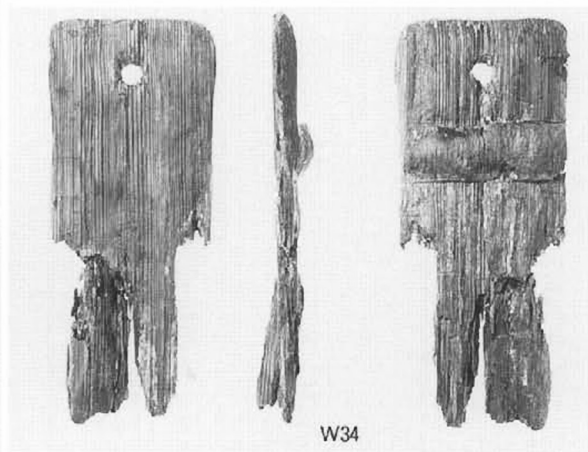
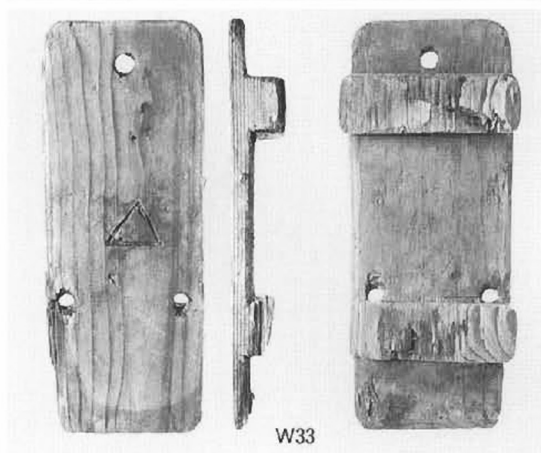
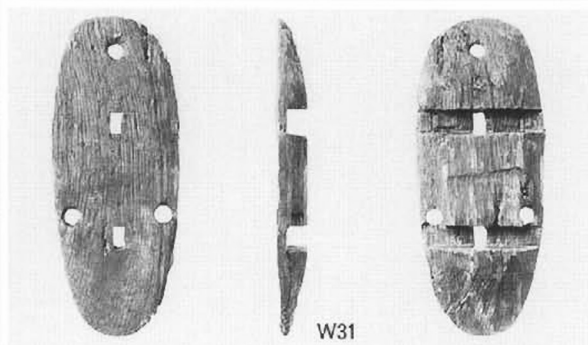
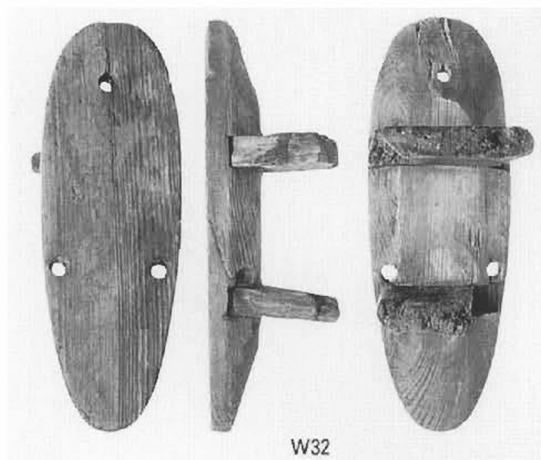
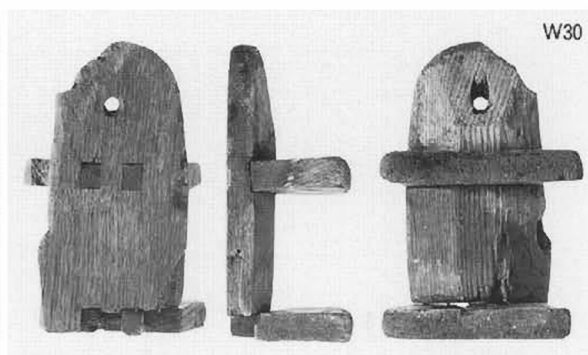
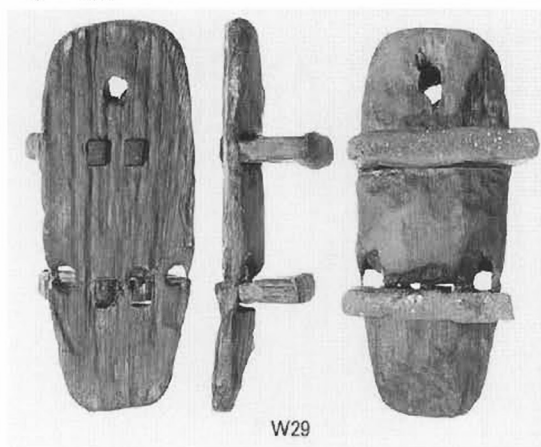


W21

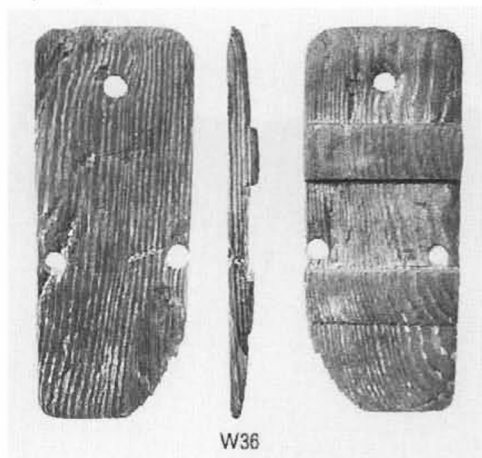
下 駄



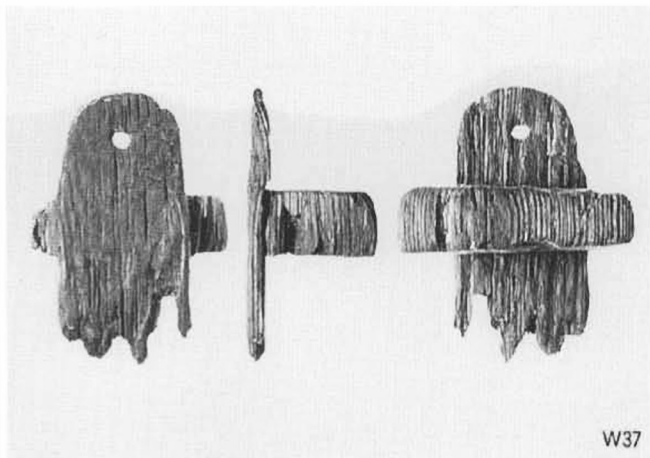
下 駄



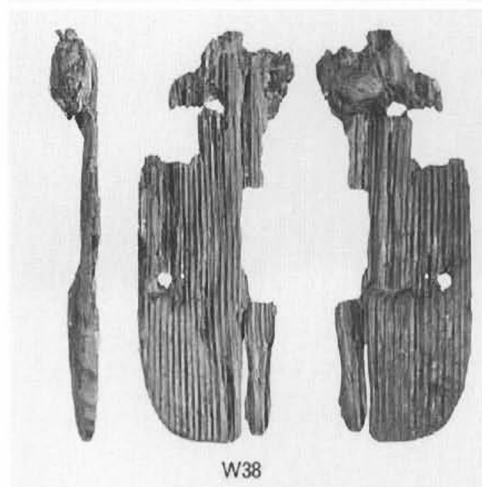
下 駄



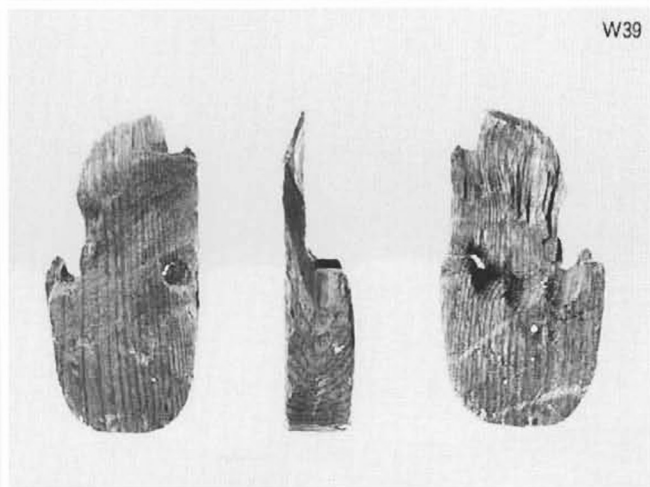
W36



W37



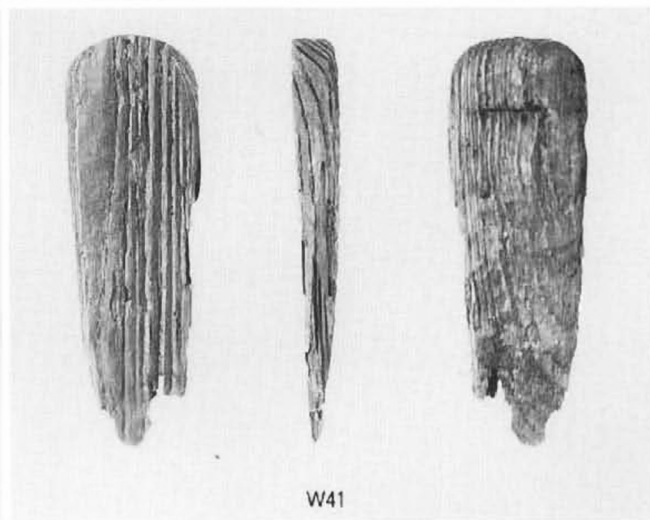
W38



W39



W40



W41

木製品



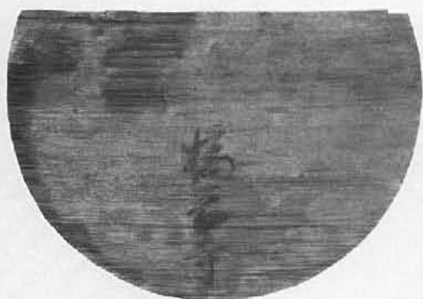
W43



W42



W51



W44



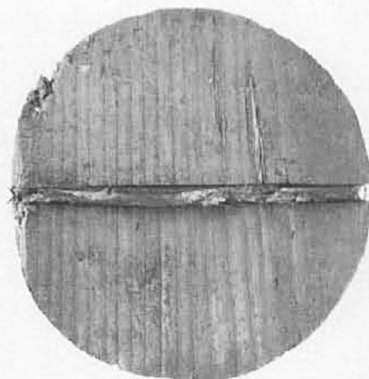
W53



W52



W111



W101



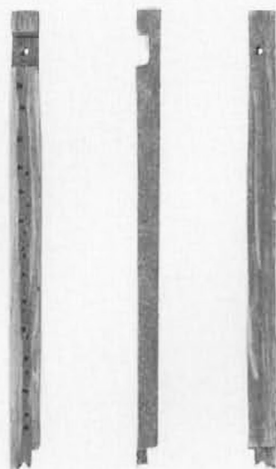
W55



W34



W56



W65

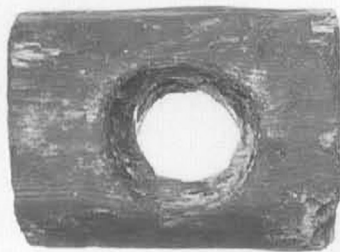
水道管継手



W69



W71



W70

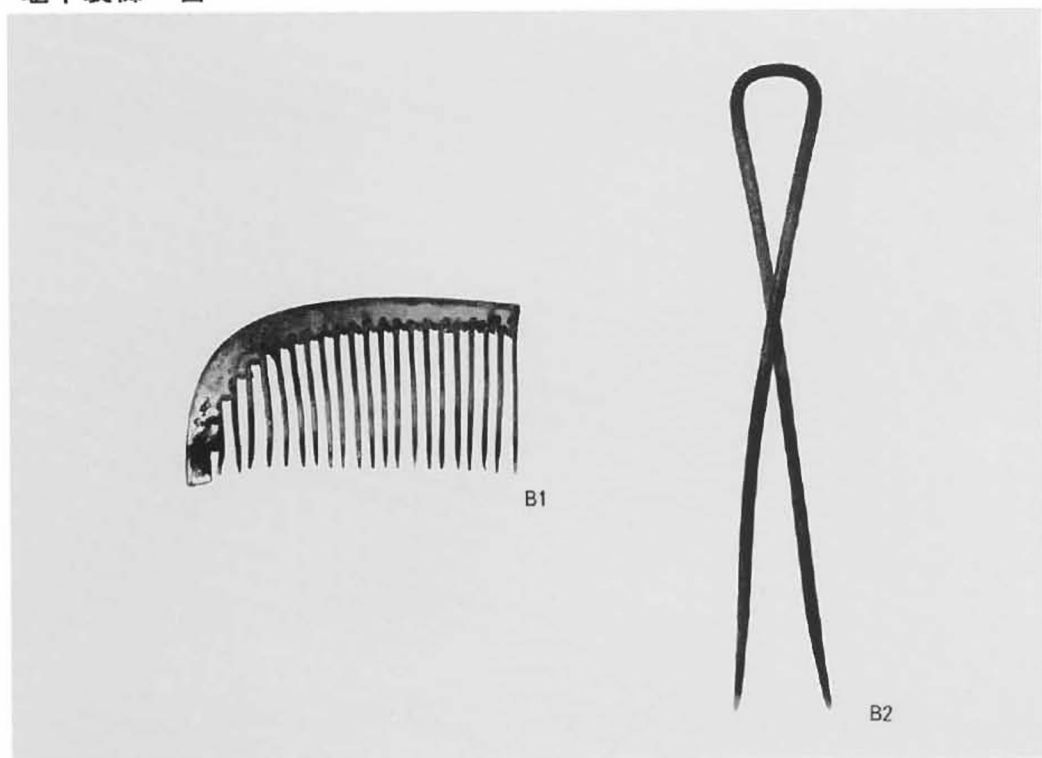


W72



W73

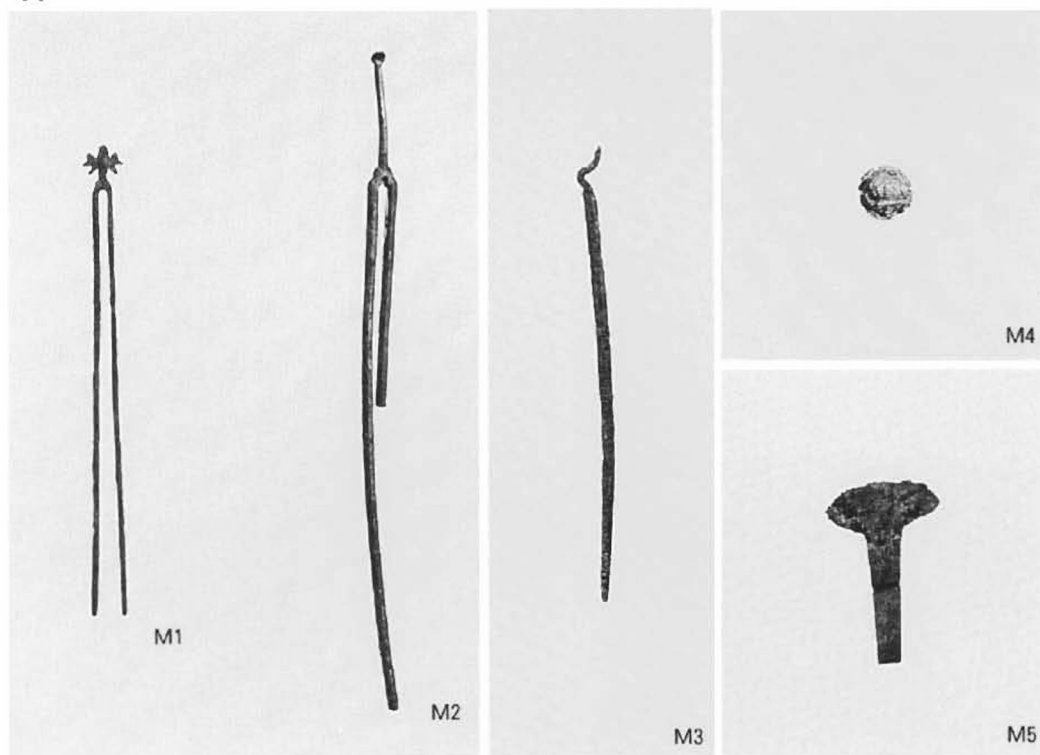
鼈甲製櫛・簪



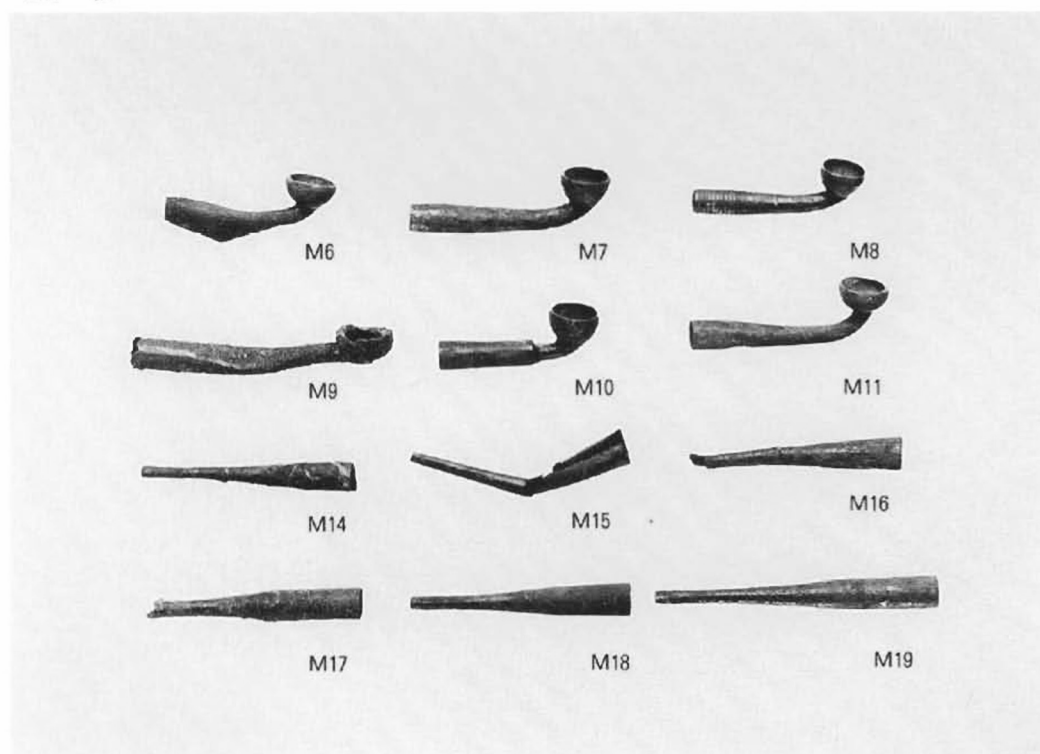
油差把手



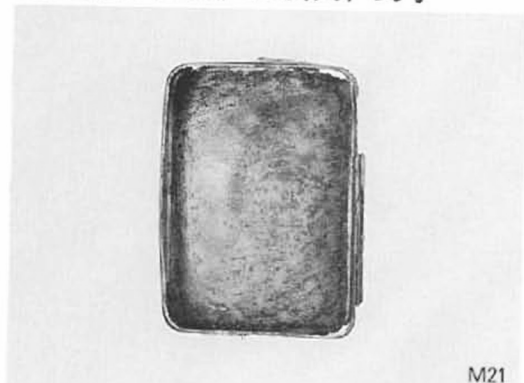
筭



煙 管



嗅ぎ煙草入れ、刀装具、釣手



M21



M22

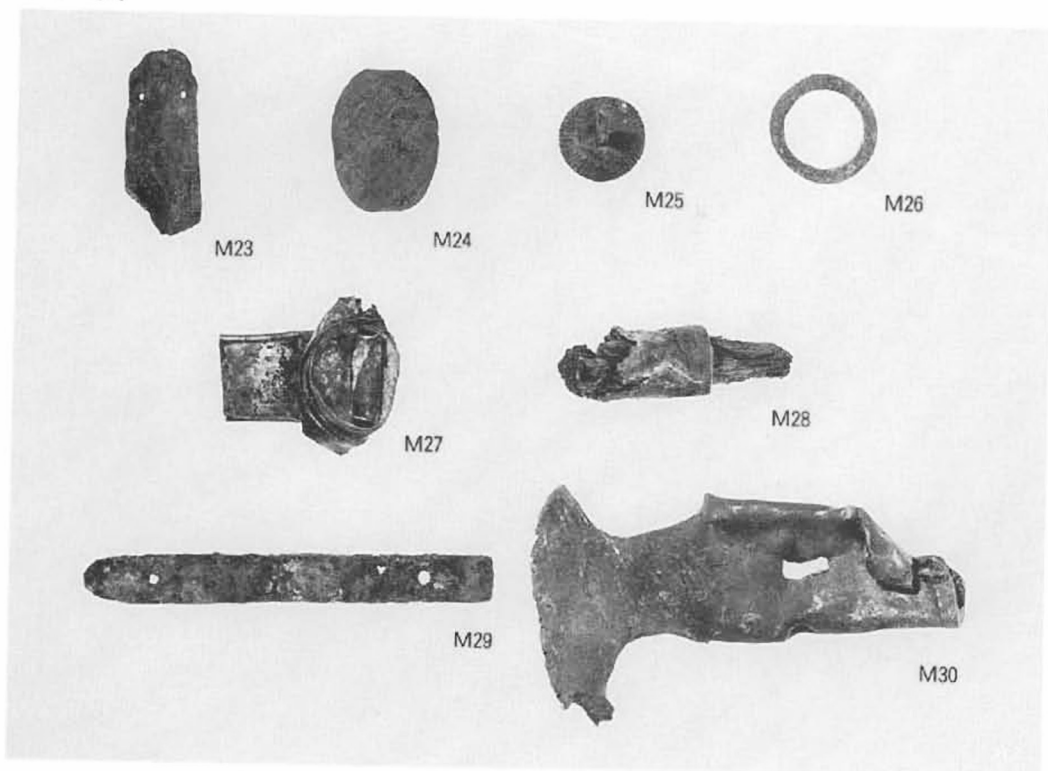


M31



M32

金 具



M23

M24

M25

M26

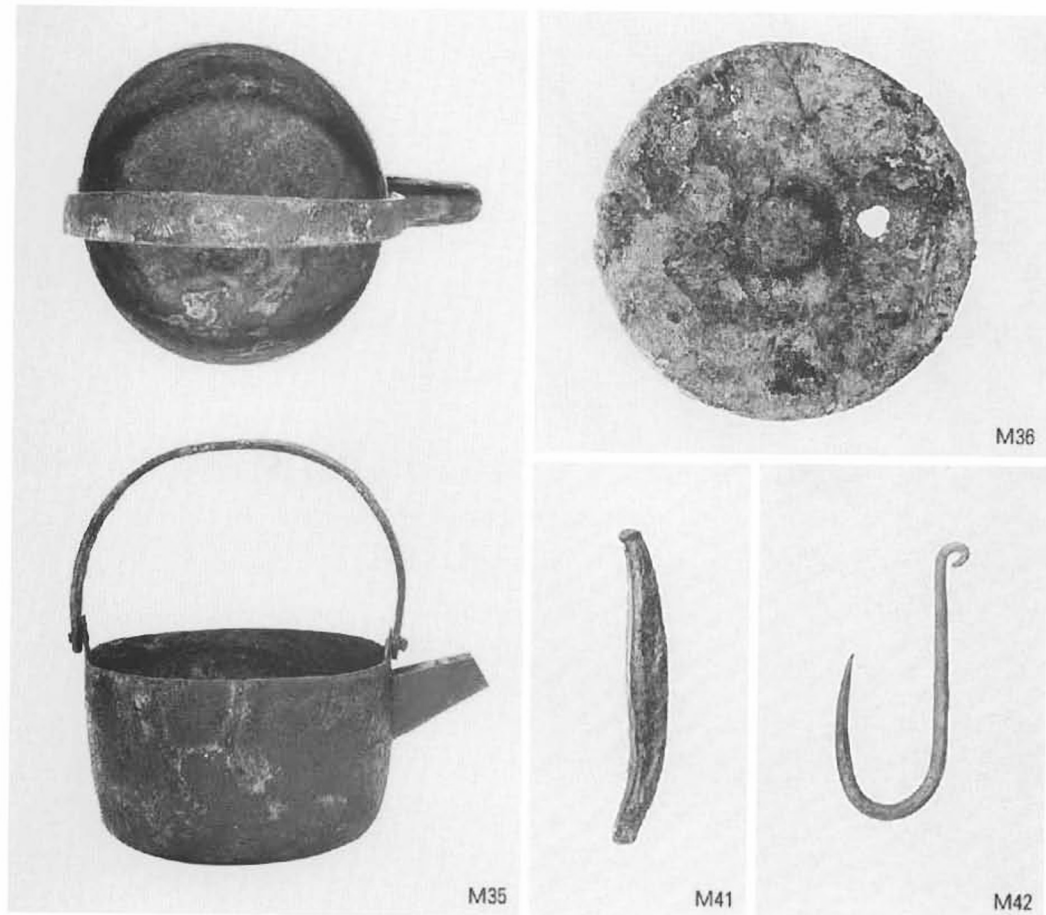
M27

M28

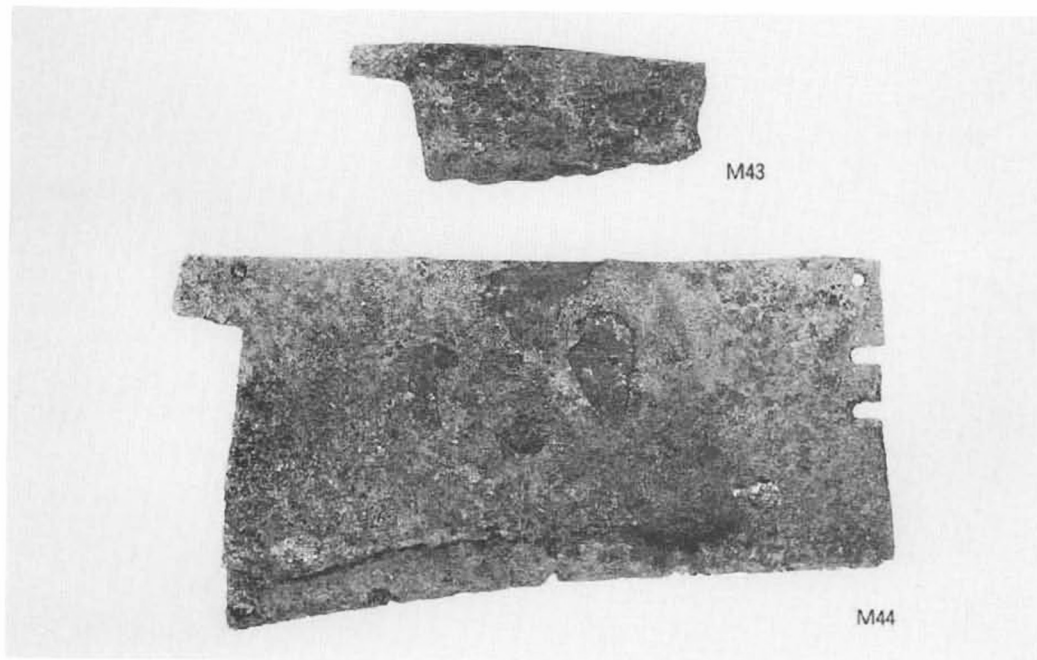
M29

M30

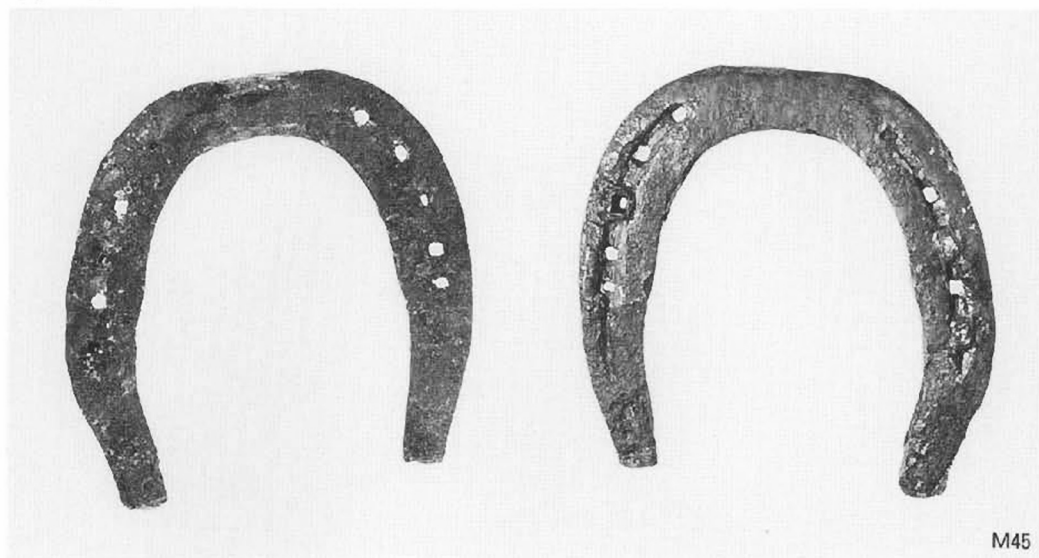
油差し、蓋



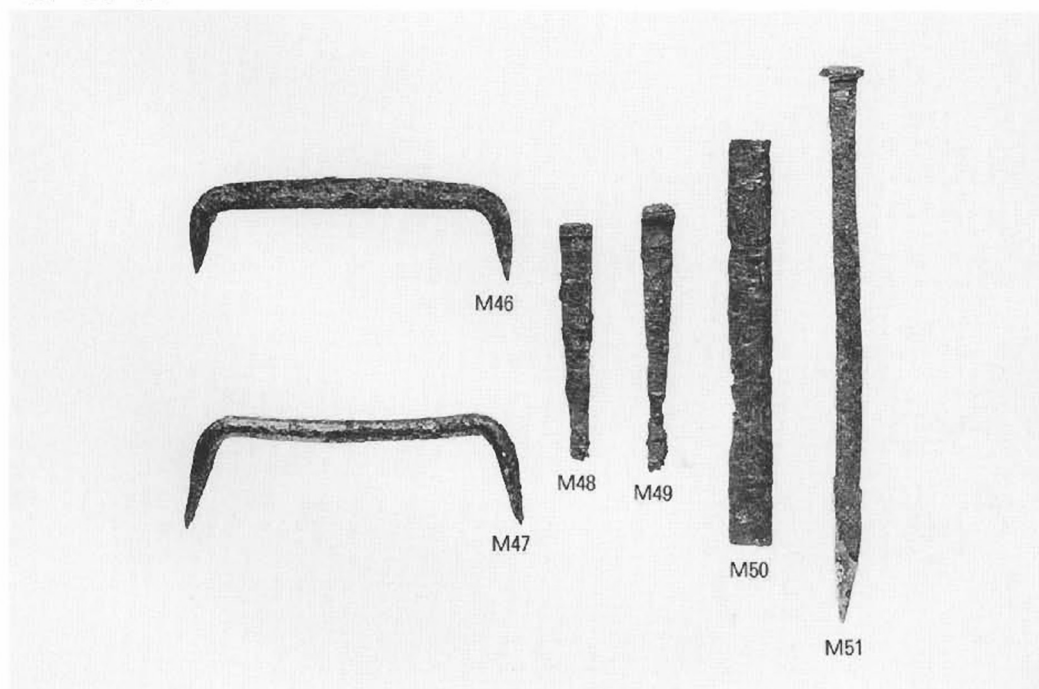
包丁・その他



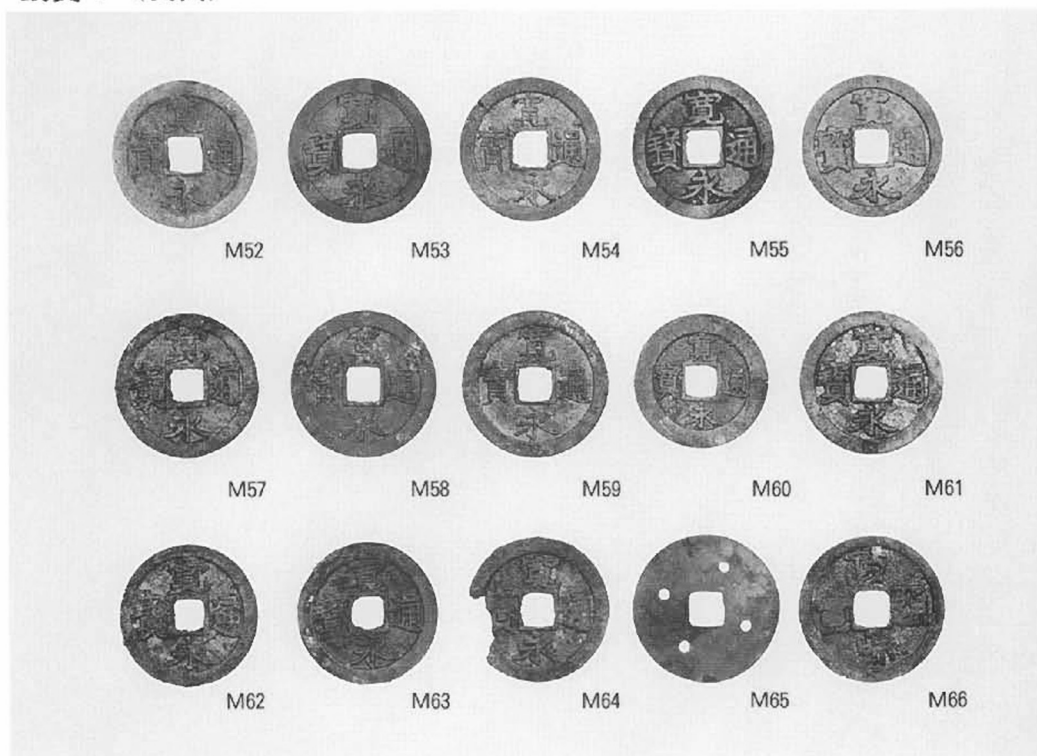
蹄 鉄



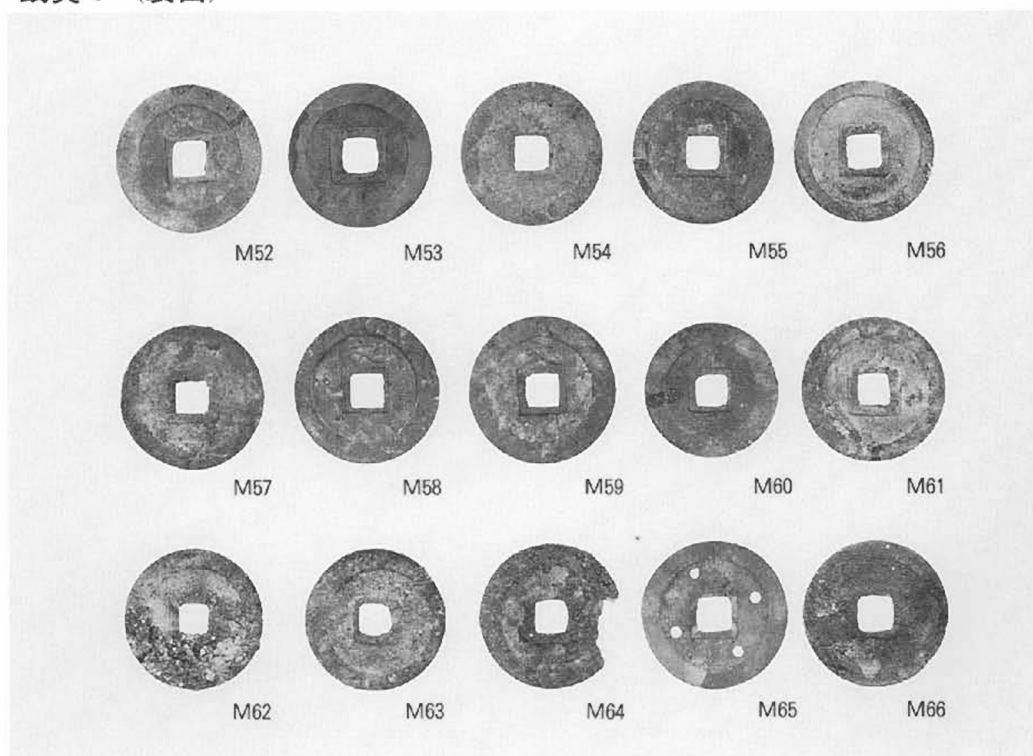
鋸・釘 他



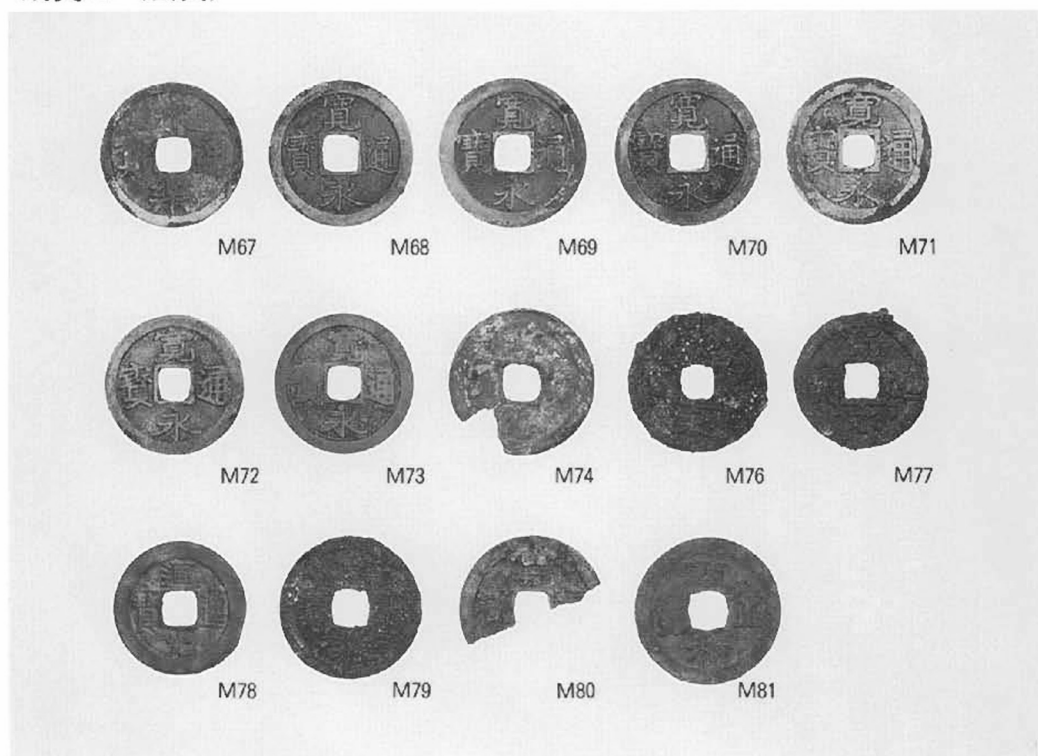
銭貨 1 (表面)



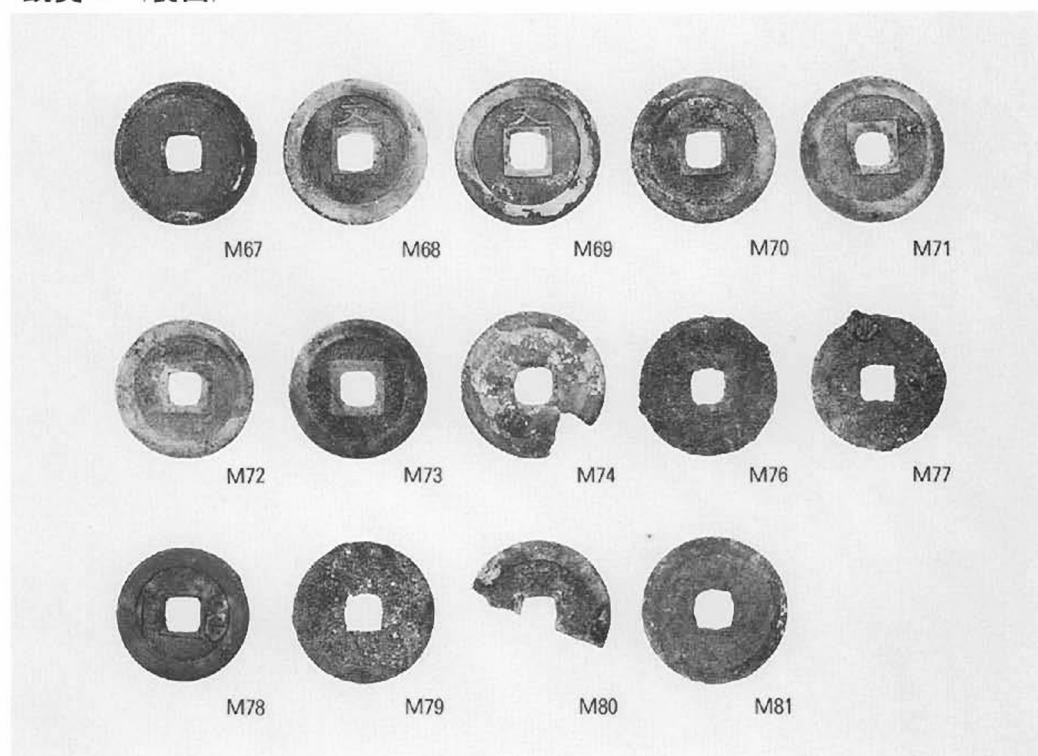
銭貨 1 (裏面)



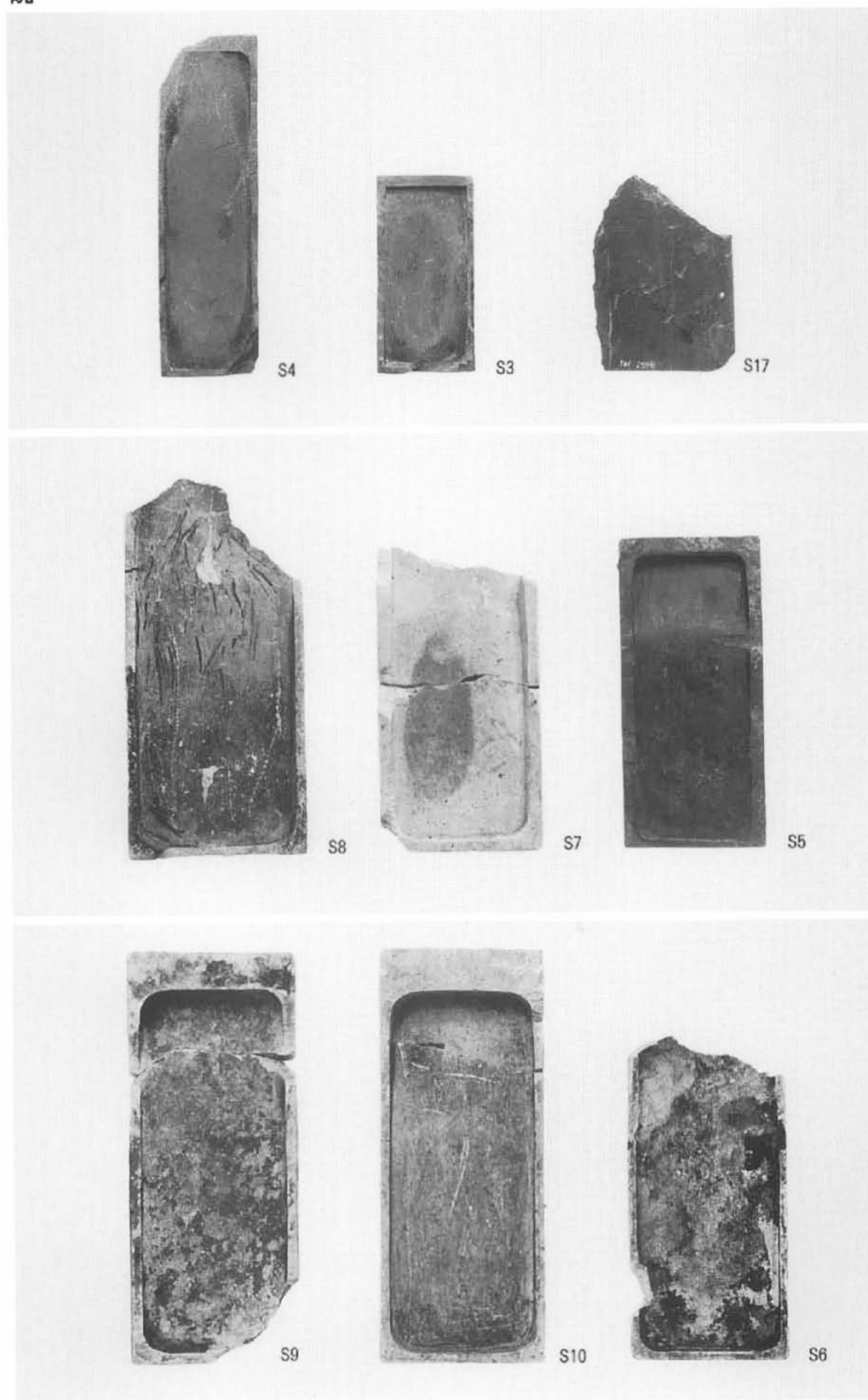
錢貨 2 (表面)



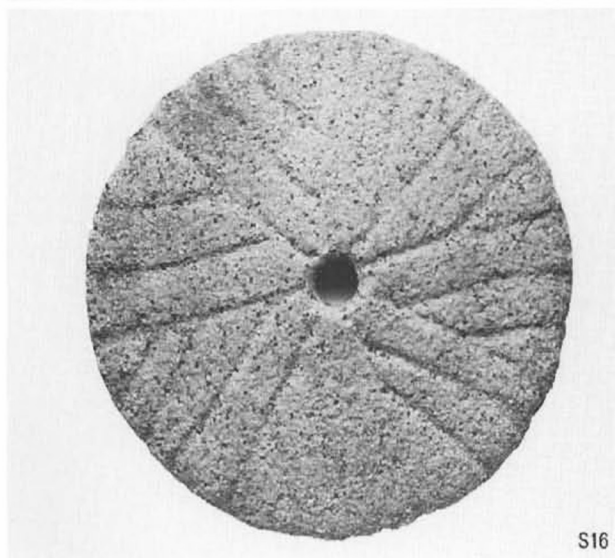
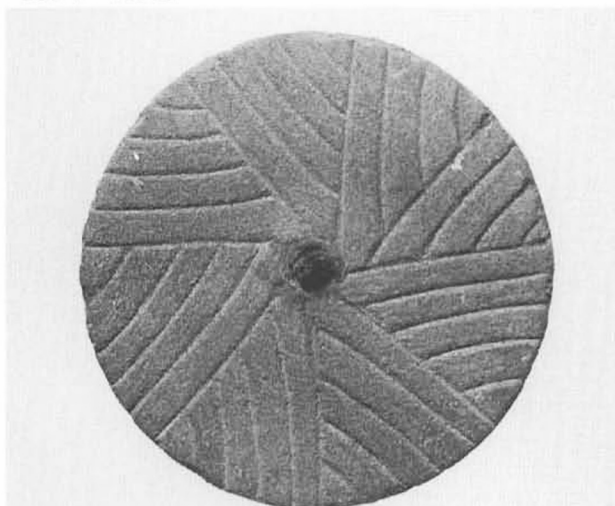
錢貨 2 (裏面)



硯



石臼・砥石



S12



S13



S14

S15

S16

兵庫県文化財調査報告 第109冊

明石市

あか しじょうぶ け や しき あと
明石城武家屋敷跡

—山陽電鉄連続立体交差事業に伴う発掘調査報告書—

平成4年3月31日 発行

編集 兵庫県教育委員会埋蔵文化財調査事務所

〒652 神戸市兵庫区荒田町2-1-5

発行 兵庫県教育委員会

神戸市中央区下山手通5-10-1

印刷 福田印刷工業株式会社

〒658 神戸市東灘区魚崎西町4-6-3
