



1. 2トレンチ (南から)



2. 4トレンチ (西から)



4. 1トレンチ南半部 (南から)



1. 3トレンチ (北から)



2. 2トレンチ (北から)



3. 4トレンチ (北から)



4. 4トレンチ (南から)



1. 1トレンチ (北から)



2. 5トレンチ (東から)



3. 5トレンチ北壁地層断面



1. 西中ノ町地区全景
(東から)



2. 西中ノ町地区全景
(西から)



3. 西中ノ町地区から
西外堀・明石川方面を望む



西中ノ町1区上層遺構面（東から）



西中ノ町1区下層遺構面全景（東から）



1. SD3501 (屋敷境溝)
2. SD3501 (埋土断面)

1. SK2503



2. SK2503

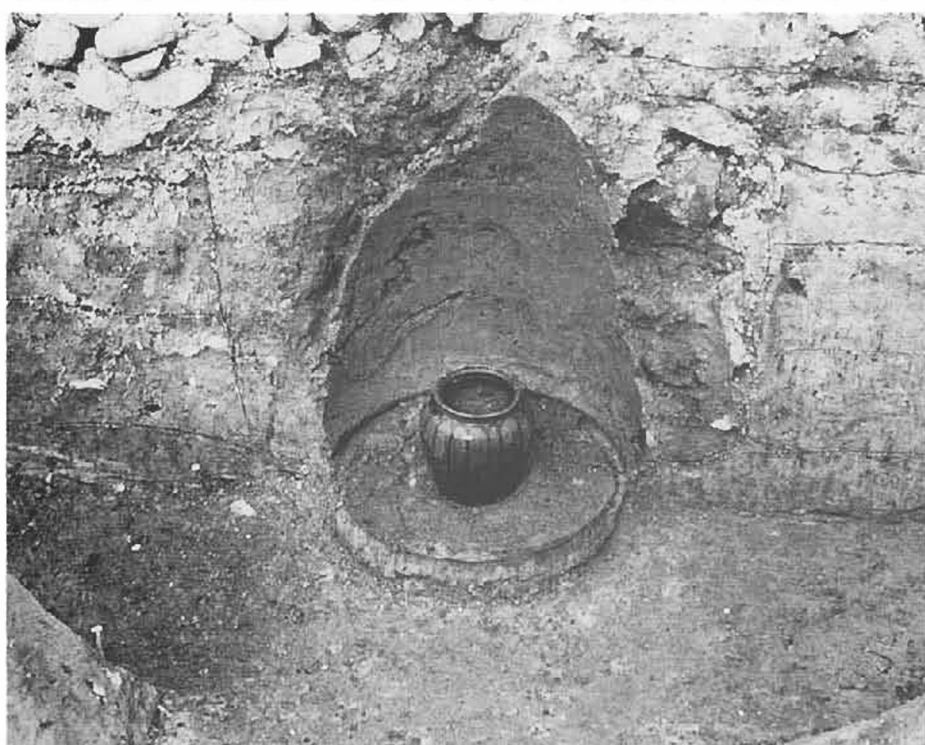


3. SK2502





1. SK2504 (水琴窟)



2. SK2504



3. SG3501 池状遺構



西中ノ町2、3区全景（東から）



1. 西中ノ町から東方を望む



2. 西中ノ町2、3区全景（西から）

1. 西中ノ町2区（東から）



2. SD2501（屋敷境溝）



3. SA2501（築地跡）



1. SB2503 (石列)



2. SG2501 (池)





1. 円形土坑群（西から）

2. 円形土坑群（北から）

SK3506, 3518, 3533, 3534, 3536



1. SK3508



2. SK3528とSD3505



1. SD2503 (道路側溝) 上層



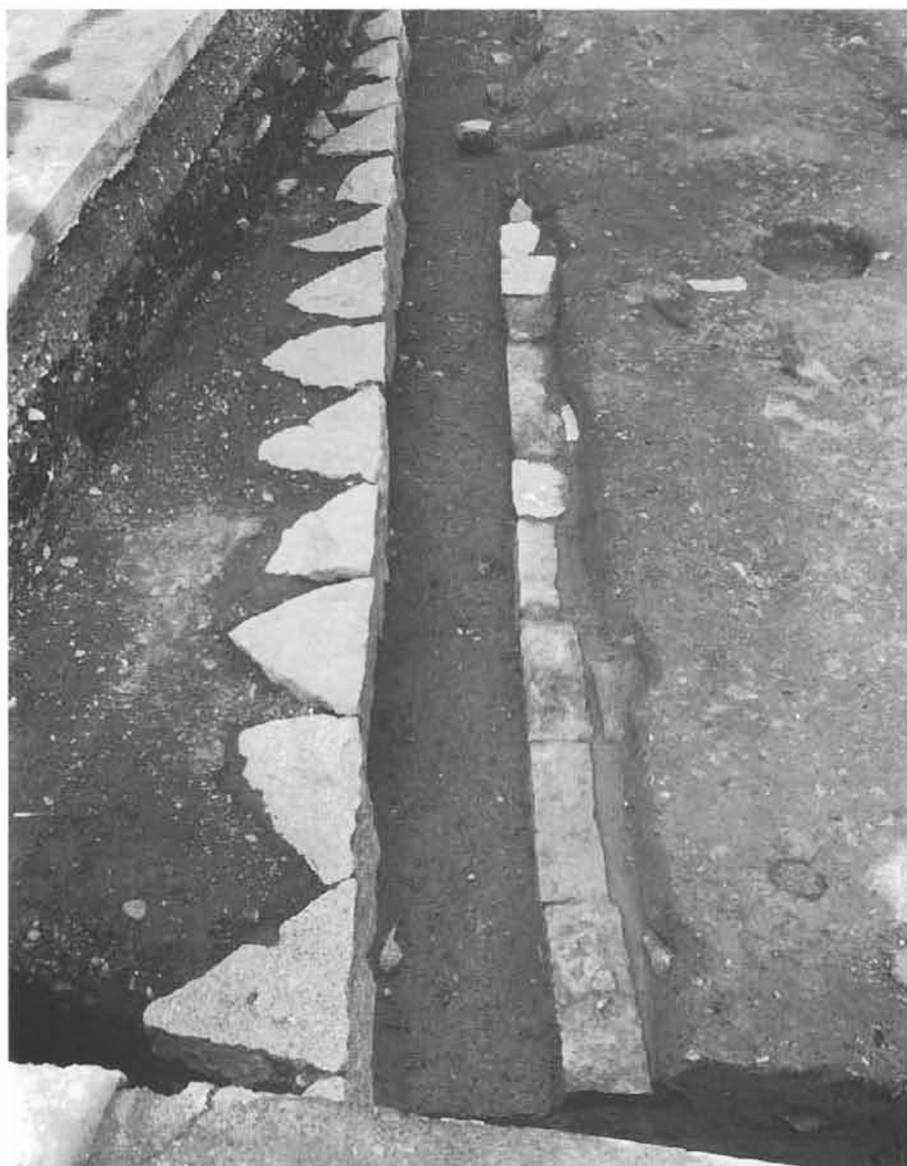
2. SD2503 (道路側溝) 下層



3. SD3503



1. SD2503 の石組



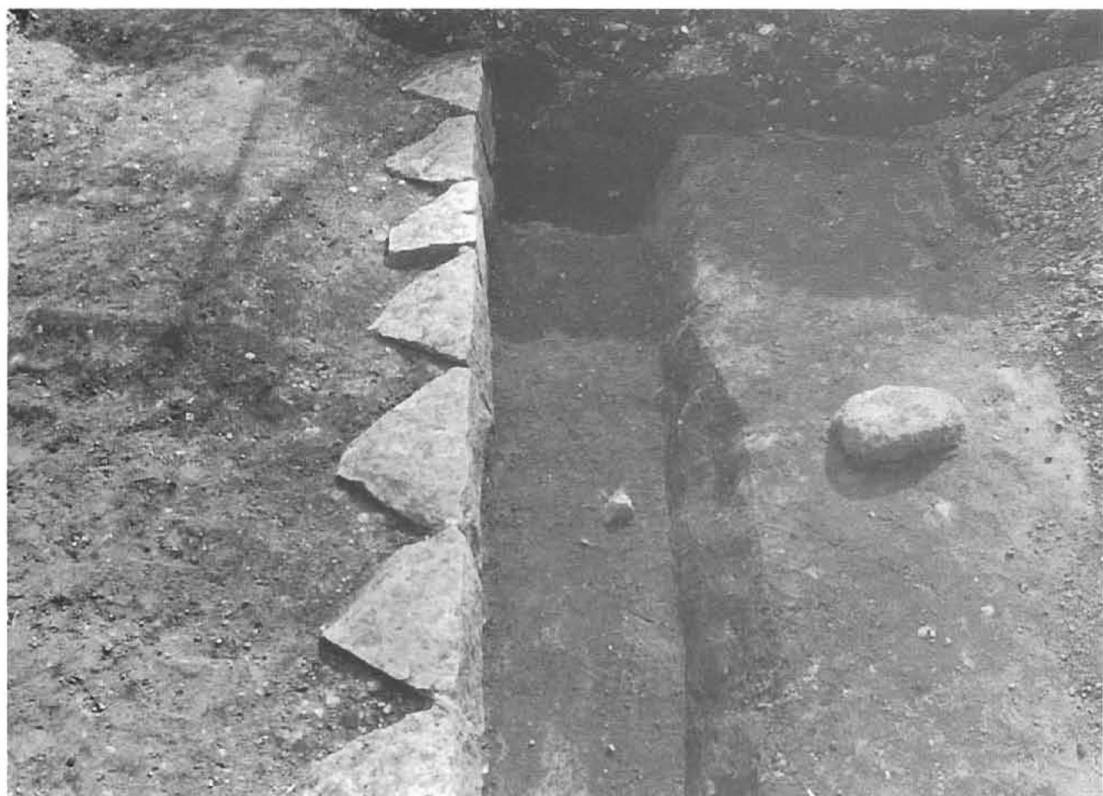
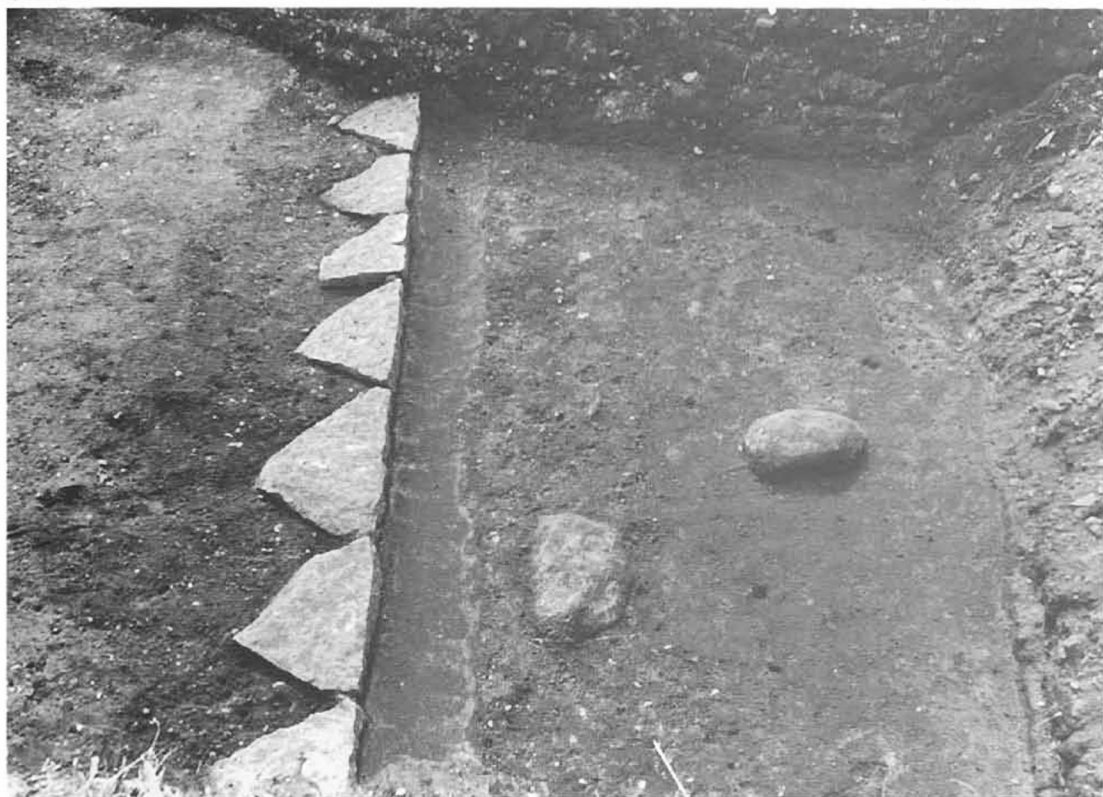
2. SD2503 の石組



1. SD2503・SD3503 断面



2. SD3503



1. SF2501とSD2504上層
2. SD2504下層

1. 東外堀跡断面（西から）



2. 東中ノ町地区
Cトレンチで検出された
石組遺構（SG2002）



3. 同 石組溝（SD2012）

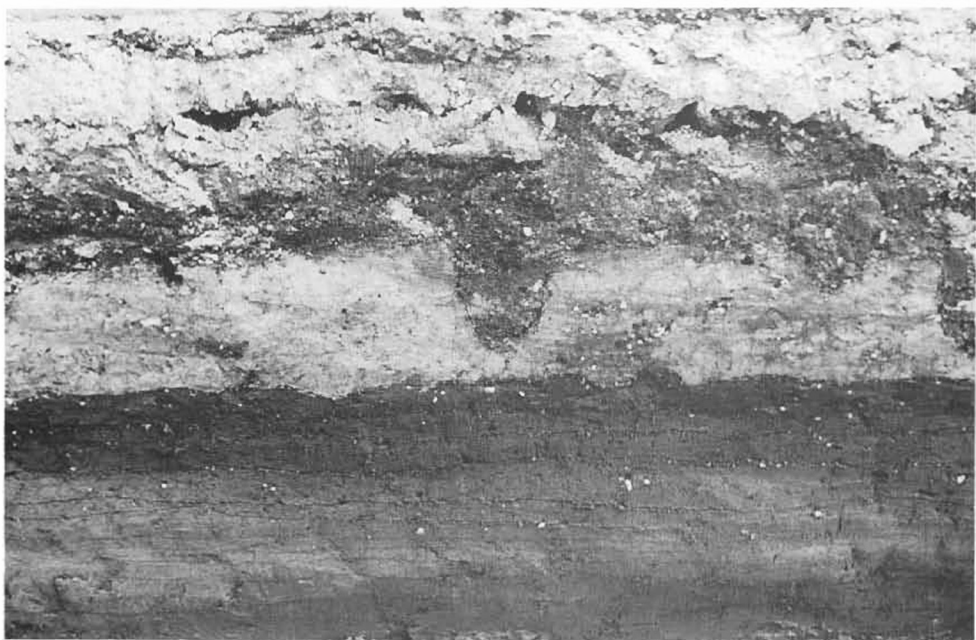




1. 東中ノ町地区
Aトレンチ南壁断面



2. 東中ノ町地区
Aトレンチ南壁断面



3. 東中ノ町地区
Aトレンチ南壁断面



1. 東中ノ町地区 2 トレンチの道路跡
(SF2001)



2. 西外堀の落ち込み



3. 西外堀の土留め

遺物図版

SD2002



SD2002



9



32



39



27



31



28



29



30

SD2002



2



40



41



69



70



94



95



96



71



72



73



74

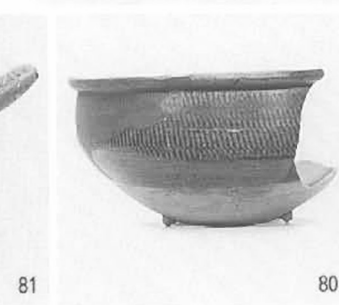
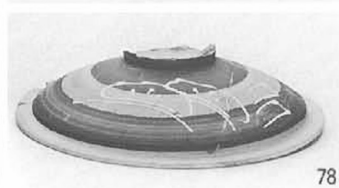
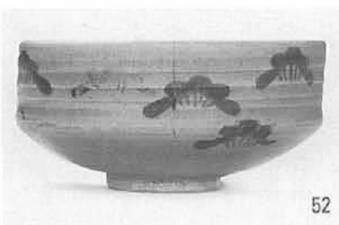


75

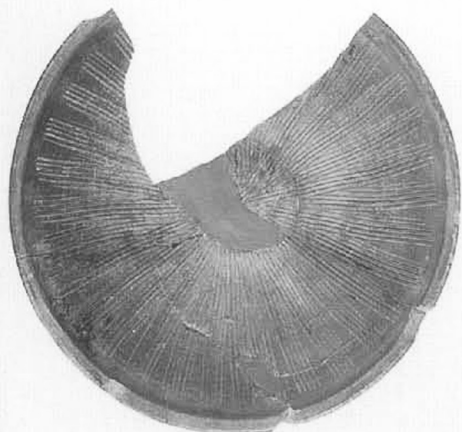


76

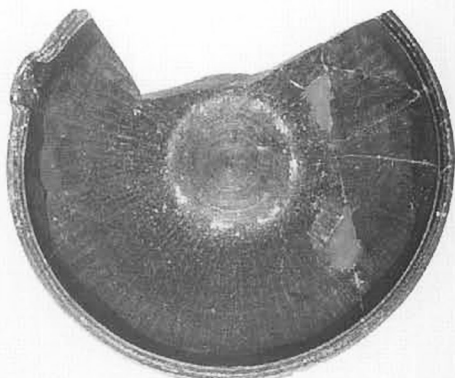
SD2002



SD2002



89



90



63



87

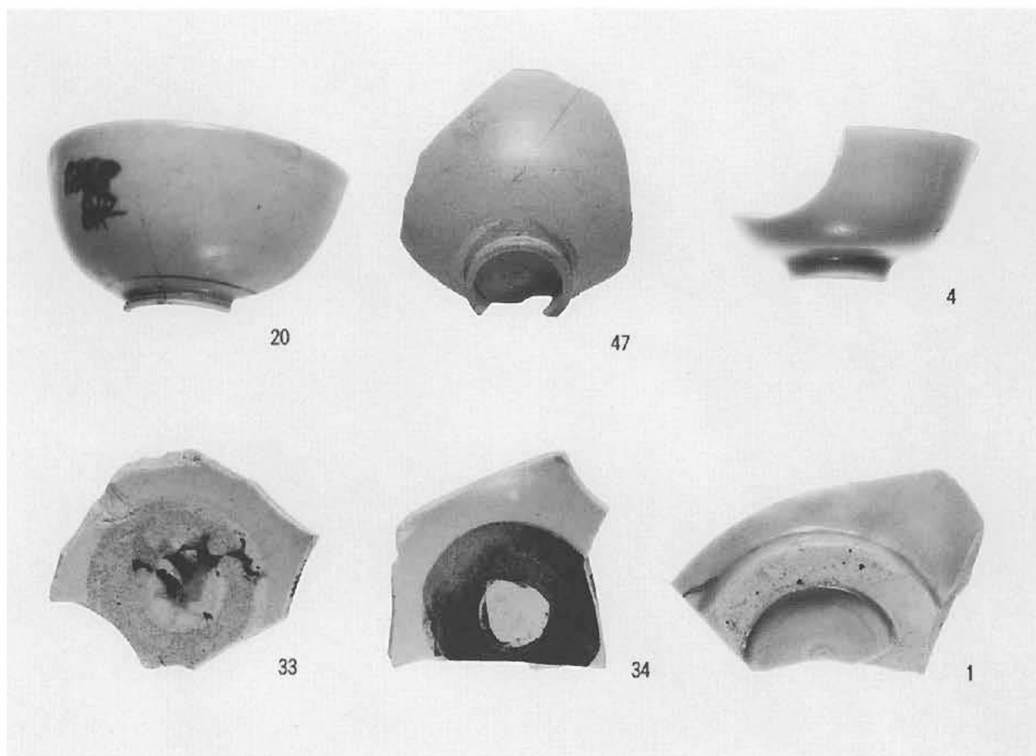


101

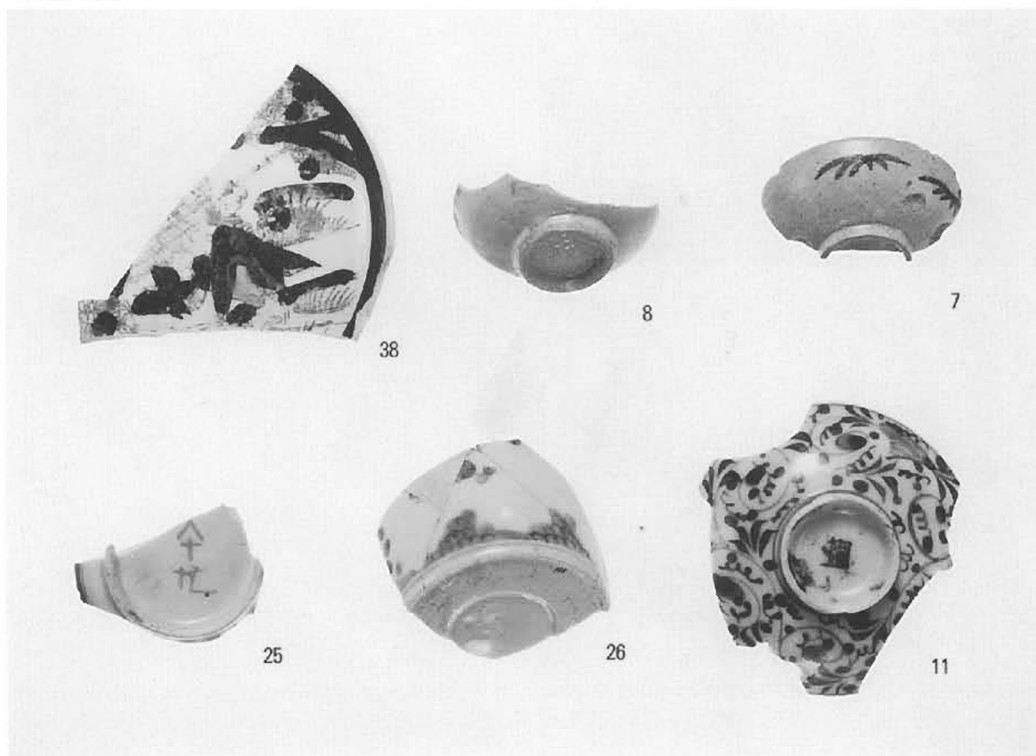


83

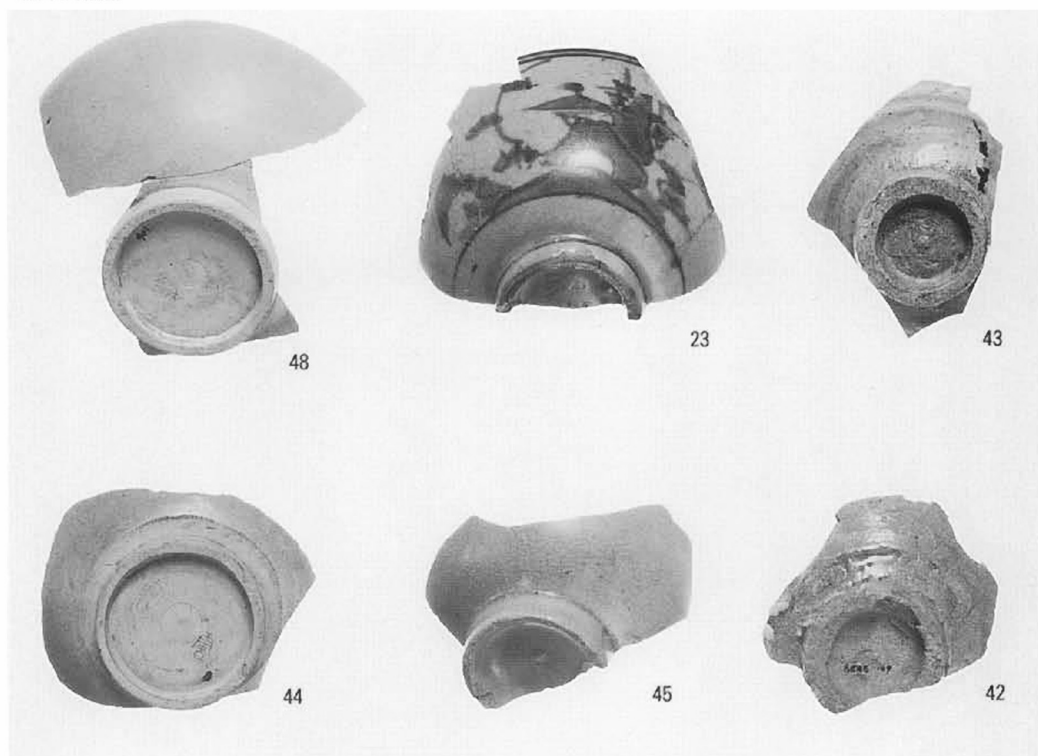
SD2002



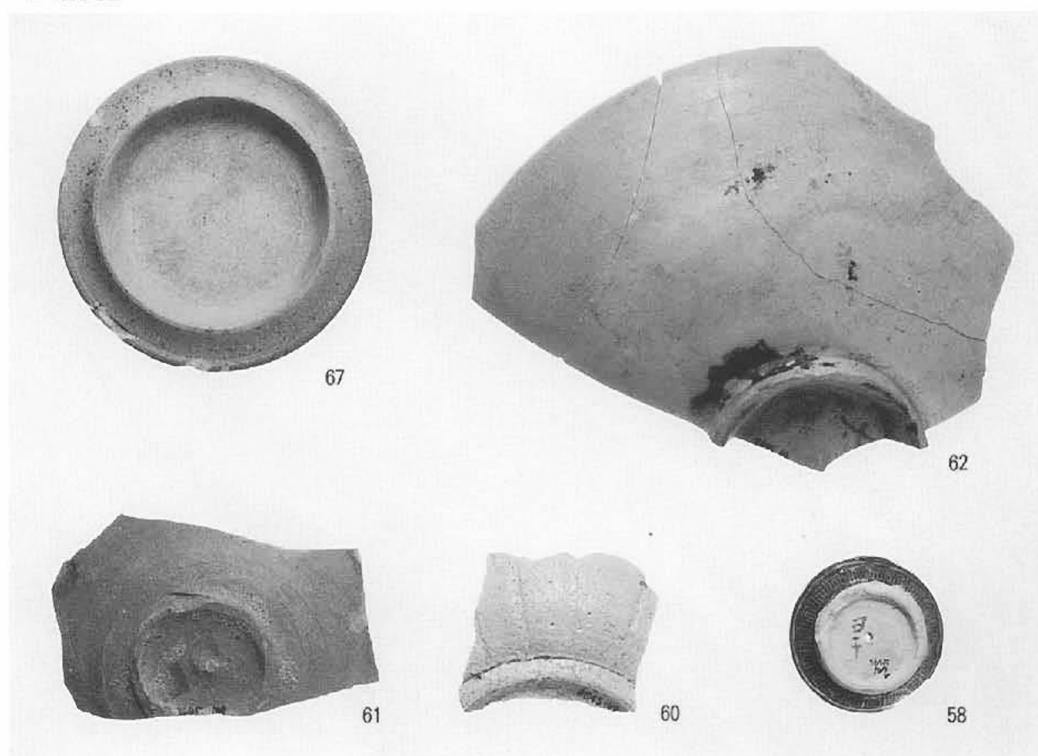
SD2002



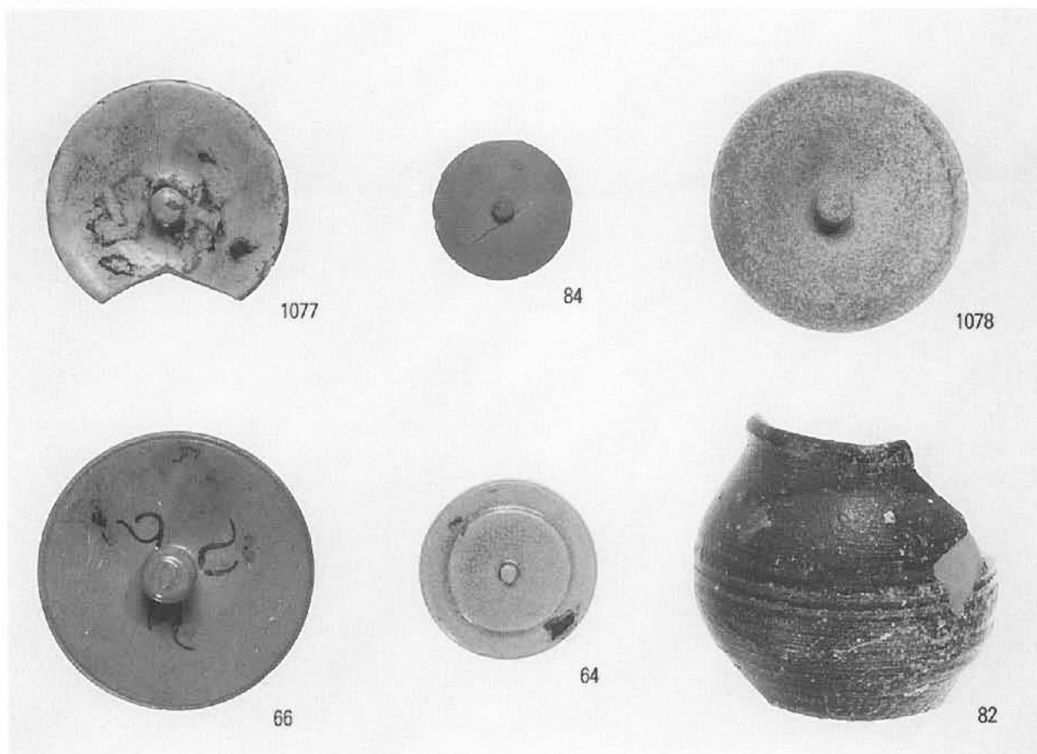
SD2002



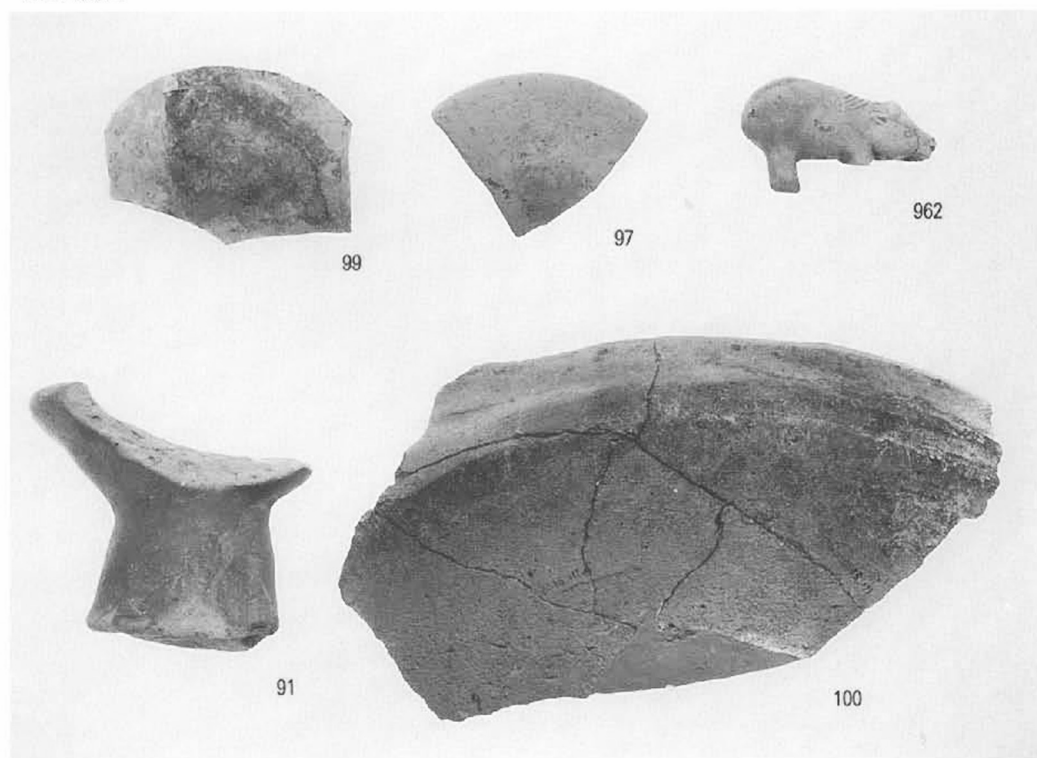
SD2002



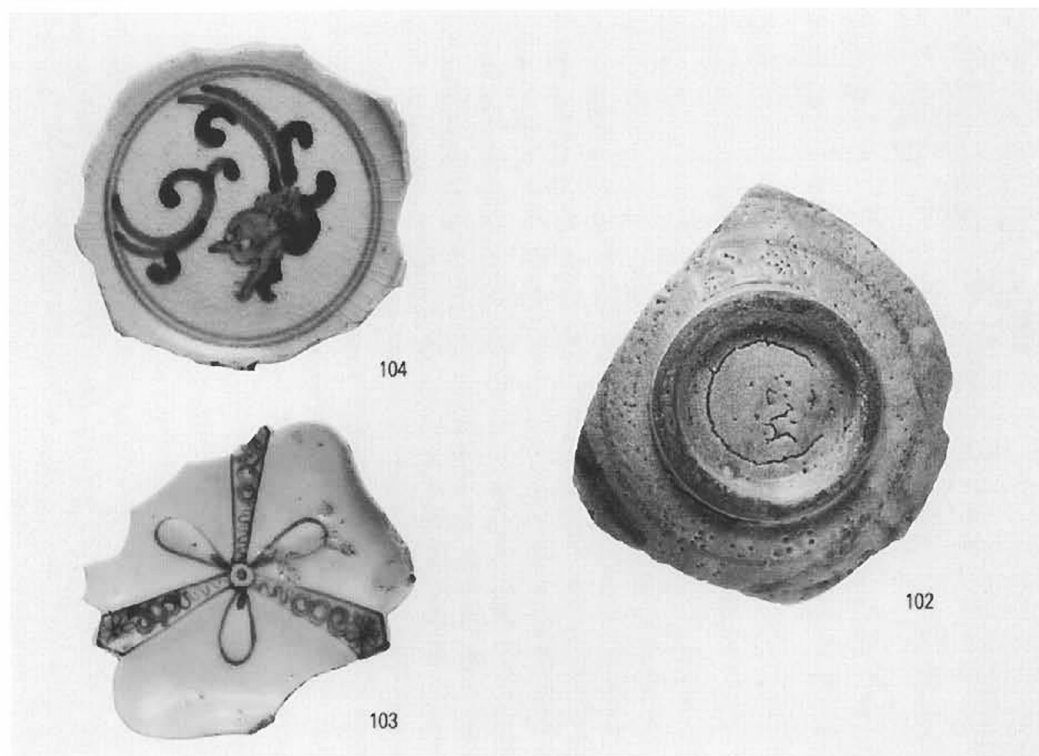
SD2002



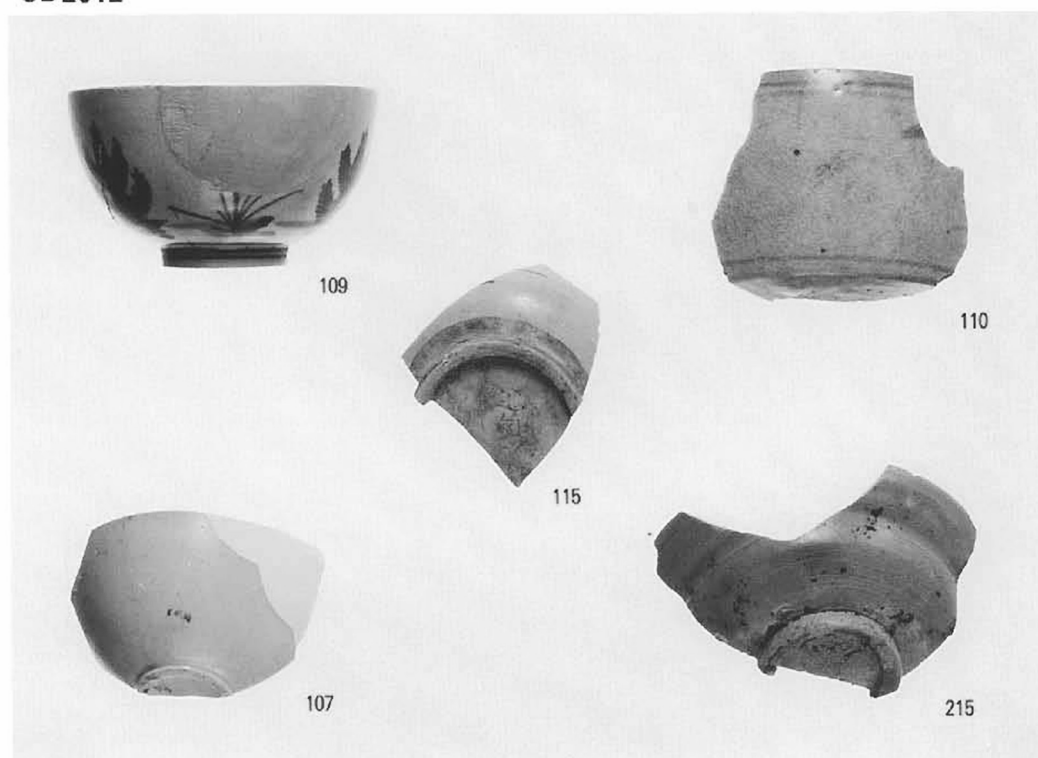
SD2002



SD3001



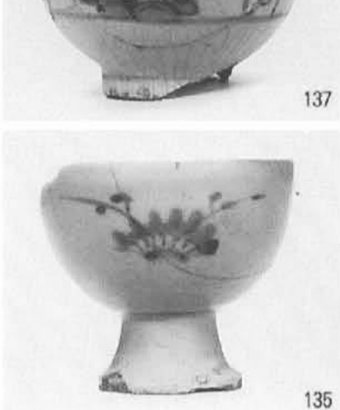
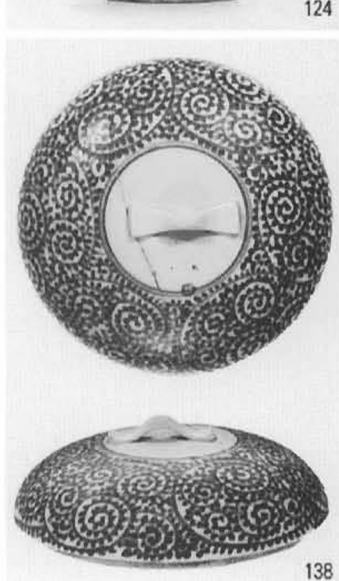
SD2012



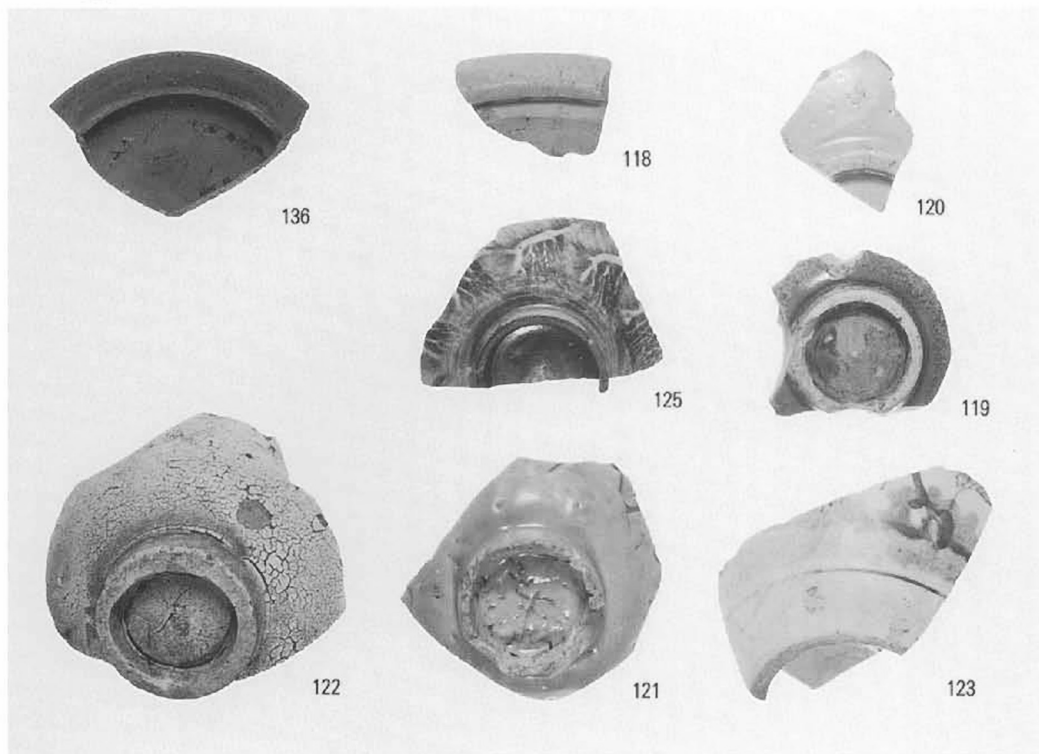
SD2012



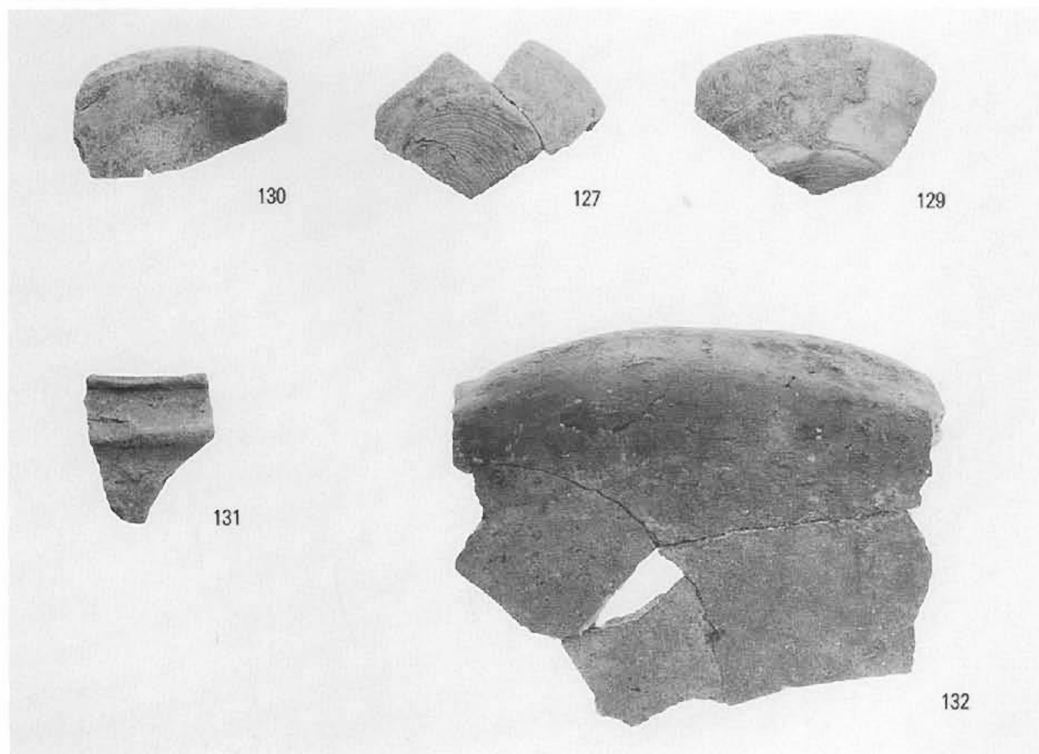
SD2001 · SD2003 · SD3004



SD2003 · SD3002



SD3002



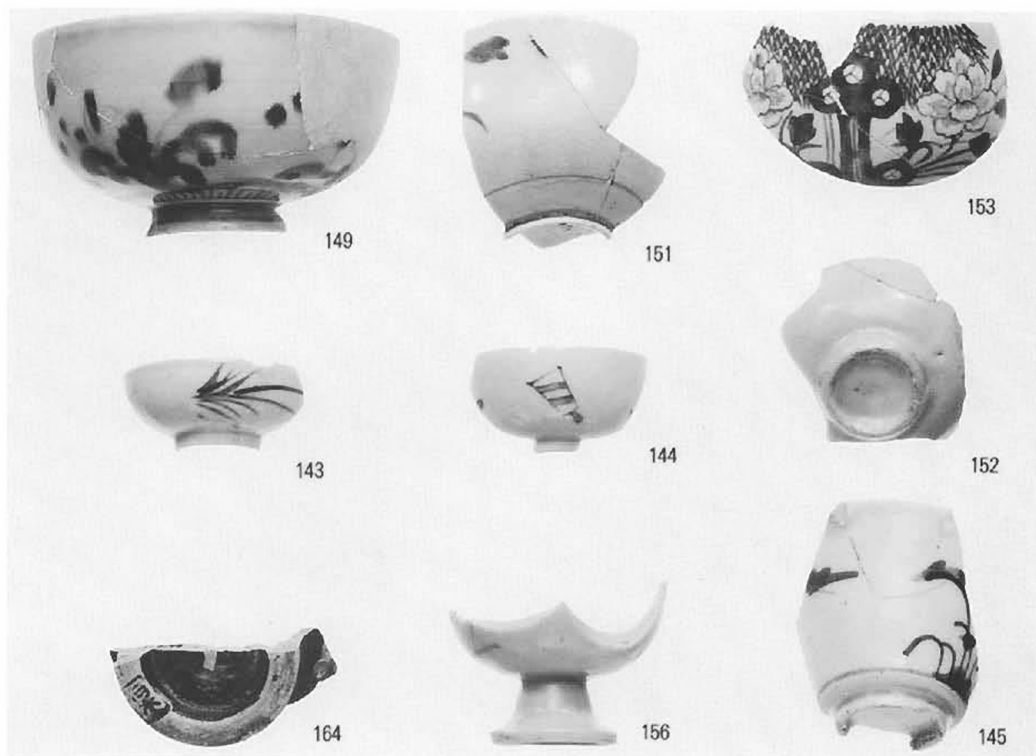
SD2013



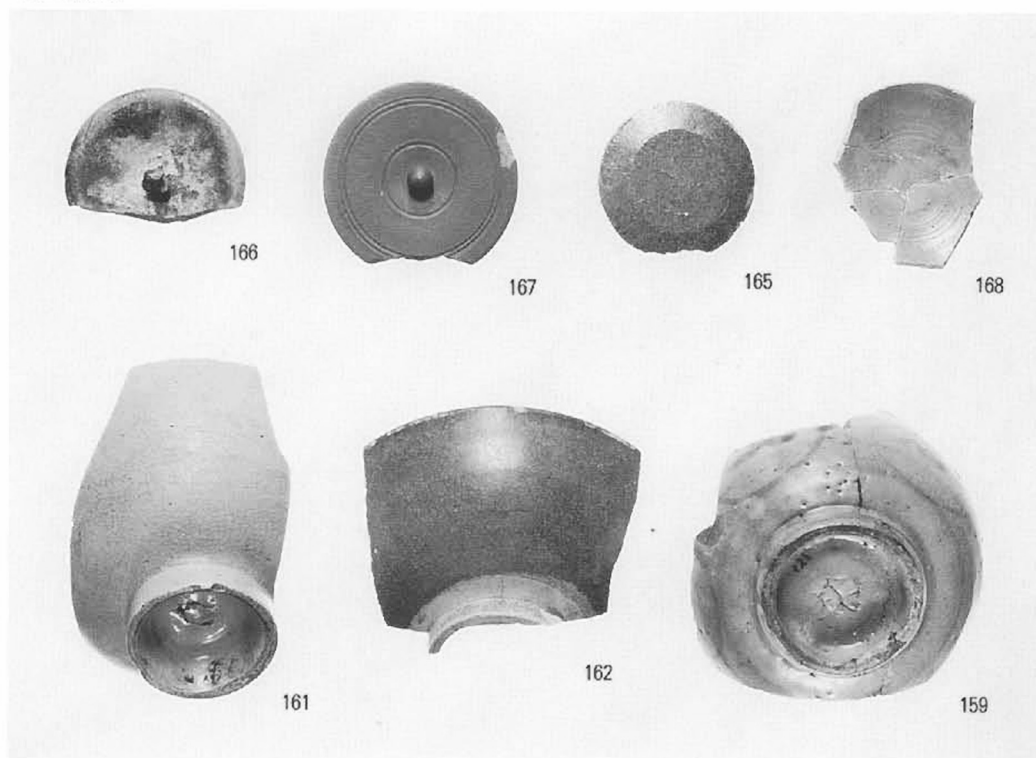
SD2002



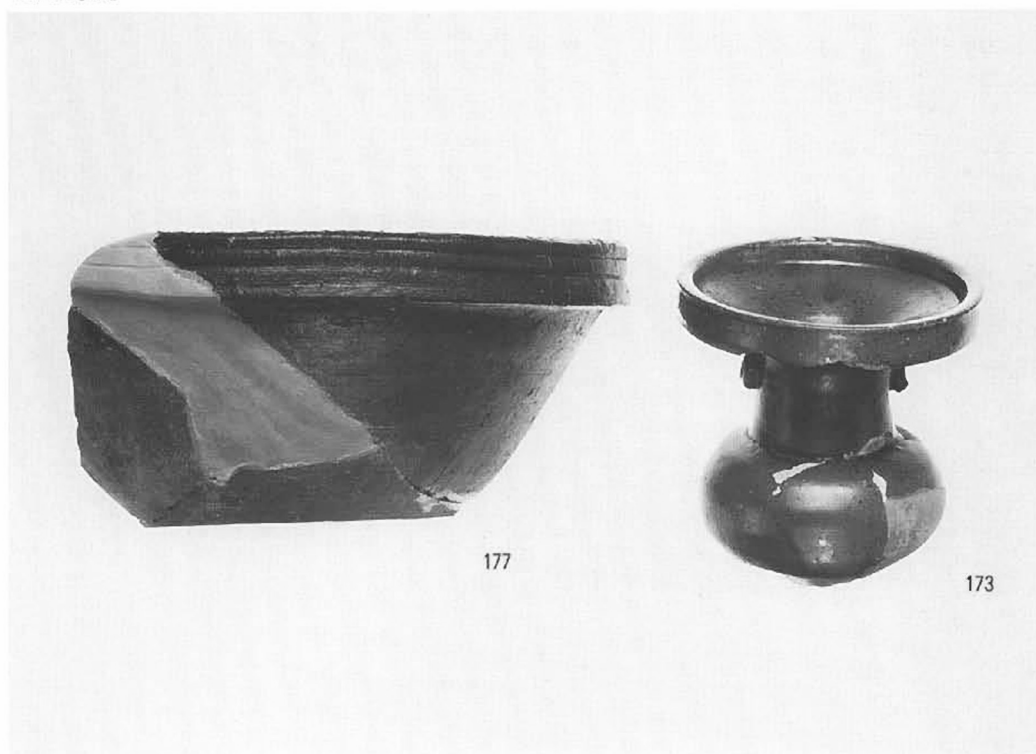
SD2013



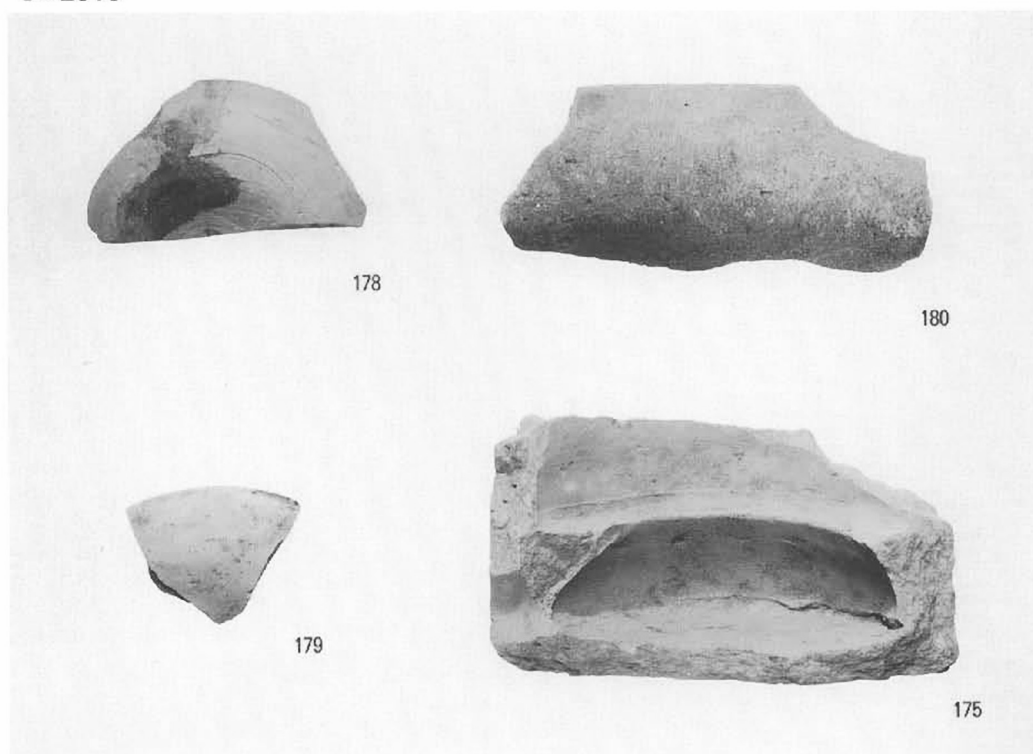
SD2013



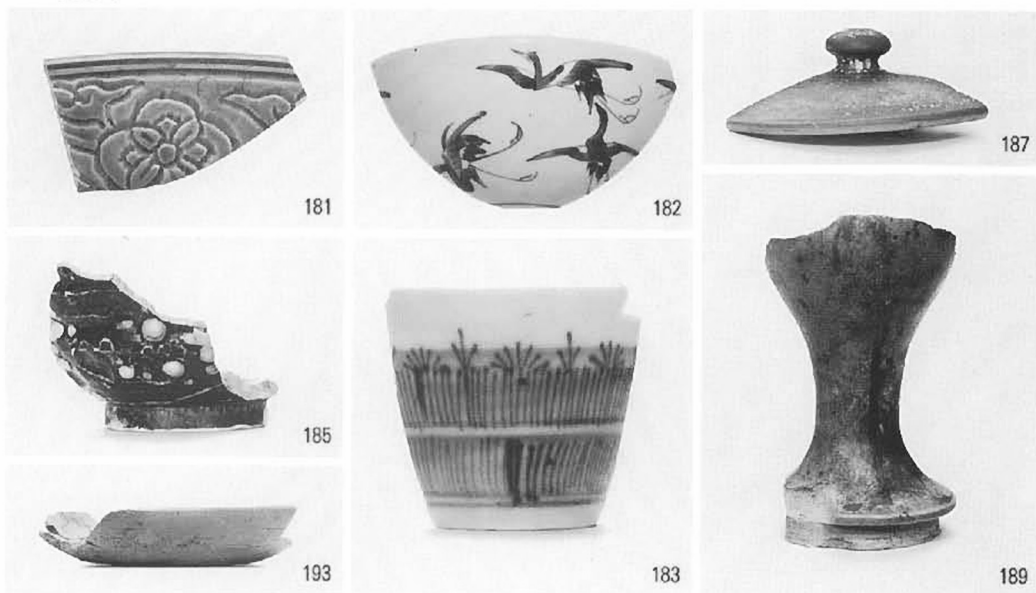
SD2013



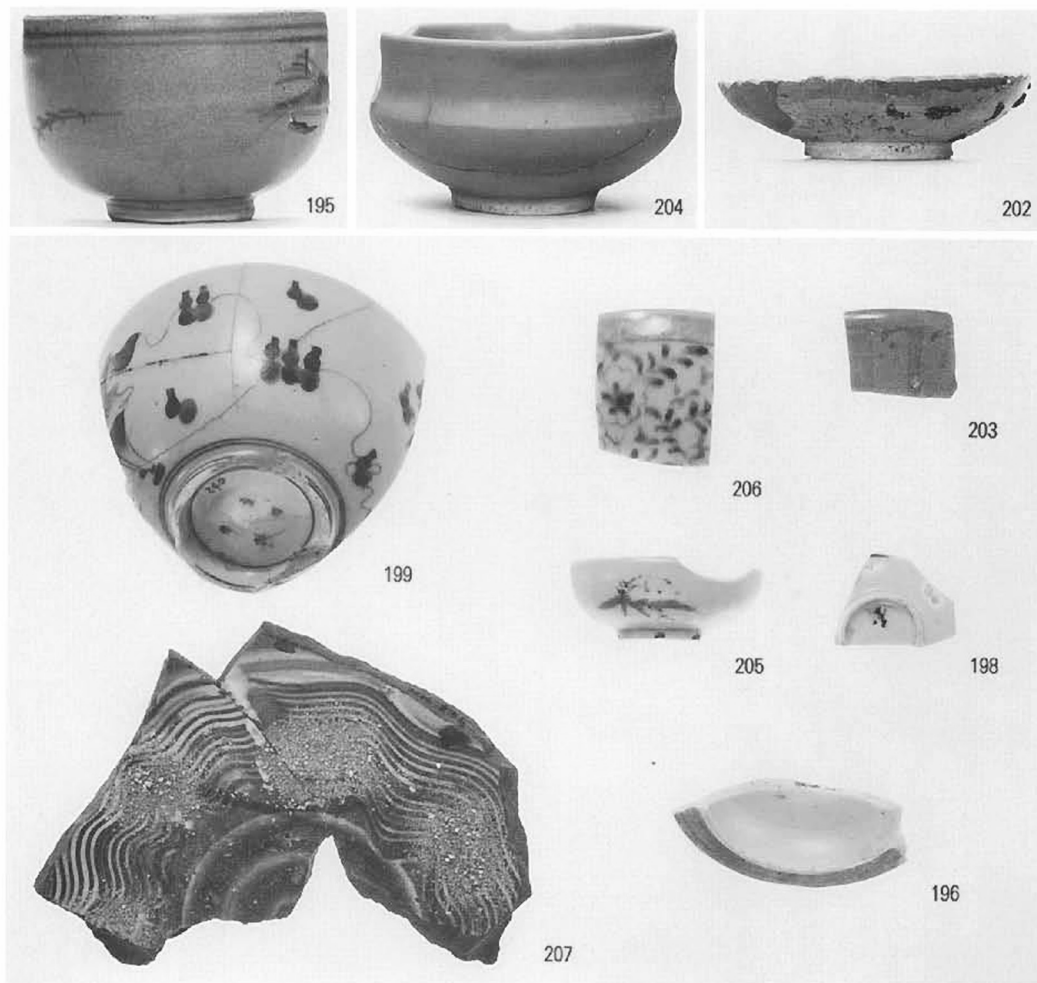
SD2013



SD3011



SE3001



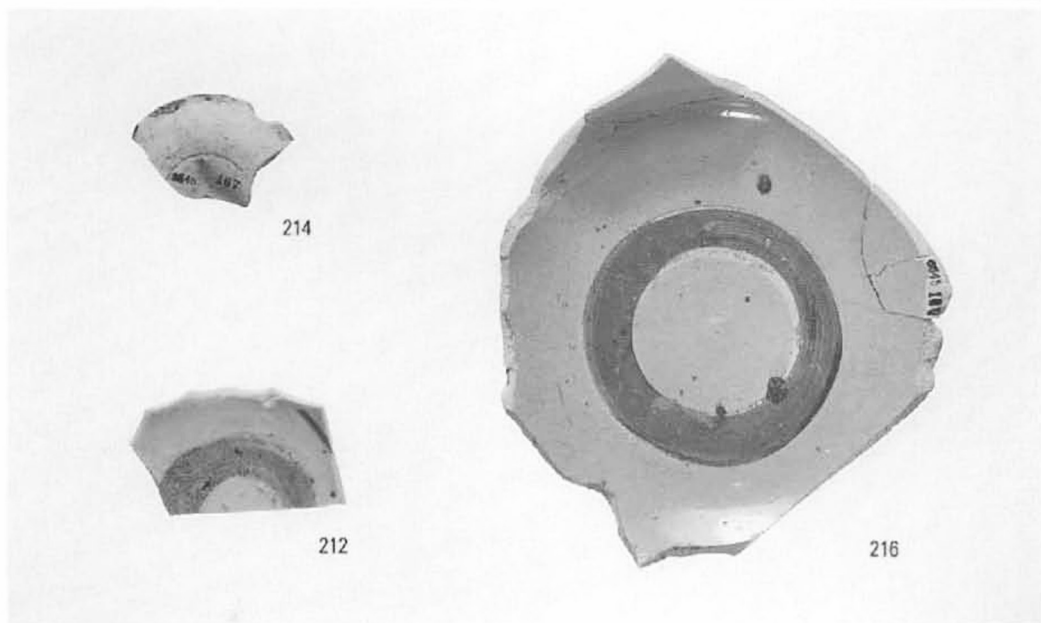
SG2002



213



217

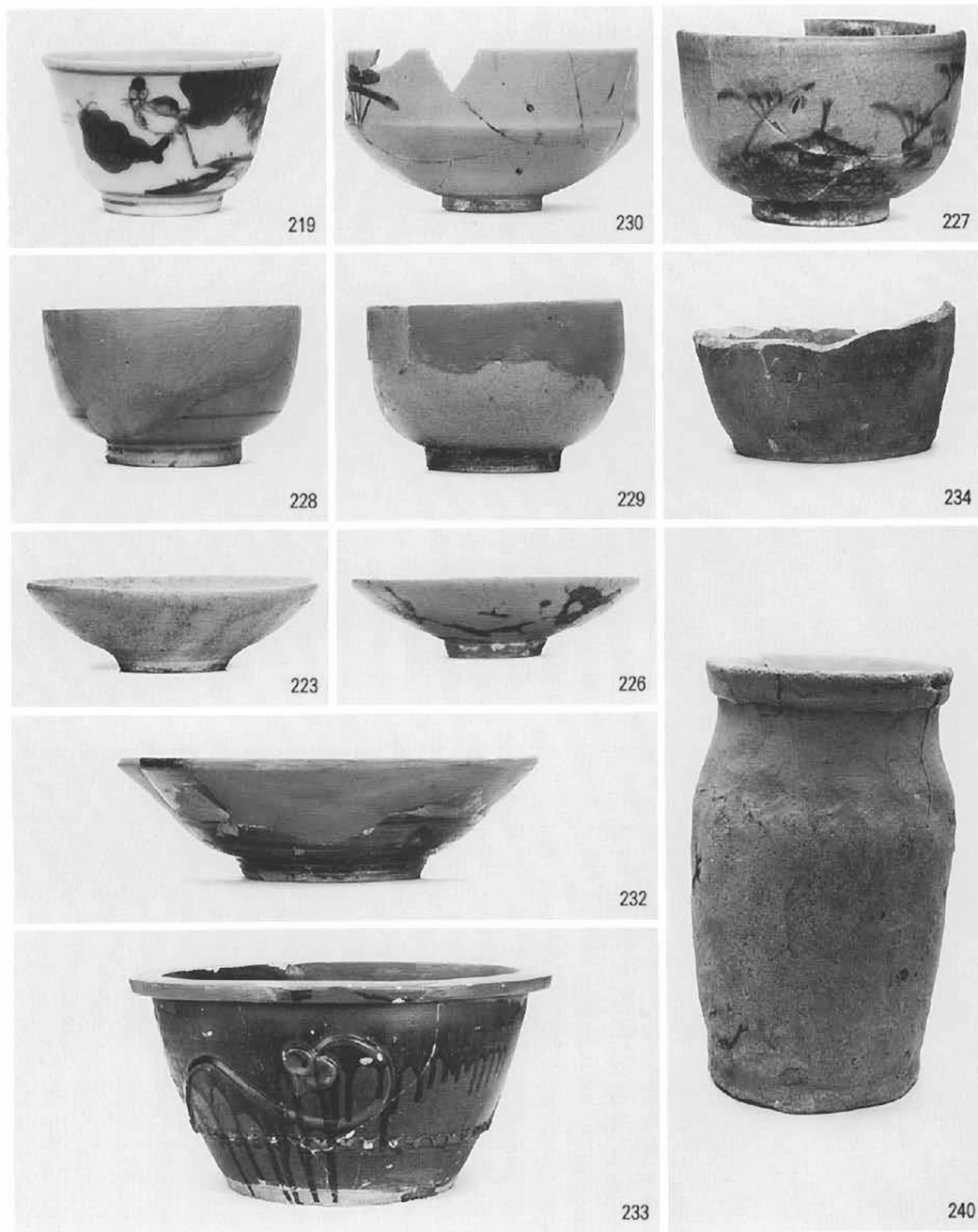


214

212

216

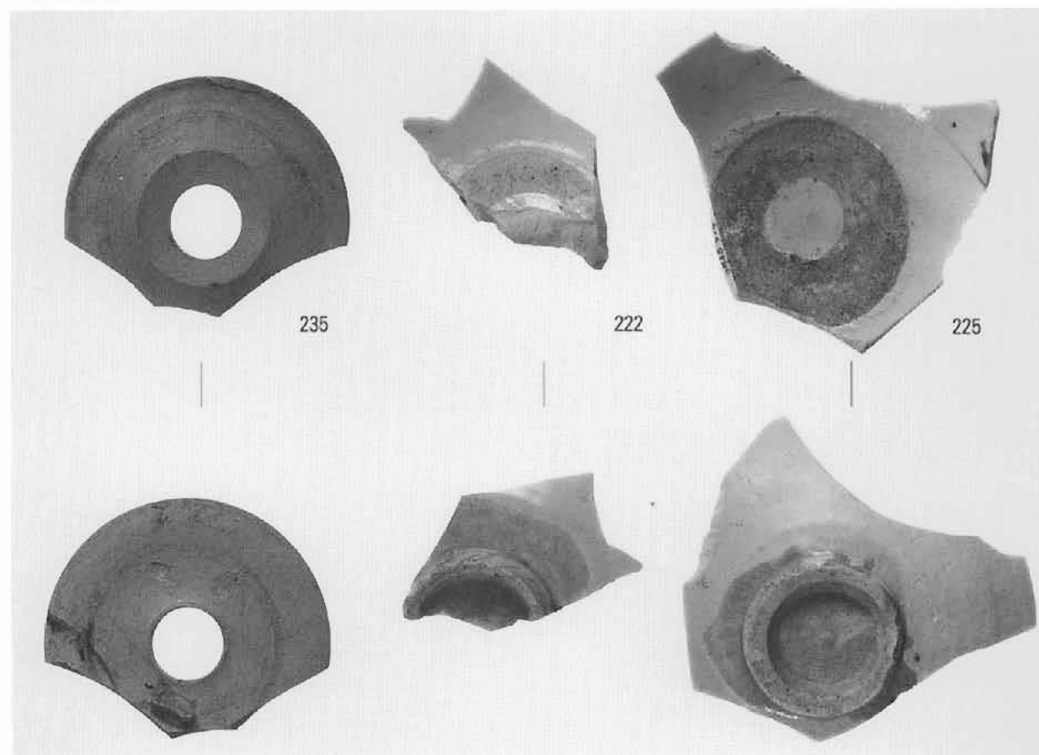
SG2001



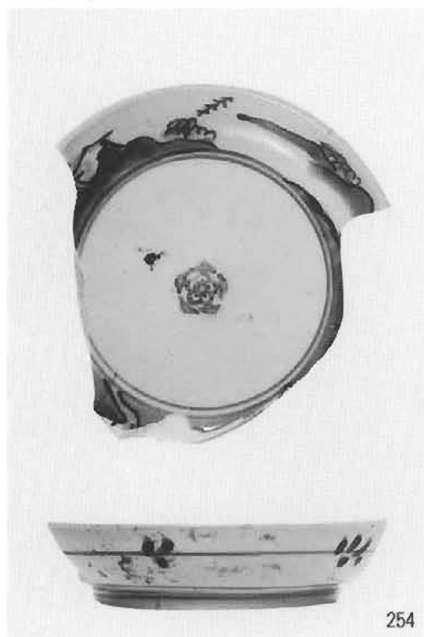
SG2001



SG2001



その他



254



253



248



249



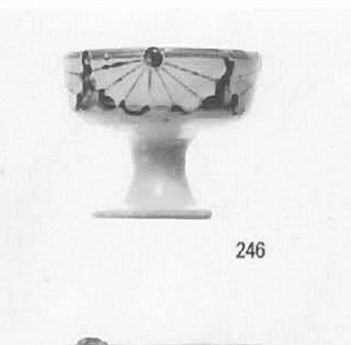
241



244



243



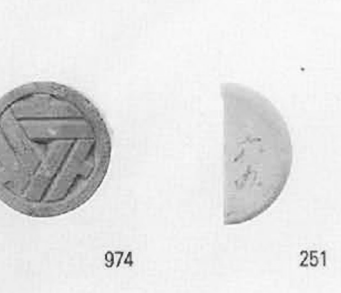
246



986



993



974



251

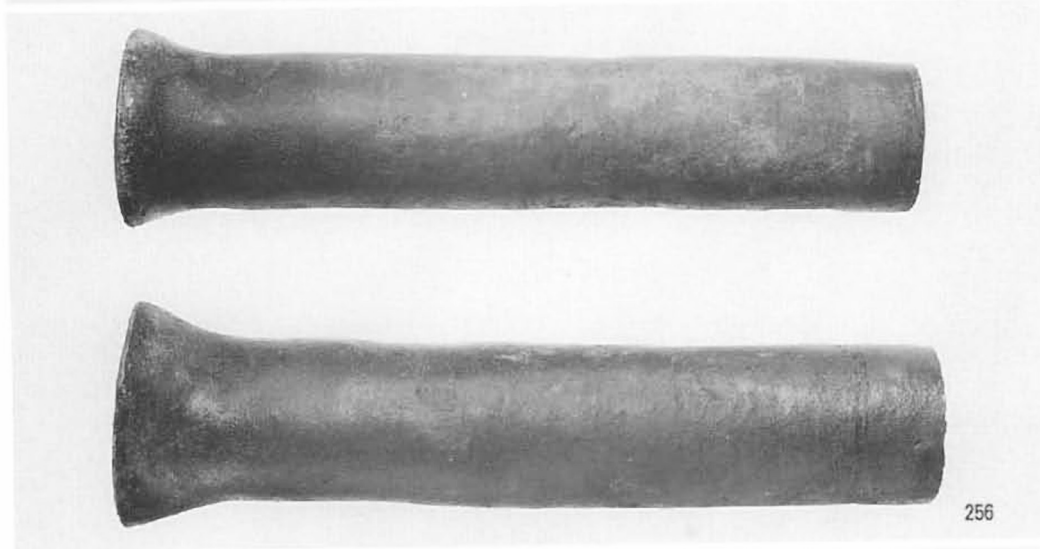


194

SP2001



258

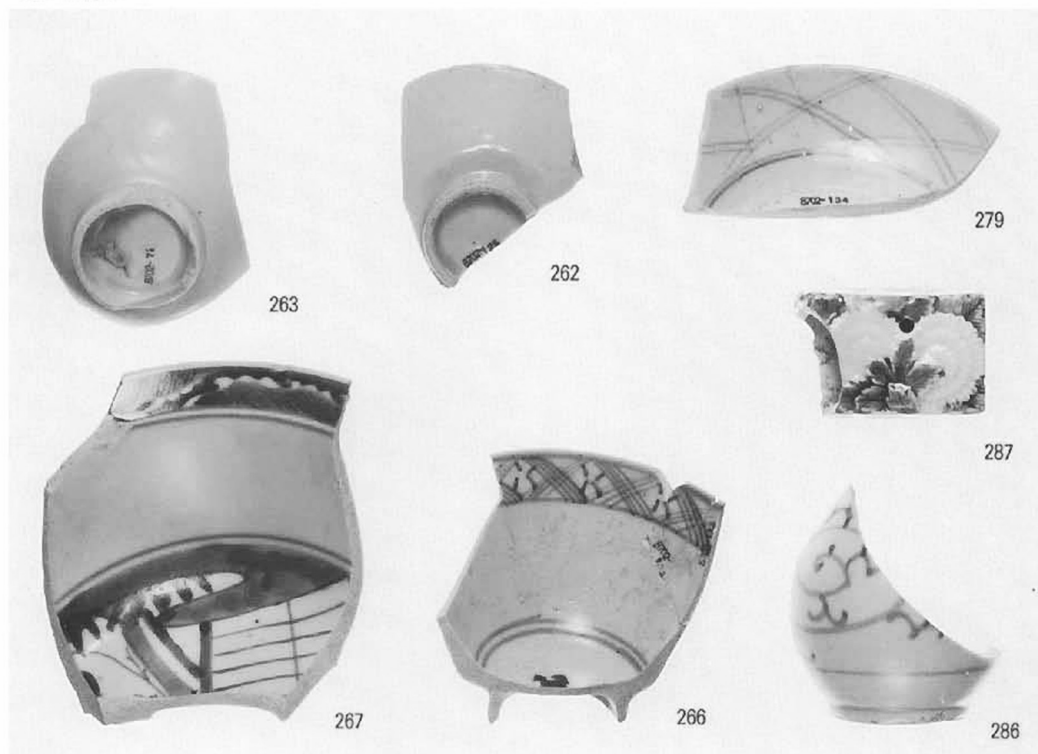


256

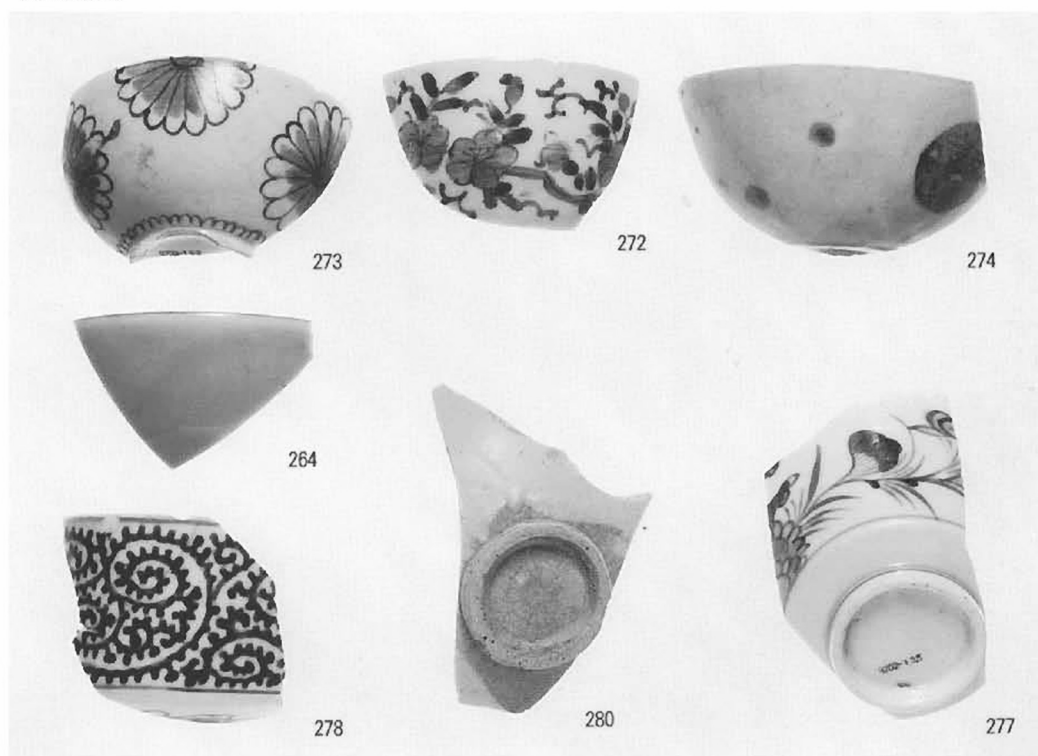


257

SD3101



SD3101



SD3101



271



276



275



265



260



270



281



282



284



268



283

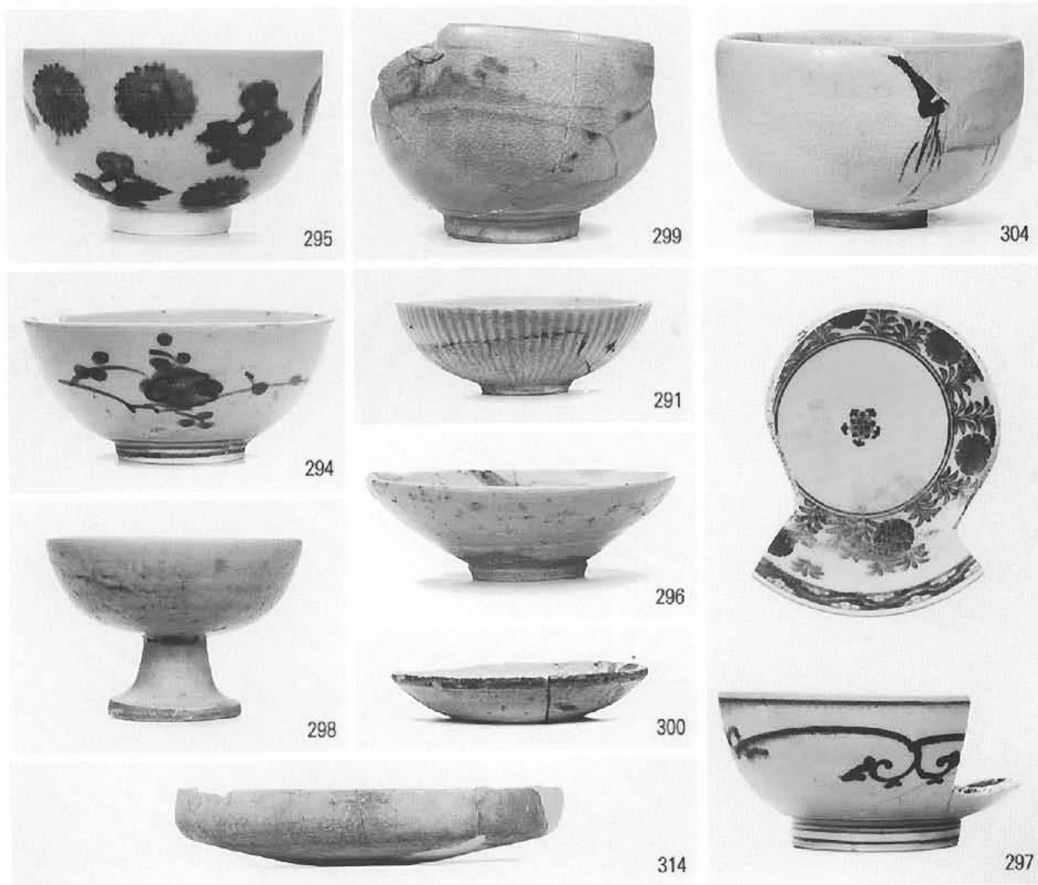


288

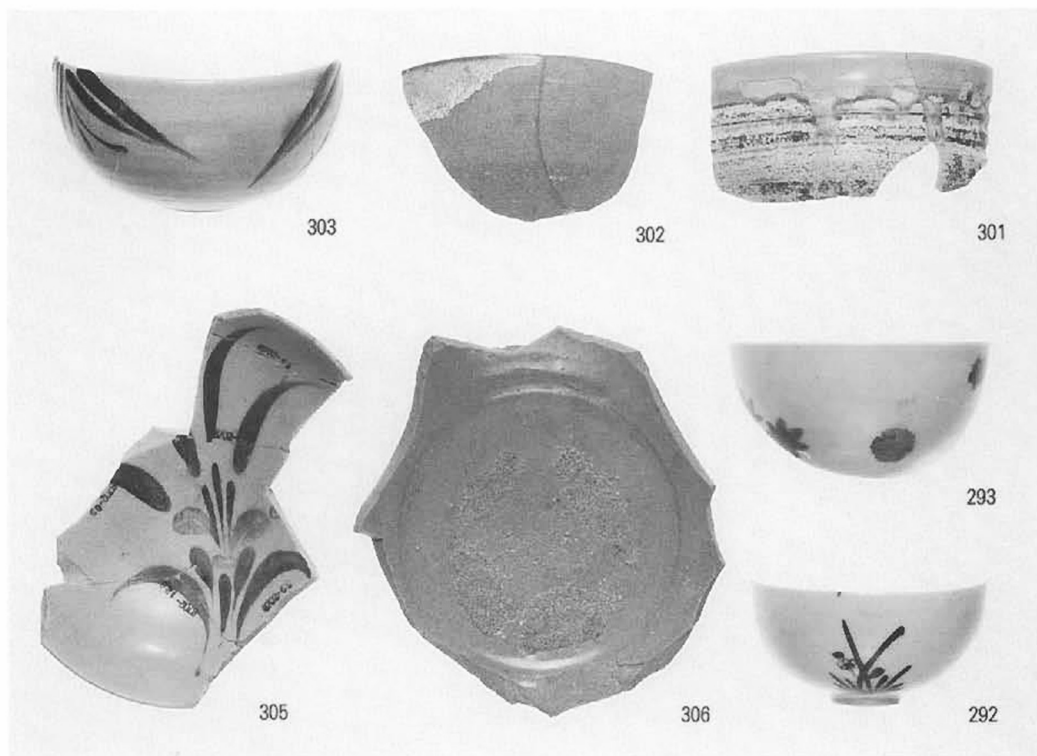
SD3101



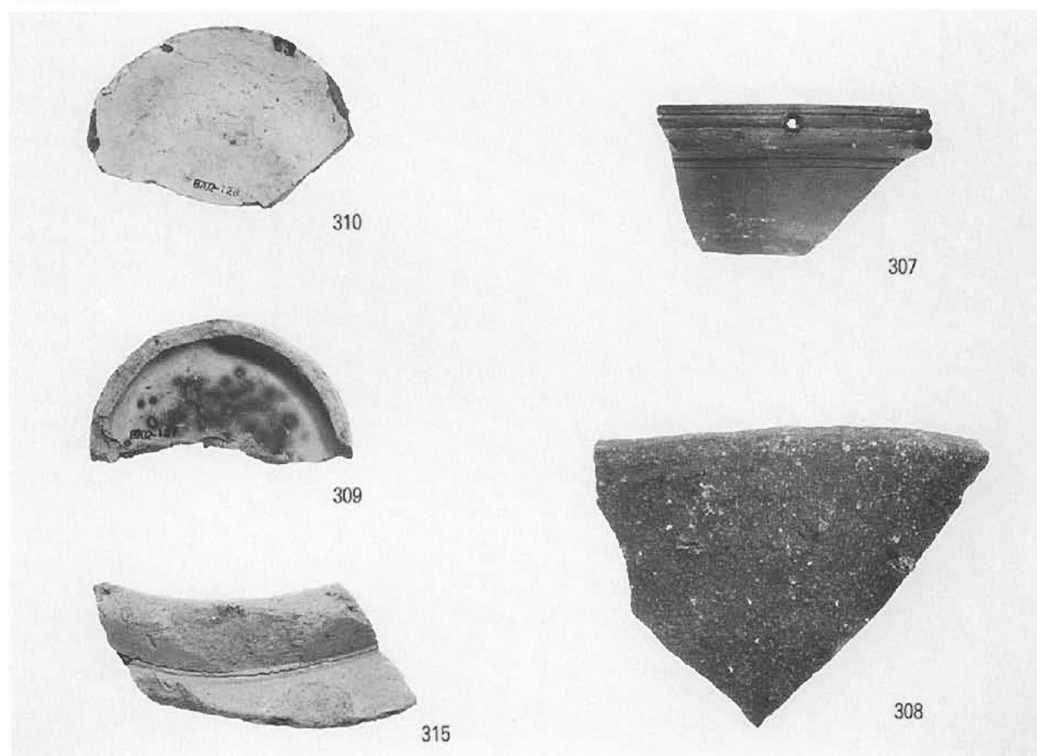
SD3101



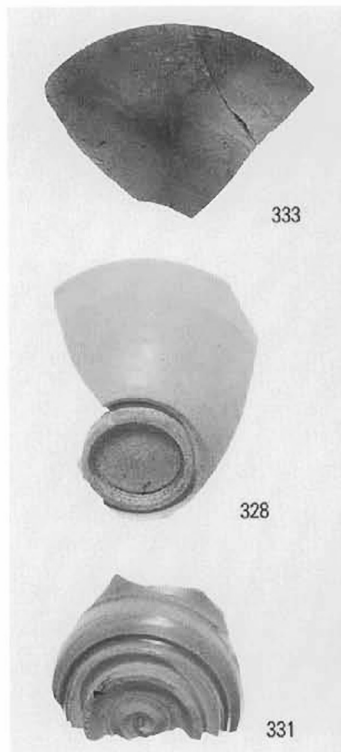
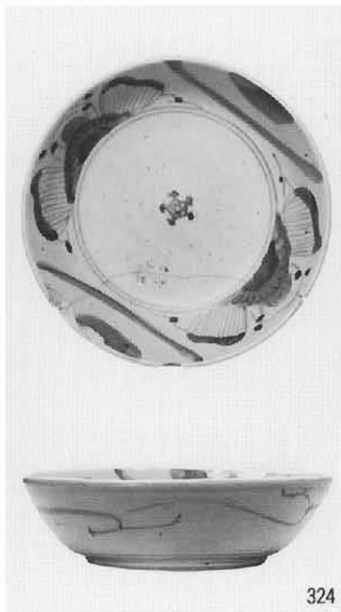
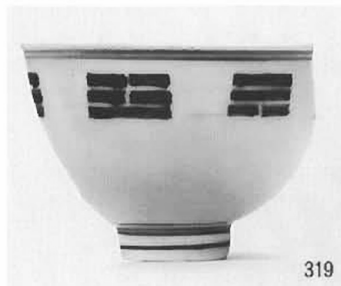
SD3101



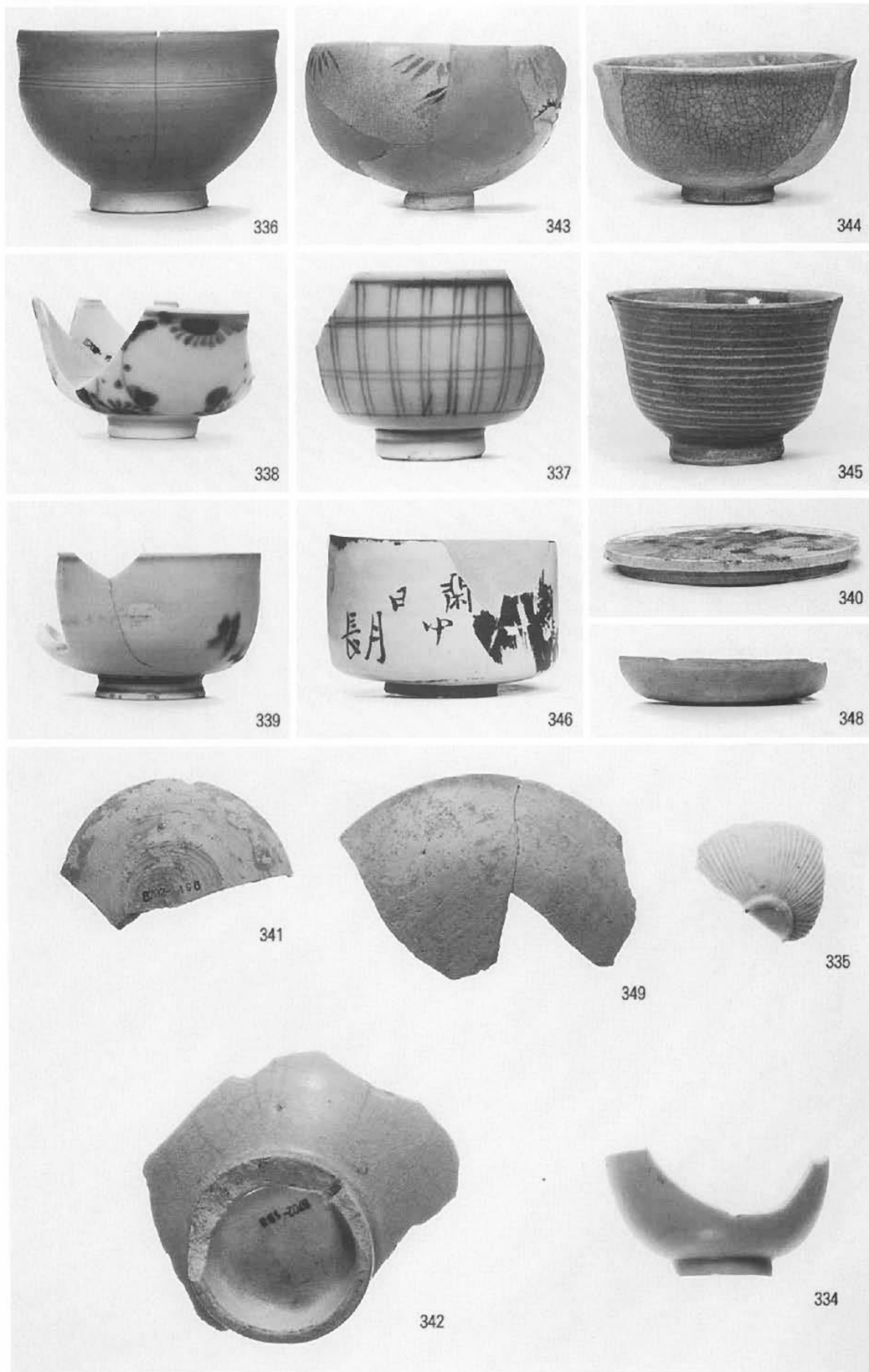
SD3101



SD2102



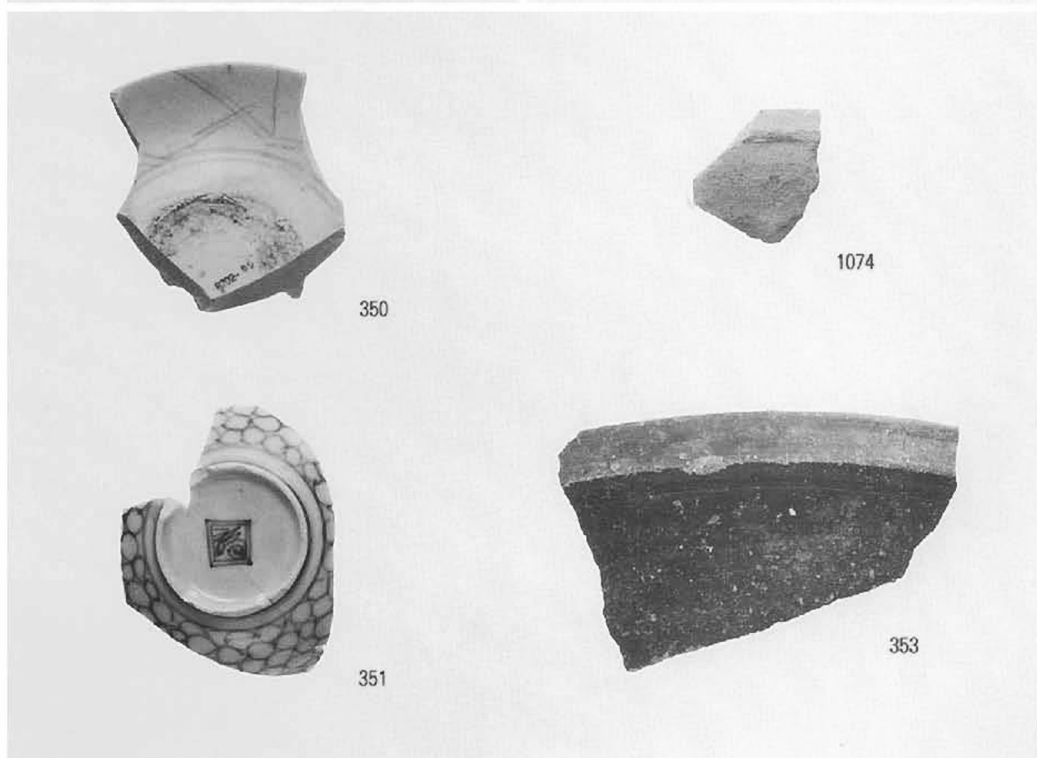
SD2101



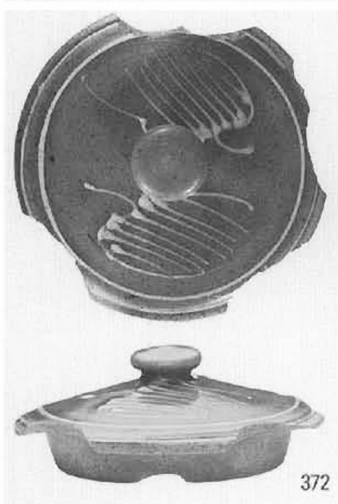
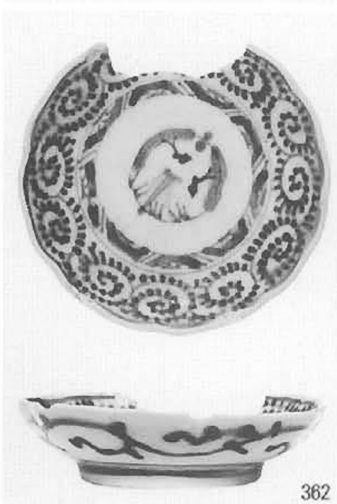
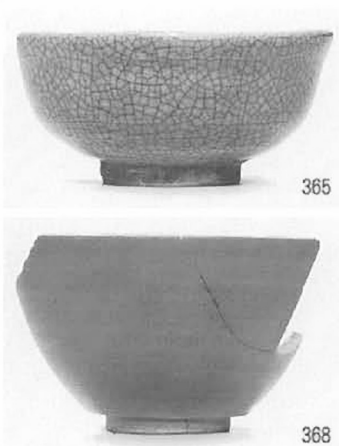
SD2002 SD2101



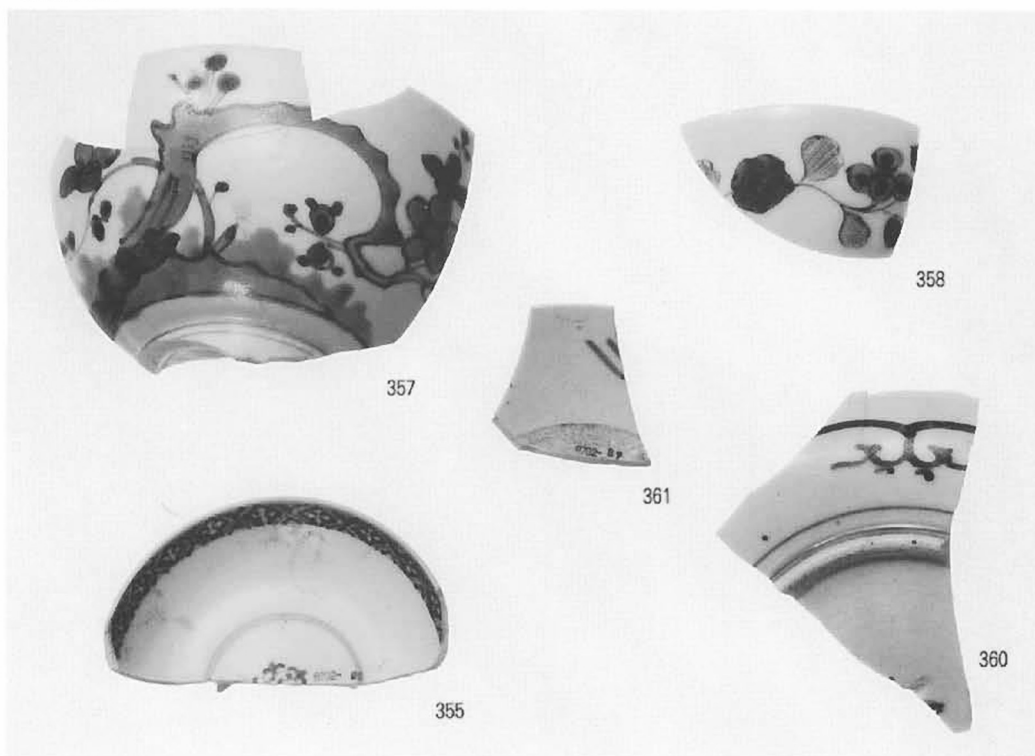
SE2101



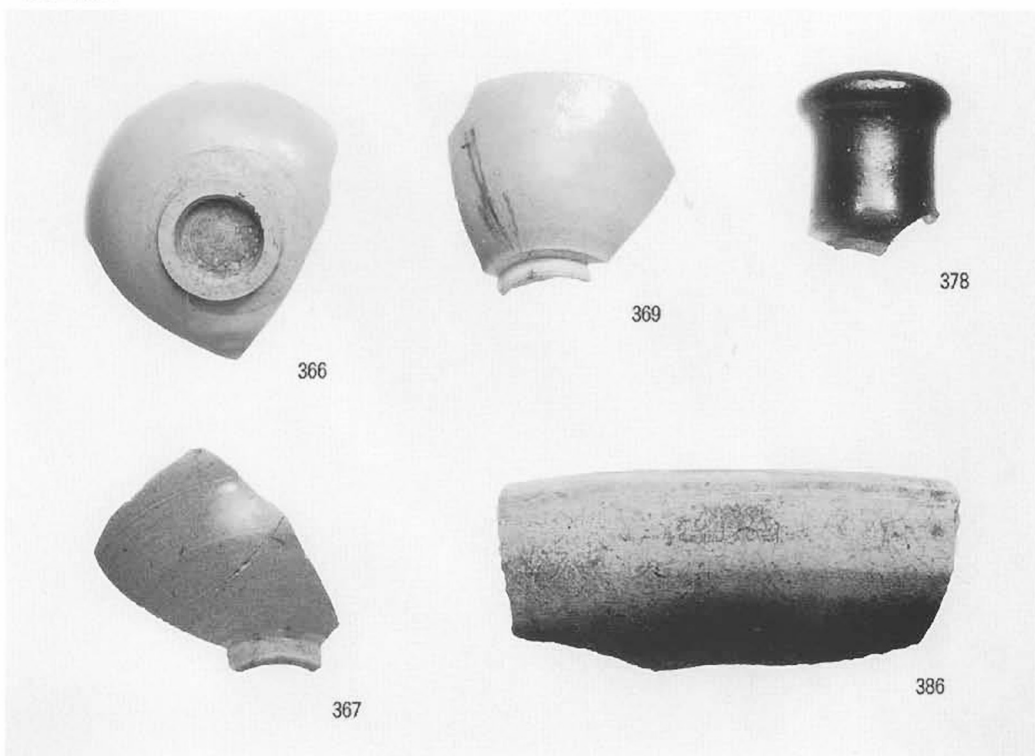
SE2102



SE2102



SE2102



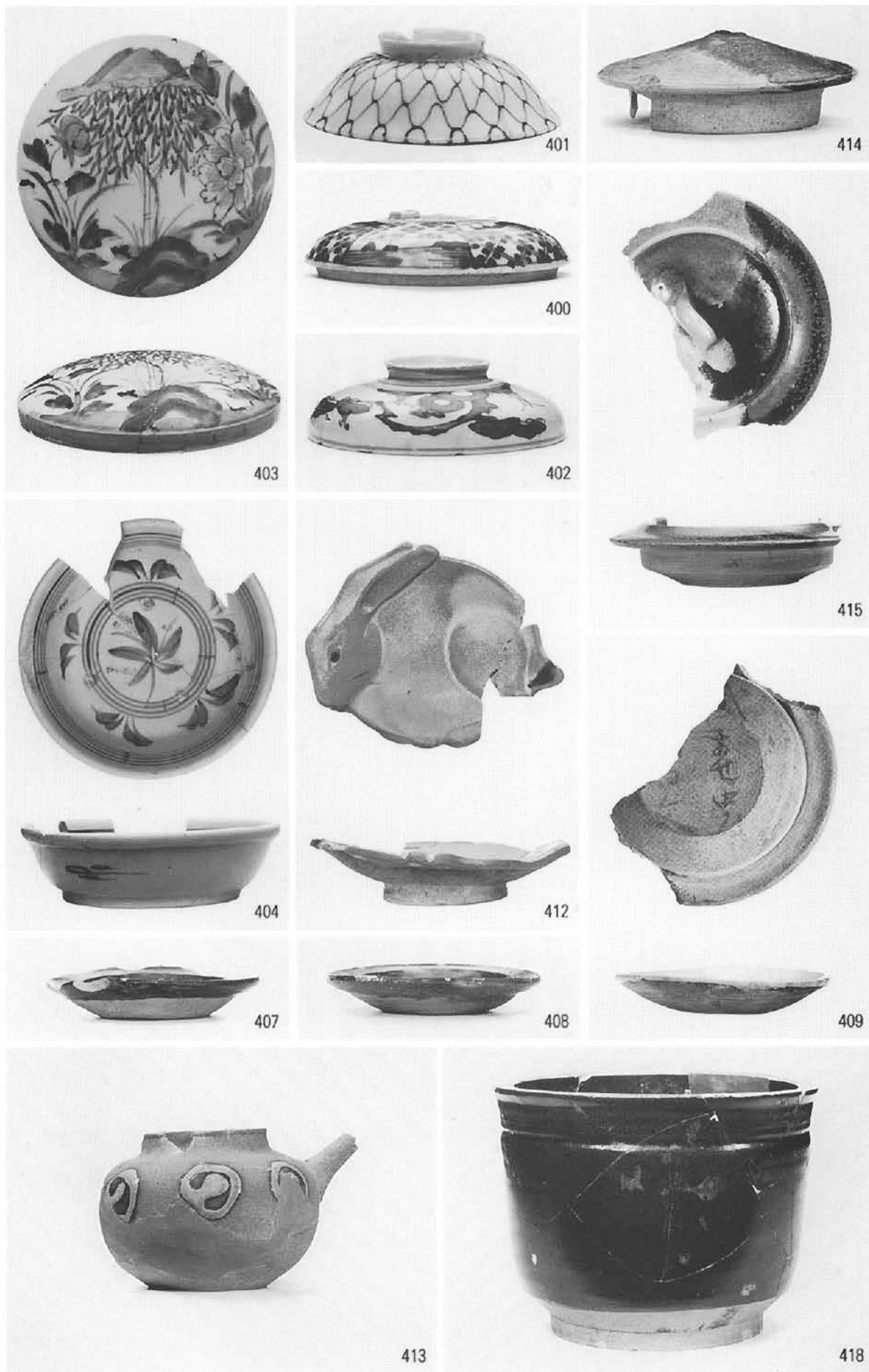
SE2102



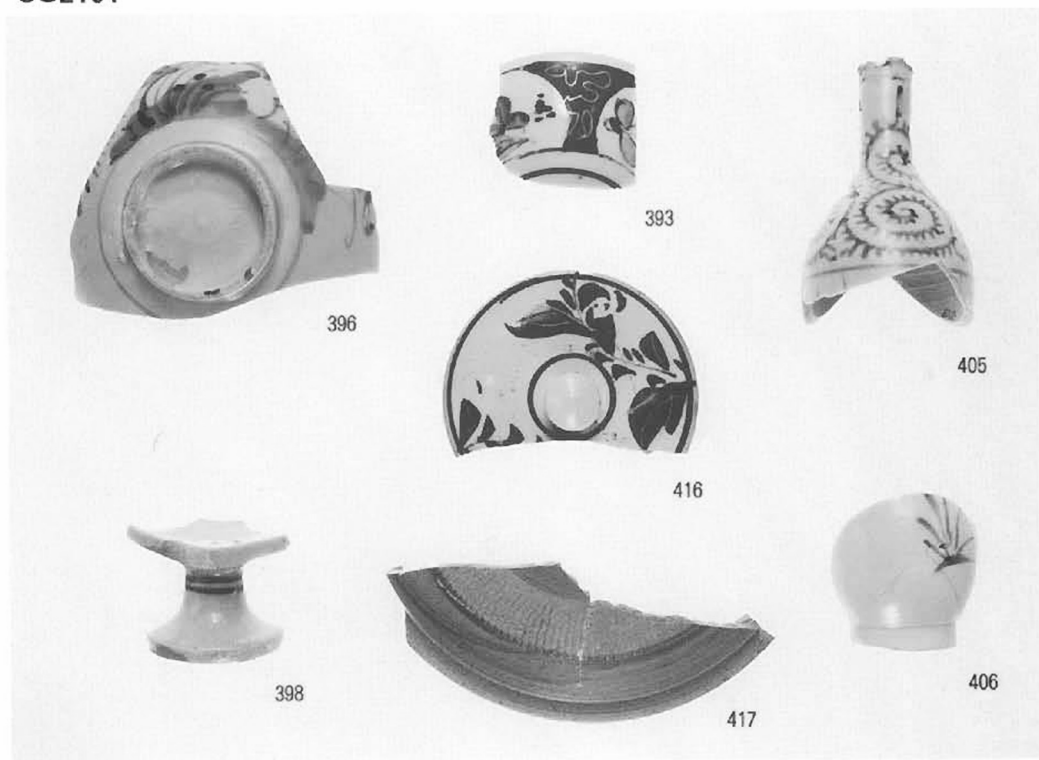
SG2101



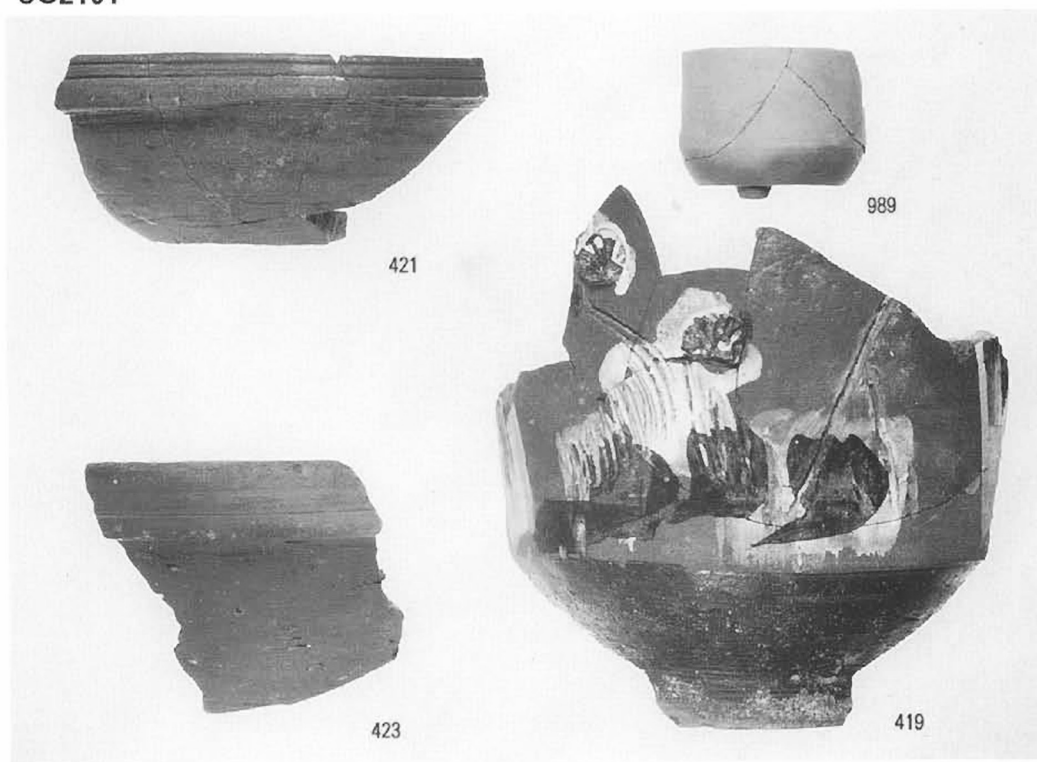
SG2101



SG2101



SG2101



SK2124



SK2159



SK2179



SD2201



452



454



453

SD3201



456



459



457



460



458

SD3202



461



464



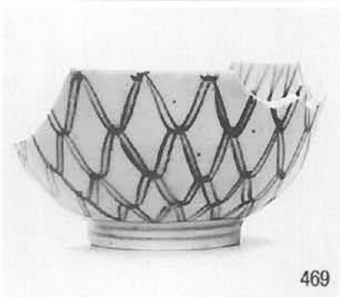
463



465

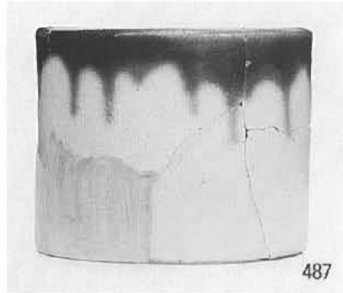
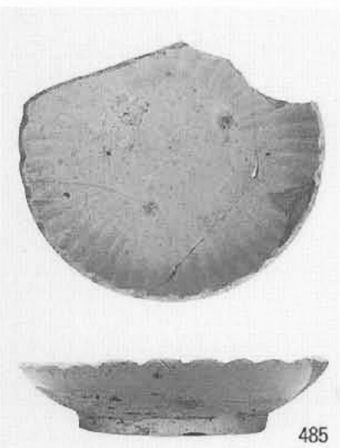
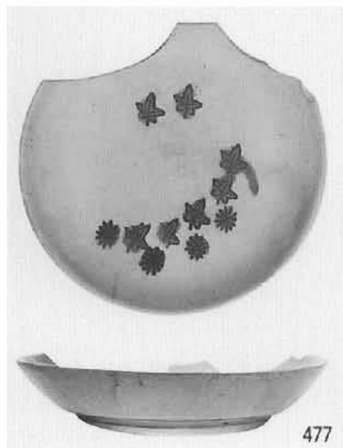
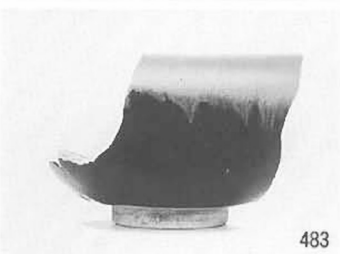
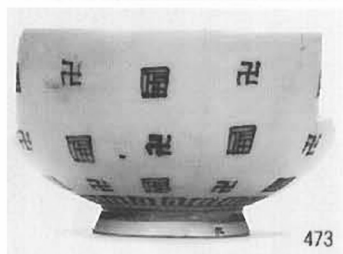


467



469

SD3202



SD3202



495



496



498



497



506

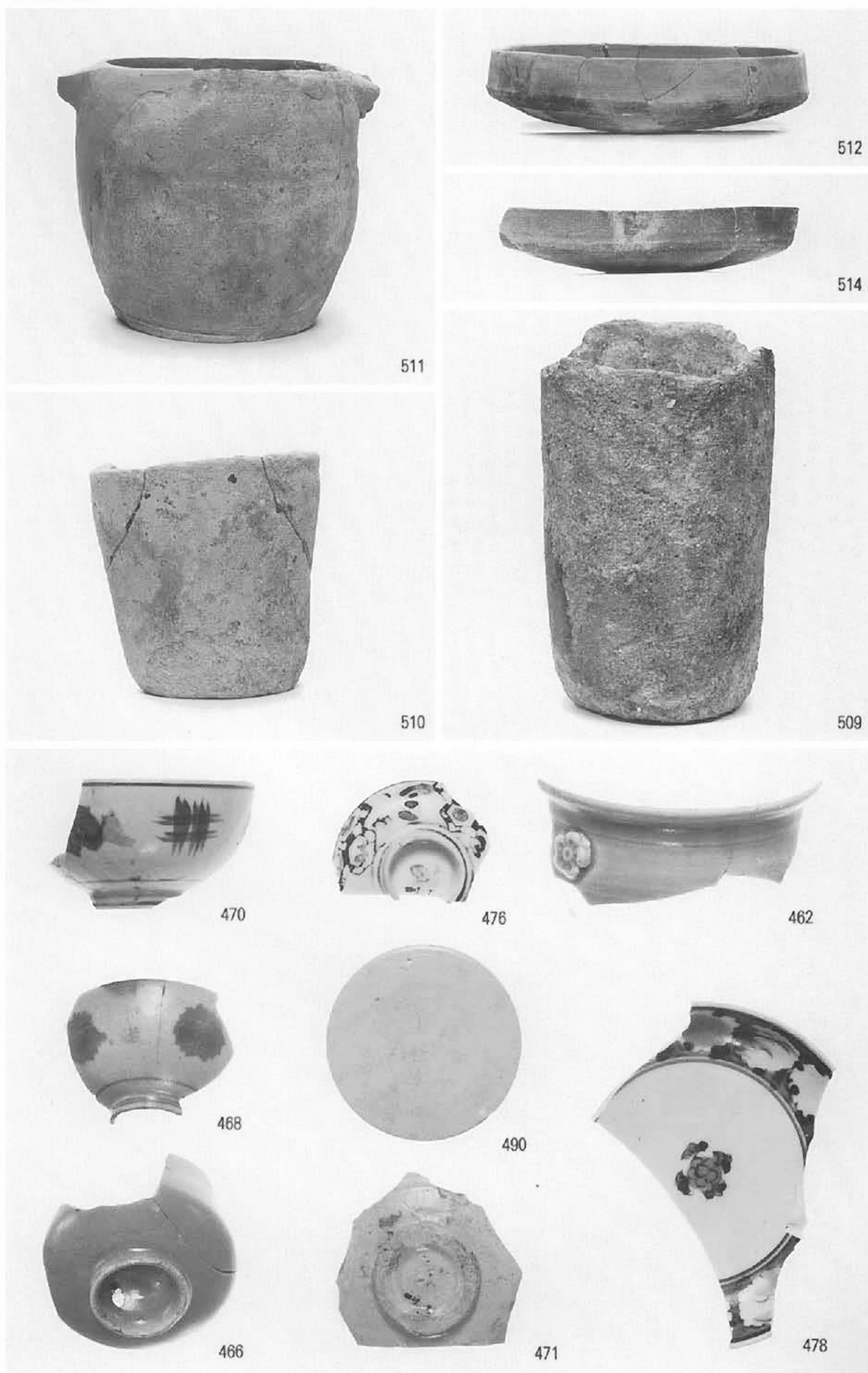


504

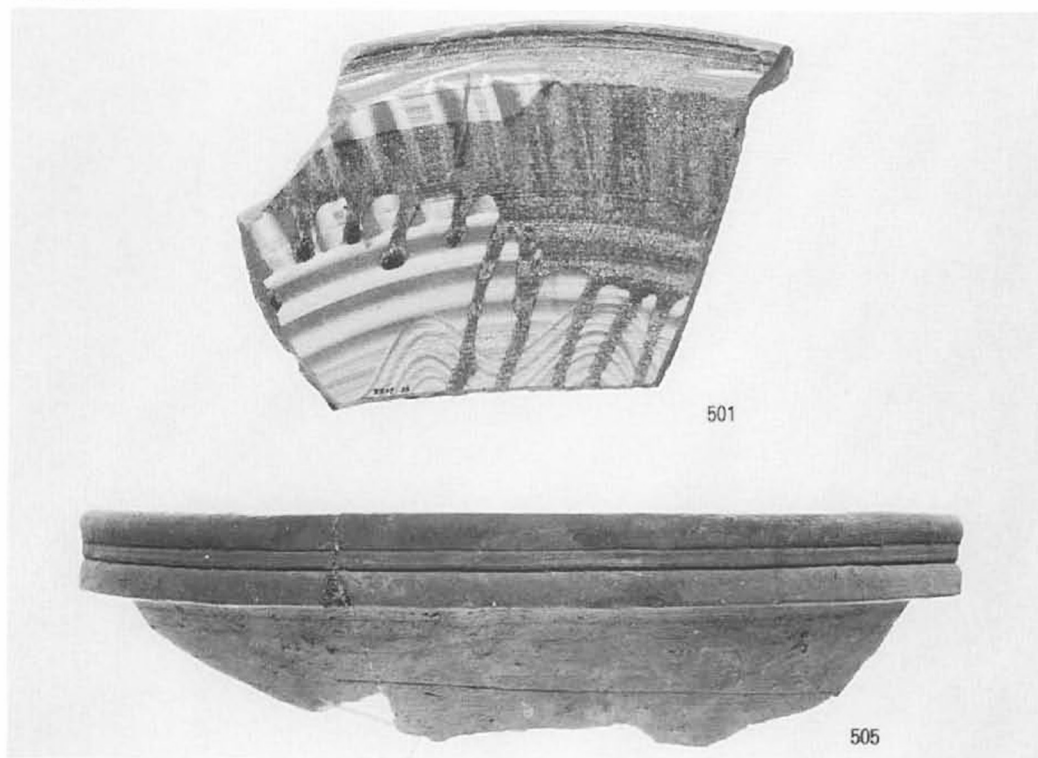


503

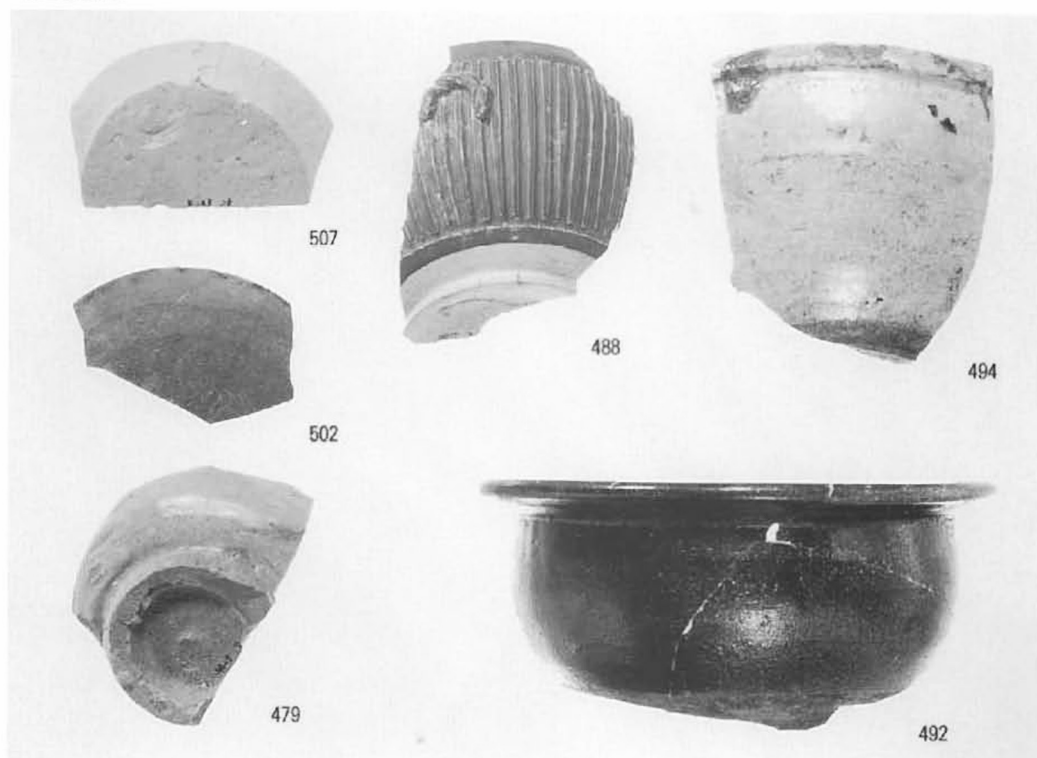
SD3202



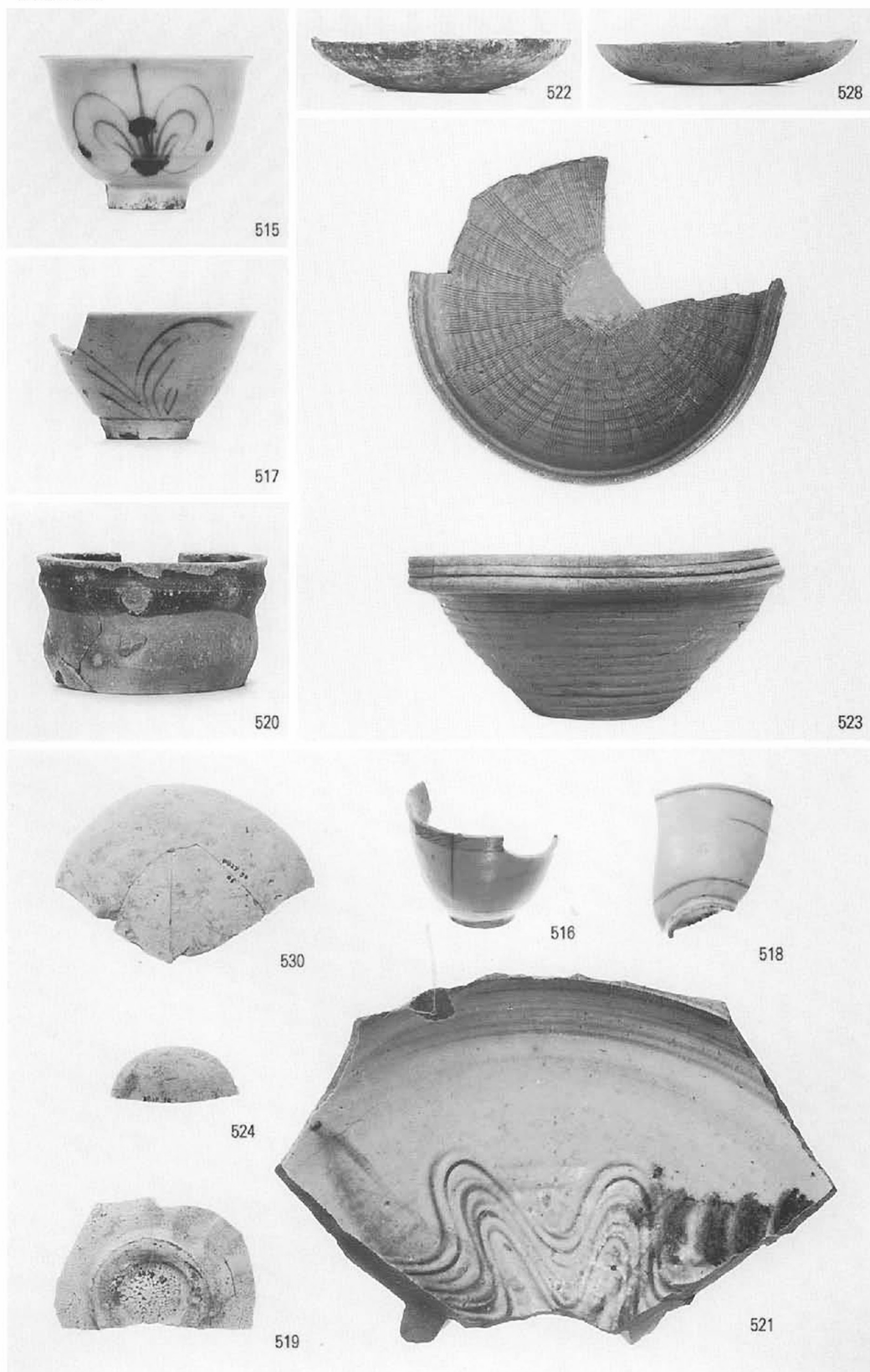
SD3202



SD3202



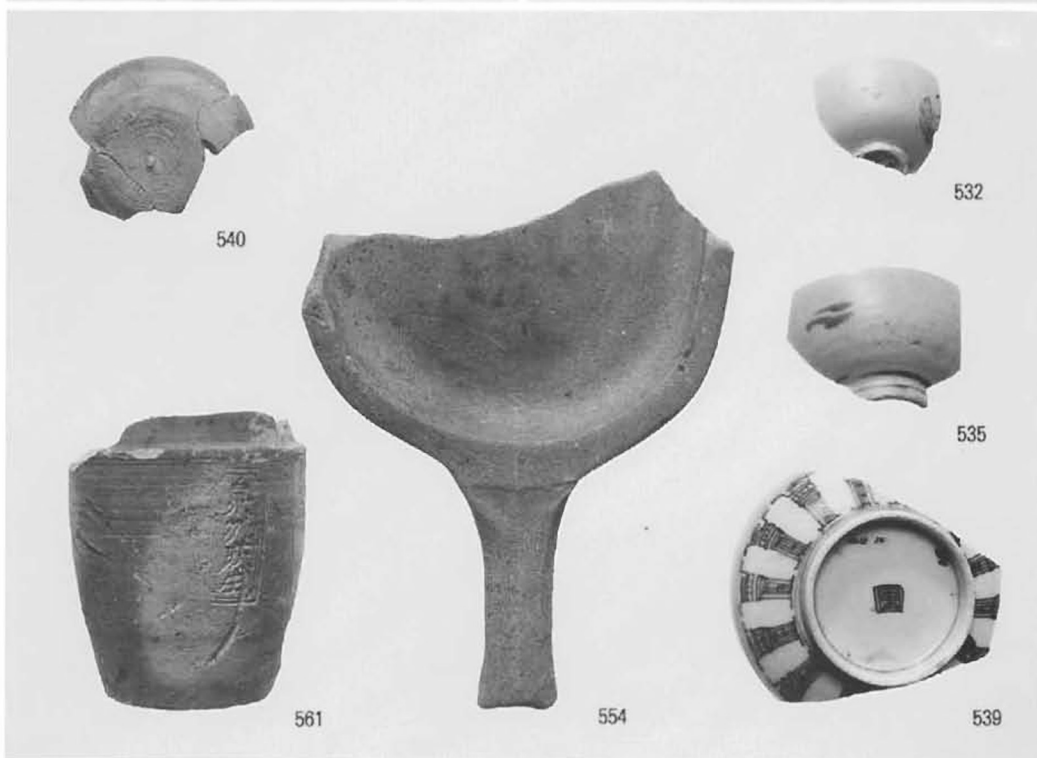
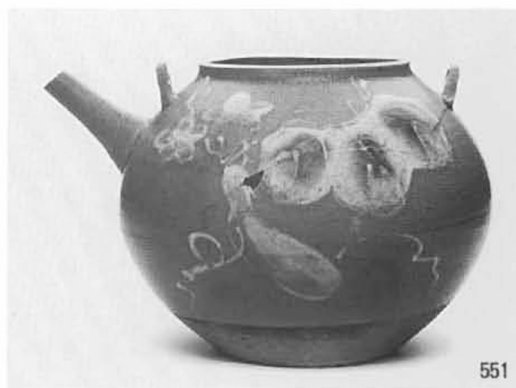
SK3208



SG3201



SG3201



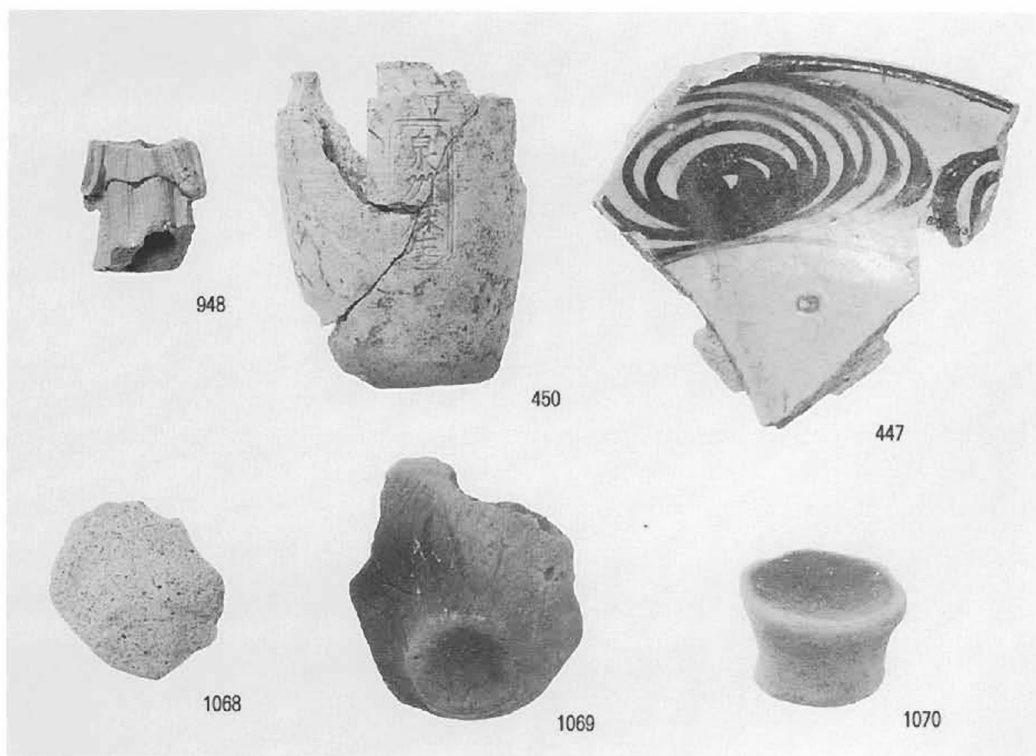
SX3202



SK3201



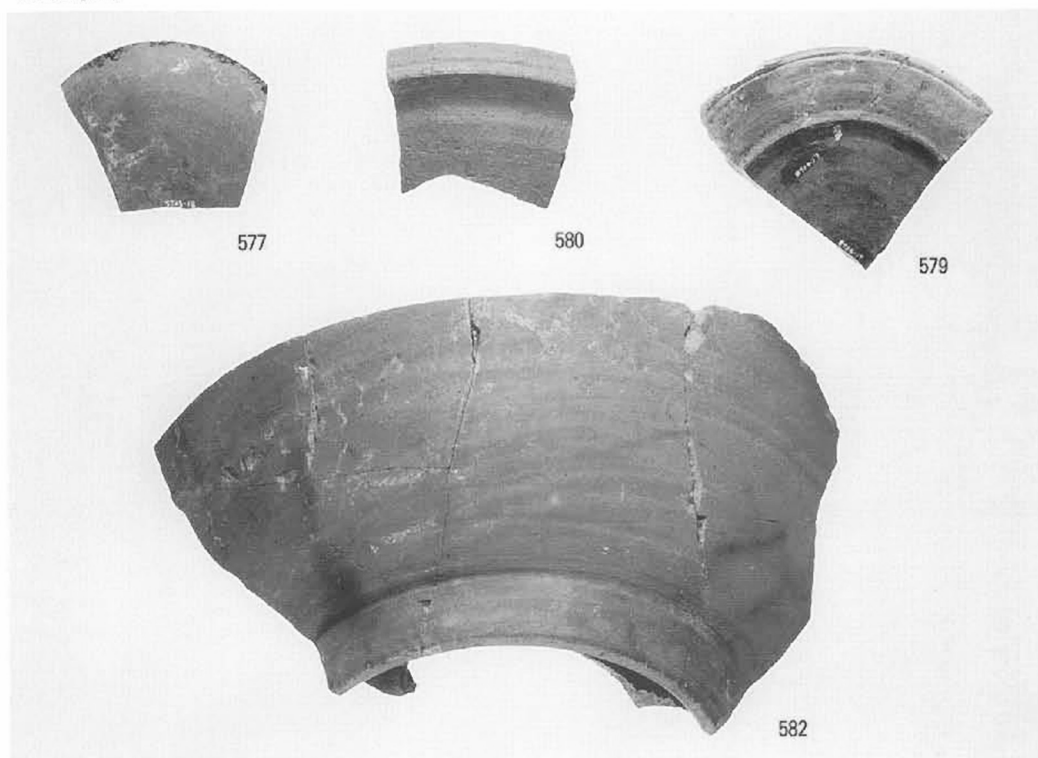
SK2159 · SK2148



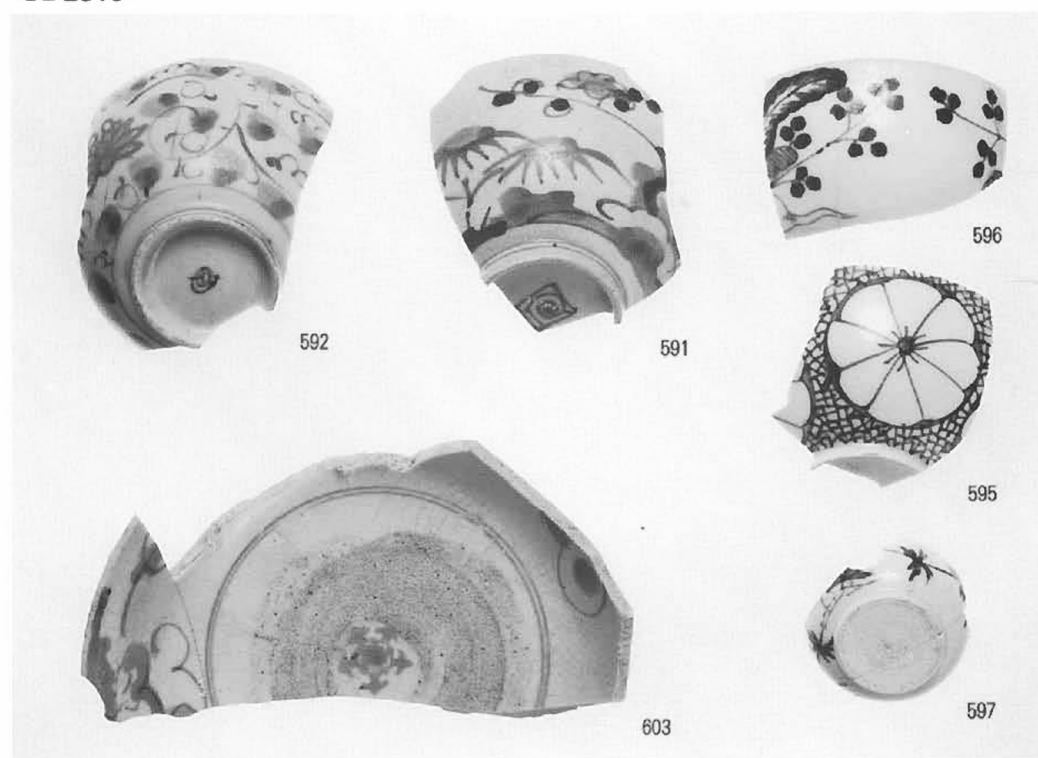
SD2321



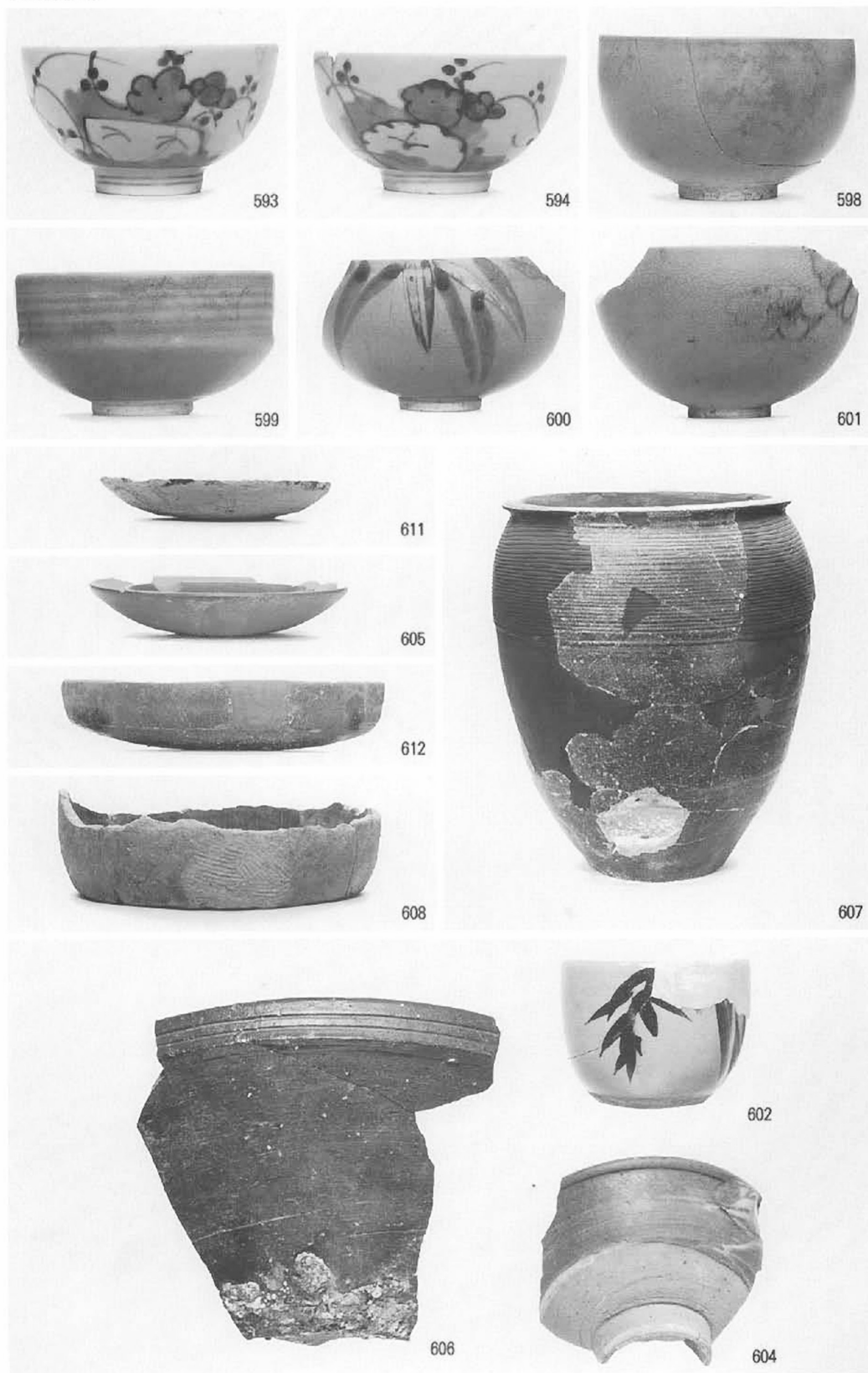
SD2321



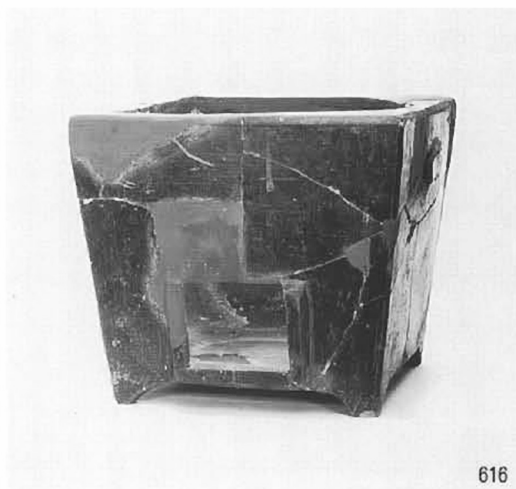
SD2310



SD2310



SD2305



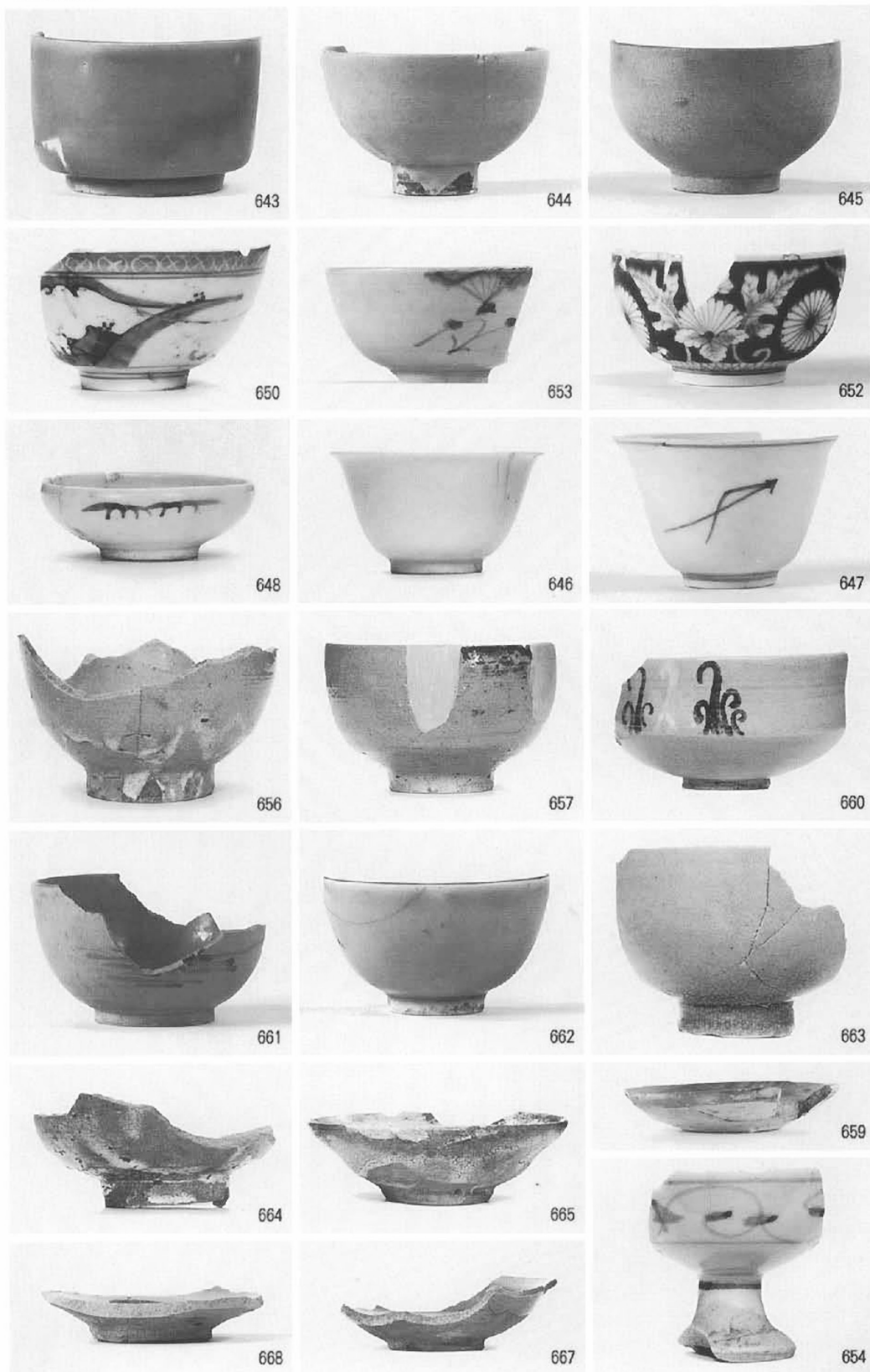
SD2404



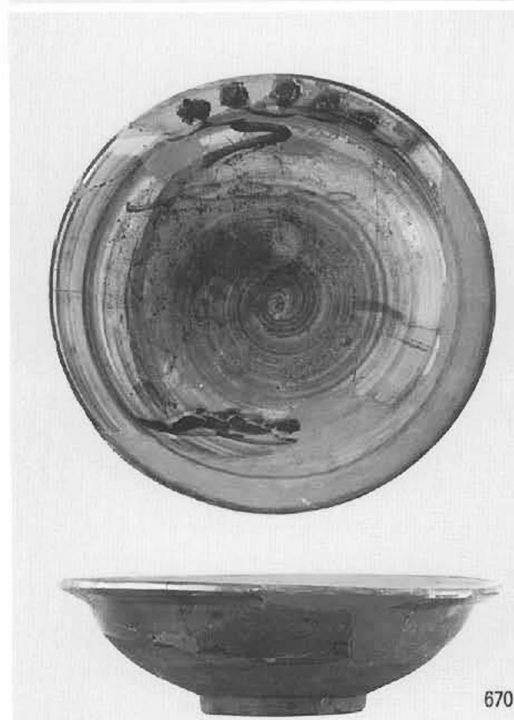
SK2417



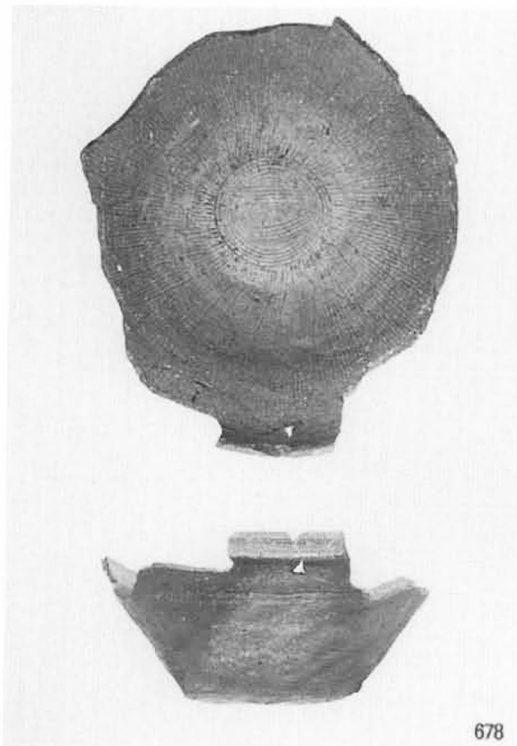
SD3501



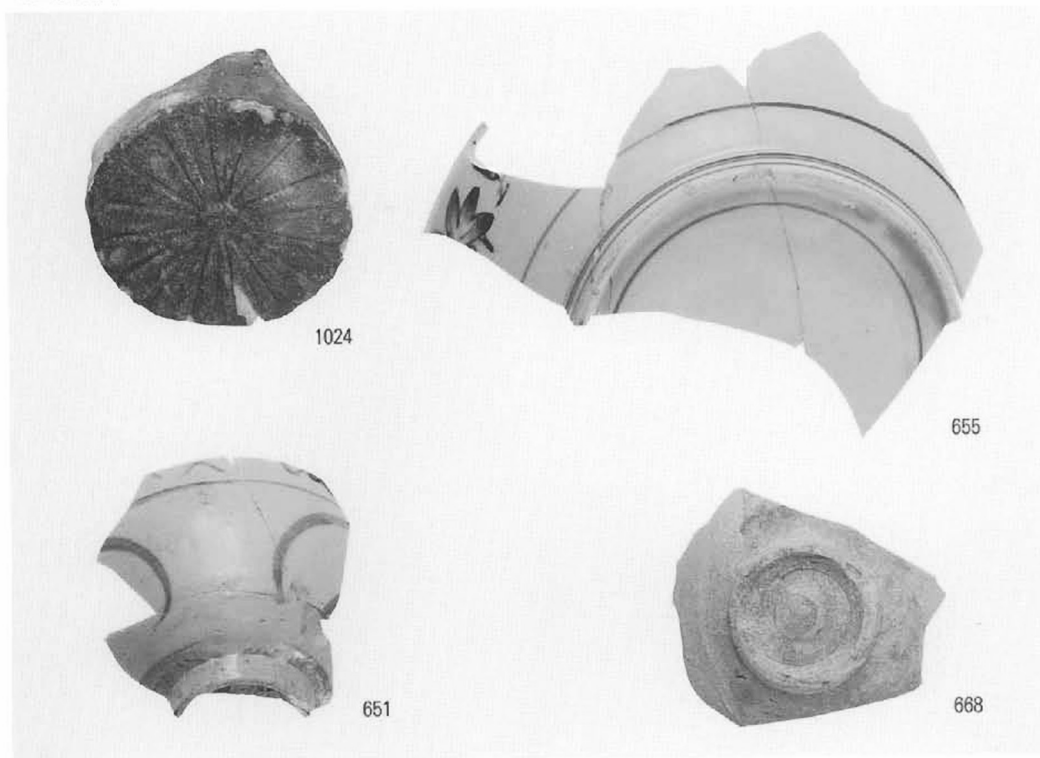
SD3501



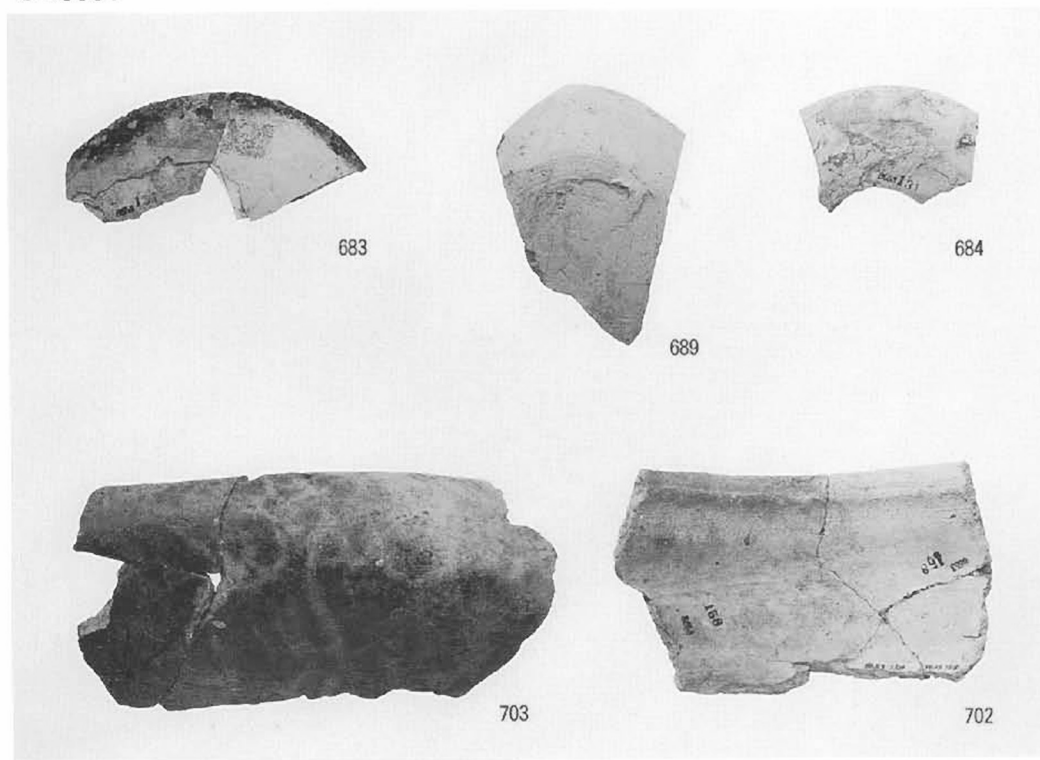
SD3501



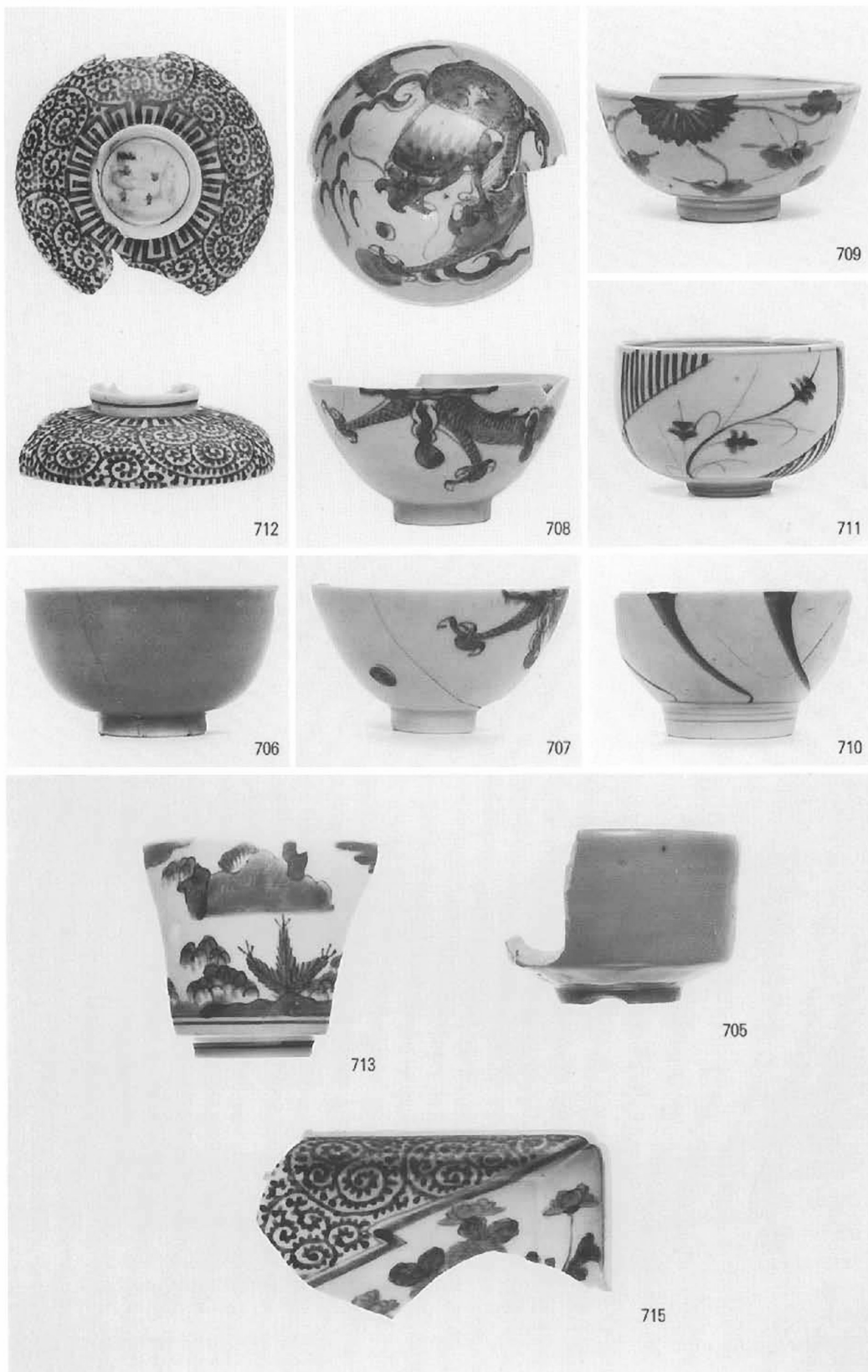
SD3501



SD3501



SD2501



SD01 SD2501



714



716



717

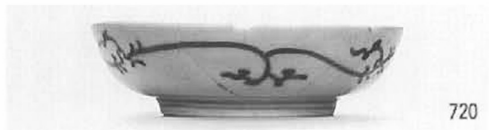


718



719

SD2502



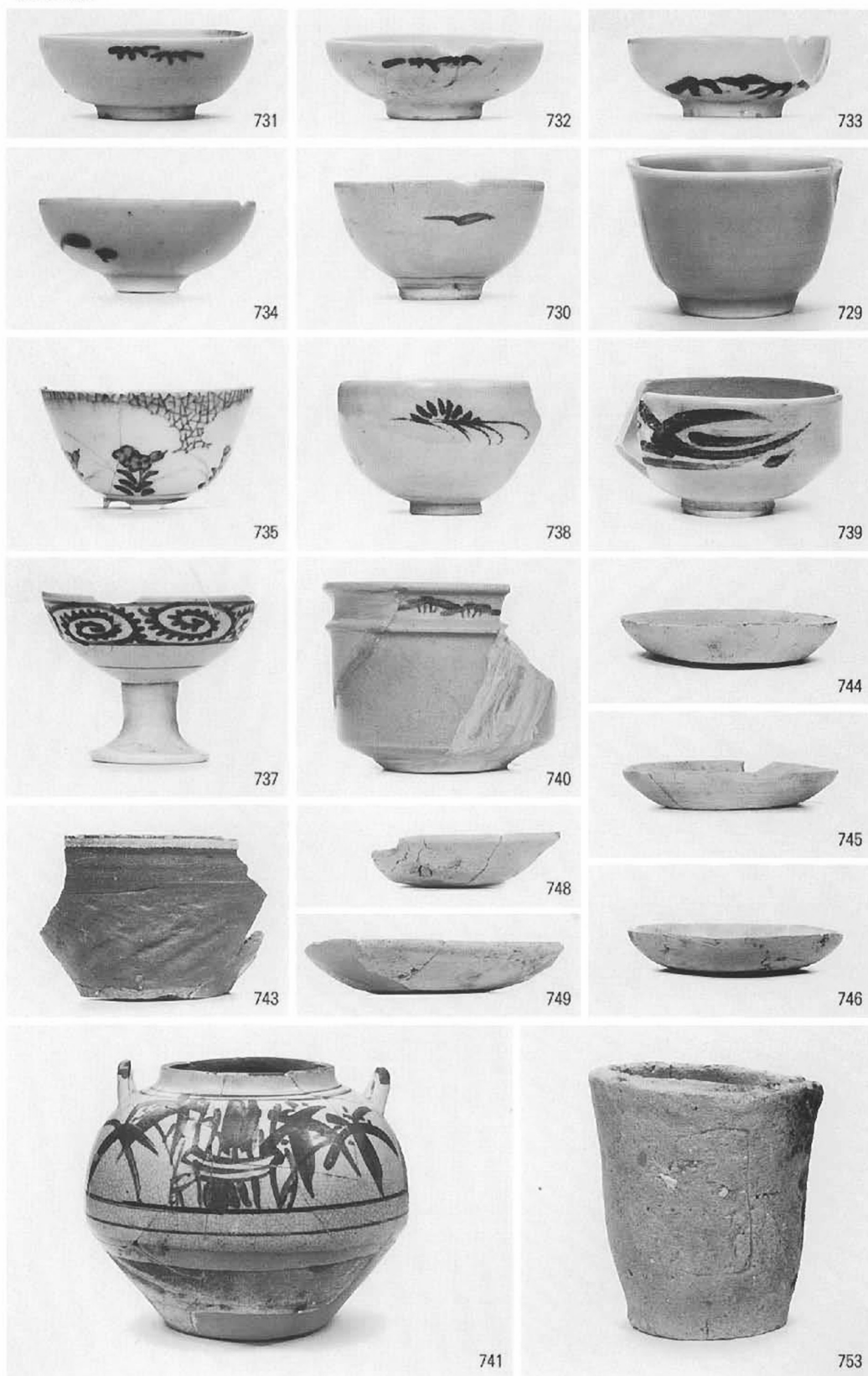
SG3501



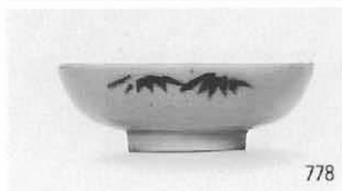
SK2503



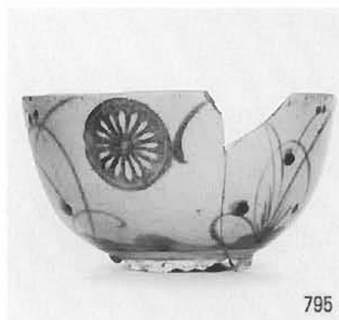
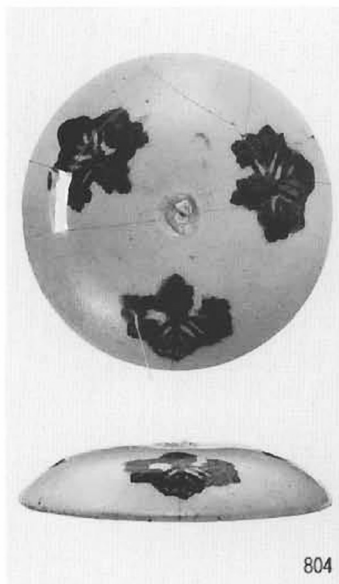
SK2501



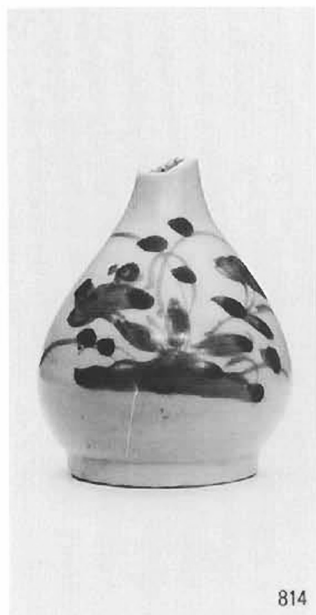
SK2502



S2502



SK2502



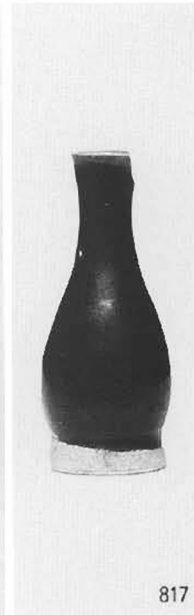
814



815



816



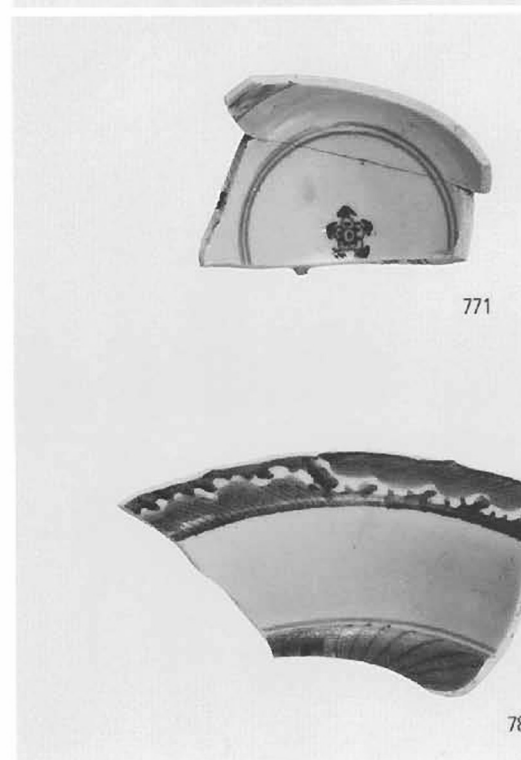
817



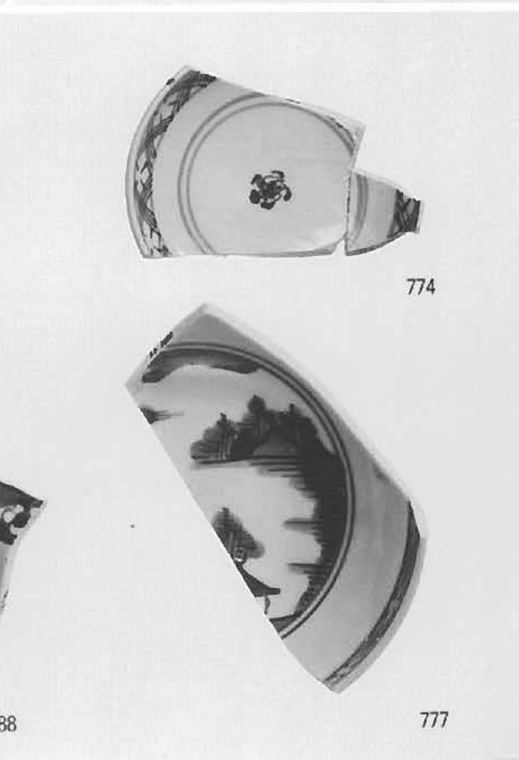
819



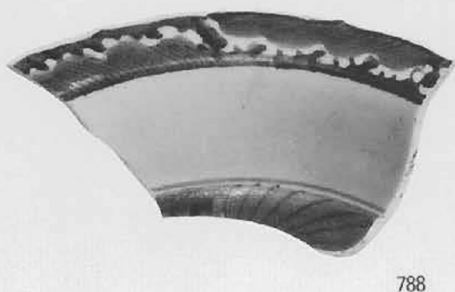
821



771



774

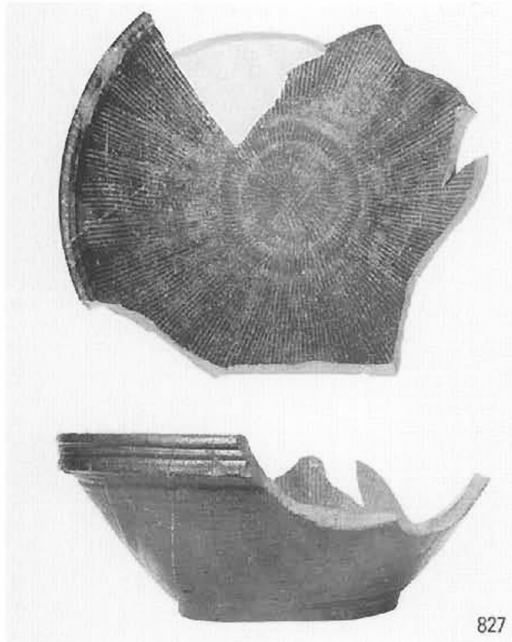


788



777

土壤1 SK2502



827

828



826



818



831



833



835



836



839



848



844



845

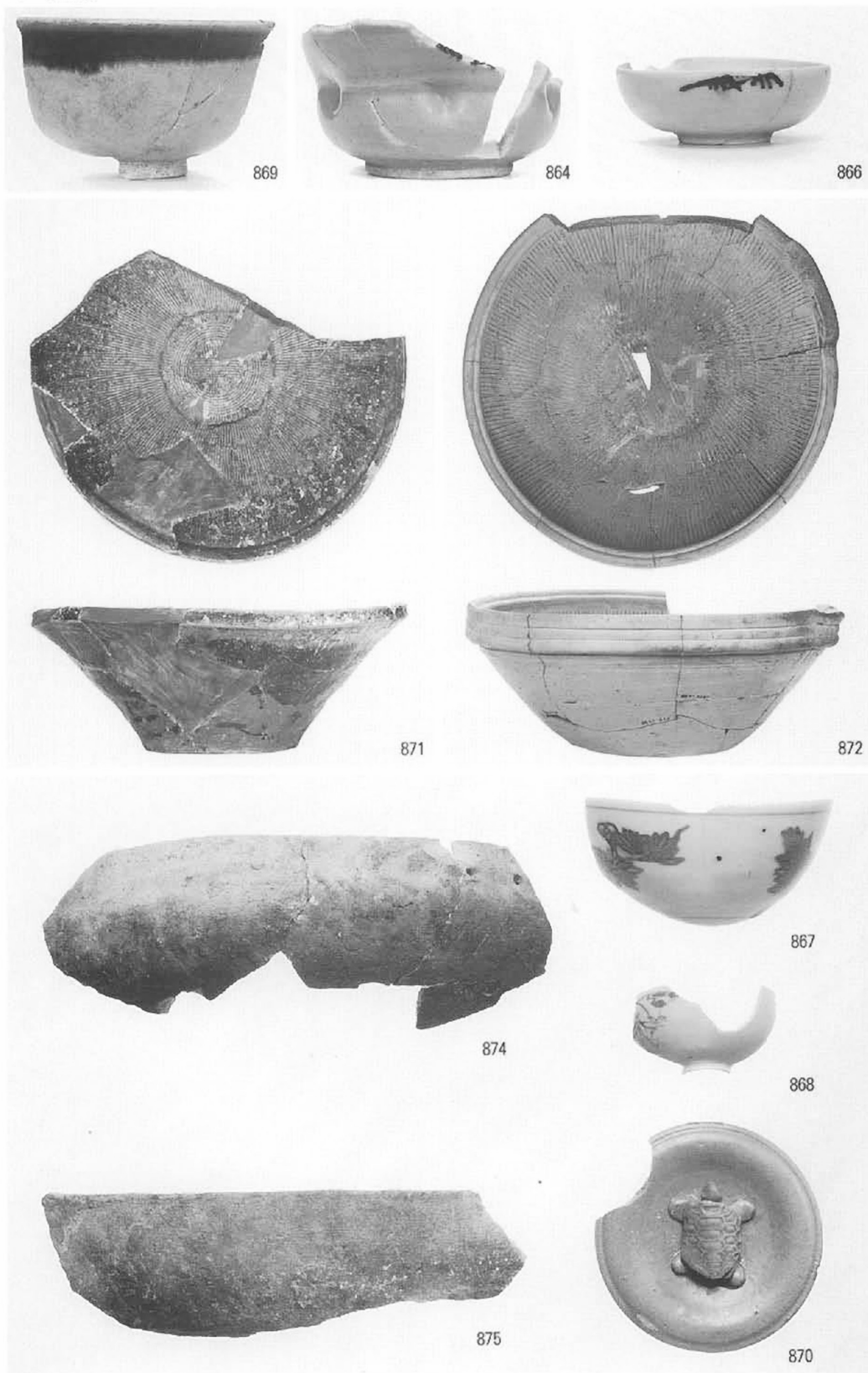
SG2501



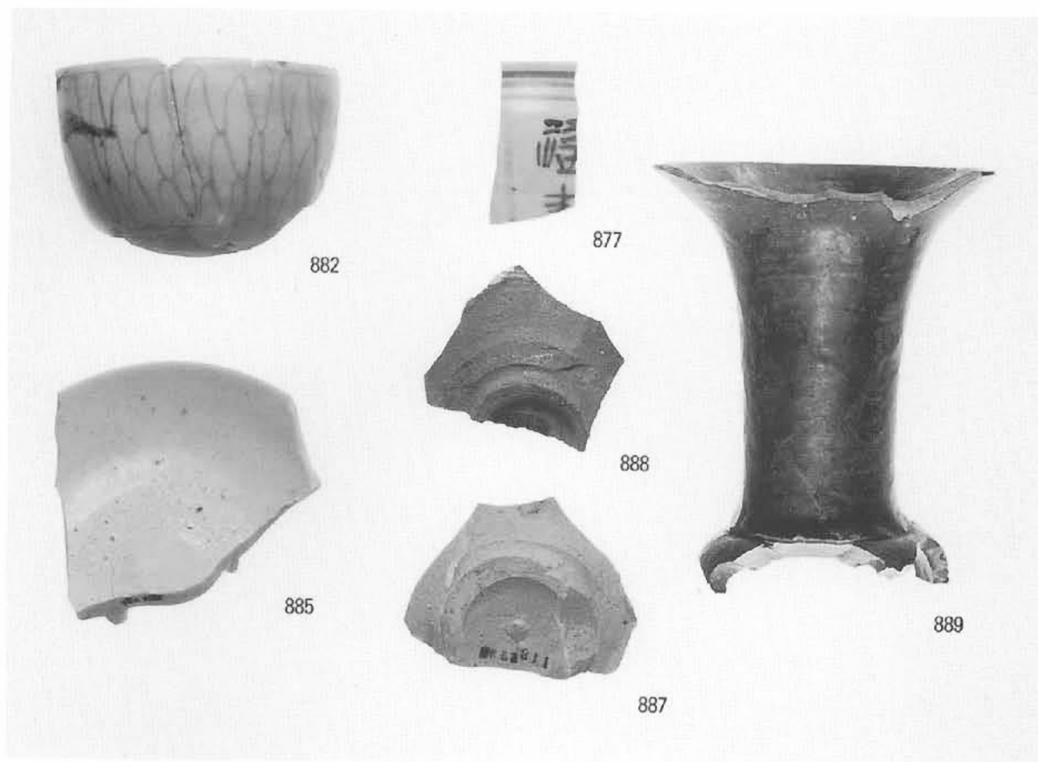
SD2505



SD3505



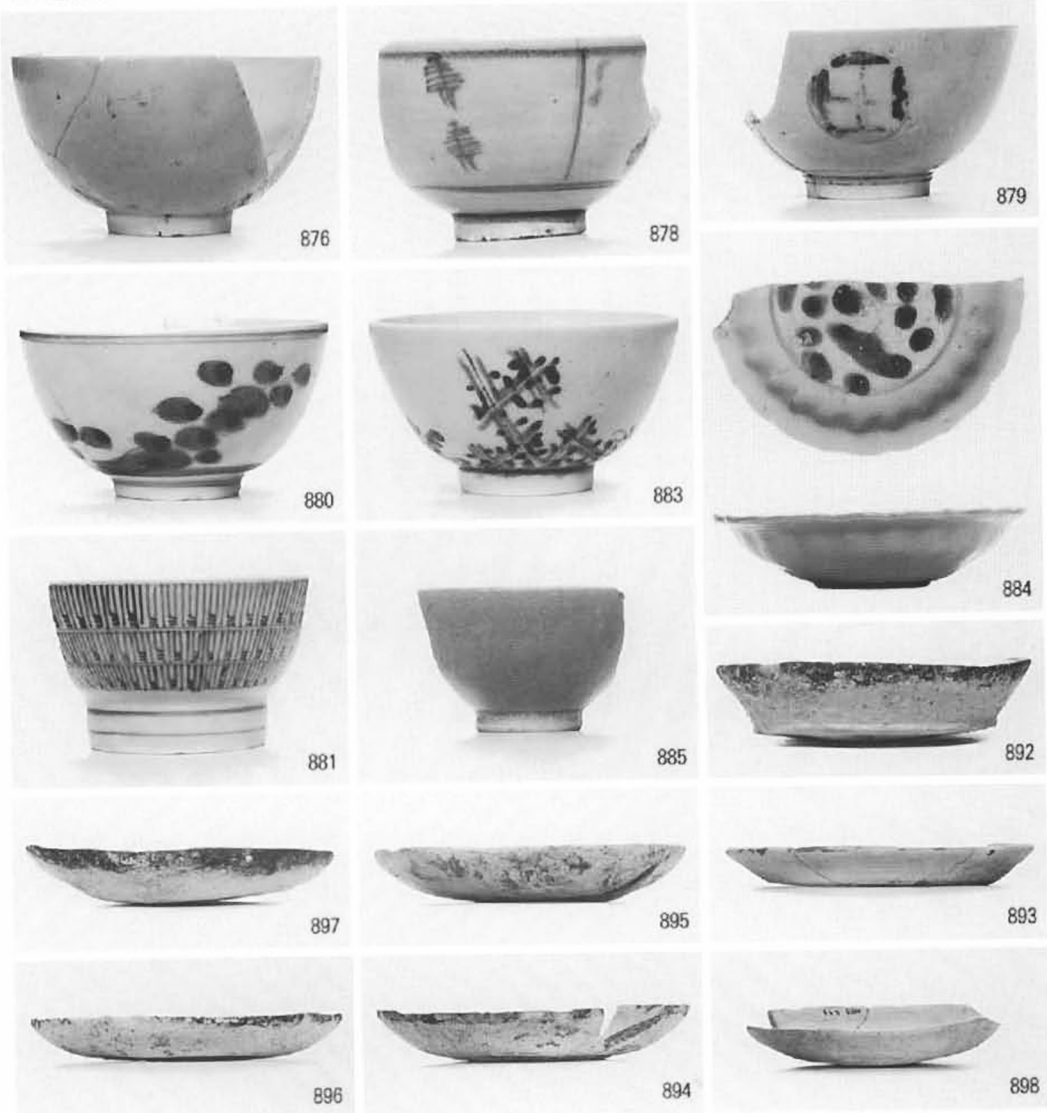
SK3506



SK3506



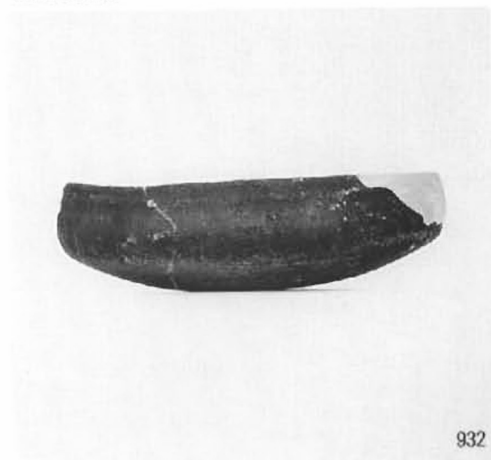
SK3506



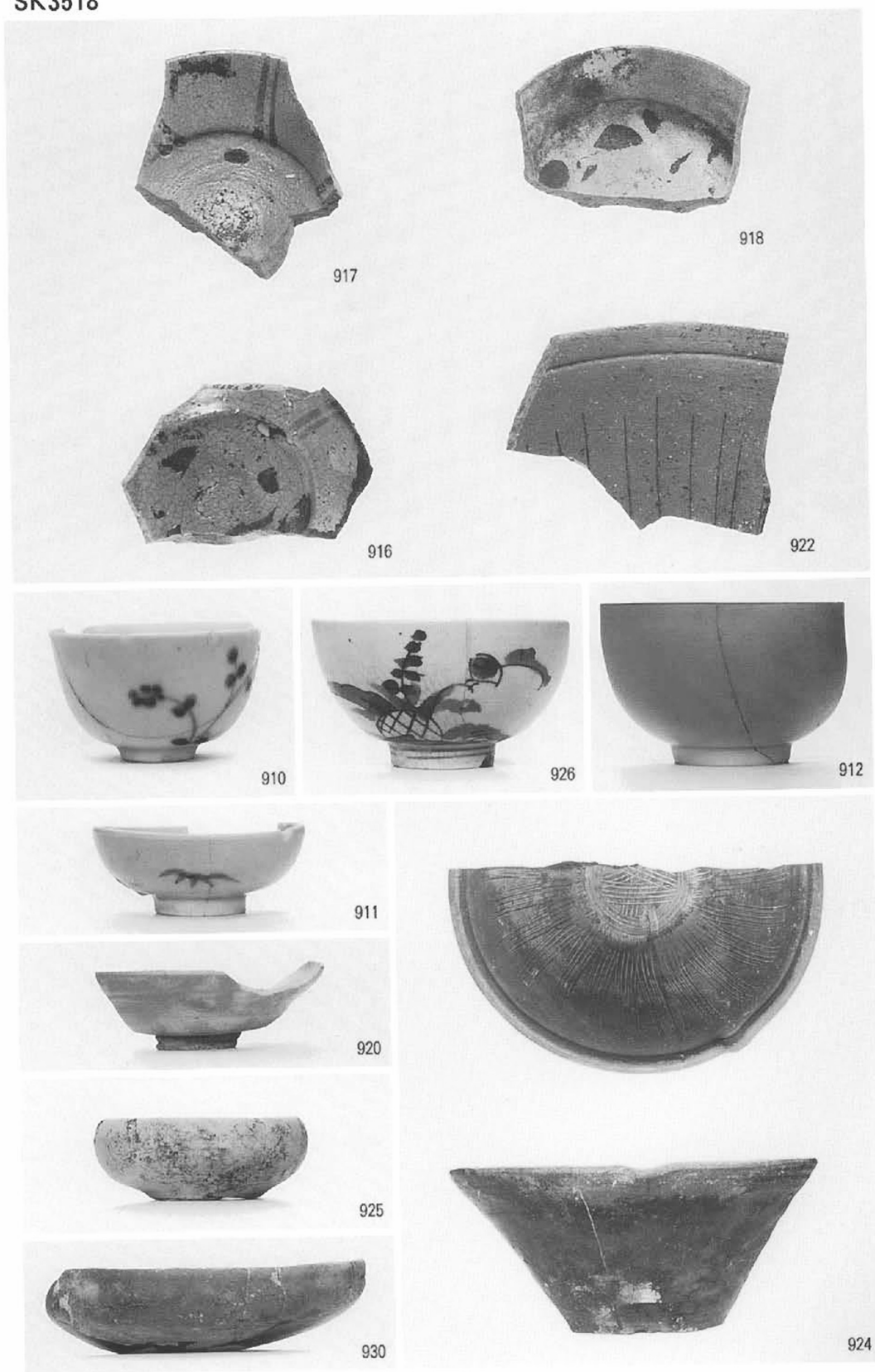
SK3536



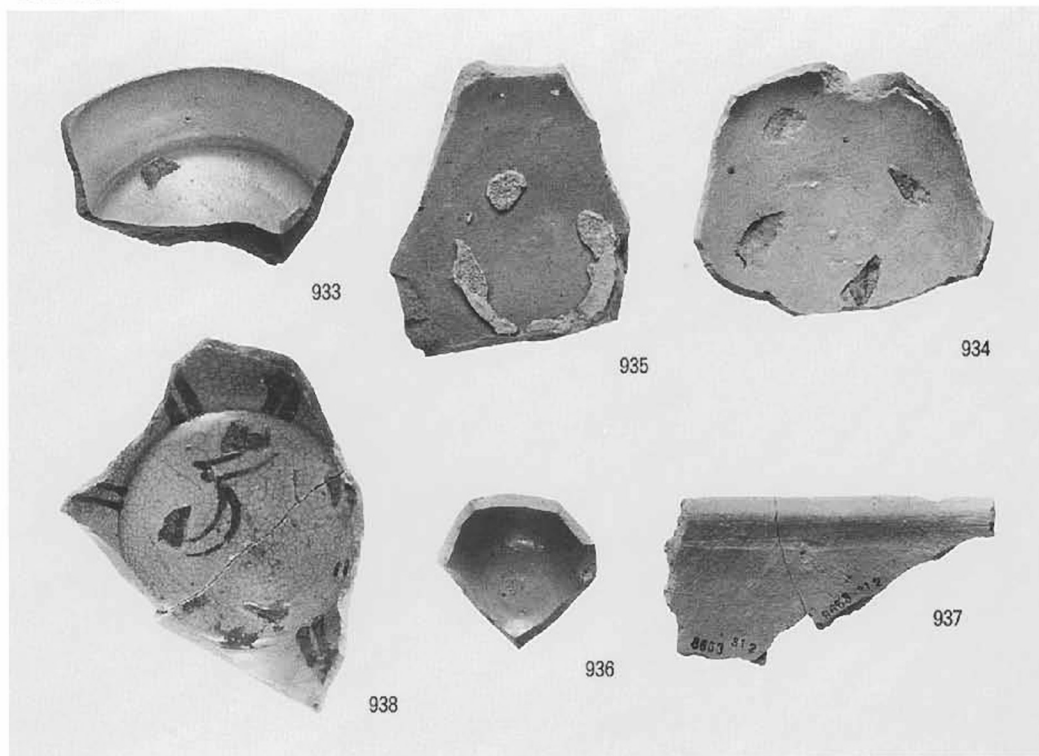
SK3528



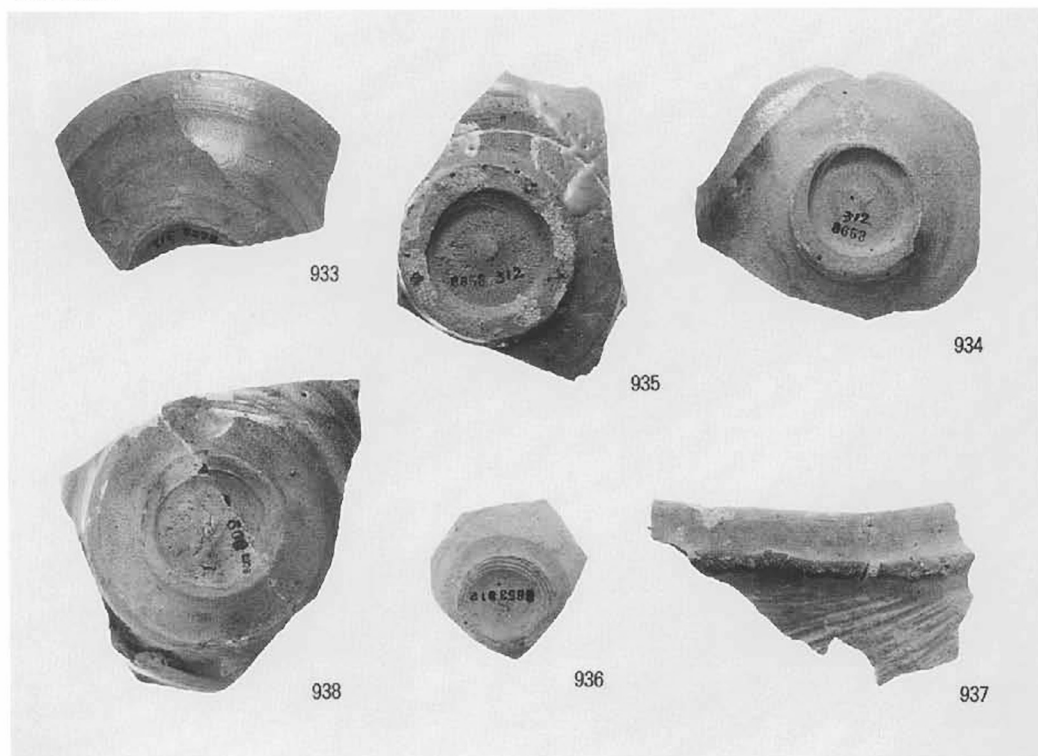
SK3518



SK3534



SK3534



SK3508



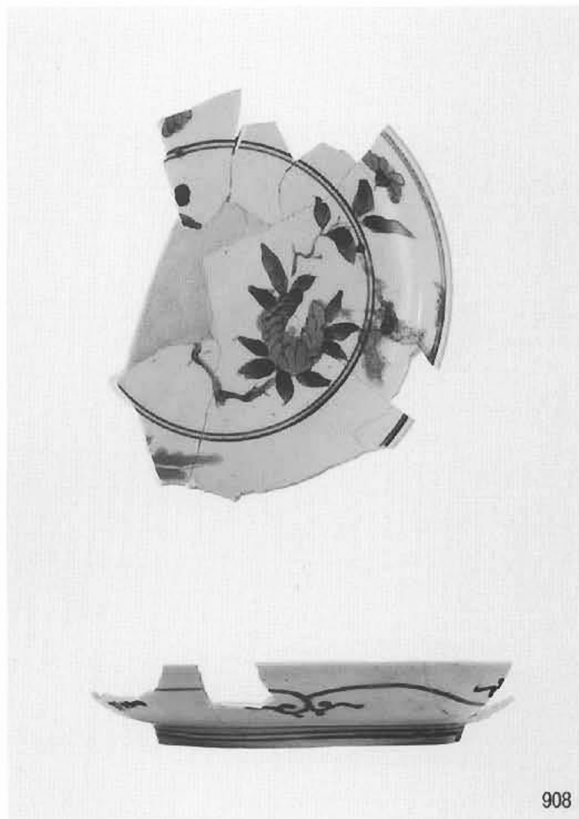
906



909



905



908

SK2505



940



941

SK2505



SK2506

SK3523

