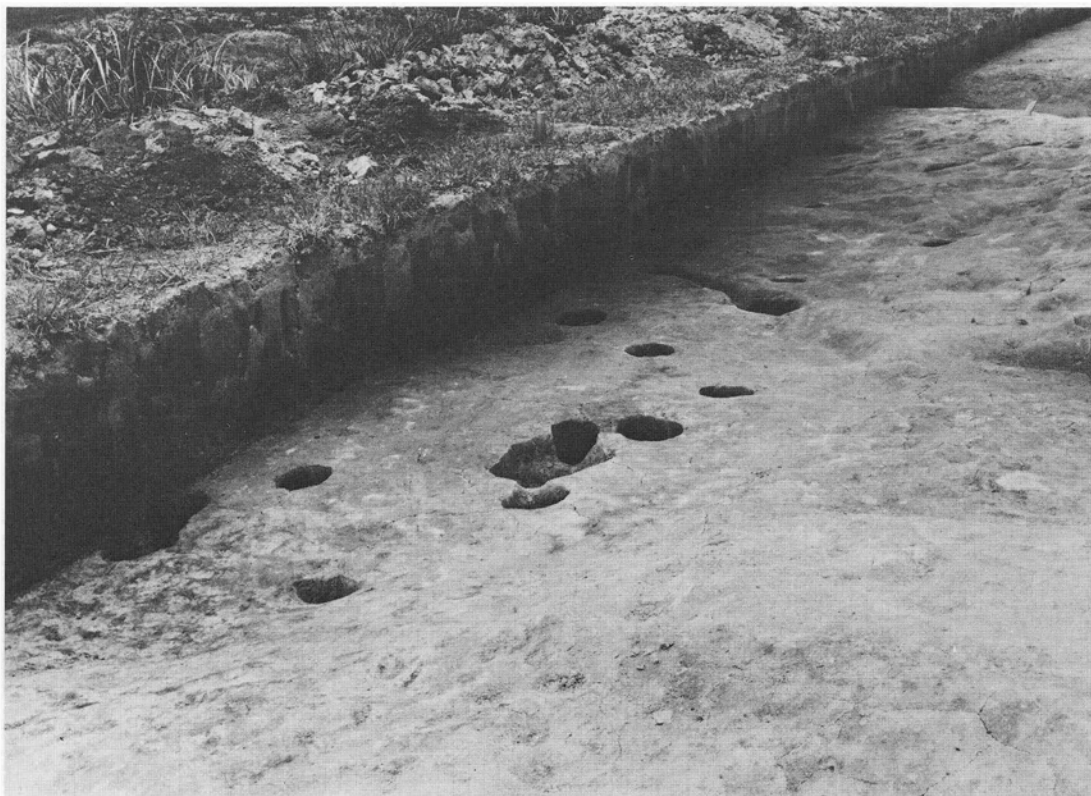




B 地区 遠景



B 地区 全景



B地区ピット群



B地区溝・杭



C 地区 遠 景



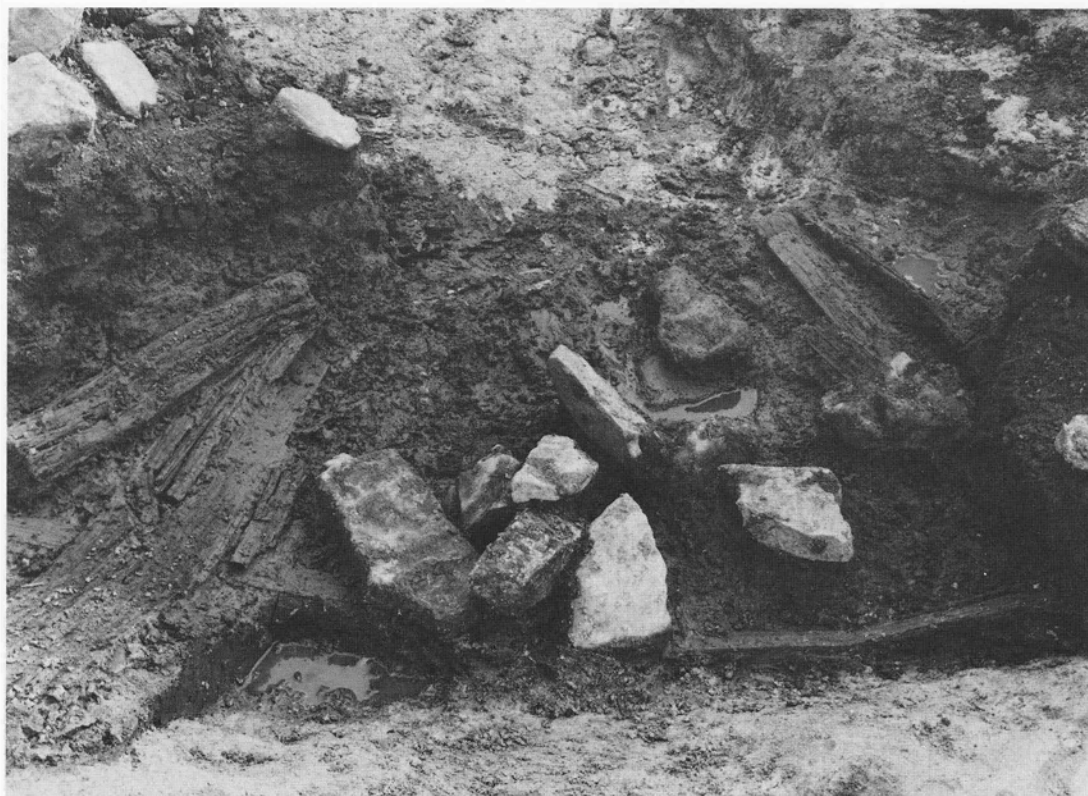
C 地区溝土層堆積狀況



C地区土坑全景



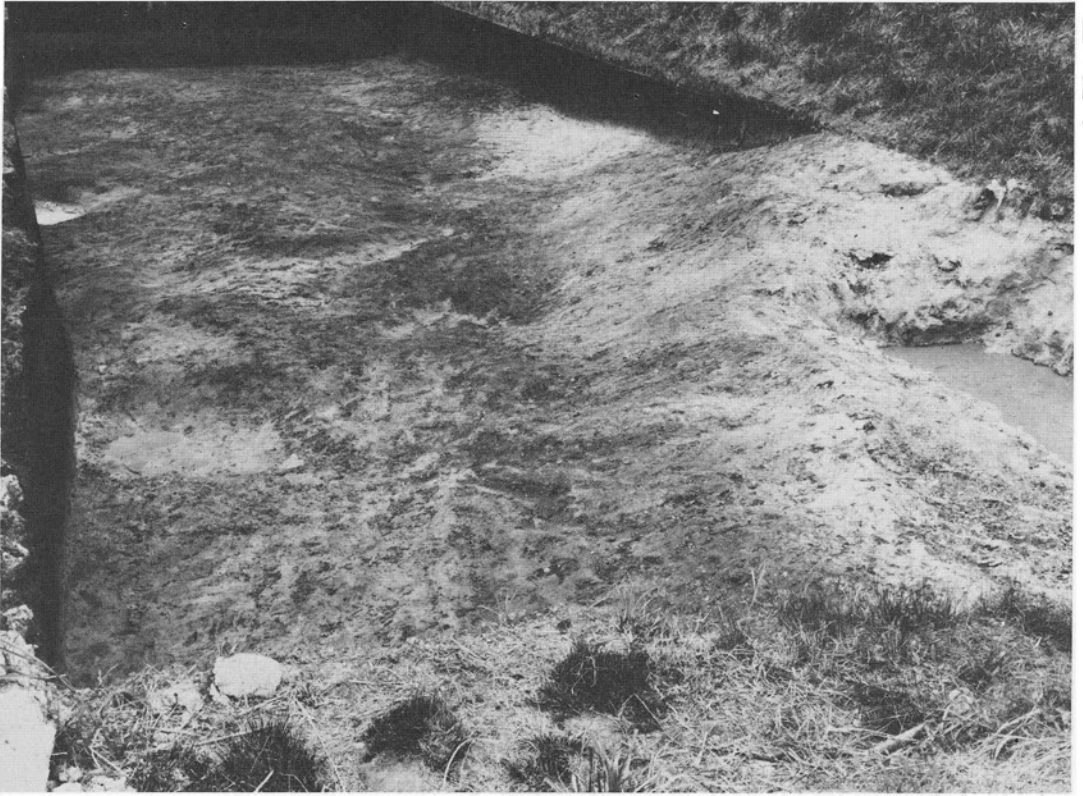
C地区土坑全景



C地区土坑焼板検出状況



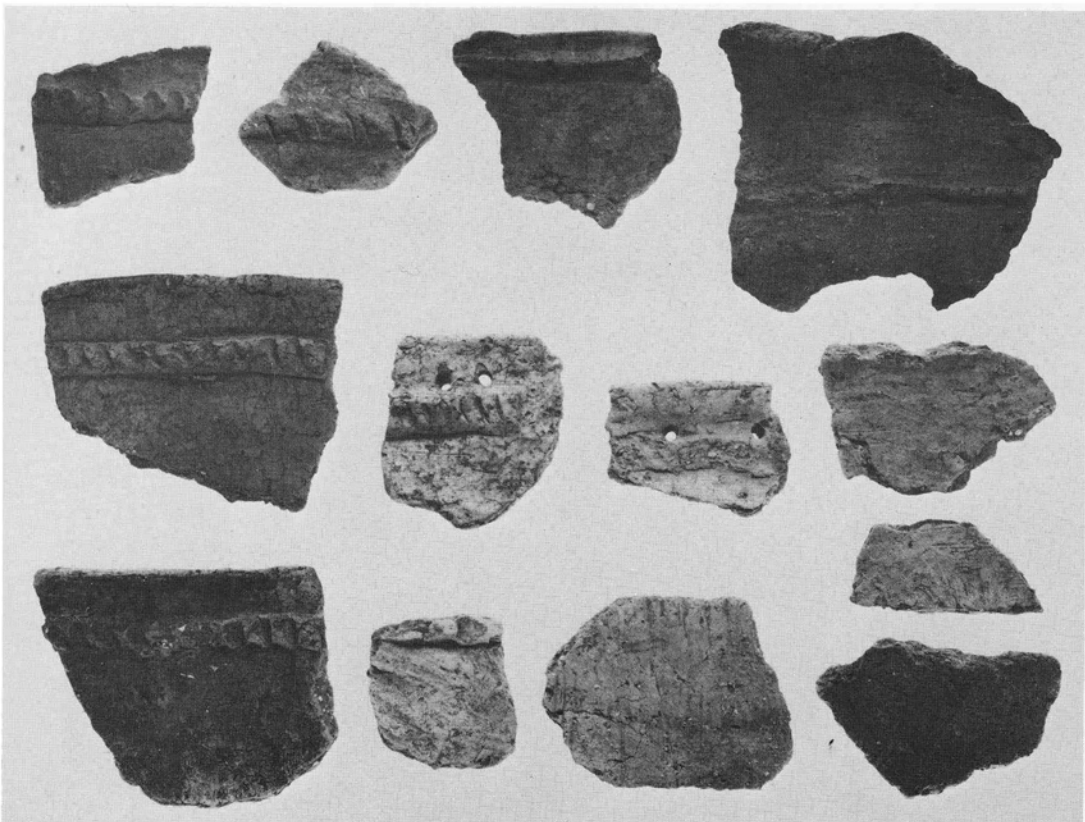
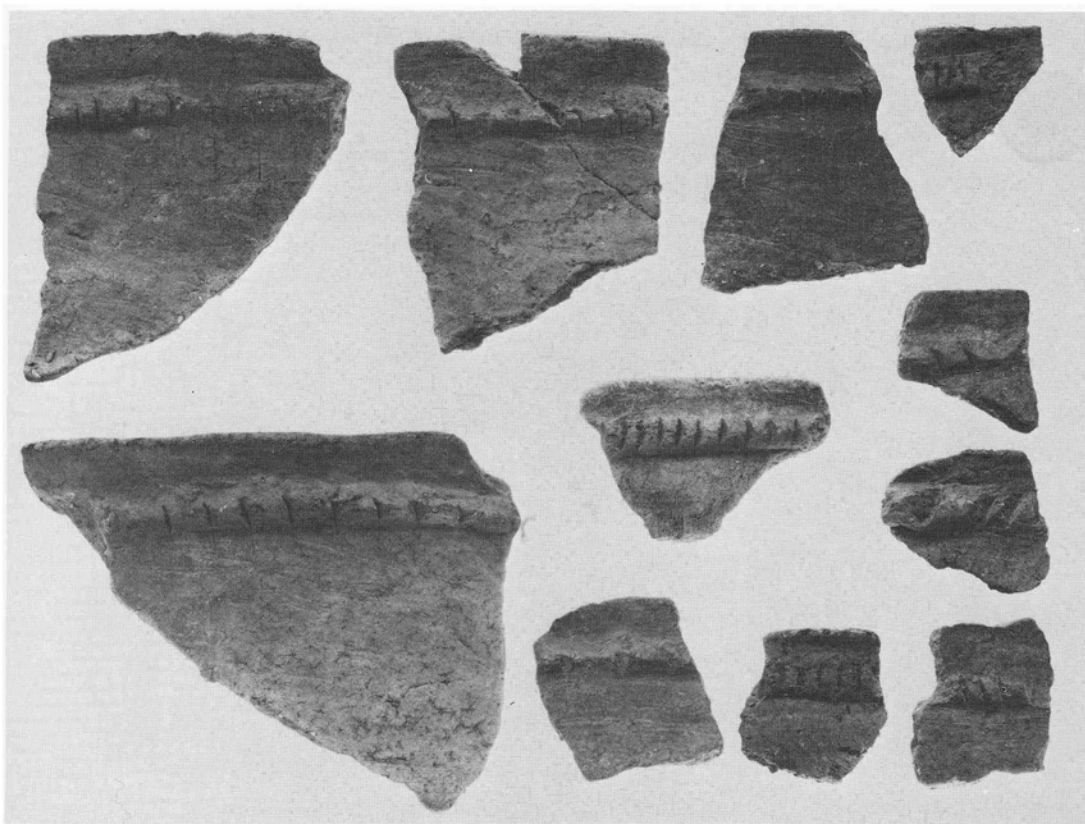
C地区土坑全景（焼板・石除去後）



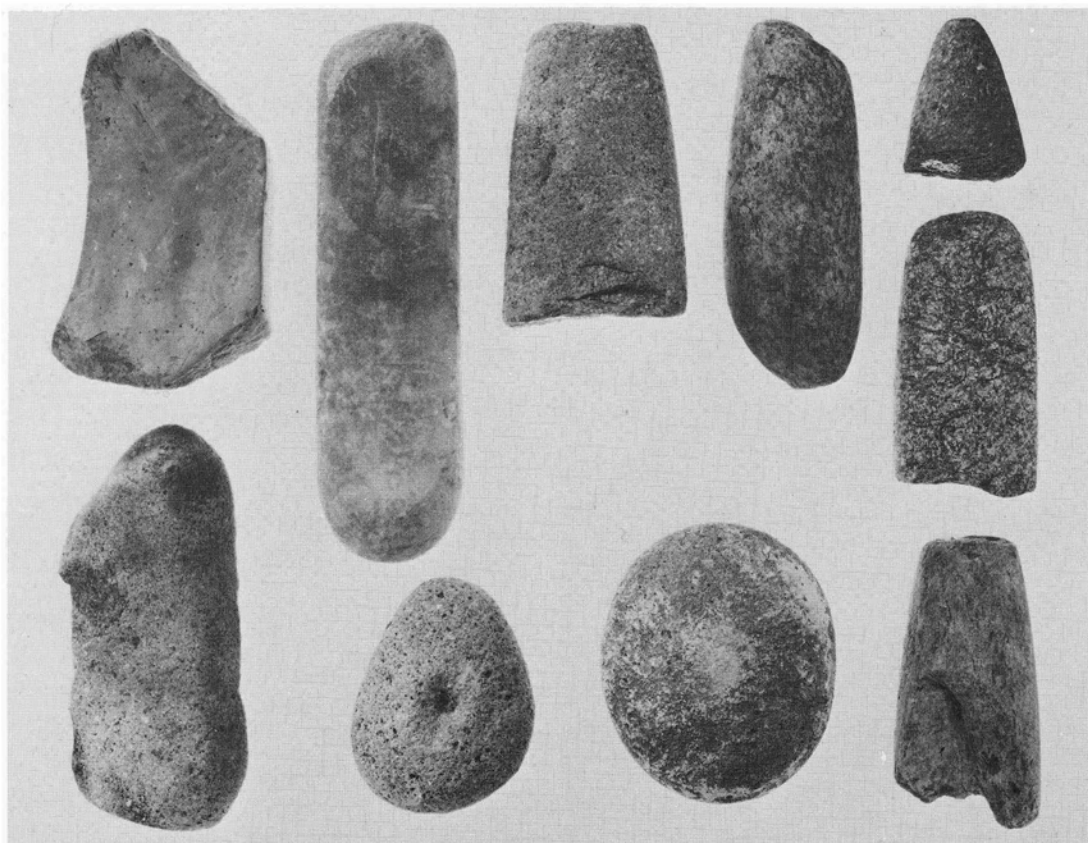
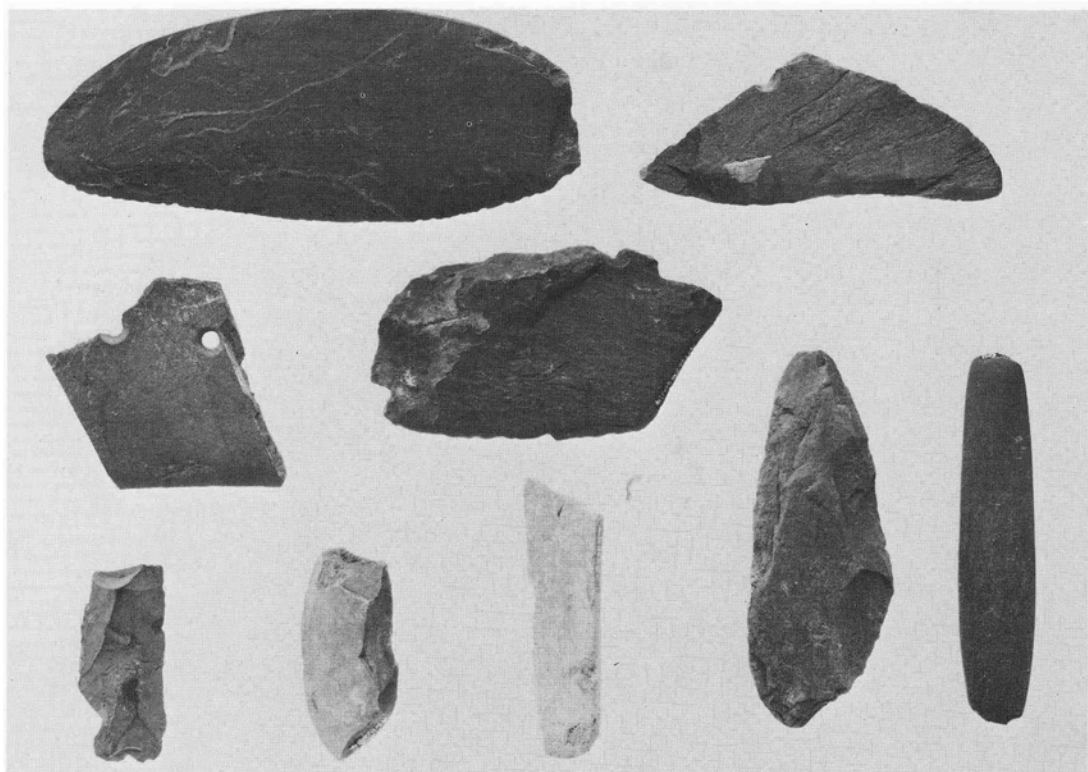
D 地区 全景

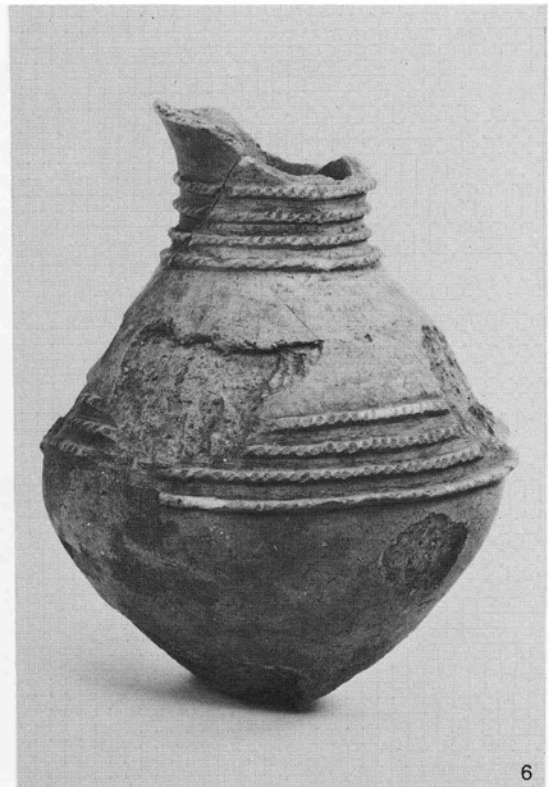
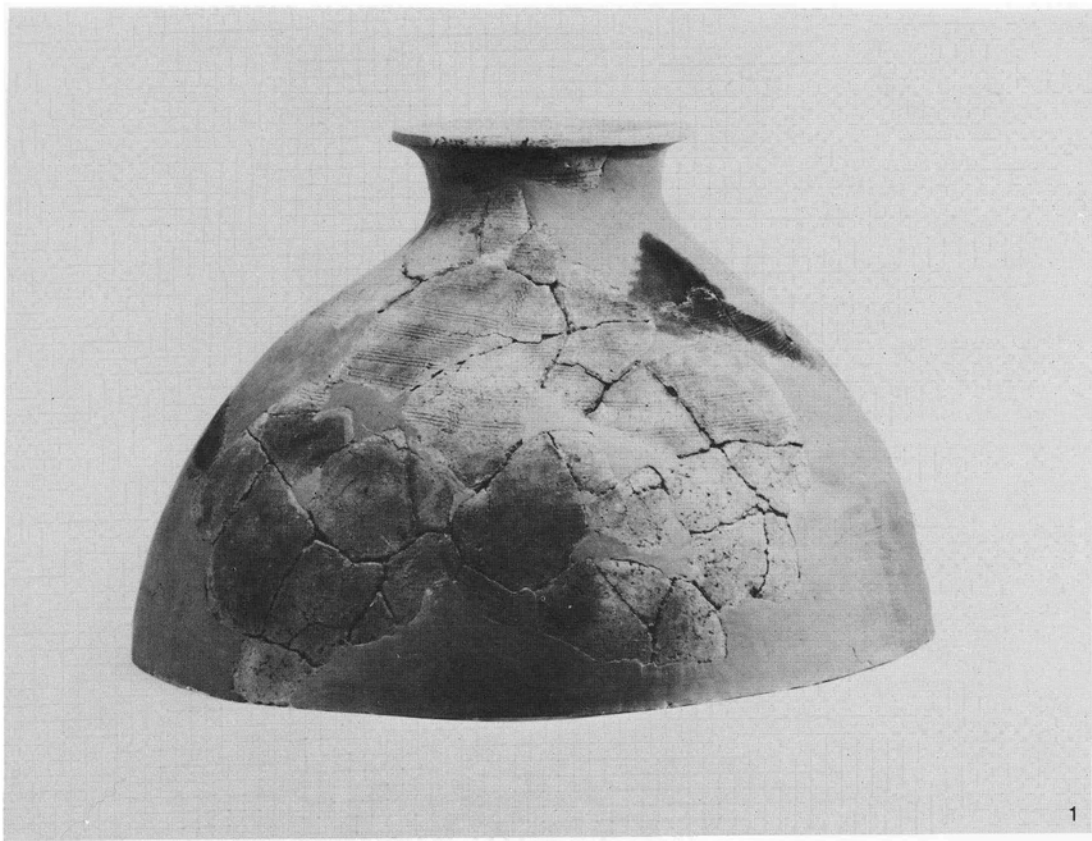


D地区西壁土层堆积状况

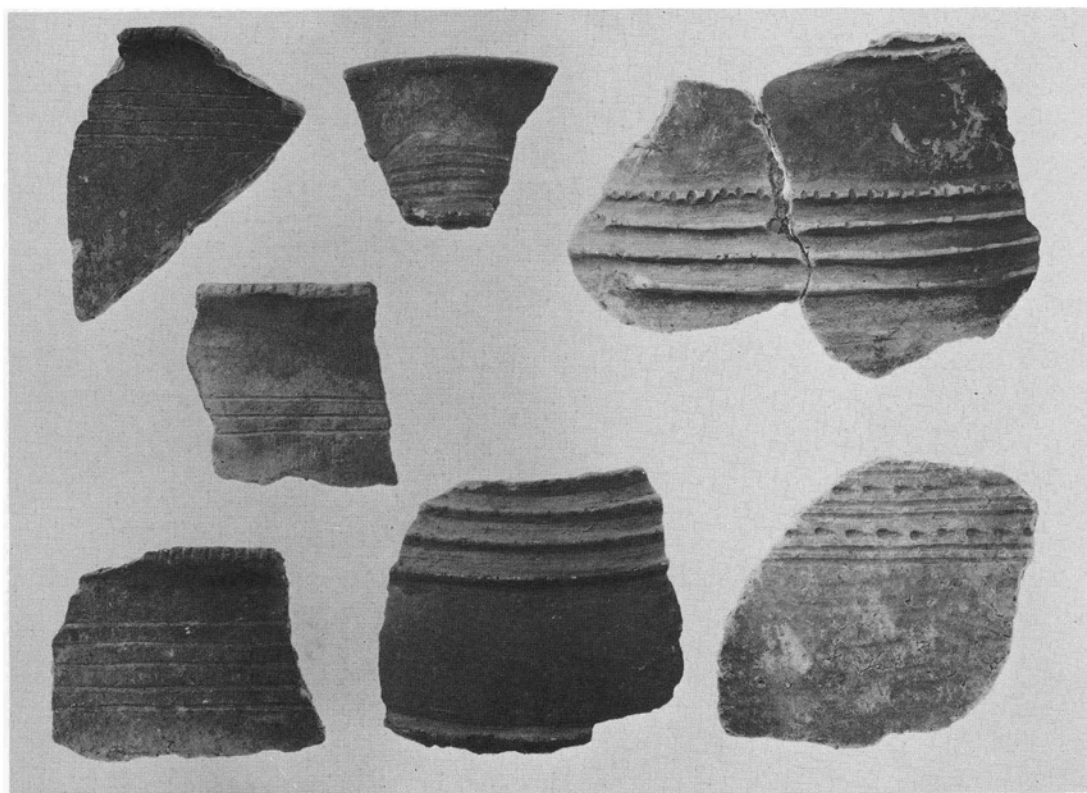
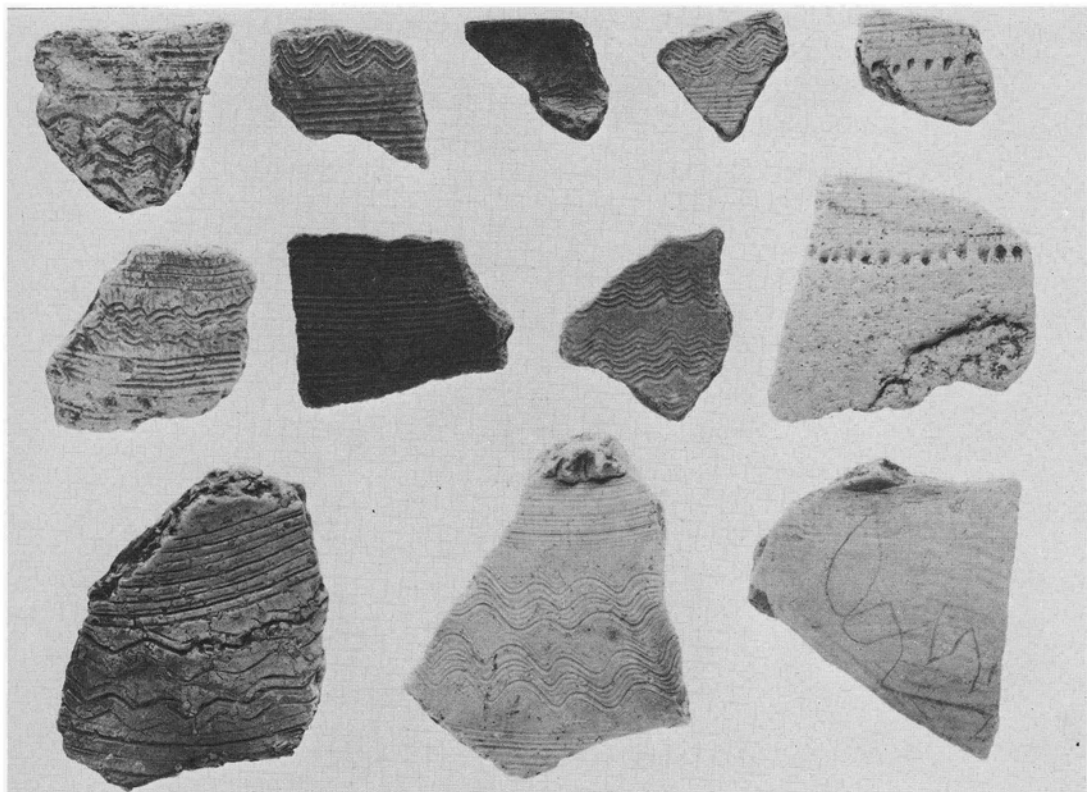


繩文土器

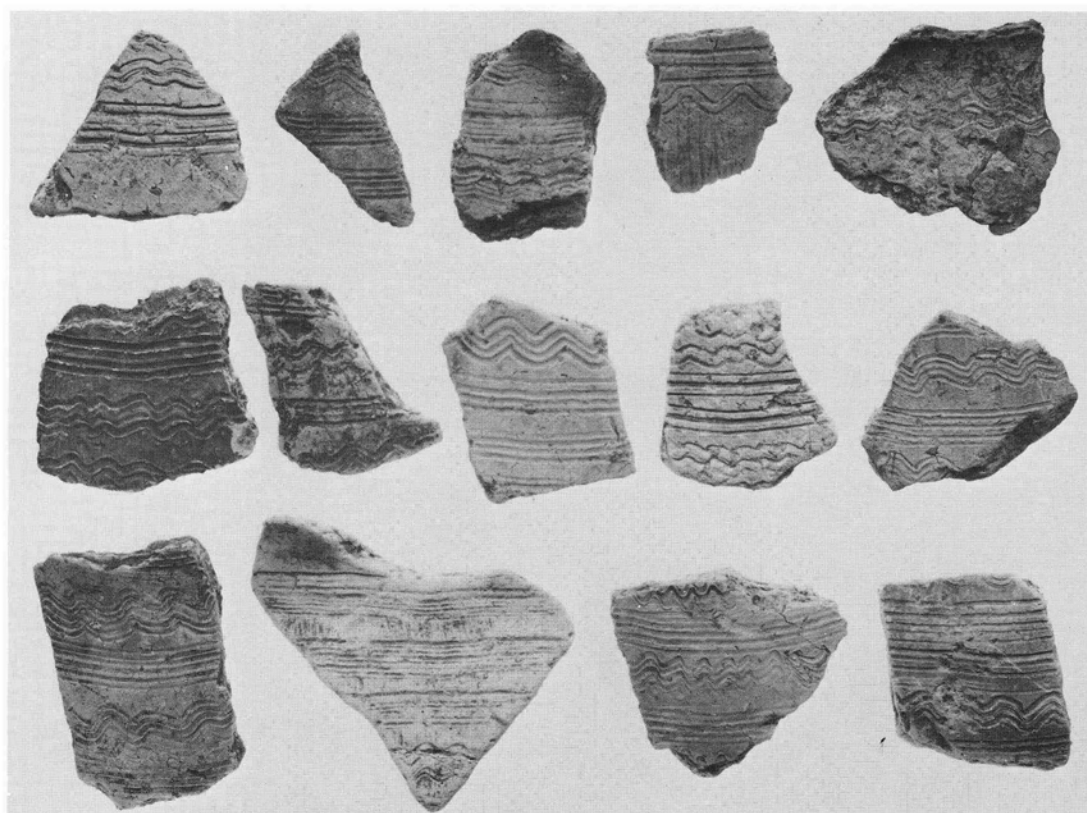
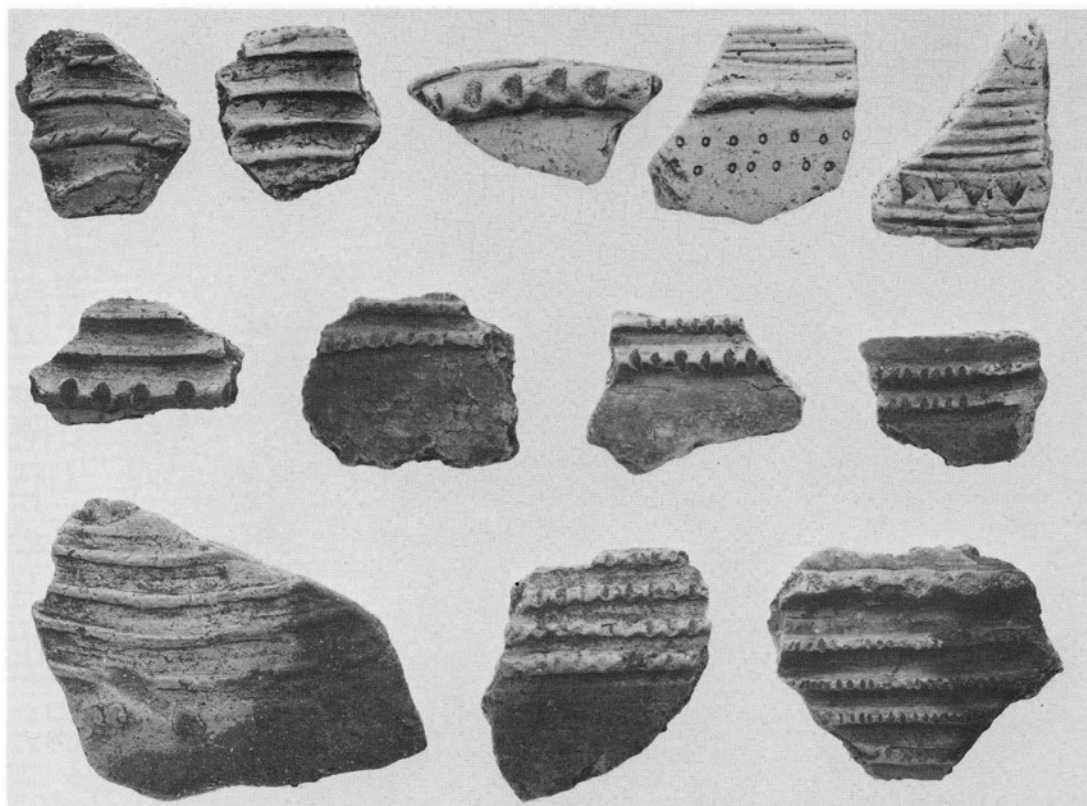




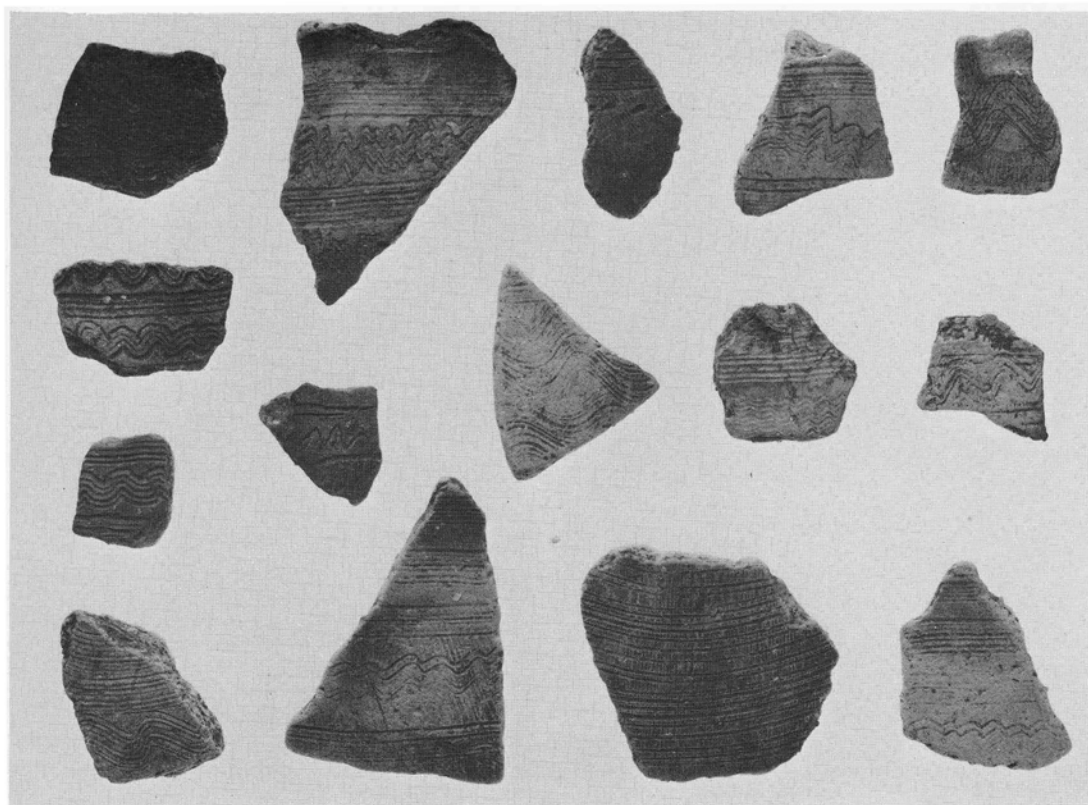
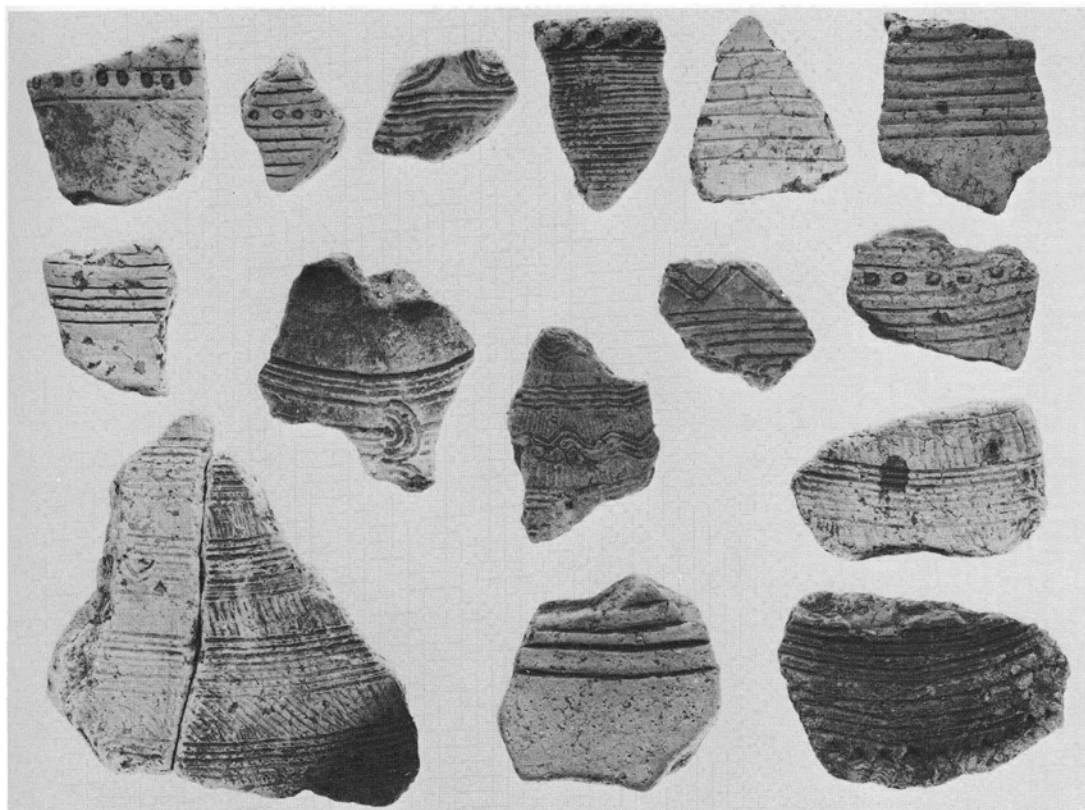
弥生土器 (1)



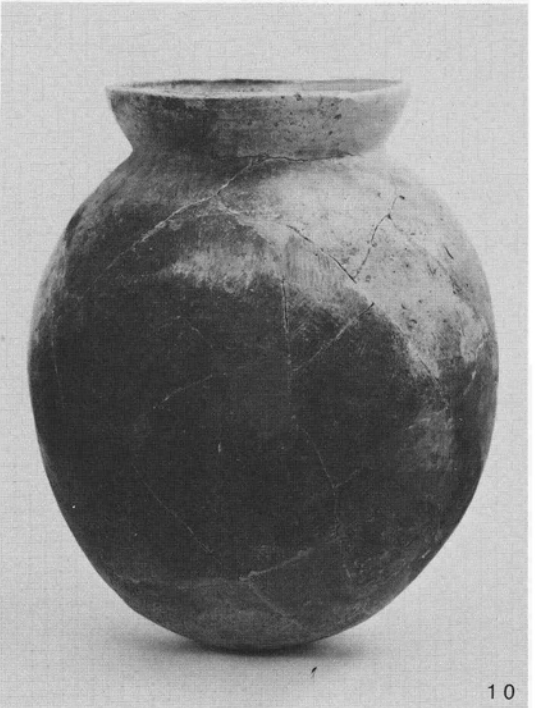
弥生土器(2)



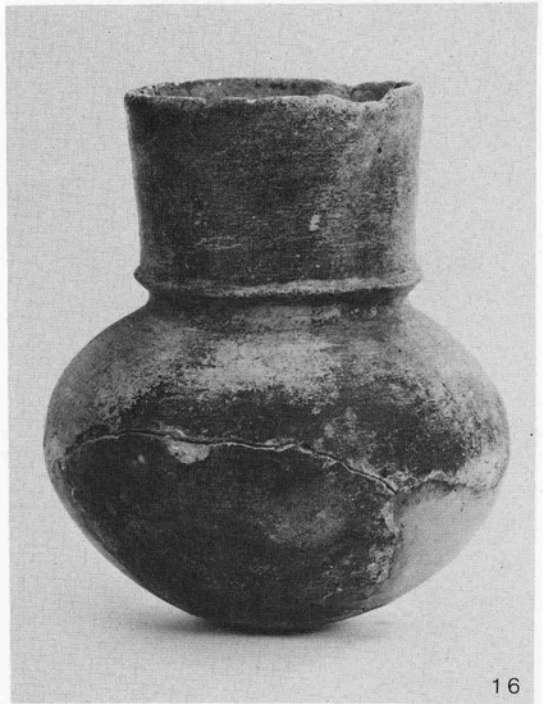
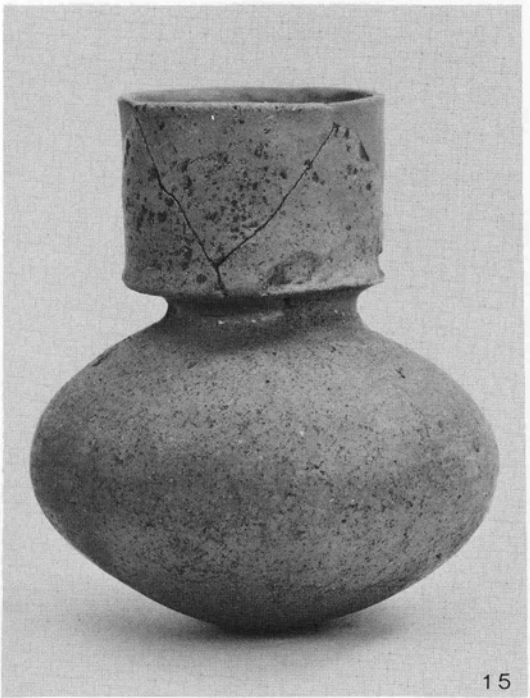
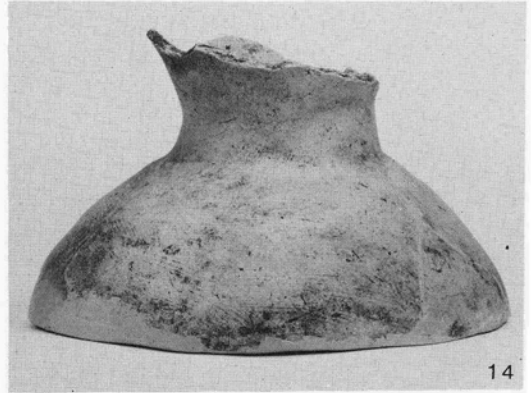
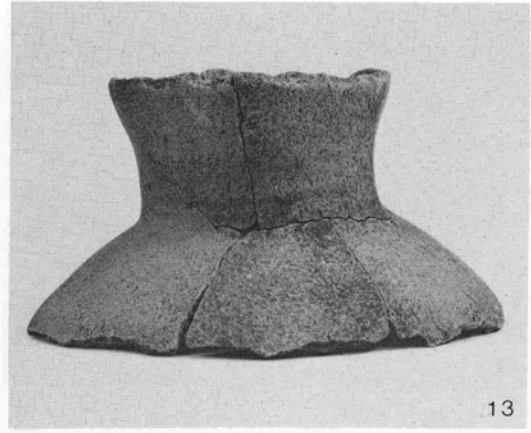
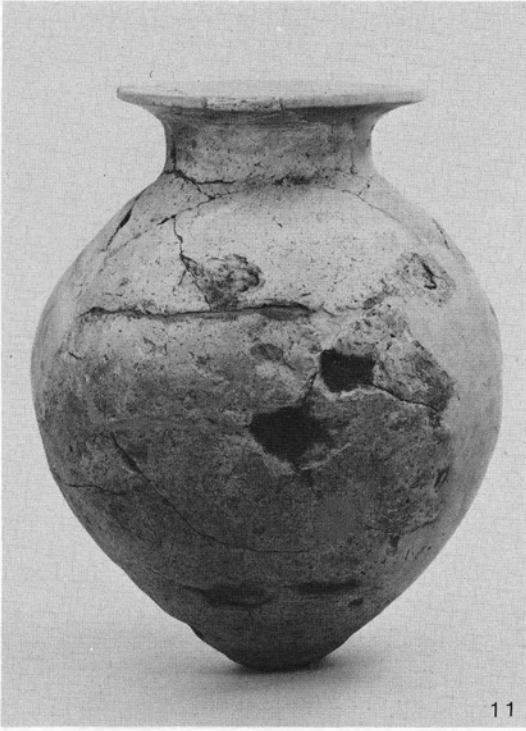
弥生土器(3)

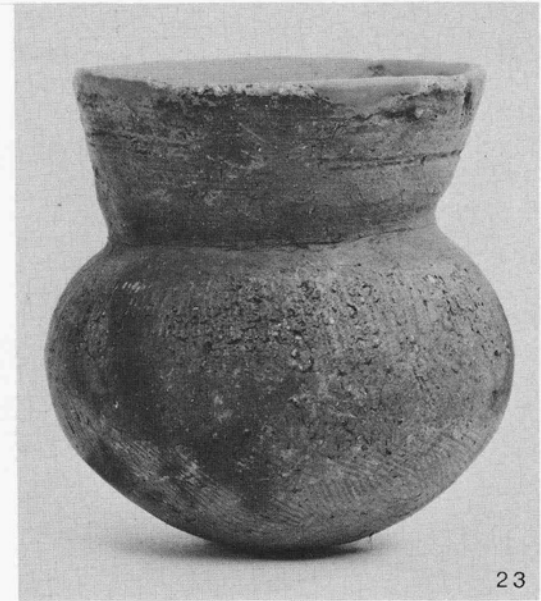
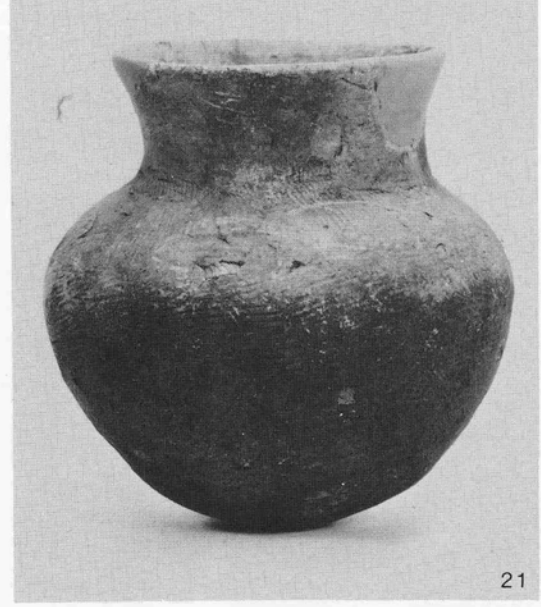
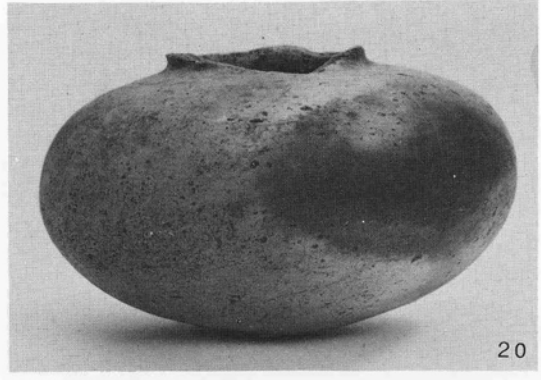
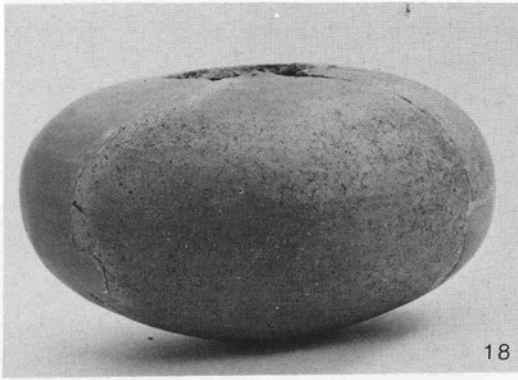


弥生土器(4)

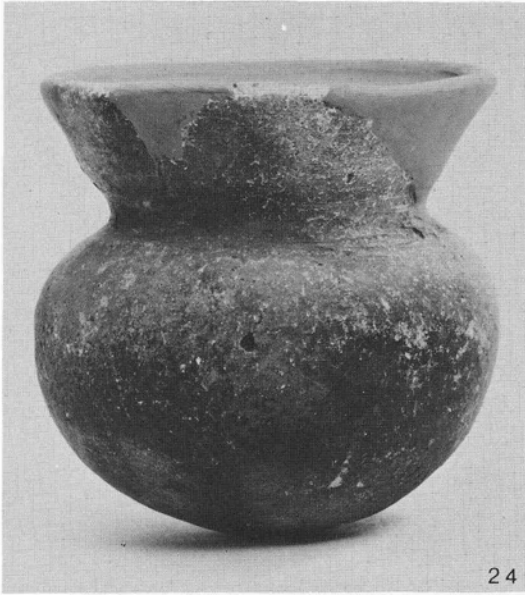


A地区出土土師器(1)

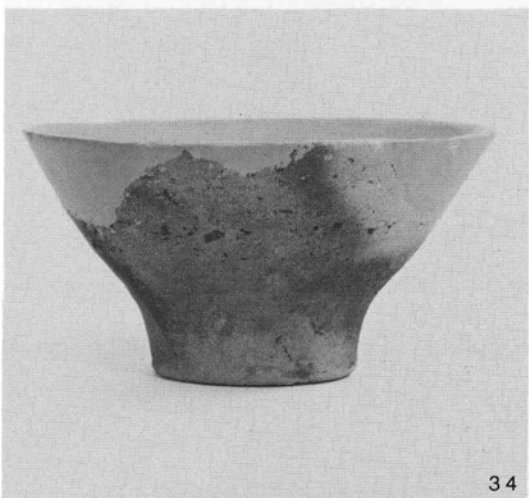




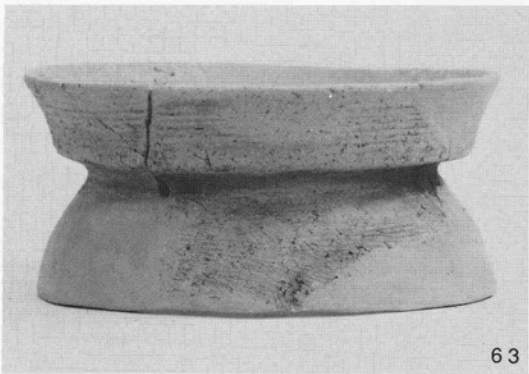
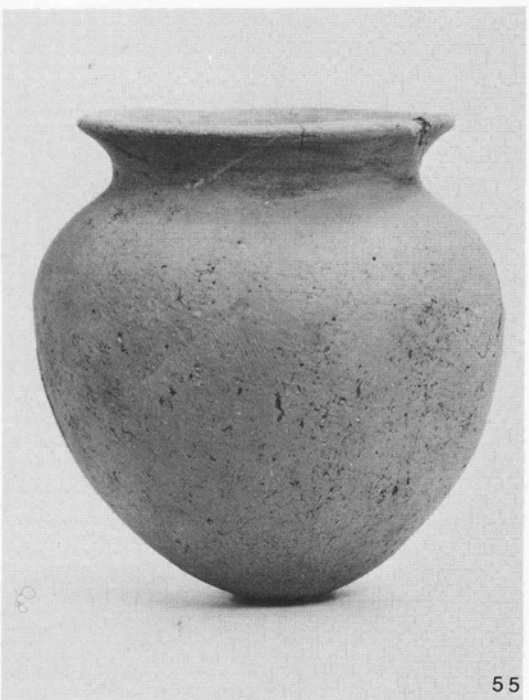
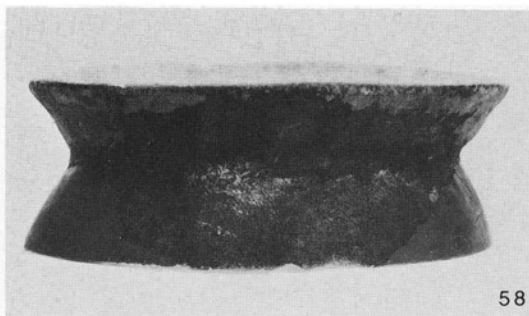
A地区出土土師器(3)



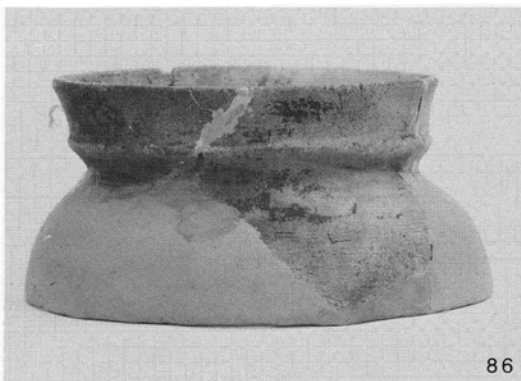
A地区出土土師器 (4)



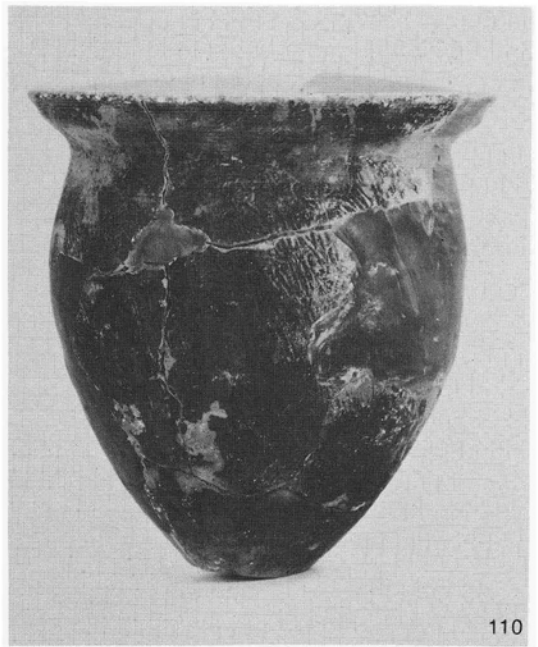
A地区出土土師器(5)



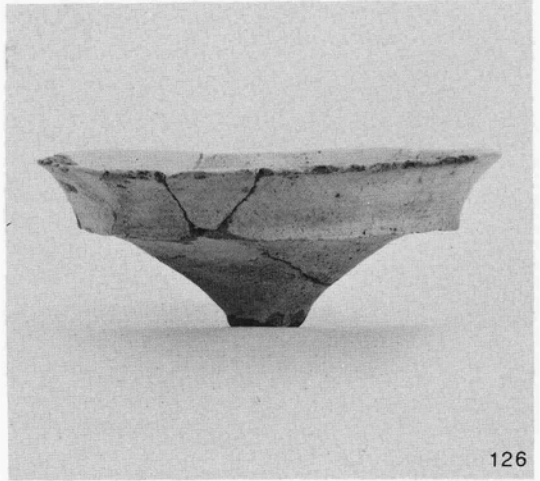
A地区出土土師器 (6)



A地区出土土師器 (7)



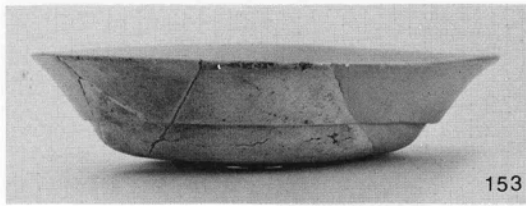
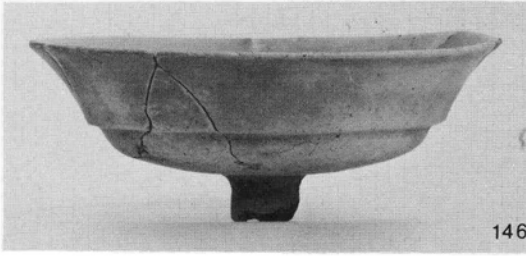
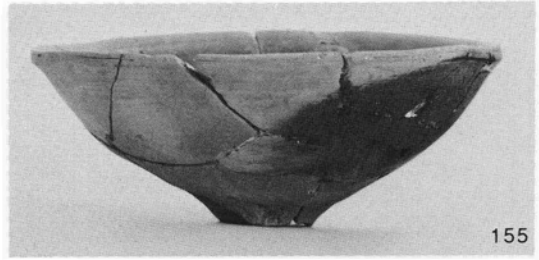
A地区出土土師器(8)



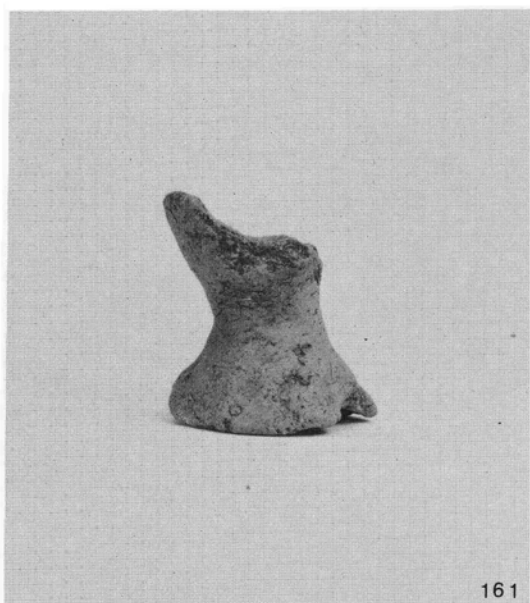
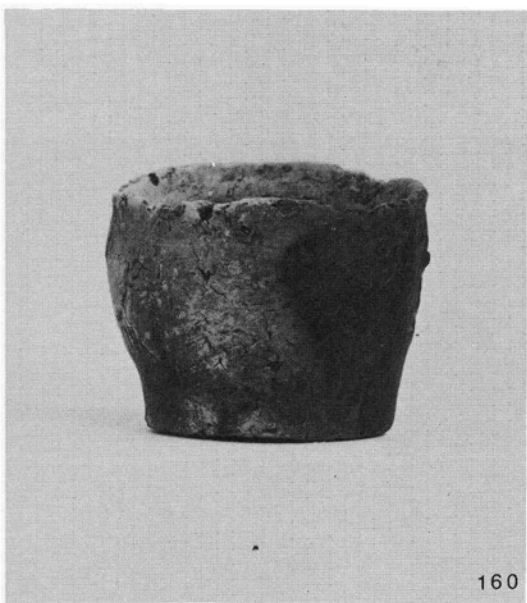
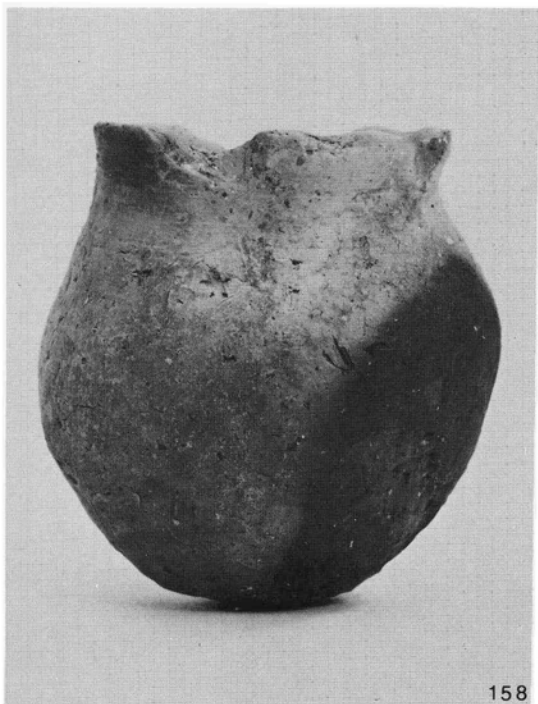
A地区出土土師器(9)

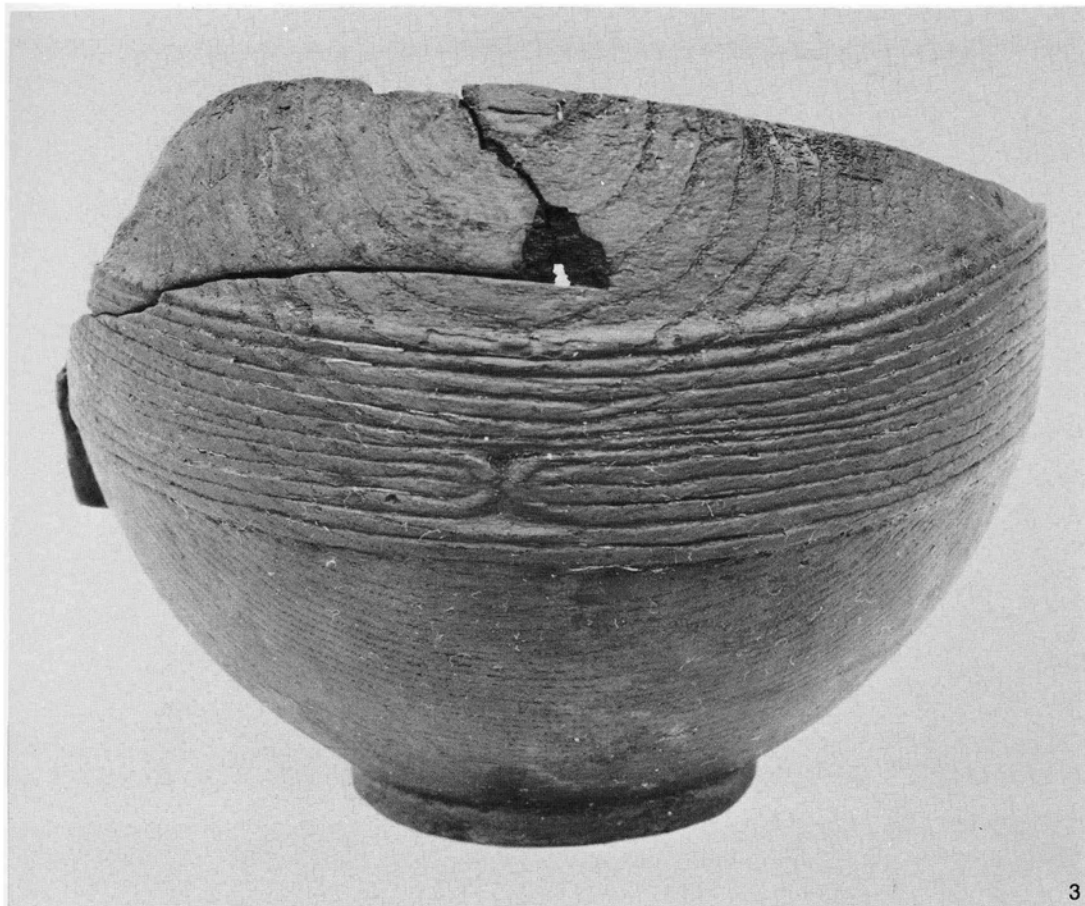


A地区出土土師器 (10)

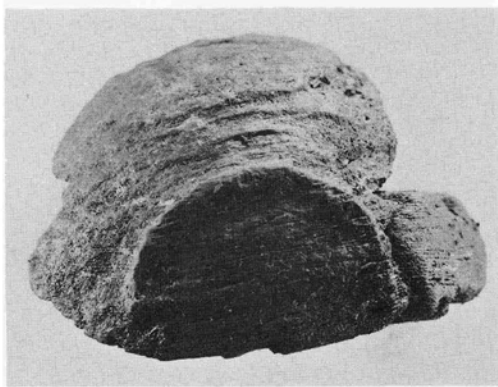
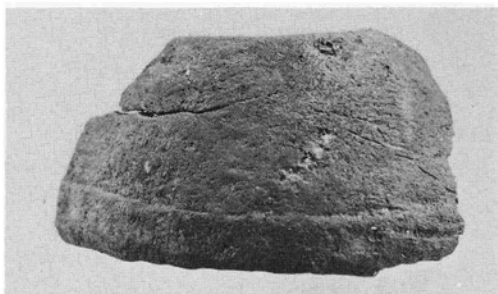
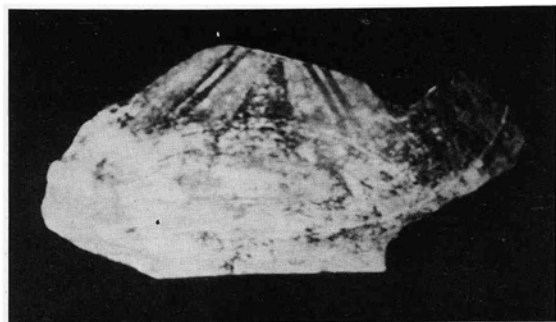


A地区出土土師器 (1)

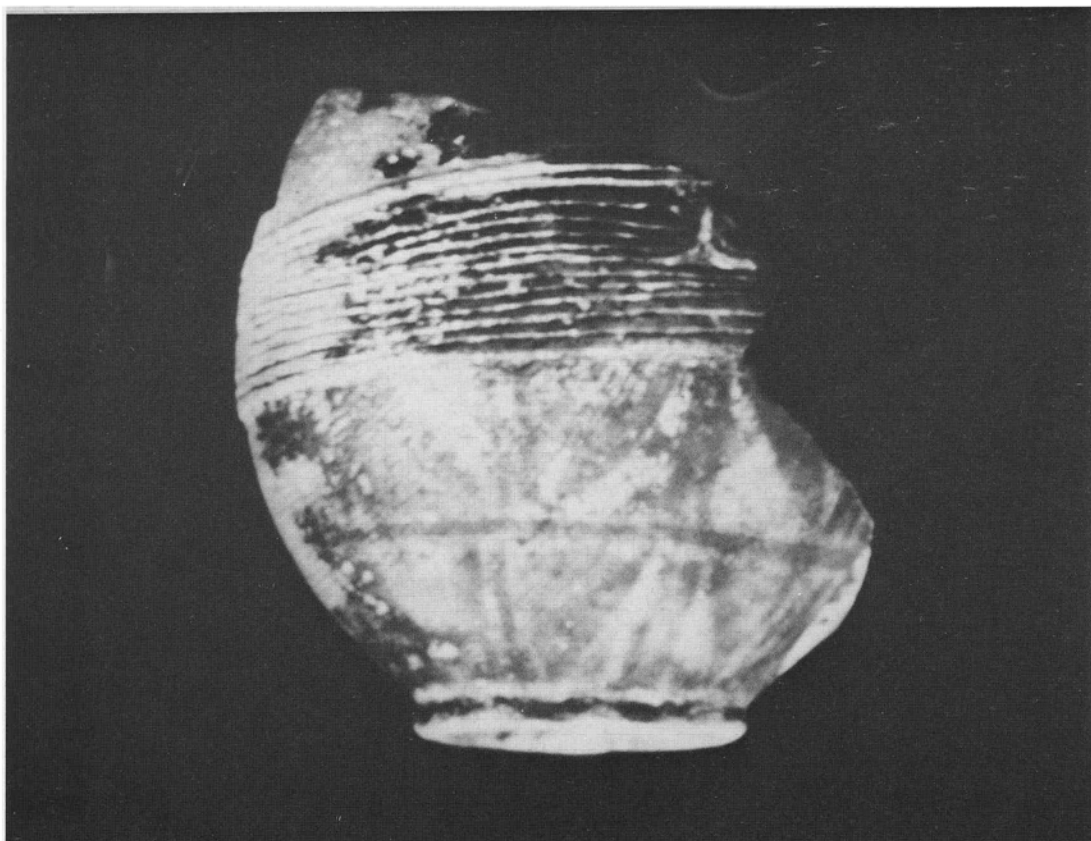
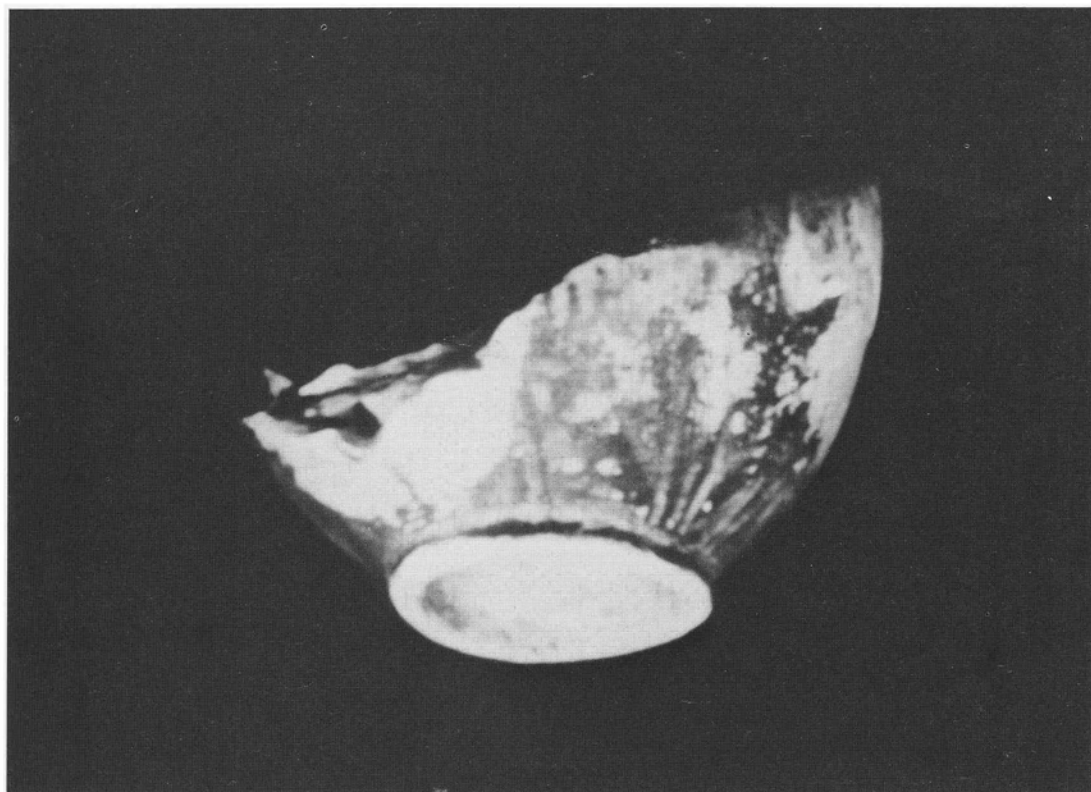




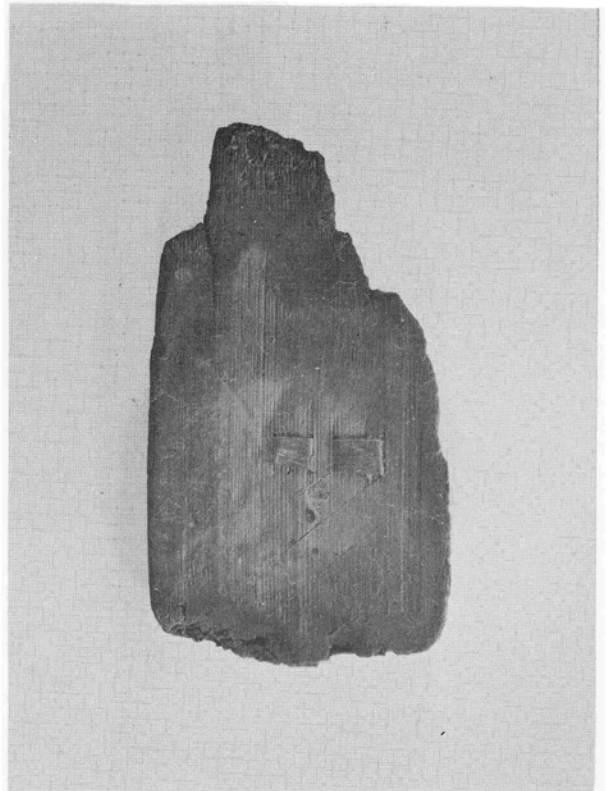
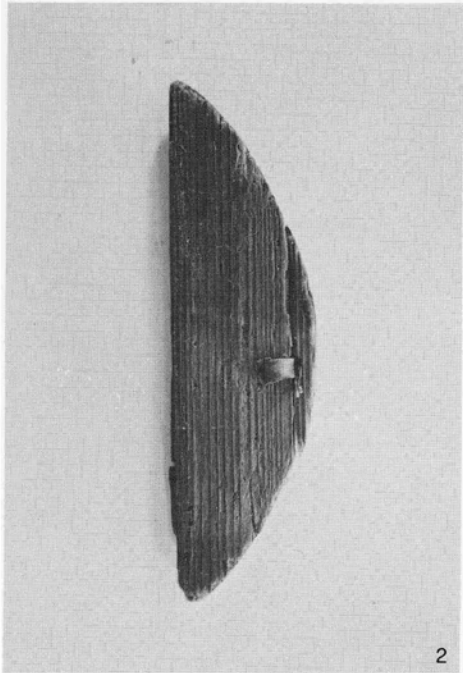
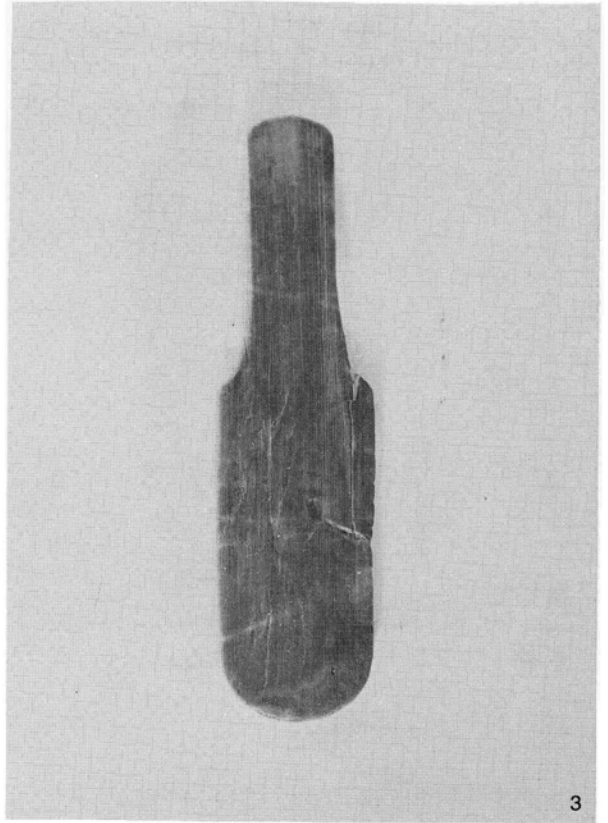
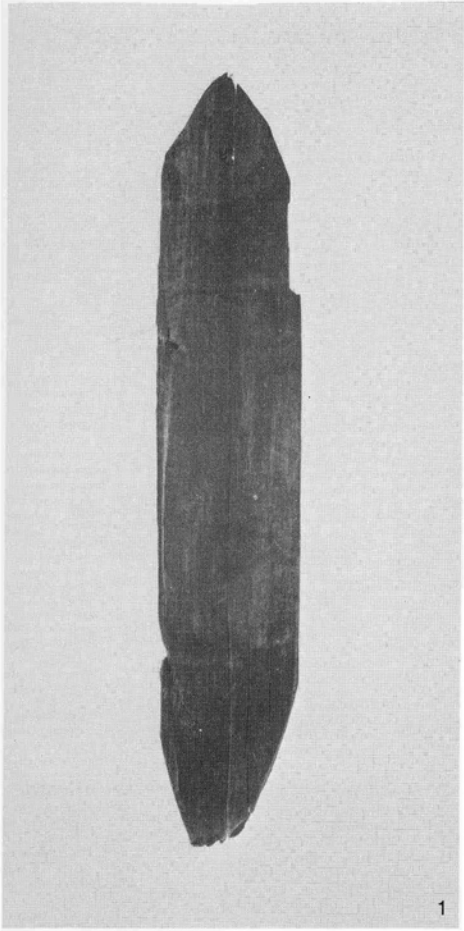
3



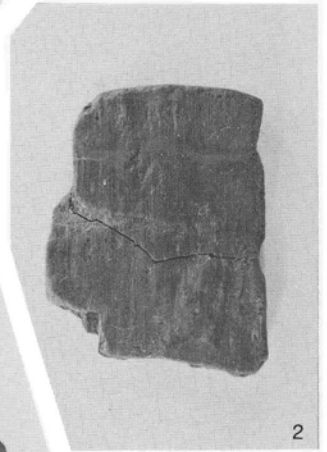
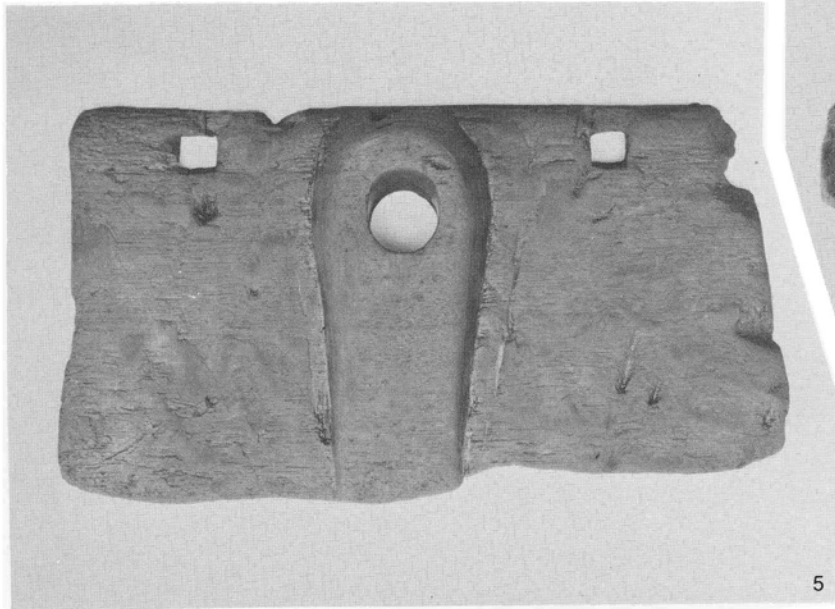
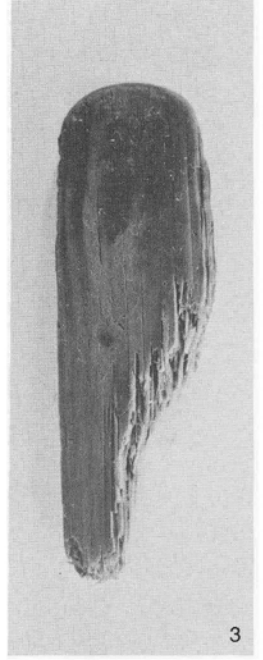
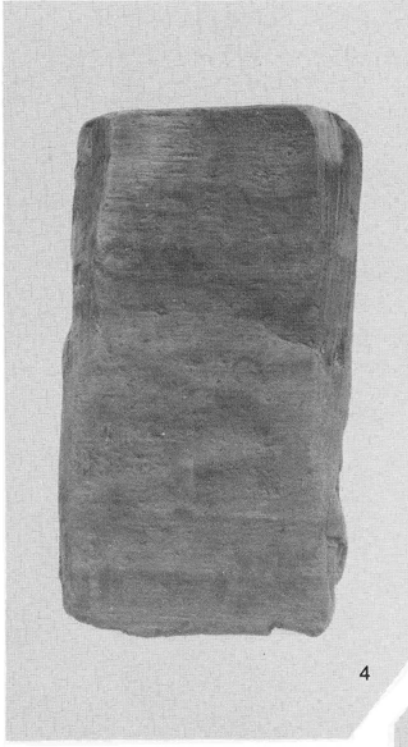
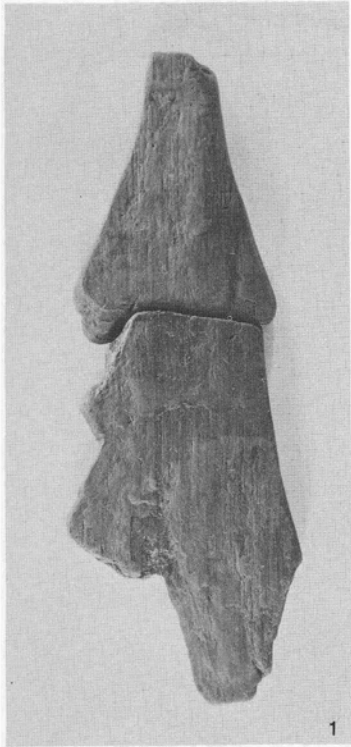
木 器 (1)

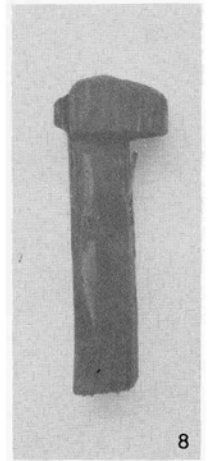
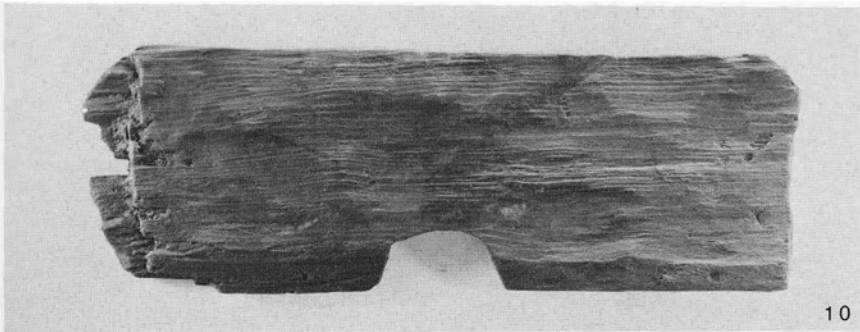
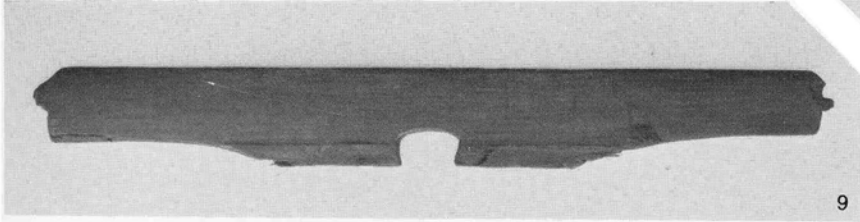
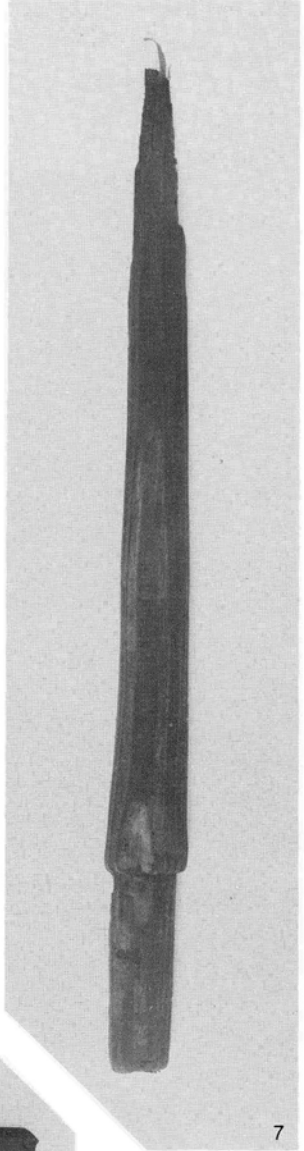
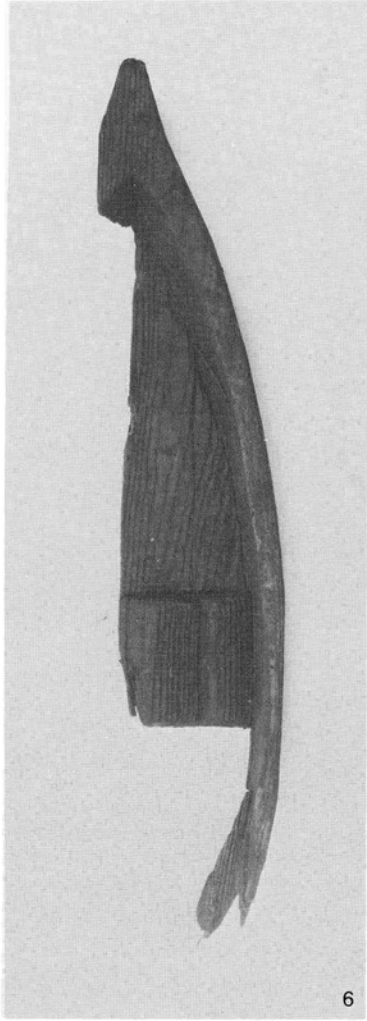
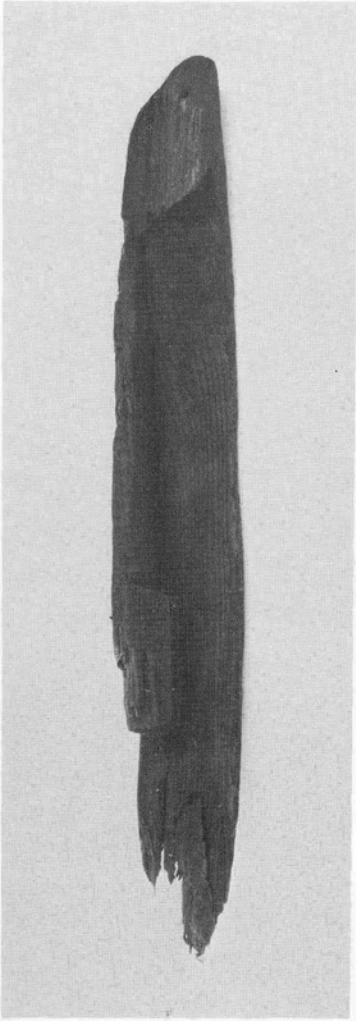


木 器 (2)



木 器 (3)





6

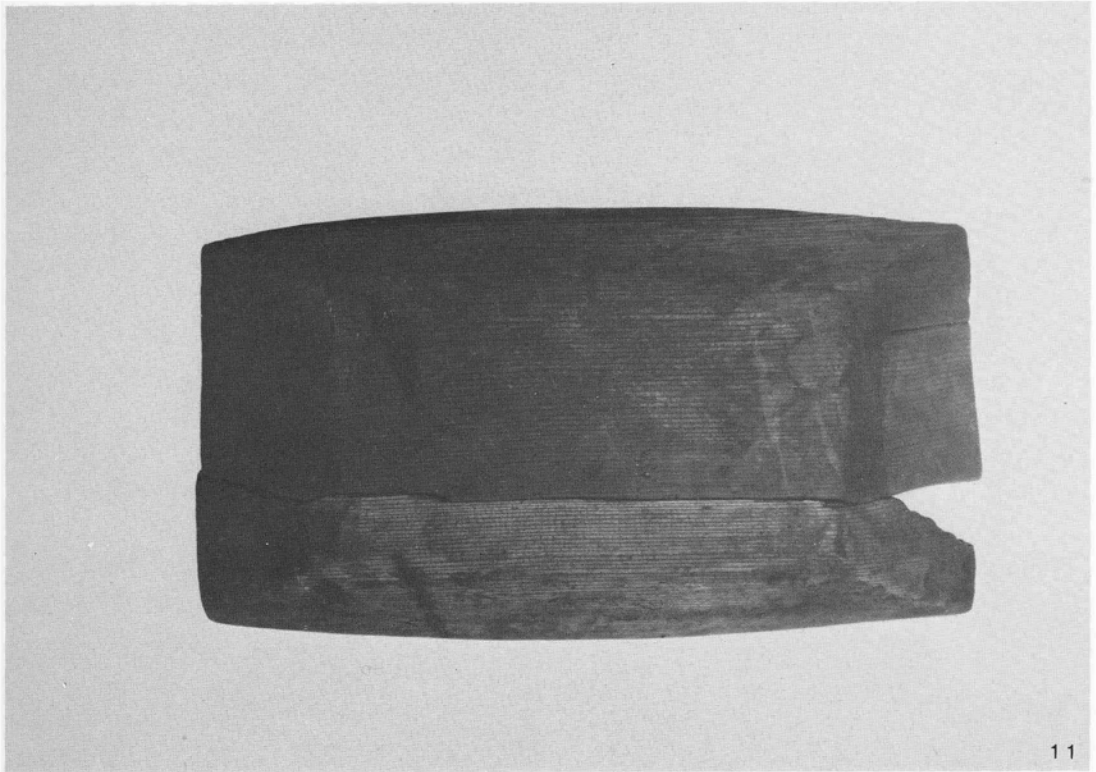
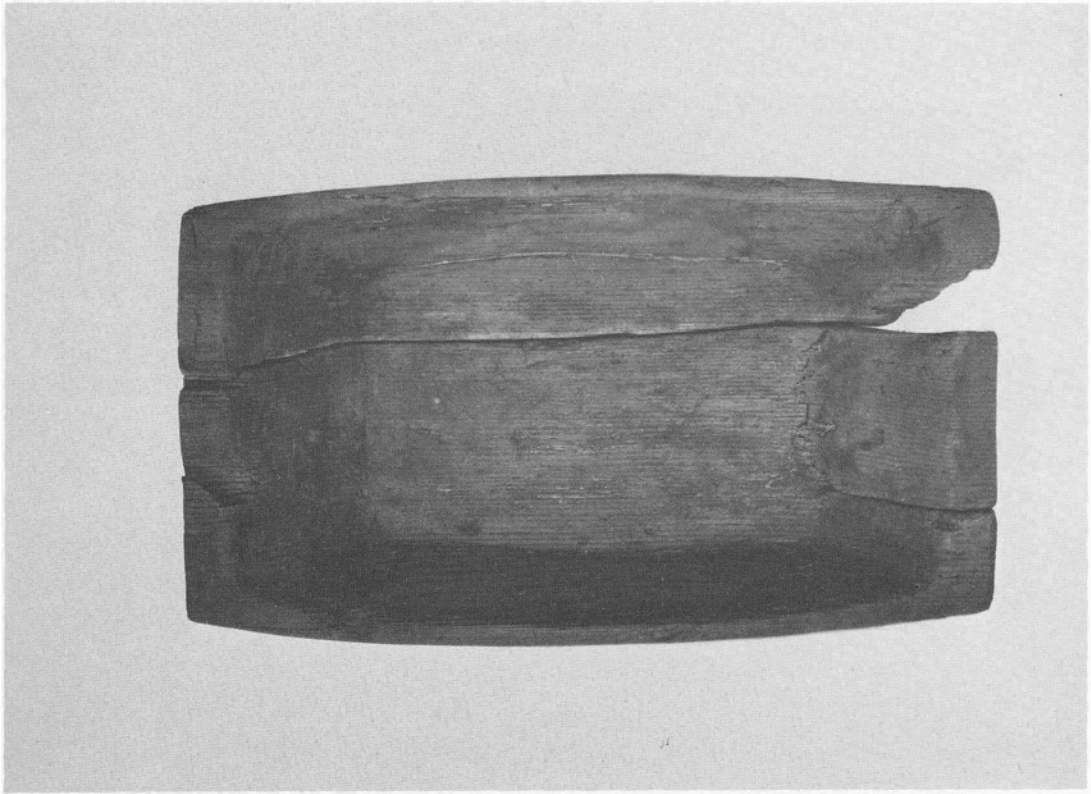
7

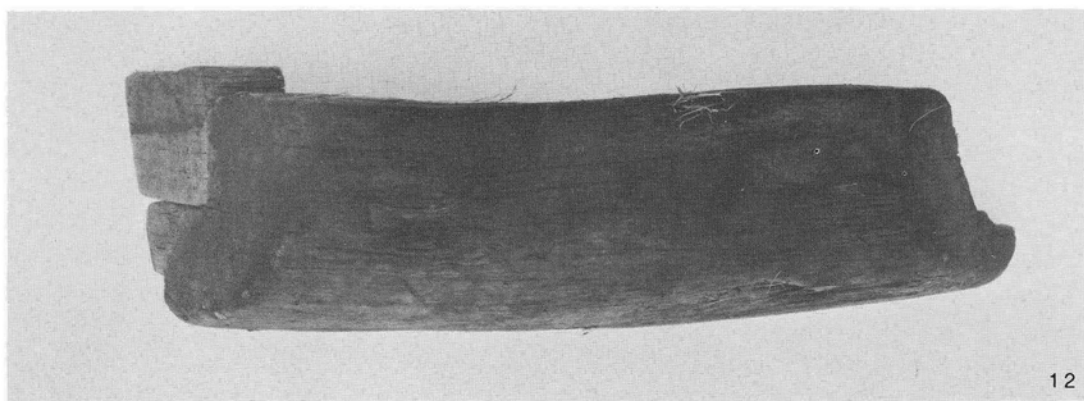
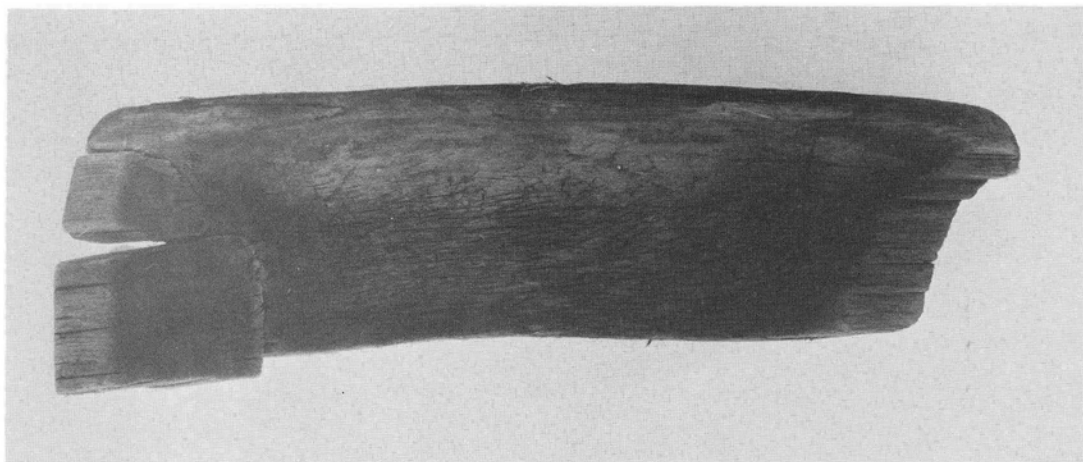
9

10

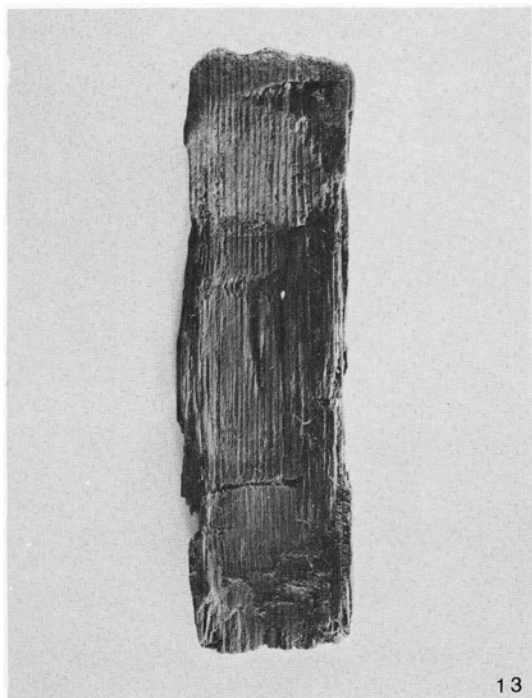
8

木 器 (5)

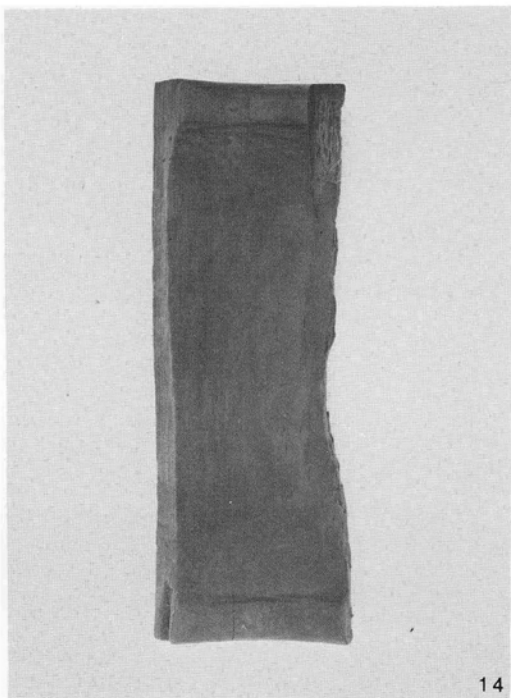




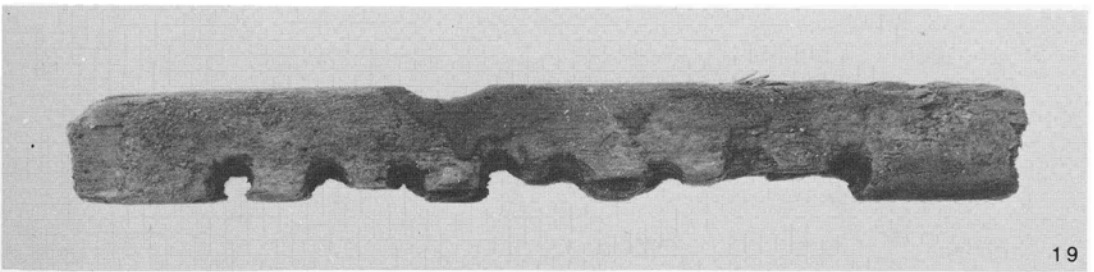
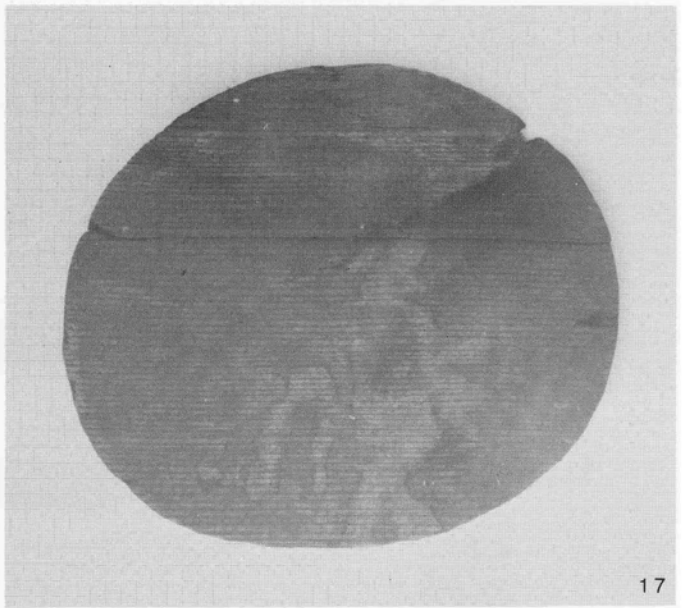
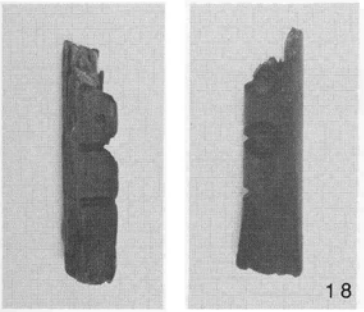
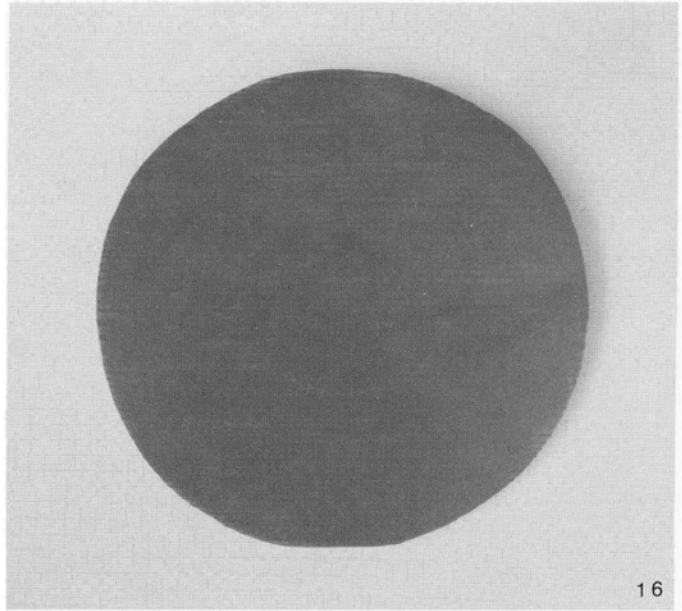
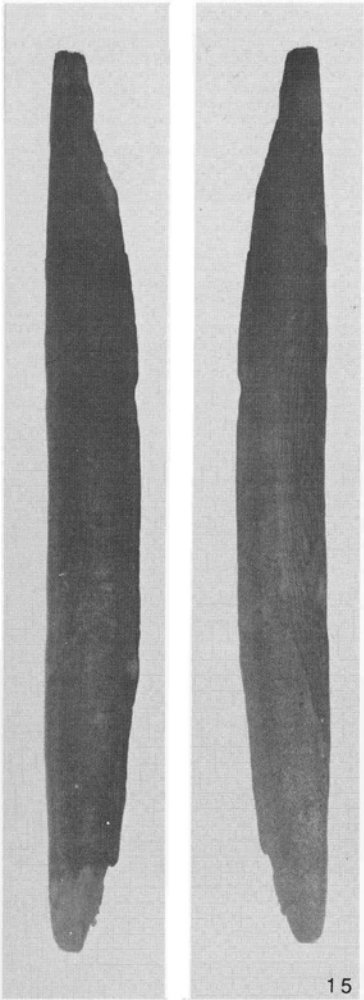
12

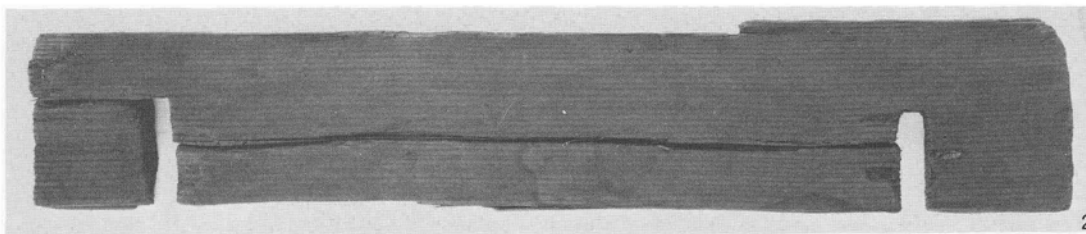


13

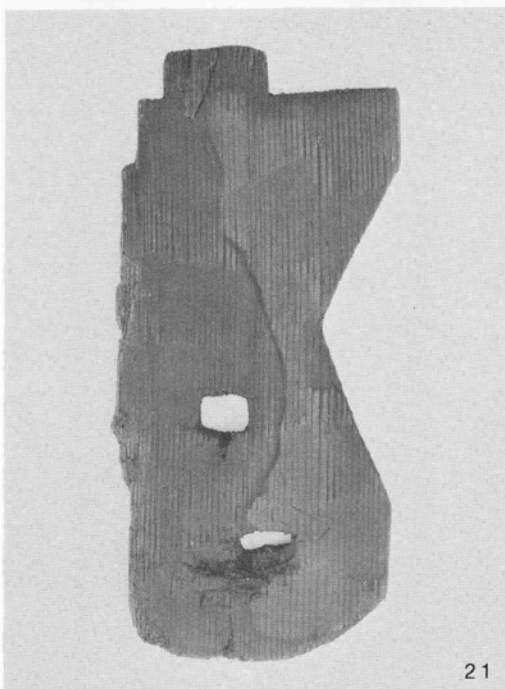


14

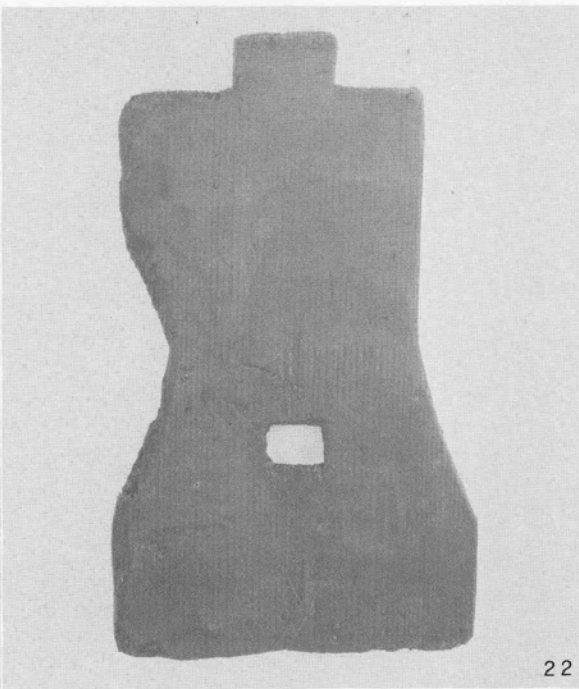




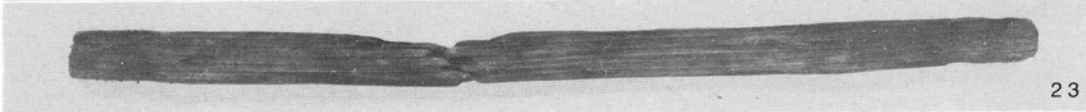
20



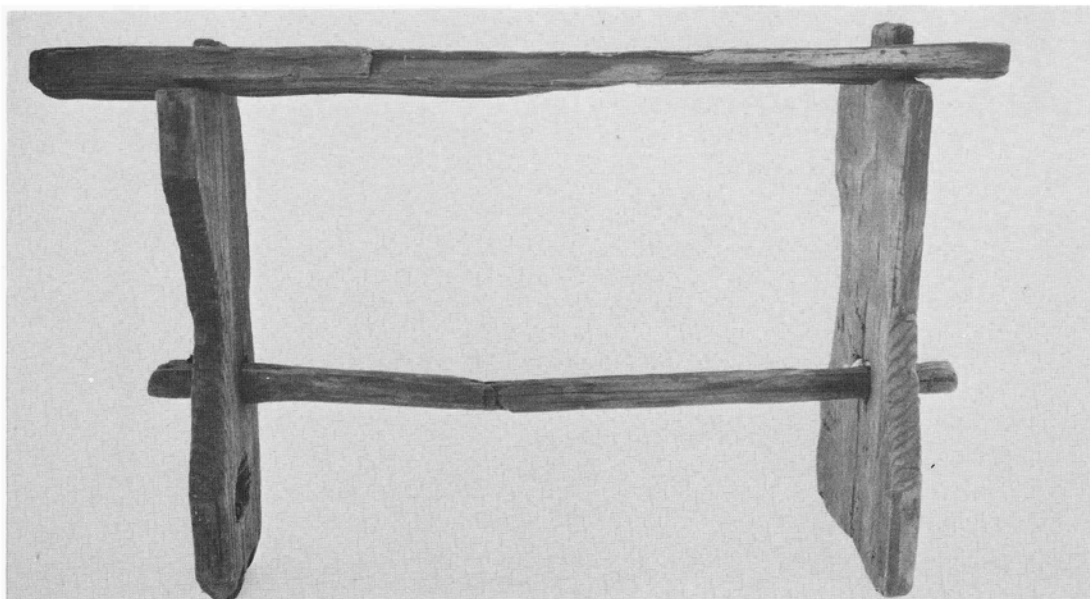
21



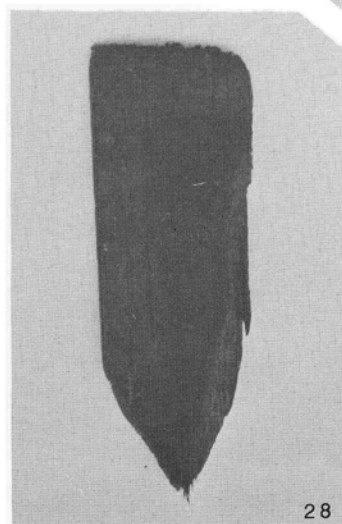
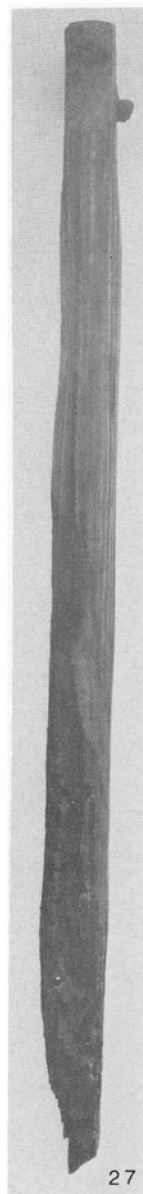
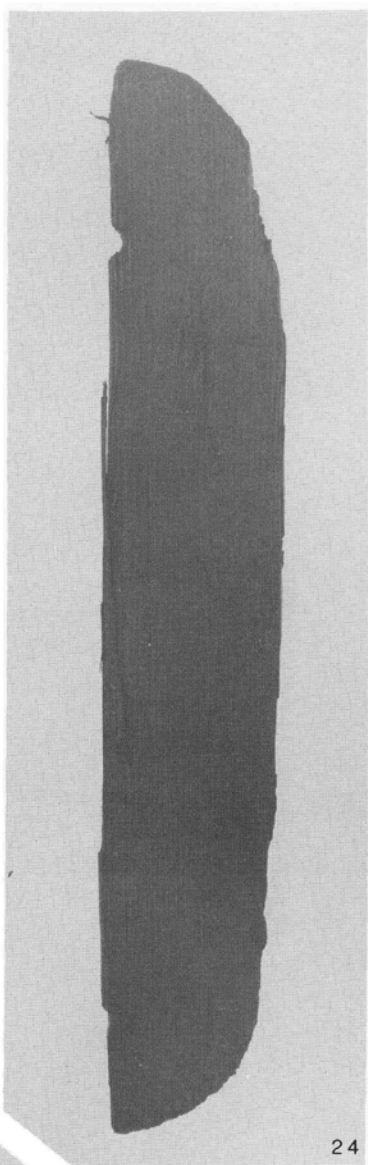
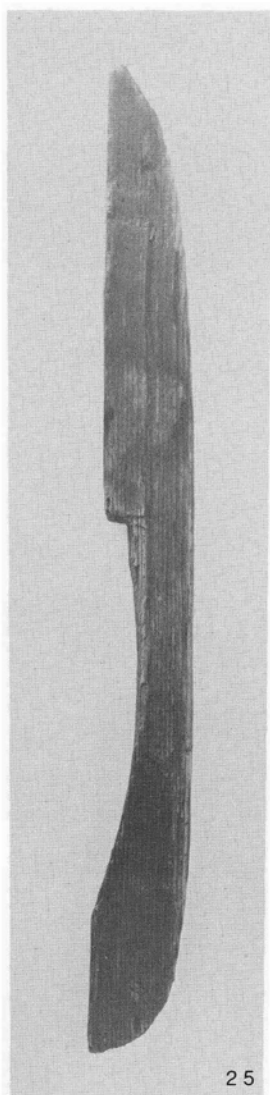
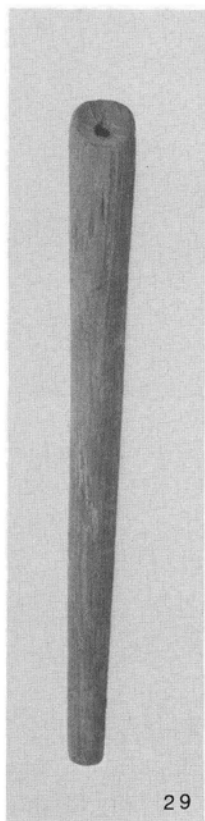
22

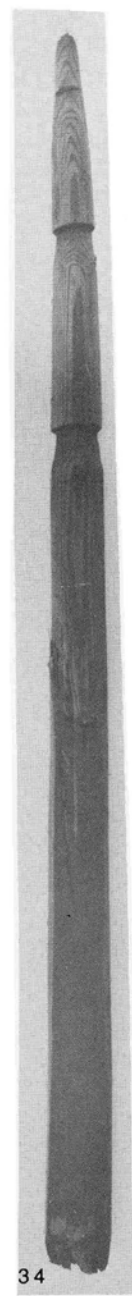
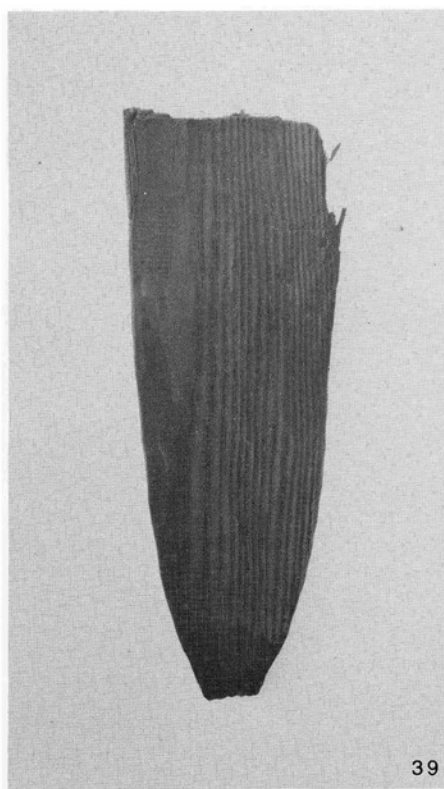
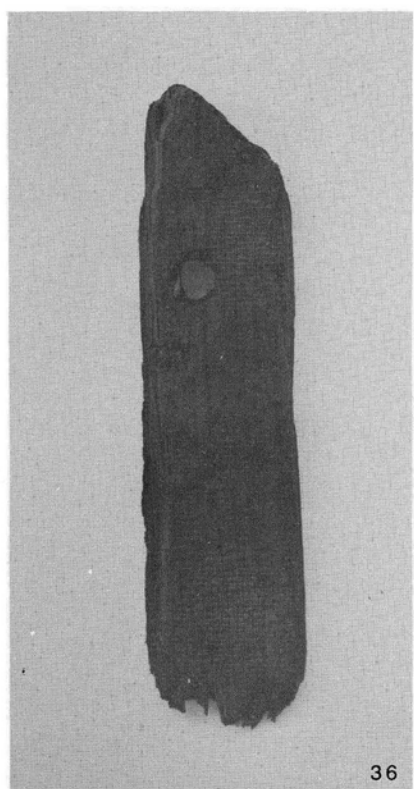
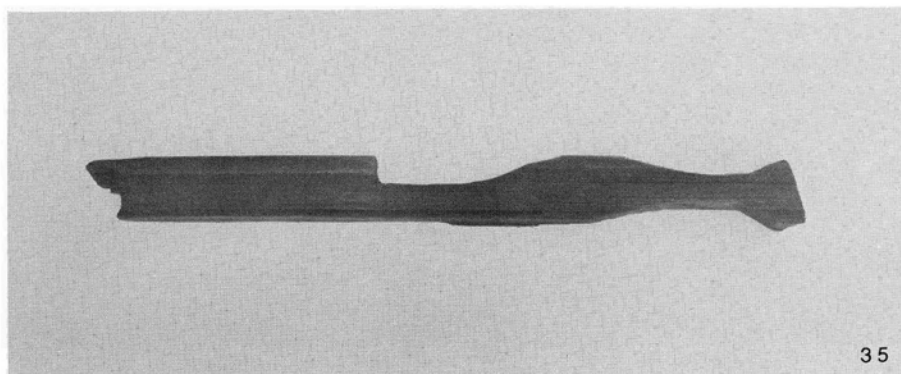
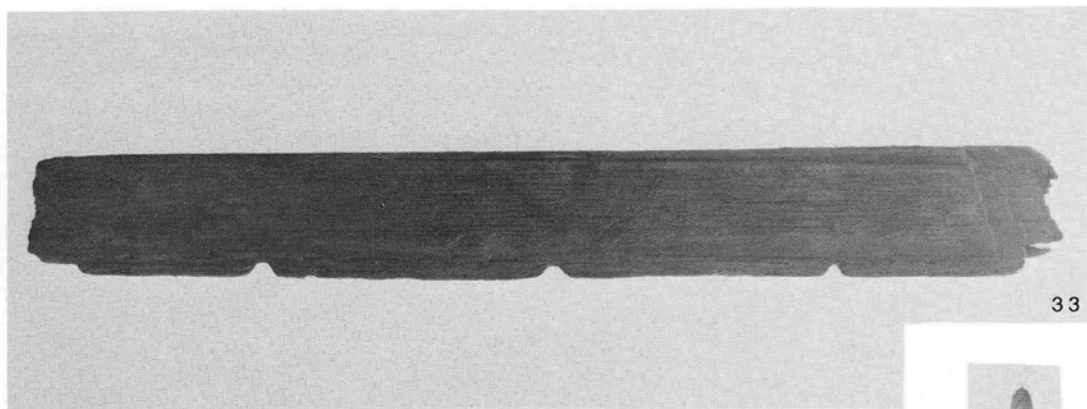


23



木 器 (9)







調査区全景（南西より）



21号墳近景（南より）



22号（墳墓）近景（南より）



24号墳近景（西より）



21号墳全景（南より）



22号（墳墓）全景（南東より）



22号（墳墓）主体部全景（北より）



第1主体（北西より）



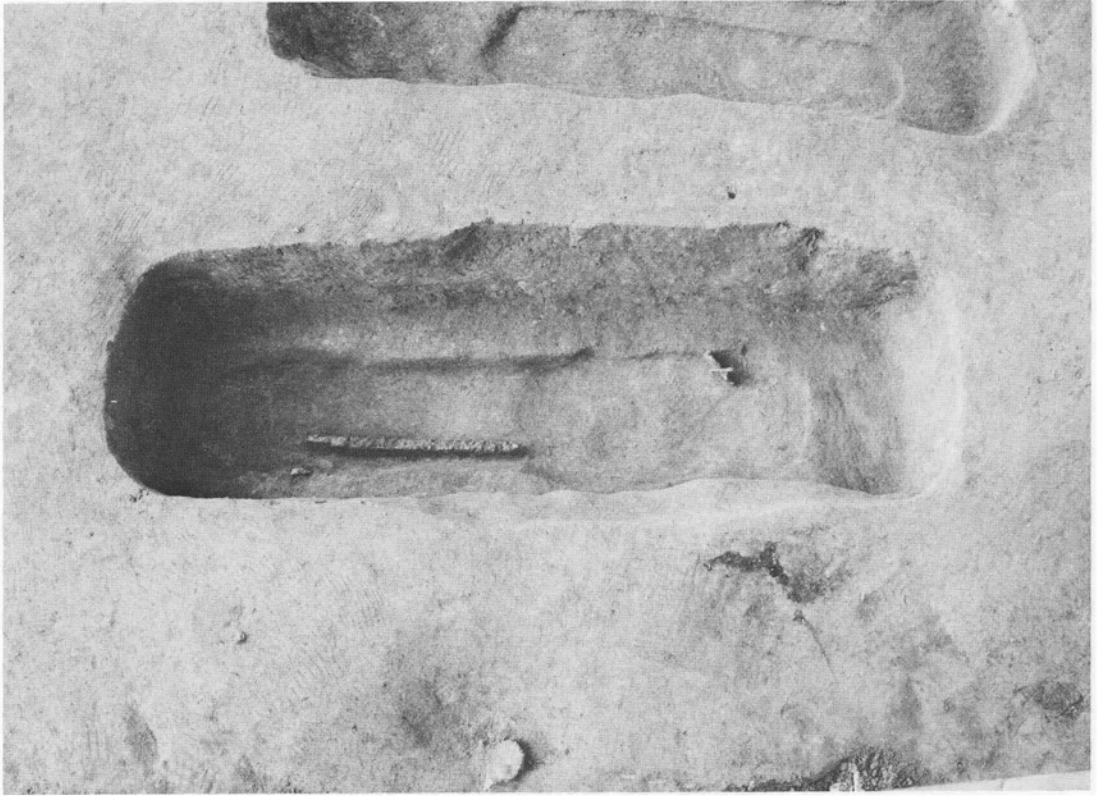
第2主体（北西より）



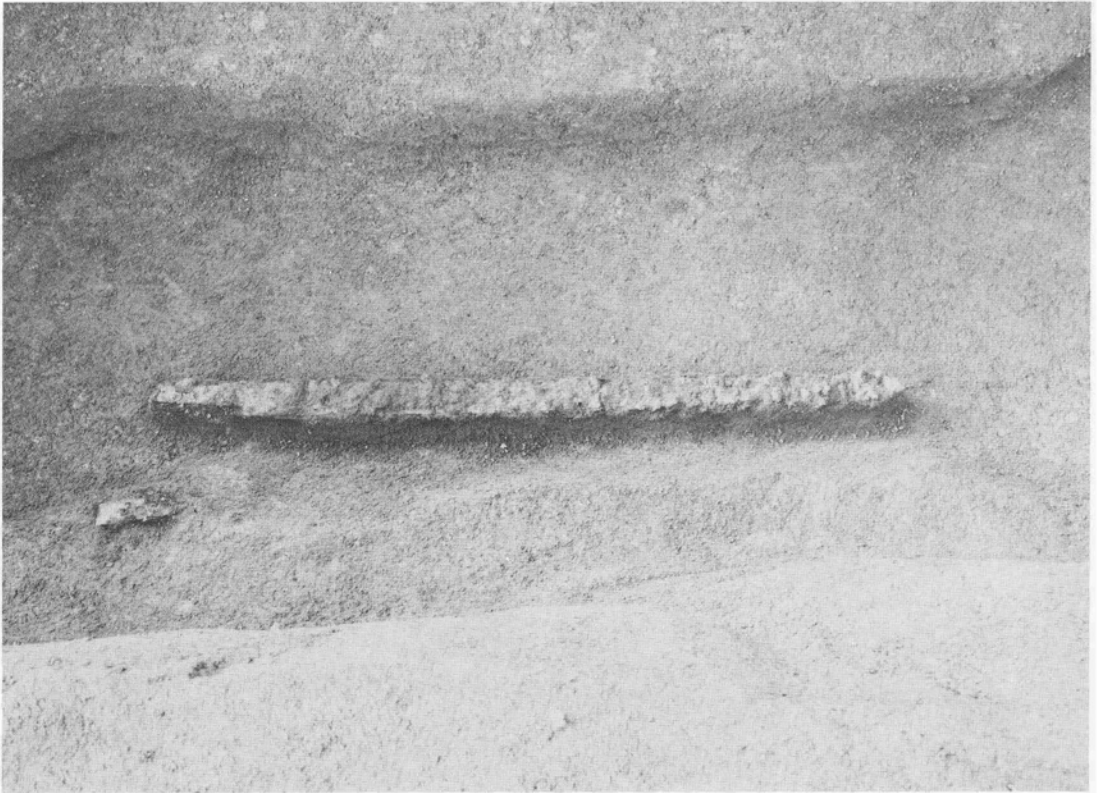
22号（墳墓）直刀出土状況



24号墳全景（南西より）



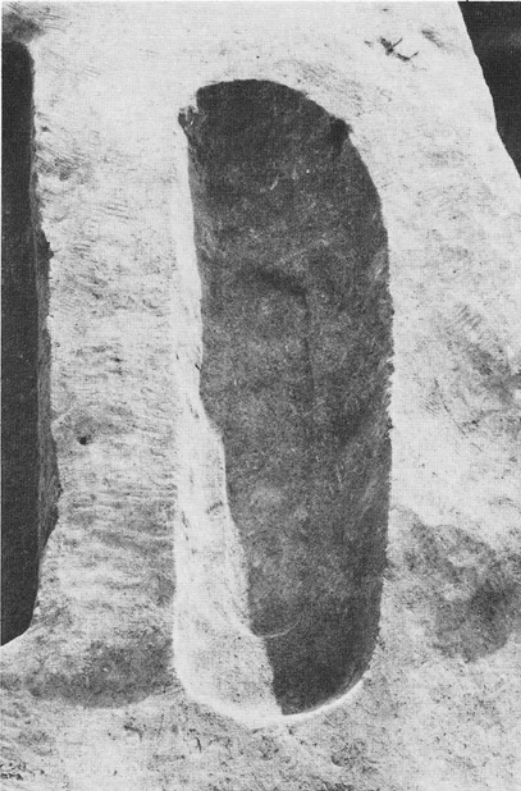
第1主体（東より）



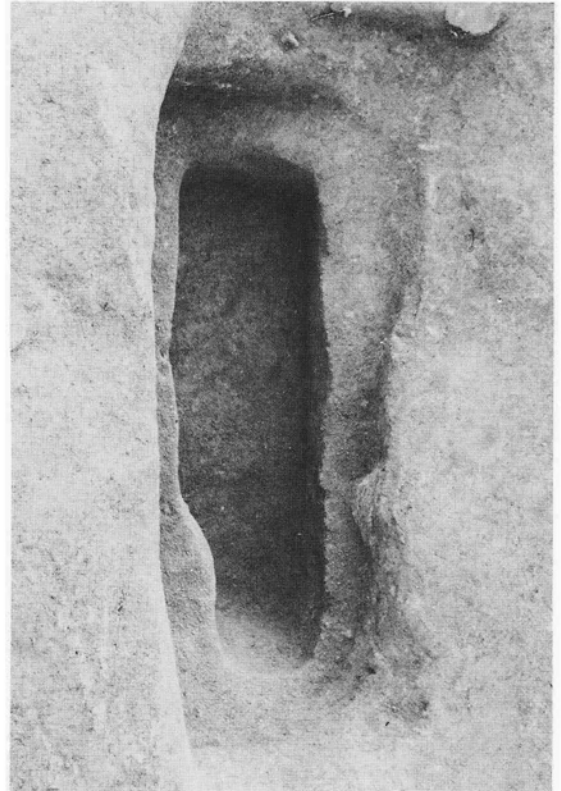
第1主体遺物出土状況（直刀）



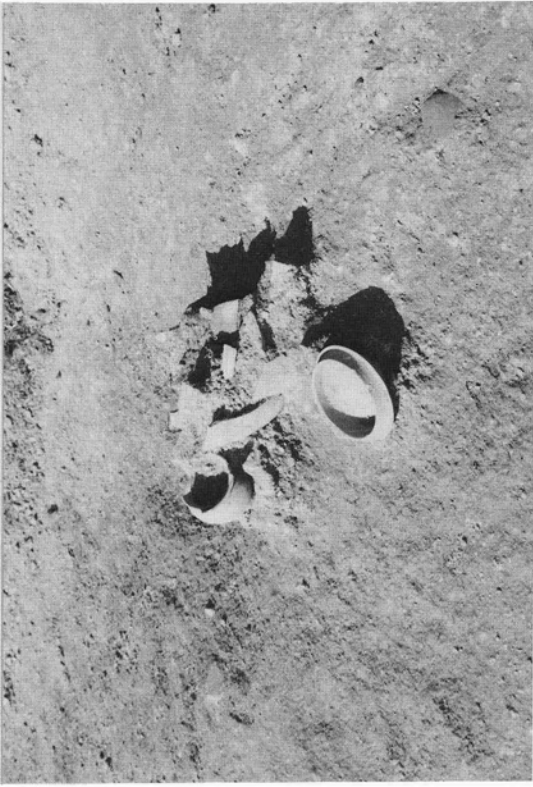
第1 主体遺物出土状況（鉄鏝）



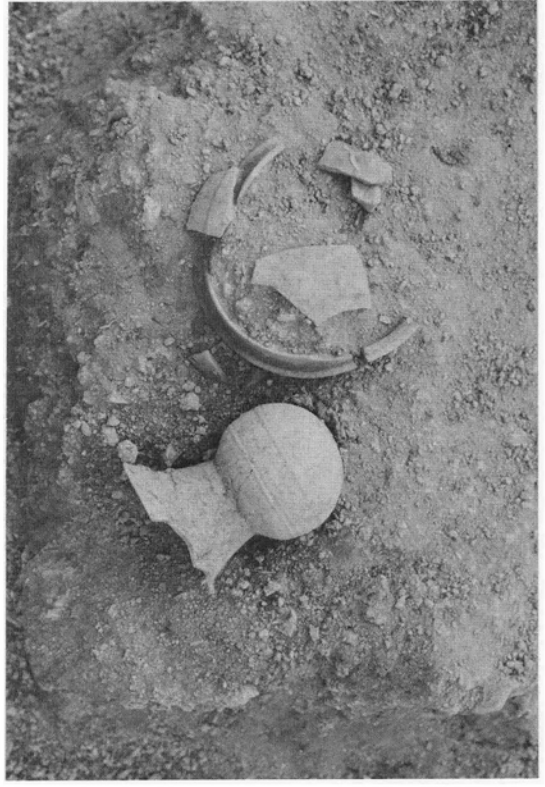
第2 主体（北東より）



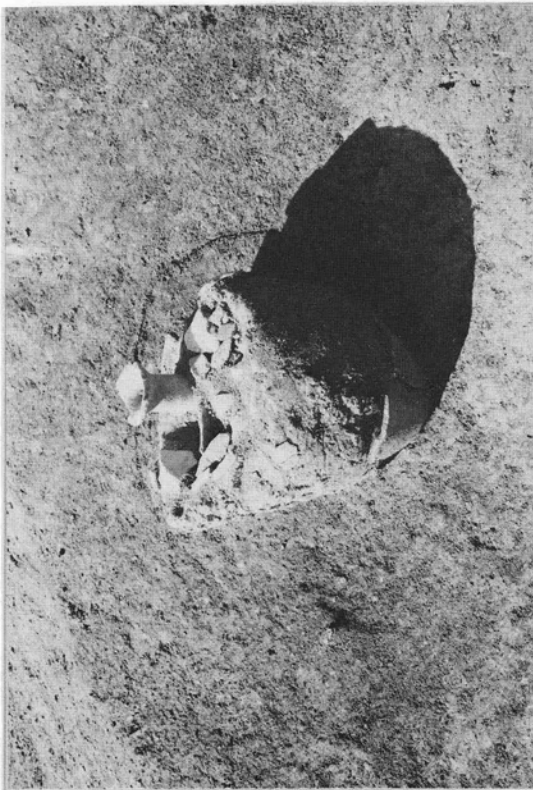
第3 主体（北東より）



A 土器群 (東より)



B 土器群 (東より)



土器棺墓 (北東より)



土器棺墓周辺遺物 (東より)



25号墳主体部（西より）



25号墳主体部遺物出土状況（玉）



26号墳全景（南より）



竖穴式石室全景（南東より）



土塚墓近景（南より）



溝遺物出土状況（東より）



27号墳全景（南西より）



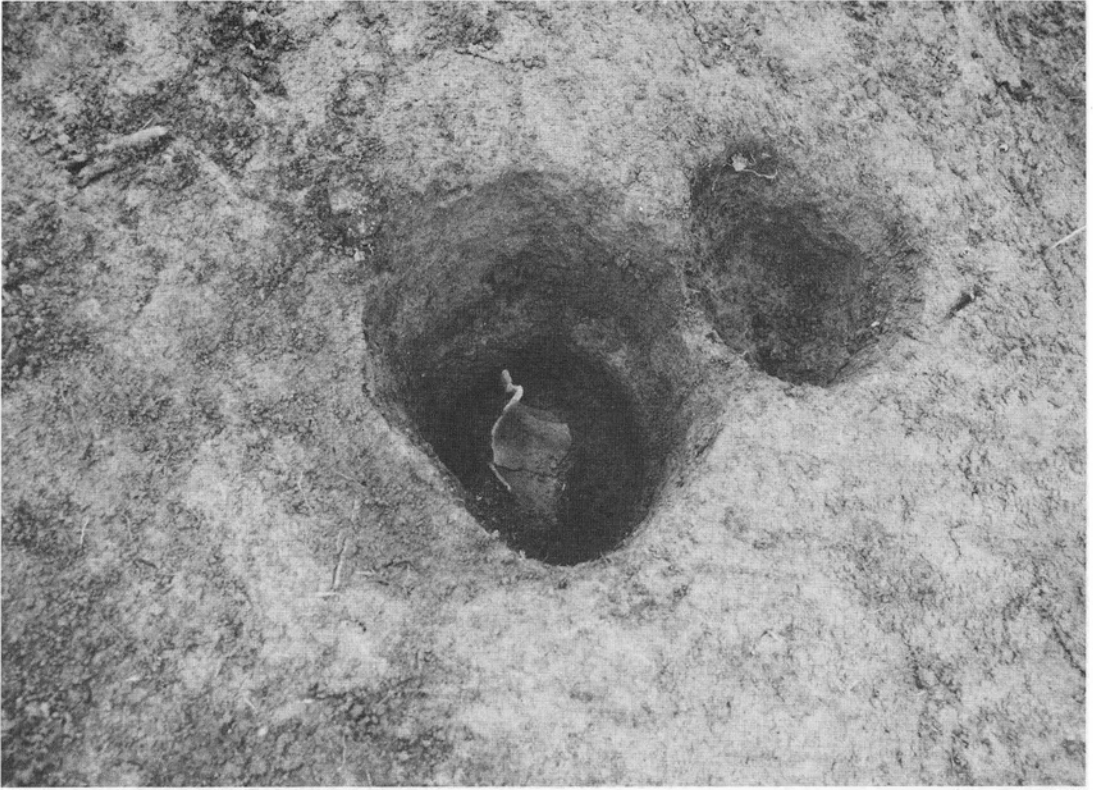
中山遺跡全景（東より）



第1住居址（南西より）



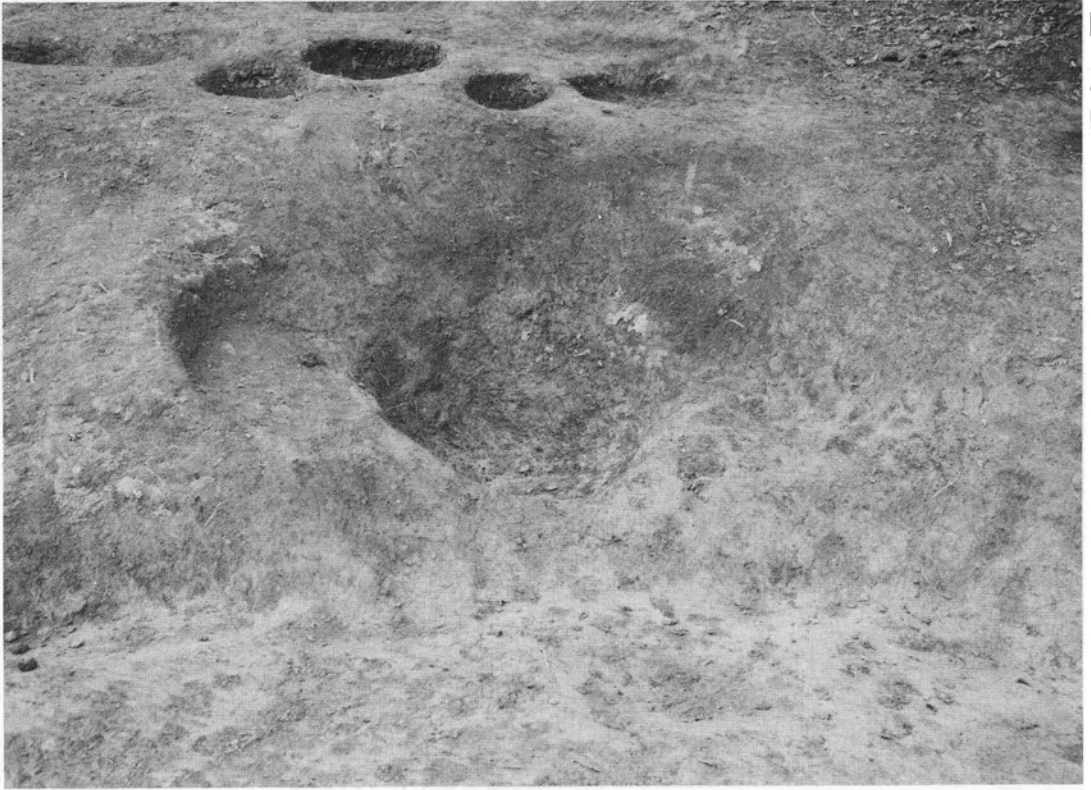
第2住居址（西より）



第2住居址柱穴1 遺物出土状況



中世墓1 (南西より)



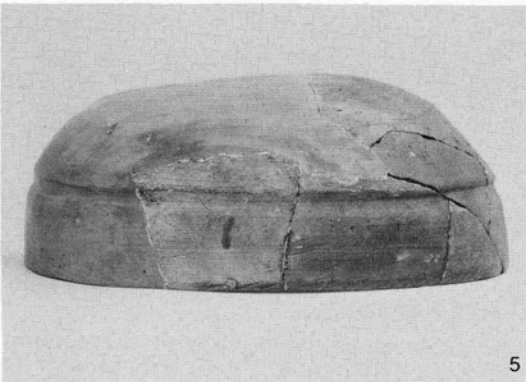
中世墓 1 (調査後)



中世墓 2 (東より)



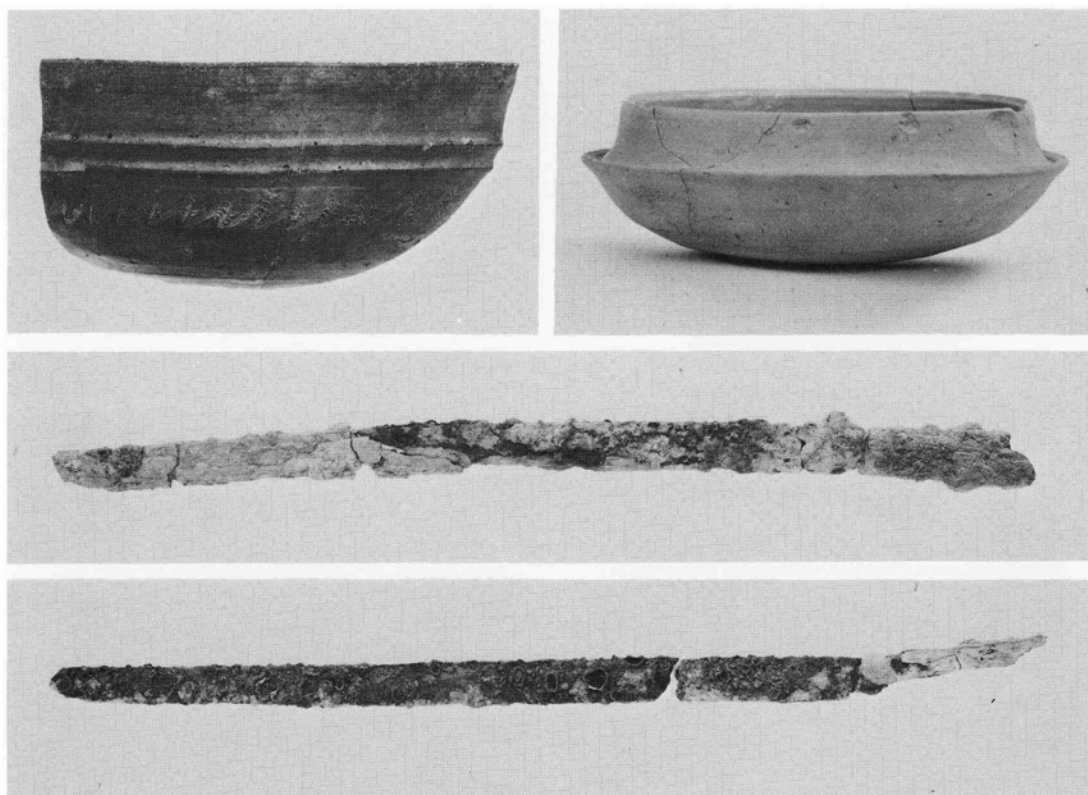
21号墳周辺出土遺物（A土器群）



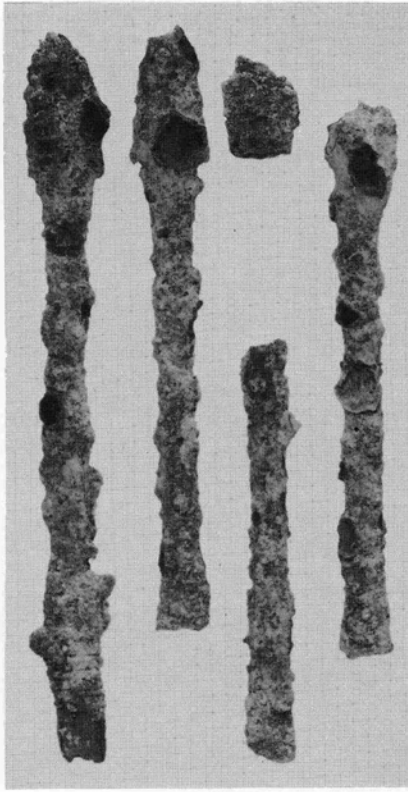
21号墳周辺出土遺物（B土器群）



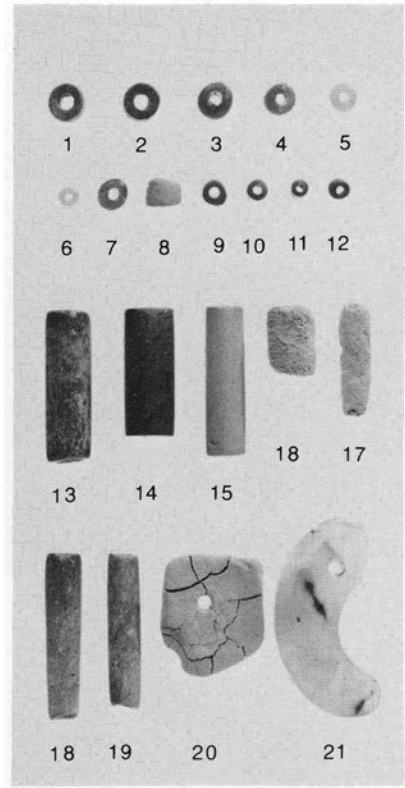
22号（墳墓）出土遺物（左：第1主体墓坛内、右：第2主体墓坛内）



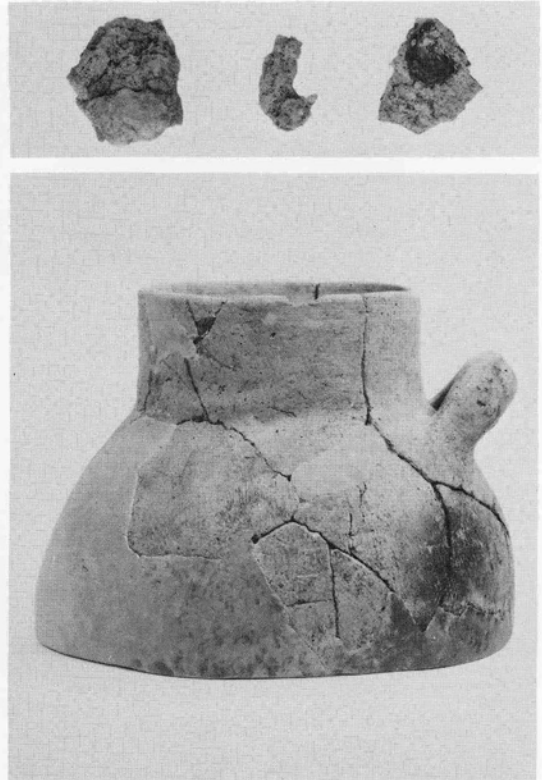
22・24号墳出土遺物（左上：22号墳墓墳丘裾部、右上：24号墳溝内、
中：22号墳墓墳頂部、下：24号墳第1主体埋土内）



24号墳第1主体出土遺物（鉄鏃）



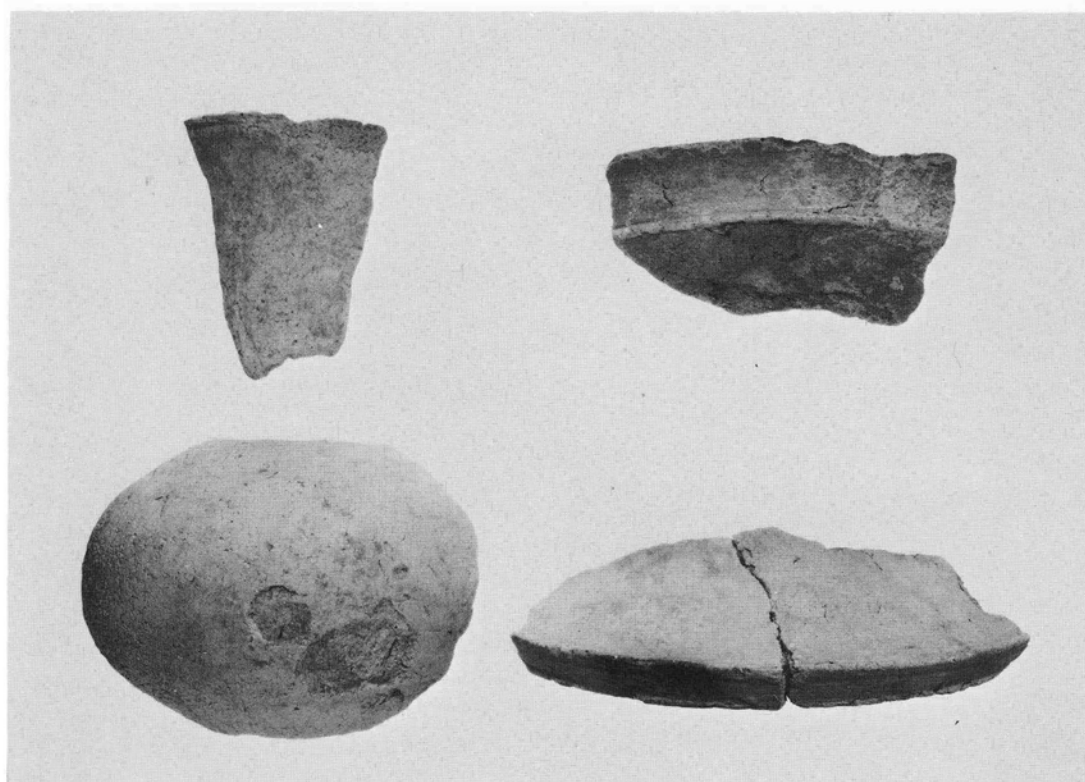
25号墳出土遺物（玉）



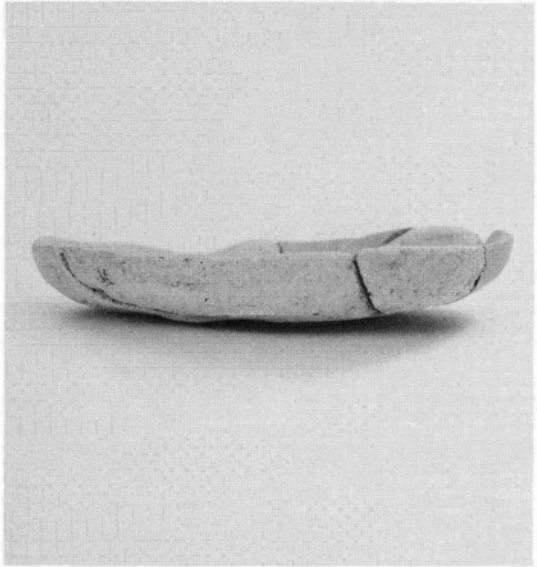
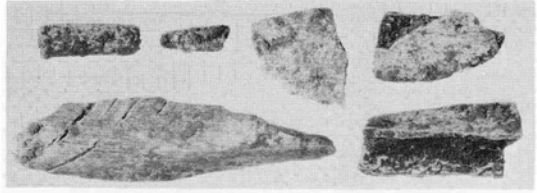
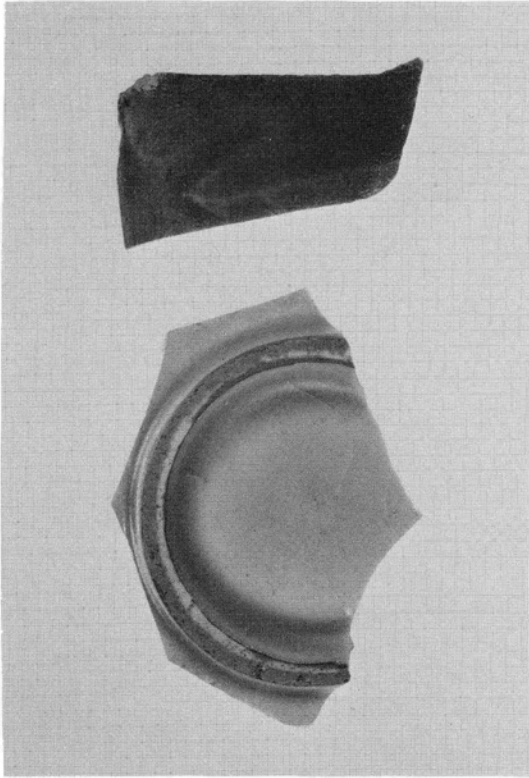
26号墳出土遺物（左：須恵器、右上：鉄鏃他）
土器棺墓周辺出土遺物（右下）



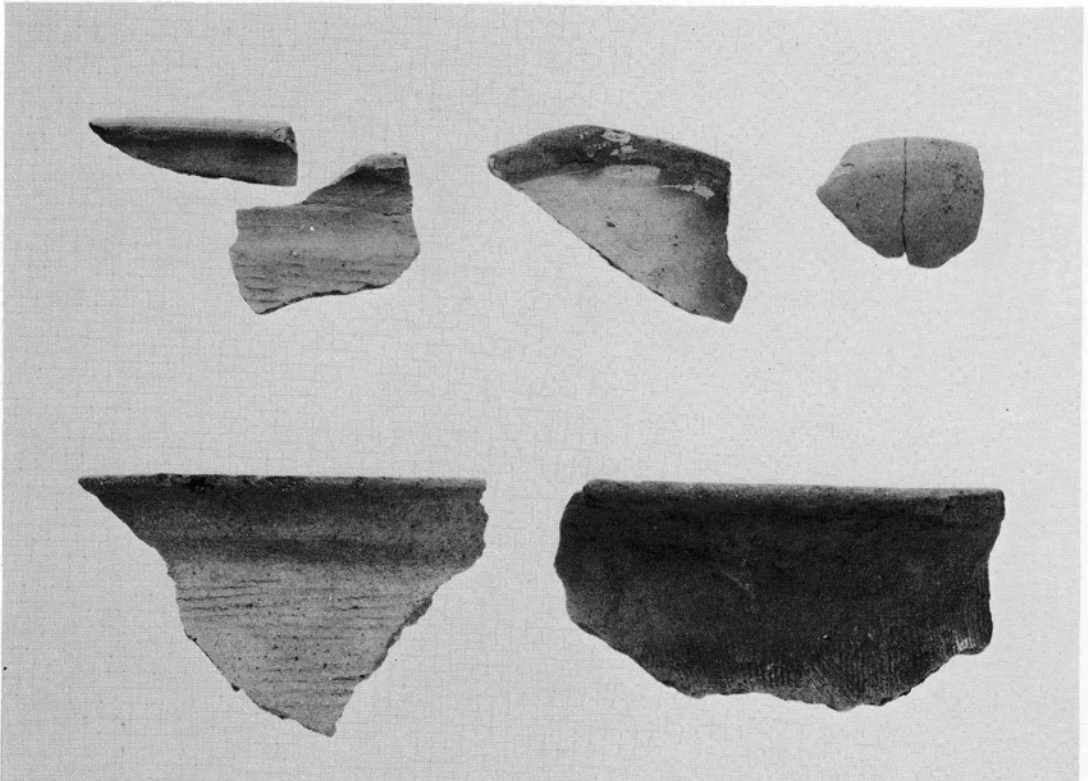
土器棺墓及び周辺出土遺物（右・左上：土器棺墓遺物、左下：周辺出土遺物）



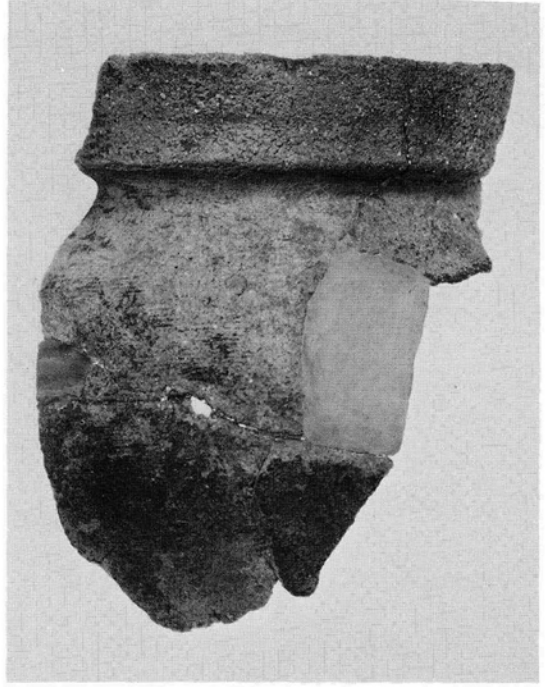
土器棺墓周辺出土遺物



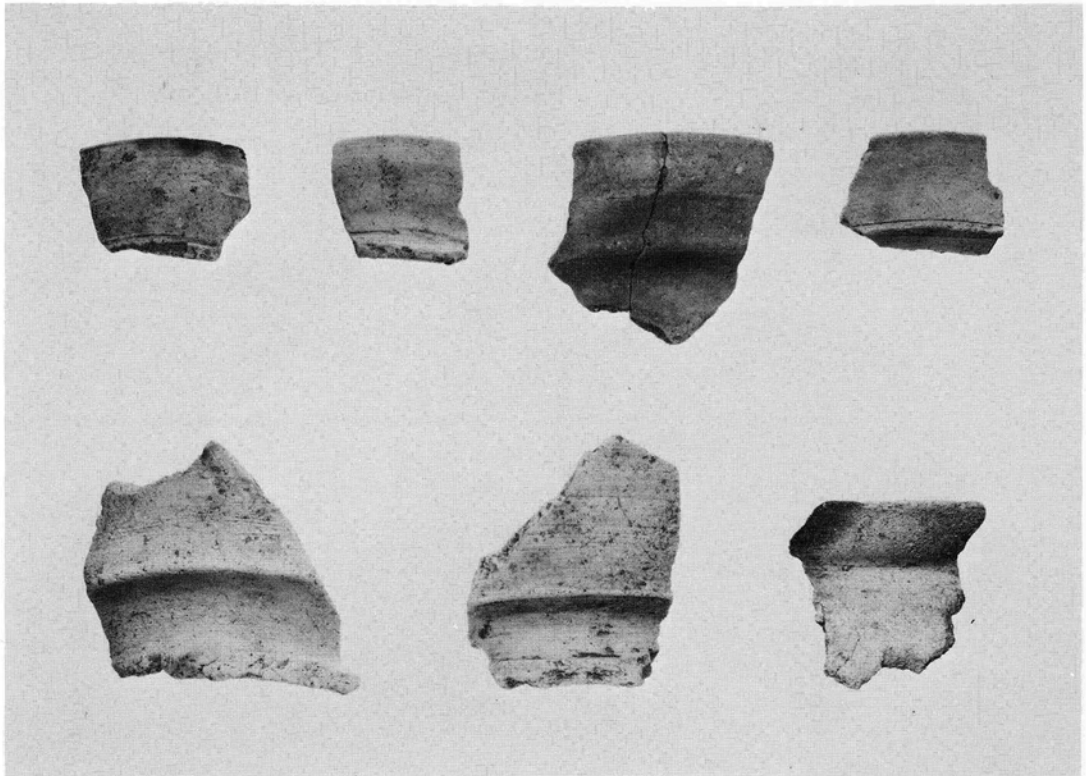
中世墓周辺出土遺物及び人骨（右上：人骨、左：青磁）



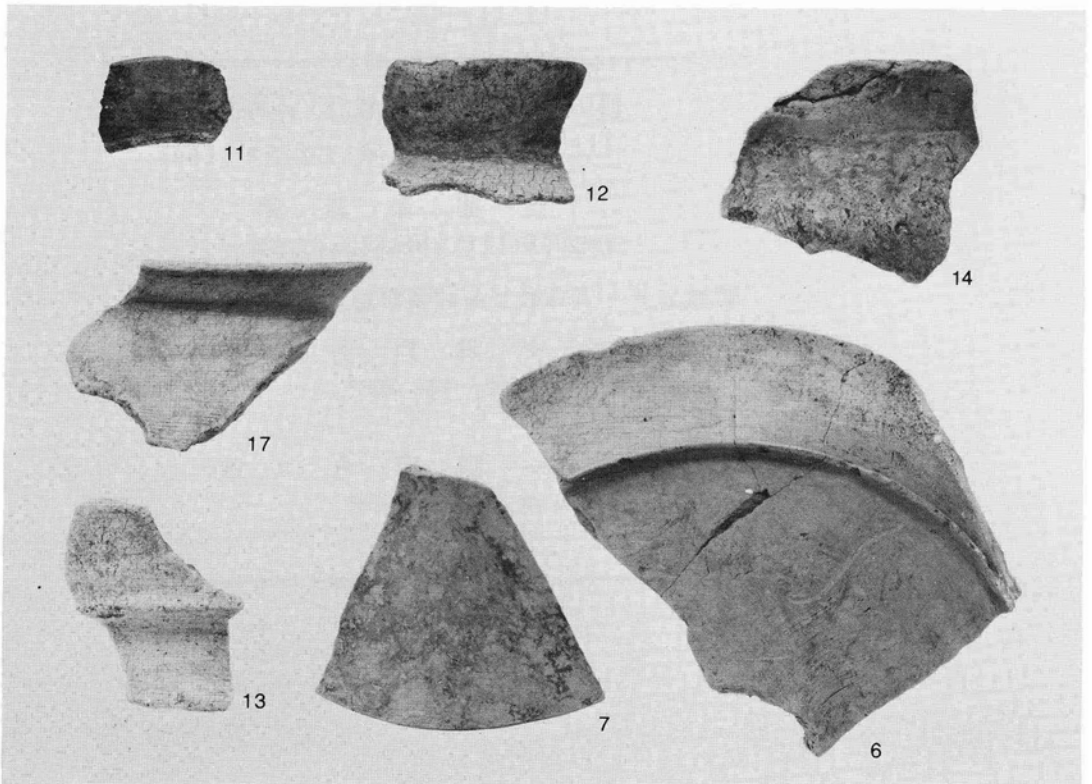
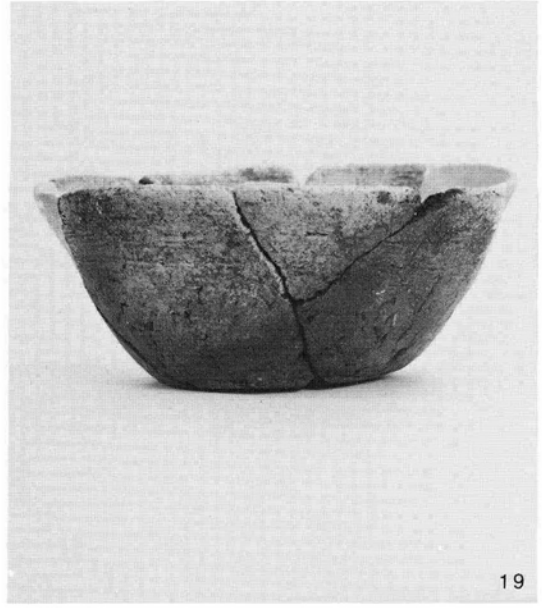
中世墓周辺出土遺物



第1及び第2住居址出土遺物（右：第2住居址柱穴1出土）



第1住居址出土遺物



溝1及び二次堆積出土遺物（溝1：6・7・19、二次堆積11・12・13・14・17・18）

兵庫県文化財調査報告 第31冊

1985年3月31日 発行

筒江遺跡群 I

－和田山工業団地建設に伴う発掘調査報告－

編集 兵庫県教育委員会社会教育・文化財課

発行 兵庫県教育委員会

〒650 神戸市中央区下山手通5丁目10-1

TEL 078 (341) 7711

印刷 大倉印刷株式会社

〒668 豊岡市中央町1番9号

TEL 07962 (2) 4474
