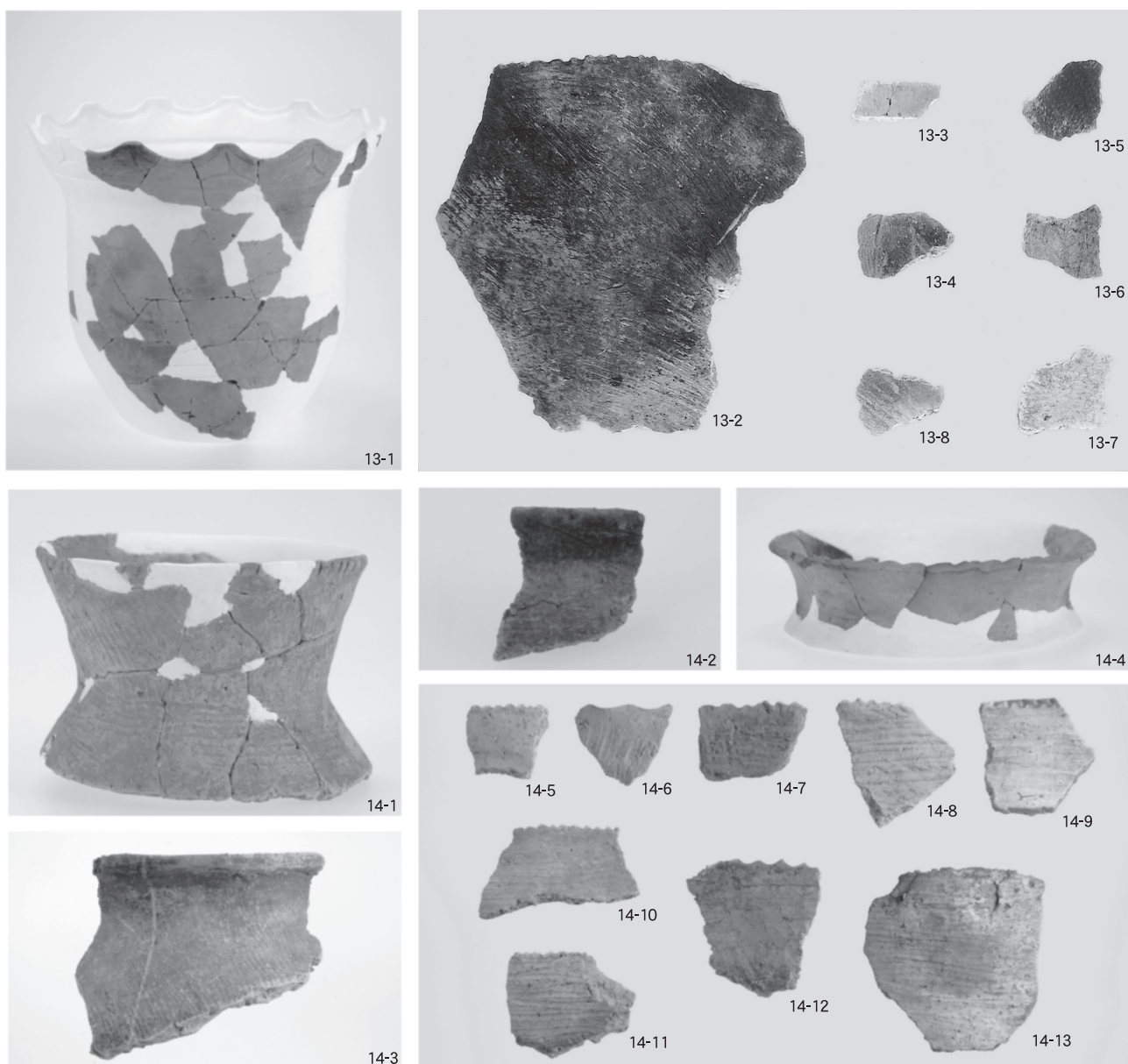


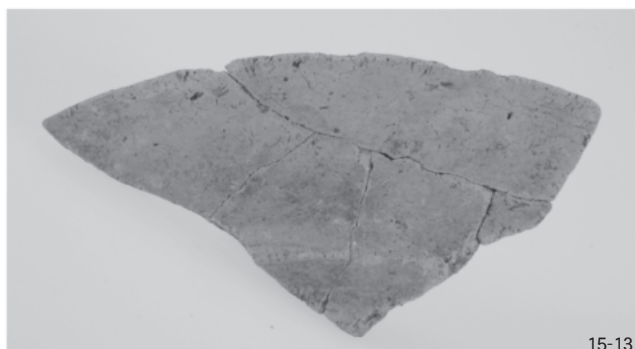
(1) 遺構出土土器



(2) 包含層出土土器

図版第二二 遺物 I区





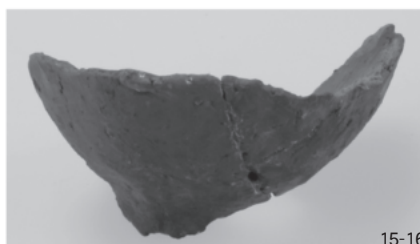
15-13



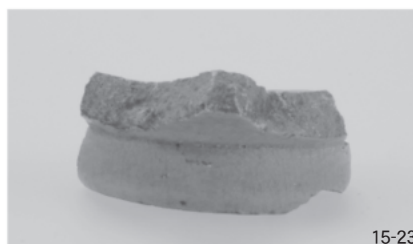
15-22



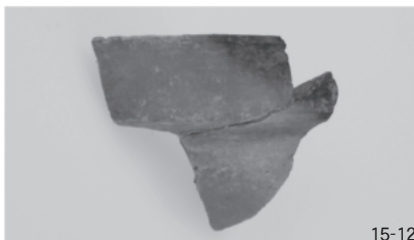
15-11



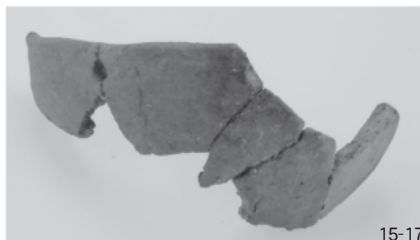
15-16



15-23



15-12



15-17



15-24



15-14



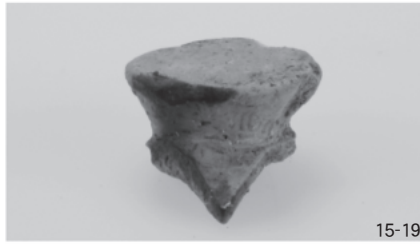
15-18



15-25



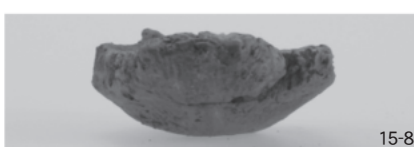
15-15



15-19



15-26



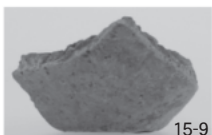
15-8



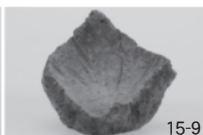
15-20



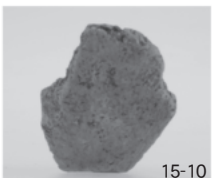
15-27



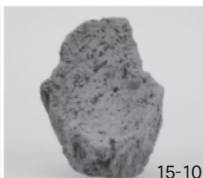
15-9



15-9



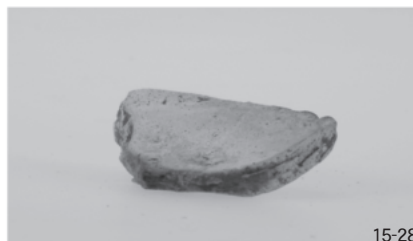
15-10



15-10



15-21



15-28



(1) 打製石斧



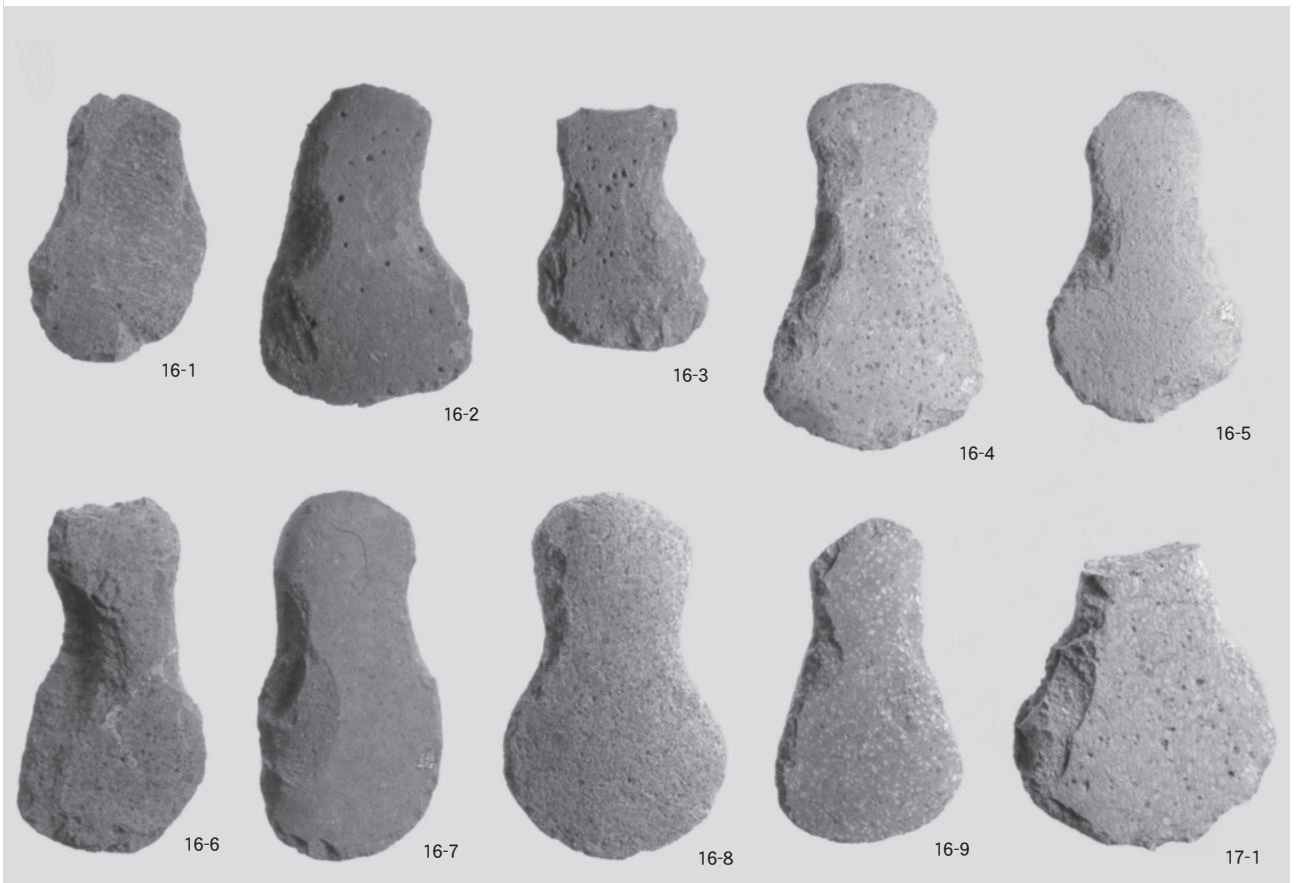
(2) 打製石斧 (ミニチュア)



(3) 磨製石斧



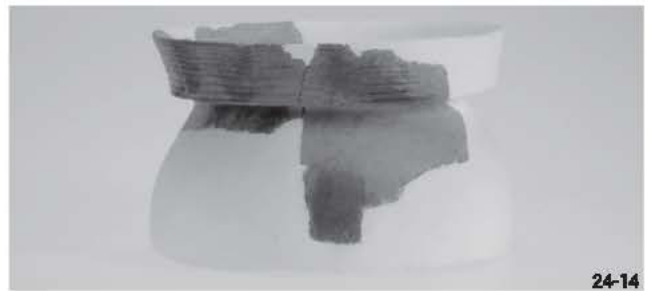
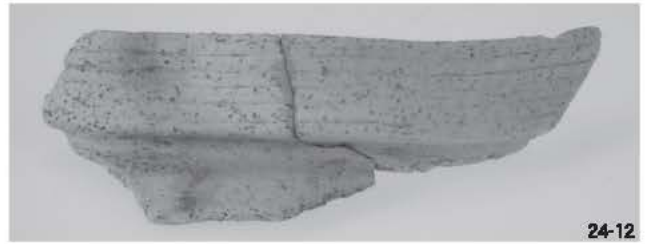
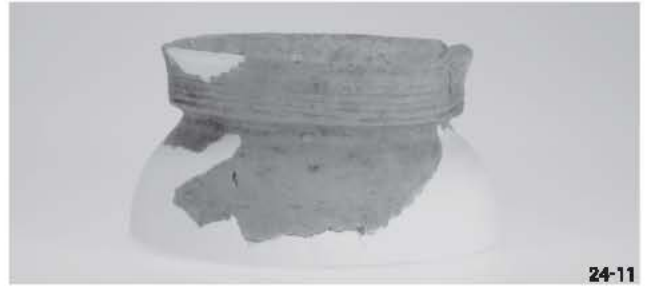
(4) 磨石類



(5) 打製石斧



図版第一六 遺物 II区





25-1



25-2



25-3



25-4



25-5



25-6



25-7



25-8



25-9



25-10



25-11



25-12



25-13



25-13

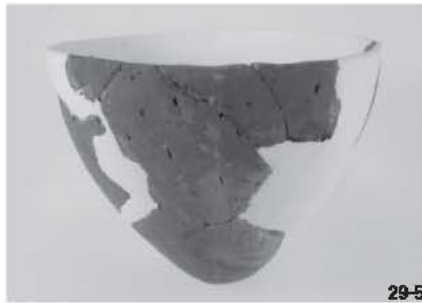
図版第一八 遺物 II区







図版第二〇 遺物 II区





30-1



30-7



30-2



30-10



30-3



30-9



30-4



30-5



30-11



30-12



30-6



31-1



31-2



31-3



30-8



31-4



31-5

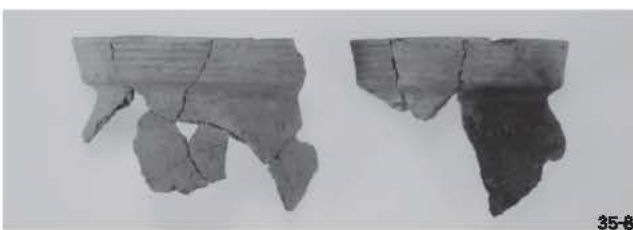
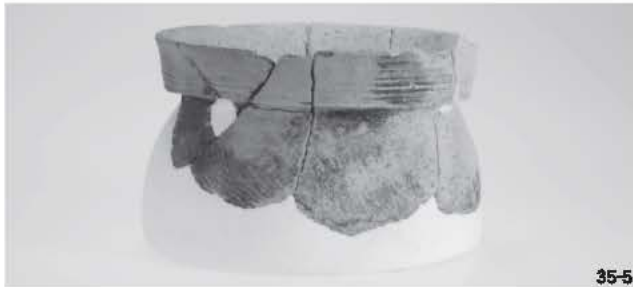
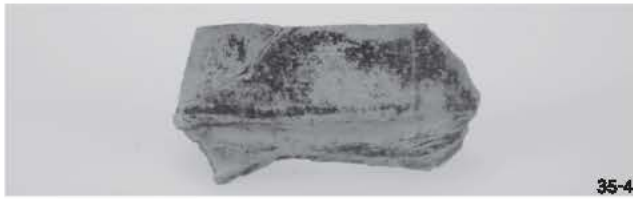
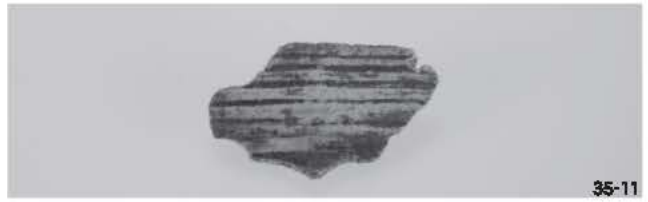


31-6



31-7

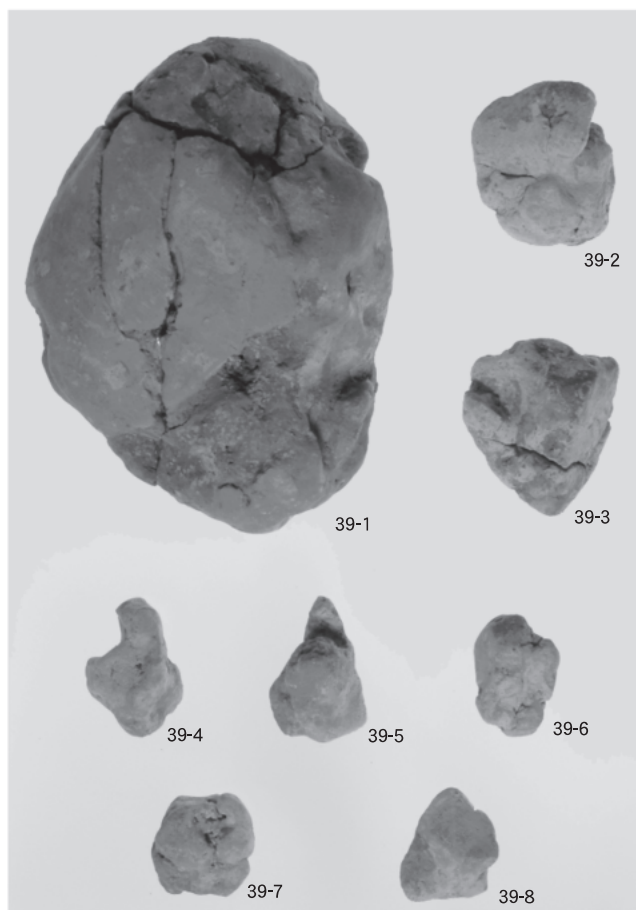
図版第三二 遺物 II区



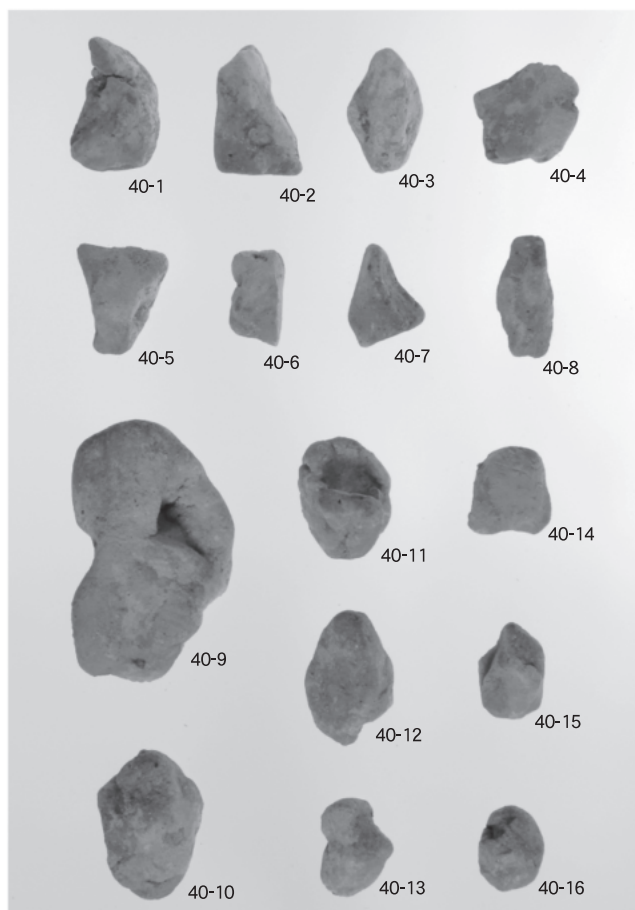


図版第二四 遺物 II区





(1) 粘土塊



(2) 粘土塊



42-1



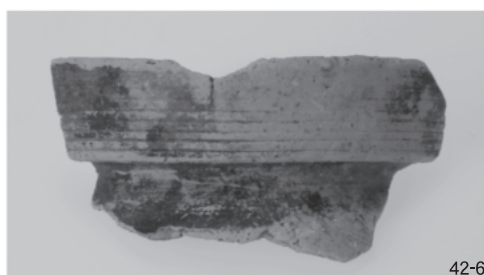
42-2



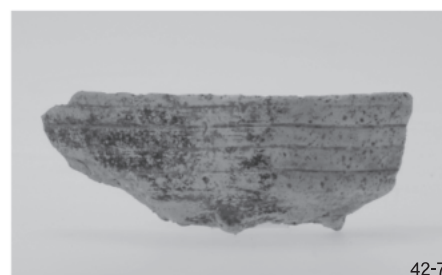
42-3



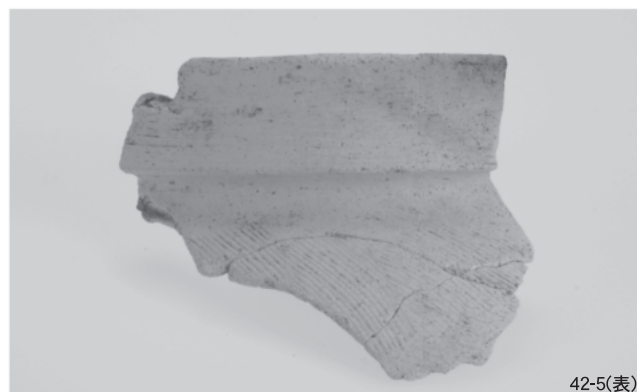
42-4



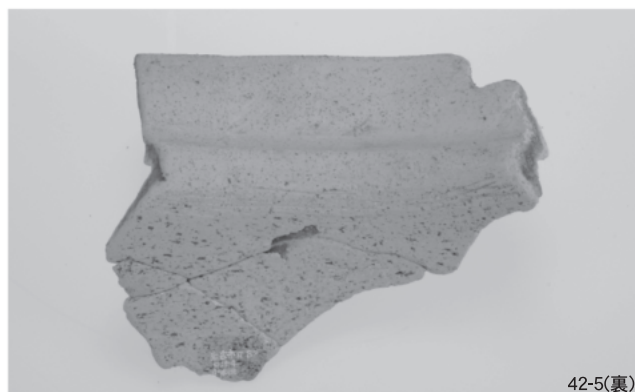
42-6



42-7

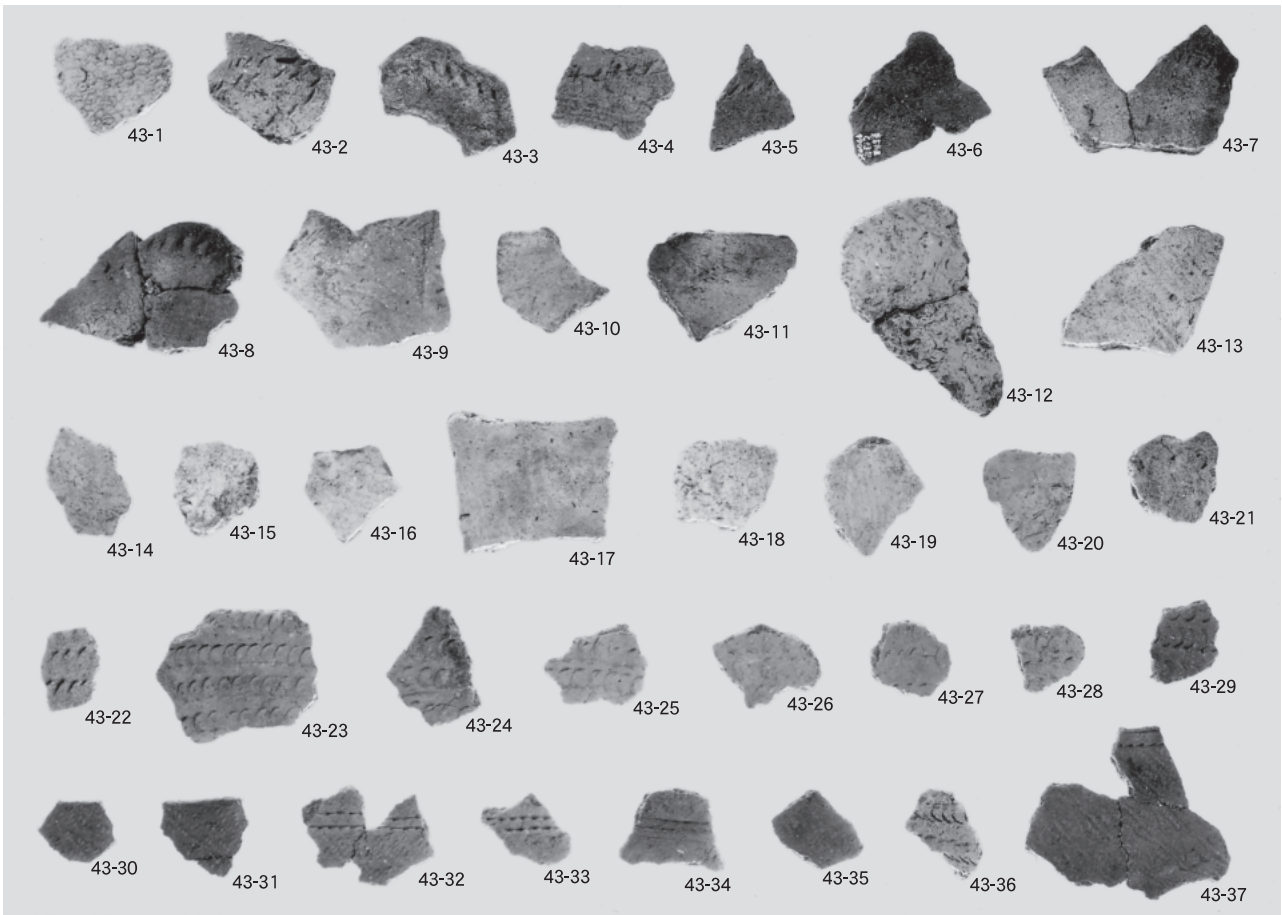


42-5(表)

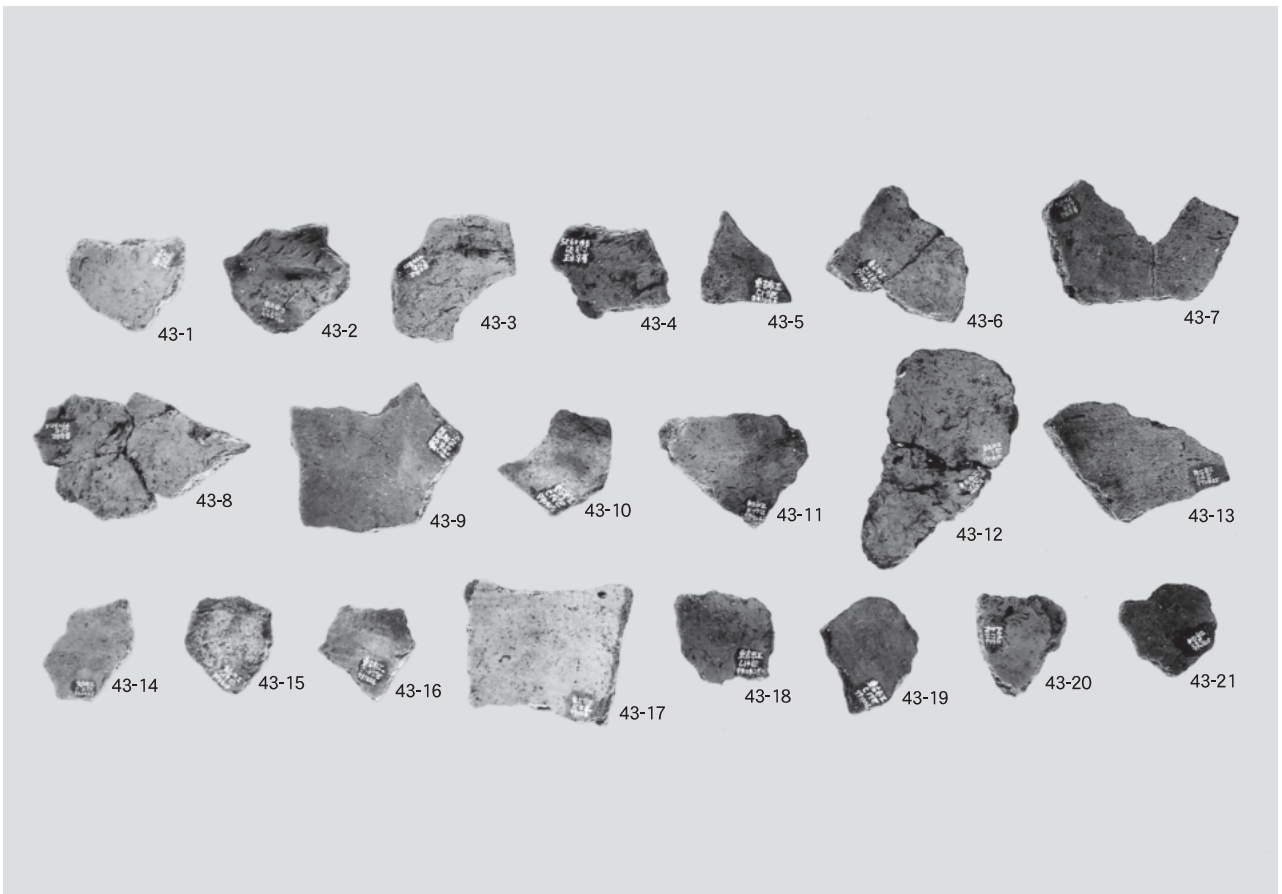


42-5(裏)

(3) 遺構出土土器

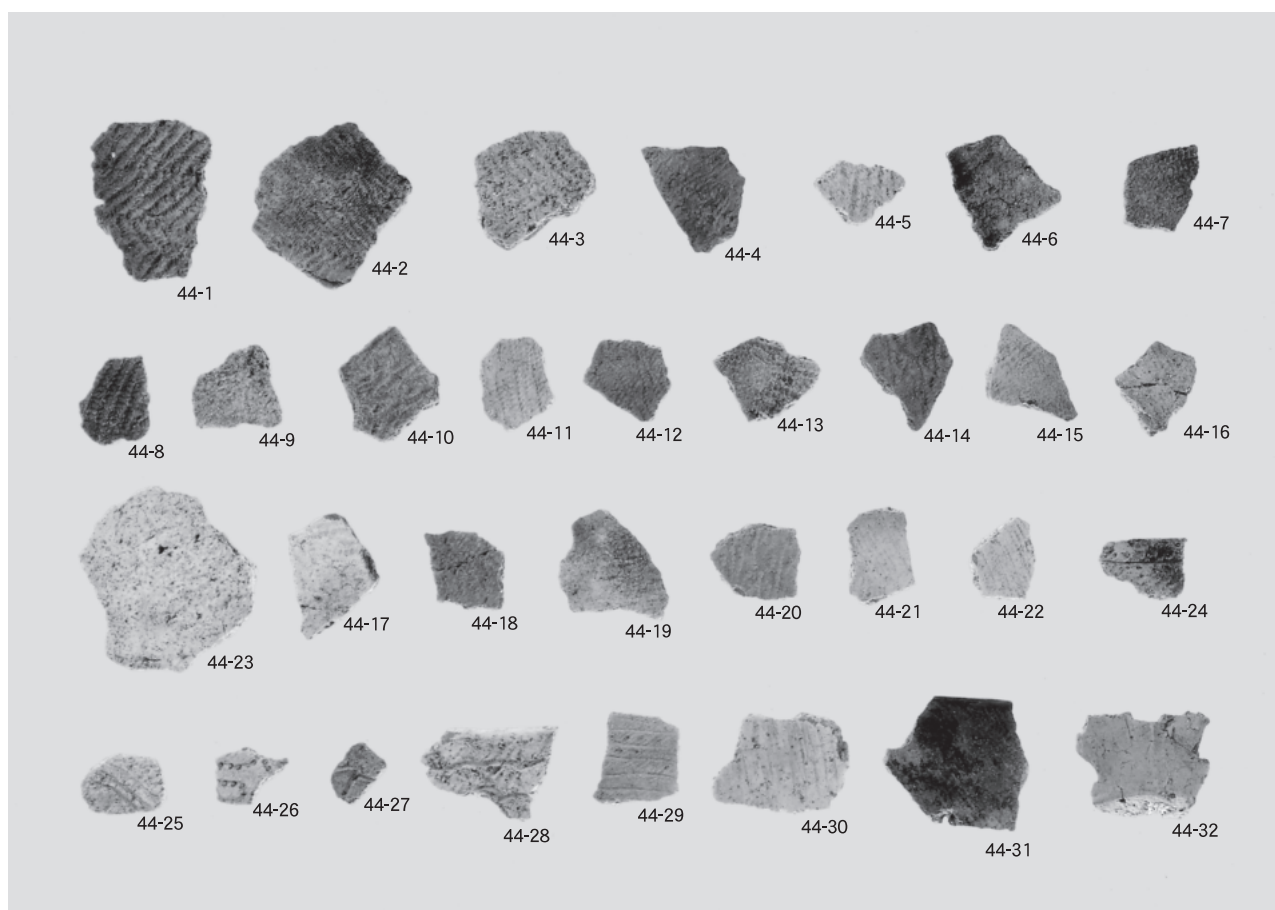


(1) 縄文土器 (表)

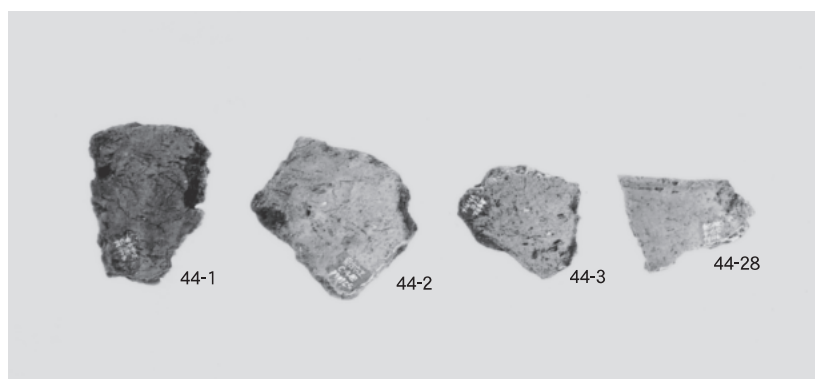


(2) 縄文土器 (裏)



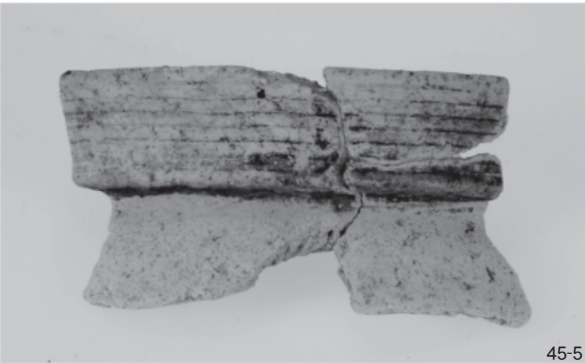
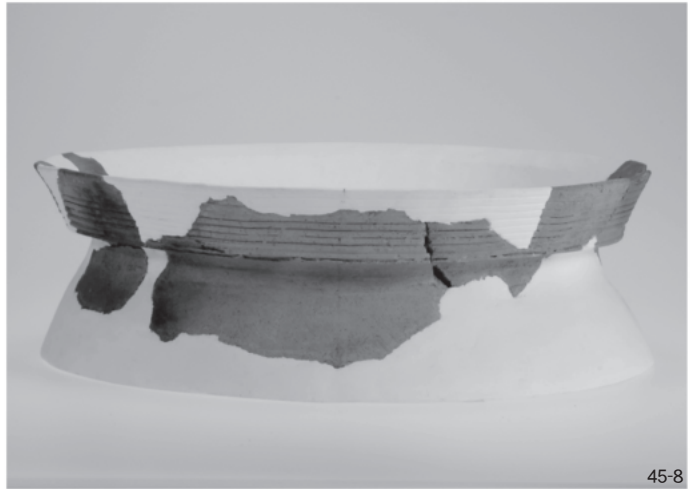


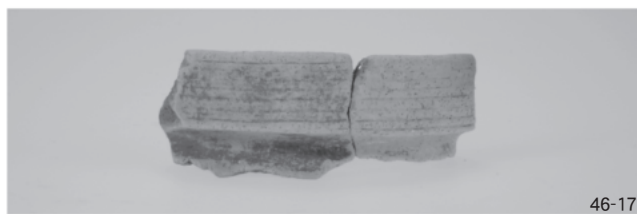
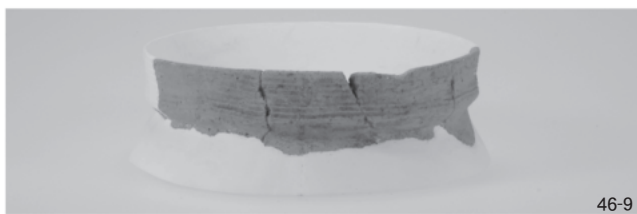
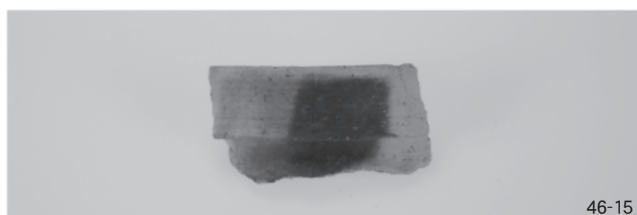
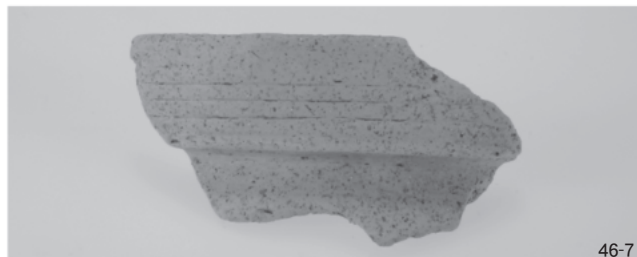
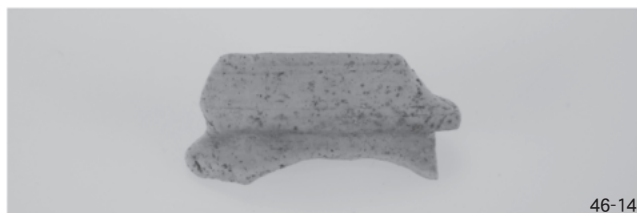
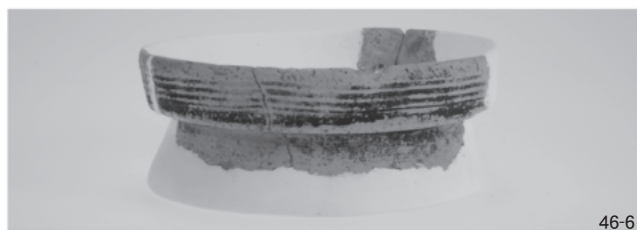
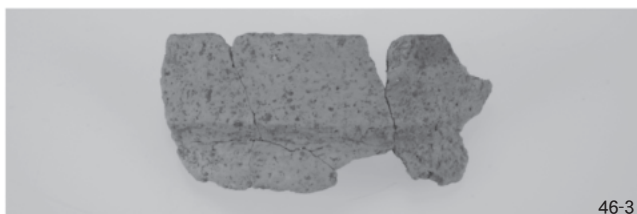
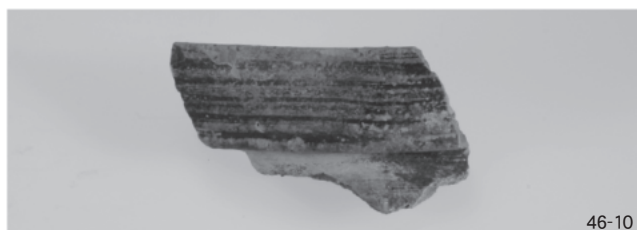
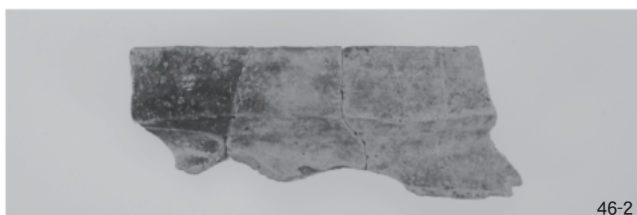
(1) 縄文土器 (表)



(2) 縄文土器 (裏)

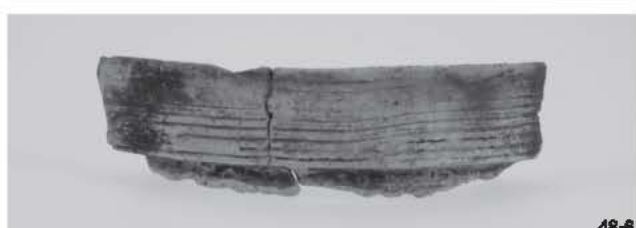
図版第二八 遺物 II区





図版第三〇 遺物 II区





図版第三二 遺物 II区



48-7



48-14



48-8



48-15



48-9



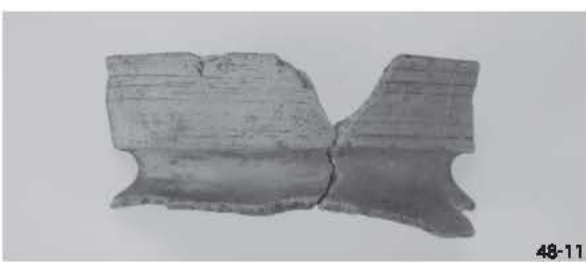
48-16



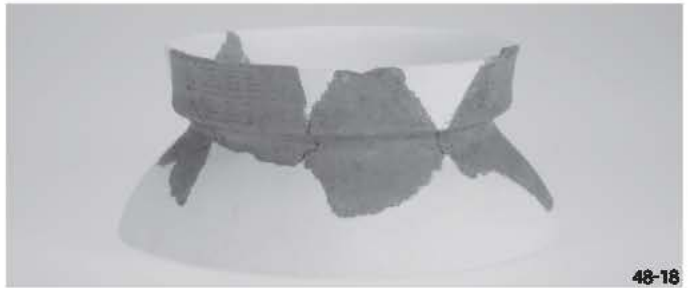
48-10



48-17



48-11



48-18



48-12



49-1



48-19



49-2



49-3



49-4



49-5



49-6



49-7



49-8



49-9



49-12



49-10



49-11



49-11(B)

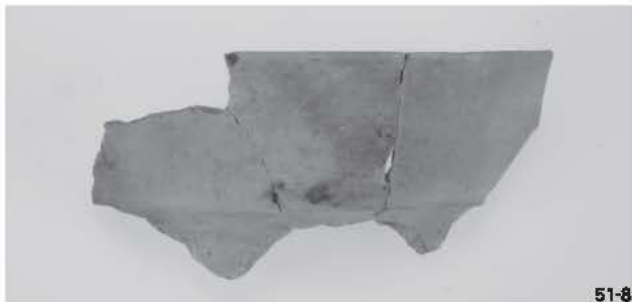
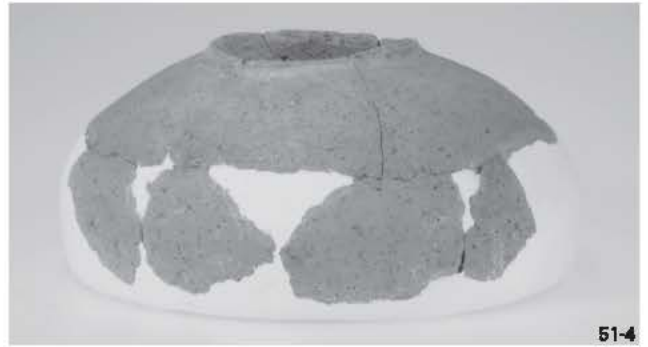


49-13



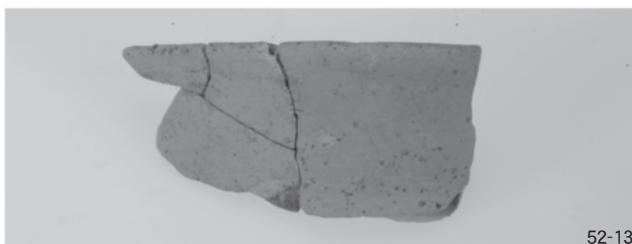
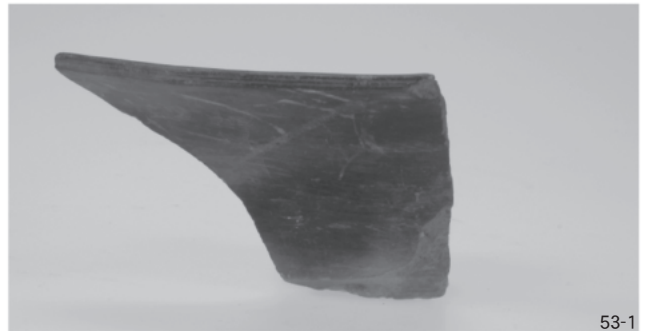
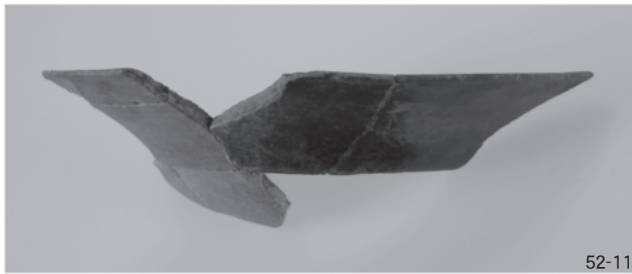
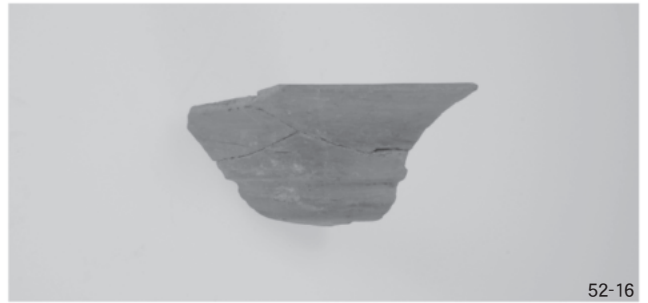
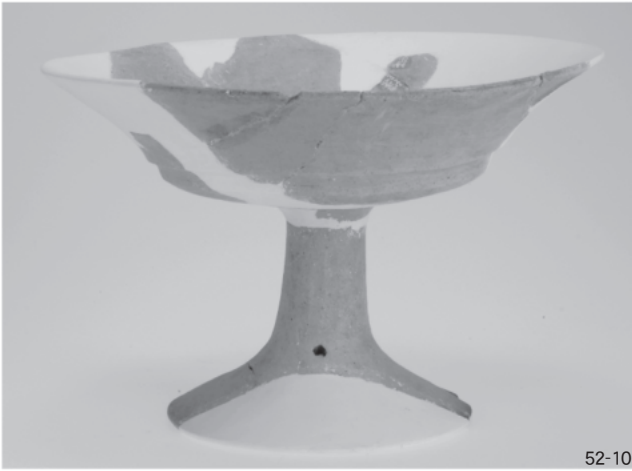
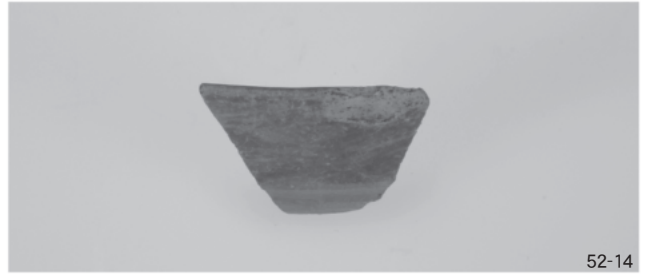
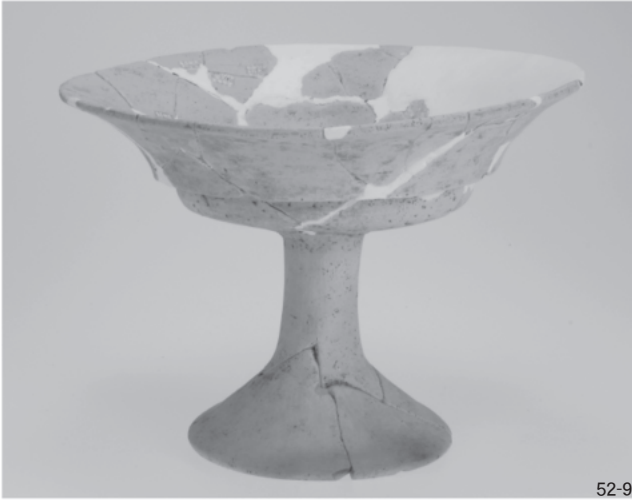








図版第三八 遺物 II区





53-4



53-5



53-12



53-6



53-7



53-13



53-8



53-9



53-14



53-10



53-15



53-16

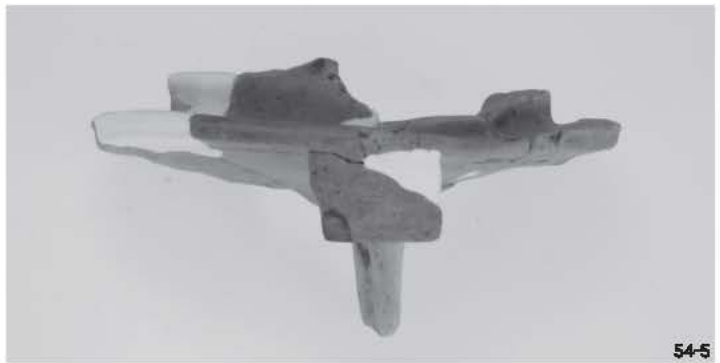


53-11



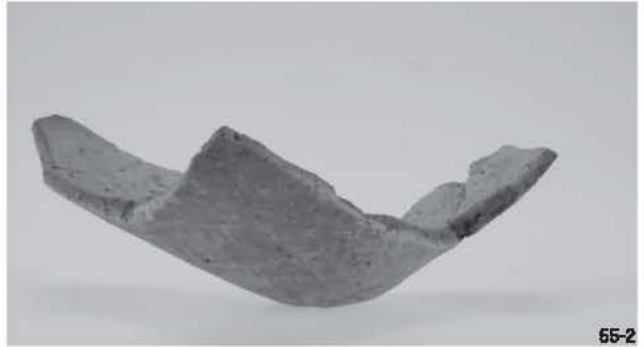
53-17

図版第四〇 遺物 Ⅱ区





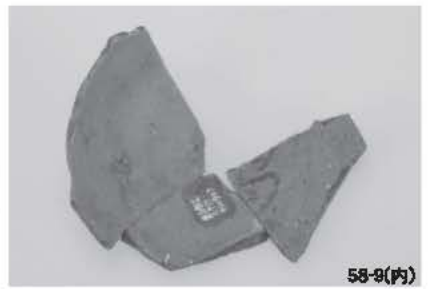
図版第四二 遺物 II区





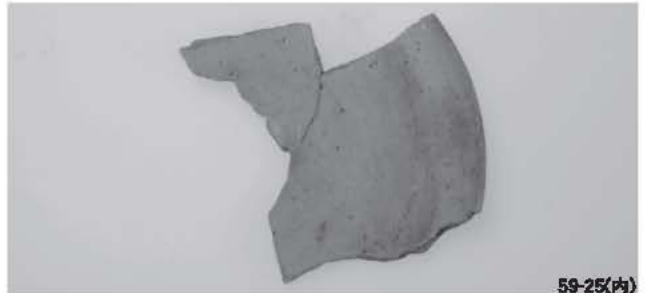


図版第四四 遺物 II区





図版第四六 遺物 II区





図版第四八 遺物 II区



60-16



61-1



60-16(底)



61-2



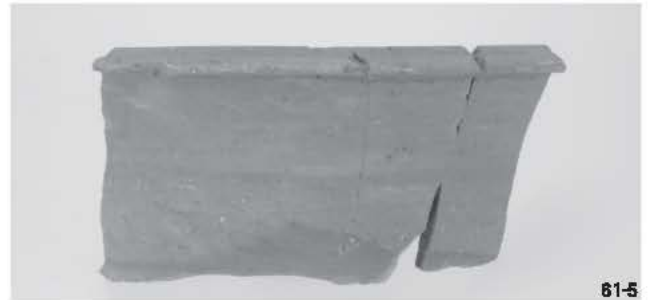
61-3



60-17(横)



60-17



61-5



60-18



61-6



60-19



61-8



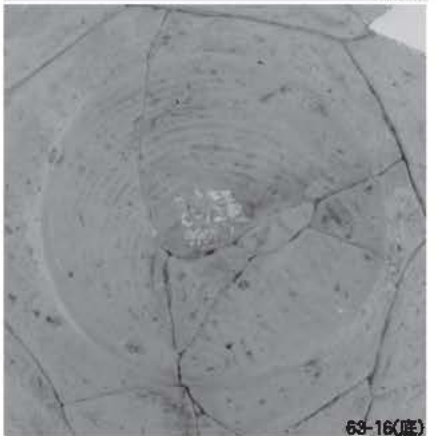
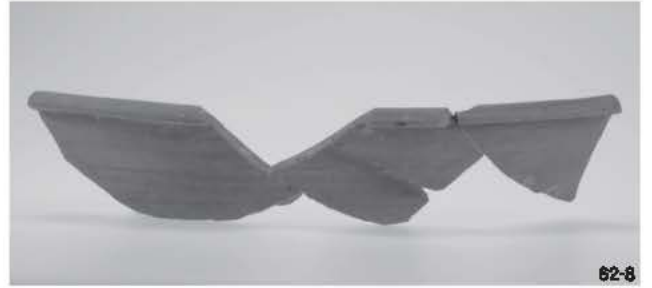
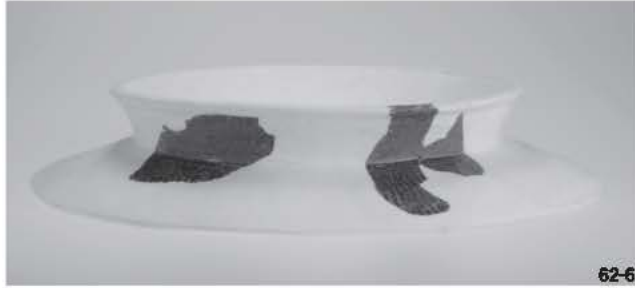
61-4



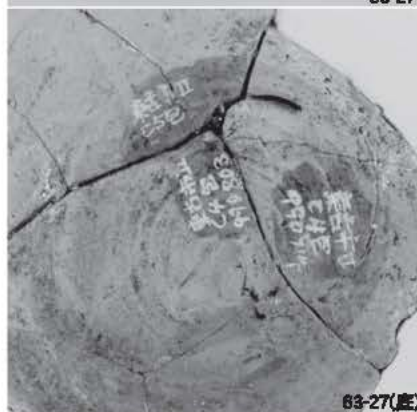
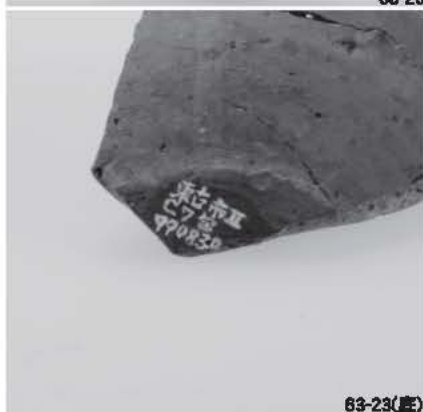
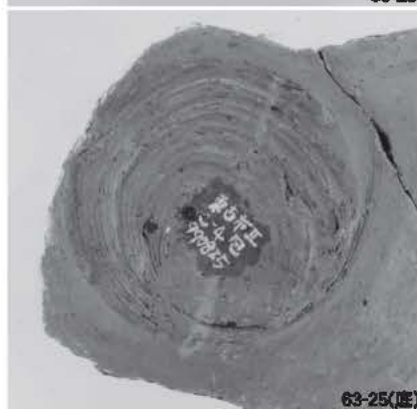
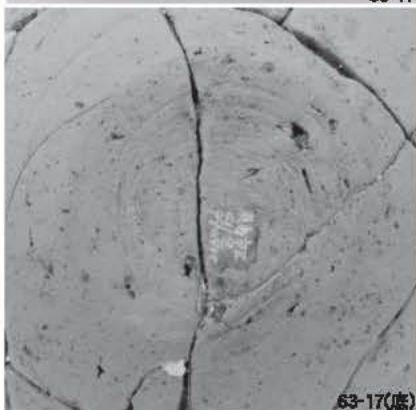
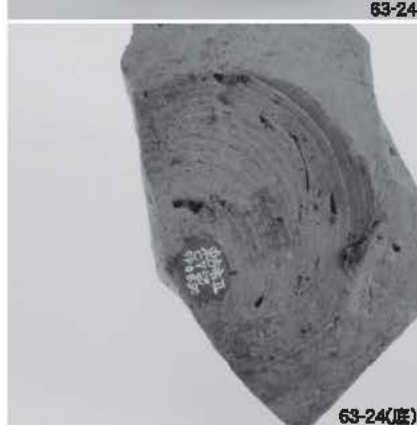
61-9



図版第五〇 遺物 II区







図版第五二 遺物 II区





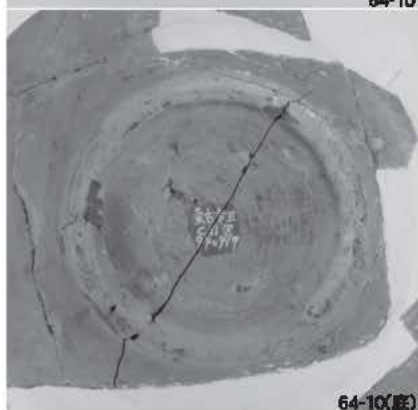
64-10



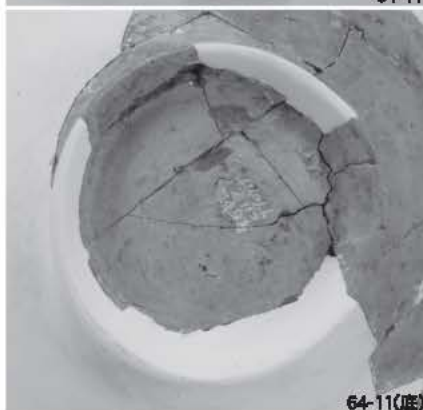
64-11



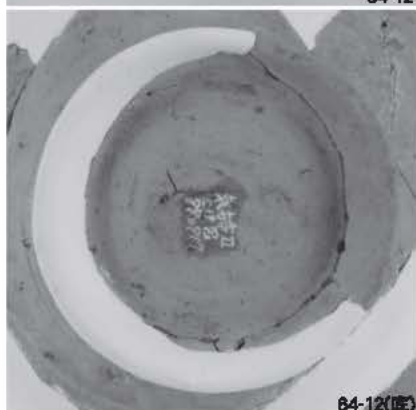
64-12



64-10(底)



64-11(底)



64-12(底)



64-13



64-16



64-16



64-19



64-14



64-17



64-20



64-15



64-18



64-21



64-23



64-22



64-24



64-25

図版第五四  
遺物 II 区





66-1



66-2



66-3



66-4



66-5



66-6



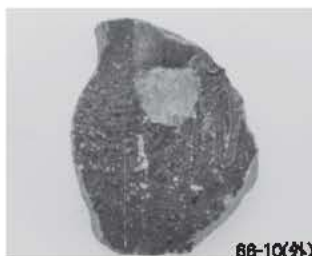
66-7



66-8



66-9



66-10(外)



66-10(内)



66-11(外)



66-11(内)



66-12



66-13(上)



66-14(外)



66-14(内)



66-13



66-15(外)



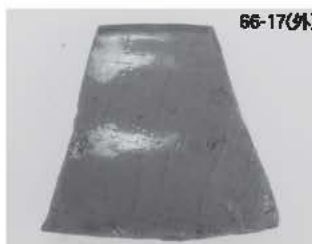
66-15(内)



66-16(外)



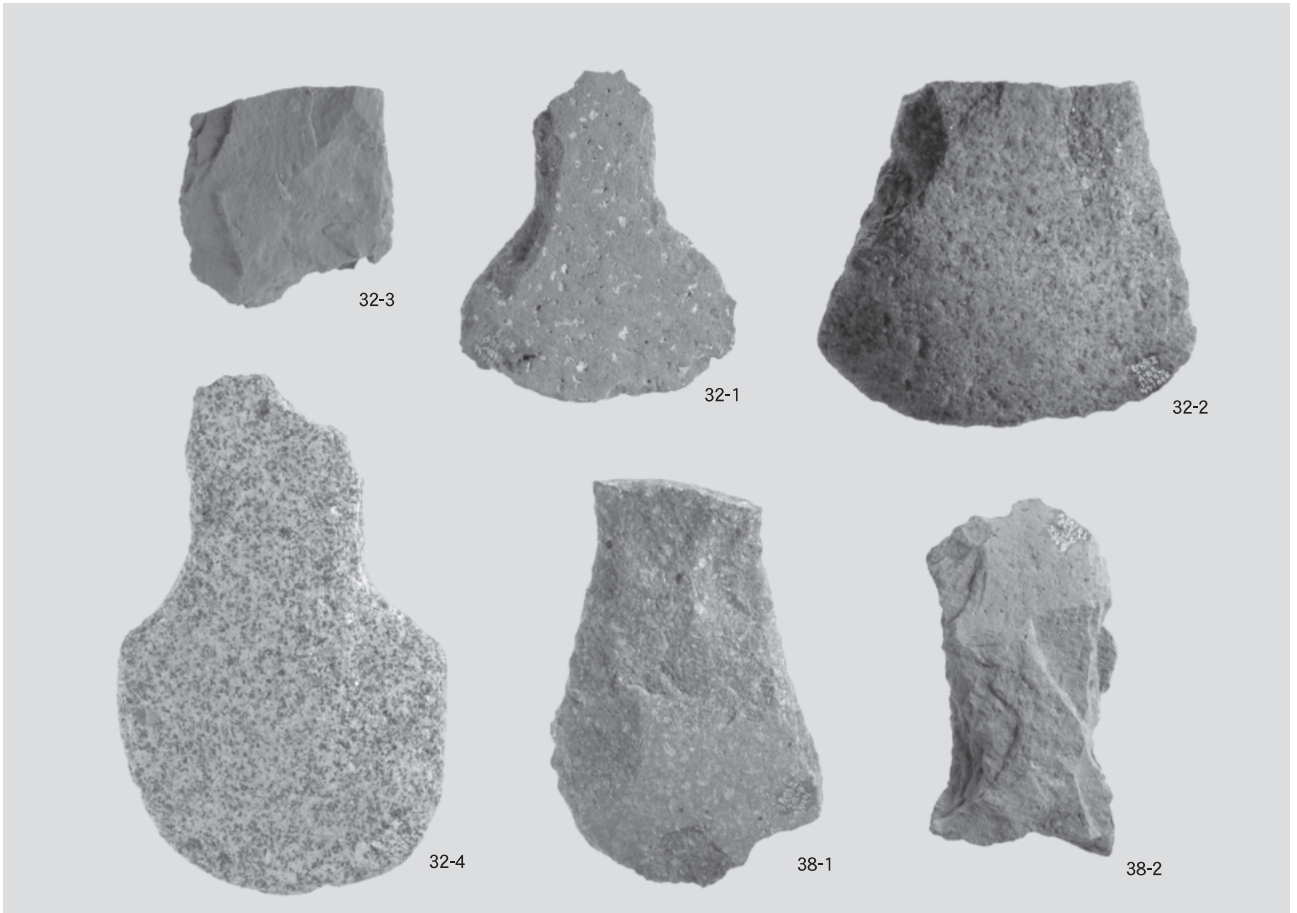
66-16(内)



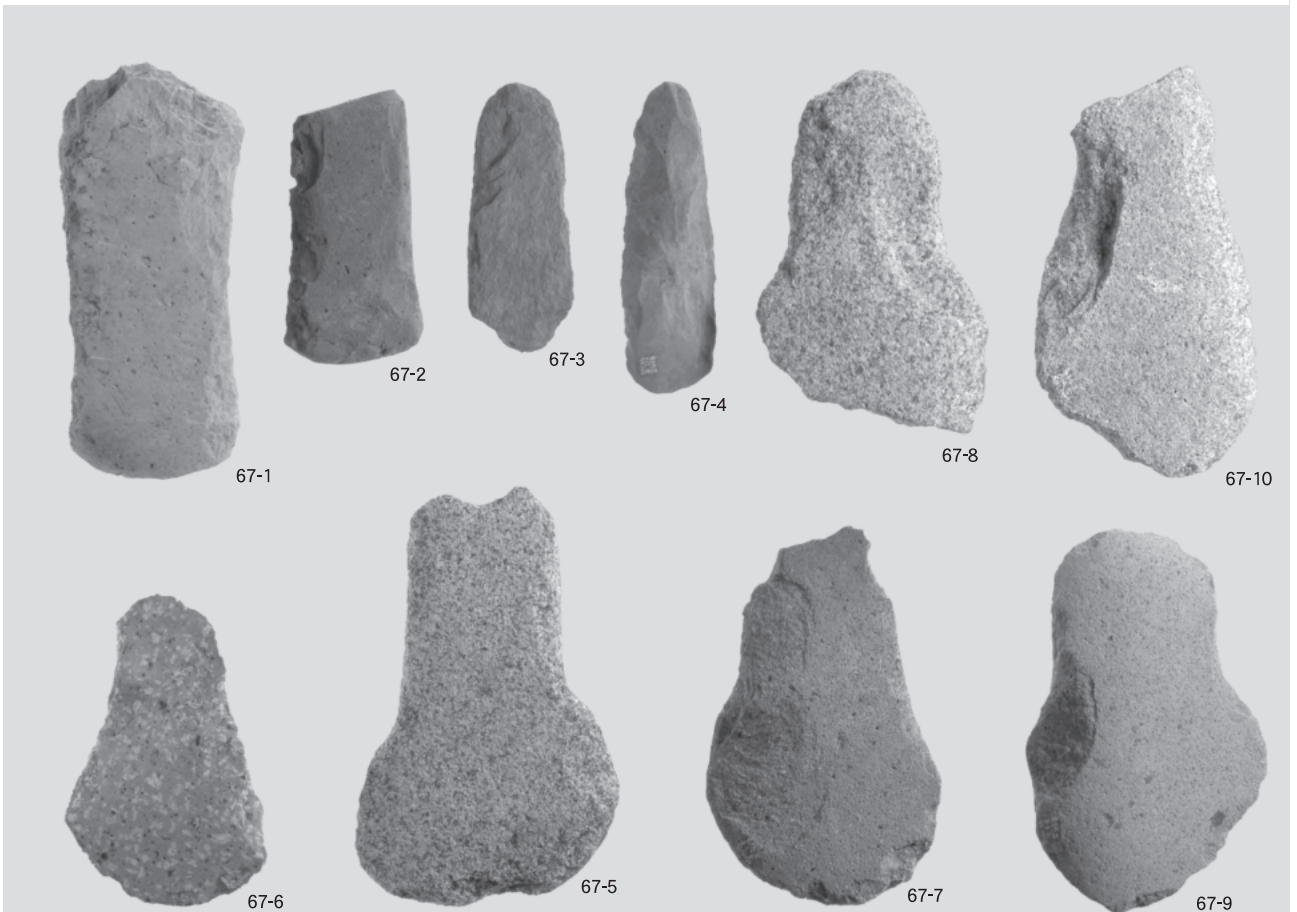
66-17(外)



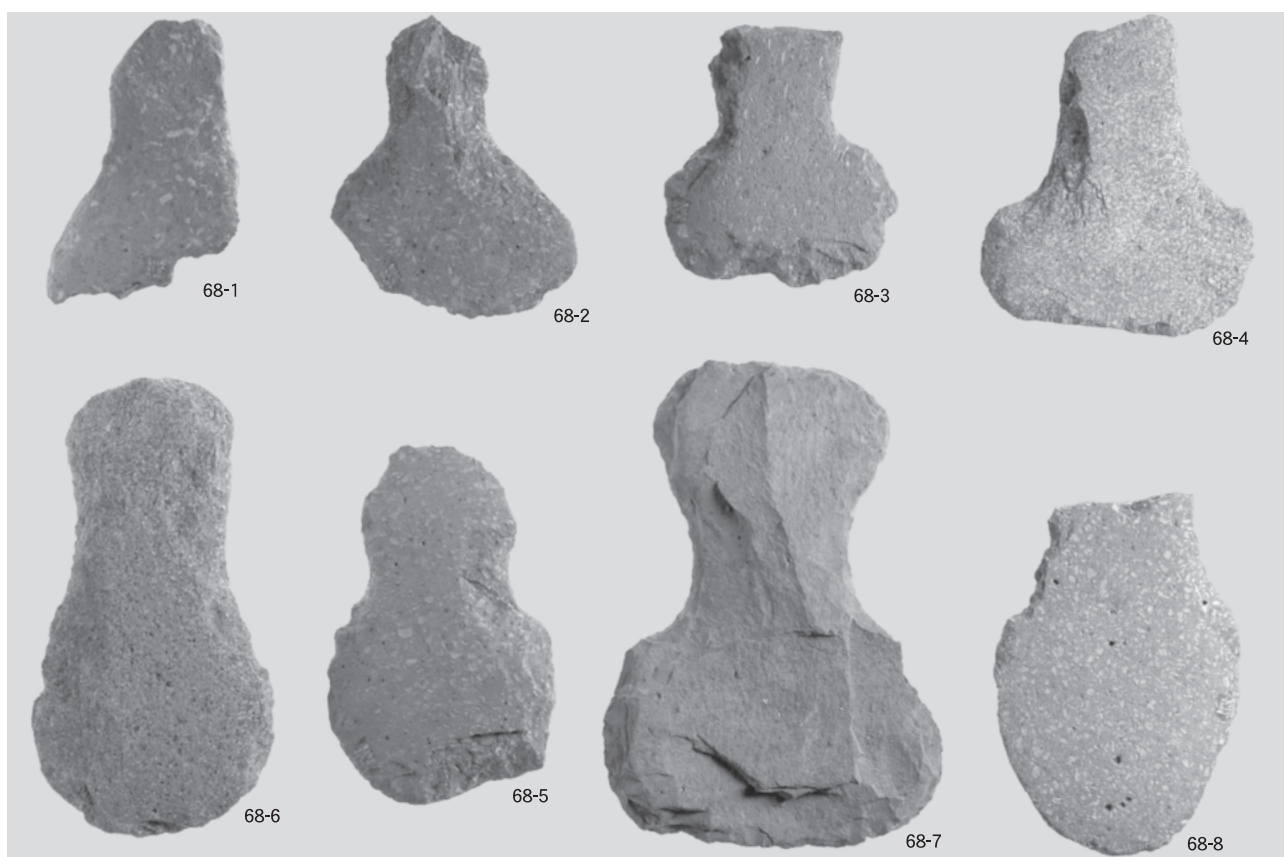
66-17(内)



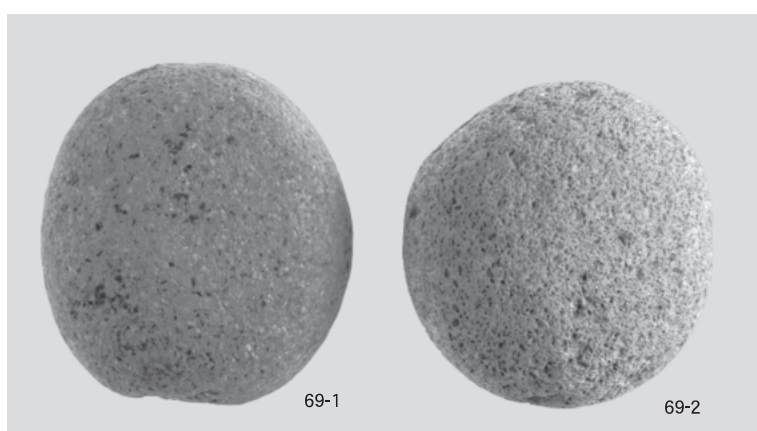
(1) 打製石斧



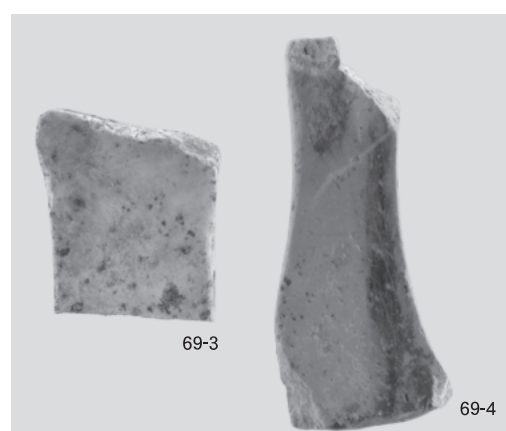
(2) 打製石斧



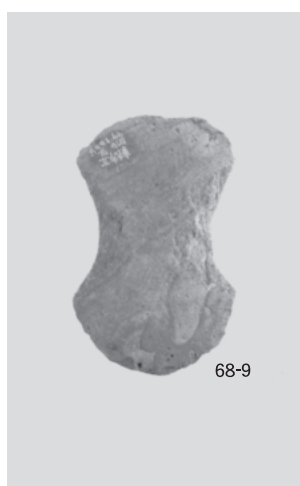
(1) 打製石斧



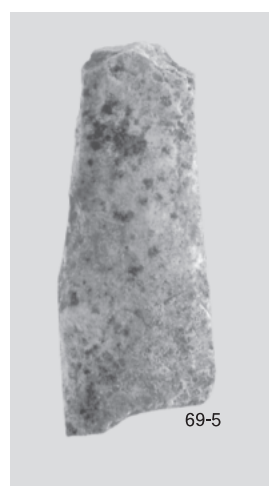
(2) 磨石類



(3) 砥石



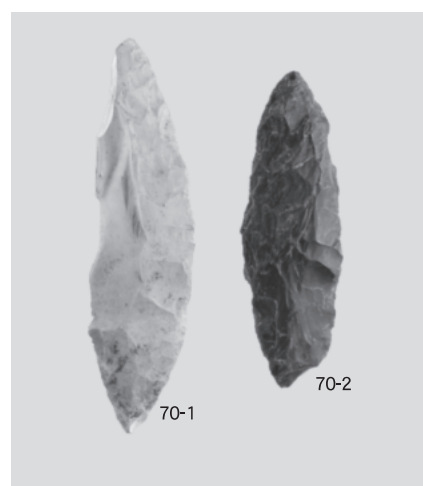
(4) 打製石斧(ミニチュア)



(5) 器種不明品



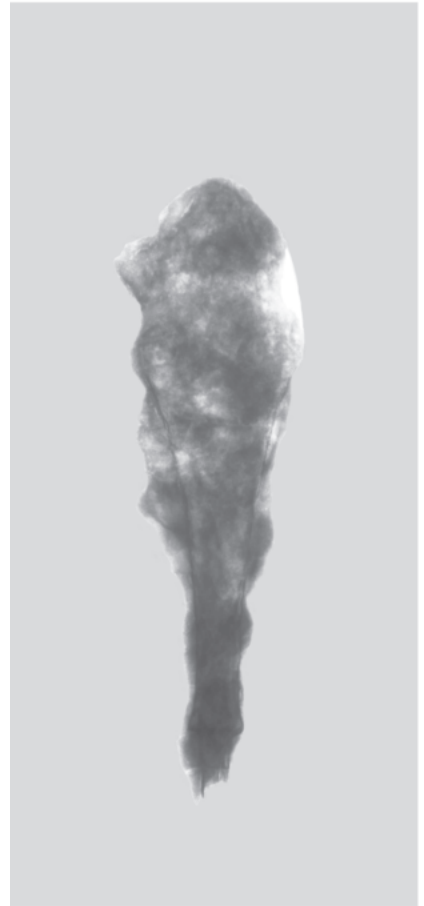
(6) 器種不明品



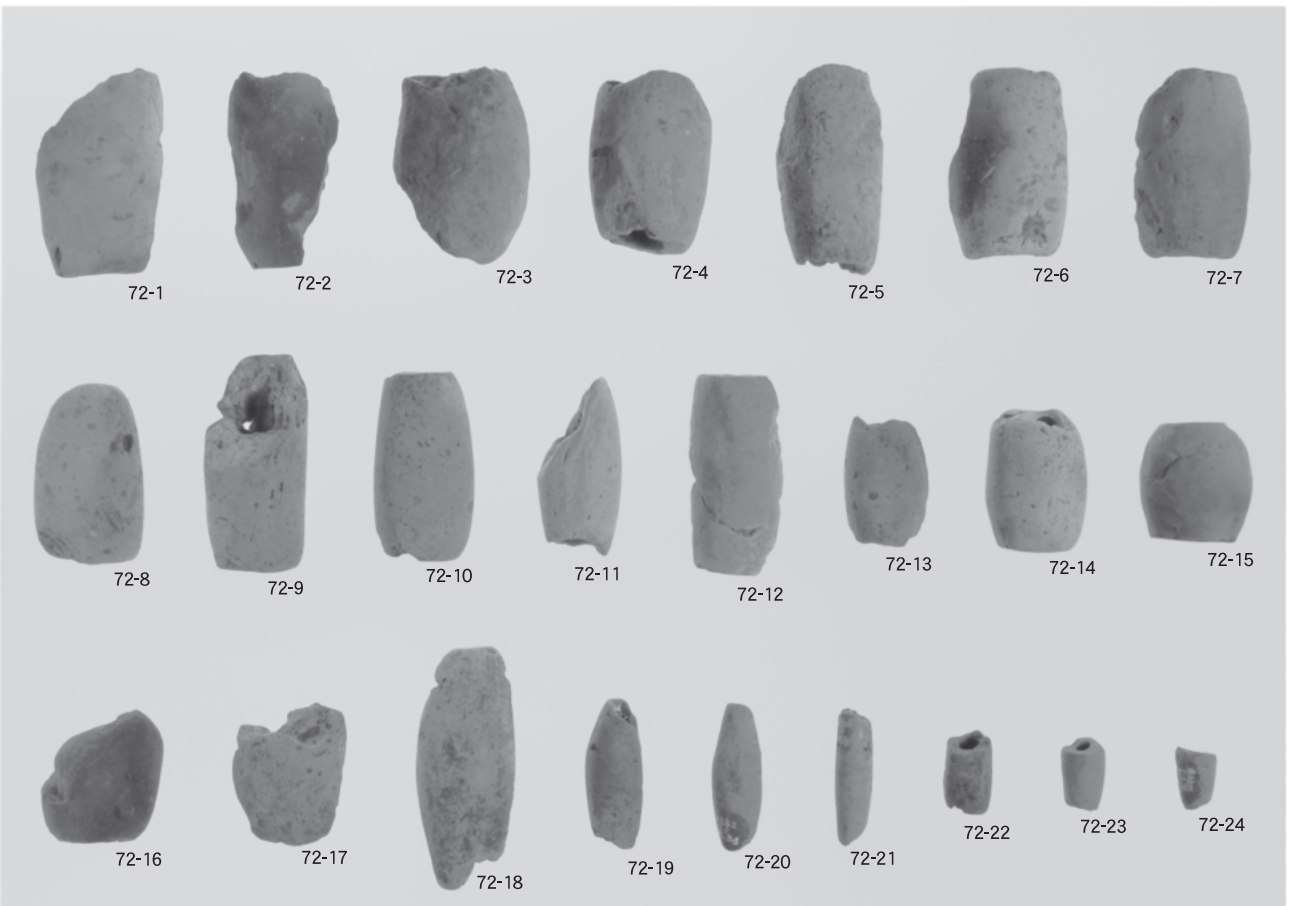
(7) 尖頭器



(1) 鉄鍬



(2) 鉄鍬 (X線画像)



(3) 土錘



# 報 告 書 抄 録

ふりがな	ひがしふるいちなわていせき							
書名	東古市縄手遺跡							
副書名	鳴鹿大堰東古市地区暫定盛土工事に伴う調査							
巻次								
シリーズ名	福井県埋蔵文化財調査報告							
シリーズ番号	第94集							
編著者名	白川 綾・中森敏晴・山本孝一・御嶽貞義・森 由佳・今林信祐・北野 薫・ 奥井智子・中野拓郎							
編集機関	福井県教育庁埋蔵文化財調査センター							
所在地	〒910-2152 福井県福井市安波賀町4-10 TEL 0776-41-3644							
発行年月日	西暦2007年3月31日							
所収遺跡	所在地	コード		北緯 。 ’ ”	東経 。 ’ ”	調査期間	調査面積 m <sup>2</sup>	調査原因
		市町村	遺跡番号					
ひがしふるいちなわ 東古市縄 手遺跡	ふくいけん 福井県 よしだぐん 吉田郡 えいへいじょう 永平寺町 ひがしふるいち 東古市	18322	15042	36° 5′ 55″	136° 19′ 48″	19990713 ～ 19991020	I区 約360m <sup>2</sup> II区 約1,240m <sup>2</sup>	鳴鹿大堰 東古市地 区暫定盛 土工事
遺跡名	種別	主な時代		主な遺構		主な遺物		特記事項
東古市縄 手遺跡	集落跡	縄文時代 弥生～古墳時代 律令 中世		竪穴住居跡 石組遺構		縄文土器 弥生土器 粘土塊 土師器 須恵器 石器 土錘		2棟の竪穴住居跡から は、月影式土器を検出。

---

福井県埋蔵文化財調査報告 第94集

## 東古市縄手遺跡

— 鳴鹿大堰東古市地区暫定盛土工事に伴う調査 —

平成19年 3月20日 印刷

平成19年 3月31日 発行

発行 福井県教育庁埋蔵文化財調査センター

〒910-2152 福井市安波賀町4-10

印刷 株式会社エクシート

〒919-0482 坂井市春江町中庄61-32

---