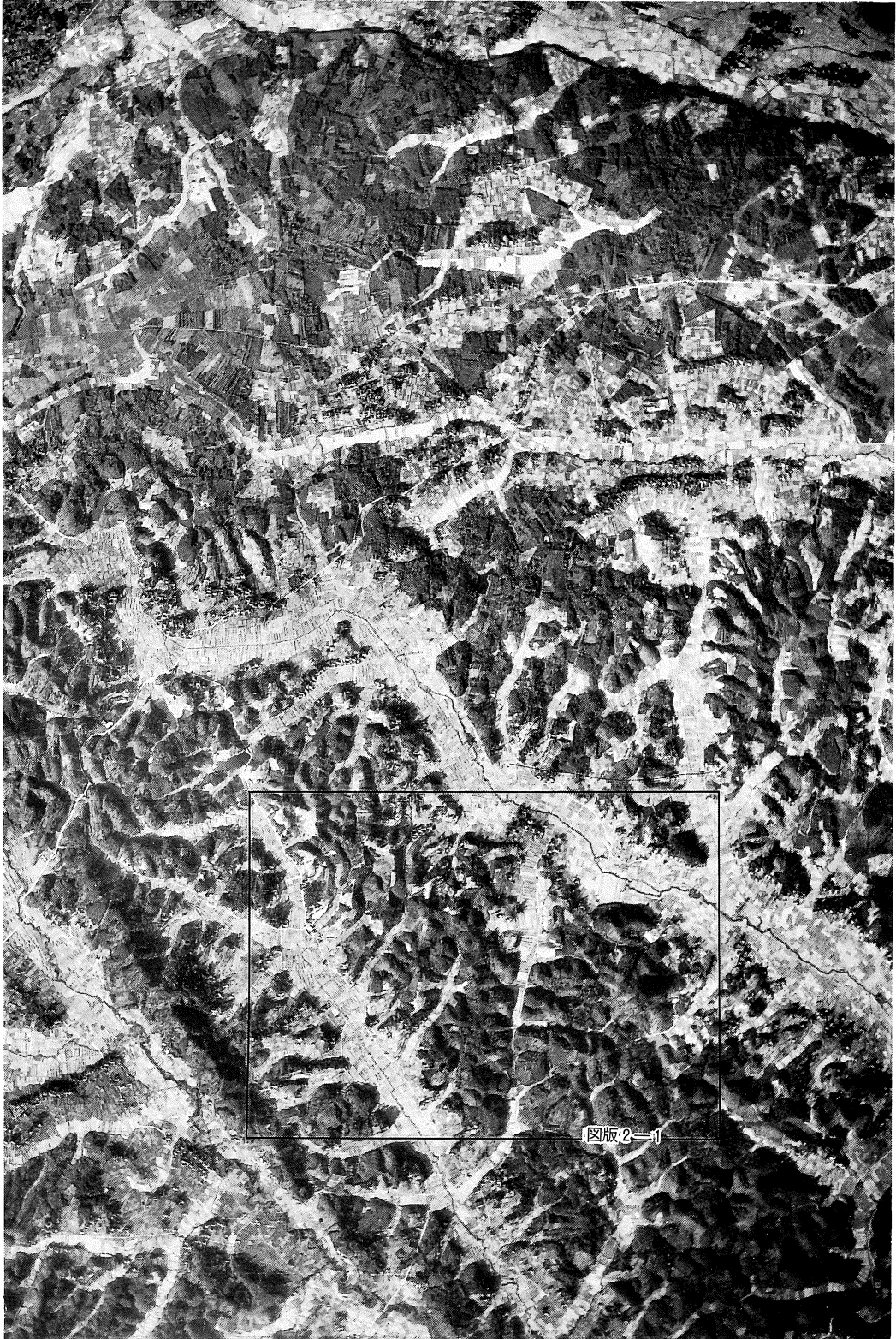


写 真 图 版



周辺の地形(1)



1 周辺の地形(2)



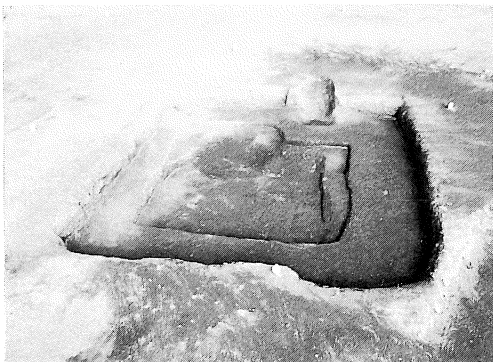
2 遺跡群全景



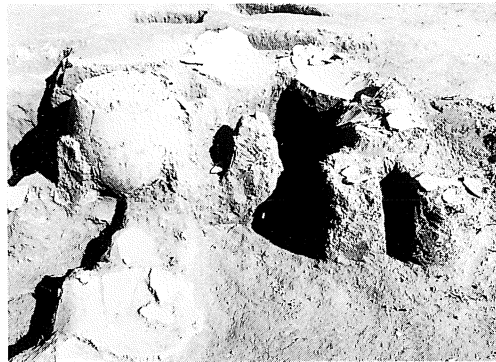
蟹沢遺跡全景（東から）



蟹沢遺跡全景（南から）



S J 1 全景



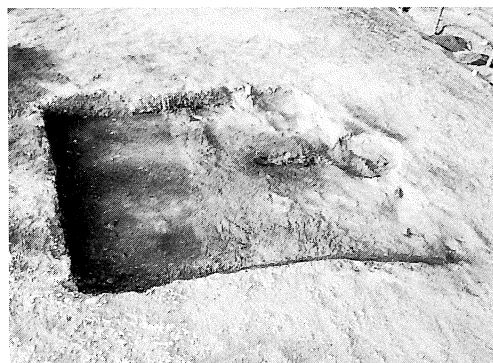
S J 1 遺物出土状態



S J 2 全景



S J 2 遺物出土状態



S J 3 全景



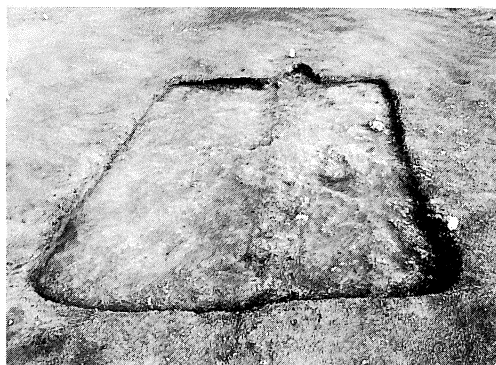
S J 3 炭化材出土状態



S J 4 全景



S J 5 全景



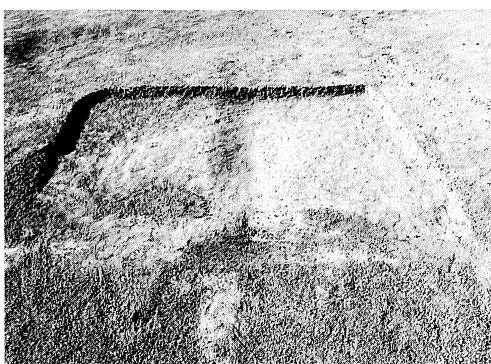
S J 6 全景



S J 7 全景



S J 8 全景



S J 9 全景



S J 10 全景



S J 10 遺物出土状態



S J 11 全景



S J 11 遺物出土状態



S J 12全景



S J 13全景



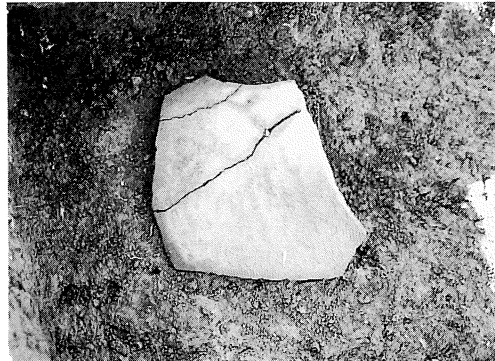
S J 13勾玉出土状態



S J 13ミニチュア土器出土状態



S J 14全景



S J 14遺物出土状態



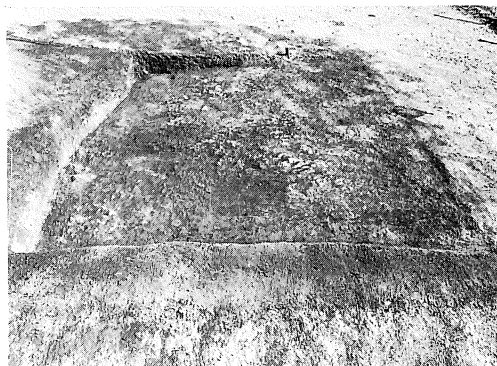
S J 15全景



S J 16遺物出土状態



S J 17全景



S J 18全景



S J 19全景



S J 20全景



S J 21全景



S J 23全景



S D 1全景



S K 1遺物出土状態



S J 11-1



S J 11-3



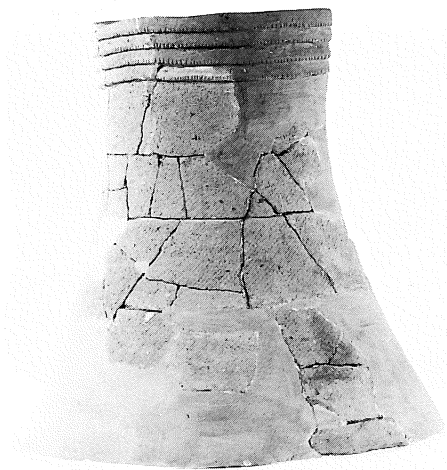
S J 12-4



S J 13-4



S J 13-3



S J 12-6



S J 13-2



S J 13-1



S J 13-13



S J 13-7



S J 14-3



S J 16-3



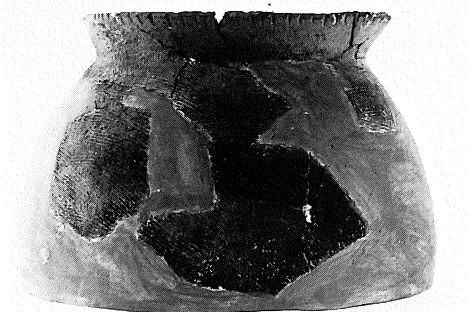
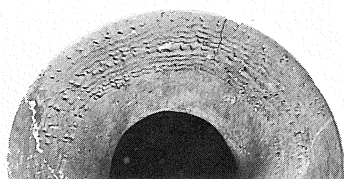
S J 16-1



S J 16-2



S J 16-14



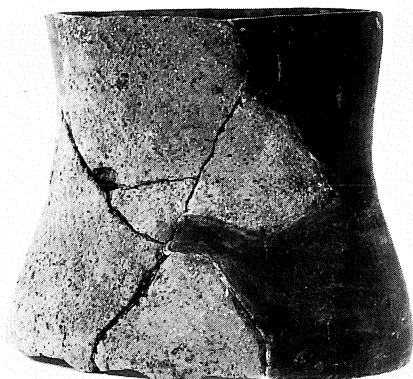
S J 16-15



S J 16-10



F 6-1



F 6-11



F 6-14



S J 17-1



S J 17-3



SK 1-1



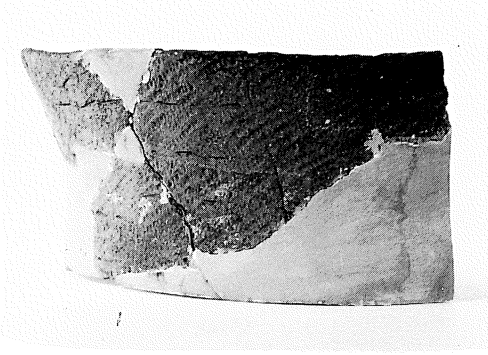
S J 19-3



F 8-1



F 8-5



S J 16-12



S J 5-1



S J 6-1



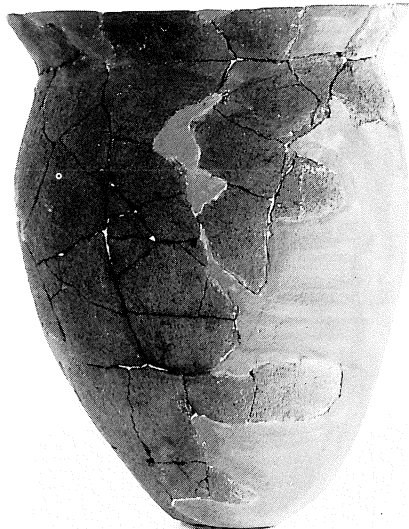
S J 1-8



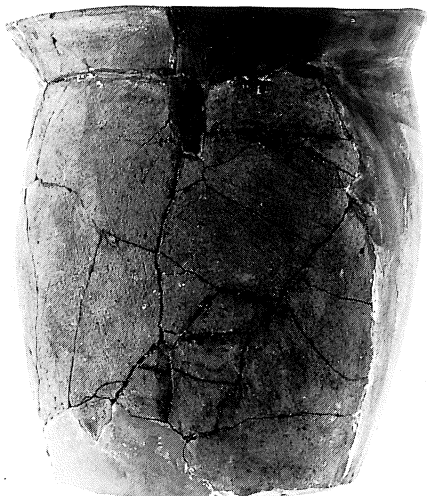
S J 1-19



S J 1-16



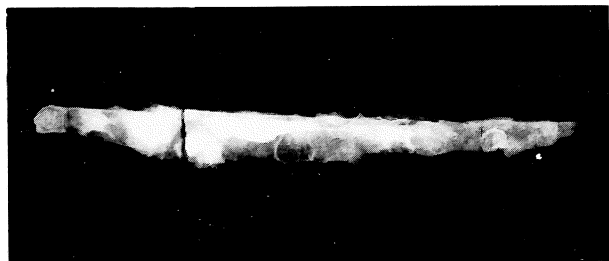
S J 1-18



S J 1-15



S J 2-5



S J 1-23



S J 4-11



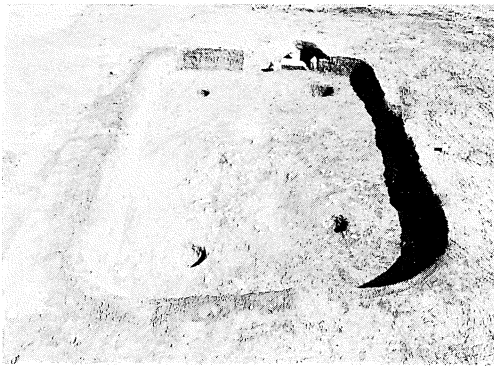
芳沼入遺跡近景



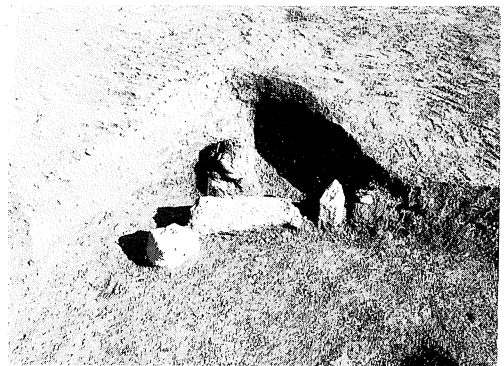
芳沼入遺跡全景



蟹沢遺跡（左）と芳沼入遺跡（右）



S J 1 全景



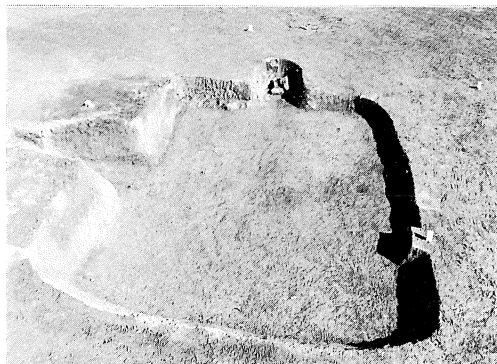
S J 1 カマド



S J 2 全景



S J 2 カマド



S J 3 全景



S J 3 カマド



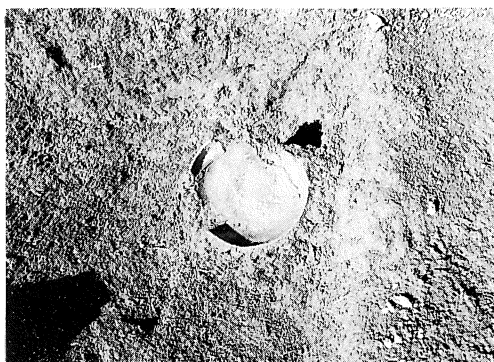
S J 4 全景



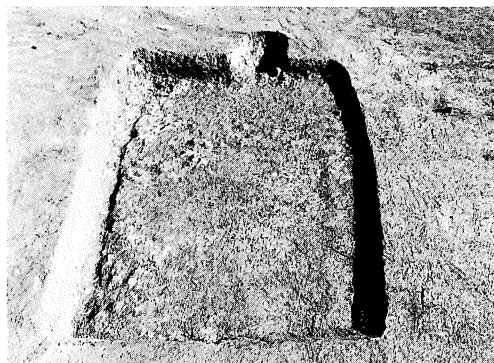
S J 4 遺物出土状態



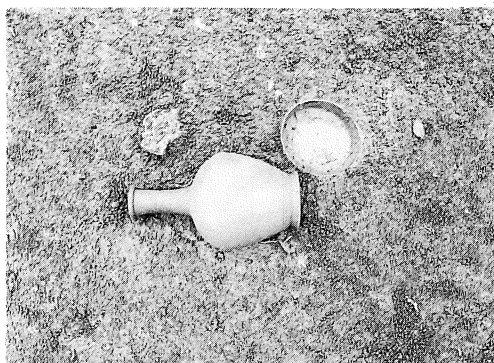
S J 5 全景



S J 5 遺物出土状態



S J 6 全景



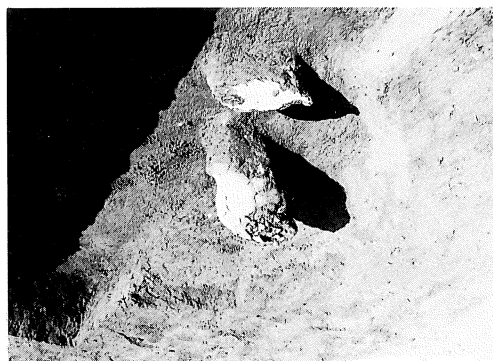
S J 6 遺物出土状態



S J 6 遺物出土状態



S J 6 遺物出土状態



S K 1 遺物出土状態



S K 2 遺物出土状態



S J 3 全景



S K 3 遺物出土状態



S K 4 全景



十三菩提式土器出土状態



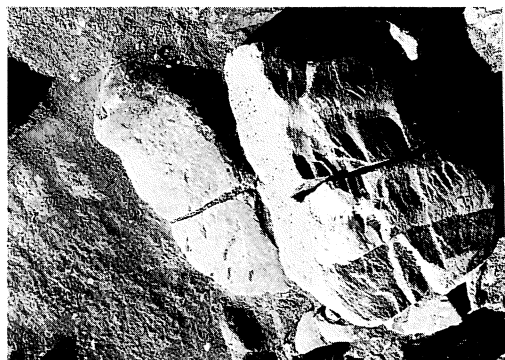
石室状遺構



石室状遺構断面



石室状遺構断面



石材にみられる加工痕



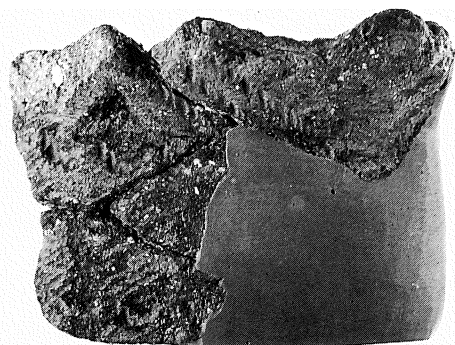
石材にみられる加工痕



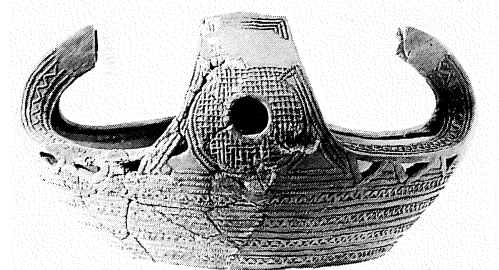
SK 3-1



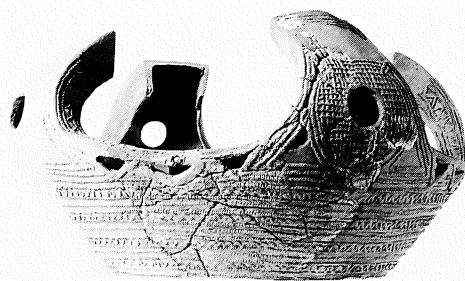
SK 3-1 拡大



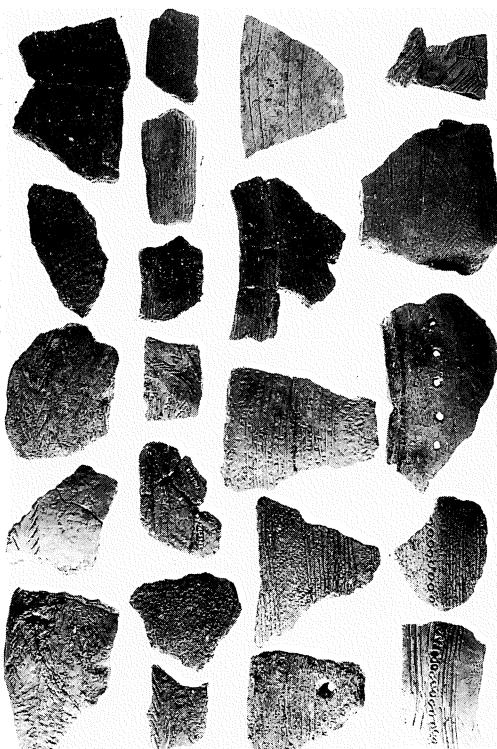
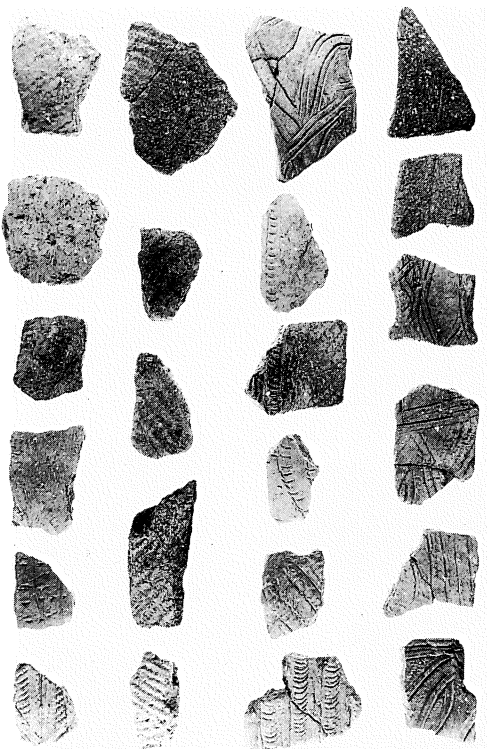
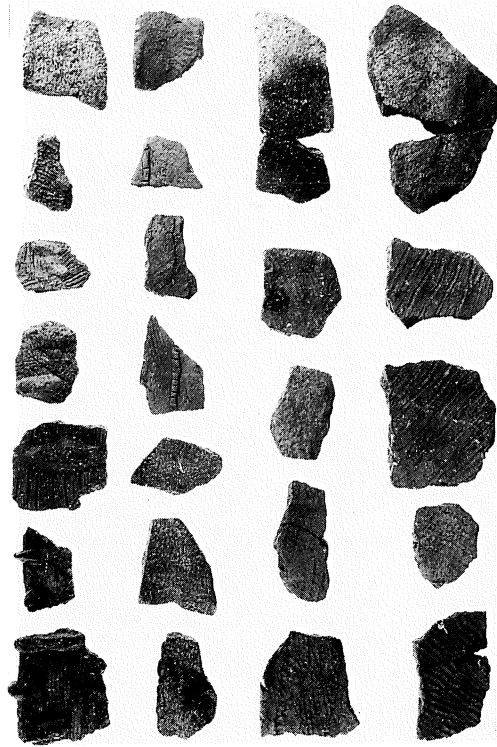
第73图157



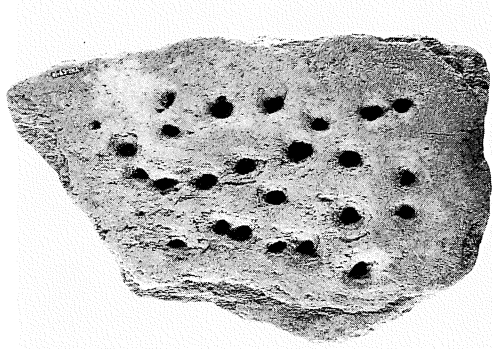
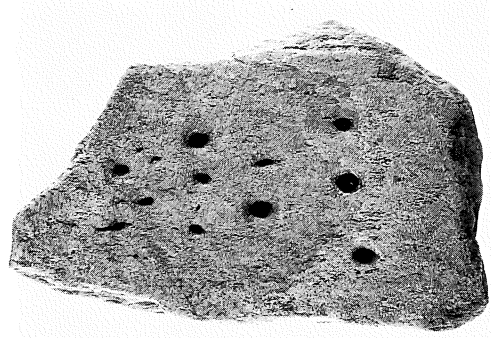
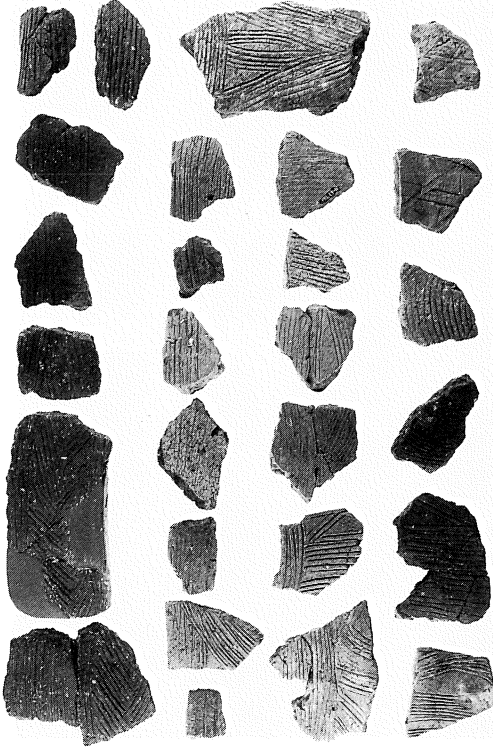
第73图158



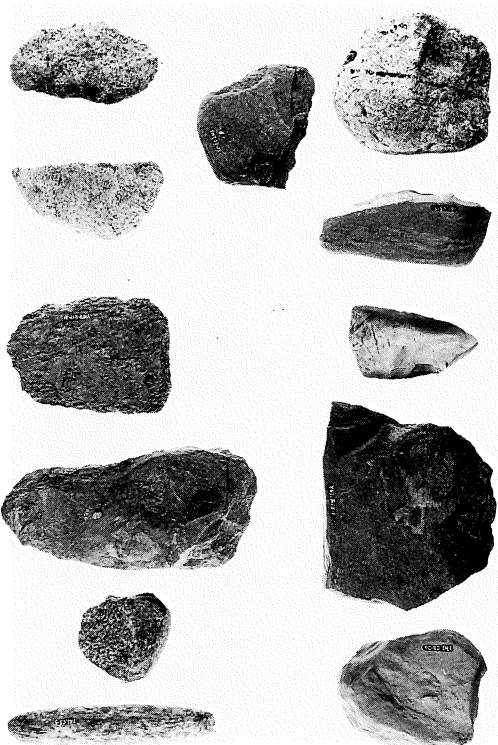
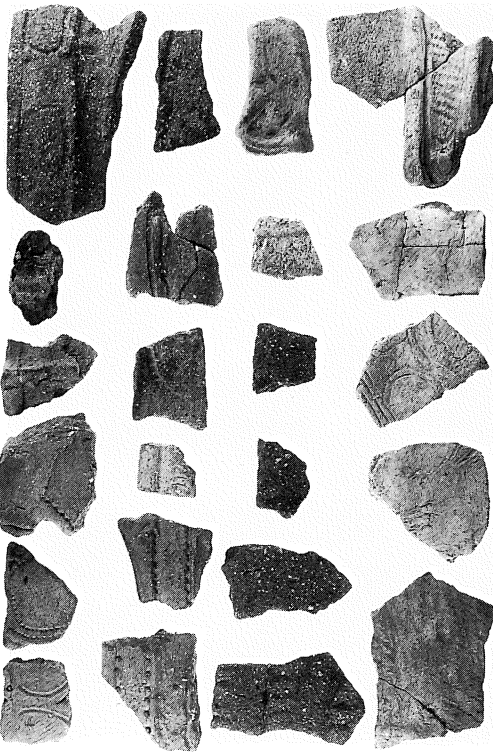
第73图158图内面



器出土ドグ



石器・石器
出土
ドッド
グリッ





SK 1-1



SK 2-1



SK 2-2



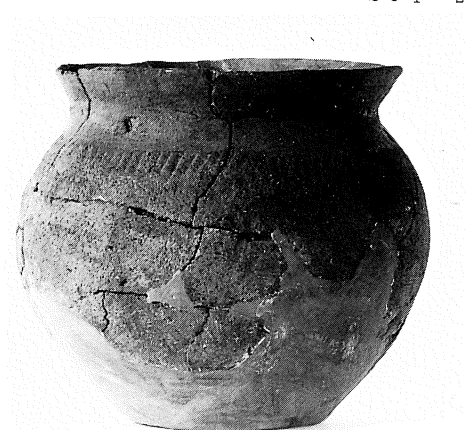
SJ 1-13



SJ 1-2



SJ 1-10



SJ 1-11



S J 3-4



S J 3-5



S J 3-7



S J 3-1



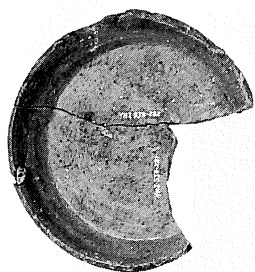
S J 4-3



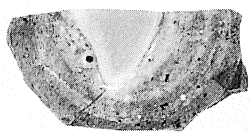
S J 4-31



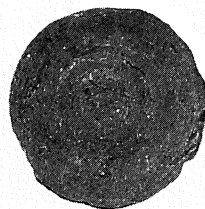
S J 4-2



S J 4-16



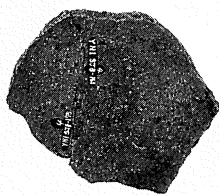
S J 4-17



S J 4-18



S J 4-19



S J 4-21



S J 4-20

転用碗



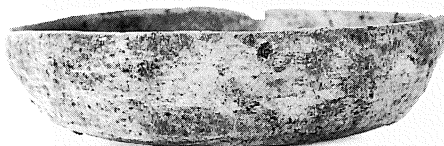
S J 5-2



S J 6-1



S J 6-3



S J 6-6



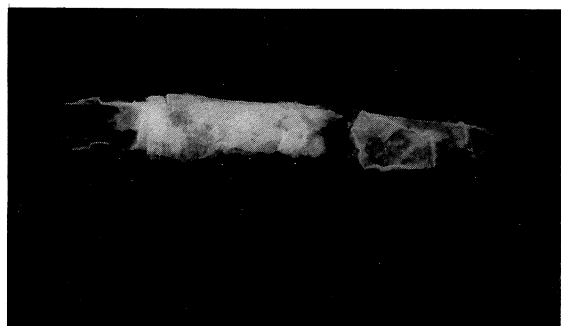
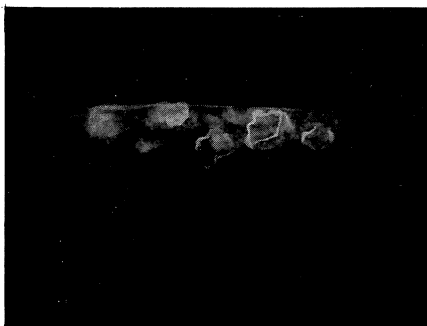
SJ 6-5



SJ 6-4



SJ 6-19





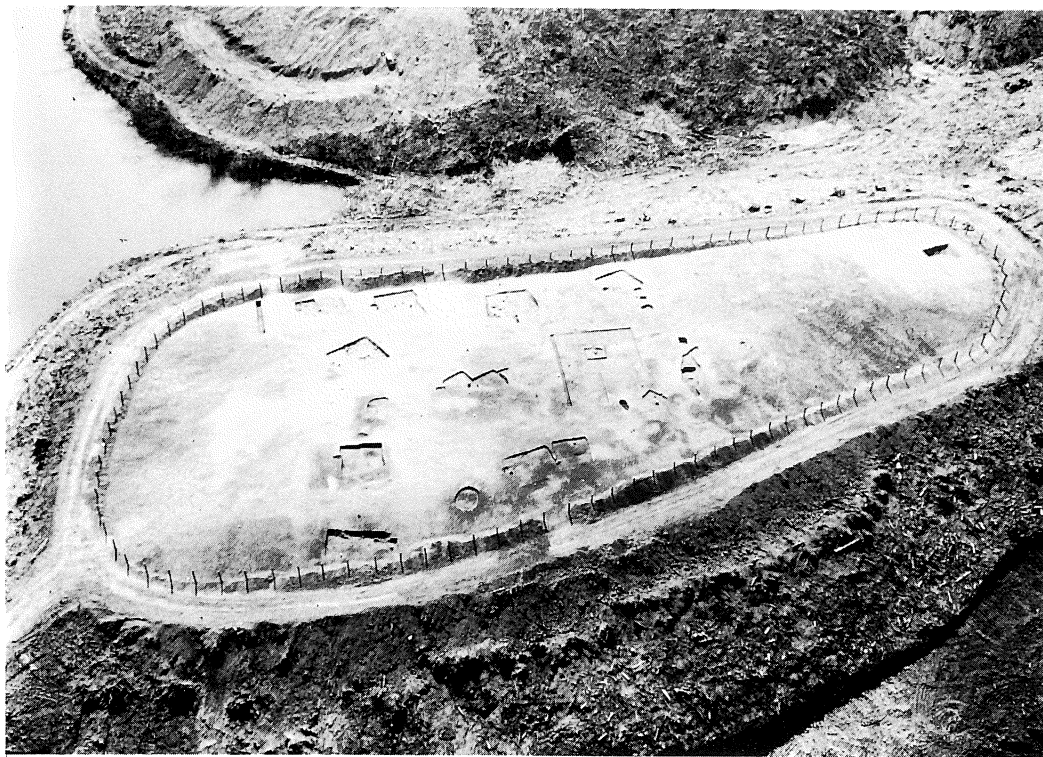
芳沼入下遺跡全景



遺物出土状態



S K 1 全景



新田坊遺跡全景



新田坊遺跡遠景



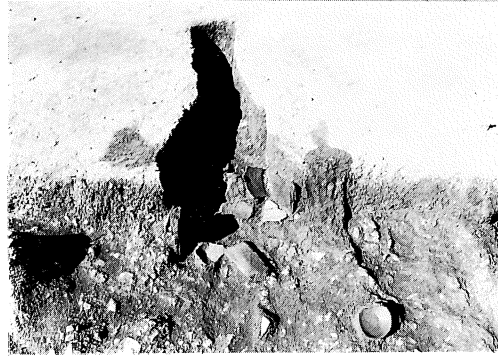
S J 1 全景



S J 1 カマド



S J 2 全景



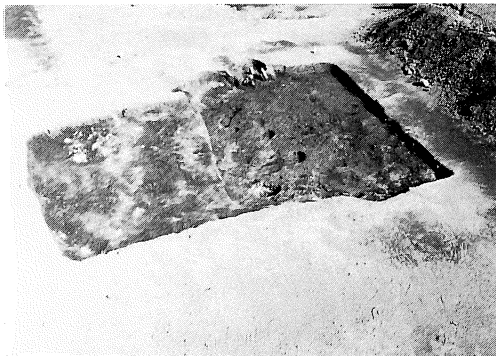
S J 2 カマド



S J 2 鉄鏝出土状態



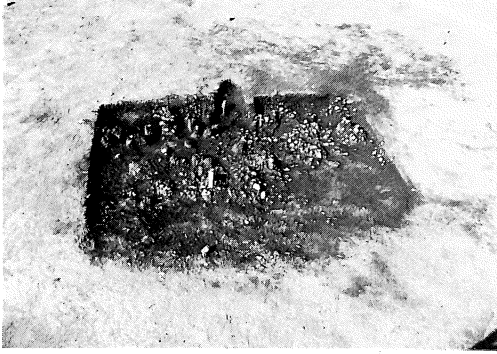
S J 2 焼土ピット



S J 3、S J 4 全景



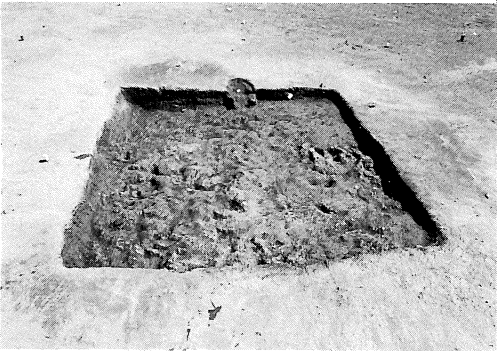
S J 4 カマド



S J 5 全景



S J 5 カマド



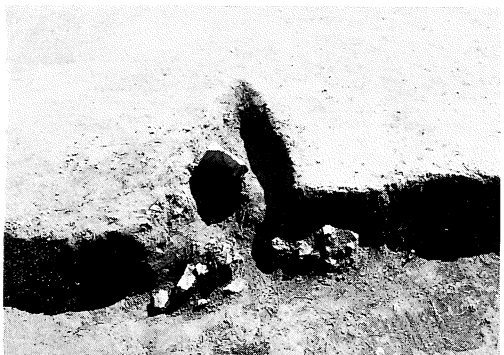
S J 6 全景



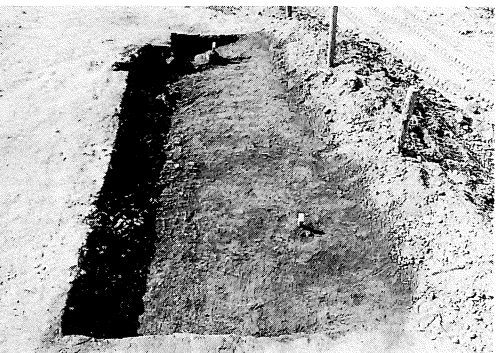
S J 6 カマド



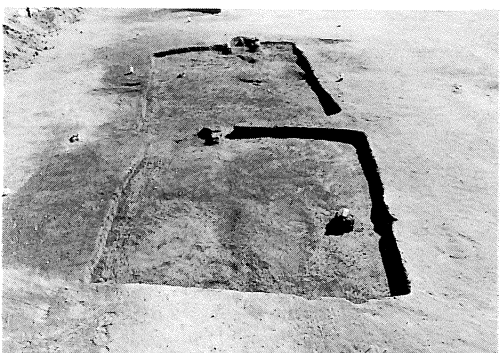
S J 7 全景



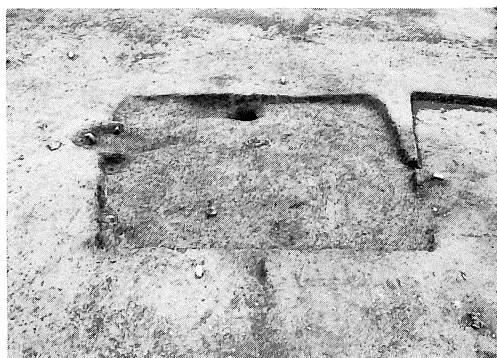
S J 7 カマド



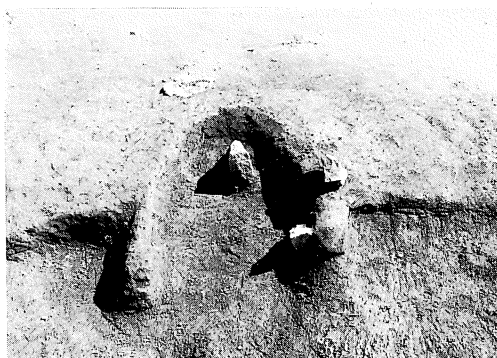
S J 8 全景



S J 9、S J 10 全景



S J 9 全景



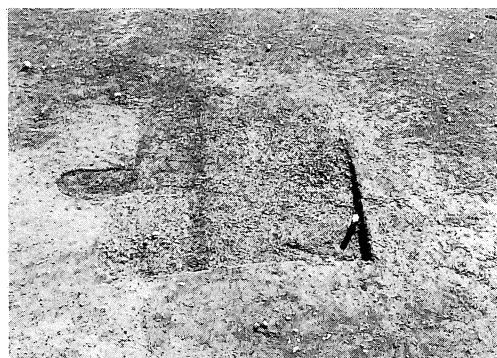
S J 9 カマド



S J 9 土坑



S J 10 全景



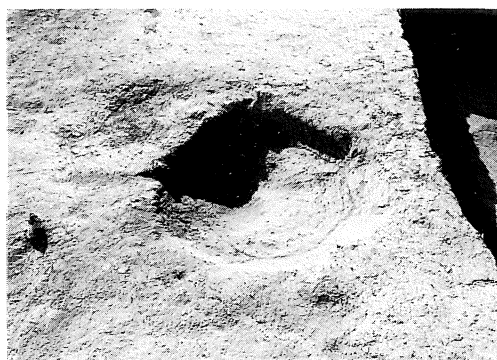
S J 11 全景



S D 2



S C 1



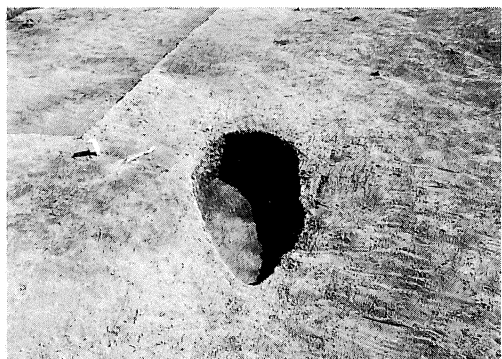
S C 1 完掘状態



SK 2、SK 3



SK 4



SK 5



SK 6



SK 7



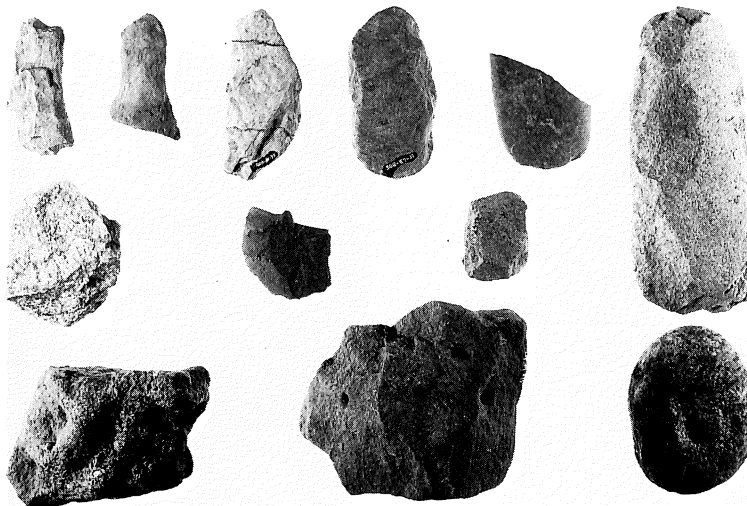
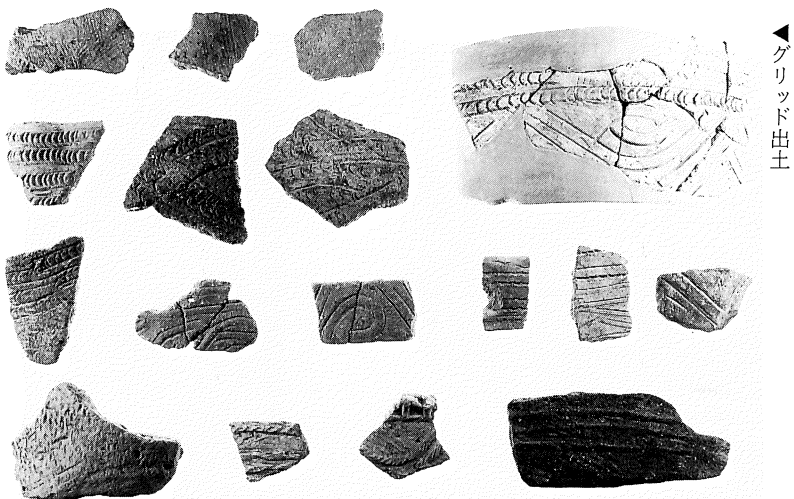
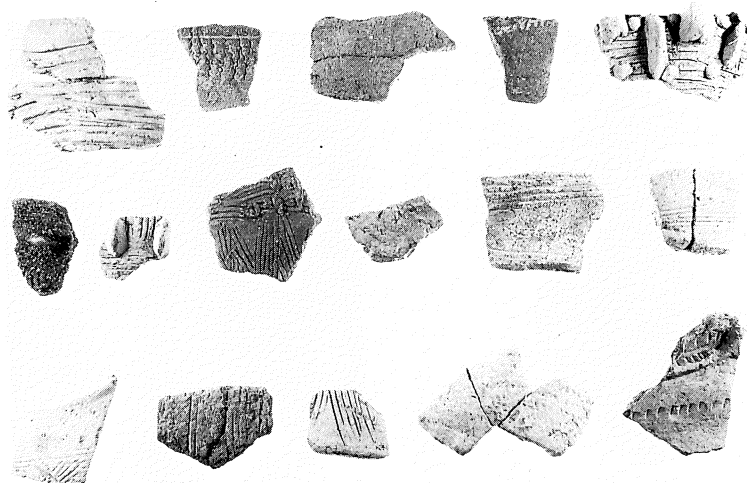
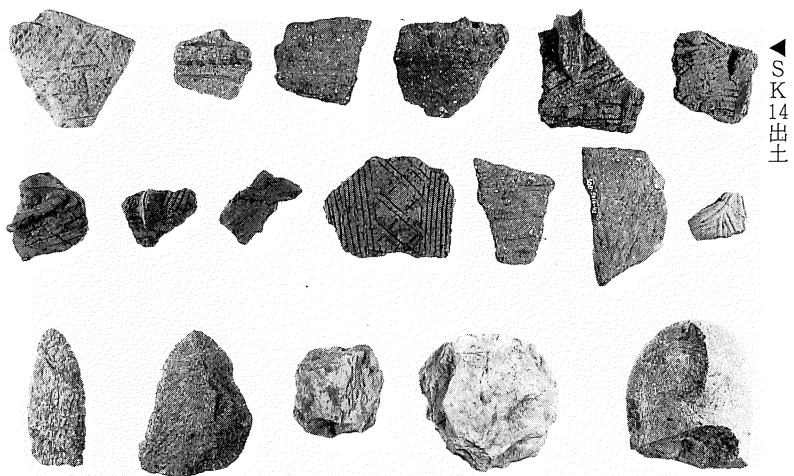
SK 8



SK 13



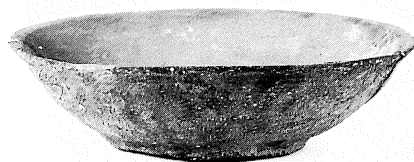
SK 14、SK 15



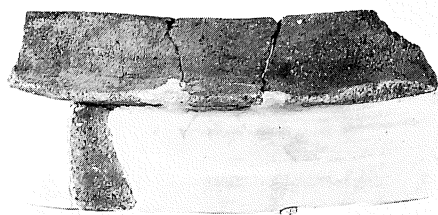
縄文土器・石器



S J 2-1



S J 2-2



S J 2-30



S J 4-5



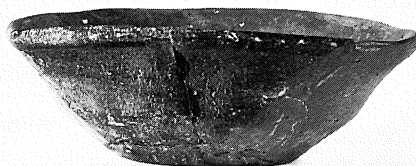
S J 2-31



S J 4-12



S J 7-3



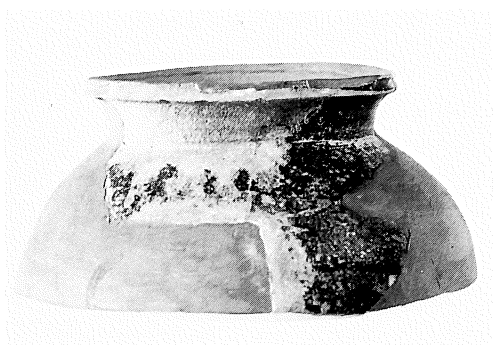
S J 7-1



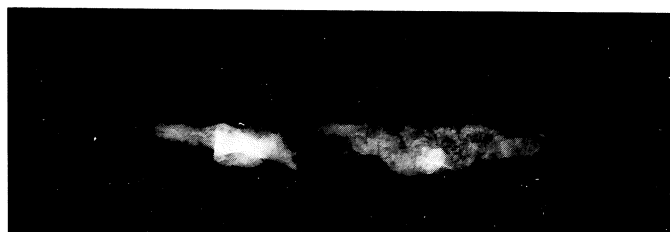
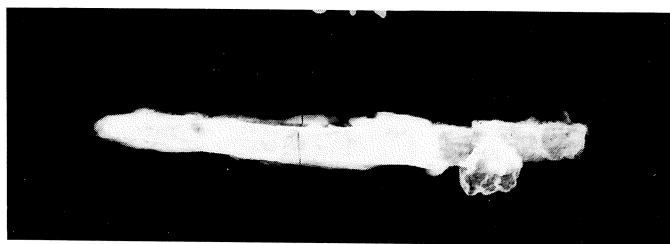
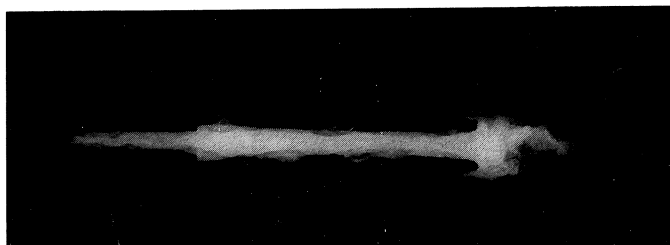
S J 9-2



S J 9-4



S K 7-4



S J 1-5



S J 2-33



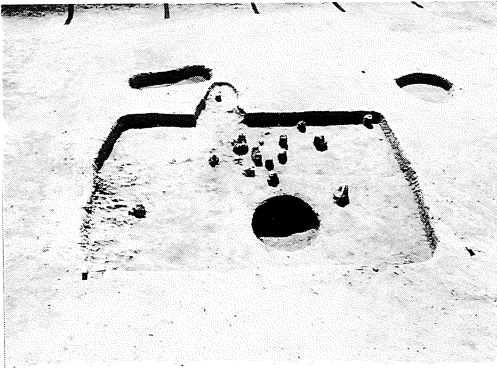
S J 4-13



尺尻遺跡全景



尺尻遺跡近景



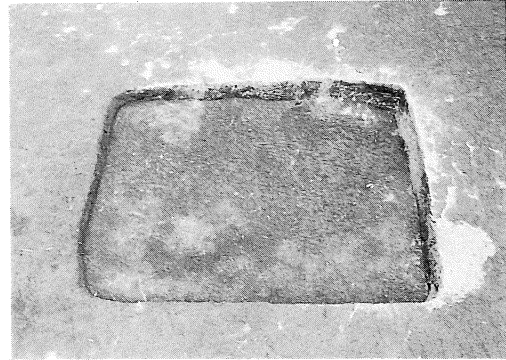
S J 1 遺物出土状態



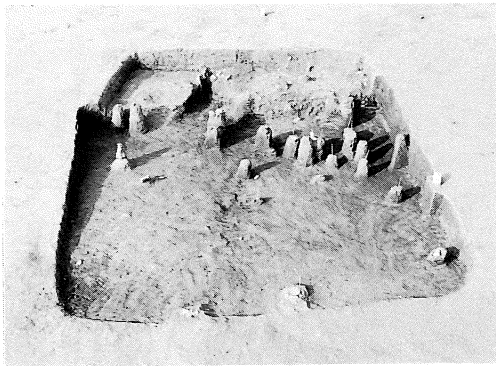
S J 1 全景



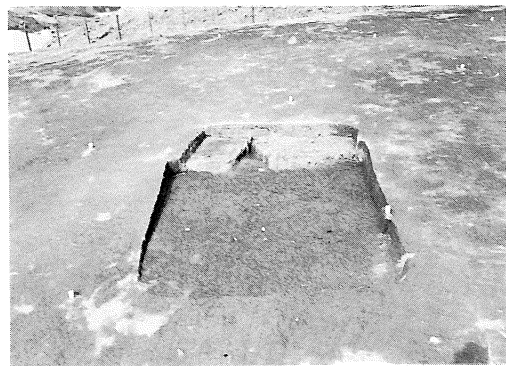
S J 2 遺物出土状態



S J 2 全景



S J 3 S J 4 遺物出土状態



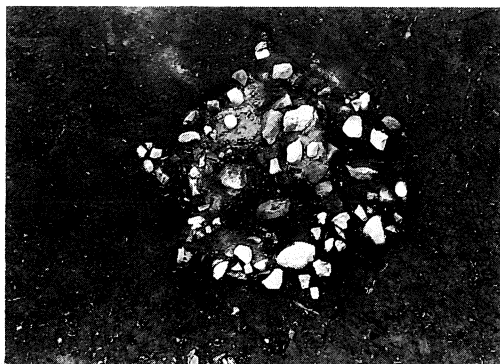
S J 3 全景



S J 3 カマド



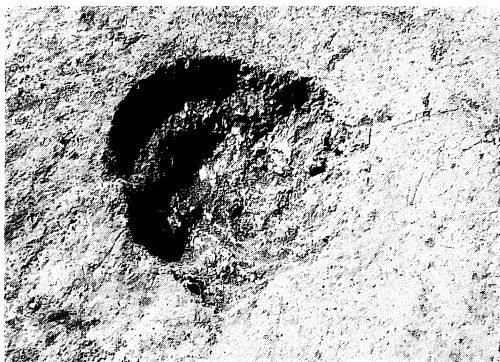
S J 3 遺物出土状態



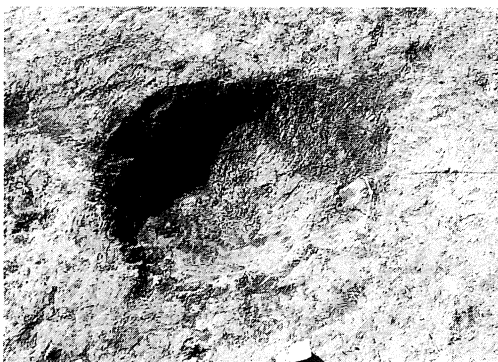
SC 1



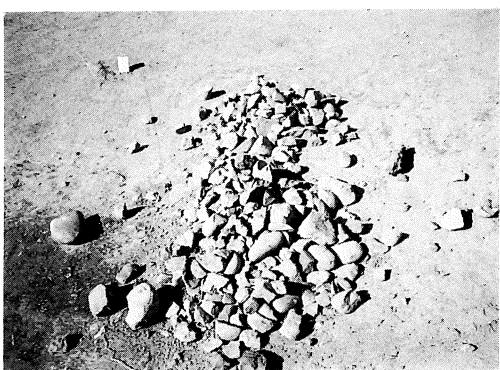
SC 2



SC 1 完掘状態



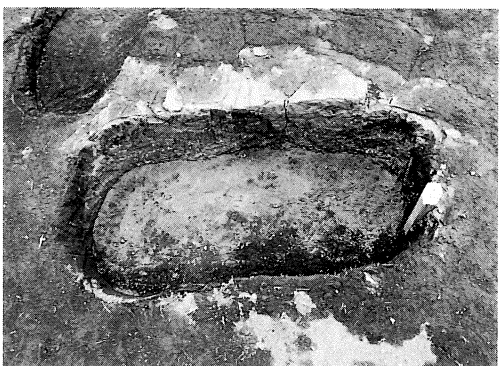
SC 2 完掘状態



SC 1 構成礫



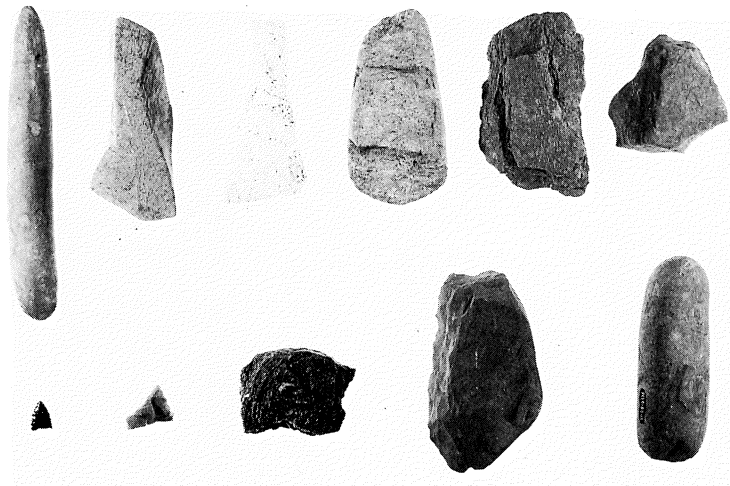
SC 2 構成礫



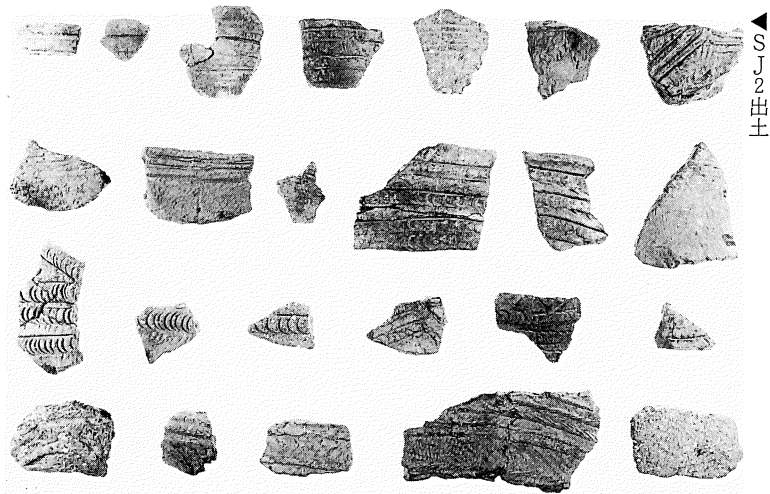
SK 1 全景



SK 2 全景



グリッド出土



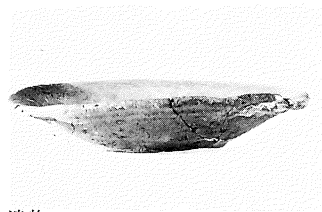
SJ3出土



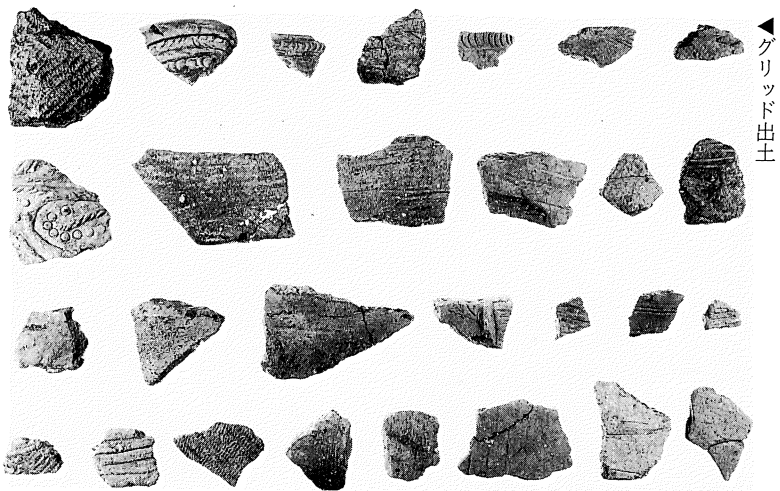
ナイフ型石器



SJ3-1



SJ3-2



グリッド出土

尺尻遺跡出土遺物



尺尻北遺跡全景



尺尻北遺跡近景



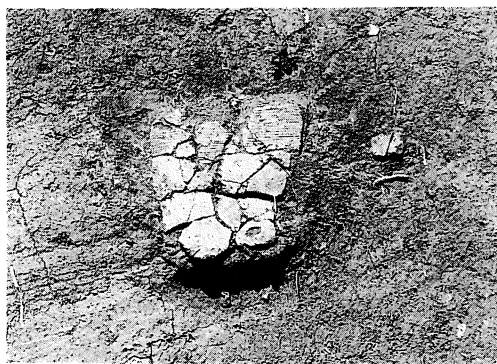
S J 1 全景



S J 1 北半部遺物出土状態



S J 1 遺物出土状態



S J 1 遺物出土状態



S J 2 全景



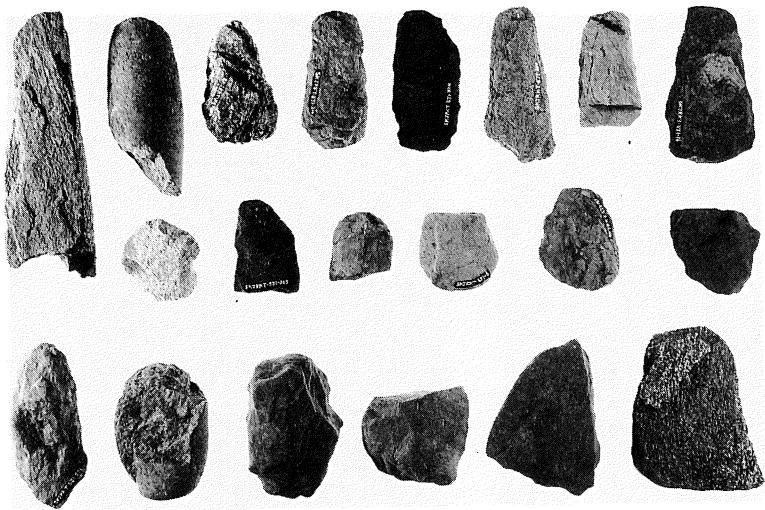
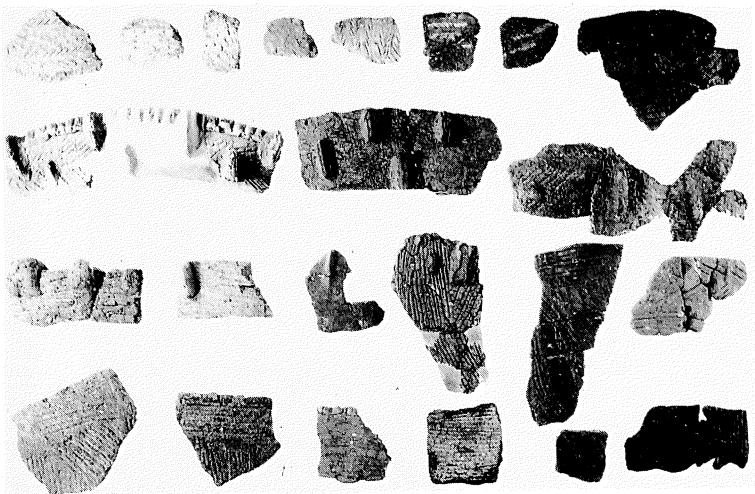
S J 2 カマド



S K 1 遺物出土状態



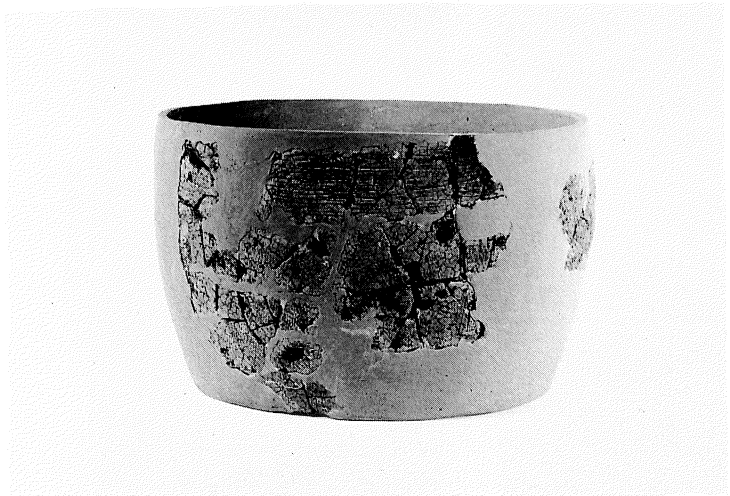
S K 2 遺物出土状態



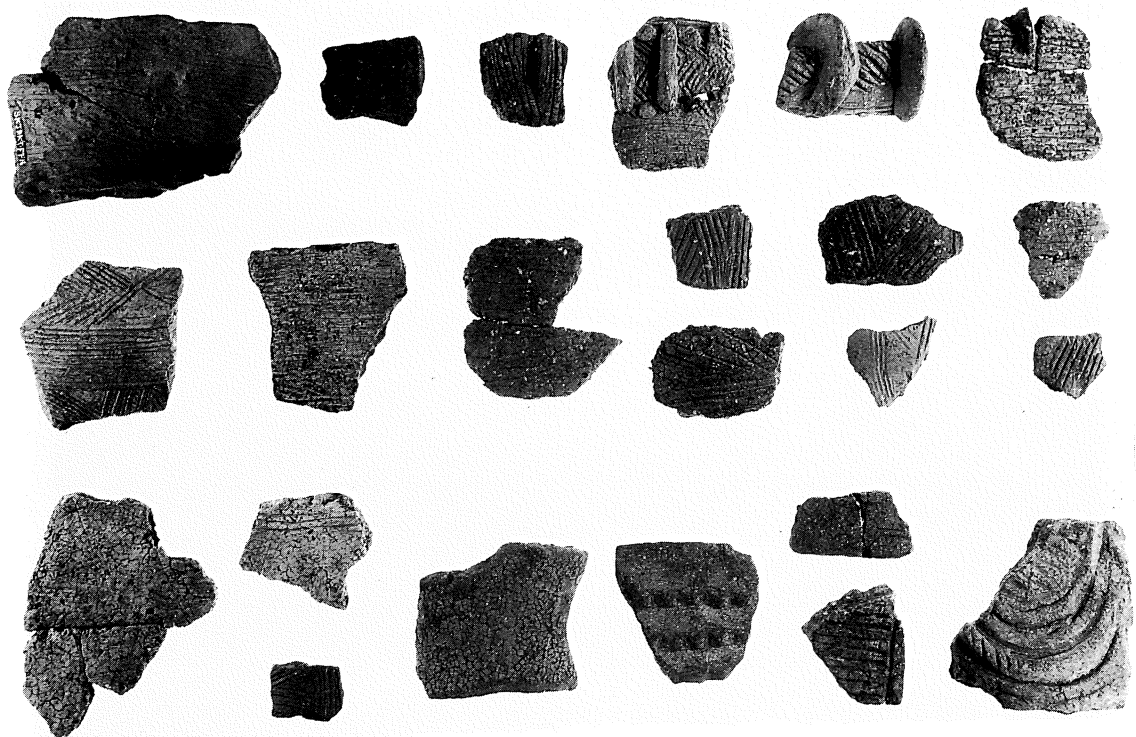
石器

▲ S J 1 — 20

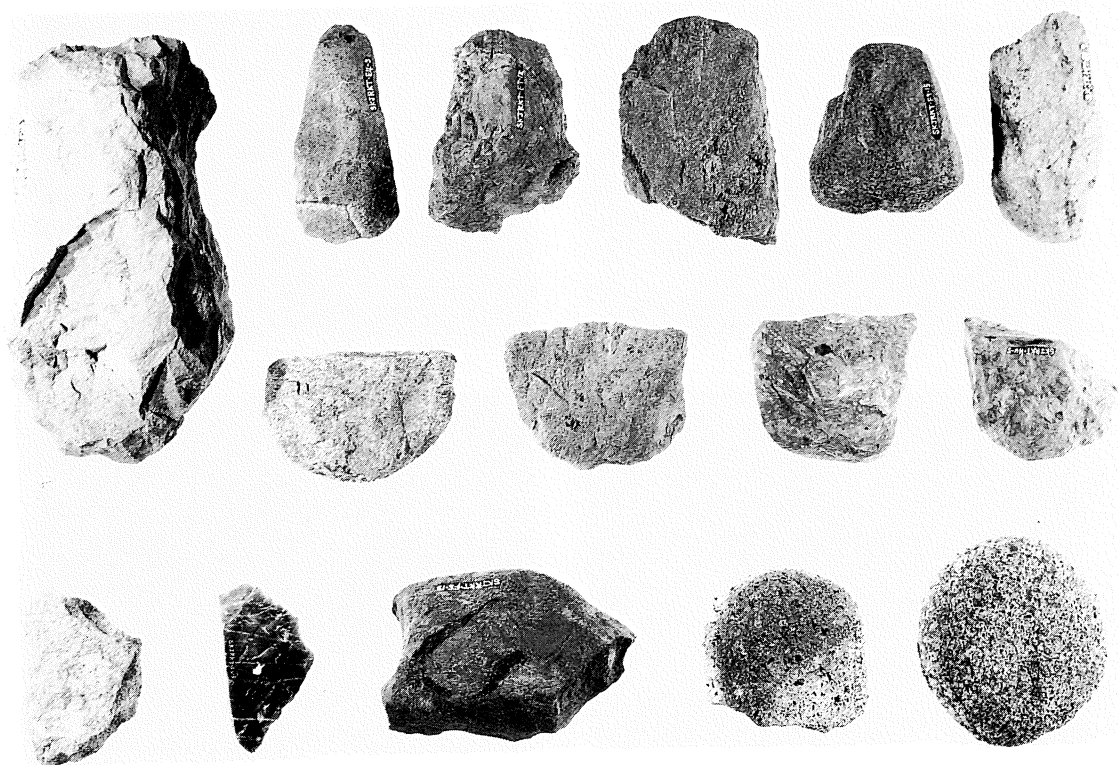
▲ S J 1 — 42



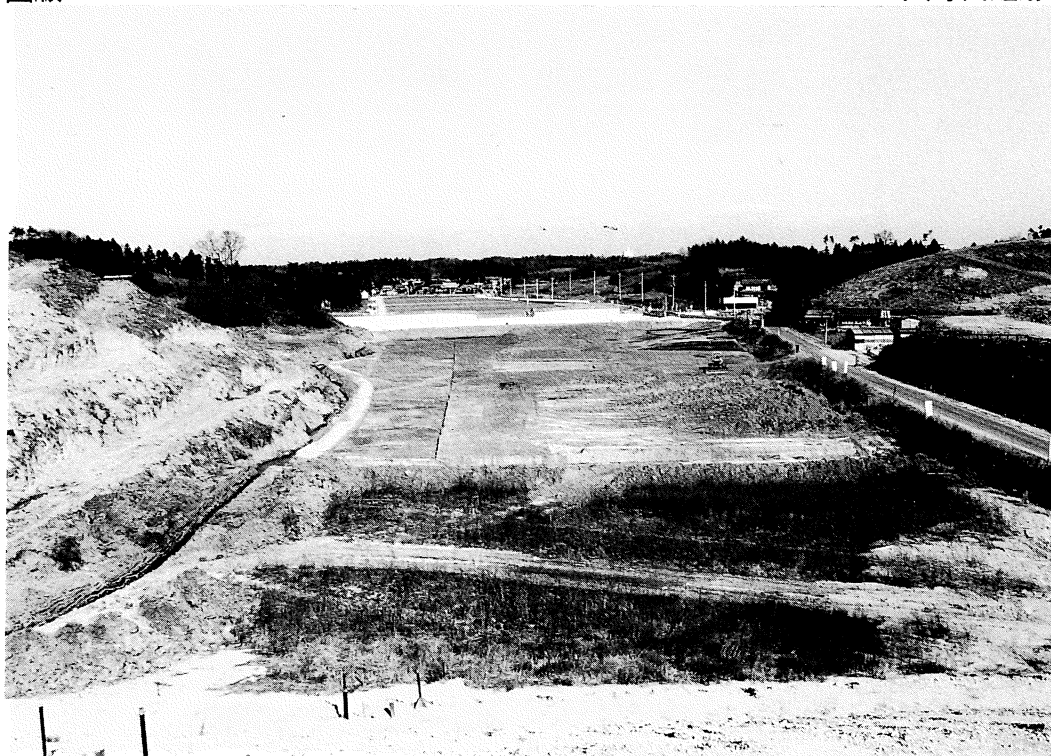
S J 1 出土遺物



グリッド出土土器



グリッド出土石器



大野田遺跡全景



大野田遺跡北半部



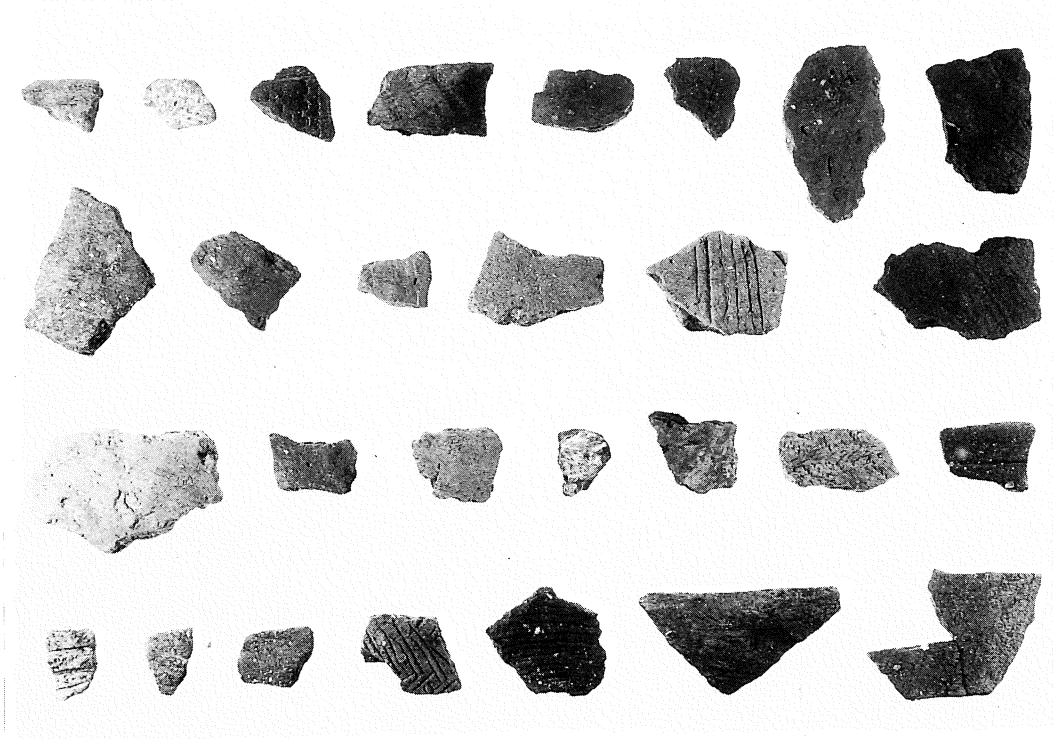
SD 1



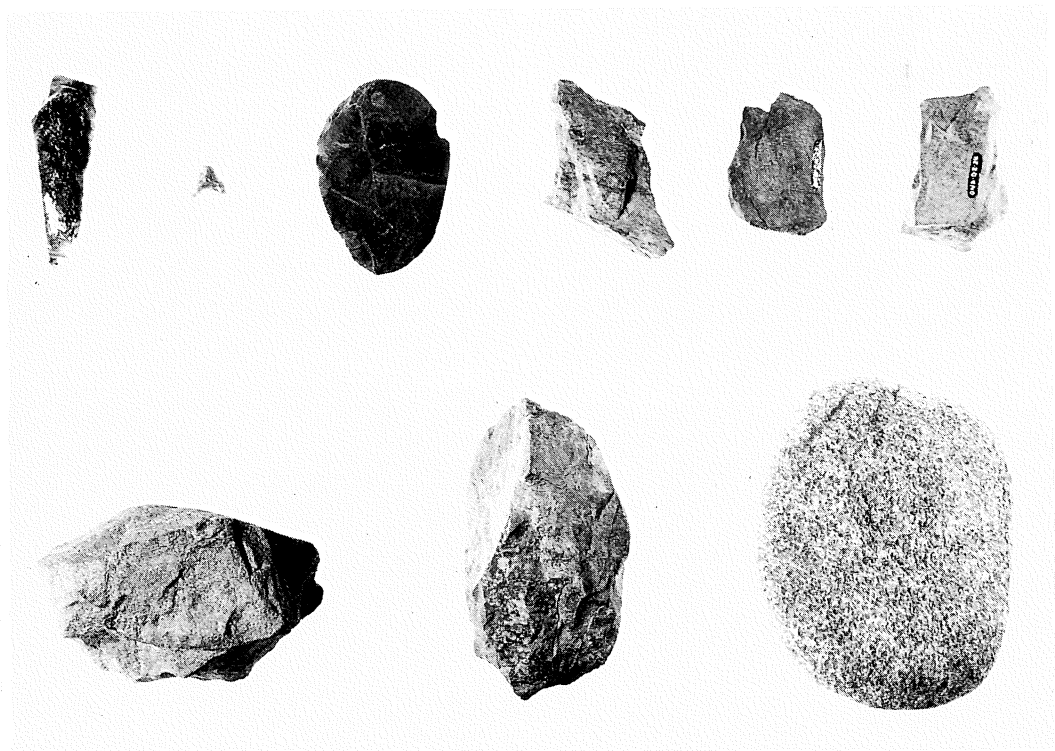
SK 1



SK 1、SK 2、SK 3



グリッド出土土器



グリッド出土石器

埼玉県埋蔵文化財調査事業団報告書 第119集

蟹沢・芳沼入・芳沼入下・新田坊

尺尻・尺尻北・大野田遺跡

嵐山工業団地関係埋蔵文化財発掘調査報告

平成4年3月15日 印刷

平成4年3月16日 発行

発行 財団法人 埼玉県埋蔵文化財調査事業団

〒369-01 大里郡大里村大字箕輪字船木884

電話 (0493) 39-3955

印刷 (株) きょうせい