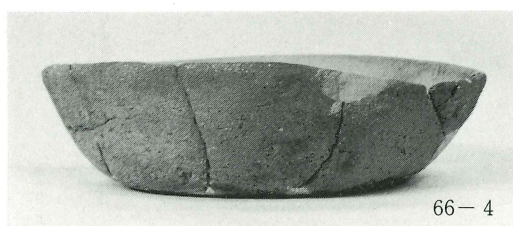


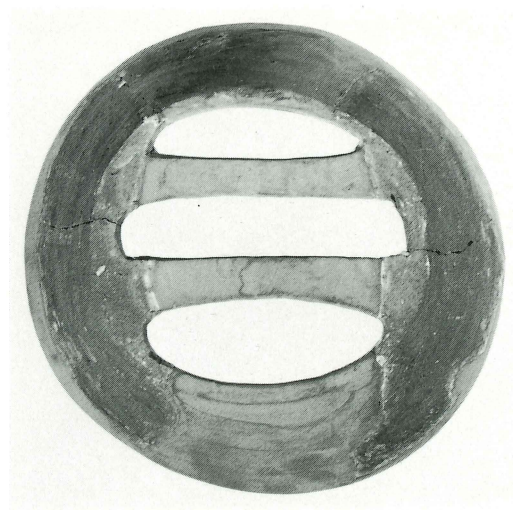
64-7



66-4



66-9



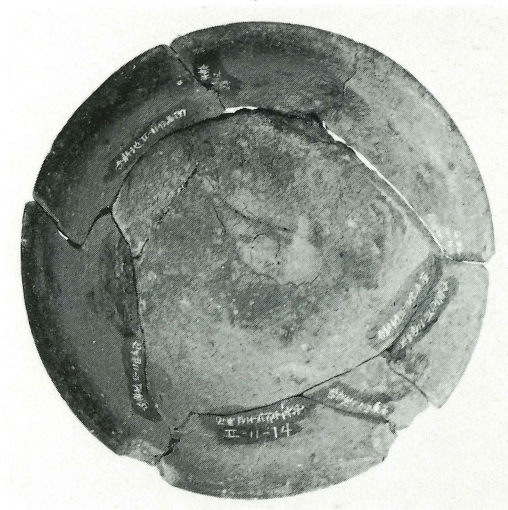
65-2



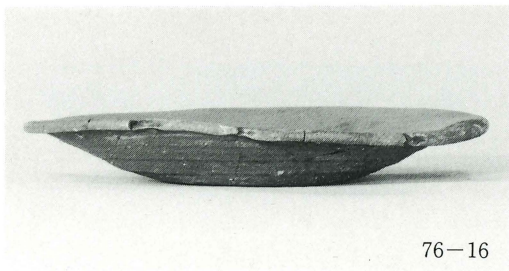
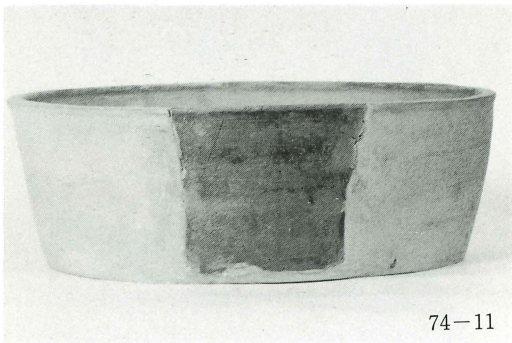
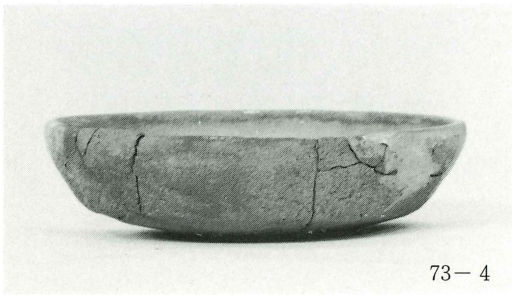
66-2



66-5

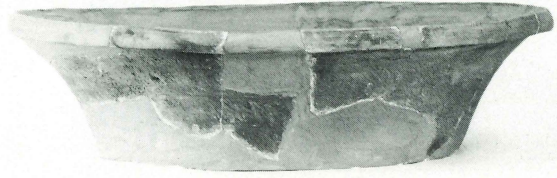


66-15





76-25



76-34



76-29



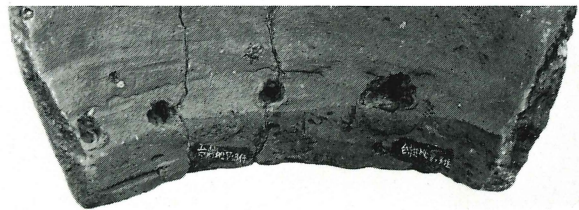
76-35



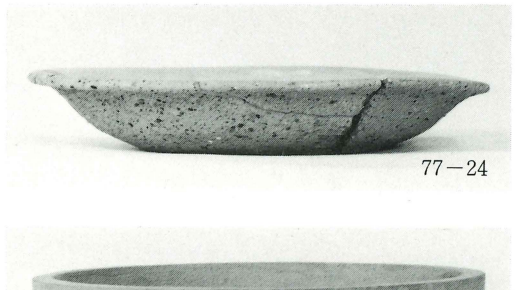
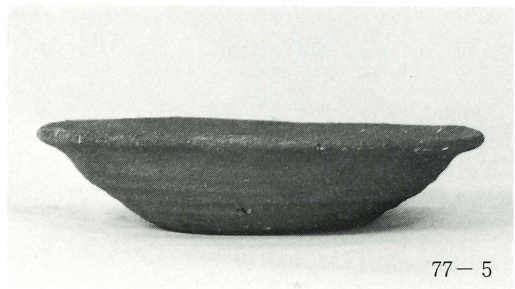
76-33

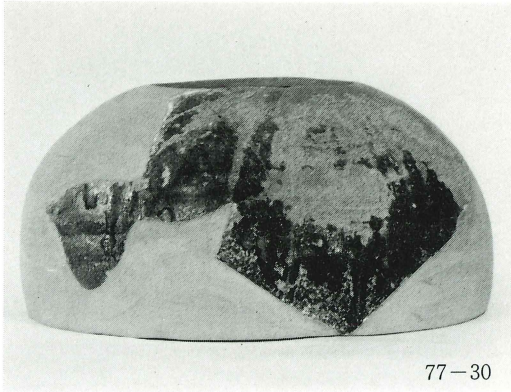


76-36



图版70





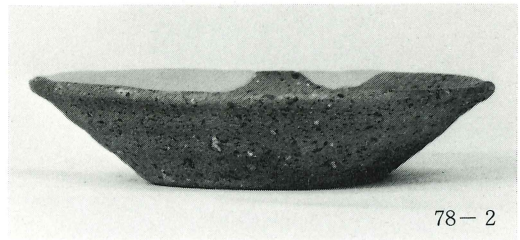
77-30



77-33



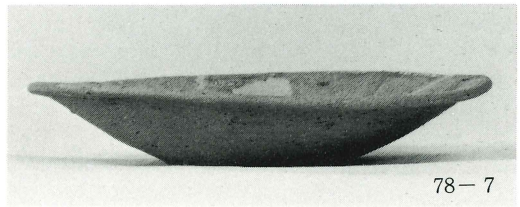
78-1



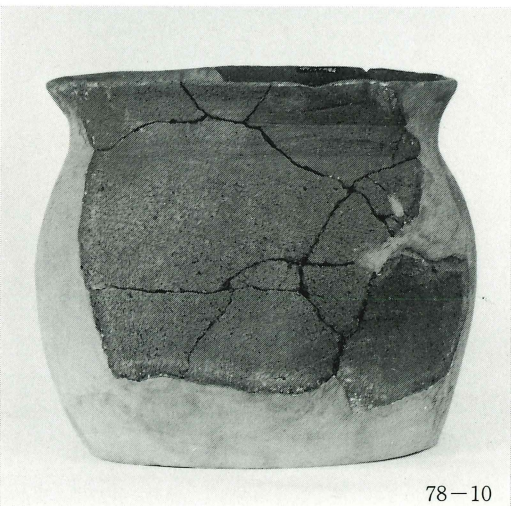
78-2



78-5



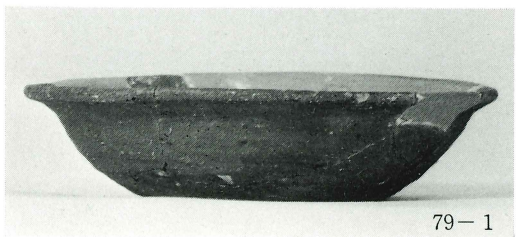
78-7



78-10



78-6



79-1



79-2



79-7



81-1



83-1



83-8



79-3



82-1

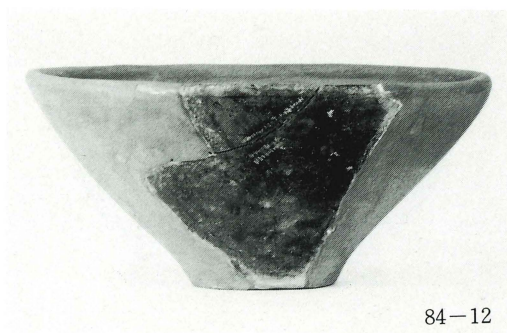


83-9

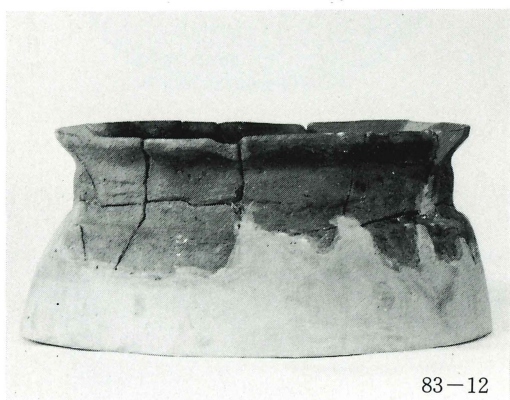




83-11



84-12



83-12



85-1



85-5



87-1



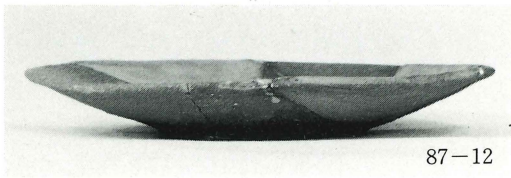
87-2



87-3

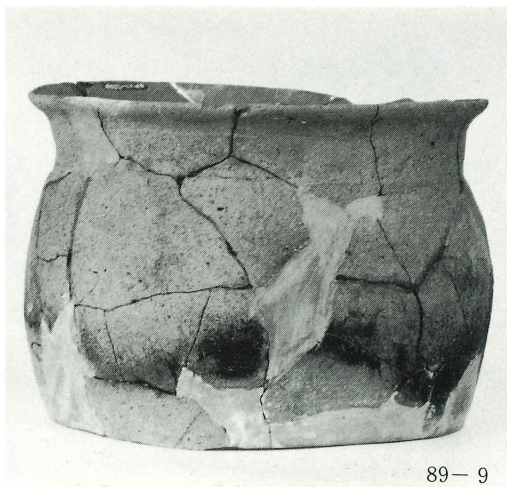


87-4





89-7



89-9



93-1



93-3



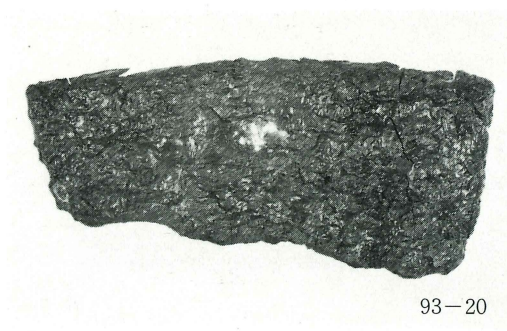
93-5



93-12



93-18



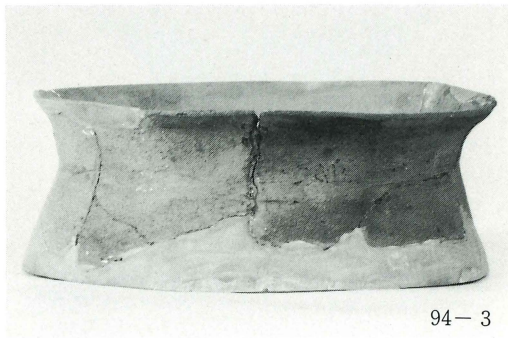
93-20



93-17



93-21



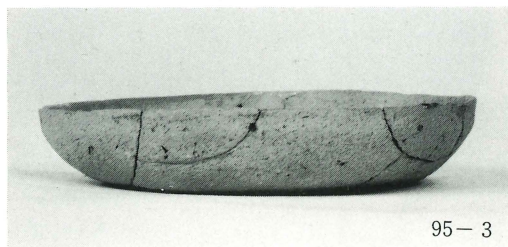
94-3



95-1



95-2



95-3



95-4



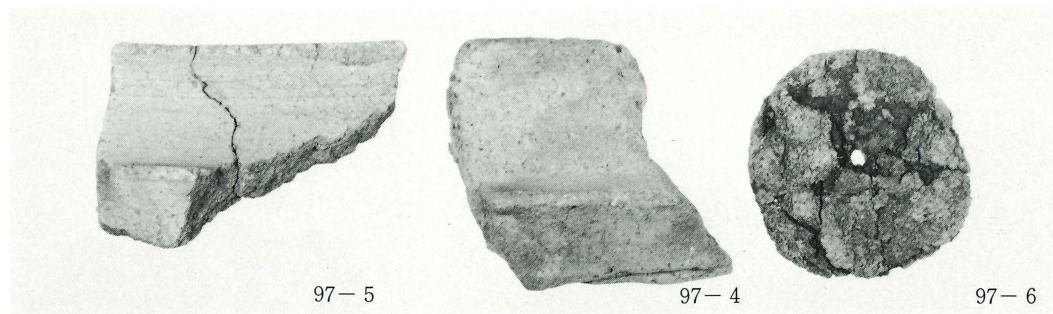
96-2



97-1



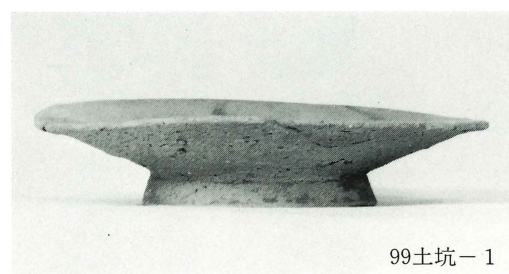
97-2



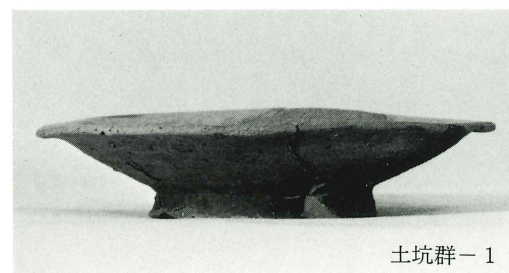
97-5

97-4

97-6



99土坑-1



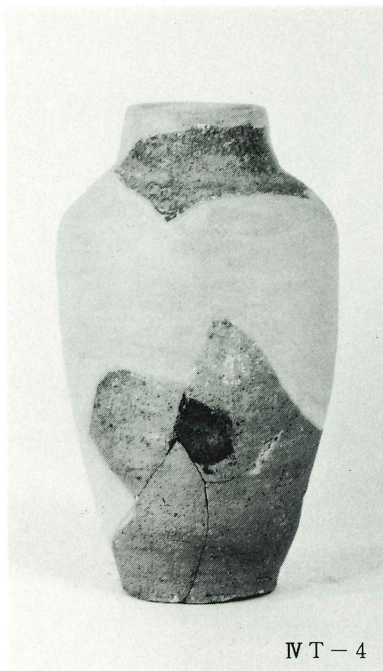
土坑群-1



土坑群-2



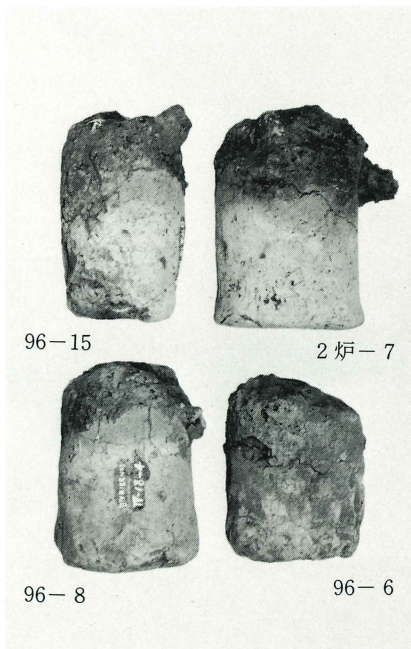
第200图



IV T - 4



3 炉 → 10



96-15

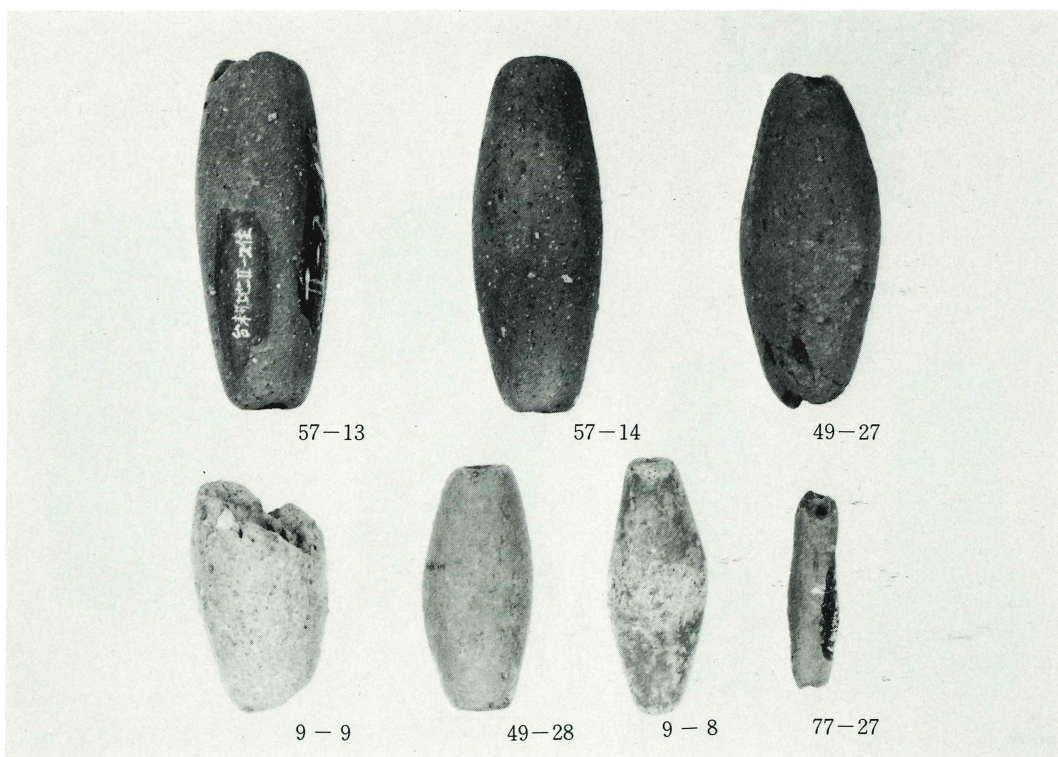
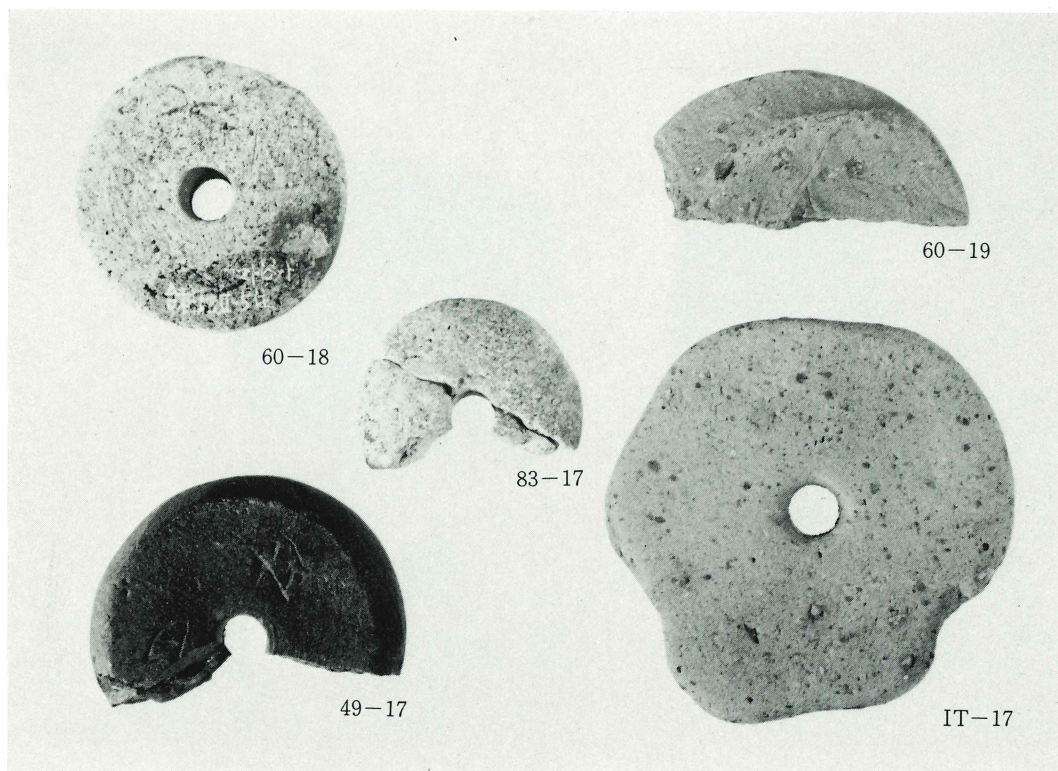
2 炉 - 7

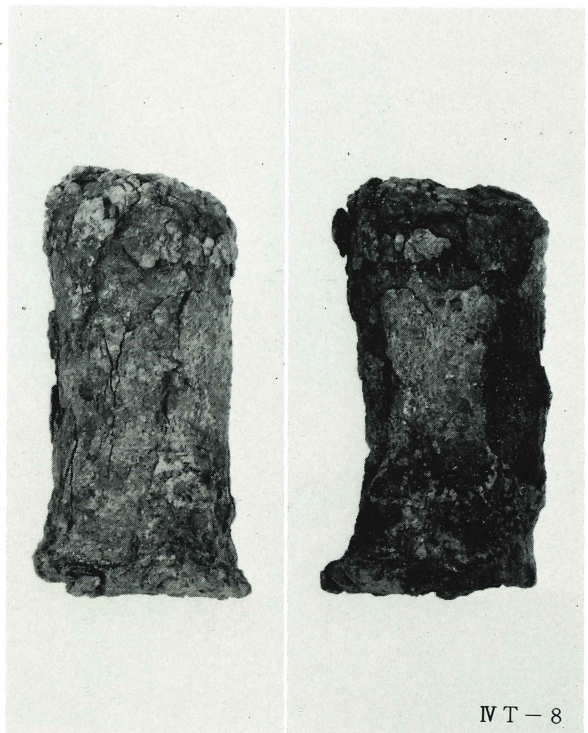
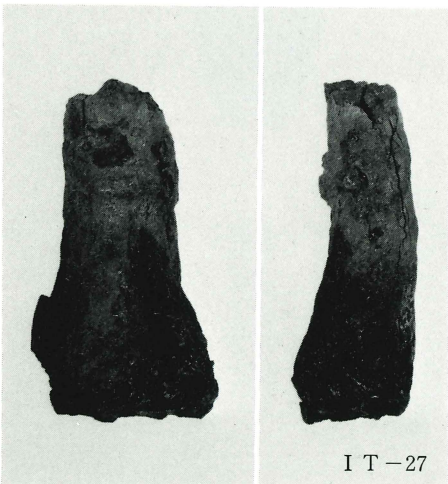
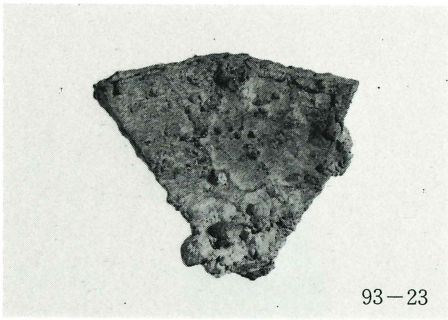
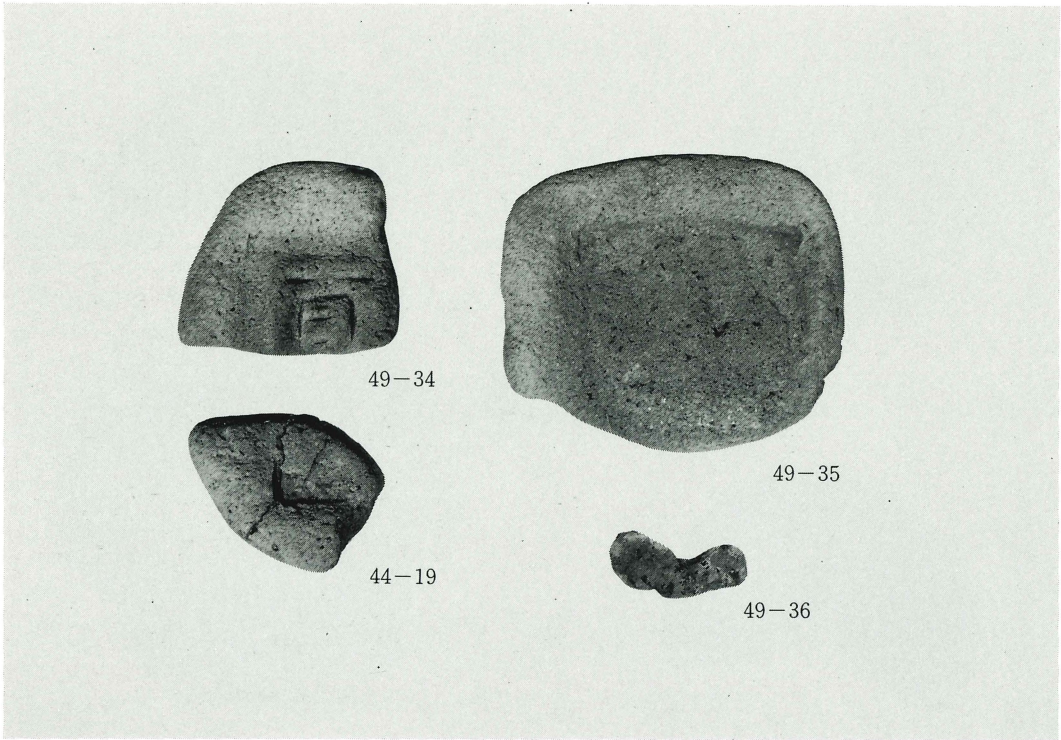
96-8

96-6

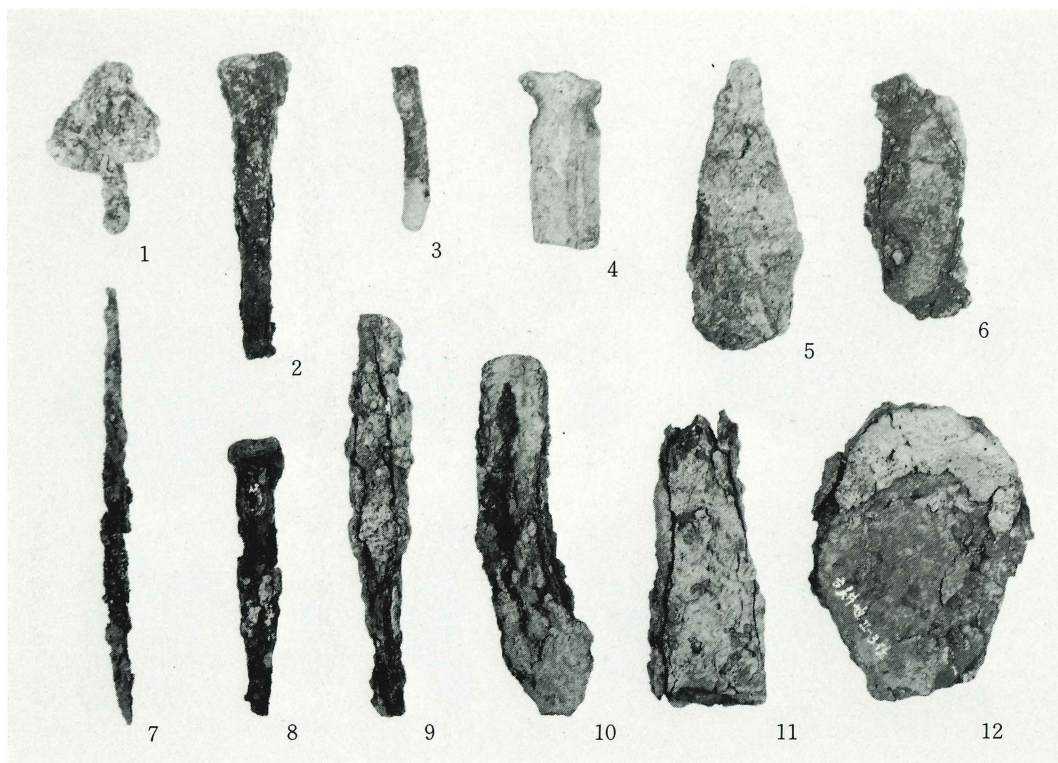


49-25

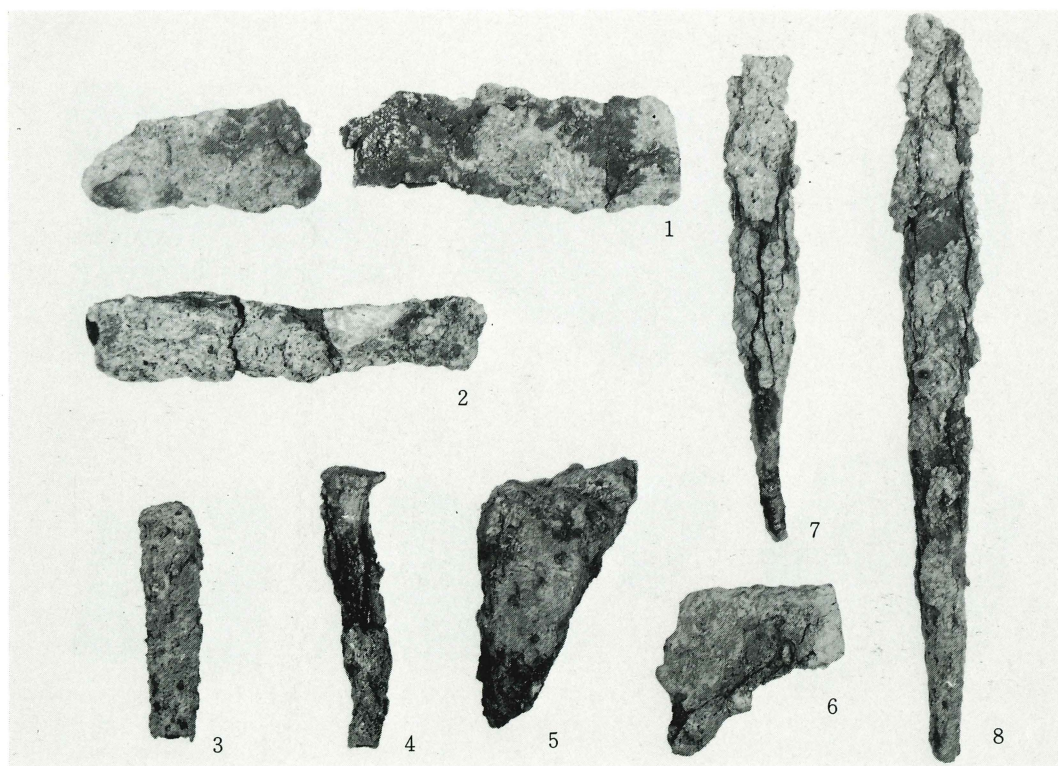




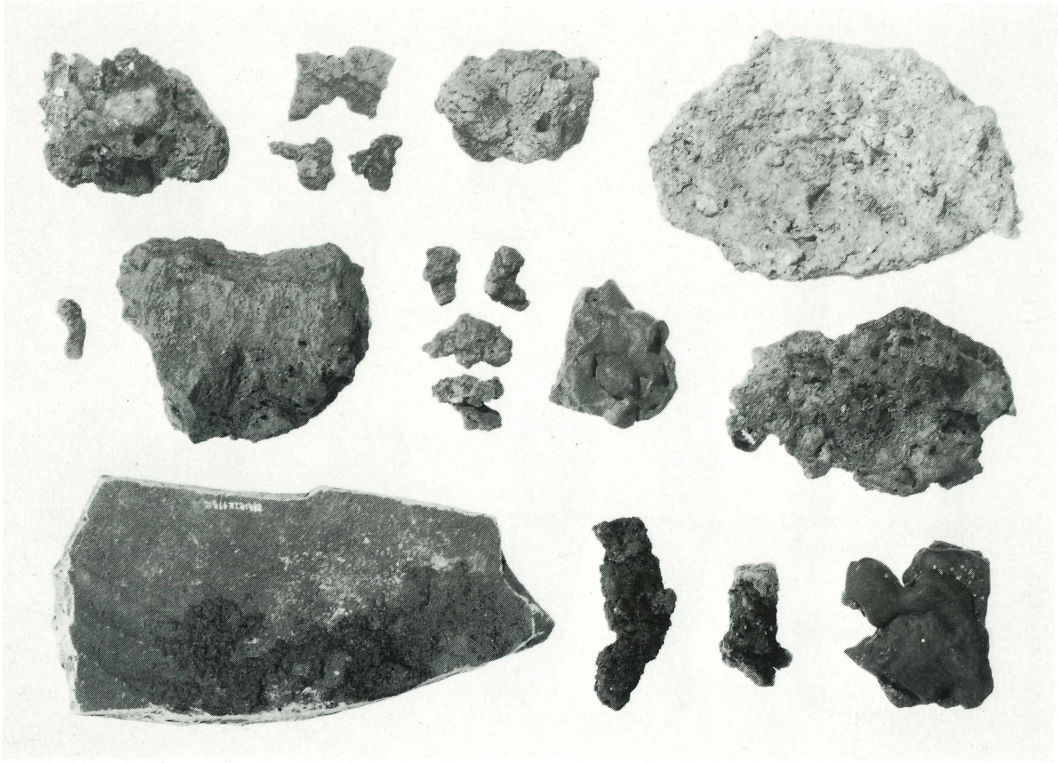




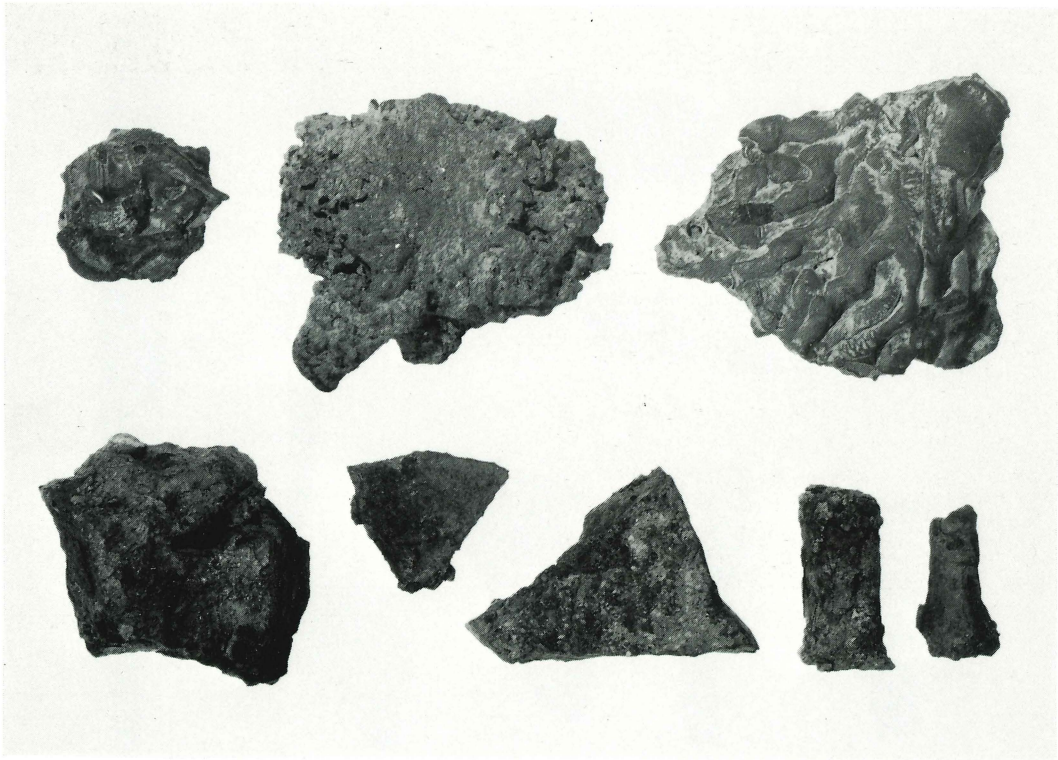
1. 93-23    2. 96-4    3. 93-22    4. 土坑群-3    5. 93-26    6. 50-22  
7. 50-21    8. 84-11    9. 74-14    10. 49-29    11. 87-18    12. 58-12



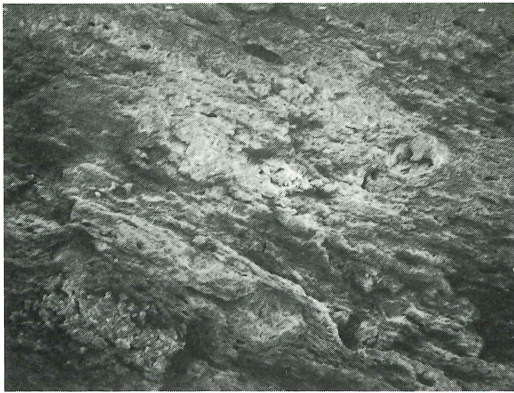
1. 87-17    2. 93-24    3. IT-9    4. V-7    5. IT-51  
6. IVT-7    8. IT-7



製鉄関連分析資料(1)



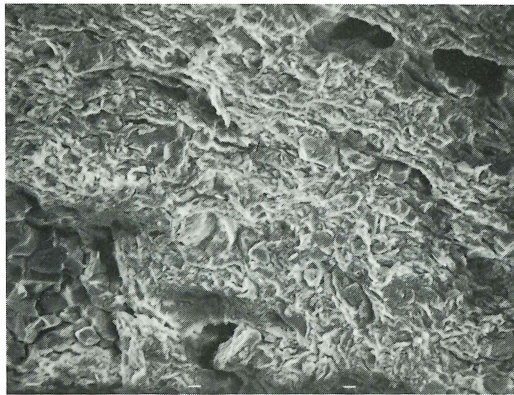
製鉄関連分析資料(2)



×35



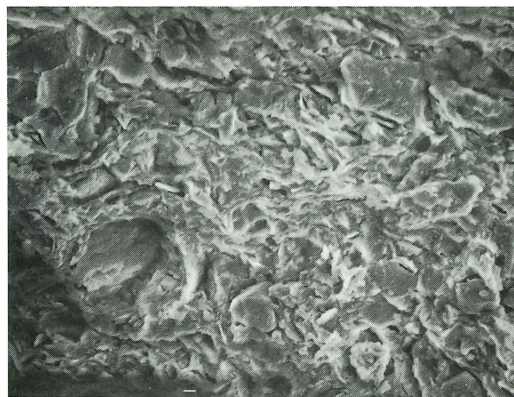
×1500



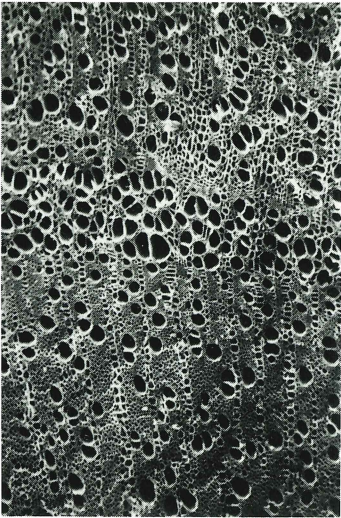
×350



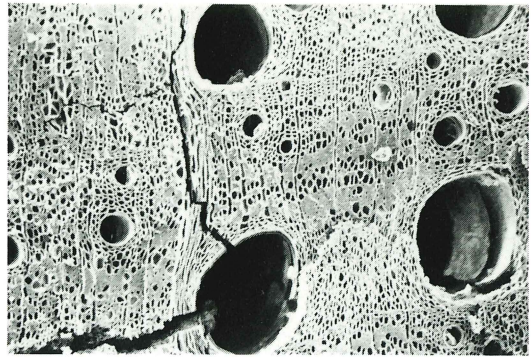
×5000



×750



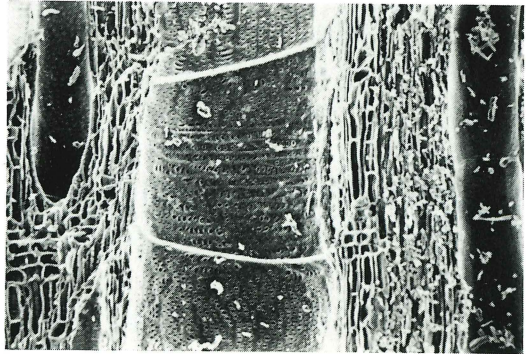
木口×70



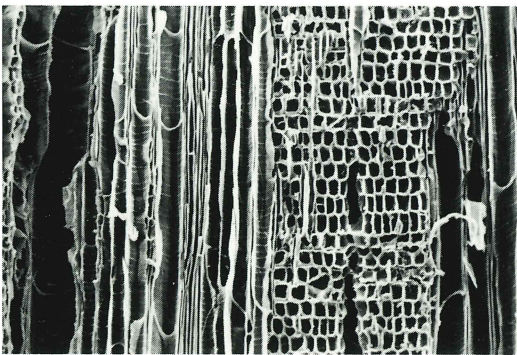
木口×70



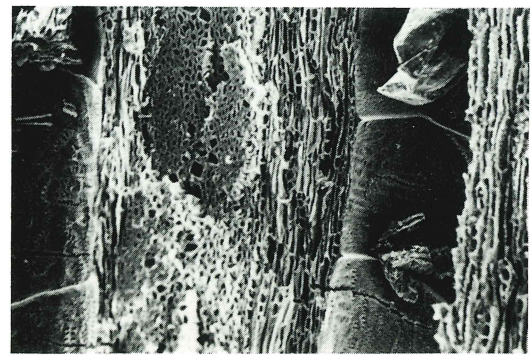
板目×140



征目×140



柱目×140



板目×140

I区49号住居跡 a (左)

I区49号住居跡 b (右)

樹種同定

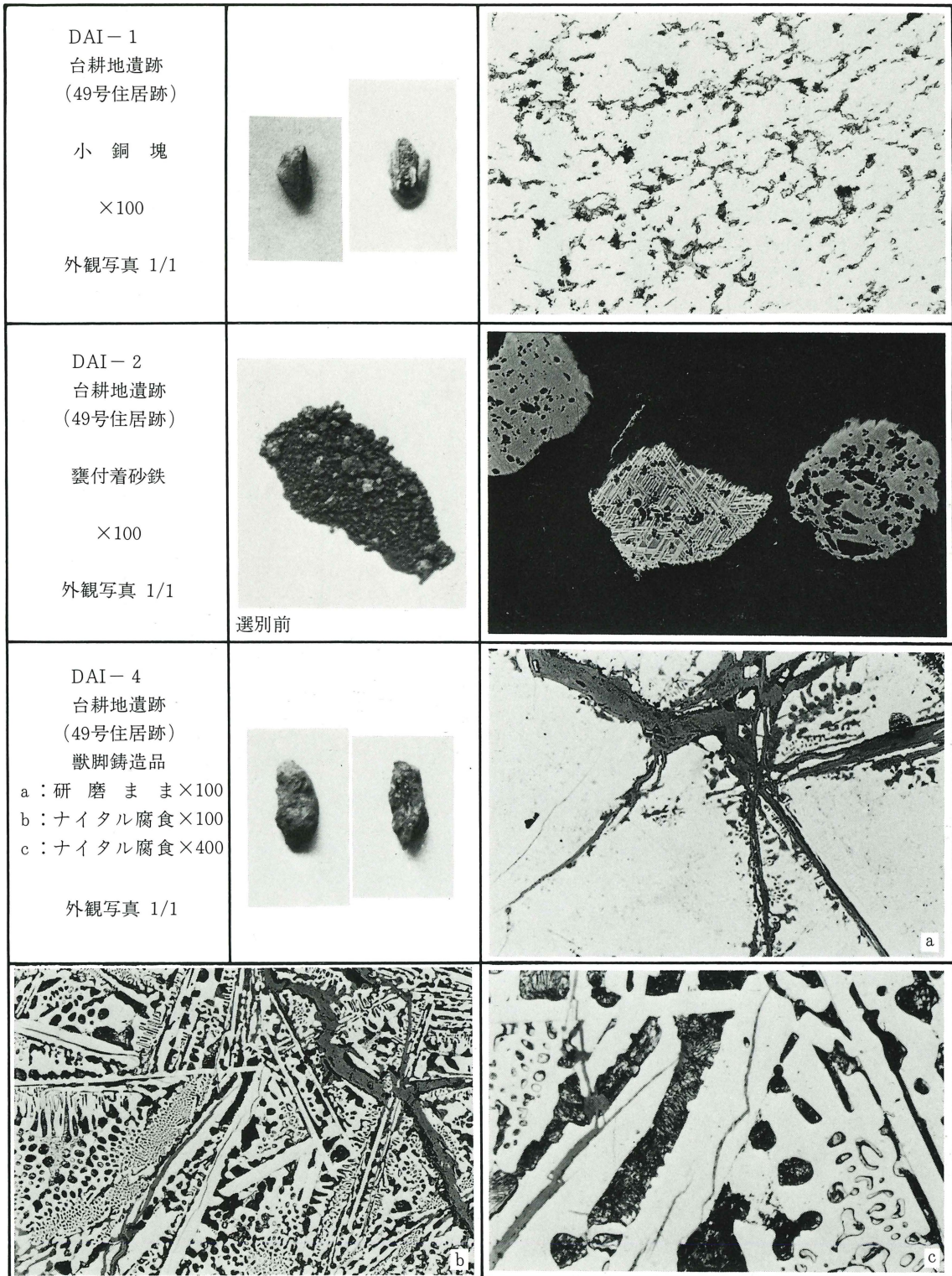


photo 1 小銅塊・砂鉄・獣脚の顕微鏡組織

図版86

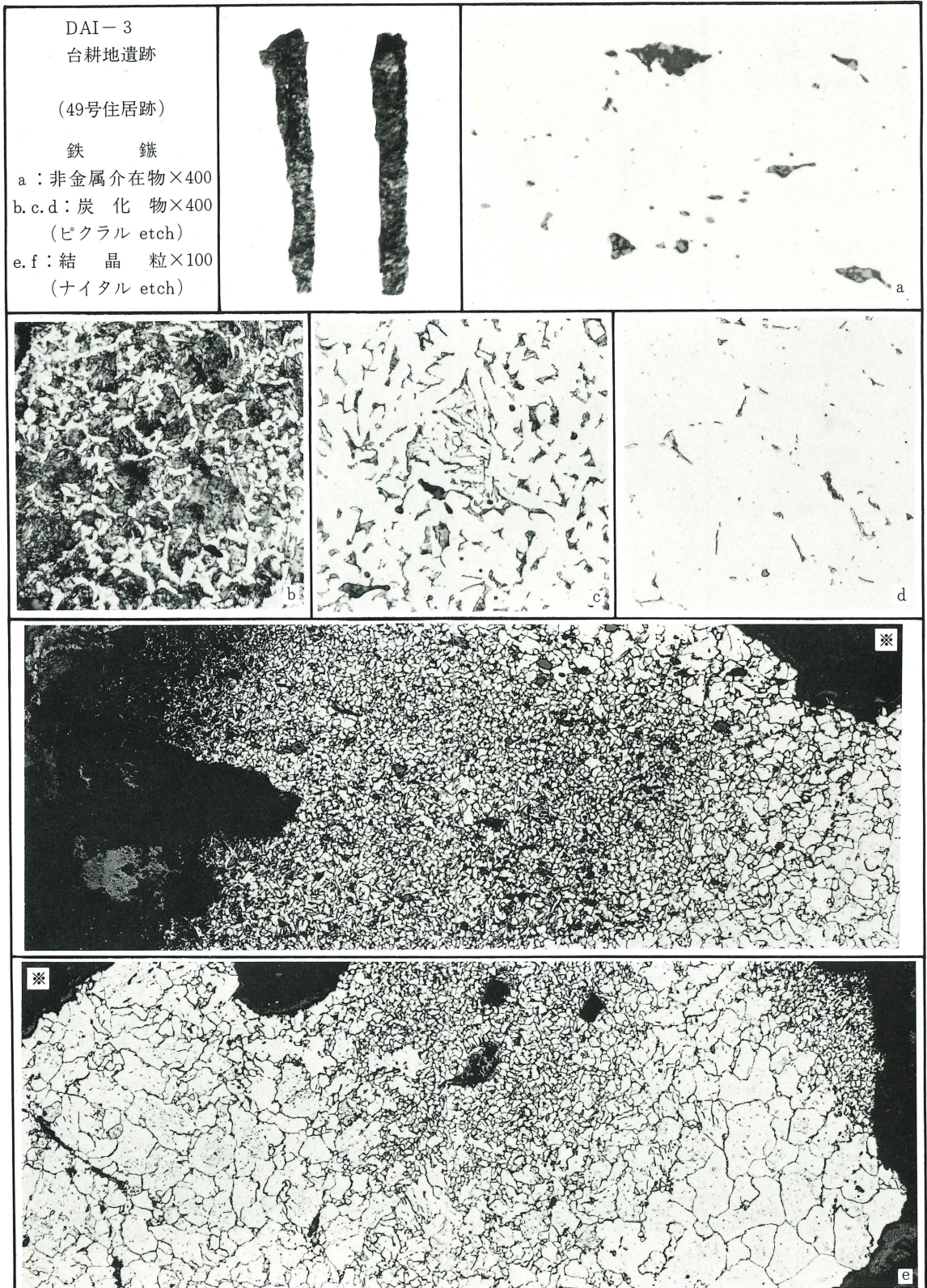


photo 2 鉄鋏の顕微鏡組織



図版88

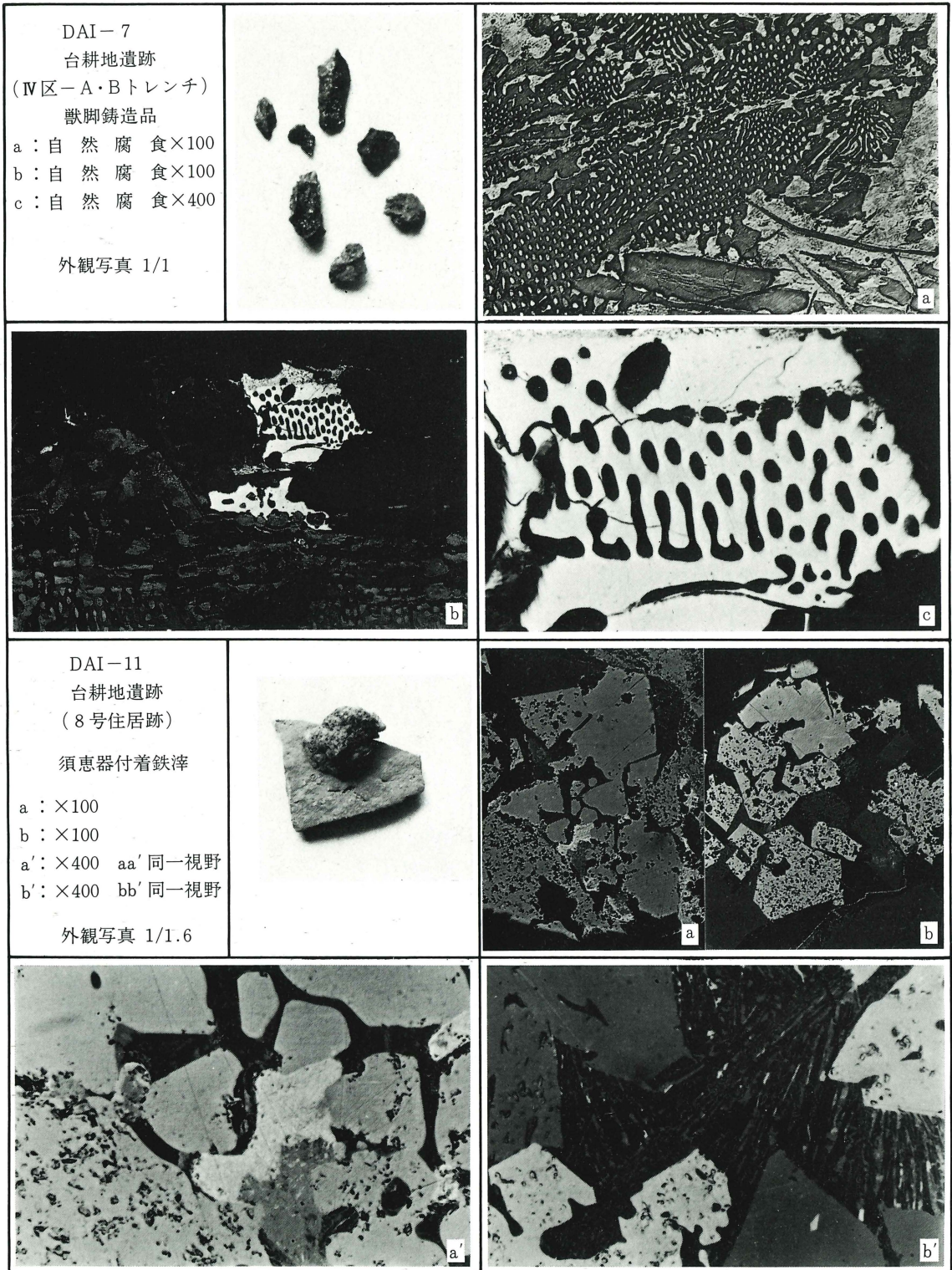


photo 4 獸脚・須恵器附着鉄滓の顕微鏡組織



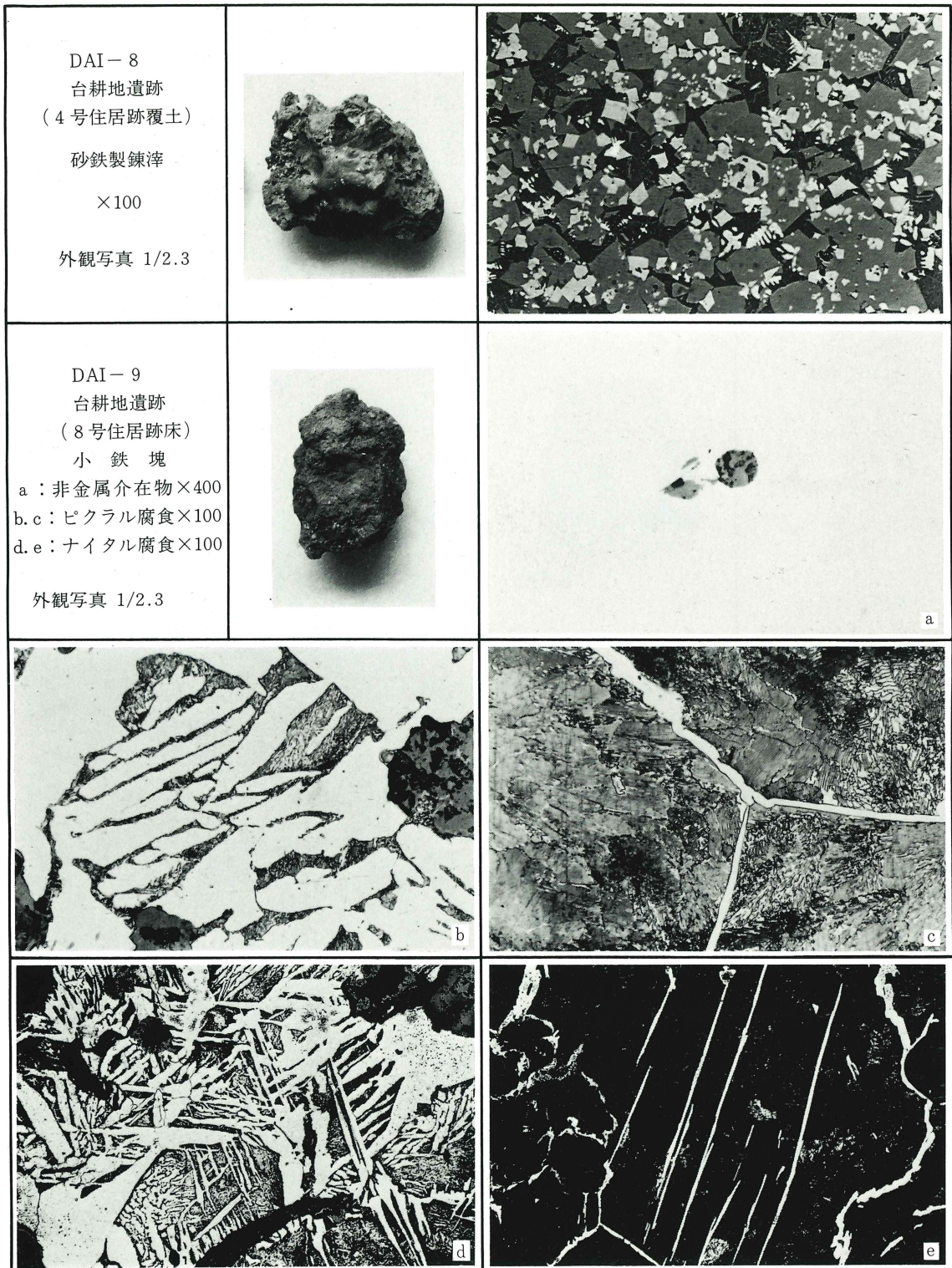


photo 5 製錬滓・小鉄塊の顕微鏡組織

図版90

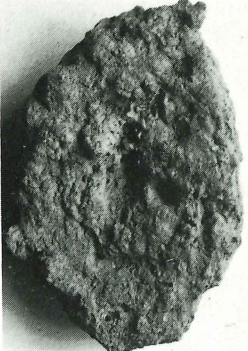

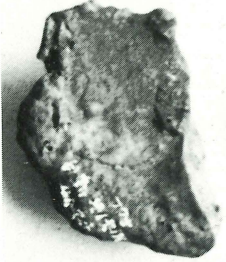
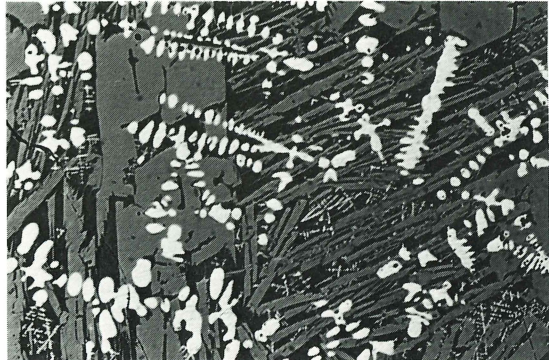
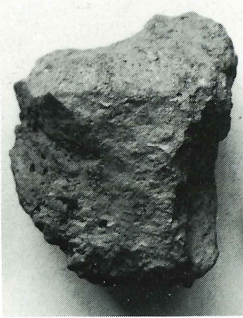
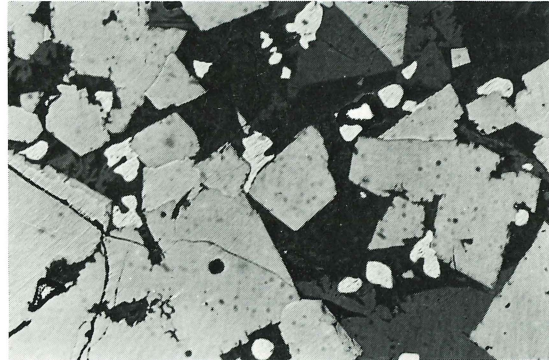
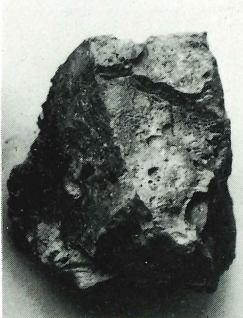

<p>DAI-10 台耕地遺跡 (8号住居跡)</p> <p>精鍊鍛冶滓 (椀形滓)</p> <p>×100</p> <p>外觀写真 1/3</p>		
<p>DAI-12 台耕地遺跡 (44号住居跡)</p> <p>鍛鍊鍛冶滓 (椀形滓半分欠)</p> <p>×100</p> <p>外觀写真 1/1</p>		
<p>DAI-13 台耕地遺跡 (44号住居跡覆土)</p> <p>砂鉄製鍊滓 ×100</p> <p>外觀写真 1/2.6</p>		
<p>DAI-14 台耕地遺跡 (87号住居跡床)</p> <p>砂鉄製鍊滓</p> <p>×100</p> <p>外觀写真 1/2.6</p>		

photo 6 精鍊鍛冶滓・鍛鍊鍛冶滓・製鉄滓の顕微鏡組織


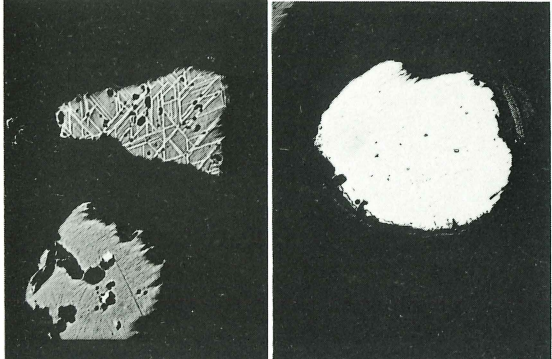
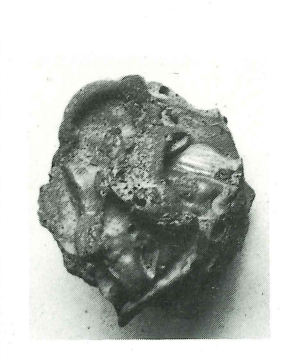

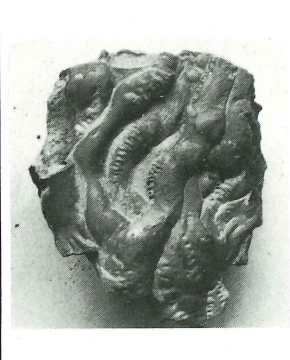
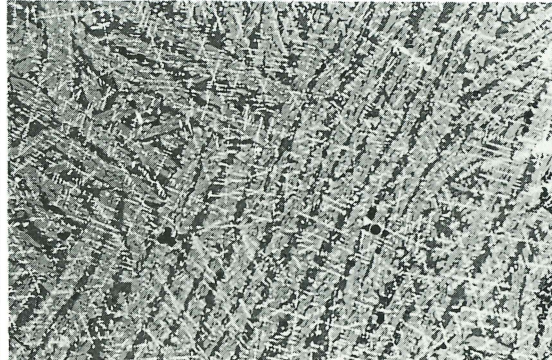

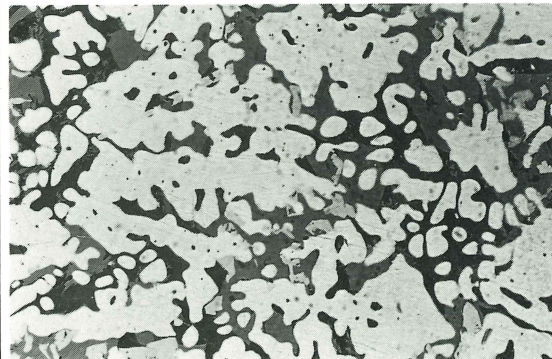
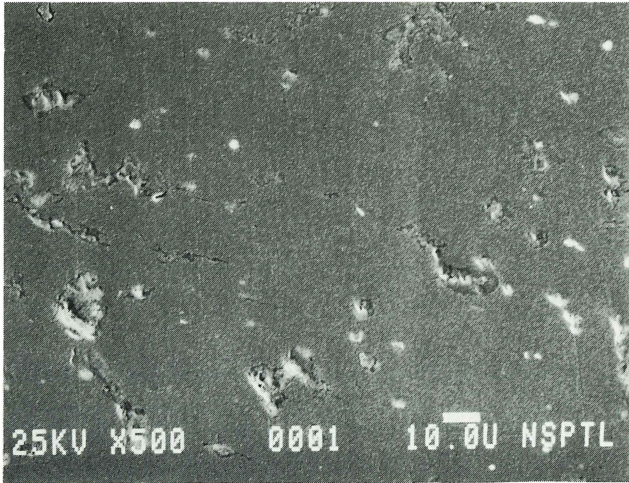
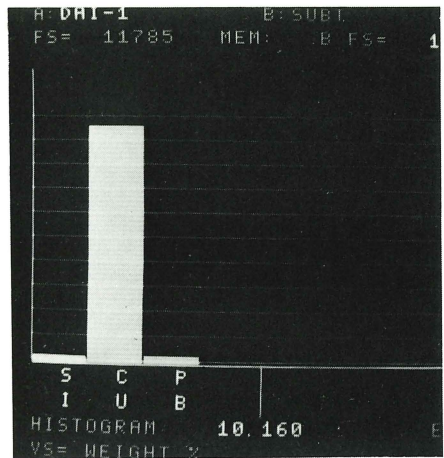
<p>DAI-15 台耕地遺跡 (IV区-1号炉第12層)</p> <p>砂 鉄</p> <p>×100</p> <p>外観写真 1/2</p>		
<p>DAI-16 台耕地遺跡 (IV区3号炉)</p> <p>砂鉄製錬滓</p> <p>×100</p> <p>外観写真 1/2</p>		
<p>DAI-17 台耕地遺跡 (IV区製鉄炉前庭部)</p> <p>砂鉄製錬滓</p> <p>×100</p> <p>外観写真 1/2</p>		
<p>DAI-18 台耕地遺跡 (IV区製鉄炉前庭部)</p> <p>砂鉄製錬滓 (炉底滓)</p> <p>×100</p> <p>外観写真 1/2.5</p>		

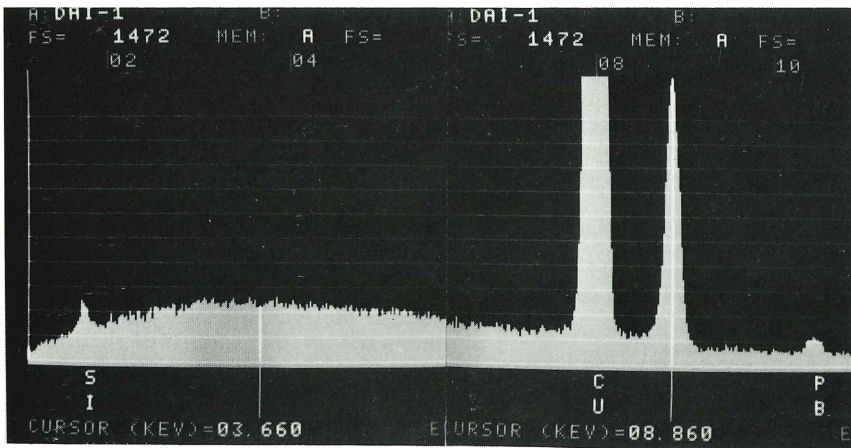
photo 7 砂鉄・製錬滓の顕微鏡組織



金属銅分析個所の二次電子像(×500)



重量パーセントのヒストグラム



同一視野からのスペクトル

分析結果

DAI-1  
 KV=25 TILT=30 TKOFF=15  
 BKGPT1=1.4 BKGPT2=11.1  
 NOST  
 12-AUG-83

CONCENTRATION

	WT. %	AT. %	%S.E.
S I K	2.05	4.61	3.12
C U K	94.89	94.46	0.26
P B L	3.06	0.93	3.89
	100.00		

photo 8 小銅塊 (DAI-1) のエネルギー分散分析結果

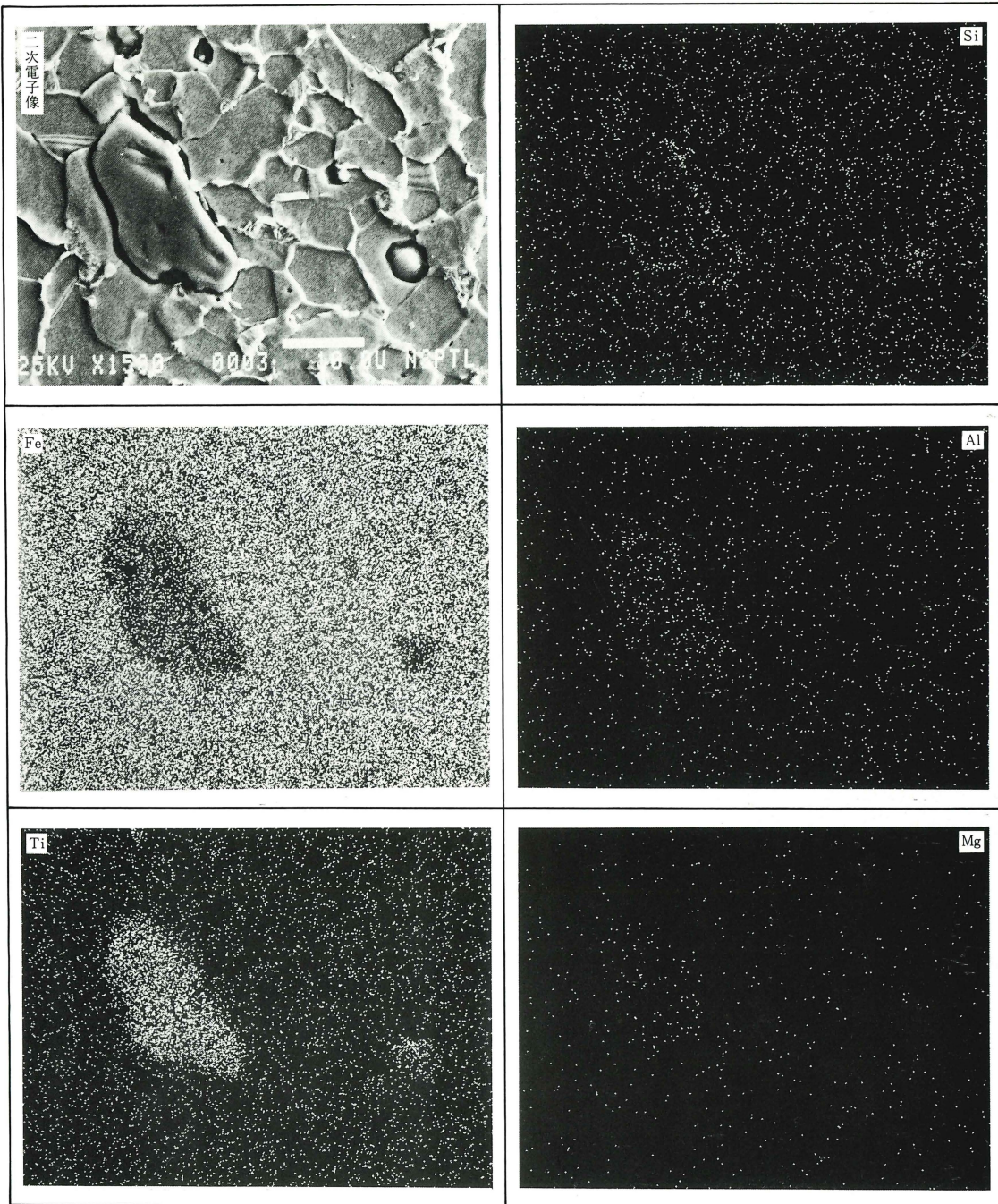
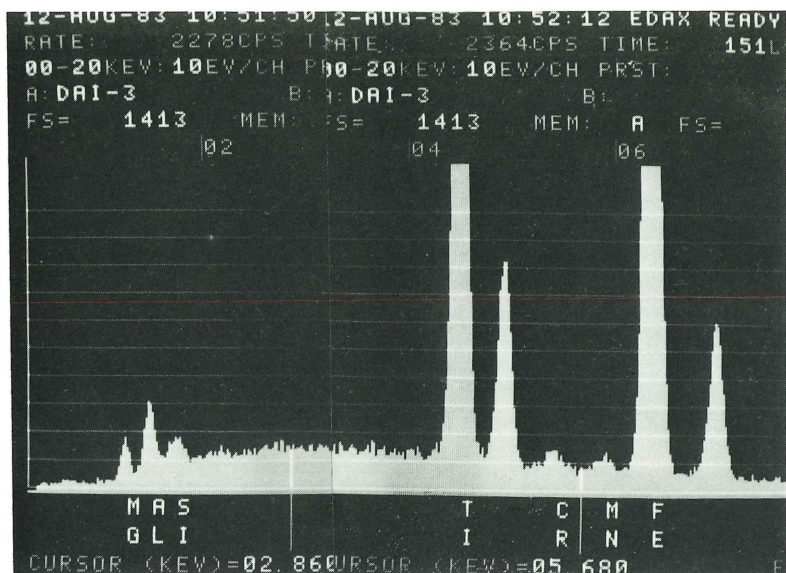
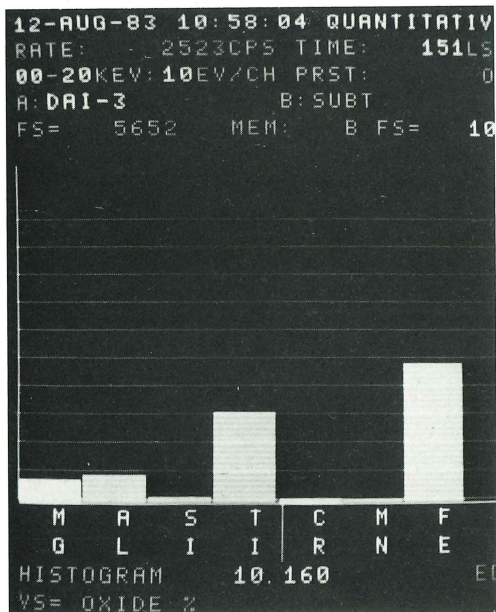


photo 9(1) 鉄鍍中 (DAI-3) の非金属介在物の走査X線像 (金属鉄)



同一視野からのスペクトル



酸化物 (Oxide) のヒストグラム

分析結果

DAI-3

KV=25 TILT=30 TKOFF=15

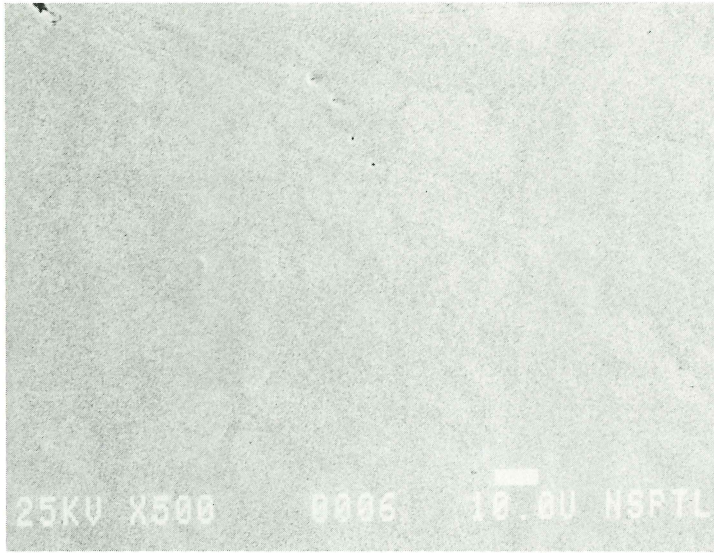
BKG PT1=1.0 BKG PT2=7.5

NOST

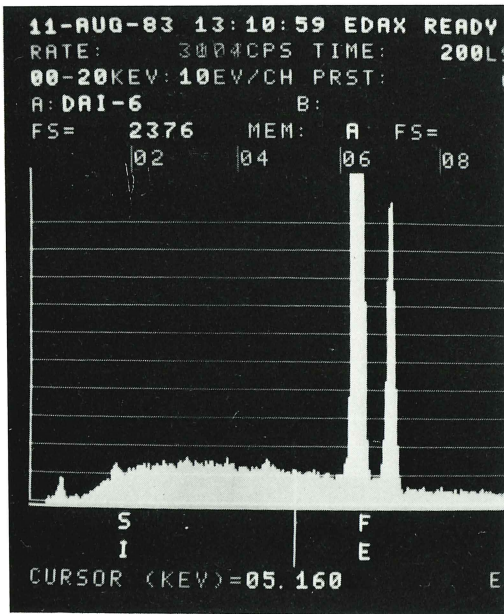
12-AUG-83

	CONCENTRATION			
	WT. %	AT. %	OX. %	%S.E.
MGK	4.48	5.25	7.43	3.0
ALK	5.20	5.49	9.82	1.9
SIK	1.00	1.02	2.14	3.3
TIK	18.79	11.18	31.34	0.4
CRK	0.46	0.25	0.68	3.2
MNK	0.35	0.18	0.45	4.7
FEK	37.42	19.09	48.14	0.3
0	32.30	57.53		
	100.00			

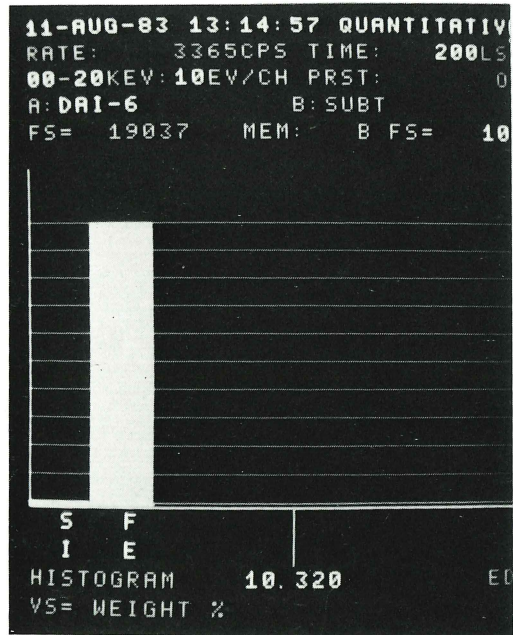
photo 9(2) 鉄鎌中 (DAI-3) の非金属介在物のエネルギー分析結果 (金属鉄)



白鑄鉄金属鉄部分分析個所の二次電子像(×500)



同一視野からのスペクトル



分析結果重量パーセントのヒストグラム

分析結果

DAI-6  
 KV=25 TILT=30 TKOFF=15  
 BKG PT1=1.3 BKG PT2=7.7  
 NOST  
 11-AUG-83

CONCENTRATION

	WT. %	AT. %	%S.E.
SIK	0.84	1.66	3.92
FEK	99.16	98.34	0.21
	100.00		

photo10 容器状鑄造品 (DAI-6) 金属鉄のエネルギー分散分析結果

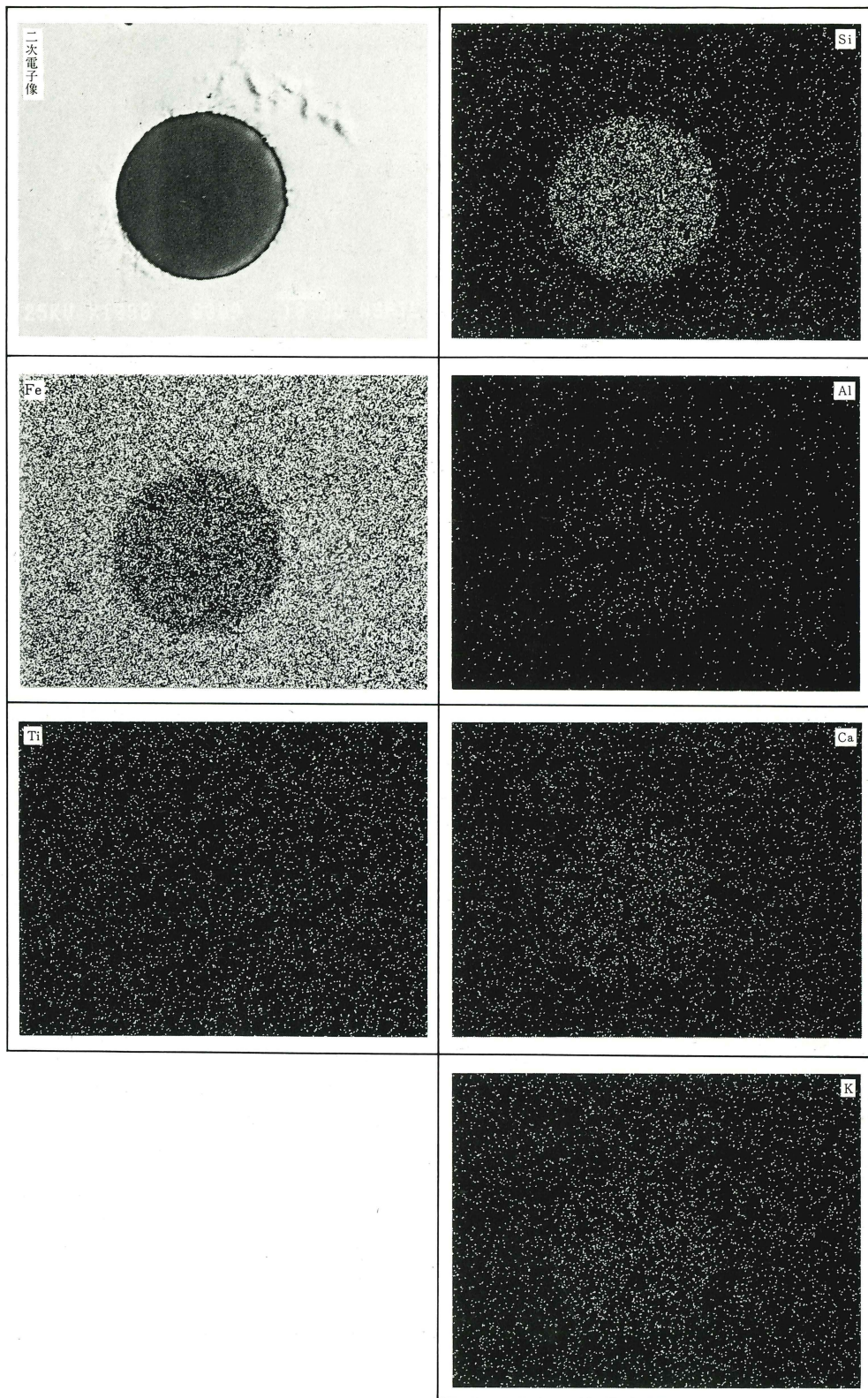
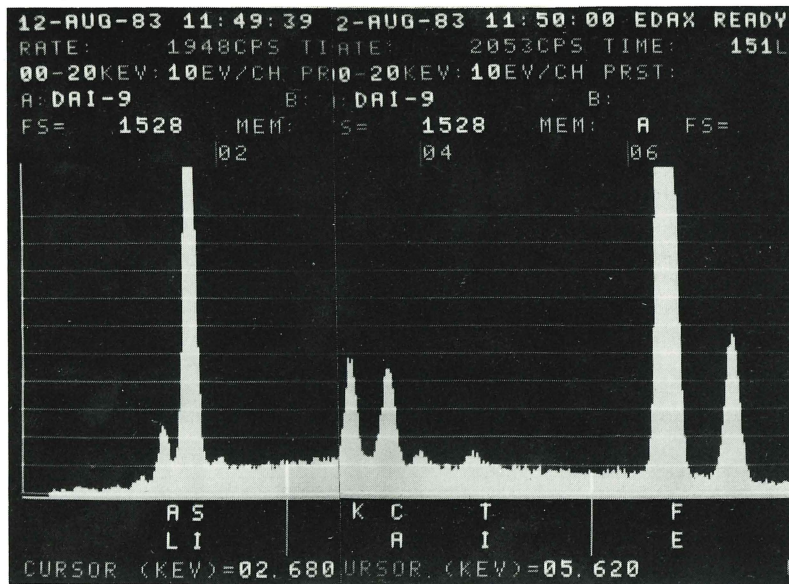


photo11(1) 小鉄塊 (DAI-9) 中の非金属介在物の走査線像 (金属鉄)





同一視野からのスペクトル

分析結果

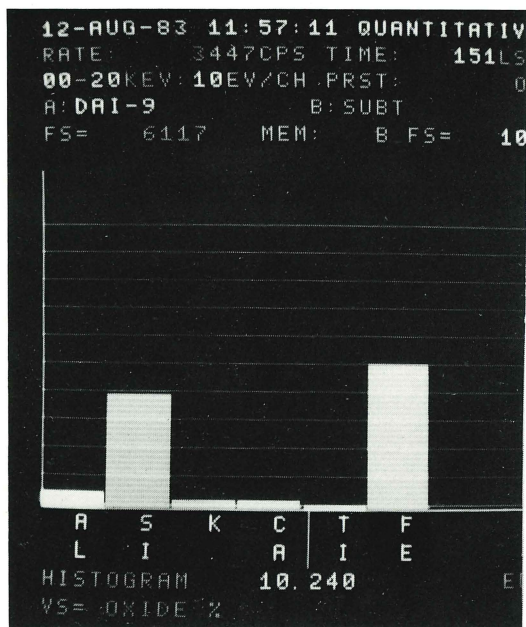
DAI-9

KV=25 TILT=30 TKOFF=15

BKG PT1=1.1 BKG PT2=7.6

NOST

12-AUG-83



非金属介在物酸化物 (Oxide) のヒストグラム

CONCENTRATION

	WT. %	AT. %	OX. %	%S.E.
ALK	2.70	2.63	5.09	2.3
S I K	18.42	17.26	39.40	0.6
K K	2.23	1.50	2.68	1.3
CAK	2.00	1.31	2.79	1.4
T I K	0.24	0.13	0.40	4.3
FEK	38.58	18.18	49.63	0.3
0	35.85	58.98		
	100.00			

photo11(2) 小鉄塊 (DAI-9) 中の非金属介在物のエネルギー分散分析結果



埼玉県埋蔵文化財調査事業団報告書 第33集

関越自動車道関係  
埋蔵文化財発掘調査報告 XIX

台 耕 地 (II)

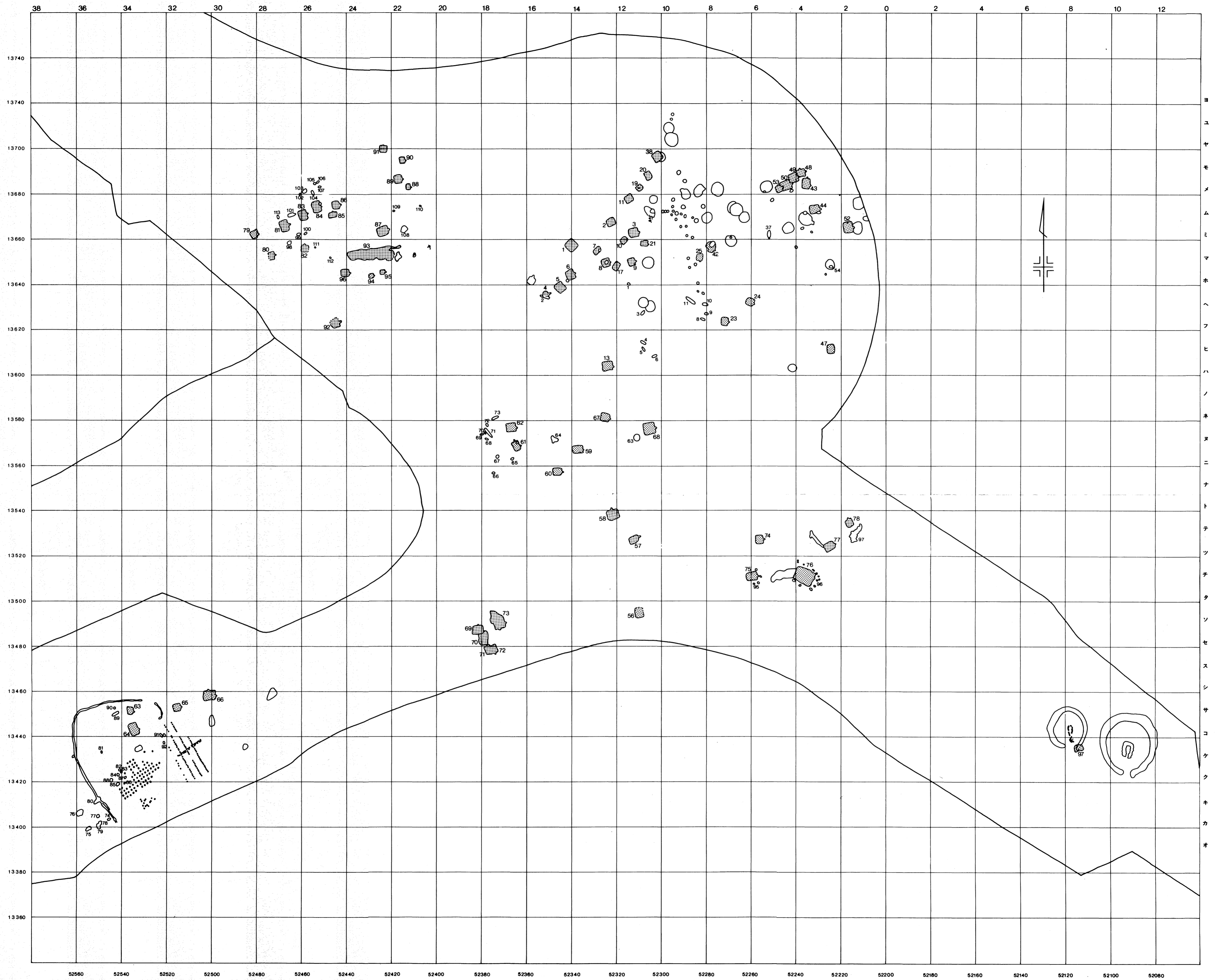
昭和59年3月20日 印刷

昭和59年3月30日 発行

発行 財団法人 埼玉県埋蔵文化財調査事業団

印刷 株式会社 誠美堂印刷所

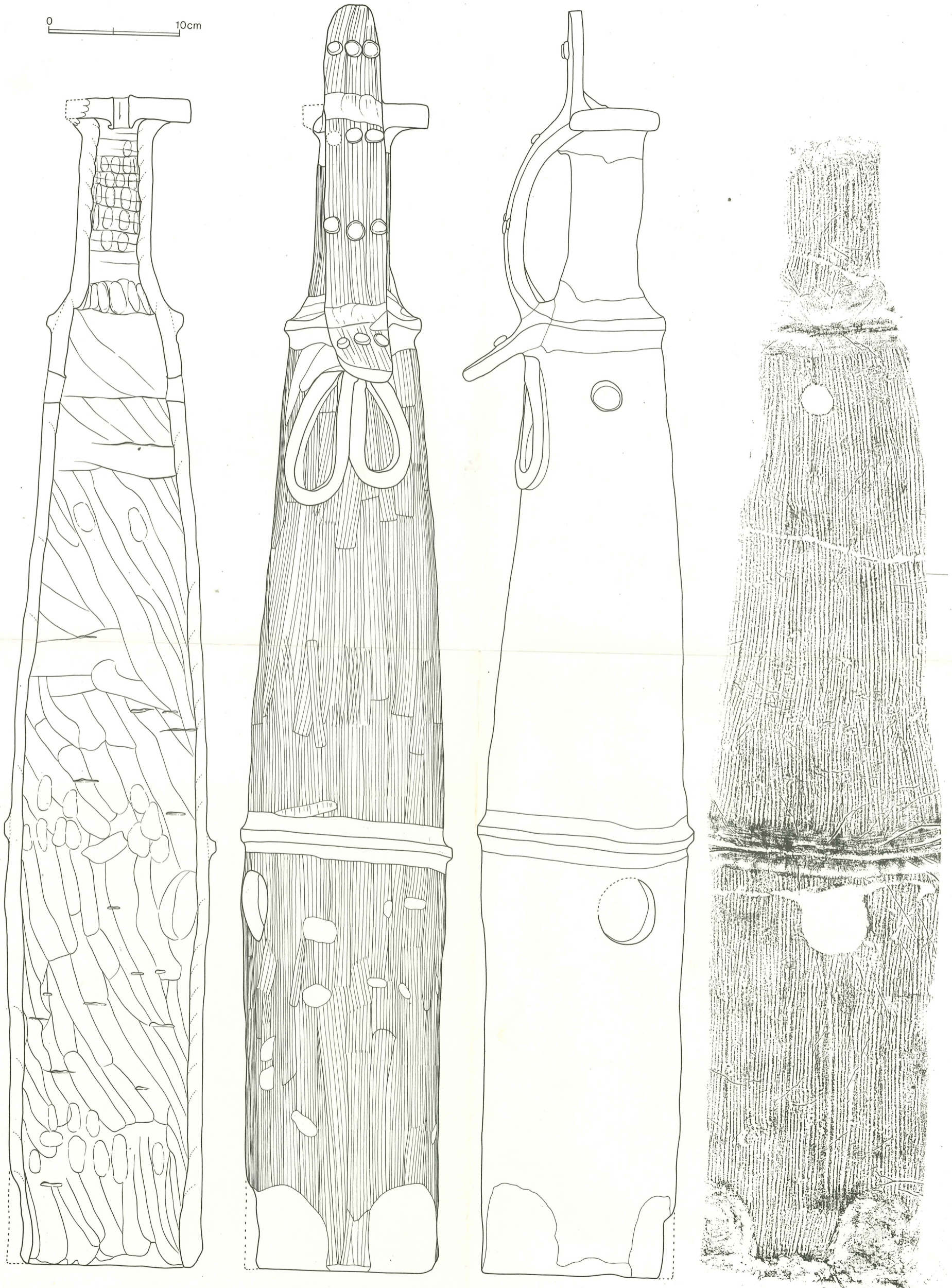




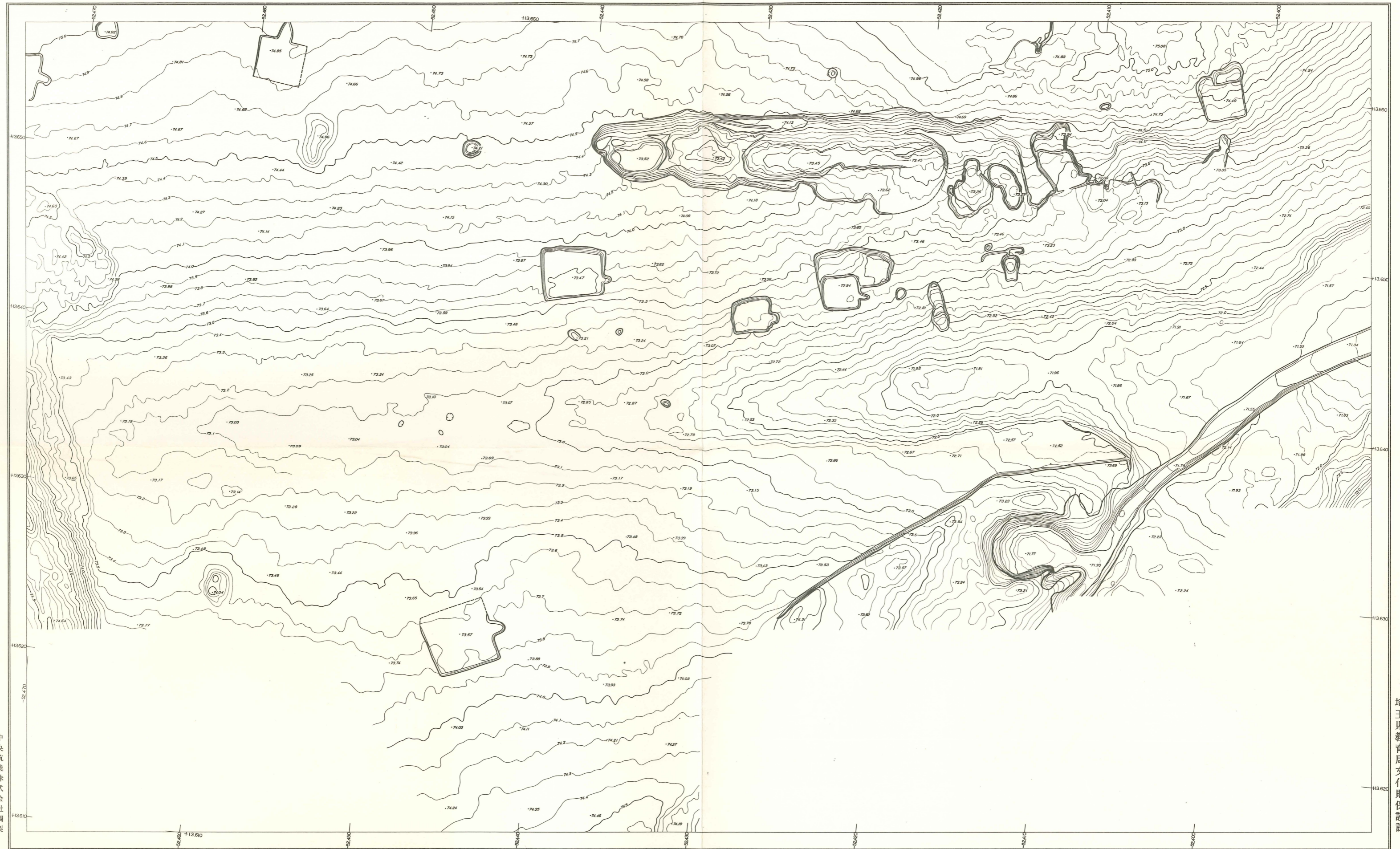
付図1 台耕地遺跡全体図

付図 2 黒田第 17 号墳全体図





付図 3 黒田第17号墳出土太刀形埴輪



中央航業株式会社調製

埼玉県教育局文化財保護課

付図4 製鉄遺構周辺図



種類 時期	須恵器										灰釉陶器	土師器					
	坏	高台付坏	高台付碗	碗	蓋	皿	鉢	壺	甌	甕	瓶	坏	鉢	小形甕	甕		
第I期 9c 1/4																	
	第II期 9c 3/4																
		第III期 10 1/4															
			第IV期 10 4														
				第V期 10 4													
<p>坏・碗・皿など小形品は <math>\frac{1}{6}</math></p> <p>壺・甕など大形品は <math>\frac{1}{8}</math></p>																	

付図 5 台耕地遺跡 平安時代土器編年