

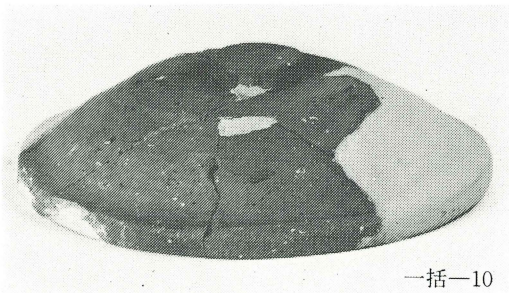
一括-13



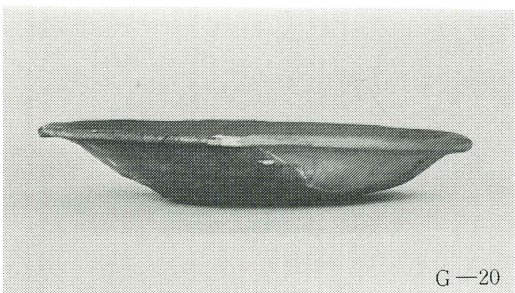
一括-8



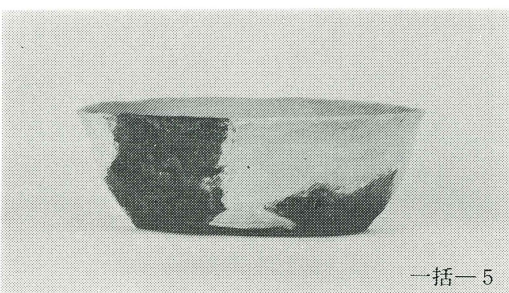
G-8



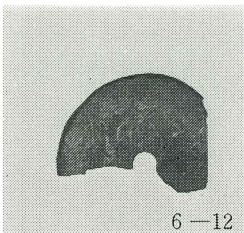
一括-10



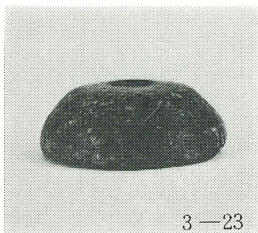
G-20



一括-5



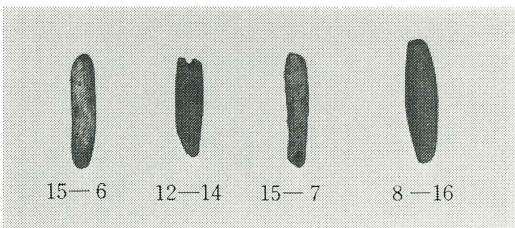
6-12



3-23



G-4

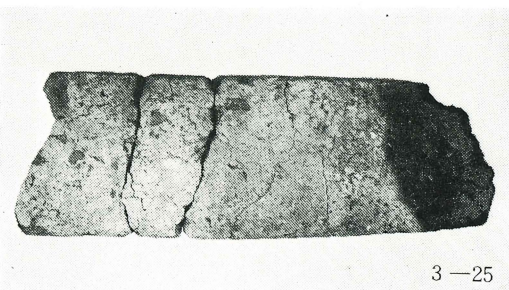


15-6

12-14

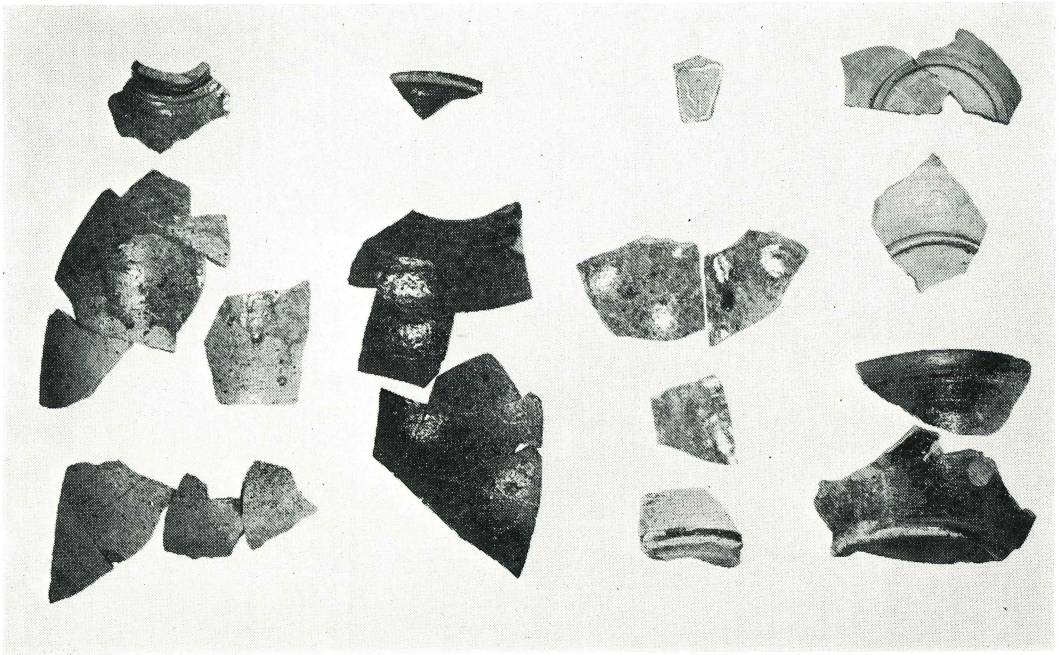
15-7

8-16

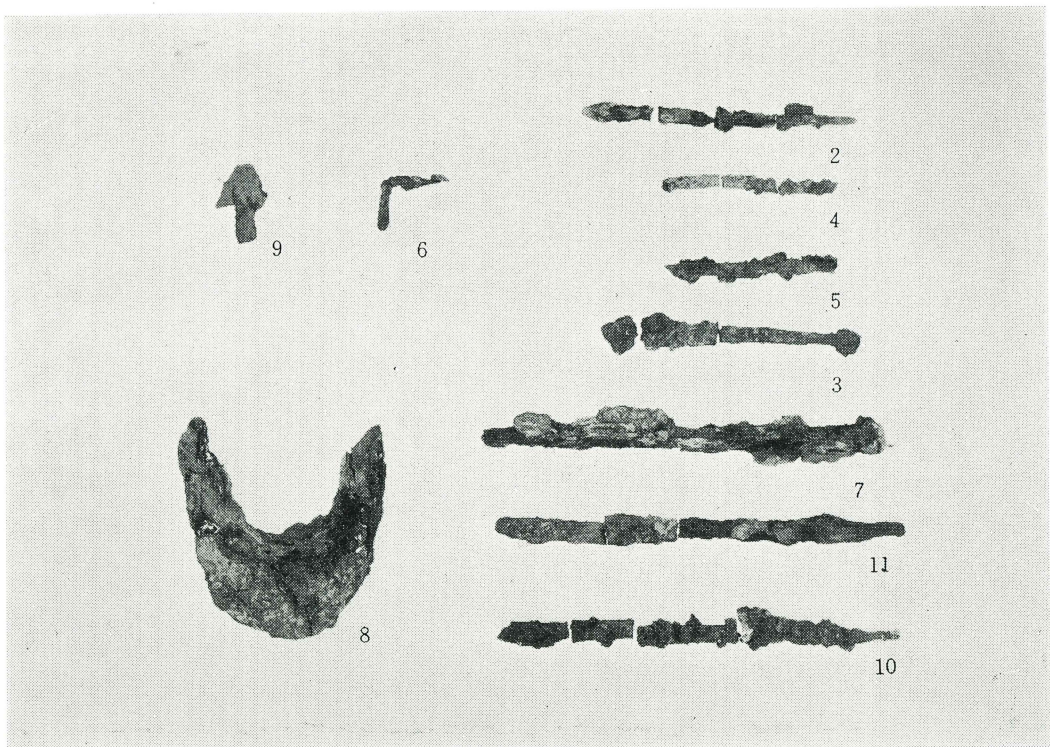


3-25



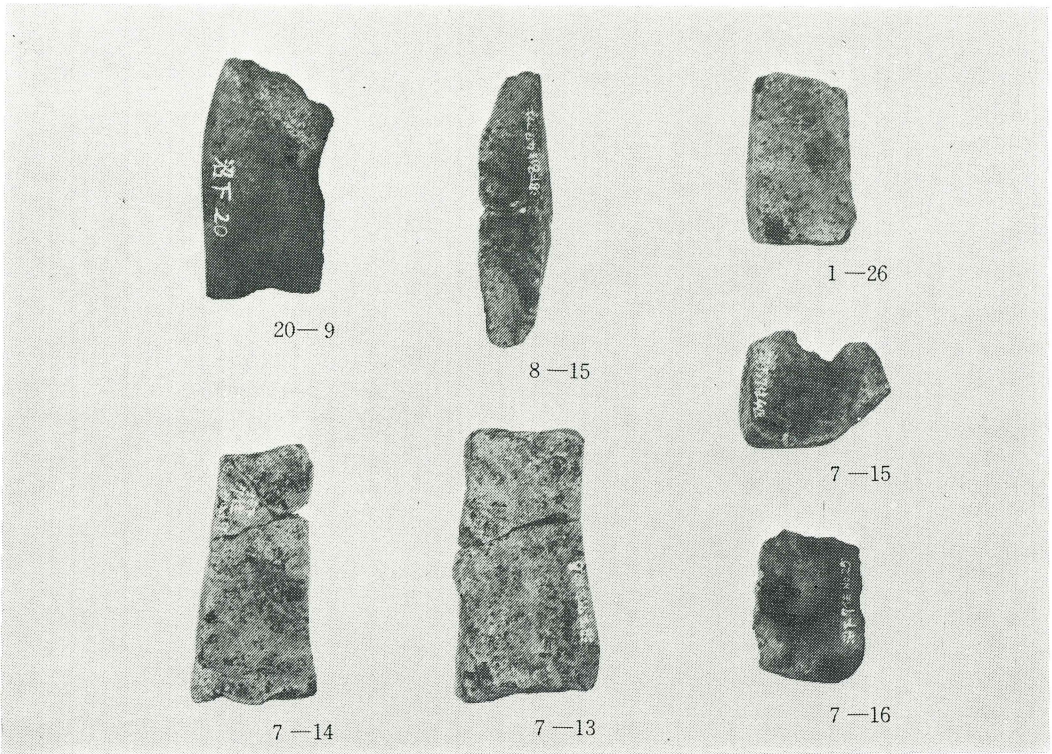


灰釉陶器

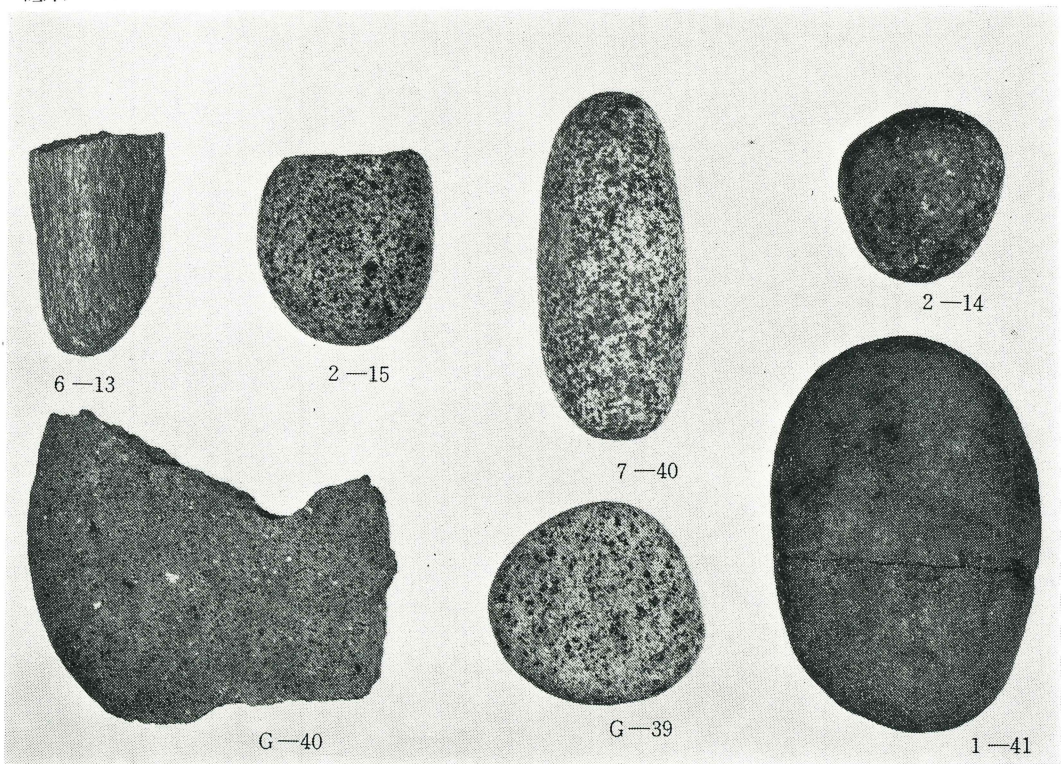


鉄製品



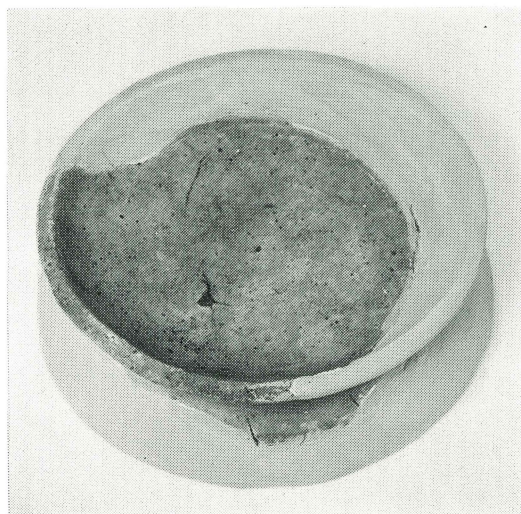


砥石

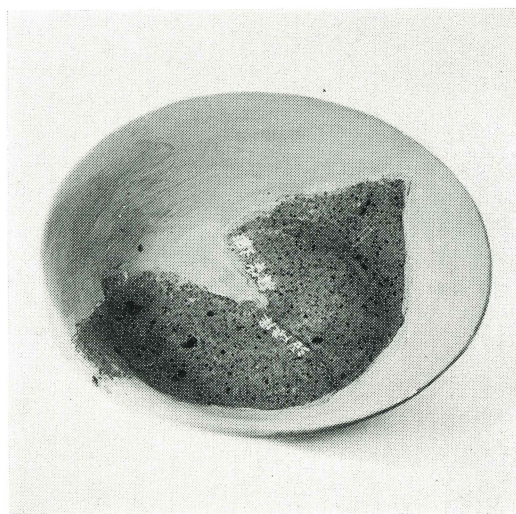


磨石・石皿等





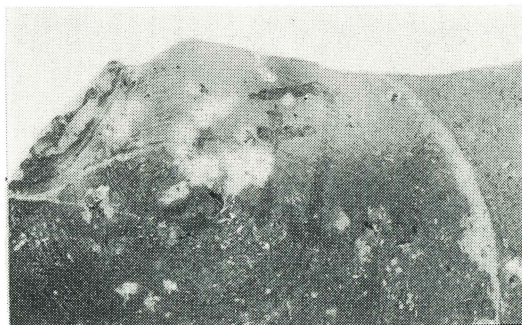
4号住居跡出土円面碗



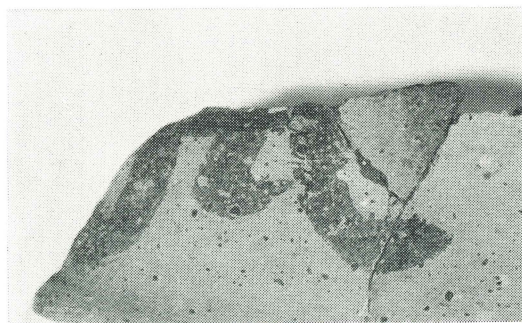
グリッド出土坏



墨書 1



墨書 2



墨書 3

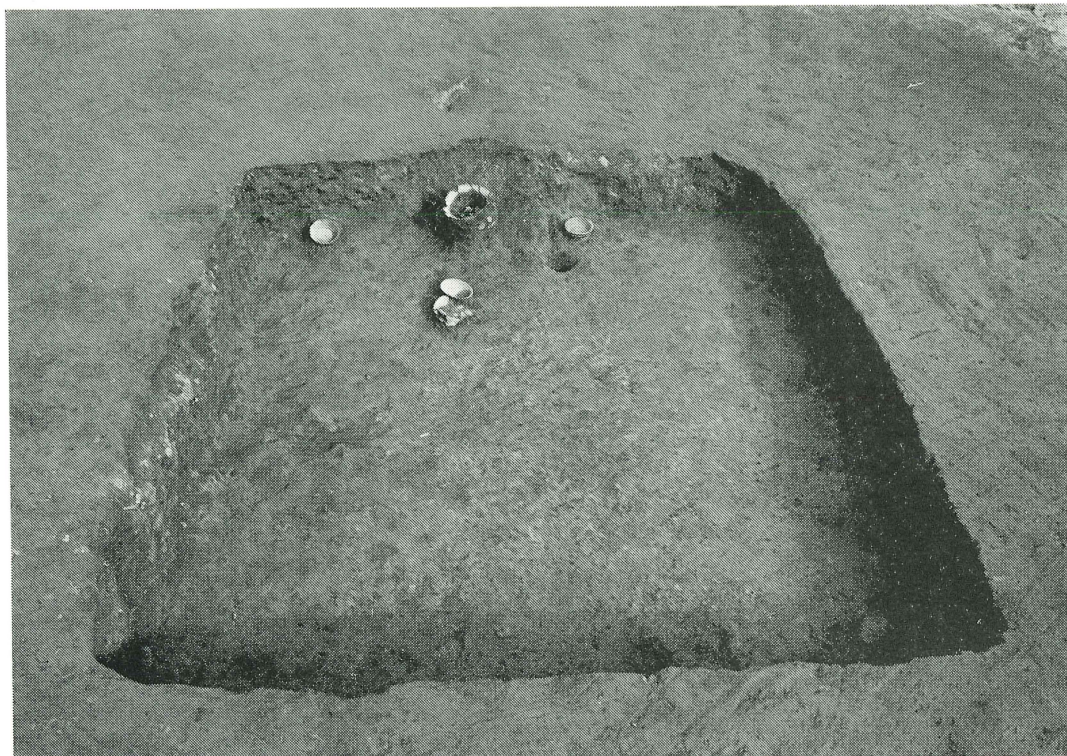


沼下遺跡



グリッド出土縄文式土器



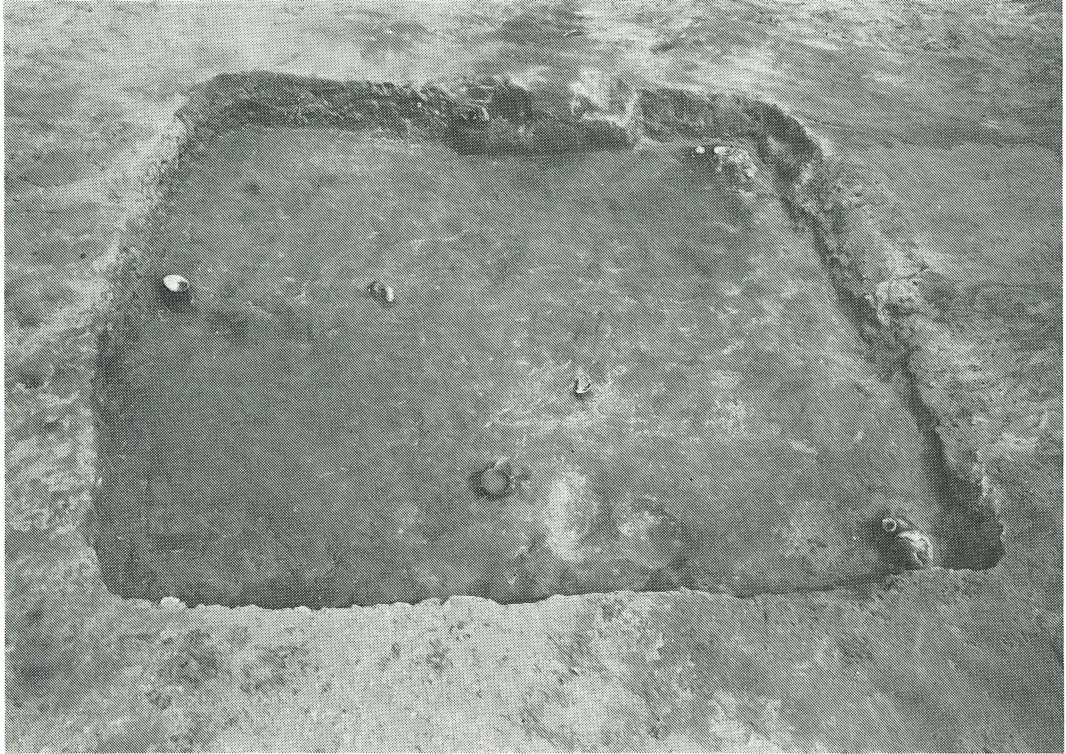


1号住居跡



1号住居跡竈



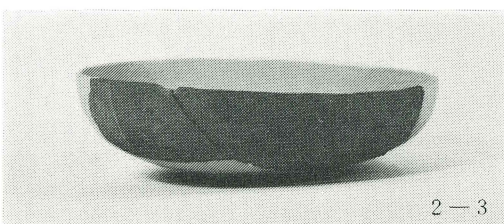
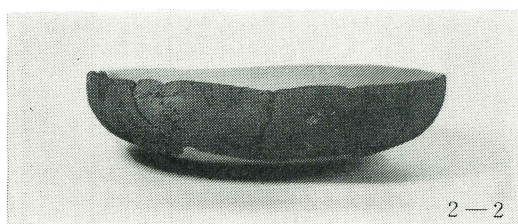
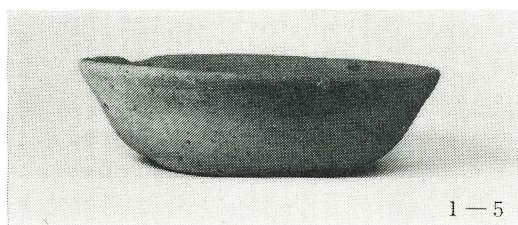
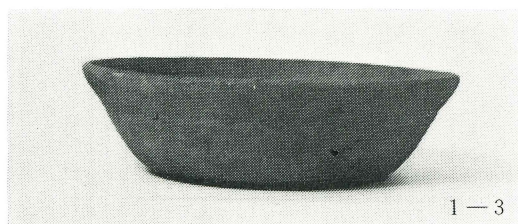


2号住居跡



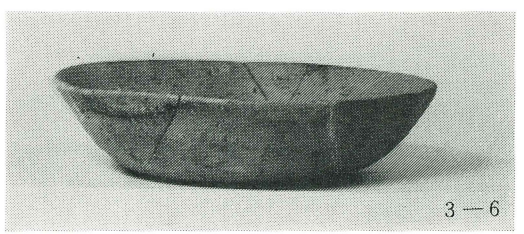
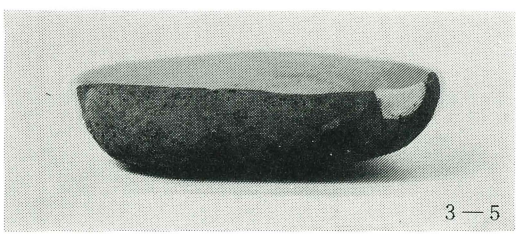
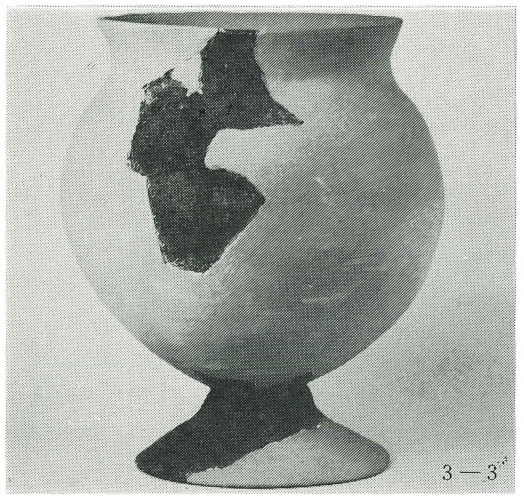
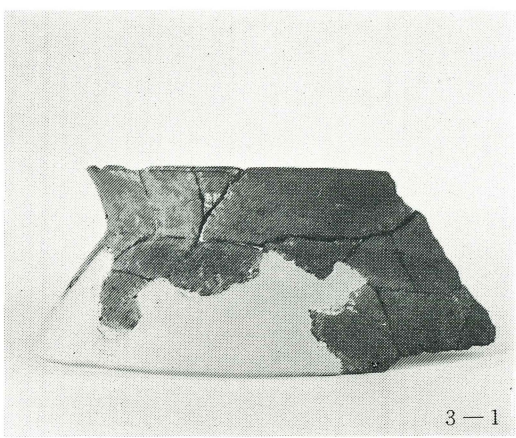
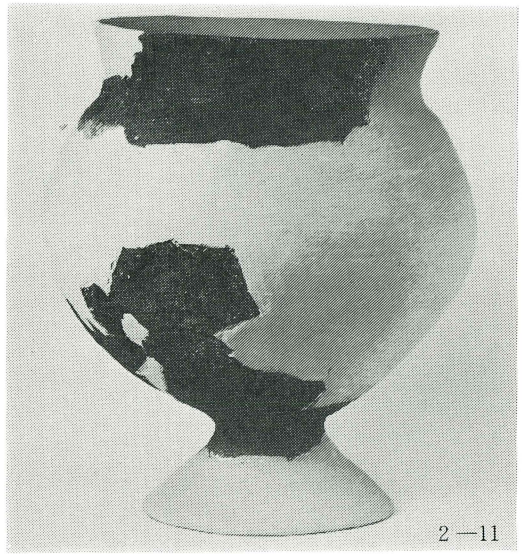
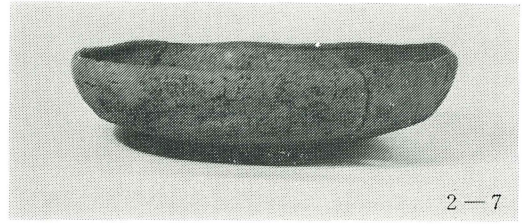
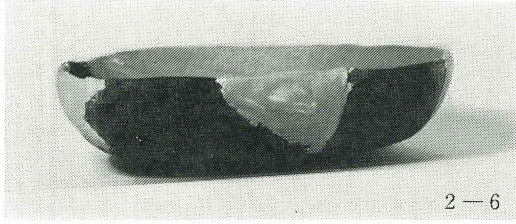
掘立柱建物跡





1・2号住居跡出土土器



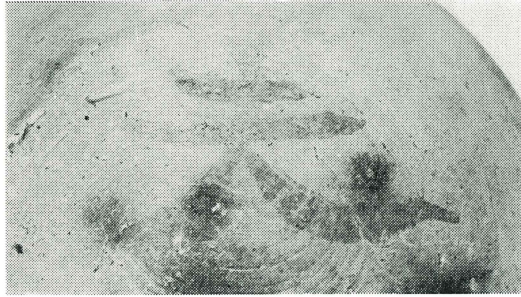


2・3号住居跡出土土器





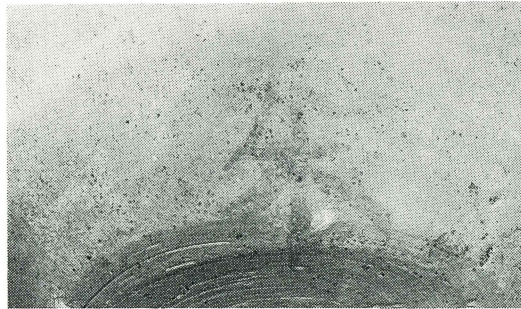
3号住居跡出土蓋



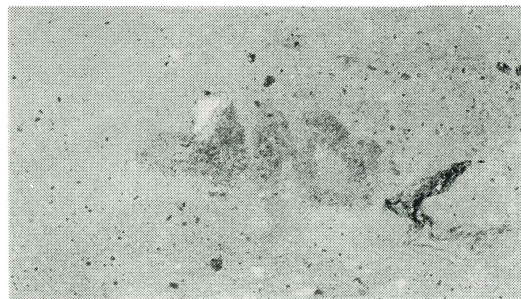
墨書 1



墨書 2



墨書 3



墨書 4





1号住居跡



1号住居跡・竈





1号炭焼窯



2号炭焼窯全景





2号炭焼窯



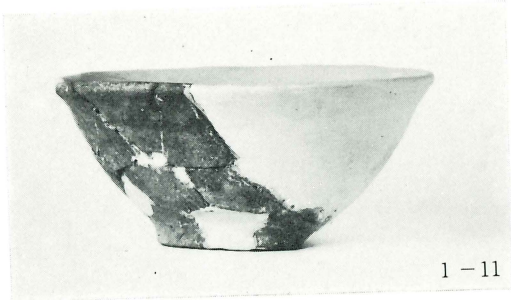
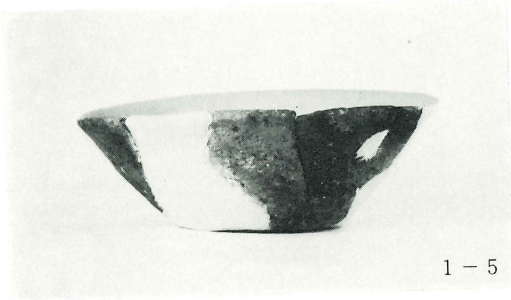
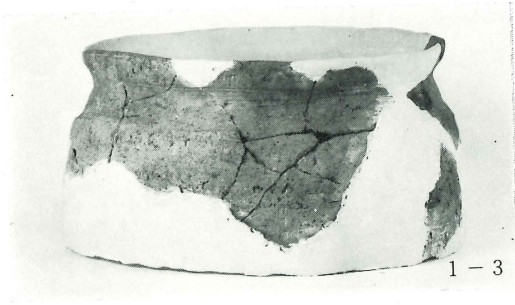
3号炭焼窯全景





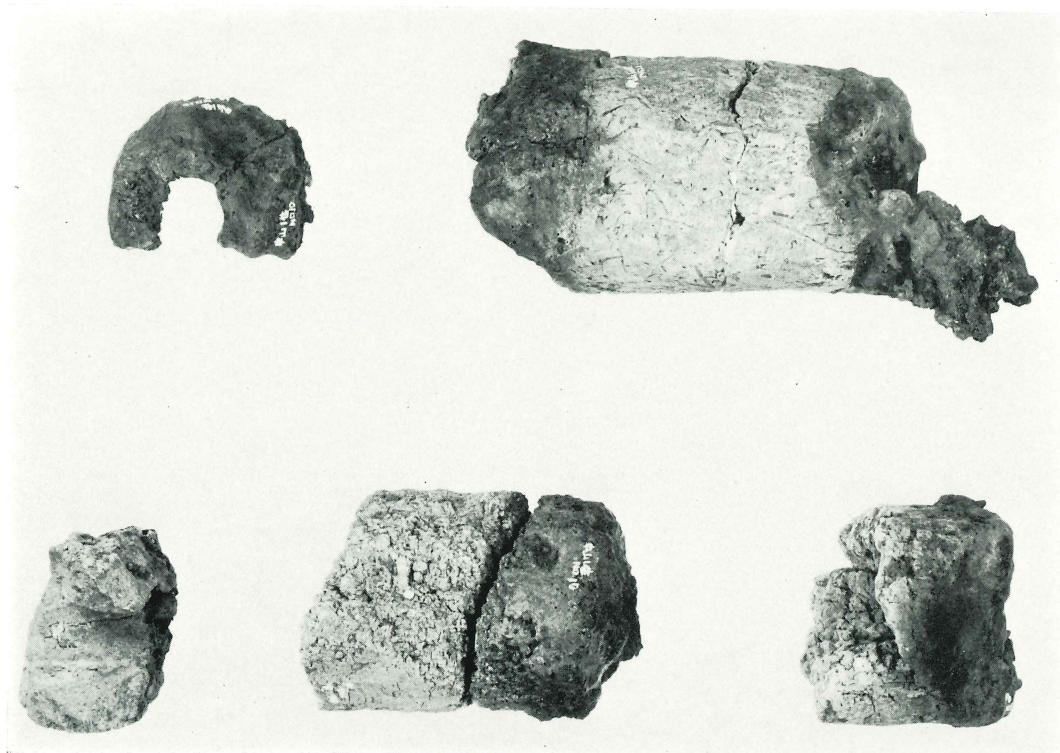
3号炭焼窯





1号住居跡出土土器





1号住居跡出土鞆羽口



中山遺跡出土石器





お金塚全景（南より）



お金塚全景（西より）



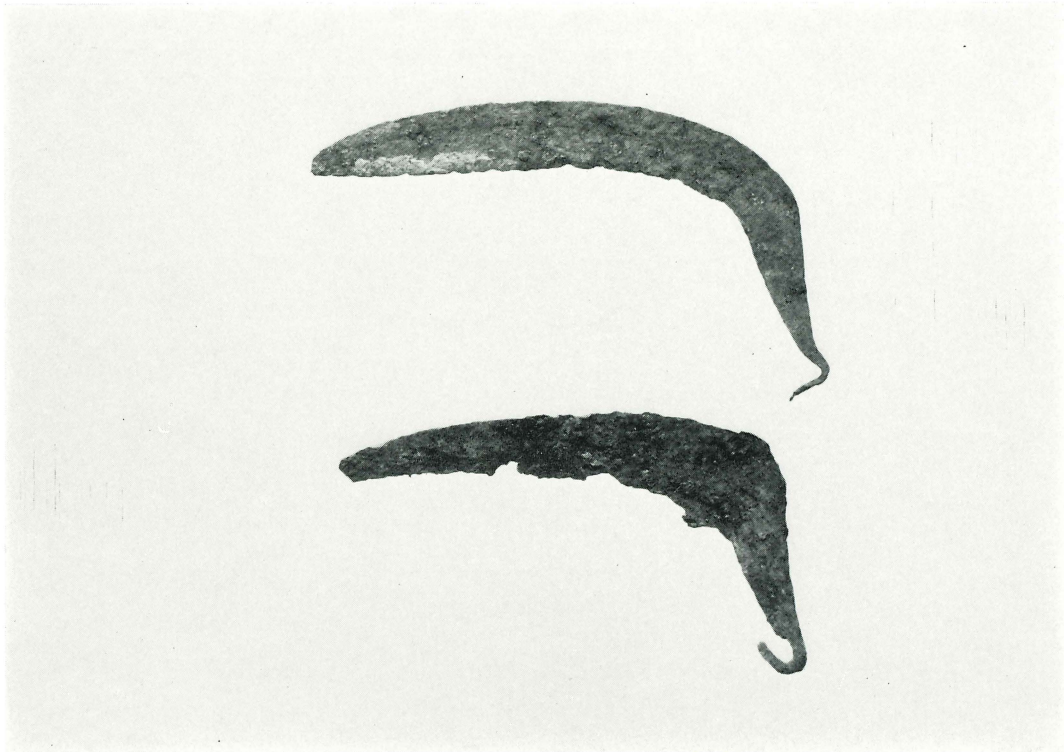


お金塚土層



お金塚かわらけ出土状態



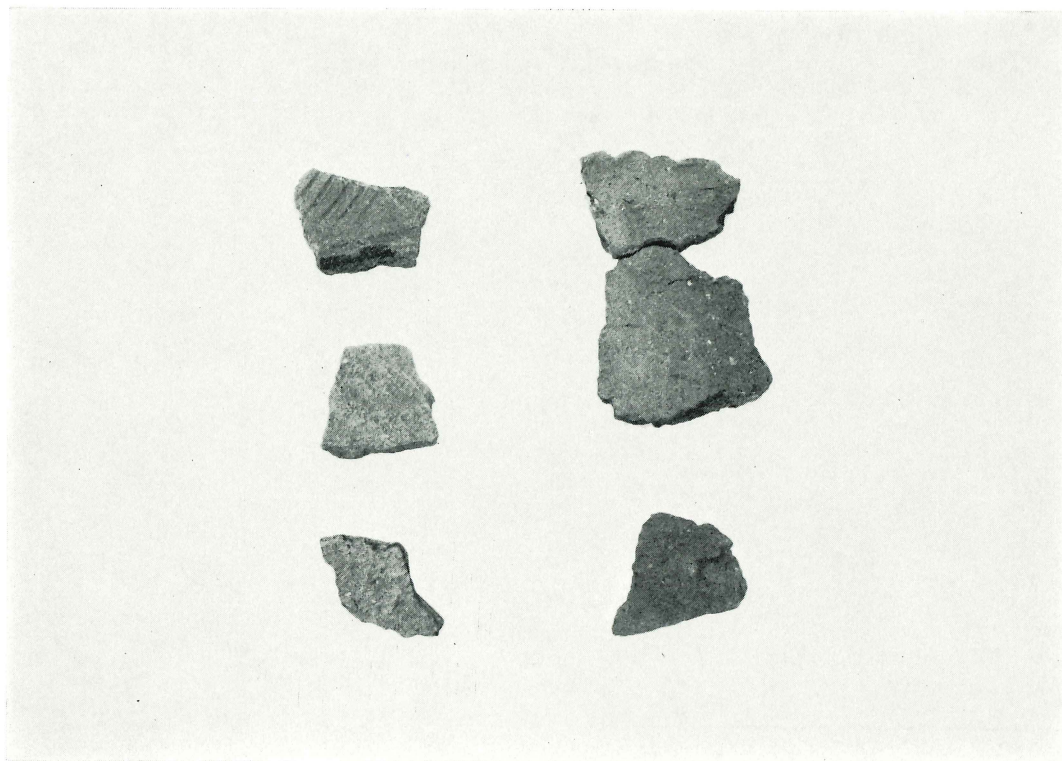


お金塚出土鎌

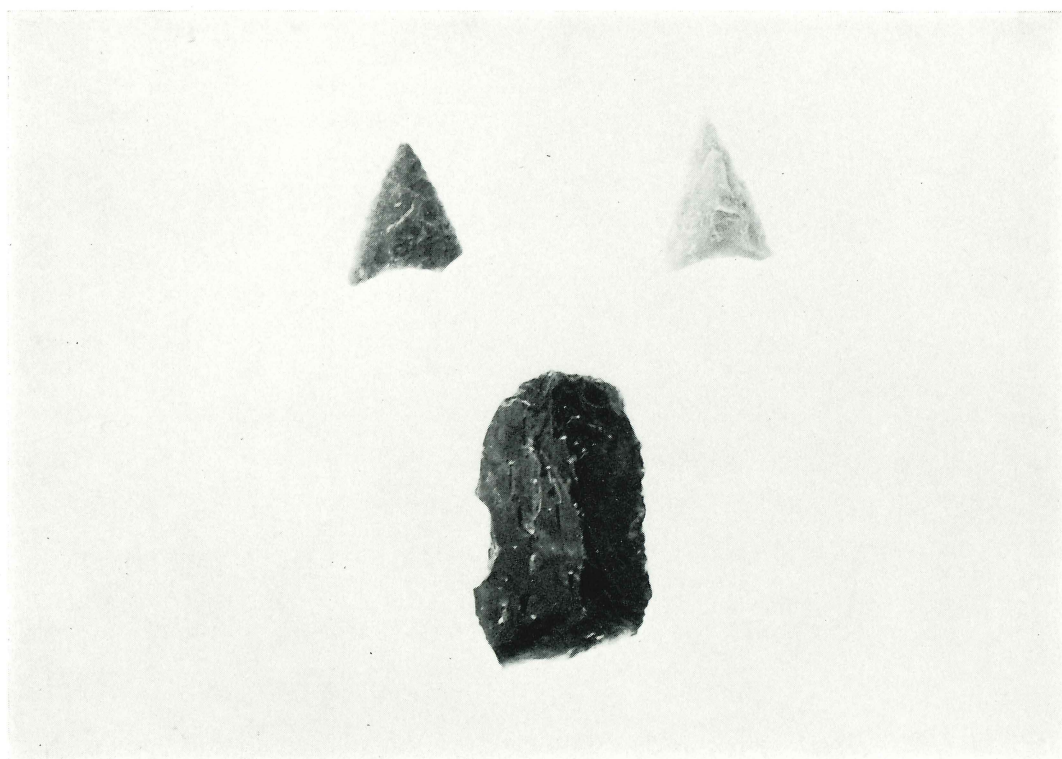


お金塚頂部庚申塔



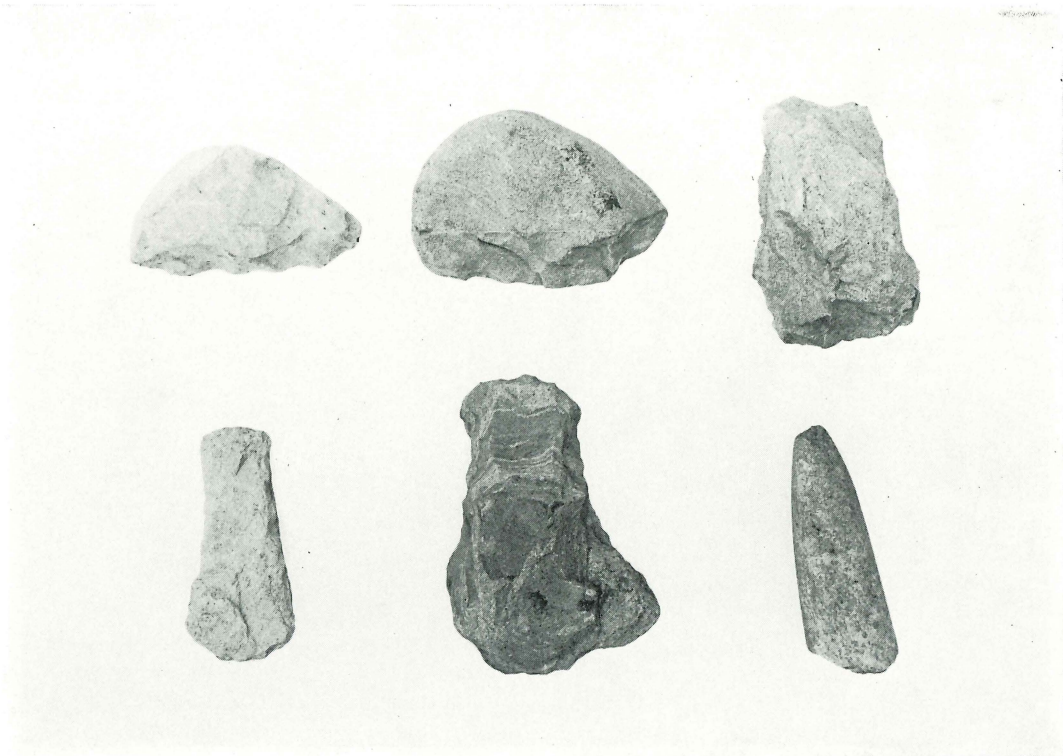


縄文式土器

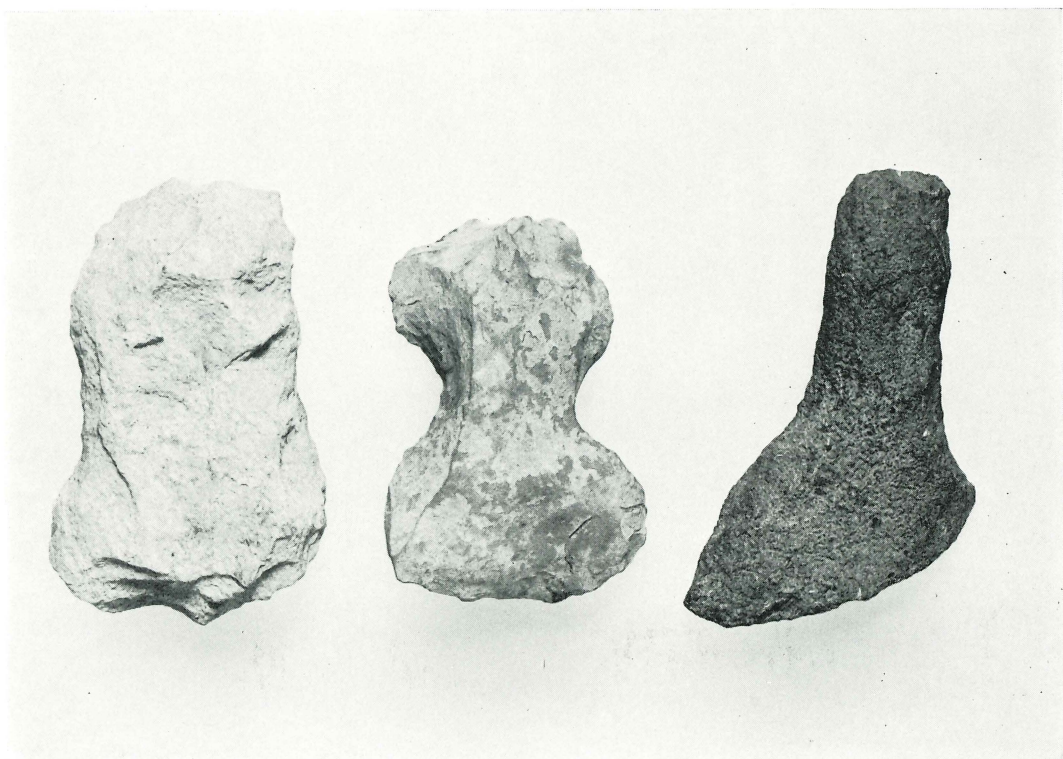


石器(1)





石器(2)



石器(3)





鶴巻遺跡全景



剥片集中区遺物出土状態



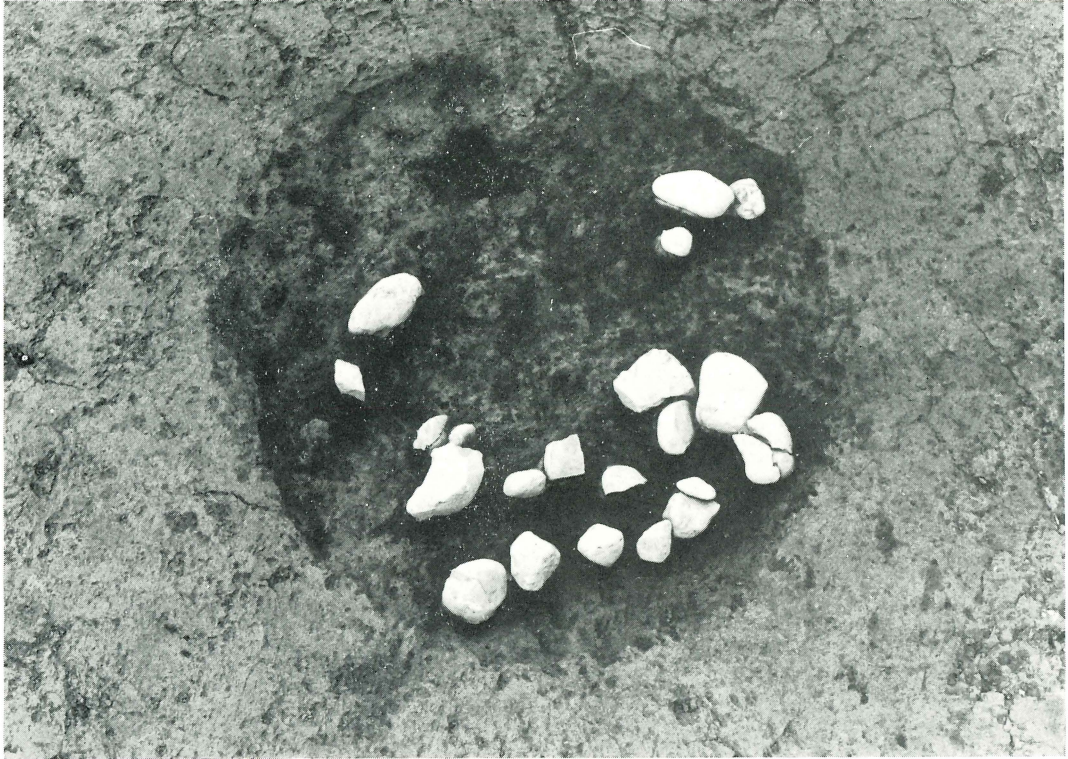


土壙 1



土壙 2





土壙 5

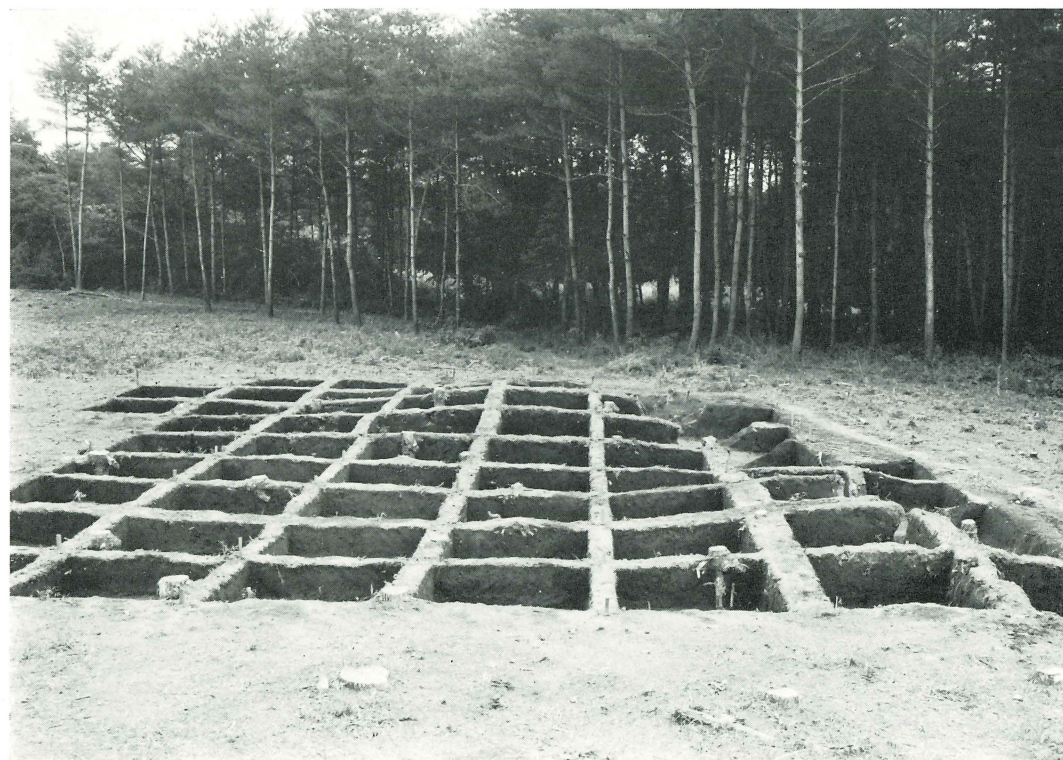


土壙 7





1・2号塚全景



1・2号塚グリッド



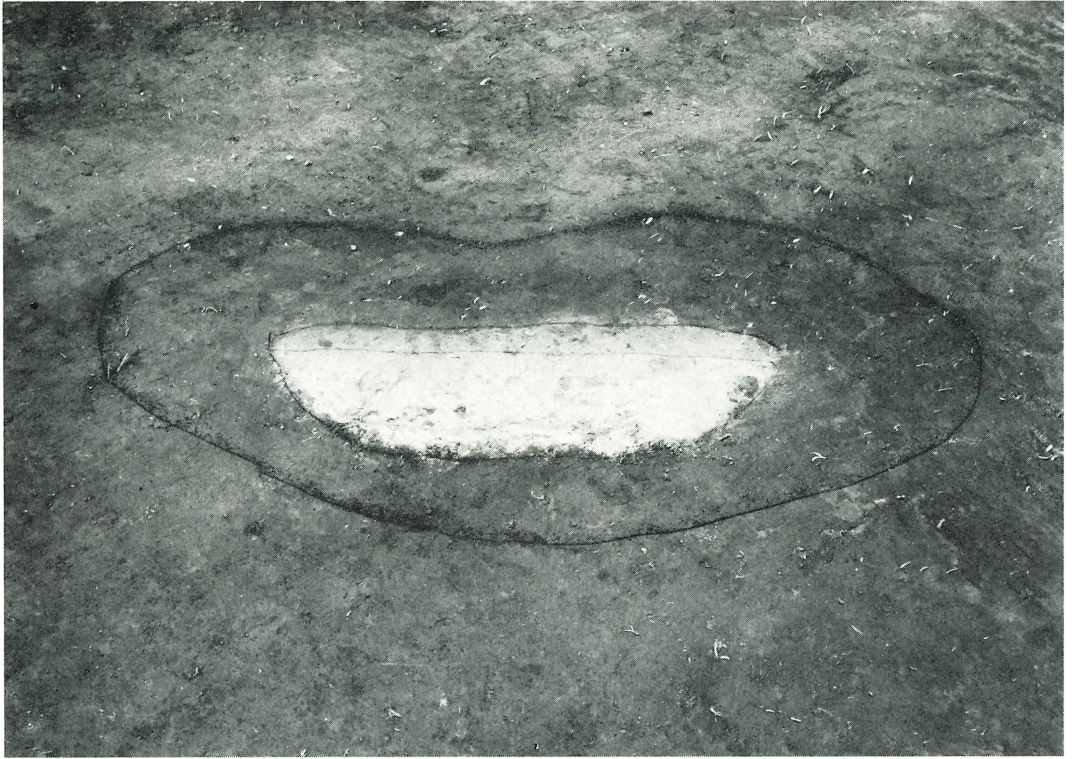


3号塚（南より）



3号塚トレンチ（西より）





倒木痕 5



倒木痕 12





倒木痕 7

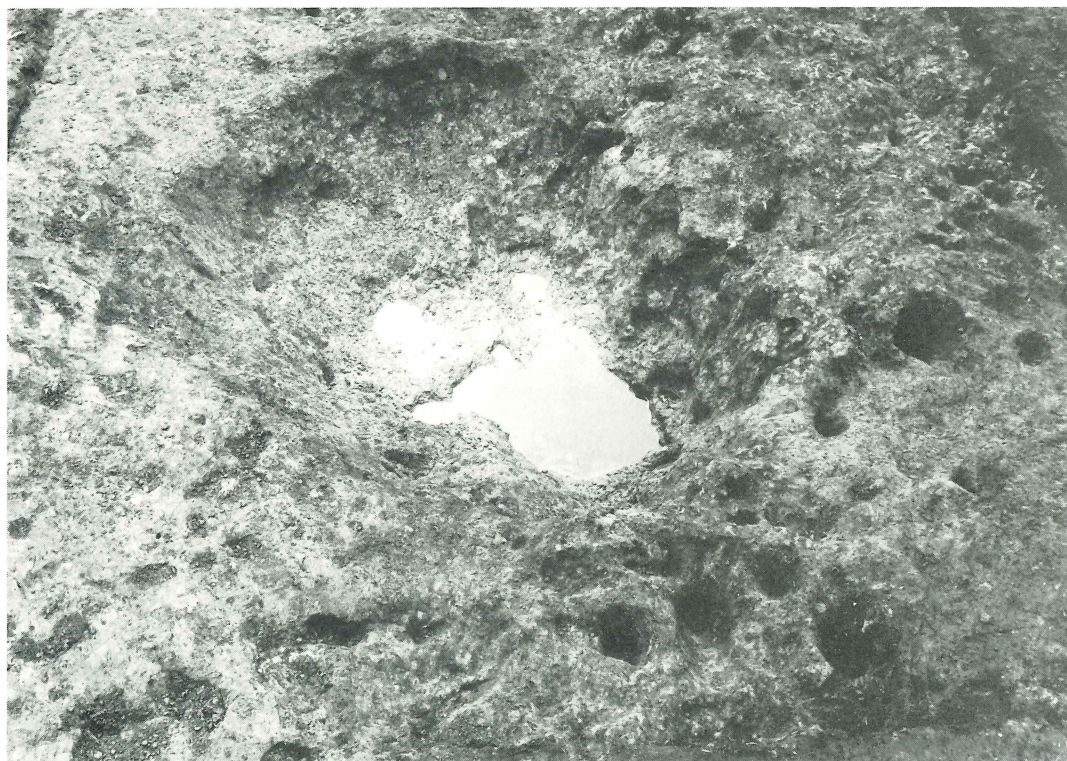


倒木痕 7 土層





倒木痕11



倒木痕11



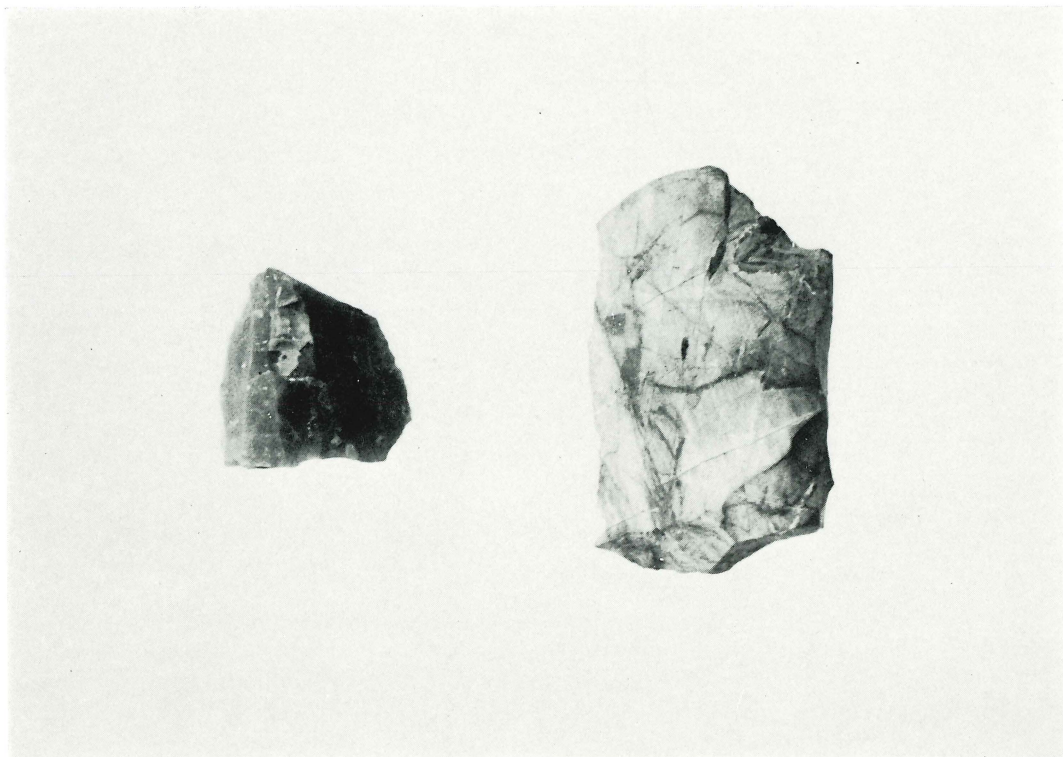


倒木痕17 完掘後全景

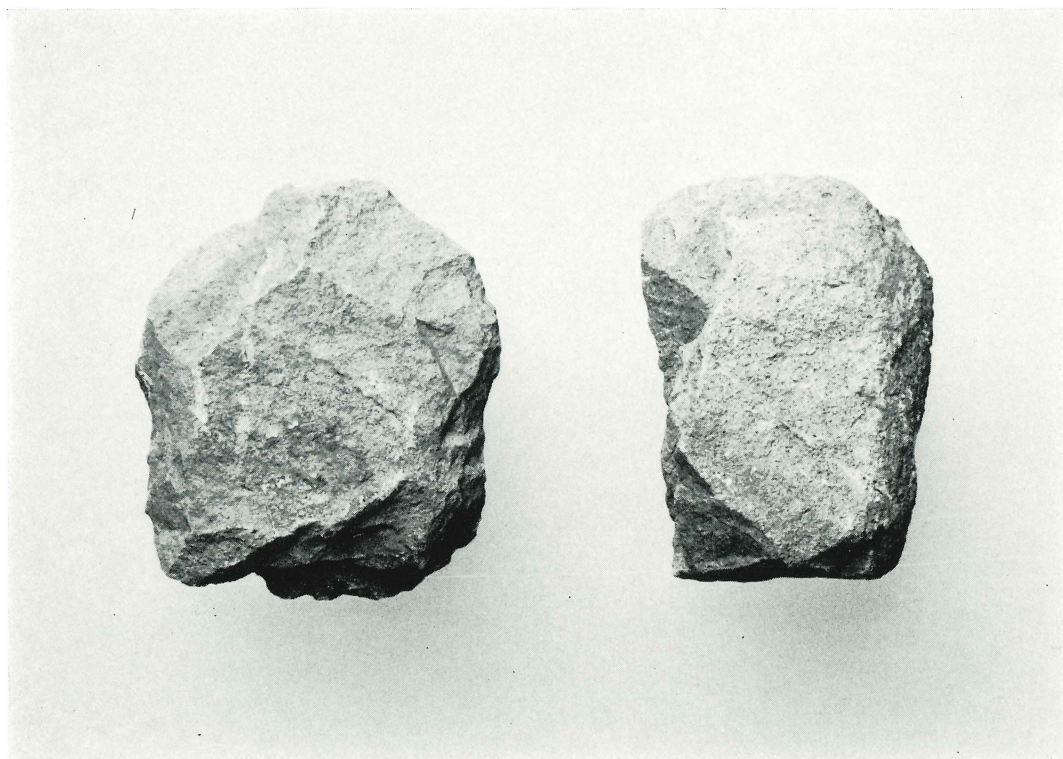


倒木痕調査風景



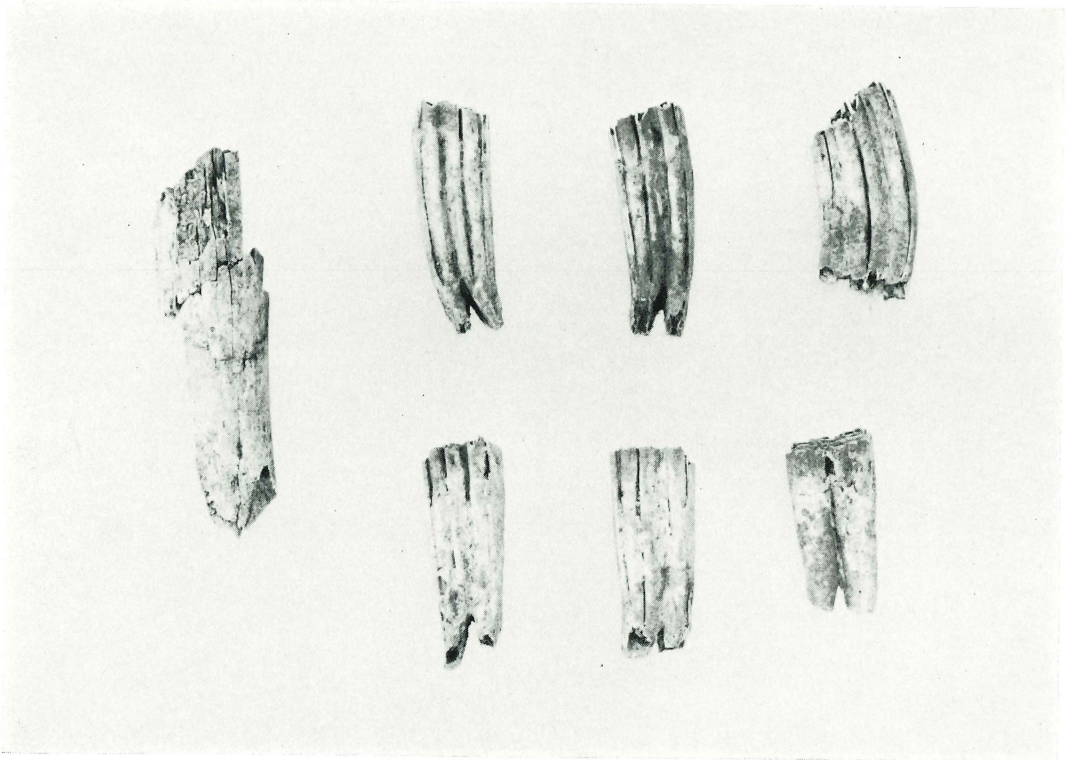


剥片集中区出土石核

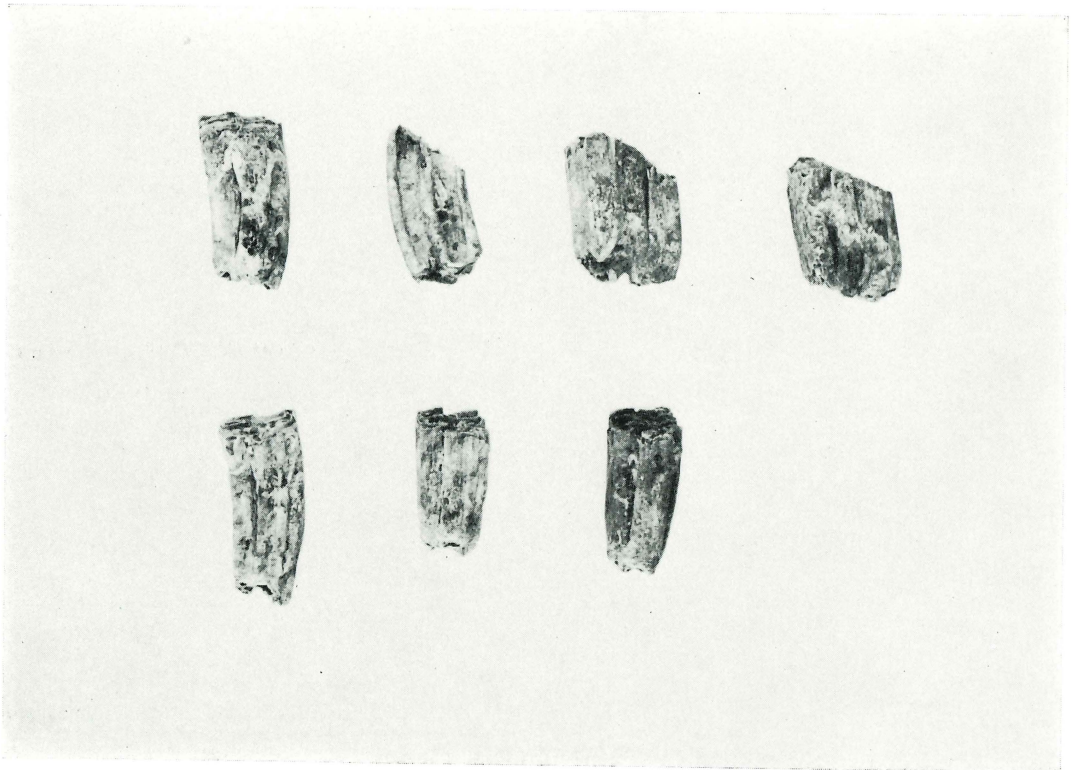


土壌5 出土石器





2号塚出土馬齒

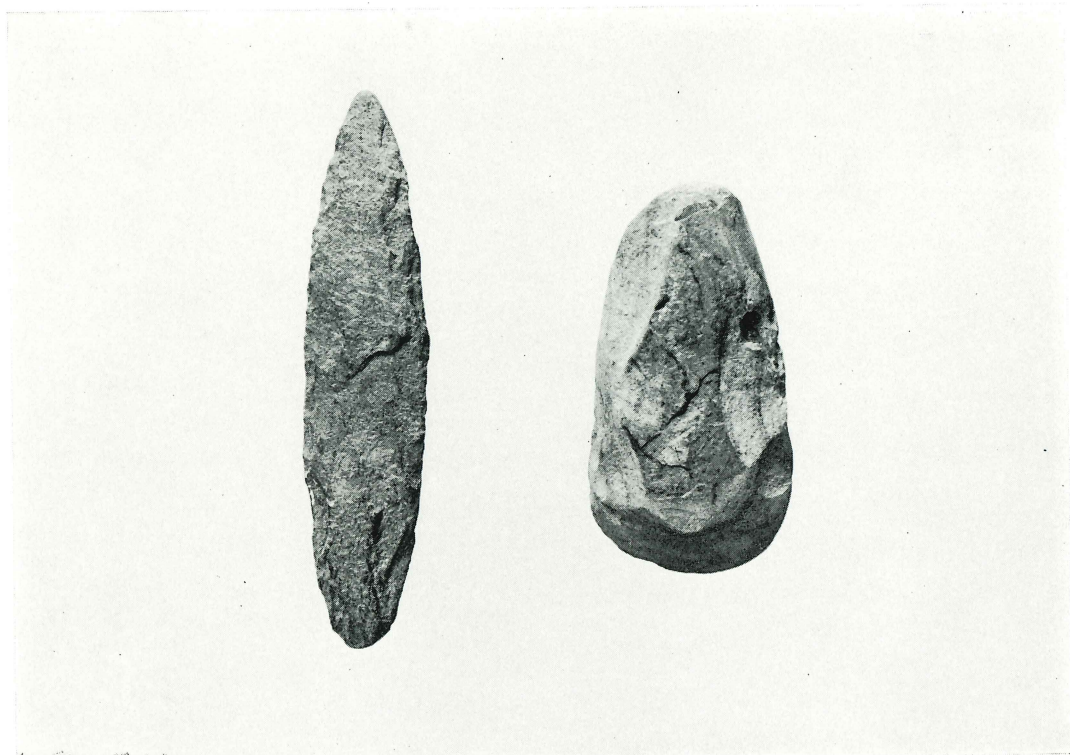


3号塚出土馬齒



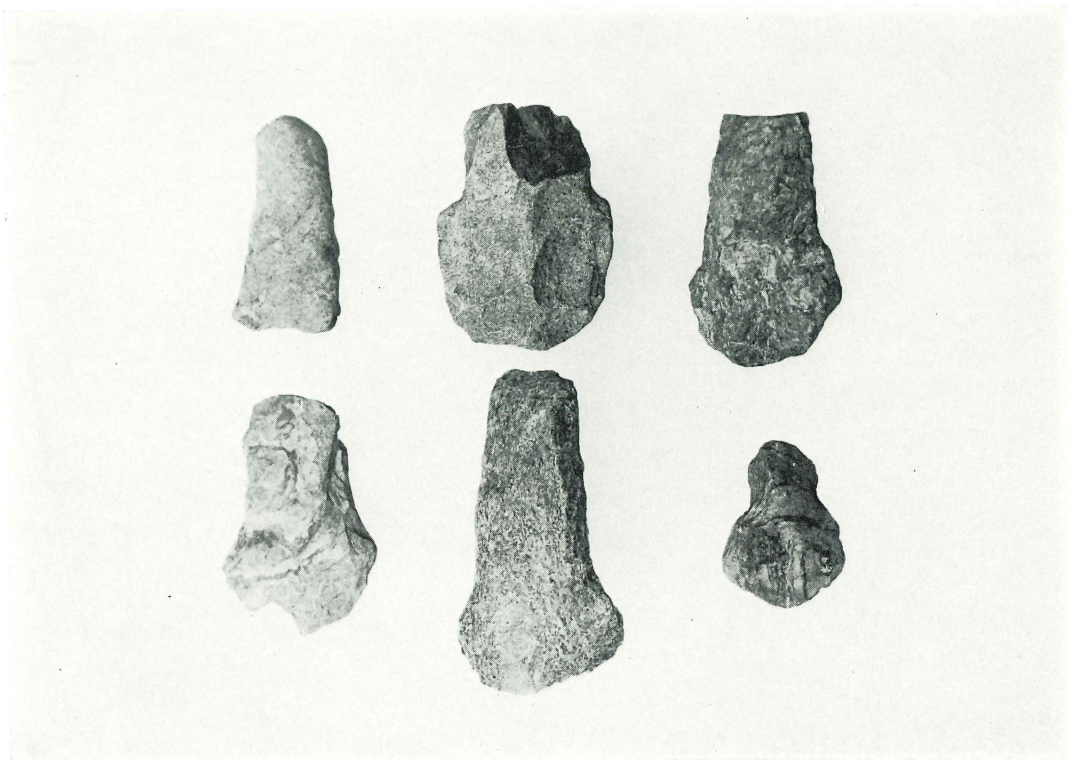


縄文式土器



石器(1)





石器(2)

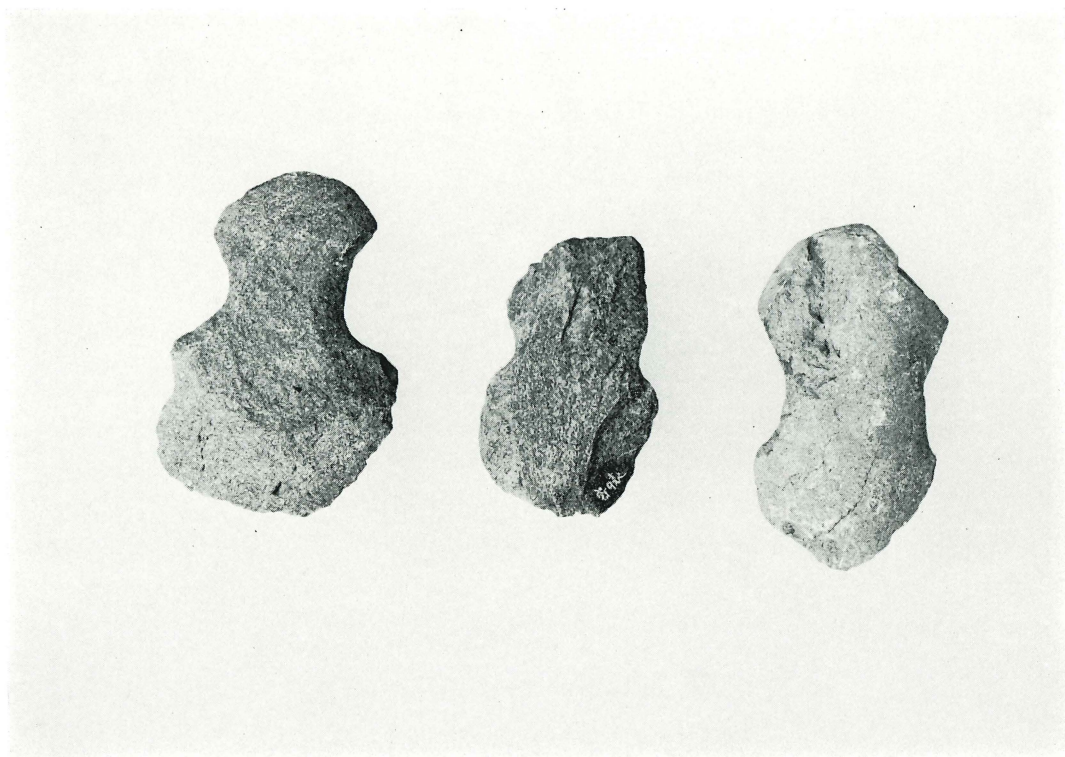


石器(3)





石器(4)



石器(5)





石器(6)



Explanation of Plates

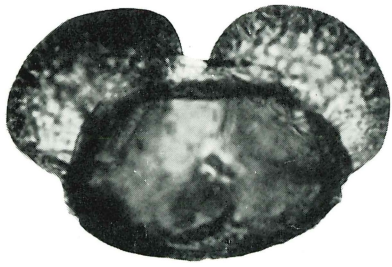
PLATE 64

- 1 Pinus
- 2 Cryptomeria
- 3 Sciadopitys
- 4 Lepidobalanus
- 5 Fagus
- 6 Zelkova
- 7 Chenopodiaceae
- 8 Impatiens
- 9 Moraceae
- 10 Portulaca
- 11 Gramineae
- 12 Monolete spore

PLATE 65

- NO. 1 OPX : 斜方輝石  
CPX : 単斜輝石
- NO. 2 PI : 斜長石  
GI : 火山ガラス

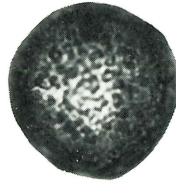




1



2



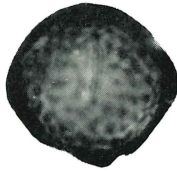
3



4



5



6



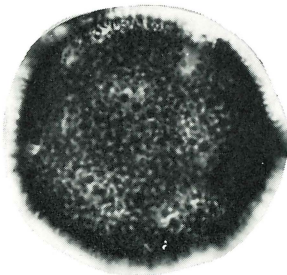
7



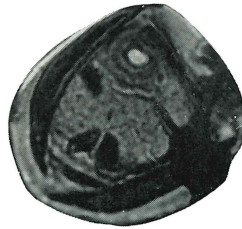
8



9



10



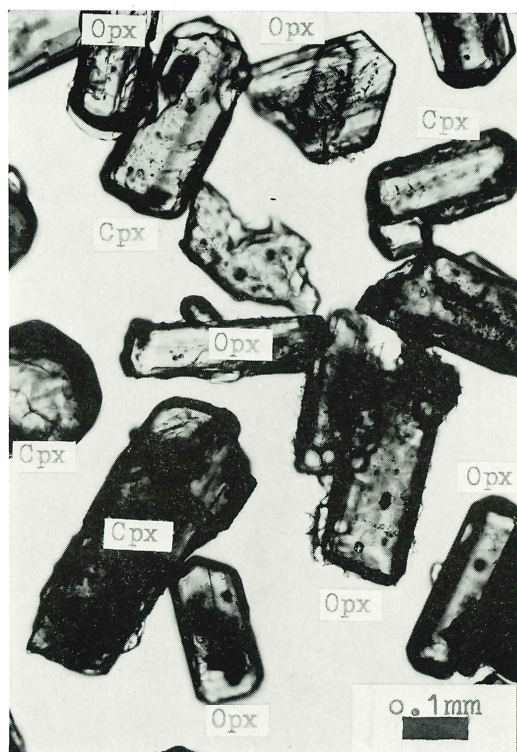
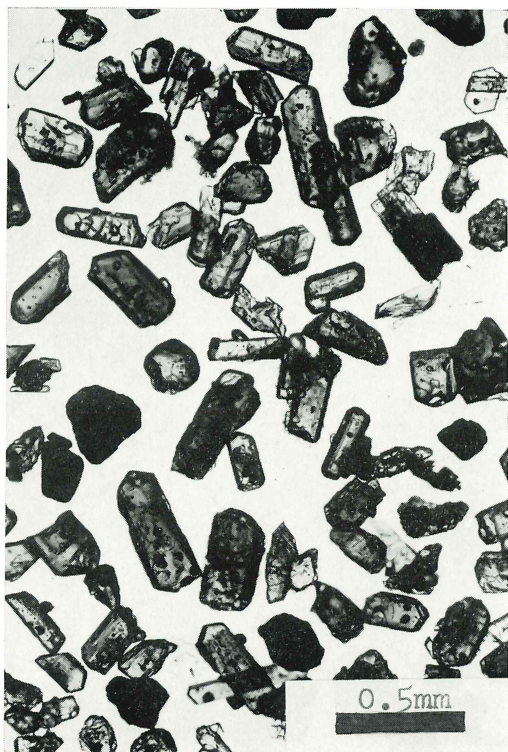
11



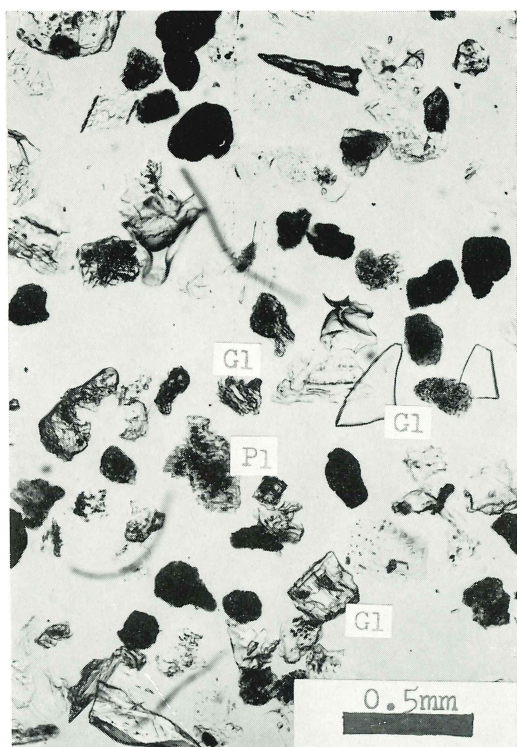
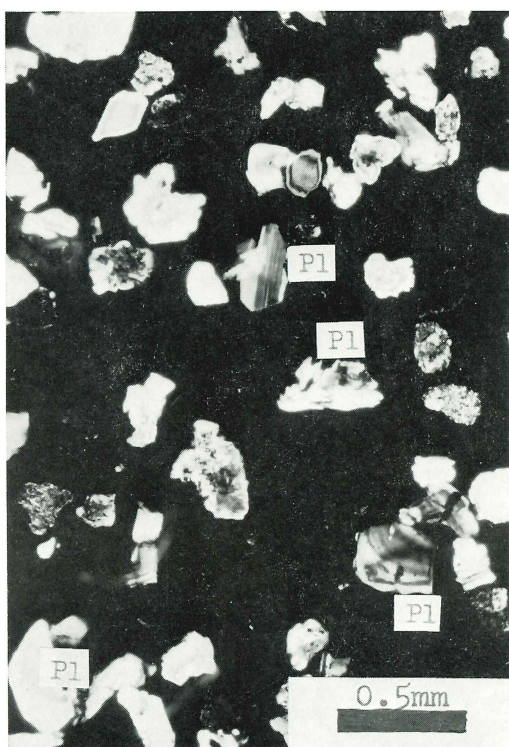
12





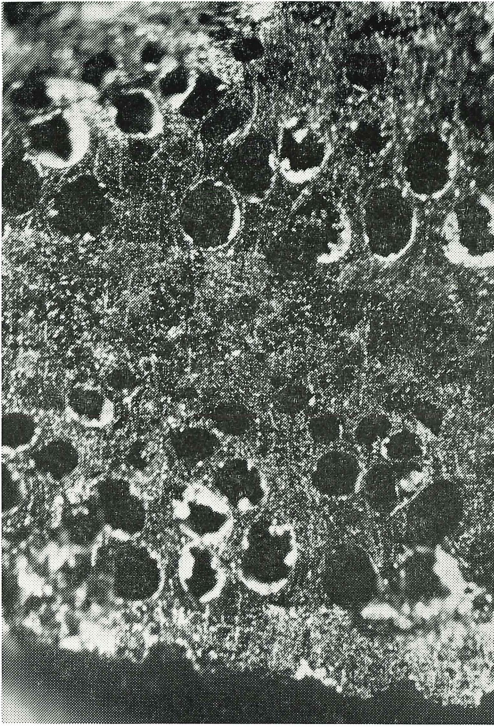


NO. 1 井戸内覆土 (ローム塊)

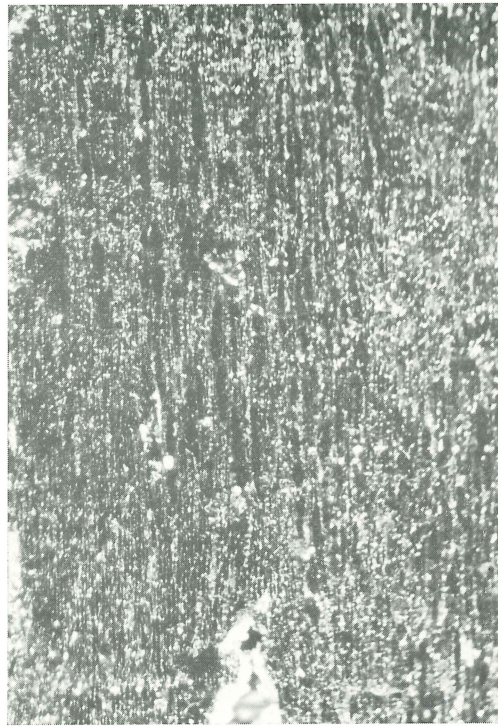


NO. 2 井戸内覆土

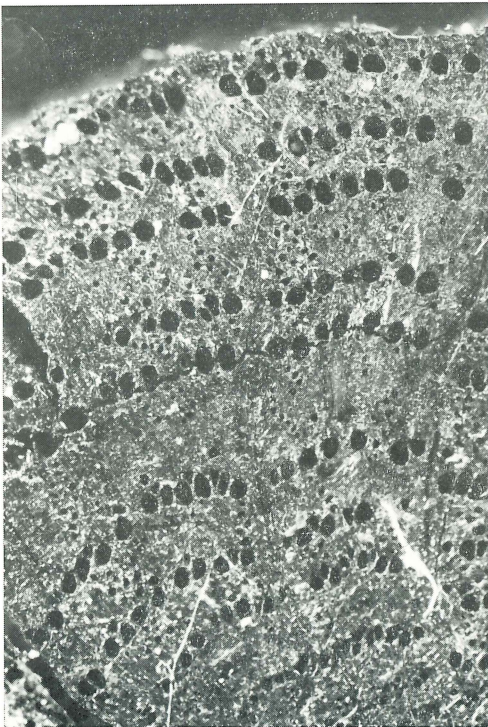




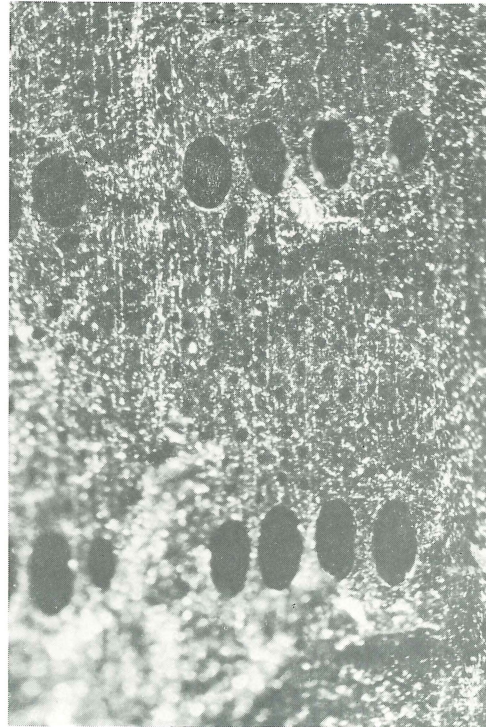
1 *Castanea crenata*  
(Cross sect.  $\times 35$ )



2 *Castanea crenata*  
(Jangential Sect.  $\times 50$ )

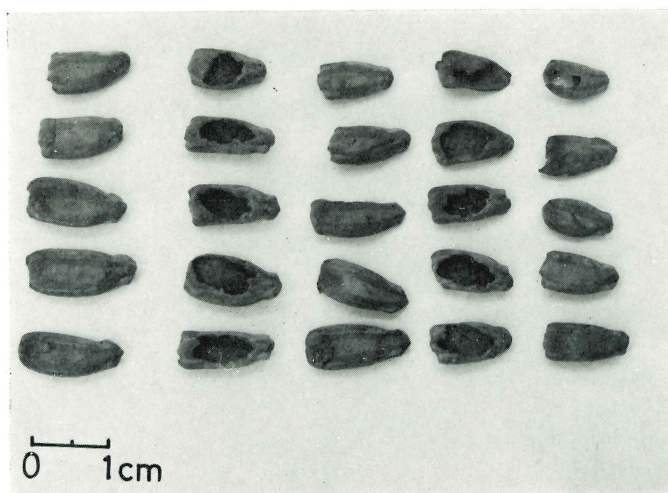


3 *Quercus acutissima*  
or *Q. Variabilis* (Cross Sect  $\times 30$ )

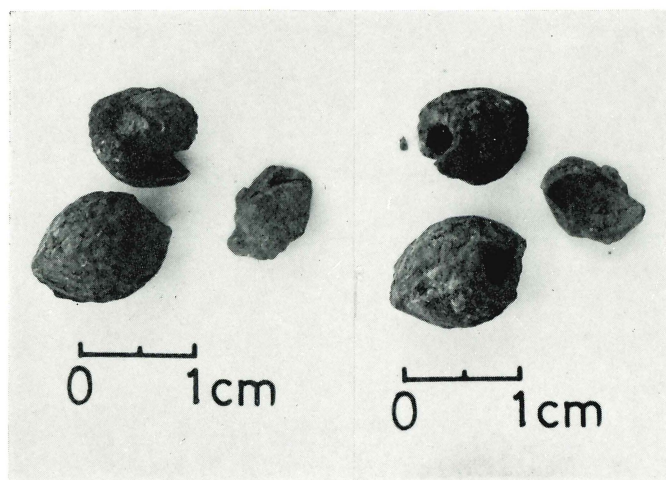


4 *Quercus acutissima*  
or *Q. Variabilis* (Cross Sect  $\times 35$ )

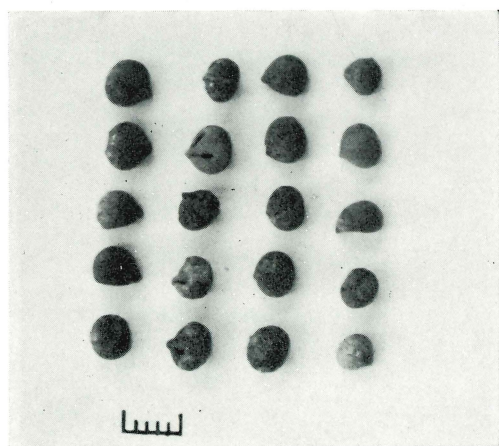




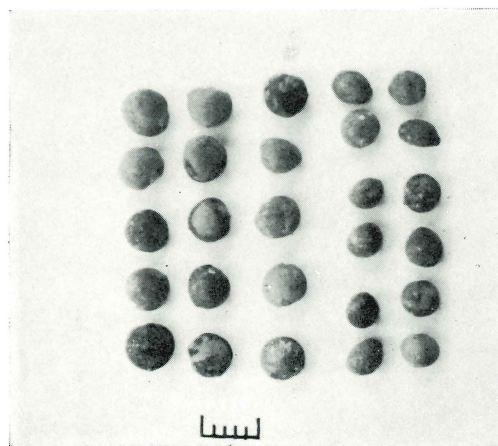
1 *Lagenaria* sp



2 *Prunus* of *salicina*

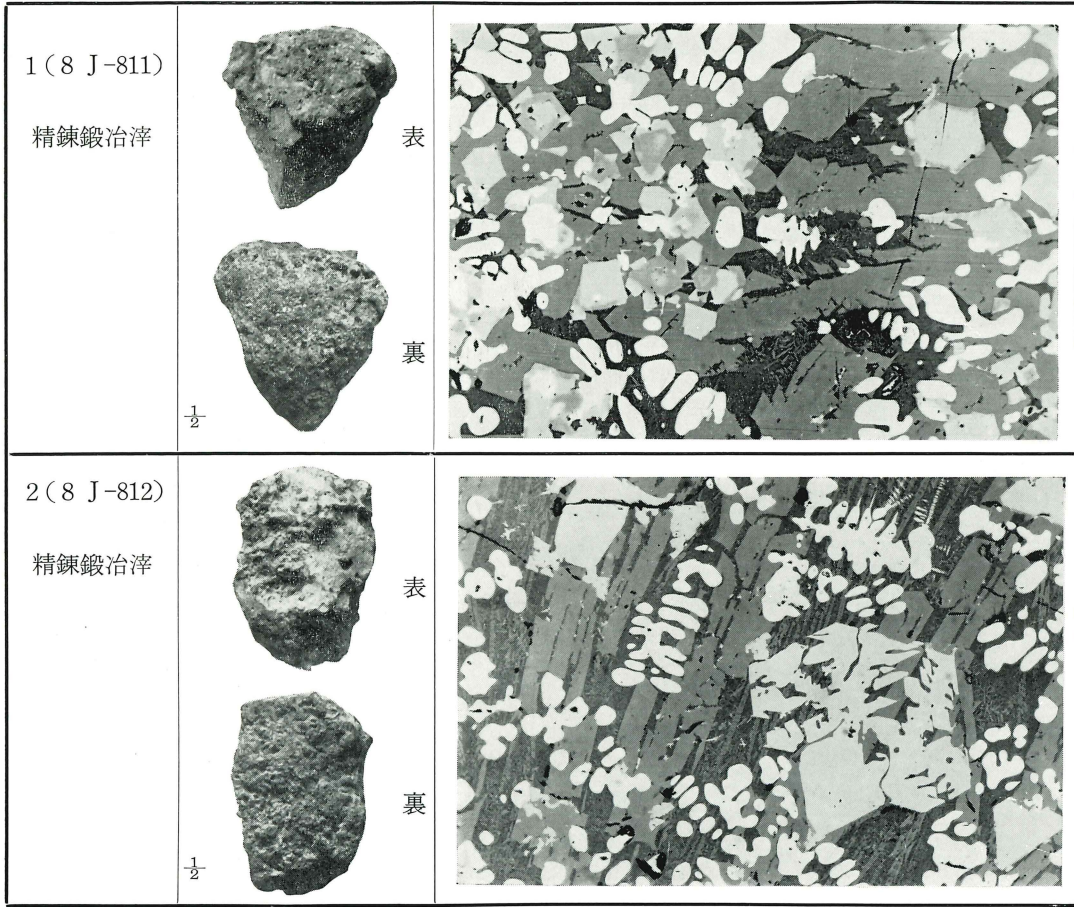


3 *Vitis ficifolia* or *V. flexuosa*

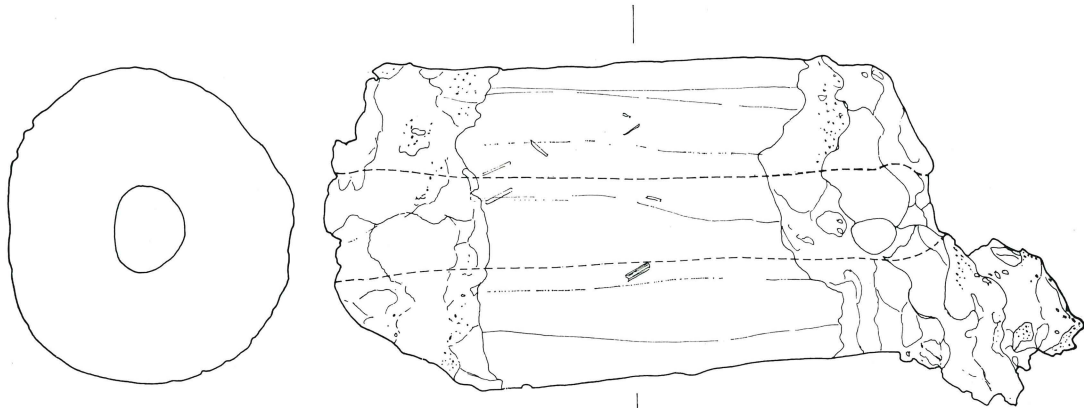


4 *Cannabis sativa*





1号住居跡出土鉄滓頭微鏡組織 (倍率: 100倍)



1号住居跡出土羽口 Na 19 実測図 ( $\frac{1}{2}$ )



埼玉県埋蔵文化財調査事業団報告書第16集

関越自動車道関係

埋蔵文化財発掘調査報告 XIV

沼下・平原・新堀・中山・お金塚

中井丘・鶴巻・水久保・猪久保遺跡

昭和57年3月20日 印刷

昭和57年3月31日 発行

発行 財団法人 埼玉県埋蔵文化財調査事業団

印刷 関東図書株式会社