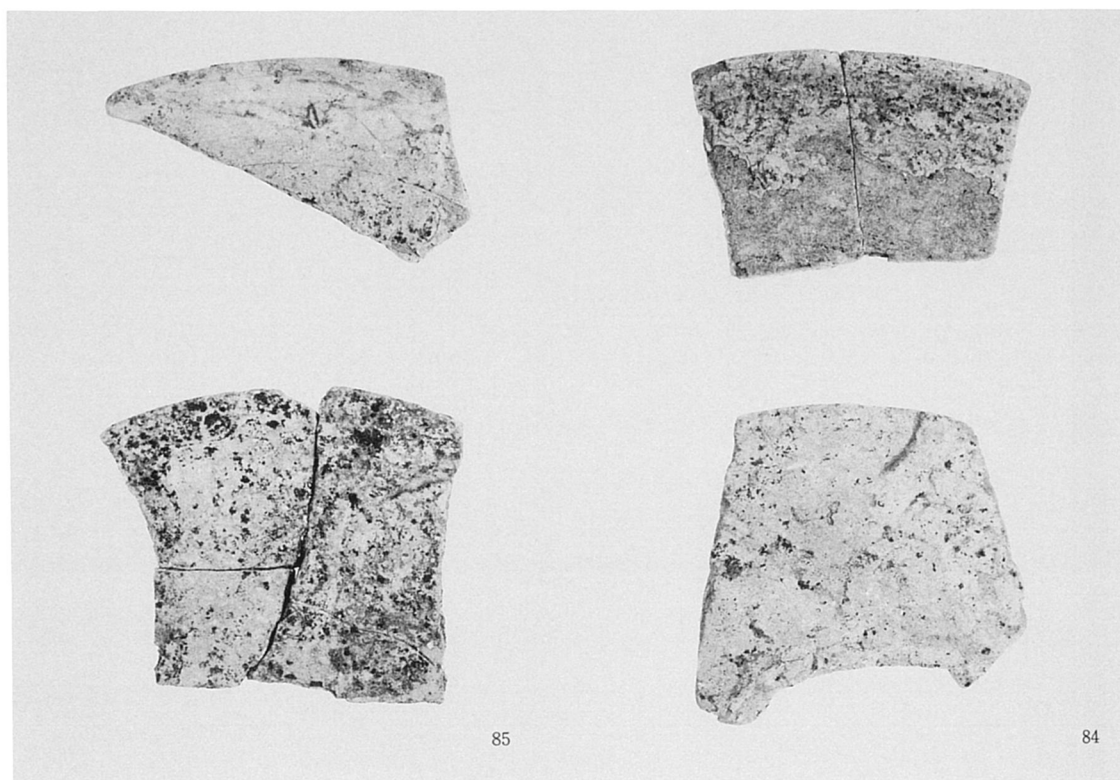
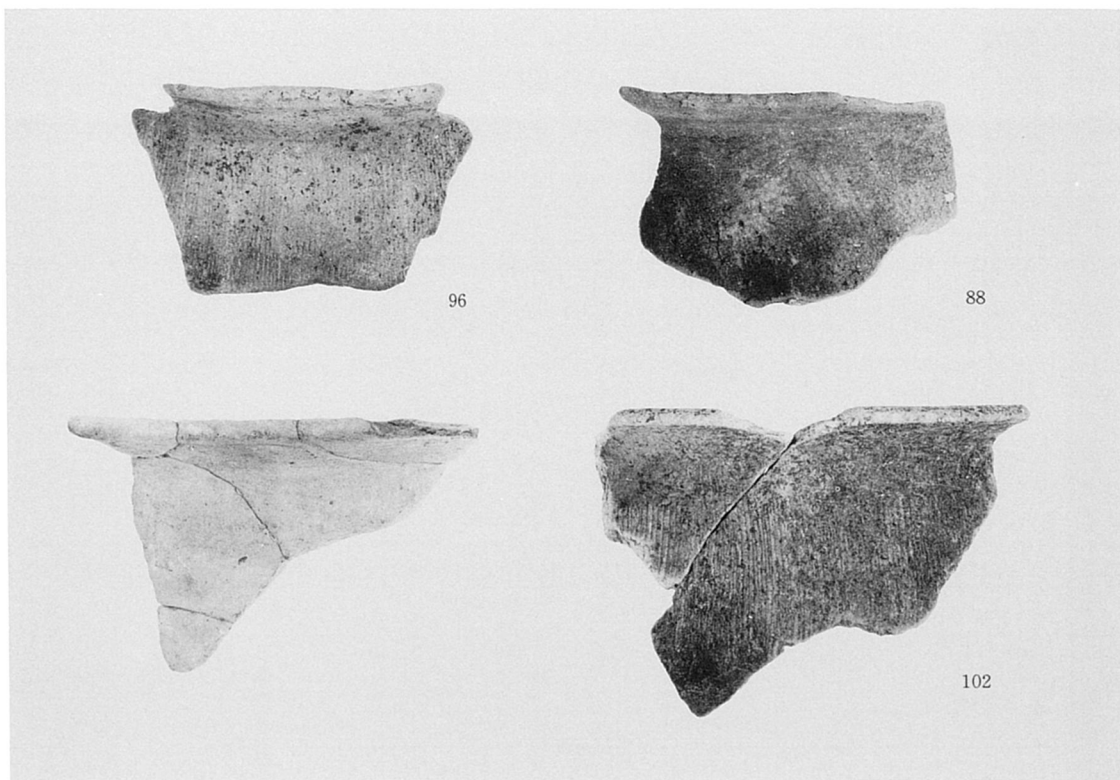


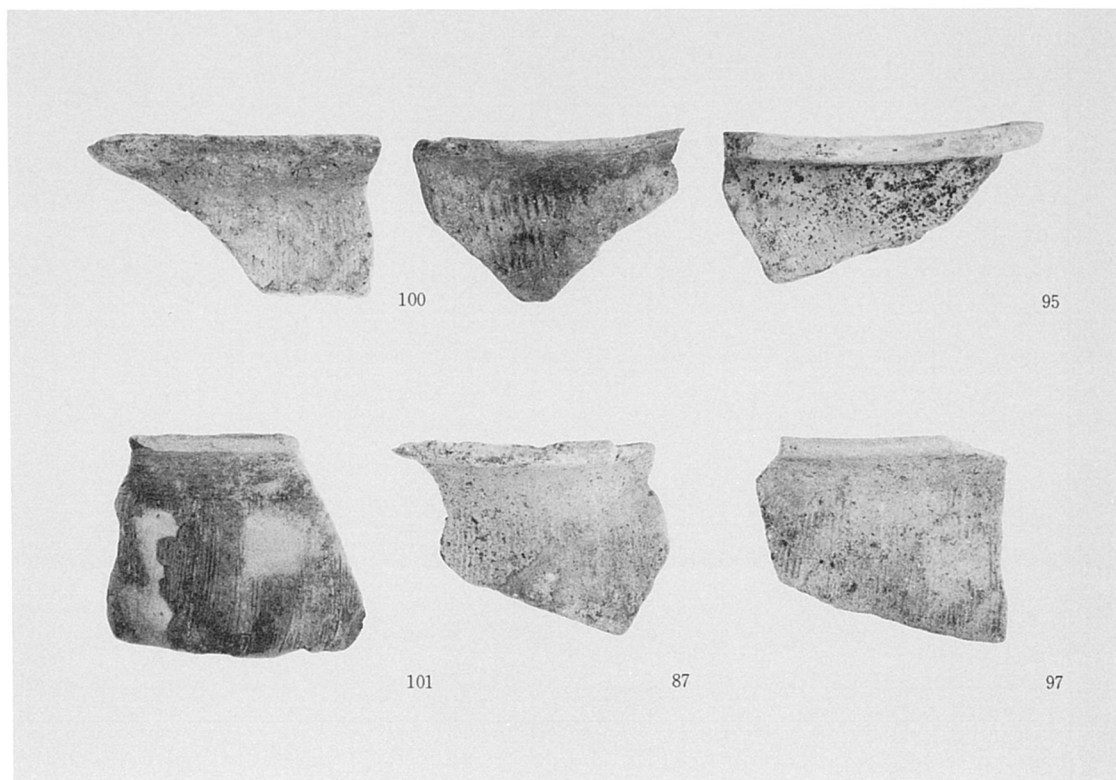
土師器高坏(内面)



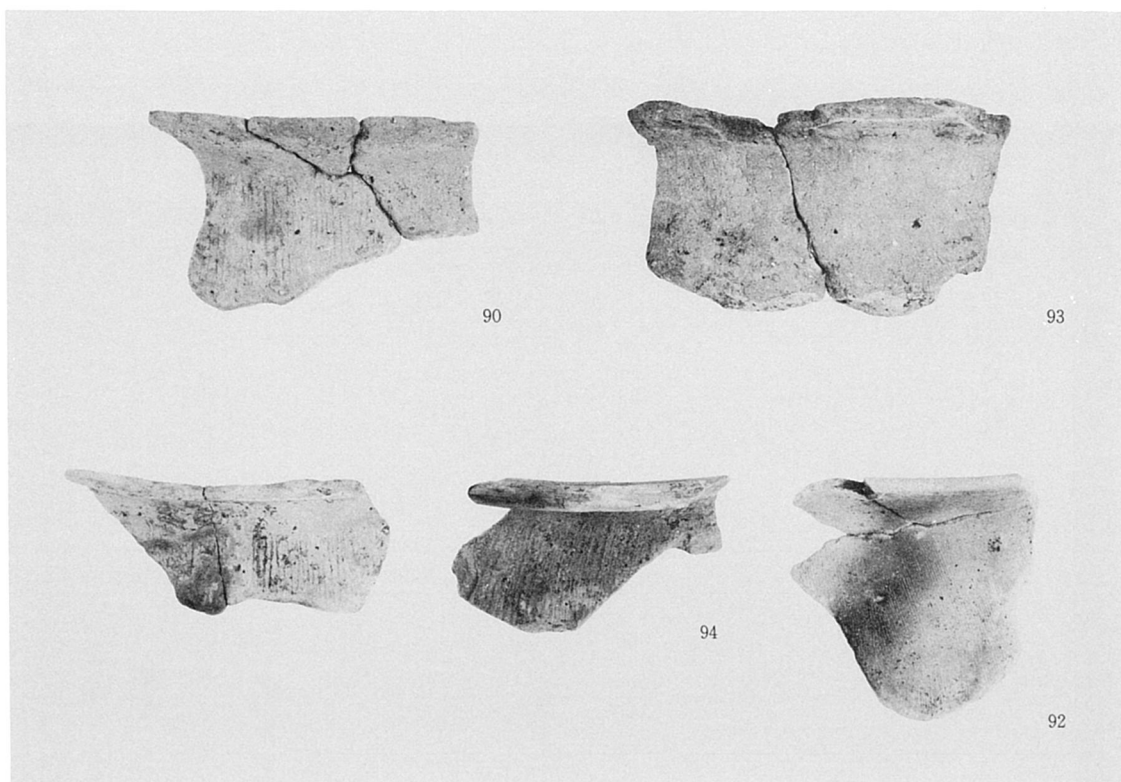
土師器高坏(外面)



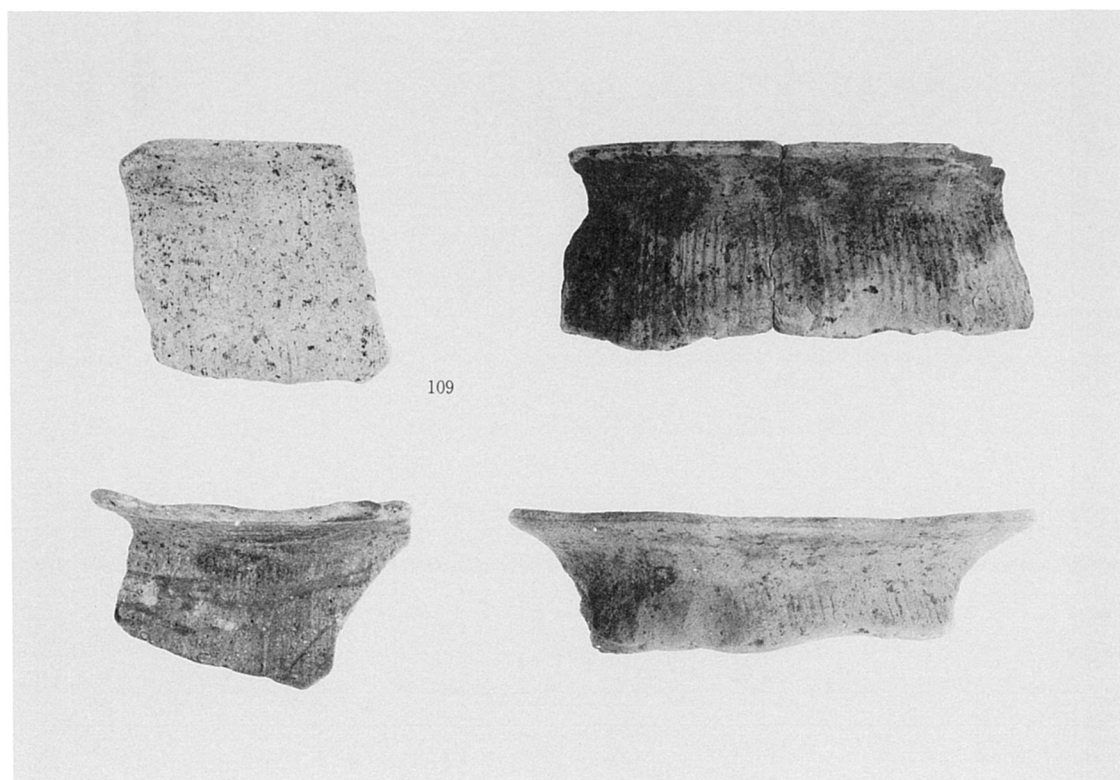
土師器甕



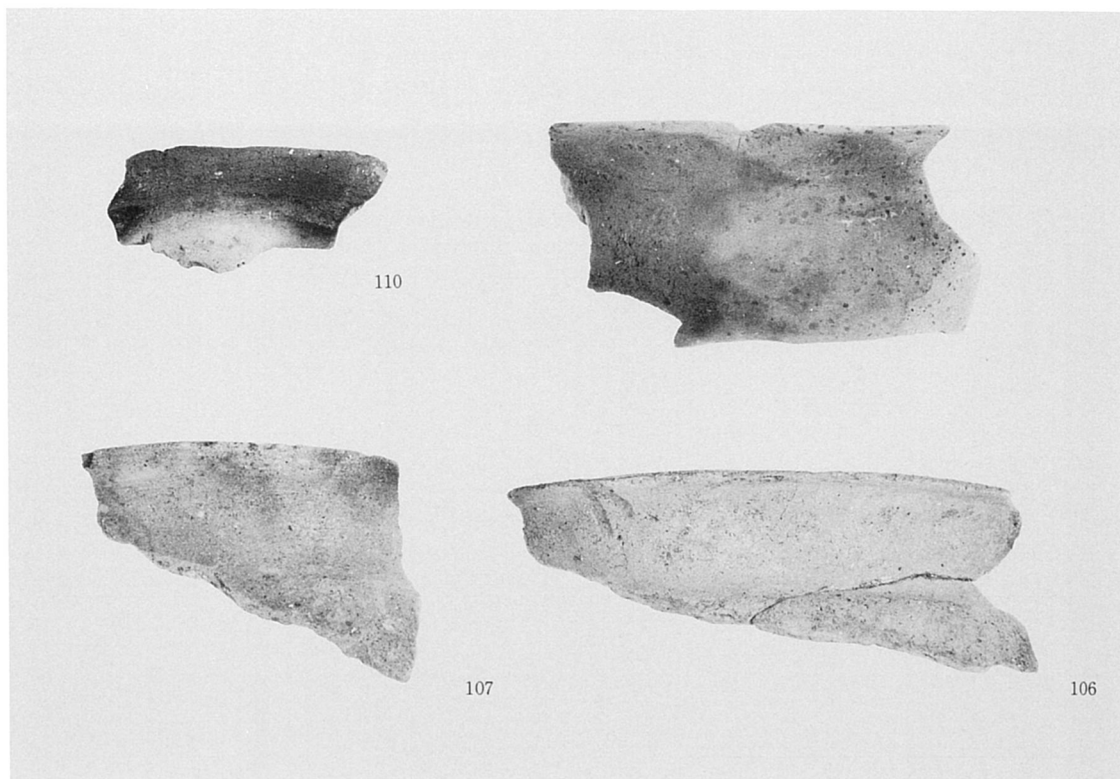
土師器甕



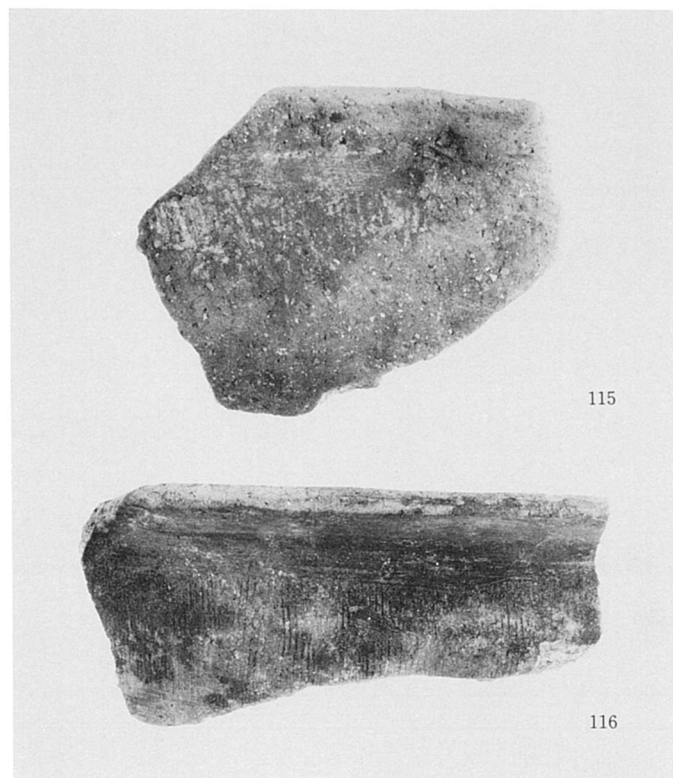
土師器甕



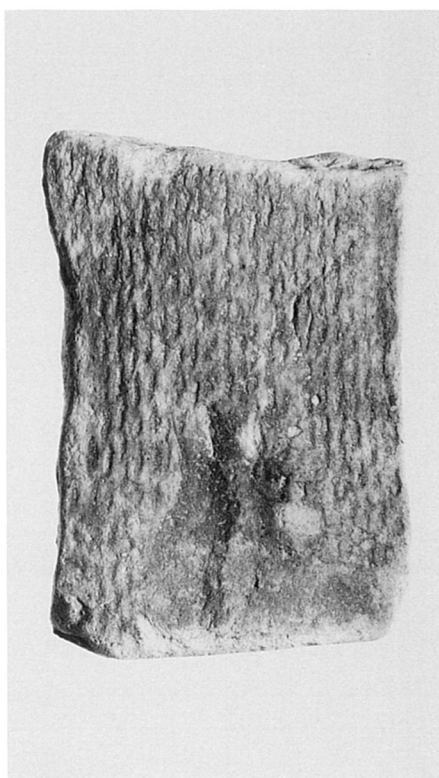
土師器甕



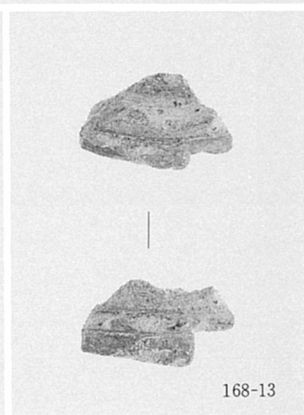
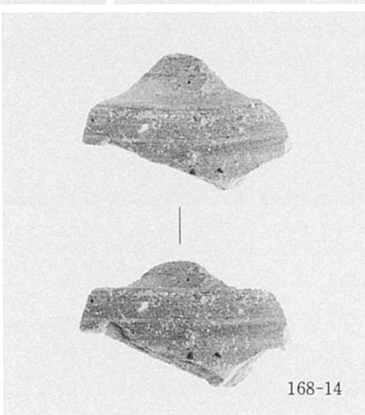
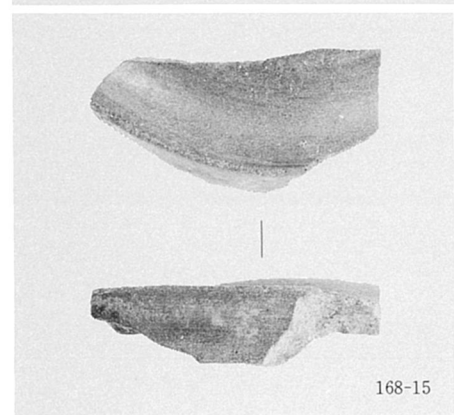
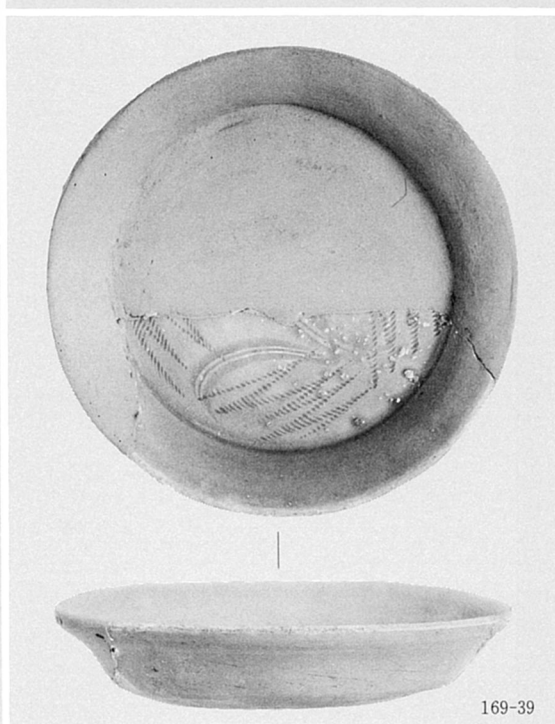
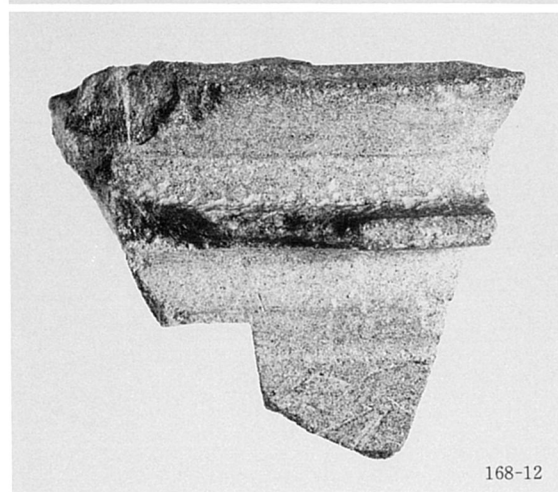
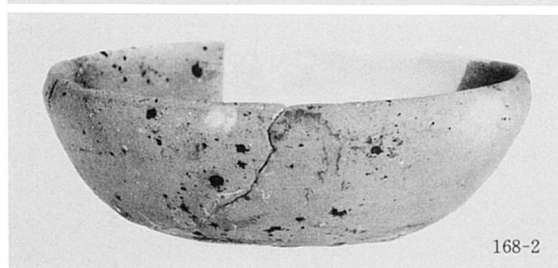
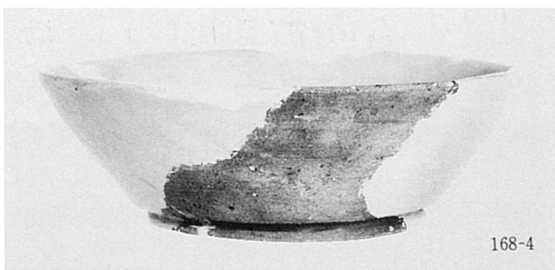
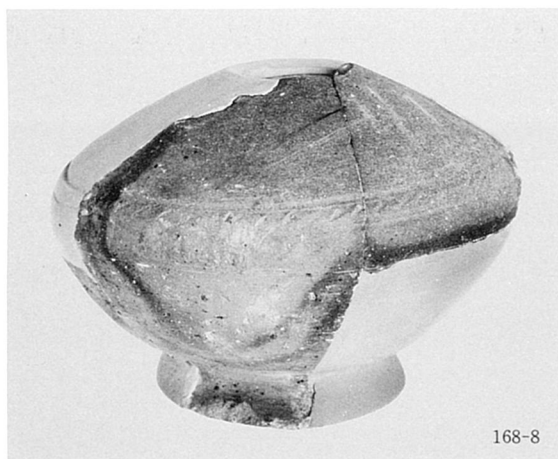
土師器甕

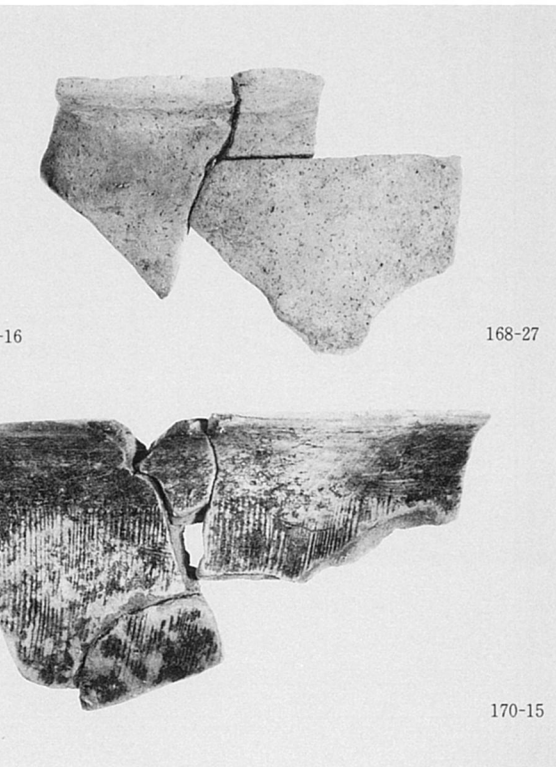
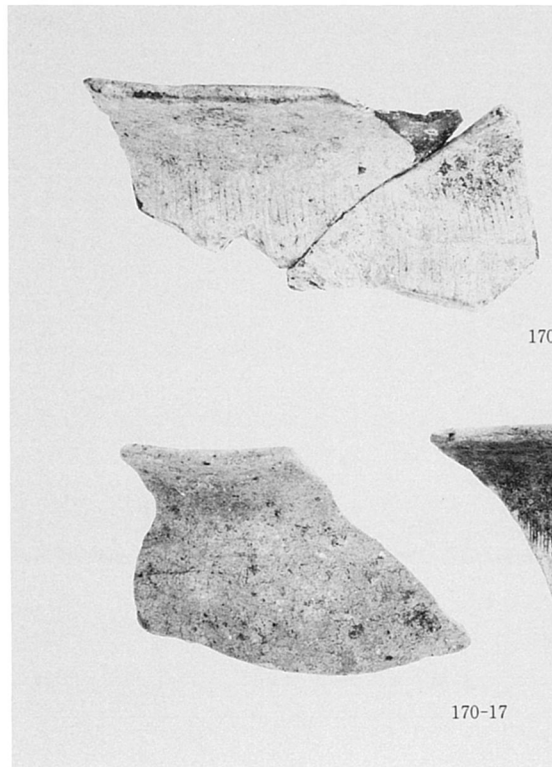
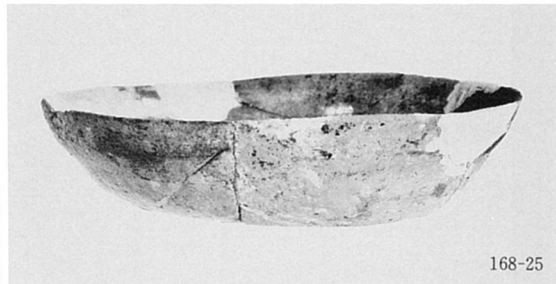
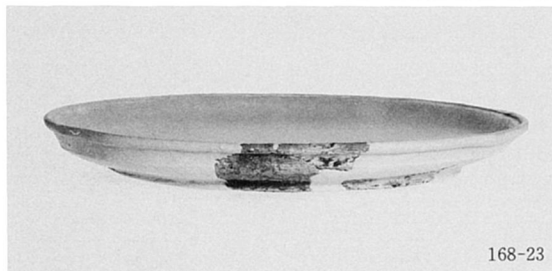
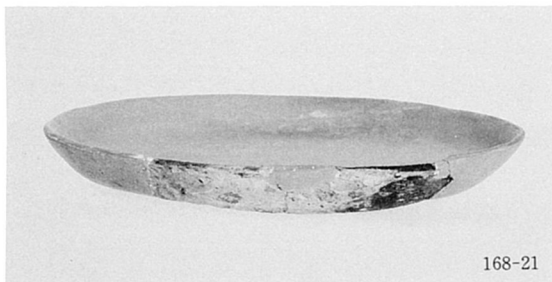


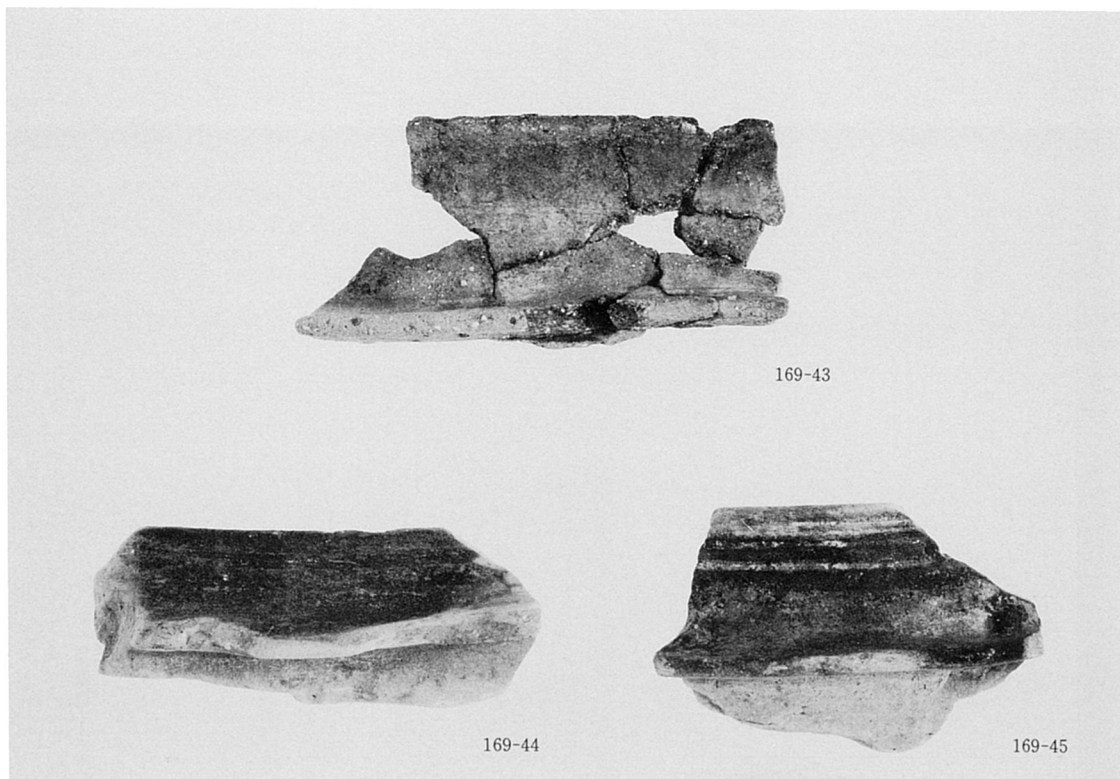
土師器鍋



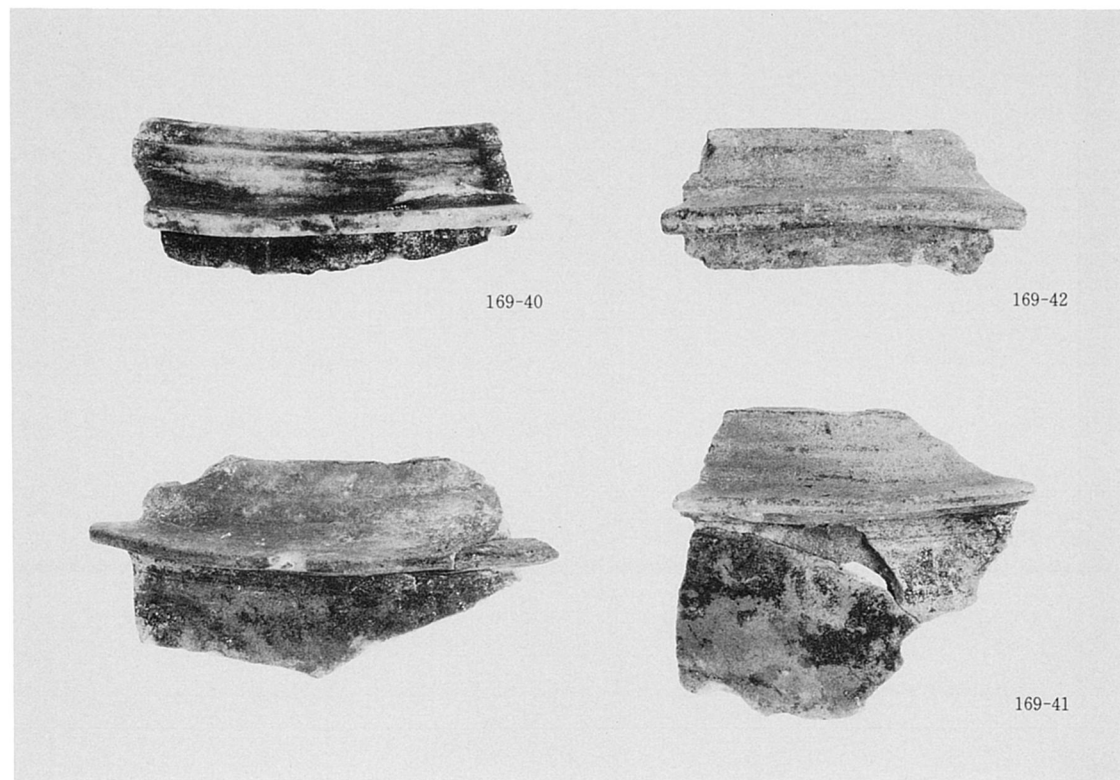
平瓦







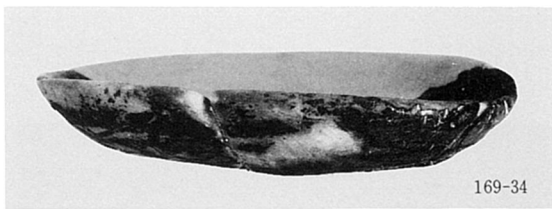
土師質・瓦質土器羽釜



瓦質土器羽釜



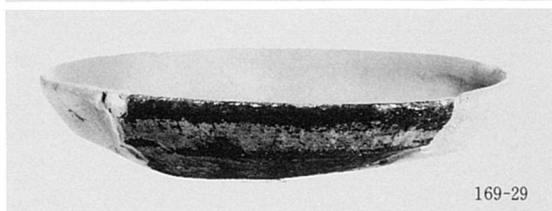
171-22



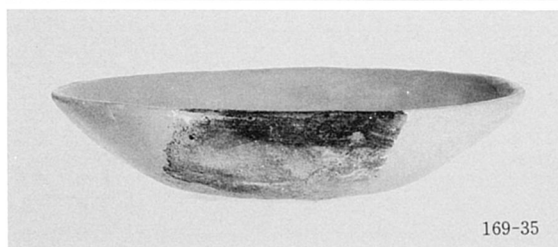
169-34



169-37



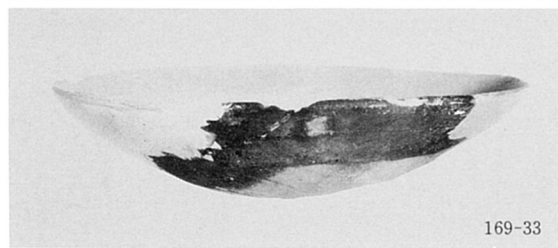
169-29



169-35



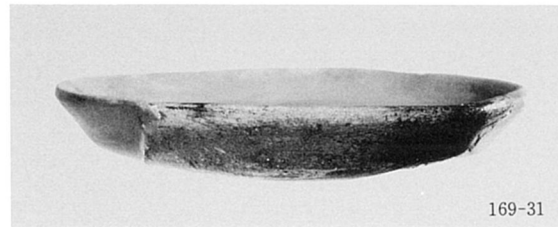
169-28



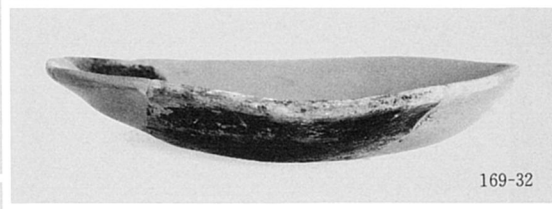
169-33



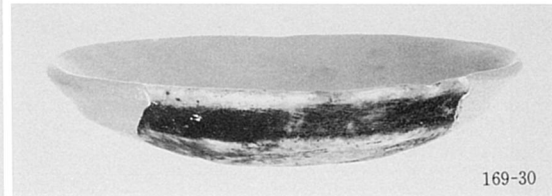
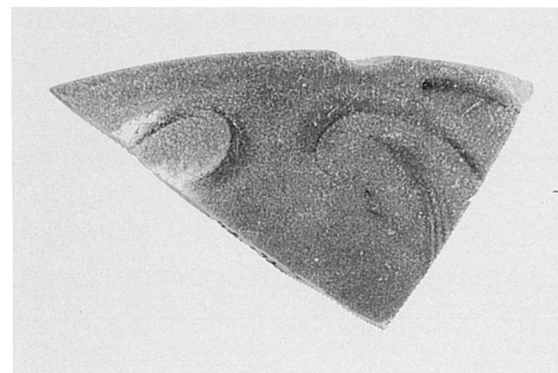
169-36



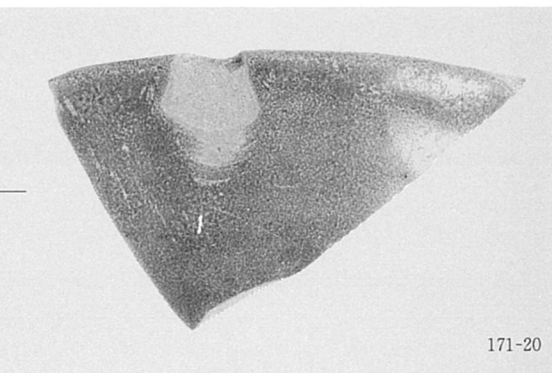
169-31



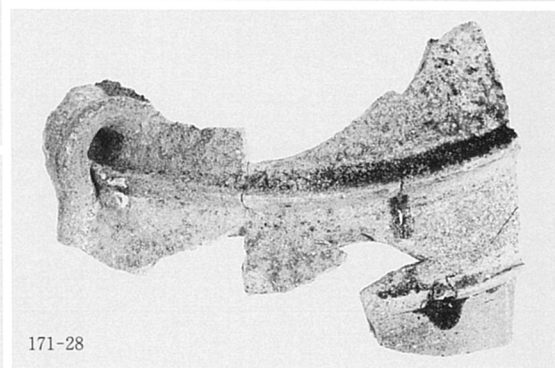
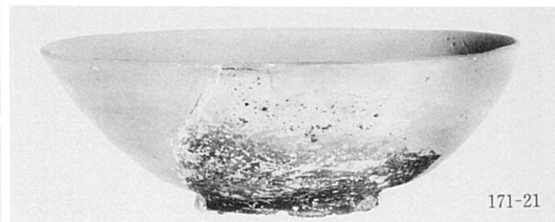
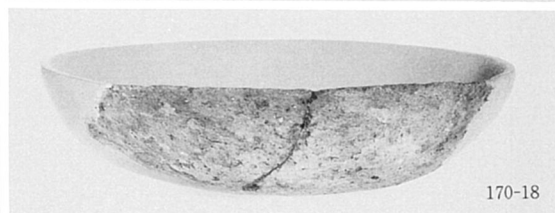
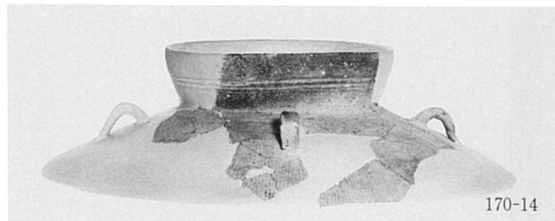
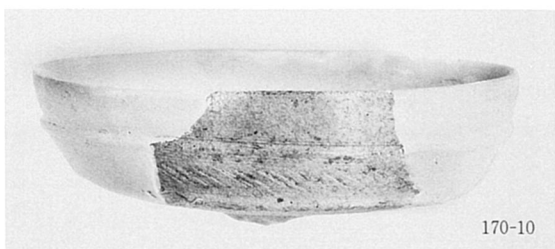
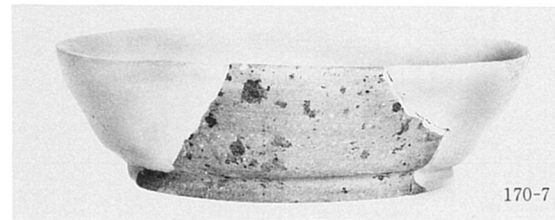
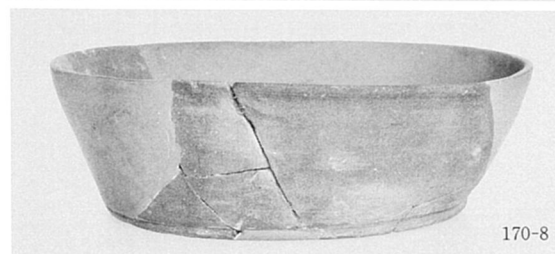
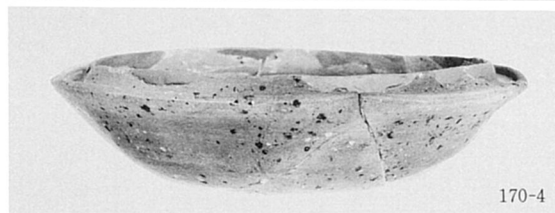
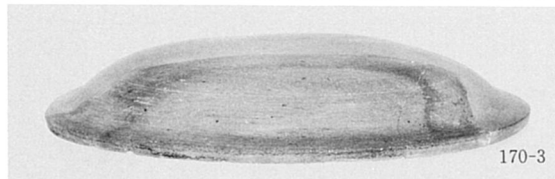
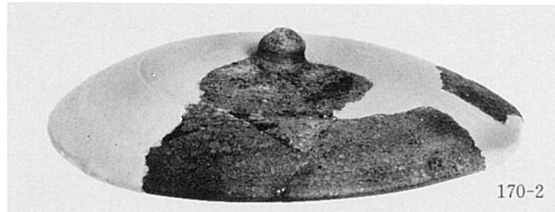
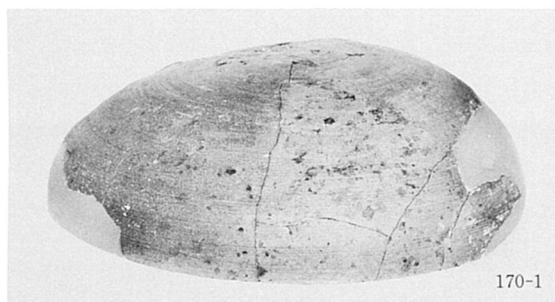
169-32



169-30



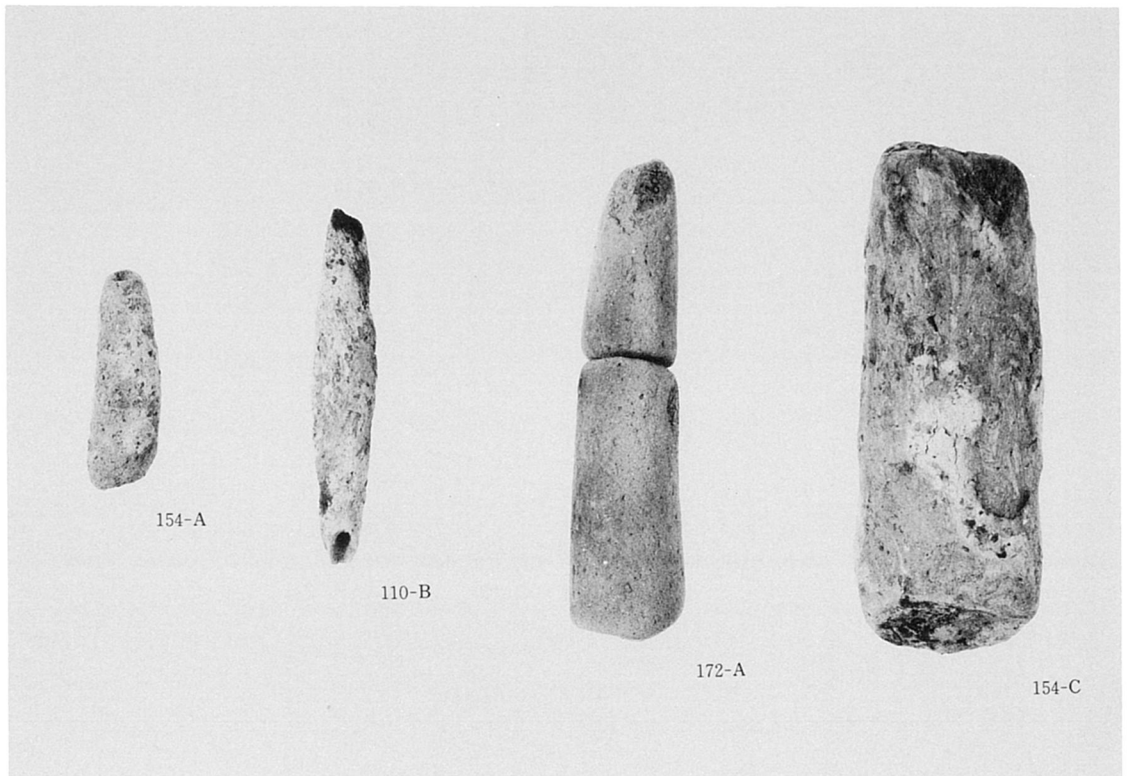
171-20



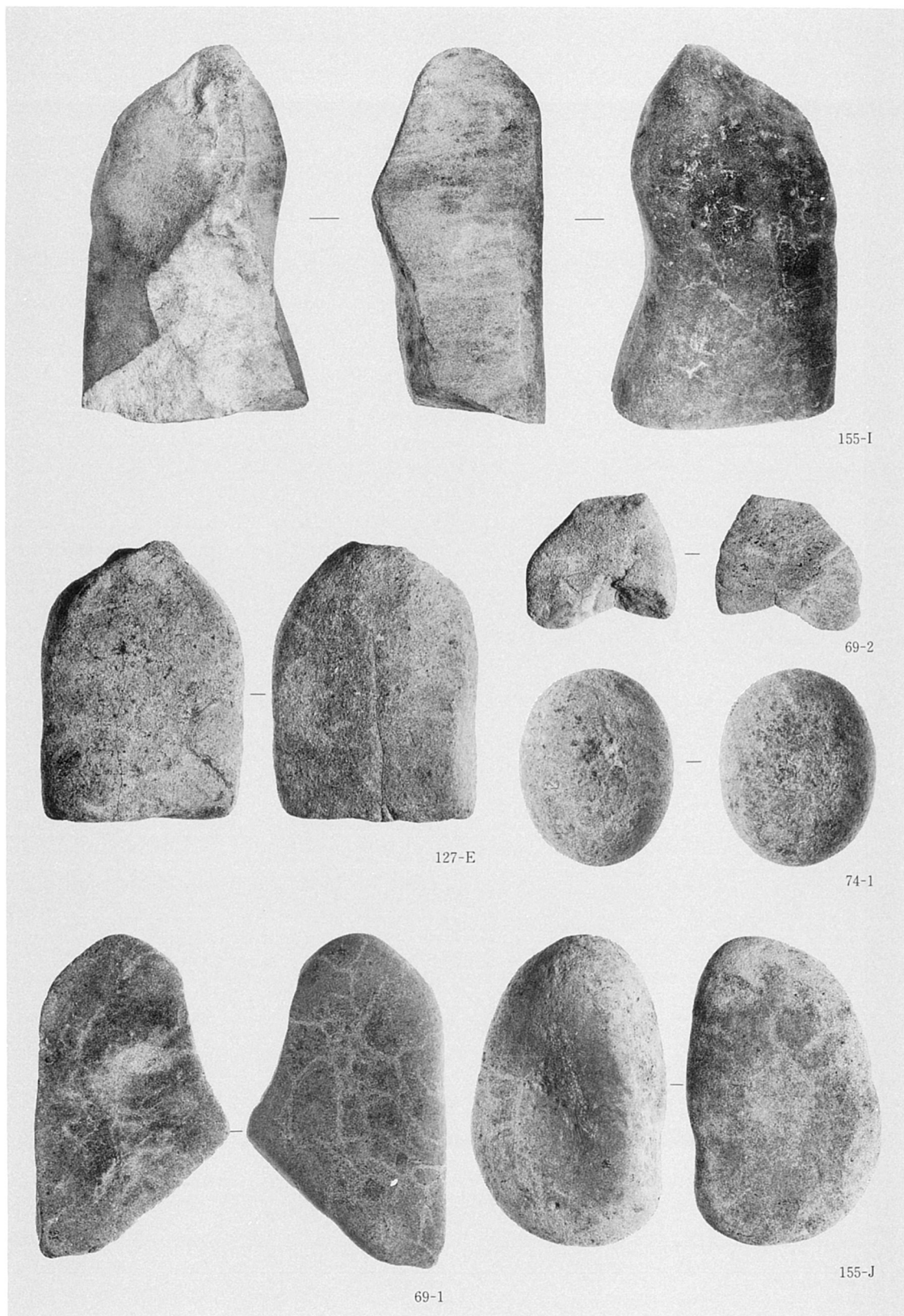
須恵器坏蓋・坏身・高坏・甕・壺，土師器坏身，瓦器碗



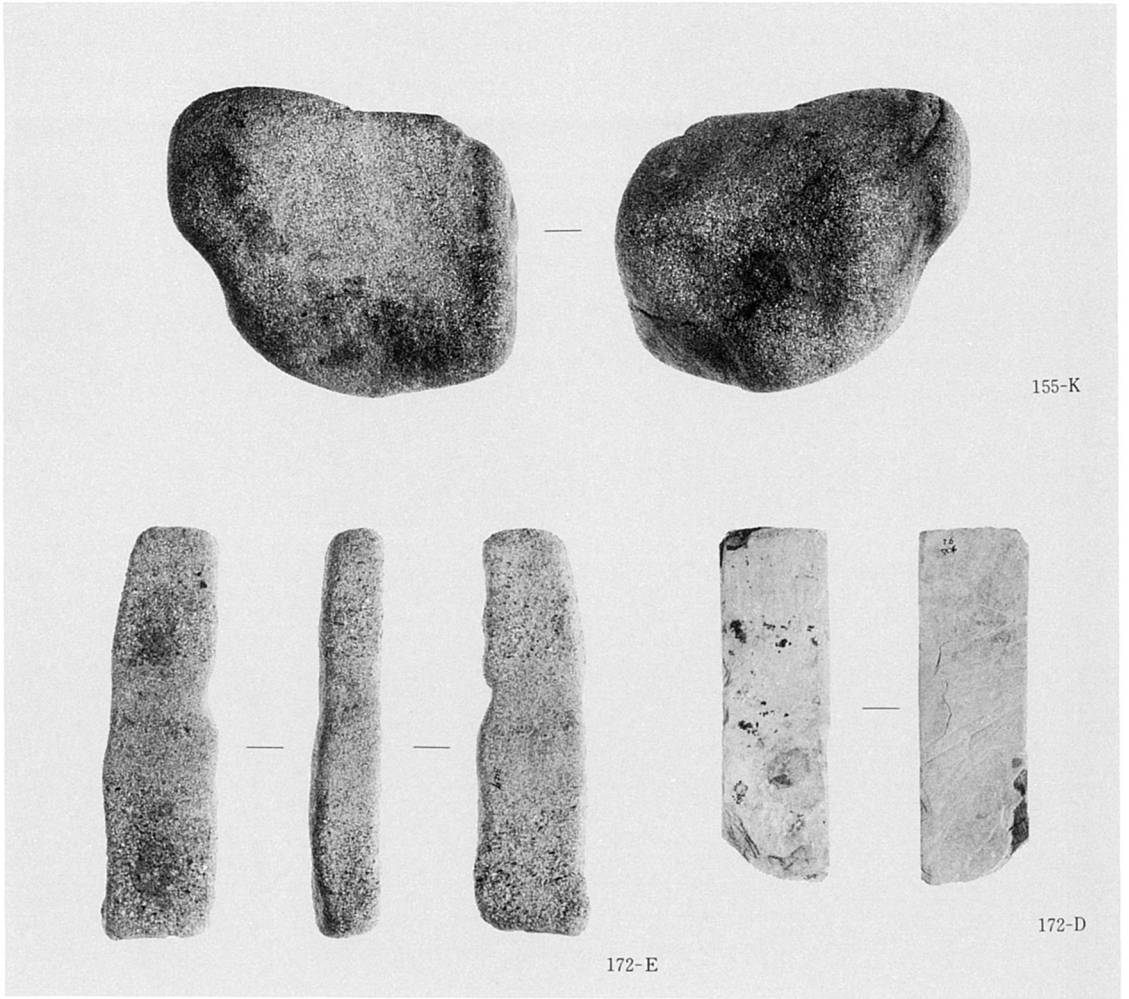
燃えさし (A : 0002—O D)



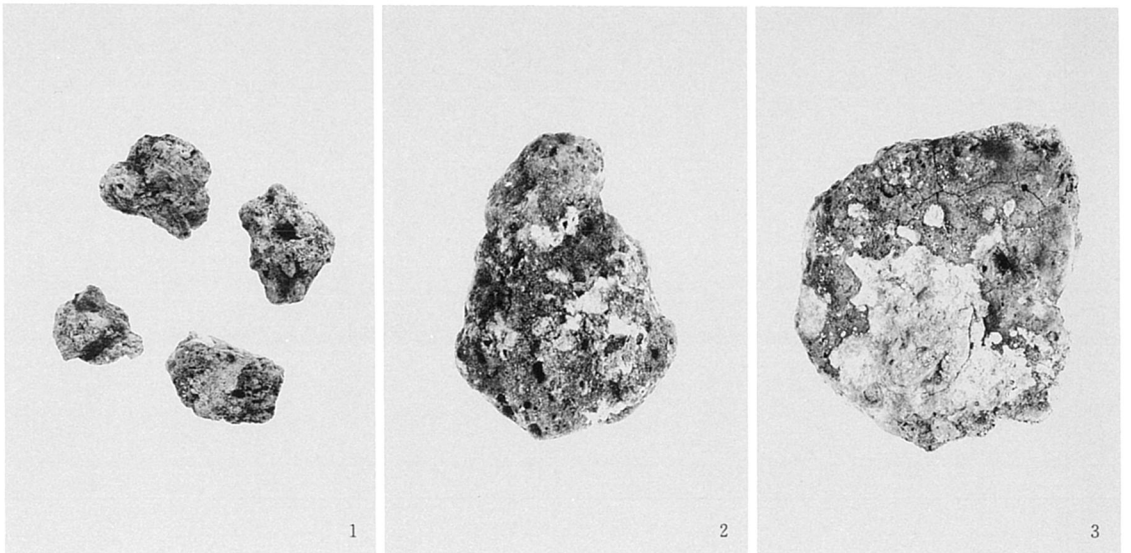
土製品



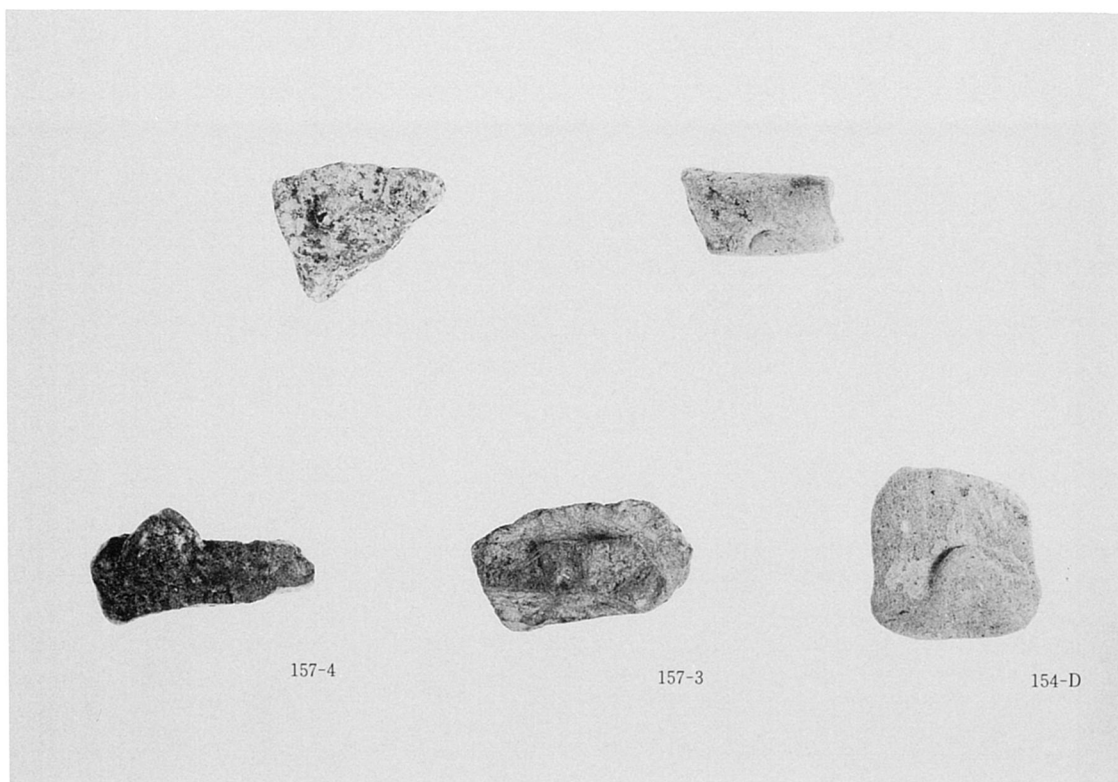
使用痕のある石器 (155-Iは S=1/6, 他は S=1/4)



使用痕のある石器



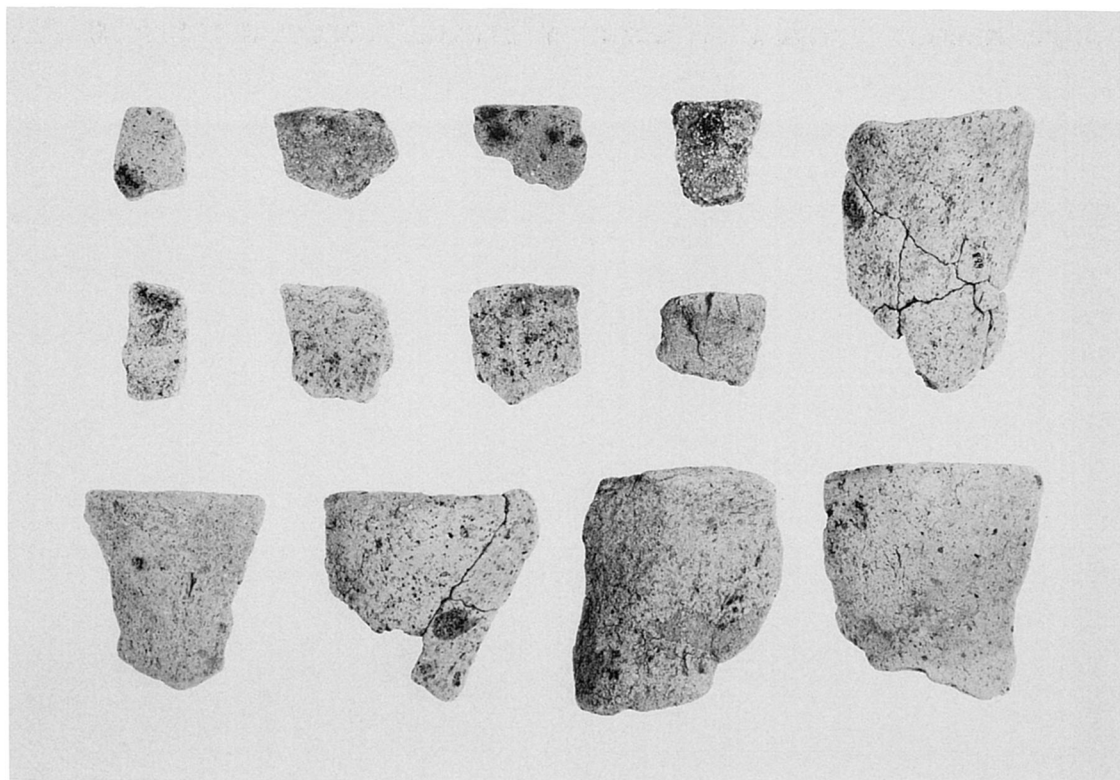
鉄滓 (1: 3033-O S, 2: 3034-O S, 3: 2015-O O)



ミニチュア土製品 (上段は3033-O S)



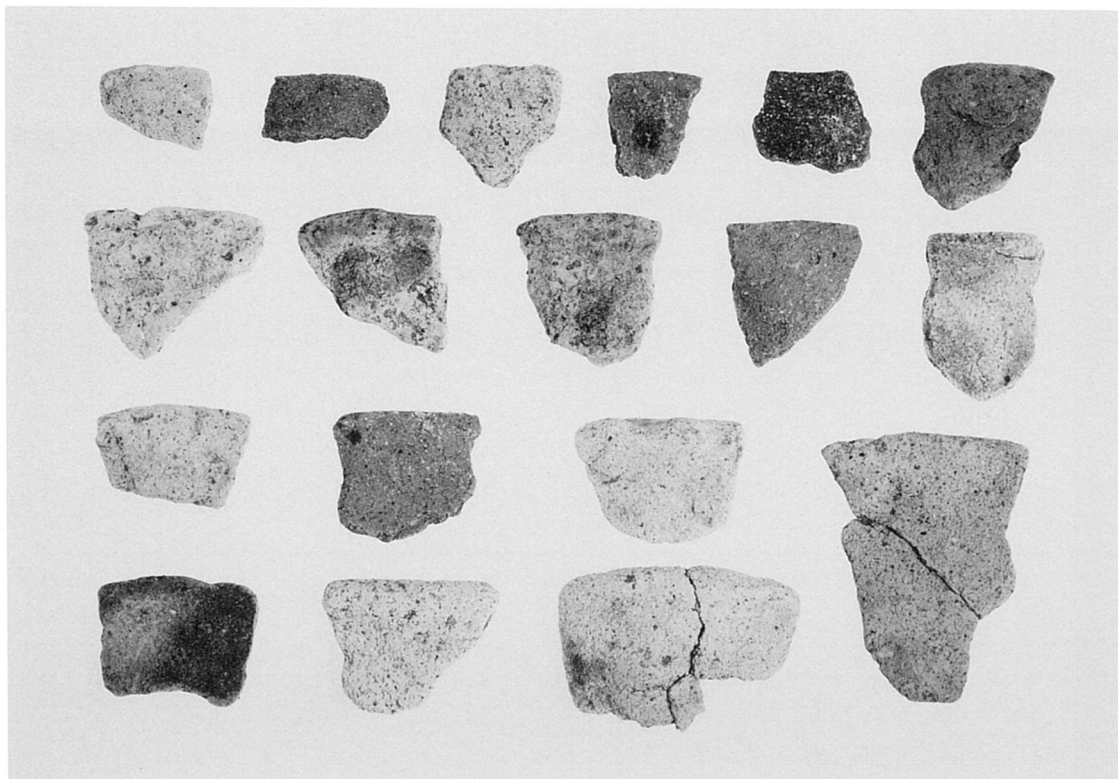
5041-O X 出土製塩土器一括



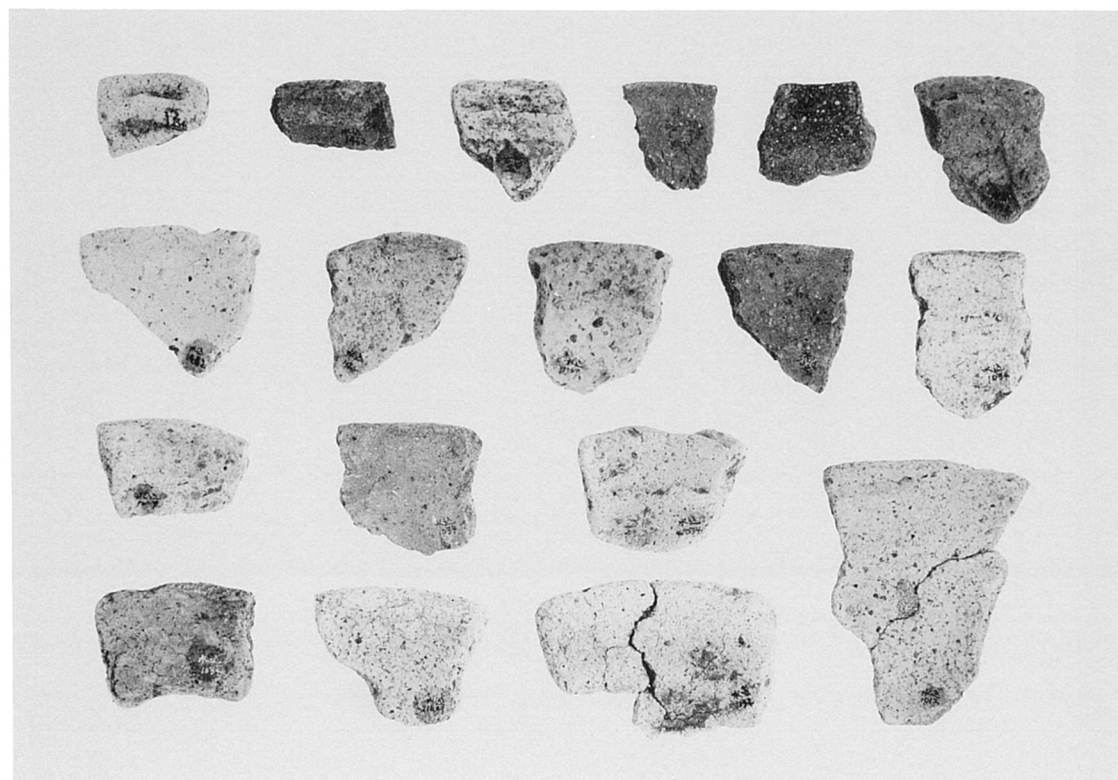
5041-O X 出土製塩土器 (外面)



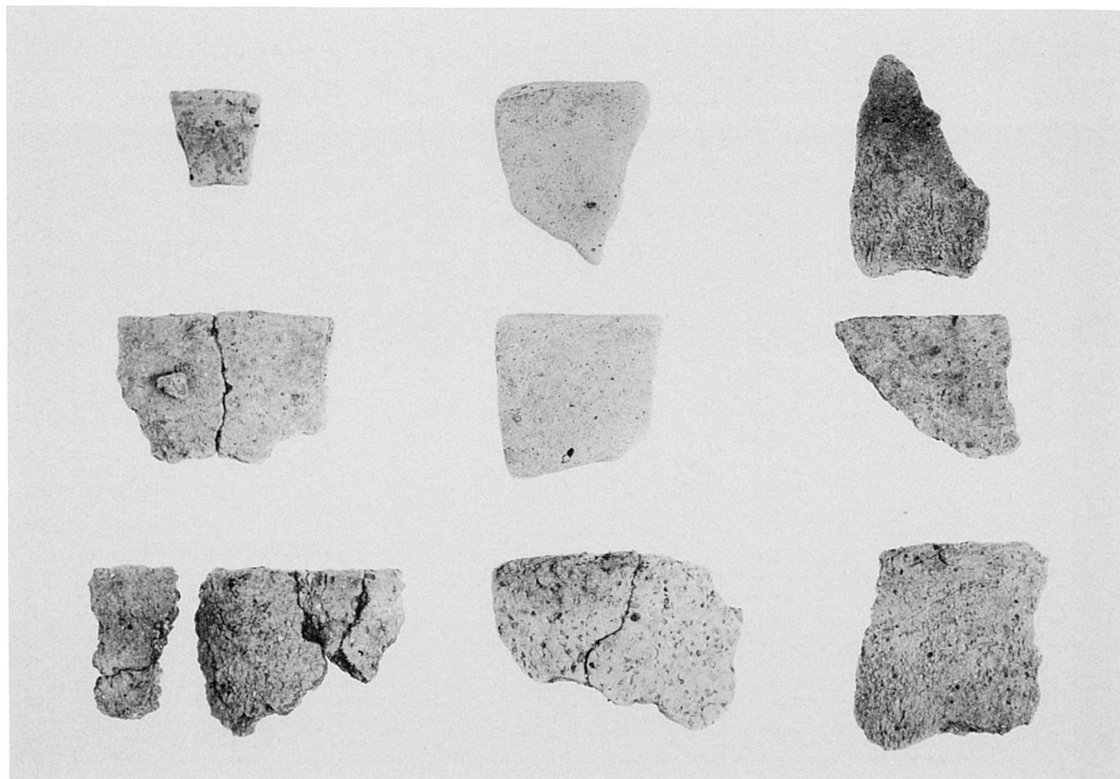
5041-O X 出土製塩土器 (内面)



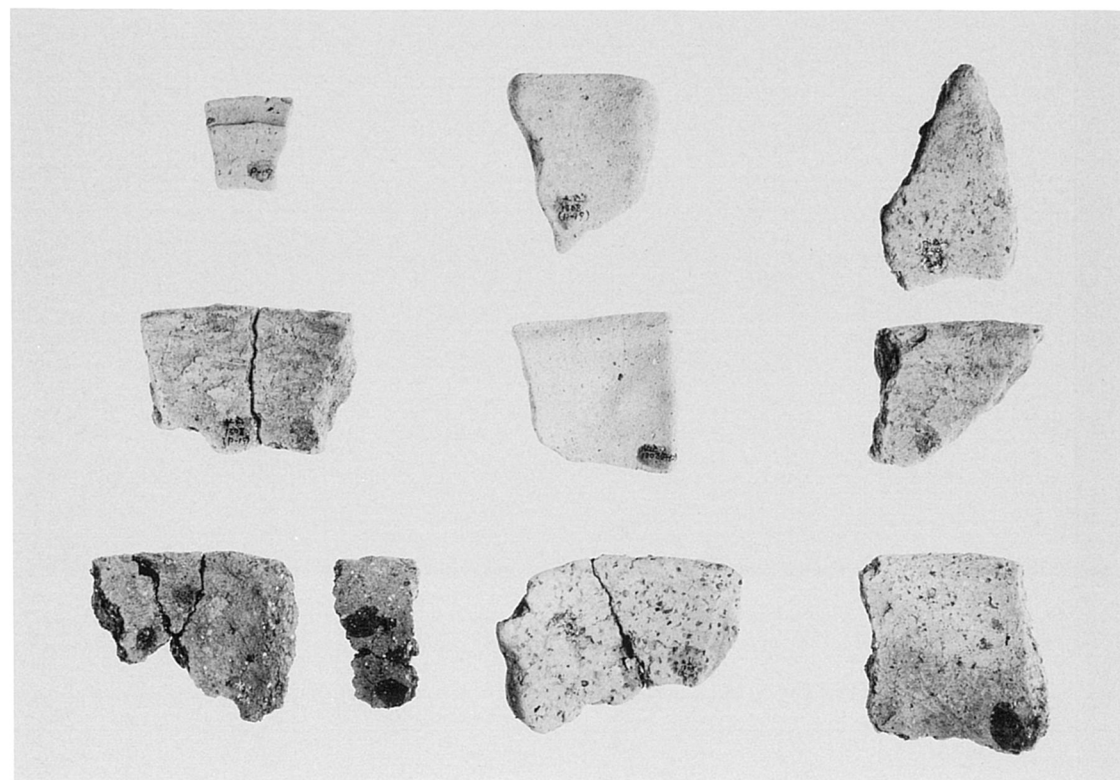
3034—O S 出土製塩土器 (外面)



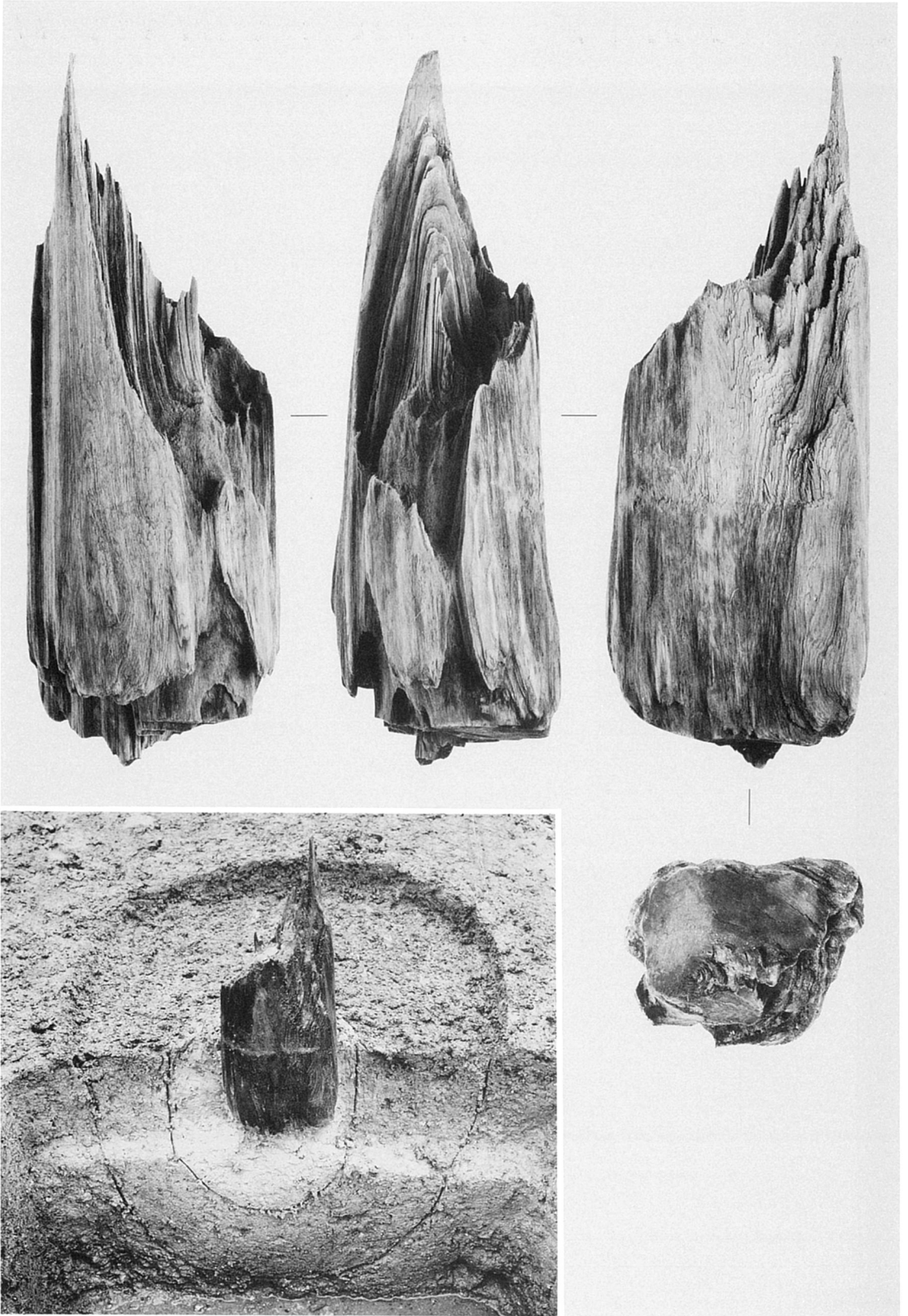
3034—O S 出土製塩土器 (内面)



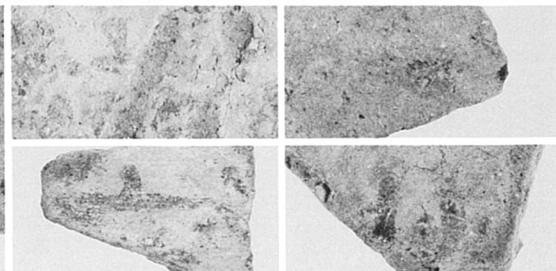
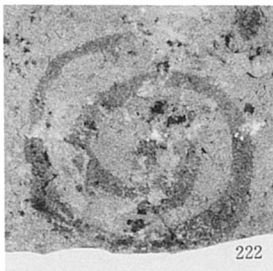
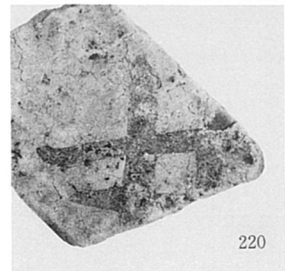
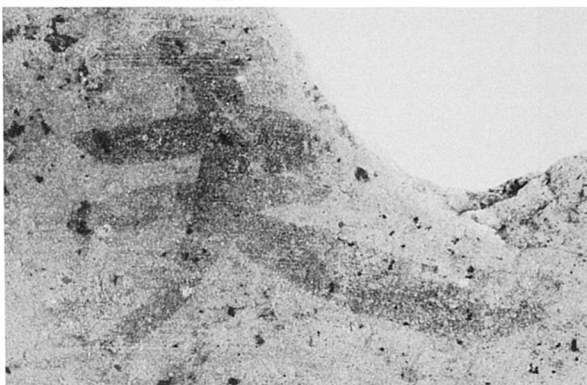
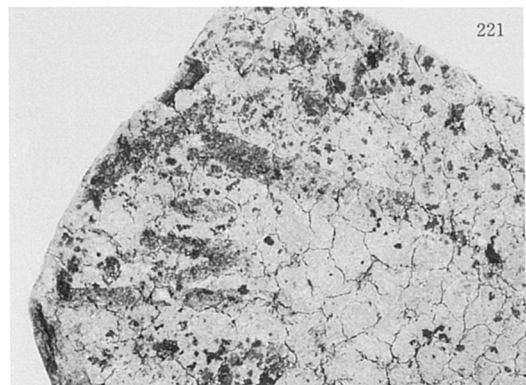
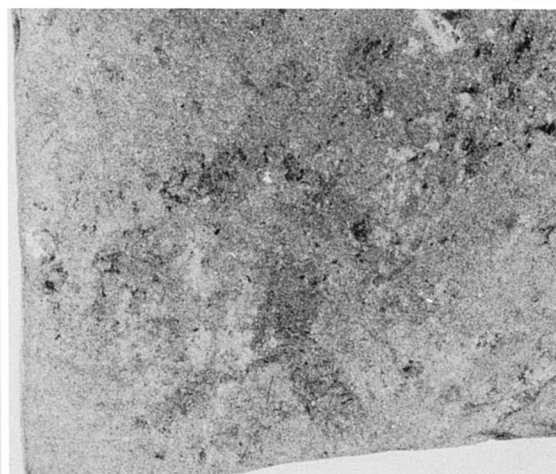
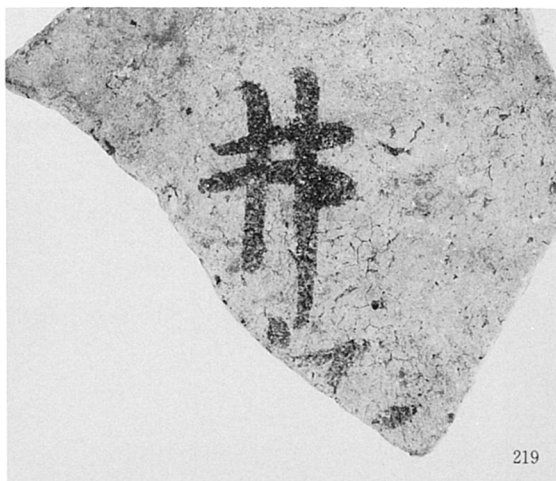
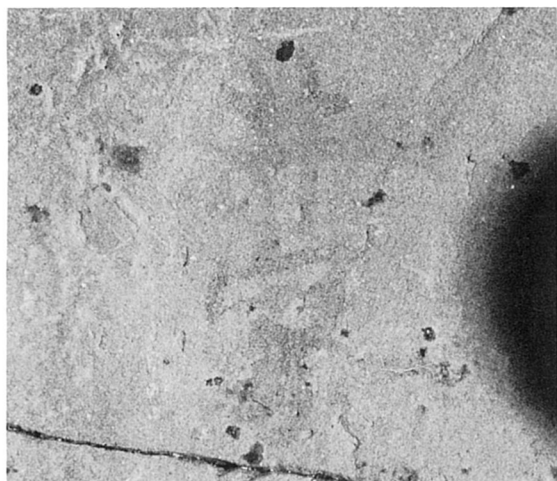
2022—00出土製塩土器（外面）

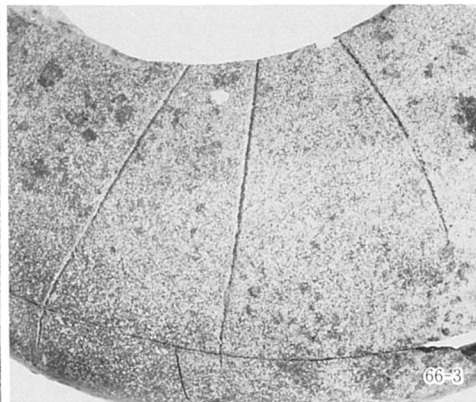
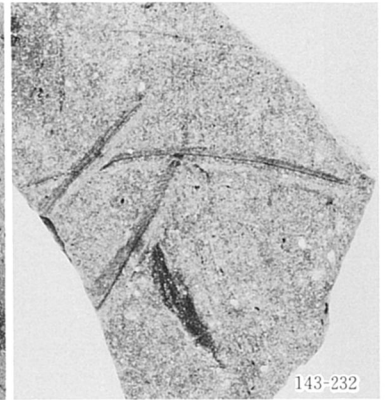
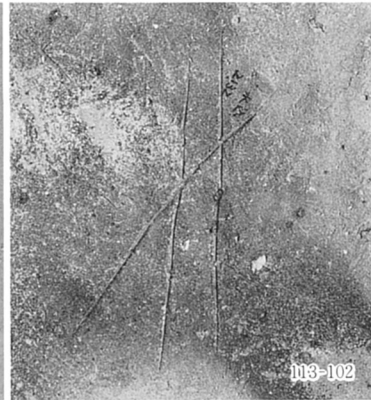
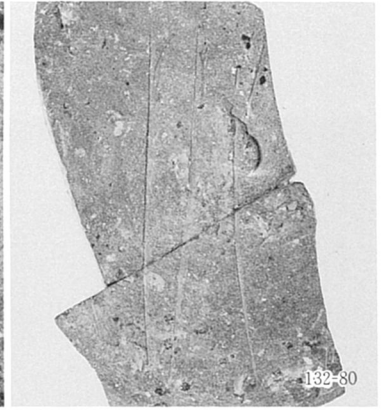
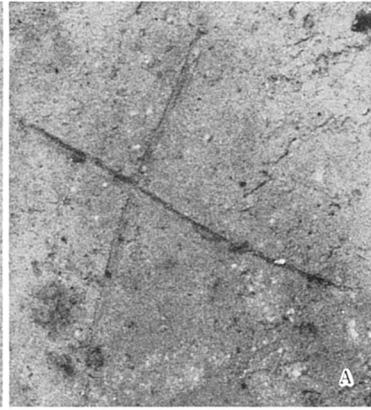


2022—00出土製塩土器（内面）

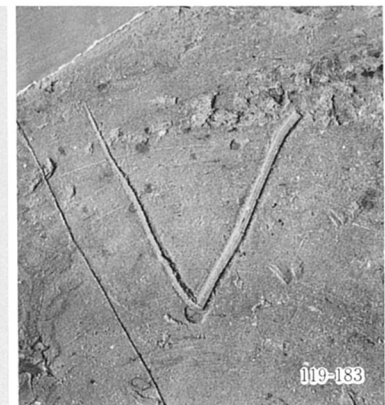


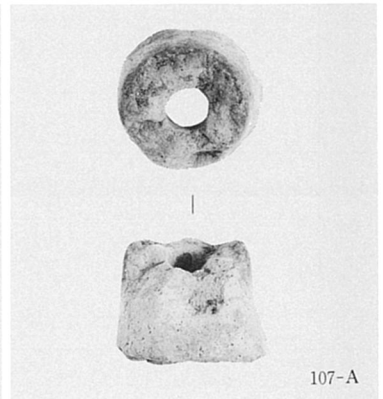
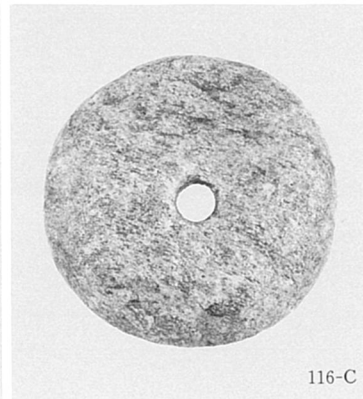
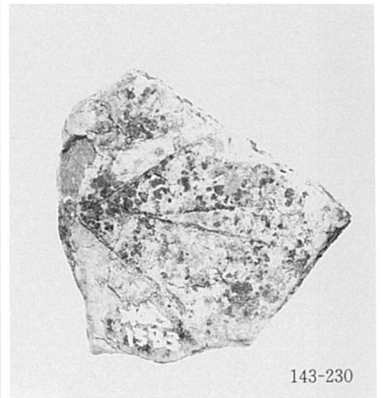
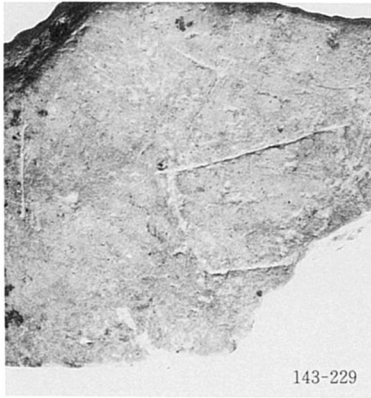
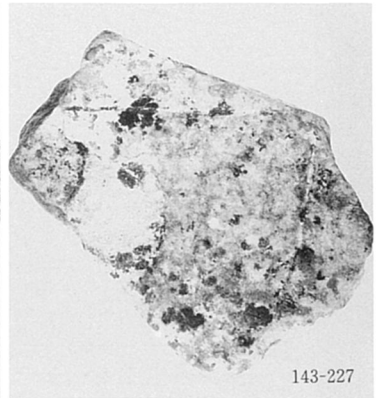
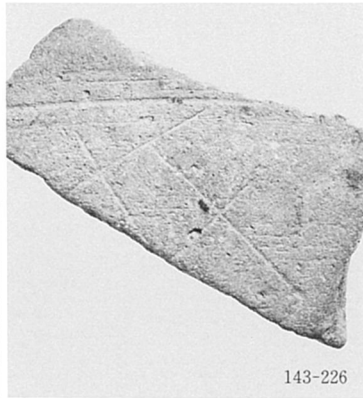
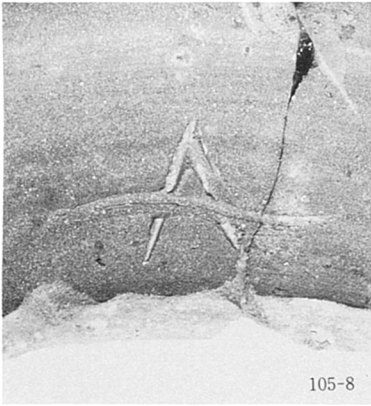
上：6141-OP 出土柱根 左下：6141-OP 柱根出土状態



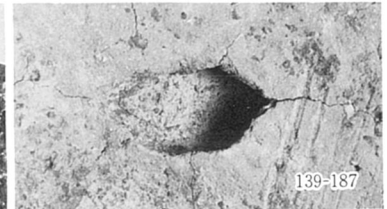
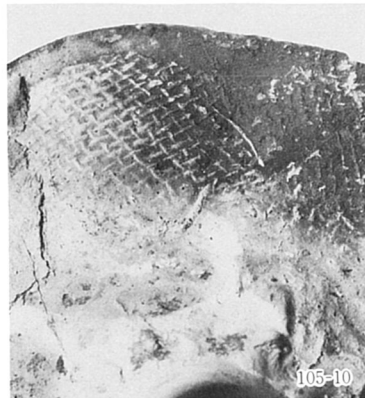
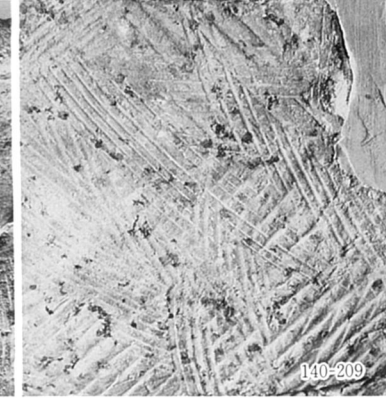
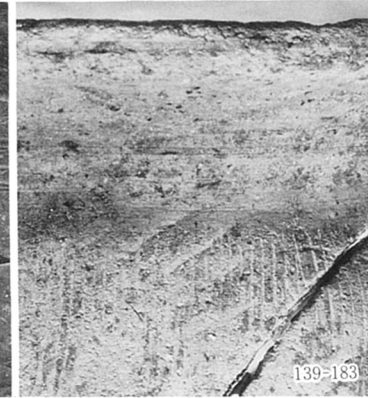
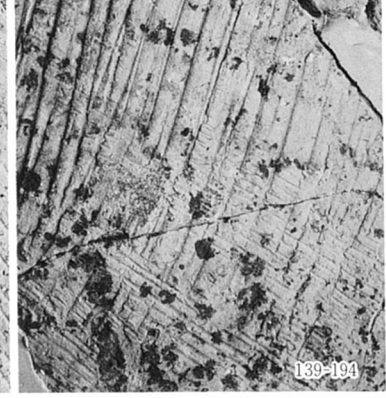
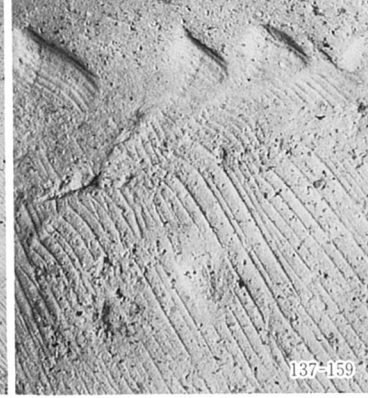


A : 3034-OS, JV,
須恵器坏底部外面

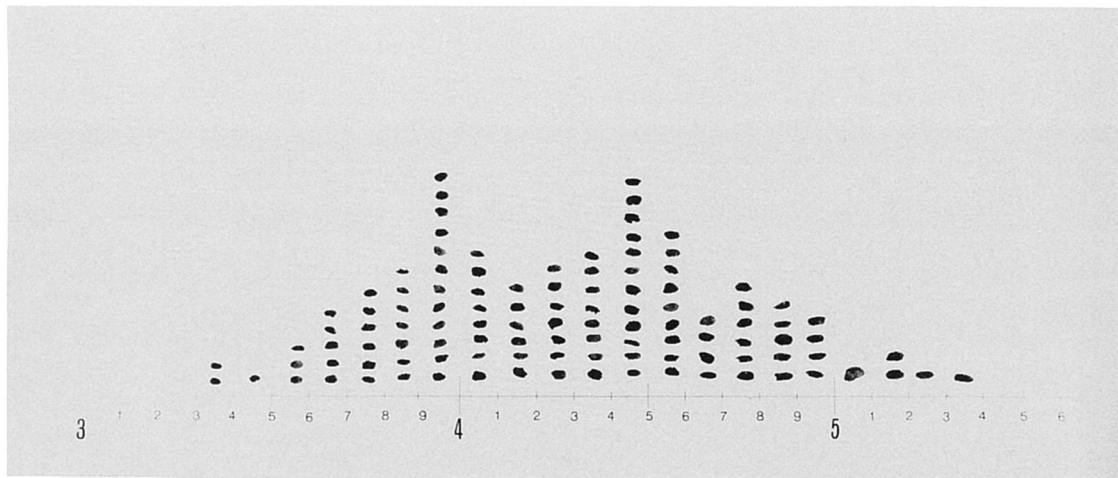




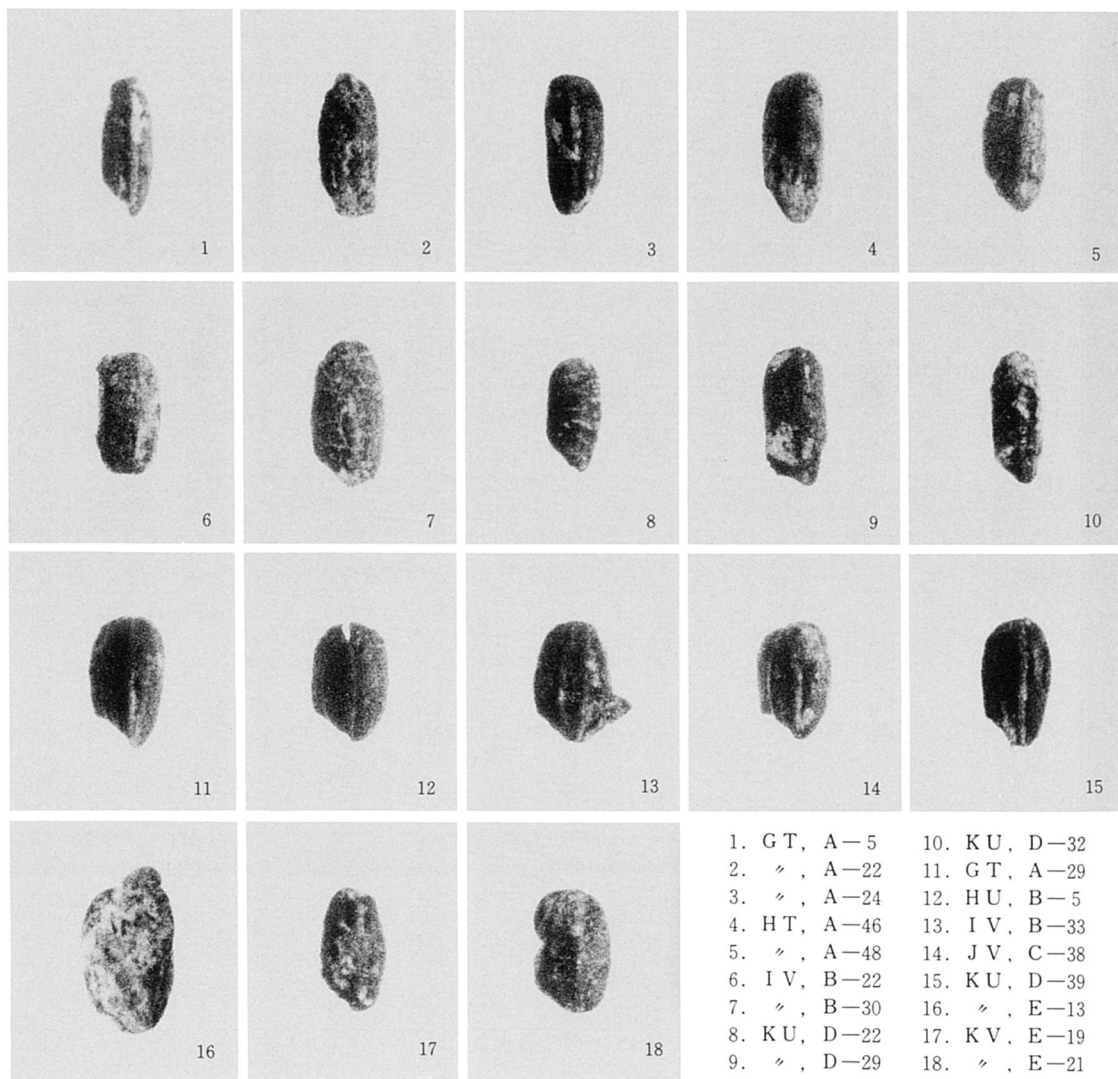
(89-1と116-CはS=1/1)



A : 5054—O X B11 J T 紐圧痕

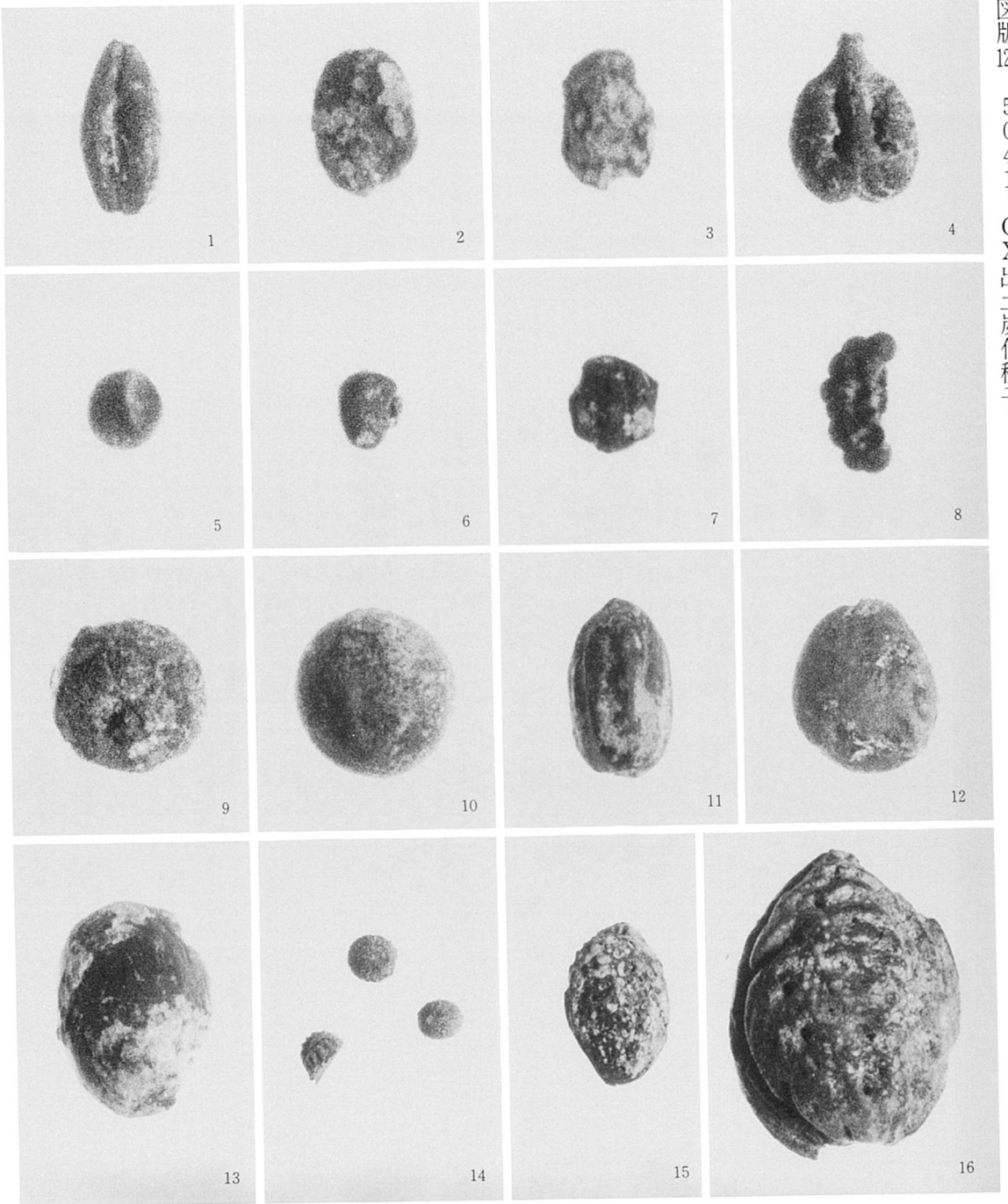


5041-O X出土炭化米ヒストグラム (1目盛0.1mm)



- | | |
|-------------|--------------|
| 1. GT, A-5 | 10. KU, D-32 |
| 2. ♪, A-22 | 11. GT, A-29 |
| 3. ♪, A-24 | 12. HU, B-5 |
| 4. HT, A-46 | 13. IV, B-33 |
| 5. ♪, A-48 | 14. JV, C-38 |
| 6. IV, B-22 | 15. KU, D-39 |
| 7. ♪, B-30 | 16. ♪, E-13 |
| 8. KU, D-22 | 17. KV, E-19 |
| 9. ♪, D-29 | 18. ♪, E-21 |

5041-O X出土炭化米 (4倍)



- | | |
|-------------------------|---|
| 1. オオムギ, B-13.(×5) | 9. 不明, JT, F-5.(×5) |
| 2. 虫コブ, 54-20.(×5) | 10. クスノキの種子, KV, F-48.(×4) |
| 3. 不明, 54-30.(×5) | 11. イチイガシ?, LT, 54-46.(×3) |
| 4. ブドウ, F-15.(×5) | 12. スモモ, HU, 54-6.(×3) |
| 5. イチイガシ? 幼果, F-47.(×5) | 13. イチイガシ, KT, 54-36.(×3) |
| 6. 不明, 54-7.(×5) | 14. アカメガシワ(2), ウドカズラ(1), 不明, 54-53.(×2) |
| 7. 不明, 54-24.(×5) | 15. ウメ, JV, 54-22.(×2) |
| 8. 不明, 54-52.(×5) | 16. モモ, KV, 54-43.(×2) |

