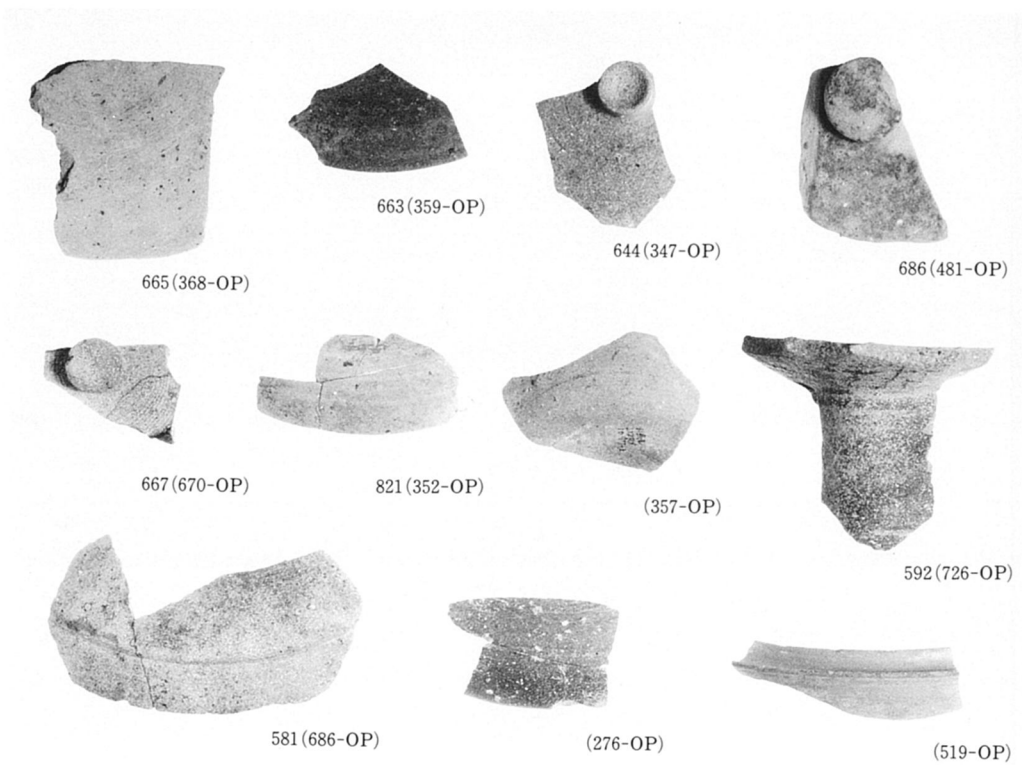
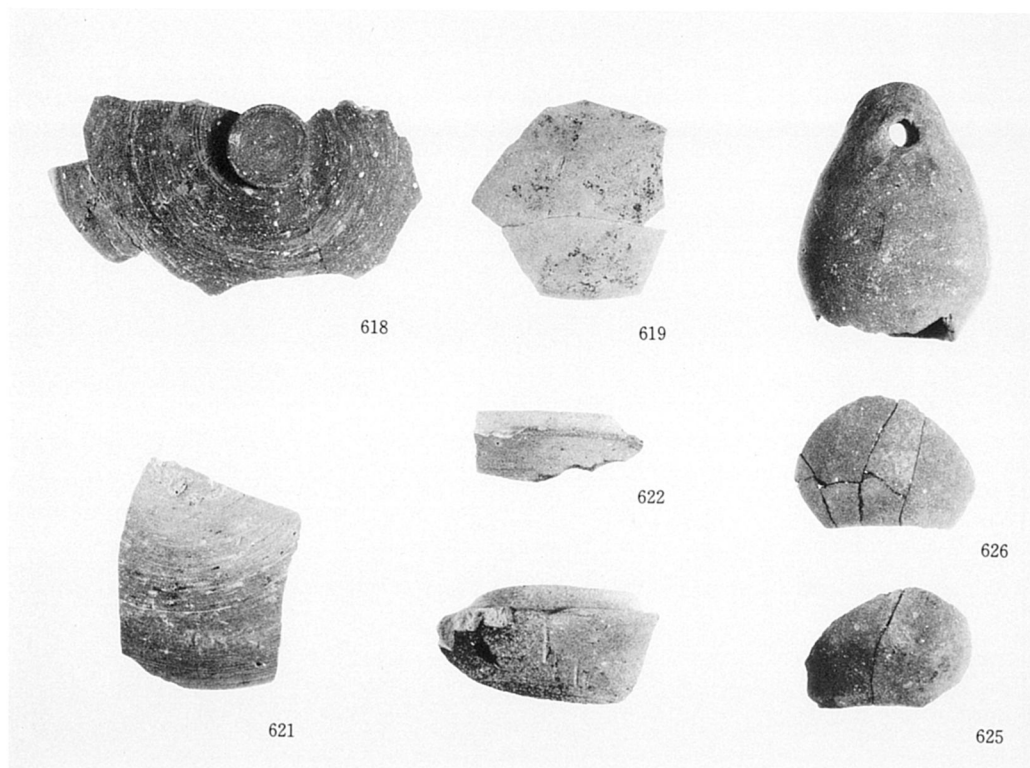


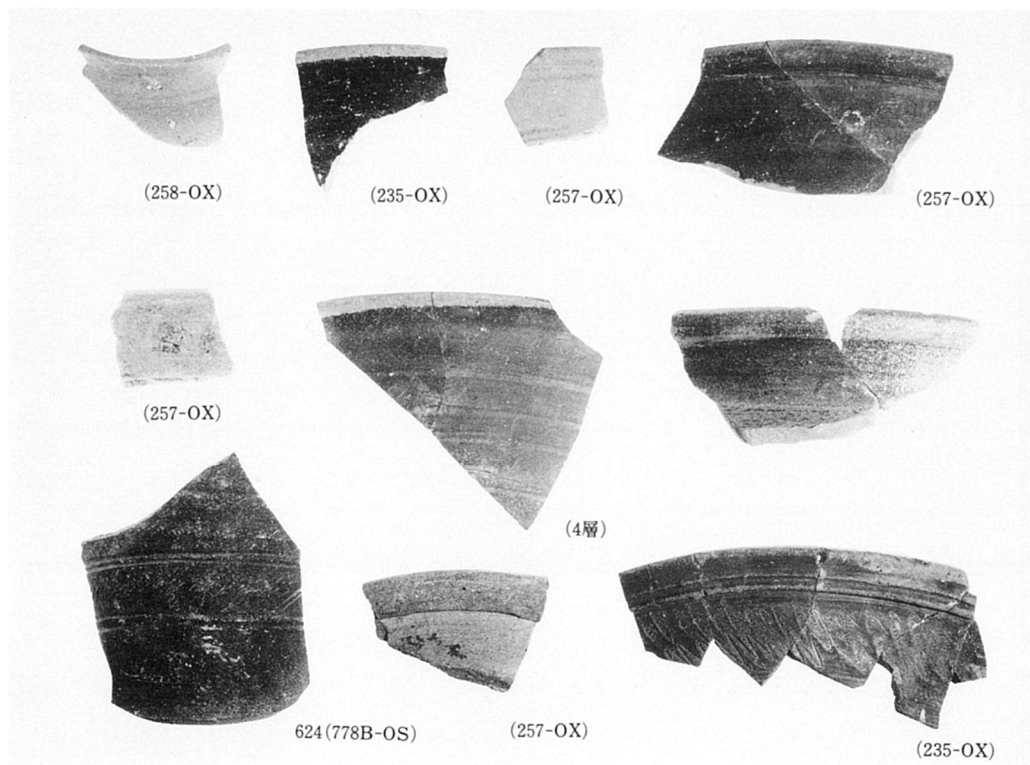
793-OD 他出土遺物



368-OP 他出土遺物



778B-O S 出土遺物



778B-O S 出土遺物





642



641



643



644



645



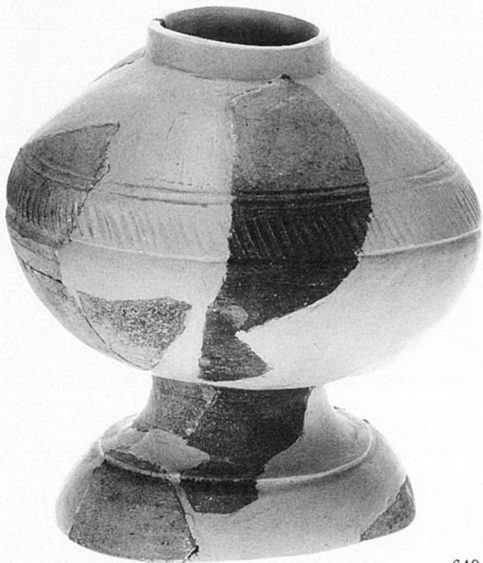
648



646



647



649



650



(3層)



(795-OX)



813(800-OX)



(799-OX)



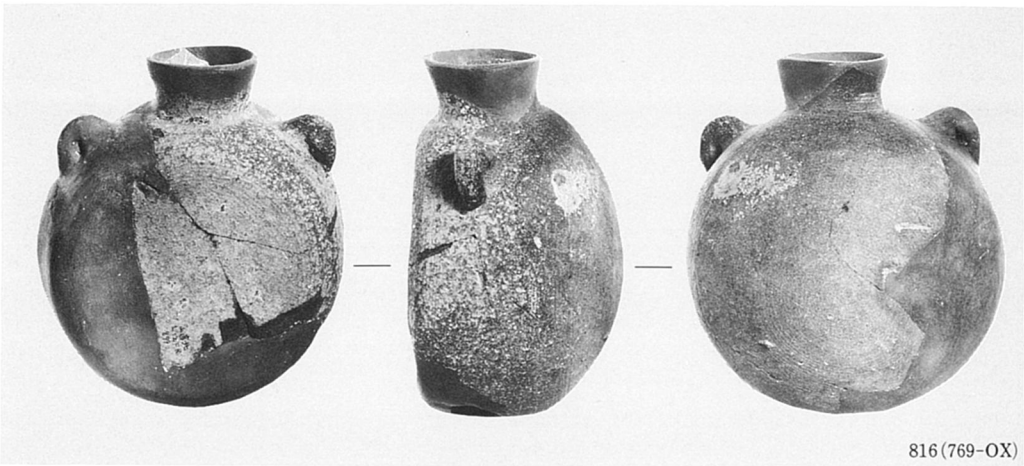
812
(148-OZ)



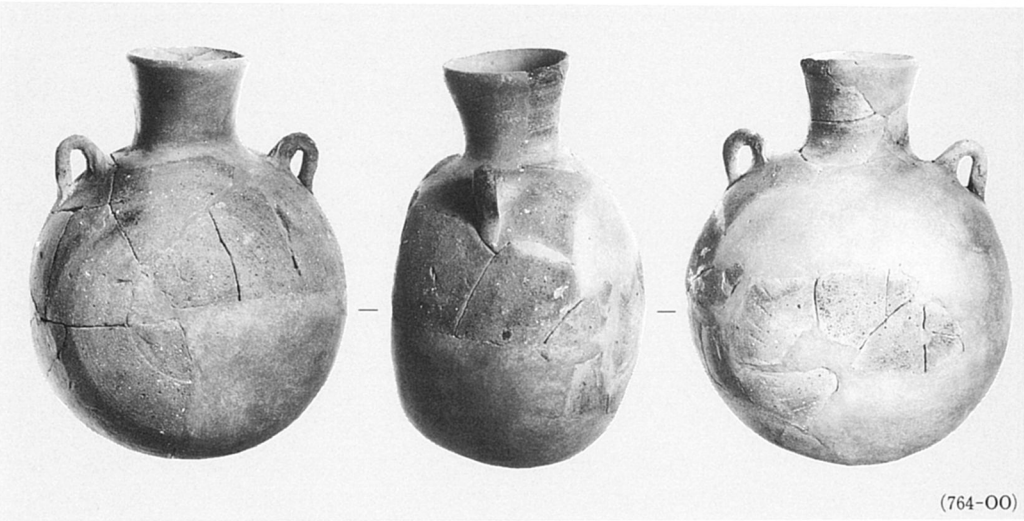
(749-OX)



(236-OX)



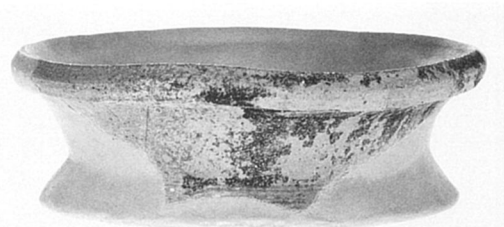
816(769-OX)



(764-00)



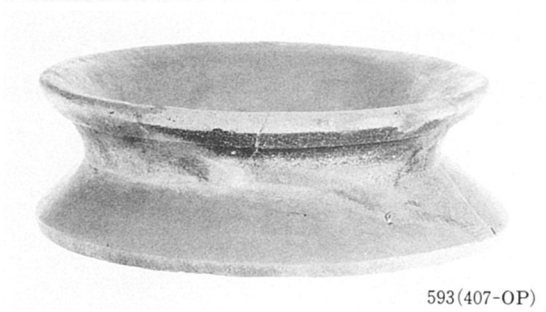
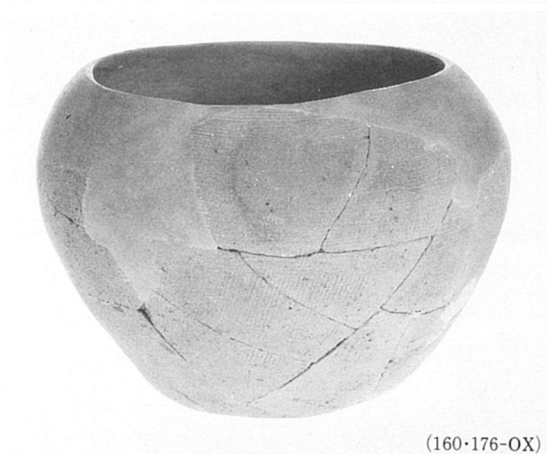
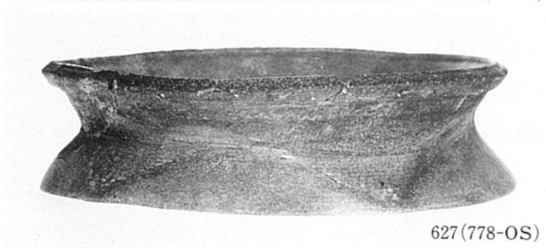
817(795-OX)

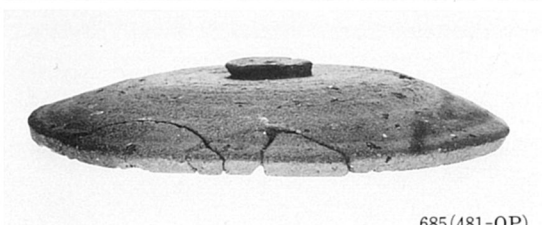
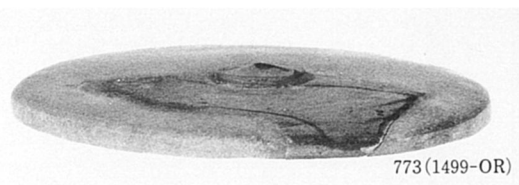
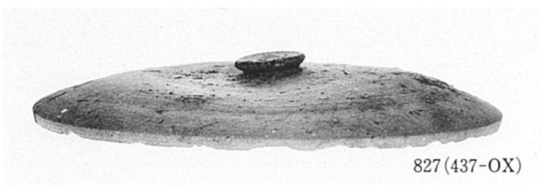
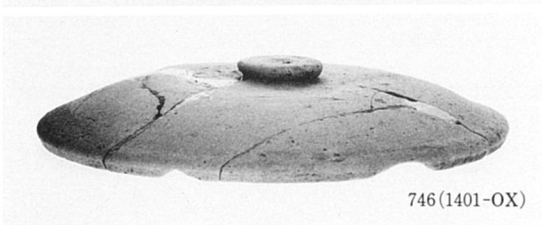
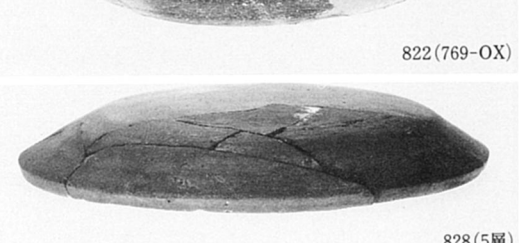
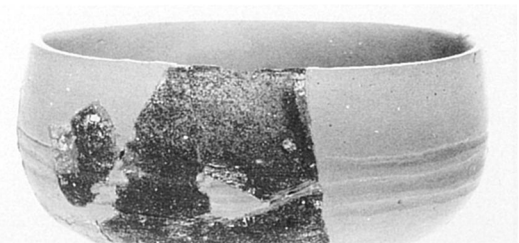
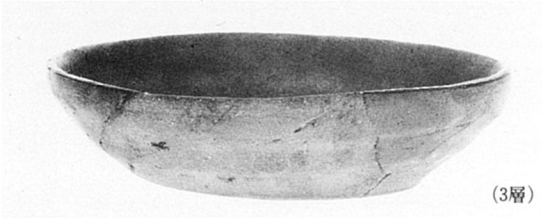
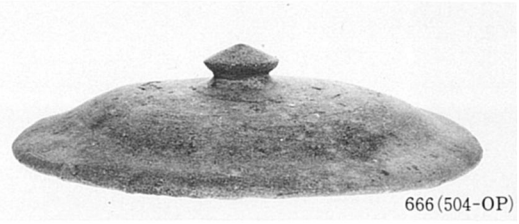
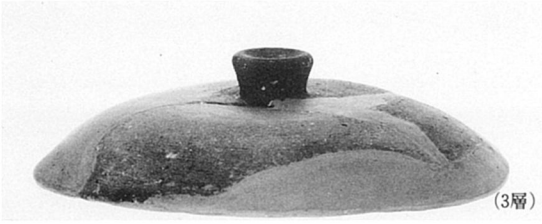


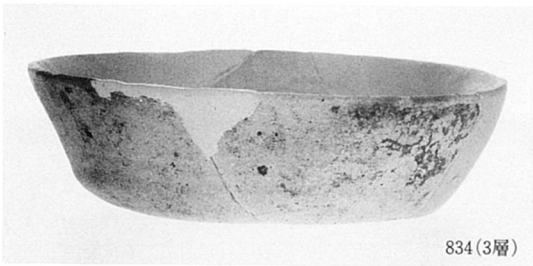
818(196-OP)



(794-OX)



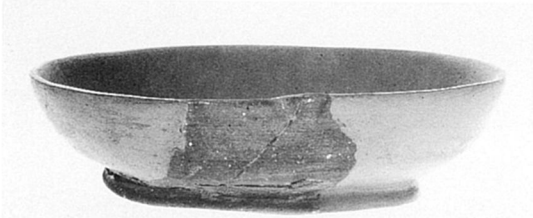




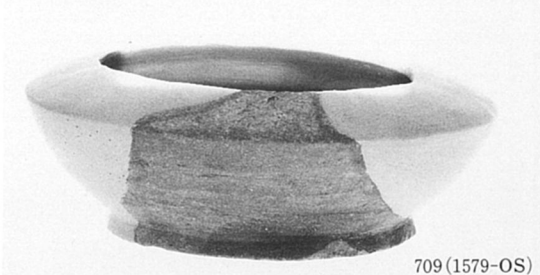
834(3層)



843(165-OZ)



840(165-OZ)



709(1579-OS)



706(251-OW)

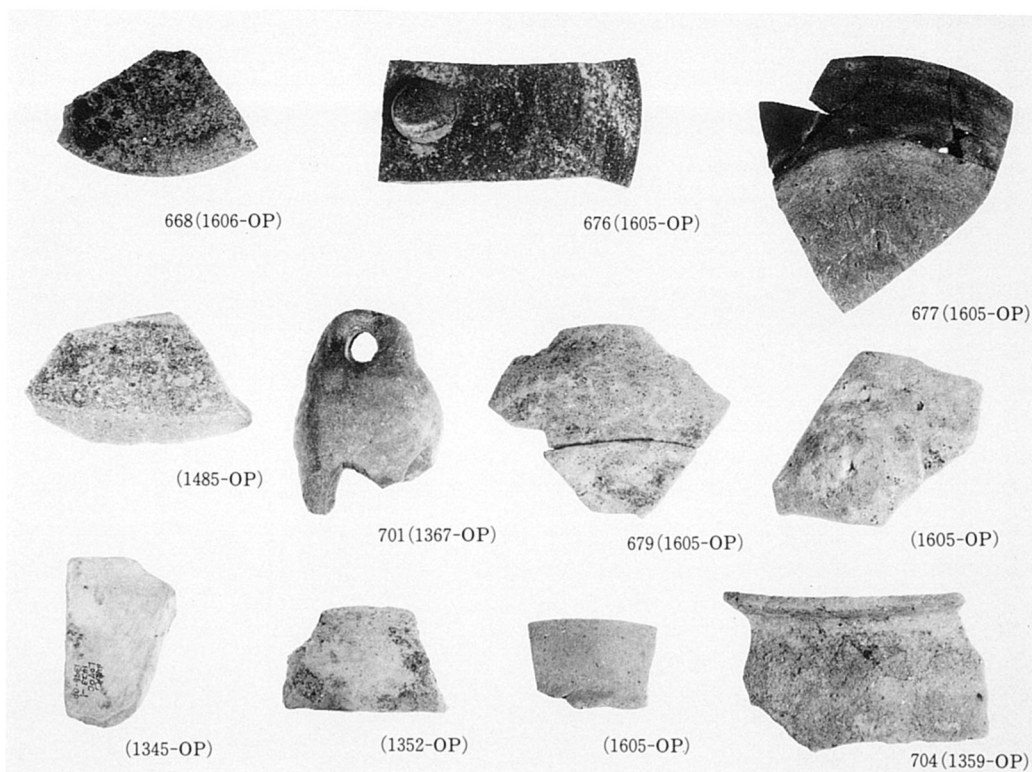


844(148-OZ)

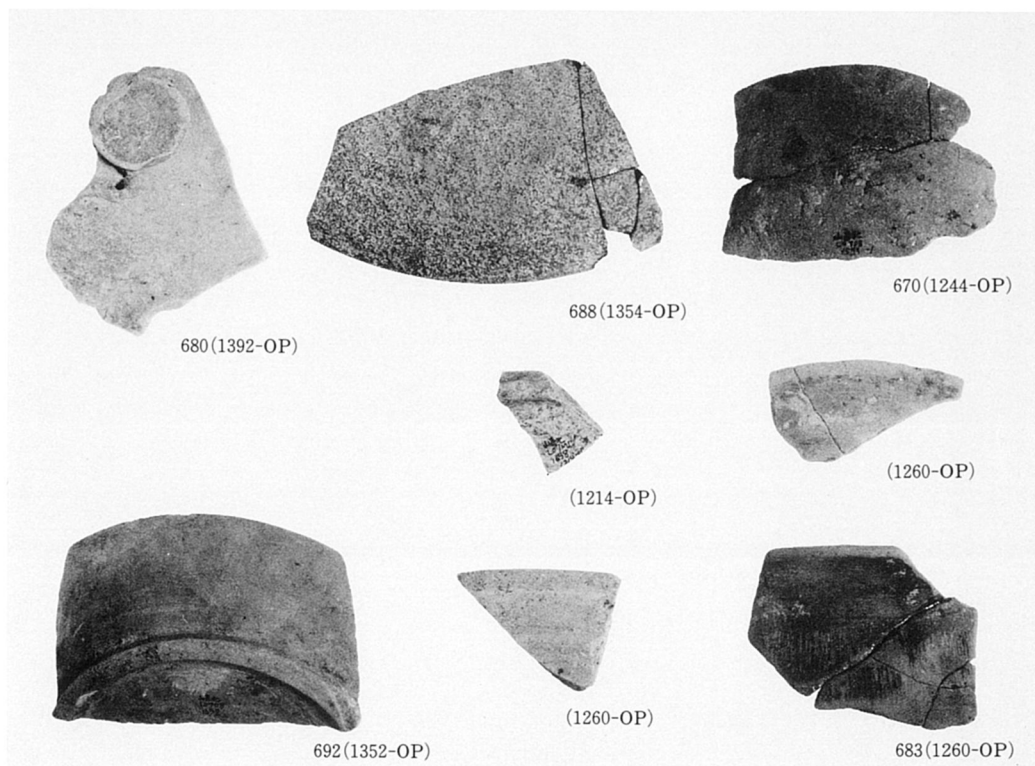


714(3020-OS)





奈良～平安時代建物群他出土遺物





846(3層)



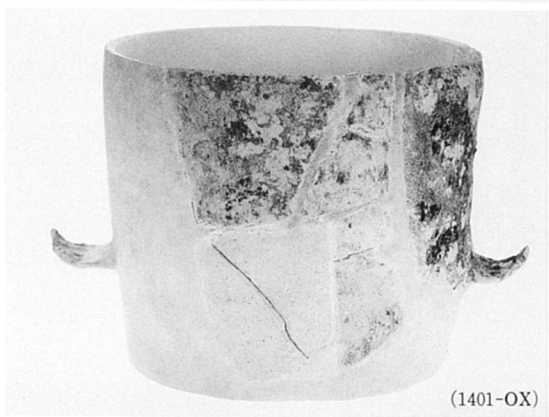
768(1469-OR)



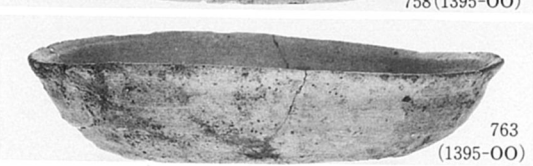
749(1401-OX)



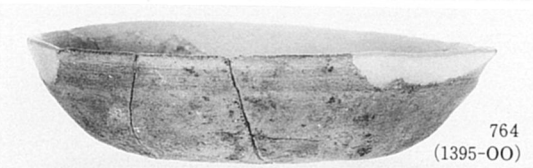
758(1395-OO)



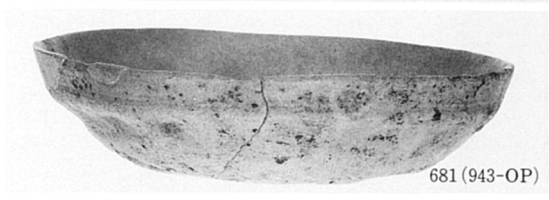
(1401-OX)



763
(1395-OO)



764
(1395-OO)



681(943-OP)



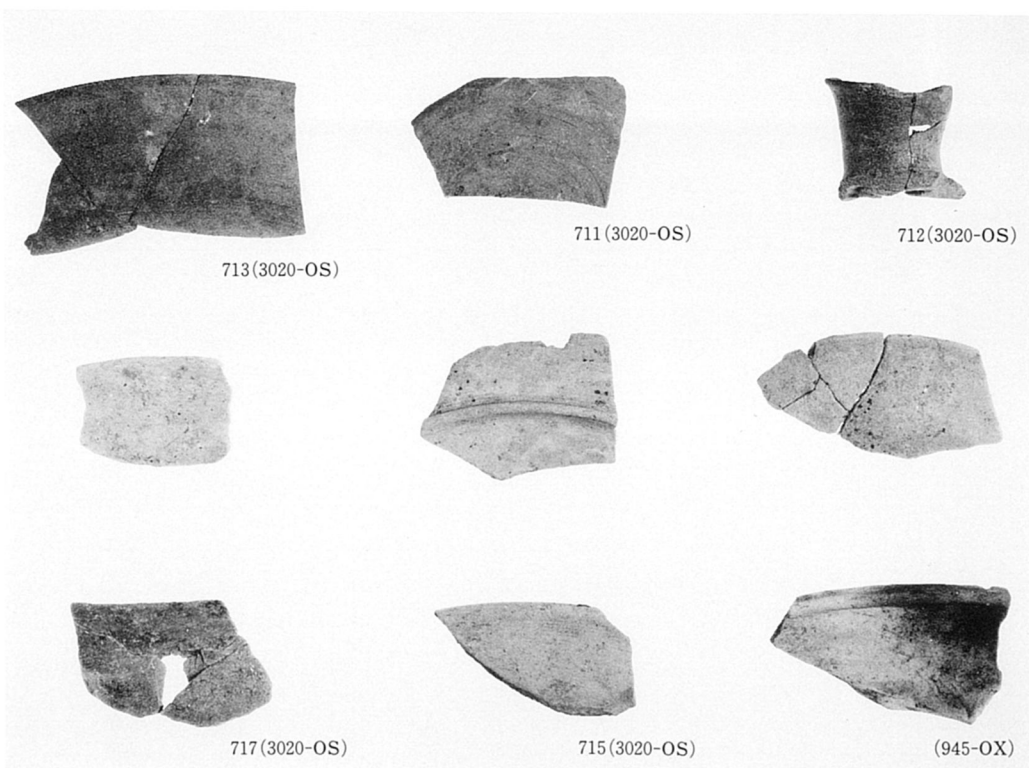
766(1395-OO)



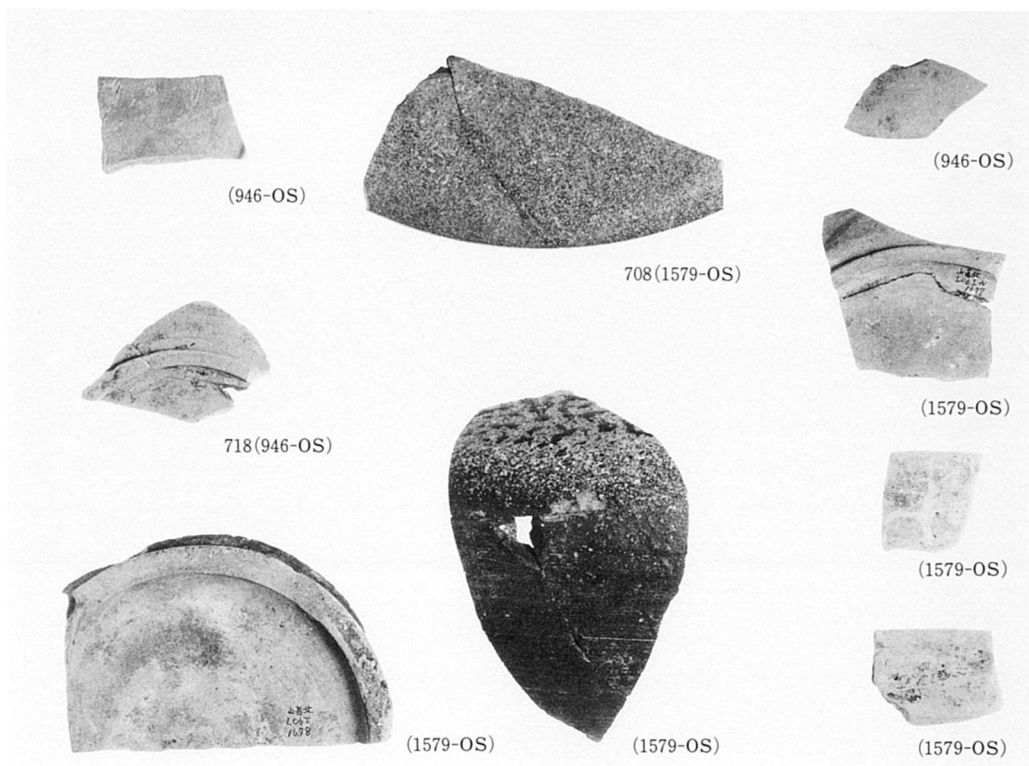
767(1395-OO)



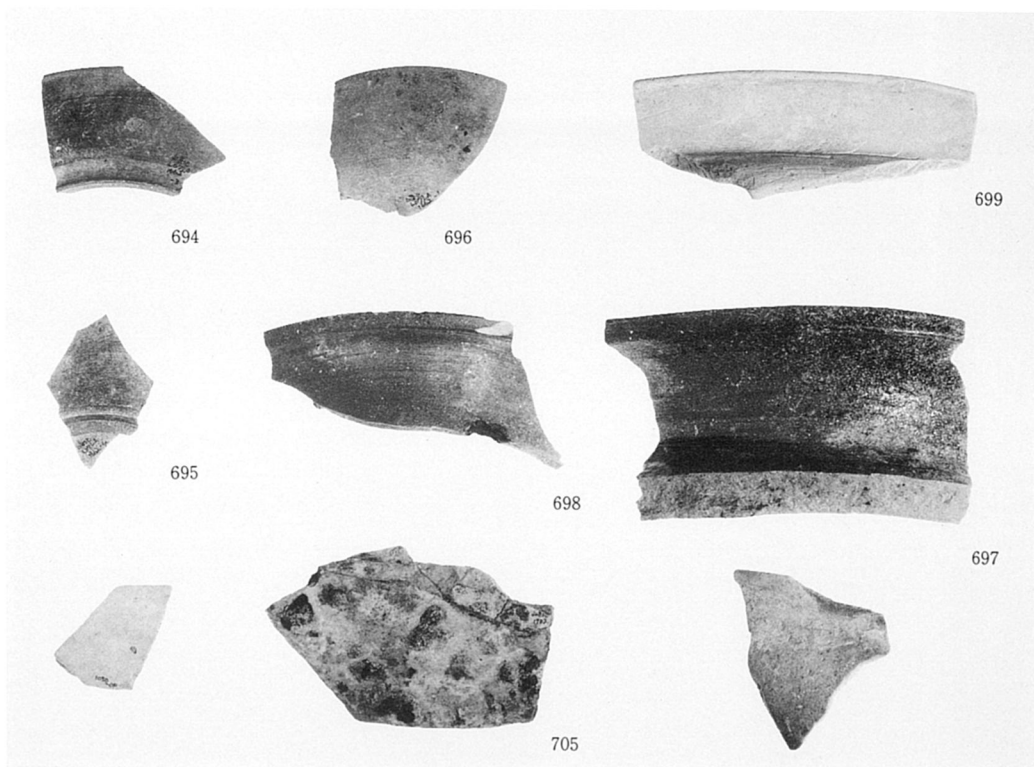
(4層)



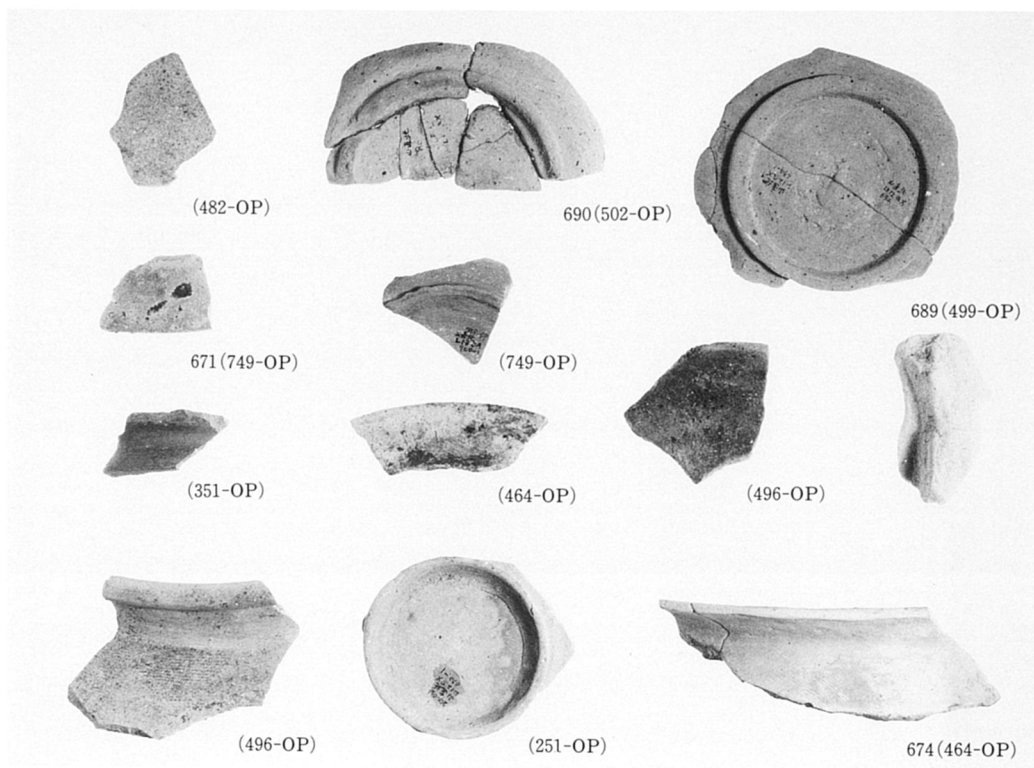
1579(3020) - OS 他出土遺物



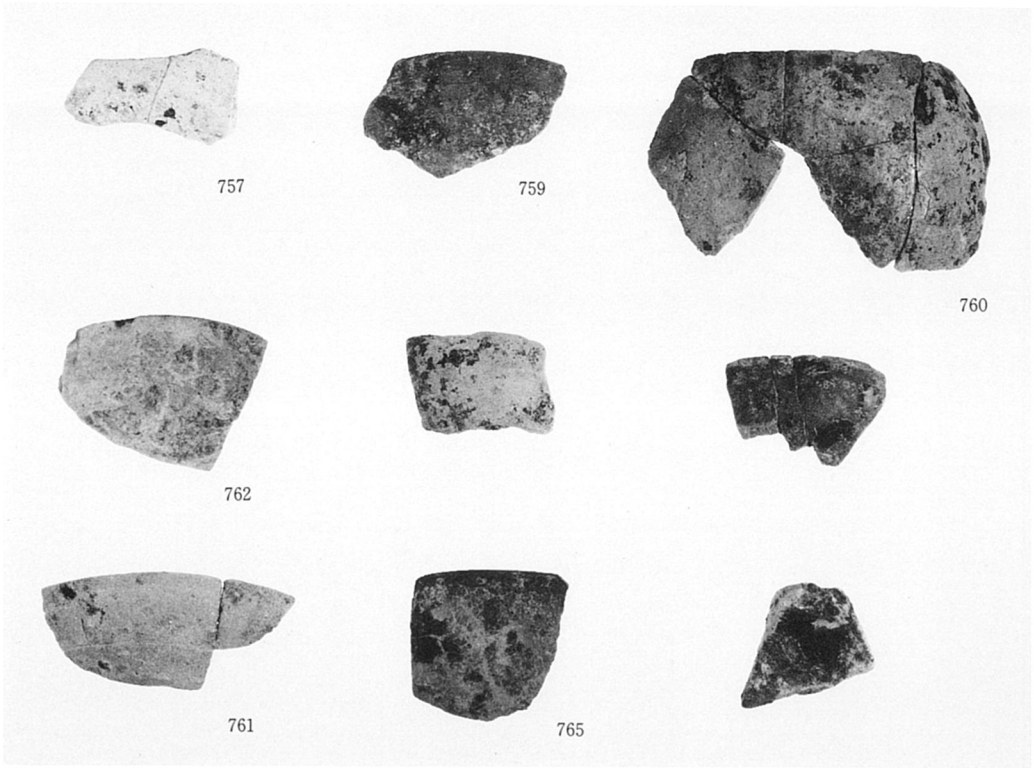
946-OS • 1579-OS 出土遺物



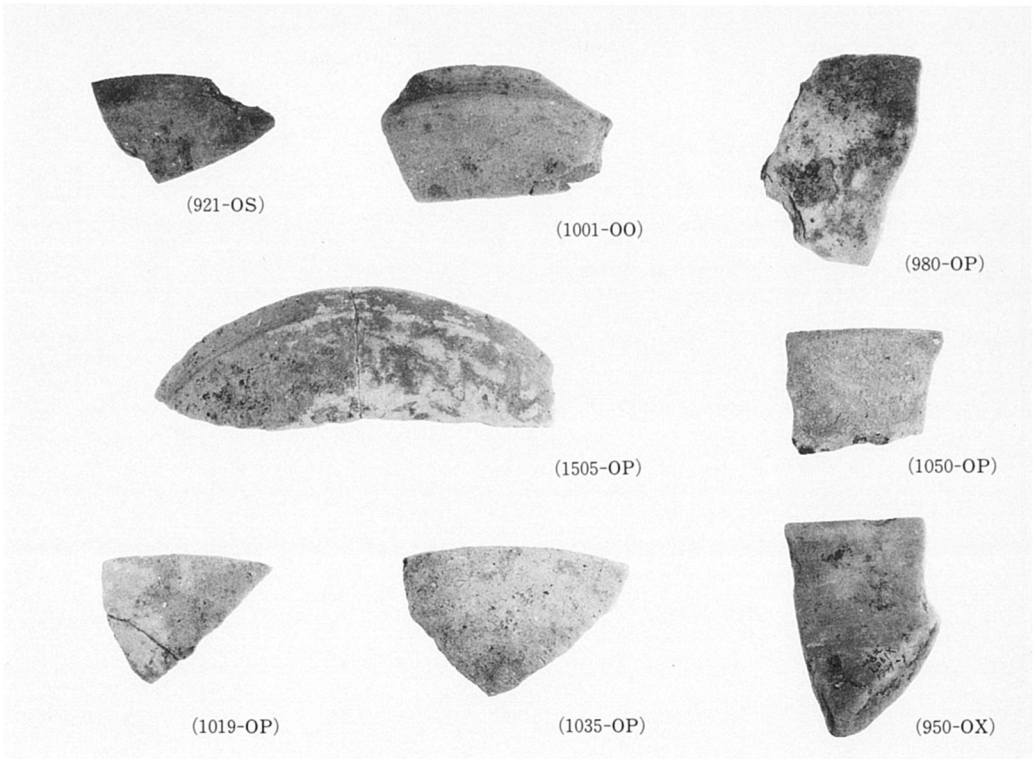
1050-O P 出土遺物



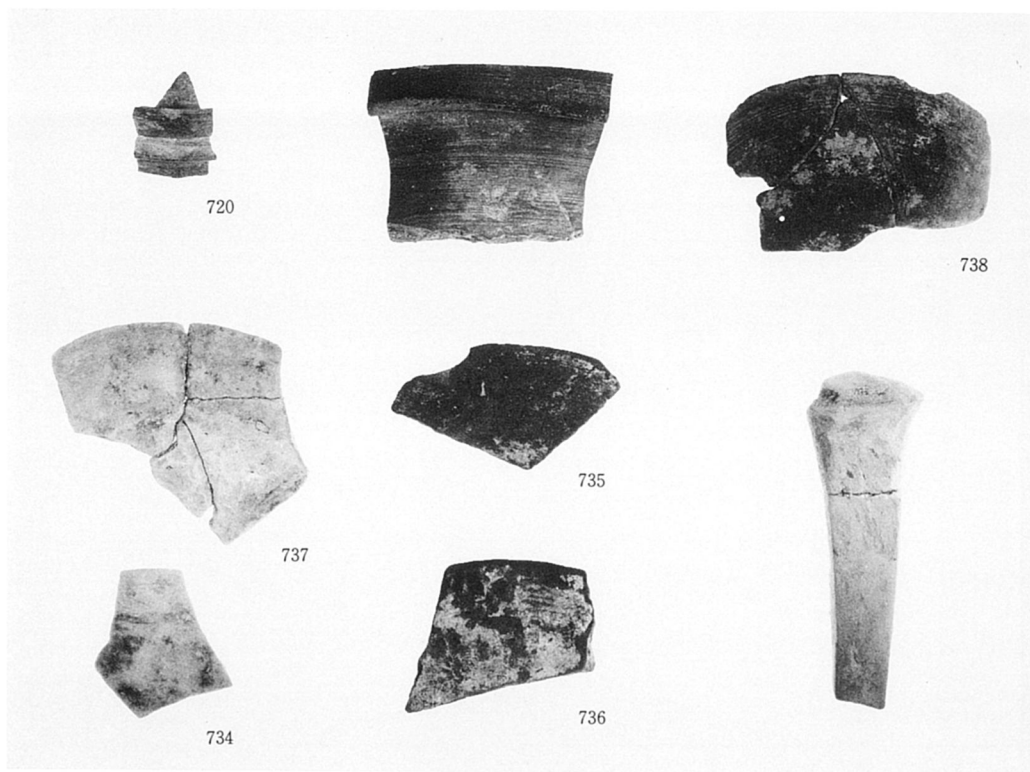
各ピット出土遺物



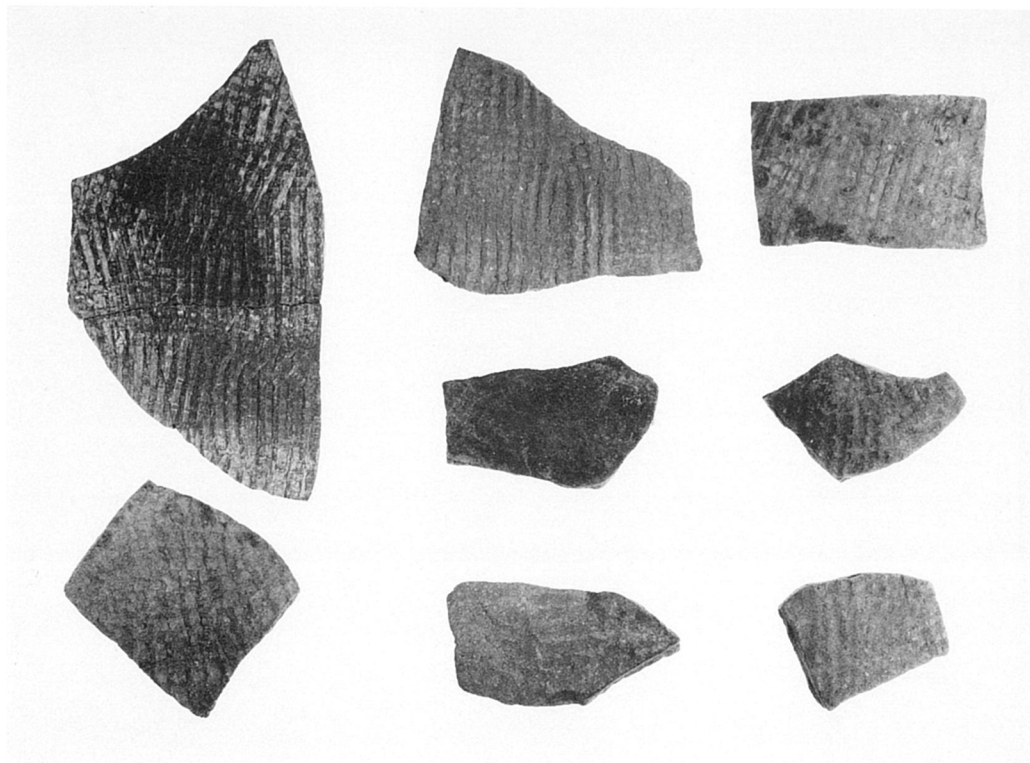
1395-00 出土遺物



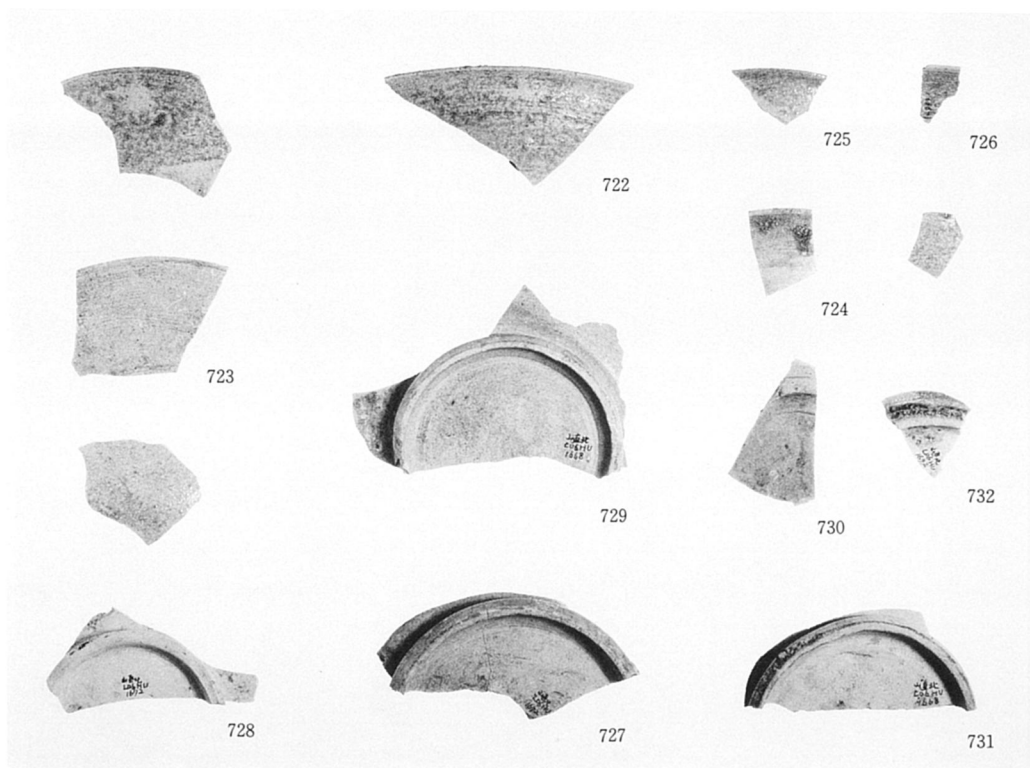
各ピット・土壇出土遺物



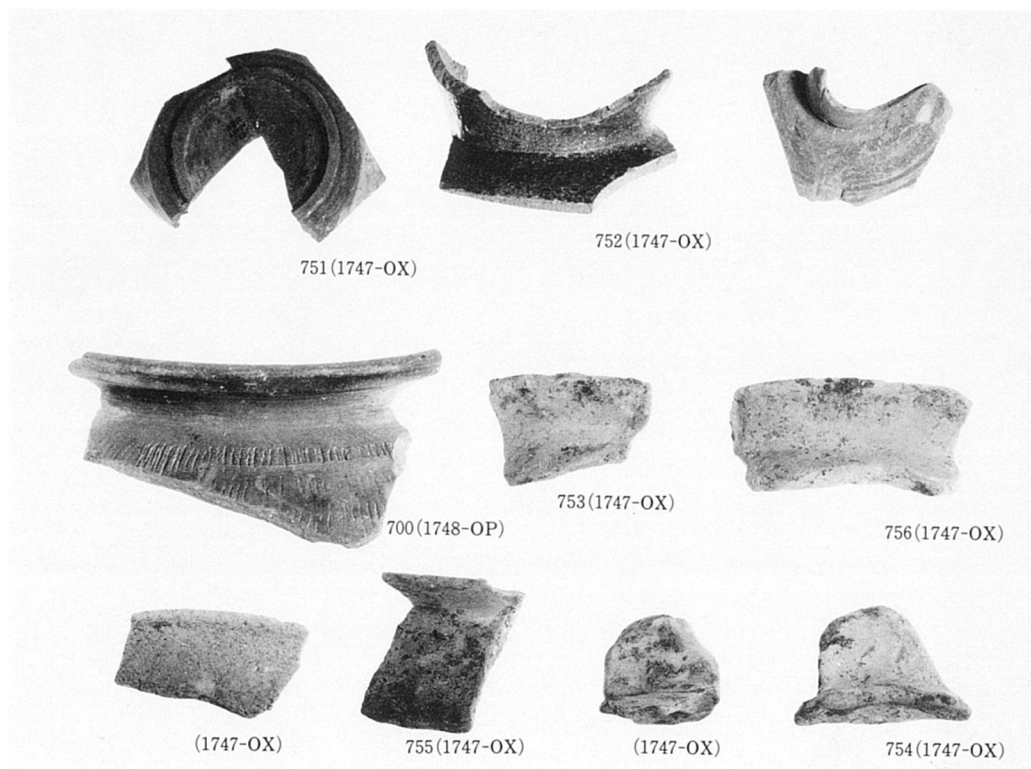
921-O S 出土遺物



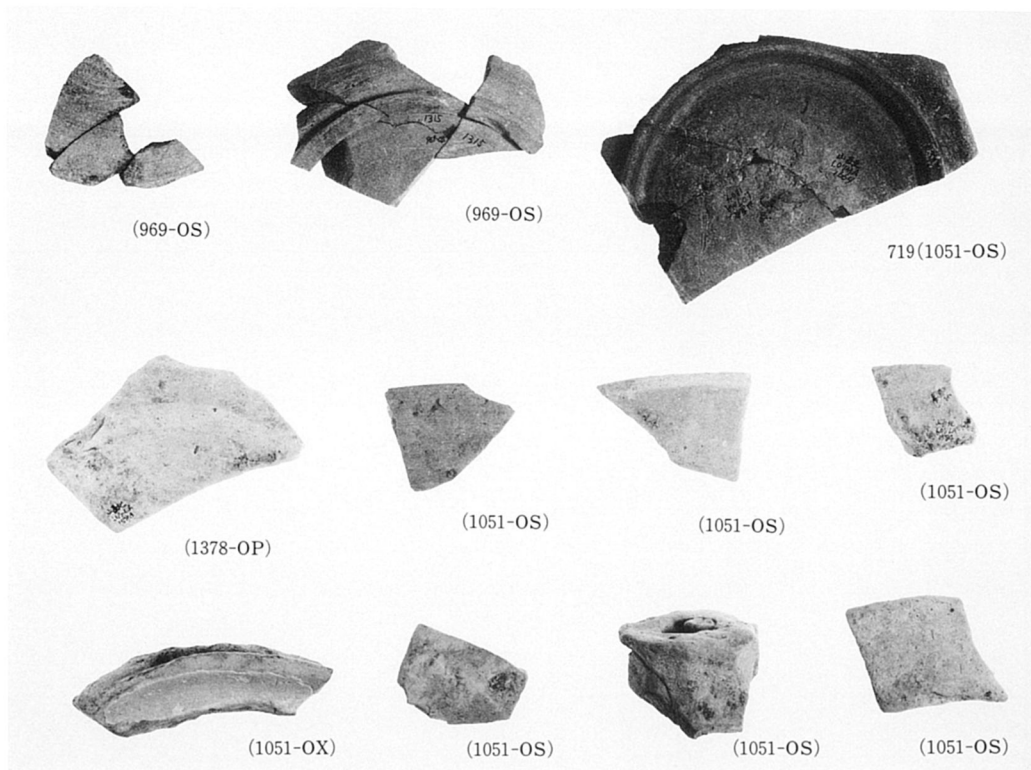
921-O S 出土遺物



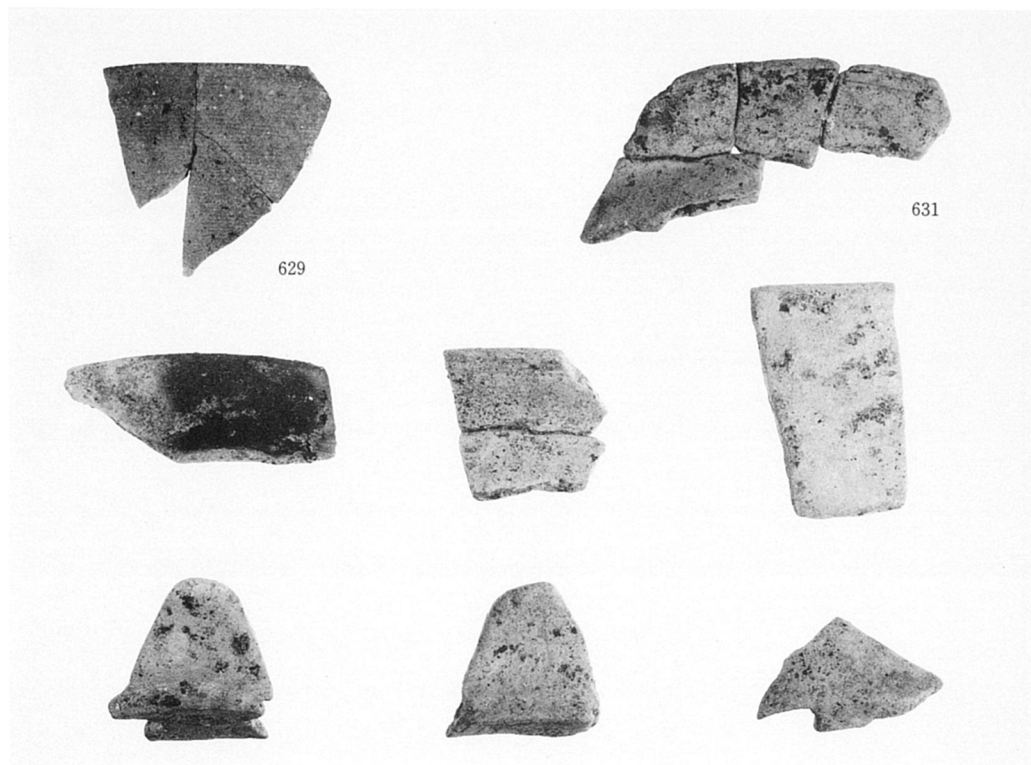
921-O S 出土遺物



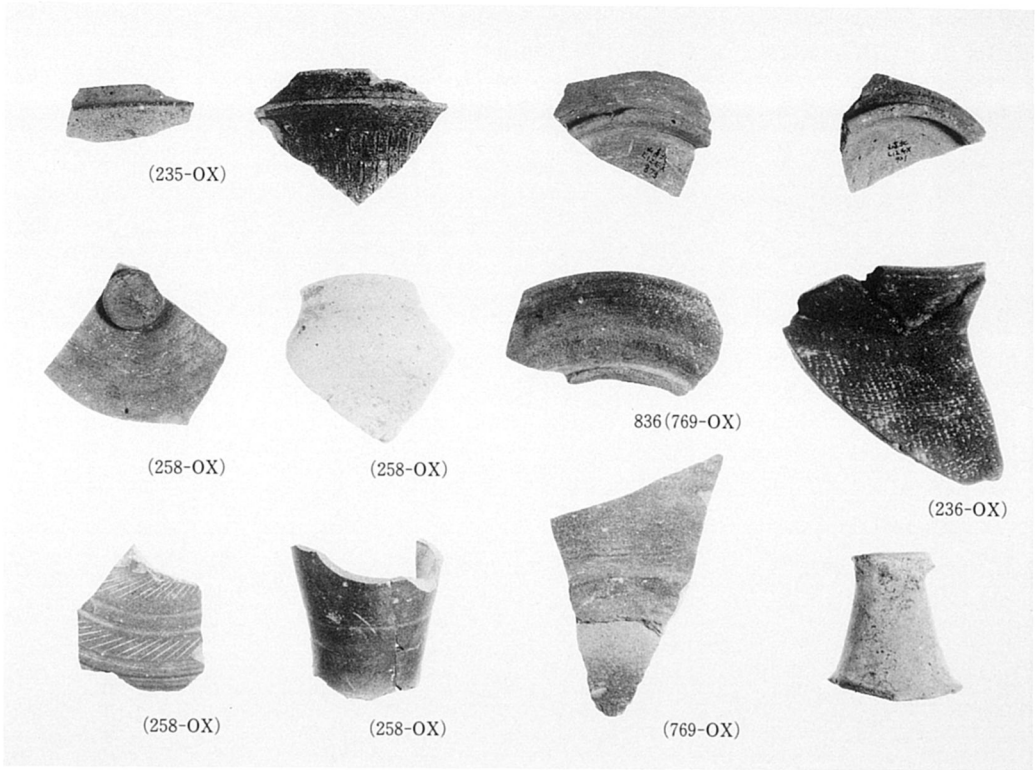
1747-O X 他出土遺物



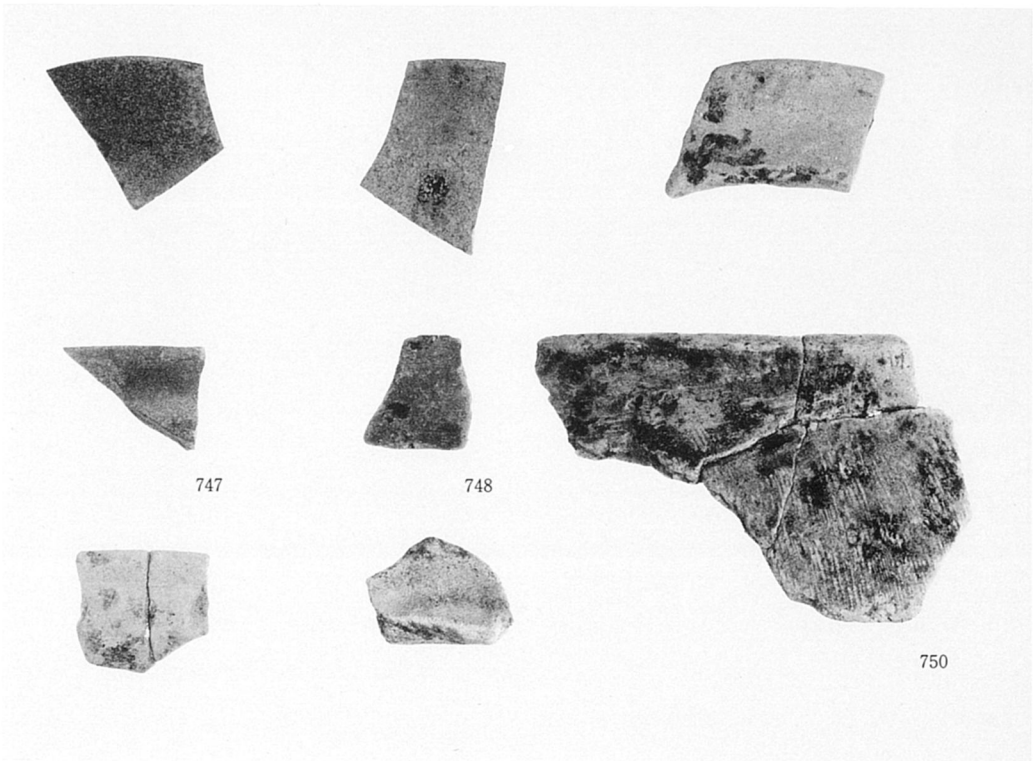
969-O S ・ 1051-O S 出土遺物



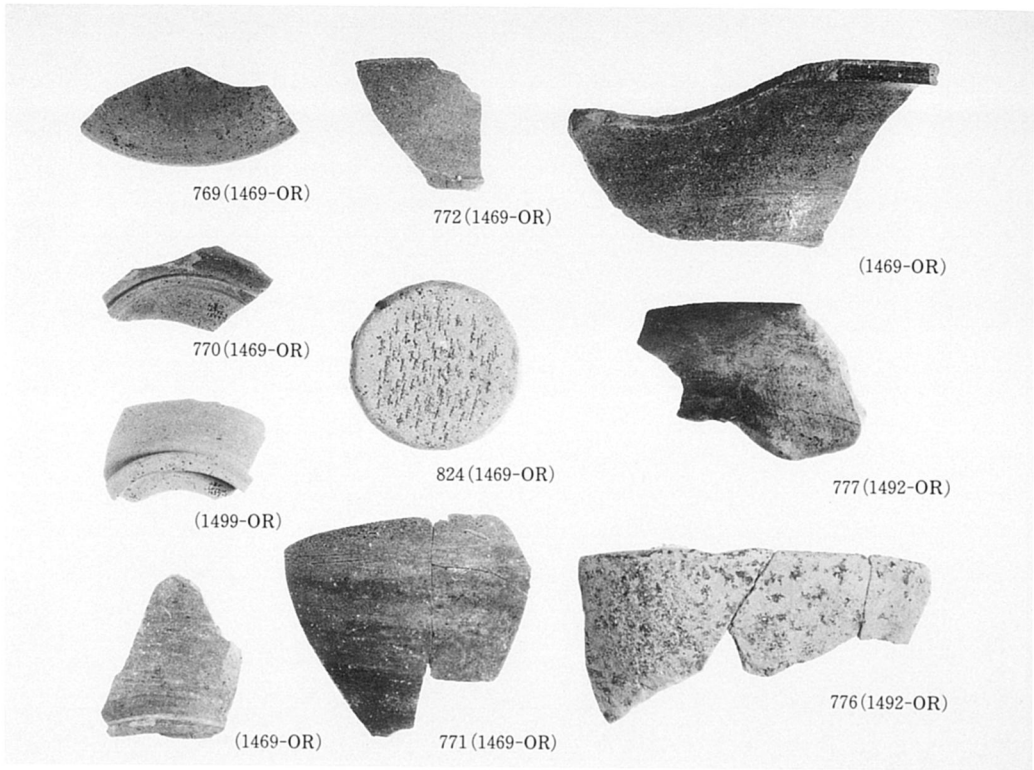
1610-O S 出土遺物



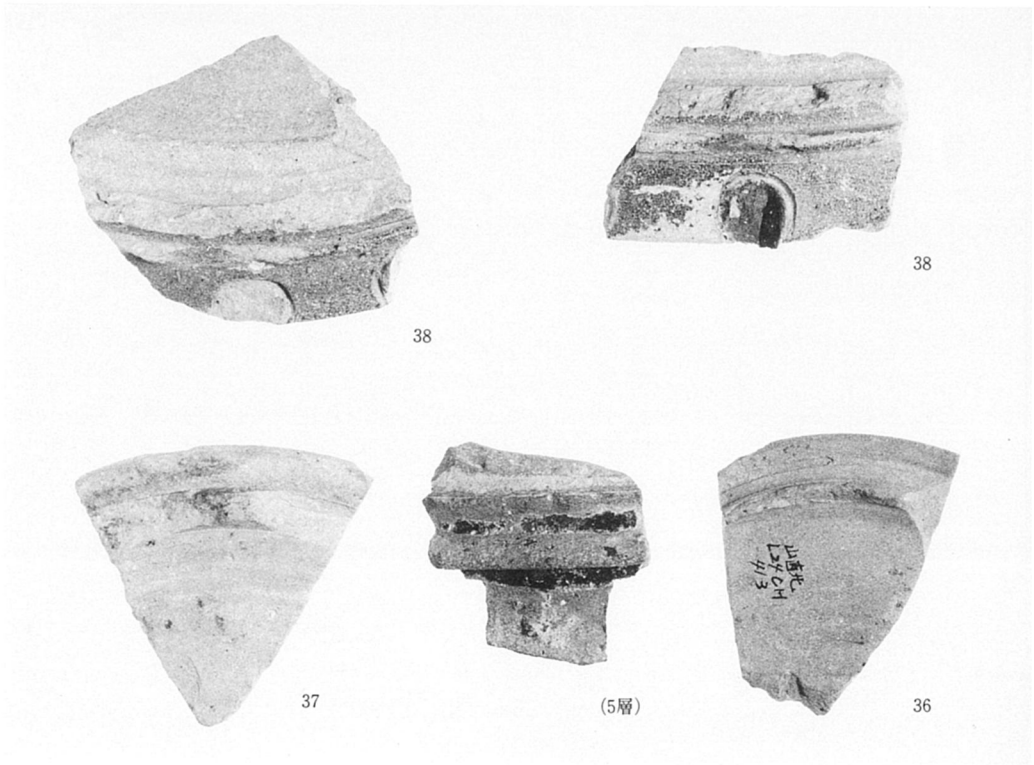
769-O X 他出土遺物



1401-O X 出土遺物



1469-O R他出土遺物



包含層出土遺物

(財)大阪府埋蔵文化財協会報告書 第24輯

主要地方道岸和田・牛滝山・貝塚線建設に伴う

山ノ内遺跡B地区・山直北遺跡

—発掘調査報告書—

昭和63年3月31日発行

編集・発行 財団法人 大阪府埋蔵文化財協会
大阪市東区谷町2丁目36番地大手前ウサミビル

印刷 株式会社 中島弘文堂印刷所

