



土坑64

760



土坑64

762



土坑64

763



墓 8



墓 8

779



墓 8

786



墓 8

780



墓 8

787



墓 8

782



墓7



墓7

772



墓7

773



土坑66

797



土坑66

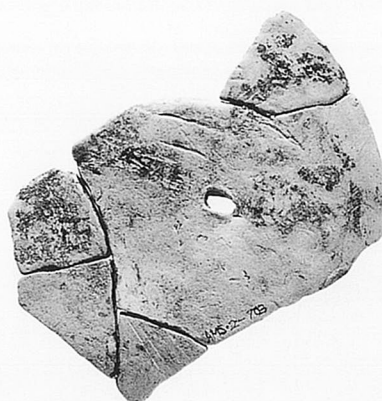
801



793



795



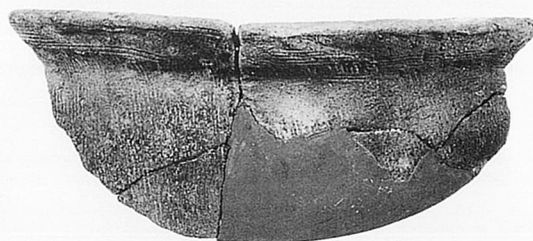
807



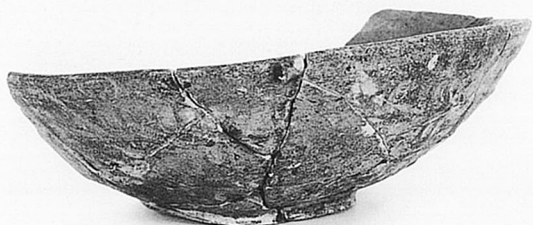
1569



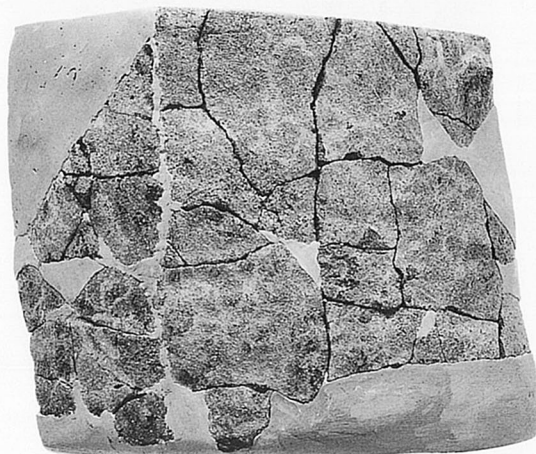
805



810



798



1570



800



土坑66

1571



土坑66

1572



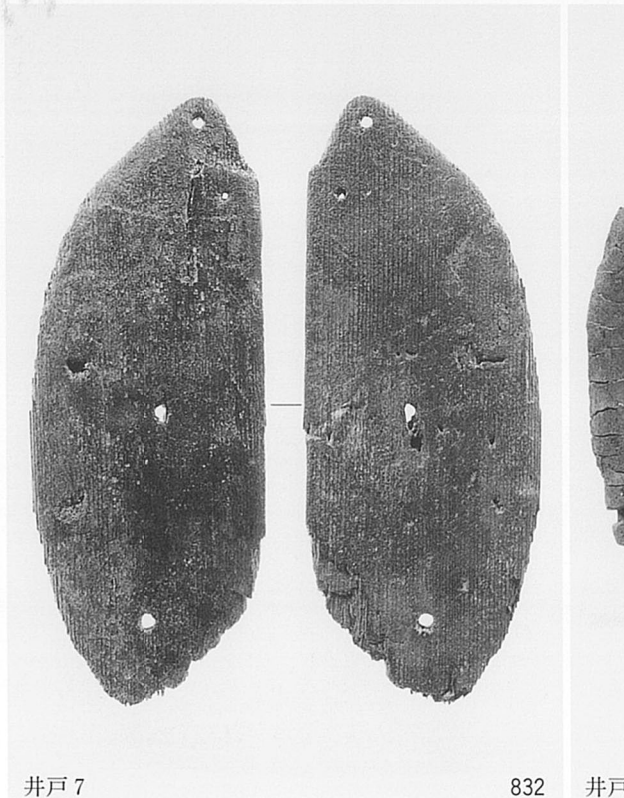
溝64

825



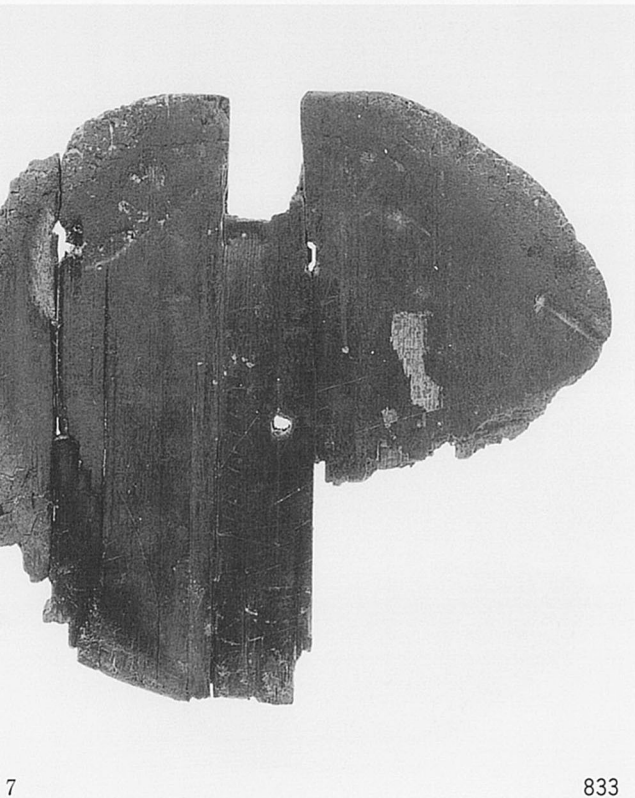
溝64

826



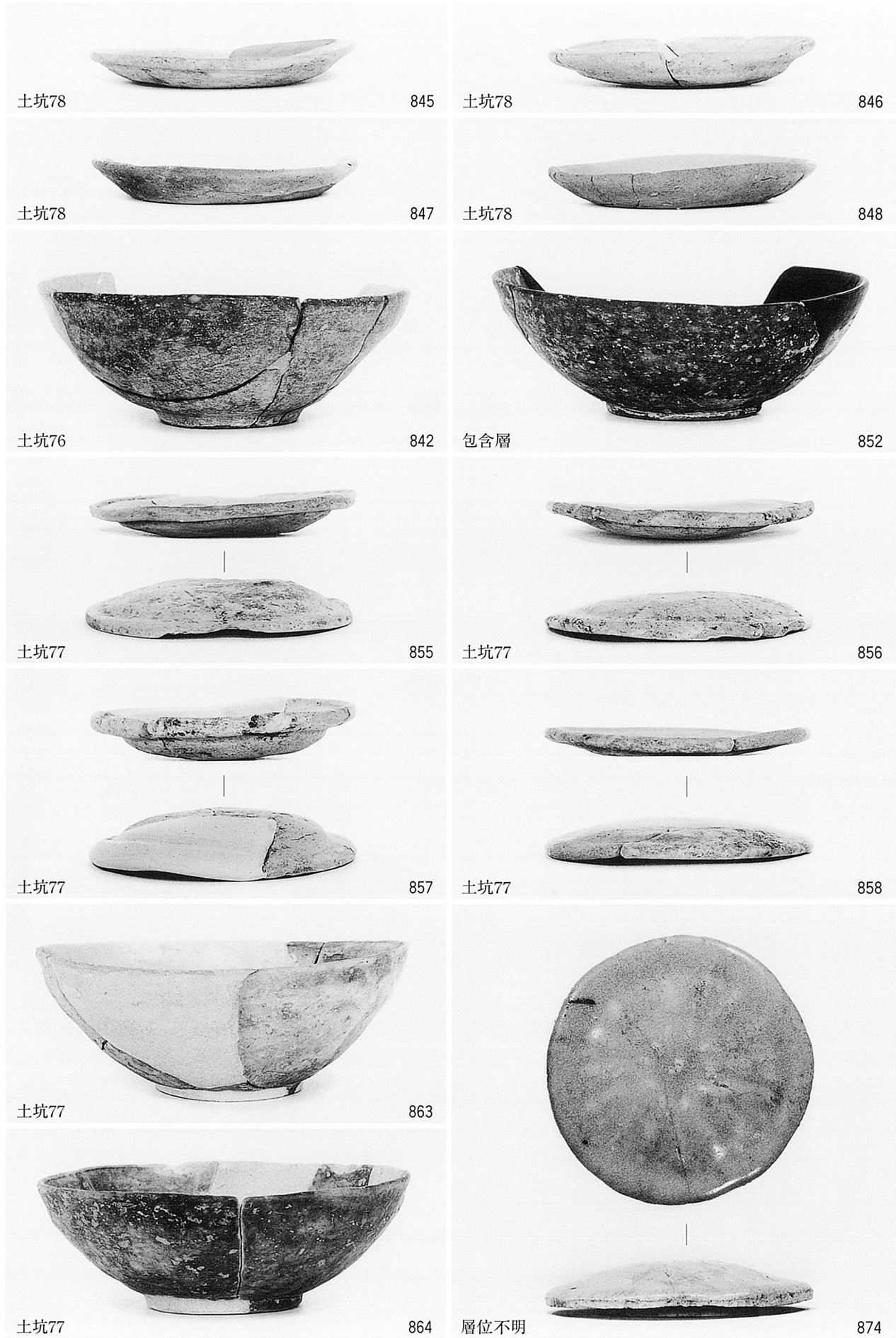
井戸7

832

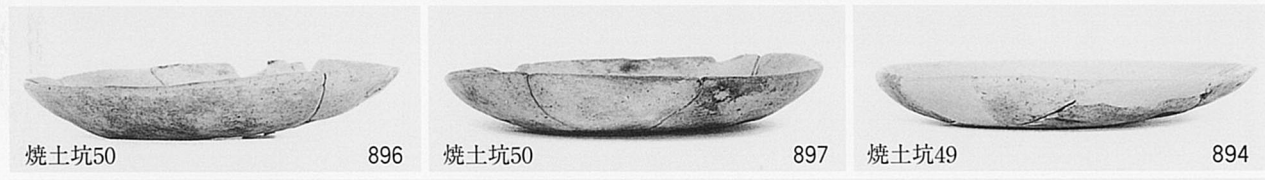


井戸7

833



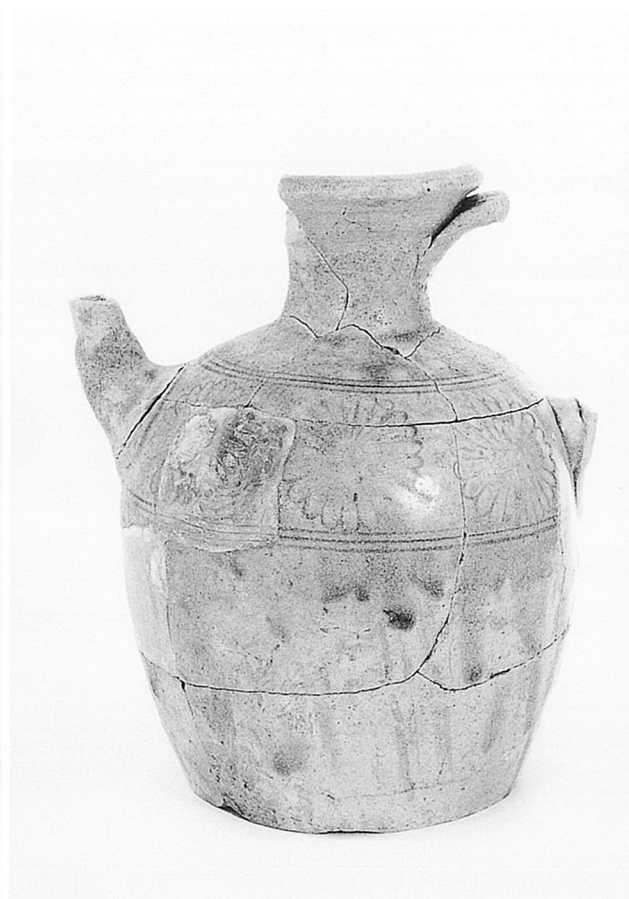






土坑88カ

914

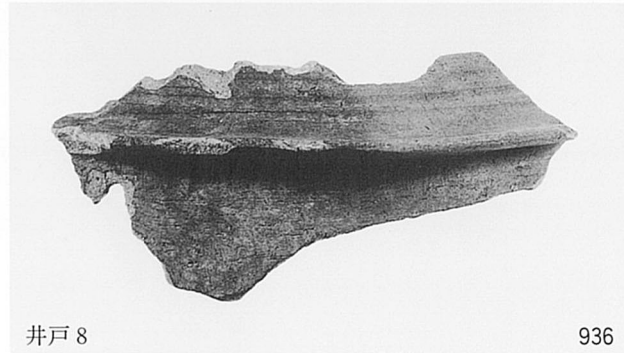
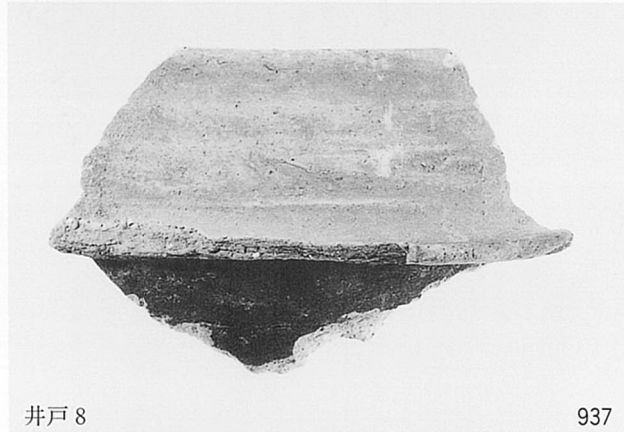
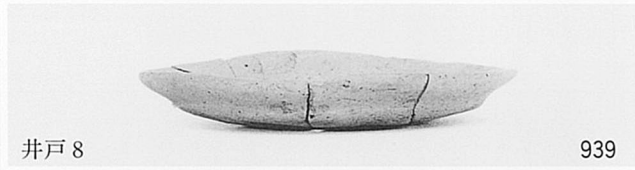
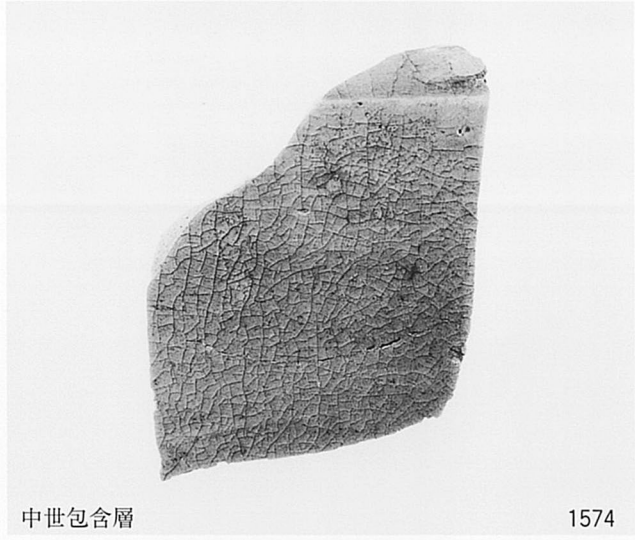


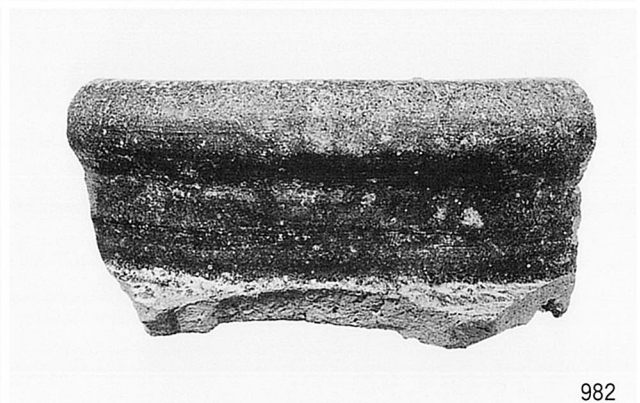
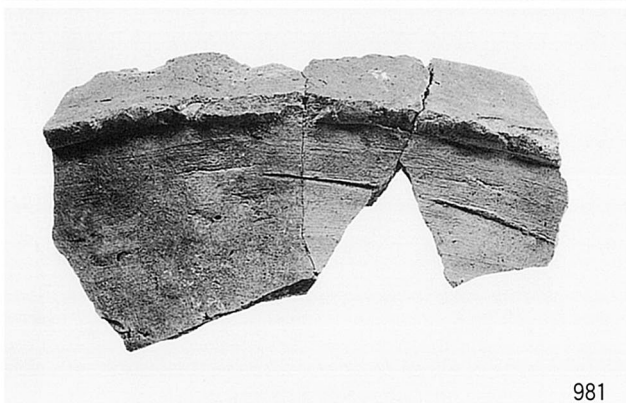
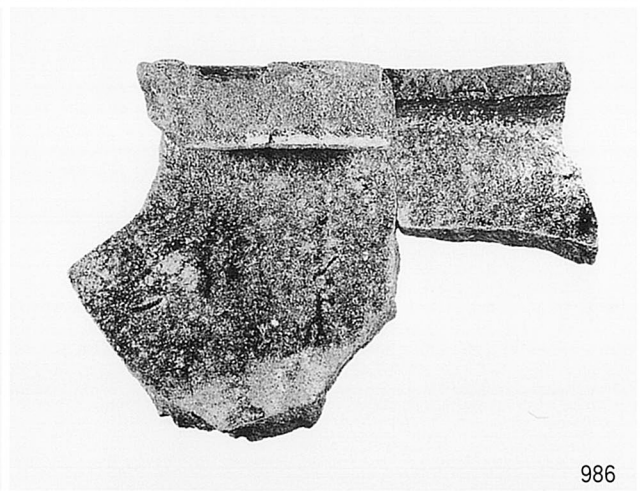
土坑88

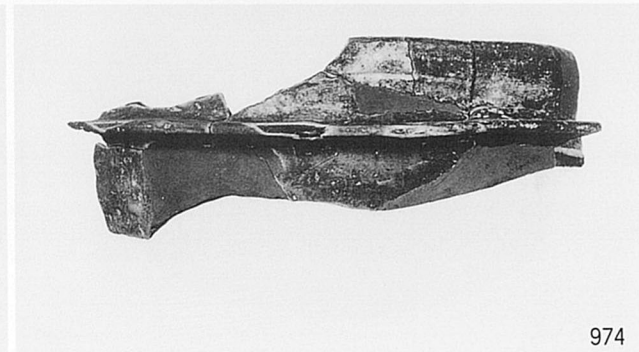
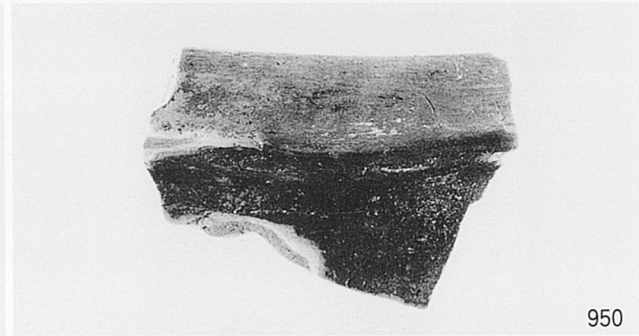
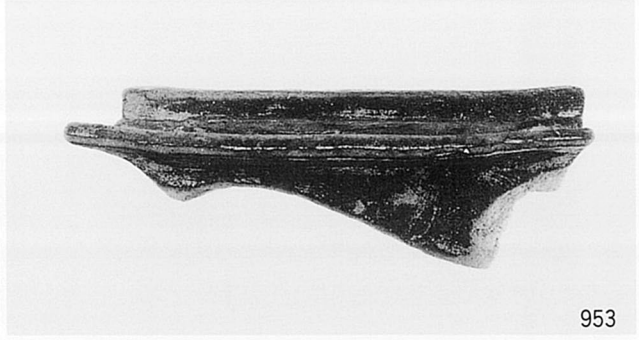
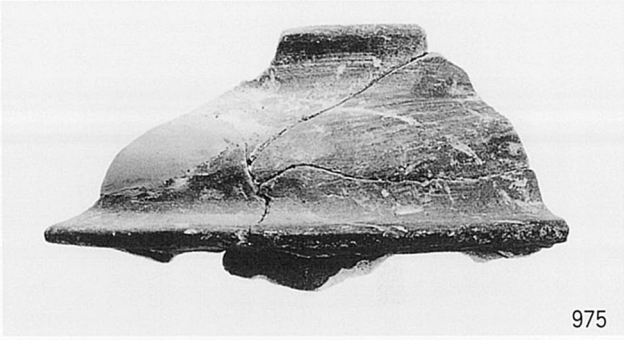
915



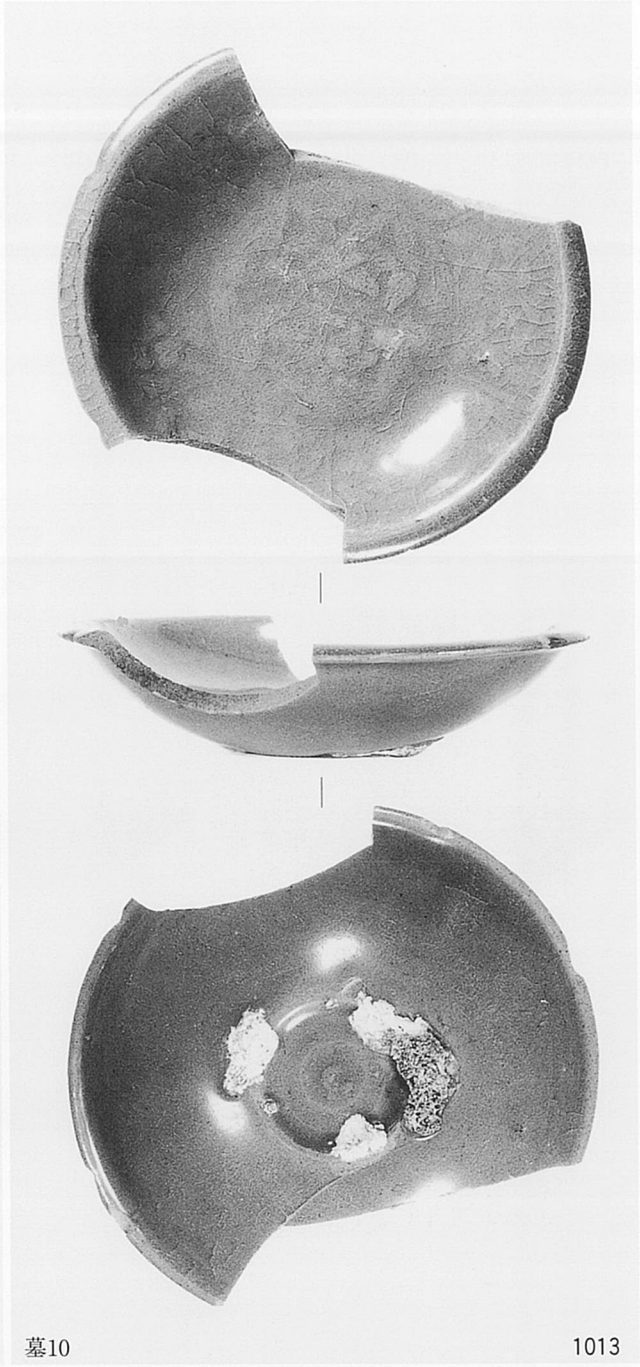
東側崖肩部



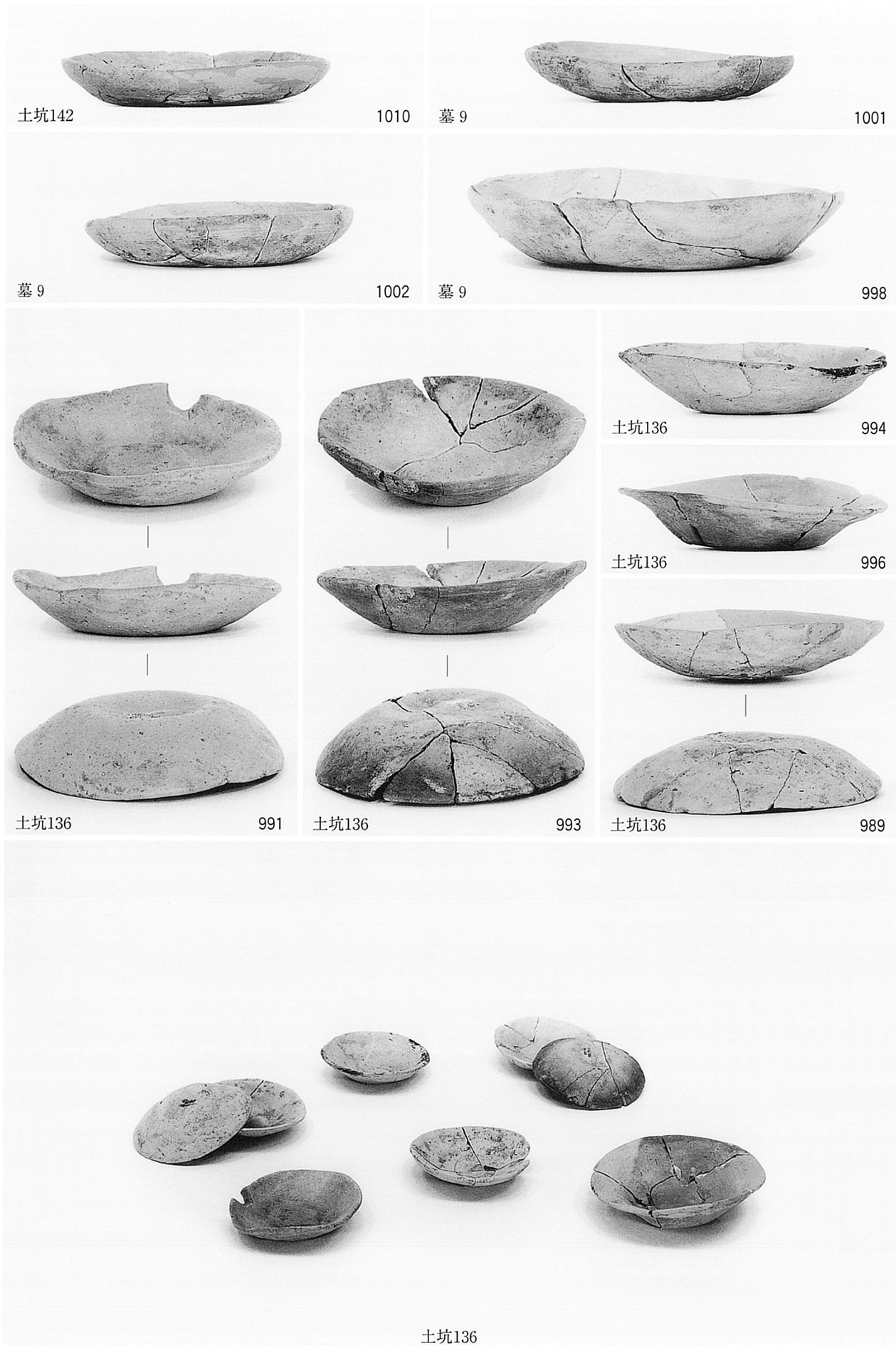




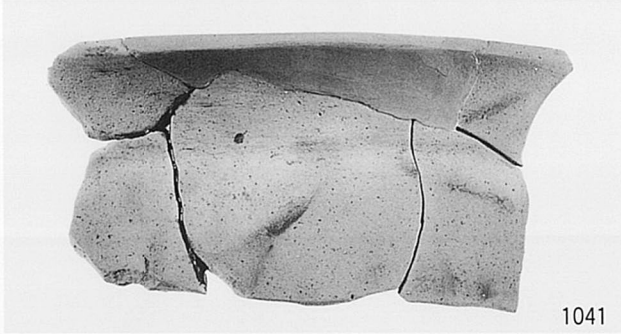


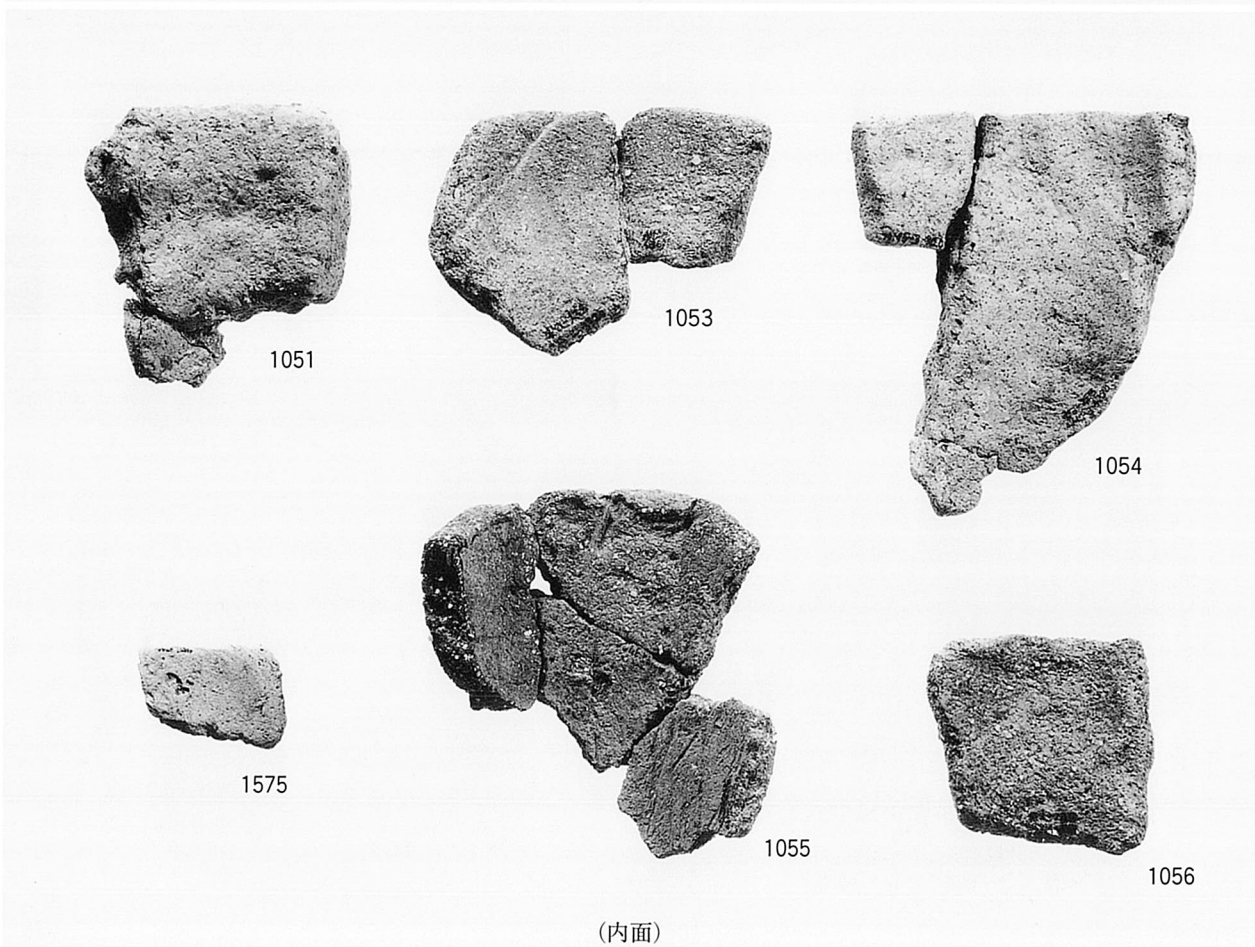
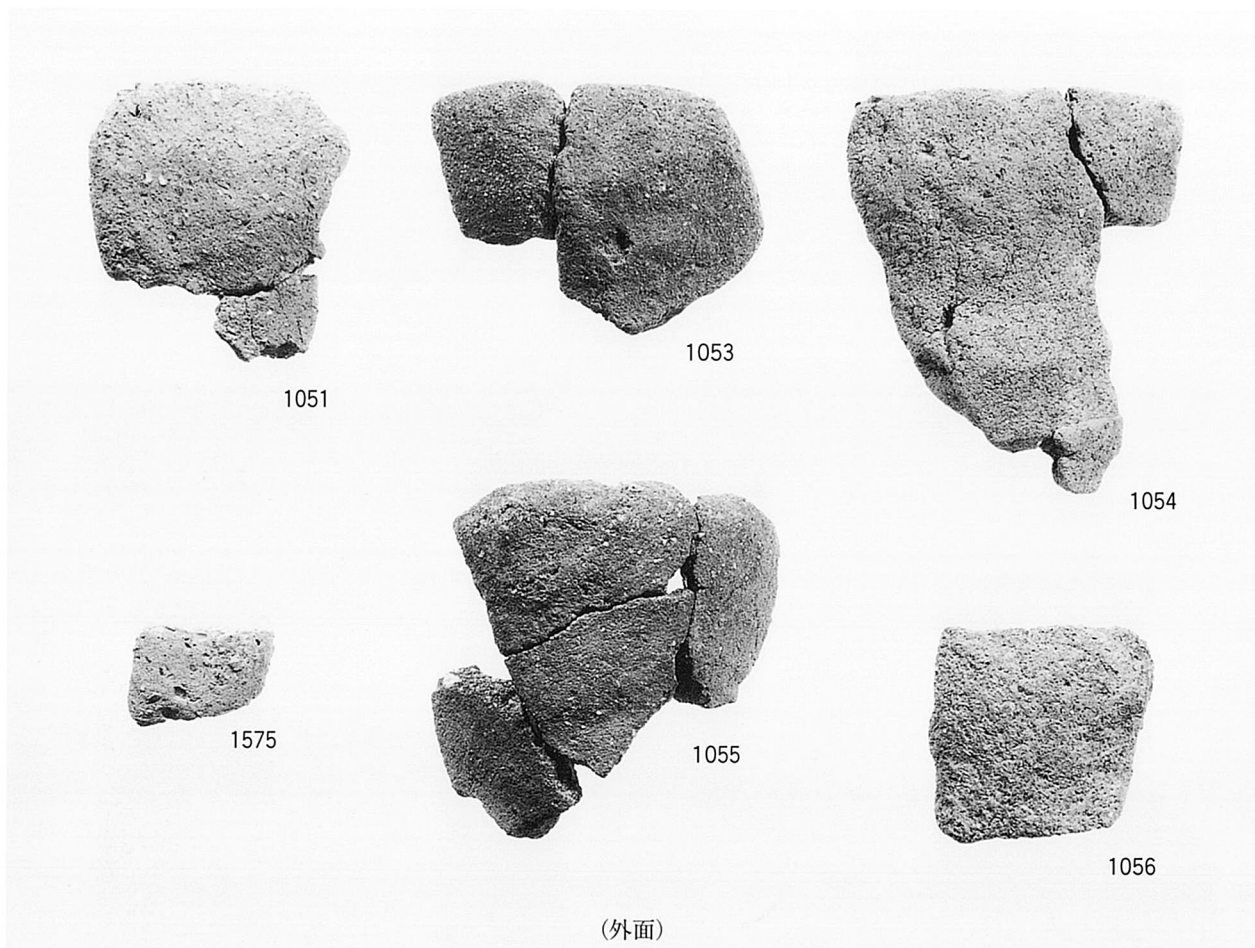


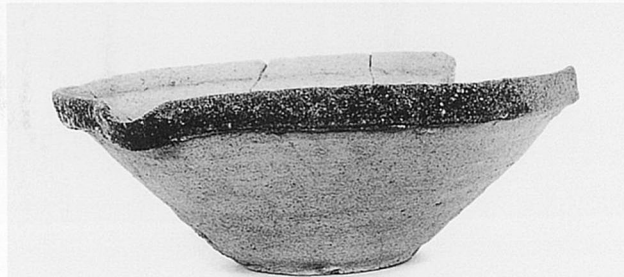
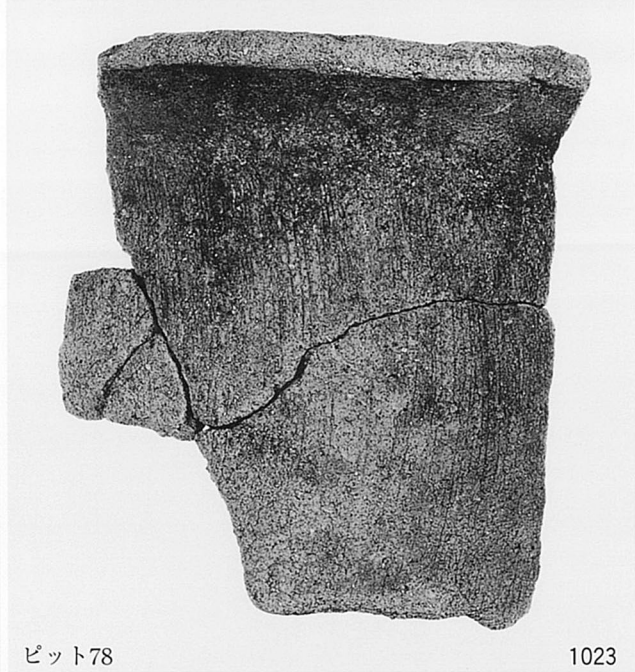
図版216 丘陵上東部出土遺物 (13) q 域 - 6

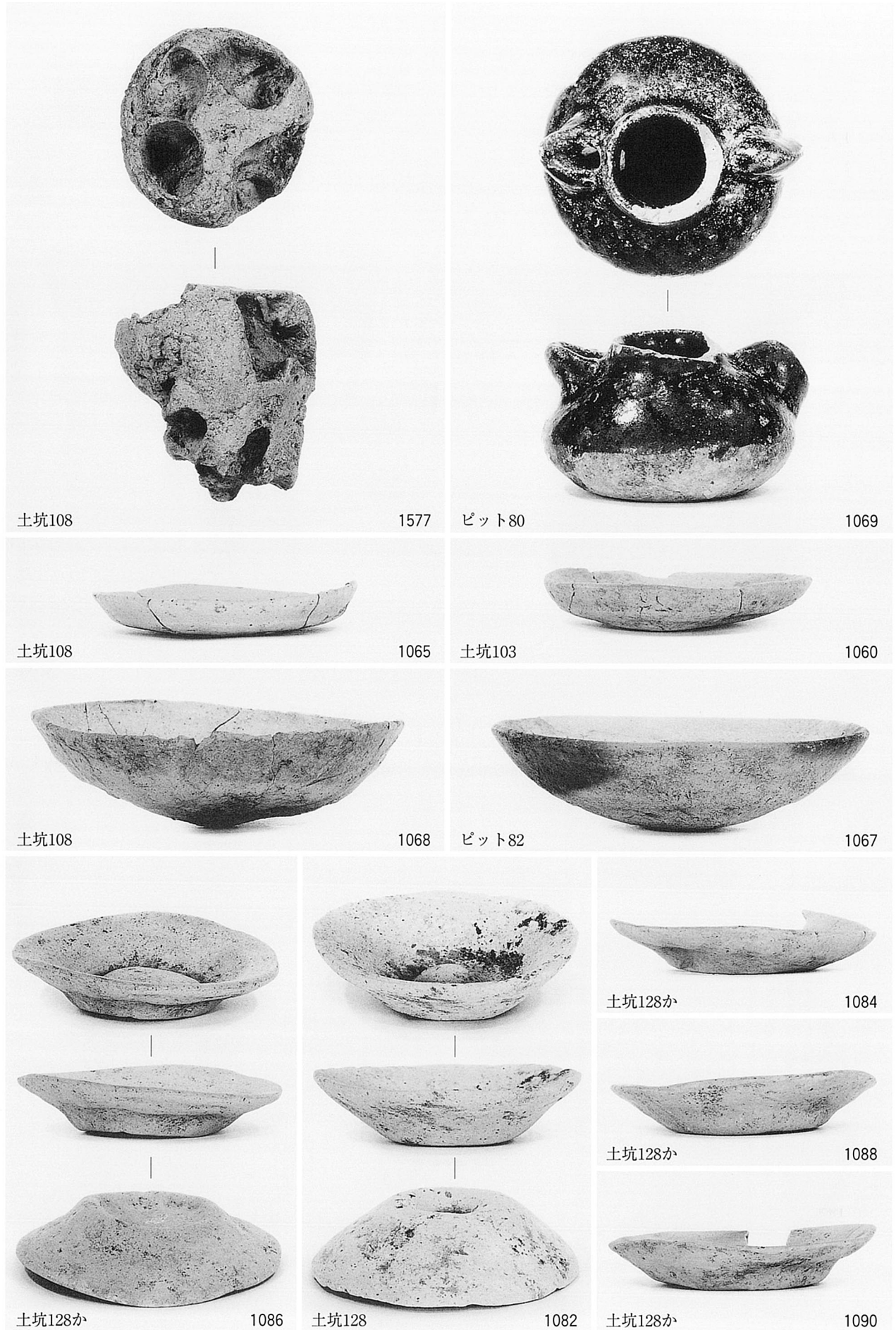
















土坑95

1115



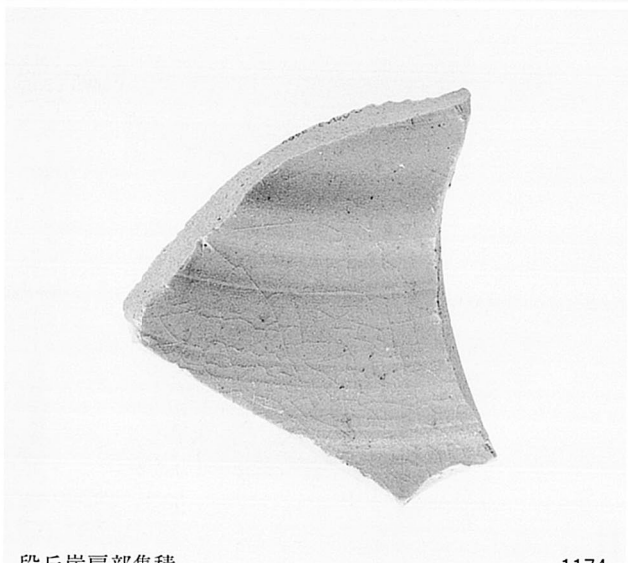
段丘崖肩部集積

1164



土坑145

1119



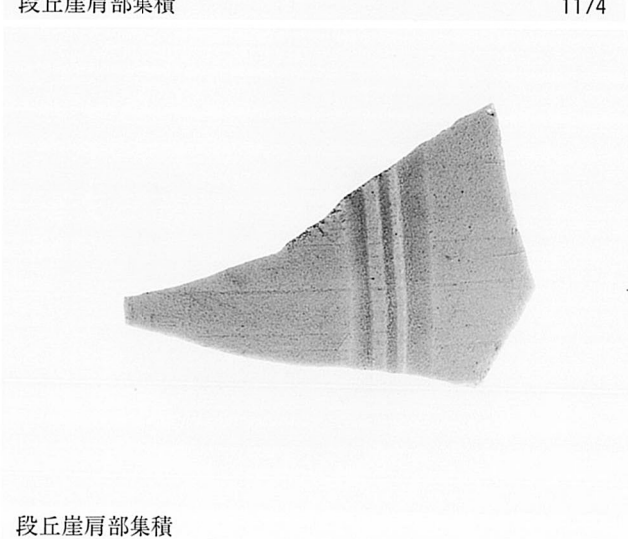
段丘崖肩部集積

1174

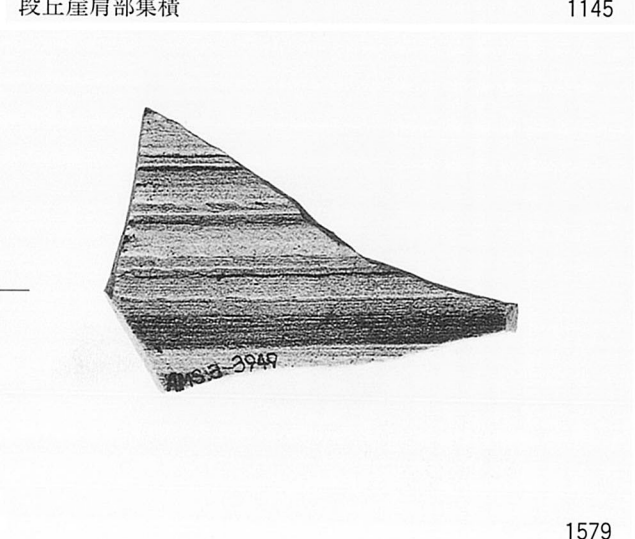


段丘崖肩部集積

1145



段丘崖肩部集積

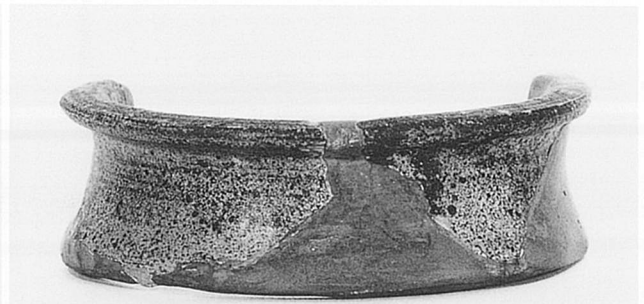


1579



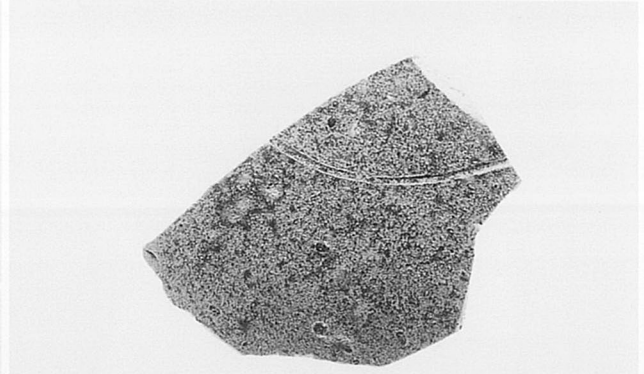
段丘崖肩部集積

1168



段丘崖肩部集積

1170



段丘崖肩部集積

1580



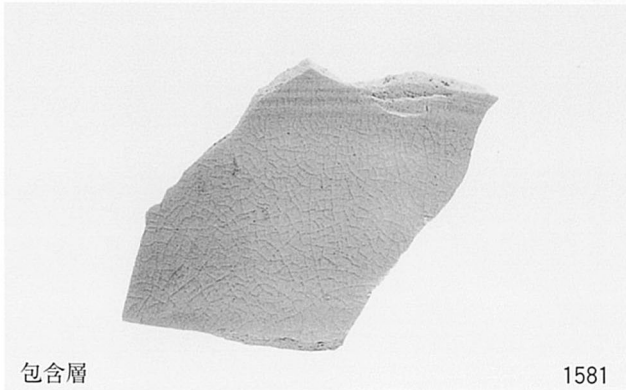
段丘崖肩部集積

1169



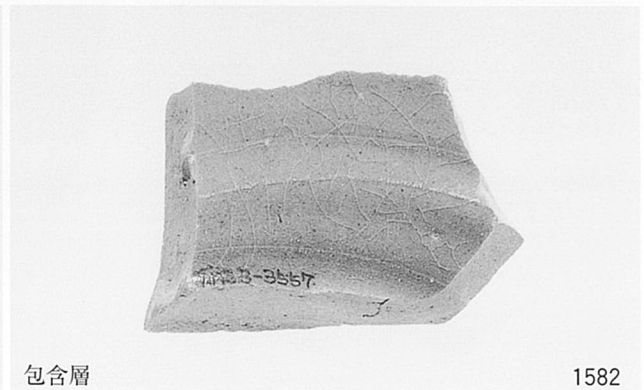
包含層

1202



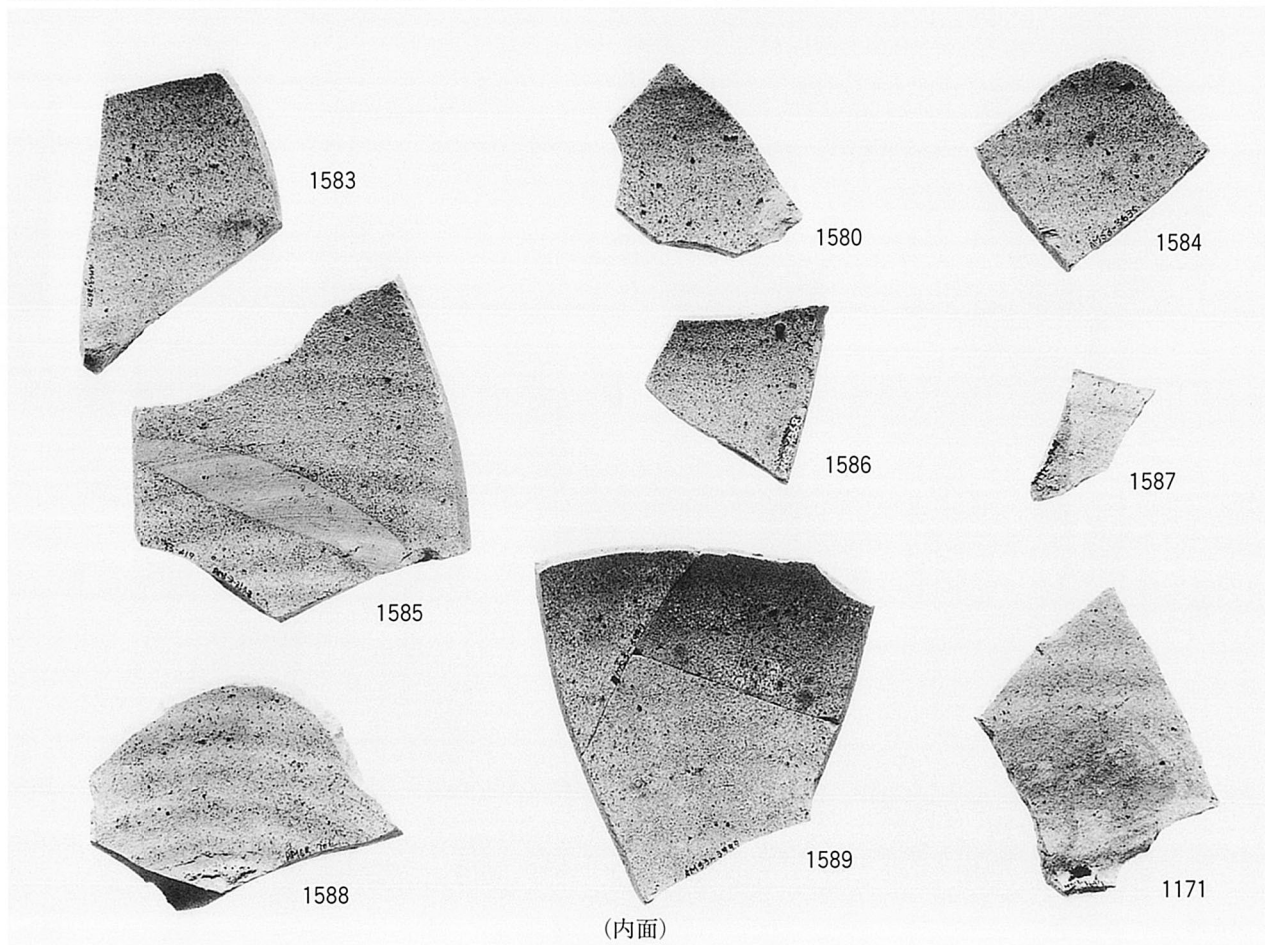
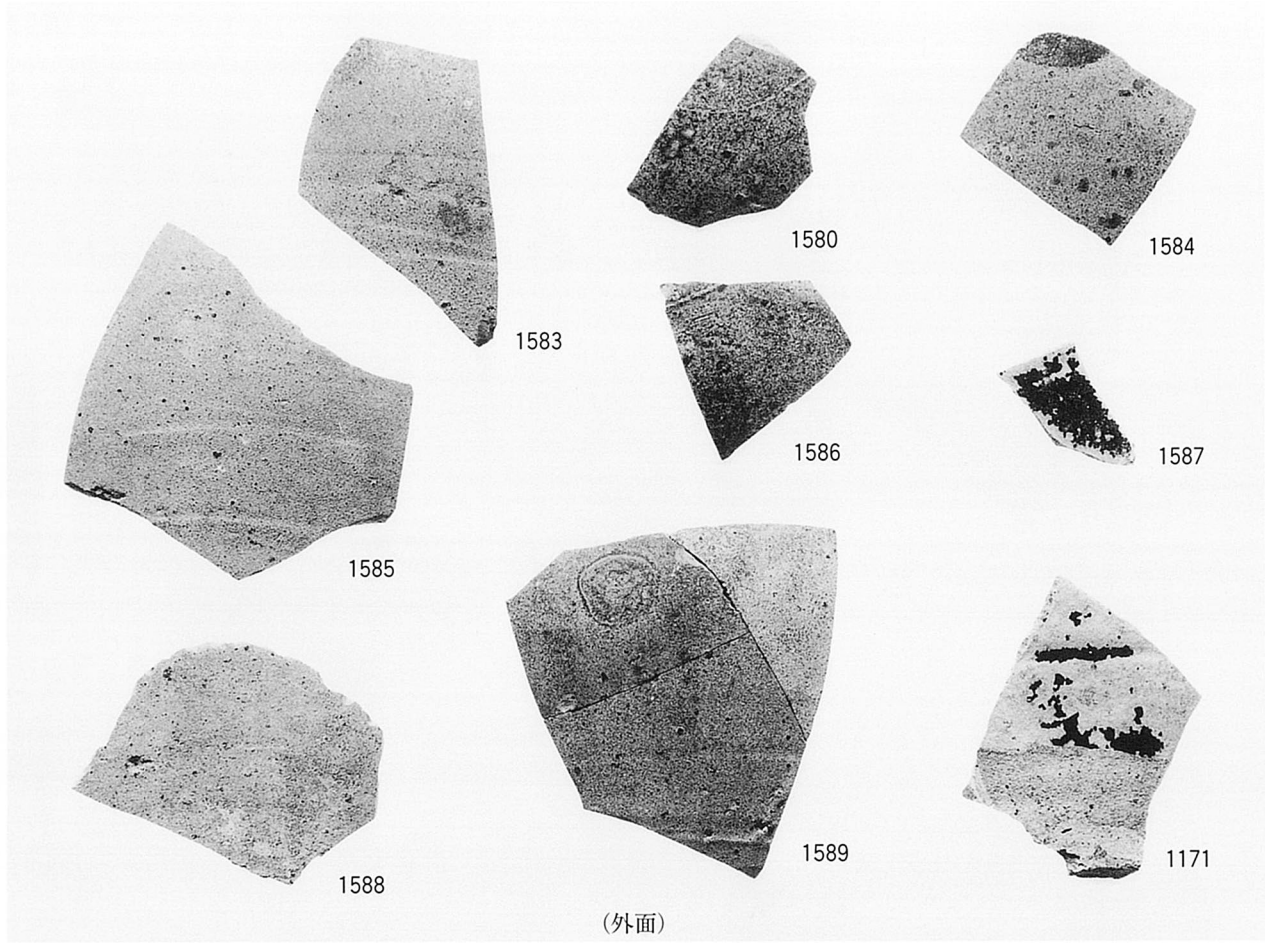
包含層

1581



包含層

1582



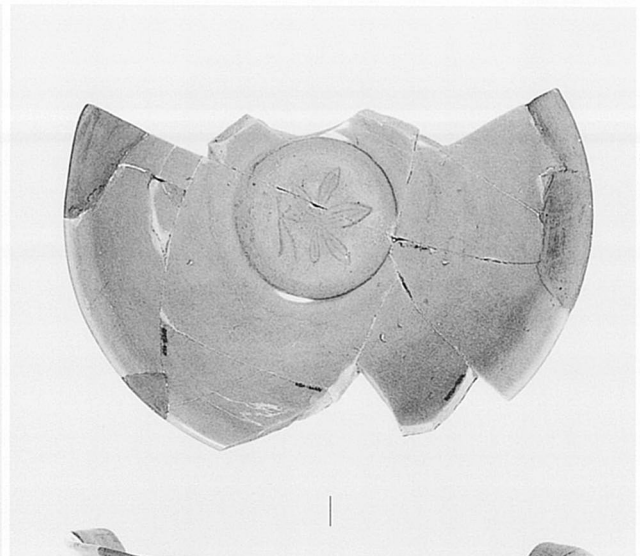
段丘崖肩部集積・包含層





包含層

1201



包含層

1200



包含層

1203



包含層

1195



層位不明

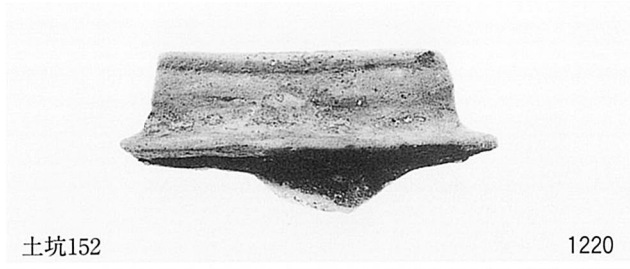
1183



包含層

1190

図版226 川合裏川段丘面西岸出土遺物 (1) r域 s域-1



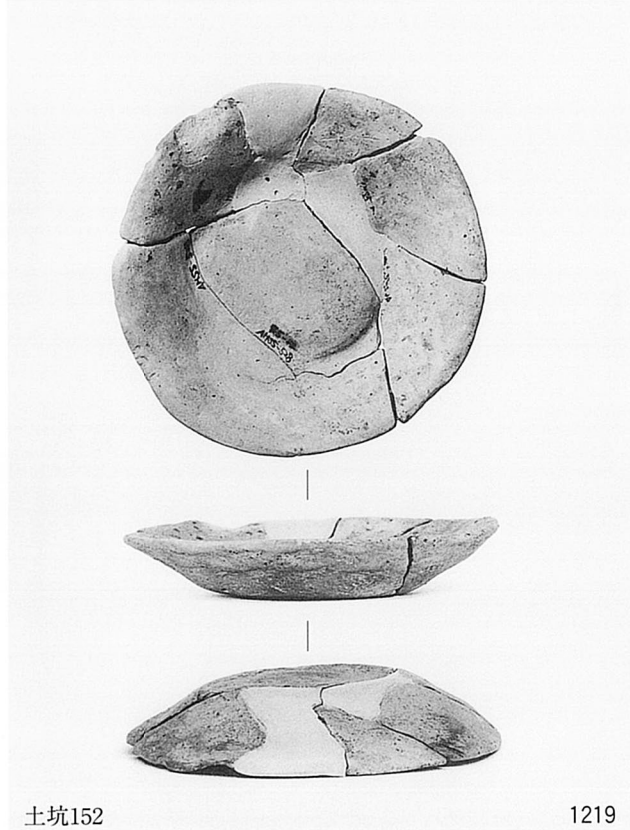
土坑152

1220



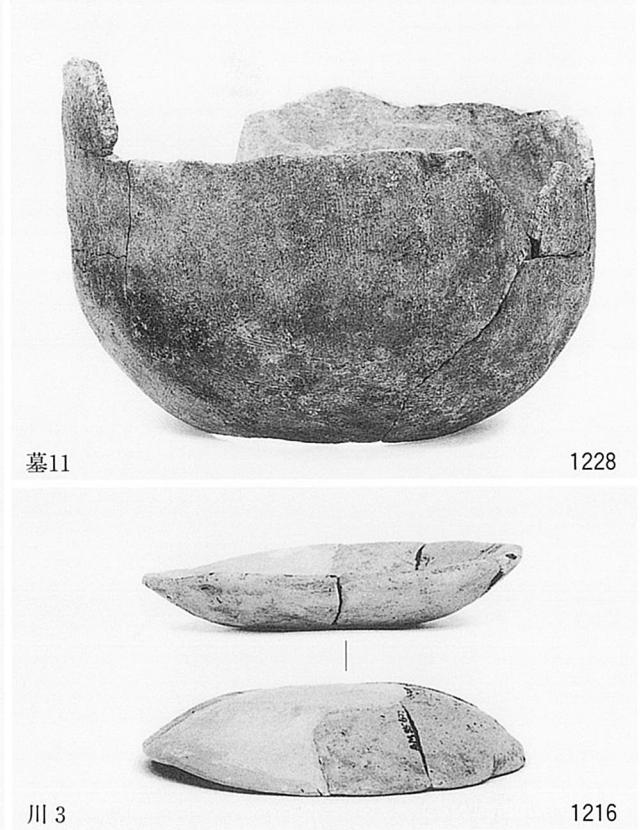
土坑169

1230



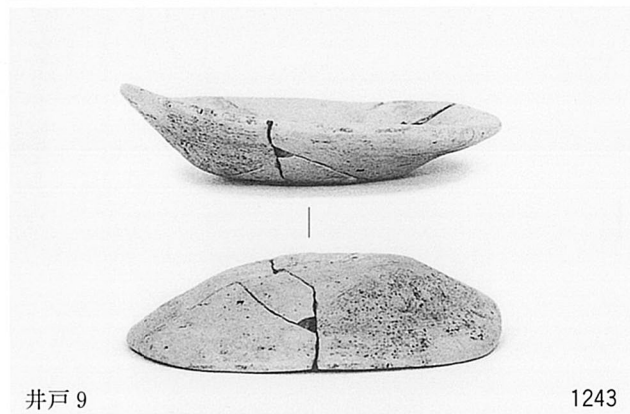
土坑152

1219



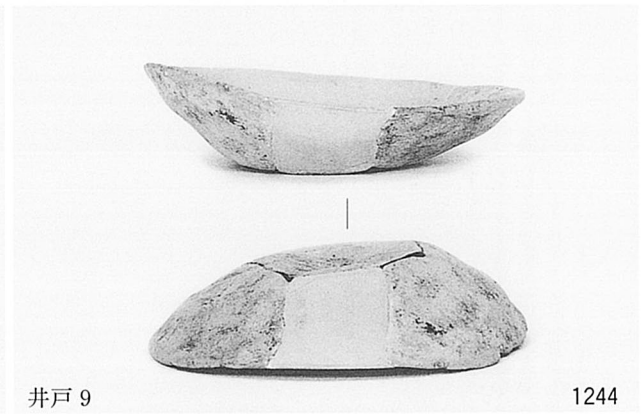
墓11

1228



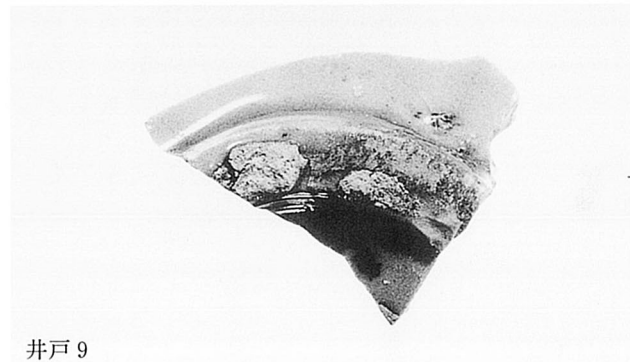
井戸9

1243

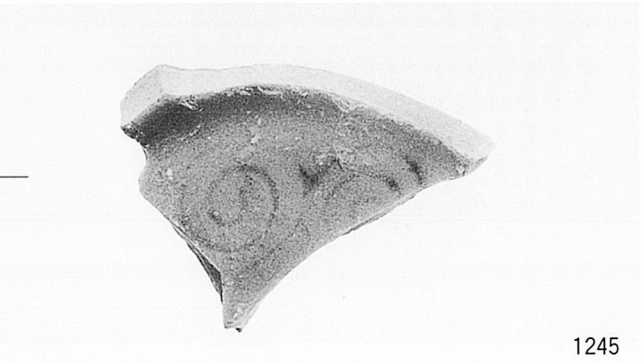


井戸9

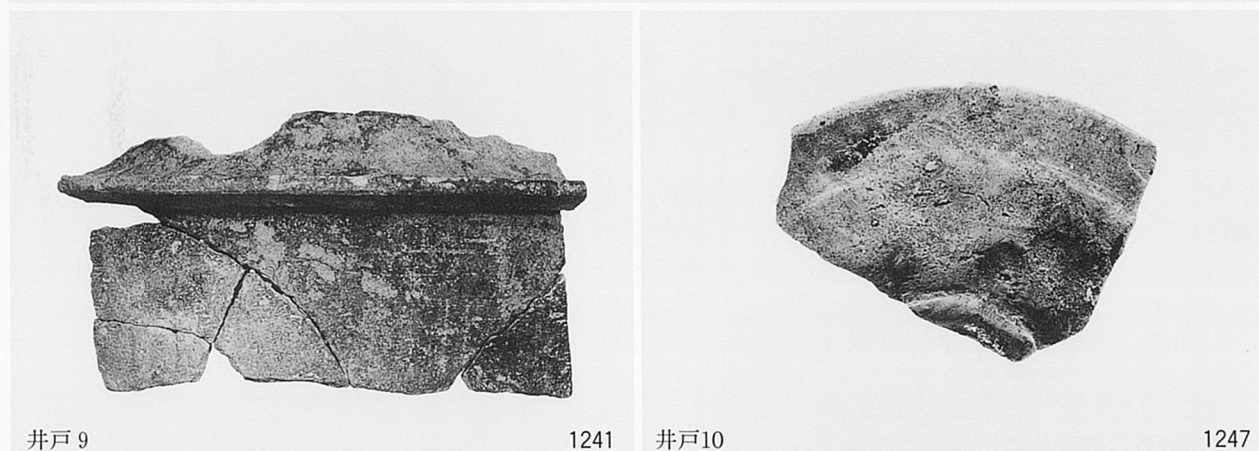
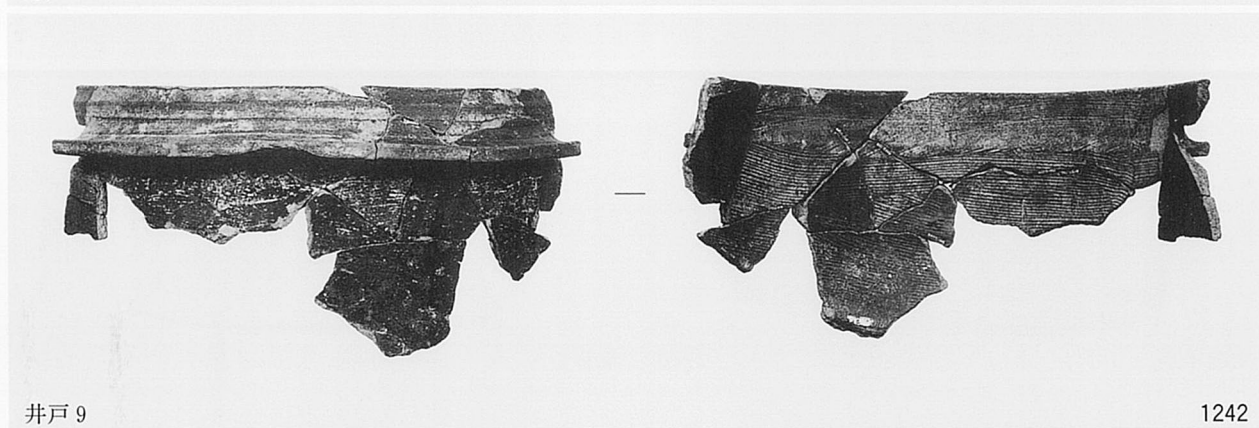
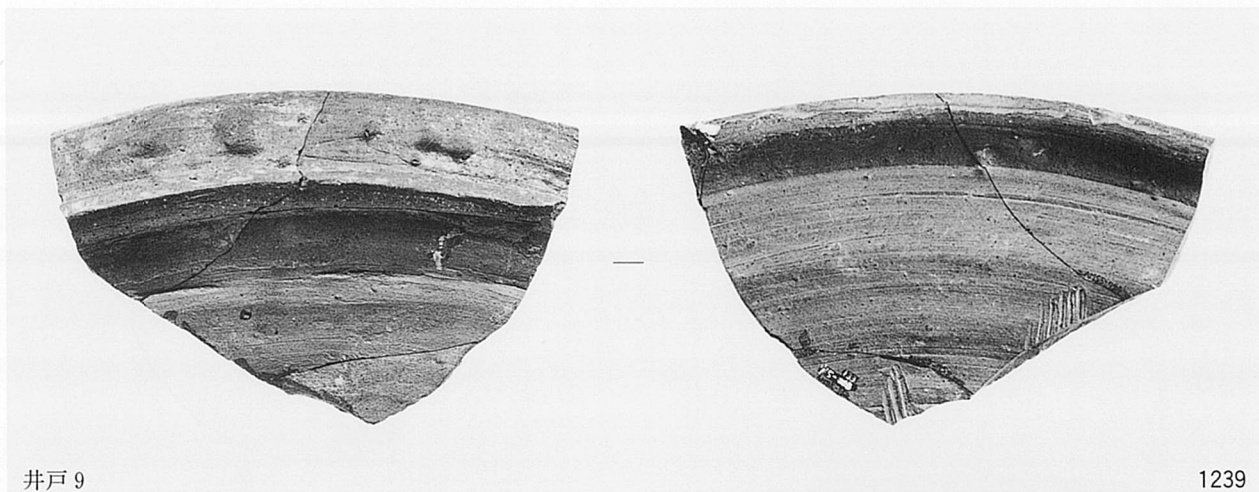
1244

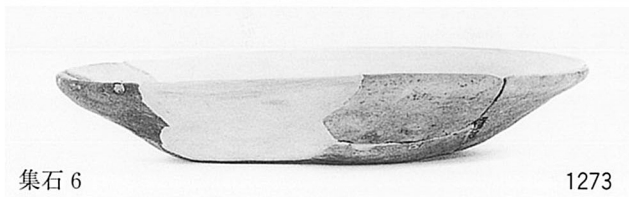
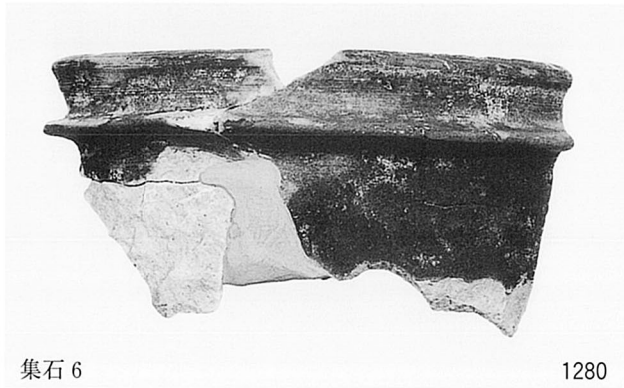
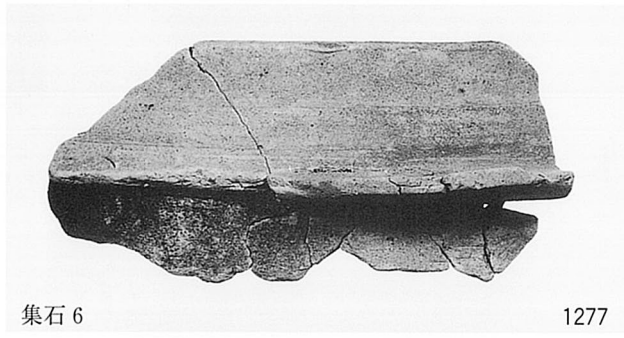
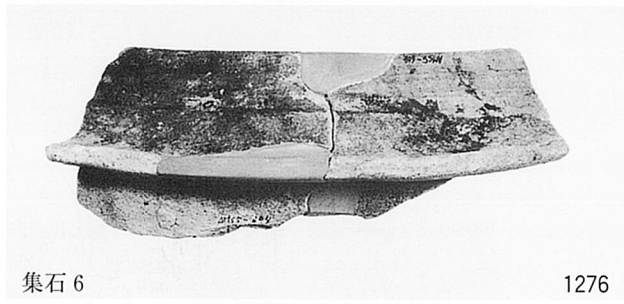


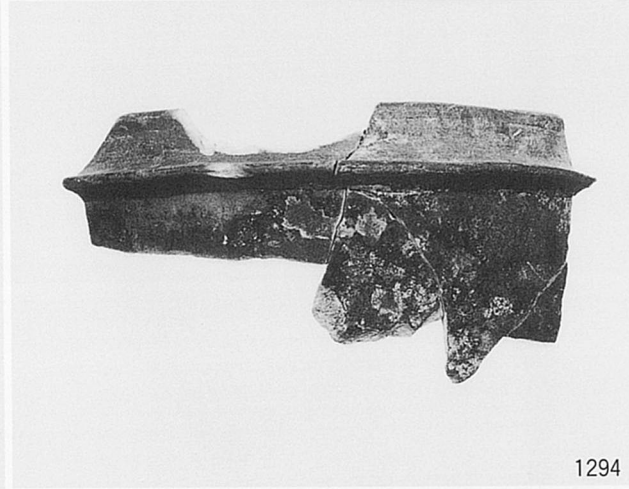
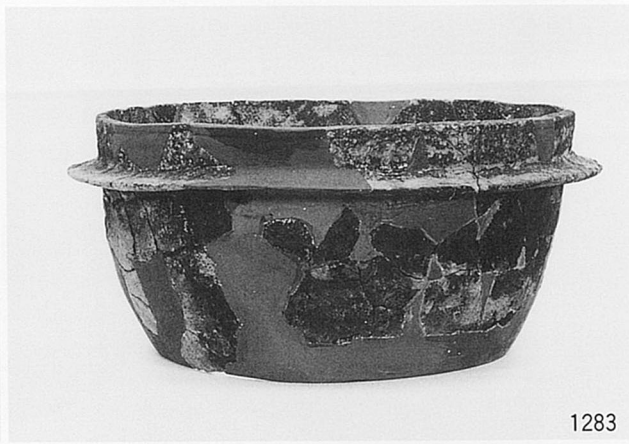
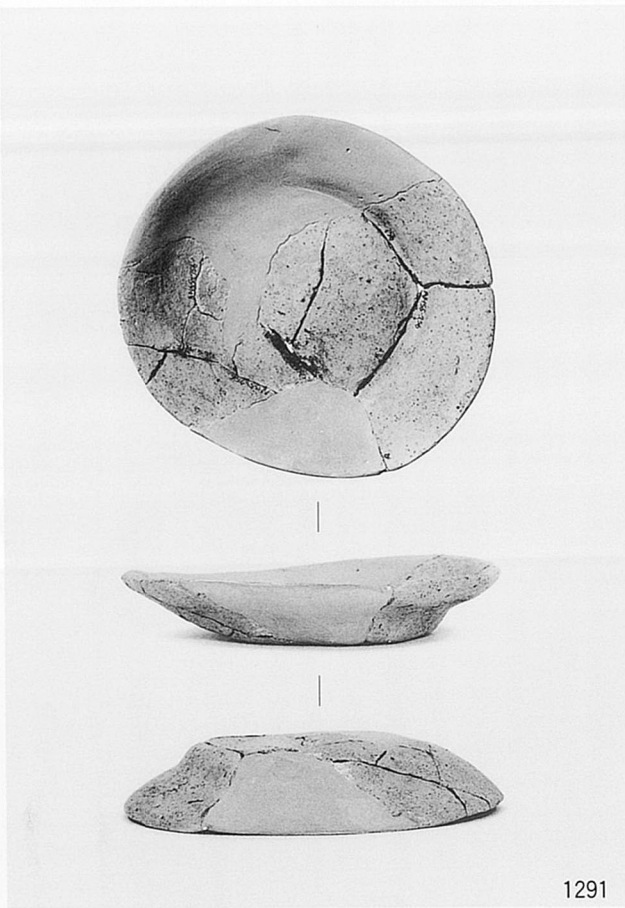
井戸9

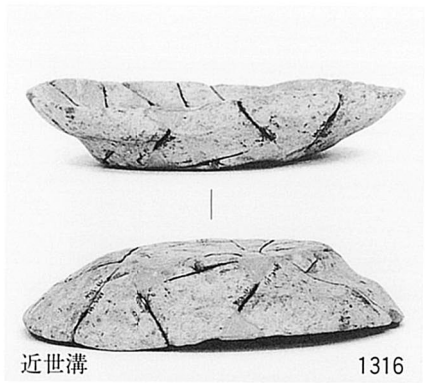


1245

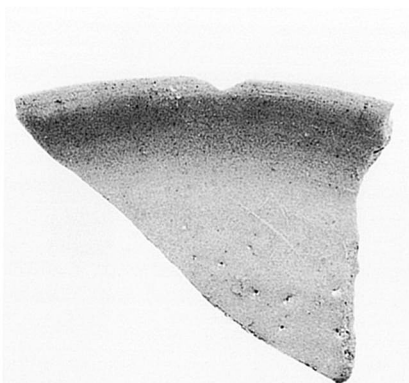








近世溝 1316



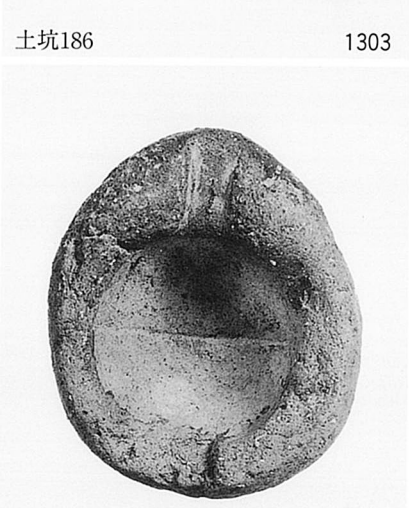
土坑186 1303



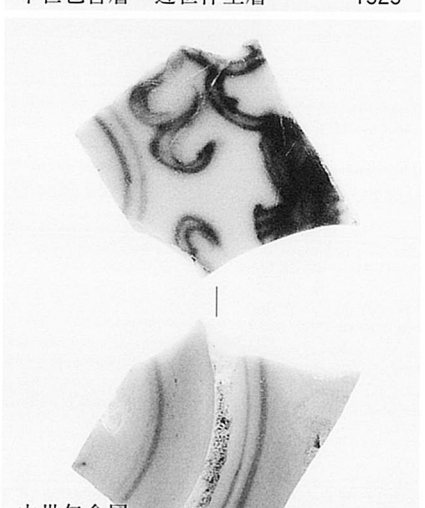
中世包含層～近世作土層 1323



中世包含層 1343



近世作土層 1336



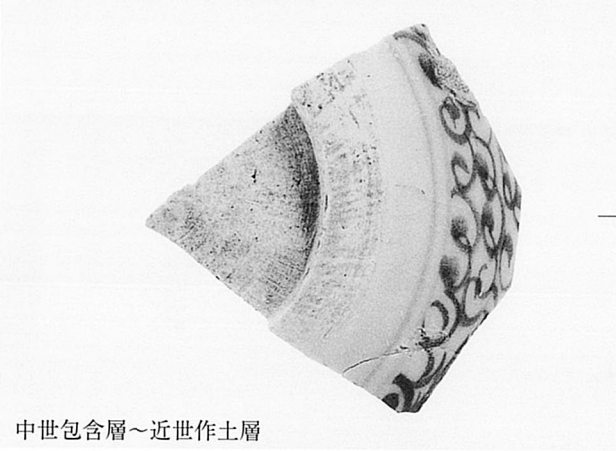
中世包含層～近世作土層 1322



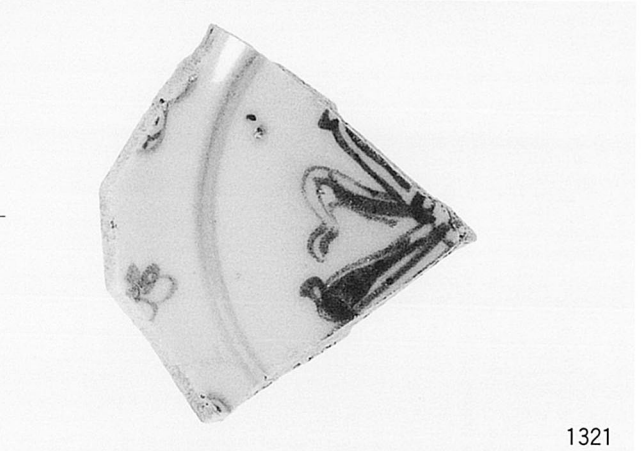
中世包含層 1344



中世包含層 1346



中世包含層～近世作土層



1321



墓12 1353



墓12 1352

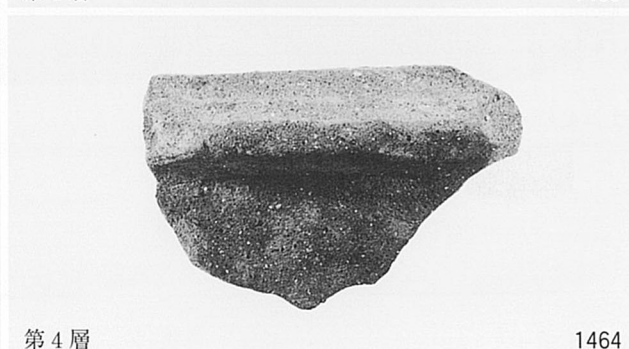
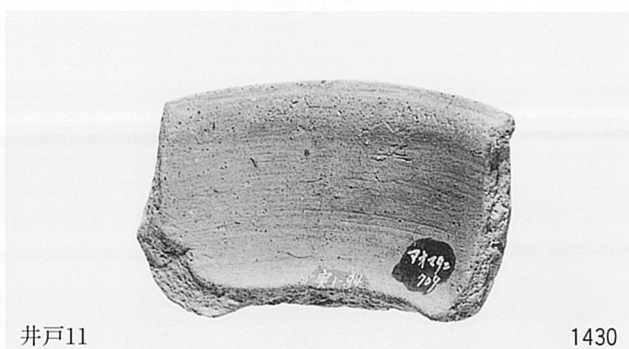


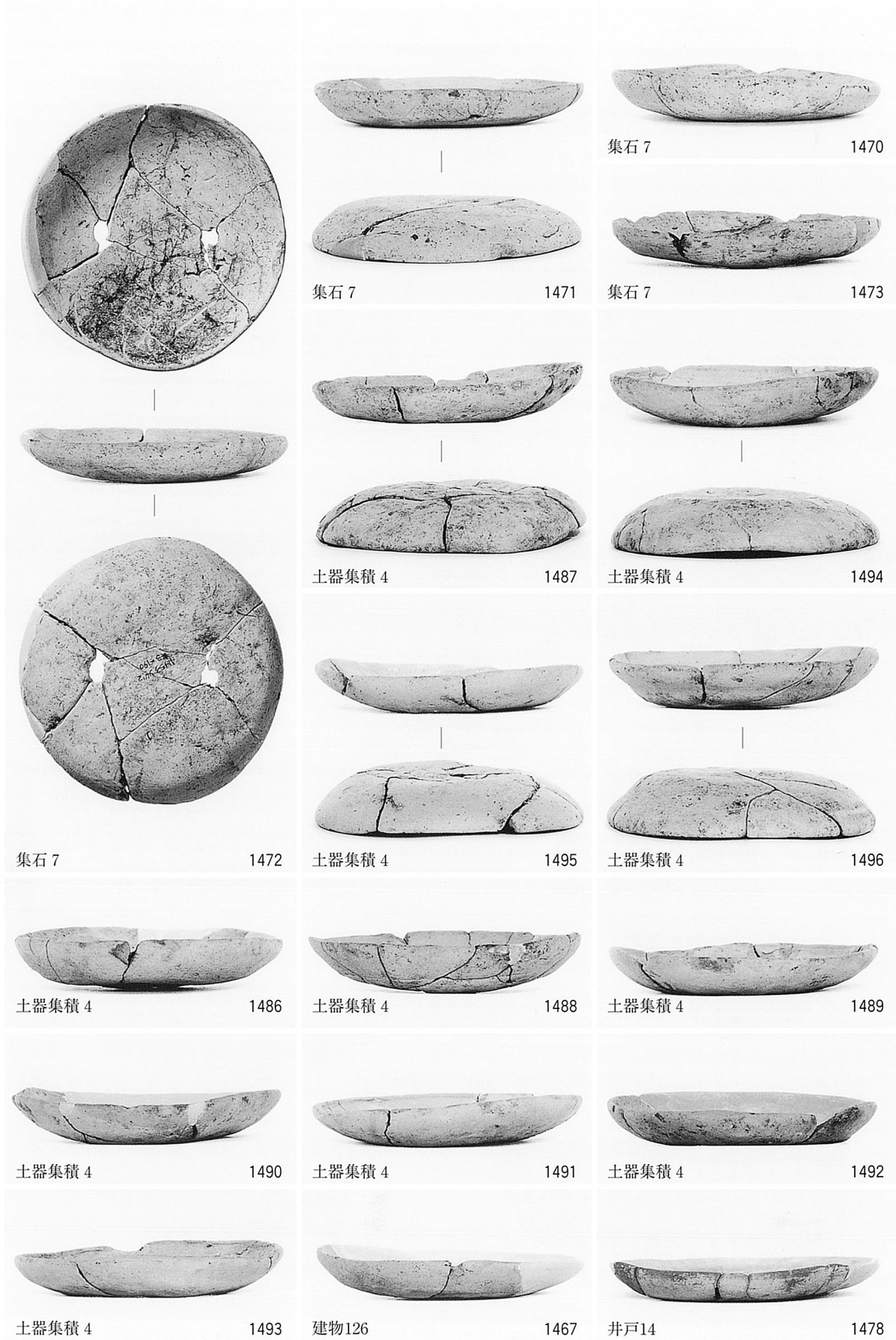
墓12 1355



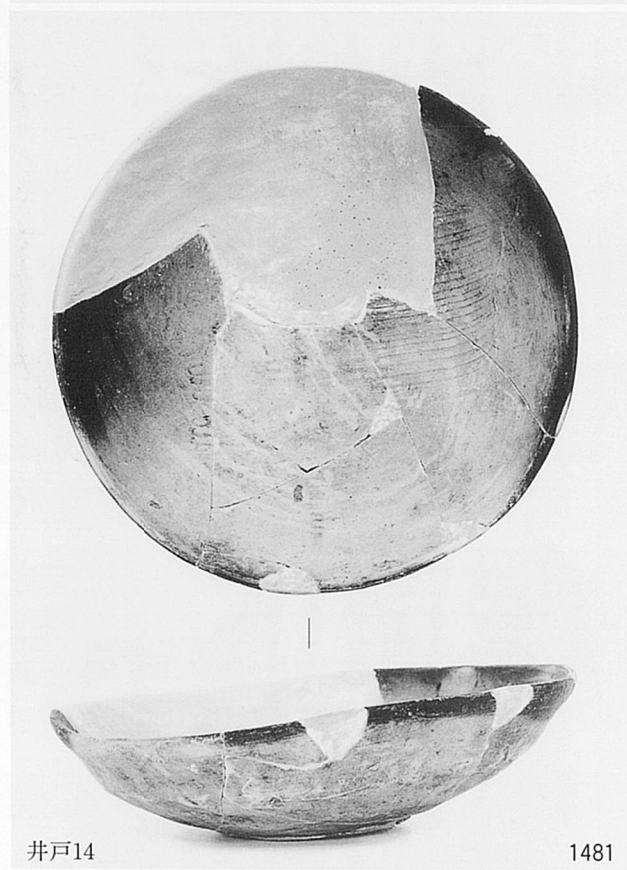
川 4 1366

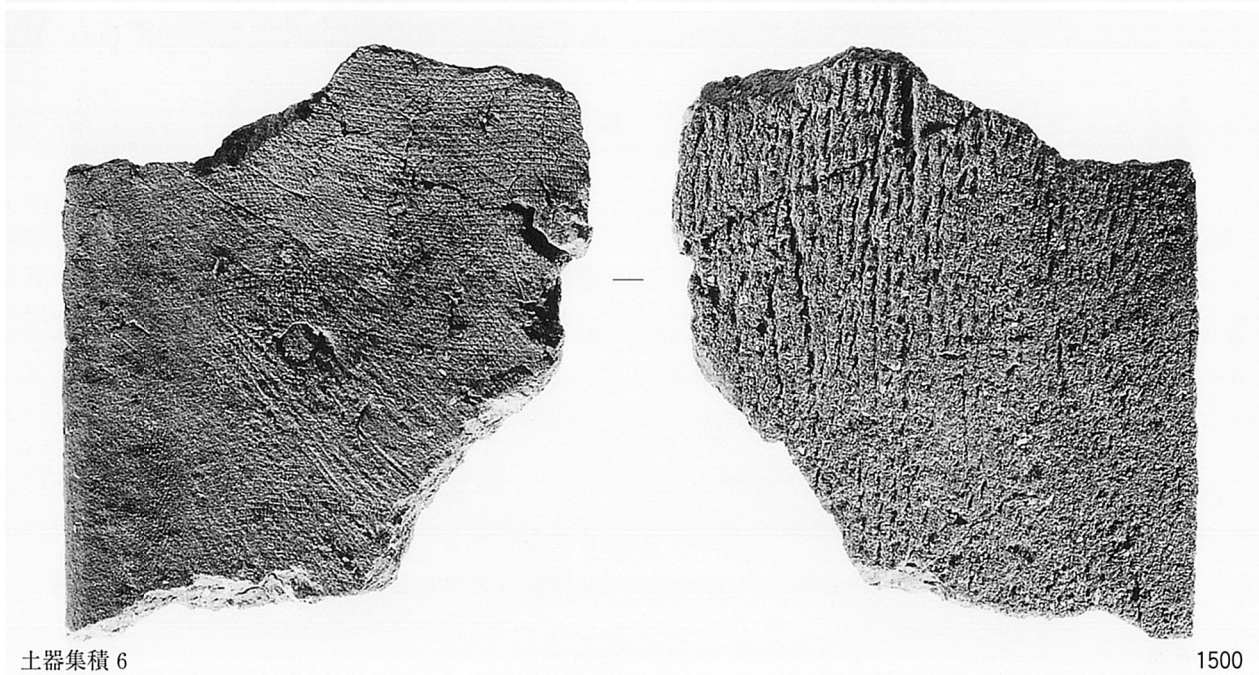
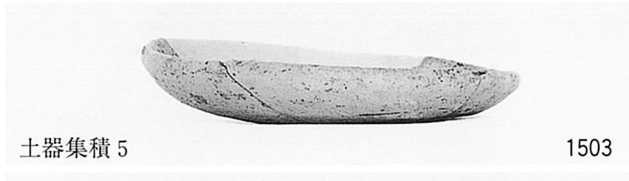
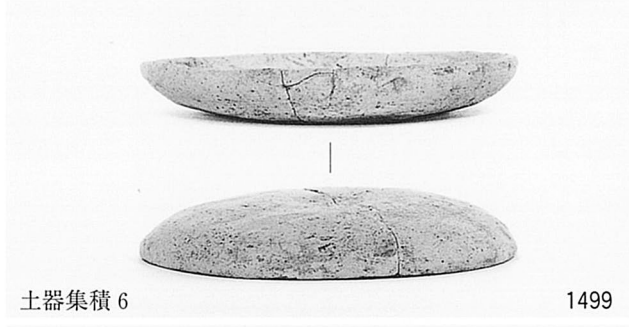
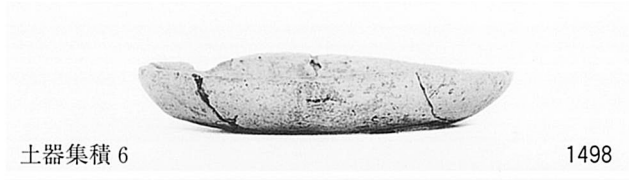
図版231 勝尾寺川段丘面出土遺物（1）v域 w域

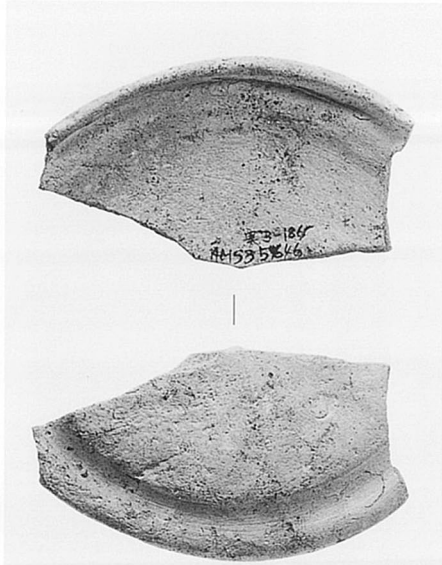






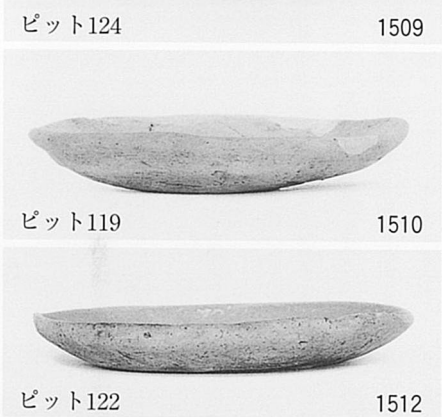






ピット120

1508



ピット124

1509



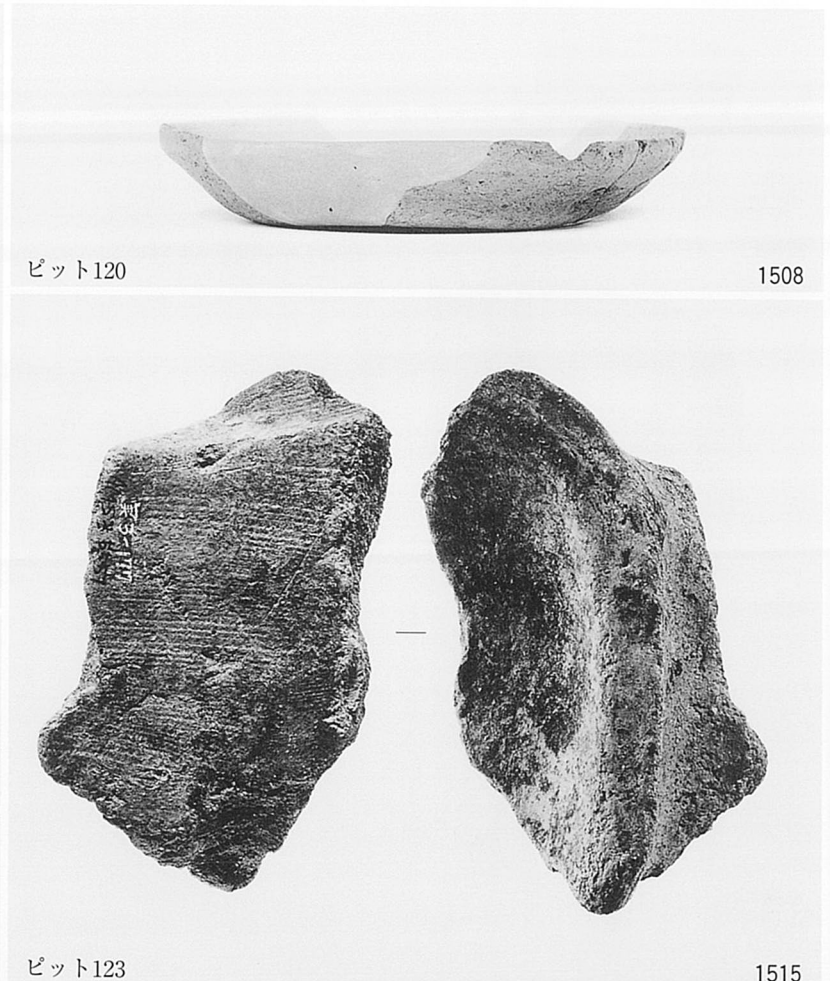
ピット119

1510



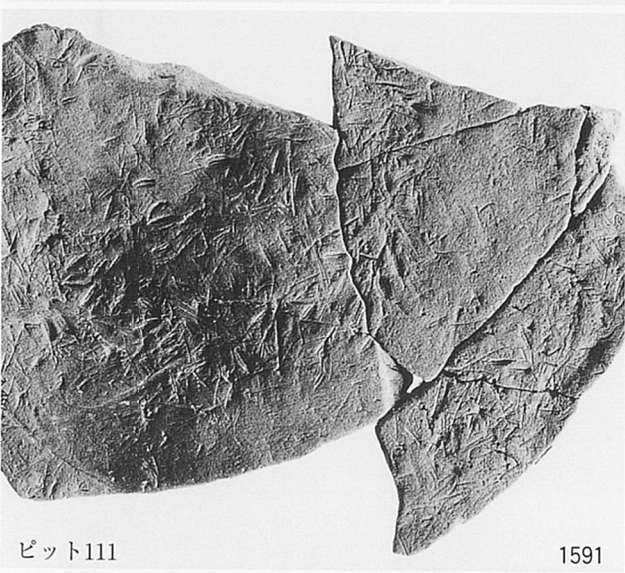
ピット122

1512



ピット123

1515



ピット111

1591



近世作土層

1592



ピット126

1513

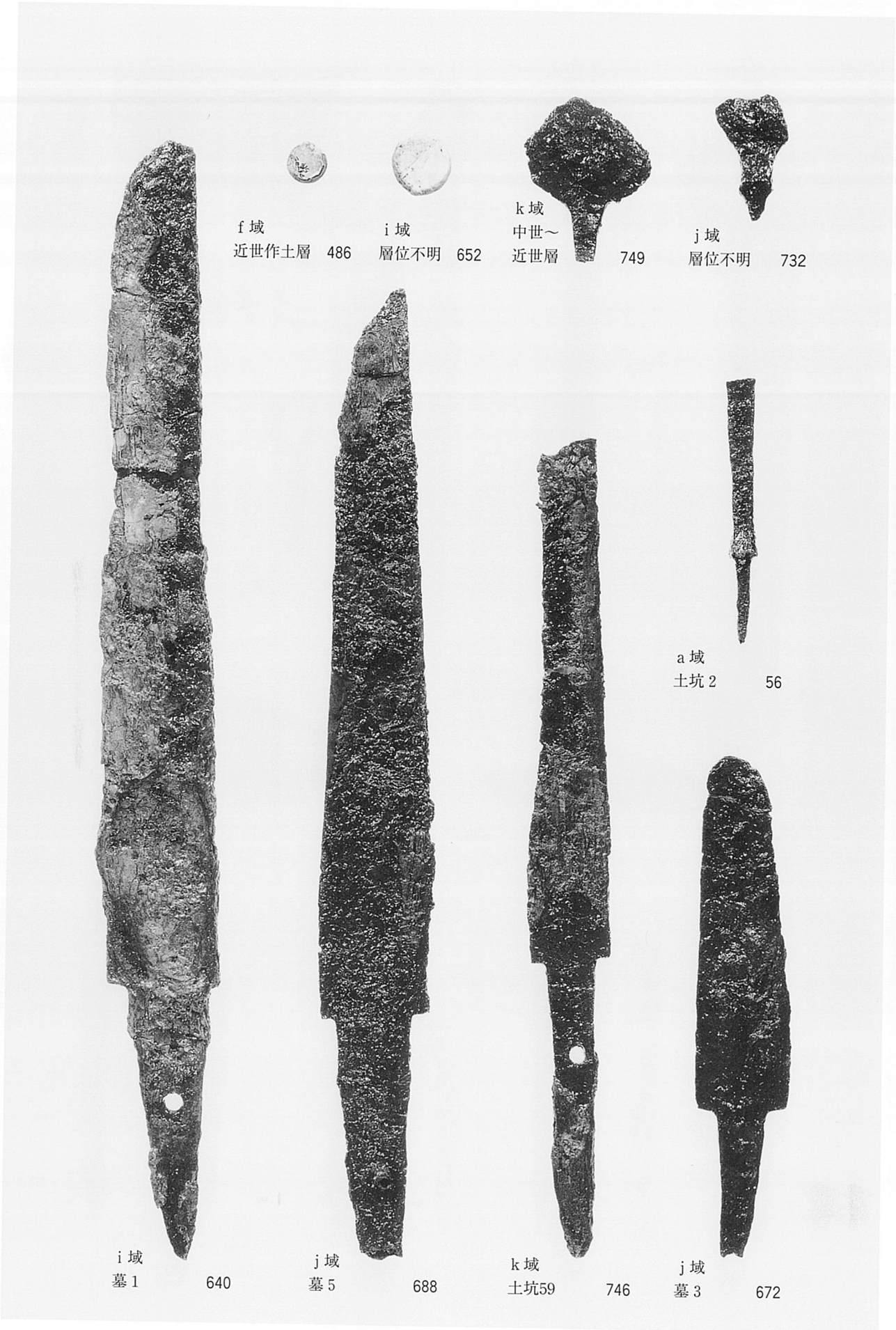


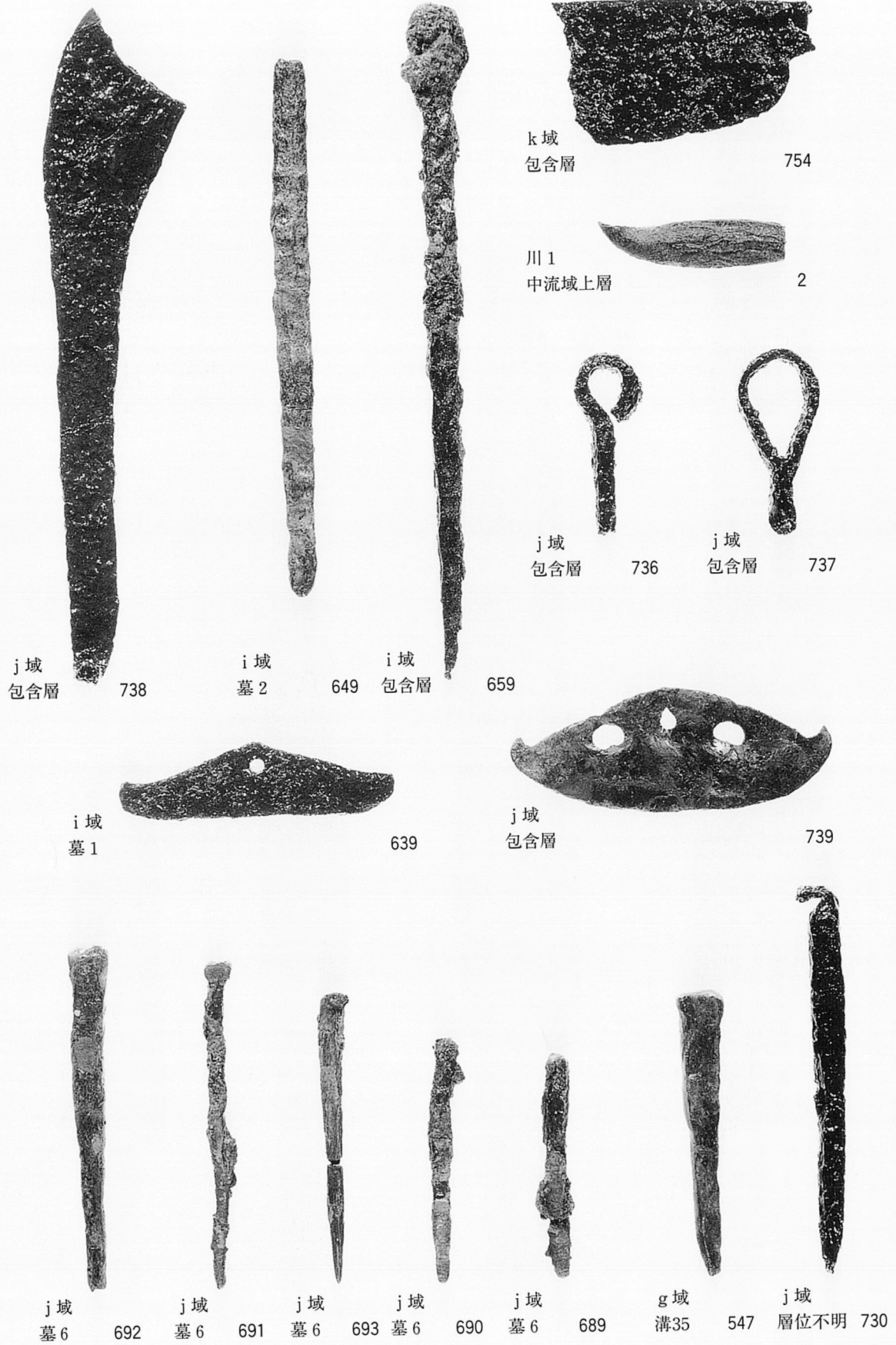
焼土坑90

1554

図版236 勝尾寺川段丘面出土遺物（6） y 域 - 2

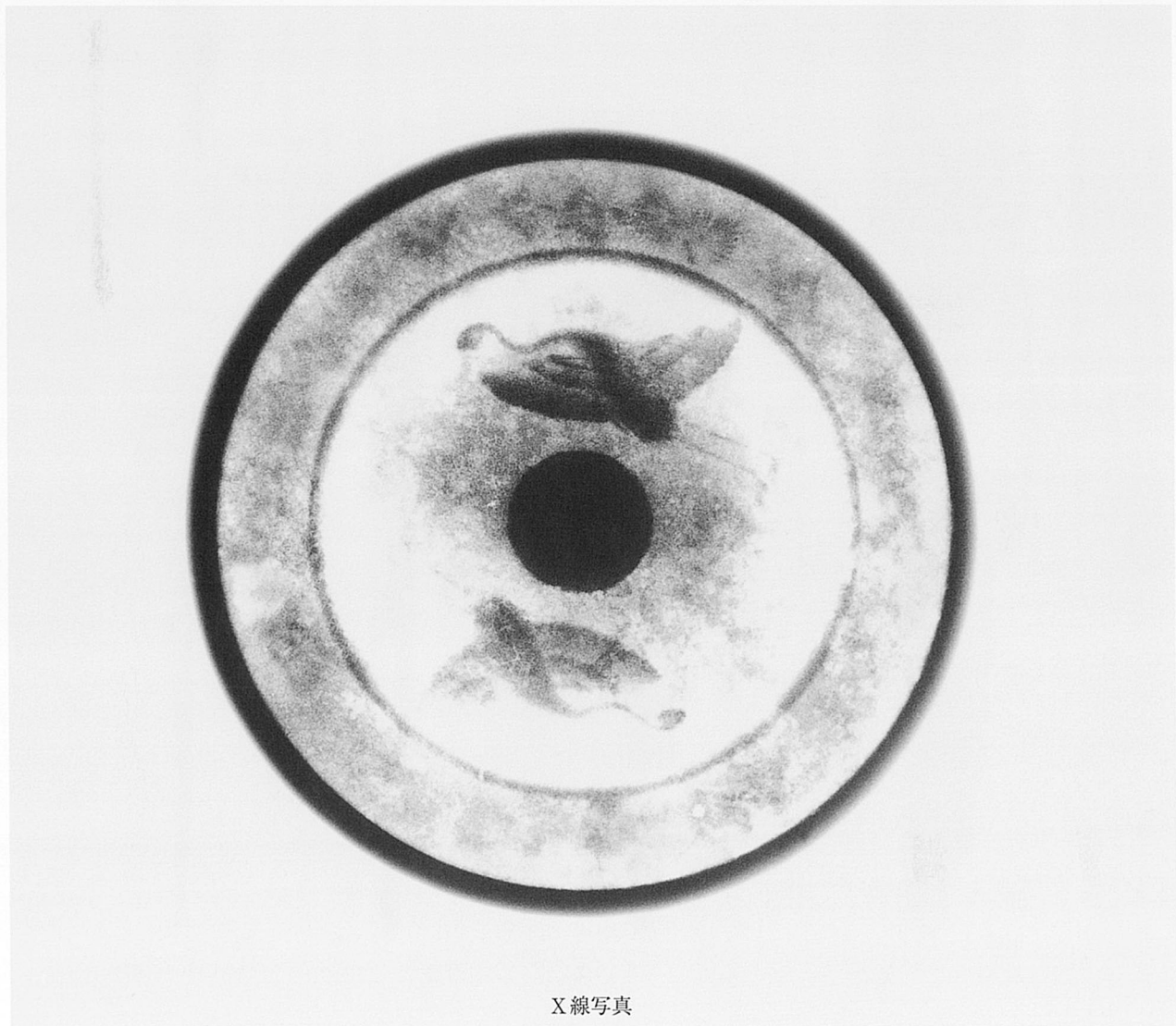






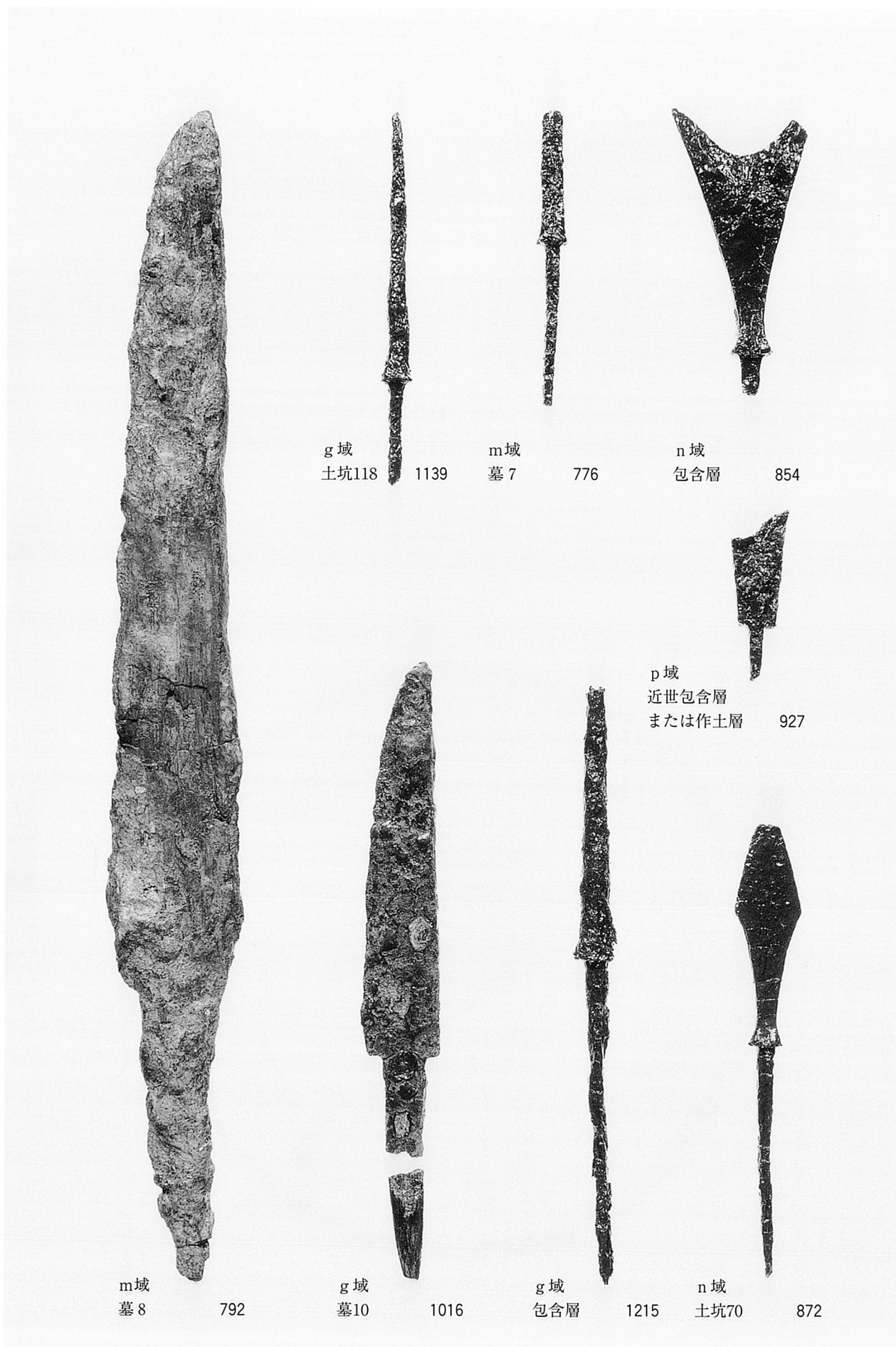


680



X線写真

j 域 墓 4







g 域  
段丘崖肩部集積

1176

s 域  
ピット107

1297

g 域  
段丘崖  
肩部集積

1175

k 域  
包含層

757

k 域  
包含層

756

g 域  
包含層

1211

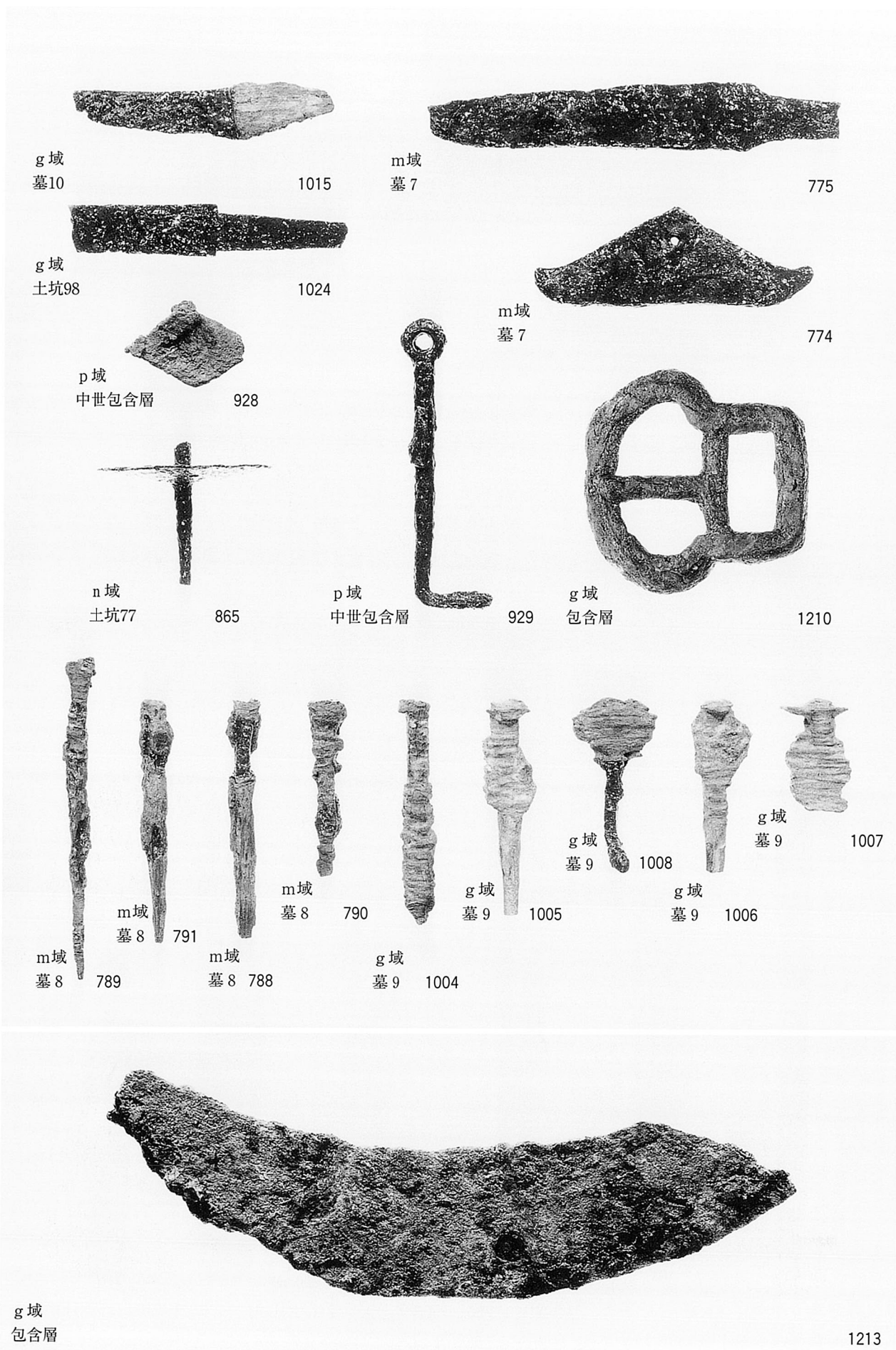
g 域  
土坑104

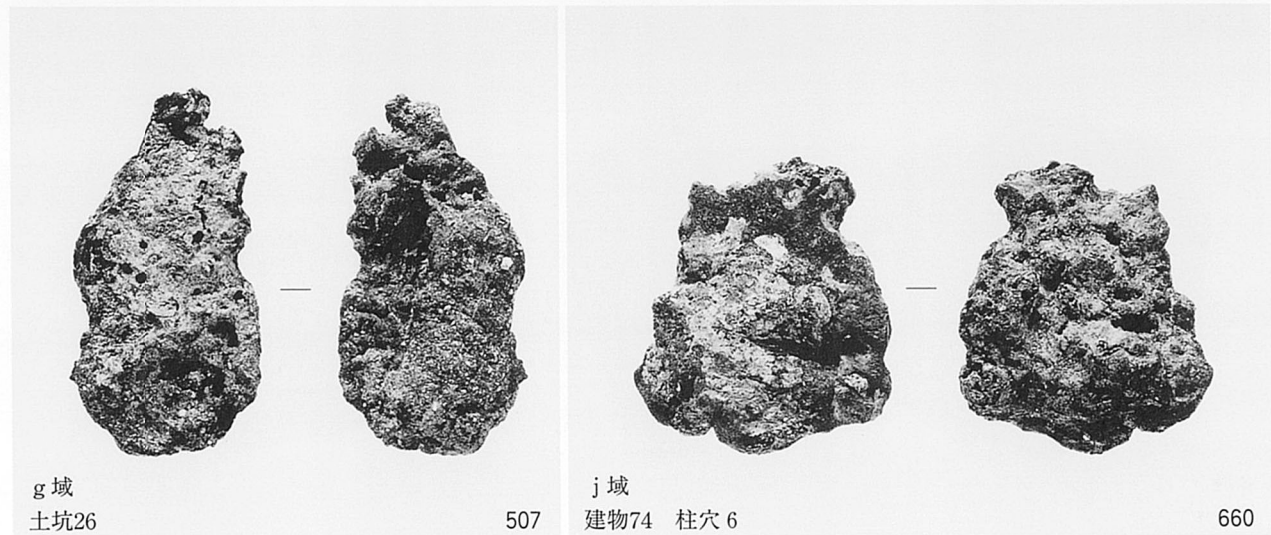
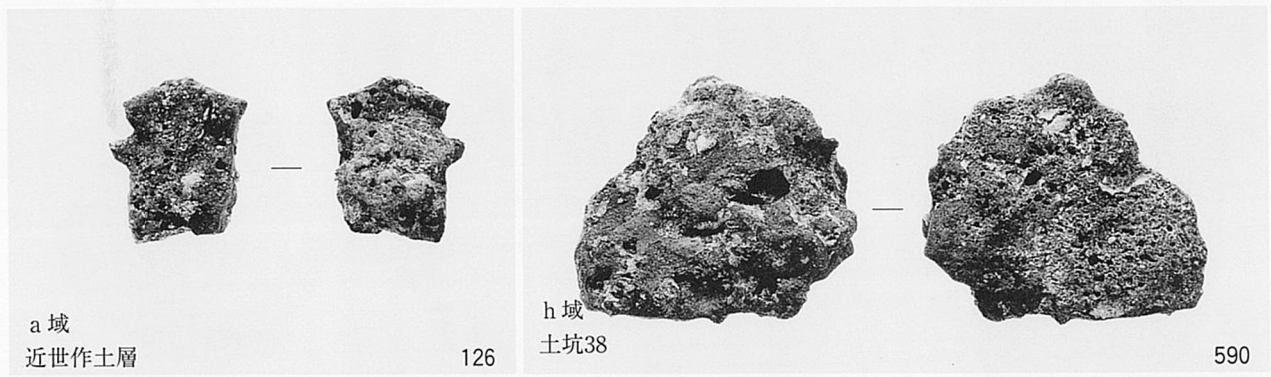
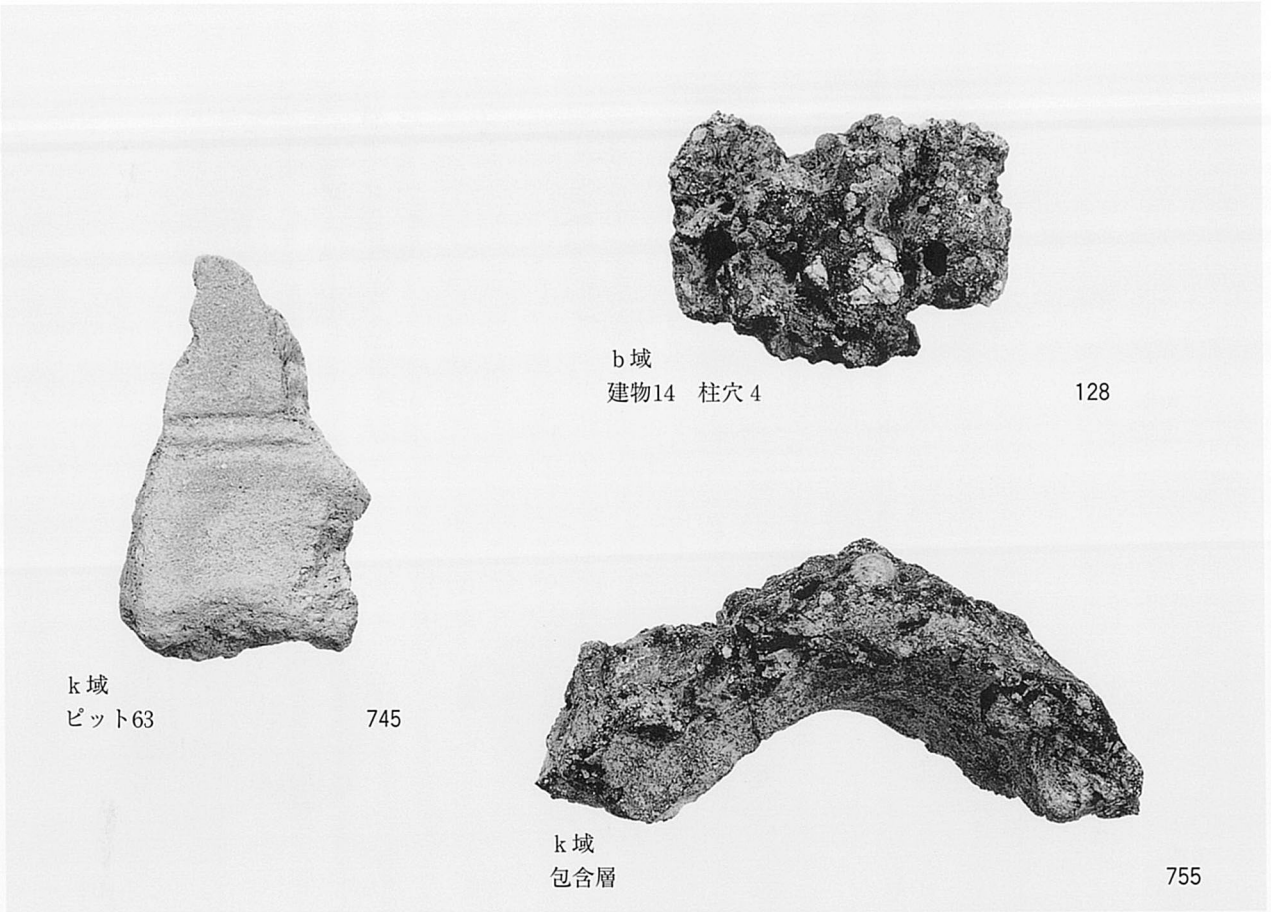
1138

g 域  
土坑104

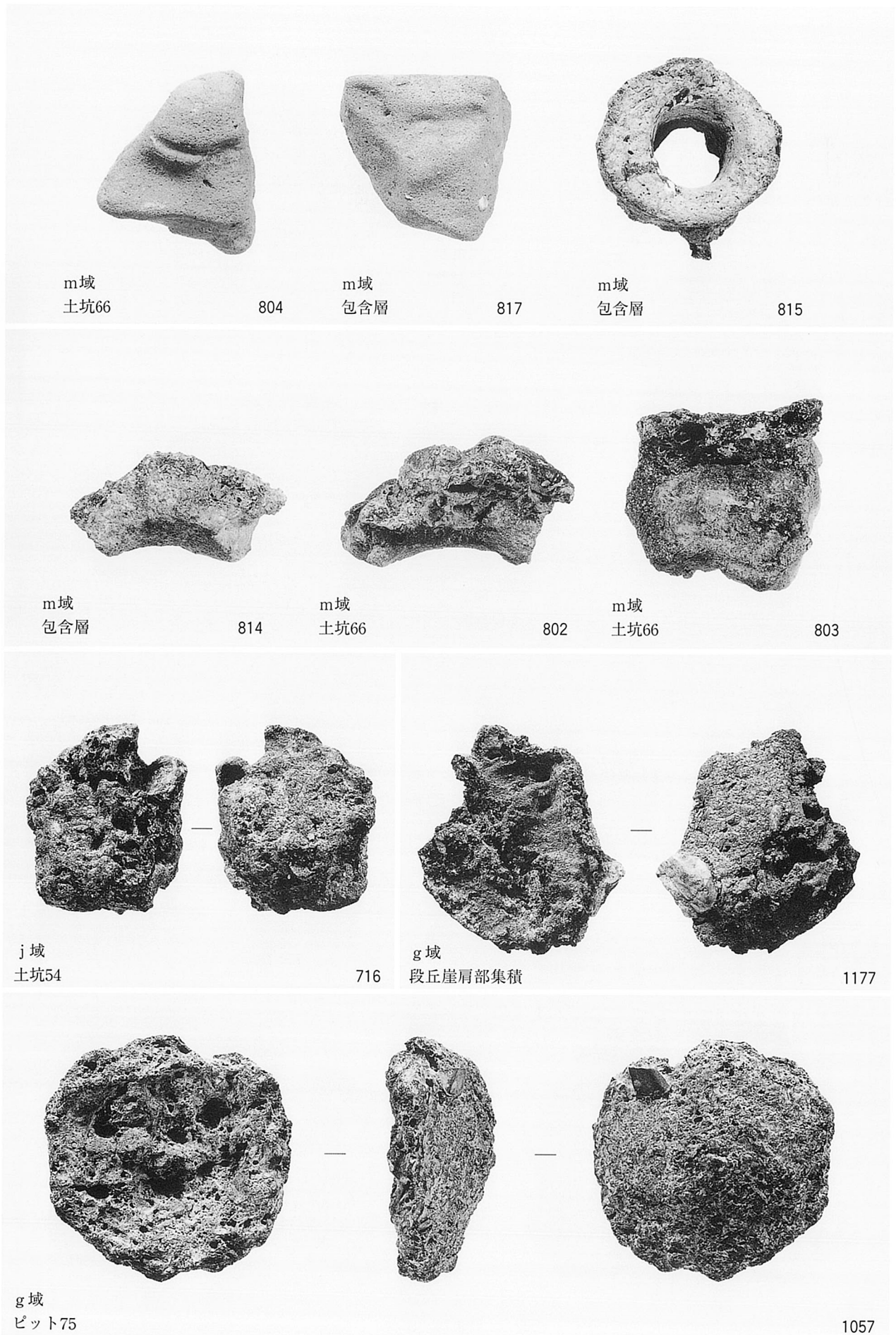
1137

図版242 金属製品 (6)





図版244 金属製品生産関連遺物 (2)





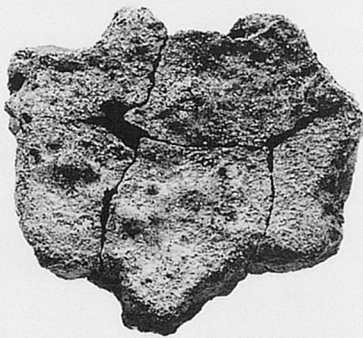
m域  
土坑66

813

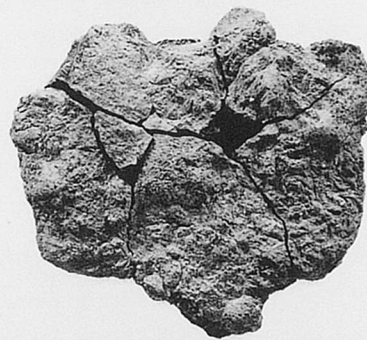


m域  
土坑66

812



m域  
土坑66

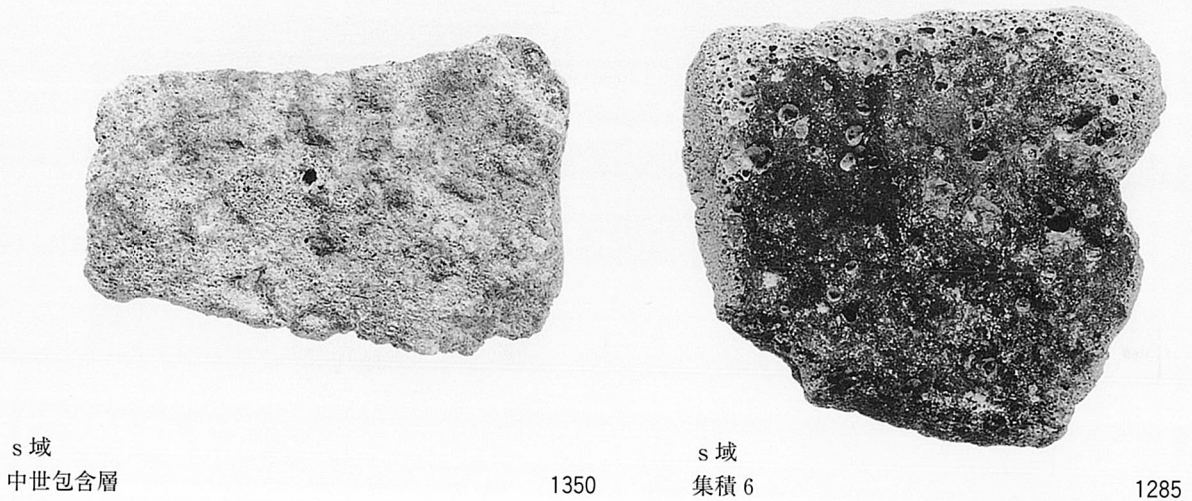
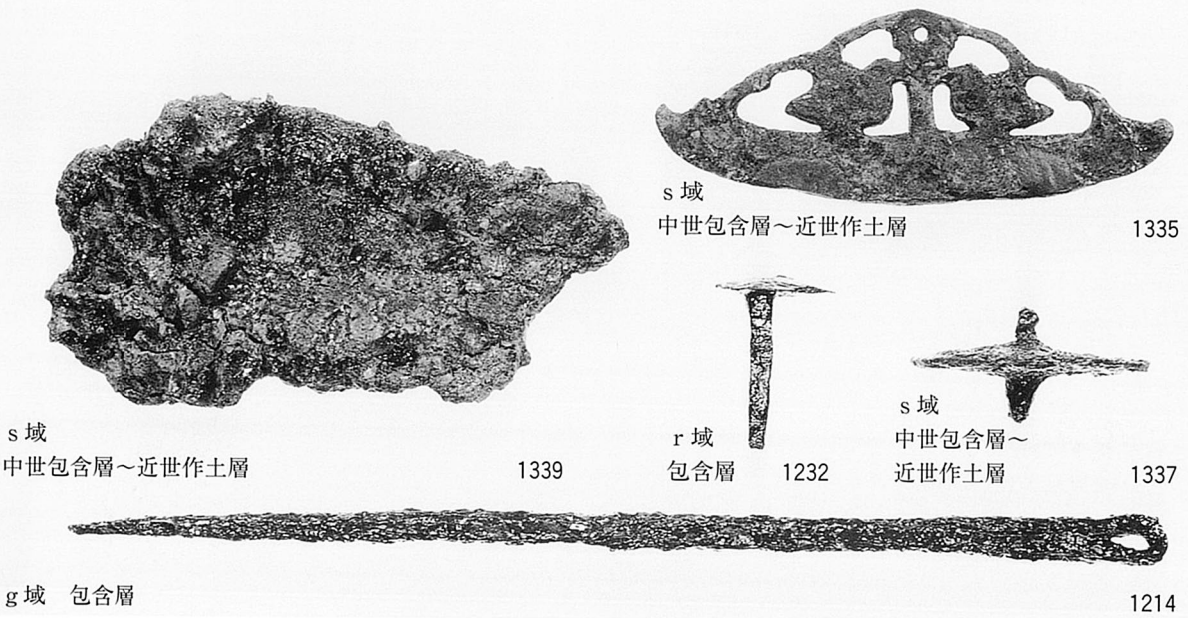
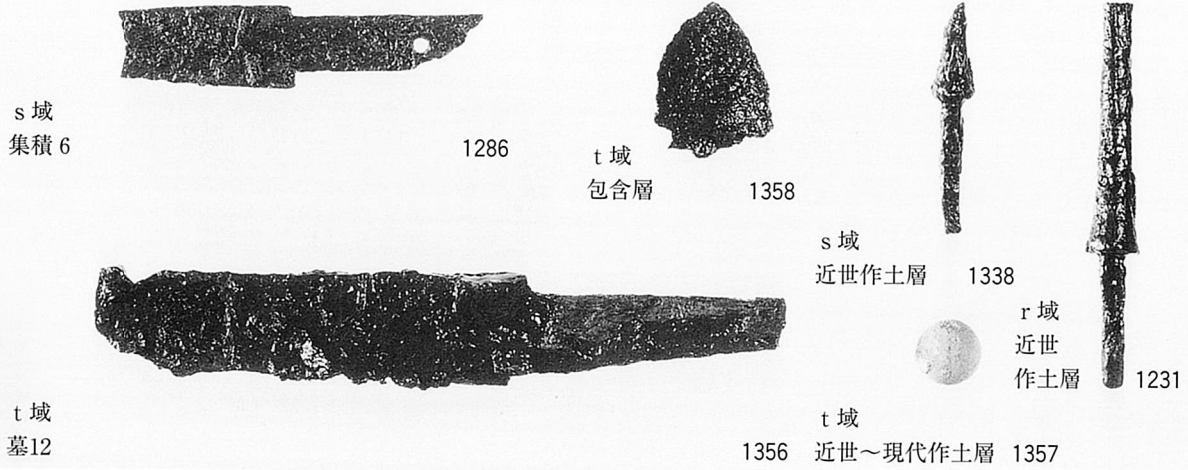


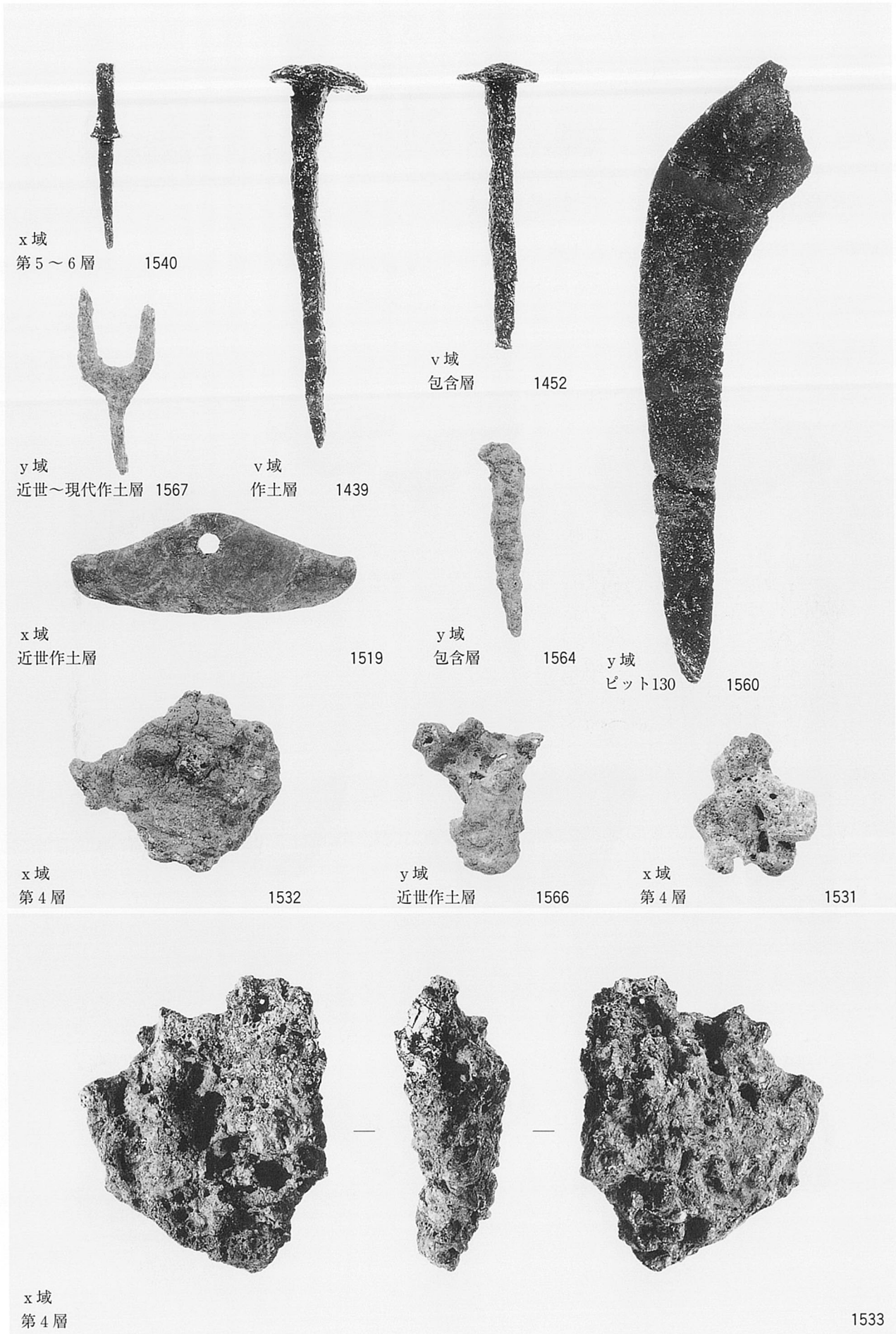
811



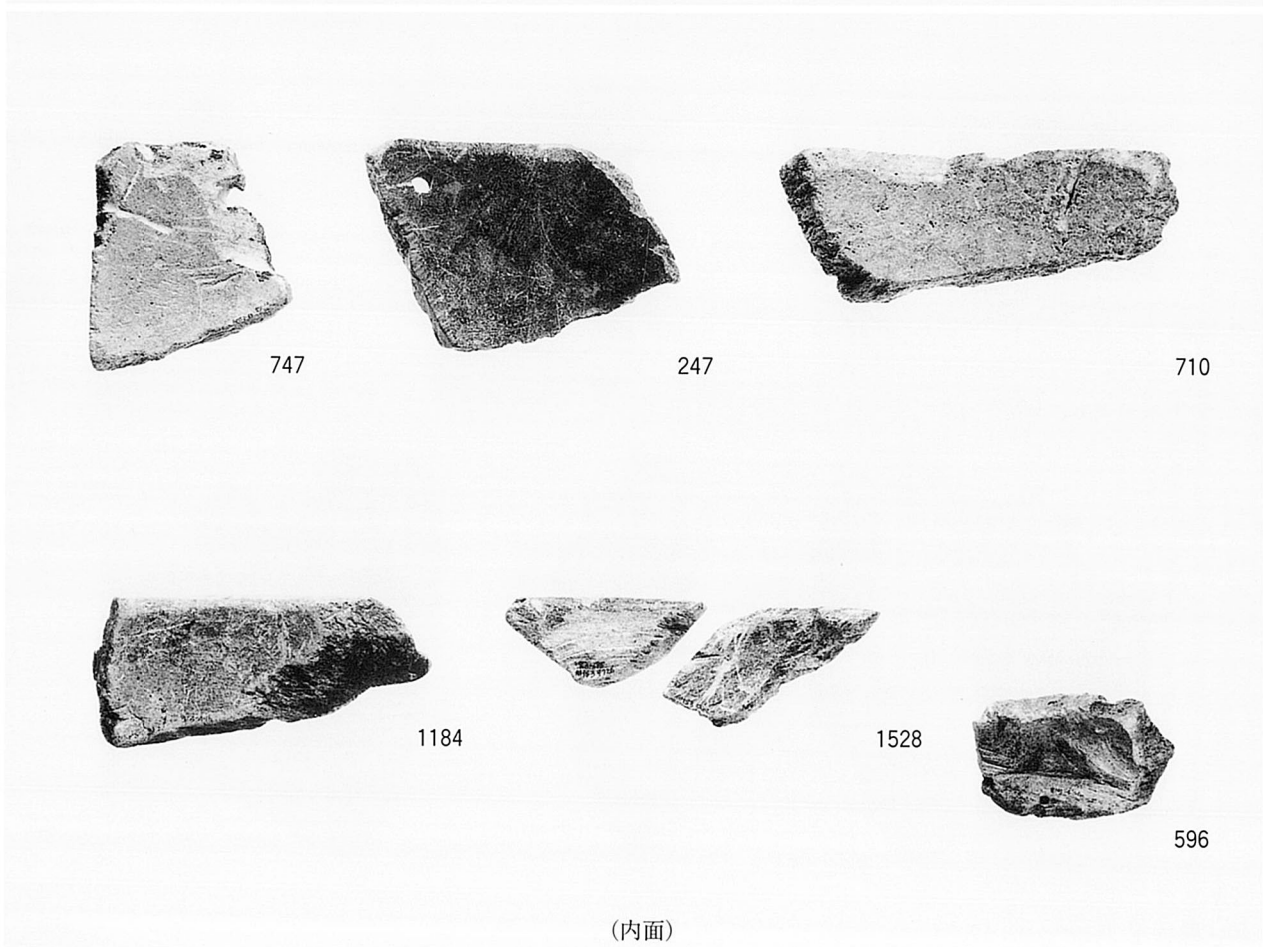
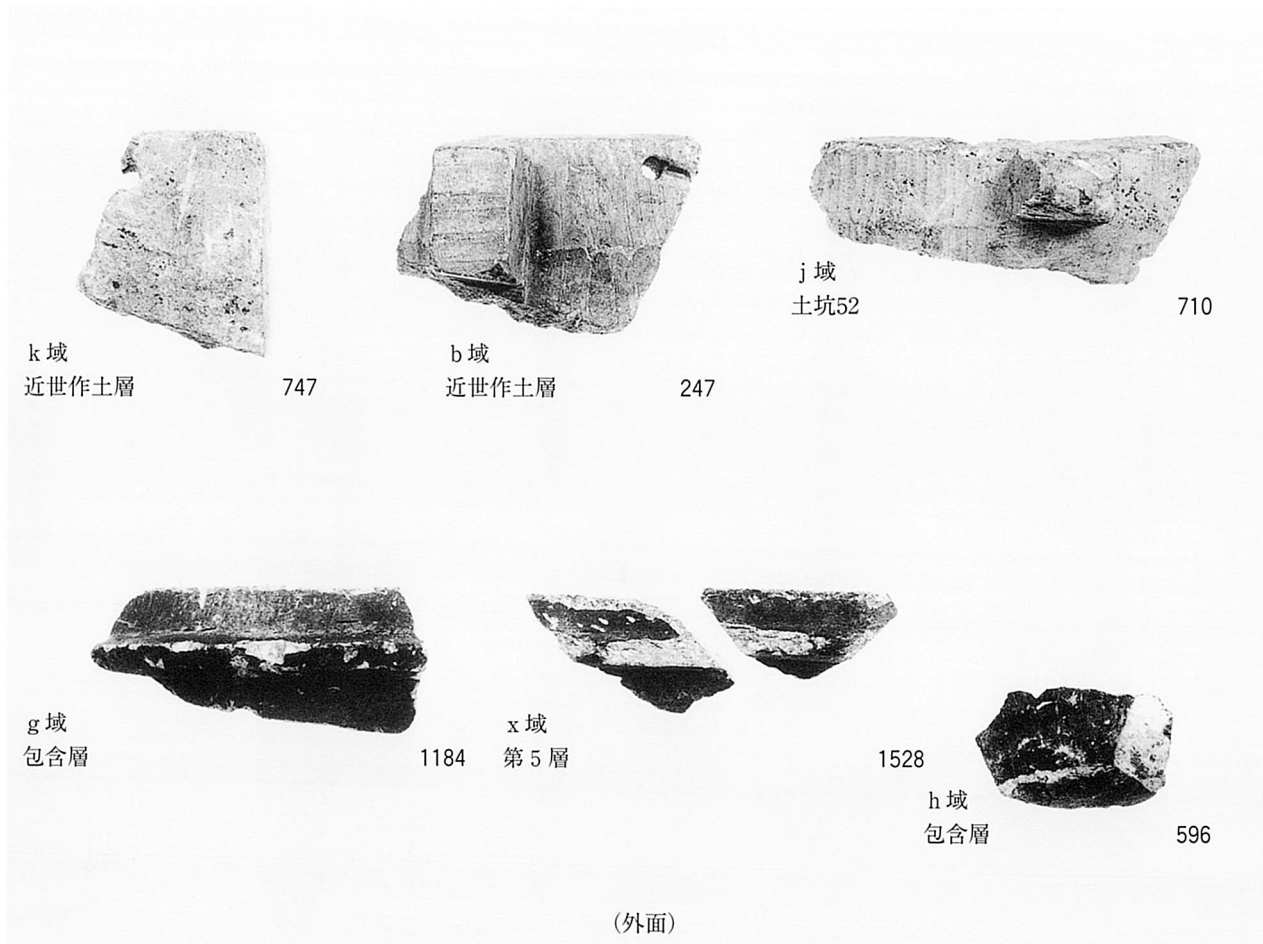
m域 土坑66

図版246 金属製品（7） 金属製品生産関連遺物（4）

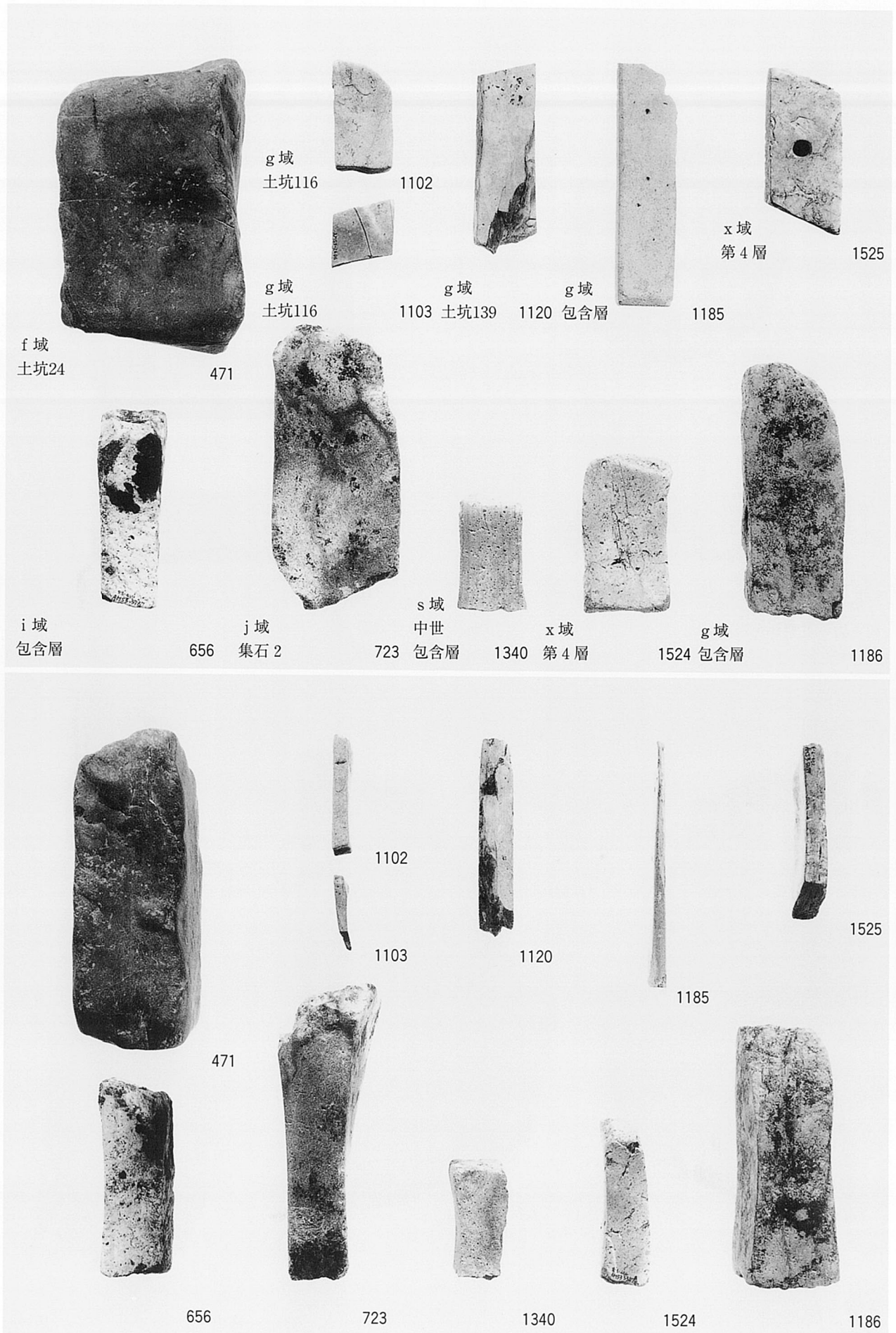




図版248 石製品 (1)

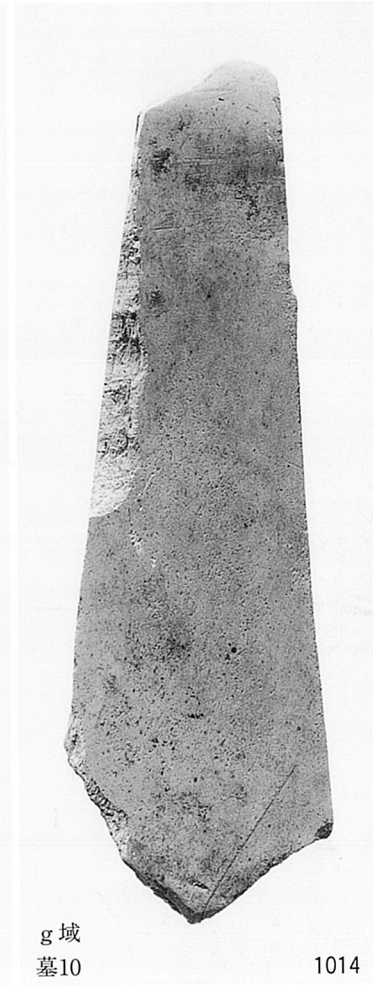
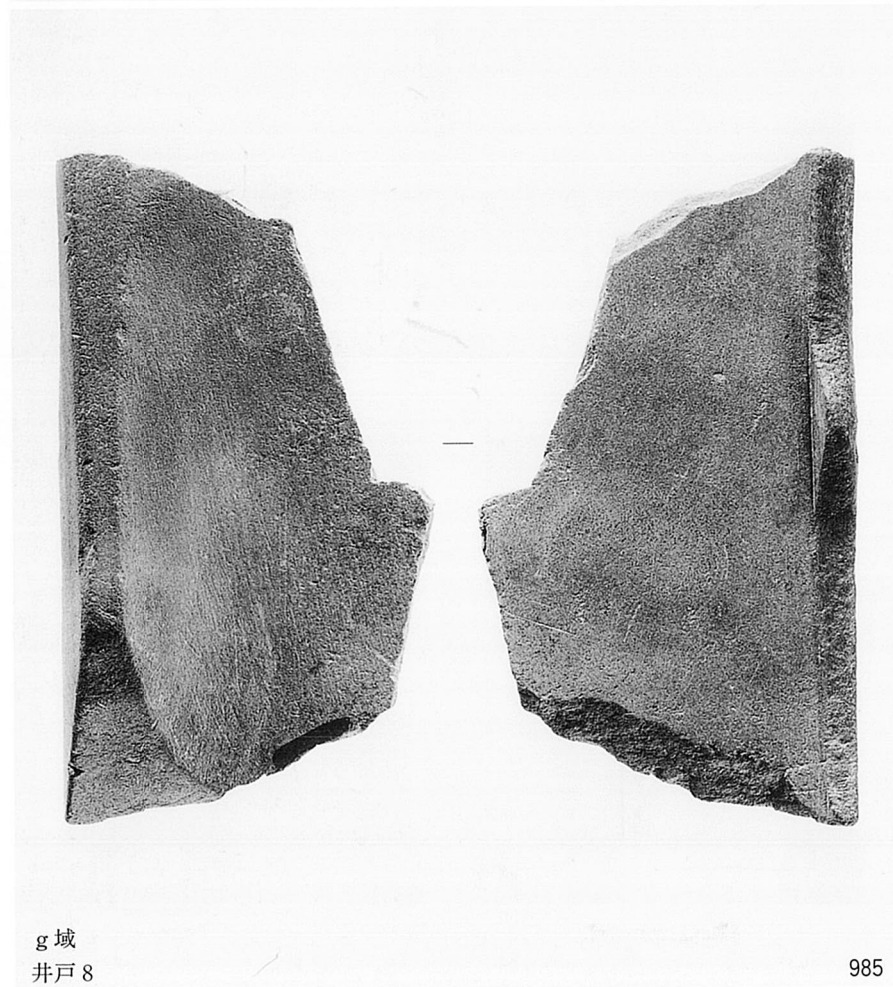
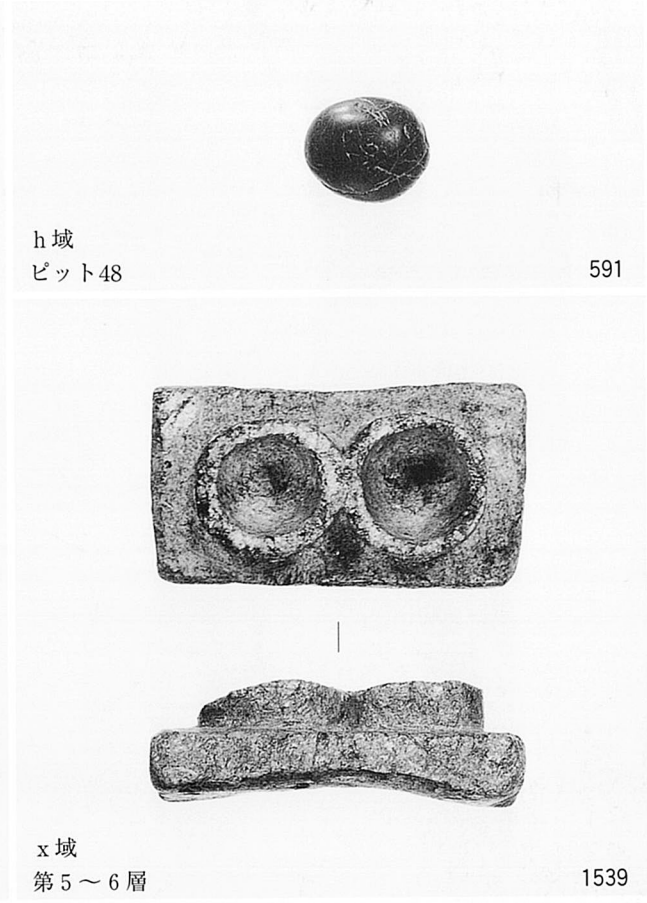


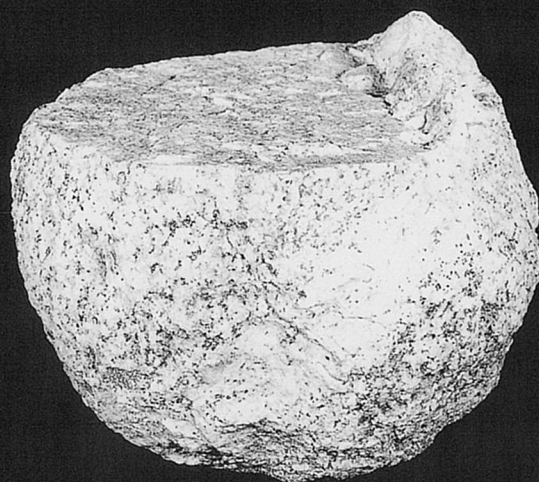
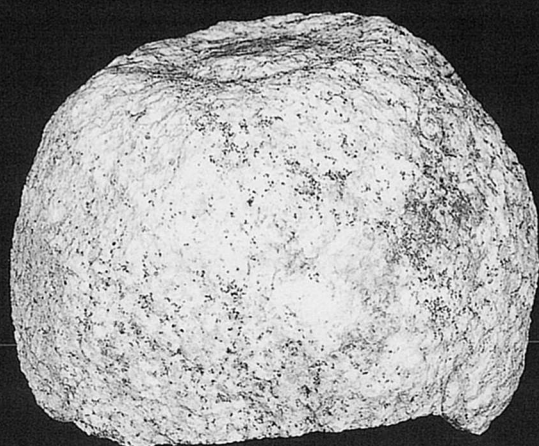




(側面)

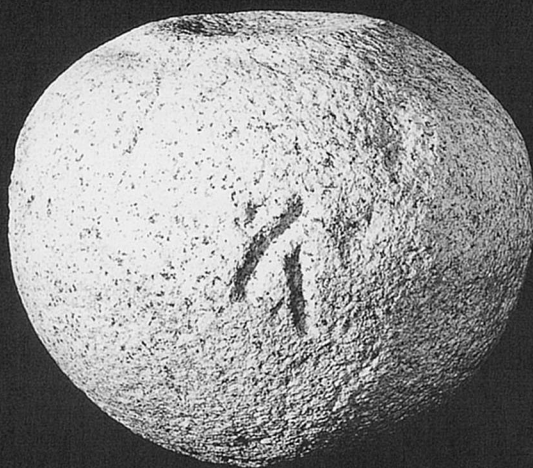
図版250 石製品 (3)





k 域  
井戸 6

742



x 域  
近現代盛土層

1516

(財)大阪府文化財センター発掘調査報告書 第85集

# 粟生間谷遺跡

古代・中世編

写真図版編

—国際文化公園都市特定土地地区画整理事業に伴う

古代から中世の集落の調査—

---

---

2003年2月 発行

編集発行／財団法人 大阪府文化財センター

〒590-0105 堺市竹城台3丁21番4号 Tel 072-299-8791

印刷／株式会社 中島弘文堂印刷所

〒537-0002 大阪市東成区深江南2丁目6番8号

---

---