

写真図版



5号窠全景



1 4・6号窯遠景



2 4号窯遠景



1 4号窯検出状況



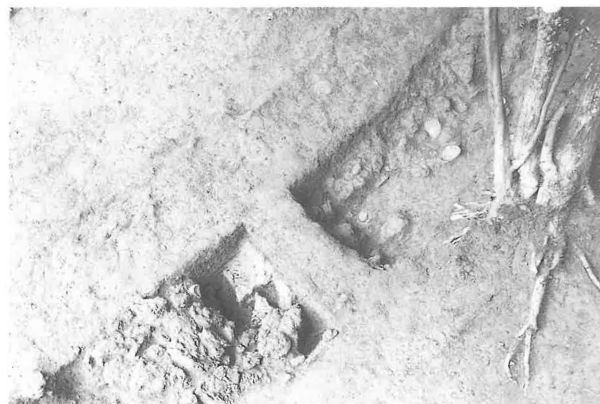
2 4号窯東半遺物出土状況



3 4号窯西半遺物出土状況



1 4号窯窯体内東半窯壁出土狀況一1



5 4号窯窯体内西半窯壁出土狀況一1



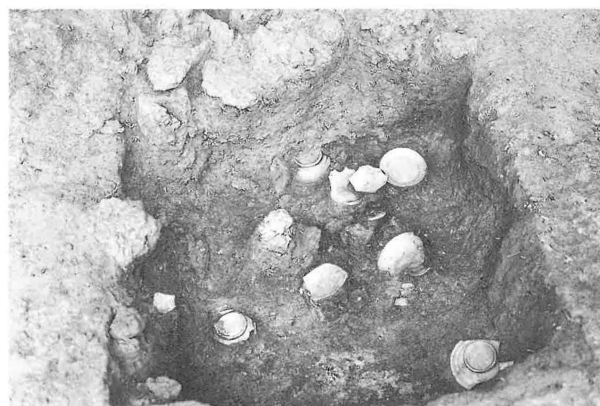
2 4号窯窯体内東半窯壁出土狀況一2



6 4号窯窯体内西半窯壁出土狀況一2



3 4号窯窯体内東半遺物出土狀況一1



7 4号窯窯体内西半遺物出土狀況一1



4 4号窯窯体内東半遺物出土狀況一2



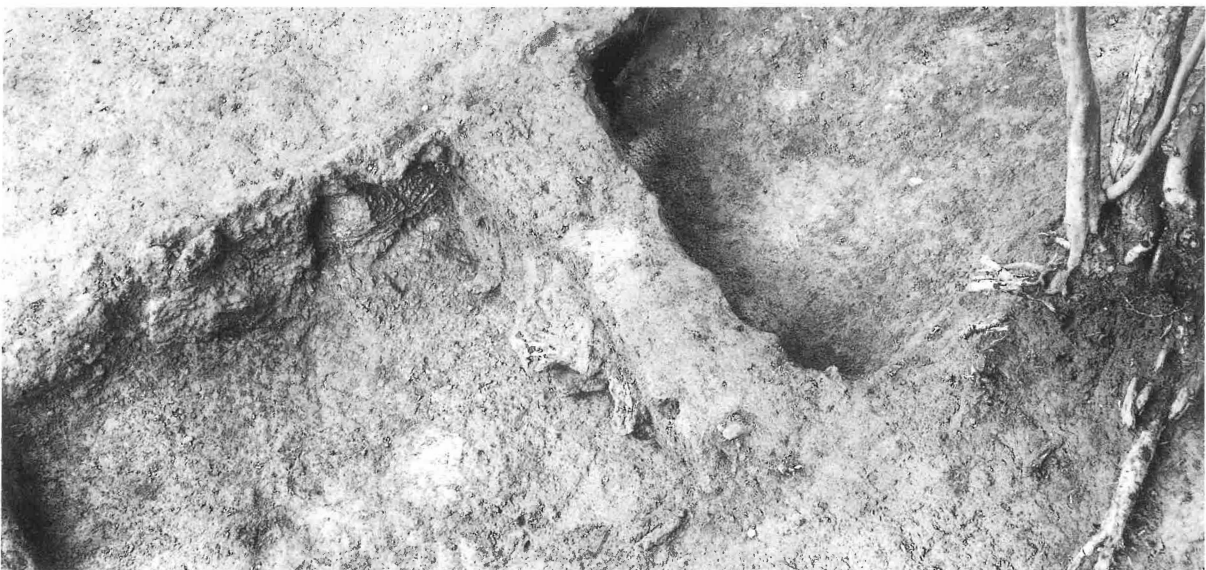
8 4号窯窯体内西半遺物出土狀況一2



1 4号窯体内土層断面



2 4号窯左壁



3 4号窯床面



1 4号窯東灰原断面



2 4号窯灰原



4号窯完掘



1 5号窯遠景



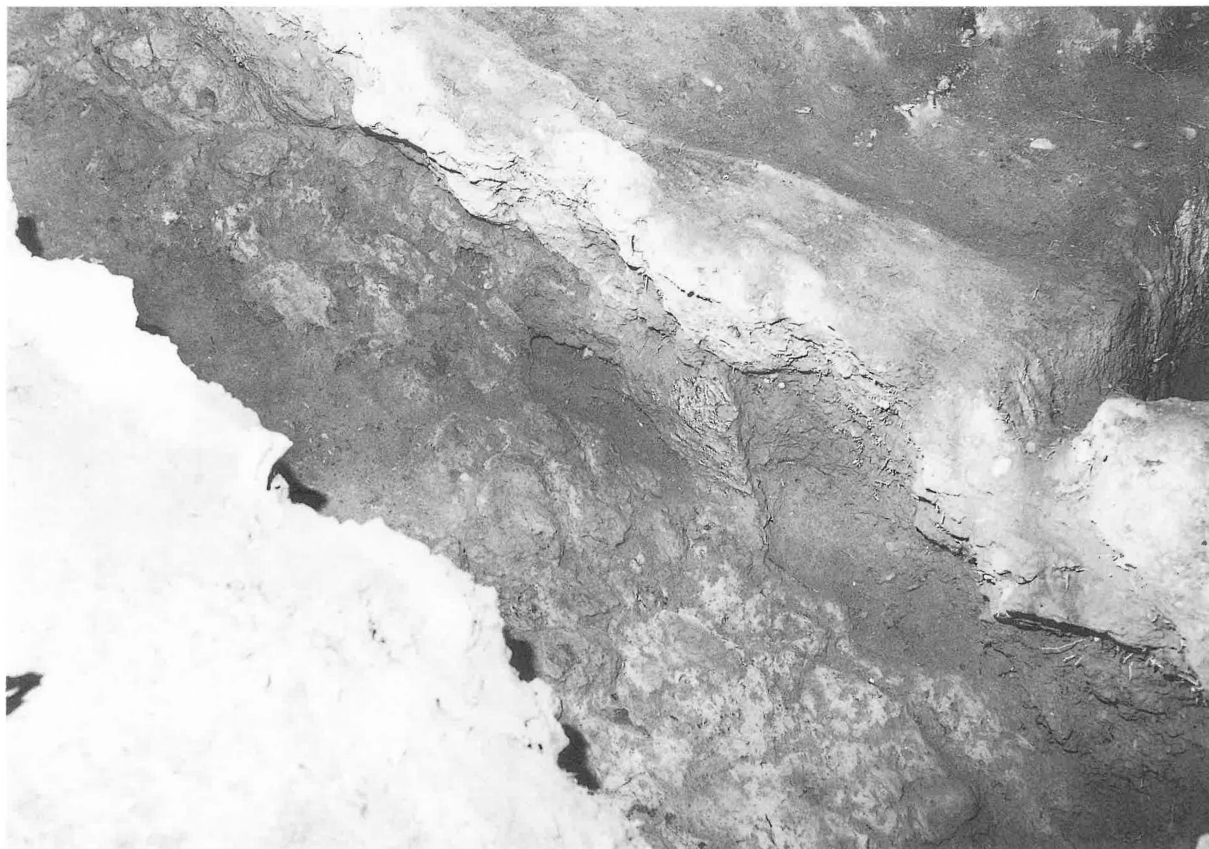
2 5号窯窯体内窯壁出土状況



1 5号窯窯体上半遺物出土状況一1



2 5号窯窯体上半遺物出土状況一2



1 5号窯窯体上半右壁



2 5号窯窯体上半左壁



1 5号窯煙出し（下から）



2 5号窯煙出し（上から）



1 5号窯下半（焚口から）



2 5号窯焼成室



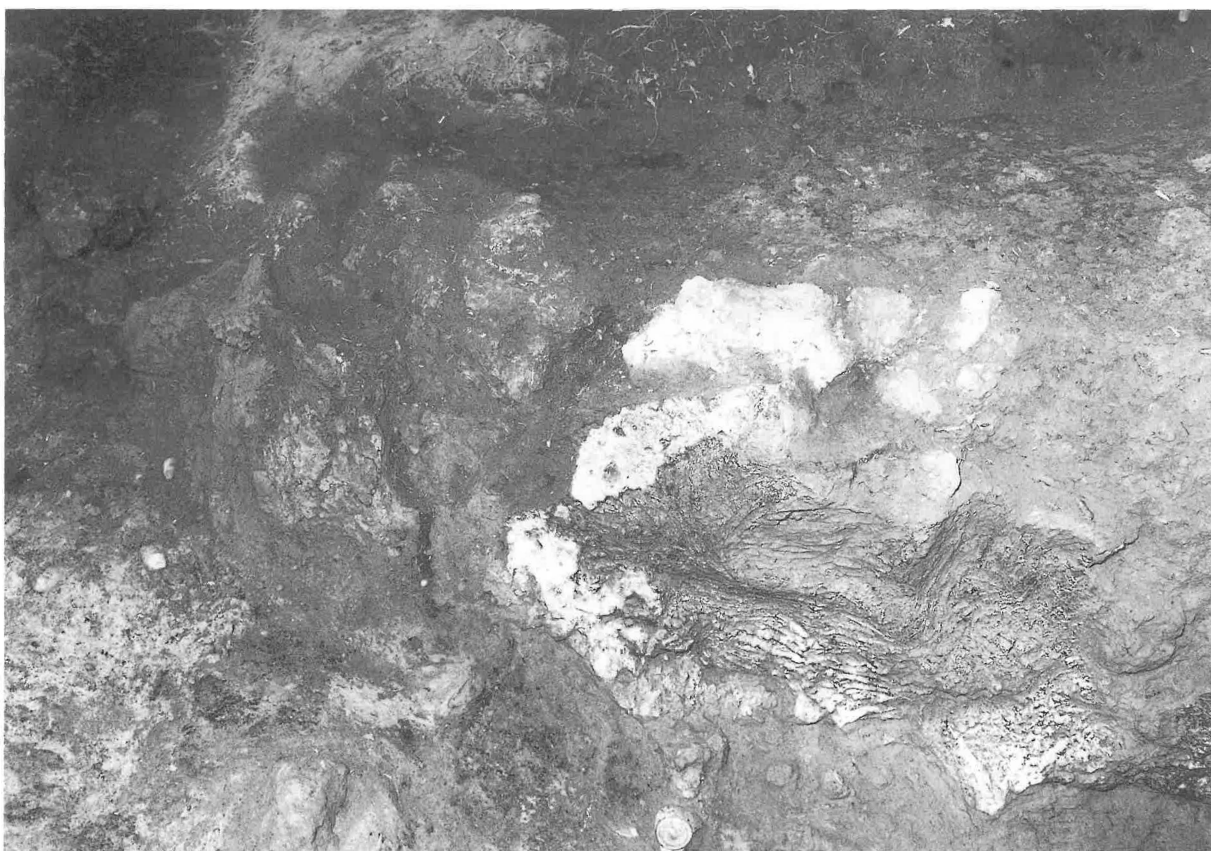
1 5号窯分焰柱



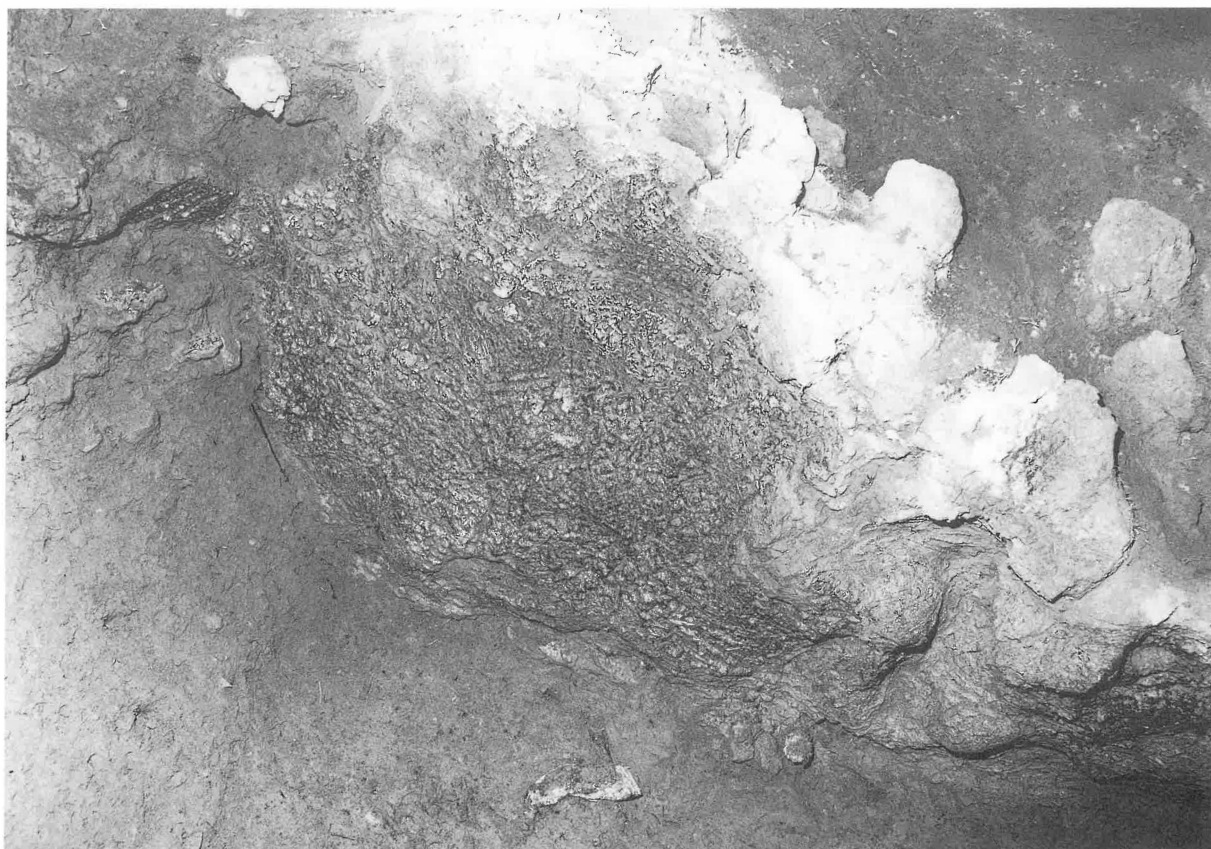
2 5号窯焚口



1 5号窑燃烧室左壁一1



2 5号窑燃成室左壁一2



1 5号窯燃烧室右壁-1



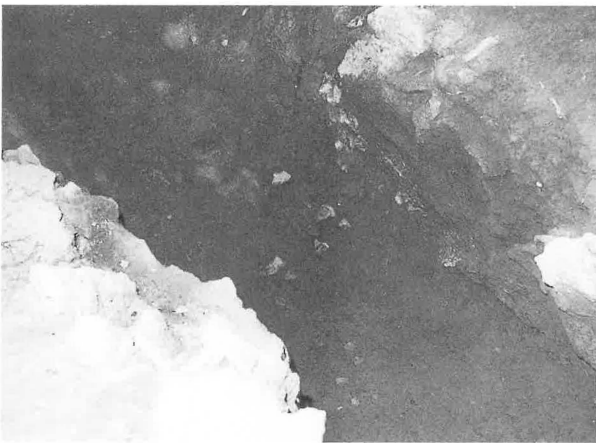
2 5号窯燃成室右壁-2



1 5号窯燃烧室上半遺物出土状況一1



2 5号窯燃成室上半遺物出土状況一2



3 5号窯燃烧室下半遺物出土状況一1



4 5号窯燃成室下半遺物出土状況一2



5 5号窯焚口付近遺物出土状況一1



6 5号窯焚口付近遺物出土状況一2



5号窯完掘状況



1 5号窠B-12~14区遺物出土状況



2 5号窠B-16~18区遺物出土状況



3 5号窠B-12区遺物出土状況



4 5号窠B-14区遺物出土状況



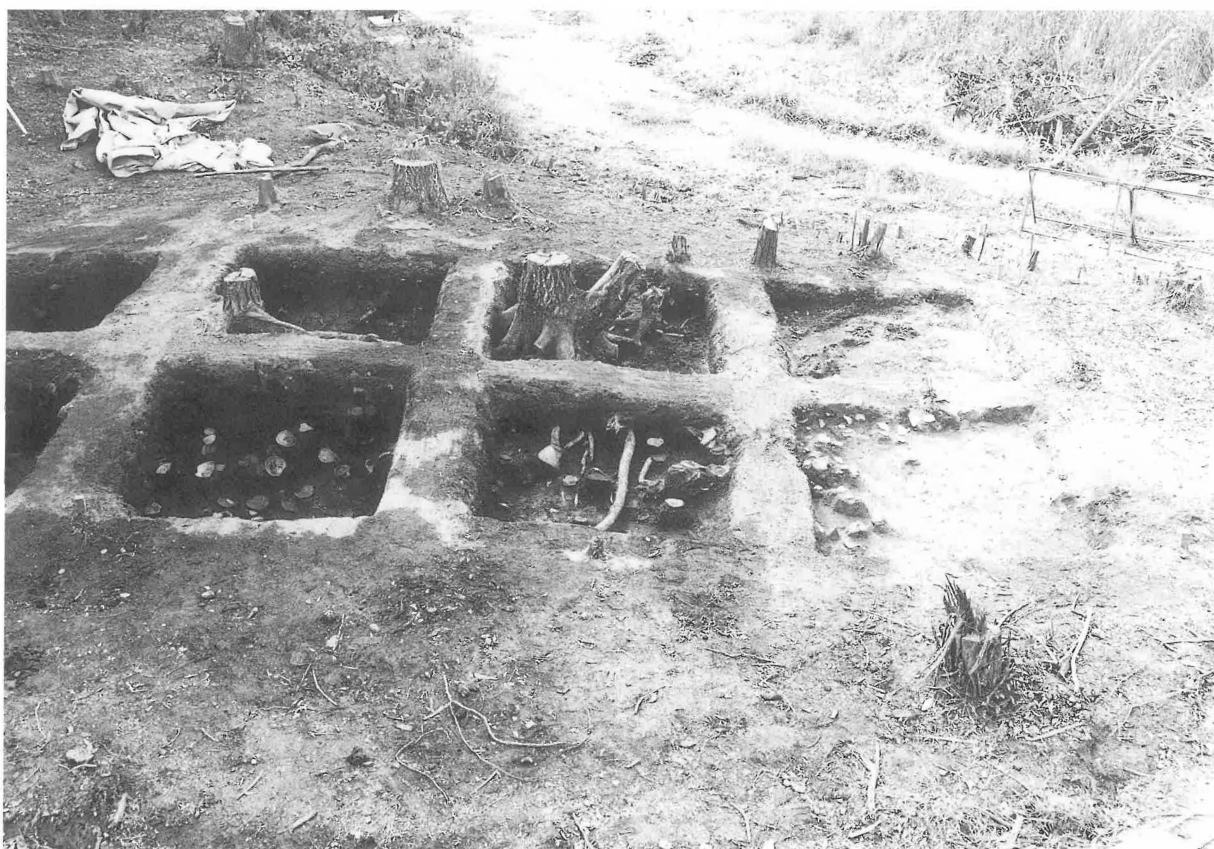
4 5号窠B-13区遺物出土状況



6 5号窠B-16区遺物出土状況



1 5号窯D-12~14区遺物出土状況



2 5号窯D-16~18区遺物出土状況



1 5号窯C-16区遺物出土状況-1



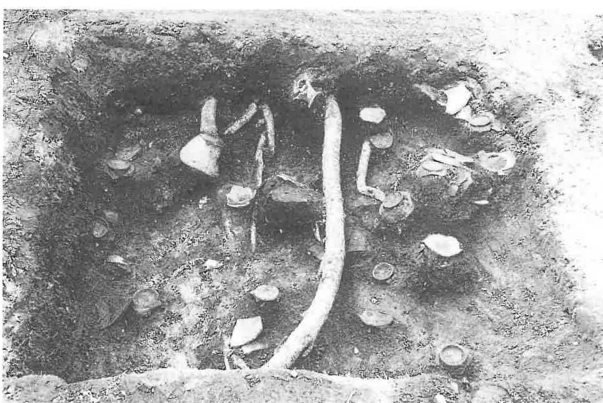
5 5号窯D-14区遺物出土状況



2 5号窯C-16区遺物出土状況-2



6 5号窯D-16区遺物出土状況



3 5号窯C-17区遺物出土状況-1



7 5号窯D-17区遺物出土状況



4 5号窯C-17区遺物出土状況-2



8 5号窯D-18区遺物出土状況



1 5号窯E～G-16・17区遺物出土状況（北から）



2 5号窯E～G-16・17区遺物出土状況（西から）



1 5号窠E・F-16~18区遺物出土状況(北から)



5 5号窠E-18区遺物出土状況



2 5号窠E・F-16~18区遺物出土状況(西から)



6 5号窠F-16区遺物出土状況



3 5号窠E-16区遺物出土状況-1



7 5号窠F-17区遺物出土状況



4 5号窠E-17区遺物出土状況-2



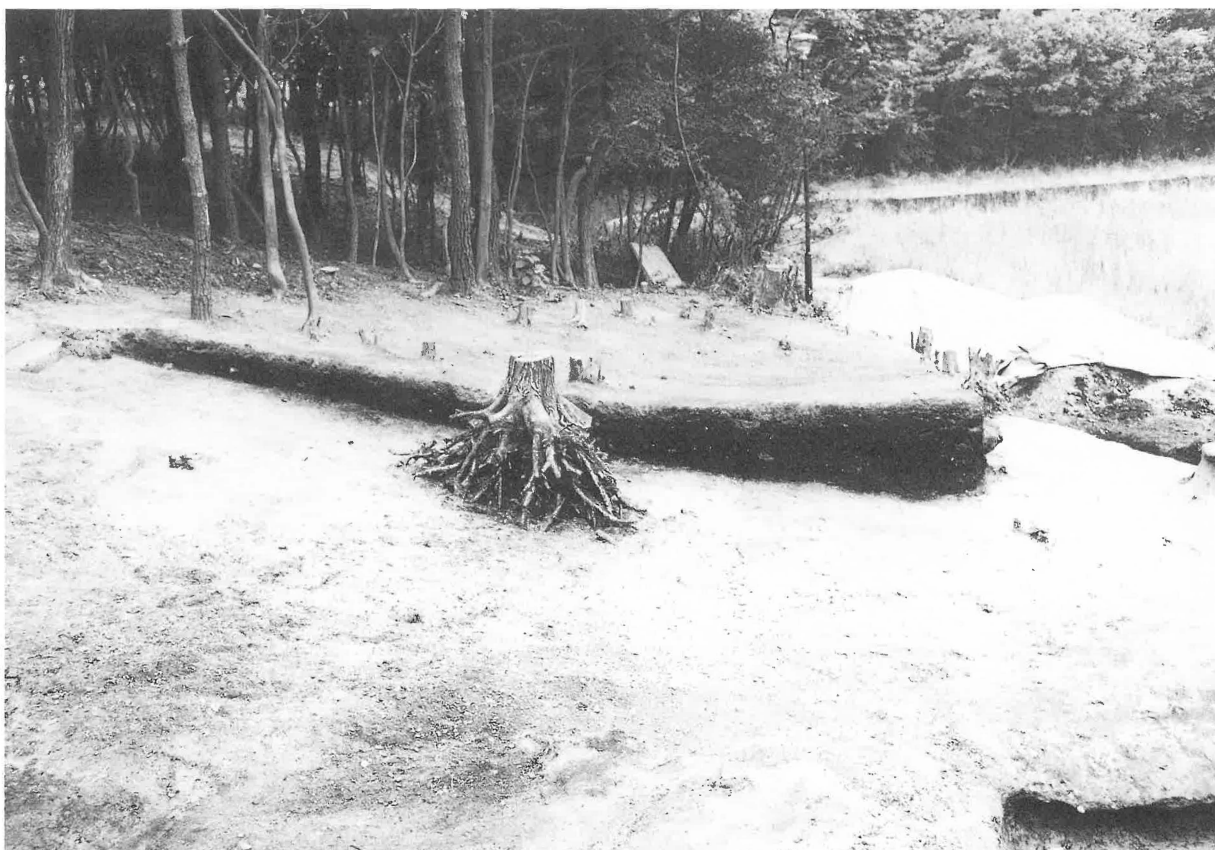
8 5号窠F-18区遺物出土状況



5号窯B~D-12~18区灰原断面（北から）



1 5号窯灰原完掘状況（北から）



2 5号窯灰原断面（東から）



1 5号窯灰原断面（北から）



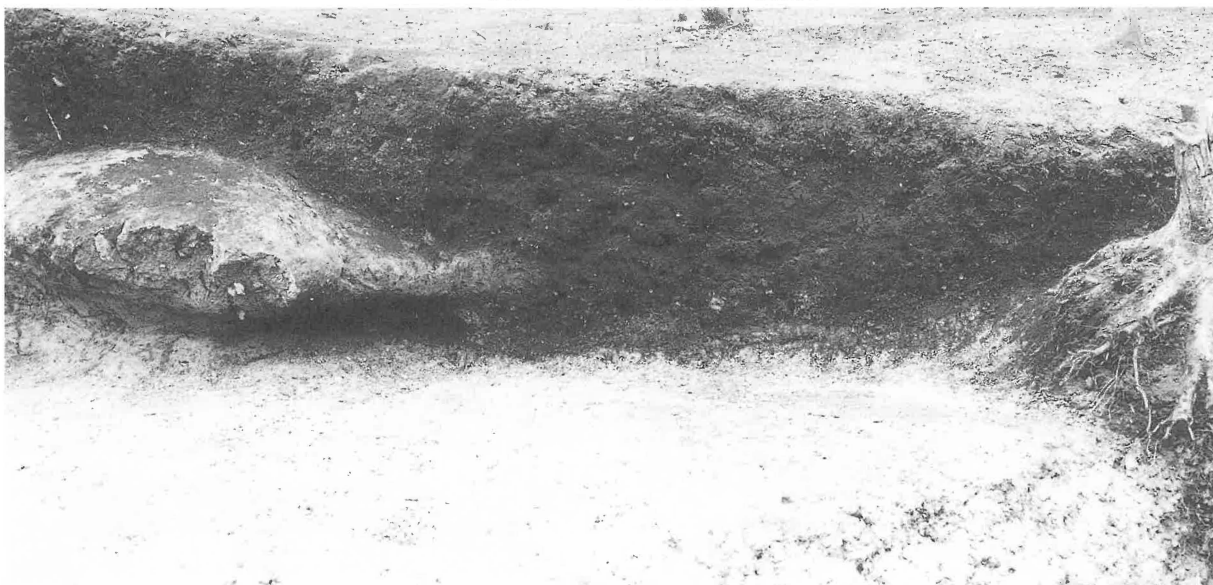
2 5号窯SK-1・3完掘状況-1（西から）



1 5号窯SK-1・3完掘状況-2



2 5号窯SK-1完掘状況(近景)



3 5号窯SK-2完掘状況(近景)



1 5号窯SK-2完掘状況-1 (西から)



2 5号窯SK-2完掘状況-2 (北から)



3 5号窯SK-2完掘状況-3 (近景)



1 6号窯調査区全体-1 (北から)



2 6号窯調査区全体-2 (西から)



1 6号窯完掘状況-1 (北から)



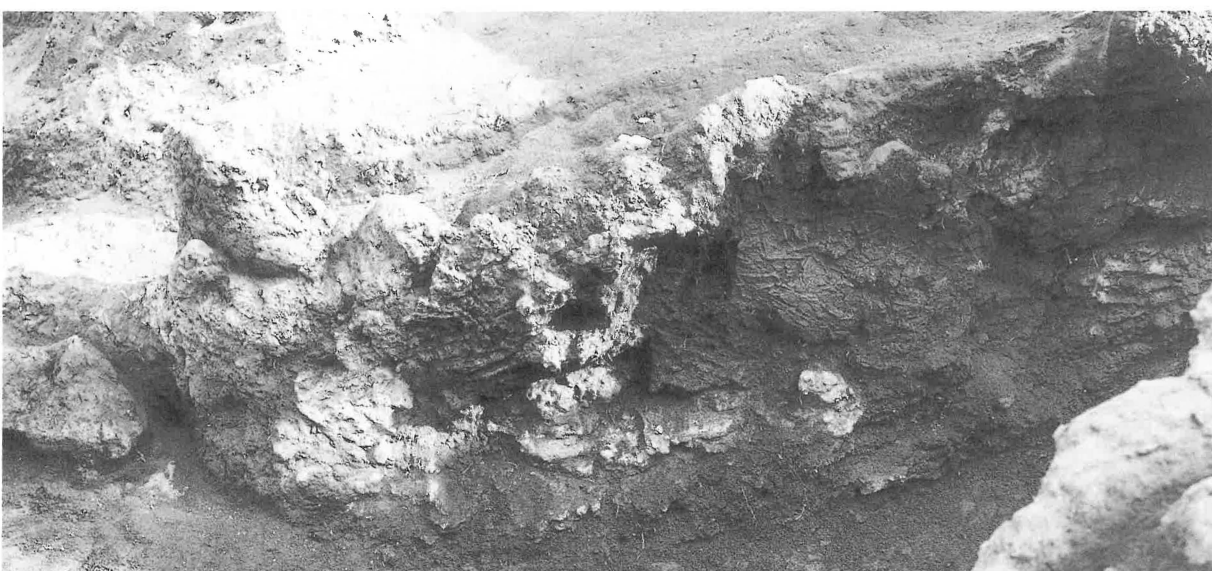
2 6号窯完掘状況-2 (西から)



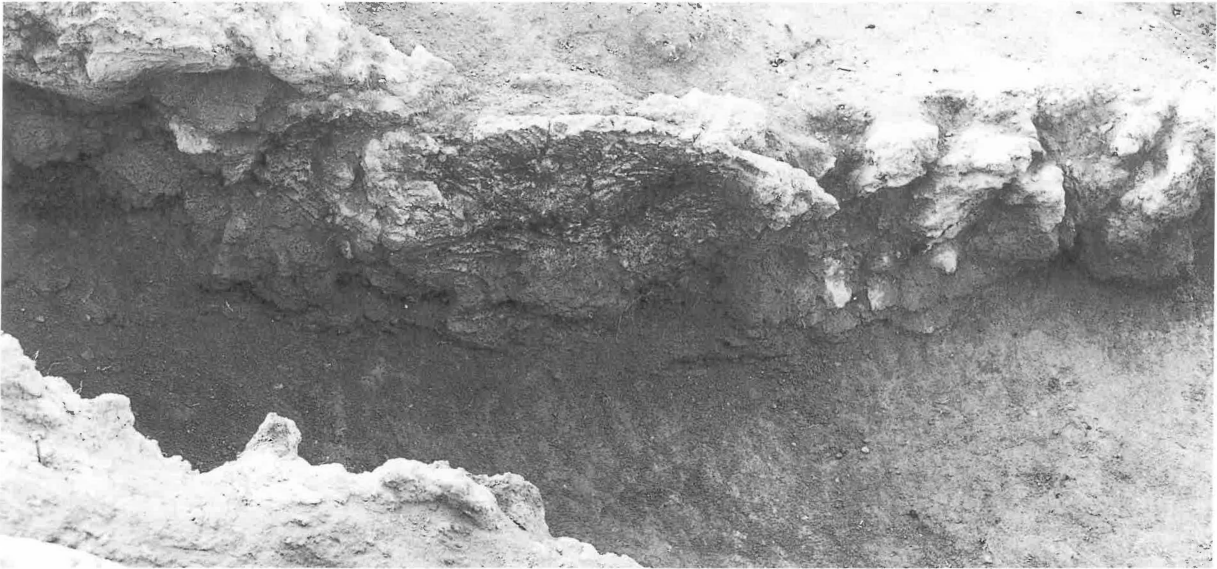
1 6号窯左壁-1 (西から)



2 6号窯左壁-2 (北から)



3 6号窯左壁-3 (西から)



1 6号窯右壁-1 (西から)



2 6号窯右壁-2 (北から)



3 6号窯右壁-3 (西から)



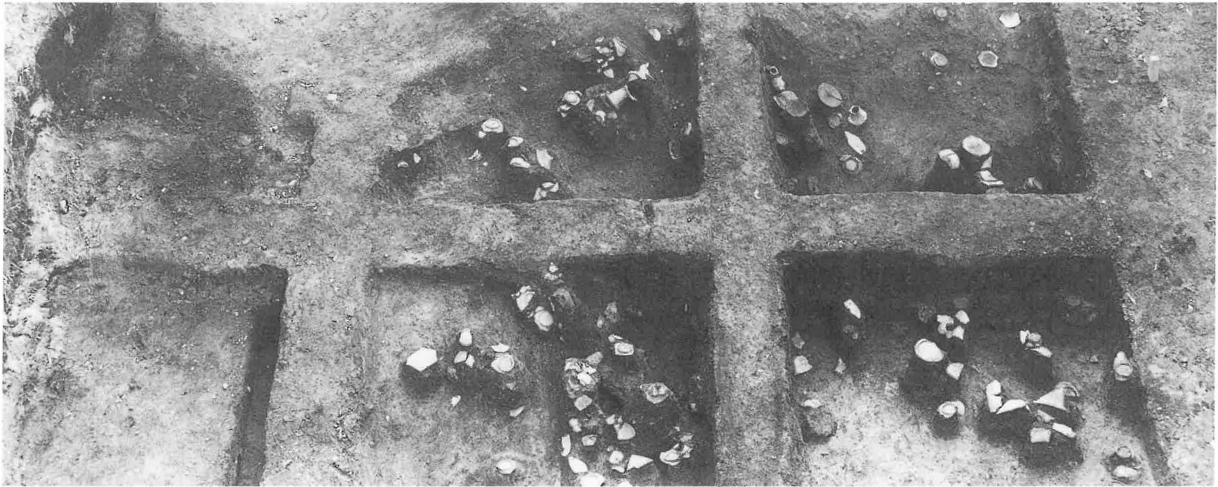
1 6号窯窯体内遺物出土状況（北から）



2 6号窯焚口遺物出土状況（東から）



3 6号窯焼成室遺物出土状況（西から）



1 6号窯灰原C～E-5・6区遺物出土状況（北から）



2 6号窯灰原D-5区遺物出土状況（東から）



3 6号窯灰原D-6区遺物出土状況（東から）



1 6号窯灰原D～F-5・6区遺物出土状況（北から）



2 6号窯灰原E-5・6区遺物出土状況（東から）



3 6号窯灰原F-5区遺物出土状況（北から）



1 6号窯窯体内土層断面A-A'ライン(北から)



2 6号窯窯体内土層断面B-B'ライン(北から)



3 6号窯窯体内土層断面C-C'ライン(北から)



1 6号窯床面断ち割り状況



2 6号窯焼成室床面断ち割り状況一



3 6号窯焼成室床面断ち割り状況二



1 6号窯前庭部断ち割り状況一



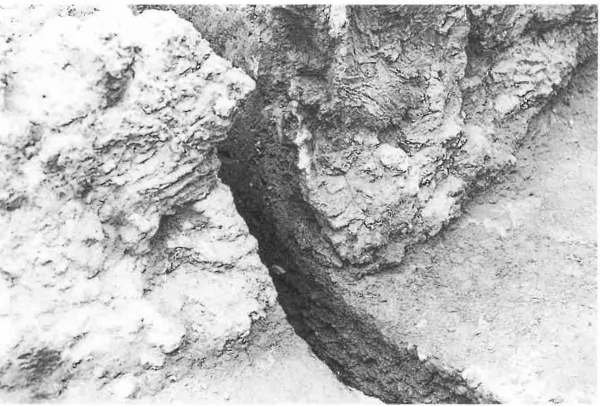
2 6号窯前庭部断ち割り状況二



3 6号窯焼成室床面断ち割り状況一



4 6号窯焼成室床面断ち割り状況二



5 6号窯焼成室左側壁断ち割り状況



6 6号窯焼成室右側壁断ち割り状況



6 6号窯焼成室左側壁断ち割り状況（近景）



8 6号窯焼成室右側壁断ち割り状況（近景）



1 6号窯灰原断ち割り状況



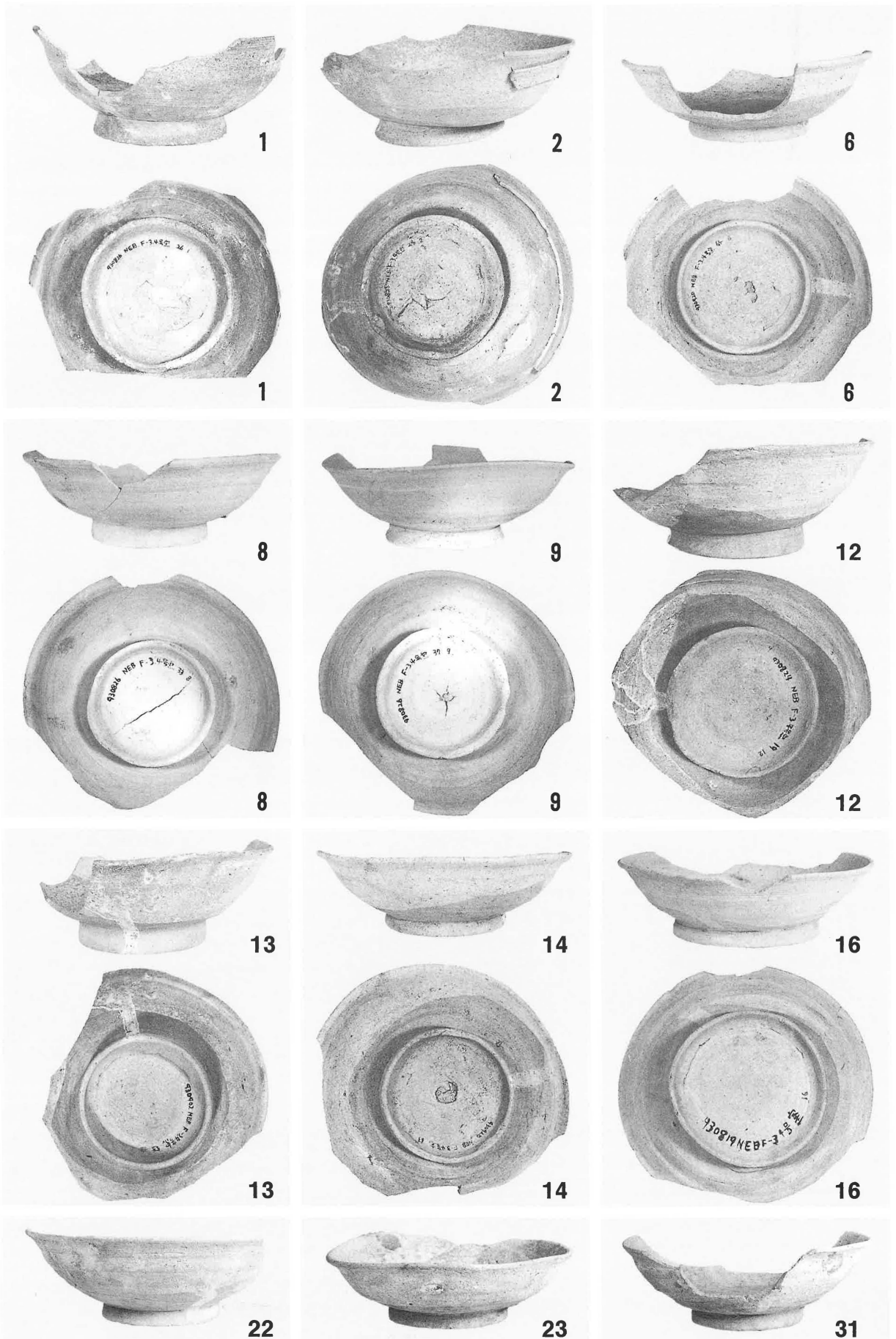
2 西壁断面



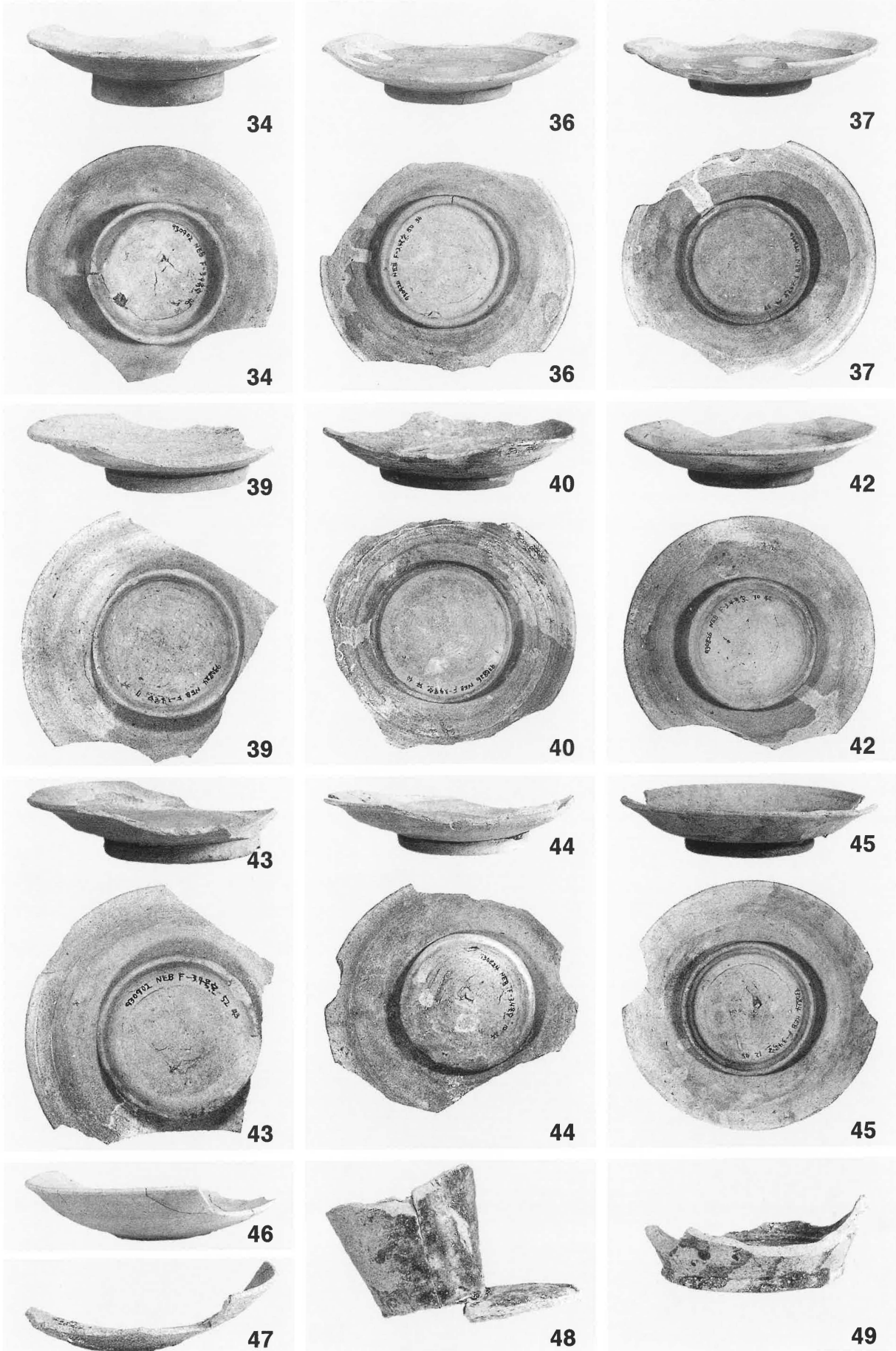
1 6号窯灰原D-5区断ち割り断面（東から）



2 6号窯灰原C-6区断ち割り断面（北東から）



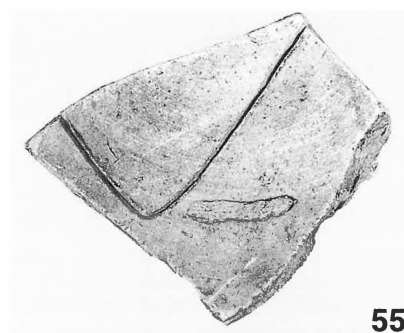
4号窯出土遺物一



4号窯出土遺物一2



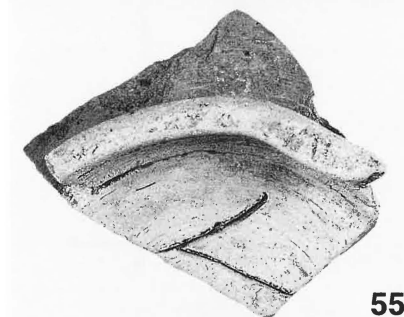
51



55



56



55



63



63



114



64



64



117



66



66



123



69



69



124



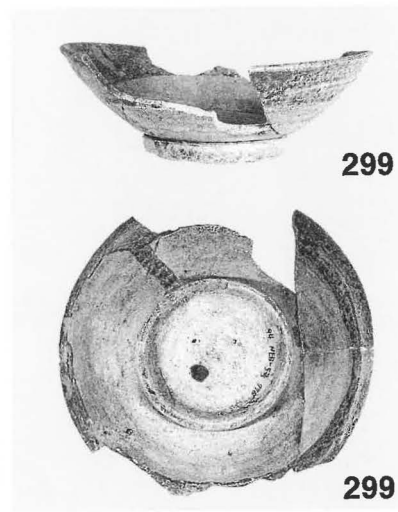
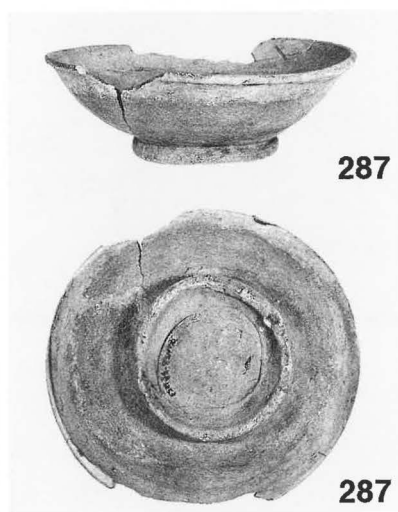
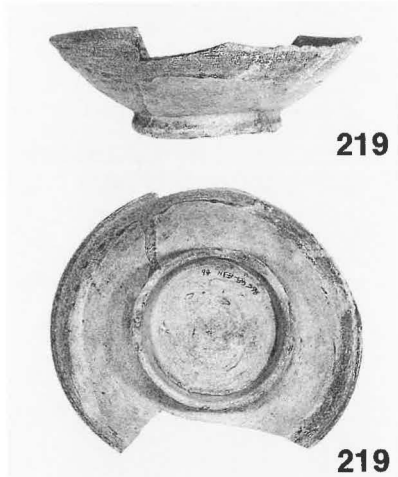
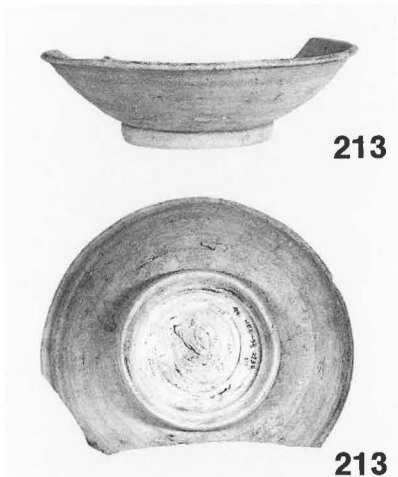
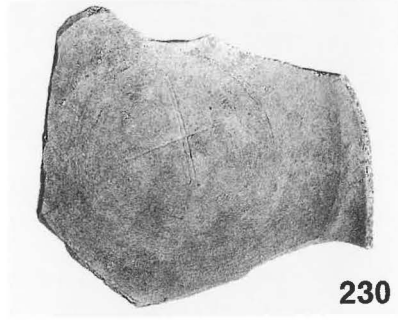
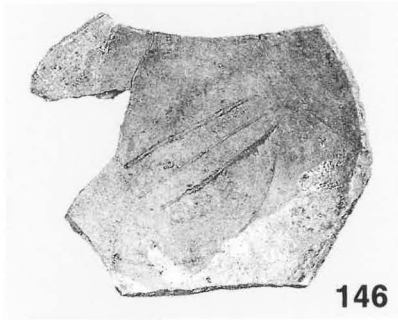
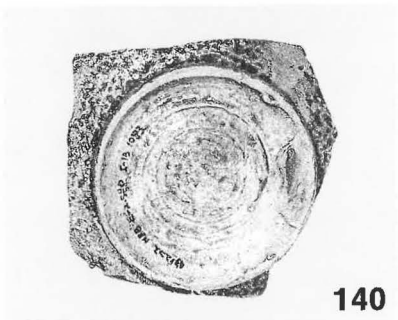
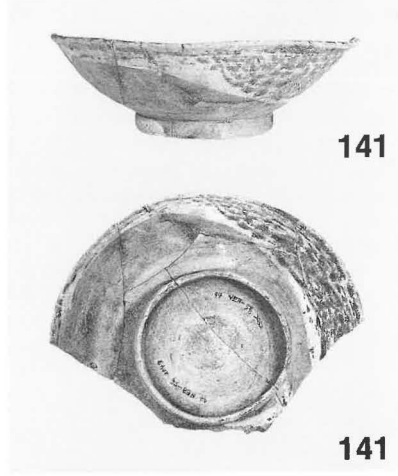
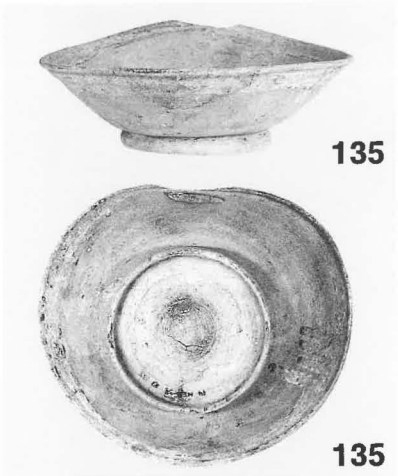
125



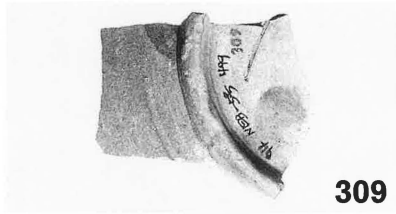
126



127



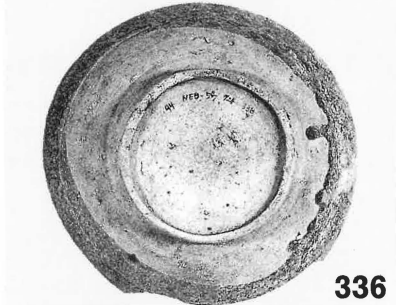
5号窯出土遺物一2



309



336



336



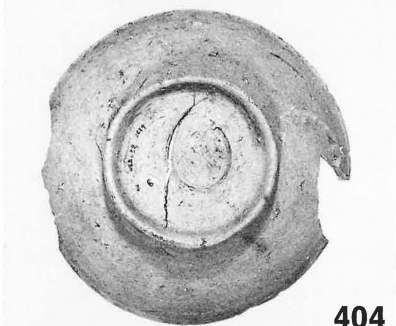
361



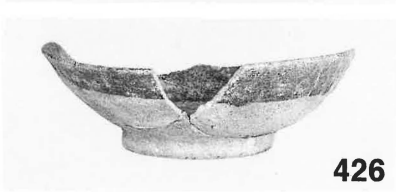
361



404



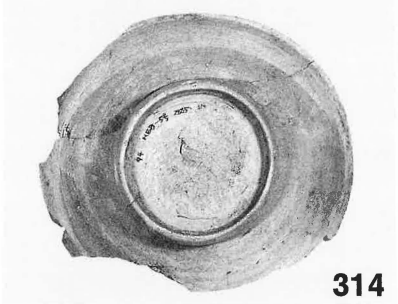
404



426



314



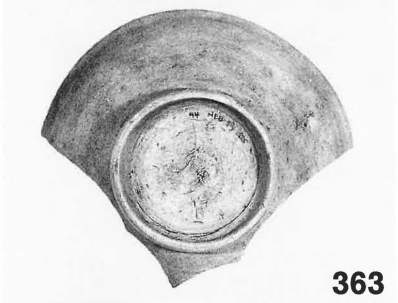
314



348



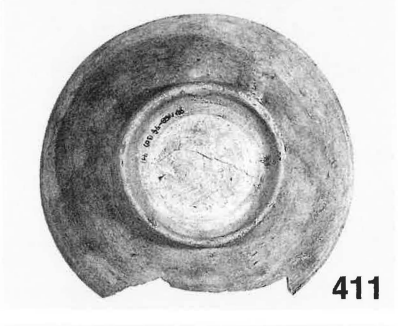
363



363



411



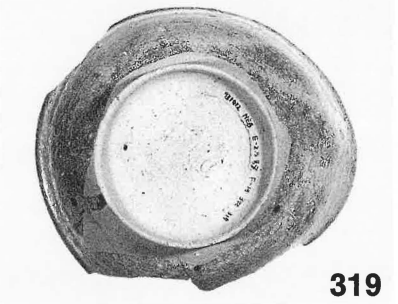
411



430



319



319



352



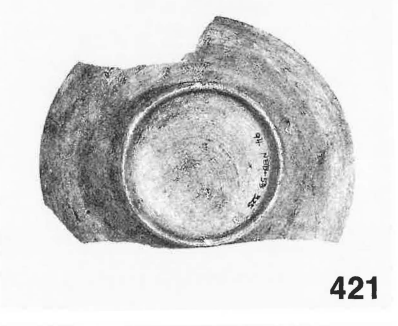
372



372



421



421



440



473



484



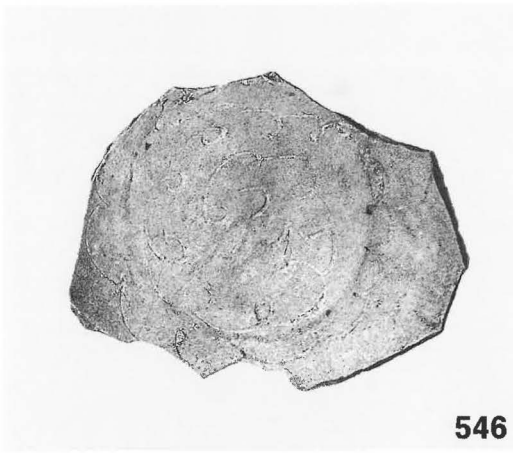
491



537



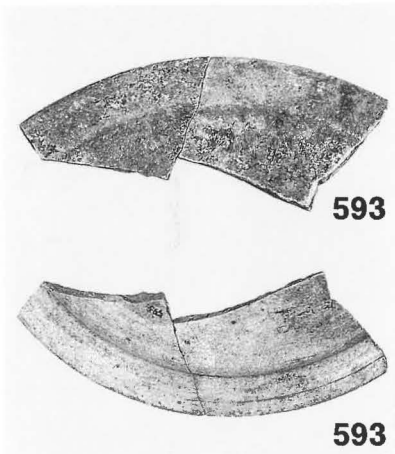
547



546



548



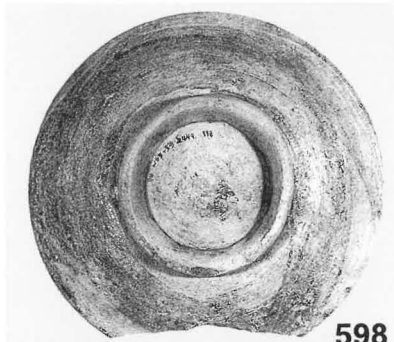
593



596



597



598



598



598



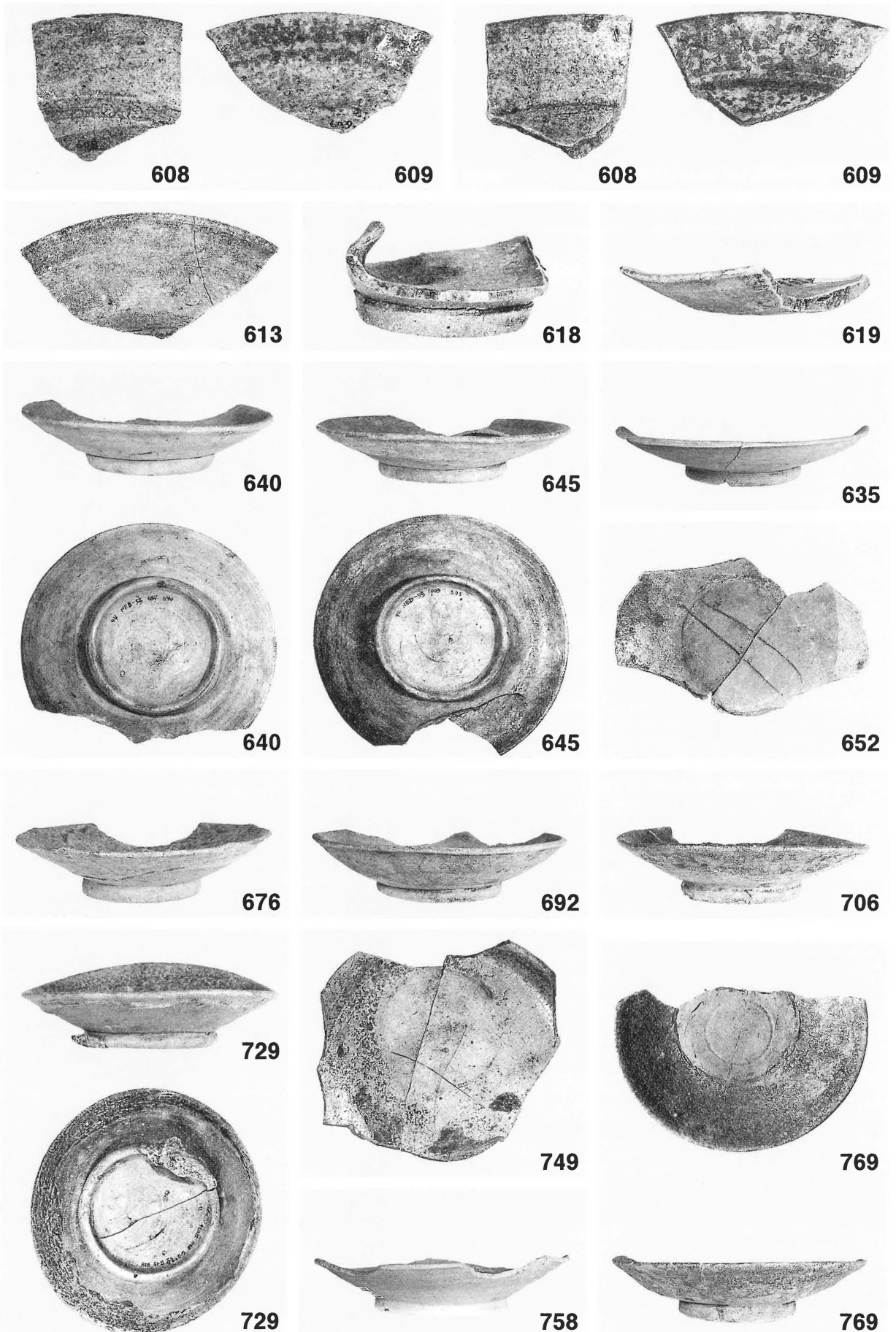
604



604



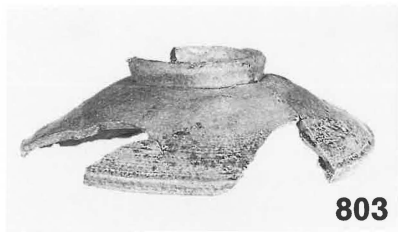
604



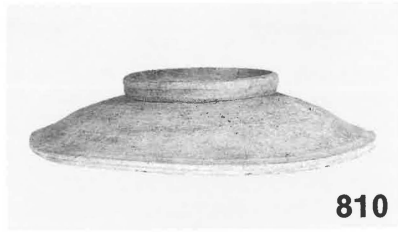
5号窯出土遺物—5



800



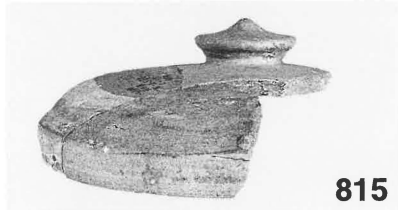
803



810



812



815



816



821



822



823



824



826



834



840



843



844



845



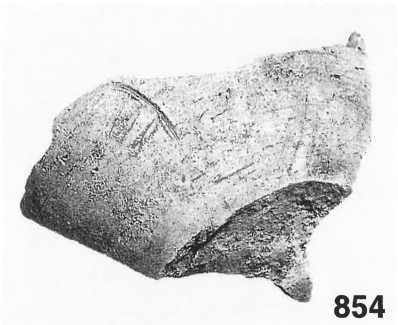
847



842



842



854



856



857



858



861



862



863



864



863



863 (裏焼き)



866



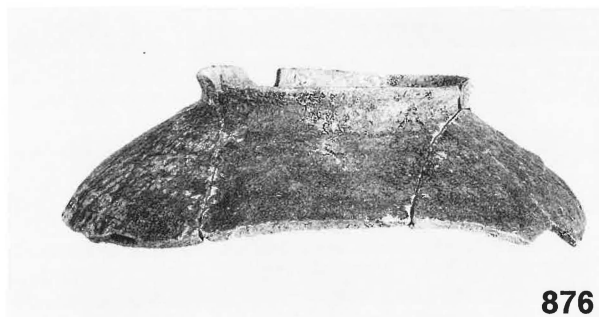
871



868



867



876



873



877



887



884



889



891



895



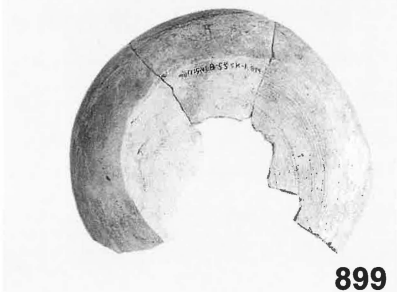
899



900



894



899



901



902



903



911



904



910



913

912



915



914



922



924



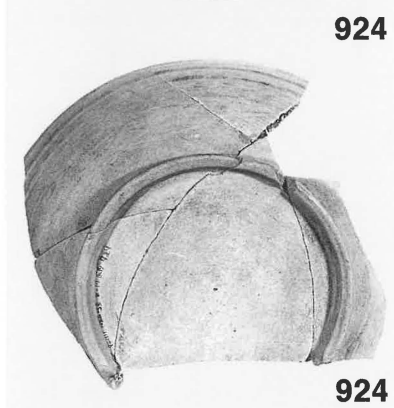
918

917

916



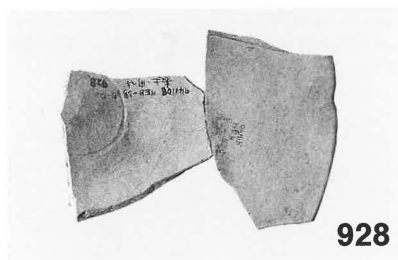
922



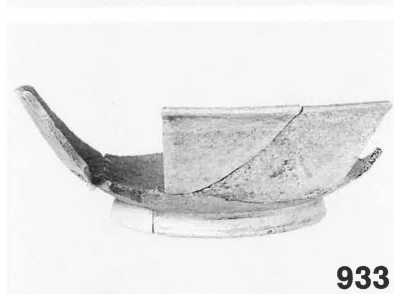
924



925



928



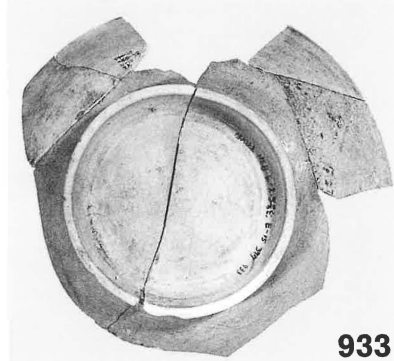
933



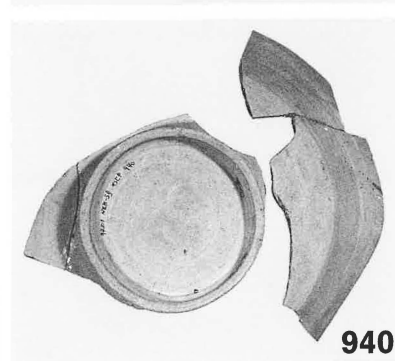
925



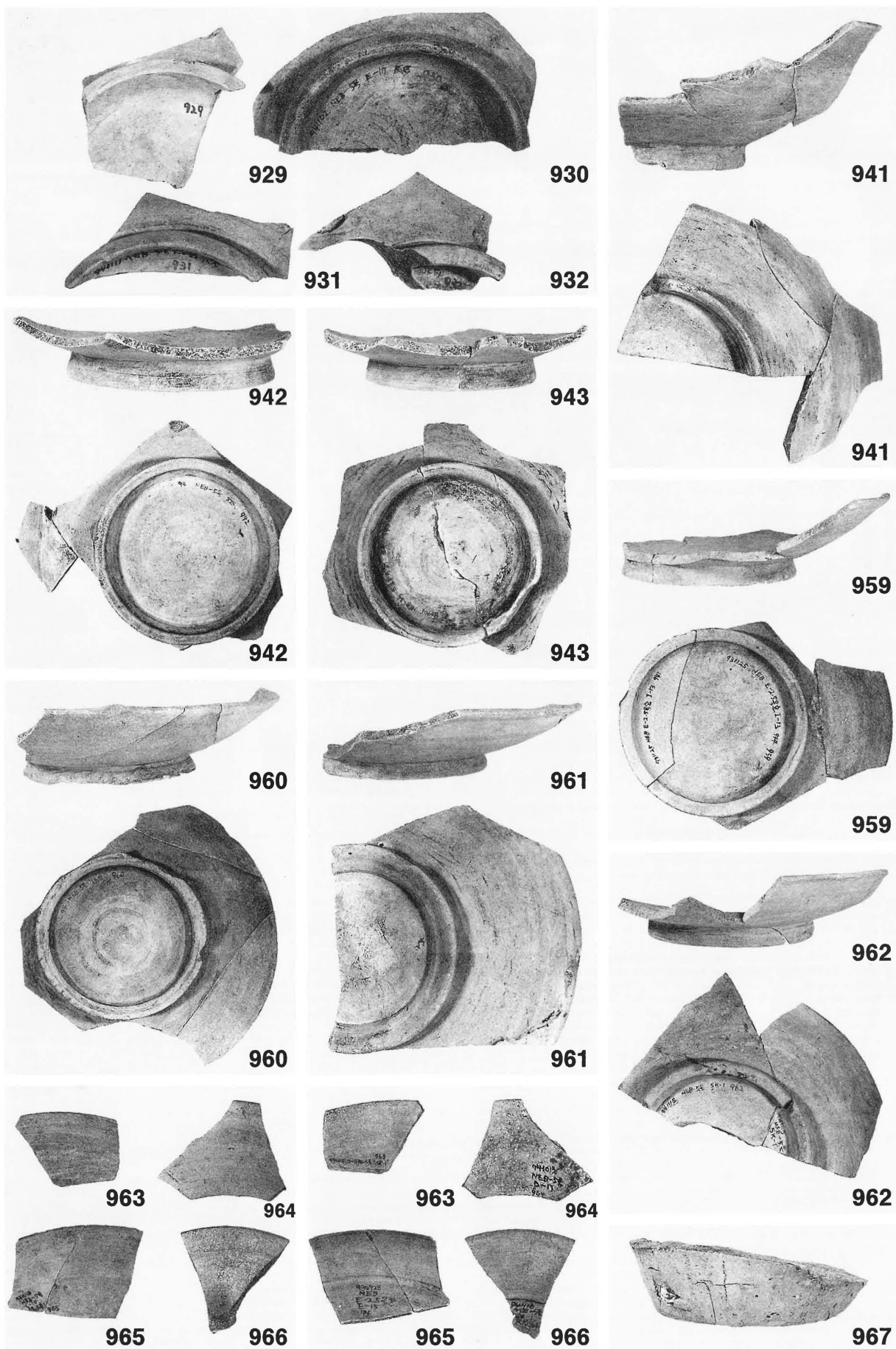
928



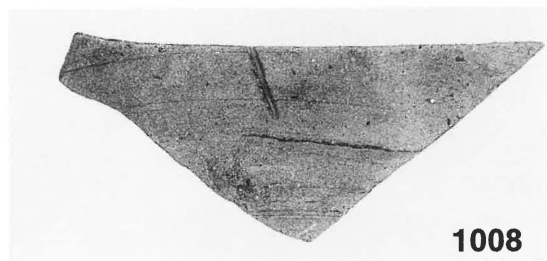
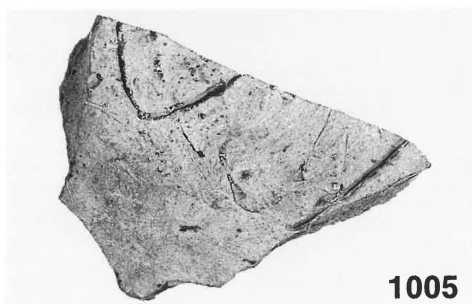
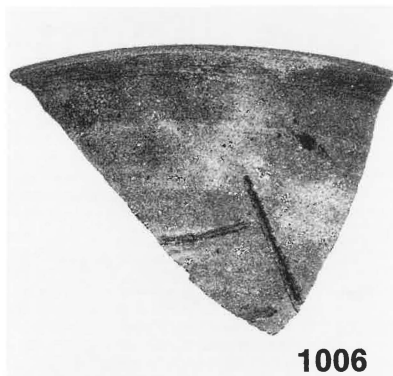
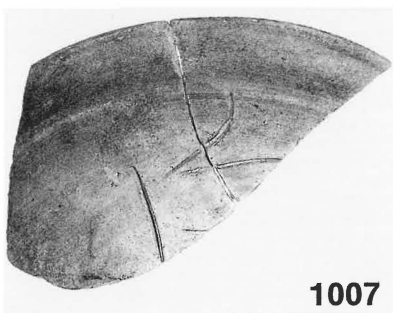
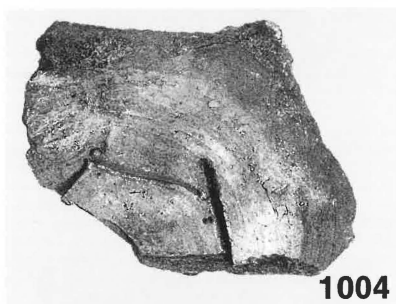
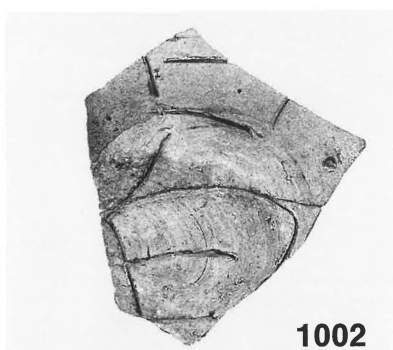
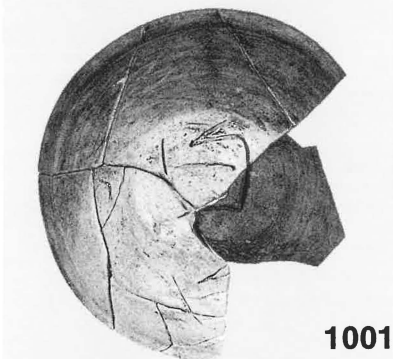
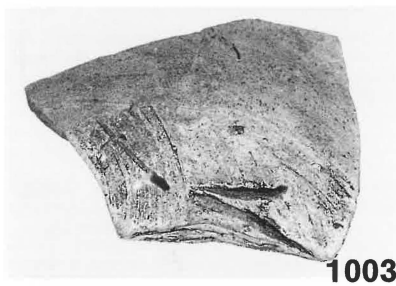
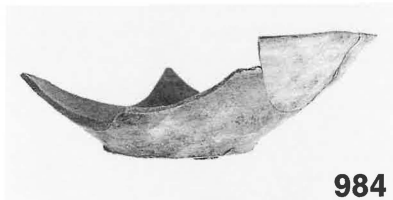
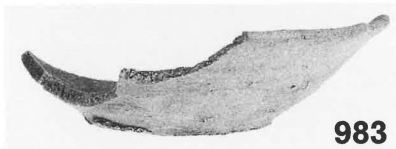
933

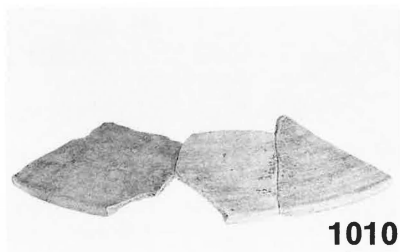


940



5号窯出土遺物—11





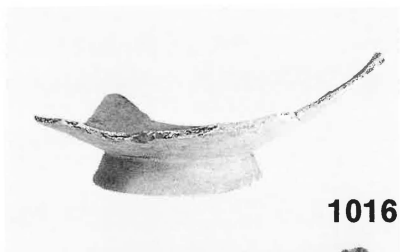
1010



1013



1019



1016



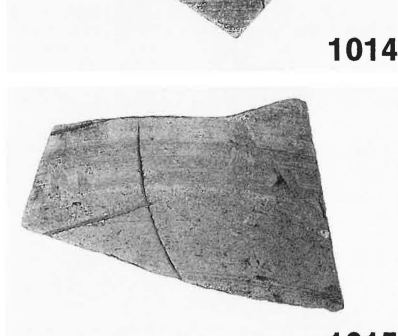
1014



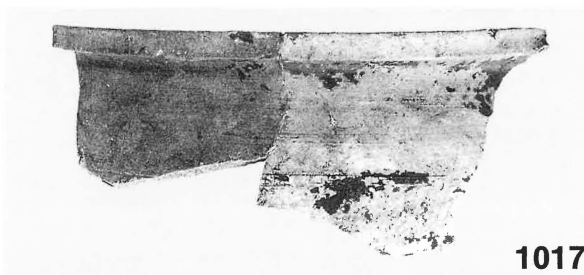
1021



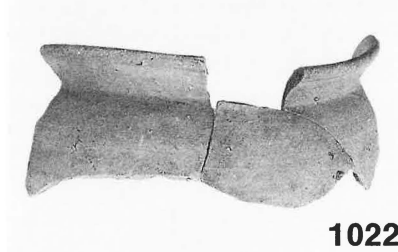
1016



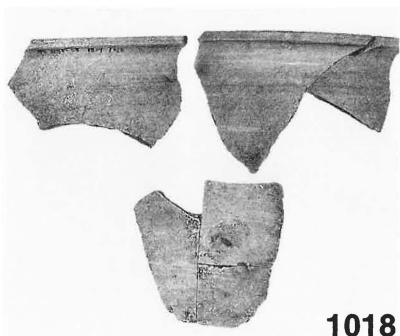
1015



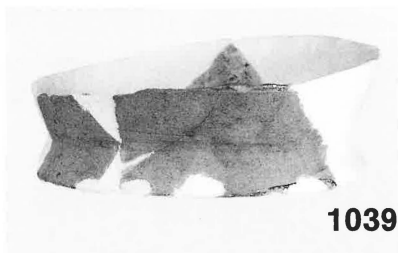
1017



1022



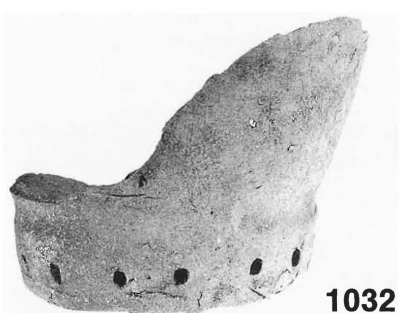
1018



1039



1023



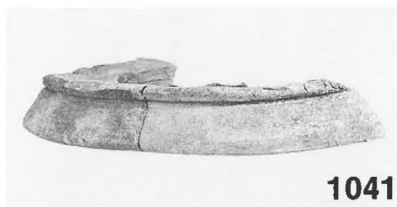
1032



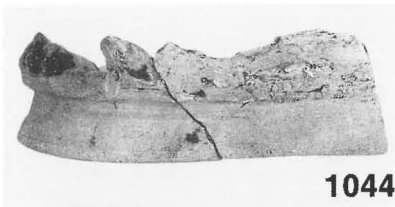
1039



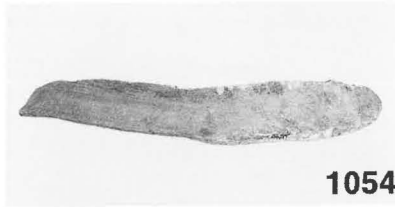
1047



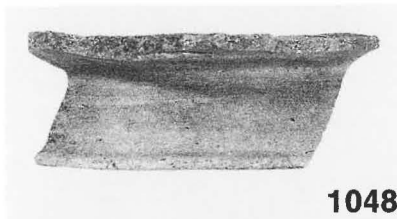
1041



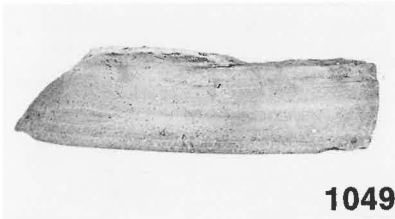
1044



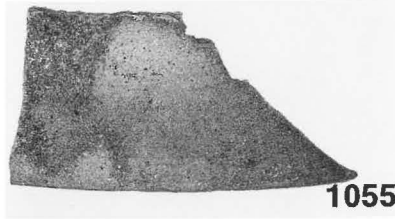
1054



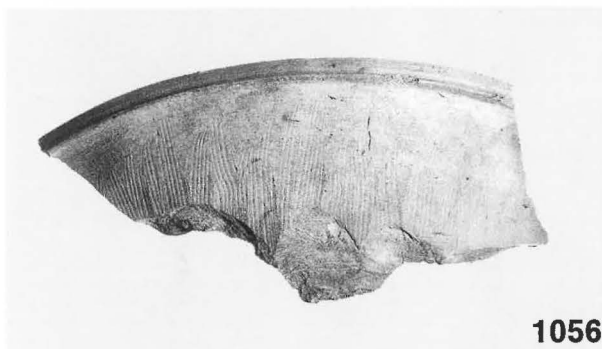
1048



1049



1055



1056



1057



1058



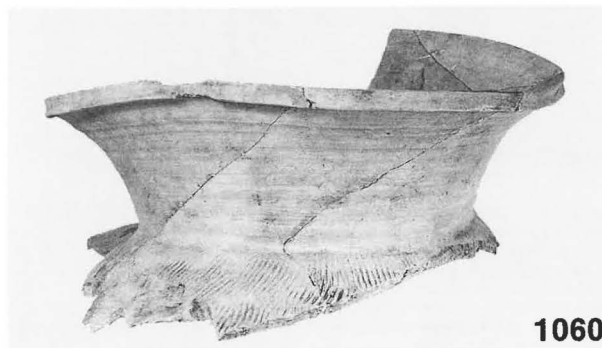
1062



1063



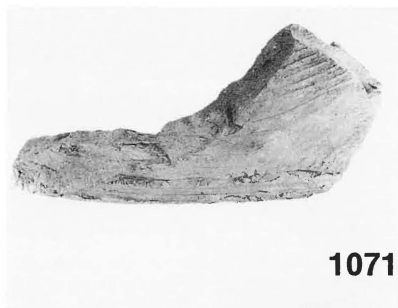
1059



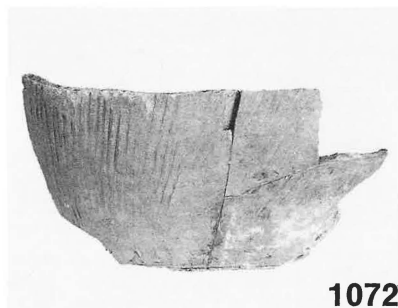
1060



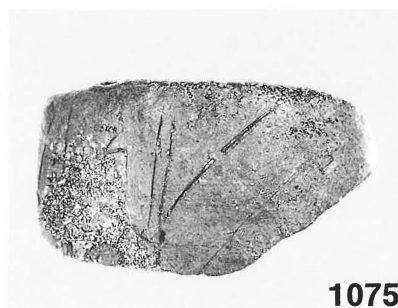
1068



1071



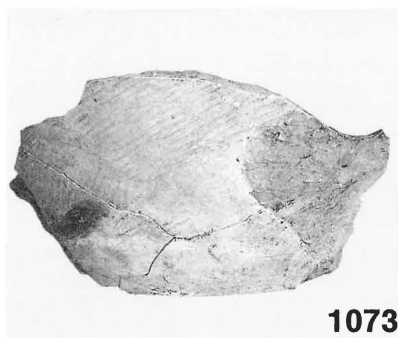
1072



1075



1071



1073



1083



1081

1080

1079

1078

1077



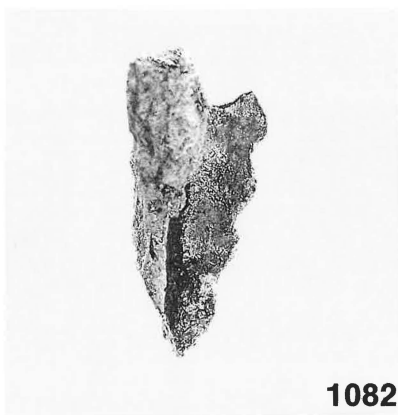
1076



1084



1089



1082



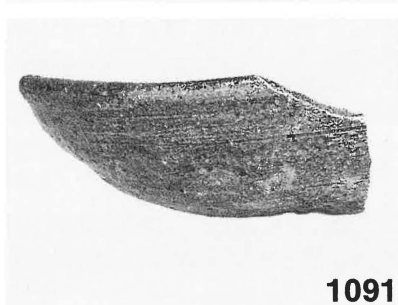
1082



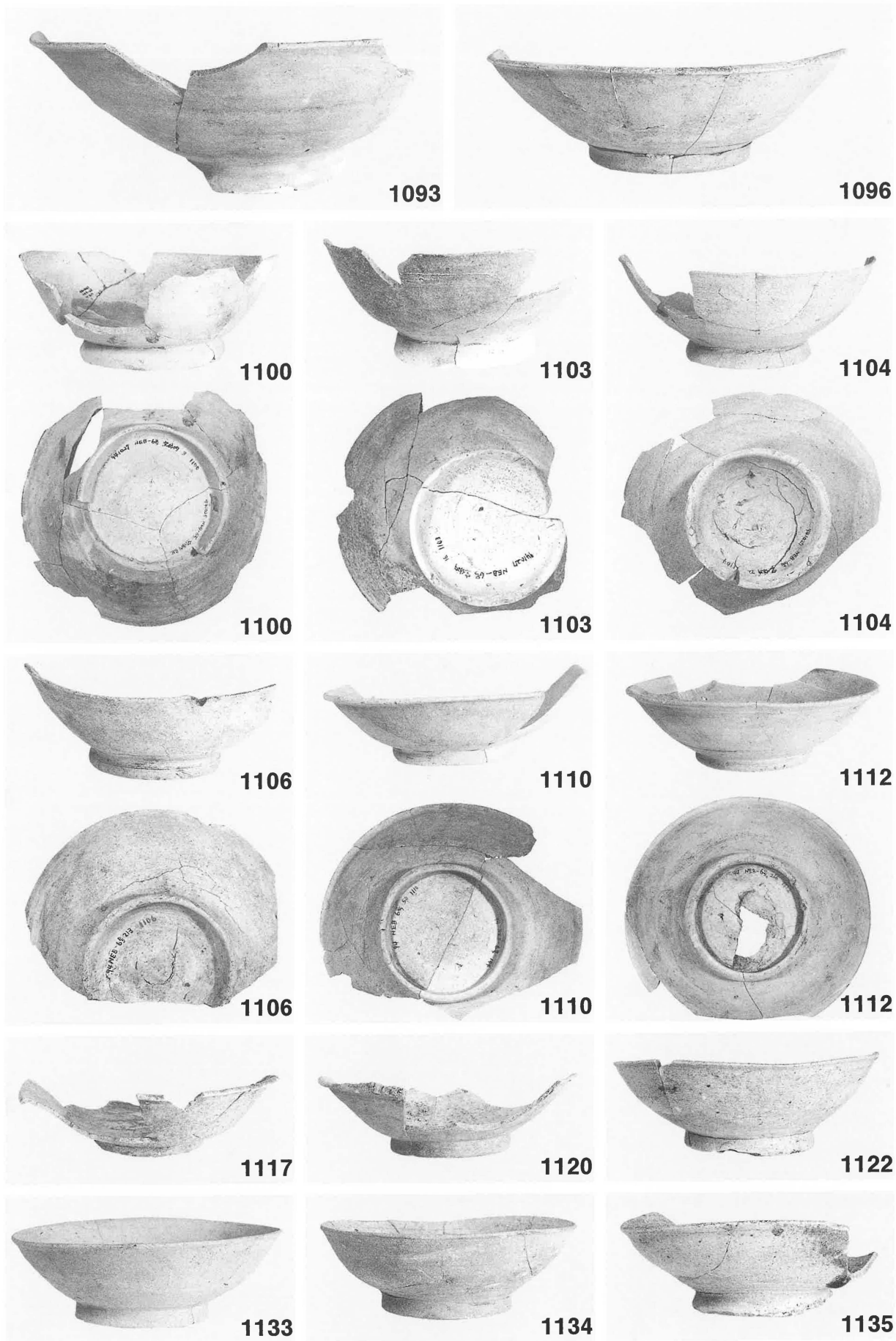
1089



1090



1091



6号窯出土遺物一1



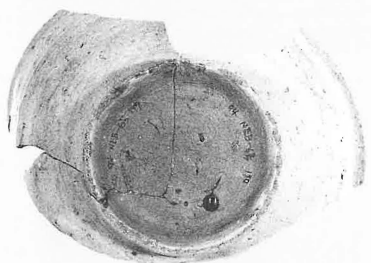
1124



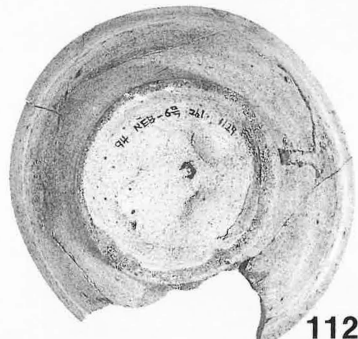
1127



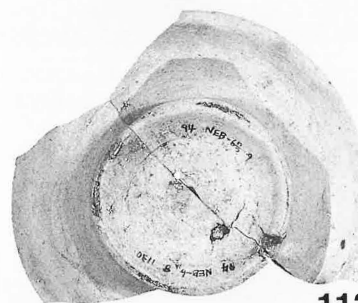
1130



1124



1127



1130



1188



1189



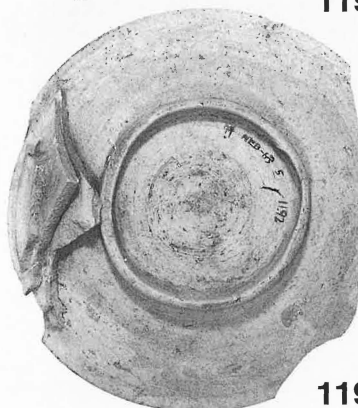
1192



1188



1189



1192



1193



1196



1198



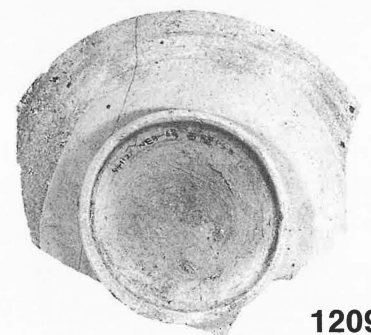
1209



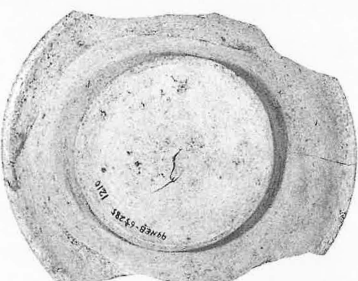
1210



1213



1209



1210



1213



1216



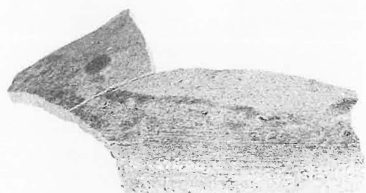
1221



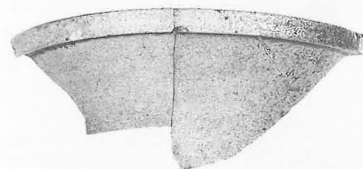
1224



1236



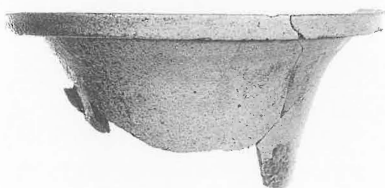
1237



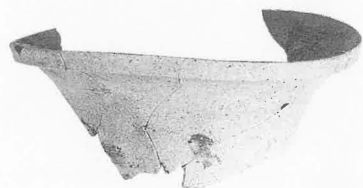
1240



1255



1241



1242



1259



1250



1256



1262



1263



1264



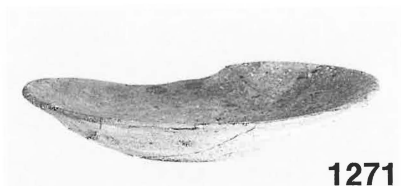
1248



1253



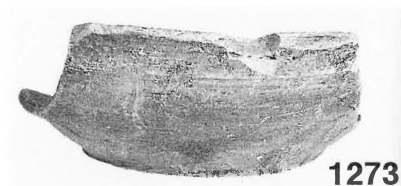
1254



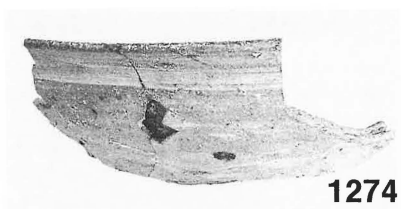
1271



1272



1273



1274



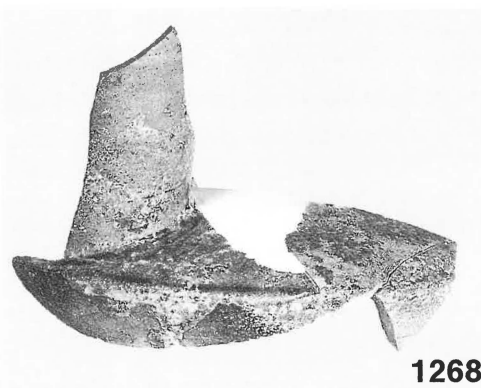
1275



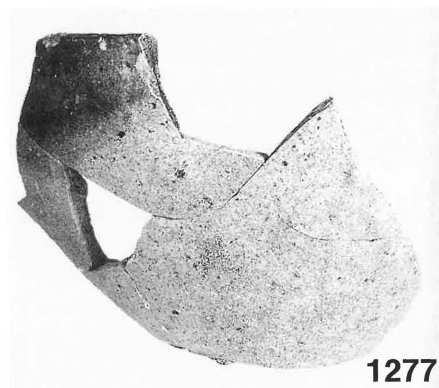
1276



1269



1268



1277



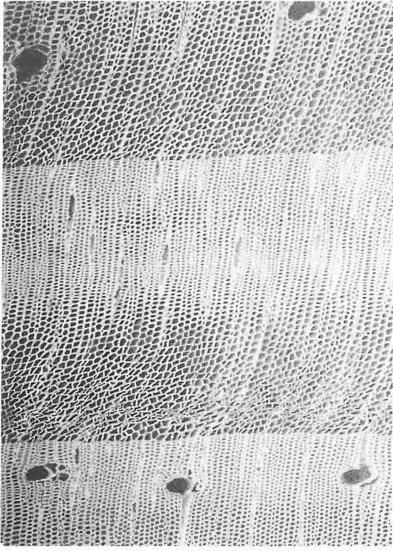
1270



1278



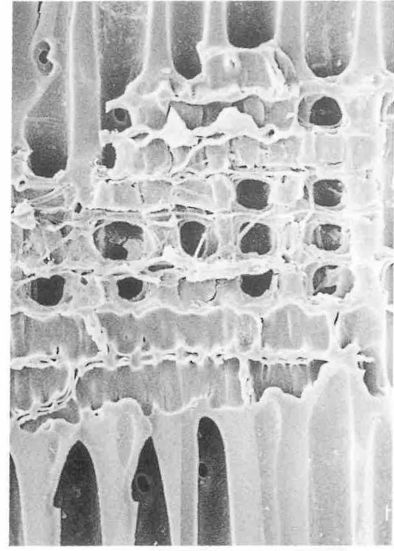
1281



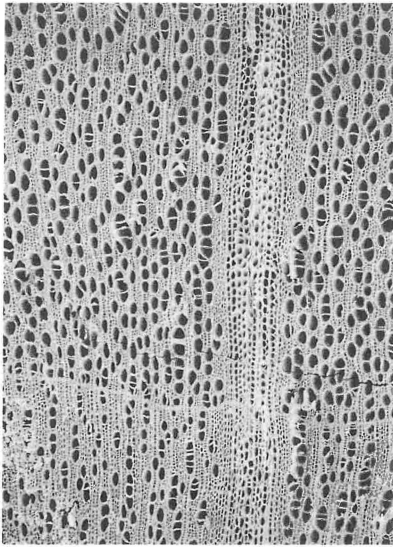
1a. マツ属複雑管束亜属 (横断面)
NEB-5号窯 SKI bar : 0.5mm



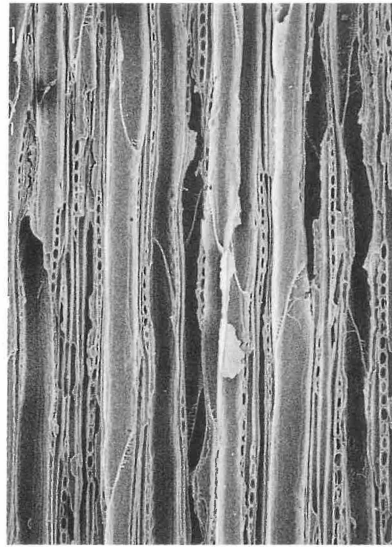
1b. 同 (接線断面) bar : 0.1mm



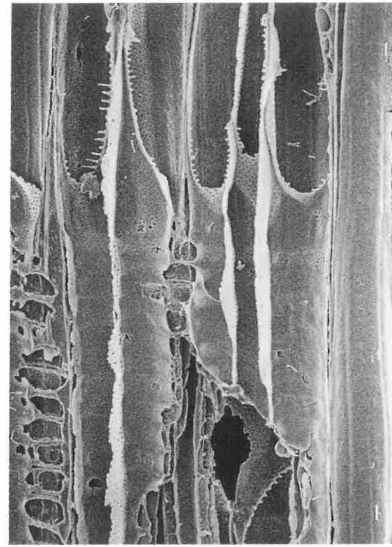
1c. 同 (放射断面) bar : 0.05mm



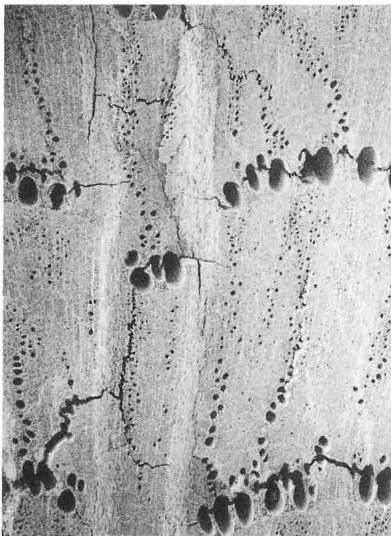
2a. ハンノキ属 (横断面)
NEB-5号窯 灰層 bar : 0.5mm



2b. 同 (接線断面) bar : 0.1mm



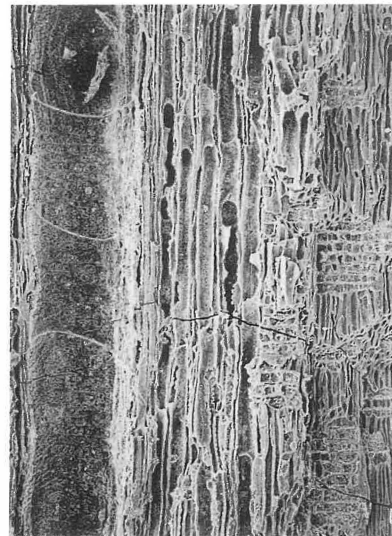
2c. 同 (放射断面) bar : 0.1mm



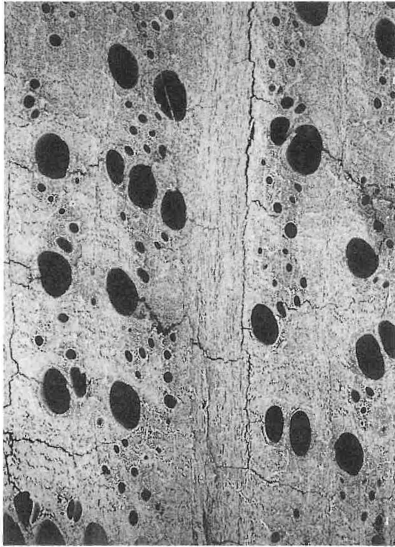
3a. コナラ (横断面)
NEB-5号窯 SKI bar : 0.5mm



3b. 同 (接線断面) bar : 0.1mm



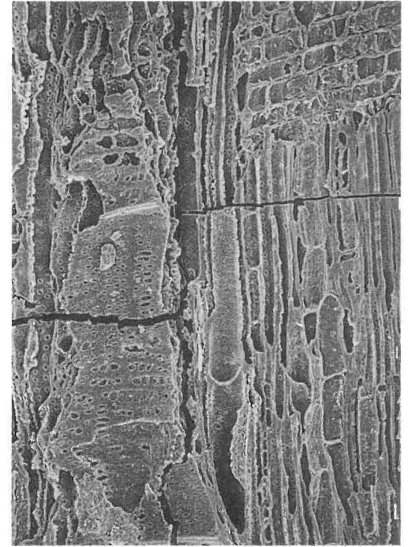
3c. 同 (放射断面) bar : 0.1mm



4a.クヌギ節 (横断面)
NEB-6号窯 bar : 1.0mm



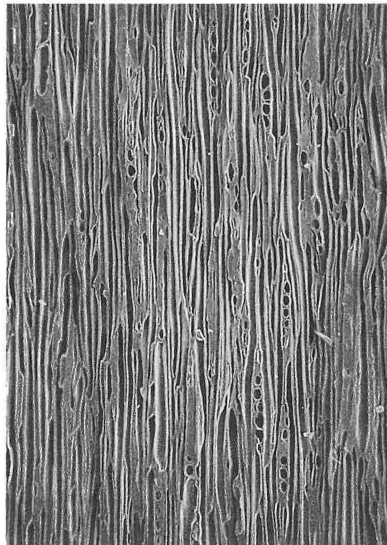
4b.同 (接線断面) bar : 0.1mm



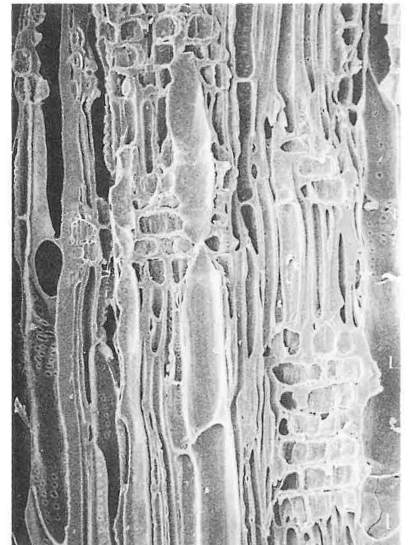
4c.同 (放射断面) bar : 0.1mm



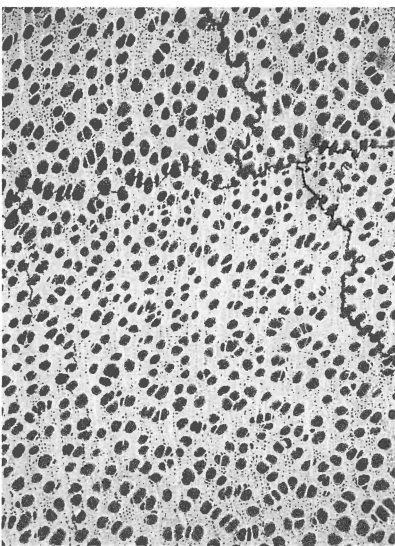
5a.クリ (横断面)
NEB-5号窯 灰層 bar : 1.0mm



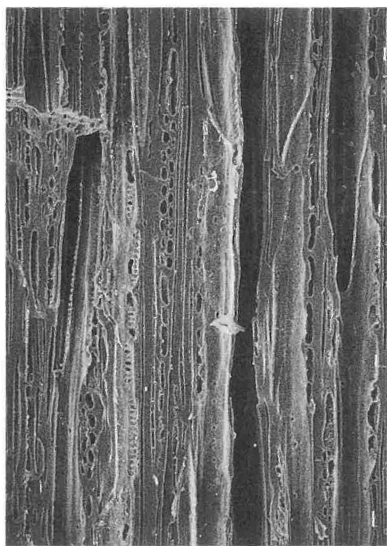
5b.同 (接線断面) bar : 0.1mm



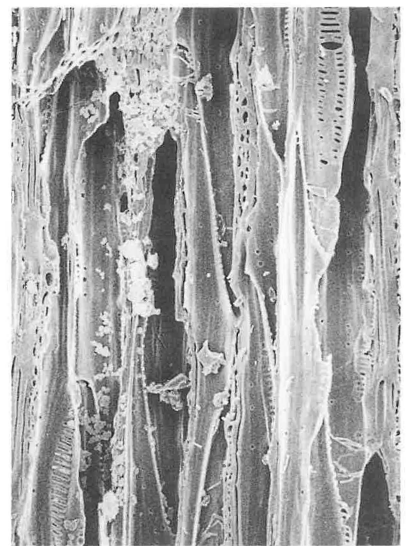
5c.同 (放射断面) bar : 0.1mm



6a.ハイノキ属 (横断面)
NEB-5号窯 灰層 bar : 0.5mm



6b.同 (接線断面) bar : 0.1mm



6c.同 (放射断面) bar : 0.1mm

豊橋市埋蔵文化財調査報告書第52集
二川古窯址群（I）

2000年3月25日

発行 豊橋市教育委員会©
生涯学習部美術博物館
〒440-0801 豊橋市今橋町3番地
印刷 共和印刷株式会社

