

写 真 图 版



1. A-2地区全景（南から）

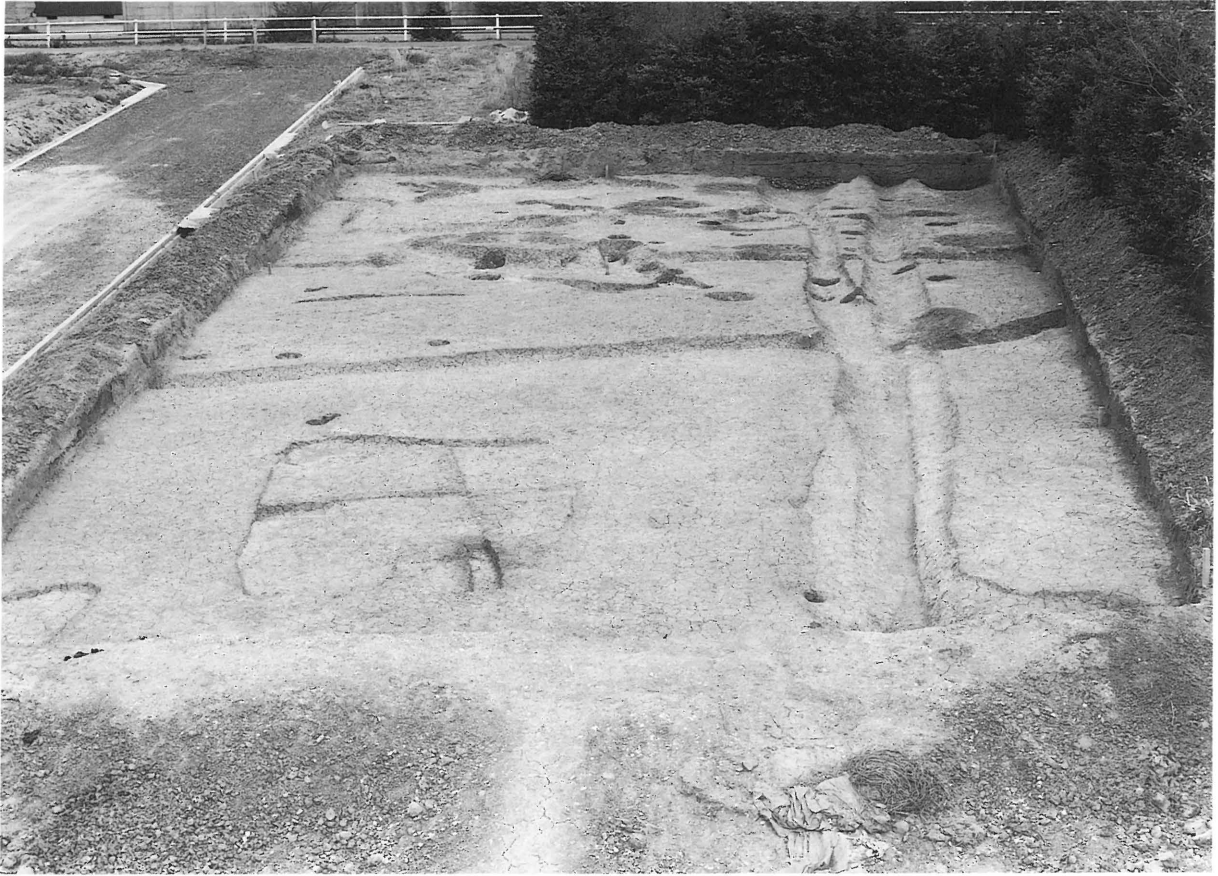


2. A-2地区SB-1全景（西から）



3. A-2地区SB-1全景（東から）

写真図版2



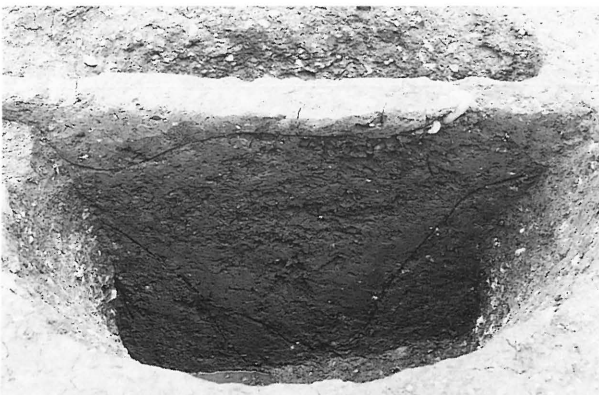
1. A-3地区全景 (西から)



2. A-3地区SB-1全景 (東から)



3. A-3地区SK-1全景 (東から)



4. A-3地区SK-2全景 (西から)



5. A-3地区SD-1全景 (西から)



1. B-1地区全景（東から）



2. B-1地区全景（西から）



3. B-1地区SB-1全景（西から）



4. B-1地区SB-2全景（東から）

写真図版4



1. B-1地区焼土-1 (南から)



2. B-1地区E-1 礫群全景 (西から)



3. B-1地区焼土-1 完掘後断ち割り (南から)



4. B-1地区D-1 礫群堆積状況 (北から)



1. B-1地区D-1 礫群全景 (北から)



2. B-1地区E-1 礫群全景 (東から)

写真図版6



1. B-1地区SX-2土師器出土状況（北から）



2. B-1地区SX-2土師器出土状況（南から）



3. B-1地区SX-2土師器出土状況（南西から）



4. B-1地区SX-2須恵器・土師器出土状況（南西から）



5. B-1地区SX-2須恵器出土状況（南から）



1. B-2地区南西部全景 (西から)



2. B-2地区南西部全景 (東から)

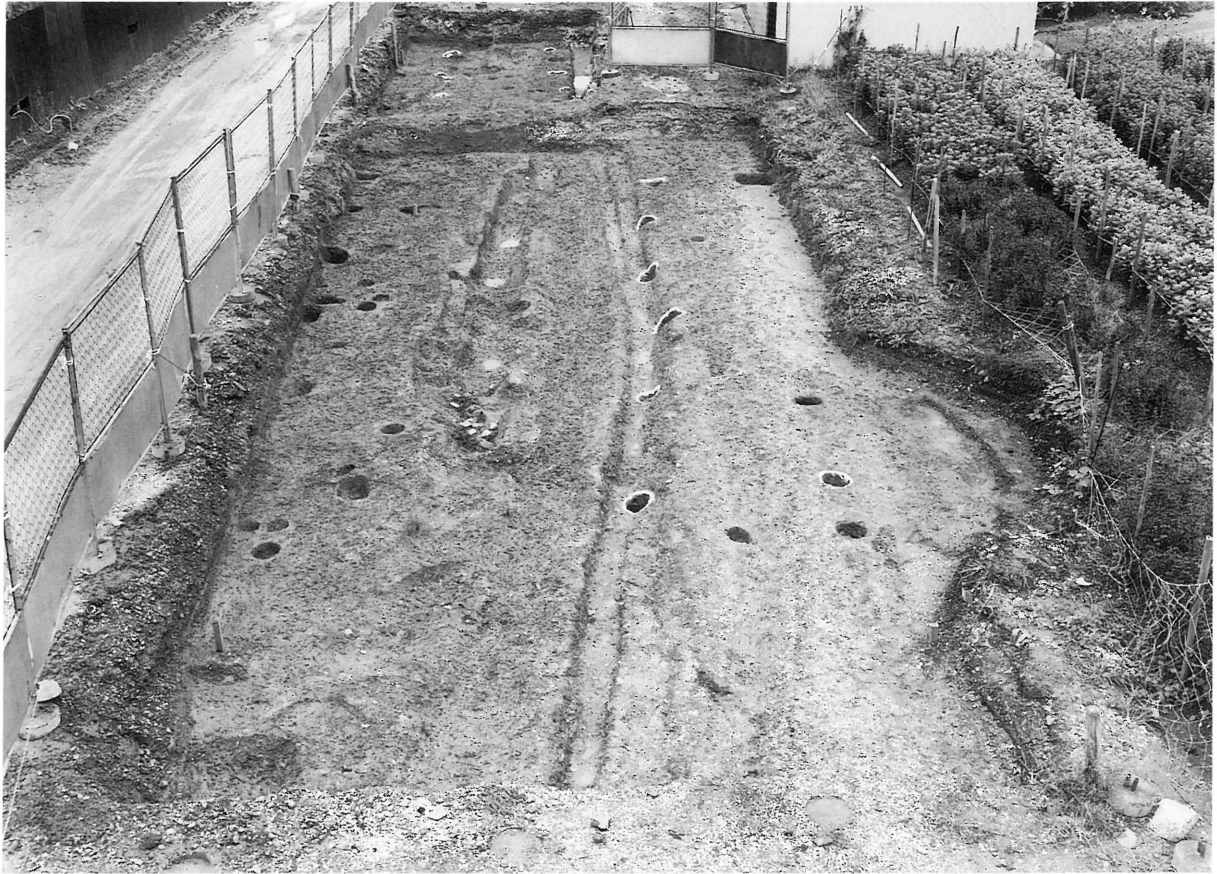


3. B-2地区南東部全景 (西から)



4. B-2地区南東部全景 (東から)

写真図版8



1. B-2地区北西部全景（東から）



2. B-2地区北東部全景（西から）



3. B-2地区北東部全景（東から）

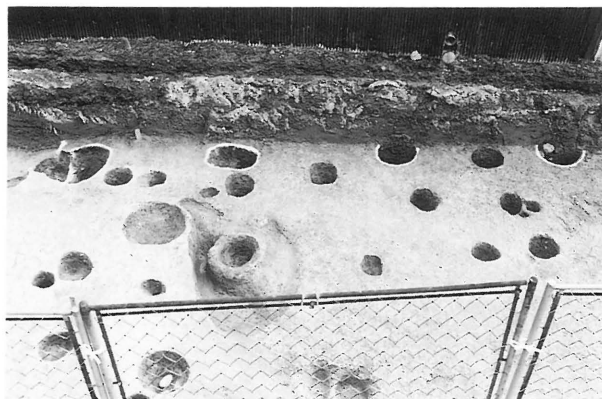


1. B-2地区SB-1全景(北から)

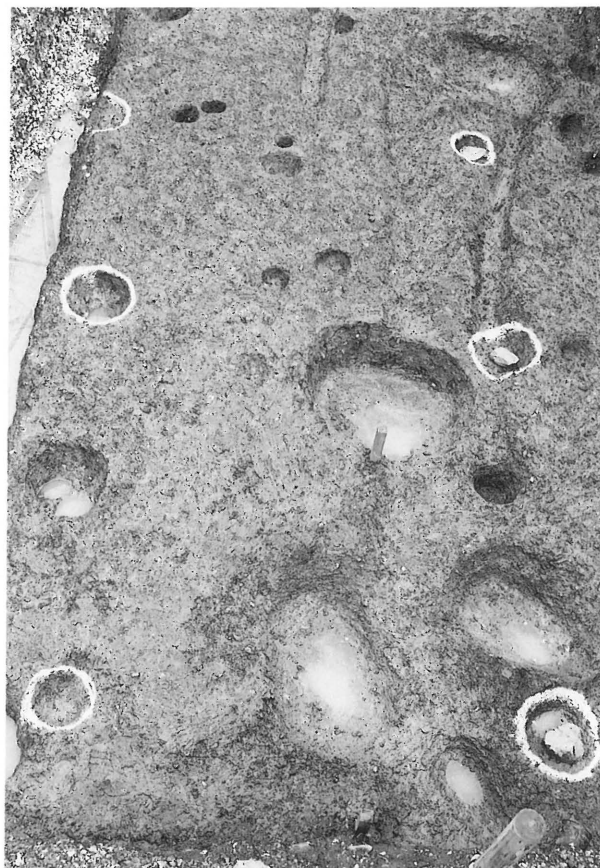


2. B-2地区SX-1遺物出土状況(北から)

写真図版10



1. B-2地区SB-3全景(北から)



3. B-2地区SB-4全景(西から)



2. B-2地区SB-7全景(北東から)



4. B-2地区SB-10・11全景(西から)



5. B-2地区SK-13全景(北から)



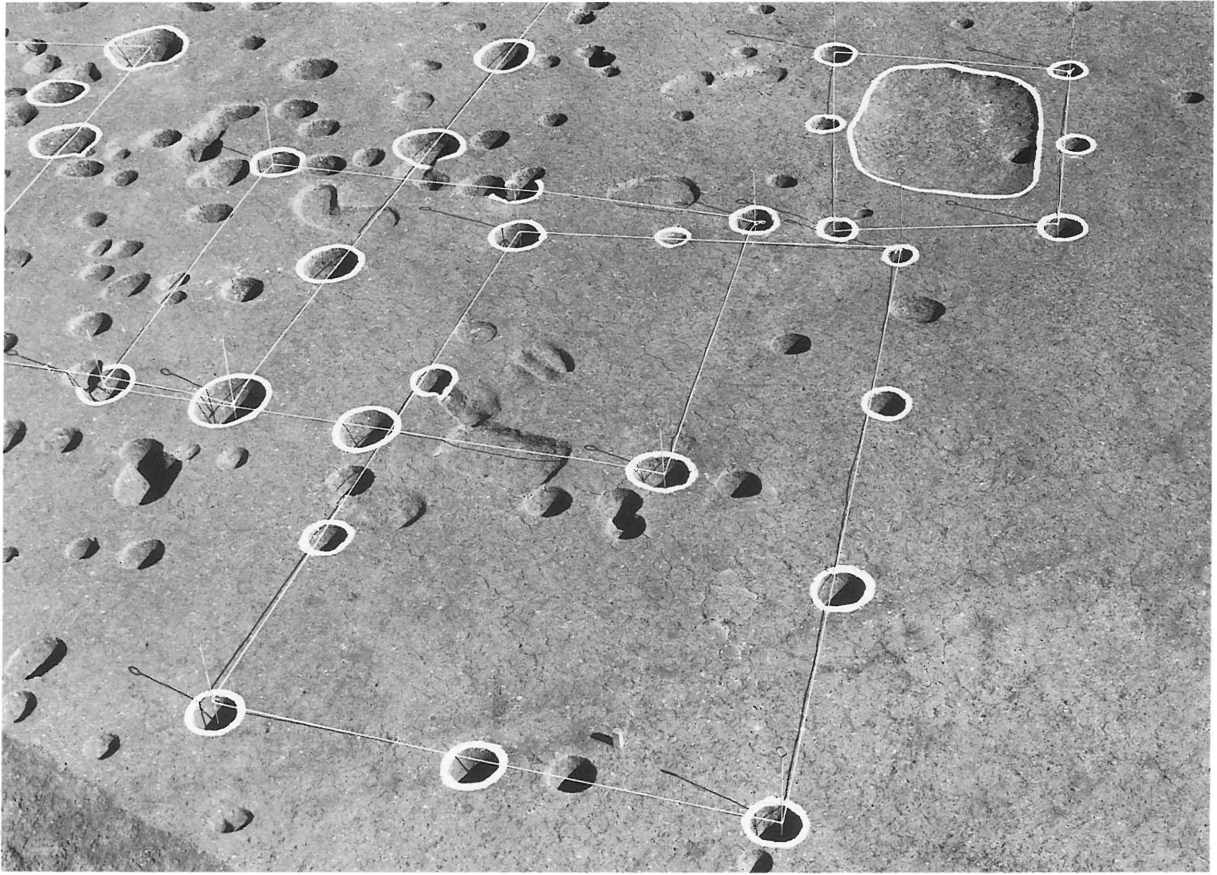
6. B-2地区SK-30全景(南から)



1. B-3地区全景（南西から）



2. B-3地区全景（南東から）



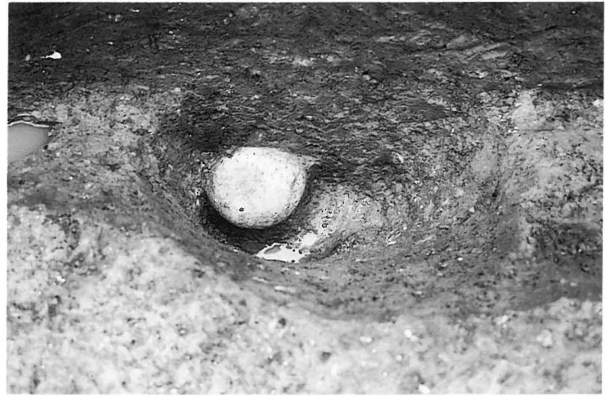
1. B-3地区SB-2・4・5全景 (西から)



2. B-3地区SB-1・3全景 (西から)



1. B-3地区SB-3・P1全景(南から)



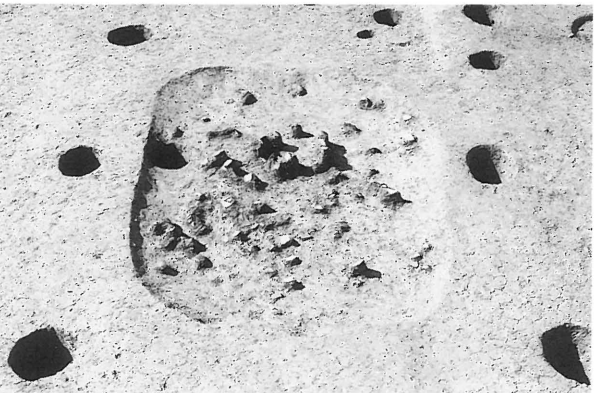
2. B-3地区SB-3・P2全景(南から)



3. B-3地区SB-3・P3全景(南から)



4. B-3地区SK-10遺物出土状況(西から)



5. B-3地区SK-10遺物出土状況(東から)



6. B-3地区SK-15遺物出土状況(西から)

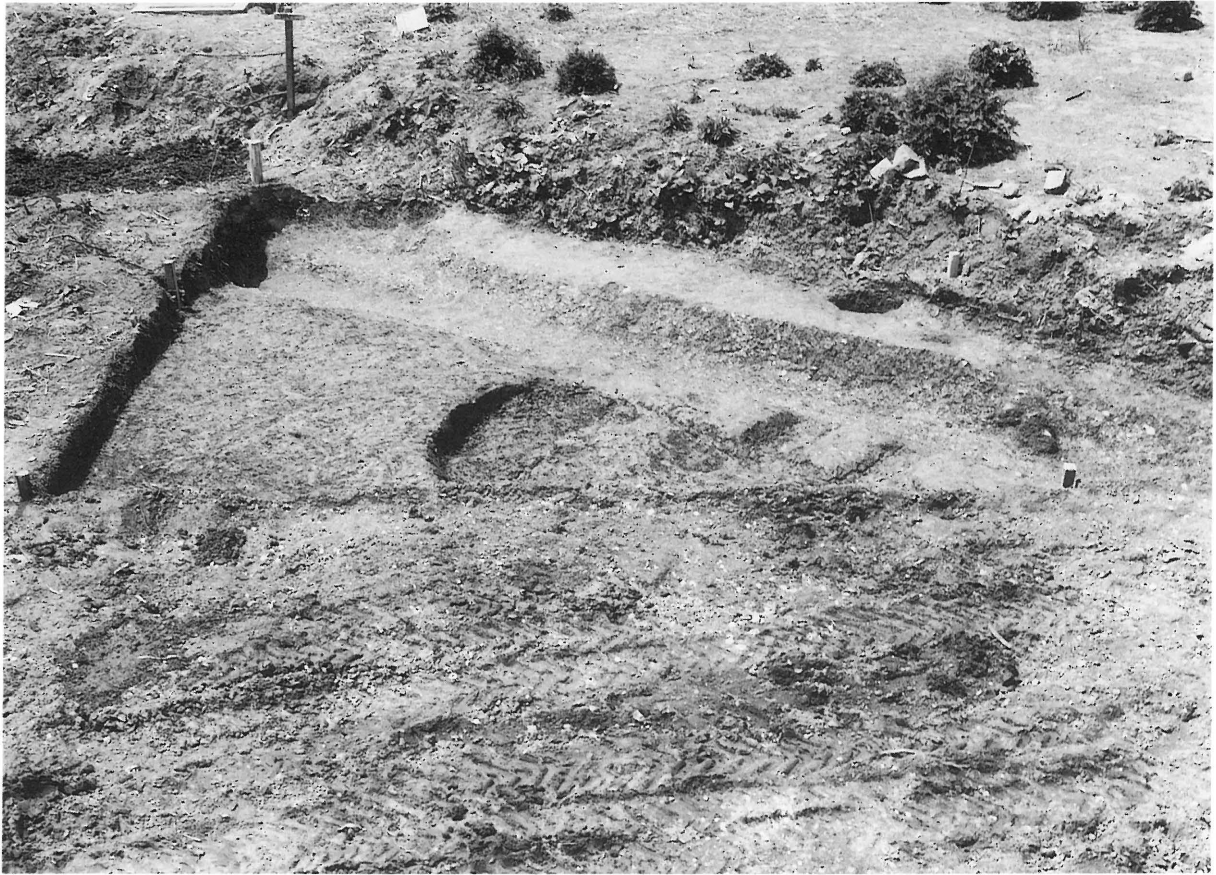


7. B-3地区作業風景

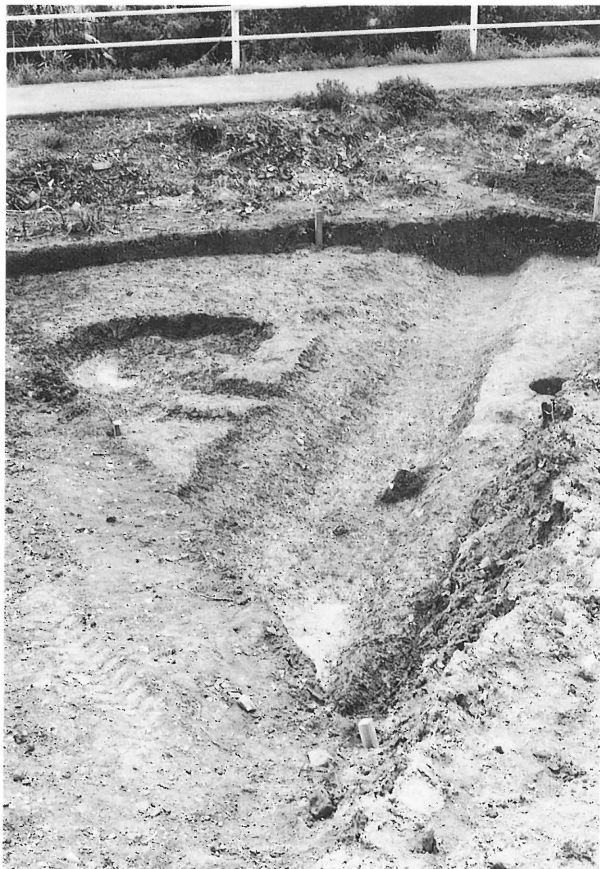


8. B-3地区現地説明会風景

写真図版14



1. B-4地区全景（東から）



2. B-4地区全景（北から）



3. B-4地区SD-1遺物出土状況（東から）



1. D-1 地区全景 (北東から)



2. D-1 地区SB-2 全景 (南西から)



3. D-1 地区SB-4 全景 (北西から)

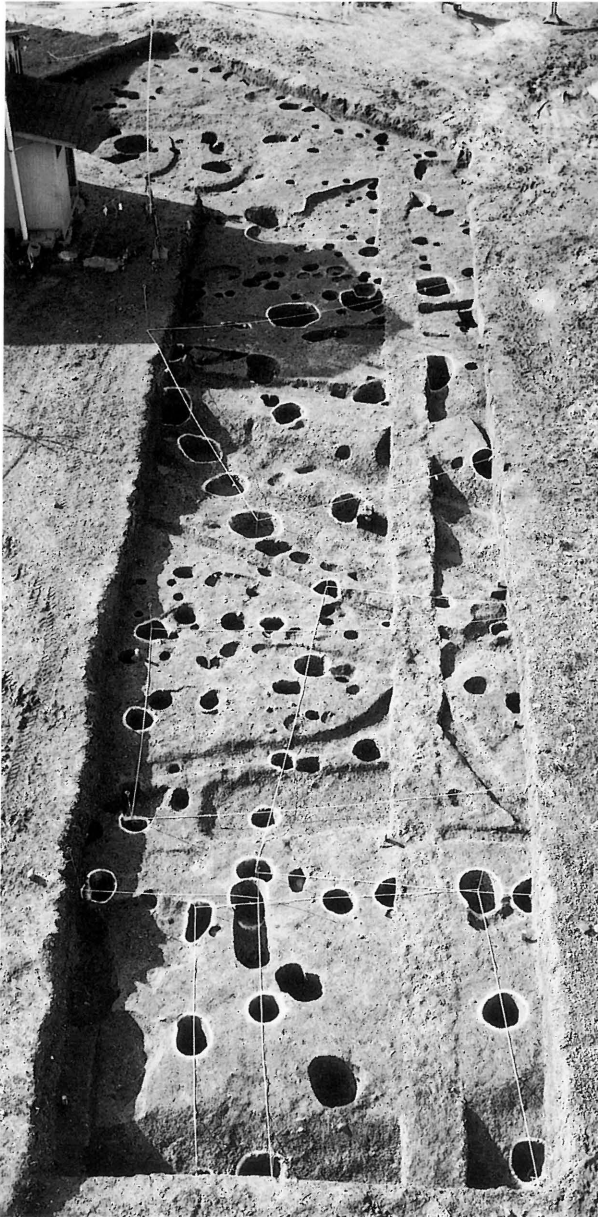


4. D-1 地区SB-6 全景 (北東から)



5. D-1 地区SK-2 遺物出土状況 (北から)

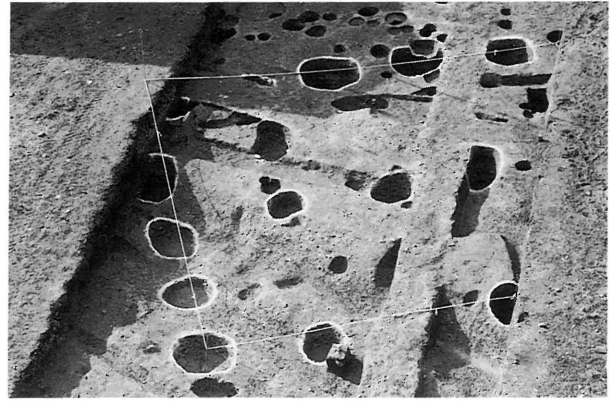
写真図版16



1. D-2地区全景 (東から)



2. D-2地区SB-9~12全景 (東から)



3. D-2地区SB-8全景 (東から)



4. D-2地区SX-1全景 (北から)



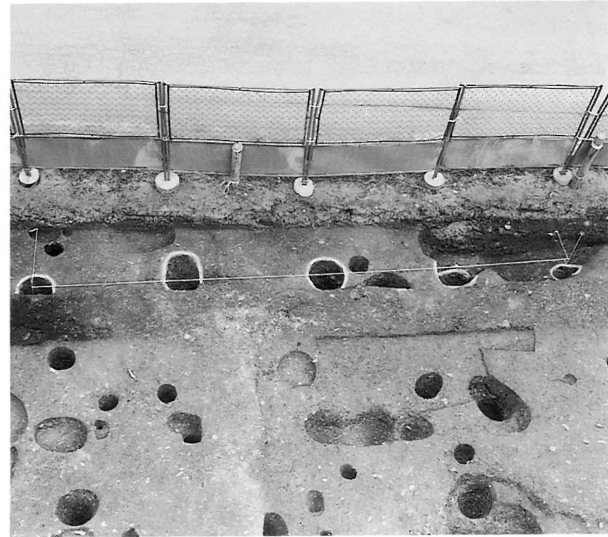
5. D-2地区SK-18遺物出土状況 (北から)



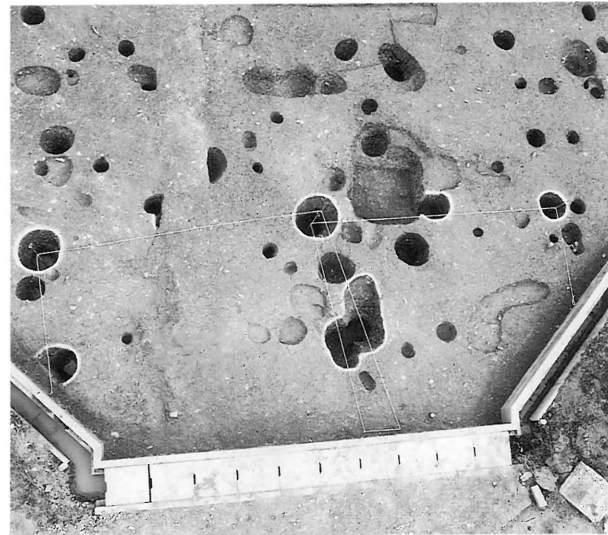
6. D-2地区SK-23遺物出土状況 (南から)



1. D-3地区南部分全景 (北から)



3. D-3地区SB-13全景 (西から)



4. D-3地区SB-11・12全景 (西から)



2. D-3地区北部分全景 (直上)



5. D-3地区SB-14全景 (北から)

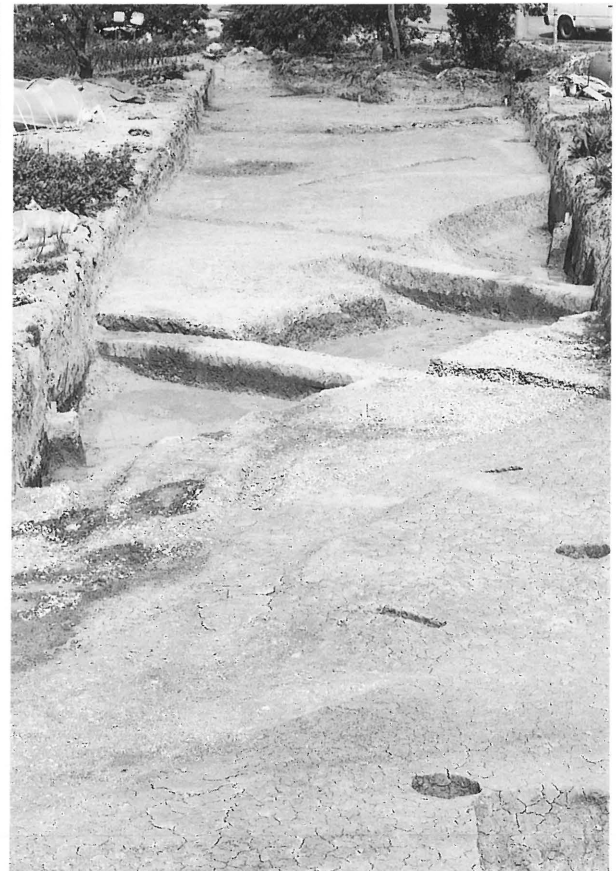
写真図版18



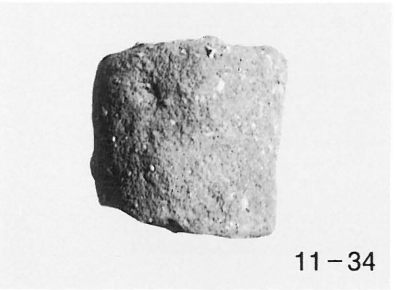
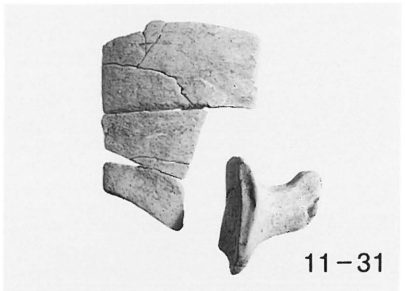
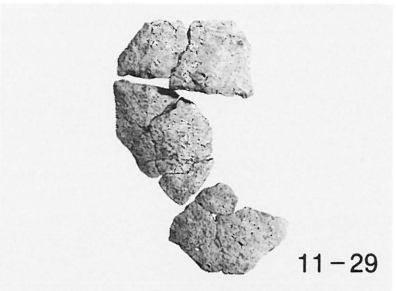
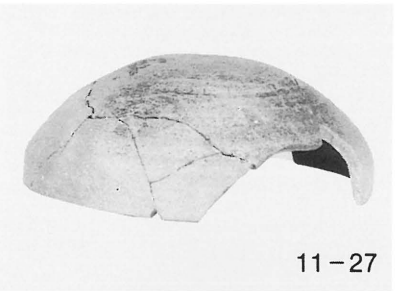
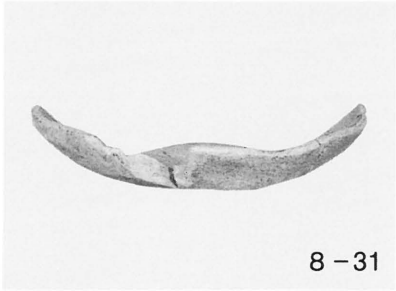
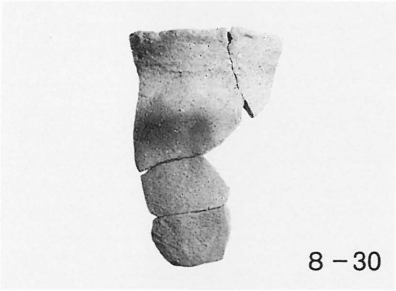
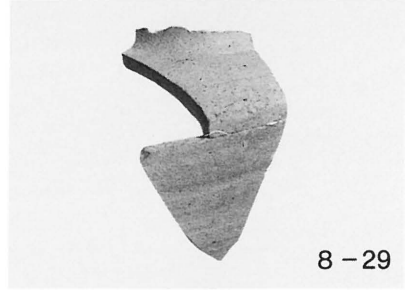
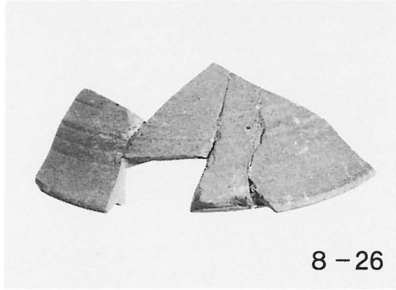
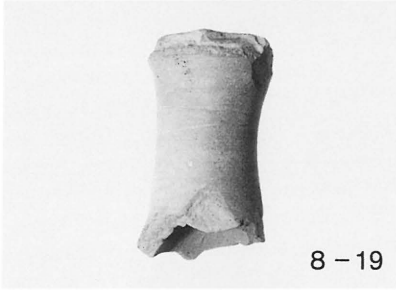
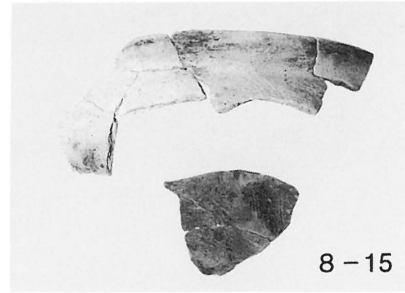
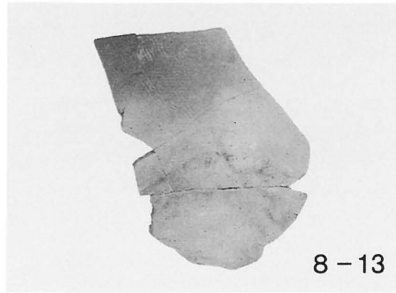
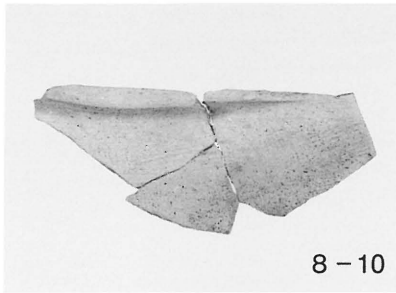
1. D-4地区全景（北東から）



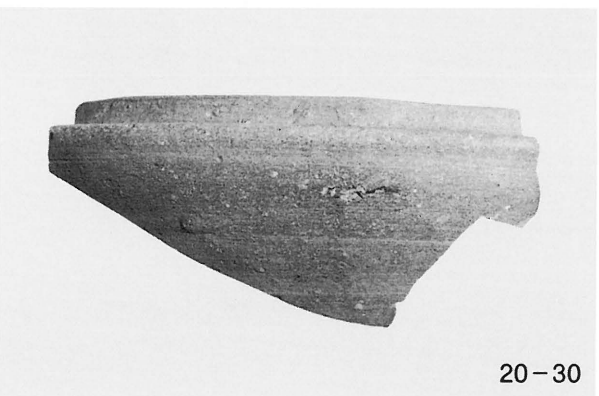
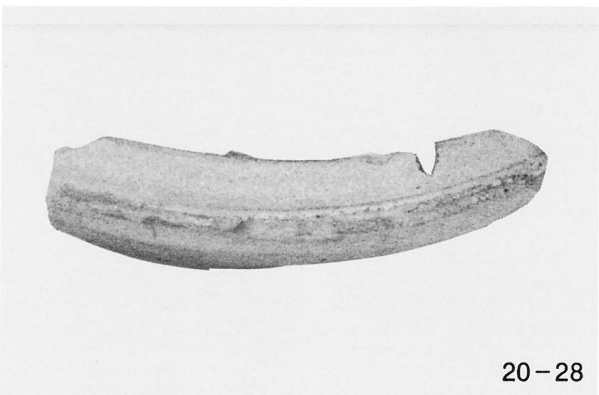
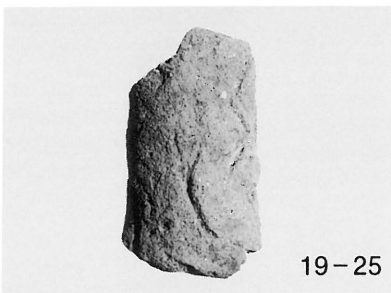
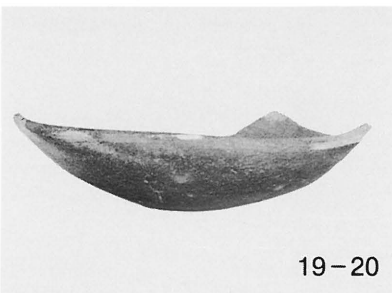
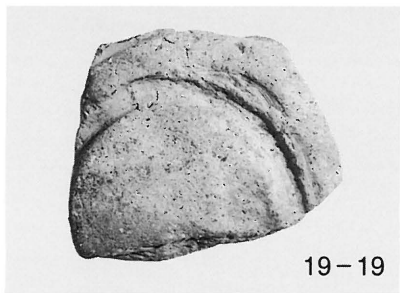
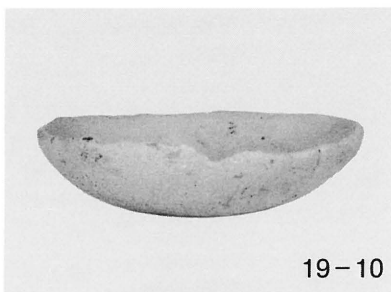
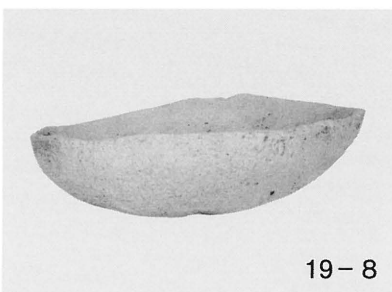
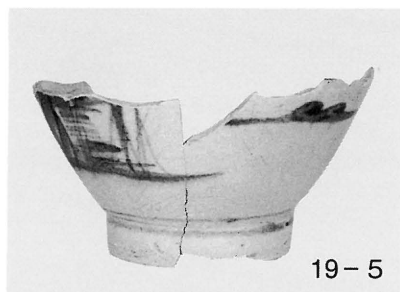
2. D-4地区SB-1全景（南西から）

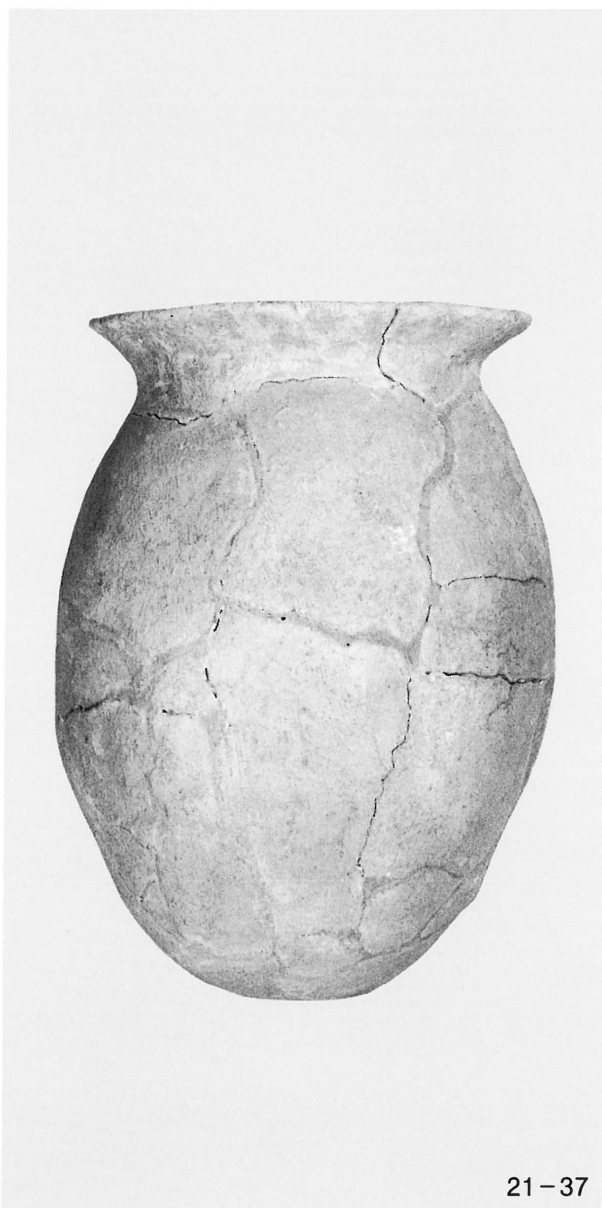


3. D-4地区SD-1全景（南西から）

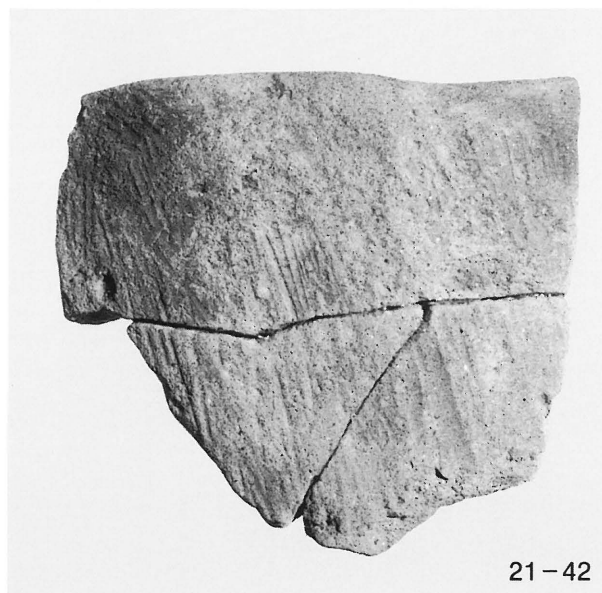
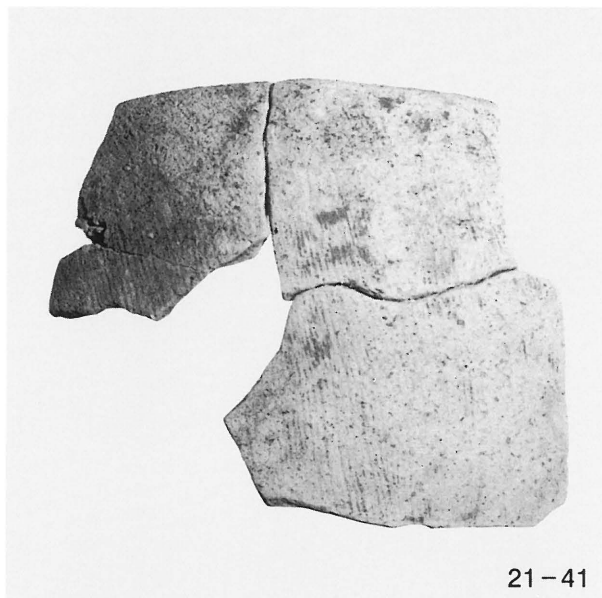


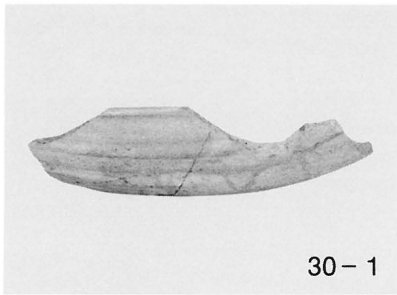
写真図版20



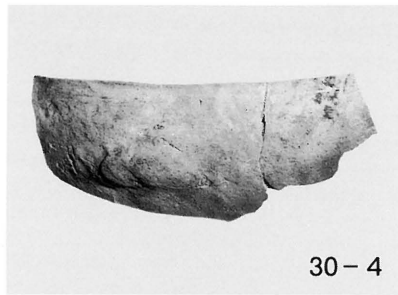


写真図版22

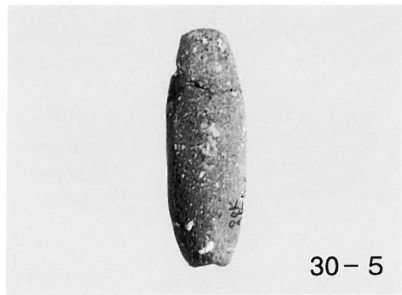




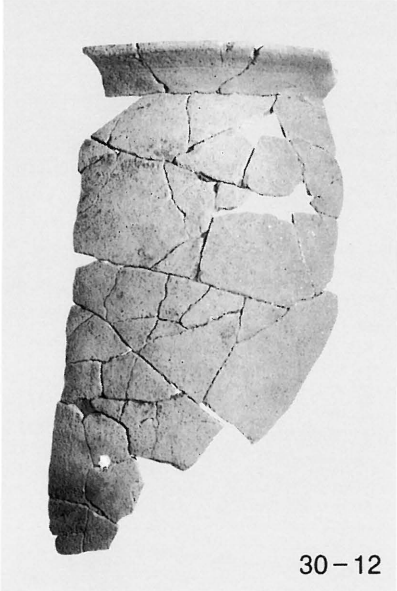
30-1



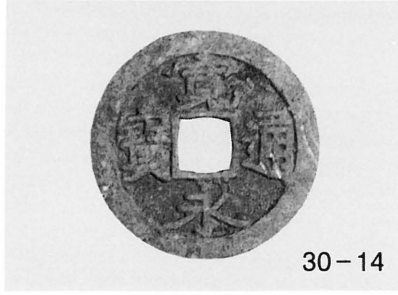
30-4



30-5



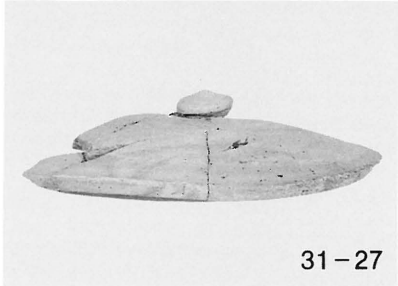
30-12



30-14



30-16



31-27



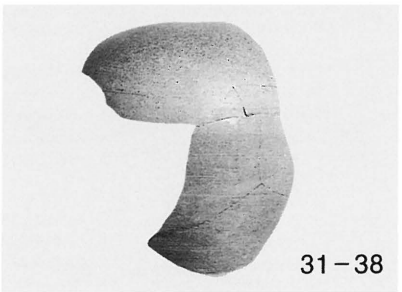
31-29



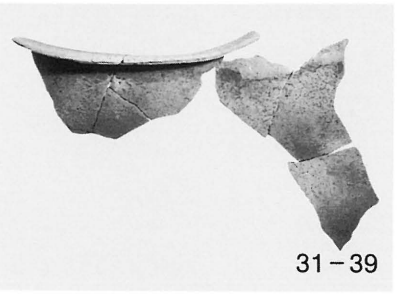
31-31



31-37



31-38



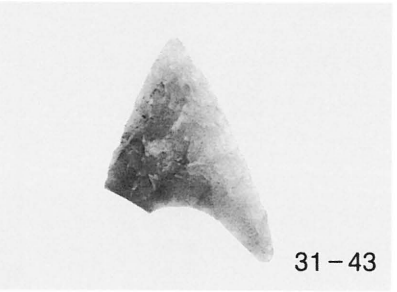
31-39



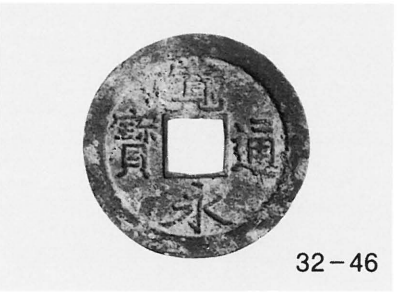
31-41



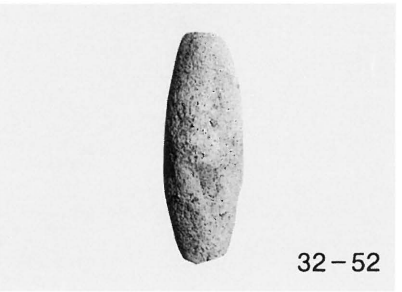
31-42



31-43

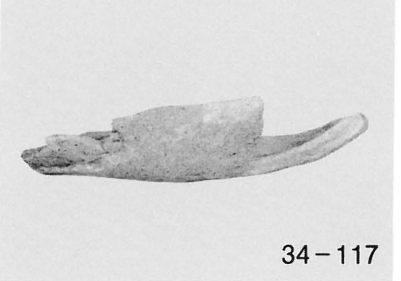
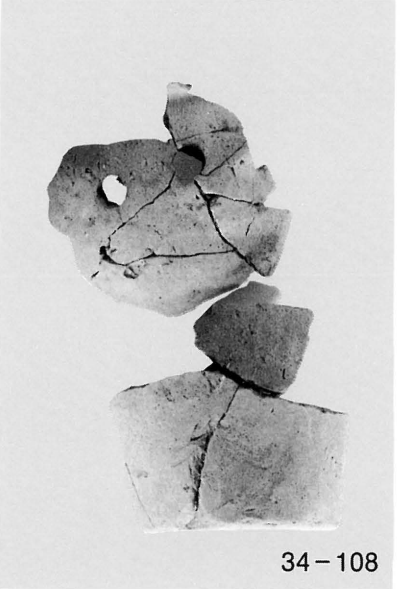
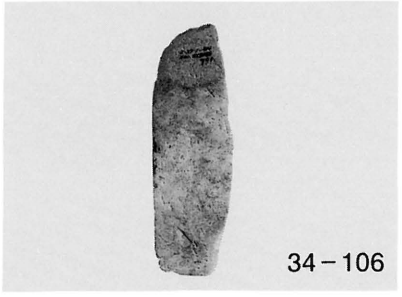
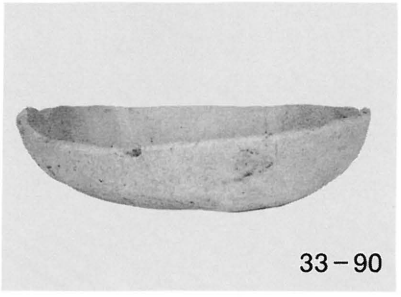
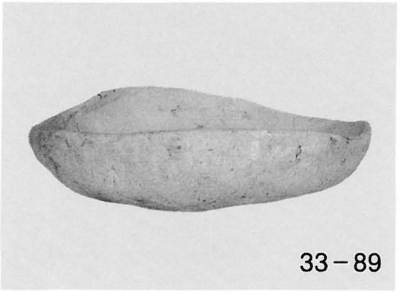
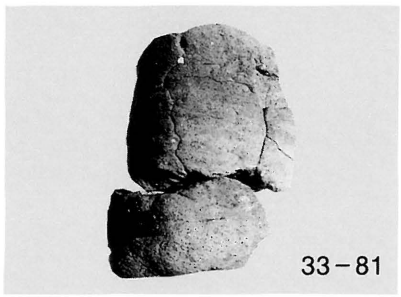
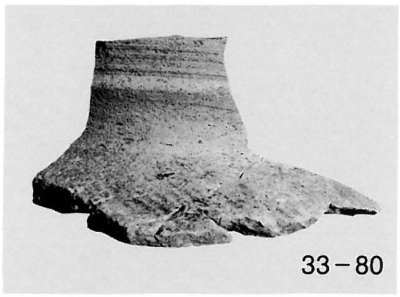
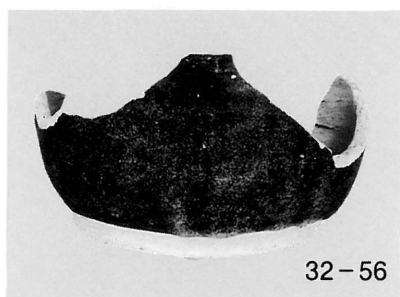


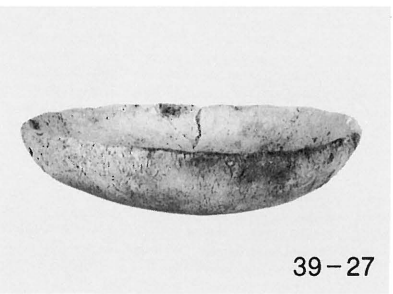
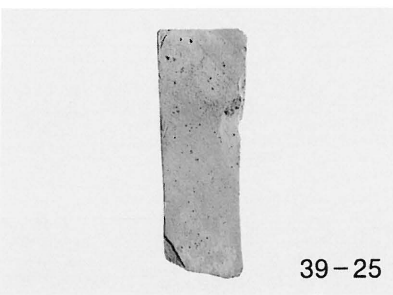
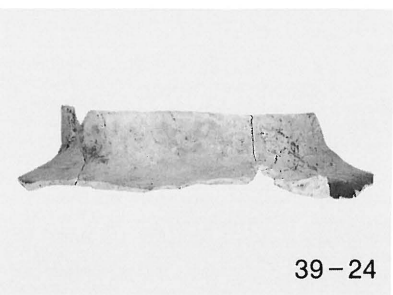
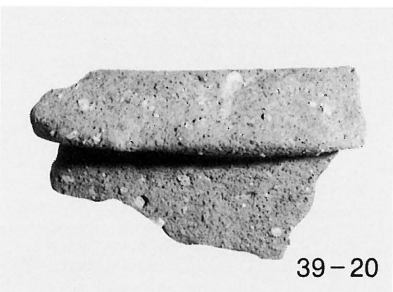
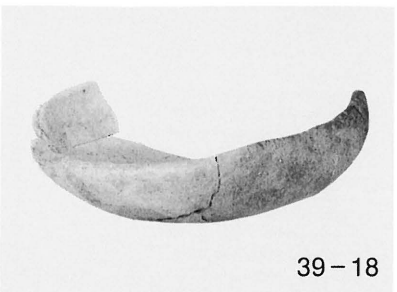
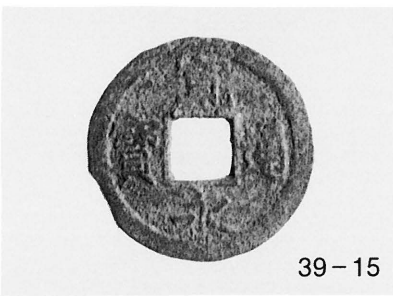
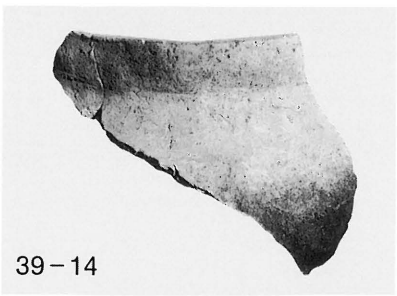
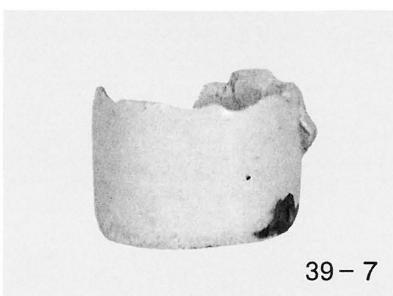
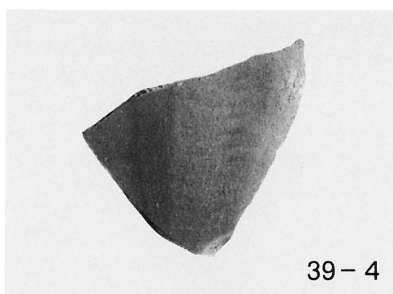
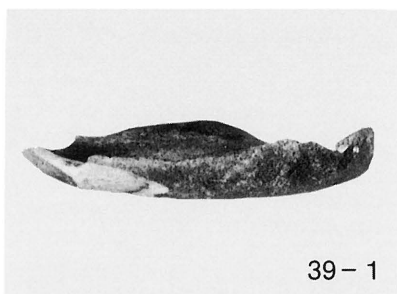
32-46



32-52

写真図版24

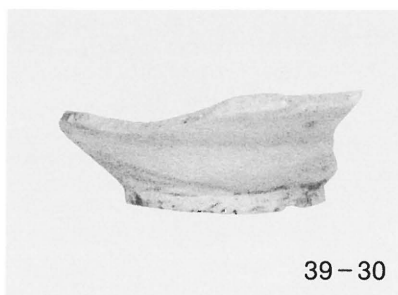




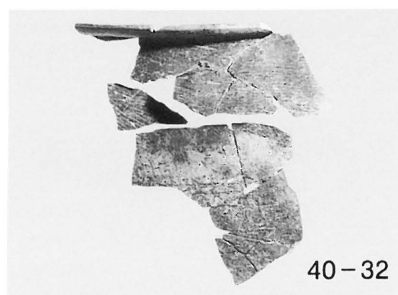
写真図版26



39-29



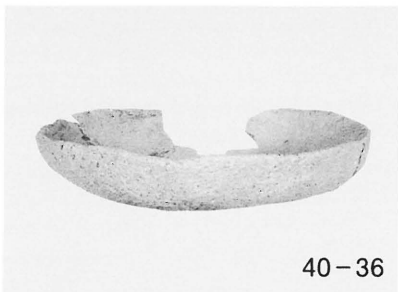
39-30



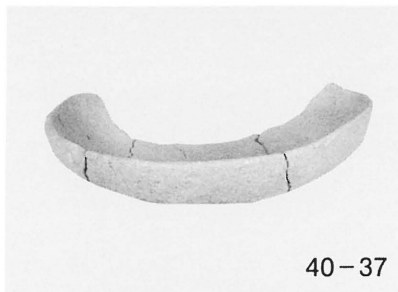
40-32



40-33



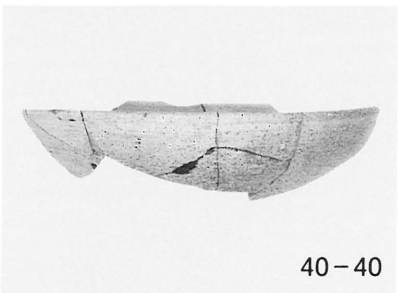
40-36



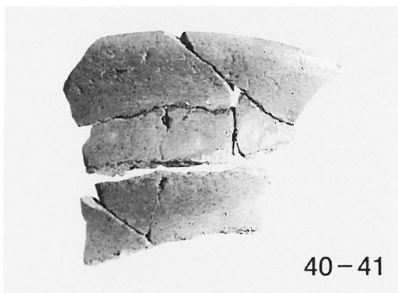
40-37



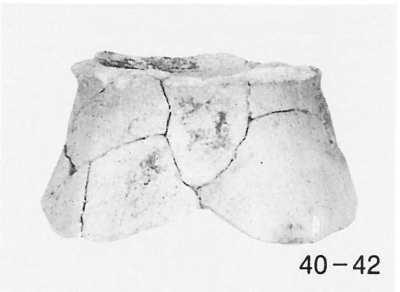
40-38



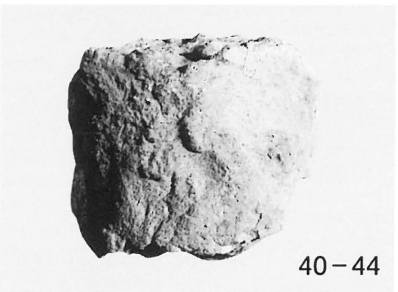
40-40



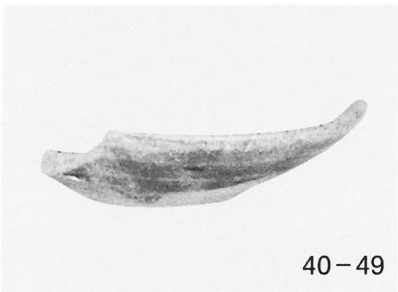
40-41



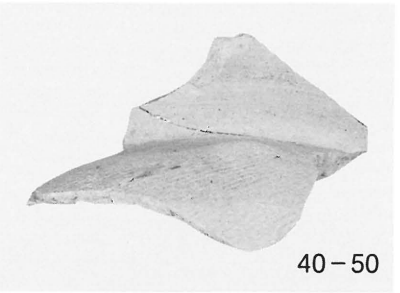
40-42



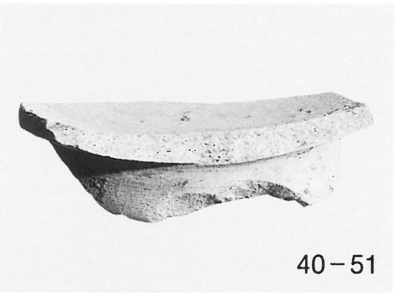
40-44



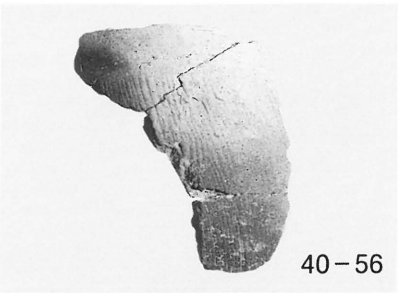
40-49



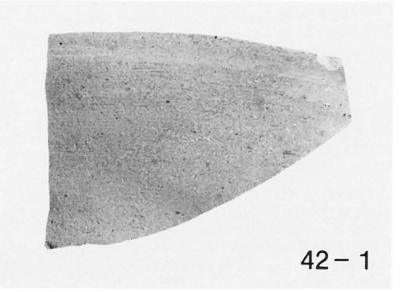
40-50



40-51



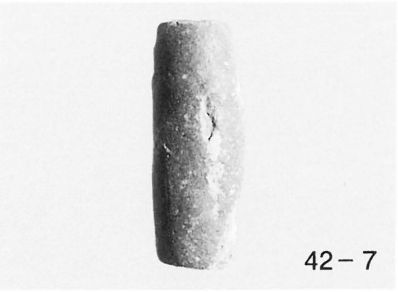
40-56



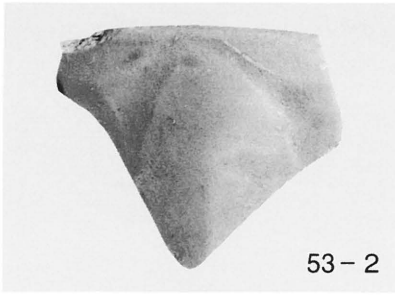
42-1



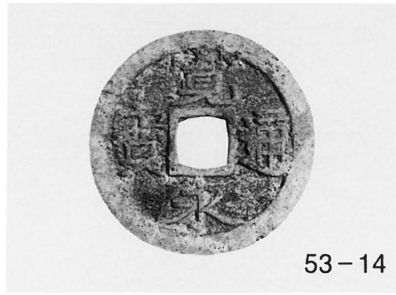
42-4



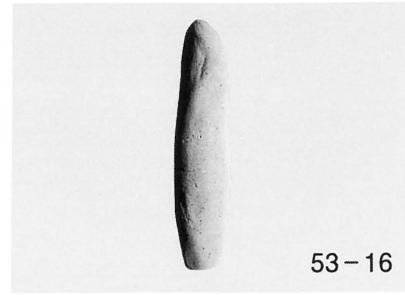
42-7



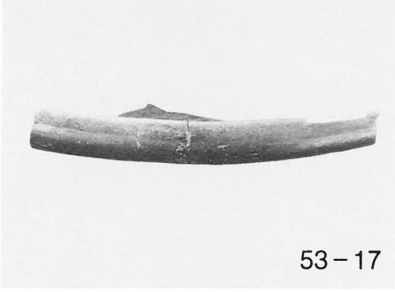
53-2



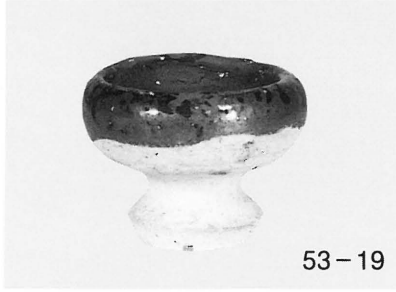
53-14



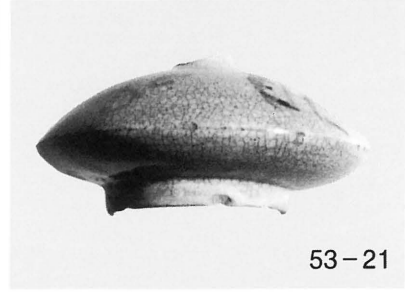
53-16



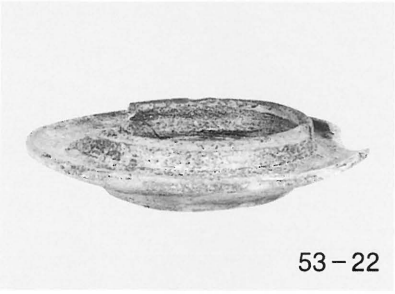
53-17



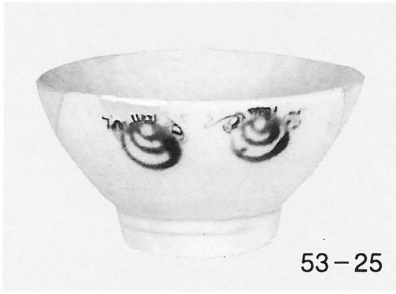
53-19



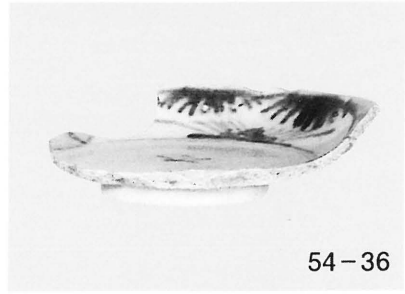
53-21



53-22



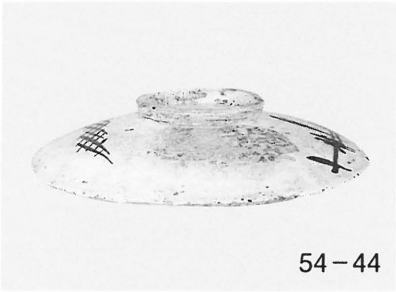
53-25



54-36



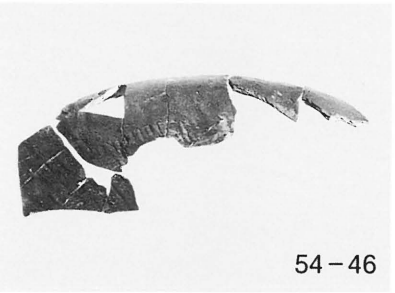
54-43



54-44



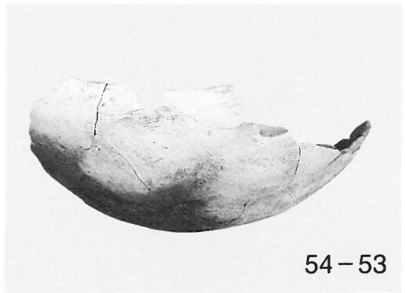
54-45



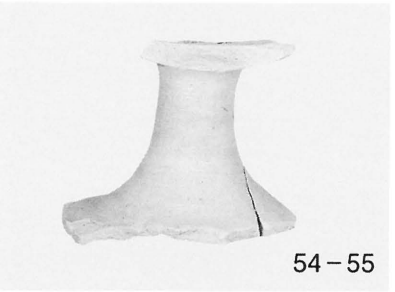
54-46



54-47



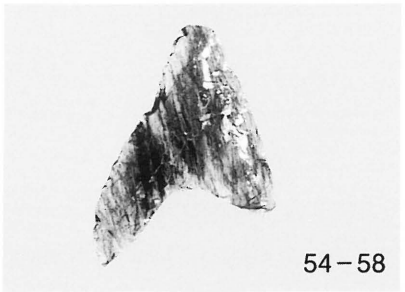
54-53



54-55

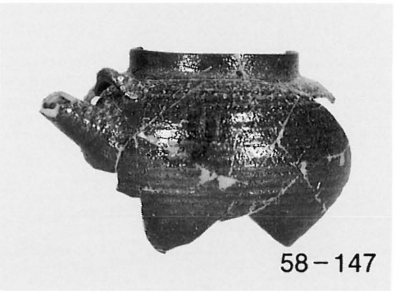
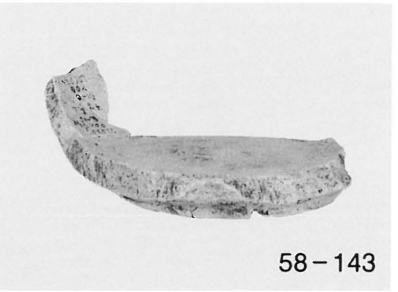
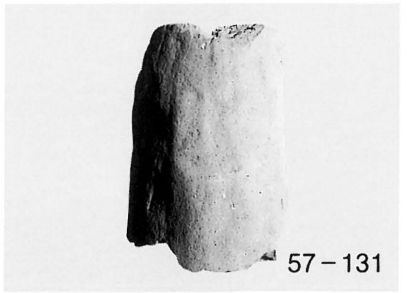
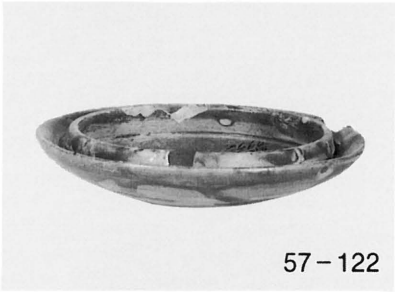
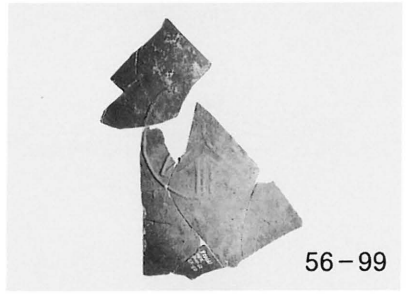
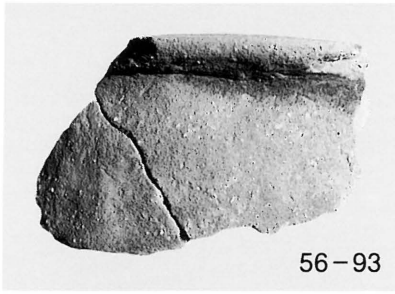
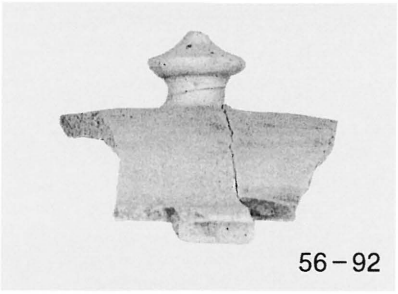
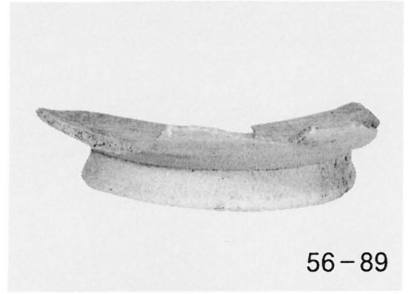
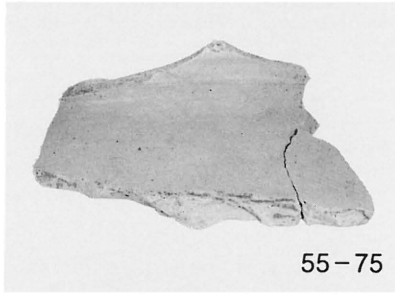
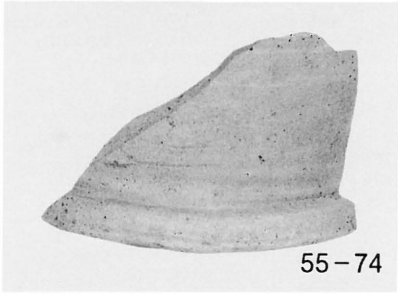
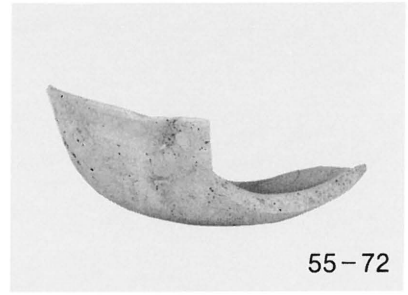
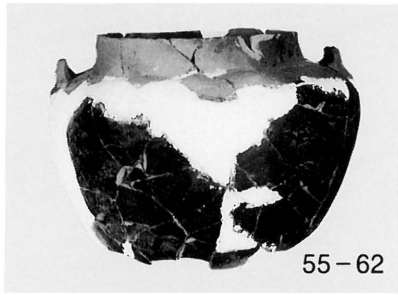


54-56



54-58

写真図版28



豊橋市埋蔵文化財調査報告書第37集

大海津遺跡（Ⅱ）

平成9年6月22日

発行 豊橋市教育委員会◎

文化振興課

牟呂地区遺跡調査会

〒440 豊橋市今橋町1番地

印刷 株式会社奉仕堂印刷