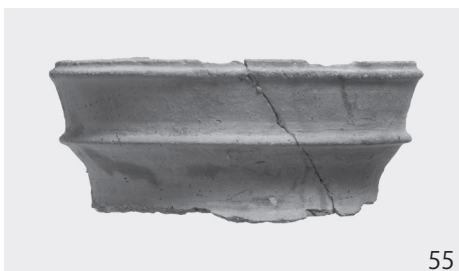
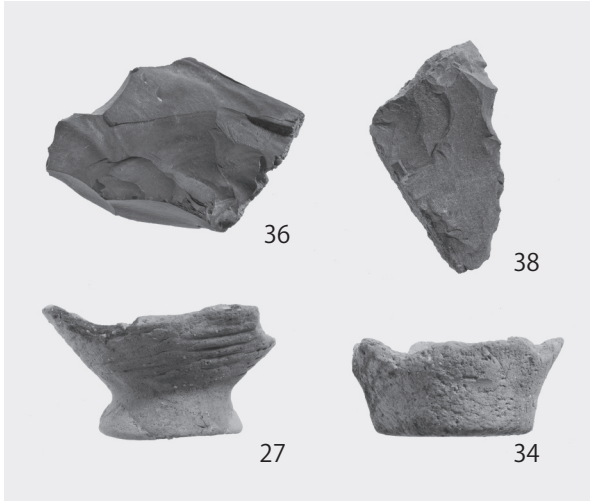




图版 66

1区 包含层出土遗物、2区 上层遗物·中层遗物出土遗物

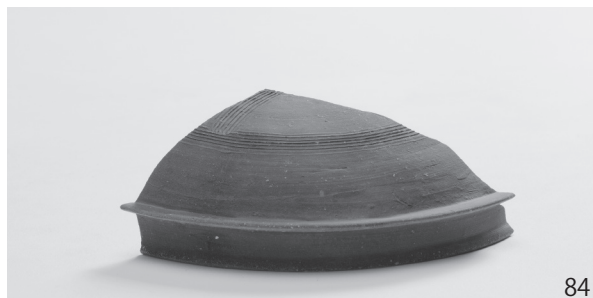




图版 68

2区
中層遺構・河道1層出土遺物





图版 70

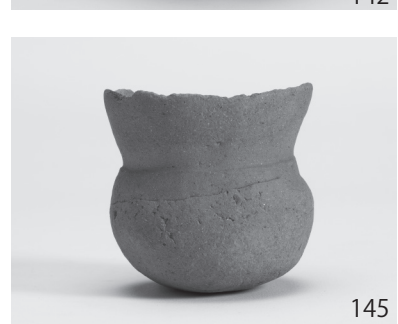
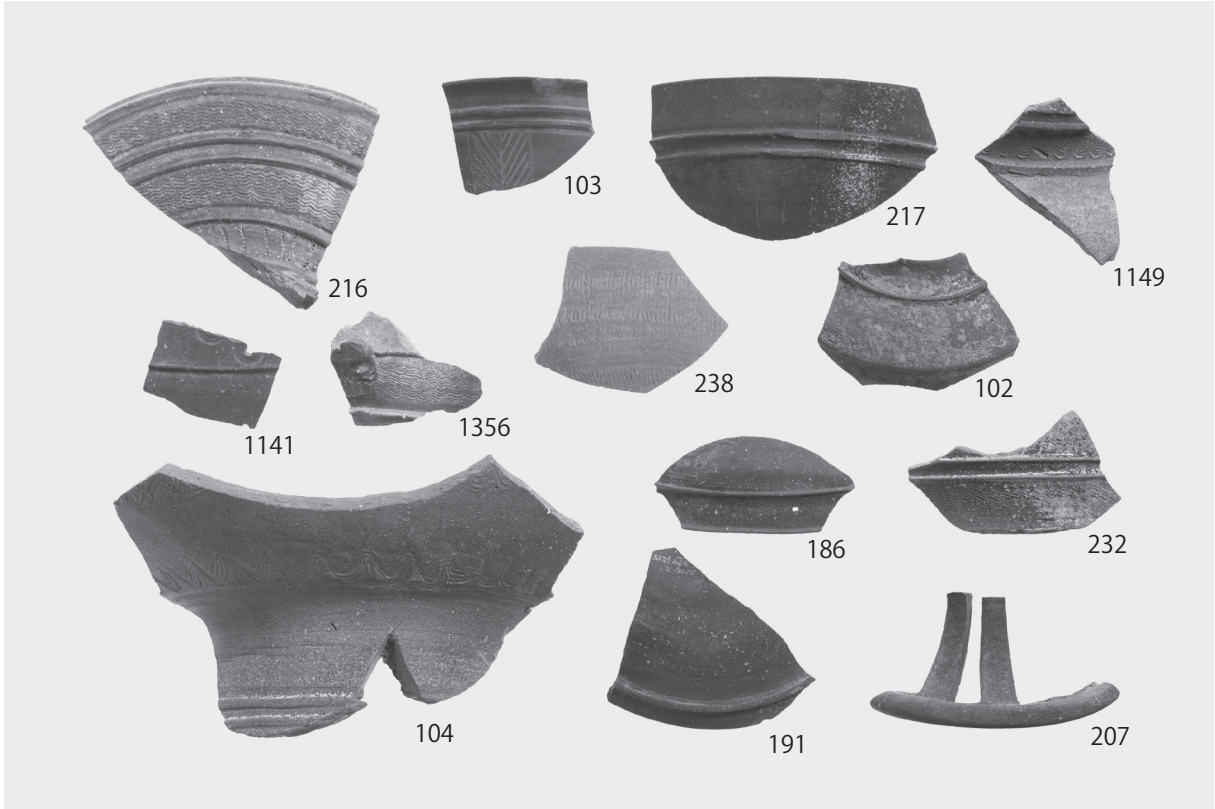
2区
河道1层出土遗物





图版 72

2区
河道1层出土文物





图版 74

2区
河道1层出土遗物





172



176



177



178



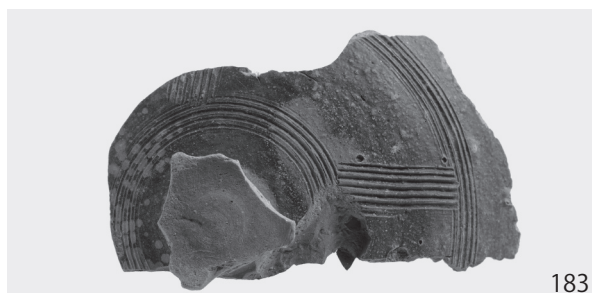
179



180



181



183



345

294

301

334

333

320

356

279

337

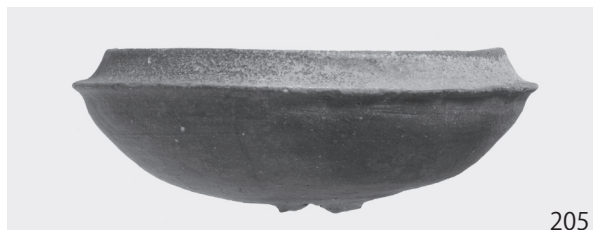
330

287

图版 76

2区
河道2·3层出土遗物

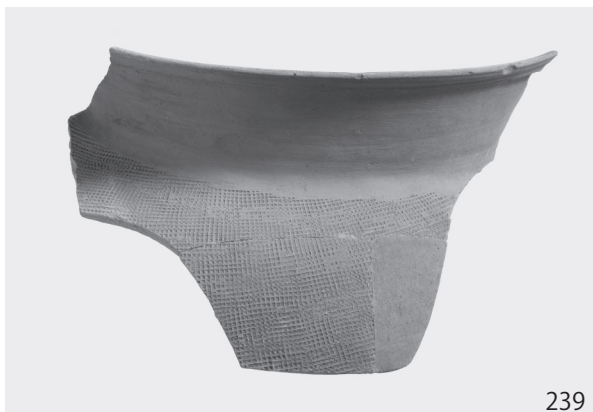
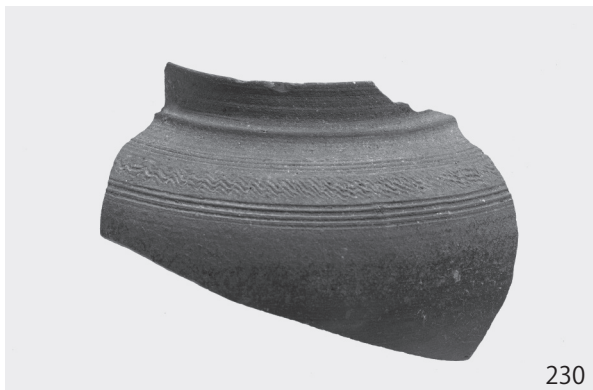




图版 78

2区
河道2·3层出土遗物





图版 80

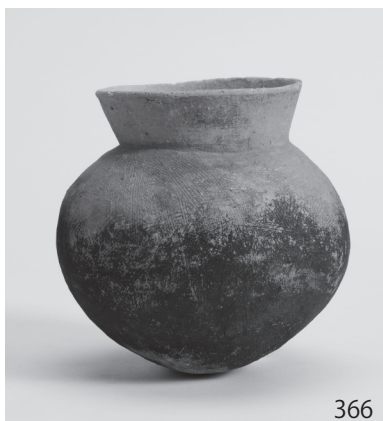
2区
河道2·3層出土遺物





图版 82

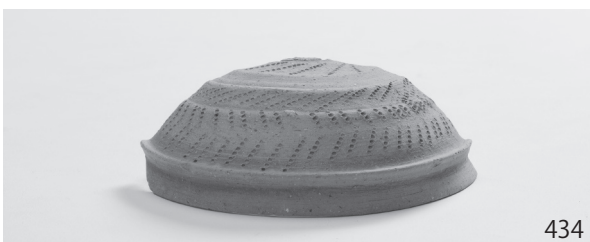
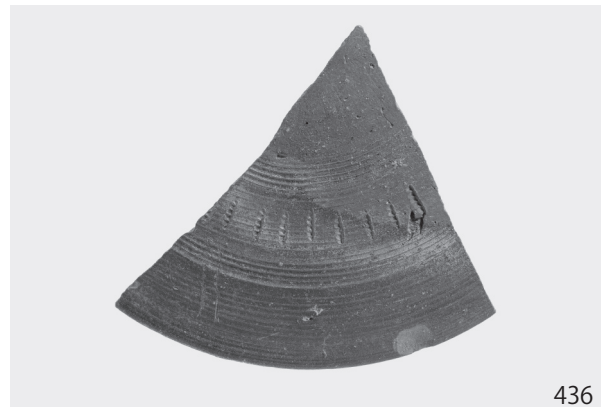
2区
河道2·3层出土遗物

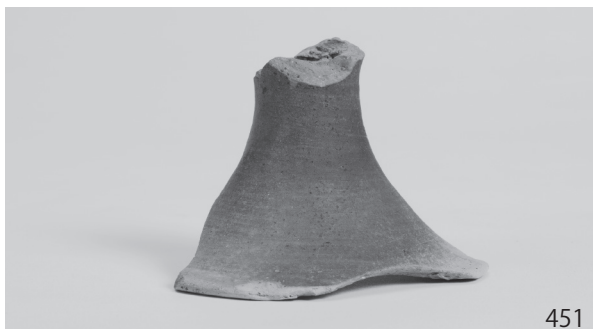
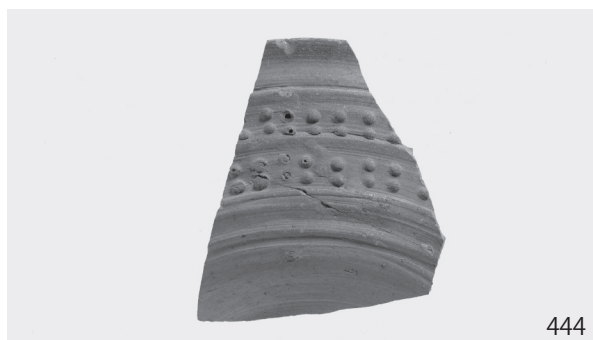




图版 84

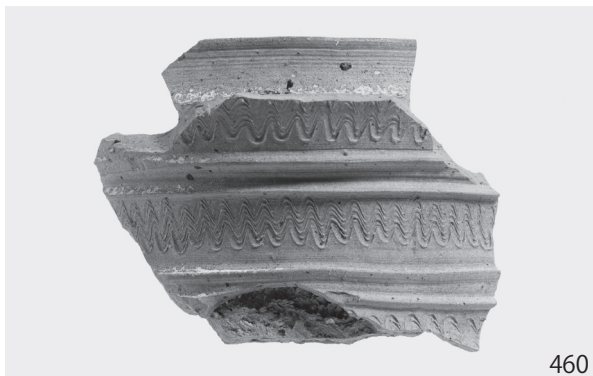
2区
河道杭列③·河道4层出土遗物





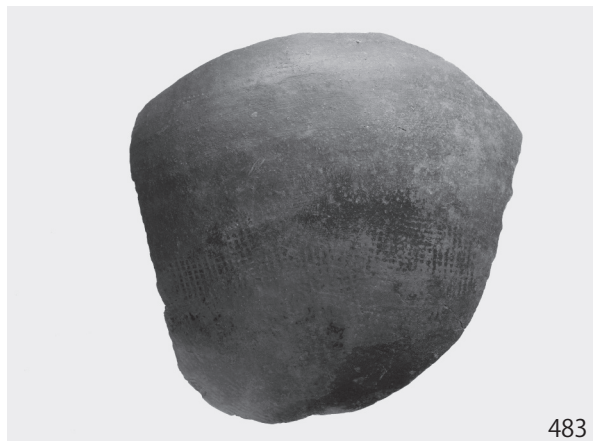
图版 86

2区
河道4层出土遗物





472



483



499



504



502



501



507

516

521

514

533

541

534

537

539

542

536

图版 88

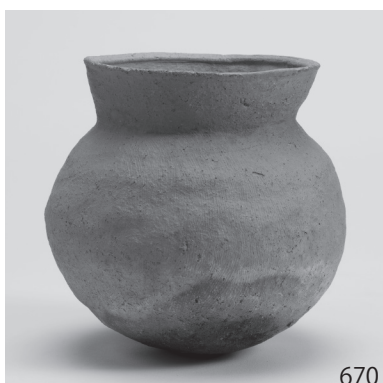
2区
河道4层出土遗物





图版 90

2区
河道4层出土遗物

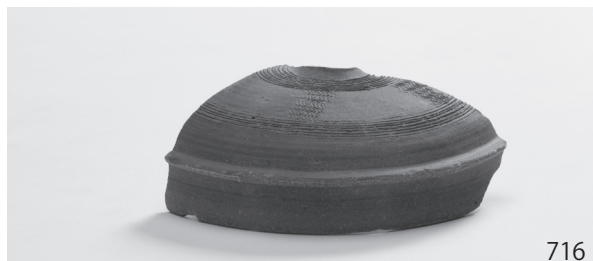




图版 92

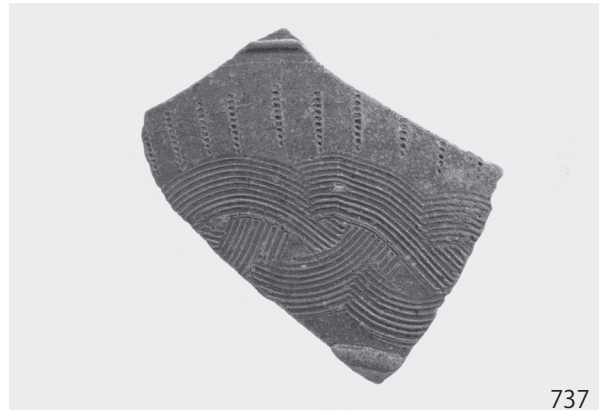
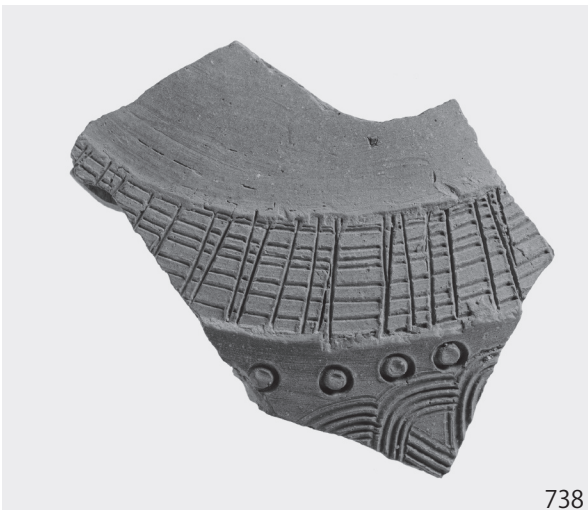
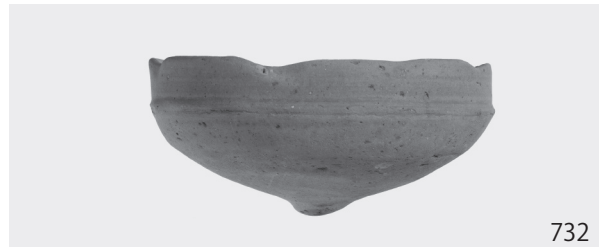
2区
河道4层出土遗物

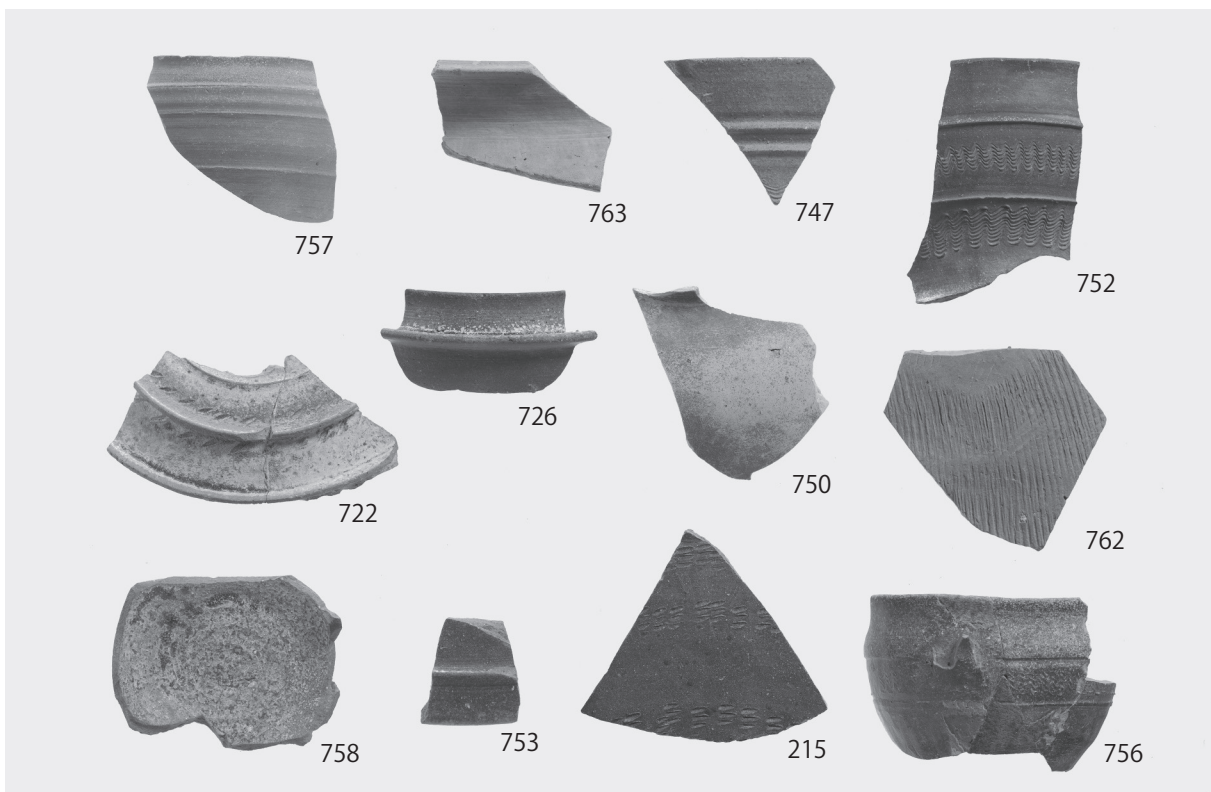




图版 94

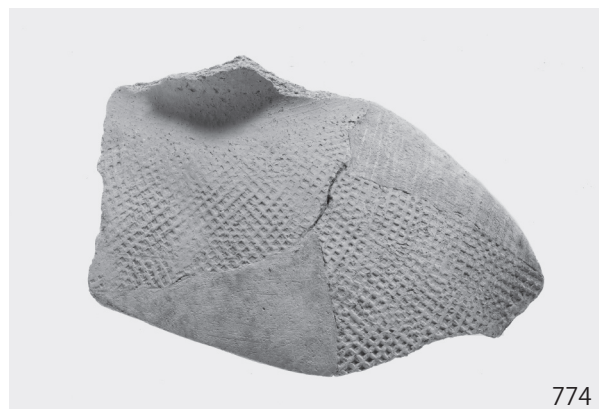
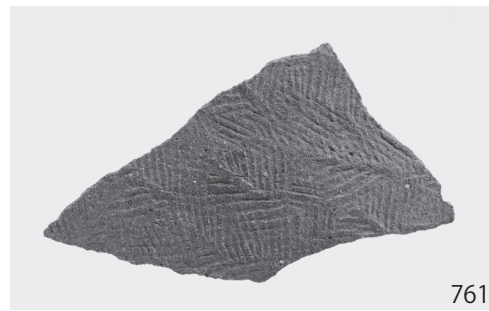
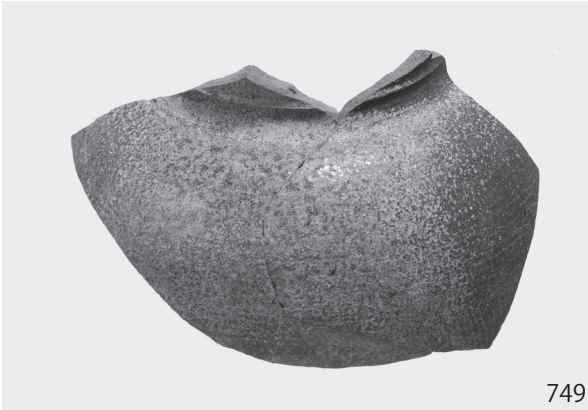
2区
河道5层出土遗物





图版 96

2区
河道5层出土遗物





766



767



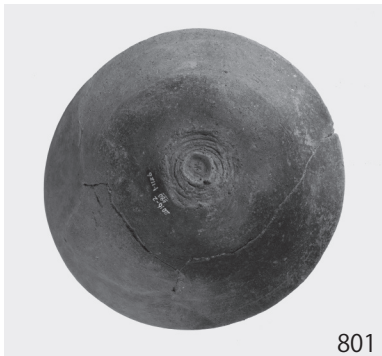
777



779



780



801



782



803



785

781

792

794

786

802

795

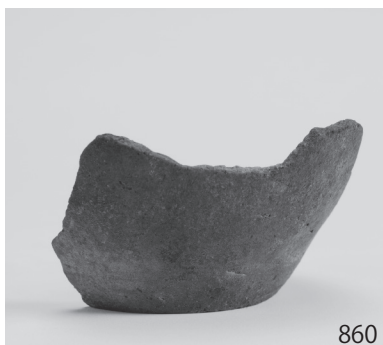
799

800

图版 98

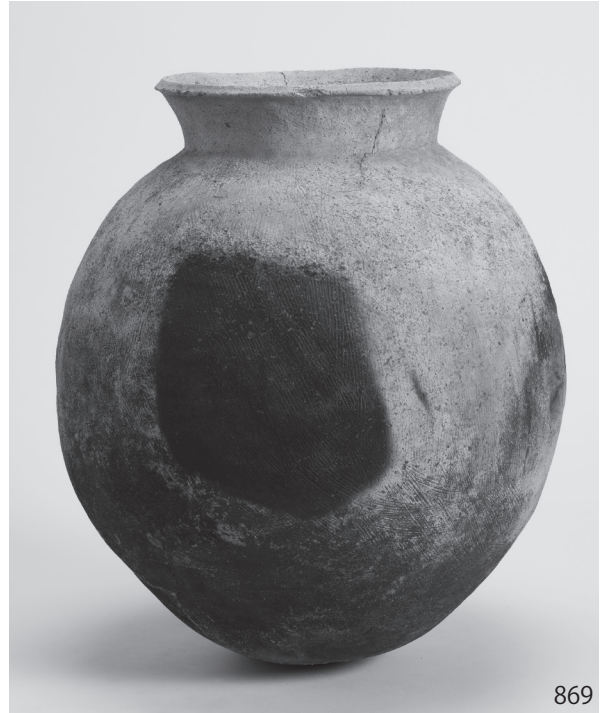
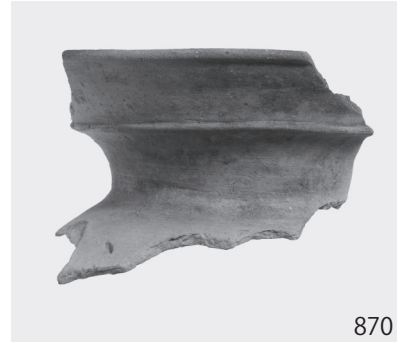
2区
河道5层出土遗物

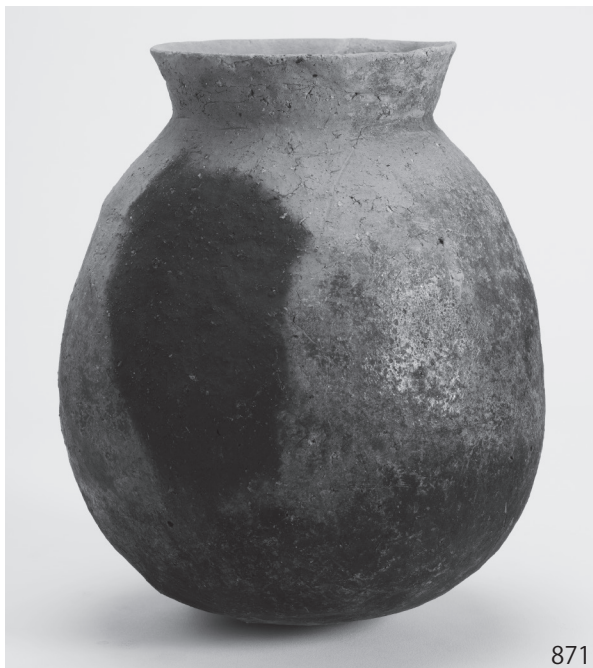




图版 100

2区
河道5层出土遗物





871



872



873



874



876



875



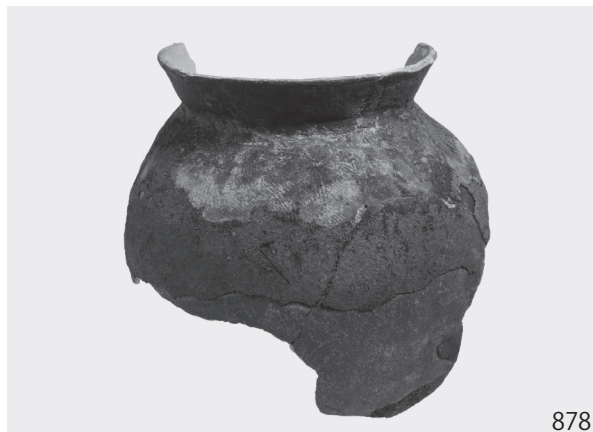
880

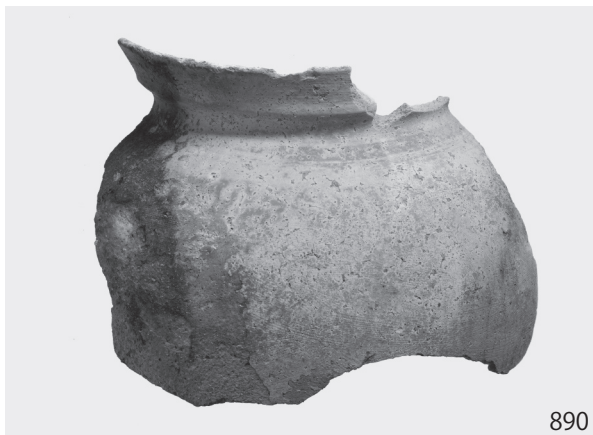


882

图版 102

2区
河道5层出土遗物





890



892



893



894



897



901



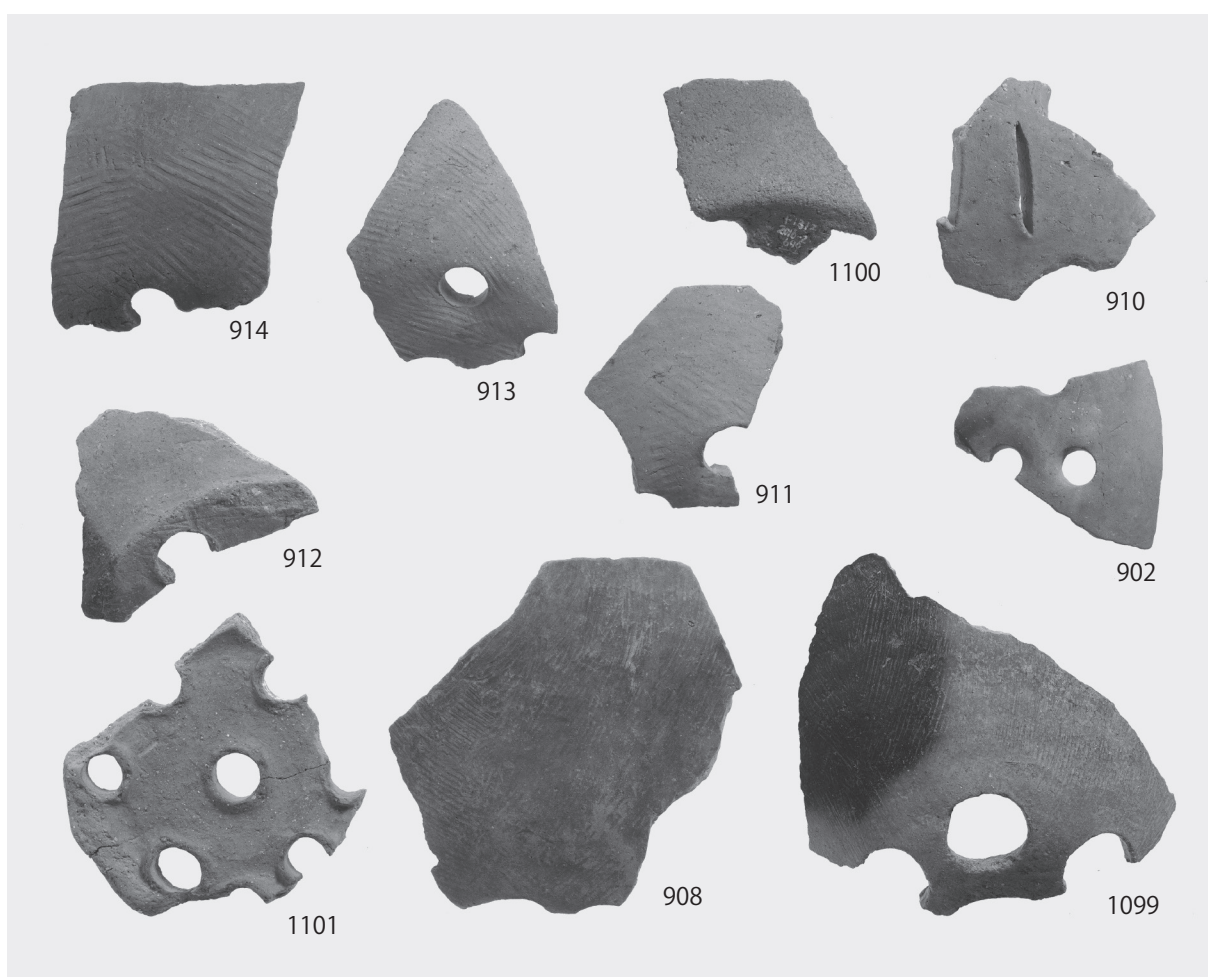
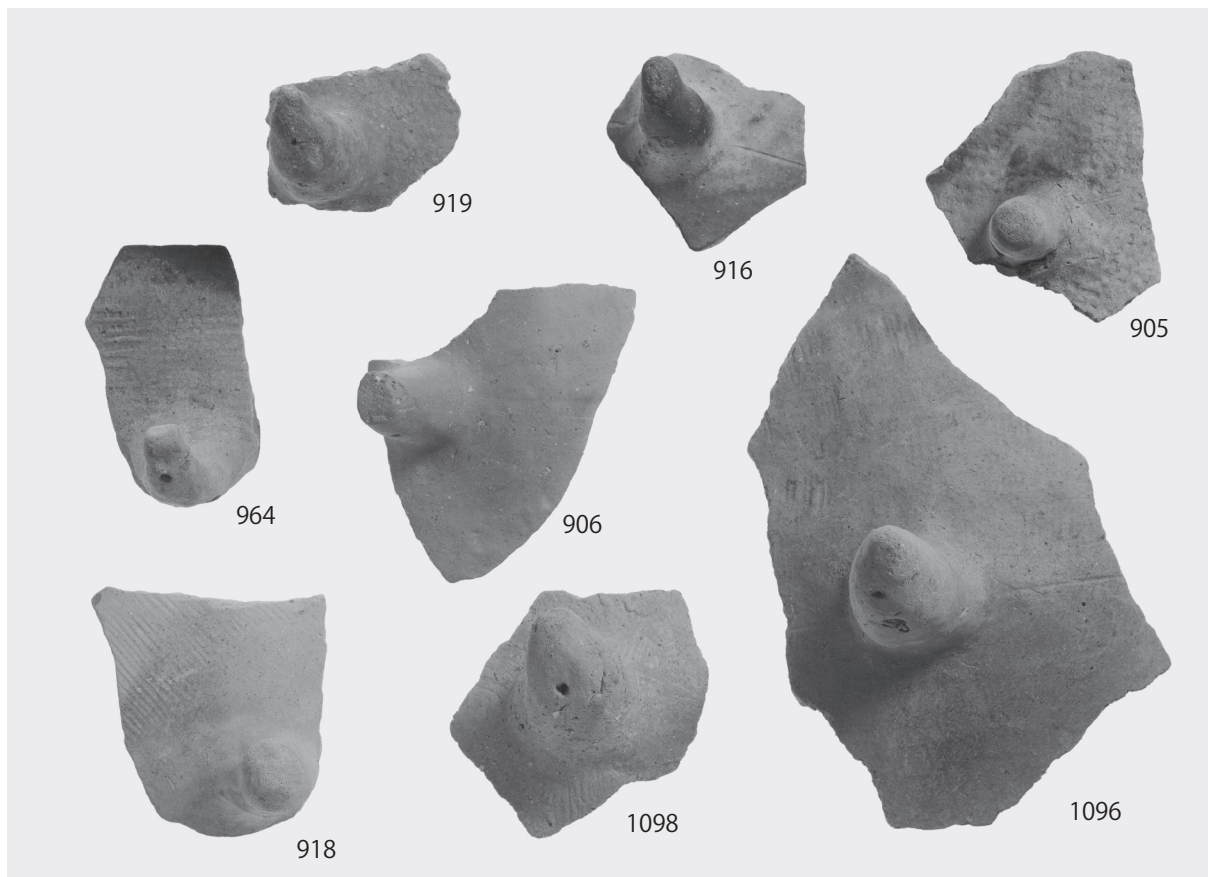
903



904

图版 104

2区
河道5层出土遗物



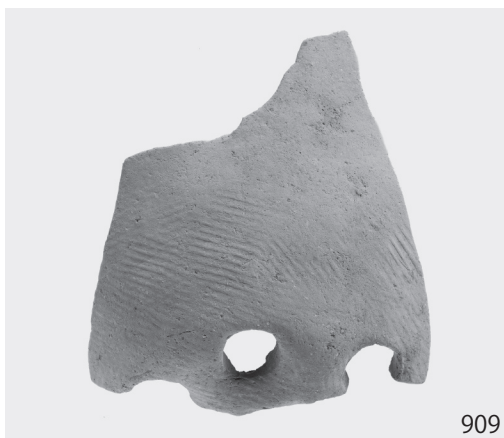
2区
河道5层出土遗物、河道下层杭列出土遗物



907



927



909



925



928



929



932



935



936

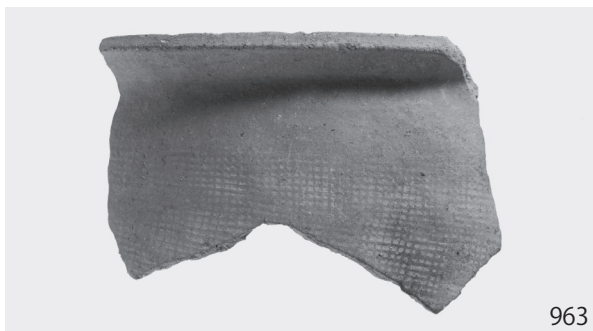
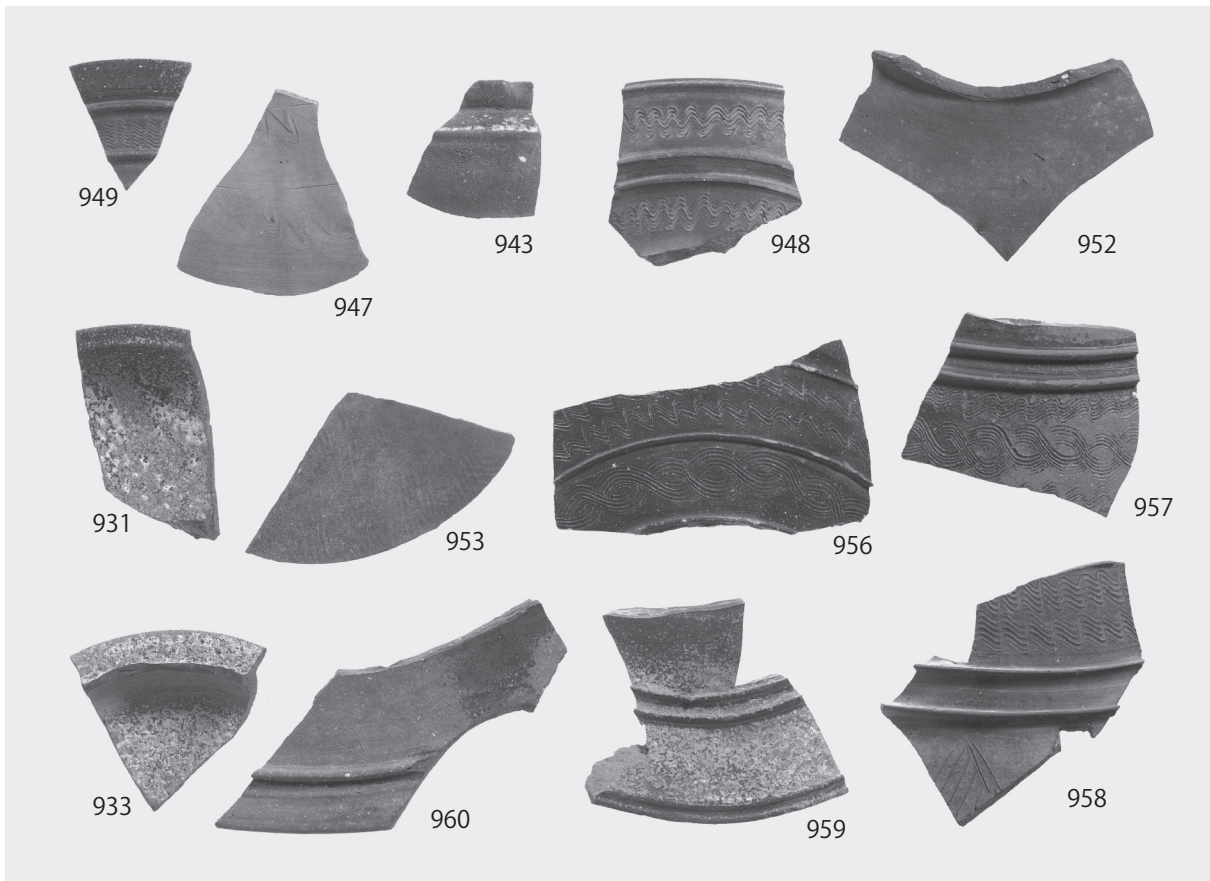


938

图版 106

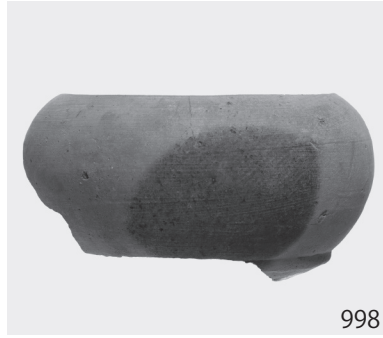
2区
河道下层杭列出土遺物





图版 108

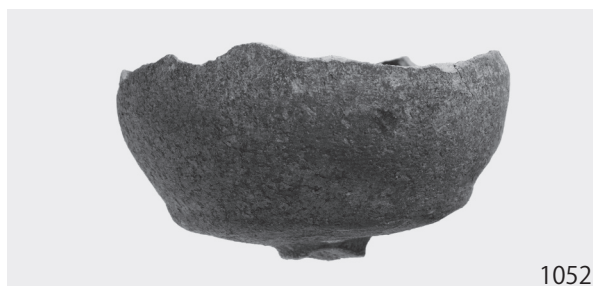
2区
河道下層杭列出土遺物





图版 110

2区
河道下層杭列出土遺物





图版 112

2区
河道下層杭列出土遺物



1079



1080



1081



1082



1083



1084



1085



1086



1088



1089



900

404

898

899

691

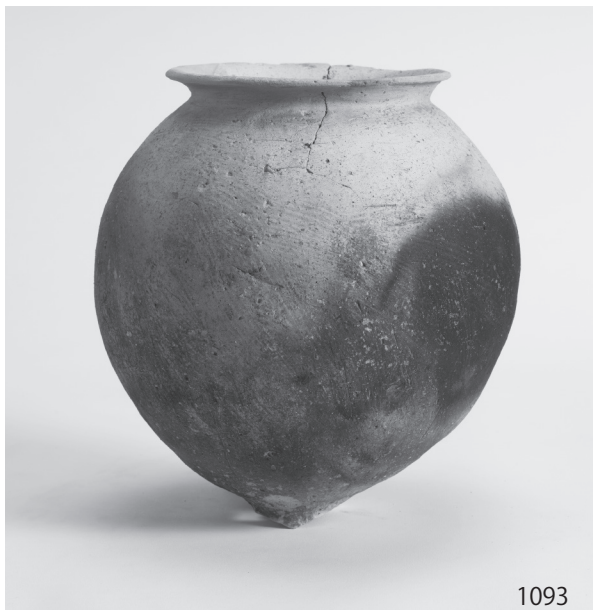
1205

1204

403

图版 114

2区
河道下層杭列出土遺物





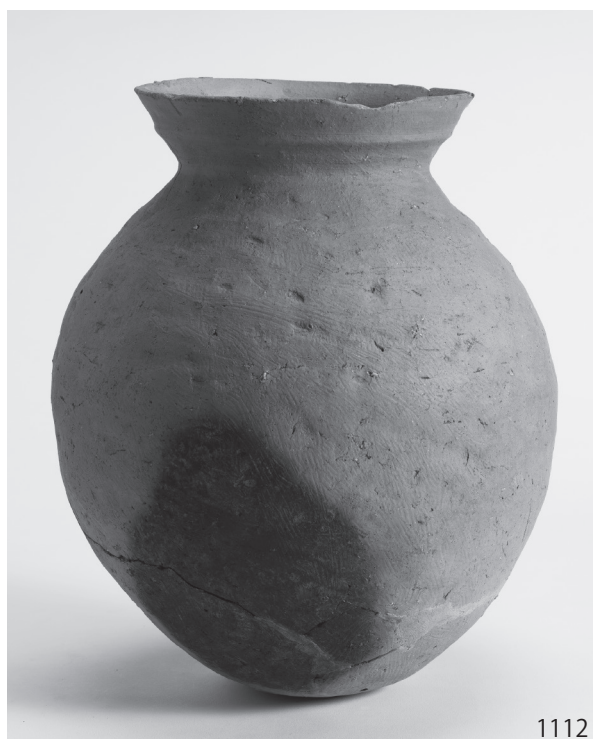
1105



1106



1110



1112



1111



1114

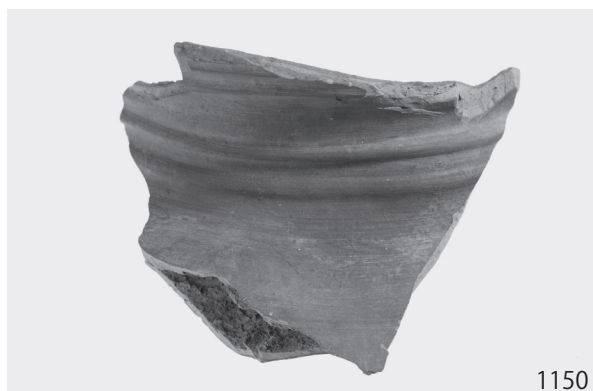


1115

图版 116

2区
河道出土遺物

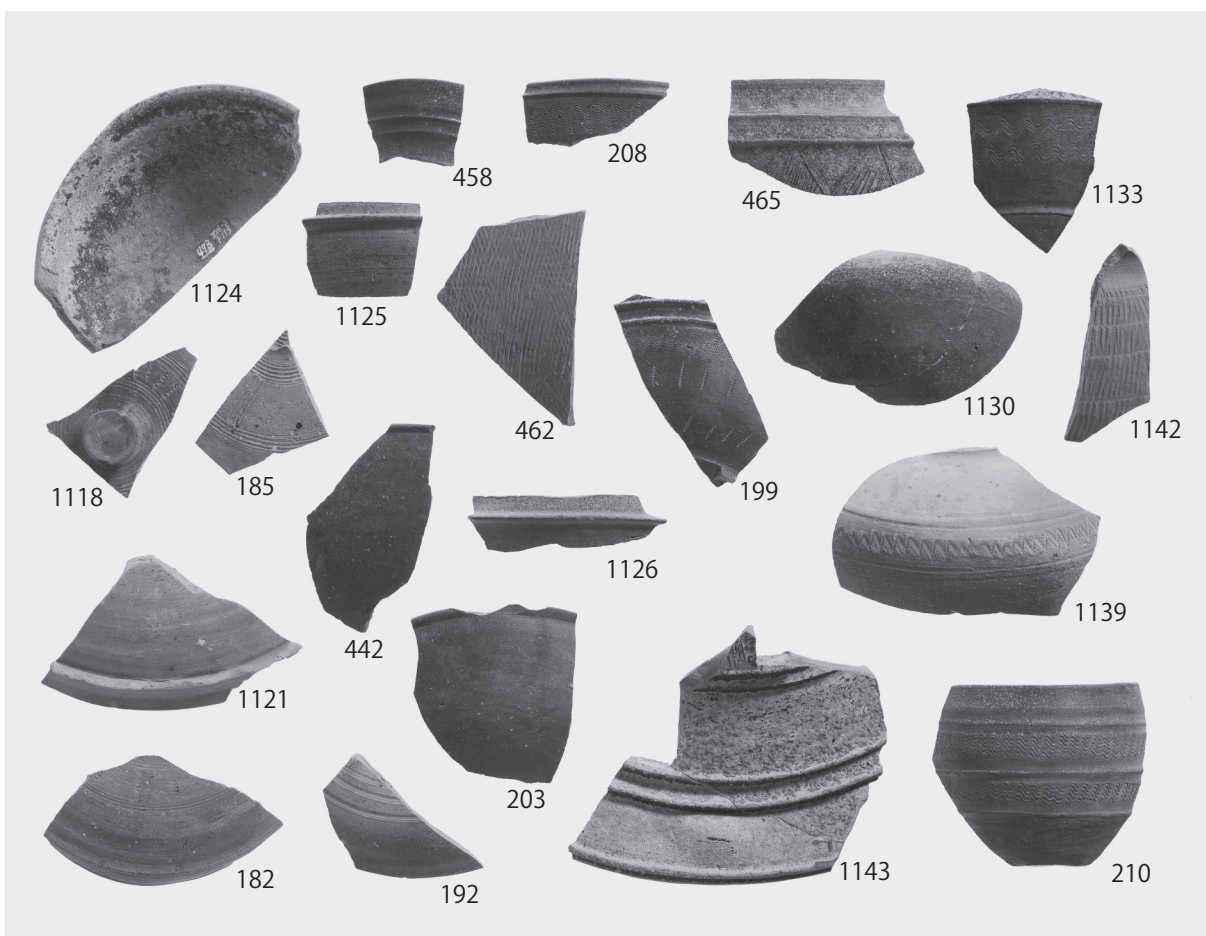




图版 118

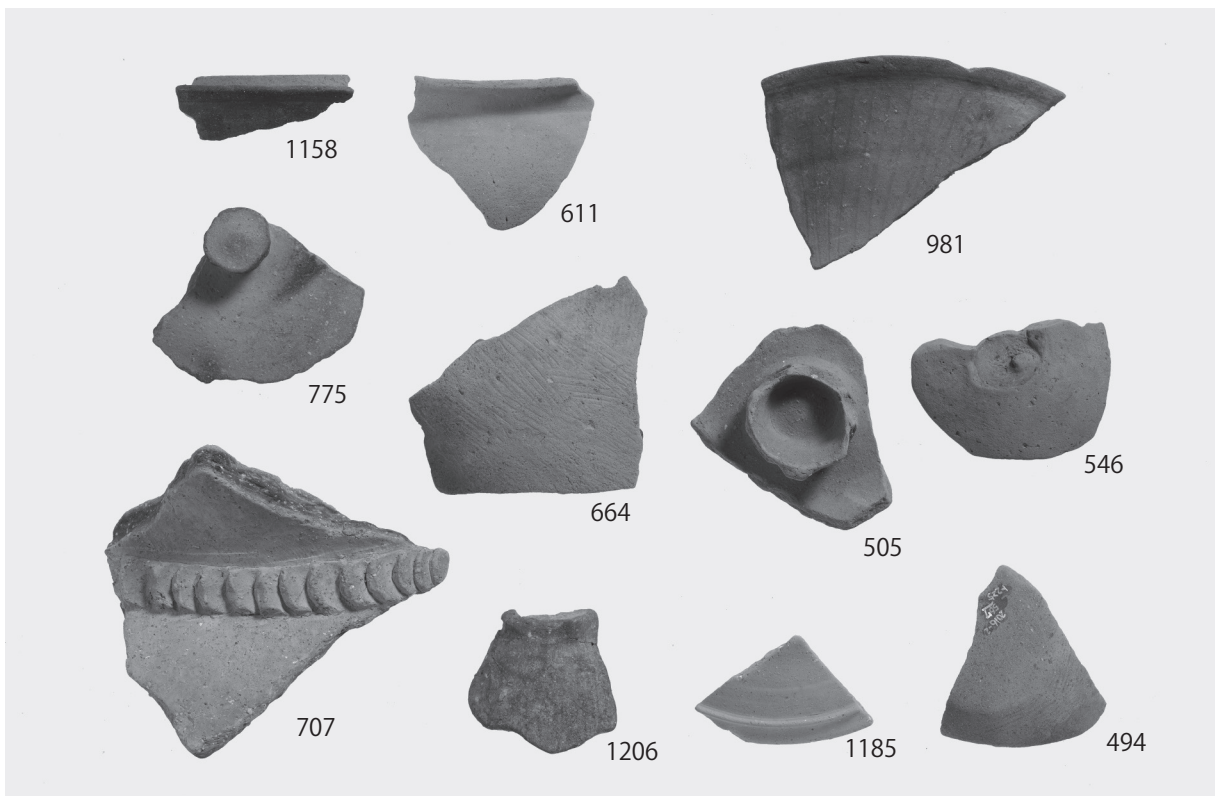
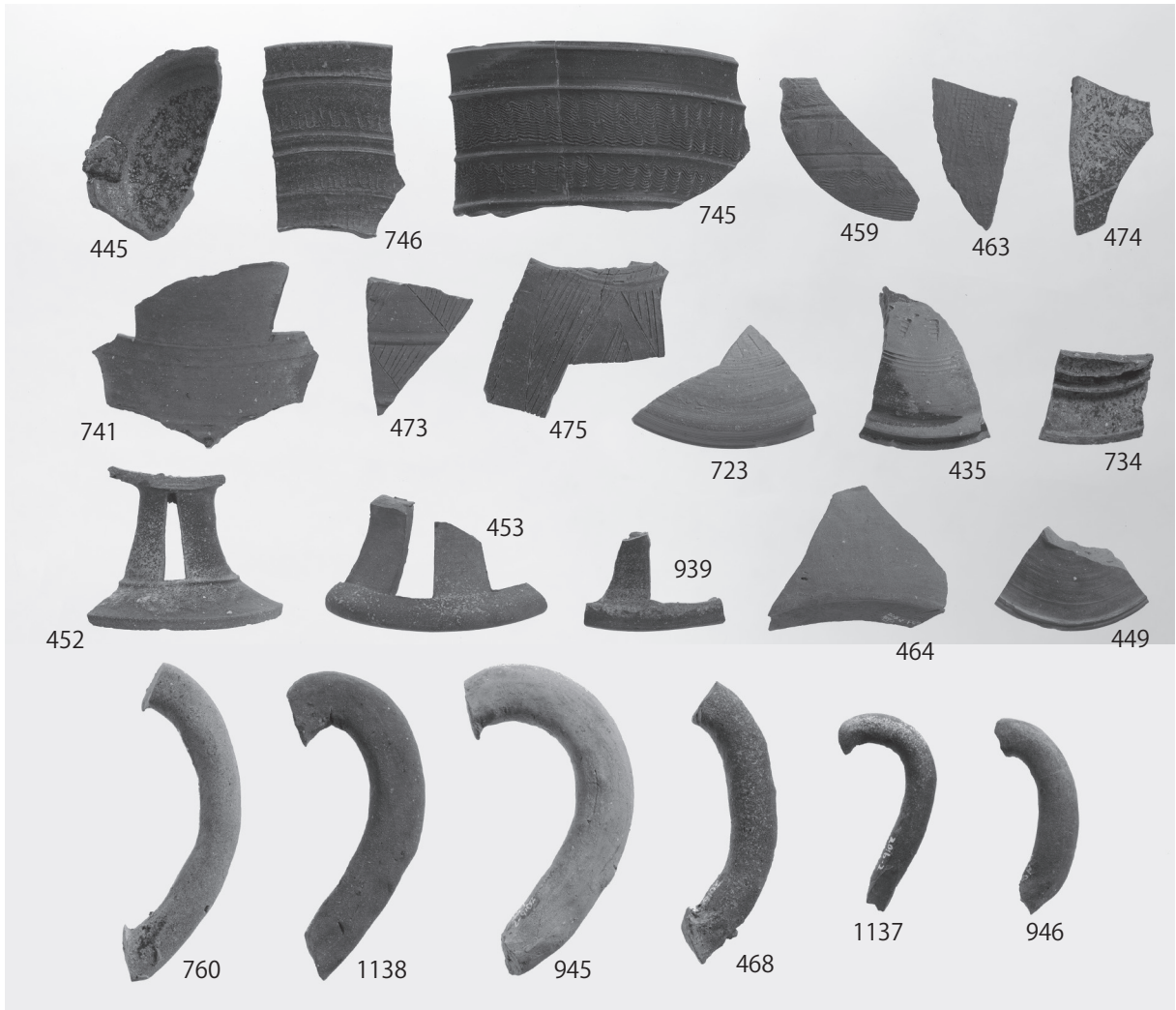
2区
河道出土遺物





图版 120

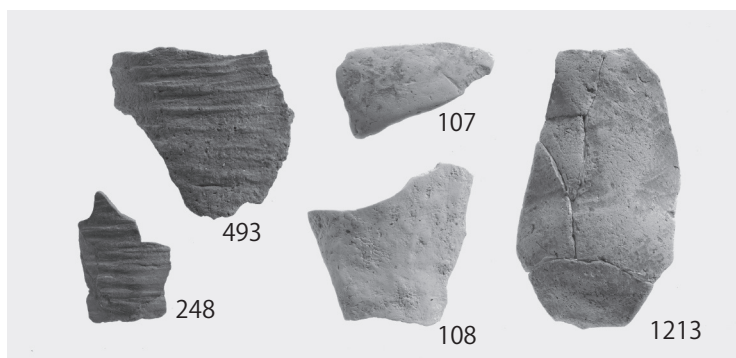
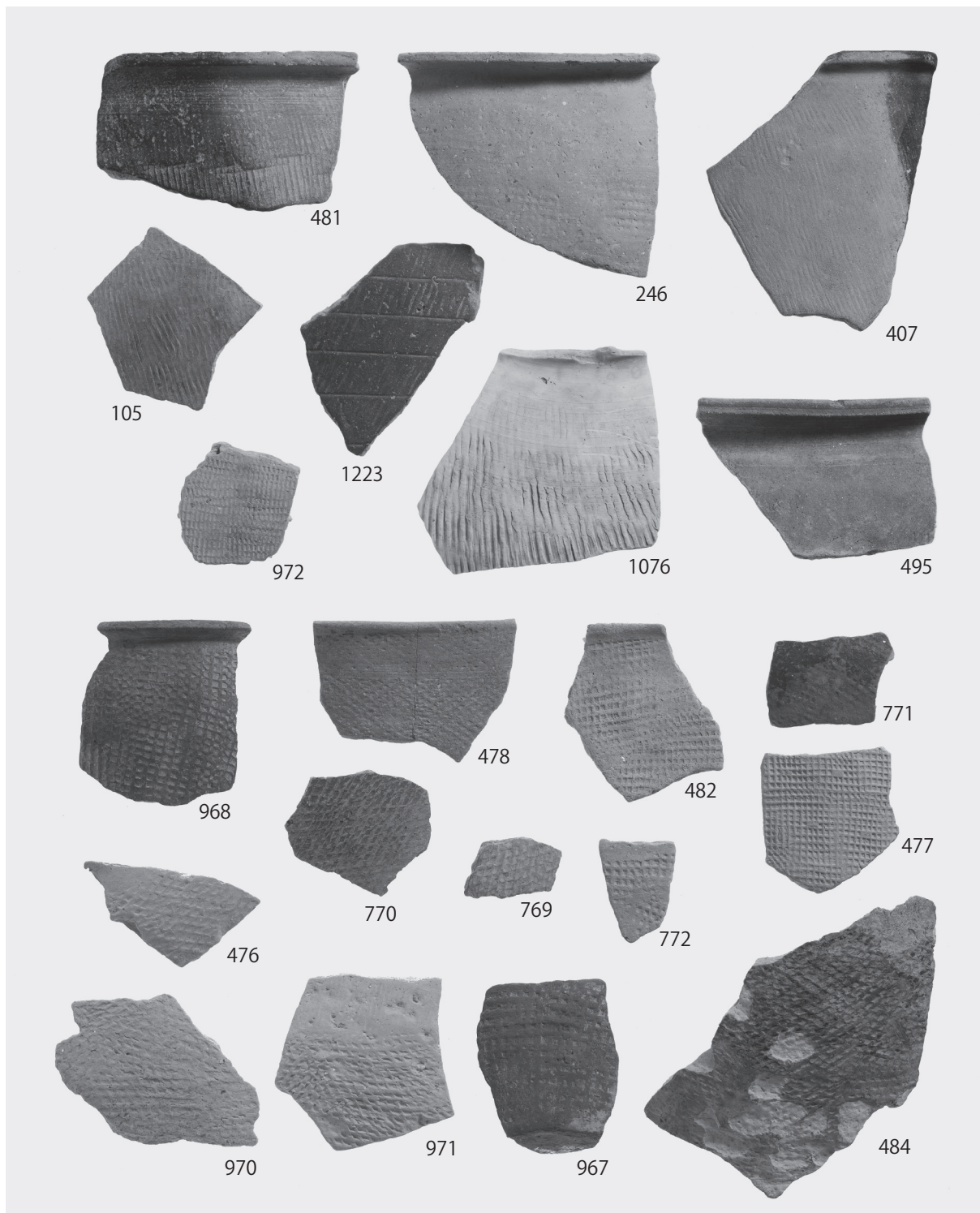
2区
河道出土遗物

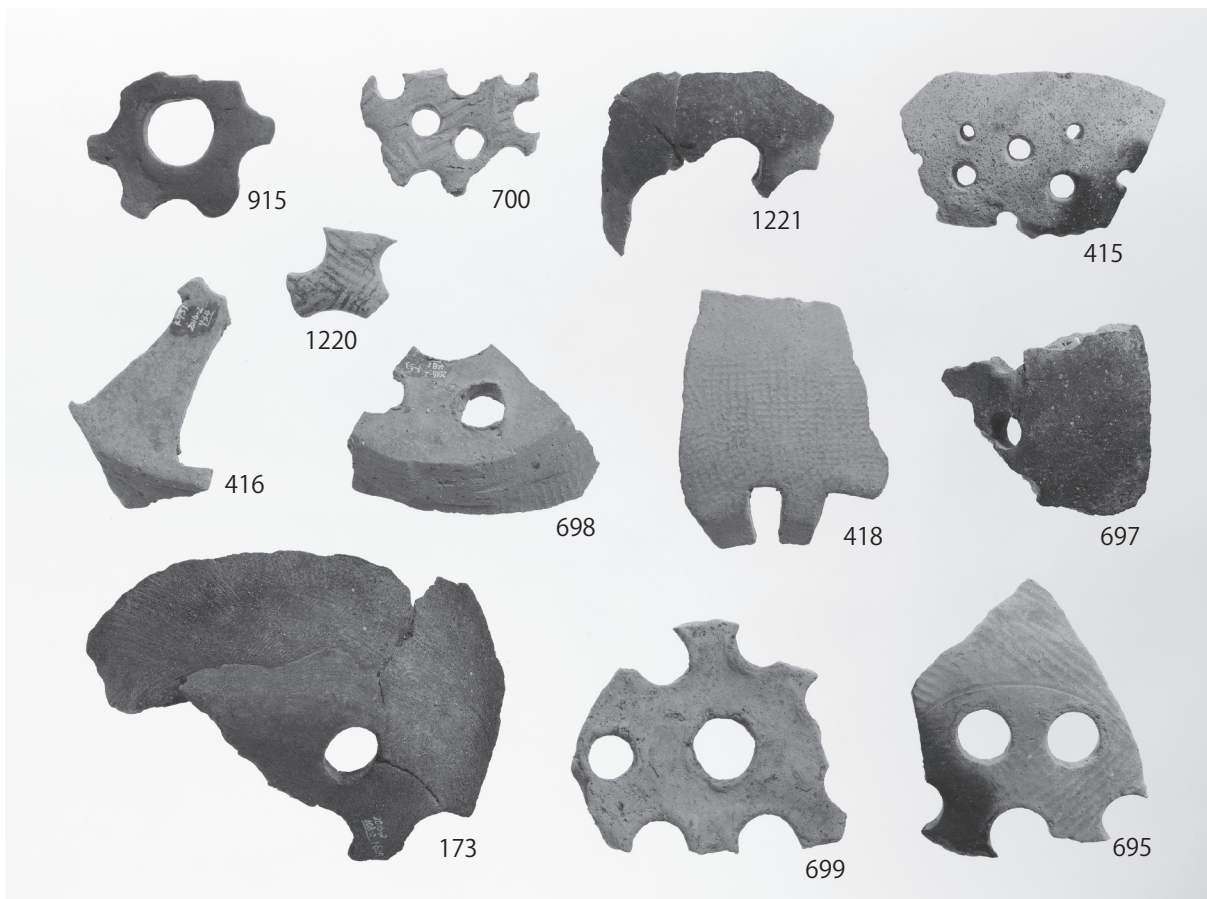
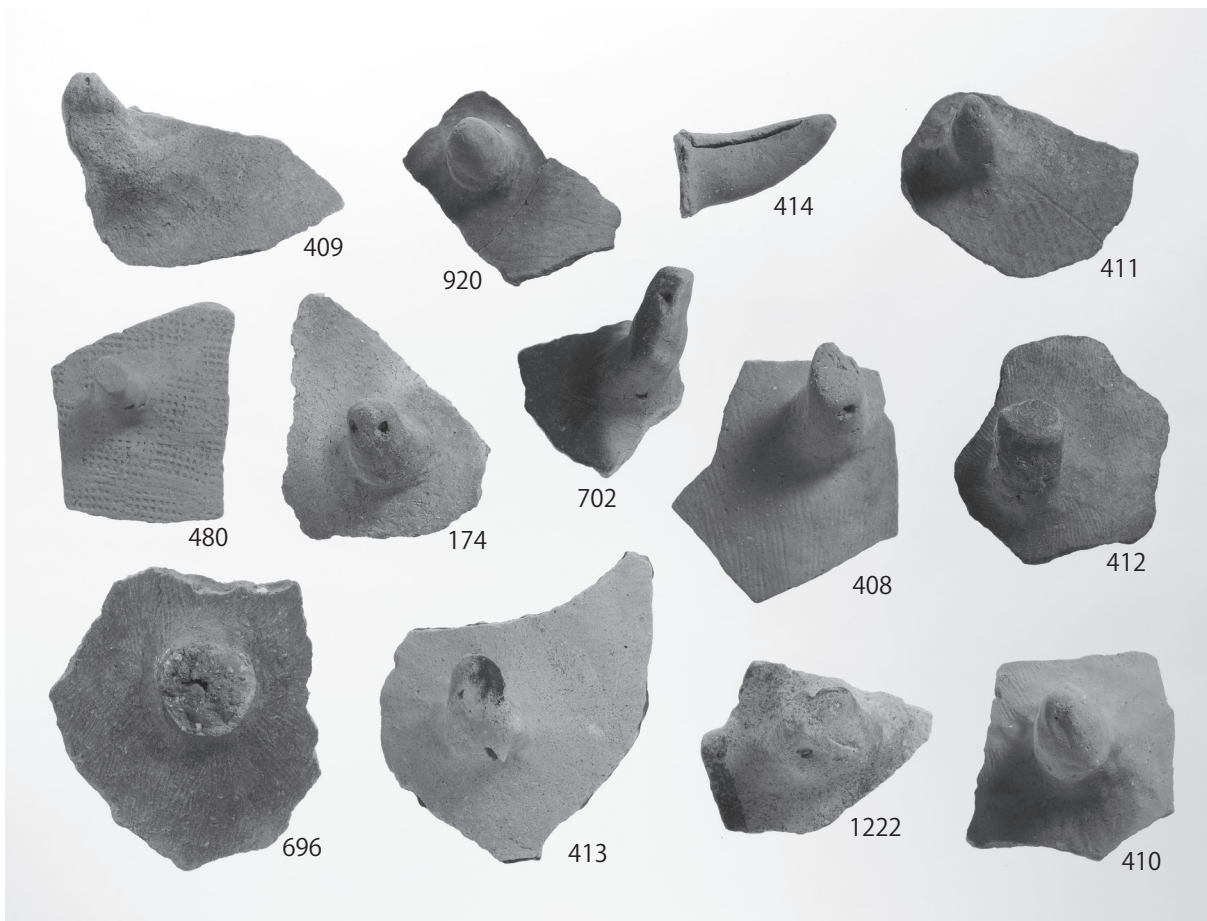




图版 122

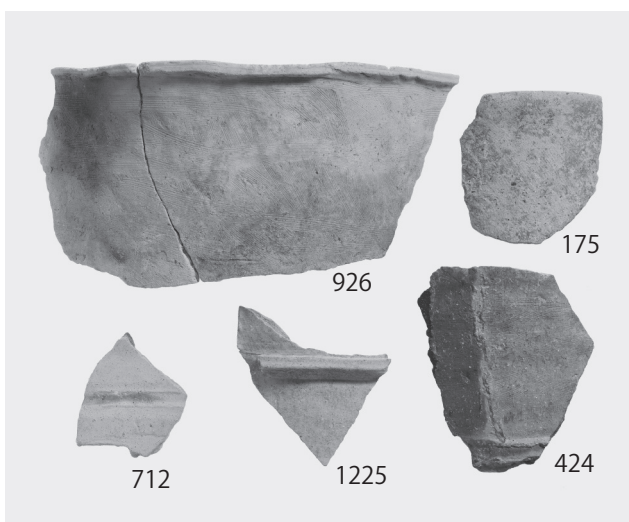
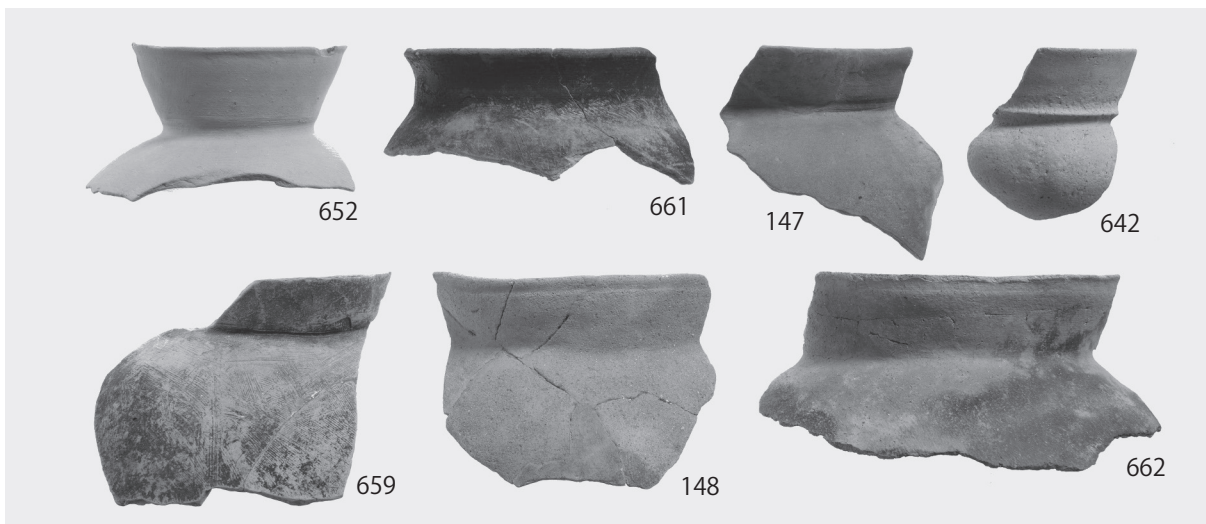
2区
河道出土遗物

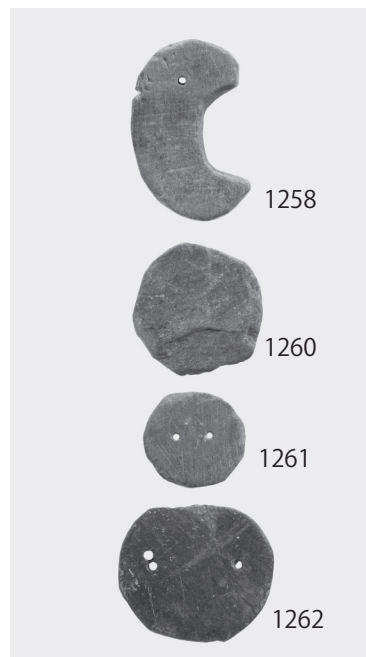
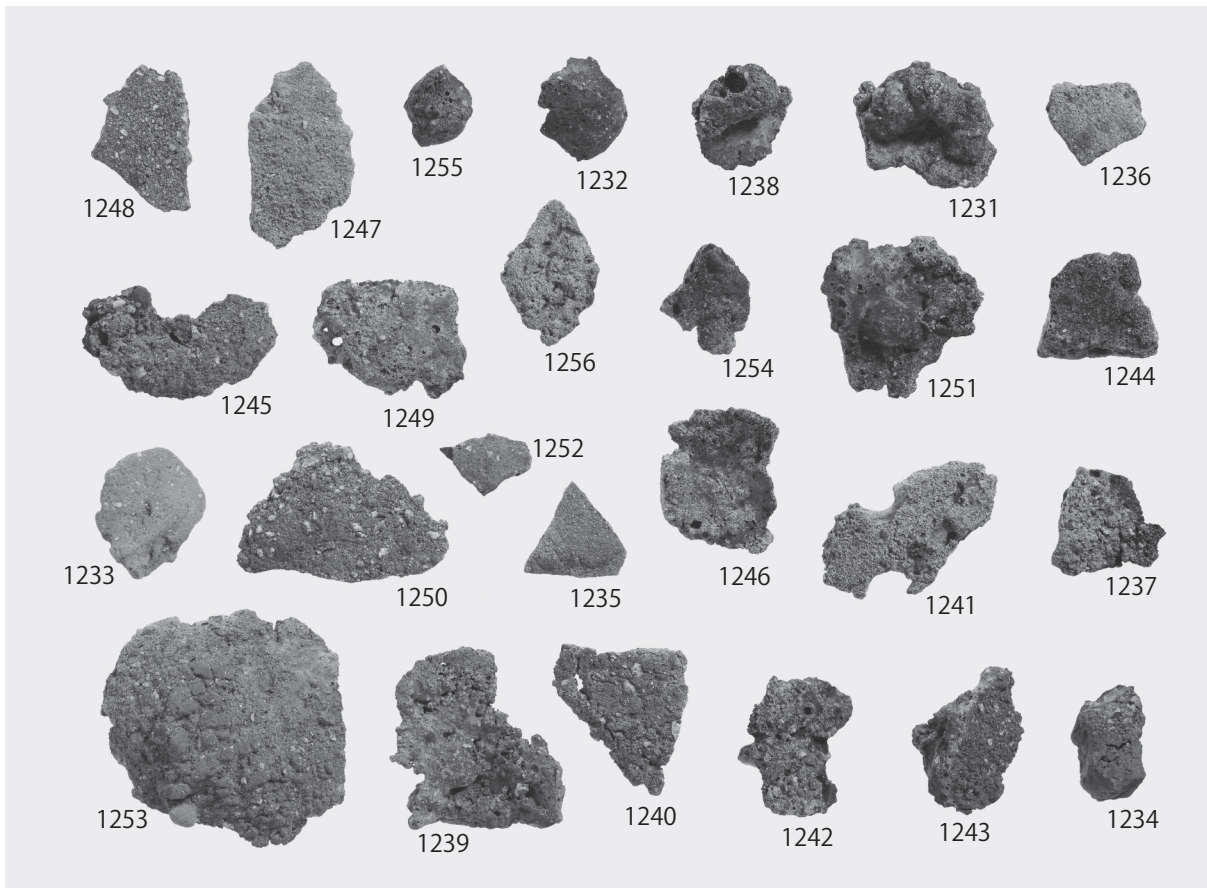




图版 124

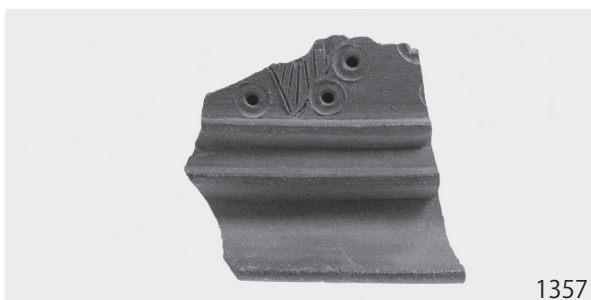
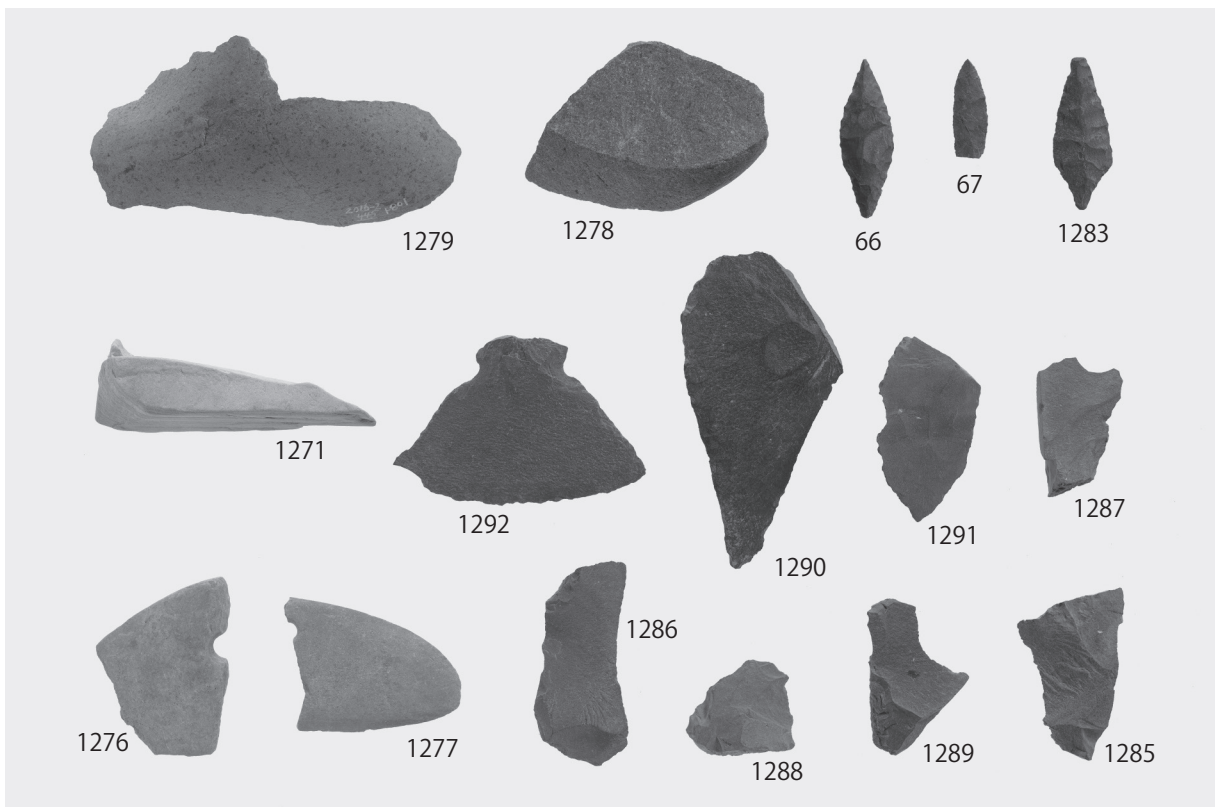
2区
河道出土遗物



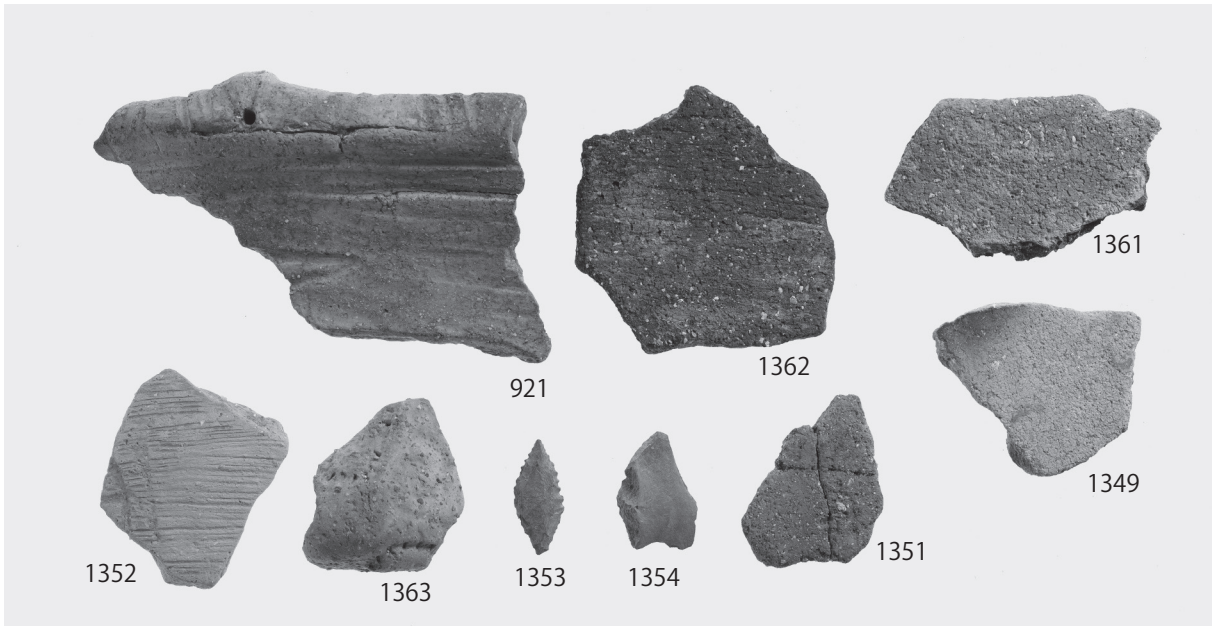


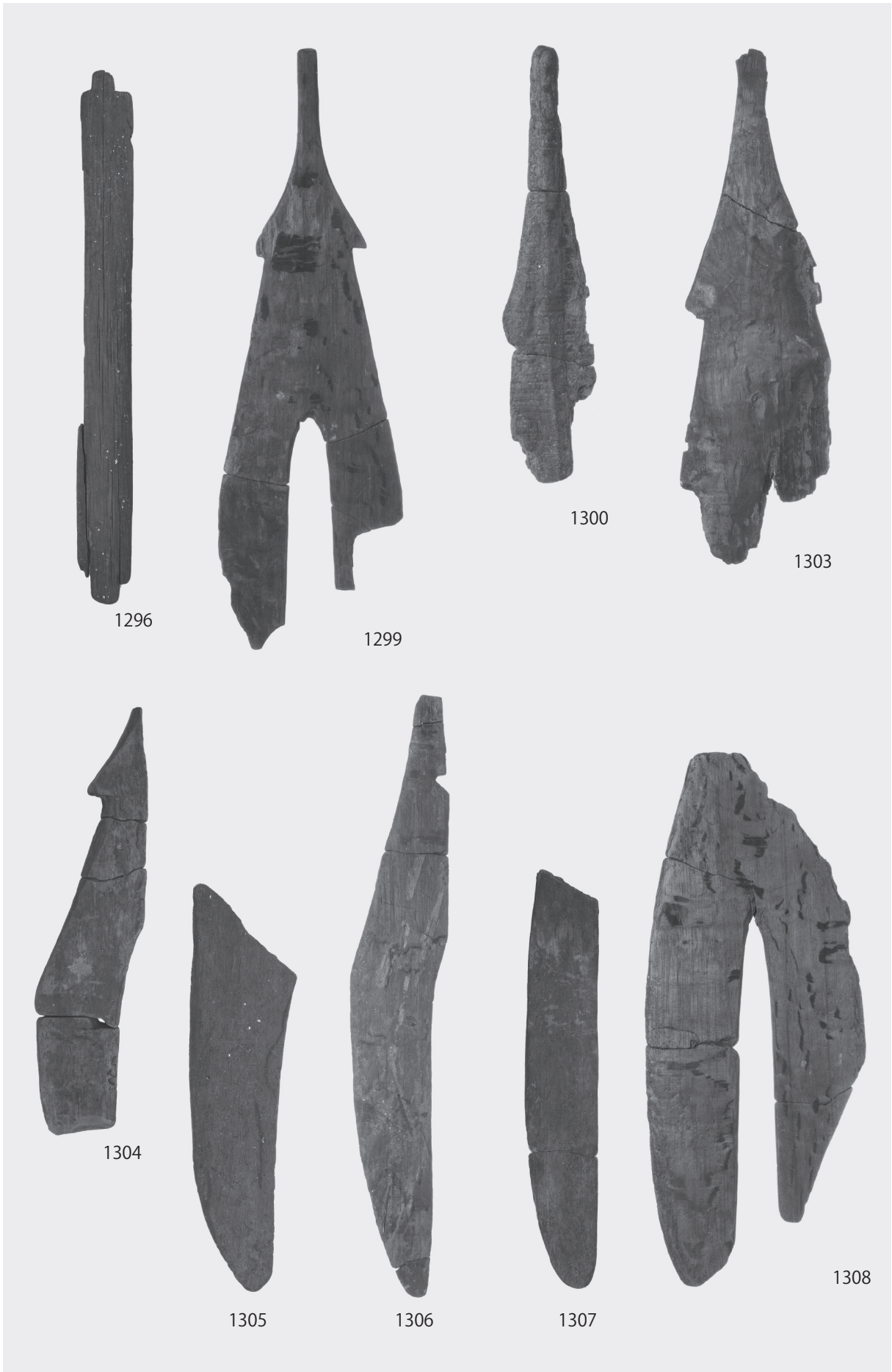
图版 126

2区
河道出土遺物、
重機掘削時出土遺物



2区 下層遺構・包含層出土遺物、中層遺構河道出土木製品







1310

1311



1310 (上面拡大)



1309



1310



1309 (使用痕拡大)



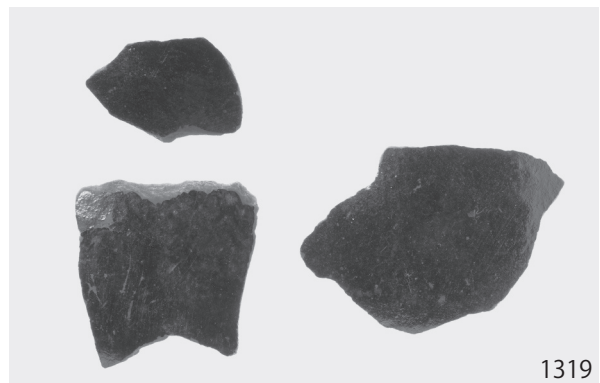
1312



1313

图版 130

2区
河道出土木製品





1320



1321



1321



1322



1322



1323



1324



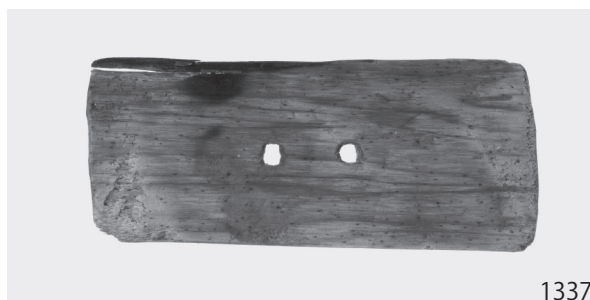
1323



1324

图版 132

2区
河道出土木製品





1330



1330 (上面)



1330



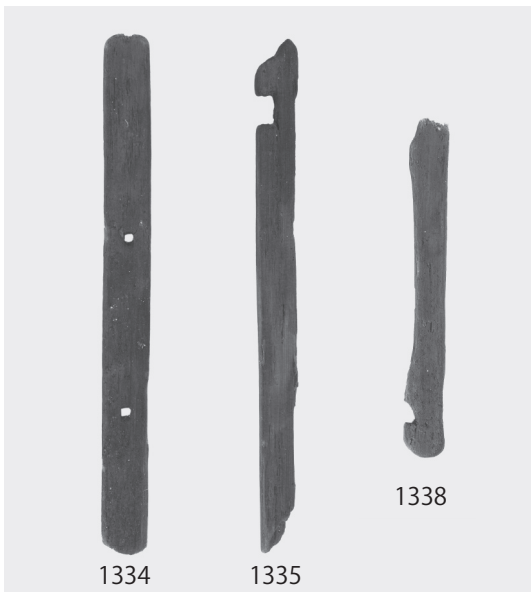
1330 (下面)



1330



1341



1334

1335

1338

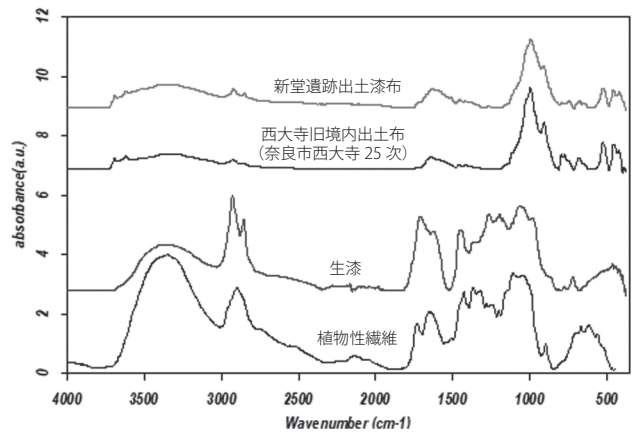


1342

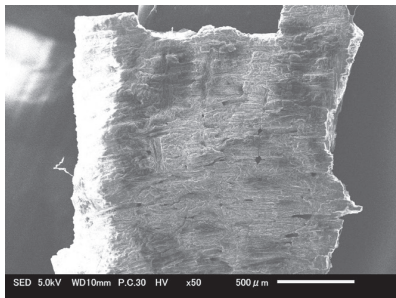
图版 134

2区
河道出土木製品

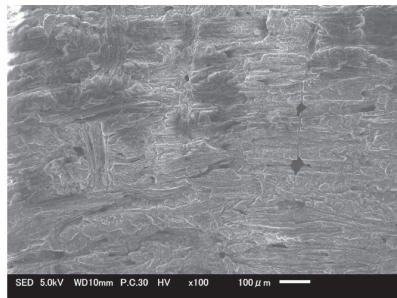




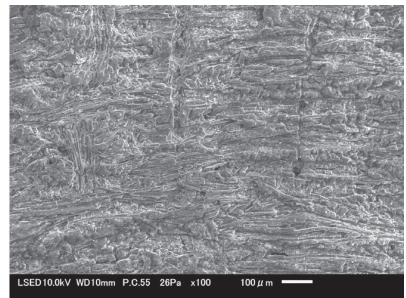
漆布の IR スペクトル



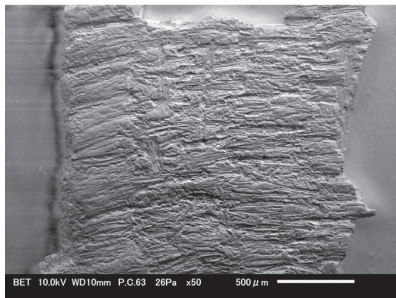
1 ト419 (二次電子像)



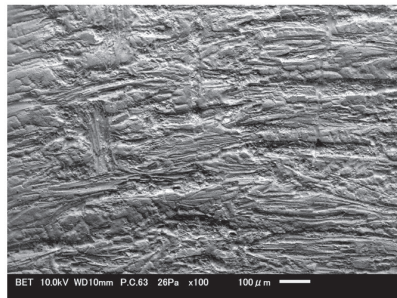
2 ト419(二次電子像)



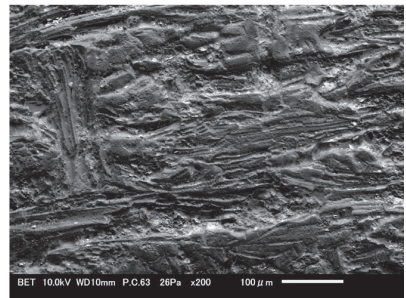
3 ト419 (低真空二次電子像)



4 ト419(低真空反射電子凹凸像)

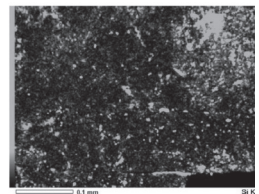
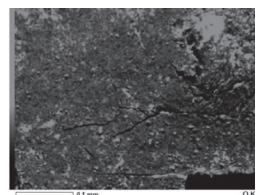
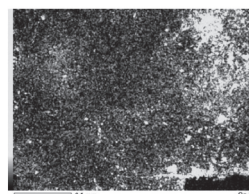
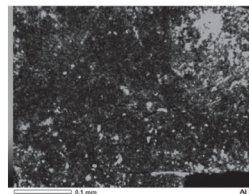
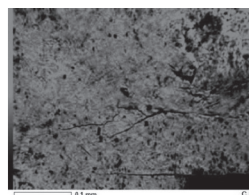
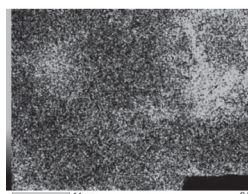
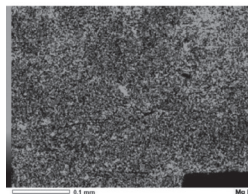
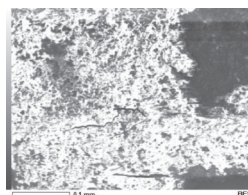
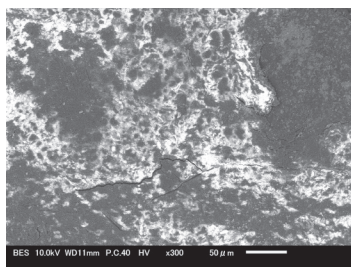
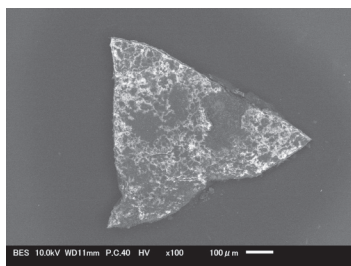


5 ト419低真空反射電子凹凸像)

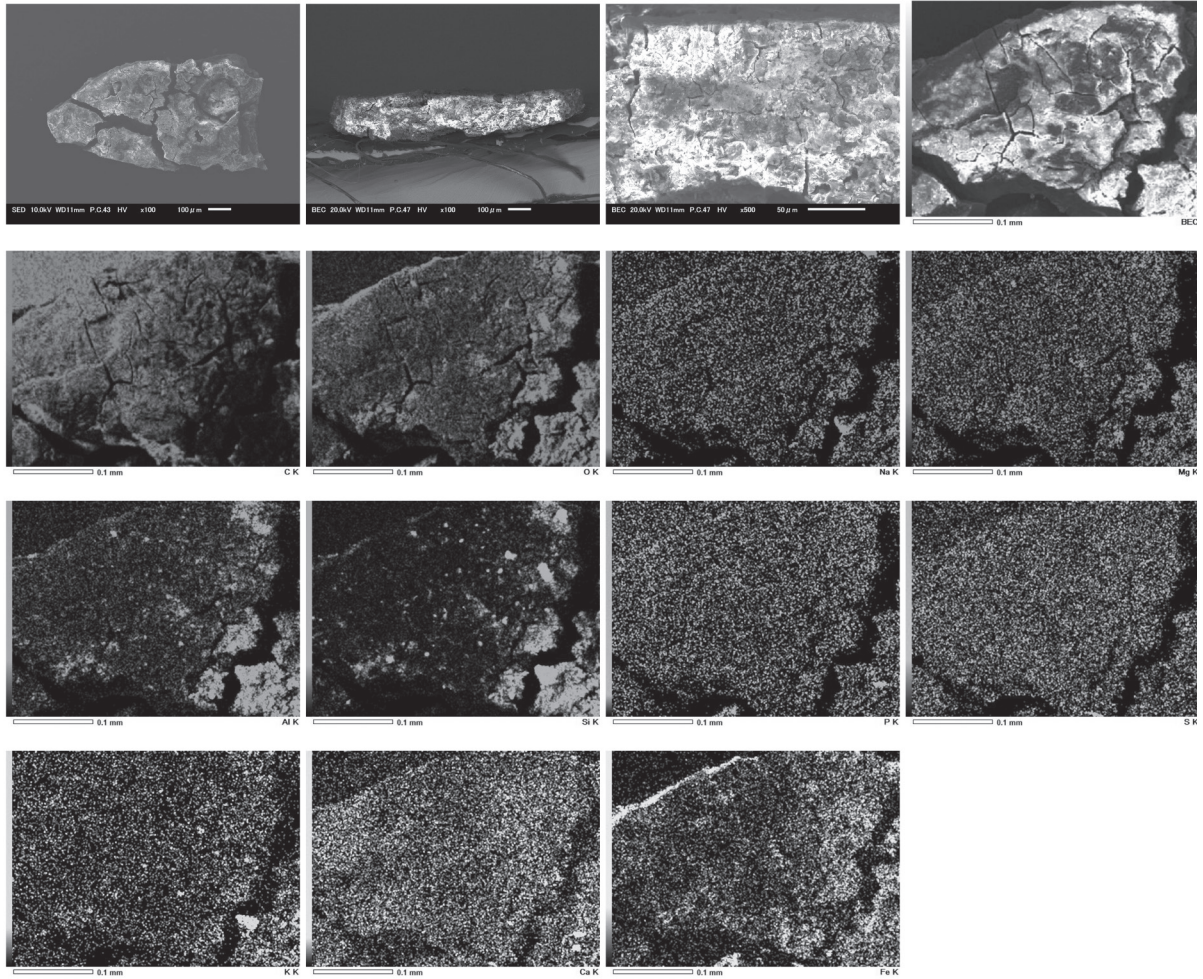


6 ト419低真空反射電子凹凸像)

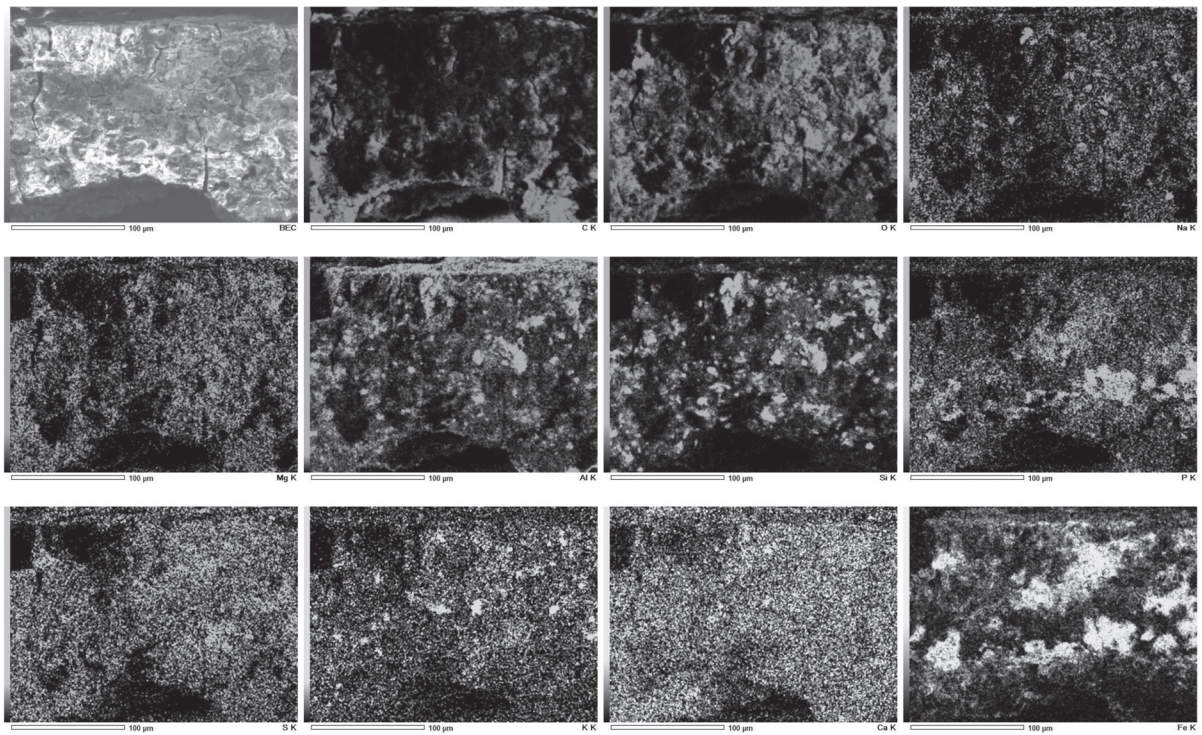
419 の SEM 像



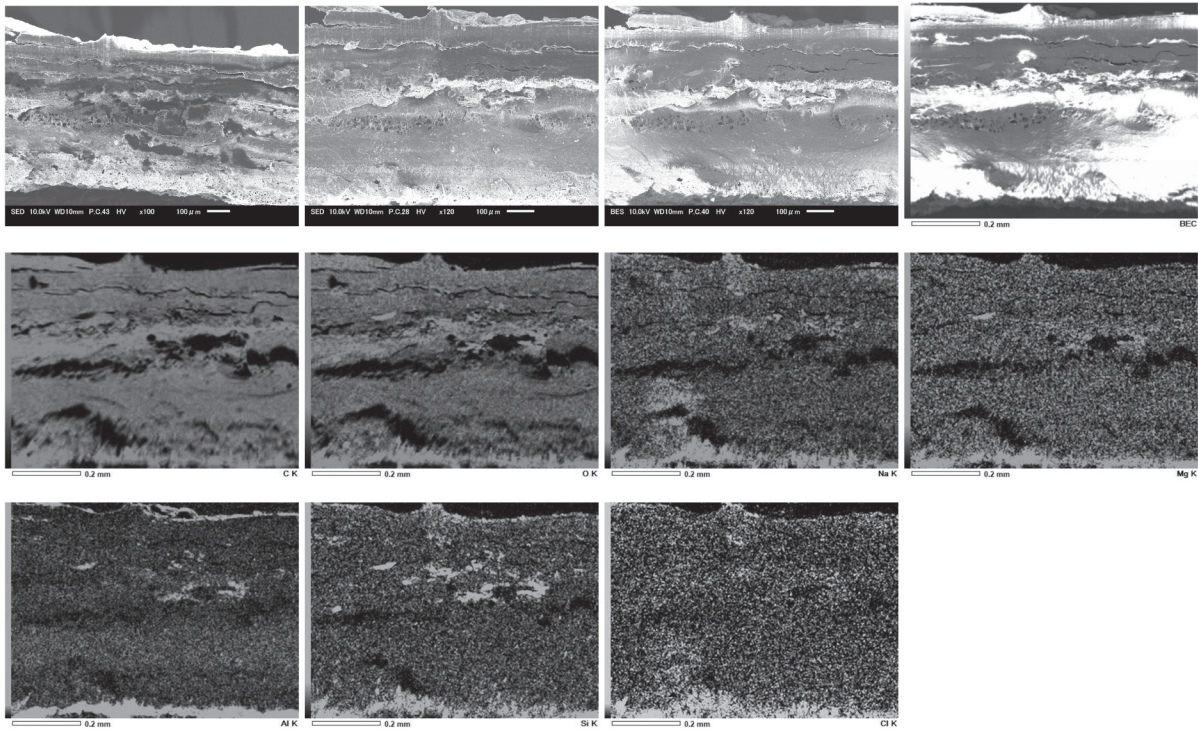
420 おもて面の SEM 像 (左上下) と元素 MAP



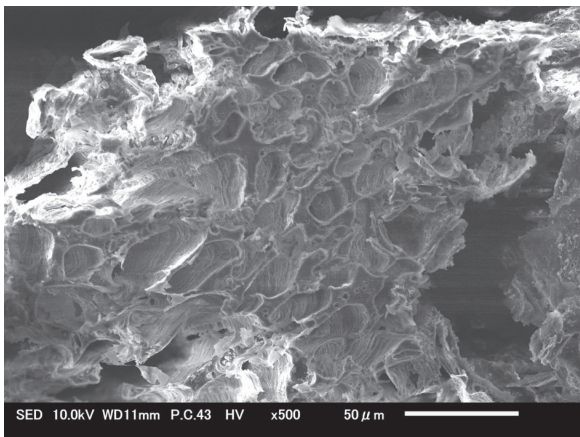
422 おもて面の SEM 像（最上段左 3 枚）と元素 MAP(最上段最右以下)



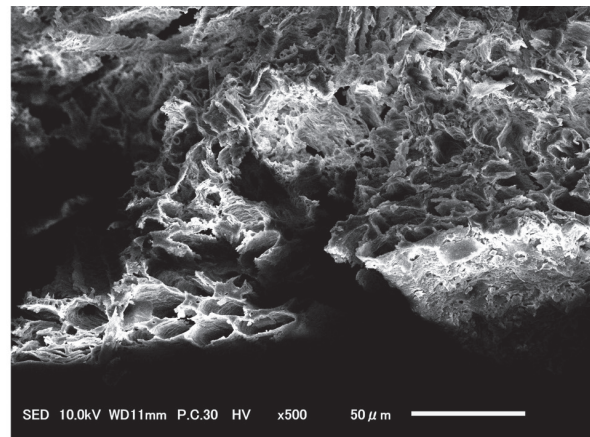
422 断面の元素 MAP（上がおもて面）



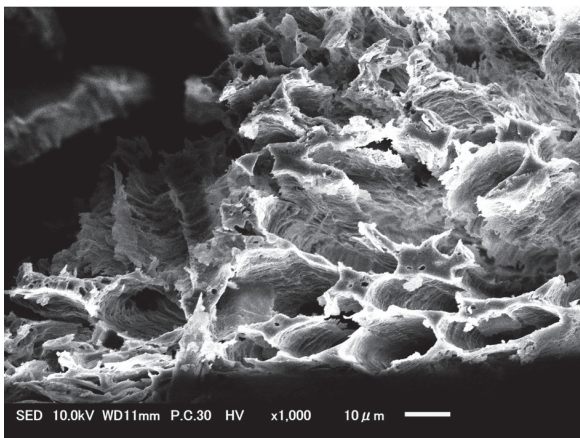
427 断面の SEM 像 (最上段左 3 枚) と元素 MAP(最上段最右以下、上がおもて面)



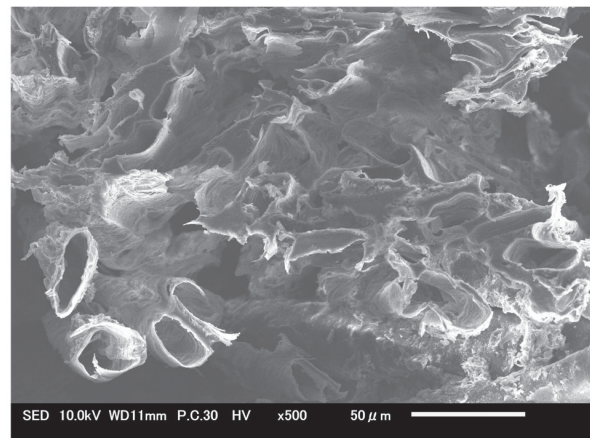
1 漆布 断面(二次電子像)



2 漆布 断面(二次電子像)



3 漆布 断面(二次電子像)



4 漆布 断面(二次電子像)

漆布の SEM 像

橿原市埋蔵文化財調査報告 第16冊

新堂遺跡Ⅳ

— 大型商業施設建設に伴う発掘調査報告書 —

発行年月日 令和2（2020）年3月27日

編集・発行 奈良県橿原市教育委員会

印刷 株式会社アイプリコム

奈良県磯城郡田原本町千代360-1