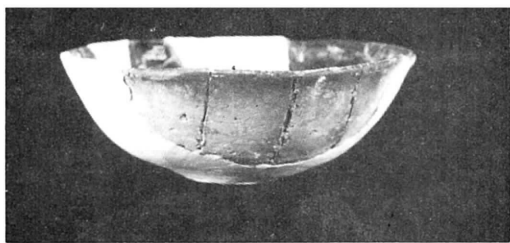
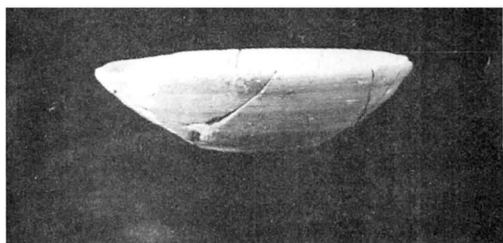


- 1 : A区ピット群全景
- 2 : 同上 南地区ピット群全景
- 3 : 同上 No.48ピット付近全景
- 4 : X C03掘込み土壇全景
- 5 : 御飯屋堀跡セクション
- 6 : 郷倉跡根石群検出状況全景
- 7 : 同上 土壇全景



1



7



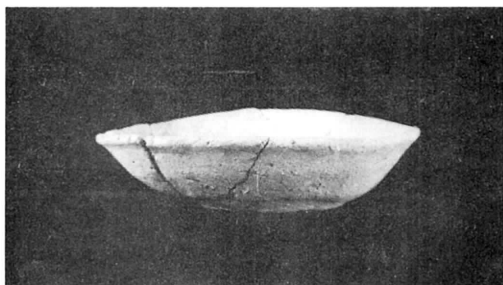
2



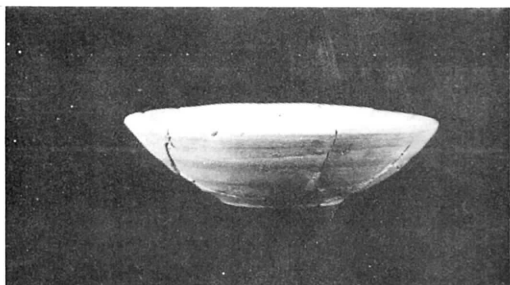
8



3



9



4



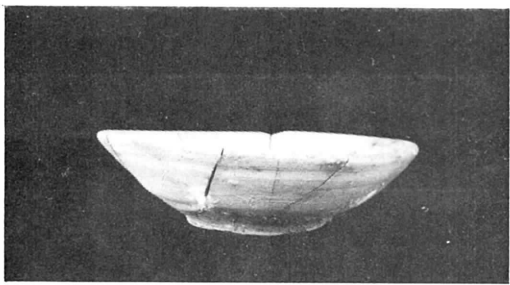
10



5



11



6

X H09住居跡出土土器

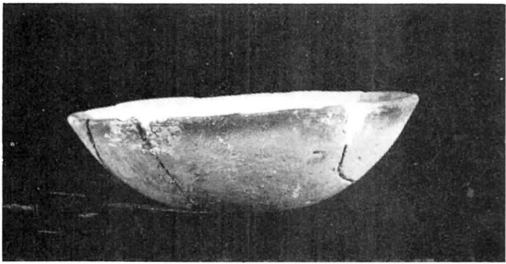
1～3：土師器 坏 (約1/3)

4～10：赤焼土器 坏 (約1/3)

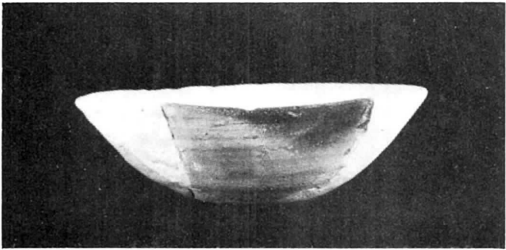
11：同上 高台付坏 (約1/3)



1



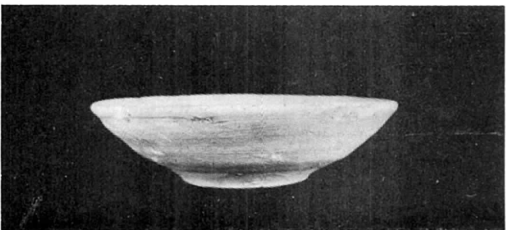
2



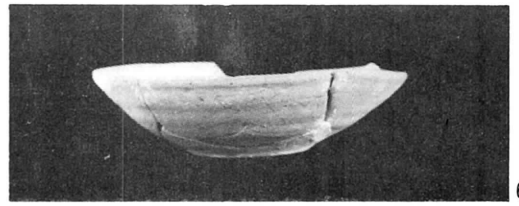
3



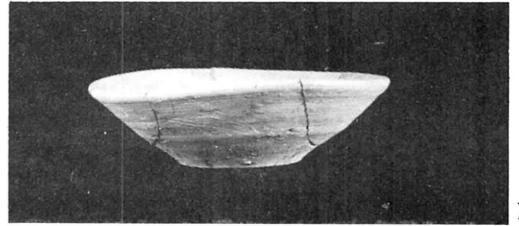
4



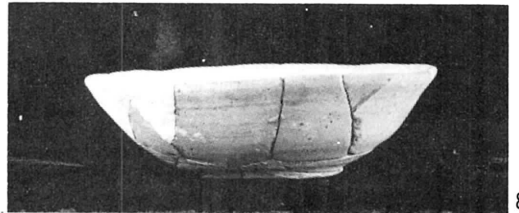
5



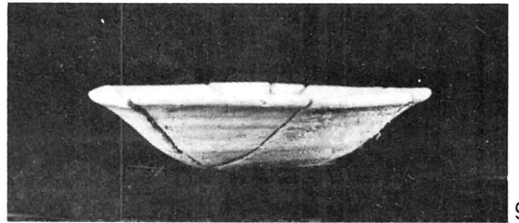
6



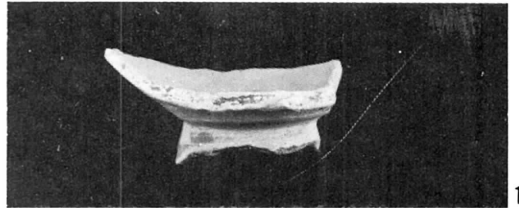
7



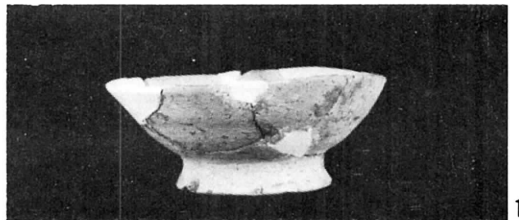
8



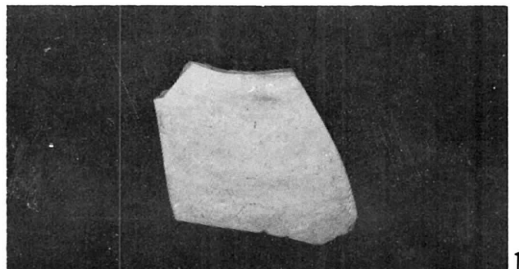
9



10

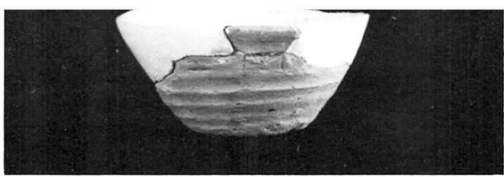


11

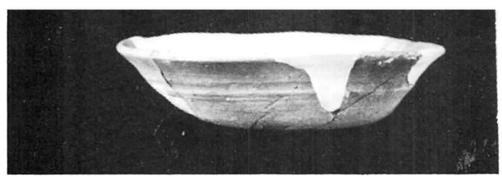


12

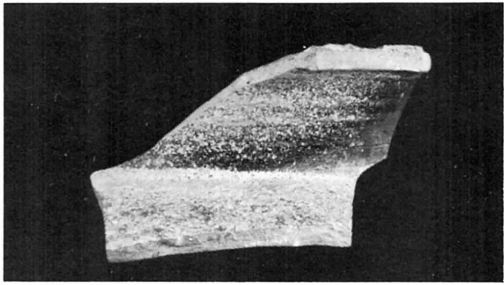
1 : X J03住居跡出土砥石 (約1/4)
 2 ~ 3 : A C15住居跡、土師器坏 (約1/3)
 4 ~ 9 : 同上 赤焼土器、坏 (約1/3)
 10 ~ 11 : 同上 高台付坏 (約1/3)
 12 : 同上 短頸瓶 (肩部付近) (約1/3)



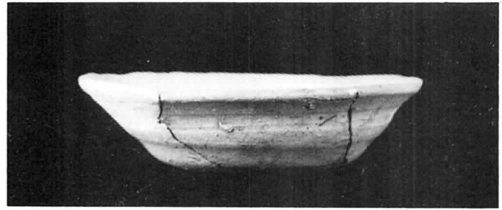
1



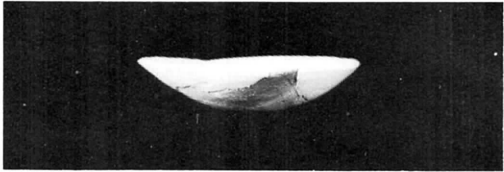
9



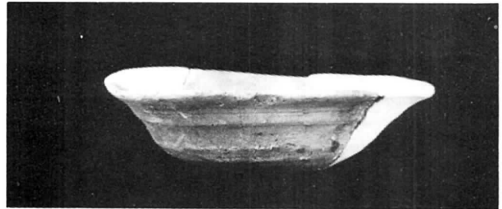
2



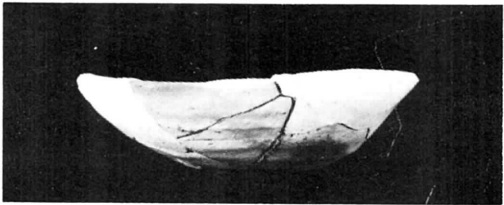
10



3



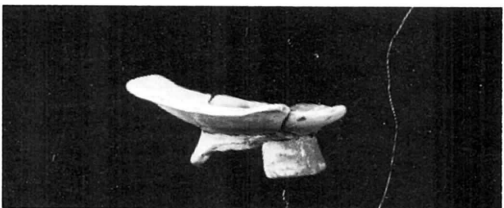
11



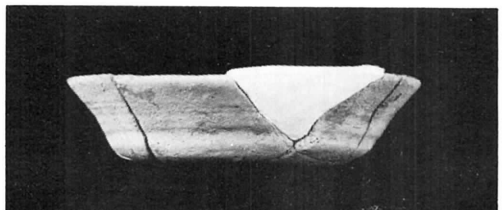
4



12



5



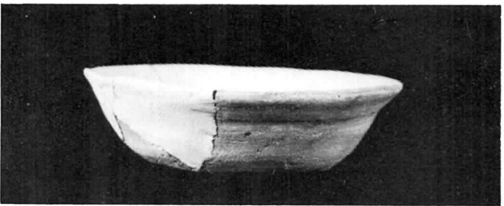
13



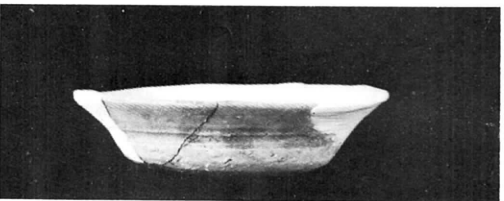
6



14



7



8

1. 2 : AE12 (I期) 住居跡出土土器 (約1/3)

3. 4 : AG18 (I期) 住居跡出土
土師器. 坏 (約1/3)

5 : 同上 土師器. 高台付坏 (約1/3)

6 ~ 13 : 同上 赤烧土器. 坏 (約1/3)

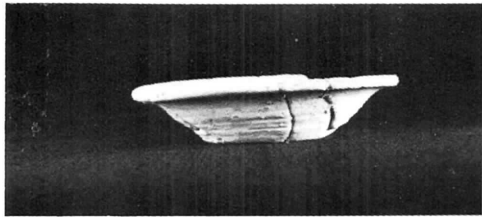
14 : 同上 高台付坏 (約1/3)



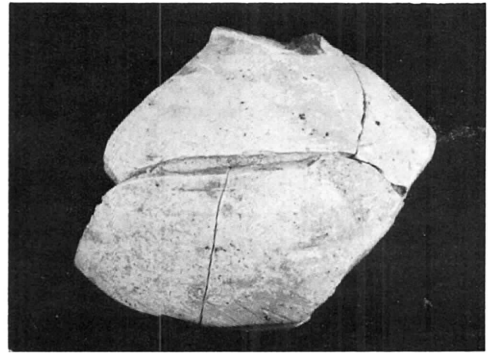
1



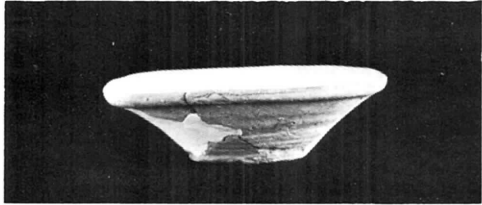
9



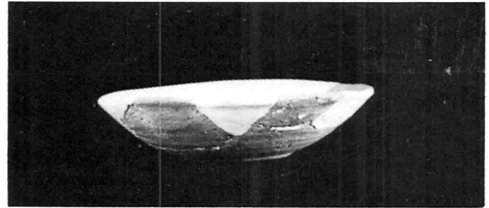
2



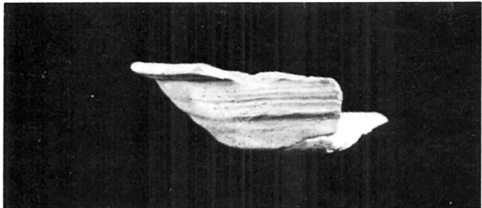
10



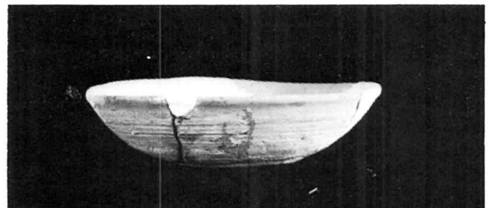
3



11



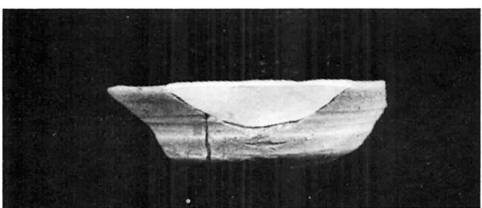
4



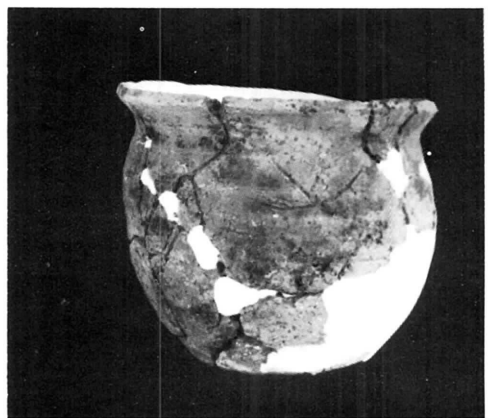
12



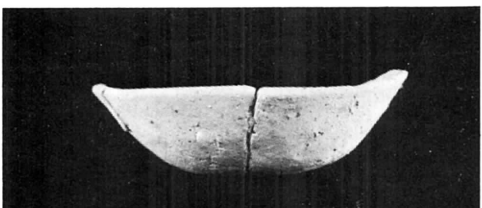
5



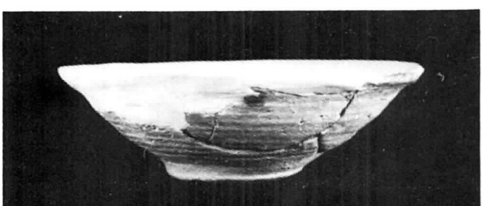
6



13



7



8

1~10: AG18 (II期) 住居跡出土土器

1: 土師器、坏 (約1/3)

2~8: 赤烧土器、坏 (約1/3)

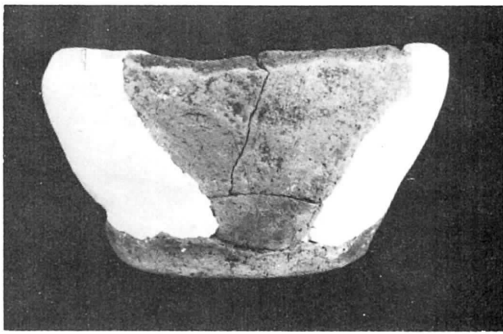
9: 同上 高台付坏 (約1/3)

10: 須恵系土器、長頸瓶 (約1/3)

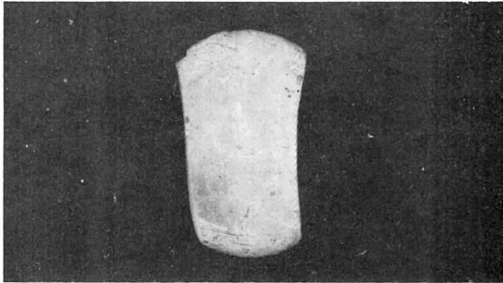
11、12: AF24住居跡出土土器

赤烧土器、坏 (約1/3)

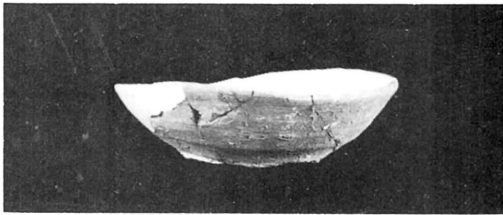
13: 土師器、甕 (約1/3)



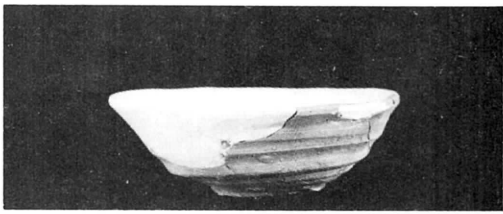
1



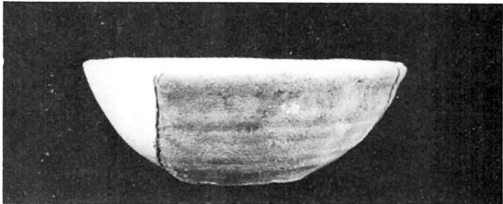
2



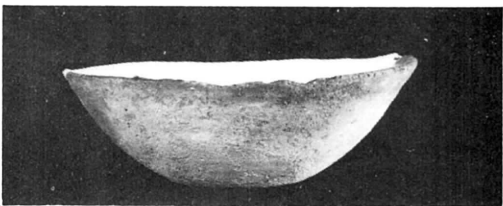
3



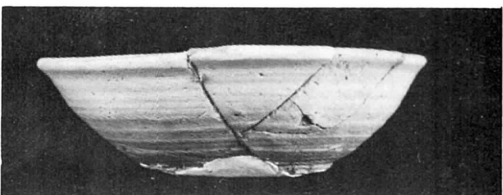
4



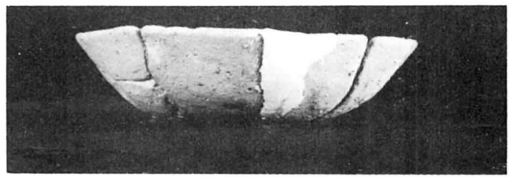
5



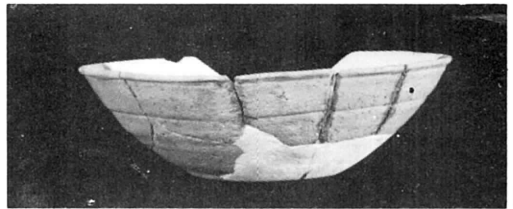
6



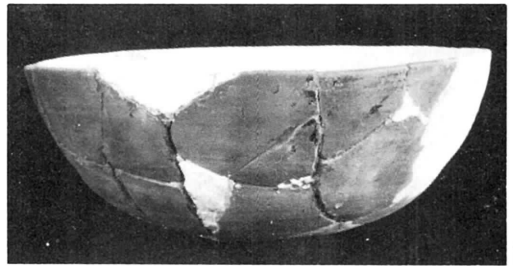
7



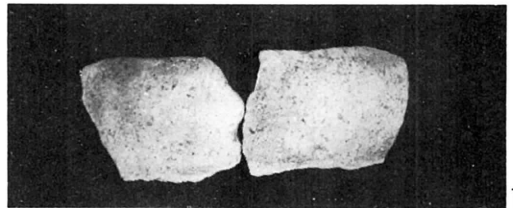
8



9



10



11



12

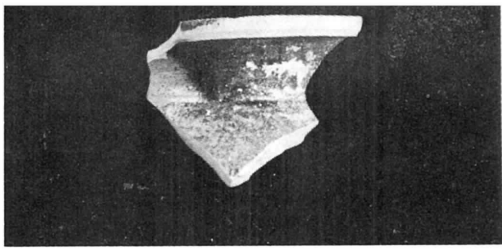


13



14

1 : BA18住居跡、土師器、甕 (約1/4)
 2 : 同上 砥石 (約1/3)
 3 ~ 5 : BC09住居跡、坏 (約1/3)
 6 : CH18住居跡出土土師器坏 (約1/3)
 7 : AH12ピット出土、赤焼土器坏 (約1/3)
 8 ~ 14 : 遺構外出土土器



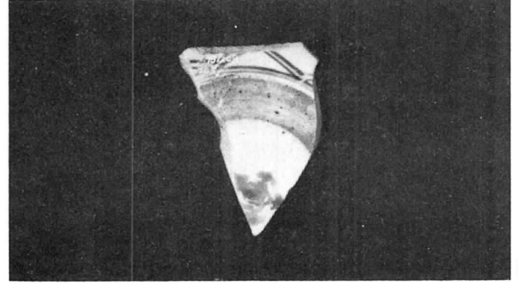
1



7



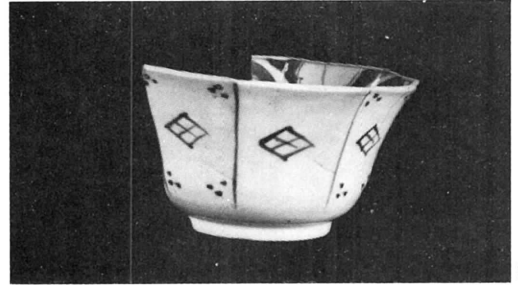
2



8



3



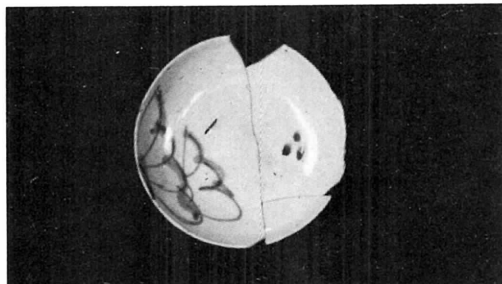
9



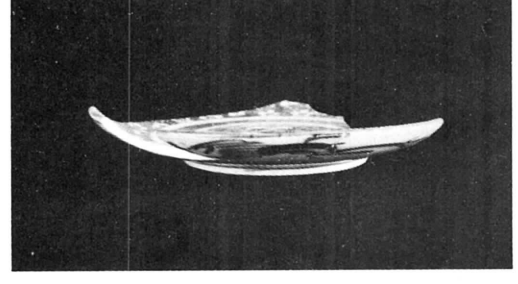
4



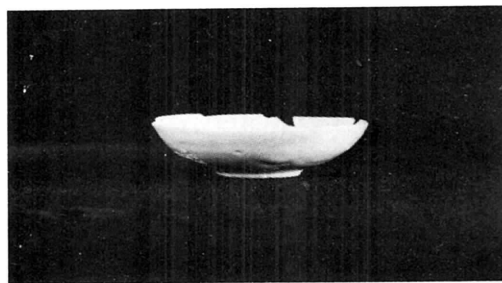
10



5

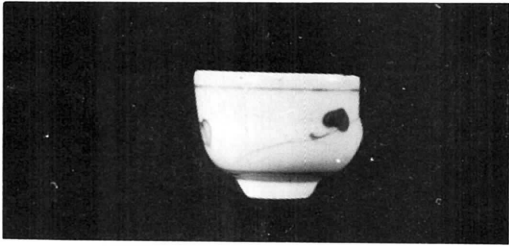


11

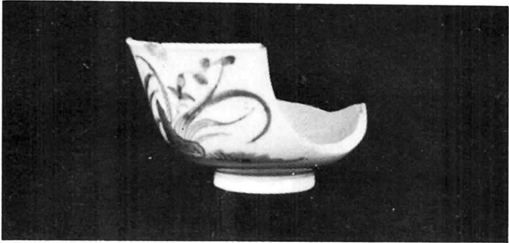


6

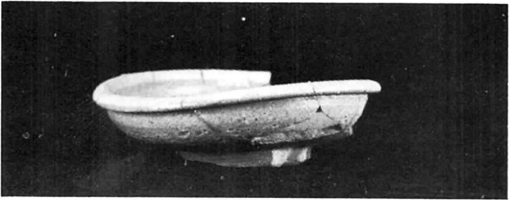
1 ~ 4 : 御飯屋堀跡出土遺物 (約1/3)
5 . 6 : 石敷遺構出土小皿 (約1/3)
7 ~ 11 : 陶磁器類 (約1/3)



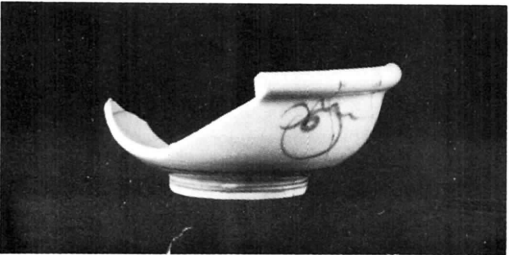
1



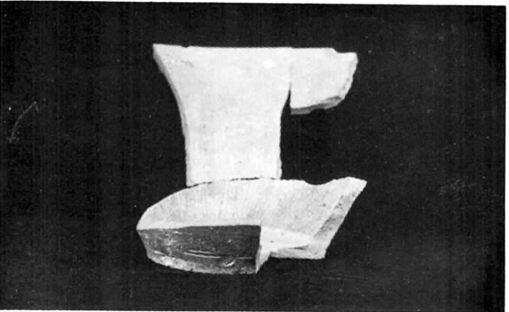
2



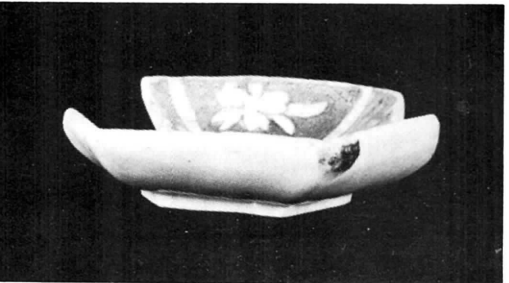
3



4



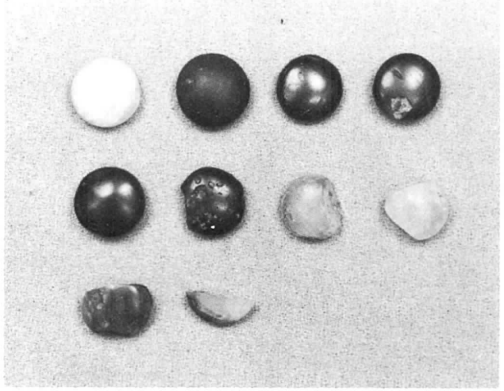
5



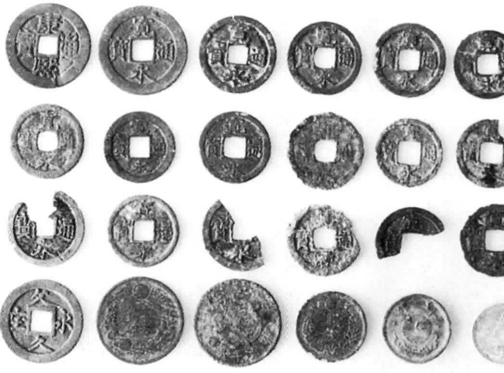
6



7

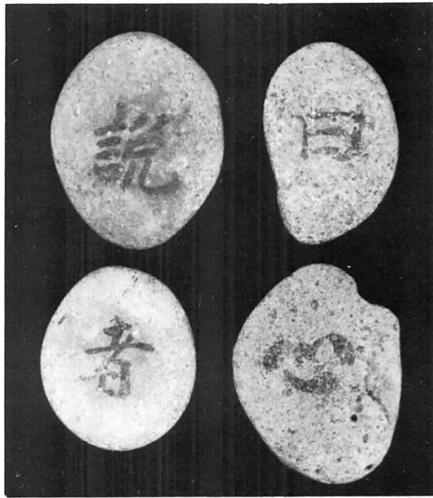


8

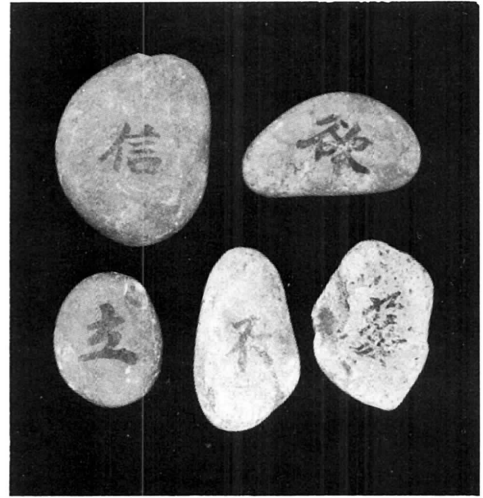


9

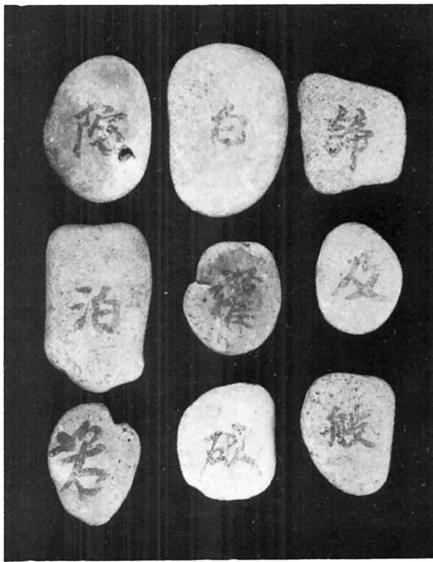
1～7：陶磁器類
8：碁石
9：古銭及び現代貨幣



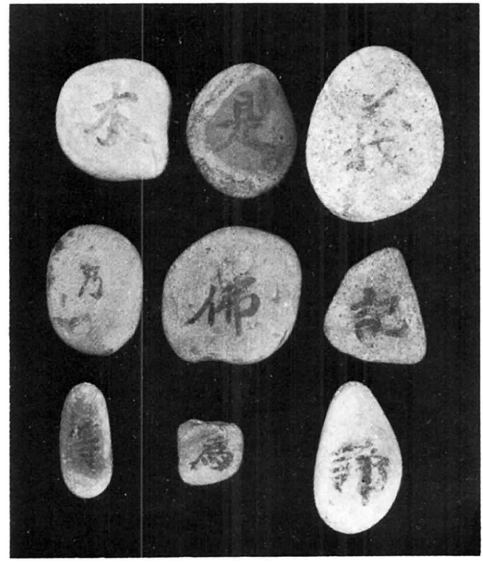
1



2



3

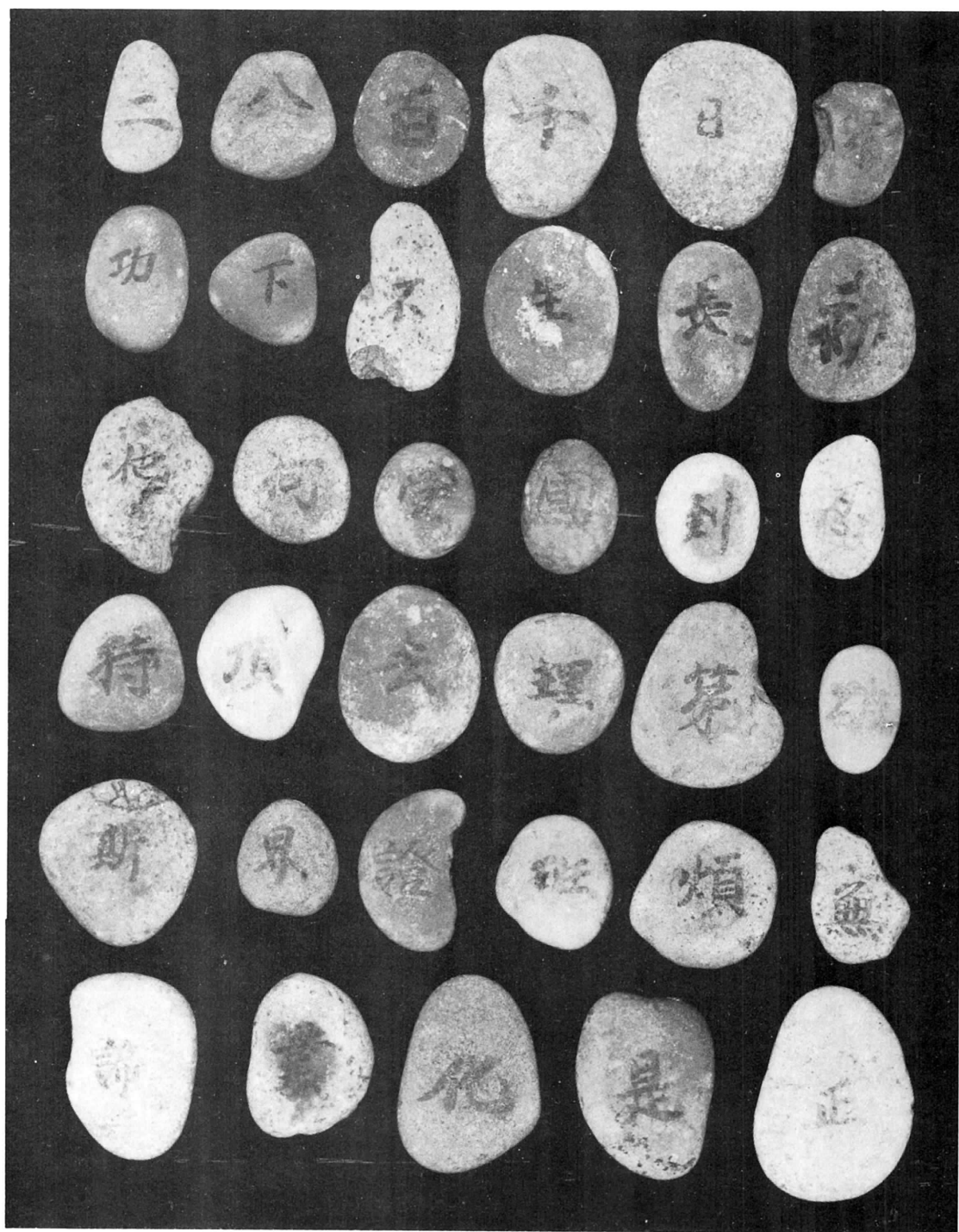


4



5

1~5：一字一石經石



二 八 百 千 日 衆 持 頂 去 理 第 破
 功 下 不 生 長 初 斯 界 證 班 煩 無
 他 何 受 國 到 忍 諦 業 化 是 正



1



2



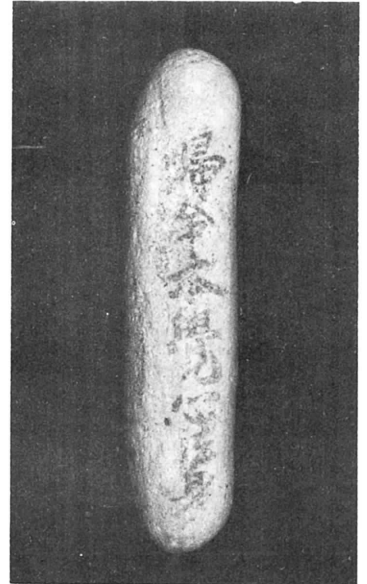
3



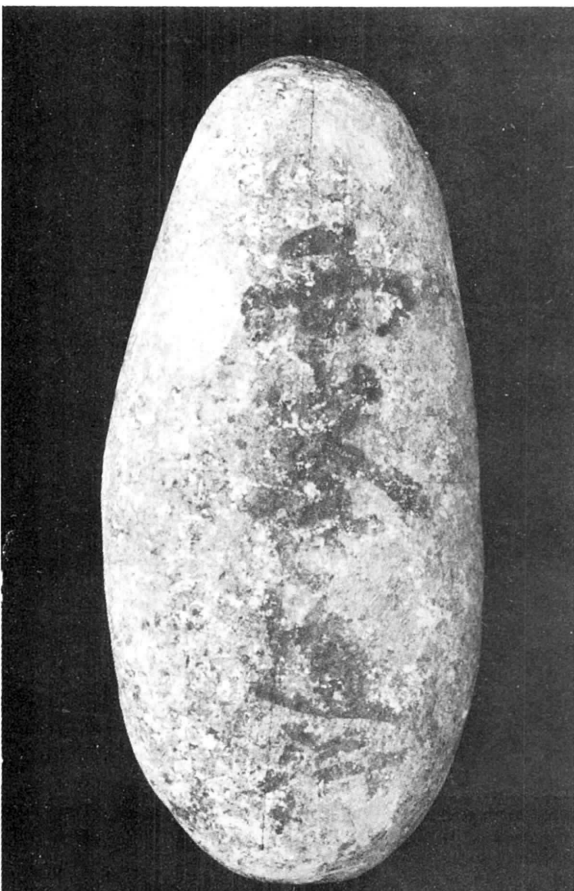
4



5



6



7

1~7: (多字石)

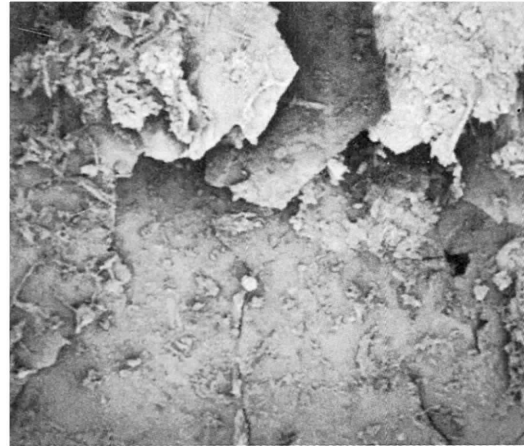
1: 奉供養仁王經

4: 為金剛儀現菩提 (表)

5: (4)の裏

6: 婦命本覺心法身

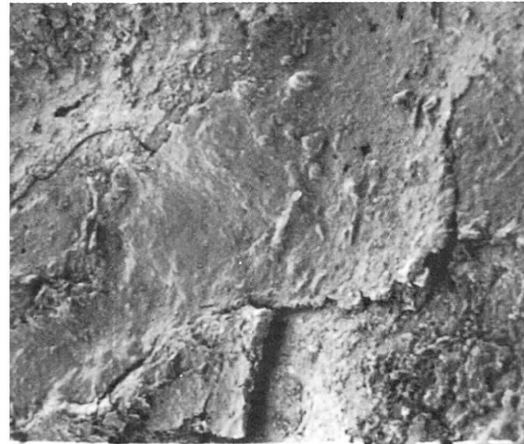
7: 西峯道行



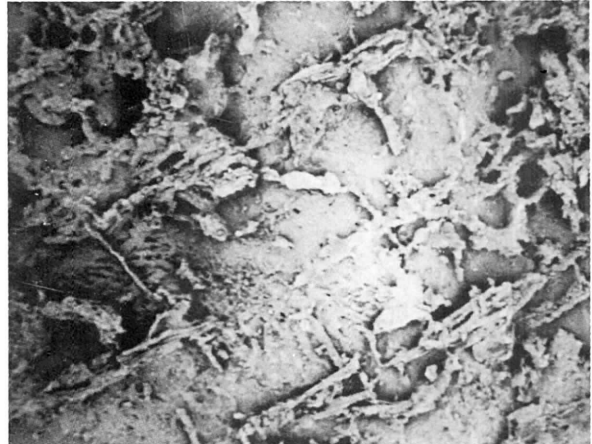
1



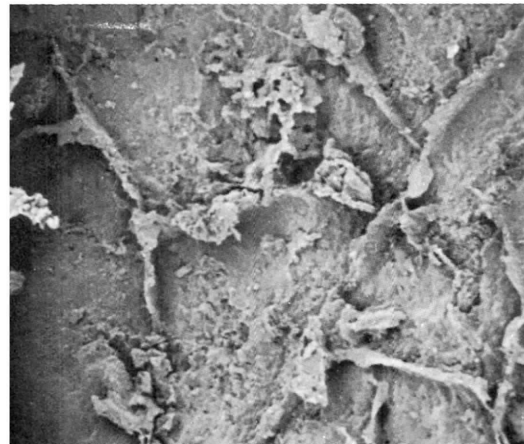
4



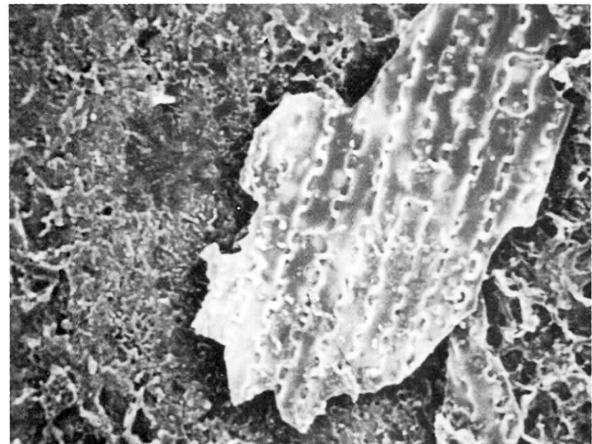
2



5



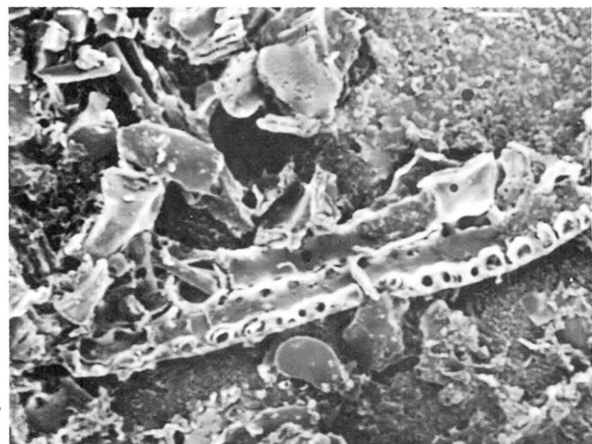
3



6

電子顕微鏡写真 (走査型)

- 1 : X32
- 2 : X51
- 3 : X130
- 4 : X50
- 5 : X130
- 6 : X500
- 7 : X520



7

おち 落 ^{あい}合 II 遺 跡



1



2

1. 遺跡全景
2. 新幹線工事で掘削されたAブロック、旧河道跡
(矢印の位置から遺物が出土した)



1



2

1. A調査区、調査開始の状況

2. 同上

旧河道跡土層断面



旧河道跡土層断面



西側旧河道跡断面



1



1. 遺物出土状況
2. 遺物出土状況
(西側から撮影)

2



1



2

1. 遺物出土状況
2. 同上 (AG09付近)



遺物出土状況

坏・BⅢ a-ア (3) No. 1他

1



遺物出土状況

壺・BⅡ b- (3) No. 2他

2



遺物出土状況

(A F06付近)

壺・BⅡ b- (3) No. 4他

3

遺物出土状況
壺・BⅡ b - (3) No. 1他

1



遺物出土状況

2



遺物出土状況
坏・BⅠ c - ア (5) No. 1他

3





遺物出土状況

1



遺物出土状況

2



土錘出土状況

3

槌出土狀況



槌出土狀況



槌出土狀況





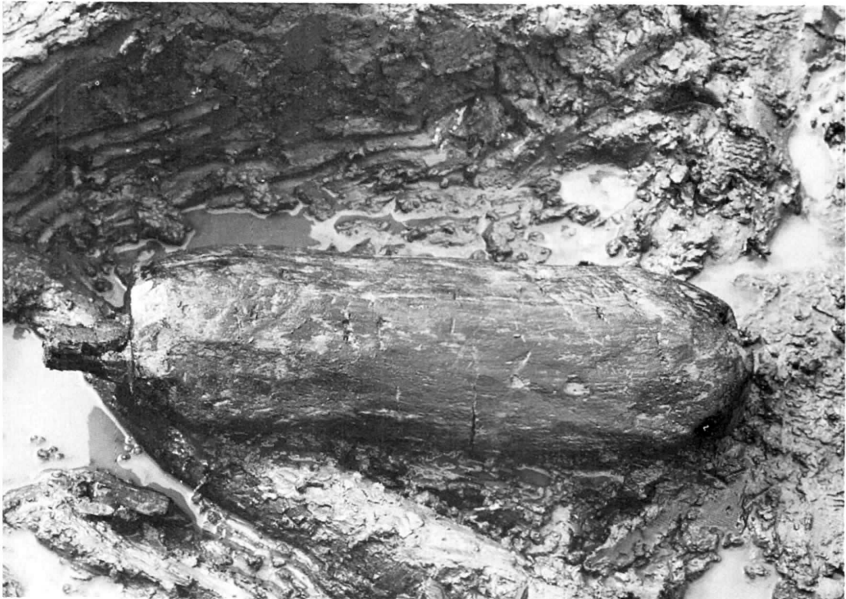
錘出土狀況

1



槽出土狀況

2



槽出土狀況

3

槌の子出土状況

1



うき出土状況

2



下駄出土状況

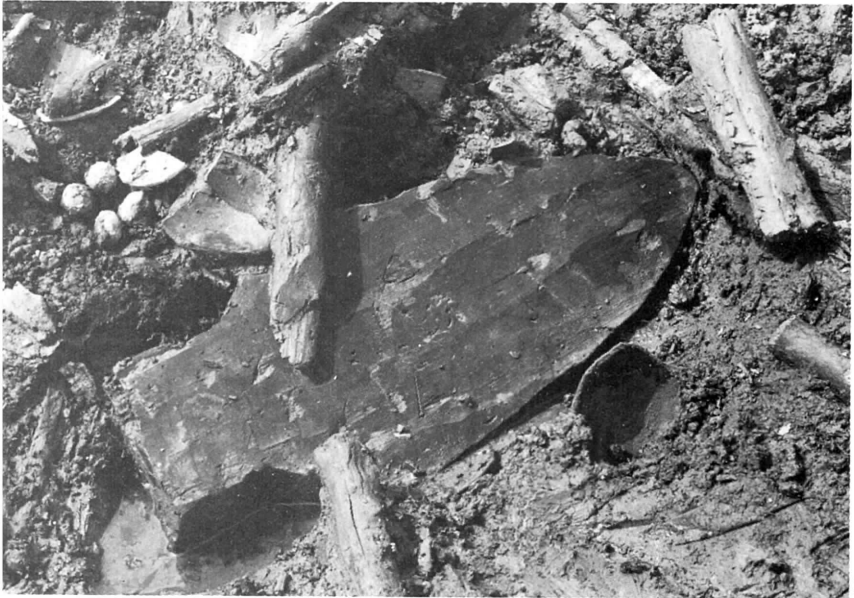
3





鋤出土状況

1



鋤出土状況

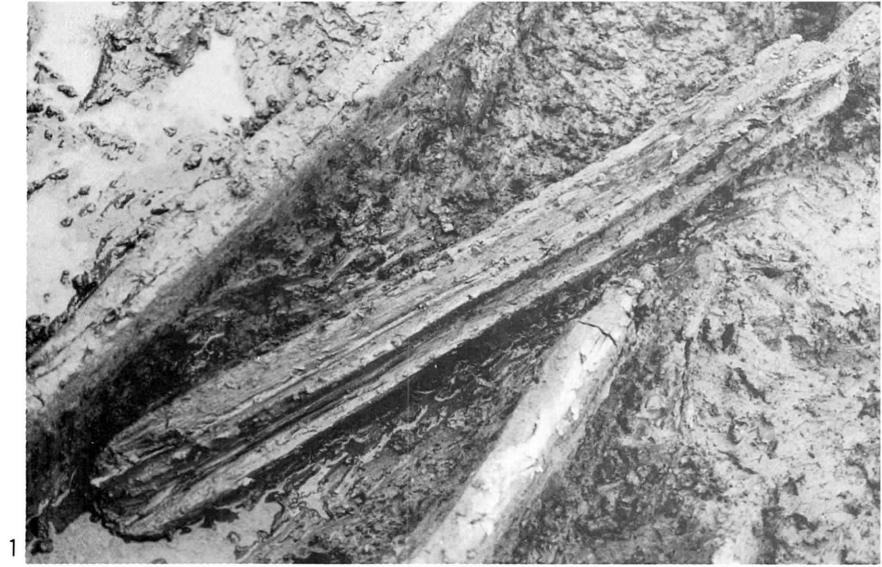
2



鋤出土状況

3

転ばし出土状況

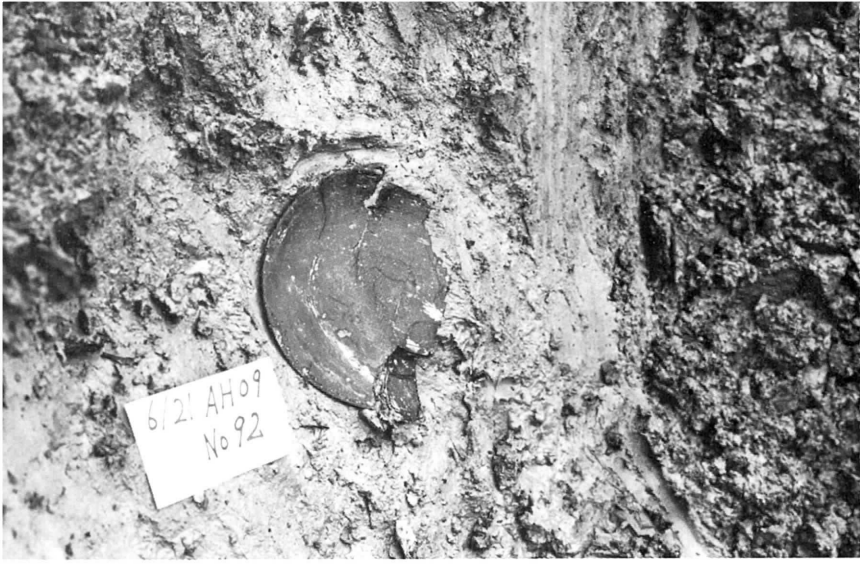


杵出土状況



加工木出土状況





腕出土状況

1



腕出土状況

2



腕出土状況

3

木皿出土状況

1



木皿出土状況

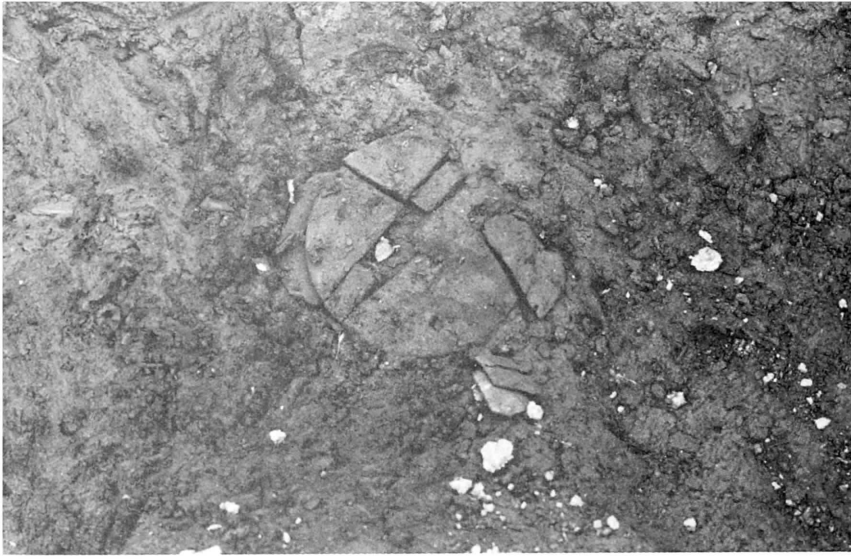
2



木皿出土状況

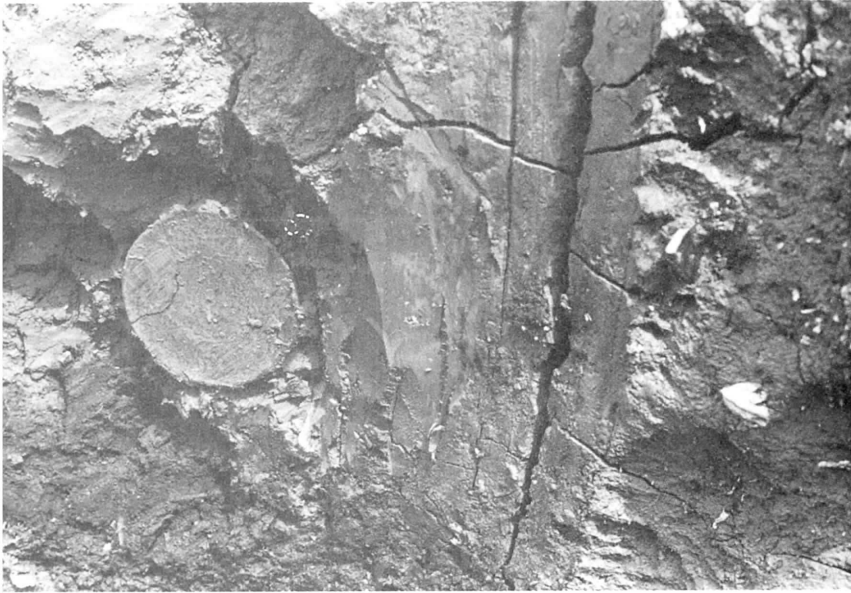
3





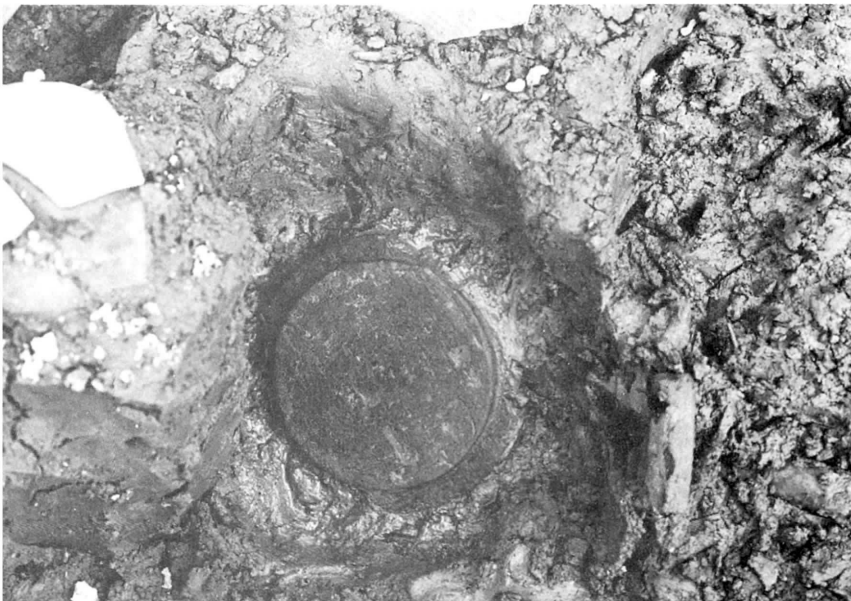
木皿出土状況

1



木皿出土状況

2



木皿出土状況

3

木皿出土状況

1



木皿出土状況

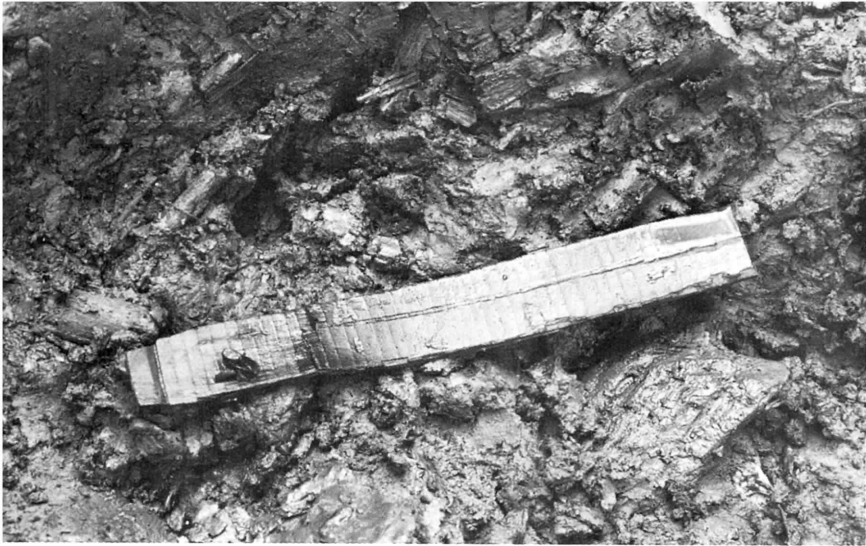
2



木皿出土状況

3





曲物側板出土狀況

1



曲物出土狀況

2



骨片出土狀況

3

1号木簡出土状況

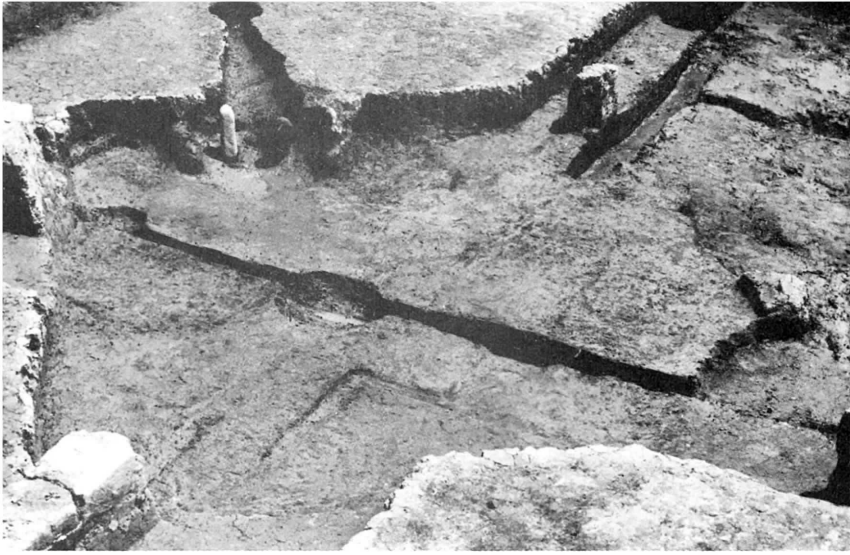


1

2号木簡出土状況



2



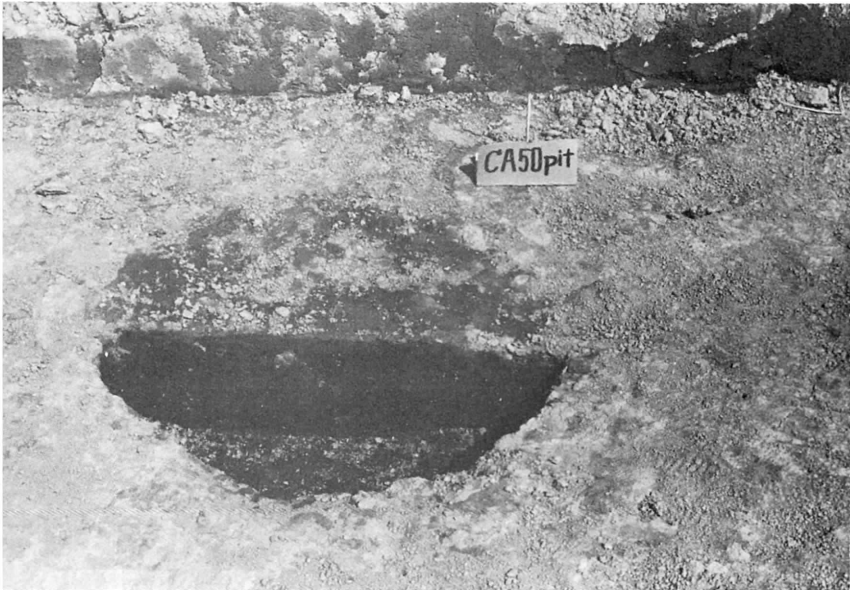
B J 50住居跡全景

1



同住居跡カマド跡

2



C A 50 P i t

3

調査状況



調査状況



調査状況





調査状況

1



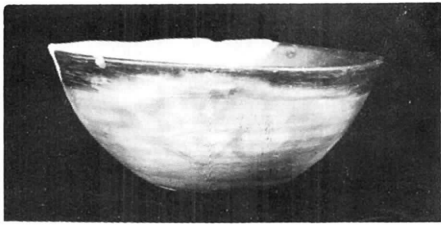
調査状況

2

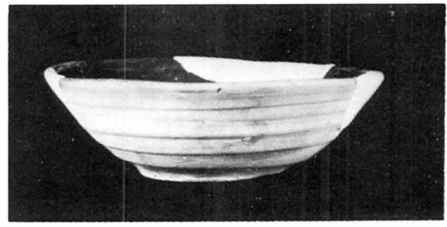


大雨の影響を
受けた A調査区

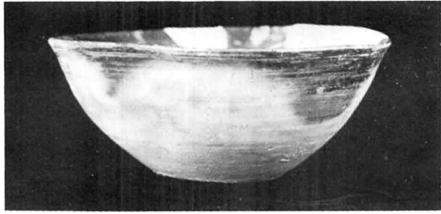
3



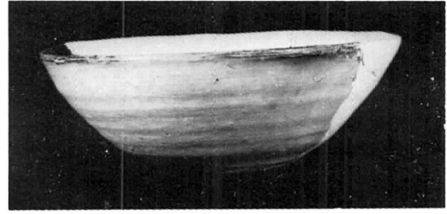
1



8



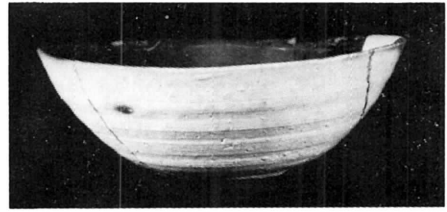
2



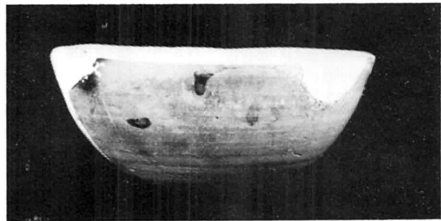
9



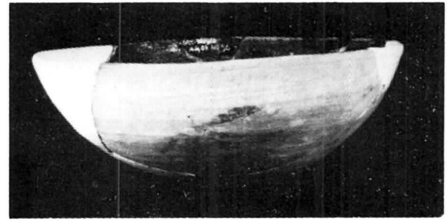
3



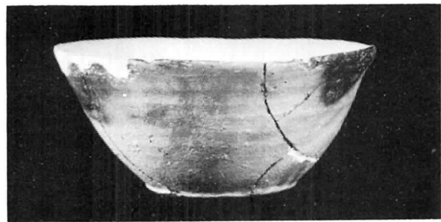
10



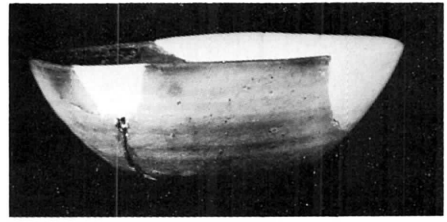
4



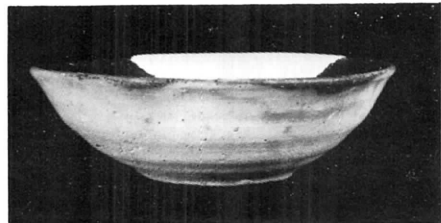
11



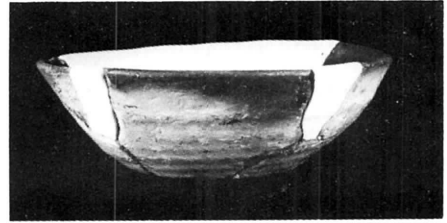
5



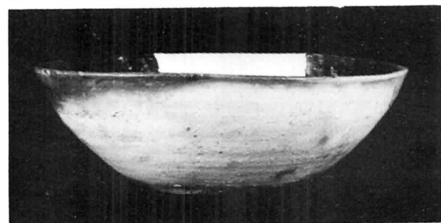
12



6



13

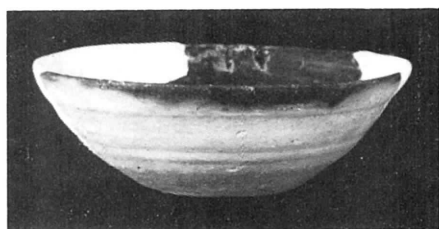


7

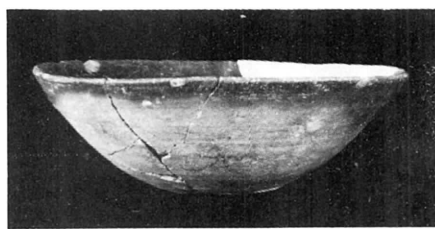


14

A区 出土土器 (环·BIa) 1/3



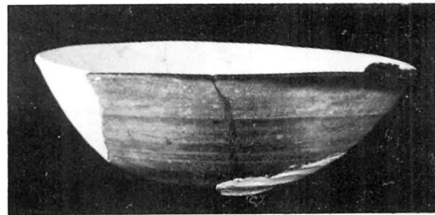
1



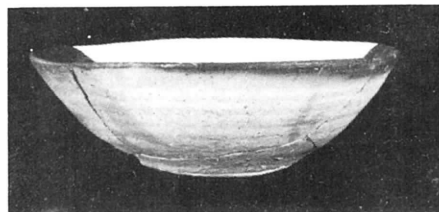
8



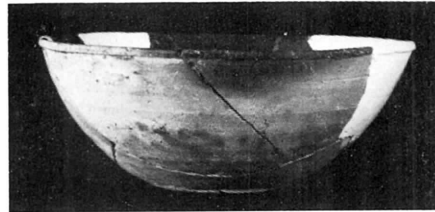
2



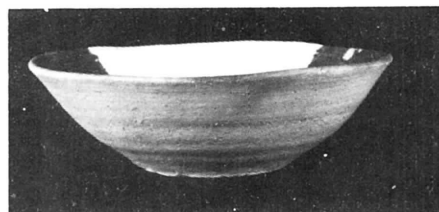
9



3



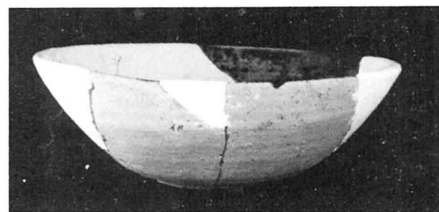
10



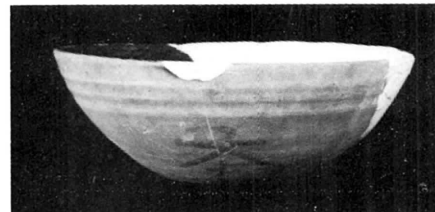
4



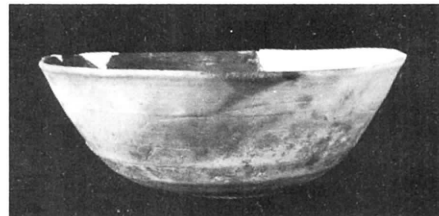
11



5



12



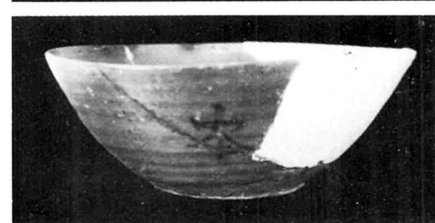
6



13

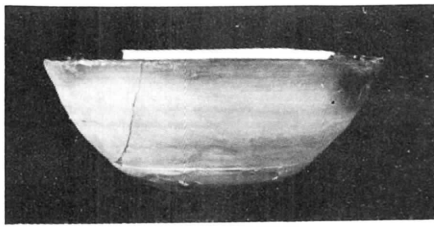


7

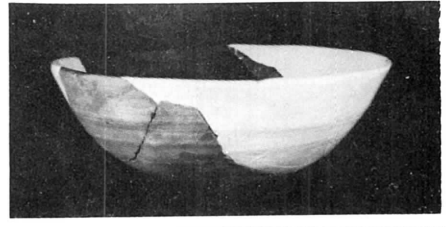


14

A区 出土土器 (坏·BIa) 1/3



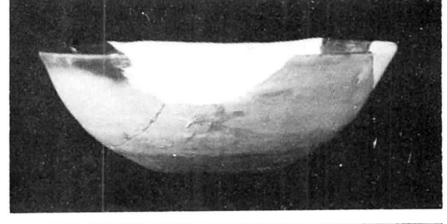
1



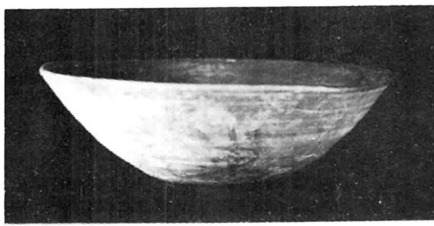
8



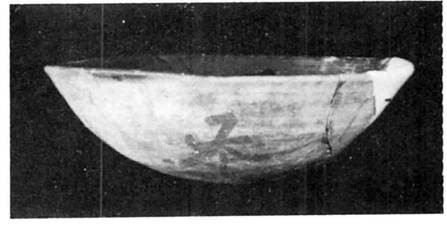
2



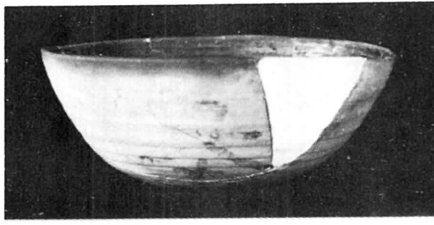
9



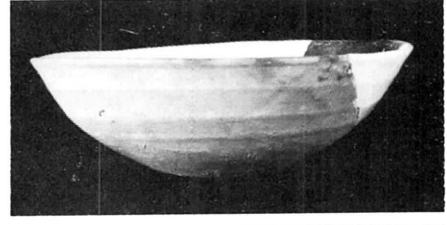
3



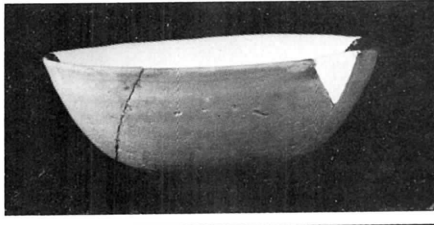
10



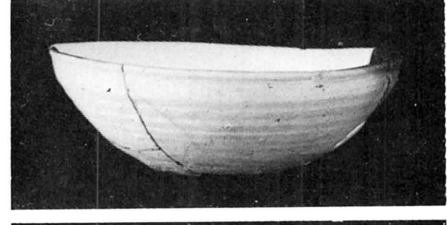
4



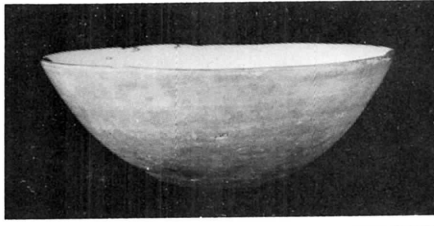
11



5



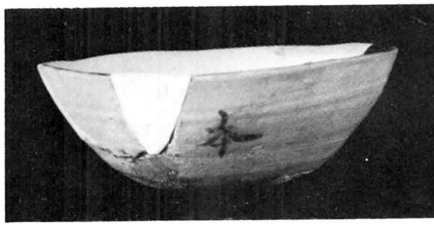
12



6



13

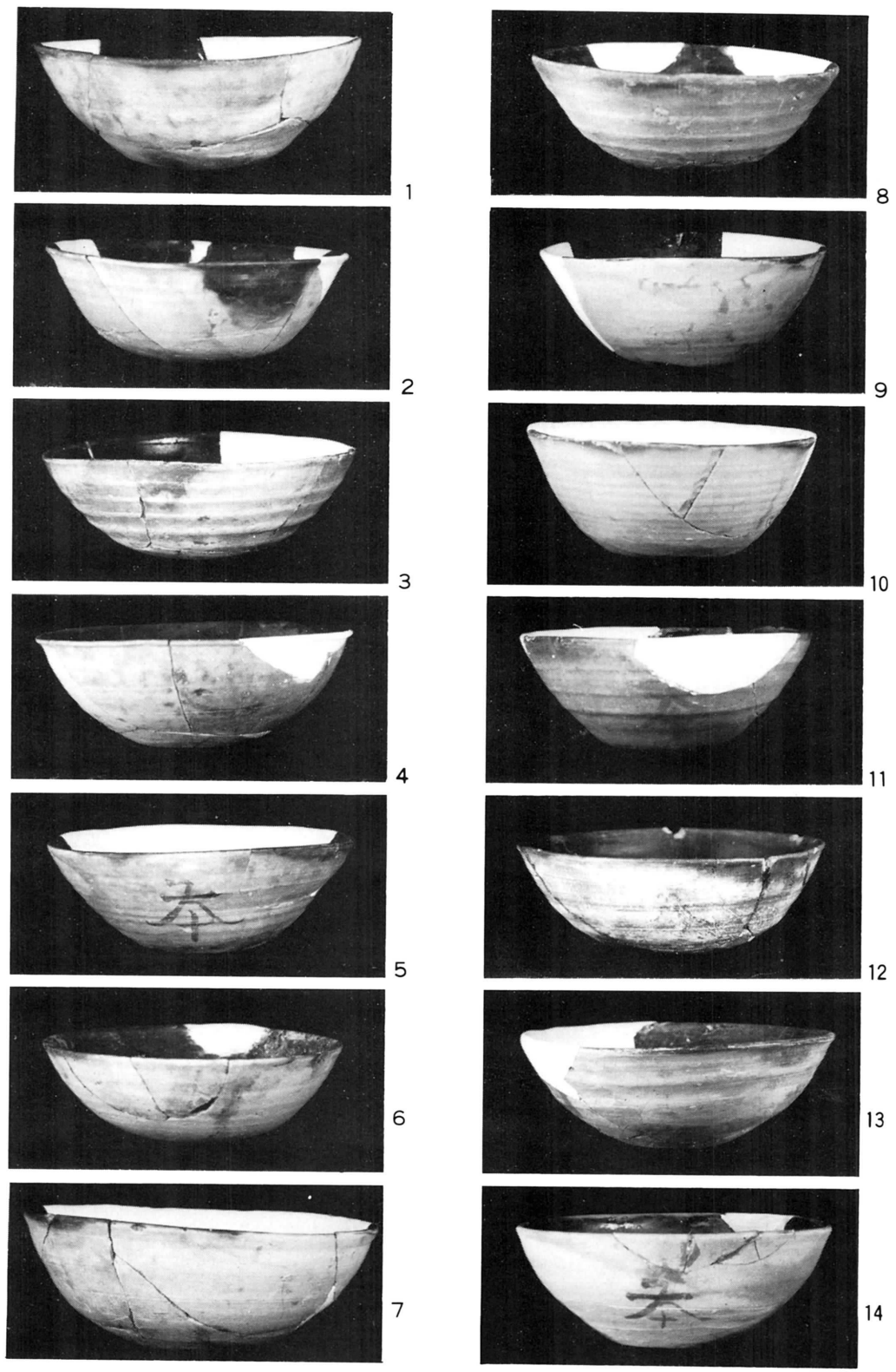


7

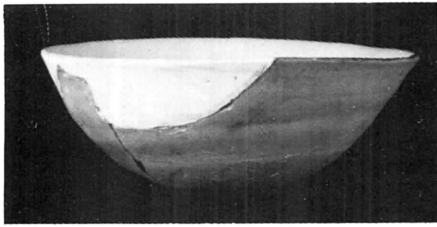


14

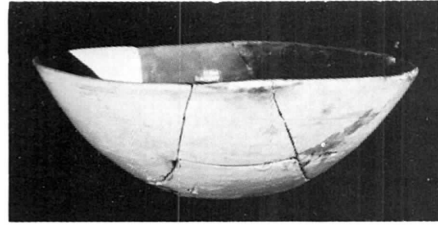
A区 出土土器 (环·BI b-H₁) 1/3



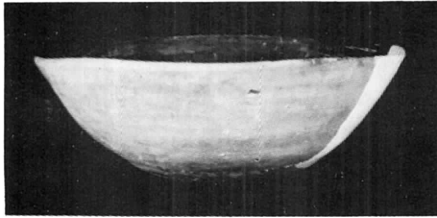
A区 出土土器 (坏·BI b-H₁·H₂) 1/3



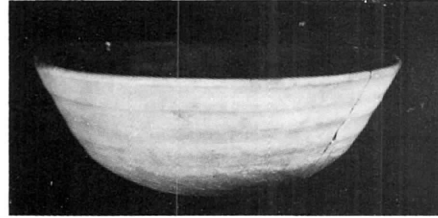
1



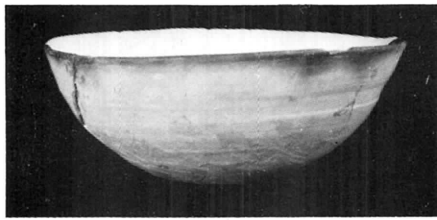
8



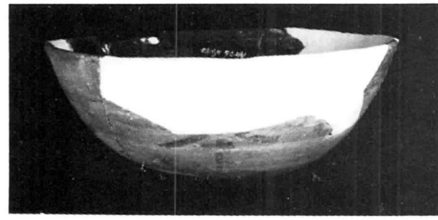
2



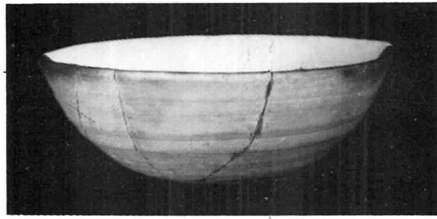
9



3



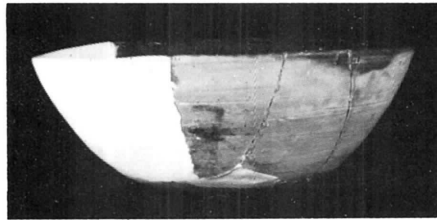
10



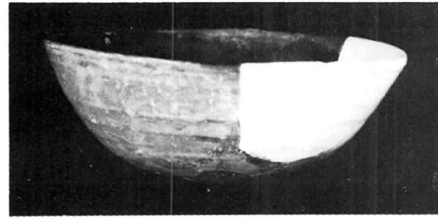
4



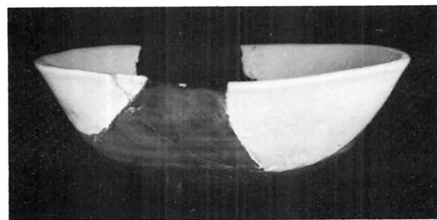
11



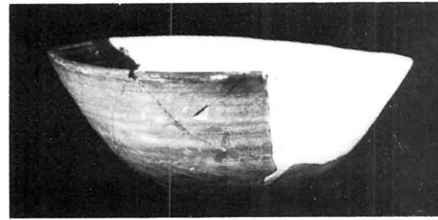
5



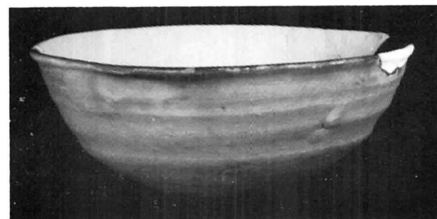
12



6



13



7



14

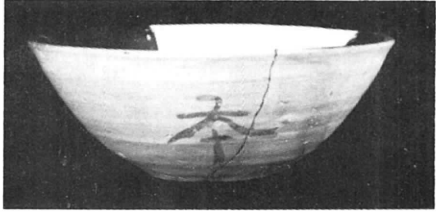
A区 出土土器 (坏·BI b-H₂) 1/3



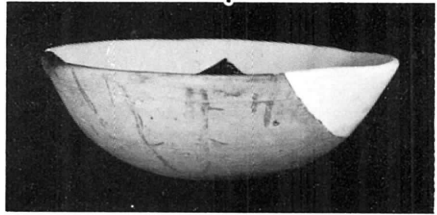
1



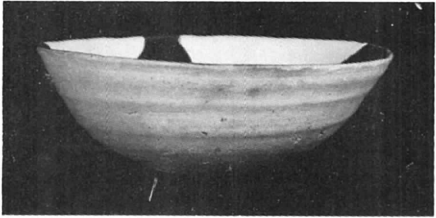
8



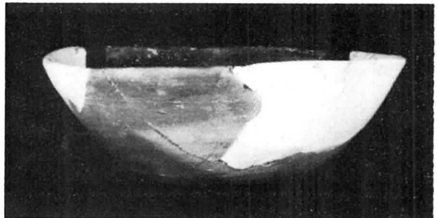
2



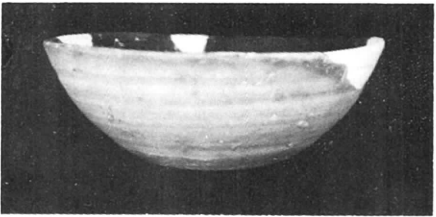
9



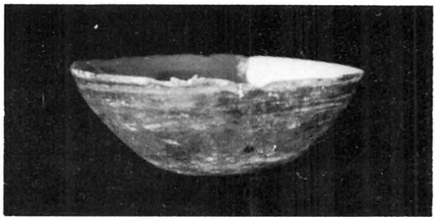
3



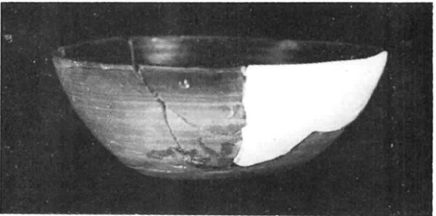
10



4



11



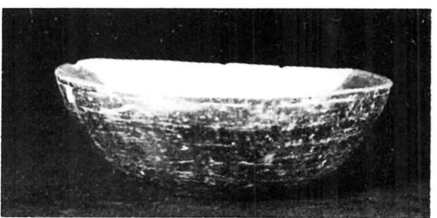
5



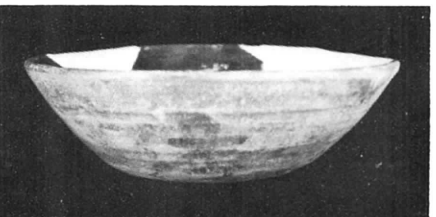
12



6



13



7



14

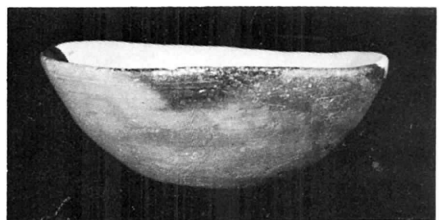
A区 出土土器 (坏·BI b-H₄·W₁·W₂·W₁H₄·P(全)) 1/3



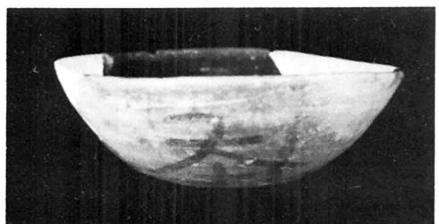
1



2



3



4



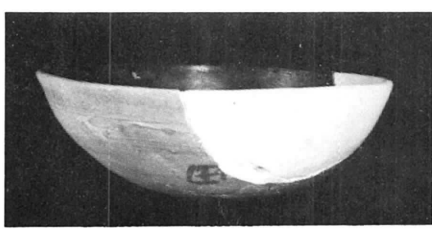
5



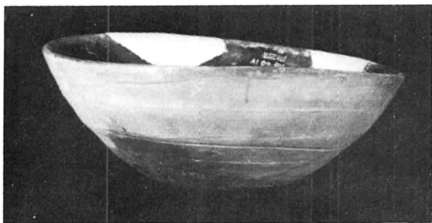
6



7



8



9



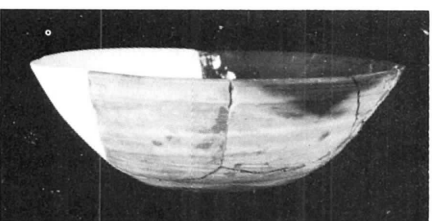
10



11



12

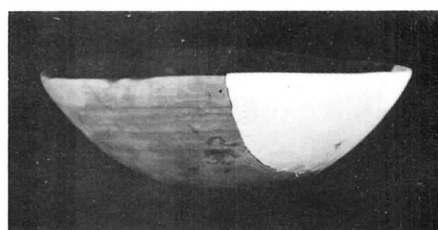


13



14

A区 出土土器 (坏·BI c-H₃) 1/3



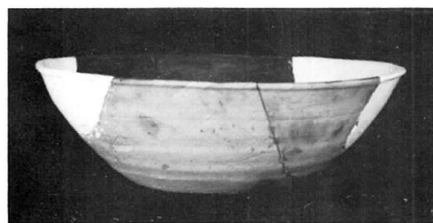
1



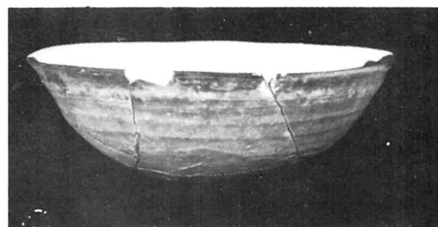
8



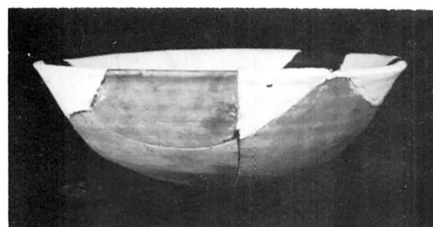
2



9



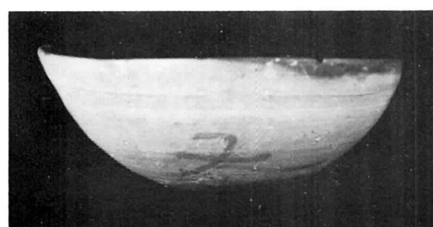
3



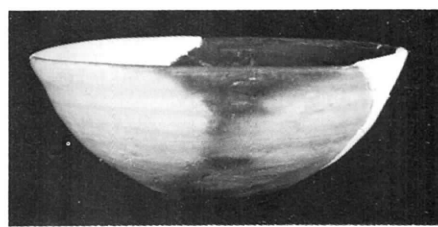
10



4



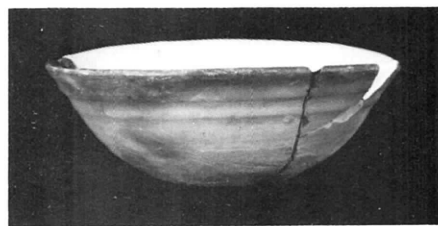
11



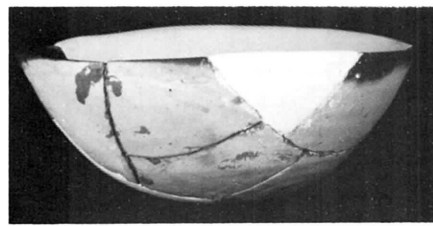
5



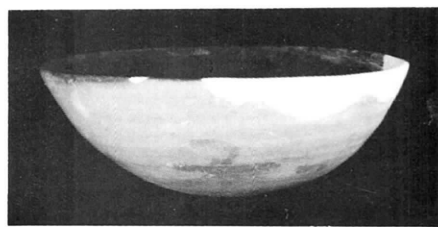
12



6



13

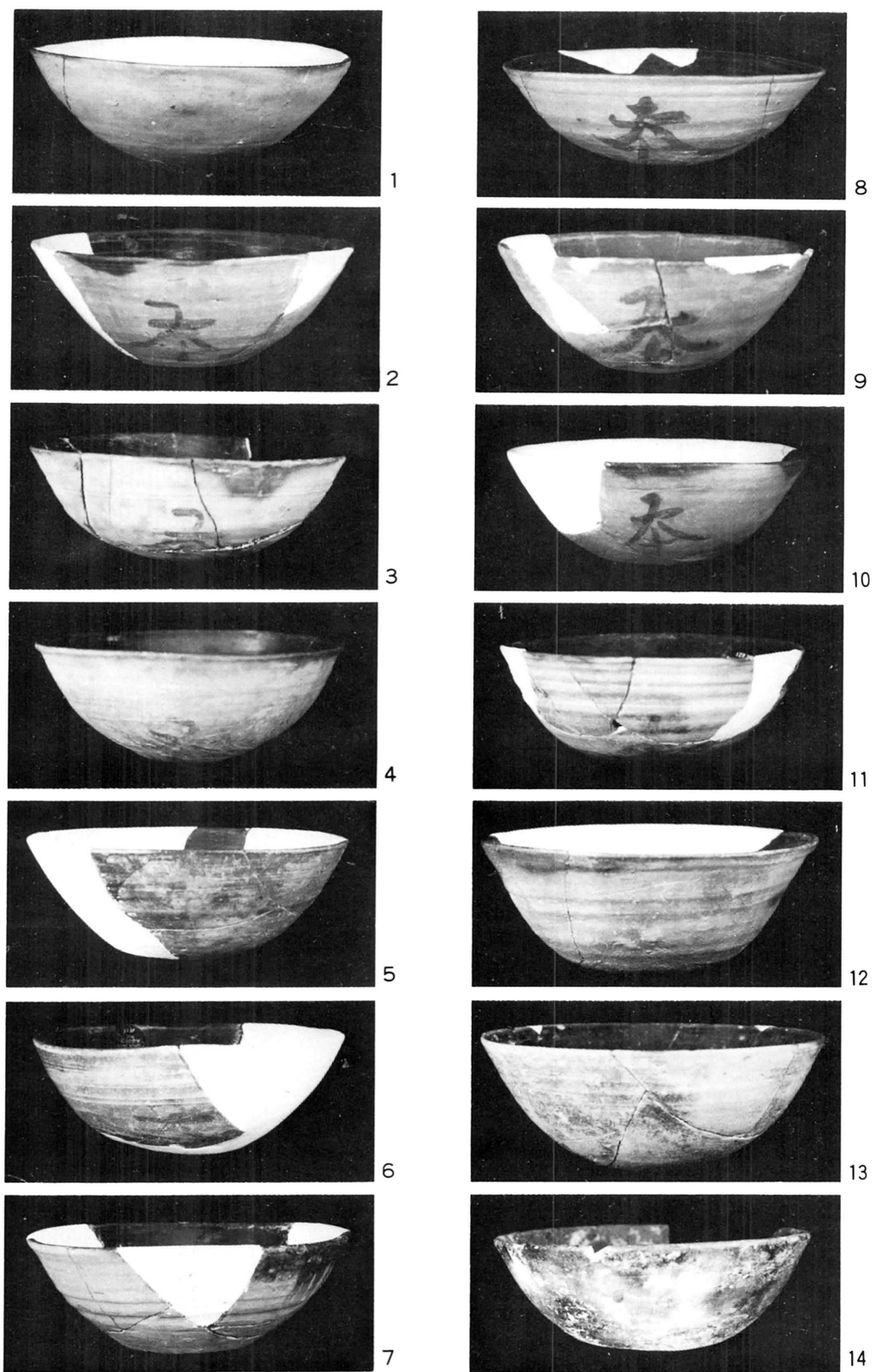


7

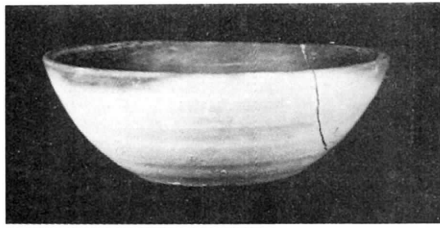


14

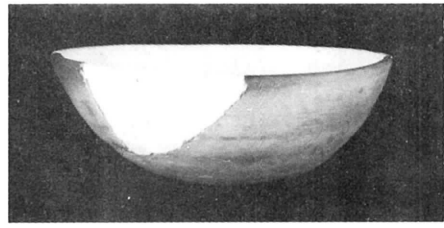
A区・出土土器(坏・BI c-H₃) 1/3



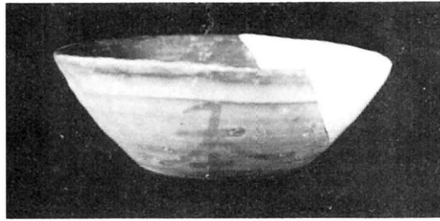
A区 出土土器 (坏 B I c-H₃) 1/3



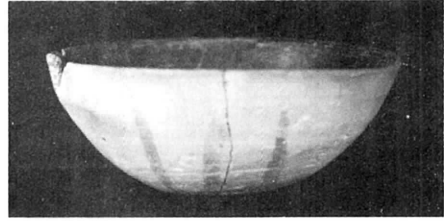
1



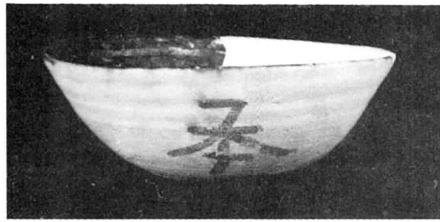
7



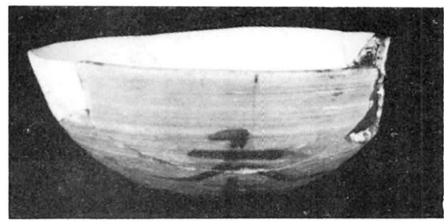
2



8



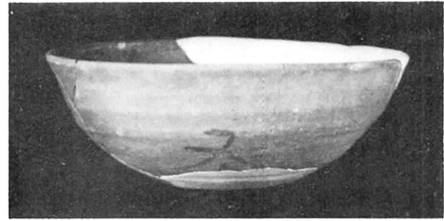
3



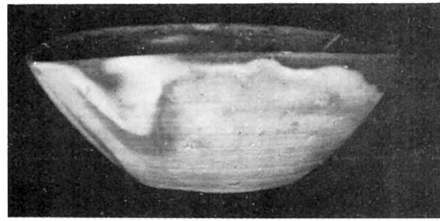
9



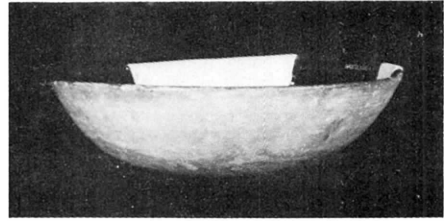
4



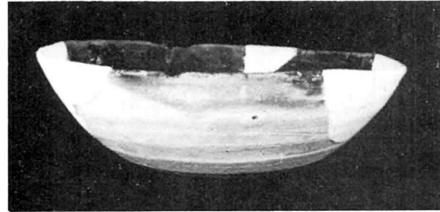
10



5



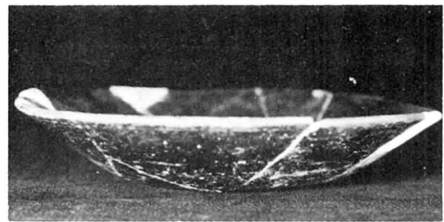
11



6

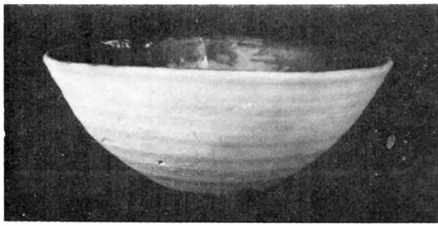


12

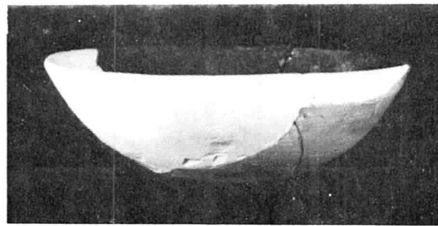


13

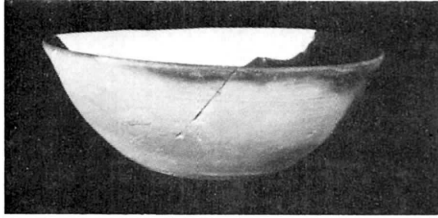
A区・出土土器 (B I c-H₅・W₁H₅・H₃P₅・P(全)) 1/3



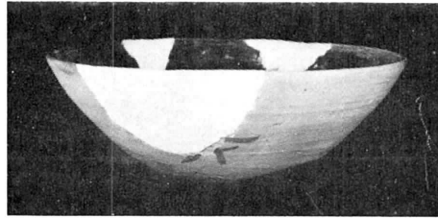
1



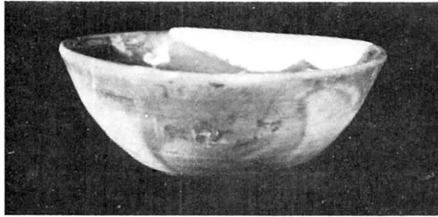
8



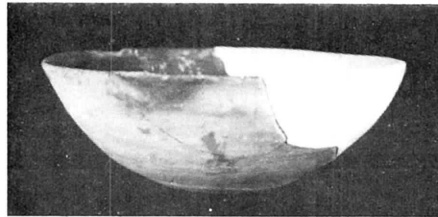
2



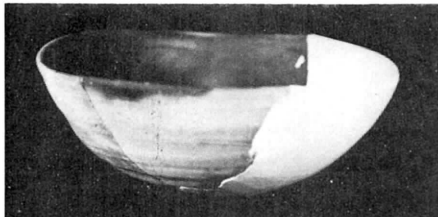
9



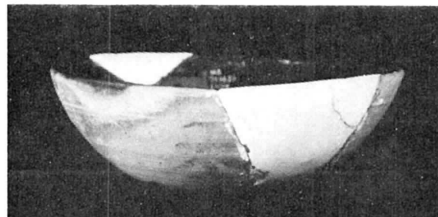
3



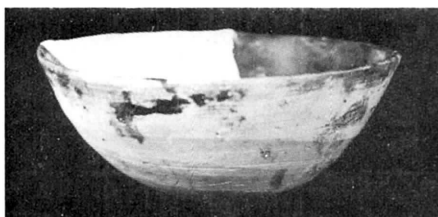
10



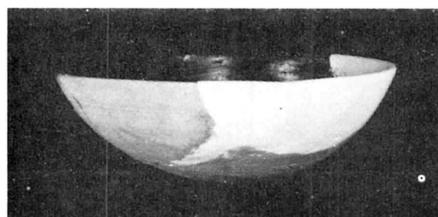
4



11



5



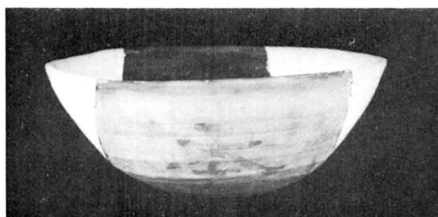
12



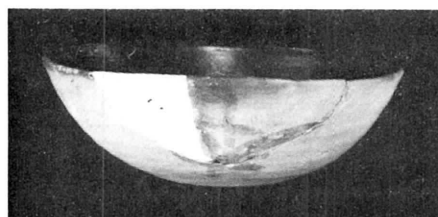
6



13

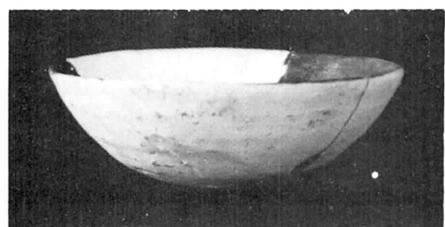


7

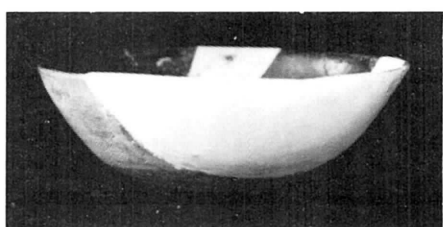


14

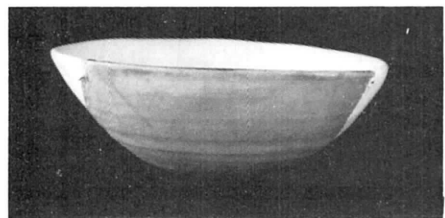
A区·出土土器(环·B I c-W₃) 1/3



1



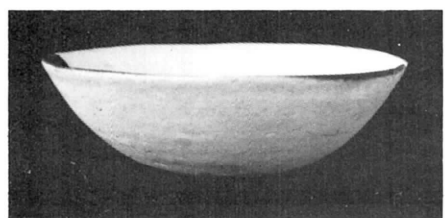
8



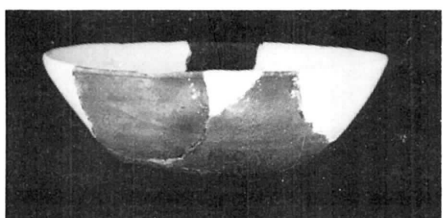
2



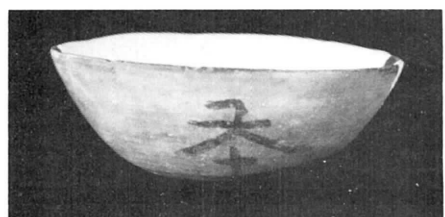
9



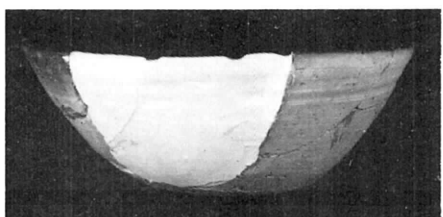
3



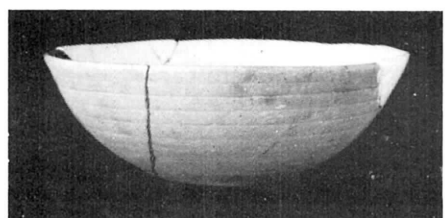
10



4



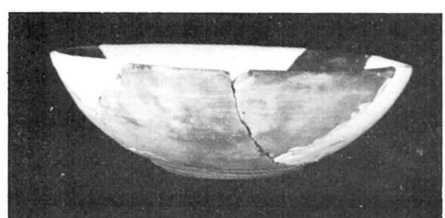
11



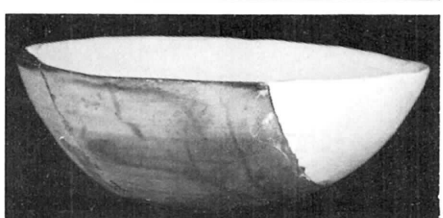
5



12



6



13

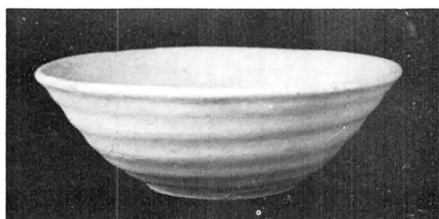


7

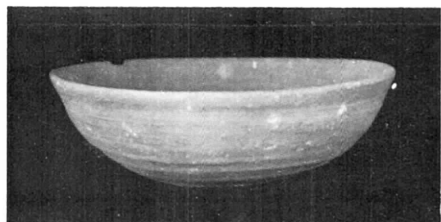
A区·出土土器 (坏·B I c-W₃) 1/3



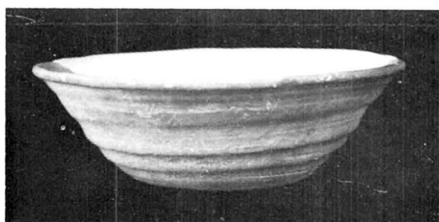
1



8



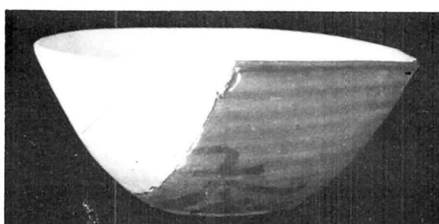
2



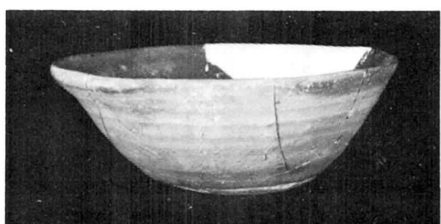
9



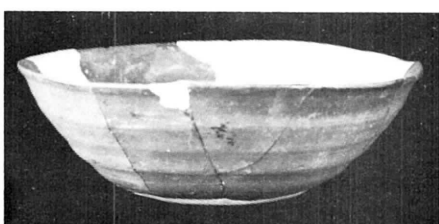
3



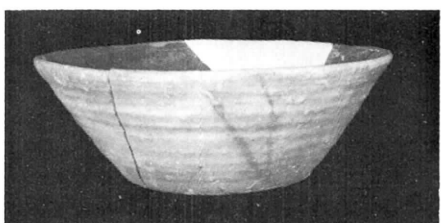
10



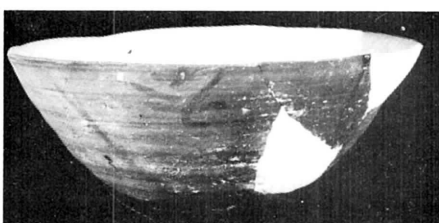
4



11



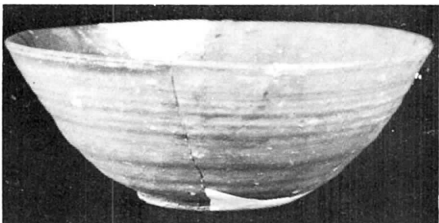
5



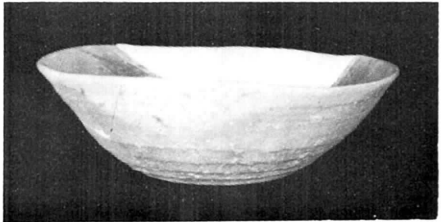
12



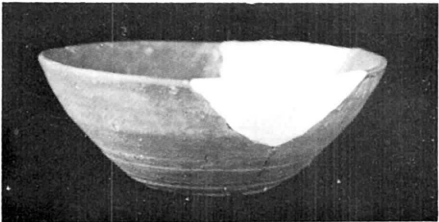
6



13



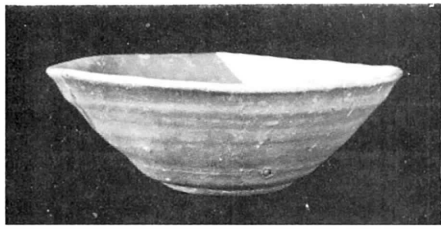
7



14

A区・出土土器(坏・B II a) 1/3

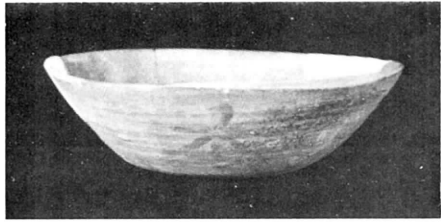
图版35



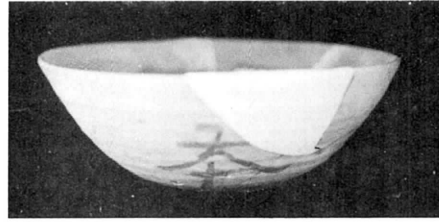
1



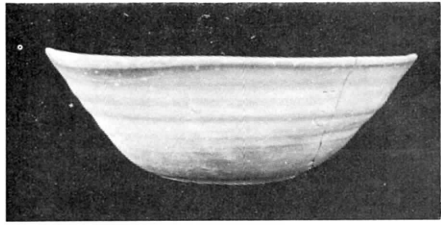
8



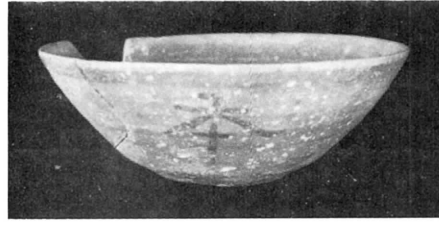
2



9



3



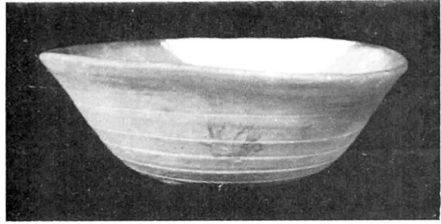
10



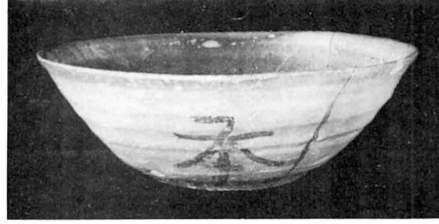
4



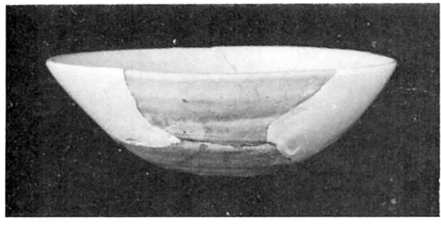
11



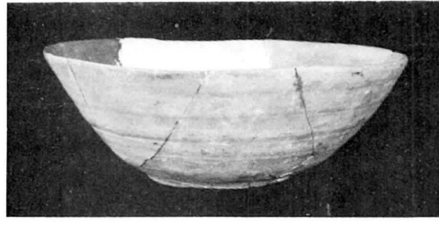
5



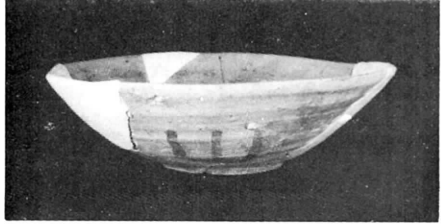
12



6



13



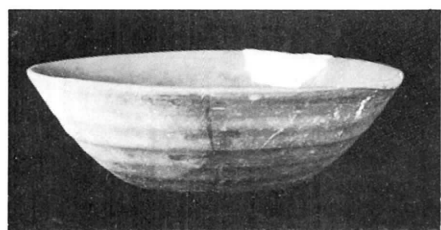
7



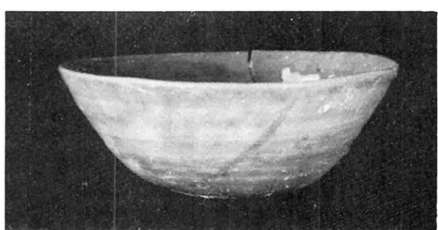
14

A区・出土土器 (坏・B II a) 1/3

图版36



1



8



2



9



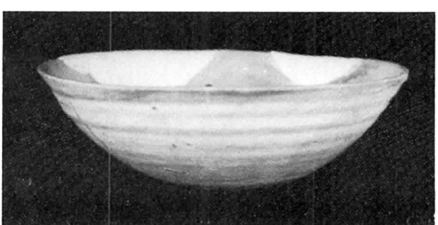
3



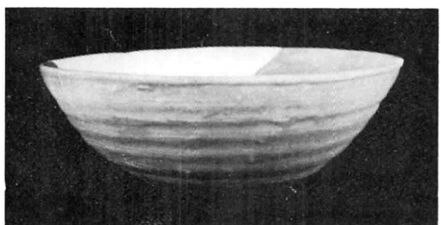
10



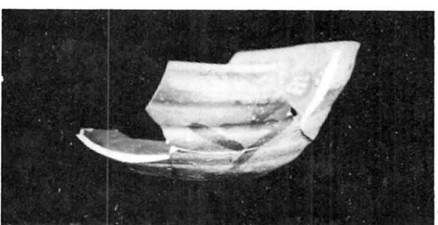
4



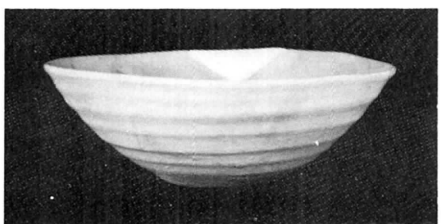
11



5



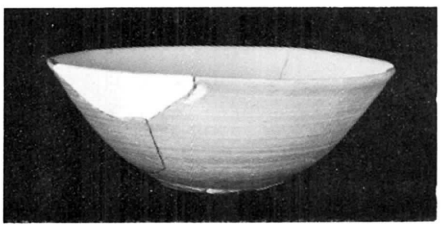
12



6



13



7

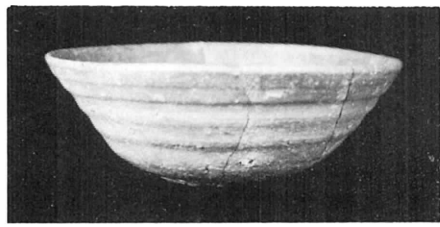


14

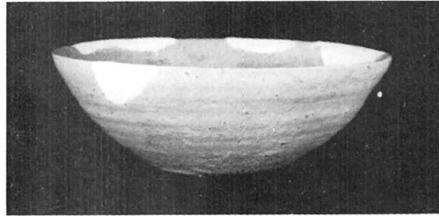
A区·出土土器 (坏·B II a·B II b-H₁·H₄·W₂) 1/3



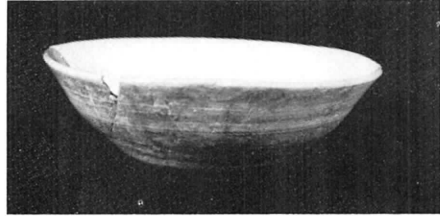
1



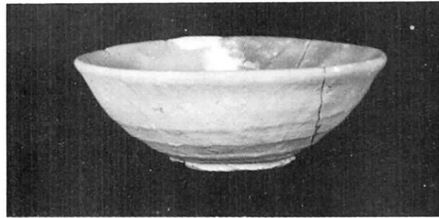
8



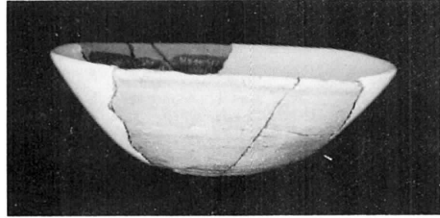
2



9



3



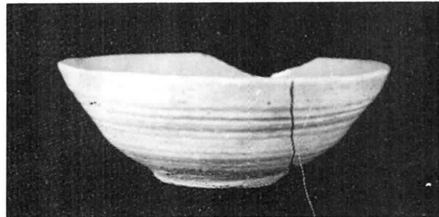
10



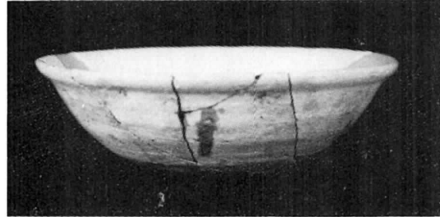
4



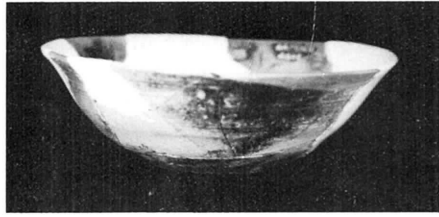
11



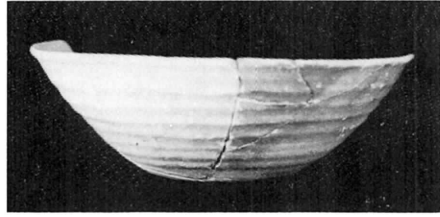
5



12



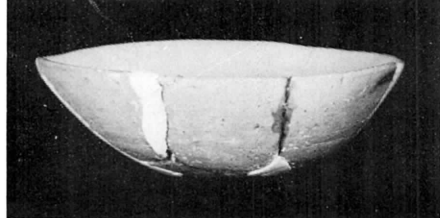
6



13

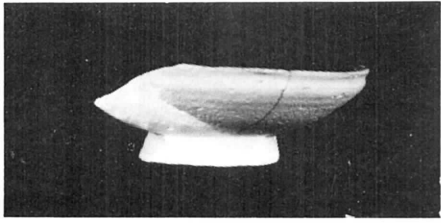


7

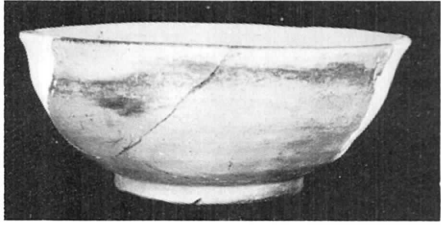


14

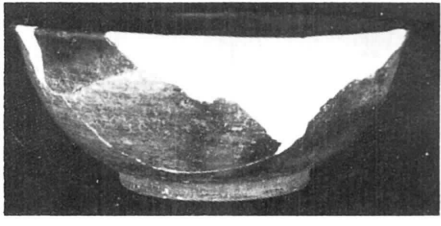
A区・出土土器 (坏・B III a・B III c-H₃) 1/3



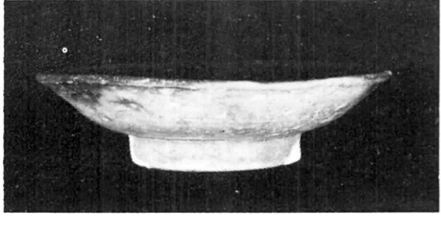
1



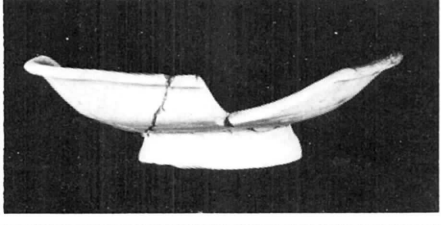
2



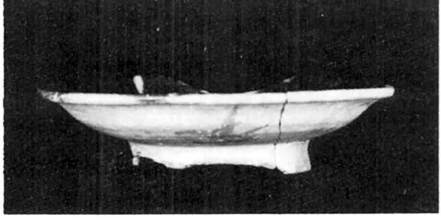
3



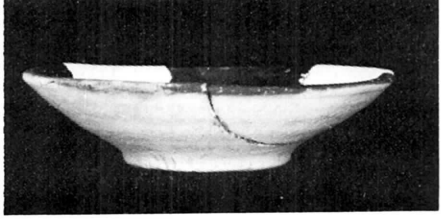
4



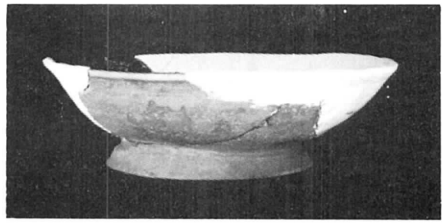
5



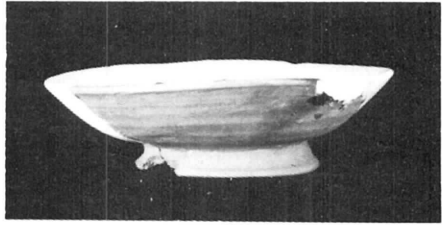
6



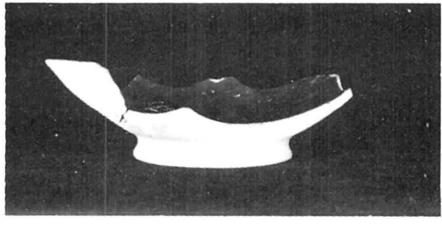
7



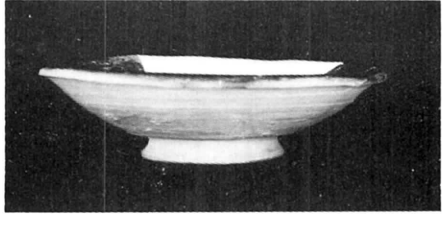
8



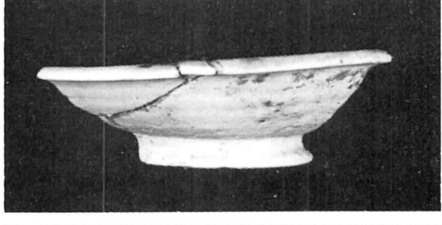
9



10



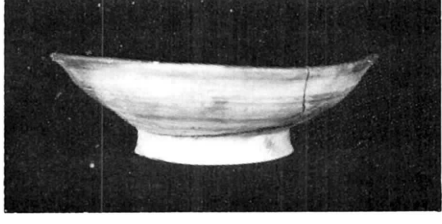
11



12



13



14

A区・出土土器（碗・高台付皿）1/3



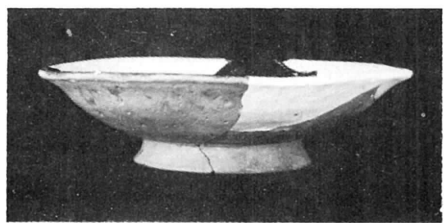
1



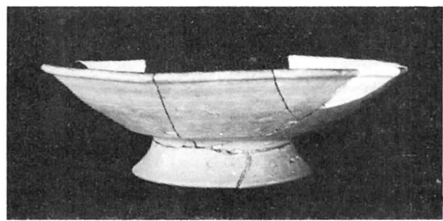
8



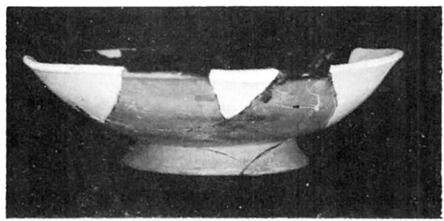
2



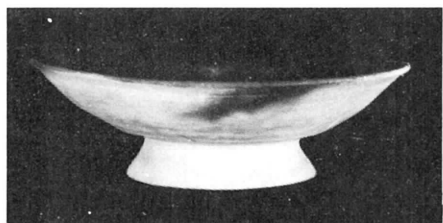
9



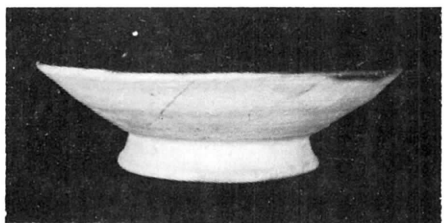
3



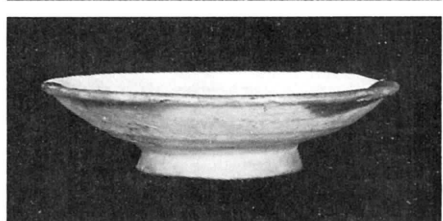
10



4



11



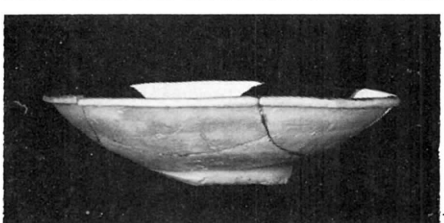
5



12



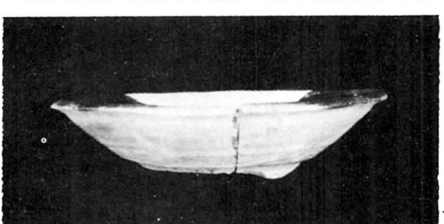
6



13



7

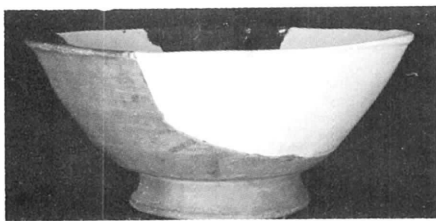


14

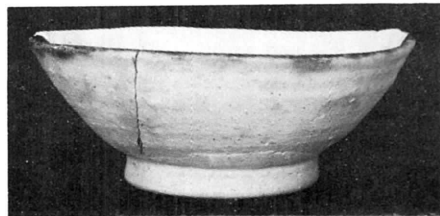
A区・出土土器（高台付皿）1/3



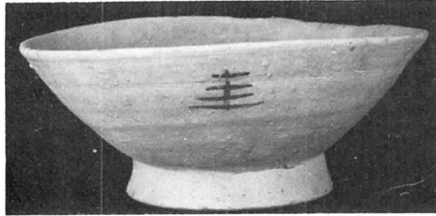
1



8



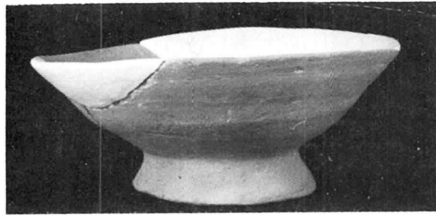
2



9



3



10



4



11



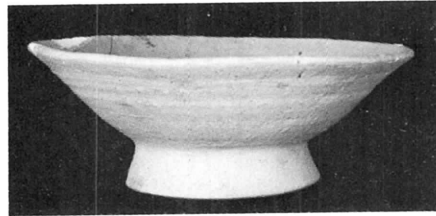
5



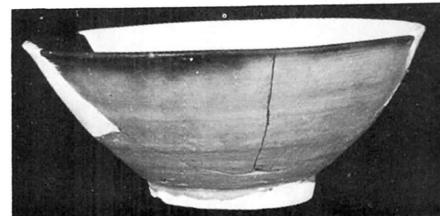
12



6



13

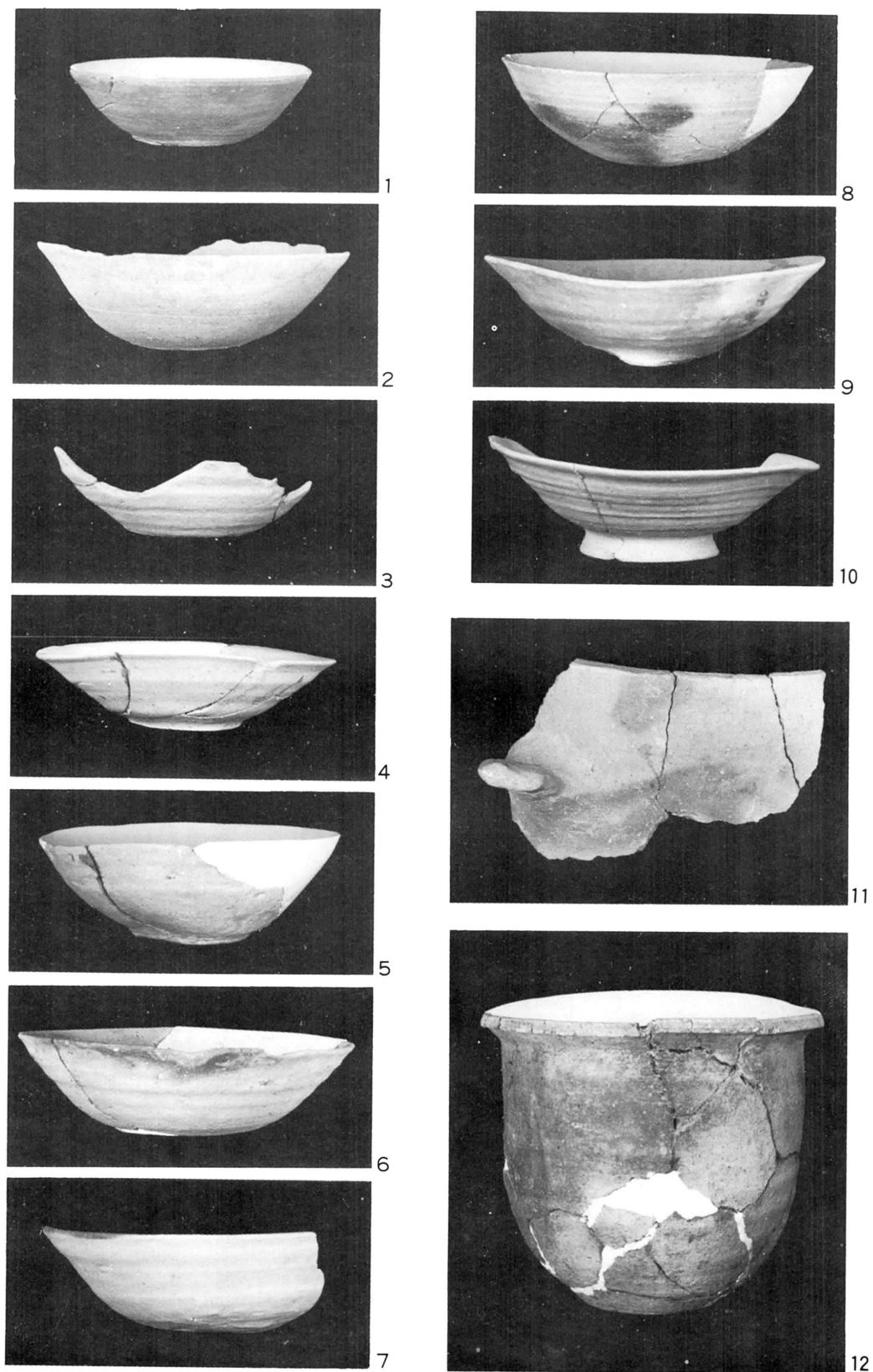


7

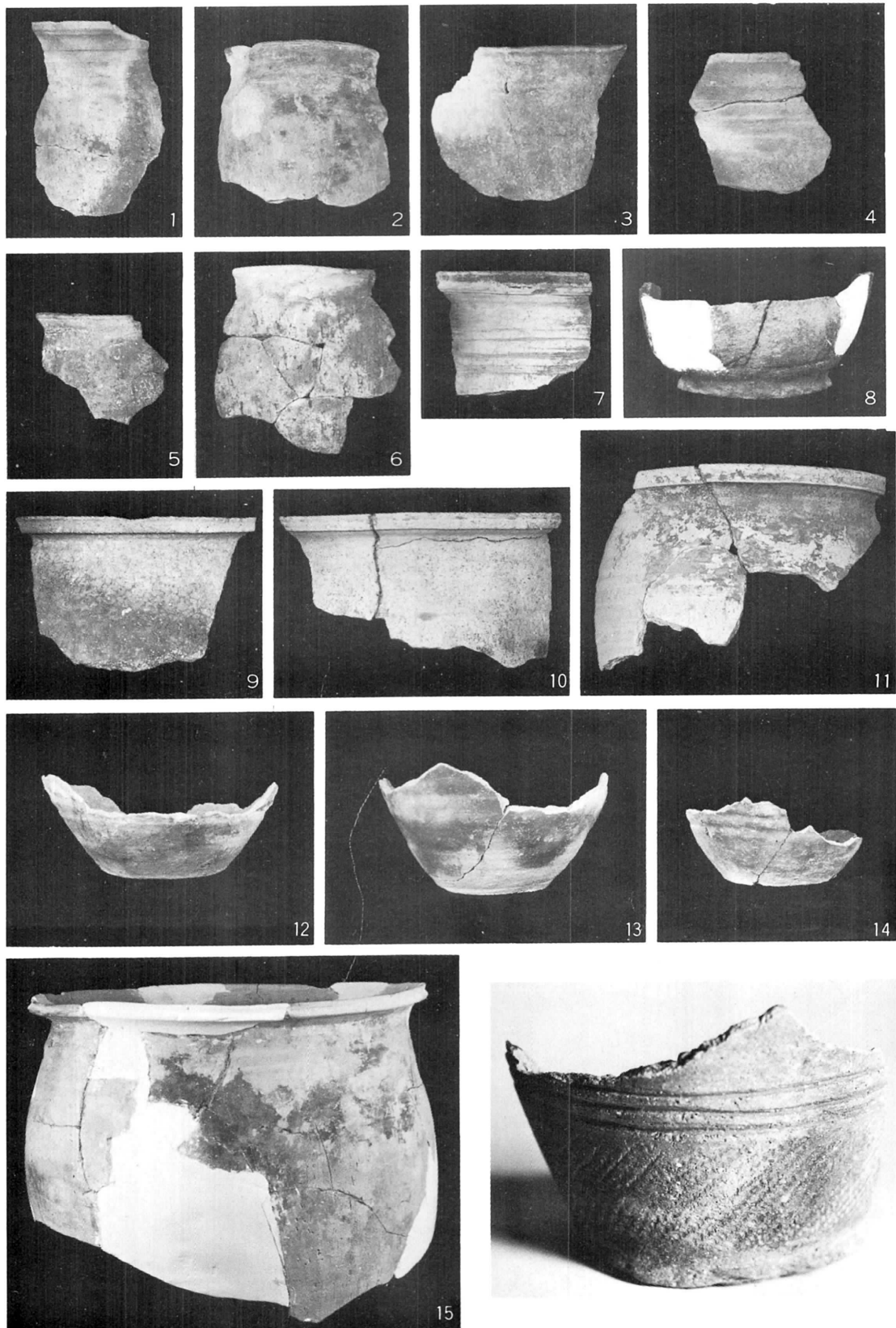


14

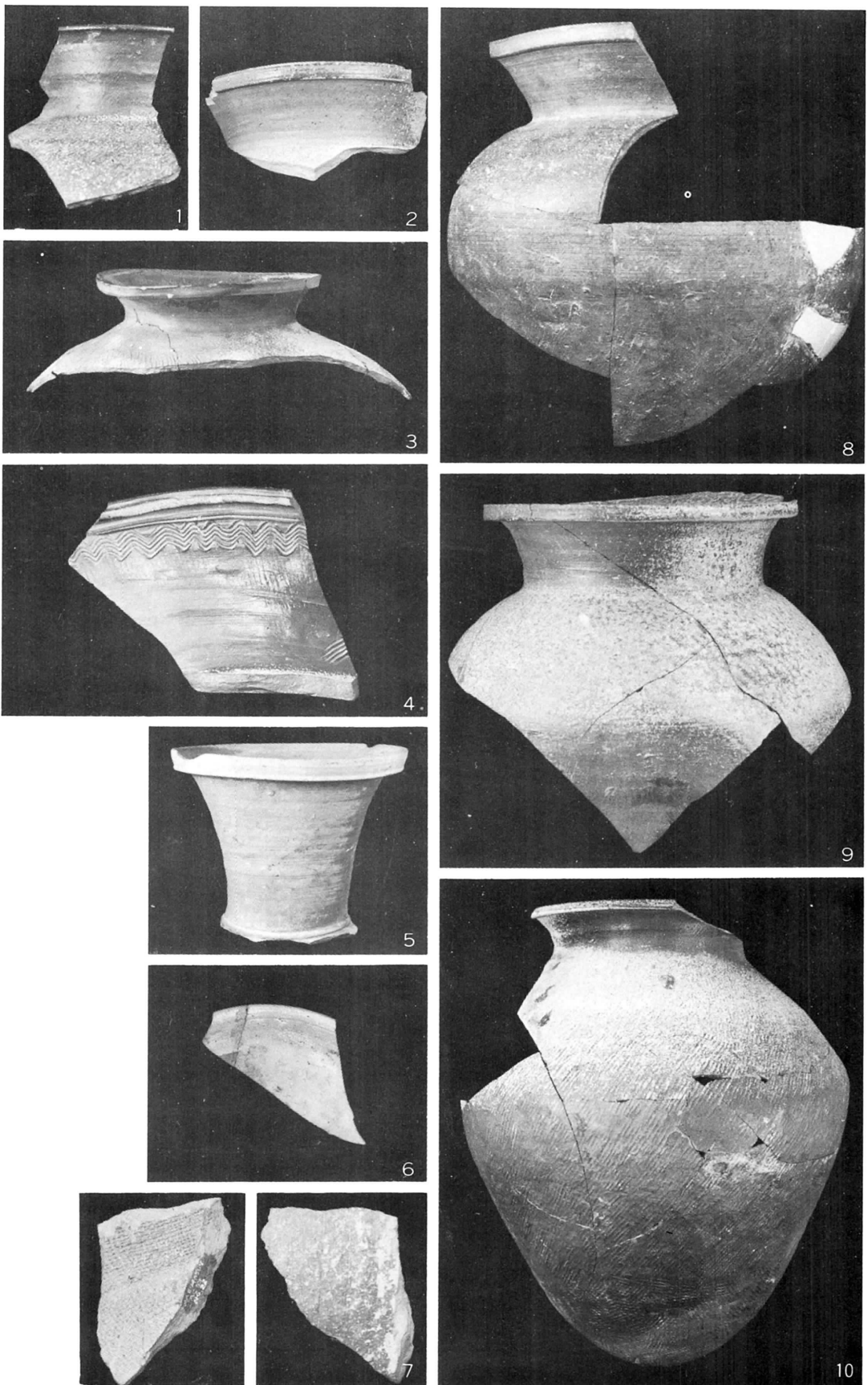
A区・出土土器（高台付坏）1/3



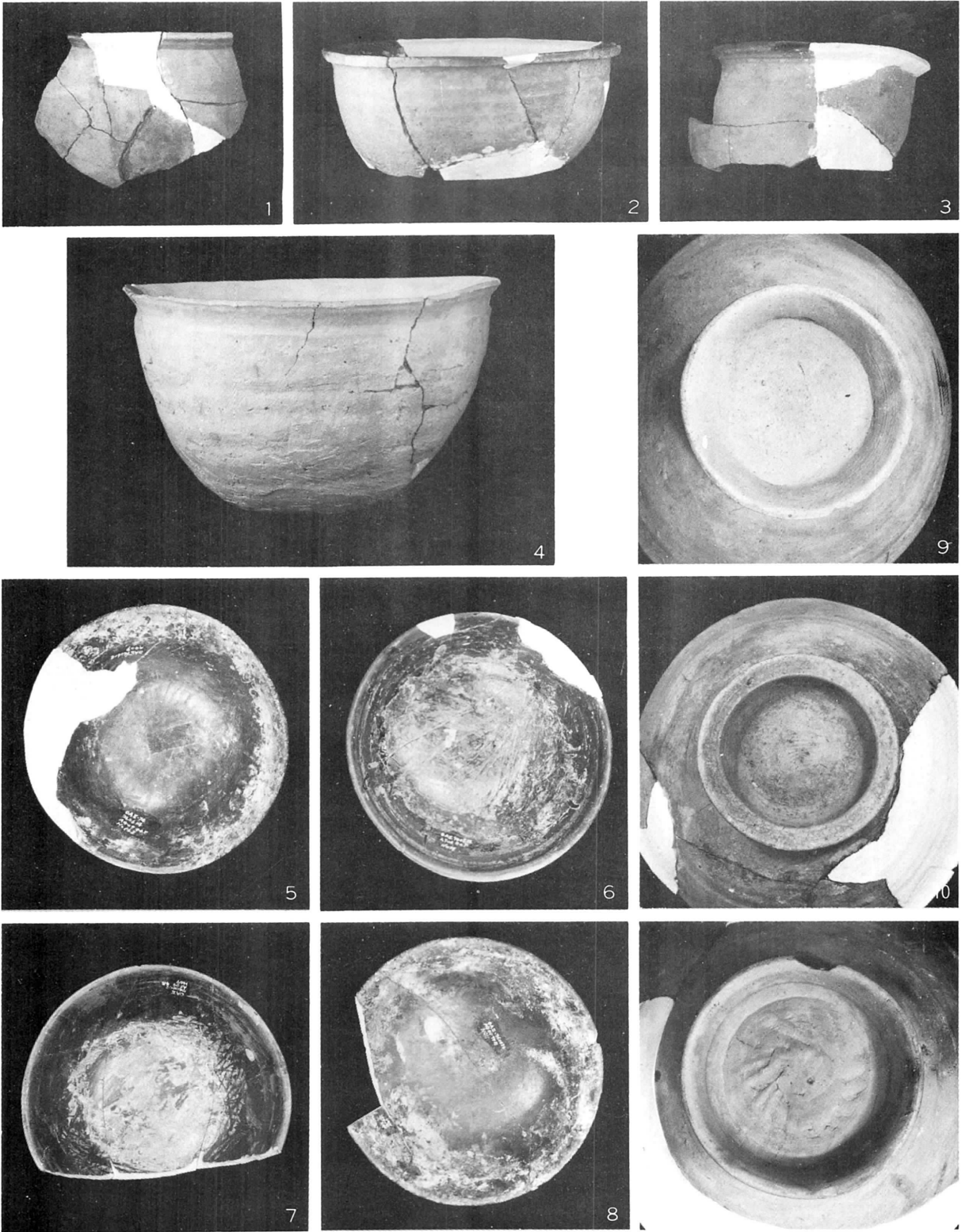
BJ 50住居跡、C、D、Eブロック出土土器 1/3



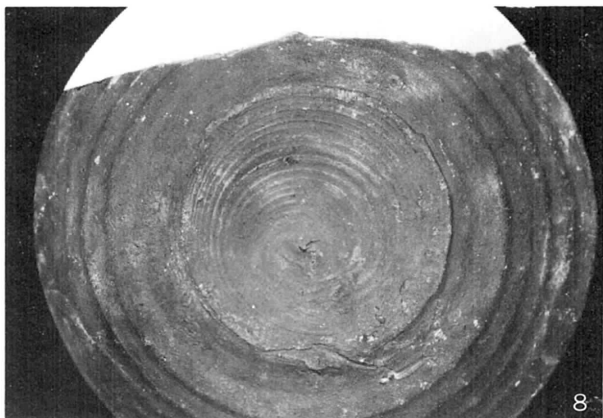
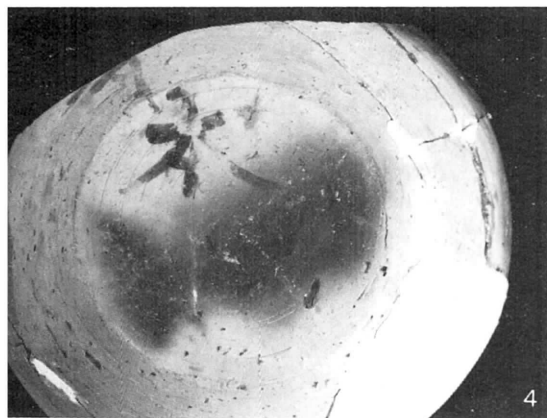
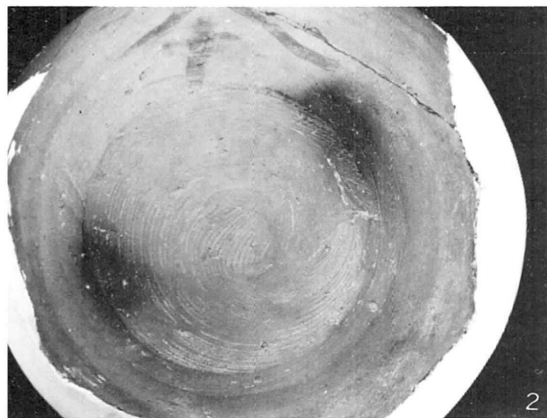
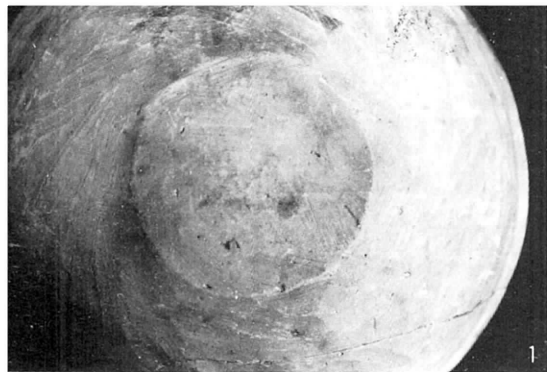
A区·出土土器(1~15甕、1/3, 16高环脚部、任意)



A区・出土遺物 (1~5, 8~10壺、6灰釉陶器、7瓦) 5・6、1/3、4・91/6他は1/4

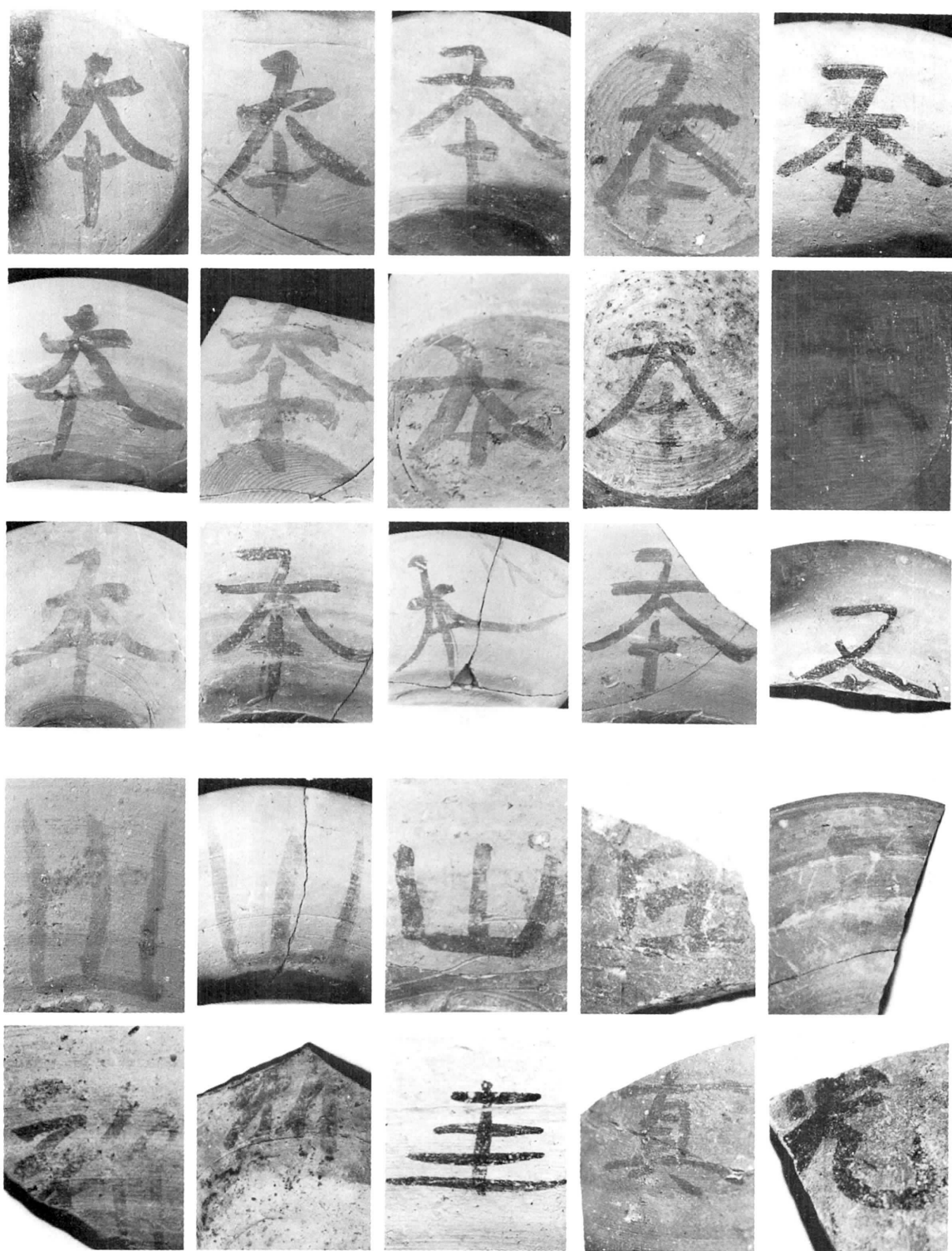


A区・出土遺物（1～4 鉢、5～8 内面付着土器、9～11 高台付坏台部）

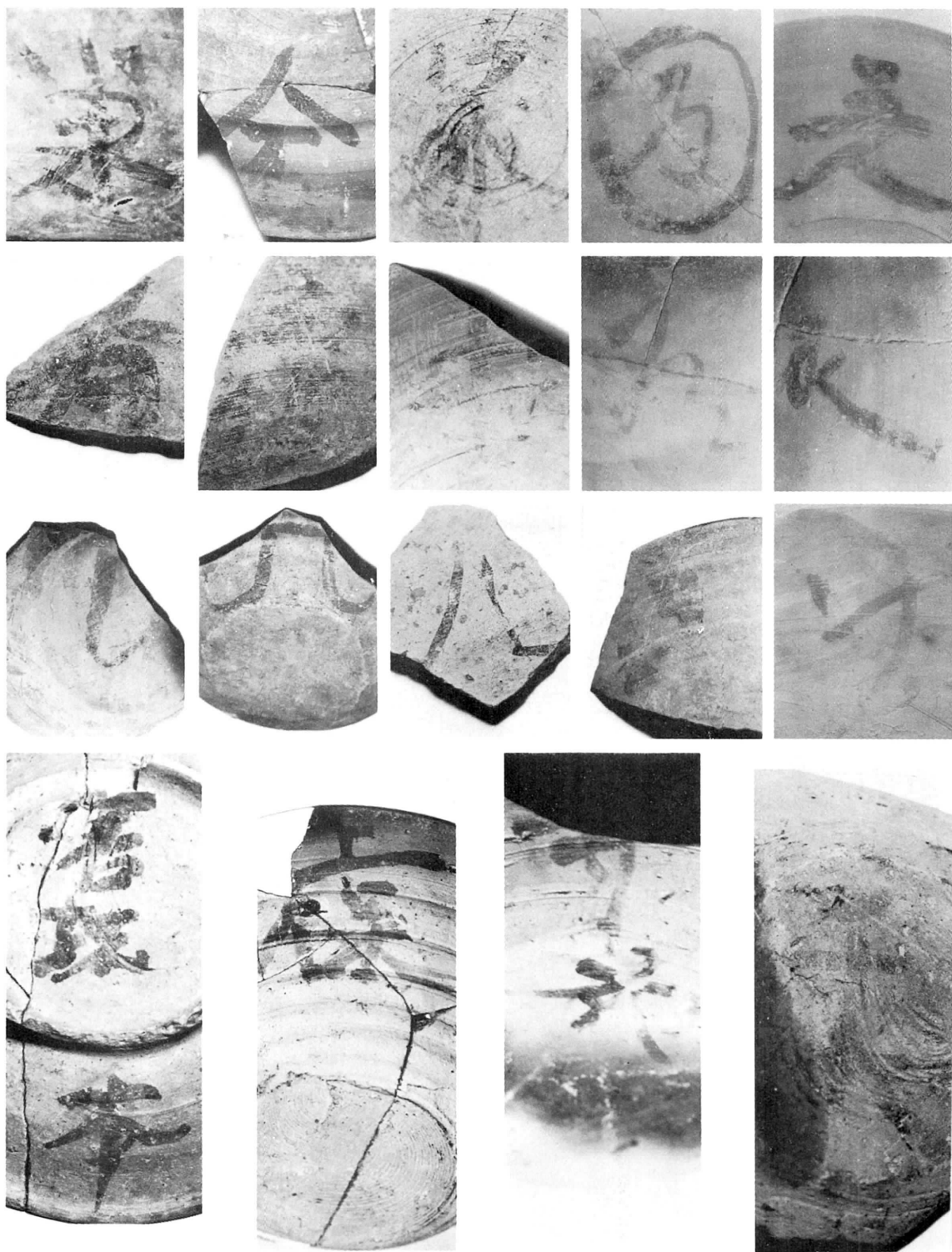


A区・出土土器の底部調整

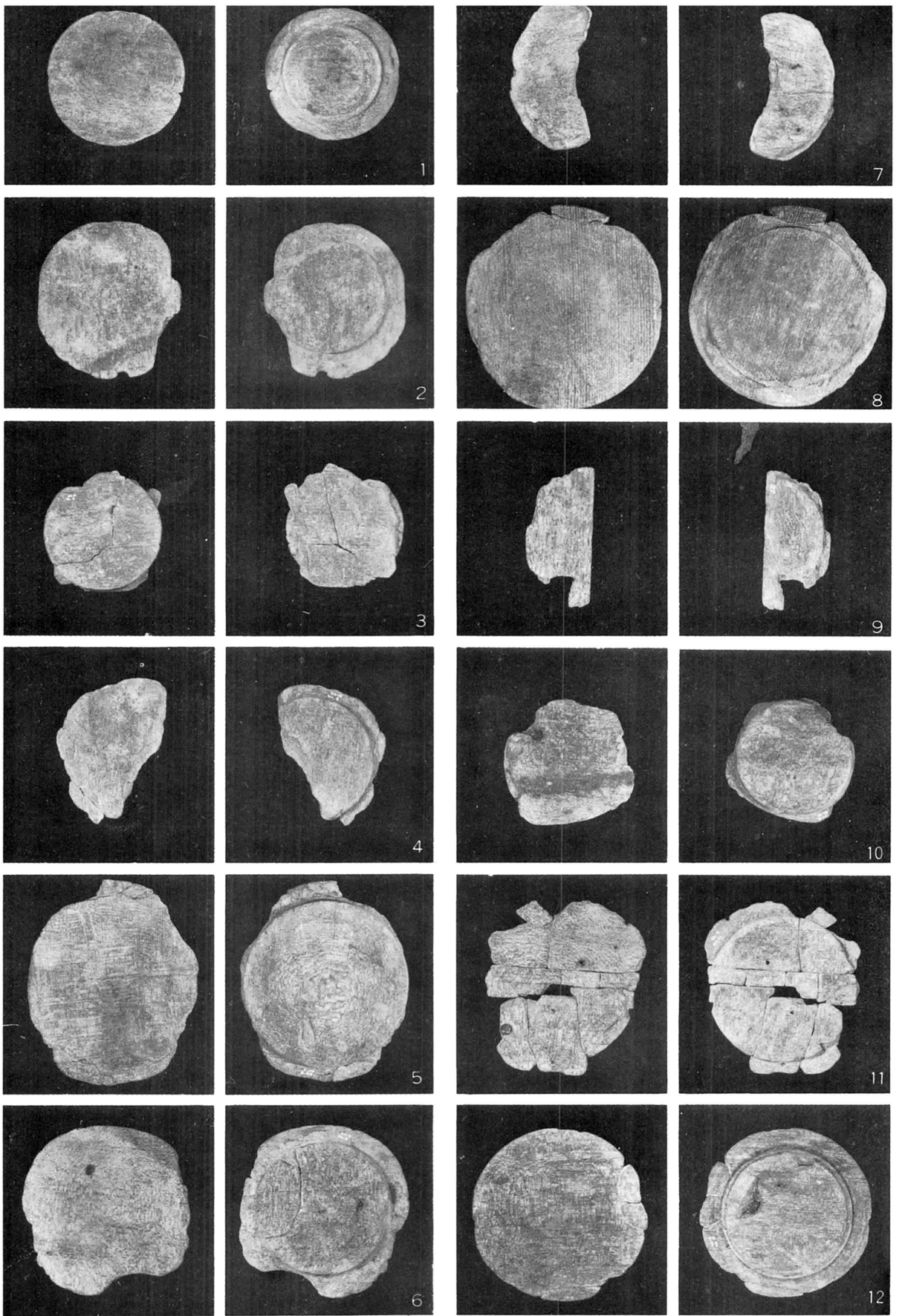
- | | |
|-----------------------------------|-----------------------------------|
| 1. 手持ちヘラケズリ (BIc-H ₃) | 5. 手持ちヘラケズリ (BIc-H ₃) |
| 2. 回転ヘラケズリ (BIb-W ₂) | 6. 手持ちヘラケズリ (BIc-H ₃) |
| 3. 回転糸切り (BIa) | 7. ヘラミガキ (BIc-P(全)) |
| 4. 回転ヘラケズリ (BIc-W ₃) | 8. 還元炎焼成、回転糸切り (BIa) |



A区·出土土器·墨書文字

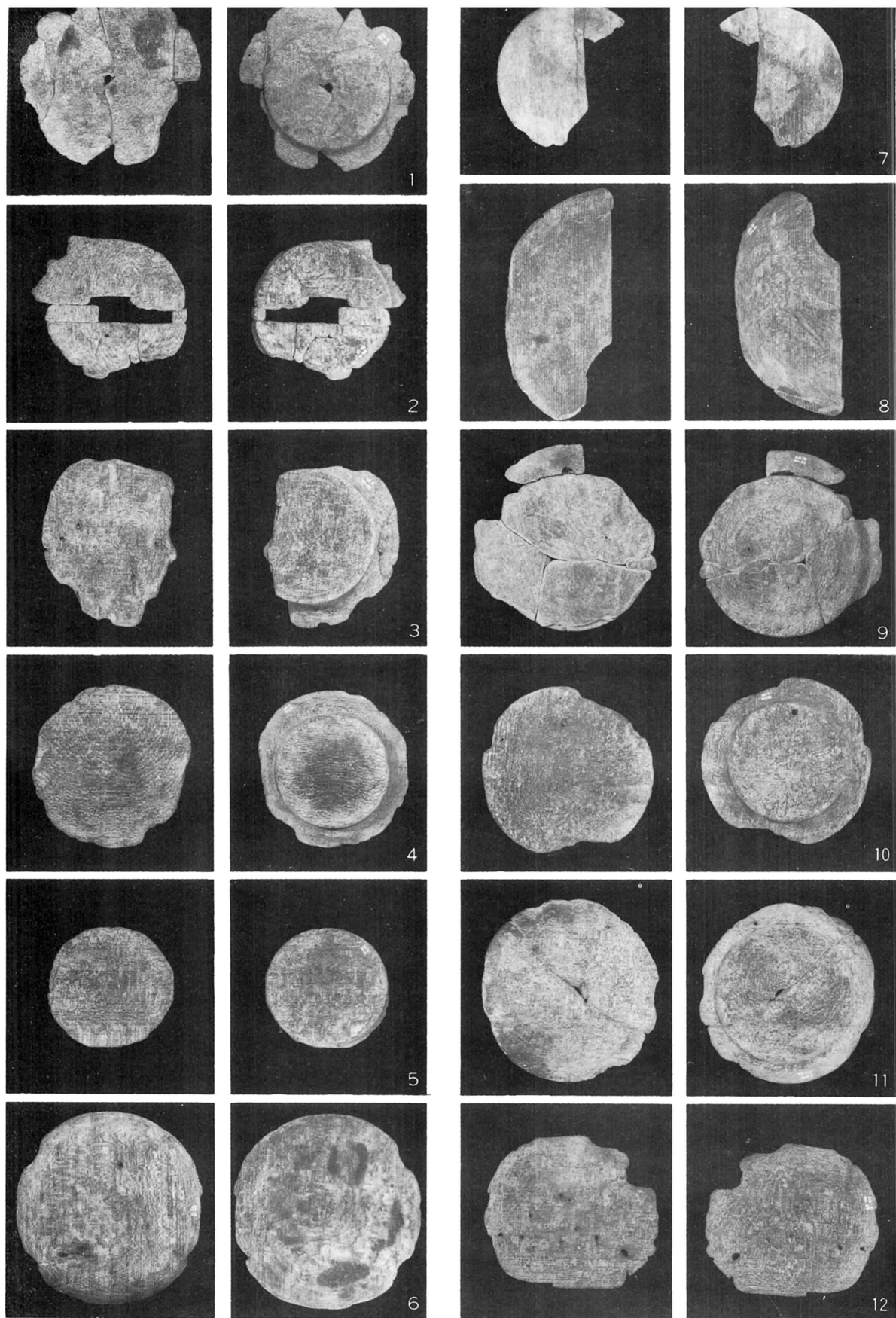


A区·出土土器·墨書文字

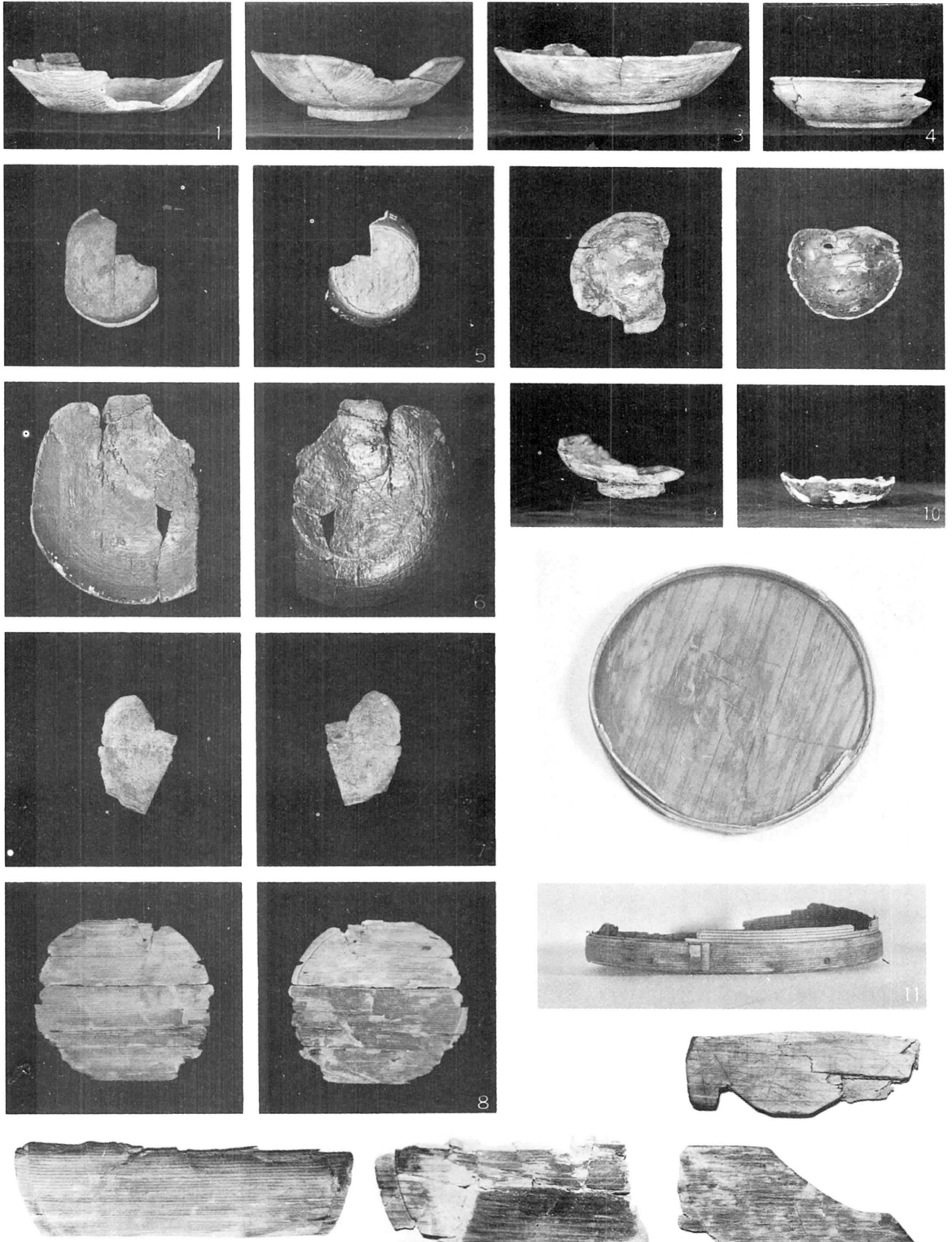


图版49

A区·出土木器 (皿)1/5



A区·出土木器(皿)1/5



1~5 椀1/5

6. 漆塗り皿 (黒) 1/5

7. 木皿1/5

8. 曲物1/5

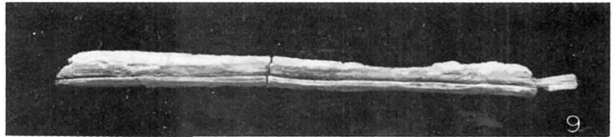
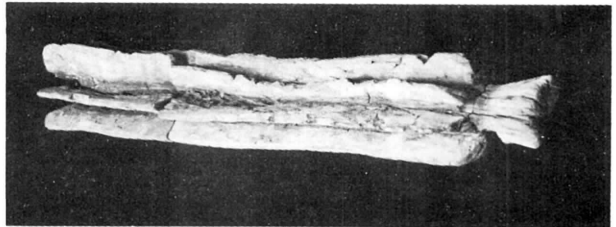
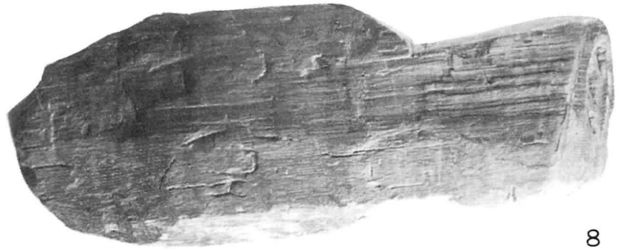
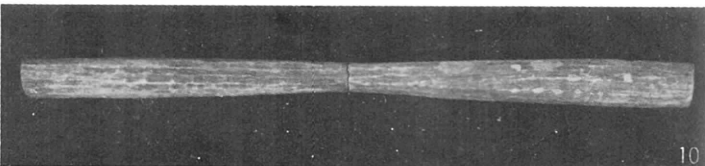
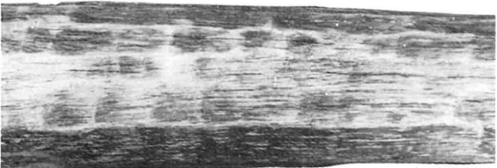
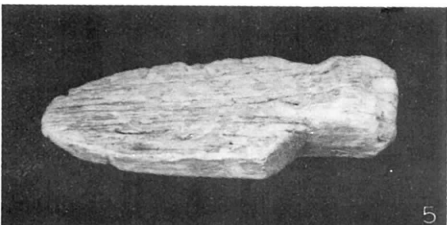
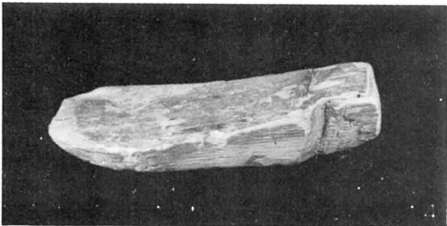
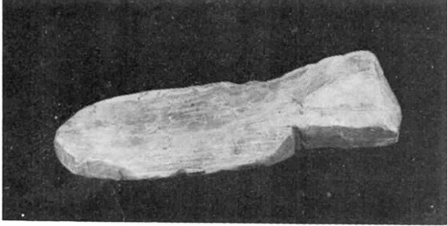
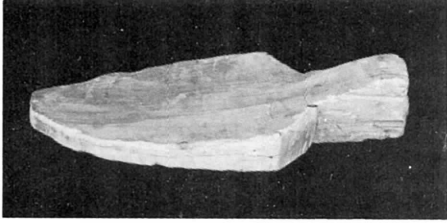
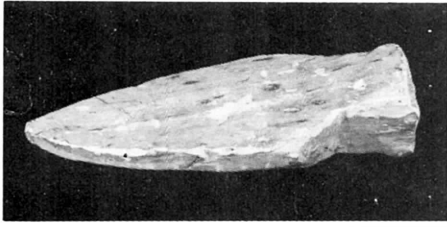
9. 漆塗り椀(赤)1/5

10. 漆塗り椀(黒)1/5

11. 13. 14曲物・任意

12. 板状木製品・任意

15. " "



6

7

8

5

9

10

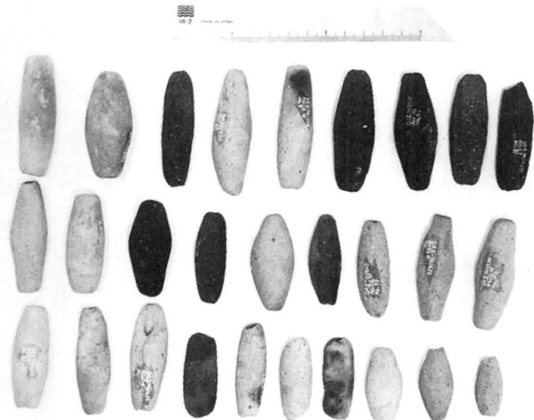
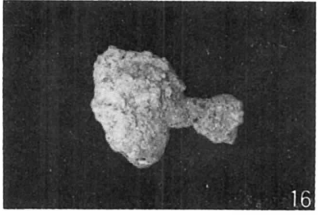
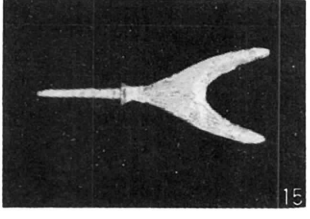
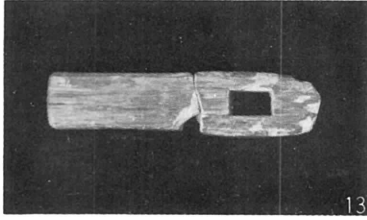
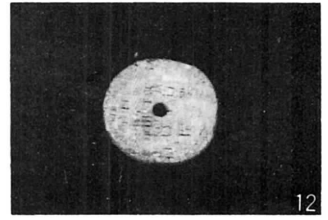
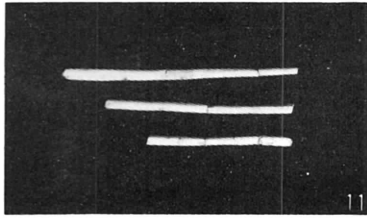
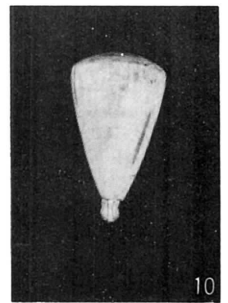
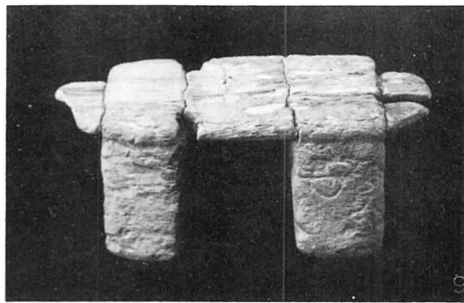
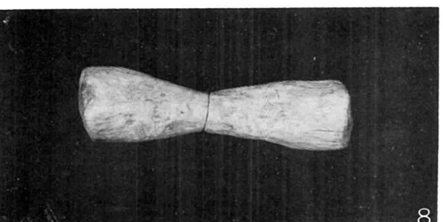
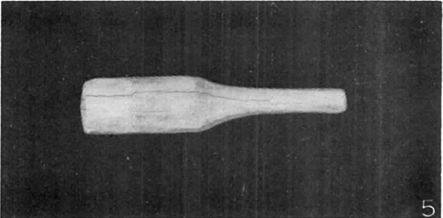
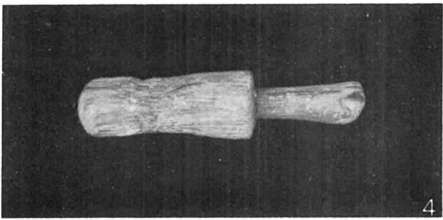
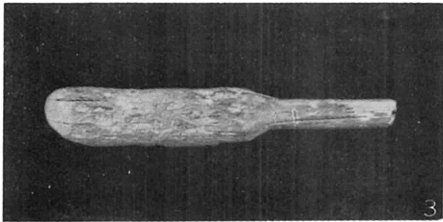
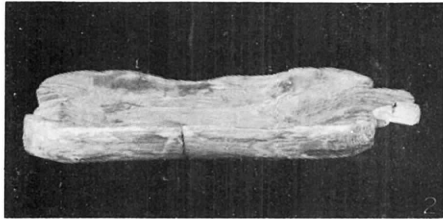
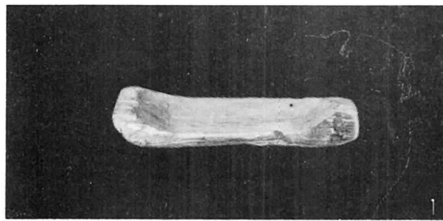
A区・出土木製品

1～5. 鋤 1/10

6～8. 鋤の加工痕、任意

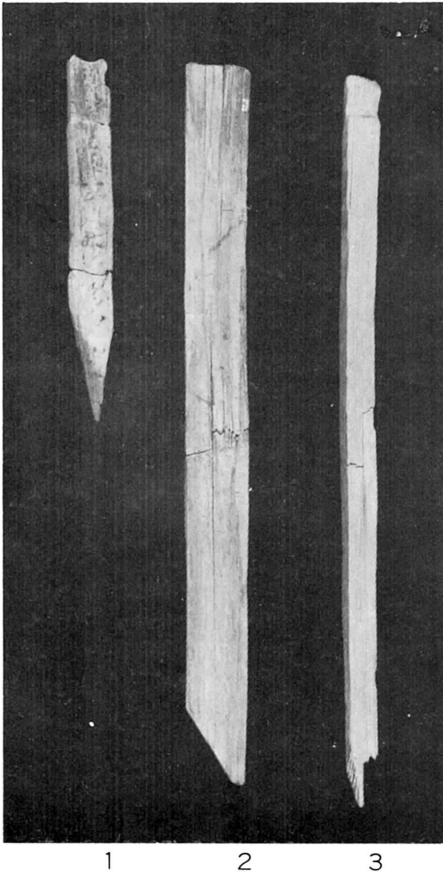
9. 転がし 1/20

10. 杵 1/20



A区・出土木製品、鉄製品、他

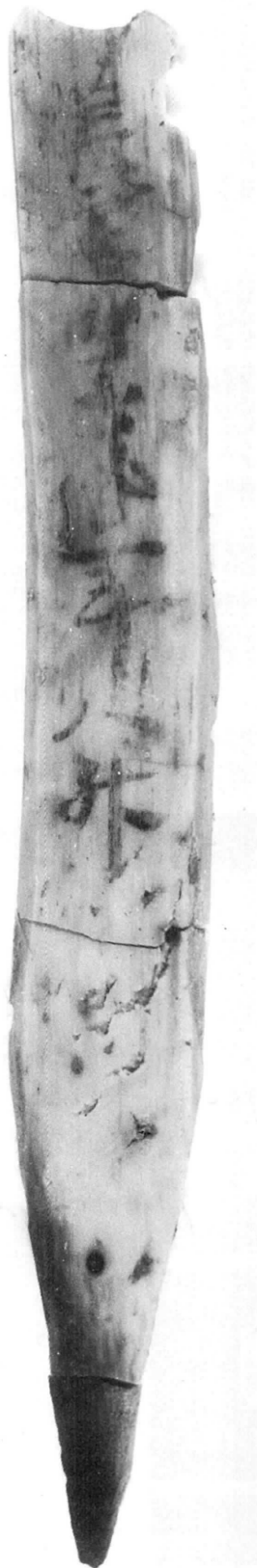
- 1. 2. 槽 1/10
- 3~6. 槌 1/8
- 7. 錘 1/5
- 8. 槌の子1/5
- 9. 下駄1/5
- 10. うき1/3
- 11. 筭 1/5
- 12. 紡錘車1/2
- 13. 角材1/5
- 14. ひょうたん・任意
- 15. 雁股鋸1/3
- 16. 鉄滓1/3
- 17. 土錘1/4



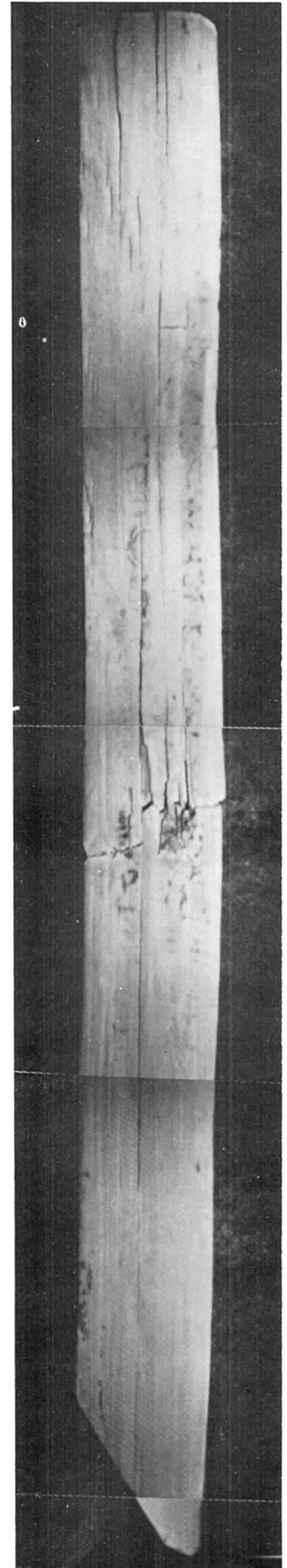
A区・出土木簡

- 1. 1号木簡1/5
- 2. 2号木簡1/5
- 3. 3号木簡1/5

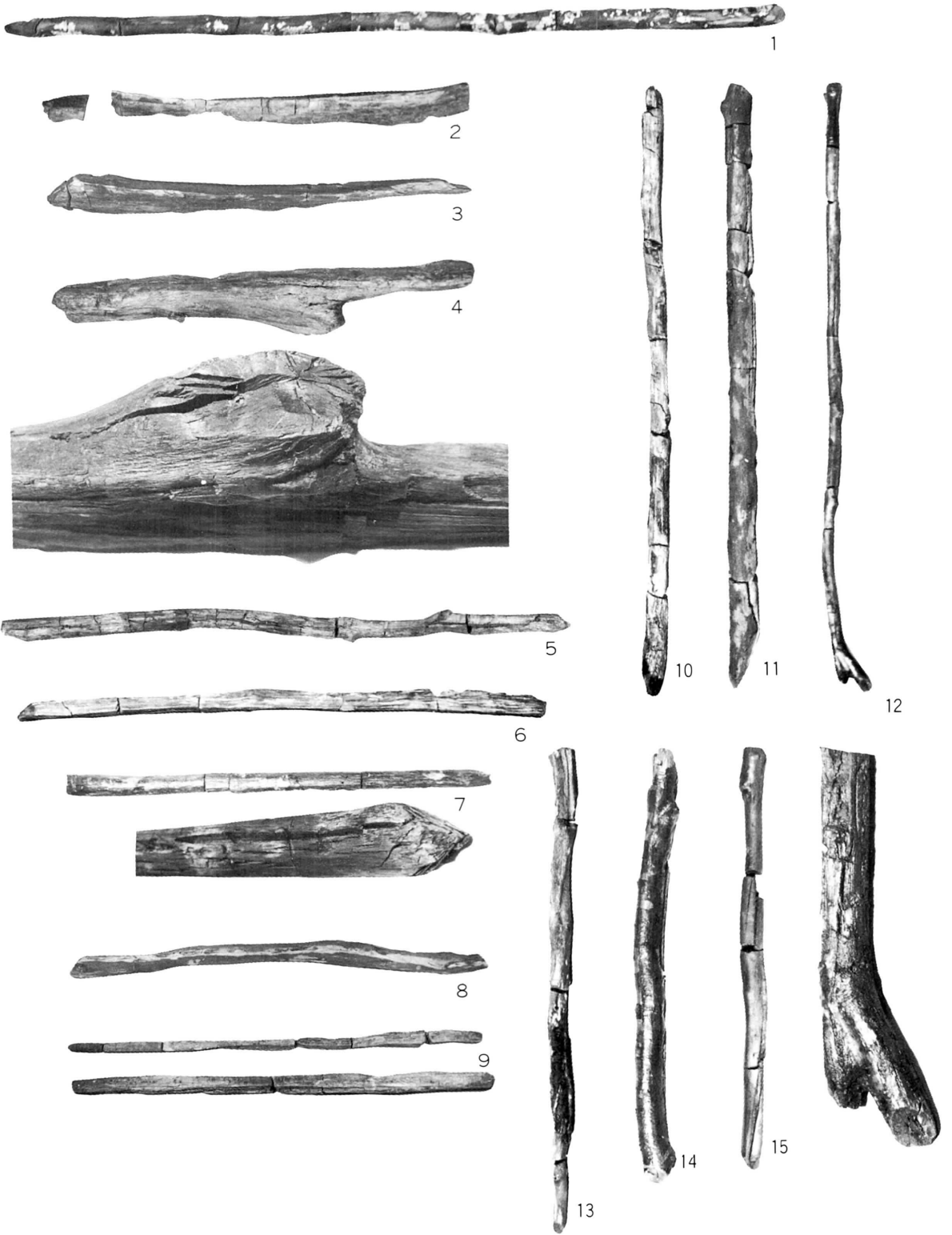
- (1) 1号木簡 (赤外線カメラによるもの)
- (2) 2号木簡 (赤外線テレビカメラによるもの)



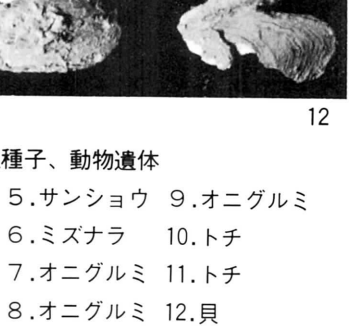
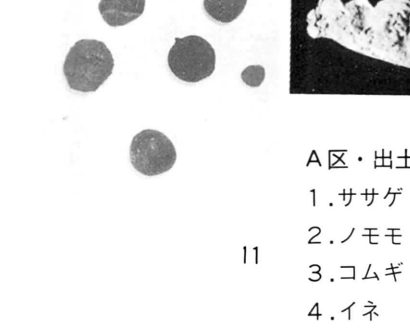
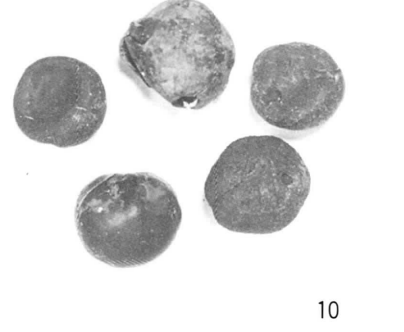
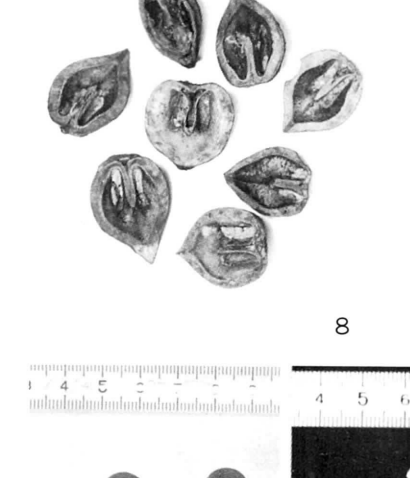
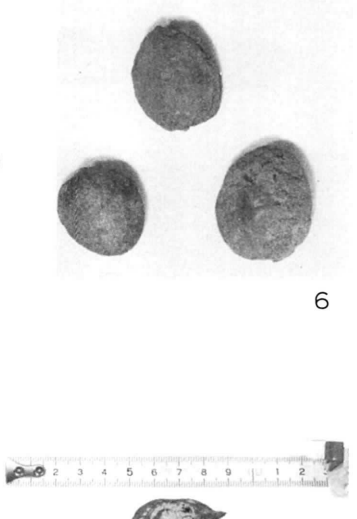
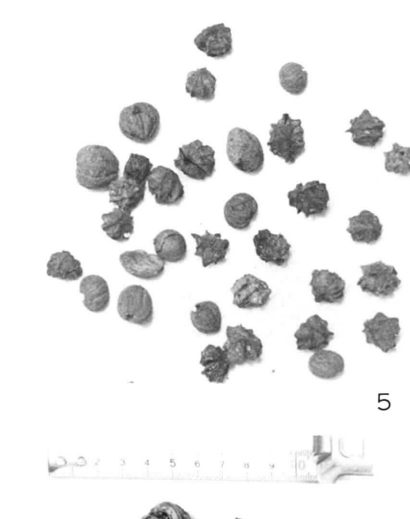
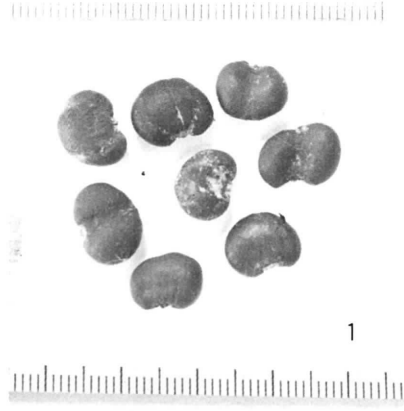
(1)



(2)



A区·出土加工木·任意



A区・出土種子、動物遺体
 1.ササゲ 5.サンショウ 9.オニグルミ
 2.ノモモ 6.ミズナラ 10.トチ
 3.コムギ 7.オニグルミ 11.トチ
 4.イネ 8.オニグルミ 12.貝

木製品顕微鏡写真

〈記入順〉

樹種名

木製品No.

遺物名

C・木口面

R・柁目面

T・板目面

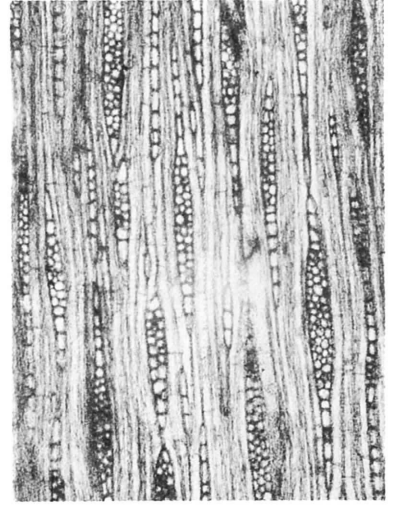
30X……写真のプリント倍率30倍



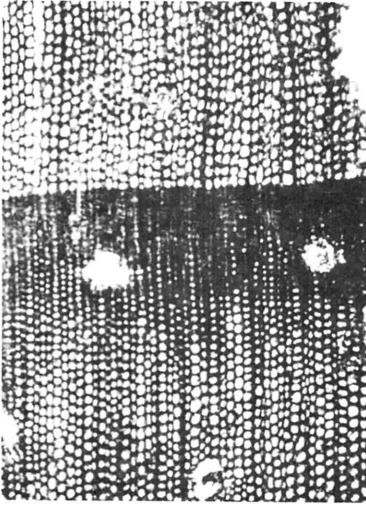
1.ハクウンボク No51 槌 C-30X



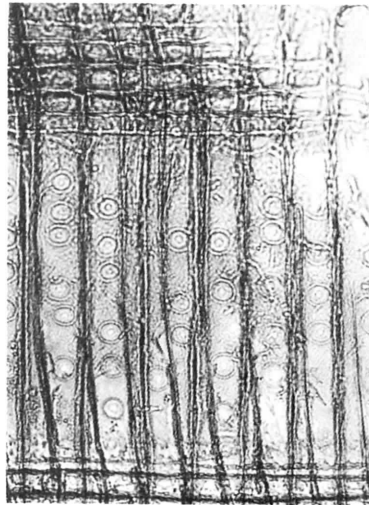
R-100X



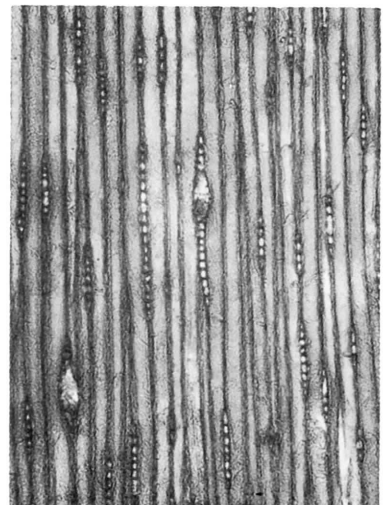
T-50X



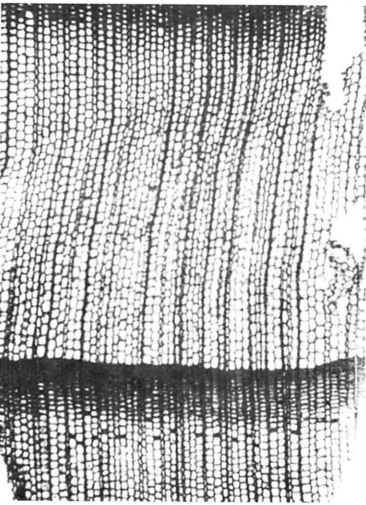
2. マツ No.43 曲物(底) C-30X



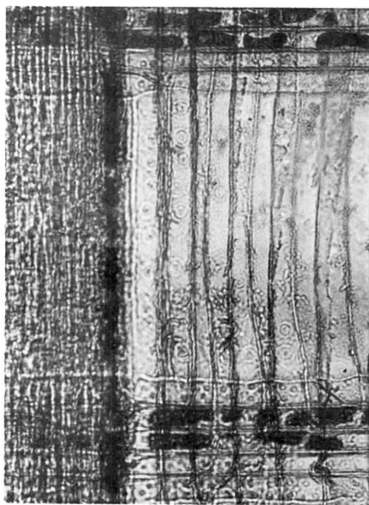
R-150X



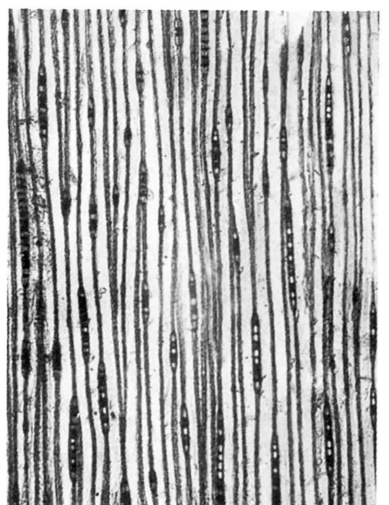
T-50X



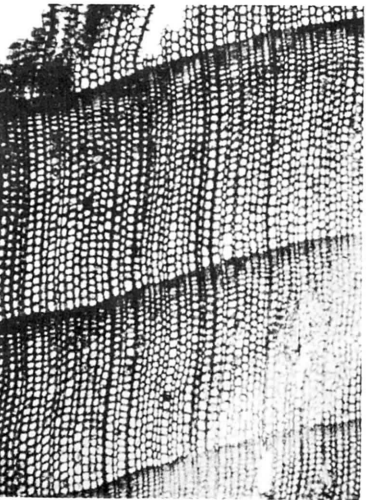
3. スギ No.41 曲物(底) C-30X



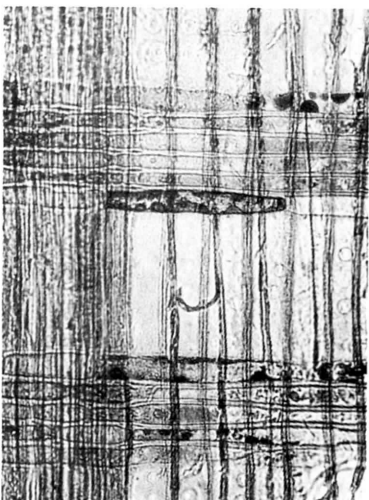
R-150X



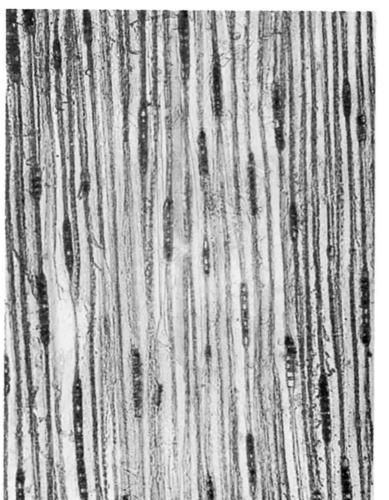
T-50X



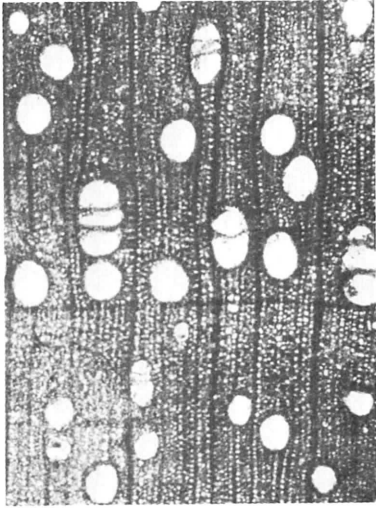
4. ヒノキ No.42 曲物(側) C-30X



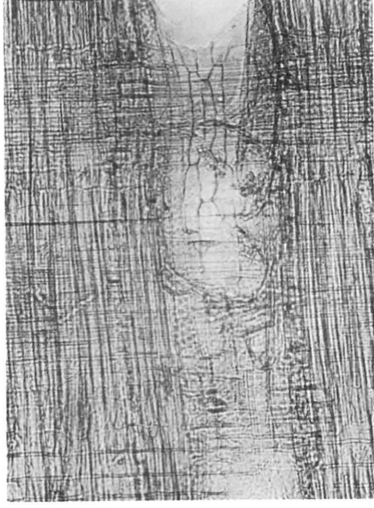
R-150X



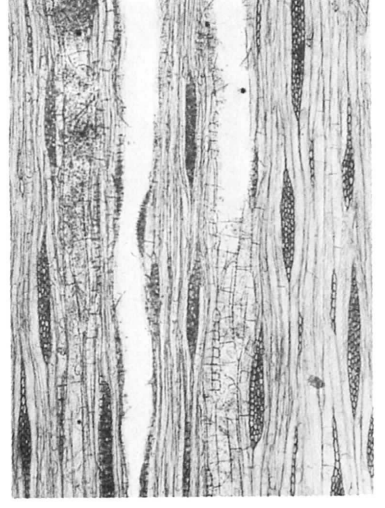
T-50X



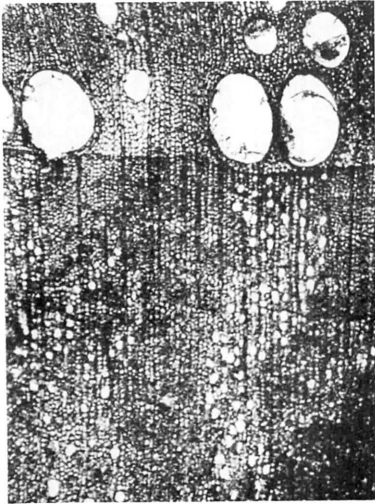
5.クルミ No63 板材 C-30X



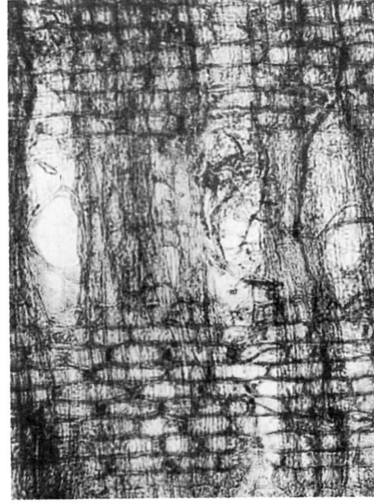
R-100X



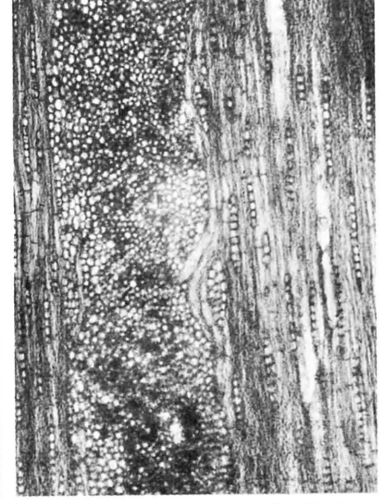
T-50X



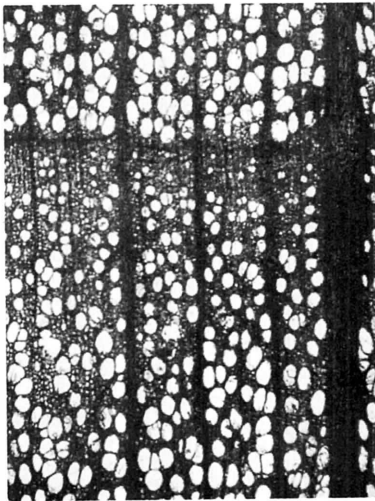
6.コナラ No61 転ばし C-30X



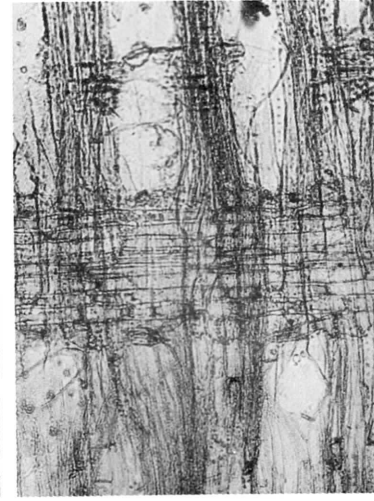
R-100X



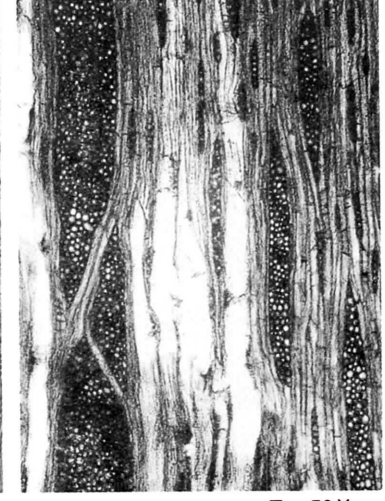
T-50X



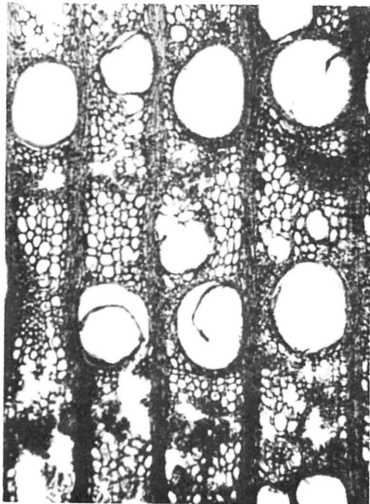
7.ブナ No34 椀 C-30X



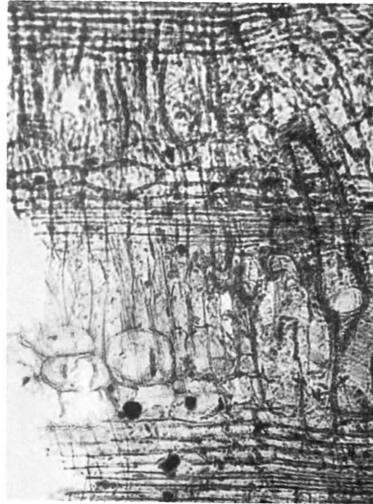
R-100X



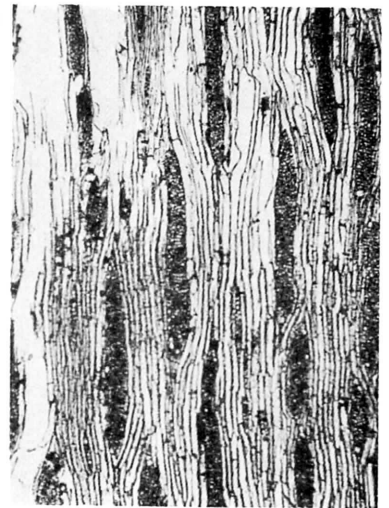
T-50X



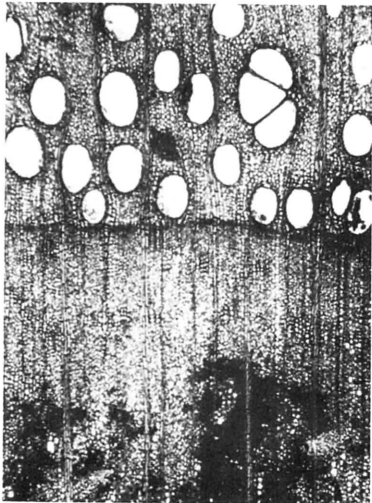
8.ケヤキ No.15 Ⅲ C-30X



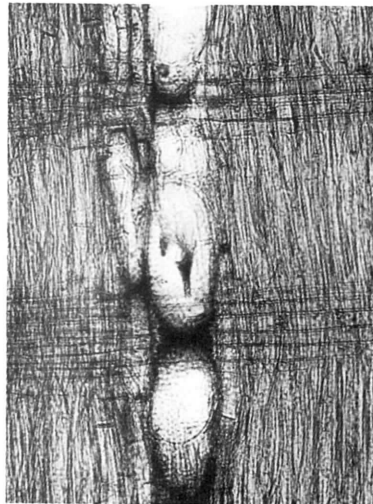
R-100X



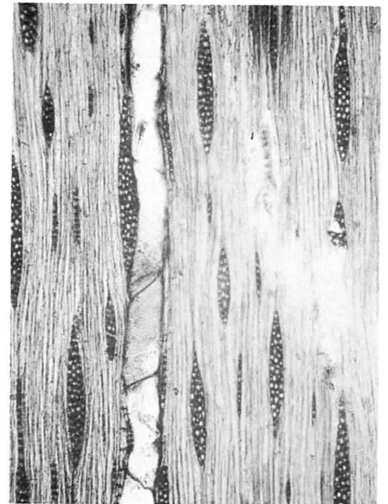
T-30X



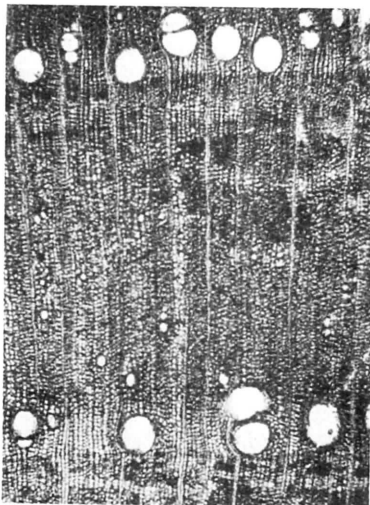
9.キハダ No.49 槽 C-30X



R-100X



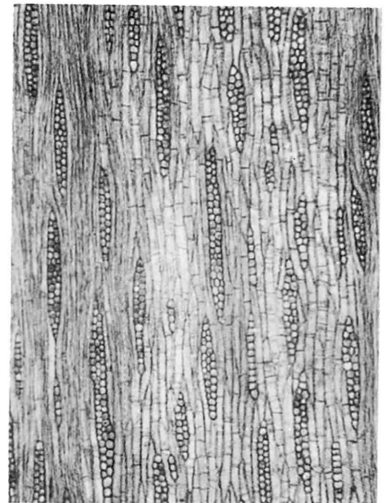
T-50X



10.トネリコ No.57 槌 C-30X



R-100X



T-50X

土器洗浄作業風景



1

地元の方々の現地見学



2

発掘調査員



3

発掘調査担当者

・落合Ⅱ遺跡

嶋 千秋 朴沢 正耕 蜂谷 艸平 菊池 久

(期限付臨時職員) 小野寺信孝

・南館遺跡

嶋 千秋 穴倉 圭介 菅原弘太郎 朴沢 正耕 蜂谷 艸平 菊池 久

鈴木 隆英 佐々木 勝

(期限付臨時職員) 伊藤 博幸 渡辺 俊一 佐藤 勝 高橋 又男

小野寺信孝

・鬼柳西裏遺跡

〈第一次調査〉菅原弘太郎 鈴木 隆英

(期限付臨時職員) 渡辺 俊一

〈第二次調査〉細谷 英男 鈴木 隆英

(期限付臨時職員) 久保 実 平野 茂

発掘調査協力機関

- ・江刺市教育委員会 北上市教育委員会

発掘調査地元作業員

・落合Ⅱ遺跡

菊地四治右衛門 菊地 文雄 菊地 覚治 佐藤 隆雄 相原久之助 中村 庄蔵

佐藤 保 菊地東四郎 相原藤治郎 高橋巳之吉 菅野 要 相原 正雄

佐藤 勝治 佐藤 文治 及川 養吉 菊地 ミヨ 菊地フミ子 浅井田シン

菊地トシオ 菊地トキワ 佐藤ウメノ 茂庭 文江 高橋 幸子 高橋 アツ

佐々木優子 菊地アヤノ 千葉カツノ 菊地 シゲ 晴山 トメ 菊地 ミチ

菅野 サツ 及川ハツチ 菊地 京子

・鬼柳西裏遺跡

〈第一次調査〉佐藤 丑蔵 阿部 善蔵 阿部 一三 千田重次郎 高橋喜代治

佐藤 朝子 桃井ハルノ 高橋マツエ 田中 ノブ 阿部 江美 小野寺スミ

高橋 キス 八重樫リエ 桃井ミドリ 高橋 静子

〈第二次調査〉佐藤 丑蔵 高橋喜代治 千田重次郎 阿部 一三 阿部 善蔵

八重樫一郎 桃井 肇 佐藤 裕治 田中 ノブ 高橋マツエ 桃井ハルノ

高橋 キス 阿部 江美 佐藤 朝子 佐藤 キミ 八重樫リエ 八重樫ノブ

八重樫ヒメ子 阿部イサ子 小野寺スミ 梶川 フサ 高橋スズ子 桃井 陽子

八重樫正美 佐藤千代子 高橋 明美 千田 清子 阿部 陽子 工藤 安子

高橋 静子

整理作業員（新幹線関係全遺跡）

• 昭和49年度	吉田 陽子 阿部みゆき	竹内 昭子 鈴木由起子	千田 篤子 工藤真理子	石川 真 川村由美子	五日市淳子 佐藤 敦子
• 昭和50年度	竹内 昭子 川村由美子 石川 真	五日市淳子 中村 幸江 大下 幸子	阿部みゆき 大坊 敏純	鈴木由起子 野口 真理	工藤真理子 佐藤 利宏
• 昭和51年度	小野真理子 堀切 紀子 佐藤 利宏 武藤 ヒサ	大下 幸子 佐藤シゲ子 村山 博子 佐藤 リエ	熊谷由美子 村田 泰子 千葉恵美子 鈴木キミヨ	石川 真 青柳 直子 小野由美子	菊池真知子 大坊 敏純 佐々木キヌ
• 昭和52年度	堀切 紀子 齊藤 綾子 伊東由美子	小野真理子 青井 伸子 小林 史子	熊谷由美子 佐藤 典義 中ノ目真弓	菊池真知子 石川 真 小野 道子	村田 泰子 浅利 孝子 宮田 達哉

岩手県教育委員会事務局文化課職員一覧

(埋蔵文化財関係)

文化課長 熊谷正男
 課長補佐(総務) 小野寺昭吾
 課長補佐(調査) 小野寺登
 庶務係長 加藤勝男
 主事 鈴木喜代治
 主事 佐藤伸一郎
 主任文化財主査 嶋千秋
 文化財主査 菊地郁雄
 技師 国生尚

縦貫自動車道関係

文化財主査 吉田努
 三上昭
 斉藤淳
 島隆
 昆野靖
 文化財調査員 相原康二
 八重樫良宏
 狩野敏男
 田村壮一
 主事 石川長喜

新幹線関係

文化財主査 菅原弘太郎
 細谷英男
 朴沢正耕
 文化財調査員 鈴木隆英
 技師 佐々木勝
 (期限付臨時職員)

斉藤孝
 鈴木優子
 村井隆(運転)
 熊谷由美子
 赤坂恵子
 藤原三代子
 村上良子
 小林史子
 勝又邦子
 下村奈々子
 伊東由美子
 山崎久美子(6月末退職)
 沢口恵子(12月末退職)

岩手県文化財調査報告書第50集
東北新幹線関係埋蔵文化財調査報告書VI

昭和55年3月31日 発行

発行 岩手県教育委員会
盛岡市内丸10-1

印刷 株式会社熊谷印刷
盛岡市上田一丁目6-49 ☎(53)4151
