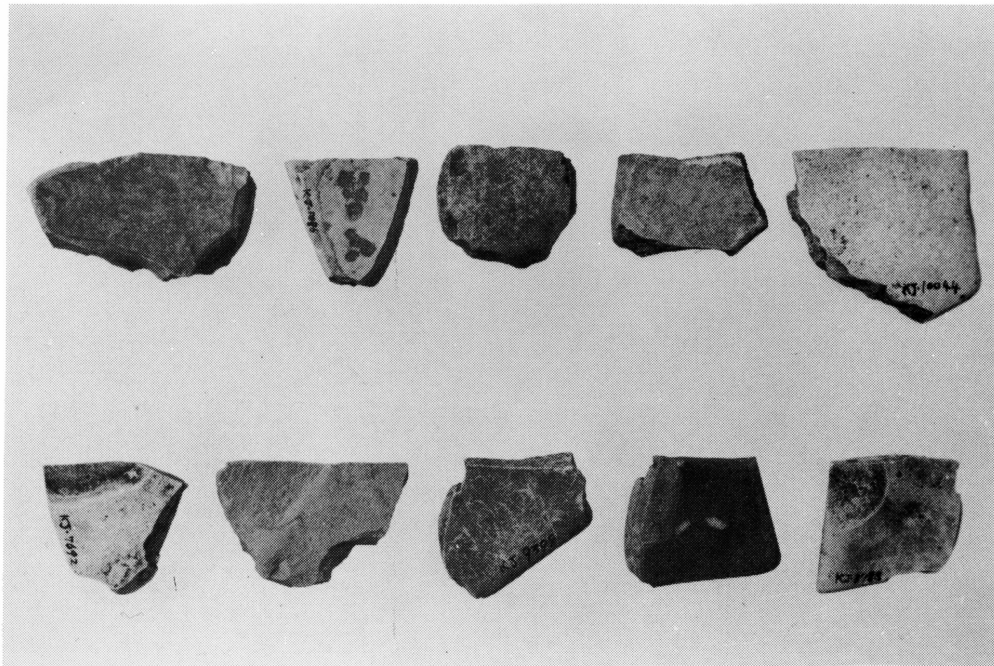
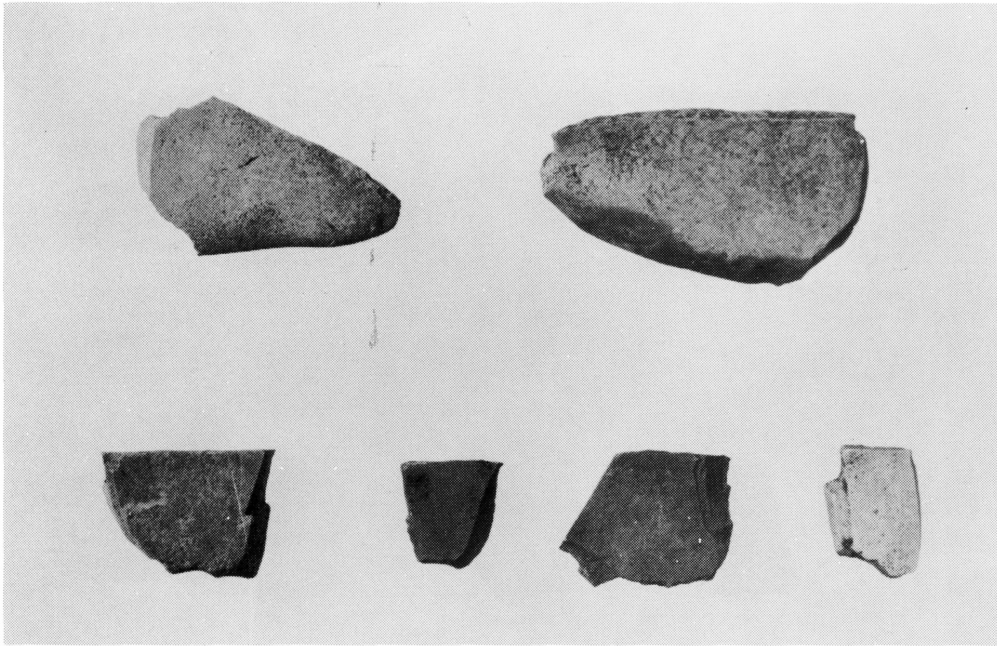


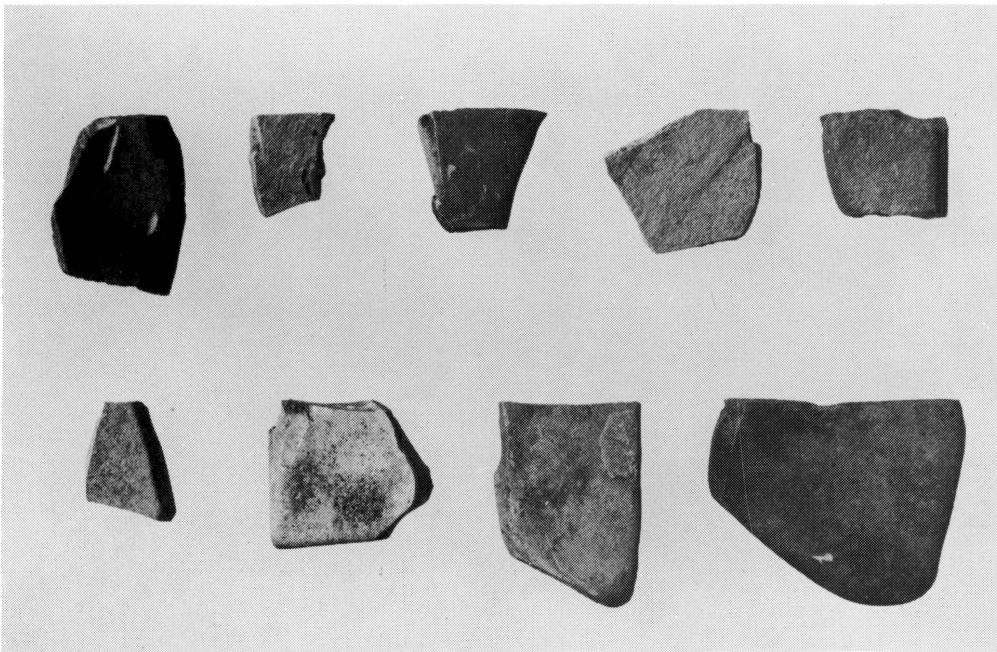
凝灰岩質頁岩の下縁調整石核



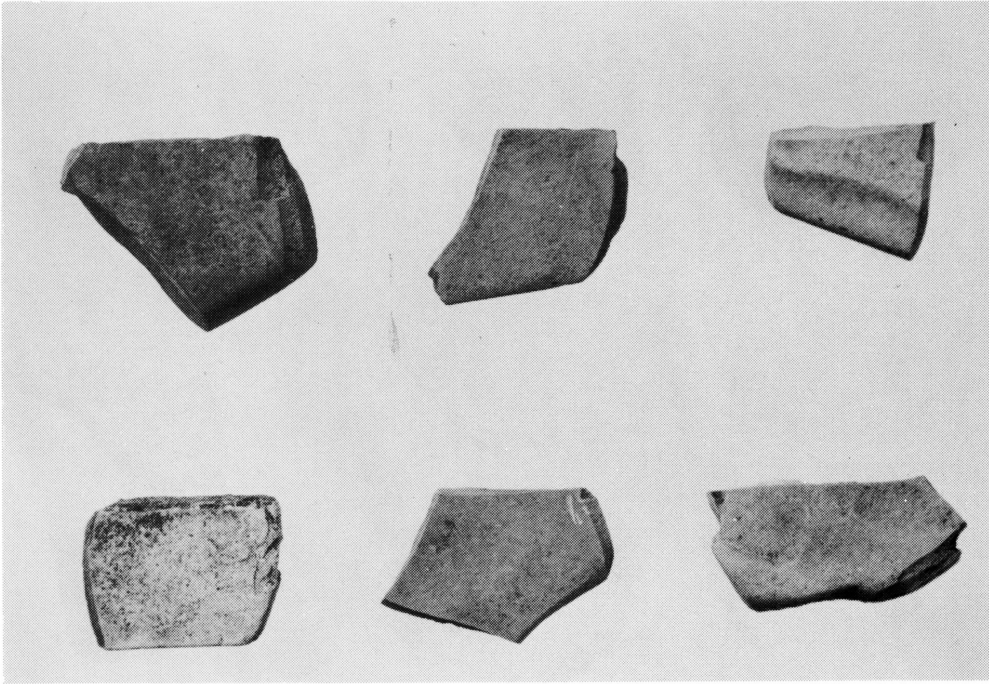
凝灰岩質頁岩の下縁調整石核



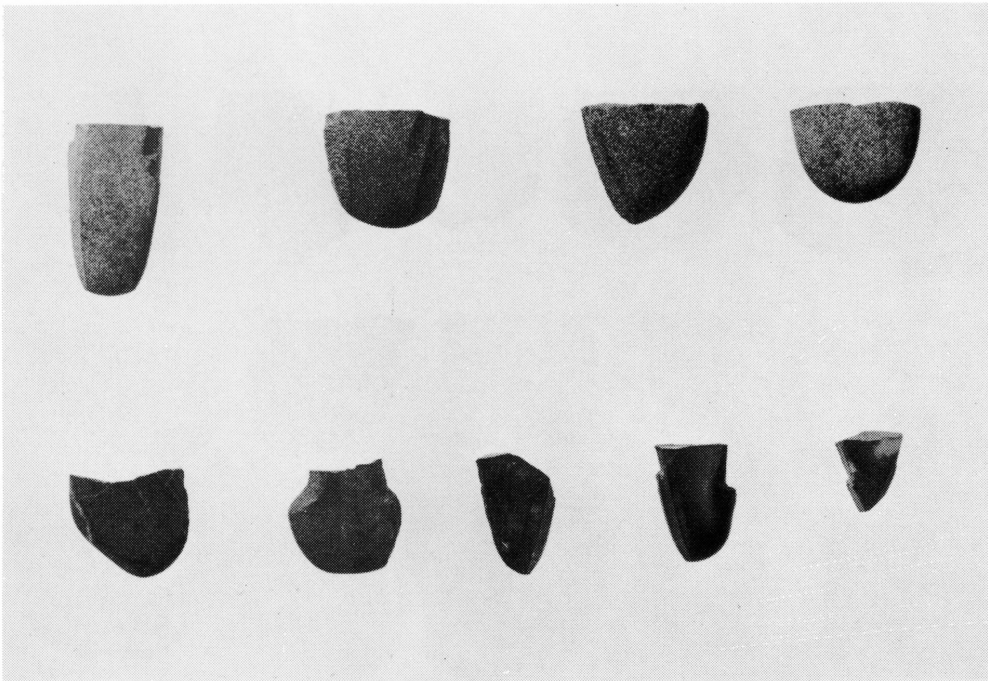
凝灰岩質頁岩の下縁調整細石刃石核



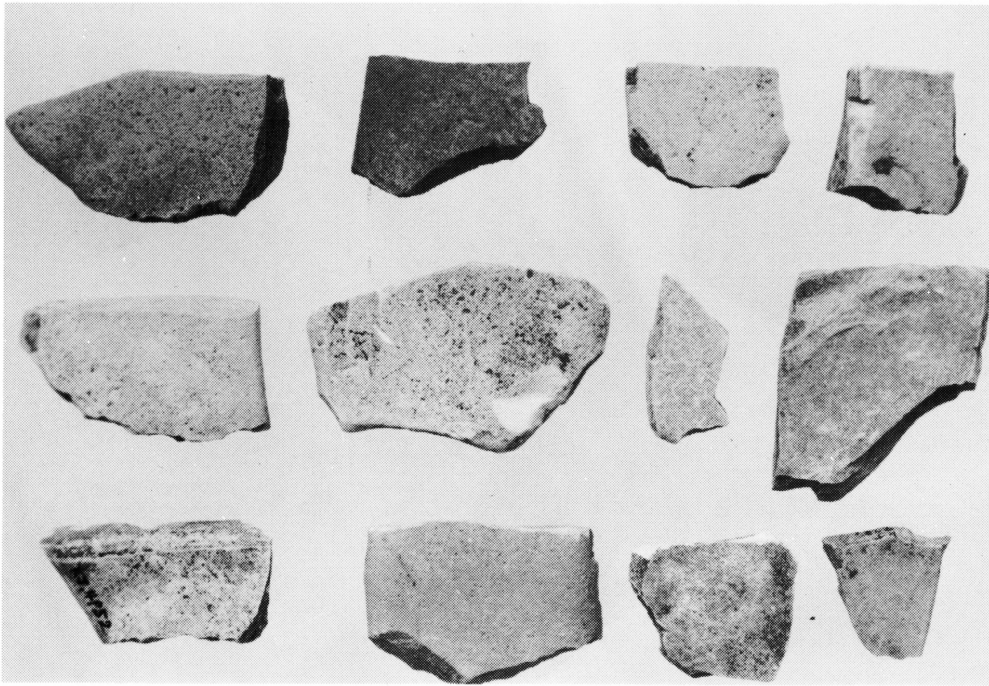
凝灰岩質頁岩の下縁調整細石刃核



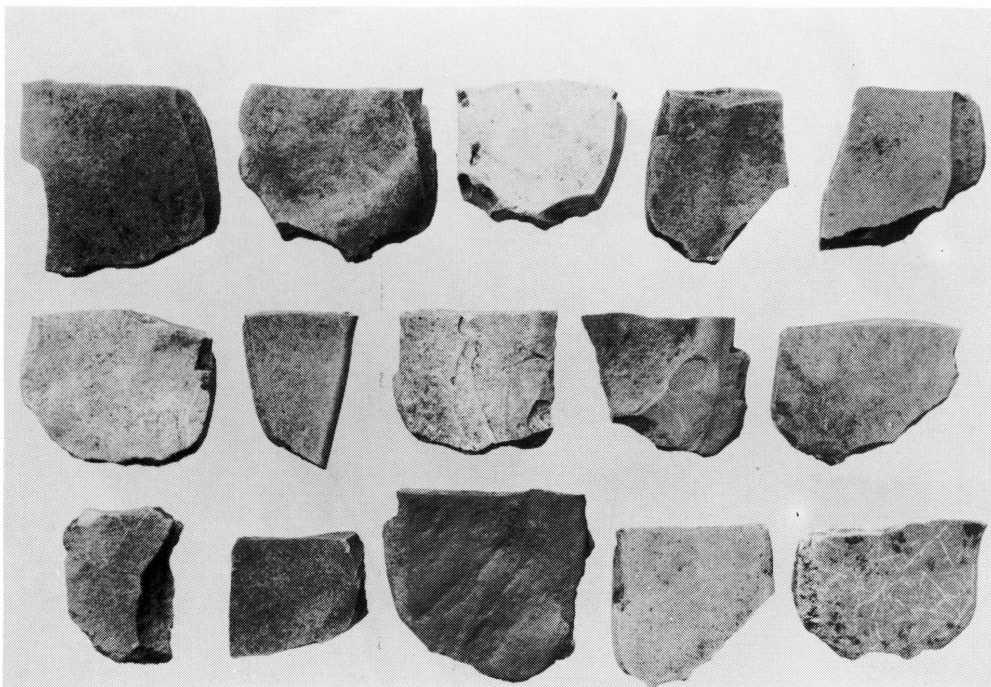
凝灰岩質頁岩の非下縁調整細石刃石核



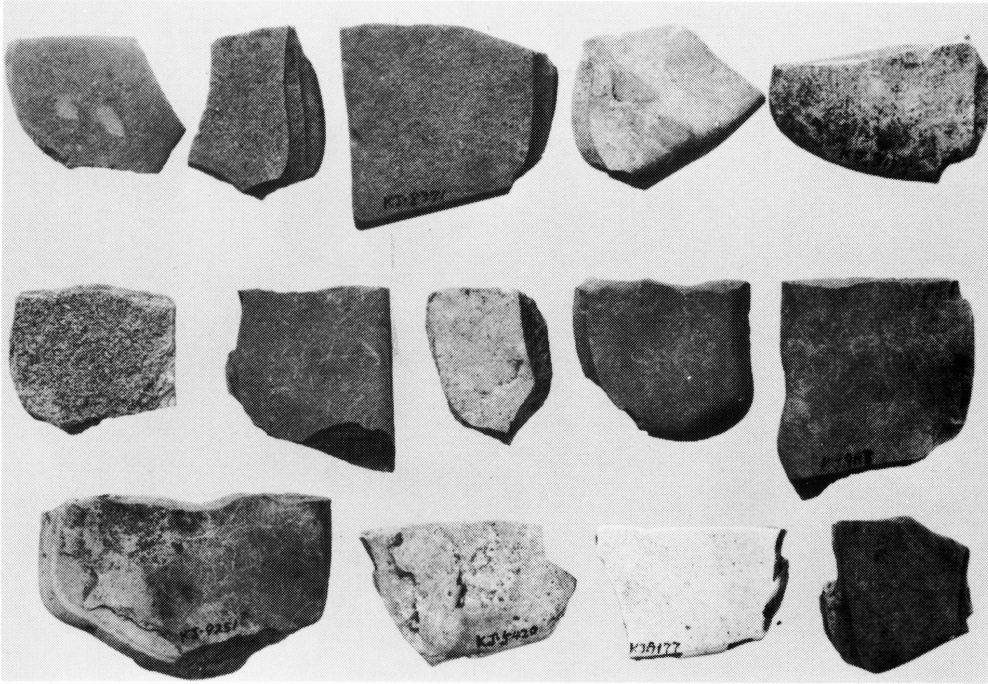
頁岩・砂岩の非下縁調整細石刃石核



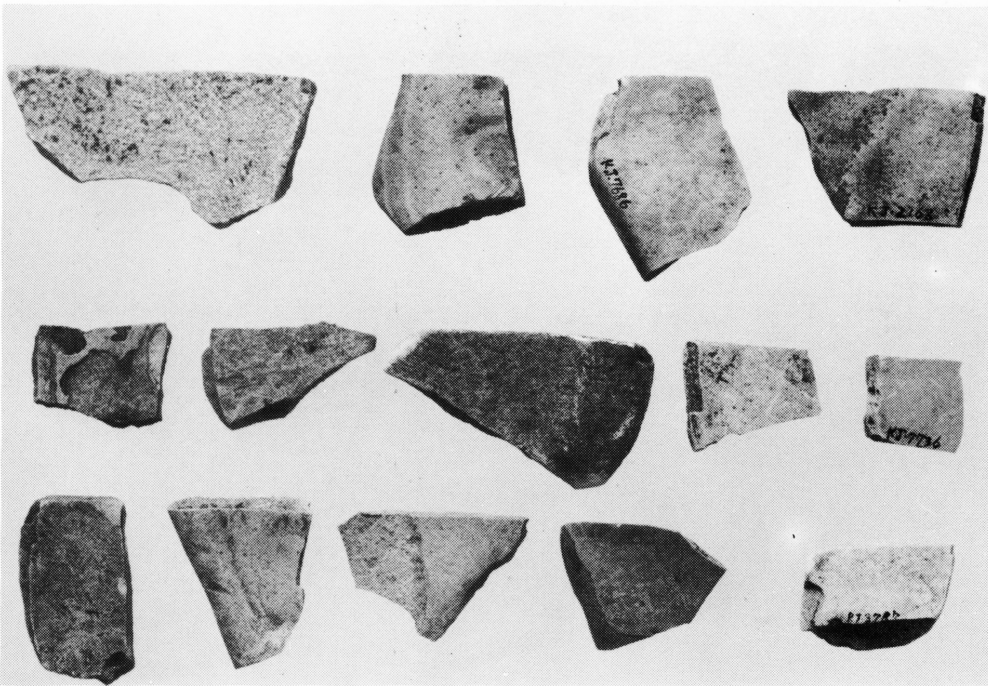
凝灰岩質頁岩の非下縁調整細石刃核



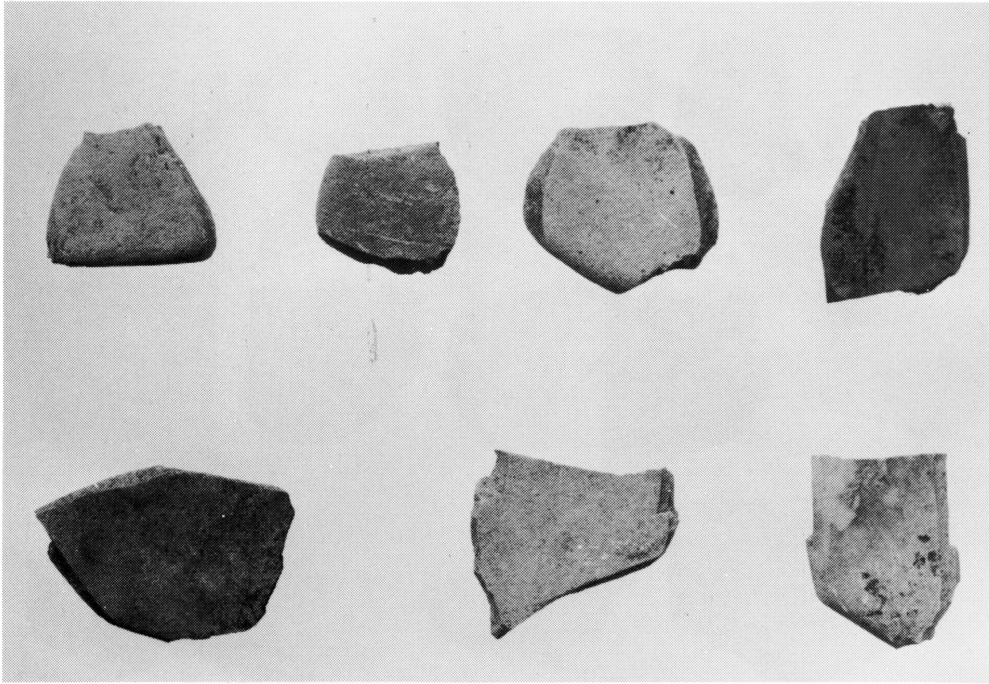
凝灰岩質頁岩の非下縁調整細石刃石核



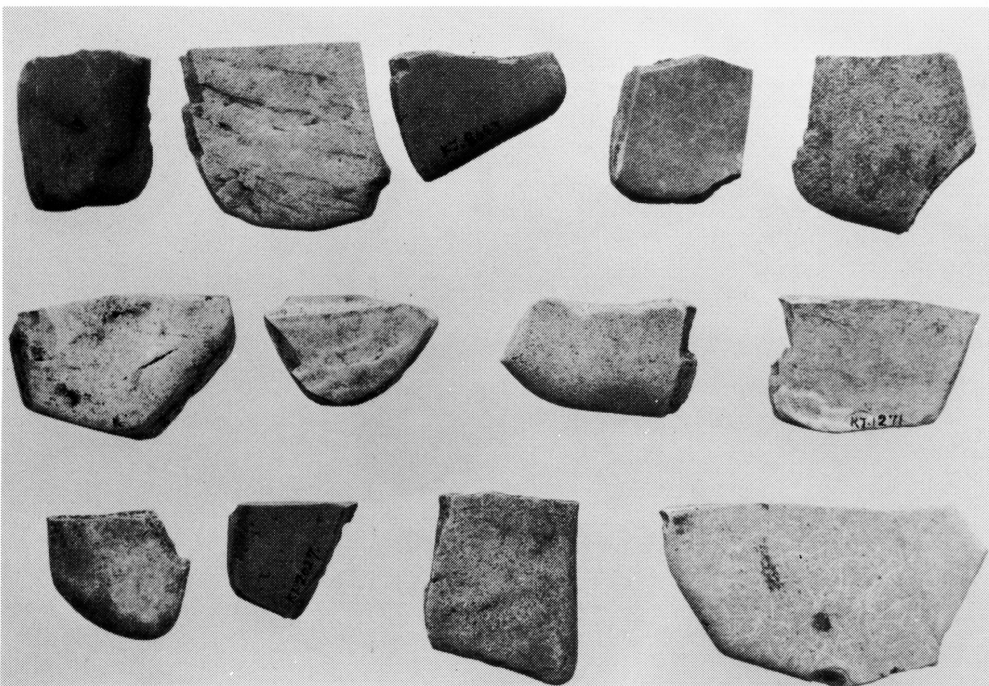
凝灰岩質頁岩の下縁調整細石刃核



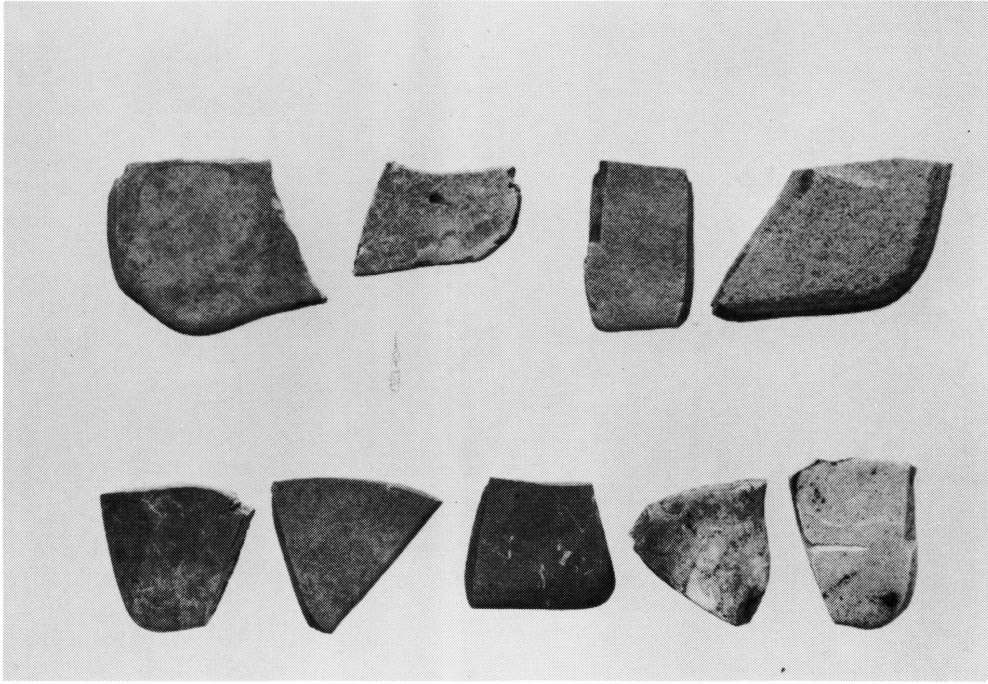
凝灰岩質頁岩の下縁調整細石刃核



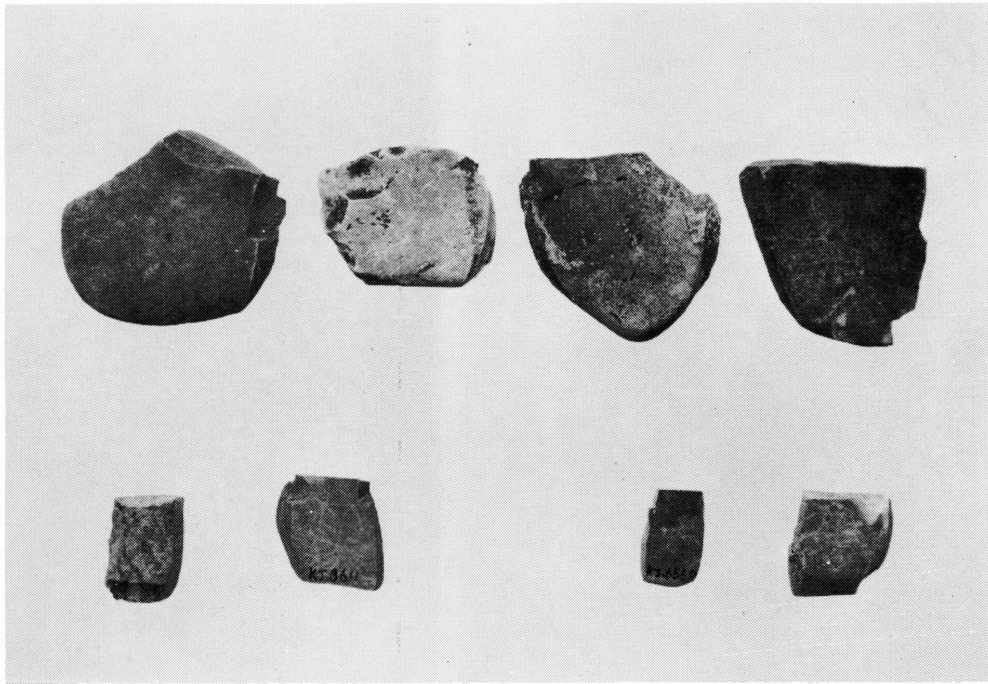
凝灰岩質頁岩の下縁調整細石刃核（2面）



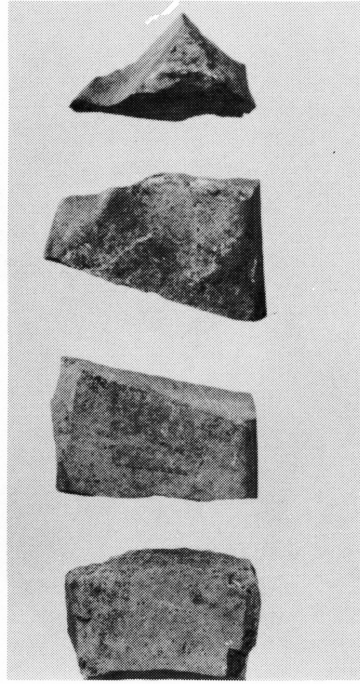
凝灰岩質頁岩の非下縁調整細石刃核



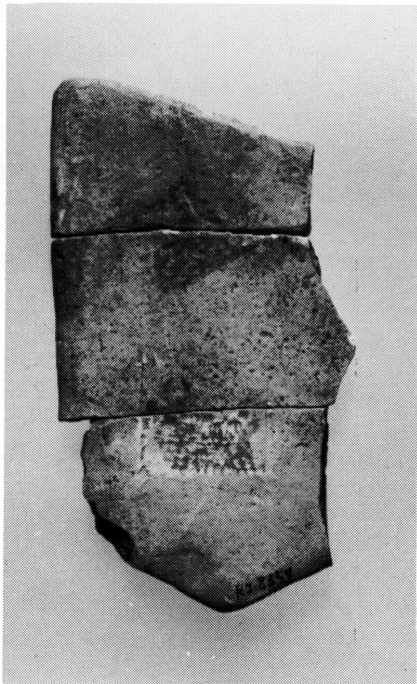
凝灰岩質非下縁調整細石刃石核



凝灰岩質非下縁調整細石刃石核 (2面)

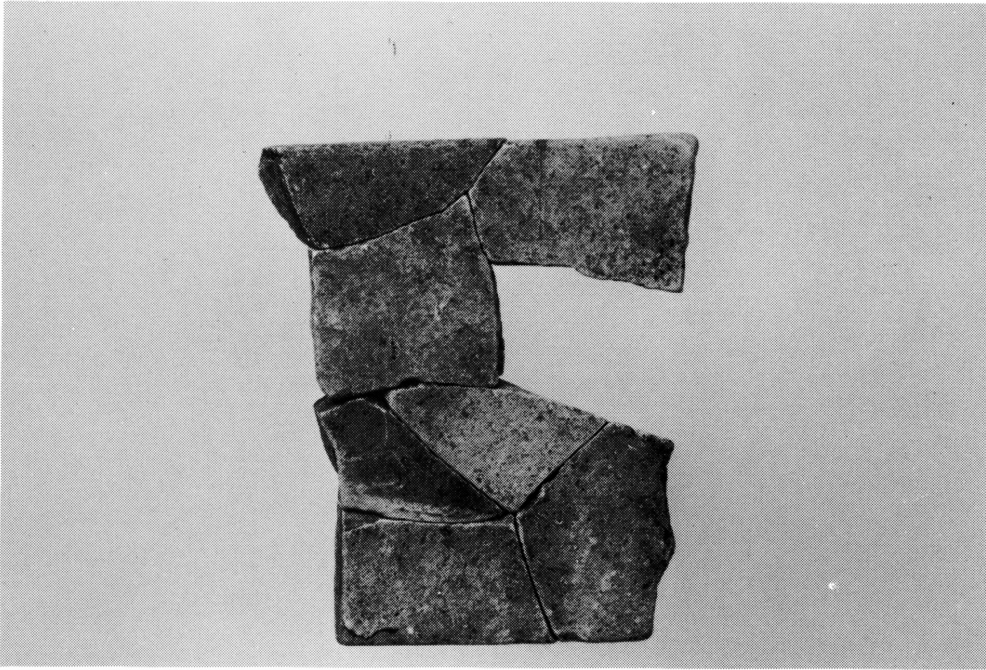


接合資料

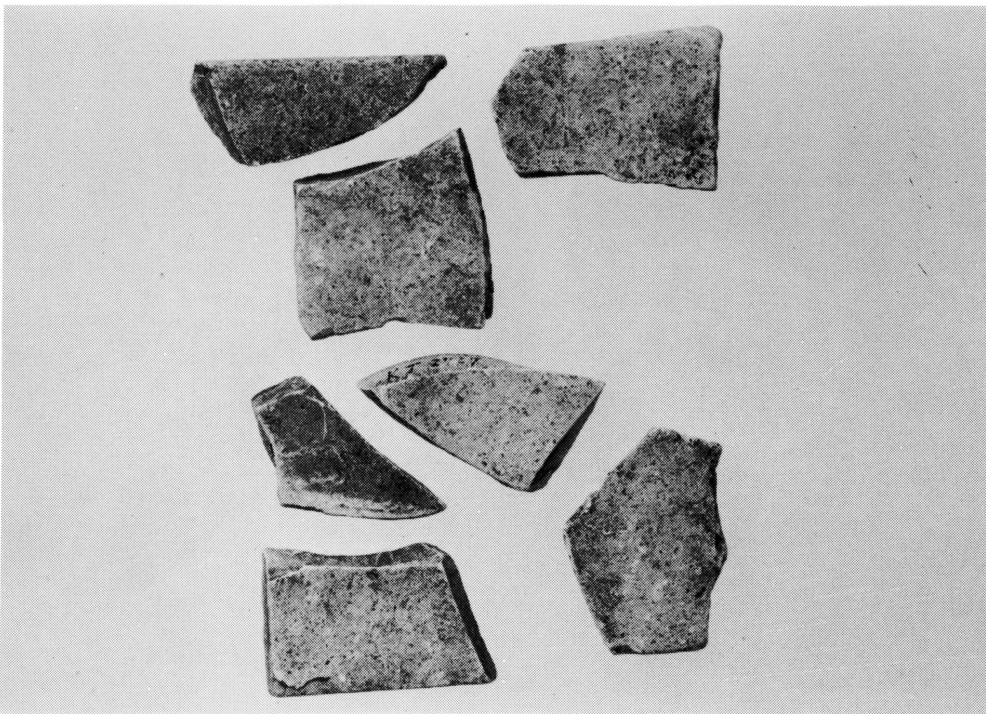


接合資料

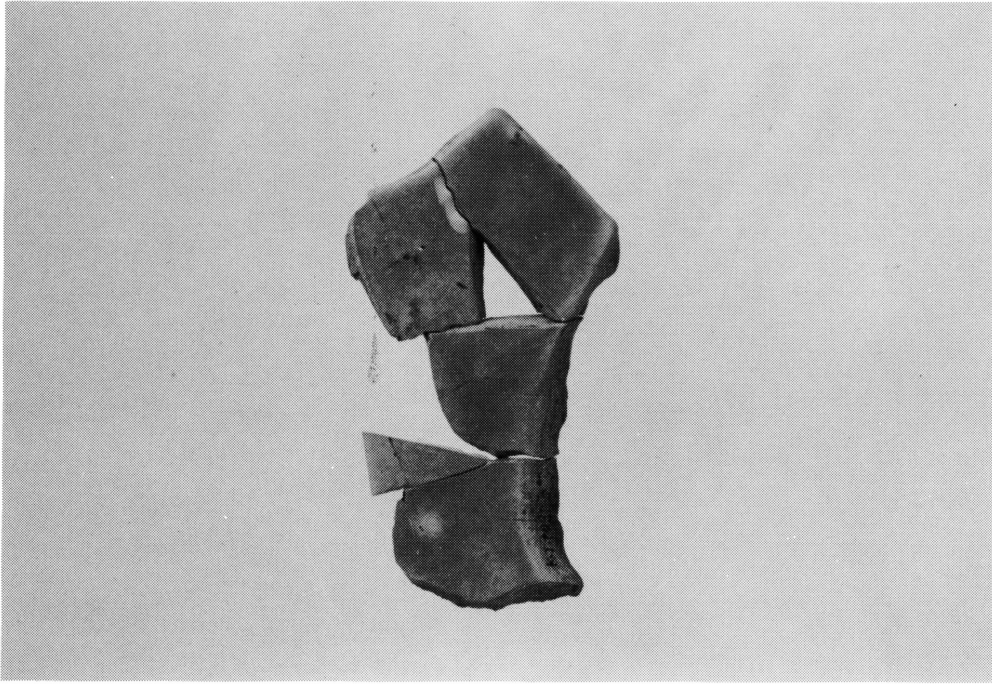




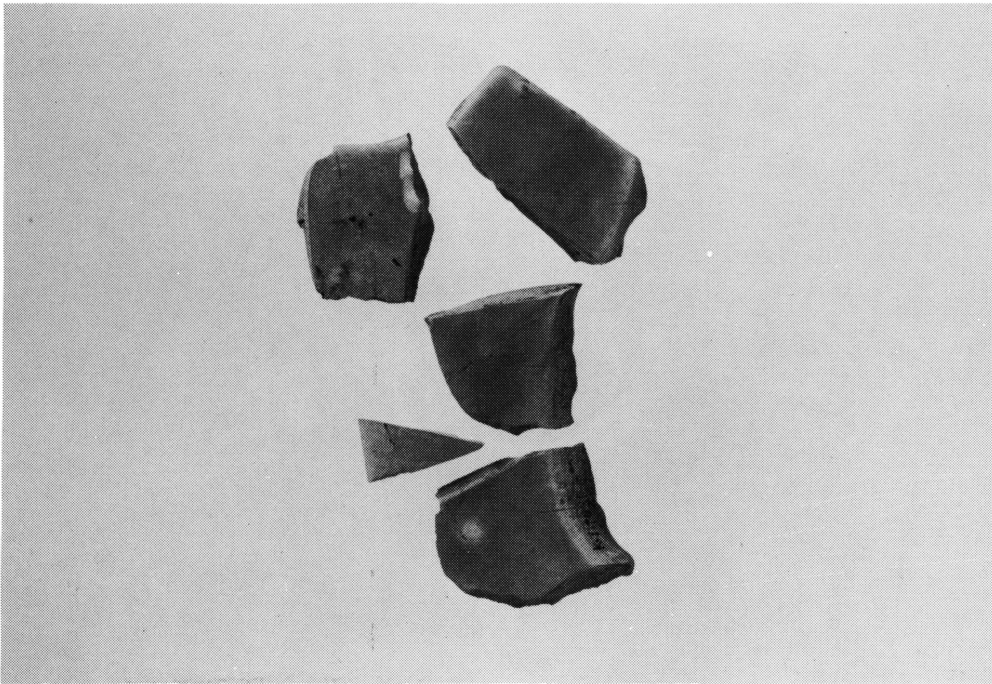
接合資料



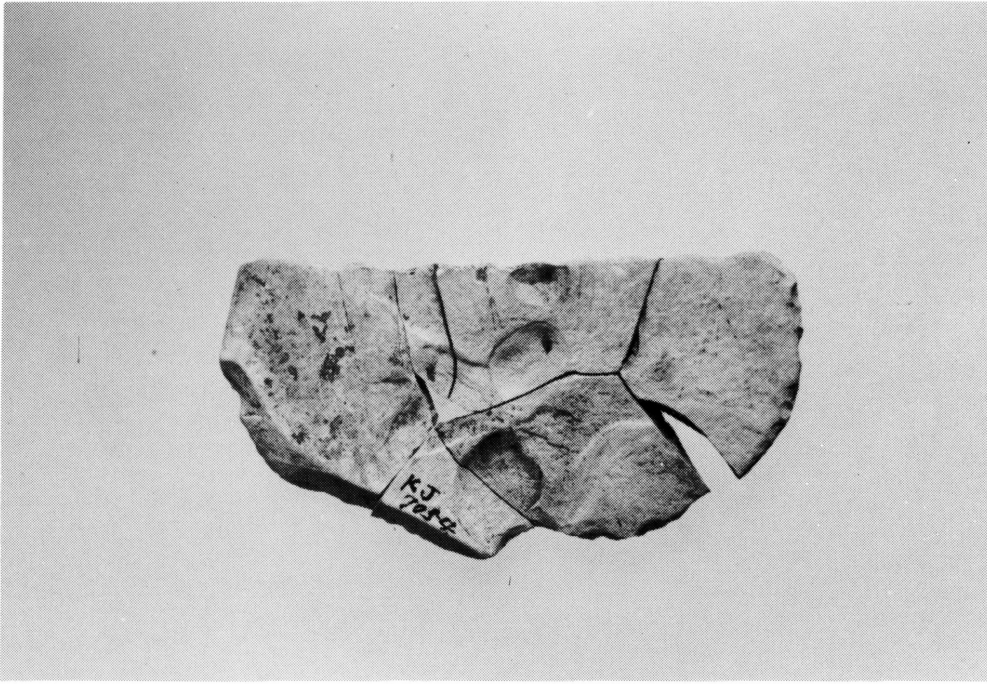
接合資料



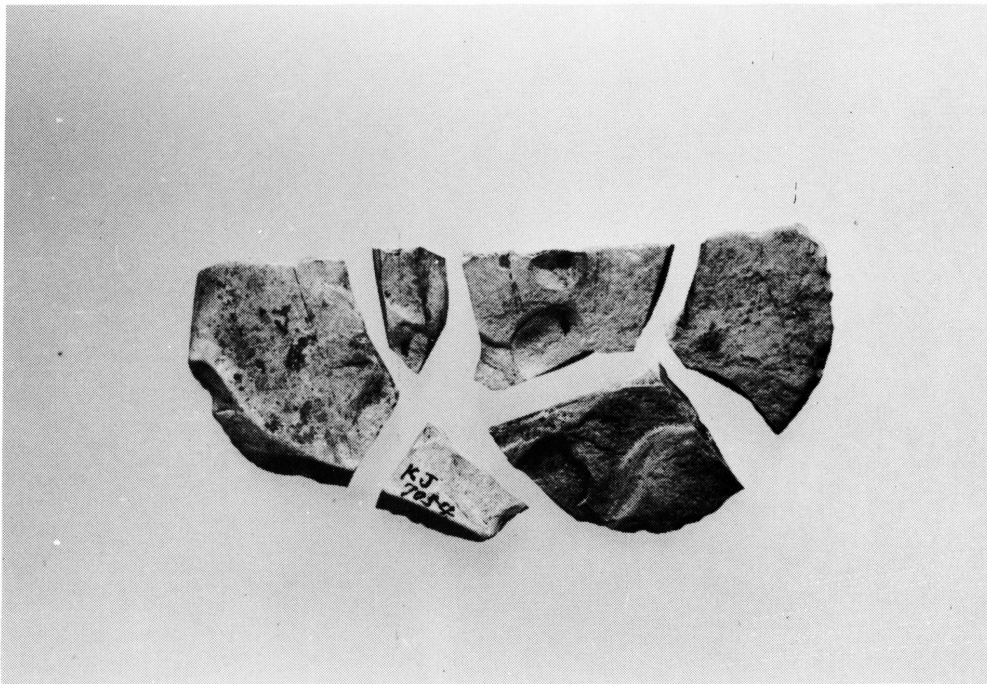
接合資料



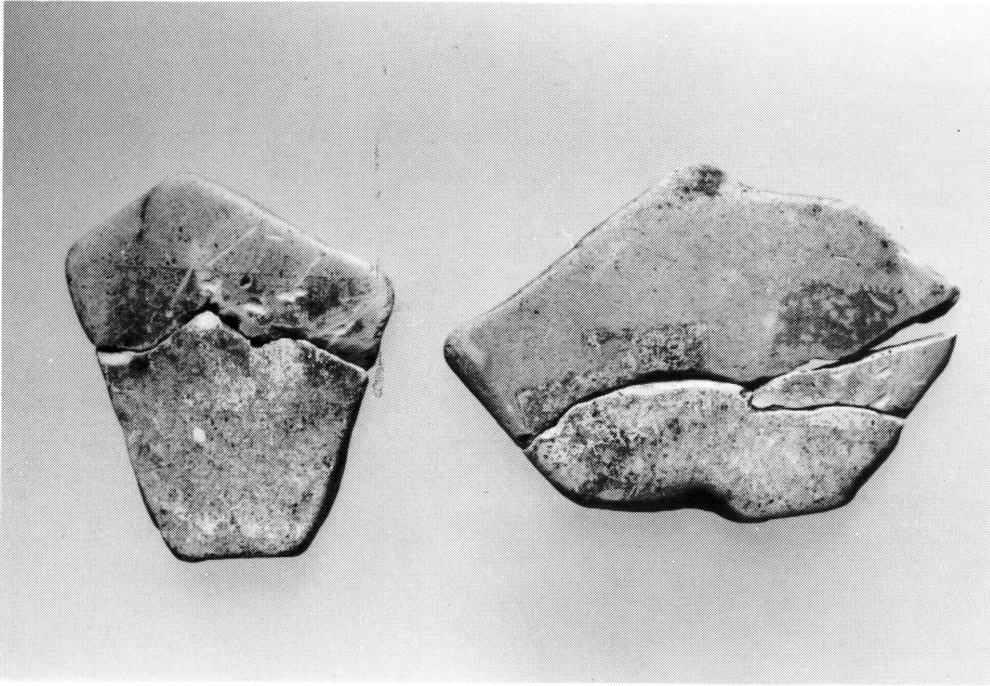
接合資料



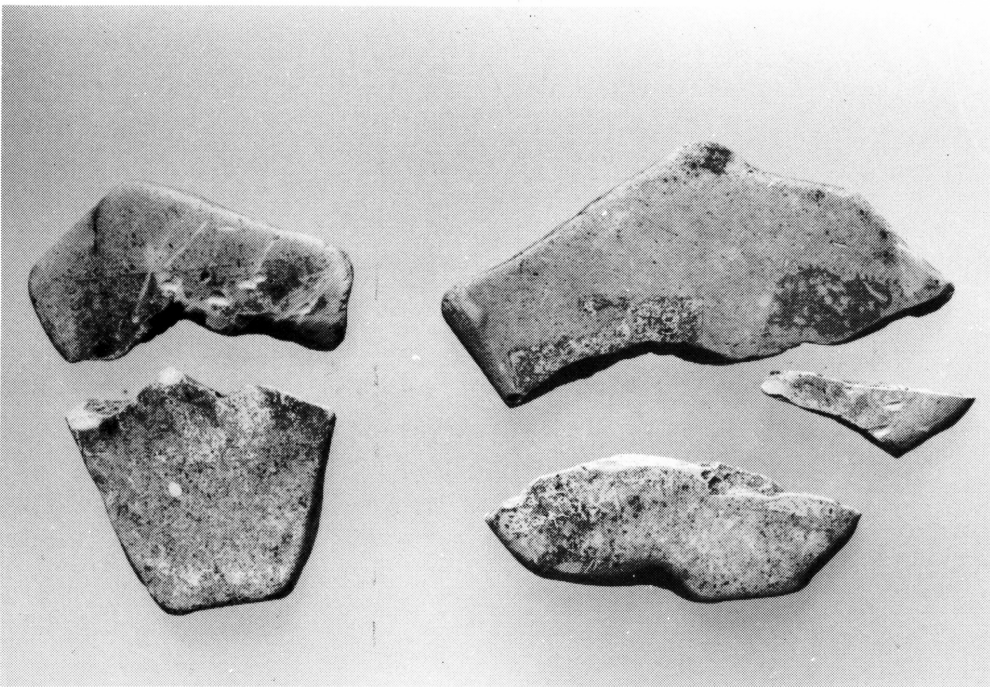
接合資料



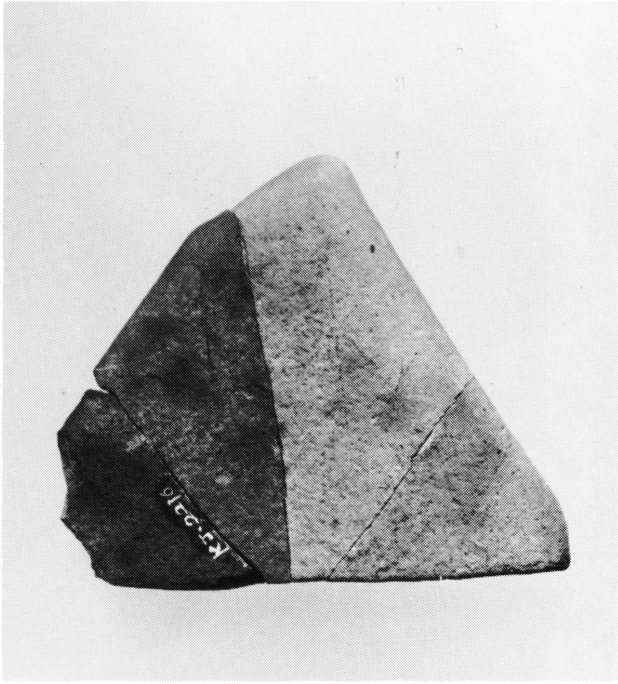
接合資料



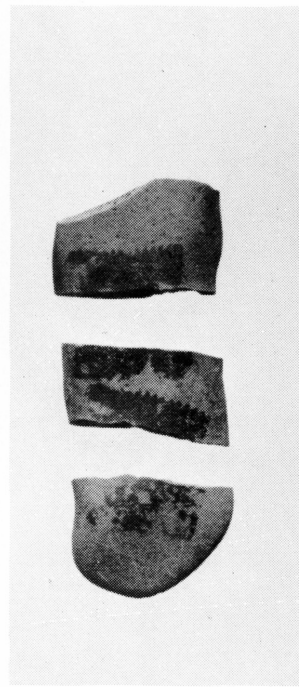
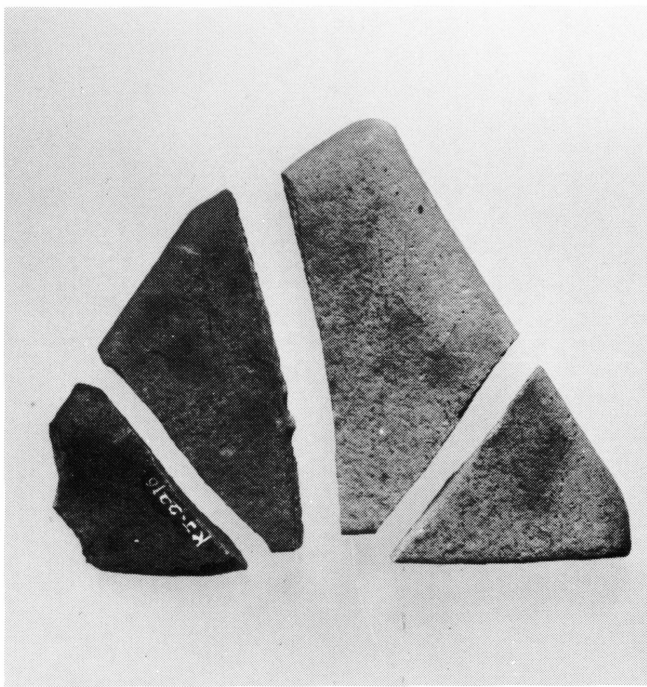
接合資料



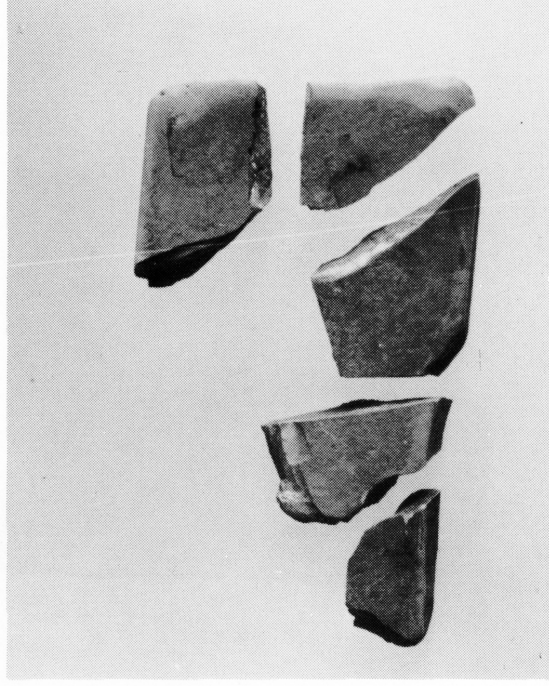
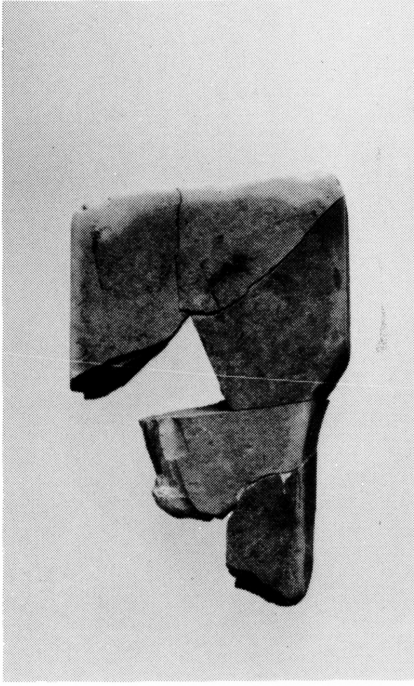
接合資料



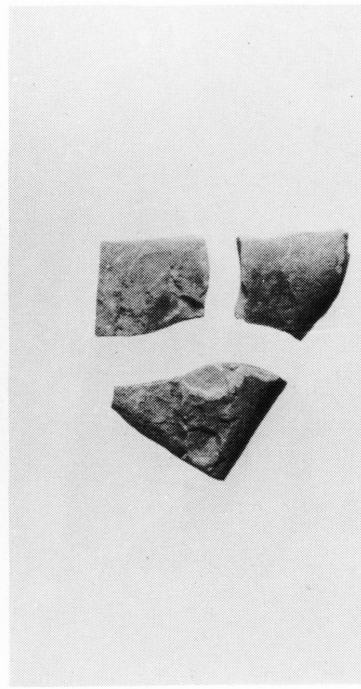
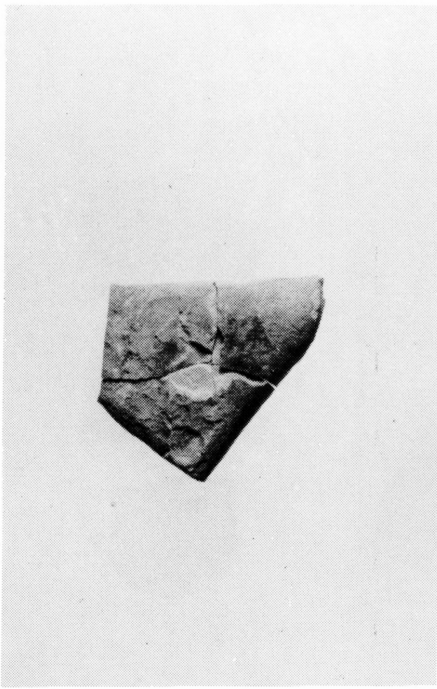
接合資料



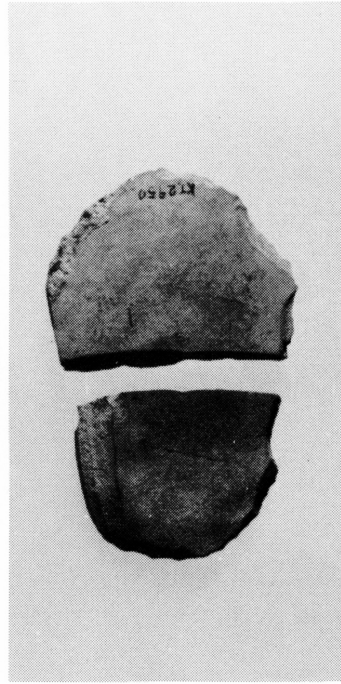
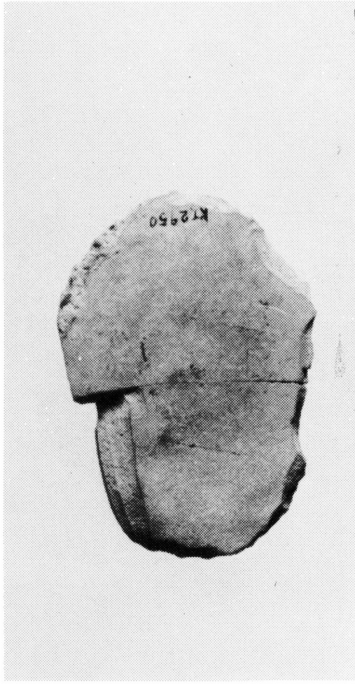
接合資料



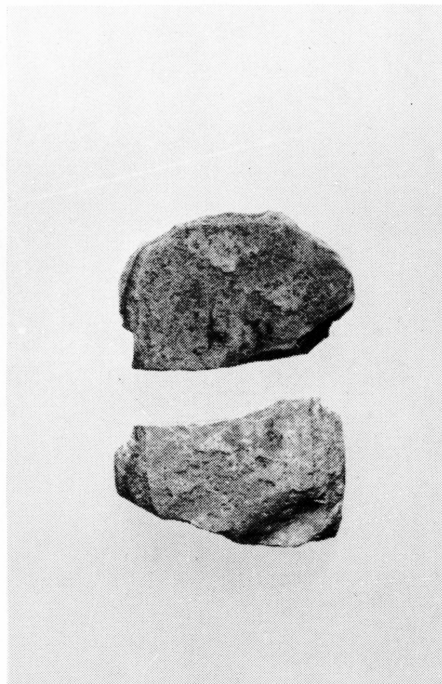
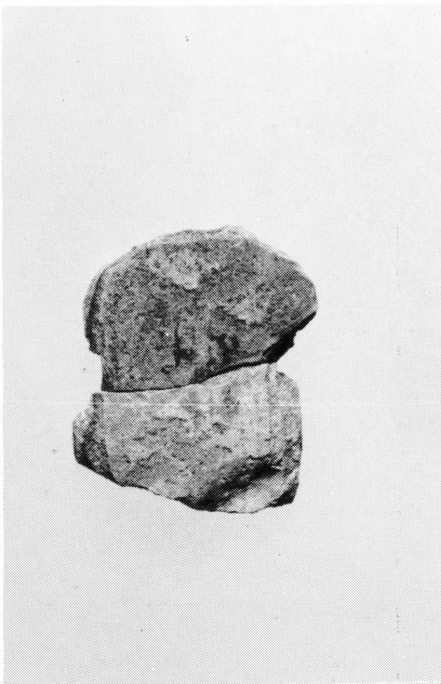
接合資料



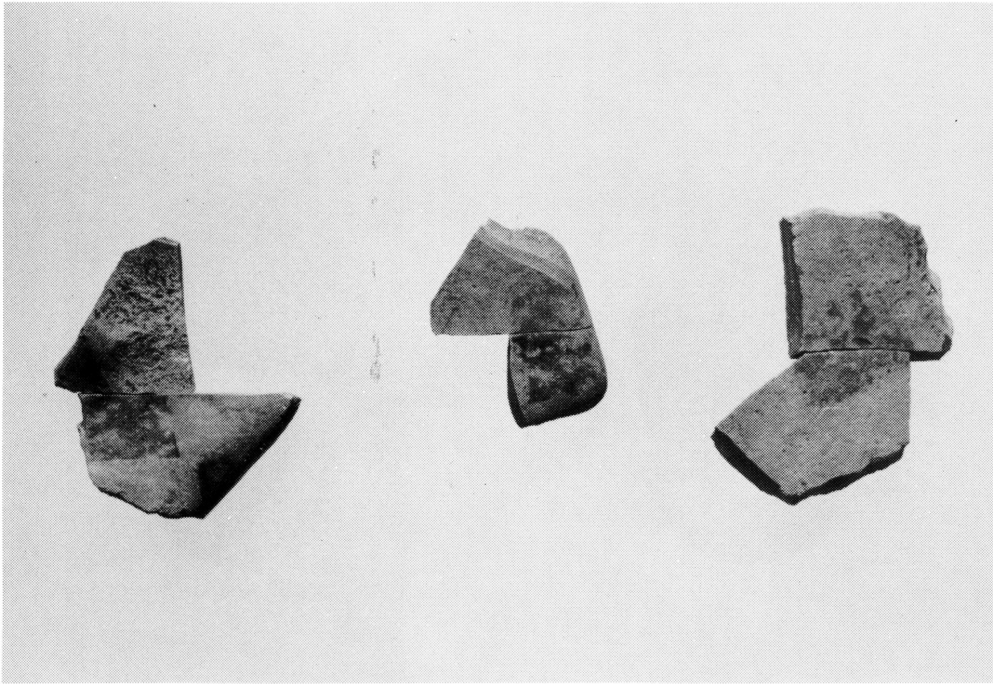
接合資料



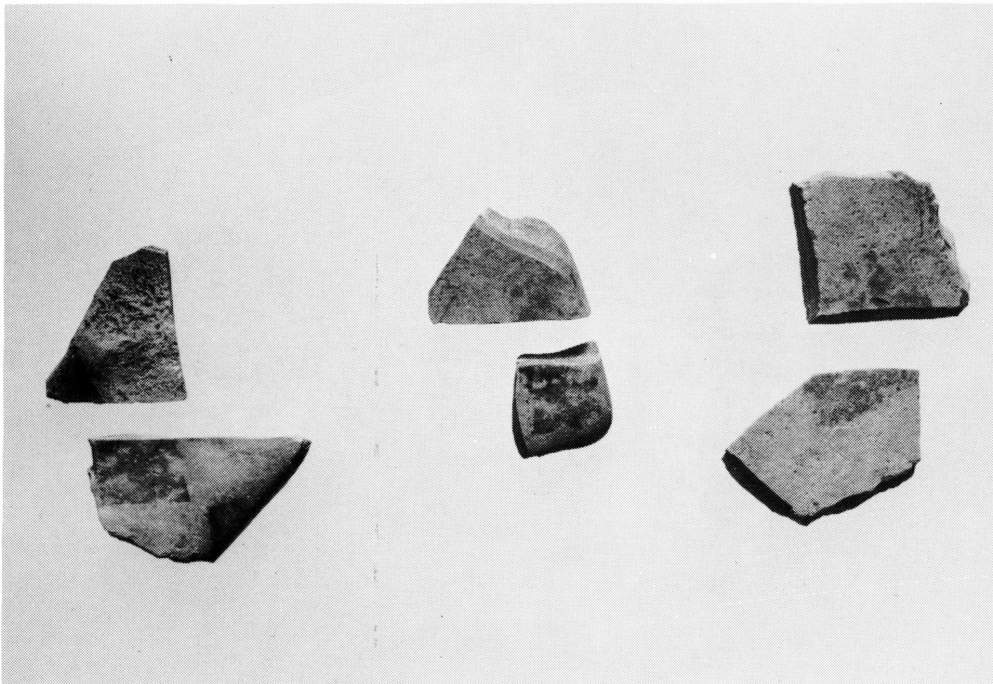
接合資料



接合資料

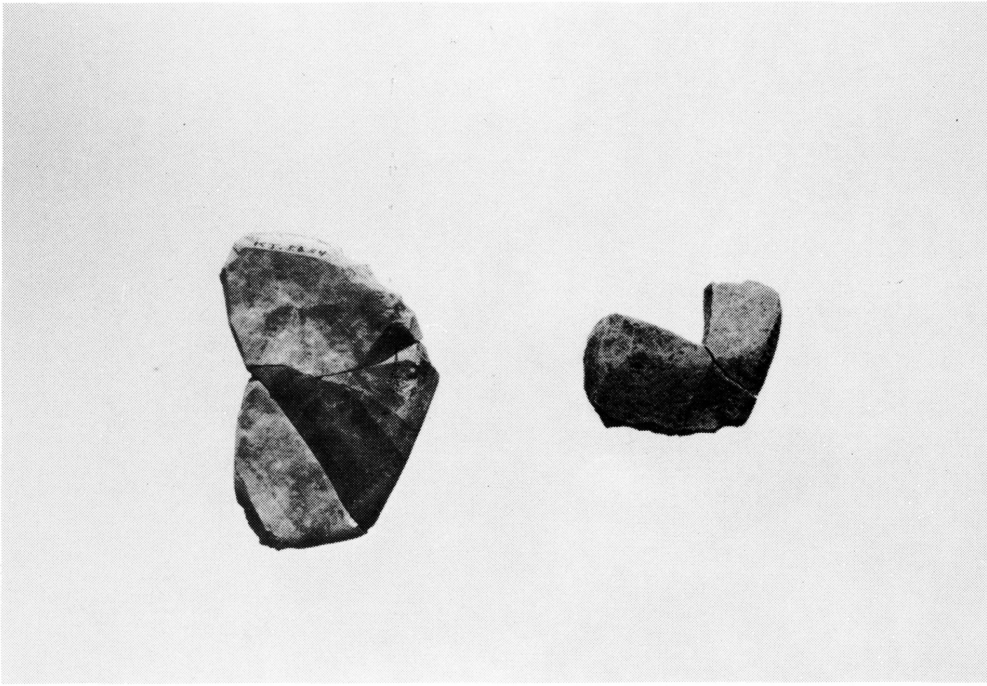


接合資料

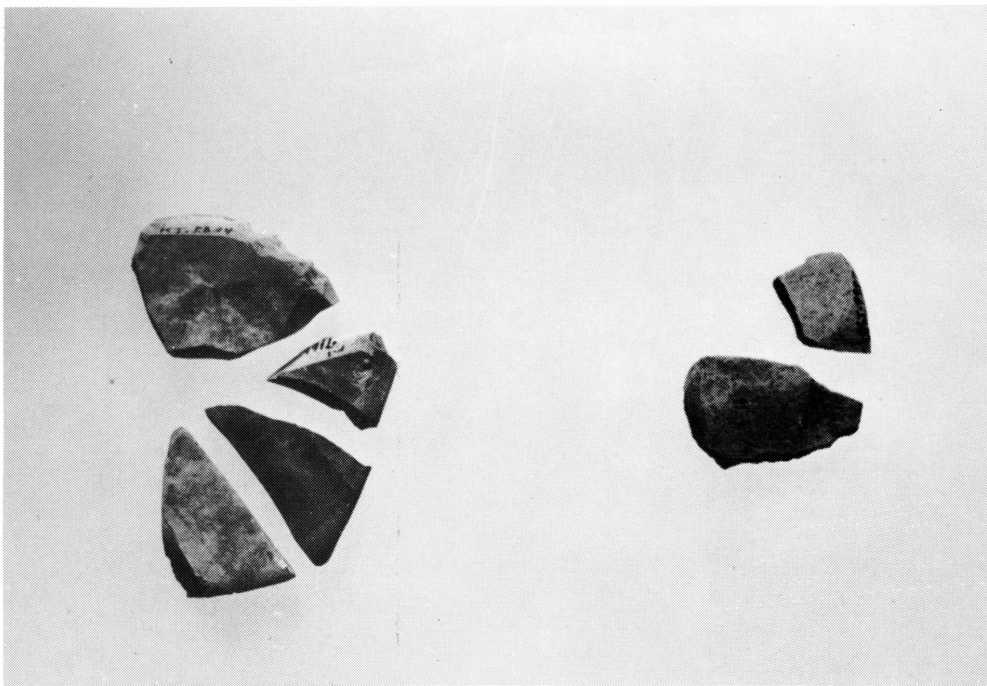


接合資料

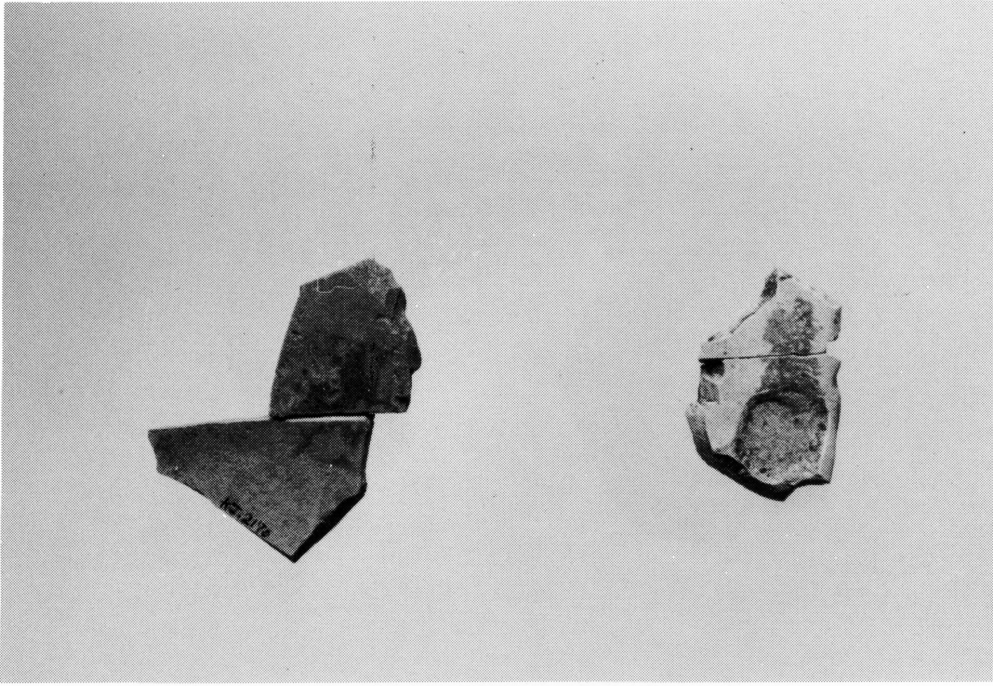




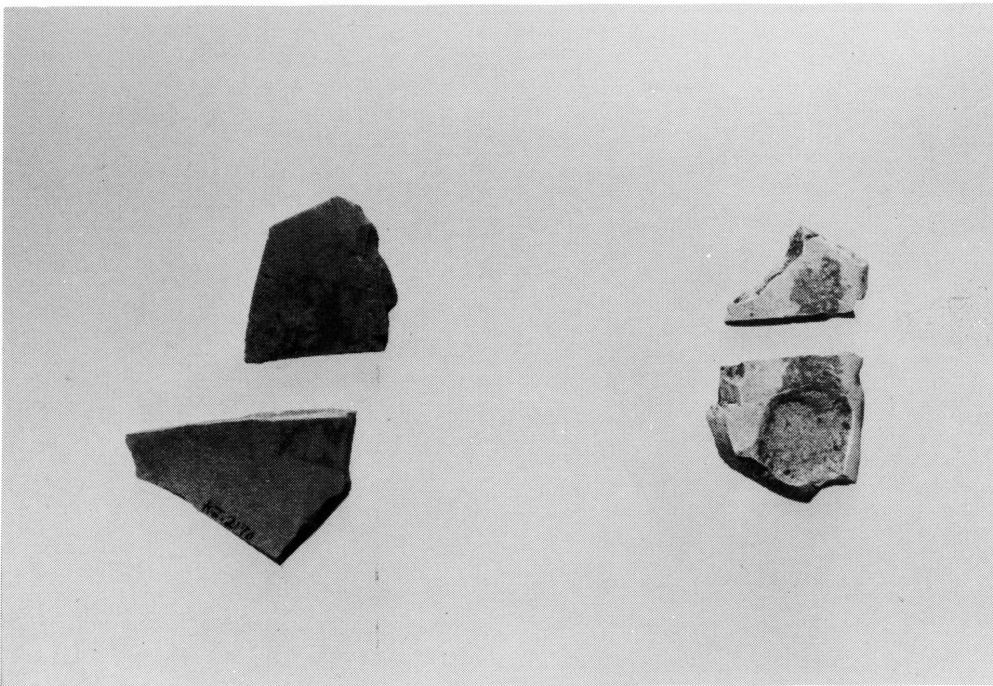
接合資料



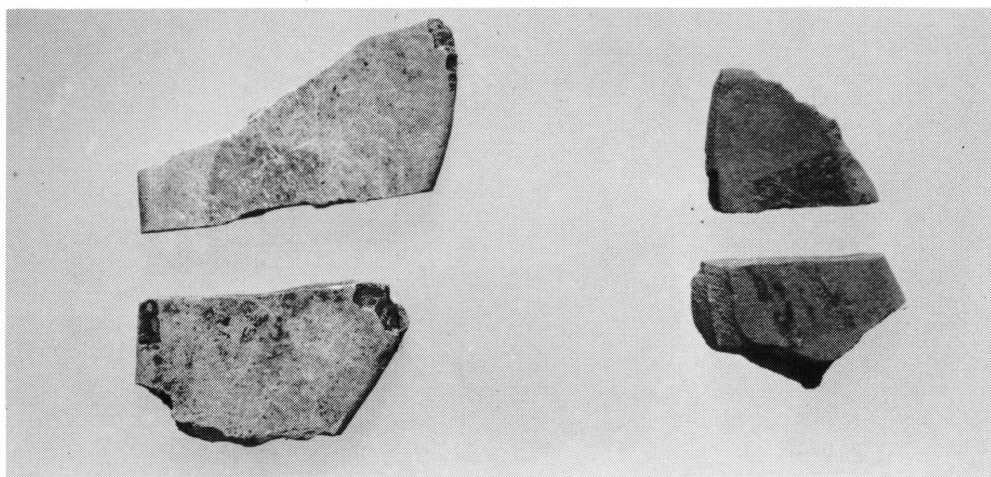
接合資料



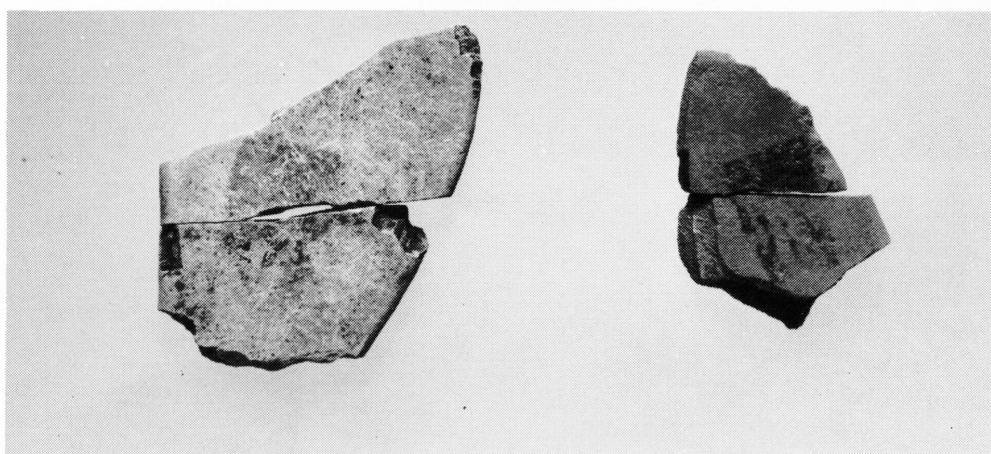
接合資料



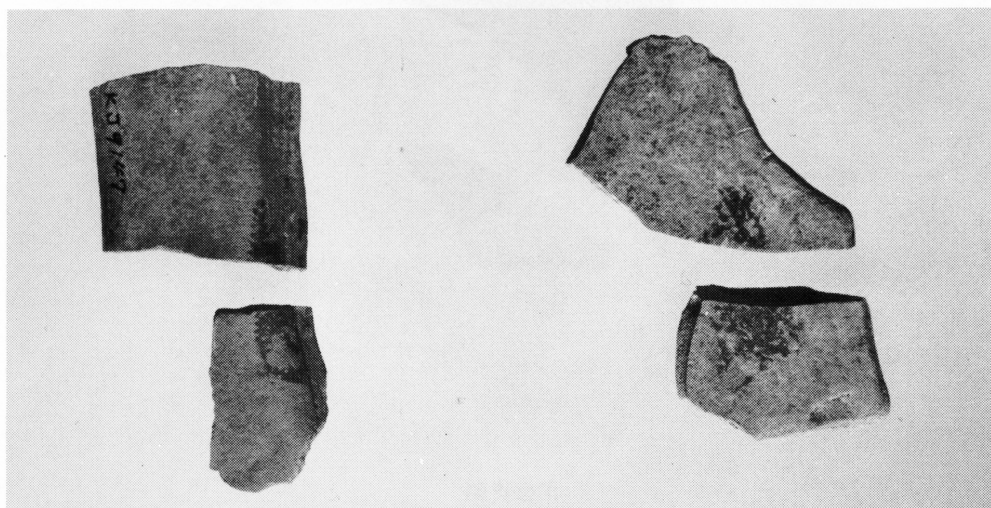
接合資料



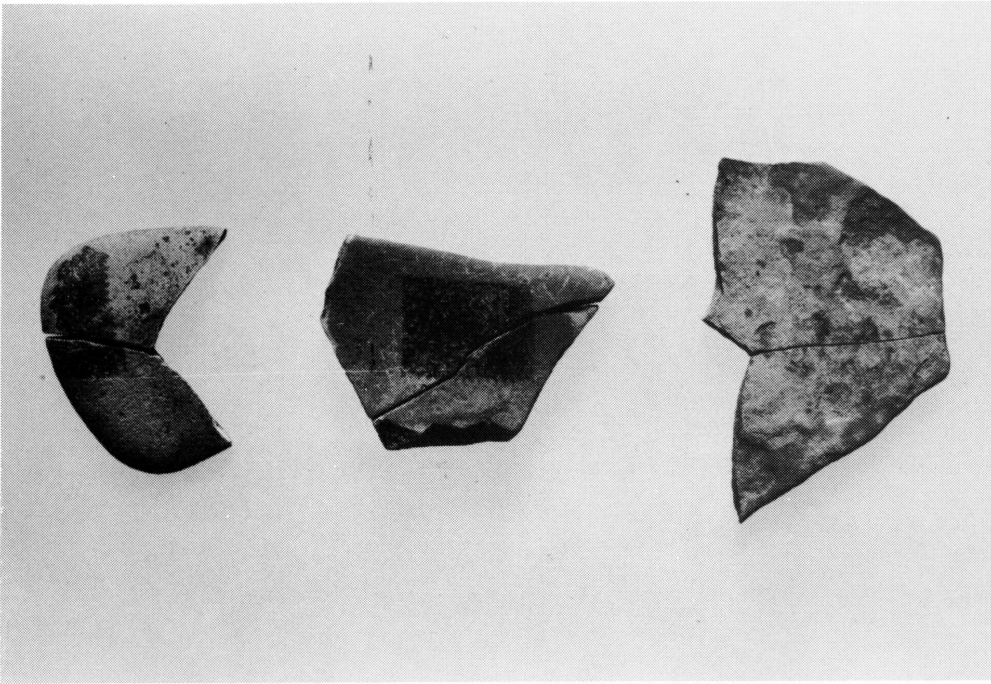
接合資料



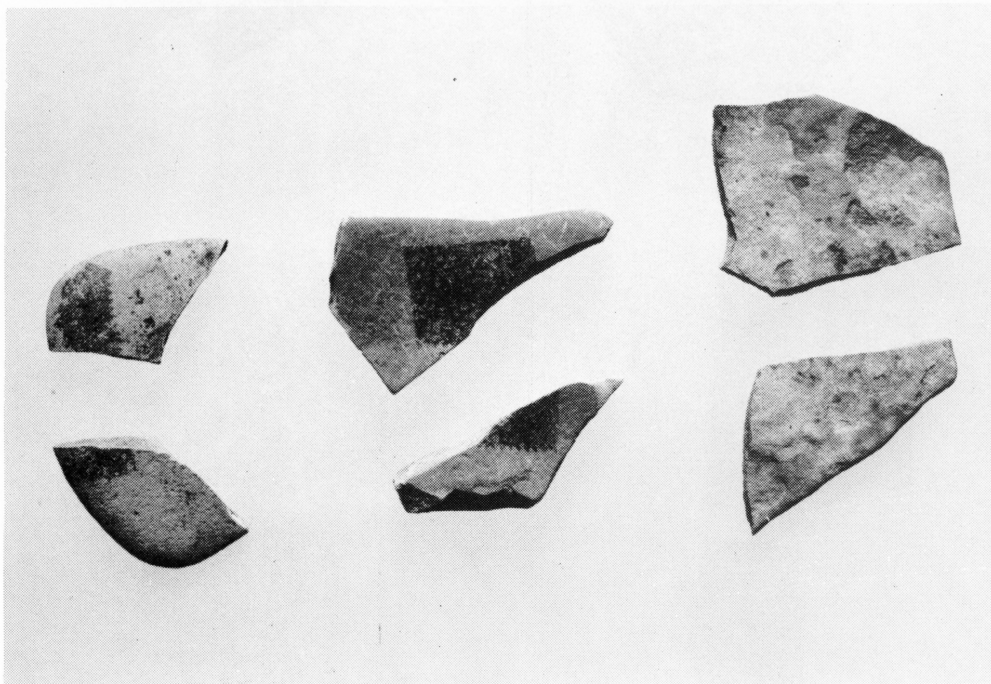
接合資料



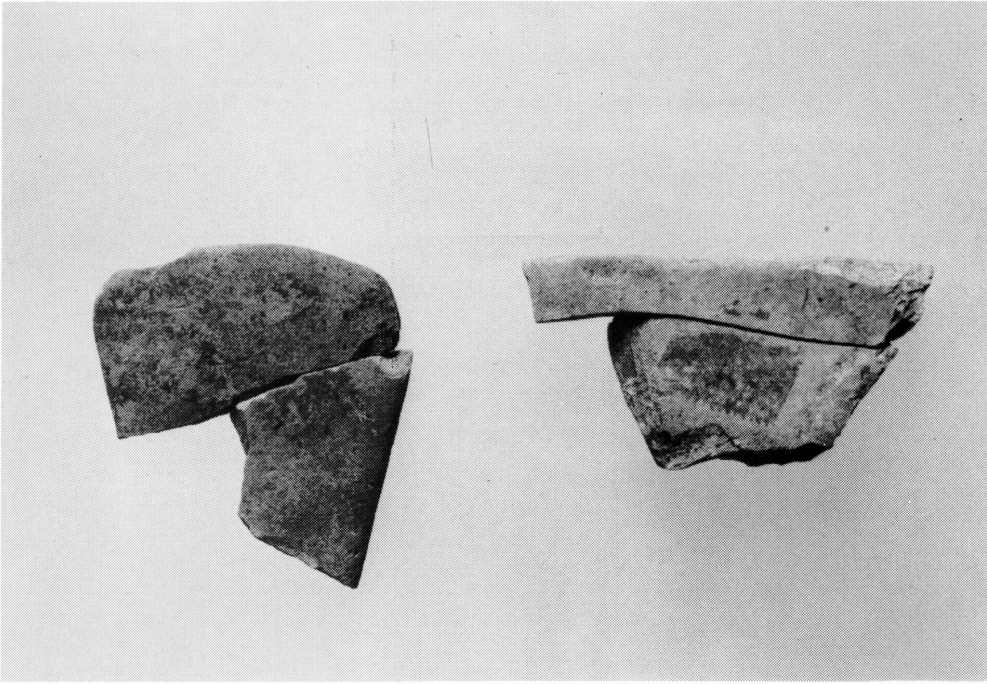
接合資料



接合資料



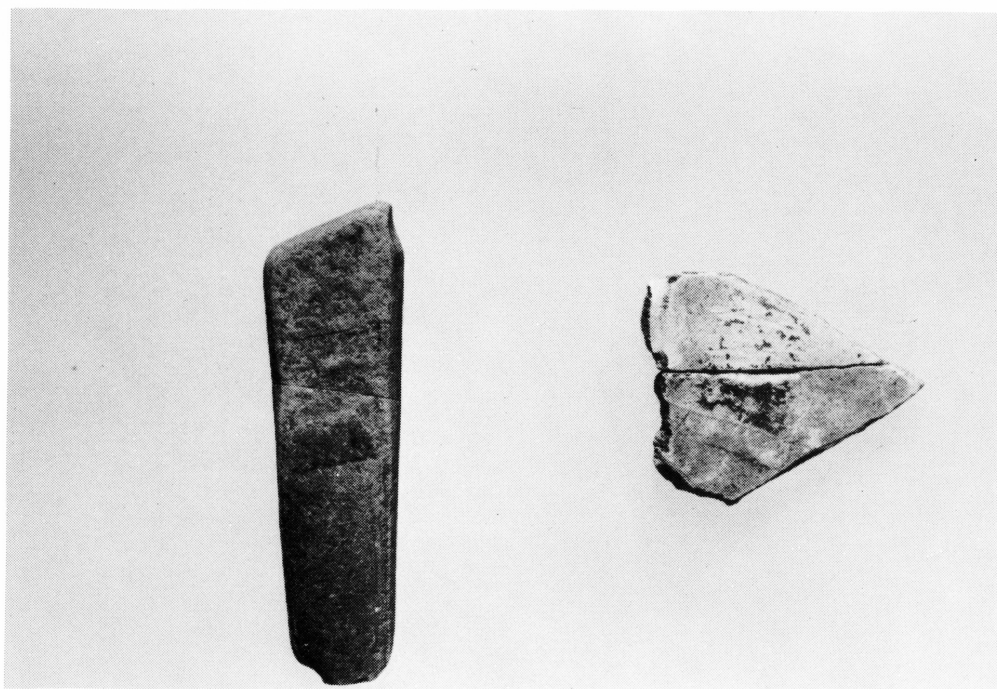
接合資料



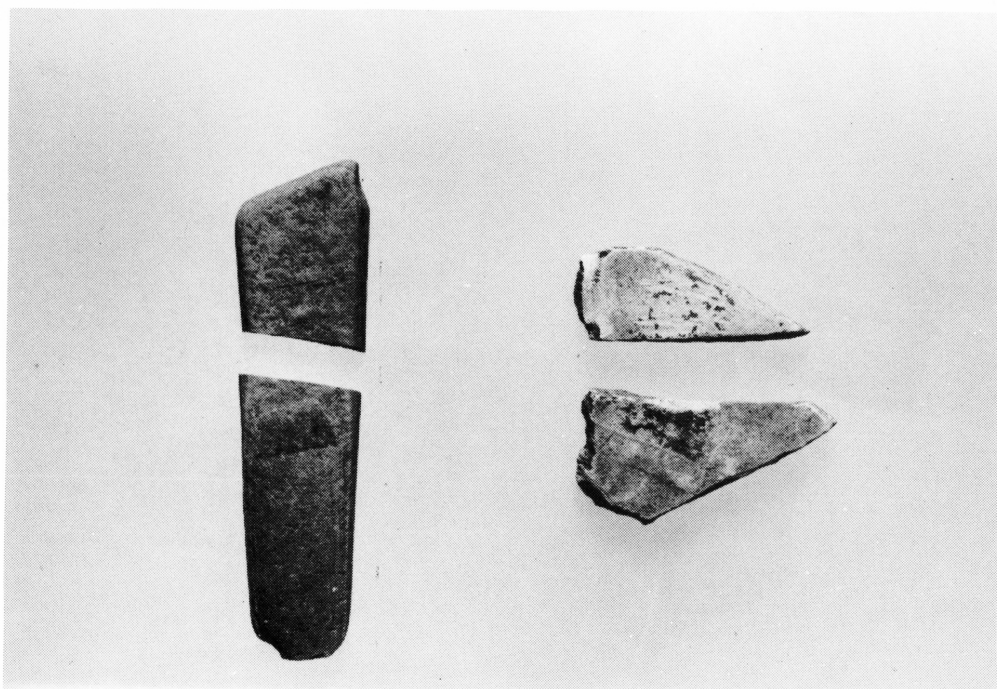
接合資料



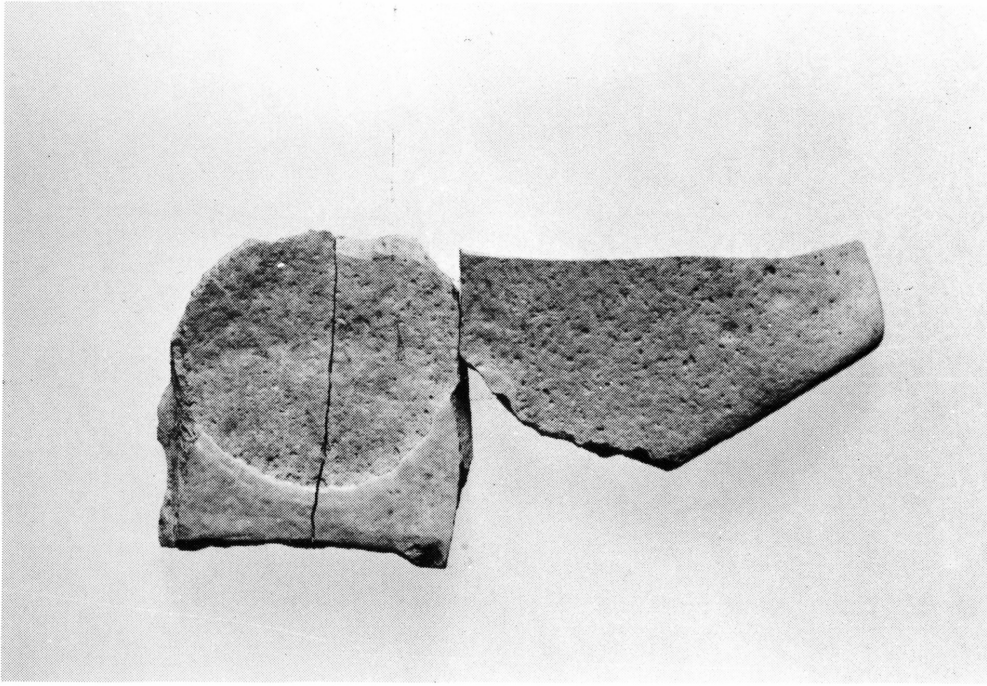
接合資料



接合資料



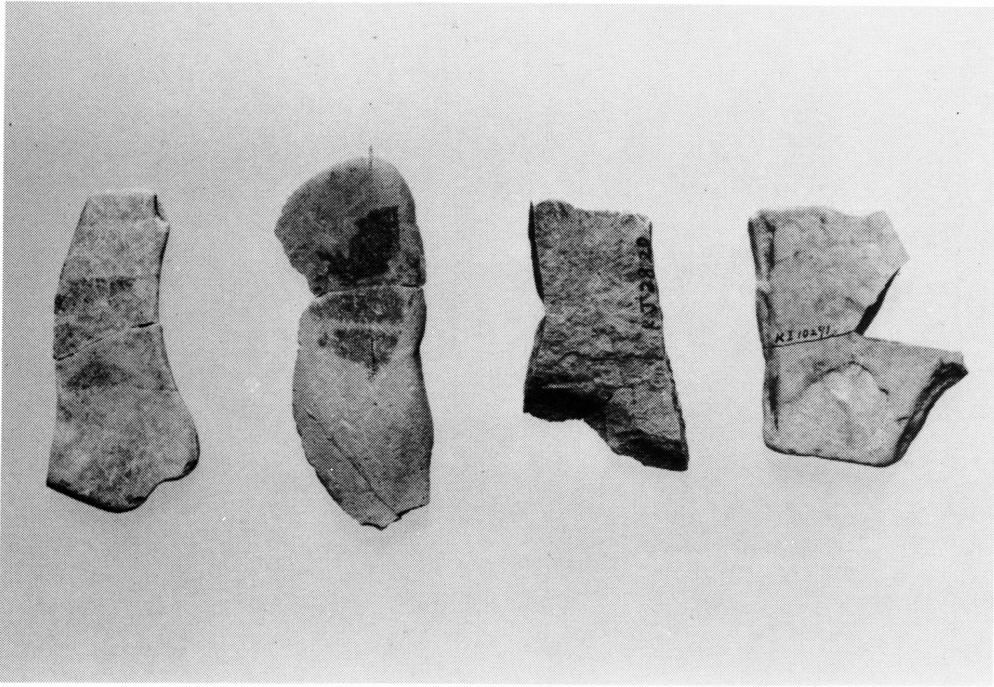
接合資料



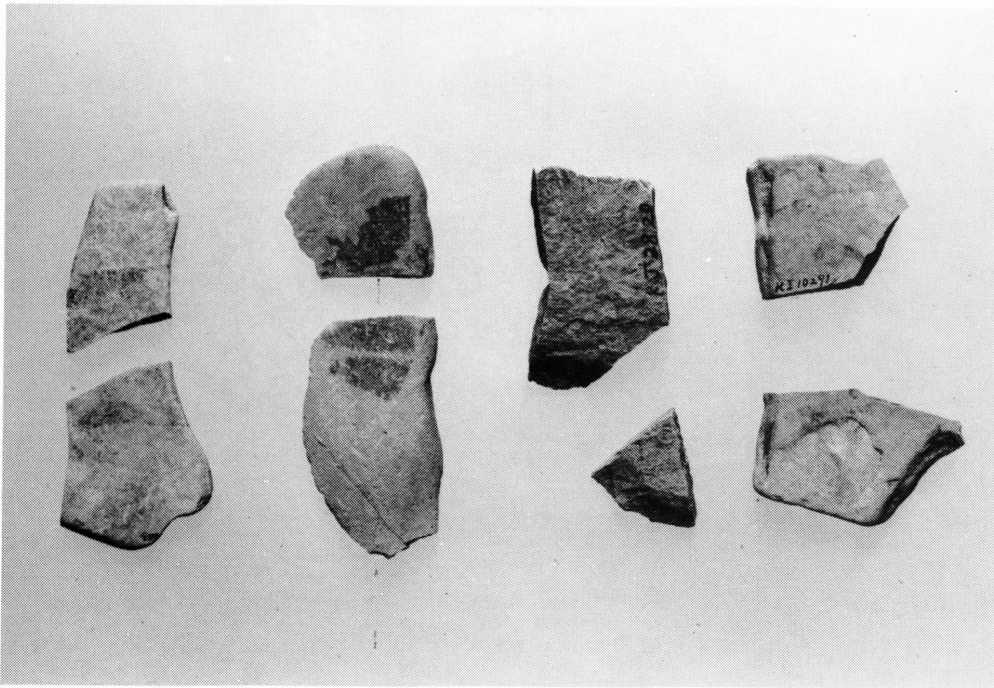
接合資料



接合資料



接合資料



接合資料