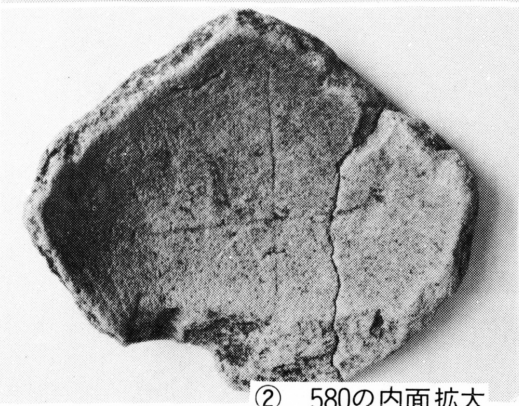
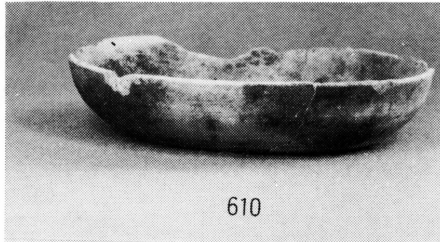


① 土師器 (坏)

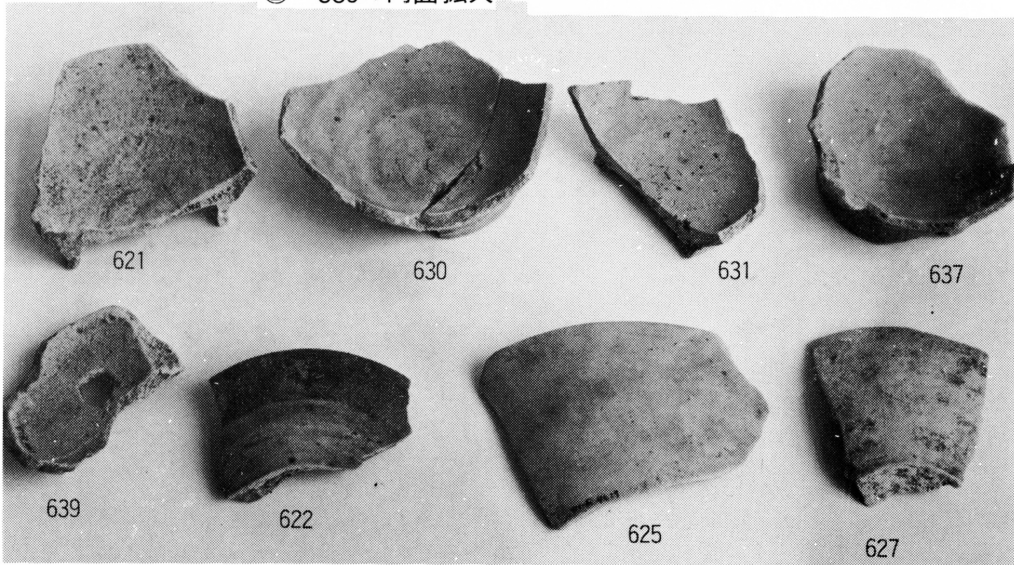


② 580の内面拡大

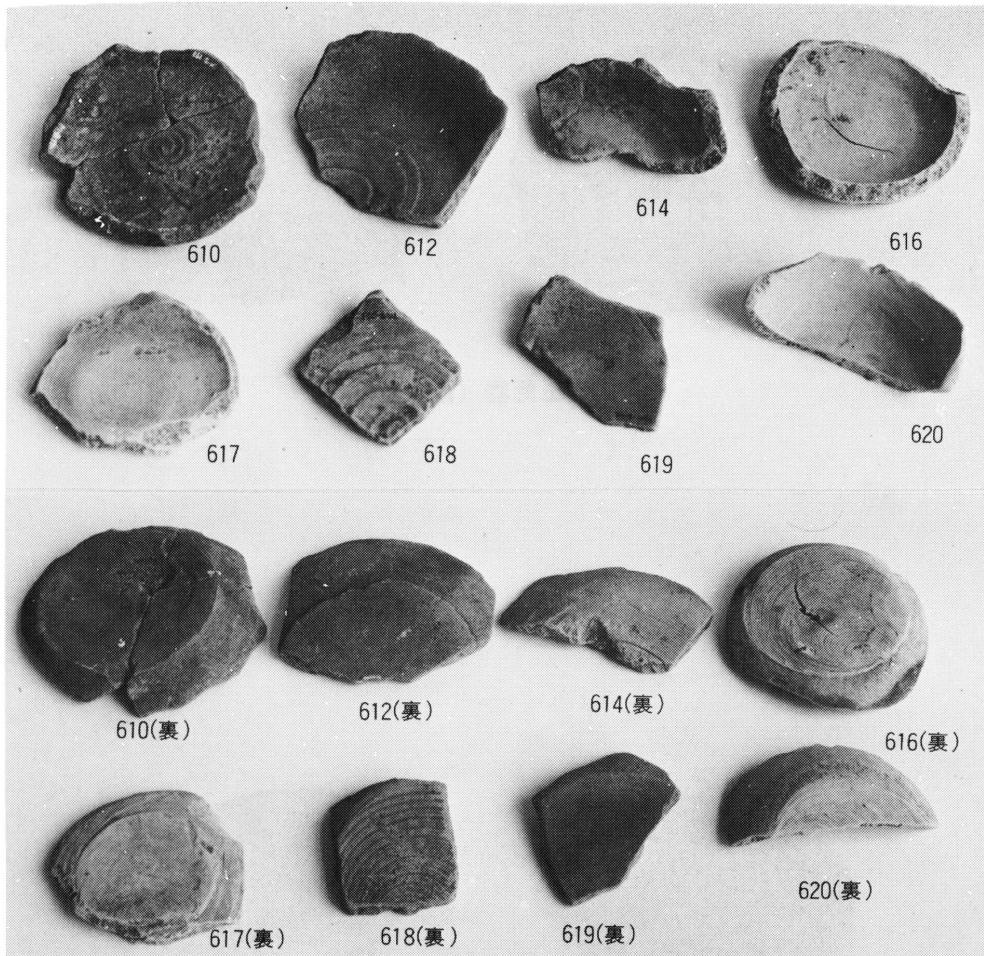


610

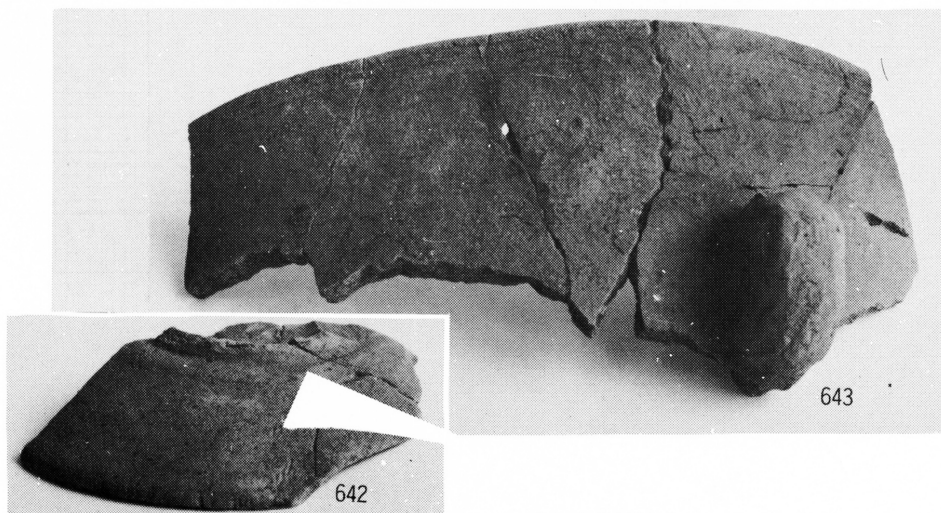
③ 土師器 (坏)



④ 土師器 (碗)

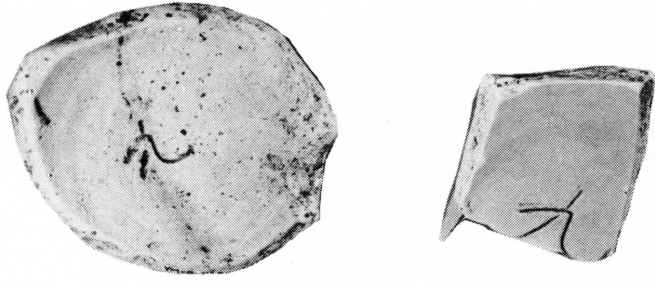


① 土師器 (坏, 糸切り底)

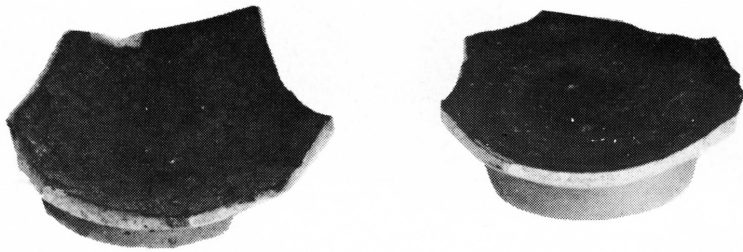


② 土師器 (蓋)

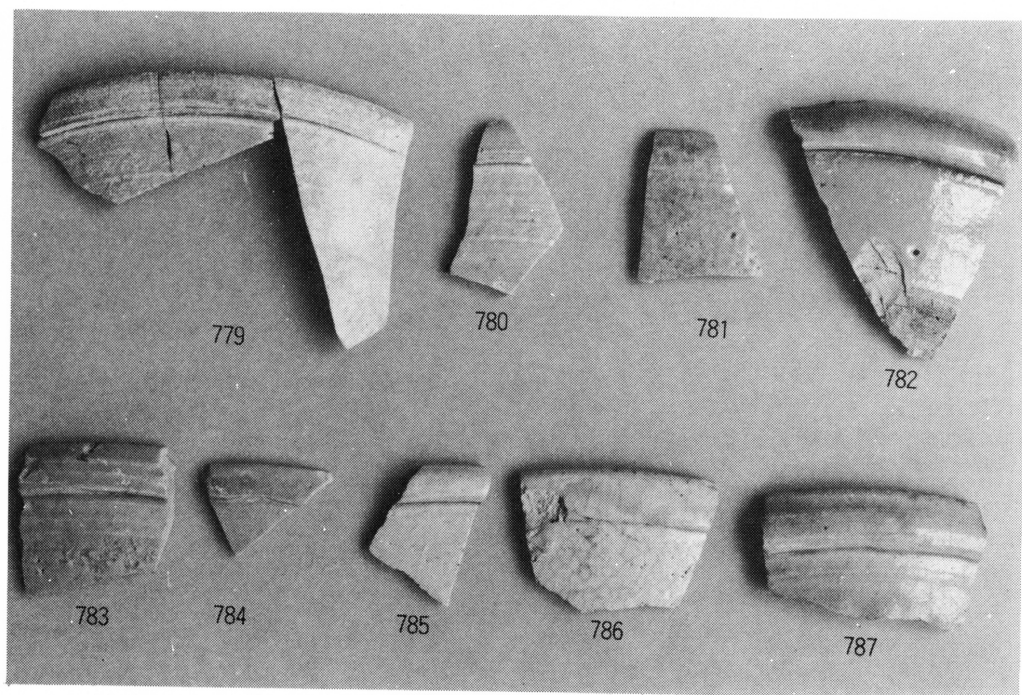
③ 土師器 (なべ)



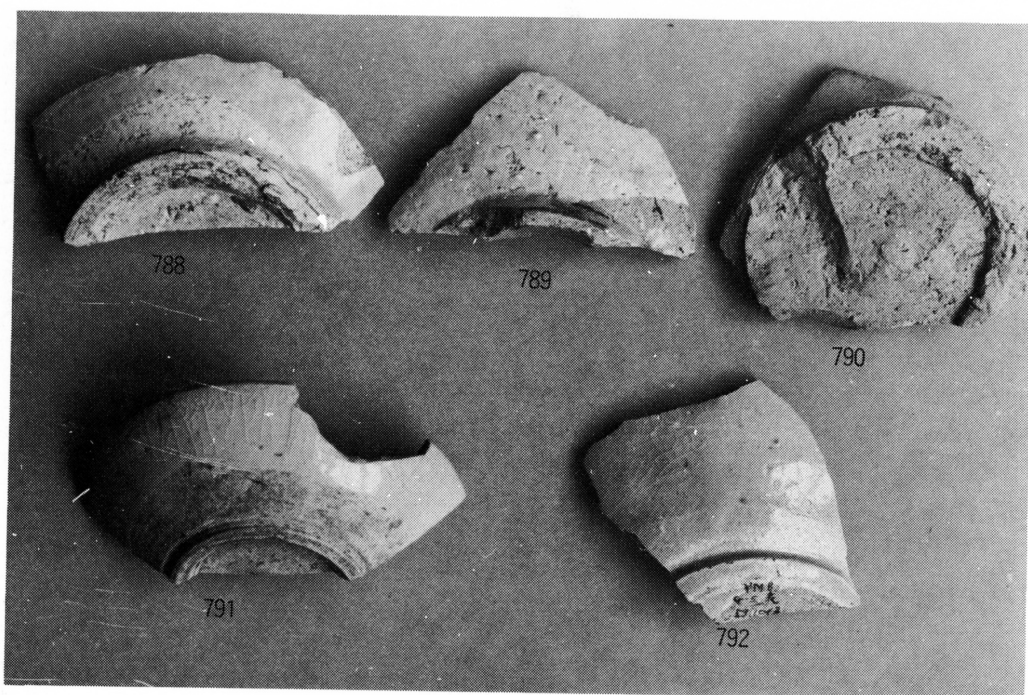
① 土師器（線刻土器）



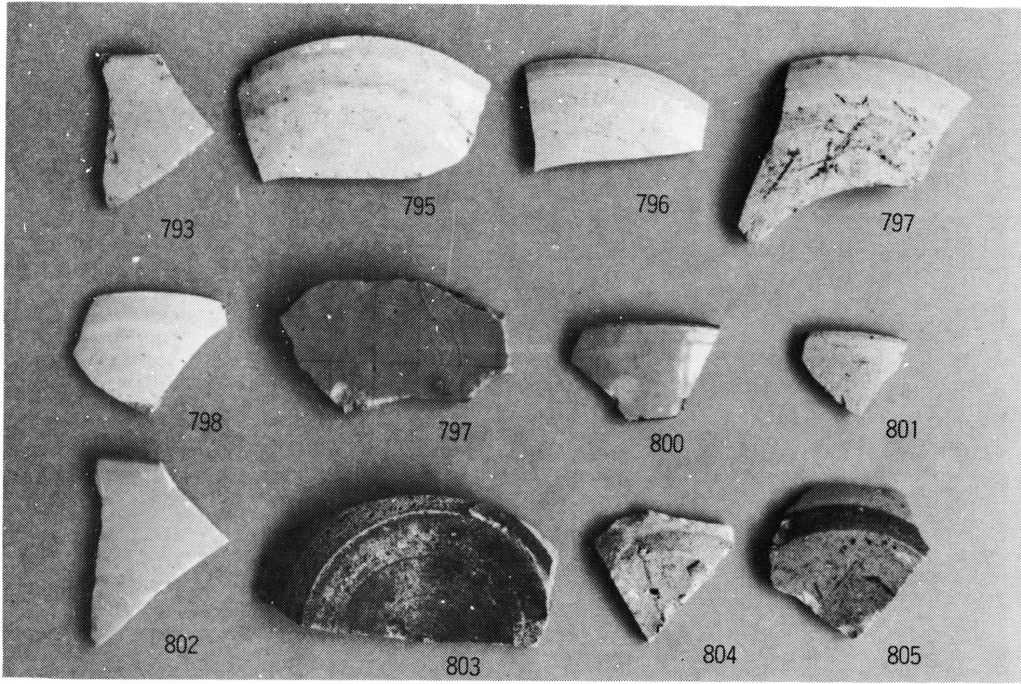
② 土師器（黒色土器）



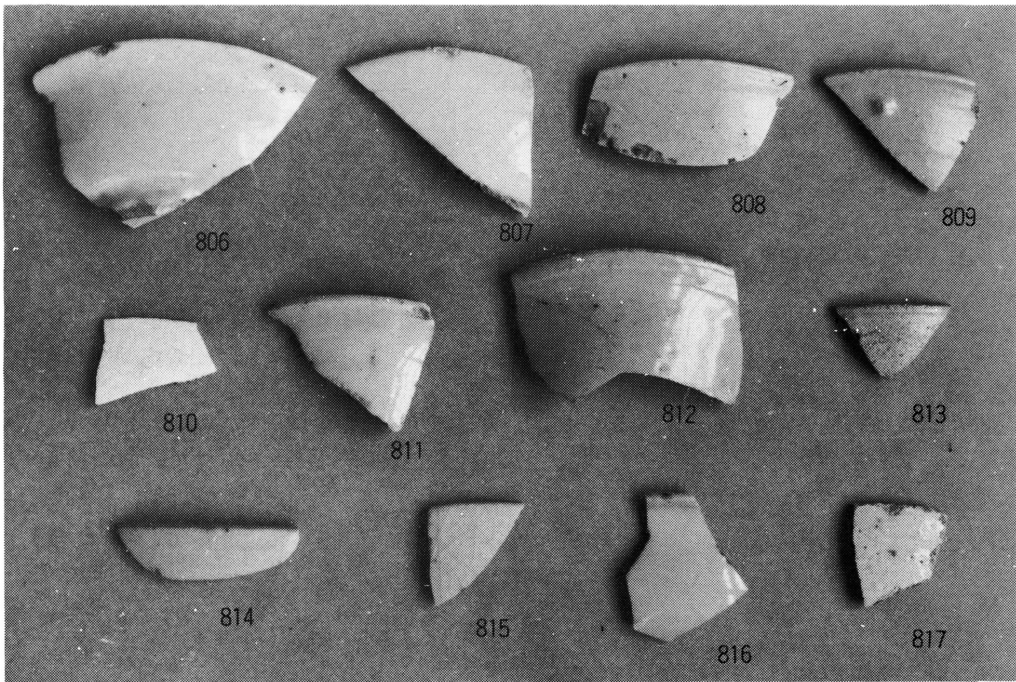
① 白 磁



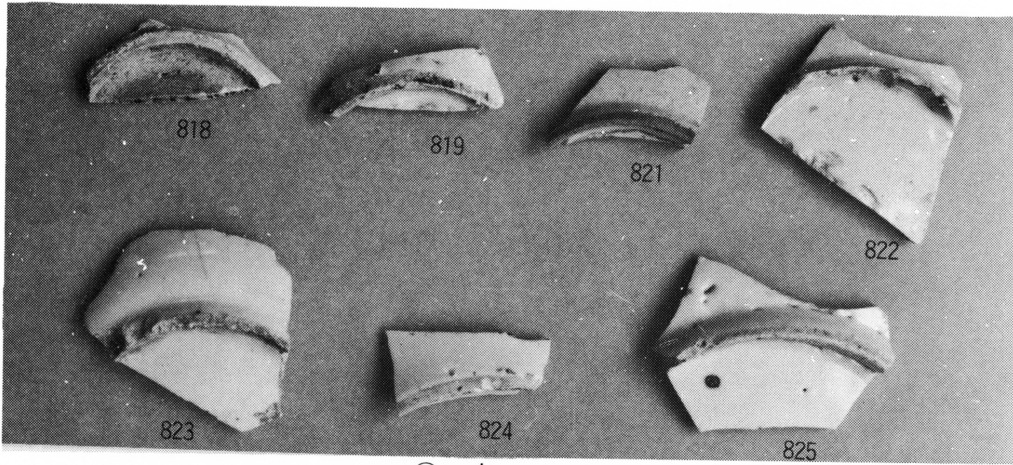
② 白 磁



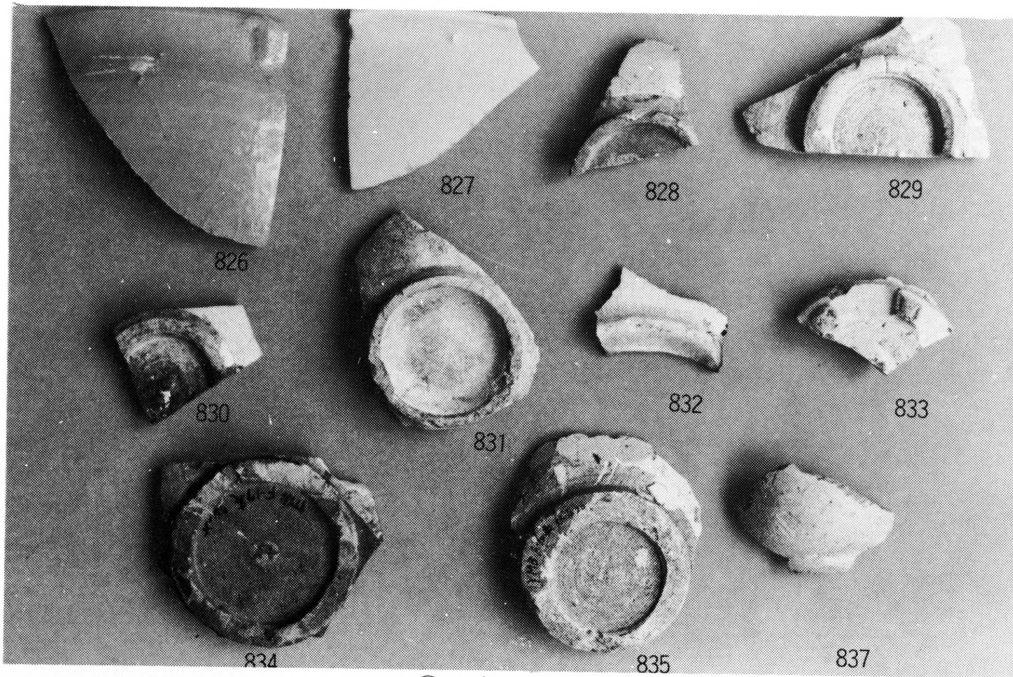
① 白 磁



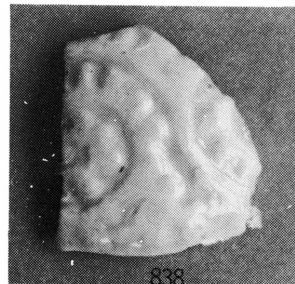
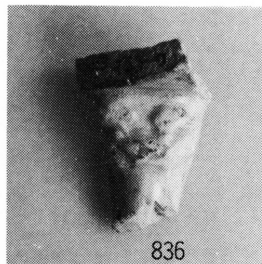
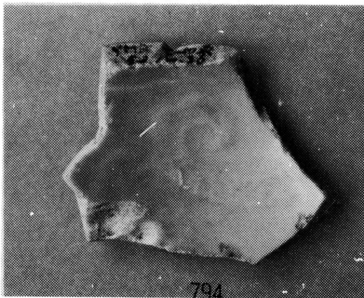
② 白 磁



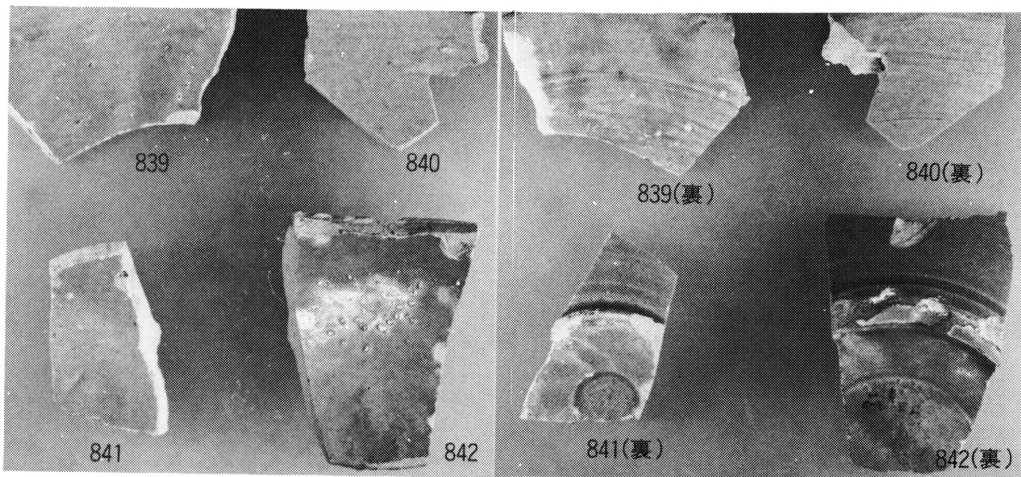
① 白 磁



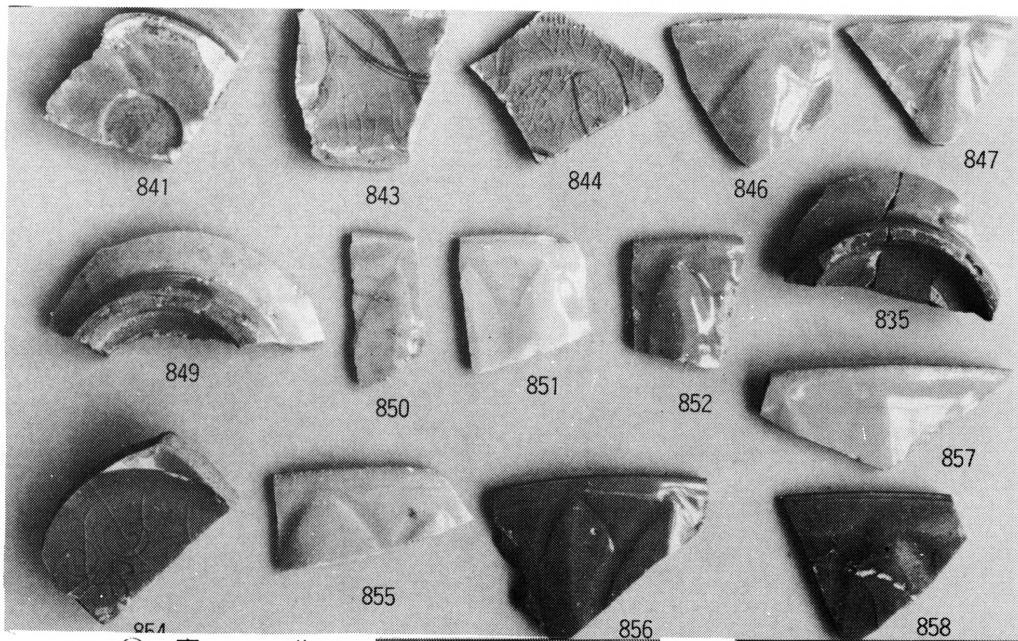
② 白 磁



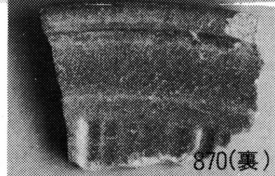
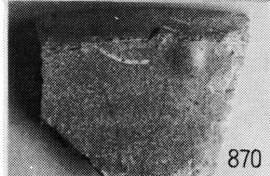
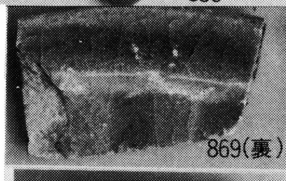
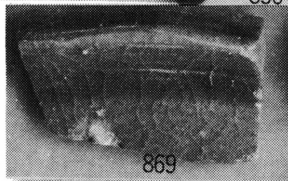
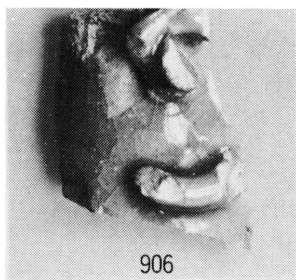
③ 白 磁



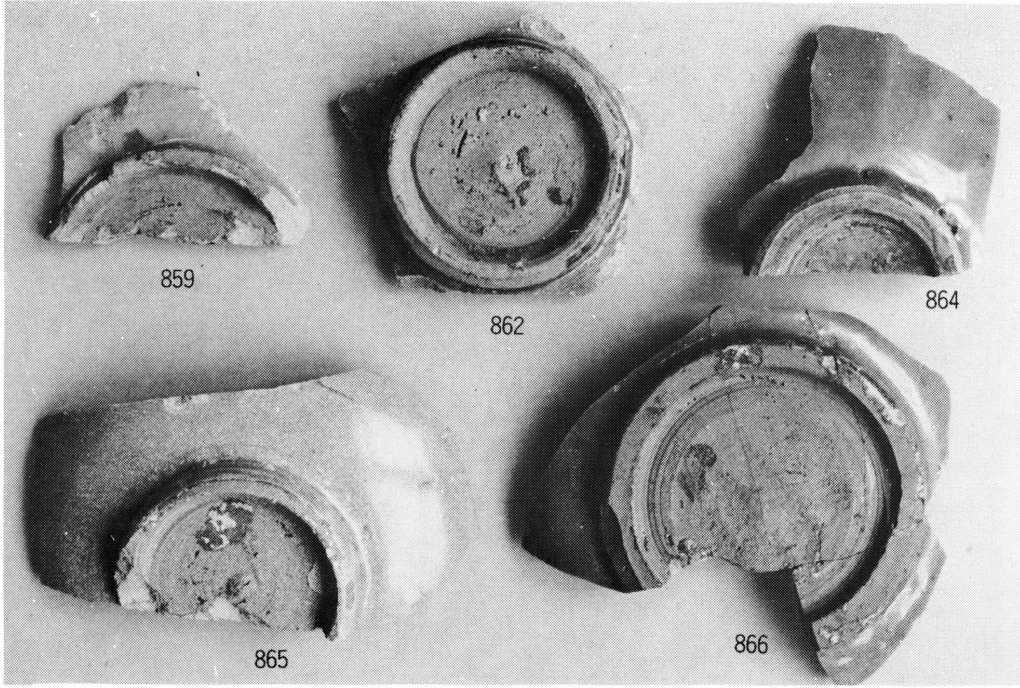
① 青 磁



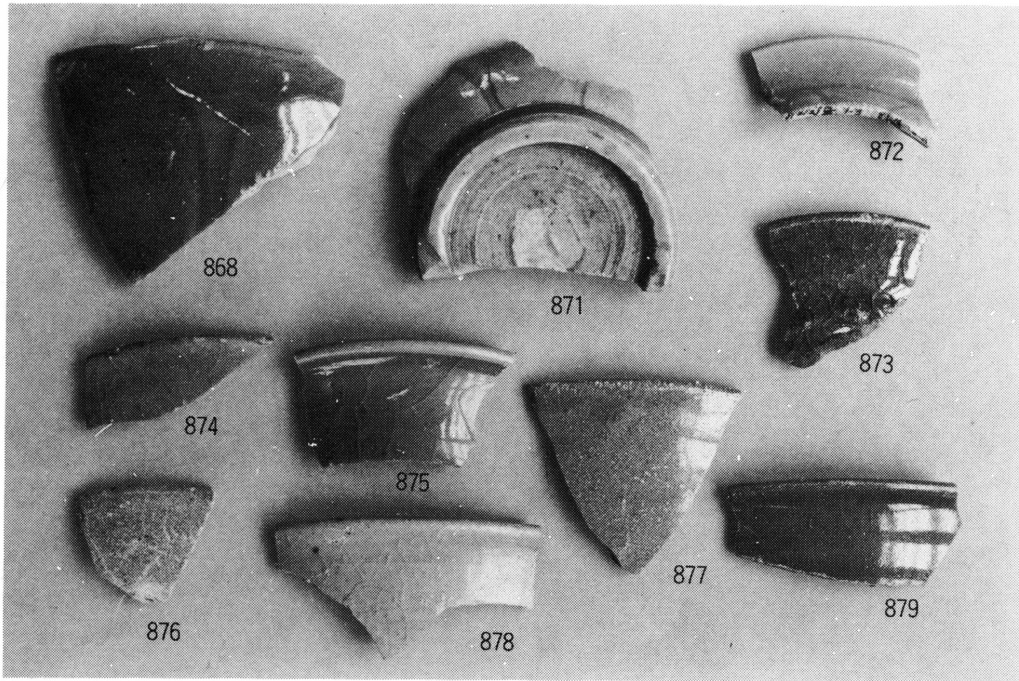
② 青 磁



③ 青 磁

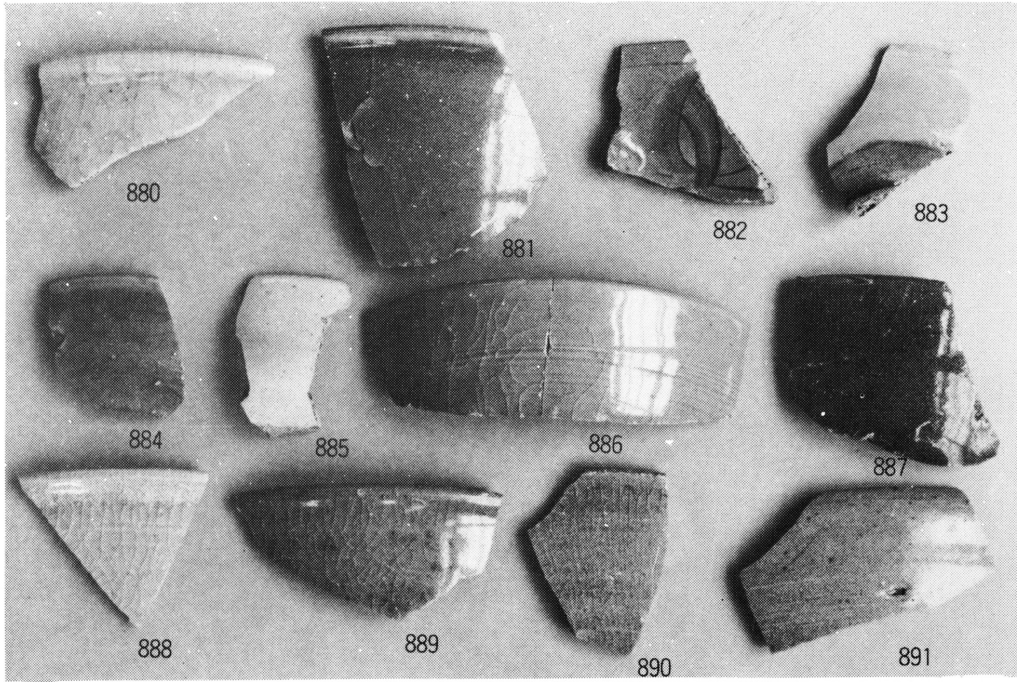


① 青 磁

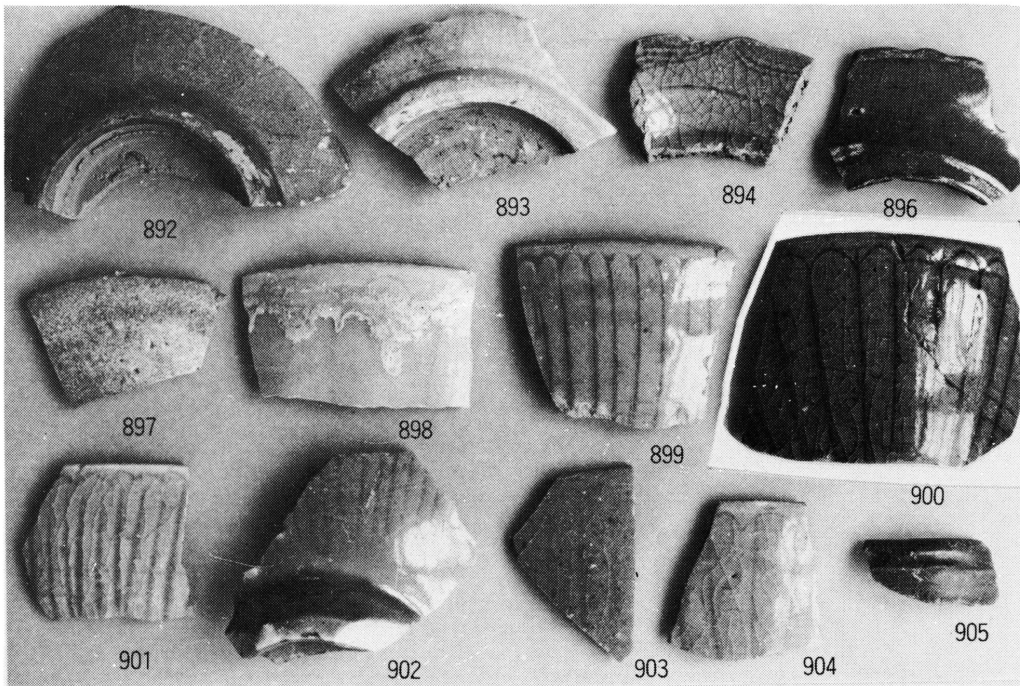


② 青 磁

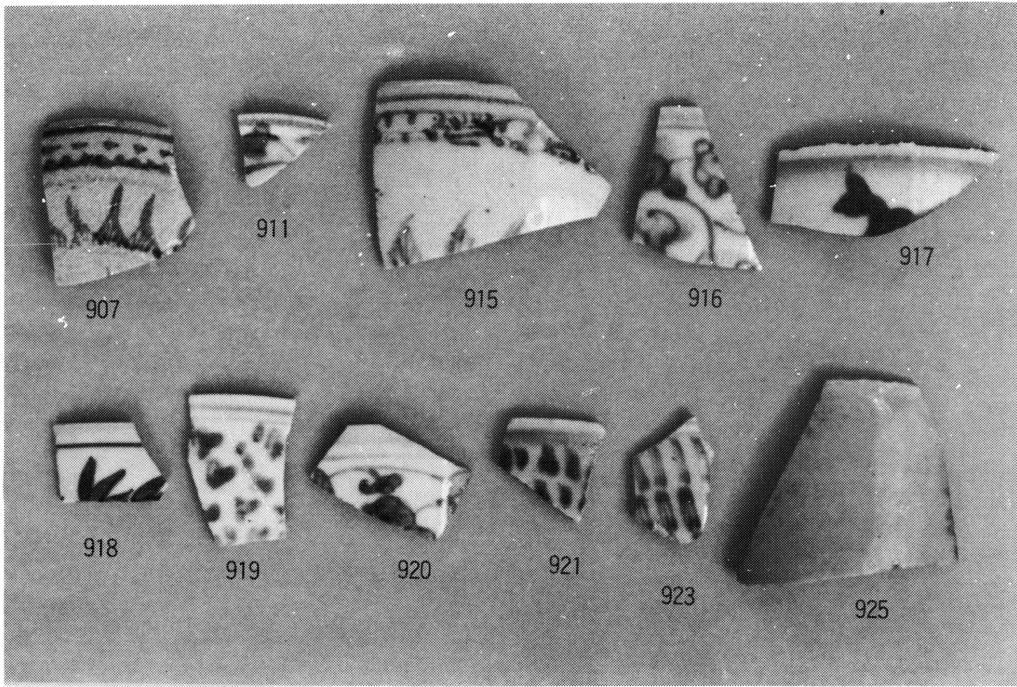




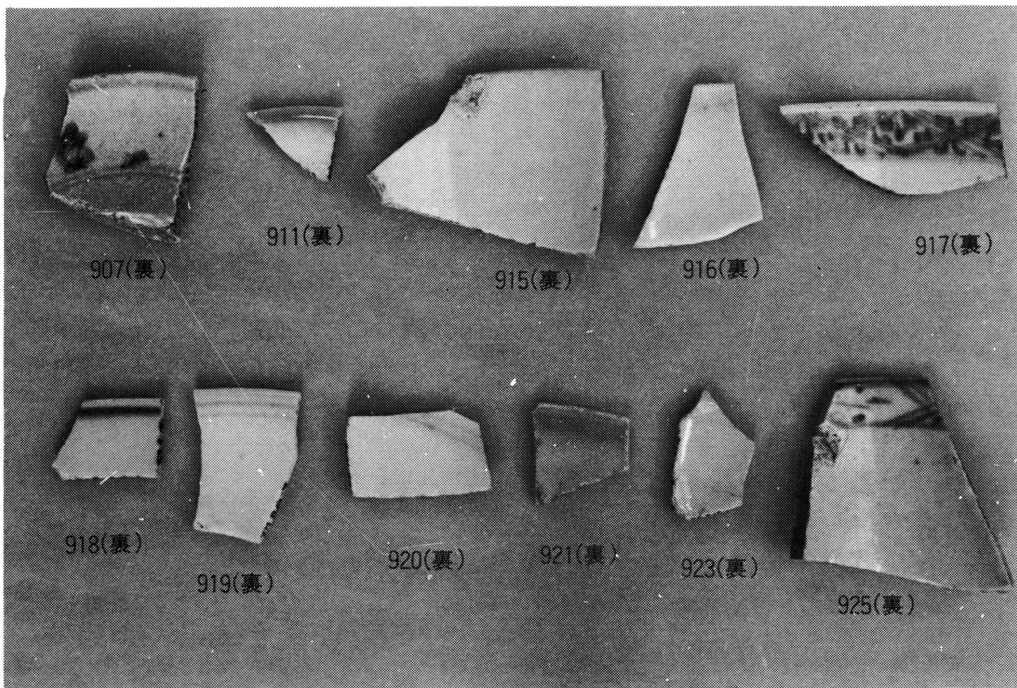
① 青 磁



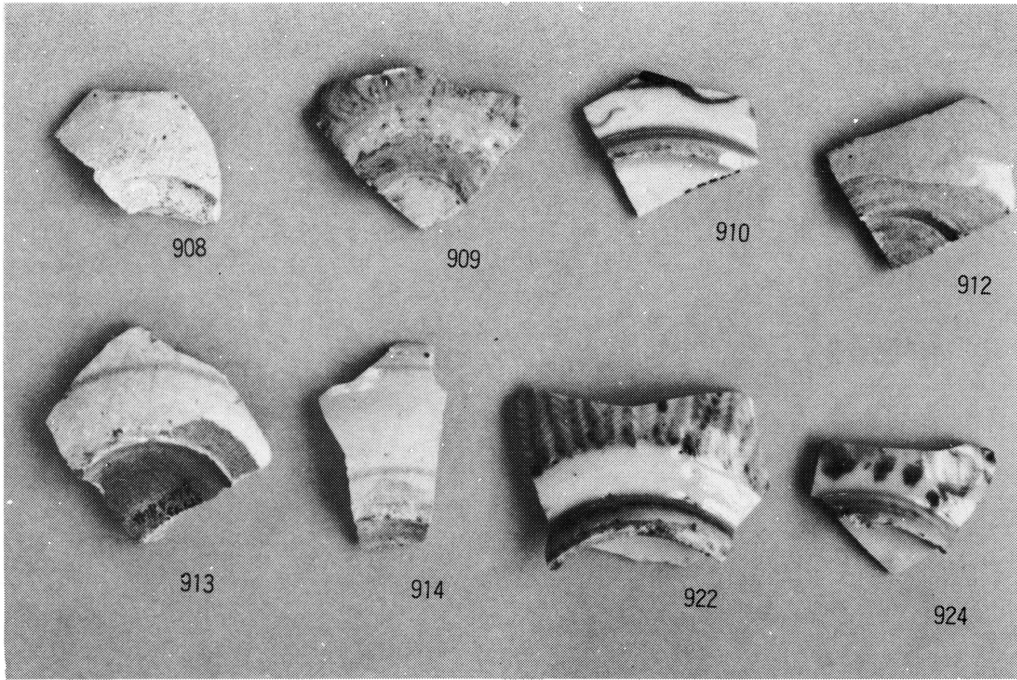
② 青 磁



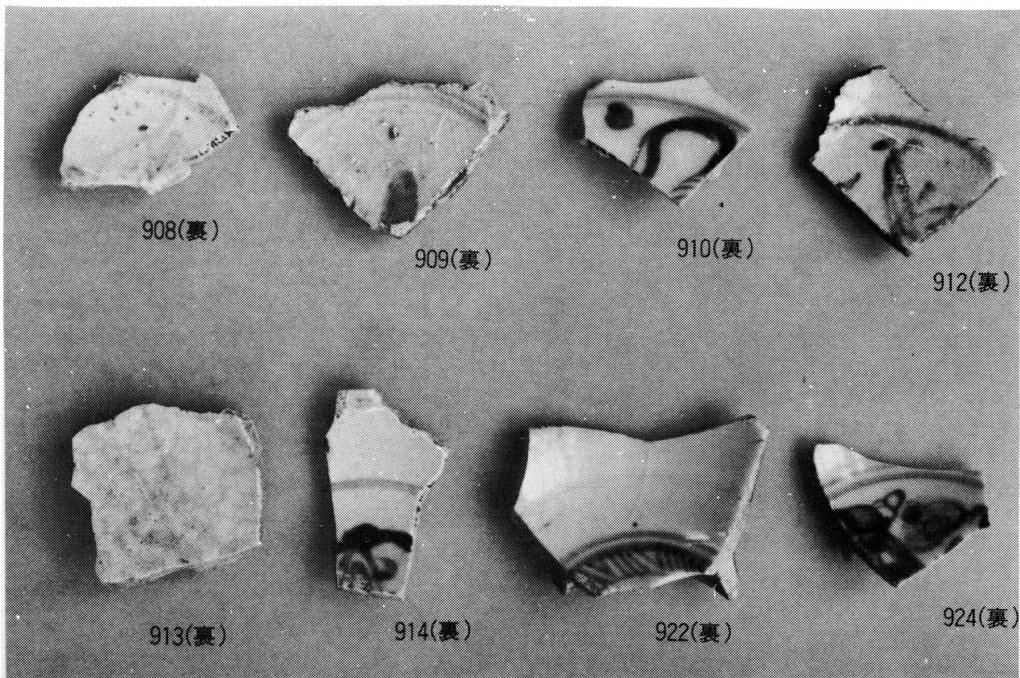
① 染 付



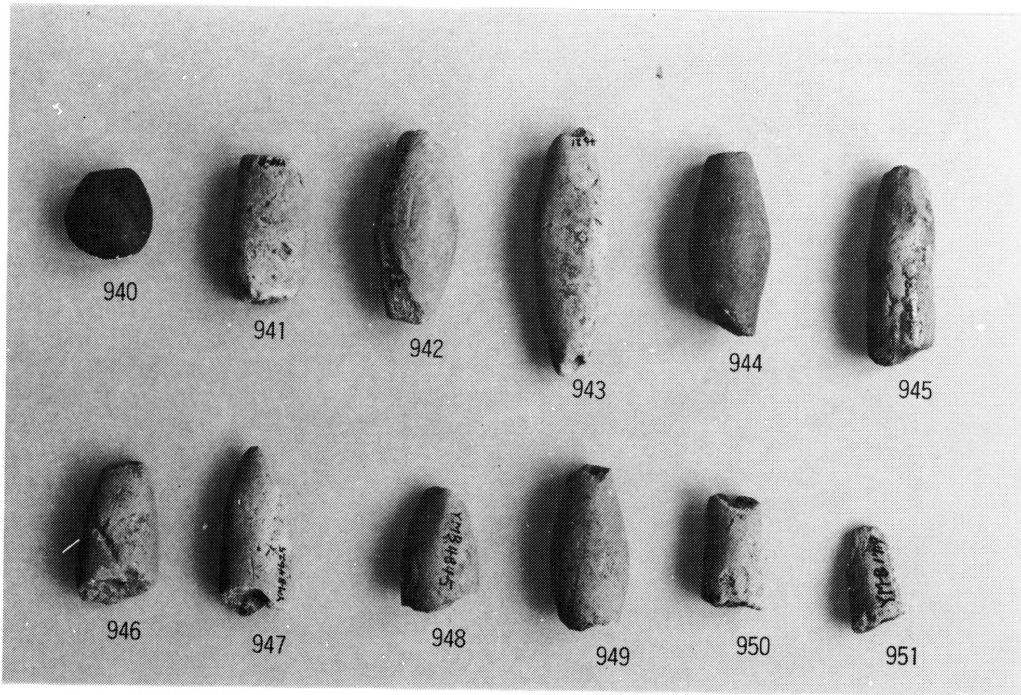
② 染 付



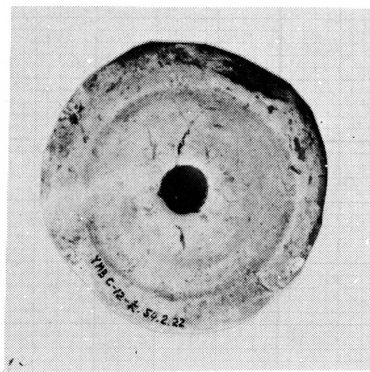
① 染 付



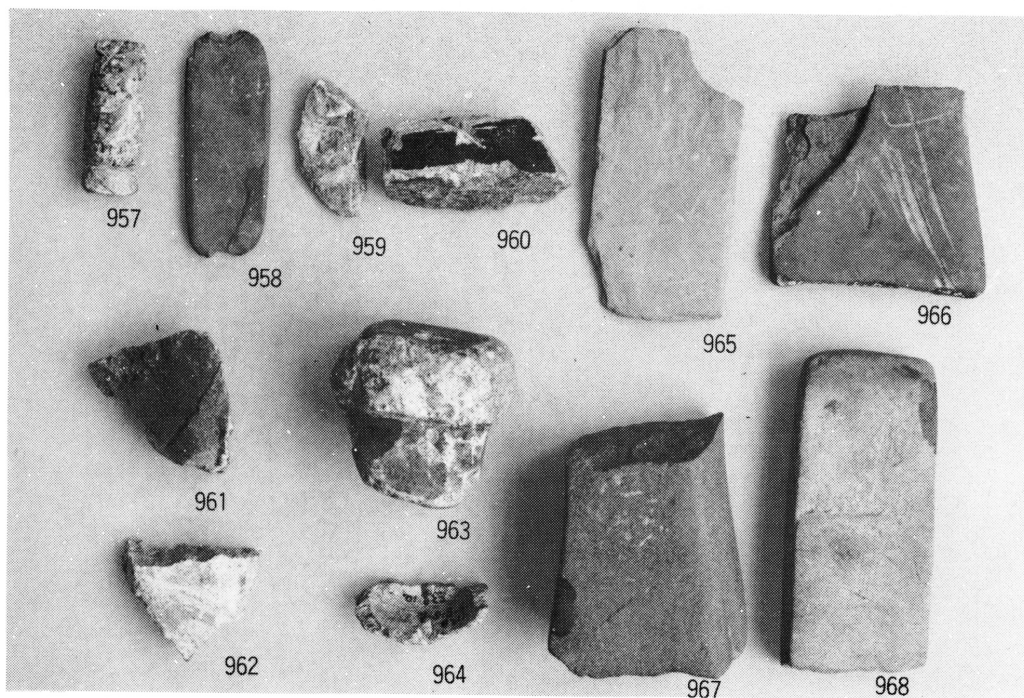
② 染 付



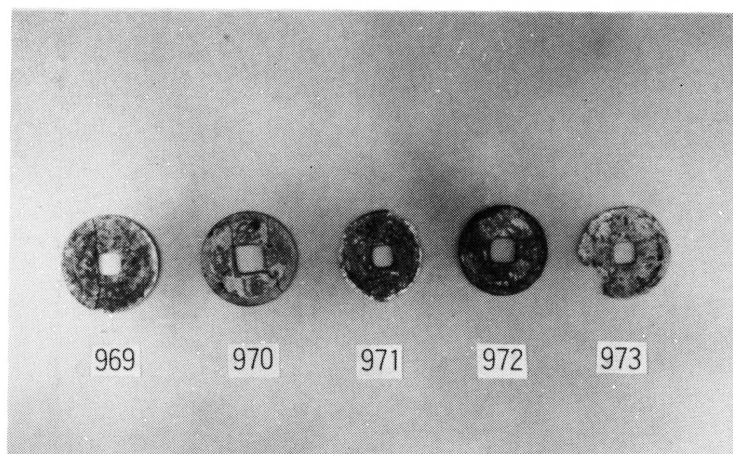
① 土製品 (土錘)



② 土製品 (紡錘車)



① 石製品



② 古 錢