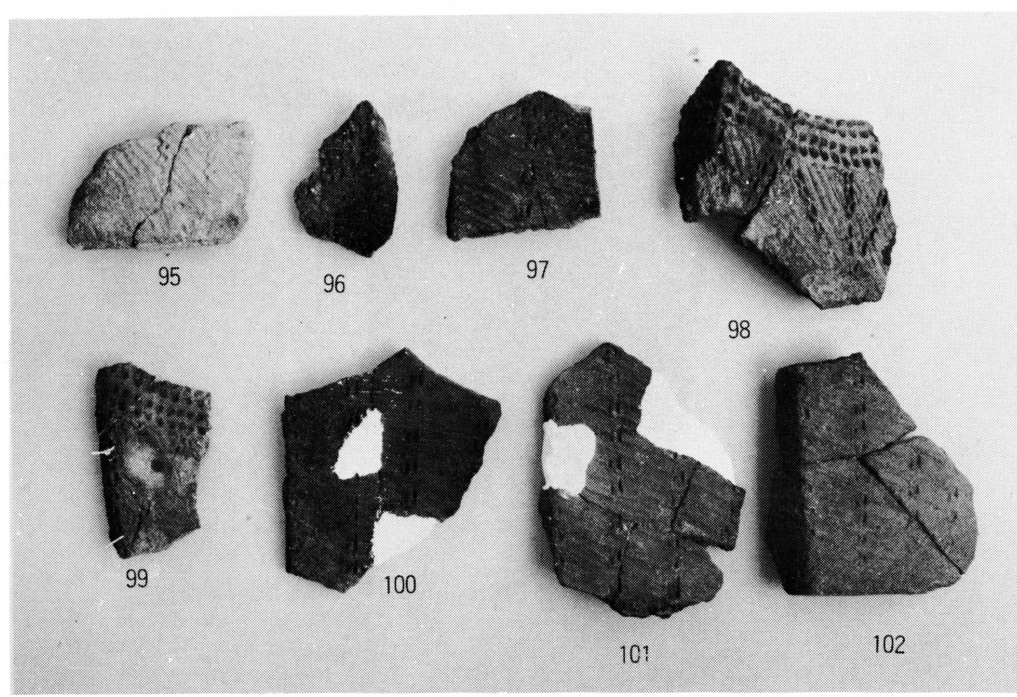
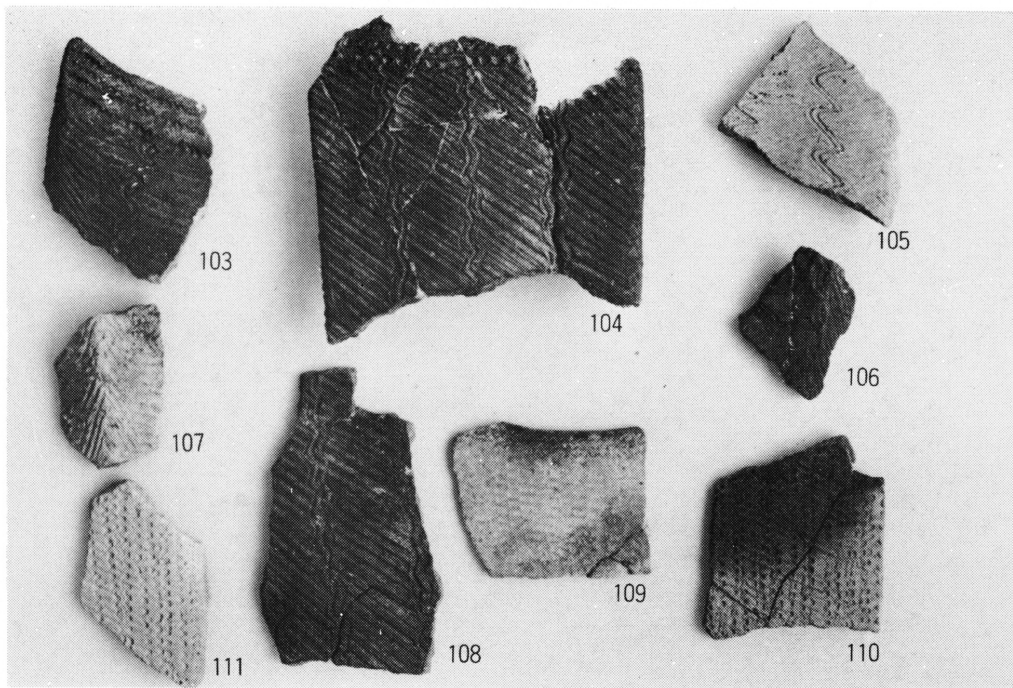


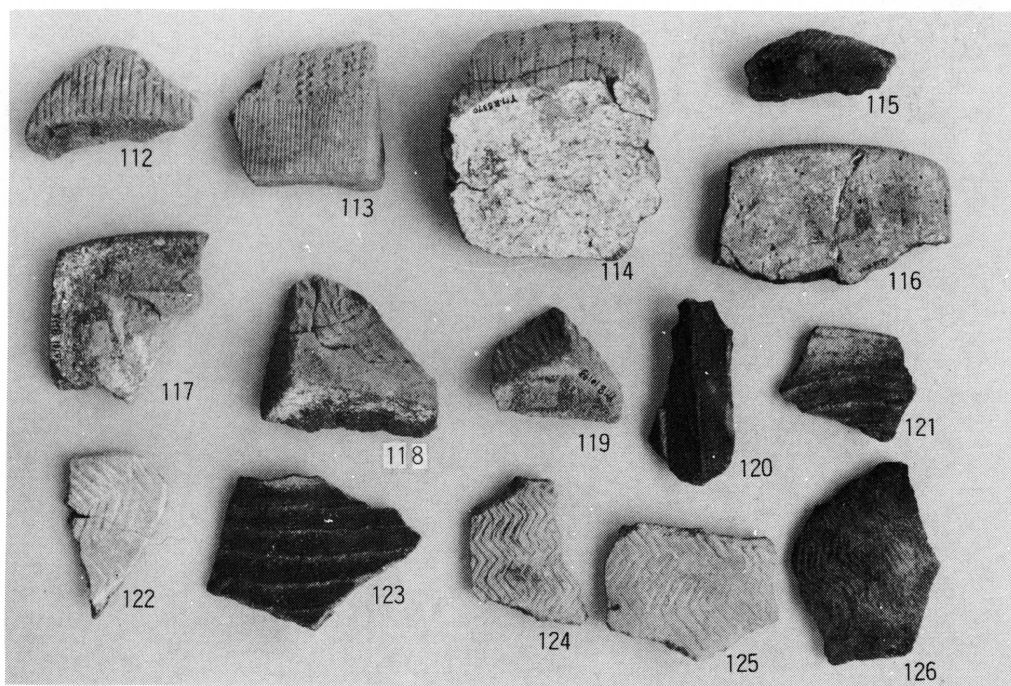
① 縄文式土器



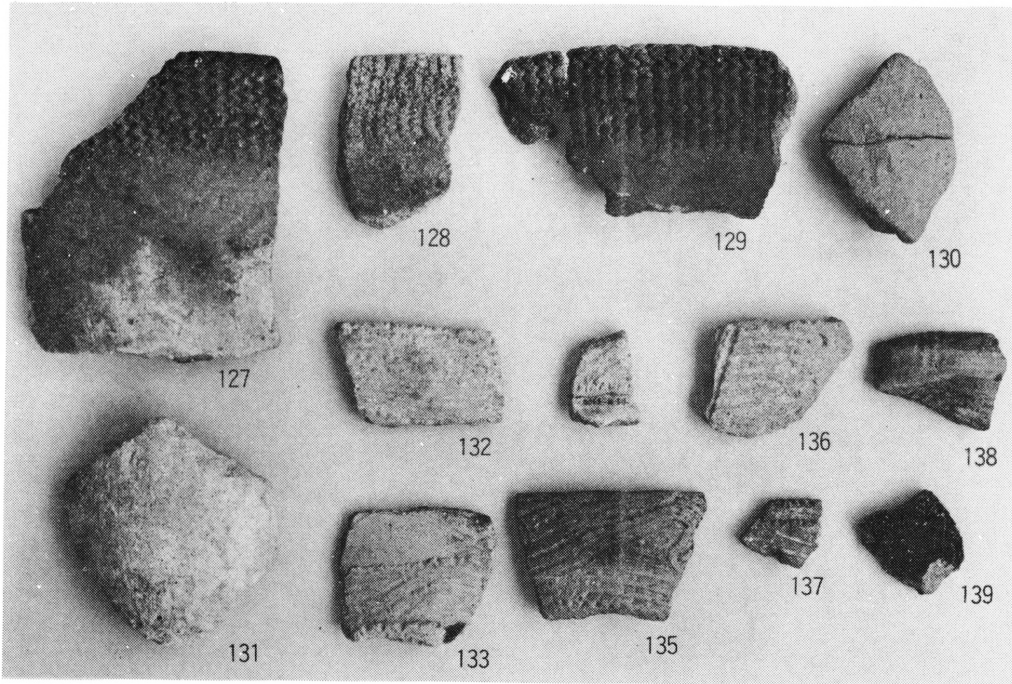
② 縄文式土器



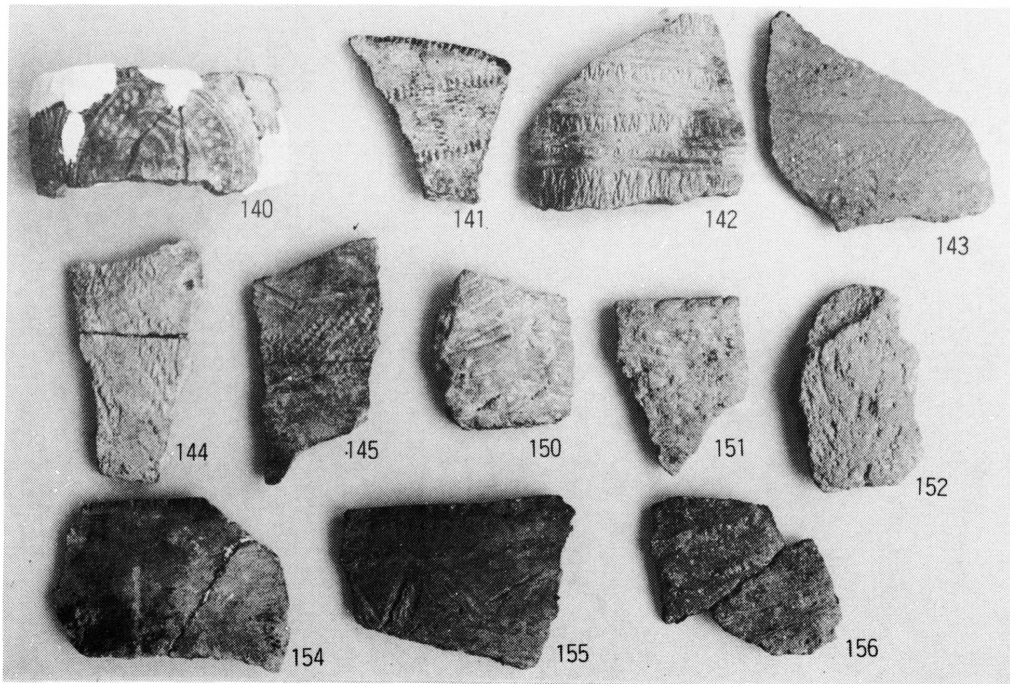
① 縄文式土器



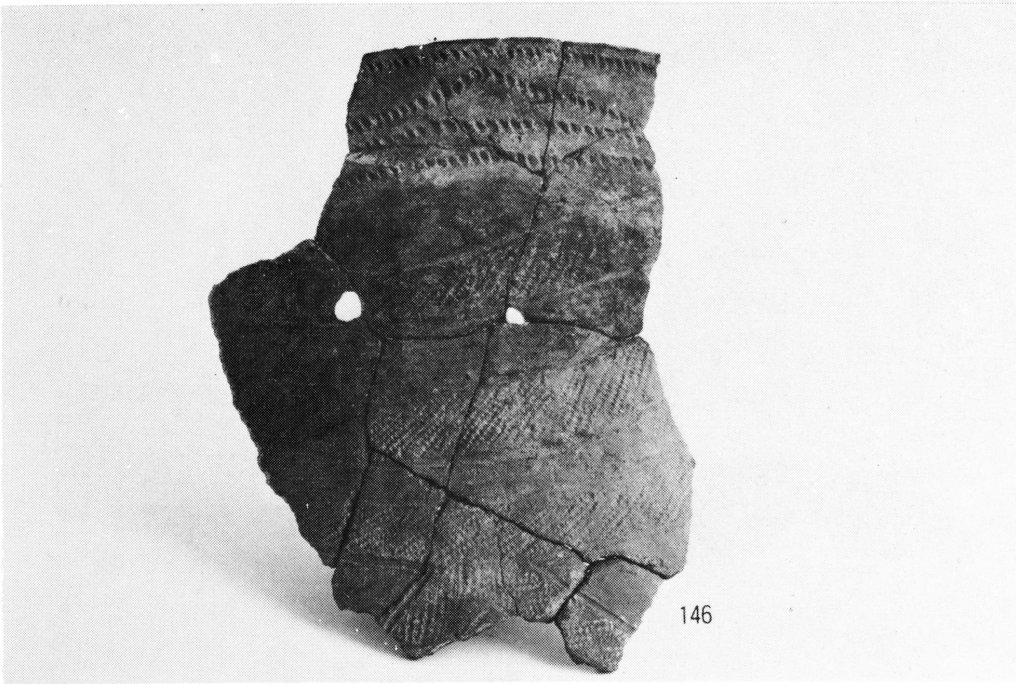
② 縄文式土器



① 縄文式土器



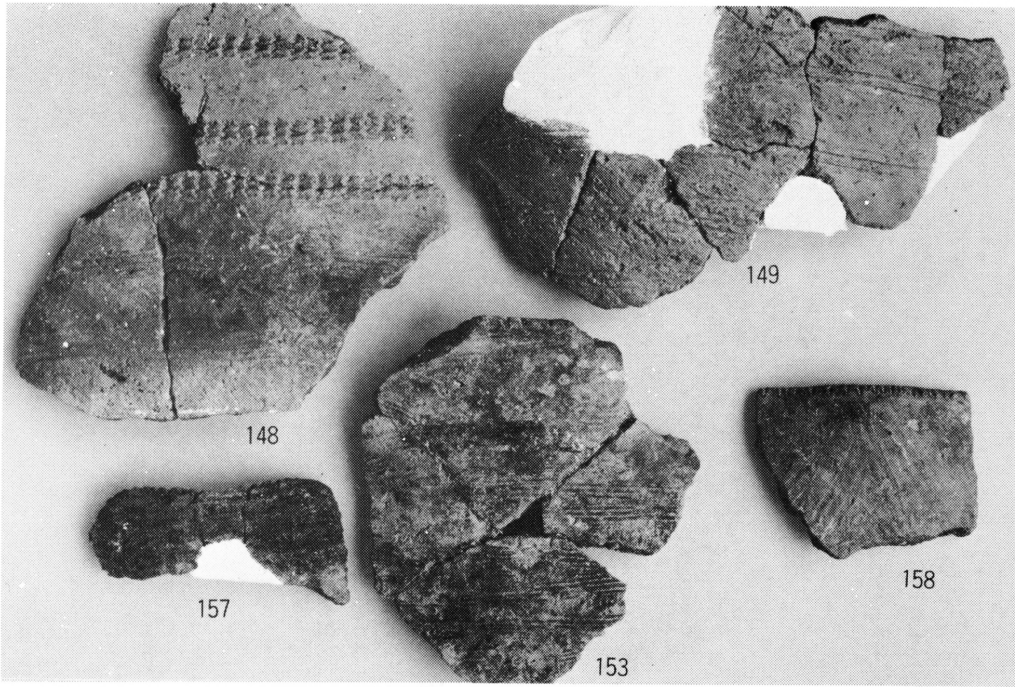
② 縄文式土器



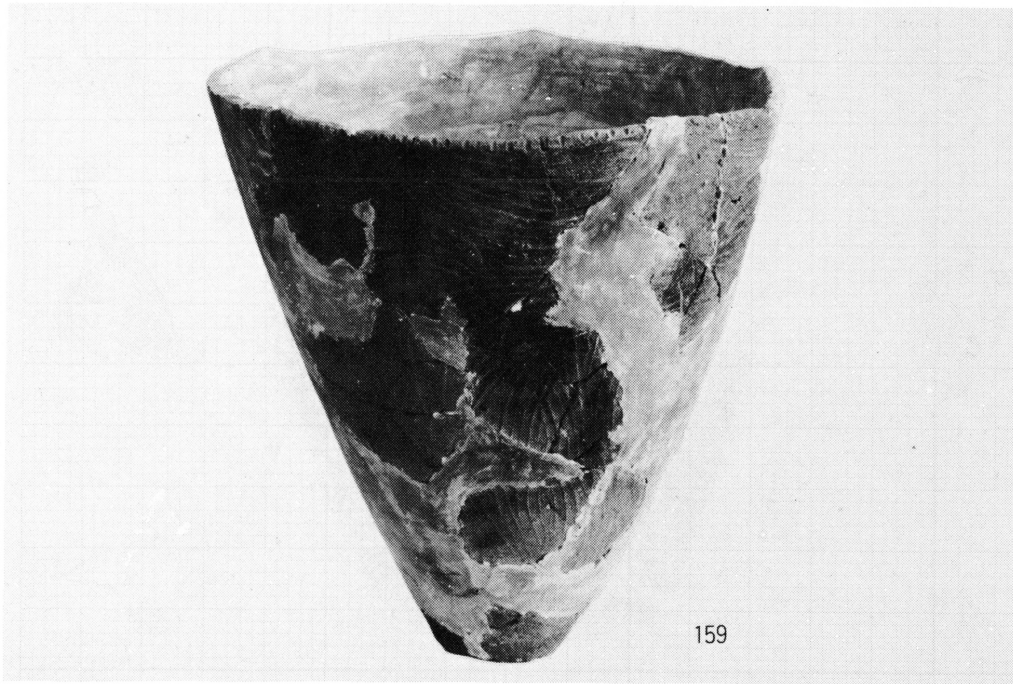
① 繩文式土器



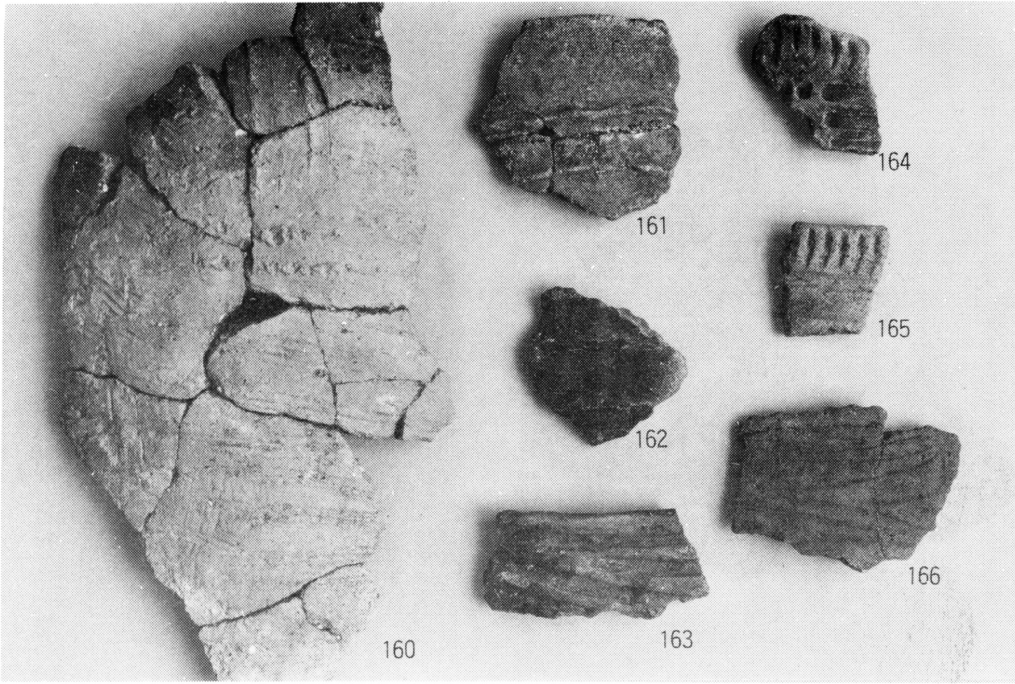
② 繩文式土器



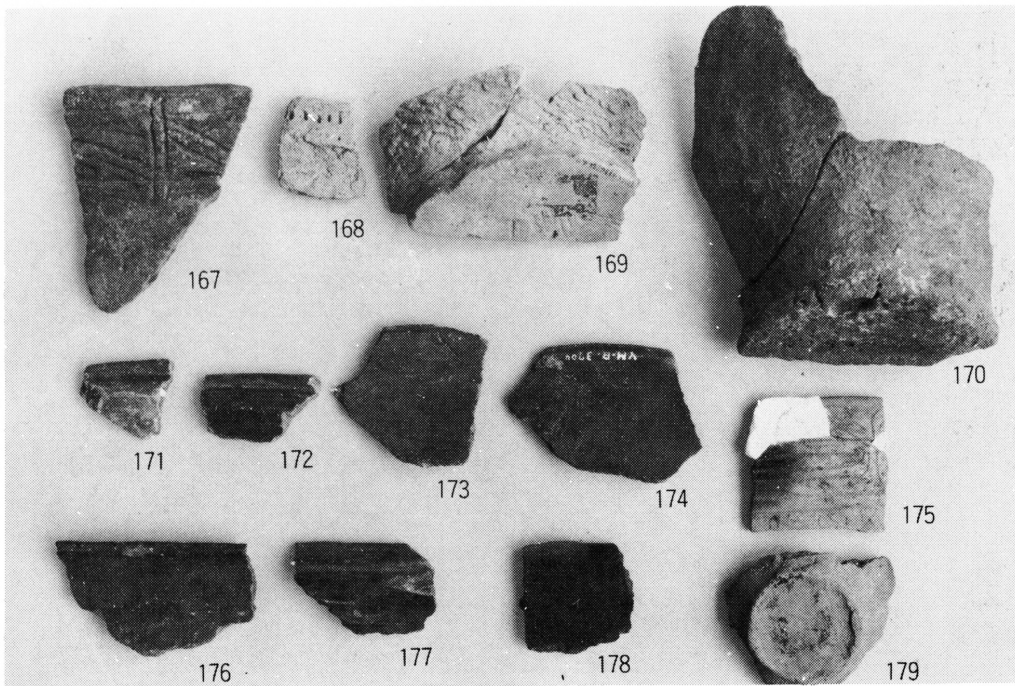
① 縄文式土器



② 縄文式土器



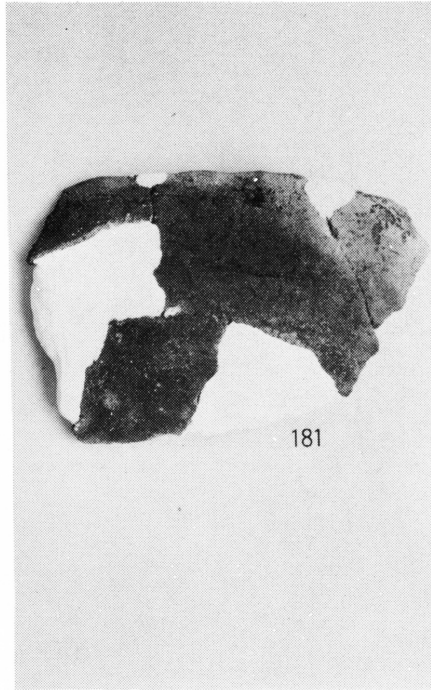
① 縄文式土器



② 縄文式土器

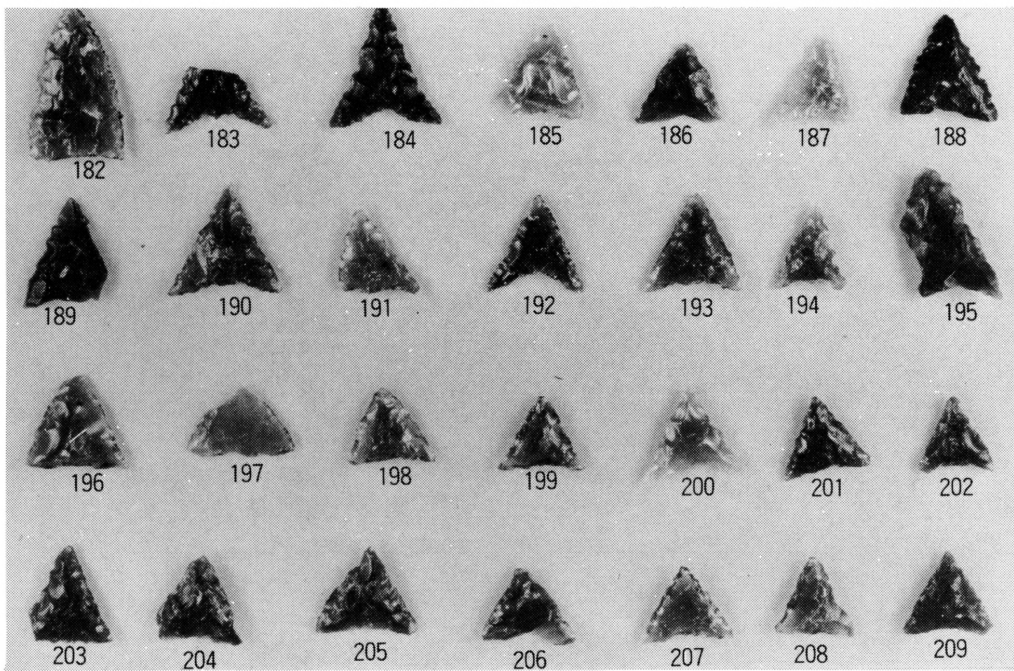


180

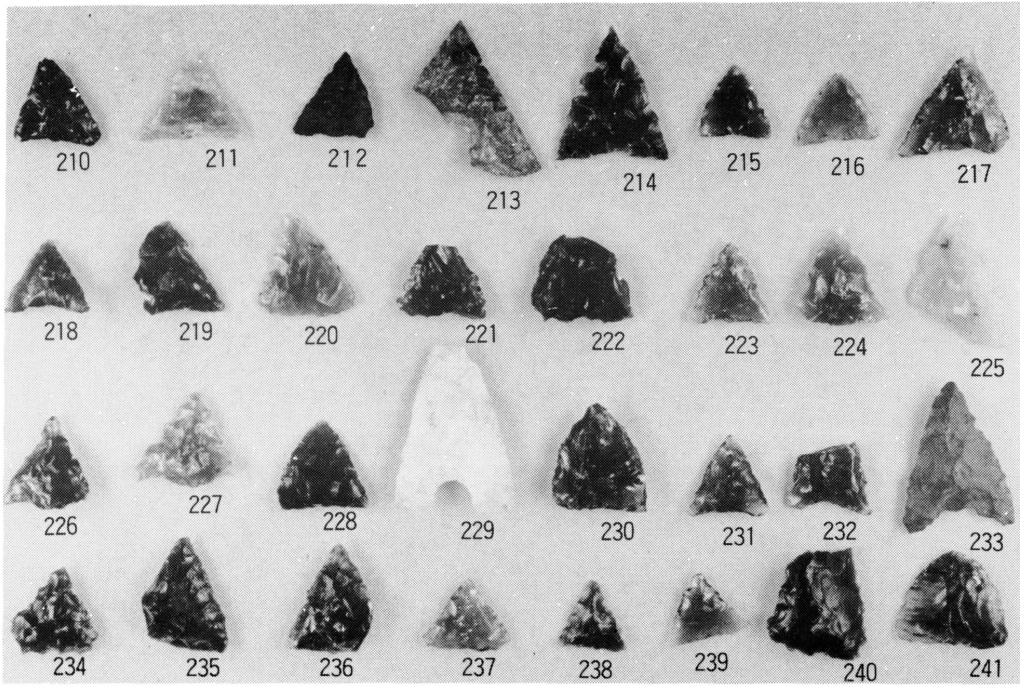


181

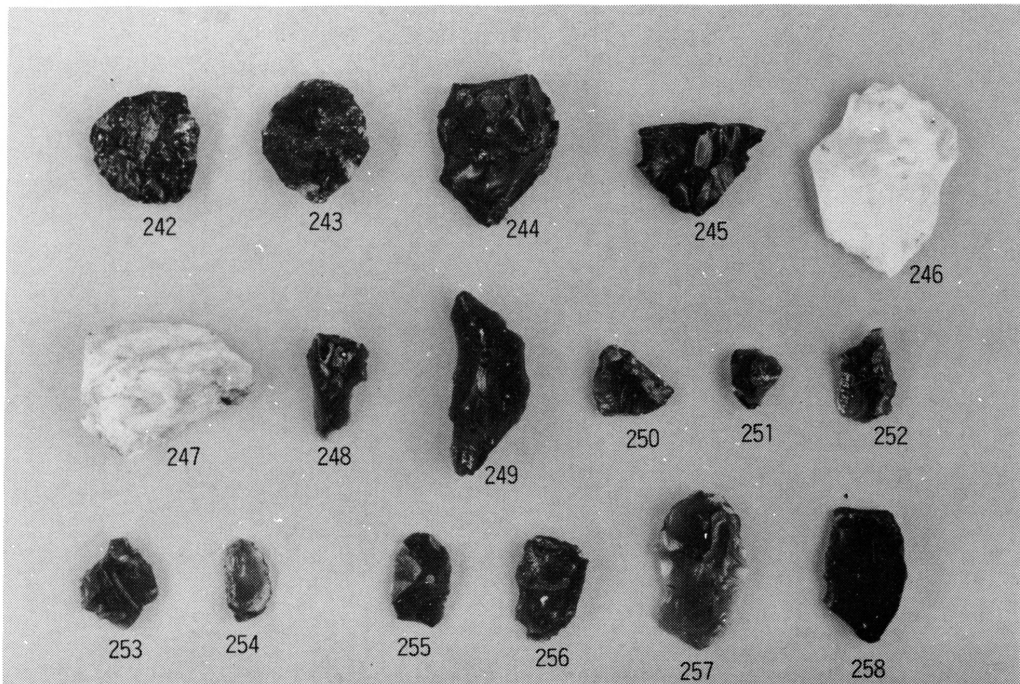
① 縄文式土器



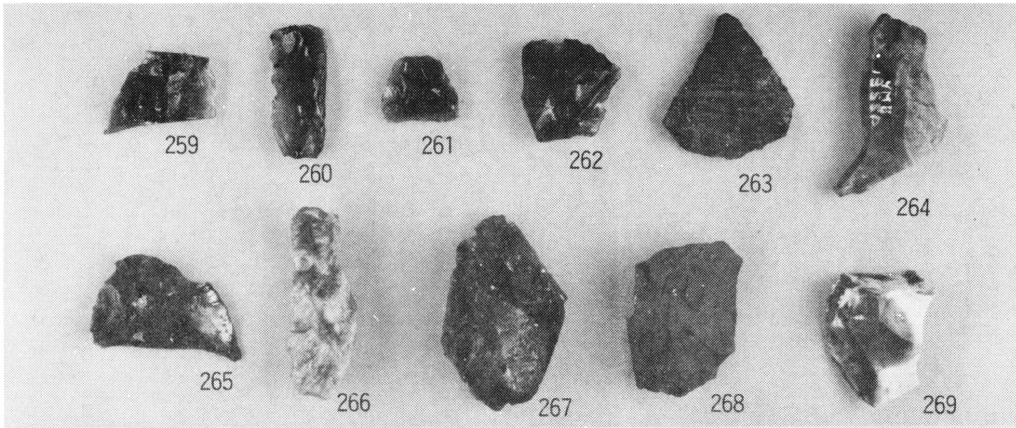
② V層出土の石器 (石鏃)



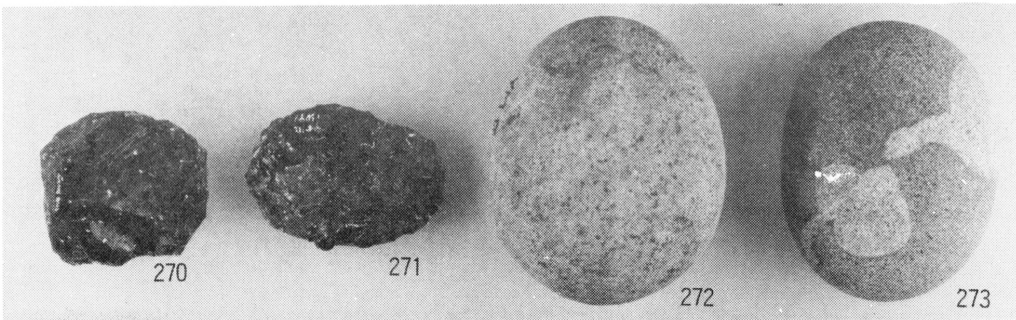
① V層出土の石器 (石鏃 スクレイパー 剥片)



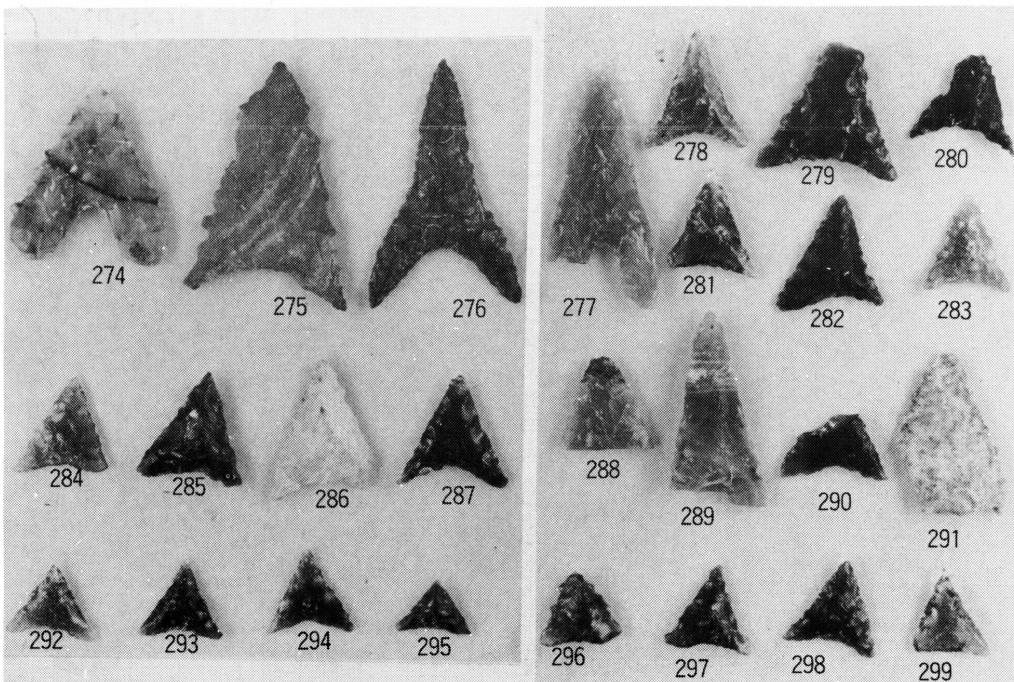
② V層出土の石器 (スクレイパー 剥片)



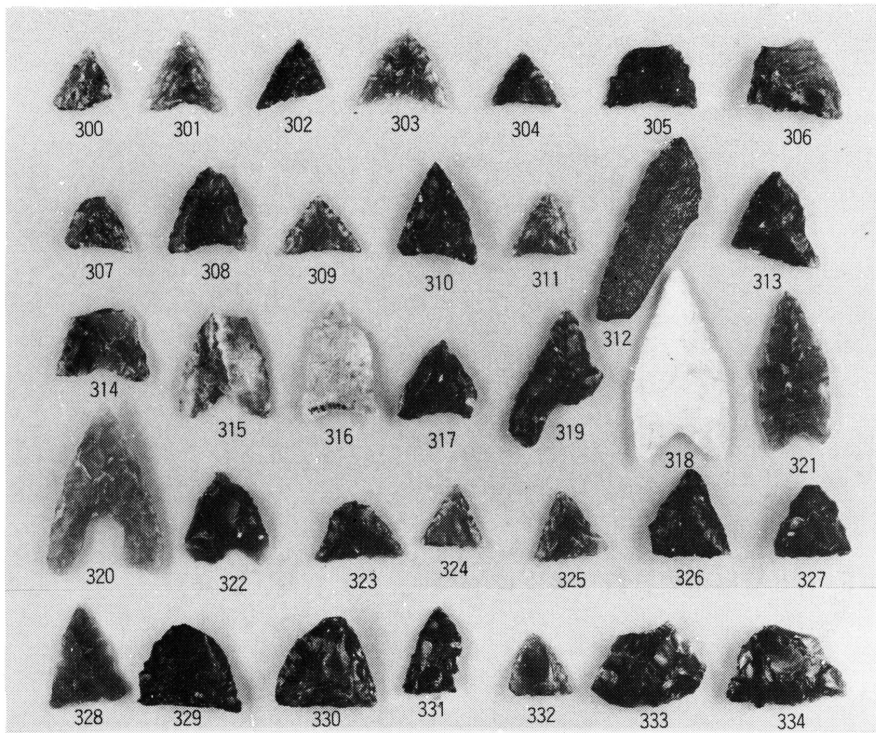
① V層出土の石器（剝片，剝片石器）



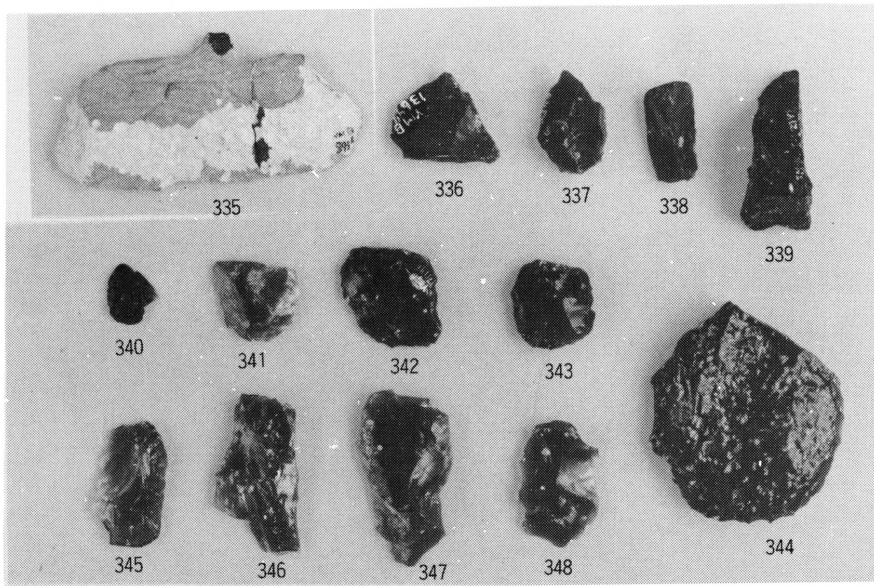
② V層出土の石器（原石，石核，すり石）



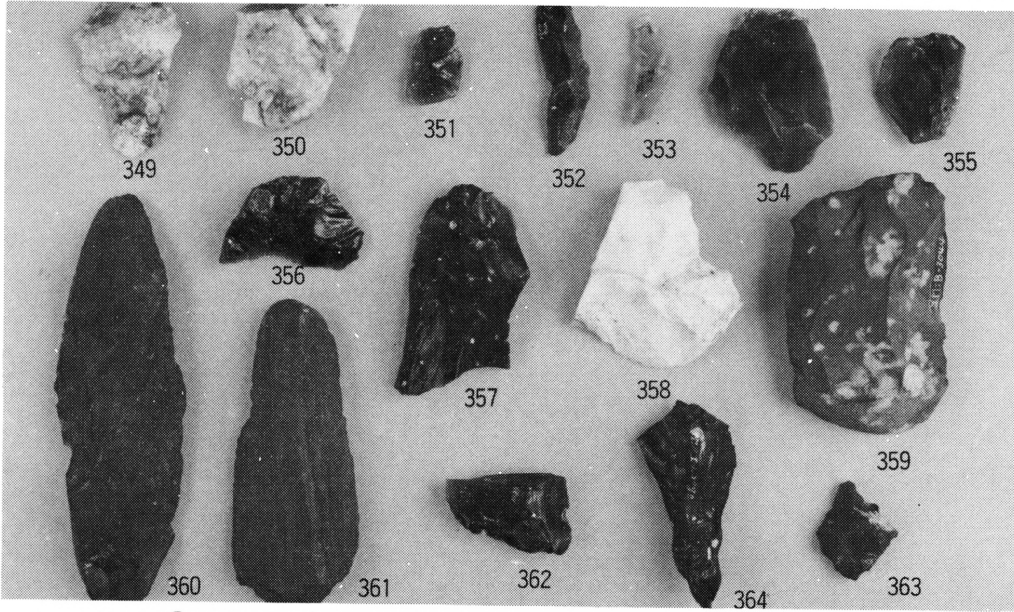
③ IV b層出土の石器（石鏃）



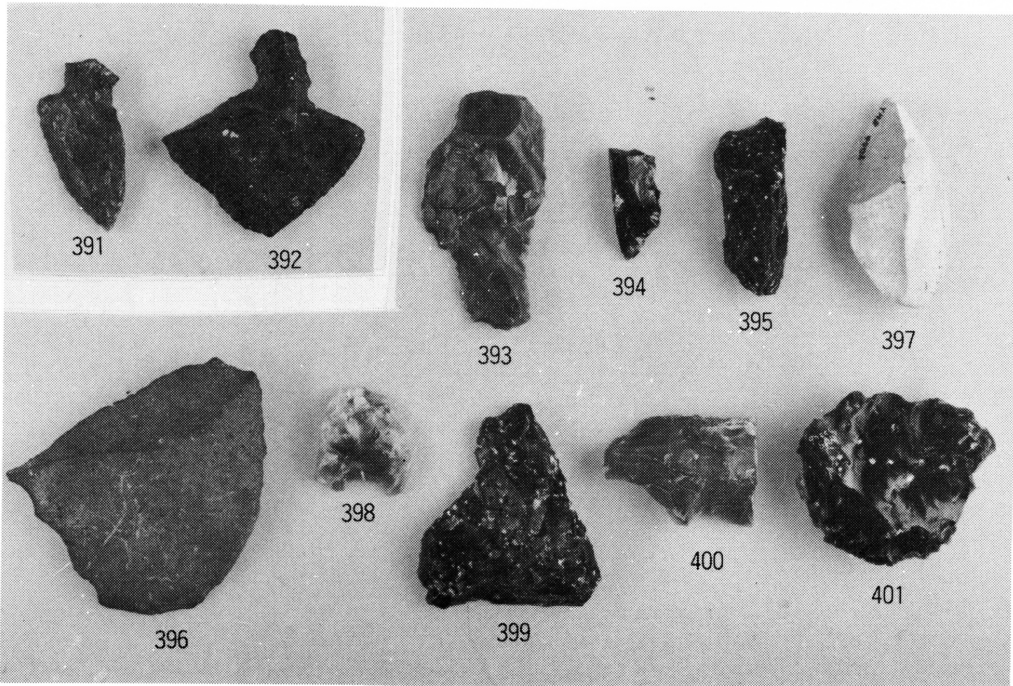
① IV b層出土の石器（石鏃）



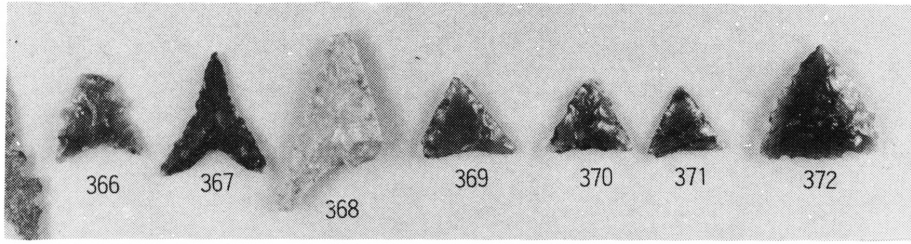
② IV b層出土の石器（石匙，スクレイパー）



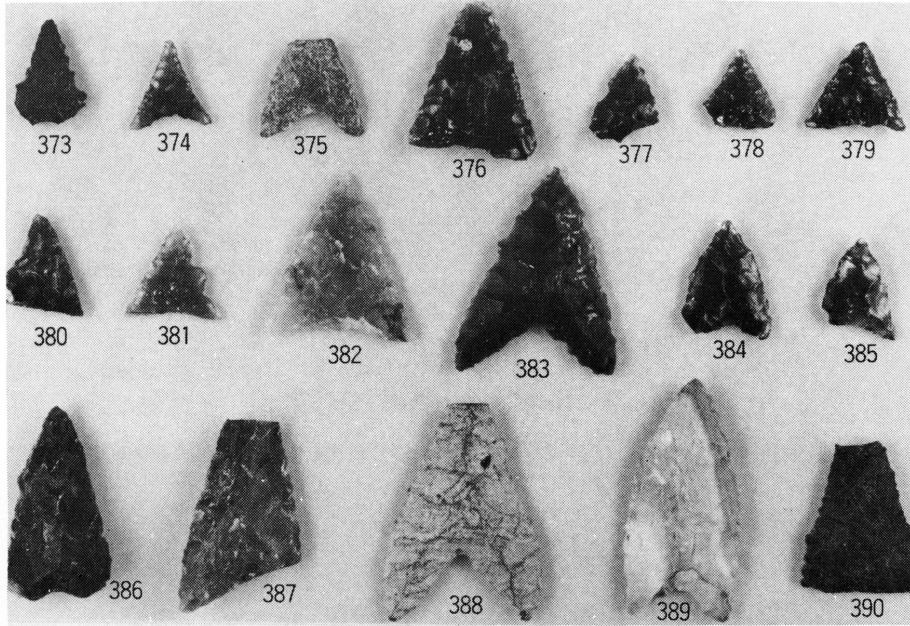
① IVb層出土の石器（スクレイパー，剝片石器，剝片）



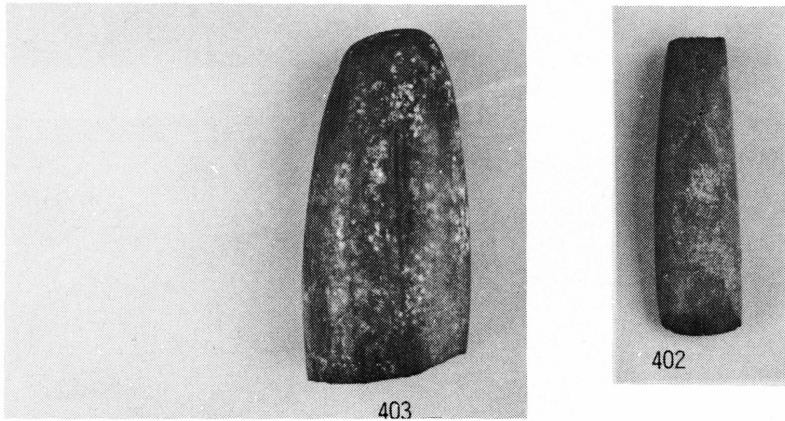
② III層出土の石器（石匙，スクレイパー）



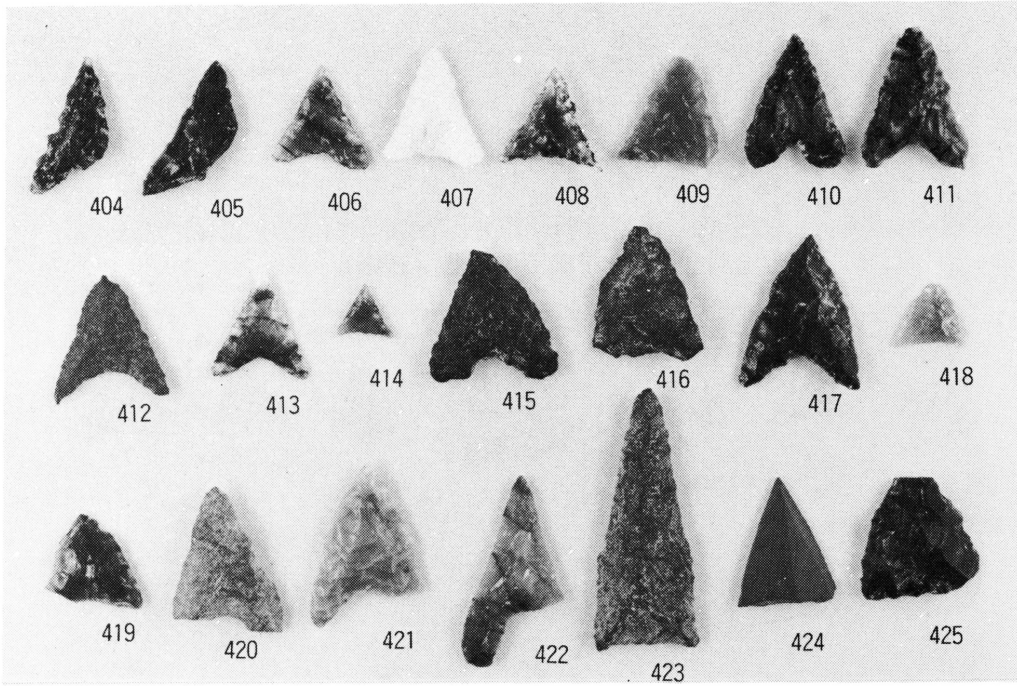
① IV a層出土の石器（石鏃）



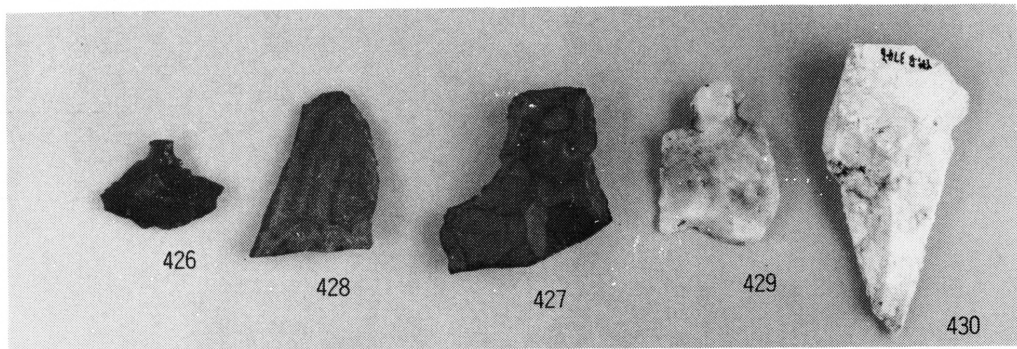
② III層出土の石器（石鏃）



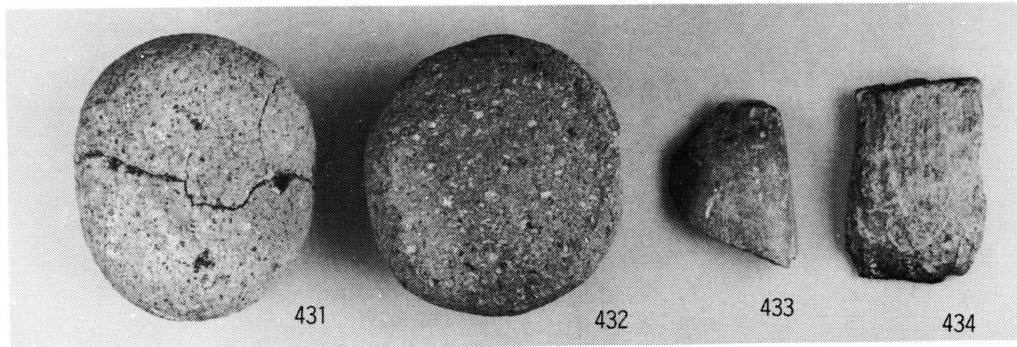
③ III層出土の石器（石斧）



① 表. II層出土の石器 (石鏃)



② 表. II層出土の石器 (石鏃)



③ 表. II層出土の石器 (すり石, 石斧)



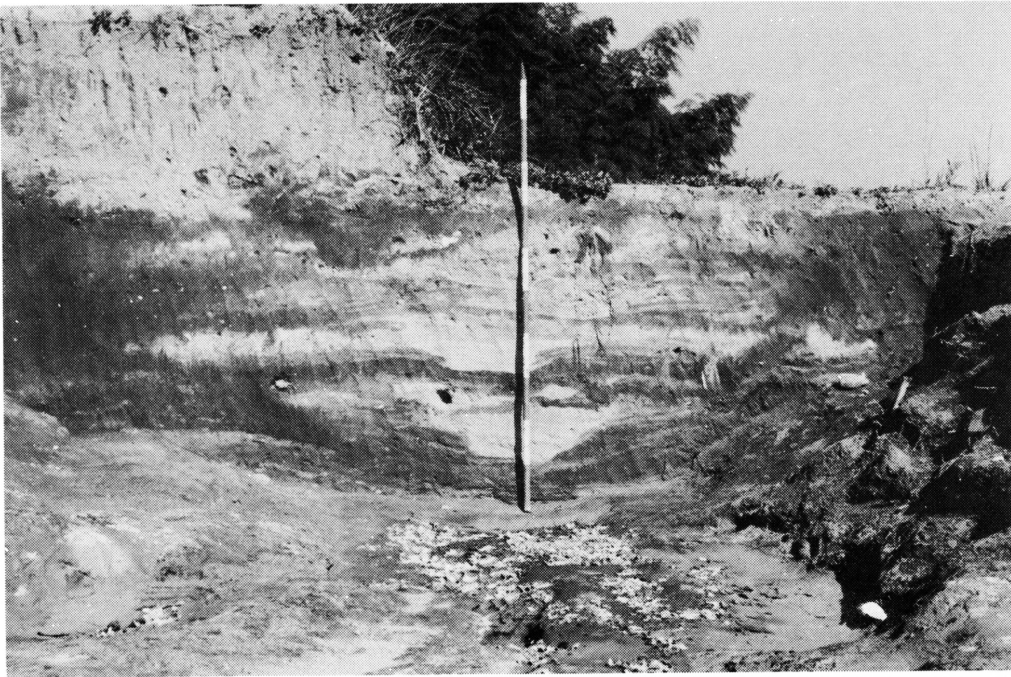
1. 掘出土状況



2. 掘検出作業



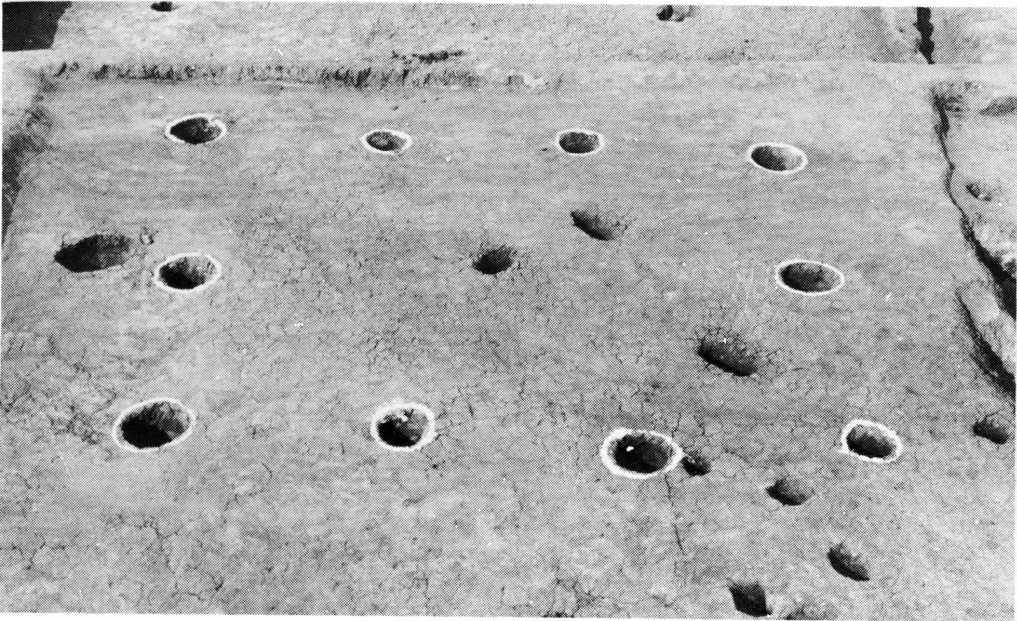
1. 掘出土状況



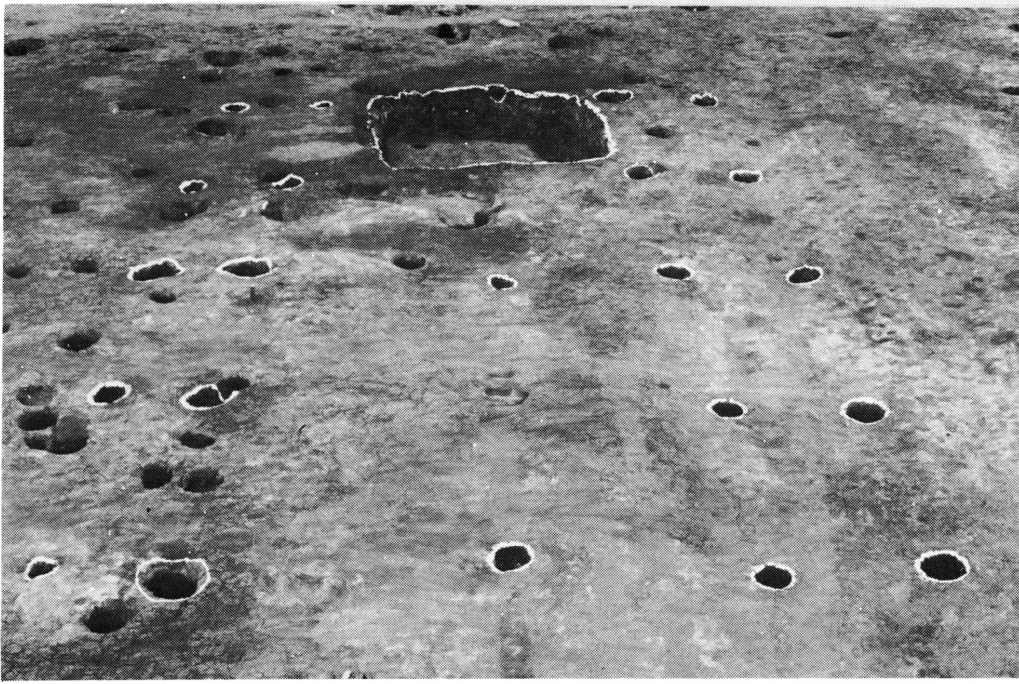
2. 掘 1 断面



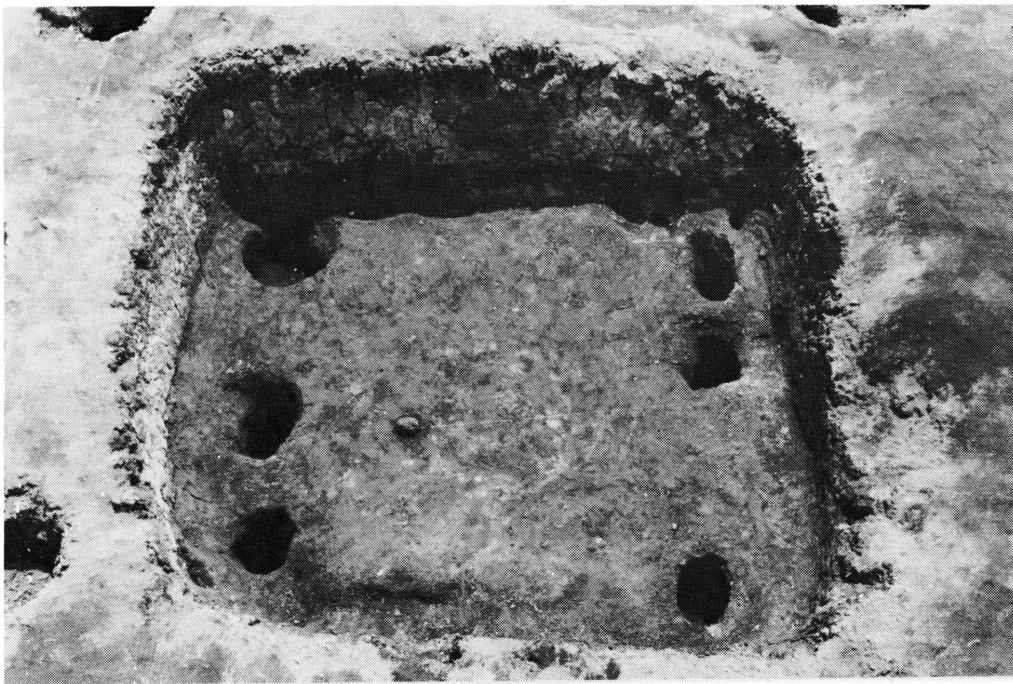
1. ピット群



2. 掘立柱建物跡 2



1. 掘立柱建物跡 3



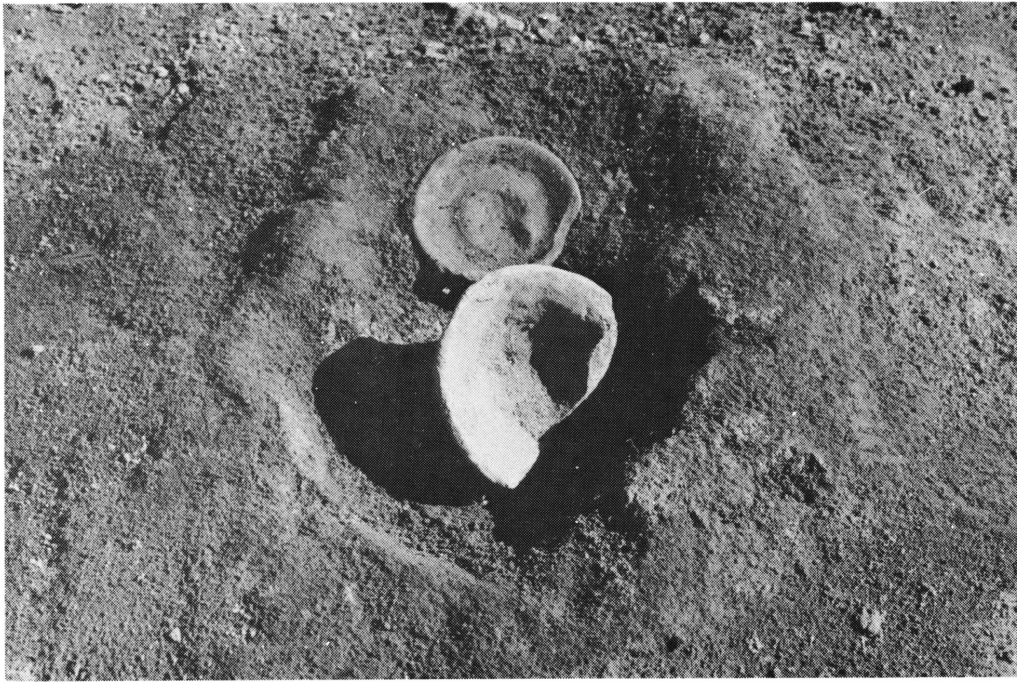
2. 同 豎 穴 状 遺 構



1. 土師器かめ出土状況（平面）



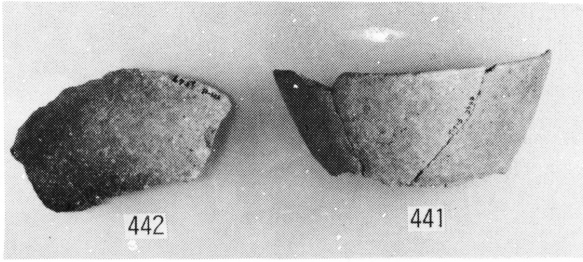
2. 同 上（側面）



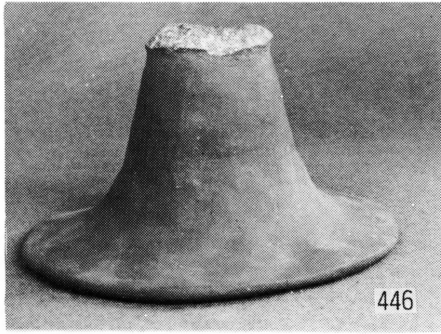
1. ピット内出土遺物



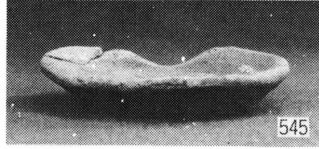
2. 塚状遺構



① 古墳時代の遺物 (埴)



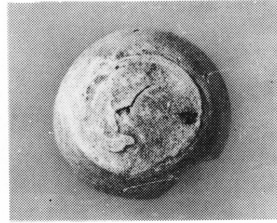
② 同 (高坏)



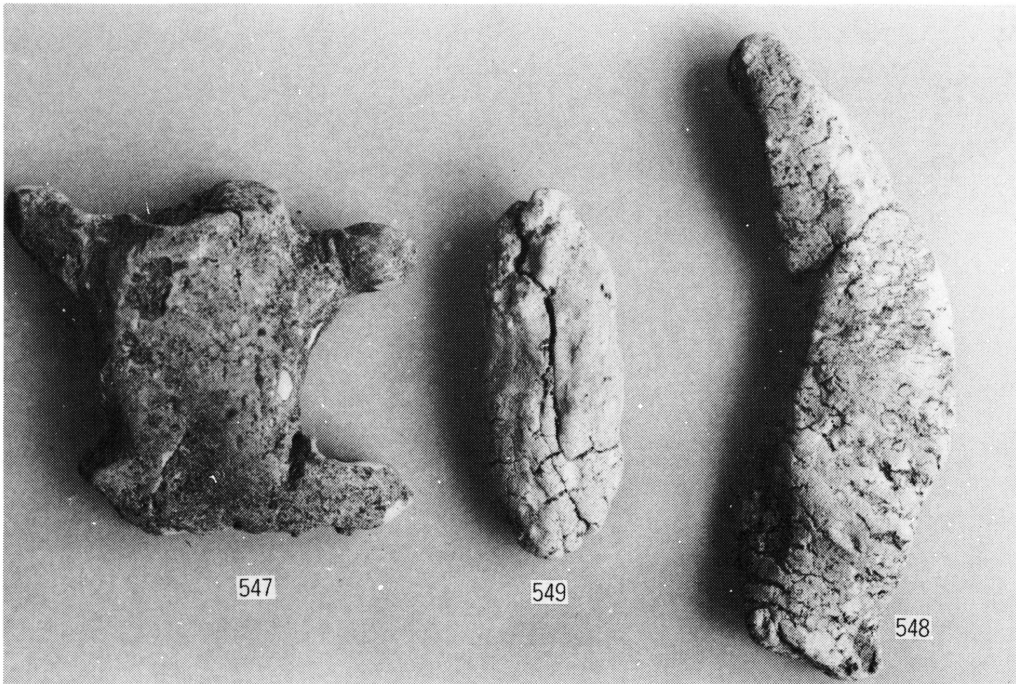
③ 同土師器 (皿)



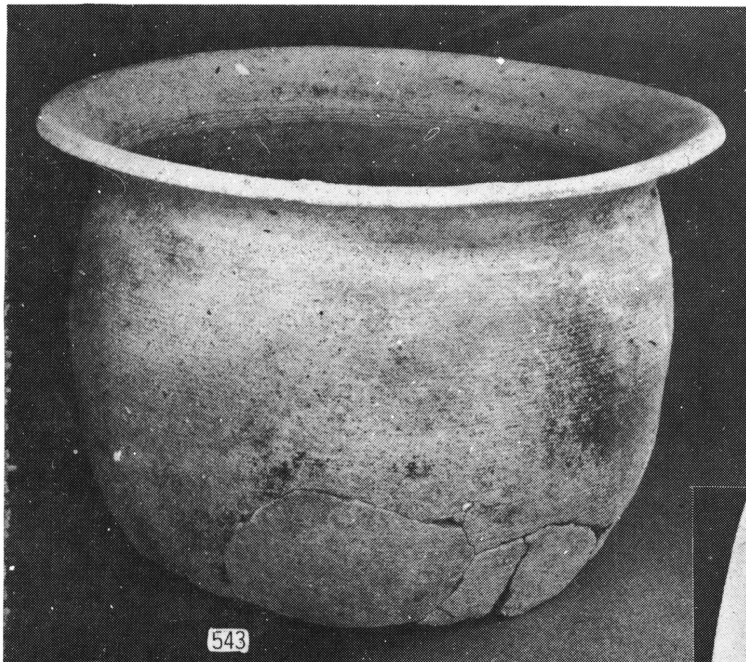
④ 同土師器 (皿)



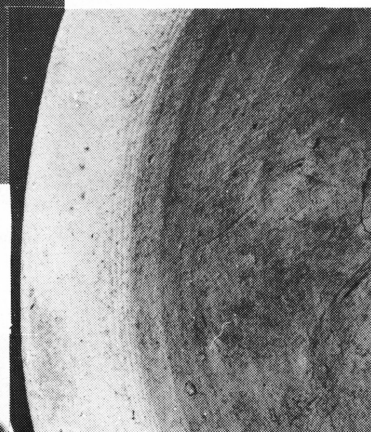
⑤ 同④の底



⑥ 土塚出土の遺物



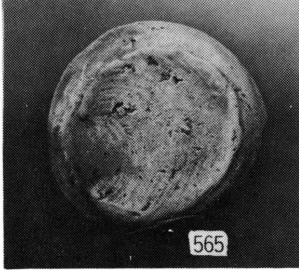
① 土坂出土の土師器かめ



② 543の口縁内面拡大

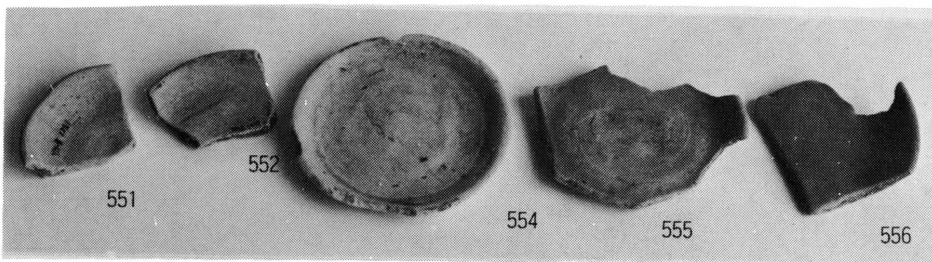


③ 土坂出土の土師器かめ

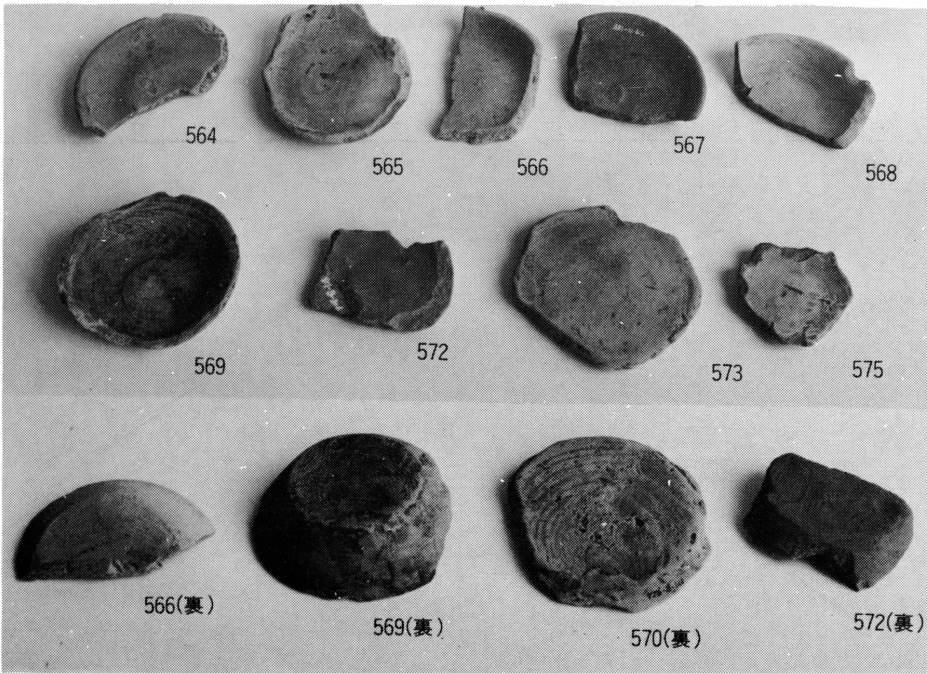


① 土師器
(皿と底)

② 土師器 (皿)



③ 土師器 (皿)



④ 土師器 (皿、糸切り底)