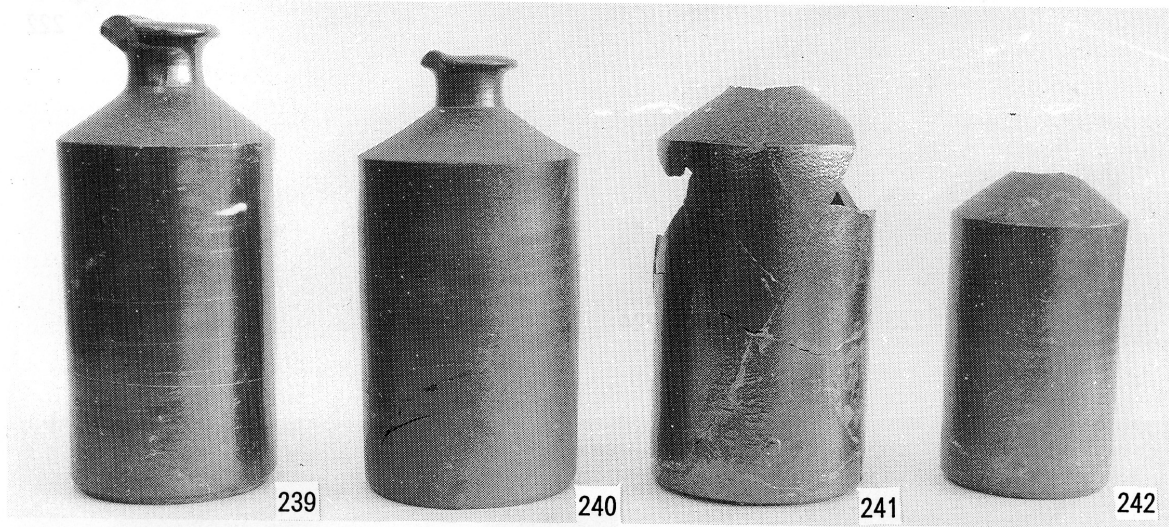
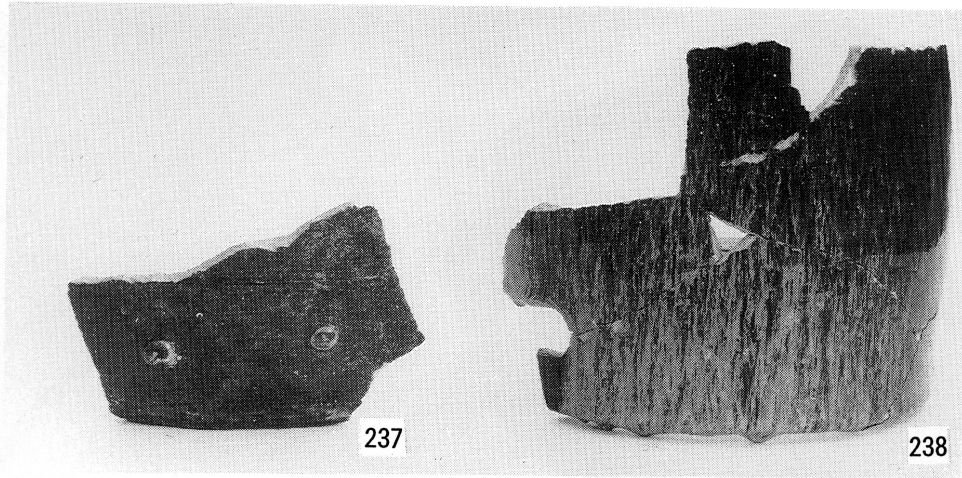
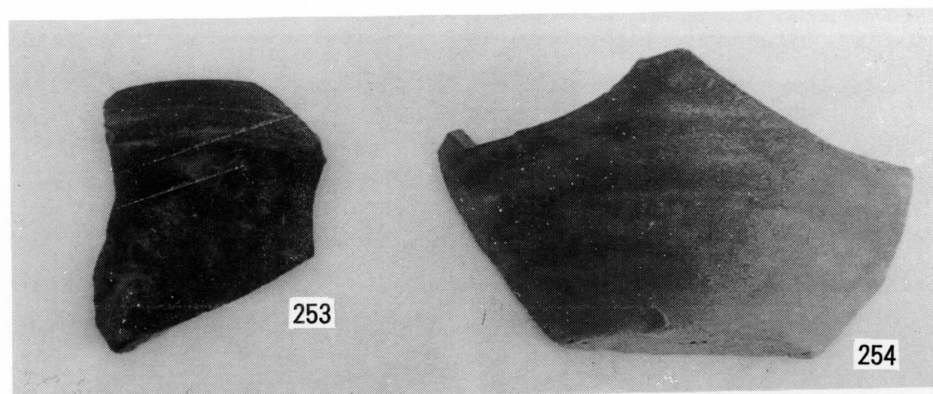
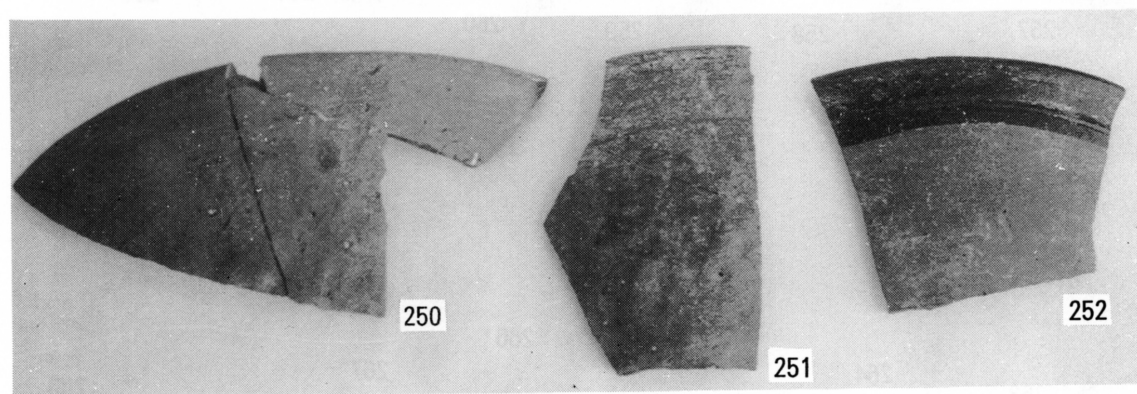
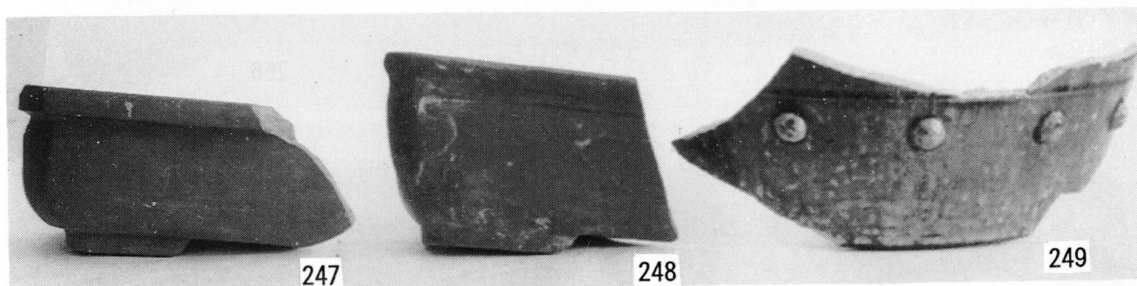


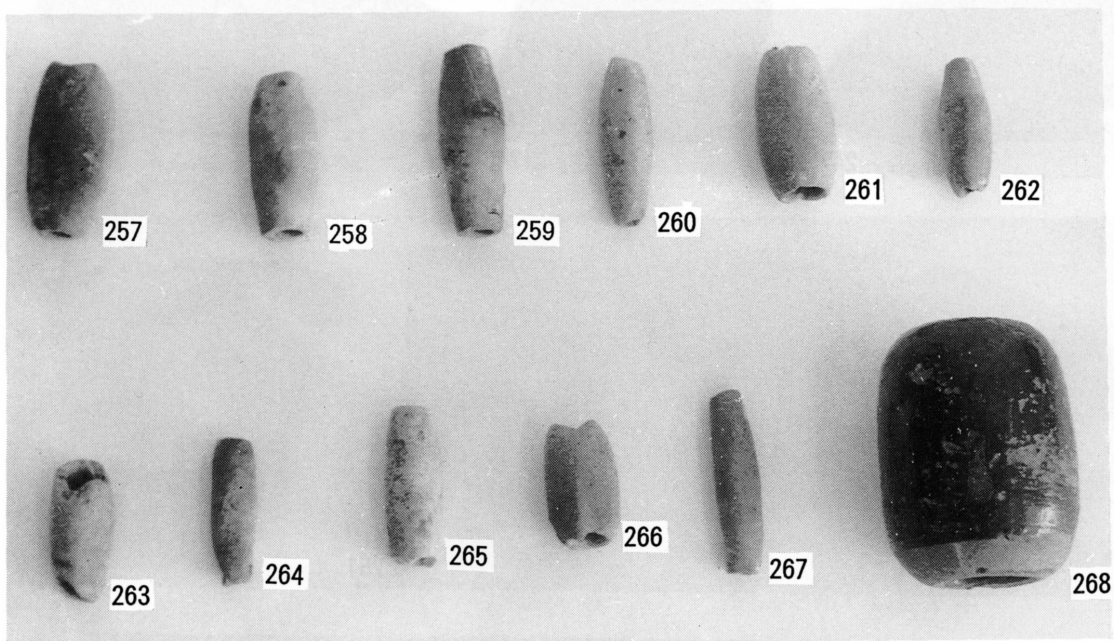
図版 16 瀬戸・美濃系 2



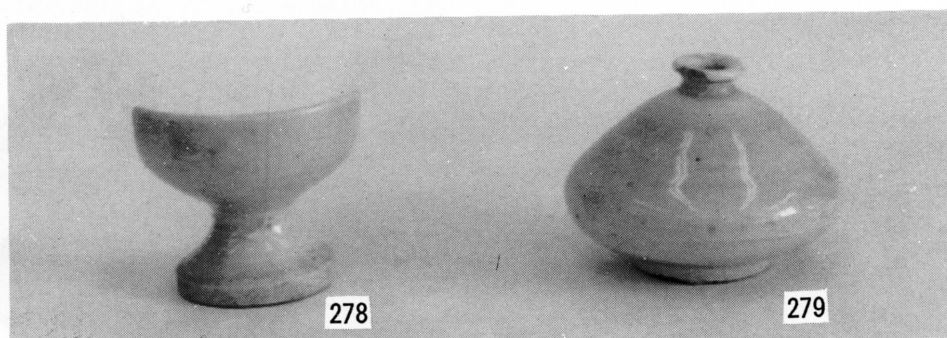
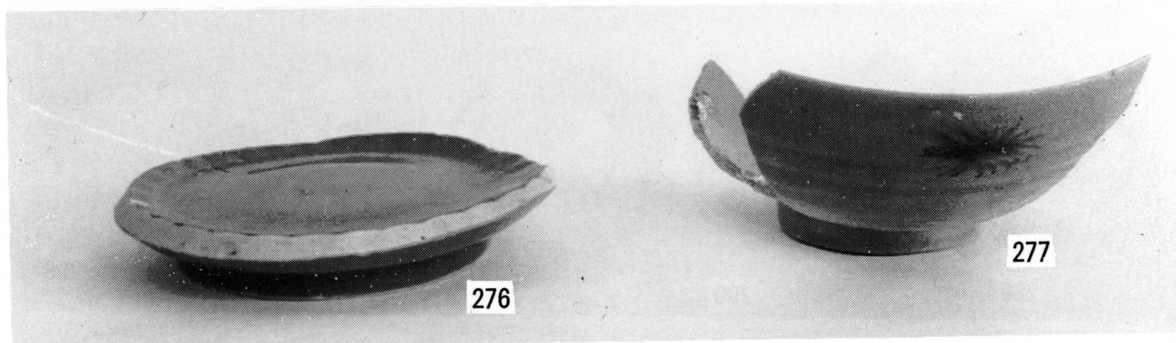
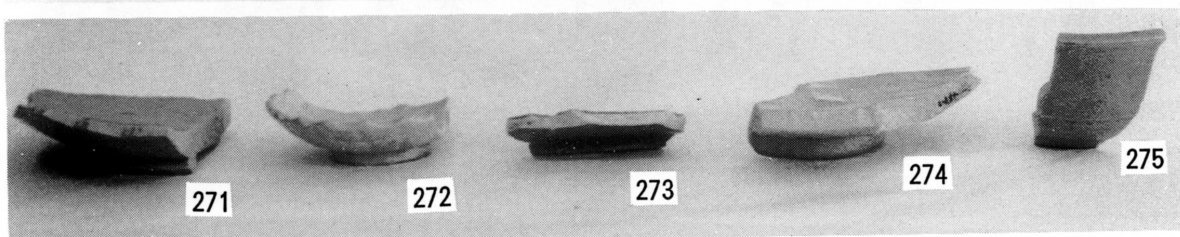
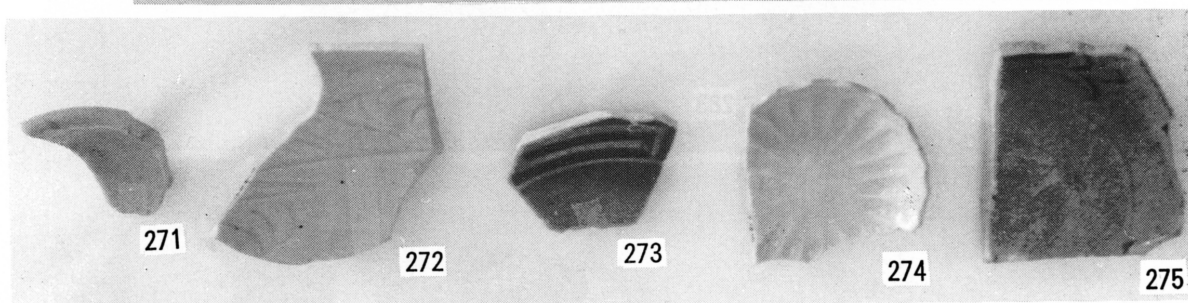
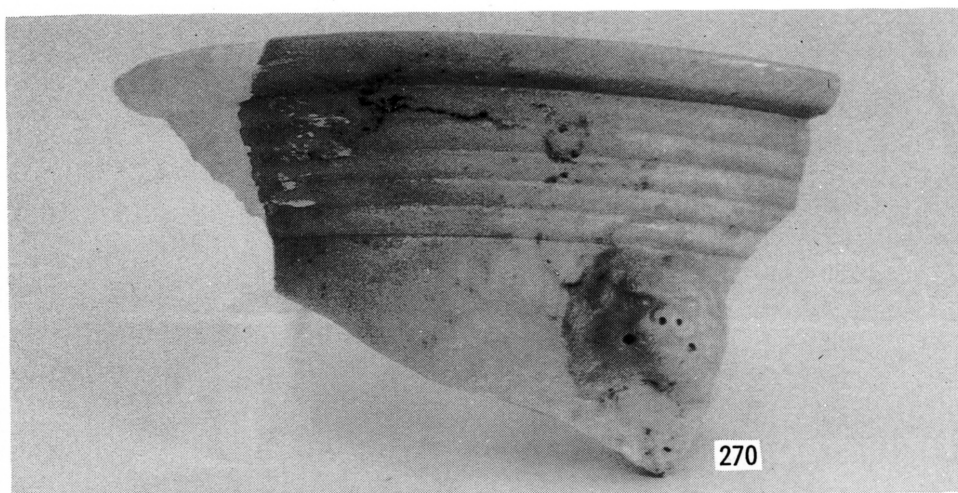
図版17 関西系・肥前系・備前系



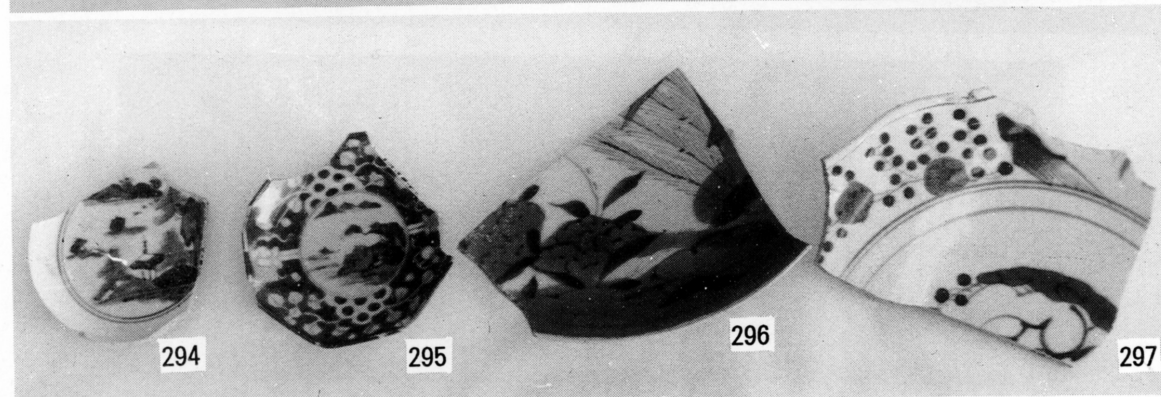
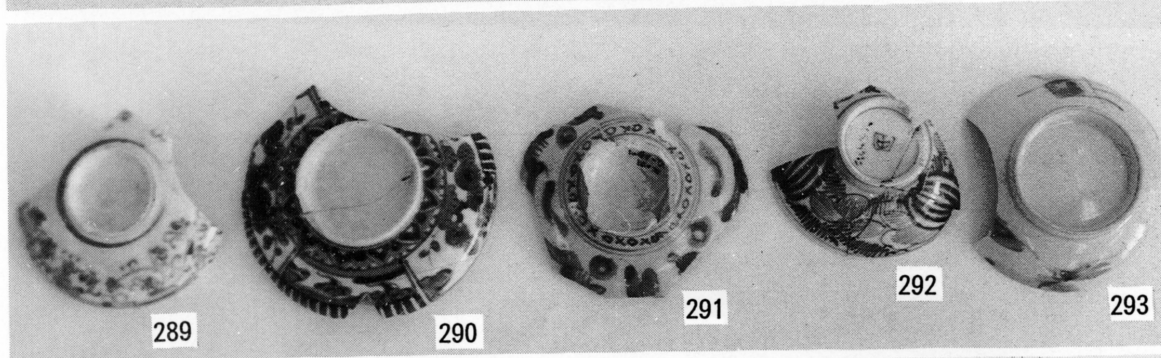
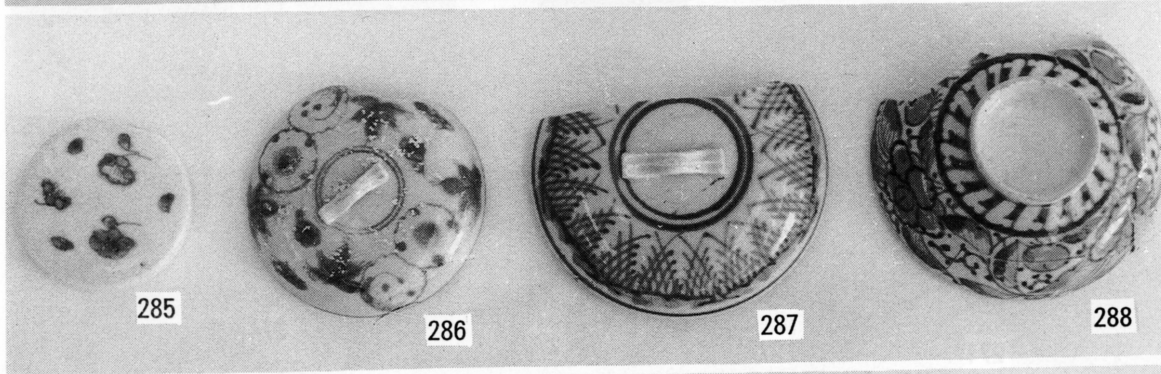
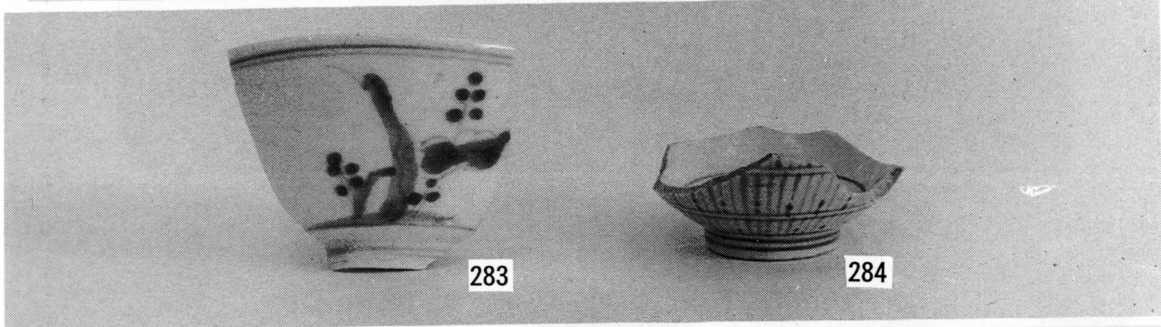
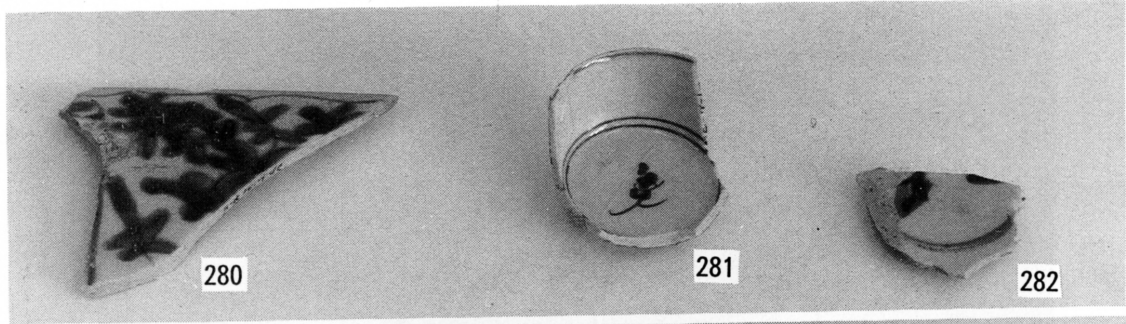
圖版 18 土管・土錘・陶錘・薩摩白磁 1



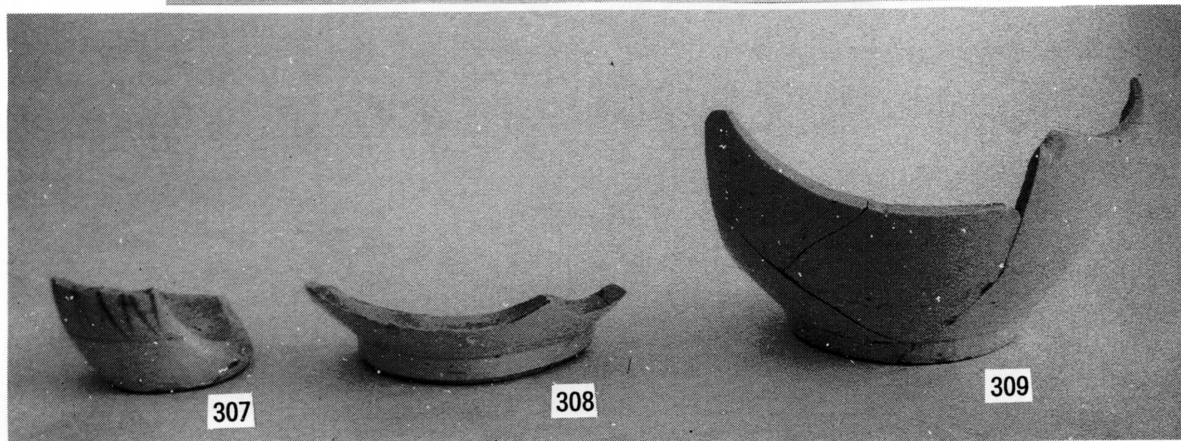
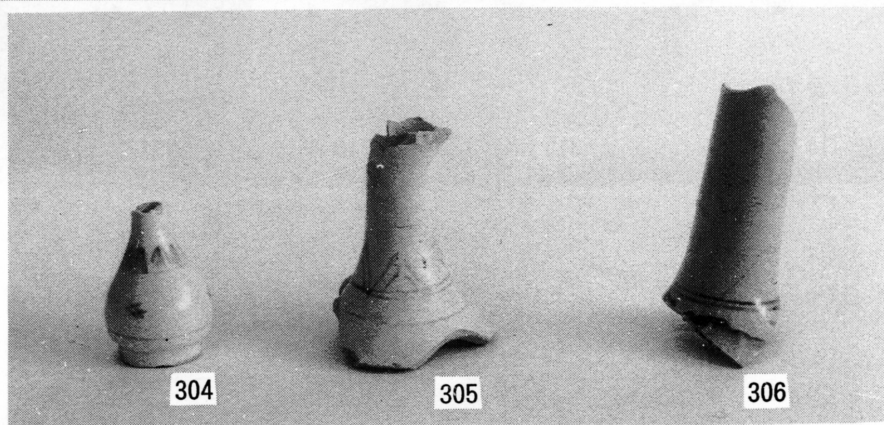
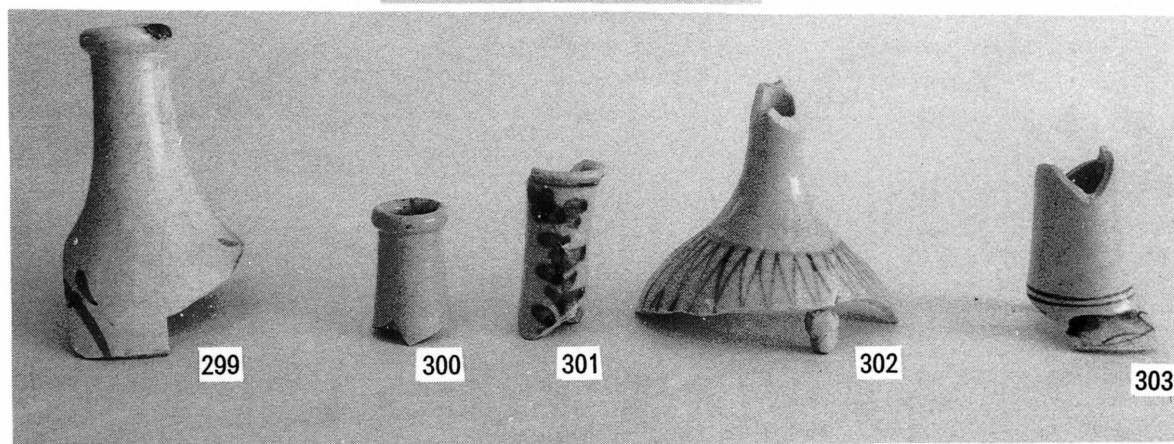
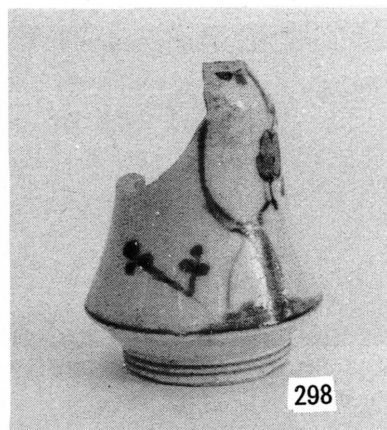
図版19 薩摩白磁 2・青白磁・青磁・白磁



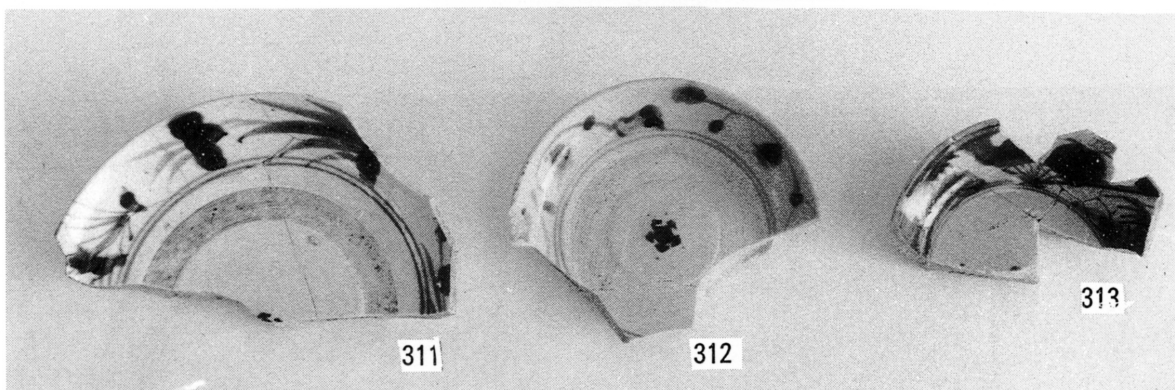
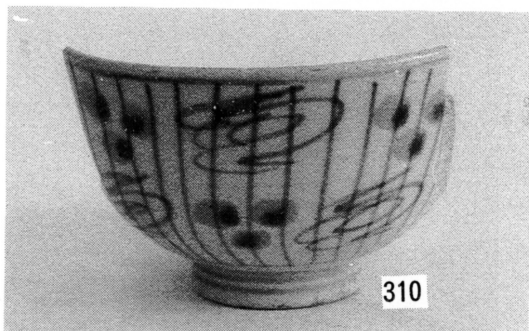
図版 20 染付 1



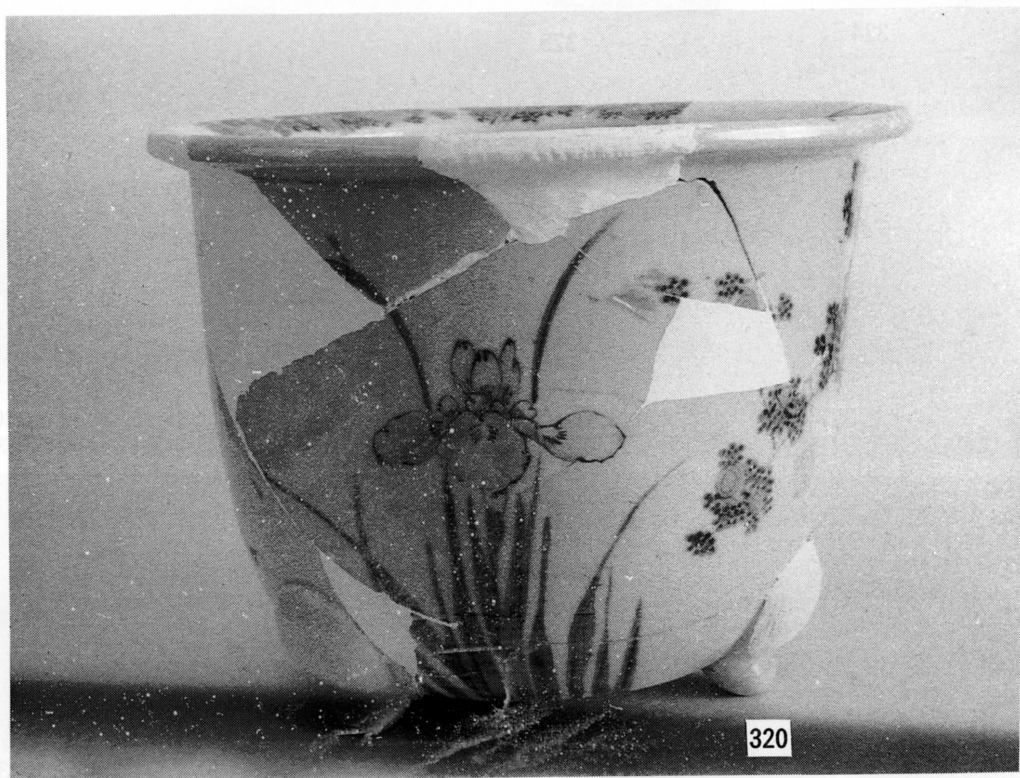
图版 21 染付 2



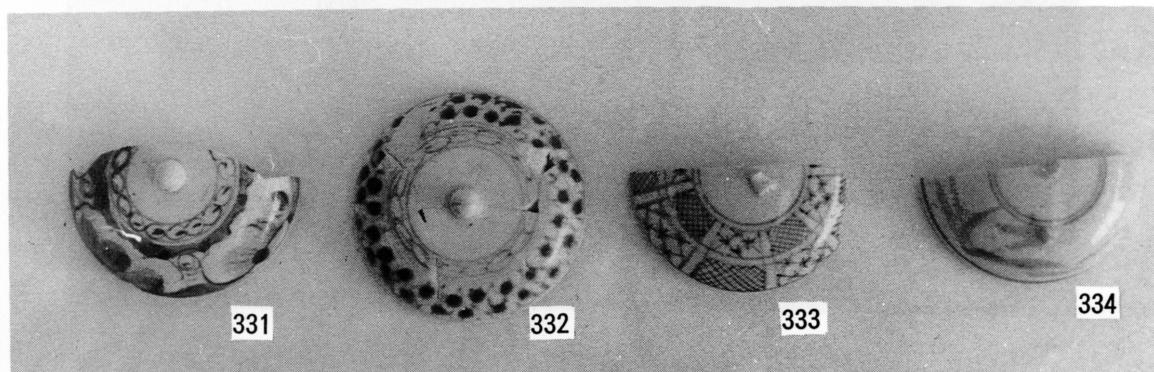
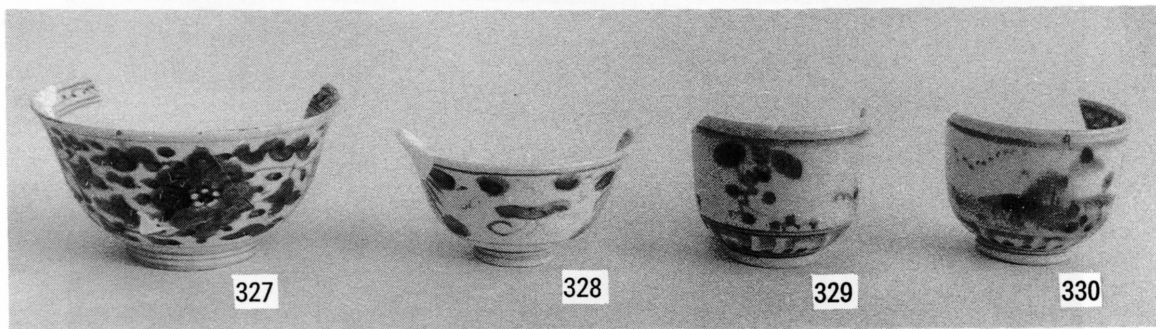
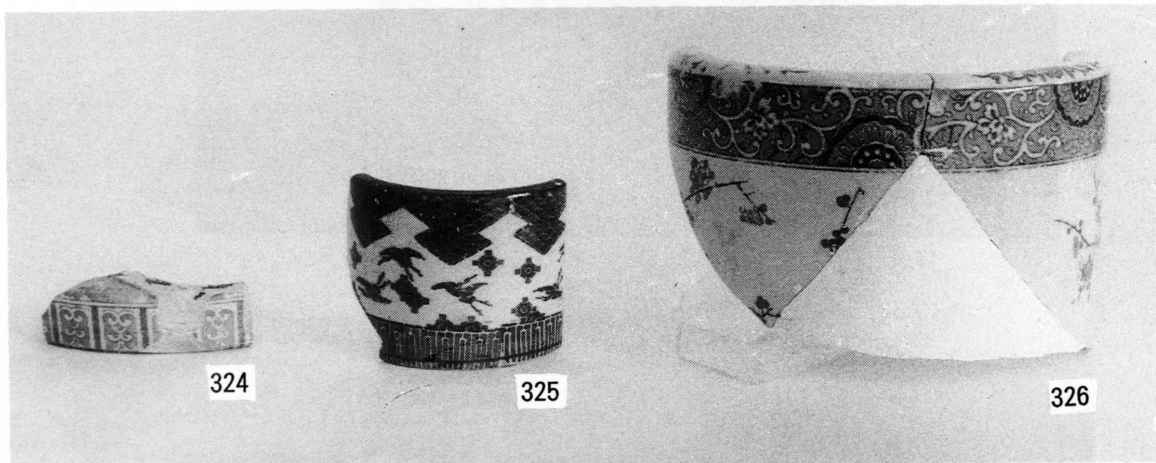
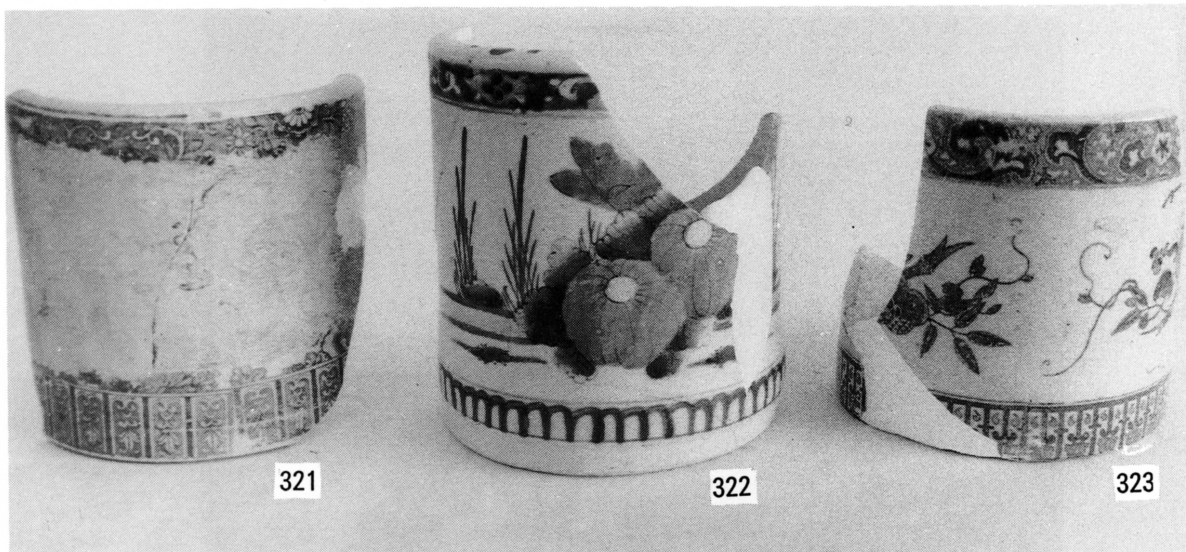
图版 22 染付 3



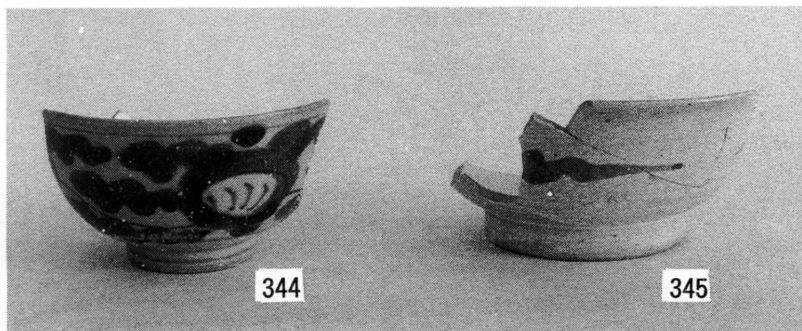
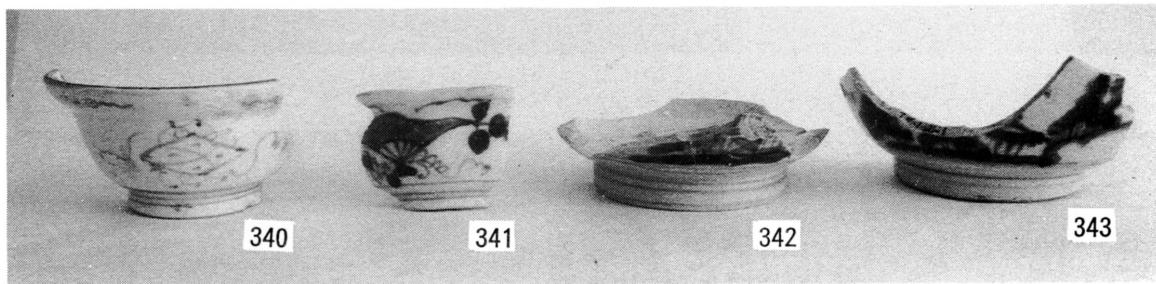
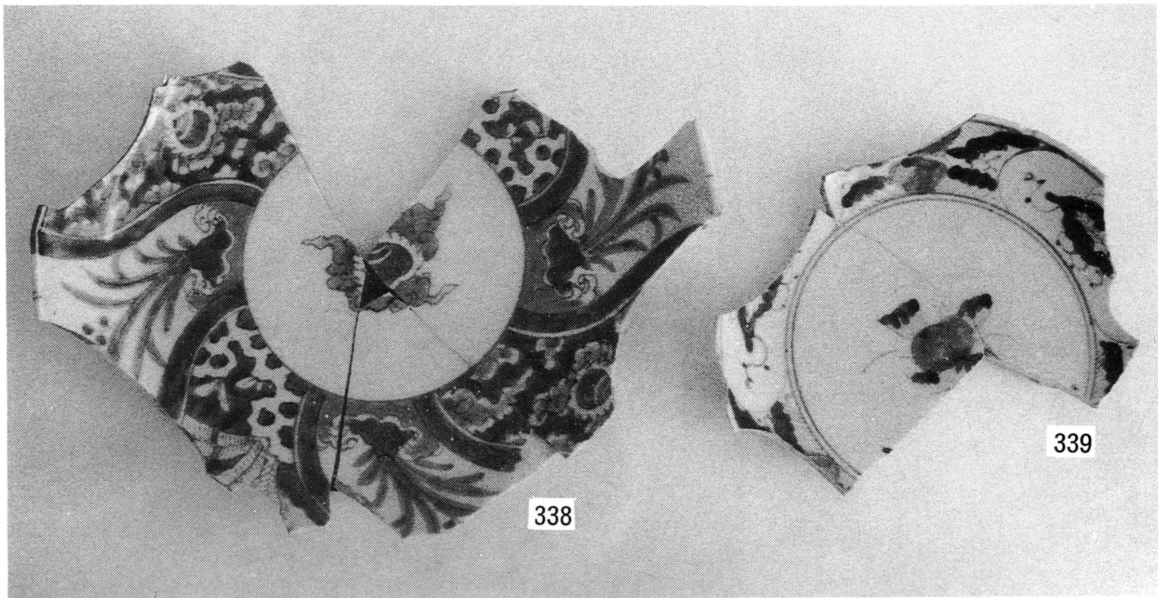
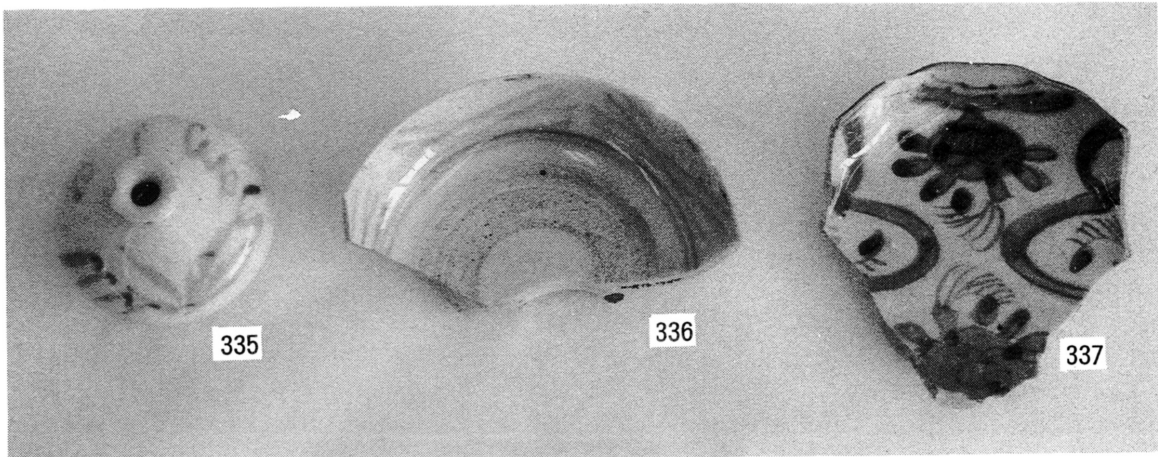
图版23 染付4



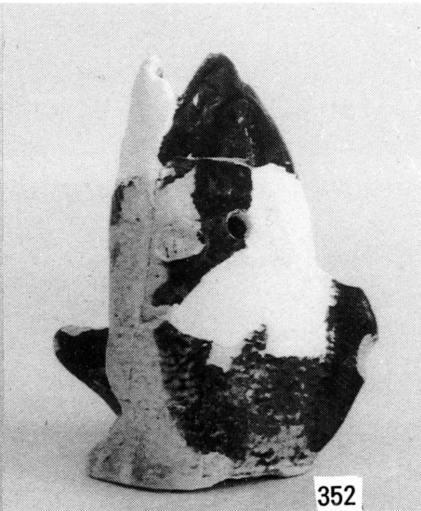
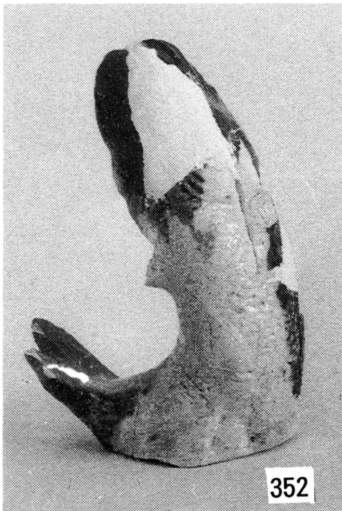
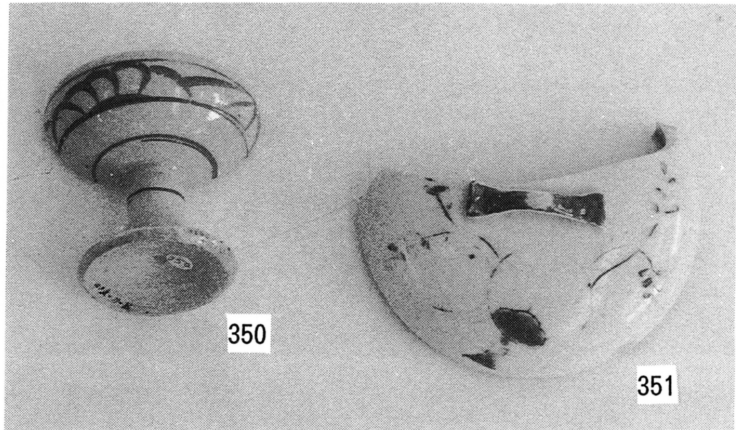
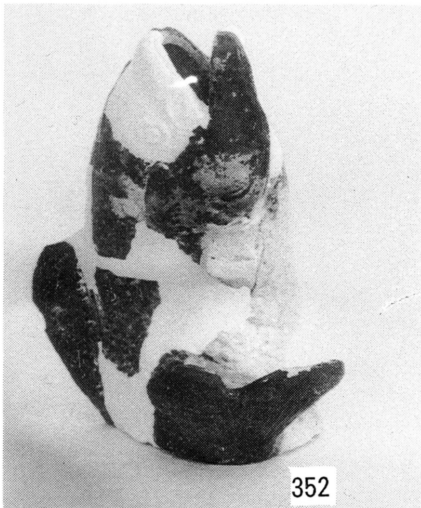
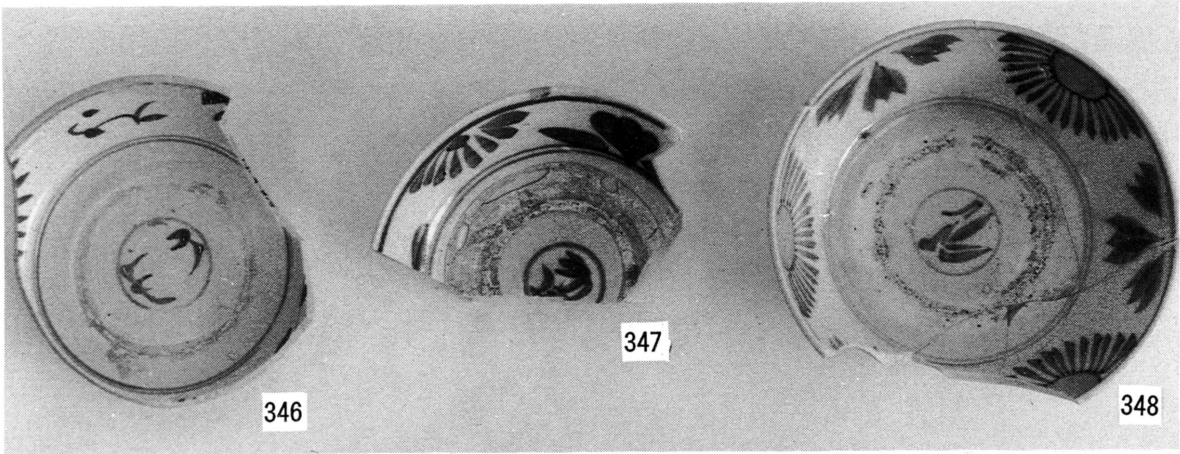




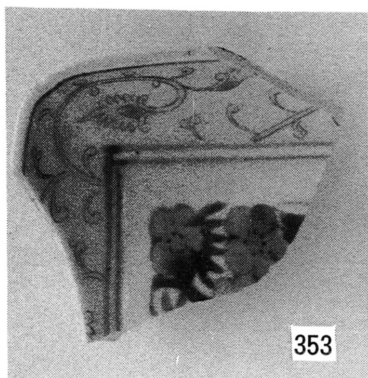
图版 25 染付 6



図版26 染付7・色絵1



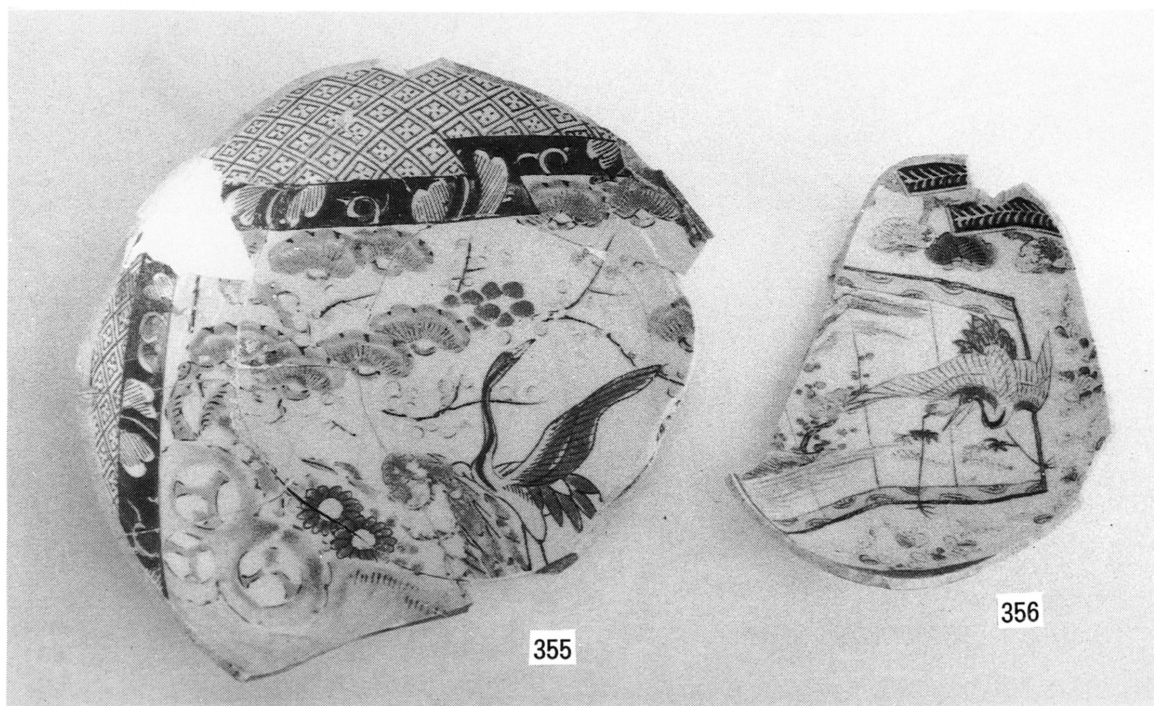
图版 27 色绘 2



353



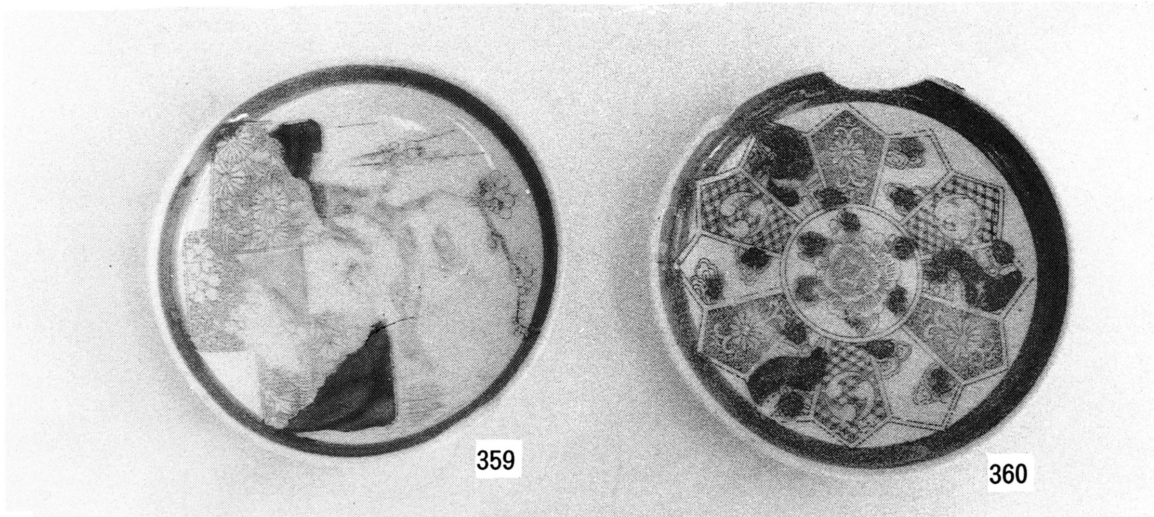
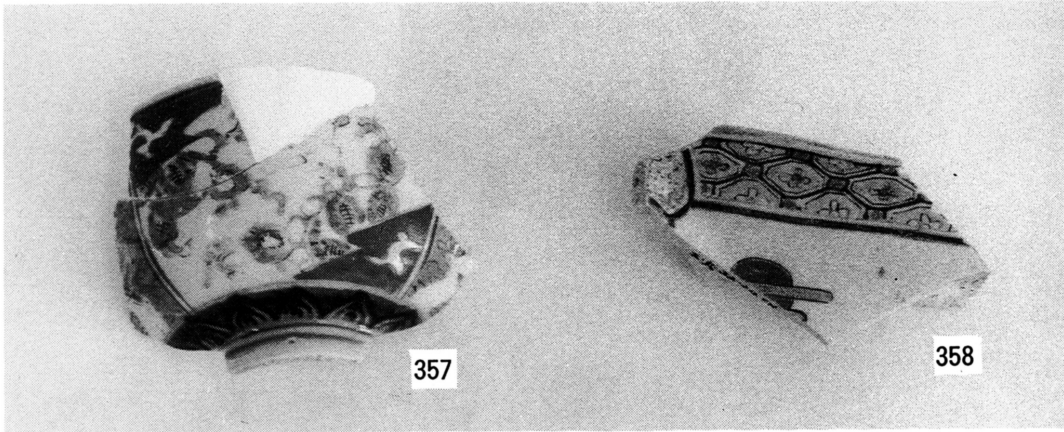
354



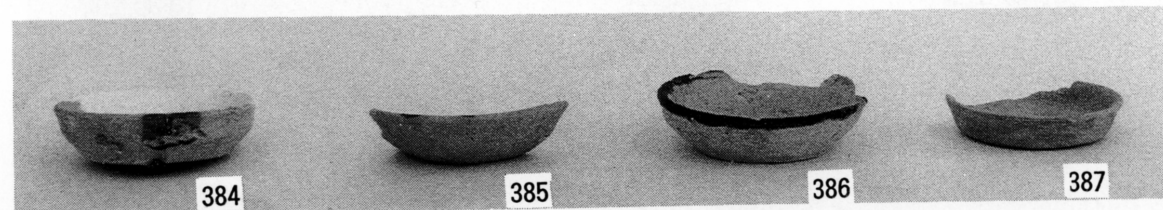
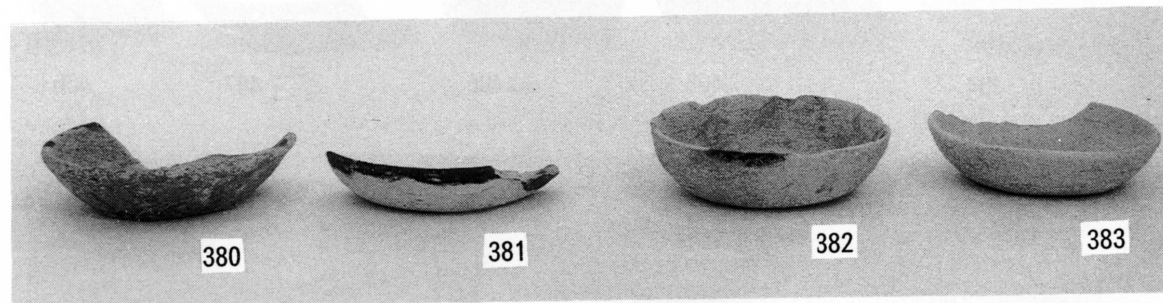
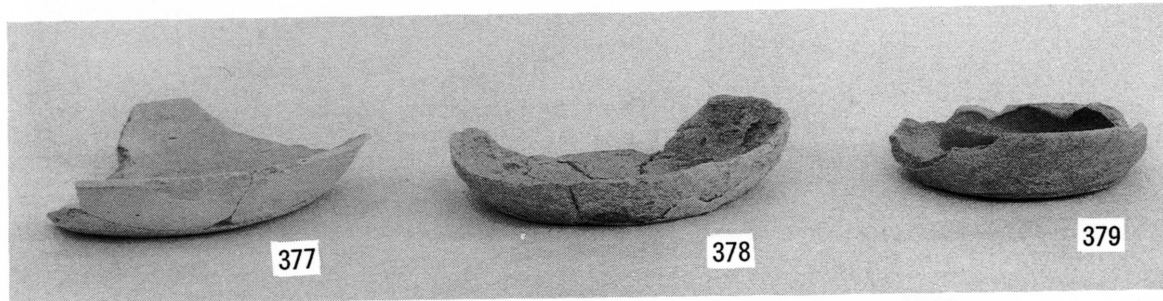
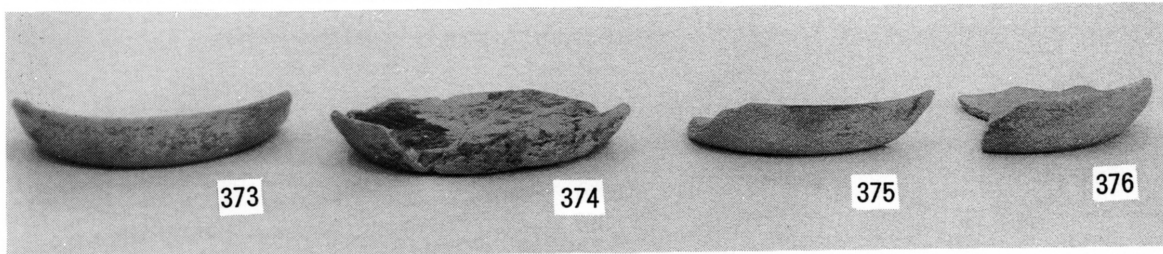
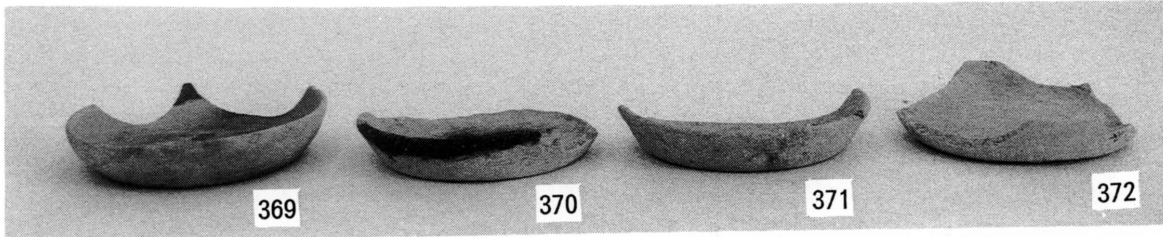
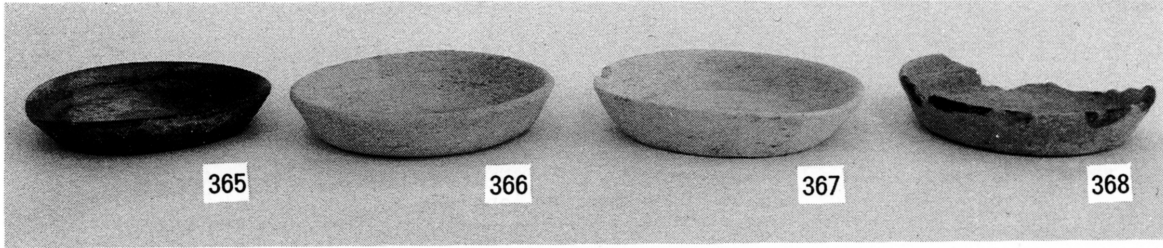
355

356

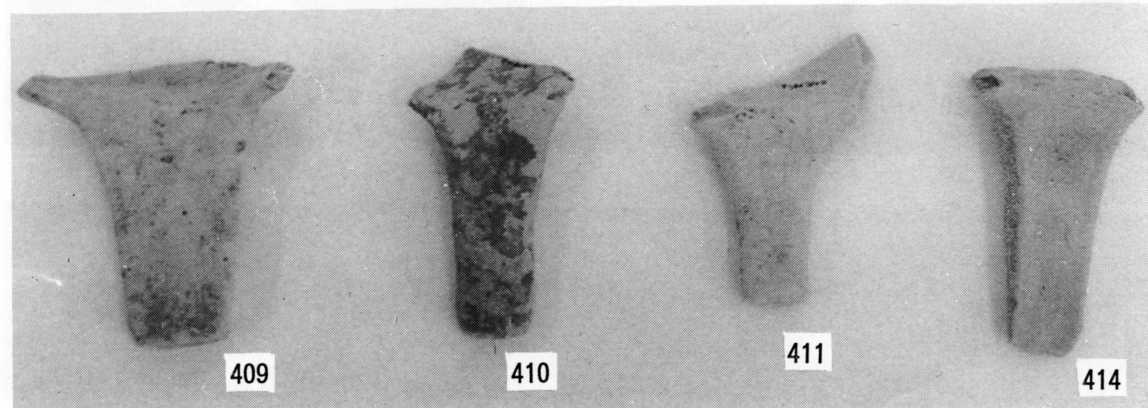
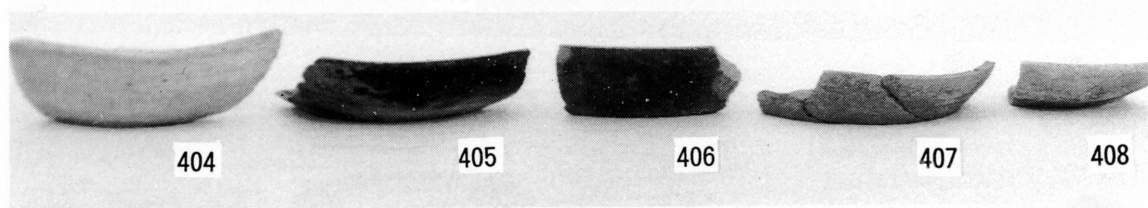
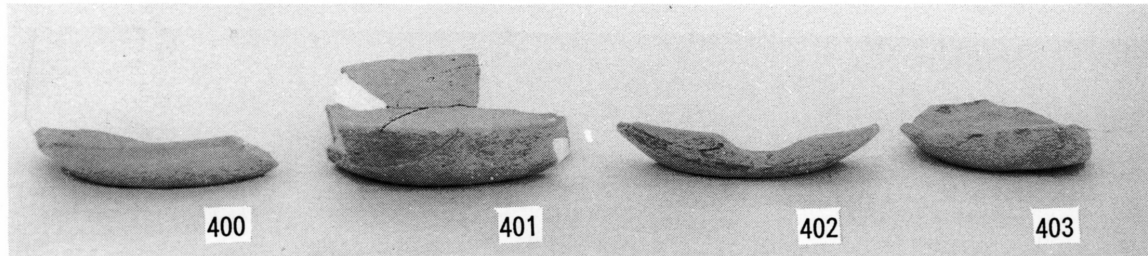
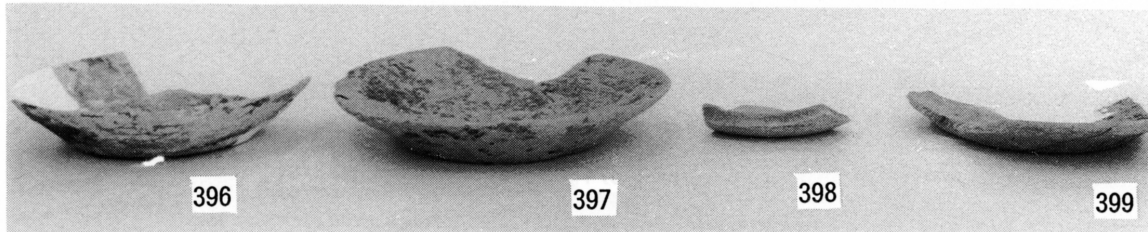
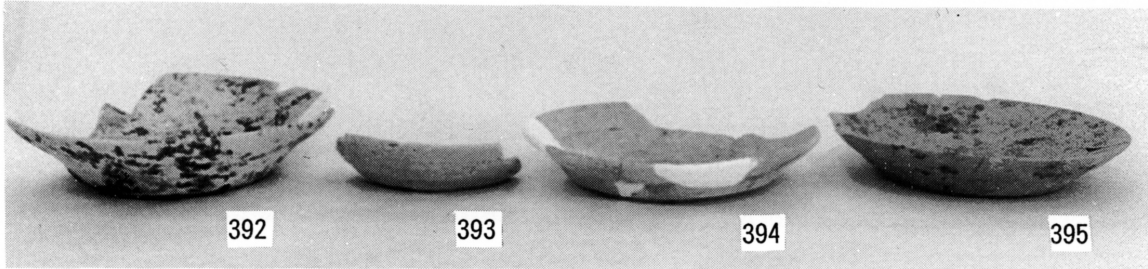
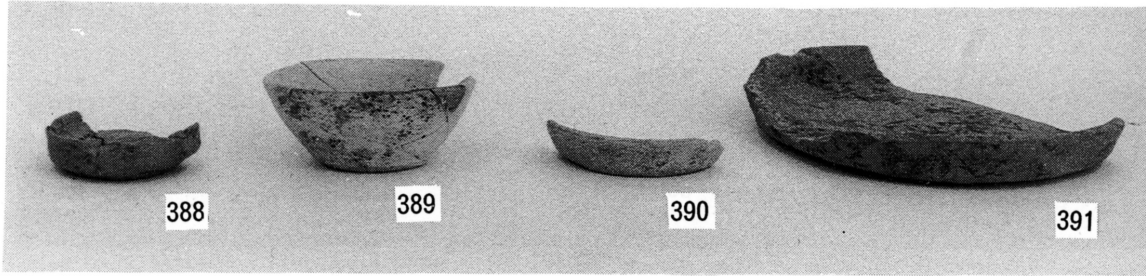
図版 28 色絵 3



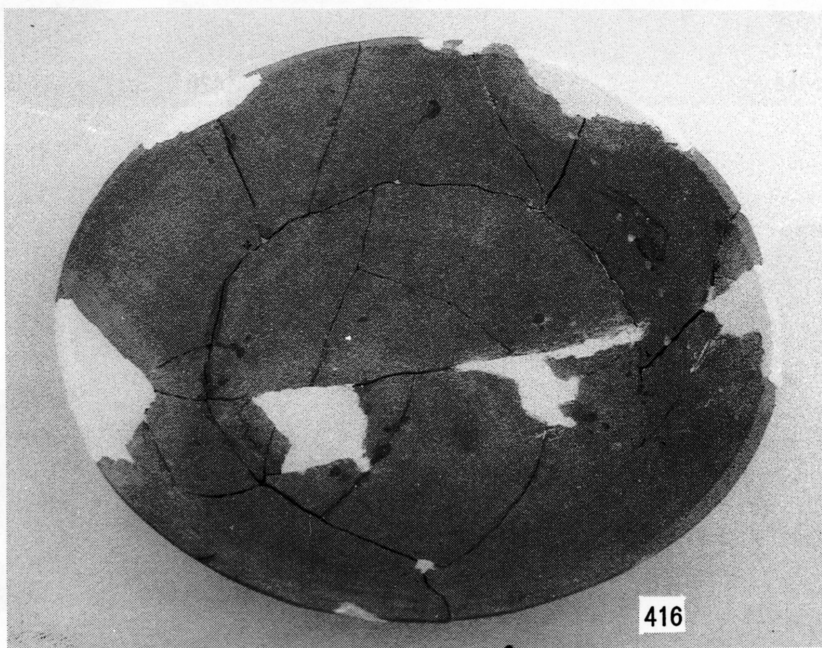
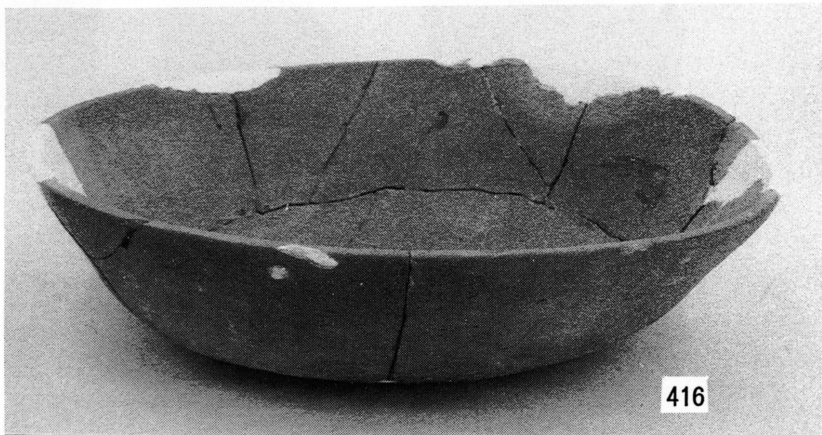
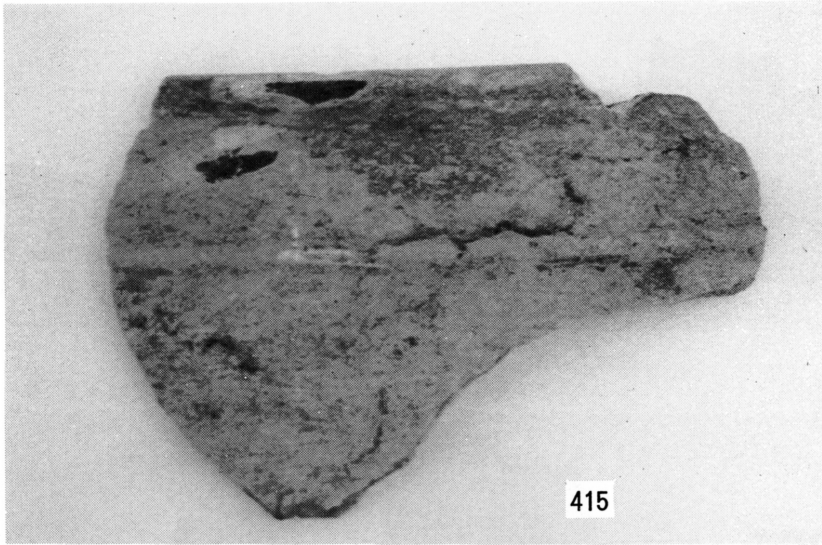
図版29 土師器 1



図版30 土師器 2

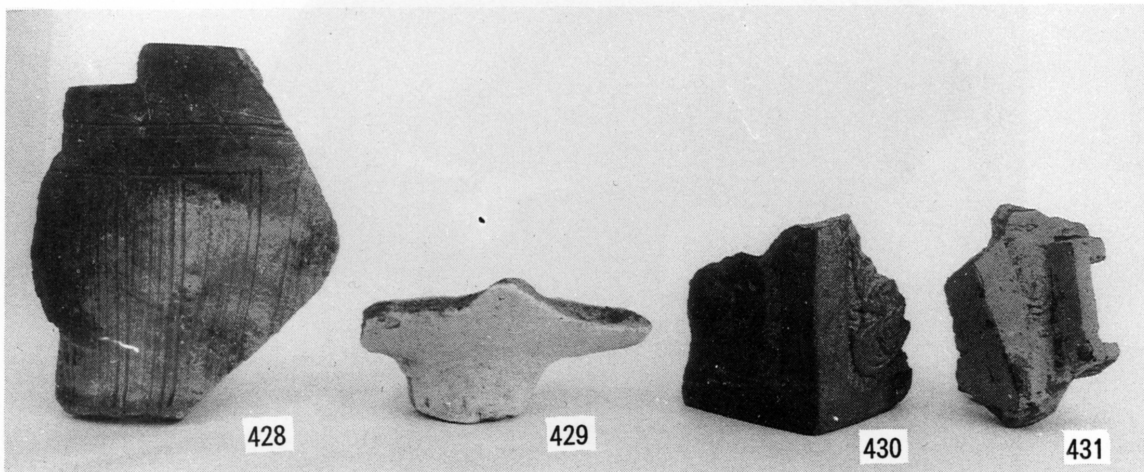
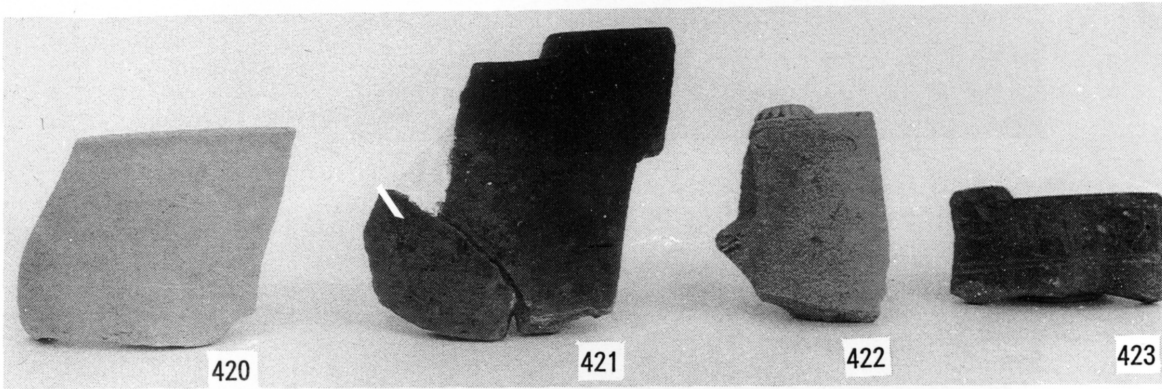
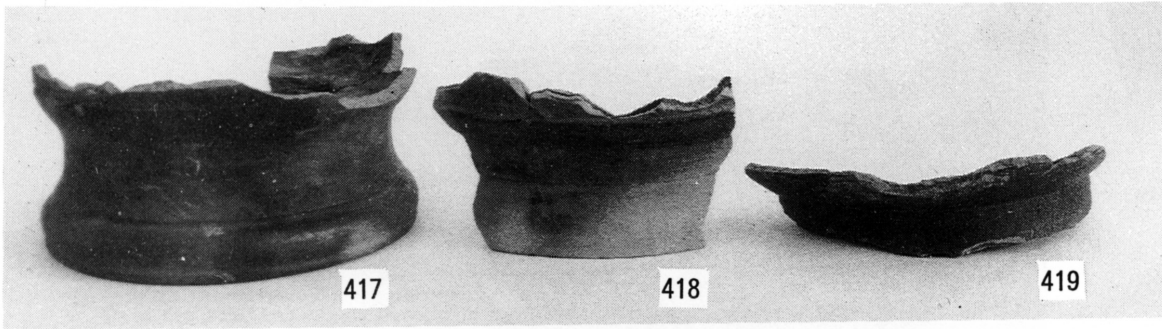


图版31 瓦器 1

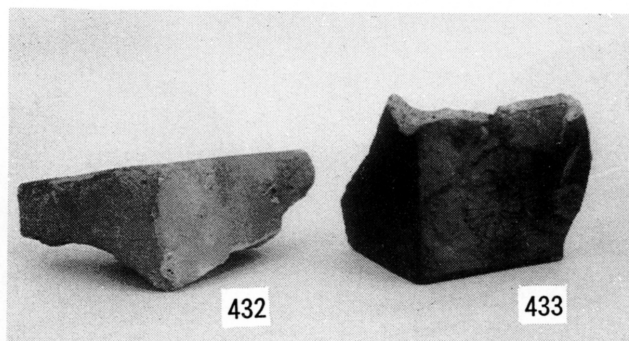




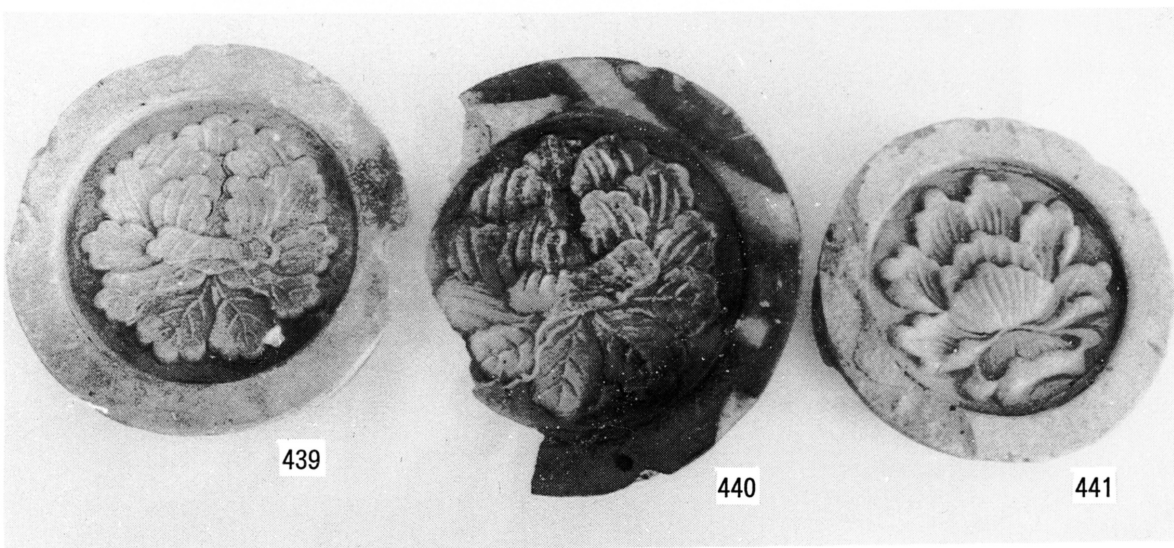
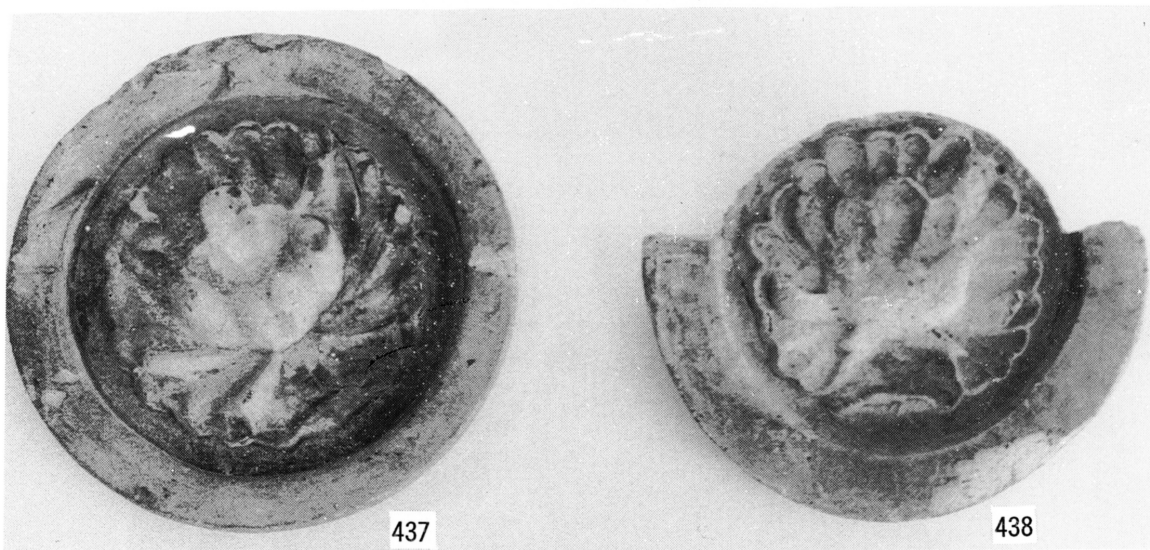
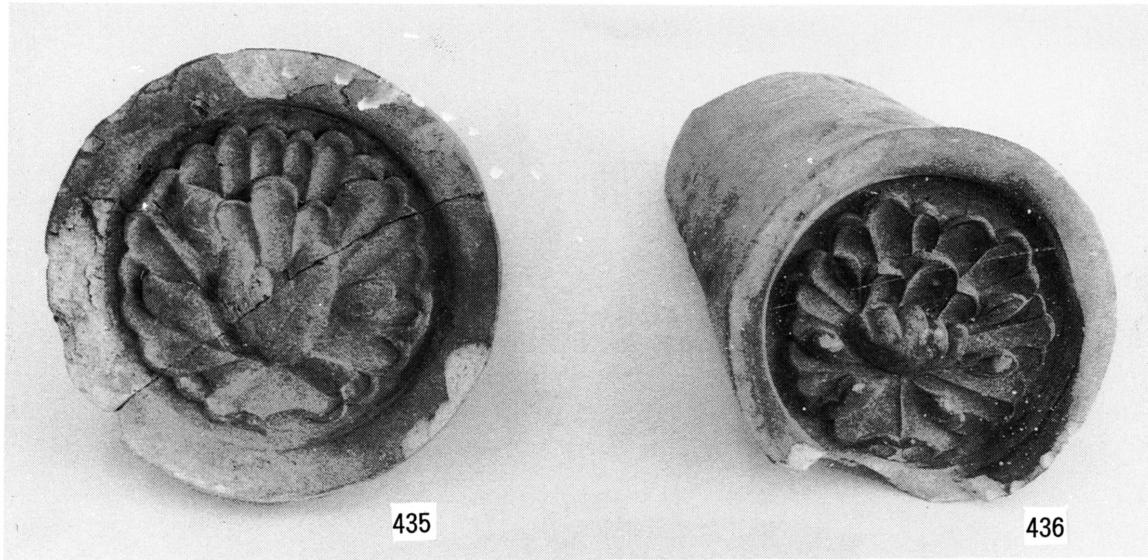
图版 32 瓦器 2



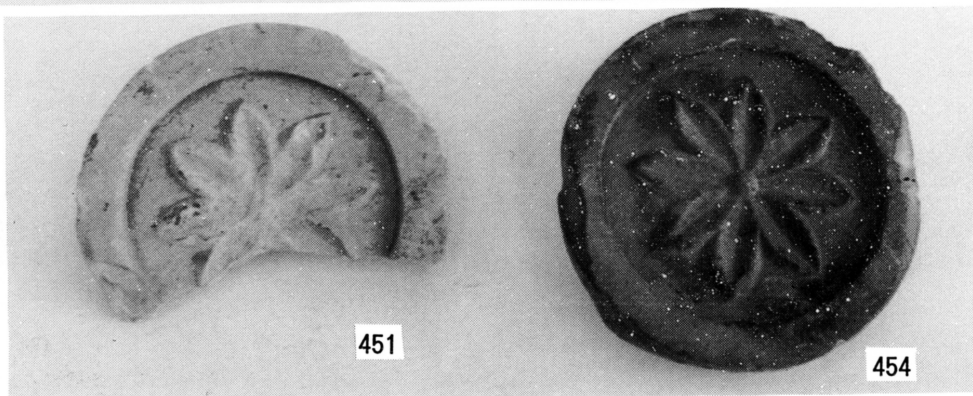
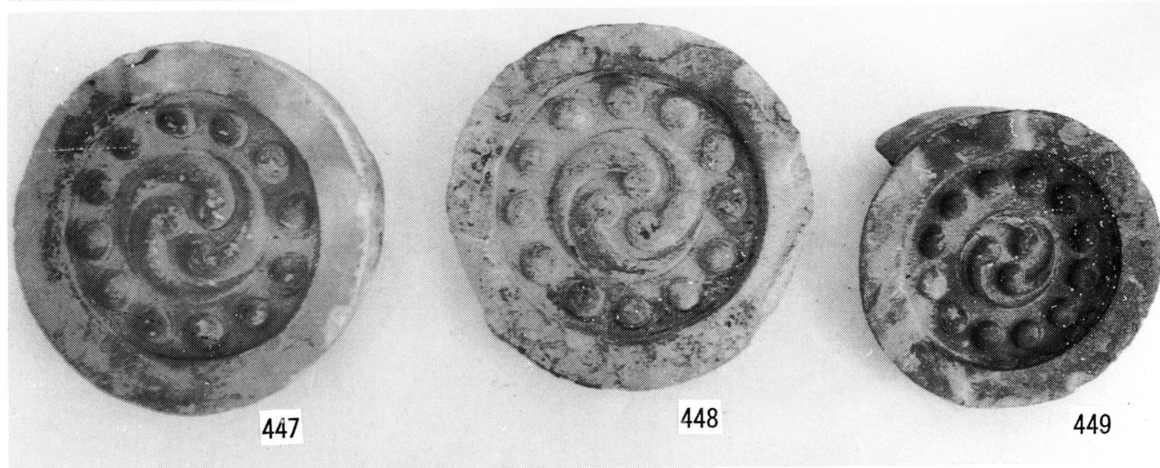
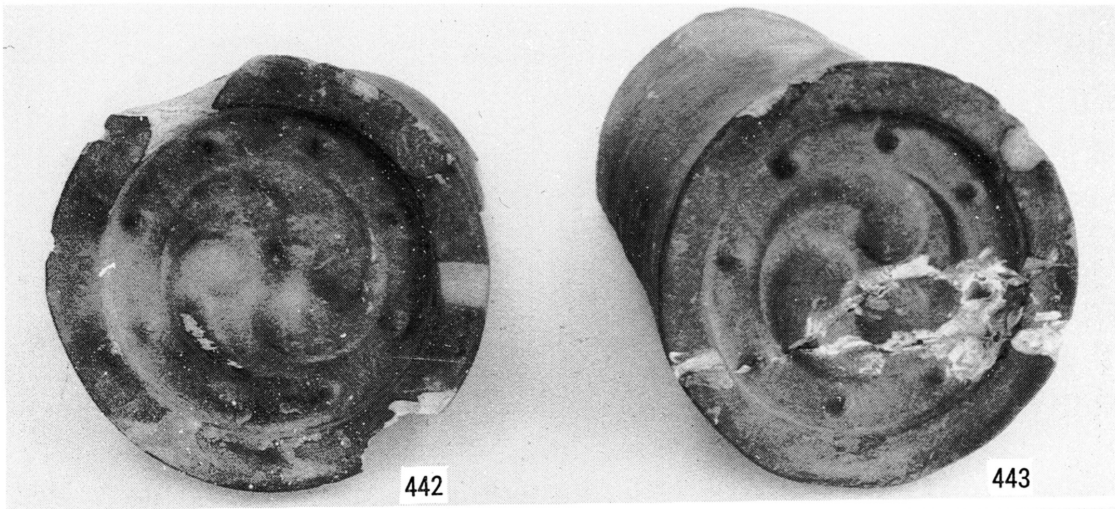
图版 33 瓦器 3



图版 34 軒丸瓦 1



图版 35 軒丸瓦 2



図版36 鳥衾瓦・差込み瓦・丸瓦

