





1084



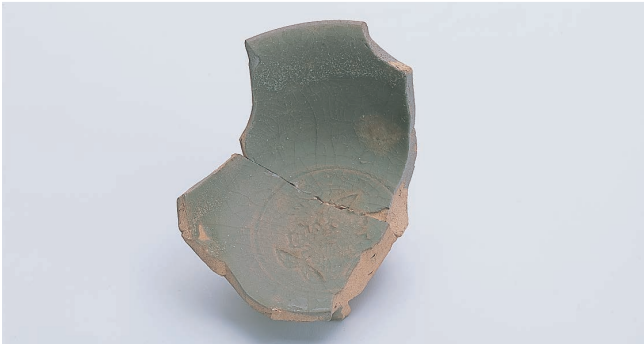
1092



1102



1093



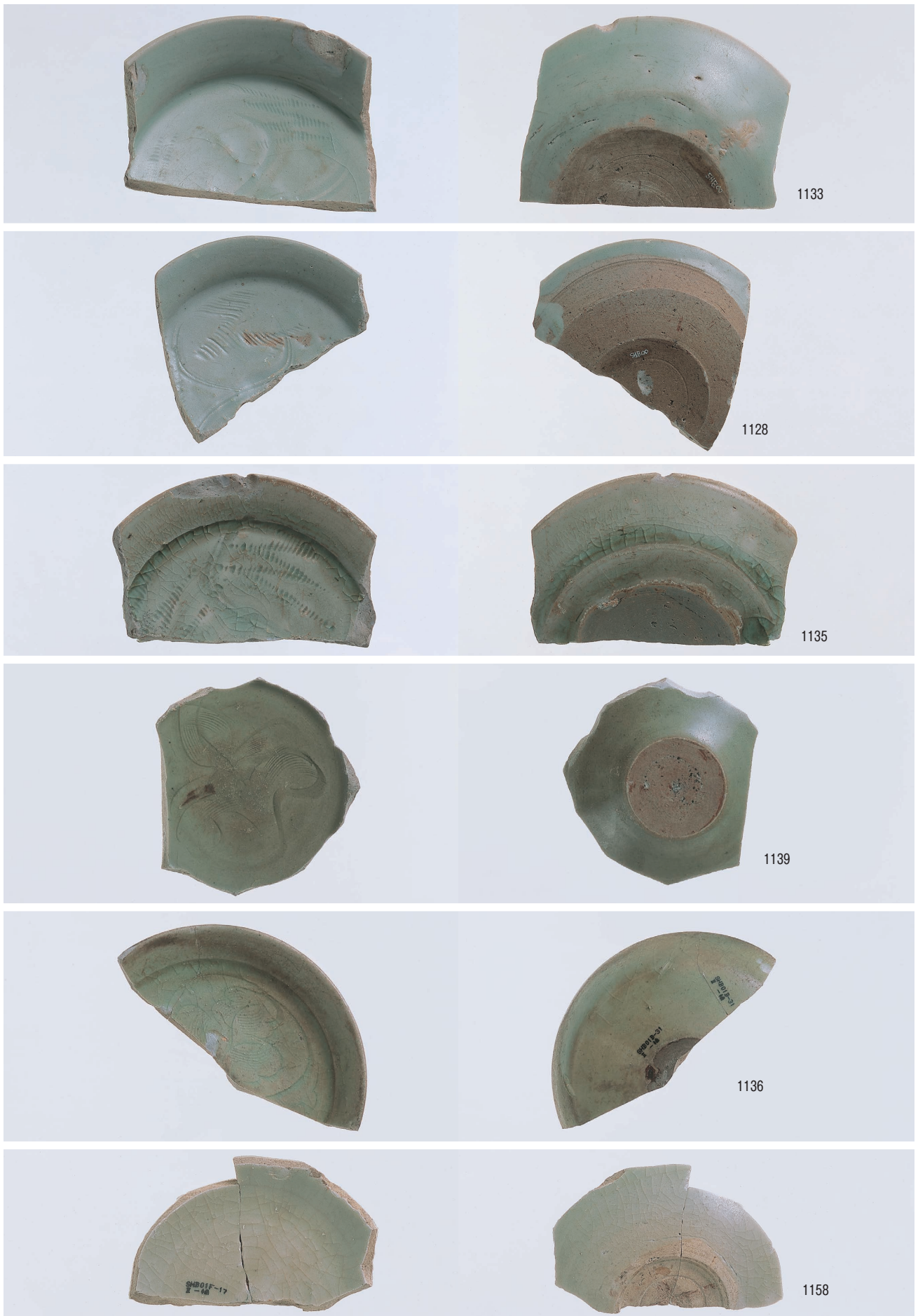
1105

1110

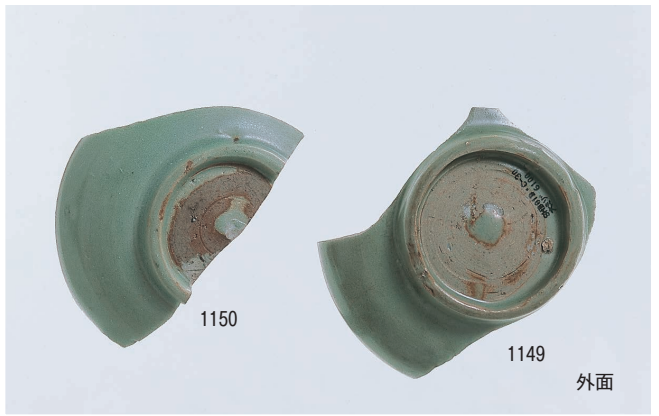
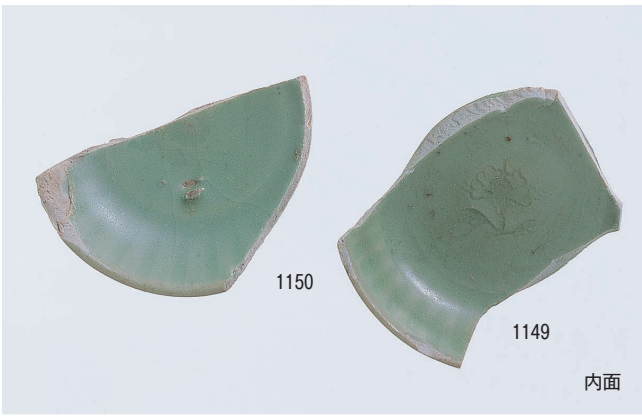


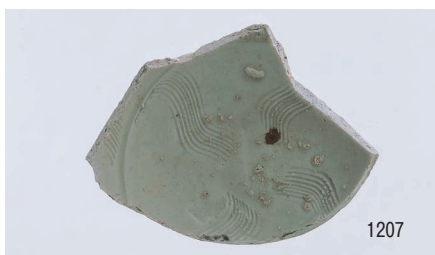
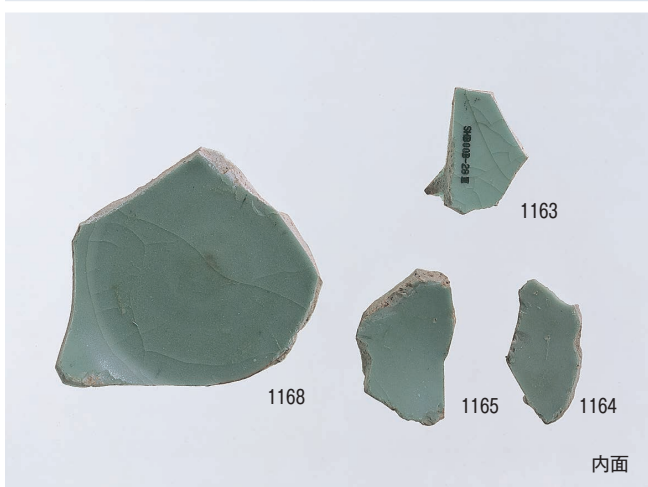
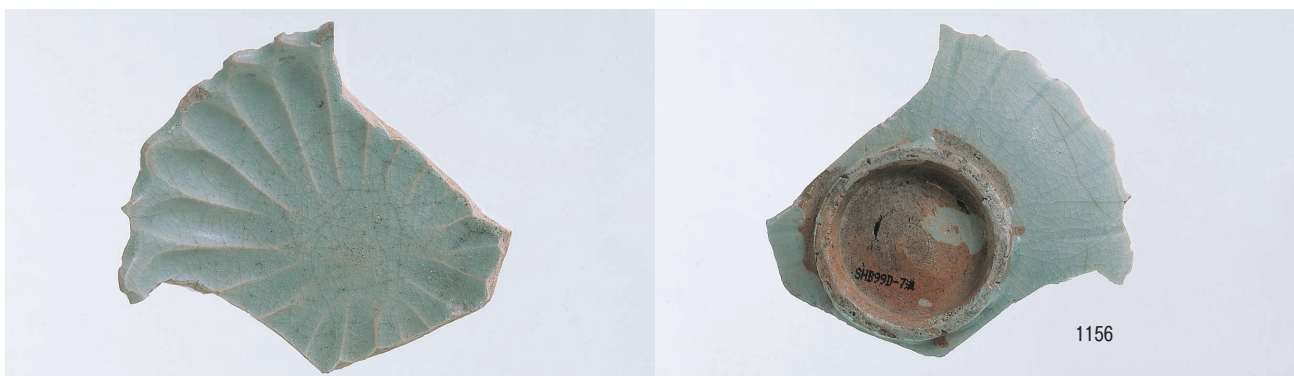
1106

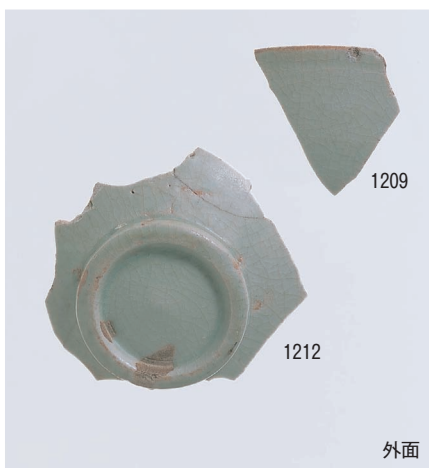
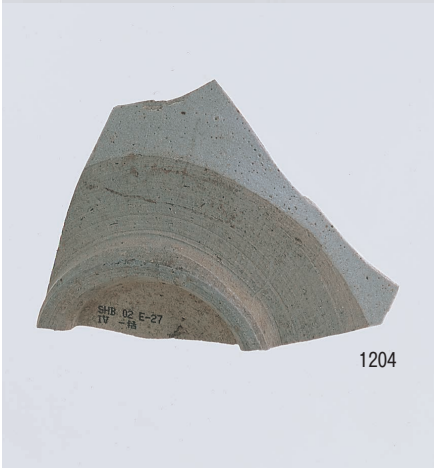
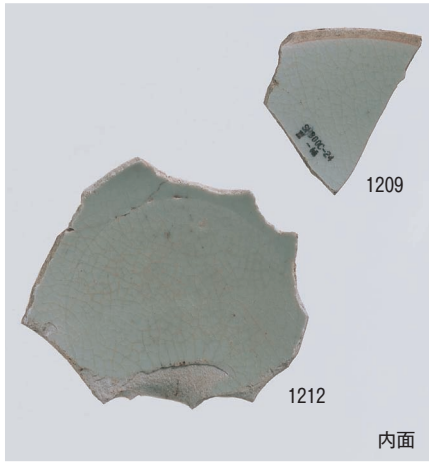
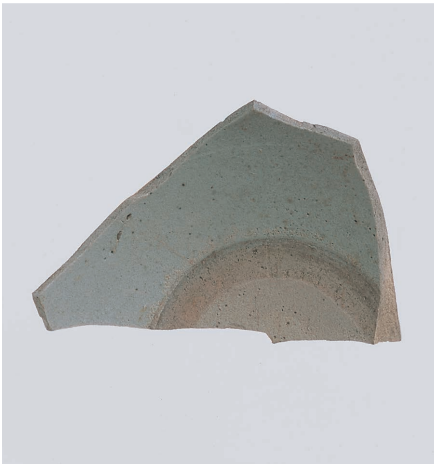
1118



青磁 4







1199

1200

1201

1209

1212

内面

1204

1209

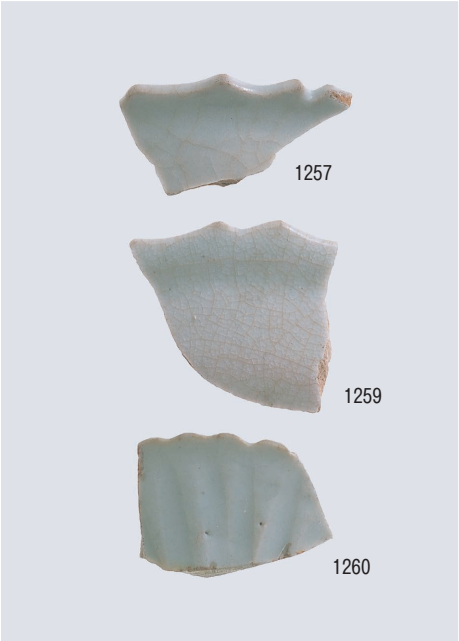
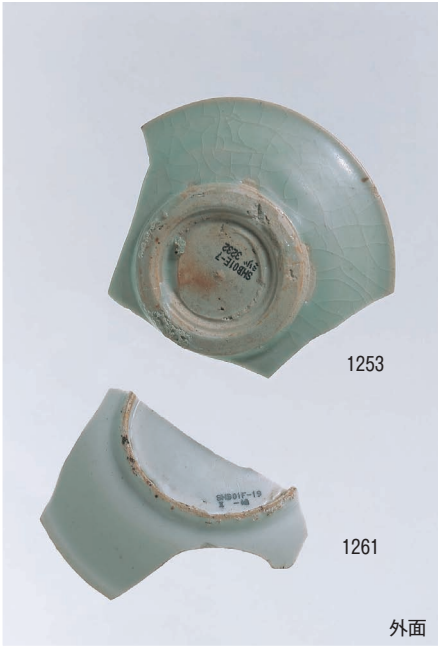
1212

外面

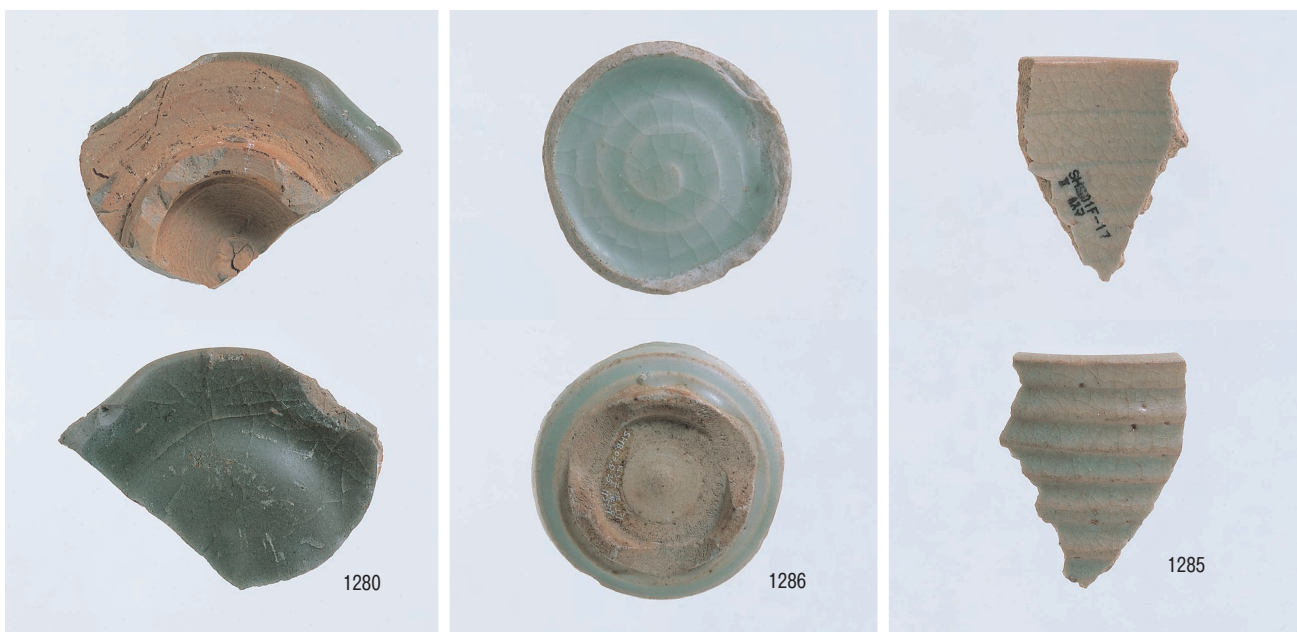
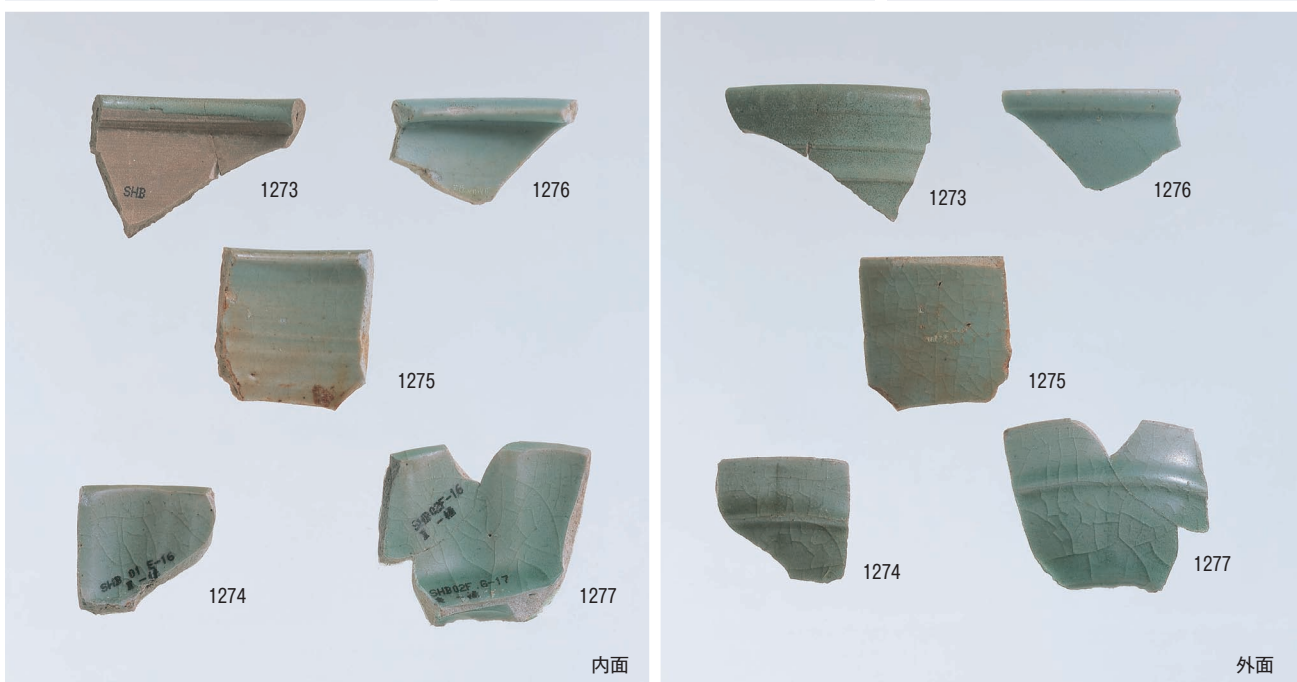
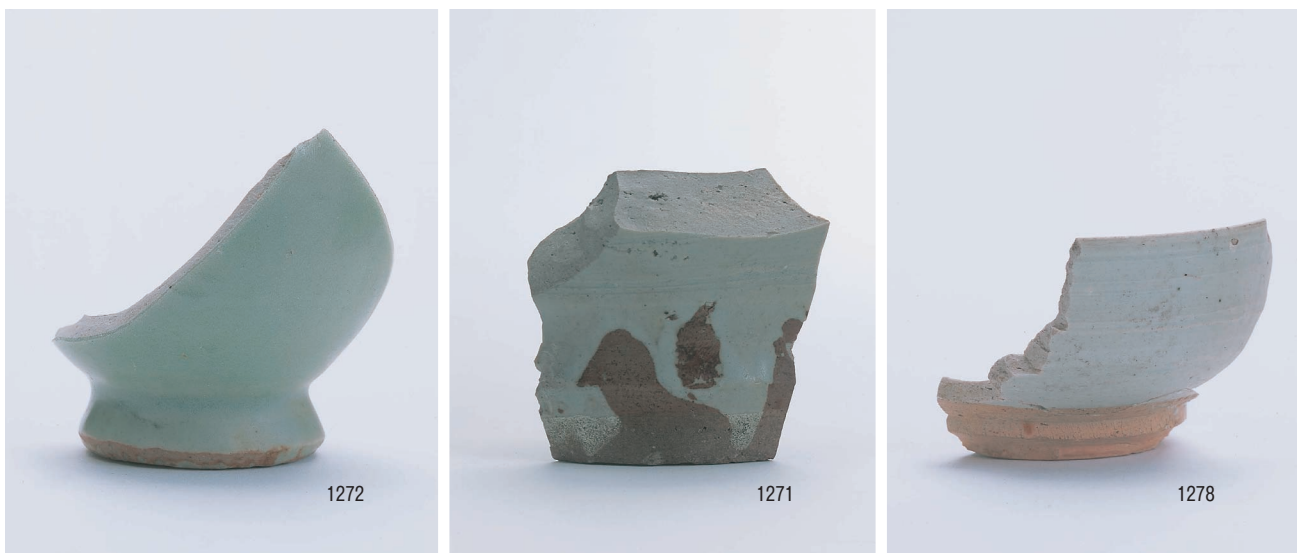
1218







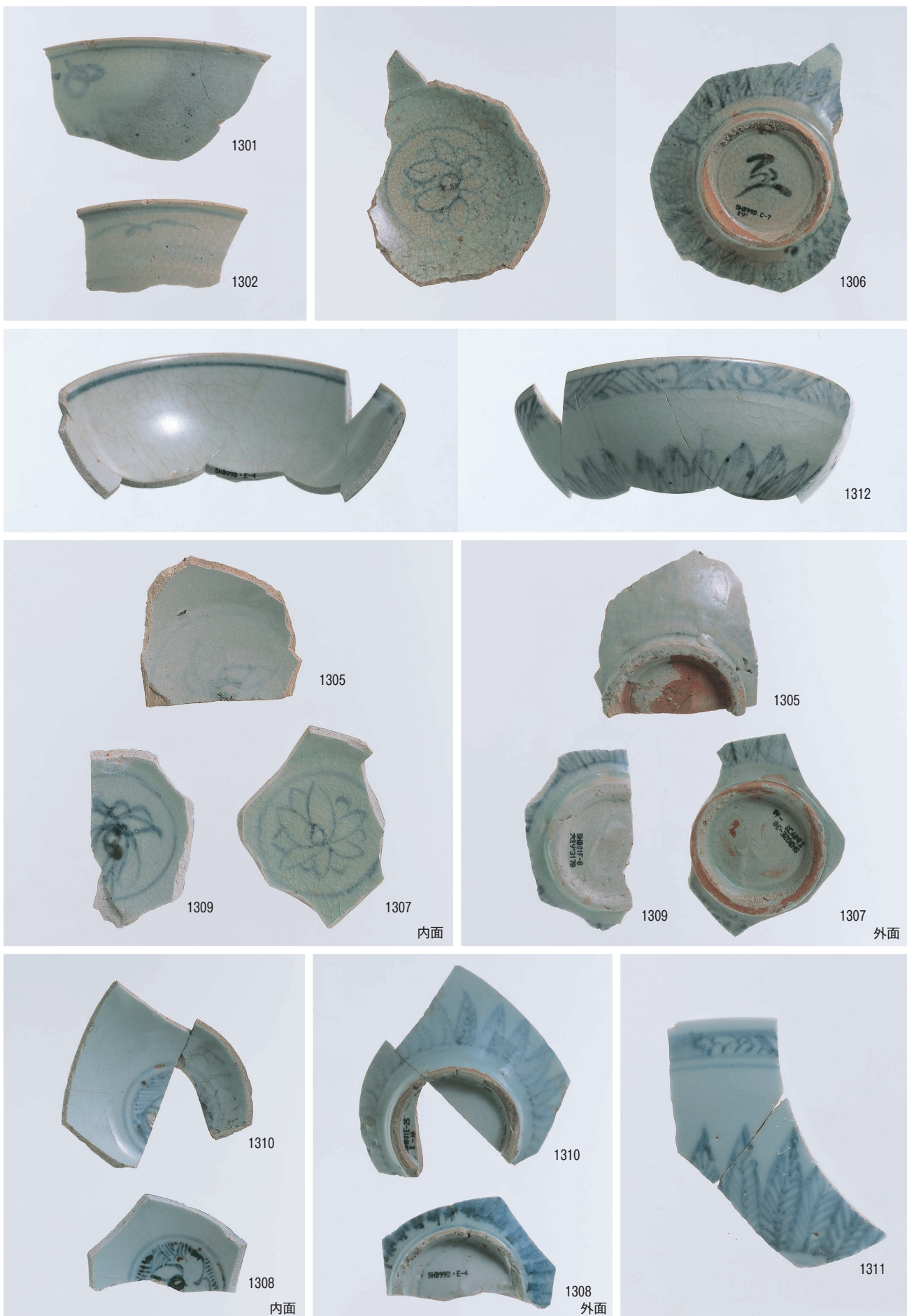
青磁7·白磁4



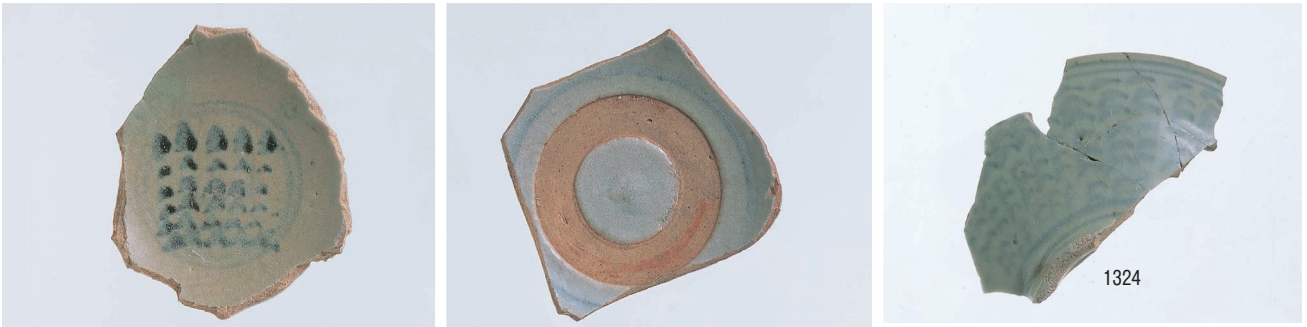
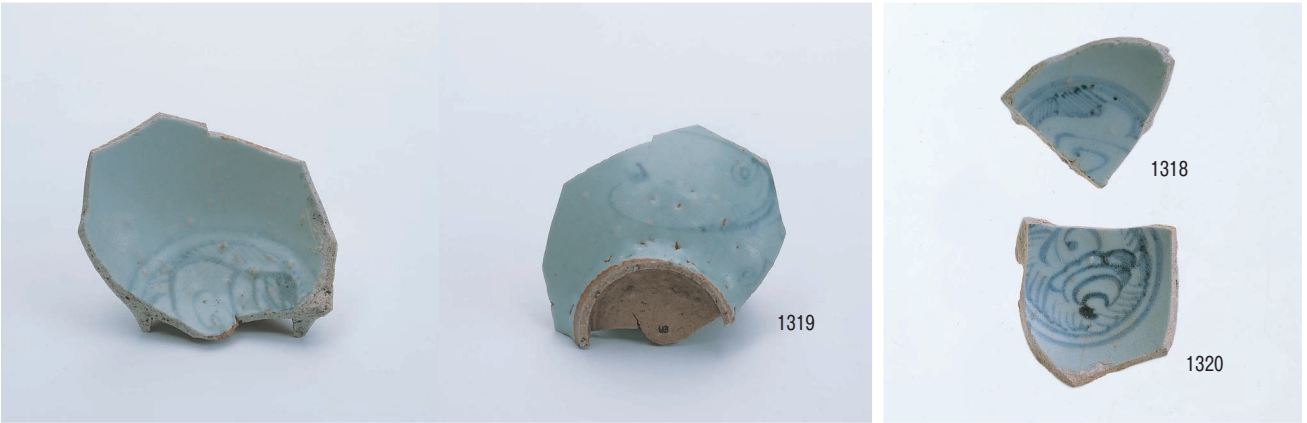
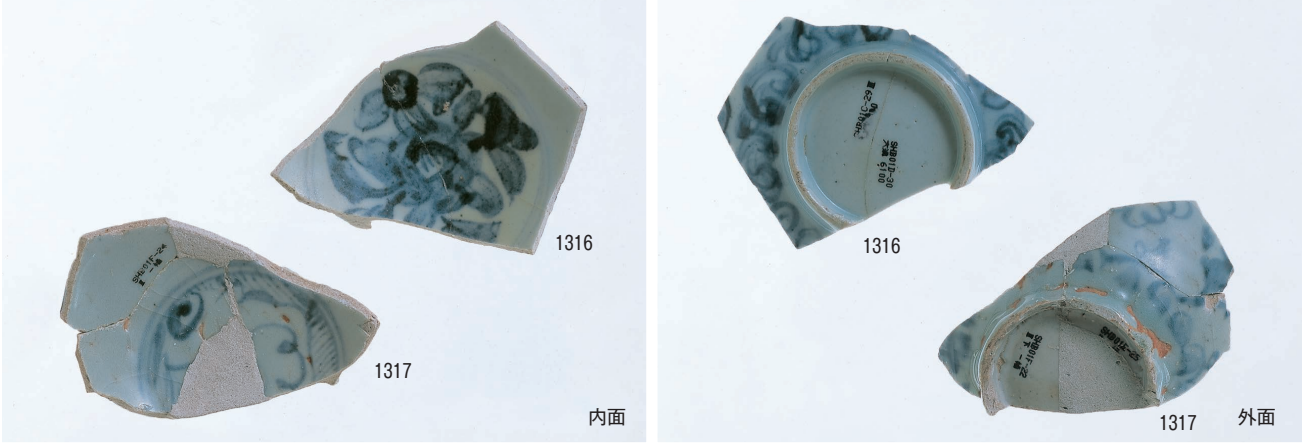
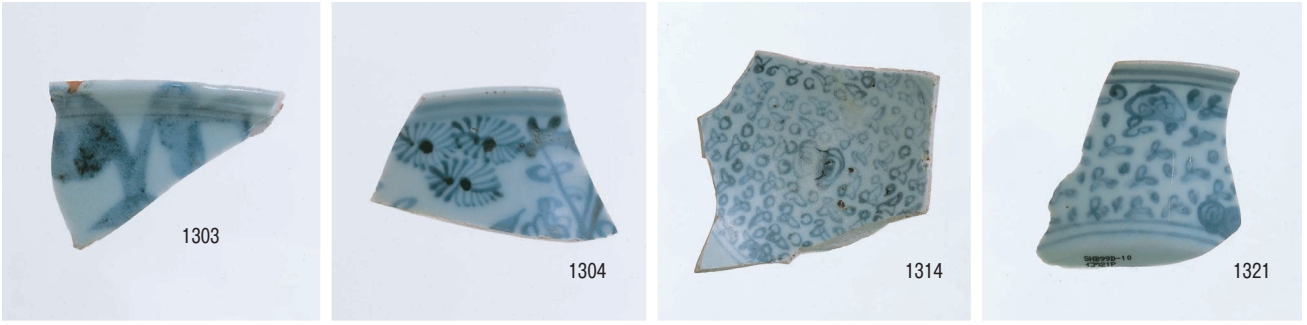


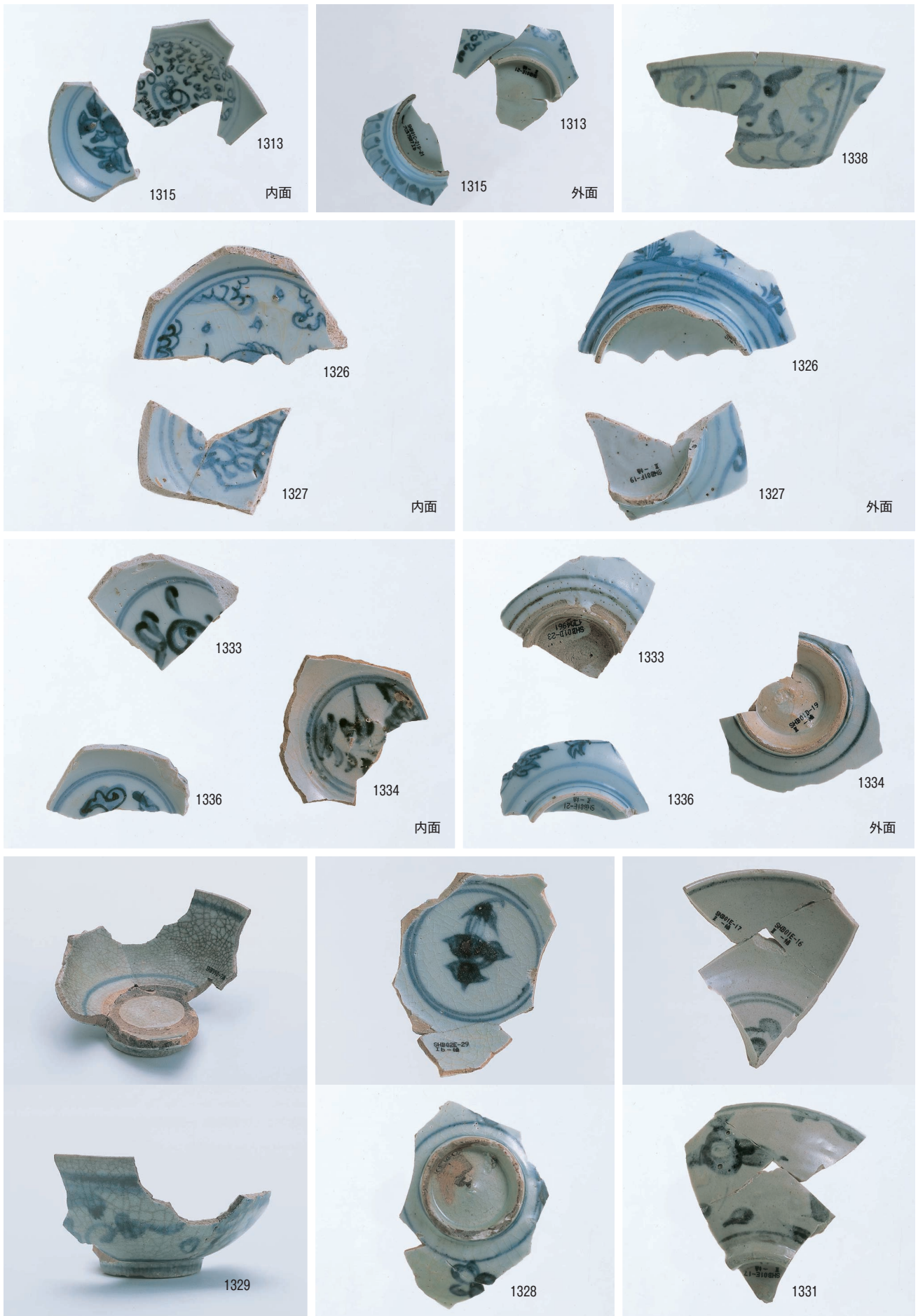
青磁10・白磁7・青白磁

番号なしは挿図非掲載

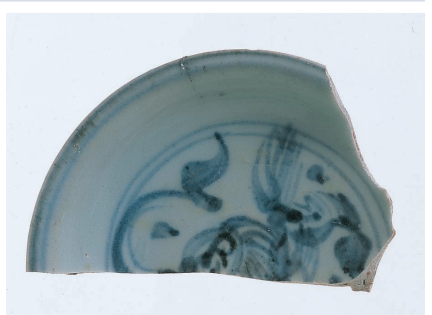
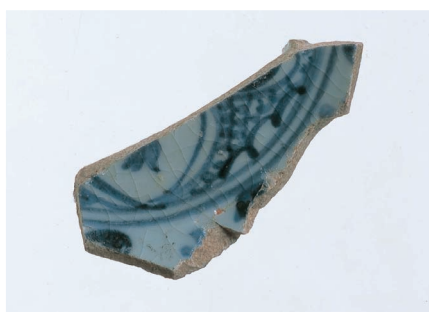
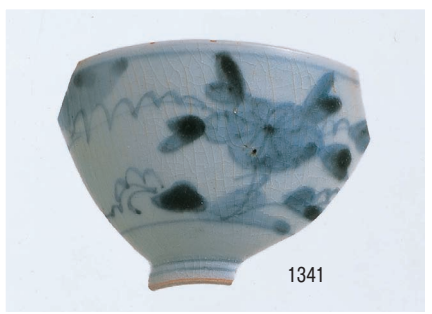
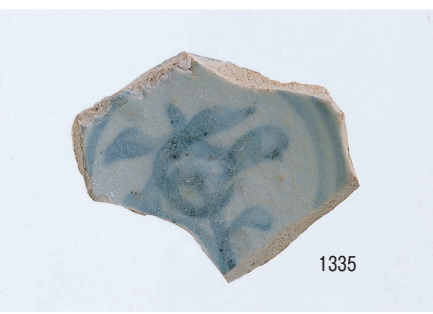
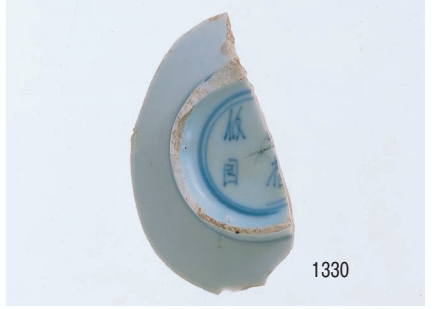
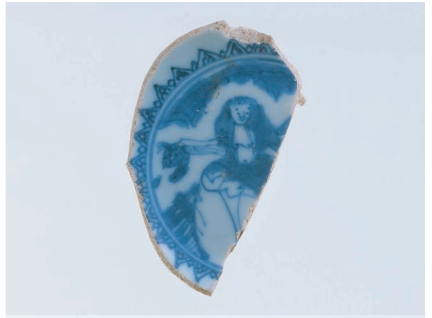
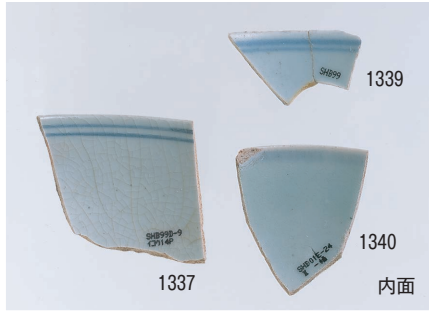


青花 1



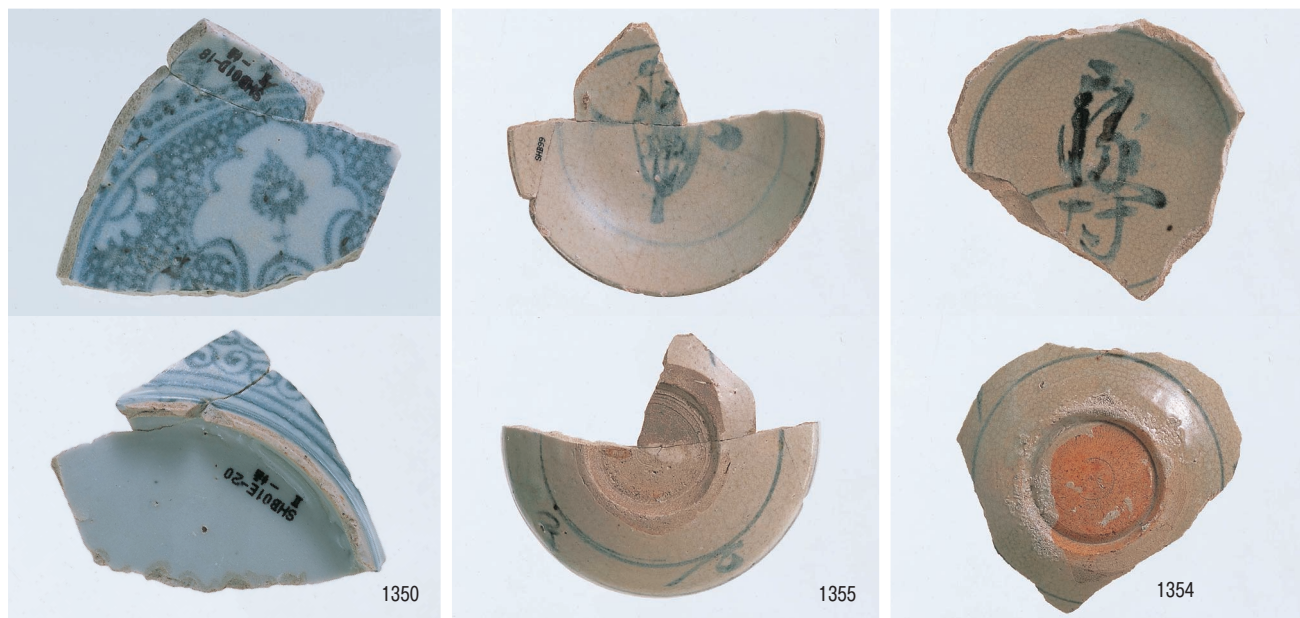
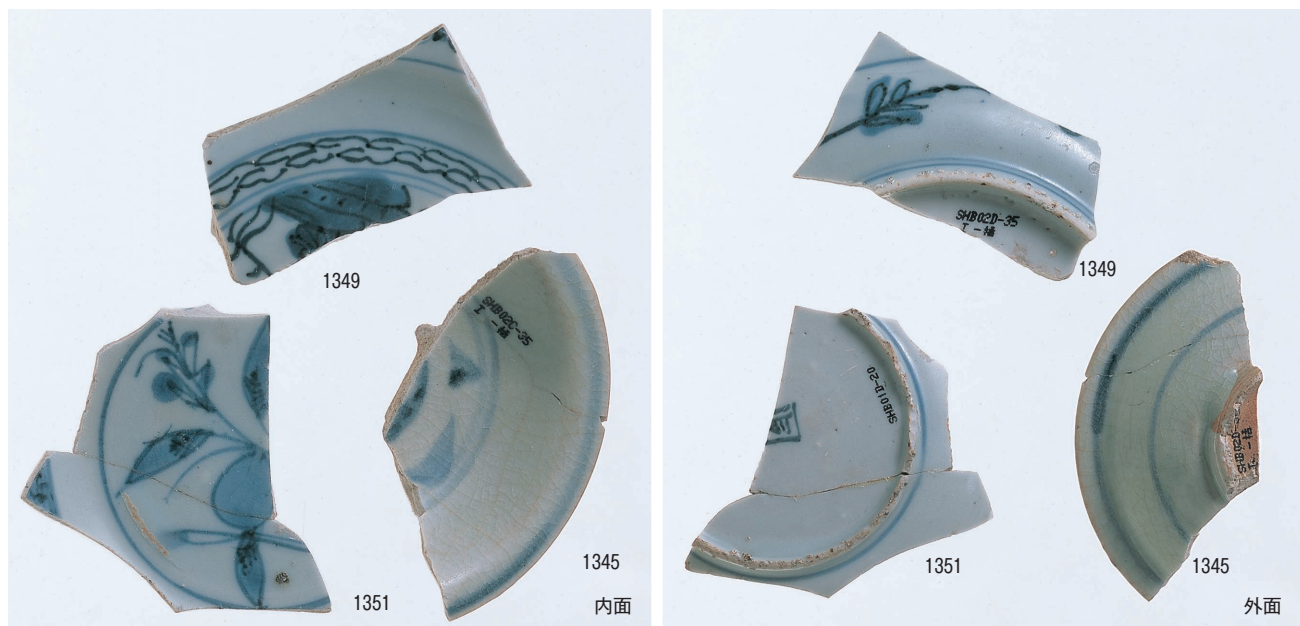


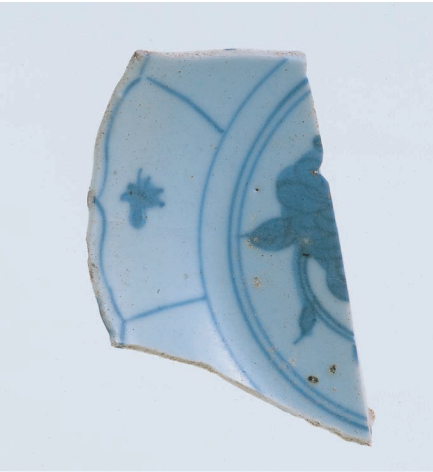
青花3



青花 4



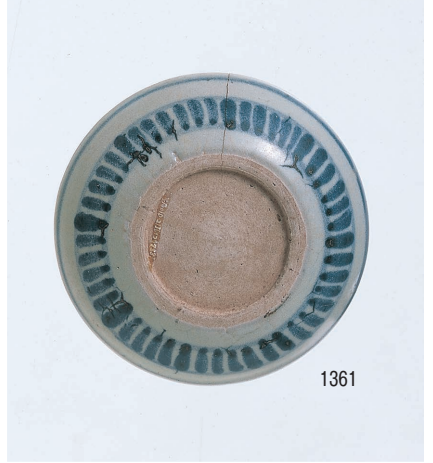




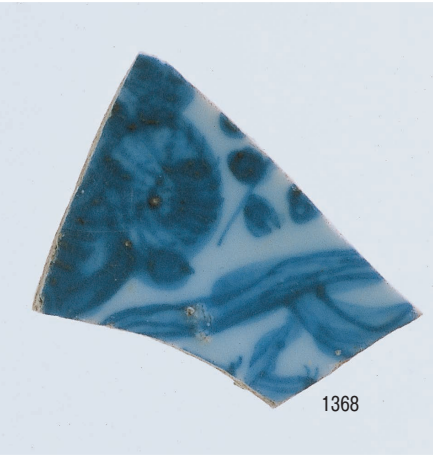
1365



1362



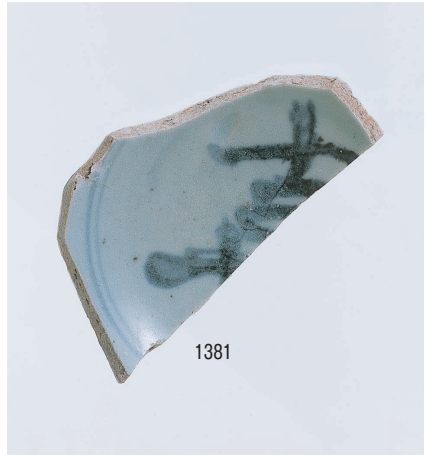
1361



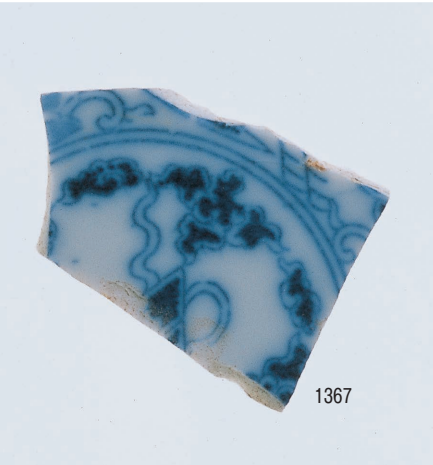
1368



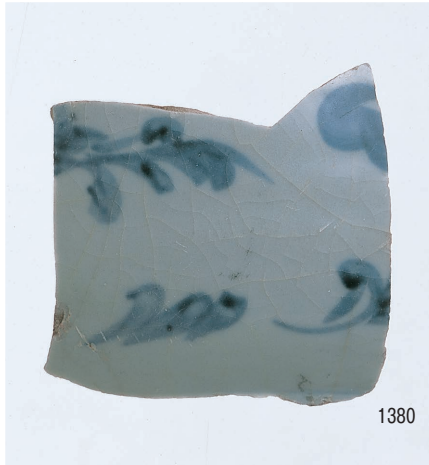
1366



1381



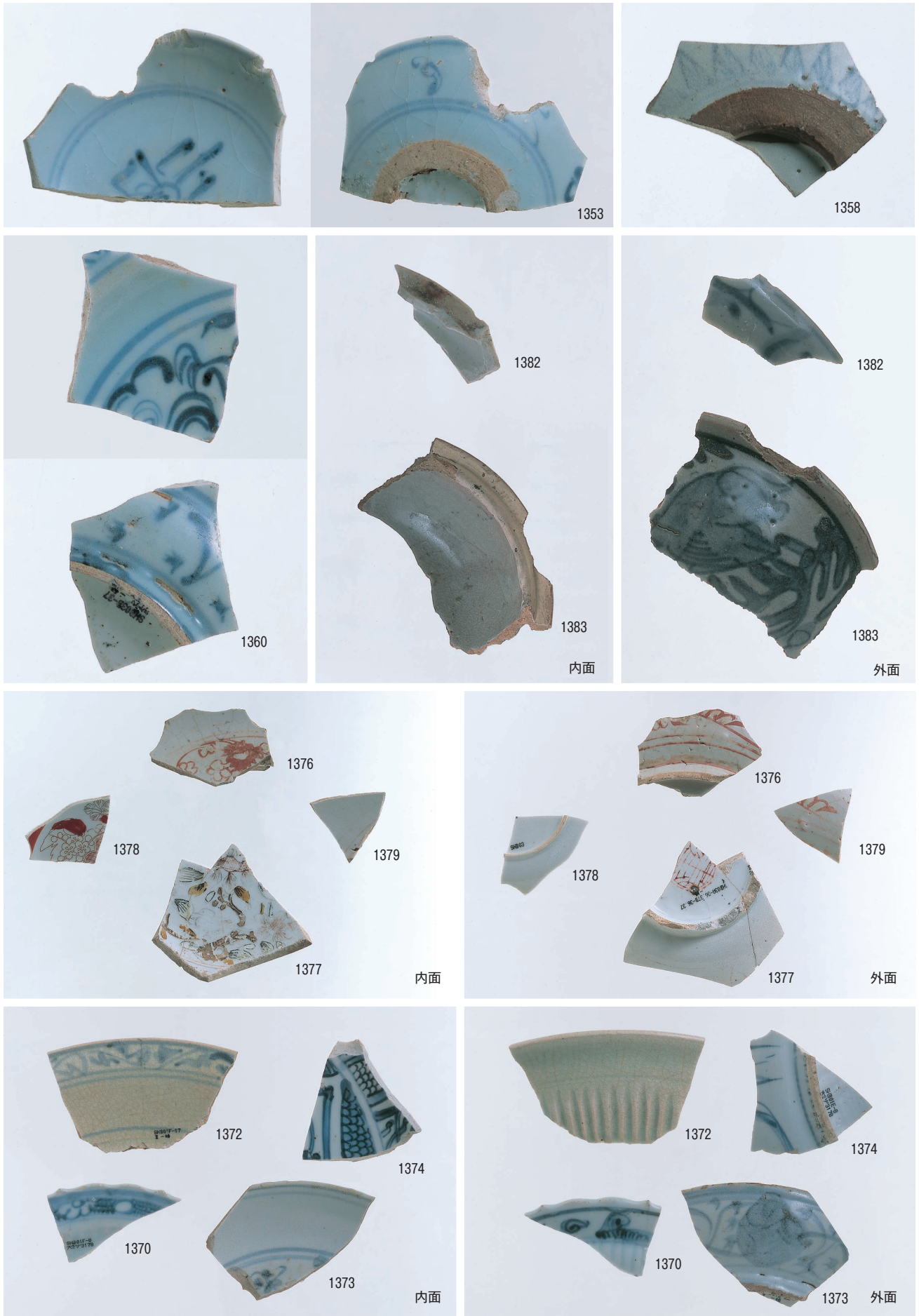
1367



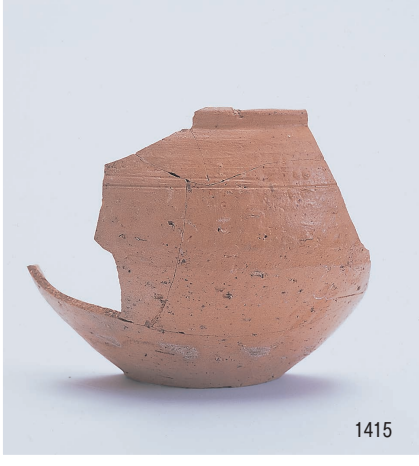
1380



1384



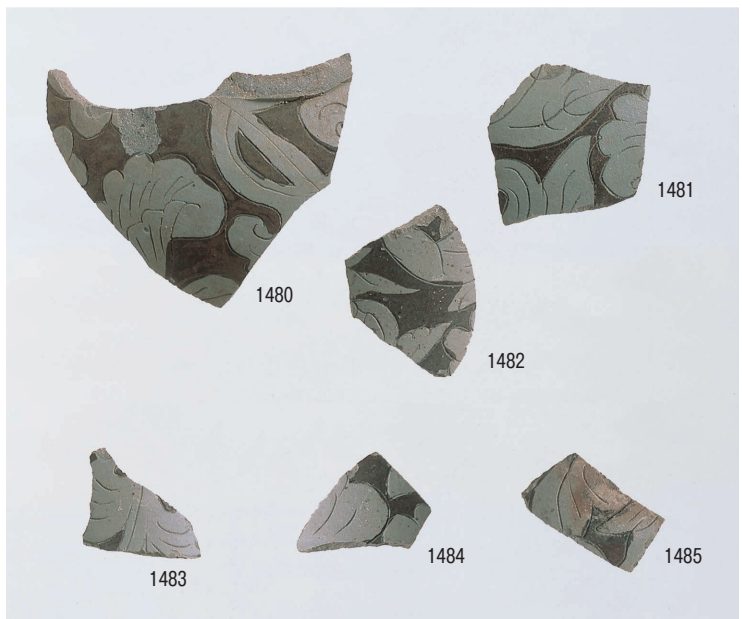
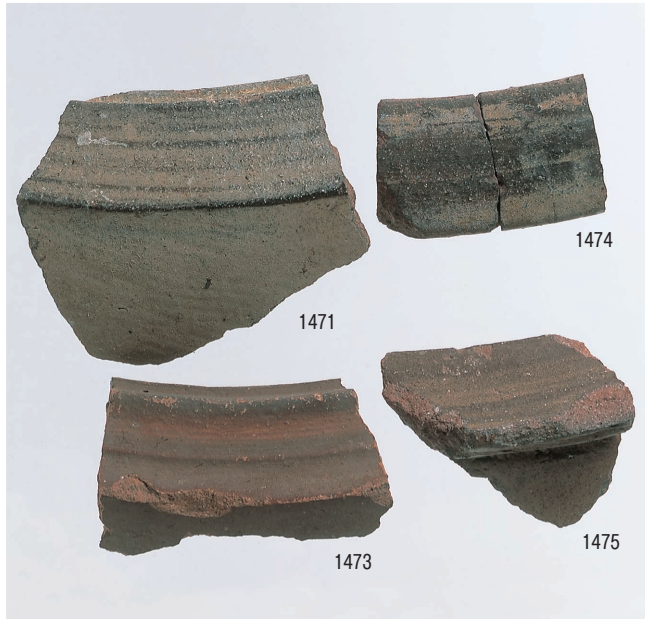
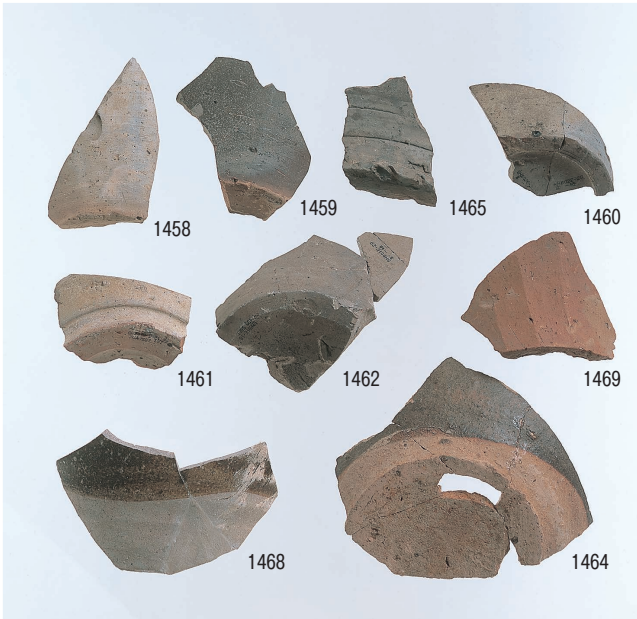
青花7・赤絵



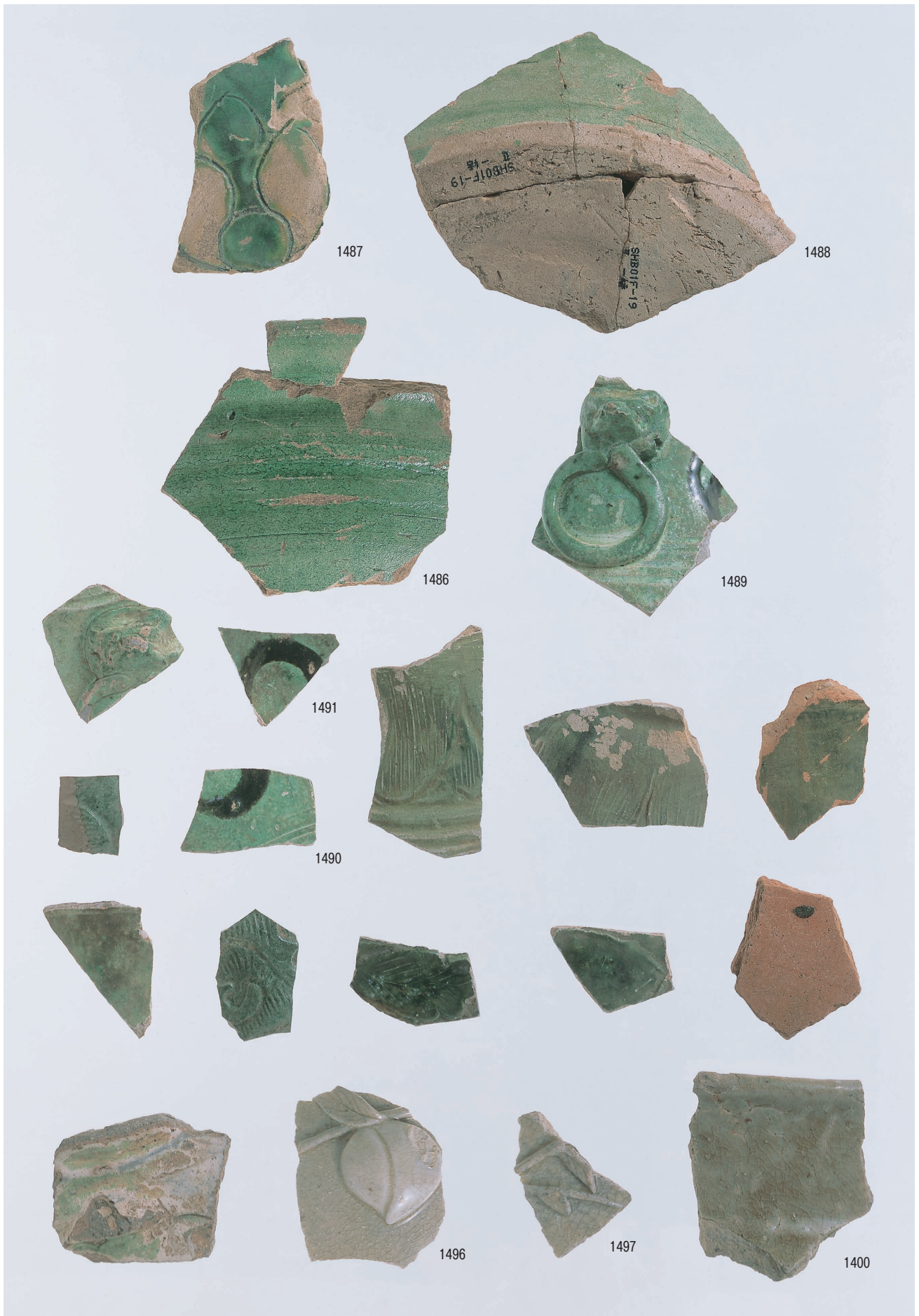


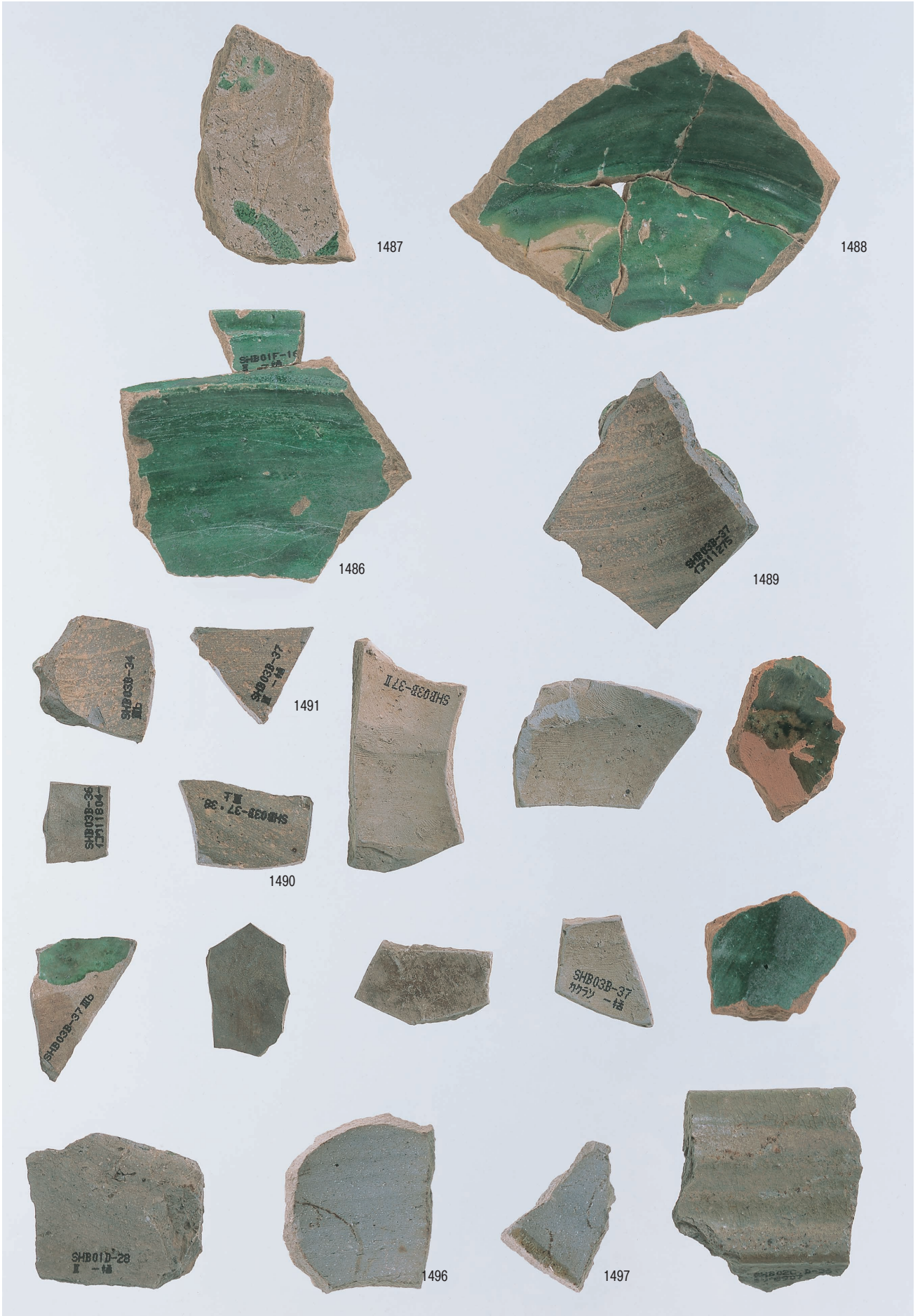














中国陶器 8 · 朝鮮陶器 2 · ベトナム陶器

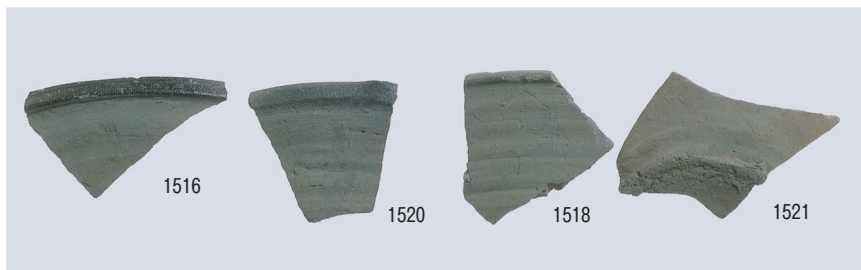


1506

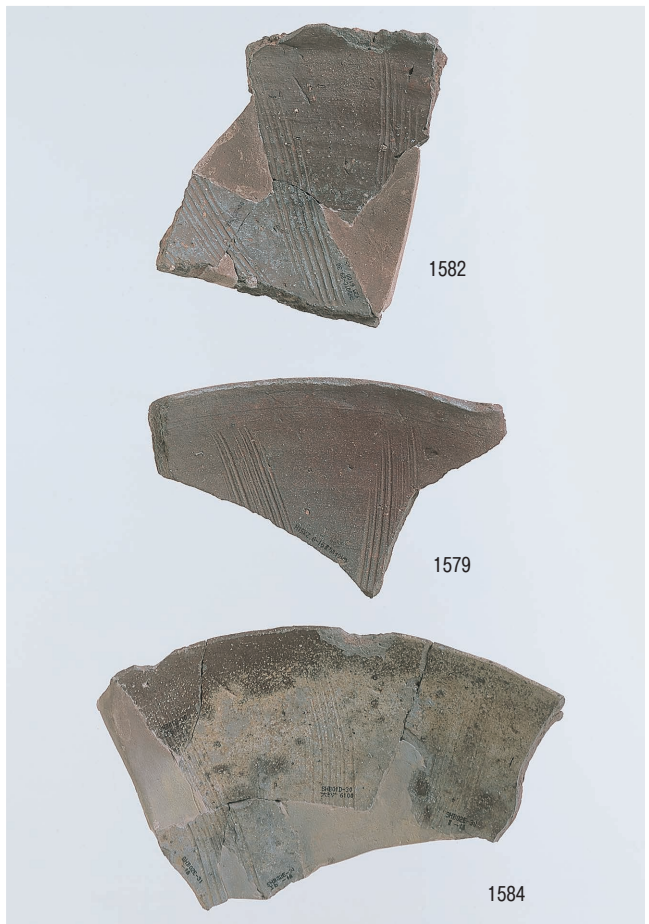


1507











1572



1568

1566

1567



1570



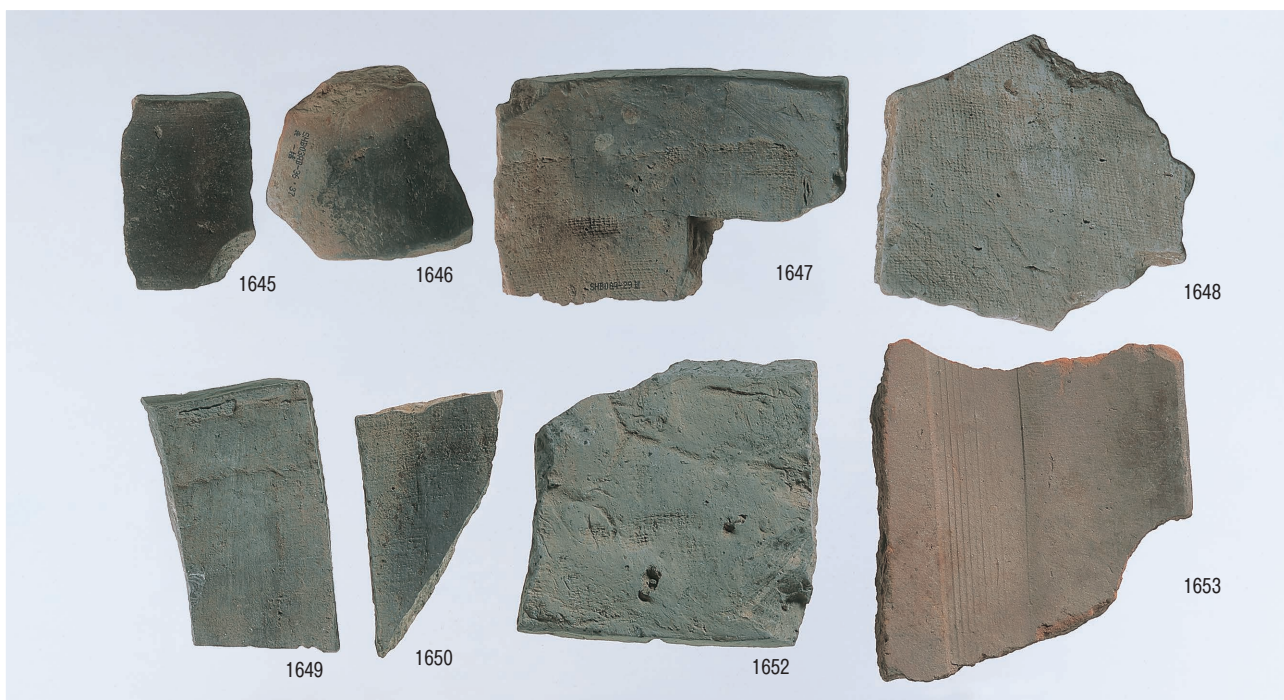
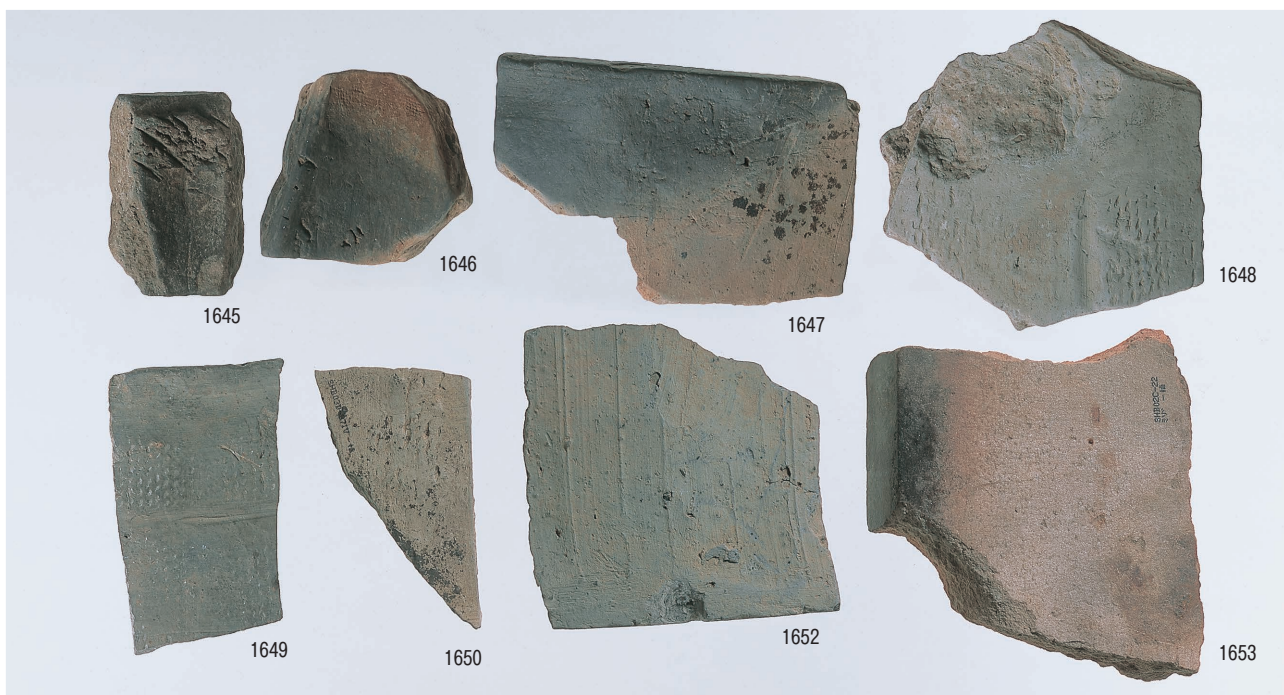
1541











瓦·滑石製石鍋





砥石



五輪塔



