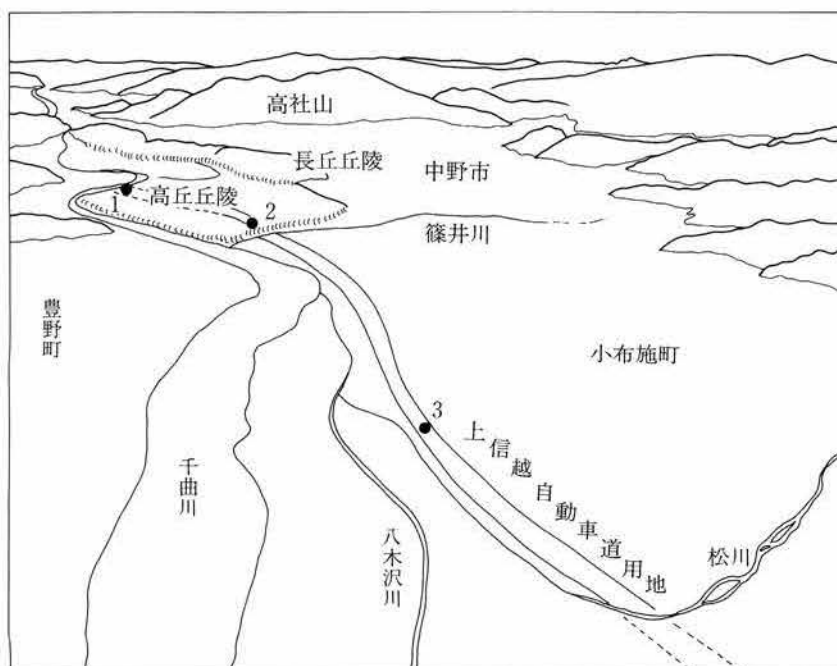
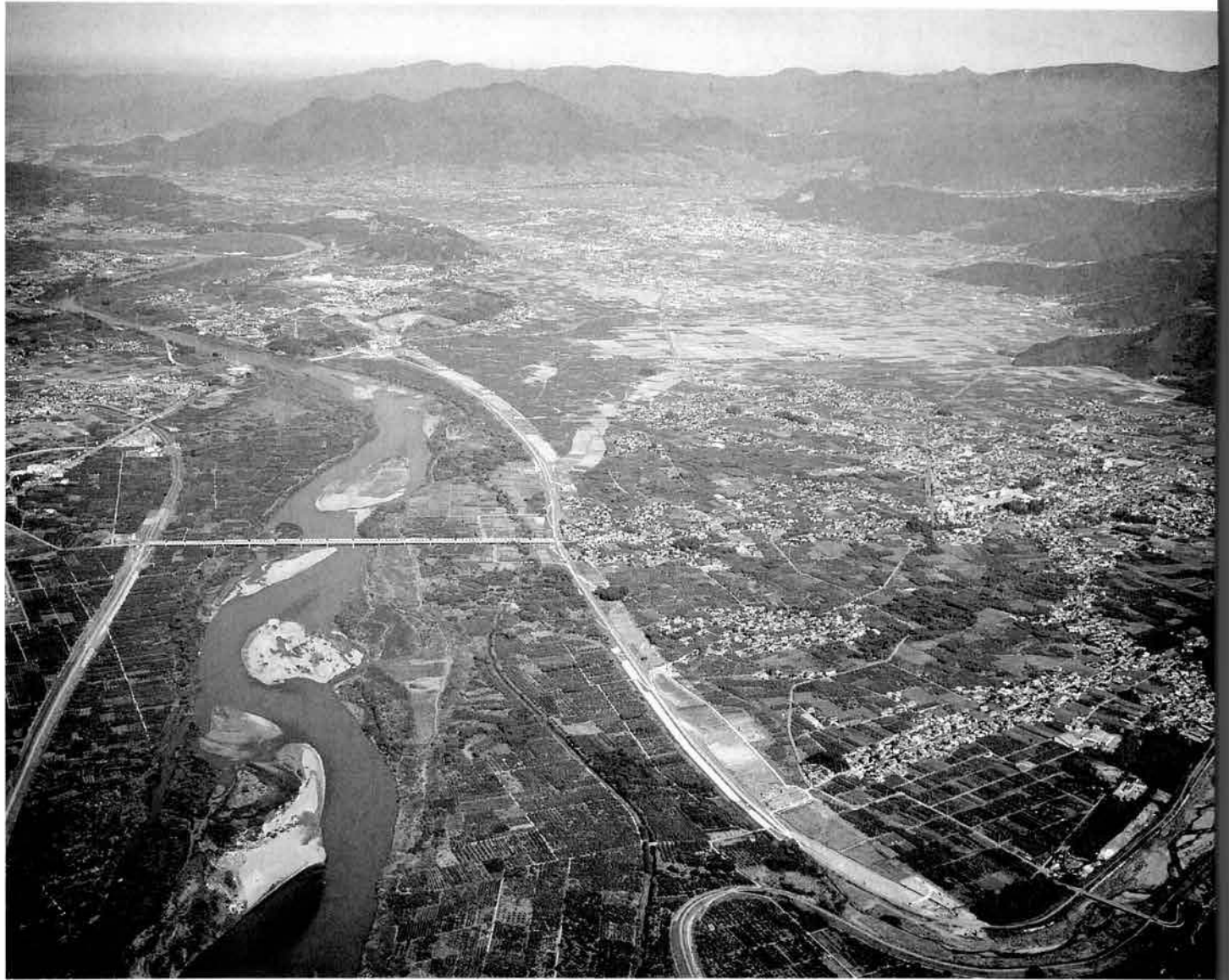


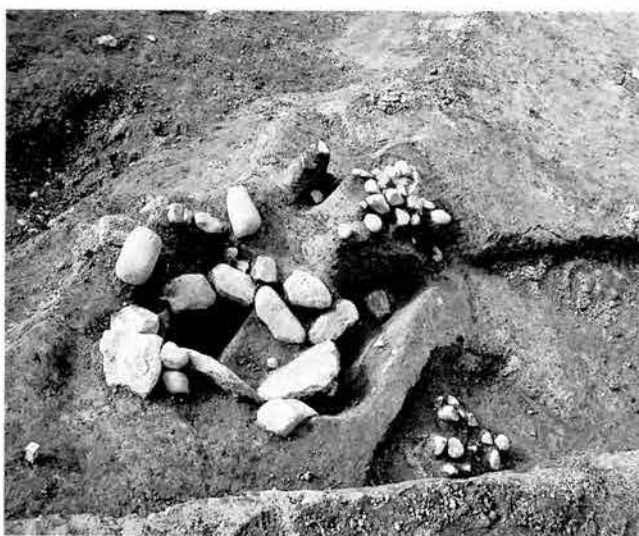
写真図版



1. 牛出古窯遺跡
2. 池田端窯跡
清水山窯跡
沢田鍋土遺跡
がまん淵遺跡
3. 玄照寺跡
飯田古屋敷遺跡



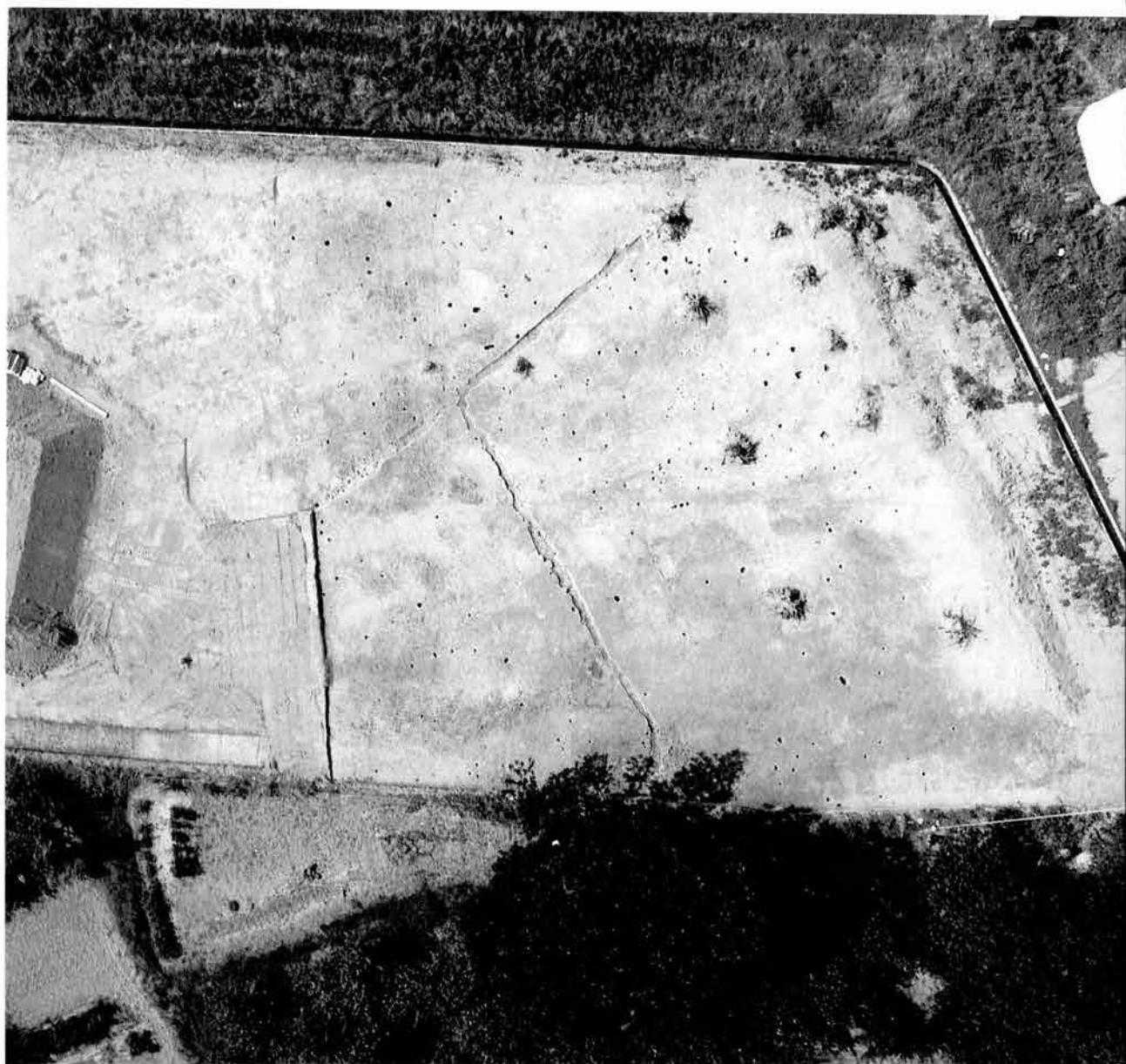
S D02・03



左：S D02
右：S D02縁の



左：S D02内
五輪塔
左：S D02底面
の植物遺体



空撮全景
(調査区北半)



左：②区水田跡
(3層面)



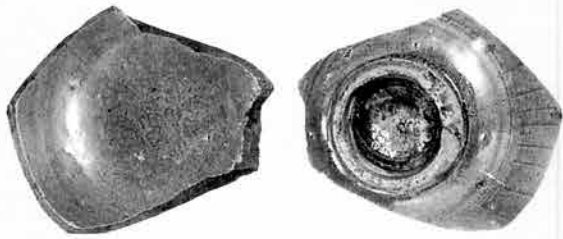
右：同上
(5層面)



左：②区水田跡
(7層面)



右：同上
(13b層面)



1



2



5



7



9



4



5



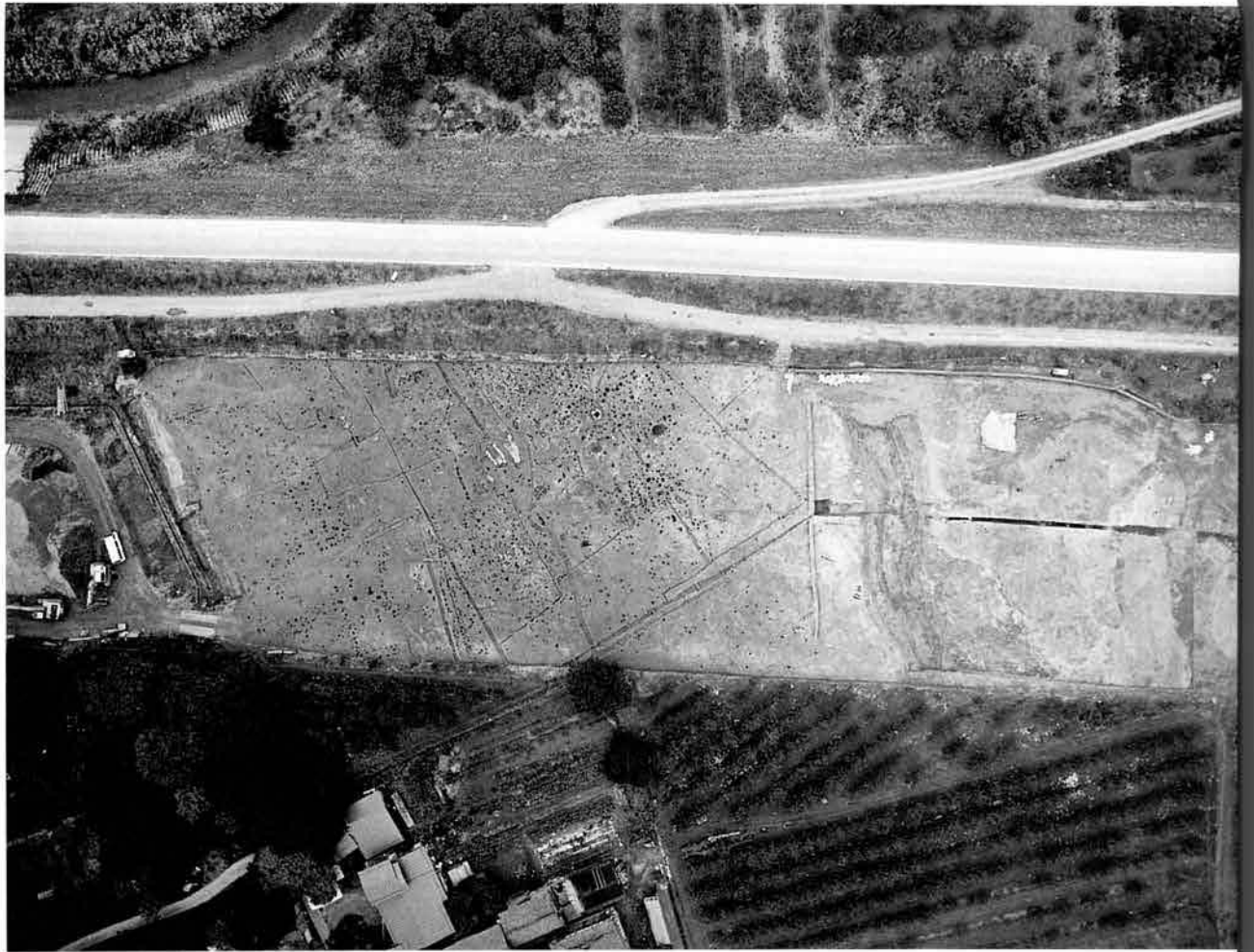
1



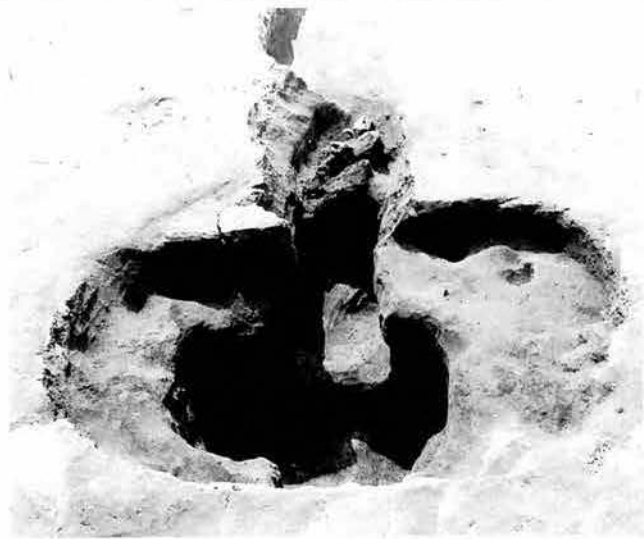
2



6



空撮全景



左：SK05

右：SX01



左：SB01

右：SB02

SK42



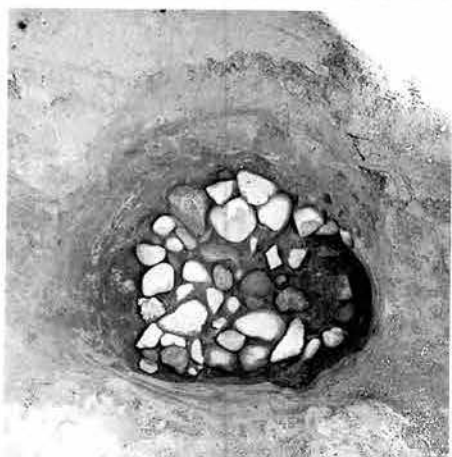
左：SK19
右：SK19断面



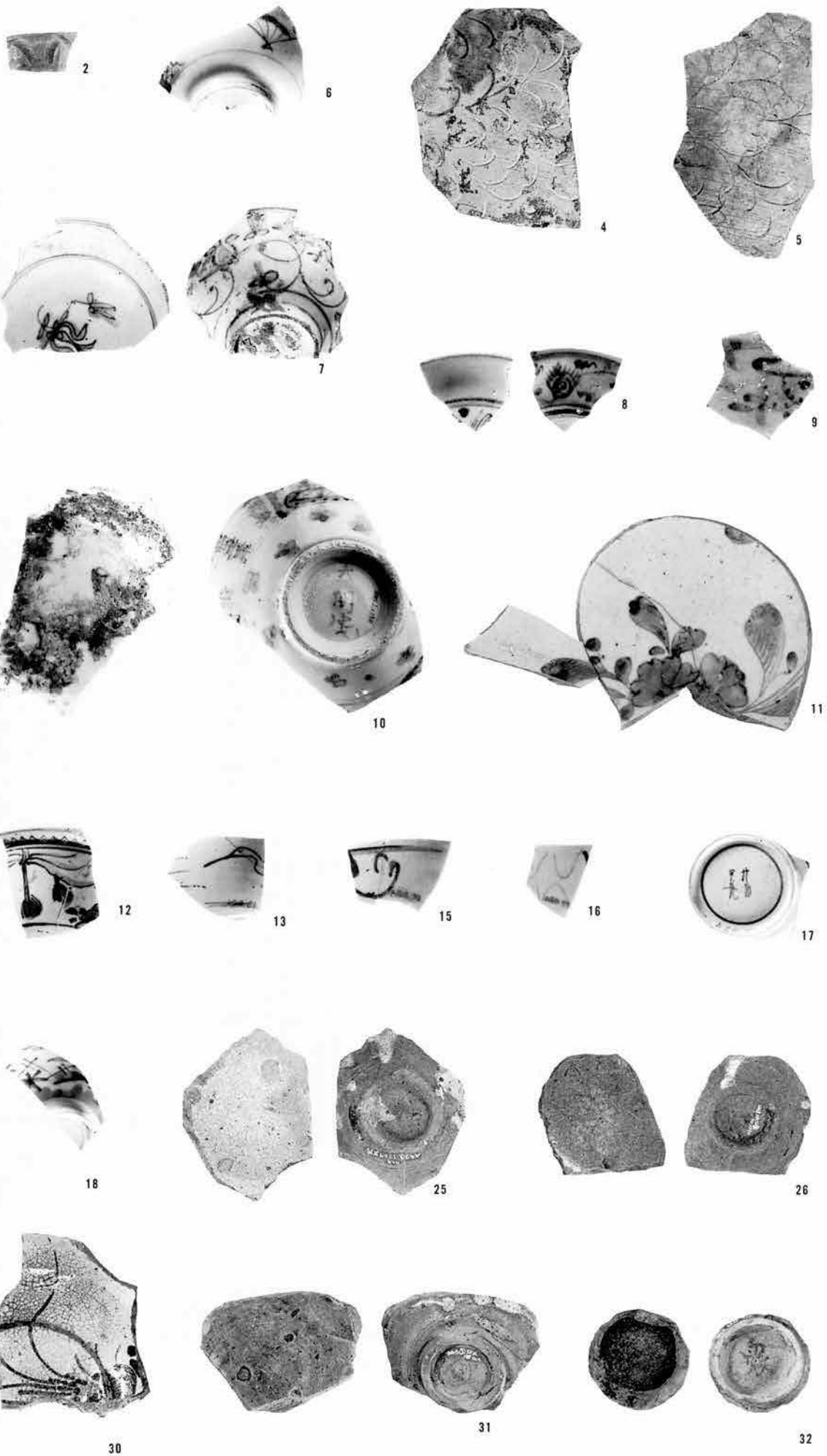
左：SK24
右：SK24断面



左：SH02
右：SH03



左：ST06のPit
中：ST06のPit
右：ST07のPit





35



36



37



41



42



43



48



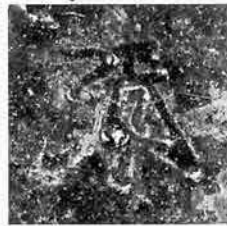
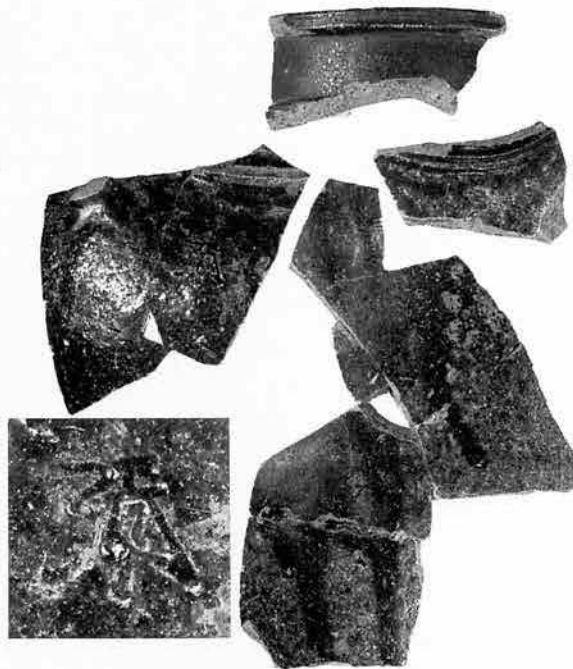
53



51



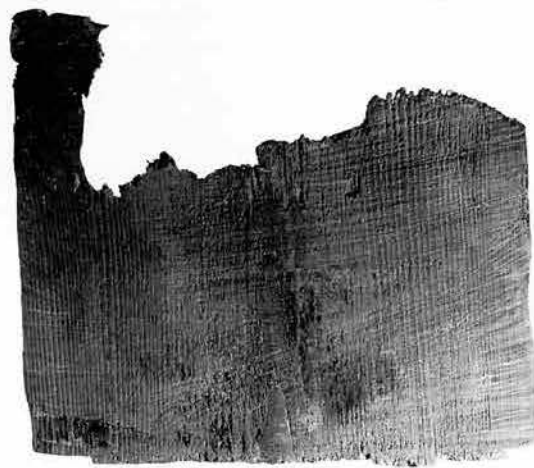
60



62



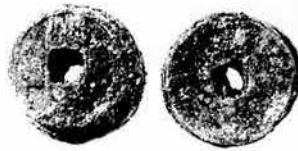
5



7



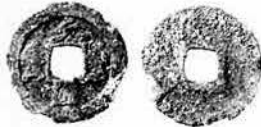
(5023)



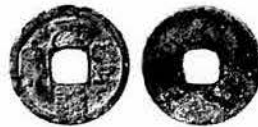
(5018)



(5001)



1(5002)



4(5003)



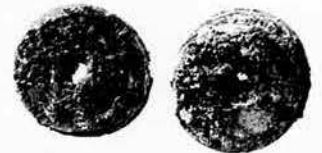
(5004)



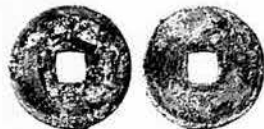
2(5019)



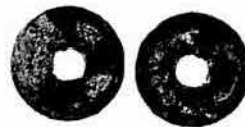
3(5005)



(5006)



(5007)



(5020)



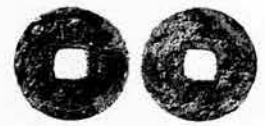
(5021)



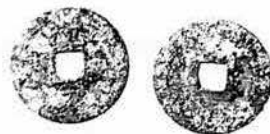
(5022)



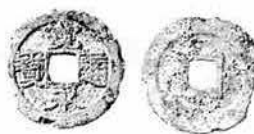
(5008)



6(5009)



(5010)



7(5011)



(5012)



8(5014)



5(5015)



(5016)



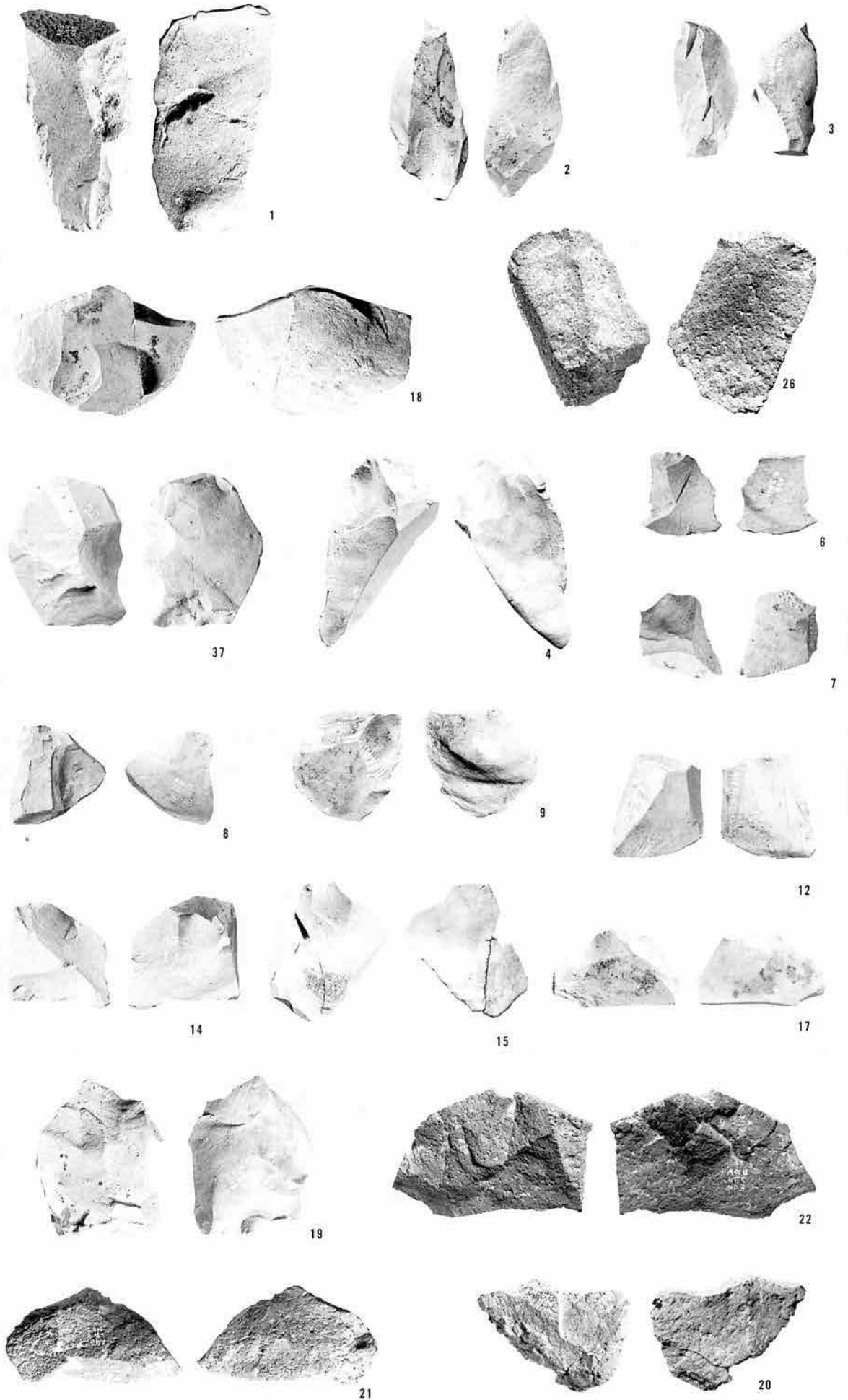
遺跡全景

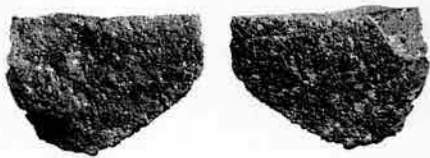


左：A区全景
右：S D01



左：S B01・03
右：S B02・04

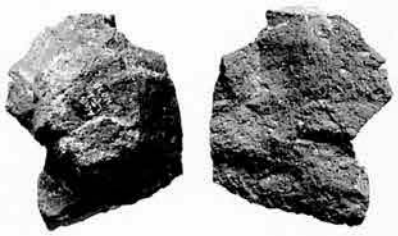




23



24



25



27



28



29



30



32



34



35



40



41



42



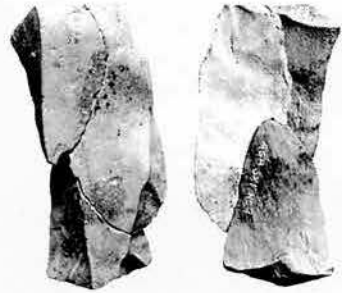
44



45



38



39(40+41+42)



36(37+38)



33(34+35)



43(44+45)



46



47



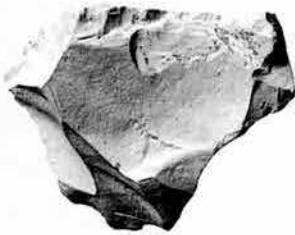
48



49



51



50



53



54



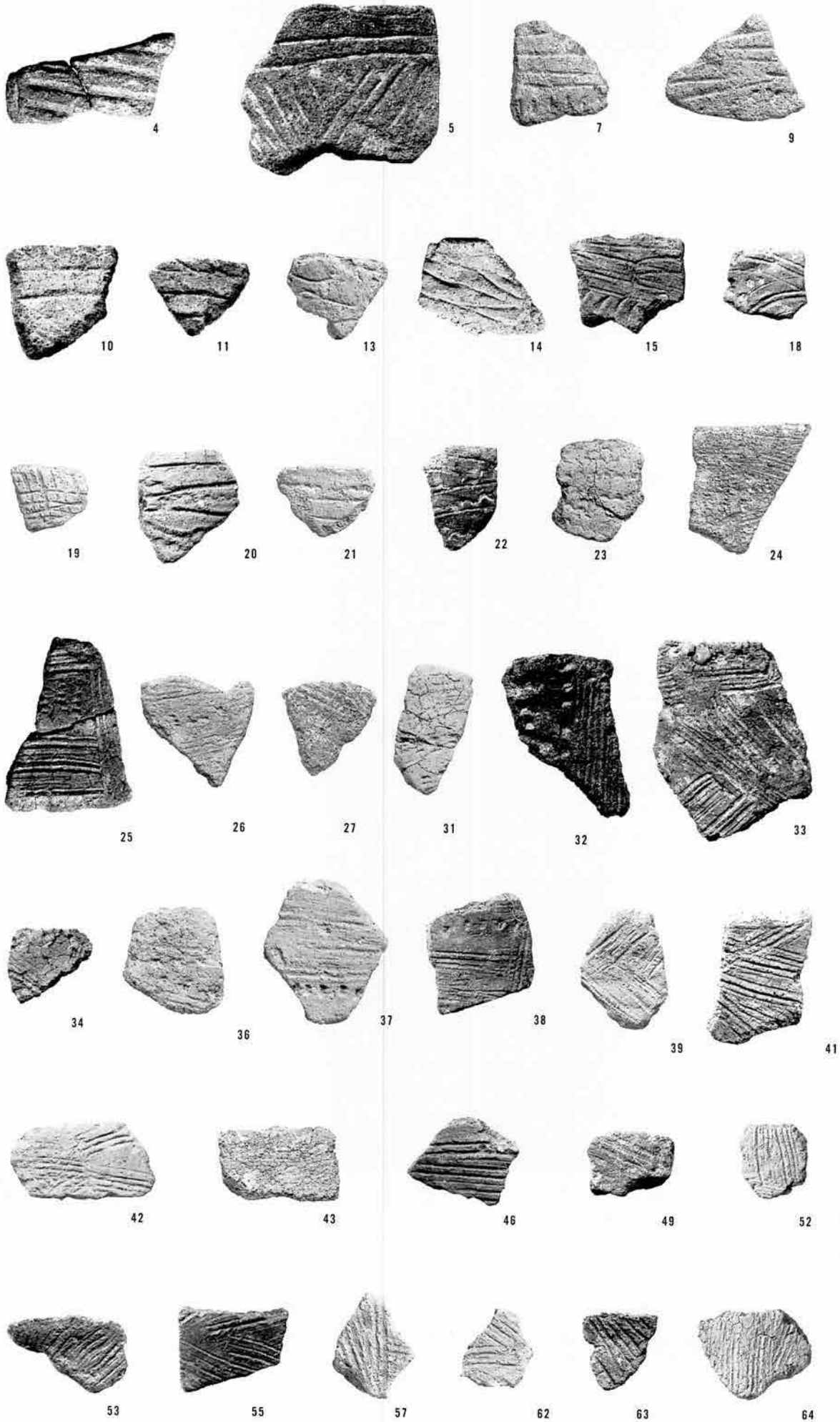
52

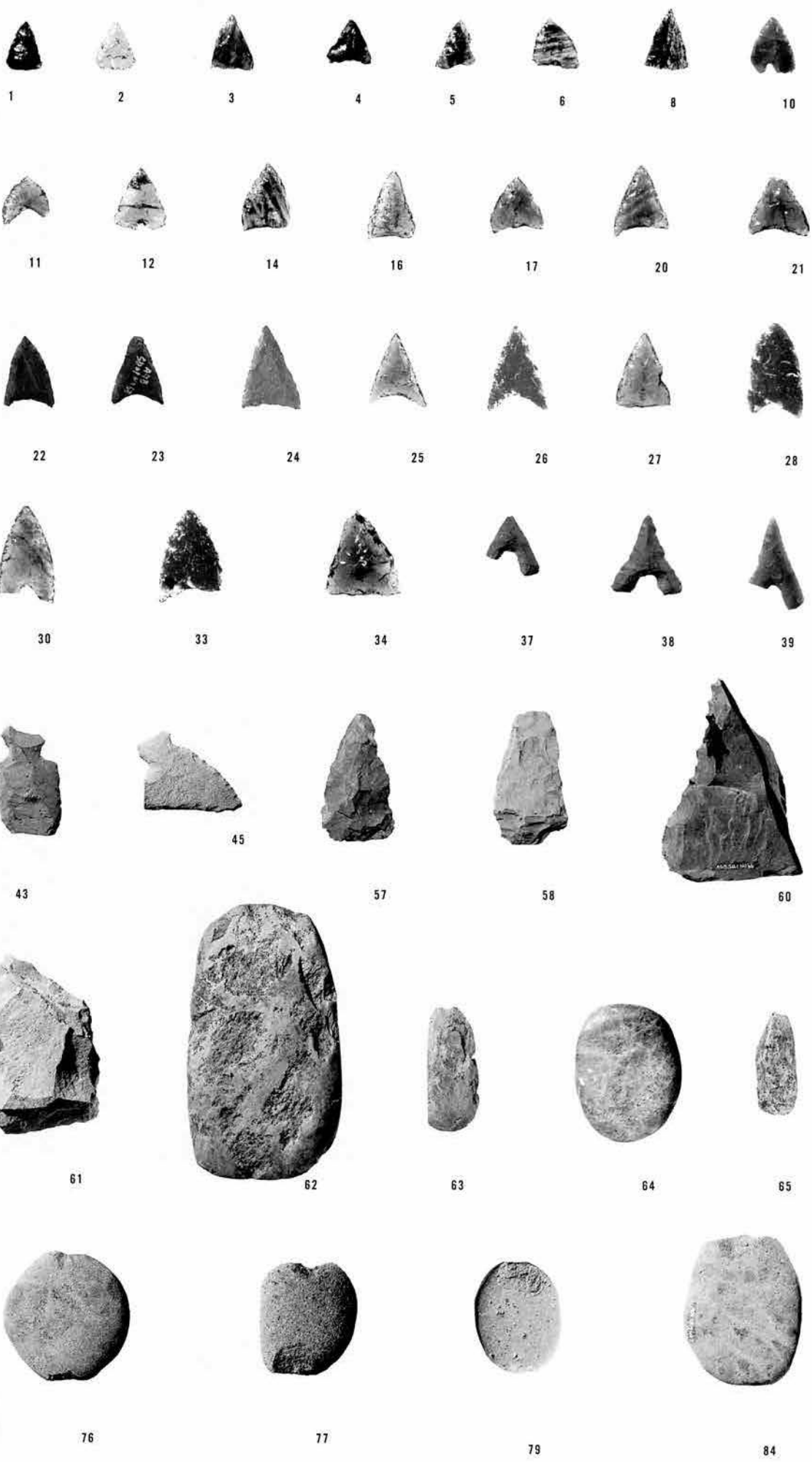


58



59





1

2

3

4

5

6

8

10

11

12

14

16

17

20

21

22

23

24

25

26

27

28

30

33

34

37

38

39

43

45

57

58

60

61

62

63

64

65

76

77

79

84



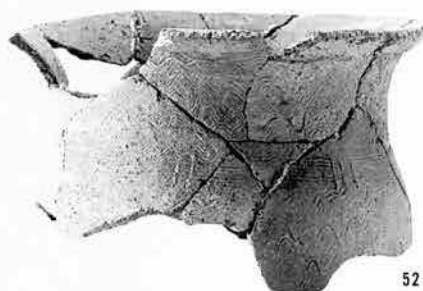
46



50



40



52



41



59



8



60



9



101



38



32



76



31



83



89



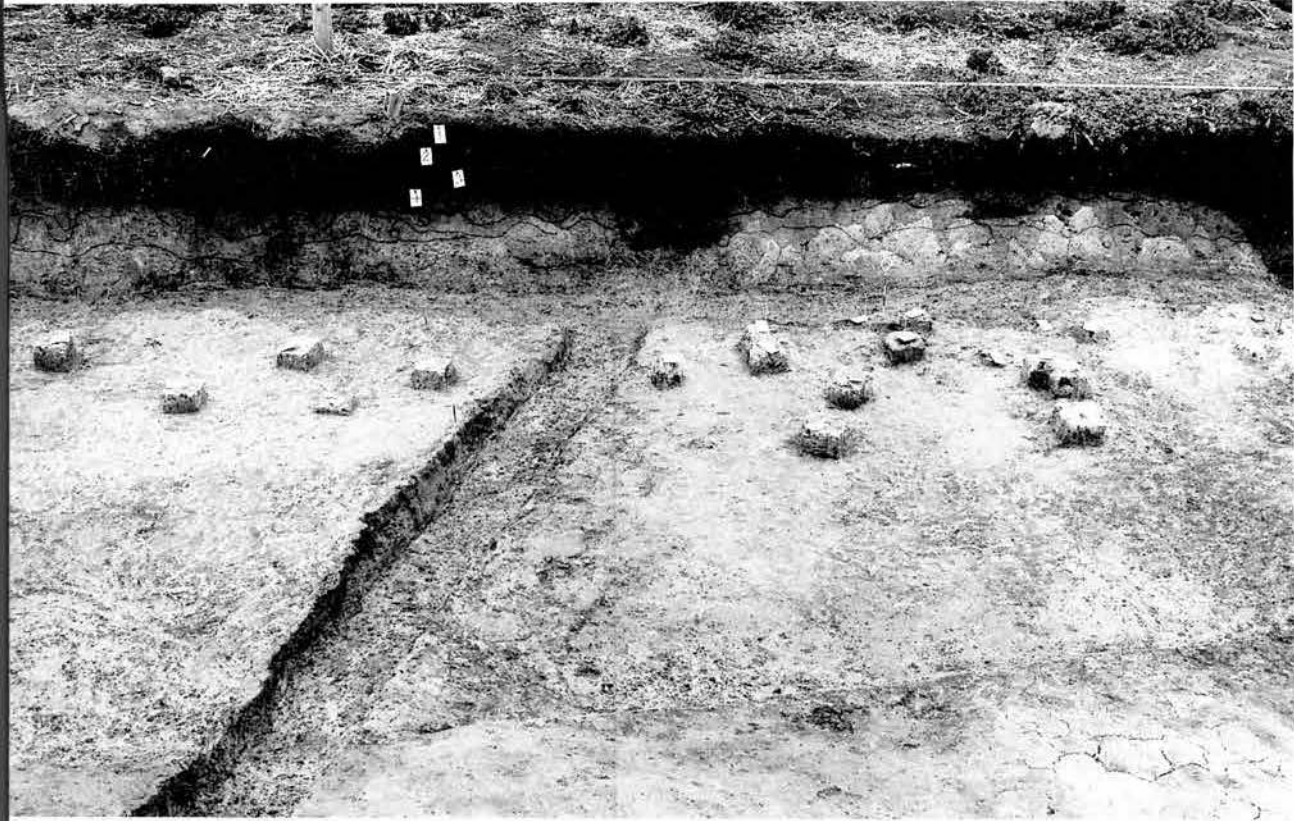
94



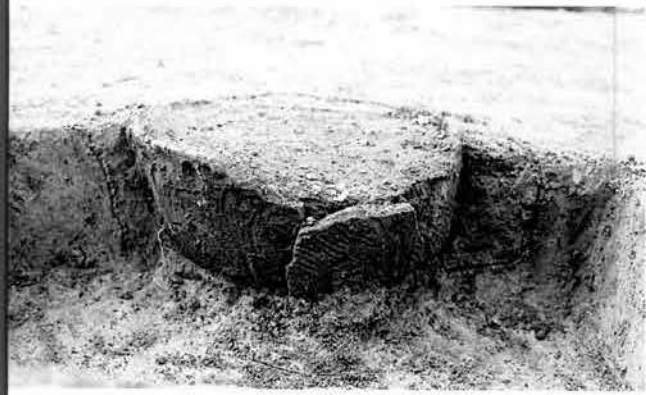
1



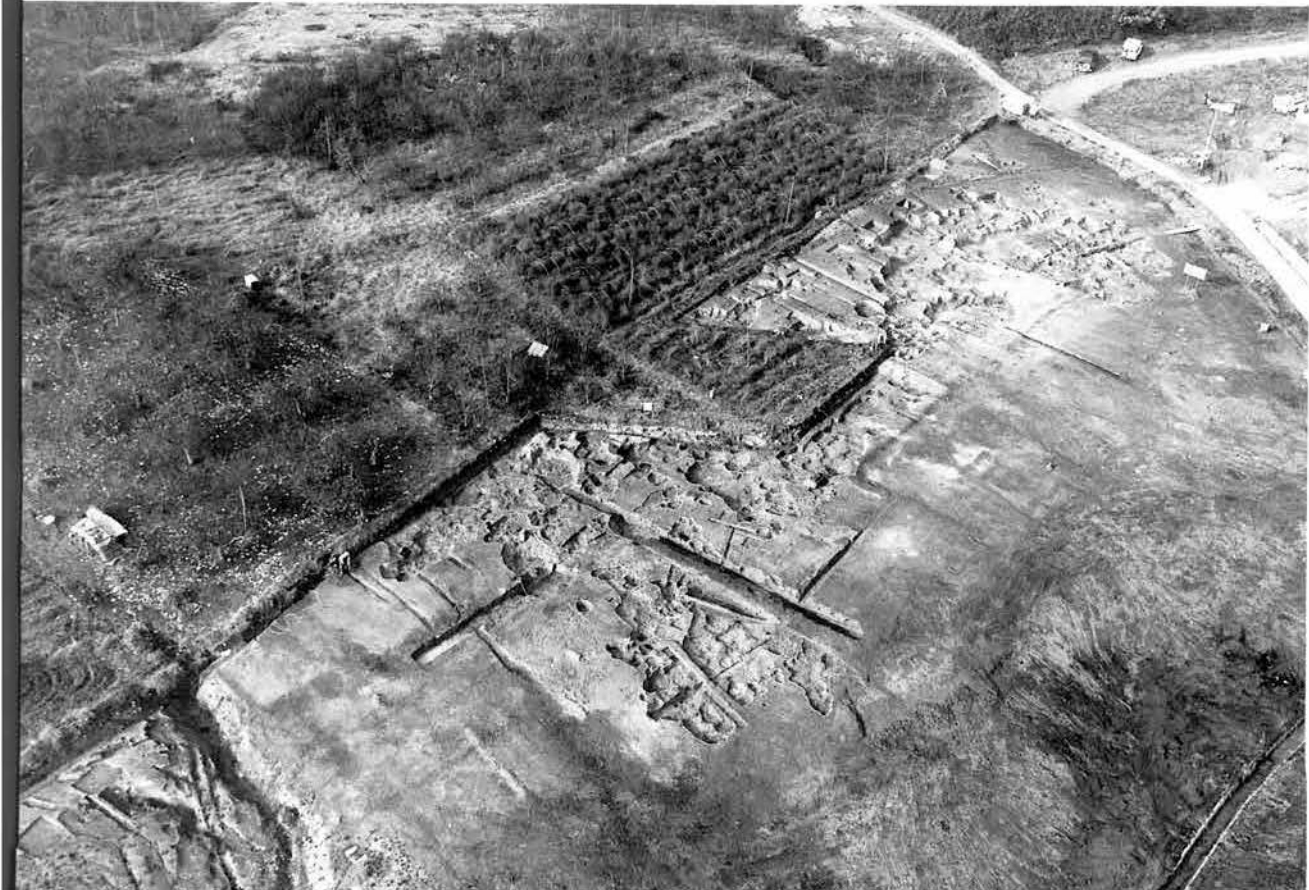
2



ブロック1
遺物出土状況



左：埋甕1
右：埋甕2



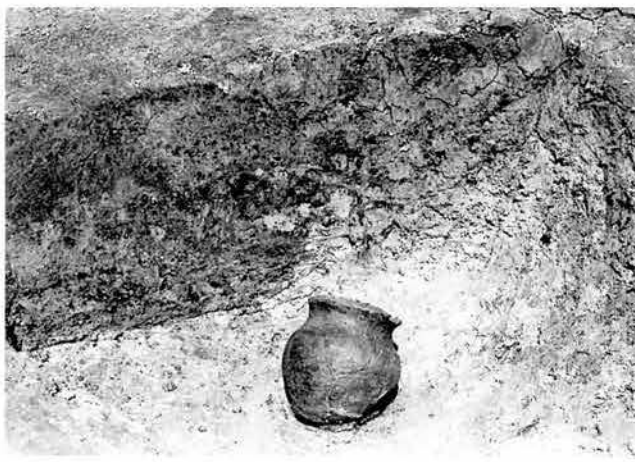
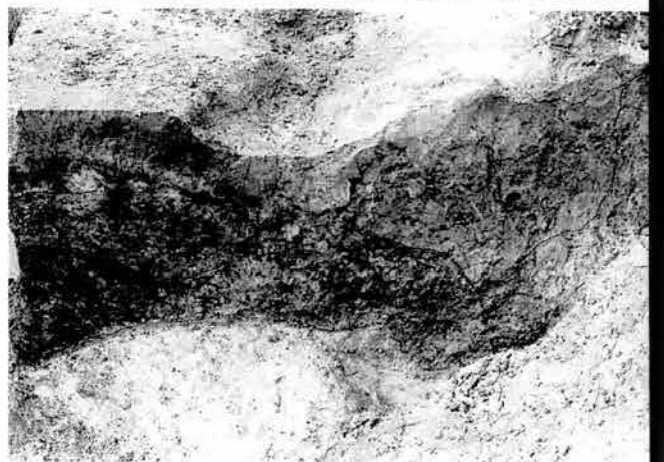
粘土採掘跡
(南より)



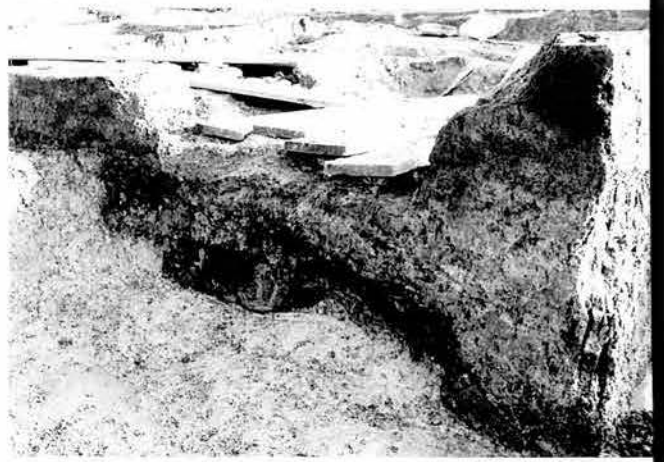
粘土採掘跡
(東より)



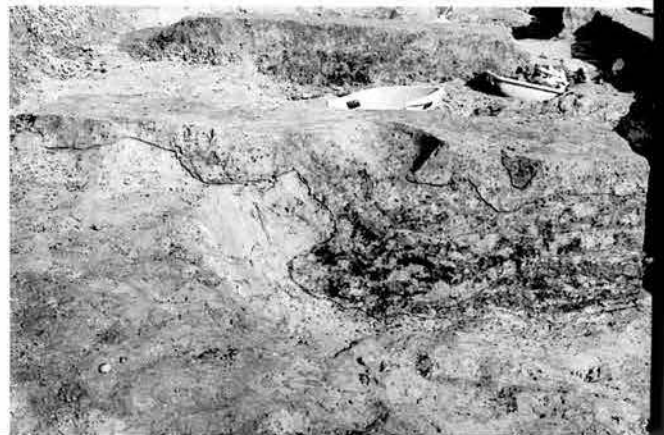
左: S X01
右: S X01
土層断面

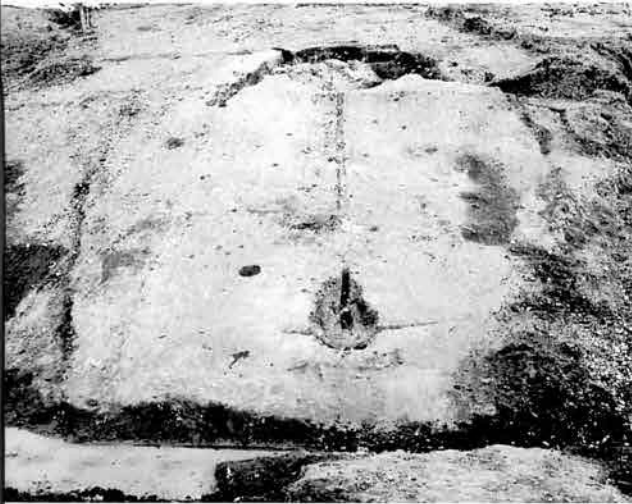


左: S X12Pit 3
遺物出土状況
右: S X12
土層断面

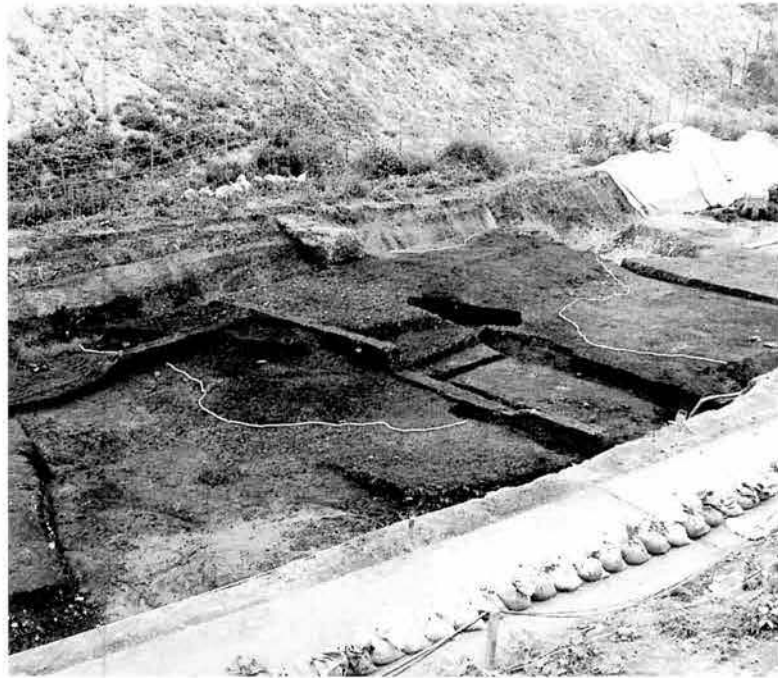


: S X24土層断面
: 同上





左：SY01
右：SY02



左：SY01・02遠
右：SW01全景



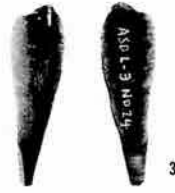
左：SK59・60
右：SW01遺物出



左：SK44検出状
右：同上完掘



1



3



4



6



7



8



9



10



13



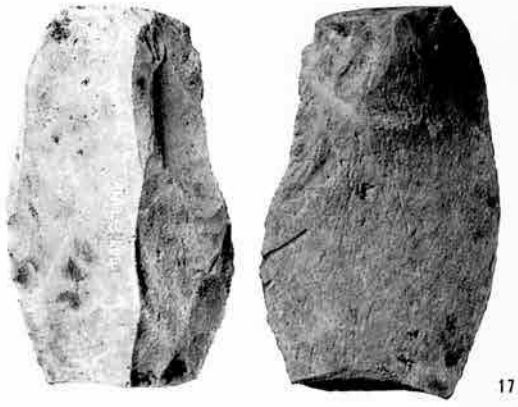
12



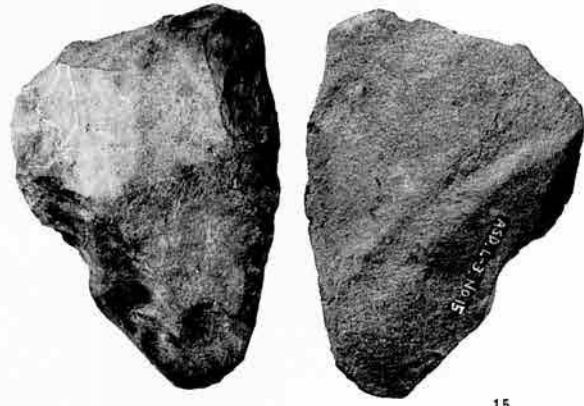
14



18



17



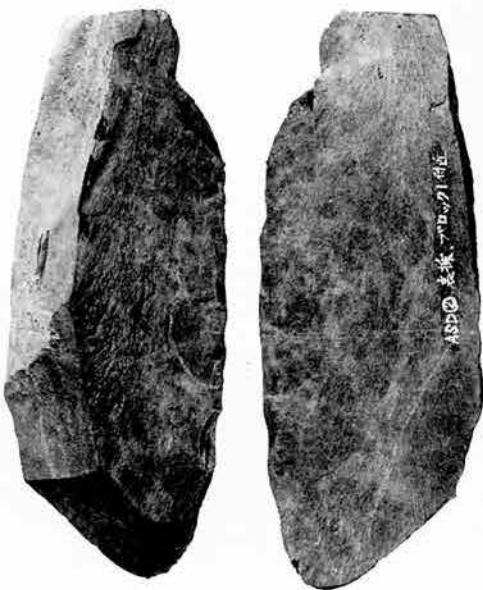
15



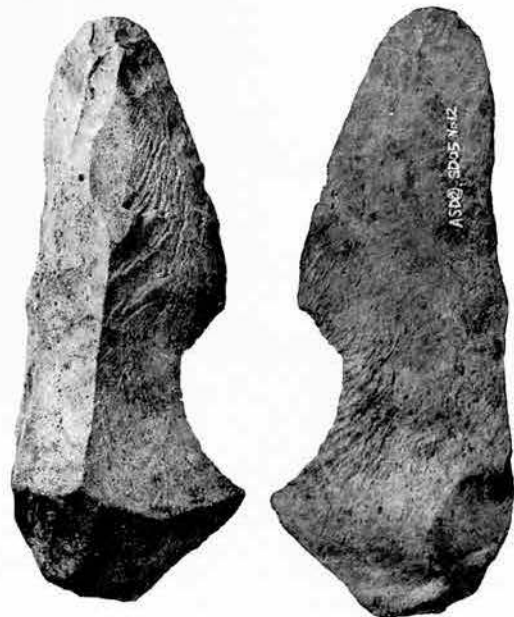
19



16



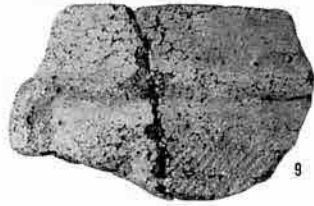
20



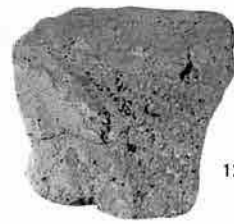
21



8



9



12



29



30



46



48



50



42+51



55



57



59



61



80



81



1



2



3



4



5



6



7



8



59



60



61



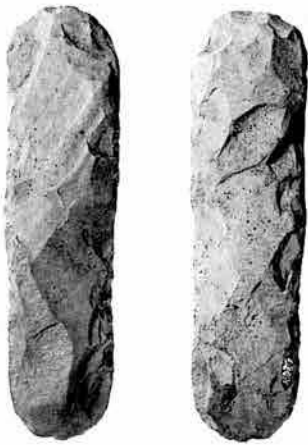
62



63



73



14



表

裏



15



表

裏



24



表

裏



36



表

裏



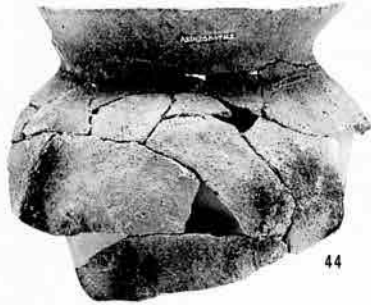
4



7



41



44



49



45



65



66



68



75



78



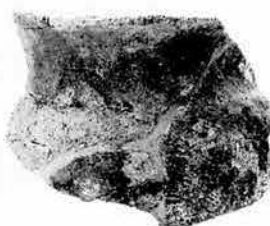
81



86



95



96



34



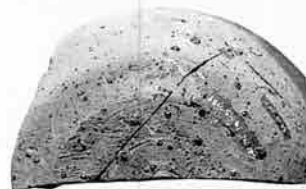
149



145



104



42

整理番号19

15



50

123

126



整理番号110

71

SW01
出土須恵器



174



174



176



175



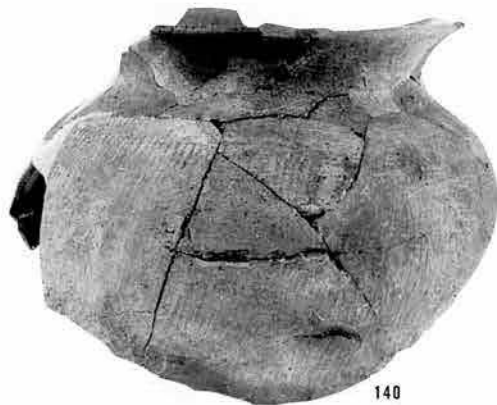
129



130



113



140



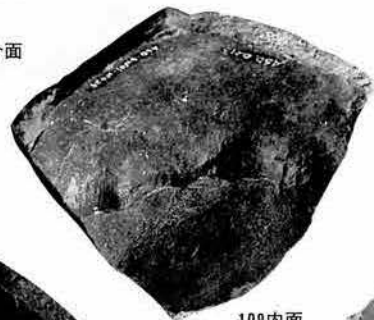
113内面



105頸部接合面



107内面



109内面



110内面



108内面

SW01
出土須恵器



調査前全景



調査区全景



部
土状況
出土状況



左：焼成部
遺物出土状況
右：燃焼部礫下の
遺物出土状況



定：「高井」皿
出土状況
行：土層断面I-J



左：覆土内礫
出土状況
右：遺物出土状況



左：燃焼部
遺物出土状況
右：完掘



左：燃焼部の溝に
覆せられた甕
右：礫と遺物の
出土状況

遺物出土状況
新窯完掘
旧窯完掘
(窯壁の礫除去後)



左：東壁
右：西壁

礫に粘土を貼った
窯壁（西壁）



窯壁を剥がした状
況



左：西壁に積まれた
礫の断面
右：土層断面
G-II





左：SW01 全景
 右：SW01 遺物
 出土状況



左：SK11
 右：SK04・05



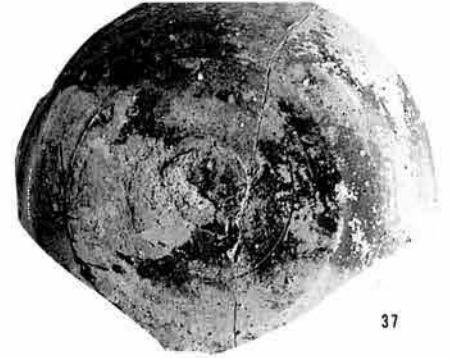
左：SX03 (埋甕)
 右：同上



左：SM01
 右：SM02



19



37



39



41



33底部



38底部



42底部



43底部



105



111



114



113



97



79



104



102



58



91



80



171



144



129



128



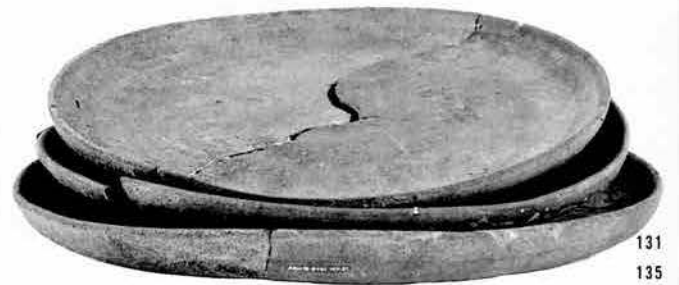
「高井」とへら描
された須恵器皿



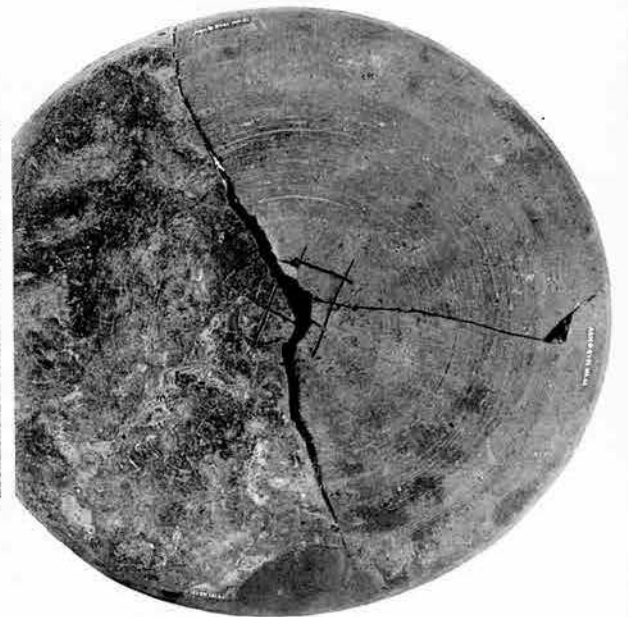
142



127
142



131
135
134



134



14



51



50



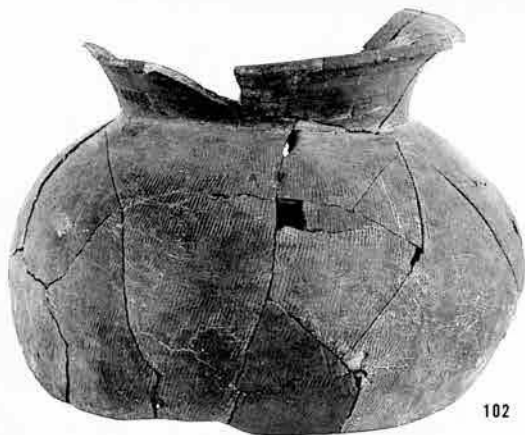
73



59底部



74



102



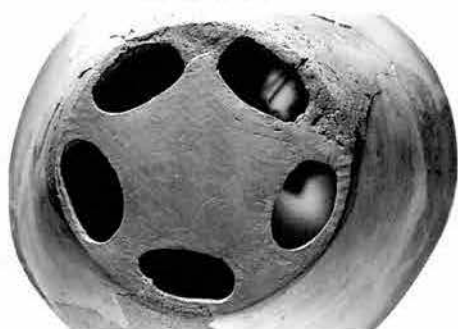
102 拡大ヘラ描き



102 拡大ヘラ描き



85



101



82



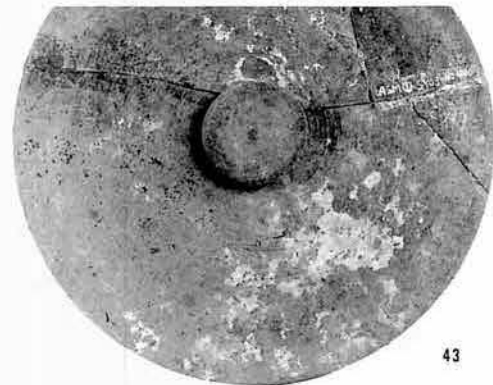
17



15



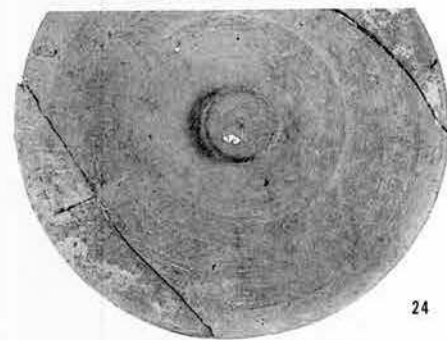
46



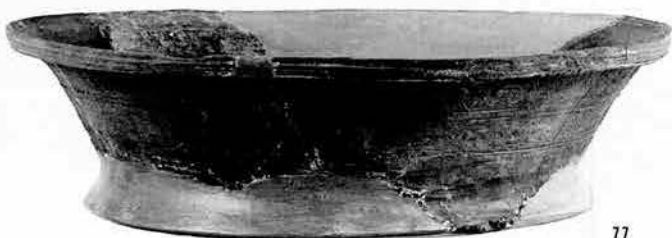
43



50



24



77



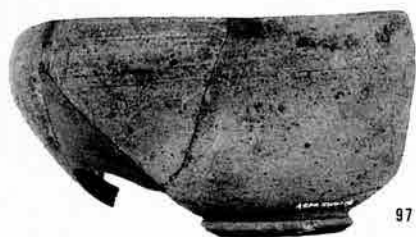
72



99



98



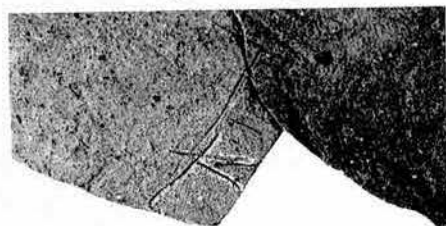
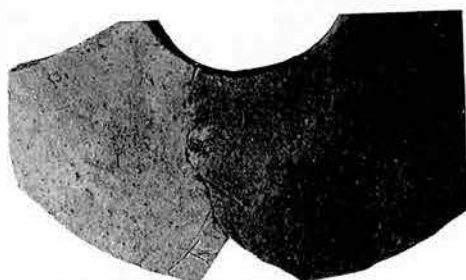
97



109



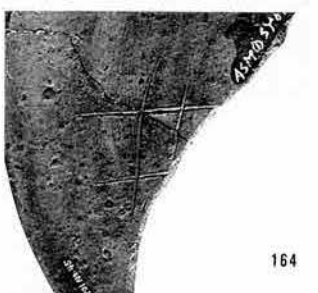
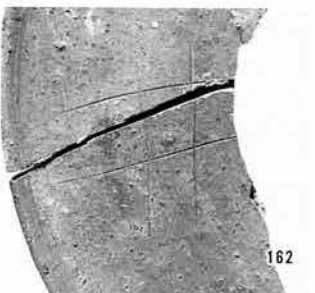
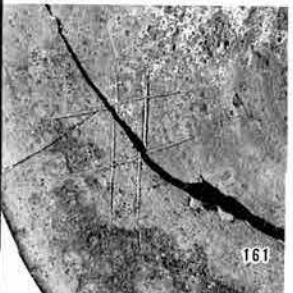
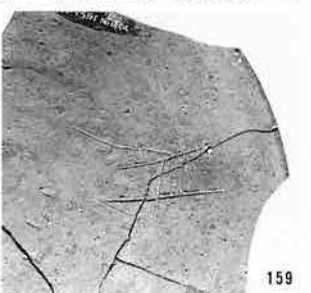
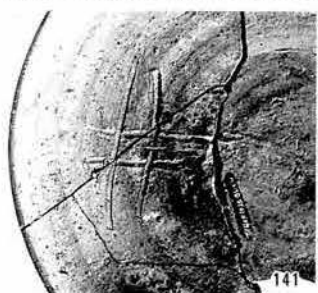
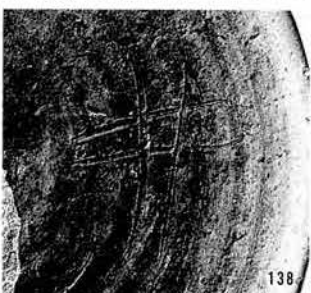
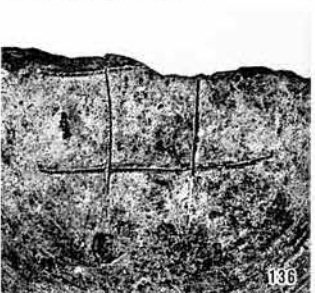
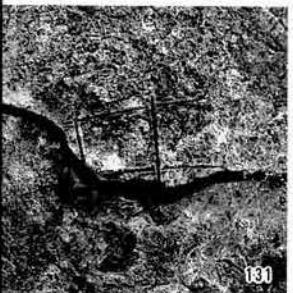
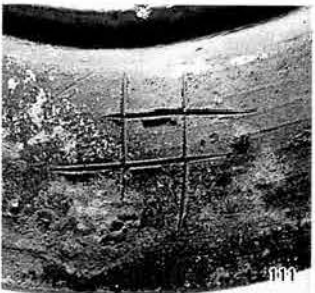
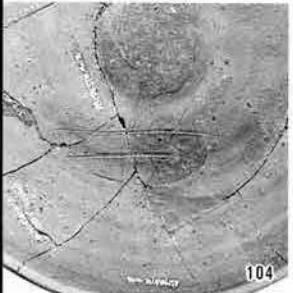
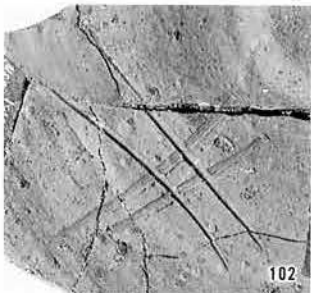
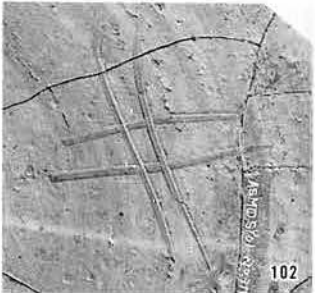
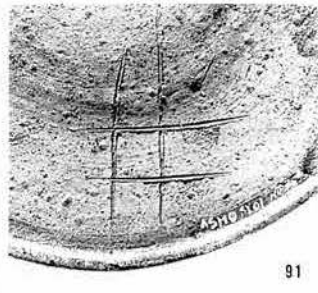
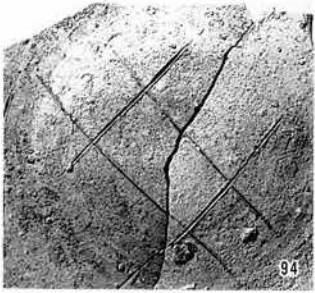
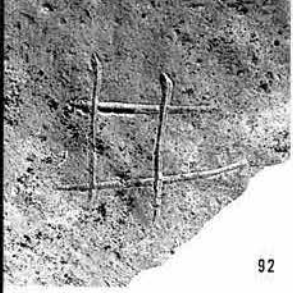
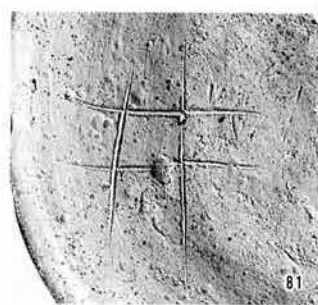
147

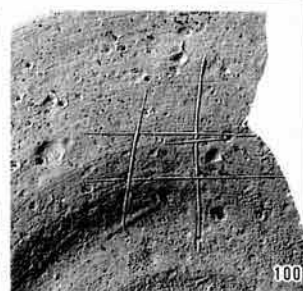
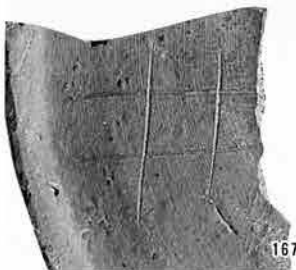
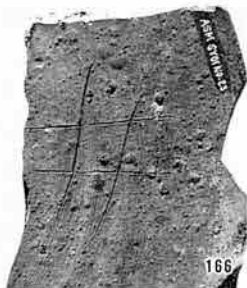


106

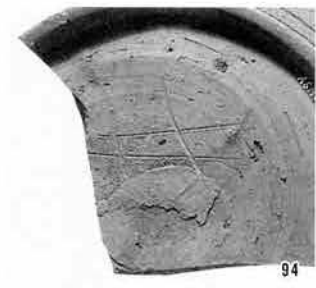
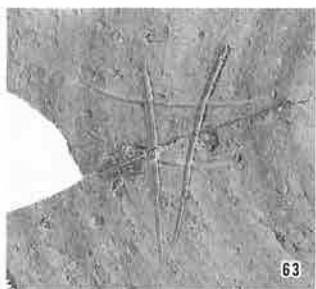


116

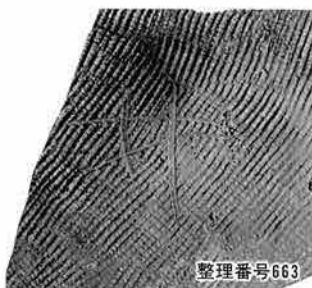




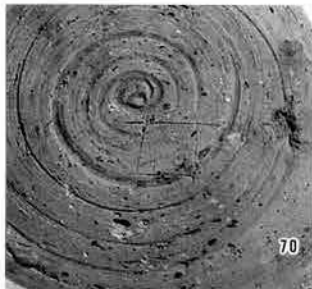
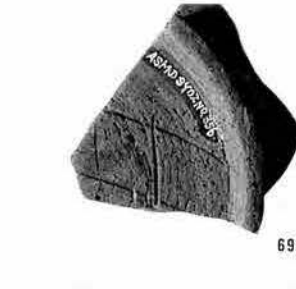
2段目はSY01出土

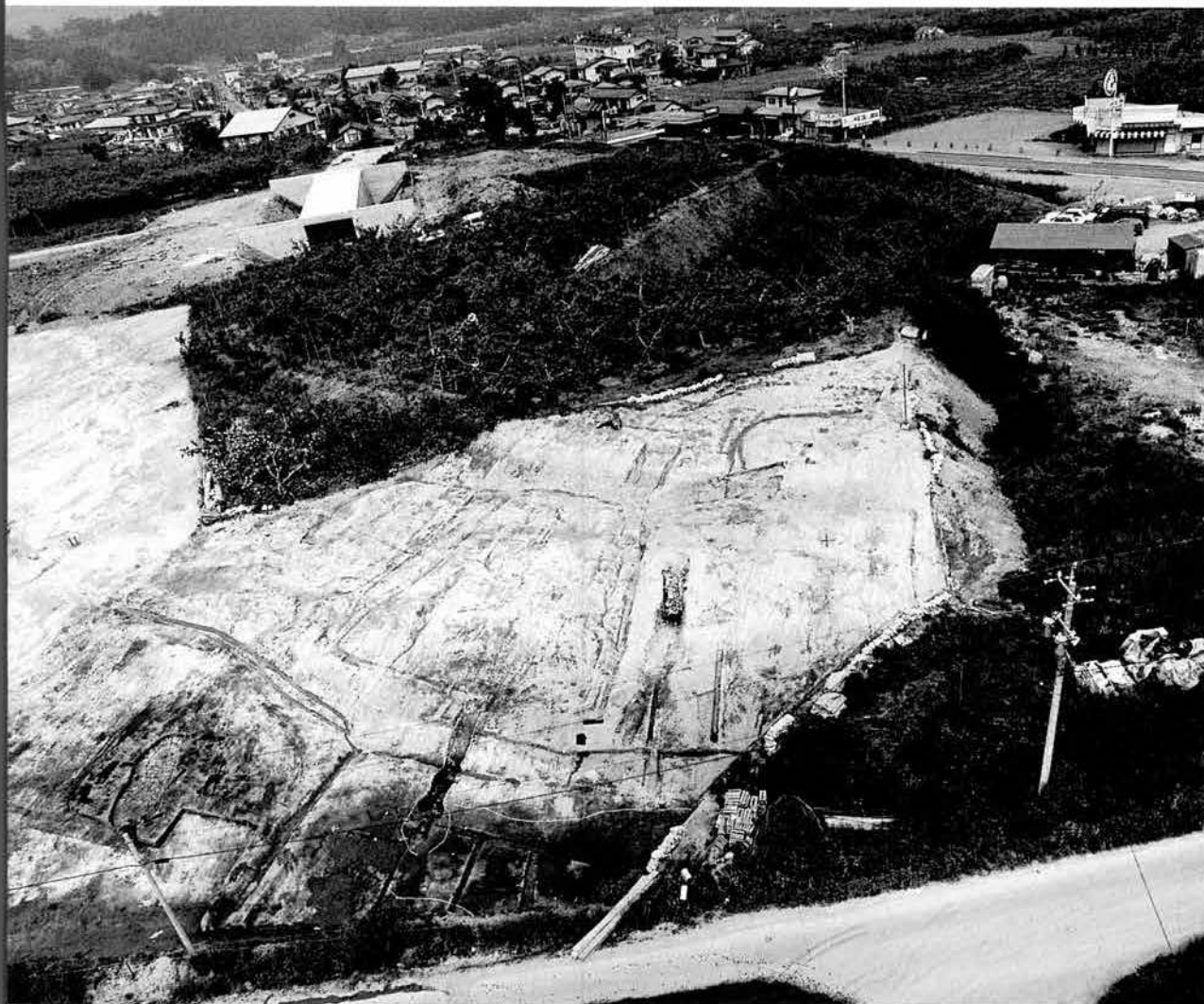


5段目はSW01・02
出土



7段目はSY02出土





①区全景



②区全景



左：S B01

右：S K53・87

・88他



S K53・87・88他
遺物出土状況



：S K53

遺物出土状況

：同上

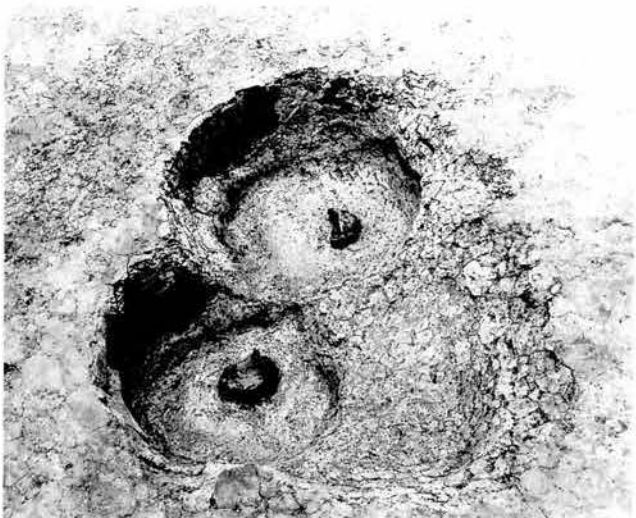




左：SK23
右：SK32



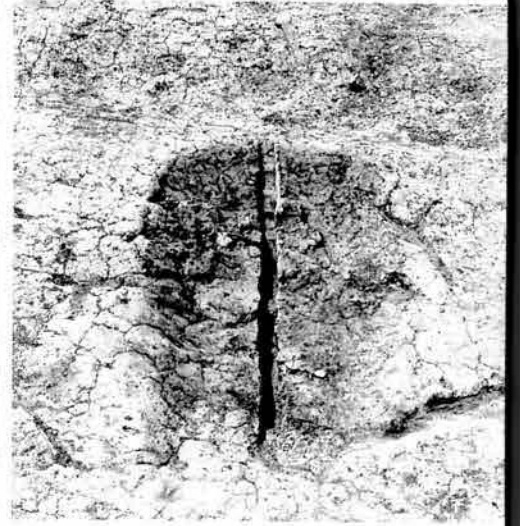
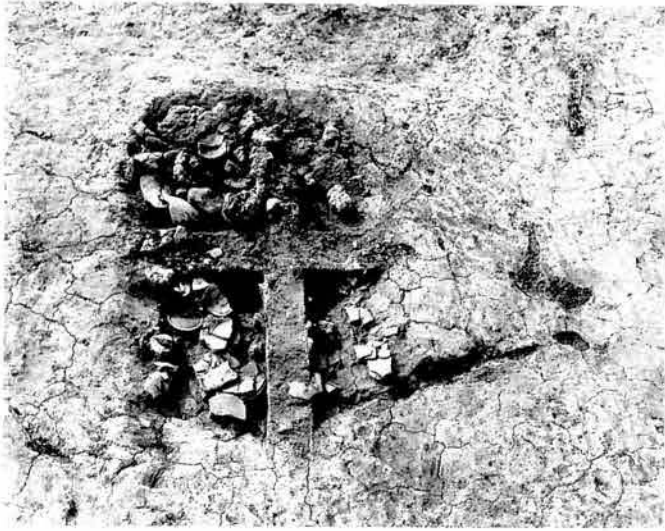
左：SK34
右：SK73土層断面



左：SK81土層断面
右：SK81



左：SK94
右：SK100



左：SY01遺物出土狀況
右：SY01完掘



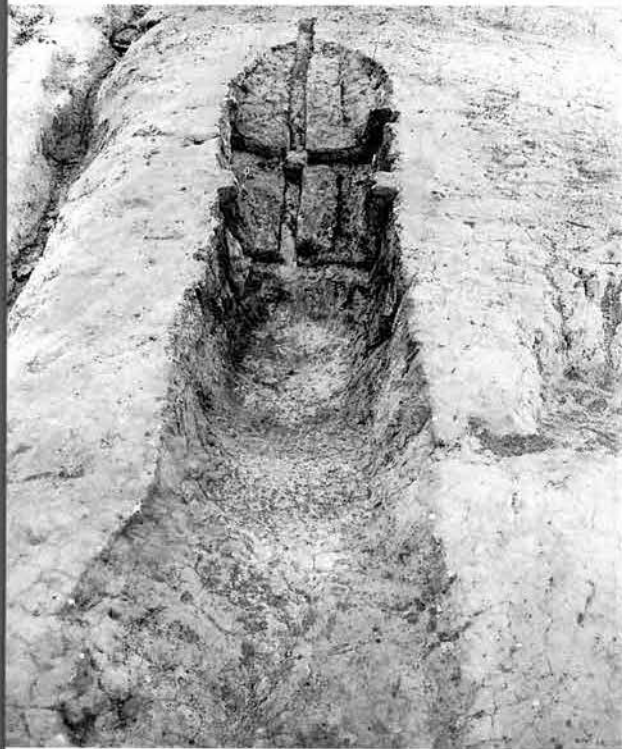
左：SY04
遺物出土狀況
右：SY04完掘



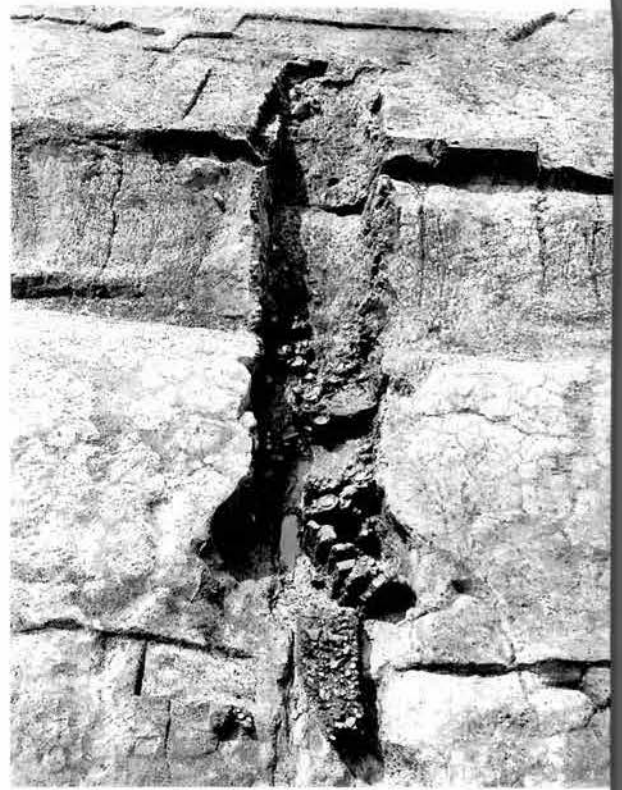
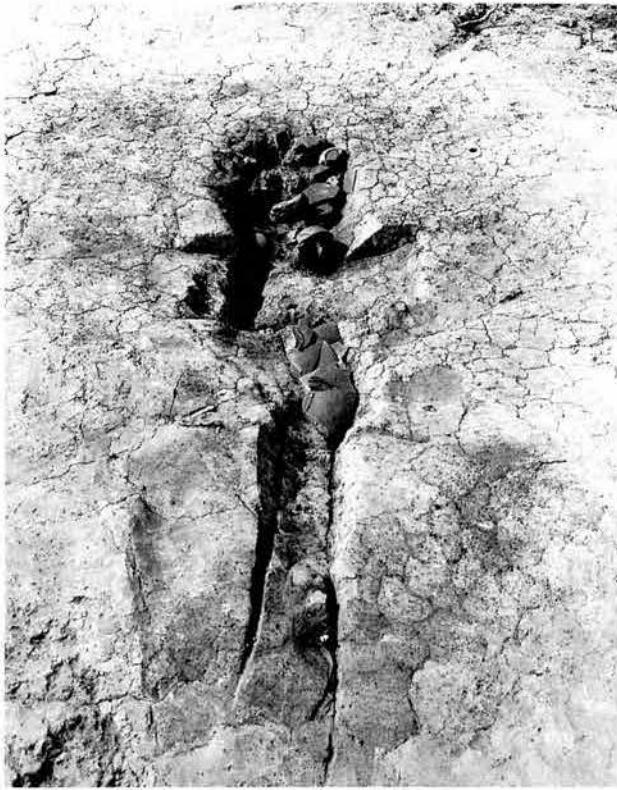
左：SY04
土層断面
C-D
右：SY04
煙道



左：SY02前庭部
遺物出土状況
右：SY02瓦出土状況



左上：SY02完掘
左下：SY02検出状況
右上：SY02
1層の遺物出土状況
右中：SY02土層断面
右下：壁内の炭化材



左：S Y05
右：S Y06



左：S Y06
遺物出土狀況
右：同上

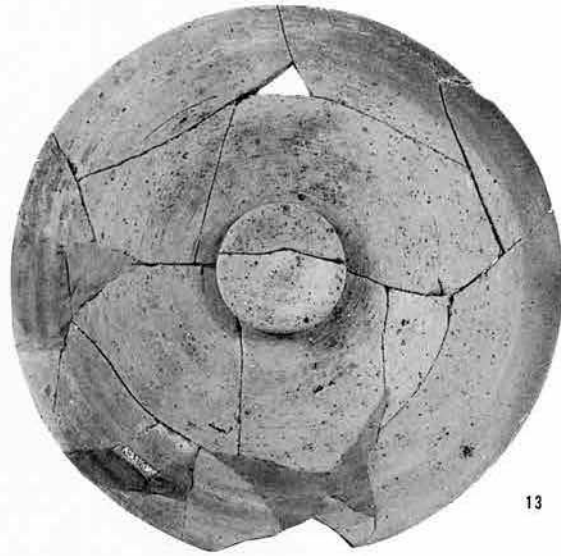


左：S Y07
遺物出土狀況
中：S Y07完掘
右上：S Y07前庭部
瓦出土狀況
右下：S Y07前庭部
溝断面



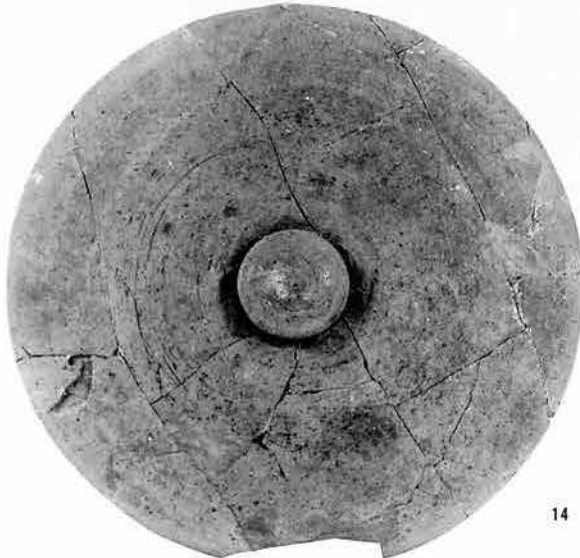
7

6



8

13



14



内面



裏面

1



内面



裏面

8



内面



裏面

6



12



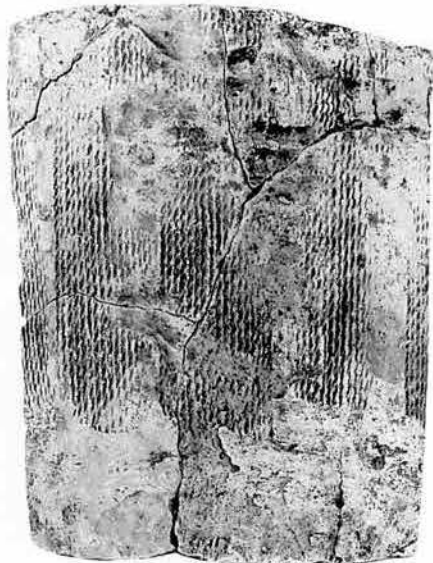
14



16



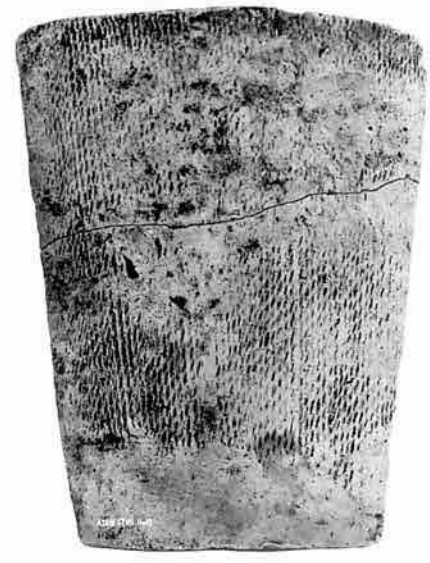
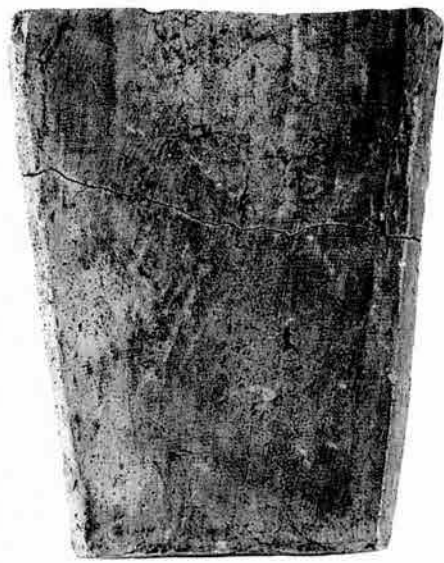
9



2



1



S Y02出土瓦

整理番号4067



左：S Y02出土瓦
右：S Y02出土瓦

11

整理番号4049



左：S Y02出土瓦
右：S Y04出土瓦

14

整理番号4063



1



5



3



7



13



S Y06
出土須恵器

14

10

23



3

2

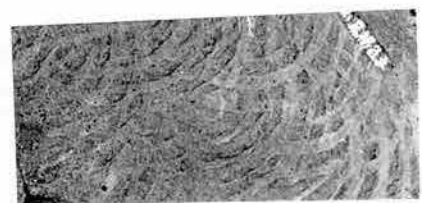
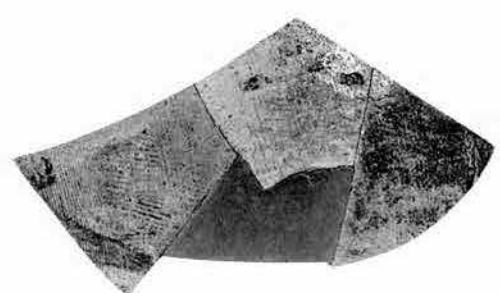


2



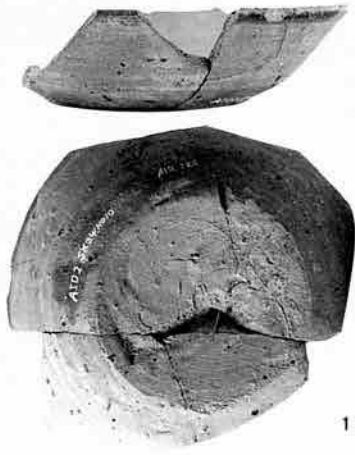
3

S Y07出土須恵器
S K31出土須恵器
S K23出土須恵器



S K20、S K21
出土須恵器

裏面拡大 1



1



2



1

左：SK34出土須恵
右：SK45出土須恵



1



1



3



1

左：SK53出土須恵
右上：SK79出土須恵
右下：SK87出土須恵



3



3 内面



4



4 内面



1

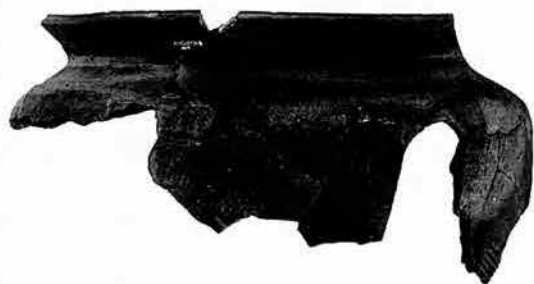


7



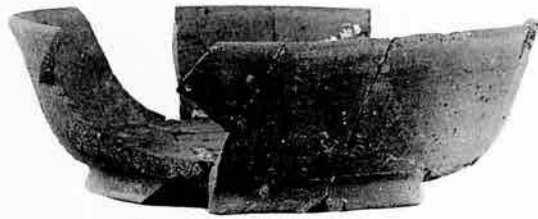
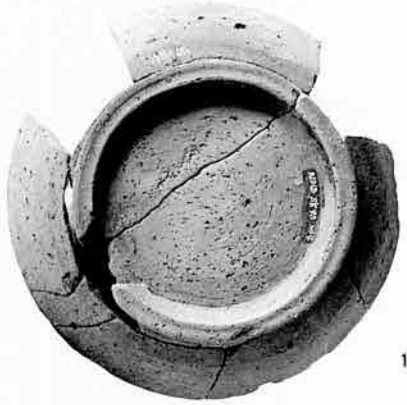
2

SK88
出土須恵器

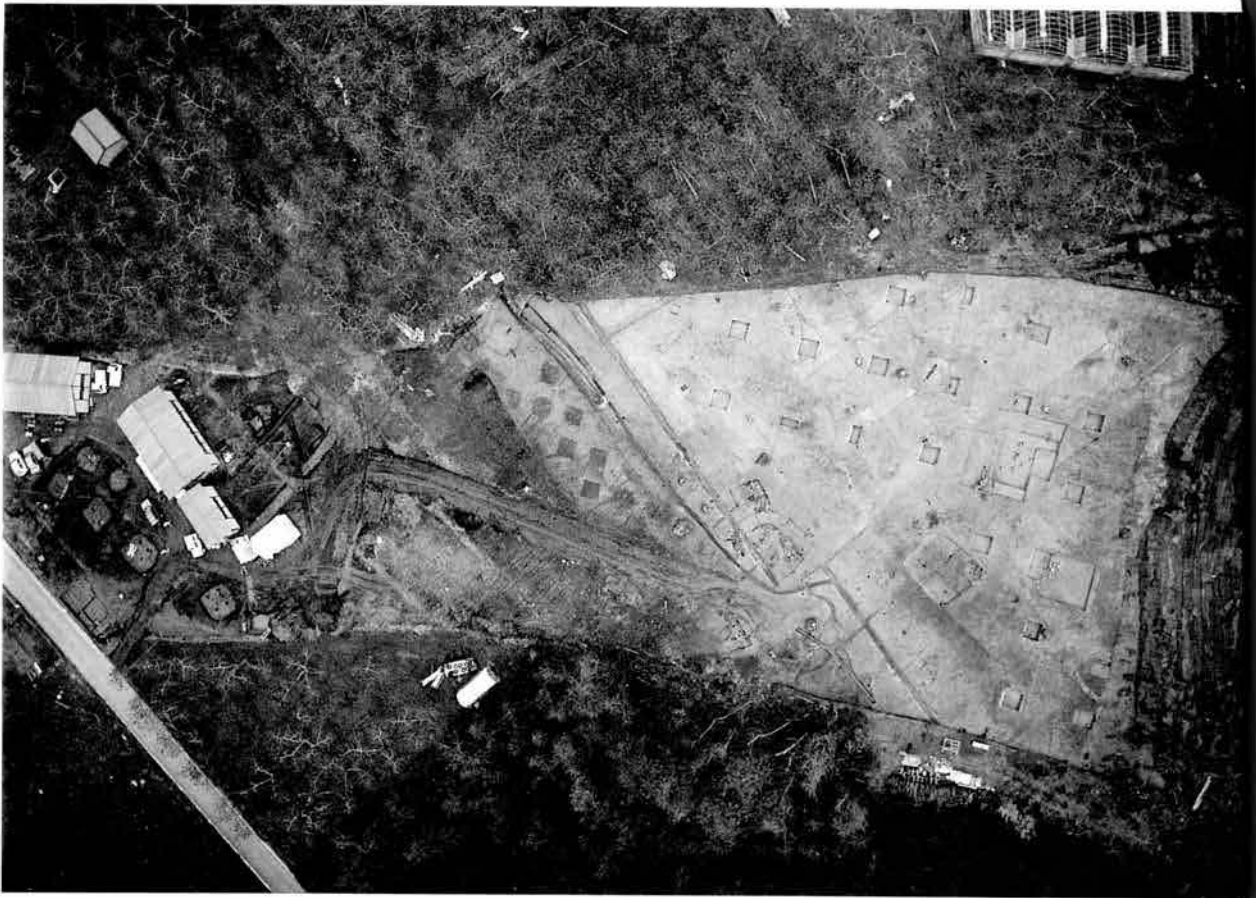


2

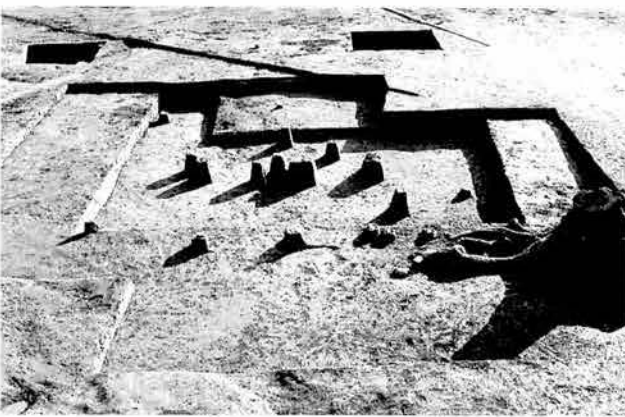
SK96
出土須恵器



左上：S K99出土須
左下：S K88出土須
右：S K98出土須



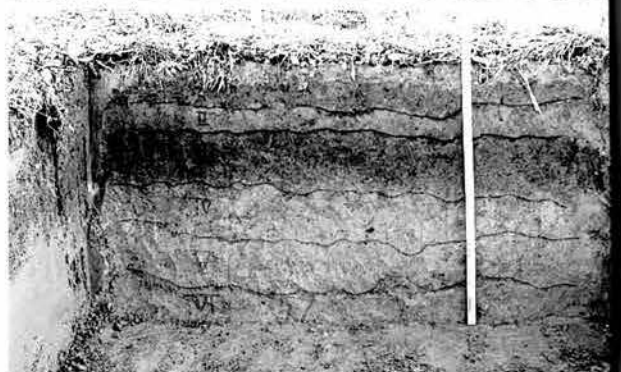
空撮全景



左：ブロック1
右：ブロック2

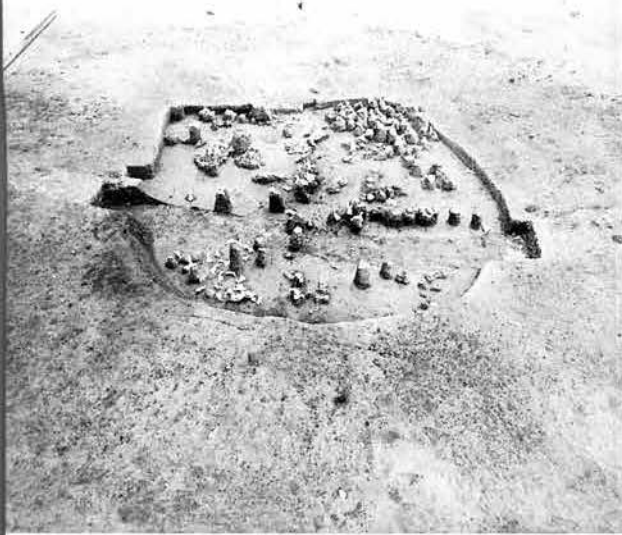


左：ブロック4・5
右：基本土層

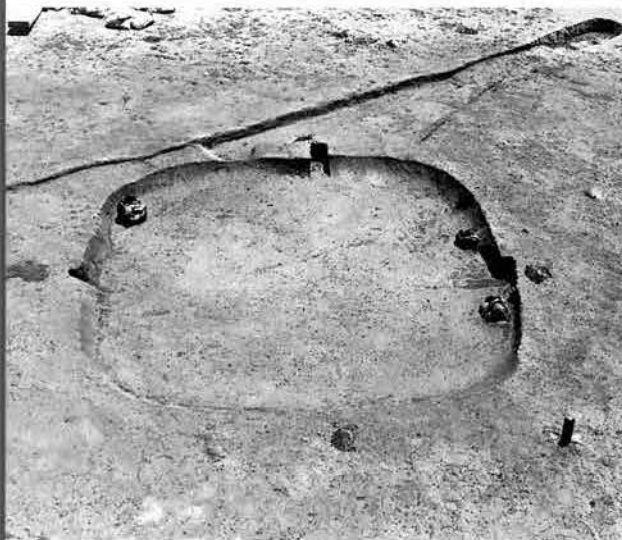


左：ブロック4
右：ブロック4・5
付近の土層





左：S B03
 右：S B03遺物出土
 (第250図3・4)



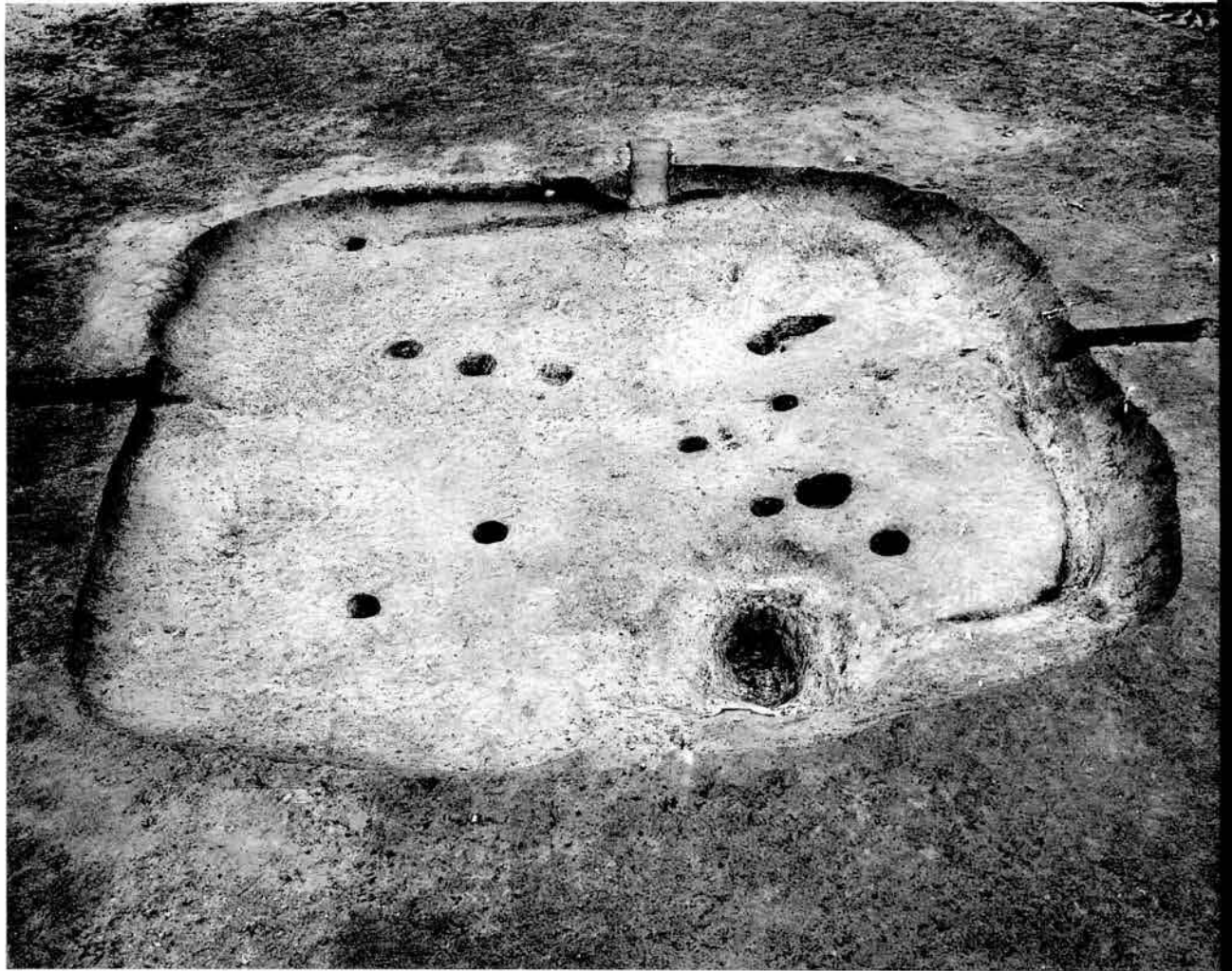
左：S B04
 中：S B04遺物出土
 (第252図4)
 右：S B04遺物出土
 (第252図7)



左：S B06
 右：S B06遺物出土
 (第260図13)



左：S B06、Pit 1
 遺物出土状況
 右：S B06、Pit 1



S B 05



左：S B 05柱穴
断面



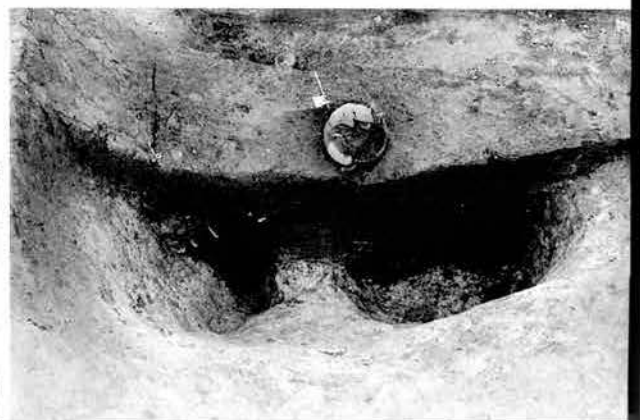
中：S B 05 A群
土器出土狀況



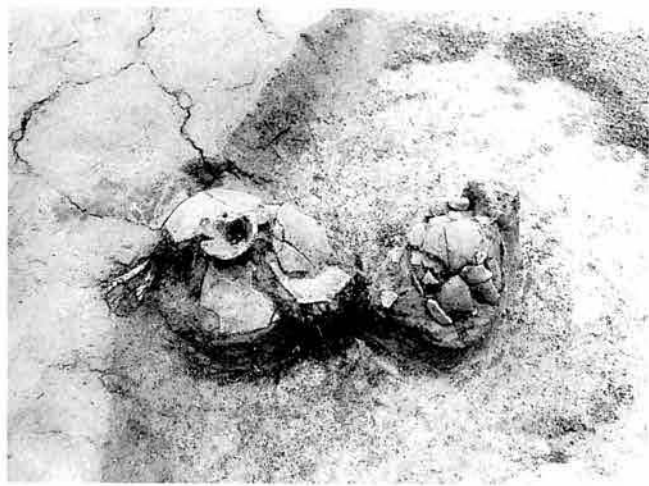
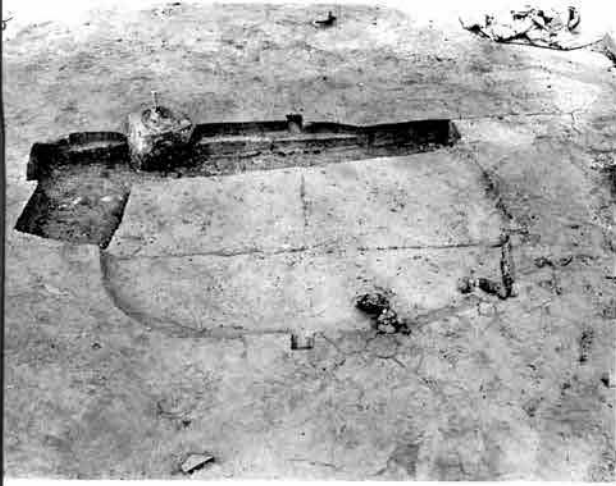
右：S B 05 B群
土器出土狀況



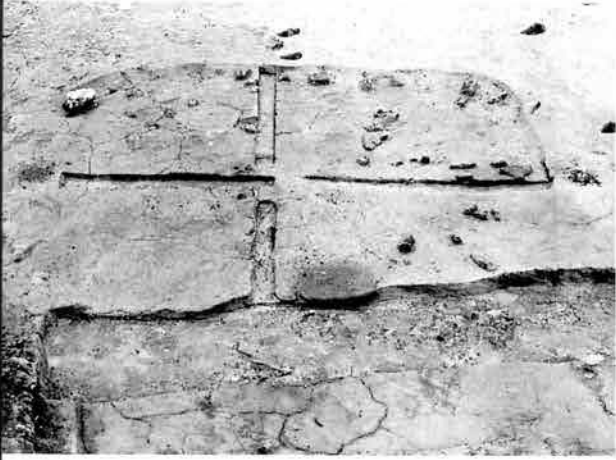
左：S B 05 C群
土器出土狀況



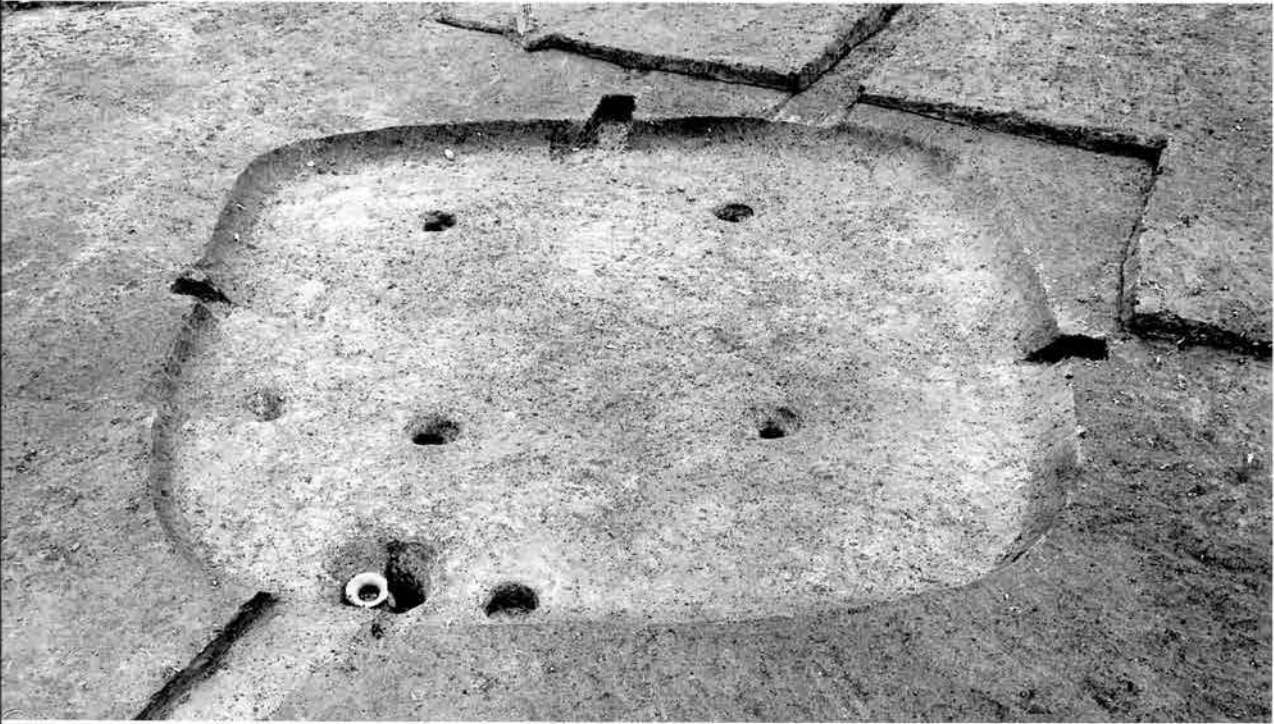
右：S B 05 Pit 1
断面



左：S B07
 右：S B07遺物出土
 (第262図1・3)



左：S B08
 右：S B08Pit 1



S B09



左：S B09遺物出土
 (第267図1～4)
 右：S B09 Pit 1



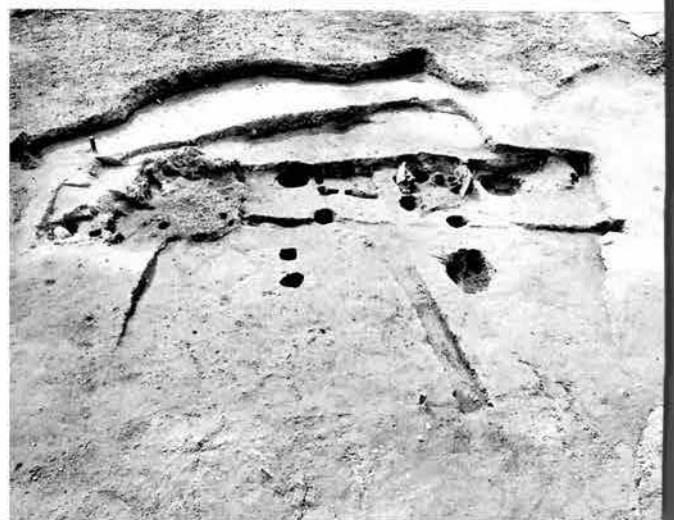
S B10



S B10 Pit 1 と
間仕切り
S B10 遺物出土状況
(第270図5)

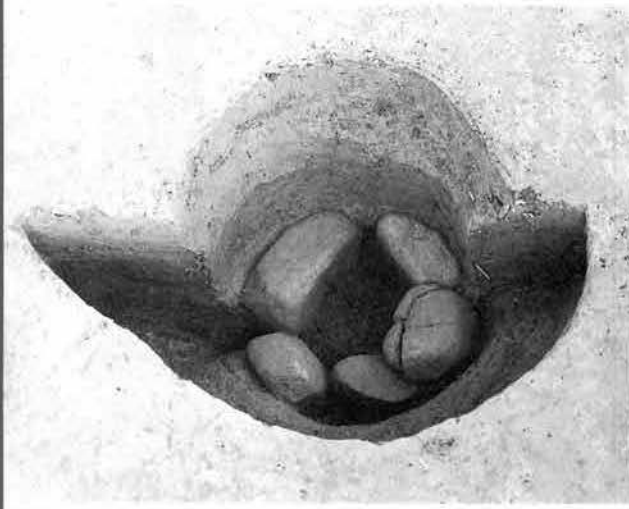


S B01
S B01・02・S K19





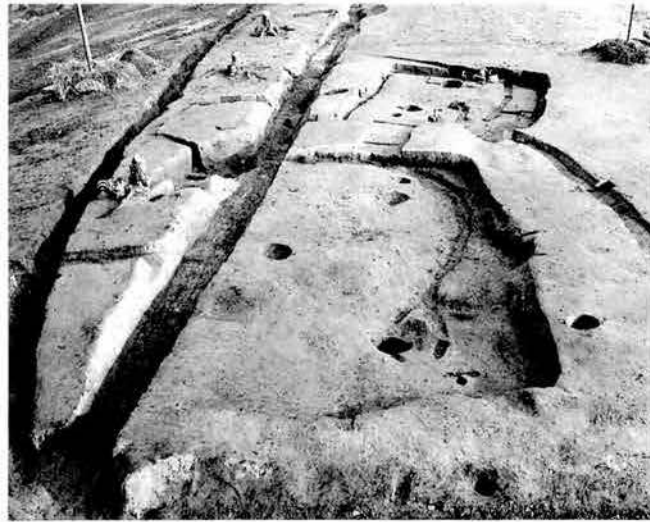
左：SB02カマド
右：SK19



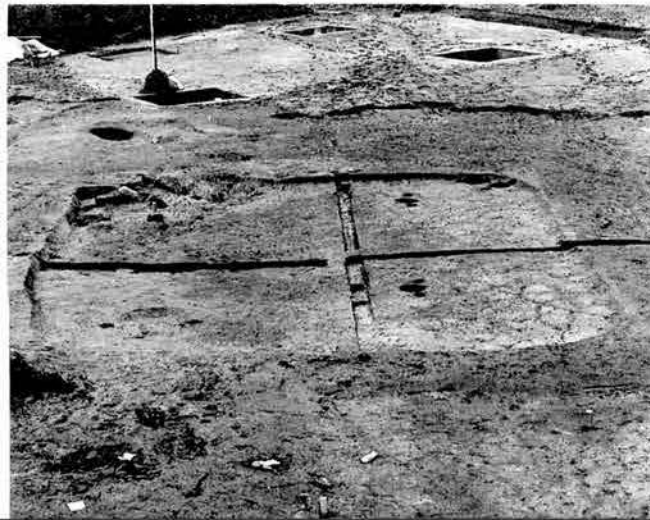
左上：SB12
左中：SB12ロケット
左下：SB12pit 7
物出土状況
右上：SB12カマド
右中：SB12遺物出
（第286図11他）
右下：SB12粘土出
況



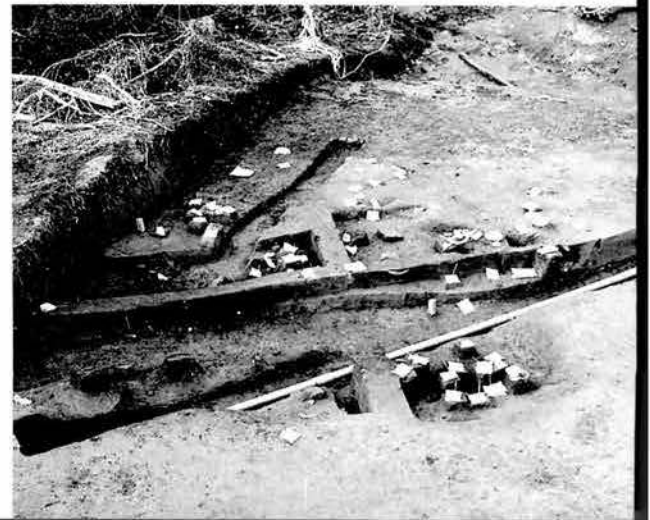
S B12・S B13



S B13
S B13甕出土状況



左：S B14
右：S B15





左：SK10
右：SK12



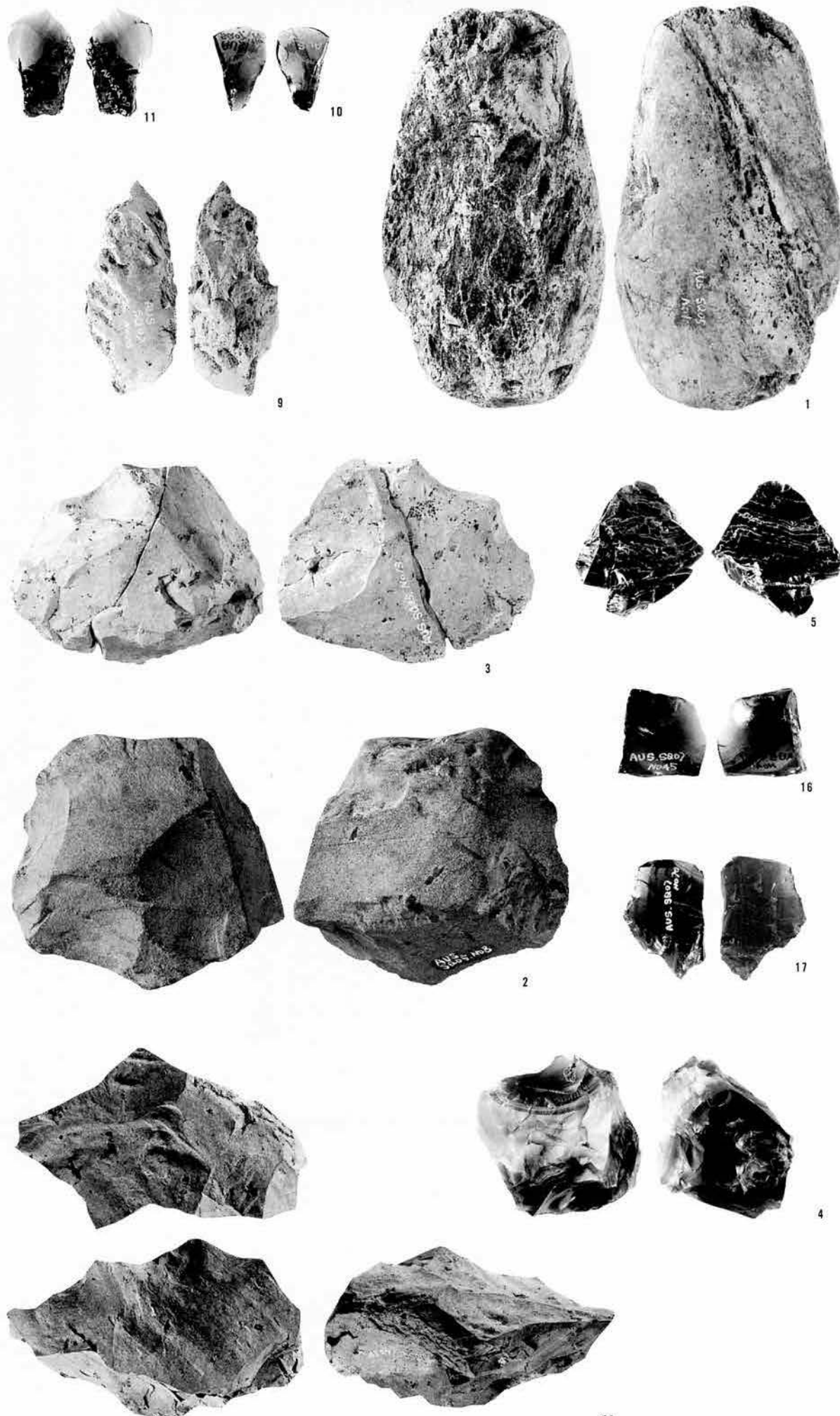
左：SK13
中：ST01
右：SY01



左：SH01
右：SH02・03



左：SH04
右：SY02





(SB10)5



(SB05)14



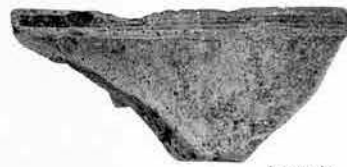
(SB03)4



(SB07)2



(SB05)16



(SB04)1



(SB04)7



(SB04)8



(SB05)15



(SB04)4



(SB06)7



(SB06)9



(SB09)4



(SB05)11



(SB05)10



(SB05)9



(SB03)1



(SB09)1



(SB05)6



(SB07)3



(SB06)11



(SB10)8



(SB05)22



(SB08)5



(SB03)10



(SB03)9



(SB08)6



(SB08)7



(SB05)23



(SB06)17



(SB05)27



(SB05)28



(SB05)29



(SB06)4



(SB07)6



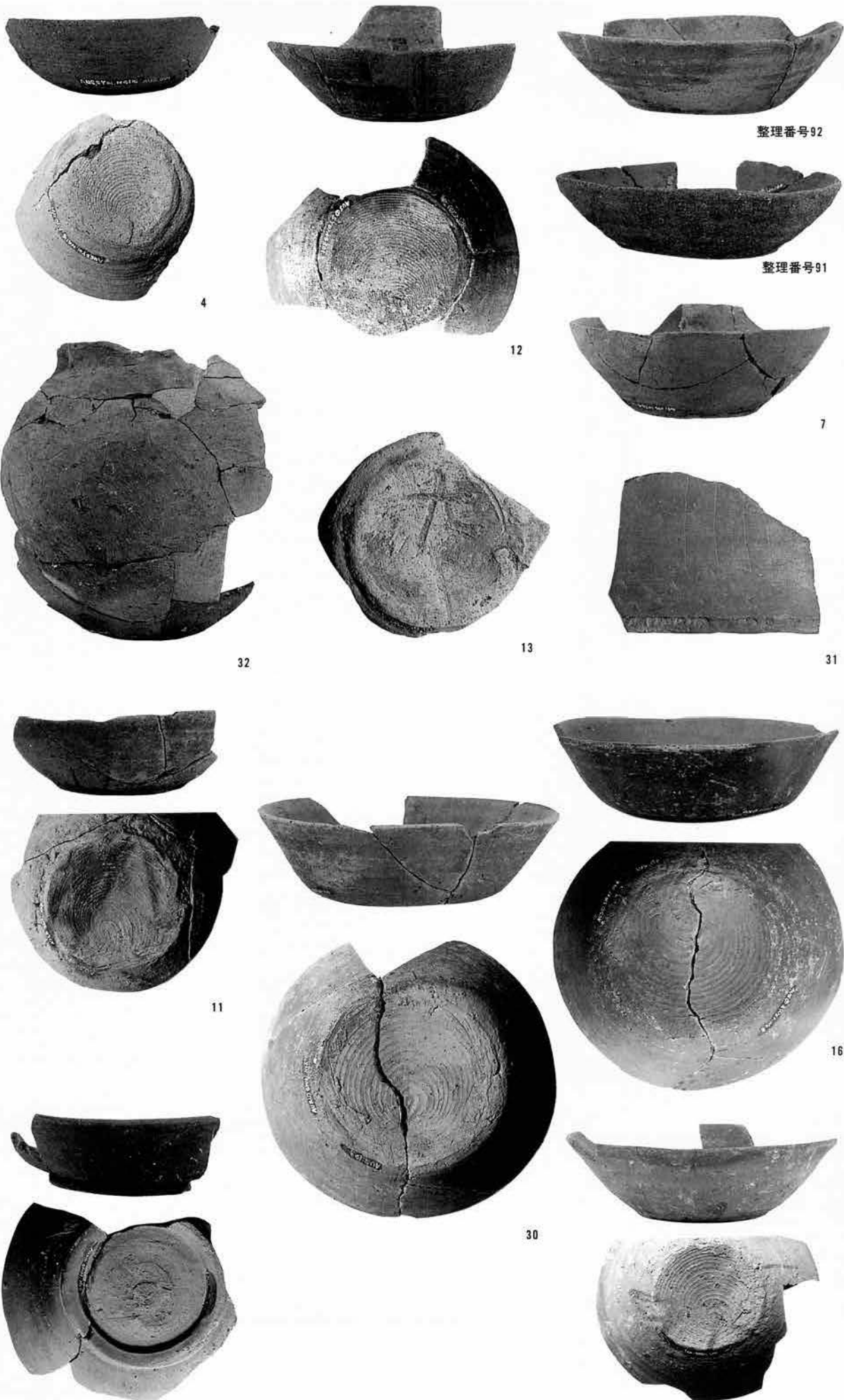
(SB07)1



(SB05)26



(SB08)9



整理番号92

整理番号91

SY01
出土須恵器

SW01・02
出土須恵器



整理番号162



2



5



13



10



12



7



19内面



3



6



14



33



28



27



26



37



38



24



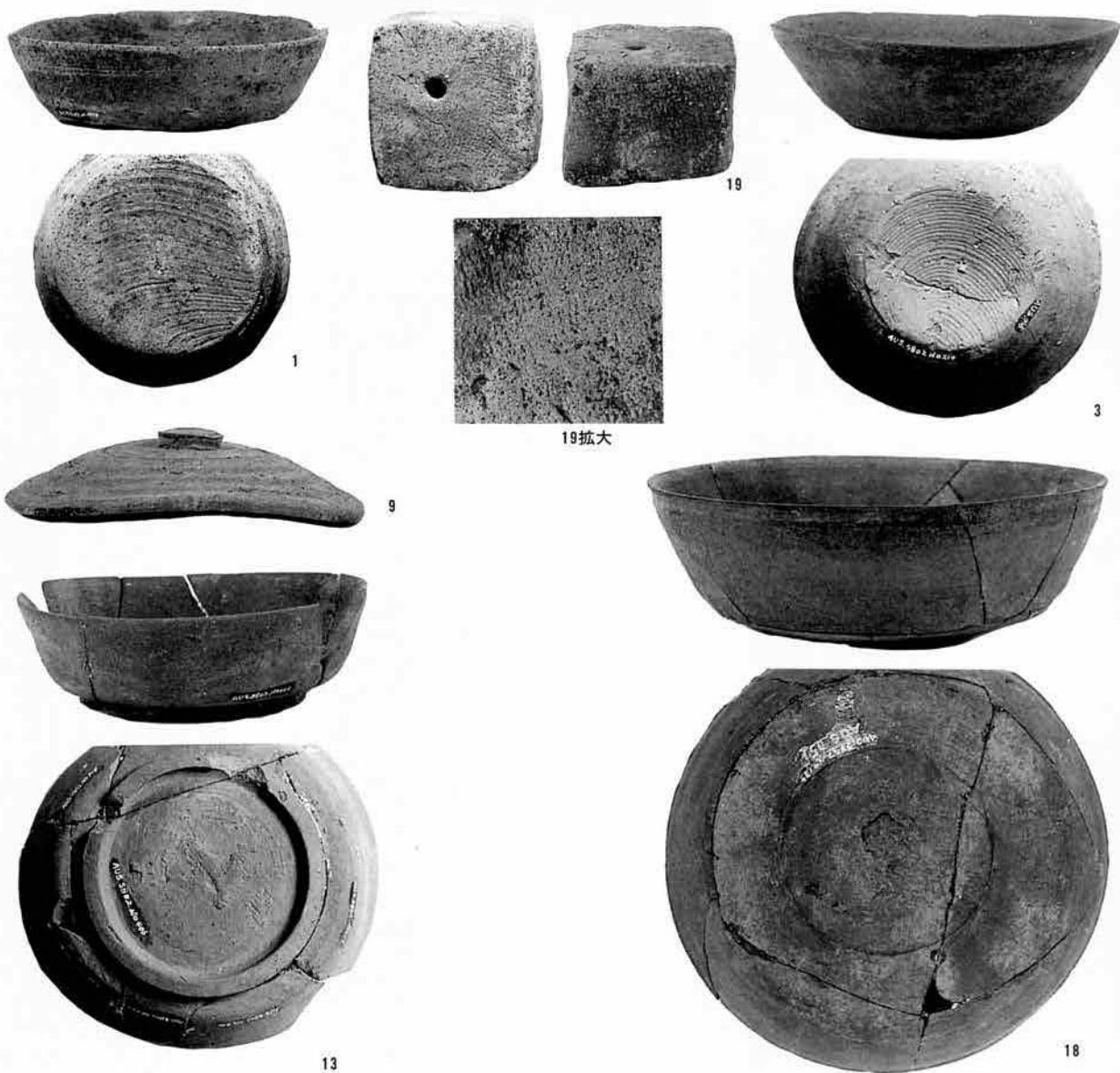
25



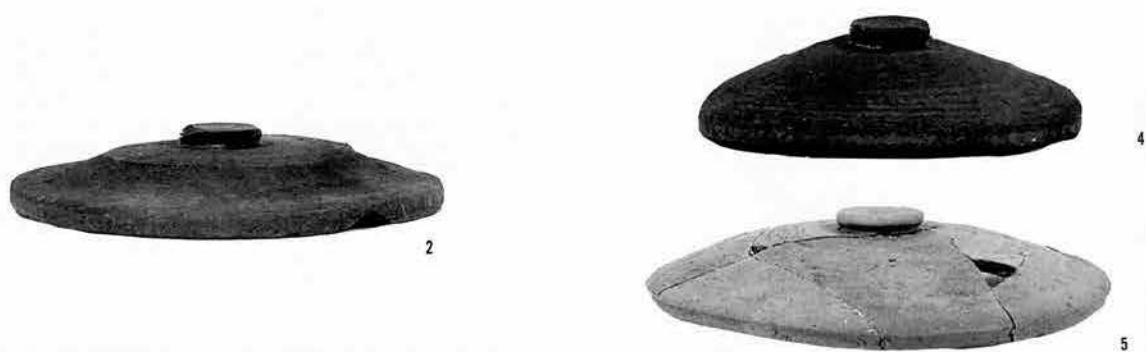
9



23



S B 02出土須恵器



S B 14出土須恵器

S B 15出土須恵器



S K 13出土須恵器

S D 05・06

出土須恵器

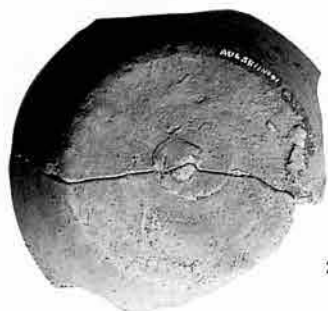
3拡大

1

2



3



2



8



7



4



整理番号15
蓋ツマミ
接合面



5



1



3,4



3



17



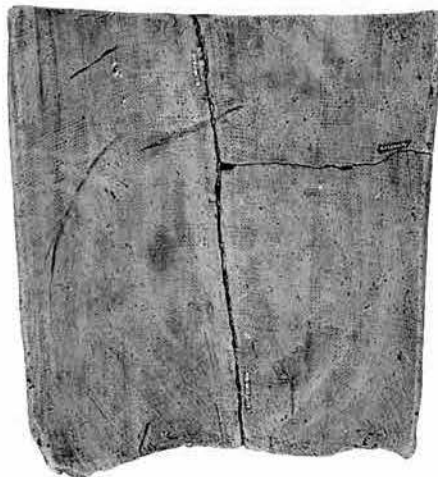
4



8

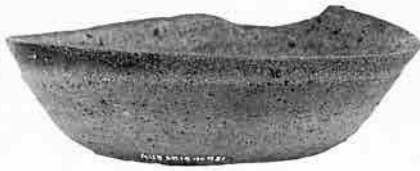


4



23

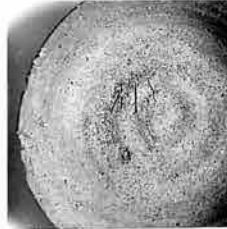




3「別」拡大



3



4「別」



4



10



26



22



29



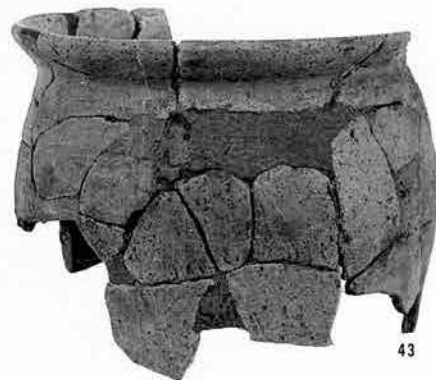
27



47



39



43

(財)長野県埋蔵文化財センター発掘調査報告書 24

上信越自動車道埋蔵文化財発掘調査報告書13

—小布施町内・中野市内その1・その2—

飯田古屋敷遺跡・玄照寺跡・がまん淵遺跡
沢田鍋土遺跡・清水山窯跡・池田端窯跡・牛出古窯遺跡

発行 平成9年3月31日発行
発行者 日本道路公団名古屋建設局
長野県教育委員会
(財)長野県埋蔵文化財センター
〒387 長野県更埴市屋代字清水260-6
TEL 026-274-3891

印刷 信毎書籍印刷株式会社