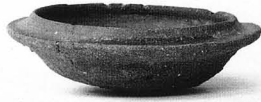


第10加工段(西より)



才ノ峠遺跡調査前遠景
(東より)



5-1



5-6



5-7



5-8



5-9



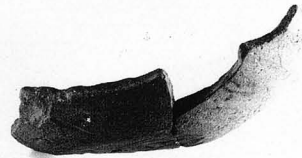
5-10



5-2



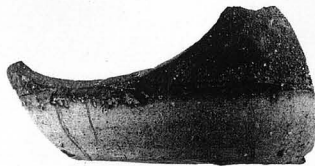
5-5



5-3



5-4



5-11



5-16



5-14



5-20



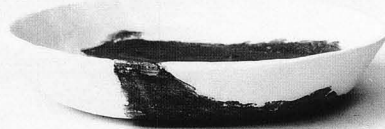
5-12



5-13



5-15



5-17



5-18



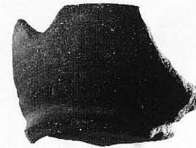
5-19



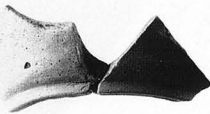
6-1



6-2



6-3



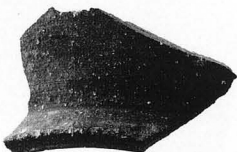
6-4



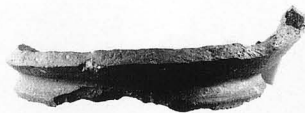
6-6



6-7



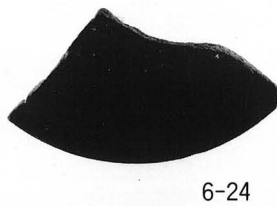
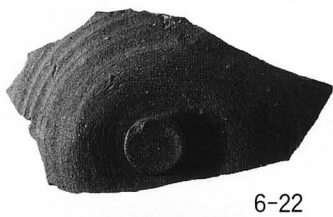
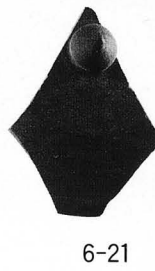
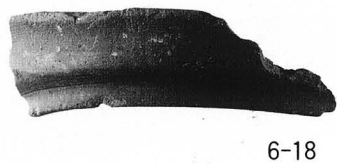
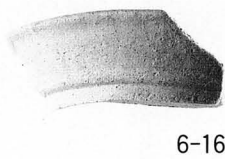
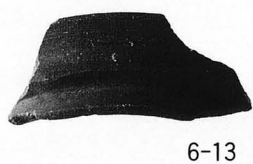
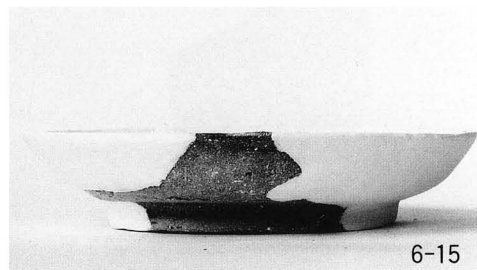
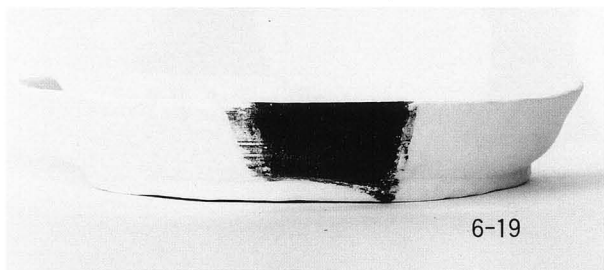
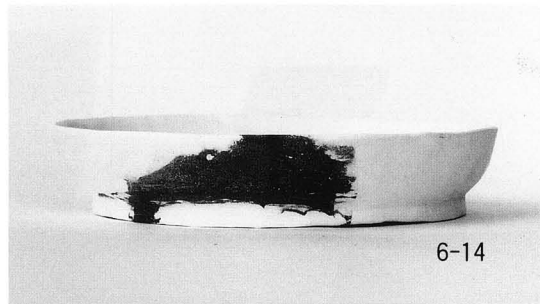
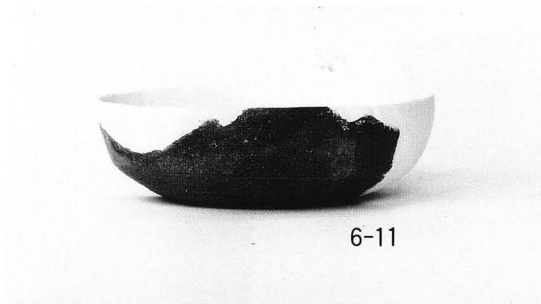
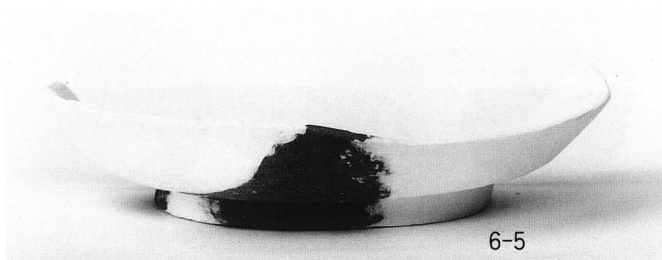
6-8



6-9



6-12



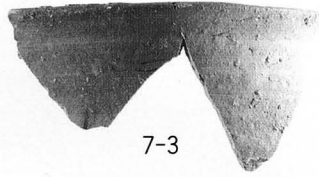
第Ⅰ、第Ⅱ調査区出土須恵器



7-1



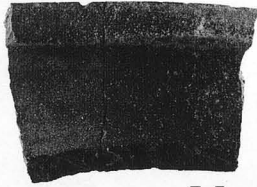
7-2



7-3



7-4



7-5



7-6



7-7



7-8



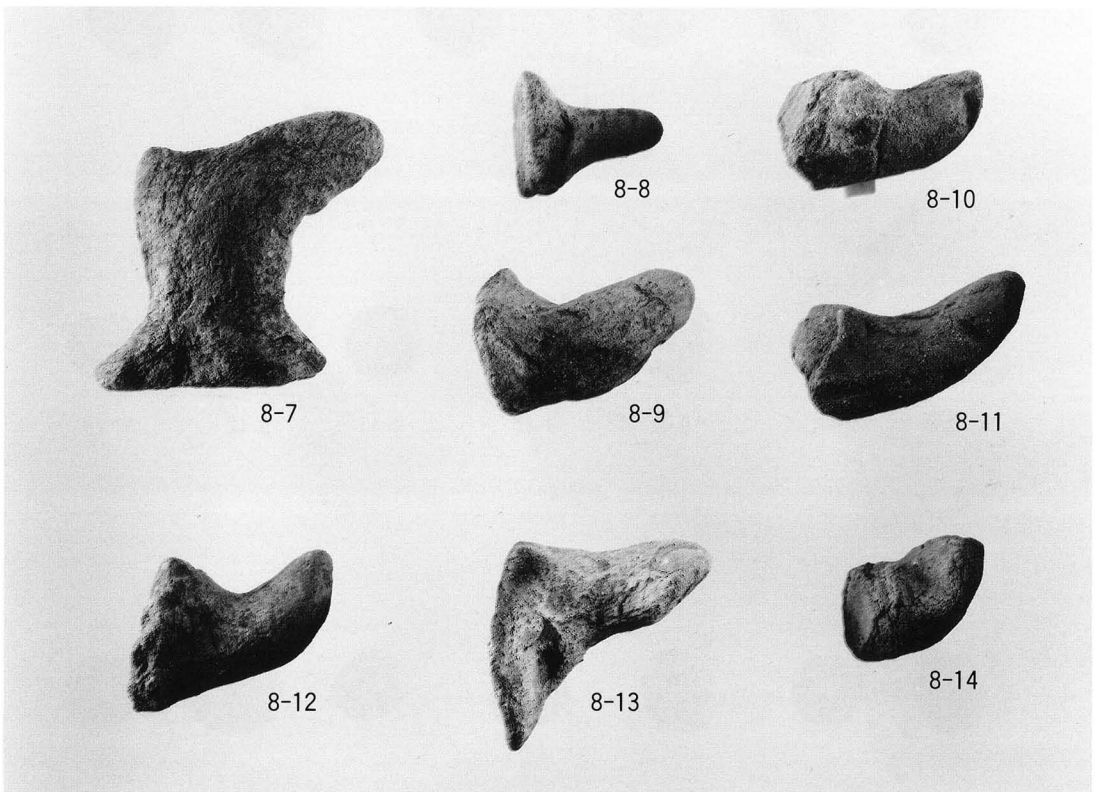
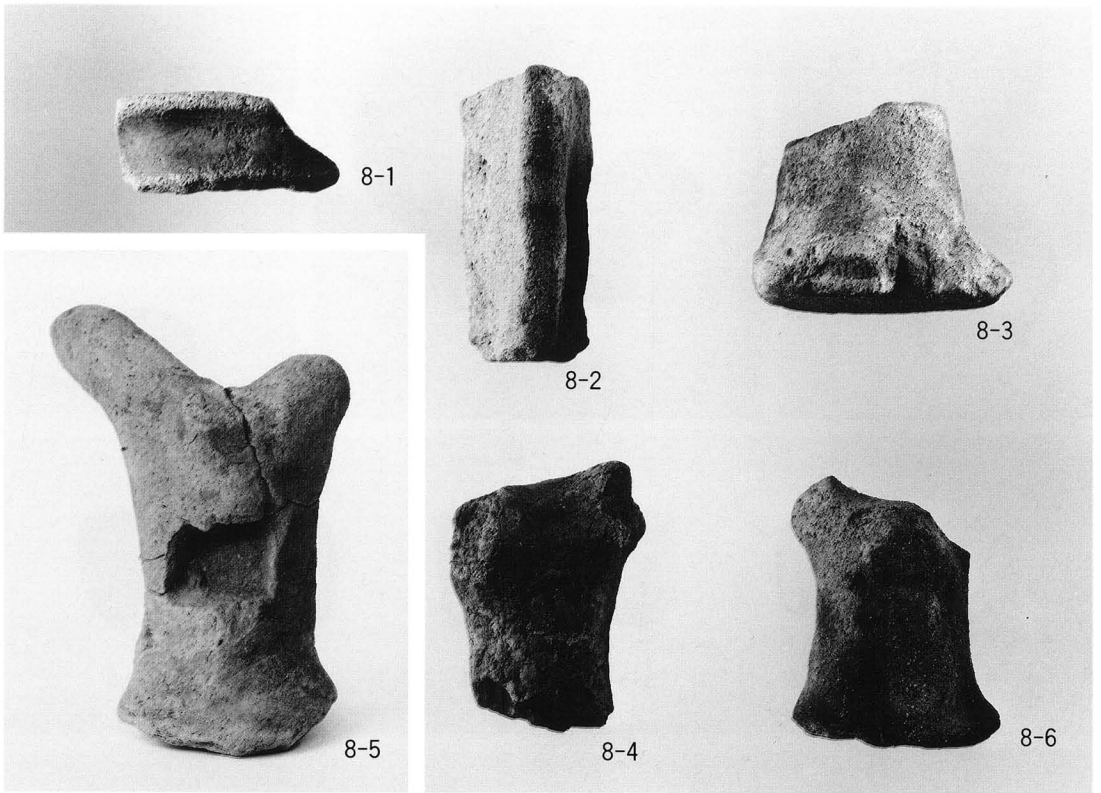
7-9



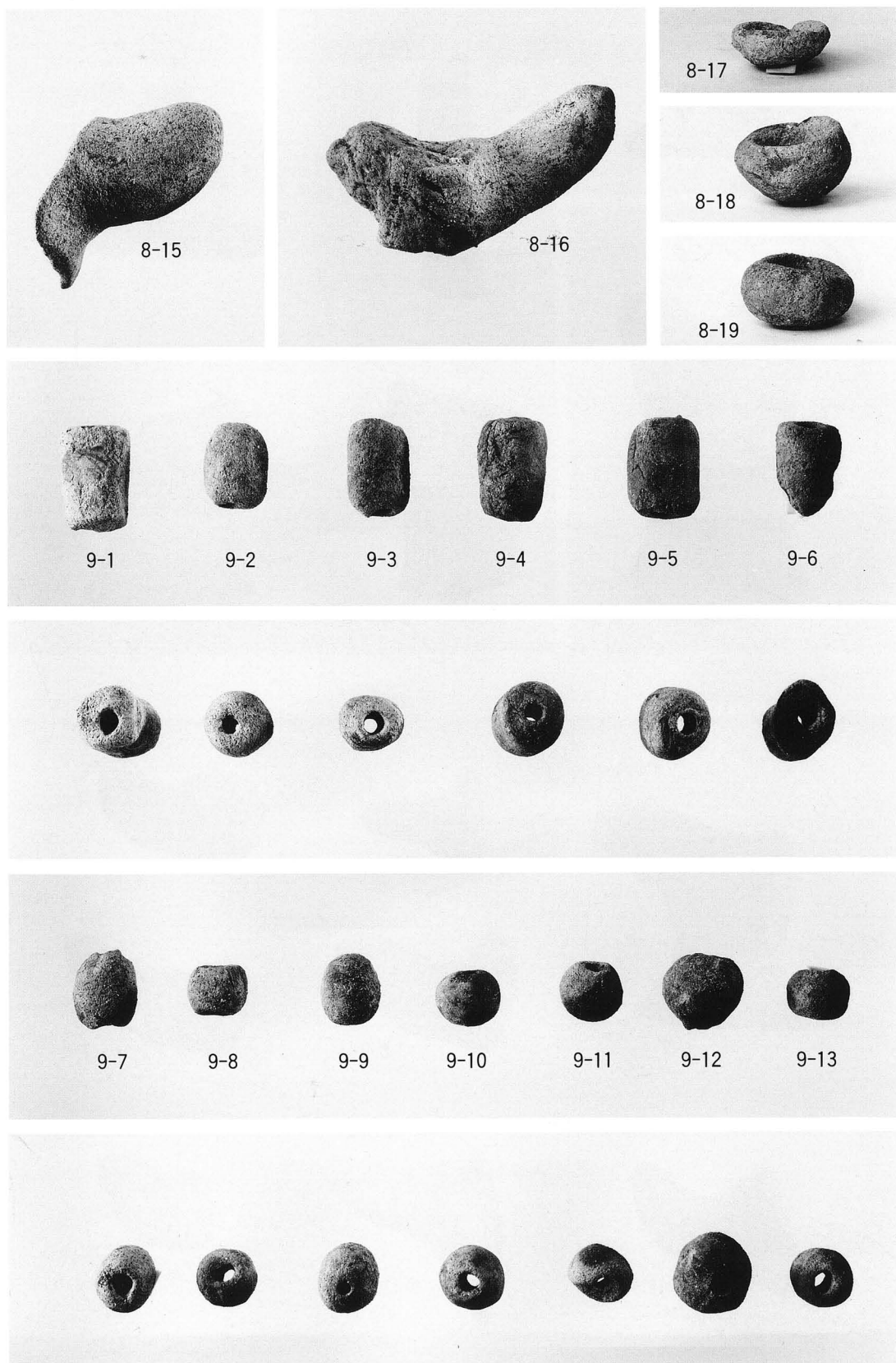
7-10



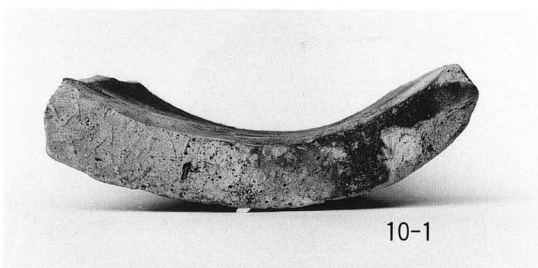
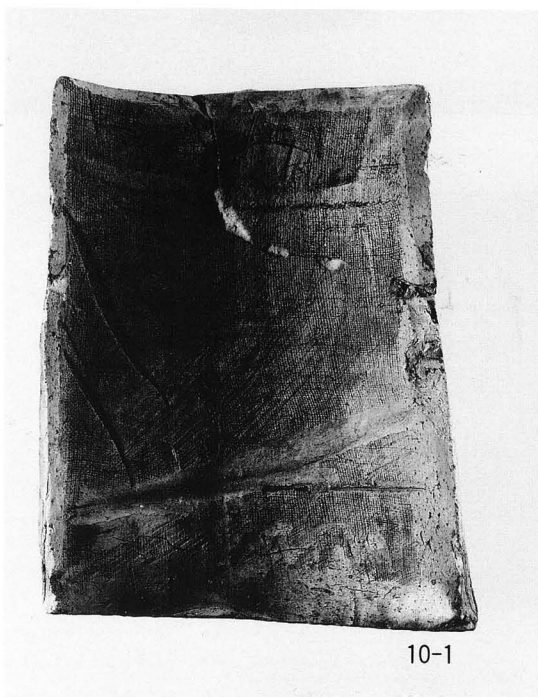
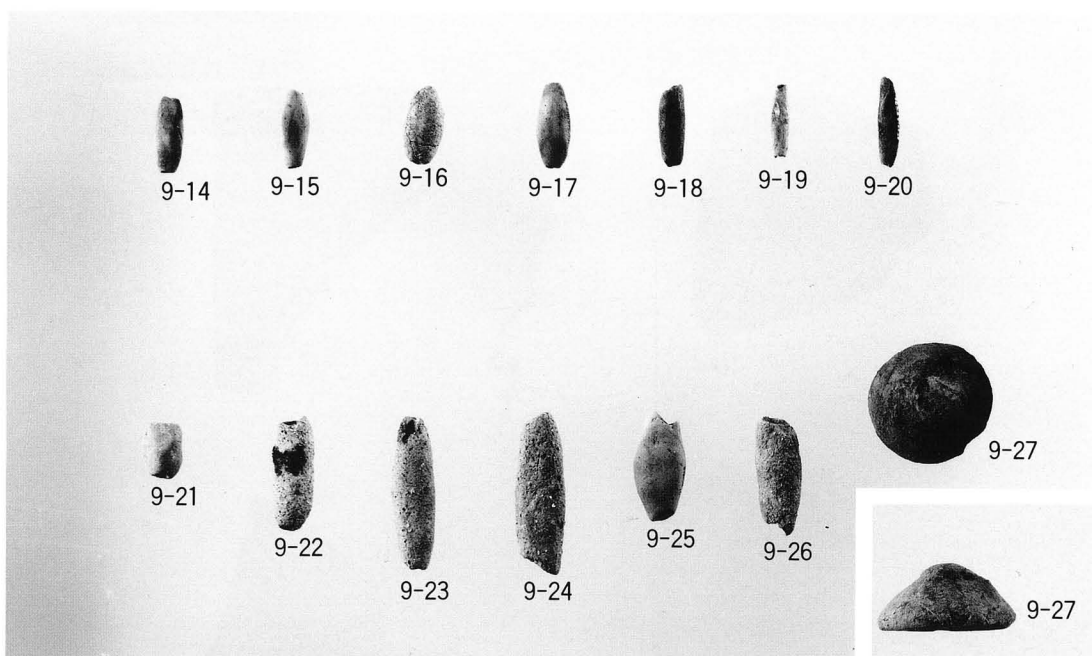
7-11



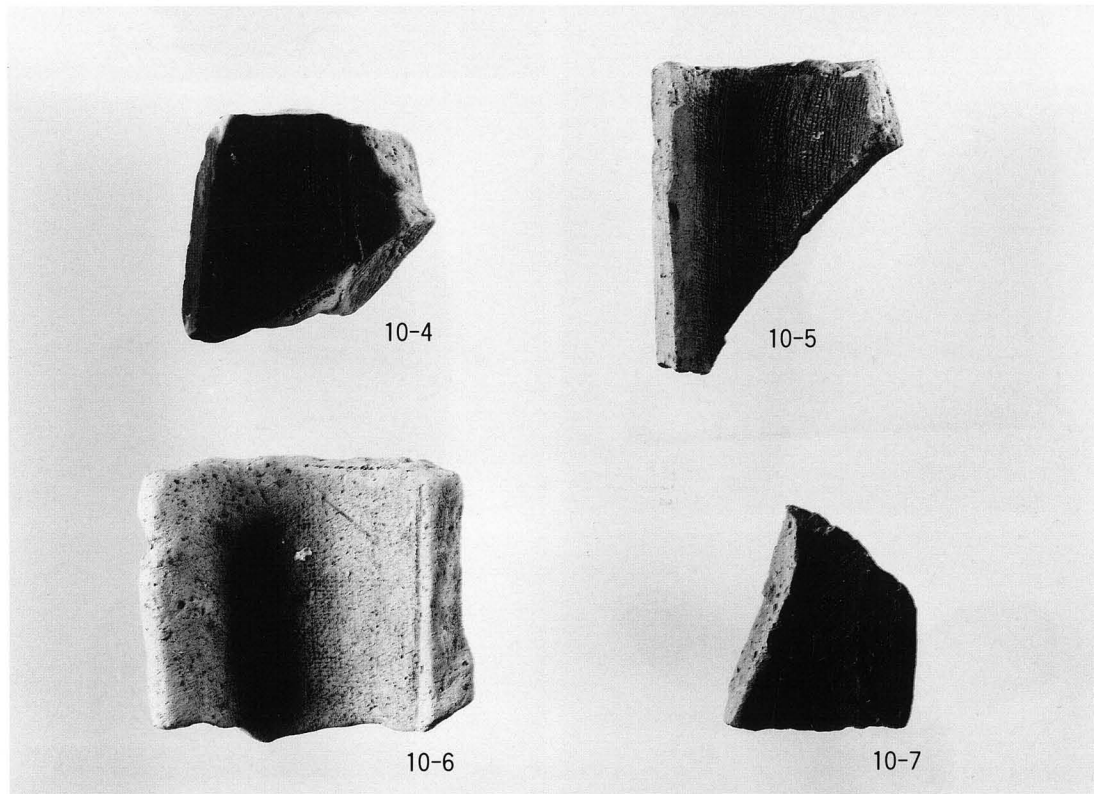
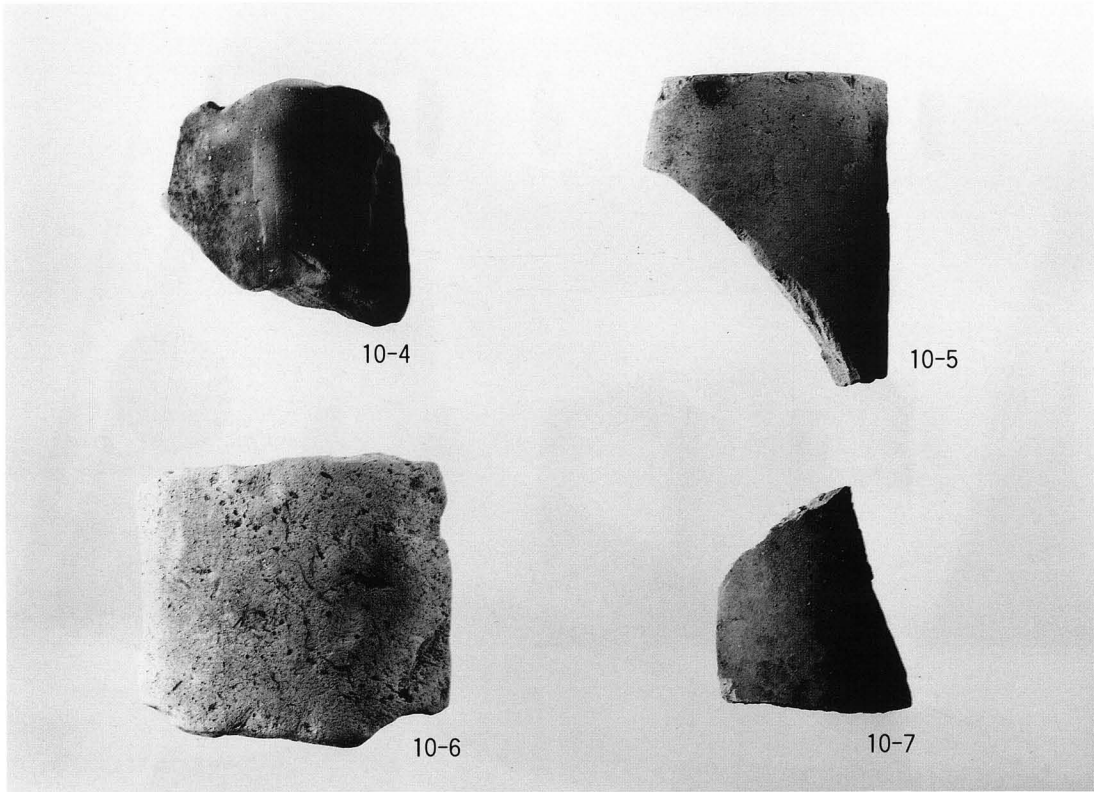
第I、第II調査区出土土師器



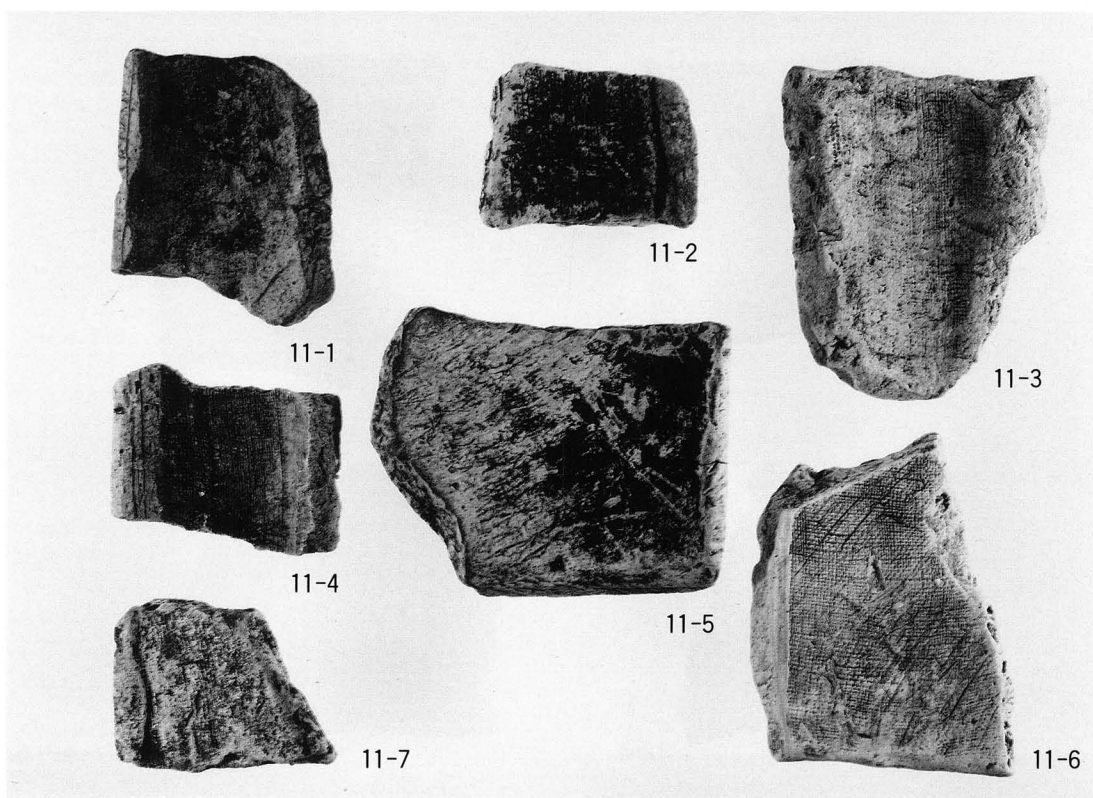
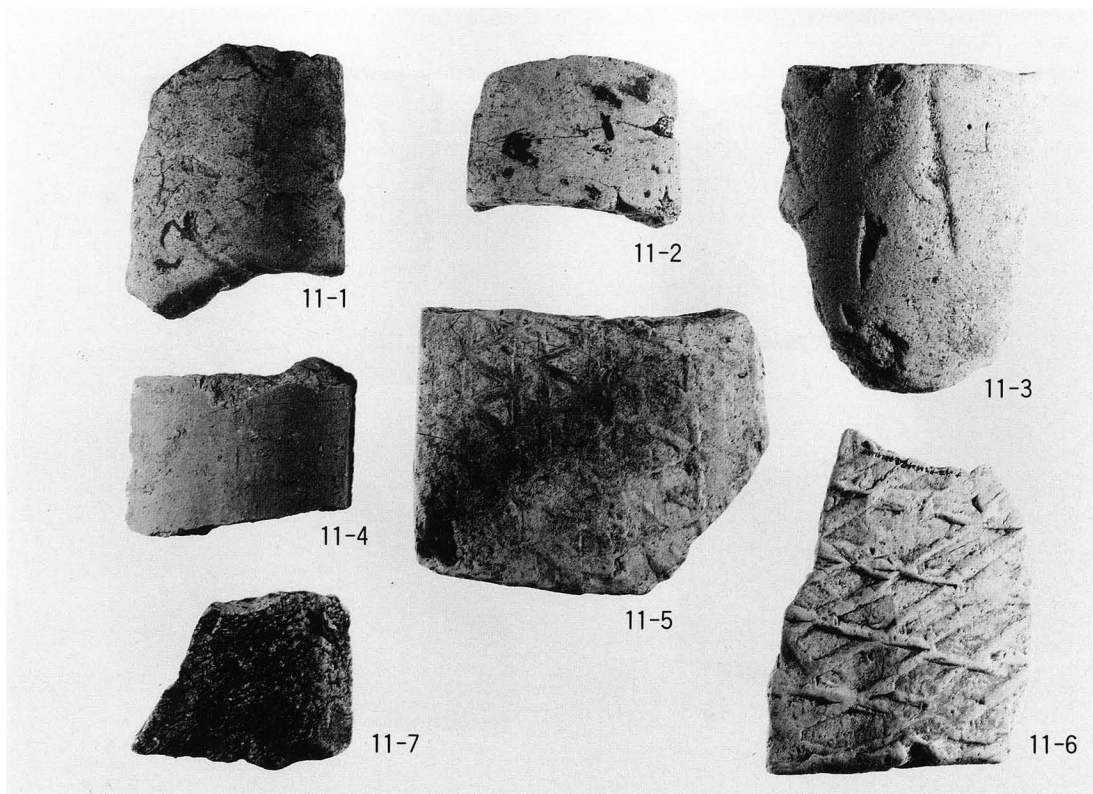
第Ⅰ、第Ⅱ調査区出土土師器・土製品



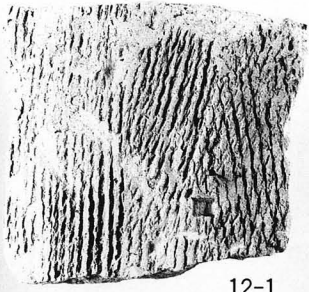
第 I、第 II 調査区出土土製品・瓦



第Ⅰ、第Ⅱ調査区出土瓦



第 I、第 II 調査区出土瓦



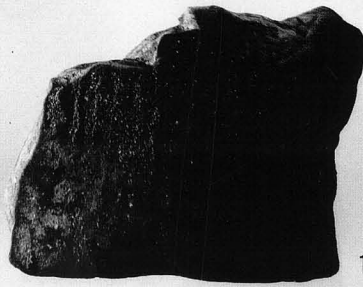
12-1



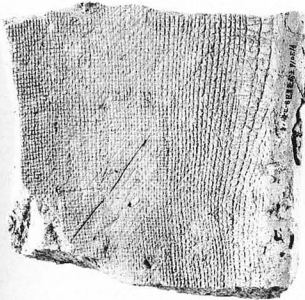
12-2



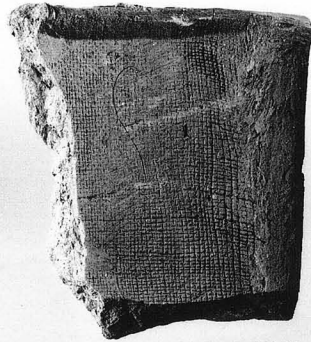
12-3



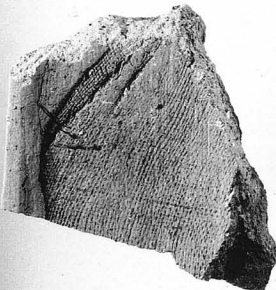
12-4



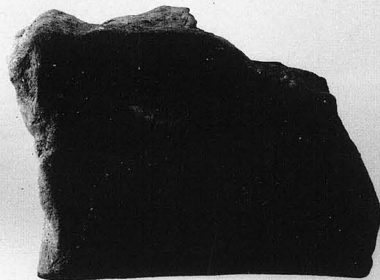
12-1



12-2

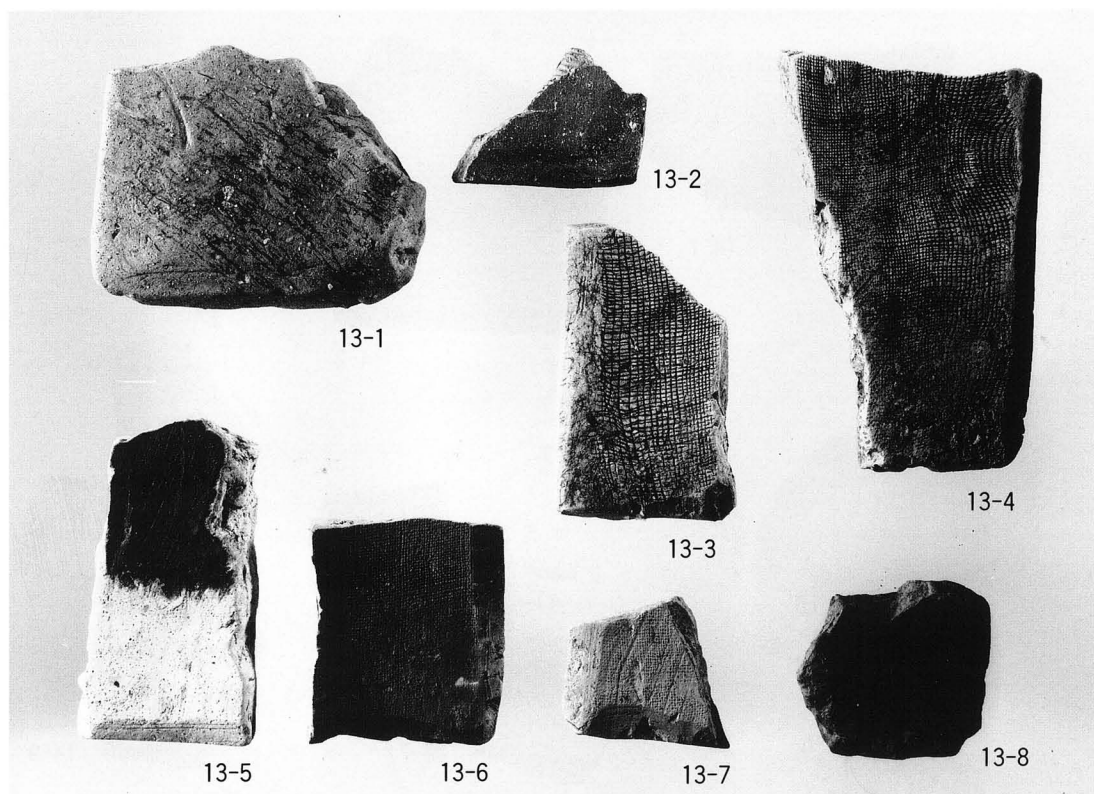
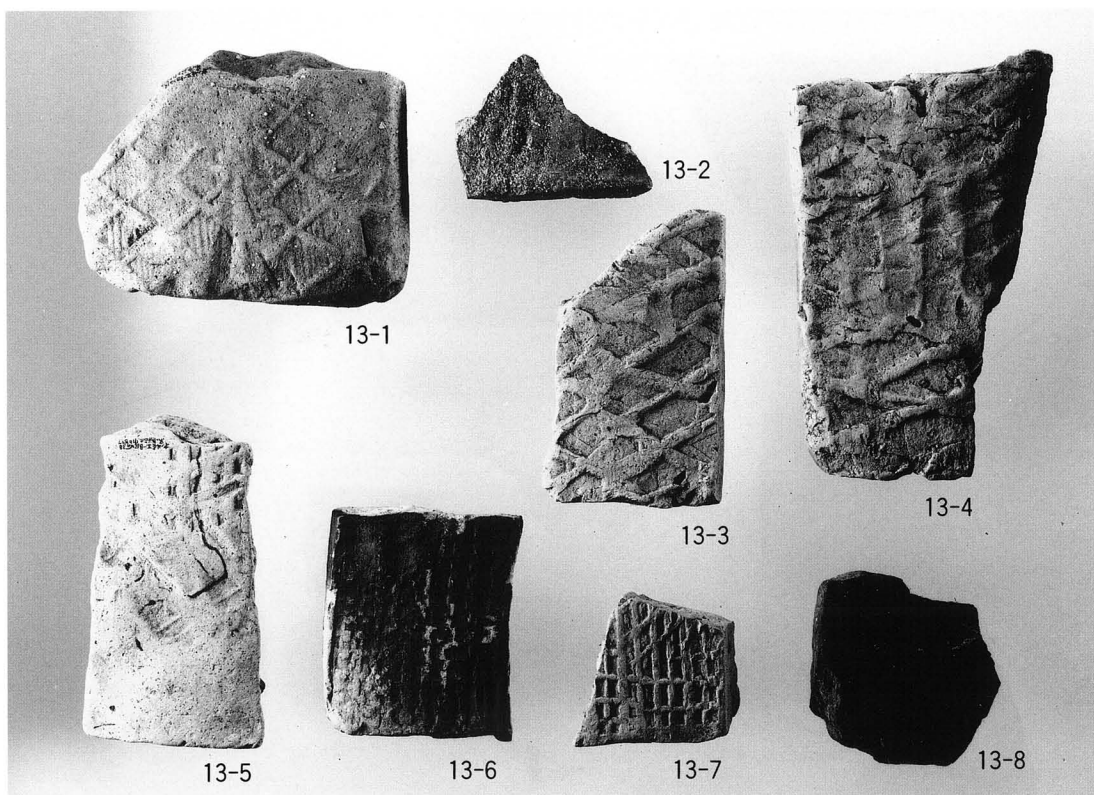


12-3

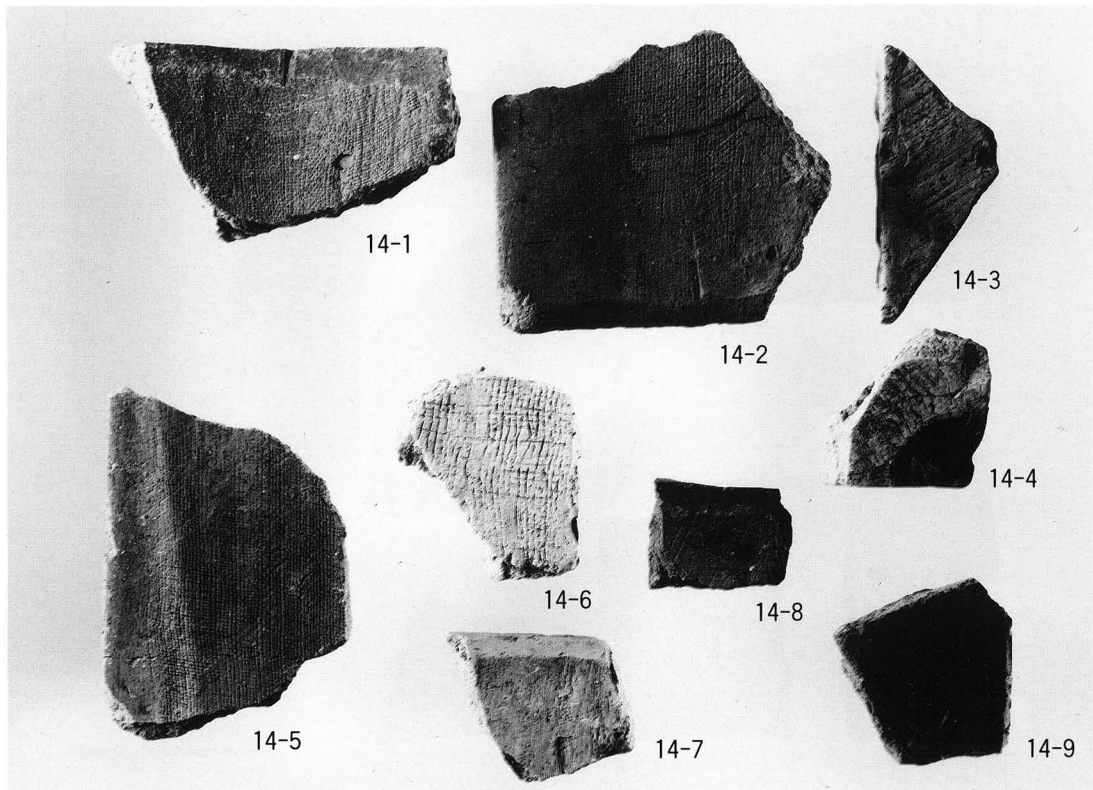
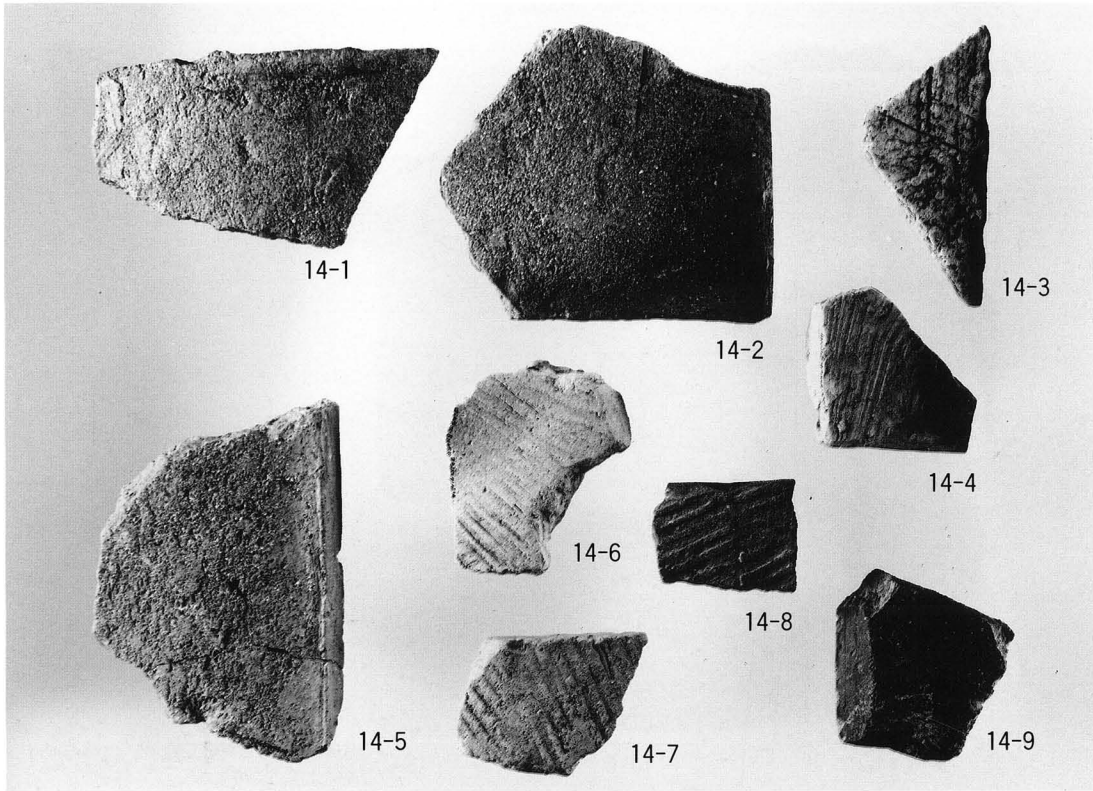


12-4

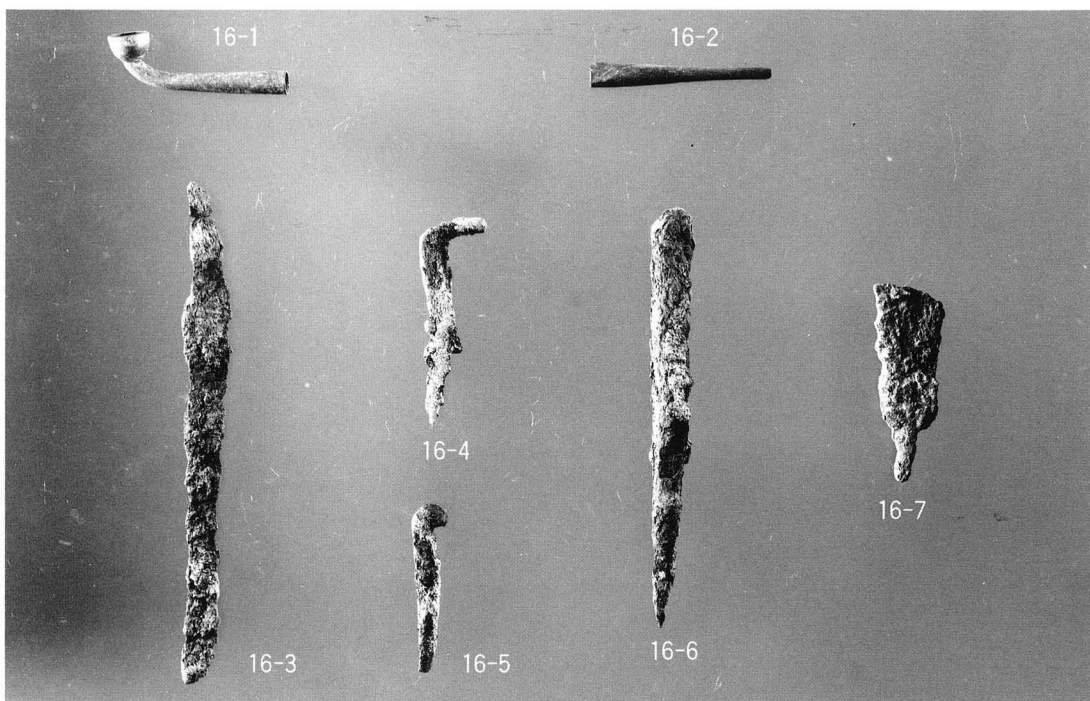
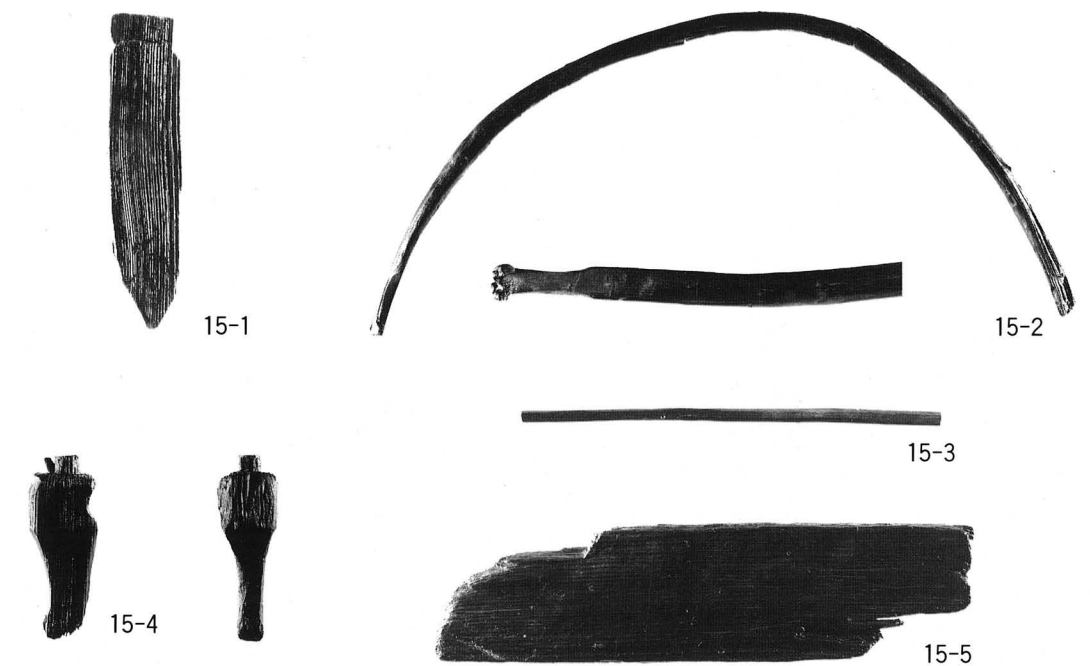
第 I、第 II 調査区出土瓦



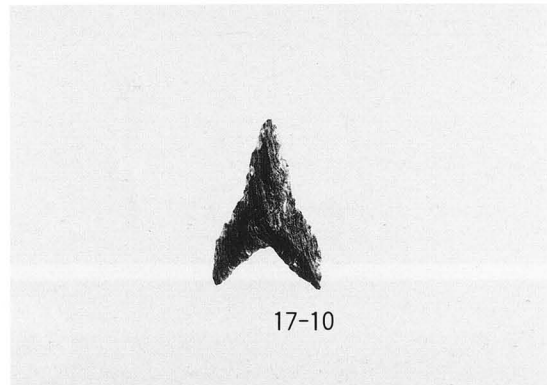
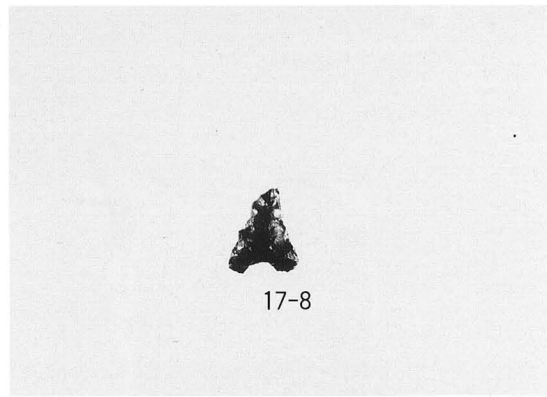
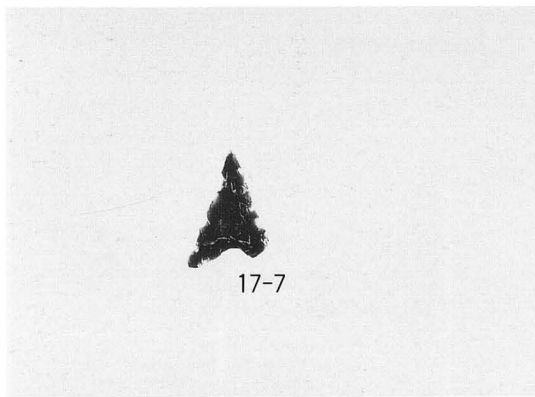
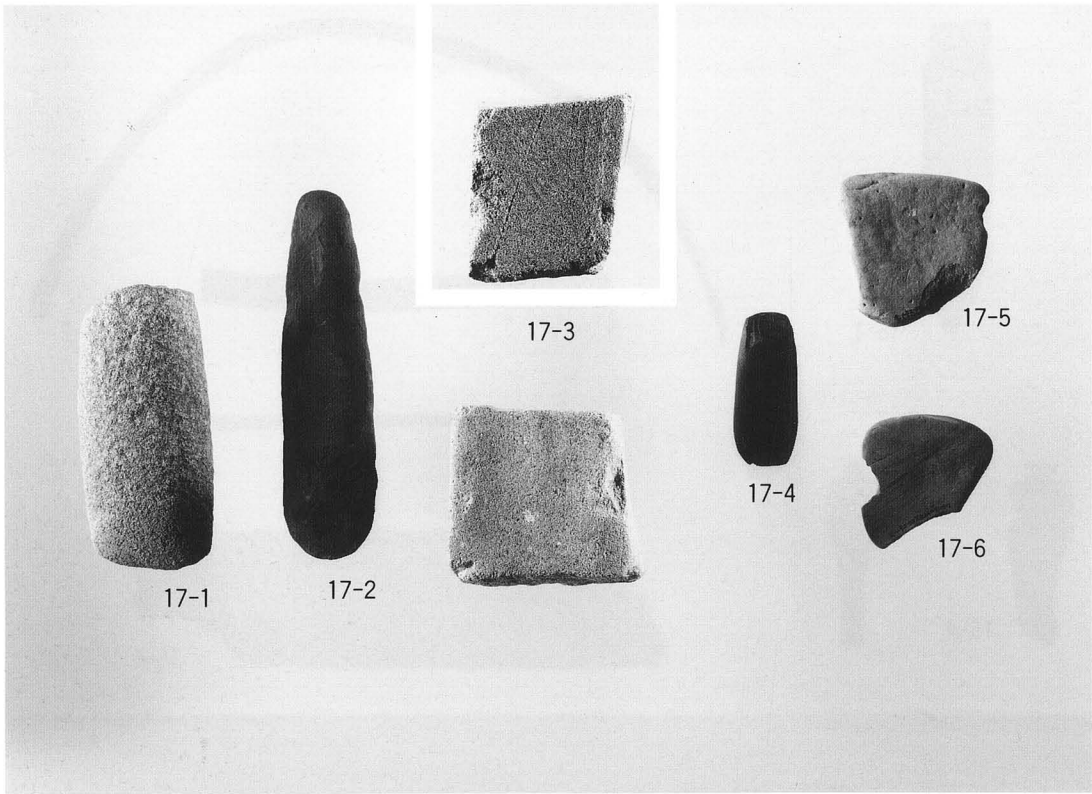
第 I、第 II 調査区出土瓦



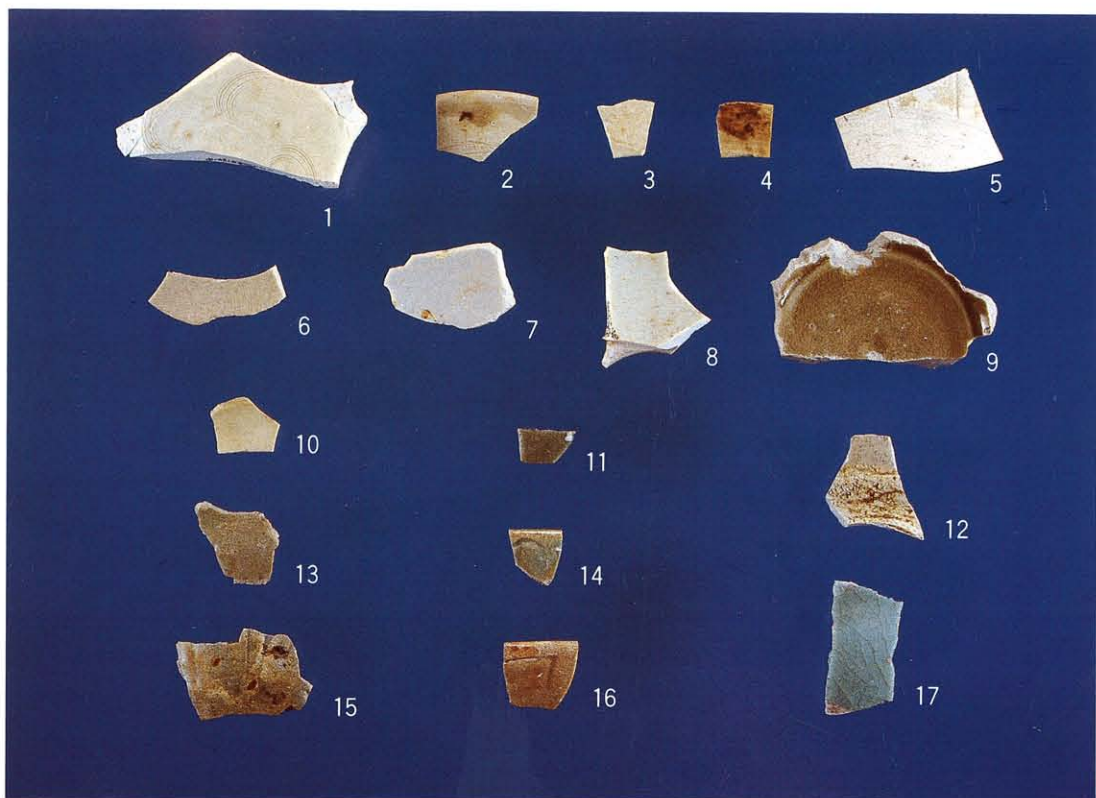
第I、第II調査区出土瓦



第Ⅰ、第Ⅱ調査区出土木製品、鉄製品、古銭



第Ⅰ、第Ⅱ調査区出土石器



第 I、第 II 調査区出土磁器



20-1



20-2



20-3



20-4



20-5



20-6



20-9



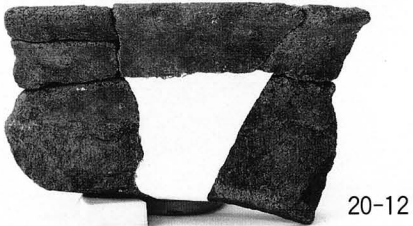
20-10



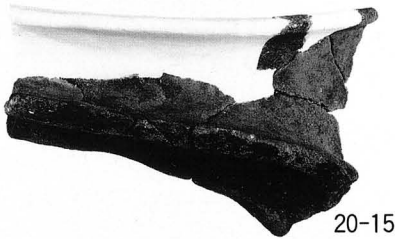
20-11



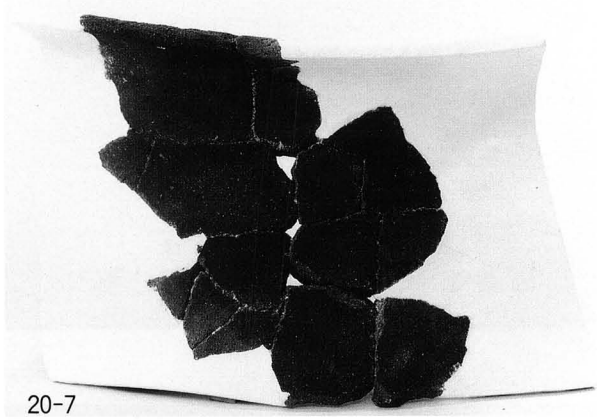
20-13



20-12



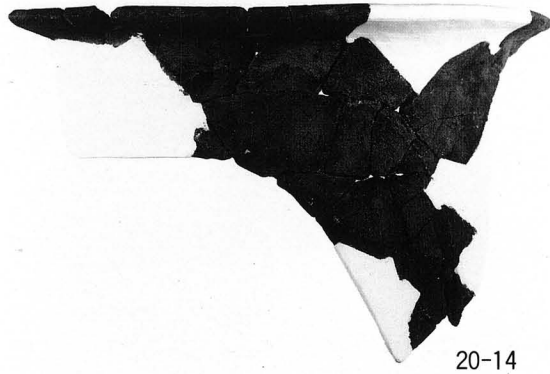
20-15



20-7



20-8



20-14



24-1



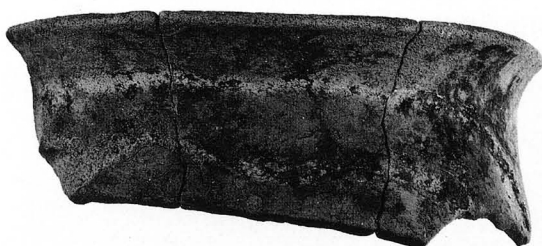
24-2



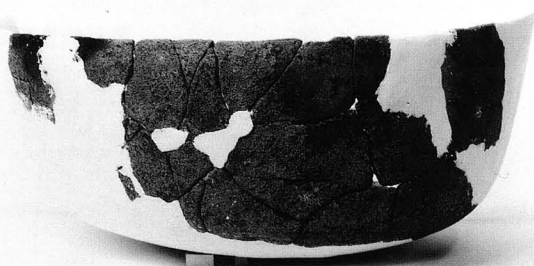
24-3



24-4



24-10



24-13



24-5



24-6



24-7



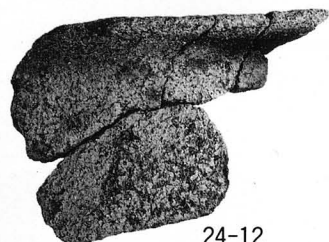
24-8



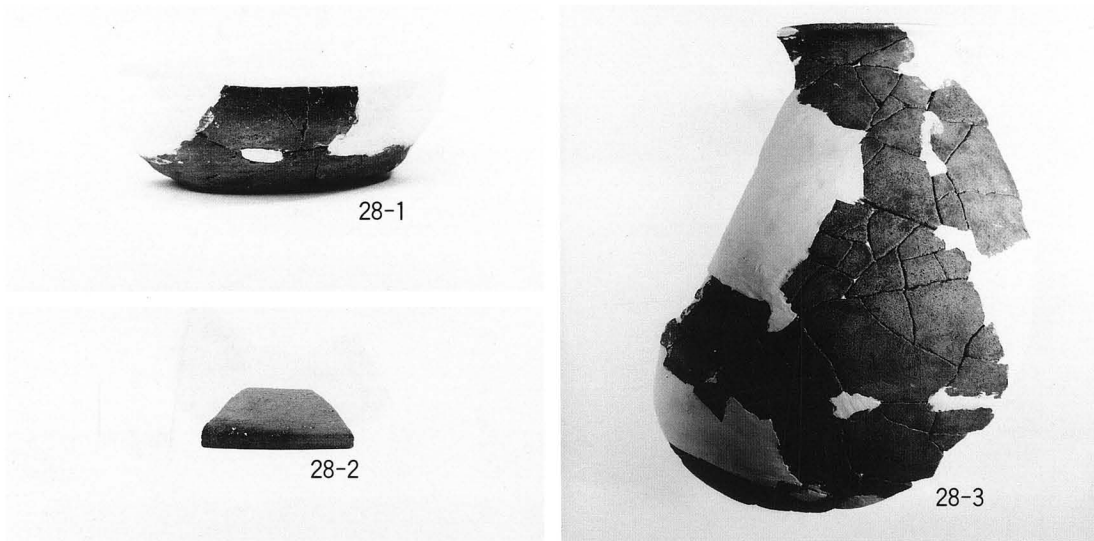
24-9



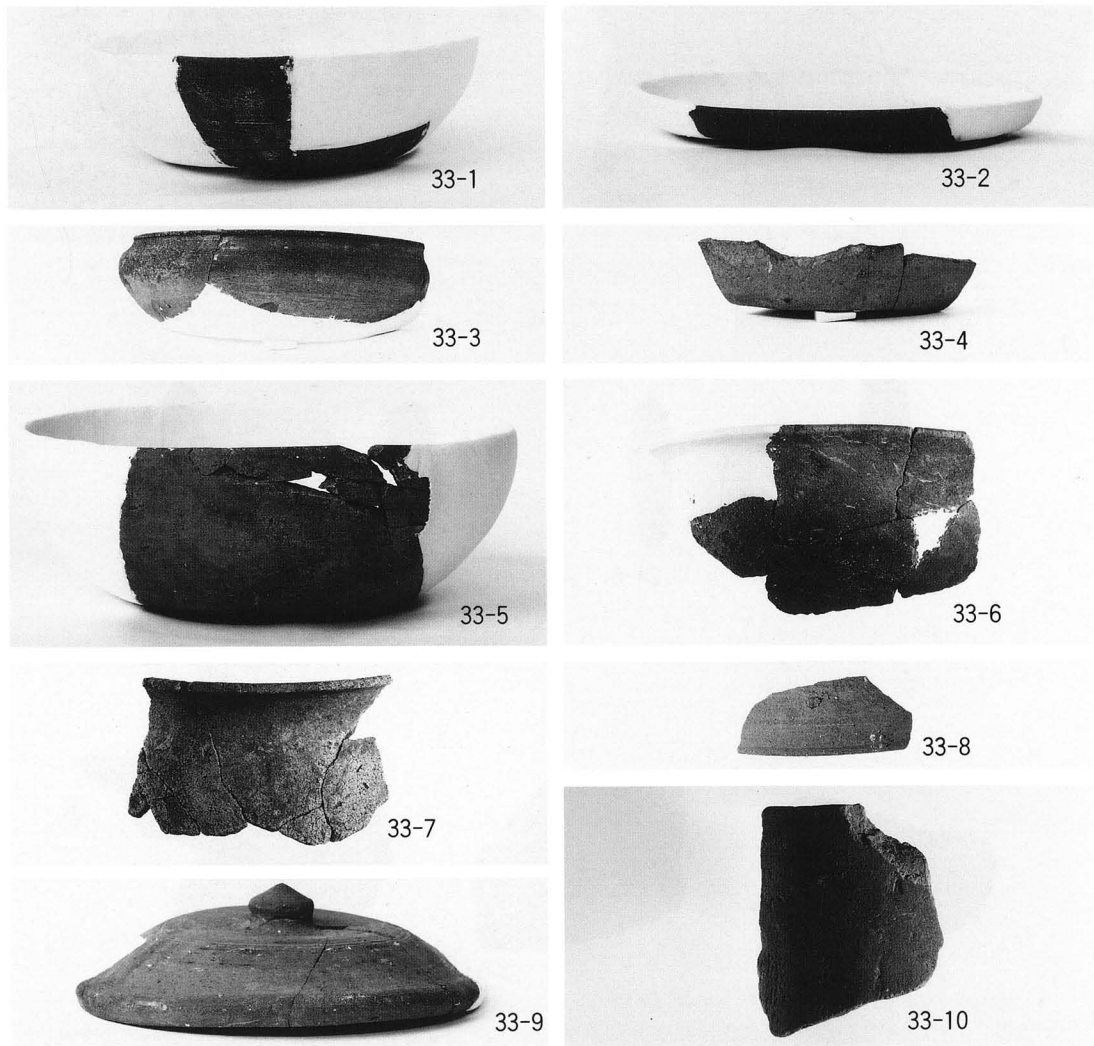
24-11



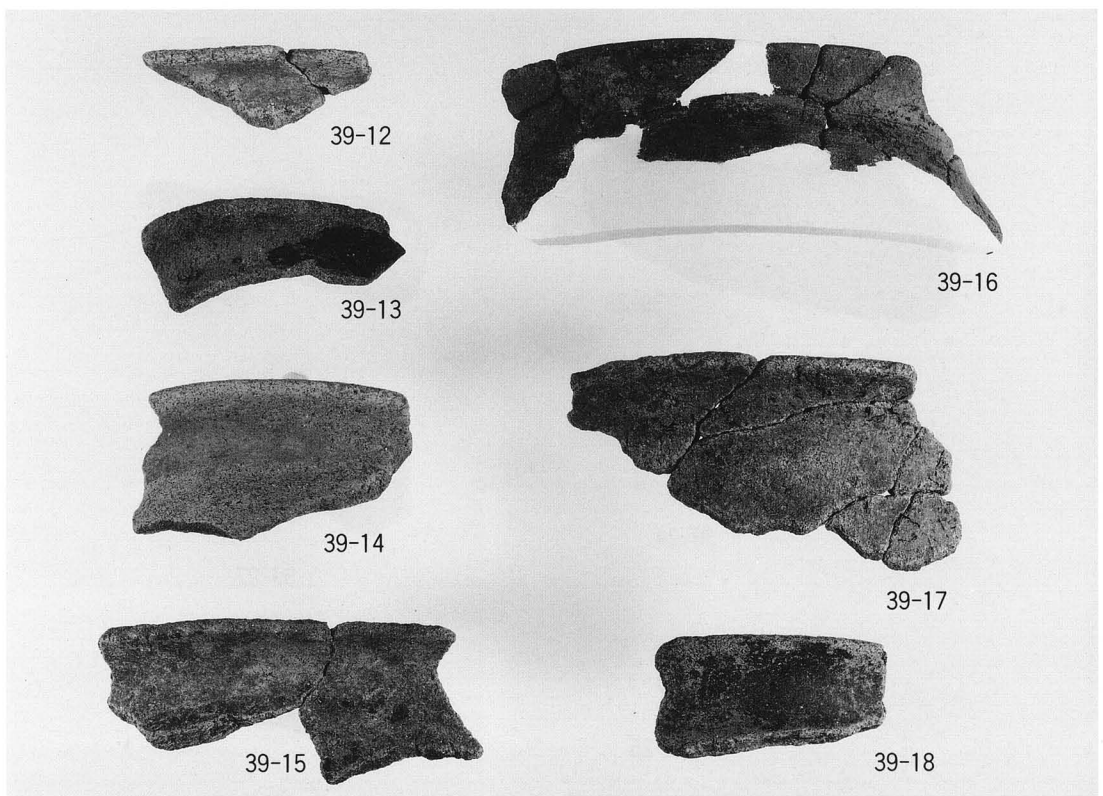
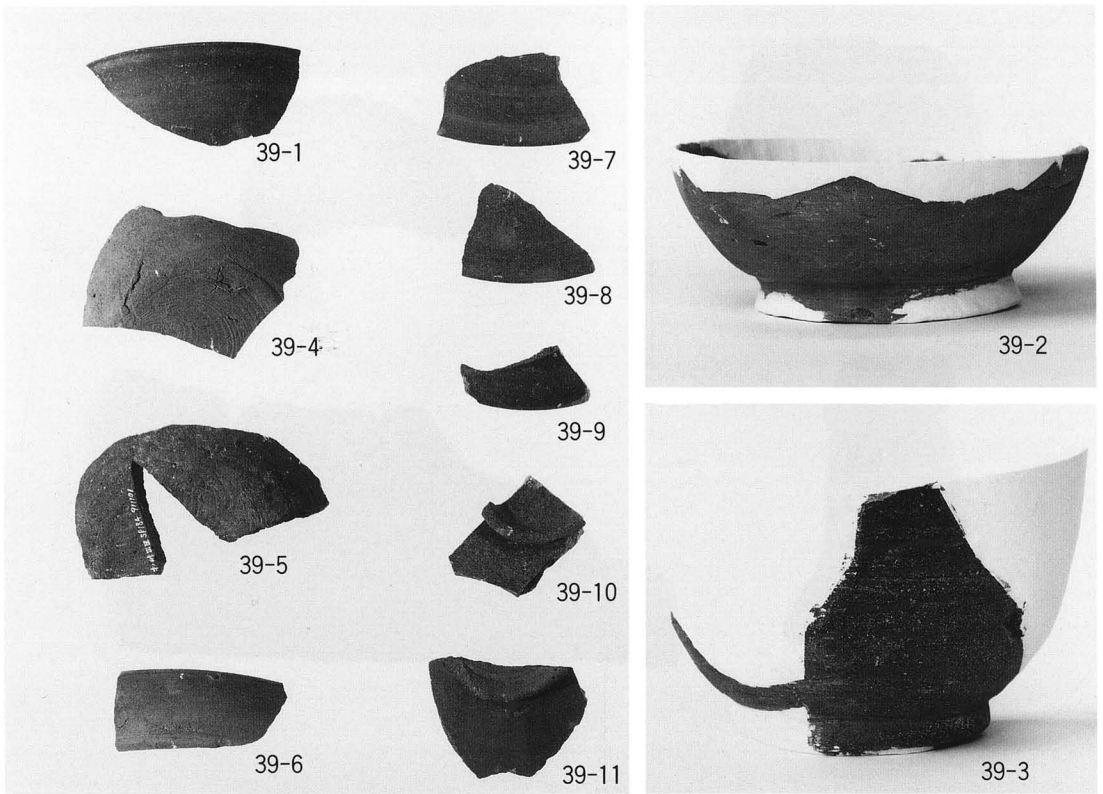
24-12



第Ⅲ調査区SX01出土遺物



第Ⅲ調査区第1、第2加工段出土遺物



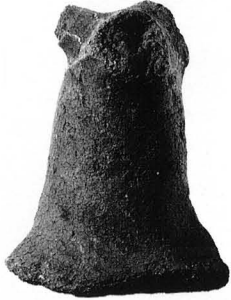
第Ⅲ調査区第3加工段出土遺物



39-19



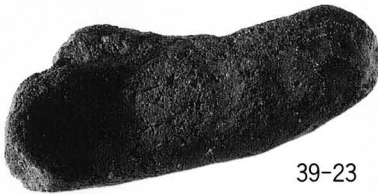
39-20



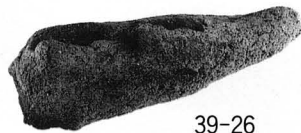
39-22



39-21



39-23



39-26



39-24

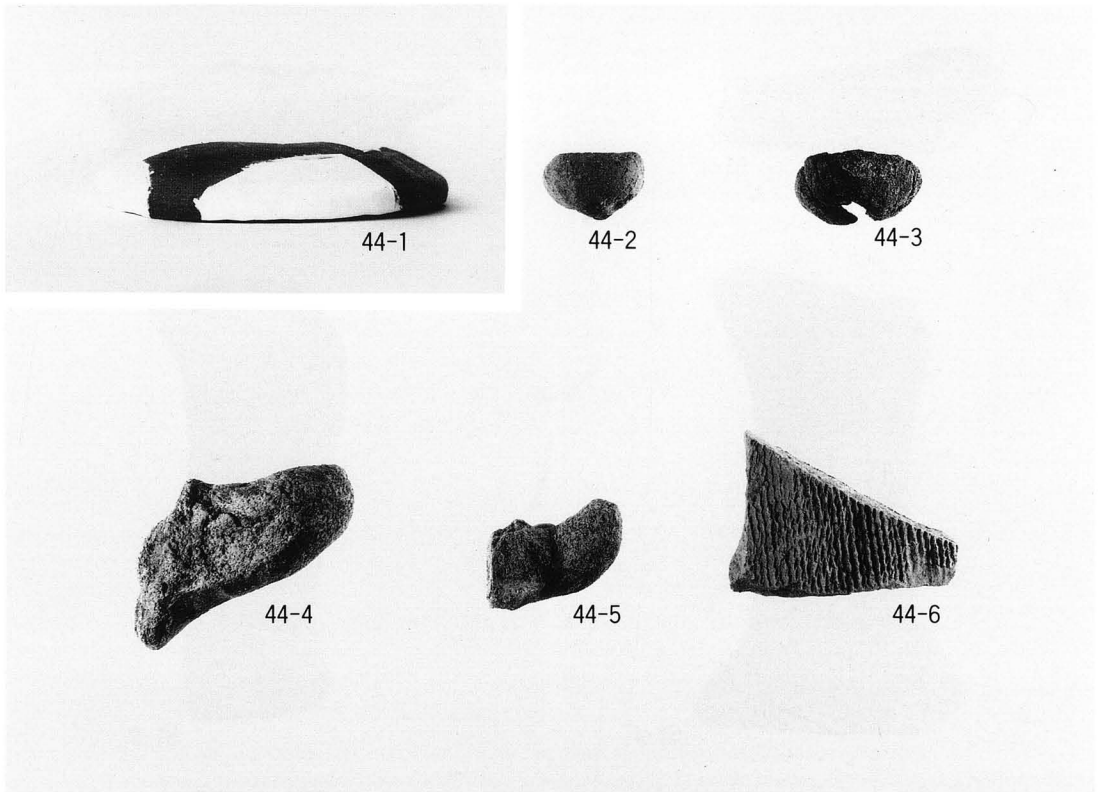


39-27

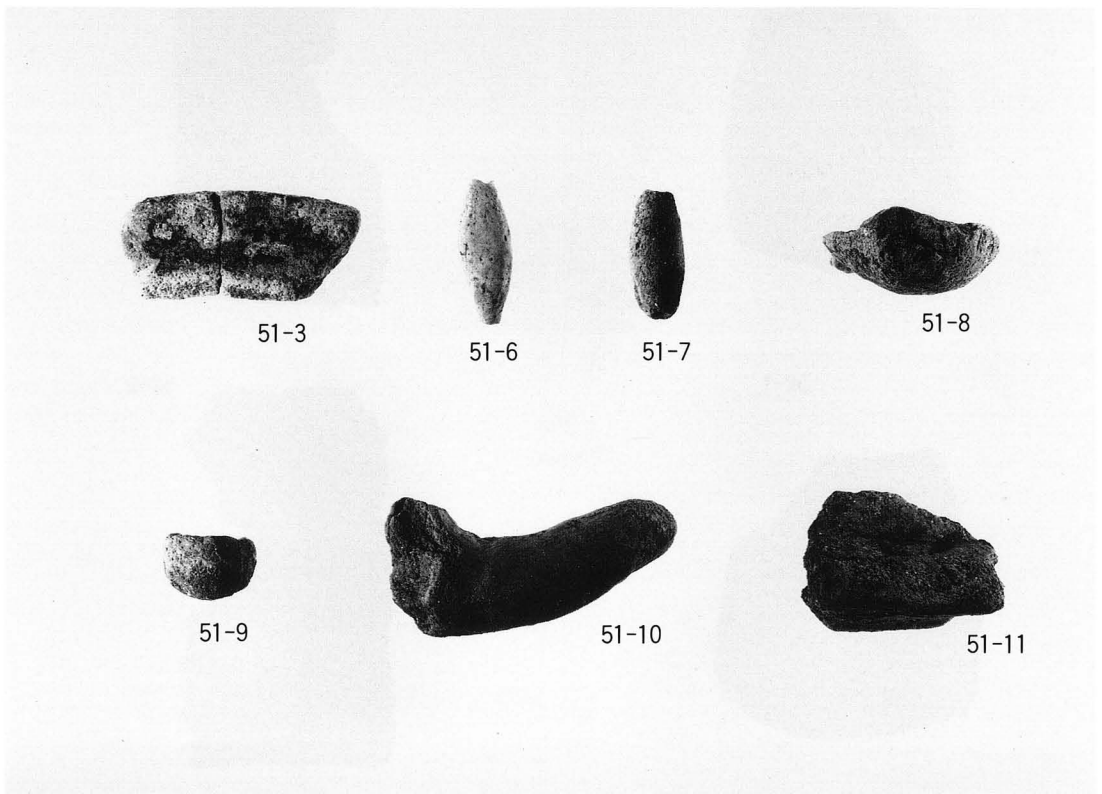


39-25





第Ⅲ調査区第4、第5、第6加工段出土遺物



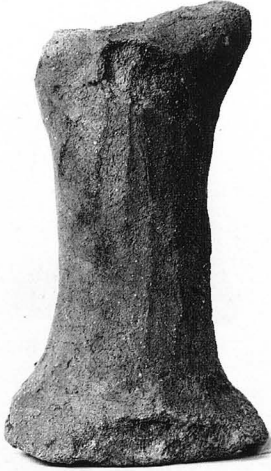
第Ⅲ調査区第7加工段出土遺物



51-1



51-2



51-4



51-5



52-1



52-2





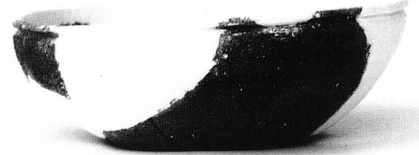
54-1



54-7



54-8



54-9



54-10



54-12



54-13



54-14



54-2



54-4



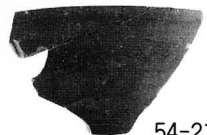
54-5



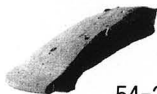
54-6



54-11



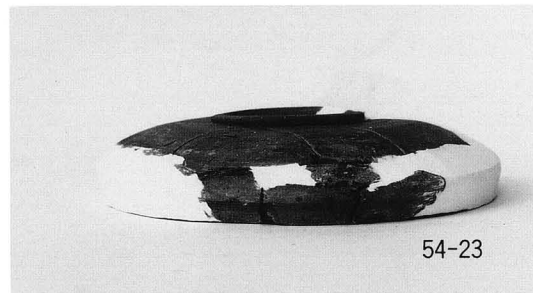
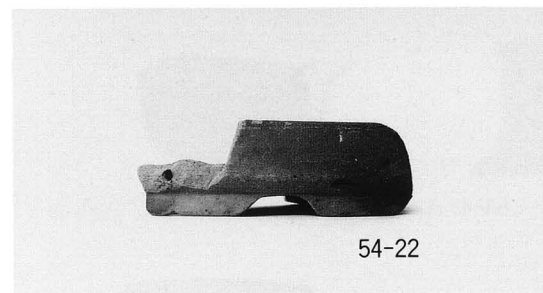
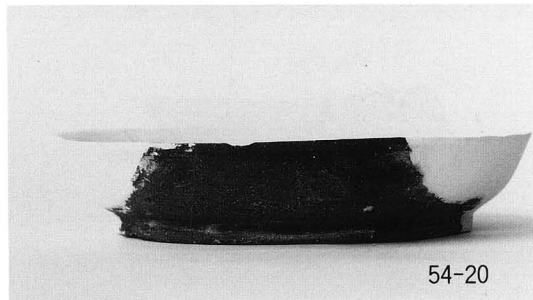
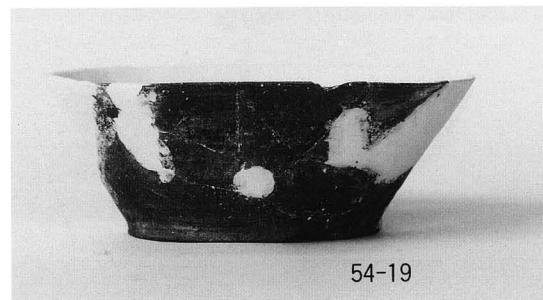
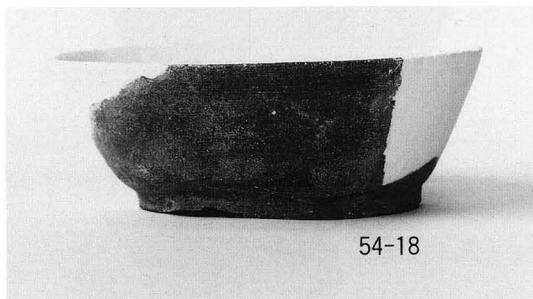
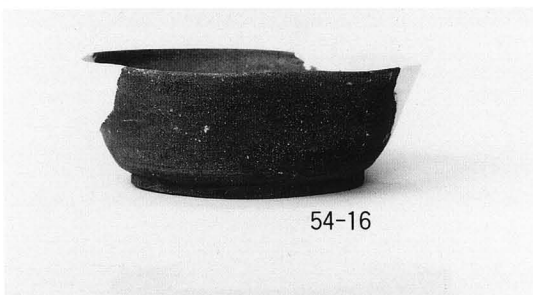
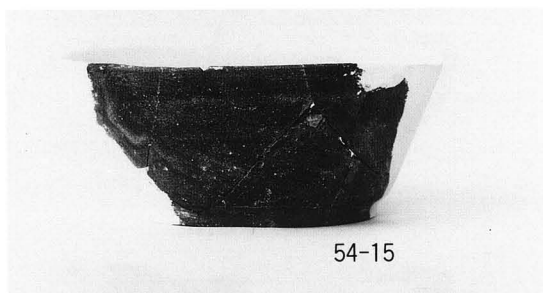
54-21



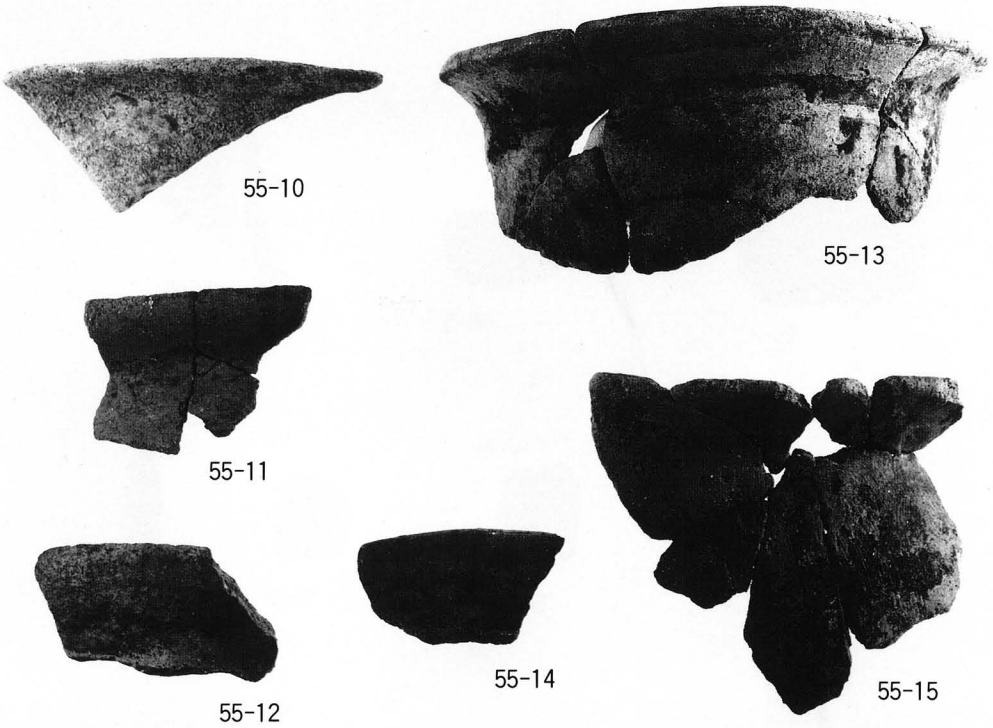
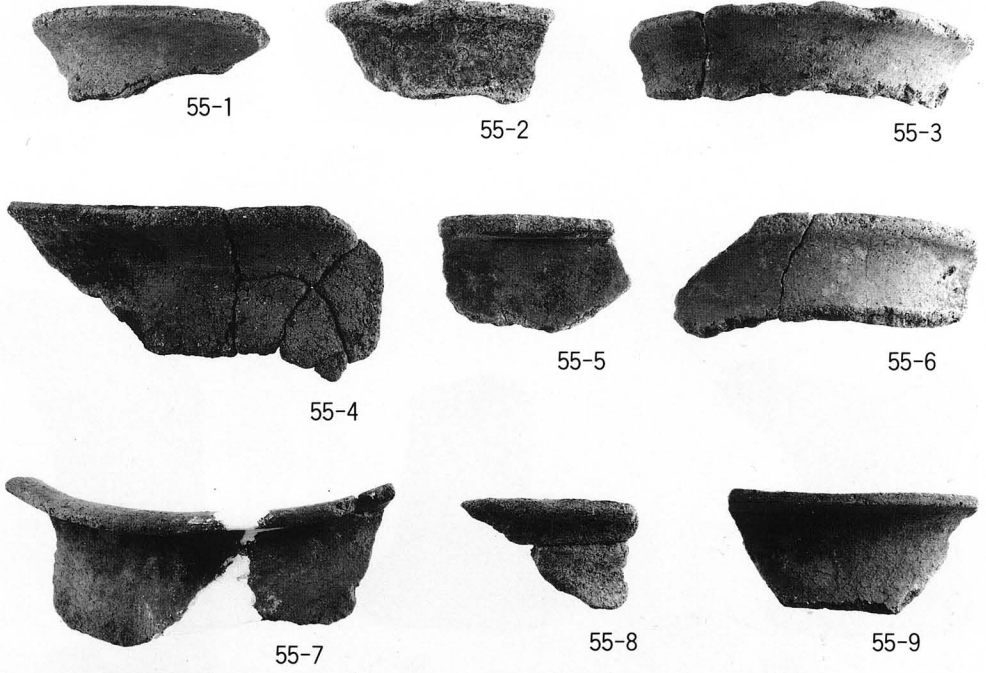
54-24



54-26

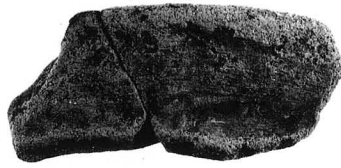


第Ⅲ調査区第8加工段出土須恵器

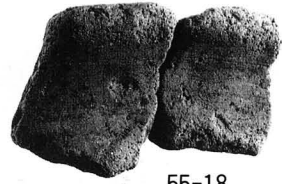




55-16



55-17



55-18



56-1



56-2



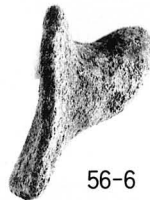
56-3



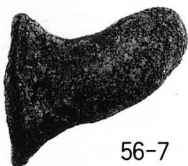
56-4



56-5



56-6



56-7



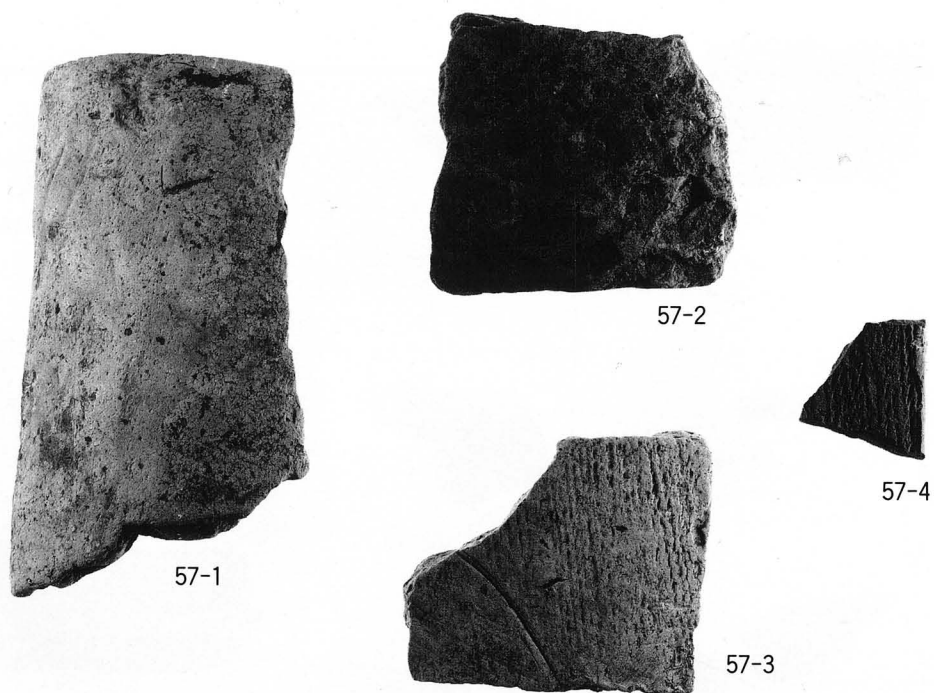
56-8



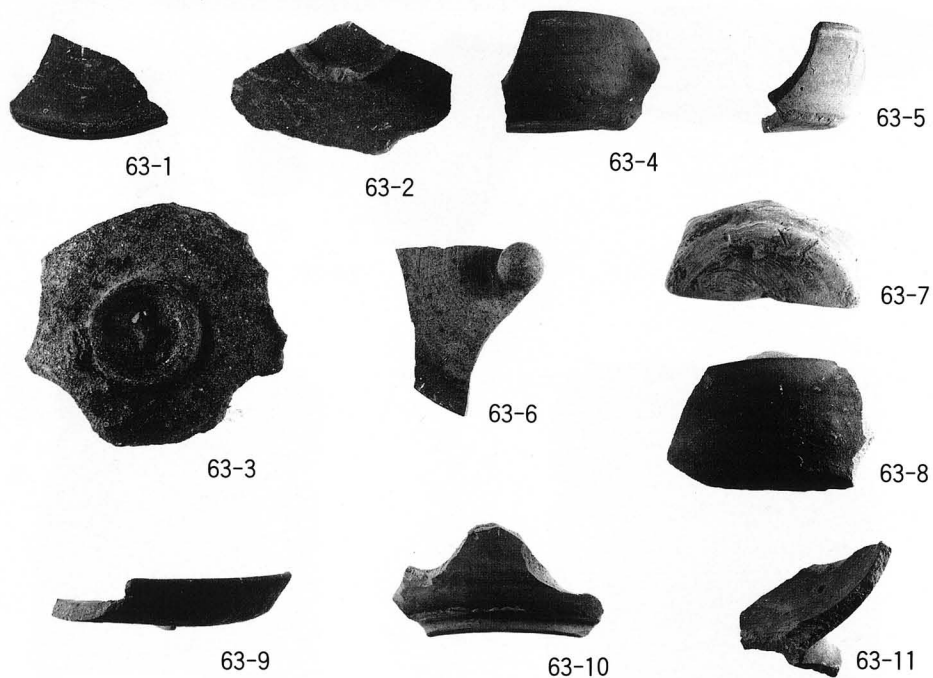
56-9



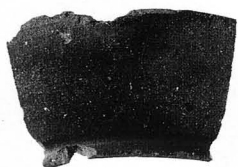
56-10



第Ⅲ調査区第8加工段出土瓦



第Ⅲ調査区第9、第10加工段出土須恵器



63-12



63-13



63-14



63-16



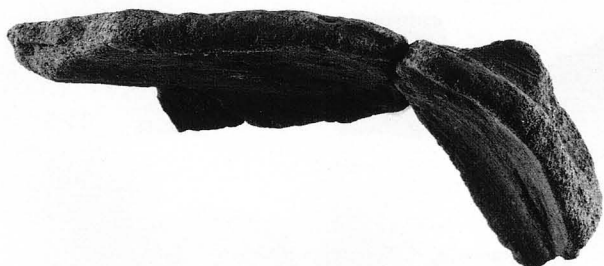
63-17



63-18



63-15



63-19



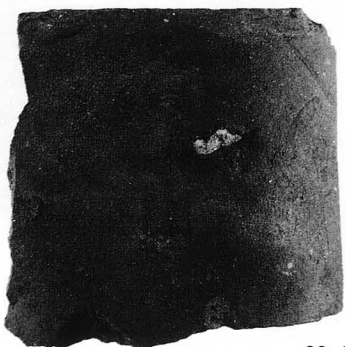
63-20



63-21



63-22



63-23



63-23

一般国道9号松江道路建設予定地内
埋蔵文化財発掘調査報告書Ⅺ
(才ノ峠遺跡)

1993. 3

発行 建設省松江国道工事事務所
島根県教育委員会
印刷 有限会社 谷口印刷