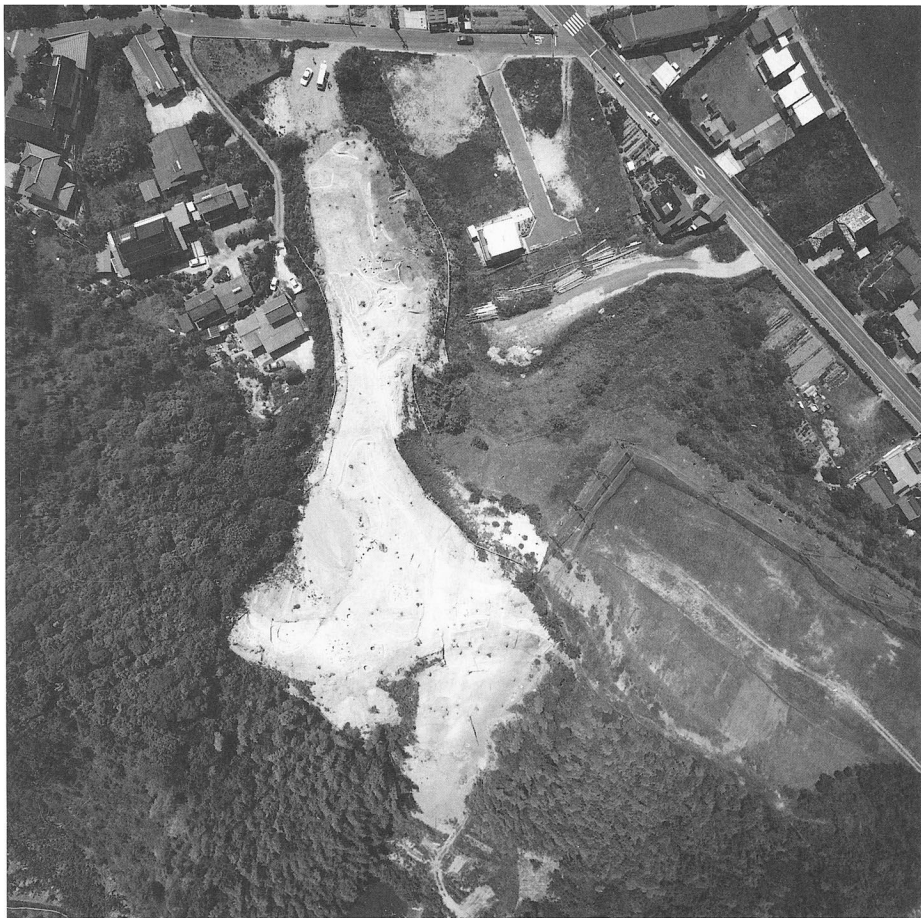


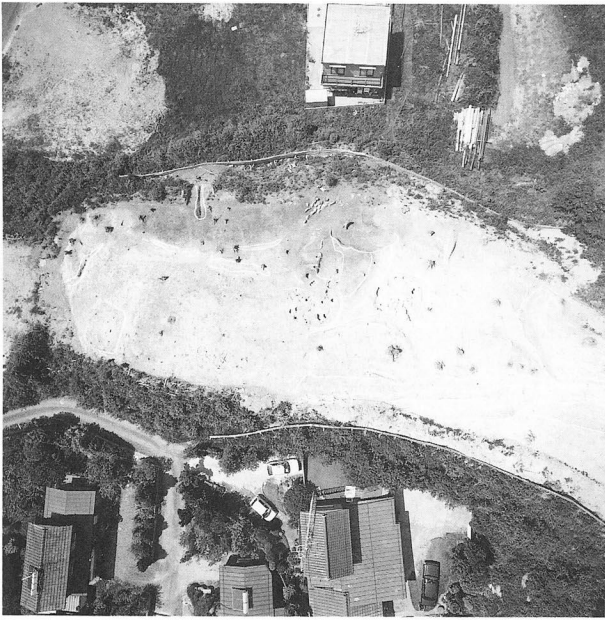
# 圖 版



1994年度西桂見遺跡全景（上空より）



1994年度西桂見遺跡全景（南東上空より）



鷺谷口地区完掘状況 (上空より)



S101完掘状況 (西より)



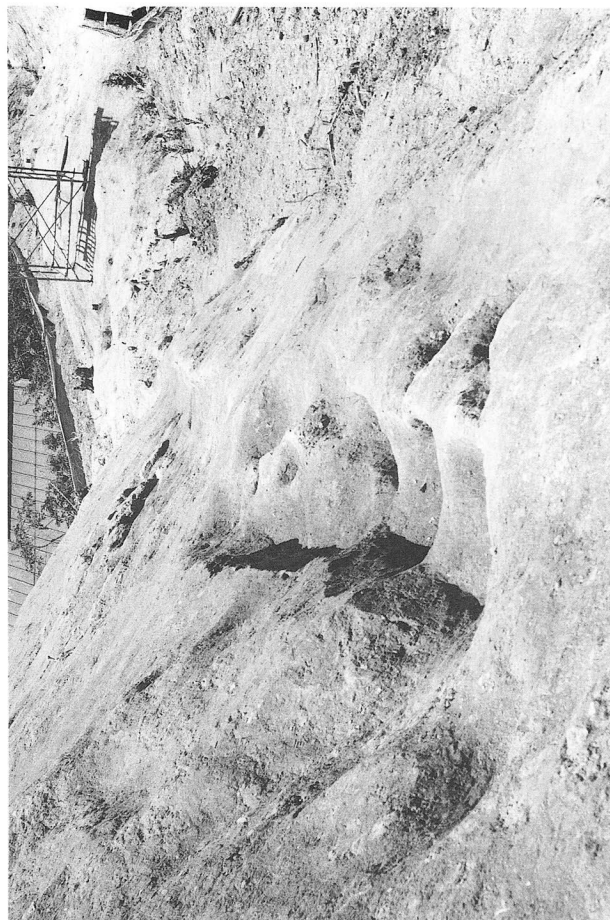
S101貼床除去後状況 (西より)



S101炭化物検出状況 (西より)



S I 03完掘状況 (南より)



S D 01東端部完掘状況 (北東より)

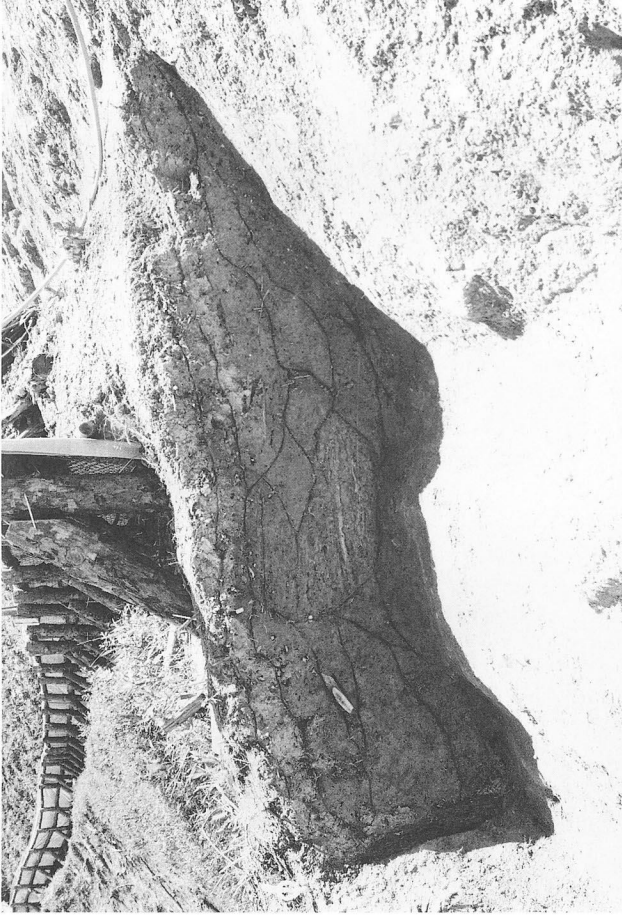


S I 02完掘状況 (西より)



S D 01・02完掘状況 (西より)

図版 4



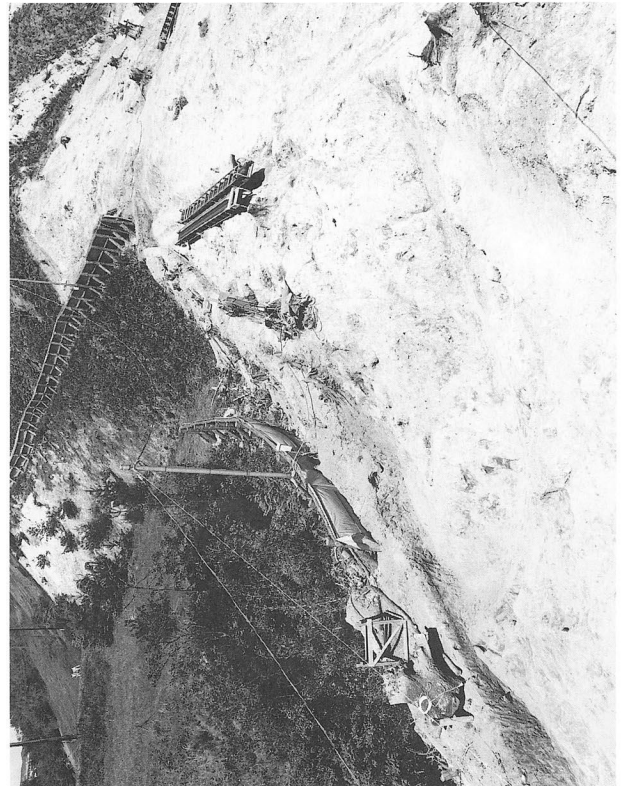
S D 04土層断面 (A-A'断面) (西より)



S D 09完掘状況 (東より)



S D 04完掘状況 (西より)



S D 05完掘状況 (西より)



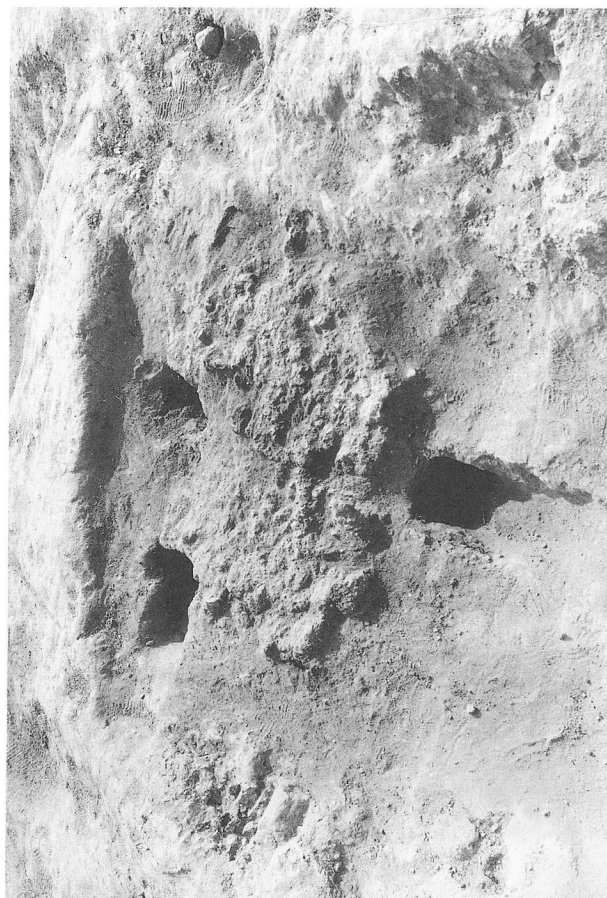
S K 01検出状況 (東より)



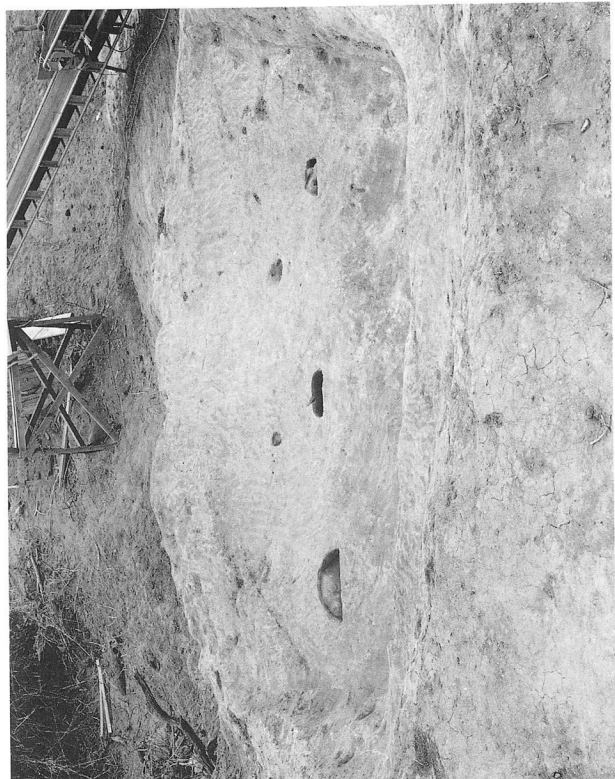
S K 02遺物出土状況 (北より)



S D 10完掘状況 (南より)



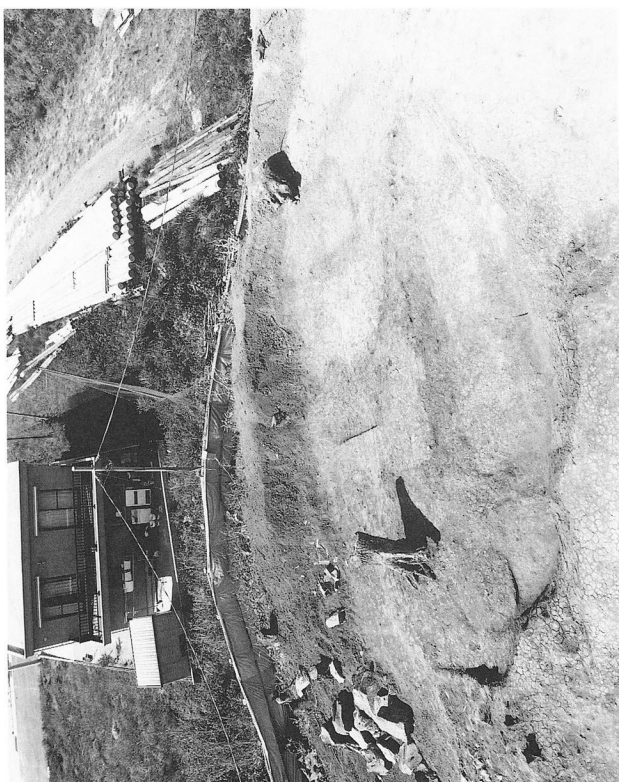
S K 01完掘状況 (東より)



S S 01 完掘状況 (東より)



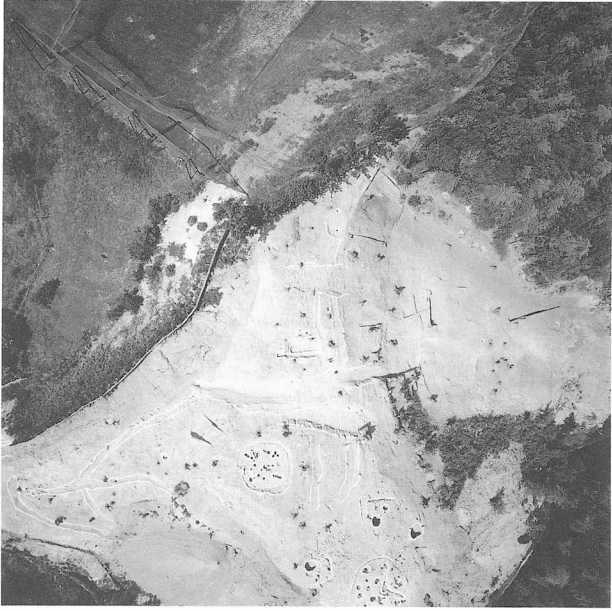
鷺谷口地区北側土器溜り検出状況 (西より)



S S 02 完掘状況 (南より)



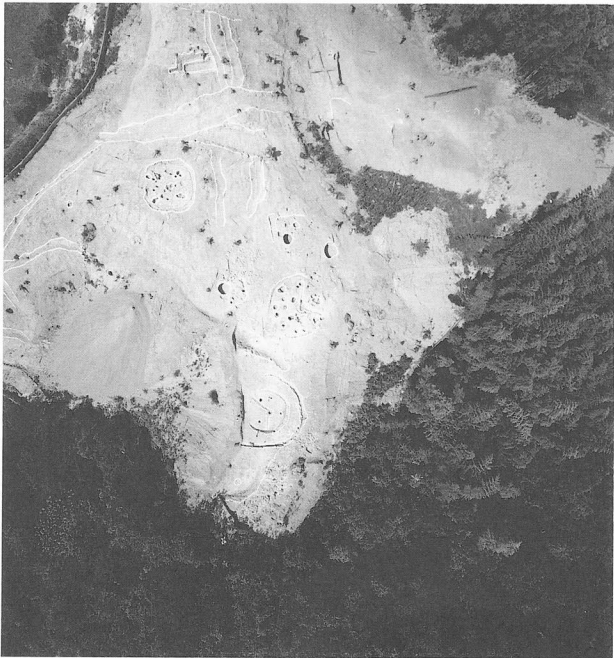
鷺谷口地区南側土器溜り検出状況 (北西より)



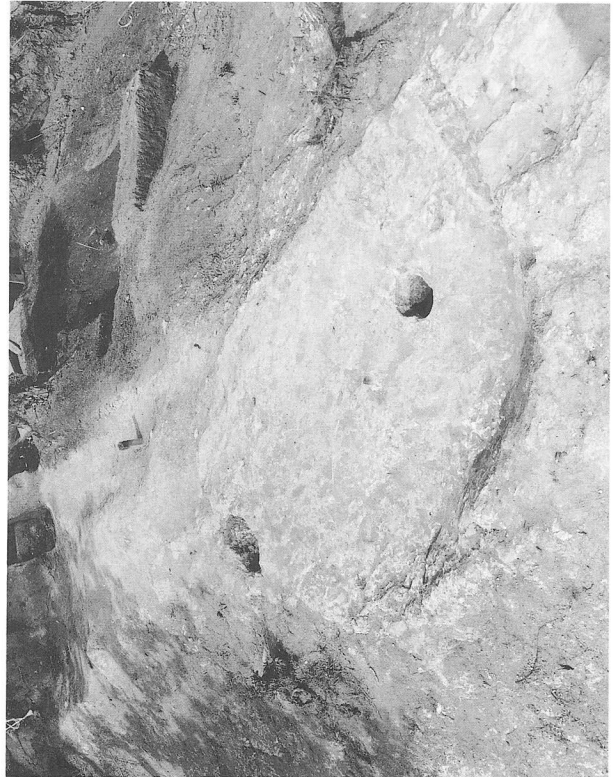
鷺谷奥地区 A 区北側完掘状況 (上空より)



S 105検出状況 (東より)



鷺谷奥地区 A 区南側完掘状況 (上空より)



S 104完掘状況 (南より)





S I 06完掘状況 (南より)



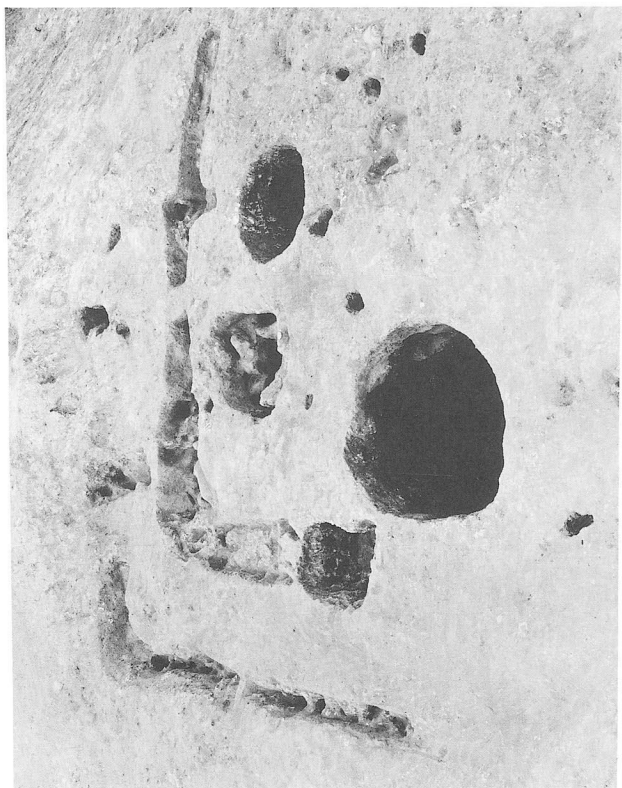
S I 07完掘状況 (東より)



S I 05完掘状況 (東より)



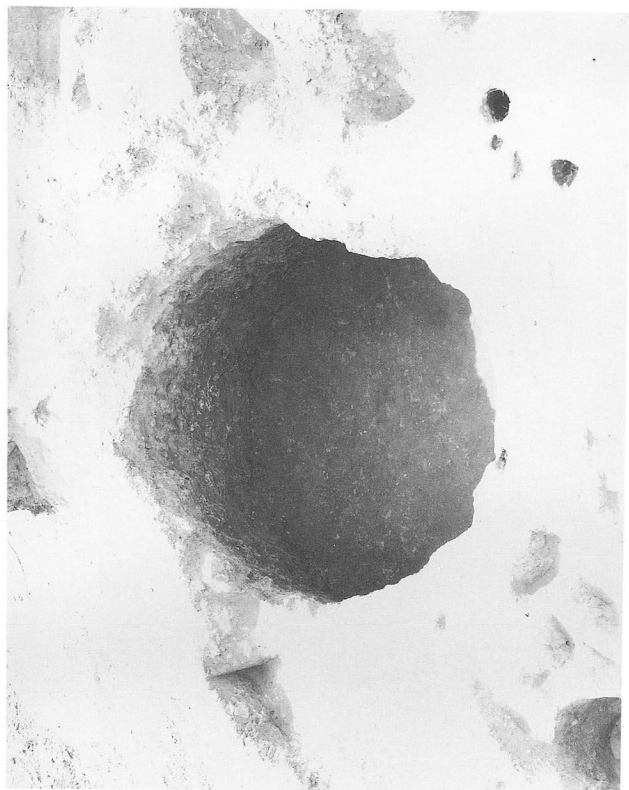
S I 06中央ピット土層断面 (南西より)



S I 08完掘状況 (南より)



S I 08 P 1内遺物出土状況 (西より)



S K 06完掘状況 (東より)



S K 03完掘状況 (西より)



S I 09床面遺物出土状況 (南東より)



S I 10完掘状況 (北より)



S I 09・S D 15完掘状況 (北より)



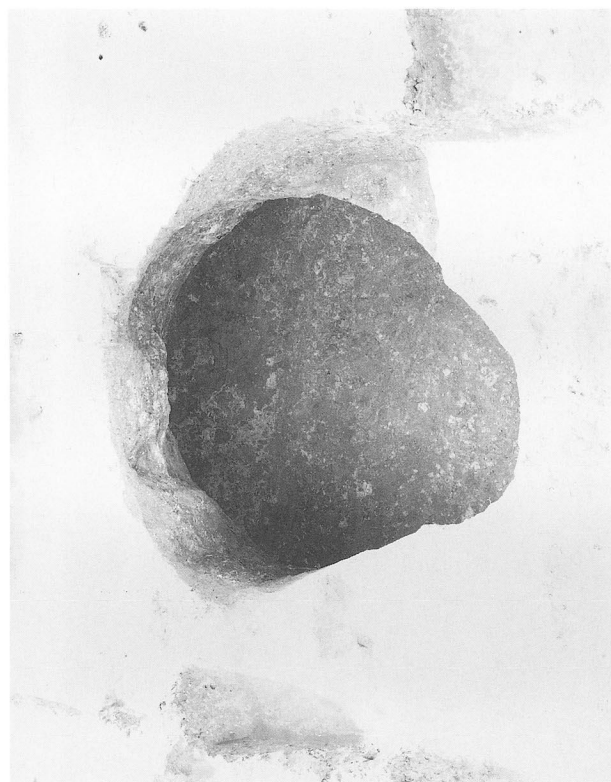
S D 15遺物出土状況 (北より)



S K 04遺物出土状況 (東より)



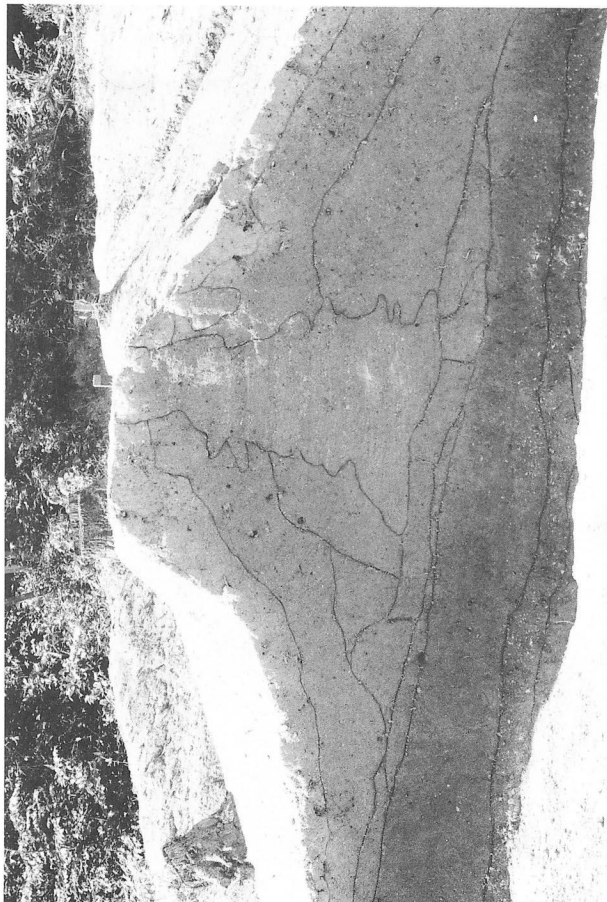
S D 11完掘状況 (西より)



S K 04完掘状況 (東より)



S K 05完掘状況 (東より)



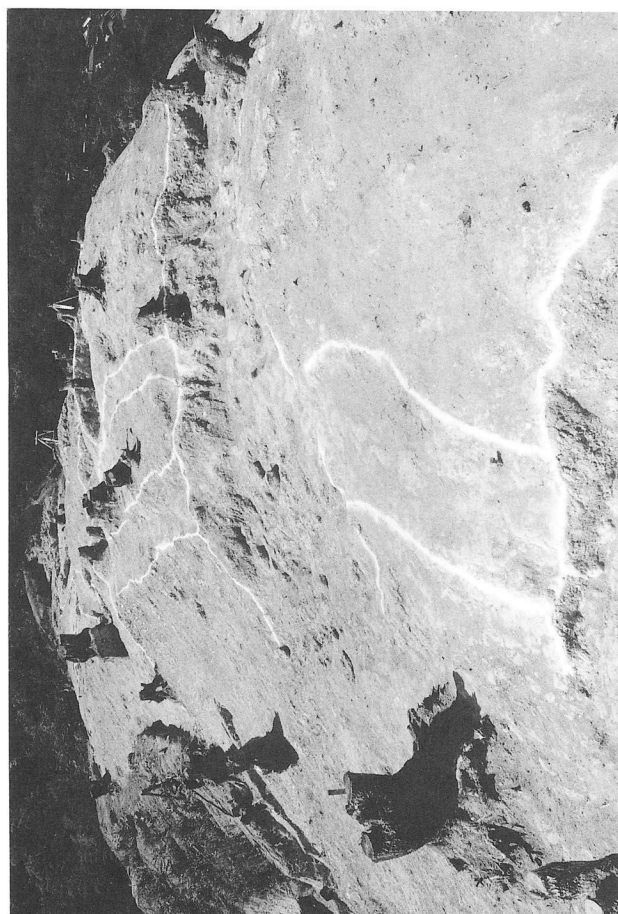
土塁状遺構盛土状況 (C-C断面) (北より)



SD13調査区南際完掘状況 (北より)



土塁状遺構検出状況 (北より)



SD12・13完掘状況 (北より)



S D 14完掘状況 (東より)



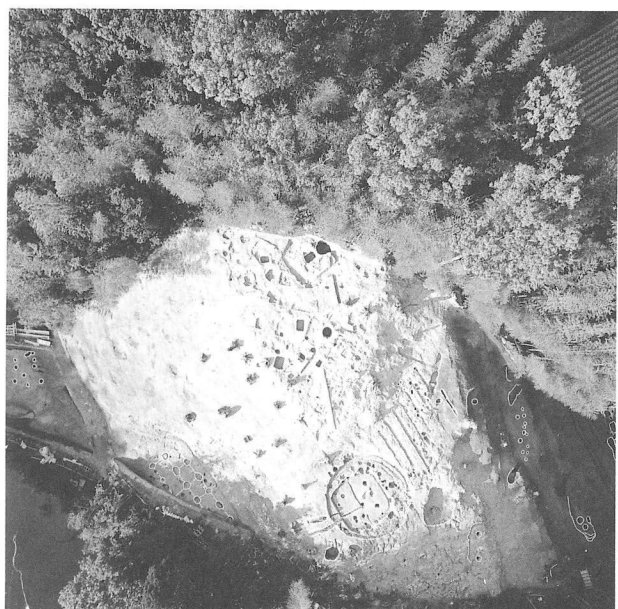
鷺谷奥地区B区完掘状況 (東より)



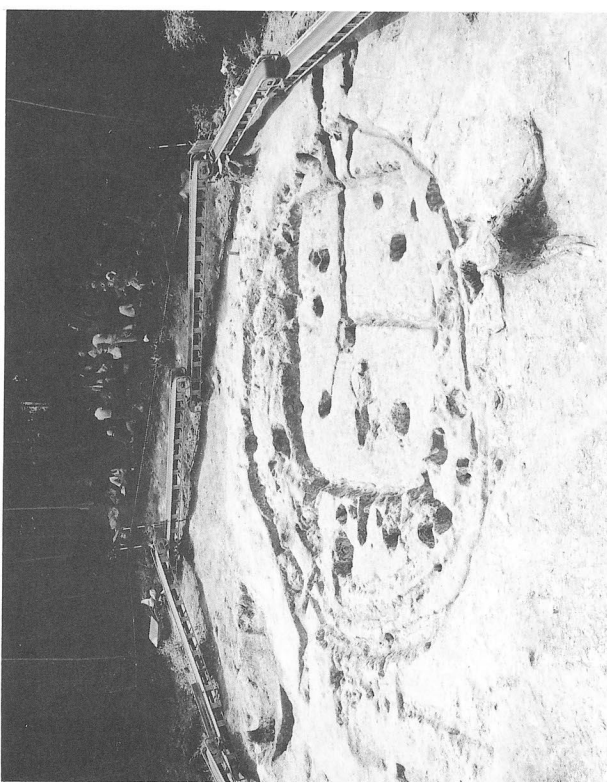
S K 07遺物出土状況 (南より)



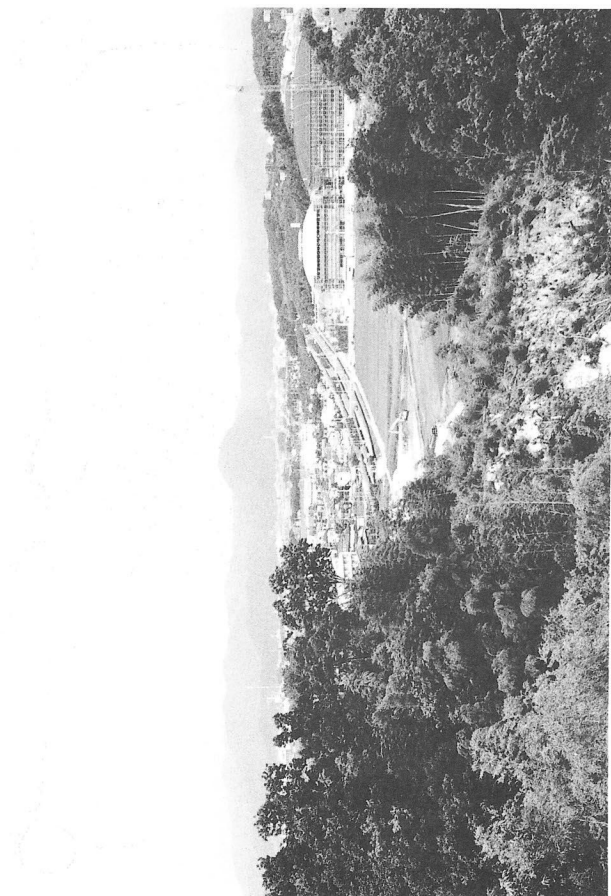
鷺谷奥地区B区土器溜り検出状況 (南より)



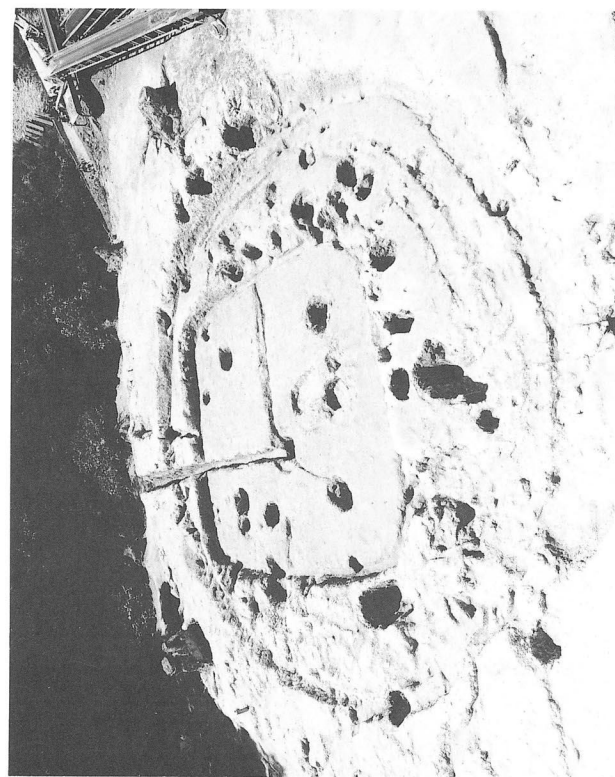
1995年度西桂見遺跡堤谷地区調査区全景（上空より）



S I 11・12完掘状況（北西より）



1995年度西桂見遺跡堤谷地区調査前状況（西より）



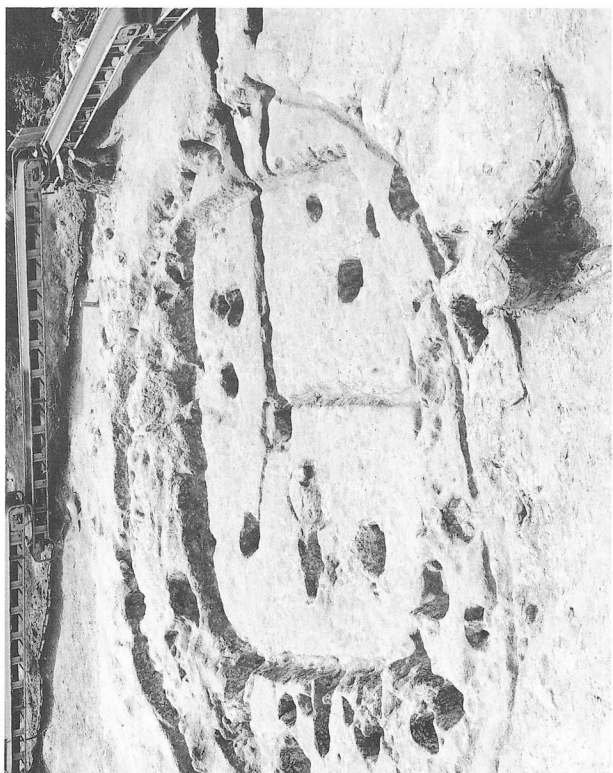
S I 11・12完掘状況（東より）



S | 11床面土器出土状況 (北より)



S | 12排水溝土層断面 (西より)



S | 11完掘状況 (北西より)



S | 11排水溝土層断面 (西より)

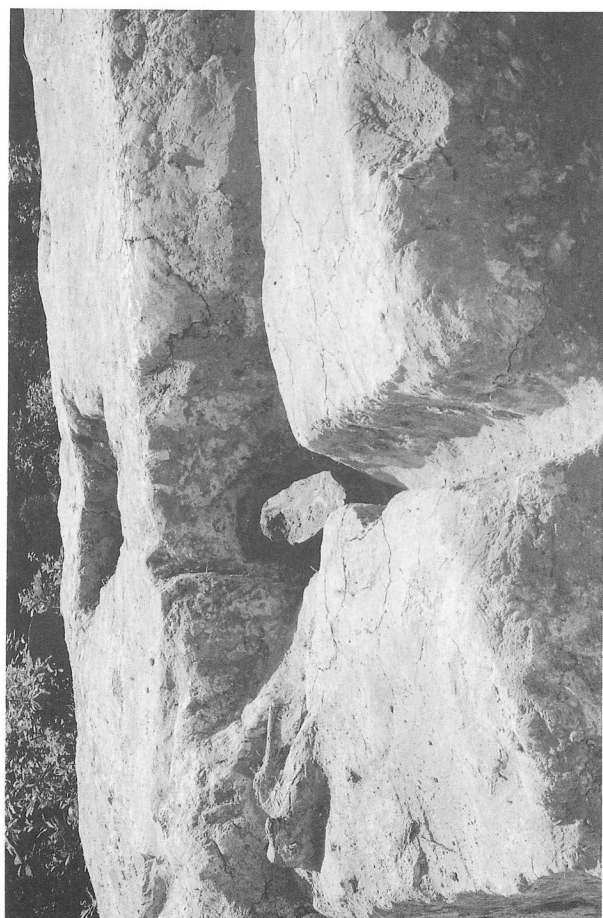




S I 13完掘状況 (西より)



S K 22完掘状況 (東より)



S I 12暗渠状排水溝検出状況 (東より)



S I 15完掘状況 (西より)



S K 24完掘状況 (北東より)



S K 10完掘状況 (南より)



S K 23完掘状況 (北より)



S K 09完掘状況 (南西より)



SK11・SD16・SB01完掘状況(北より)



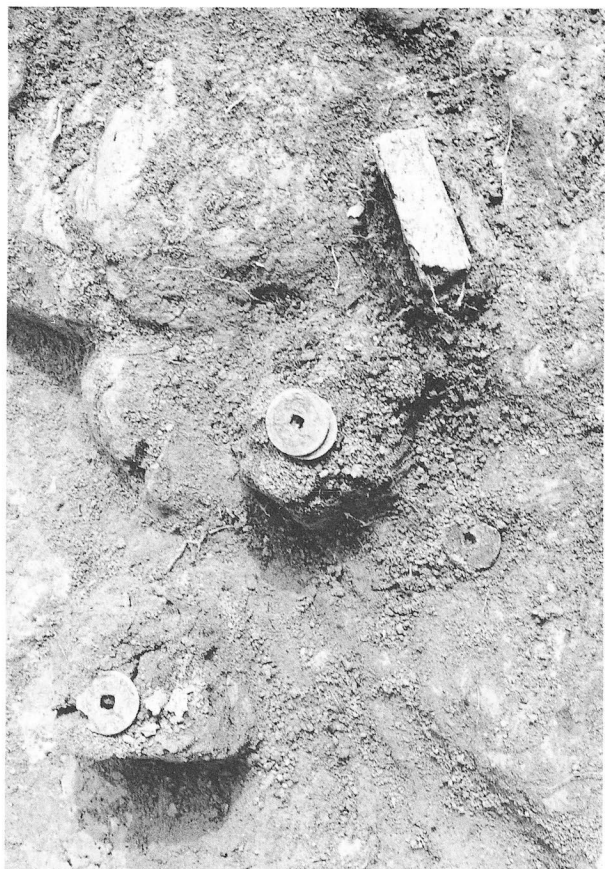
SK11古銭出土状況(南より)



SK10遺物出土状況(南より)



SK11完掘状況(南より)



S K 12古銭出土状況 (南より)



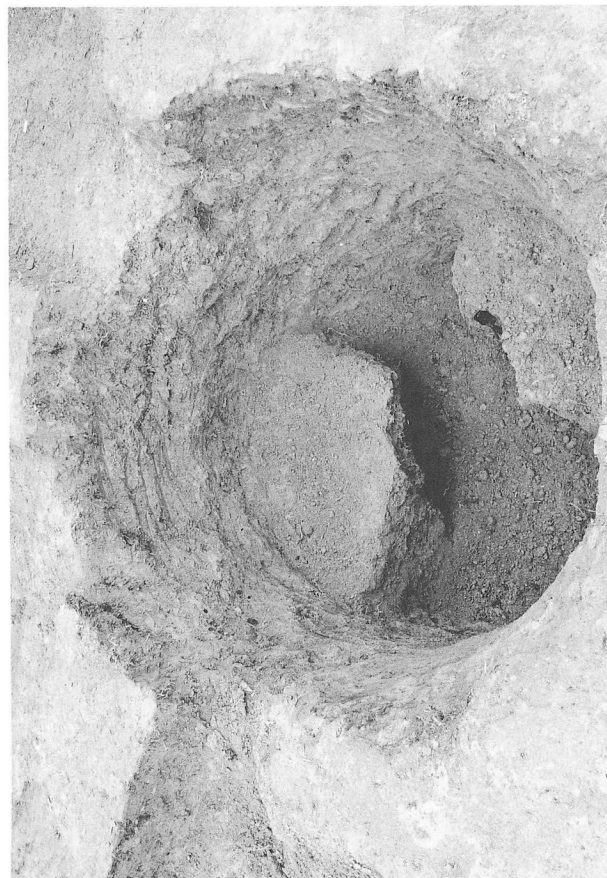
S K 14完掘状況 (南より)



S K 12・13完掘状況 (南より)



S K 14・S D 17完掘状況 (北より)



S K 14埋土空洞部検出状況 (南より)



S K 16・S D 18完掘状況 (南東より)



S K 14人骨・古鉄出土状況 (西より)



S K 15完掘状況 (南より)



S K 17完掘状況 (南より)



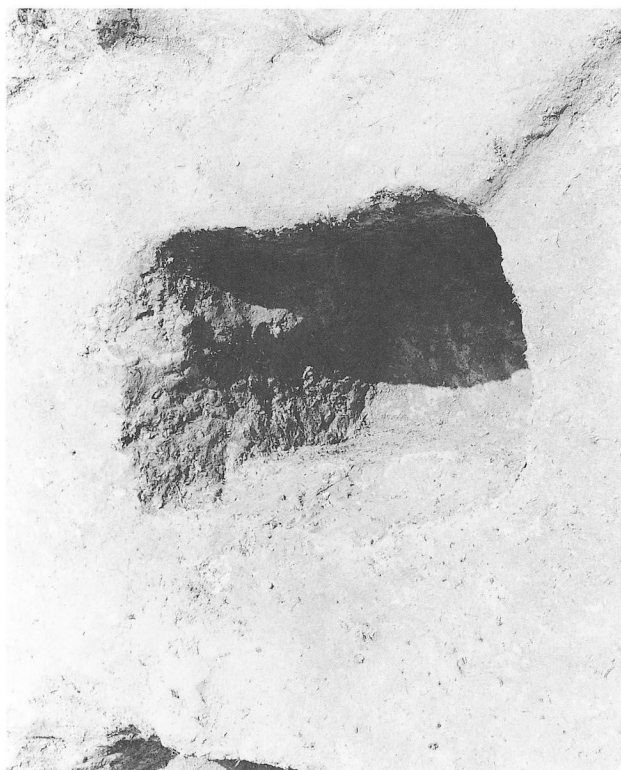
S K 19完掘状況 (南より)



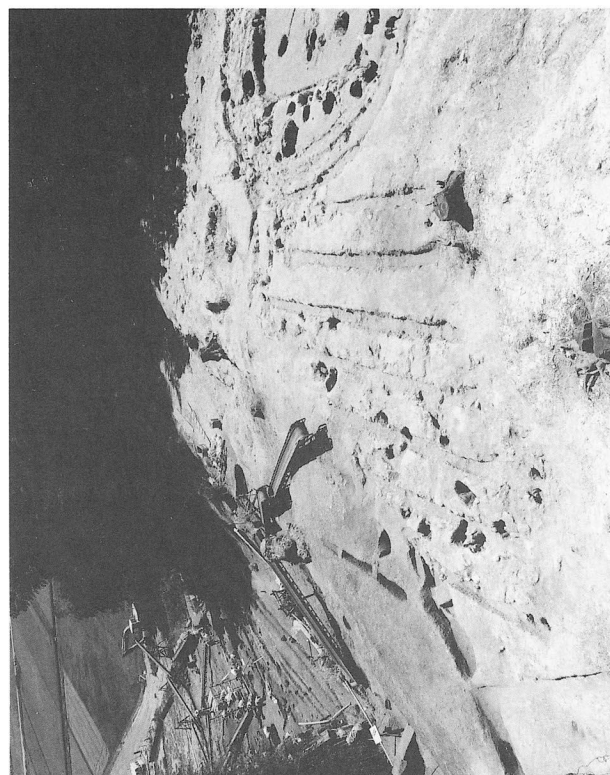
S K 16完掘状況 (南東より)



S K 18完掘状況 (西より)



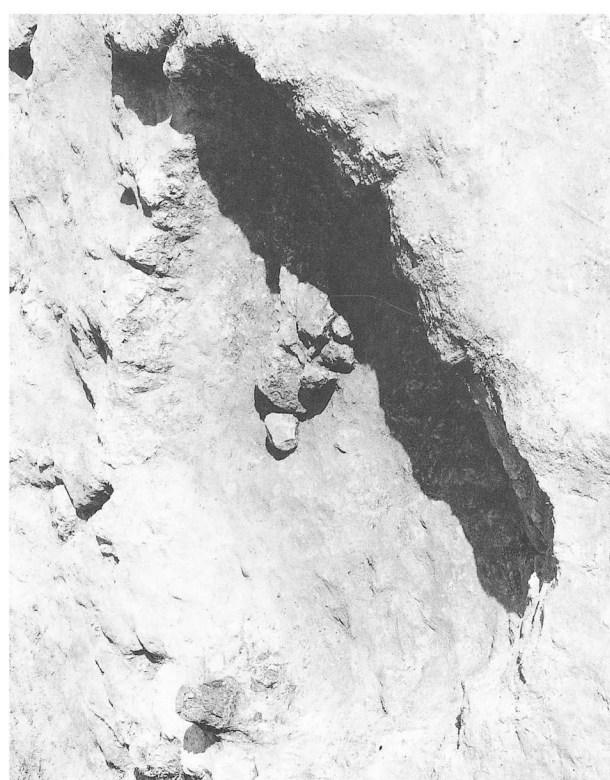
S K 21完掘状況 (南より)



溝状遺構・ピット群02完掘状況 (北西より)



S K 20完掘状況 (北より)



S K 27完掘状況 (西より)



S | 16完掘状況 (西より)



S | 17完掘状況 (西より)



S | 14完掘状況 (西より)



S | 16P 1内砥石出土状況 (北より)

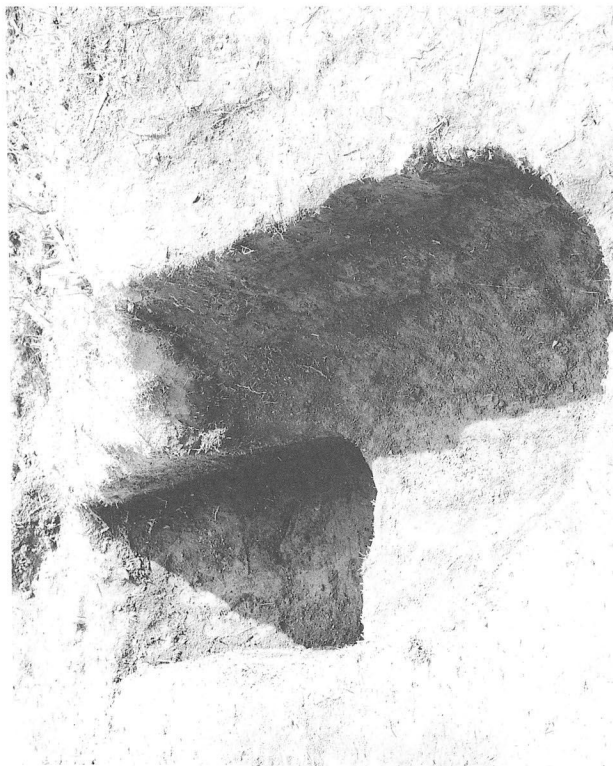




S K 25短刀出土状況 (北西より)



S D 19完掘状況 (西より)



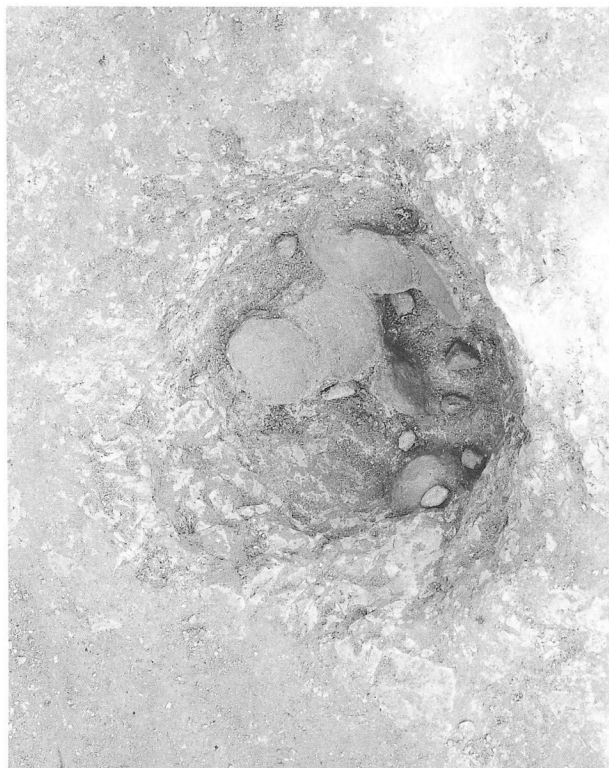
S K 25完掘状況 (西より)



S K 26完掘状況 (東より)



S B 02完掘状況 (北東より)



S B 02 P 14内遺物出土状況 (北より)



ピット群03完掘状況 (南西より)



S B 02 P 13内遺物出土状況 (南東より)



S S03盛土状況 (北より)



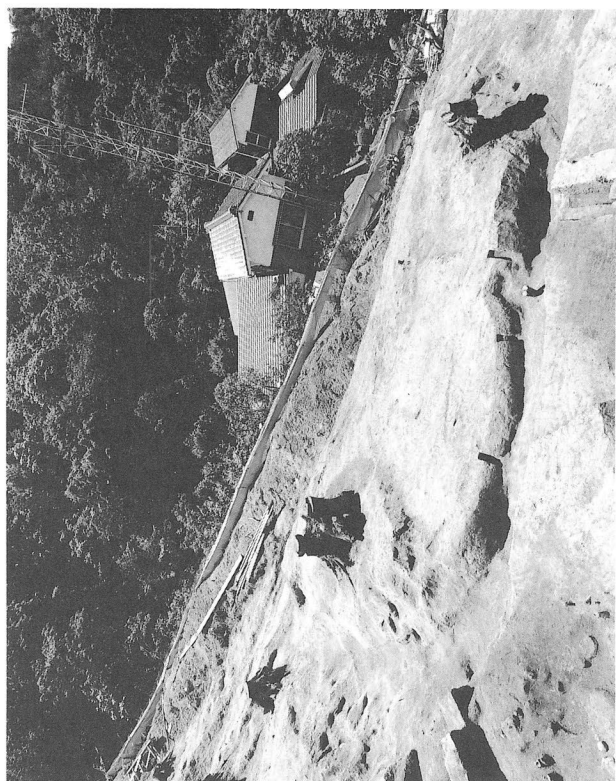
倉見7号墳主体部完掘状況 (北より)



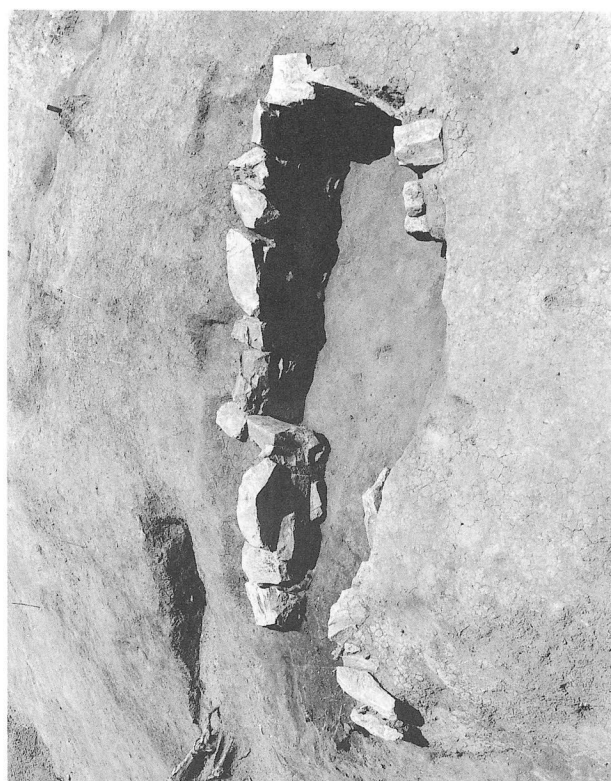
S S03完掘状況 (東より)



倉見7号墳完掘状況 (上空より)



倉見 8 号墳完掘状況 (北より)



倉見 9 号墳横穴式石室完掘状況 (西より)



倉見 7 号墳南側周溝内遺物出土状況 (南より)



倉見 9 号墳完掘状況 (北上空より)



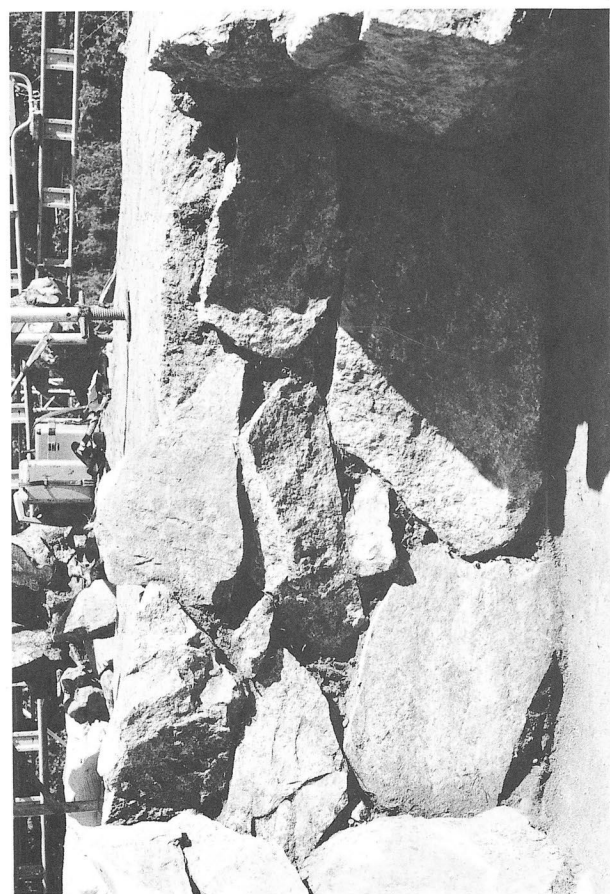
倉見9号墳横穴式石室基底石検出状況(南より)



倉見9号墳横穴式石室基底石検出状況(西より)



倉見9号墳横穴式石室東側壁石積み状況(西より)



倉見9号墳横穴式石室奥壁石積み状況(北より)



倉見9号墳横穴式石室羨道部石積み状況(西より)



倉見9号墳周溝内埋葬施設完掘状況(西より)

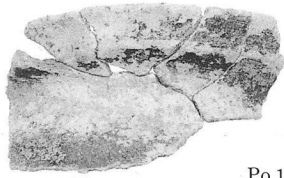


倉見9号墳横穴式石室玄門部石積み状況(南より)

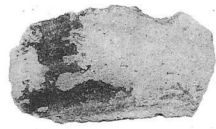


倉見9号墳主体部墓壇完掘状況(南より)

图版30



Po 1



Po 2



F 1



F 2



F 3



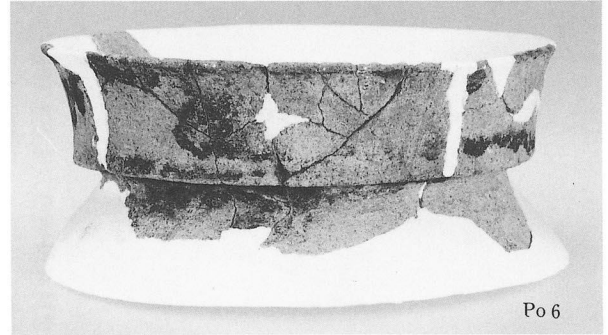
F 4



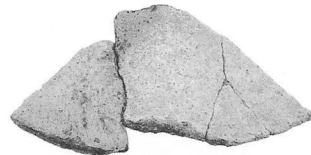
J 1



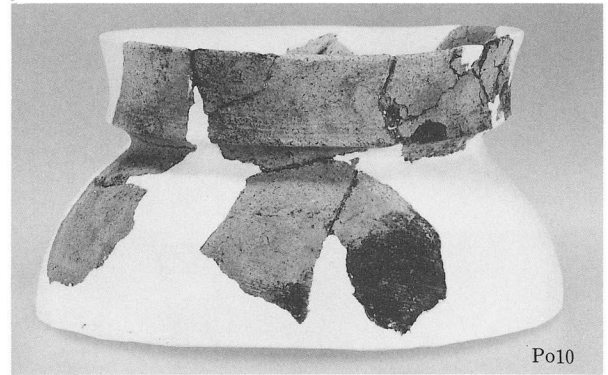
S 1



Po 6



Po 8



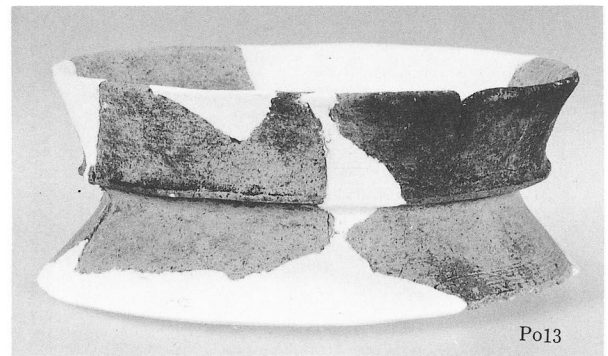
Po 10



Po 9



Po 11



Po 13



Po 12



Po 14



S 2



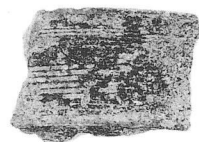
Po 15



Po 18



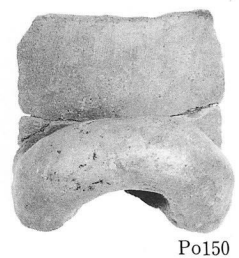
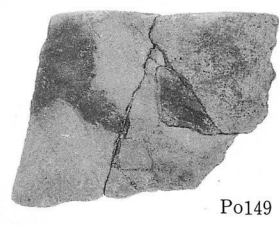
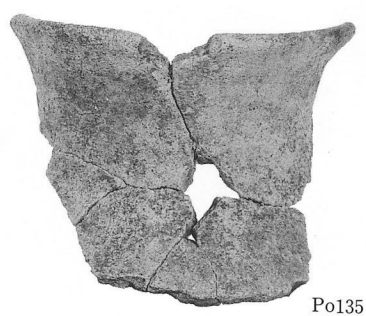
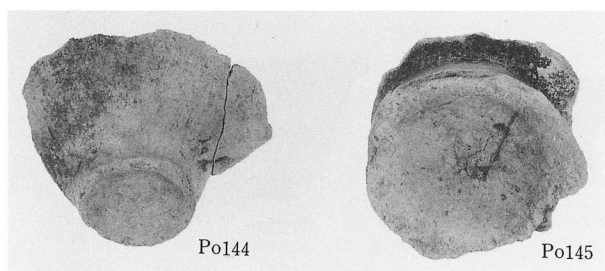
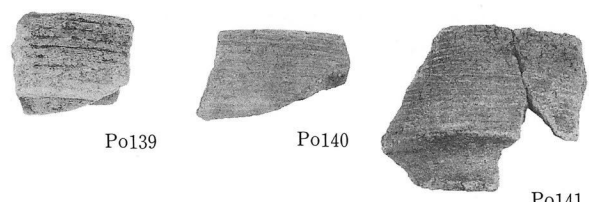
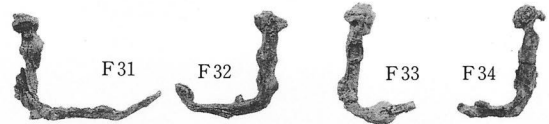
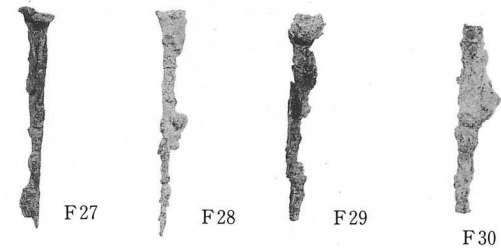
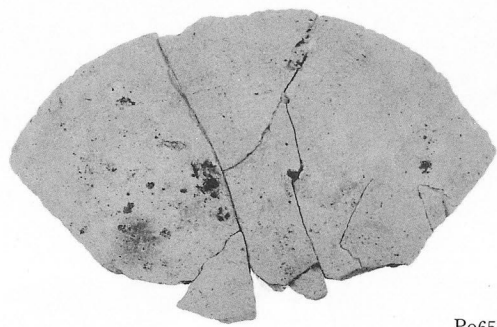
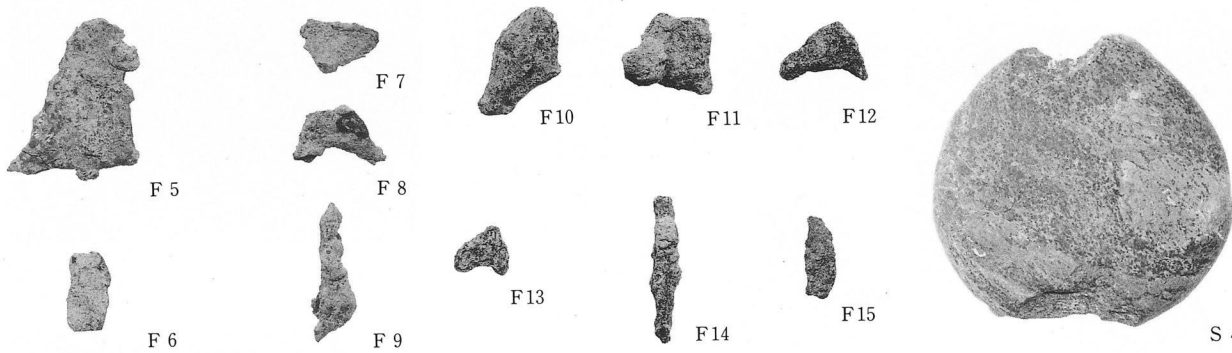
Pd 9



Po 21

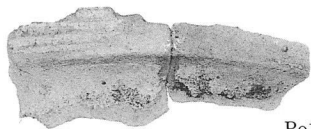


Po 22





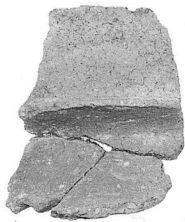
図版32



Po156



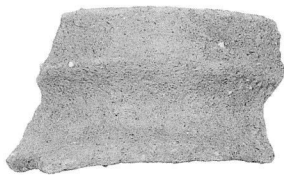
Po157



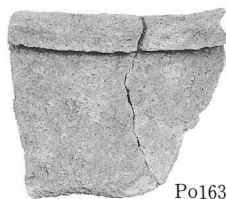
Po159



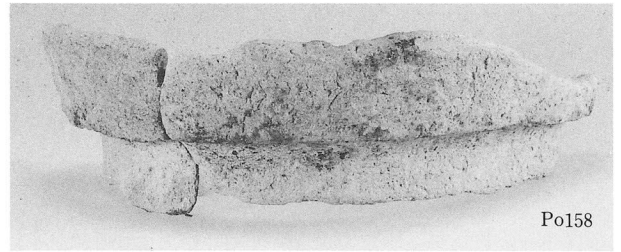
Po160



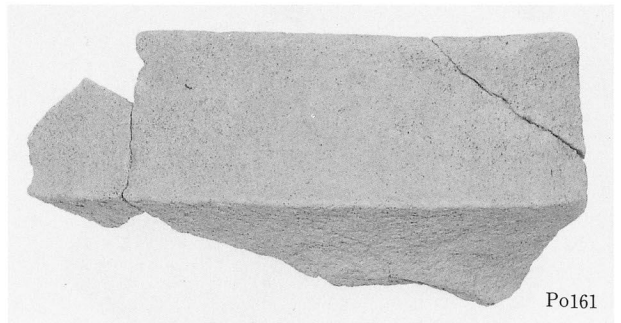
Po162



Po163



Po158



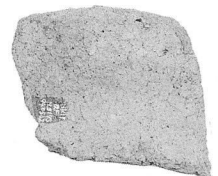
Po161



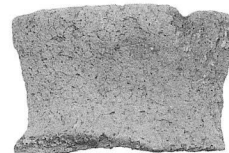
Po169



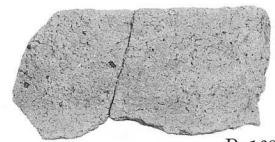
Po165



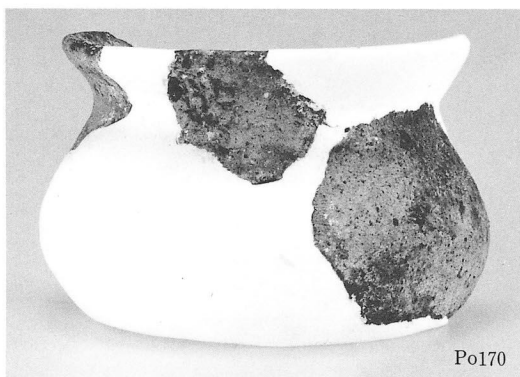
Po166



Po167



Po168



Po170



Po171



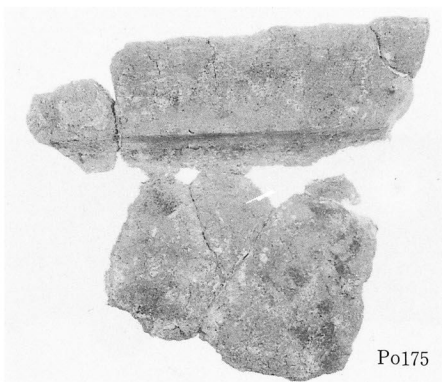
Po172



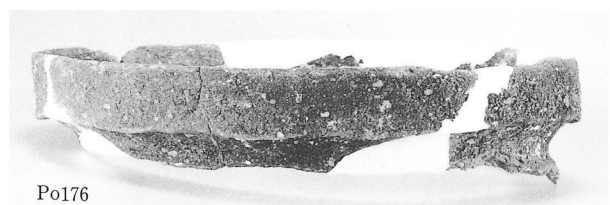
Po173



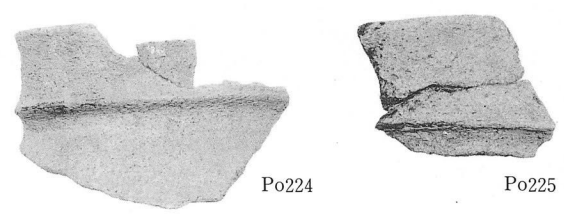
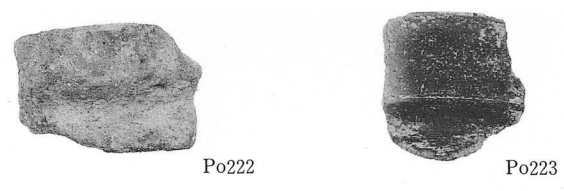
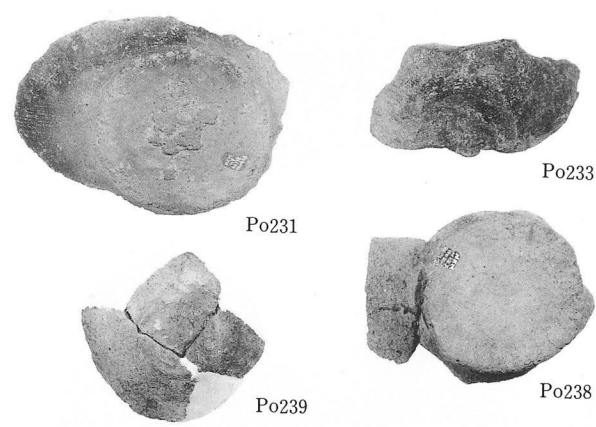
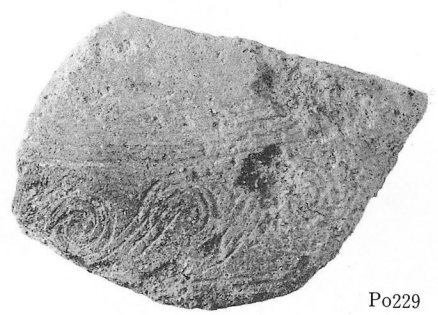
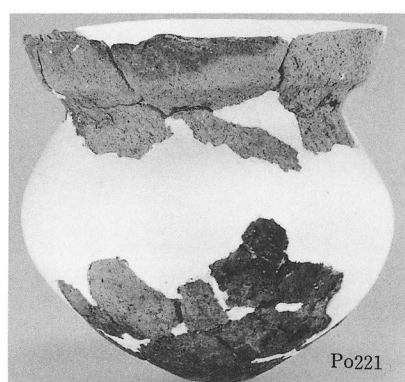
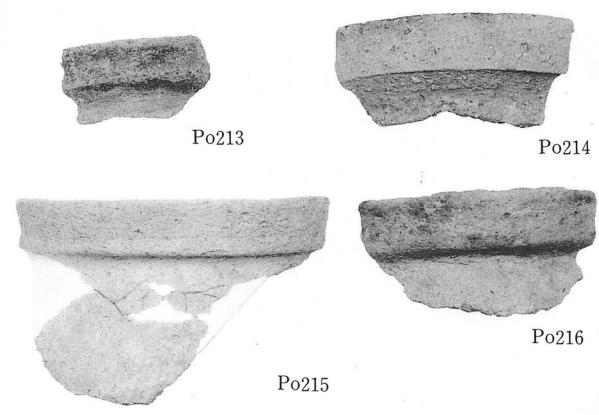
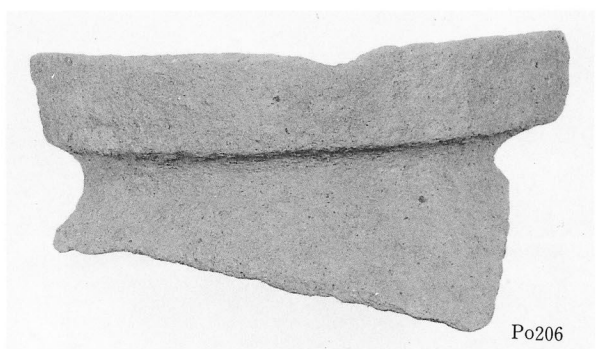
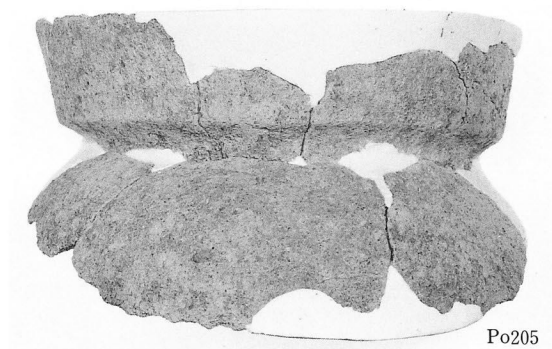
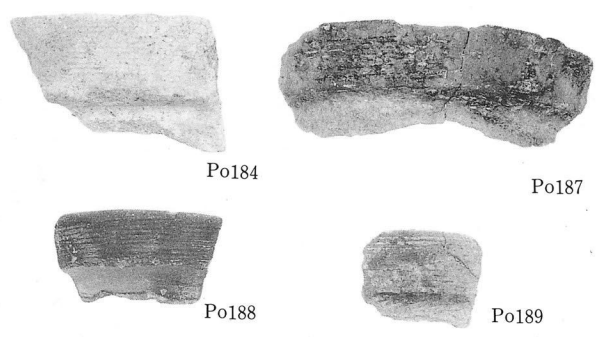
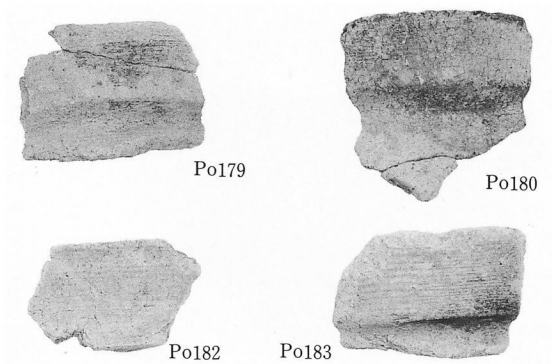
Po177



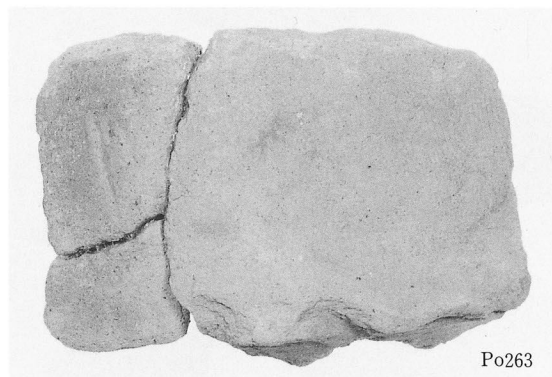
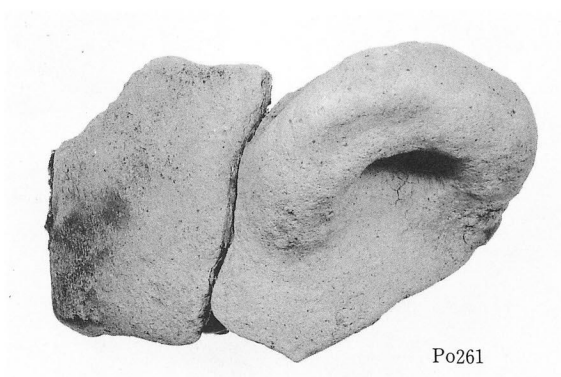
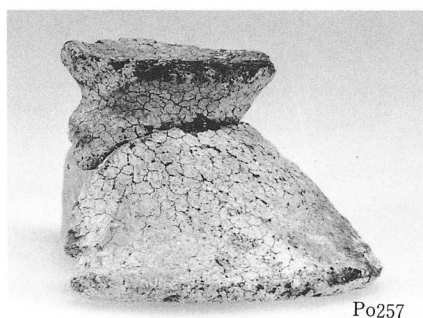
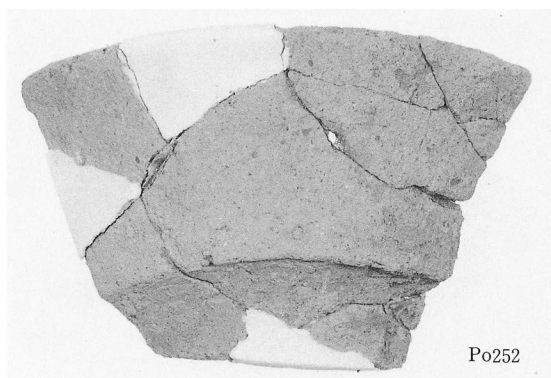
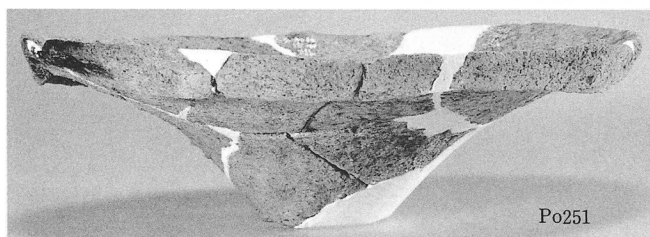
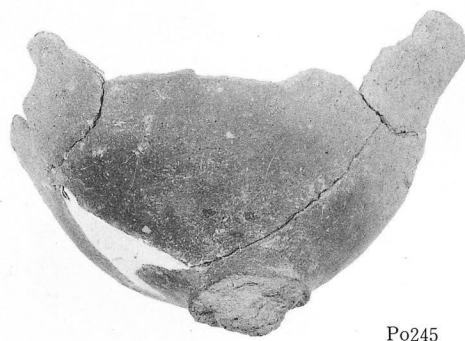
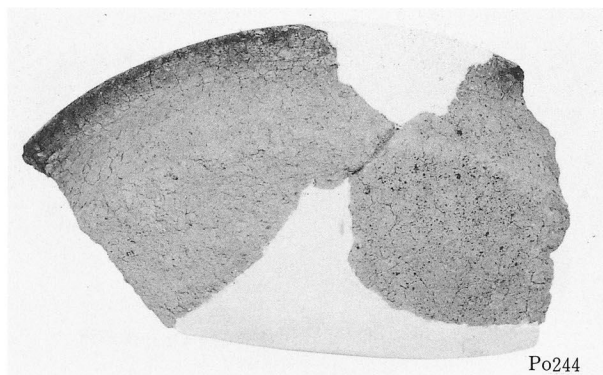
Po175



Po176



図版34





Po264



F 40



S 19



S 20



Po301



Po302



Po303



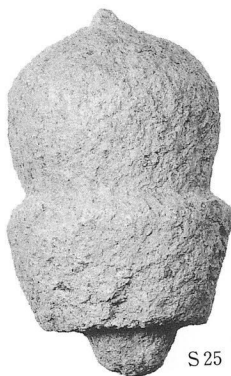
Po304



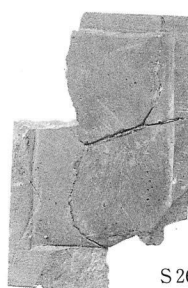
Po305



Po307



S 25



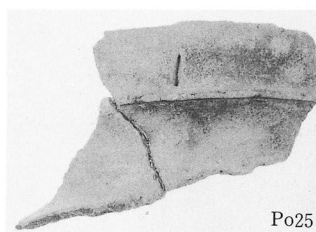
S 26



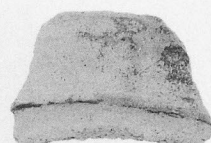
C 1



Po24



Po25



Po26



Po33



Po34



F 16



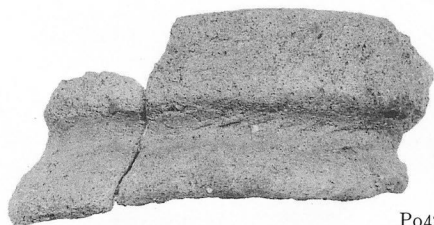
S 7



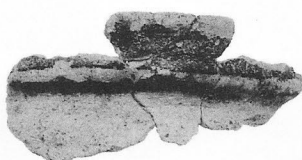
Po35



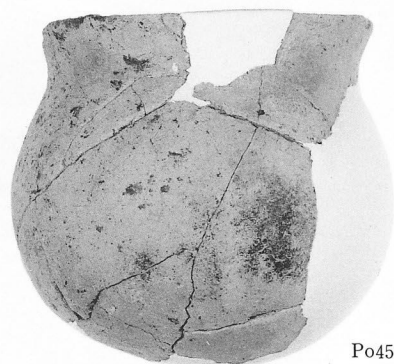
Po36



Po42

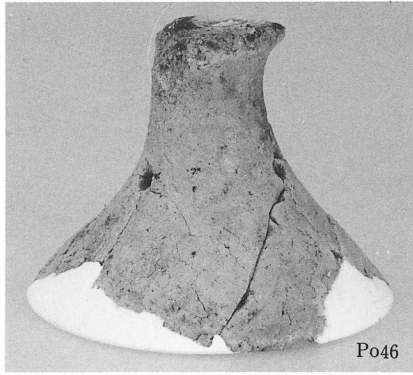


Po43

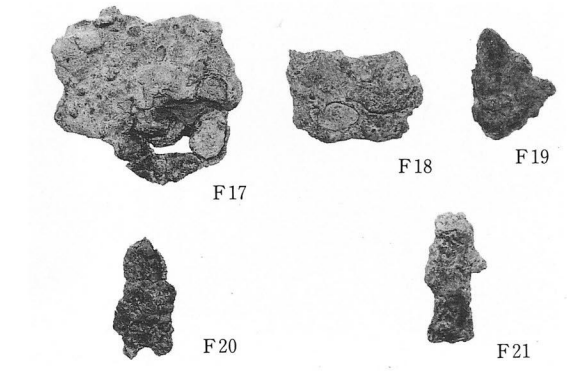


Po45

图版36



Po46



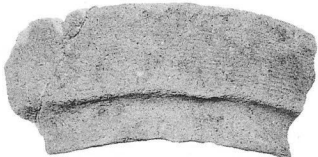
F17

F18

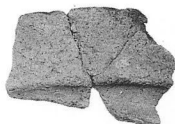
F19

F20

F21



Po95



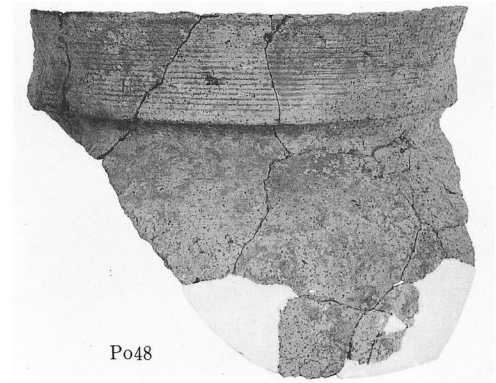
Po96



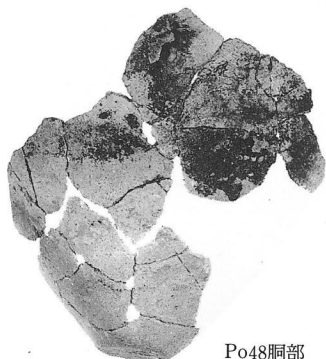
Po97



Po98



Po48



Po48胴部



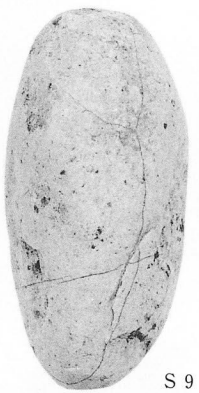
F35



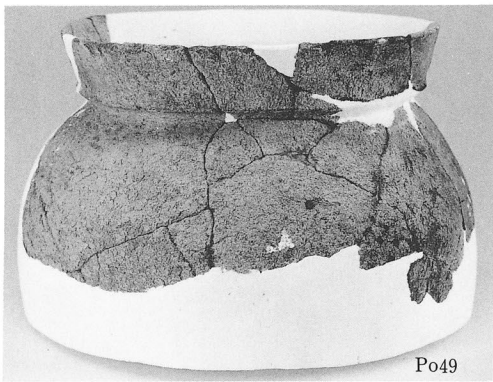
F36



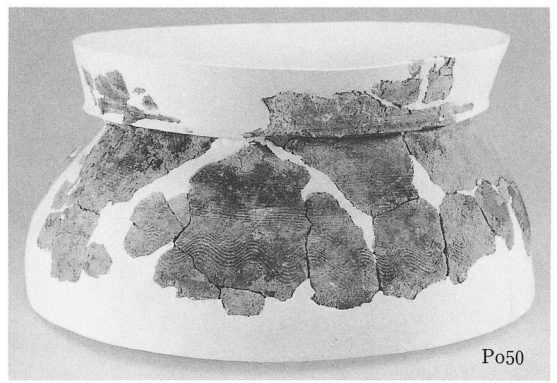
F37



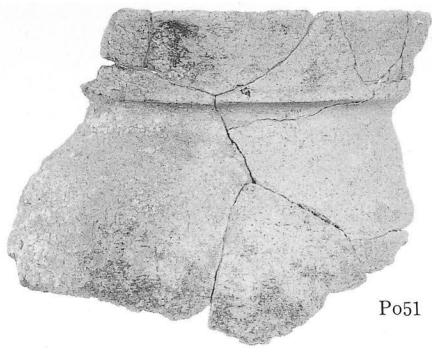
S 9



Po49



Po50



Po51



F22



F23



F24



F25



F26



S10



S11



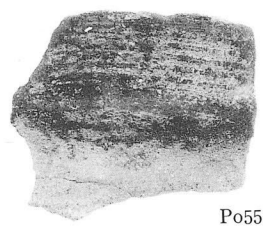
S12



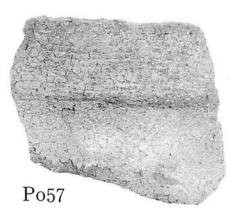
S13



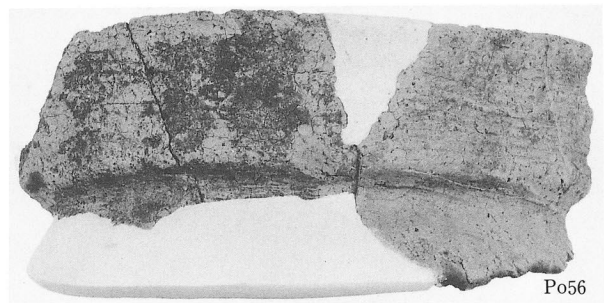
S14



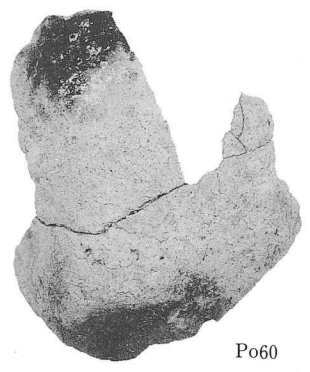
Po55



Po57



Po56



Po60



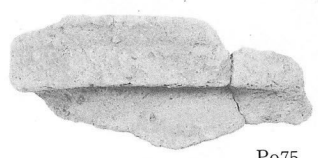
S16



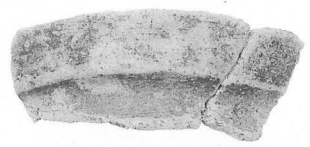
S15



Po70



Po75



Po76



Po77

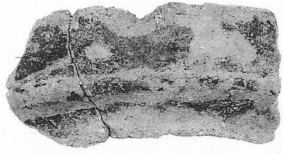


Po78



Po79

图版38



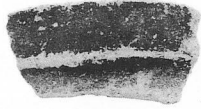
Po80



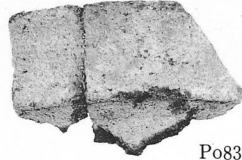
Po81



Po84



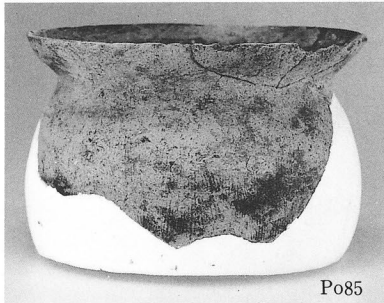
Po82



Po83



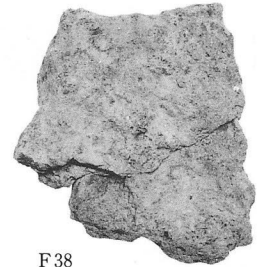
Po92



Po85



Po90



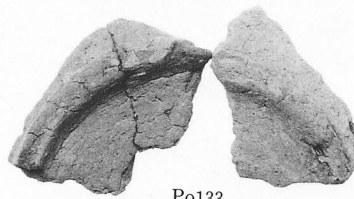
F38



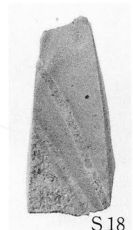
Po131



Po132



Po133



S18



Po151



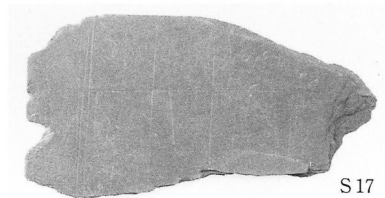
Po152



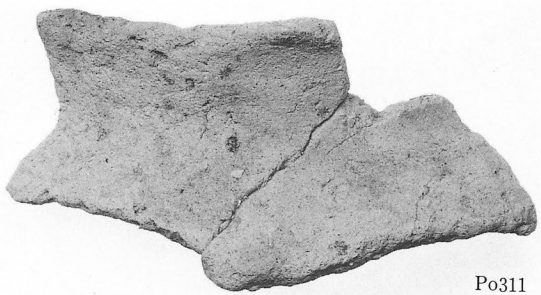
Po155



F39



S17



Po311



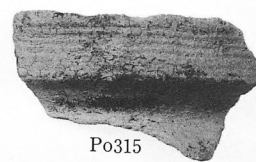
Po312



Po314



Po313



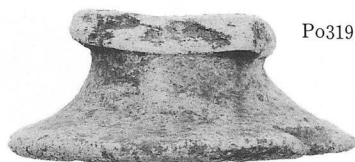
Po315



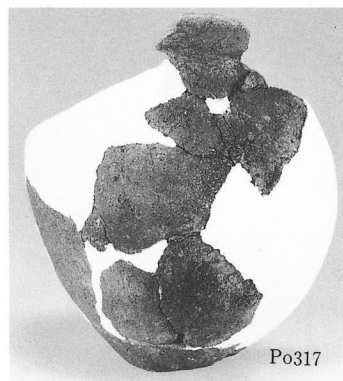
Po320



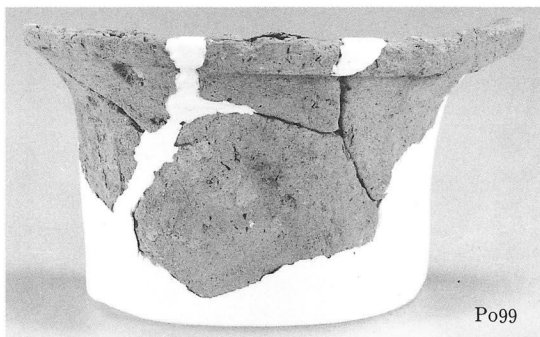
Po318



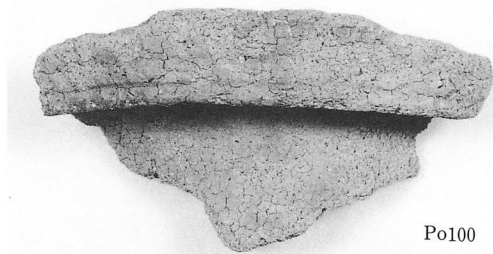
Po319



Po317



Po99



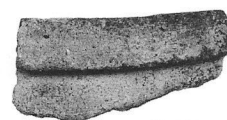
Po100



Po101



Po102



Po104



Po105



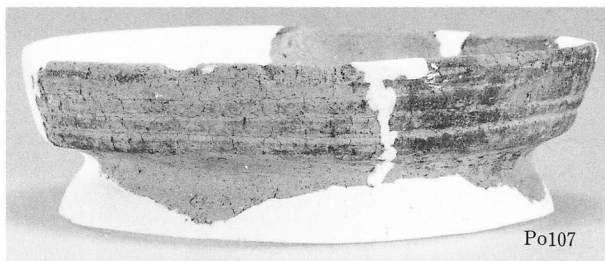
Po106



Po109



Po111



Po107



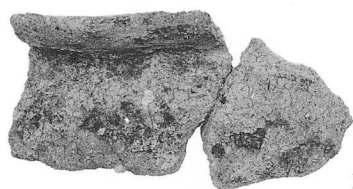
Po113



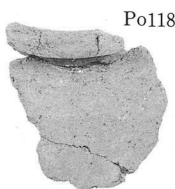
Po114



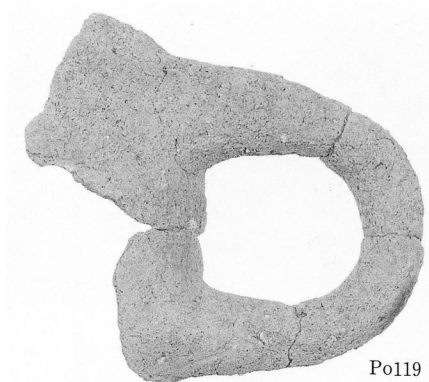
图版40



Po117



Po118



Po119



Po123



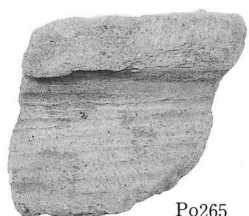
Po120



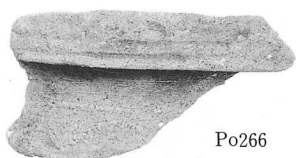
Po122



Po124



Po265



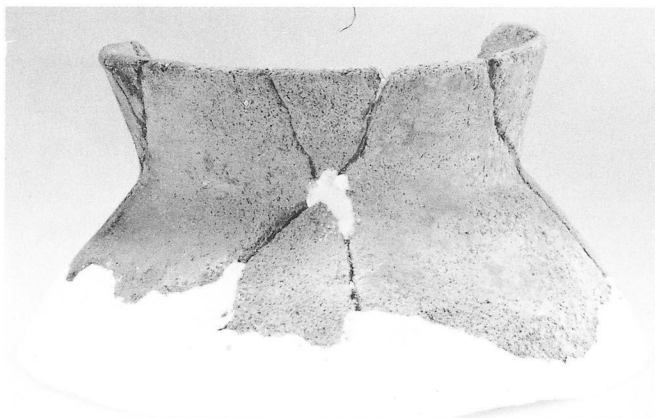
Po266



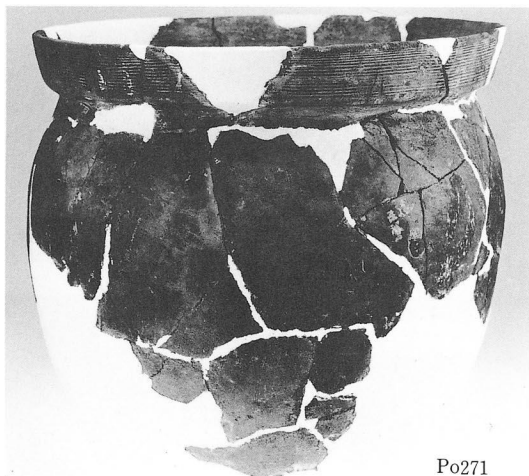
Po267



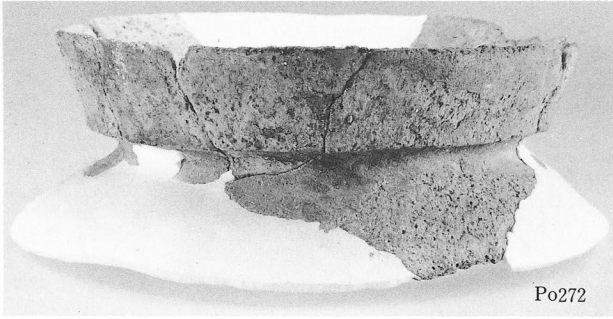
Po268



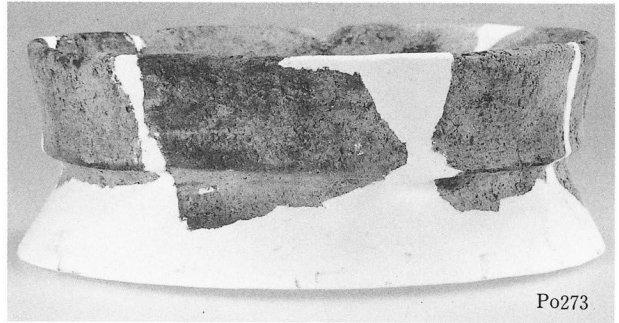
Po270



Po271



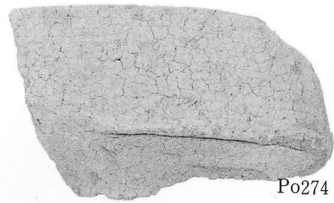
Po272



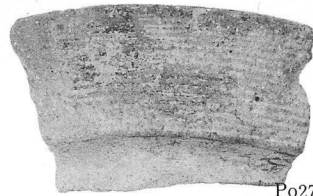
Po273



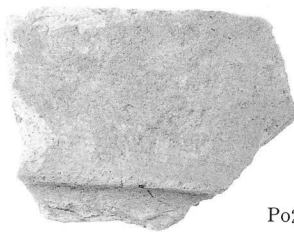
Po275



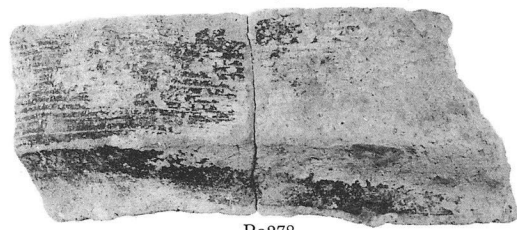
Po274



Po276



Po279



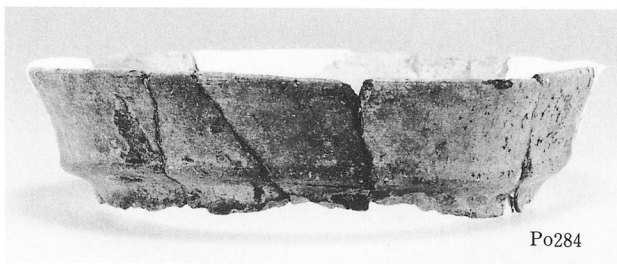
Po278



Po281



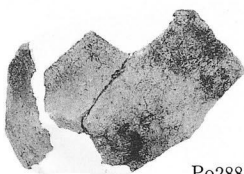
Po282



Po284



Po286



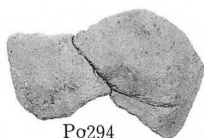
Po288



Po289



Po291



Po294

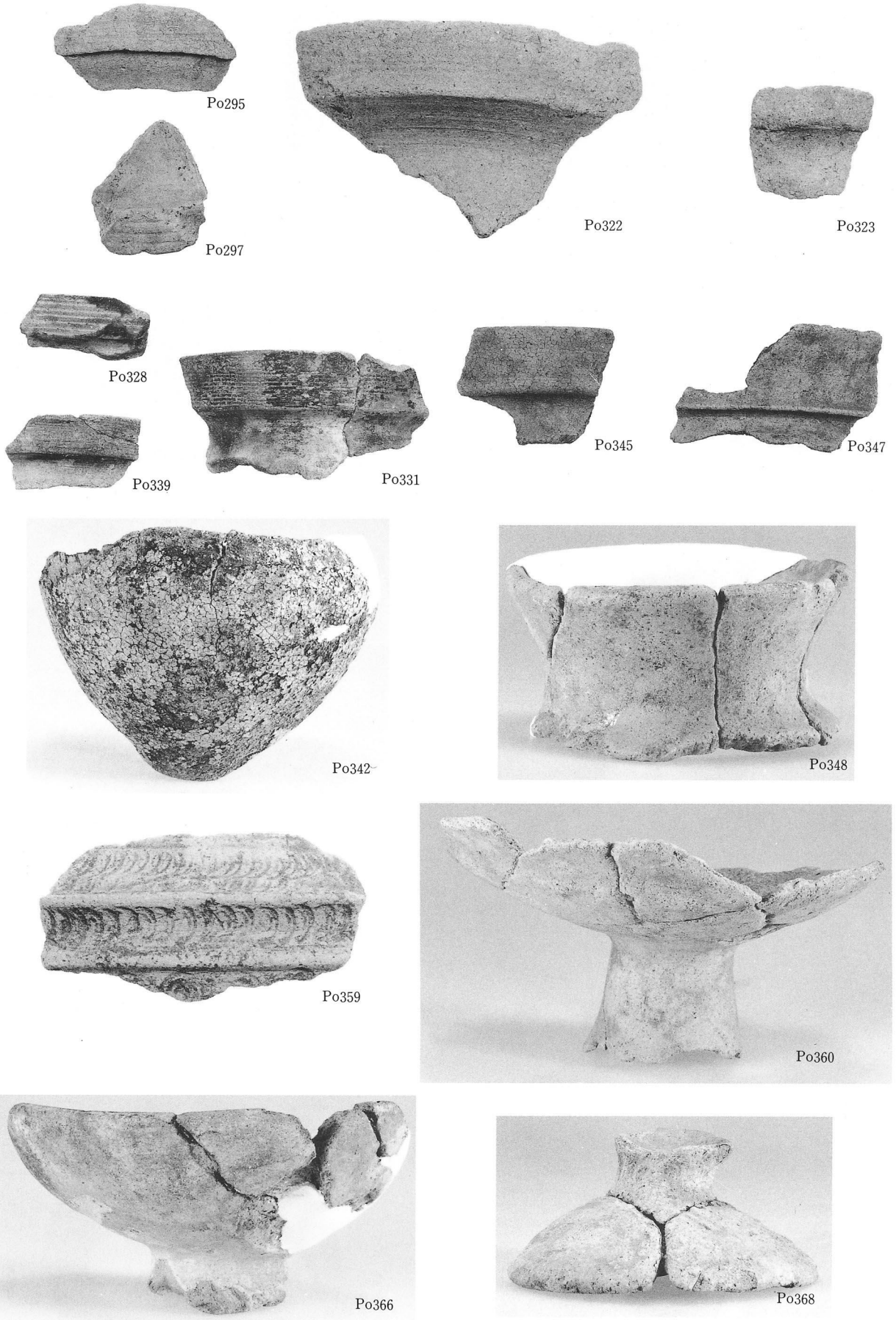


Po299

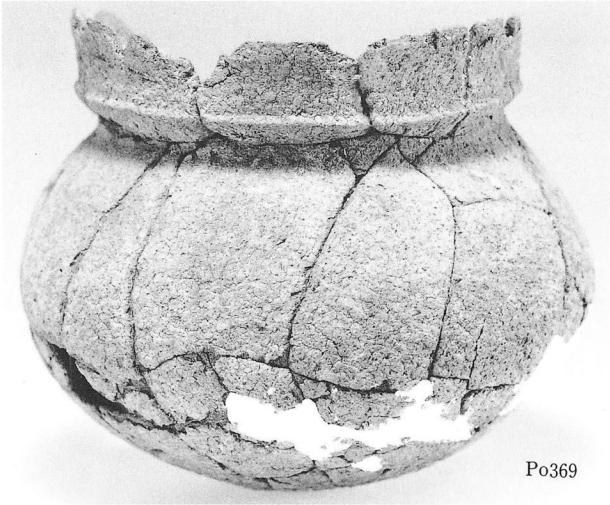


Po300

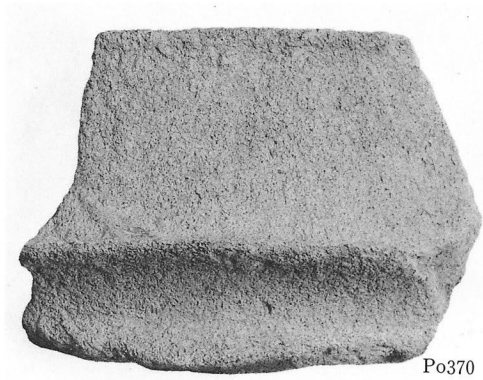
図版42



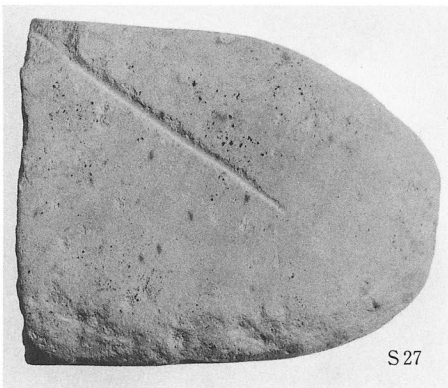
鷲谷奥地区B区土器溜り・鷲谷奥地区B区遺構外出土遺物



Po369



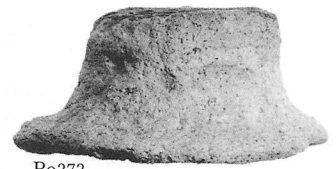
Po370



S27



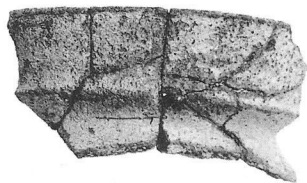
S28



Po373



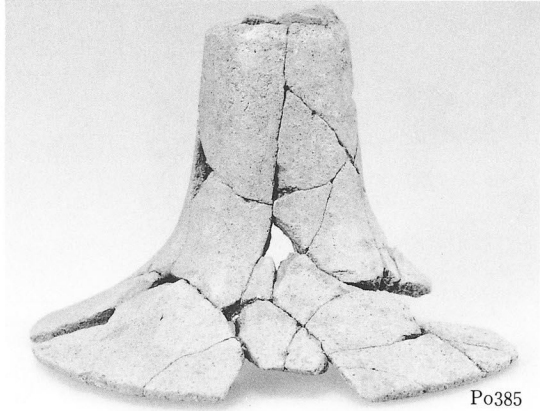
Po382



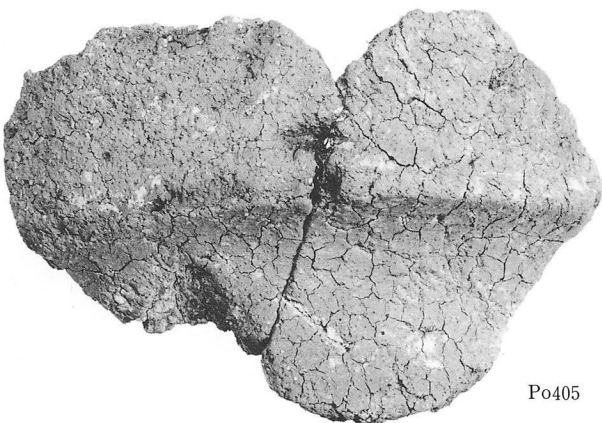
Po383



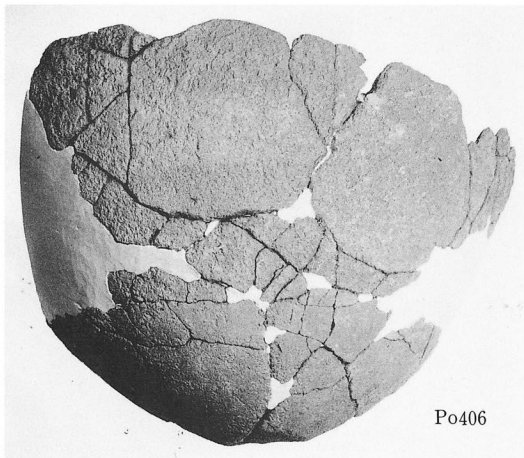
Po384



Po385

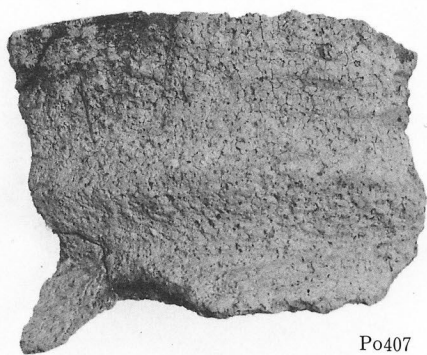


Po405

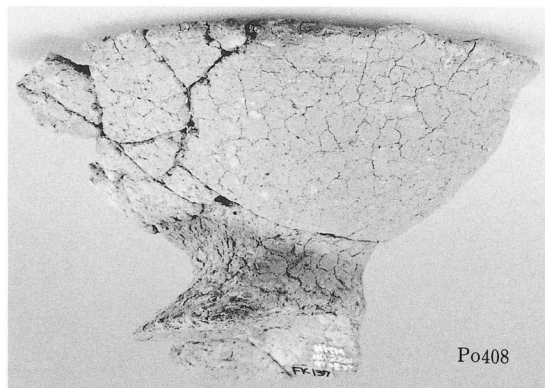


Po406

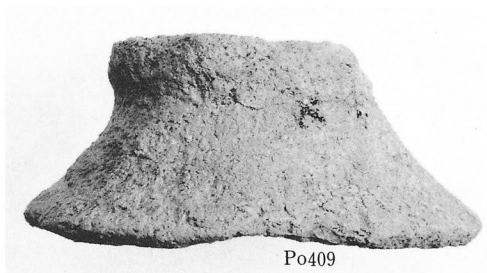
图版44



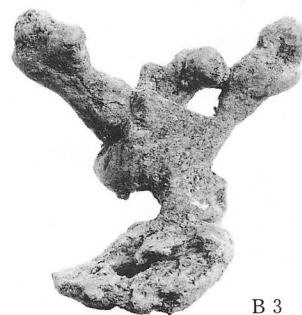
Po407



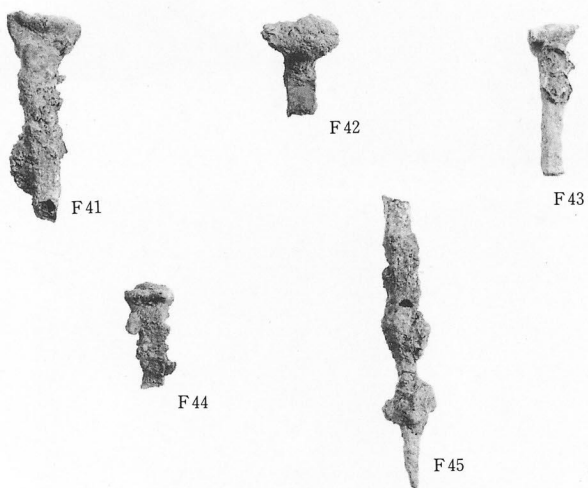
Po408



Po409



B 3



F41

F42

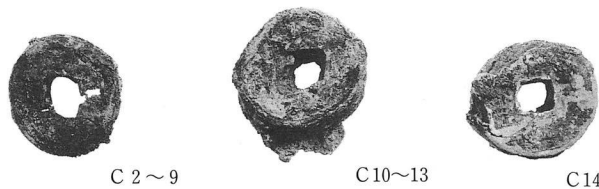
F43

F44

F45



Po400



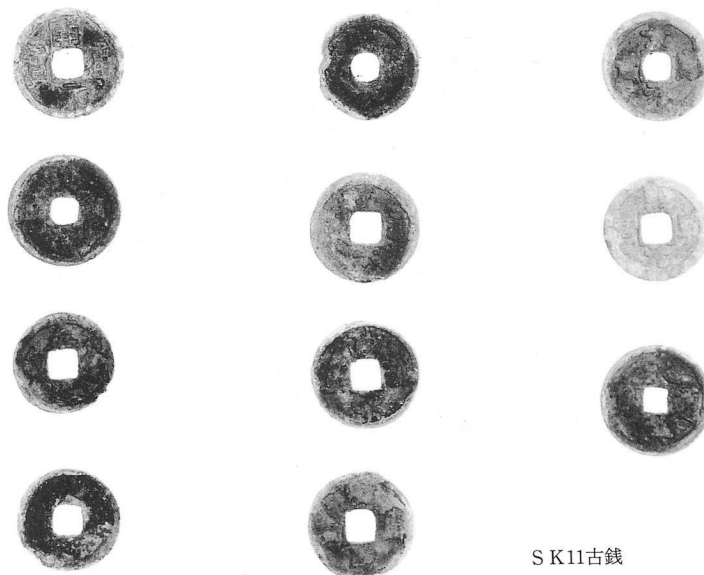
C 2~9

C10~13

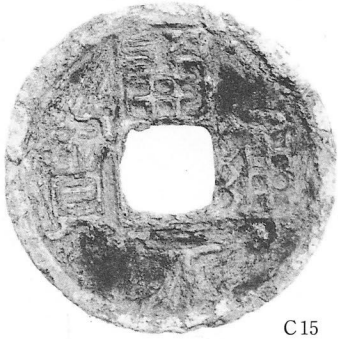
C14



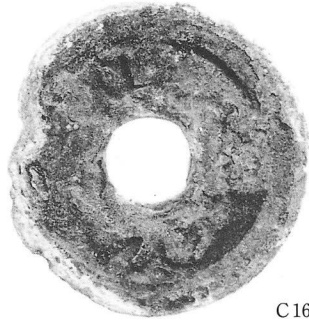
F46



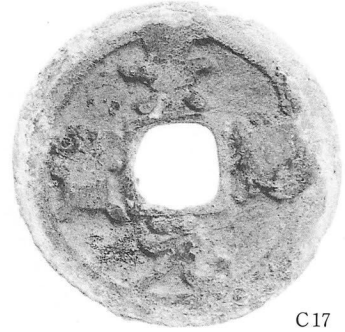
S K11古銭



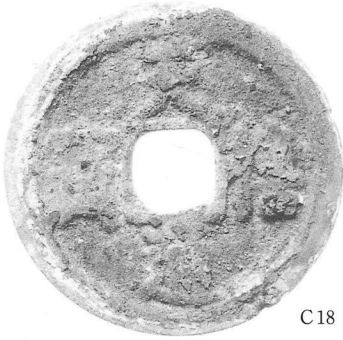
C15



C16



C17



C18



C19



C20



C22



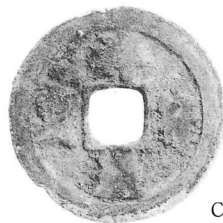
C23



F47



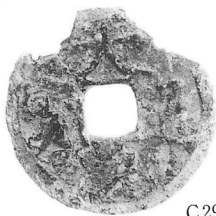
C26



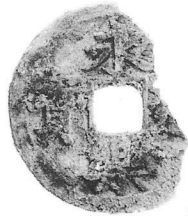
C27



C28



C29



C30



C31



C26



C27



C28



C29



C30



C31



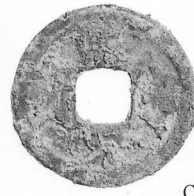
F48



F49



C32~34



C35



C36~37



C32~34



C32~34 裏面



F51



F50



F52



F54



F55



F56



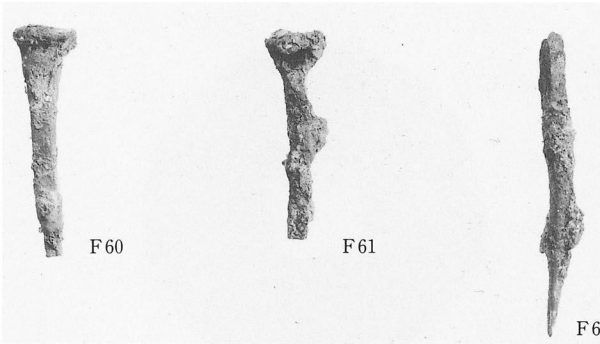
F57



F58



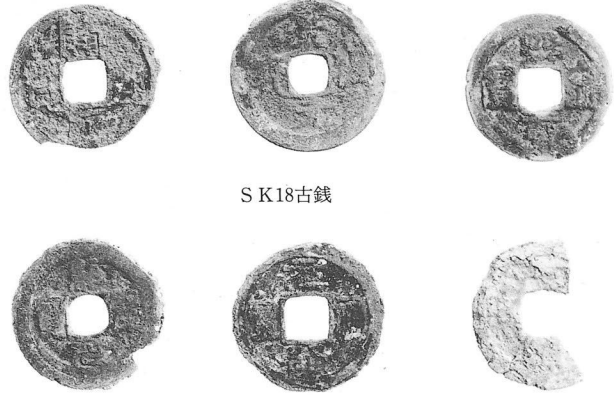
F59



F60

F61

F62



S K18古銭



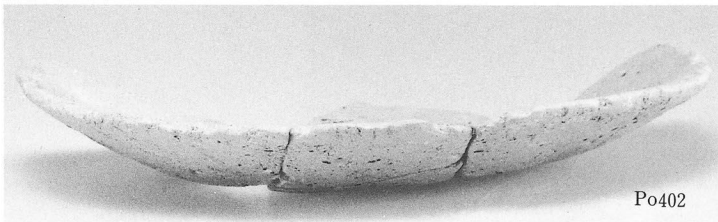
C39



C40



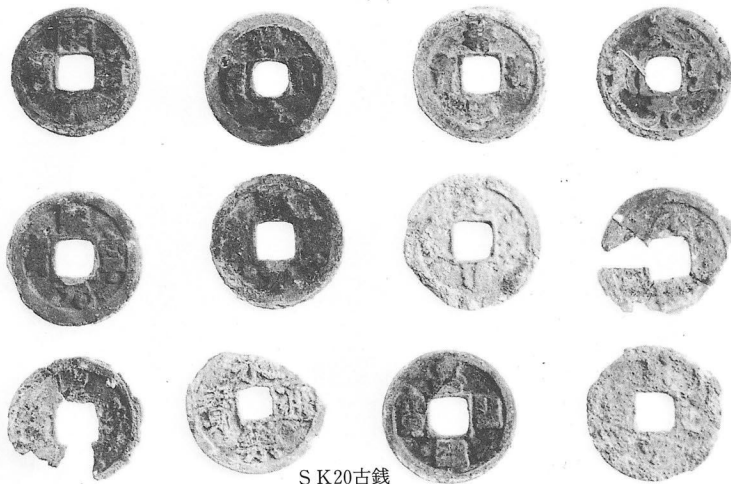
C42



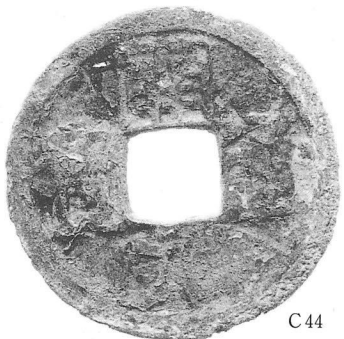
Po402



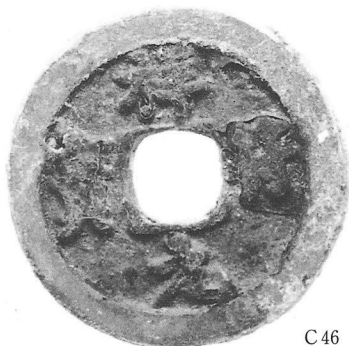
Po403



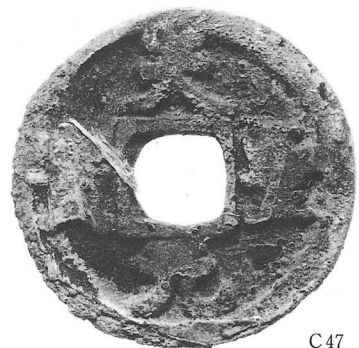
S K20古銭



C44



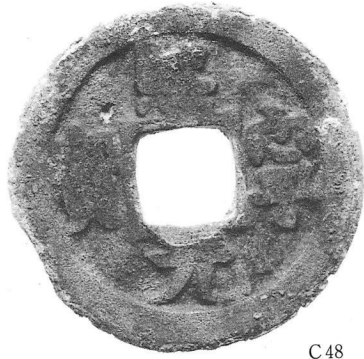
C46



C47



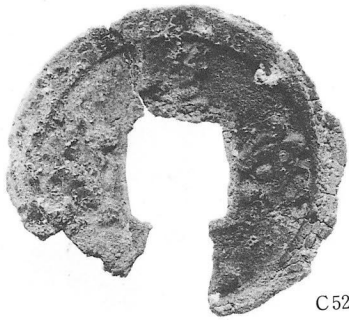
图版48



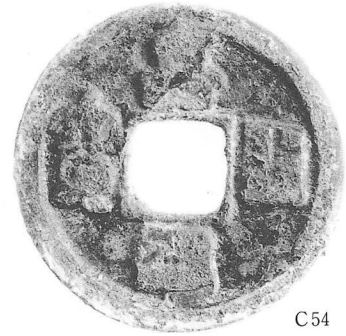
C48



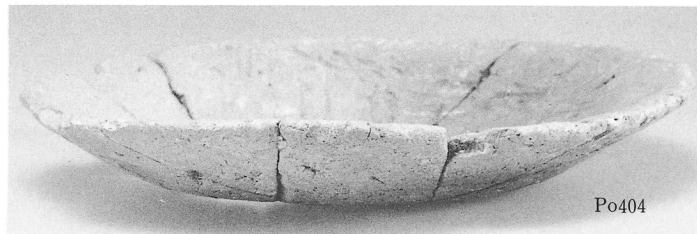
C50



C52



C54



Po404



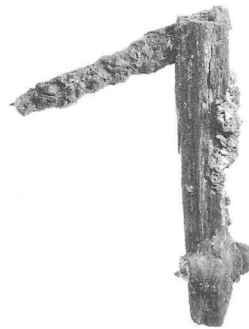
F63



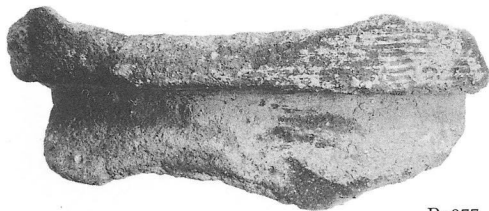
F64



F65



F66~68



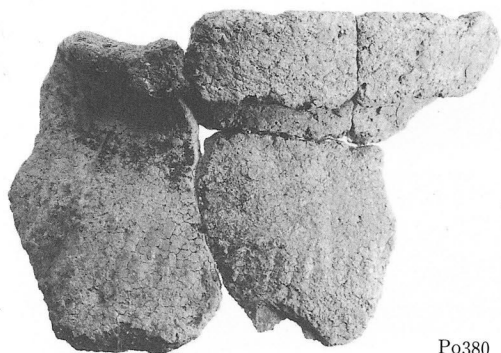
Po377



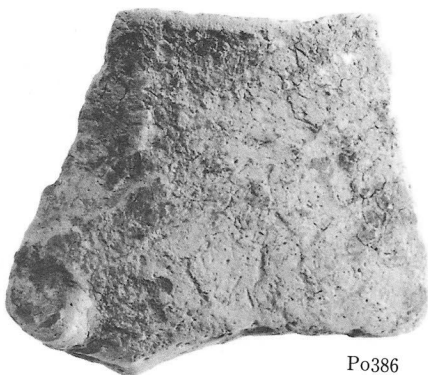
Po378



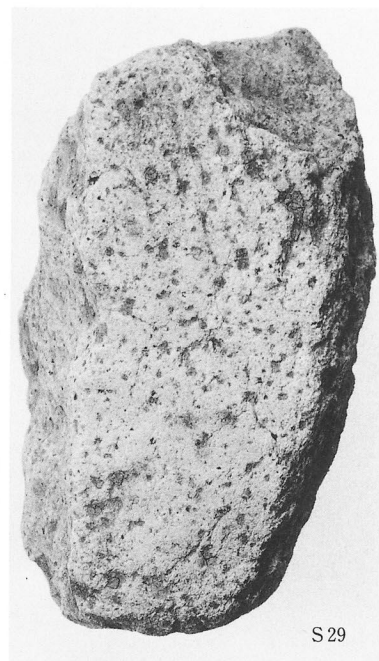
Po379



Po380



Po386



S 29



Po410



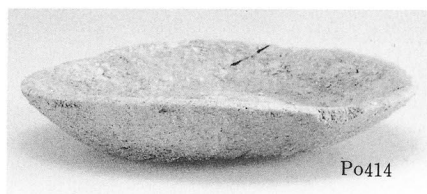
Po411



Po412



Po413



Po414



F 69



S 30



Po417

S I 14 • S I 16 • S K 25 • S K 26出土遺物

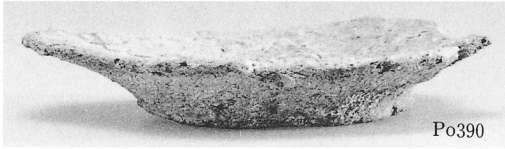
図版50



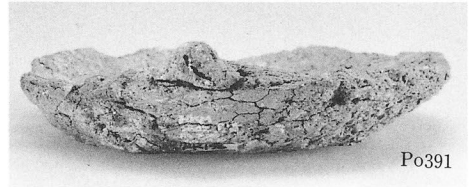
Po388



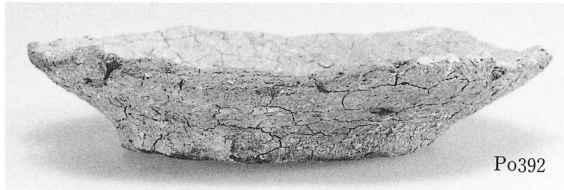
Po389



Po390



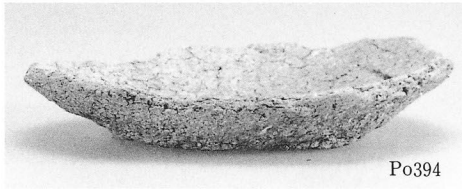
Po391



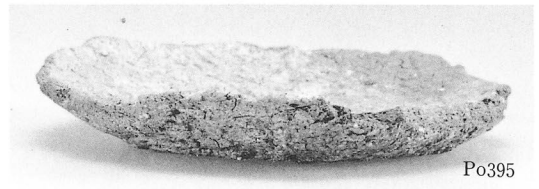
Po392



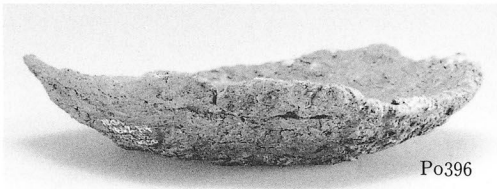
Po393



Po394



Po395



Po396



Po397



S B02  
P13内円礫



S B02  
P14内円礫

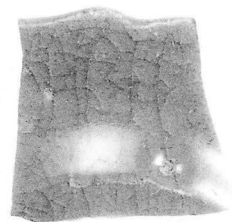
S B02出土遺物



Po422



Po425



Po423



Po424



F70



F71



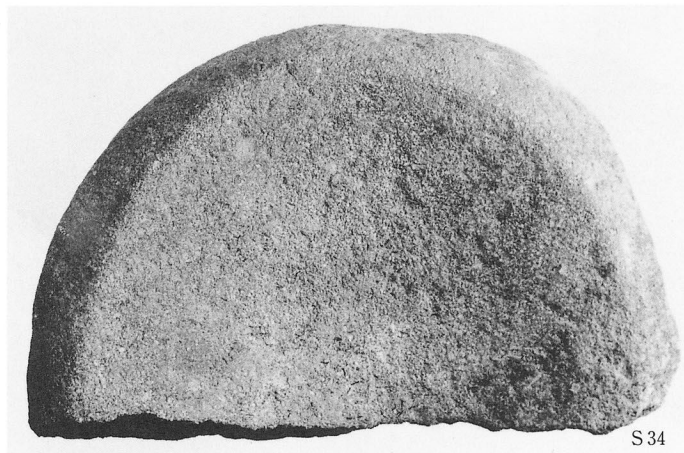
S31



S32

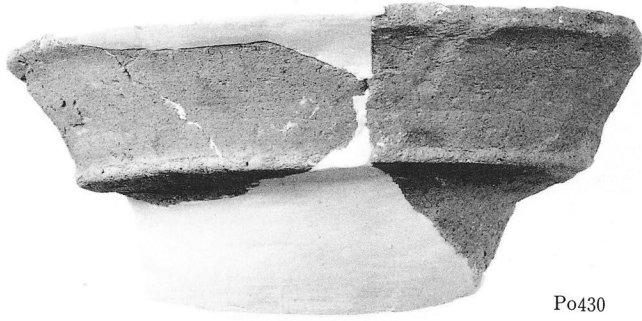


S33



S34

図版52



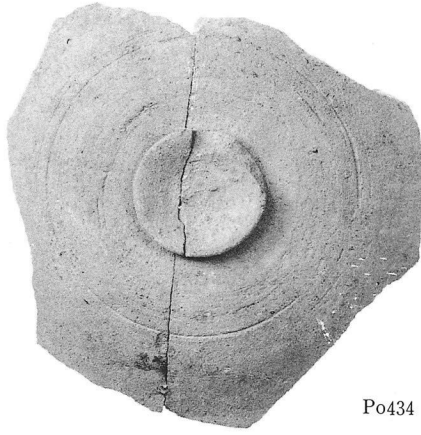
Po430



Po431



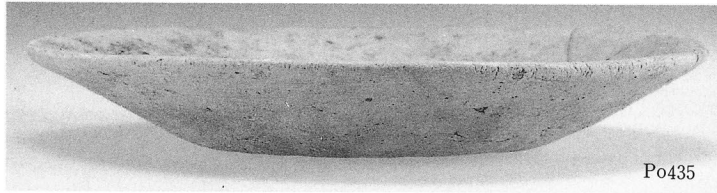
Po433



Po434



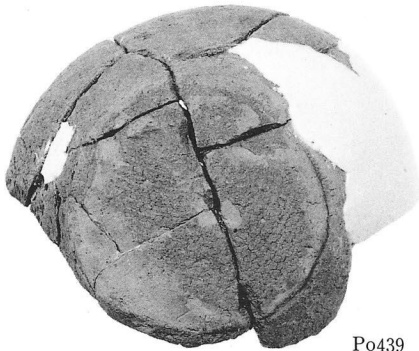
F61



Po435



B 4



Po439



F74



Po447



F73

# 報告書抄録

ふりがな	かつらみいせき—わしだにぐちちく・わしだにおくちく・つつみだにちく— くらみこふんぐん							
書名	西桂見遺跡—鷺谷口地区・鷺谷奥地区・堤谷地区— 倉見古墳群							
副書名	主要地方道鳥取鹿野倉吉線道路整備事業に伴う発掘調査報告書							
巻次	II							
シリーズ名	鳥取県教育文化財団調査報告書							
シリーズ番号	46							
編集者名	牧本哲雄、小谷修一、高垣陽子							
編集機関	財団法人鳥取県教育文化財団 鳥取県埋蔵文化センター							
所在地	〒680-01 鳥取県岩美郡国府町宮下1260 Tel(0857)27-6711							
発行年月日	西暦1996年3月1日							
所収遺跡名	所在地	コード		北緯	東経	調査期間	調査面積 m <sup>2</sup>	調査原因
		市長村	遺跡番号					
西桂見遺跡 <small>にしかつらみいせき</small>	とつとりけんとつとりし 鳥取県鳥取市  かつらみあざつつみだに 桂見字堤谷  たかづみあざわしだにぐち 高住字鷺谷口  あざわしだにおく ・字鷺谷奥			35° 29' 50"	134° 11' 16"	19930406 ～ 19951207	5784.2m <sup>2</sup>	主要地方 道鳥取鹿 野倉吉線 道路整備 事業
倉見古墳群 <small>くらみこふんぐん</small>	とつとりけんとつとりし 鳥取県鳥取市  たかづみあざわしだにぐち 高住字鷺谷口  あざわしだにおく ・字鷺谷奥							
所収遺跡名	種別	主な時代	主な遺構		主な遺物		特記事項	
西桂見遺跡	集落跡 墓地	弥生時代 後期 古墳時代 前期 奈良・平安 中世	竪穴住居 土坑 段状遺構  溝状遺構 中世墓 土塁 ピット群	17棟 12基 3基  19条 15基 1基 3か所	弥生土器・石器・玉 製品・鉄器 土師器・石器・鉄器  須恵器 土師質土器・瓦質土 器・青磁・陶器・古 銭・鉄器	屋外に延びる排水溝を 持つもの2棟。 焼失住居2棟。  溝で区画された中世墓 3基。 人骨片出土		
倉見古墳群	古墳	古墳時代 前期 古墳時代 後期	倉見7号墳  倉見8号墳 倉見9号墳		土師器・須恵器・土 師質土器・弥生土器 須恵器・土師質土器 須恵器・鉄器・金銅 製品・弥生土器	二段墓墳。  横穴式石室内包。		

鳥取県教育文化財団調査報告書46

主要地方道鳥取鹿野倉古線道路整備事業に伴う発掘調査報告書

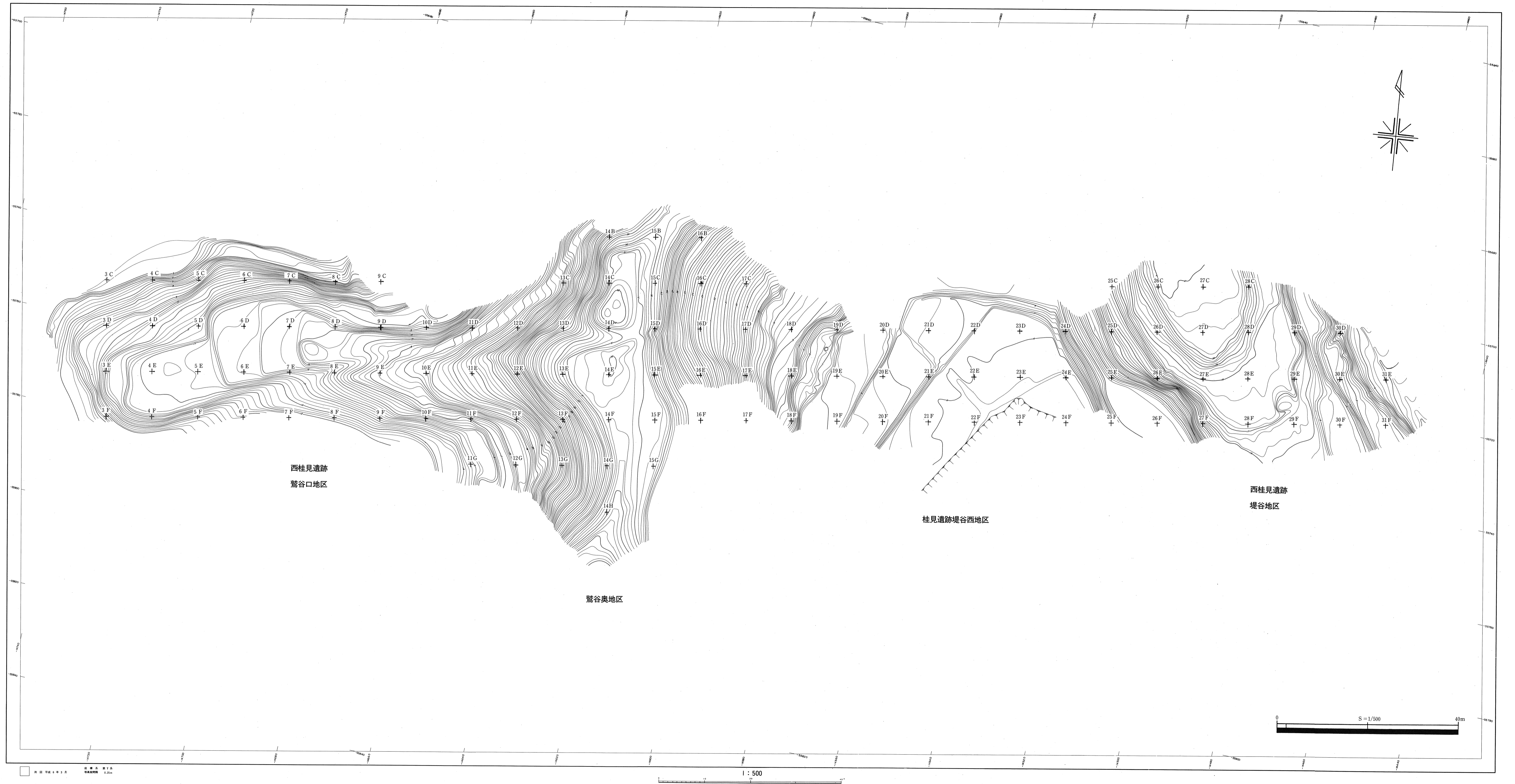
鳥取県鳥取市

**西桂見遺跡・倉見古墳群**

発行 1996年3月1日

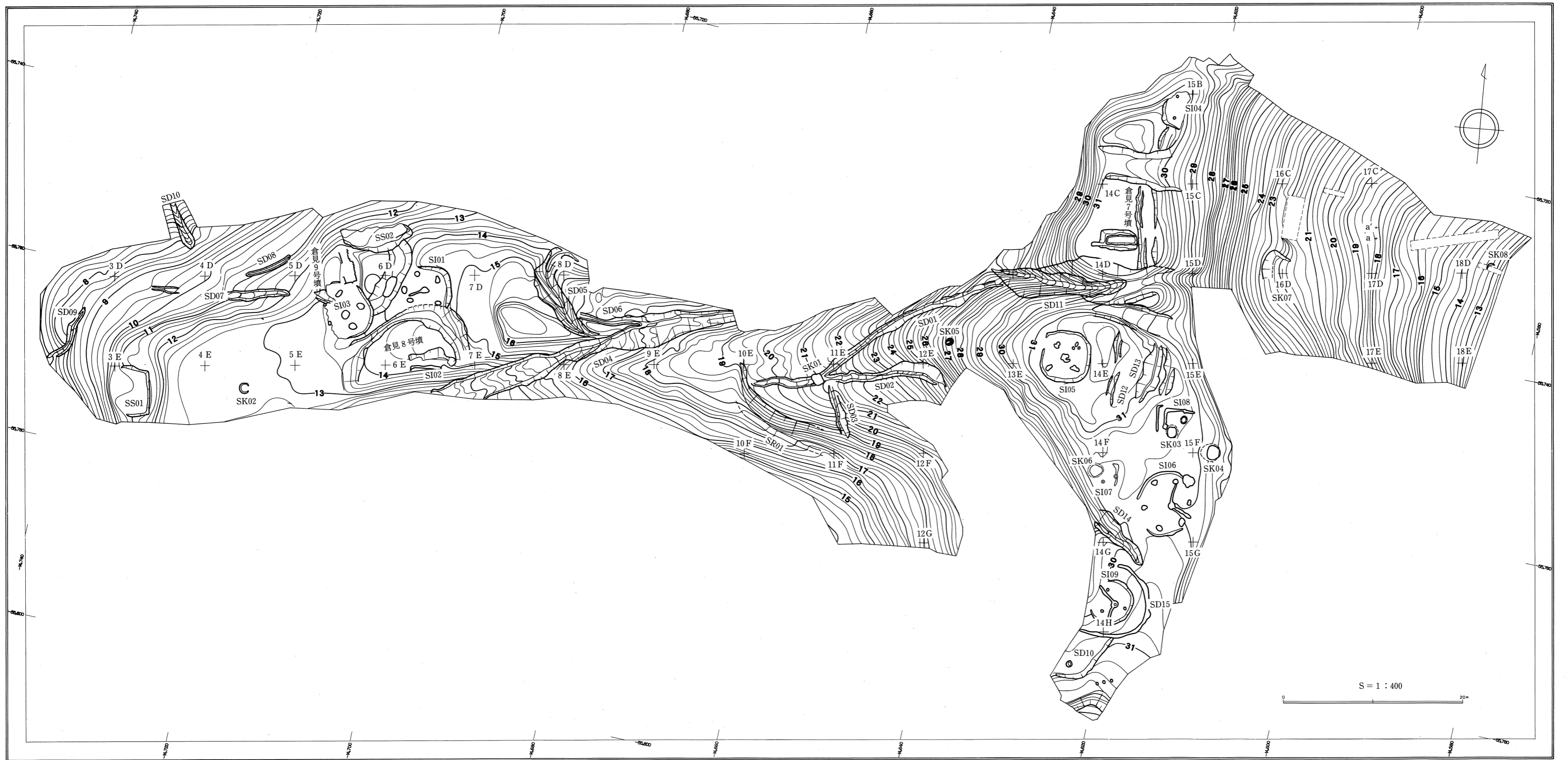
発行者 財団法人 鳥取県教育文化財団  
〒680 鳥取市東町1丁目271番地  
電話 (0857) 26-8397

印刷 中央印刷株式会社

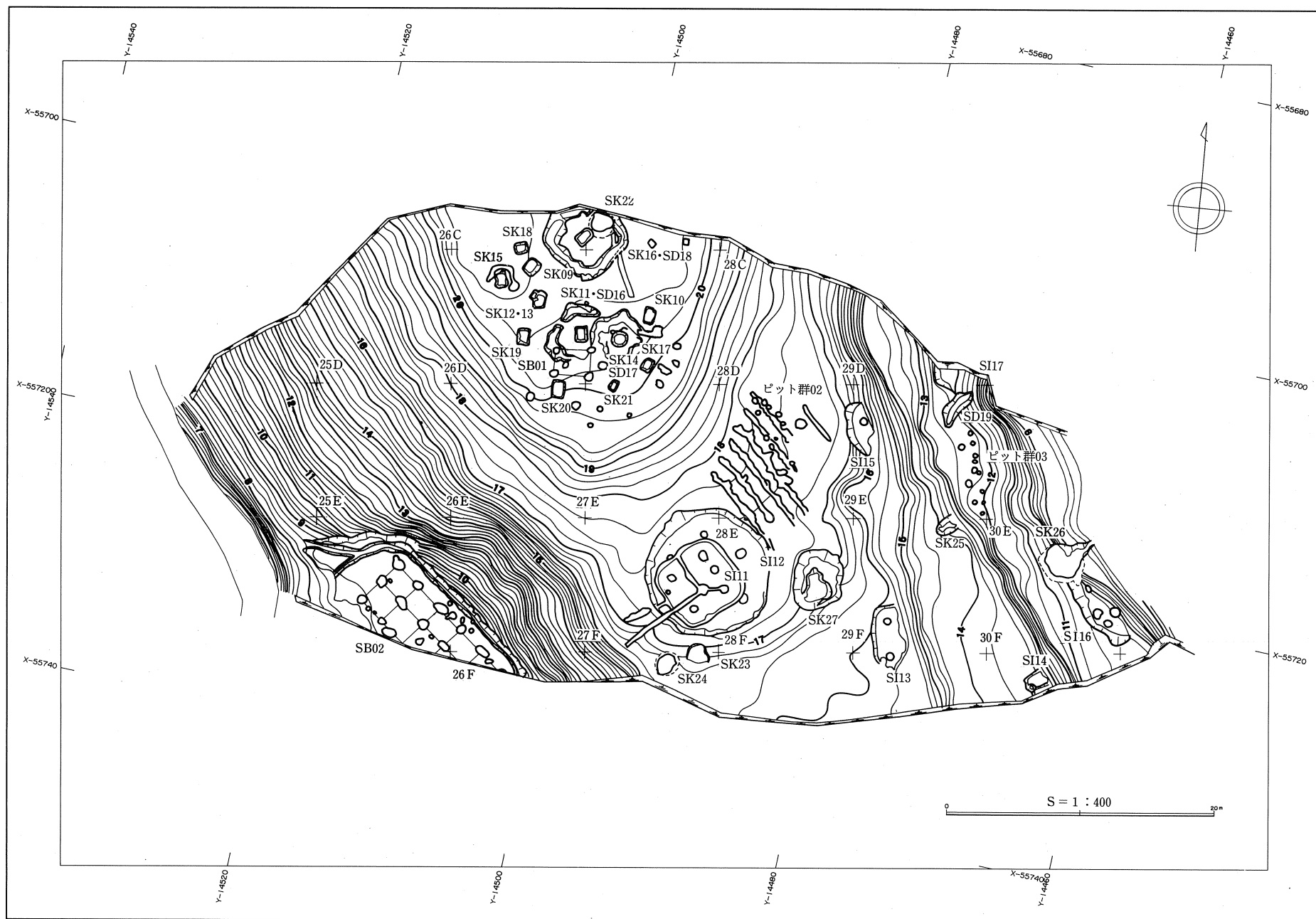


付図1 西桂見遺跡鷺谷口・鷺谷奥・堤谷地区、桂見遺跡堤谷西地区調査前地形測量図





付图2 1994年度西桂見遺跡調査区全体図



付図3 1995年度西桂見遺跡調査区全体図