



(1) SR102 土器出土状況 (南から)



(2) SR104 土器出土状況 (北から)



(1) SE101 (上部) (東から)



(2) SE101 (土師質土器井戸枠除去後) (西から)

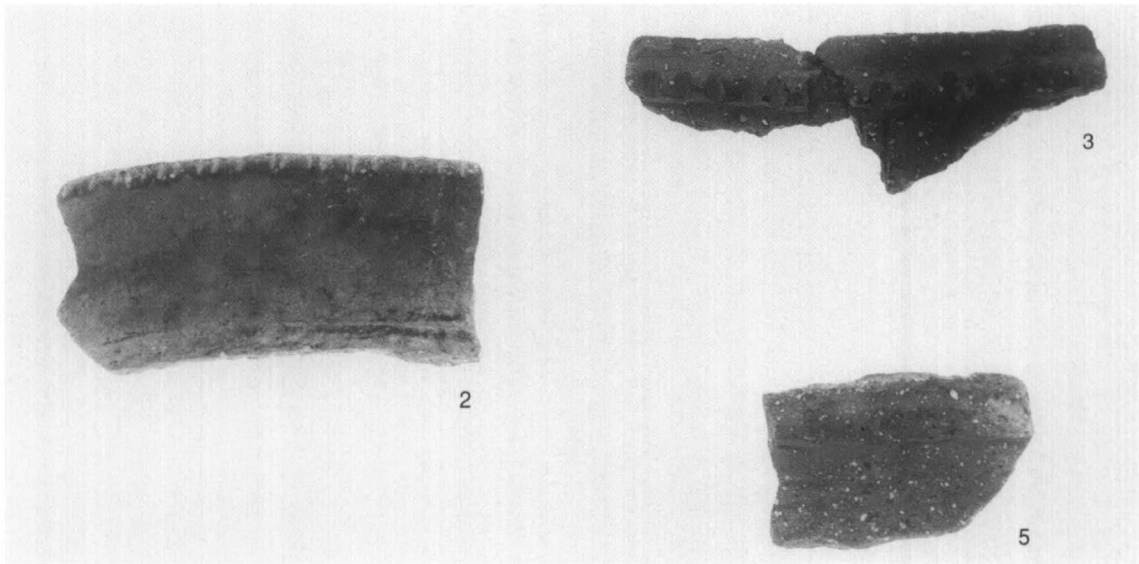
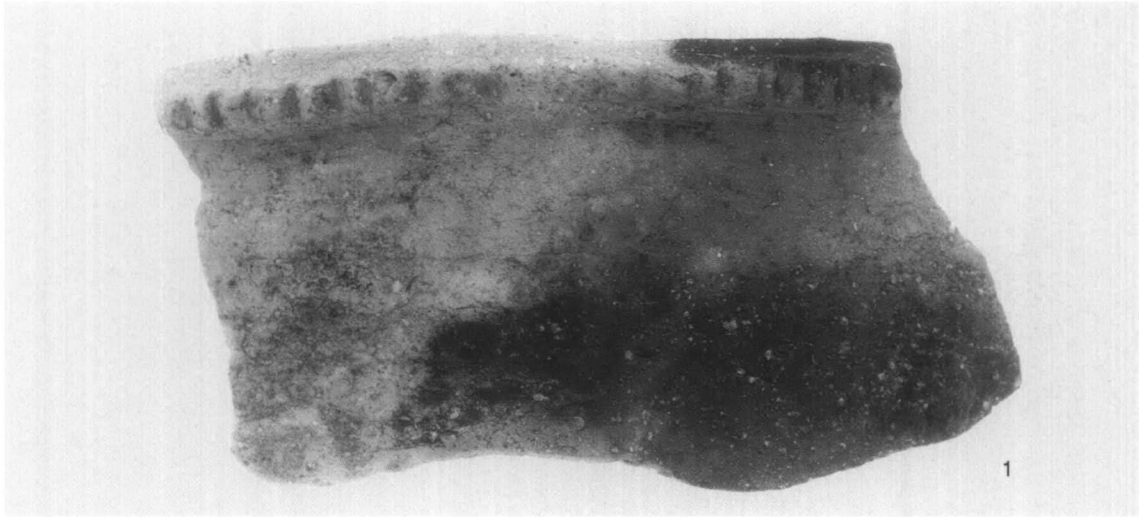


(1) SE101 (蓋除去後) (東から)

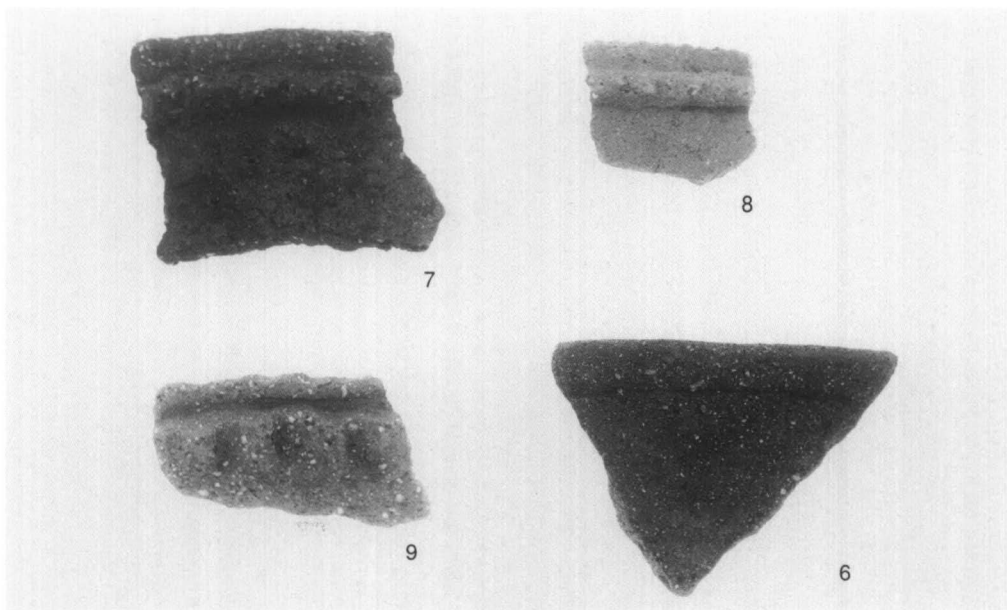


(2) SE101 (完掘) (北から)



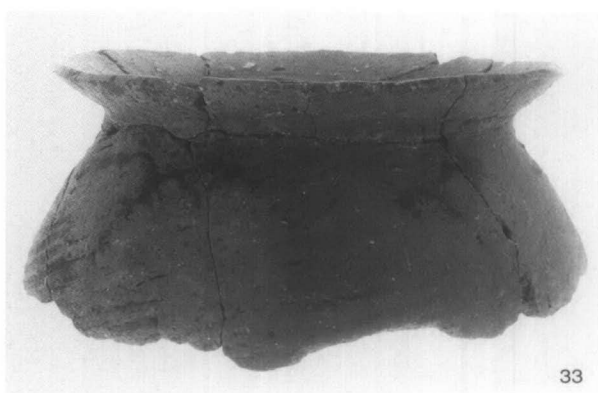
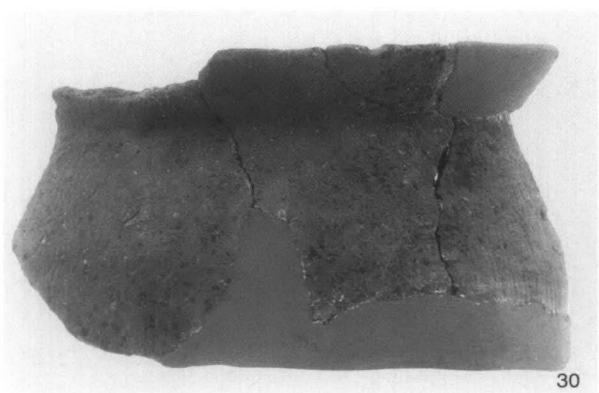
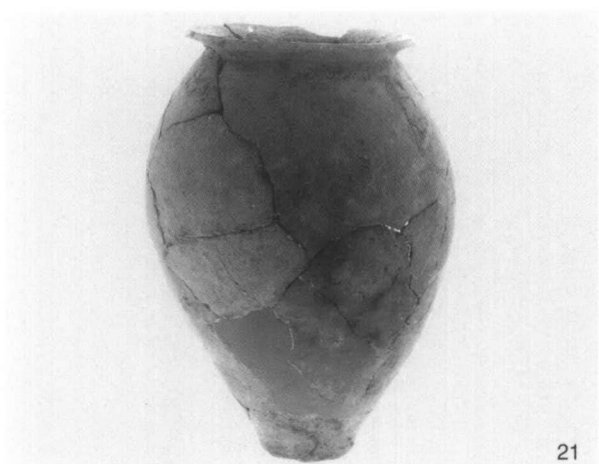
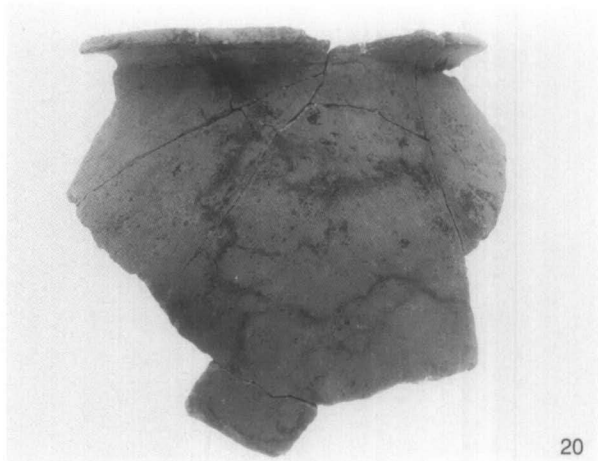


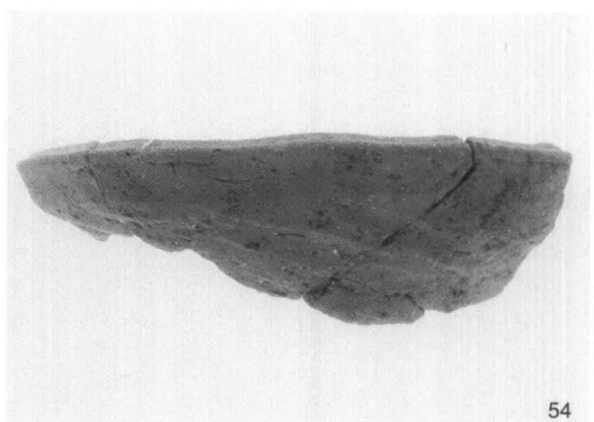
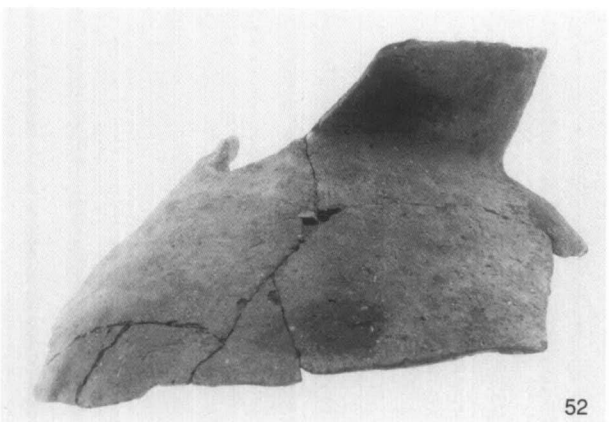
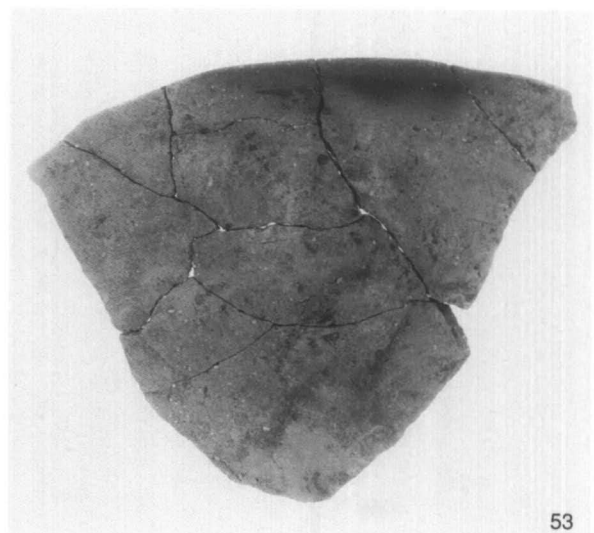
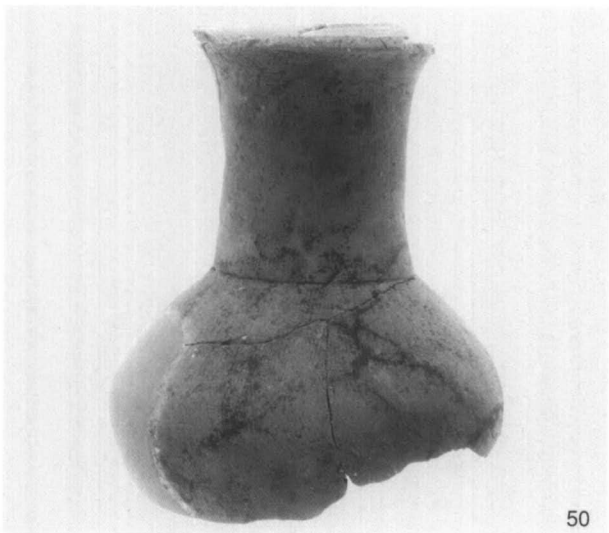
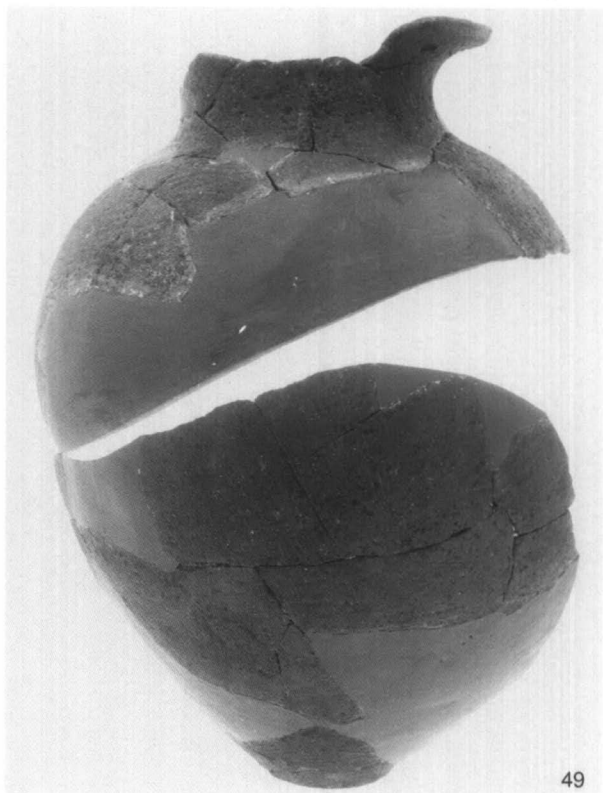
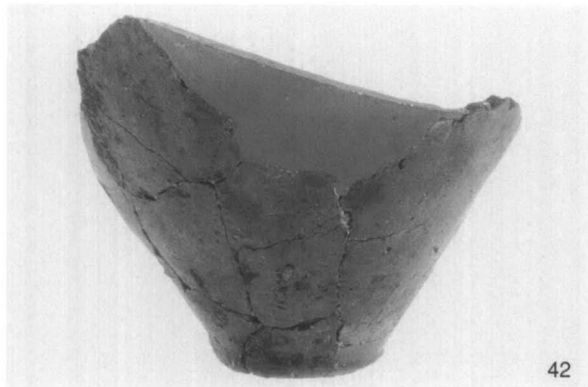
(1) V区 縄文土器包含層出土遺物



(2) VII区 縄文土器包含層出土遺物

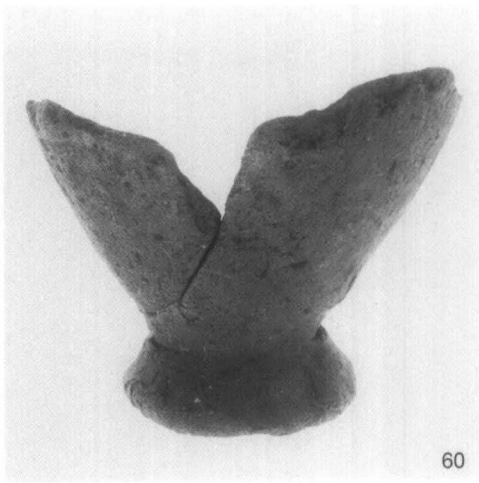






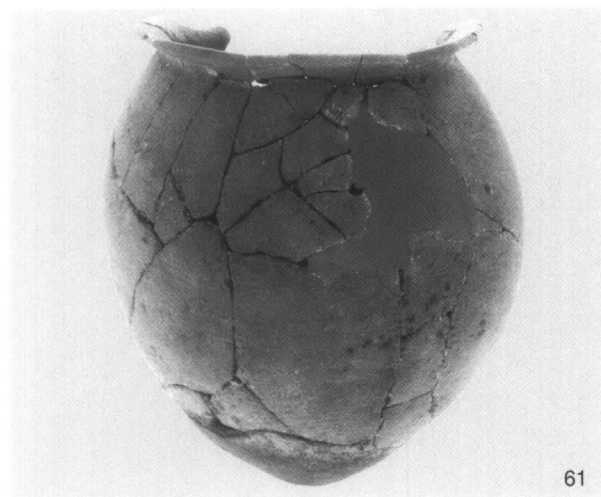


56

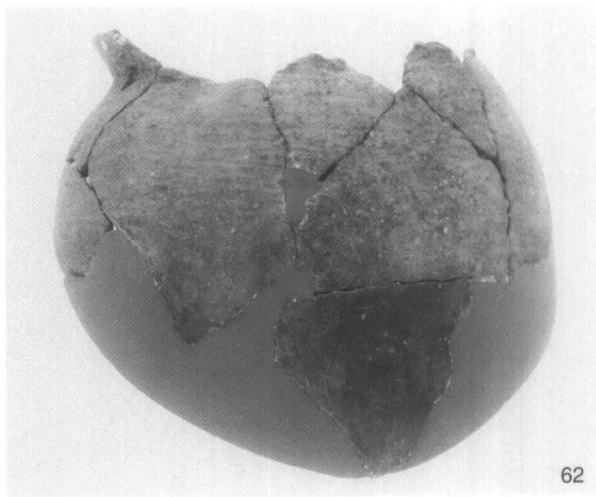


60

(1) SD101 出土遺物③



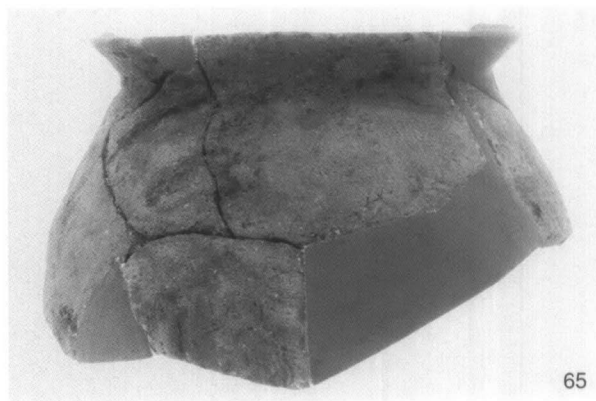
61



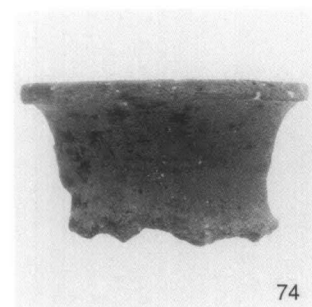
62



64



65



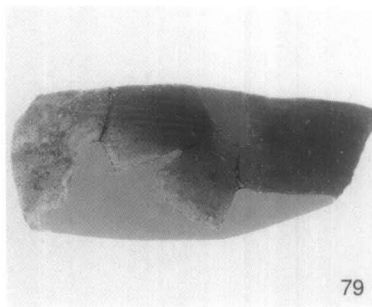
74



76



77

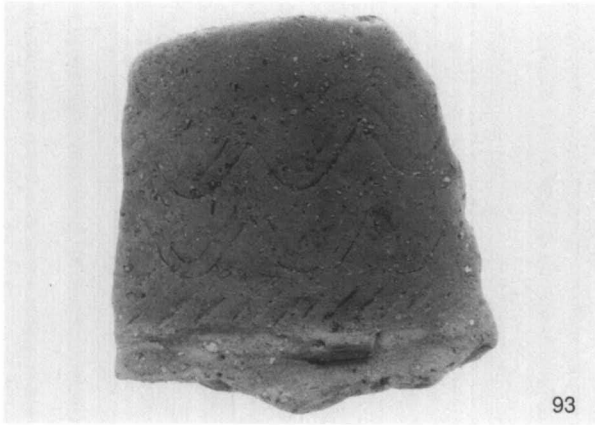


79

(2) SD102 出土遺物①

61~79 SD102





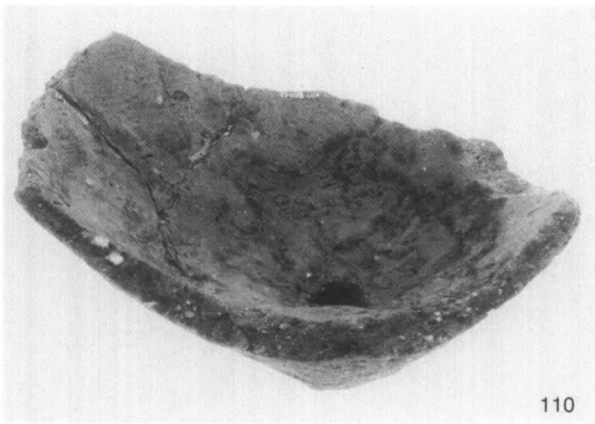
93



96

(1) SD102 出土遺物②

93・96 SD102東部

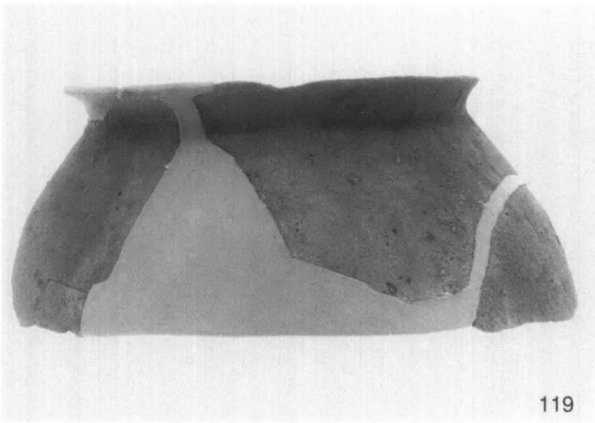


110

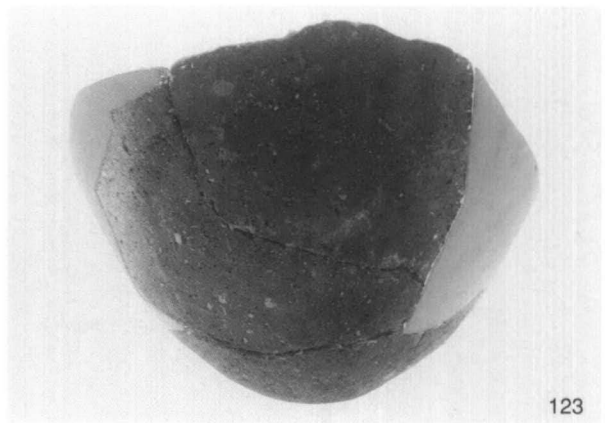


112

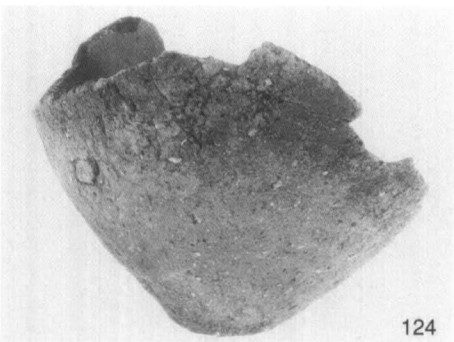
110・112 SD103



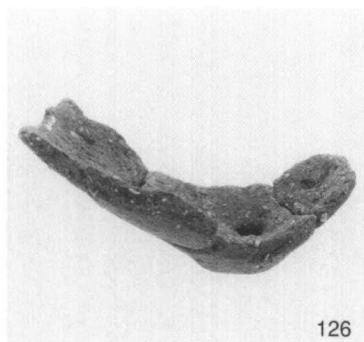
119



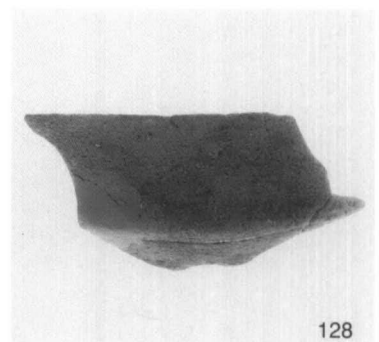
123



124



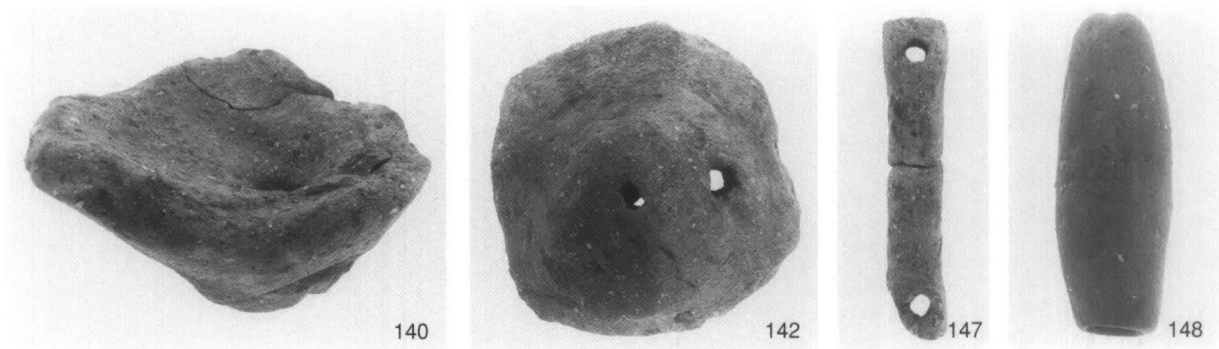
126



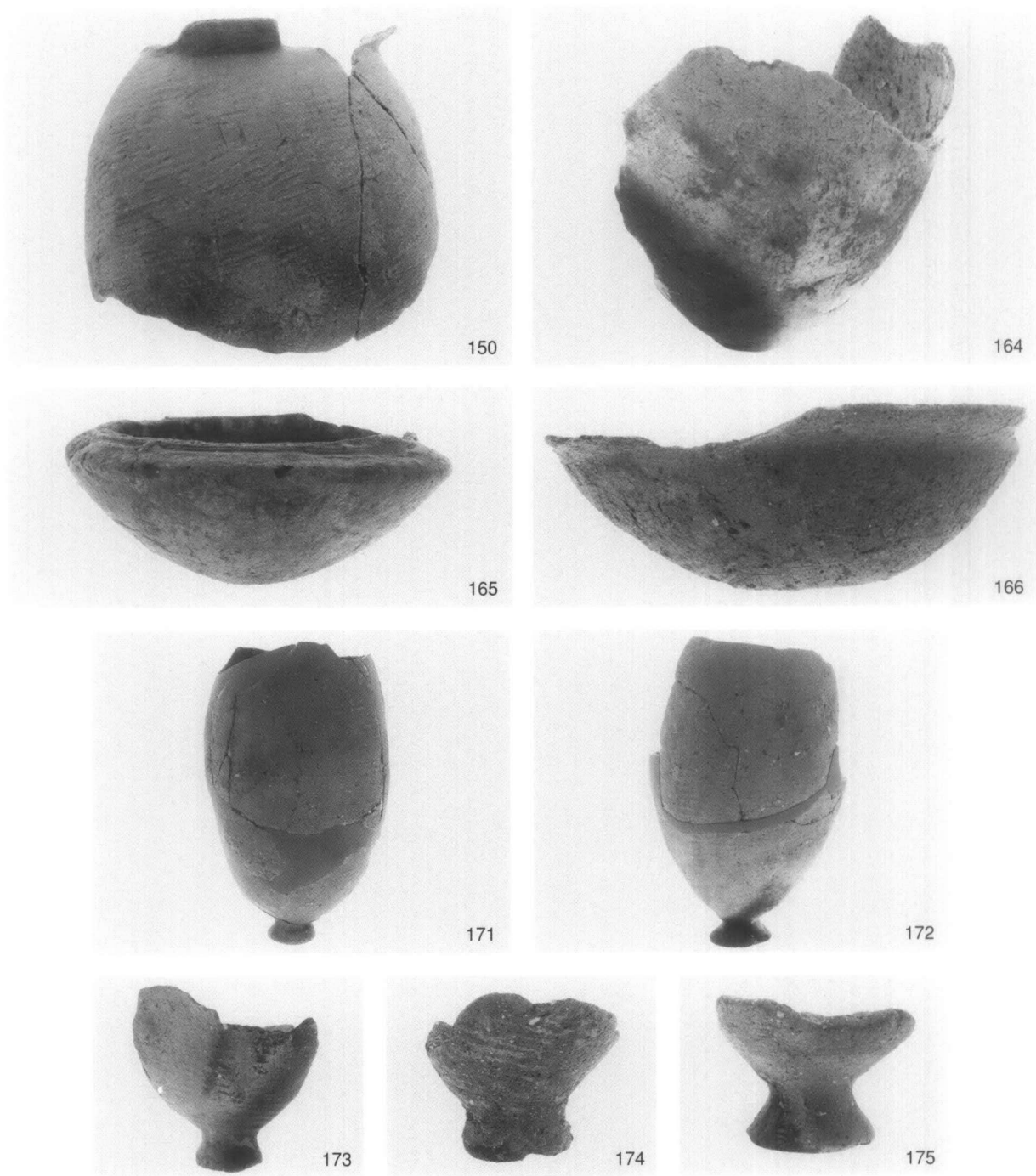
128

(2) SD103・SD105 出土遺物

119~128 SD105



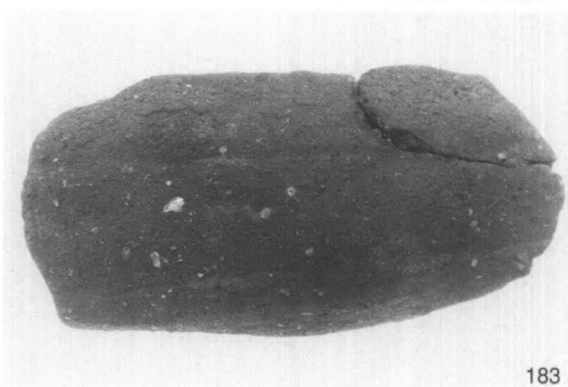
(1) II区・III区 弥生土器包含層出土遺物



(2) SK101 出土遺物



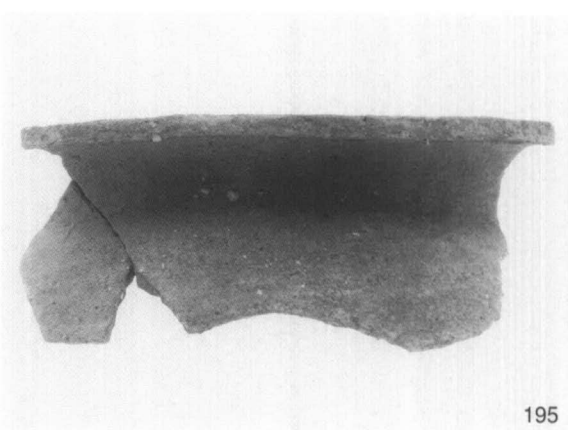
177



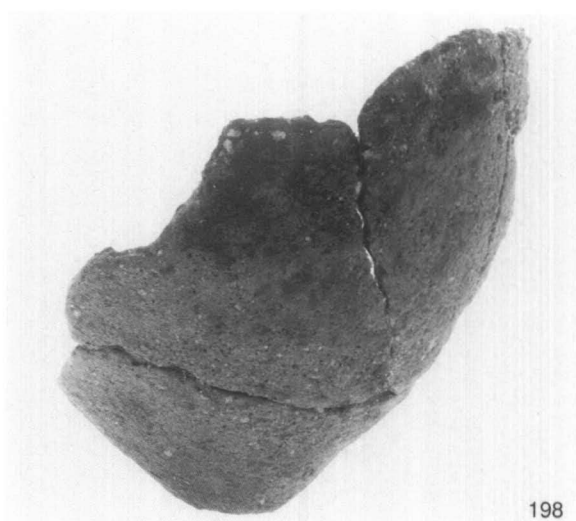
183



178

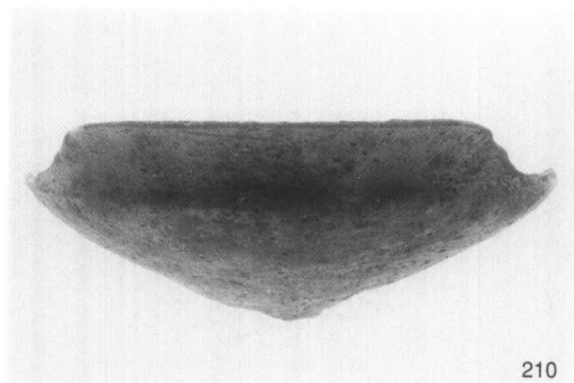


195



198

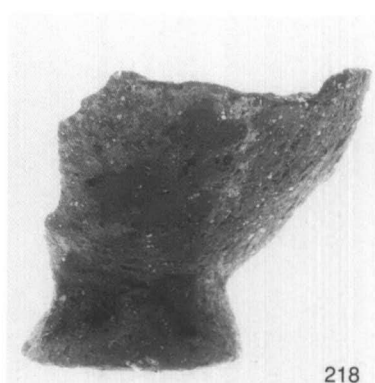
(1) SR101 出土遺物



210



217

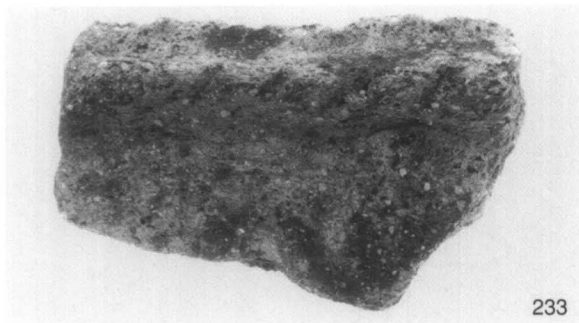


218

(2) VI区 弥生土器包含層出土遺物①

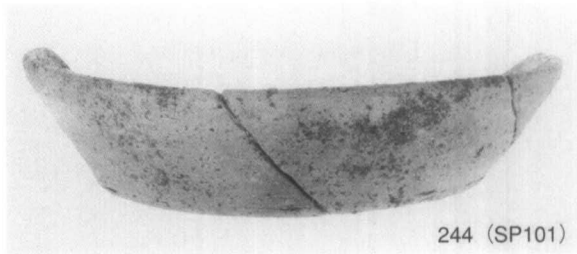
183~218 暗褐色粘質土層 (第2層)



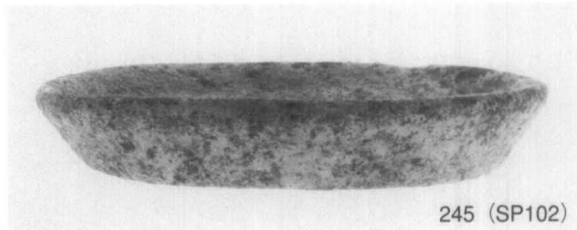


233

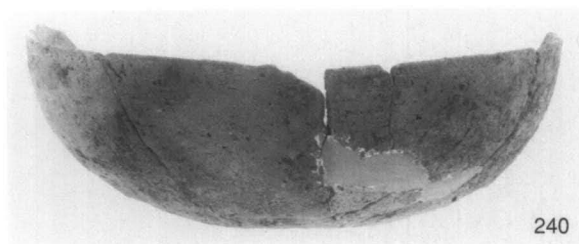
233 茶褐色砂混粘土層 (第4層)  
(1) VI区 弥生土器包含層出土遺物②



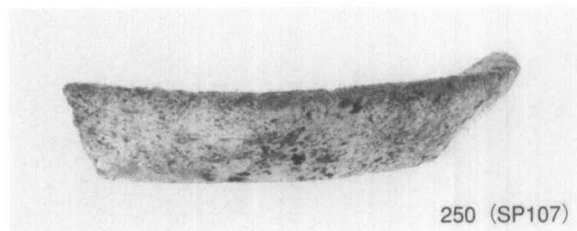
244 (SP101)



245 (SP102)



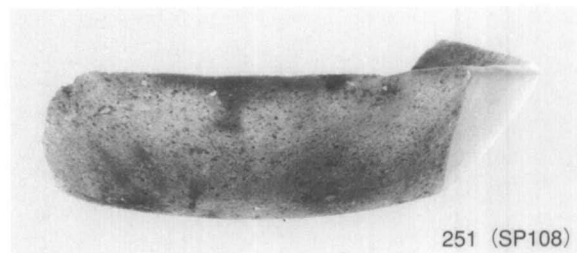
240



250 (SP107)



241

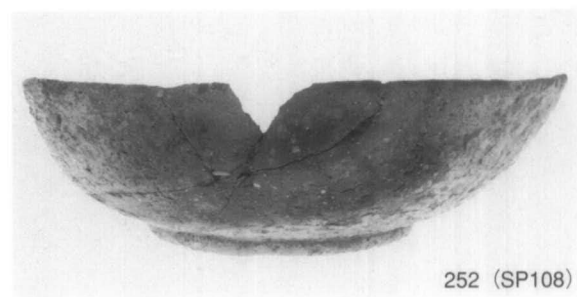


251 (SP108)



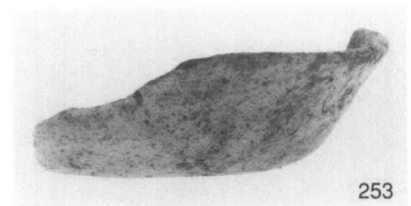
243

(2) SD106 出土遺物

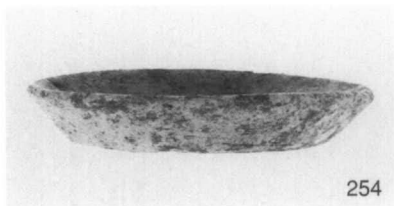


252 (SP108)

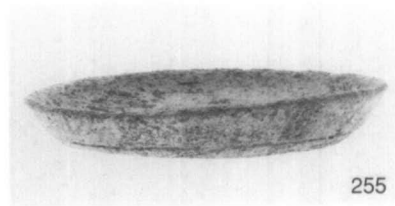
(3) III区 ピット出土遺物



253

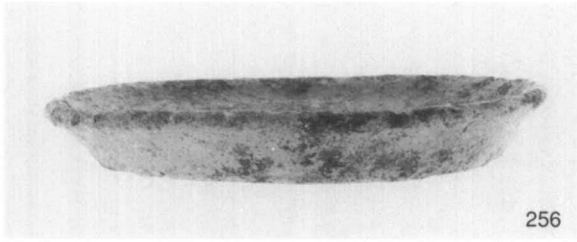


254

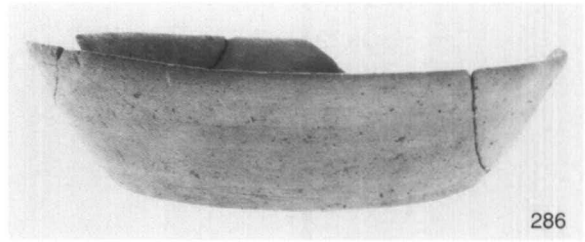


255

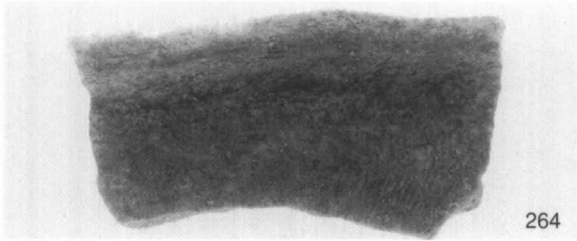
(4) SK102 出土遺物



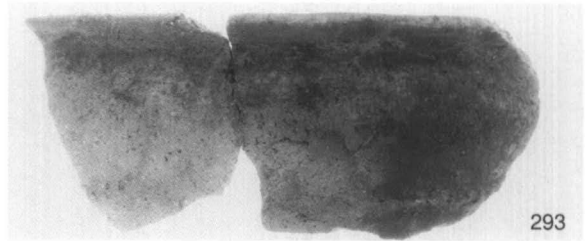
(1) SD108 出土遺物



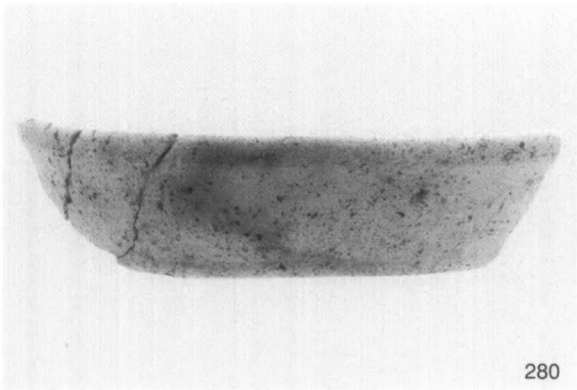
(4) SX101 出土遺物



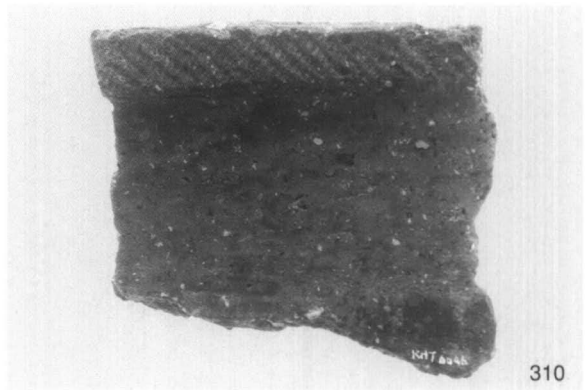
(2) SD113 出土遺物



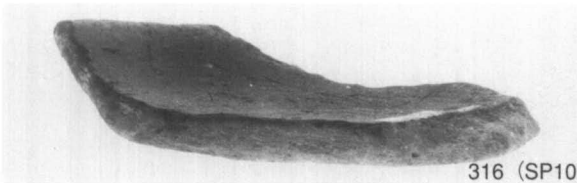
(5) SX102 出土遺物



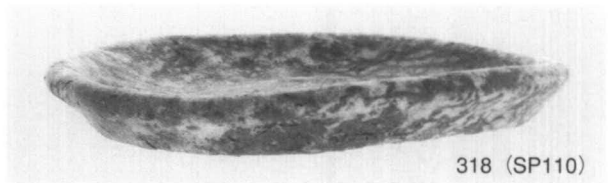
(3) SD120 出土遺物



(6) II区 包含層出土遺物



316 (SP109)



318 (SP110)



319



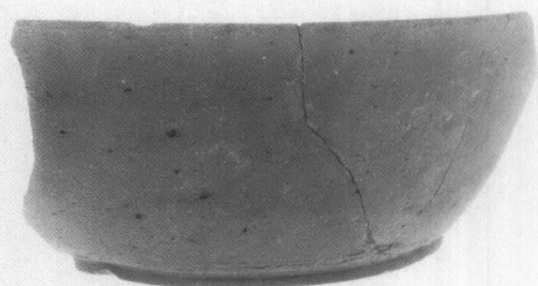
323

(7) IV区 ピット・自然河川出土遺物①

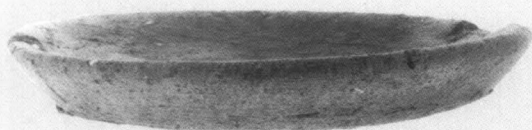
319・323 SR102①



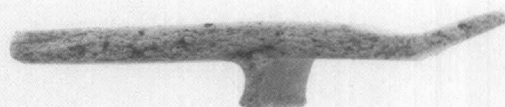
321



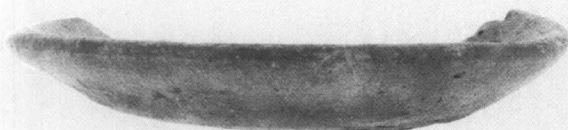
339



329



342



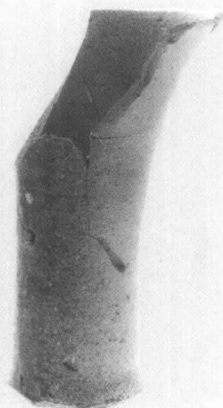
330



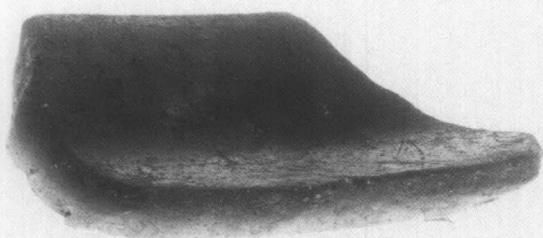
345



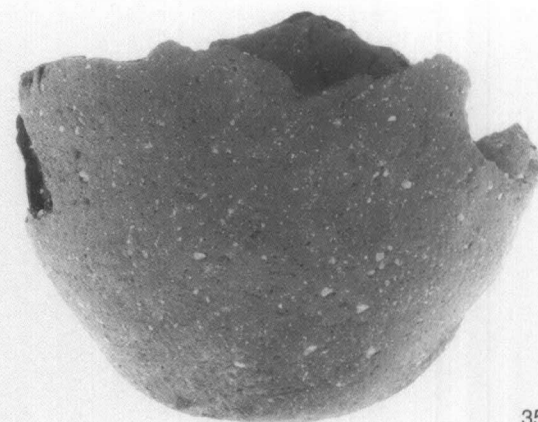
337



353

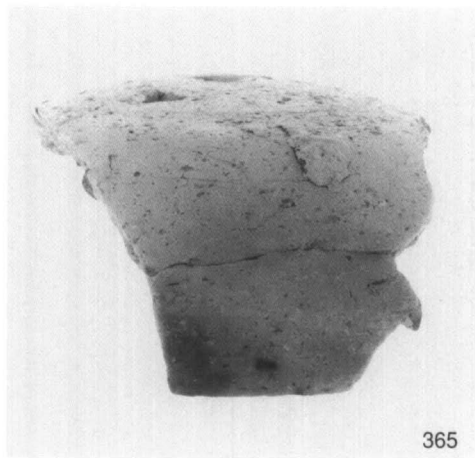


338

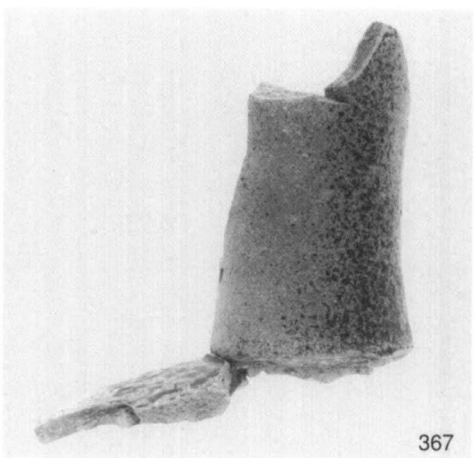


358





365

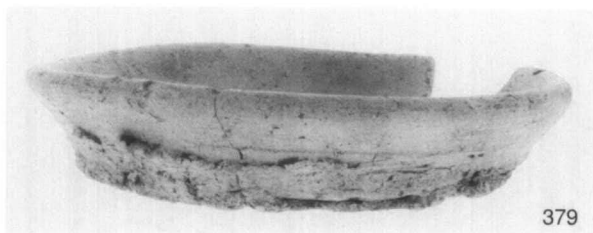


367

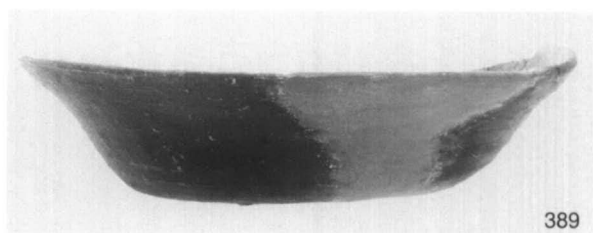


372

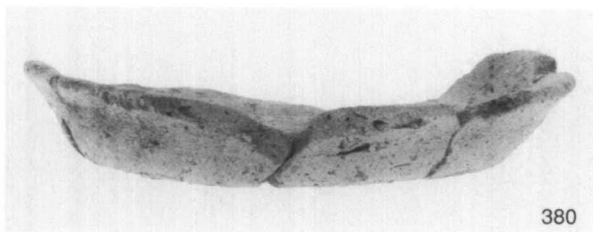
365~372 SR102・SR103合流付近



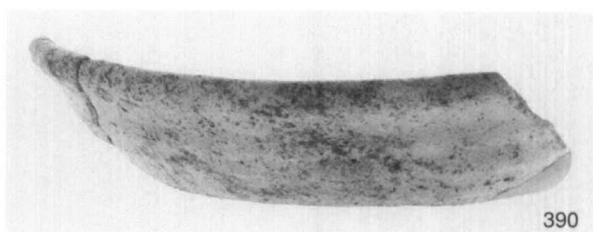
379



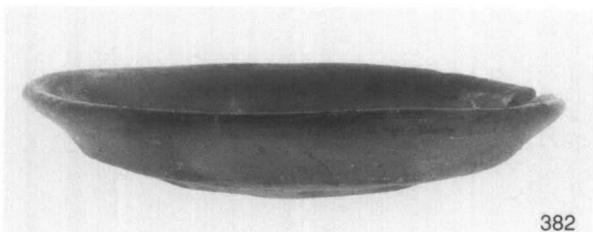
389



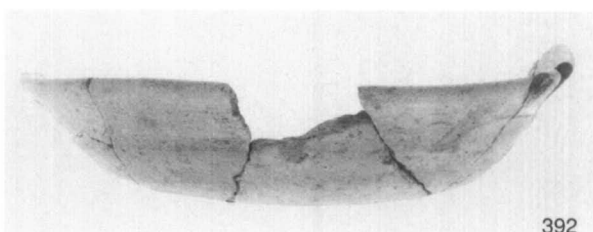
380



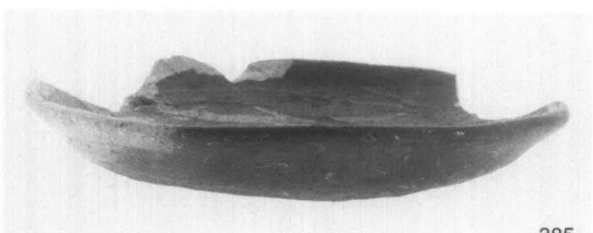
390



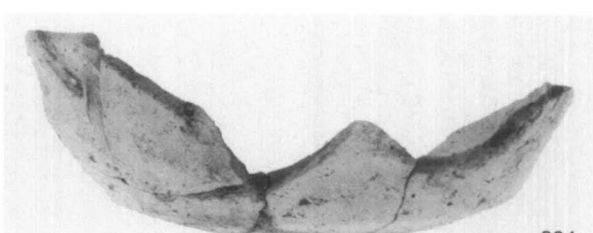
382



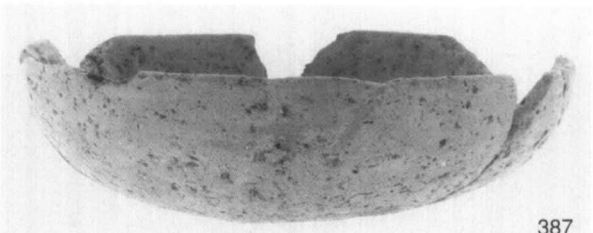
392



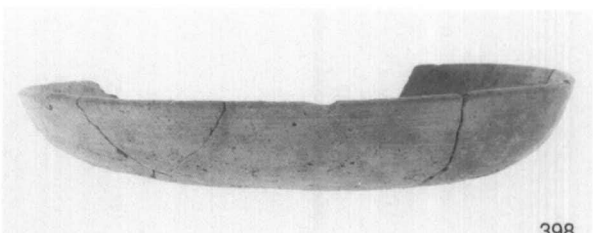
385



394



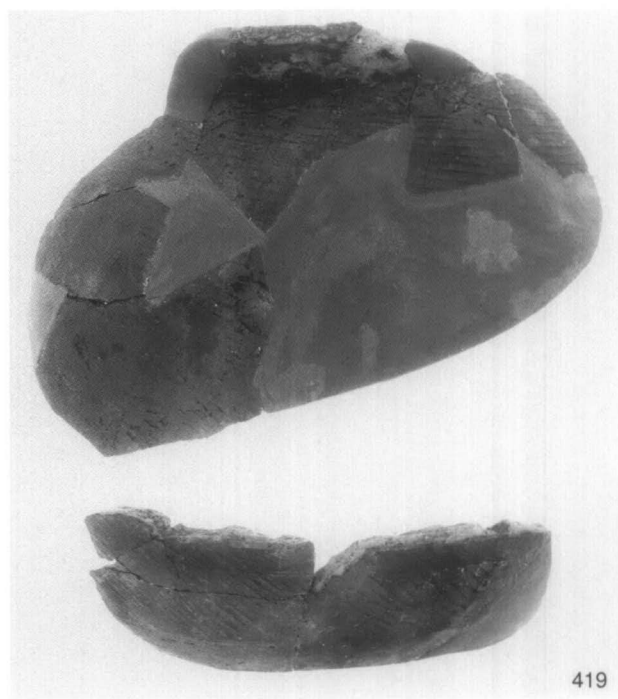
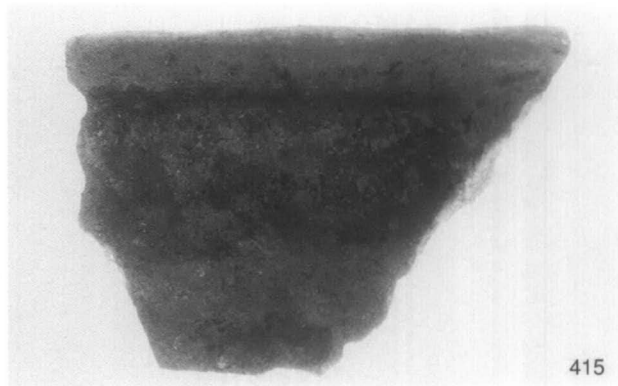
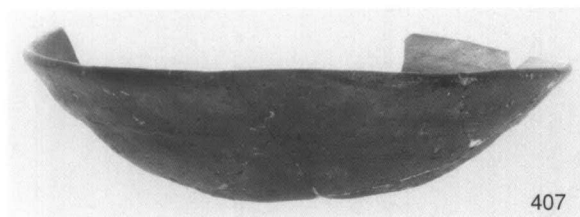
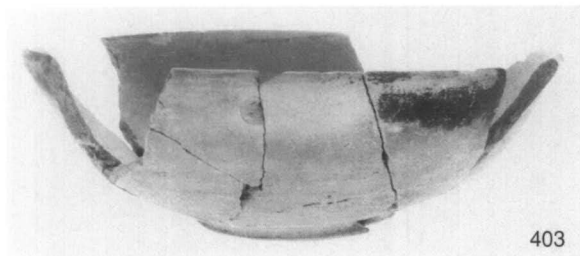
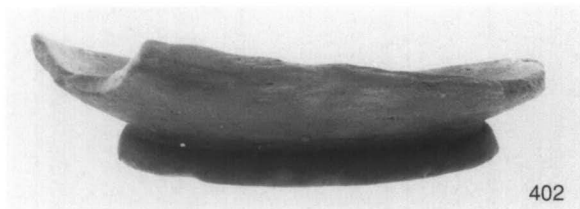
387



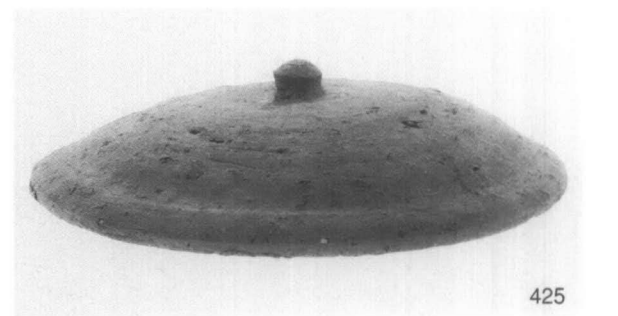
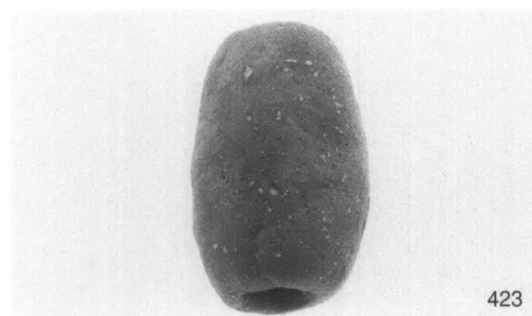
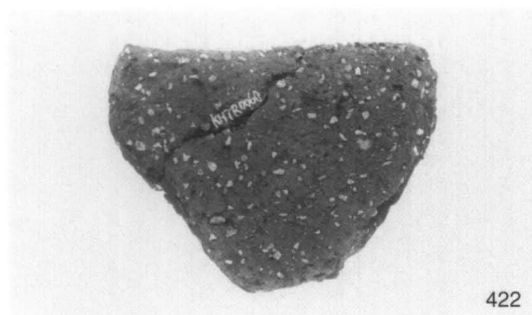
398

IV区 自然河川出土遺物③

379~398 SR103①

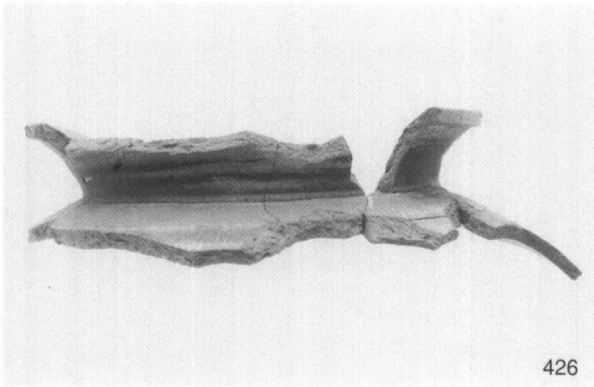


402~419 SR103②

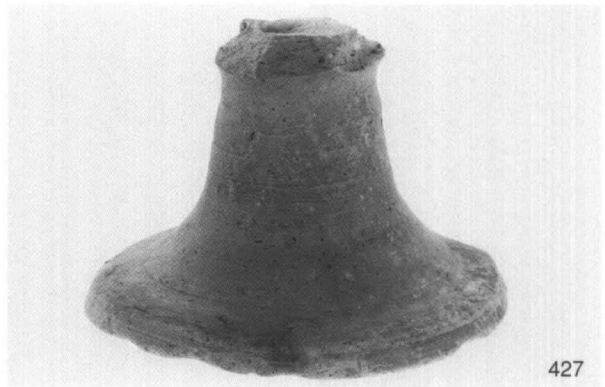


IV区 自然河川出土遺物④

422~425 SR104①

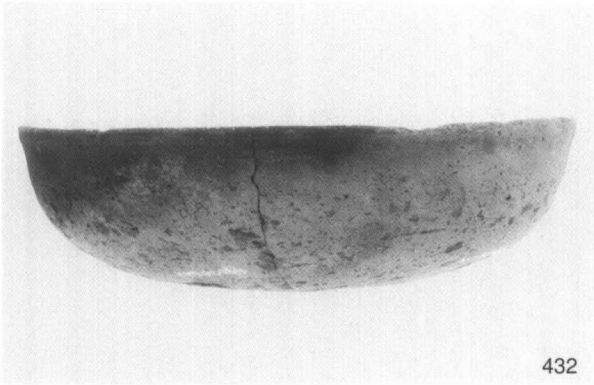


426



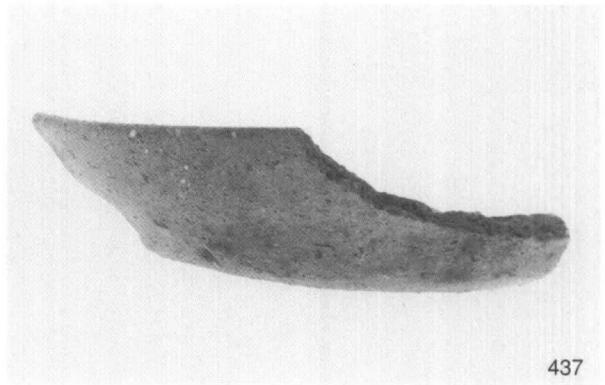
427

426・427 SR104②



432

432 SR105

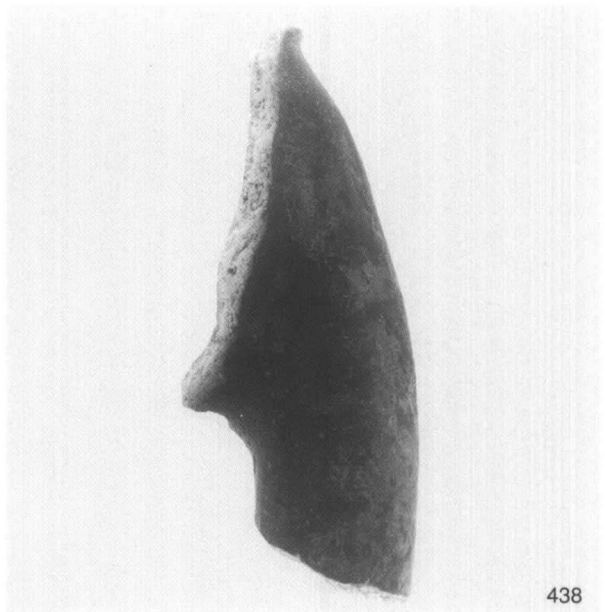


437

437 SR107

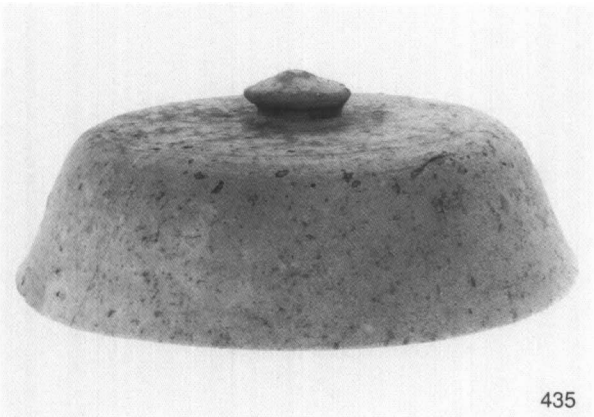


434



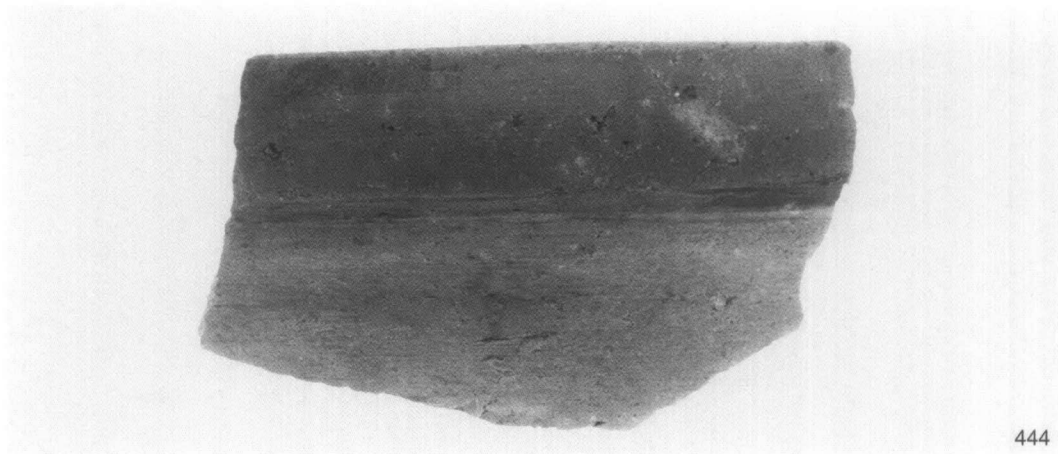
438

438 遺構精査中



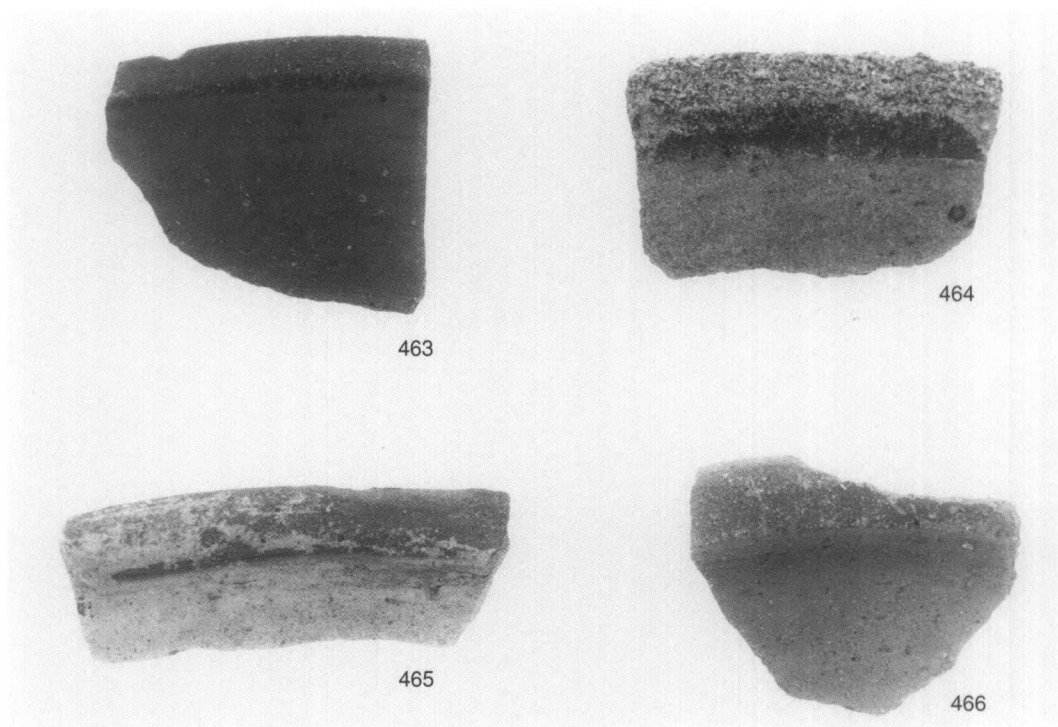
435

434・435 SR106



444

444 灰色砂質土層

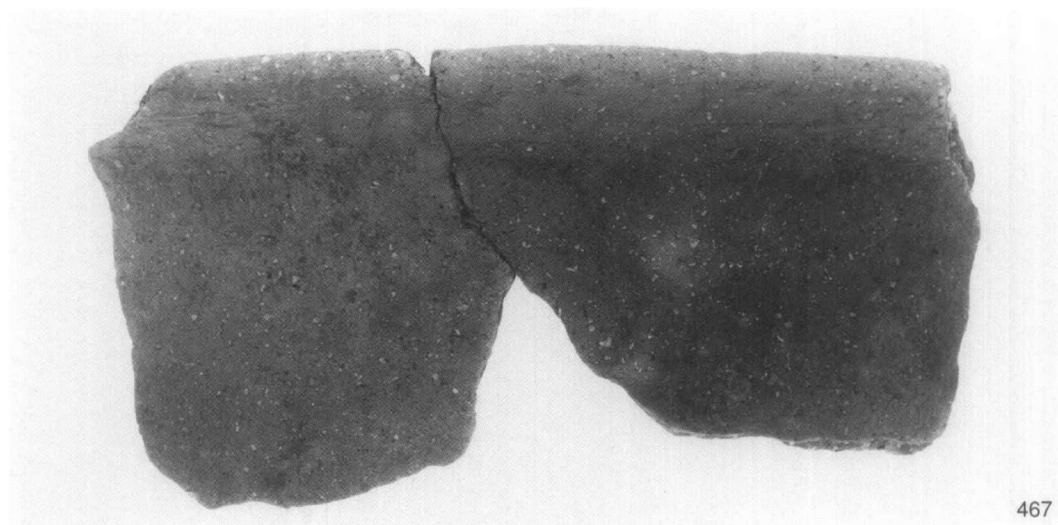


463

464

465

466

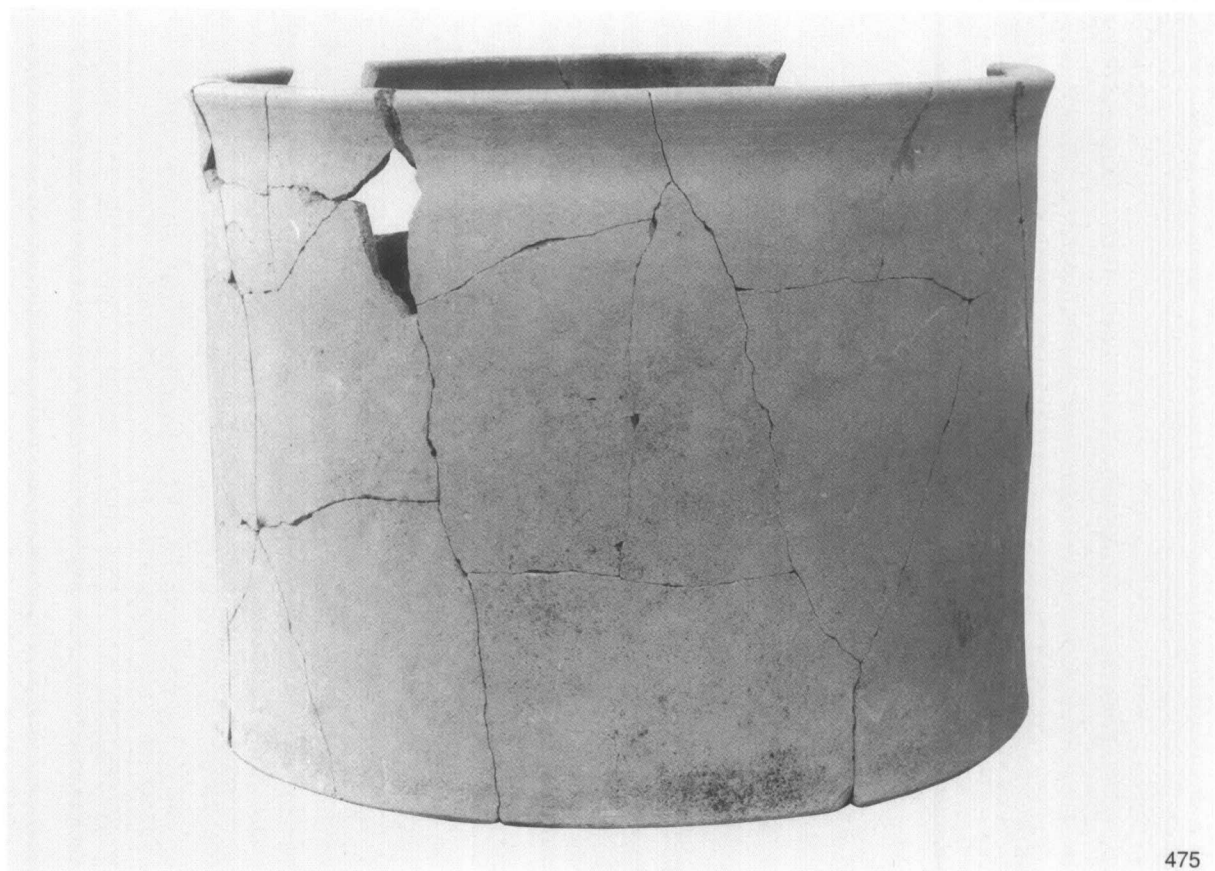


467

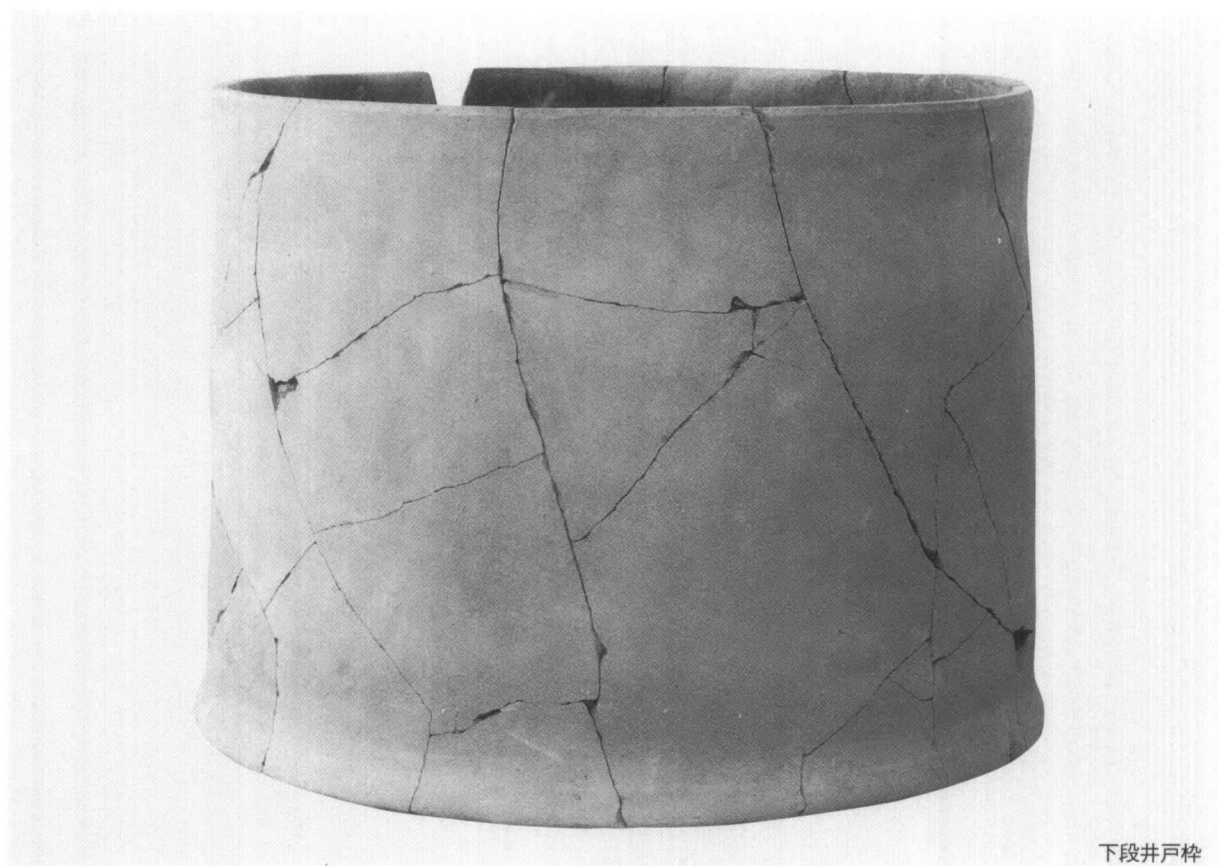
Ⅲ区 中世包含層出土遺物

463~467 包含層



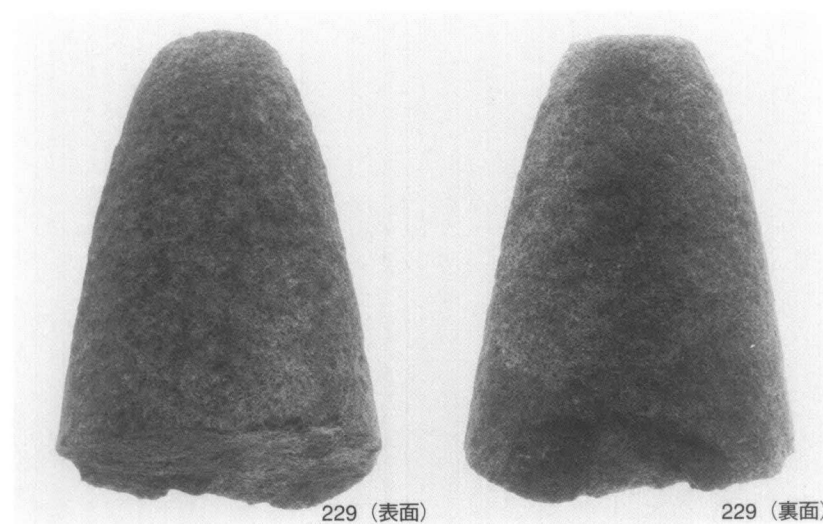
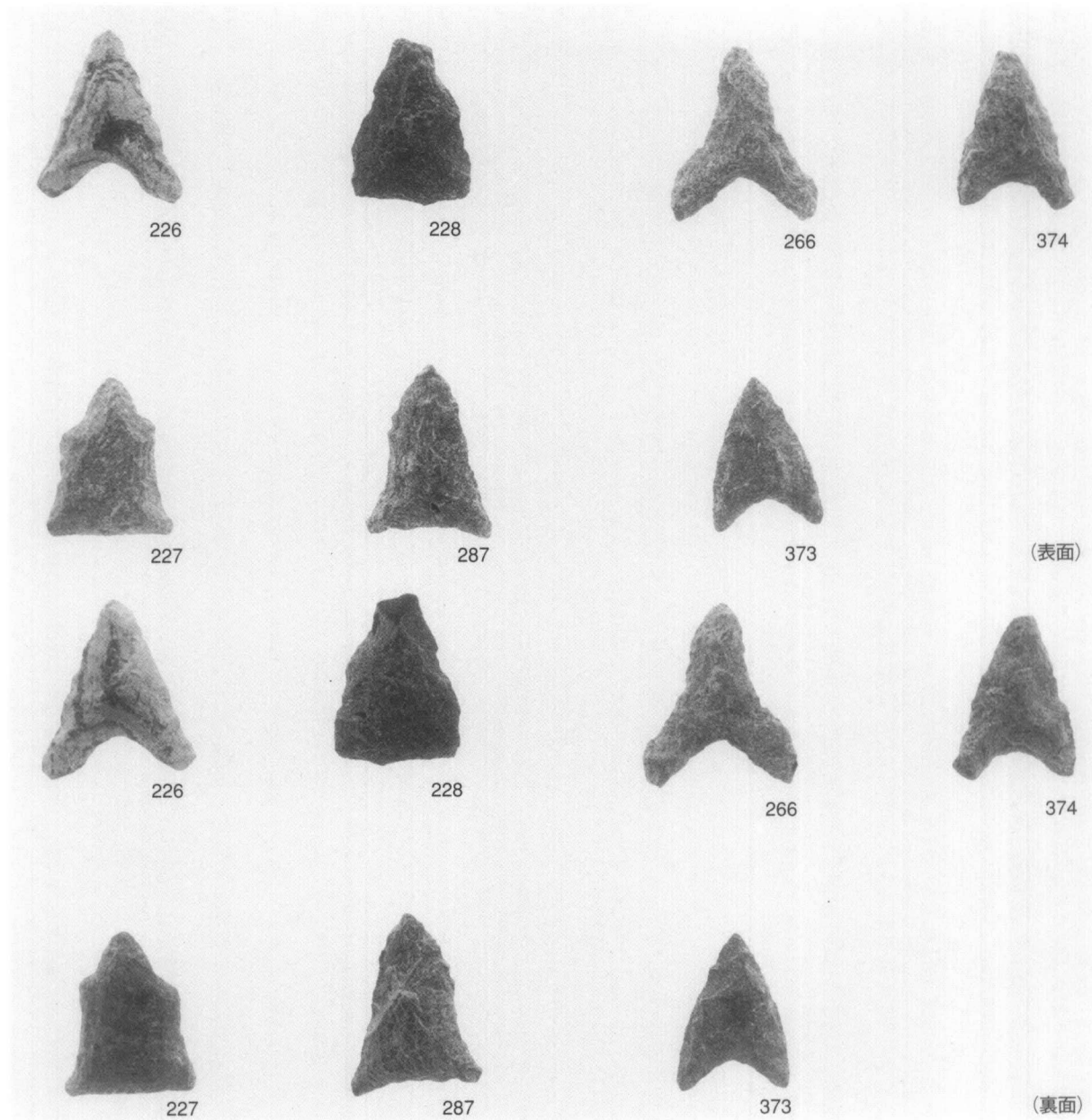


475



下段井戸枠

SE101 出土遺物

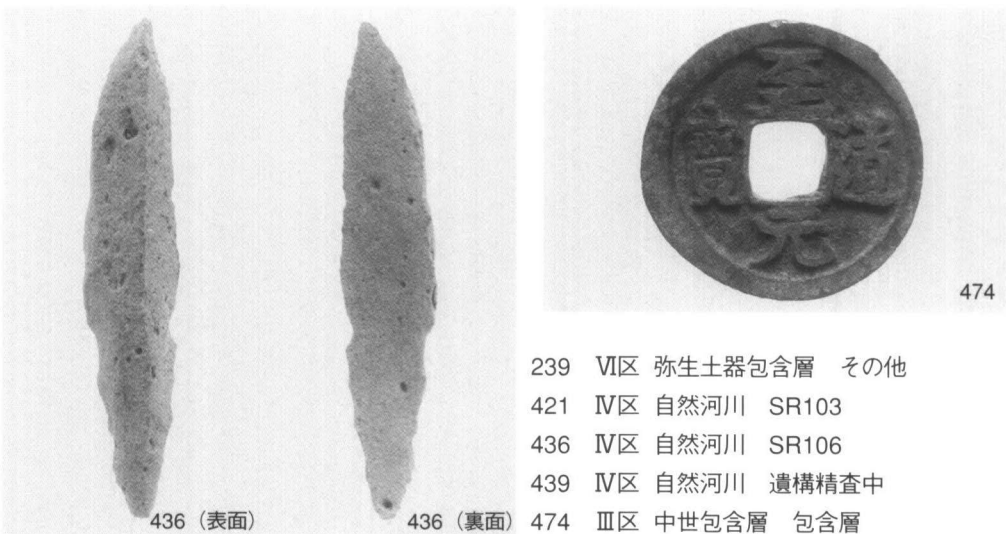
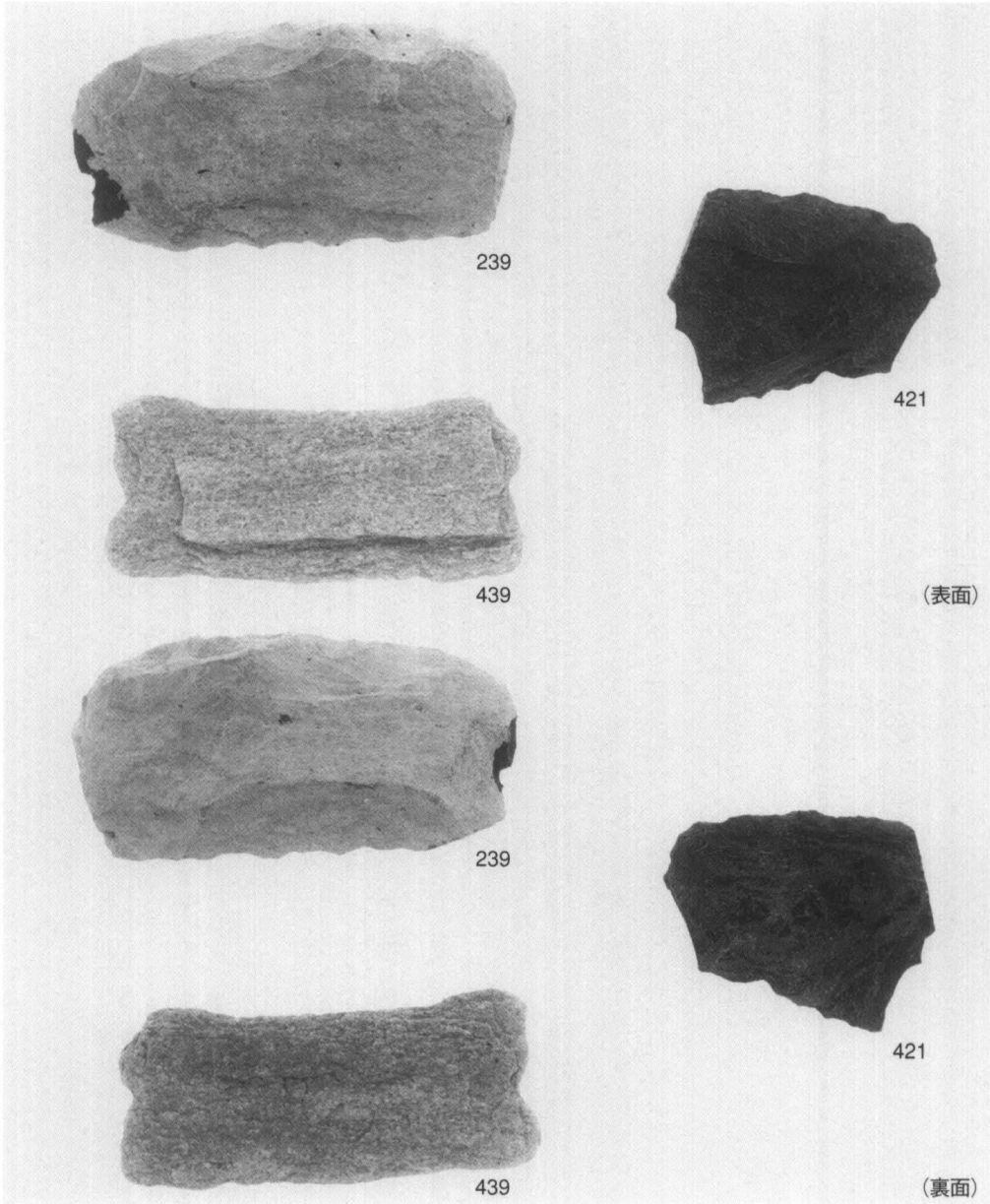


226~229  
VI区弥生土器包含層  
暗褐色粘質土層 (第2層)

266  
SD116

287  
SX101

373・374  
IV区自然河川  
SR102・103合流付近



- 239 VI区 弥生土器包含層 その他
- 421 IV区 自然河川 SR103
- 436 IV区 自然河川 SR106
- 439 IV区 自然河川 遺構精査中
- 474 III区 中世包含層 包含層

本 村 ・ 横 内 遺 跡

図 版





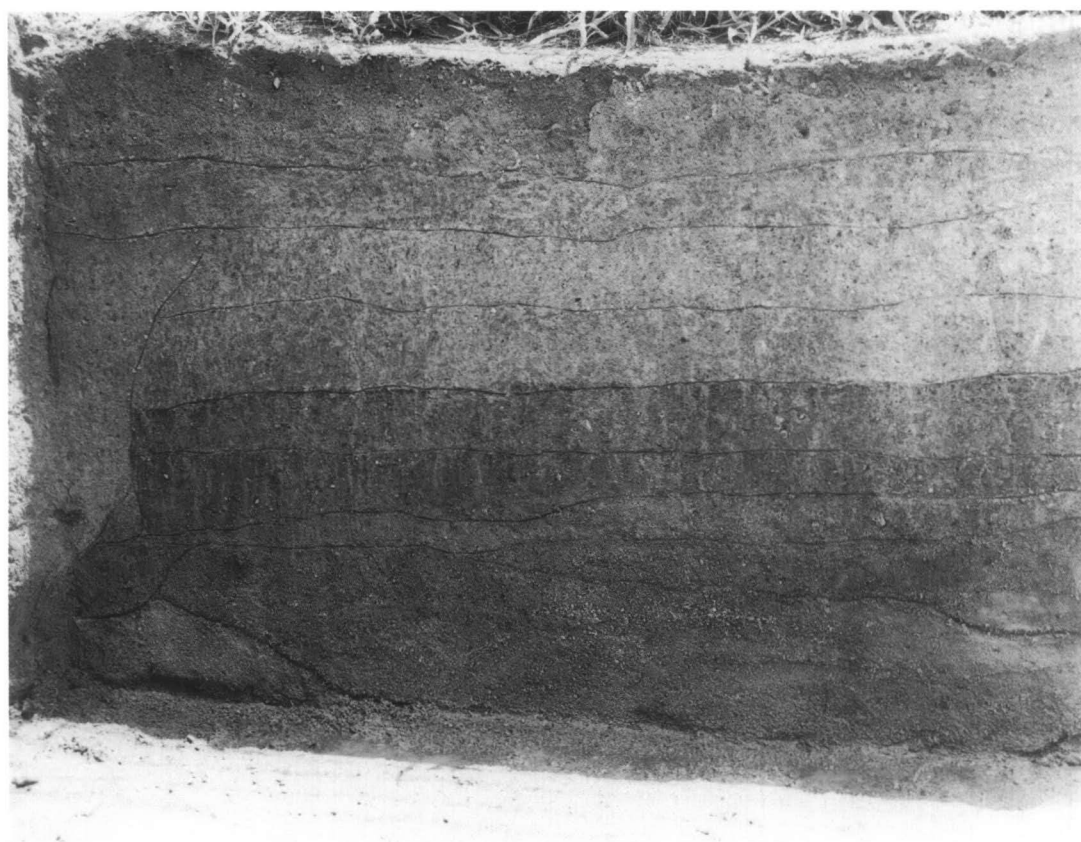
(1) 調査区 全景 (北から)



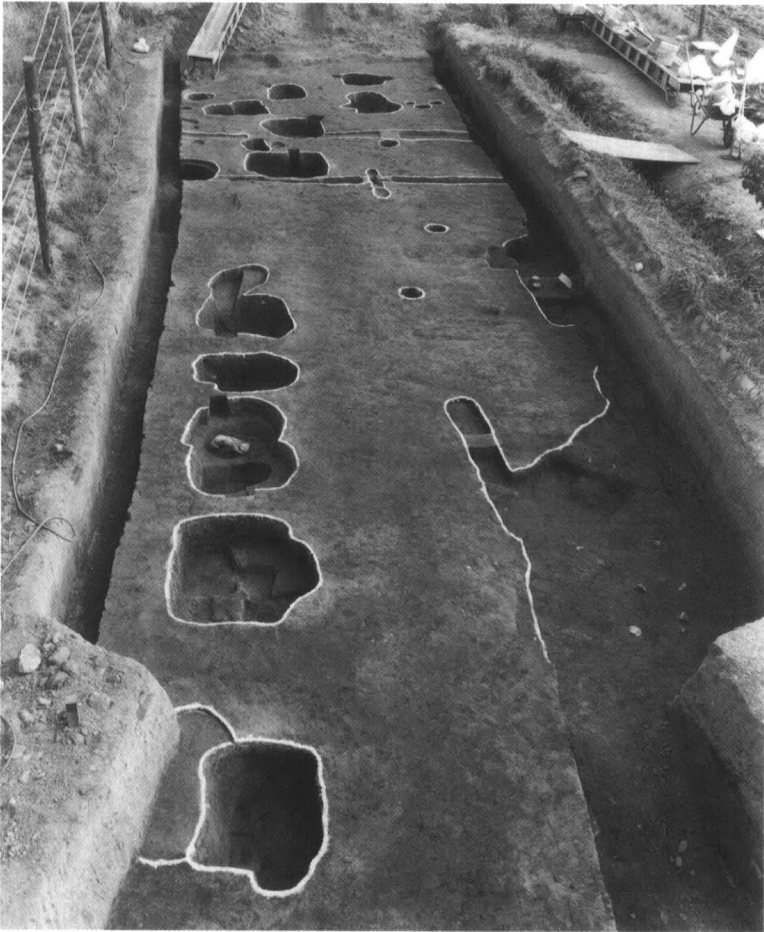
(2) II区 全景 (南から)



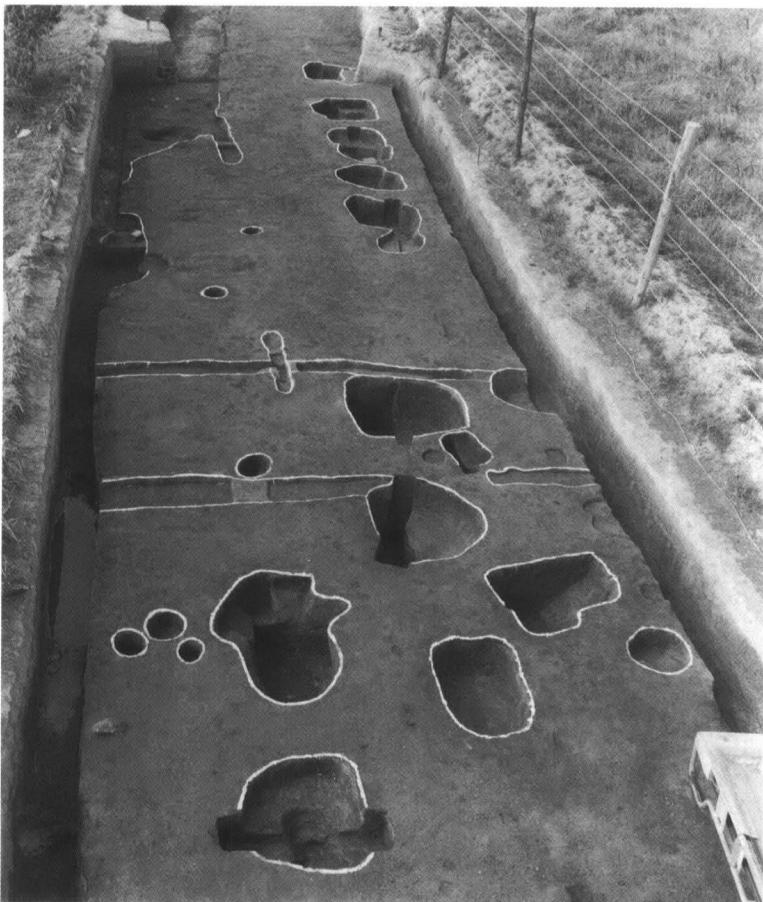
(1) I区 東壁土層 (北端付近) (西から)



(2) IV区 東壁土層 (北端付近) (西から)



(1) IV区 包含層上遺構全景 (北から)



(2) IV区 包含層上遺構全景 (南から)



(1) SB101・SB102 柱穴土層（西から）

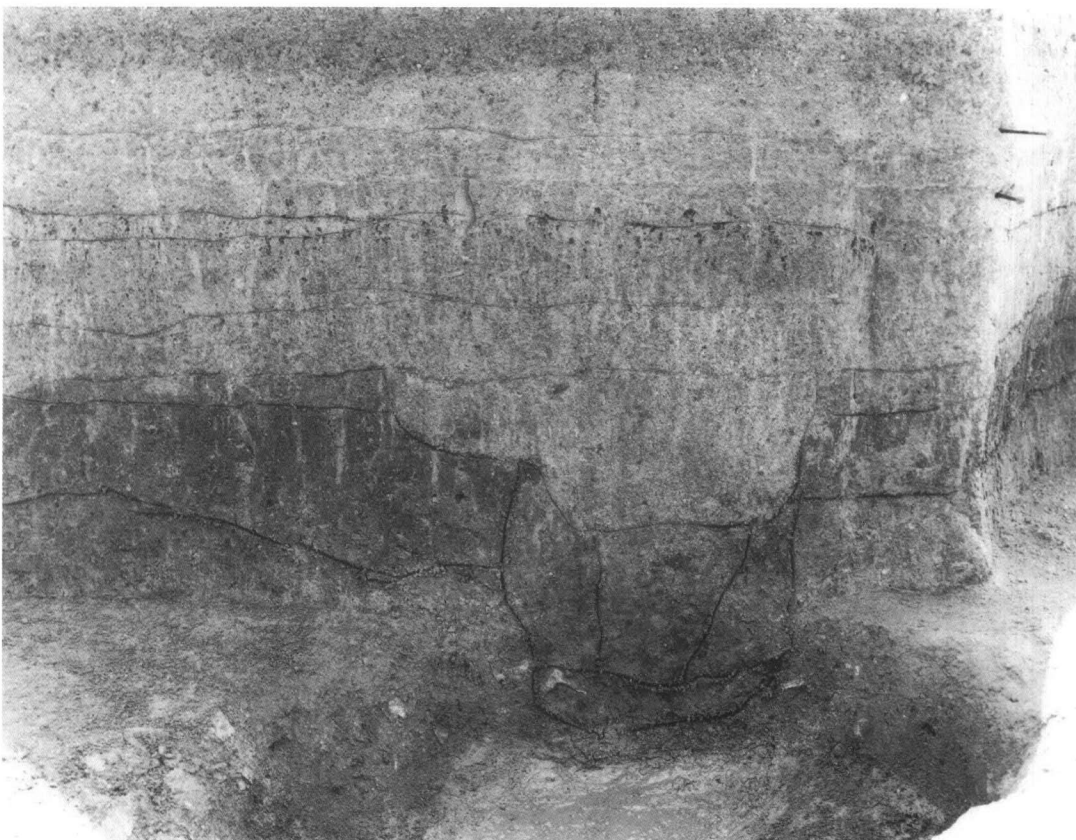


(2) SB101・SB102 柱穴土層（北から）

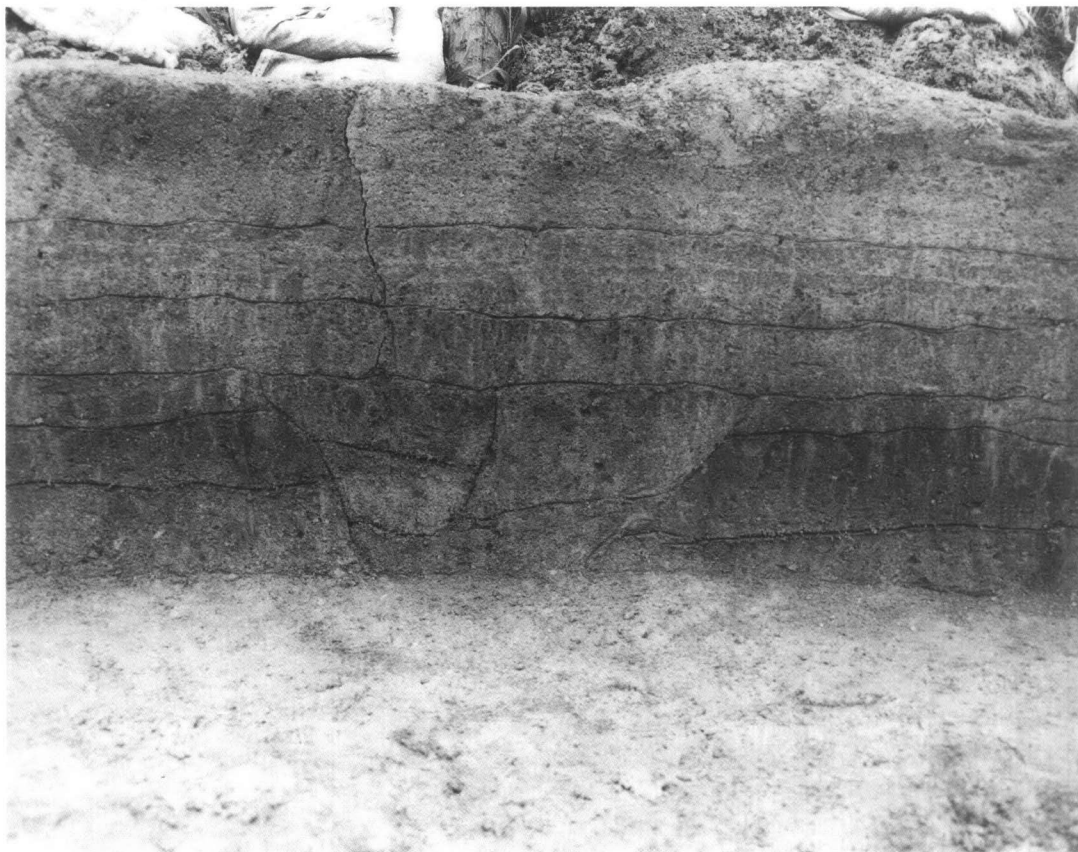




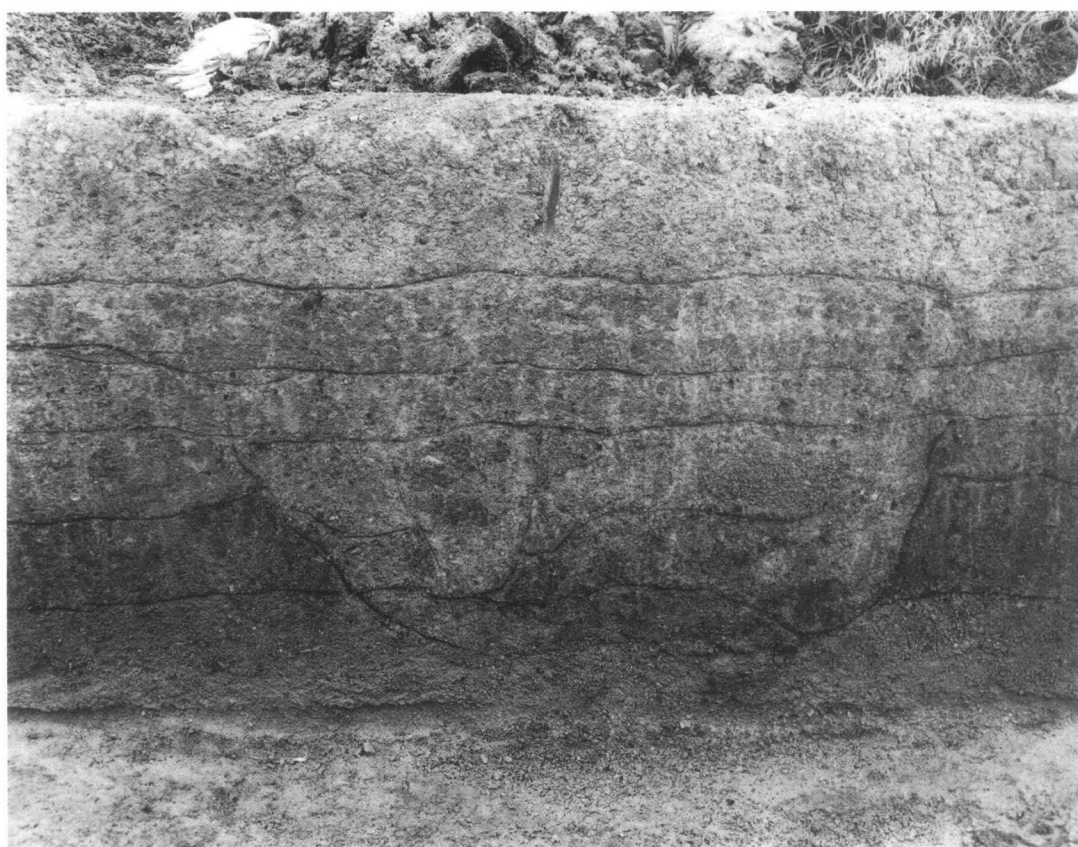
(1) SB103 柱穴土層 (南から)



(2) IV区 東壁土層 (SB104柱穴) (北から16.4m付近) (西から)



(1) IV区 東壁土層 (SB104柱穴) (北から18.2m付近) (西から)



(2) IV区 東壁土層 (SB105柱穴) (北から26.8m付近) (西から)



(1) SB104 柱穴土層 (西から)



(2) SB105 柱穴土層 (東から)





(1) SX101 土器出土状況 (東から)



(2) SX101 土器出土状況 (東から)

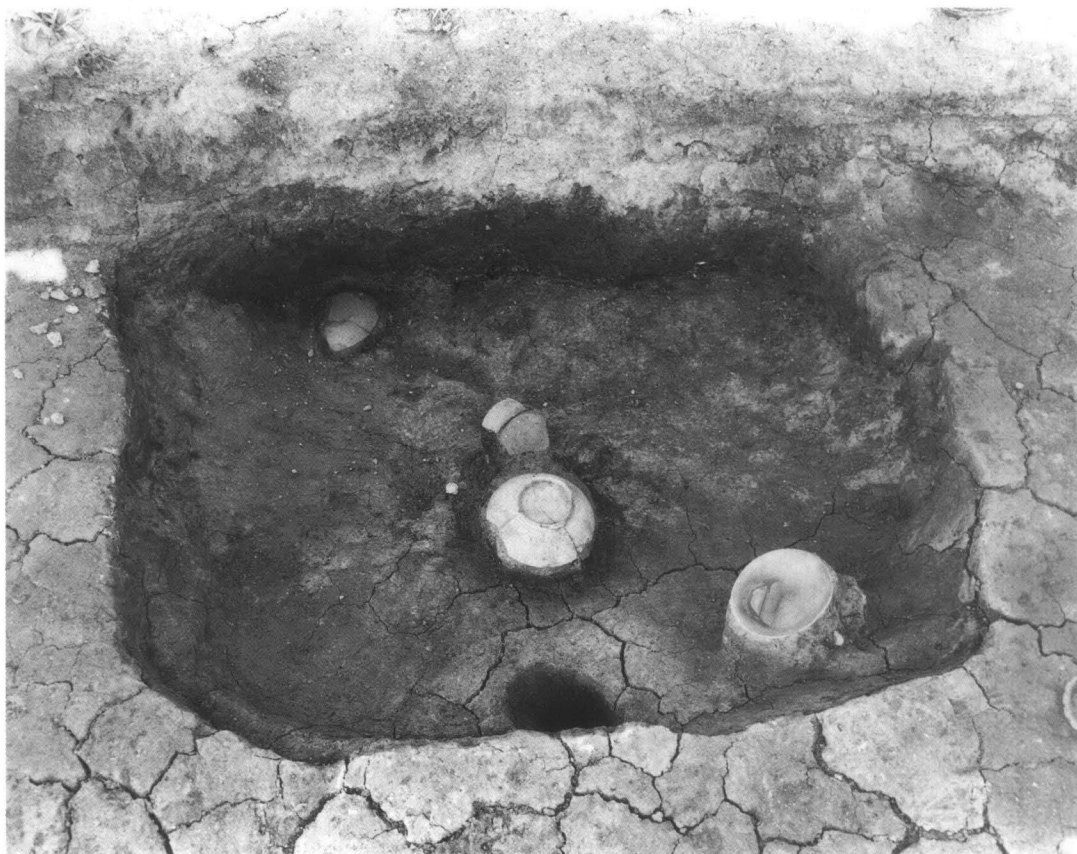




(1) SX101 土器出土状況 (北から)



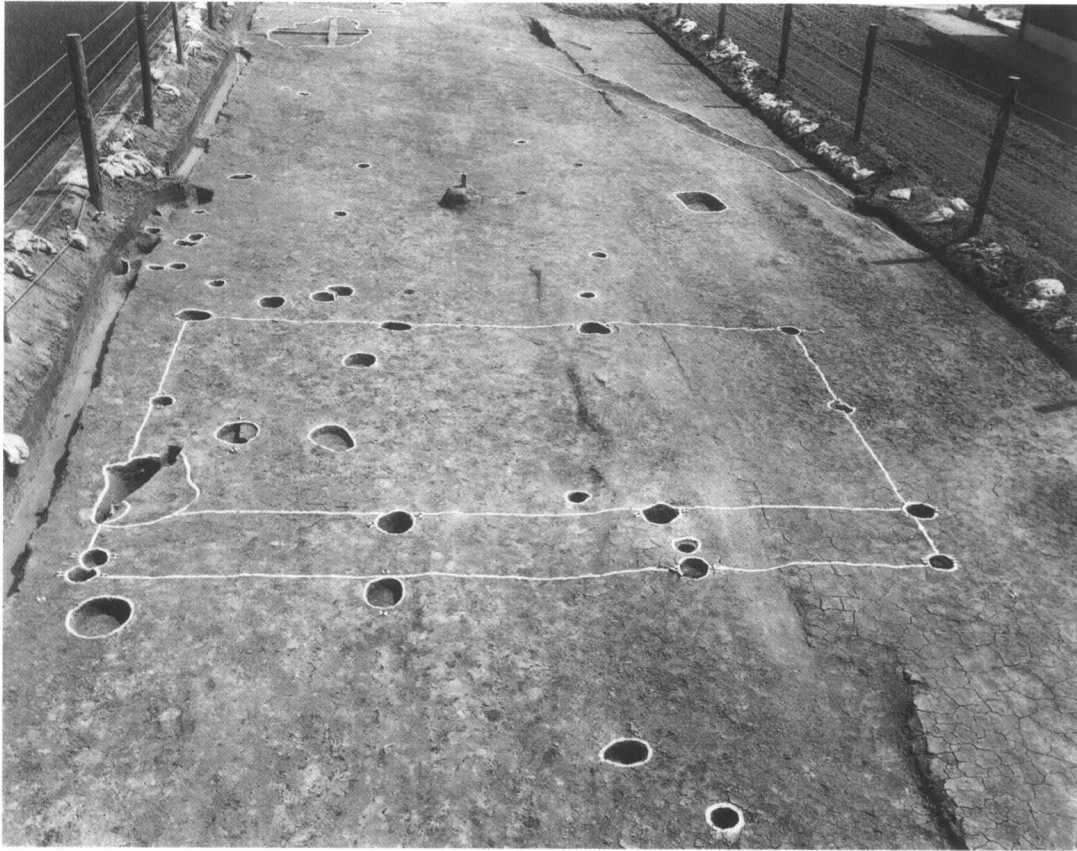
(2) SK101 土層 (南から)



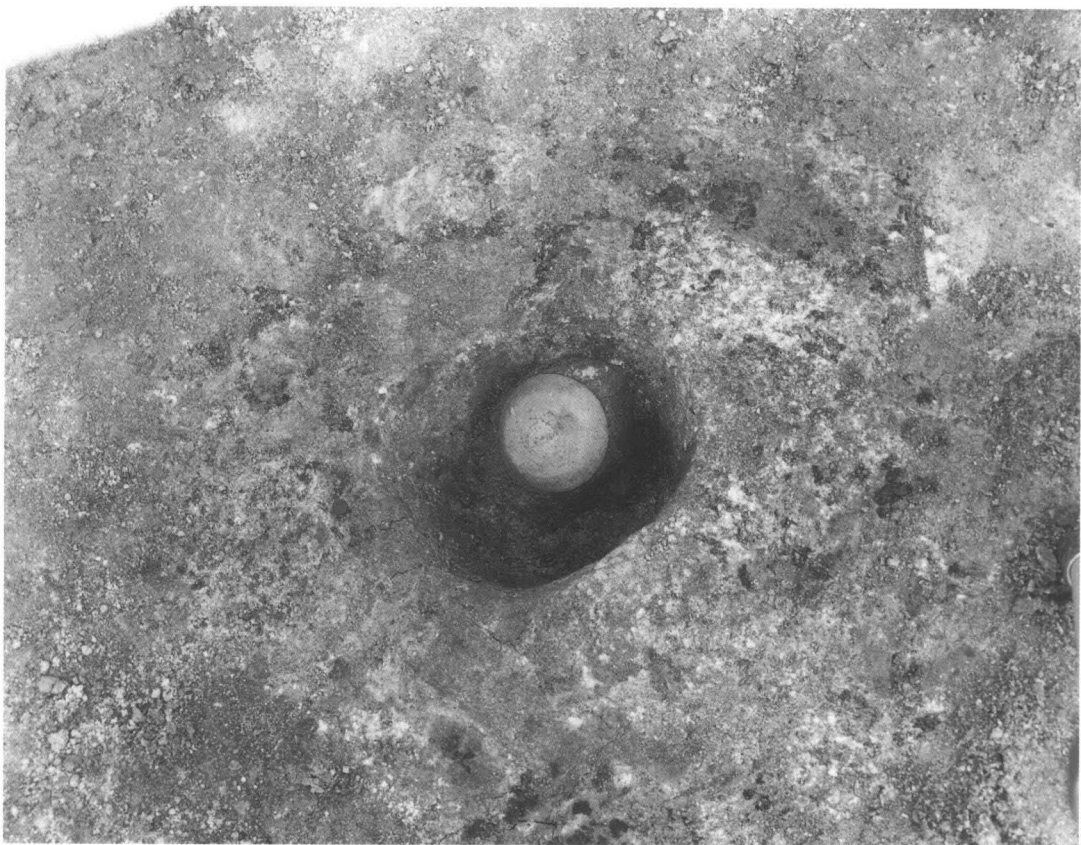
(1) SK101 土器出土状況 (南から)



(2) SD101 土器出土状況 (南から)



(1) SB107 全景 (北から)



(2) SB107-SP103 土器出土状況 (西から)



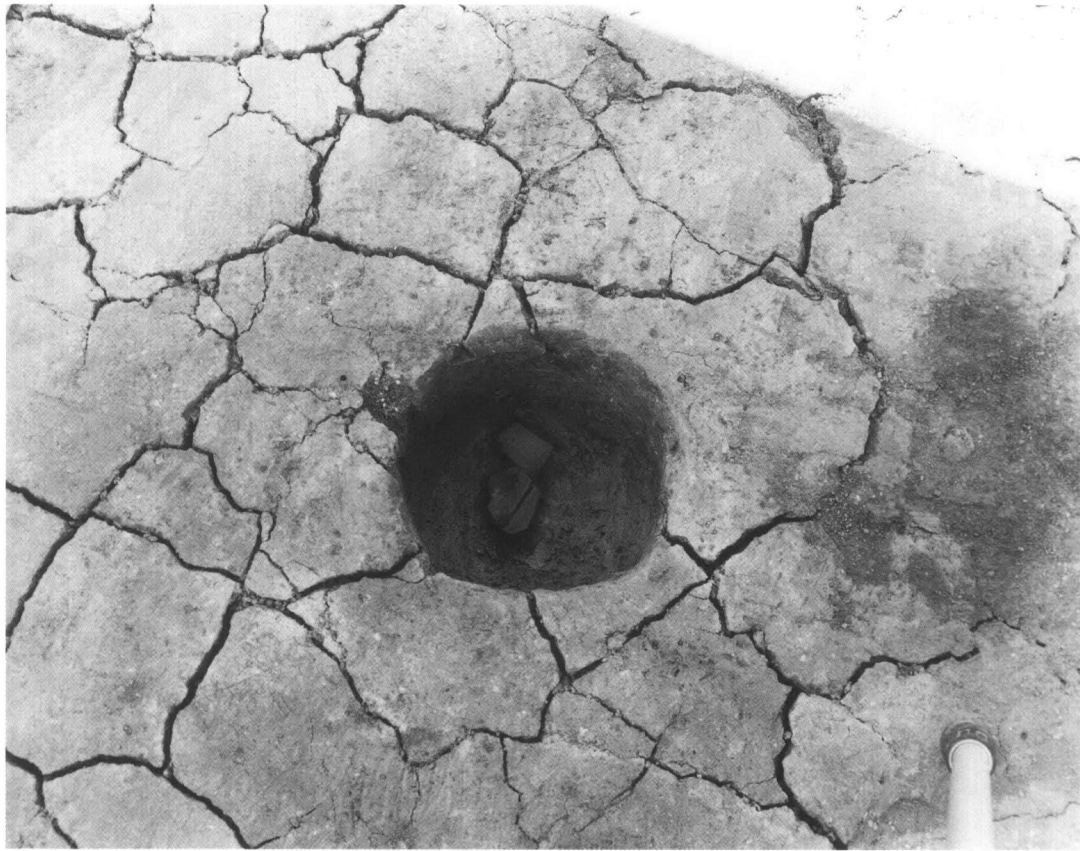


(1) SB107-SP102 柱穴土層 (南から)



(2) SB107-SP102 土器出土状況 (東から)





(1) SB107-SP101 土器出土状況 (南から)



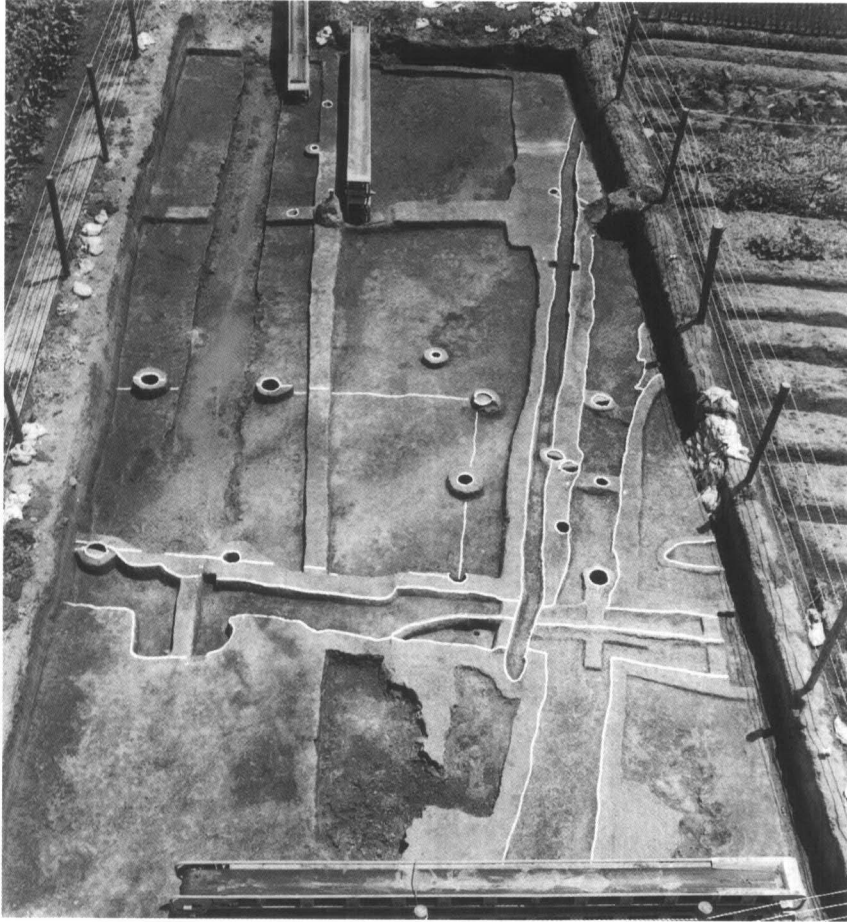
(2) SD107 土層 (北から)



(1) SD109 土層 (西から)



(2) SD108 土層 (北から)

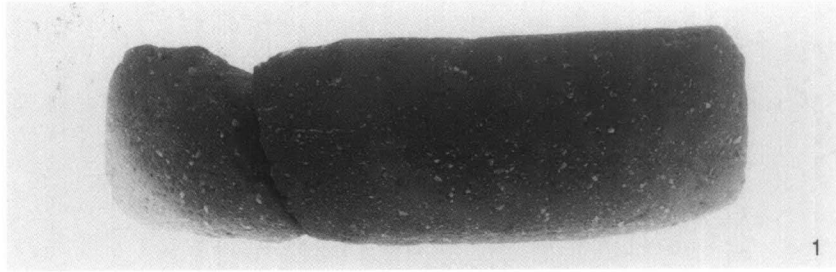


(1) I区 全景 (北から)

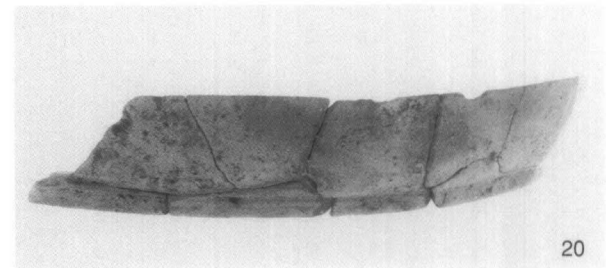
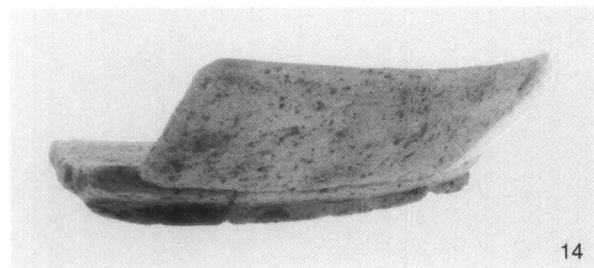
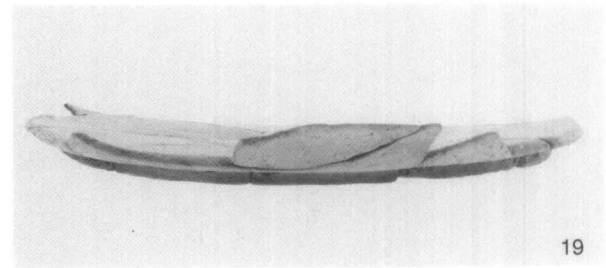
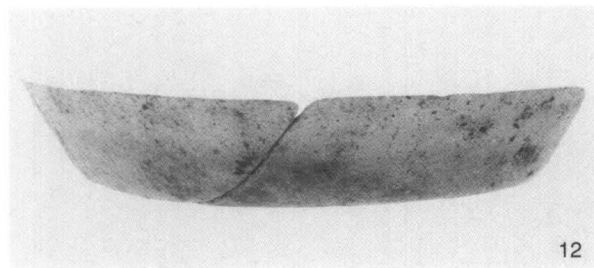
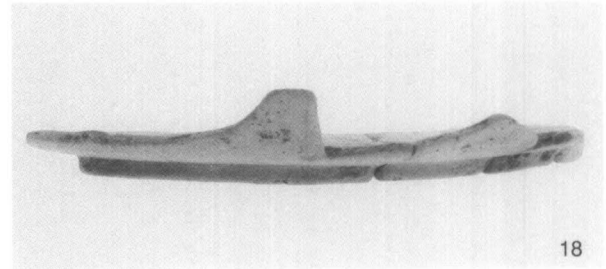
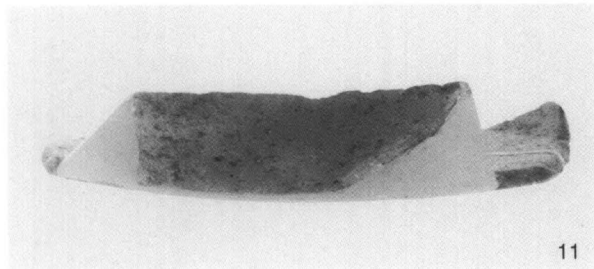
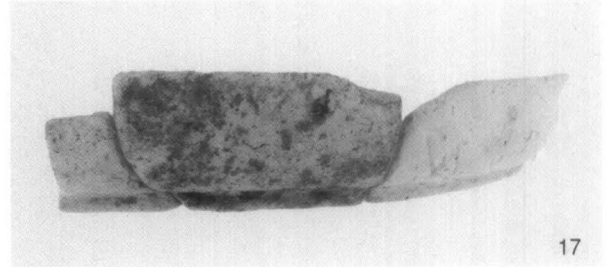
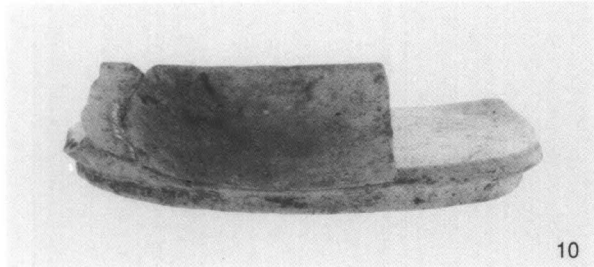
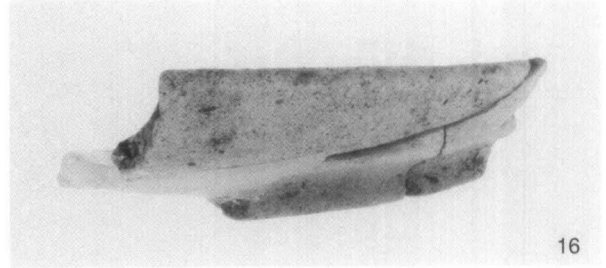
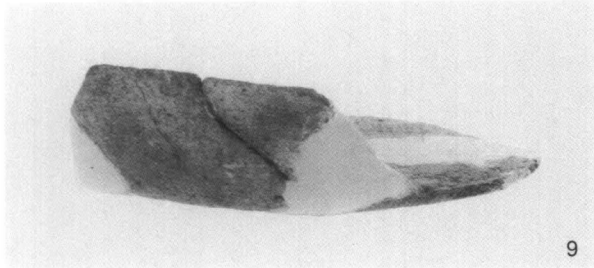


(2) 作業風景



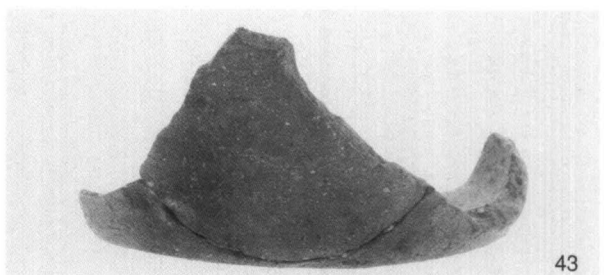
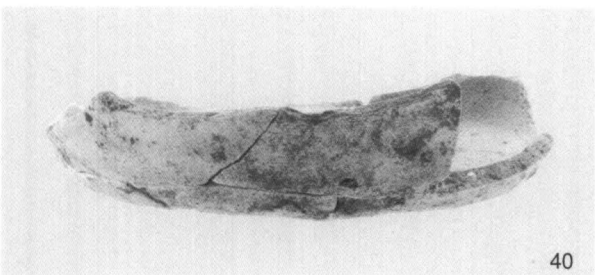
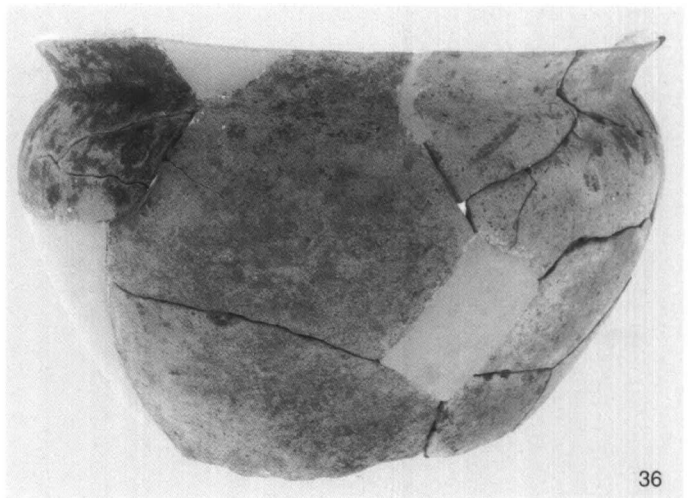
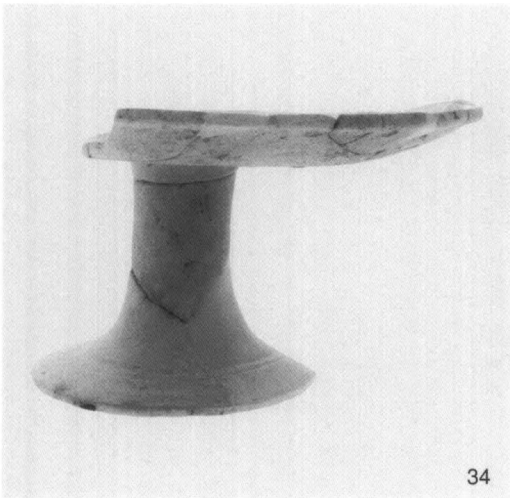
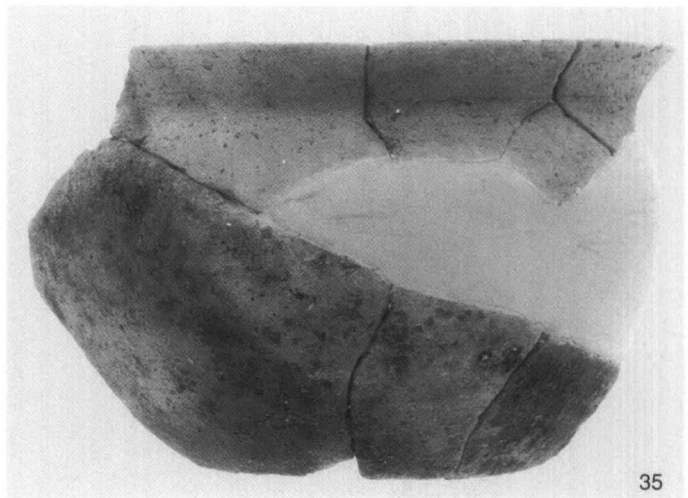
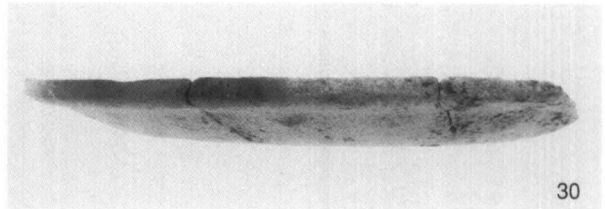
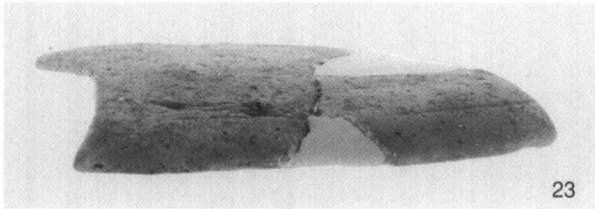
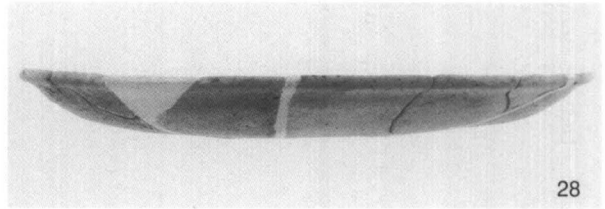
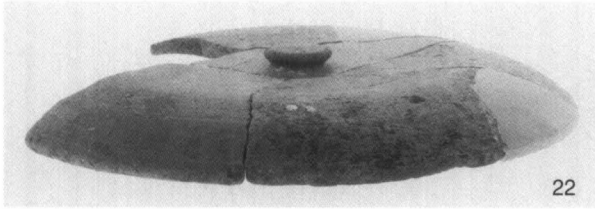


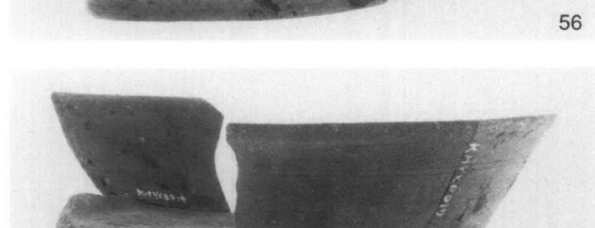
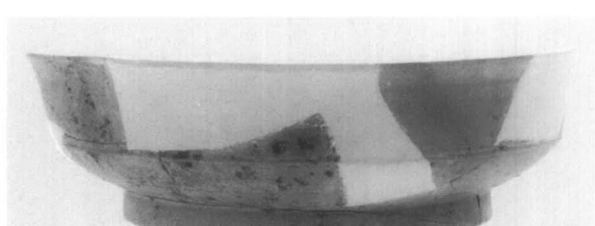
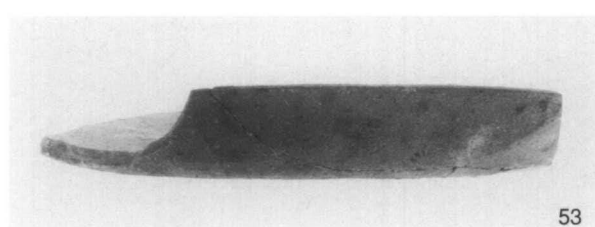
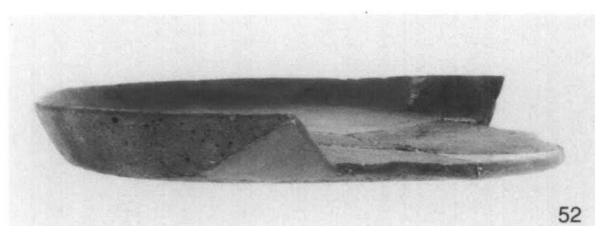
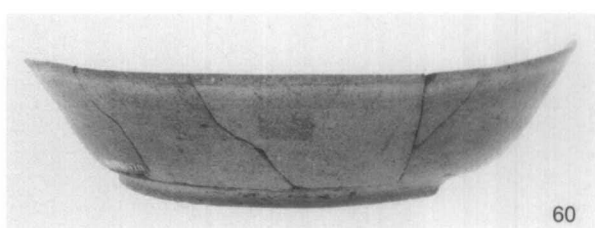
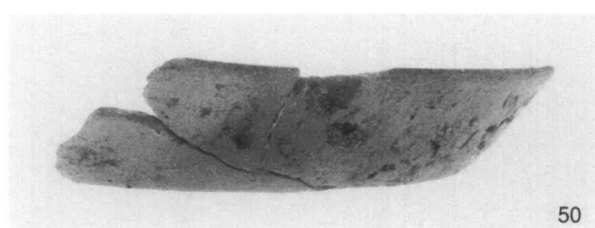
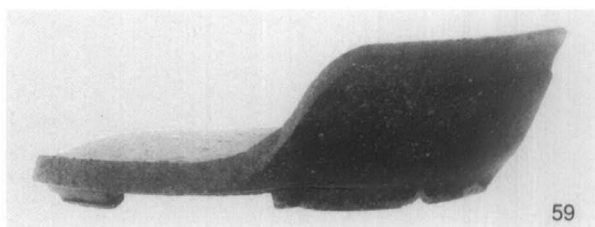
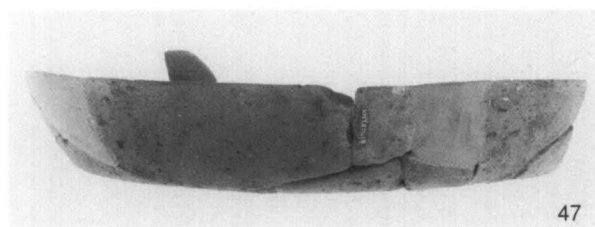
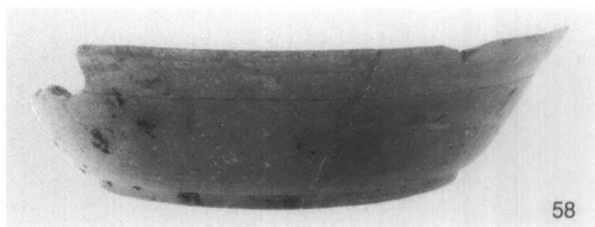
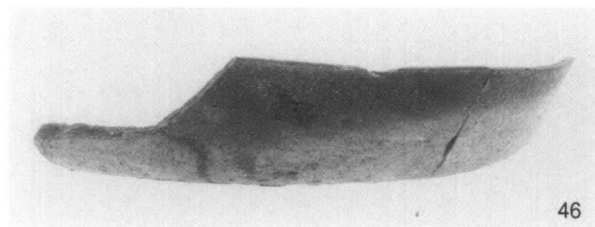
(1) SP100 出土遺物

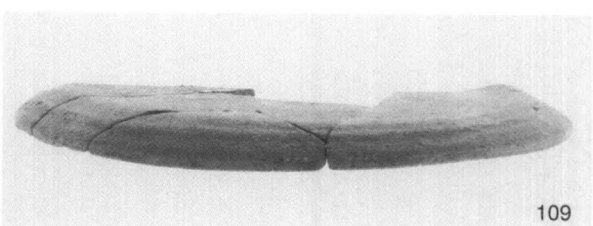
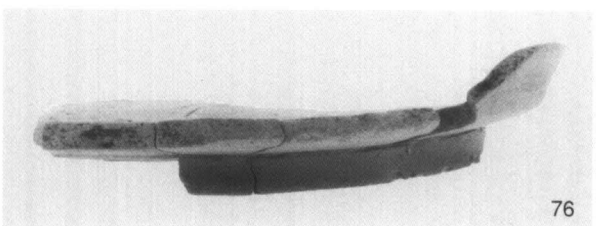
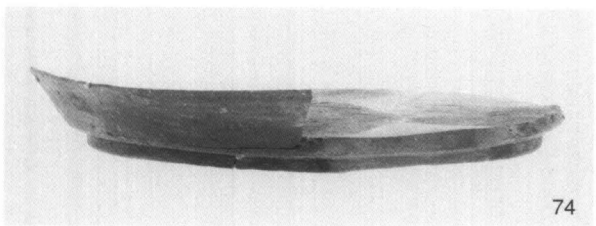
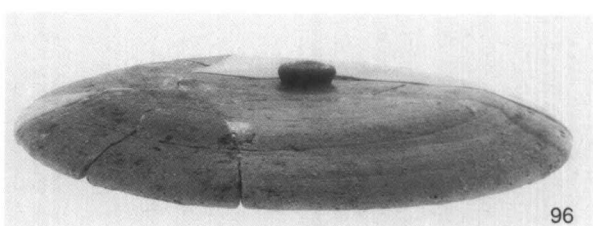
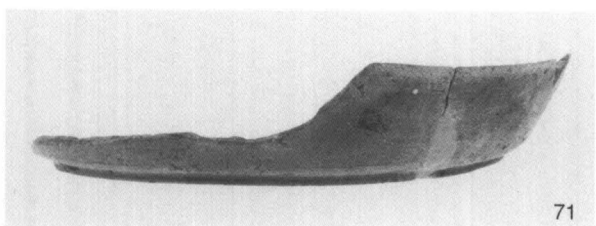
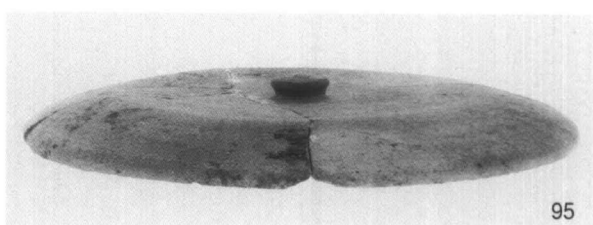
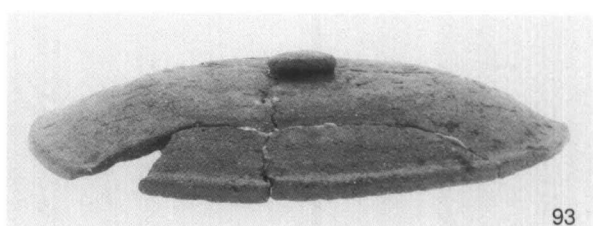
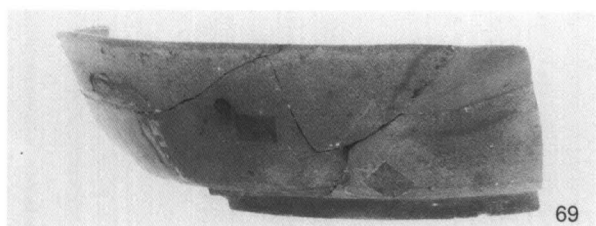
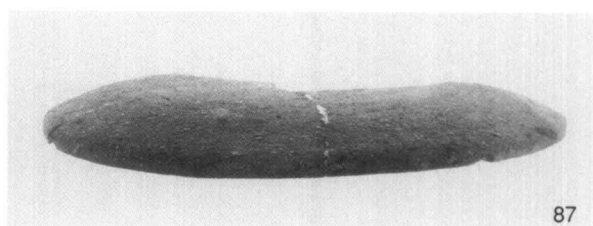
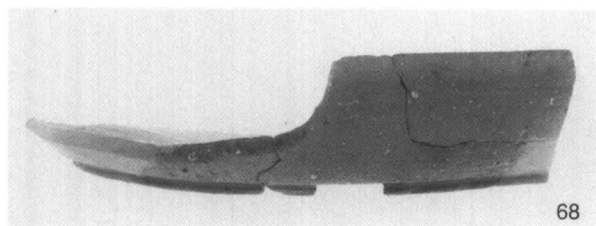
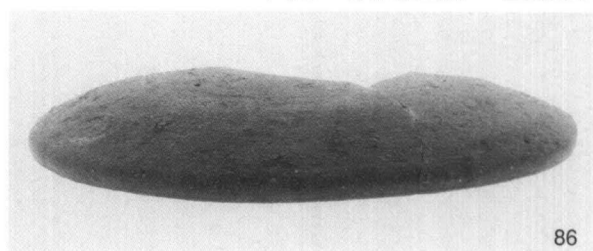
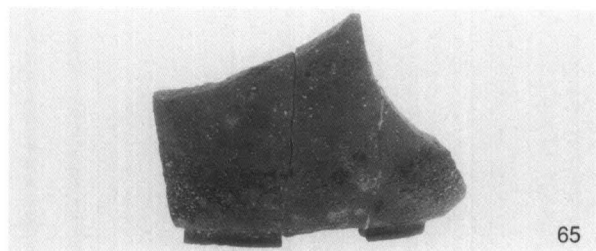


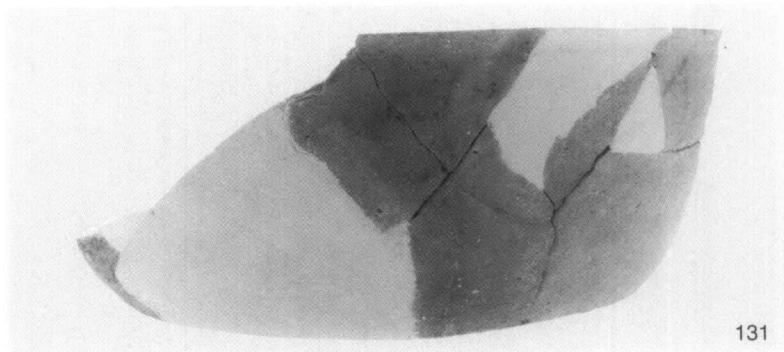
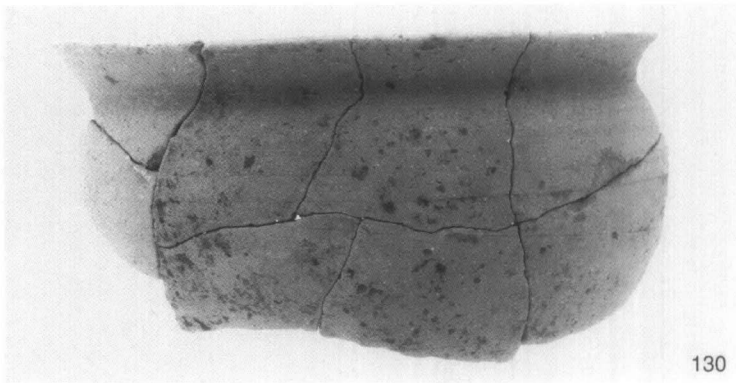
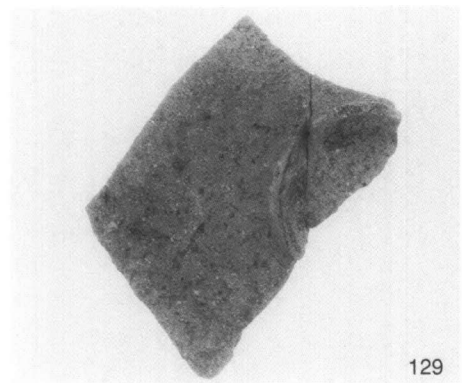
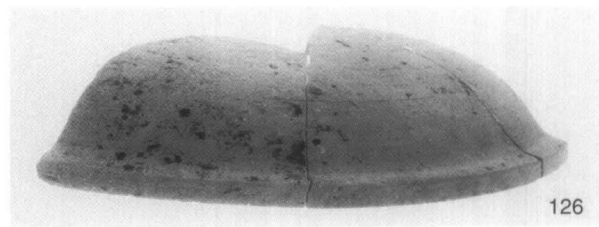
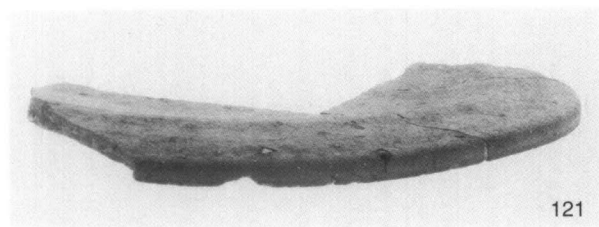
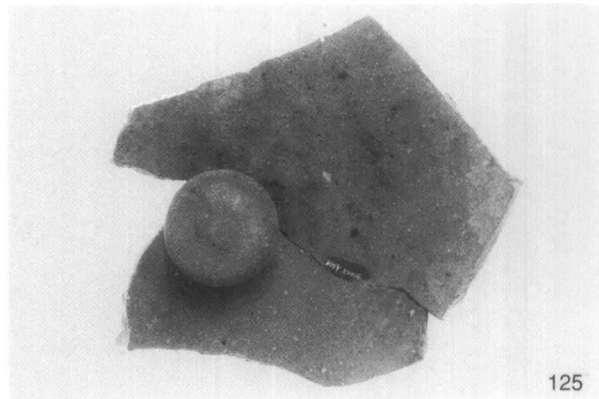
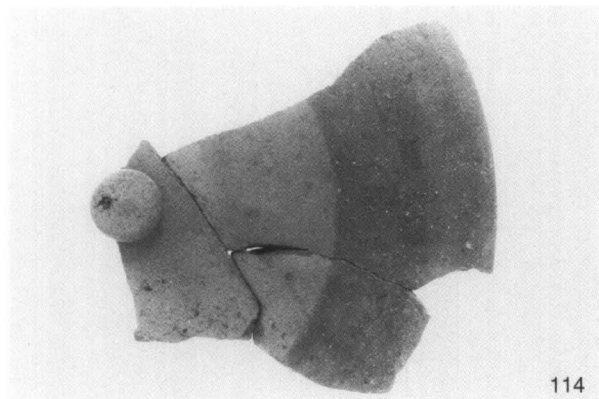
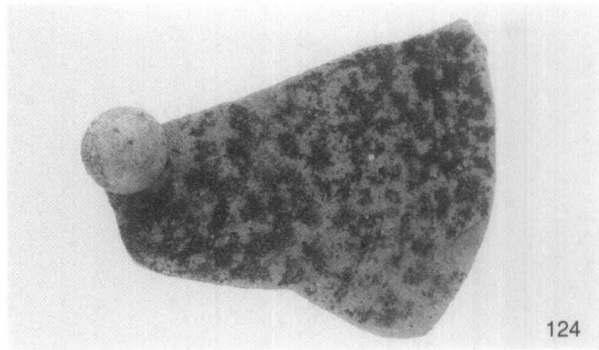
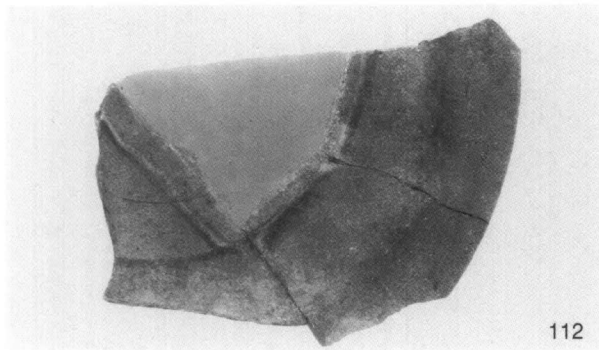
(2) SX101 出土遺物①



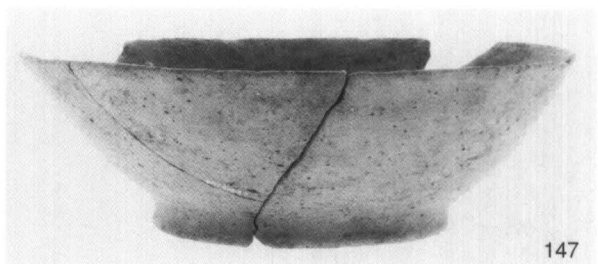
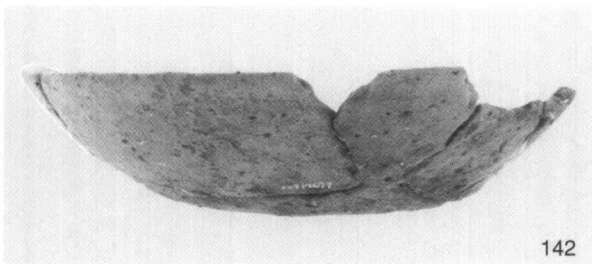
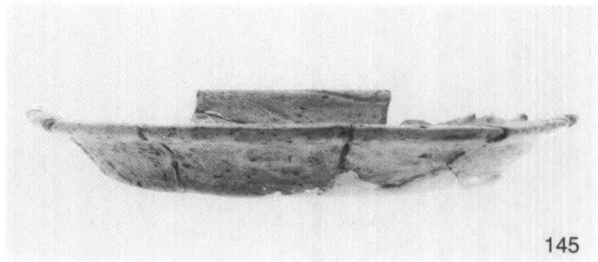
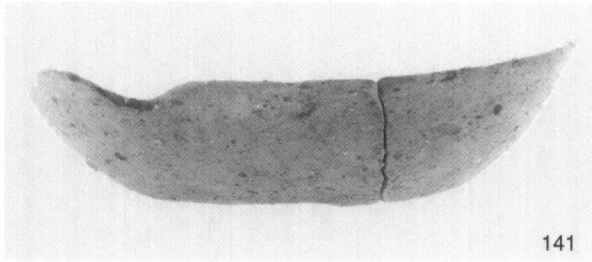
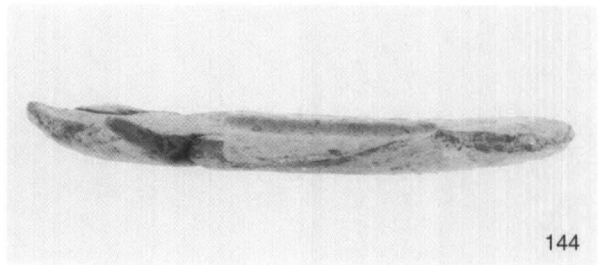
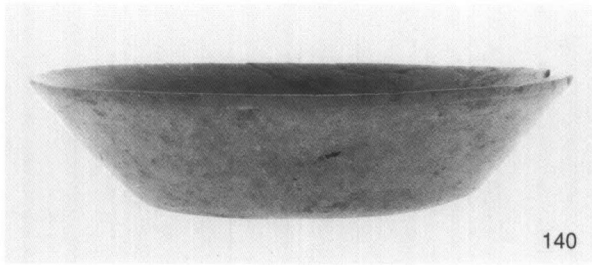




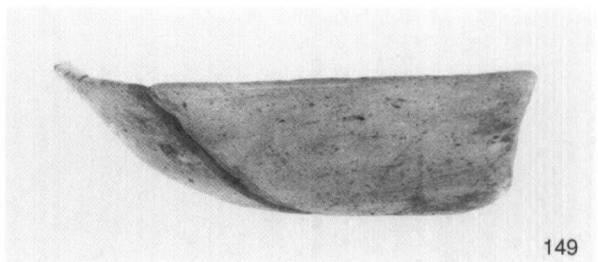
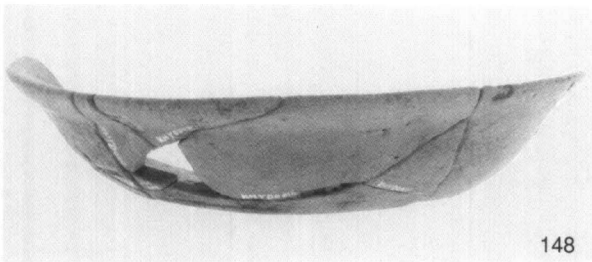




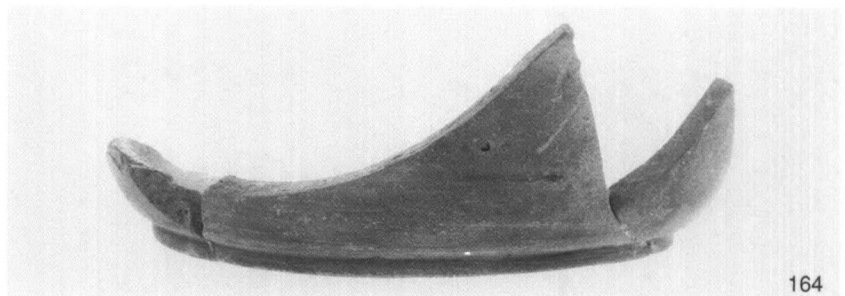
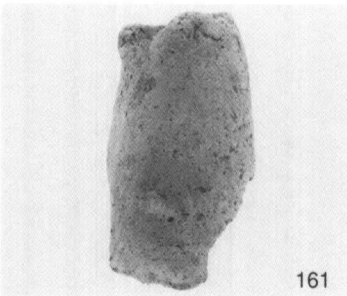
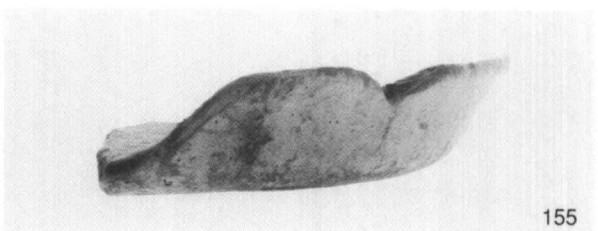
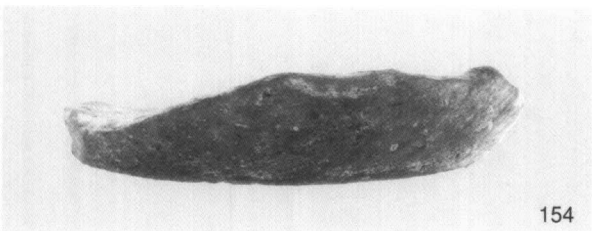




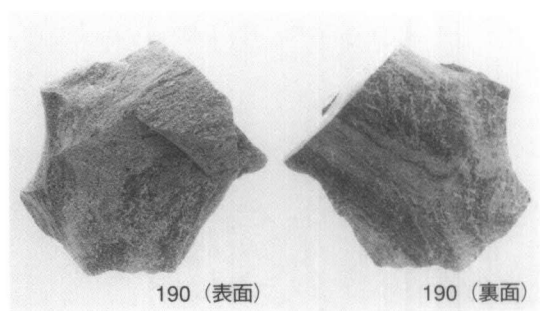
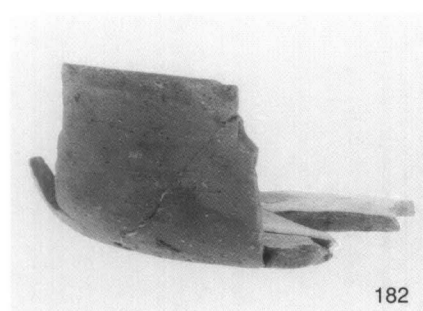
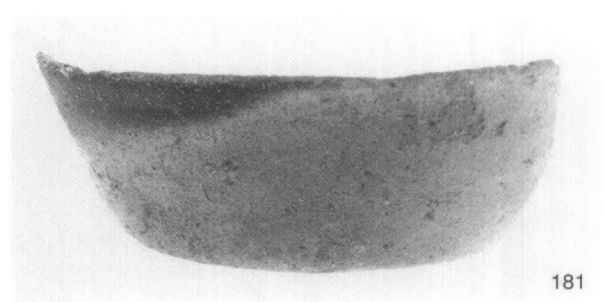
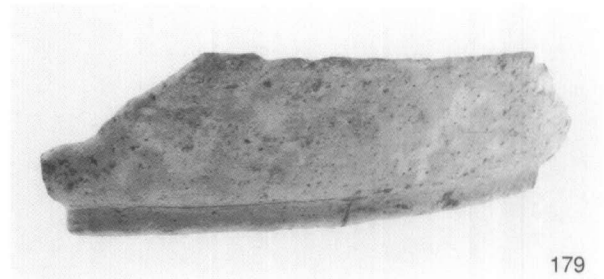
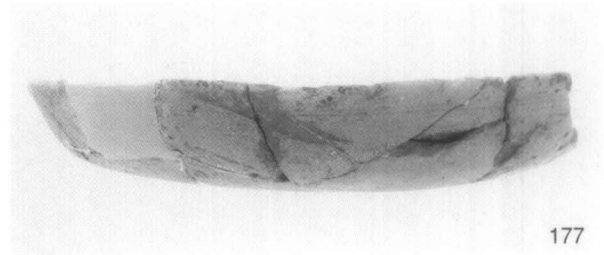
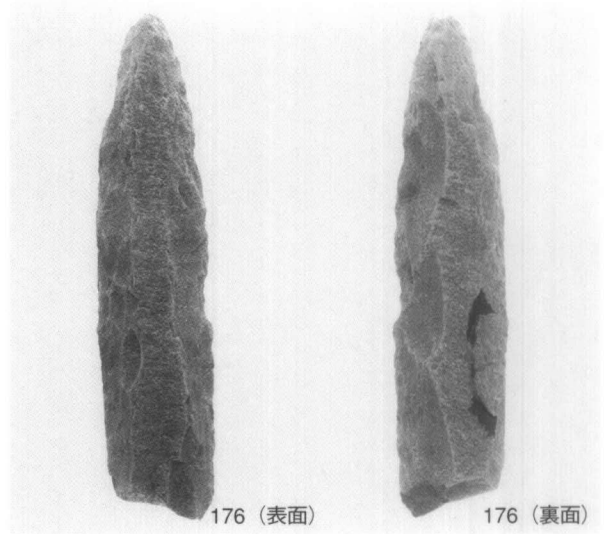
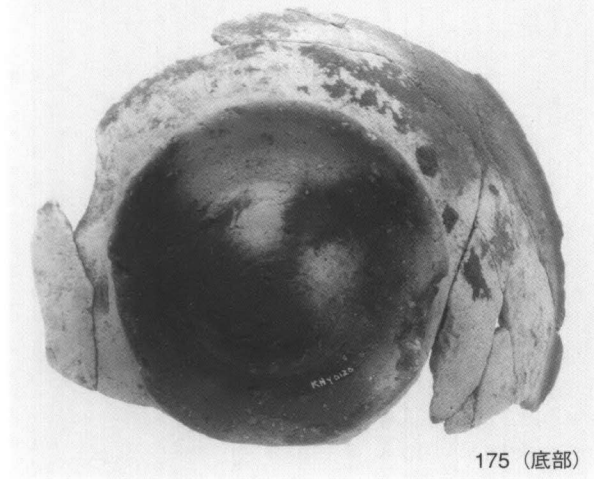
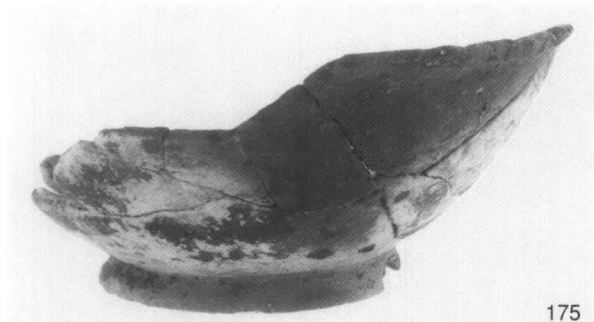
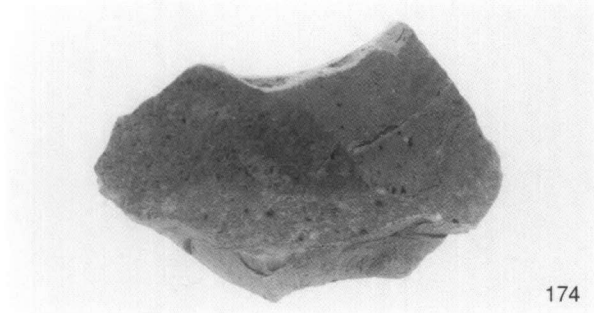
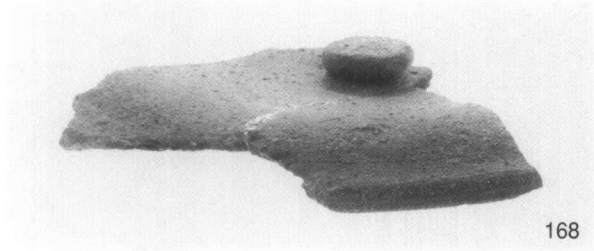
(1) SK101 出土遺物

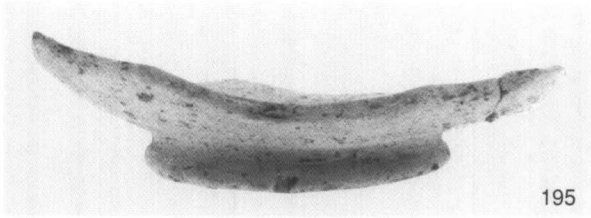


(2) SD101 出土遺物

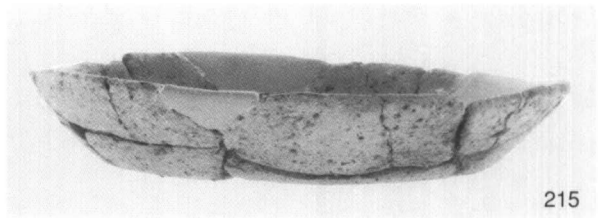


(3) IV区 包含層出土遺物①





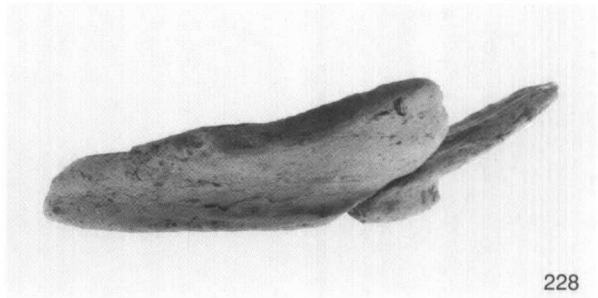
195



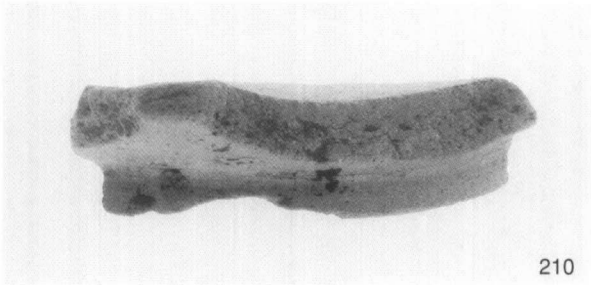
215



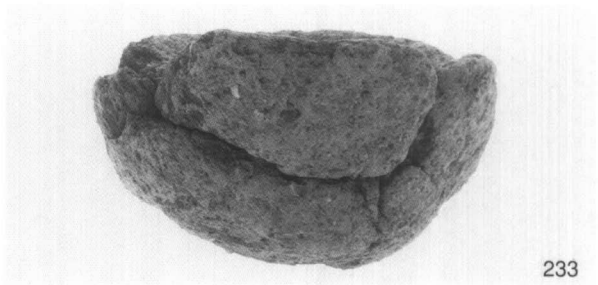
209



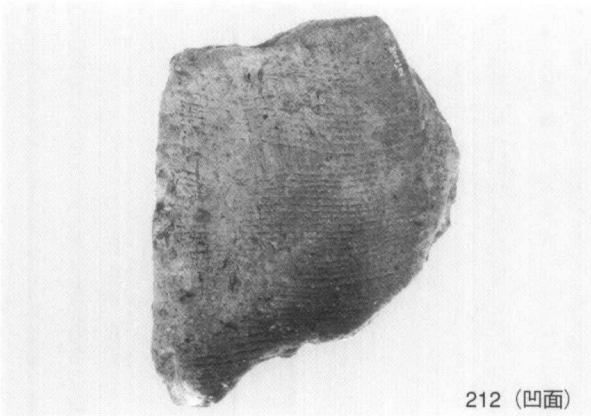
228



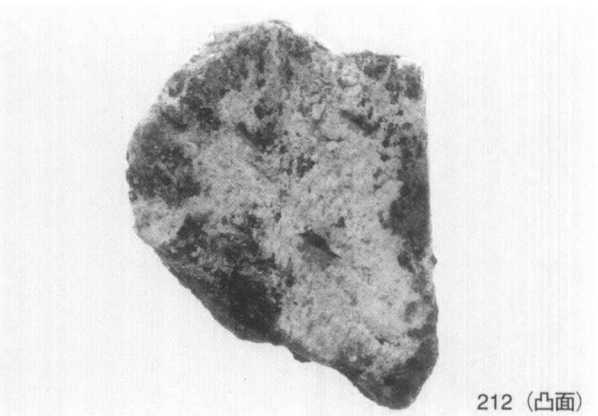
210



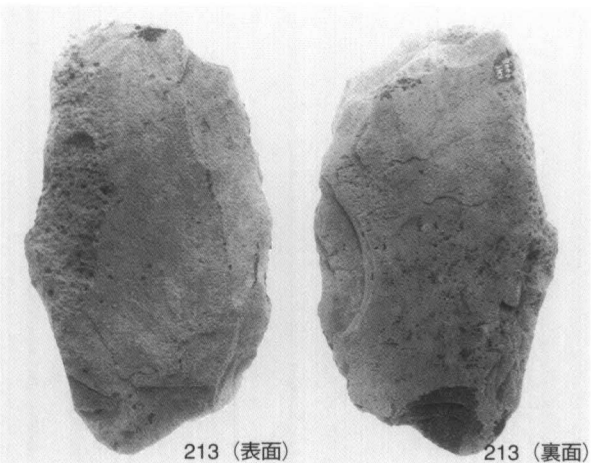
233



212 (凹面)

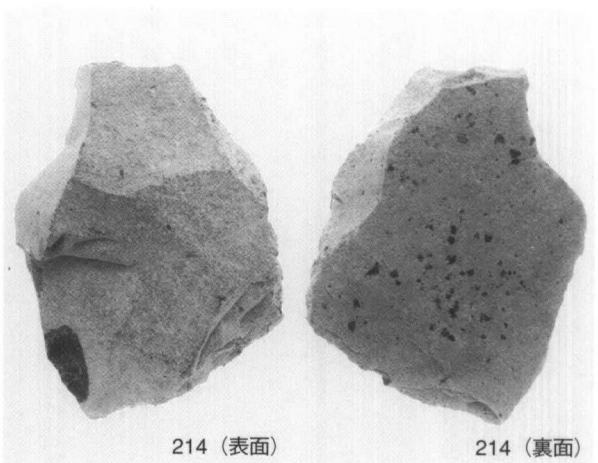


212 (凸面)



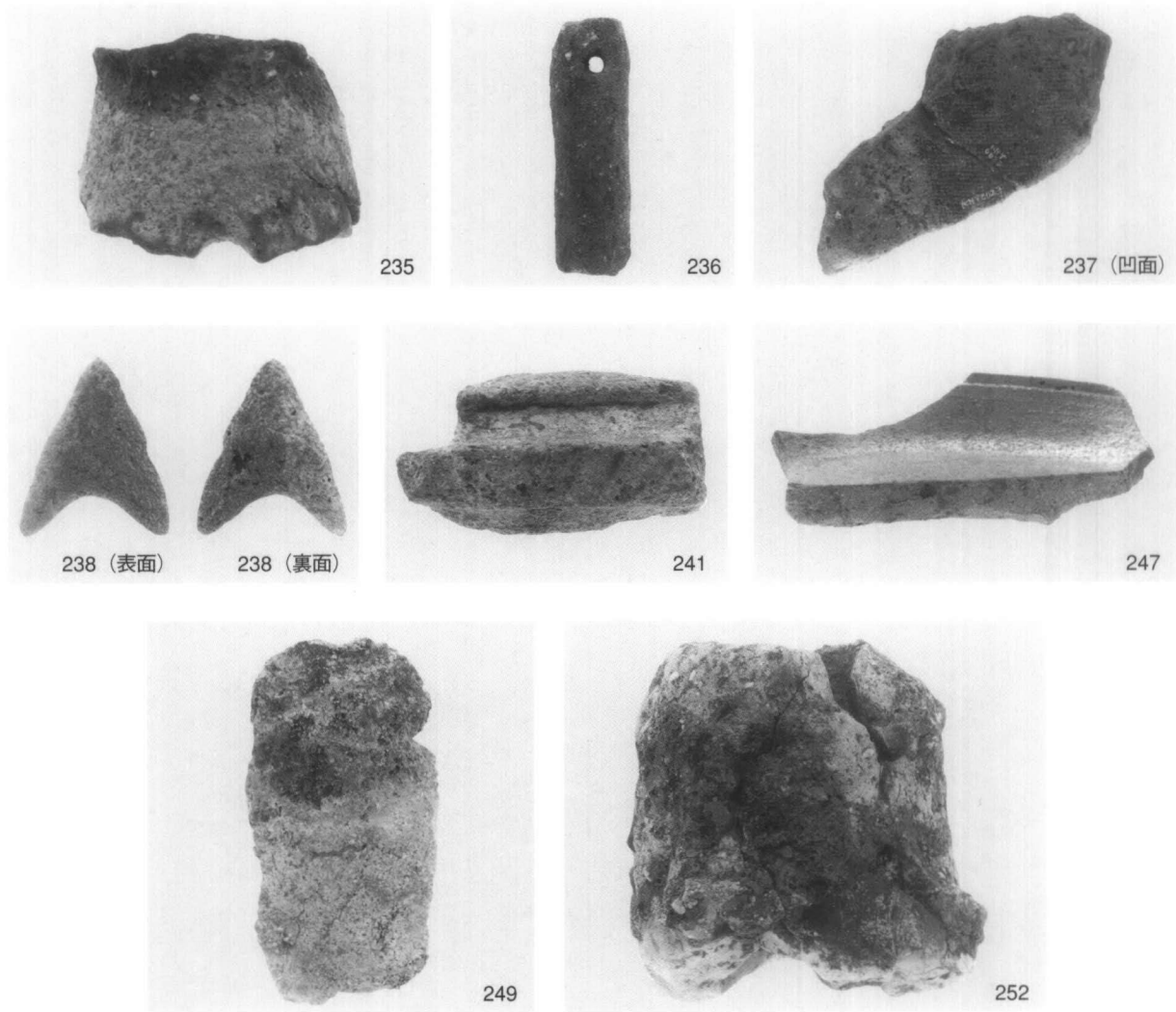
213 (表面)

213 (裏面)

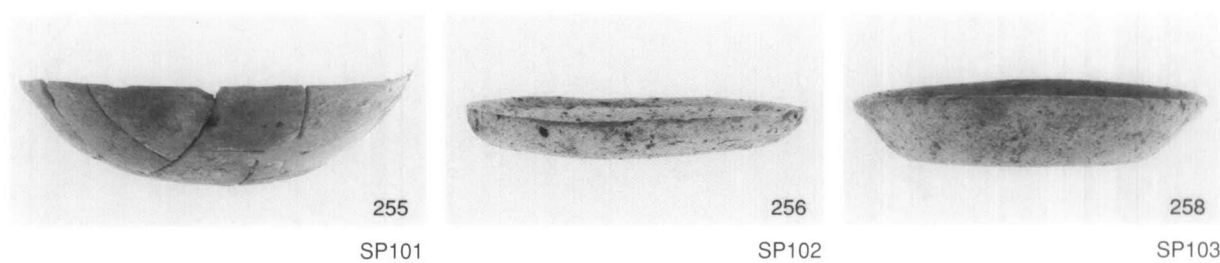


214 (表面)

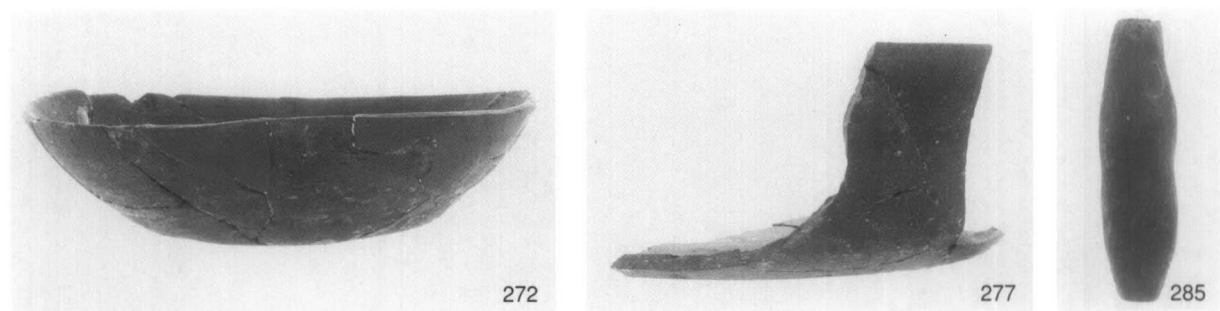
214 (裏面)



(1) I区 包含層出土遺物②



(2) SP101~SP103 出土遺物



(3) SD109 出土遺物

(4) III区 その他出土遺物

(5) II区 その他出土遺物



# 報 告 書 抄 録

ふりがな	けんどうかいりょうこうじにともなうまいぞうぶんかざいはくつちようさほうこく はちようじいせき ほんむら・よこうちいせき							
書名	県道改良工事に伴う埋蔵文化財発掘調査報告 八丁地遺跡 本村・横内遺跡							
副書名								
巻次	平成11年度							
シリーズ名								
シリーズ番号								
編著者名	山元素子							
編集機関	財団法人香川県埋蔵文化財調査センター							
所在地	〒762-0024 香川県坂出市府中町南谷5001-4 TEL 0877-48-2191							
発行機関名	香川県教育委員会 財団法人香川県埋蔵文化財調査センター							
発行年月日	西暦2000年2月29日							
総頁数	目次等	本文	観察表	図版	写真枚数	挿図枚数	付図枚数	
252頁	19頁	160頁	25頁	73頁	331枚	113枚	0枚	
ふりがな 所収遺跡名	ふりがな 所在地	コード		北緯	東経	調査期間	調査面積 (㎡)	調査原因
		市町	遺跡					
はちようじいせき 八丁地遺跡	かがわけんおおかわぐんしどちようしど 香川県大川郡志度町志度	37306		34度18分 45秒	134度10分 8秒	19940701 ～19950331 19950701 ～19950831	4,584	県道高松志度線 道路改良工事
ほんむら よこうちいせき 本村・横内遺跡	かがわけんおおかわぐんさかんちようしど 香川県大川郡寒川町石田東	37307		34度15分 55秒	134度10分 30秒	19940401 ～19940630	1,500	県道石田東志度 線道路改良工事
所収遺跡名	種別	主な時代		主な遺構		主な遺物		特記事項
八丁地遺跡	集落跡	縄文時代晩期		洪水堆積砂?		縄文土器		
		弥生時代後期～ 古墳時代初頭		土坑・溝・ 自然河川		弥生土器・石器		
		鎌倉～室町時代		ピット・溝 自然河川		土師器・須恵器 黒色土器・瓦器		
本村・横内遺跡	集落跡	奈良～平安時代		掘立柱建物・ 土器溜り		土師器・須恵器 黒色土器・緑釉陶器 灰釉陶器		
		鎌倉～室町時代		掘立柱建物 柵列・溝		土師器		
		近世		掘立柱建物				

県道改良工事に伴う  
埋蔵文化財発掘調査報告

八丁地遺跡

本村・横内遺跡

2000年2月29日発行

編集 財団法人 香川県埋蔵文化財調査センター  
〒762-0024

香川県坂出市府中町南谷5001-4

発行 香川県教育委員会

財団法人 香川県埋蔵文化財調査センター

印刷 株式会社 成光社

