



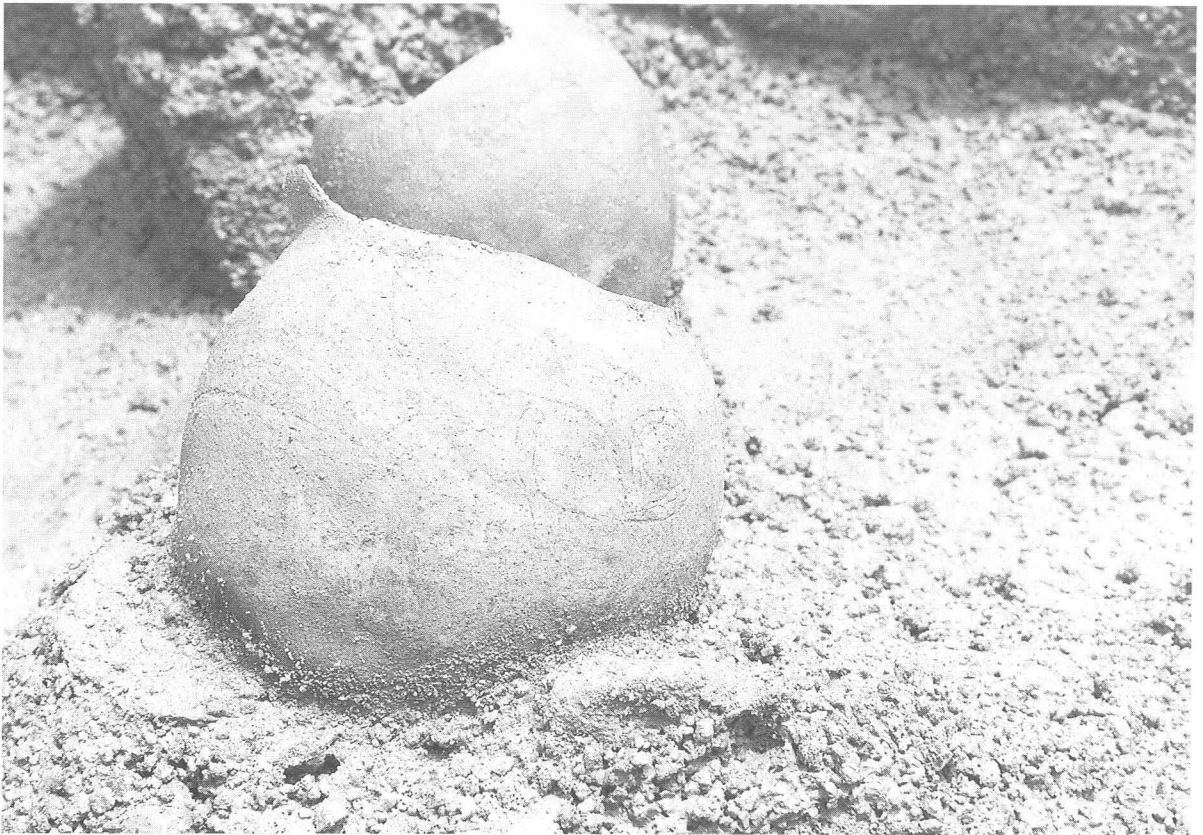
S R01 (平成9年度) 掘削状況 (東北から)



S R01 (平成9年度) 完掘状況 (西南から)



S R01 遺物出土状況



S R01 遺物出土状況



S R01(平成8年度) 完掘状況(東北から)



S R01(平成8年度) 断面(南から)



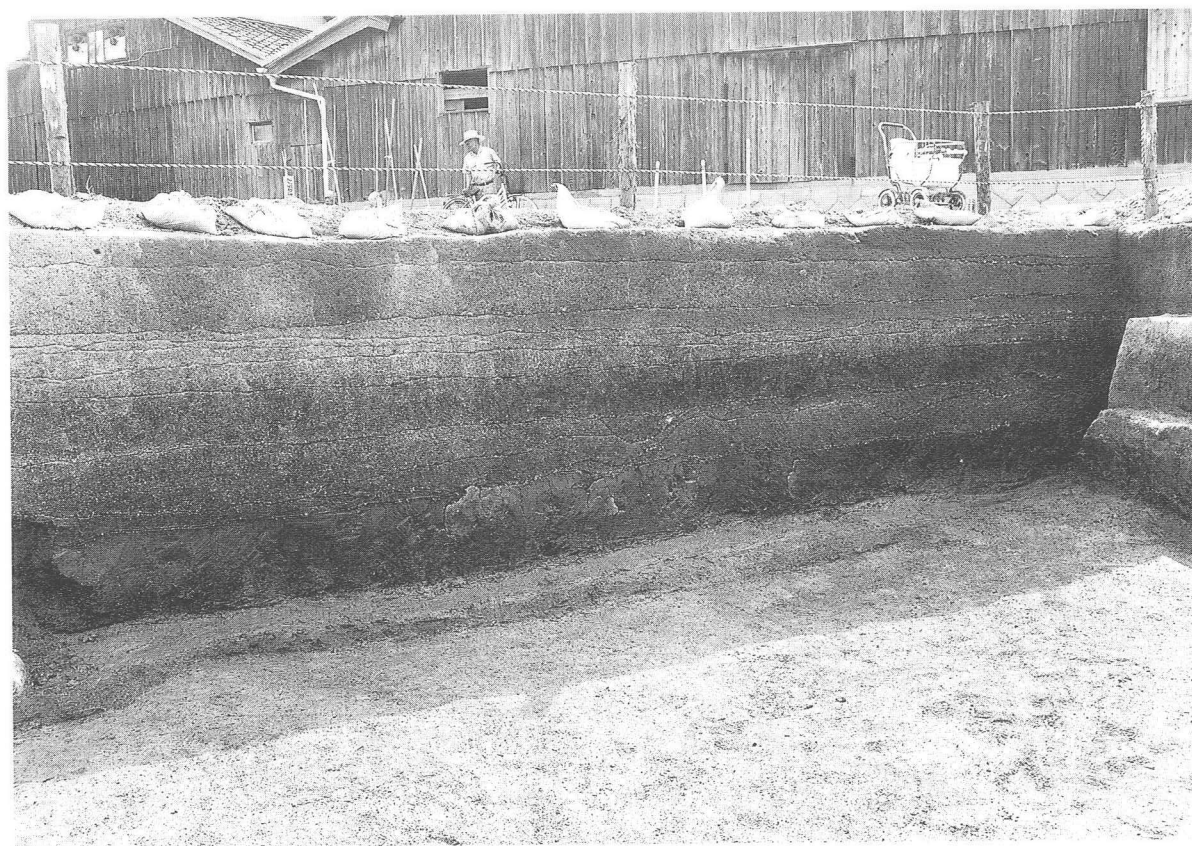
S R01 遺物出土状況



S R02 完掘状況（西北から）



S R02 断面（西北から）



S R02 断面（東北から）



S R02 遺物出土状況（北から）



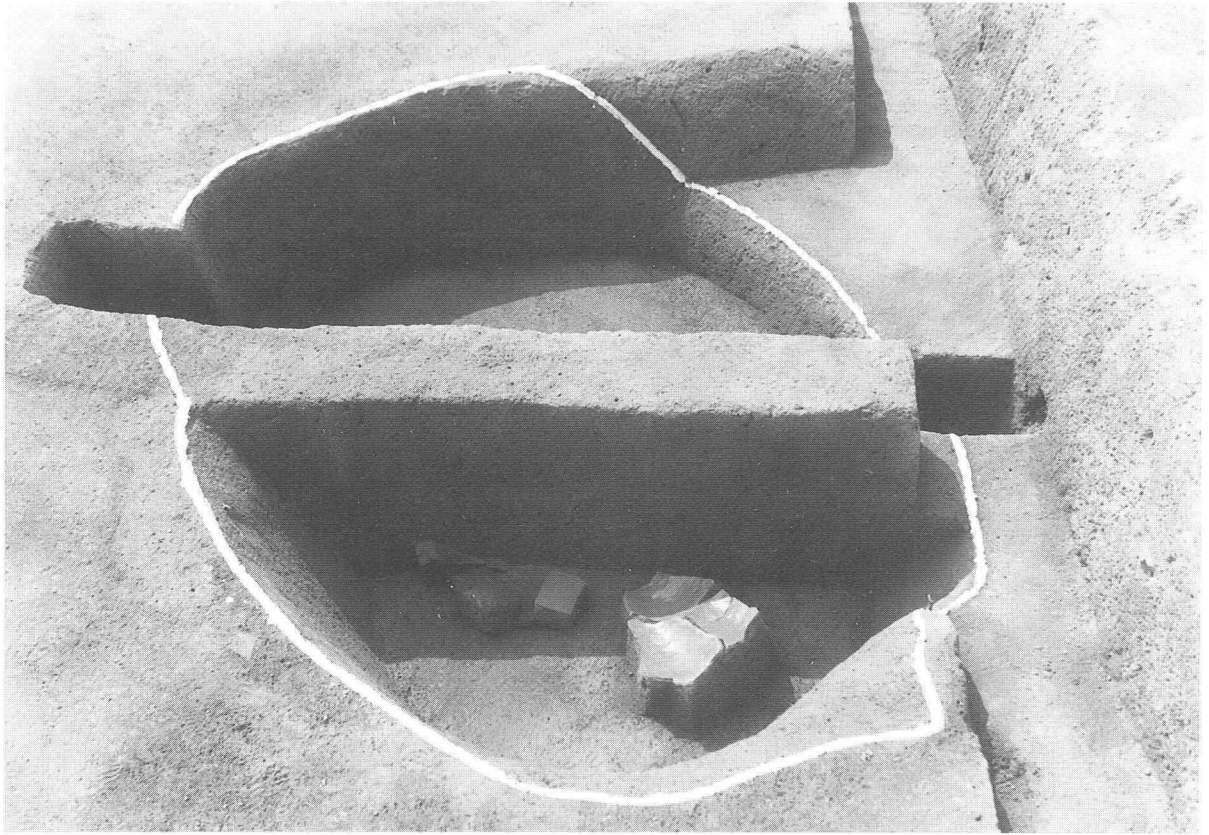
S R02 遺物出土状況（西北から）



S R02 遺物出土状況（東北から）



S R02 遺物出土状況（東北から）



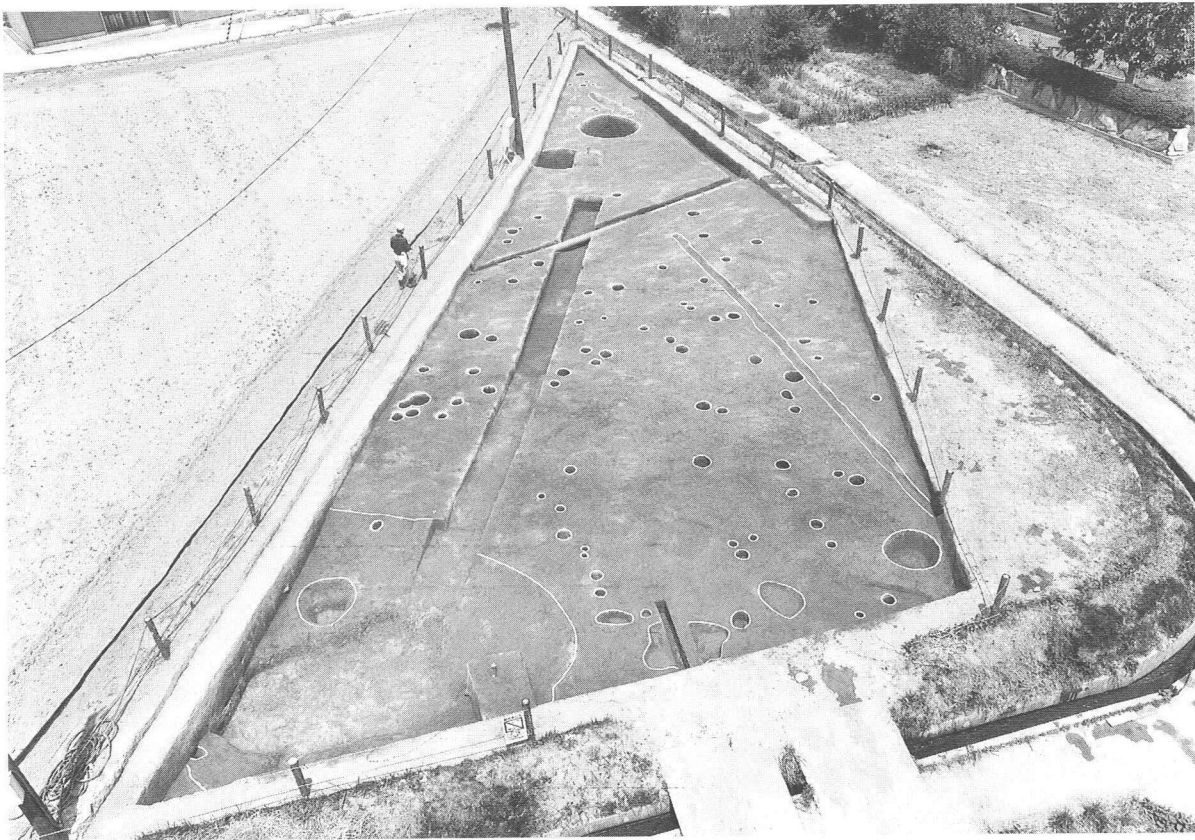
S K 01 掘削状況（東南から）



S K 01 断面（東南から）



S D03 その① 断面 (北から)



西段丘地区① 完掘状況 (東北から)



西段丘地区② 完掘状況（北から）



西段丘地区③ 完掘状況（西北から）



S K02 断面 (南東から)



S K03 断面 (南から)



S X01 掘削状況（北から）



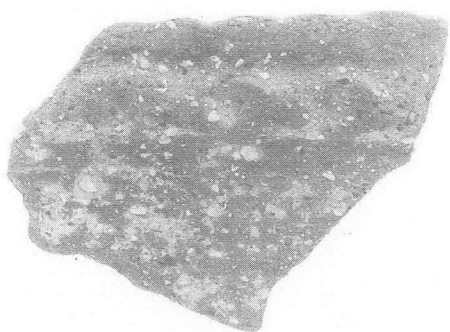
S X01 断面（西から）



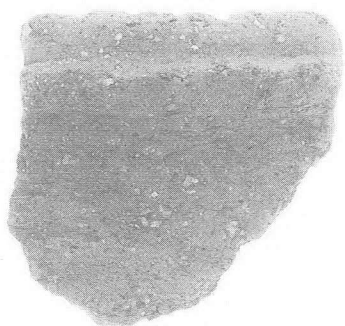
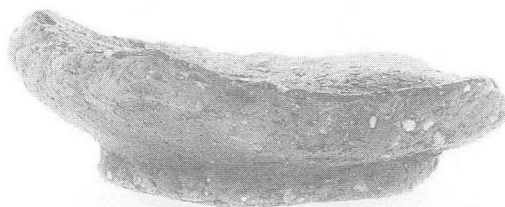
S X02 断面 (南東から)



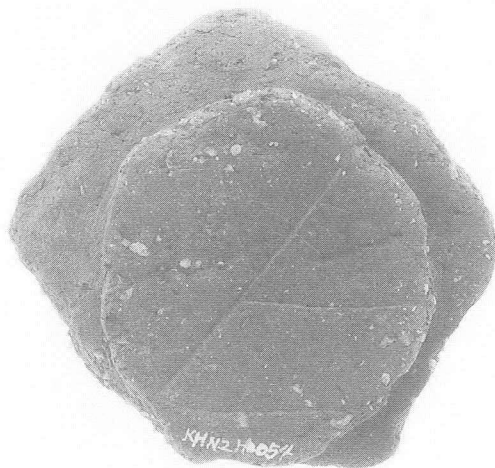
S X02 断面 (西南から)



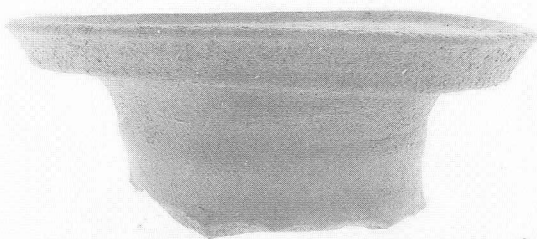
1



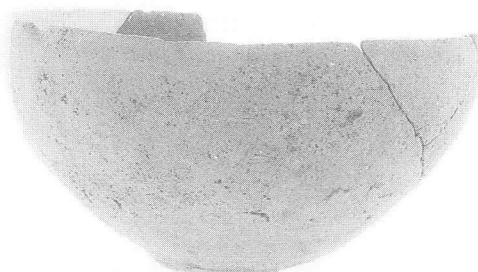
3



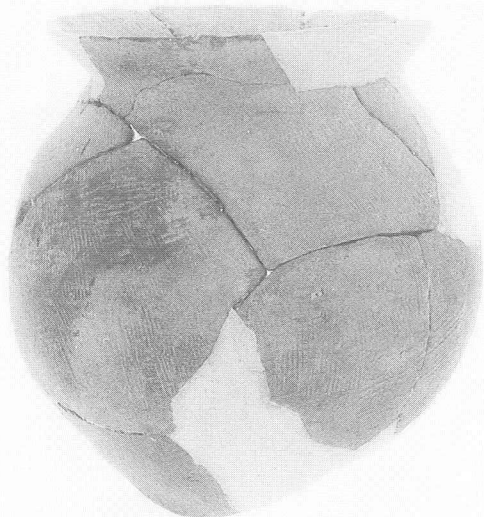
29



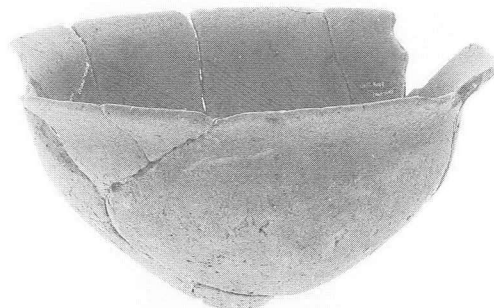
6



34



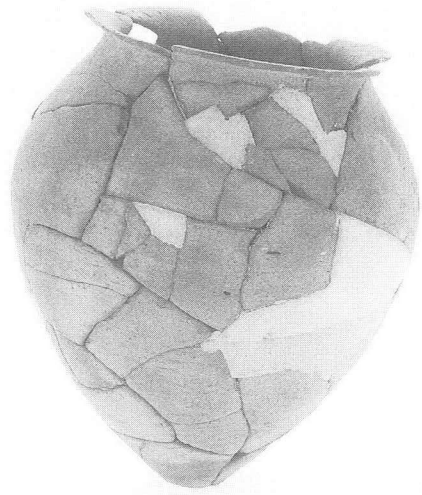
8



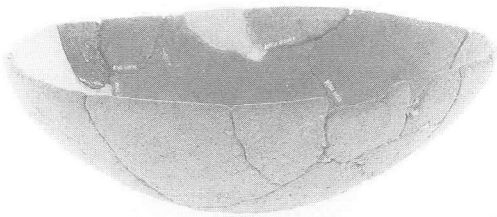
35



49



70



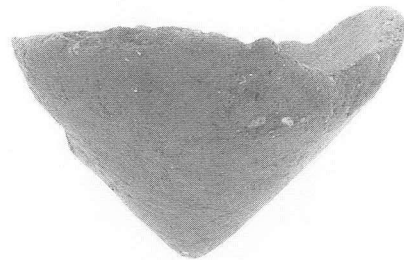
45



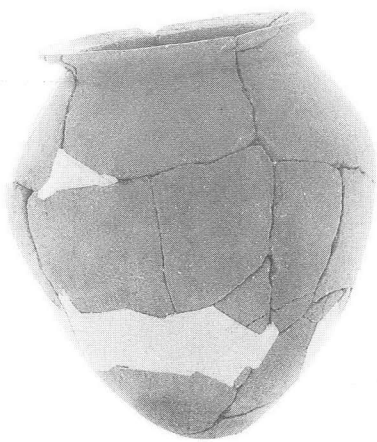
81



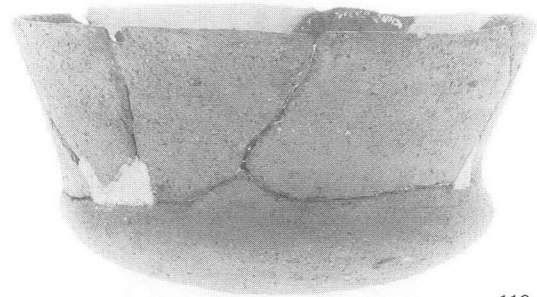
60



83



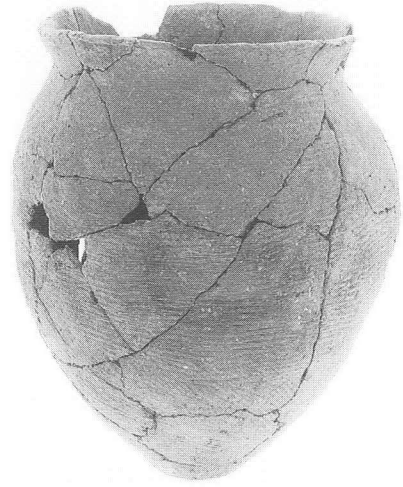
61



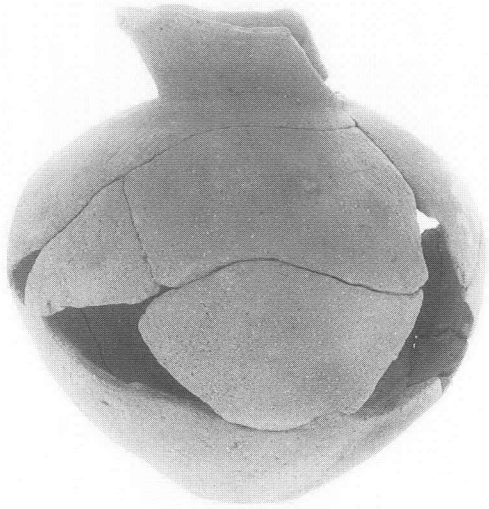
113



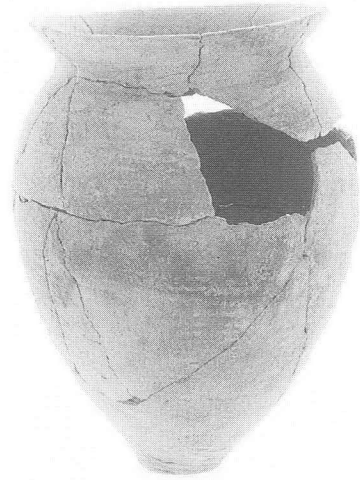
114



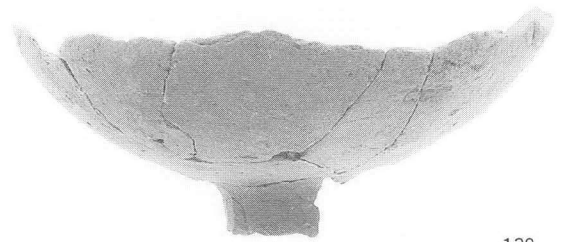
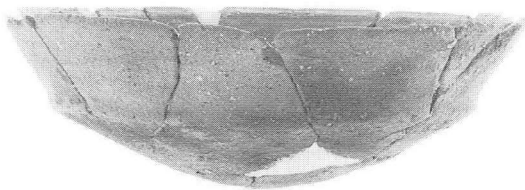
127



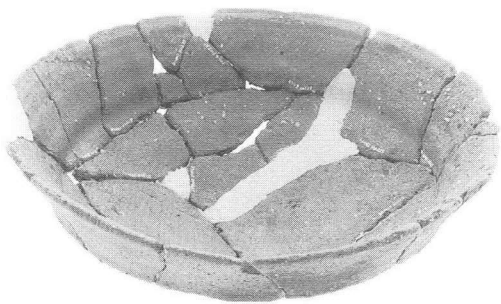
116



128



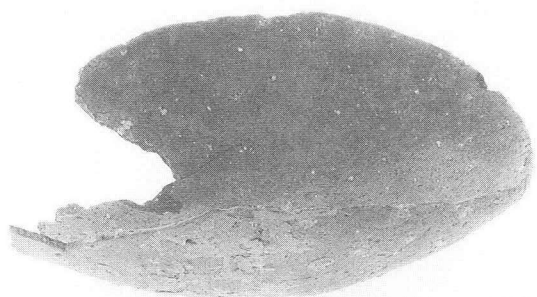
138



125



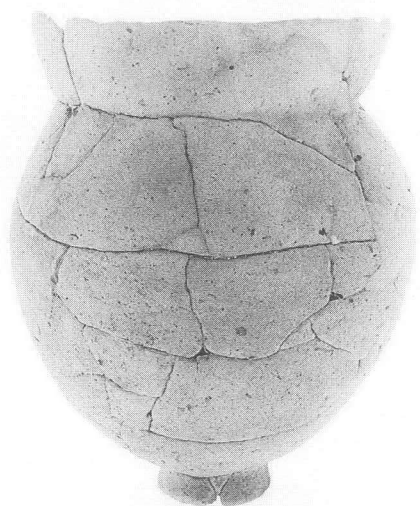
140



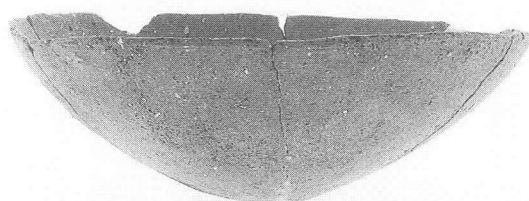
142



172



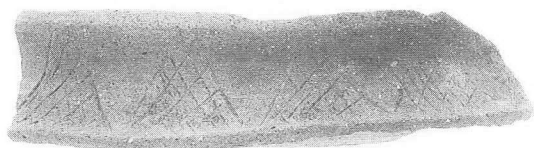
152



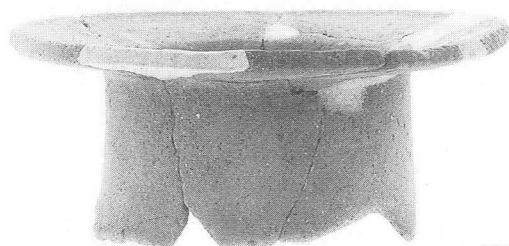
182



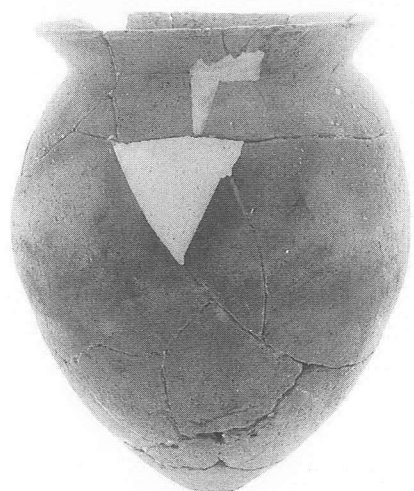
189



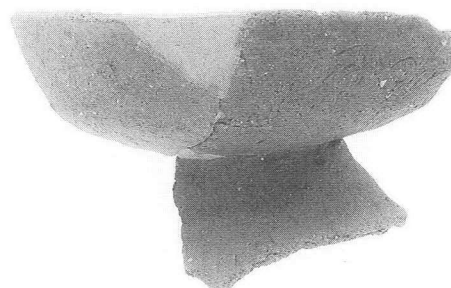
163



204



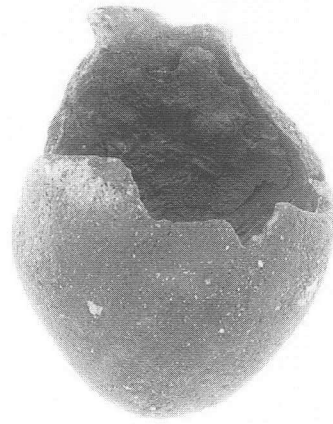
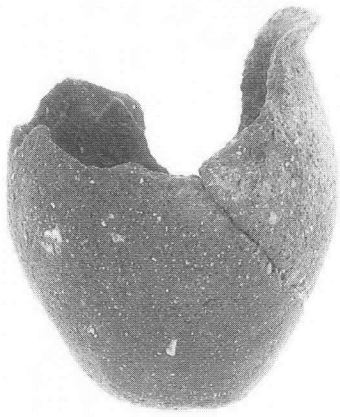
167



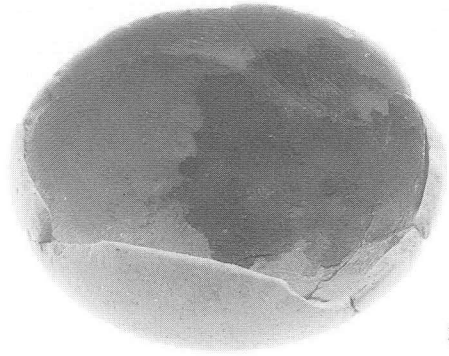
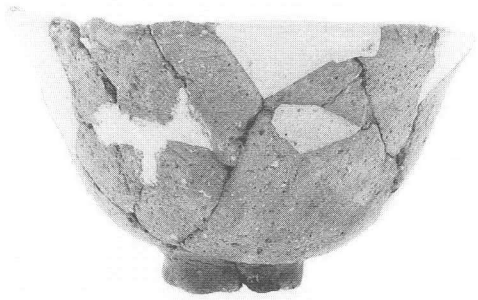
209



232



233

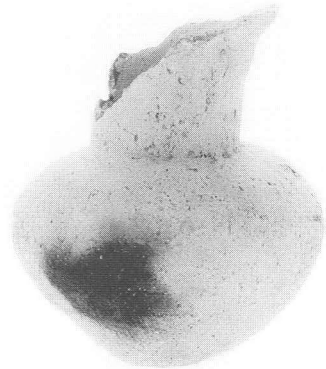


269

243



260



271



272



282



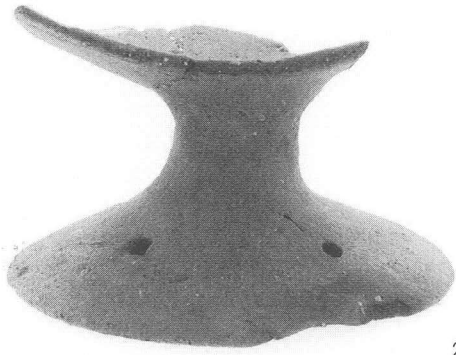
273



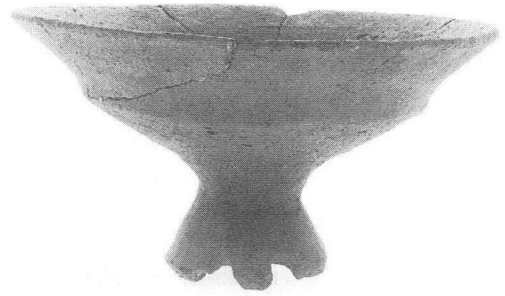
286



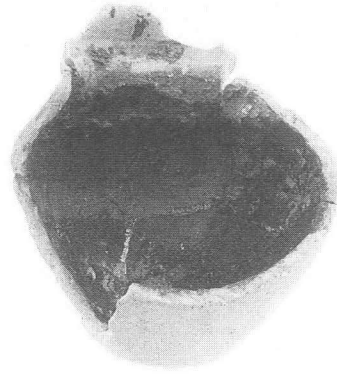
287



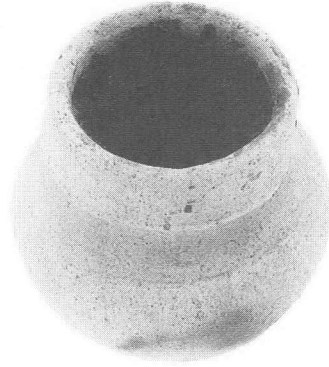
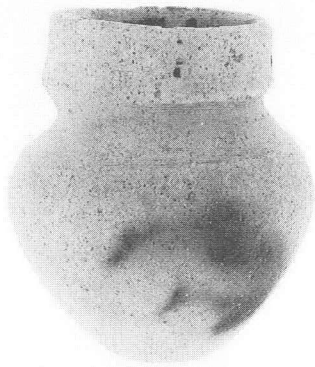
294



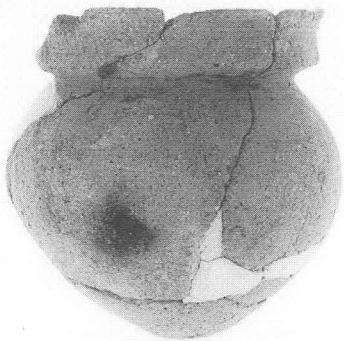
298



317



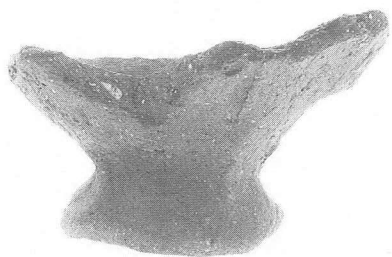
318



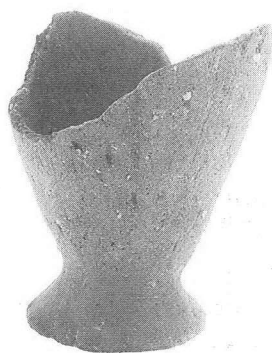
319



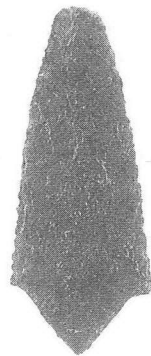
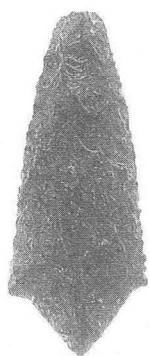
321



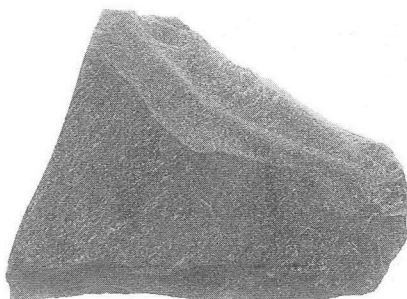
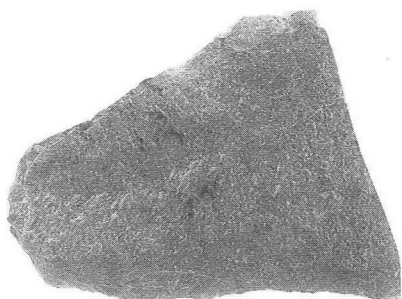
324



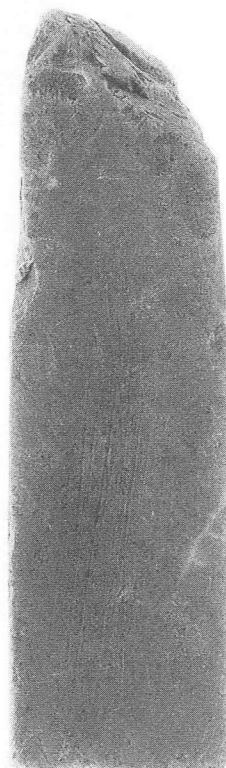
325



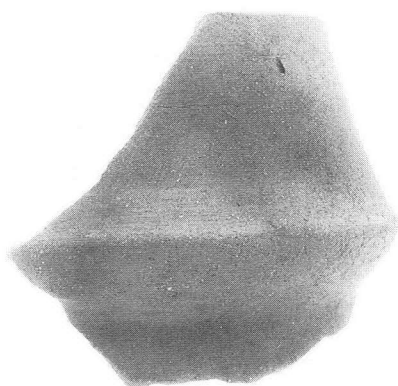
328



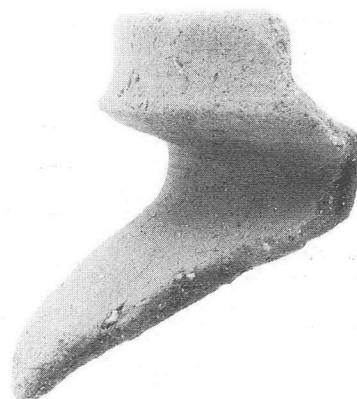
329



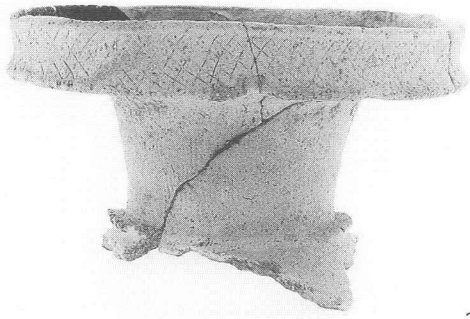
331



333



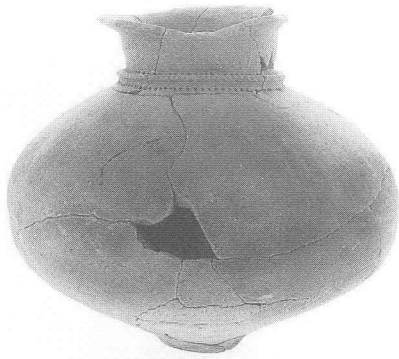
345



347



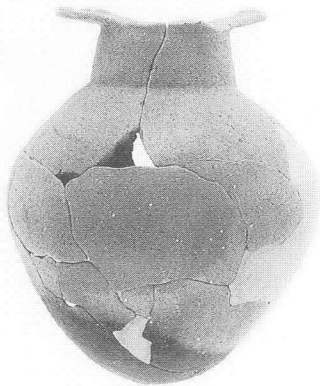
366



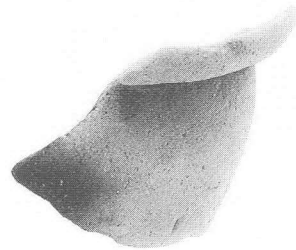
349



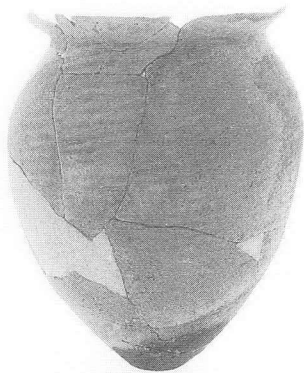
379



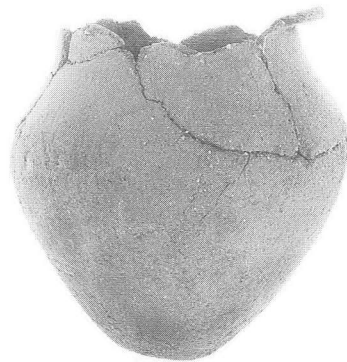
358



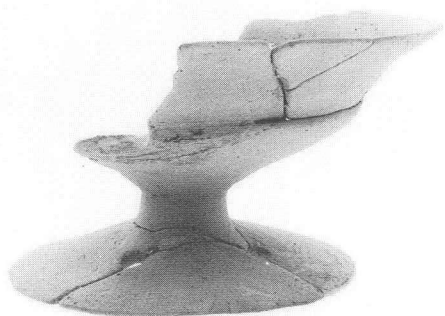
388



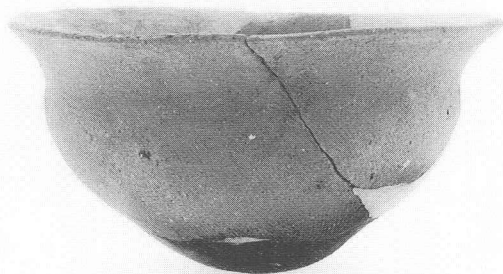
363



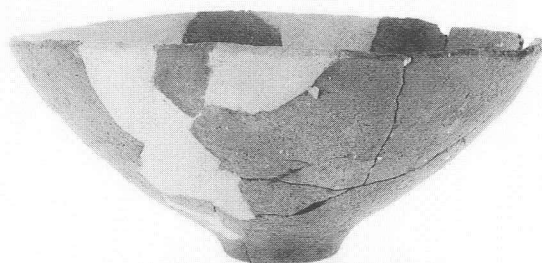
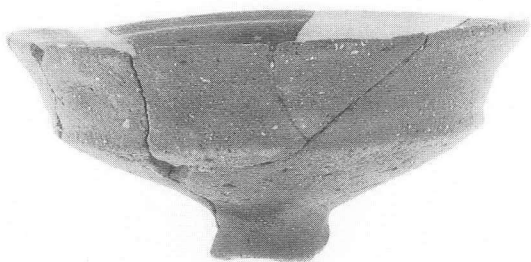
396



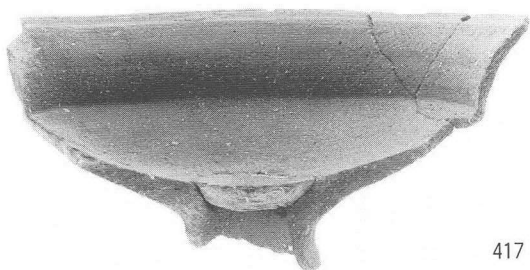
407



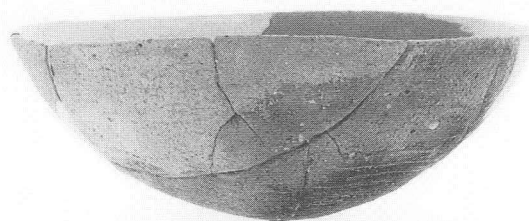
426



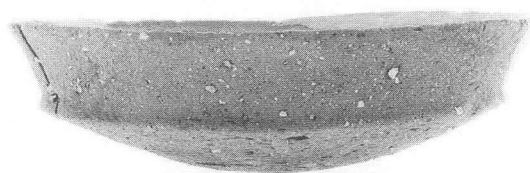
434



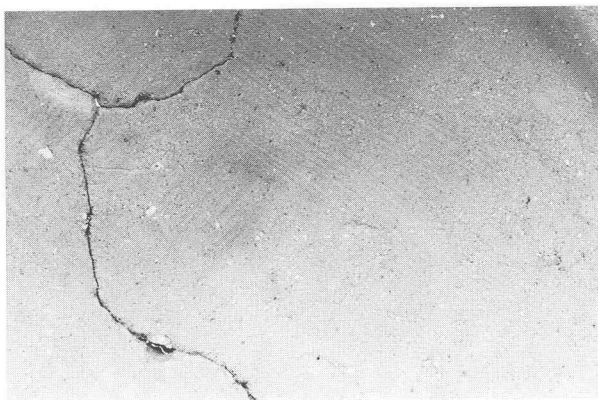
417



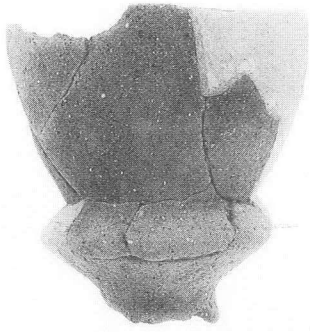
444



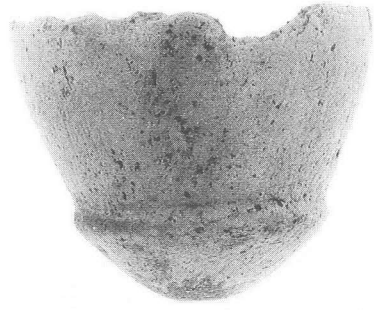
424



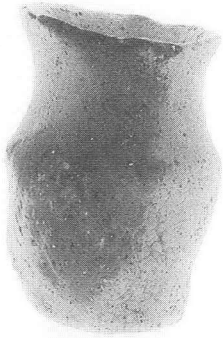
450



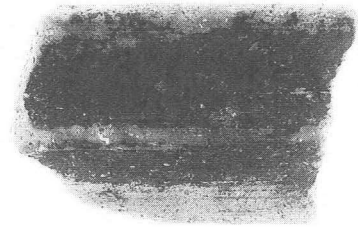
457



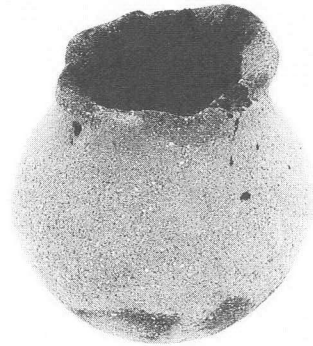
460



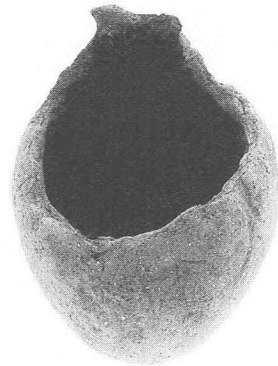
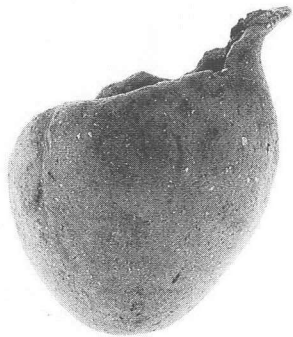
474



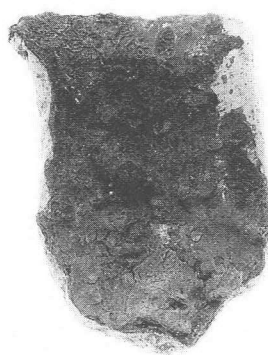
477



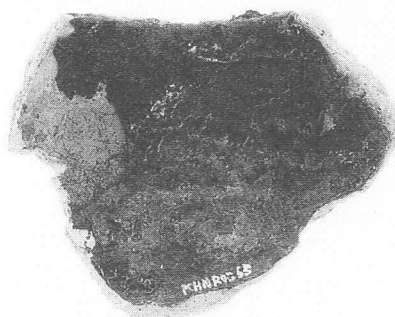
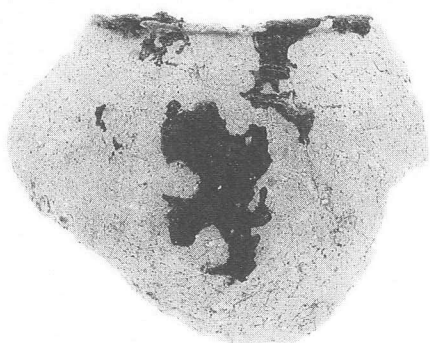
481



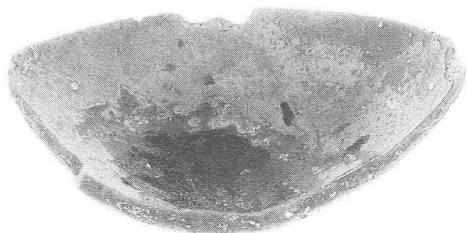
482



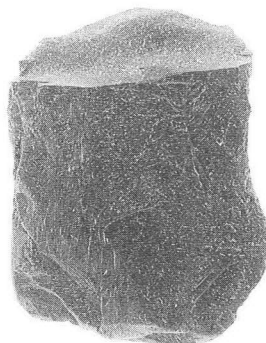
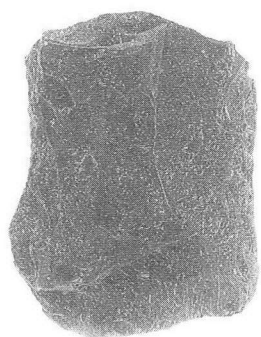
483



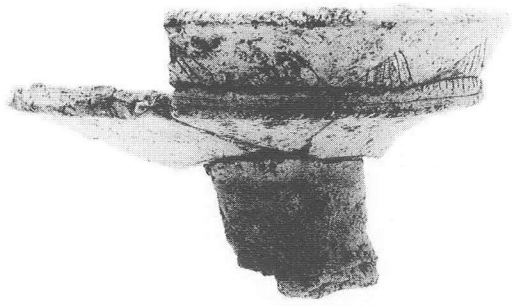
485



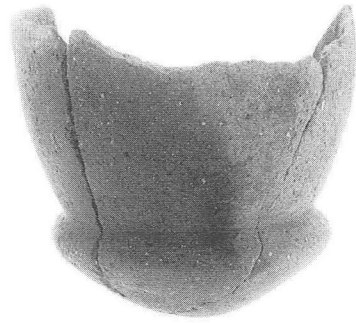
486



491



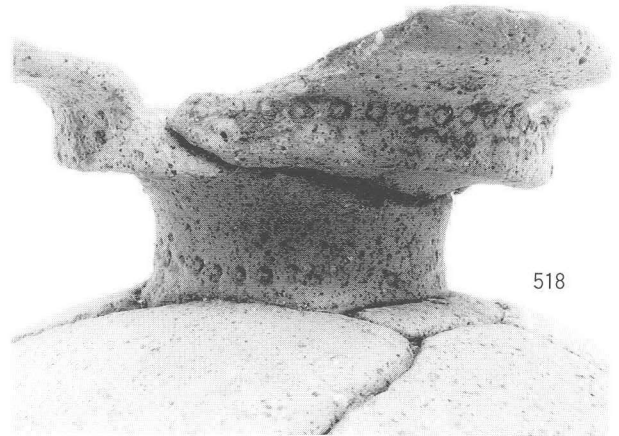
497



512



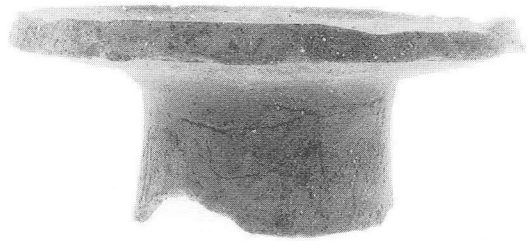
502



518



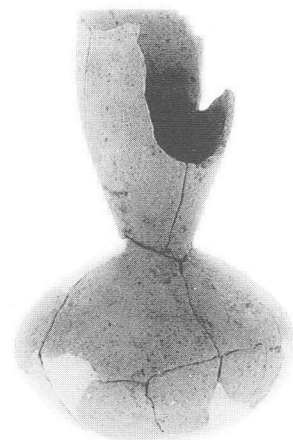
503



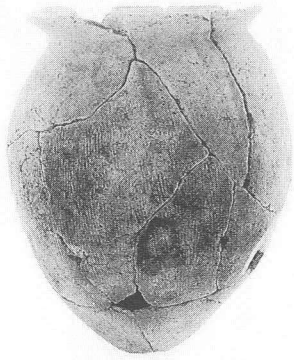
522



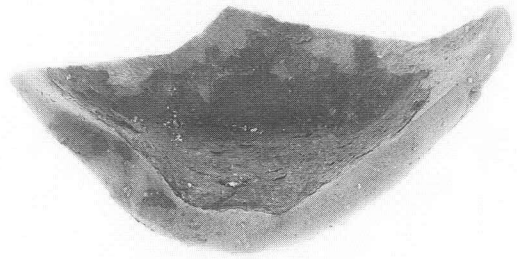
511



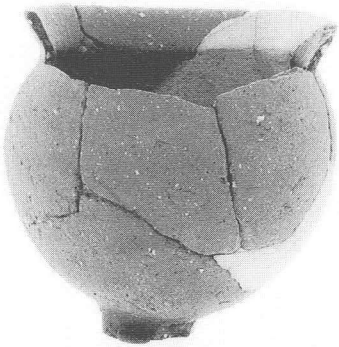
528



533



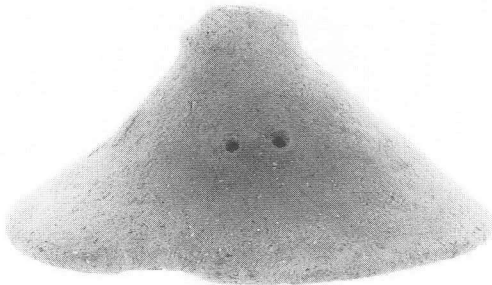
615



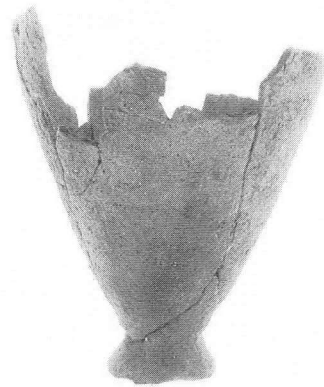
544



617



582



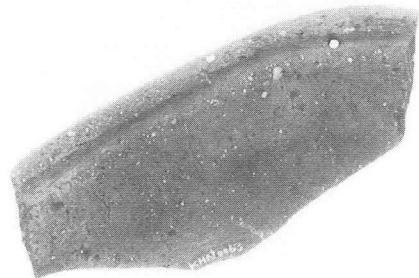
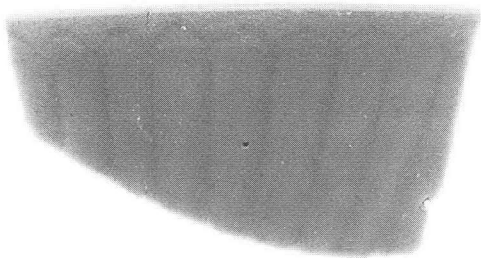
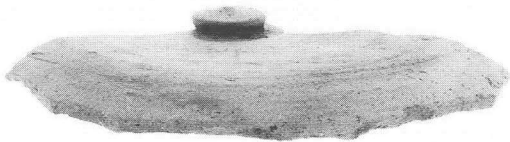
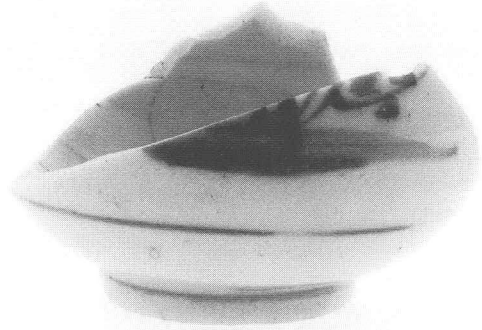
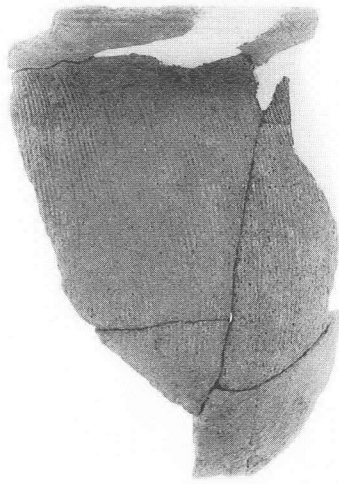
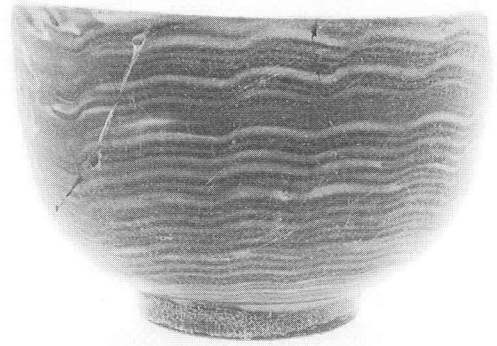
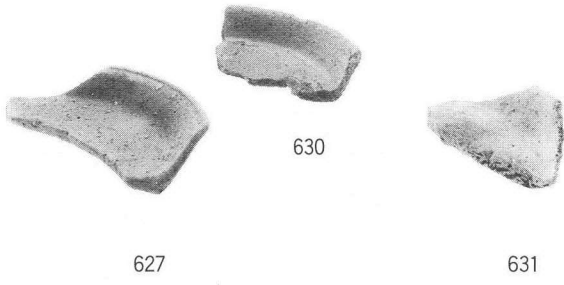
622

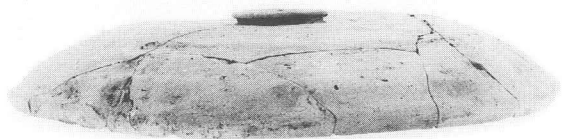


614

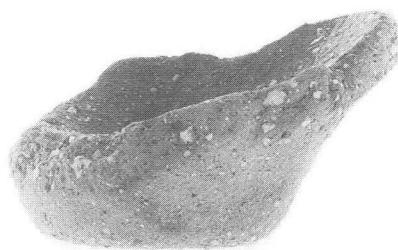
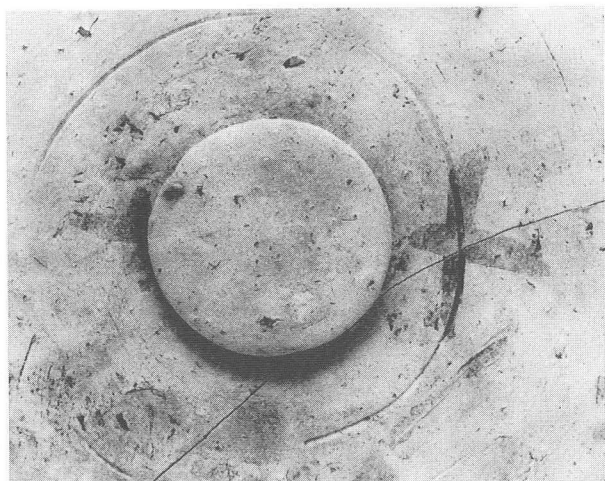


623





677



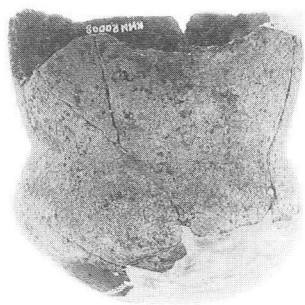
674



665



676



675



680

報 告 書 抄 録

ふりがな	けんどうたかまつしどせんきんきゅうせいびこうじおよびけんりつりょうたんきだいがくけんせつにともなう まいぞうぶんかざいはくつちょうさほうこく はらなかむらいせき						
書名	県道高松志度線緊急整備工事および県立医療短期大学建設に伴う埋蔵文化財発掘調査報告 原中村遺跡						
副書名							
巻次							
シリーズ名							
シリーズ番号							
編著者名	木下晴一						
編集機関名	財団法人香川県埋蔵文化財調査センター						
所在地	〒762-0024 香川県坂出市府中町南谷5001-4 TEL0877-48-2191						
発行期間名							
発行年月日	2000年2月29日						
総頁数	目次等	本文	観察表	図版	挿図枚数	写真枚数	
162	7	82	27	46	78	171	
所収遺跡名	所在地	コード 市町村 遺跡	北緯	東経	調査期間	調査面積	調査原因
原中村遺跡	香川県木田郡牟礼町原	37342	34度 19分 7秒	134度 9分 43秒	19960401 ～ 19960630 19970401 ～ 19970630	1,500m ² 2,000m ²	県道高松 志度線緊急 整備工事 県立医療 短期大学 建設
所収遺跡名	種別	主な時代	主な遺構		主な遺物	特記事項	
原中村遺跡	集落跡	弥生時代後期 古代 中世 近世	竪穴住居跡 柱穴跡 自然河川跡 土坑 溝状遺構 土坑等		弥生土器 須恵器 土師器 中世土器 陶磁器	漆の付着した弥 生時代の土器片 が多数出土して いる。	

県道高松志度線緊急整備工事および
県立医療短期大学建設に伴う

埋蔵文化財発掘調査報告

原中村遺跡

2000年2月29日発行

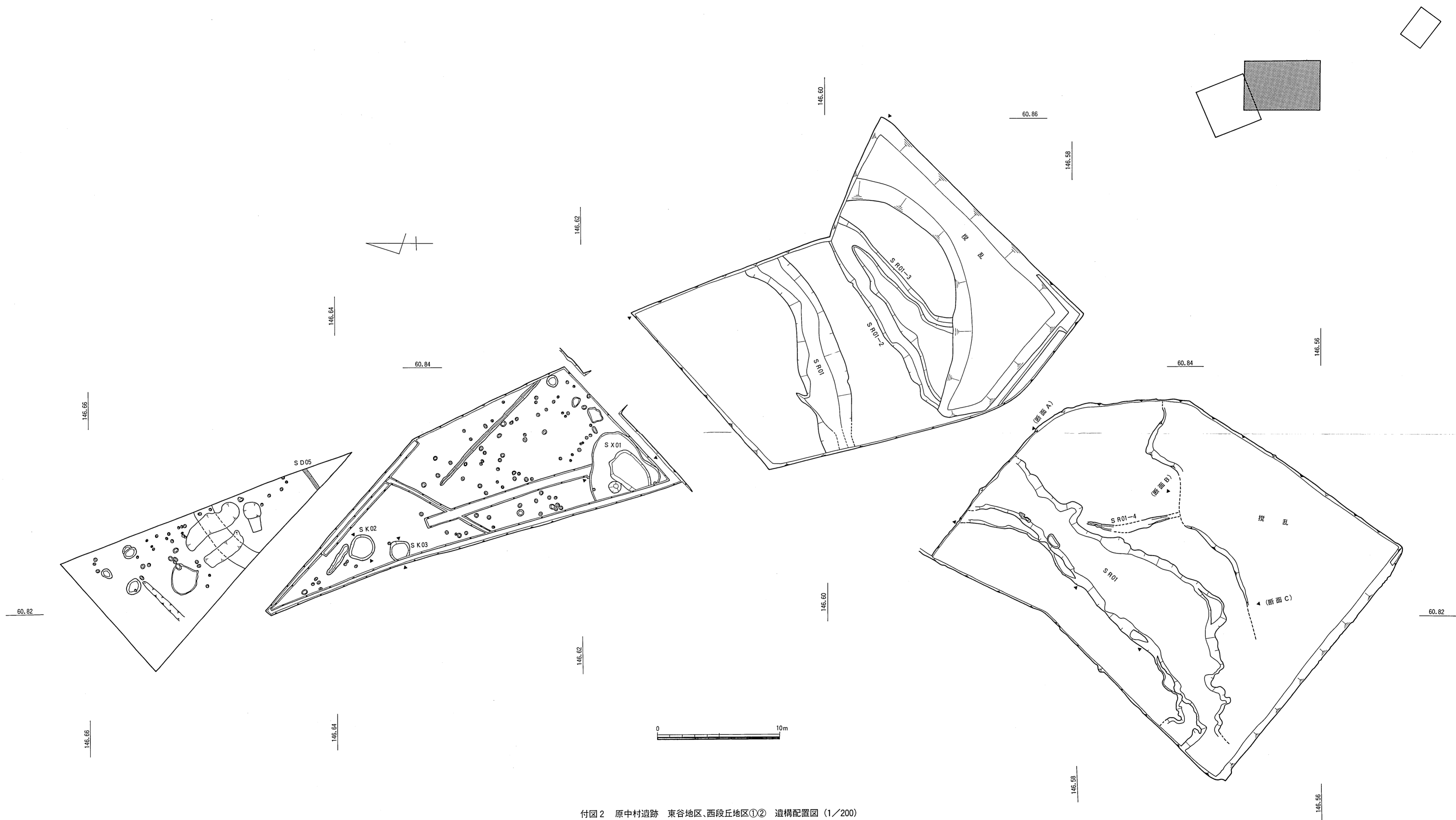
編集 財団法人香川県埋蔵文化財調査センター
〒762-0024 香川県坂出市府中町南谷5001-4
電話 0877-48-2191 (代表)

発行 香川県教育委員会
財団法人香川県埋蔵文化財調査センター

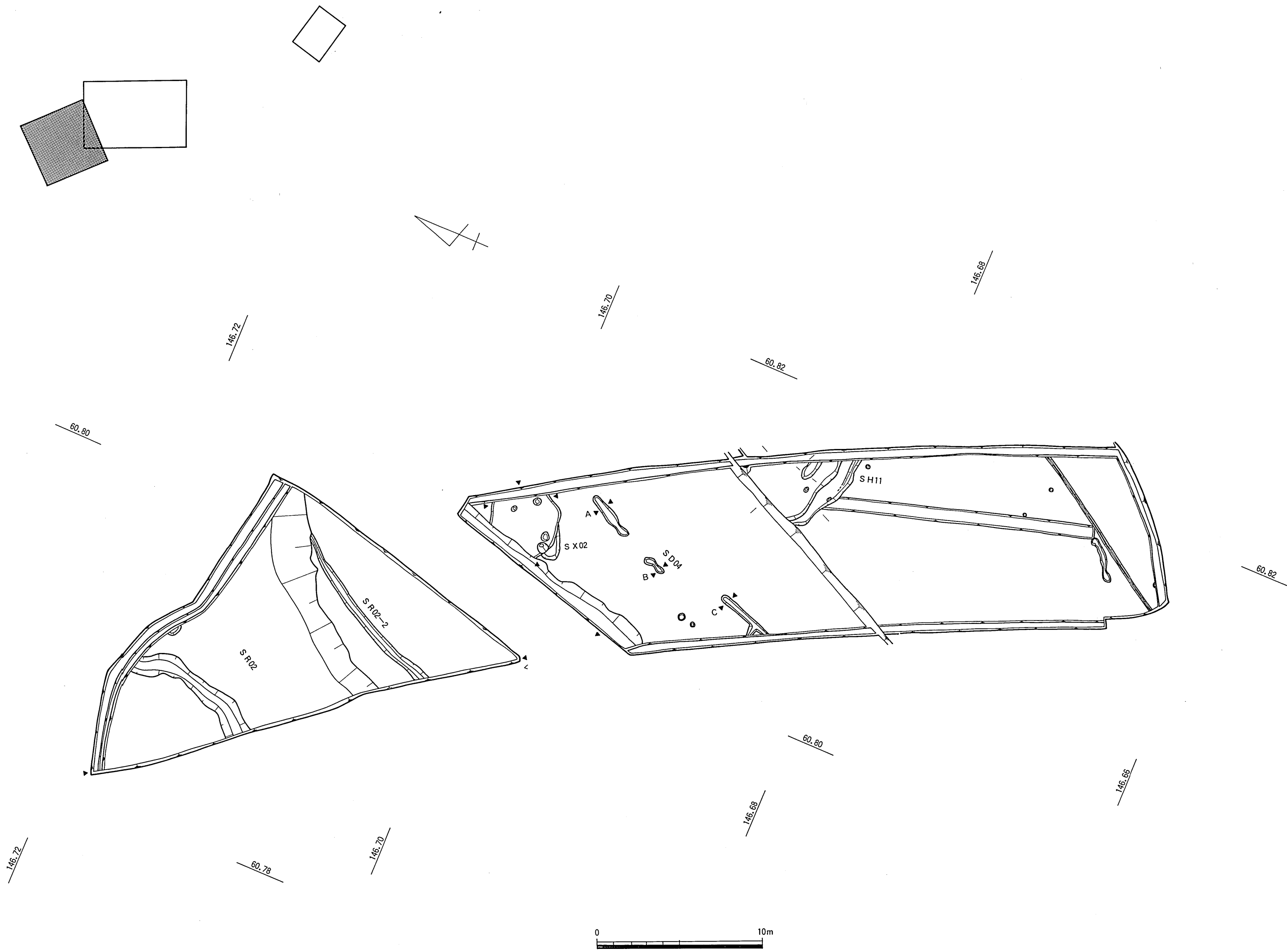
印刷 株式会社 美巧社



付図1 原中村遺跡 東段丘地区 遺構配置図 (1/100)



付図2 原中村遺跡 東谷地区、西段丘地区①② 遺構配置図 (1/200)



付图3 原中村遺跡 西段丘地区③ 西谷地区 遺構配置図 (1/200)

