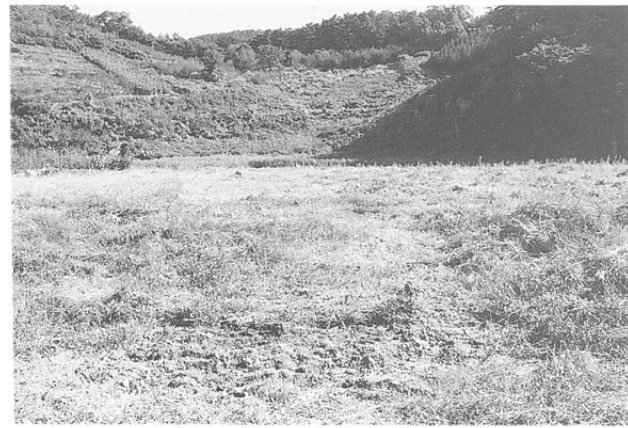


左：遺跡遠景
（奥の山下）
右：調査前の状況



1次調査全景

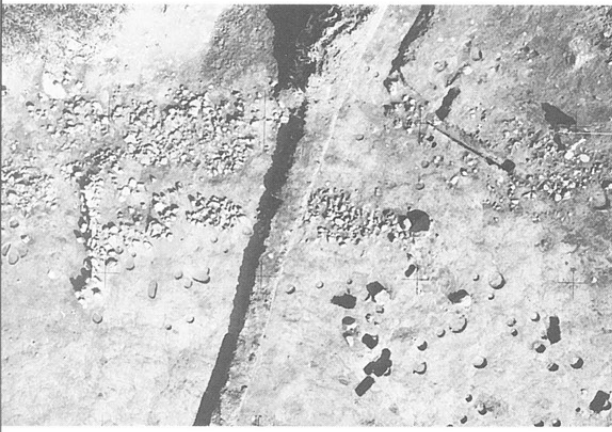


左：1次調査A区
右：1次調査C区

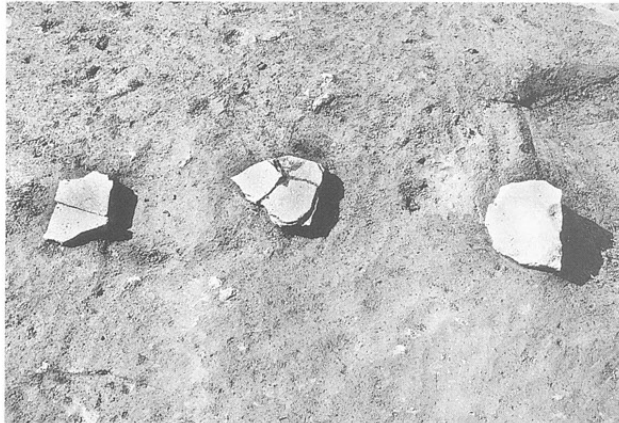


左：2次調査A区
右：2次調査C区





左：ST01
右：ST02



左：ST03
右：SA04



左：ST08（上より）
右：ST08（東より）

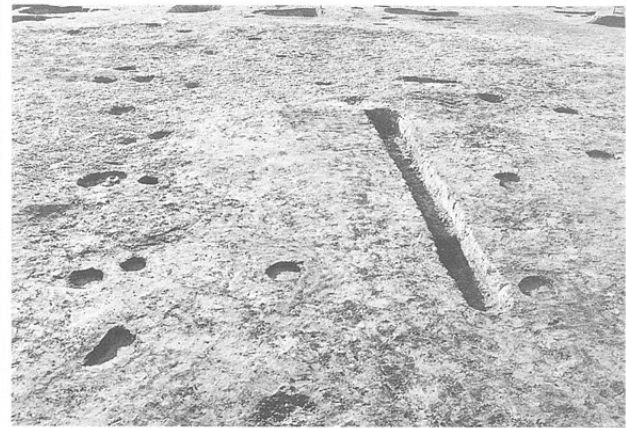


左：ST09
右：ST10
（2次調査6面）



左：ST04・05
（1次調査）
右：ST04・05
（2次調査）

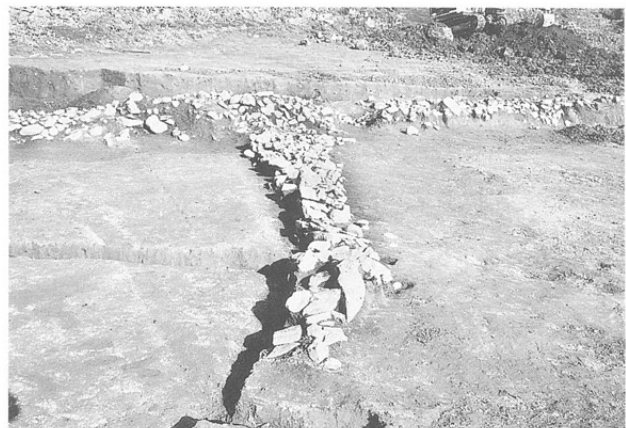
左：ST11・12
右：ST15



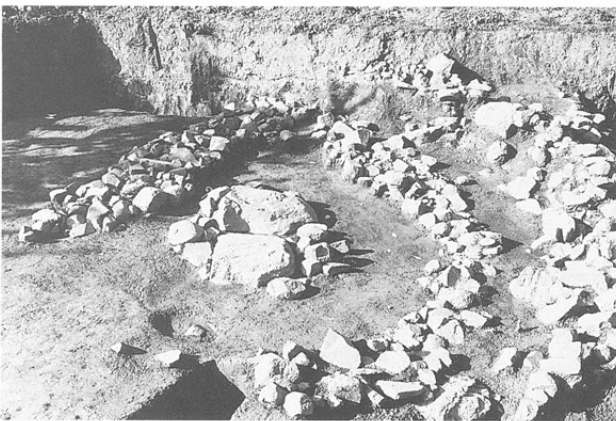
左：SK354周辺
ピット群
右：A区平地部
ピット群



左：SH02・03、10~12
右：SH03

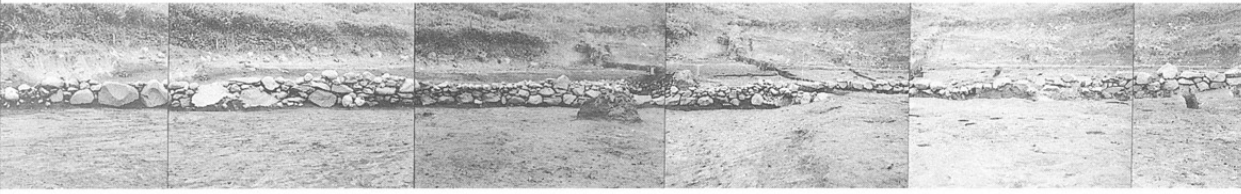


左：SH10~12
右：SH14

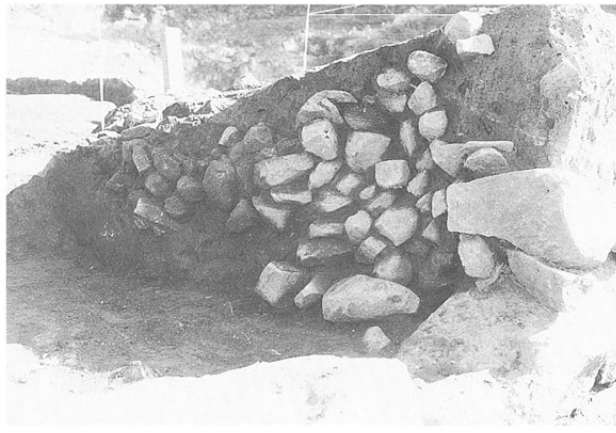


左：SH15
右：SH16

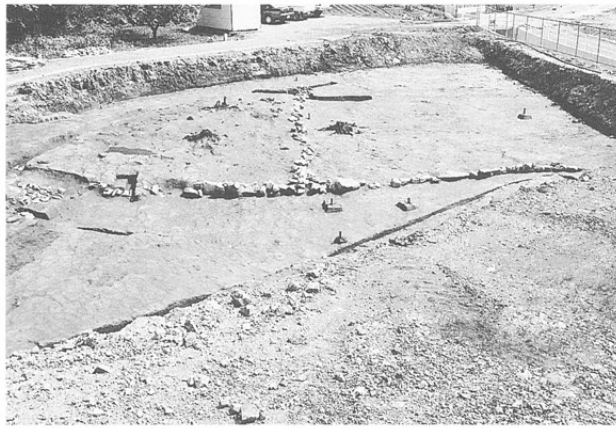
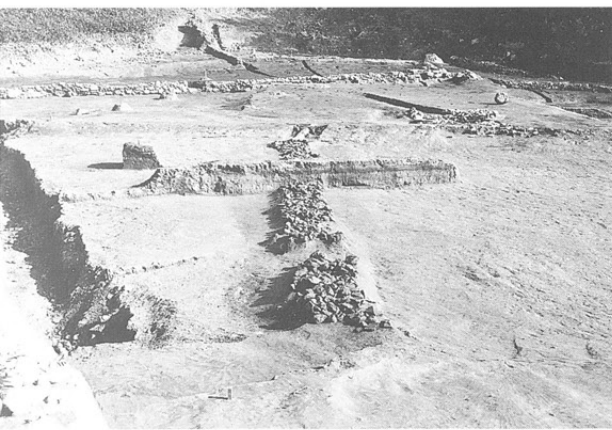




SH09側面



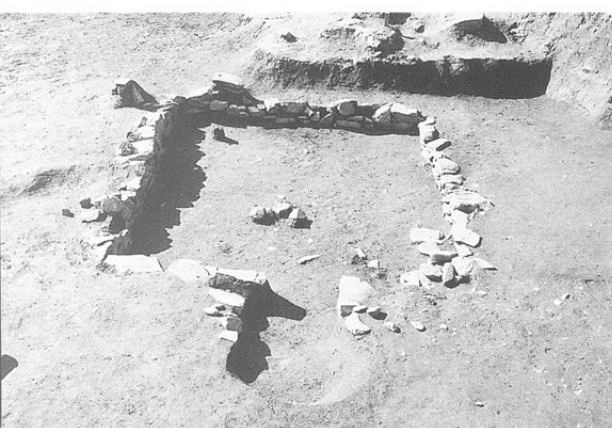
左：SH09（上空より）
右：SH09断面



左：SH17
右：SA01・02

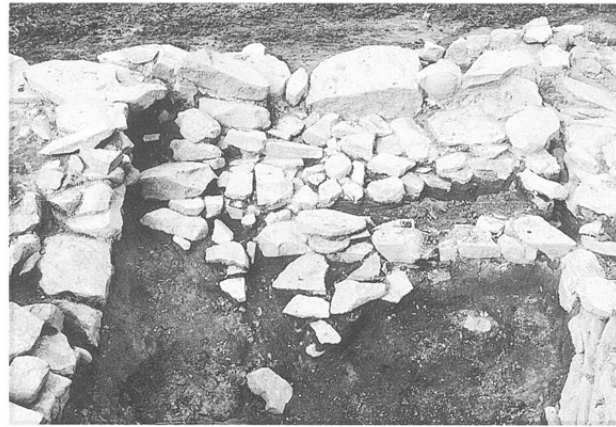


左：SA03・SH30
（西より）
右：SH30（南より）



左：SB04
右：SB05

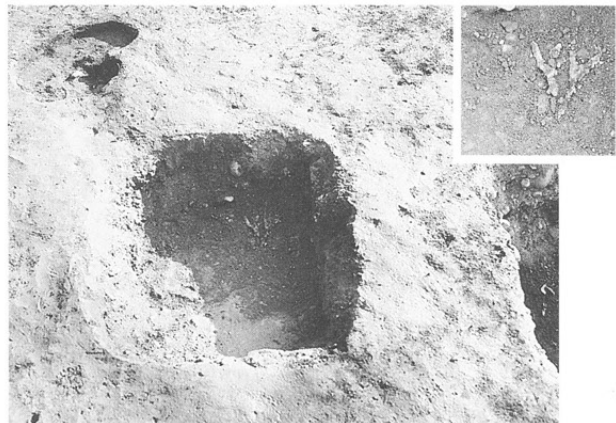
左：SX01
右：SX01 北壁



左：SK361石組
(SX02)
右：SK354



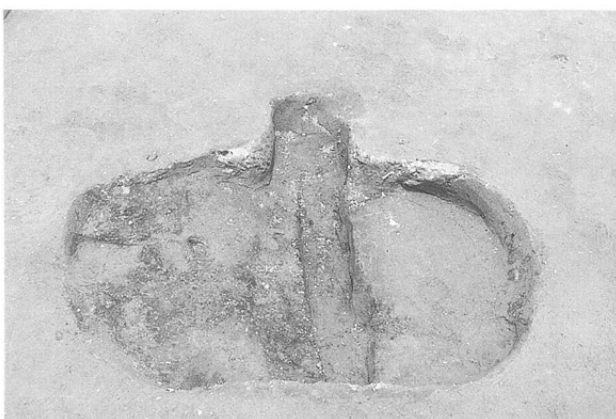
左：SK167
右：SK186
同鉄鏝出土状況

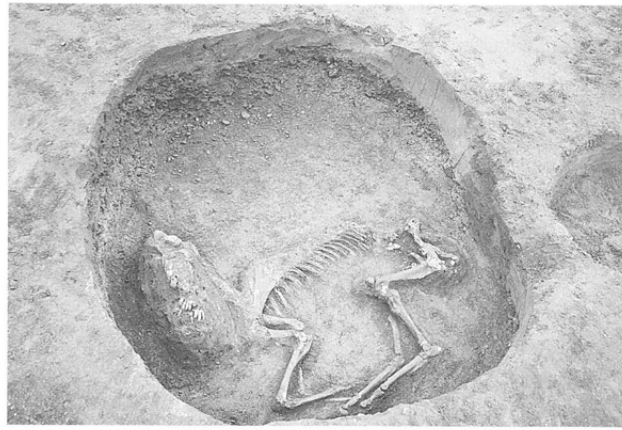


左：SX03検出状況
右：SX完掘状況



左：SK840
右：SM02





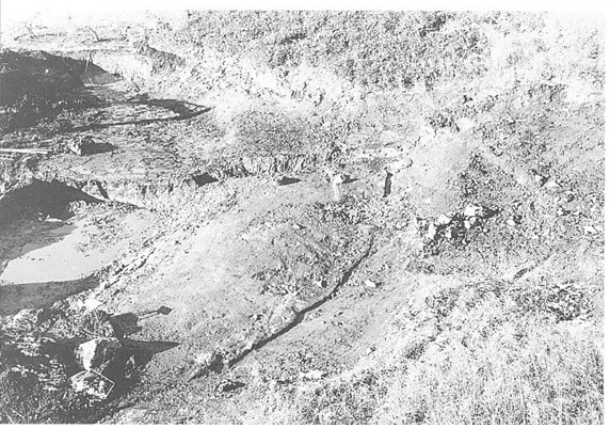
左：SK198
右：SK179



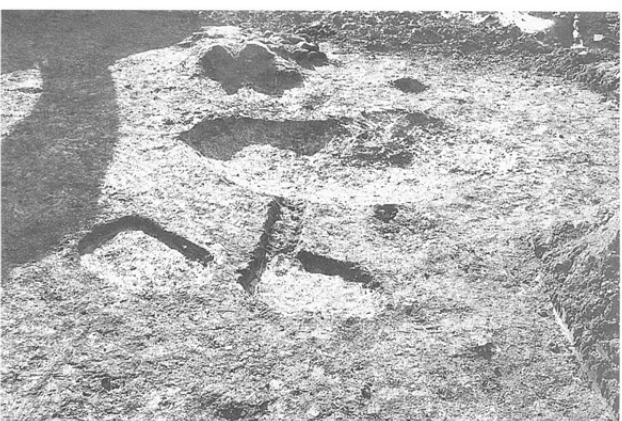
左：SD10
右：A区低地水田



左：C・D区トレンチ
右：SB01

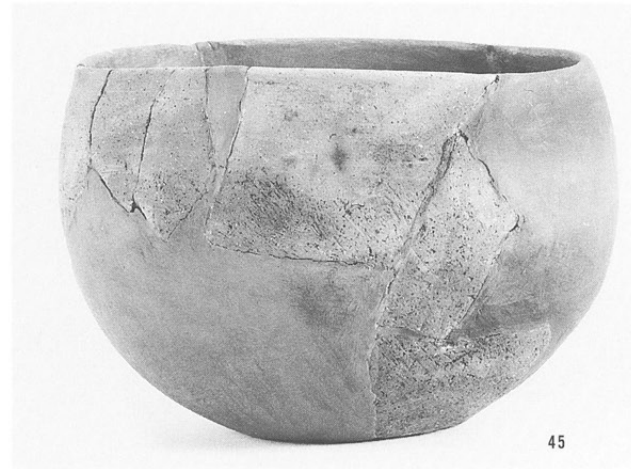
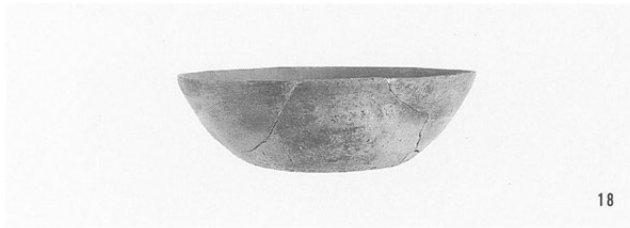


左：A区II面
右：A区II面SF

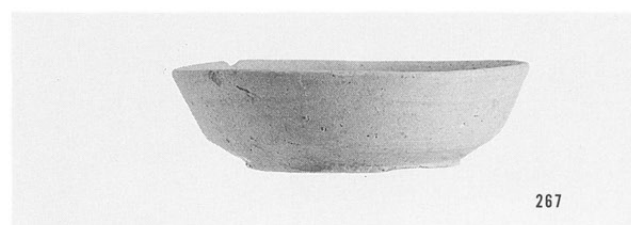
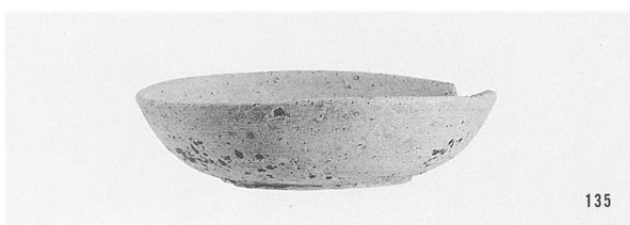
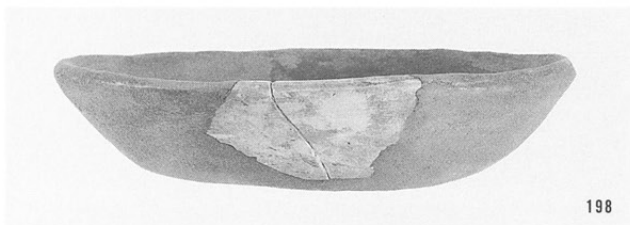
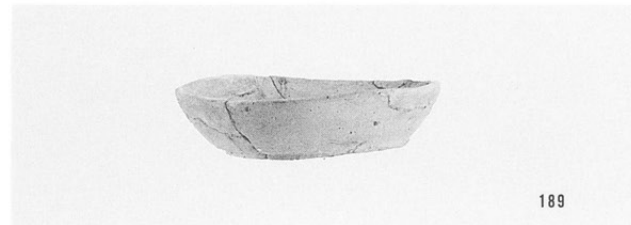
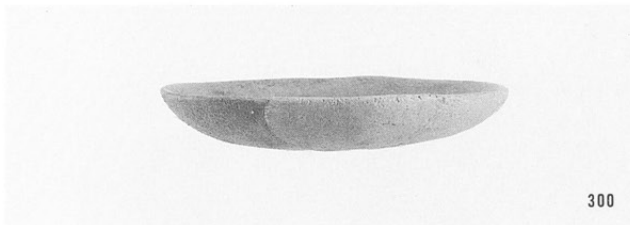


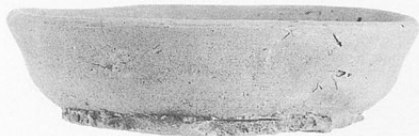
左：A区III面
右：SK602～604

古代

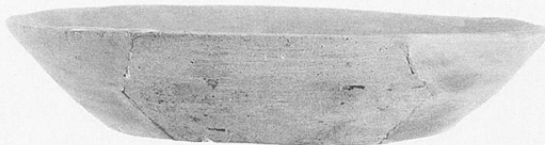


中世
カワラケ

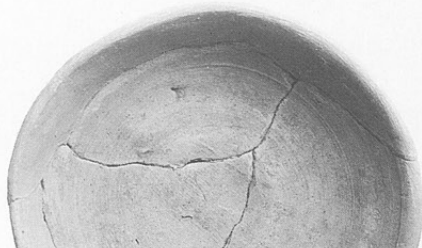




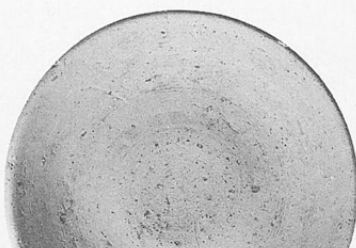
182



51

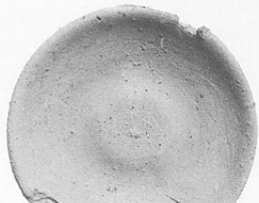


181

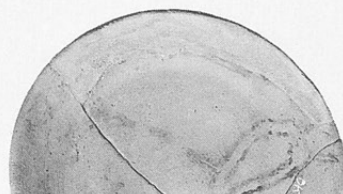


135

左：181内面
右：135内面



305



189

左：305内面
右：189内面



296



74



191



60



288



257



237



294



324

加工痕を有する
カワラケ



280

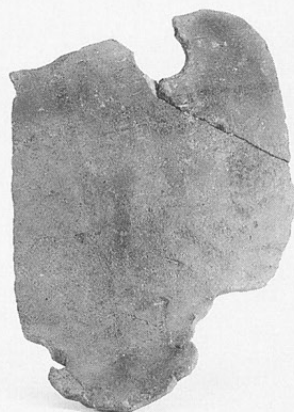


146

内耳鍋



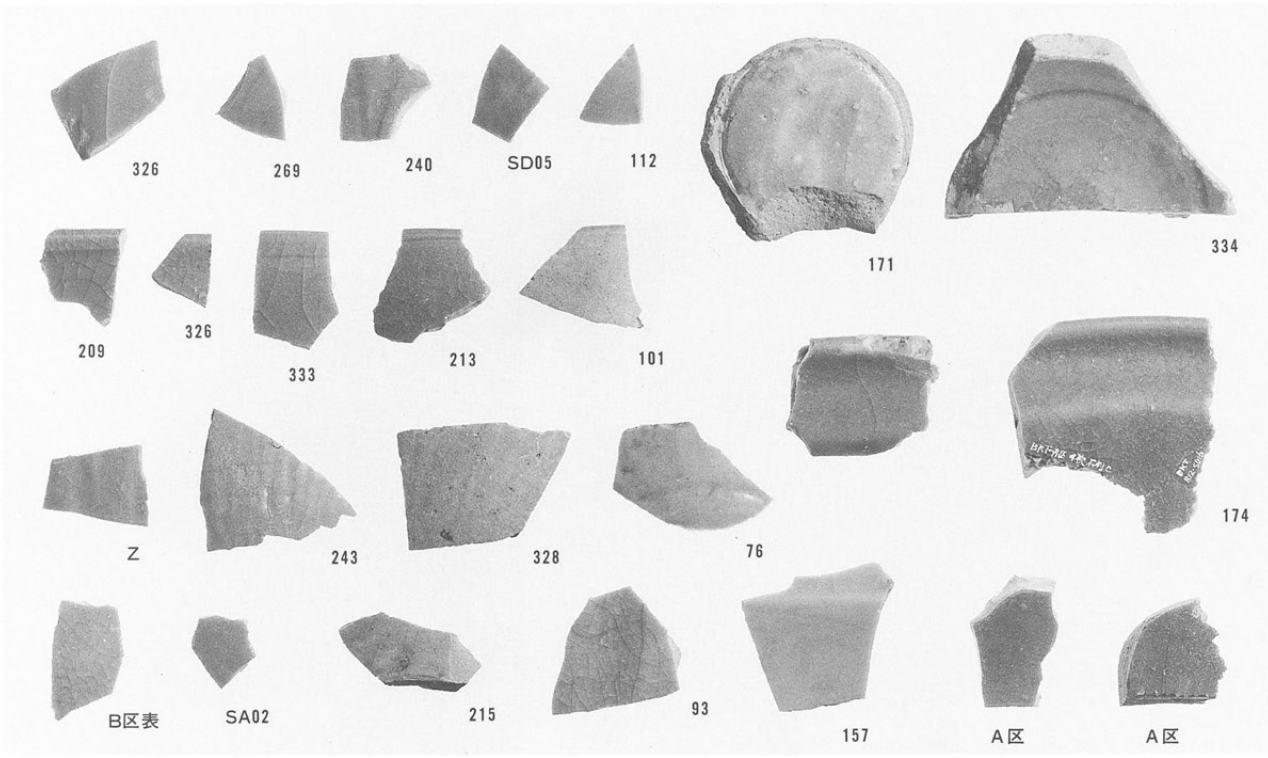
142



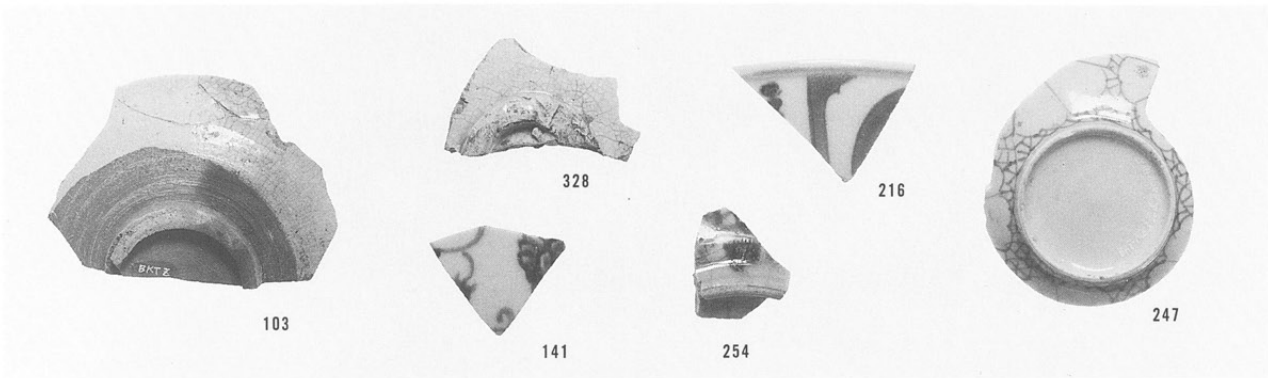
148

左：内耳鍋
右：土器風炉

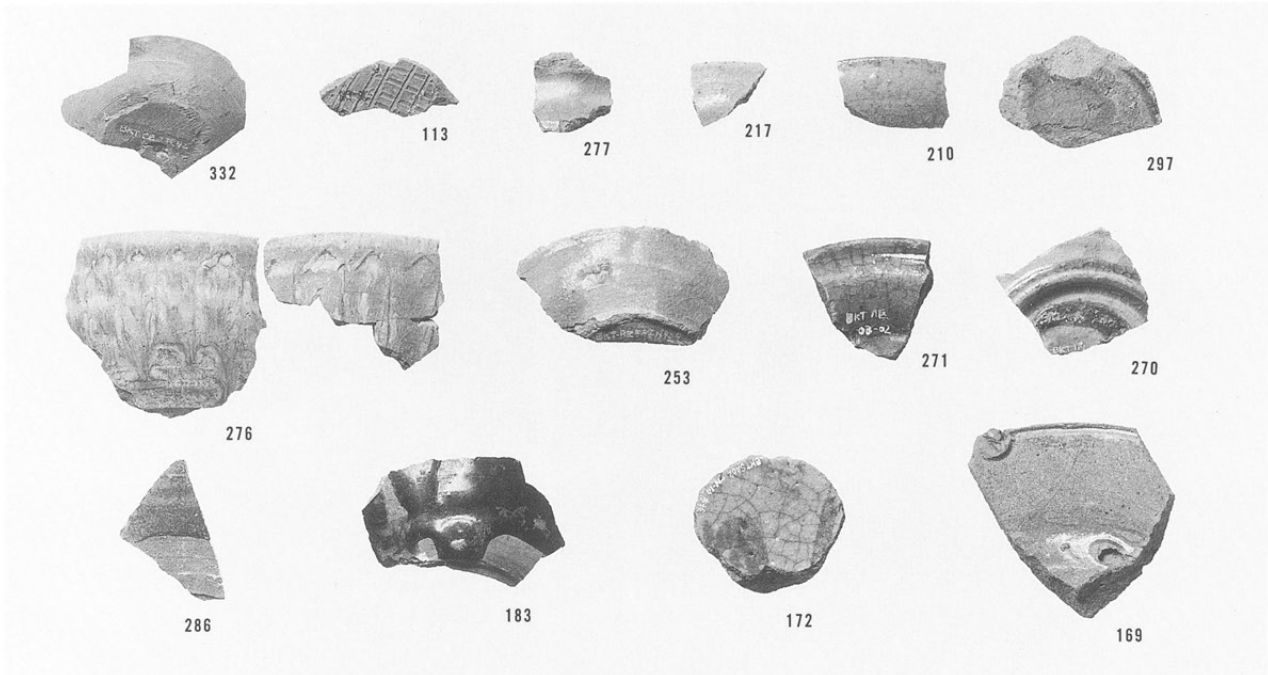
青磁



白磁・青花・伊万里



古瀬戸・大窯・唐津



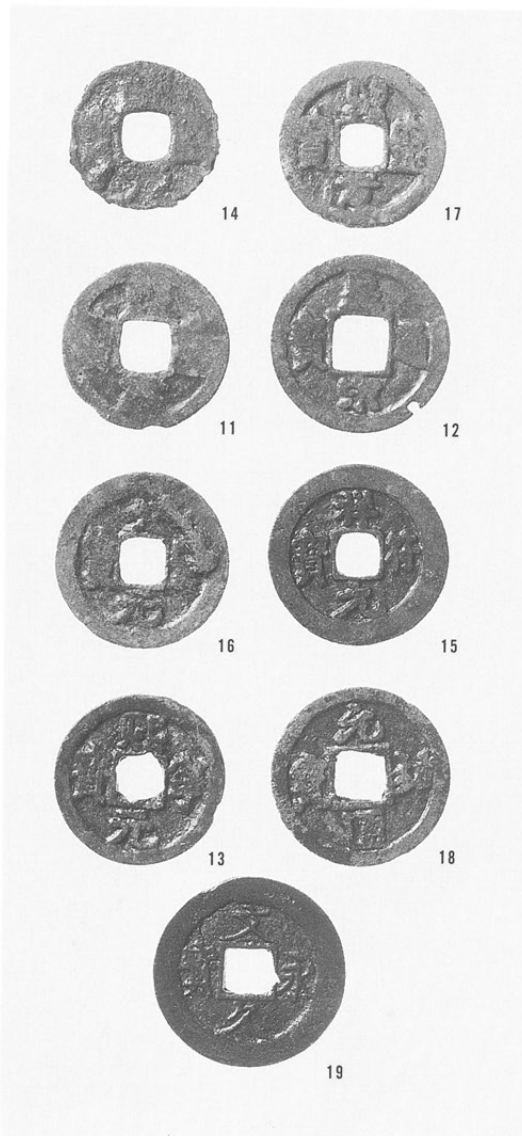
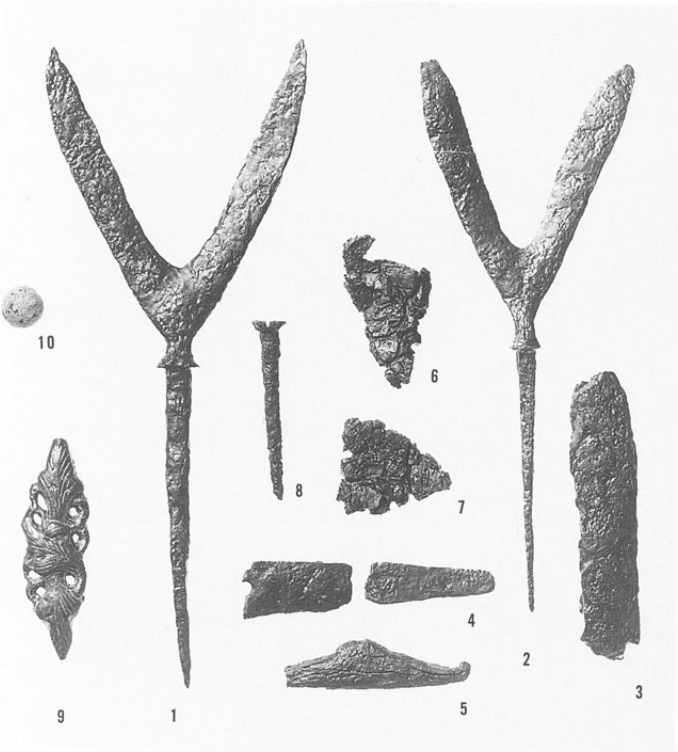
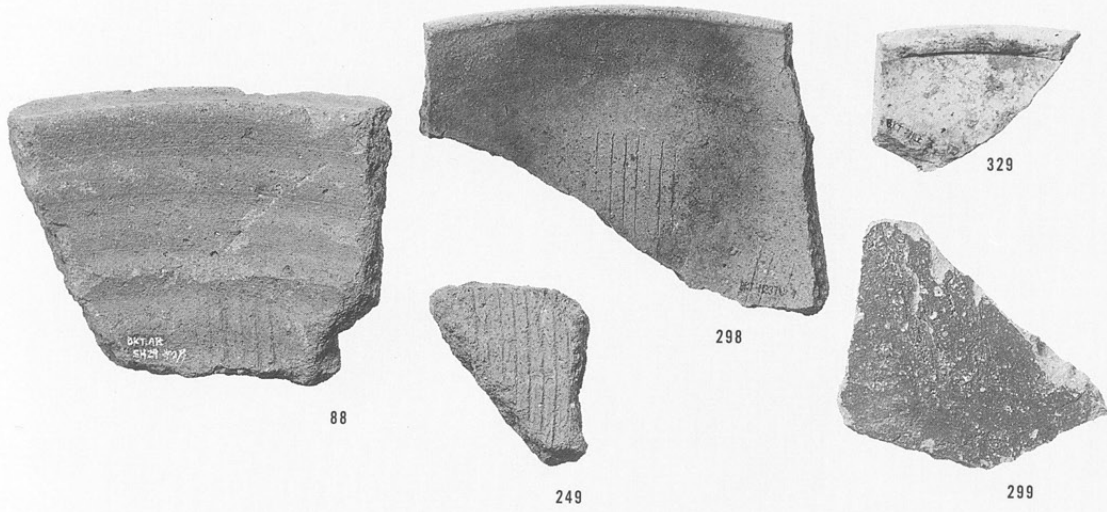
左：古瀬戸香炉
右：唐津碗



140



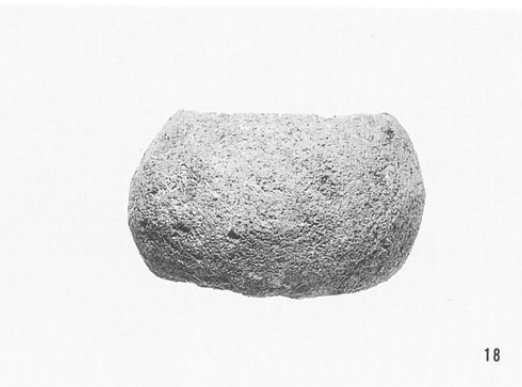
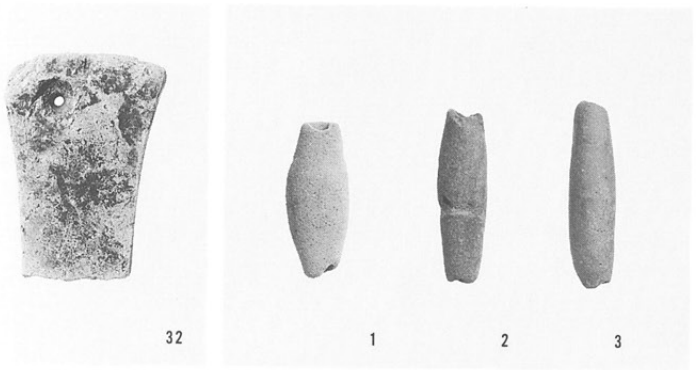
156



左上：金属製品

左下：砥石
左中：土錘

右：銅銭



左：凹石類

右：搗臼

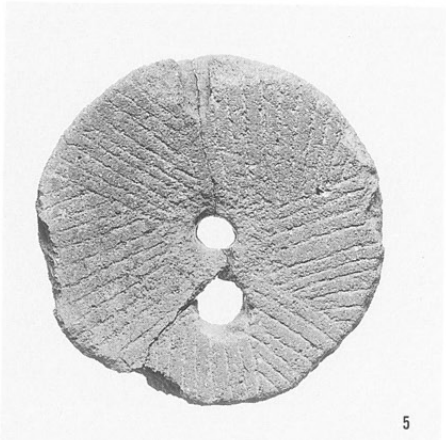
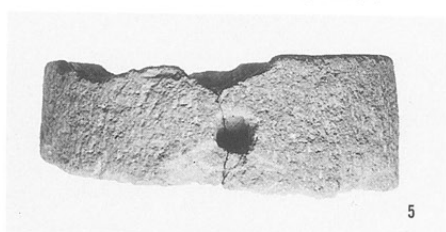
小滝遺跡石製品

PL11

左上：石鉢
左下：〃

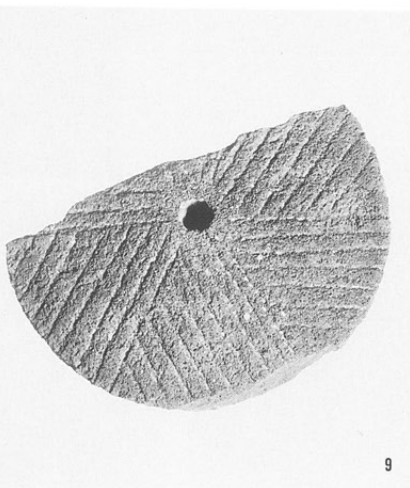
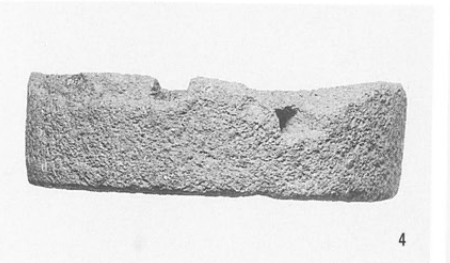
中上：鉢側面
中下：裏面

右上：石臼側面
右下：石臼裏面

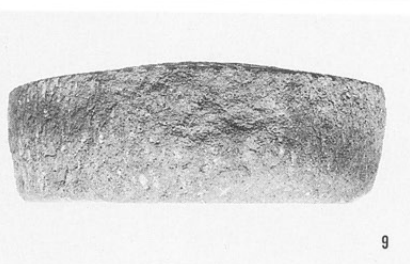
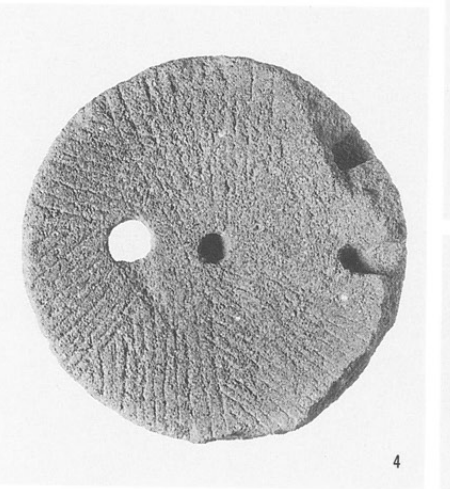


左上：石臼側面
左下：石臼表面

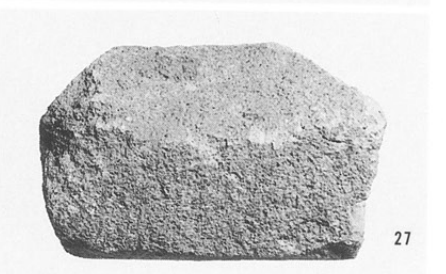
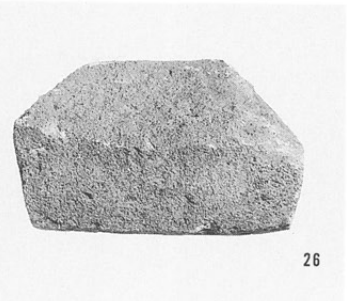
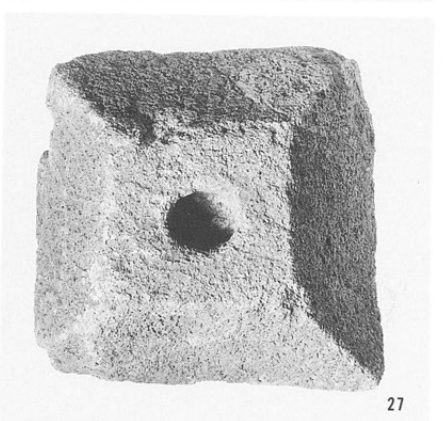
中上：石臼上面
中下：石臼側面



右上：茶臼
右下：五輪塔水輪



左上：五輪塔空風輪
左下：〃 火輪
中上：〃 空風輪
中下：〃 火輪
右上：〃 火輪上面
右下：〃 火輪側面





北之脇遺跡全景



左：調査前風景
右：1面全景



左：ST01・02
右：ST03

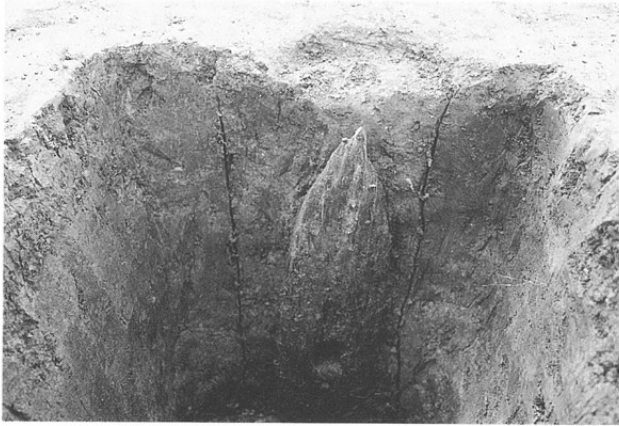


左：ST04
右：ST05

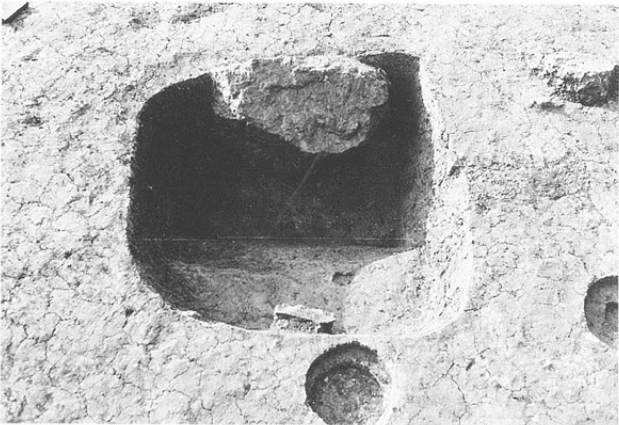
左：ST06
右：ST08



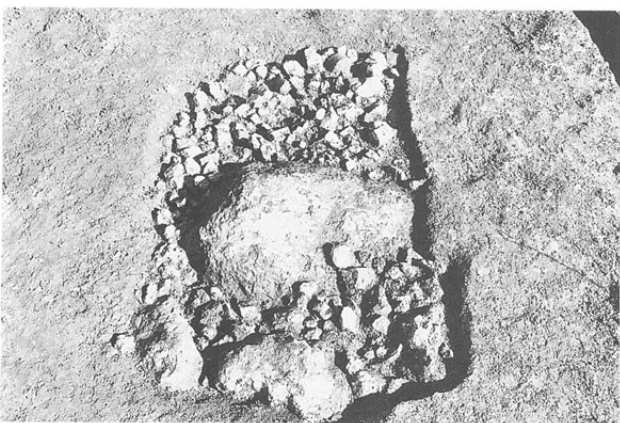
左：ST03柱穴断面
(SK197断面)
右：ST03柱穴断面
(SK209・210)



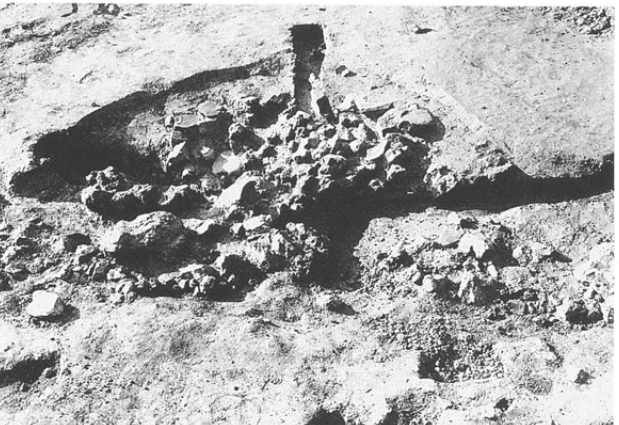
左：SK01
右：SK02

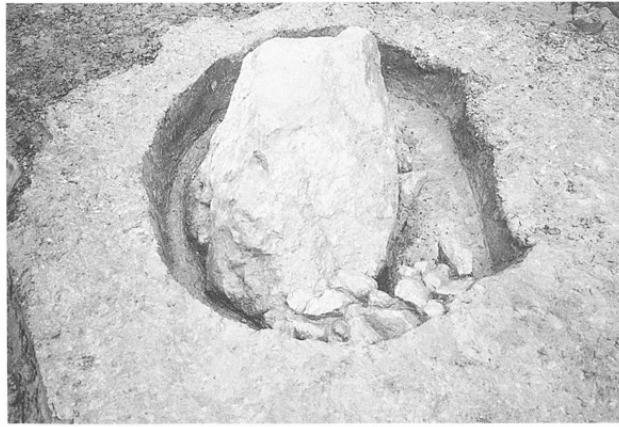
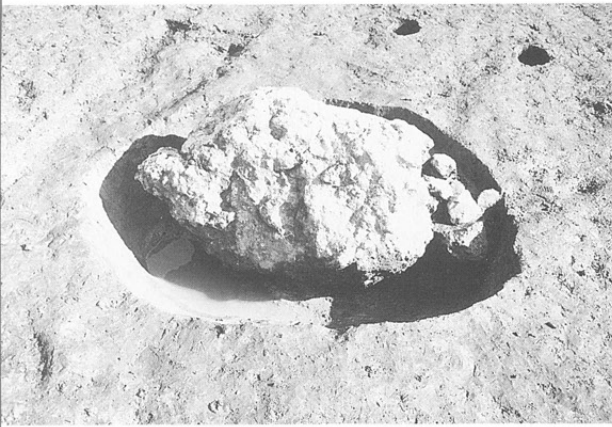


左：SK06
右：SK10



左：SK27
右：SK356





左：SK392
右：SK447



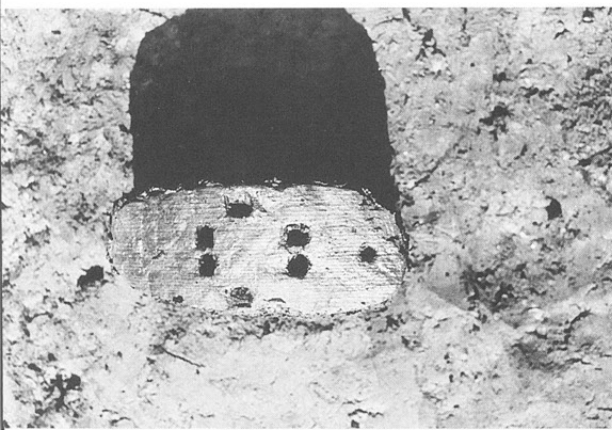
左：SK430遺物出土
状況
右：SK17内耳出土状
況



左：SK300遺物出土
状況
右：鍛冶炉
SF04・05検出状況



左上：SD06遺物出土
状況
左下：SD06下駄出土
状況
右：SD06完掘
(東端より)



左：SD19
右上：SX01断面
右下：SX01（北より）

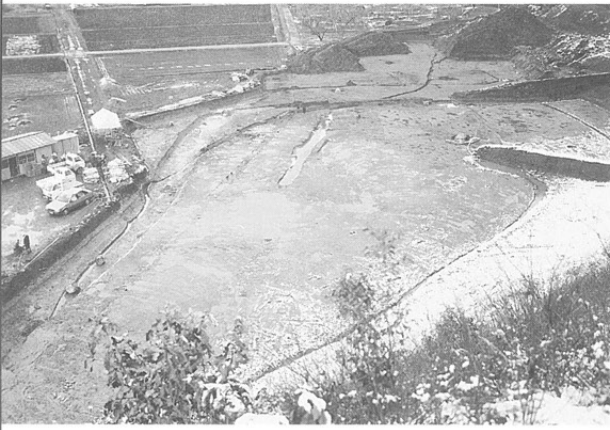


左：SH01
右：SX01（南より）

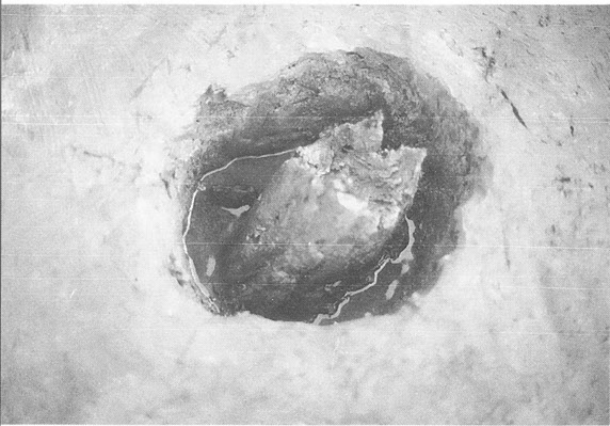


左：3面全景
右上：3面土層
右下：ピット断面





左：3面調査状況
右：3面ピット検出状況



左：SK500木材出土状況
右：3面ピット群

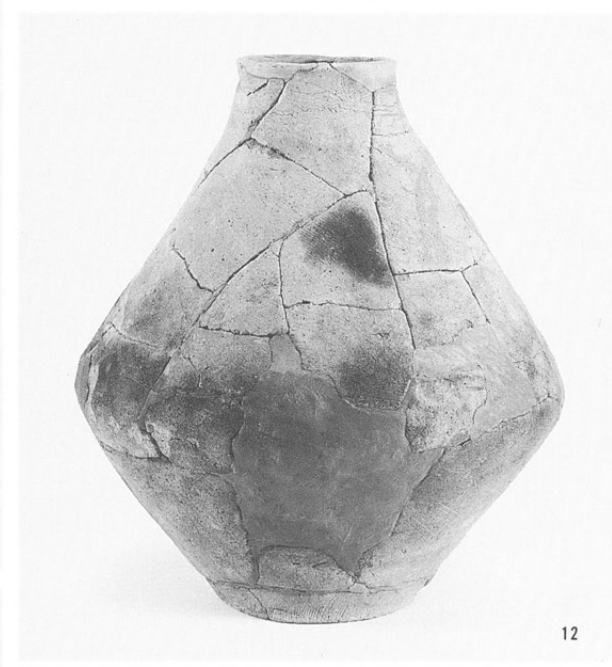
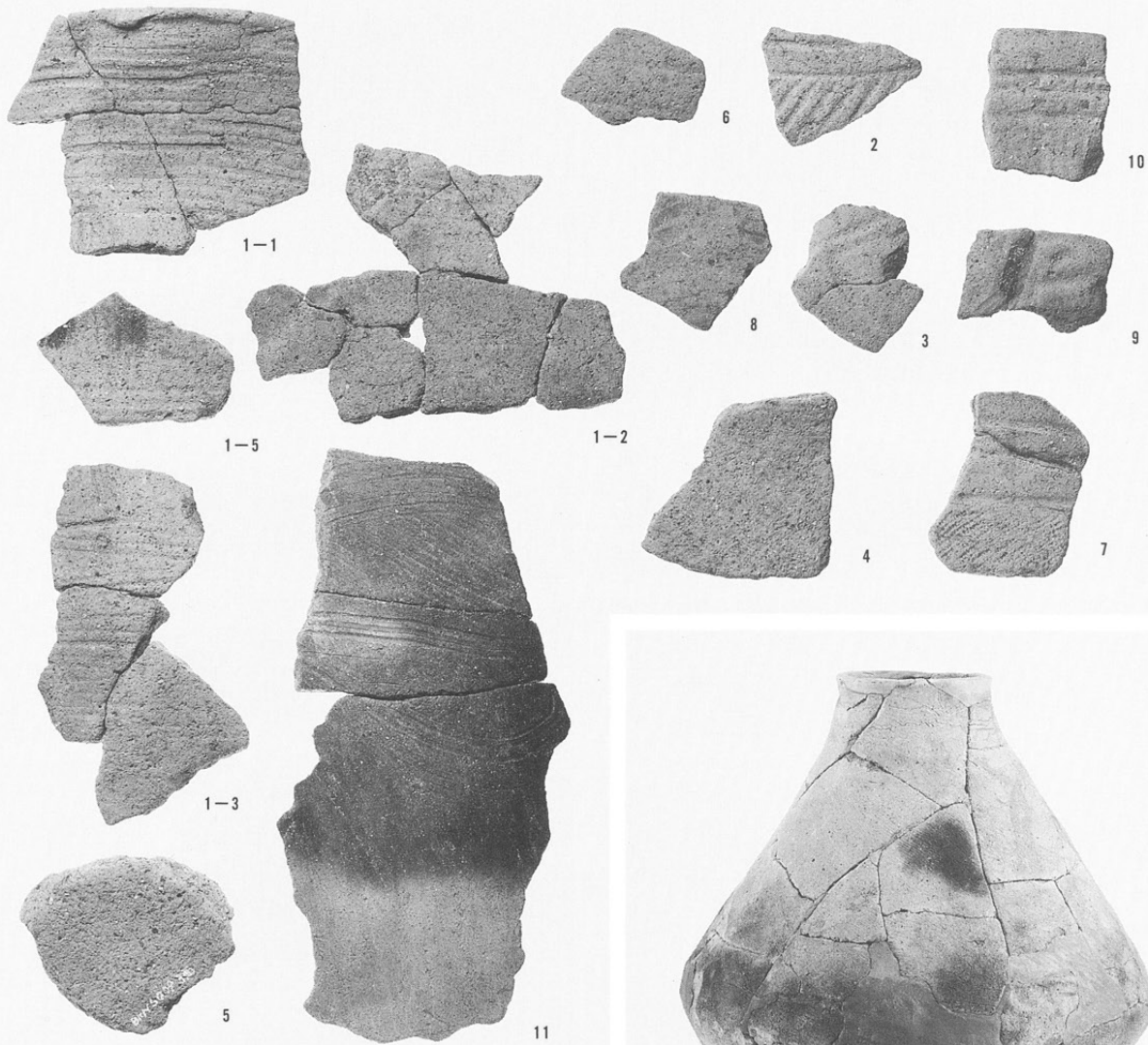


左上：SD17（北より）
左下：SD17断面
右：SD17・SD23

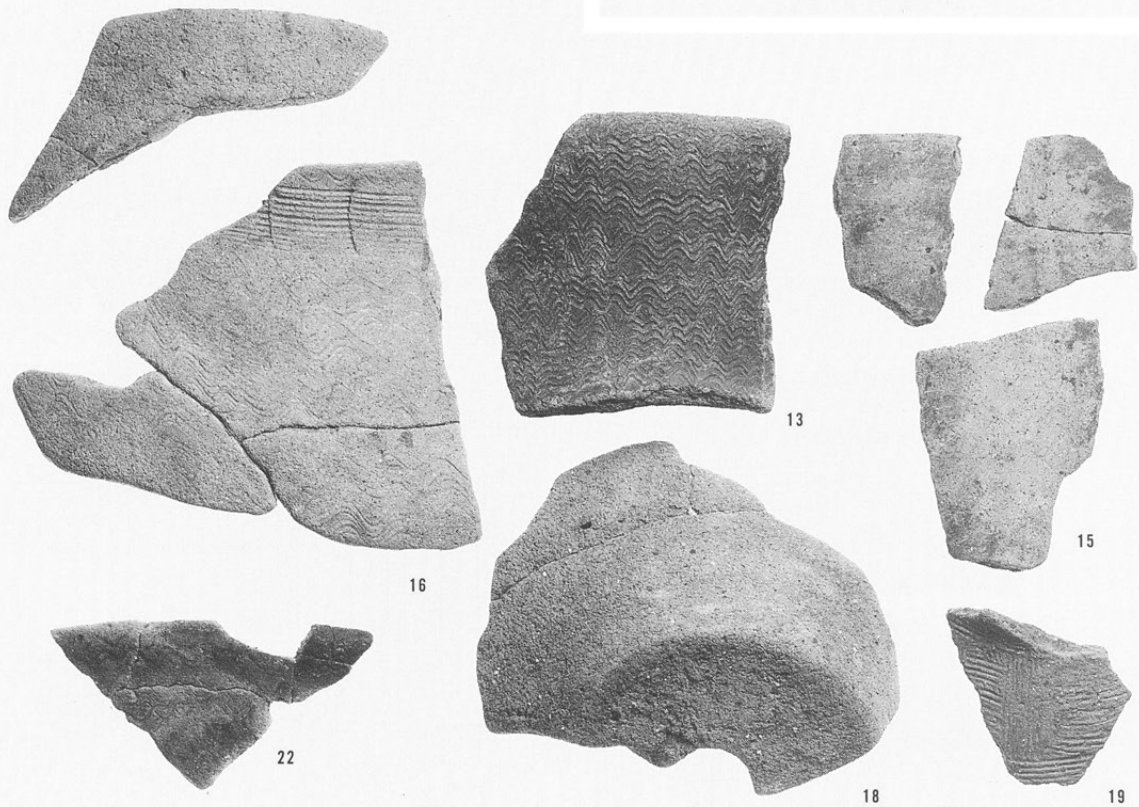


左：SK626
右：SQ10

弥生中期土器



弥生後期土器

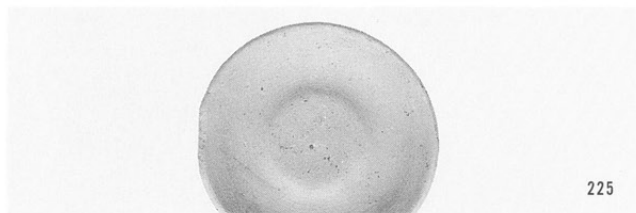
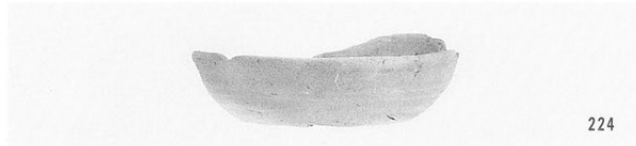




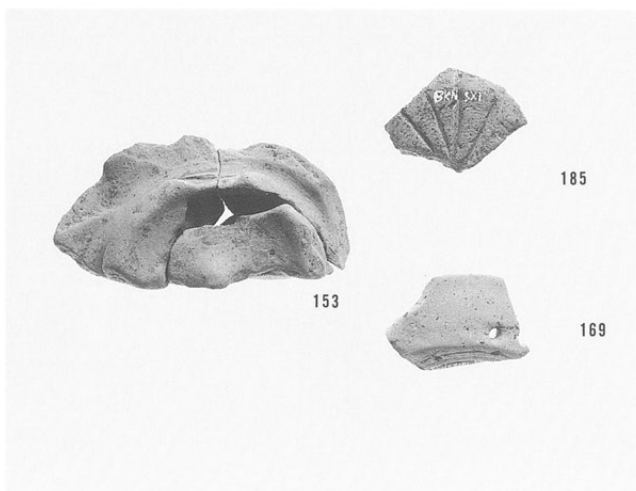
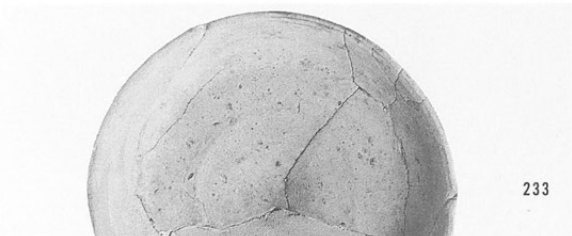
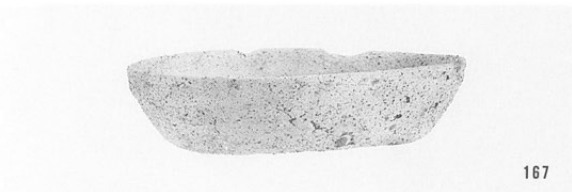
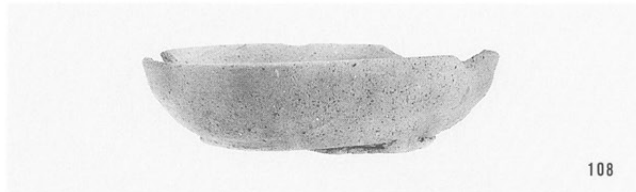
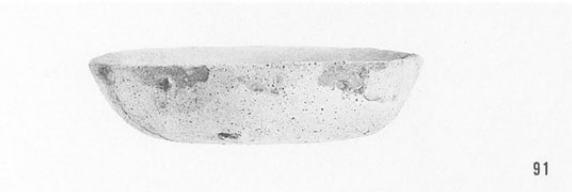
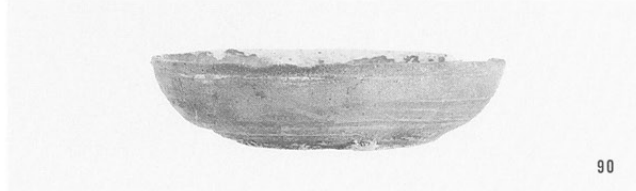
古墳時代土師器



中世カワラケ



カワラケ内面調整



左：カワラケ内面調整

右：加工痕を有するカワラケ他

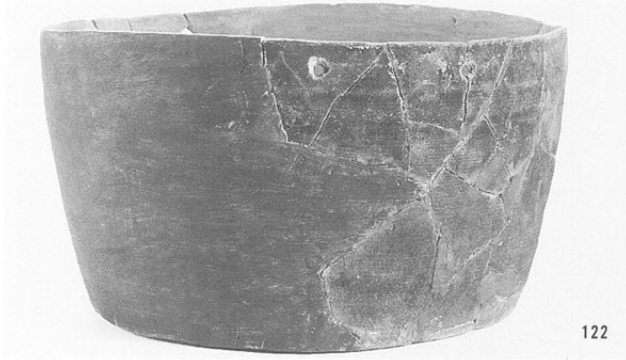
内耳鍋



43



133

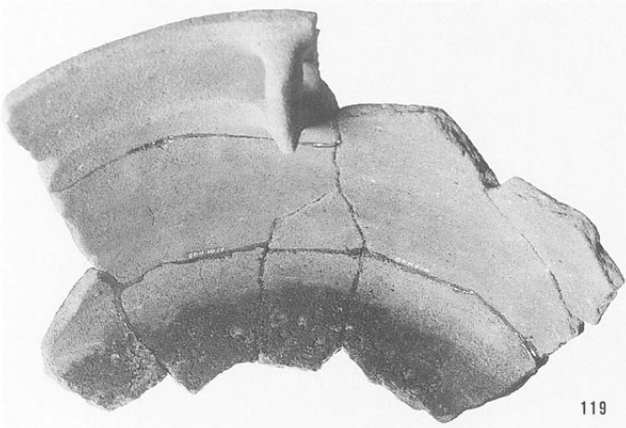


122



94

左：内耳鍋内面
炭化物
右：青磁碗

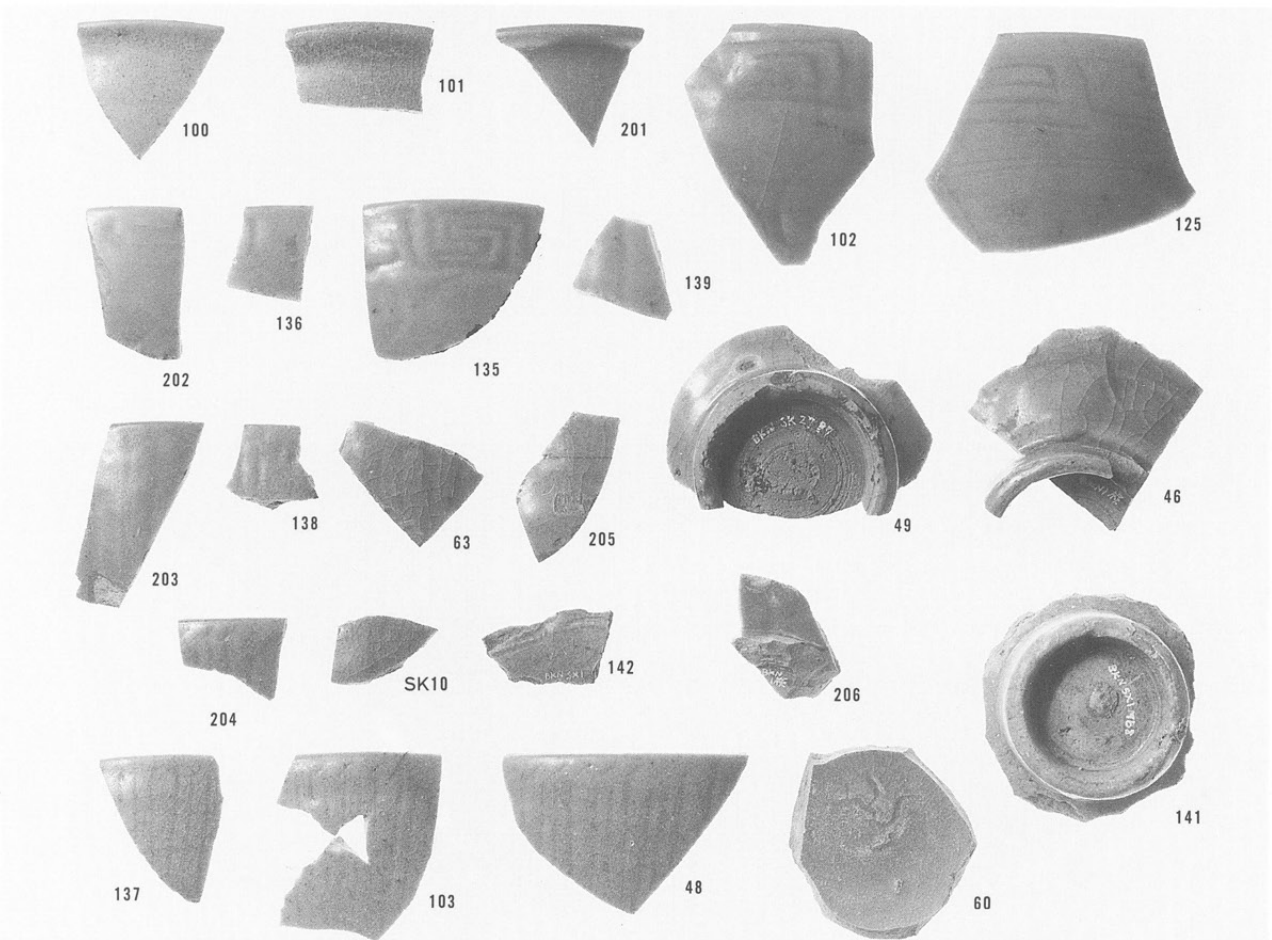


119



140

青磁



100

101

201

102

125

136

139

202

135

49

46

203

138

63

205

204

SK10

142

206

141

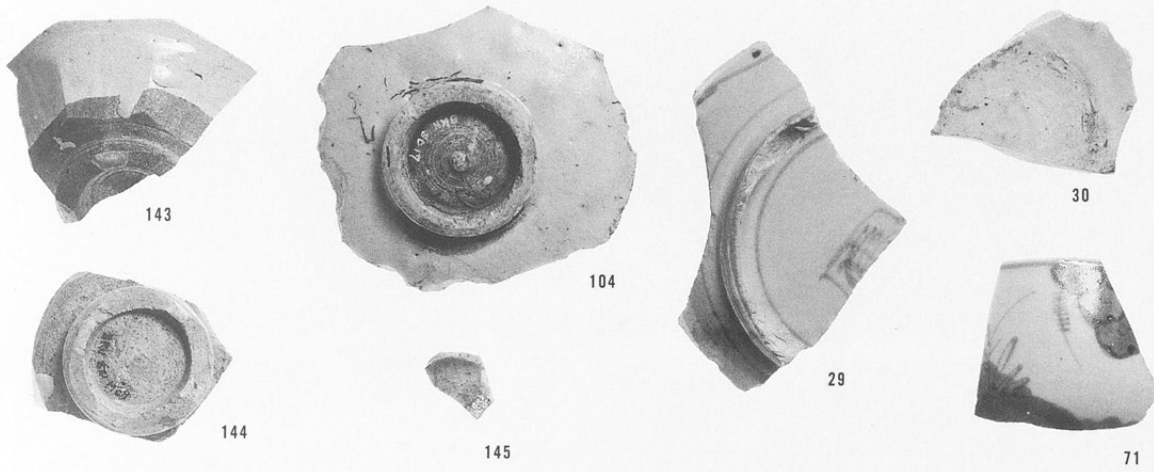
137

103

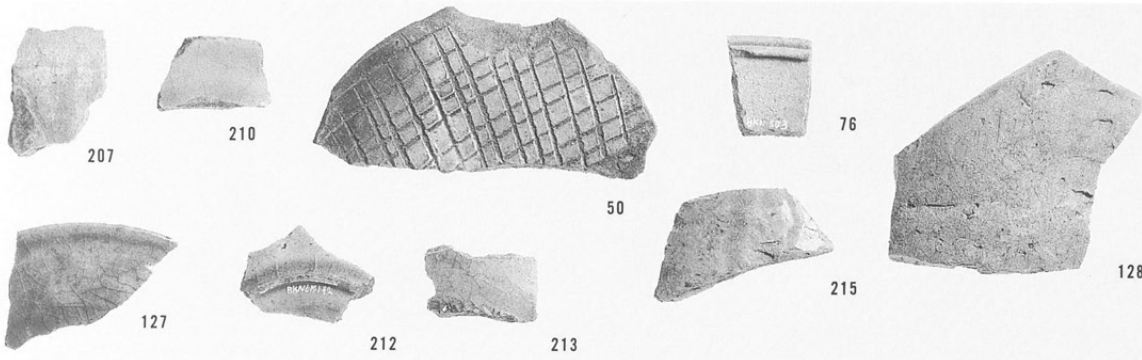
48

60

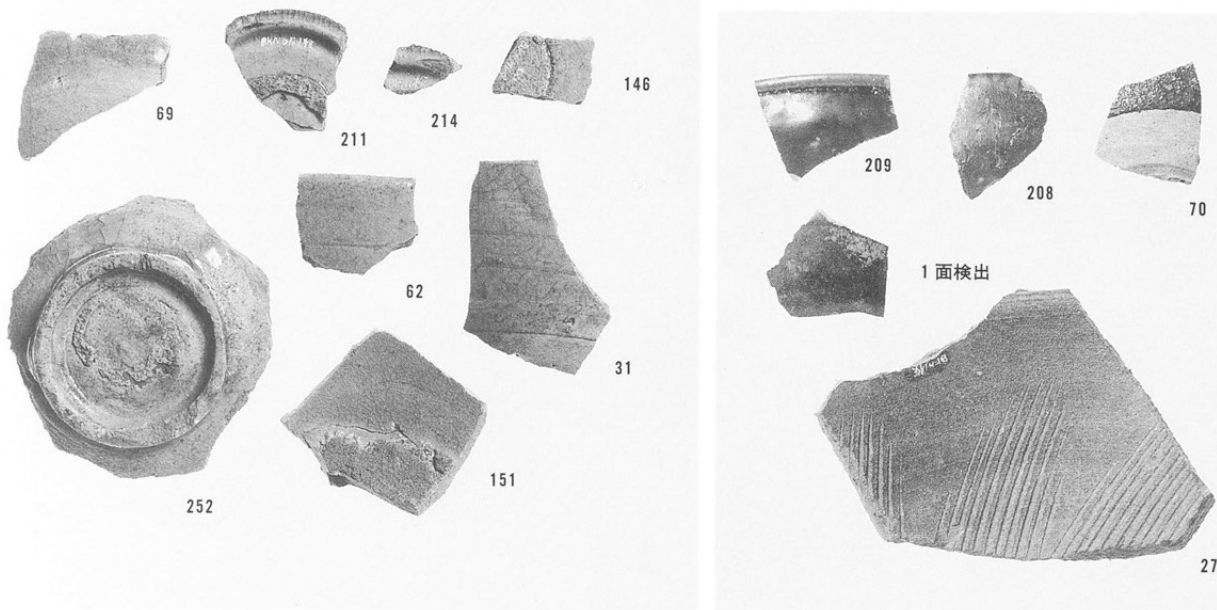
白磁・青花・伊万里



古瀬戸・大窯製品



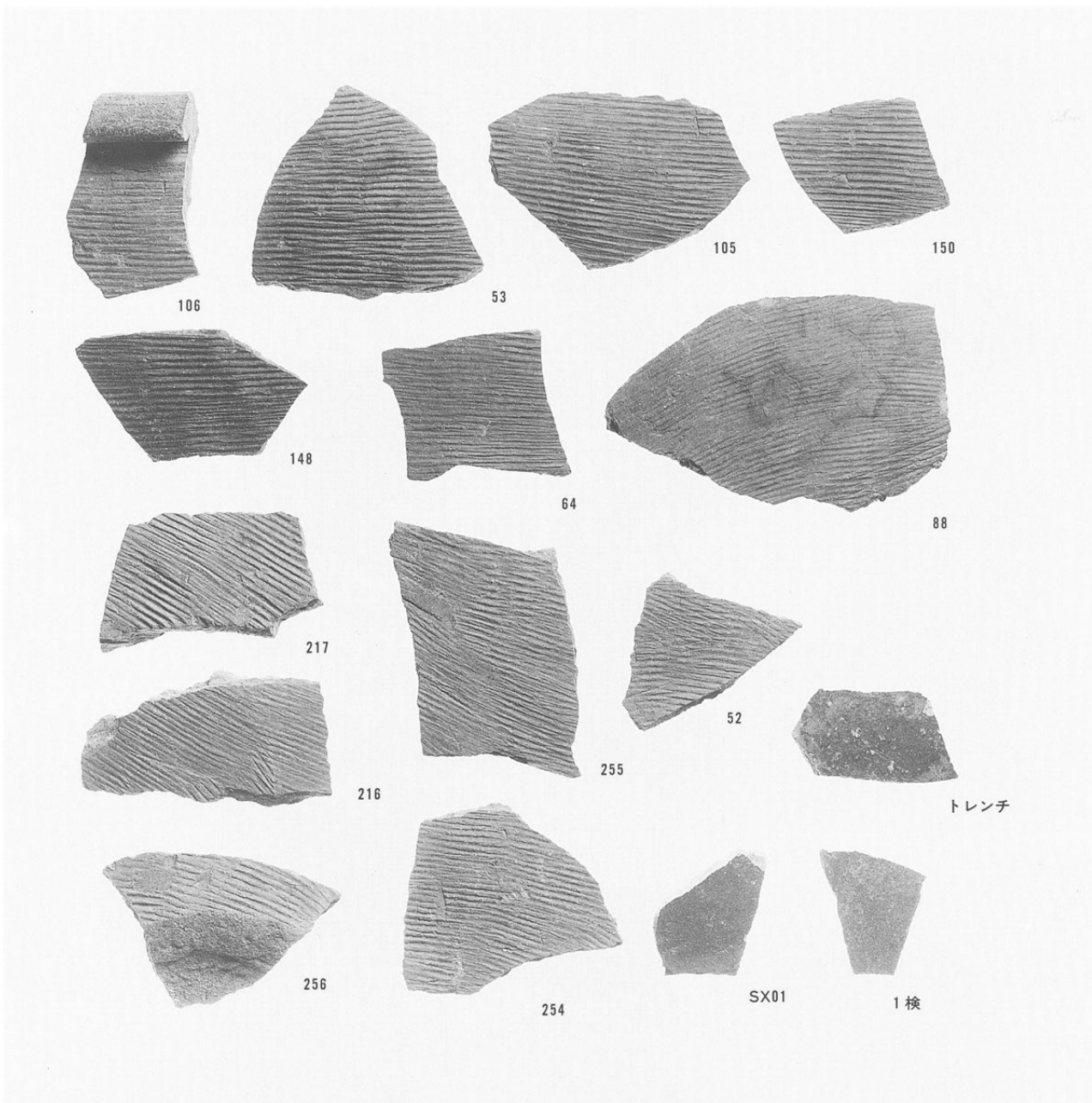
古瀬戸・大窯製品
唐津



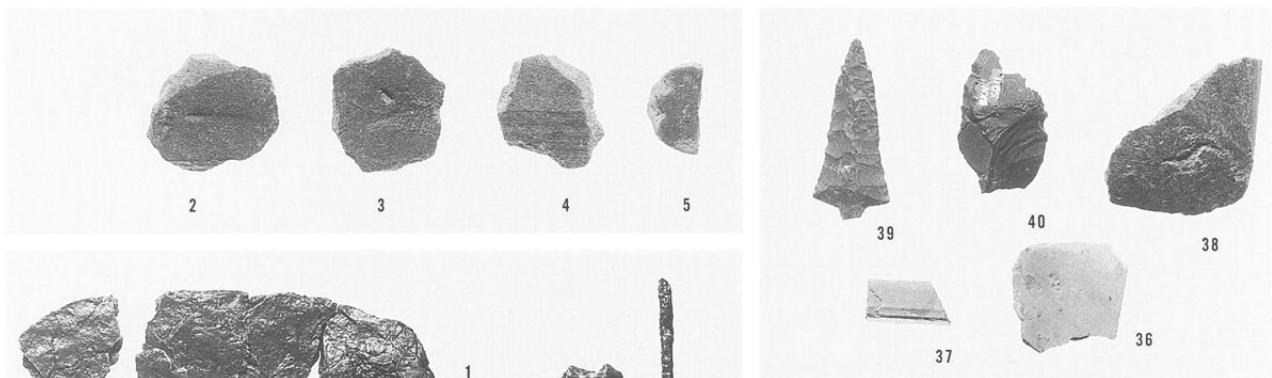
左：土器香炉
右：土釜



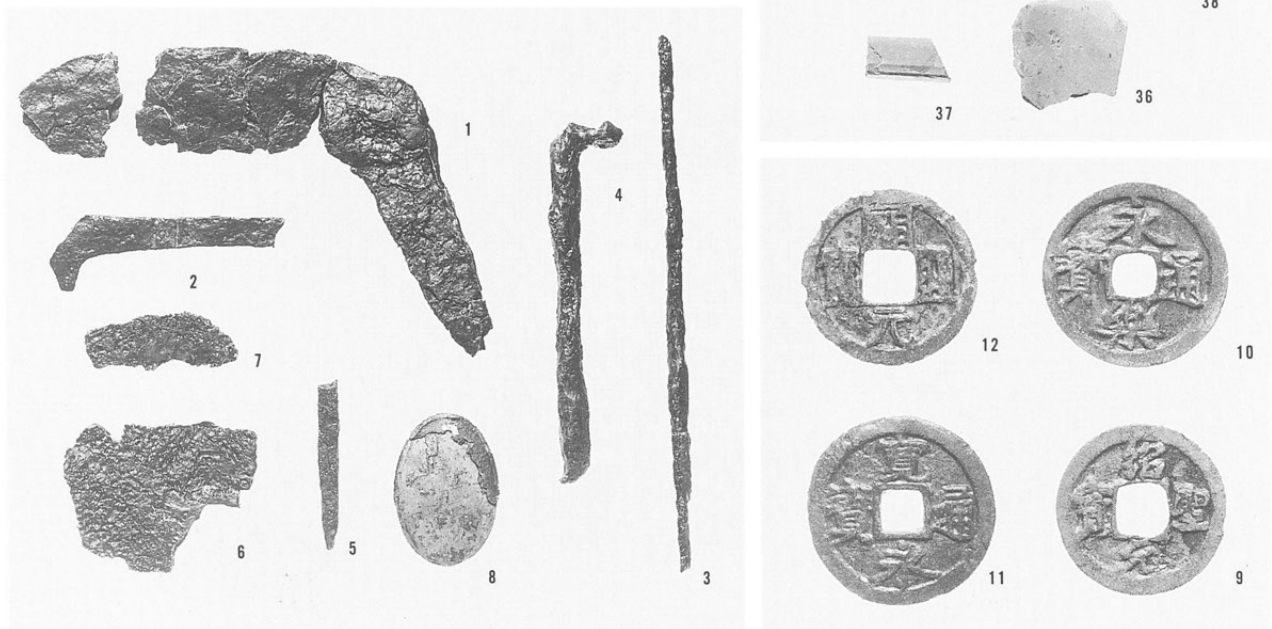
珠洲・常滑



左：土製円盤
右：石器



左：金属製品
右：銅銭

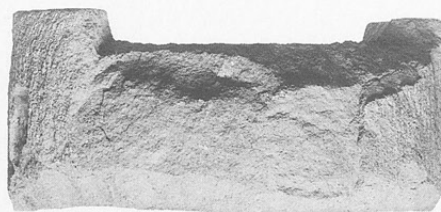




1



5



17

石臼
左上：茶臼
下：〃
中：茶臼
右上：石臼側面
下：〃 下面



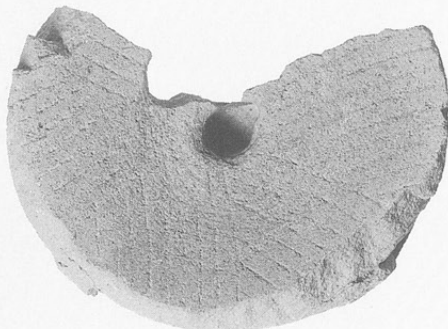
1



13



15



17

左上：石臼下面
下：〃 上面
中上：〃 下面
下：〃 上面
右上：〃 上面
下：〃 側面



18



27



28



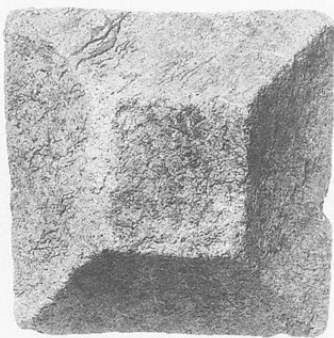
28



29

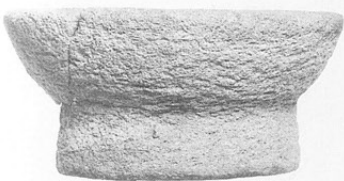


35

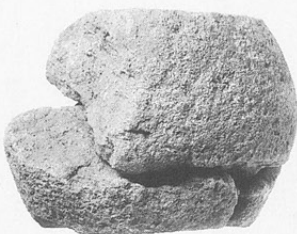


34

左上・下：石鉢
中上：五輪塔（火輪）
下：〃（水輪）
右：〃（火輪）



31

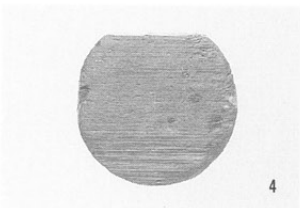


32

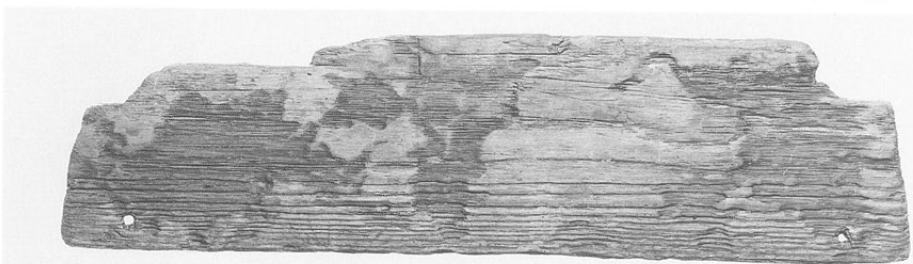


34

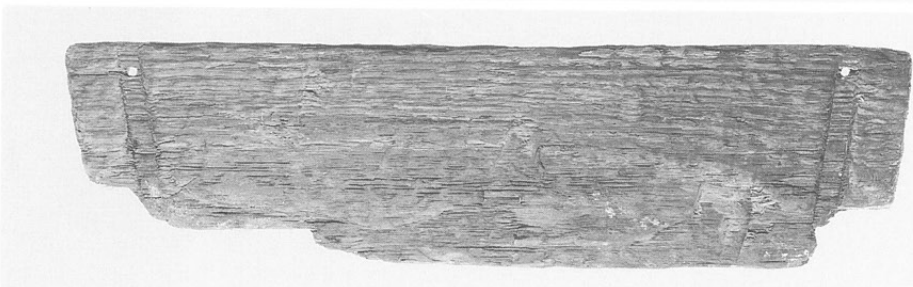
左：曲物
右：箱形容器



4

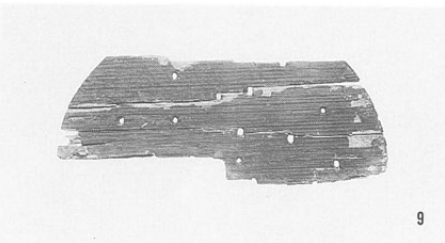
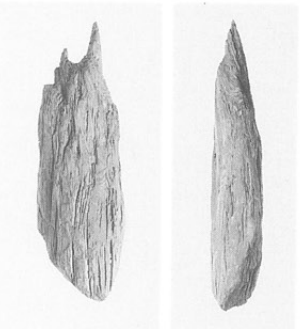


5



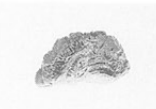
13

中：曲物
左：柱

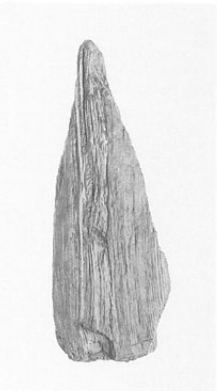
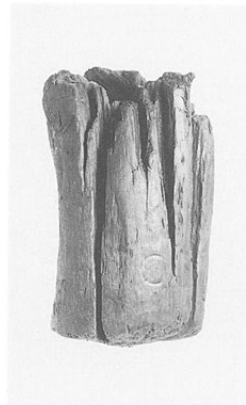


9

左：柱
中："
右："



27



60



62

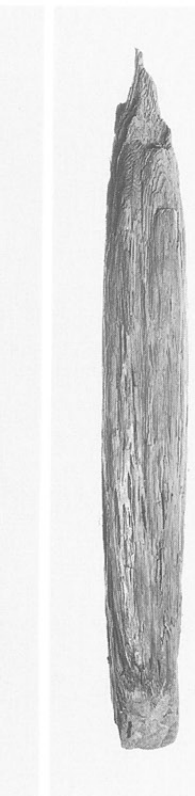
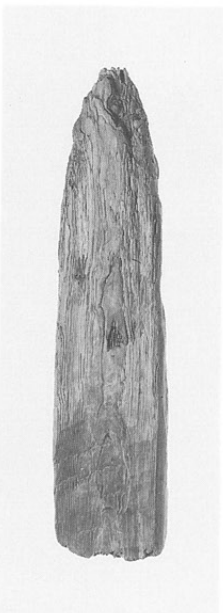


32



35

左：柱
中："
右："



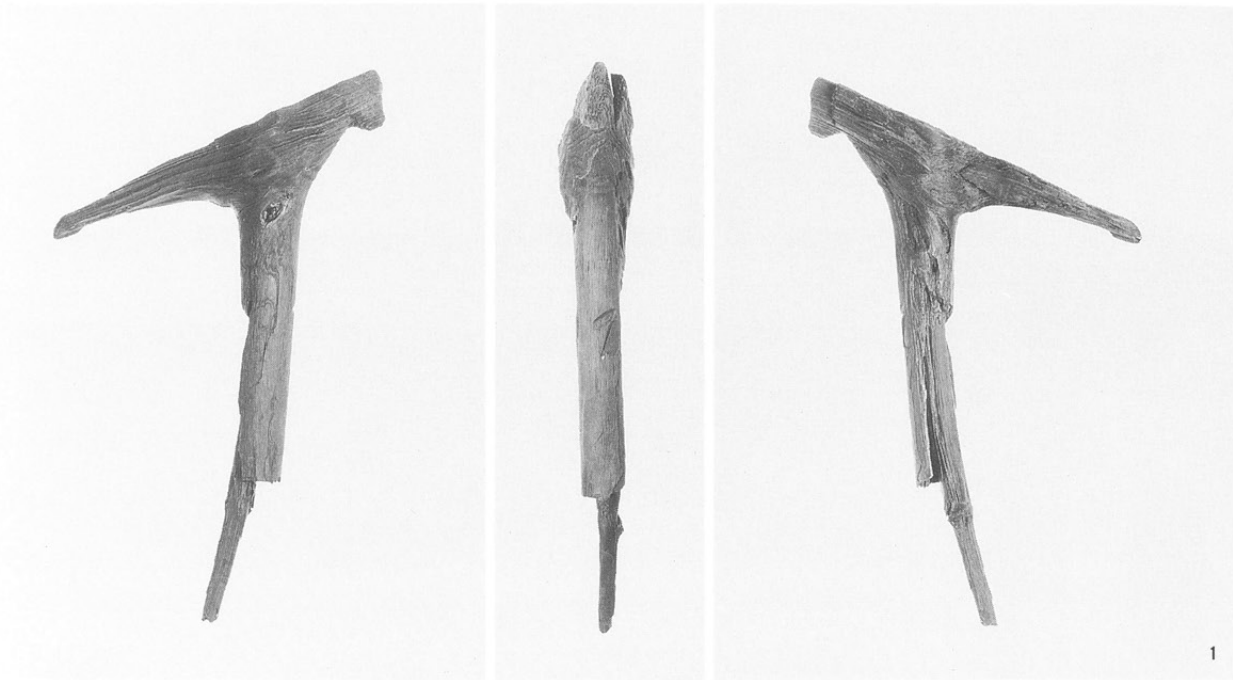
38



36

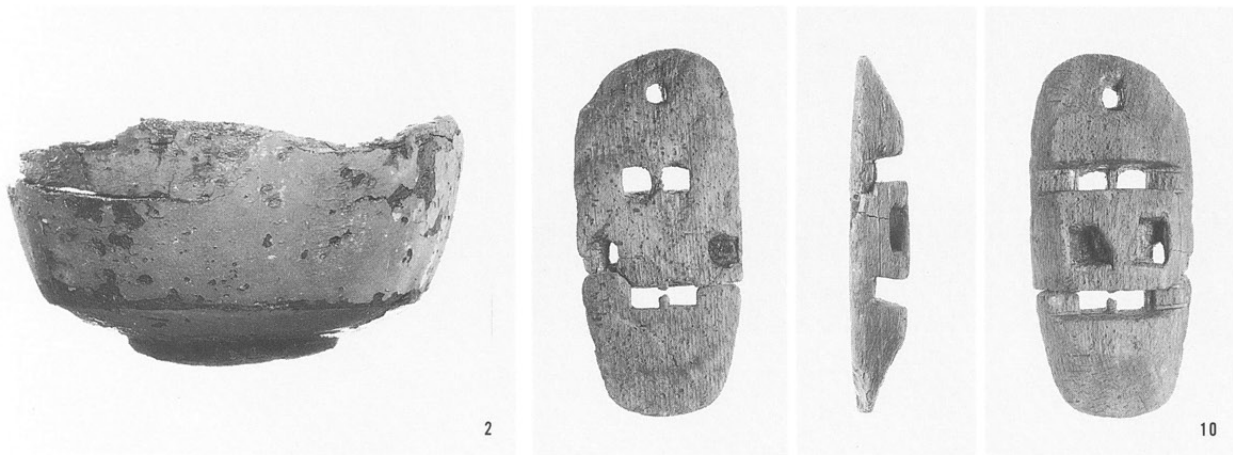


40



膝柄曲柄

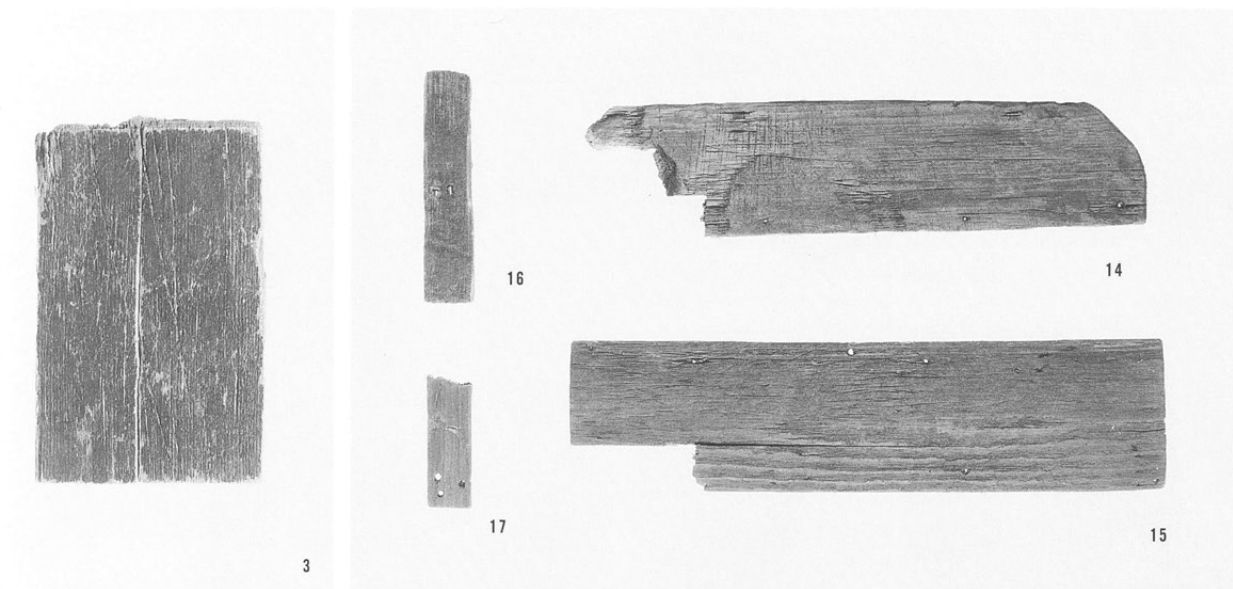
1



左：漆碗
右：下駄

2

10



左：漆箱
右：折敷類

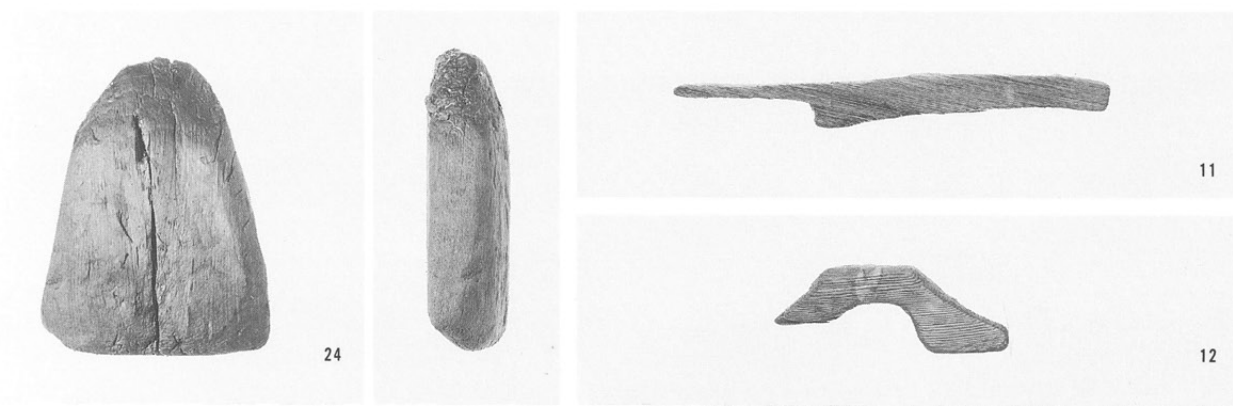
3

16

14

17

15



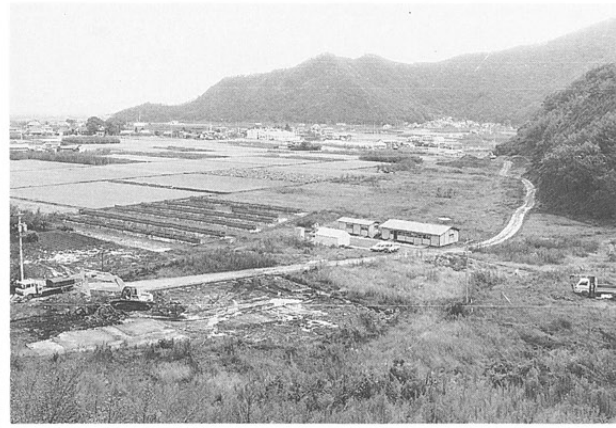
左：不明製品
右：把手

24

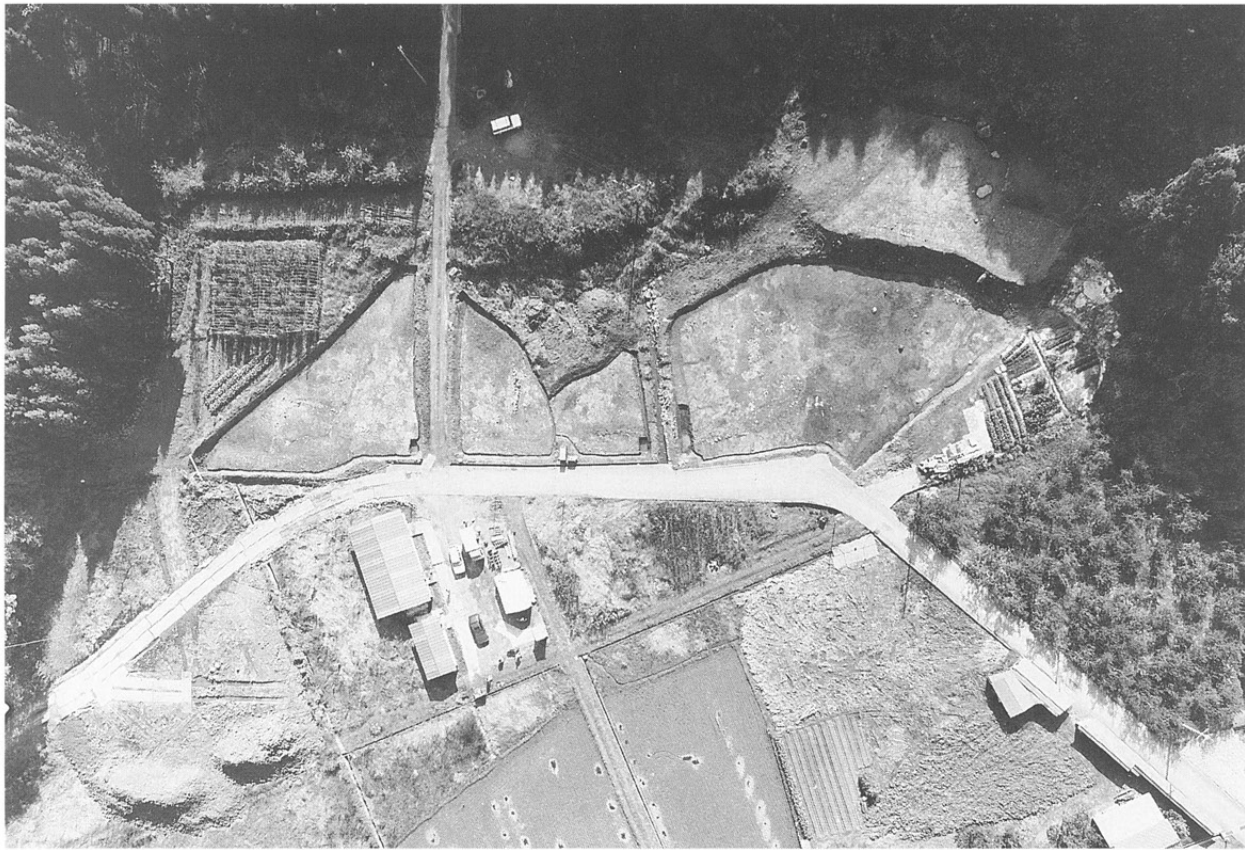
11

12

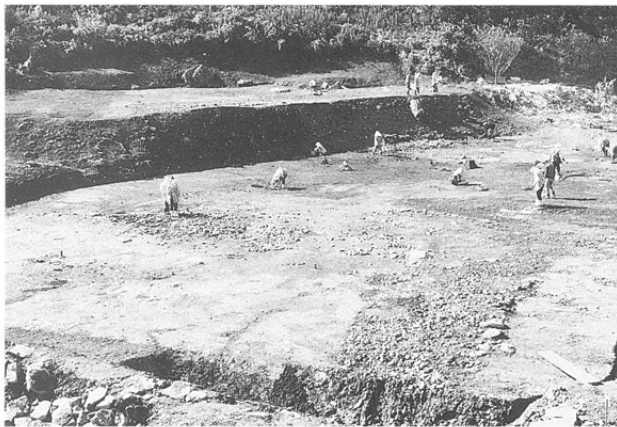
左：遺跡遠景
右：調査前風景



1次調査全景



左：平地1とテラス
右：平地2

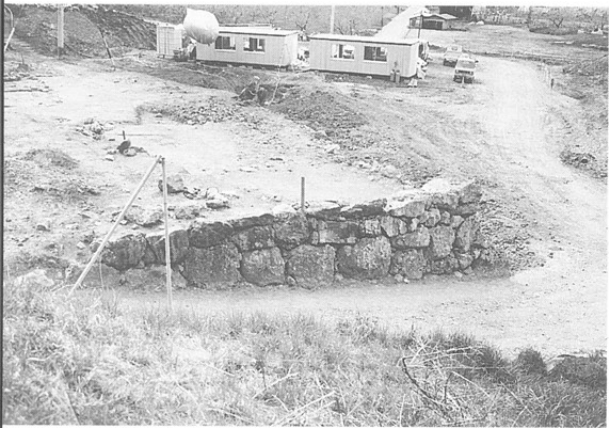


左：平地3
右：平地4





左：テラスII (西より)
右：テラスII (旧庫裏跡)



左：SA16東面
右：SA16北面
SA14・17



テラスII (上空より)



左：テラスI
右：山際小テラス群

テラス部

左：ST15

右：ST15内礎石



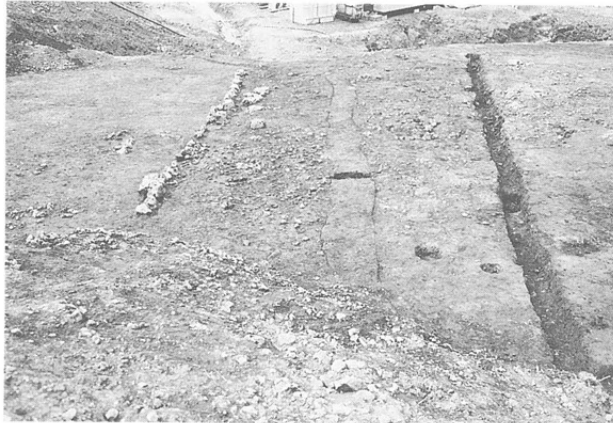
左：ST01

右：ST13



左：ST14

右：ST17



左：SX01

右：SQ01



左：SK13上面

右：SK13側面

石組

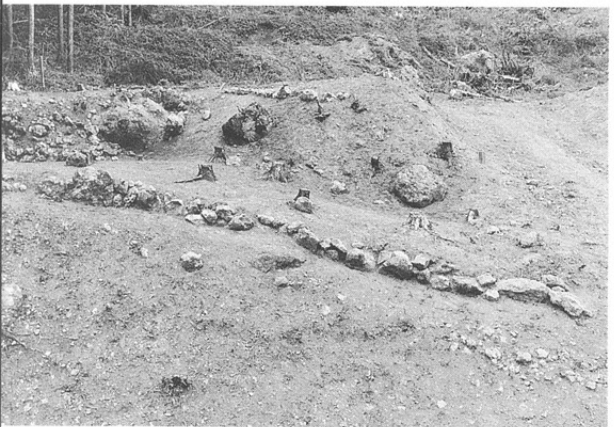




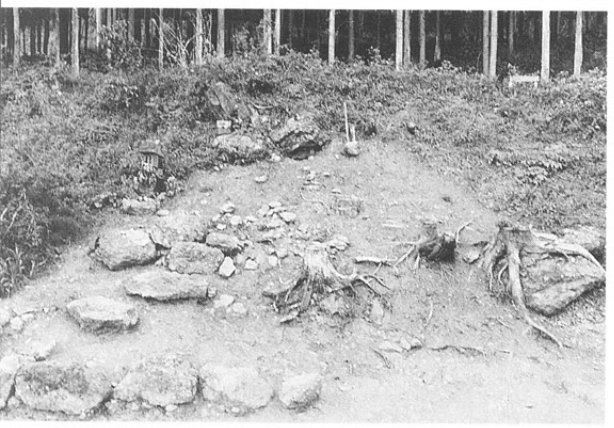
左：SK03
右：SK04



左：SK05
右：SA11



左：SA12
右：SA13

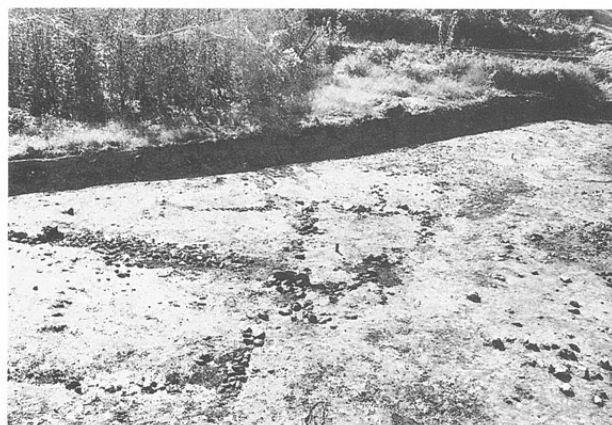


左：SH48
右：テラストレンチ



左：ST12
右：平地1 SH02~04

左：ST06
右：ST08



左：ST06・19
右：ST18



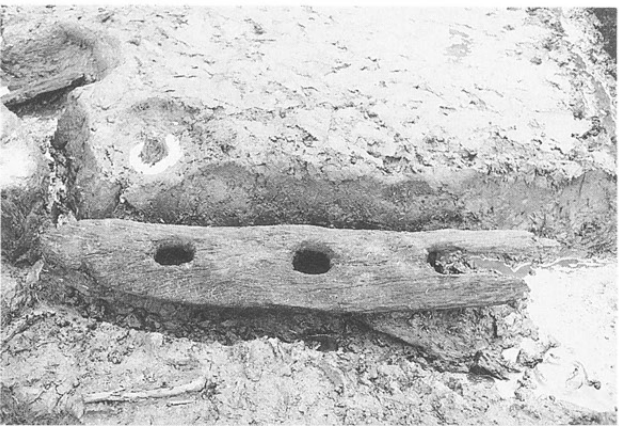
左：ST20
(2次調査)
右：ST11、SD06

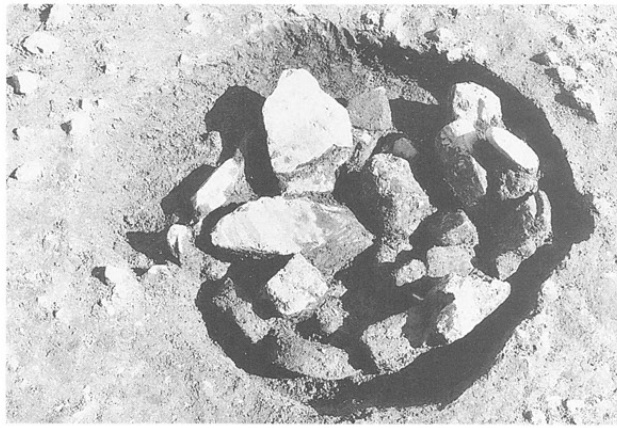


左：SQ04
右：ST09・21

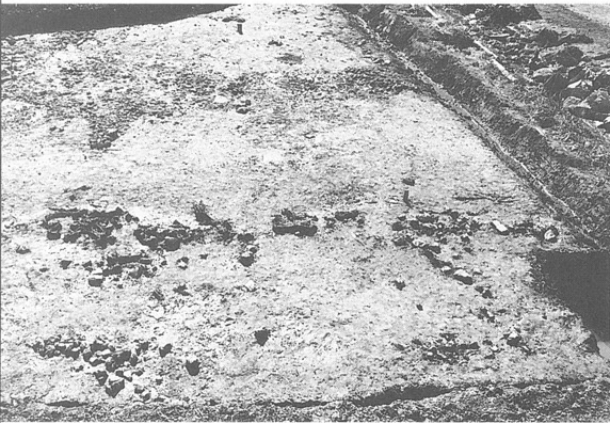


左：SQ04建築材
出土状況
右：SQ10建築材
出土状況

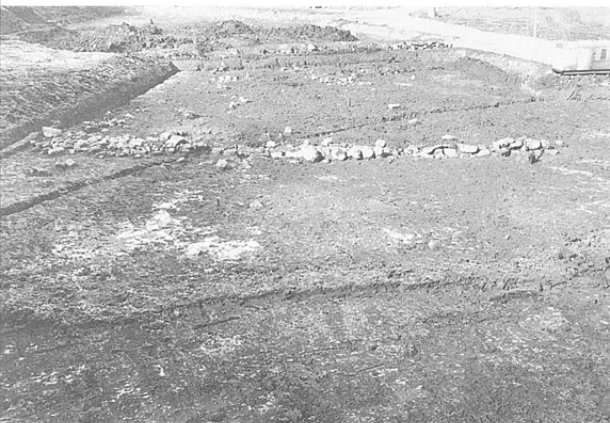




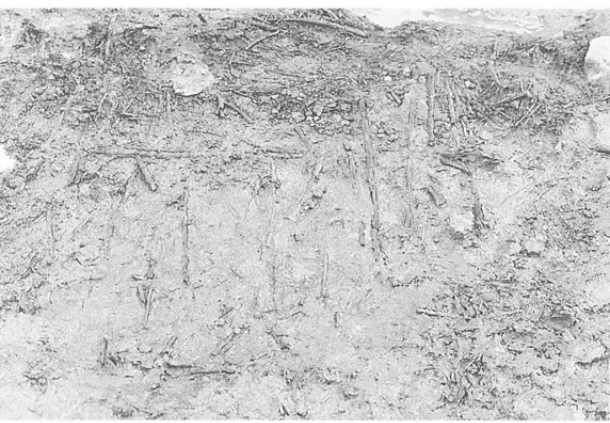
左：SH01
右：SH23



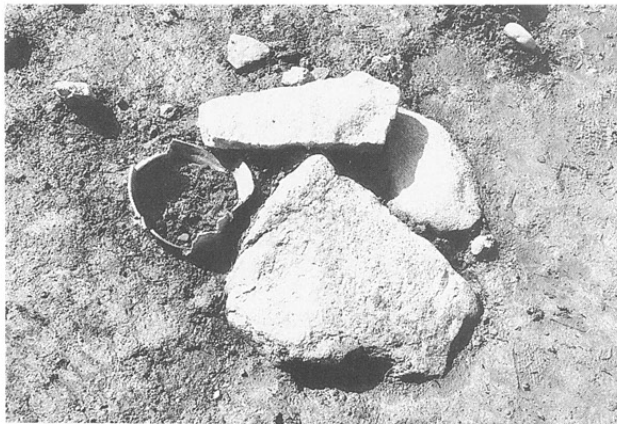
左：ST03
右：SA02・03



左：SA02・03
右：SK07



左：平地1 柵状遺構
右：SC02

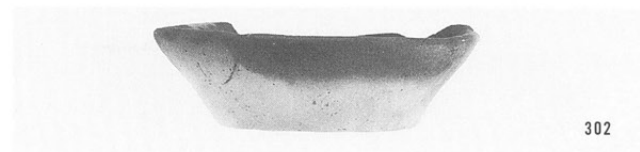


左：SQ08
右：SH16

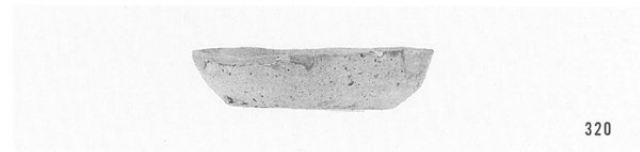
左：古代焼物
右、他：中世焼物
カワラケ



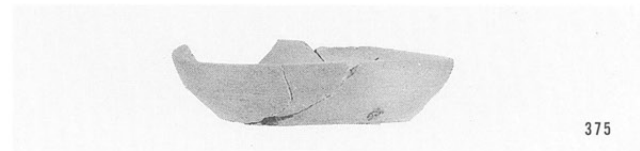
4



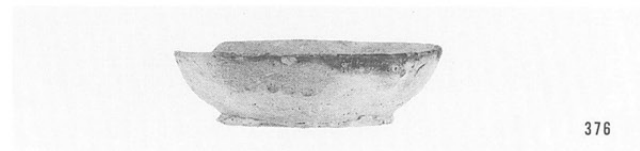
302



320



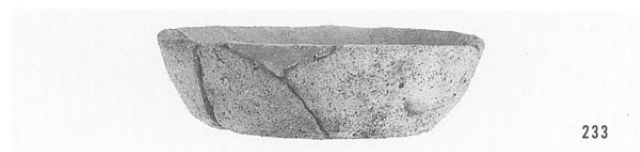
375



376



175

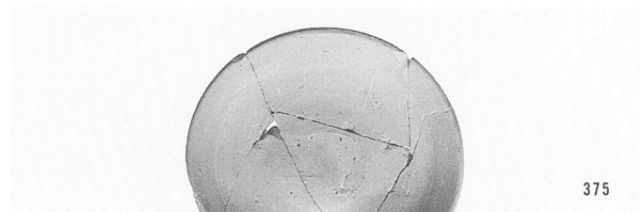


233

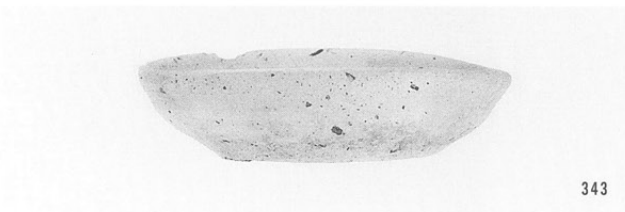
カワラケ内面調整



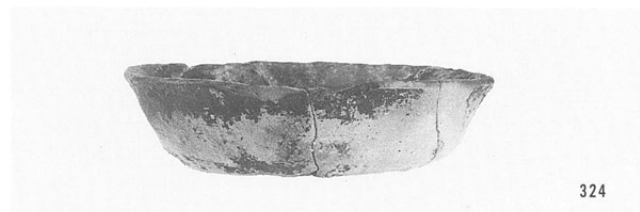
320



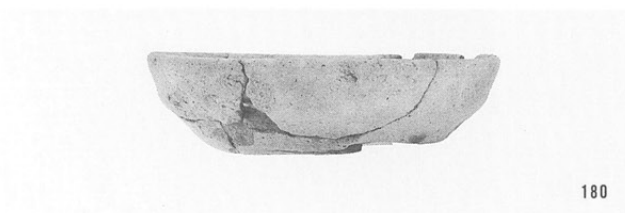
375



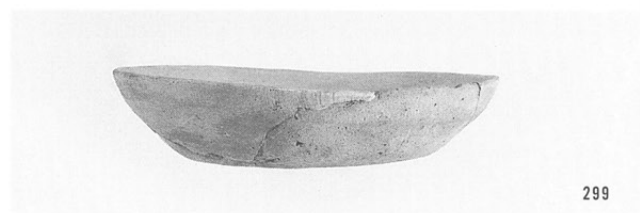
343



324



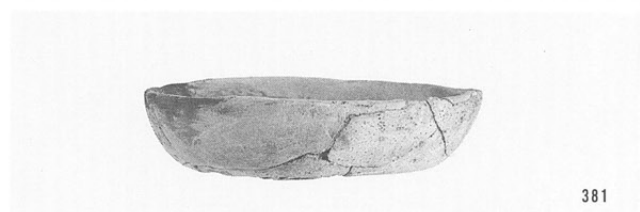
180



299

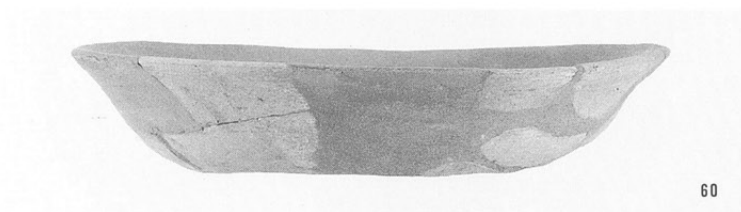


350

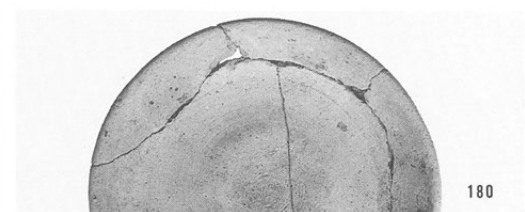


381

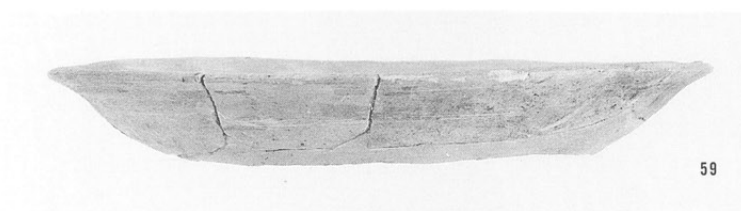
右：カワラケ内面調整



60



180



59



208



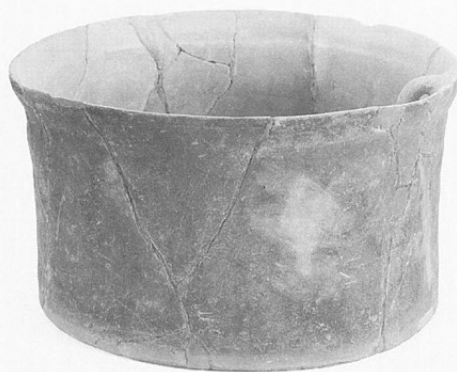
351



209



50



392



251



391



384



384

左上：加工痕を有するカワラケ

内耳鍋

左：内耳鍋内面



SD1



125



84



66



24



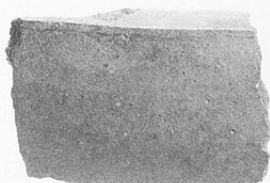
30



257



399



137



140

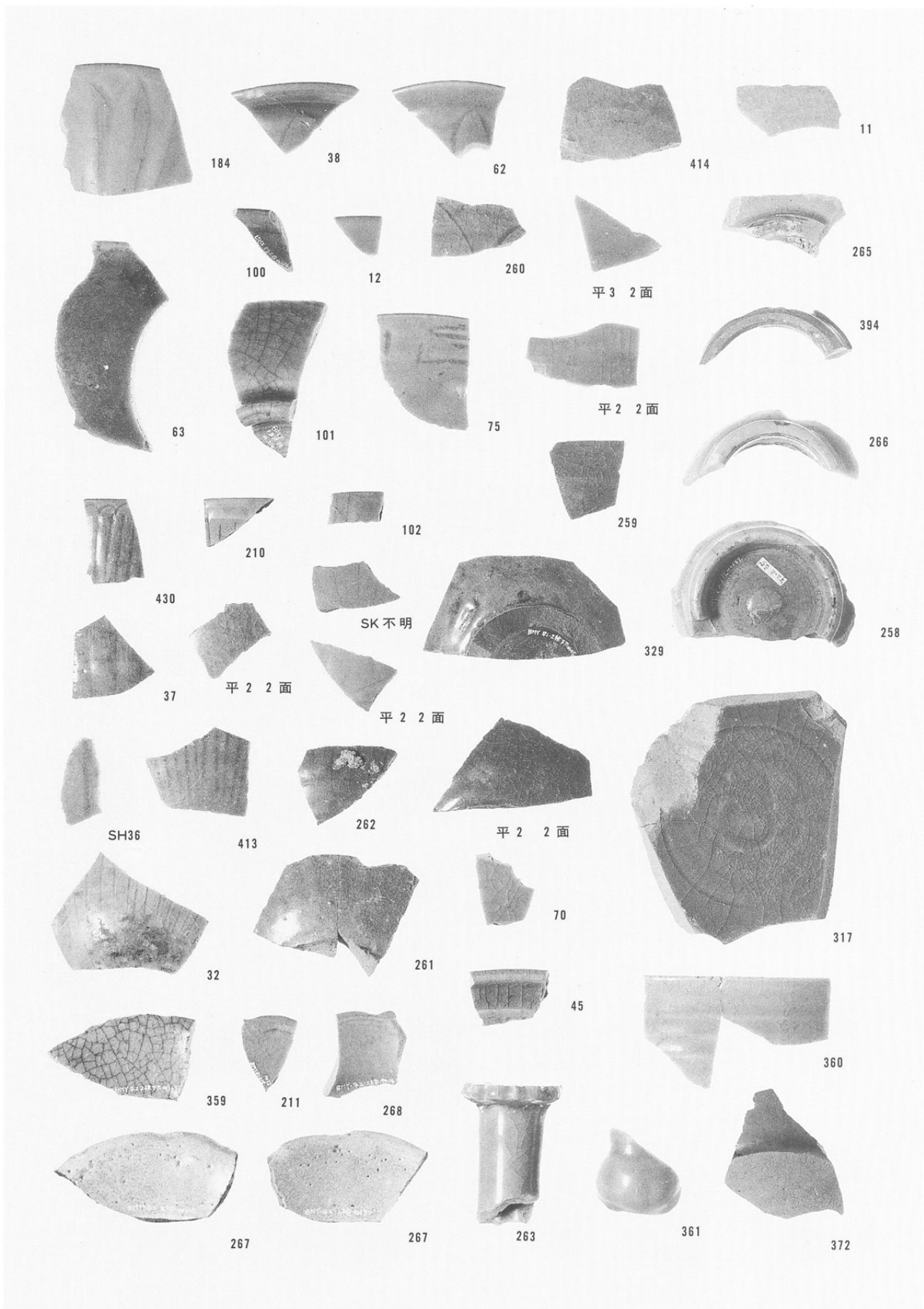


117

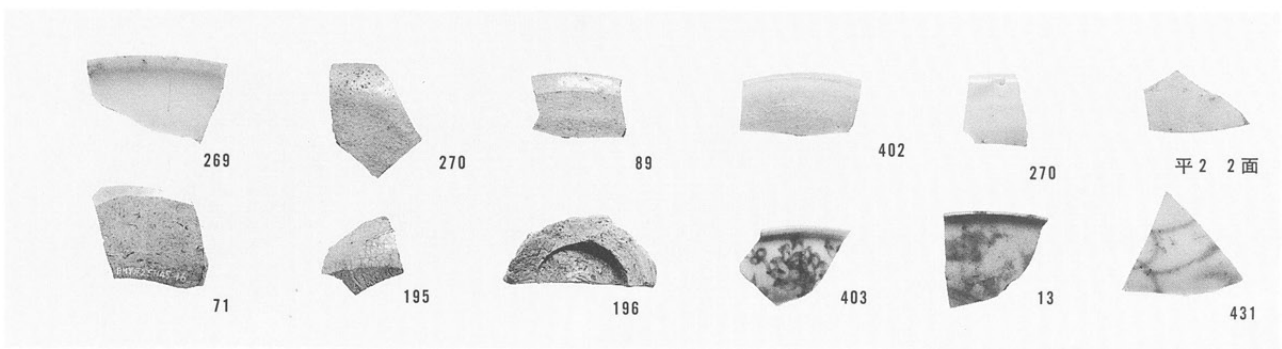


瓦質土器・酸化炎焼成土器

輸入青磁
天目

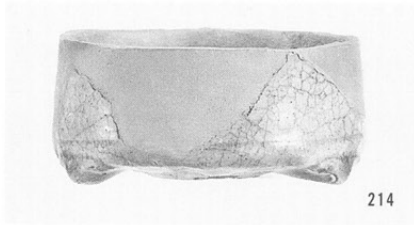


白磁
青花

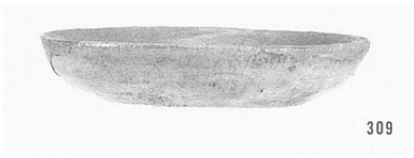




395



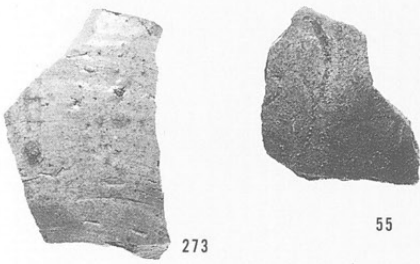
214



309



203



273

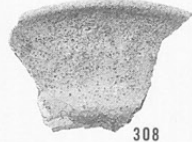
55



平 2 2 面



162



308



162

17

276



277



363



平 2 2 面



274

275

185



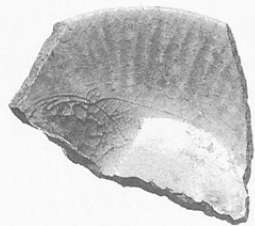
187

408



186

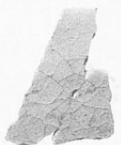
42



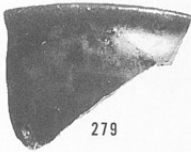
147



278



410



279



279



409



41



190



16



40



369



362



307



163



415

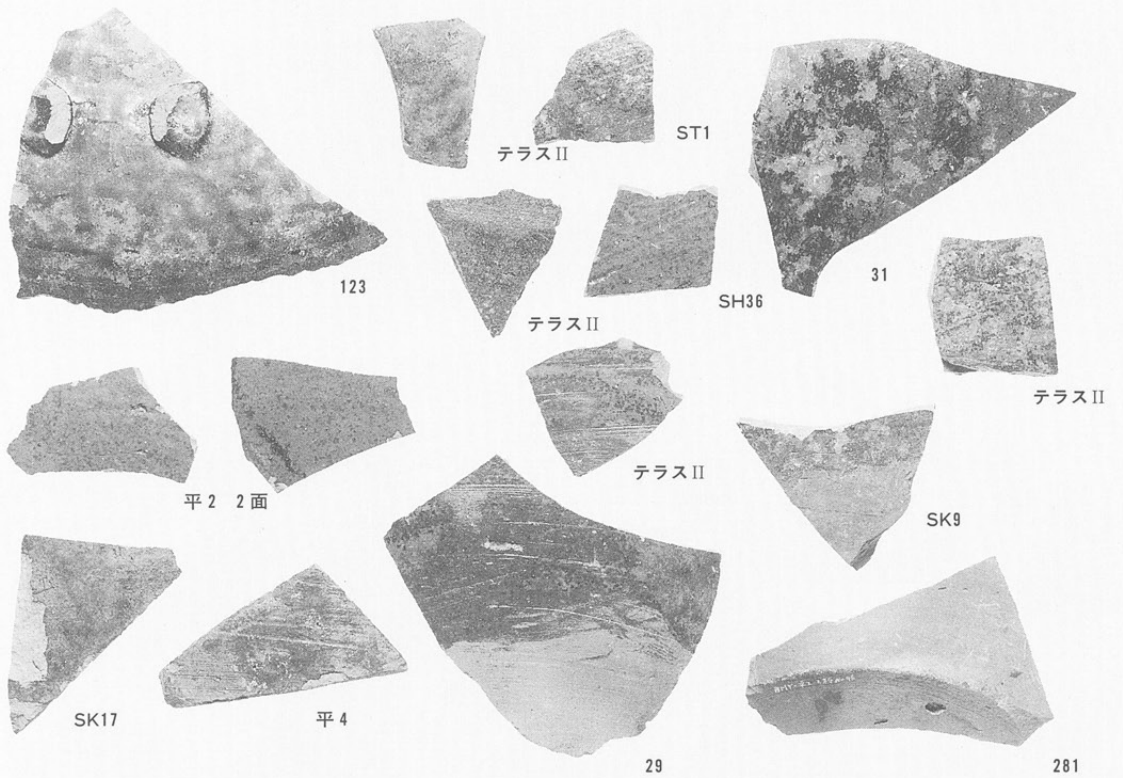


132

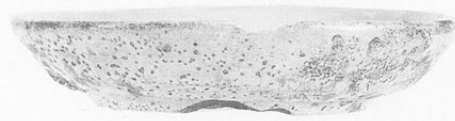


295

古瀬戸? 茶壺類



瀬戸美濃
志野丸皿

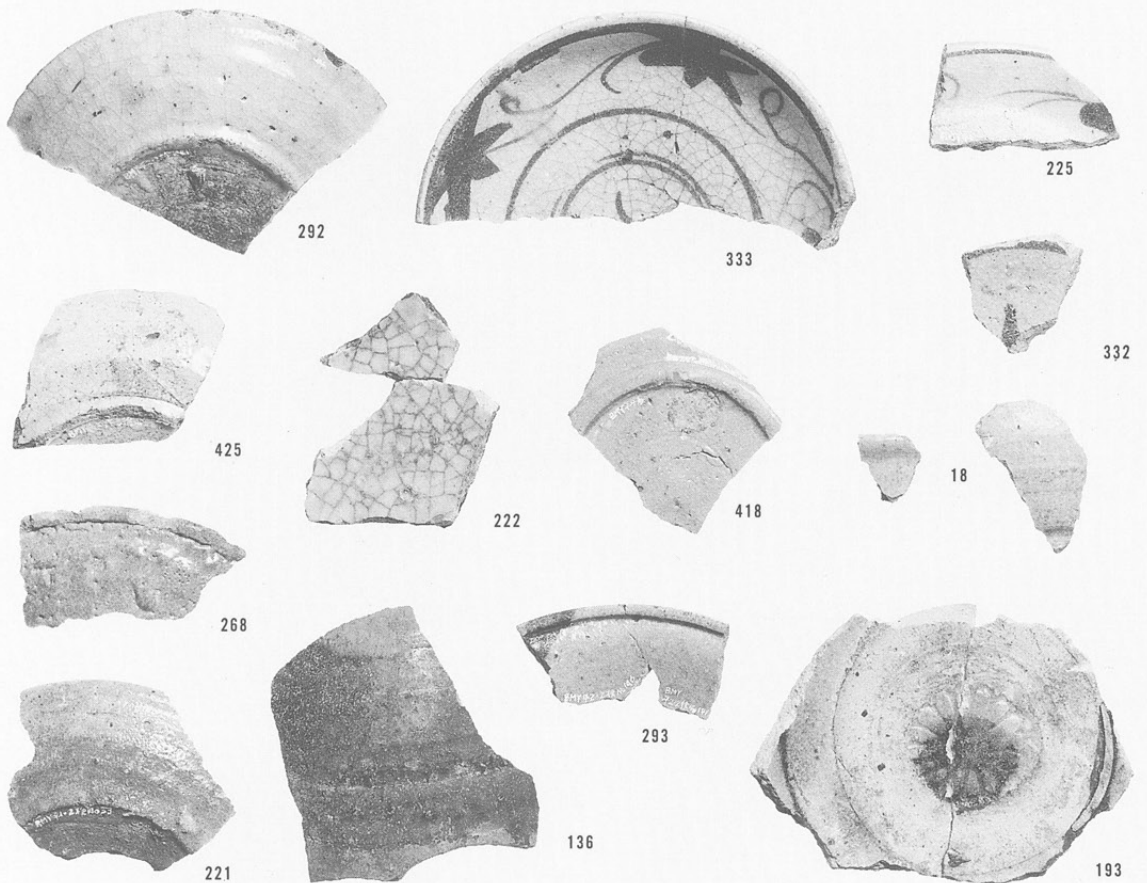


436

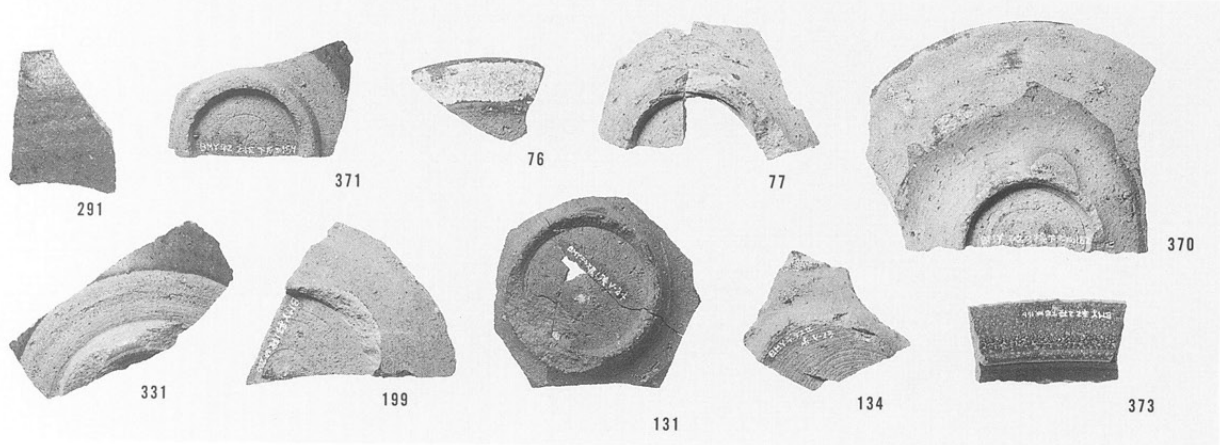
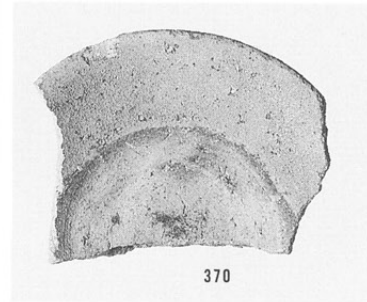
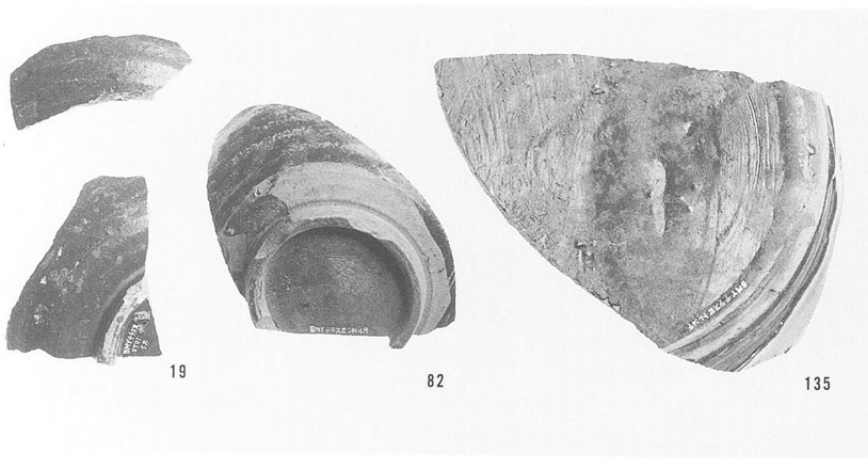


112

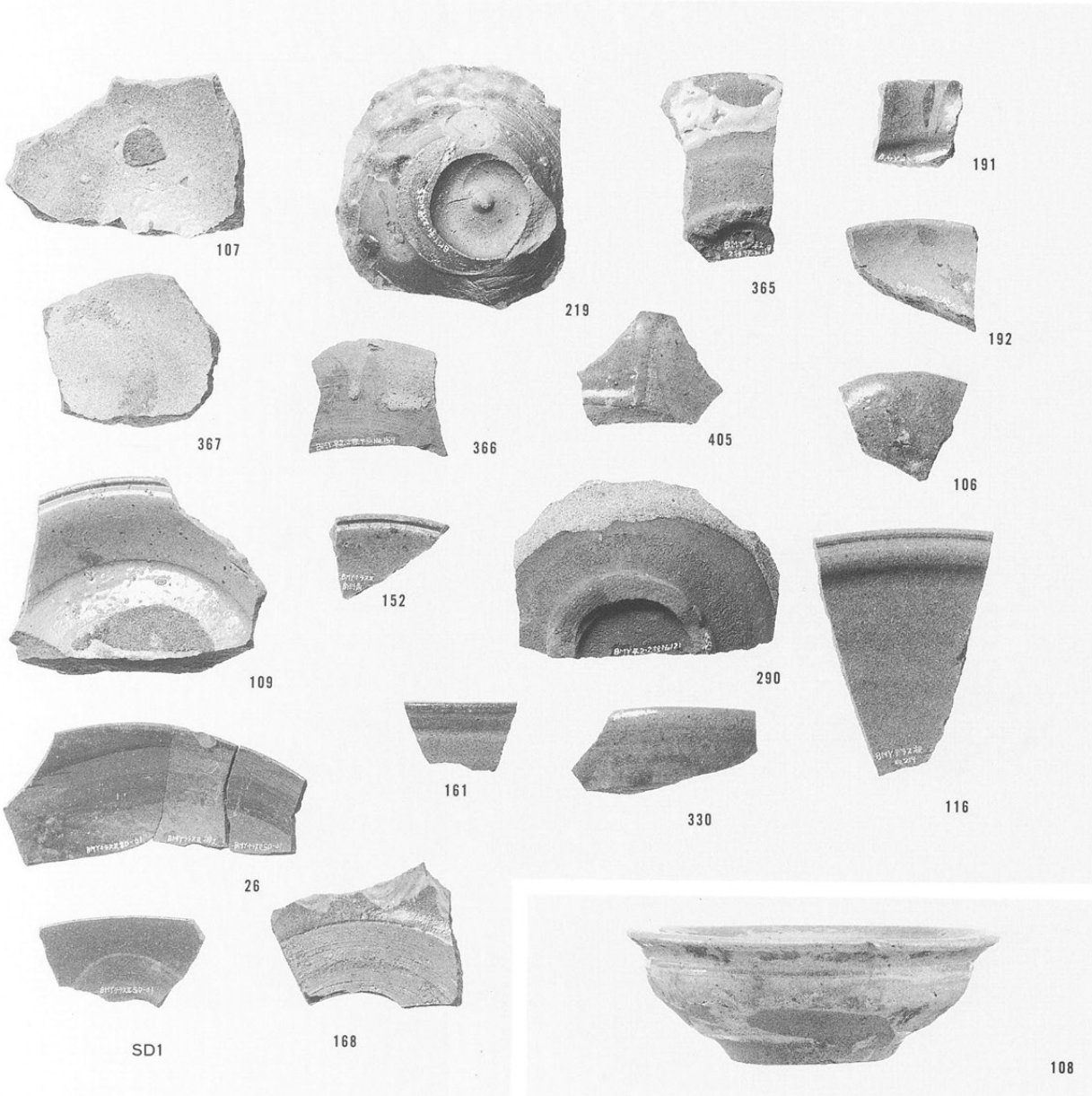
瀬戸美濃近世
大窯・本業焼



左：瀬戸美濃本業焼
鉄釉陶
右：越中瀬戸皿内面

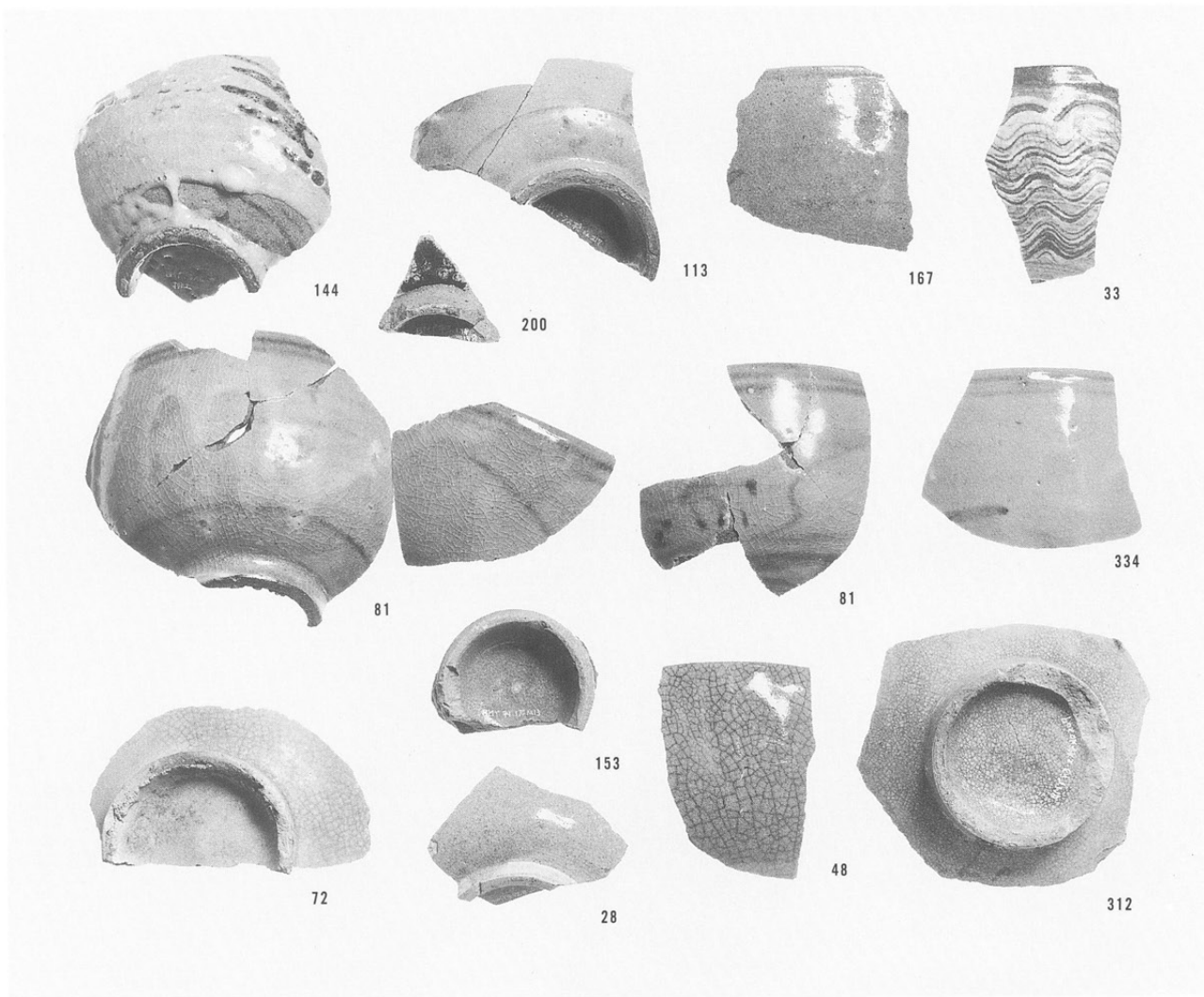


越中瀬戸

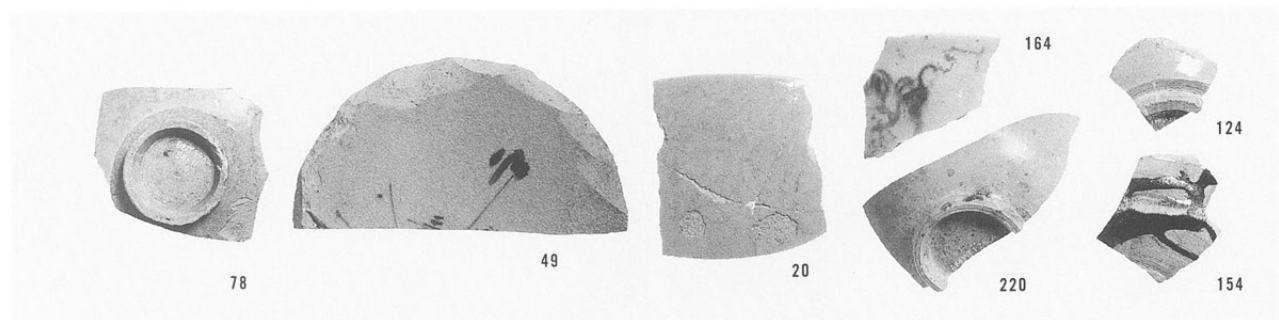


唐津皿

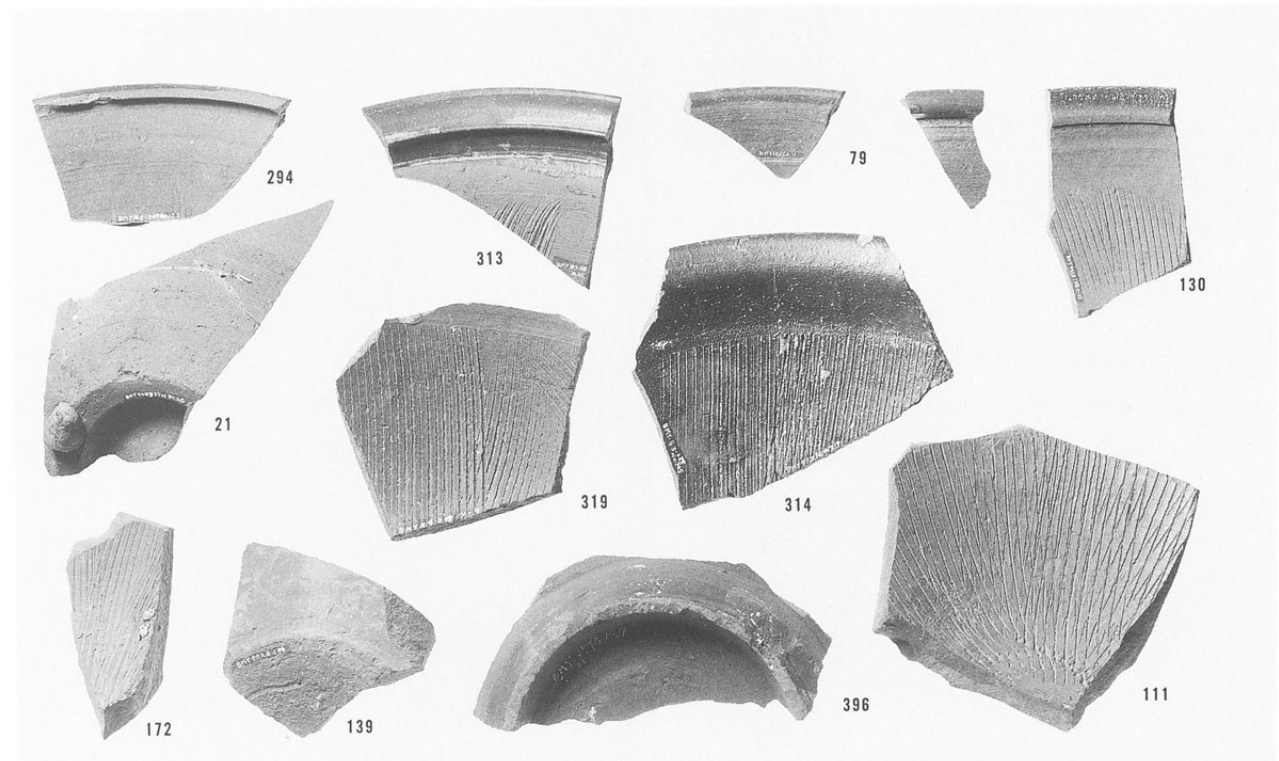
唐津
肥前系陶器碗



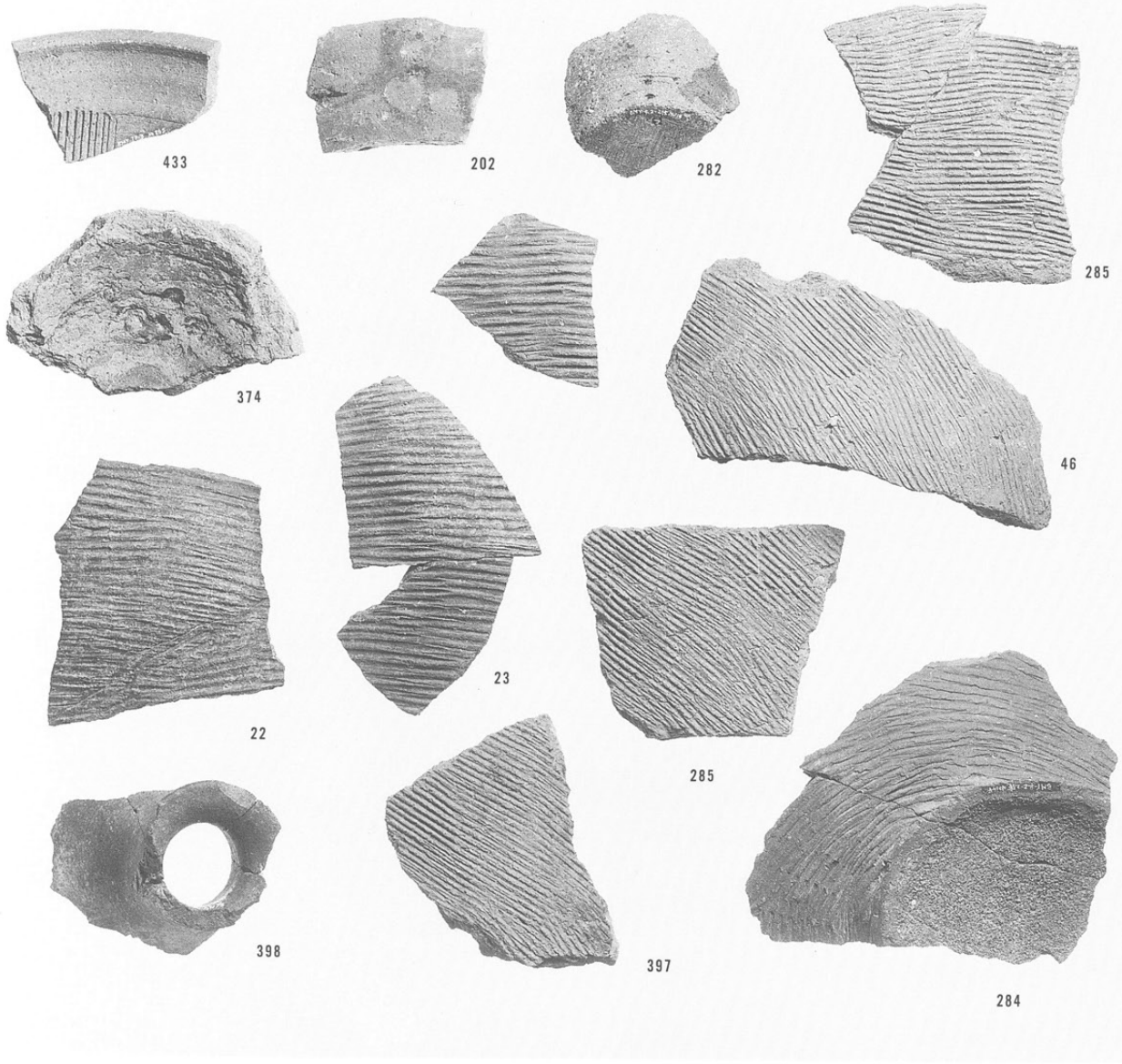
京焼系 (肥前産)
萩焼



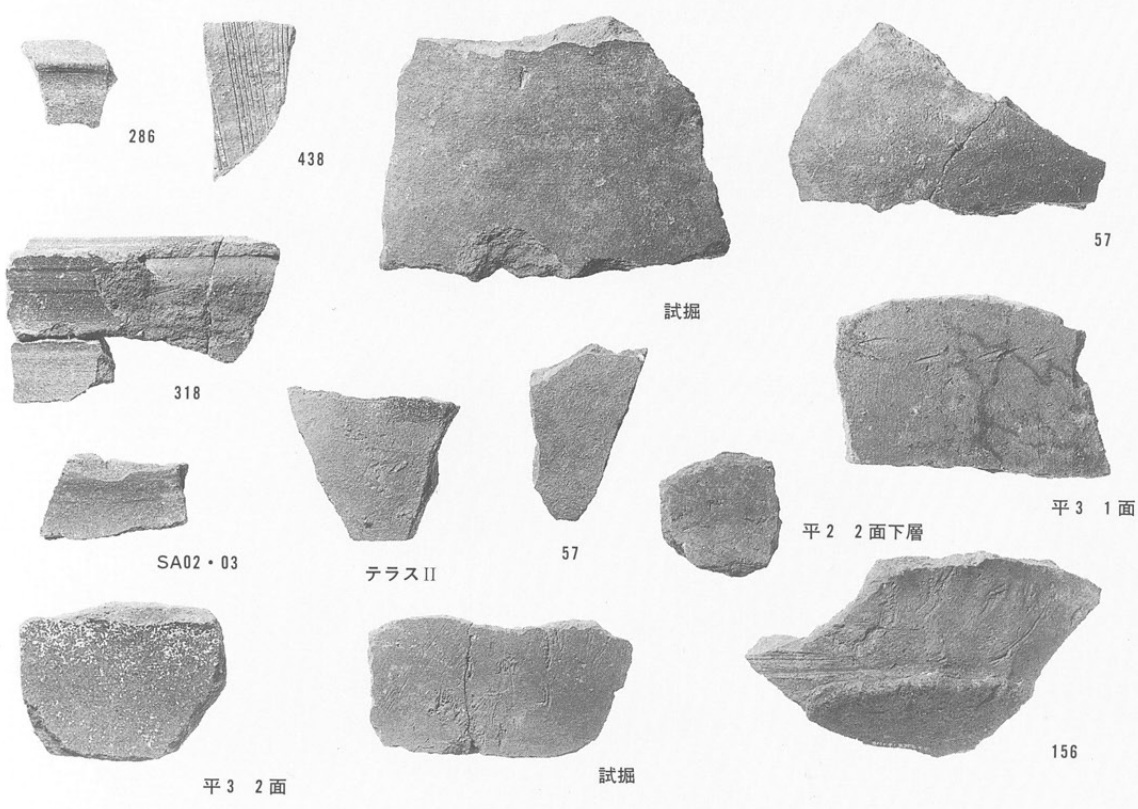
唐津すり鉢



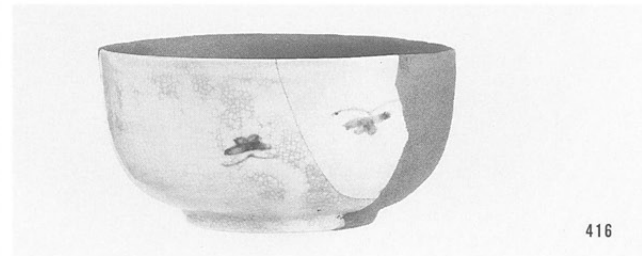
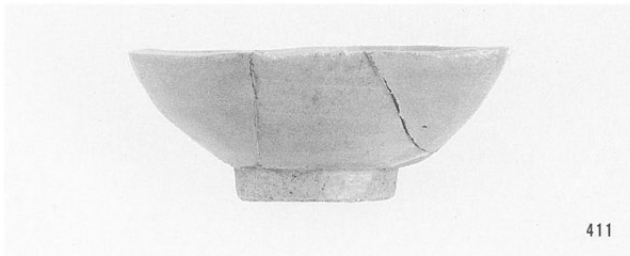
珠洲
産地不明須恵質陶



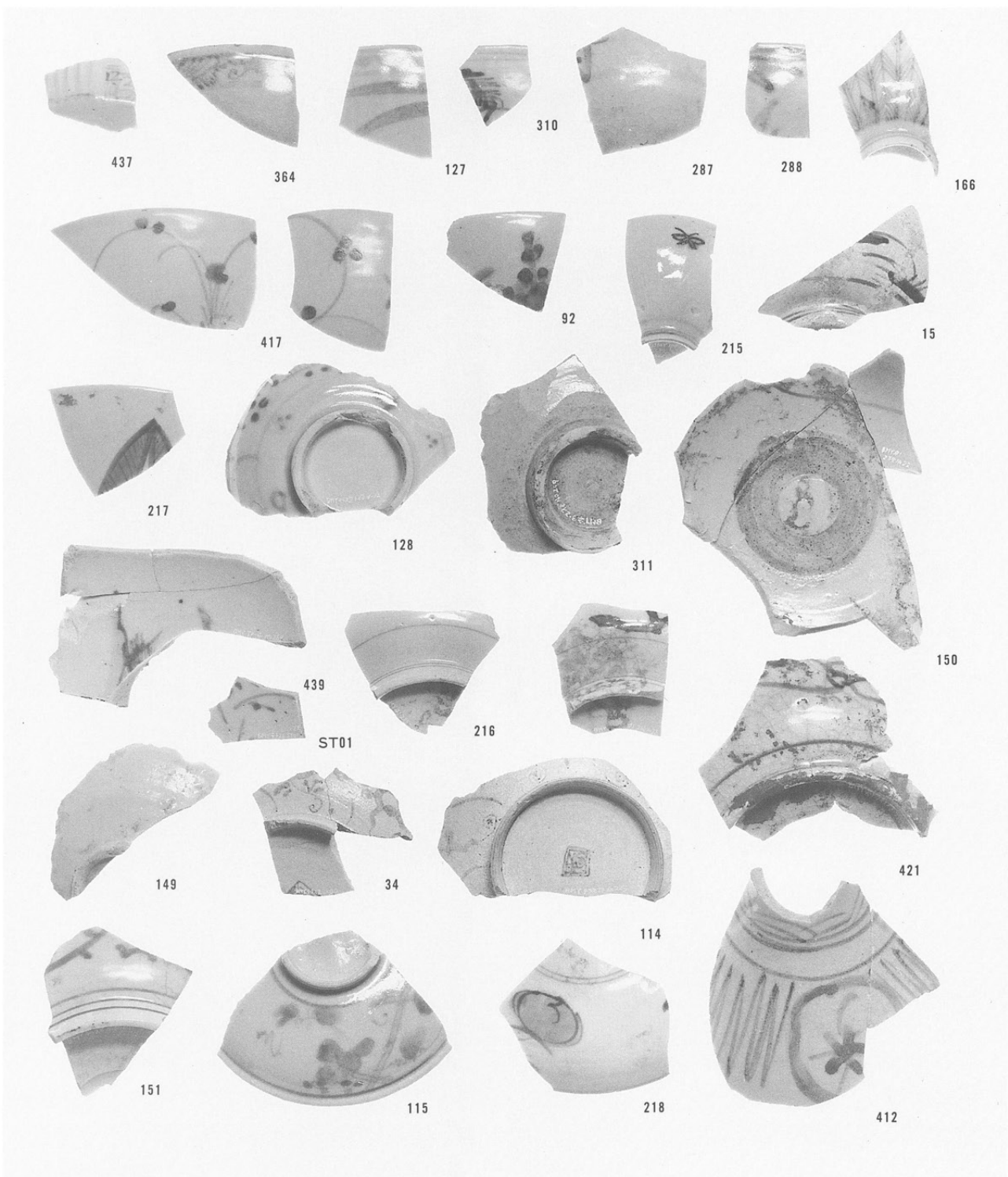
常滑・信楽
瓷器系統縮陶



伊万里



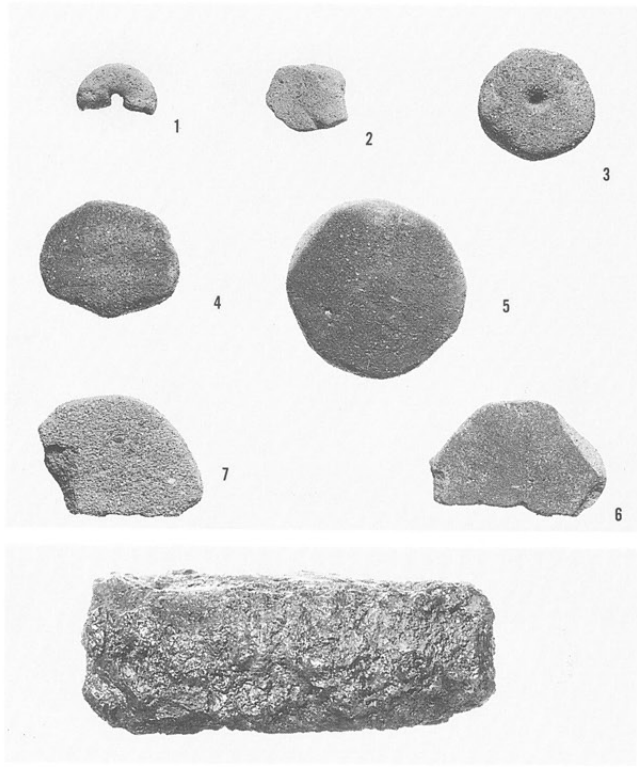
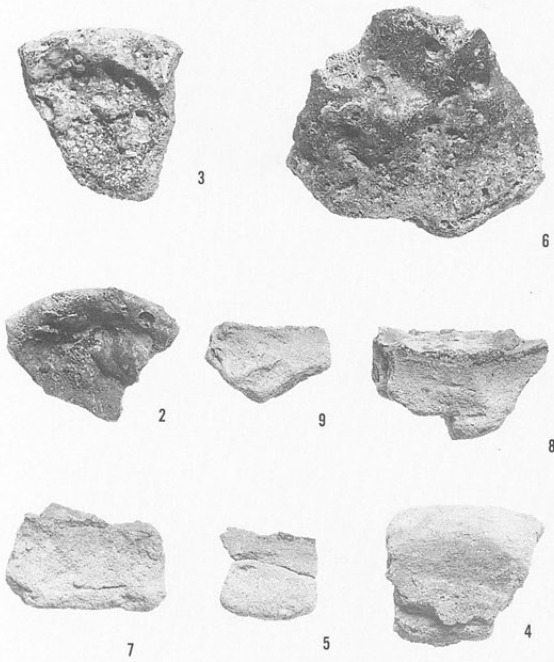
伊万里



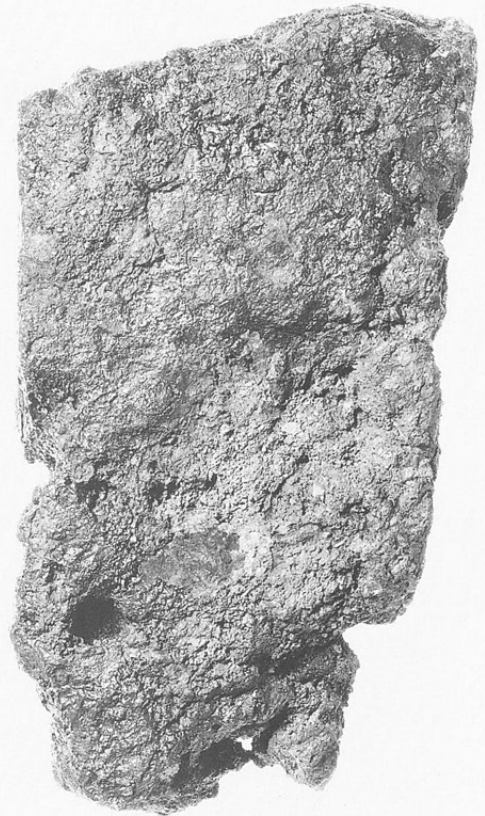
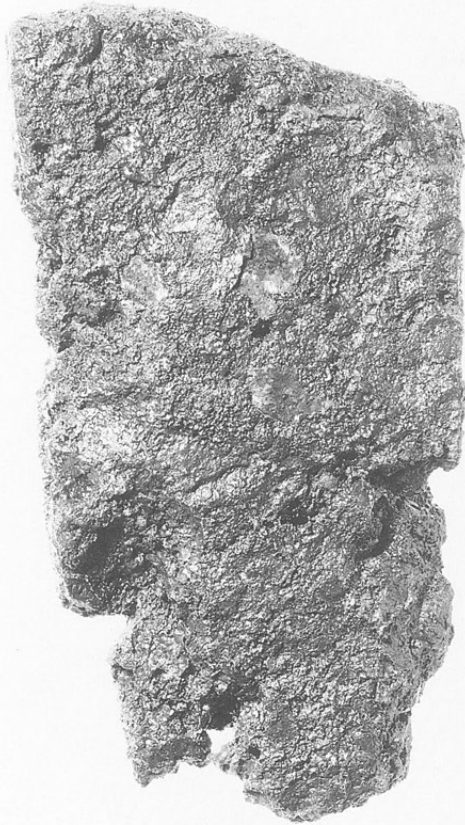
左：伊万里
右：松代



左：金属加工関係
遺物
右上：土製円盤



板状鉄塊



1

金属製品その1



22



21



32



36



30



銅滓



27



18

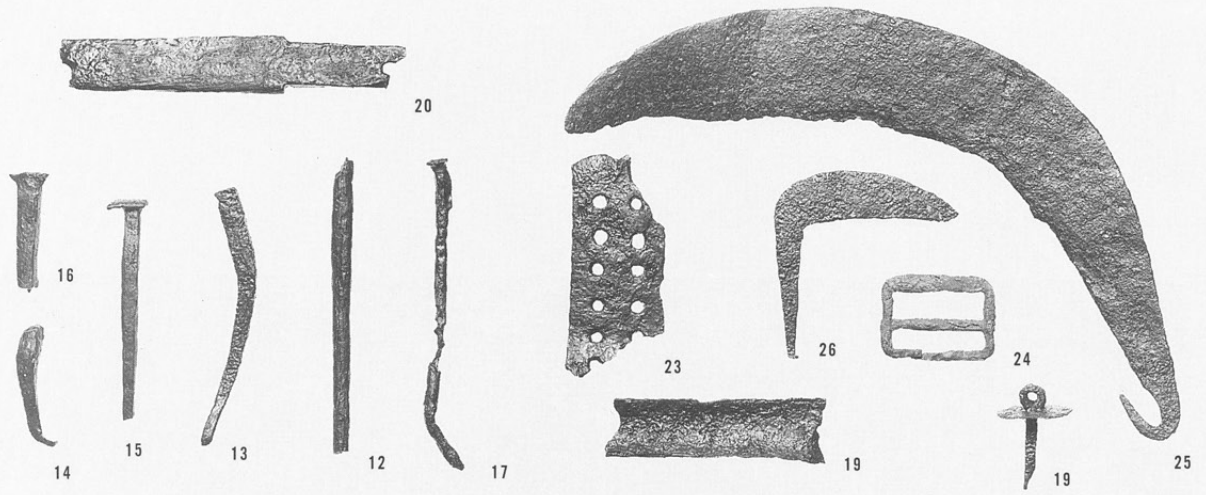


10

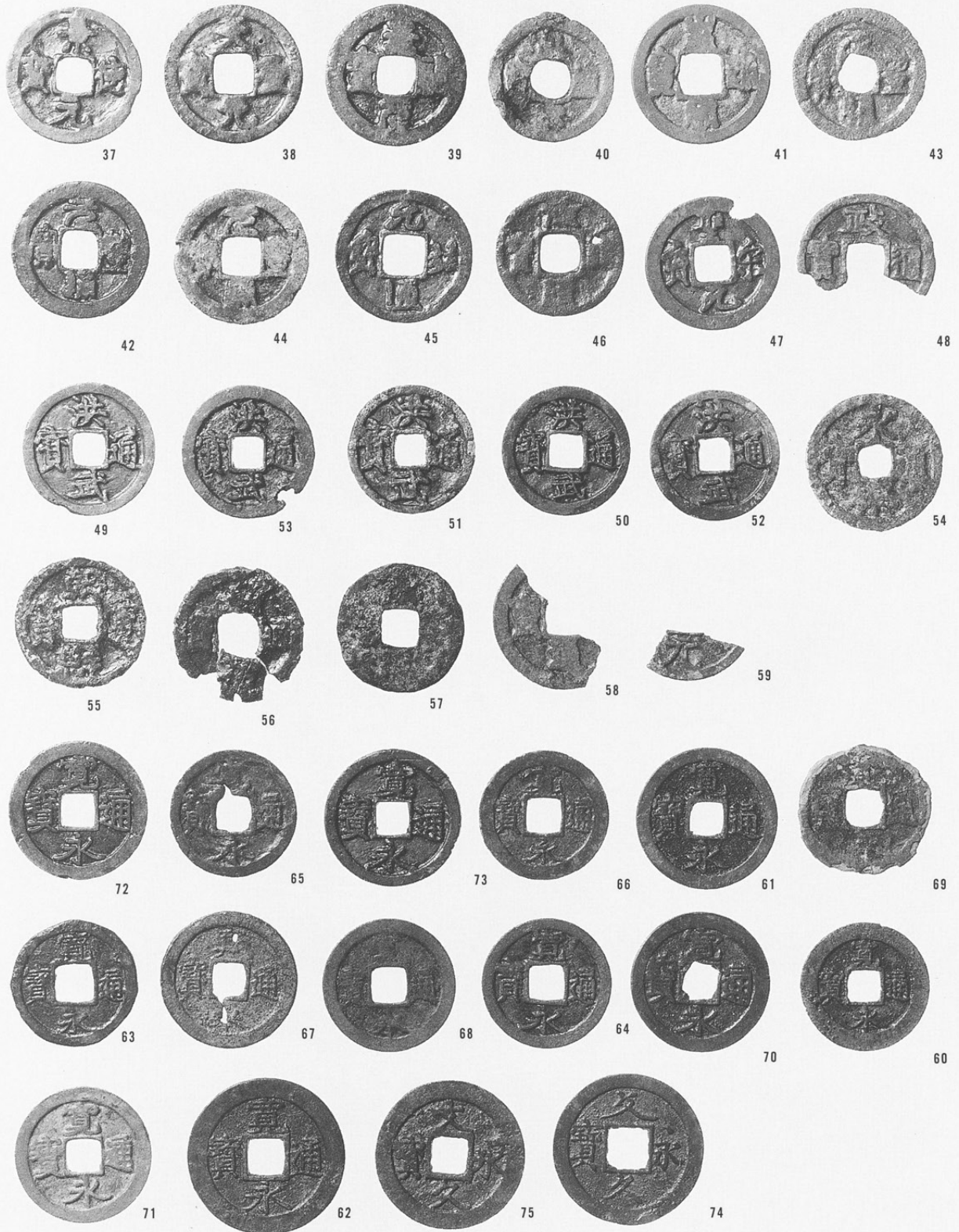


11

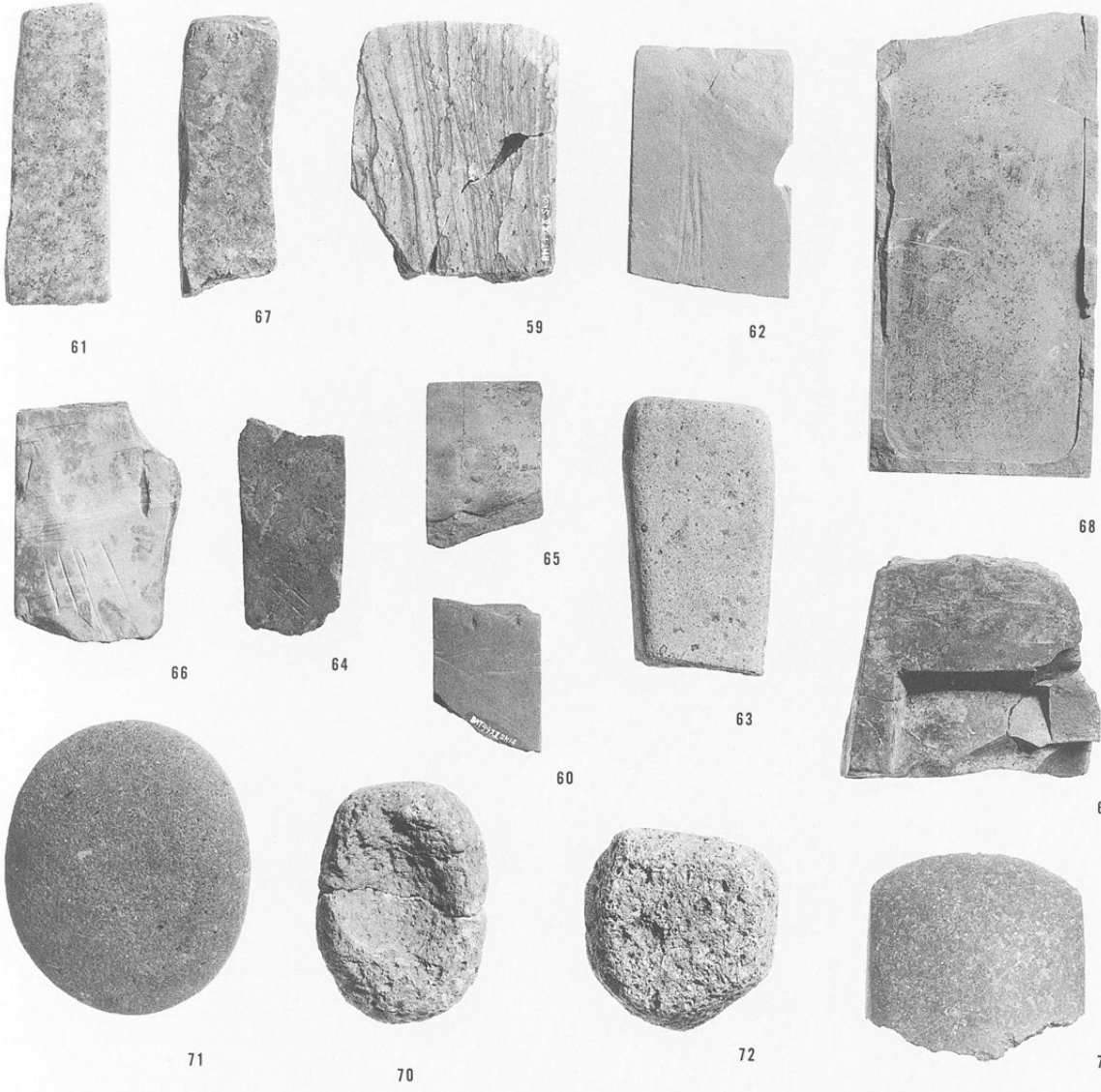
鉄製品その2



銅銭



砥石・硯
加工石・石斧



53



左上：石鉢
左中：搗臼
左下：石鉢

中中：石鉢
中下：石鉢



50



54



右：石臼末製品



55



52



49