

使用痕写真

砥石

S B215

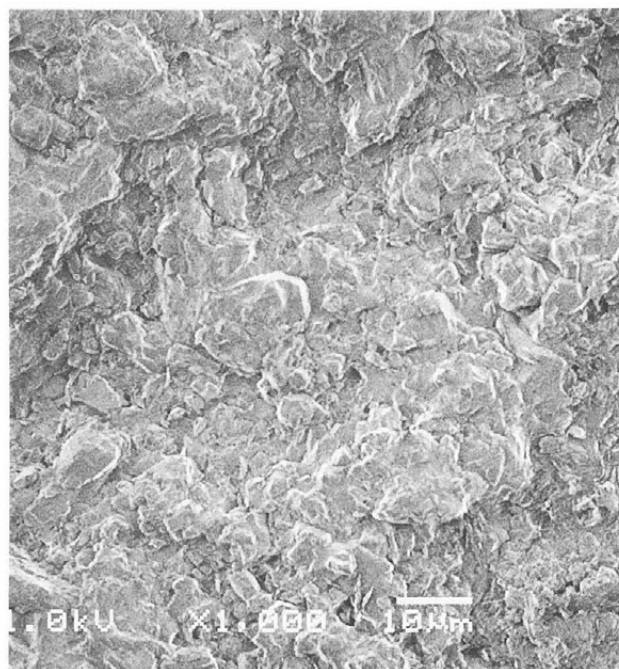
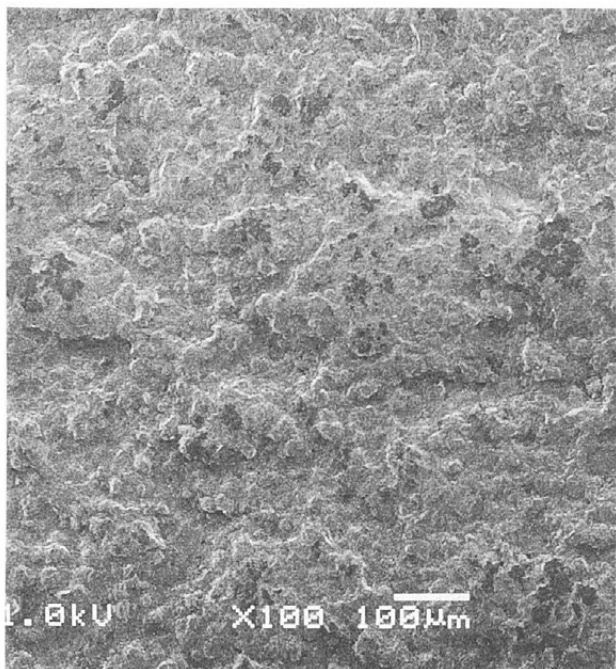
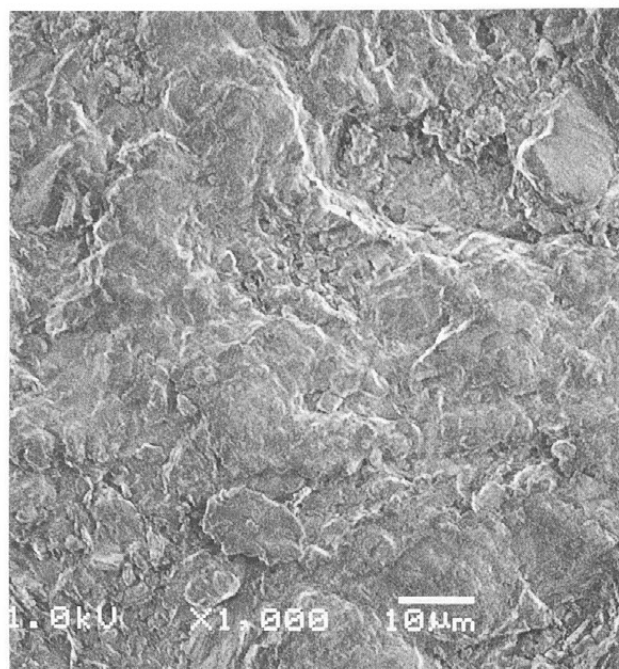
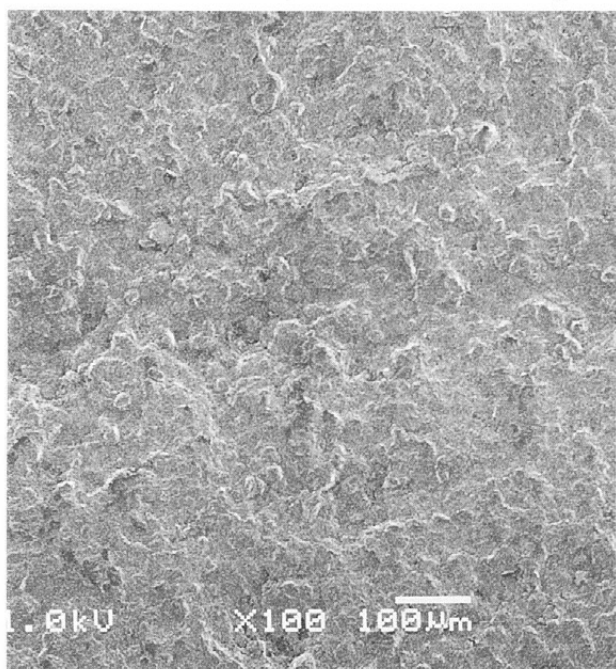
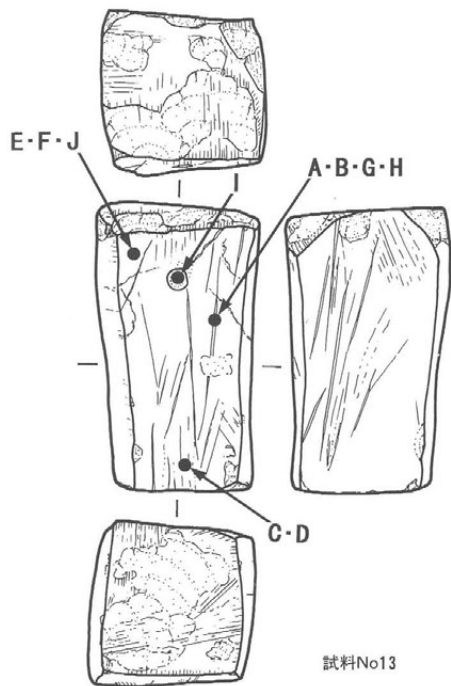
(写真A~I)

図版274-27

P L129-27

(A・B, 砥面溝内摩耗痕)

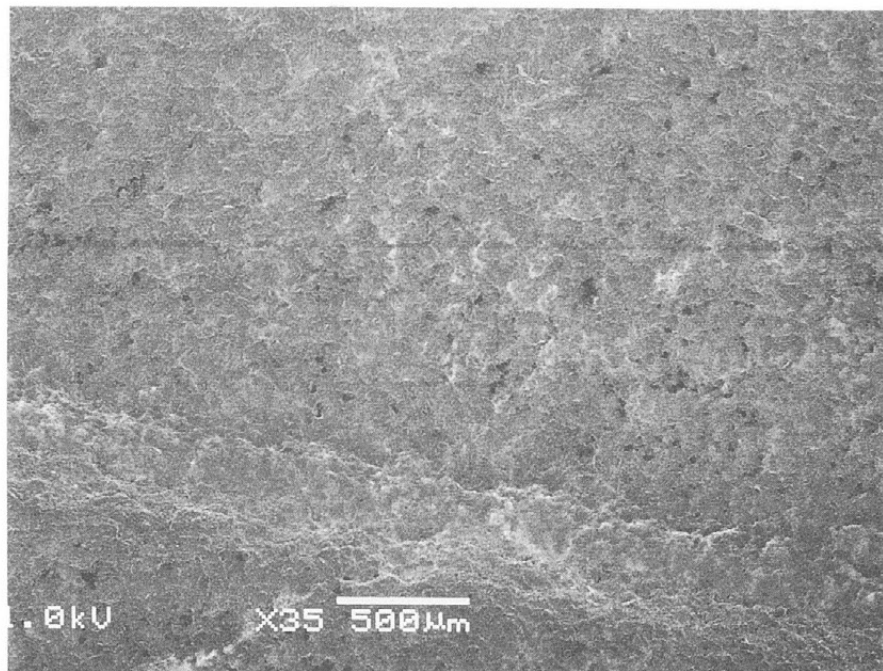
(C~F, 砥面摩耗痕)



使用痕写真

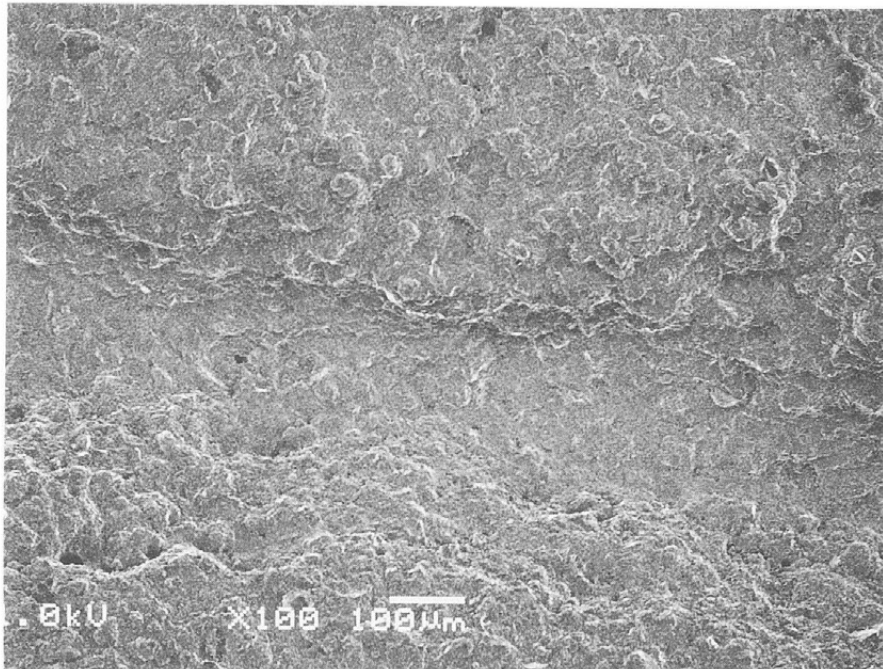
(G・H, 砥面溝内摩耗痕)

(I, 穴部研摩痕)



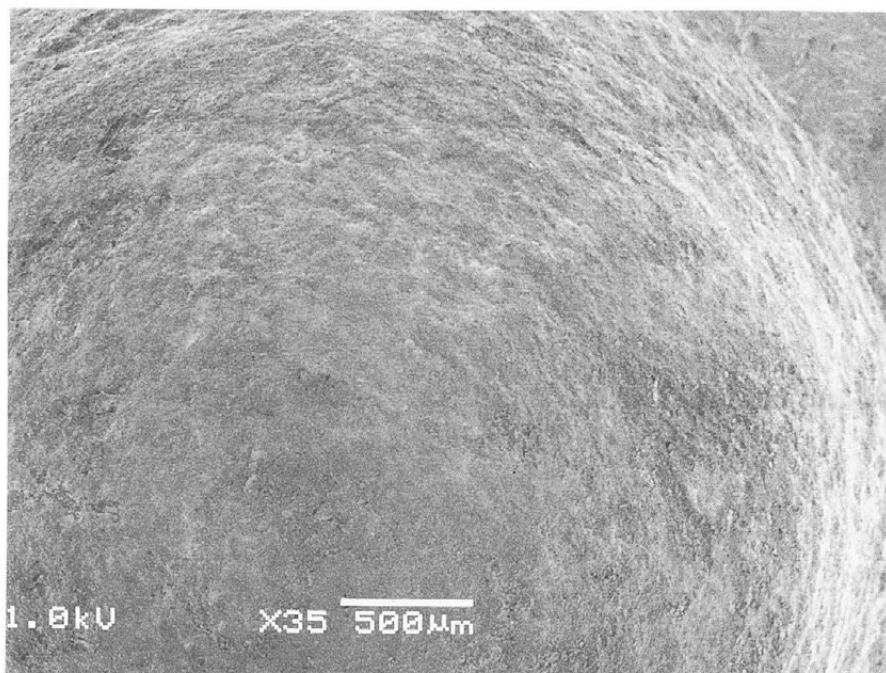
G

X35



H

X100

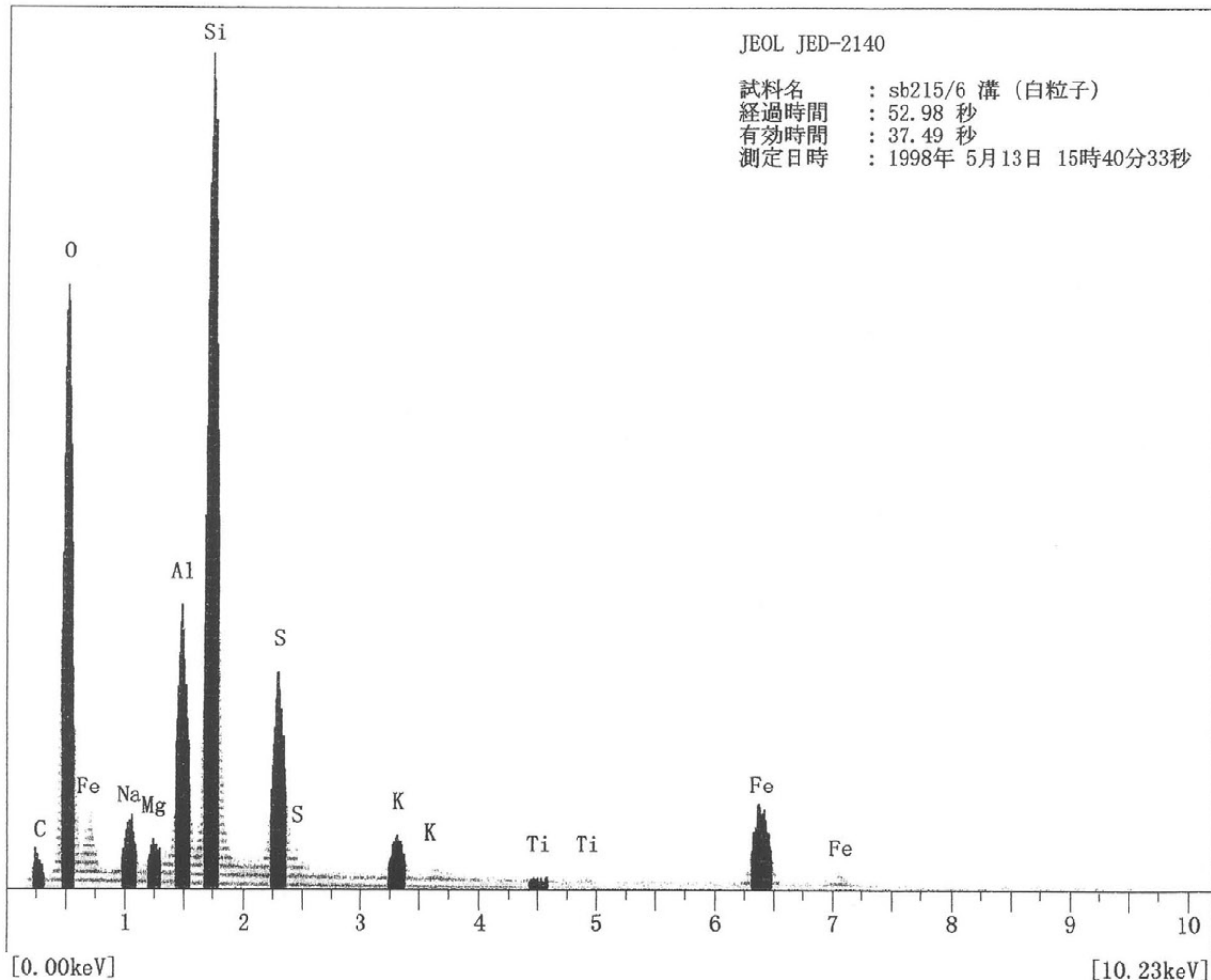


I

X35

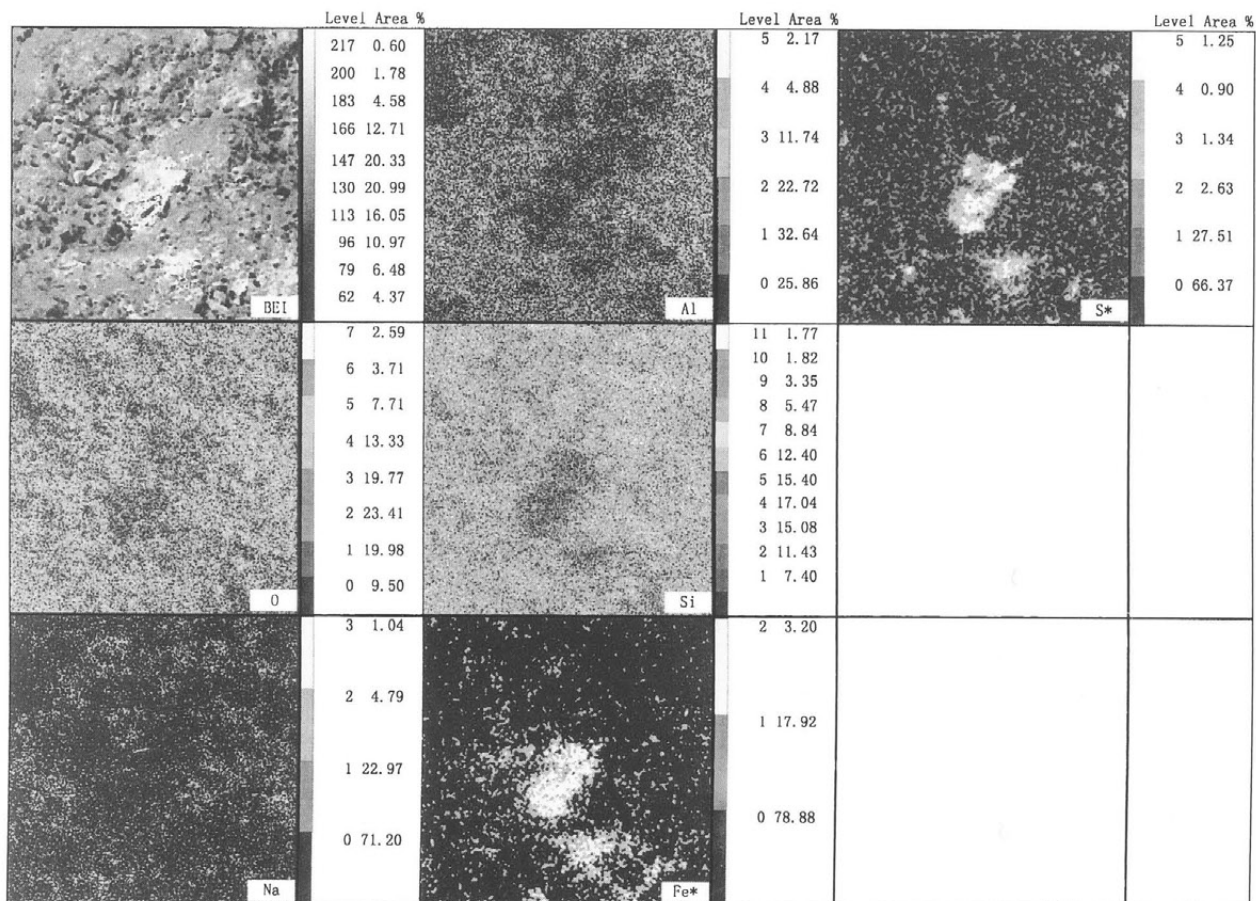
使用痕写真  
(J, 砥面付着物)

LIN 2K カウント



J

EDX分析チャート

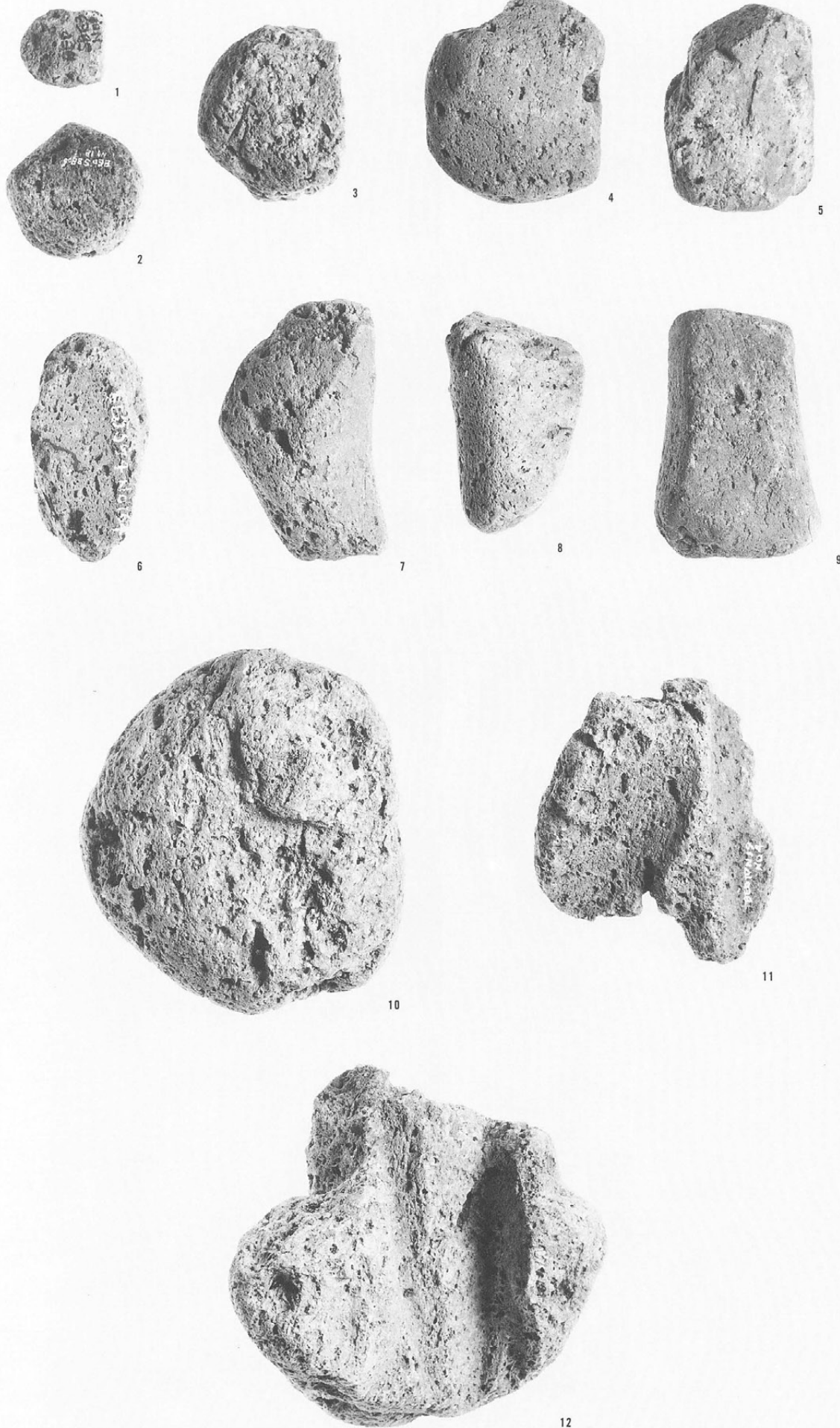


J

EDX分析図

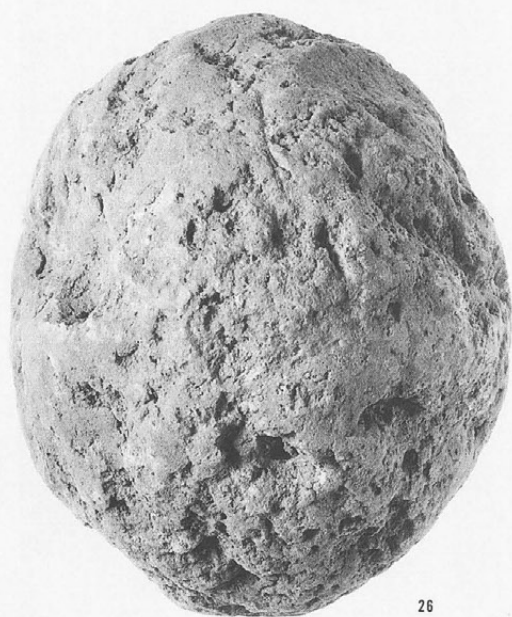
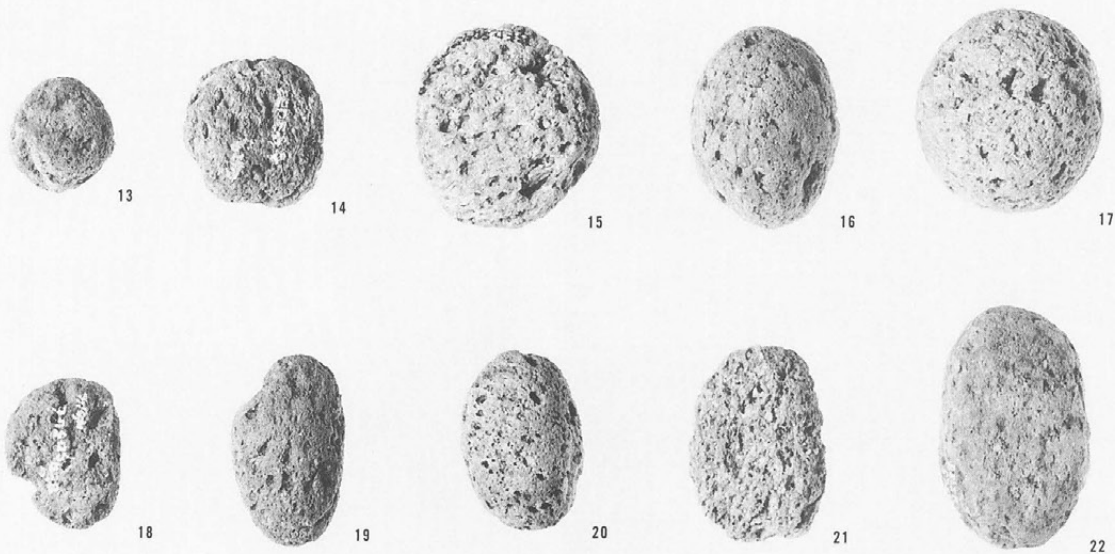
軽石製品

- 1. SB63
  - 2. SB806
  - 3. SB1403
  - 4. SB 9
  - 5. SB115
  - 6. SG 4
  - 7. SB380
  - 8. SB380
  - 9. SB1181
  - 10. SB1448
  - 11. IVN19
  - 12. SB1628
- (2 : 3)



軽石製品

- 13. SD47
  - 14. SG 4
  - 15. SD47
  - 16. Z
  - 17. SB1100
  - 18. SD506
  - 19. SD95
  - 20. SD47
  - 21. SK16712
  - 22. SK5288
  - 23. SB1068
  - 24. SB1471
  - 25. SB1212
  - 26. SD47
- (2 : 3)



磨製石斧

S B 457

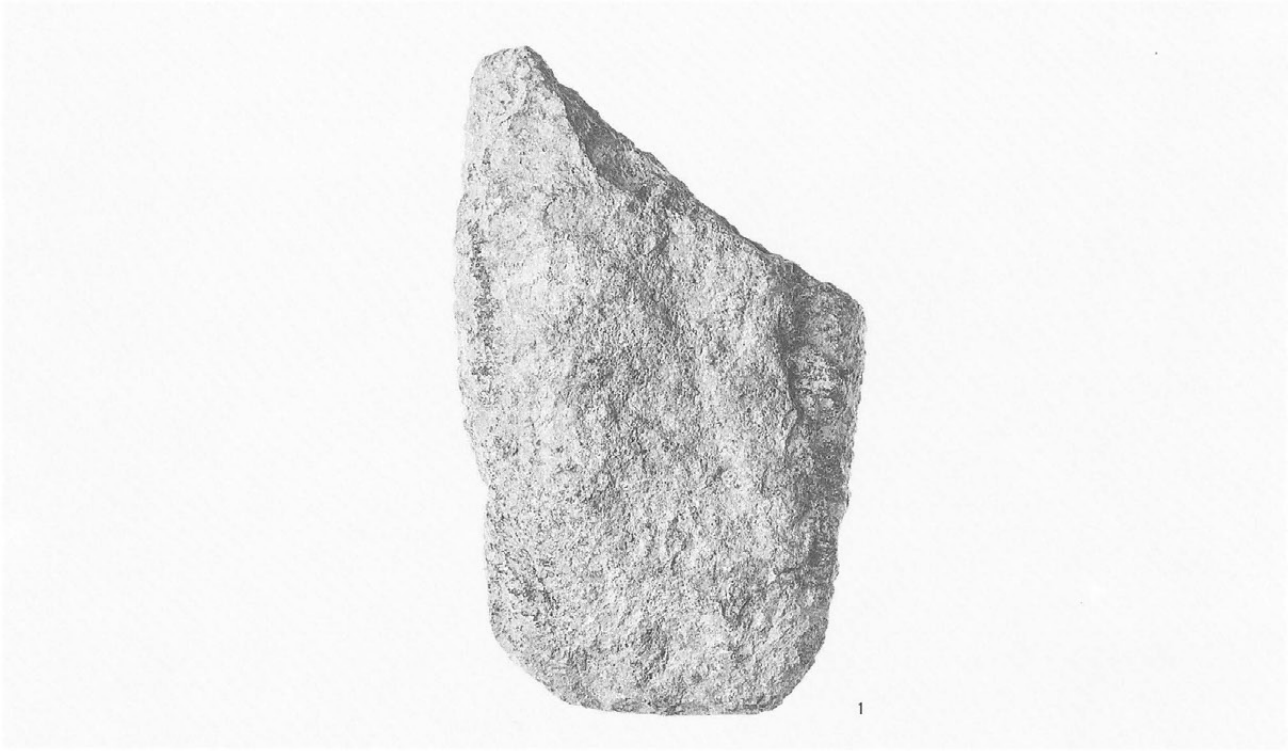
1. 原石
2. 素材剥片(礫)
3. 素材剥片(礫)
4. 未製品G,段階  
(大型蛤刃)
5. 未製品E,段階  
(扁平片刃)  
(1:2)



磨製石斧

S B 440

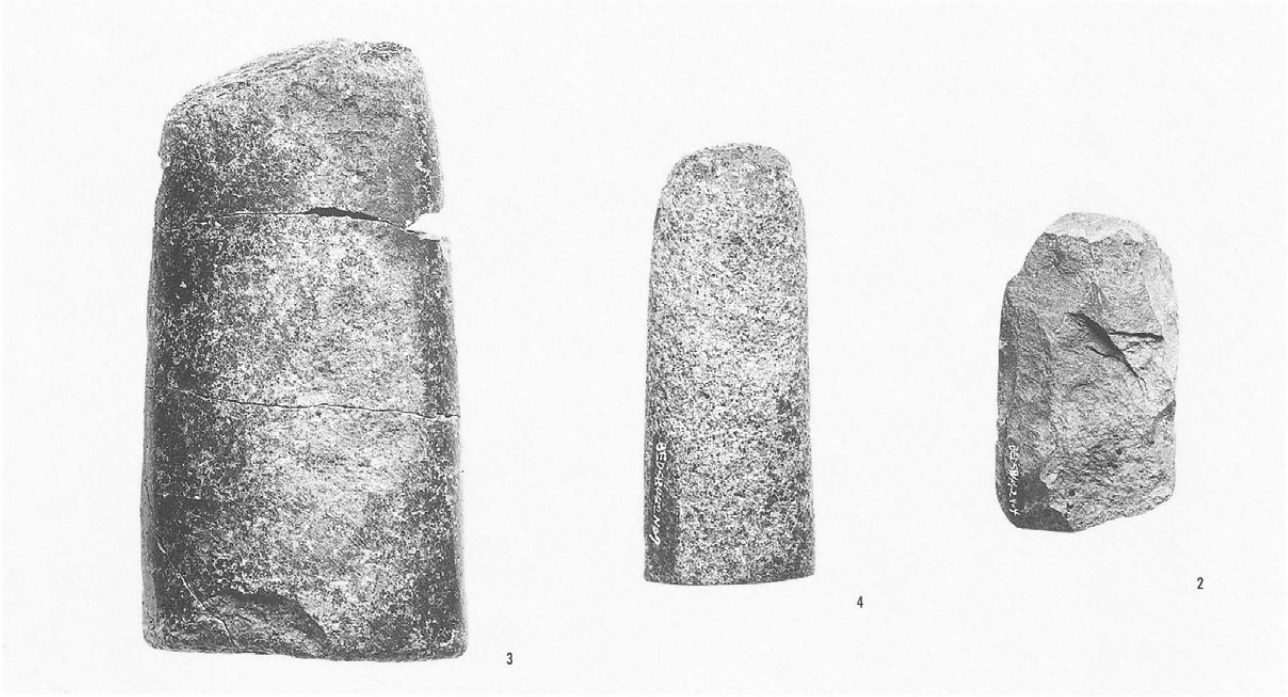
- 1. 未製品D段階  
(太型蛤刃)  
(2 : 3)



磨製石斧

S B 442

- 2. 未製品E<sub>3</sub>段階  
(扁平片刃)
- 3. 石槌
- 4. 石槌  
Z-105と接合  
P L 160  
(2 : 3)



磨製石斧

S B 843

- 5. 未製品C<sub>1</sub>段階  
(太型蛤刃)
- 6. 剥片2種B段階
- 7. 剥片2種B段階  
(2 : 3)



磨製石斧

S B837

1. 素材剥片(礫)
2. 剥片1種B段階
3. 剥片B類C段階
4. 未製品D段階  
(大型蛤刃)
5. 石槌
6. 未製品E<sub>1</sub>段階  
(扁平片刃)  
(2:3)



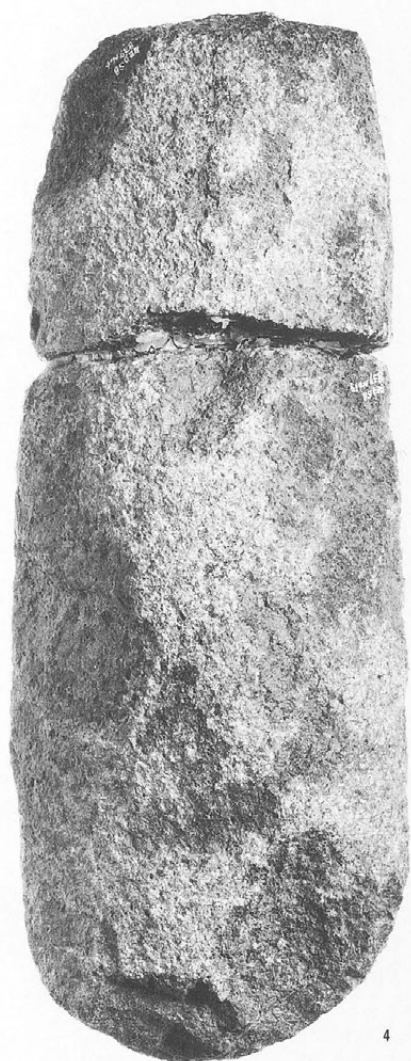
1



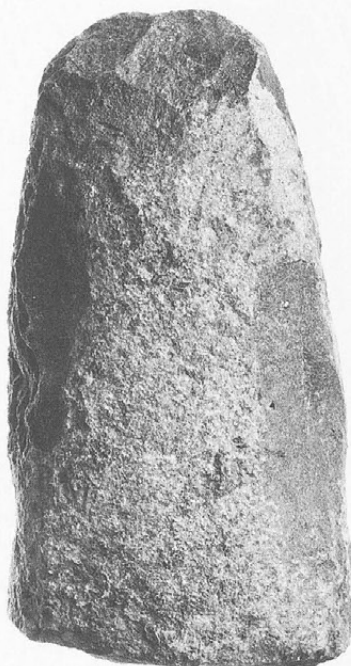
2



3



4



5



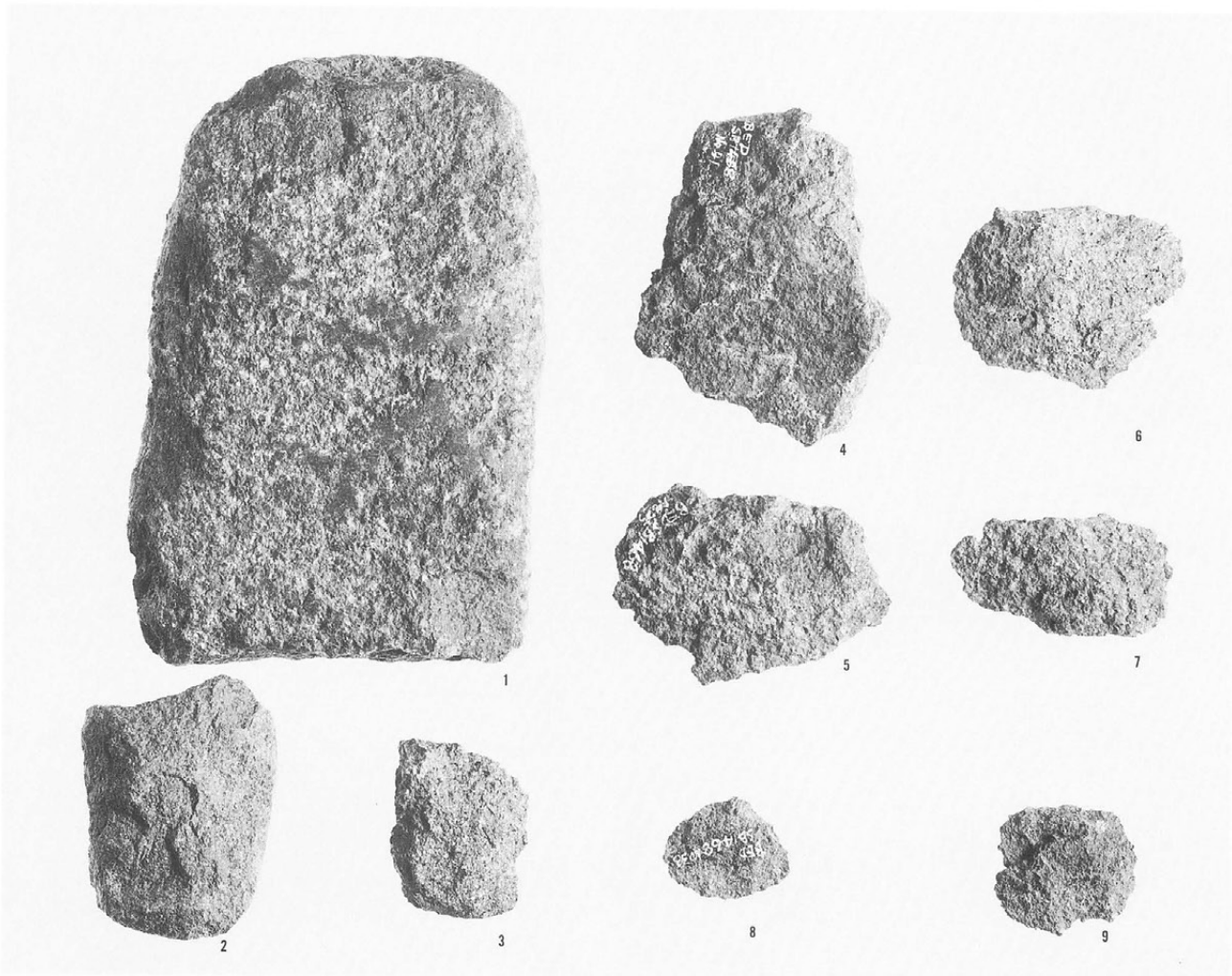
6



磨製石斧

S B1468

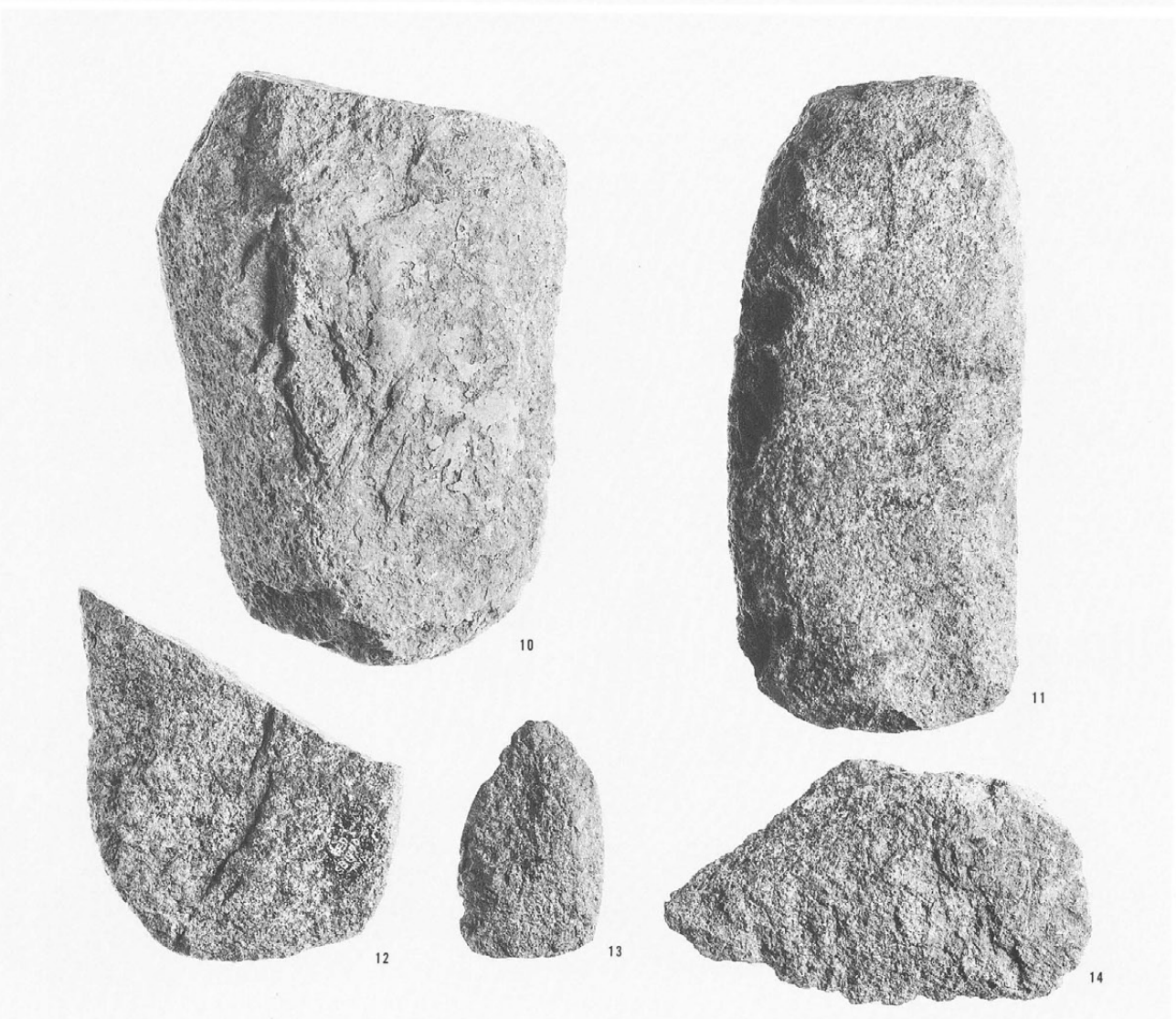
1. 未製品E<sub>1</sub>段階  
(扁平片刃)
2. 未製品E<sub>2</sub>段階  
(扁平片刃)
3. 未製品E<sub>3</sub>段階  
(扁平片刃)
4. 剝片I種B段階
5. 剝片B類C<sub>1</sub>段階
6. 剝片B類B段階
7. 剝片B類C段階
8. 碎片B段階
9. 碎片B段階  
(2 : 3)



磨製石斧

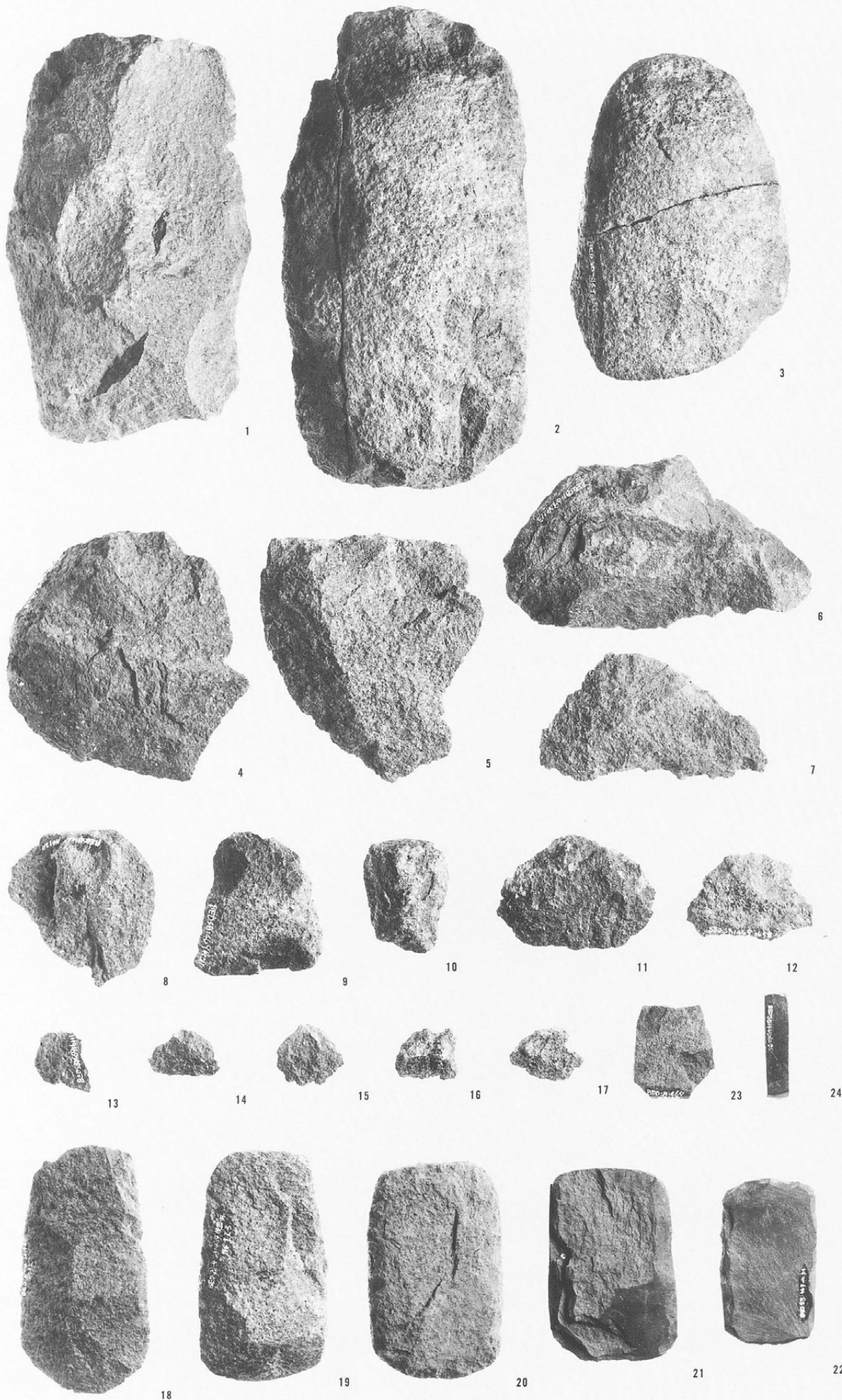
S B1470

10. 未製品C<sub>3</sub>段階  
(太型蛤刃)
11. 未製品E<sub>1</sub>段階  
(太型蛤刃)
12. 未製品B段階  
(扁平片刃)
13. 未製品E<sub>2</sub>段階  
(扁平片刃)
14. 剝片B類B段階  
(2 : 3)



磨製石斧

S B1469

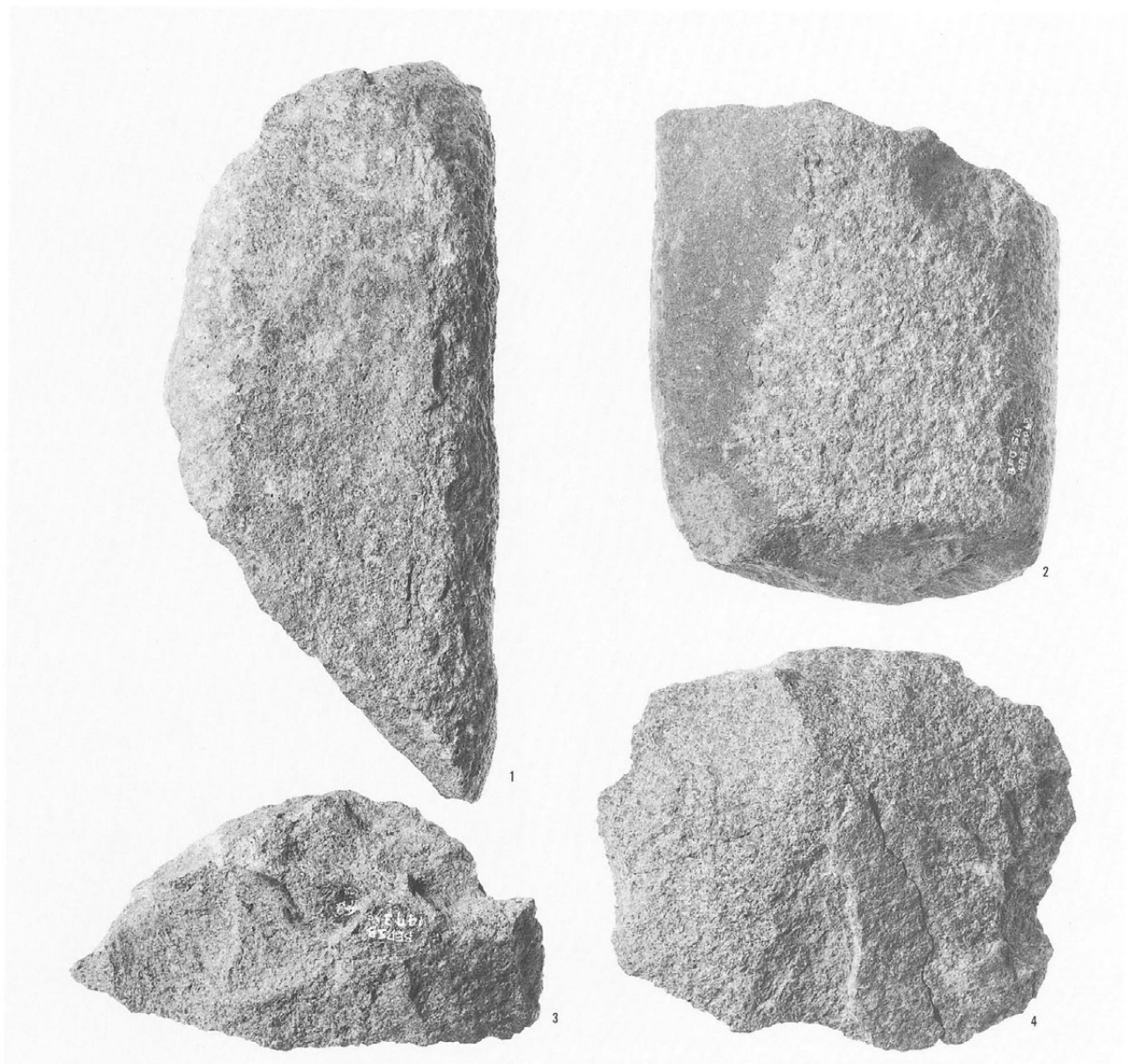


1. 未製品B段階  
(太型蛤刃)
2. 未製品C<sub>2</sub>段階  
(太型蛤刃)
3. 未製品D段階  
(太型蛤刃)
4. 剥片1種B段階
5. 剥片B類B段階
6. 剥片1種A段階
7. 剥片B類B段階
8. 剥片B類E<sub>1</sub>段階
9. 剥片B類C<sub>1</sub>段階
10. 剥片B類C<sub>2</sub>段階
11. 剥片1種C<sub>1</sub>段階
12. 剥片1種C<sub>2</sub>段階
13. 碎片B段階
14. 碎片B段階
15. 碎片B段階
16. 碎片C<sub>1</sub>段階
17. 碎片C<sub>2</sub>段階
18. 未製品B段階  
(扁平片刃)
19. 未製品E<sub>3</sub>段階  
(扁平片刃)
20. 未製品D段階  
(扁平片刃)
21. 扁平片刃石斧
22. 未製品E<sub>2</sub>段階  
(扁平片刃)
23. 未製品E<sub>3</sub>段階  
(扁平片刃)
24. 柱状片刃石斧  
(1:2)

磨製石斧

S B1473

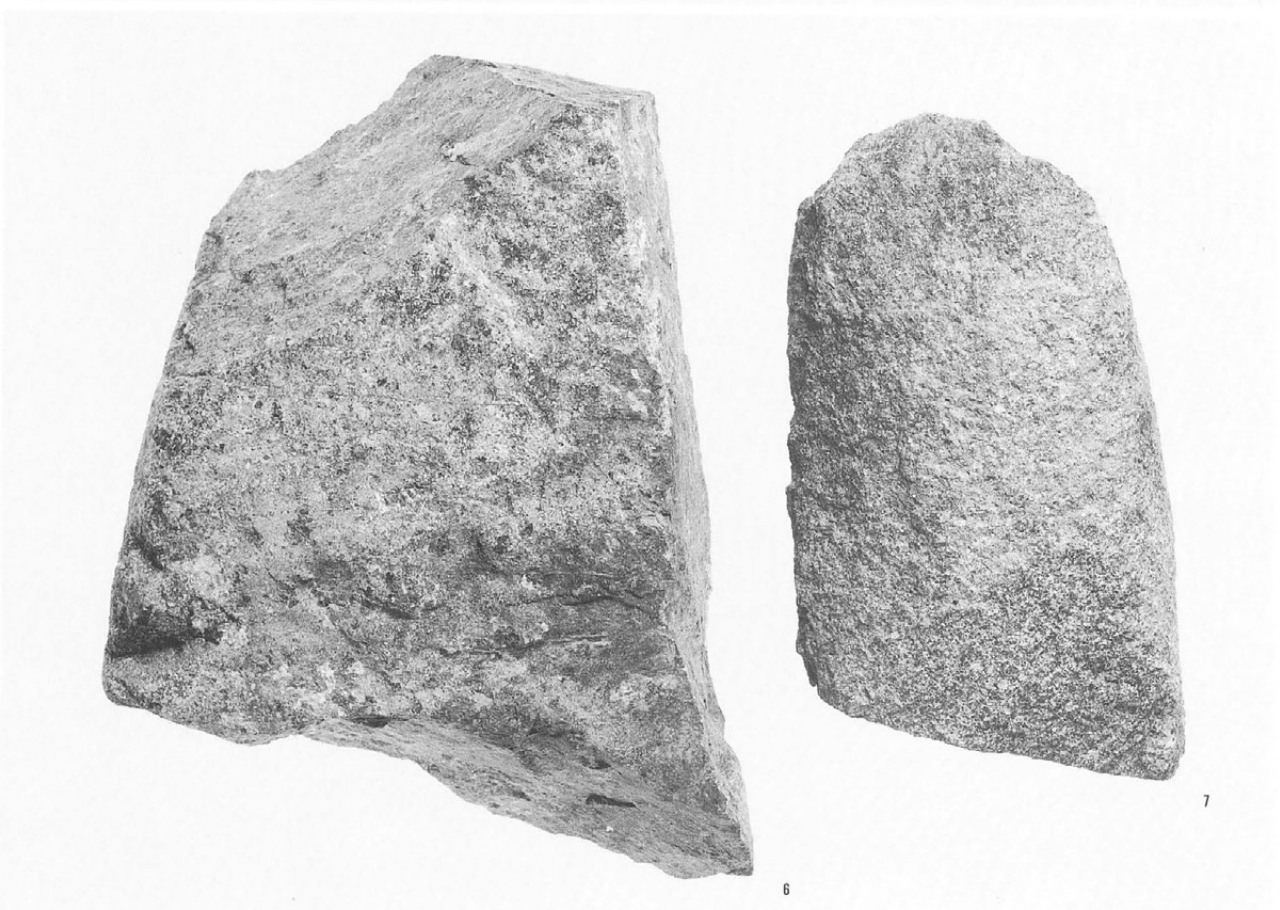
- 1. 未製品C<sub>3</sub>段階  
(大型蛤刃)
- 2. 未製品C<sub>3</sub>段階  
(大型蛤刃)
- 3. 剝片B類B段階
- 4. 剝片B類B段階  
(2:3)



磨製石斧

S B1681

- 6. 素材剝片(礫)
- 7. 未製品D段階  
(大型蛤刃)  
(2:3)



磨製石斧

S B1473

5. 原石

(3 : 5)



磨製石斧

S B1474

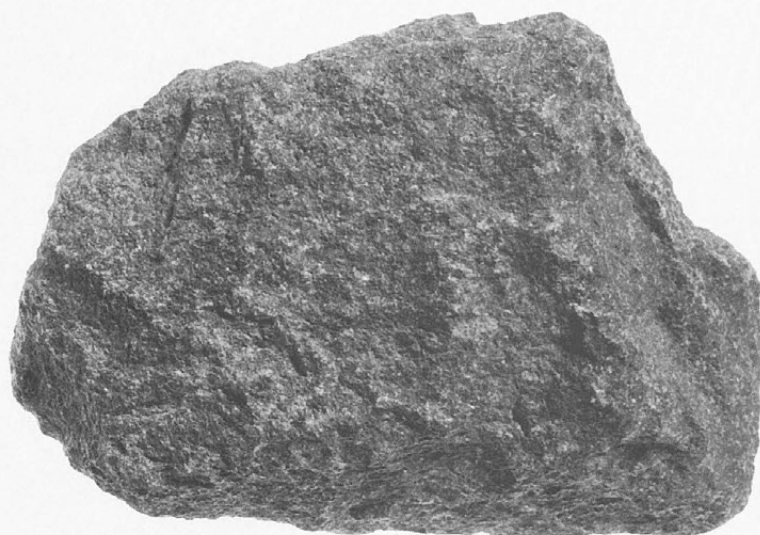
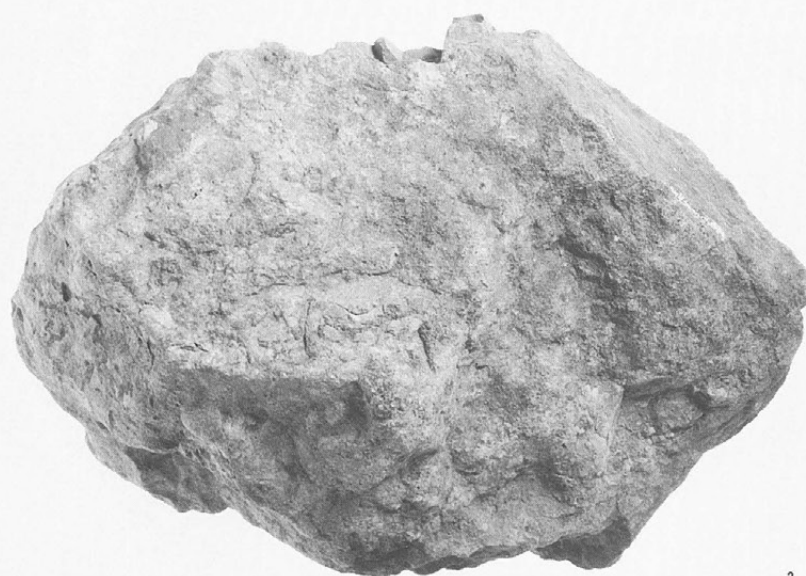
1. 素材剥片(礫)

2. 素材剥片(礫)

3. 未製品C<sub>3</sub>段階

(大型蛤刃)

(1:2)



磨製石斧

S B1474

4. 未製品C<sub>3</sub>段階

(太型蛤刃)

5. 未製品C<sub>3</sub>段階

(太型蛤刃)

6. 石槌

7. 剝片B類A段階

8. 未製品E<sub>2</sub>段階

(柱狀片刃)

9. 扁平片刃石斧

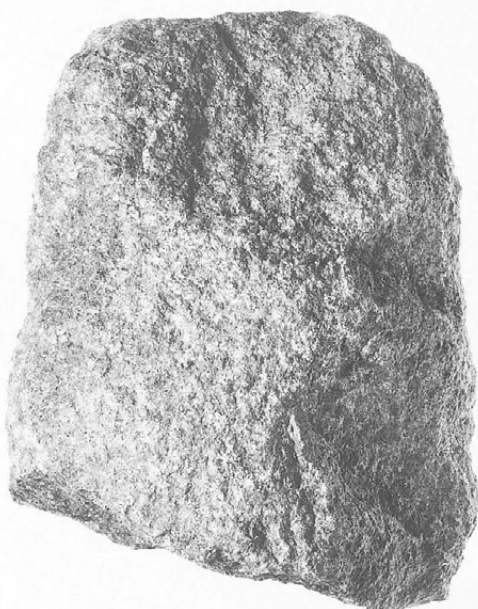
(2:3)



4



6



5



8



7

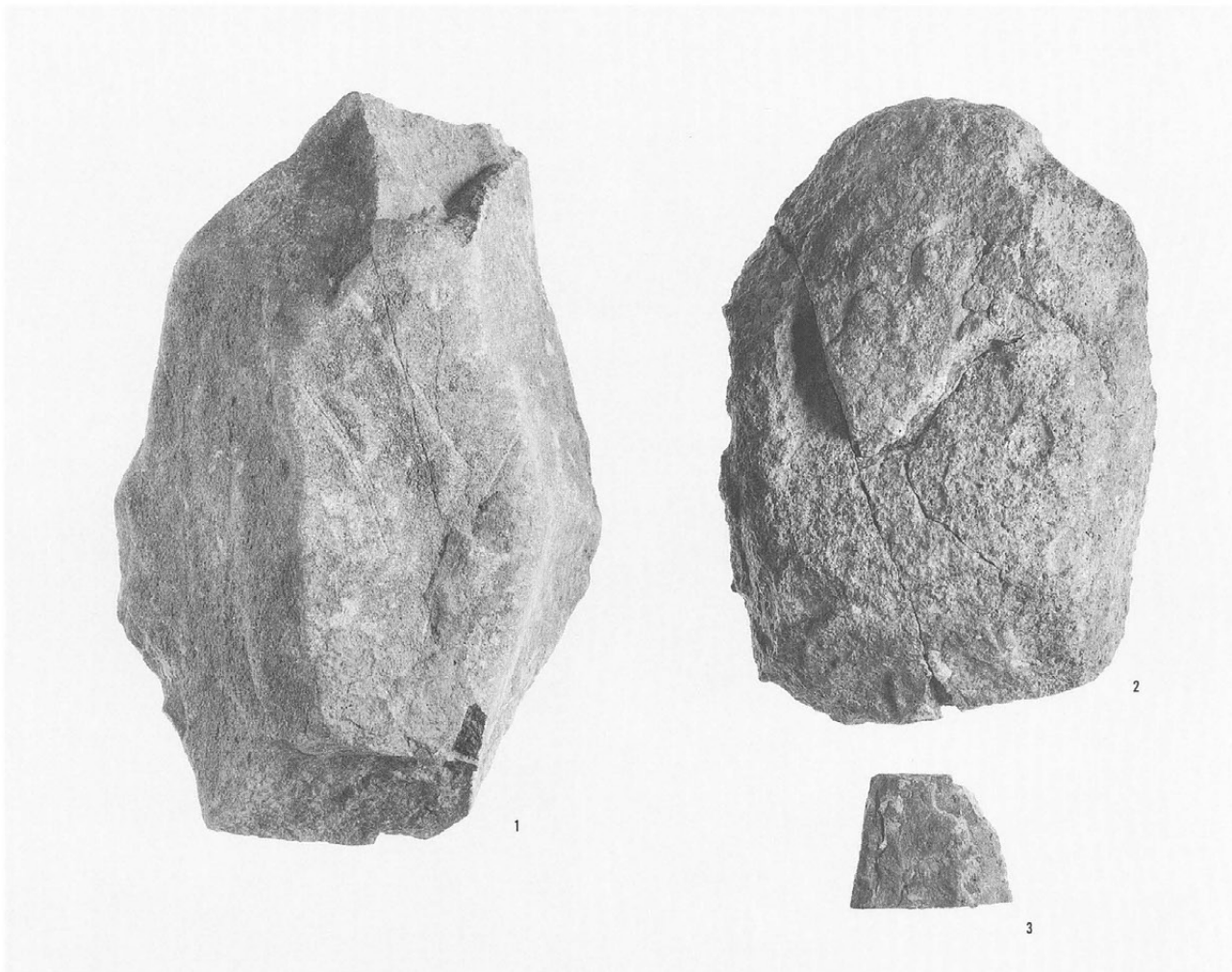


9

磨製石斧

S B1478

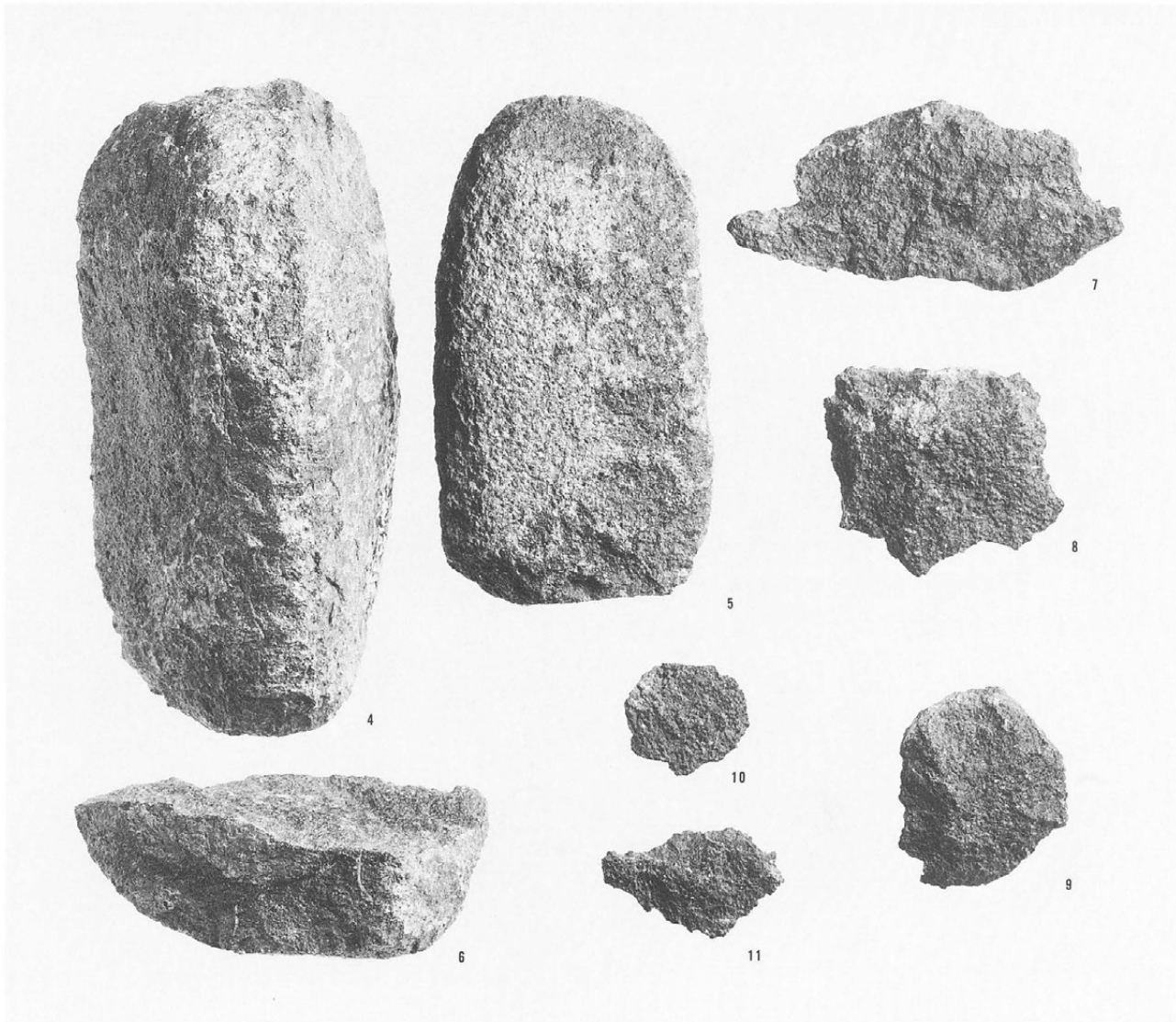
- 1. 原石
- 2. 未製品B段階  
(扁平片刃)
- 3. 未製品B段階  
(扁平片刃)  
(2 : 3)



磨製石斧

S B1483

- 4. 未製品C<sub>3</sub>段階  
(大型蛤刃)
- 5. 未製品D段階  
(大型蛤刃)
- 6. 未製品D段階  
(扁平片刃)
- 7. 剝片B類C<sub>1</sub>段階
- 8. 剝片B類C<sub>1</sub>段階
- 9. 剝片B類B段階
- 10. 碎片B段階
- 11. 碎片B段階  
(2 : 3)

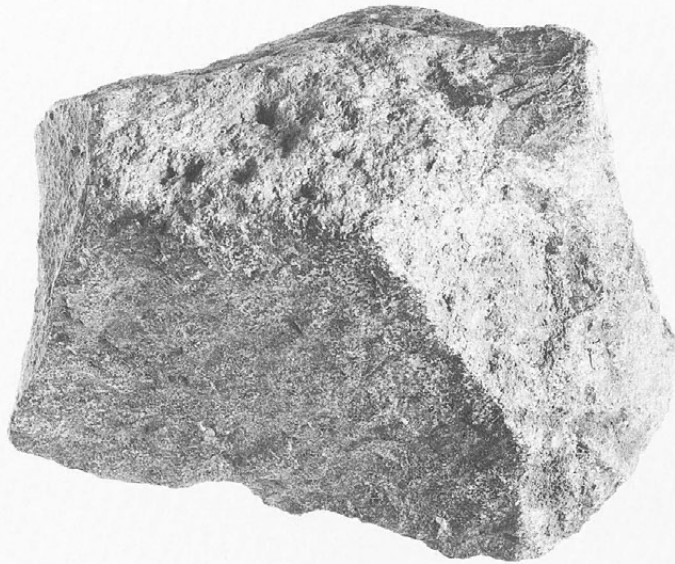


磨製石斧

S B1482

1. 素材剥片 (礫)
2. 剥片1種A段階
3. 剥片B類B段階
4. 剥片B類C<sub>i</sub>段階
5. 剥片B類B段階
6. 剥片2種C<sub>i</sub>段階
7. 剥片B類C<sub>i</sub>段階
8. 剥片1種C<sub>i</sub>段階
9. 碎片C<sub>i</sub>段階
10. 碎片C<sub>i</sub>段階

(2 : 3)



1



2



3



4



5



6



7



8



9



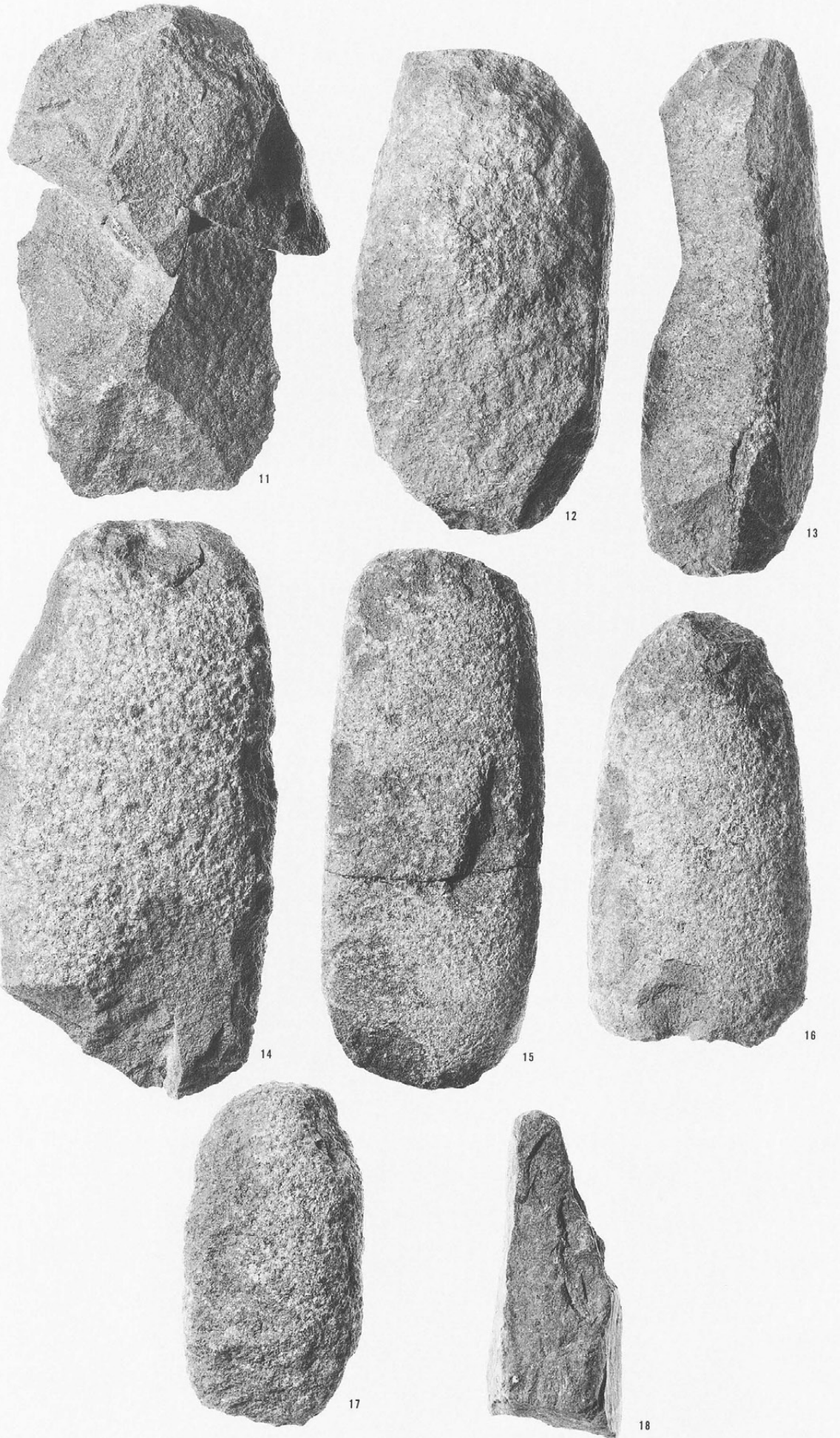
10



磨製石斧

S B1482

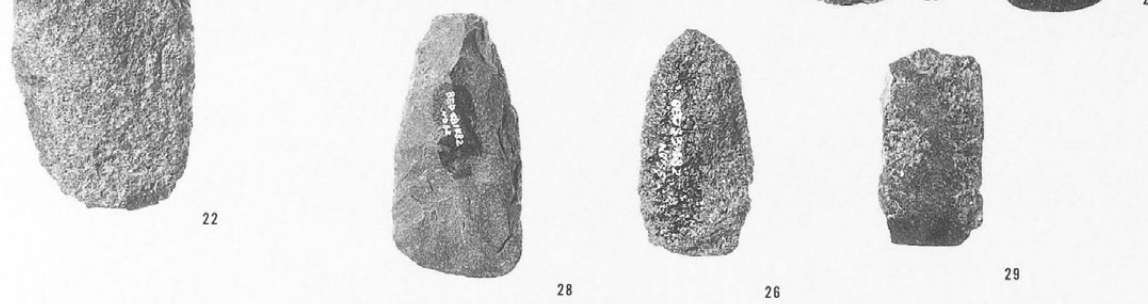
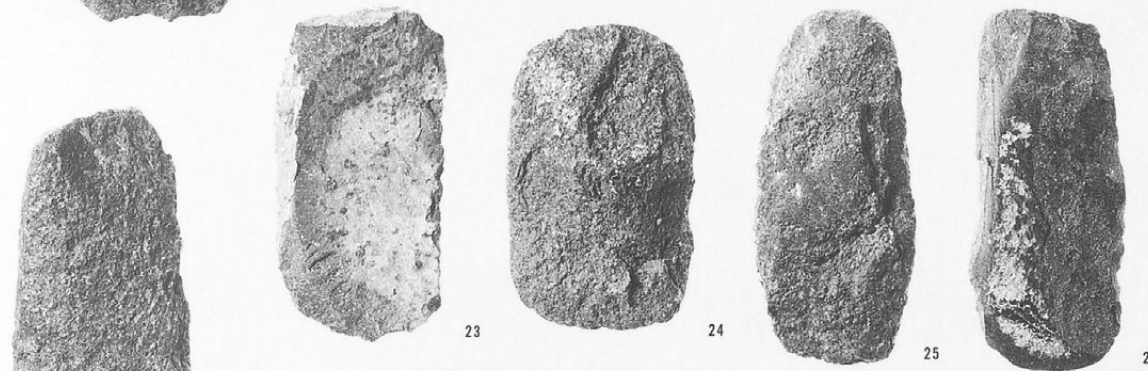
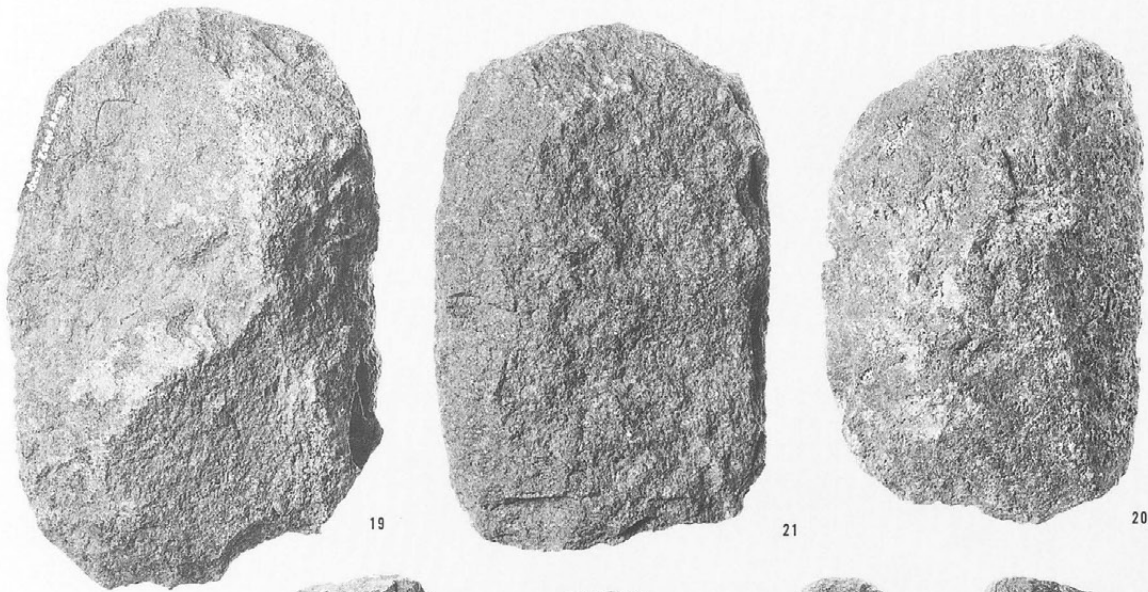
- 11. 未製品B段階  
(太型蛤刃)
- 12. 未製品C<sub>3</sub>段階  
(太型蛤刃)
- 13. 未製品C<sub>1</sub>段階  
(太型蛤刃)
- 14. 未製品C<sub>2</sub>段階  
(太型蛤刃)
- 15. 未製品D段階  
(太型蛤刃)
- 16. 未製品D段階  
(太型蛤刃)
- 17. 未製品C<sub>3</sub>段階  
(太型蛤刃)
- 18. 石槌  
(1 : 2)



磨製石斧

S B1482

- 19. 未製品B段階  
(扁平片刃)
- 20. 未製品B段階  
(扁平片刃)
- 21. 未製品B段階  
(扁平片刃)
- 22. 未製品B段階  
(扁平片刃)
- 23. 原石
- 24. 未製品B段階  
(扁平片刃)
- 25. 未製品E<sub>1</sub>段階  
(扁平片刃)
- 26. 未製品B段階  
(扁平片刃)
- 27. 未製品E<sub>3</sub>段階  
(扁平片刃)
- 28. 未製品E<sub>3</sub>段階  
(扁平片刃)
- 29. 未製品E<sub>3</sub>段階  
(扁平片刃)  
(2 : 3)



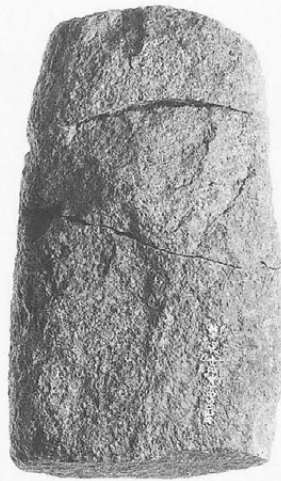
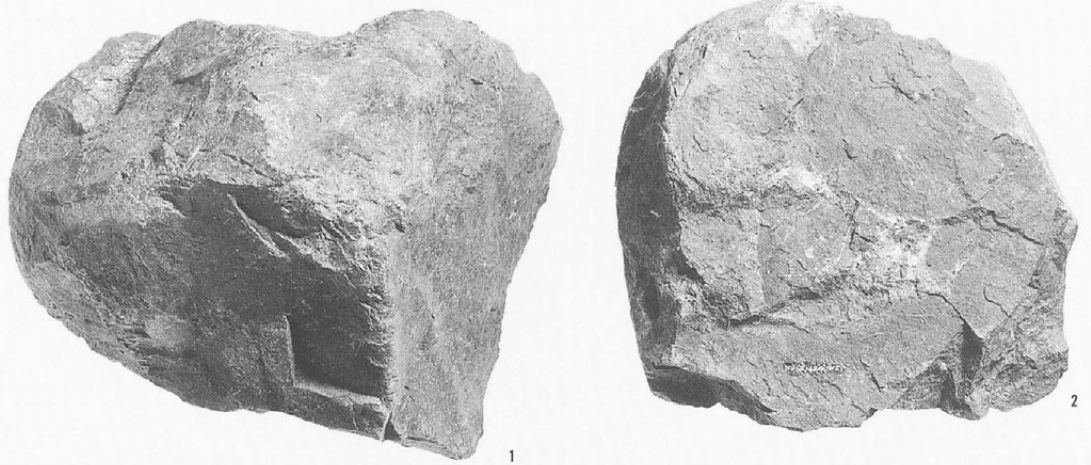
- 30. 未製品  
(磨製石戈・有孔石劍)  
(2 : 3)



磨製石斧

S B1484

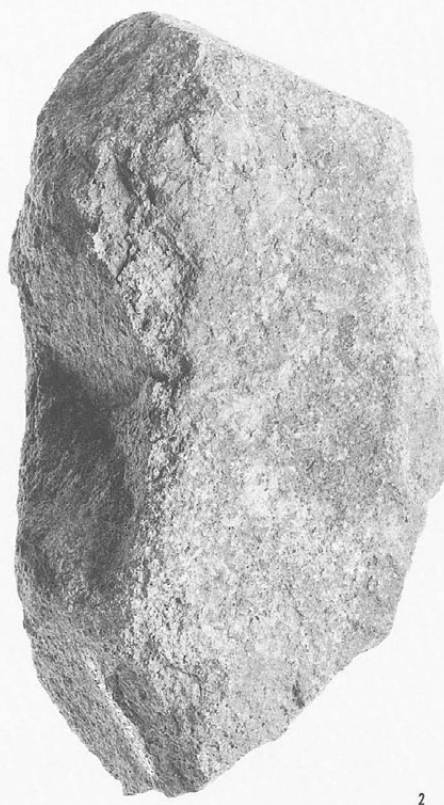
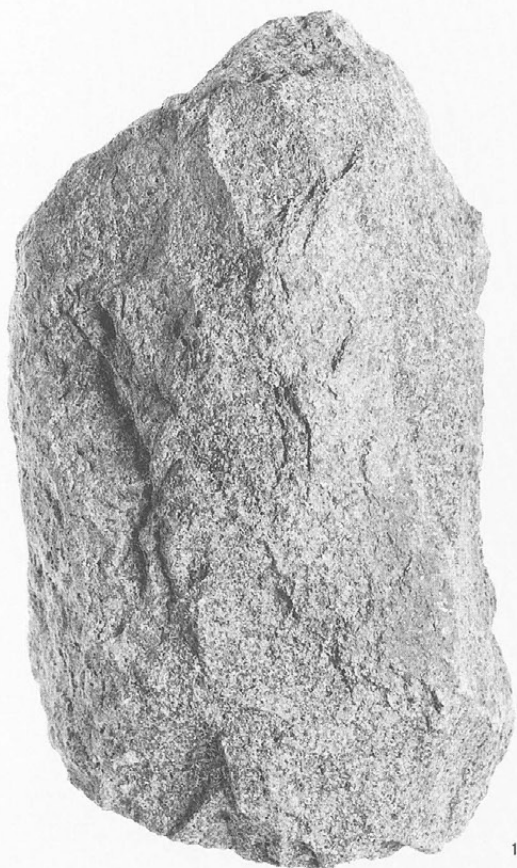
- 1. 素材剥片 (礫)
- 2. 素材剥片 (礫)
- 3. 未製品B段階  
(太型蛤刃)
- 4. 未製品C<sub>2</sub>段階  
(太型蛤刃)  
(1 : 3)
- 5. 剥片B類B段階
- 6. 未製品E<sub>1</sub>段階  
(扁平片刃)
- 7. 剥片1種B段階
- 8. 碎片B段階
- 9. 碎片E<sub>1</sub>段階
- 10. 未製品D段階  
(太型蛤刃)
- 11. 未製品D段階  
(太型蛤刃)
- 12. 未製品D段階  
(太型蛤刃)
- 13. 扁平片刃石斧  
(1 : 2)



磨製石斧

S K14770

1. 未製品B段階  
(太型蛤刃)
2. 未製品C<sub>1</sub>段階  
(太型蛤刃)  
(2 : 3)



磨製石斧

S K14726

3. 未製品C<sub>3</sub>段階  
(太型蛤刃)  
(2 : 3)

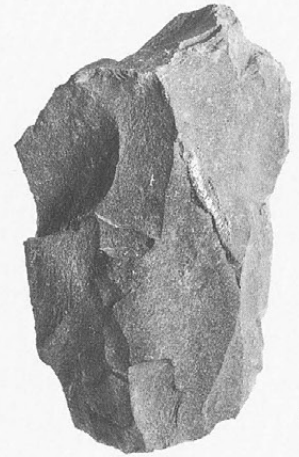
磨製石斧

SD318

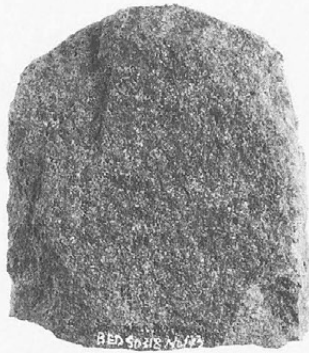
- 1. 剥片2種A段階
- 2. 石核?
- 3. 剥片B類C,段階
- 4. 剥片B類C,段階
- 5. 未製品D段階  
(扁平片刃)
- 6. 未製品E,段階  
(扁平片刃)  
(2:3)



1



2



5



6



4



3

磨製石斧

SK3277

- 7. 未製品B段階  
(扁平片刃)
- 8. 未製品E,段階  
(太型蛤刃)
- 9. 扁平片刃石斧  
(2:3)



7



8



9

磨製石斧

S B313

1. 太型蛤刃石斧

S K9244

2. 石槌

S B1185

3. 太型蛤刃石斧

(1 : 1)



1



2



3

磨製石斧

SG 1

1. 扁平片刃石斧

SG 3

2. 未製品D段階

(太型蛤刃)

3. 未製品D段階

(扁平片刃)

4. 未製品B段階

(扁平片刃)

SG 4

5. 太型蛤刃石斧

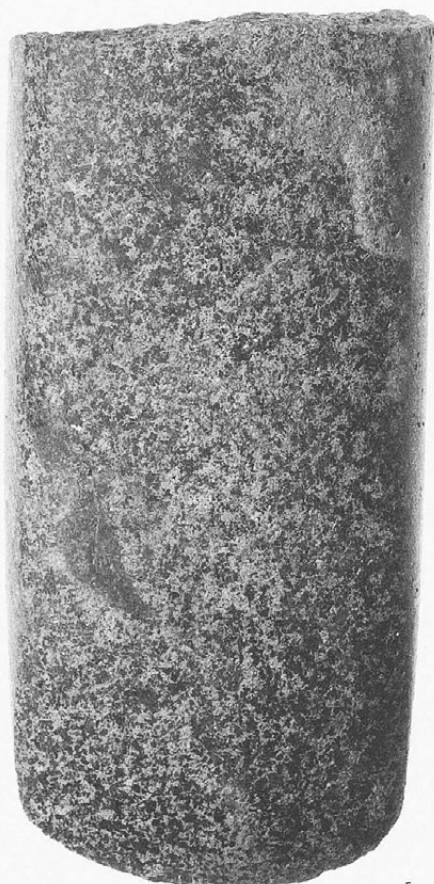
(1 : 1)



2



3



5



4



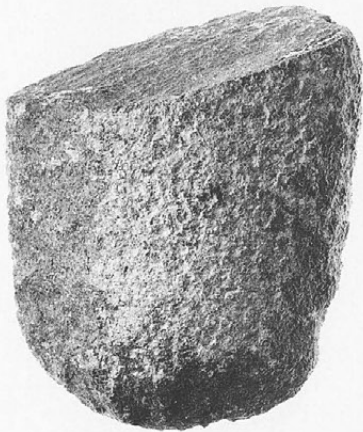
1



1



5



2



6



3



4



9



8



7

磨製石斧

IVS 4

- 1. 未製品C<sub>3</sub>段階  
(太型蛤刃)
- 2. 未製品D段階  
(太型蛤刃)

VII B12

- 3. 太型蛤刃石斧

Z

- 4. 両刃石斧  
SB442-7と接合  
PL160

- 5. 石槌

IVR15

- 6. 石槌

IVS 3

- 7. 未製品E<sub>3</sub>段階  
(扁平片刃)

Z

- 8. 扁平片刃石斧

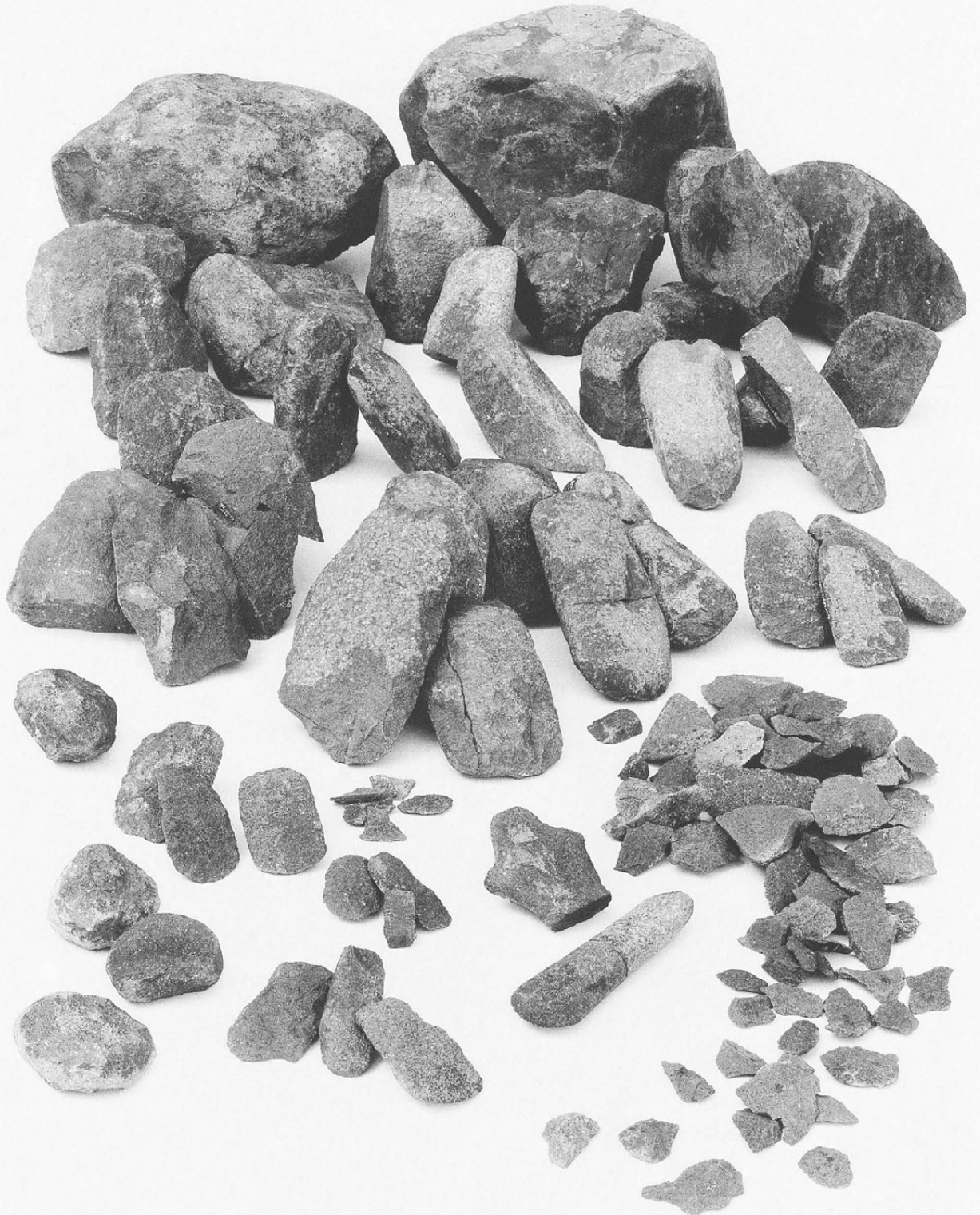
IVN19

- 9. 未製品E<sub>3</sub>段階  
(柱状片刃石斧)

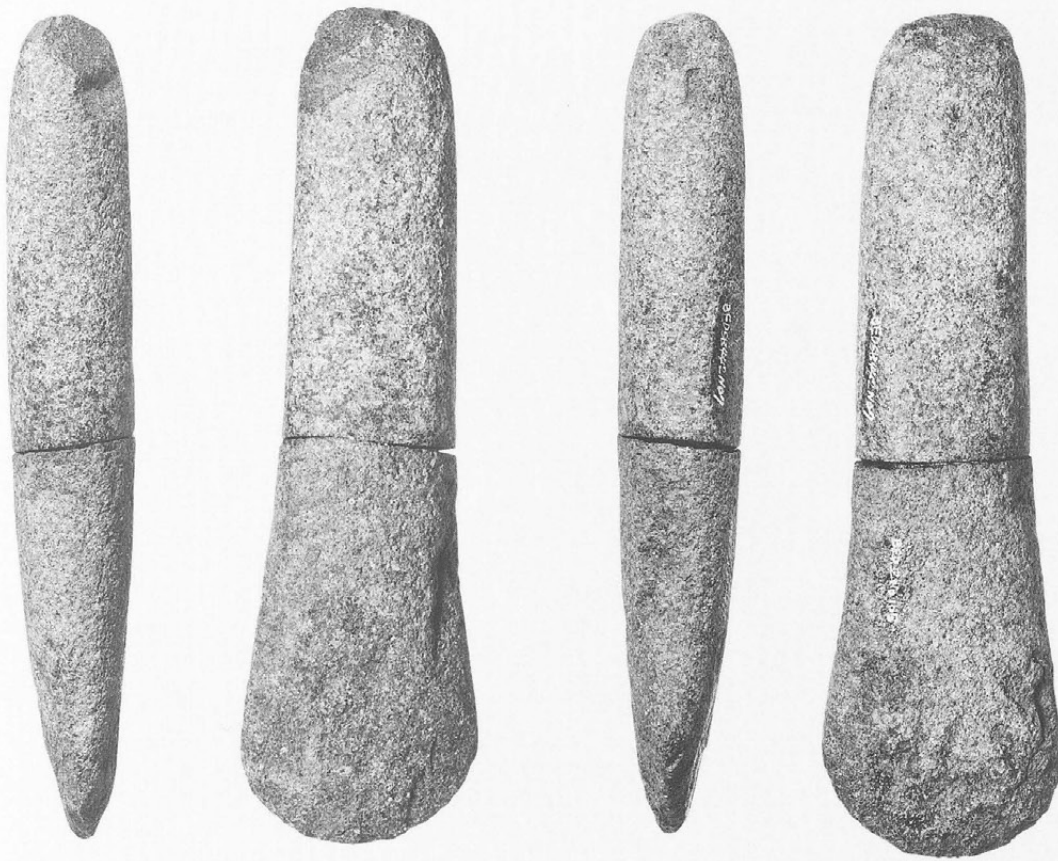
(1 : 2)



磨製石器  
製作関連資料  
集合写真



両刃石斧  
S B442-7と  
Z-105接合  
(1:3)



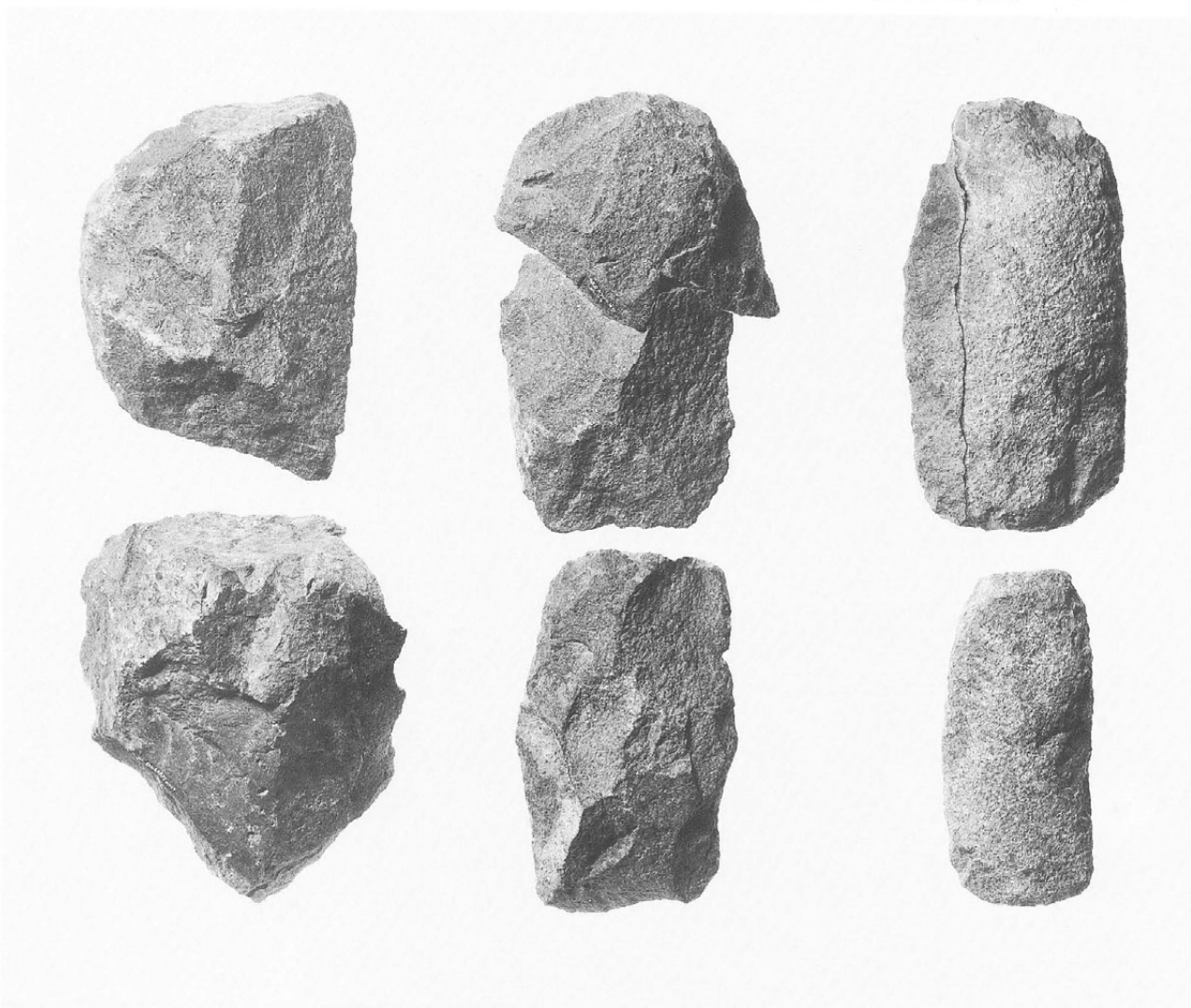
磨製石鏃  
製作関連資料  
集合写真  
(1:1)



太型蛤刃石斧

製作関連資料  
集合写真

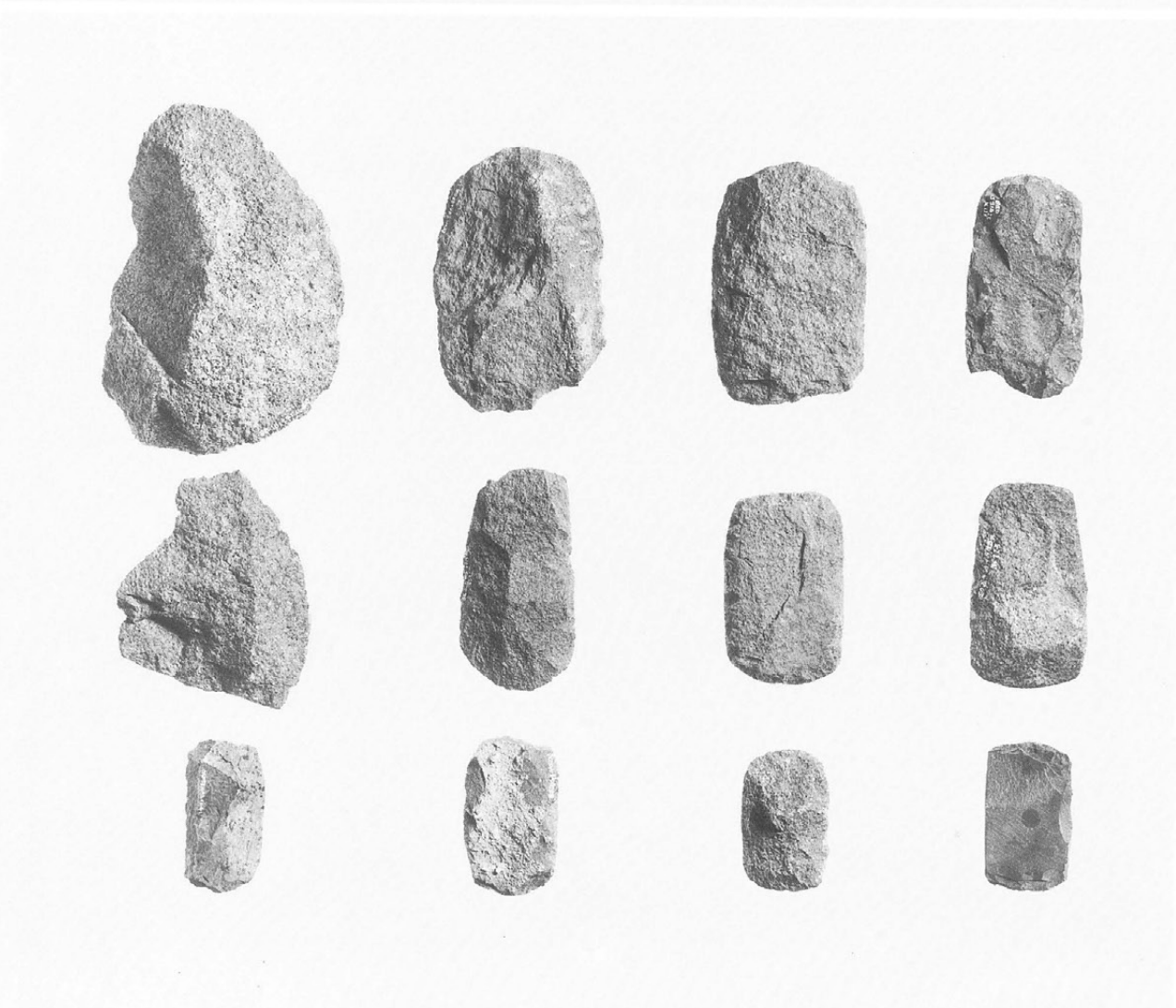
(1:3)



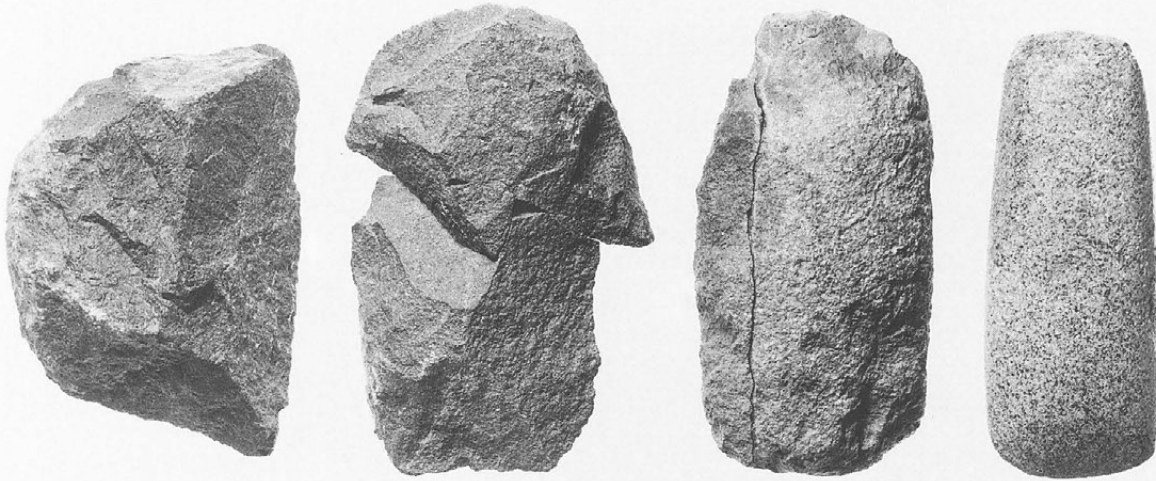
扁平片刃石斧

製作関連資料  
集合写真

(1:3)



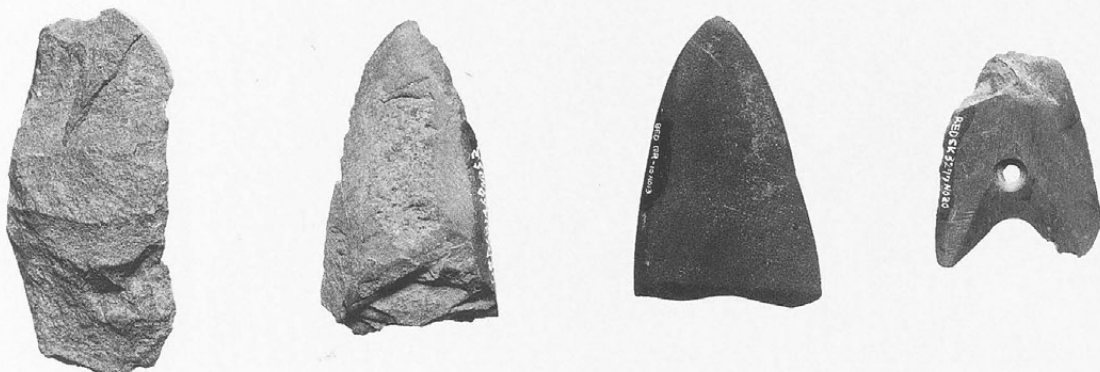
太型蛤刃石斧の  
製作工程  
(右端製品は松原  
遺跡出土例)  
(1:3)



扁平片刃石斧の  
製作工程  
(右端製品は松原  
遺跡出土例)  
(1:3)



磨製石鏃の製作工程  
(1:1)



使用痕写真

太型蛤刃石斧

1. SG 4

図版299-5

PL157-5

(1a, 刃部摩耗線状痕)

2. 接合資料

第76図

PL160の上

SB442 (上)

図版276-4

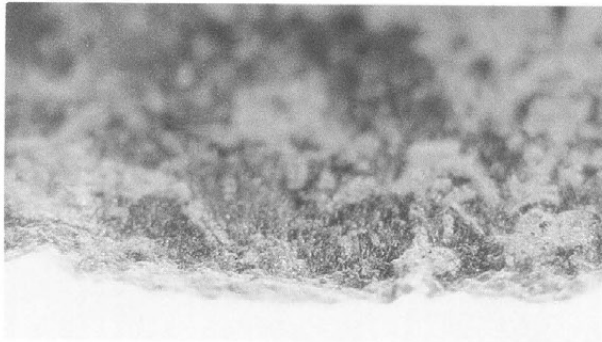
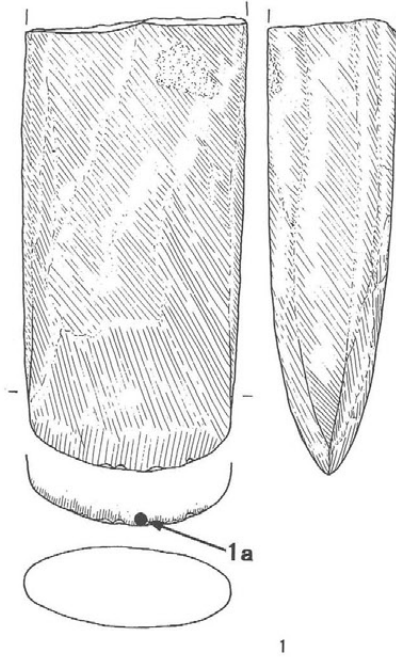
PL141-4

Z (下)

図版300-4

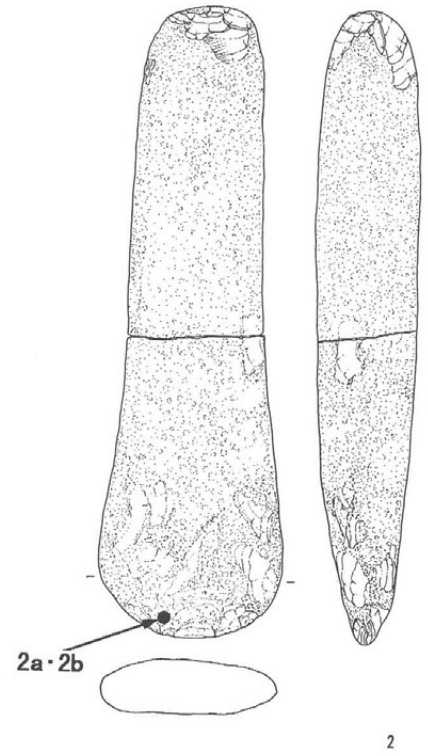
PL158-4

(2a·b, 刃部摩耗痕)



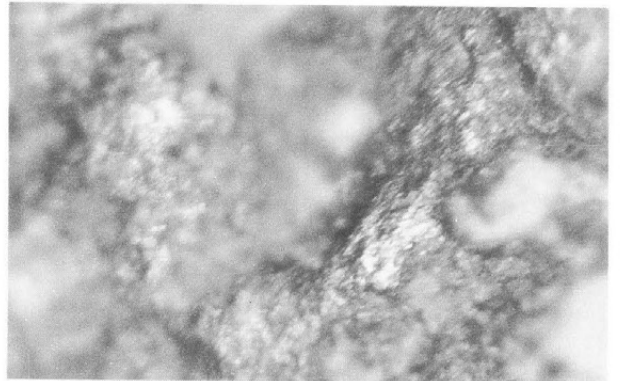
1 a

×7.5



2 a

×10



2 b

×25

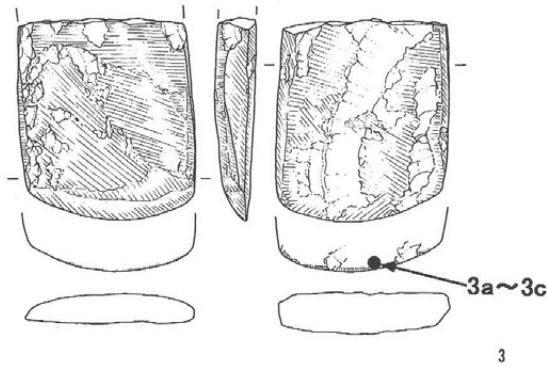
扁平片刃石斧

3. SG 1

図版299-1

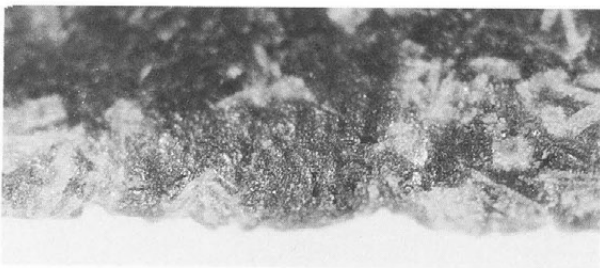
PL157-1

(3a~c, 刃部摩耗線状痕)



3 a

×3.3



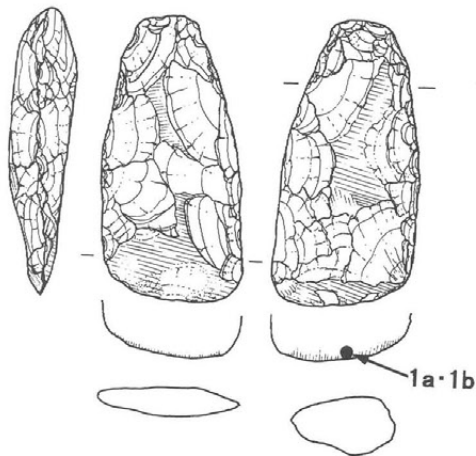
3 b

×7.5

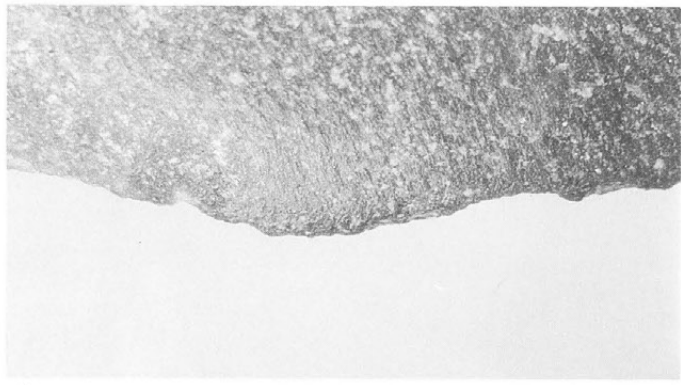


3 c

×15

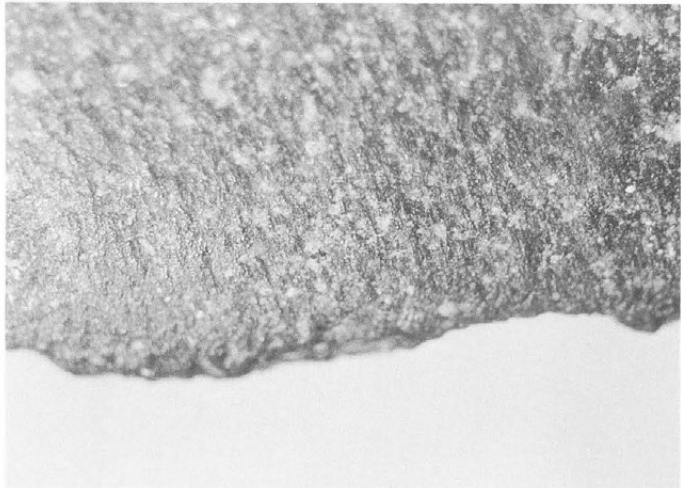


1



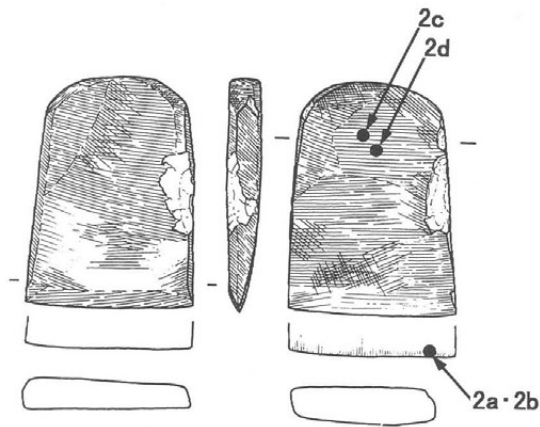
1 a

×3.3

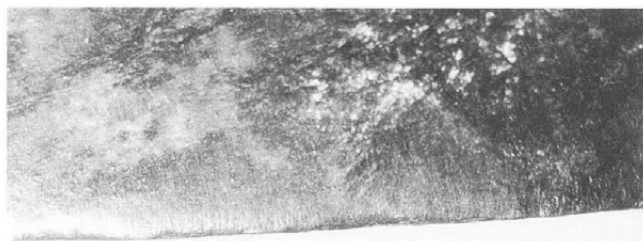


1 b

×7.5



2



2 a

×3.3



2 b

×7.5



2 c

×25



2 d

×25

使用痕写真

扁平片刃石斧  
未製品

1. S B1482

図版291-28

P L152-28

(1a·b, 刃部  
摩耗線状痕)

扁平片刃石斧

2. S B1474

図版287-9

P L148-9

(2a·b, 刃部  
摩耗線状痕)

(2c, 基部研磨痕)

(2d, 基部摩耗痕)

使用痕写真

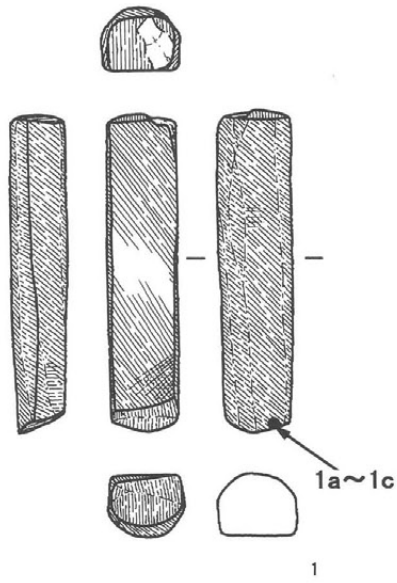
柱状片刃石斧

1. SB1469

図版282-24

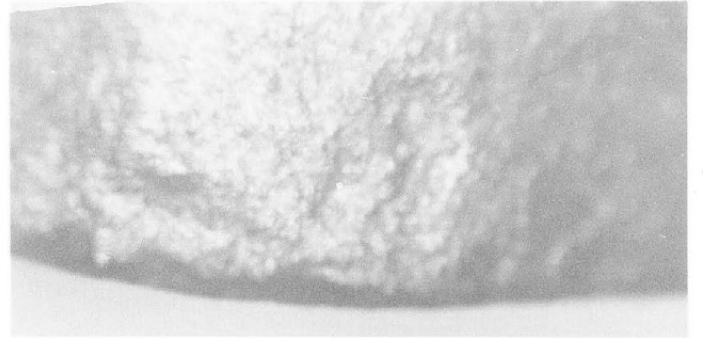
PL144-24

(1a~c, 刃部摩耗線状痕)



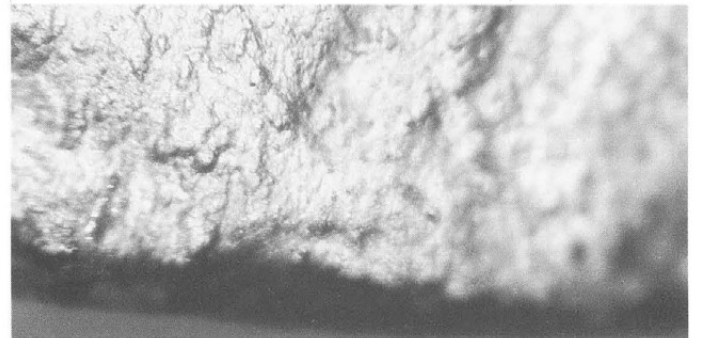
1 a

×3.3



1 b

×12.5



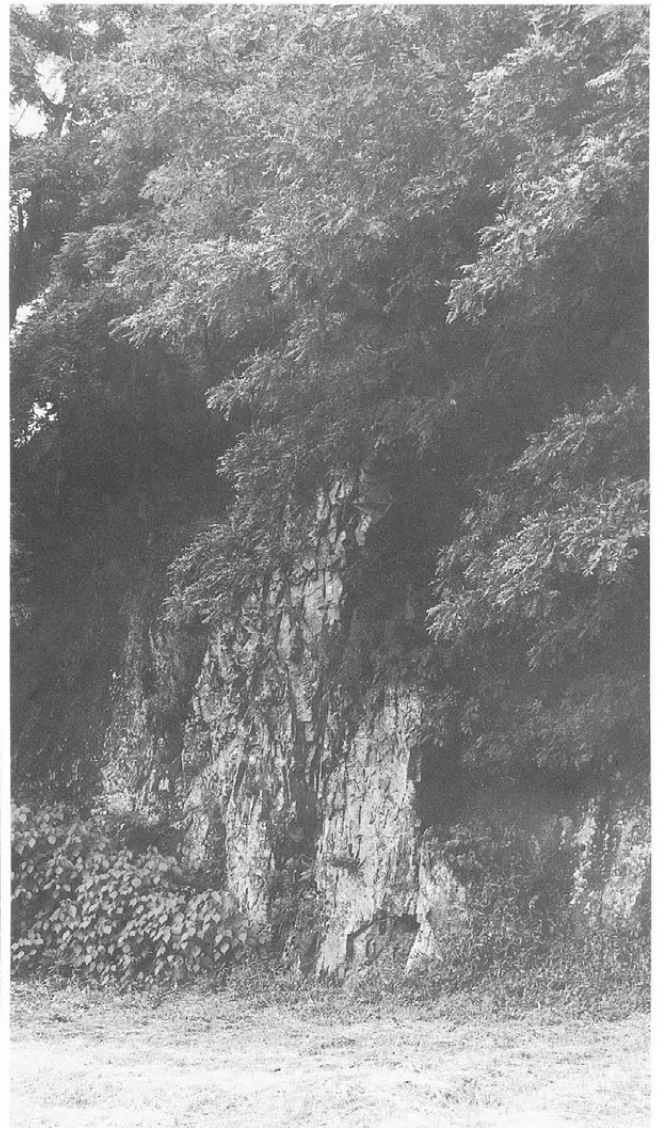
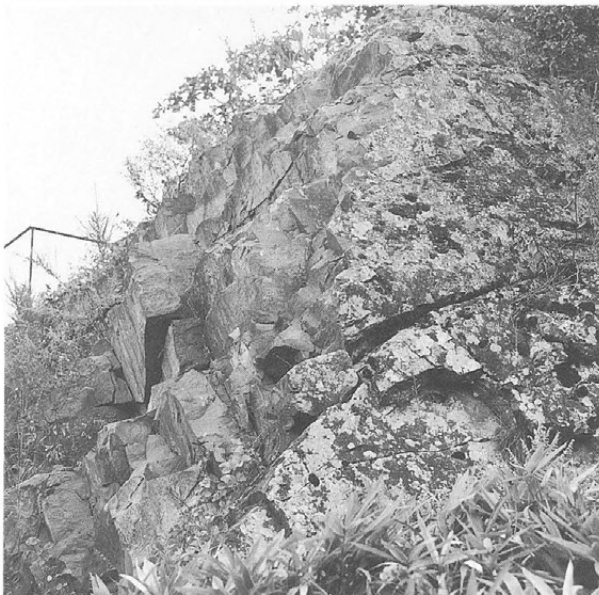
1 c

×25

露頭写真

保科玄武岩類

(遺跡より北へ1 km)



くぼみ石・石鉢・石臼

- 1. SG 3
- 2. SB663
- 3. SB680
- 4. IVR25
- 5. SG 1
- 6. SB314
- 7. SG 4
- 8. SB688
- 9. SB688
- 10. SD 1
- 11. SK439
- 12. ST 2
- 13. SD 1
- 14. SD 1
- 15. SD 1

(1 : 6)



1



2



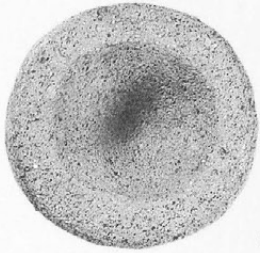
3



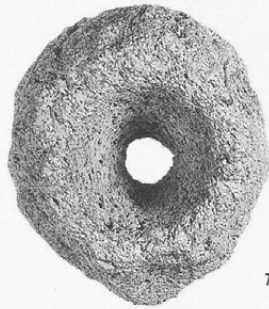
4



5



6



7



8



9



10



11



12



13



14

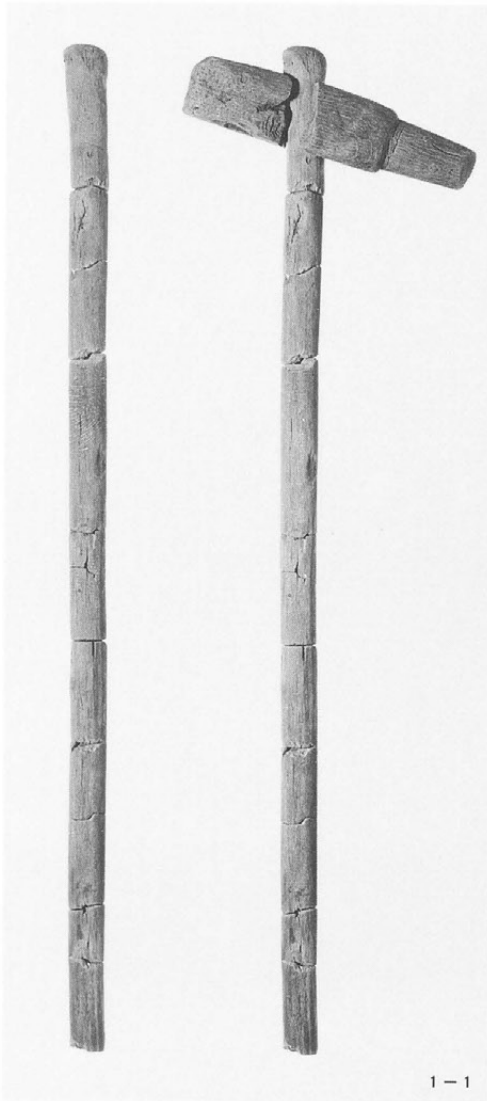


15



1・2・5 斧柄

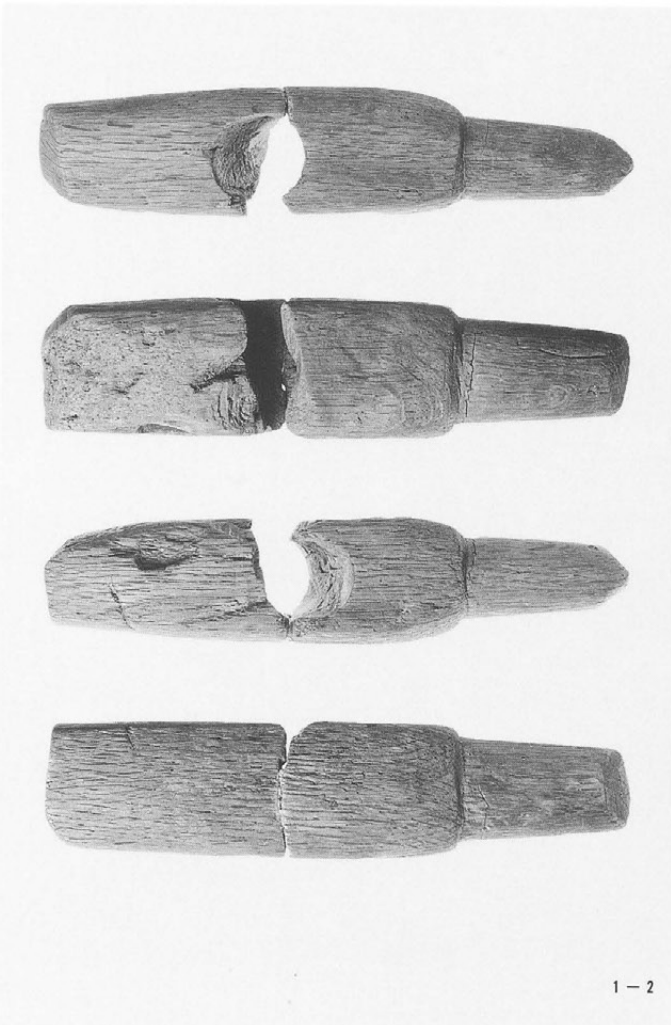
1-2・2-2 斧台



1-1



2-1



1-2



2-2



5



4



3



6



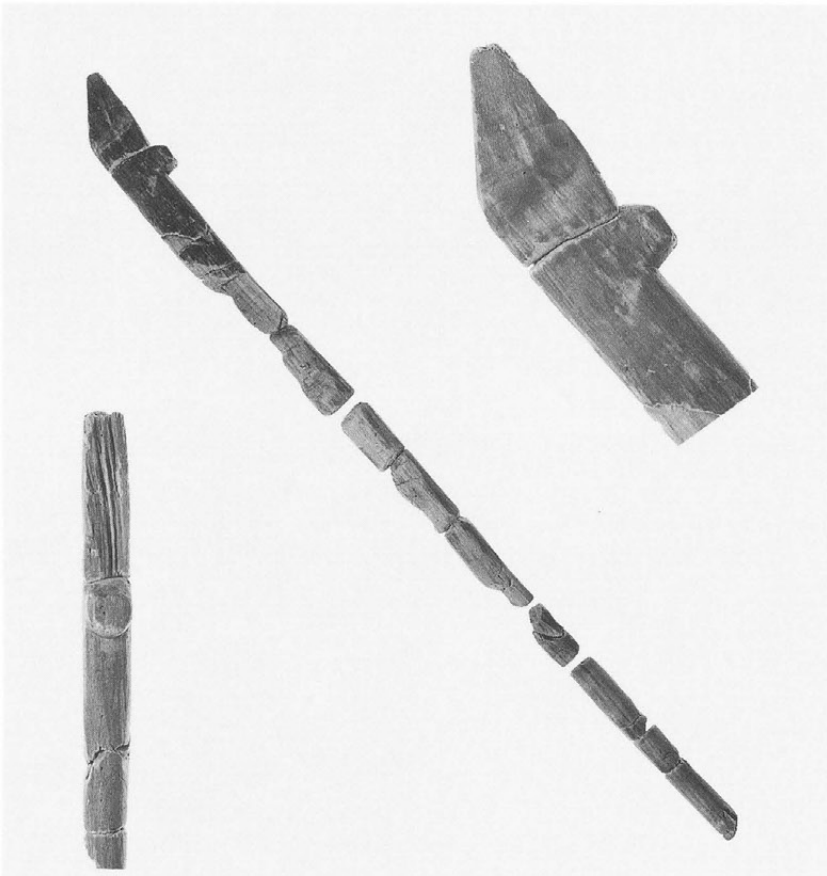
8



9



10

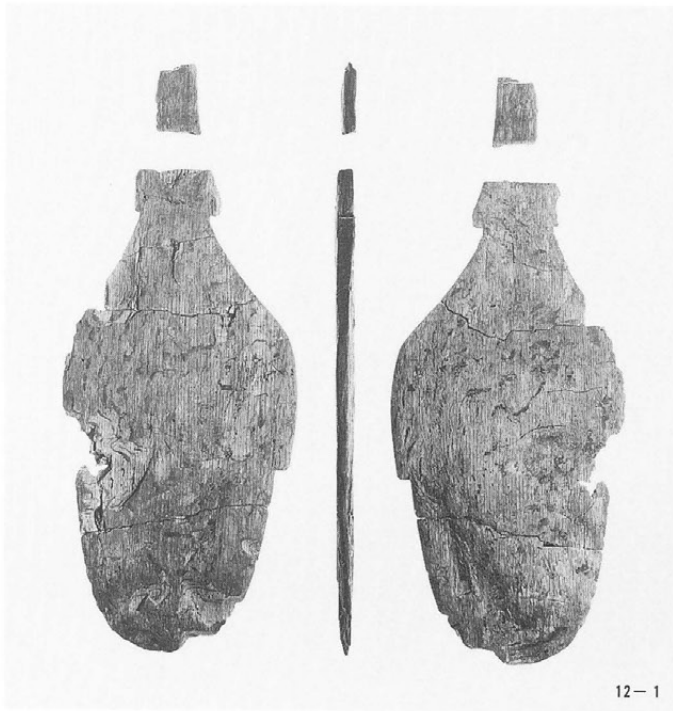


11

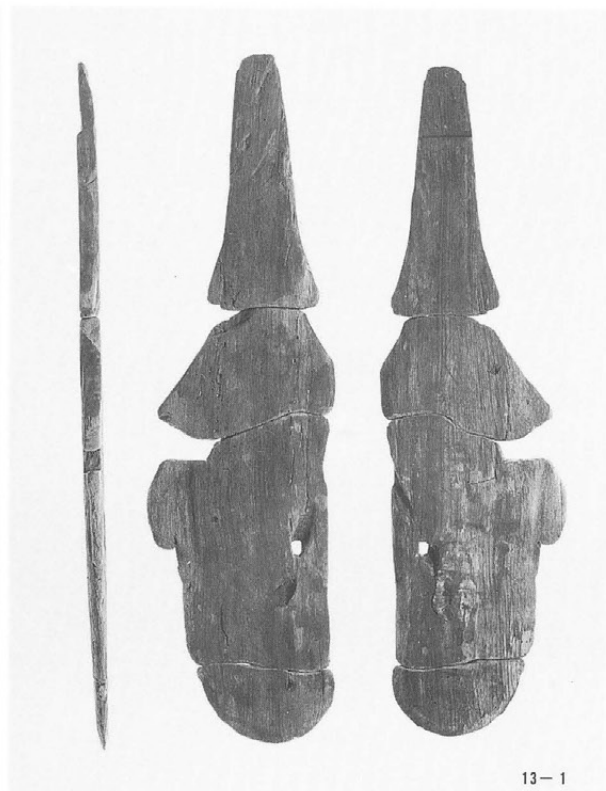
3・4・6・8 斧柄

9・10・11 鉤曲柄

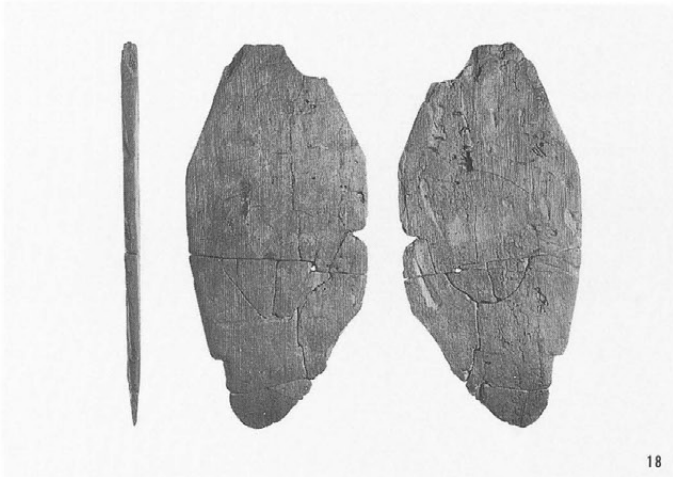
12・13・14・曲柄平鋏  
16・18・19



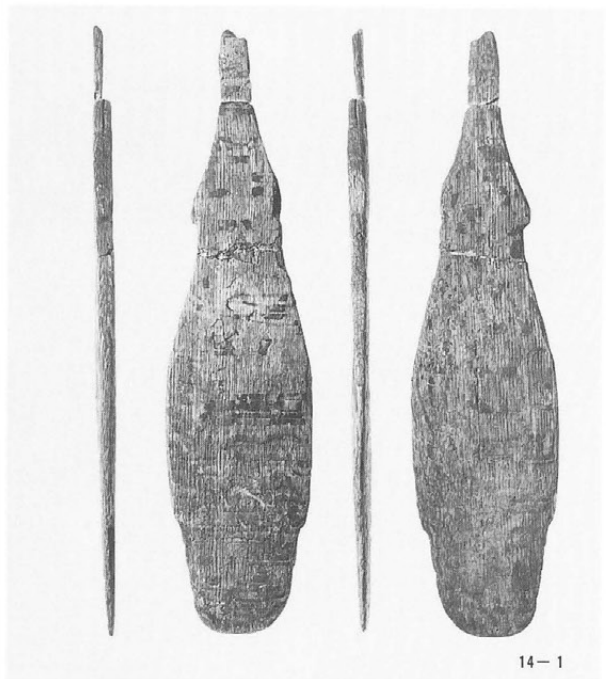
12-1



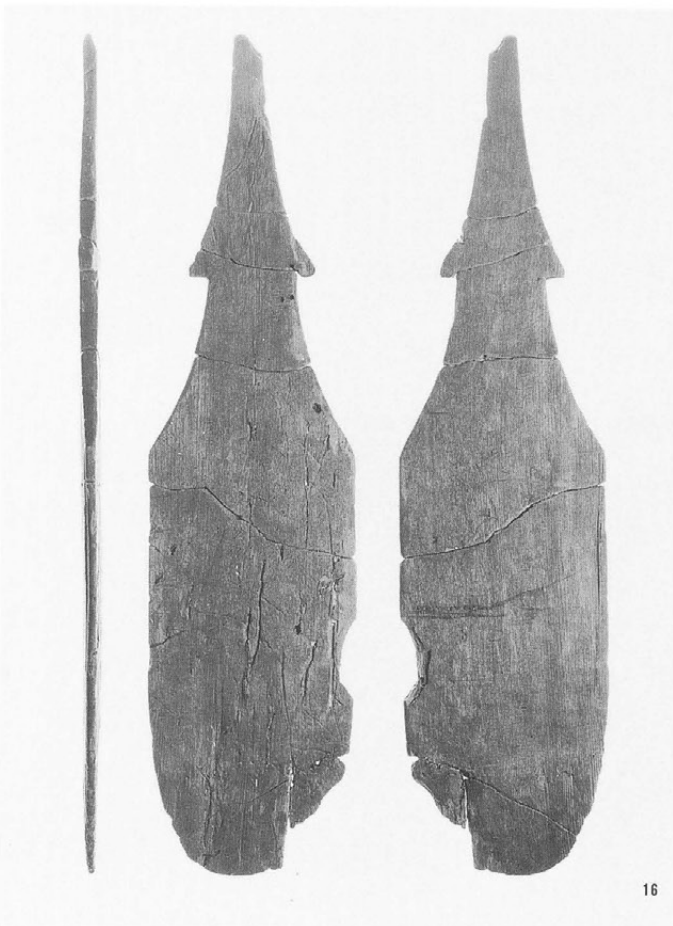
13-1



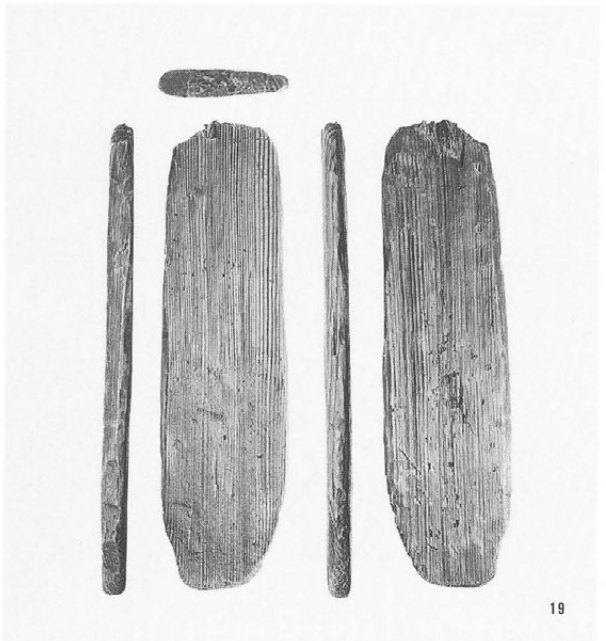
18



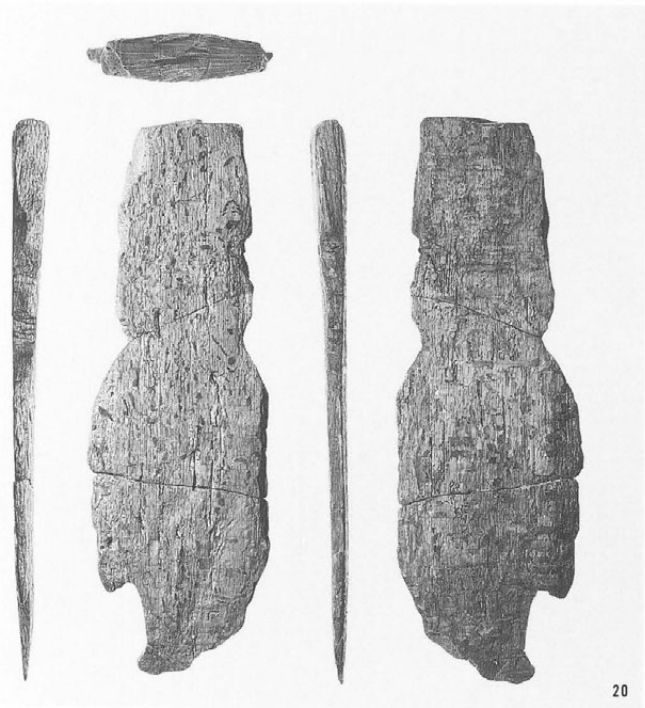
14-1



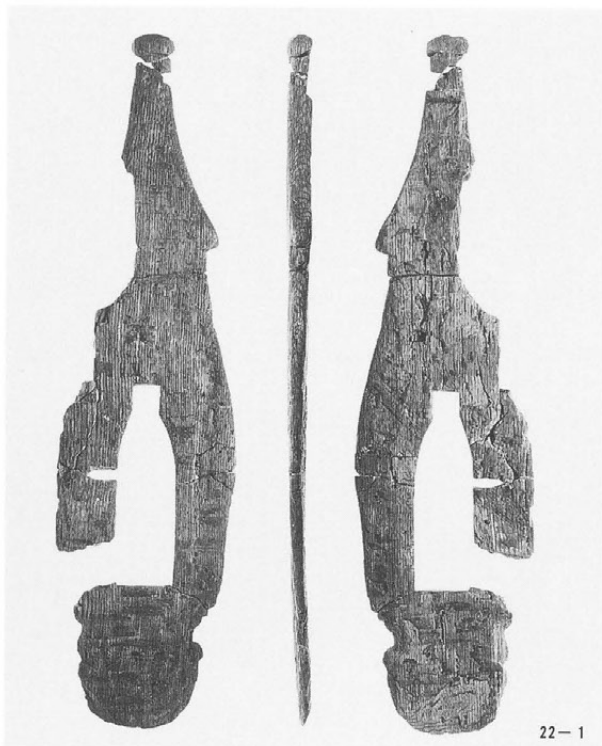
16



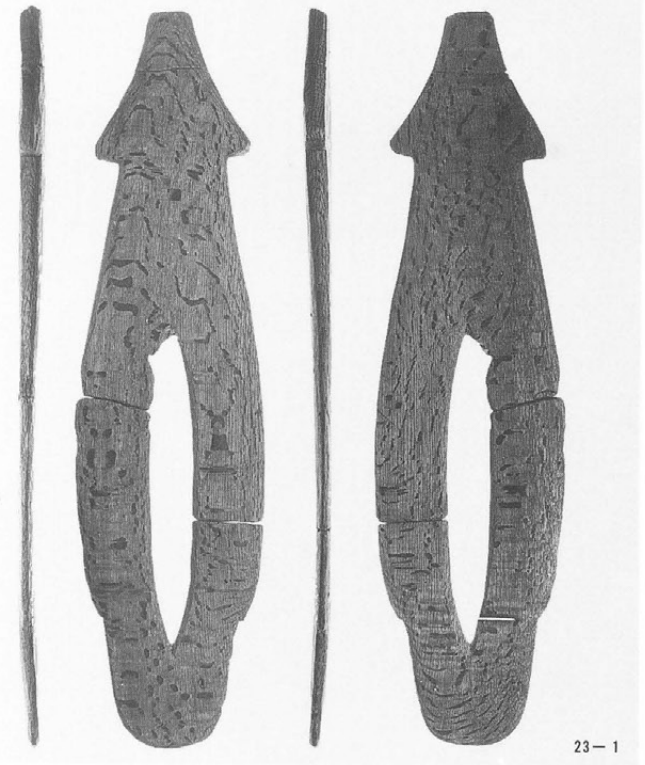
19



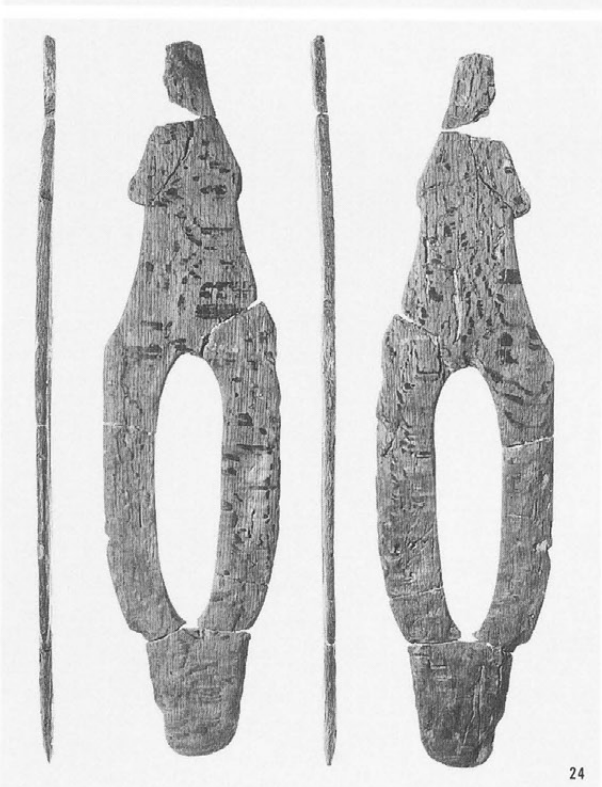
20



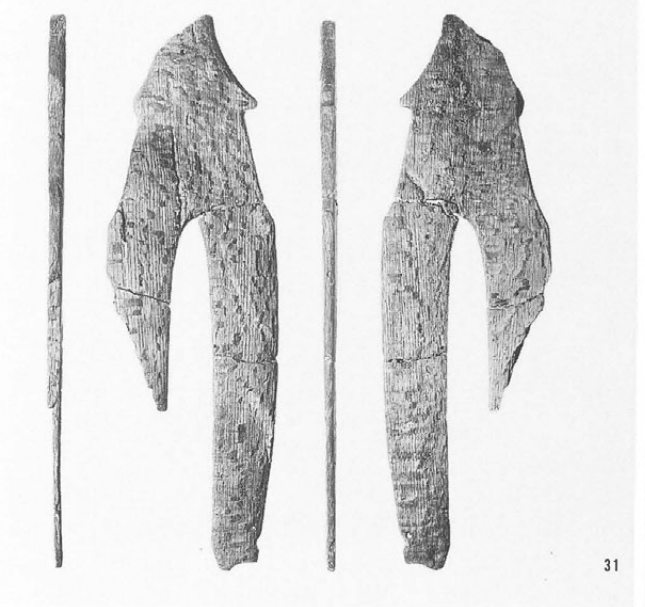
22-1



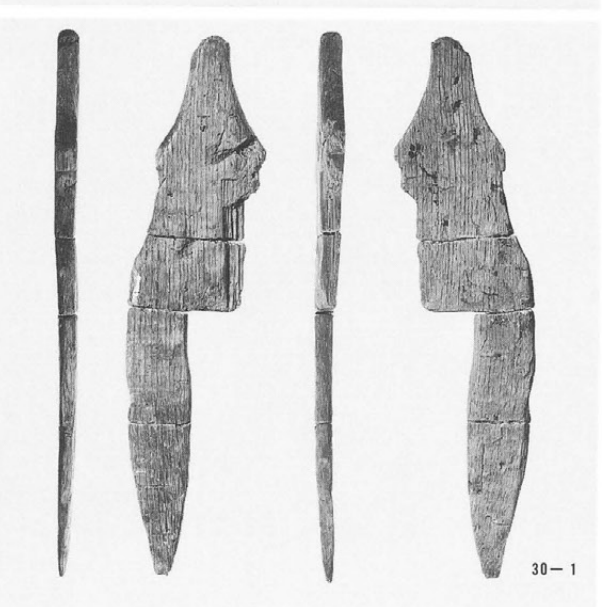
23-1



24



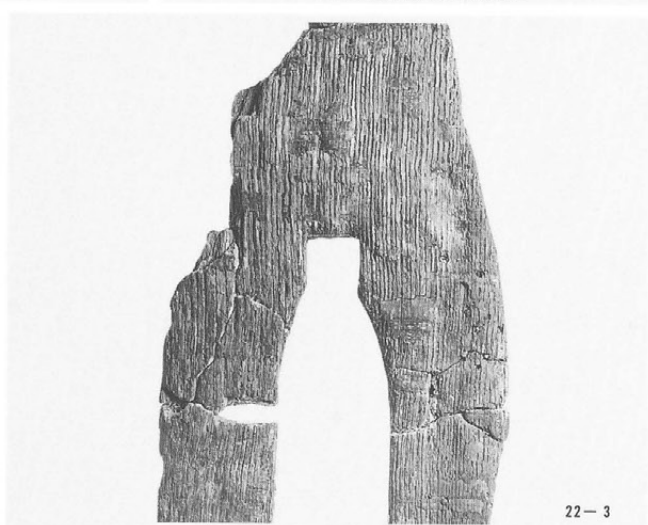
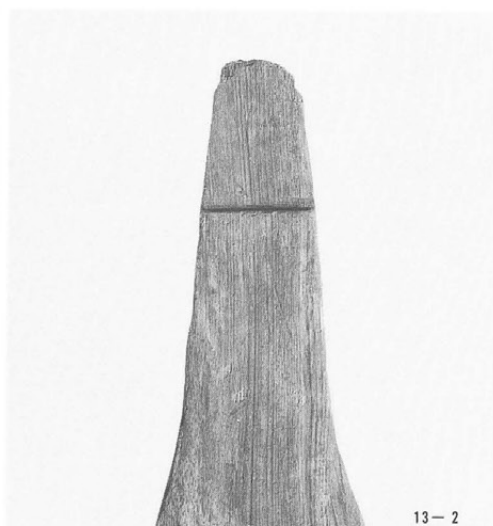
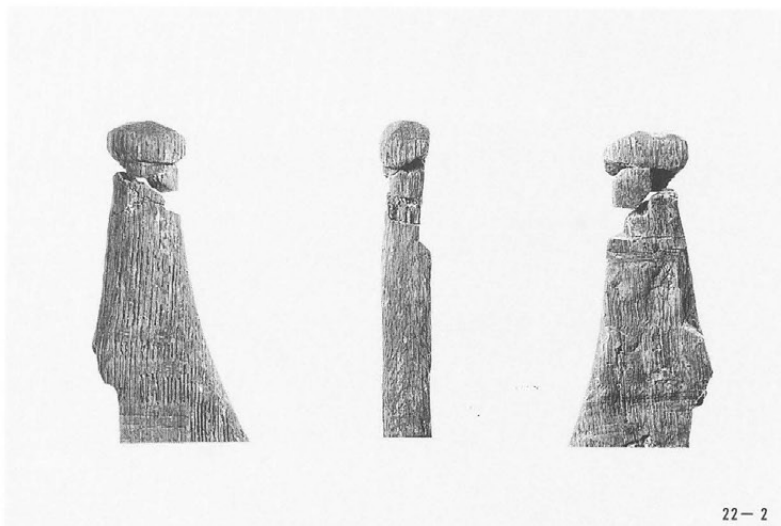
31



30-1

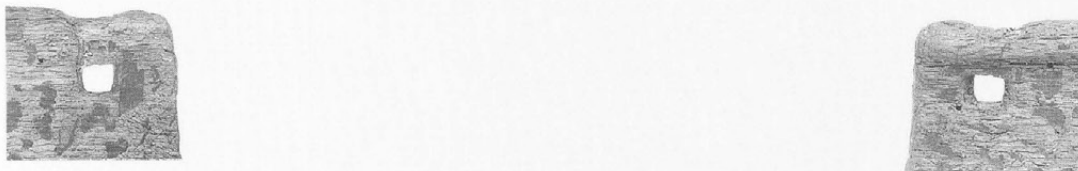
20・22・ 曲柄平鍬  
 23・24  
 30・31 曲柄又鍬

- 13-2・曲柄平鋏軸部
- 22-2
- 22-3・同スリット部
- 23-2
- 12-2・同刃部先端
- 14-2・
- 23-3
- 30 曲柄又鋏
- 刃部先端

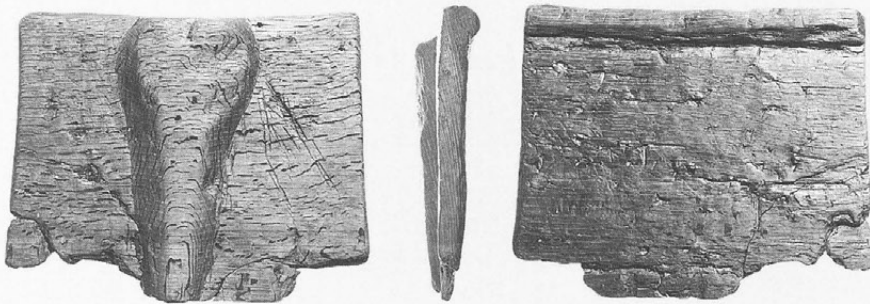




32



33

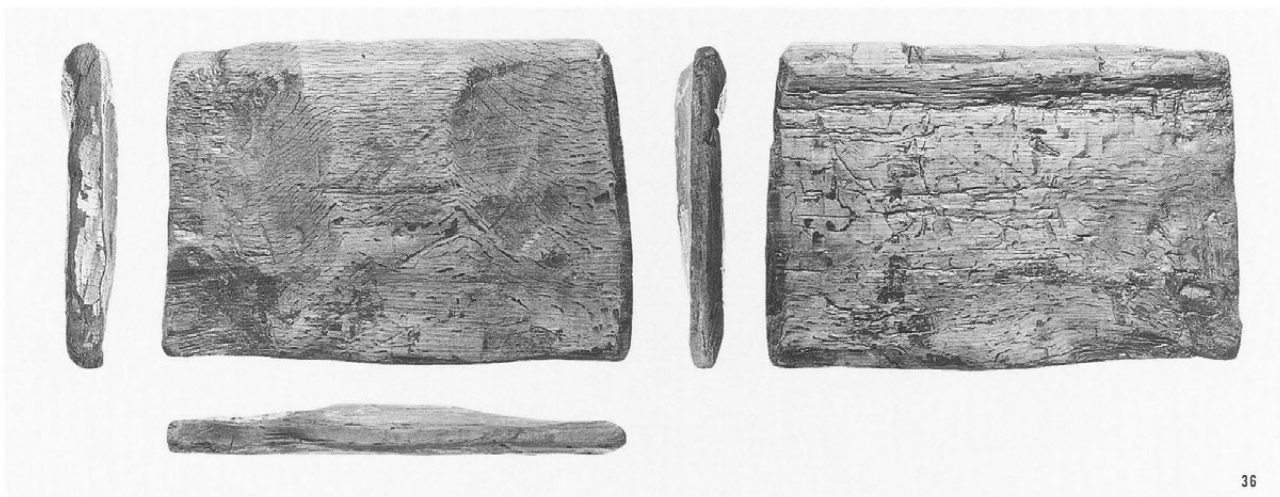


34

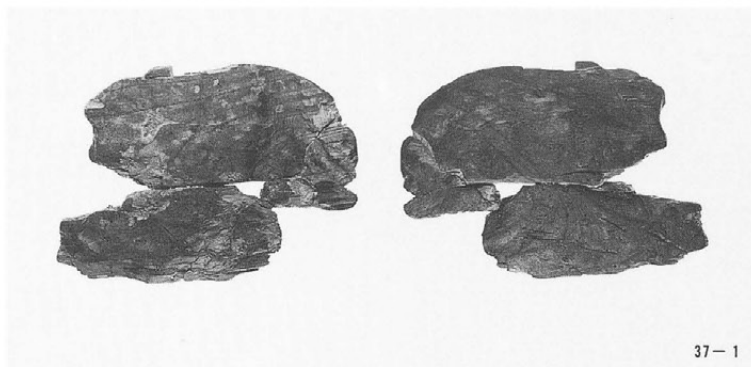


35

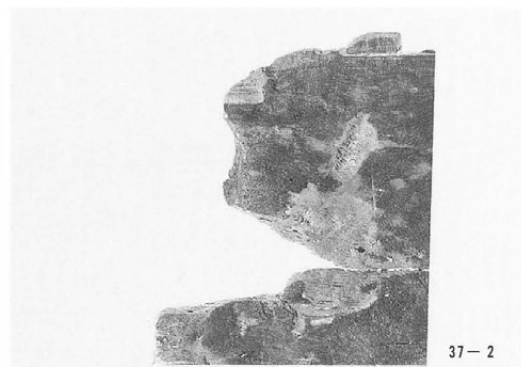
- 36 直柄横鉞
- 37 泥除け
- 37-2 柄孔
- 38 えぶり



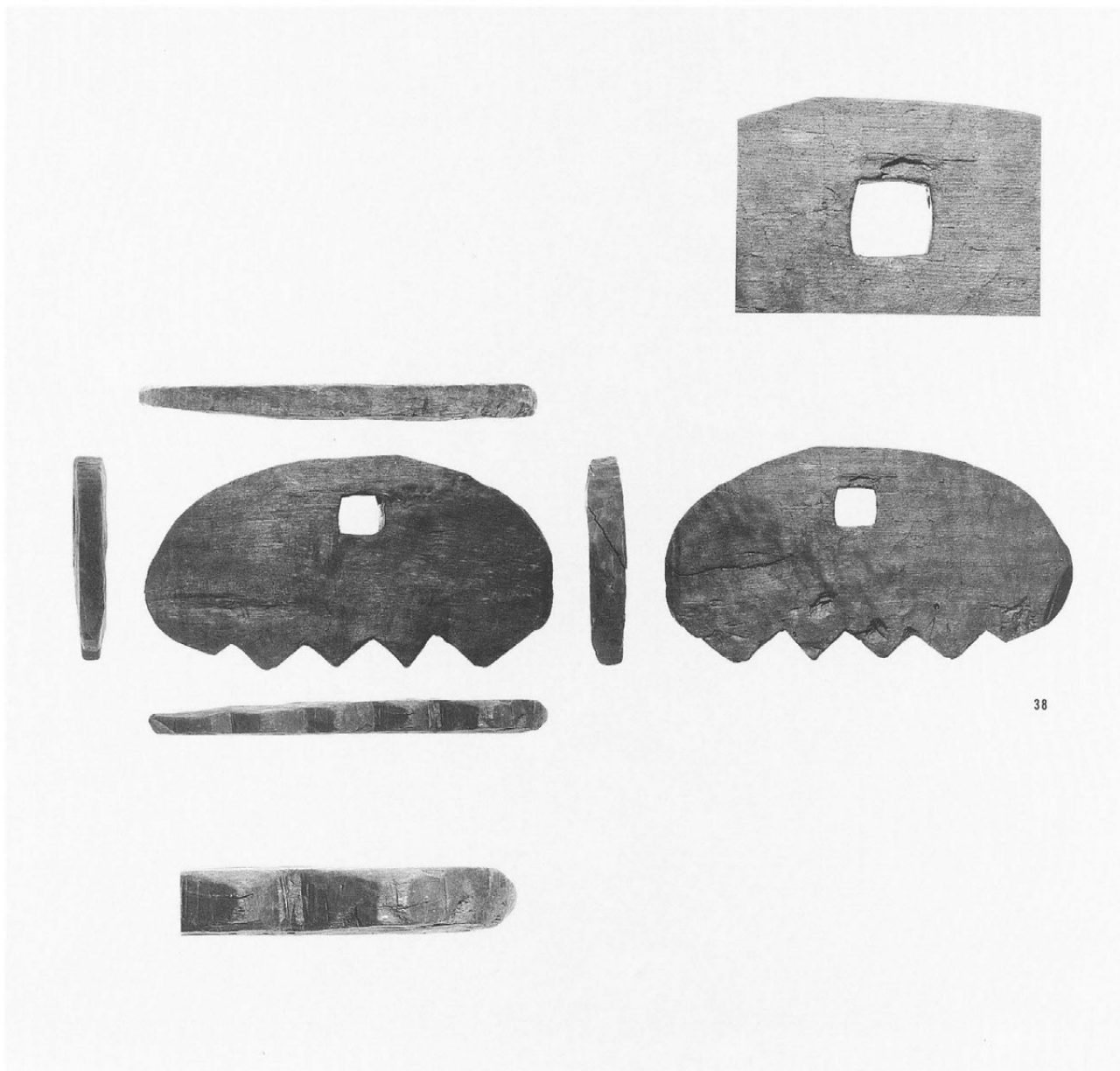
36



37-1



37-2



38



43-1



43-3

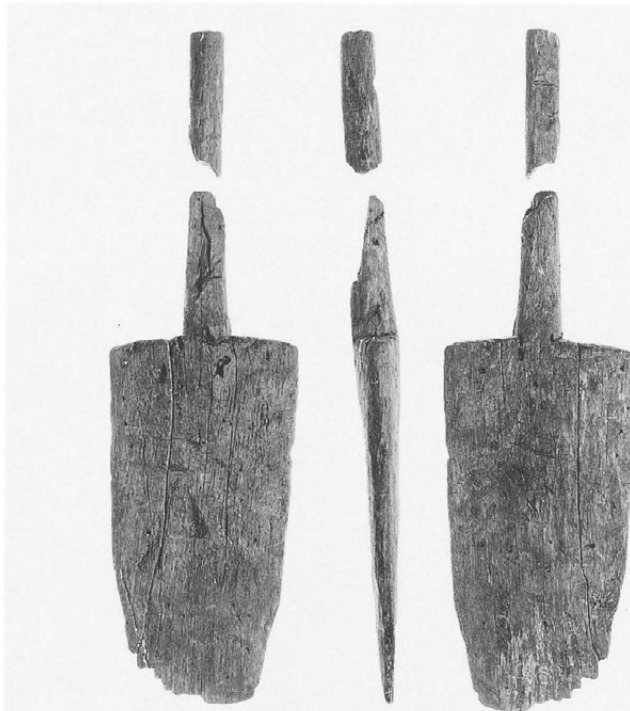


42

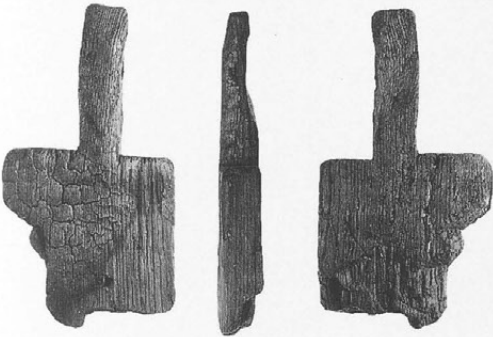
- 42・43 一木鋤
- 43-1 把手 (表)
- 43-2 把手 (裏)
- 44・45・46 一木鍬
- 47-1 組合わせ式  
多又鋤



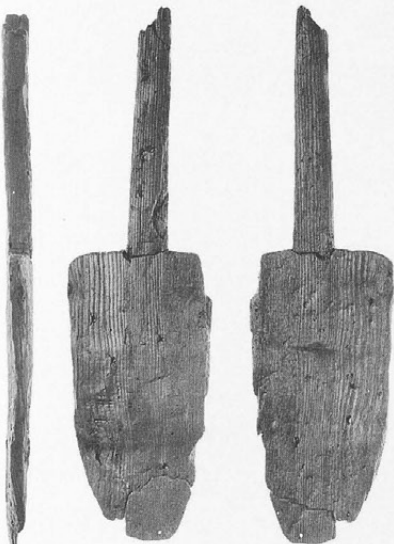
43-2



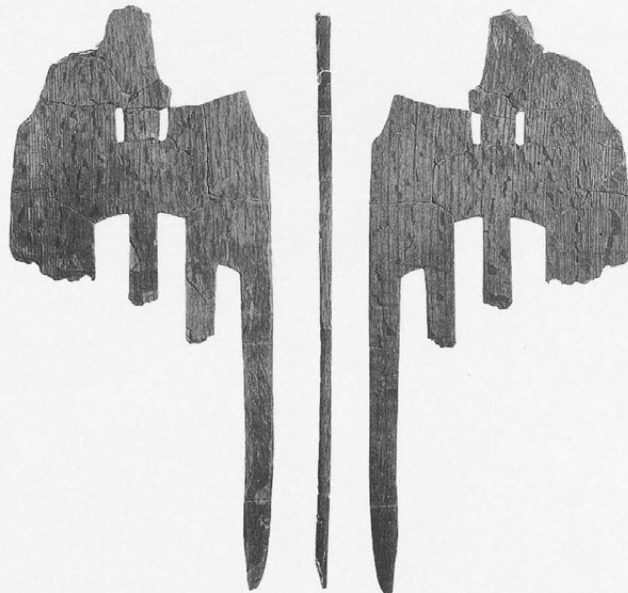
46-1



44



45-1



47-1



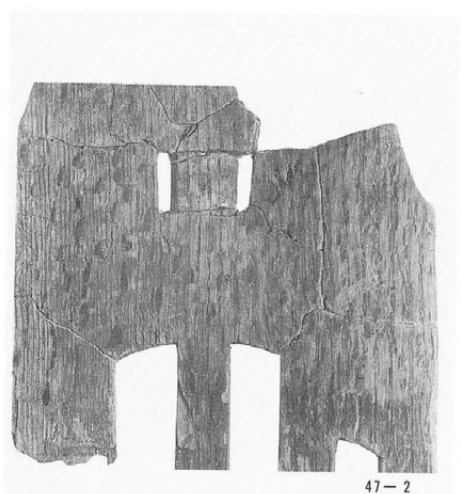
- 45-2 一木鋤刃部先端
- 46-2
- 47-2 組合わせ多又鋤柄孔拡大
- 49~52 大足
- 49-2 同横杵先端
- 52-2 同側面
- 80・81 木錘
- 83・85
- 80-2 括れ部
- 83-2 上端



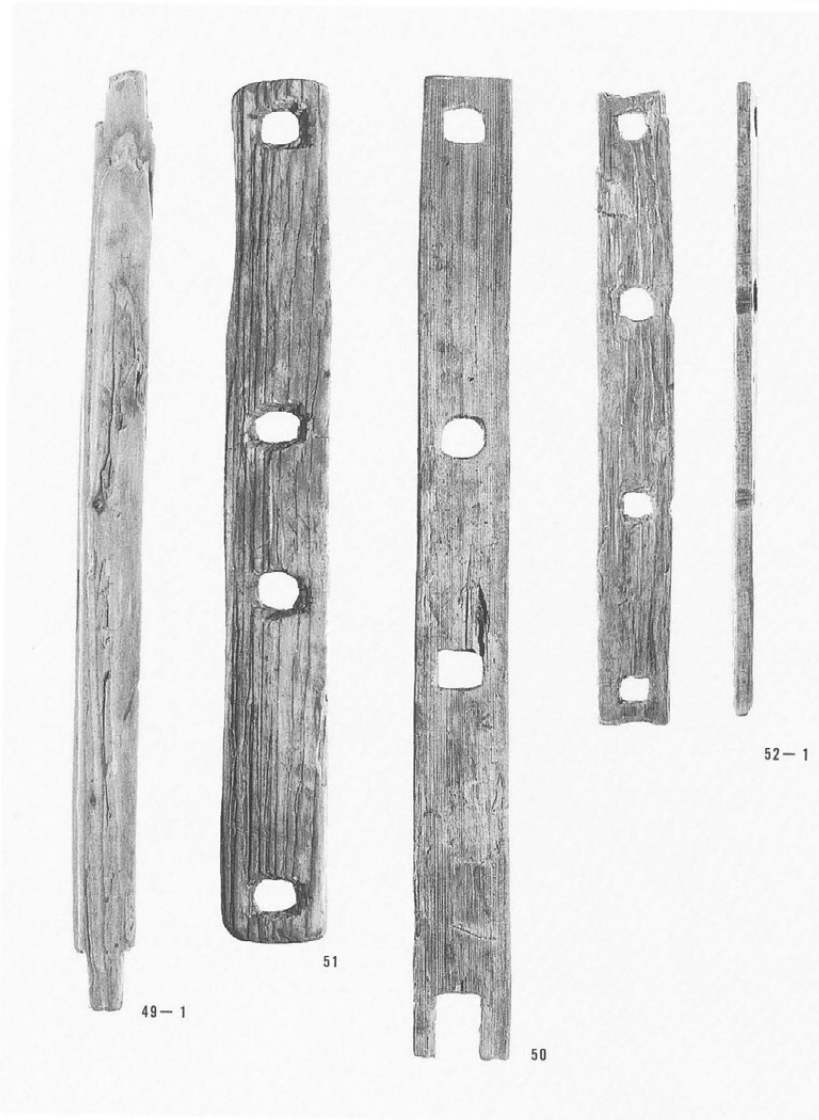
46-2



45-2



47-2



49-1

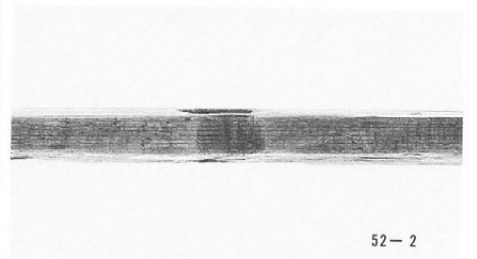
51

50

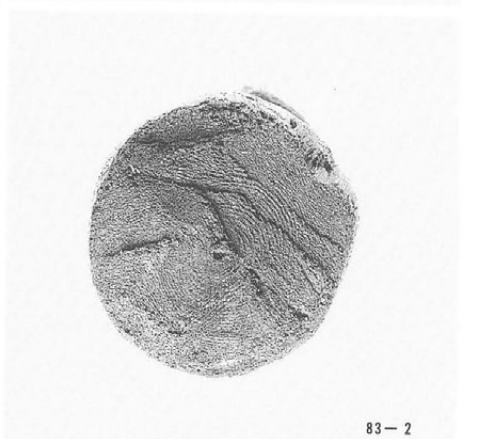
52-1



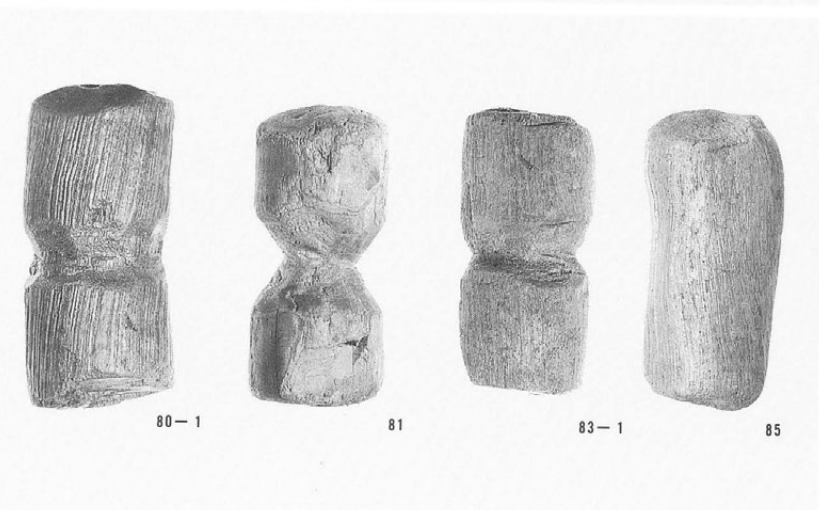
49-2



52-2



83-2

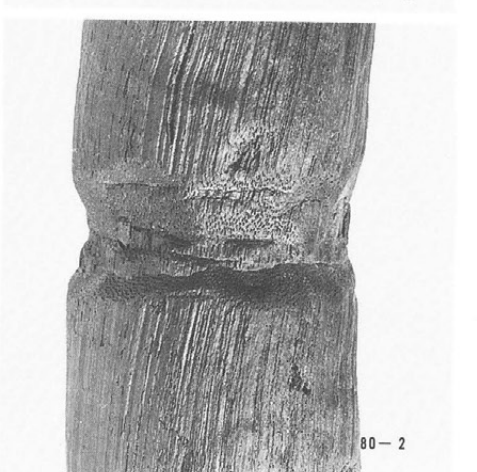


80-1

81

83-1

85



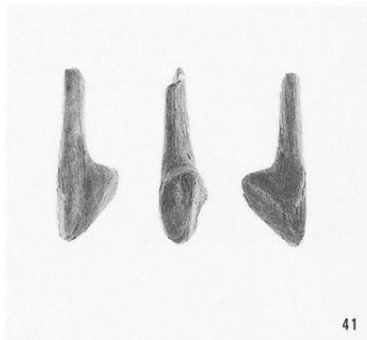
80-2



39-1



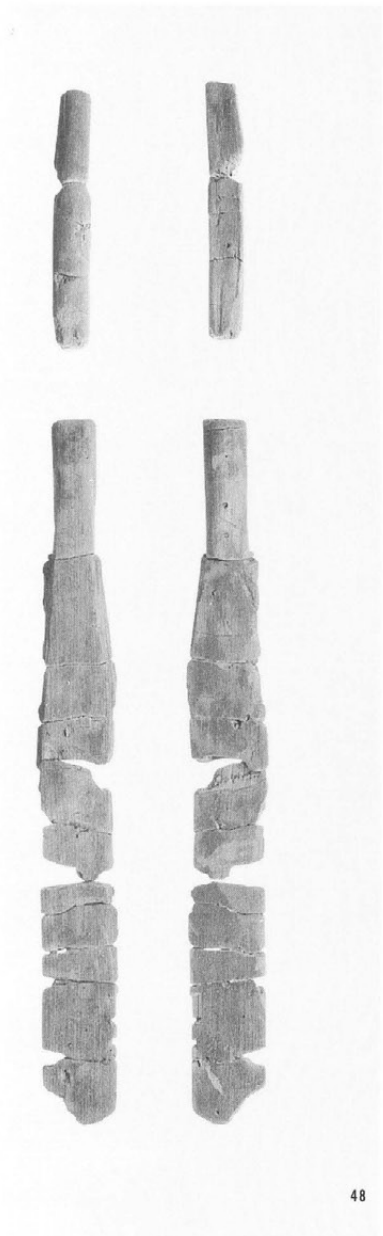
39-2



41



40



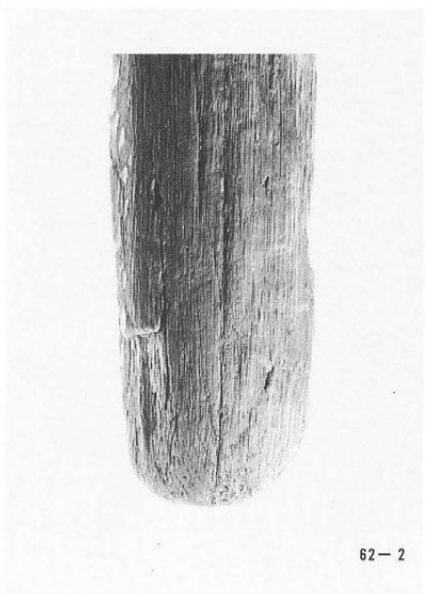
48



61-2



57-2



62-2



59-2

- 39・40 鎌柄
- 39-2 装着孔
- 41 鎌柄基部
- 48 粃打ち棒
- 57-2・堅杵搗部先端
- 59-2・
- 62-2
- 61-2 堅杵握部

54~62 堅杵



58



55



57-1



62-1



56



54



60



61-1



59-1



63



64



65



66

67~72・横槌  
78・79



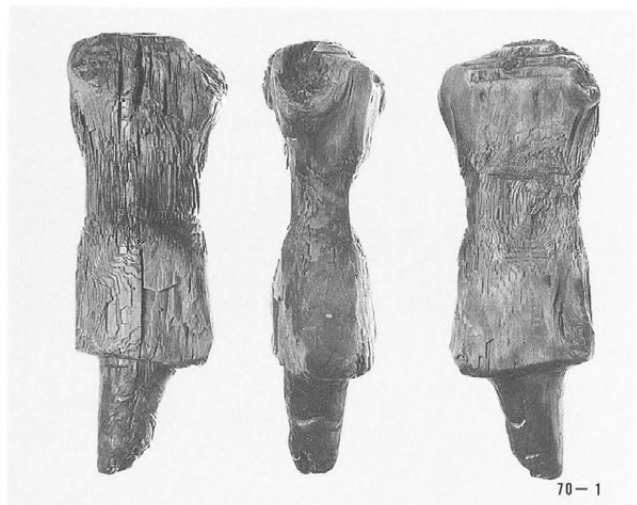
67



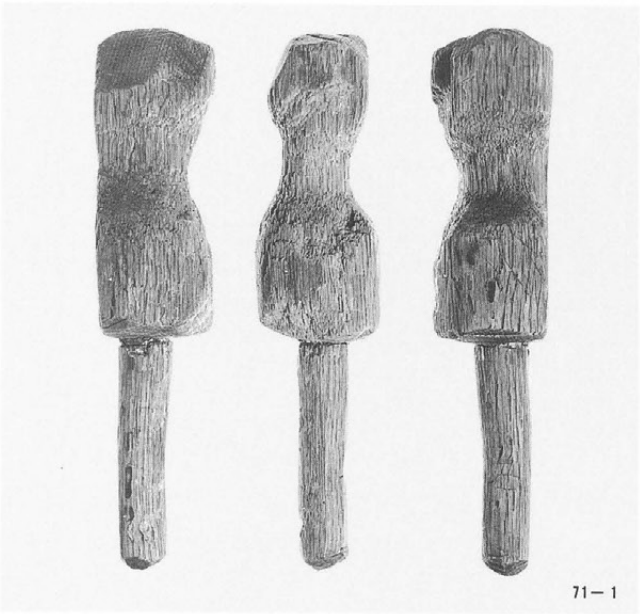
68



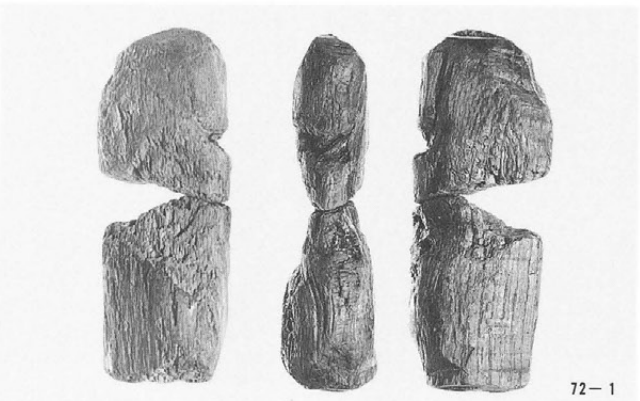
69



70-1



71-1



72-1



78



79



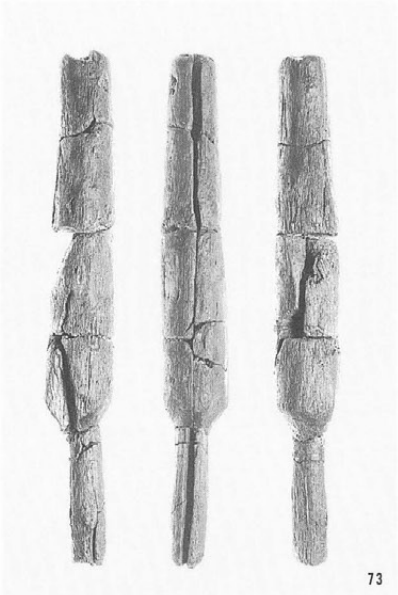
75



74-1



77



73

- 73~77 横槌
- 70-2・同敲打痕
- 71-2・
- 72-2
- 74-2 同上部
- 88 紡錘車
- 87 杼
- 87-3 同鋸齒状文



76



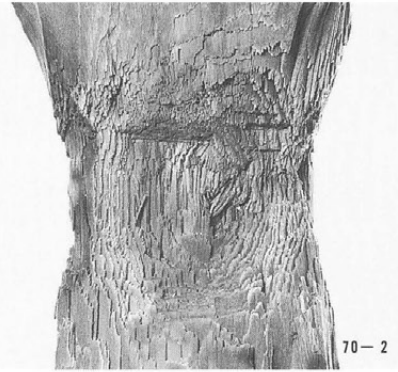
71-2



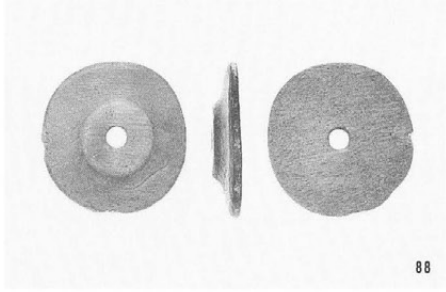
74-2



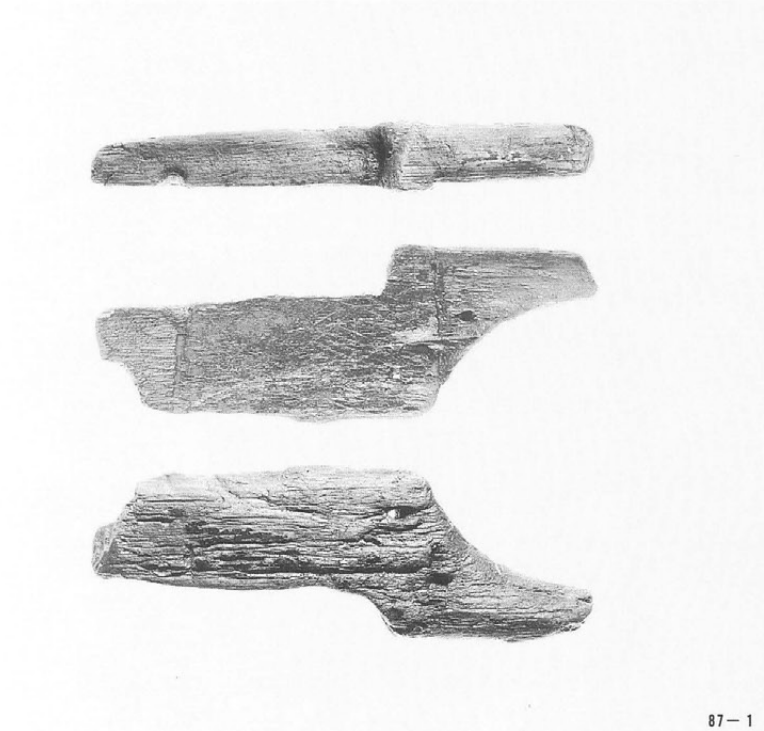
72-2



70-2



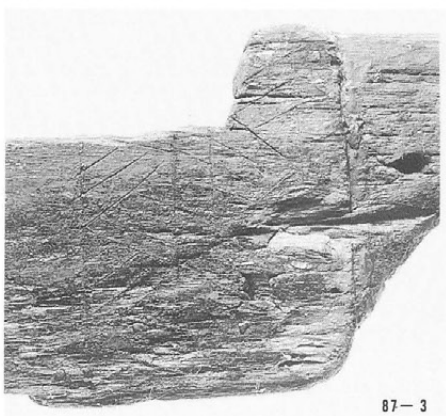
88



87-1



87-2



87-3

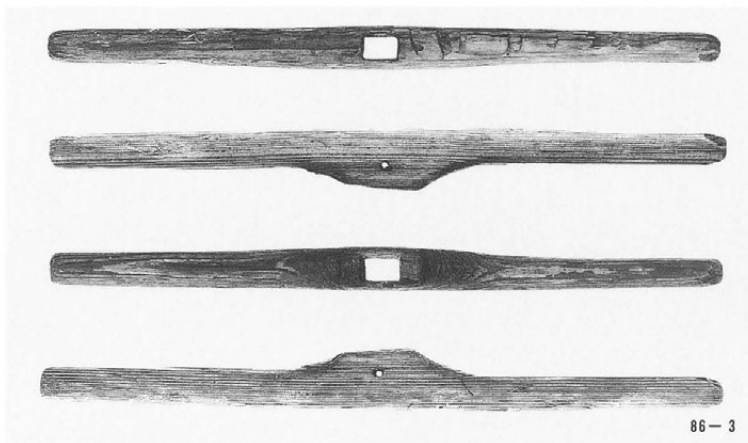
- 86 杵
- 86-2 支え木
- 86-3 腕木
- 86-4 支え木出柄
- 86-5 腕木柄孔
- 89 糸巻



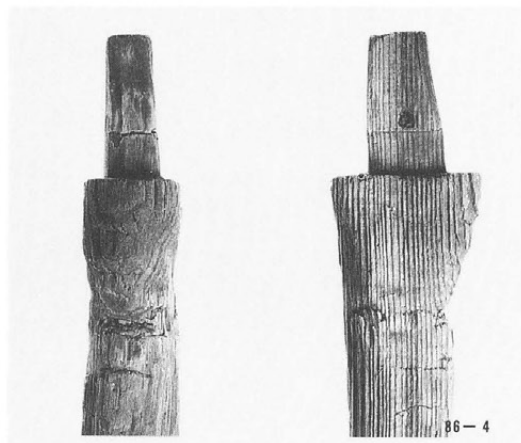
86-1



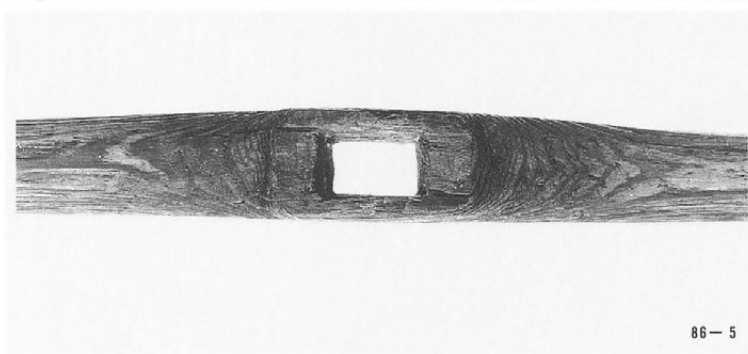
86-2



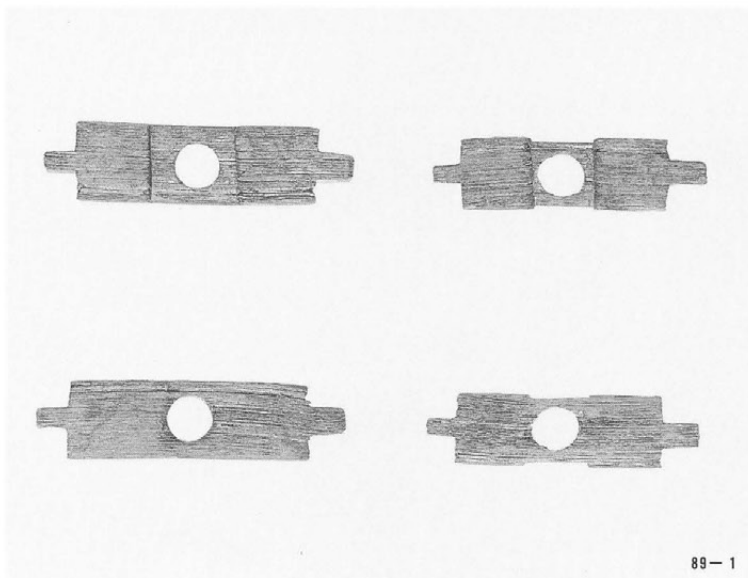
86-3



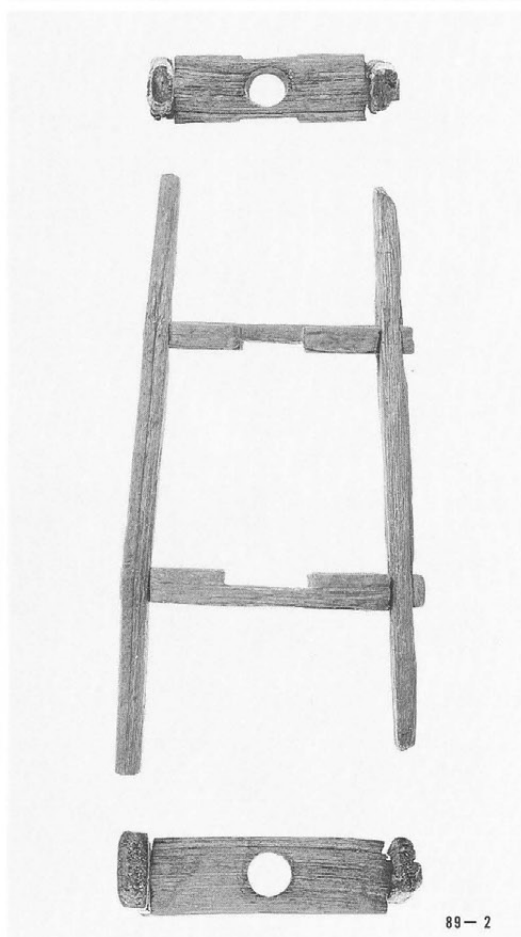
86-4



86-5

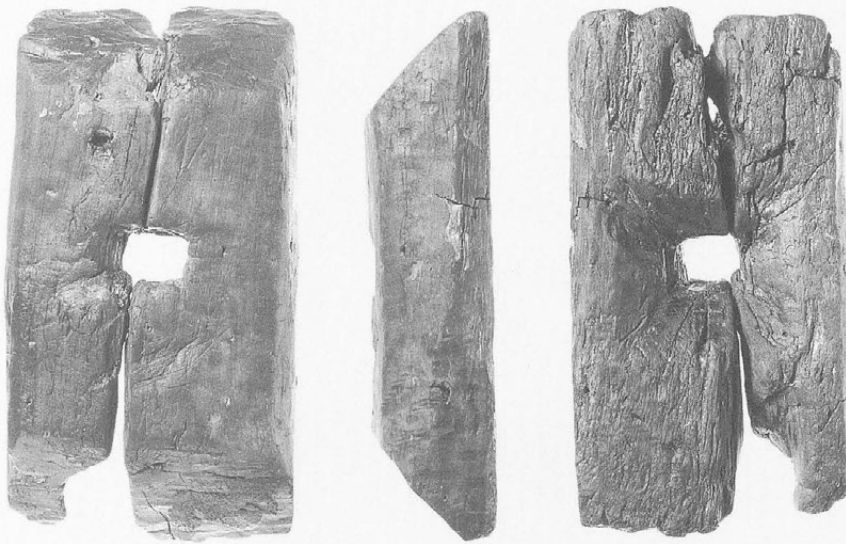


89-1

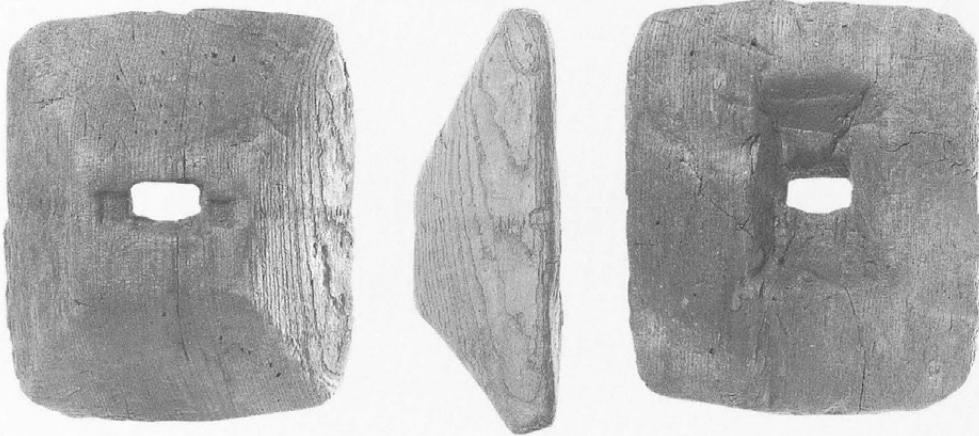


89-2

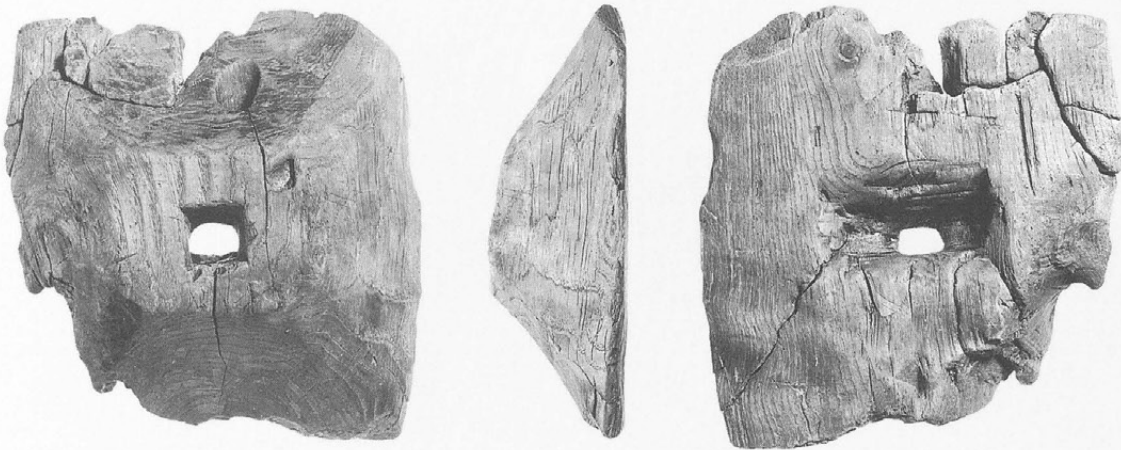
90・91・92 櫛  
90-2・同 軸孔  
91-2・  
92-2



90-1



91-1



92-1



90-2



91-2



92-2



93 櫛

107・108 劍鞘

107-2・108-2 鞘尻

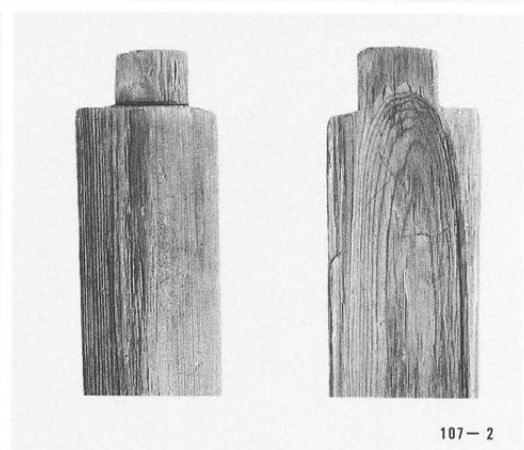


93

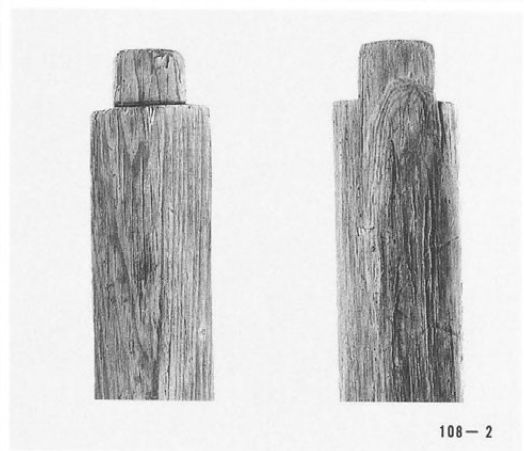


107-1

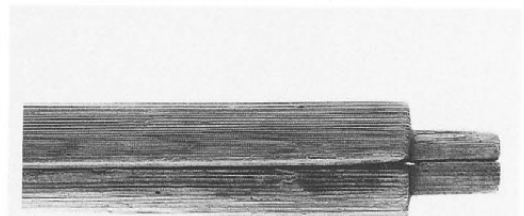
108-1



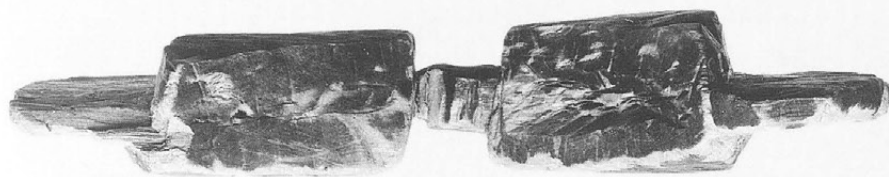
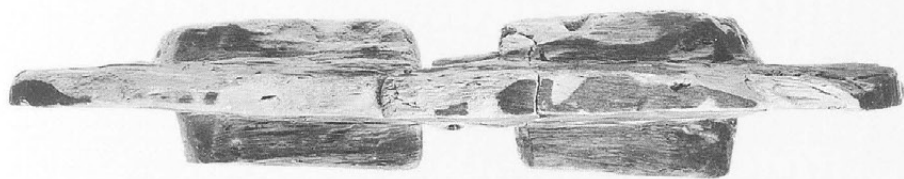
107-2



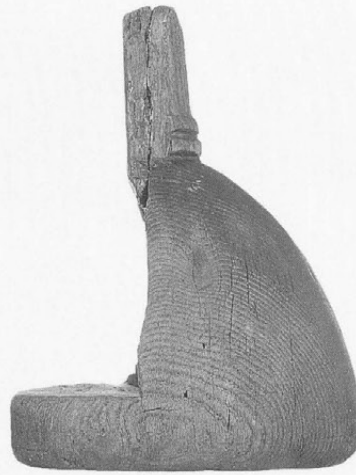
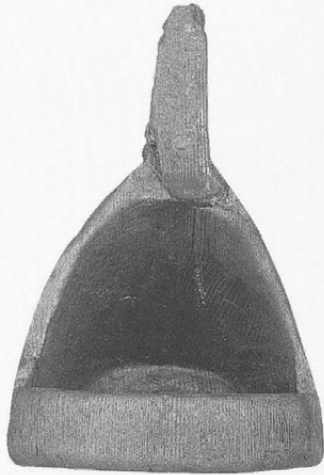
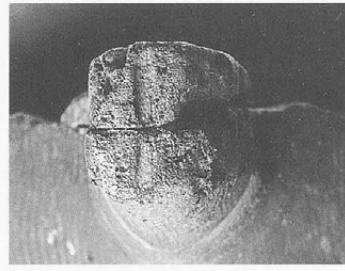
108-2



107・108



110 壺鑑  
95~98 白木弓



110



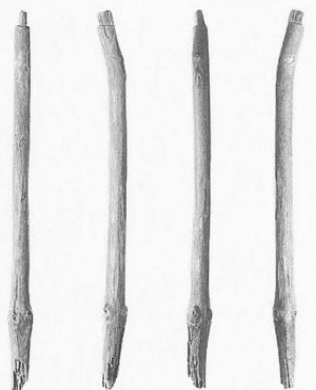
95



96



97



98

99・101・白木弓  
102  
99-2・末弭  
101-2  
103 飾り弓



99-1



101-1



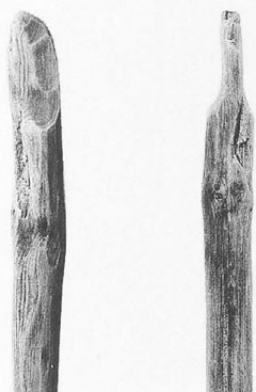
99-2



102



103

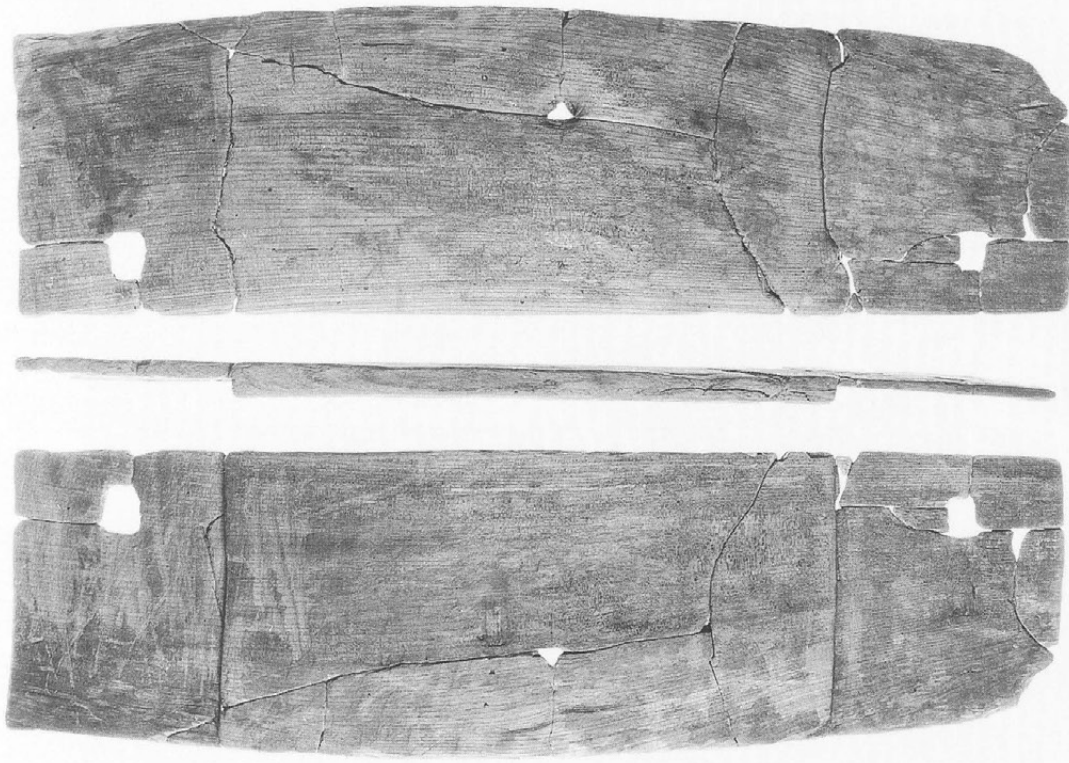


101-2

104・105 白木弓

106 飾り弓





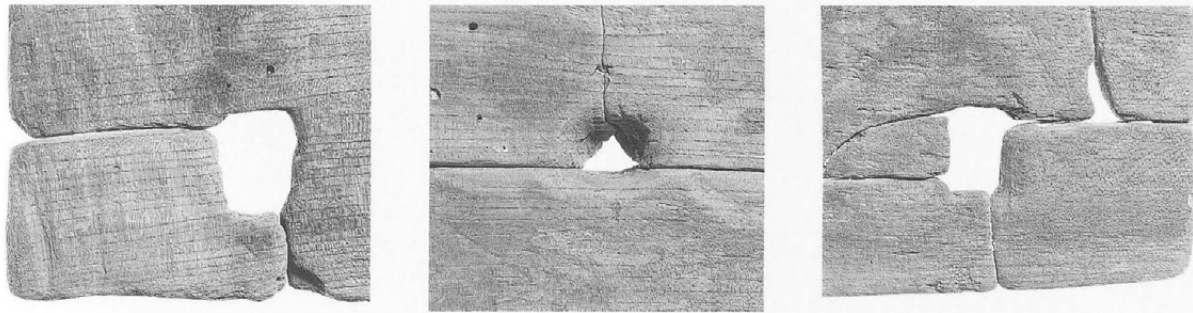
111-1

111 案もしくは机状  
木製品

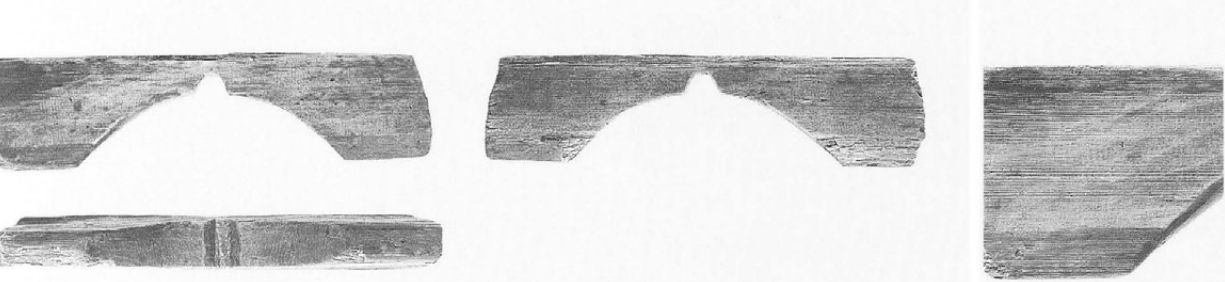
111-2 同 柄孔

112・113・案もしくは机状

114 木製品脚部

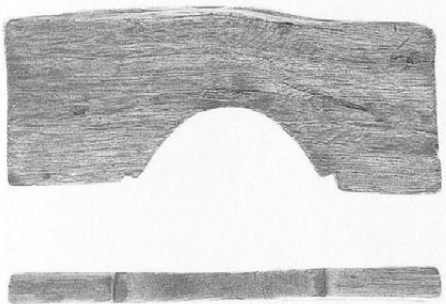


111-2

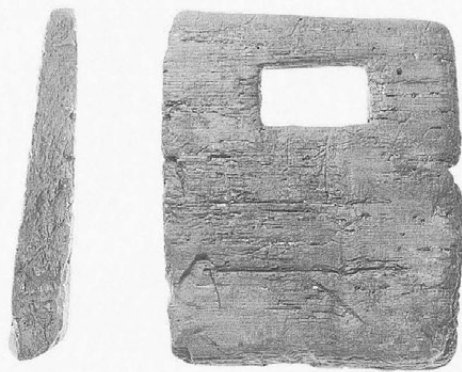


112-1

112-2



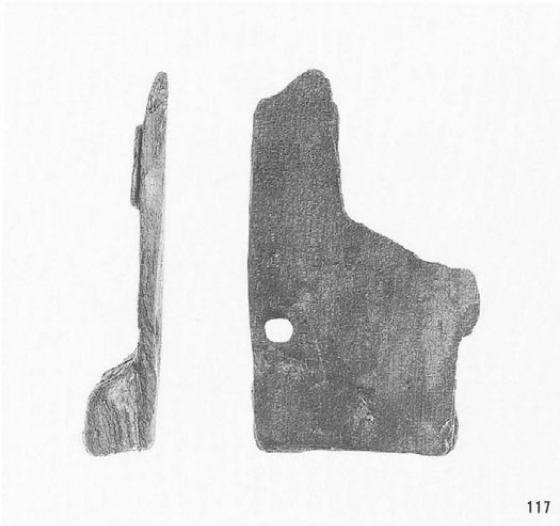
113



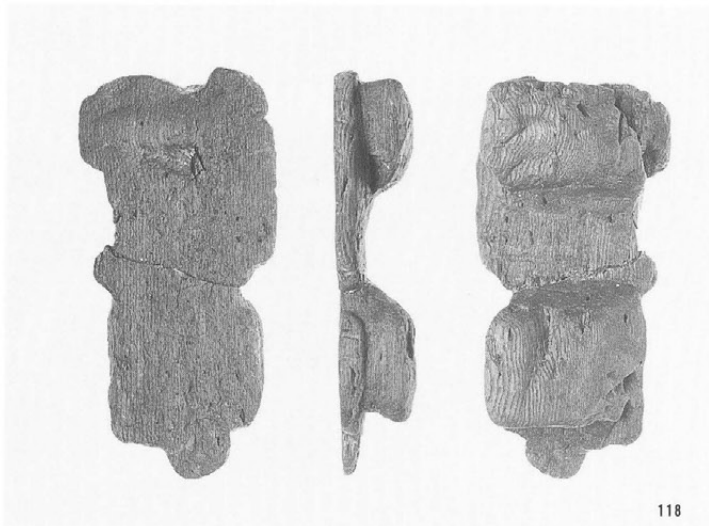
114

117~120 下駄

123 木履



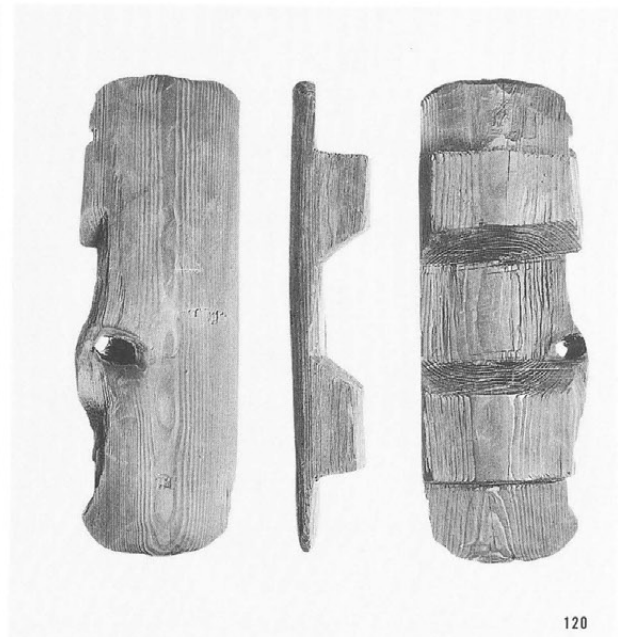
117



118



119



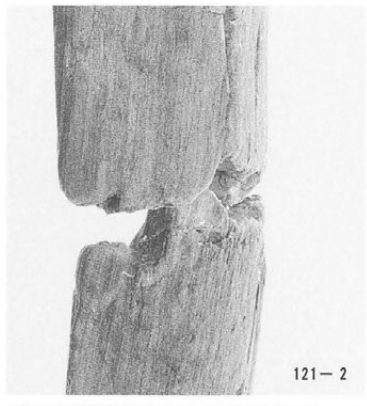
120



123



121-1



121-2

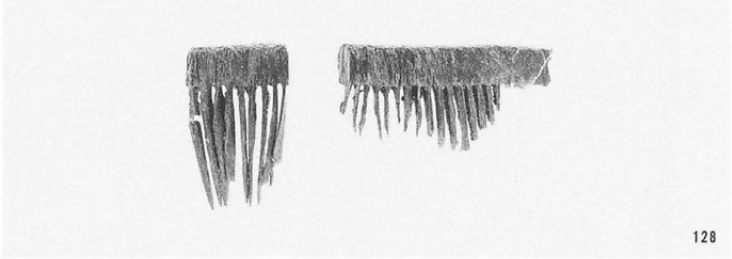


121-3

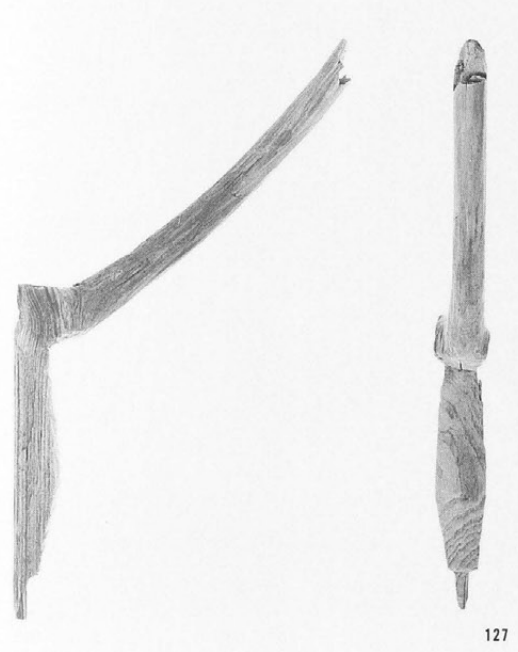
121・122 木履  
 121-2 同 側面  
 121-3 同 裏面  
 128 横櫛  
 126・127 きぬがさ状  
 木製品



122



128



127



126



125 きぬがさ状木製品

125-2 同 軸

125-3 同 軸下面

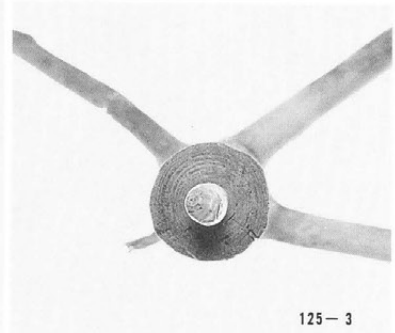
115・116 腰掛け



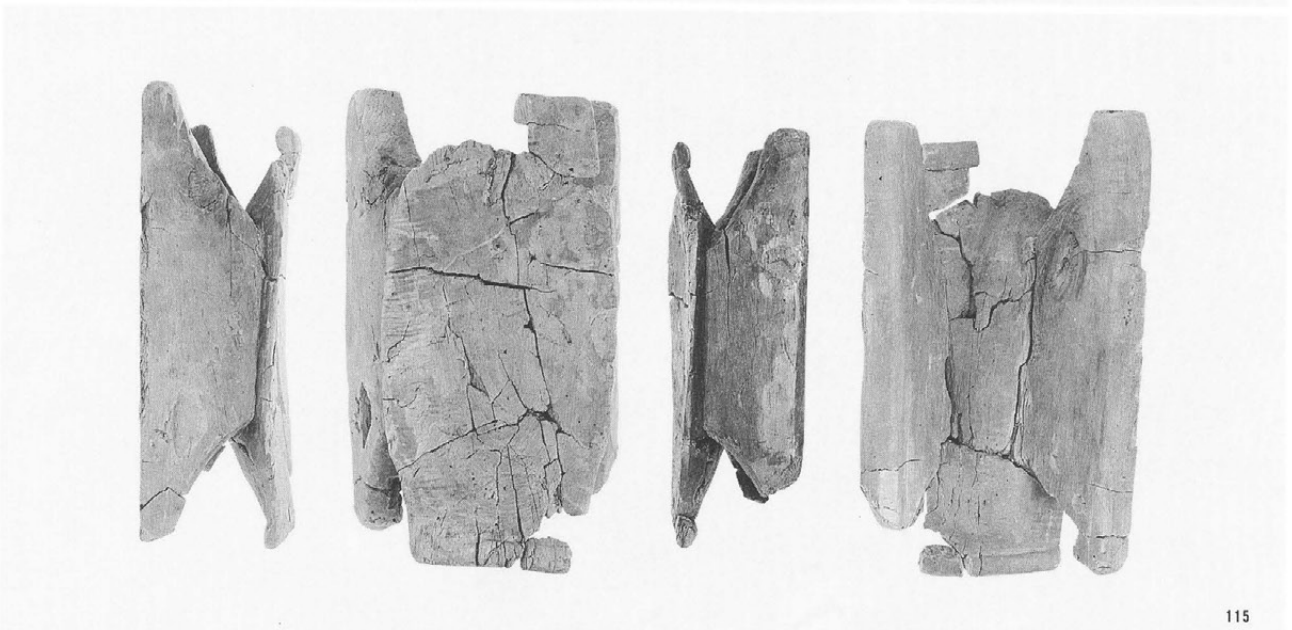
125-1



125-2



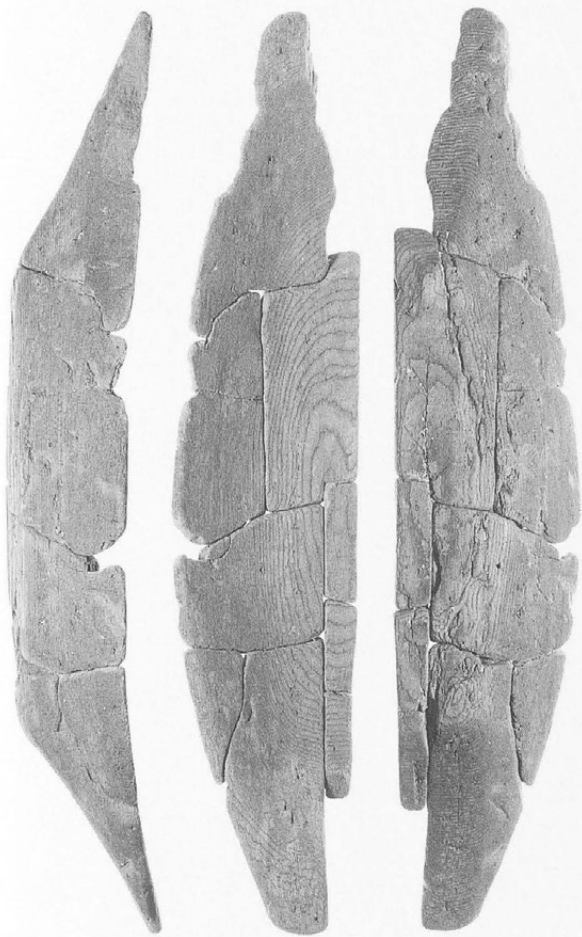
125-3



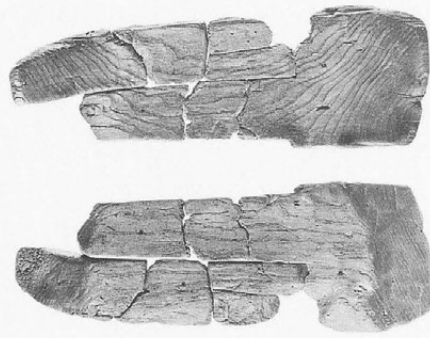
115



116



129



134



130



133



131



132