



22



23



24



25



27



30

SB625



2



3



9



8



16



14



15



10



11



18



19



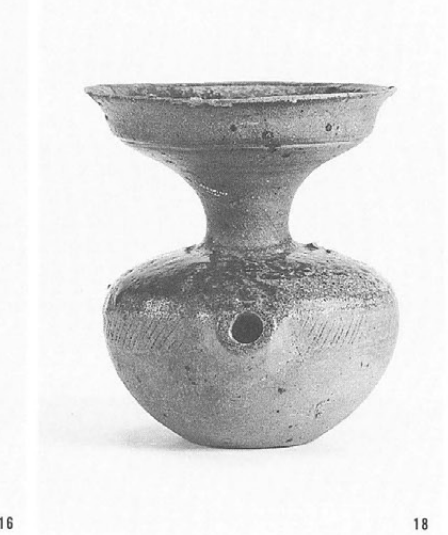
24



20



23



SB1219-②



17



21



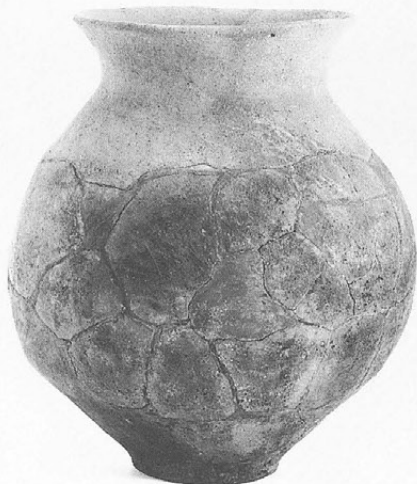
26



19



27



22



23



10



7

8



28



40



41



44



29



30



31



32



33



34



35



39



36



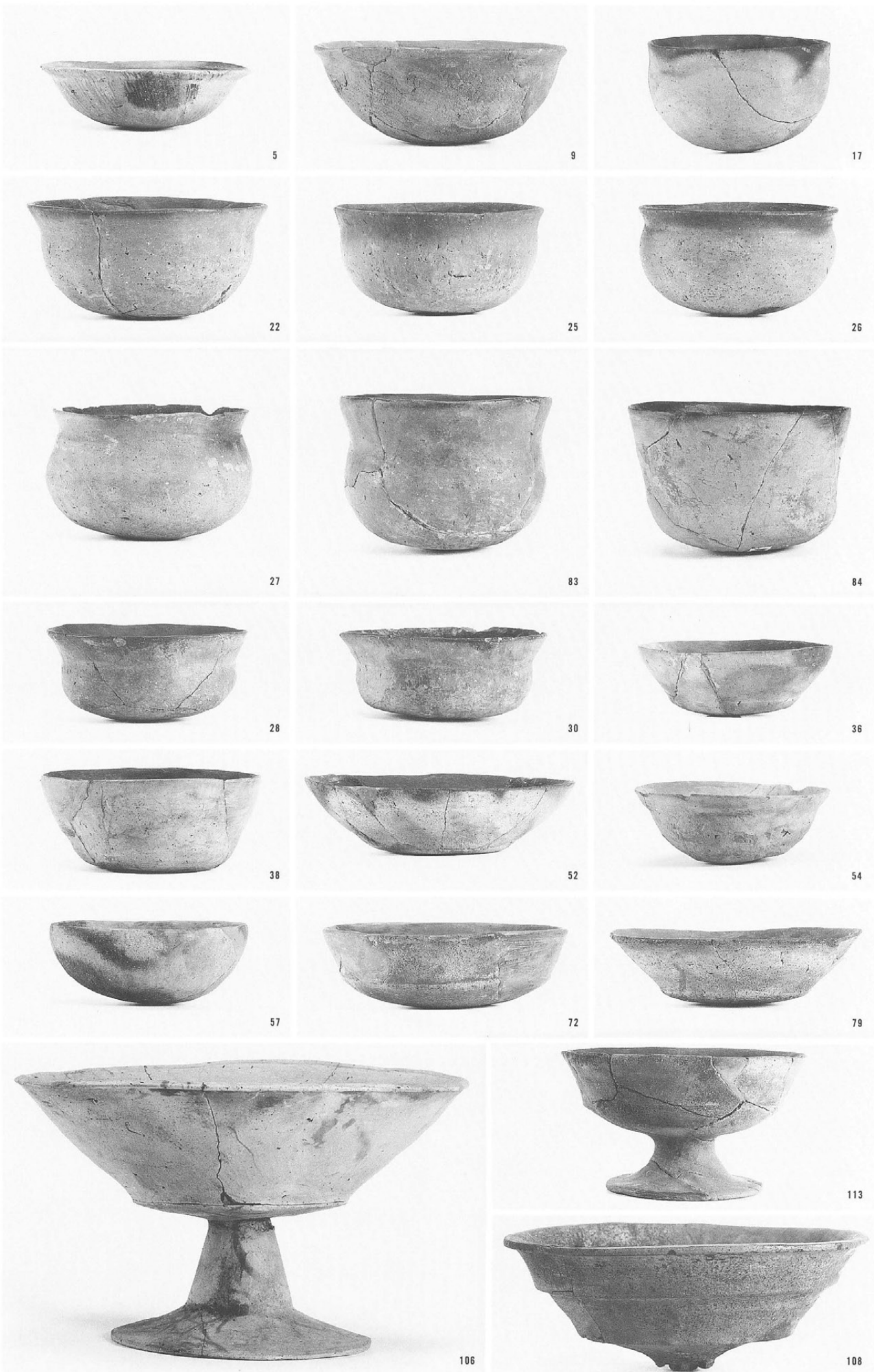
37



38

SG 3

IV層-①



SG 3
IV層-②



87



89



88



93



90



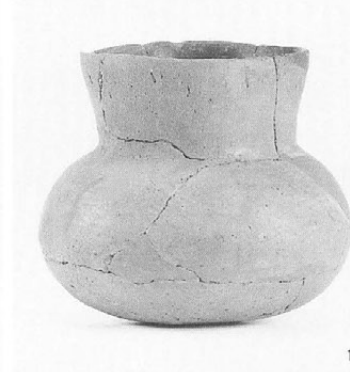
92



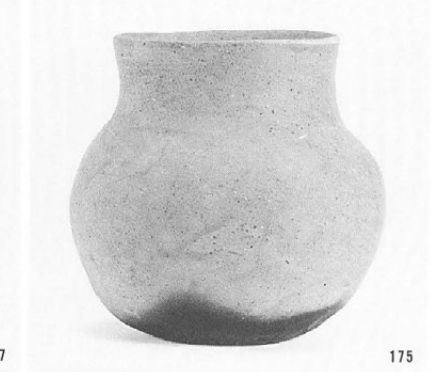
128



127



137



175



138



168



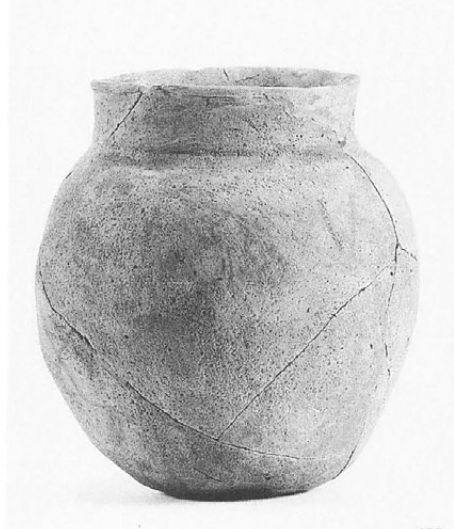
160



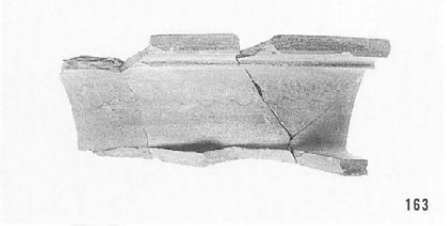
155



165



177



163



167



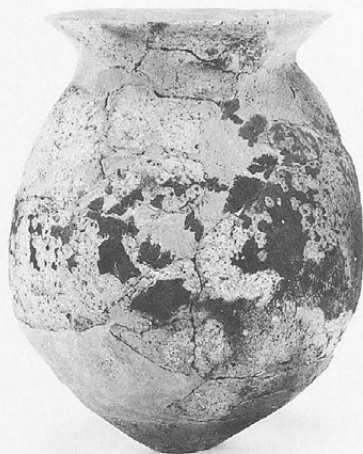
158

SG 3

IV層-③



186



196



205



198



203



208



209



211



212

SG 3
IV層-④



217



219



228



221



235



236



246



247

SG 3

IV層-⑤



241



243



249



261



256

SG 3
VI層-①



268



272



277



278



291



294



298



304



306



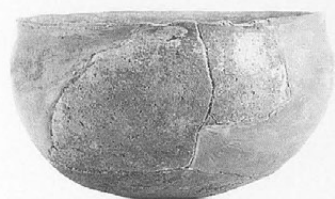
271



283



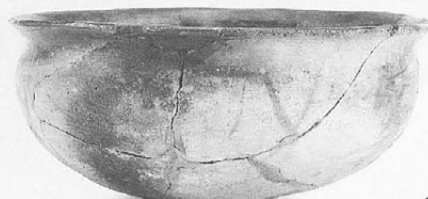
287



282



295



280



315



312



311



316



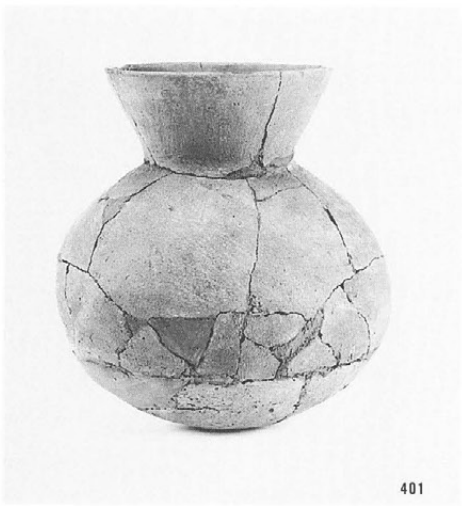
320



310

SG 3

VI層-②



SG 3
VI層-③



432



433



436



445



447



449



453

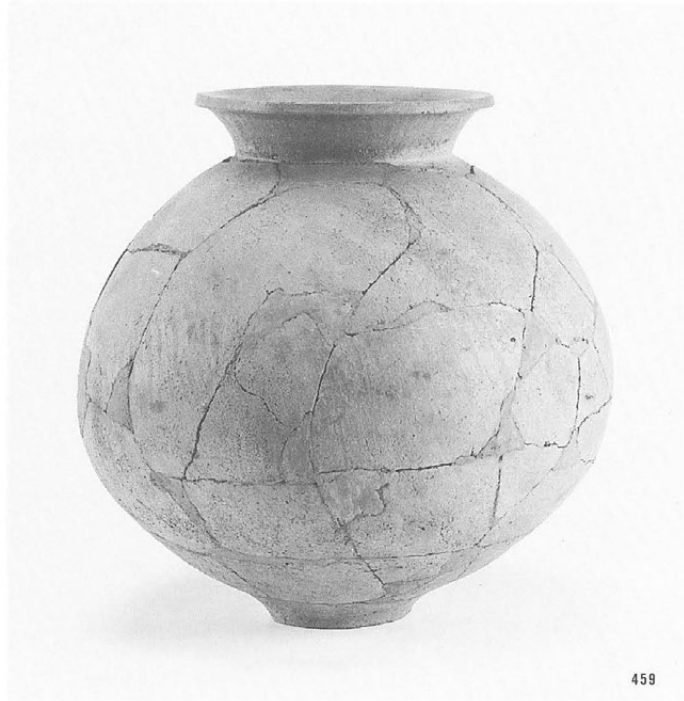
SG 3

VI層-④

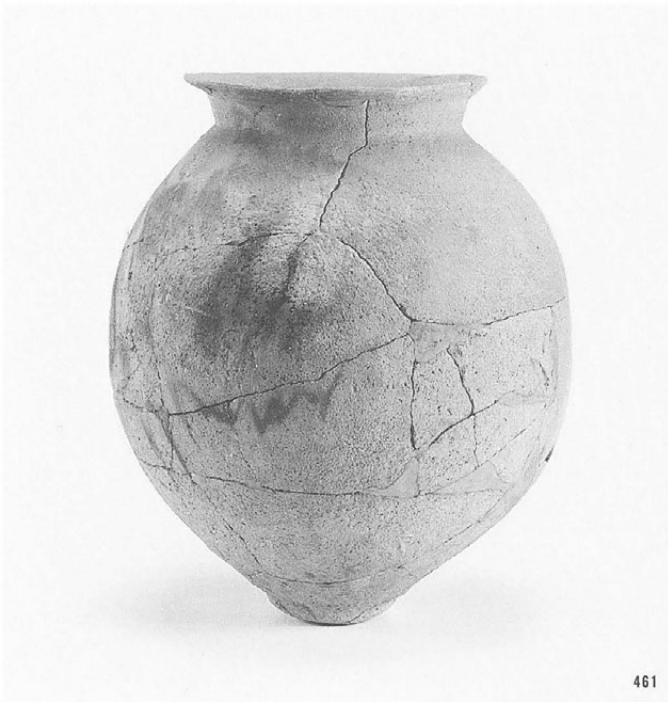
(455・459・
461・462・
463)



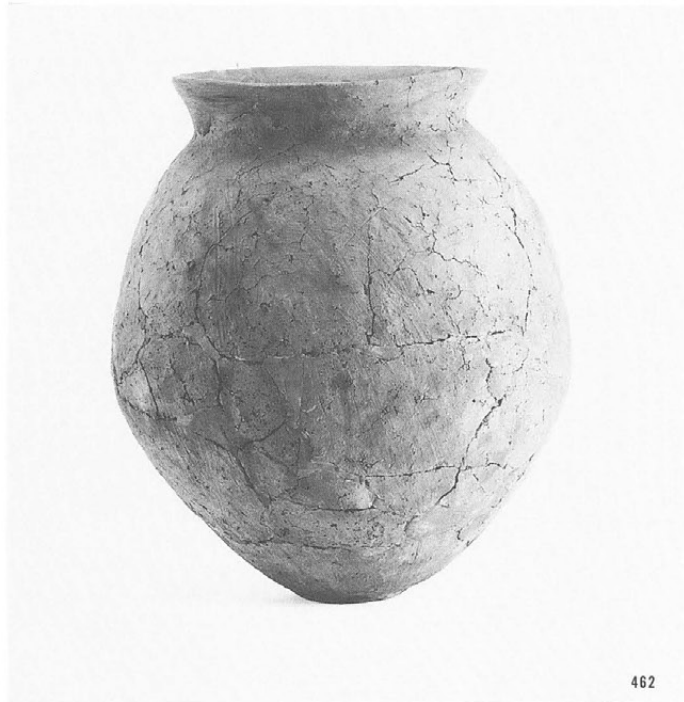
455



459



461



462

SG 3 VII層
(476)



463



476



508



509



515



516

SG 3 VIII層
(503・504・
506・508・
509・513・
515・516・
548・549)



506



513



504



503



548



549



575

SG 3
層位不明
(575・580・
582・586)



580



582



586

SG 3

②-3A地区



48



49



50



51



52



53



32



34



35



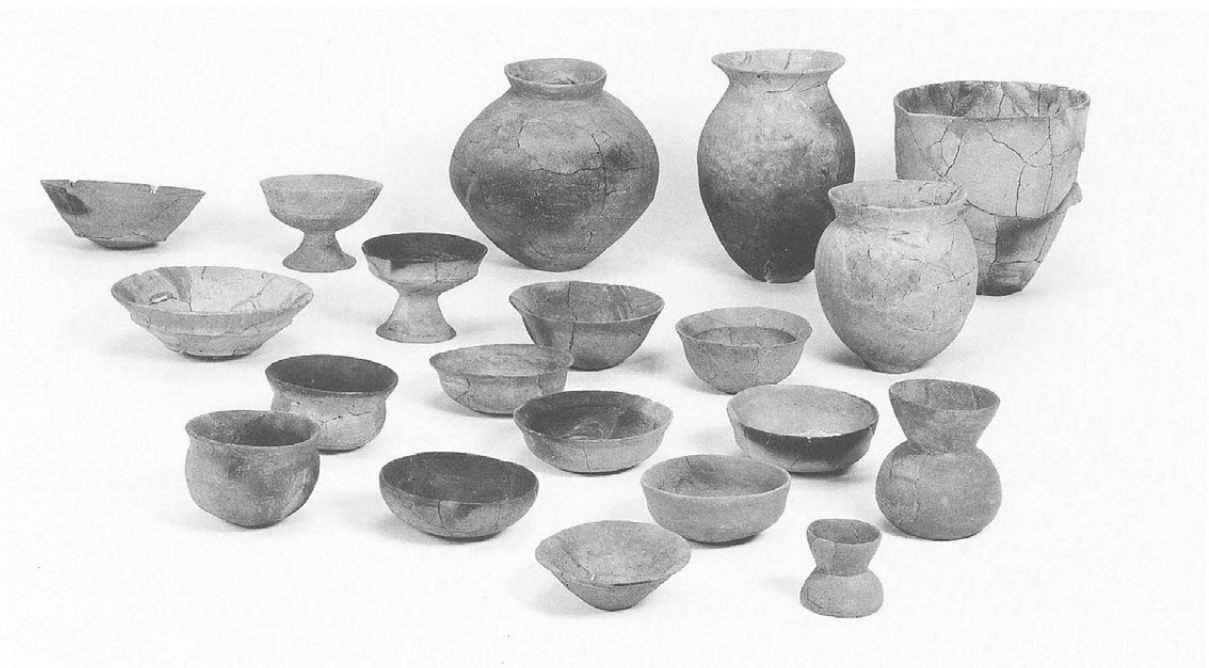
80



SB1627
古墳Ⅰ期



SB322
古墳Ⅱ期



SB380
古墳Ⅱ期

SB625
古墳Ⅲ期

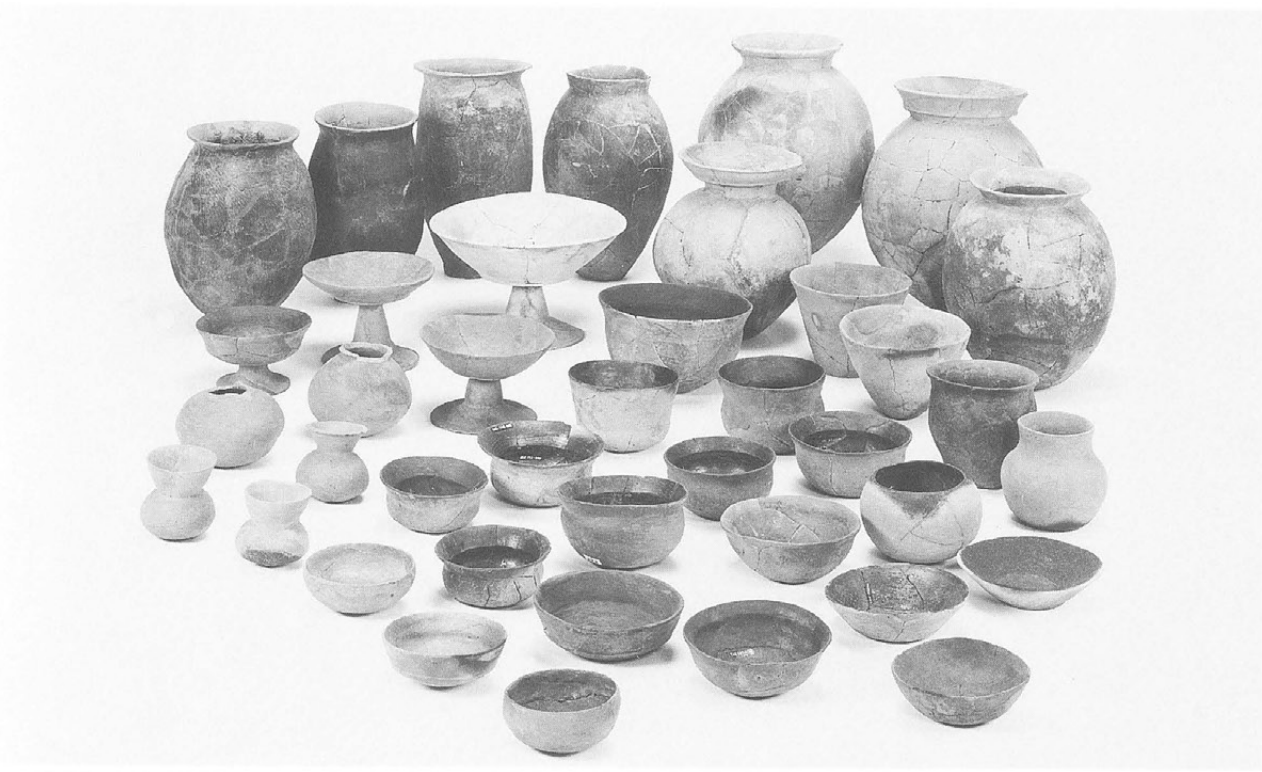


SB69
古墳Ⅳ期

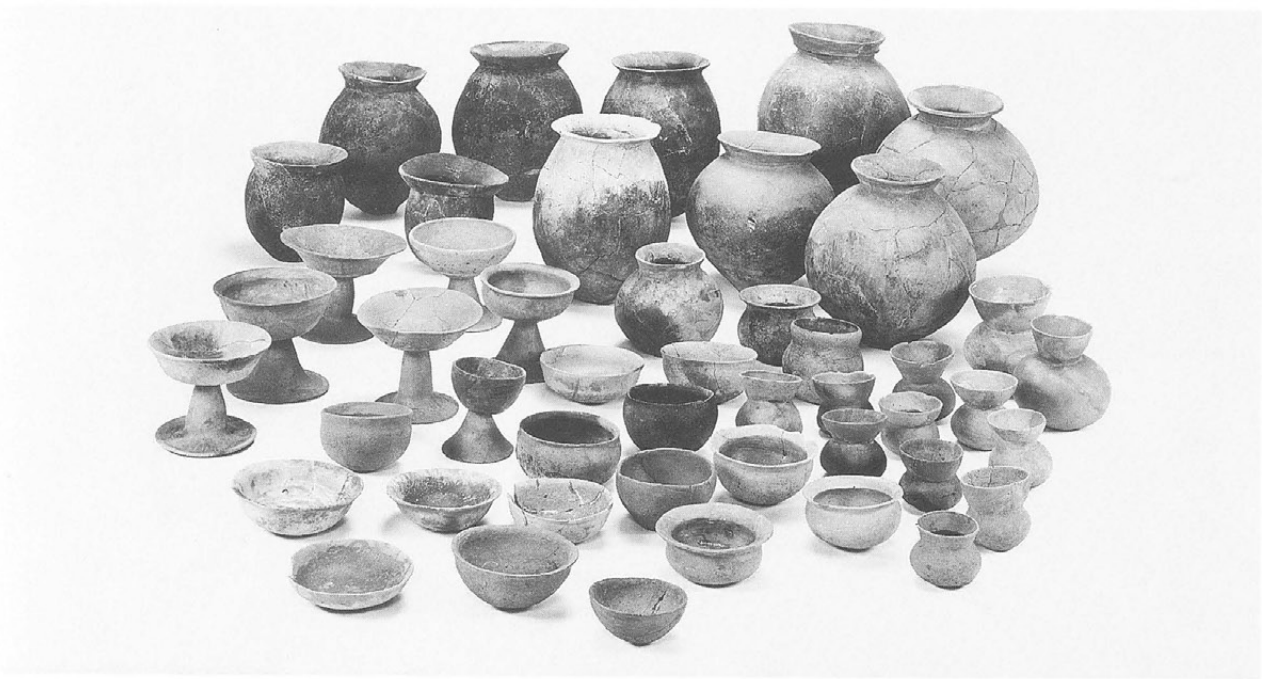


SB1219
古墳Ⅴ期





SG 3 IV層



SG 3 VI層

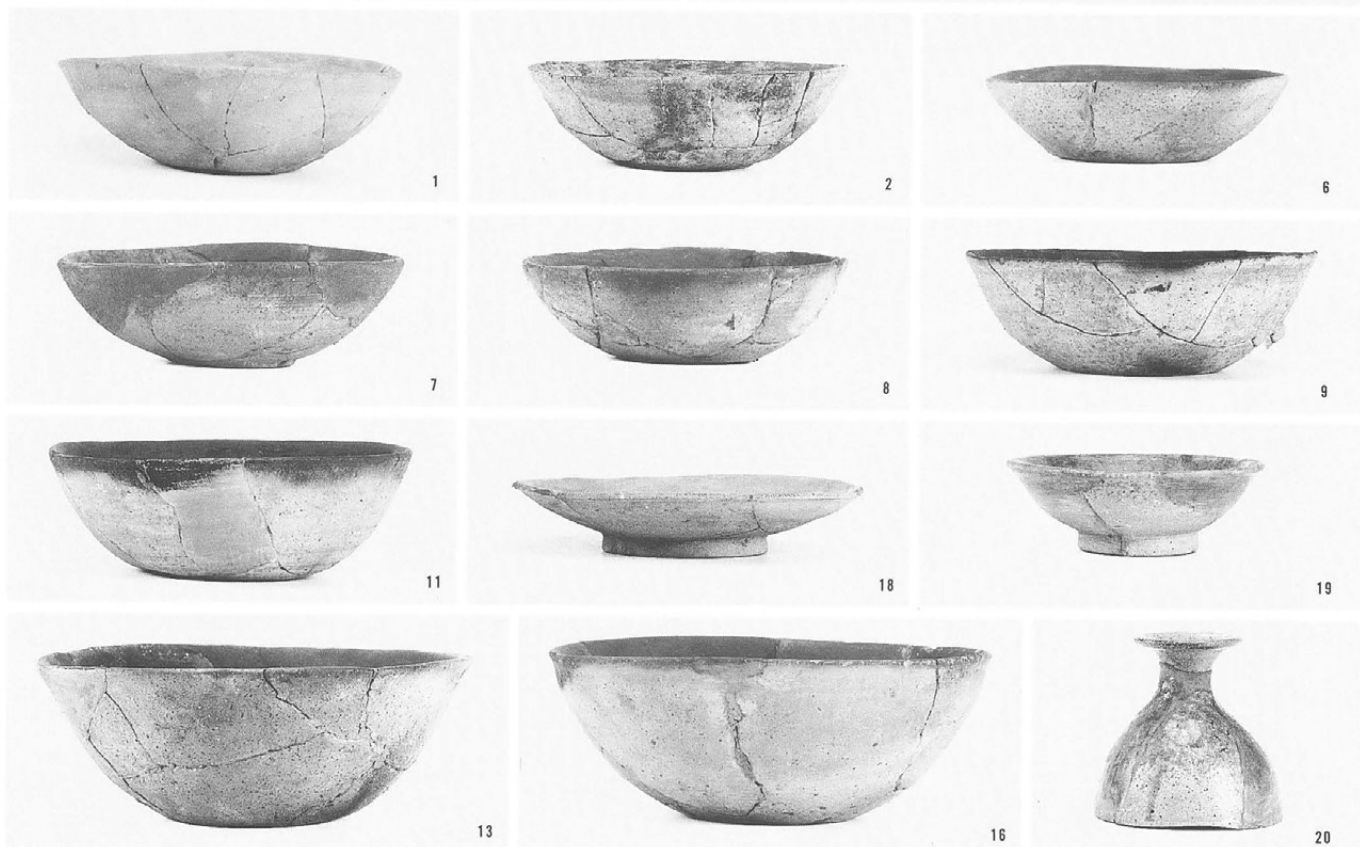


SG 3 VIII層

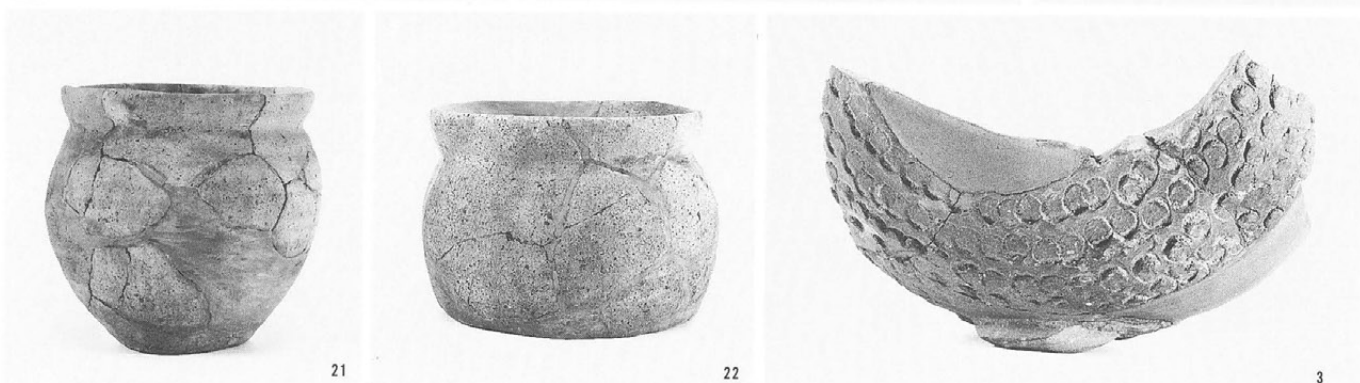
SB8
(1 ~ 4・8)



SB503
(1・2・6 ~ 9・
11・13・16・
18~22)



SB512
(3)



奈良時代～
平安時代土器
SD47
(6～9・19・
32・34・35・38・
58・63・70・76・
81・171・174・
175)



6



7



8



9



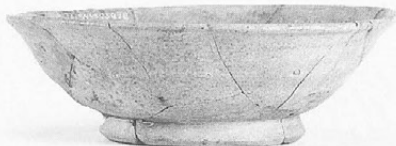
19



32



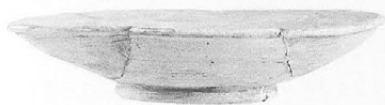
34



38



171



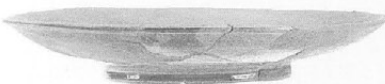
174



175



58



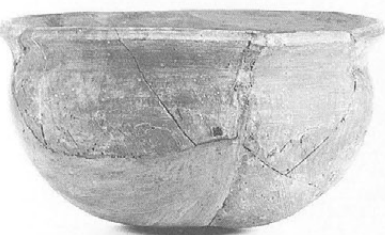
63



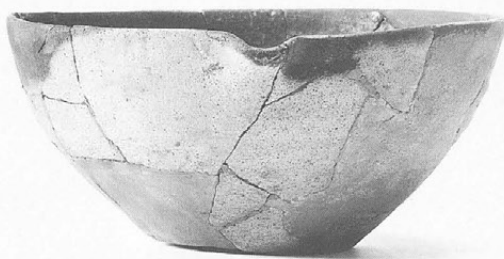
70



81



76



35



1



2



4



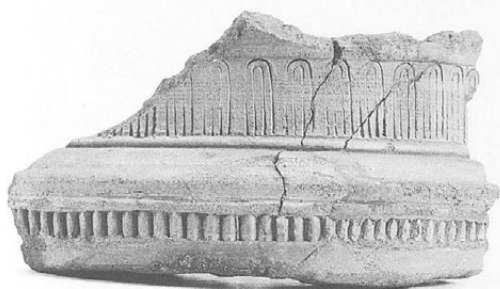
3



5

中世土器

1. SD13-1
2. SK316-1
3. SK778-1
4. III区表採-2
5. VI区表採-1
6. III L 7-1
7. SD1-18



6



7

SB503

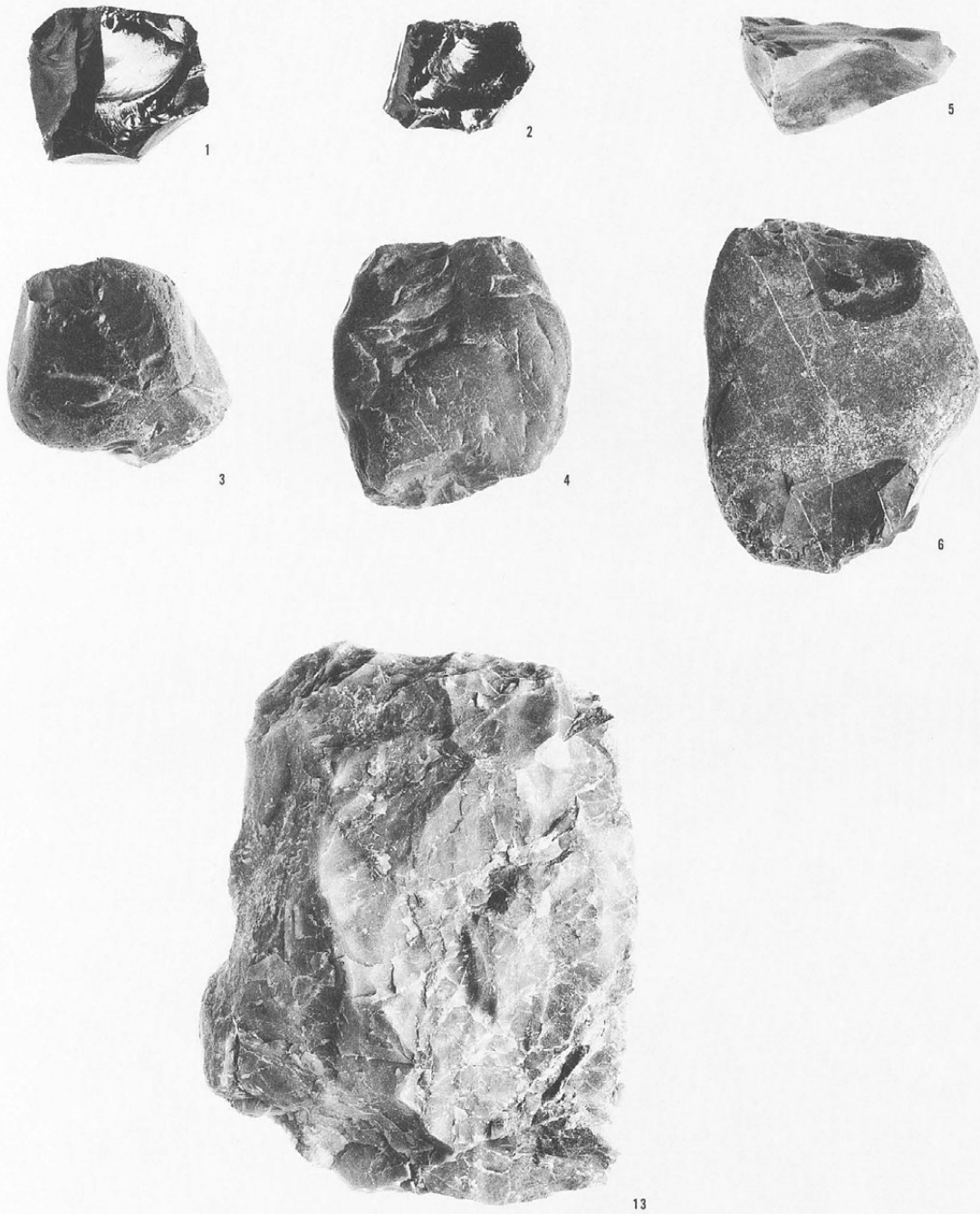


SD47



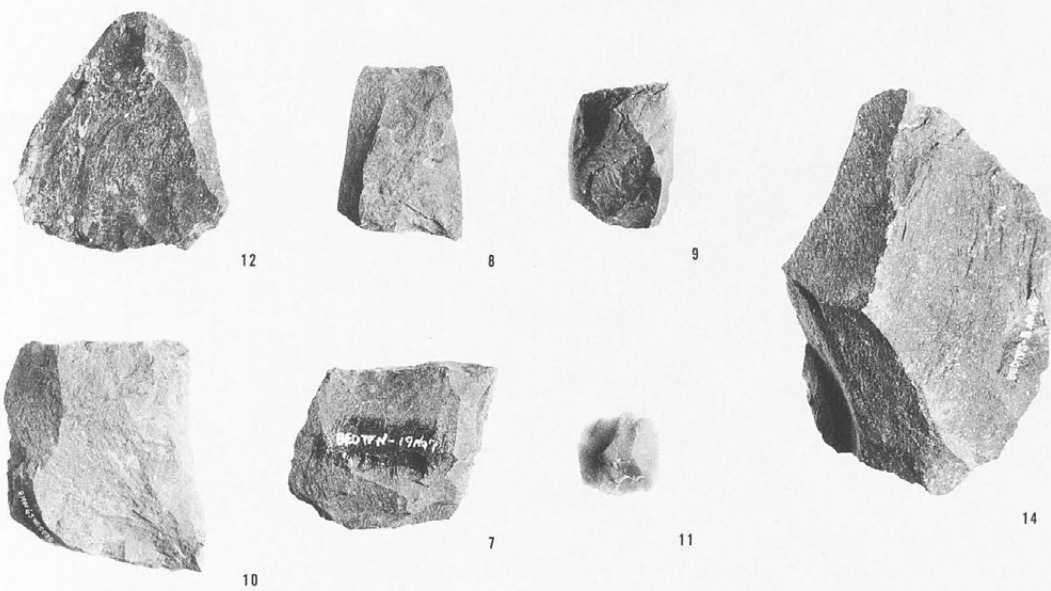
石核

- 1. Z
- 2. VIS 18
- 3. SB445
- 4. SB459
- 5. SB1483
- 6. SB457
- 13. SB1474
(2 : 3)



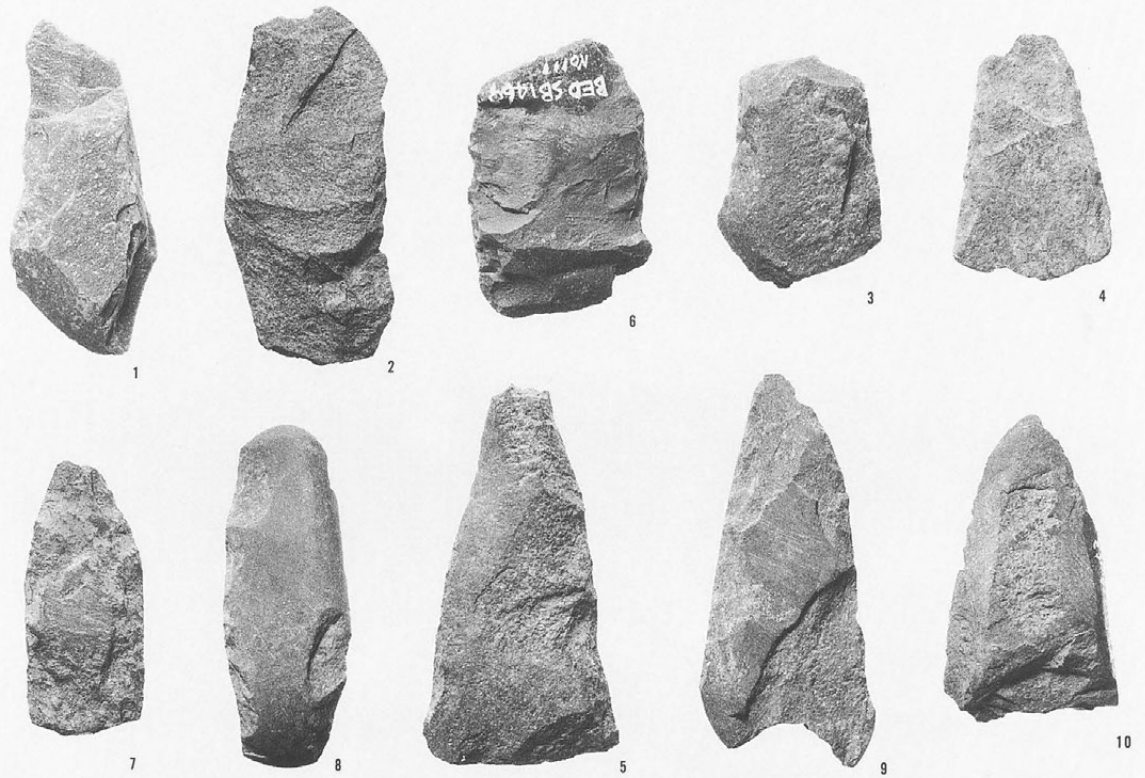
剥片A類

- 7. IVN19
- 8. SB1469
- 9. IVN19
- 10. SB459
- 11. IVS 17
- 12. SB1468
- 14. IVS 8
(2 : 3)



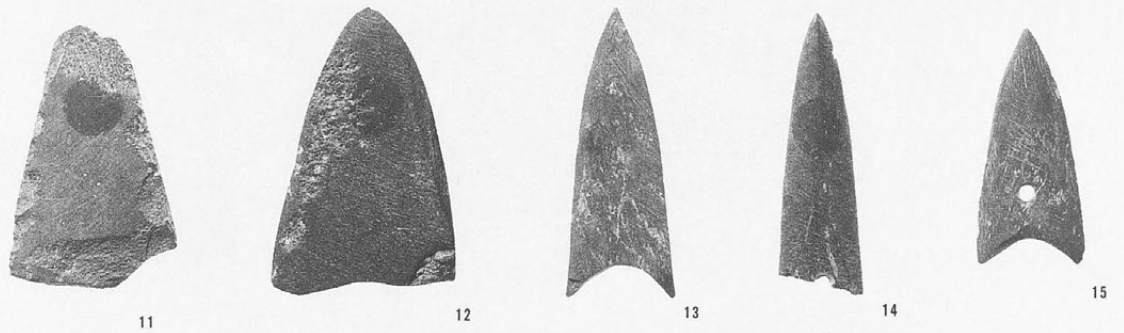
磨製石鋏

1. SB1469
 2. SB1469
 3. SB1484
 4. IVS 11
 5. SK14706
 6. SB1469
 7. IVS 11
 8. IVS 3・4
 9. SB1473
 10. SB1469
 11. SB1469
 12. IVR 10
 13. SB157
 14. SB1469
 15. SB445
 16. SK3277
 17. SB459
 22. SD47
- (1 : 1)



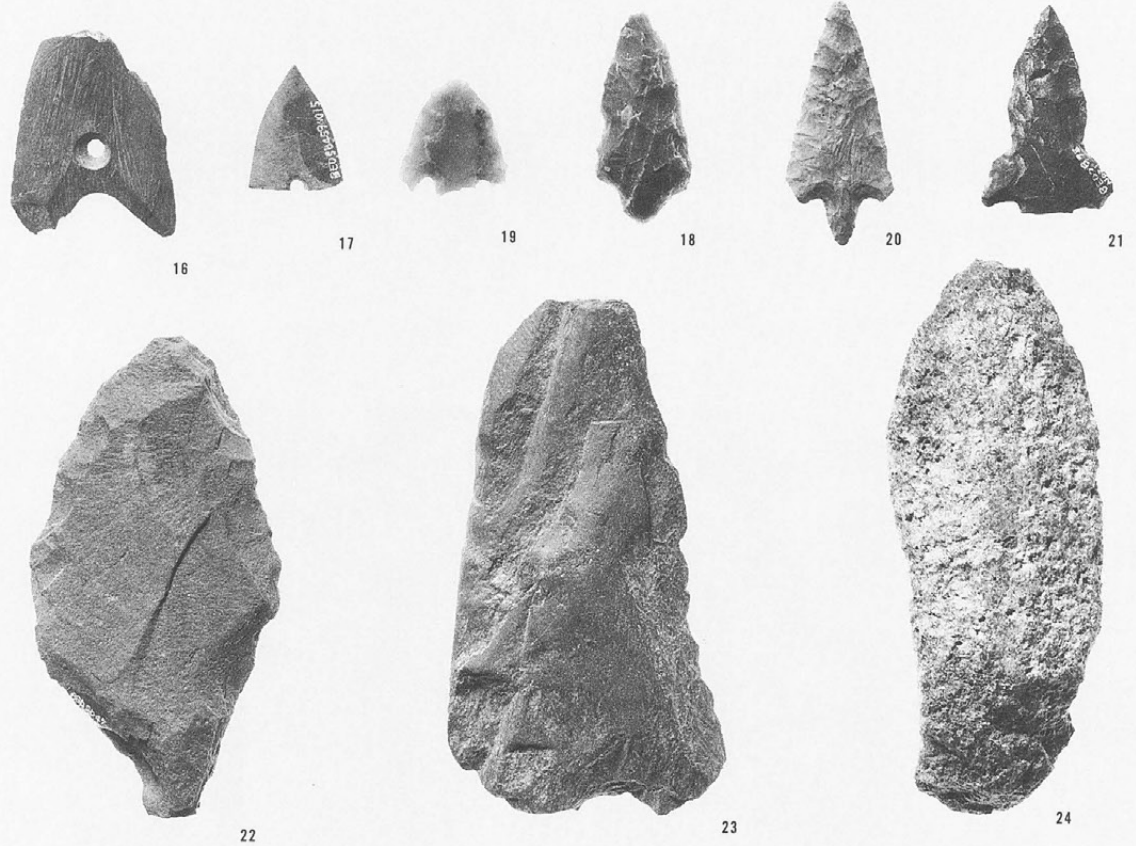
打製石鋏

18. SD79
 19. SD47
 20. SB1469
 21. SB98
- (1 : 1)

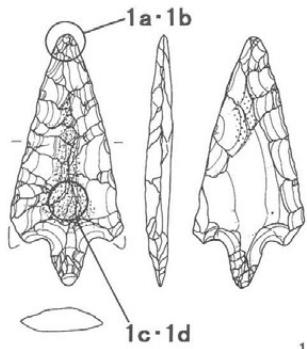


磨製石劍

23. SB361
 24. SB1482
- (1 : 1)



PL104 弥生時代石器(3)



x12.5



x25

使用痕写真

打製石鏃

1. SB1469

図版259-20

PL103-20

(1a・b, 先端部摩耗痕)

(1c・d, 基部摩耗痕)

LIVETIME (spec.) = 99

Peak at 2.30 keV omitted ?
Peak at 2.62 keV omitted ?

ENERGY	RES	AREA
-3.7	61.11	35293
TOTAL AREA =		41268

ENERGY	RES	AREA
-3.8	61.21	35250
TOTAL AREA =		39521

	%OXIDE	FORMULA
SiO2	70.250	9.175
TiO2	1.573	.154
Al2O3	15.718	2.420
◆FeO	.440	.040
◆MnO	.044	.005
MgO	3.623	.705
CaO	1.911	.267
Na2O	3.417	.865
K2O	3.023	.504
		24.000
	99.999	14.145

	%OXIDE	FORMULA
SiO2	68.233	8.967
TiO2	1.854	.183
Al2O3	16.670	2.582
◆FeO	.782	.086
◆MnO	-.063	-.007
MgO	3.968	.777
CaO	1.589	.224
Na2O	3.849	.981
K2O	3.053	.512
		24.000
	99.936	14.305

先端部 1

先端部 2

ENERGY	RES	AREA
-3.8	61.34	35318
TOTAL AREA =		33541

ENERGY	RES	AREA
-4.0	61.19	35314
TOTAL AREA =		33710

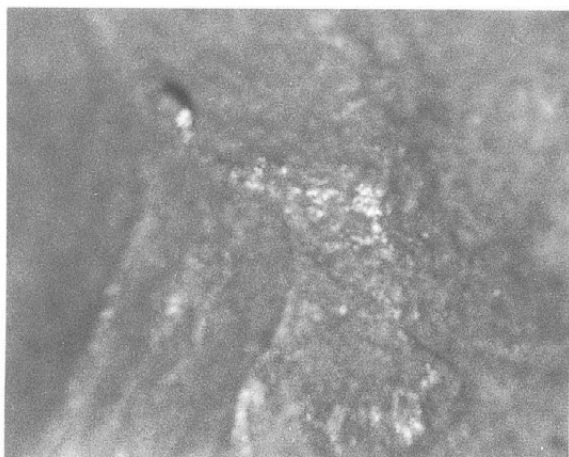
	%OXIDE	FORMULA
SiO2	61.542	8.291
TiO2	4.623	.460
Al2O3	17.602	2.775
◆FeO	.990	.112
◆MnO	-.070	-.008
MgO	2.864	.575
CaO	7.644	1.103
Na2O	2.260	.590
K2O	2.471	.425
		24.000
	99.926	14.351

	%OXIDE	FORMULA
SiO2	63.004	8.365
TiO2	3.309	.330
Al2O3	19.526	3.056
FeO	1.457	.162
◆MnO	-.062	-.007
MgO	3.918	.775
CaO	5.028	.715
◆Na2O	1.416	.365
K2O	2.738	.396
		24.000
	99.935	14.157

基部 1

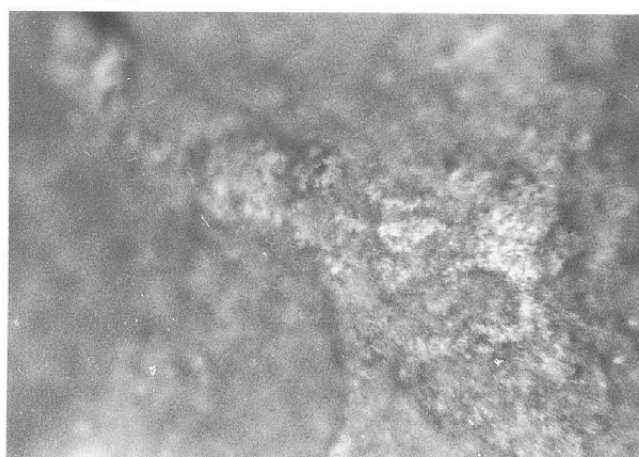
基部 2

EDX分析チャート (半定量)



1 c

x25



1 d

x50

使用痕写真

磨製石鏃

失敗品 2 A類

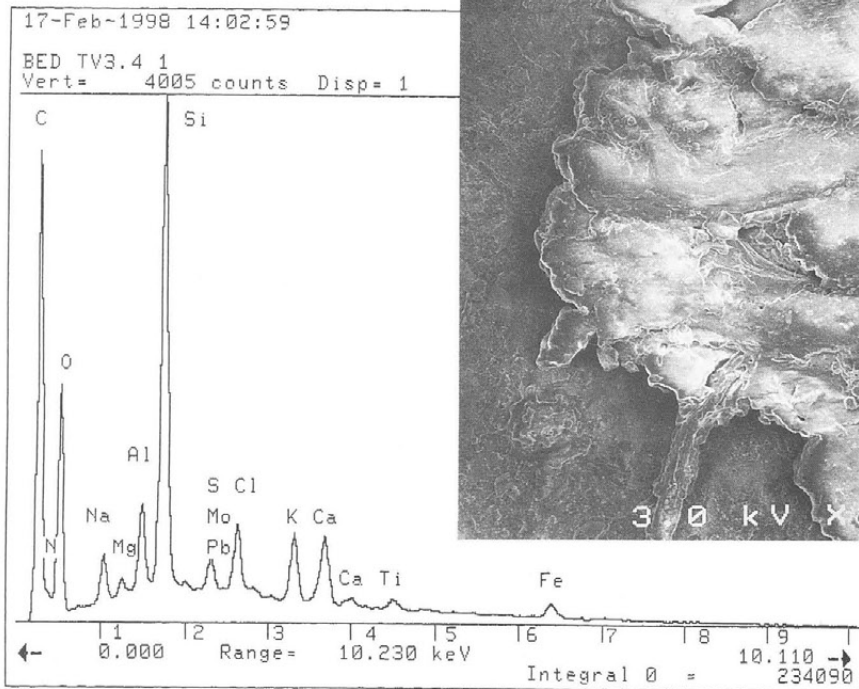
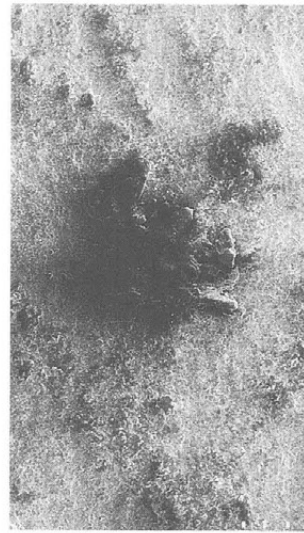
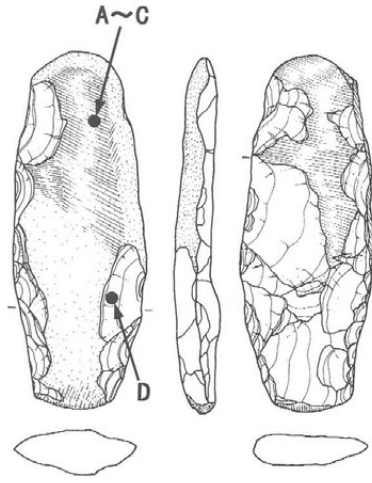
IVS 3・4

図版258-8

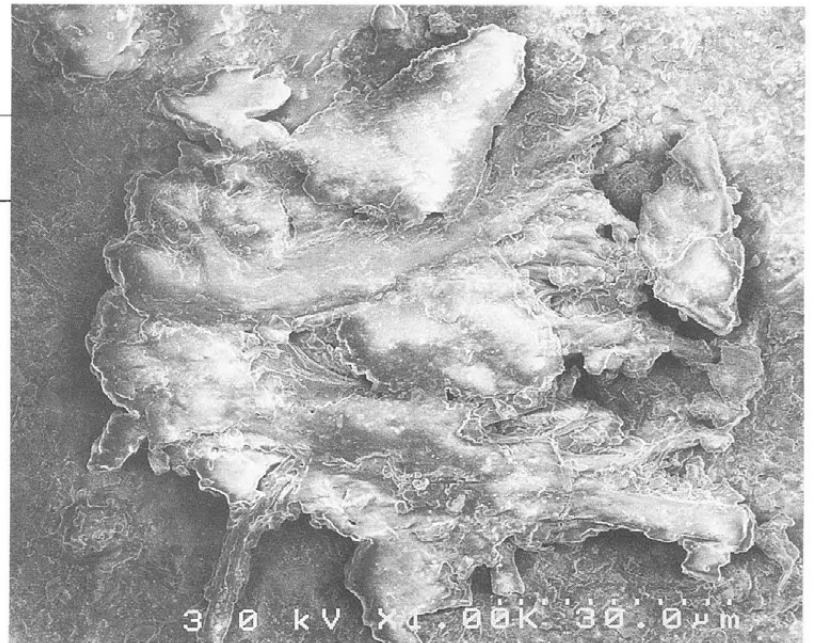
PL103-8

(A~C, 基部先端研磨痕)

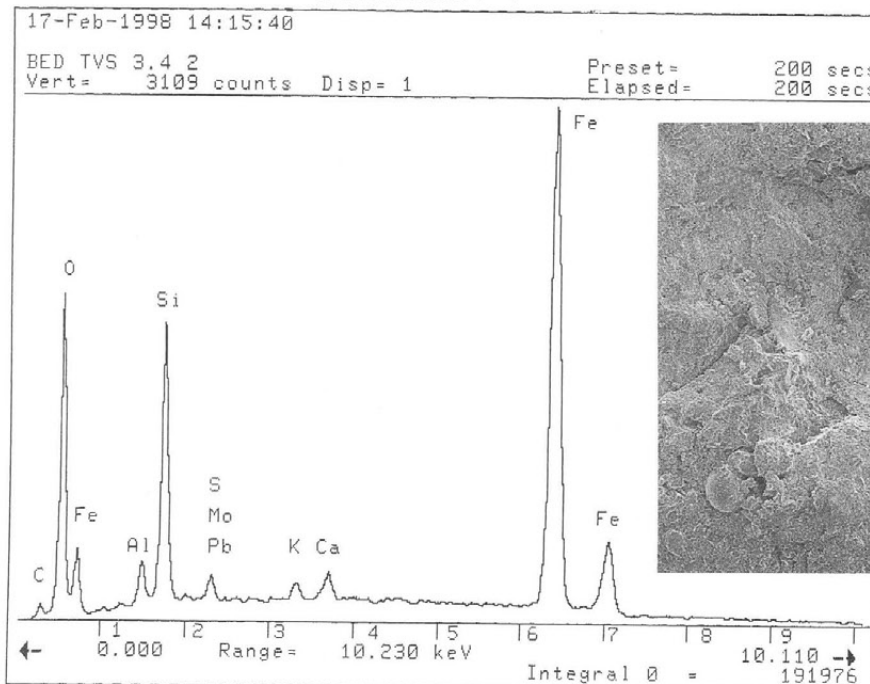
(D, 基部剝離痕)



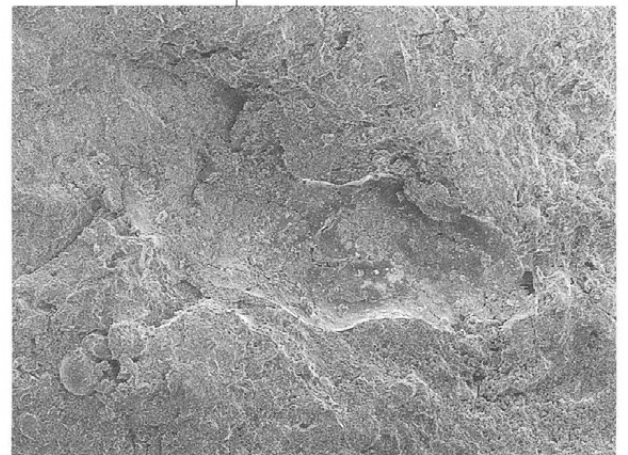
基部先端EDX分析チャート



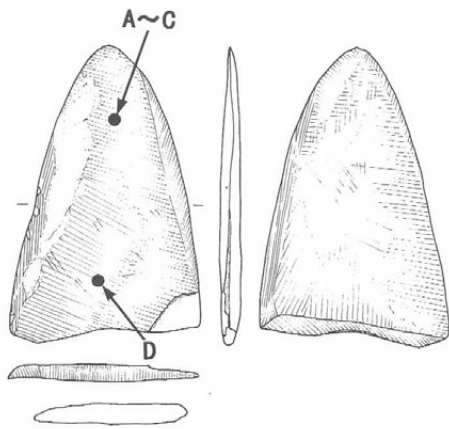
C ×1000



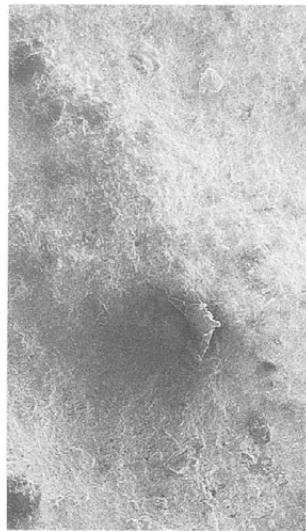
基部EDX分析チャート



D ×200

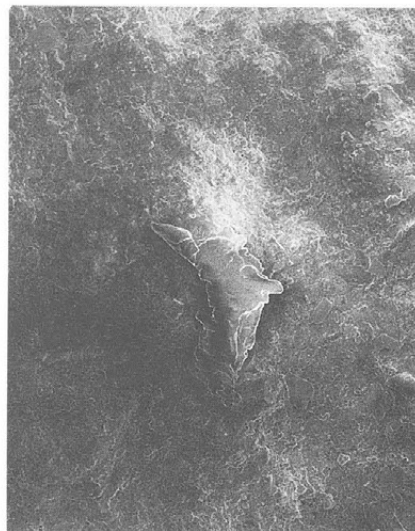


試料No 2



A

×200



B

×500

使用痕写真

磨製石鏃

失敗品 2 B類

IVR10

図版258-12

PL103-12

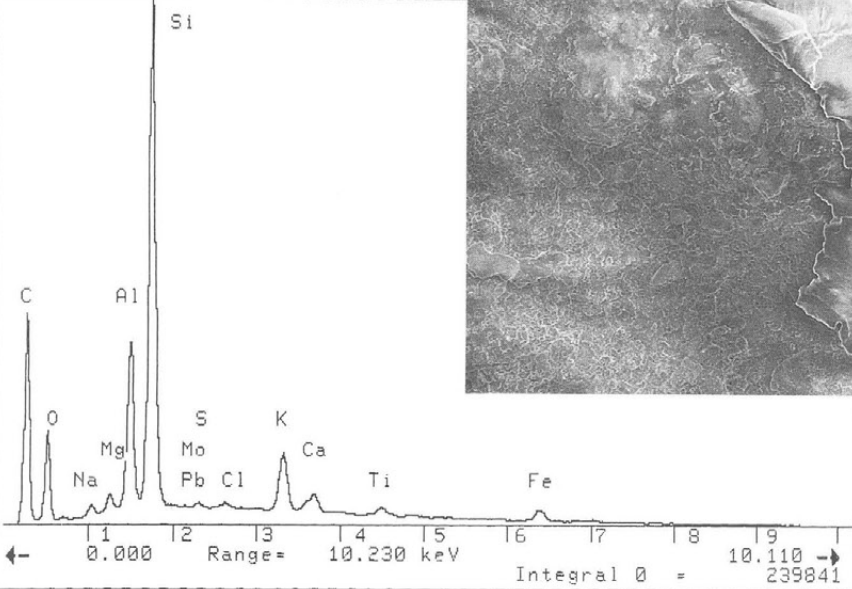
(A~C, 先端部研摩痕)

(D, 基部研摩痕)

17-Feb-1998 13:04:36

BED TVR-10 1

Vert= 6324 counts Disp= 1



先端部EDX分析チャート



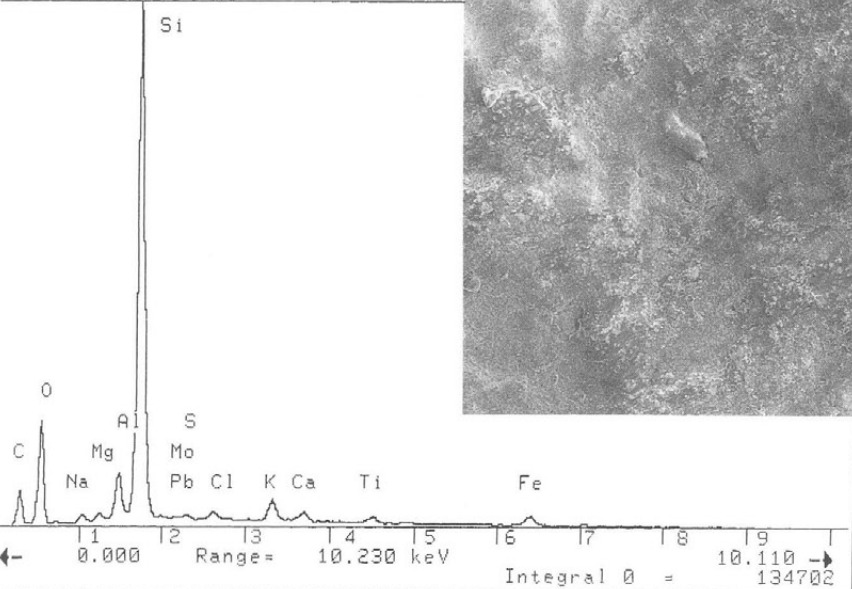
C

×1000

17-Feb-1998 13:18:22

BED TVR-10 2

Vert= 5669 counts Disp= 1



基部EDX分析チャート



D

×200

使用痕写真

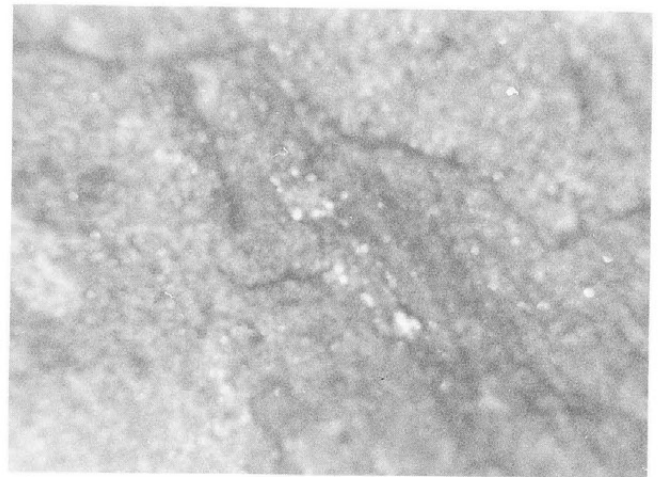
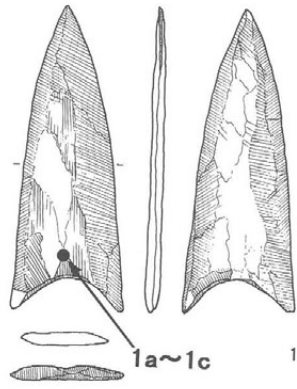
磨製石鏃

1. S B157

図版259-13

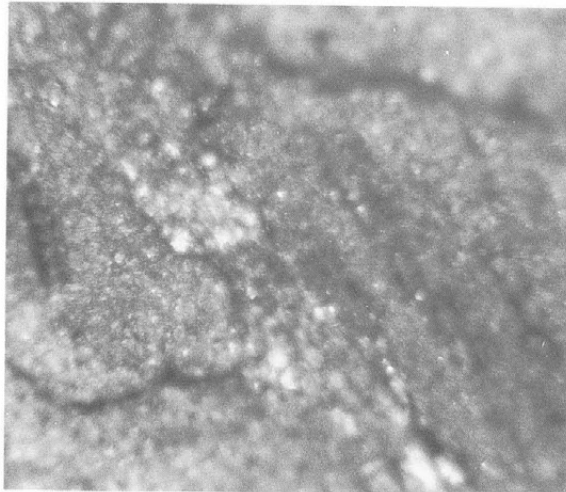
PL103-13

(1a~c, 基部摩耗痕)



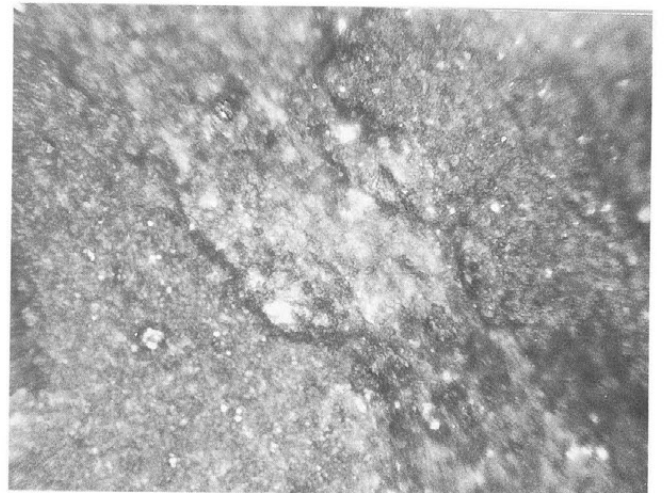
1 a

X25



1 b

X50



1 c

X125

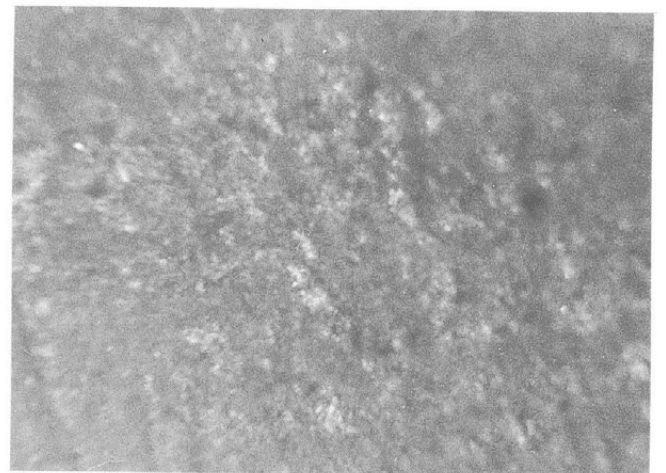
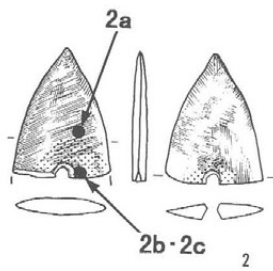
2. S B459

図版259-17

PL103-17

(2a, 基部摩耗痕)

(2b・c, 穴部周辺の
白色付着物)



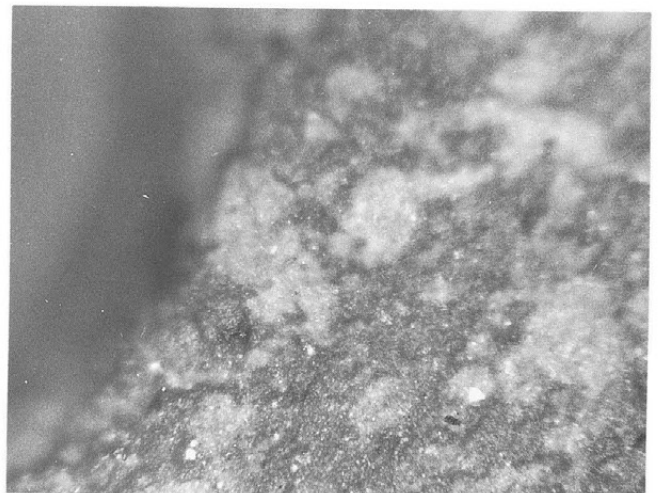
2 a

X25



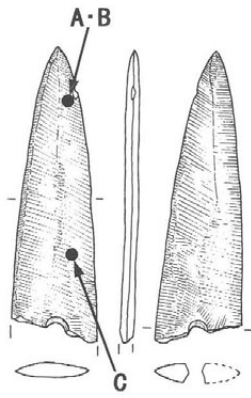
2 b

X25

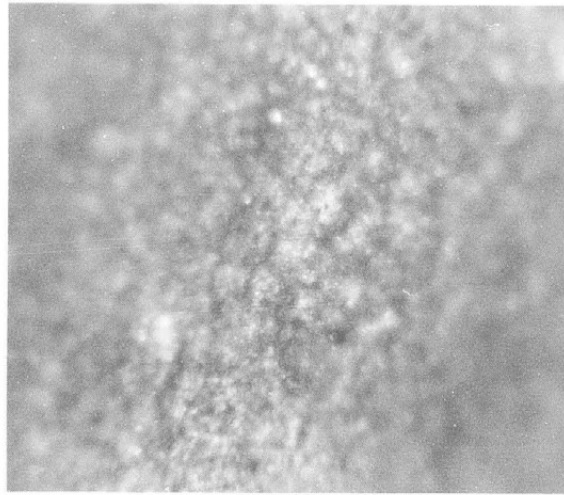


2 c

X50



試料No 3



A

X25

使用痕写真

磨製石鏃

SB1469

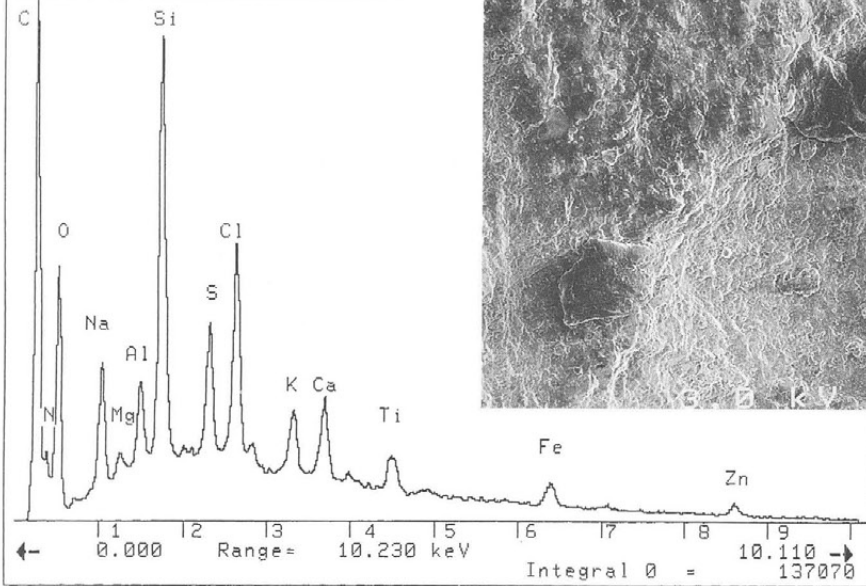
図版259-14

PL103-14

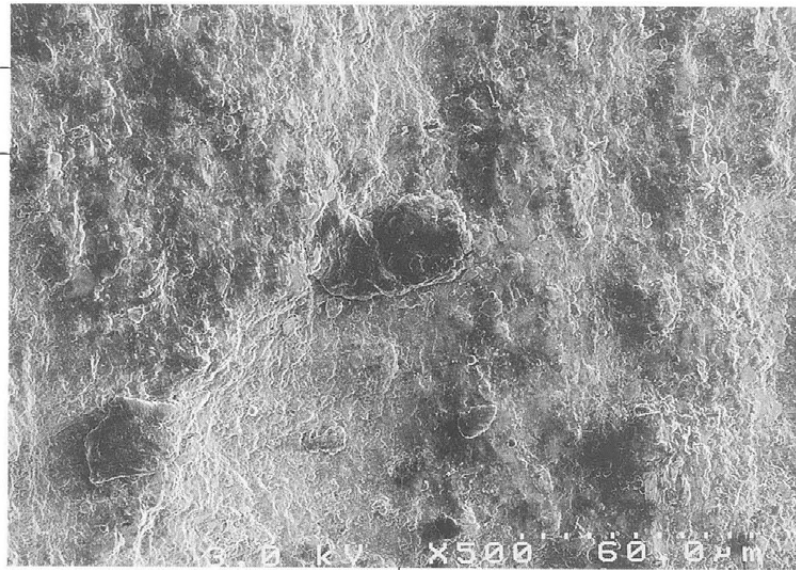
(A·B, 先端部
研摩痕)

(C, 基部研摩痕)

17-Feb-1998 13:34:44
BED SB1469-75 1
Vert= 1471 counts Disp= 1



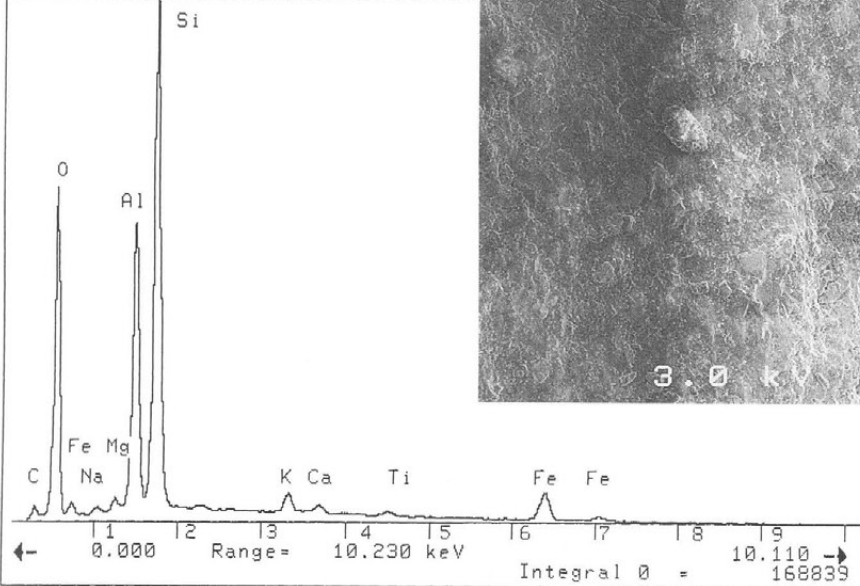
先端部EDX分析チャート



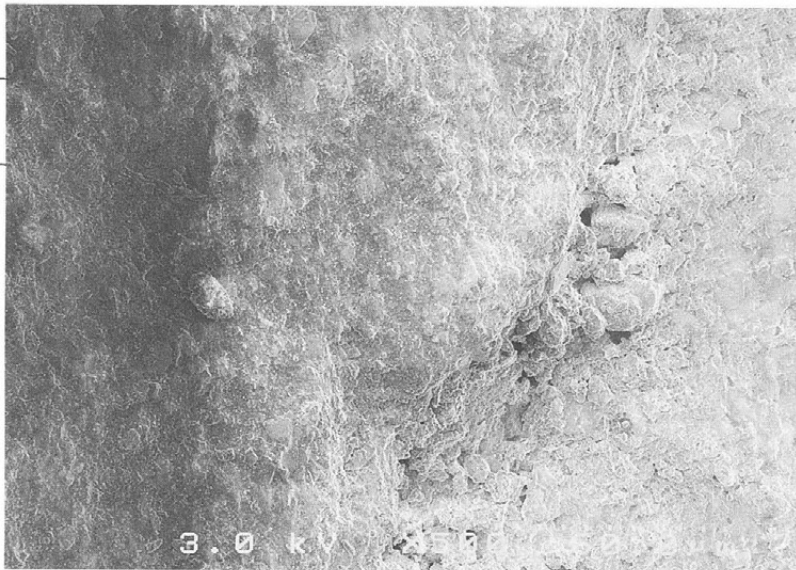
B

X500

17-Feb-1998 13:43:45
BED SB1469-75 2
Vert= 4606 counts Disp= 1



基部EDX分析チャート



C

X500

使用痕写真

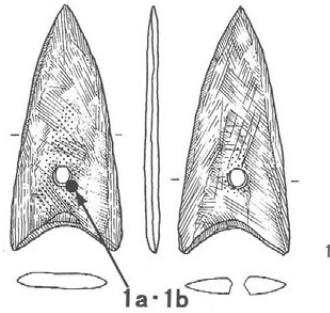
磨製石鏃

1. SB445

図版259-15

PL103-15

(1a・b, 穴部周辺の摩耗痕)



LIVETIME(spec.) = 51

15.00 kV
TILT = .00
ELEV = 45.00
AZIM = .00
COSINE = .965

ENERGY	RES	AREA
-3.7	62.21	18207
TOTAL AREA =		94541
Peak at	.39 keV omitted ?	
Peak at	.41 keV omitted ?	

ENERGY	RES	AREA
-3.8	61.43	18117
TOTAL AREA =		86103
Peak at	2.30 keV omitted ?	
Peak at	2.63 keV omitted ?	

	%OXIDE	FORMULA
SiO2	68.682	9.159
TiO2	1.865	.187
Al2O3	14.756	2.319
FeO	5.806	.648
MnO	.628	.071
MgO	2.607	.518
CaO	.279	.040
Na2O	2.164	.560
K2O	3.212	.546
		24.000
	100.000	14.048

	%OXIDE	FORMULA
SiO2	67.608	9.027
TiO2	1.306	.131
Al2O3	15.948	2.510
FeO	5.896	.658
◆MnO	.141	.016
MgO	3.125	.622
CaO	.500	.071
Na2O	1.910	.494
K2O	3.566	.607
		24.000
	100.000	14.138

先端部

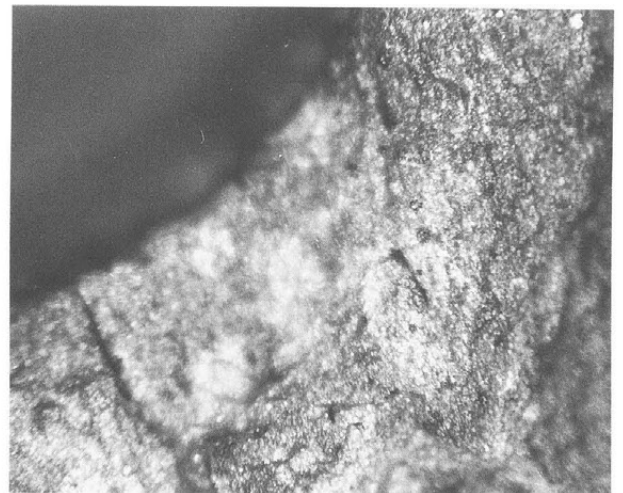
基部

EDX分析チャート(半定量)



1 a

×25



1 b

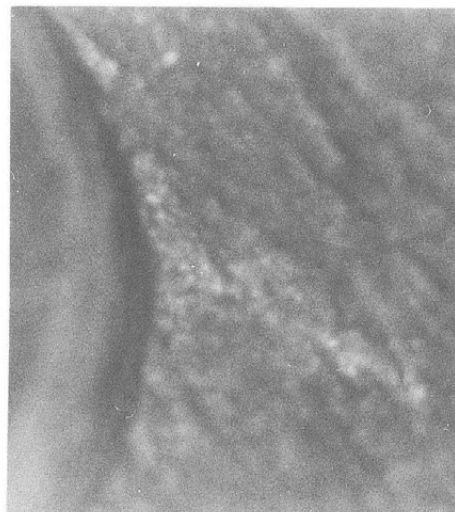
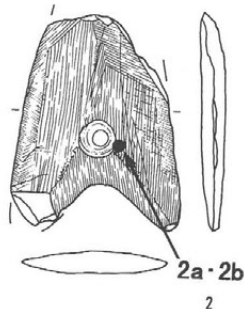
×50

2. SK3277

図版259-16

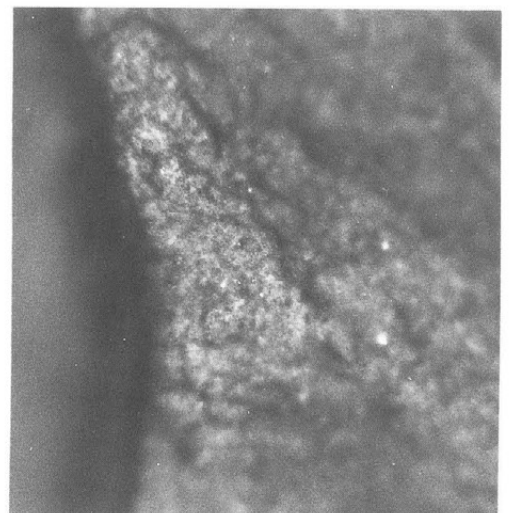
PL103-16

(2a・b, 穴部周辺の摩耗痕)



2 a

×25

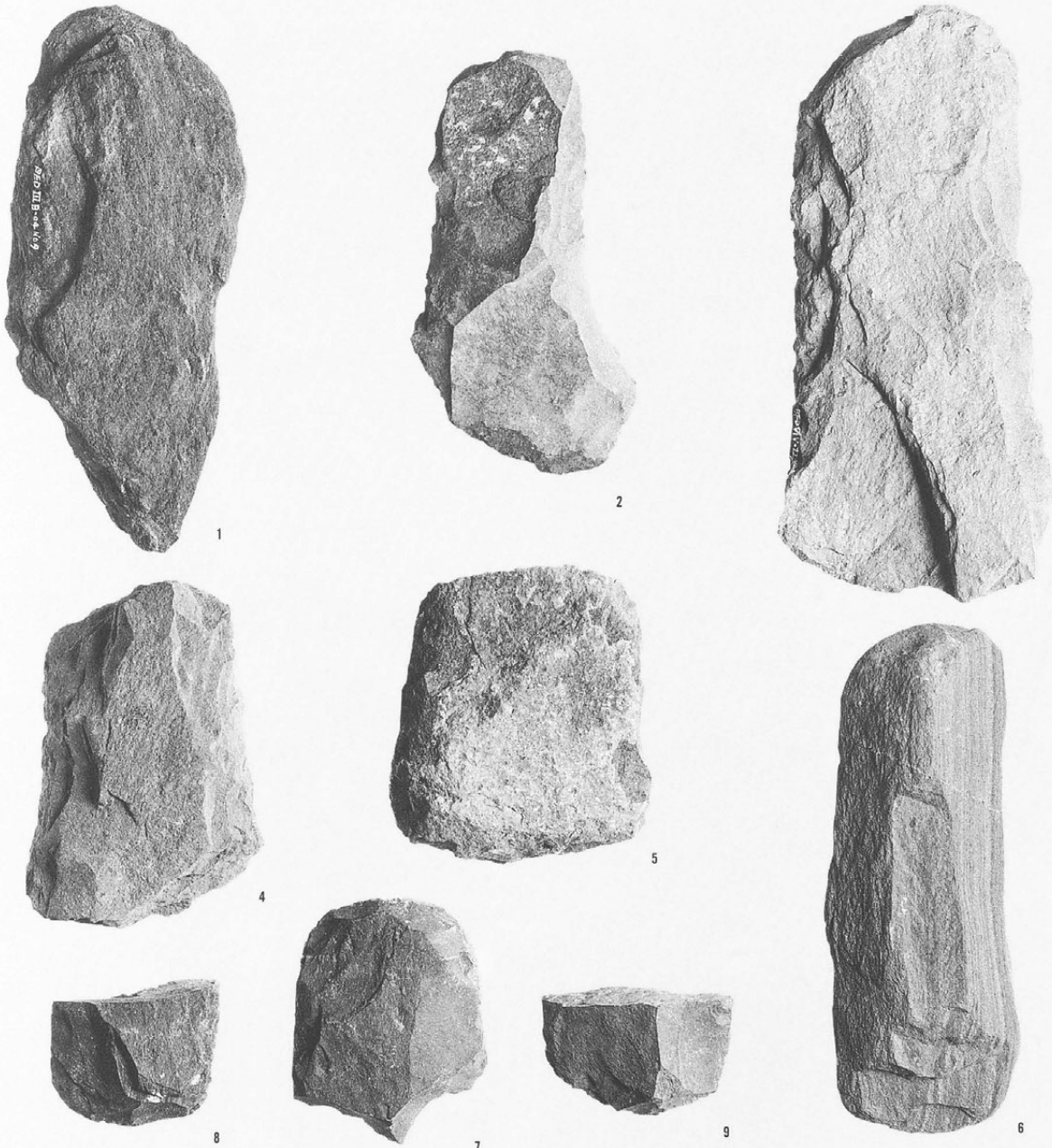


2 b

×50

打製石斧

1. III B 4
 2. IV N 19
 3. V I V 22
 4. S D 57
 5. S B 442
 6. ②-3-C
 7. S B 1482
 8. S B 1482
 9. I V S 11
- (1 : 2)



小形刃器

1. S D 47
 2. S D 79
 3. S B 459
 4. S D 79
- (1 : 1)



使用痕写真

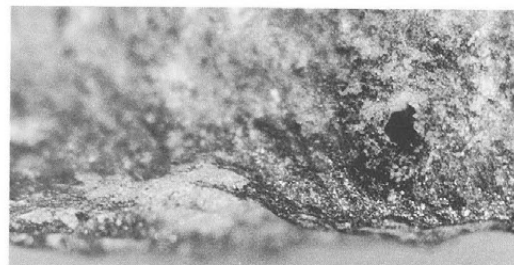
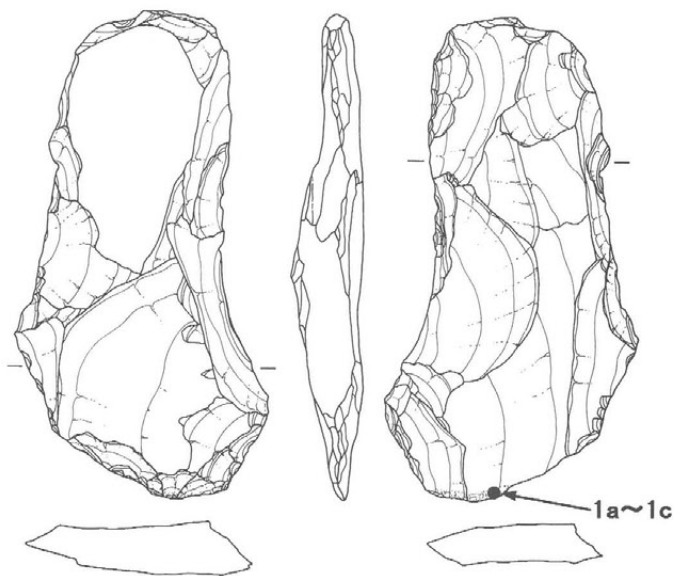
打製石斧

1. IVN19

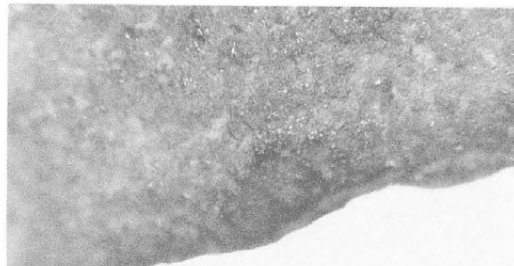
図版260-2

PL110-2

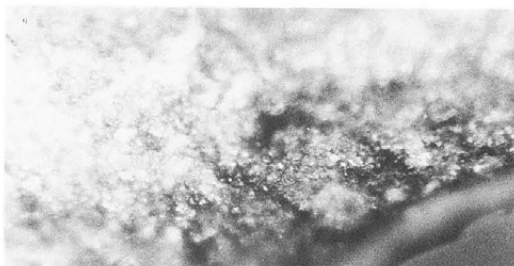
(1a~c, 刃部摩耗痕)



1 a ×10



1 b ×12.5



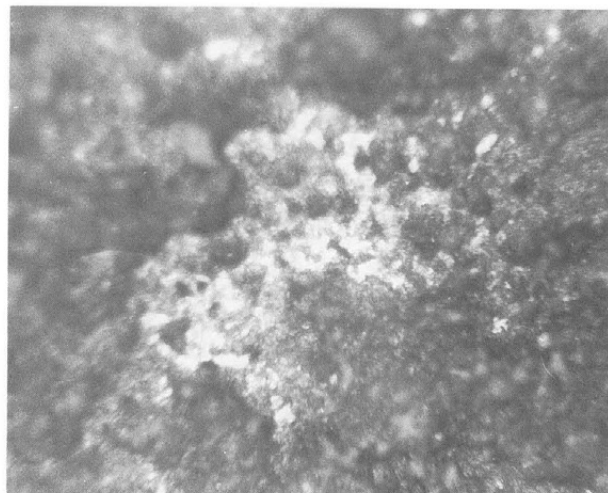
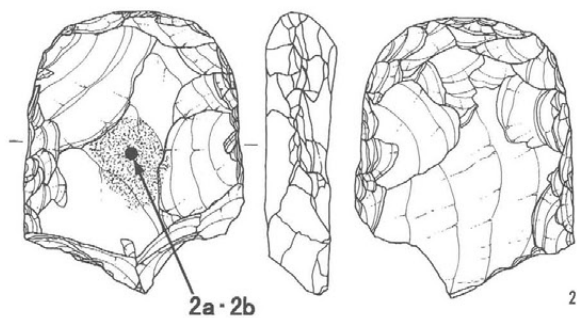
1 c ×25

2. SB1482

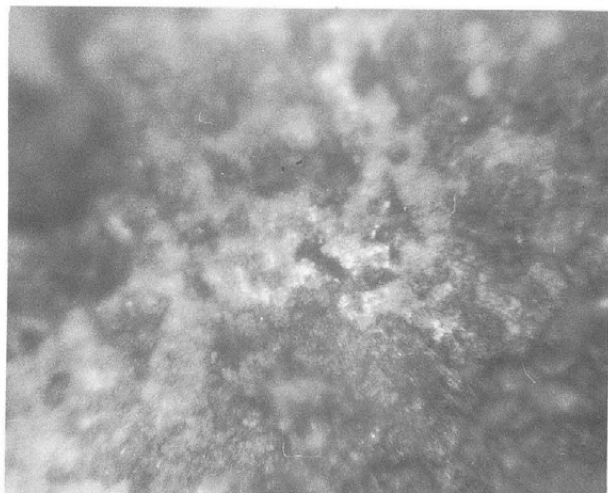
図版261-7

PL110-7

(2a·b, 基部摩耗痕)



2 a ×25



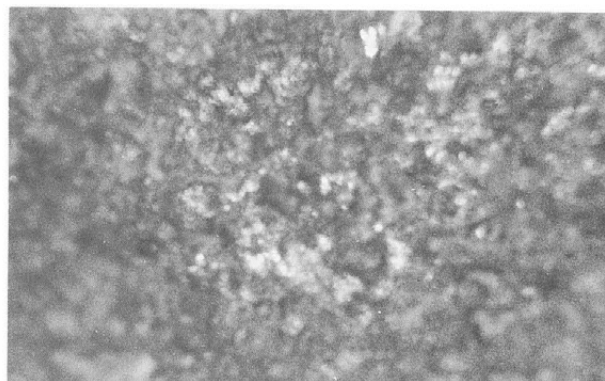
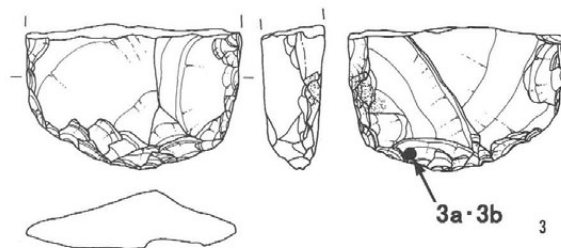
2 b ×50

3. IVS11

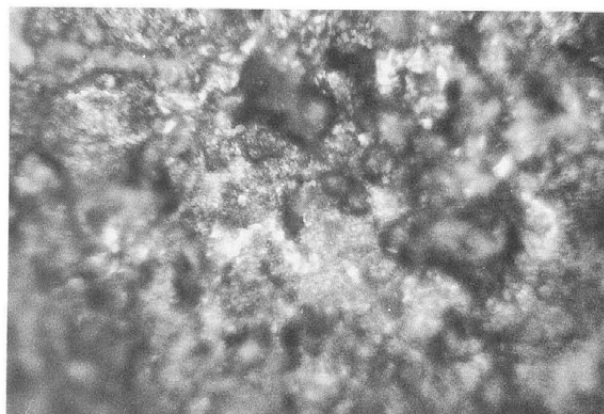
図版261-9

PL110-9

(3a·b, 刃部摩耗痕)



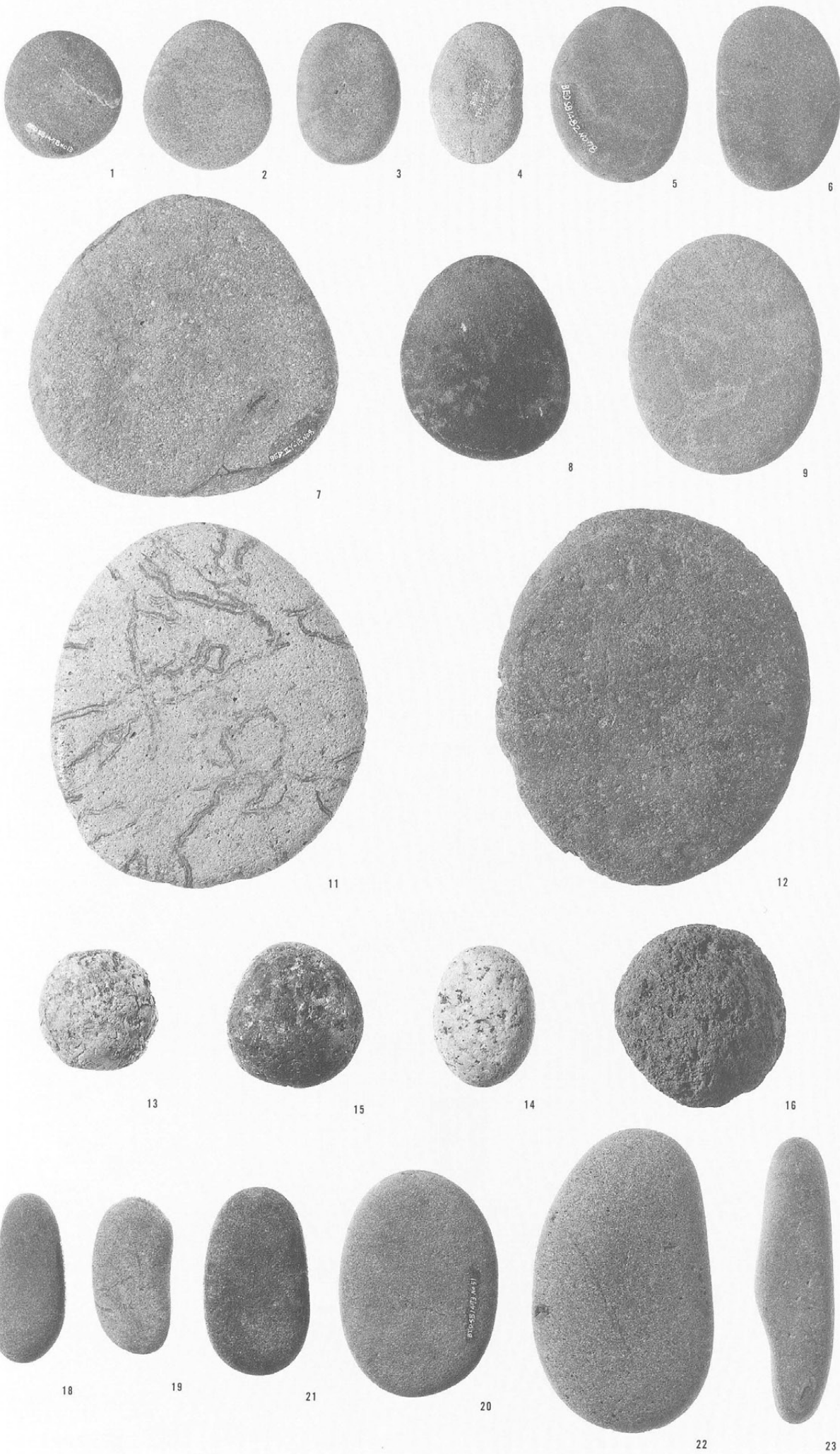
3 a ×25



3 b ×50

磨石

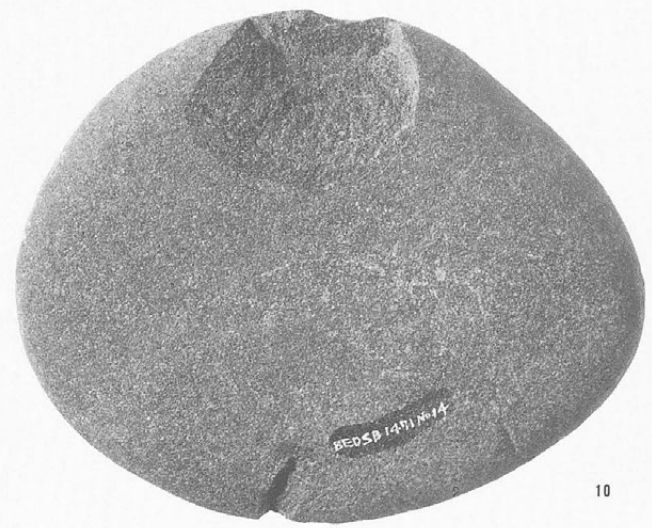
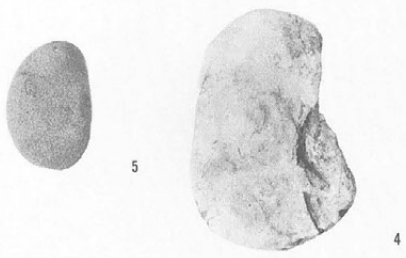
1. SB1478
 2. IVN24
 3. SB1473
 4. IVN24
 5. SB1482
 6. SB1474
 7. IIY13
 8. SB1474
 9. SB1473
 11. IIY13
 12. SB736
 13. SB1469
 14. IVN24
 15. SB1469
 16. IVS16
 18. SB1469
 19. SB1482
 20. SB1473
 21. SB1474
 22. SB1651
 23. SB1651
- (1 : 2)



凹石 敲石

- 24. SB440
 - 25. SB1484
 - 26. SB1484
 - 27. SB380
 - 28. VIO18
 - 29. SK14711
 - 30. SB1440
 - 31. SB1450
 - 32. SB380
 - 33. SB1679
 - 34. SB838
 - 35. SB354
 - 36. SB1474
 - 37. SB1482
 - 38. SB1484
 - 39. SB1474
 - 40. SB1482
 - 41. IVS11
 - 42. SB1482
 - 43. SB1474
 - 44. SB1484
 - 45. SB1469
 - 46. SK14706
- (1 : 3)





みがき石

- 1. SB1482
- 2. IVS11
- 3. SB1471
- 4. Z
- 5. SB1482
- 6. SG3
(2:3)

円盤状石製品

- 7. SG3
- 8. SB1661
(2:3)

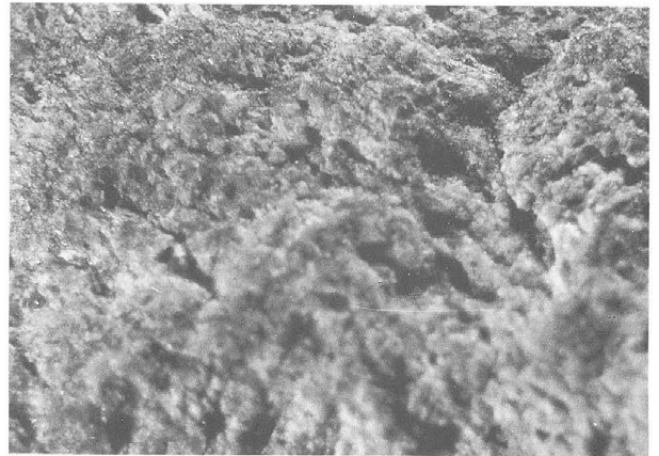
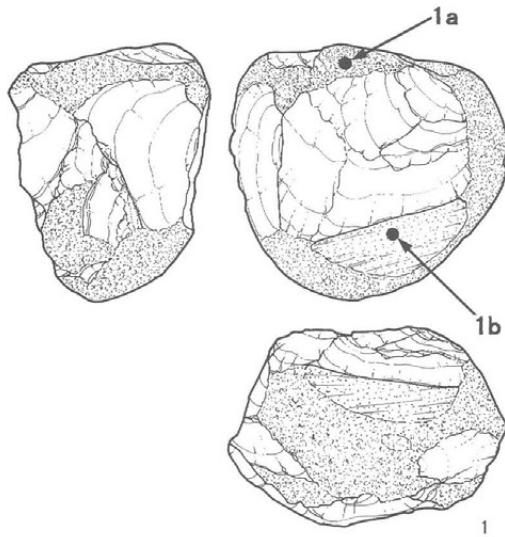
石錘

- 9. SB1482
- 10. SB1471
(2:3)

使用痕写真

敲石

1. SB1474
 図版264-43
 PL113-43
 (1a·b, 敲打痕)

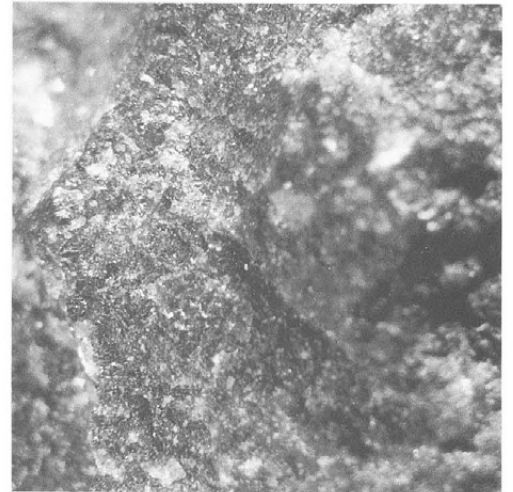
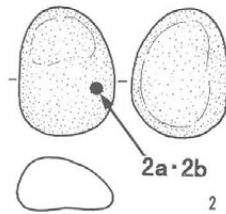


1 a

x3.3

みがき石

2. SB1471
 図版265-3
 PL114-3
 (2a·b, 摩耗痕)

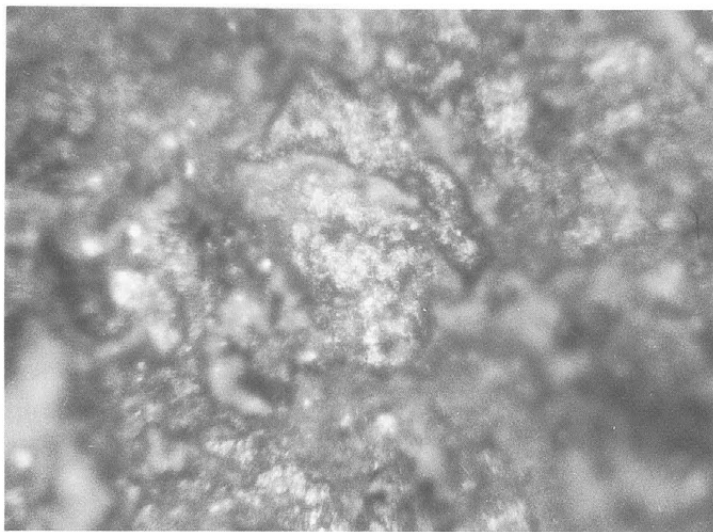


1 b

x3.3

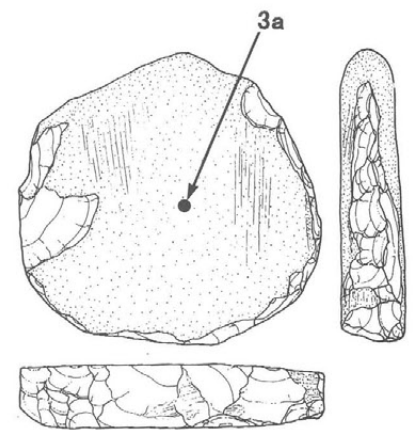
円盤状石製品

3. SB1661
 図版265-8
 PL114-8
 (3a, 摩耗痕)

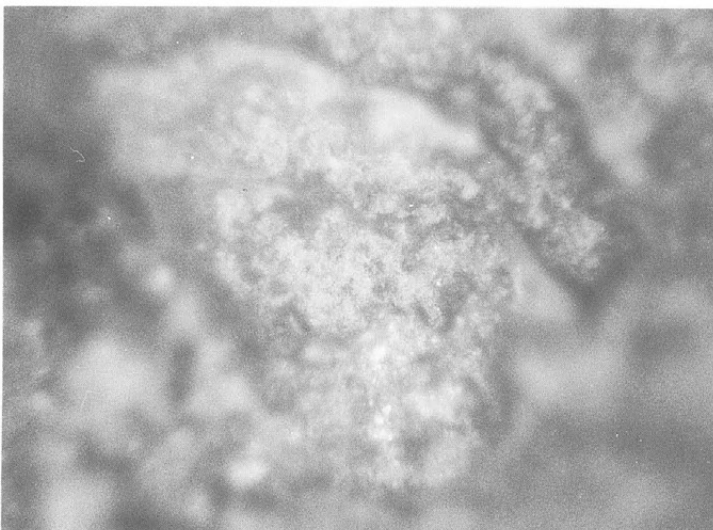


2 a

x25

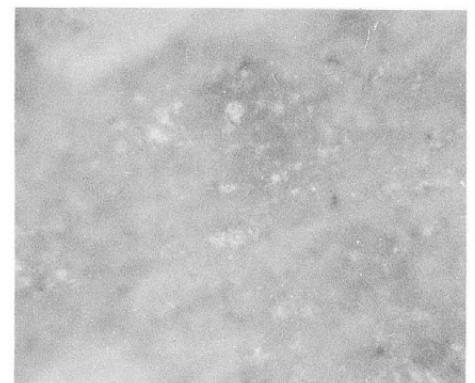


3



2 b

x50



3 a

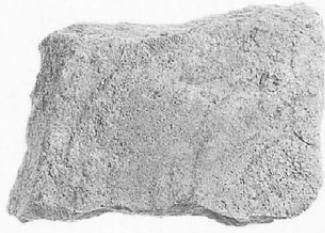
x50

台石 石皿

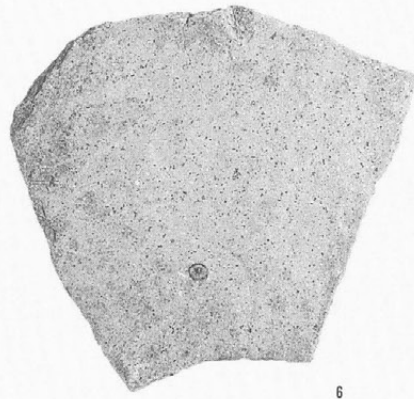
- 1. SB 9
 - 2. SB1469
 - 3. SB1222
 - 4. SB1478
 - 5. SB440
 - 6. SB803
 - 7. SD 1
 - 8. SB85
 - 9. SB529
 - 10. SB147
 - 11. SB722
 - 12. SB168
- (1 : 6)



1



2



6



5



3



4



7



11



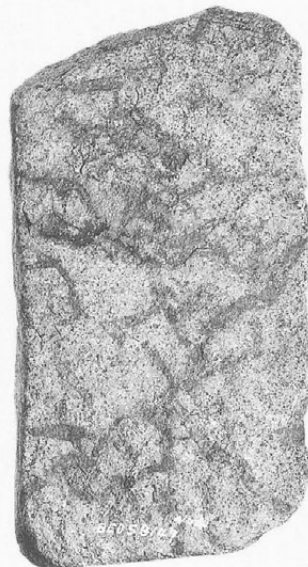
12



8



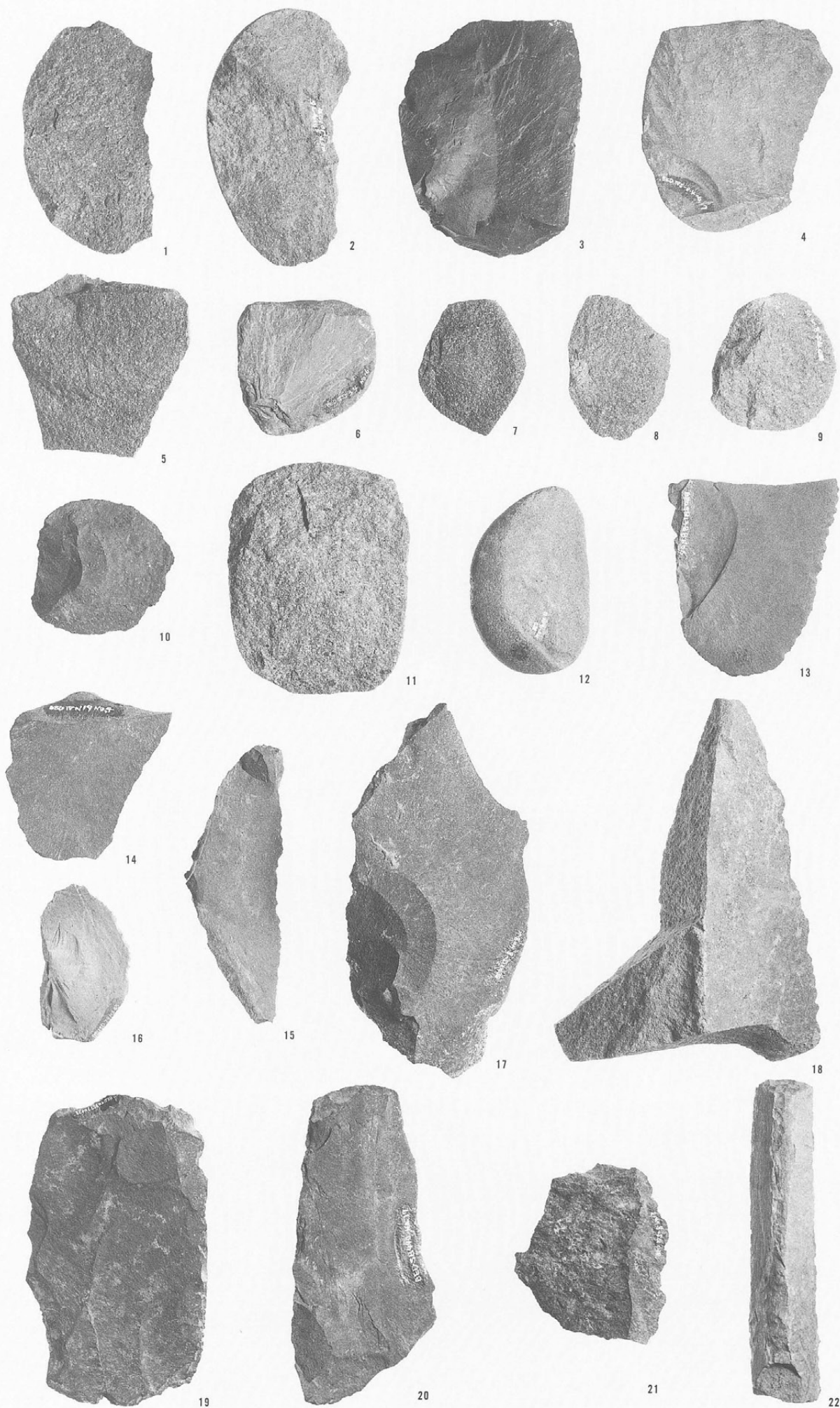
9

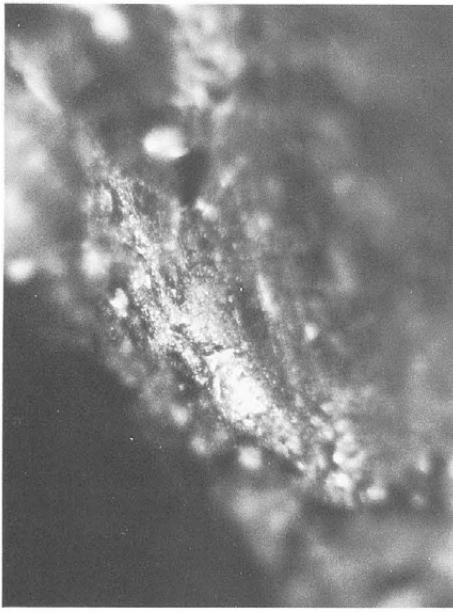
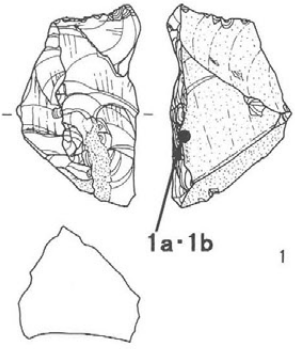


10

大形刃器

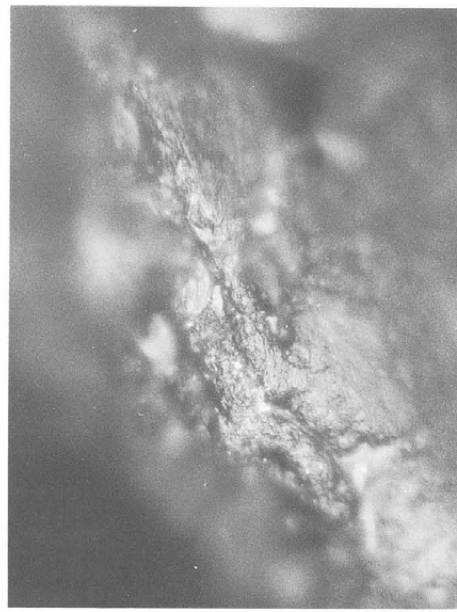
1. SB1473
 2. SB457
 3. SB1469
 4. IVS 3・4
 5. IVS 3・4
 6. IVS 3・4
 7. SB1469
 8. SB1469
 9. IVS 8
 10. SB159
 11. SB1681
 12. IVS 16
 13. SB1488
 14. IVN19
 15. SB1480
 16. SD79
 17. IVS 8
 18. SB1469
 19. SK3277
 20. SB440
 21. IVS 8
 22. IVS 8
- (1 : 2)





1 a

x25



1 b

x50

使用痕写真

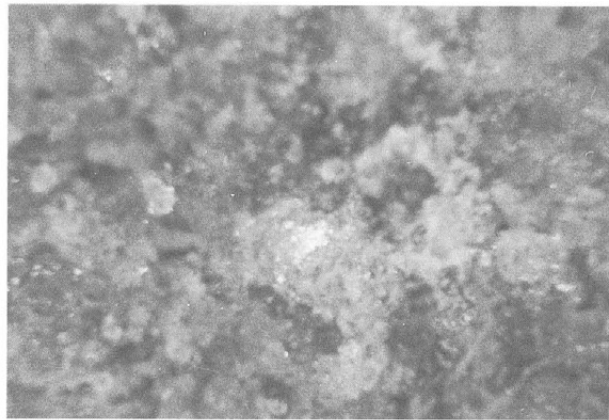
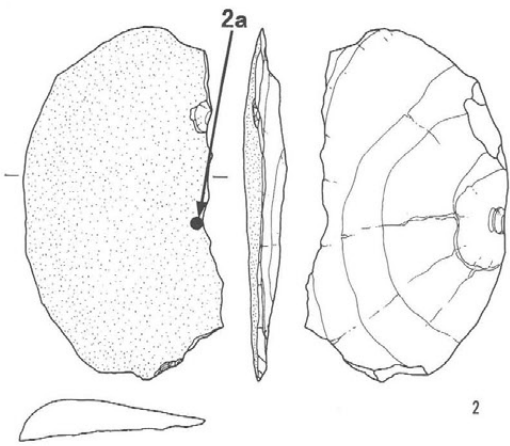
小形刃器

1. SD79

図版261-2

PL110-2

(1a·b, 刃部摩耗痕)



2 a

x25

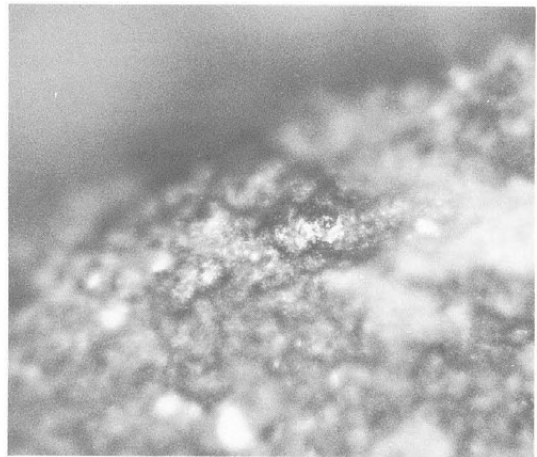
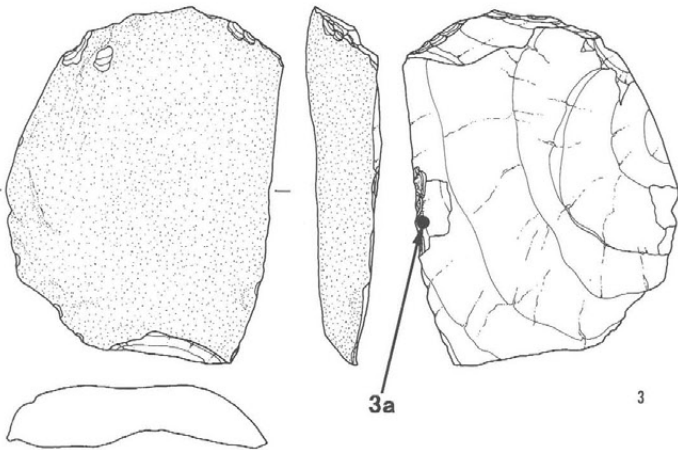
大形刃器II1a類

2. SB1473

図版267-1

PL117-1

(2a, 埋没光沢痕)



3 a

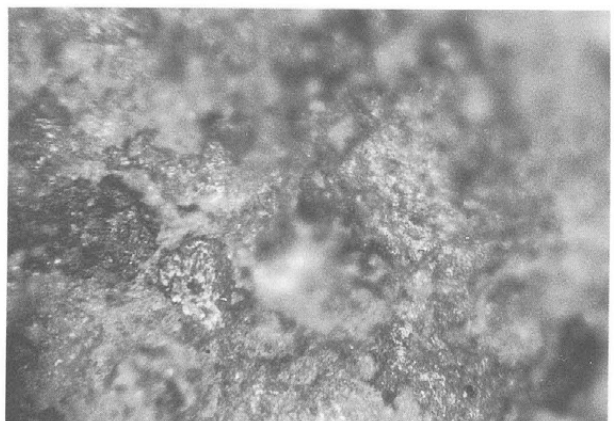
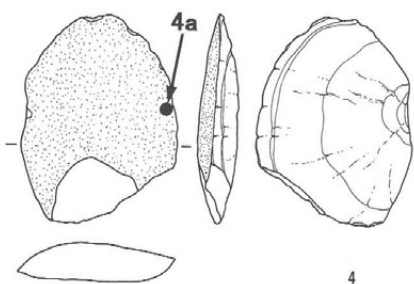
x25

3. SB1469

図版267-3

PL117-3

(3a, 刃部摩耗光沢痕)



4 a

x25

大形刃器IV1a類

4. SB1469

図版267-8

PL117-8

(4a, 埋没光沢痕)

使用痕写真

大形刃器III1a類

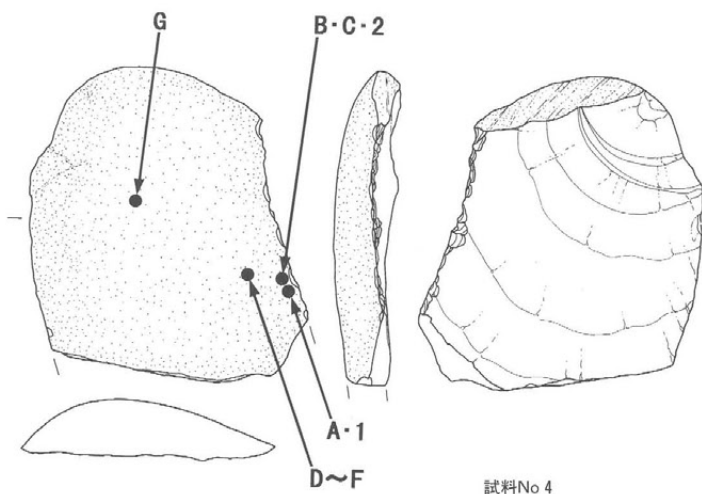
IVS 3・4

(写真A~G)

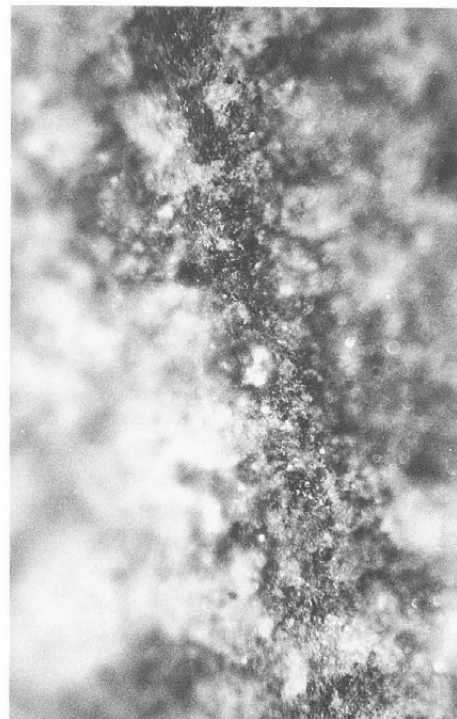
図版267-4

PL117-4

(A~E, 刃部摩耗光沢痕)



試料No 4



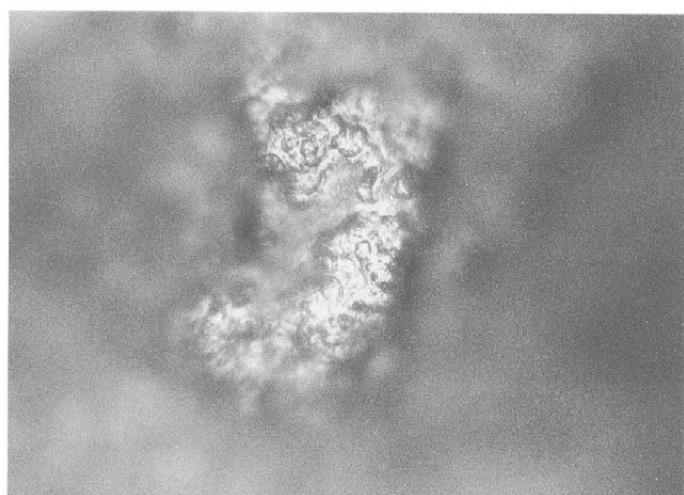
A

×25



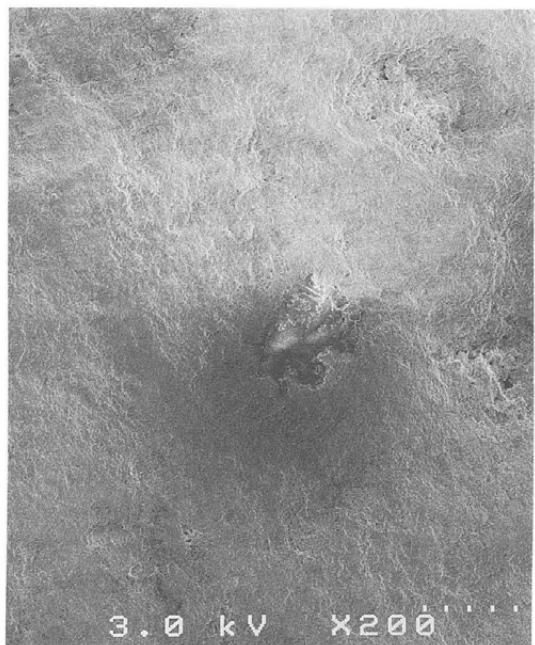
B

×25



C

×50



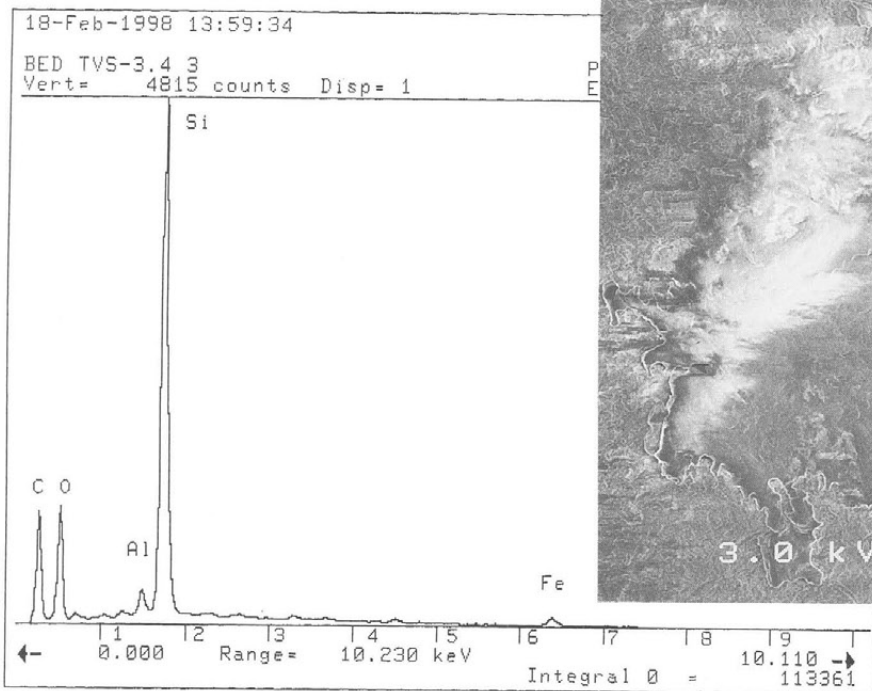
D

×200

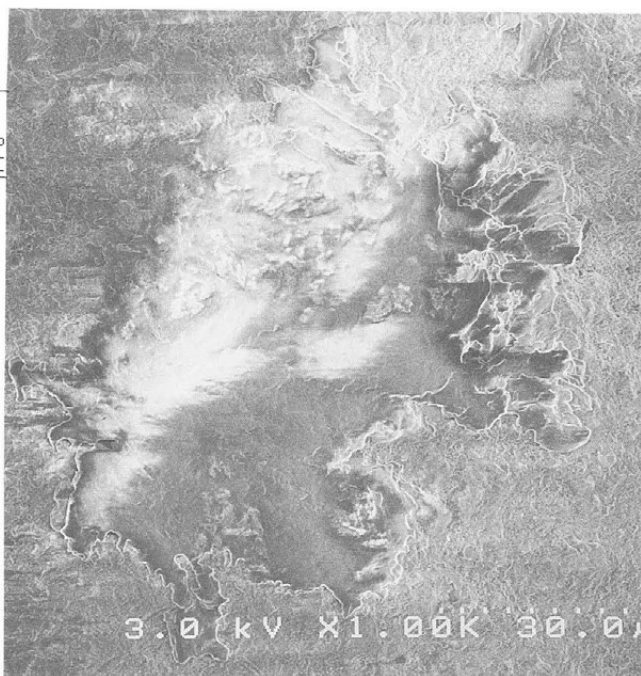


E

×500

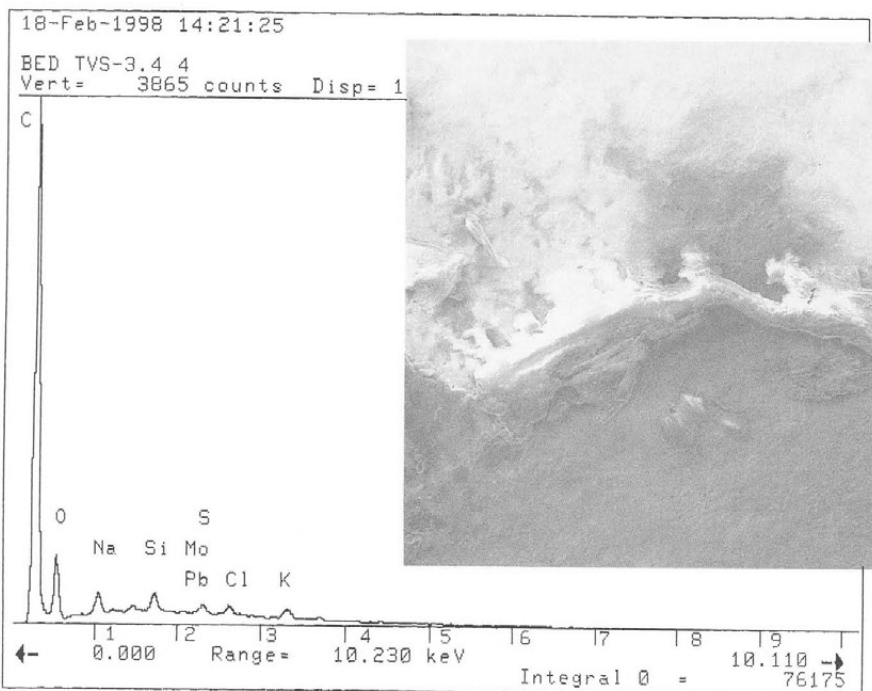


刃部EDX分析チャート

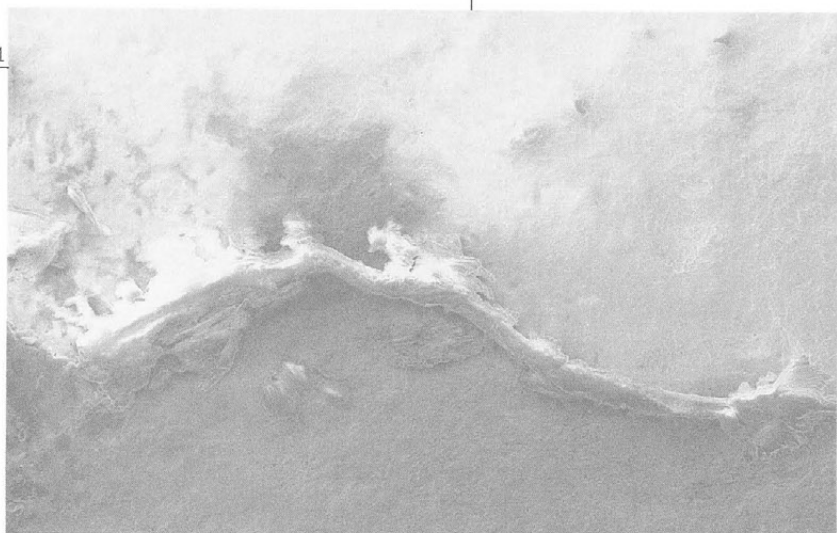


F ×1000

使用痕写真
 (F, 刃部摩耗光沢痕)

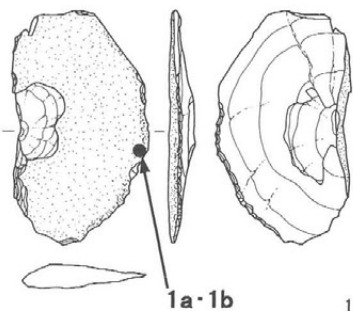


基部EDX分析チャート



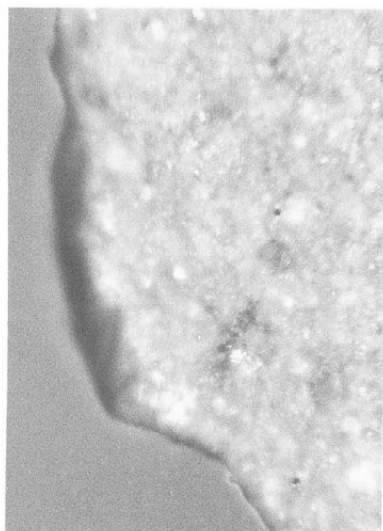
G ×200

(G, 基部附着物)



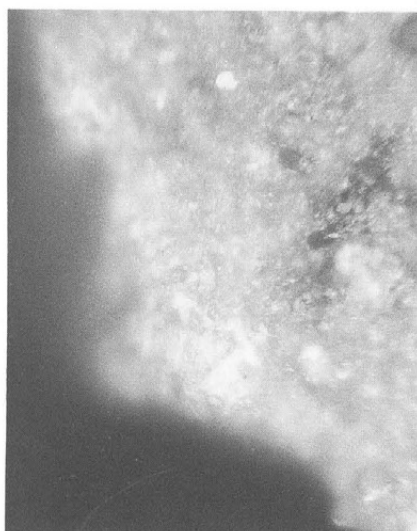
1a·1b

1



1 a

×25



1 b

×50

大形刃器IV2B類
 1, SD79
 図版268-16
 PL117-16
 (1a·b, 刃部摩耗線状痕)

使用痕写真

大形刃器IV1a類

IVS 3・4

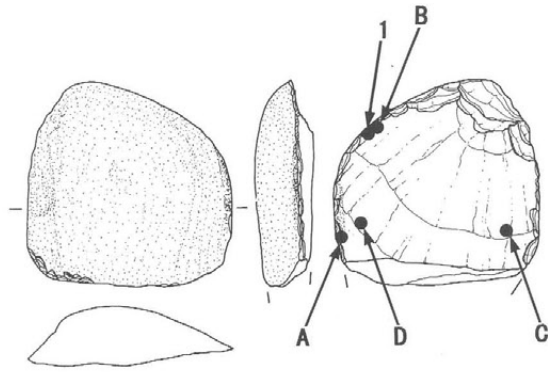
(写真A~D)

図版267-6

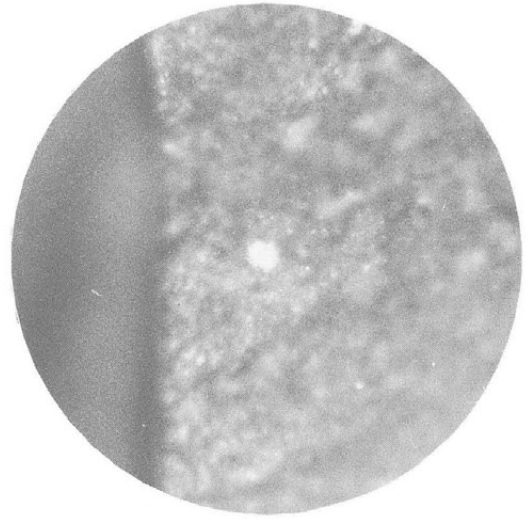
PL117-6

(A・B, 刃部摩耗光沢痕)

(C, 基部摩耗痕?)

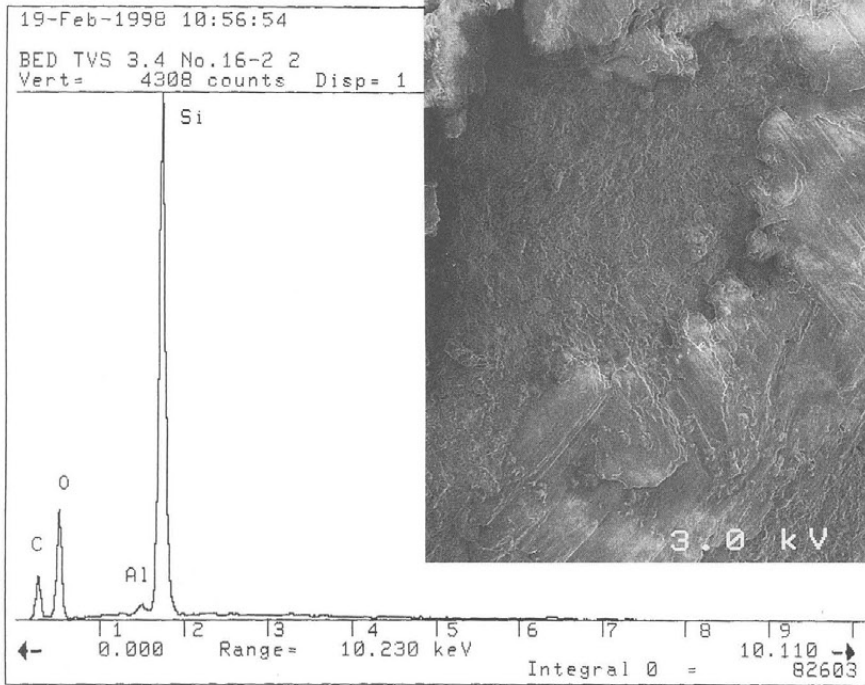


試料No 5

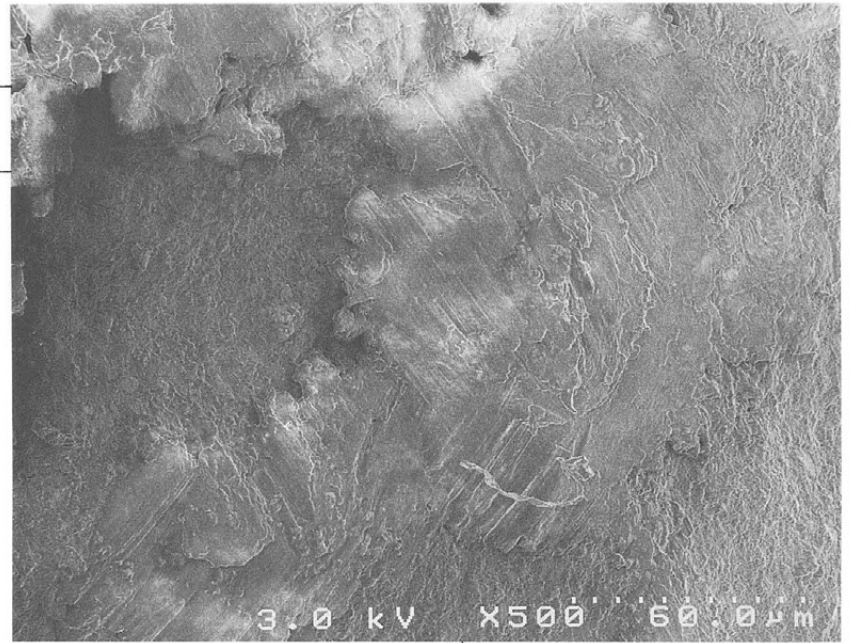


A

×25

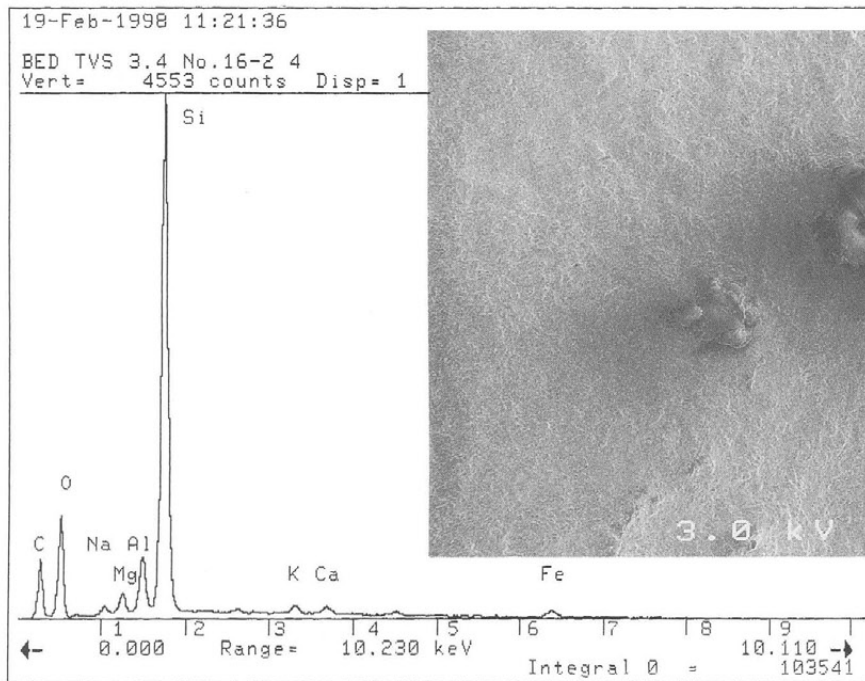


刃部EDX分析チャート

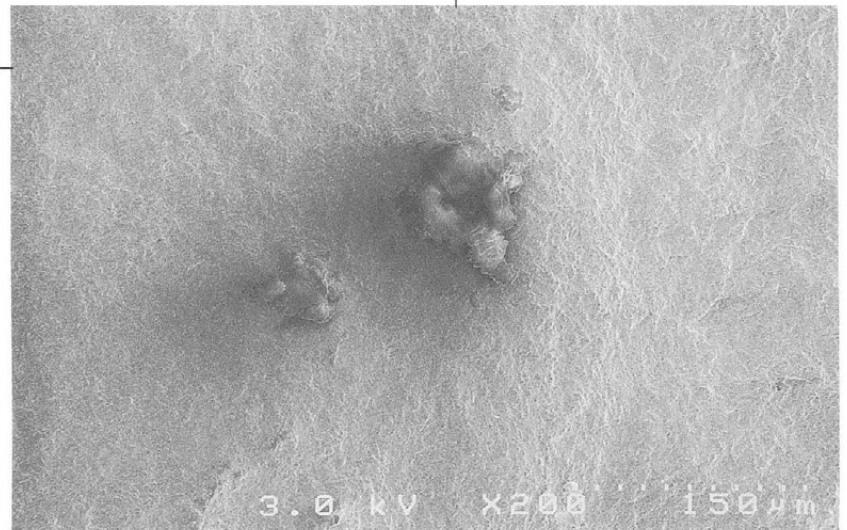


B

×500

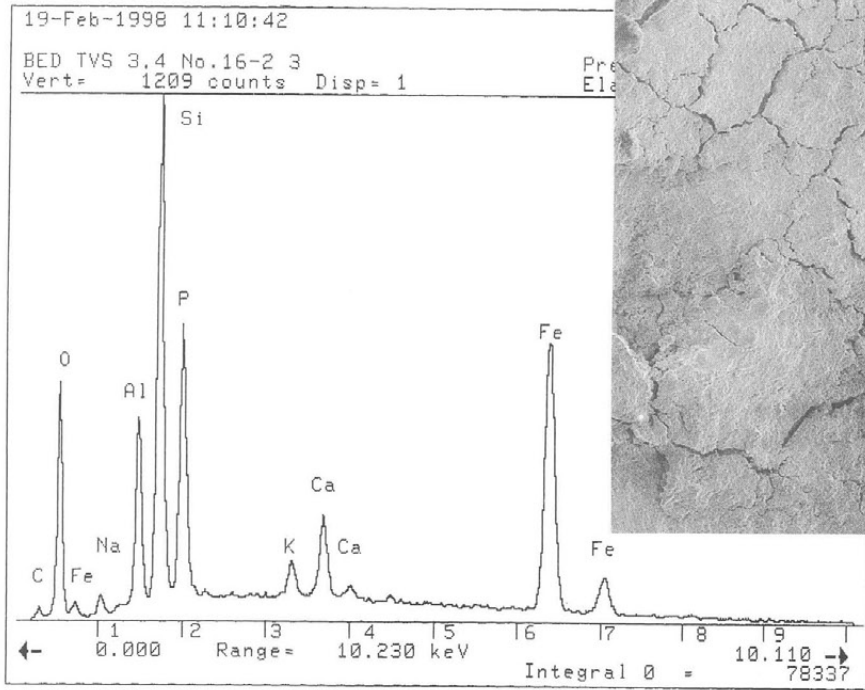


基部EDX分析チャート



C

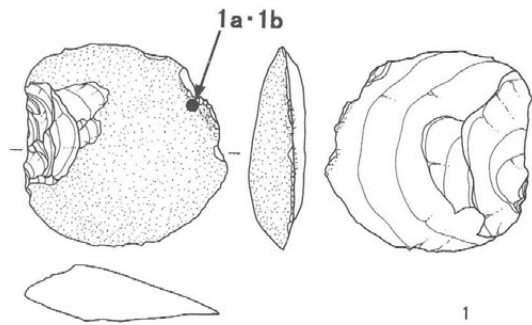
×200



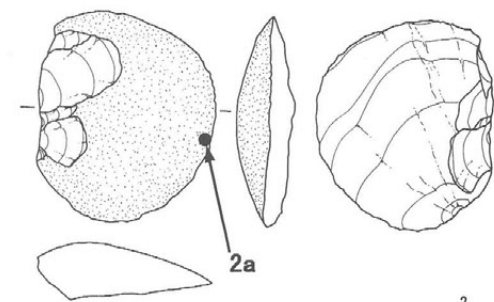
基部EDX分析チャート



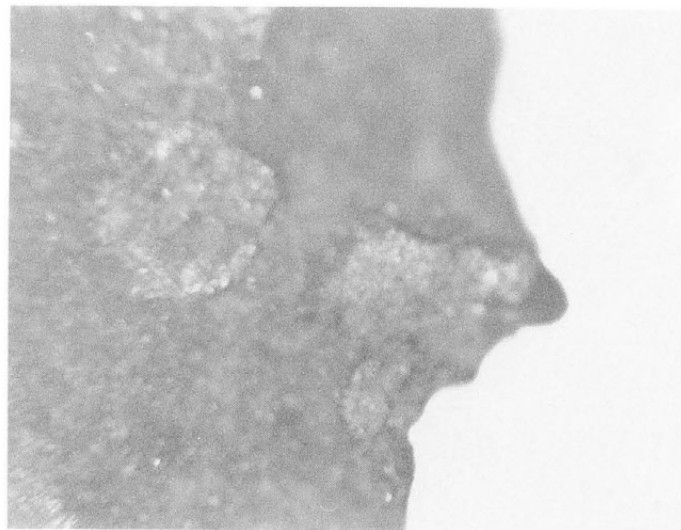
使用痕写真
 (D, 基部付着物)



1



2



1 a

x25

大形刃器IV2A類

1. SB159

図版268-10

PL117-10

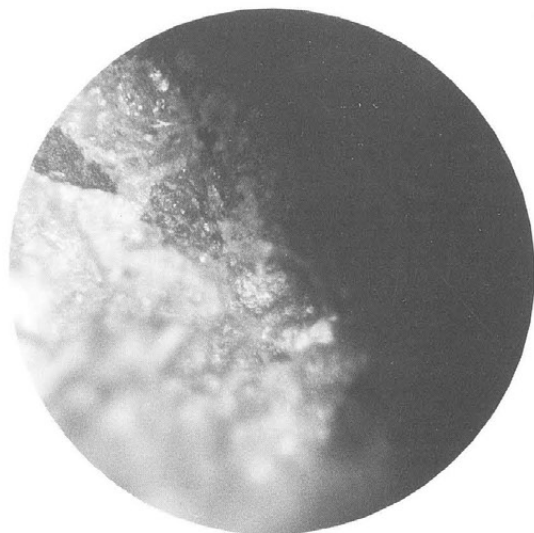
(1a·b, 刃部
 摩耗線状痕?)

2. IVS 8

図版268-9

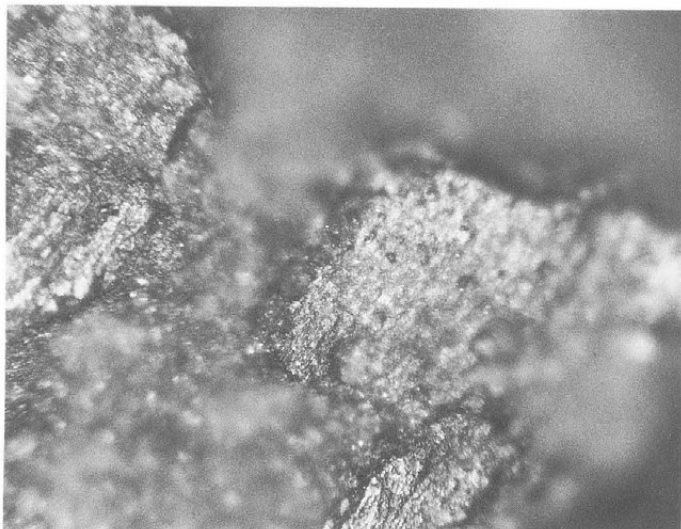
PL117-9

(2a, 埋没光沢痕)



2 a

x25



1 b

x50

使用痕写真

大形刃器II類特殊

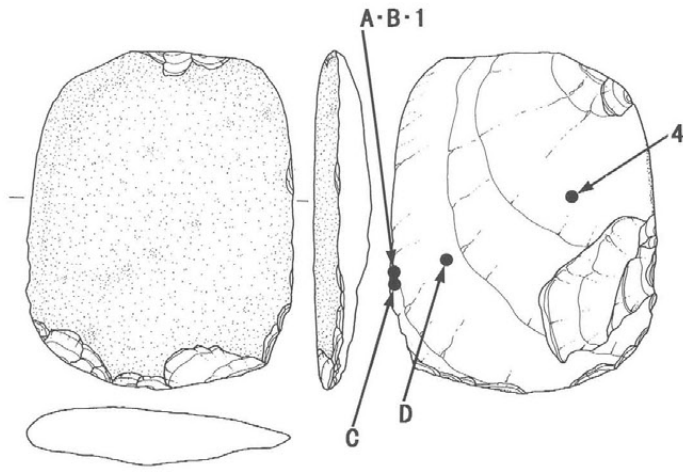
S B1681

図版268-11

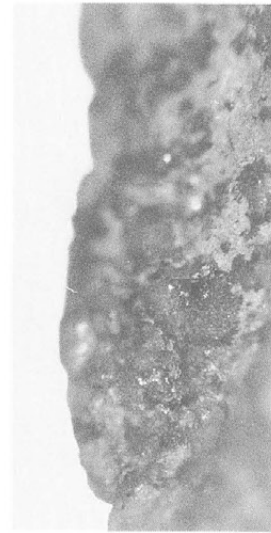
PL117-11

(A~C, 刃部
摩耗光沢痕)

(D, 基部付着物)



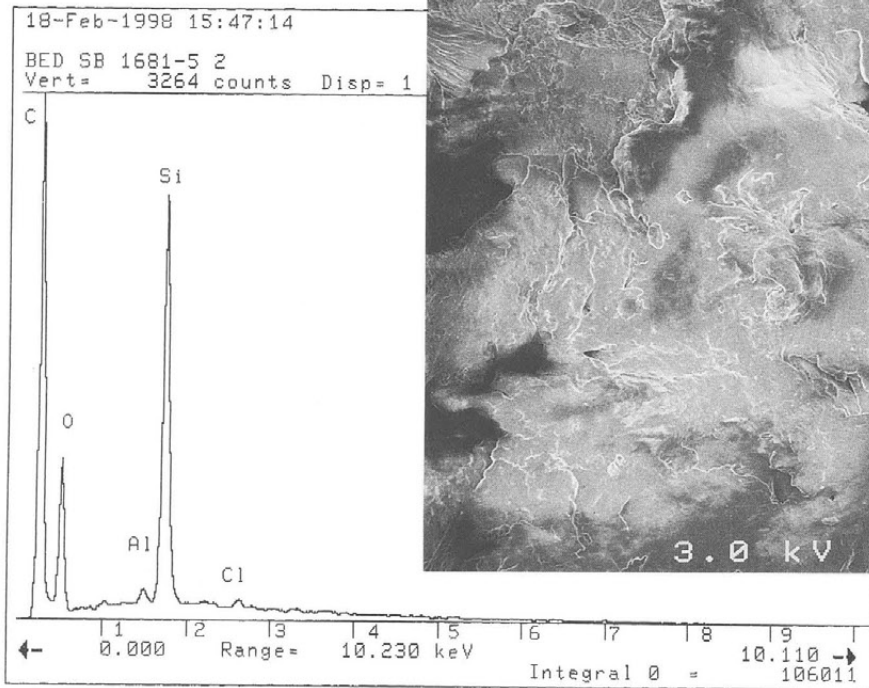
試料No 6



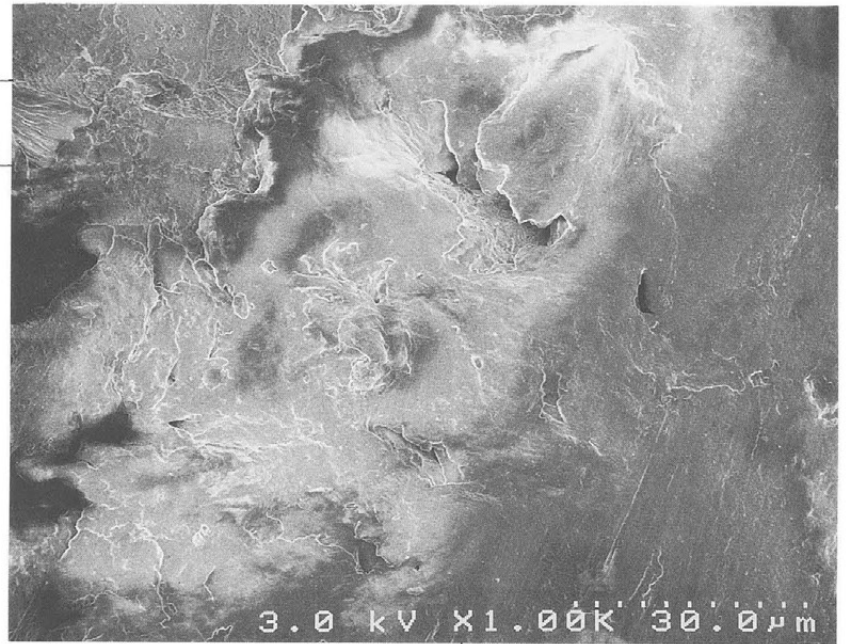
A ×25



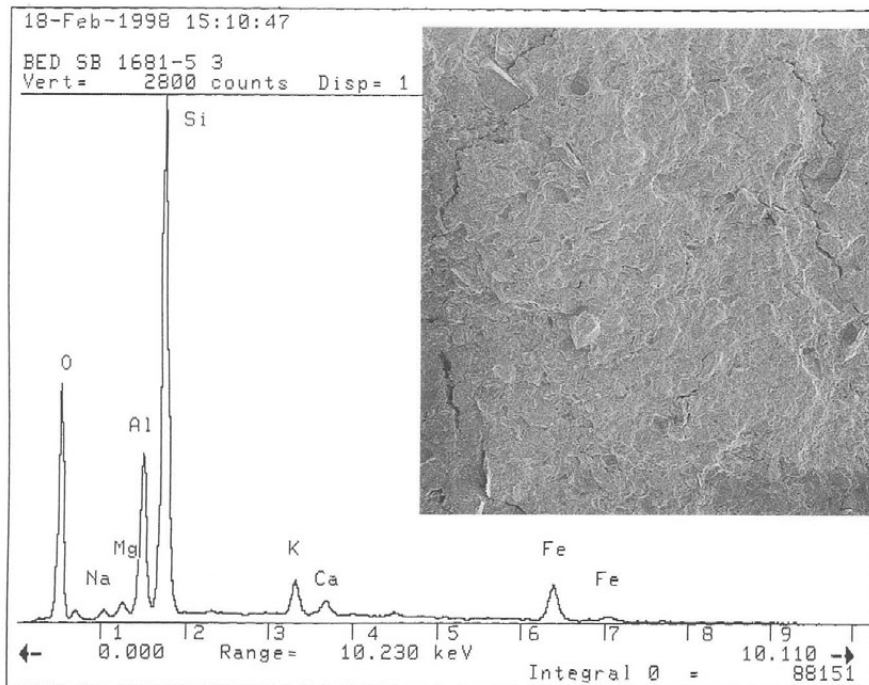
B ×50



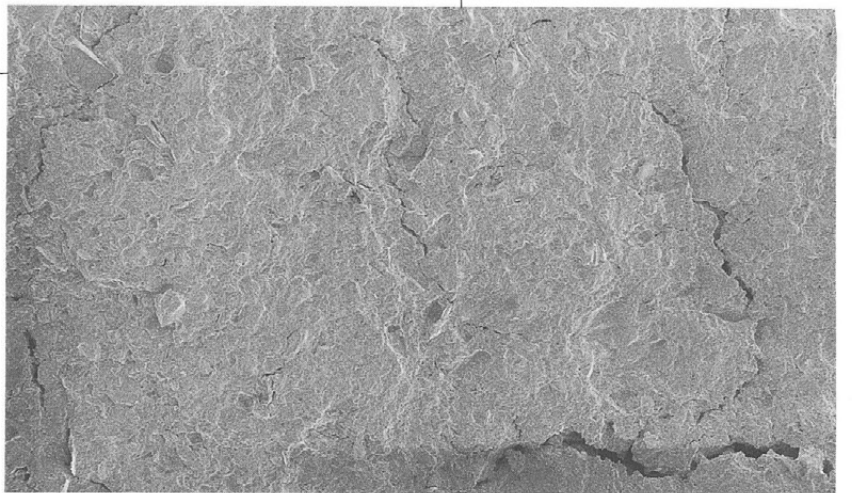
刃部EDX分析チャート



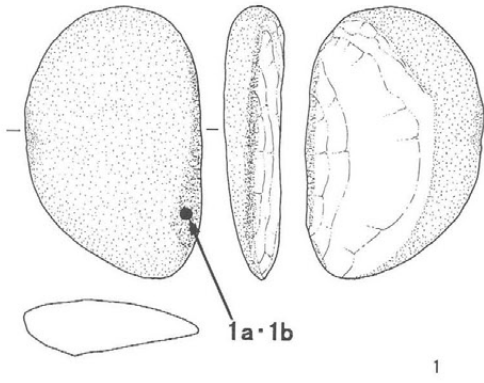
C ×1000



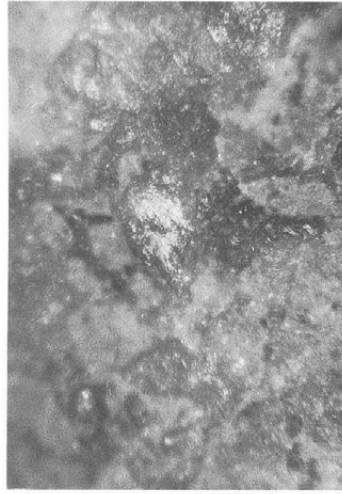
基部EDX分析チャート



D ×200

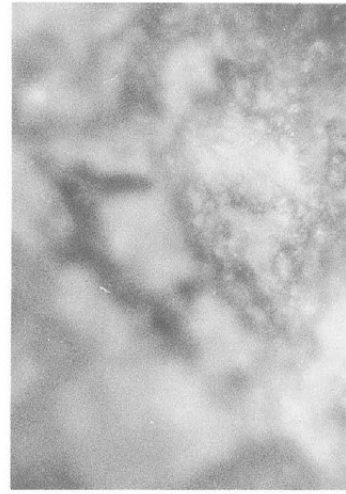


1



1 a

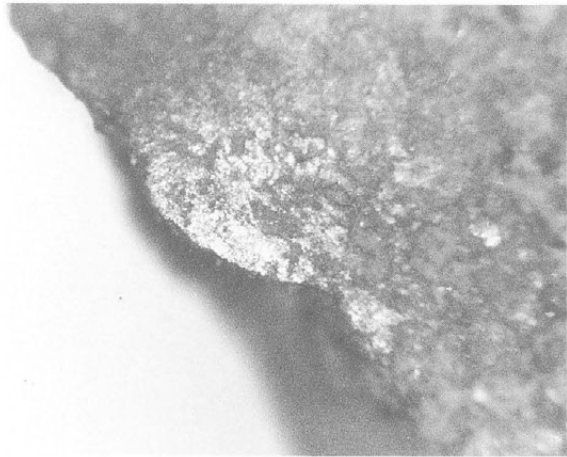
×25



1 b

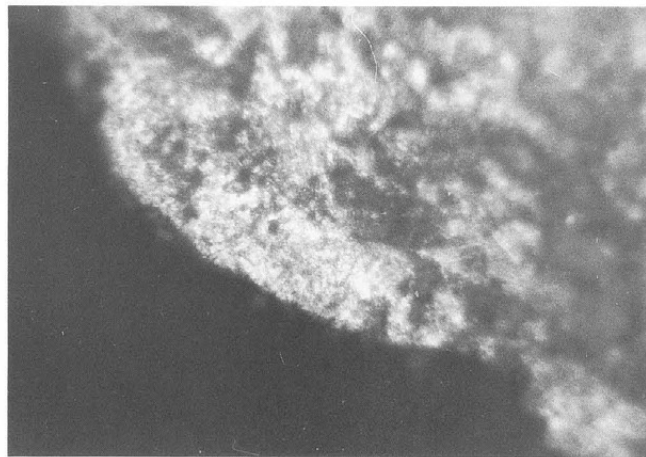
×50

使用痕写真
大形刃器III2C類
1. IVS16
図版268-12
P L117-12
(1a·b, 刃部
摩耗光沢痕)



2 a

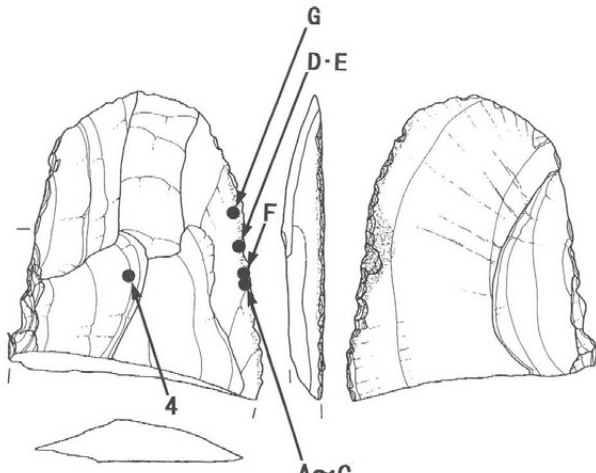
×25



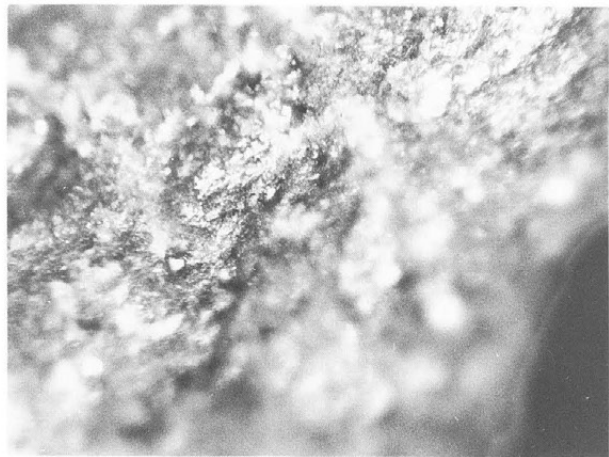
2 b

×50

2. SG3
図版-なし
P L-なし
(2a·b, 刃部摩耗痕)



試料No 8



A

×25

大形刃器III2B類
S B1488
(写真A~G)
図版268-13
P L117-13
(A, 刃部摩耗光沢痕)
(B·C, 刃部
摩耗線状痕)



B

×25

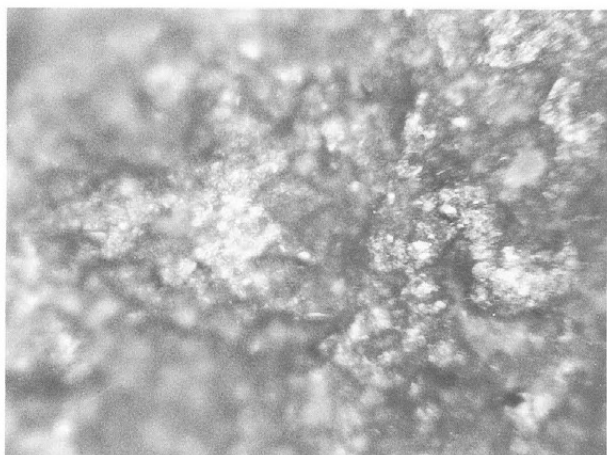


C

×50

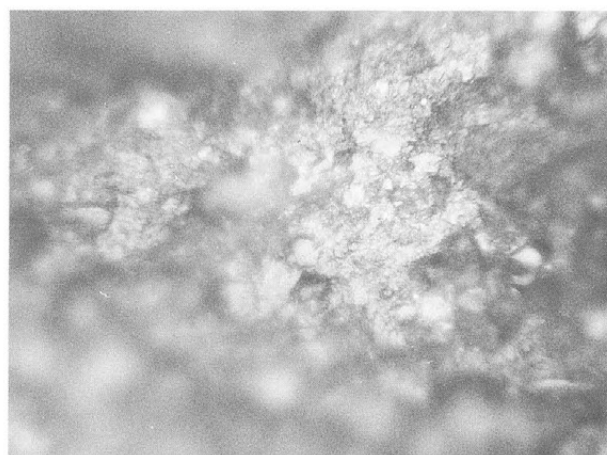
使用痕写真

(D~G, 刃部
摩耗光沢痕)



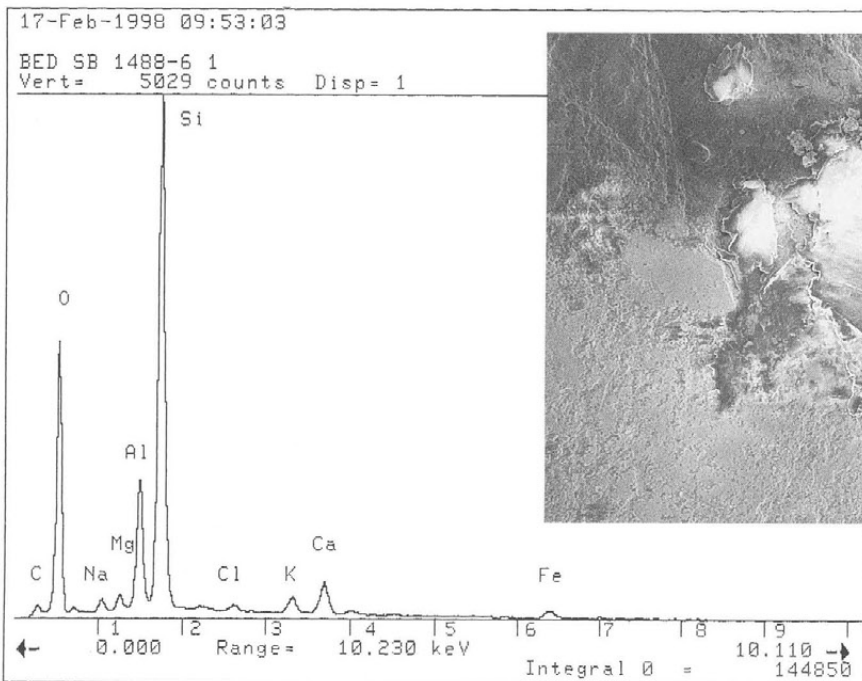
D

x25



E

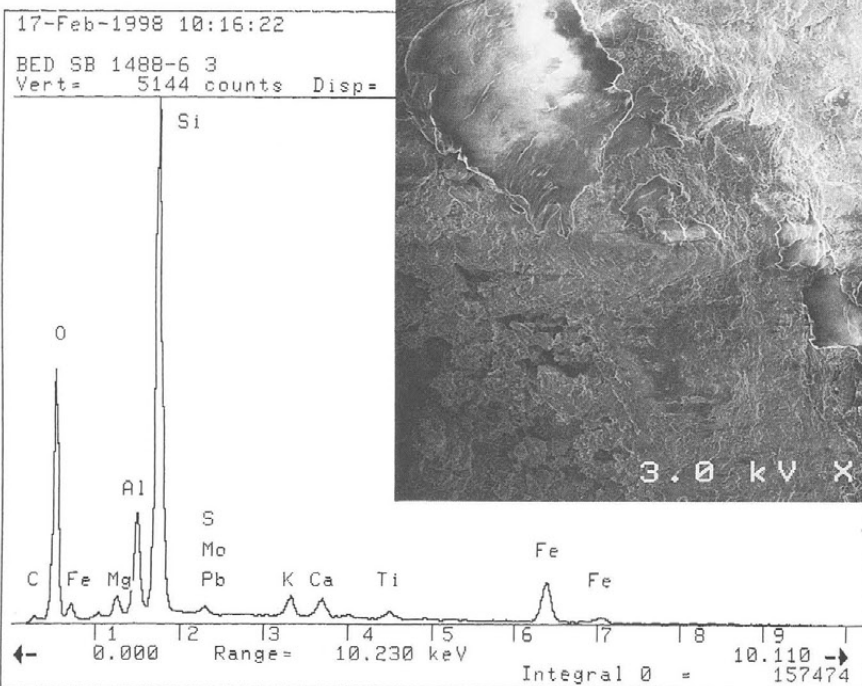
x50



刃部EDX分析チャート

F

x500

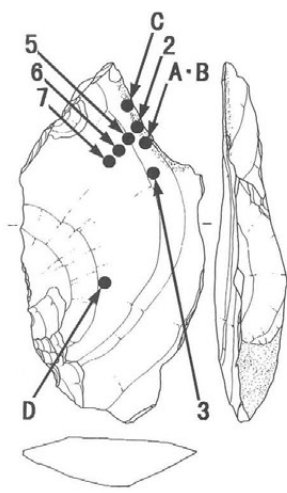


刃部EDX分析チャート

G

x1000





試料No 7



A

×25



B

×50

使用痕写真

大形刃器 I 1b類

IVS 8

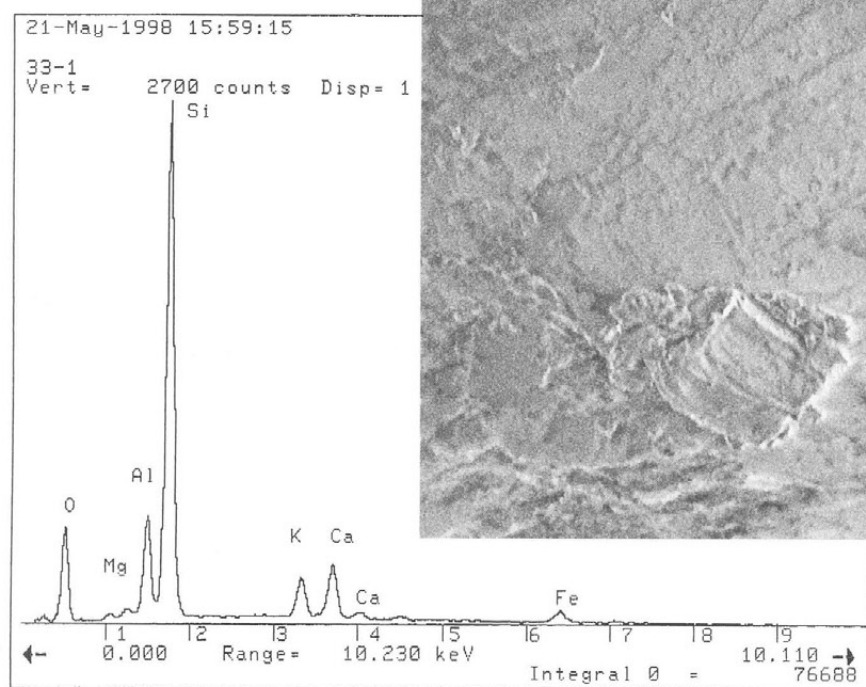
図版269-17

PL117-17

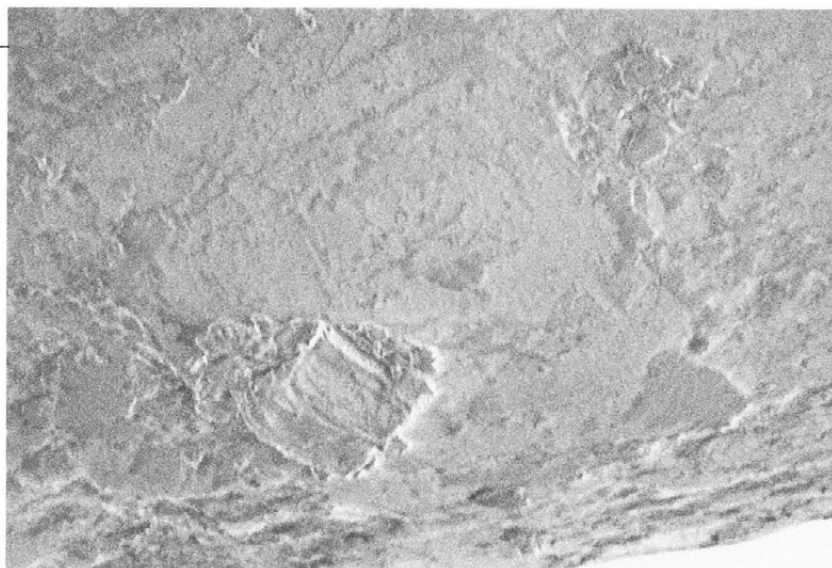
(A・B, 刃部摩耗光沢痕)

(C, 刃部摩耗痕)

(D, 基部剝離面)

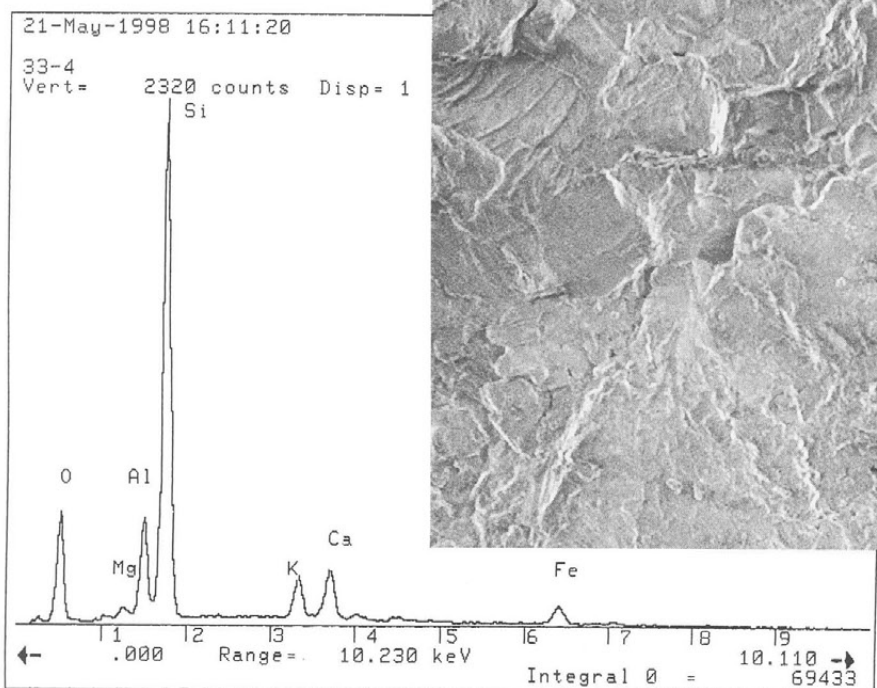


刃部EDX分析チャート

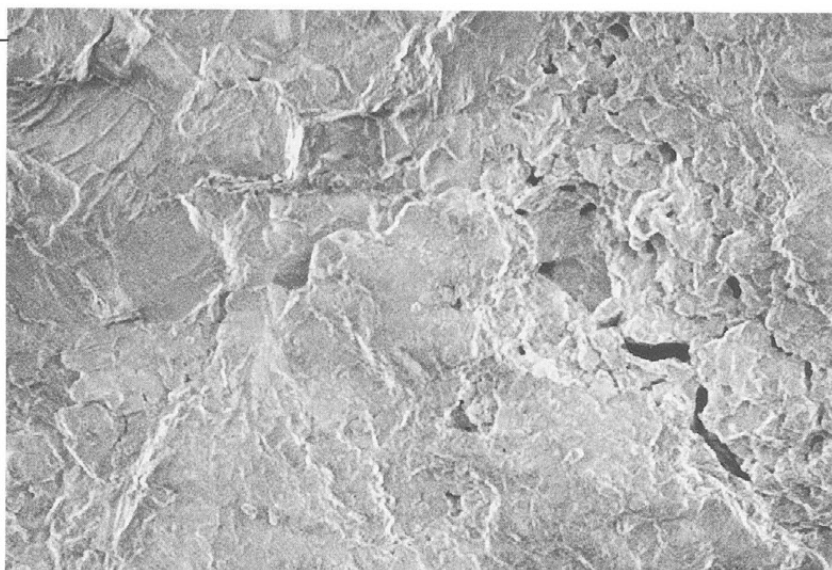


C

×1000



基部EDX分析チャート



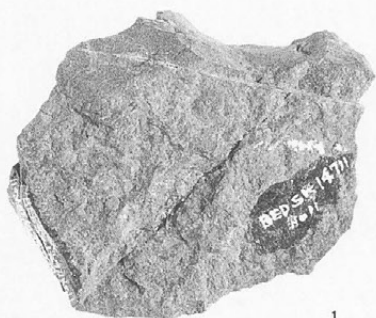
D

×1000

磨製石包丁

- 1. SK14711
- 2. SB837
- 3. SB1482
- 4. SK14711
- 5. SB1484

(1 : 1)



1



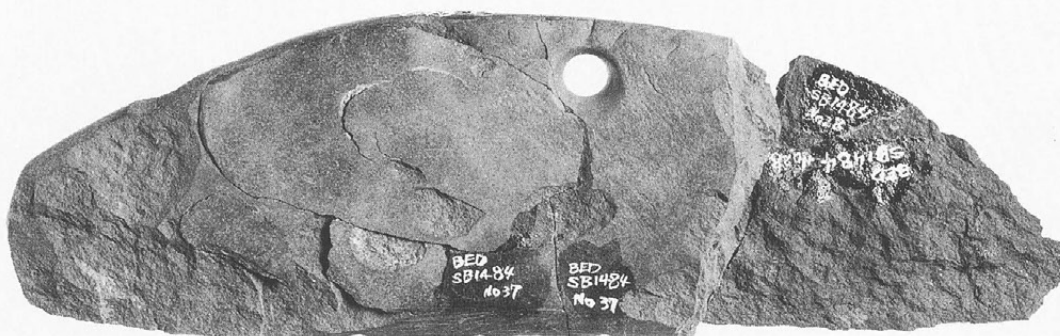
2



3



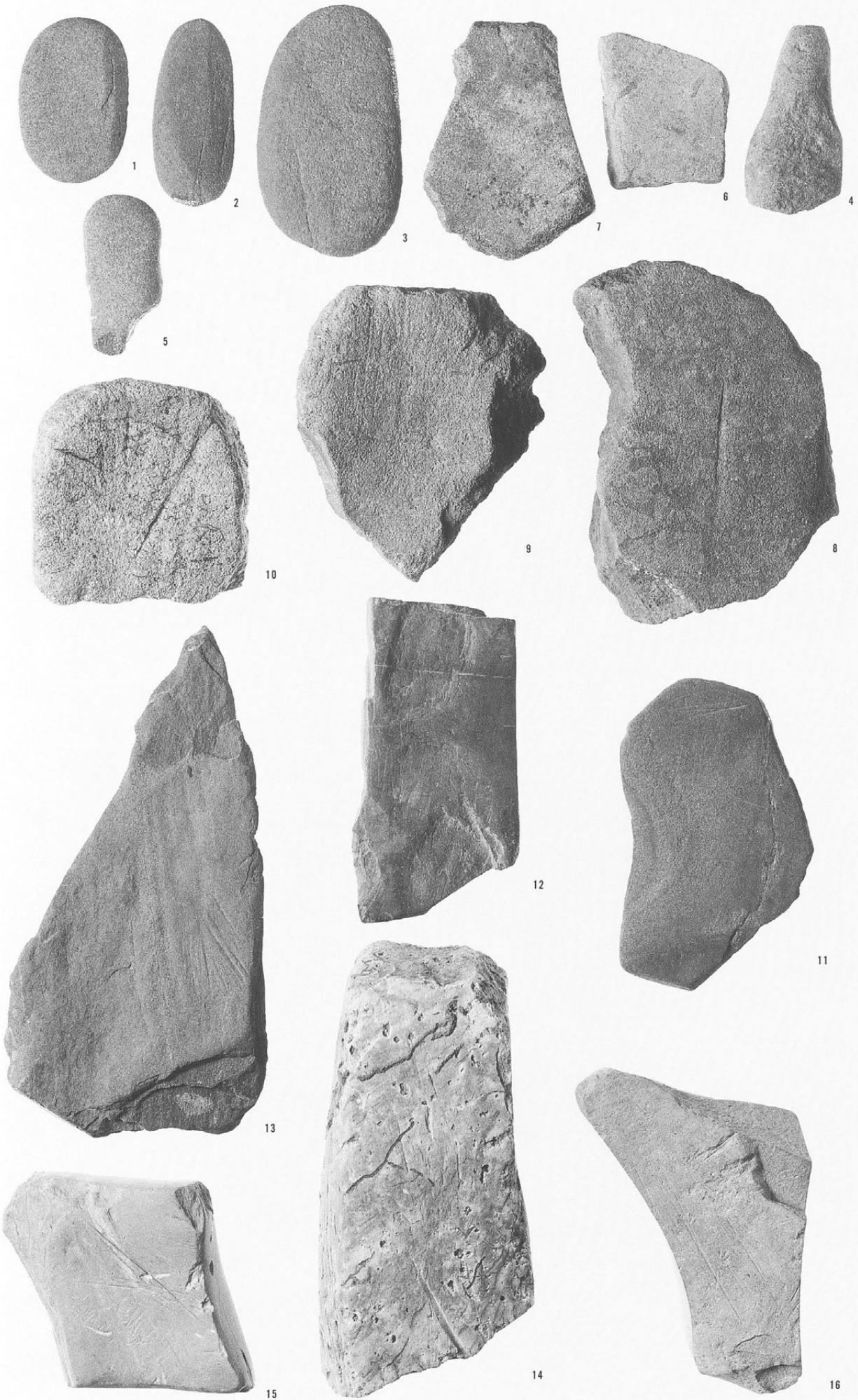
4



5

砥石

- 1. SG 3
 - 2. SB459
 - 3. SB1469
 - 4. IVN24
 - 5. IVN19
 - 6. SK14708
 - 7. IVW 6
 - 8. SB1473
 - 9. SB1473
 - 10. SB172
 - 11. S G 3
 - 12. SB355
 - 13. SB318
 - 14. SB227
 - 15. SD122
 - 16. SB1654
- (1 : 2)



砥石

- 17. SB371
- 18. SG 2
- 19. SB1207
- 20. SB1016
- 21. SB138
- 22. SB280
- 23. IV11
- 24. Z
- 25. Z
- 26. SB282
- 27. SB215
- 28. SB197
- 29. SB486
- 30. SB758
- 31. SB1144
- 32. SB507
- 33. SB1427
- 34. SK3603
- 35. SB284
- 36. SB216
- 37. SB361
- 38. SB316
- 39. SK16267
- 40. SB158
- 41. SB1608

(1 : 2)



34

36

37

38

39

40

41

22

24

25

23

26

27

29

28

17

18

19

20

21

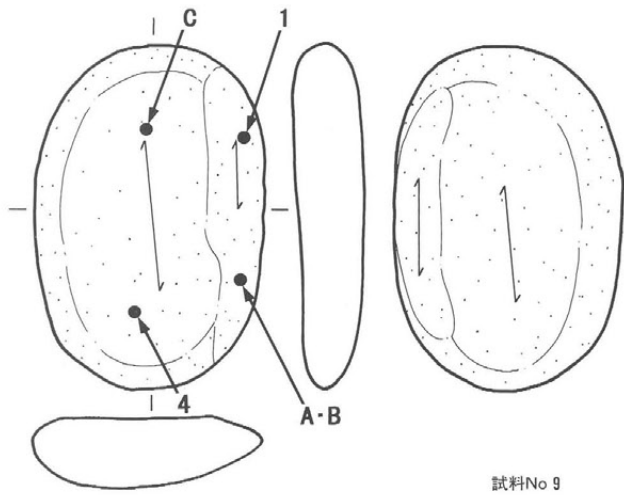
30

31

32

33

35



試料No 9



A

X3.3

使用痕写真

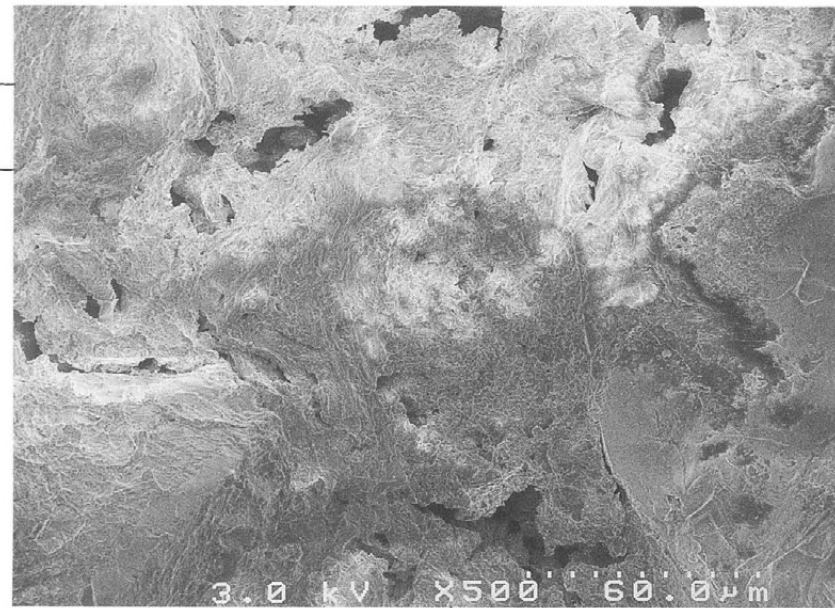
砥石

SG 3

図版271-1

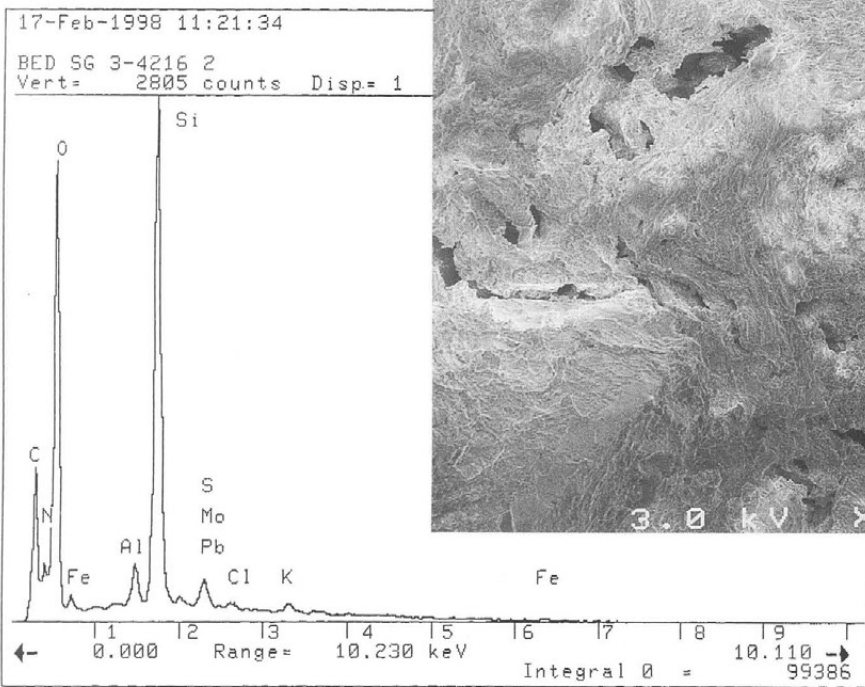
PL128-1

(A~C, 砥面摩耗部)

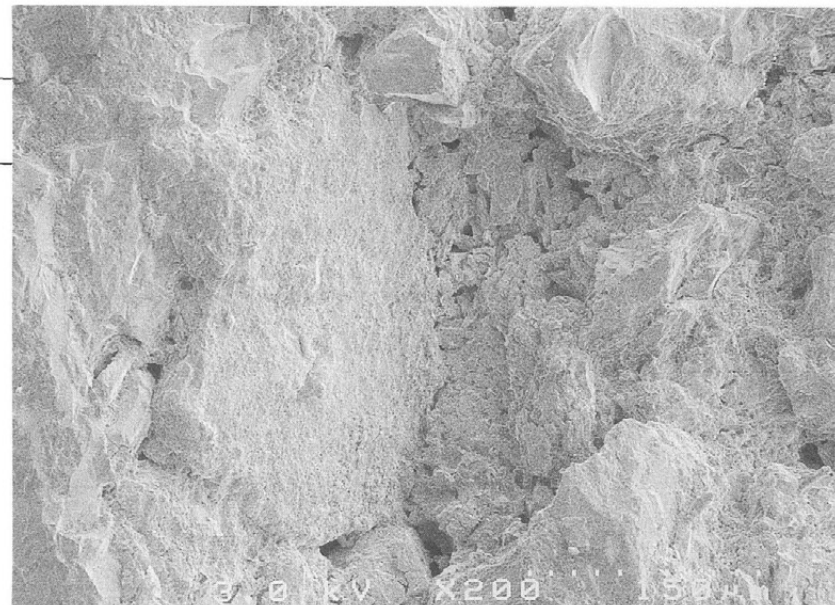


B

X500

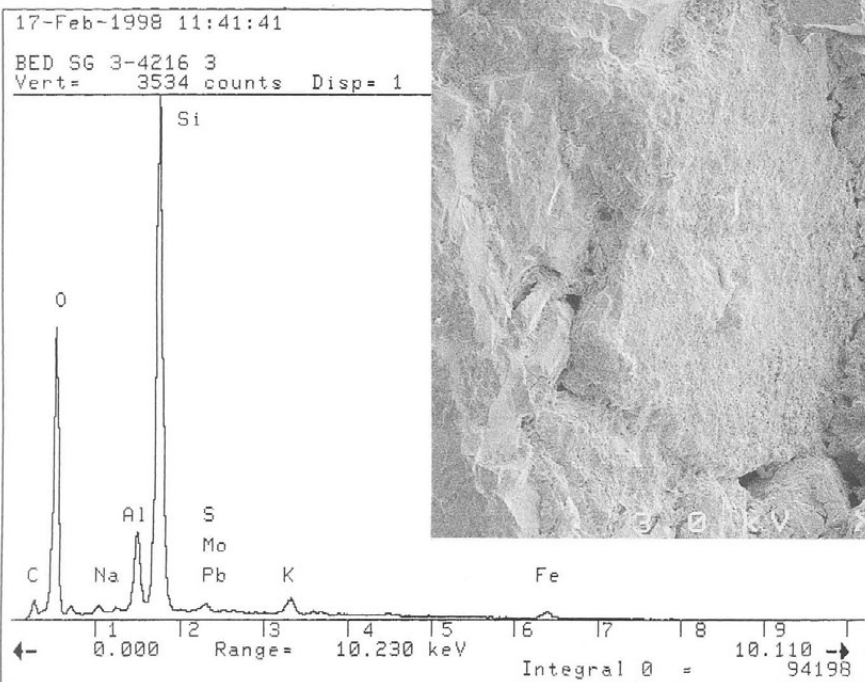


砥面EDX分析チャート



C

X200



砥面EDX分析チャート

使用痕写真

砥石

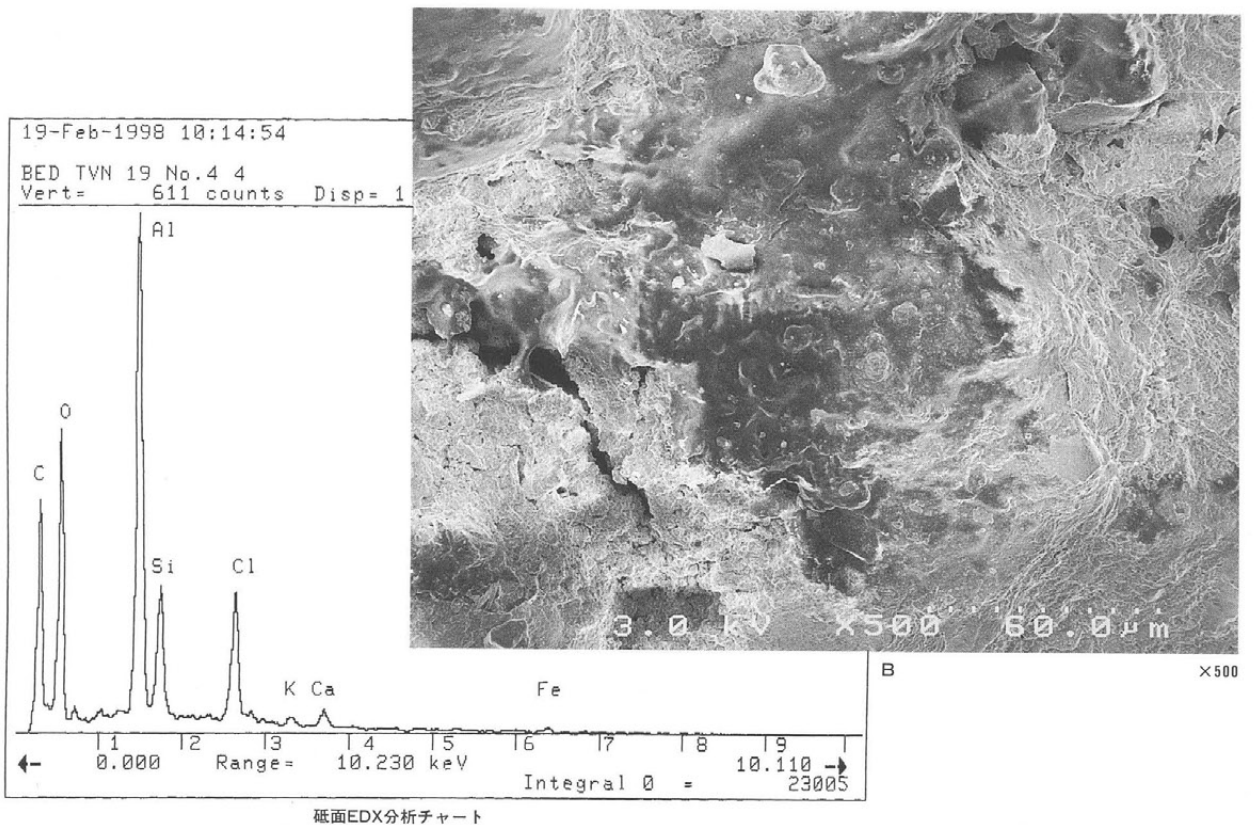
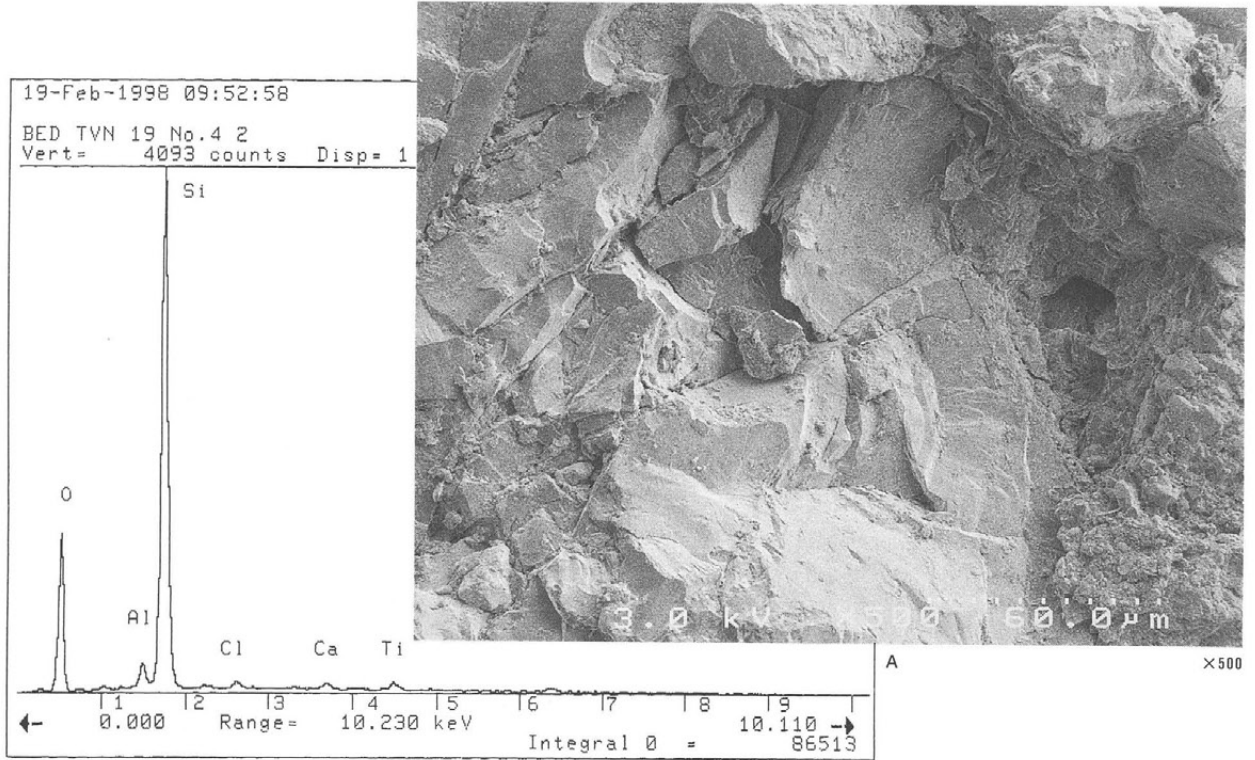
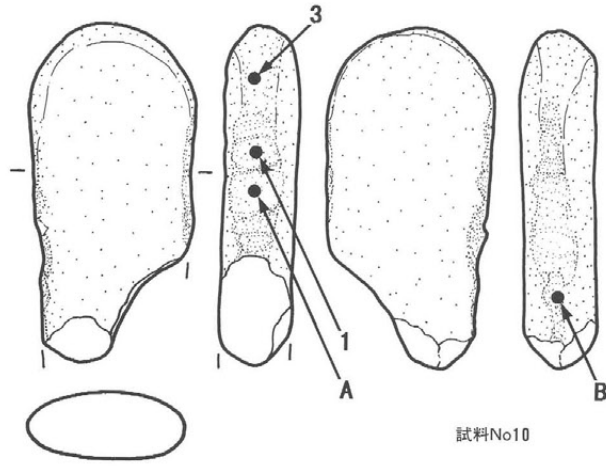
IVN19

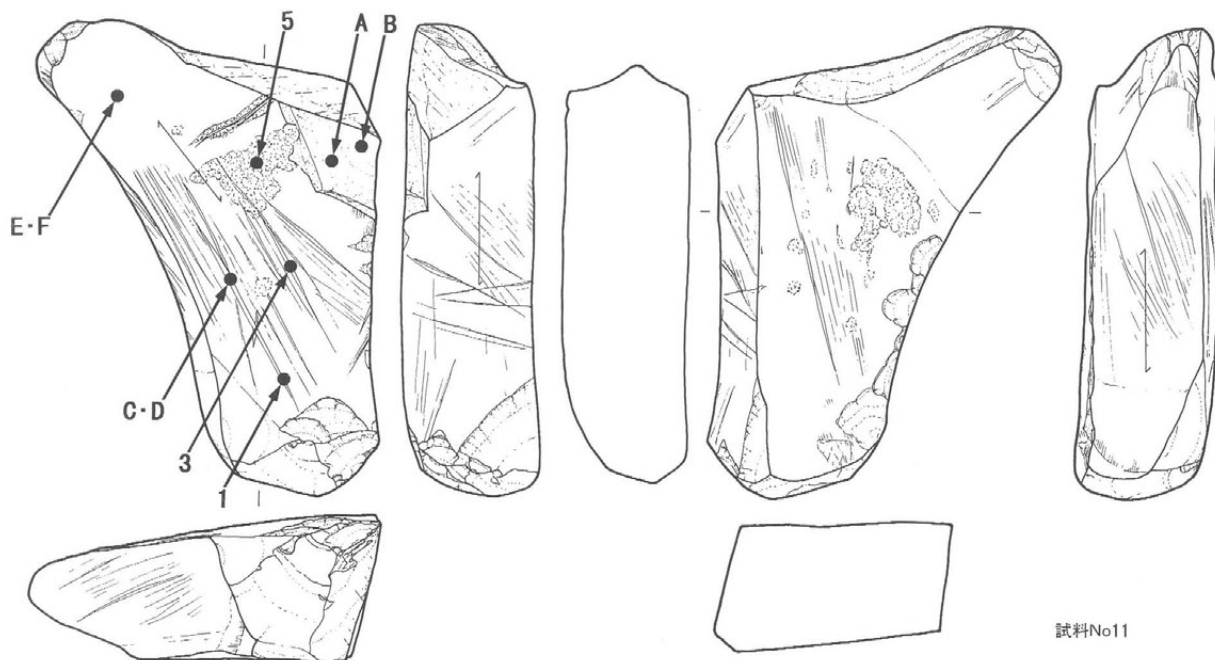
図版271-5

PL128-5

(A, 自然面)

(B, 砥面付着物)





使用痕写真

砥石

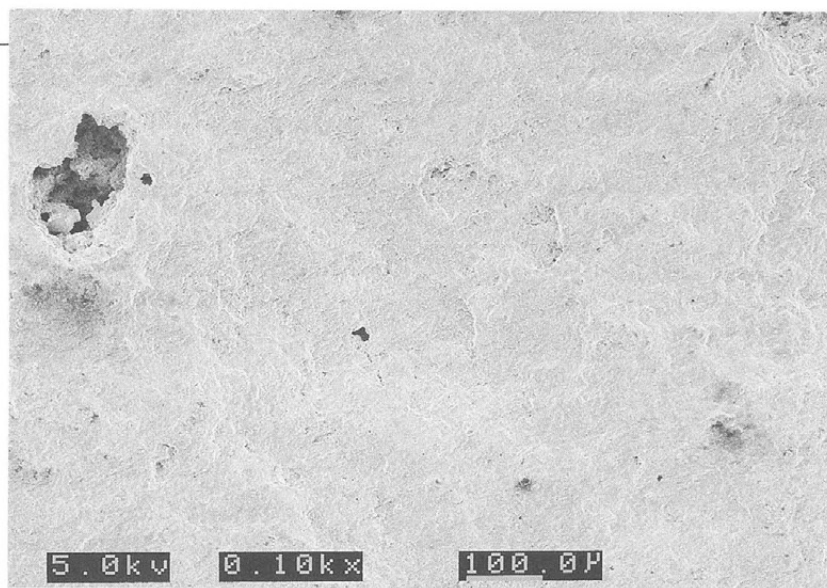
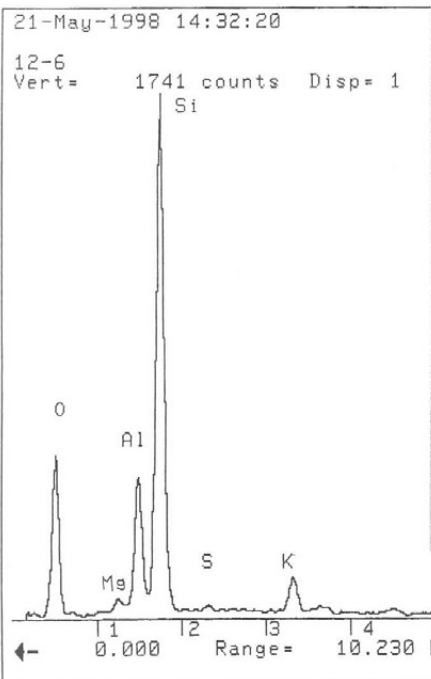
S B1654

(写真A~F)

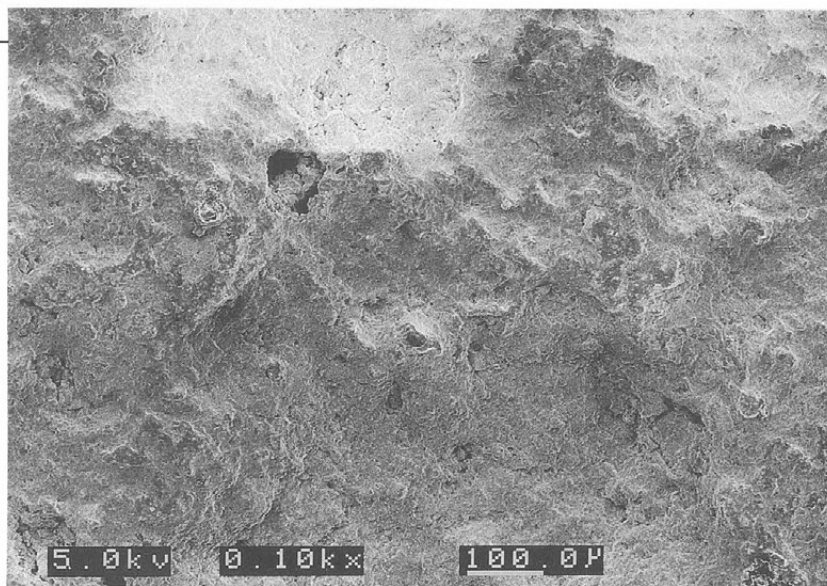
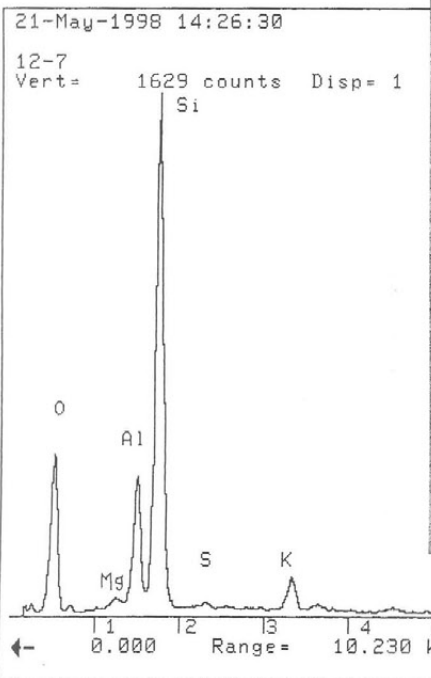
図版272-16

PL128-16

(A・B, 基部剥離面)



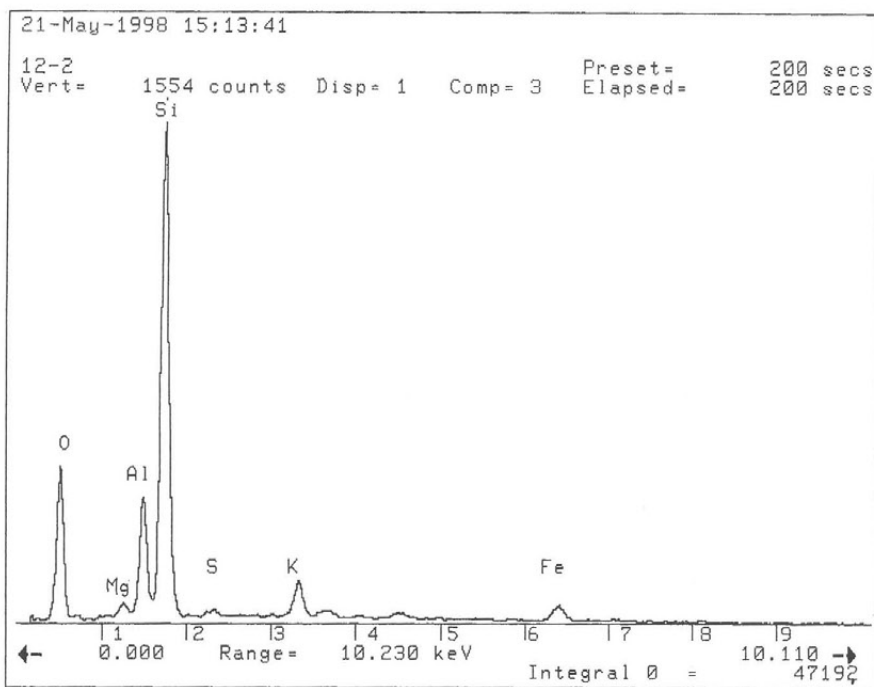
A ×100



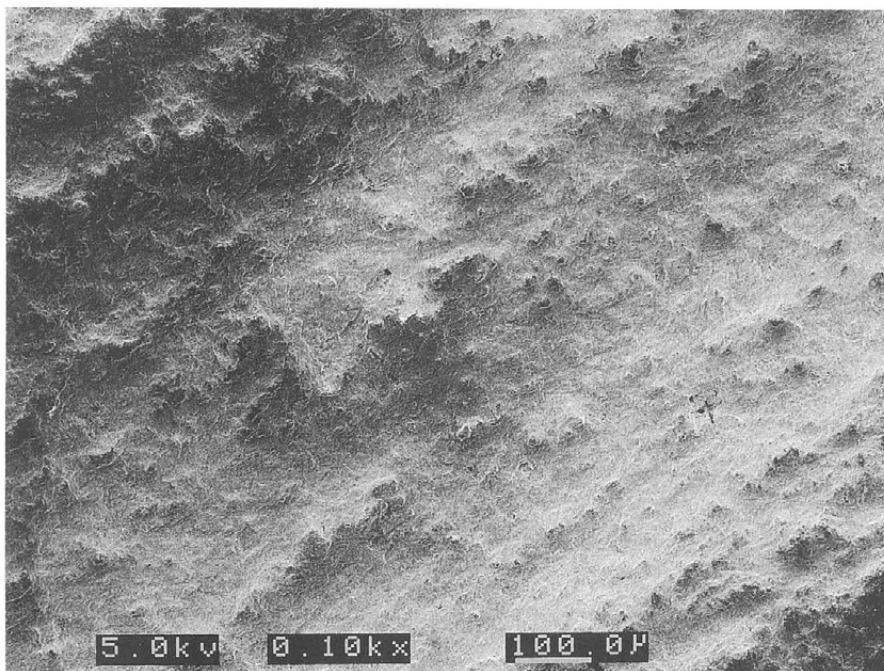
B ×100

使用痕写真

(C・D, 砥面溝内摩耗部)

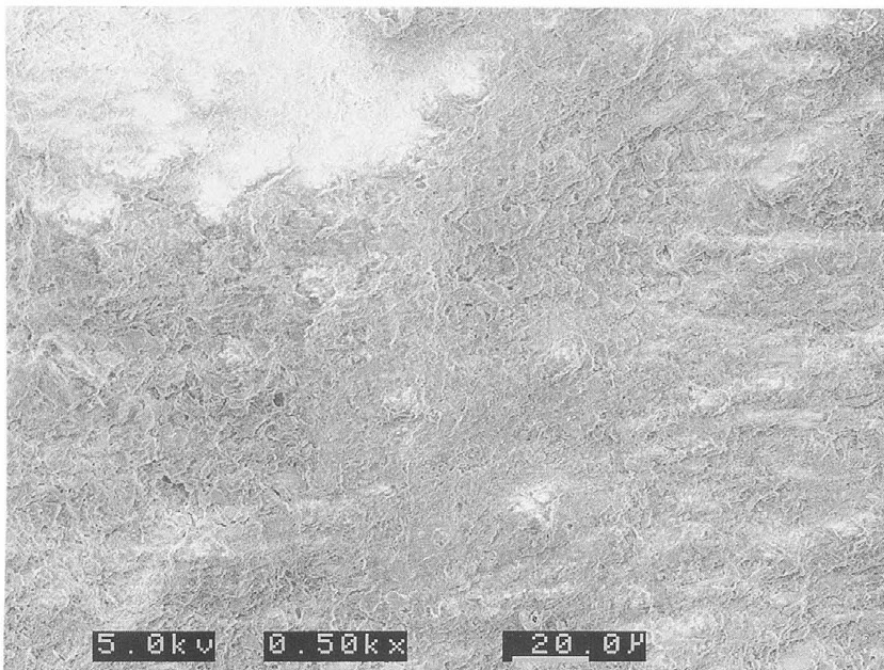


砥面溝内EDX分析チャート



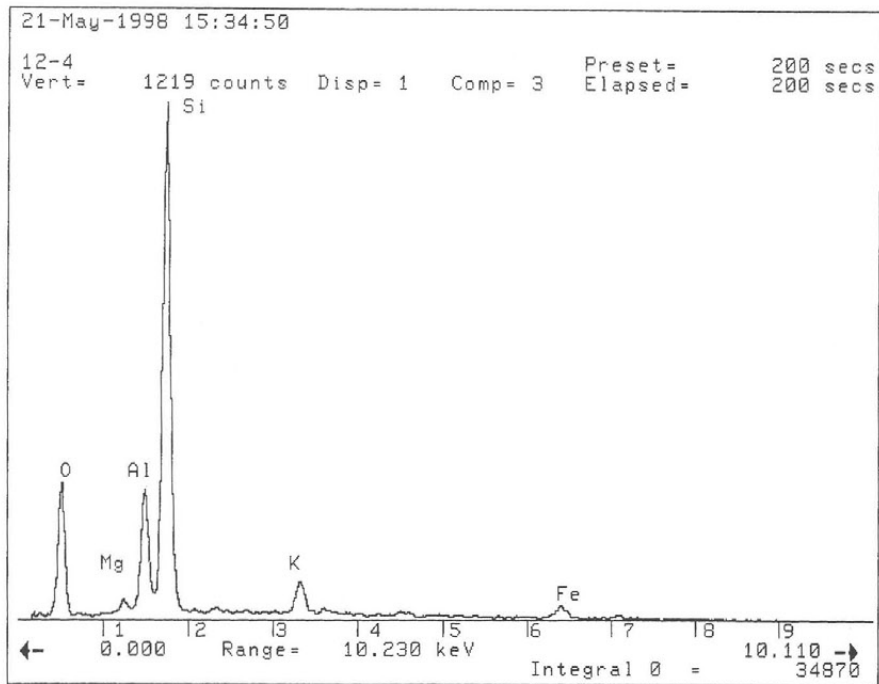
C

×100



D

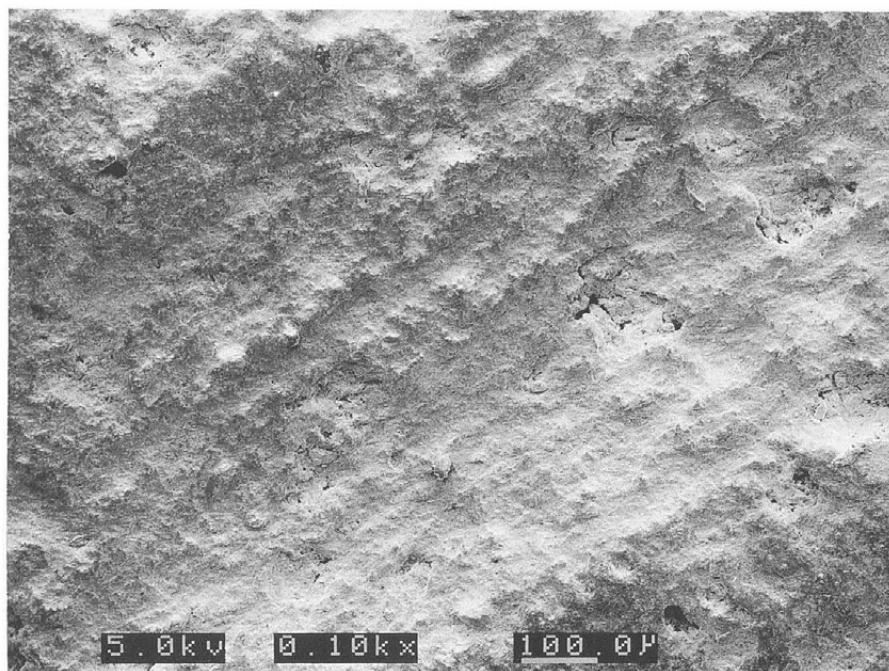
×500



砥面摩耗部EDX分析チャート

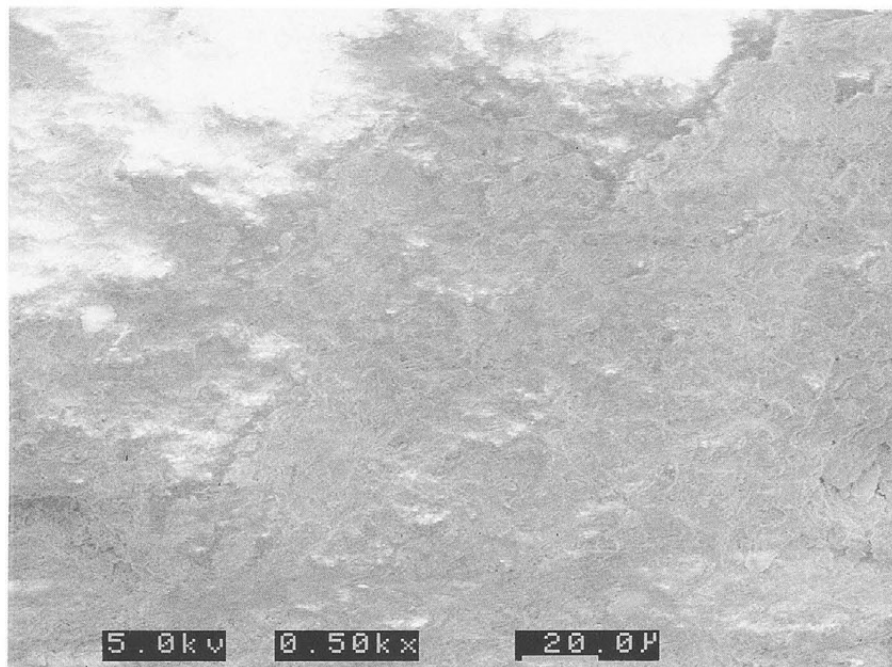
使用痕写真

(E・F, 砥面摩耗部)



E

X100



F

X500